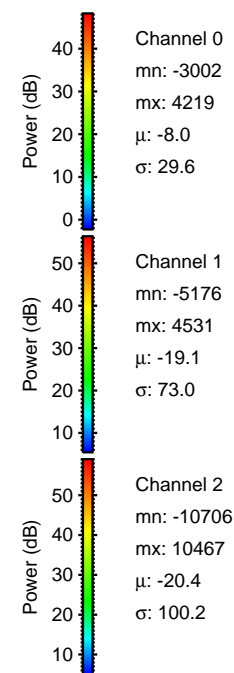
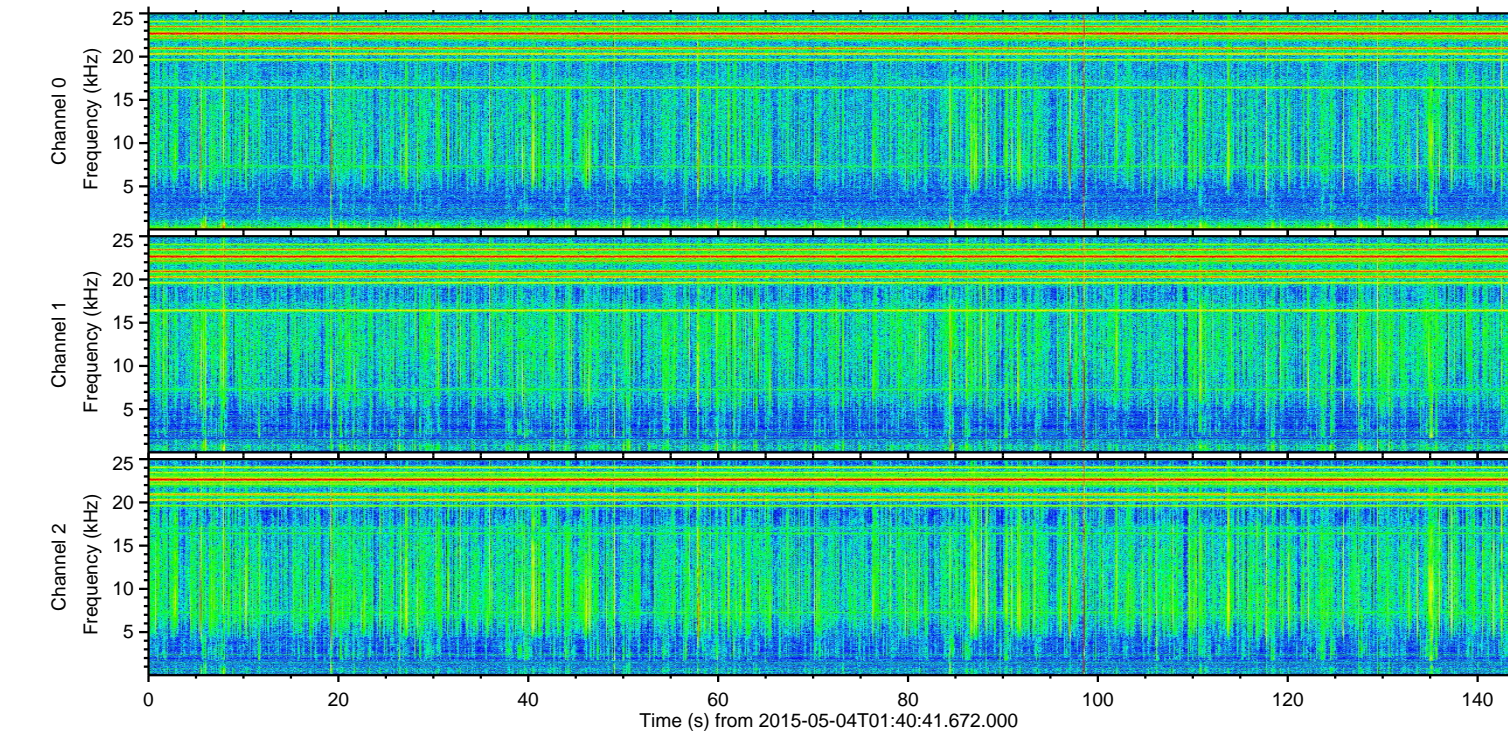
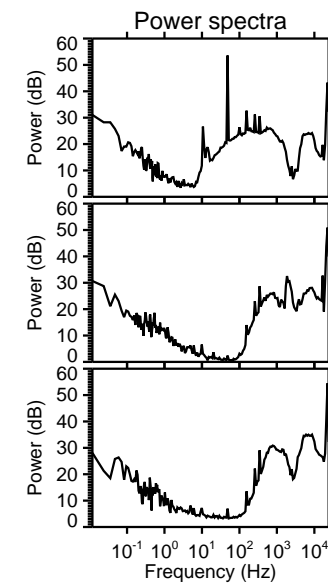
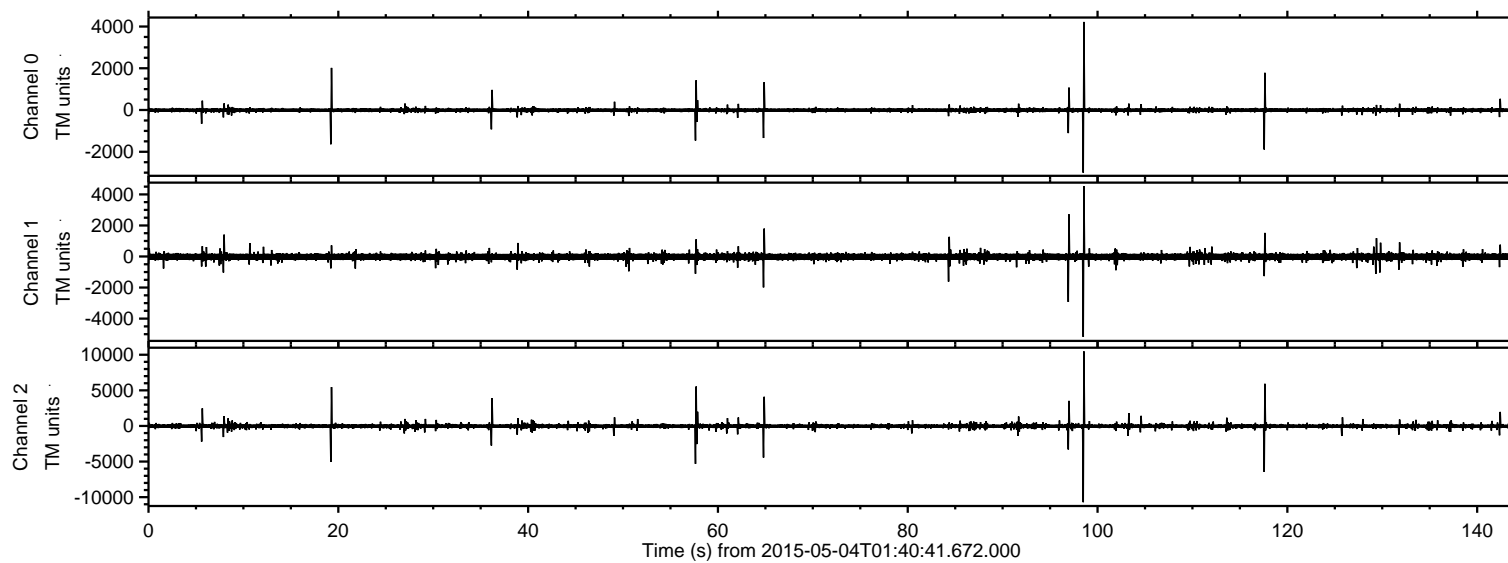
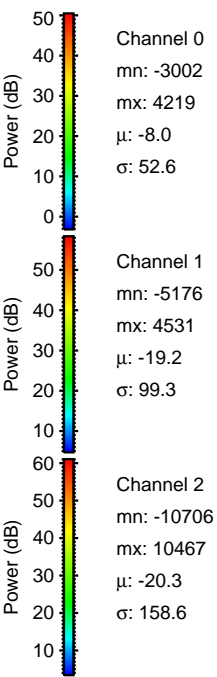
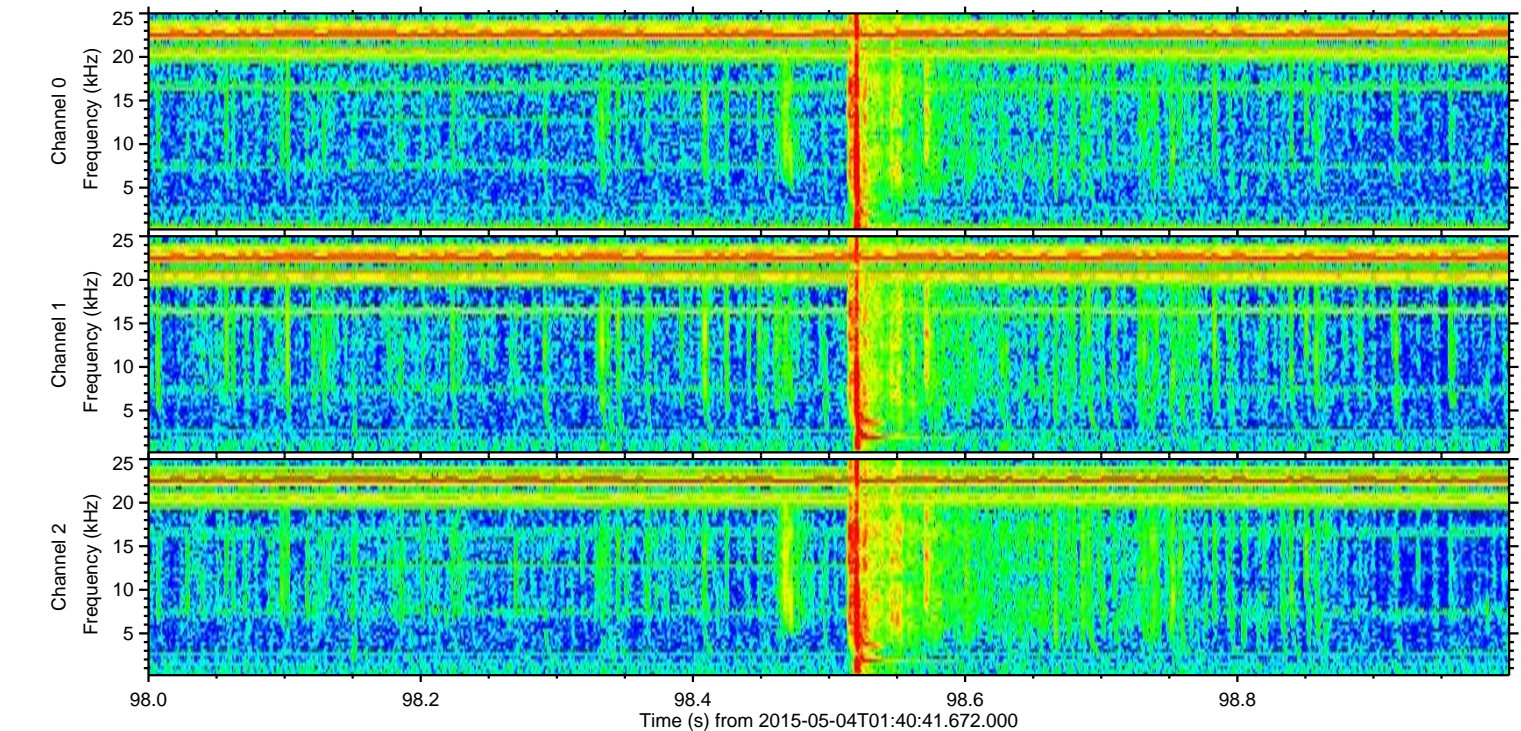
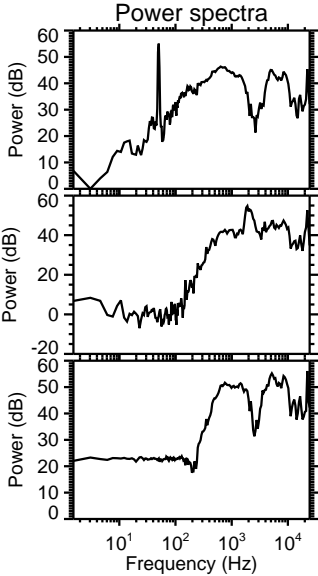
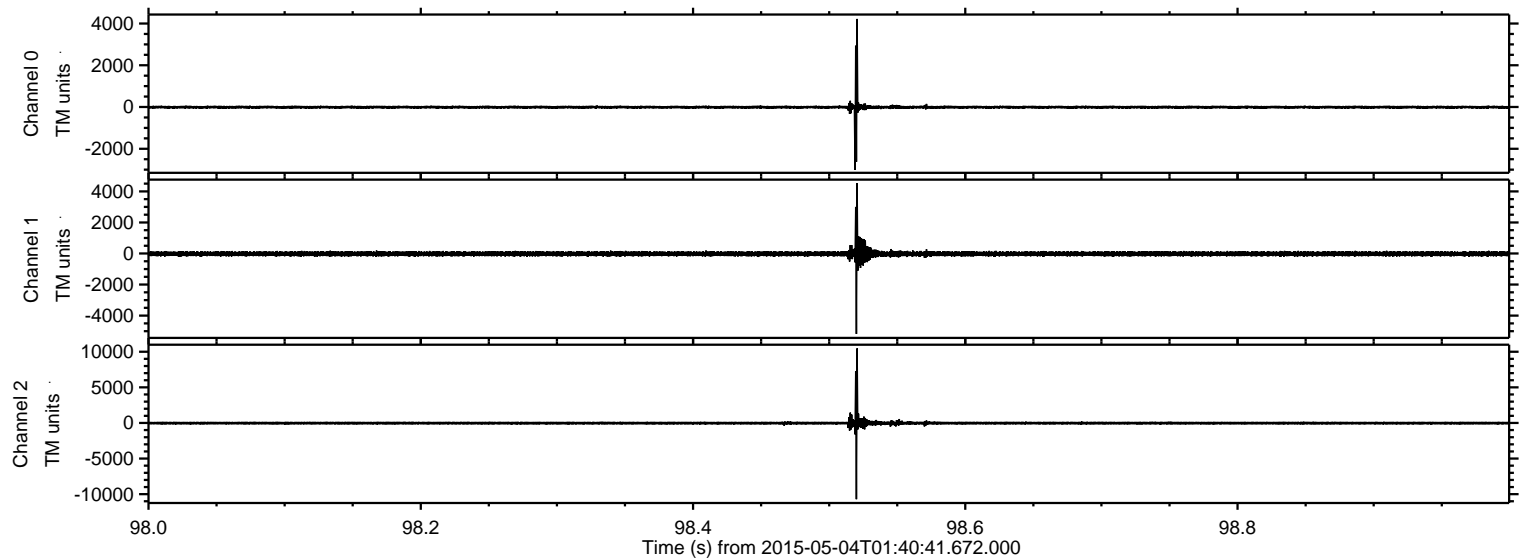


ELMAVAN 3D WAVEFORMS (Measured data sampled at 50 kHz) 49781 packets of 144 samples from 2015-05-04T01:40:41.672.000.

Processed Mon May 4 03:48:09 2015 by ELM ver.2012-10-06 from 001__elm20150504_014040__dat00.bin

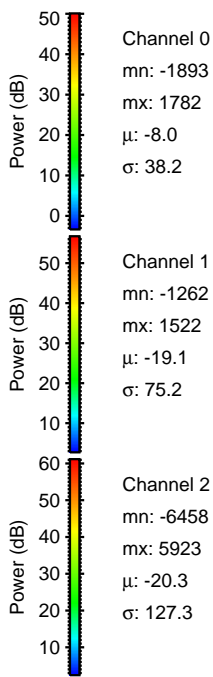
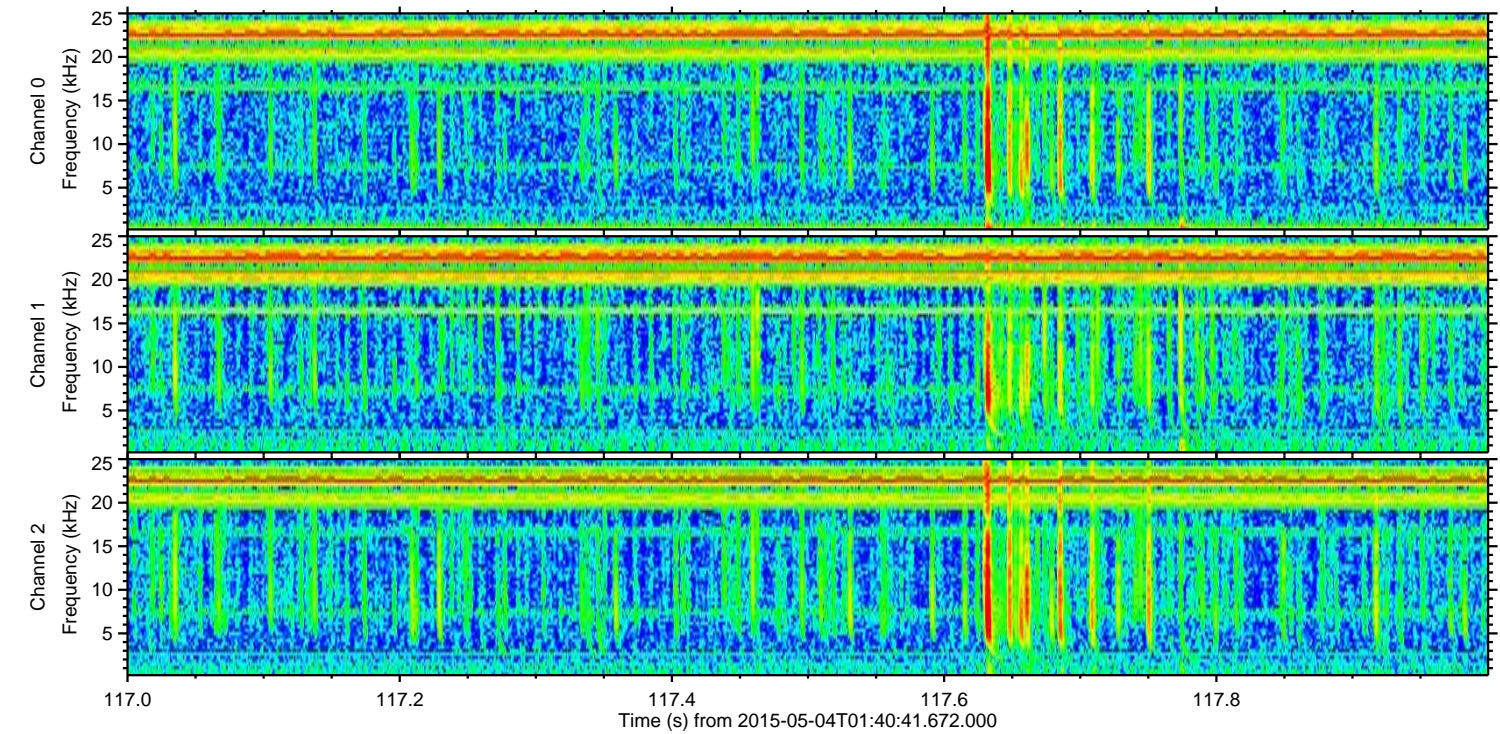
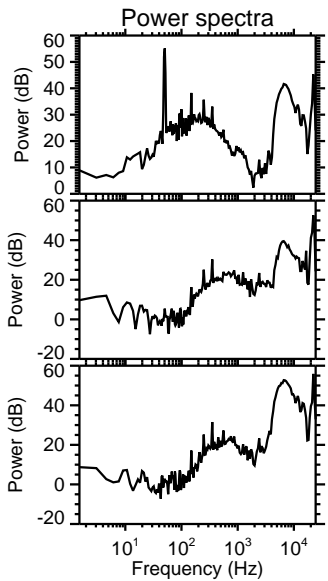
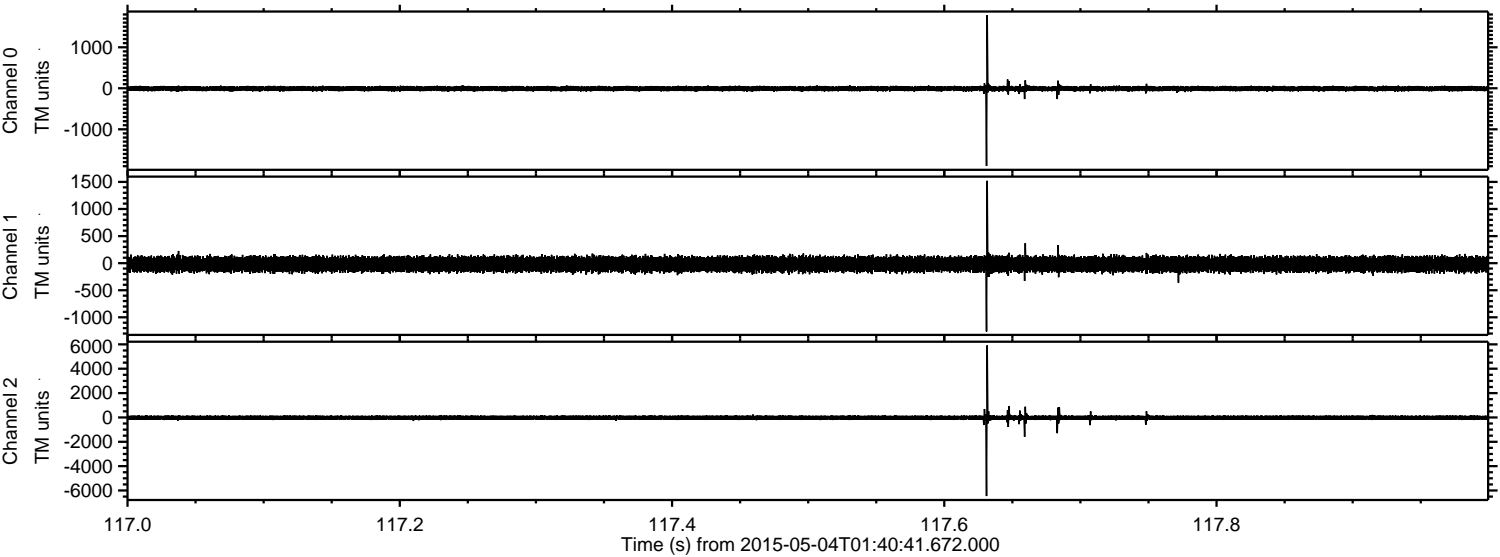


Processed Mon May 4 03:48:21 2015 by ELM ver.2012-10-06 from 001__elm20150504_014040__dat00.bin

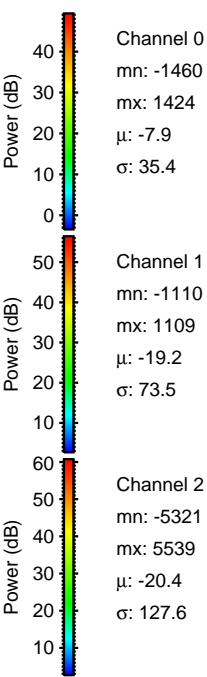
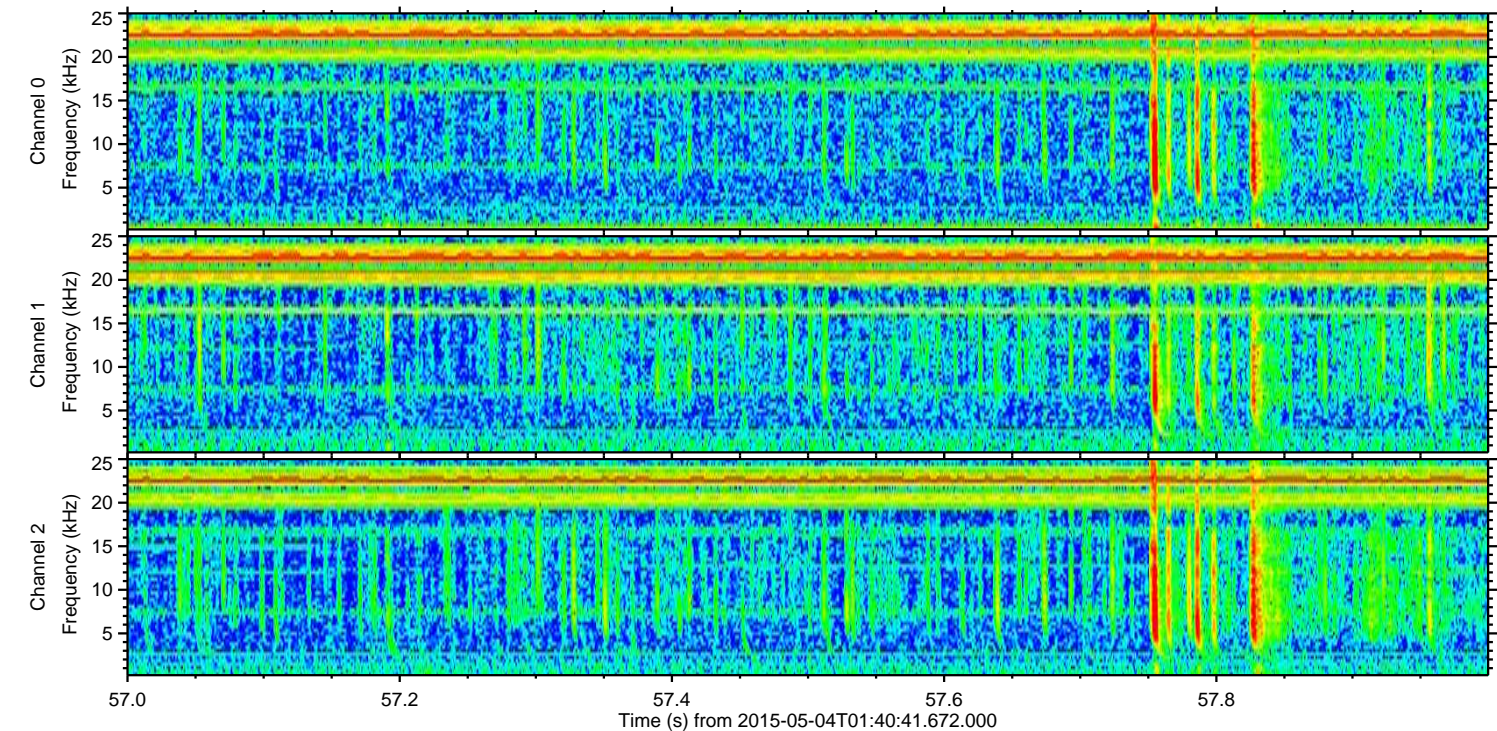
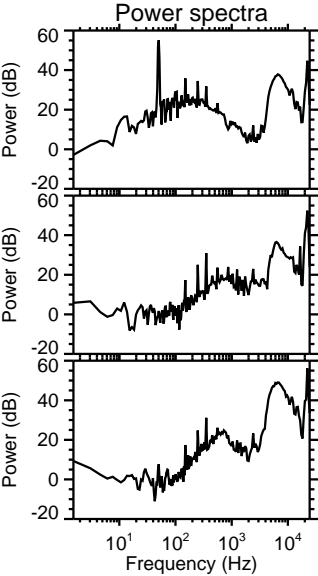
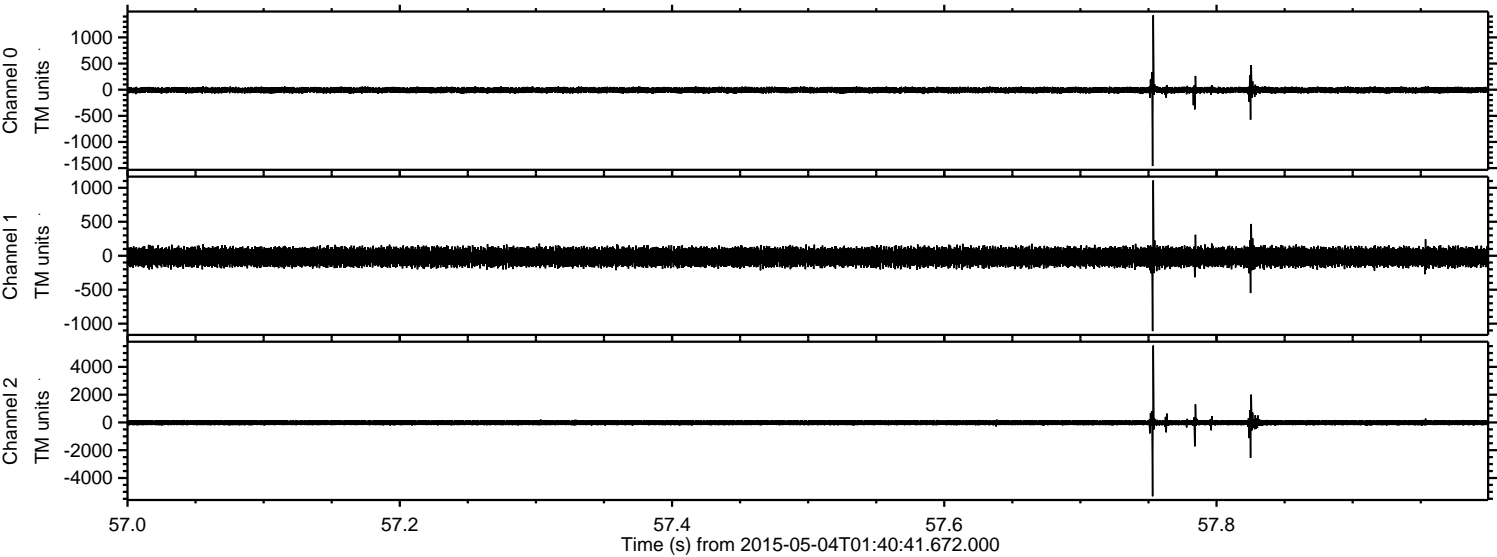


ELMAVAN 3D WAVEFORMS (Measured data sampled at 50 kHz) 49781 packets of 144 samples from 2015-05-04T01:40:41.672.000. Part 118/144

Processed Mon May 4 03:48:22 2015 by ELM ver.2012-10-06 from 001__elm20150504_014040__dat00.bin

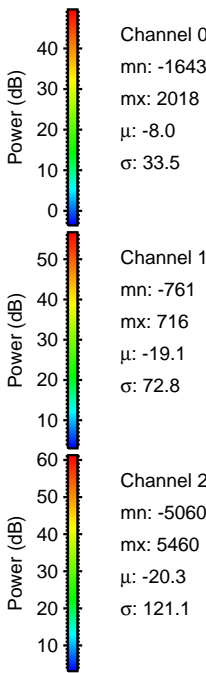
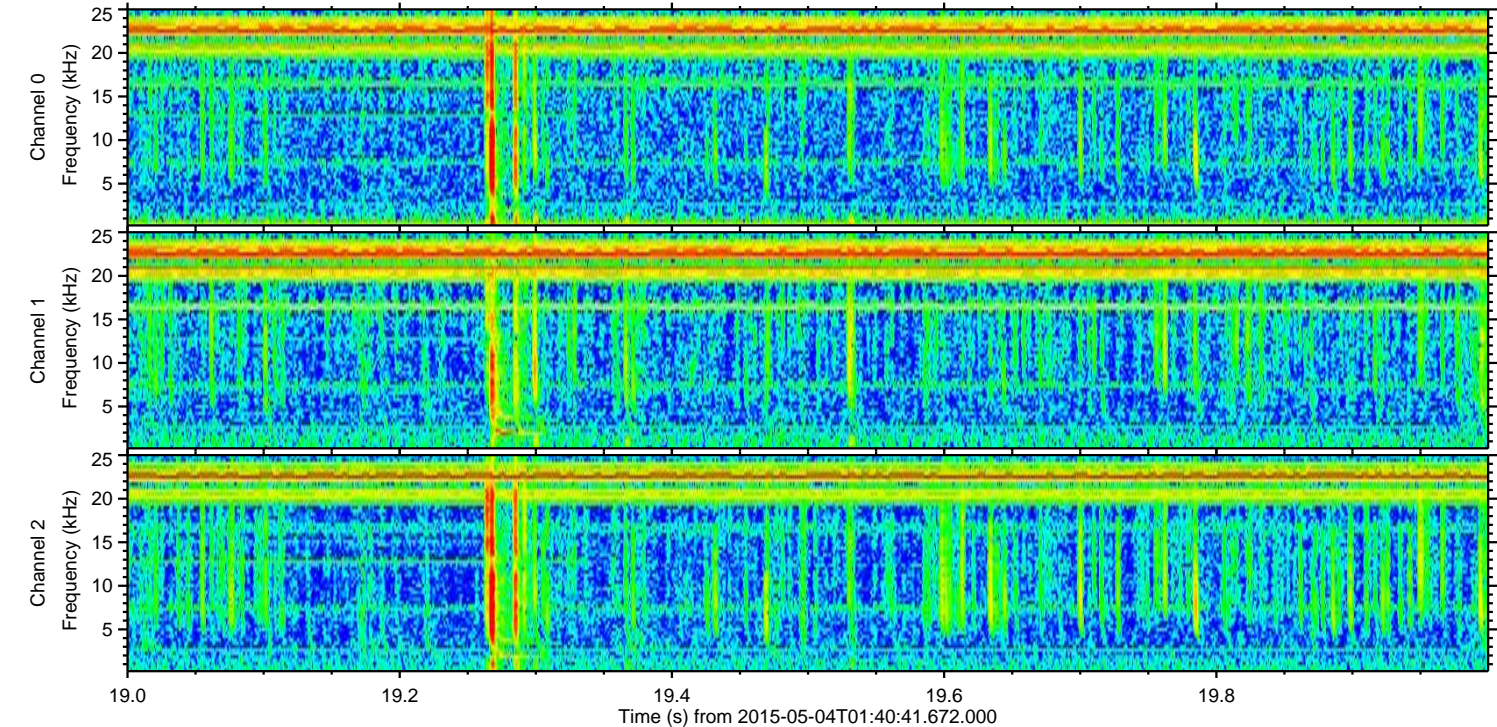
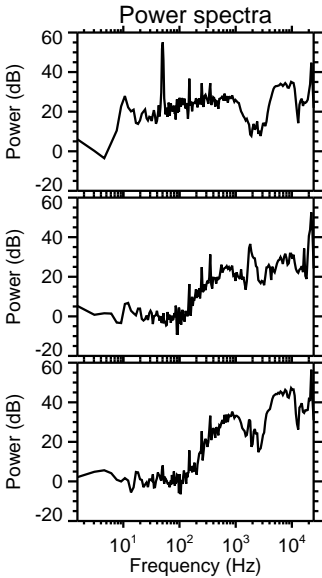
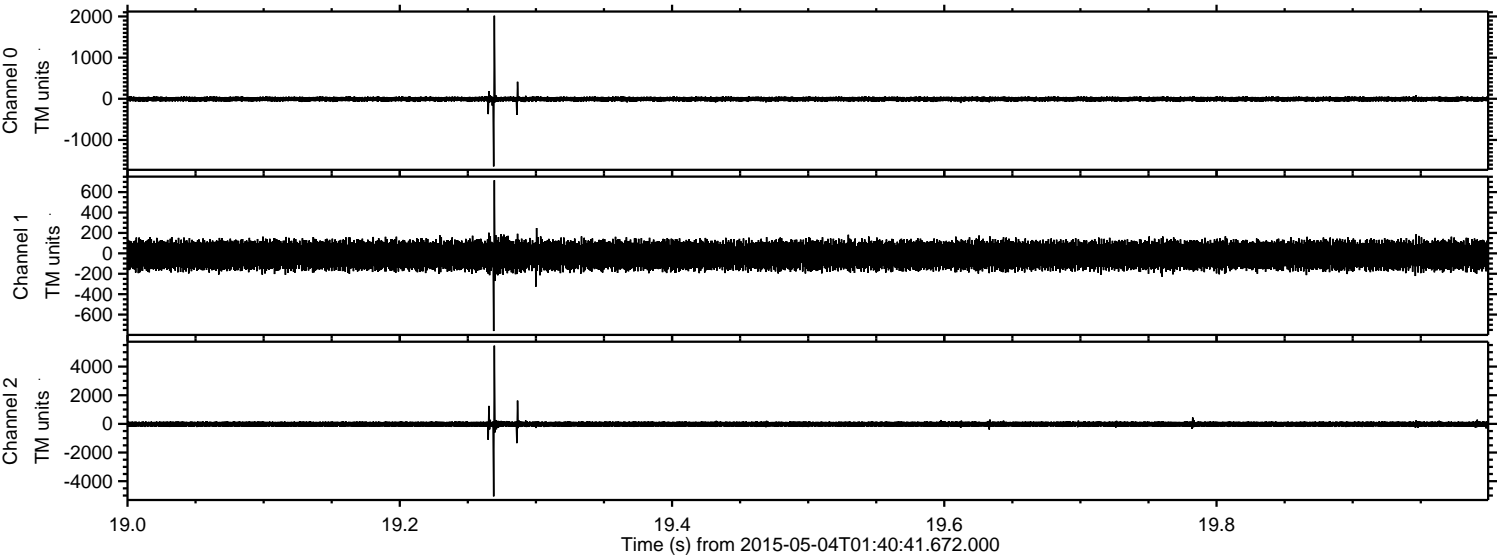


Processed Mon May 4 03:48:23 2015 by ELM ver.2012-10-06 from 001__elm20150504_014040__dat00.bin

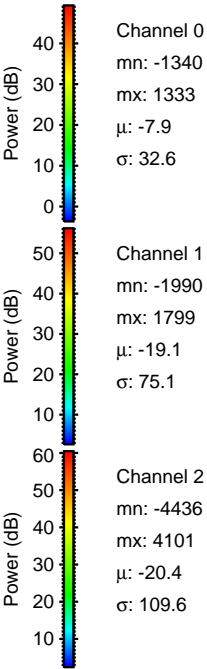
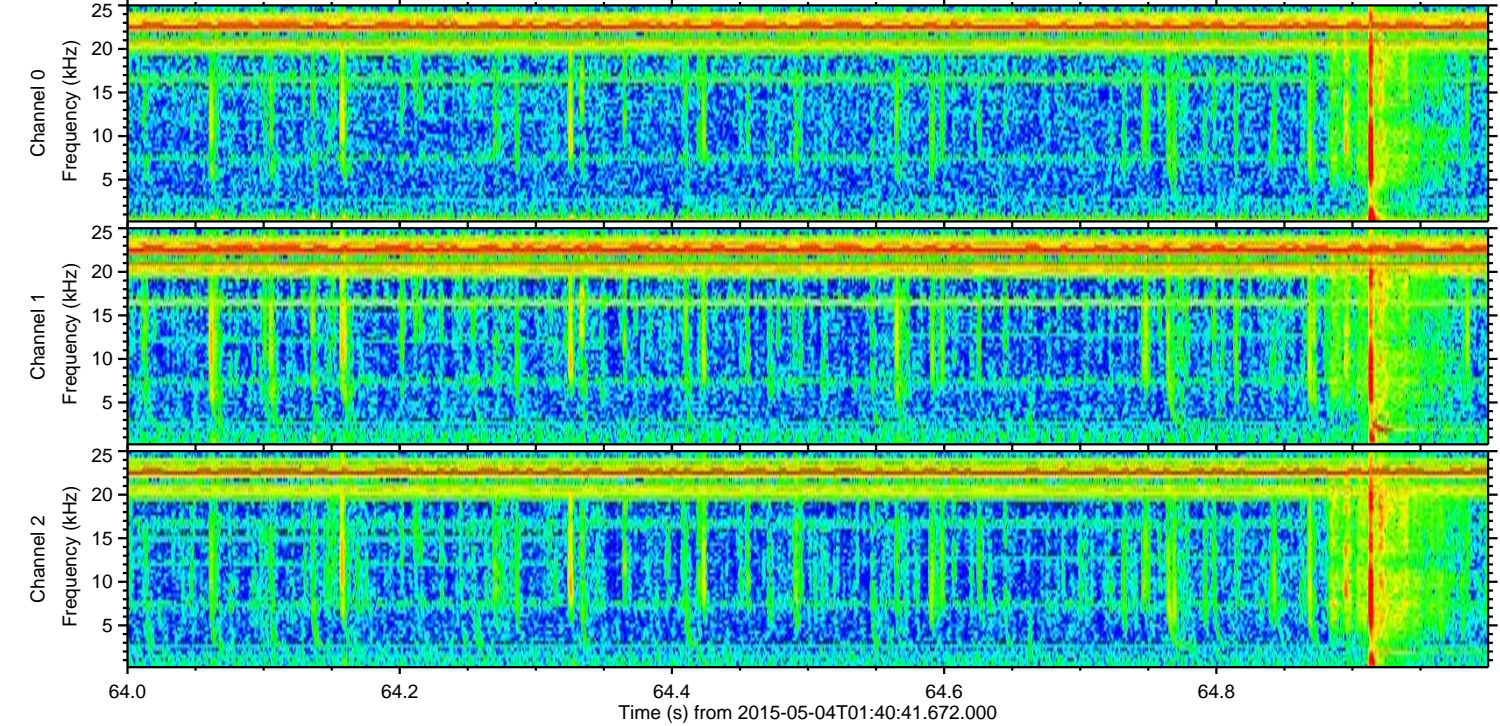
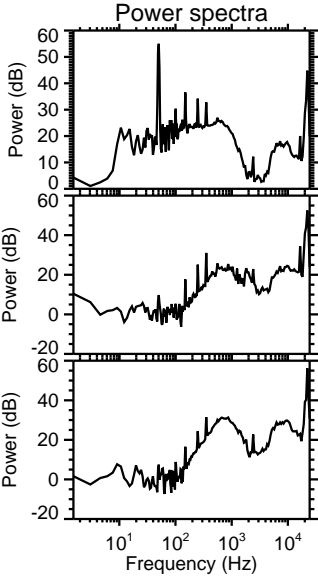
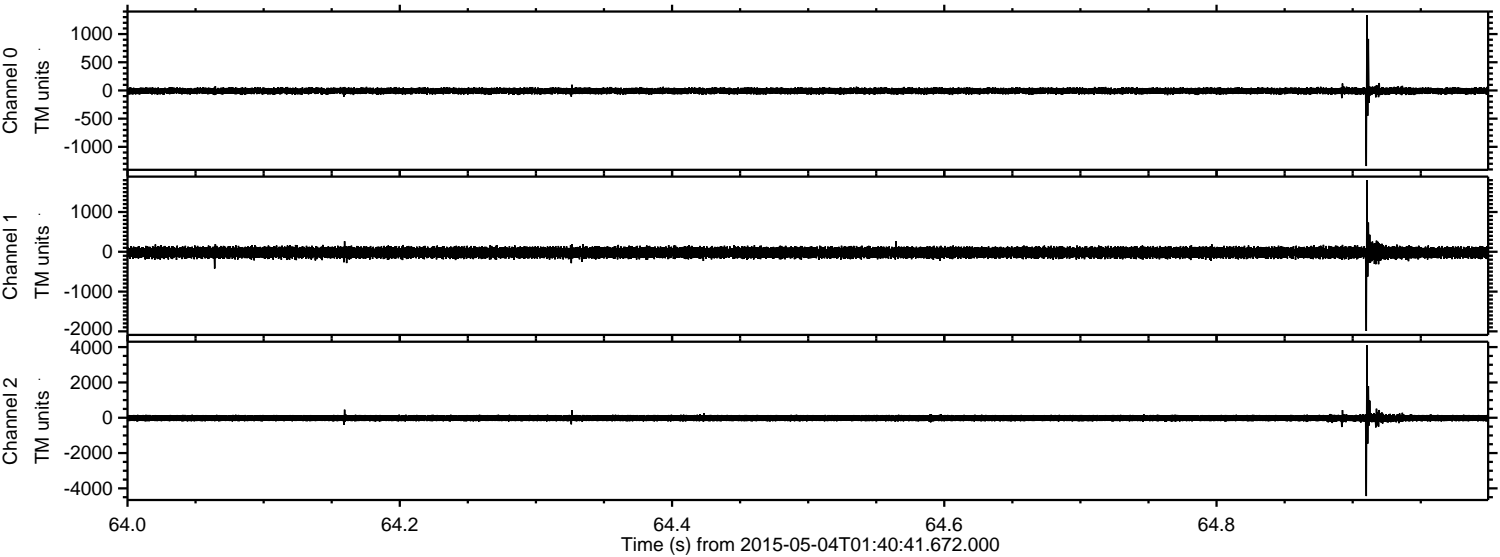


ELMAVAN 3D WAVEFORMS (Measured data sampled at 50 kHz) 49781 packets of 144 samples from 2015-05-04T01:40:41.672.000. Part 20/144

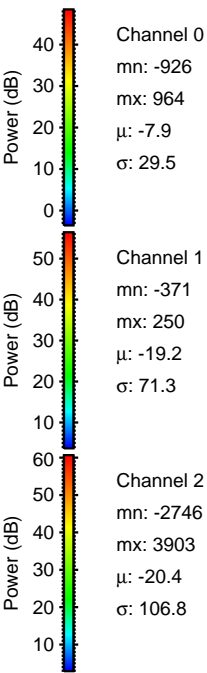
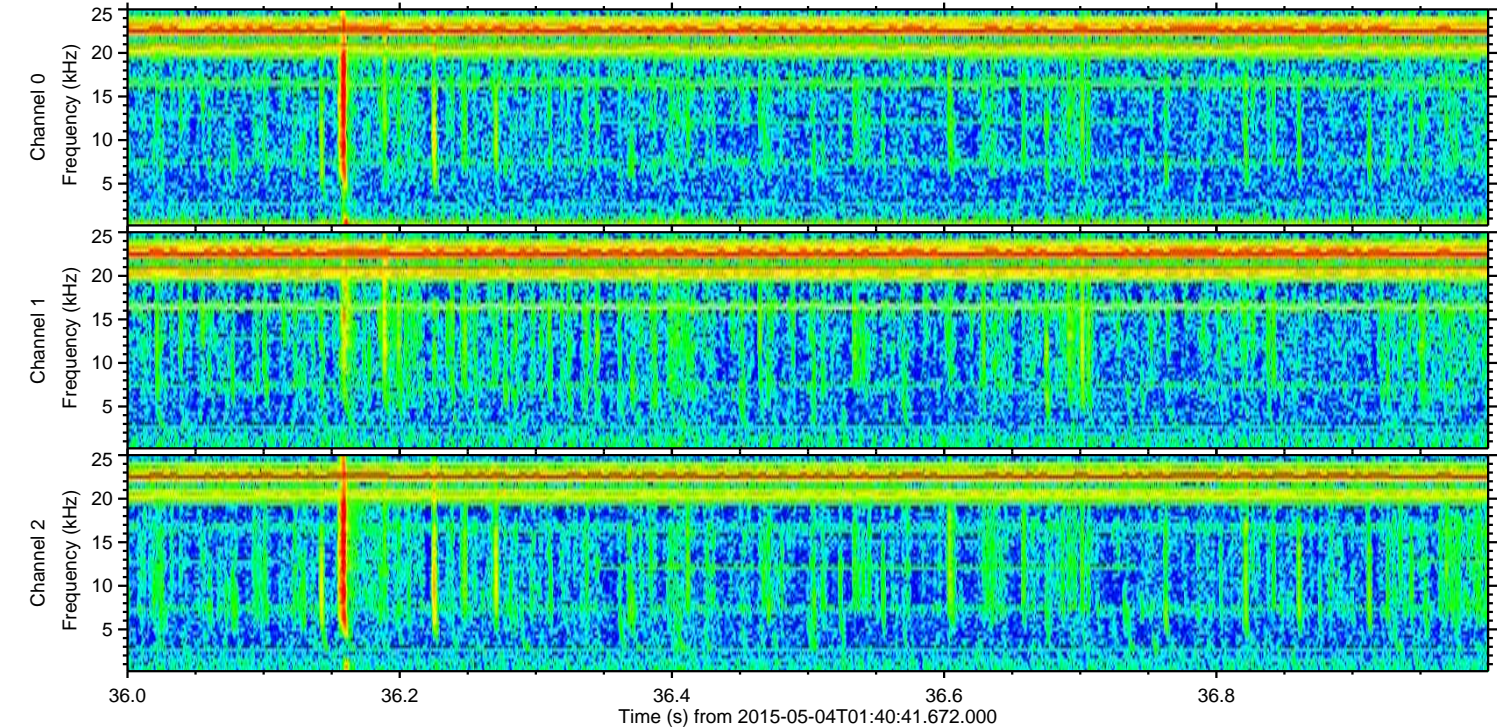
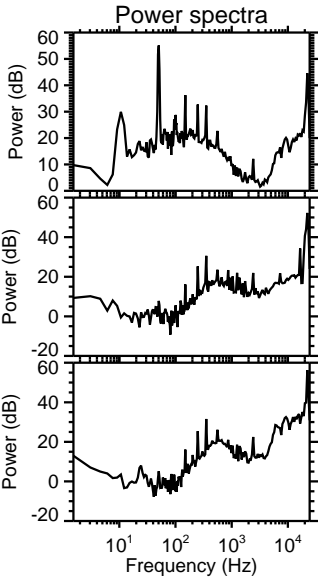
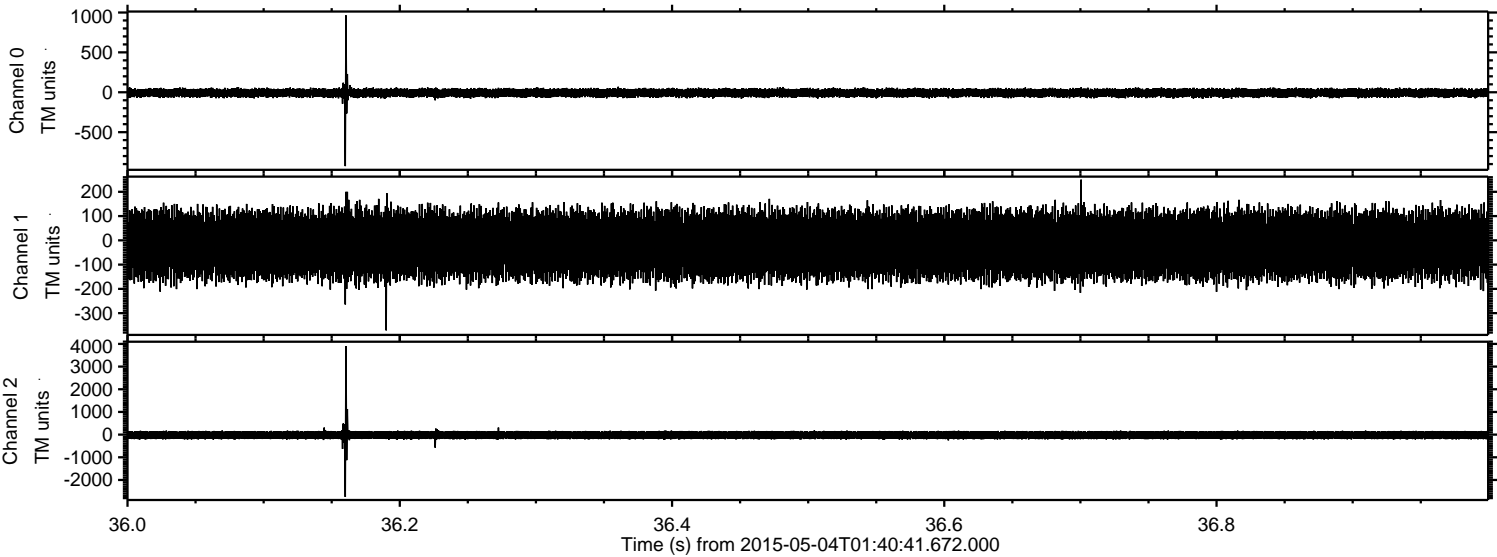
Processed Mon May 4 03:48:23 2015 by ELM ver.2012-10-06 from 001__elm20150504_014040__dat00.bin



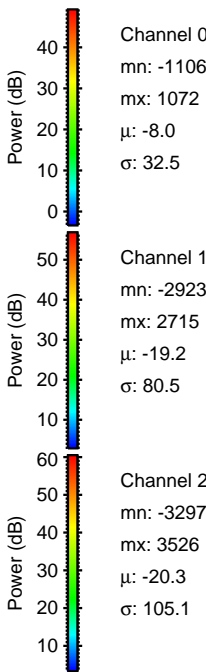
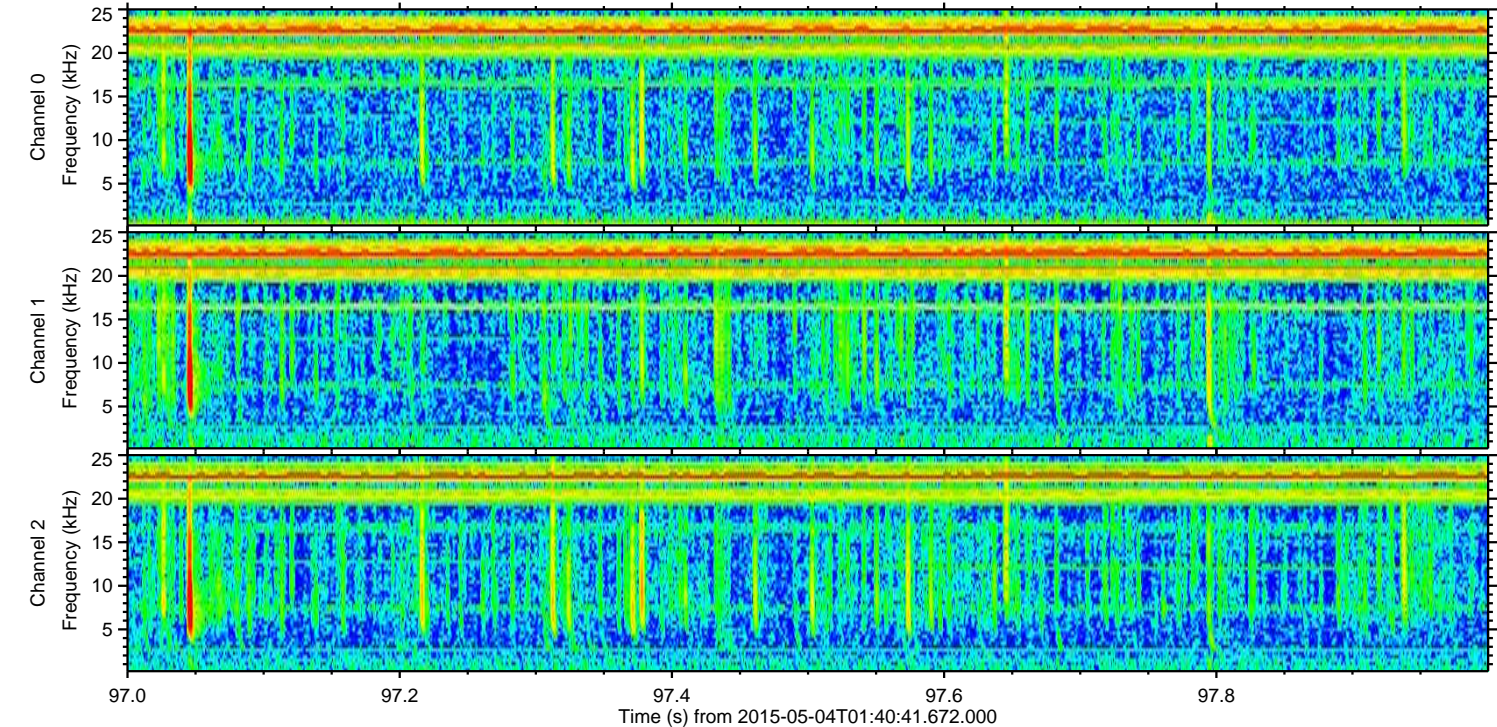
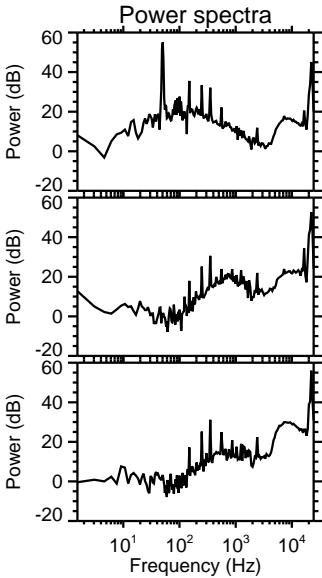
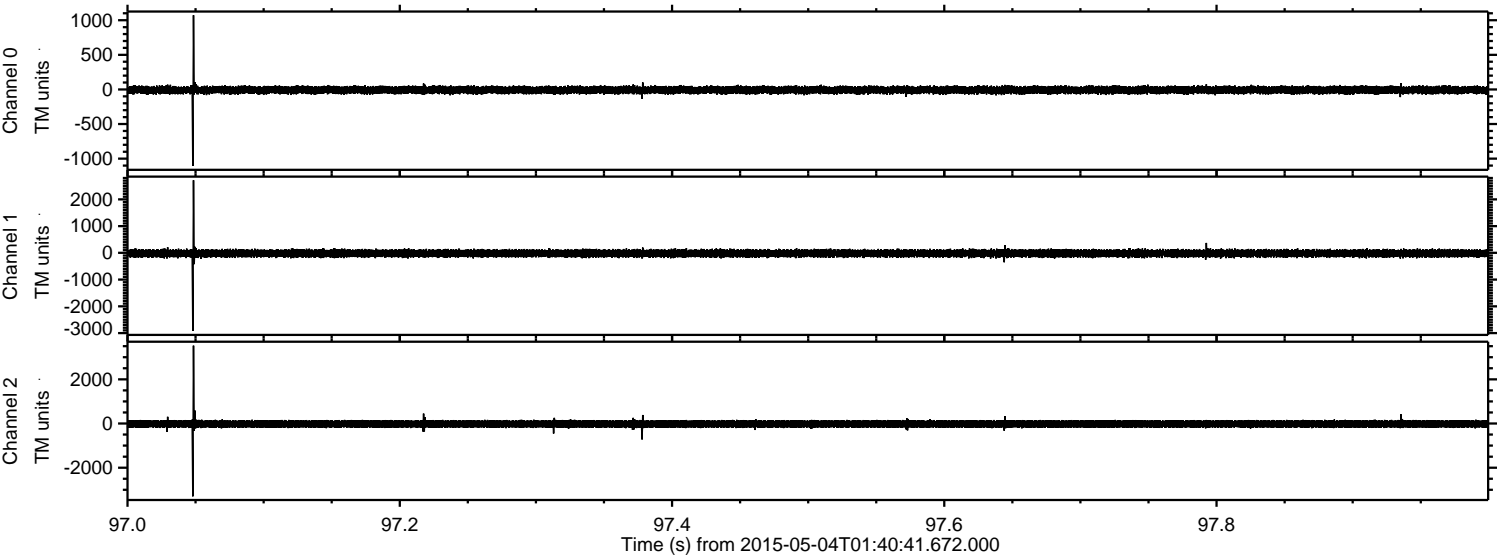
Processed Mon May 4 03:48:24 2015 by ELM ver.2012-10-06 from 001__elm20150504_014040__dat00.bin



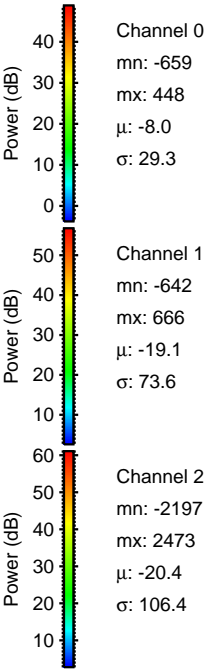
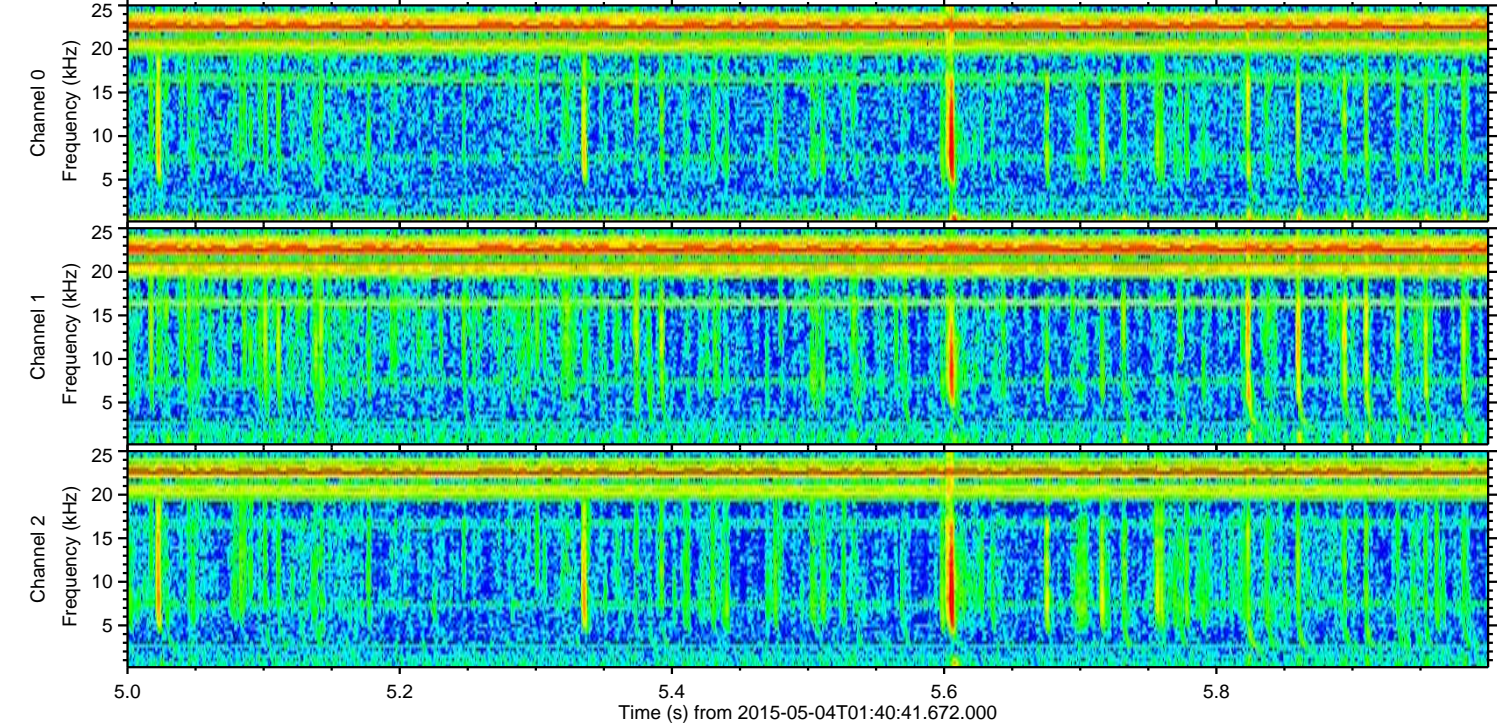
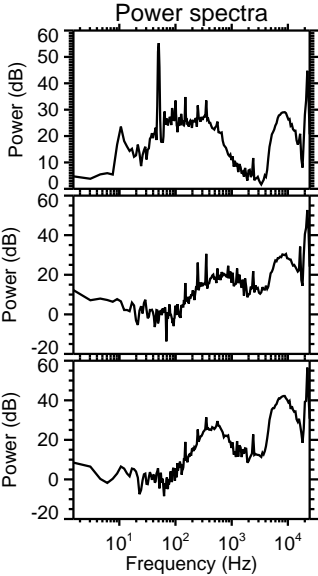
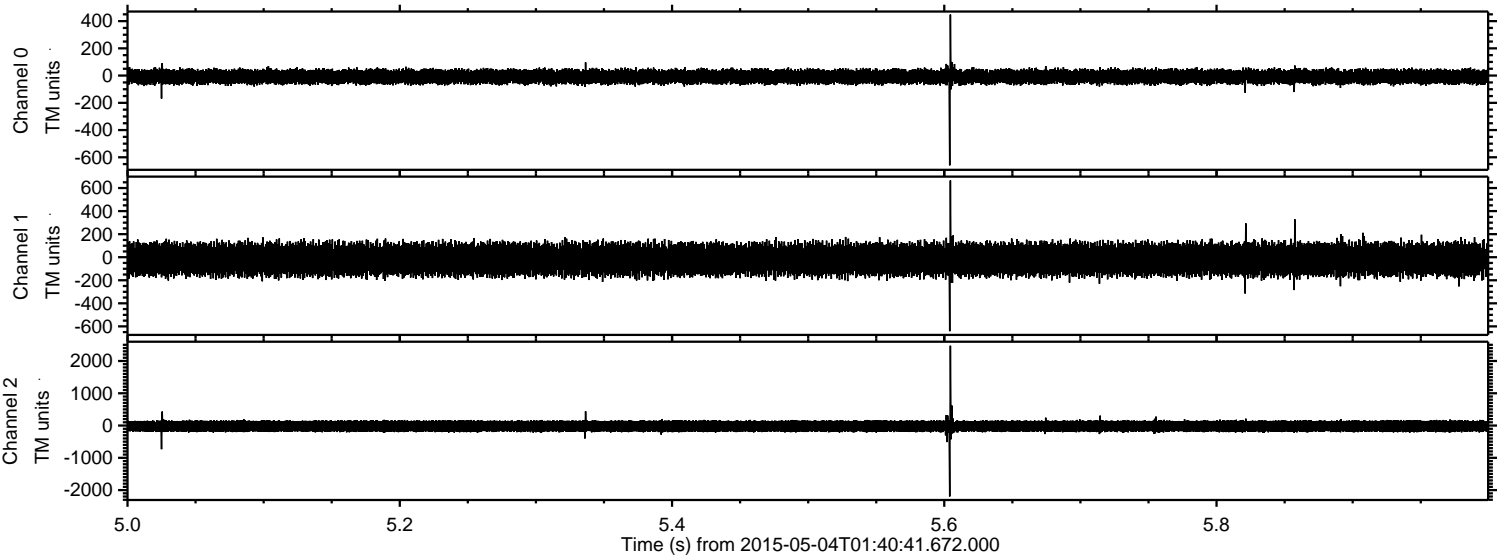
Processed Mon May 4 03:48:25 2015 by ELM ver.2012-10-06 from 001__elm20150504_014040__dat00.bin



Processed Mon May 4 03:48:26 2015 by ELM ver.2012-10-06 from 001__elm20150504_014040__dat00.bin

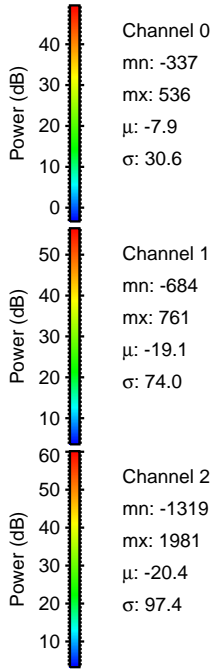
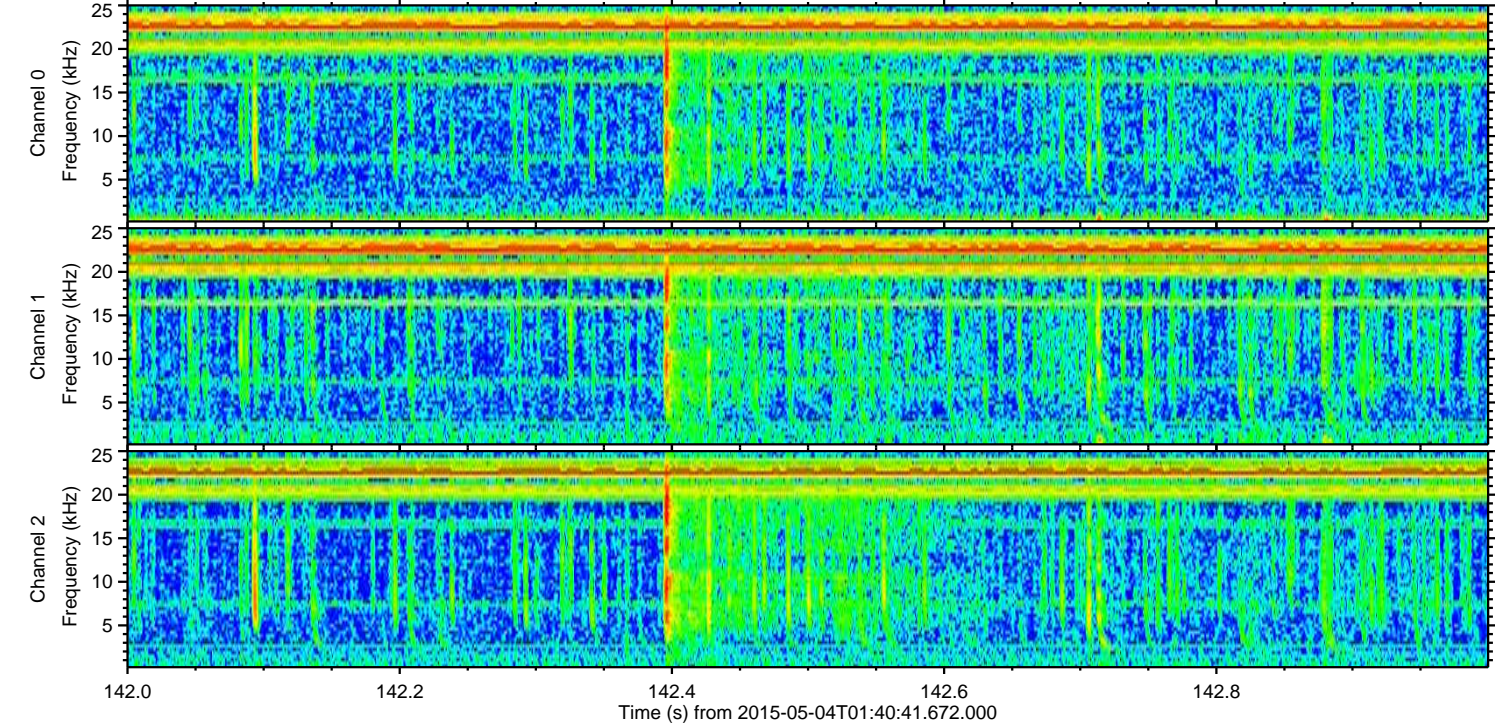
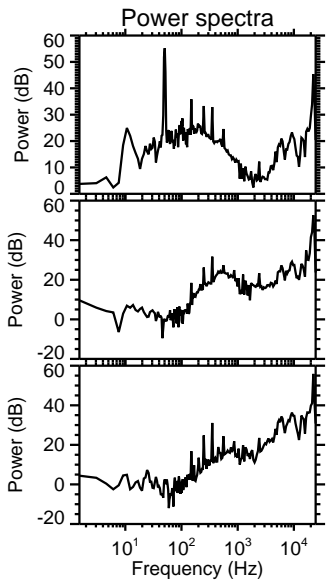
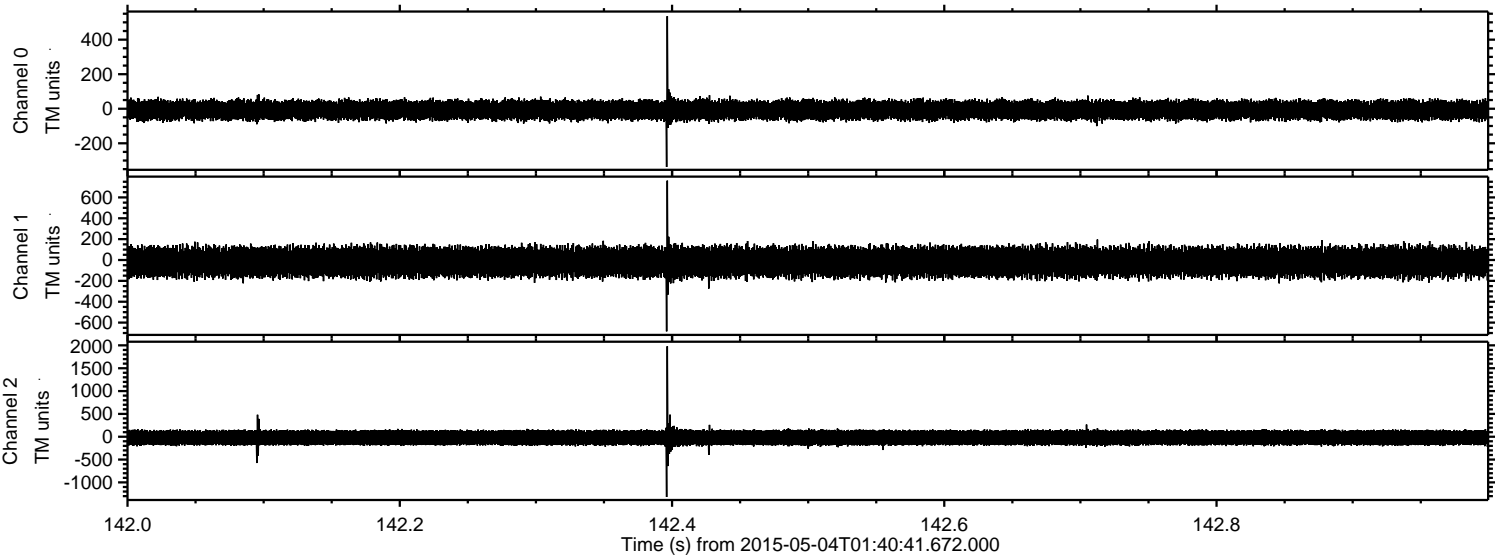


Processed Mon May 4 03:48:27 2015 by ELM ver.2012-10-06 from 001__elm20150504_014040__dat00.bin



ELMAVAN 3D WAVEFORMS (Measured data sampled at 50 kHz) 49781 packets of 144 samples from 2015-05-04T01:40:41.672.000. Part 143/144

Processed Mon May 4 03:48:28 2015 by ELM ver.2012-10-06 from 001__elm20150504_014040__dat00.bin



Channel 0
mn: -337
mx: 536
 μ : -7.9
 σ : 30.6

Channel 1
mn: -684
mx: 761
 μ : -19.1
 σ : 74.0

Channel 2
mn: -1319
mx: 1981
 μ : -20.4
 σ : 97.4

Processed Mon May 4 03:48:29 2015 by ELM ver.2012-10-06 from 001__elm20150504_014040__dat00.bin

