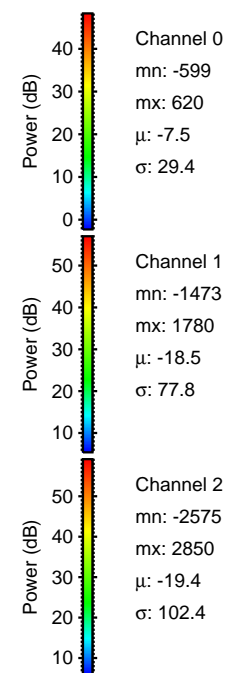
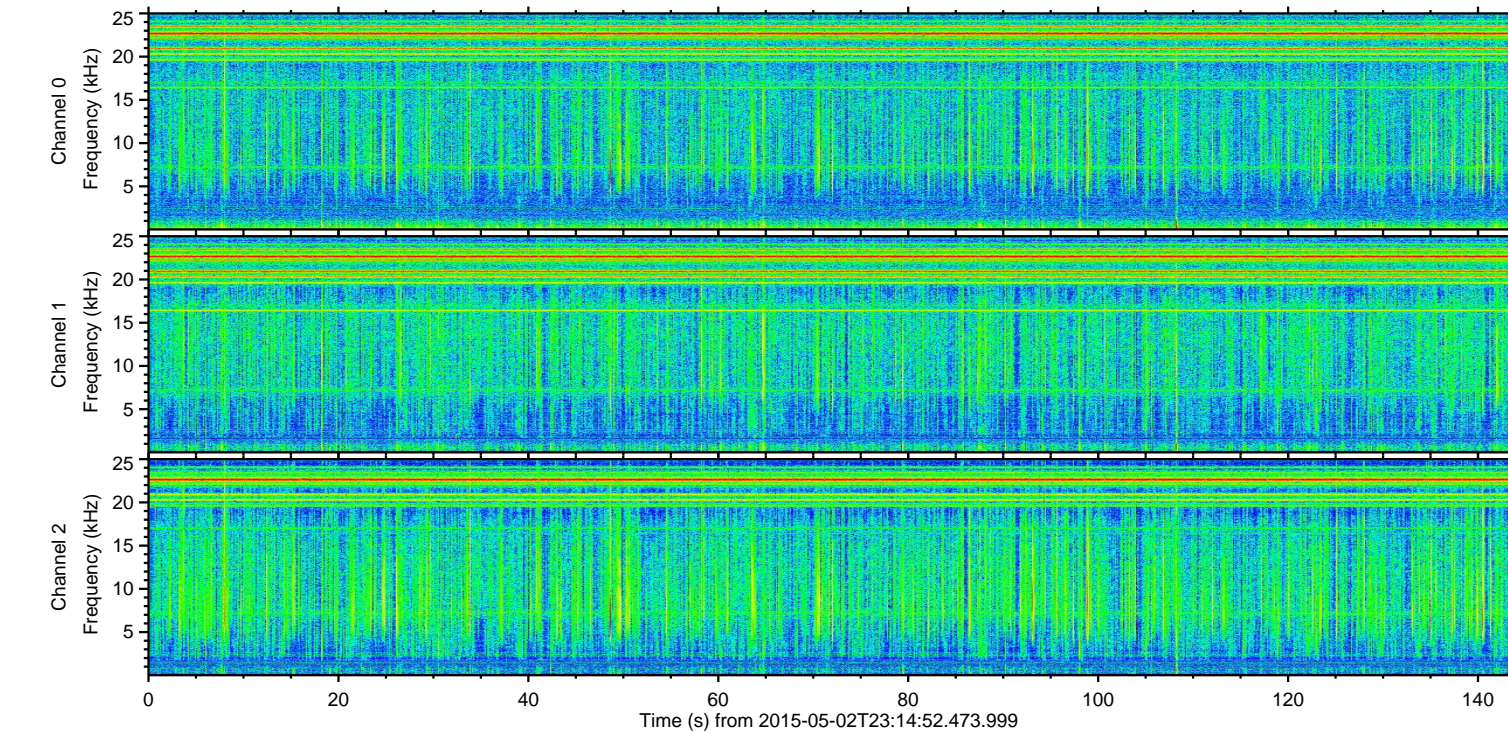
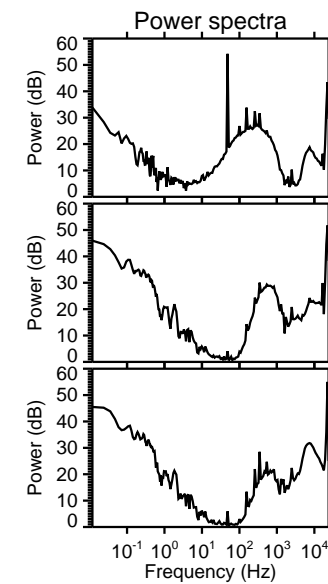
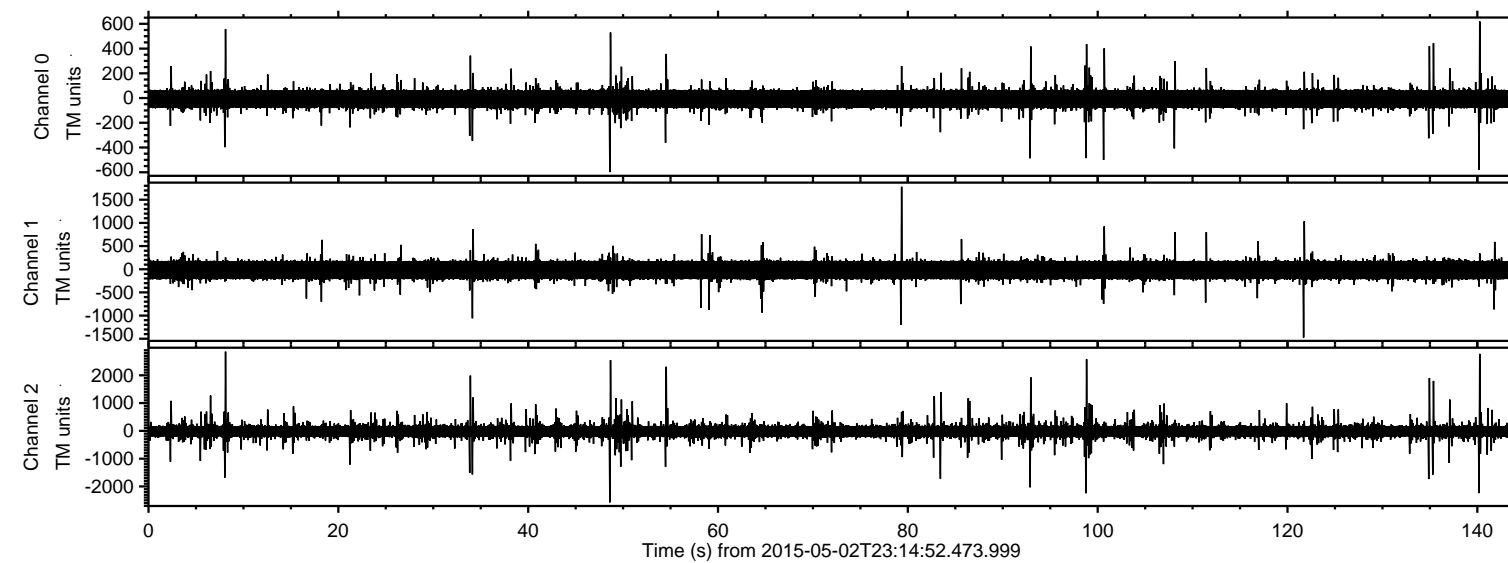
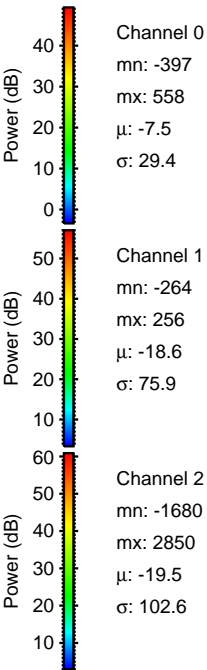
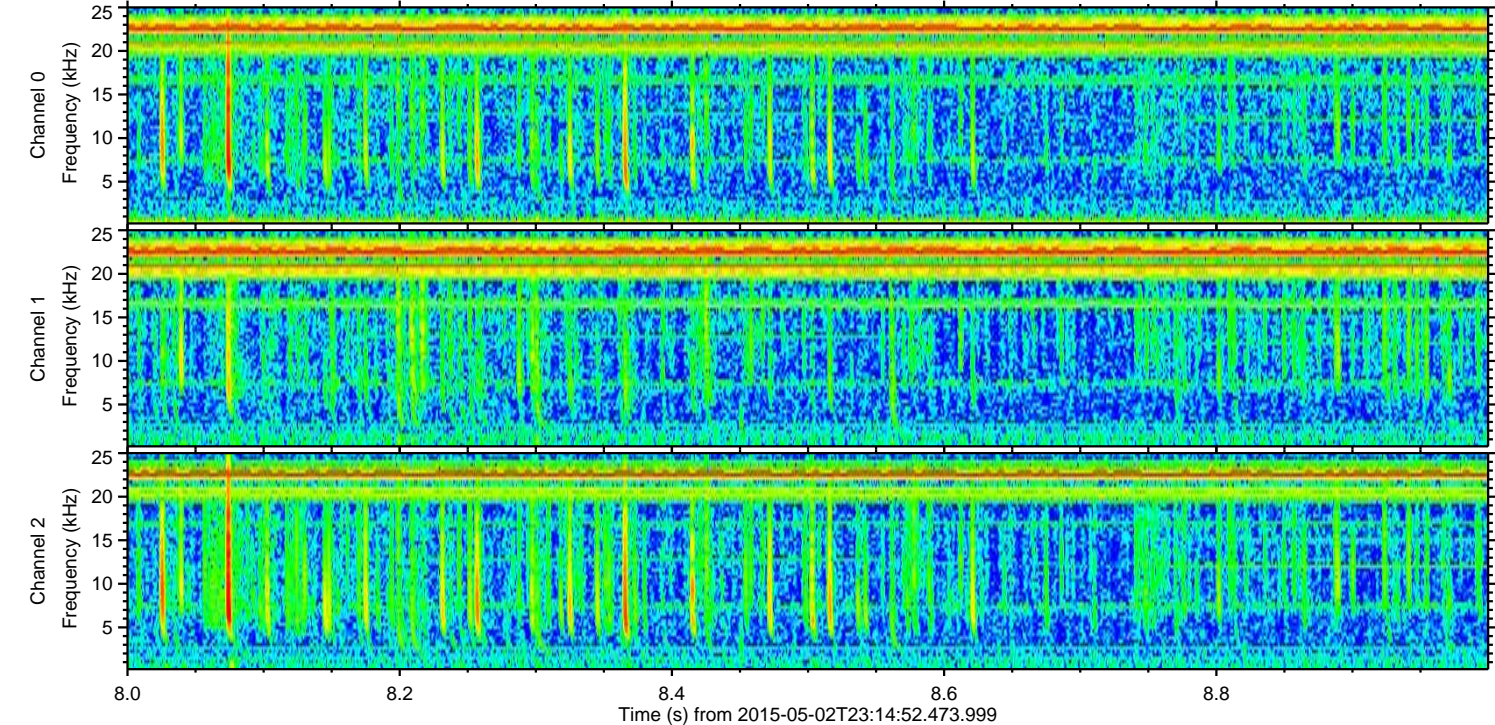
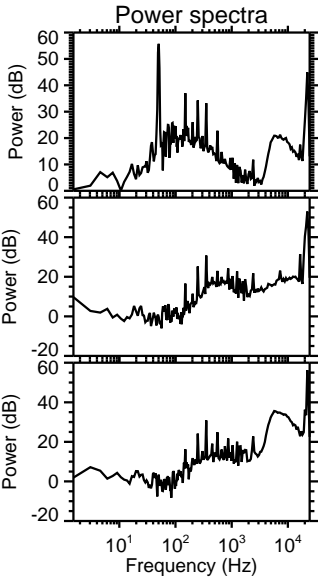
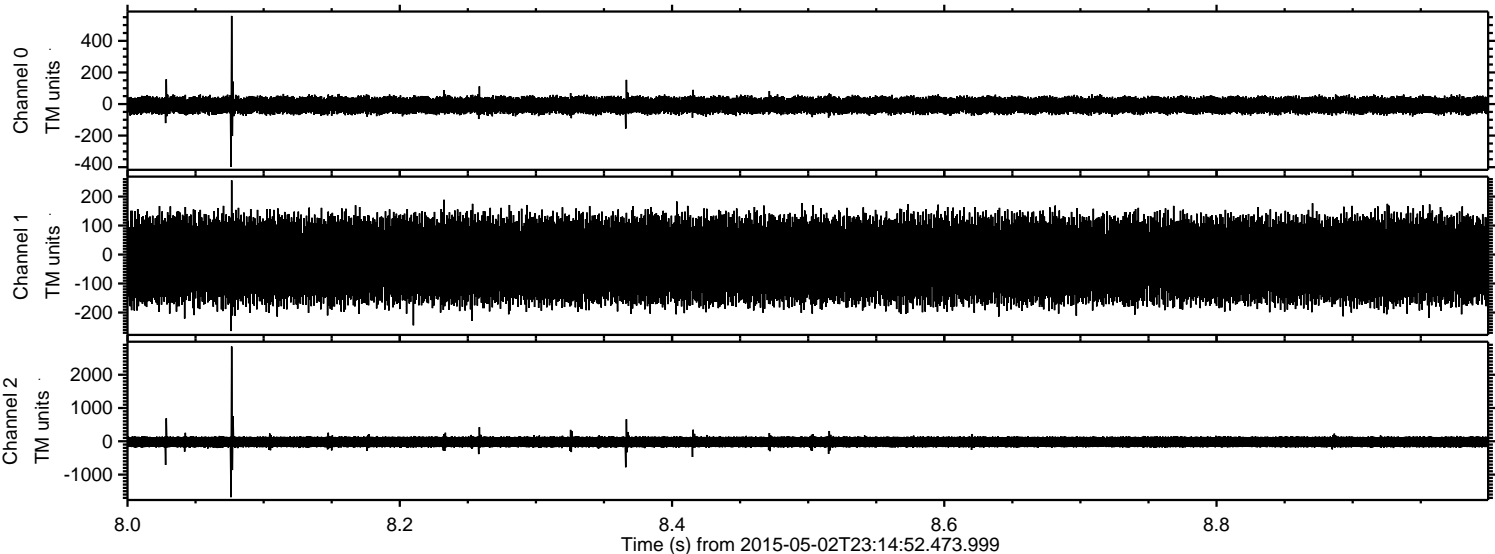


ELMAVAN 3D WAVEFORMS (Measured data sampled at 50 kHz) 49774 packets of 144 samples from 2015-05-02T23:14:52.473.999.

Processed Sun May 3 01:21:50 2015 by ELM ver.2012-10-06 from 001\_\_elm20150502\_231451\_\_dat00.bin

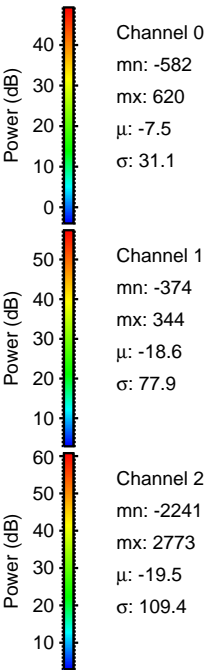
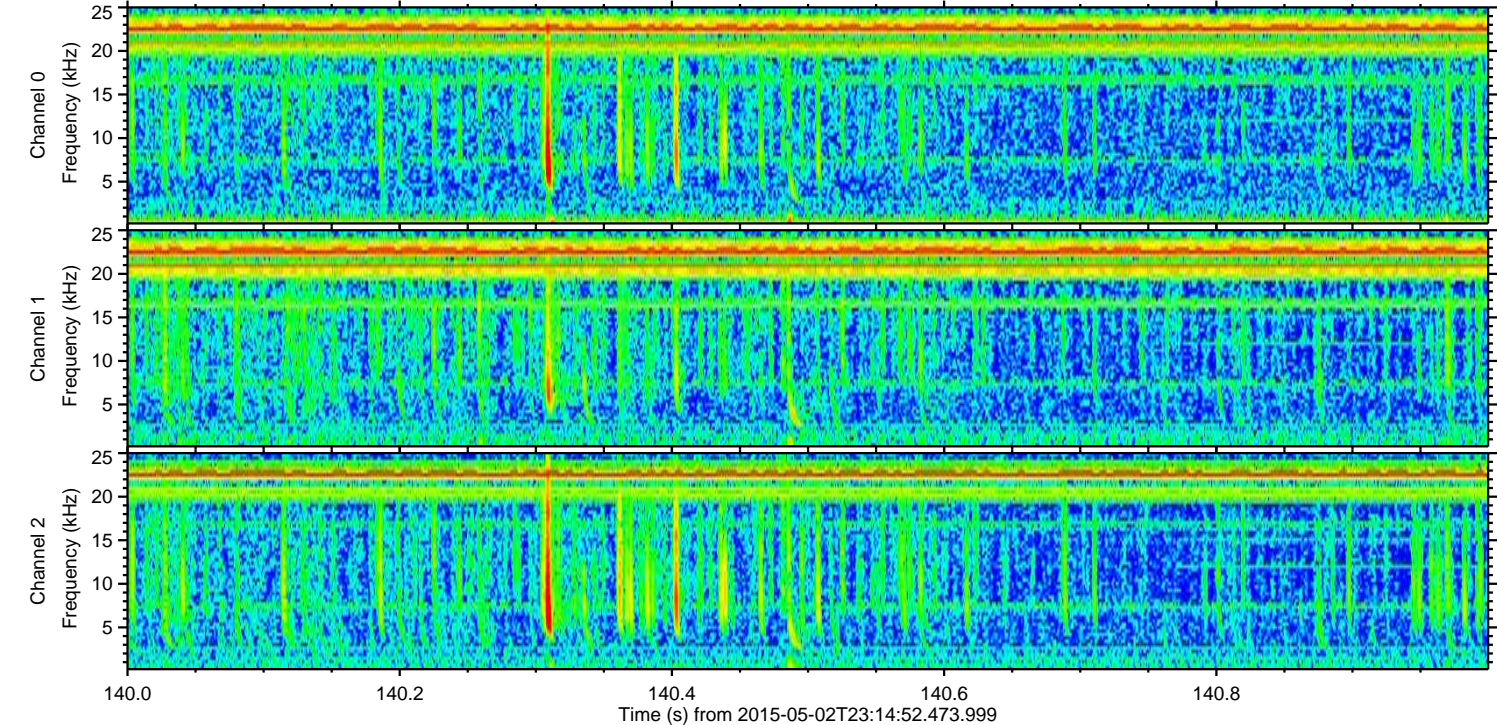
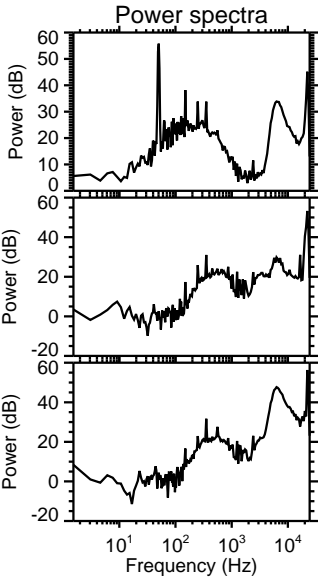
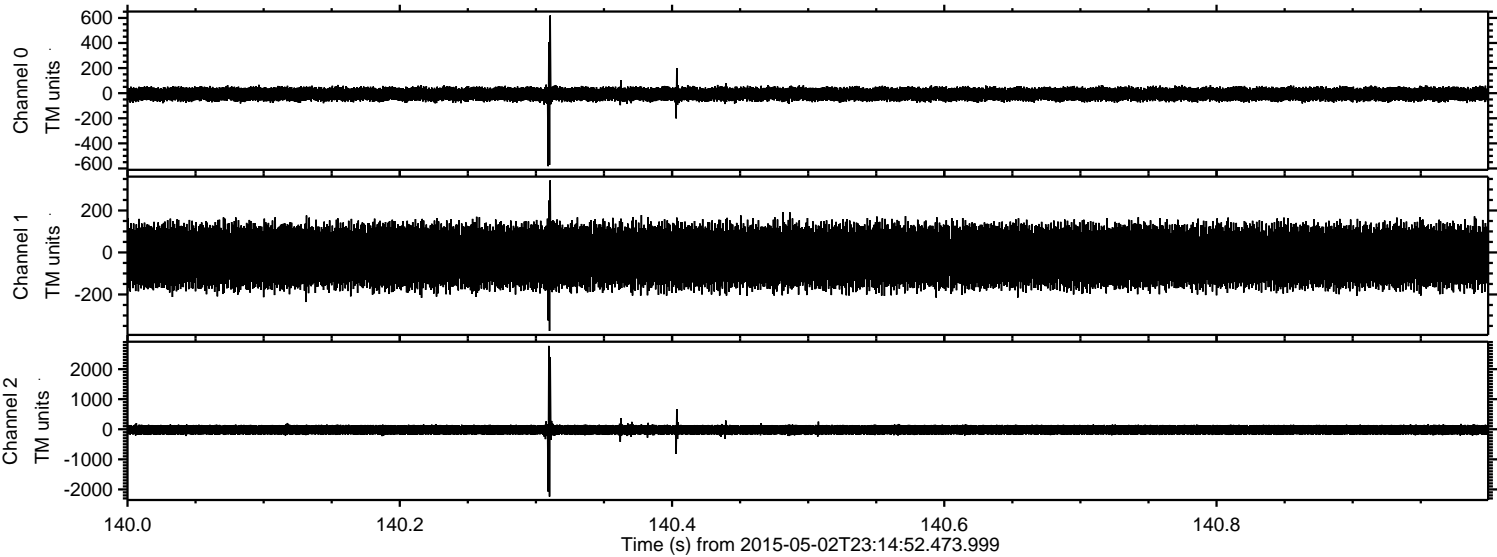


Processed Sun May 3 01:22:02 2015 by ELM ver.2012-10-06 from 001\_\_elm20150502\_231451\_\_dat00.bin



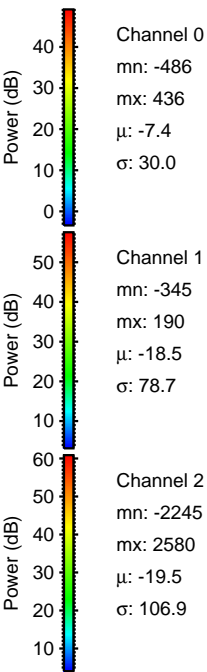
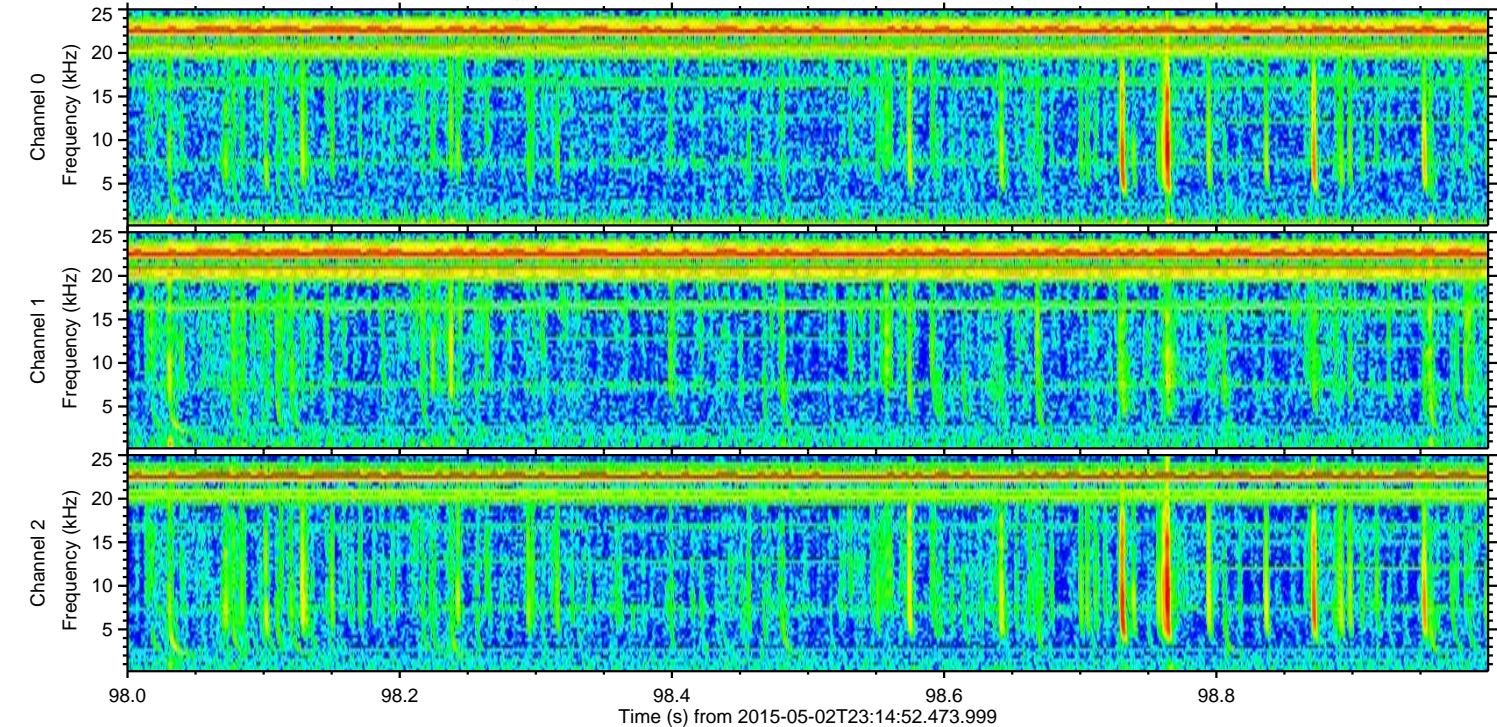
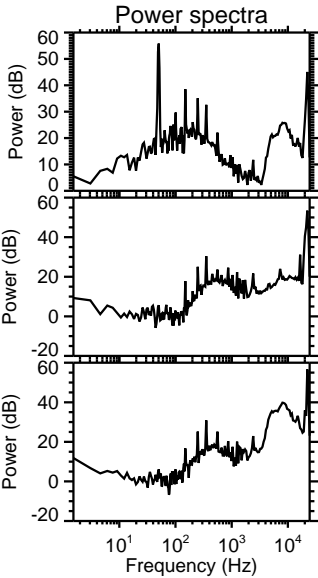
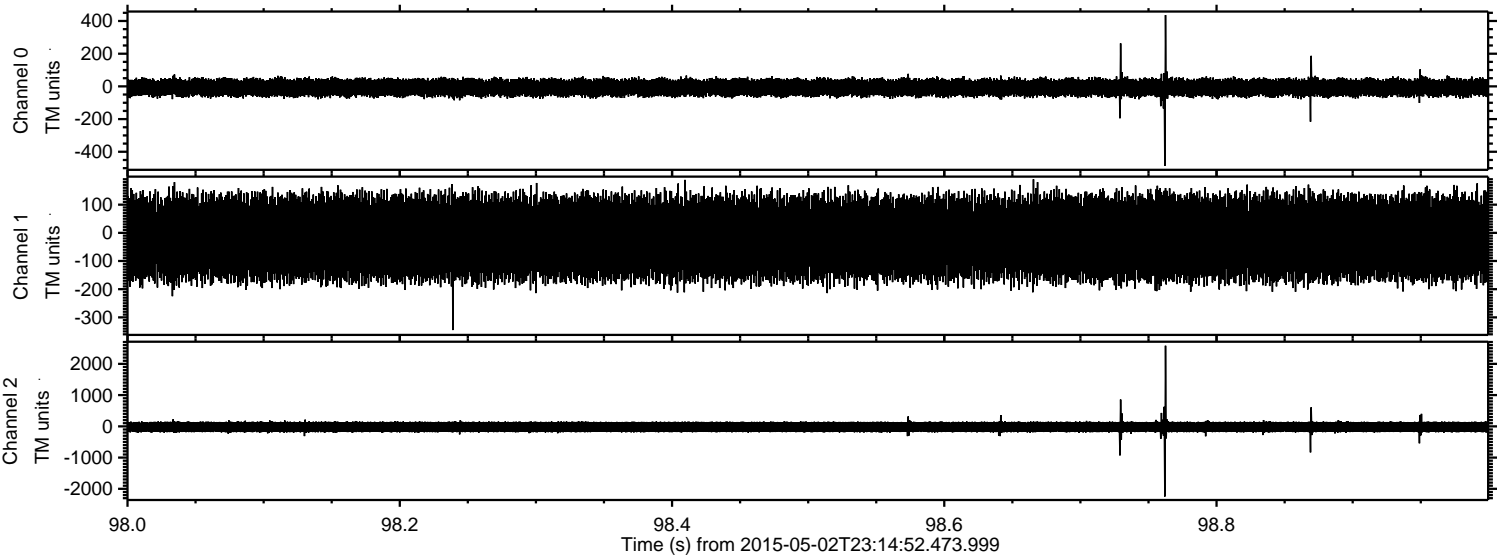
ELMAVAN 3D WAVEFORMS (Measured data sampled at 50 kHz) 49774 packets of 144 samples from 2015-05-02T23:14:52.473.999. Part 141/144

Processed Sun May 3 01:22:03 2015 by ELM ver.2012-10-06 from 001\_\_elm20150502\_231451\_\_dat00.bin



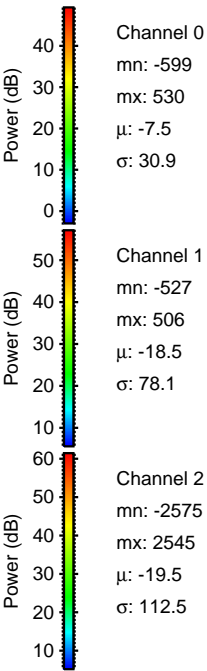
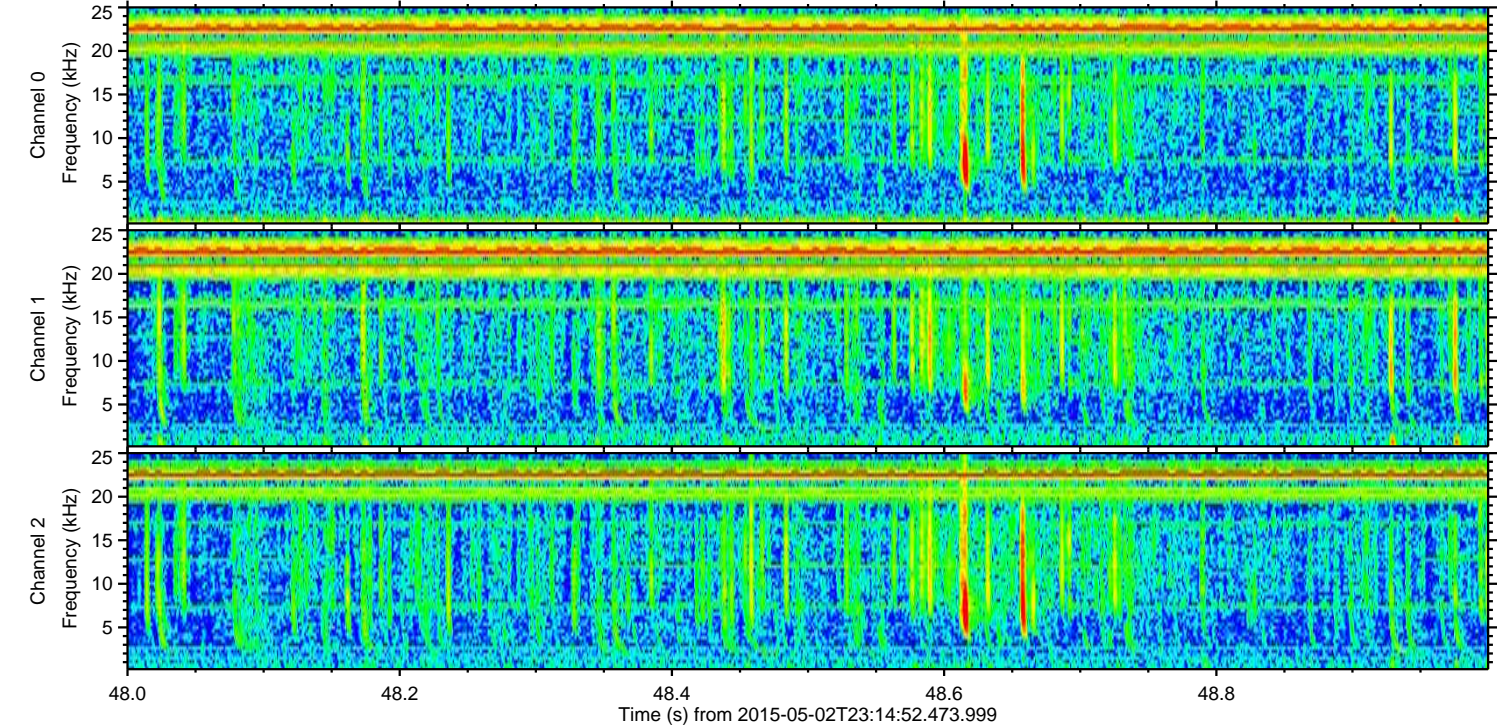
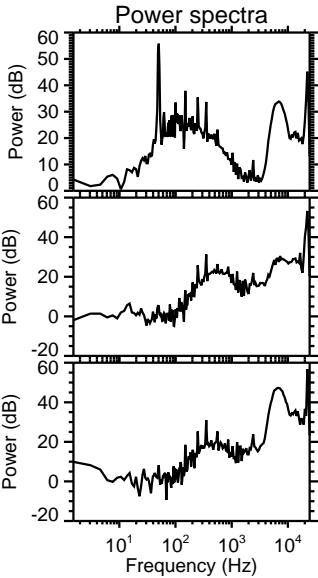
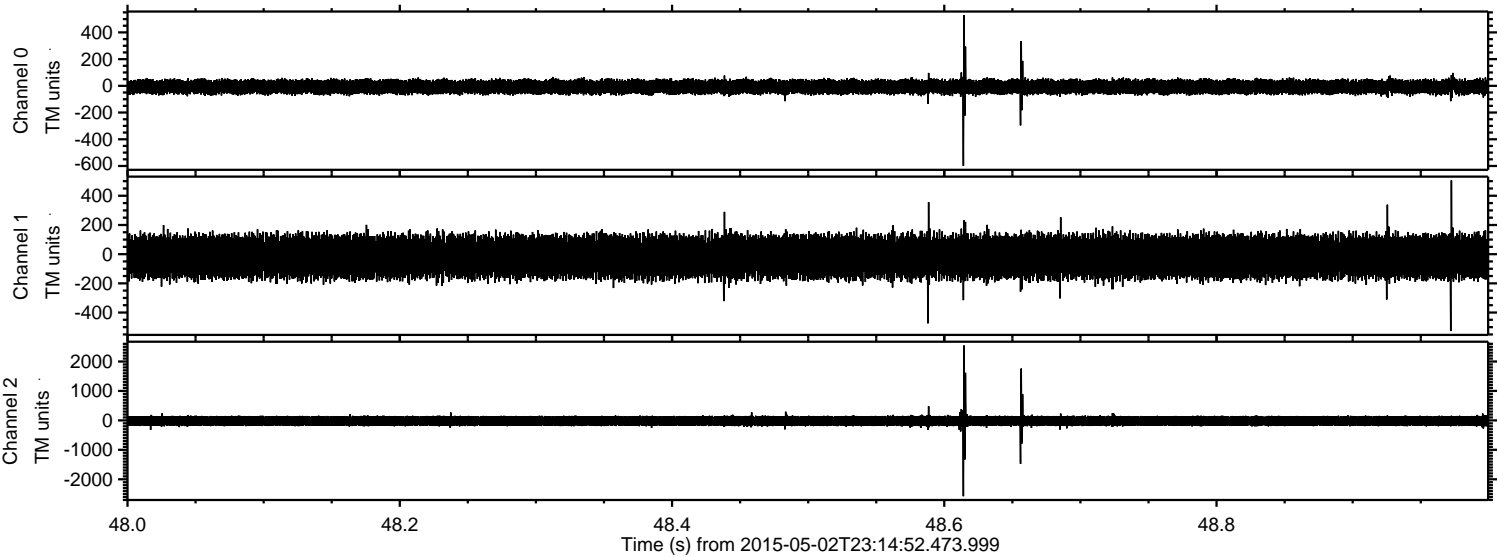
ELMAVAN 3D WAVEFORMS (Measured data sampled at 50 kHz) 49774 packets of 144 samples from 2015-05-02T23:14:52.473.999. Part 99/144

Processed Sun May 3 01:22:04 2015 by ELM ver.2012-10-06 from 001\_\_elm20150502\_231451\_\_dat00.bin



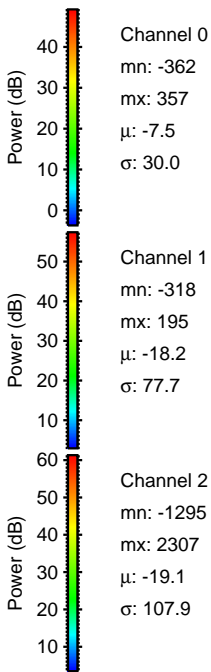
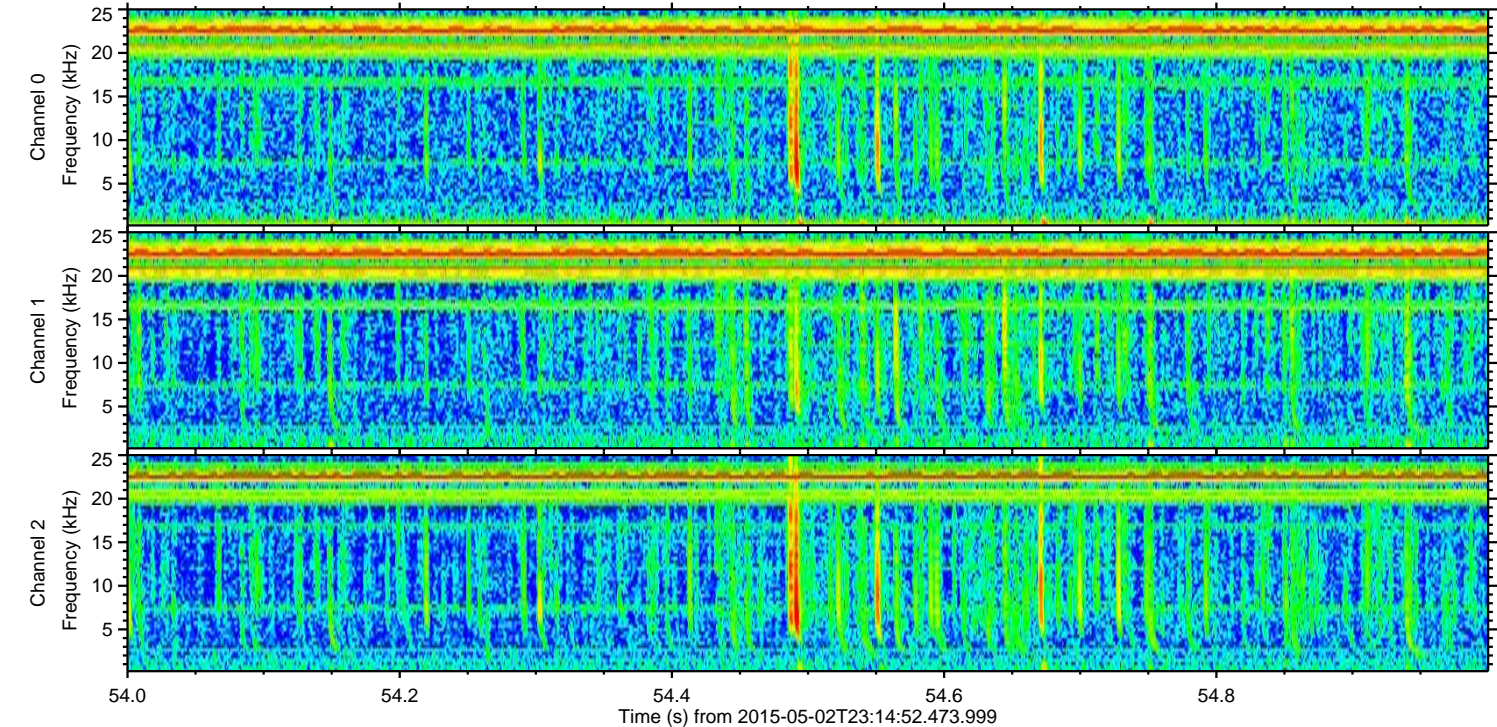
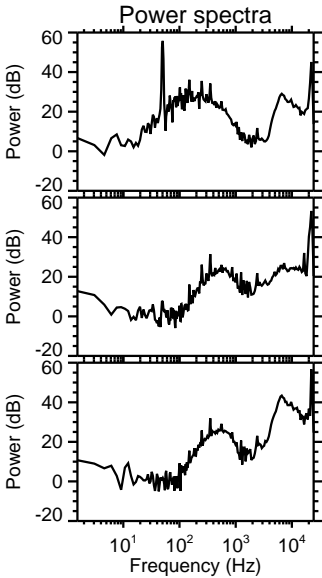
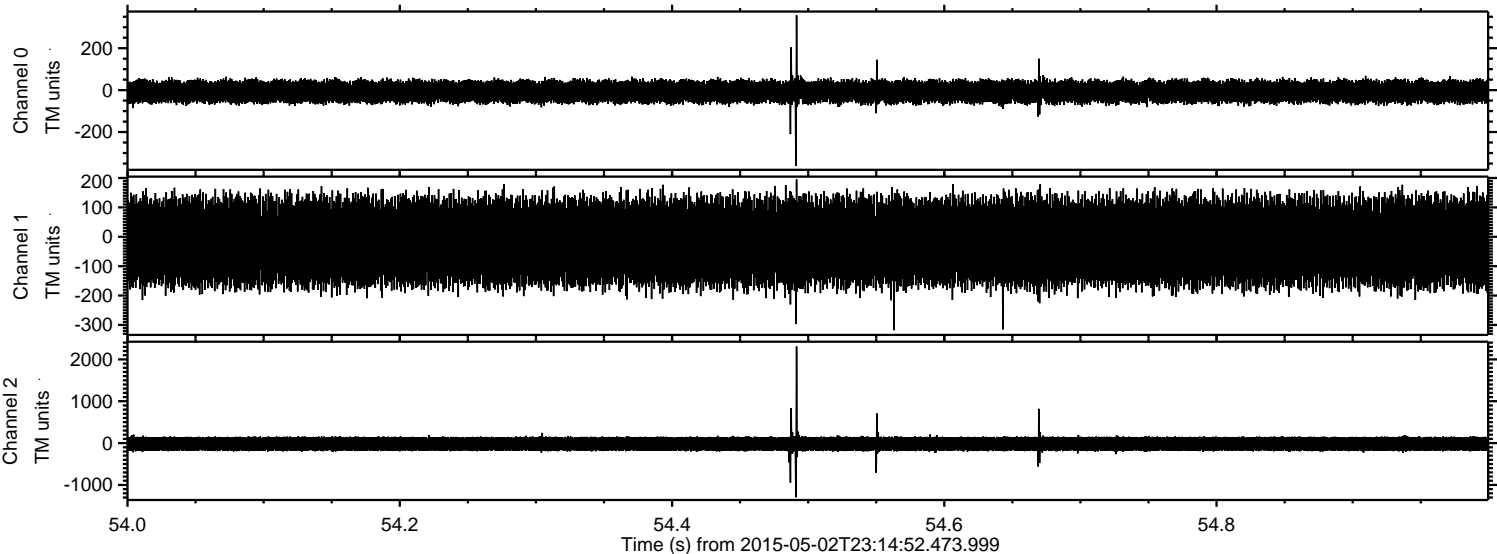
ELMAVAN 3D WAVEFORMS (Measured data sampled at 50 kHz) 49774 packets of 144 samples from 2015-05-02T23:14:52.473.999. Part 49/144

Processed Sun May 3 01:22:05 2015 by ELM ver.2012-10-06 from 001\_\_elm20150502\_231451\_\_dat00.bin

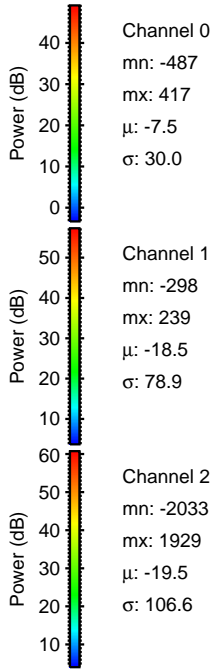
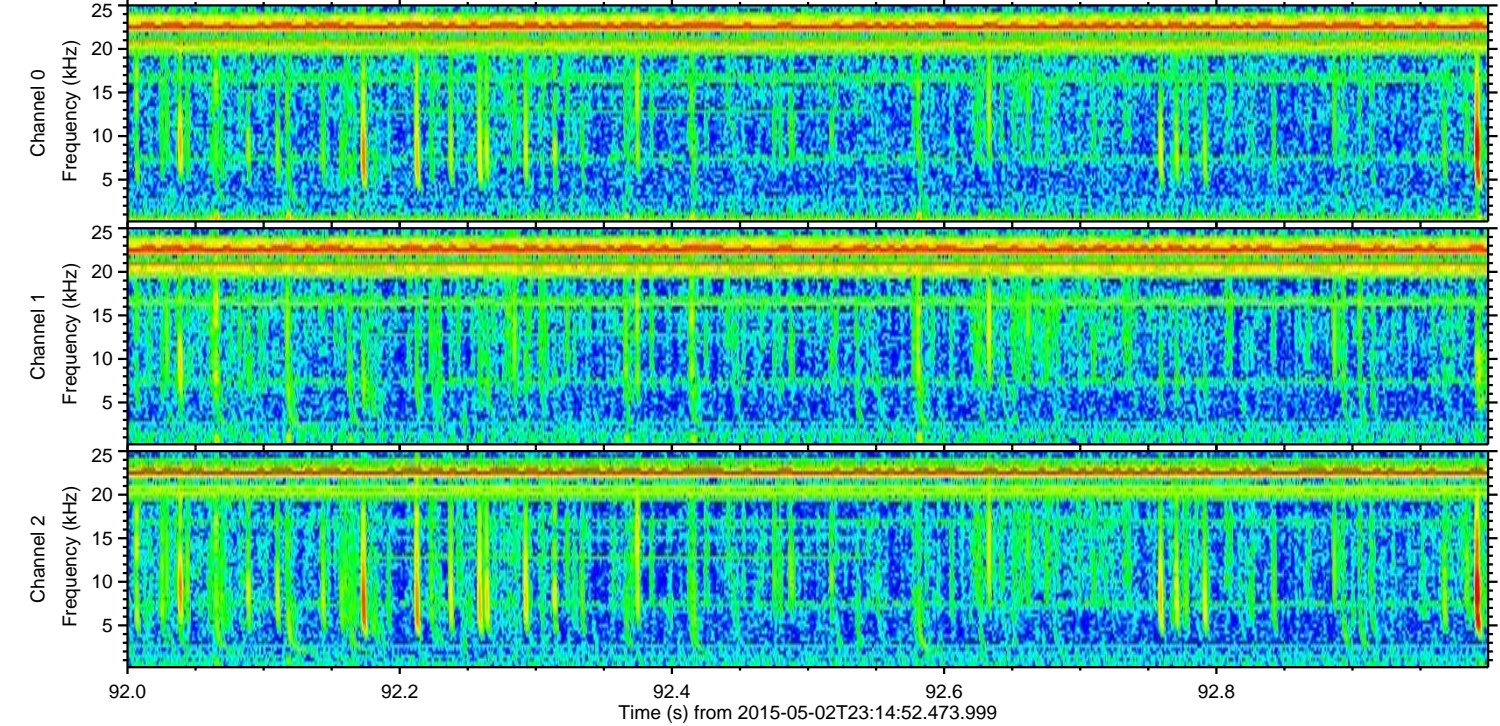
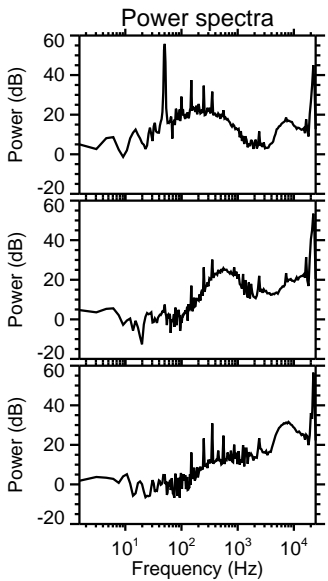
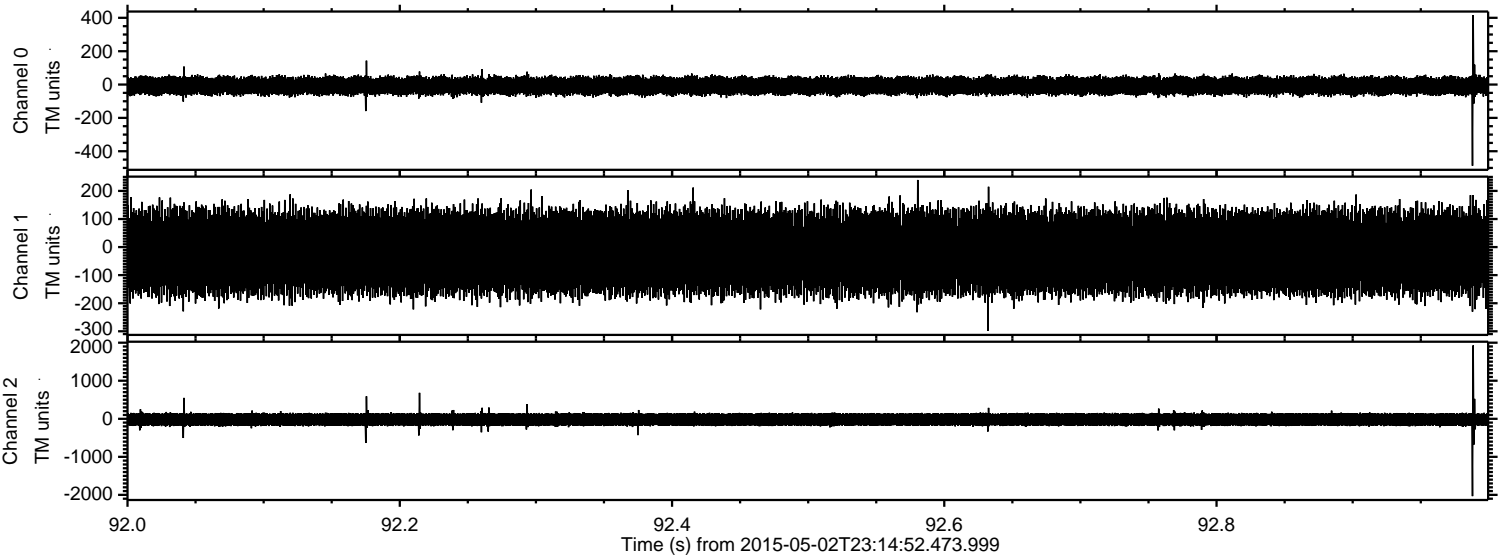


ELMAVAN 3D WAVEFORMS (Measured data sampled at 50 kHz) 49774 packets of 144 samples from 2015-05-02T23:14:52.473.999. Part 55/144

Processed Sun May 3 01:22:05 2015 by ELM ver.2012-10-06 from 001\_\_elm20150502\_231451\_\_dat00.bin



Processed Sun May 3 01:22:06 2015 by ELM ver.2012-10-06 from 001\_\_elm20150502\_231451\_\_dat00.bin

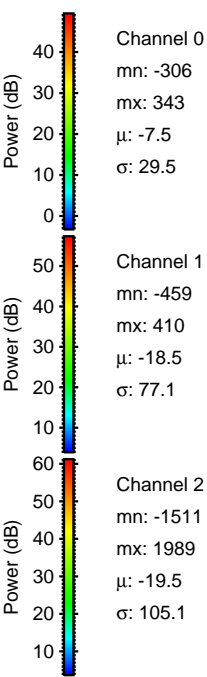
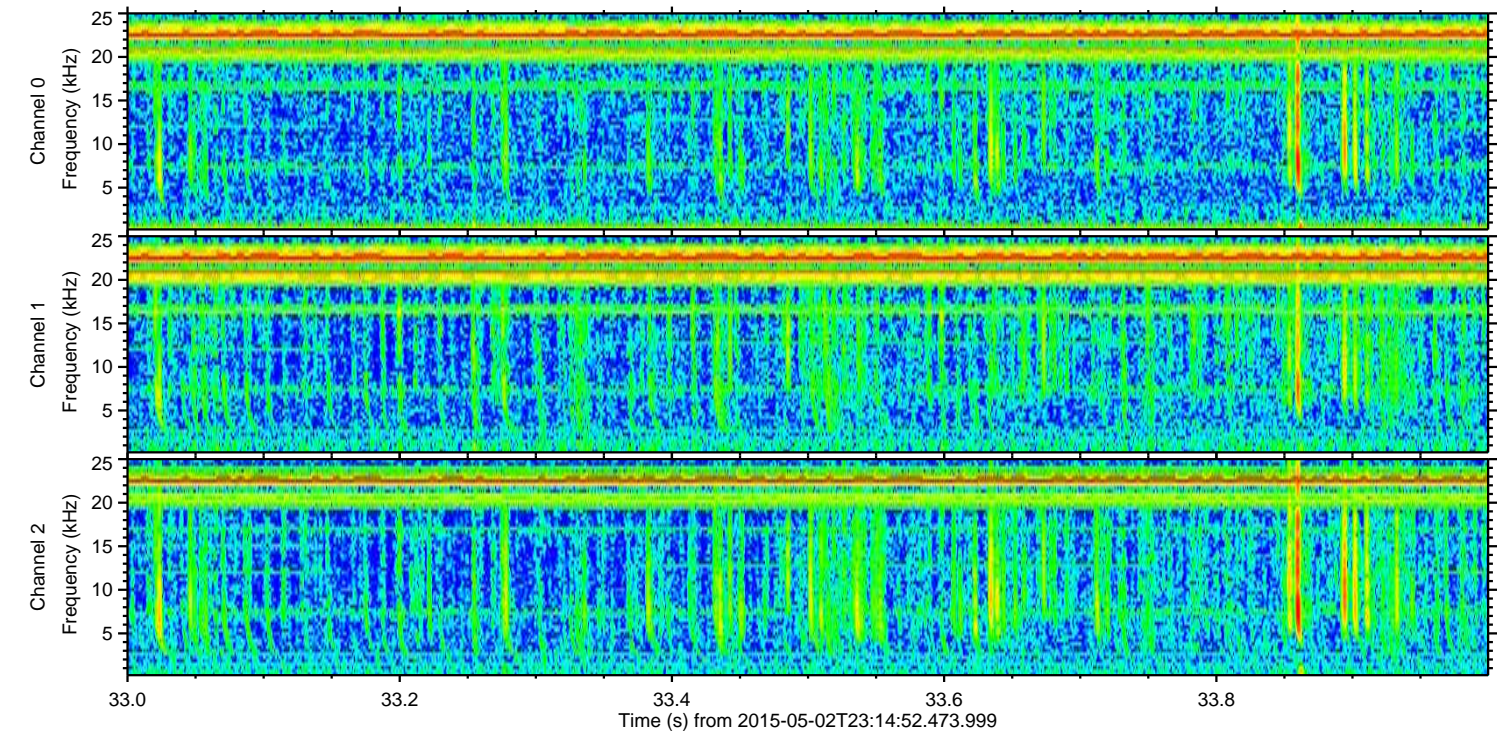
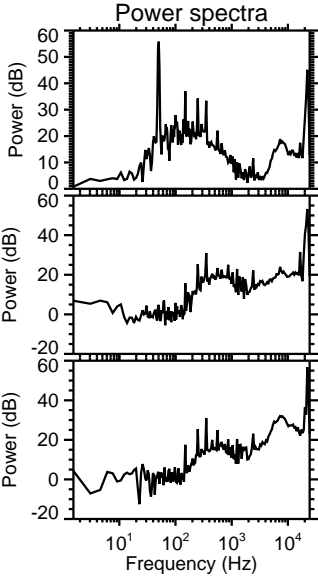
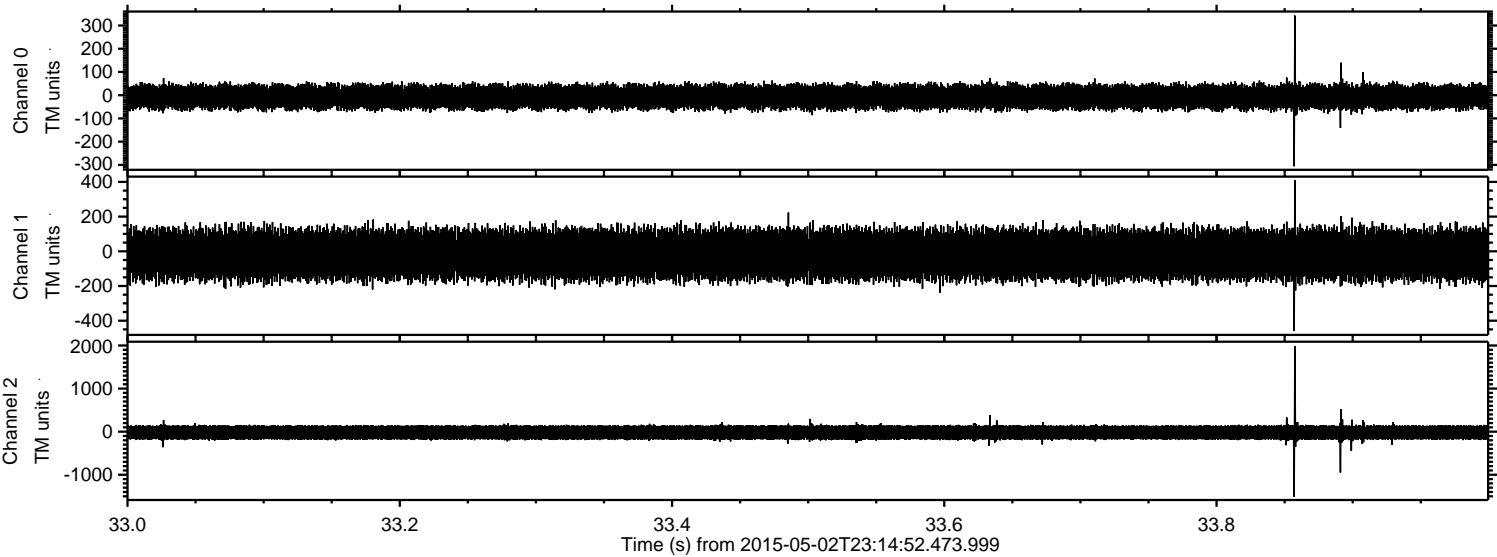


Channel 0  
mn: -487  
mx: 417  
 $\mu$ : -7.5  
 $\sigma$ : 30.0

Channel 1  
mn: -298  
mx: 239  
 $\mu$ : -18.5  
 $\sigma$ : 78.9

Channel 2  
mn: -2033  
mx: 1929  
 $\mu$ : -19.5  
 $\sigma$ : 106.6

Processed Sun May 3 01:22:07 2015 by ELM ver.2012-10-06 from 001\_\_elm20150502\_231451\_\_dat00.bin



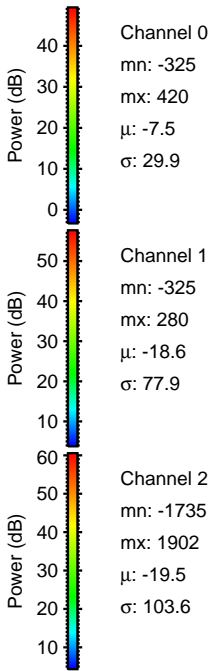
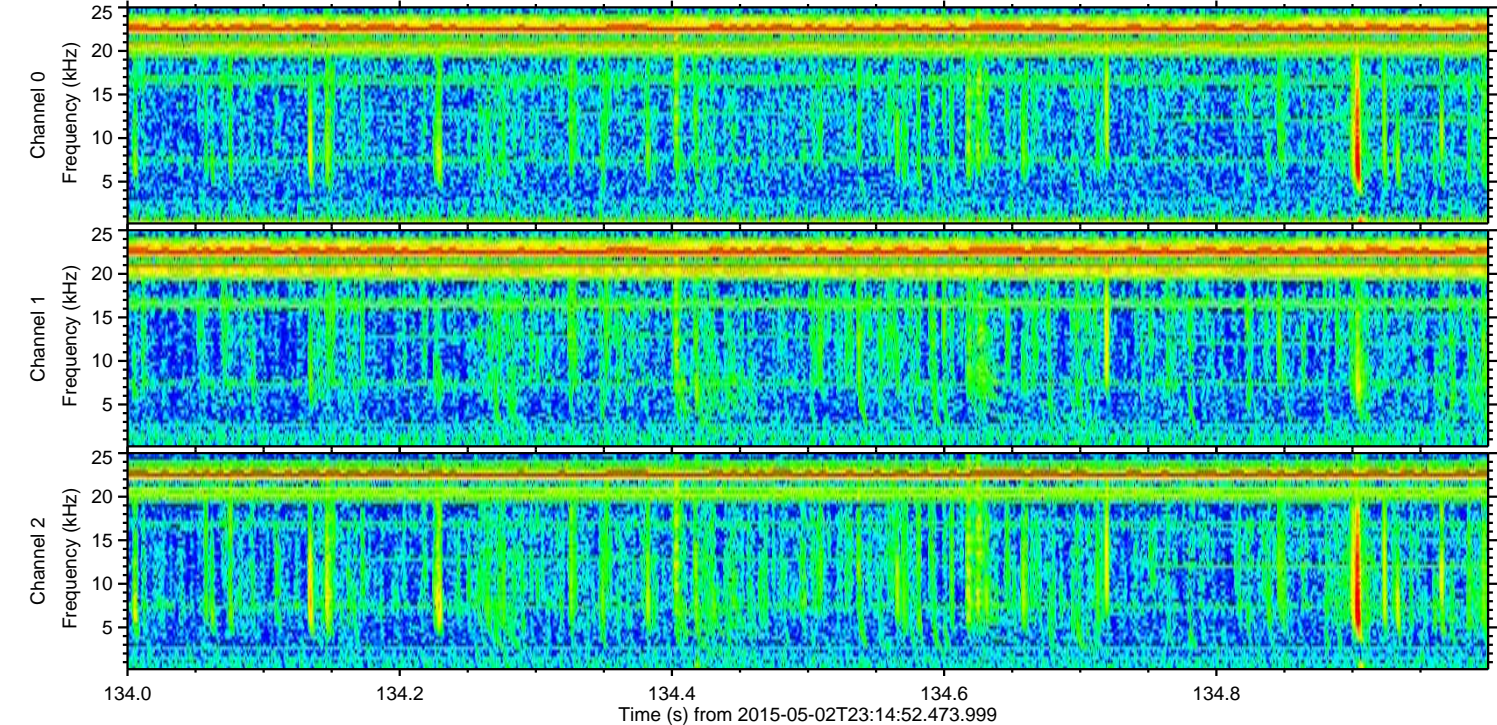
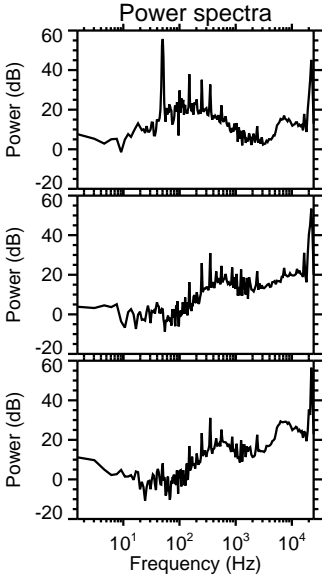
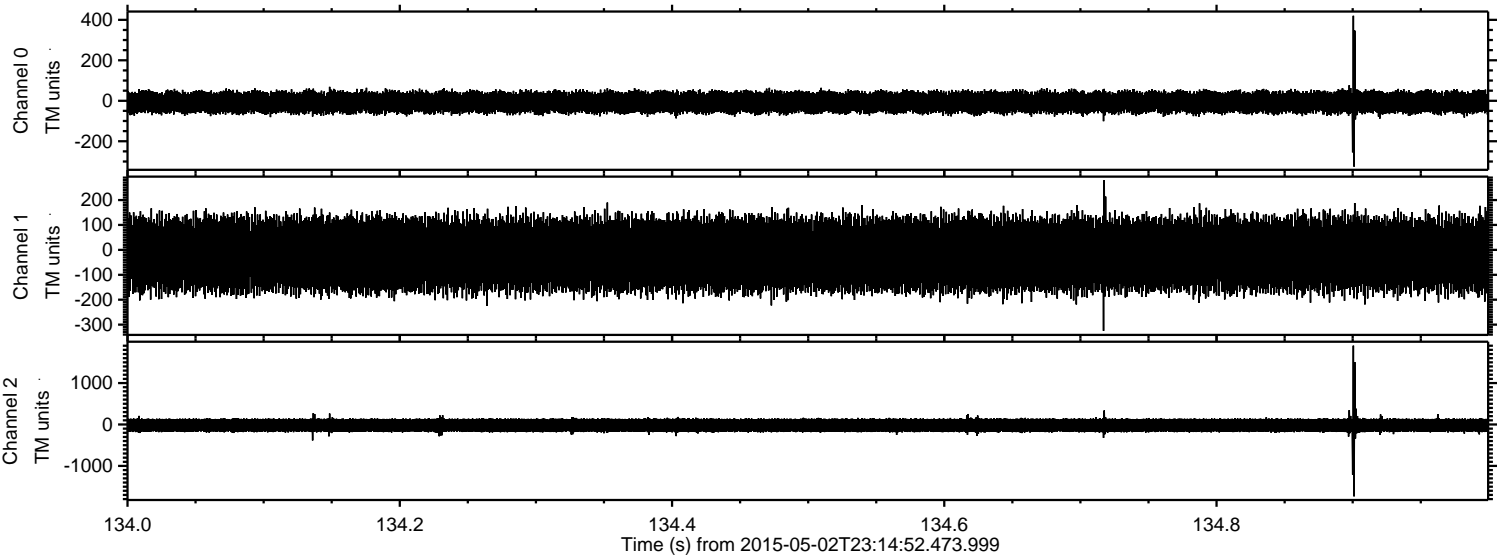
Channel 0  
mn: -306  
mx: 343  
 $\mu$ : -7.5  
 $\sigma$ : 29.5

Channel 1  
mn: -459  
mx: 410  
 $\mu$ : -18.5  
 $\sigma$ : 77.1

Channel 2  
mn: -1511  
mx: 1989  
 $\mu$ : -19.5  
 $\sigma$ : 105.1

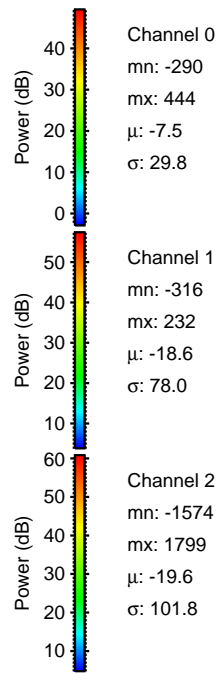
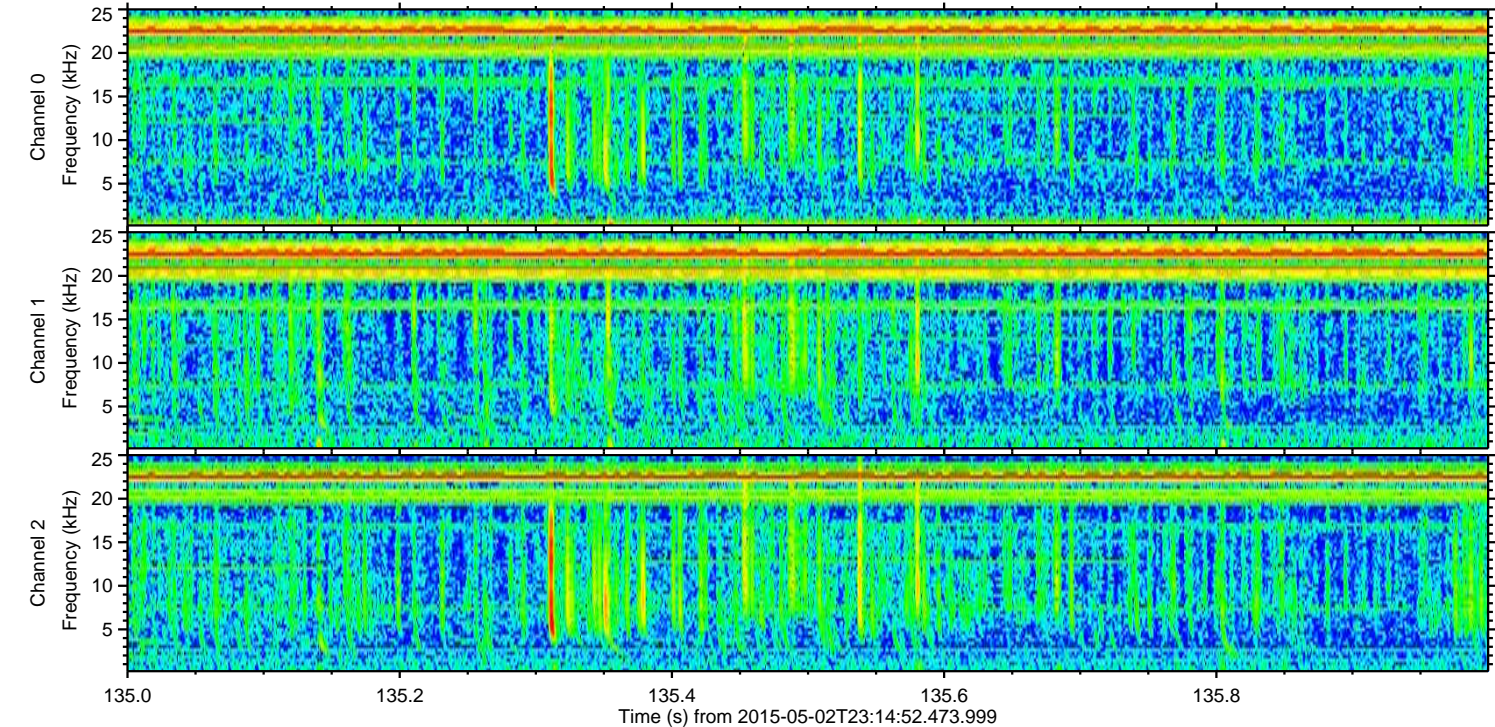
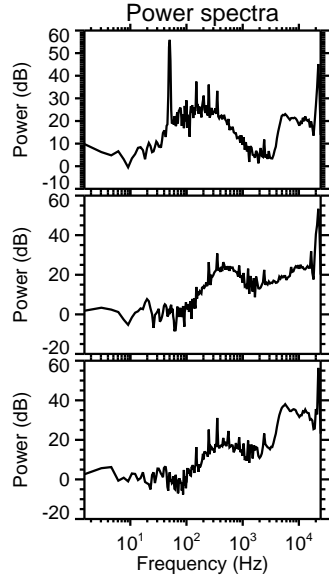
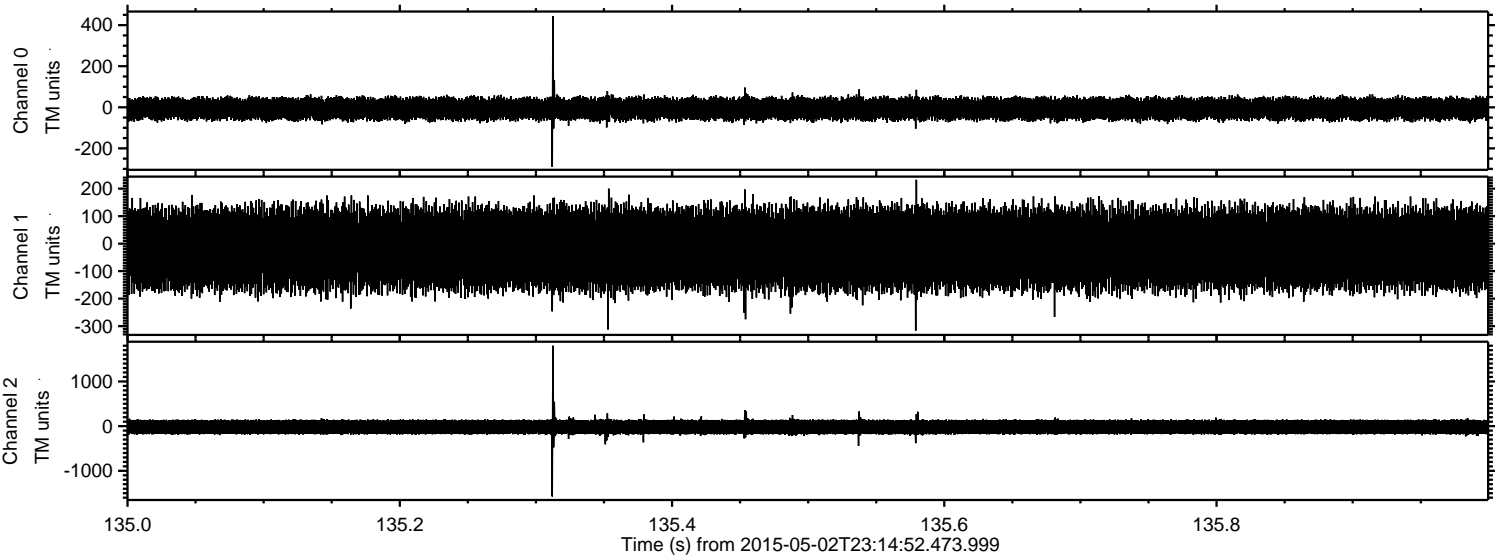
ELMAVAN 3D WAVEFORMS (Measured data sampled at 50 kHz) 49774 packets of 144 samples from 2015-05-02T23:14:52.473.999. Part 135/144

Processed Sun May 3 01:22:08 2015 by ELM ver.2012-10-06 from 001\_\_elm20150502\_231451\_\_dat00.bin



ELMAVAN 3D WAVEFORMS (Measured data sampled at 50 kHz) 49774 packets of 144 samples from 2015-05-02T23:14:52.473.999. Part 136/144

Processed Sun May 3 01:22:09 2015 by ELM ver.2012-10-06 from 001\_\_elm20150502\_231451\_\_dat00.bin



ELMAVAN 3D WAVEFORMS (Measured data sampled at 50 kHz) 49774 packets of 144 samples from 2015-05-02T23:14:52.473.999. Part 2/144

Processed Sun May 3 01:22:10 2015 by ELM ver.2012-10-06 from 001\_\_elm20150502\_231451\_\_dat00.bin

