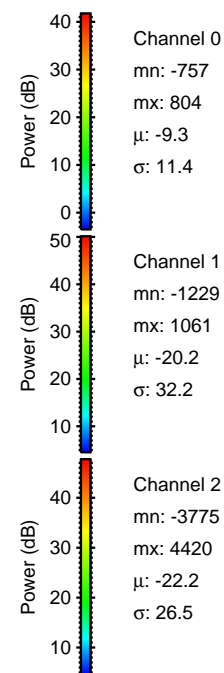
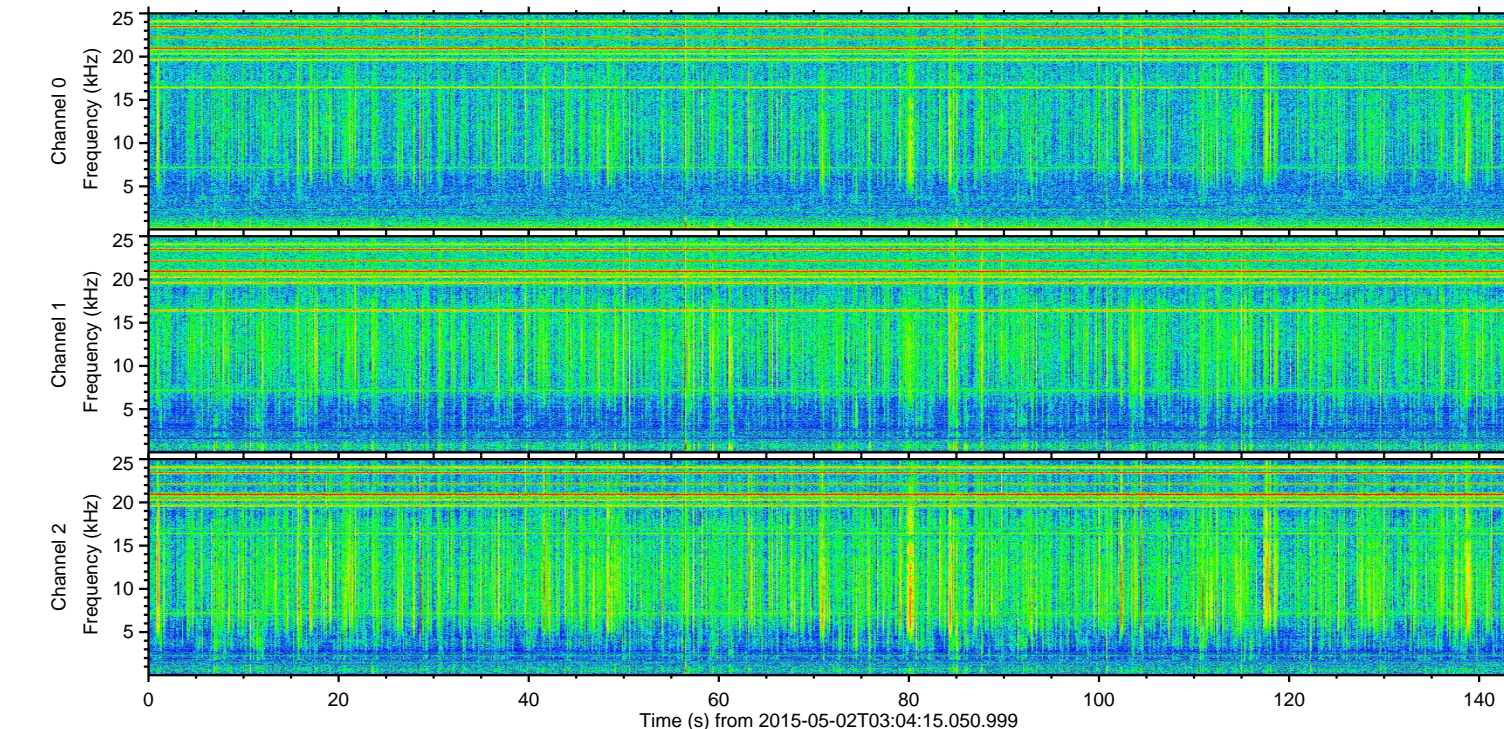
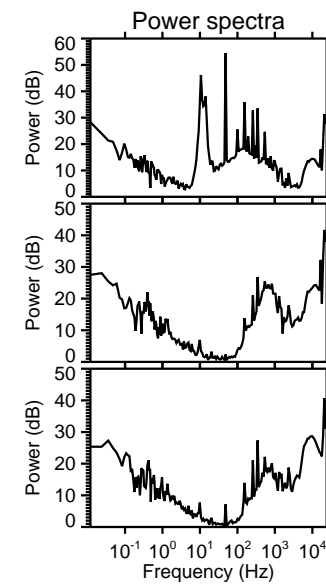
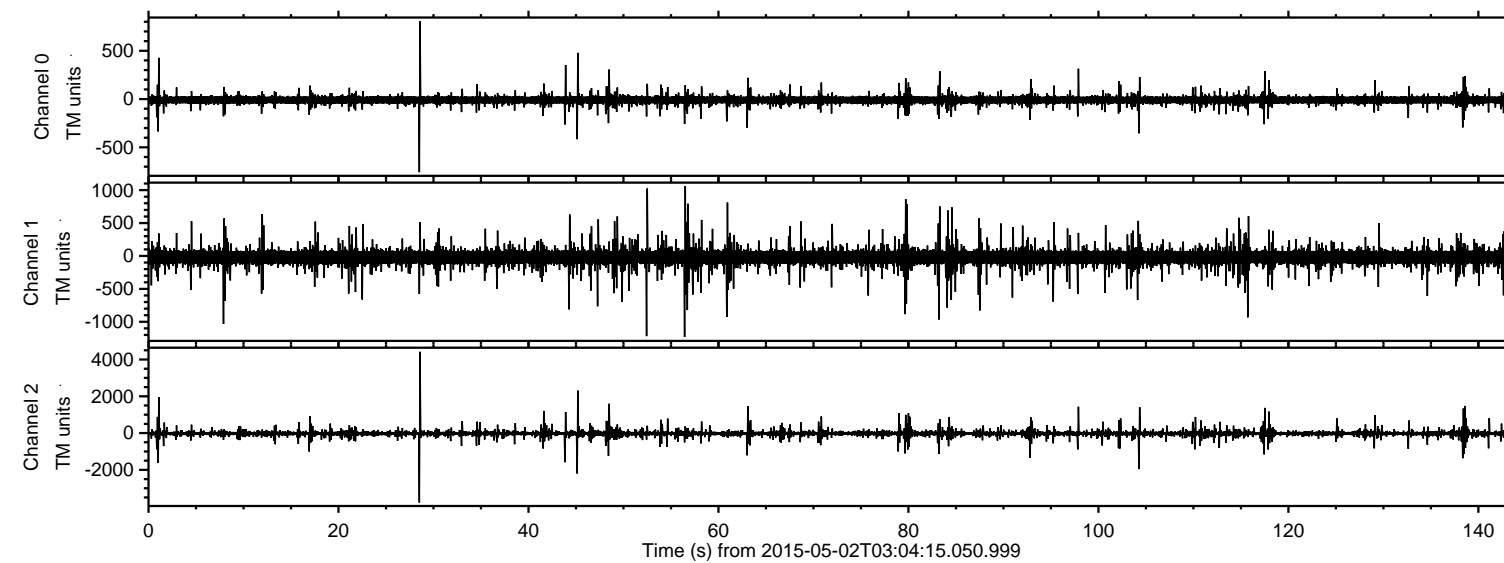


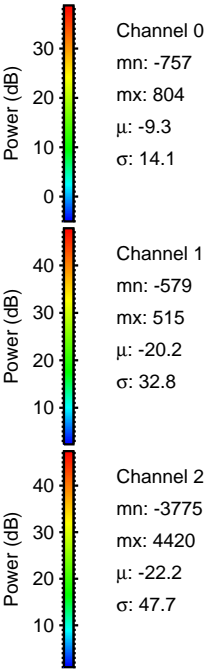
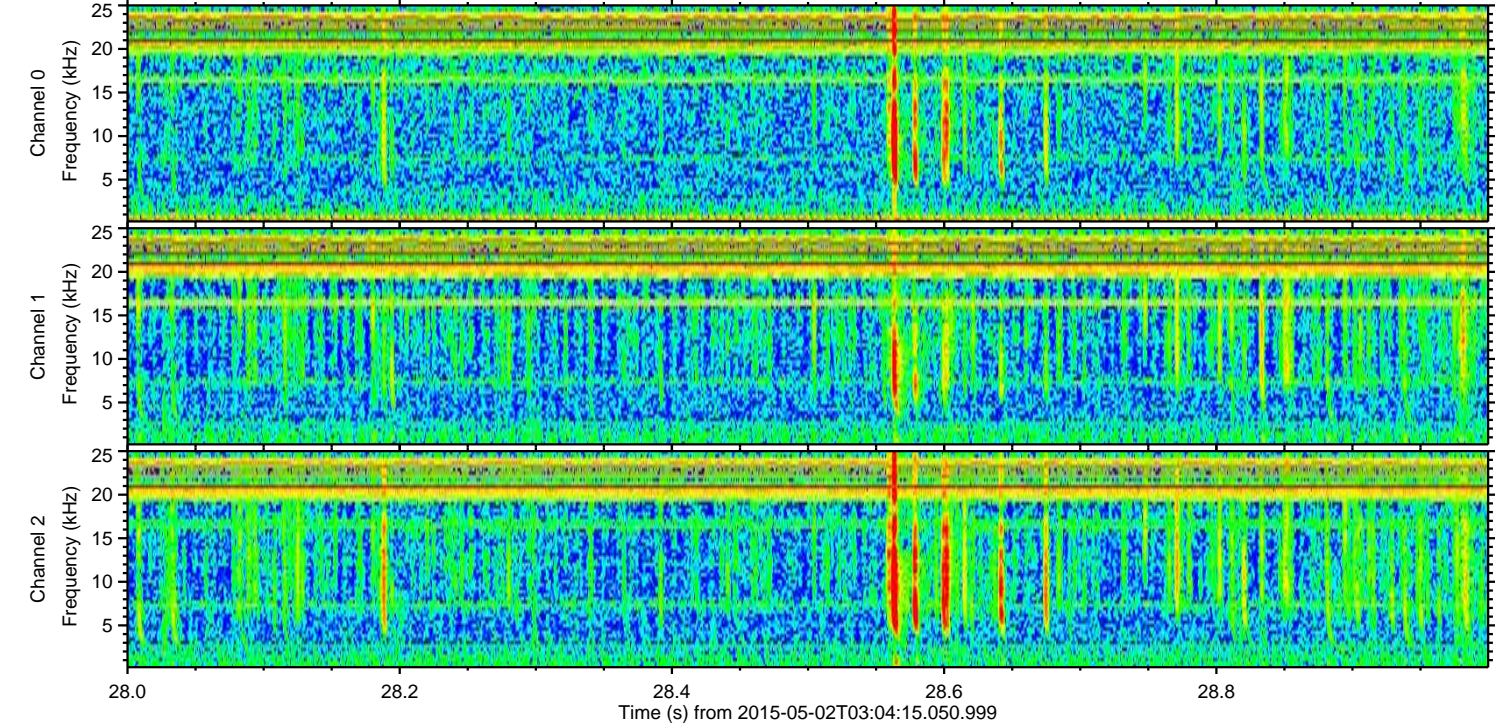
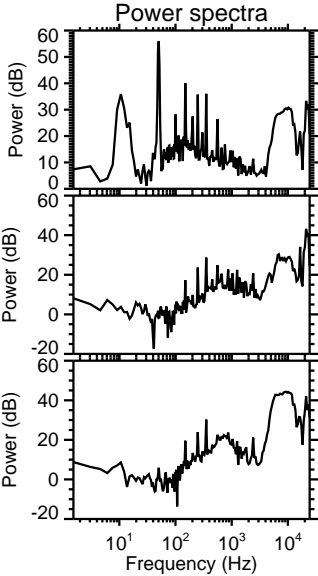
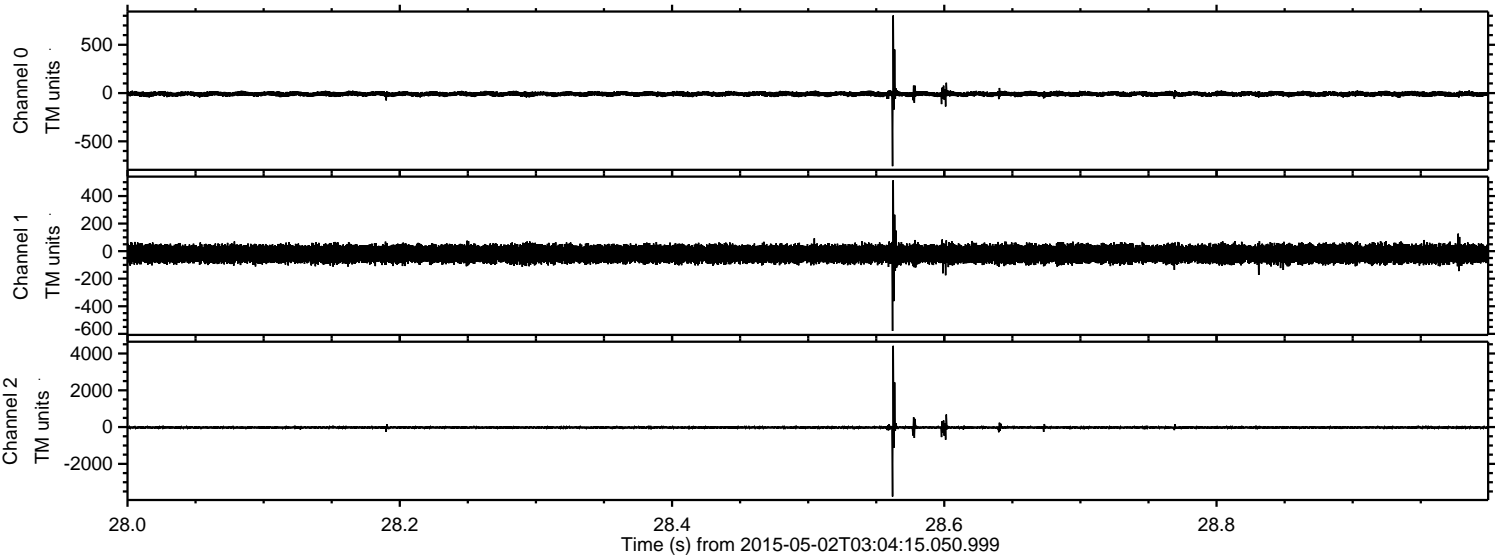
# ELMAVAN 3D WAVEFORMS (Measured data sampled at 50 kHz) 49735 packets of 144 samples from 2015-05-02T03:04:15.050.999.

Processed Sat May 2 05:11:24 2015 by ELM ver.2012-10-06 from 001\_\_elm20150502\_030414\_\_dat00.bin





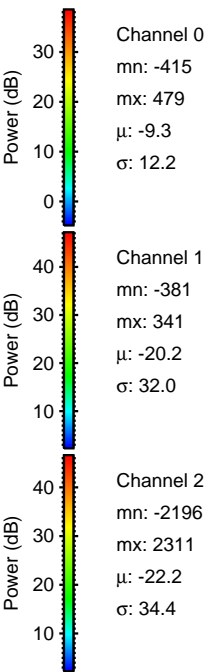
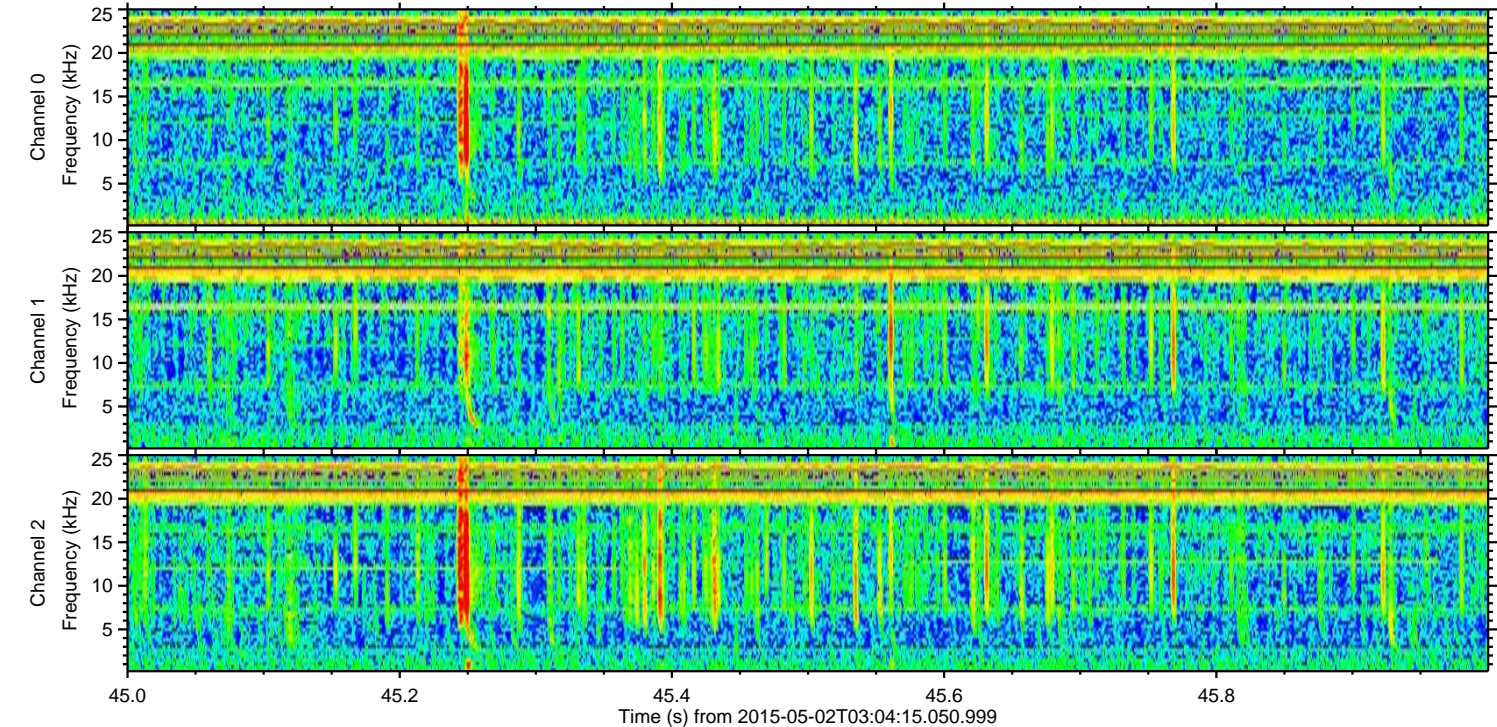
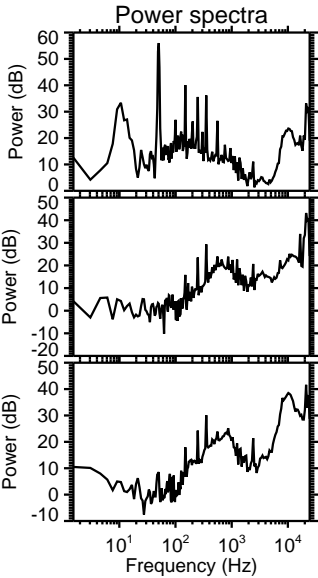
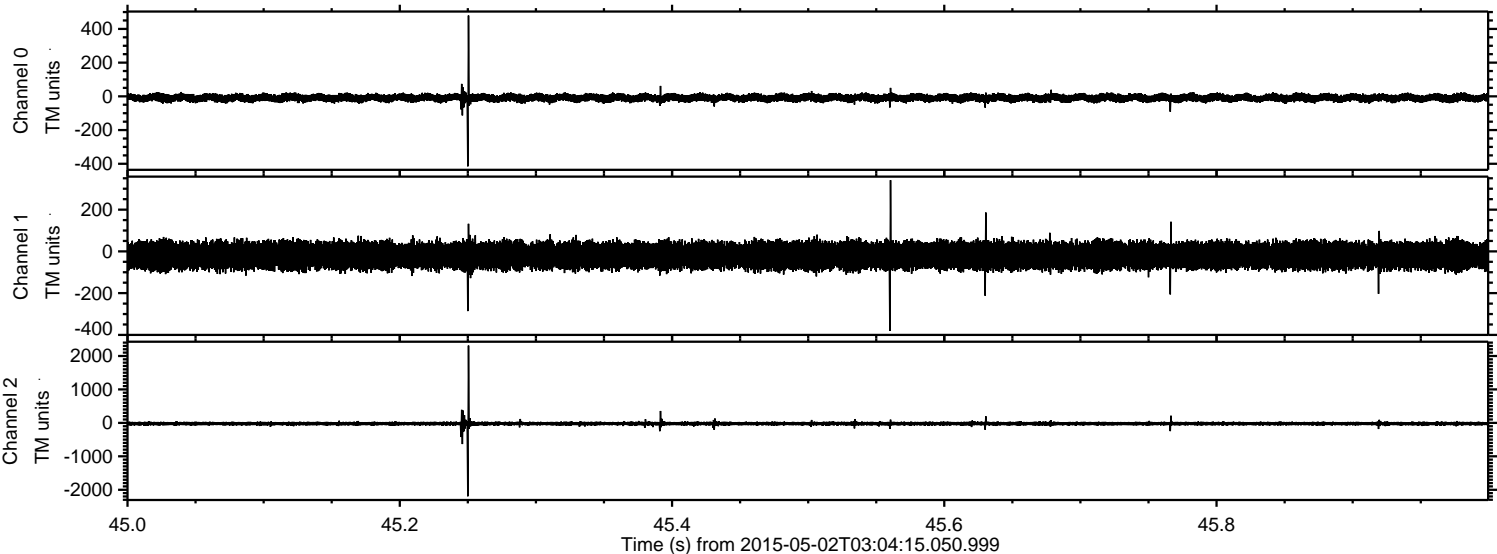
Processed Sat May 2 05:11:35 2015 by ELM ver.2012-10-06 from 001\_\_elm20150502\_030414\_\_dat00.bin





ELMAVAN 3D WAVEFORMS (Measured data sampled at 50 kHz) 49735 packets of 144 samples from 2015-05-02T03:04:15.050.999. Part 46/144

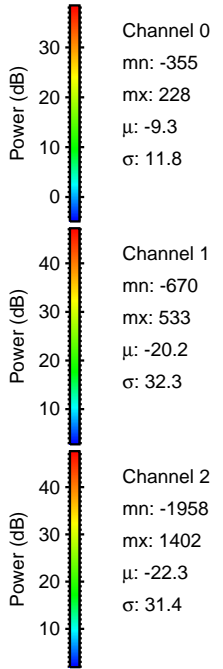
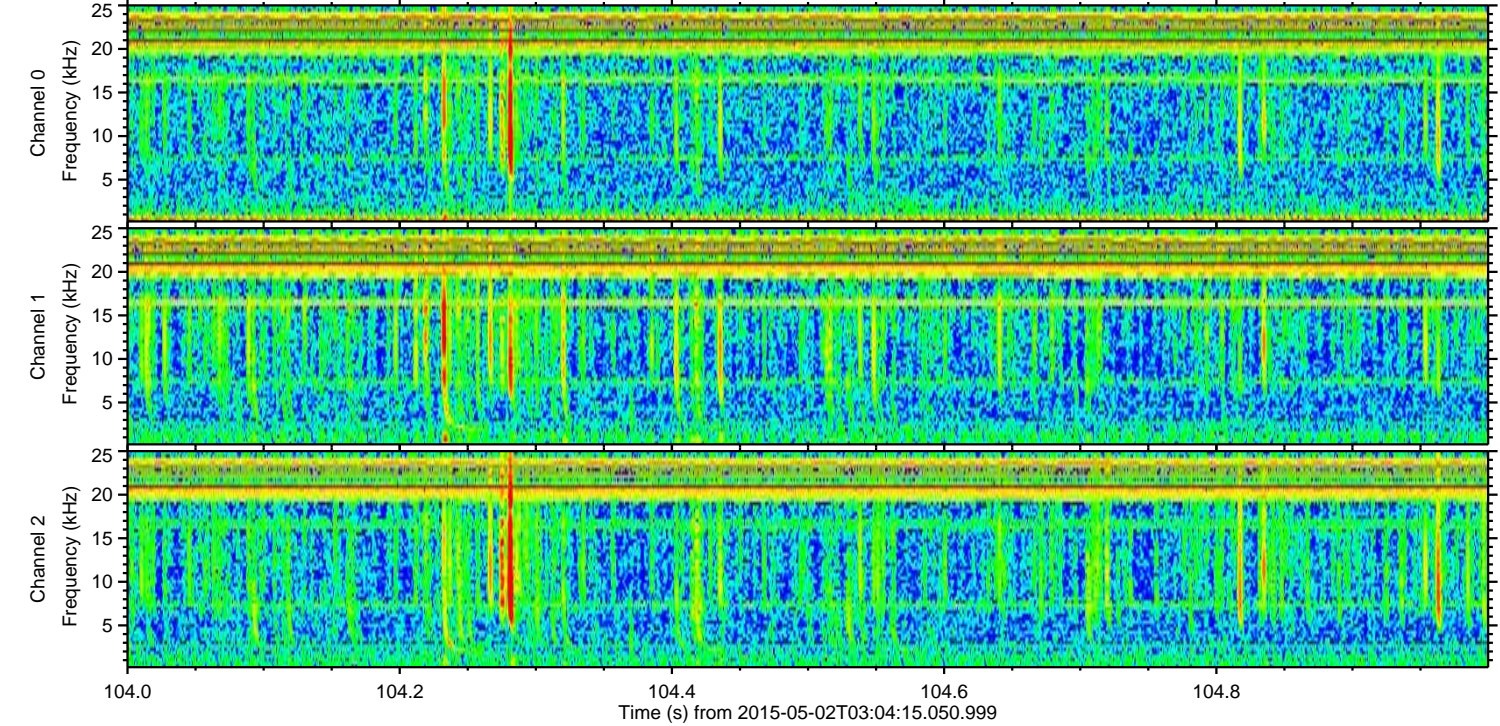
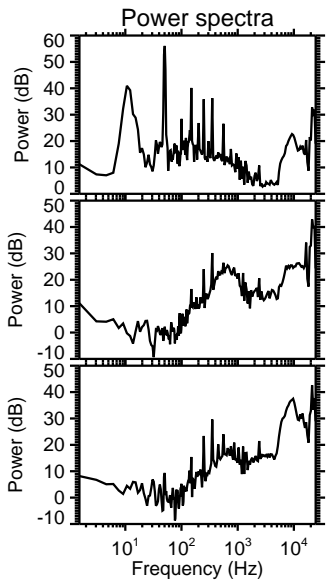
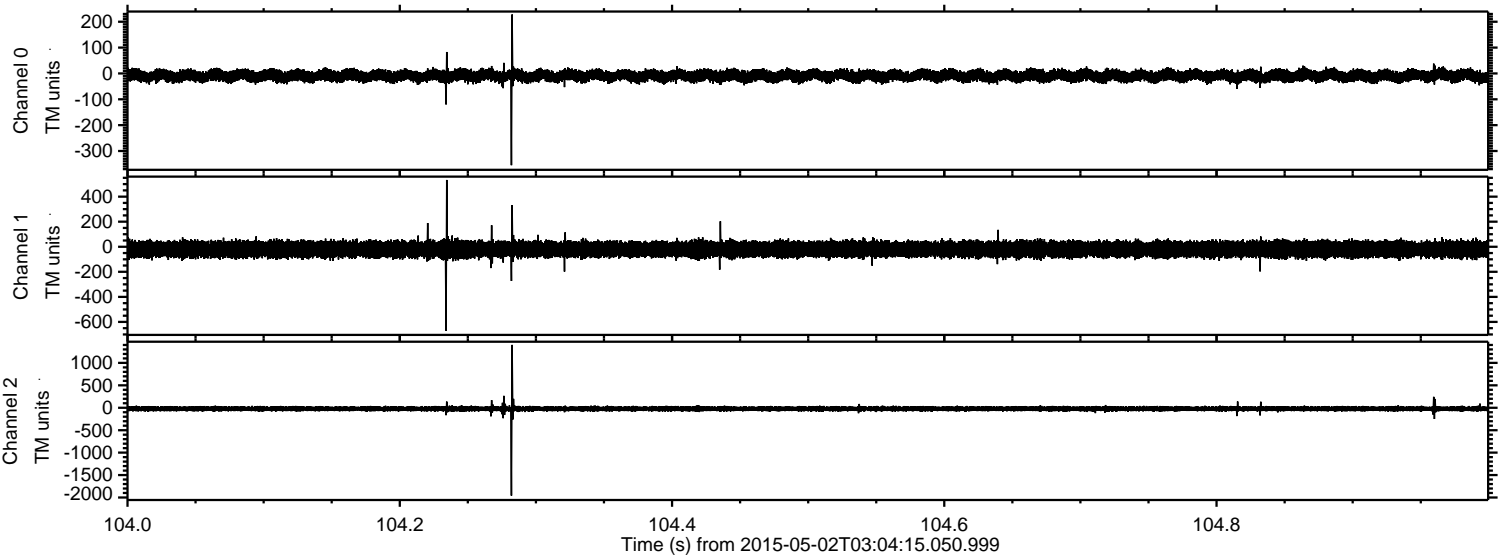
Processed Sat May 2 05:11:36 2015 by ELM ver.2012-10-06 from 001\_\_elm20150502\_030414\_\_dat00.bin





ELMAVAN 3D WAVEFORMS (Measured data sampled at 50 kHz) 49735 packets of 144 samples from 2015-05-02T03:04:15.050.999. Part 105/144

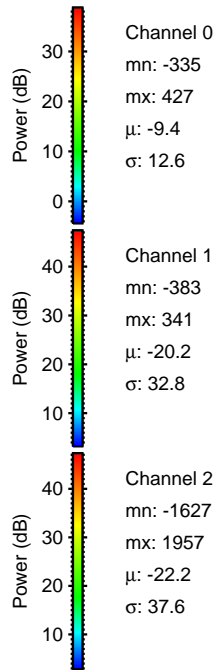
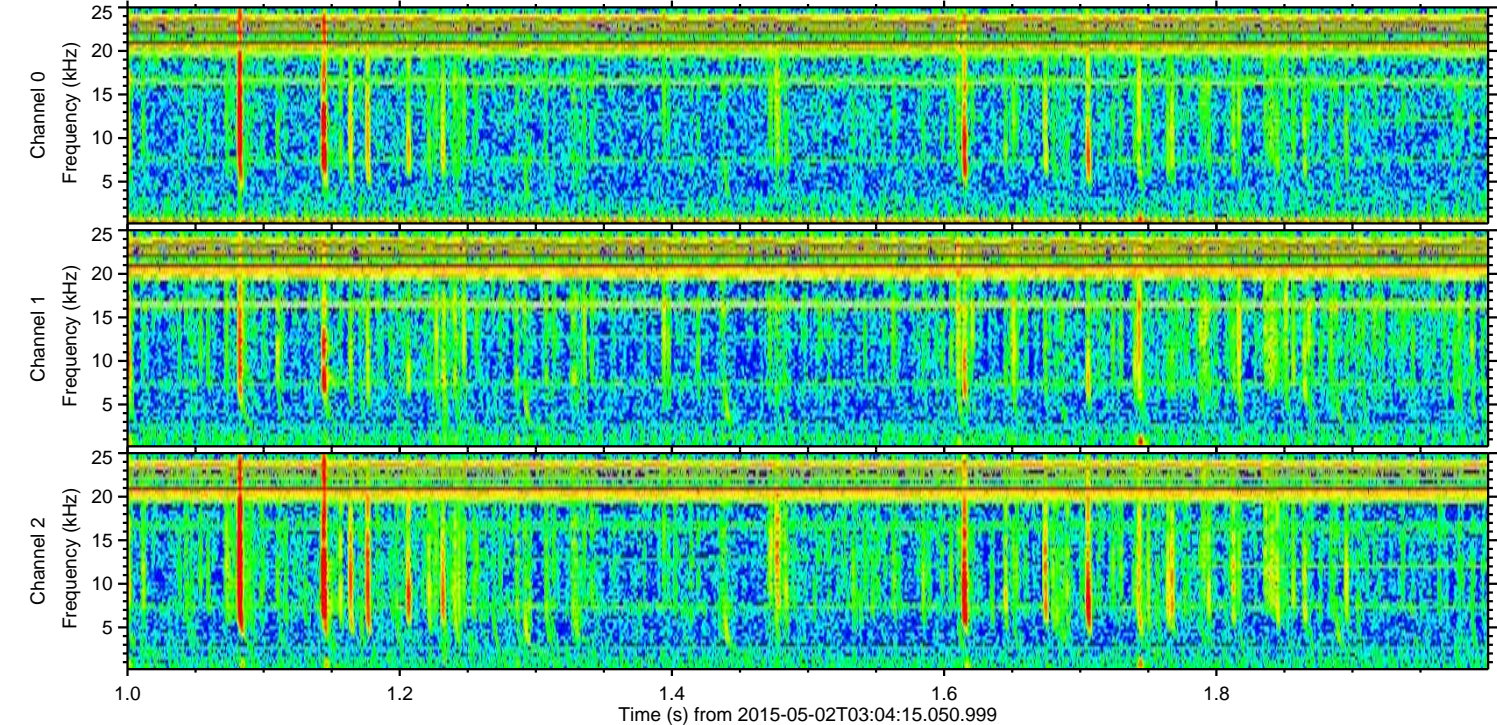
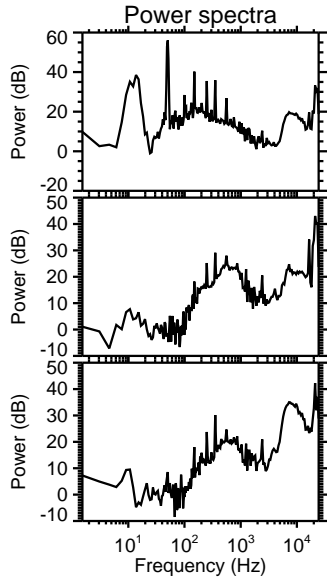
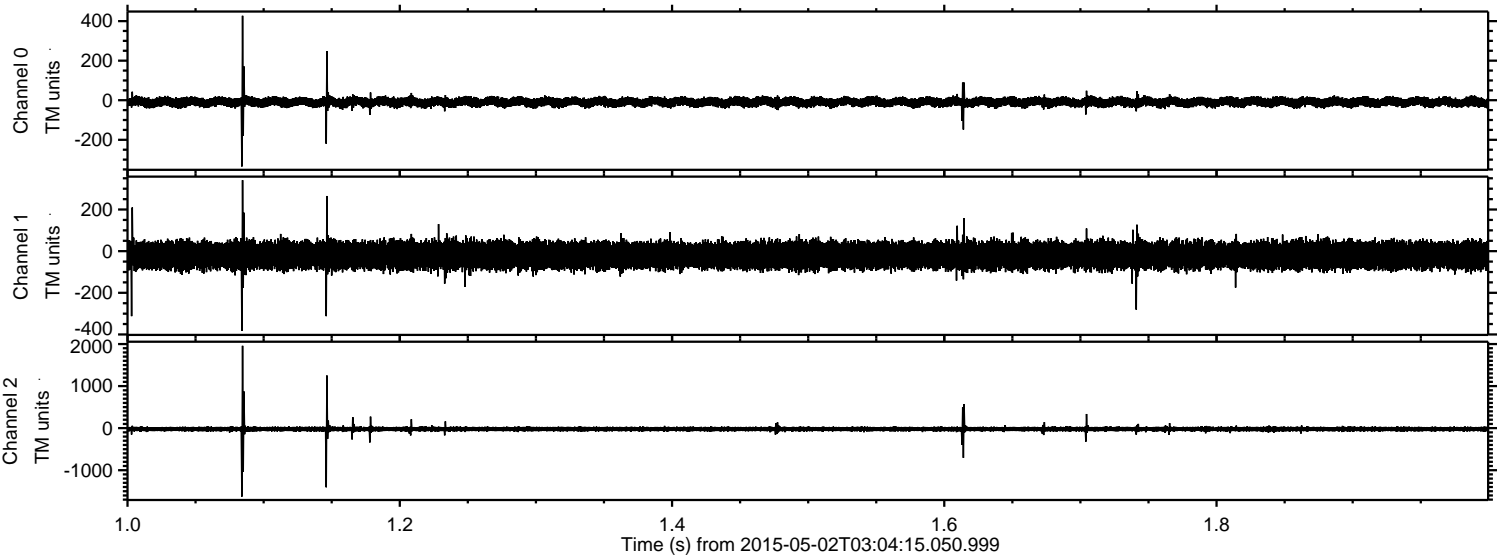
Processed Sat May 2 05:11:37 2015 by ELM ver.2012-10-06 from 001\_\_elm20150502\_030414\_\_dat00.bin





ELMAVAN 3D WAVEFORMS (Measured data sampled at 50 kHz) 49735 packets of 144 samples from 2015-05-02T03:04:15.050.999. Part 2/144

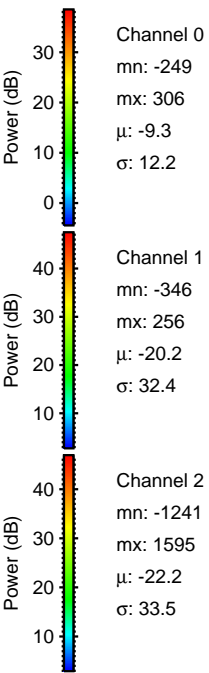
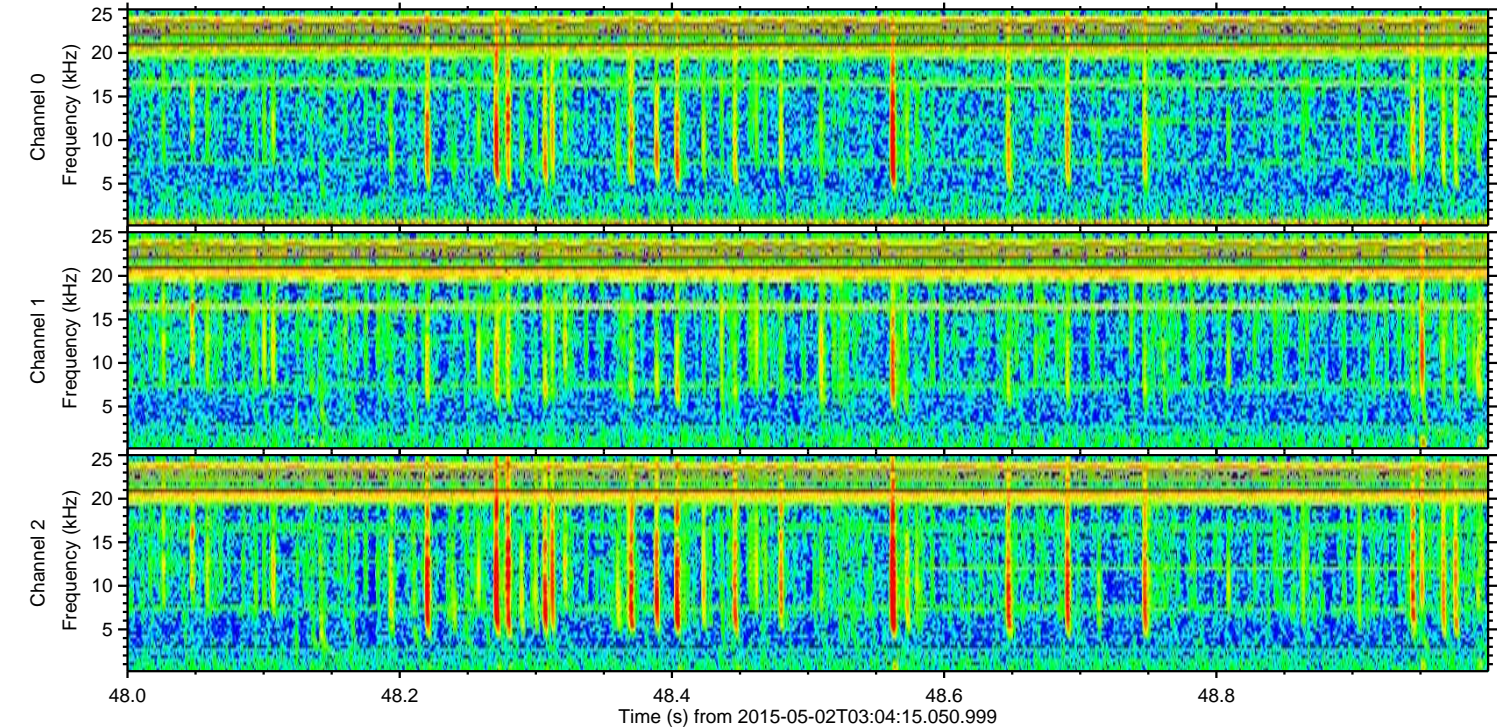
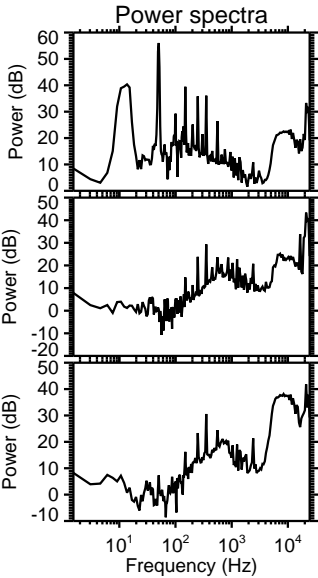
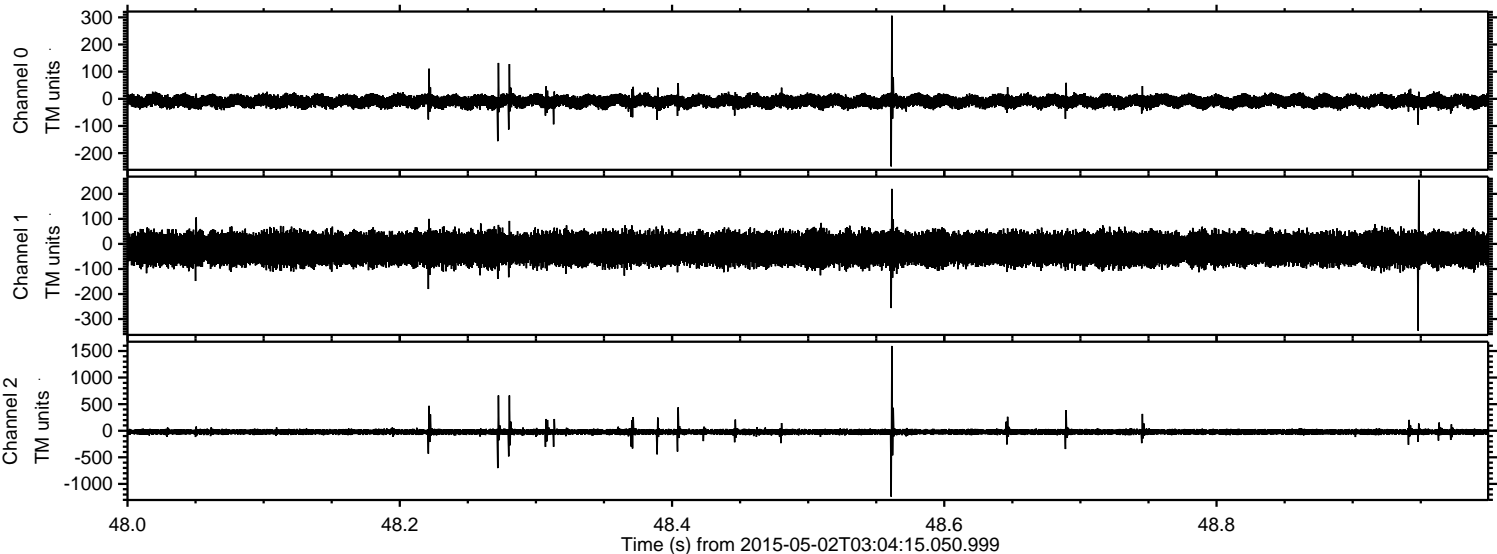
Processed Sat May 2 05:11:38 2015 by ELM ver.2012-10-06 from 001\_\_elm20150502\_030414\_\_dat00.bin





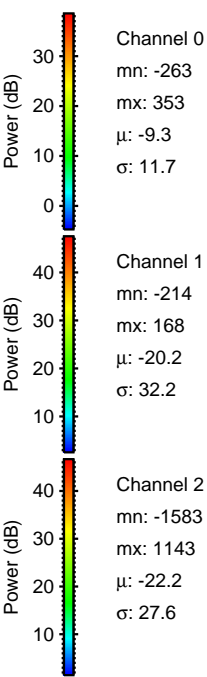
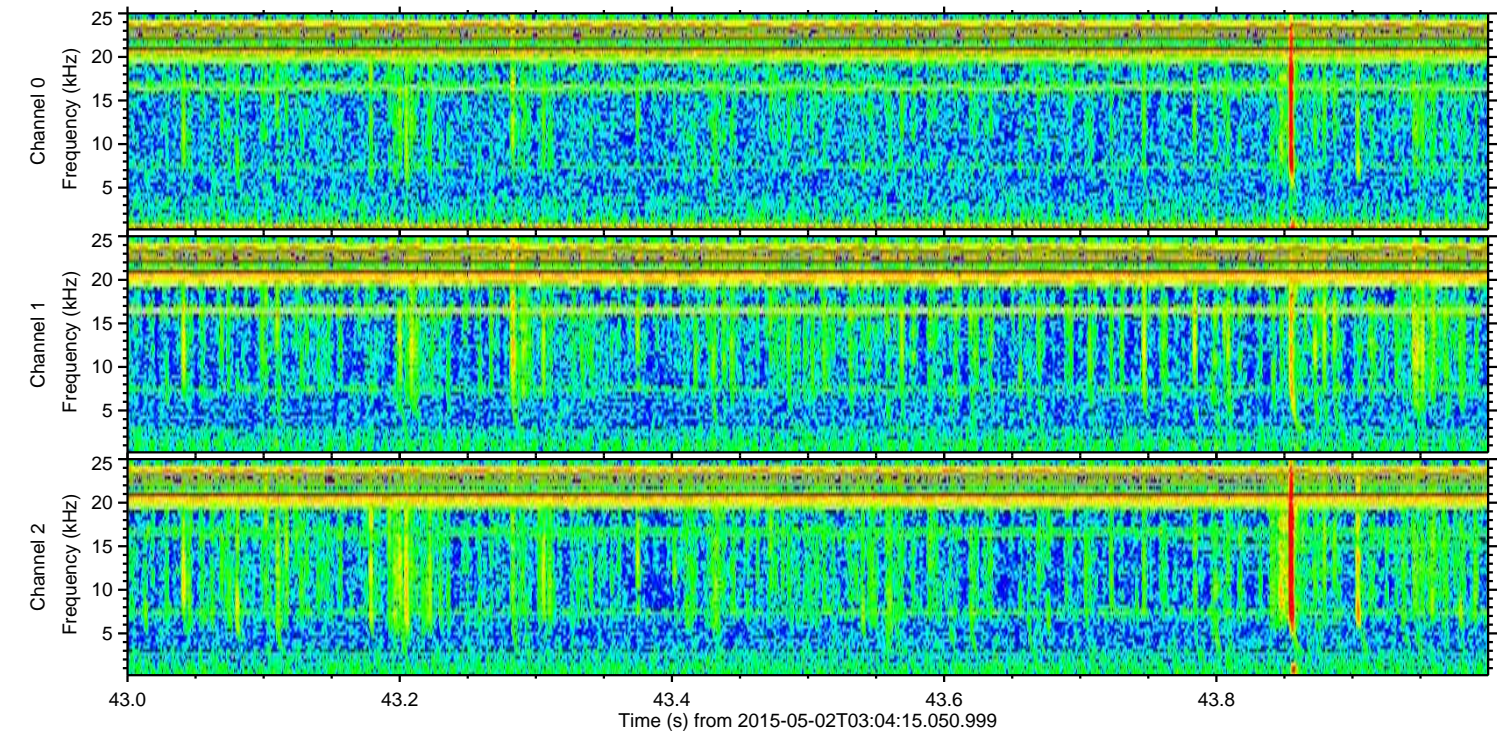
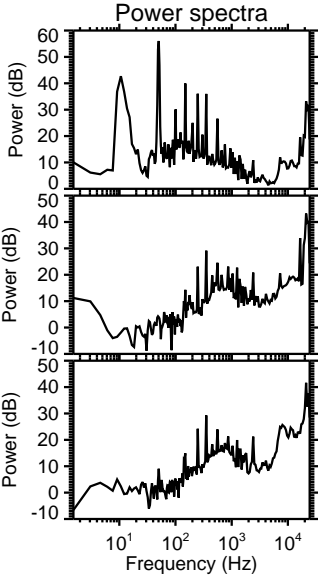
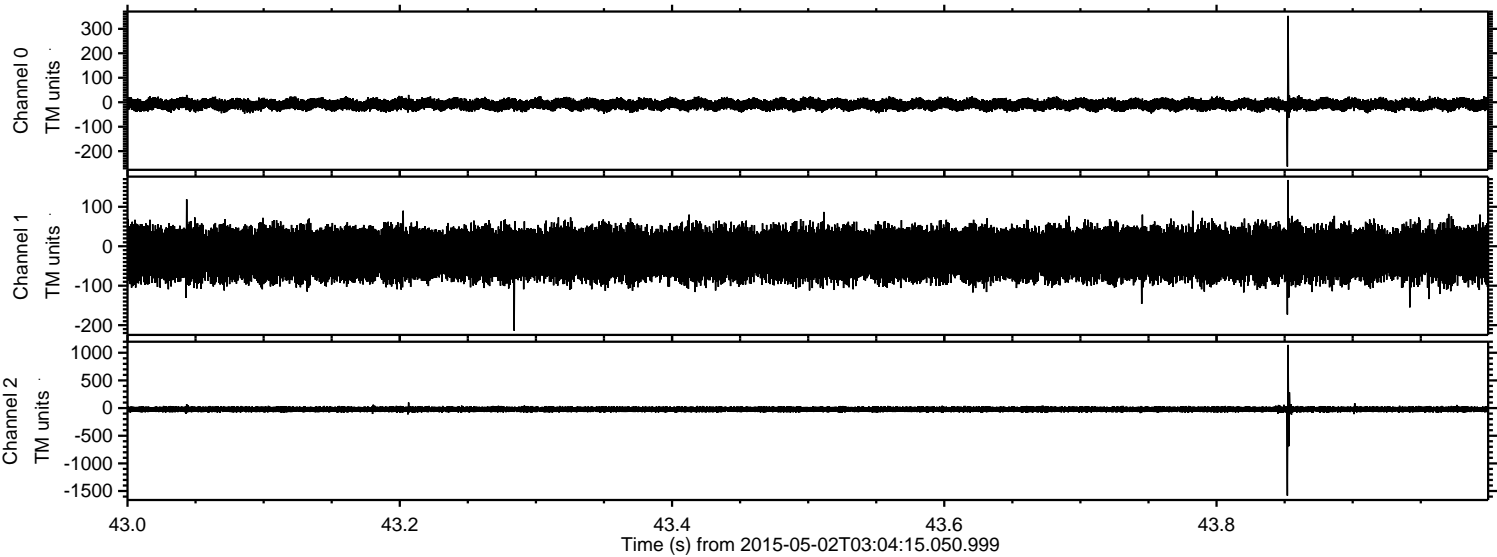
ELMAVAN 3D WAVEFORMS (Measured data sampled at 50 kHz) 49735 packets of 144 samples from 2015-05-02T03:04:15.050.999. Part 49/144

Processed Sat May 2 05:11:39 2015 by ELM ver.2012-10-06 from 001\_\_elm20150502\_030414\_\_dat00.bin





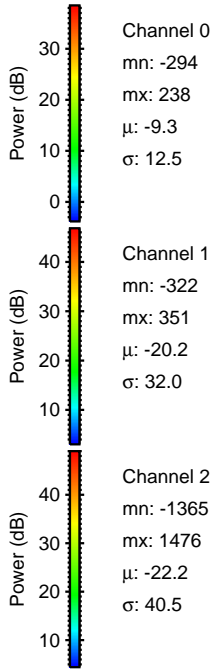
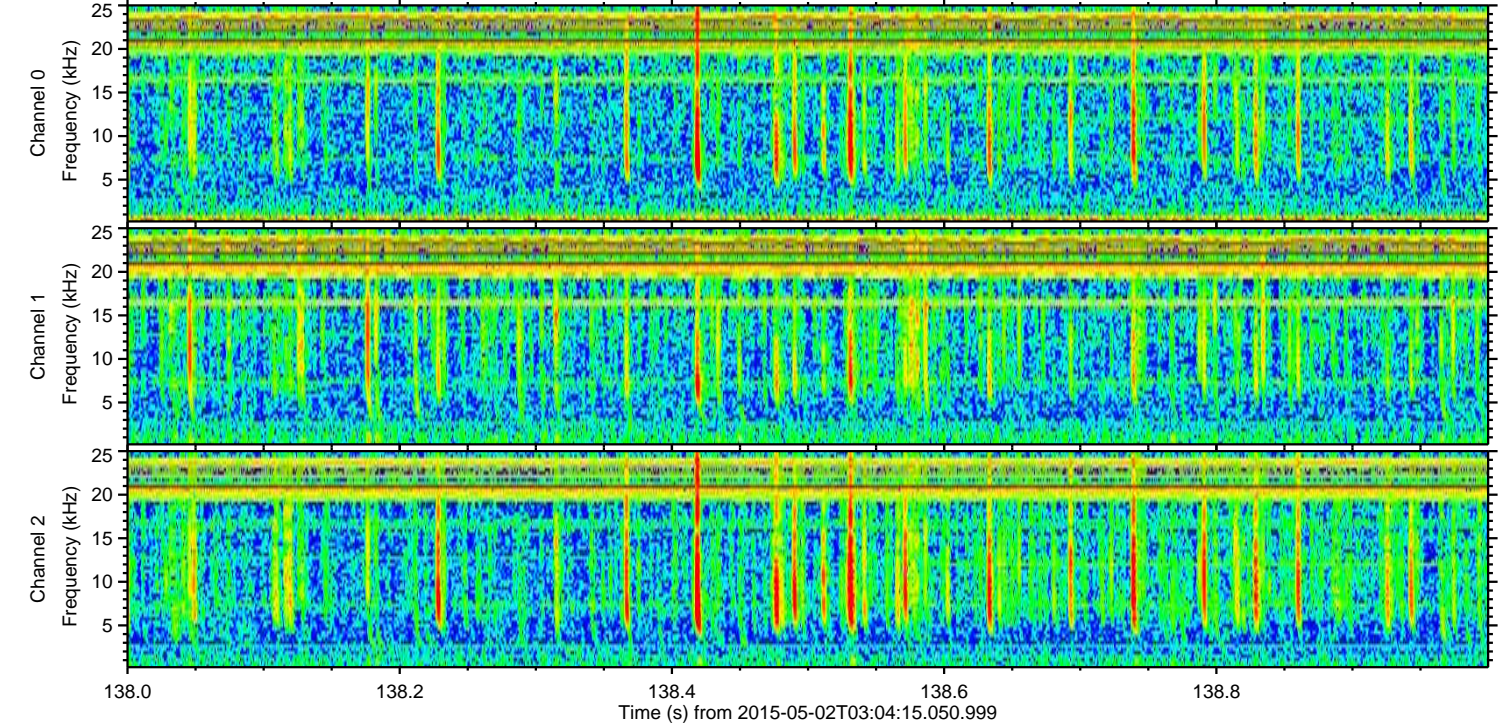
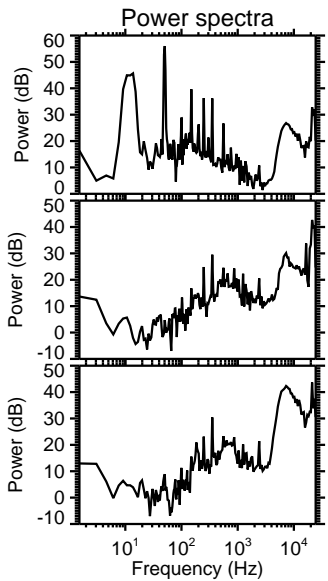
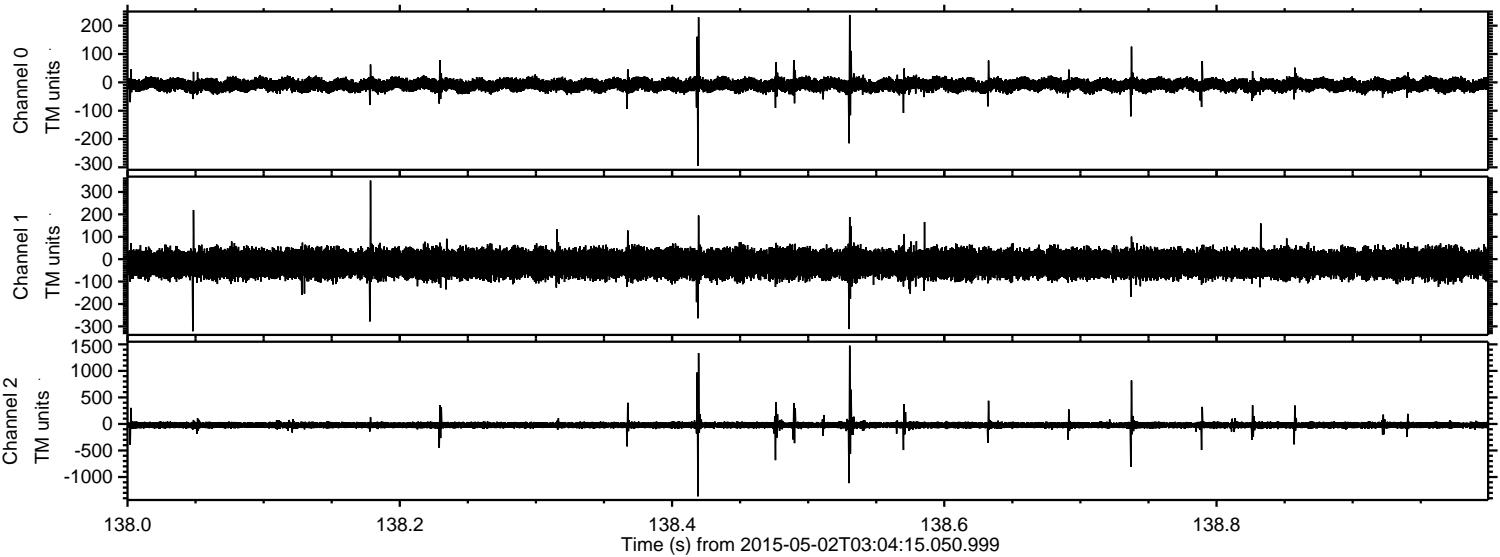
Processed Sat May 2 05:11:40 2015 by ELM ver.2012-10-06 from 001\_\_elm20150502\_030414\_\_dat00.bin





ELMAVAN 3D WAVEFORMS (Measured data sampled at 50 kHz) 49735 packets of 144 samples from 2015-05-02T03:04:15.050.999. Part 139/144

Processed Sat May 2 05:11:41 2015 by ELM ver.2012-10-06 from 001\_\_elm20150502\_030414\_\_dat00.bin



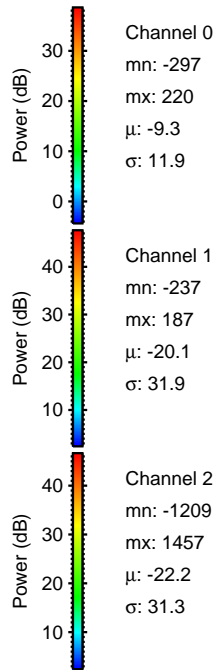
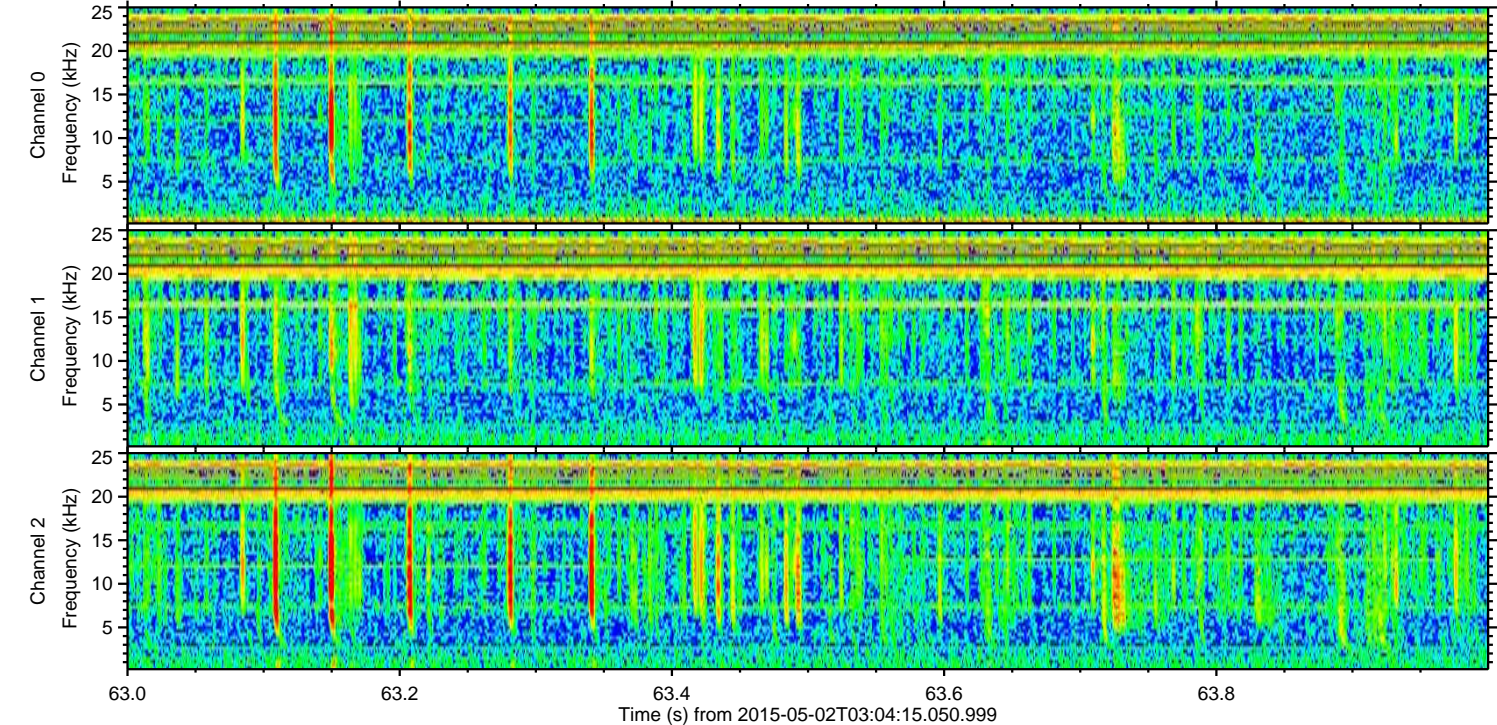
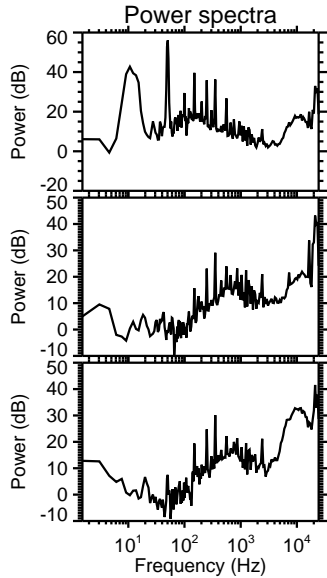
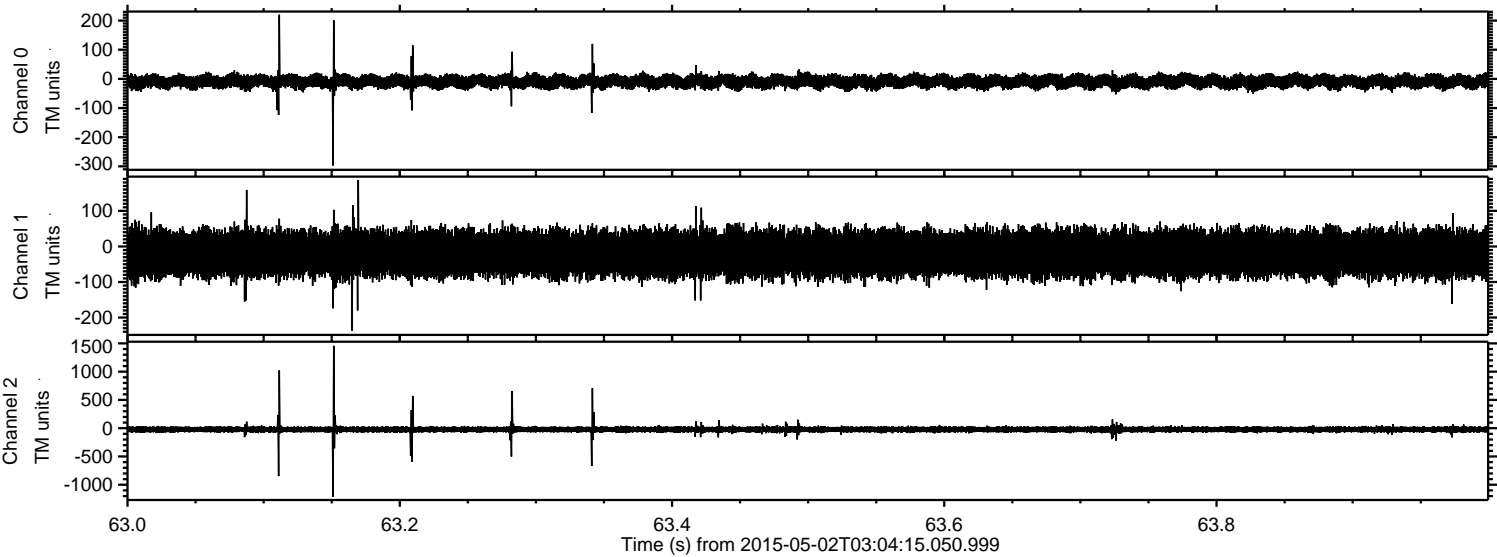
Channel 0  
mn: -294  
mx: 238  
 $\mu$ : -9.3  
 $\sigma$ : 12.5

Channel 1  
mn: -322  
mx: 351  
 $\mu$ : -20.2  
 $\sigma$ : 32.0

Channel 2  
mn: -1365  
mx: 1476  
 $\mu$ : -22.2  
 $\sigma$ : 40.5

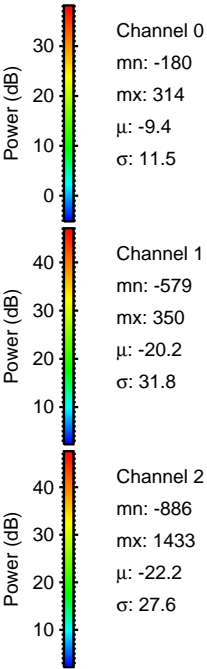
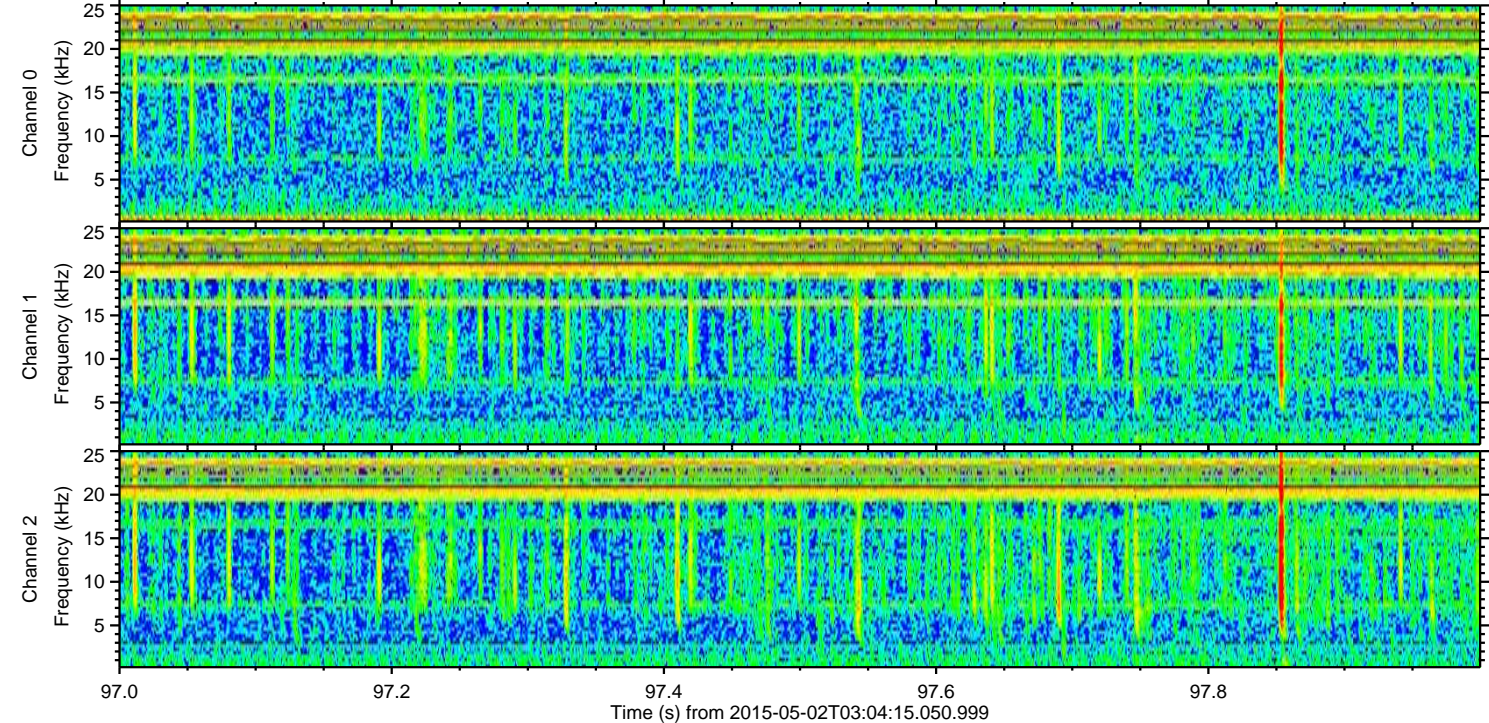
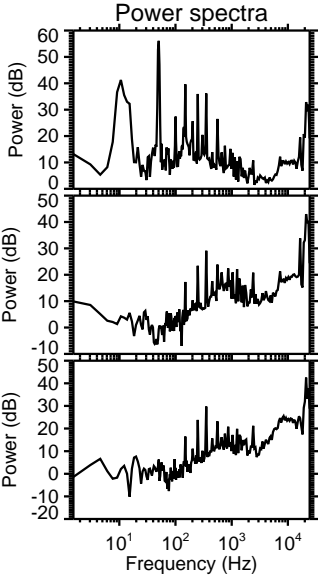
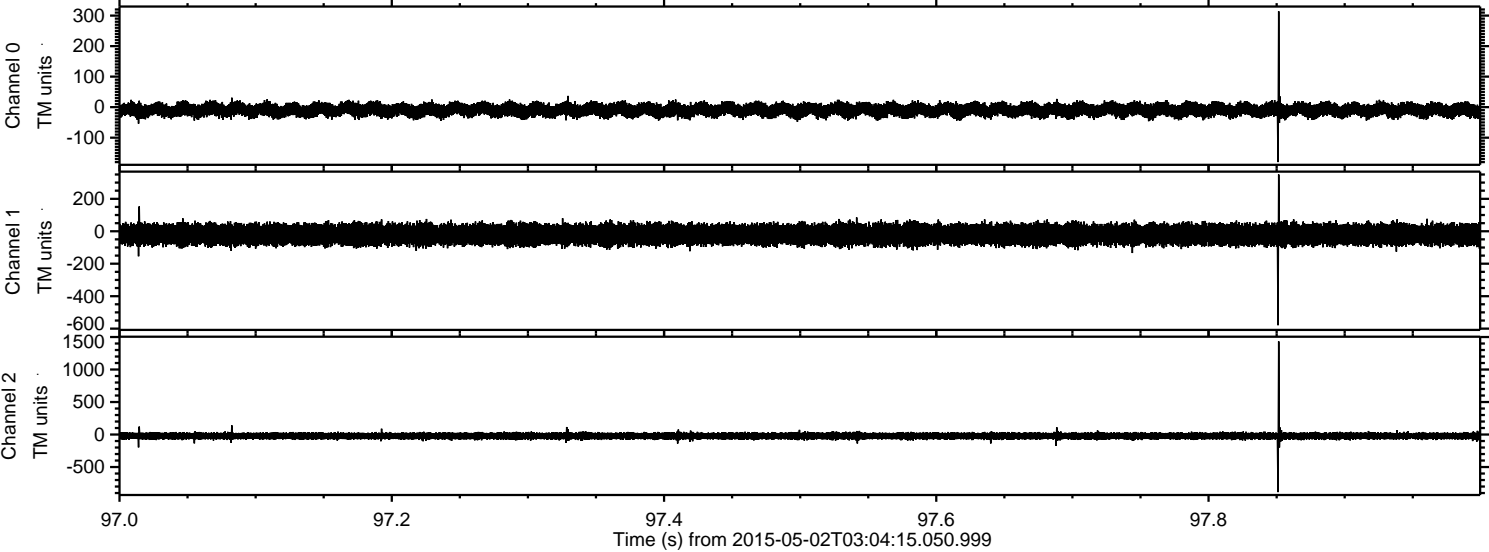


Processed Sat May 2 05:11:42 2015 by ELM ver.2012-10-06 from 001\_\_elm20150502\_030414\_\_dat00.bin





Processed Sat May 2 05:11:43 2015 by ELM ver.2012-10-06 from 001\_\_elm20150502\_030414\_\_dat00.bin





Processed Sat May 2 05:11:44 2015 by ELM ver.2012-10-06 from 001\_\_elm20150502\_030414\_\_dat00.bin

