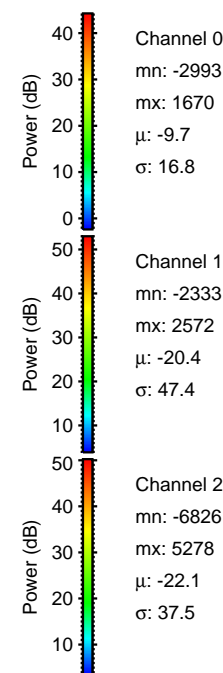
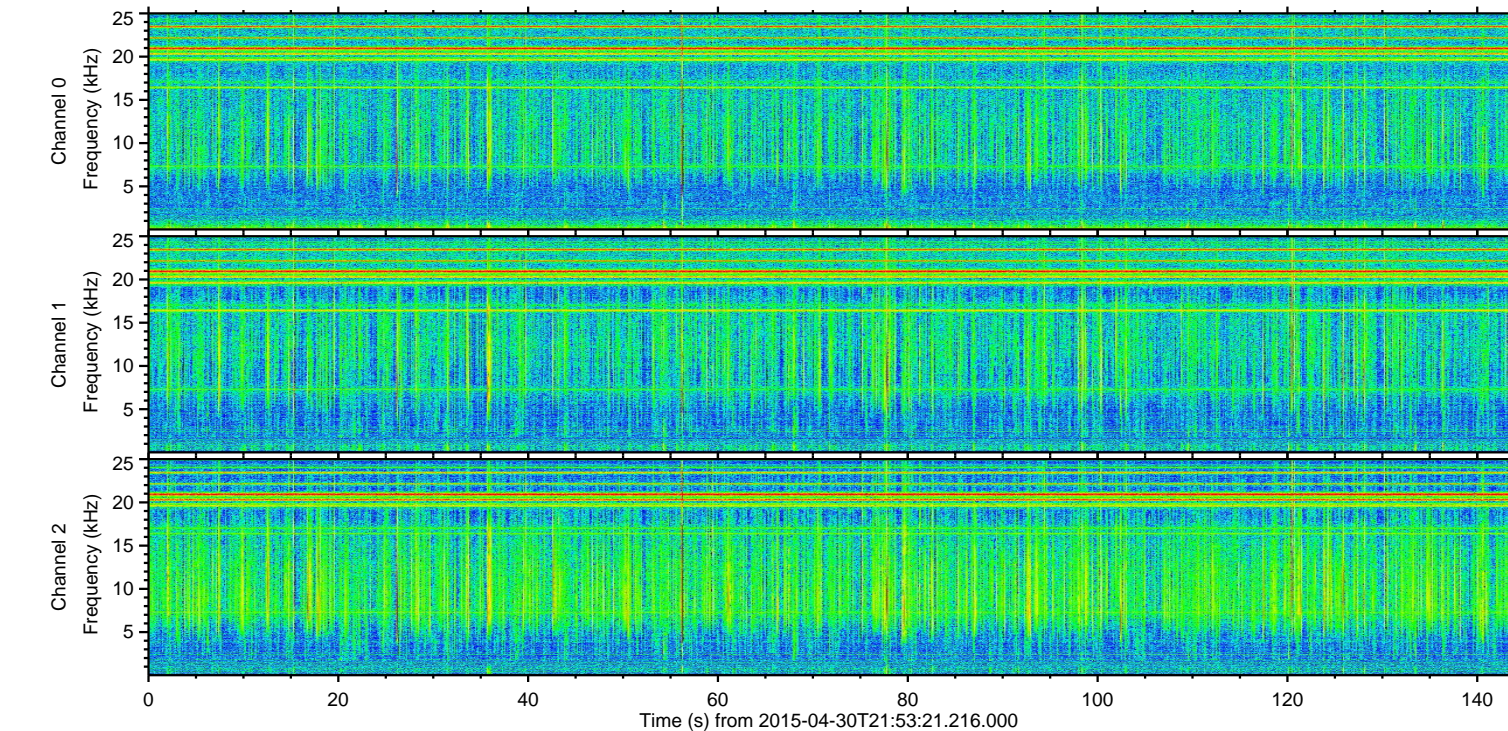
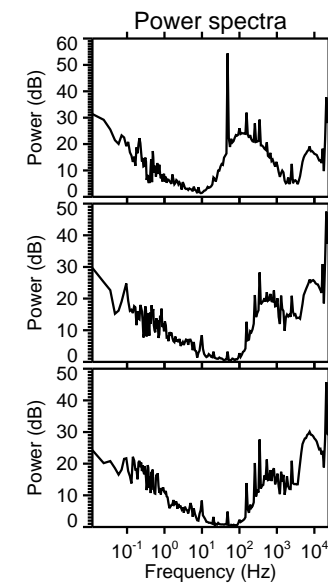
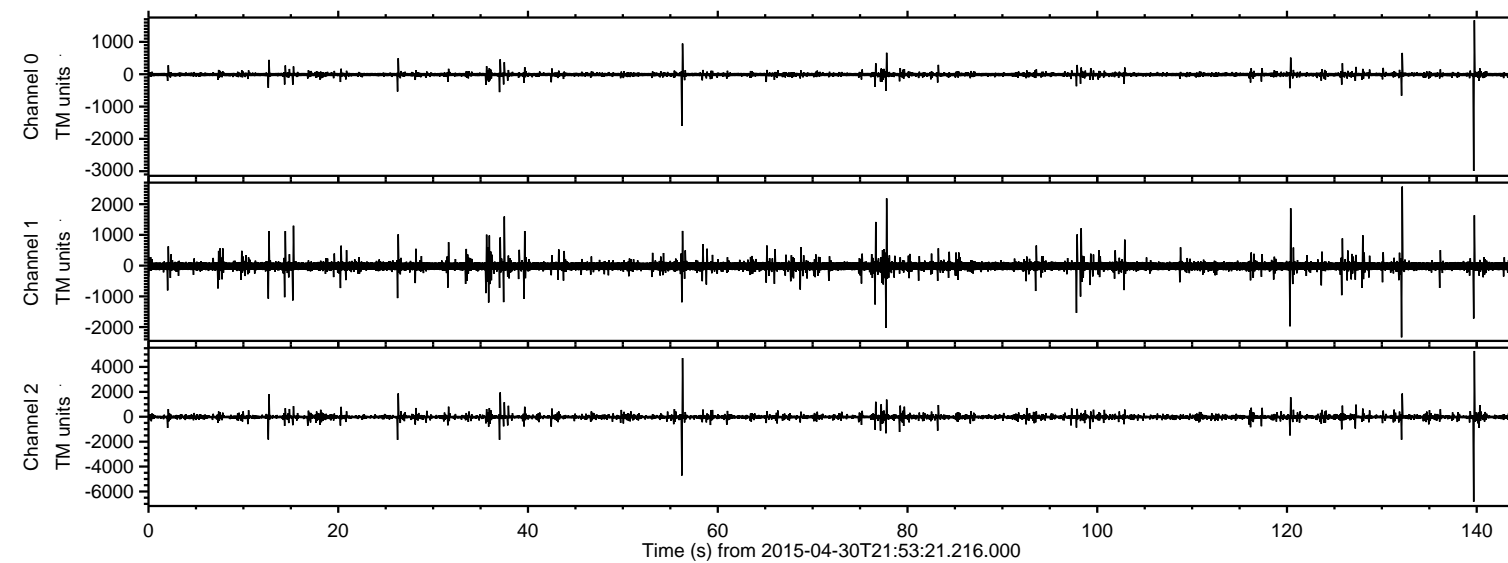


# ELMAVAN 3D WAVEFORMS (Measured data sampled at 50 kHz) 49797 packets of 144 samples from 2015-04-30T21:53:21.216.000.

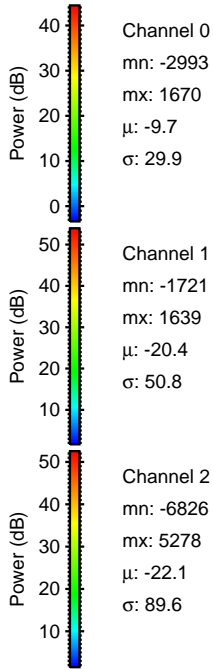
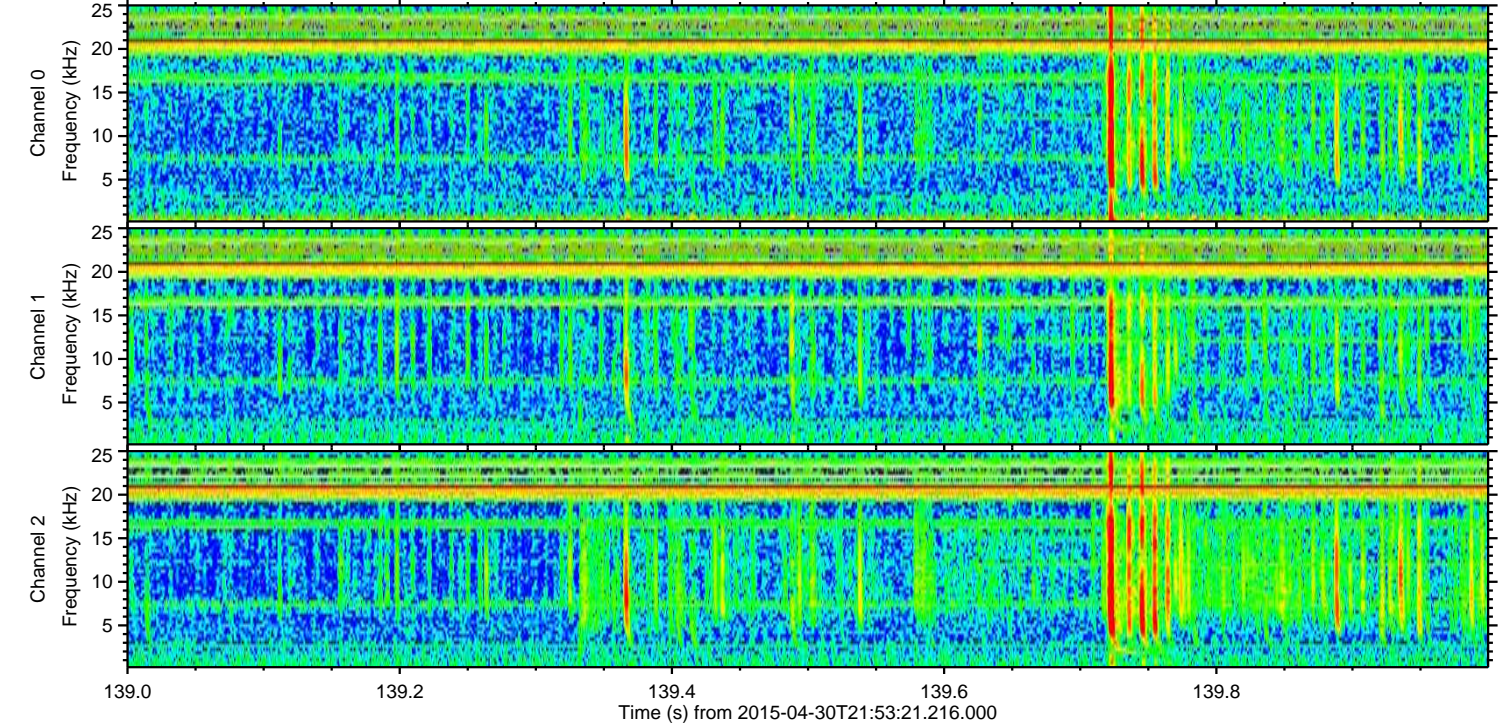
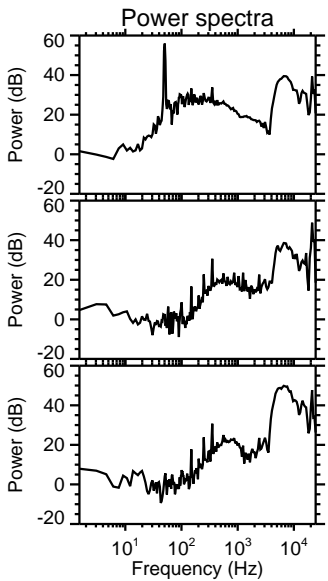
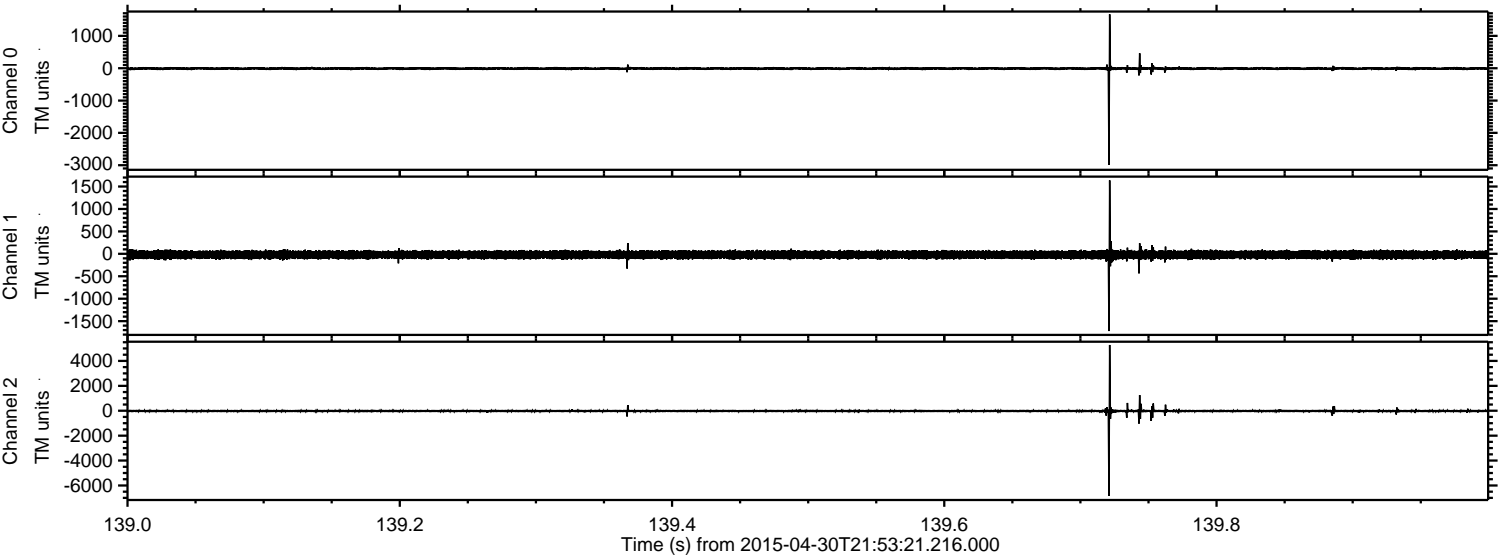
Processed Fri May 1 00:00:32 2015 by ELM ver.2012-10-06 from 001\_\_elm20150430\_215320\_\_dat00.bin





ELMAVAN 3D WAVEFORMS (Measured data sampled at 50 kHz) 49797 packets of 144 samples from 2015-04-30T21:53:21.216.000. Part 140/144

Processed Fri May 1 00:00:43 2015 by ELM ver.2012-10-06 from 001\_\_elm20150430\_215320\_\_dat00.bin



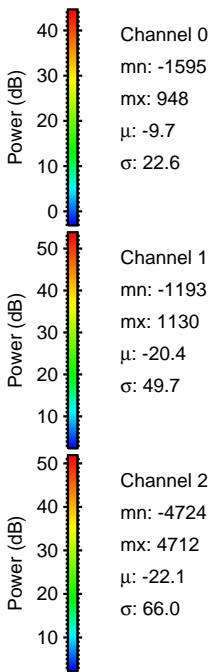
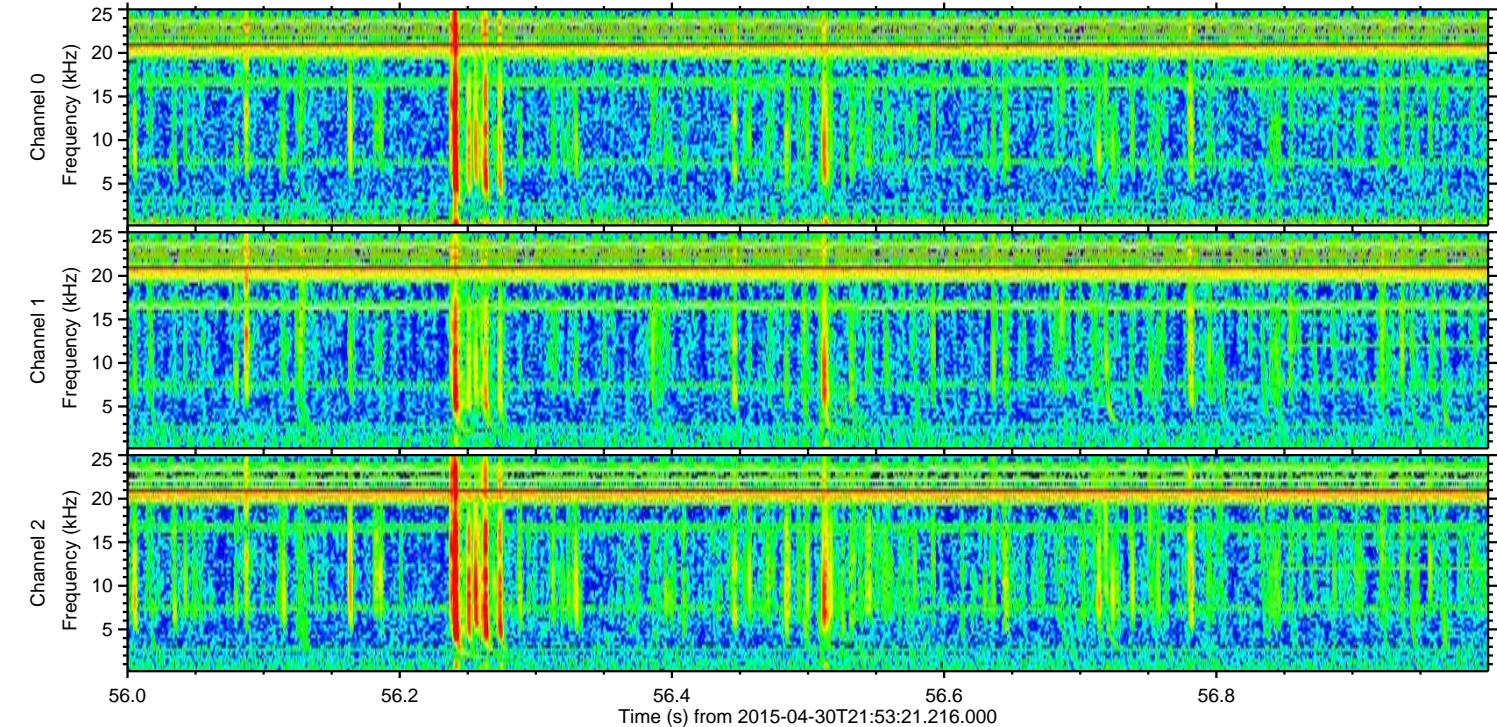
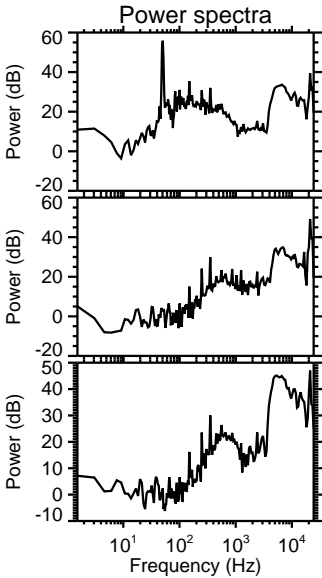
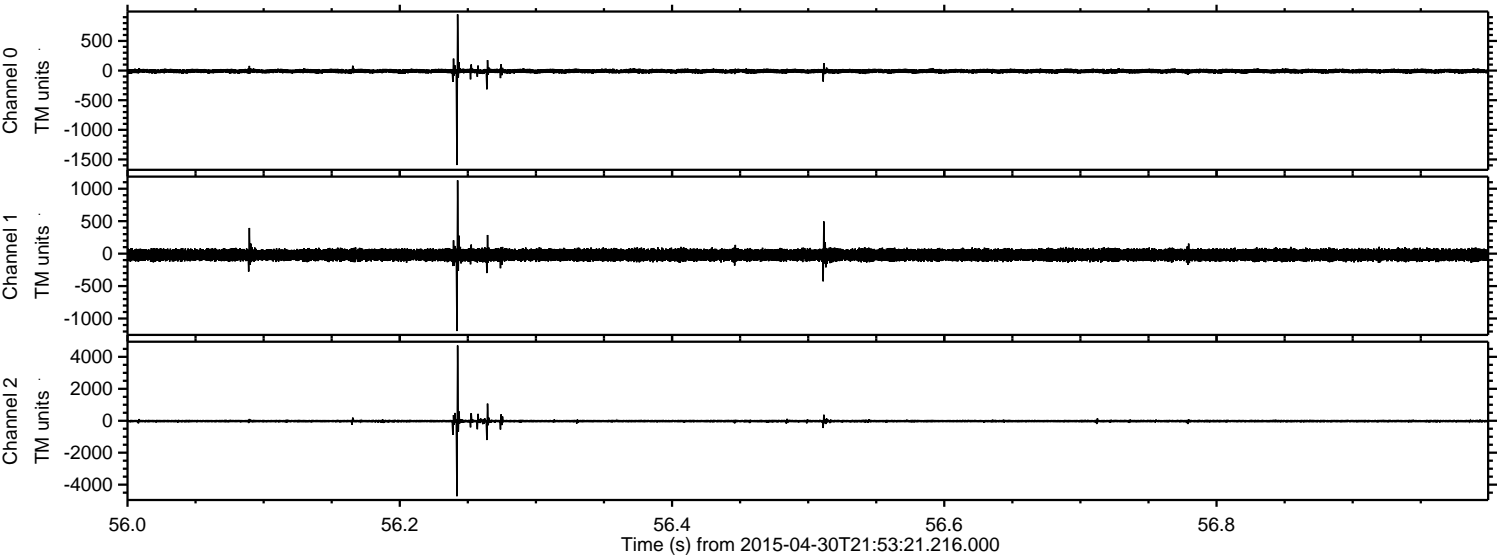
Channel 0  
mn: -2993  
mx: 1670  
 $\mu$ : -9.7  
 $\sigma$ : 29.9

Channel 1  
mn: -1721  
mx: 1639  
 $\mu$ : -20.4  
 $\sigma$ : 50.8

Channel 2  
mn: -6826  
mx: 5278  
 $\mu$ : -22.1  
 $\sigma$ : 89.6



Processed Fri May 1 00:00:44 2015 by ELM ver.2012-10-06 from 001\_\_elm20150430\_215320\_\_dat00.bin



Channel 0  
mn: -1595  
mx: 948  
 $\mu$ : -9.7  
 $\sigma$ : 22.6

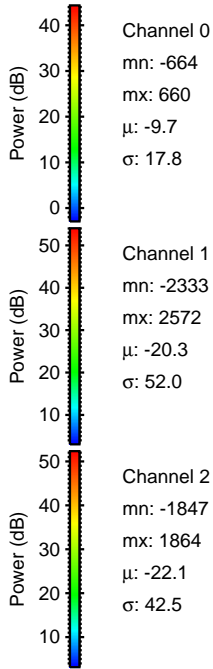
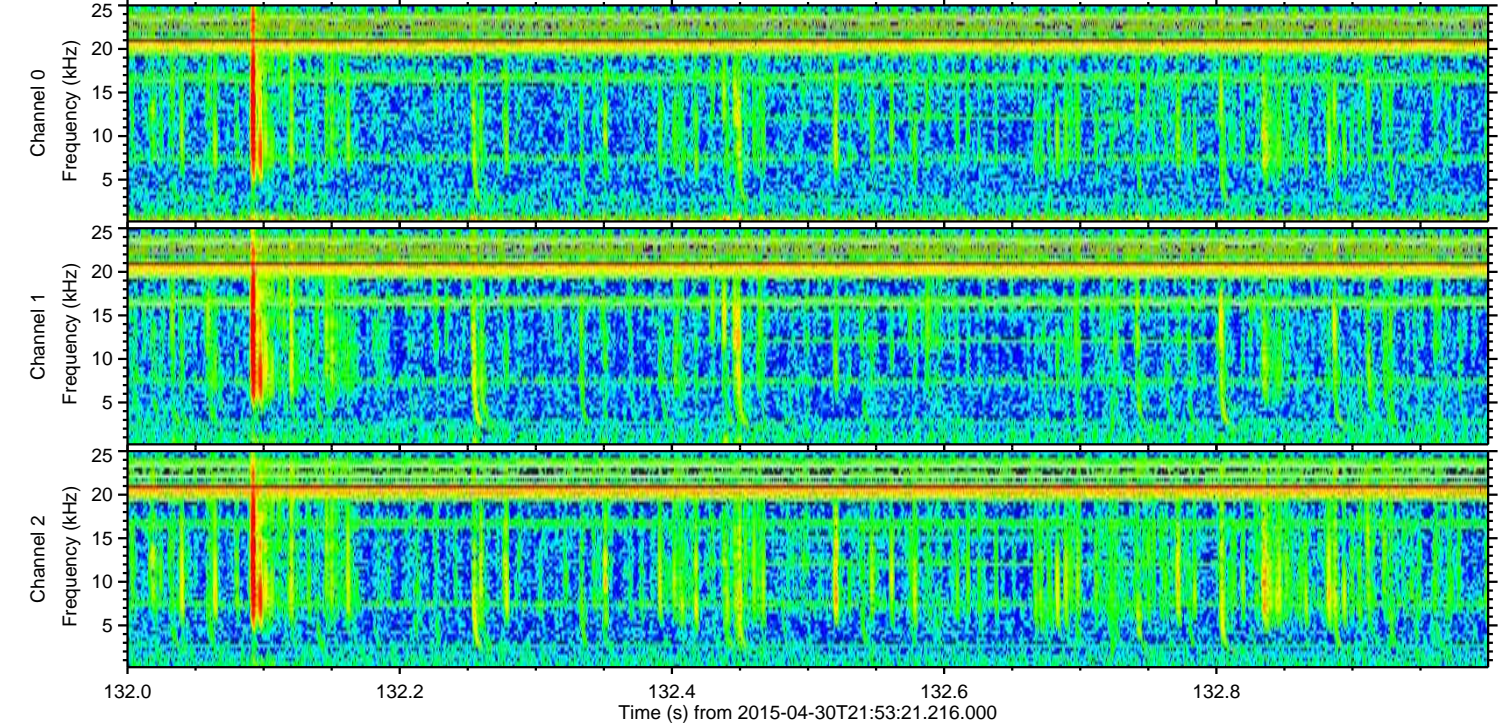
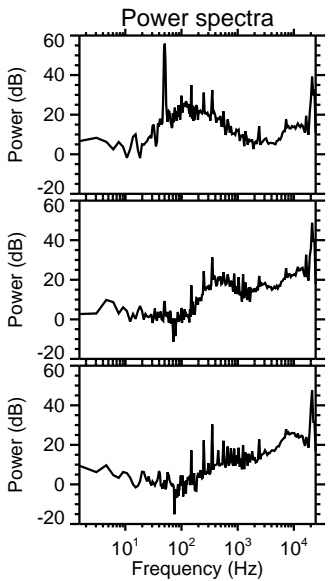
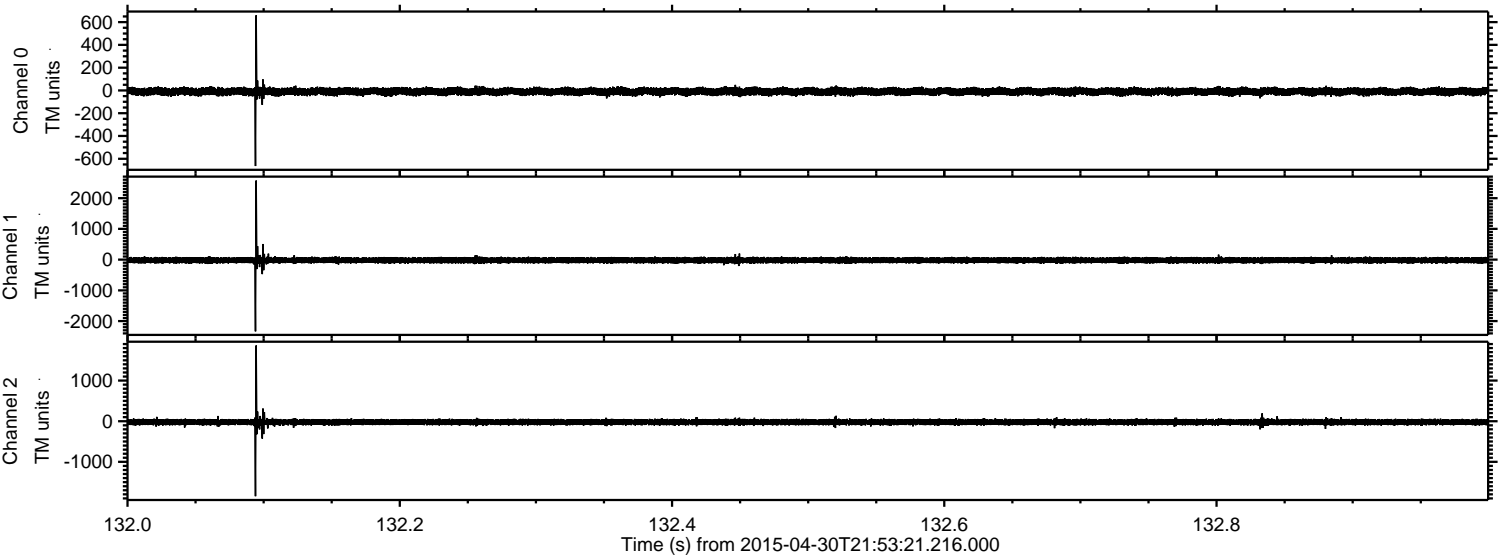
Channel 1  
mn: -1193  
mx: 1130  
 $\mu$ : -20.4  
 $\sigma$ : 49.7

Channel 2  
mn: -4724  
mx: 4712  
 $\mu$ : -22.1  
 $\sigma$ : 66.0



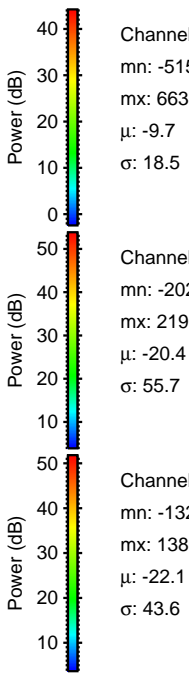
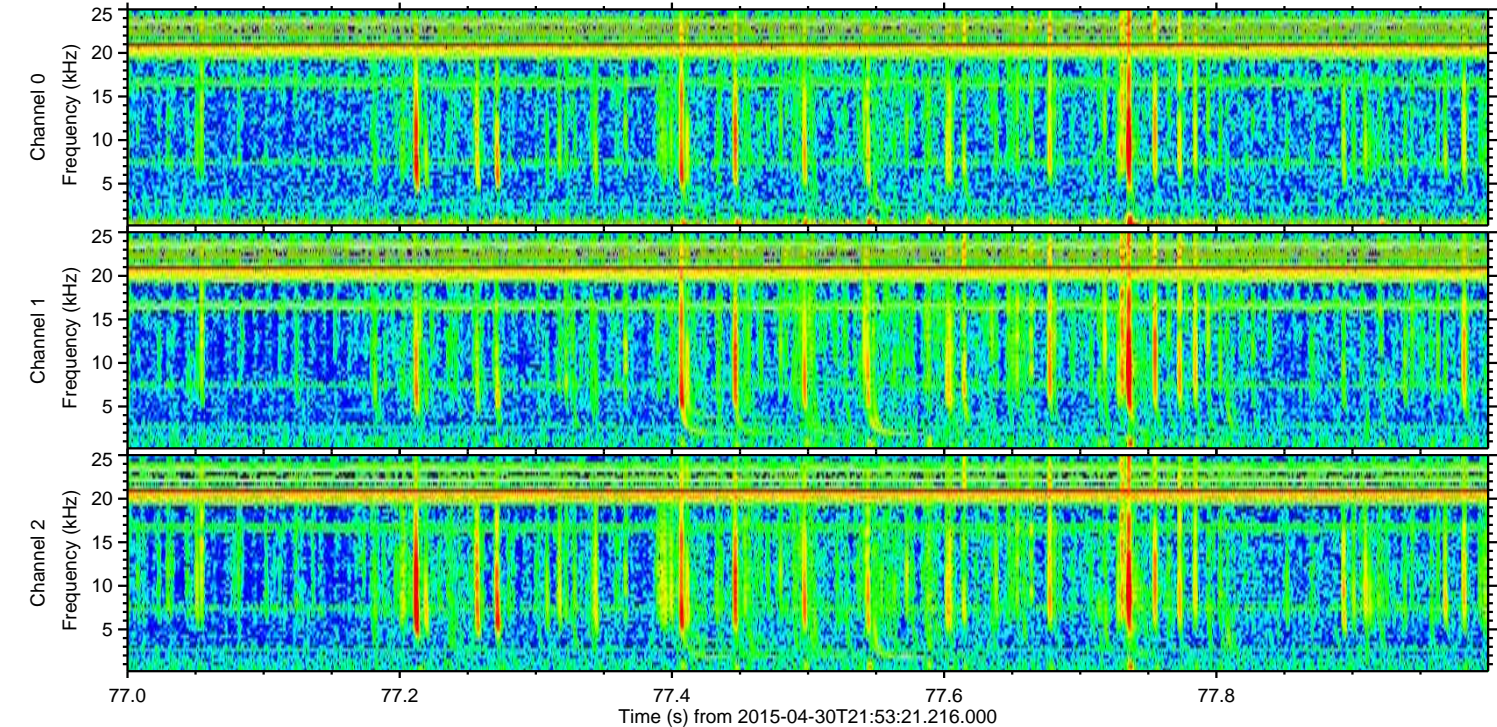
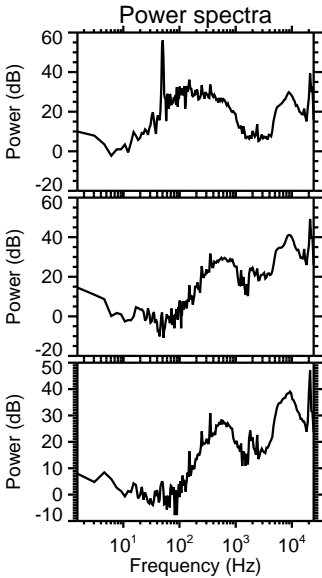
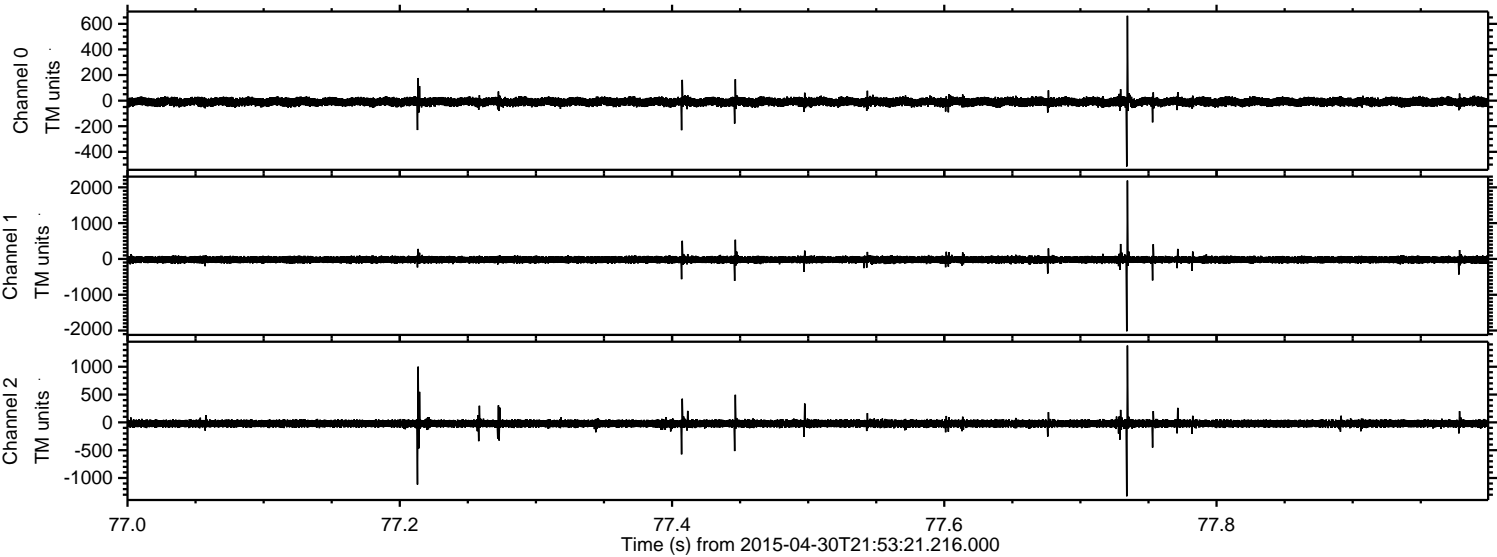
ELMAVAN 3D WAVEFORMS (Measured data sampled at 50 kHz) 49797 packets of 144 samples from 2015-04-30T21:53:21.216.000. Part 133/144

Processed Fri May 1 00:00:45 2015 by ELM ver.2012-10-06 from 001\_\_elm20150430\_215320\_\_dat00.bin





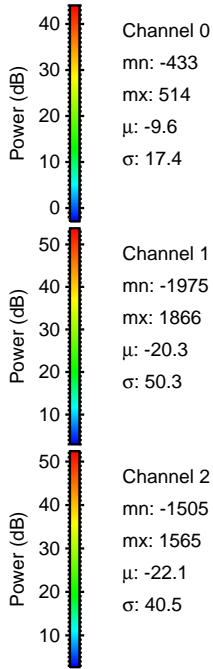
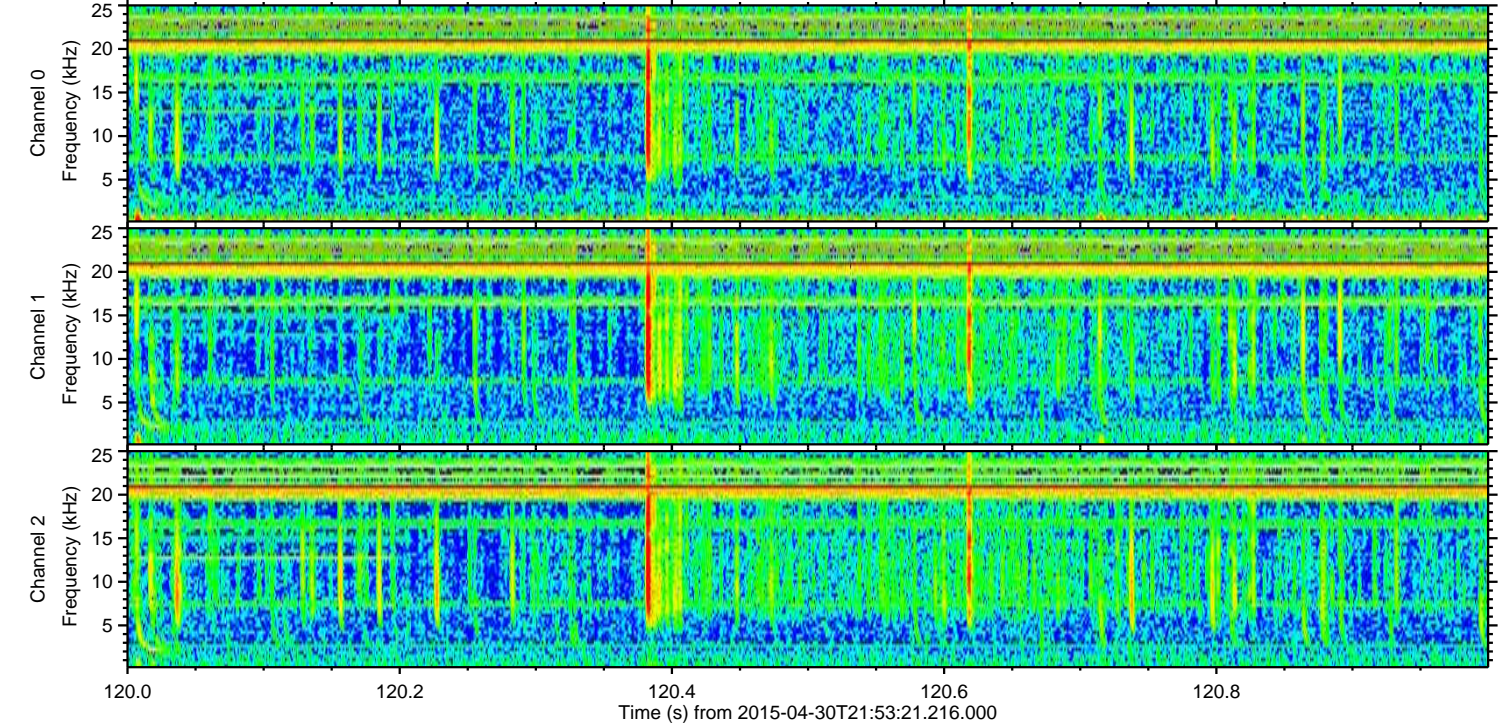
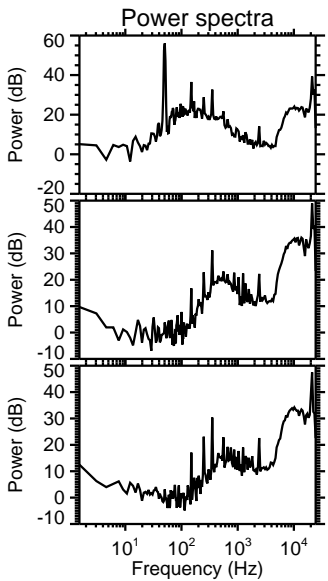
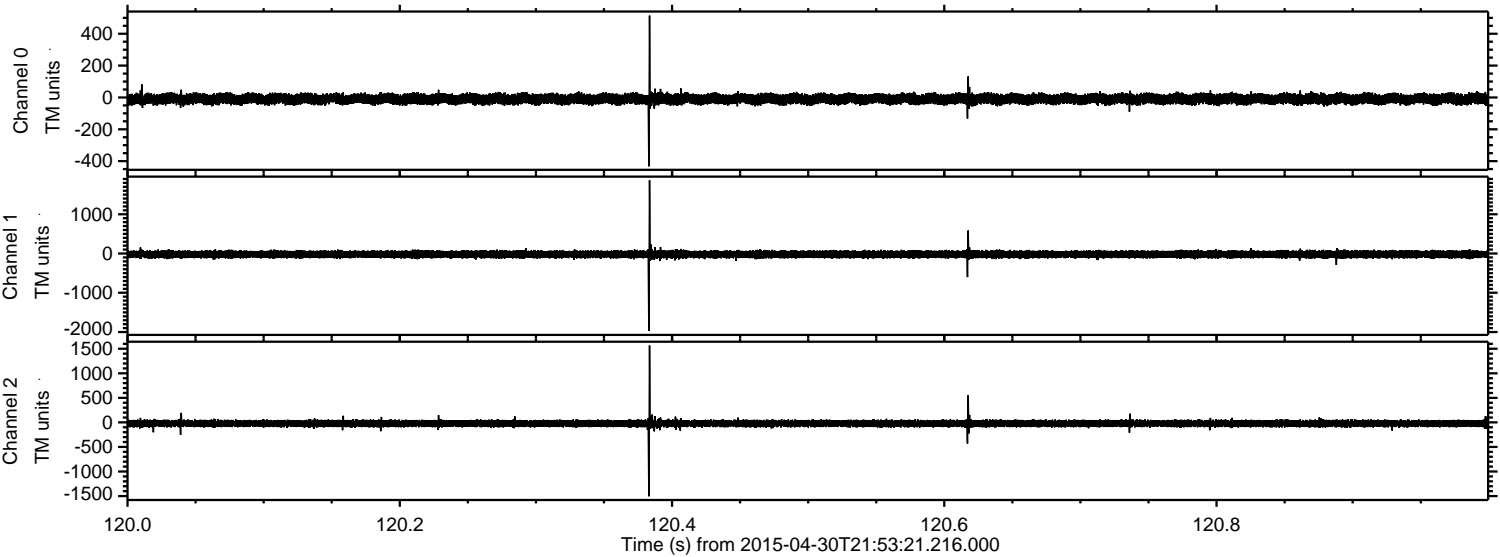
Processed Fri May 1 00:00:46 2015 by ELM ver.2012-10-06 from 001\_\_elm20150430\_215320\_\_dat00.bin





ELMAVAN 3D WAVEFORMS (Measured data sampled at 50 kHz) 49797 packets of 144 samples from 2015-04-30T21:53:21.216.000. Part 121/144

Processed Fri May 1 00:00:47 2015 by ELM ver.2012-10-06 from 001\_\_elm20150430\_215320\_\_dat00.bin



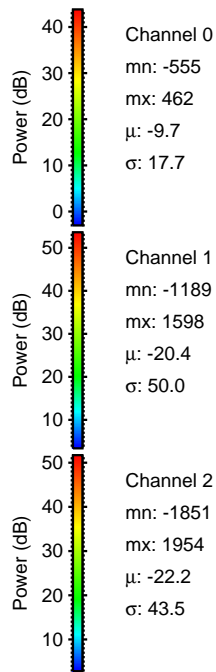
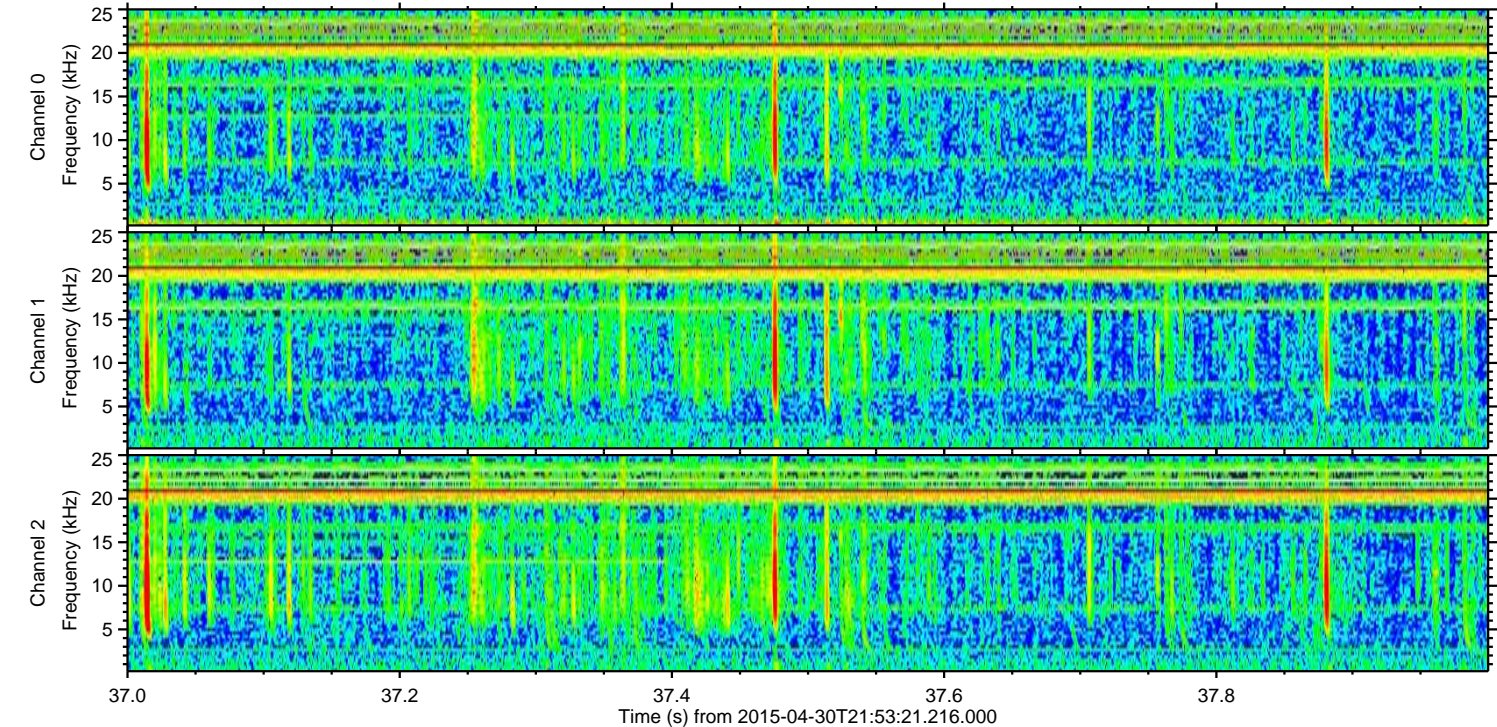
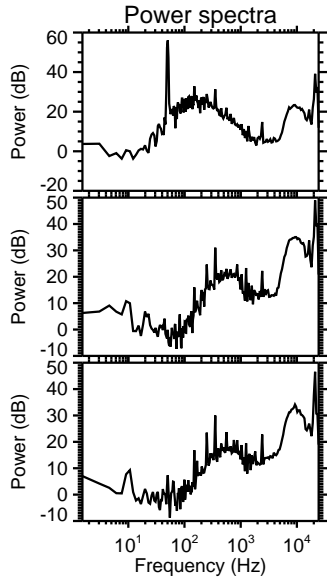
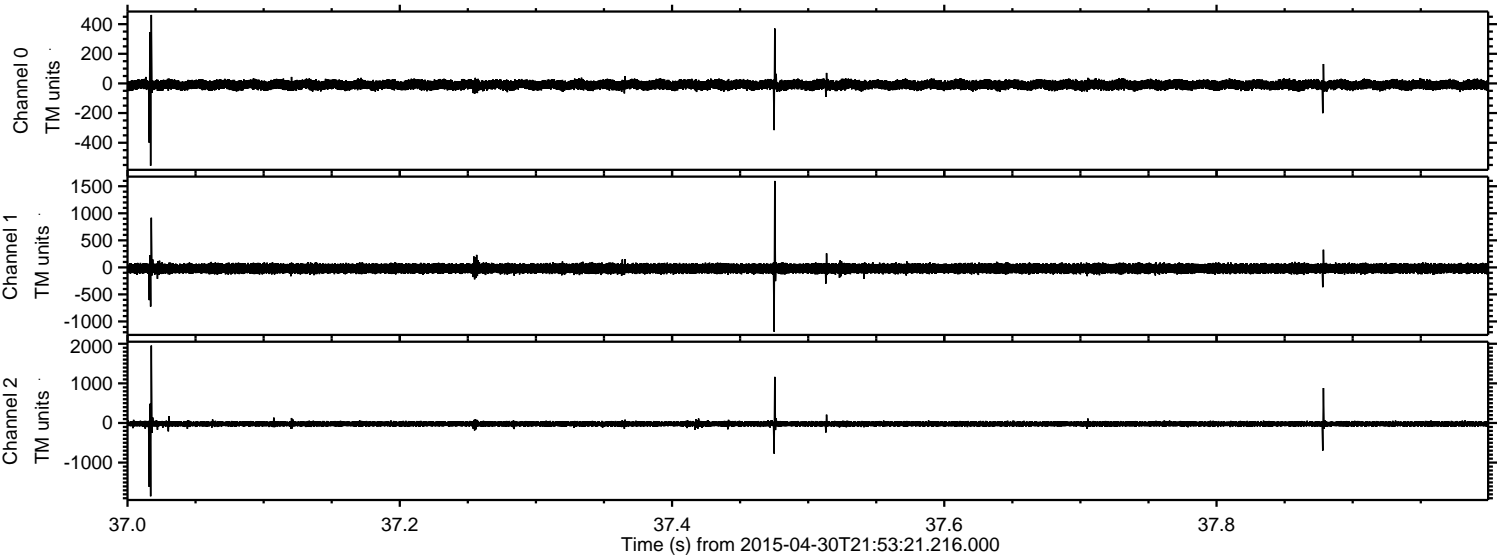
Channel 0  
mn: -433  
mx: 514  
 $\mu$ : -9.6  
 $\sigma$ : 17.4

Channel 1  
mn: -1975  
mx: 1866  
 $\mu$ : -20.3  
 $\sigma$ : 50.3

Channel 2  
mn: -1505  
mx: 1565  
 $\mu$ : -22.1  
 $\sigma$ : 40.5

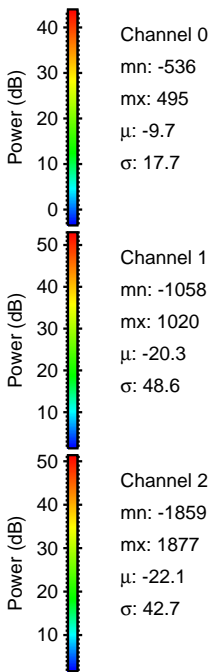
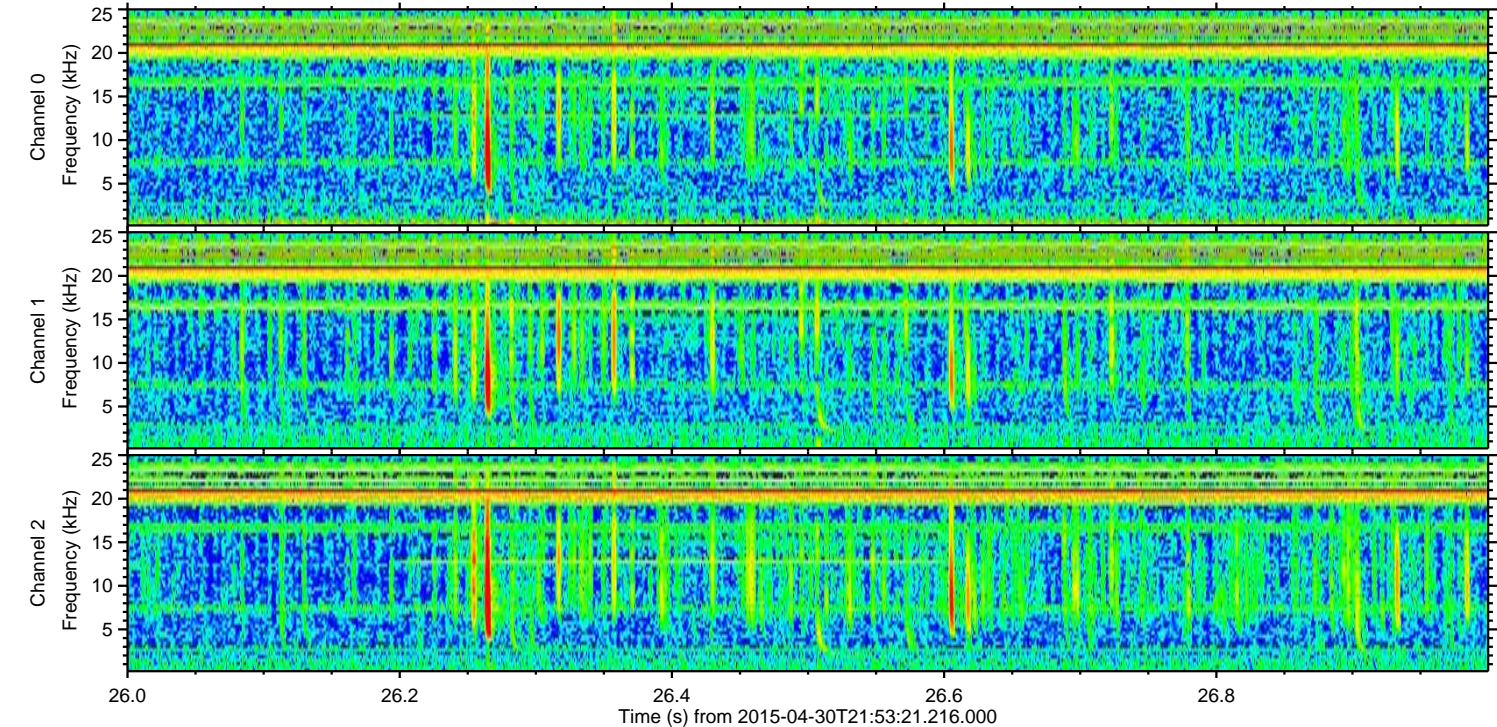
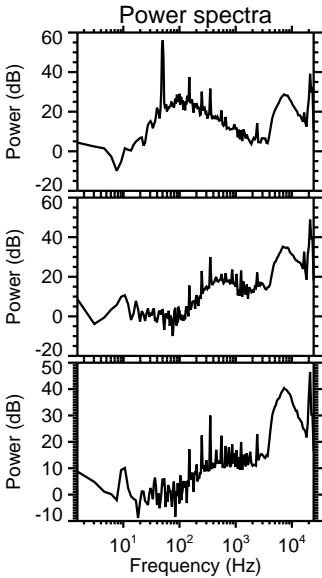
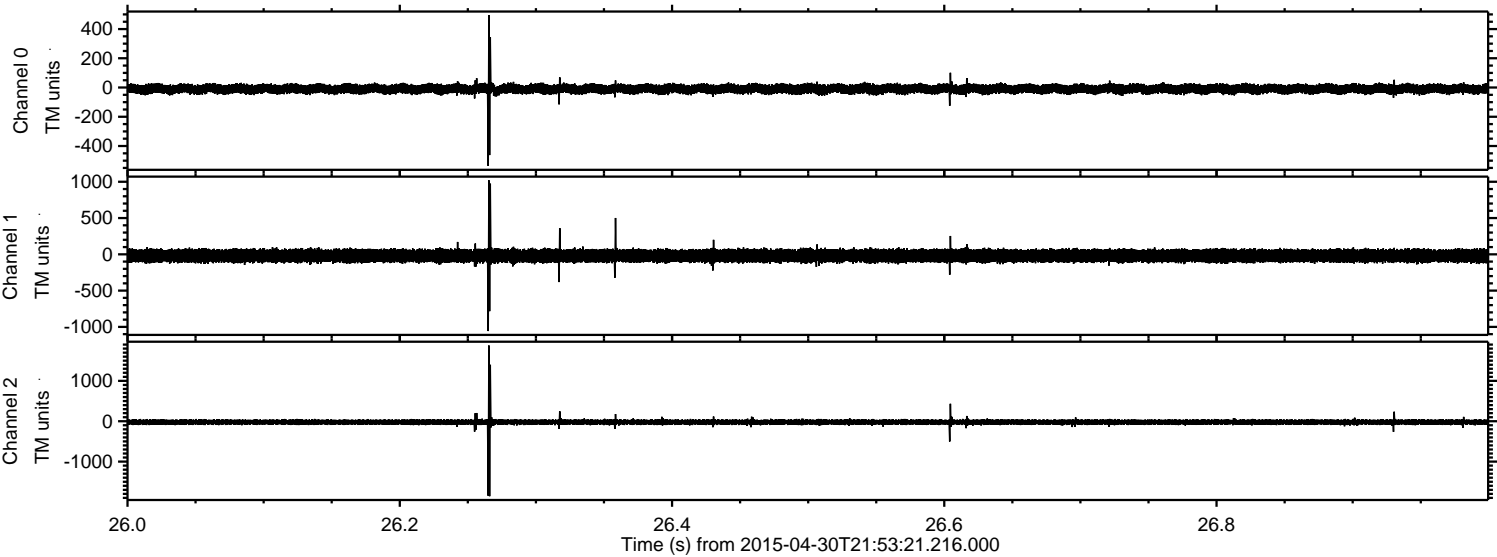


Processed Fri May 1 00:00:48 2015 by ELM ver.2012-10-06 from 001\_\_elm20150430\_215320\_\_dat00.bin



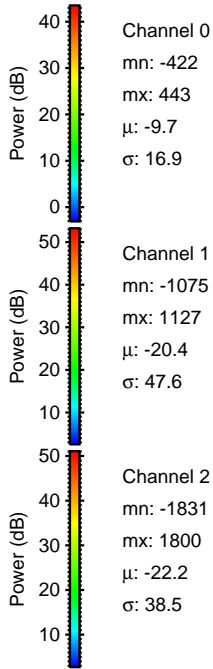
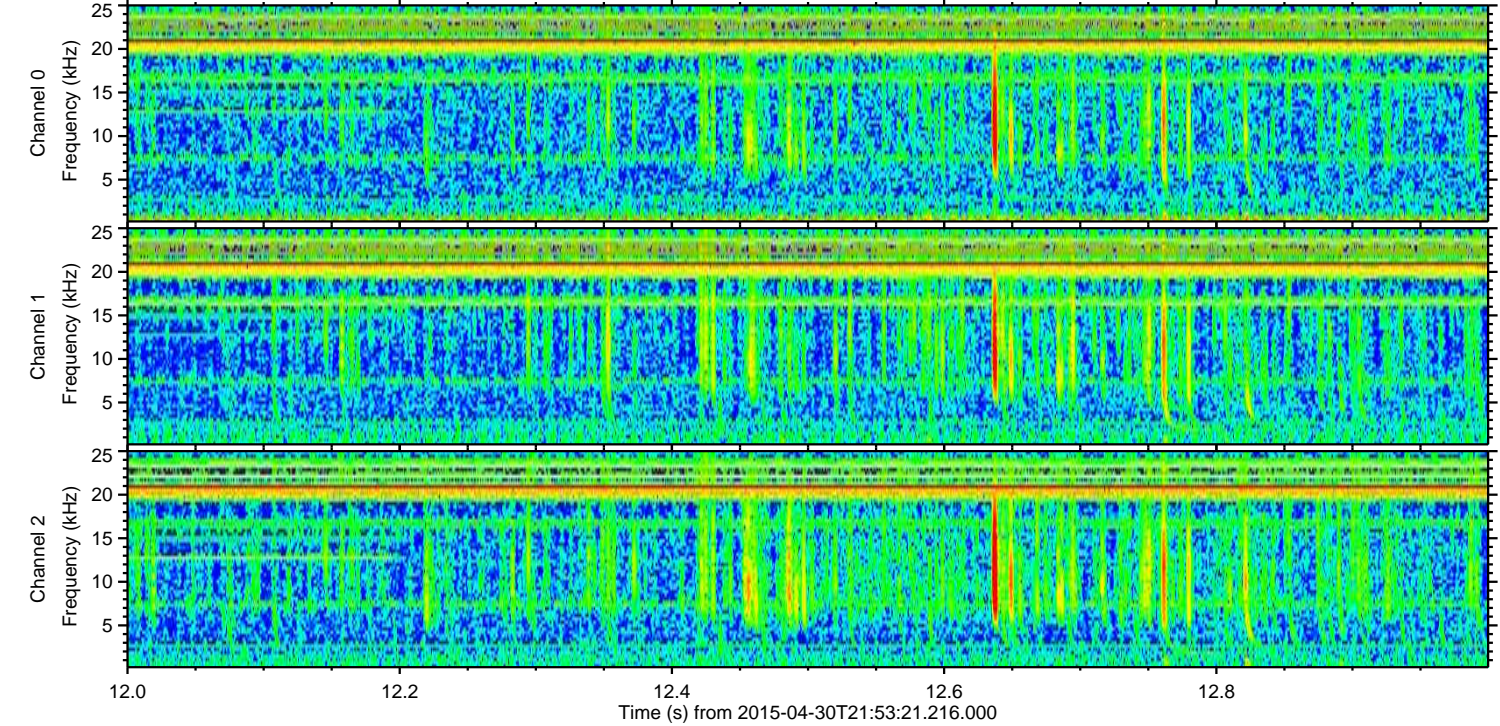
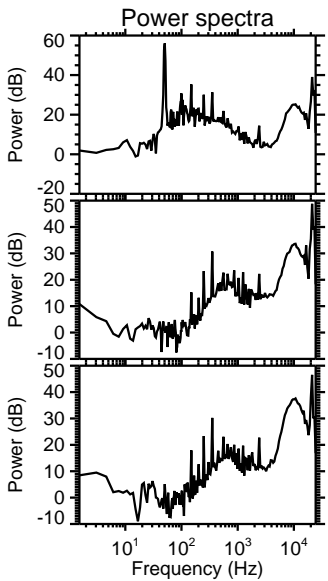
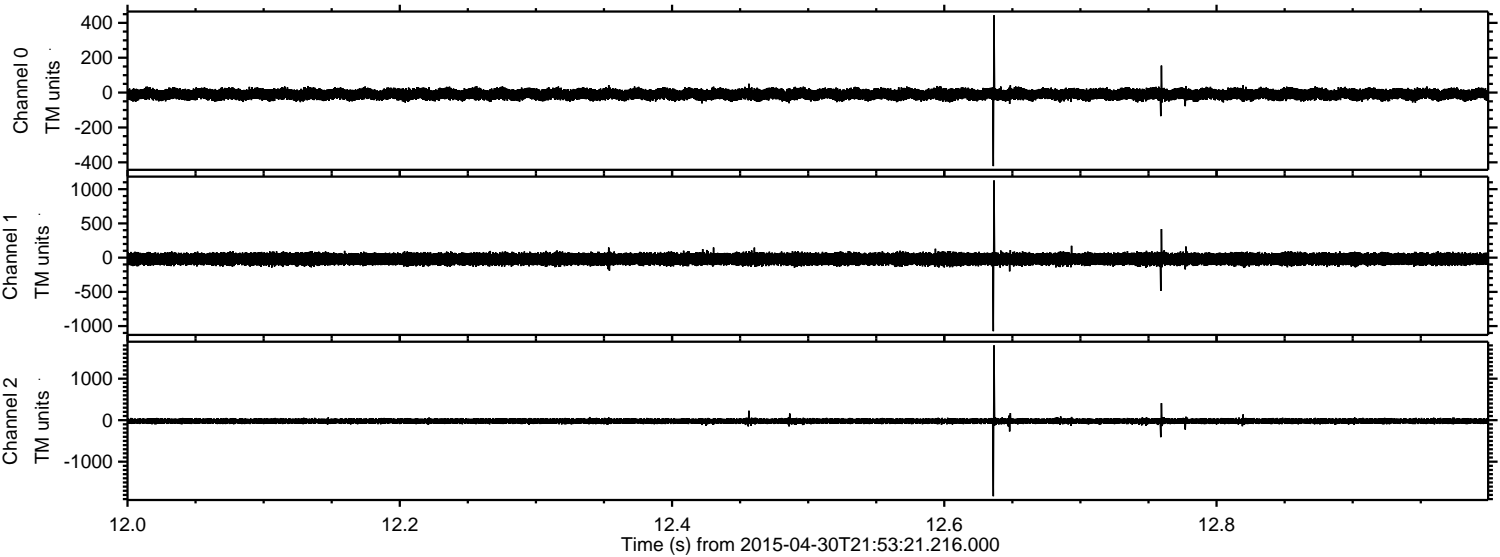


Processed Fri May 1 00:00:49 2015 by ELM ver.2012-10-06 from 001\_\_elm20150430\_215320\_\_dat00.bin





Processed Fri May 1 00:00:50 2015 by ELM ver.2012-10-06 from 001\_\_elm20150430\_215320\_\_dat00.bin





Processed Fri May 1 00:00:51 2015 by ELM ver.2012-10-06 from 001\_\_elm20150430\_215320\_\_dat00.bin

