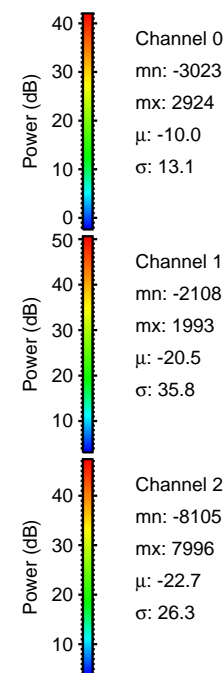
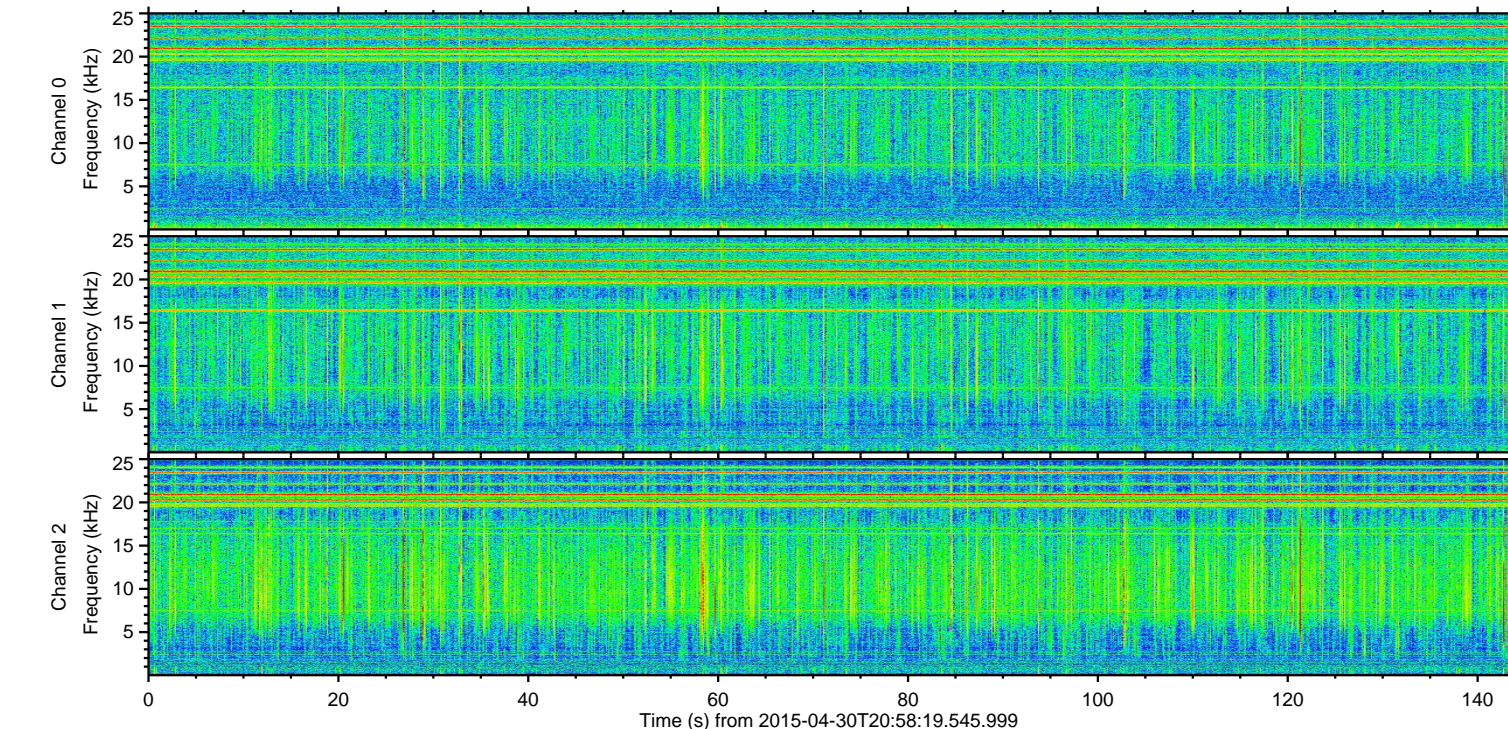
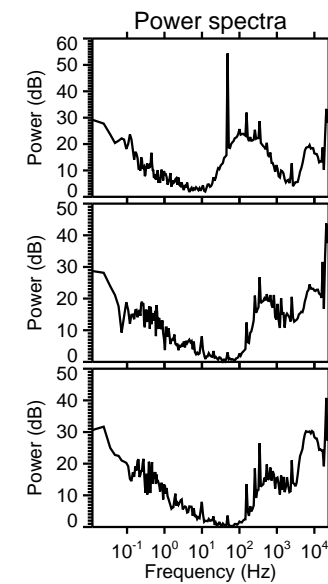
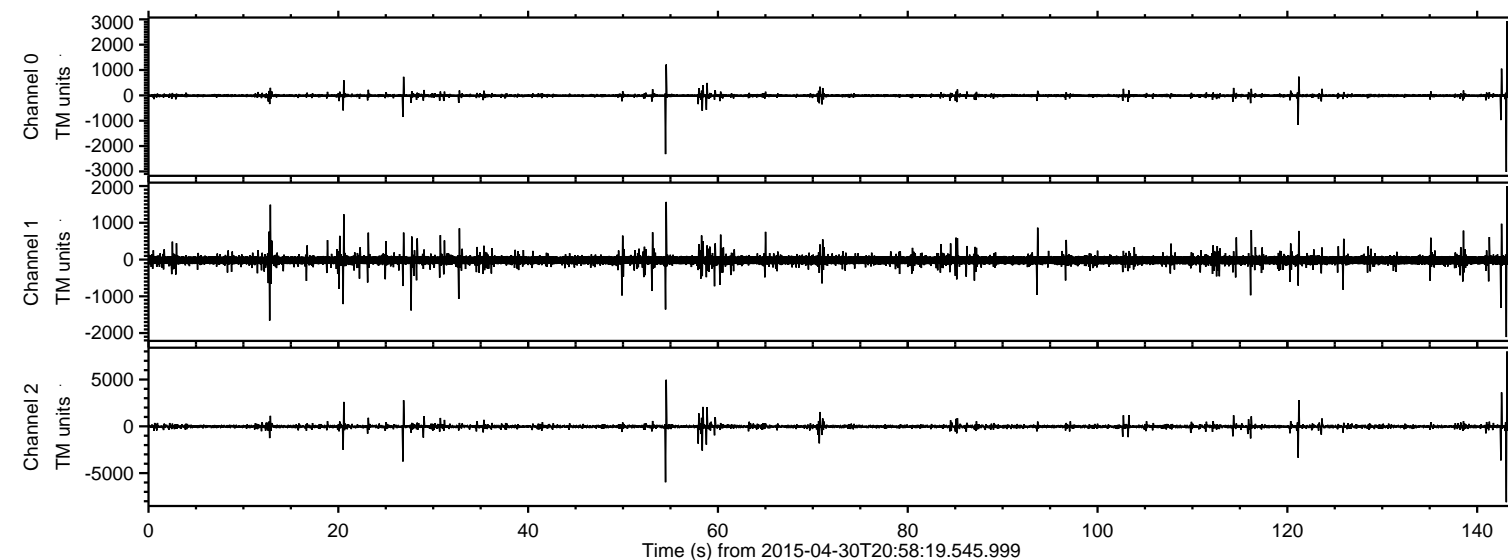
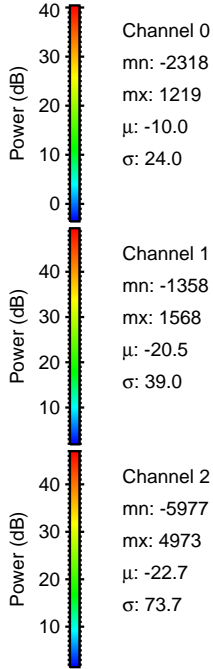
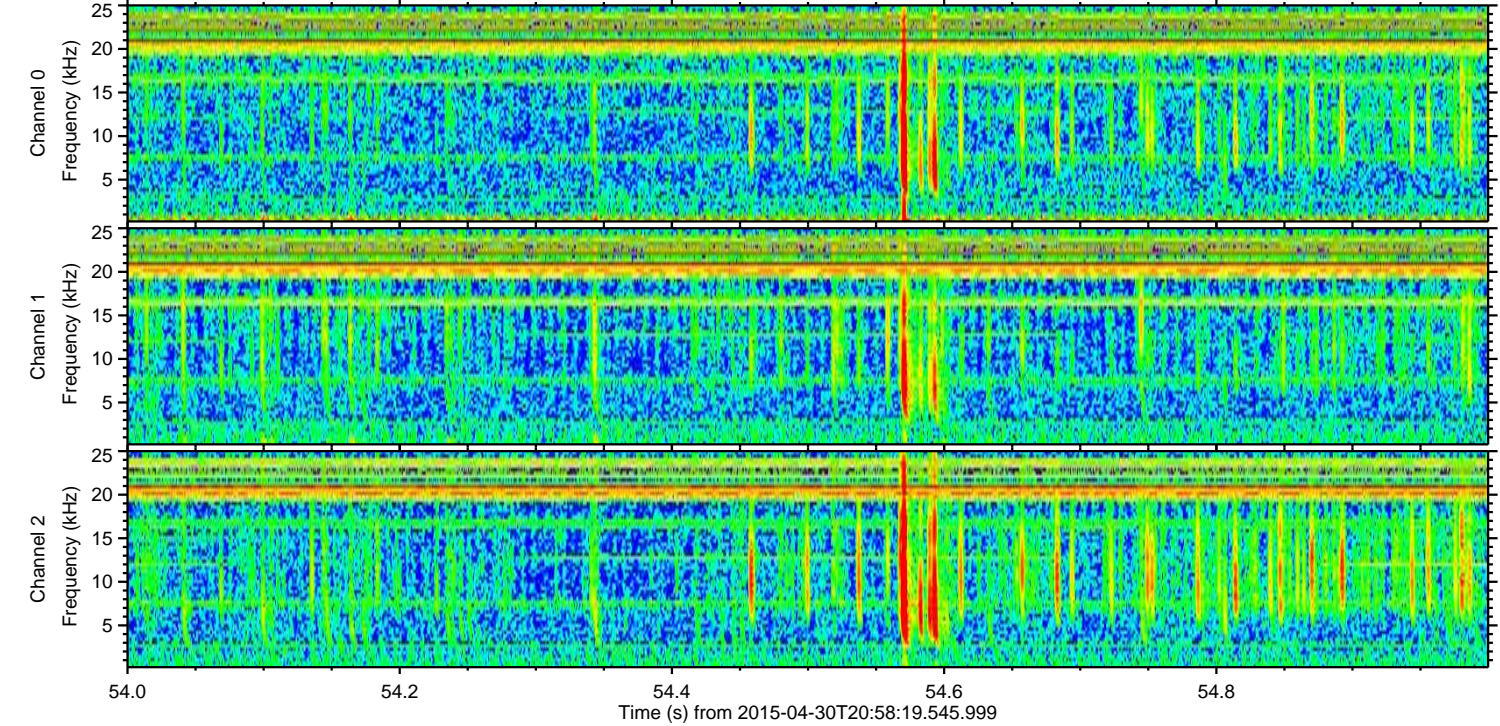
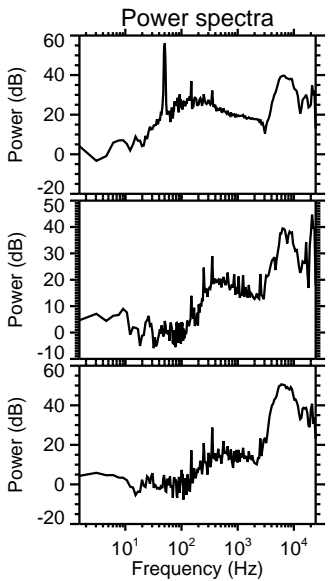
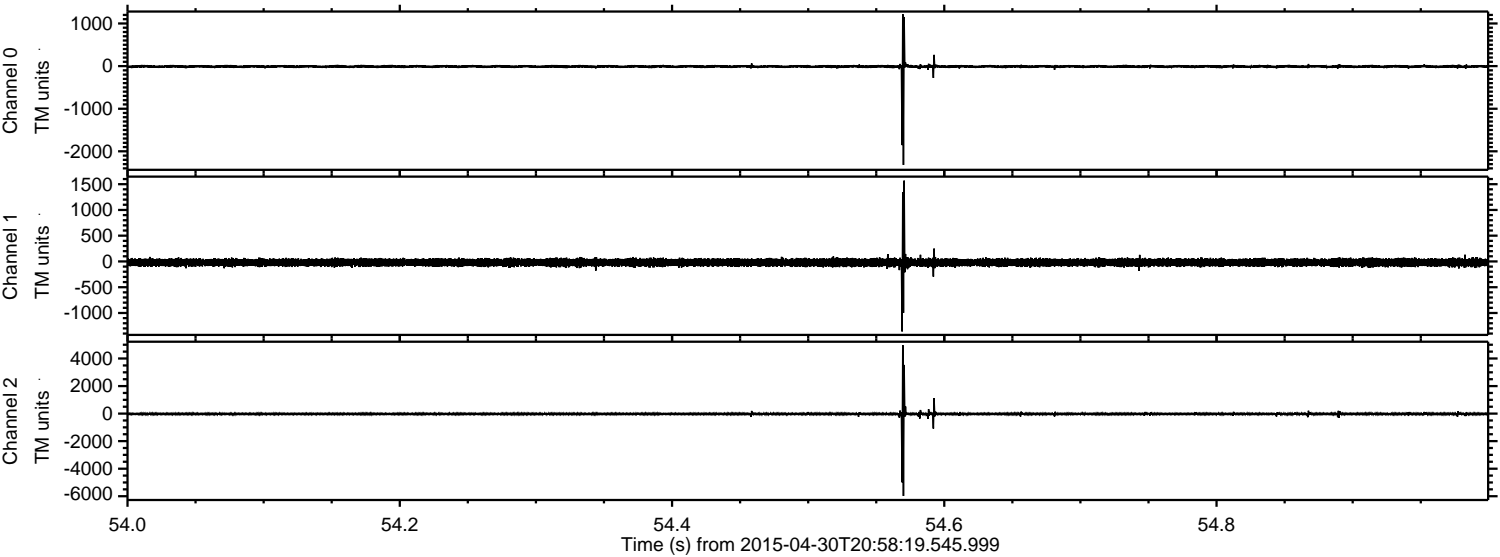


ELMAVAN 3D WAVEFORMS (Measured data sampled at 50 kHz) 49782 packets of 144 samples from 2015-04-30T20:58:19.545.999.

Processed Thu Apr 30 23:05:18 2015 by ELM ver.2012-10-06 from 001__elm20150430_205818__dat00.bin

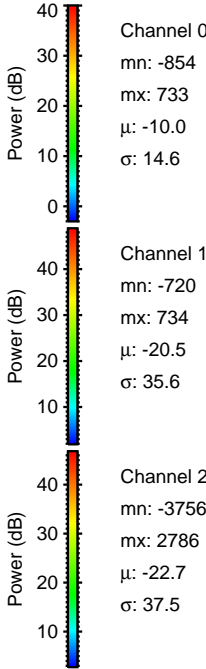
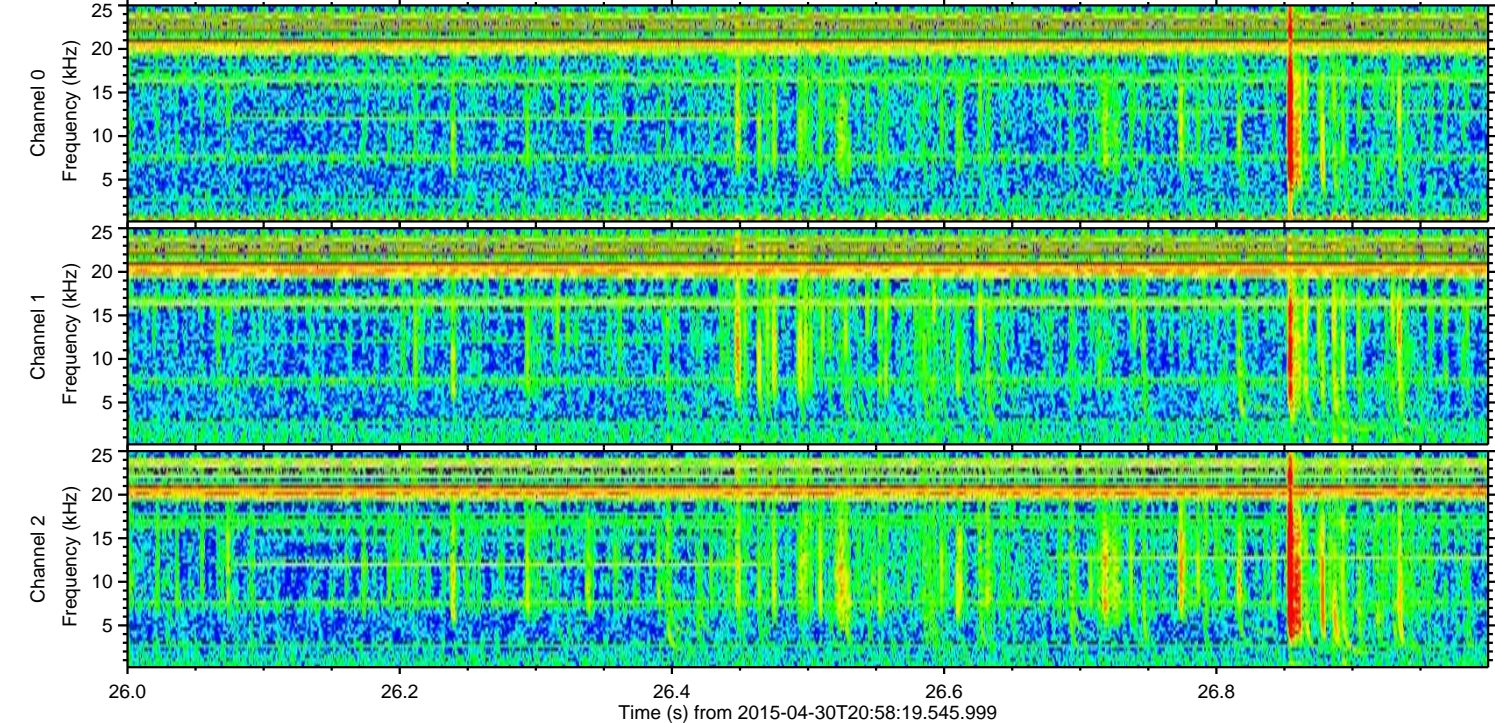
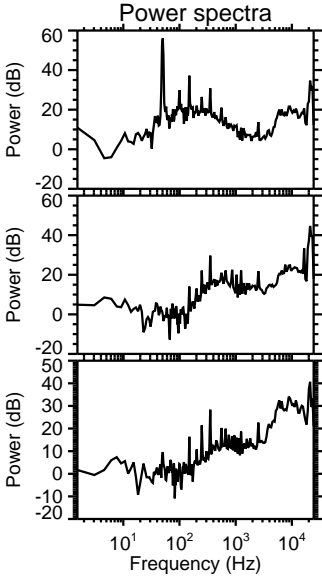
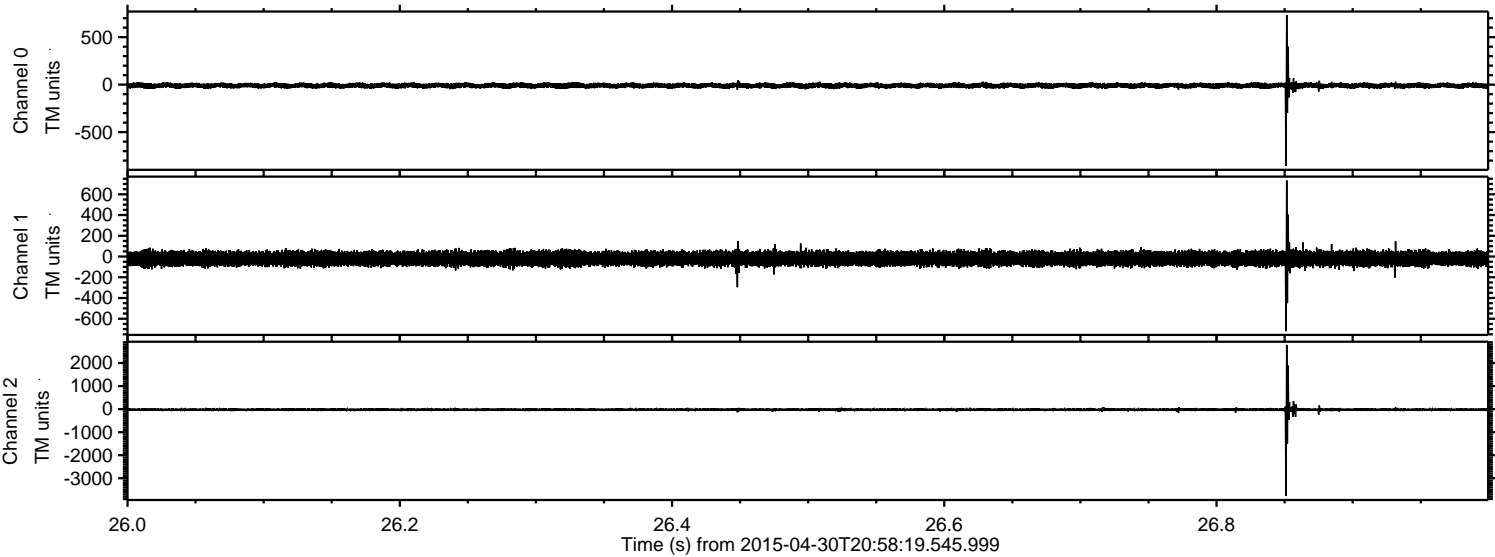


Processed Thu Apr 30 23:05:29 2015 by ELM ver.2012-10-06 from 001__elm20150430_205818__dat00.bin



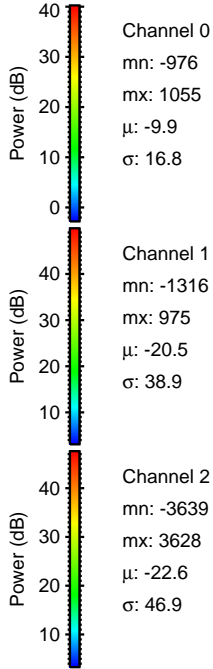
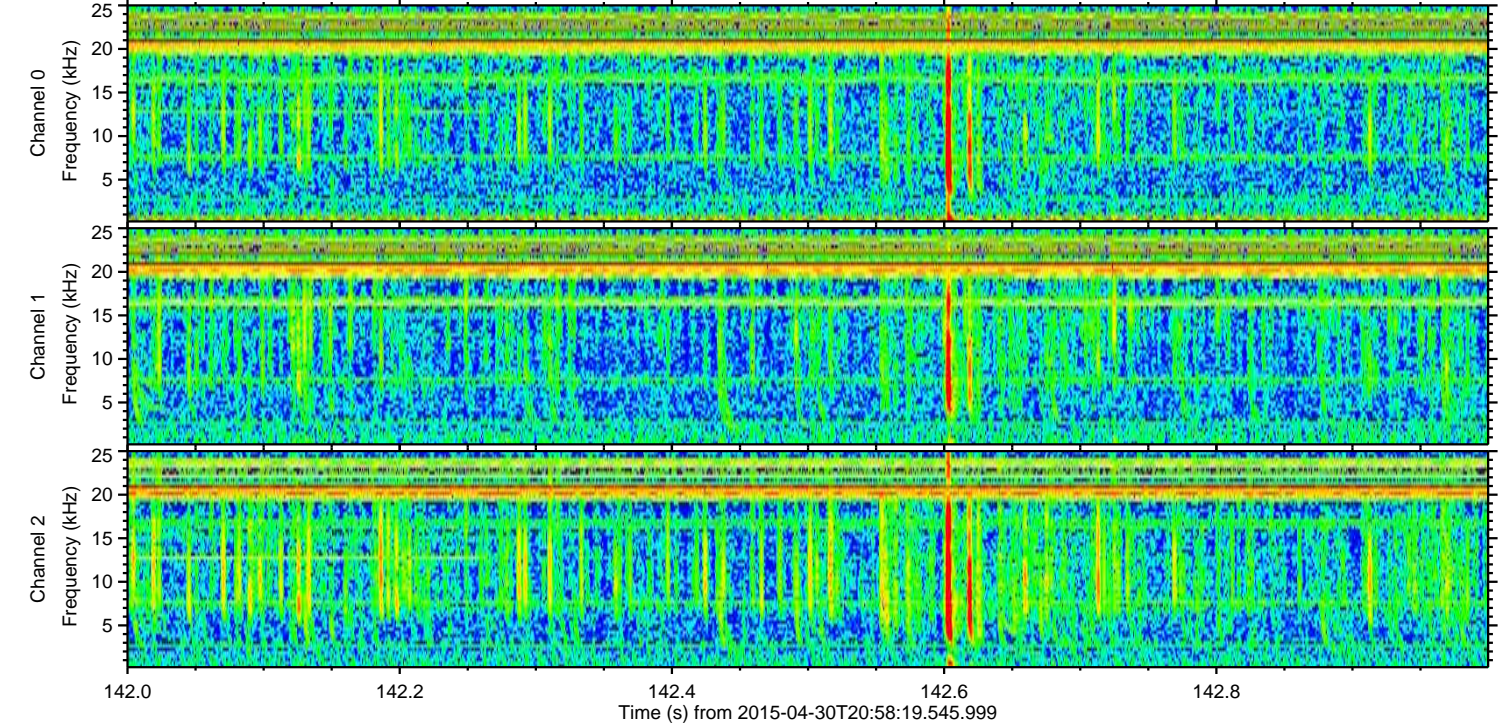
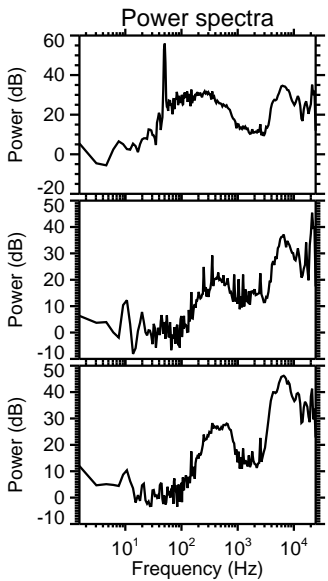
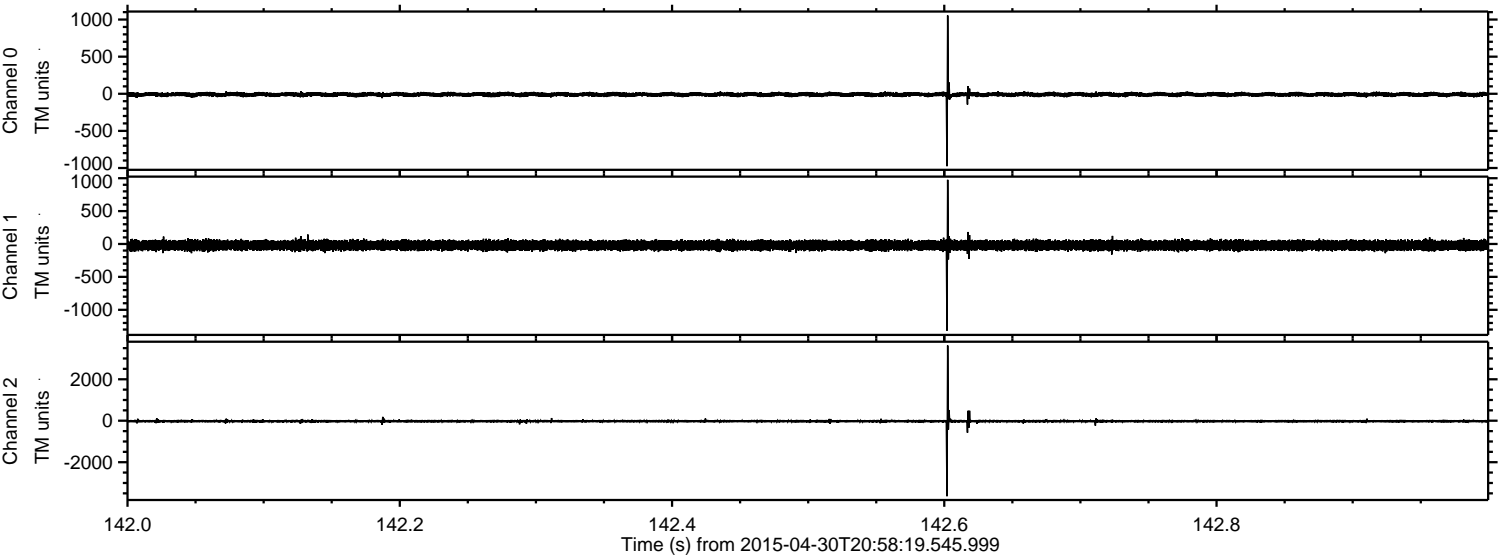
ELMAVAN 3D WAVEFORMS (Measured data sampled at 50 kHz) 49782 packets of 144 samples from 2015-04-30T20:58:19.545.999. Part 27/144

Processed Thu Apr 30 23:05:30 2015 by ELM ver.2012-10-06 from 001__elm20150430_205818__dat00.bin



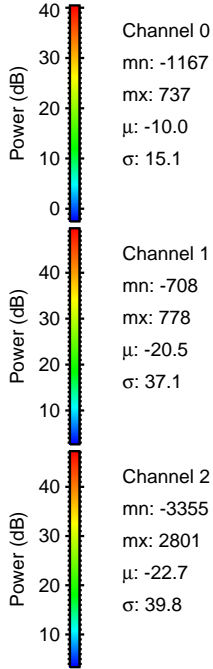
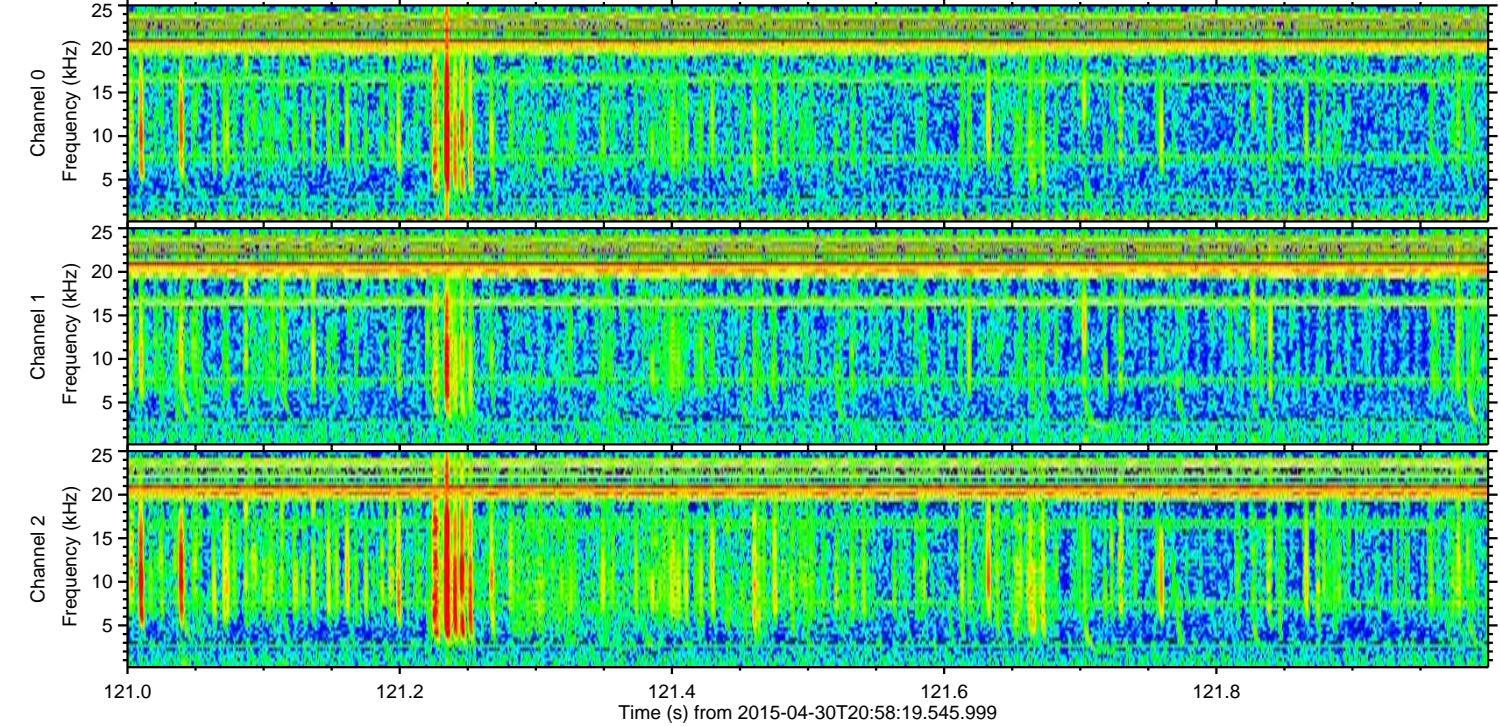
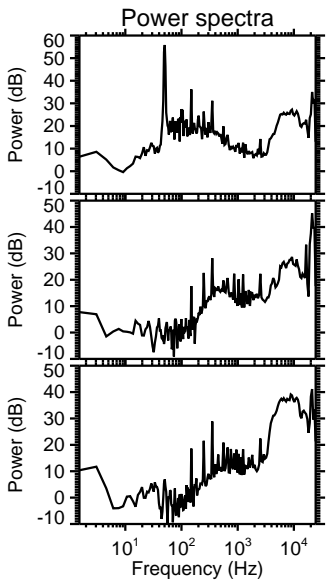
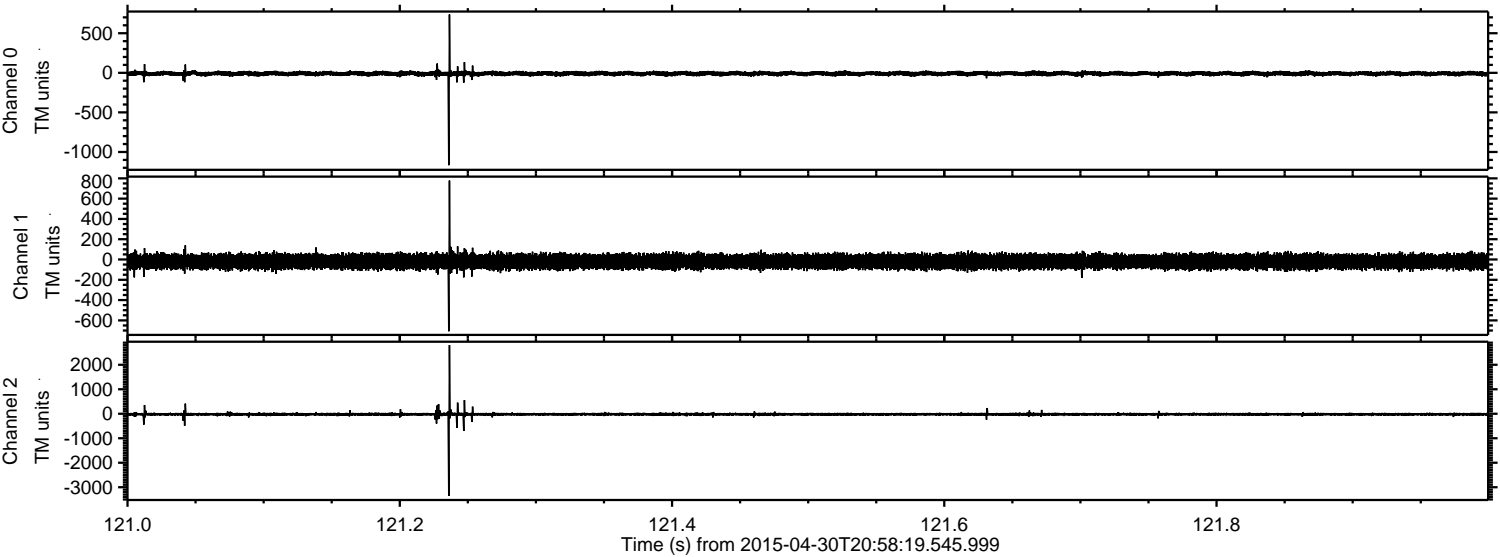
ELMAVAN 3D WAVEFORMS (Measured data sampled at 50 kHz) 49782 packets of 144 samples from 2015-04-30T20:58:19.545.999. Part 143/144

Processed Thu Apr 30 23:05:31 2015 by ELM ver.2012-10-06 from 001__elm20150430_205818__dat00.bin



ELMAVAN 3D WAVEFORMS (Measured data sampled at 50 kHz) 49782 packets of 144 samples from 2015-04-30T20:58:19.545.999. Part 122/144

Processed Thu Apr 30 23:05:32 2015 by ELM ver.2012-10-06 from 001__elm20150430_205818__dat00.bin



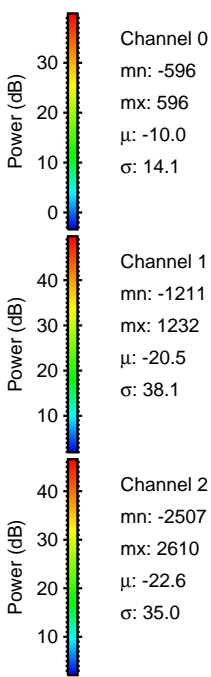
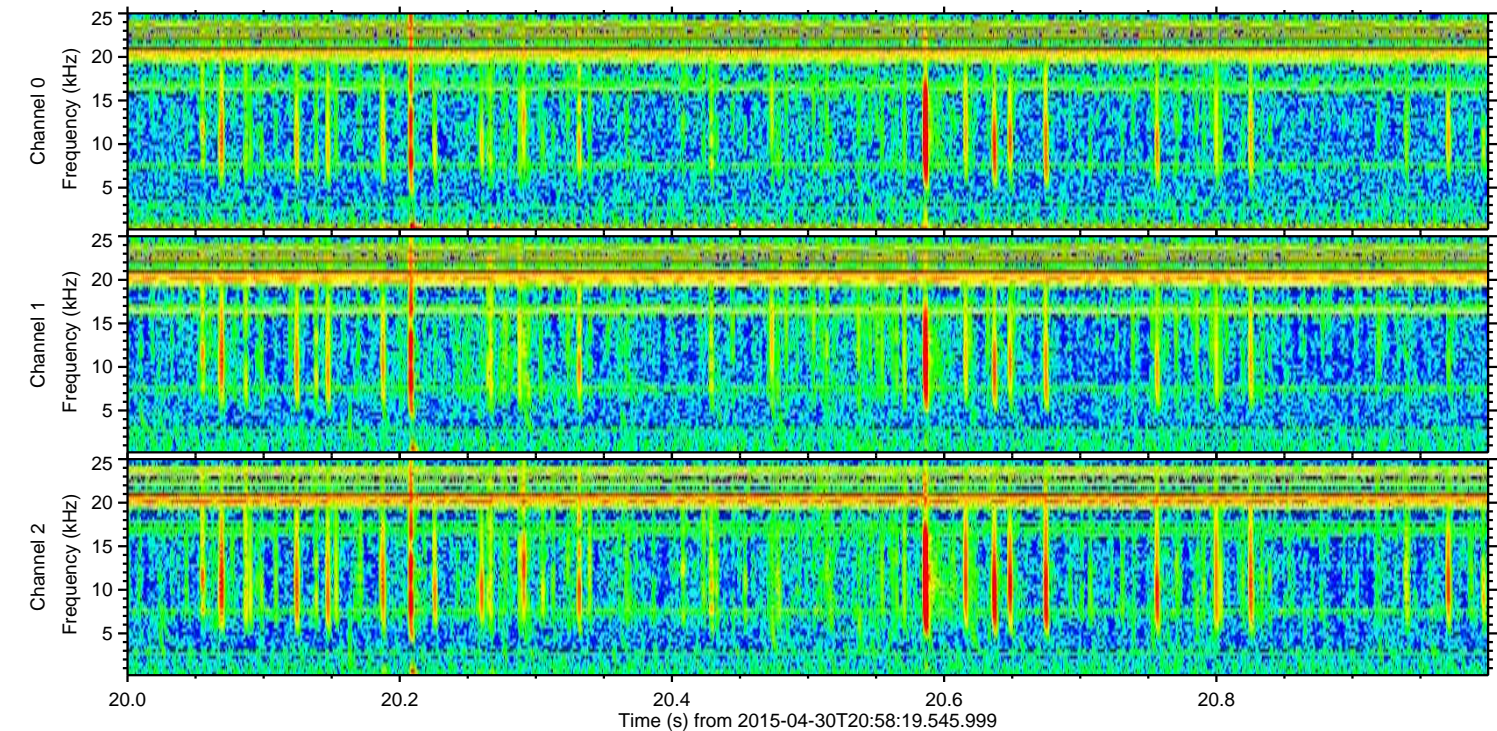
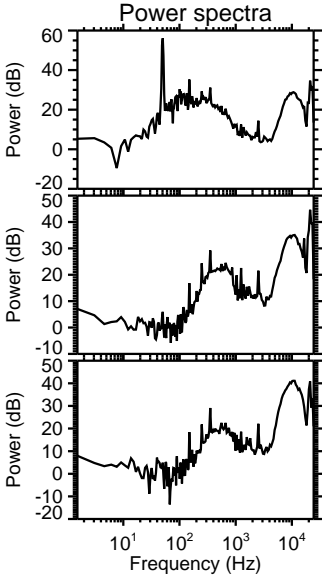
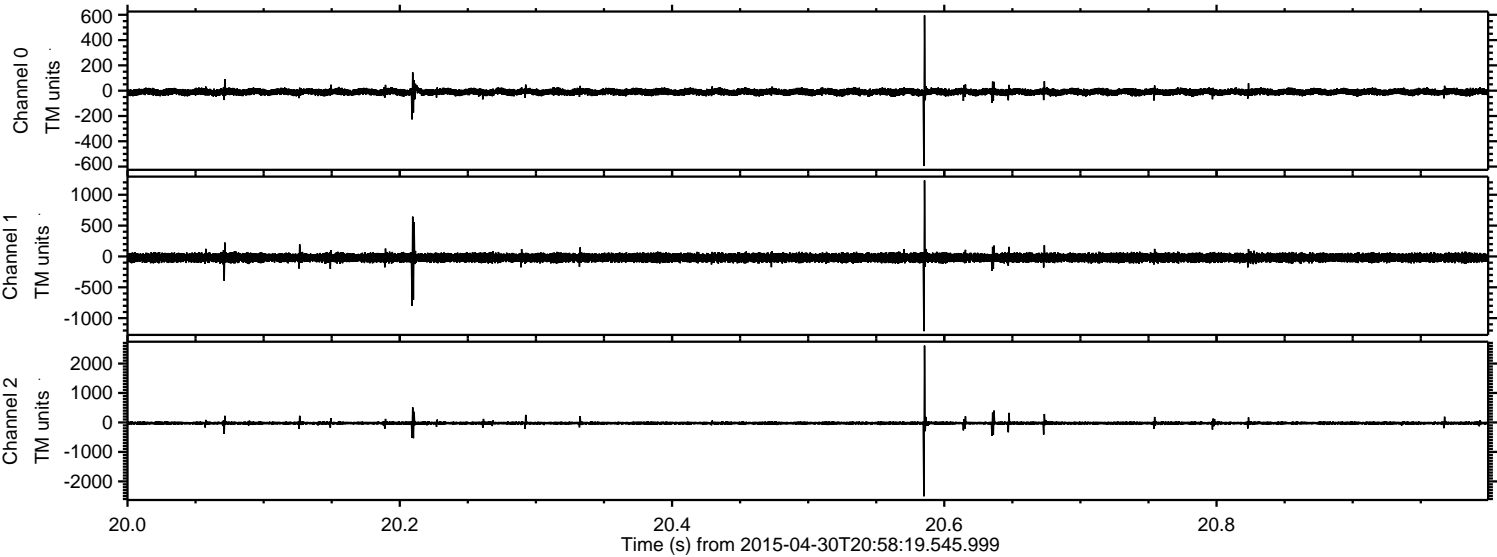
Channel 0
mn: -1167
mx: 737
 μ : -10.0
 σ : 15.1

Channel 1
mn: -708
mx: 778
 μ : -20.5
 σ : 37.1

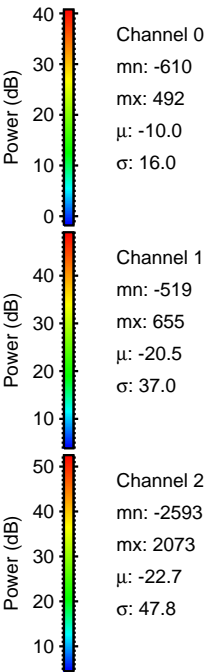
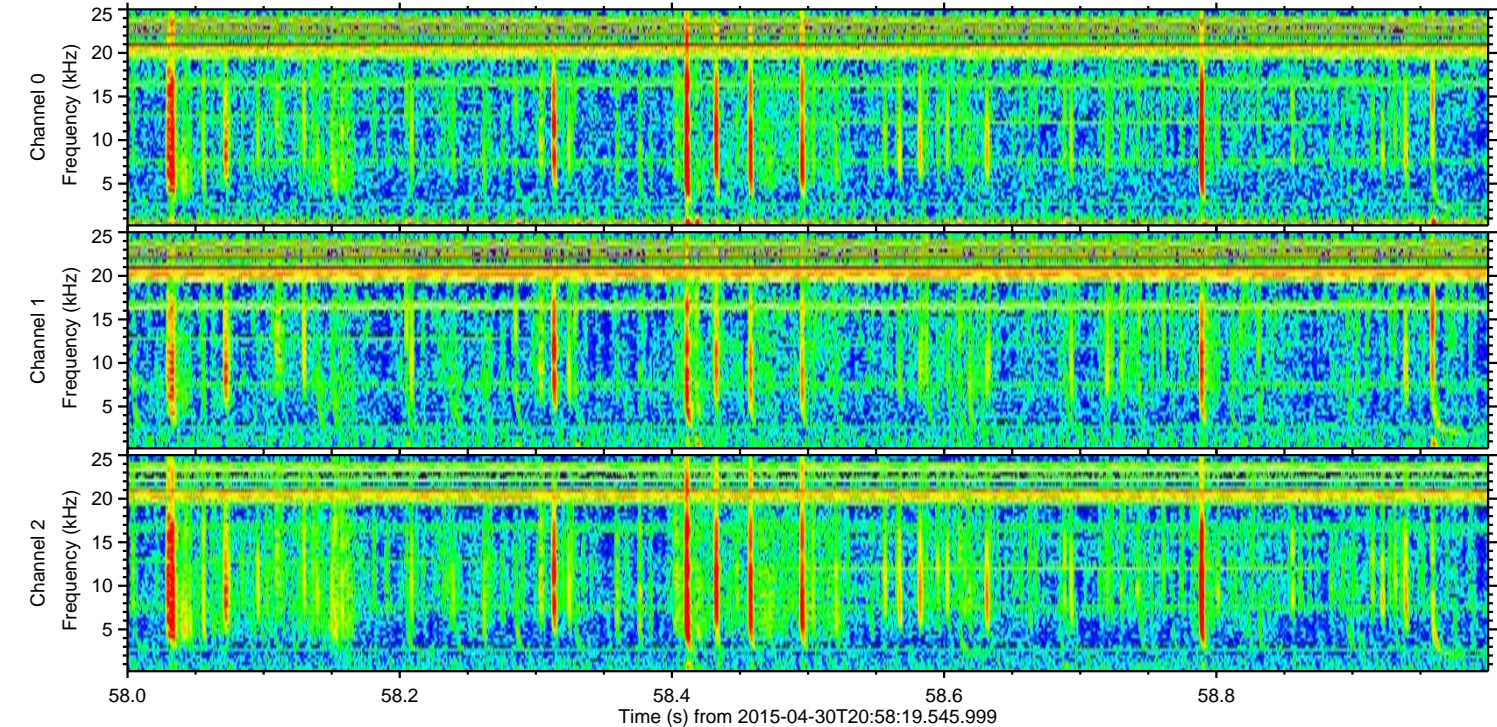
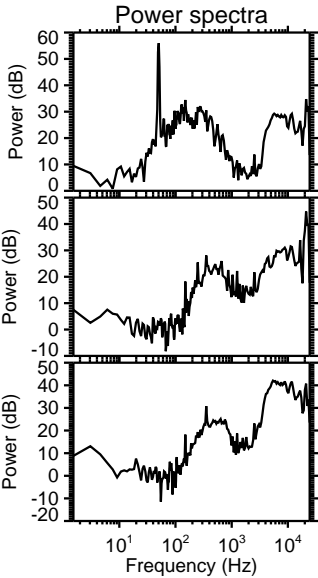
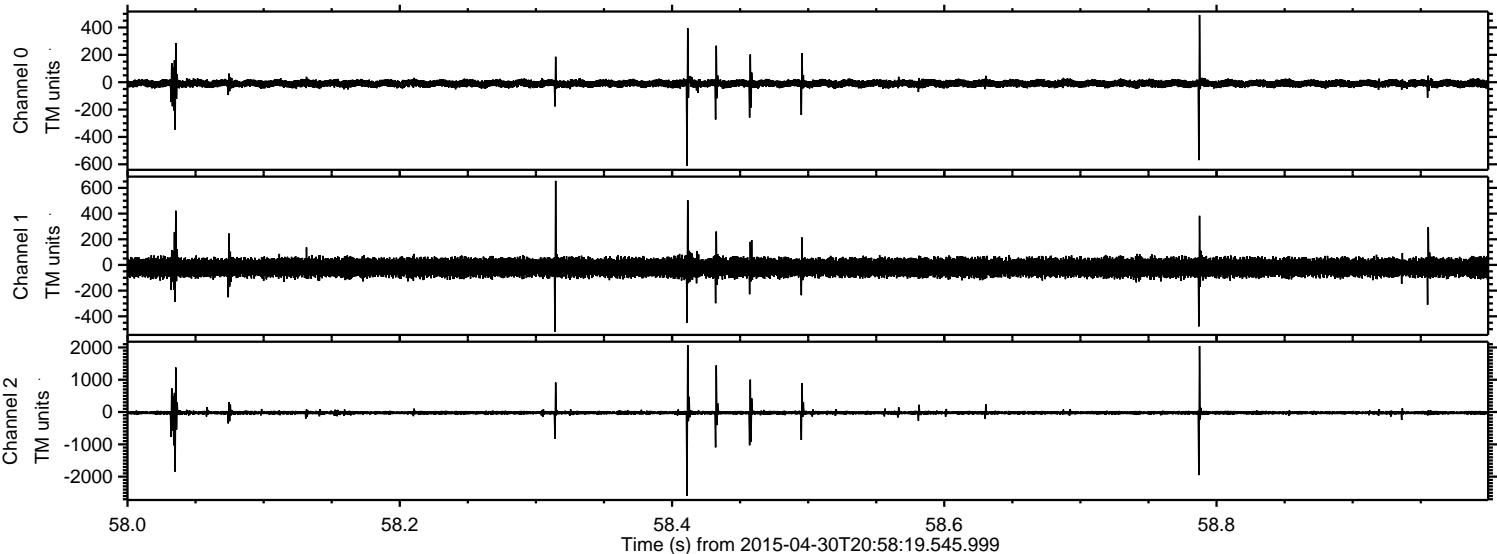
Channel 2
mn: -3355
mx: 2801
 μ : -22.7
 σ : 39.8

ELMAVAN 3D WAVEFORMS (Measured data sampled at 50 kHz) 49782 packets of 144 samples from 2015-04-30T20:58:19.545.999. Part 21/144

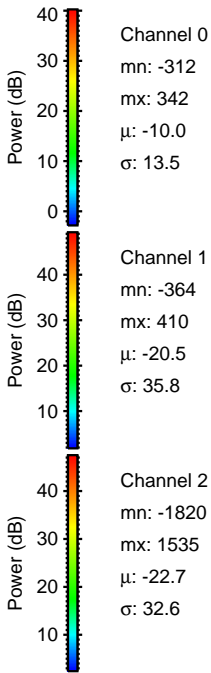
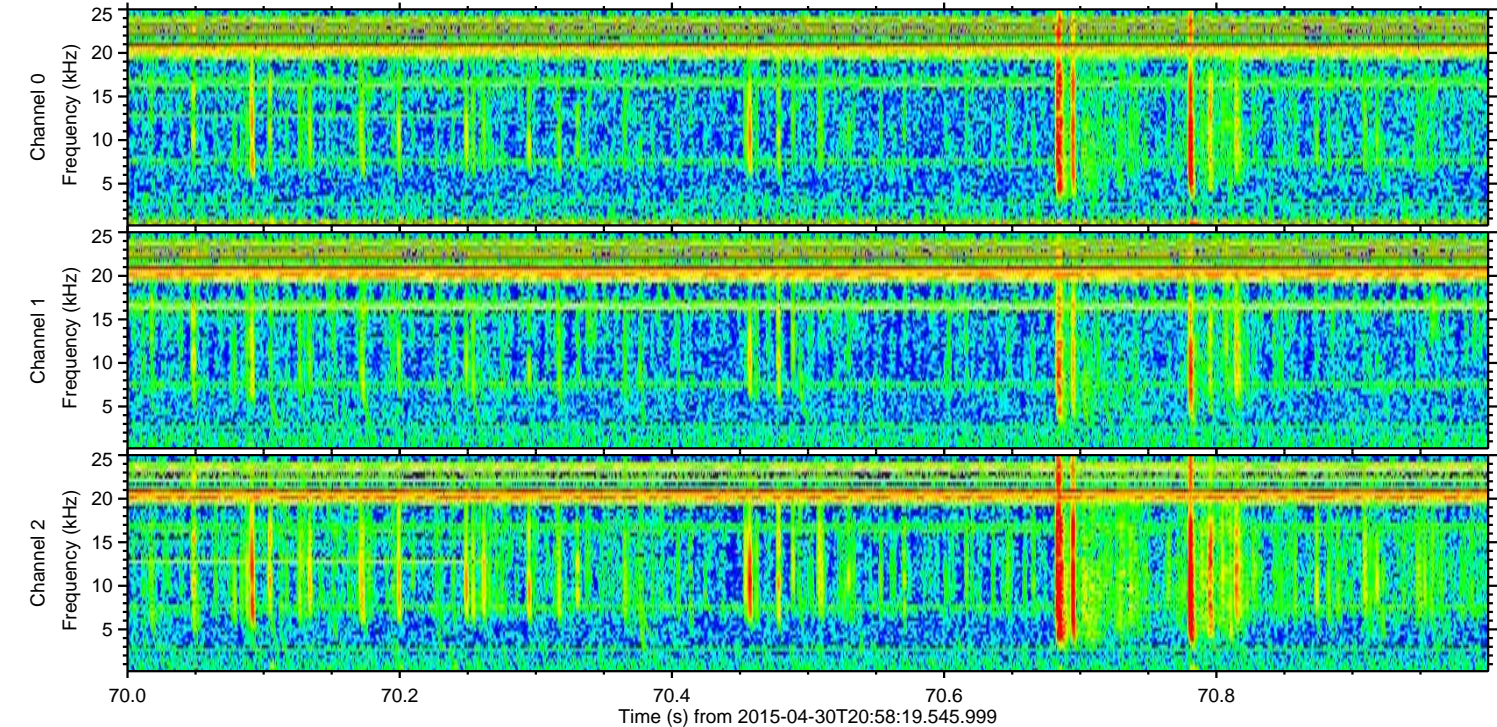
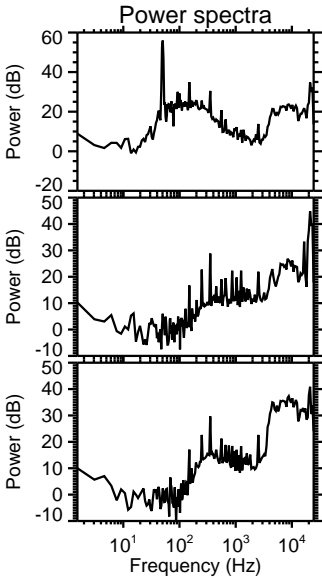
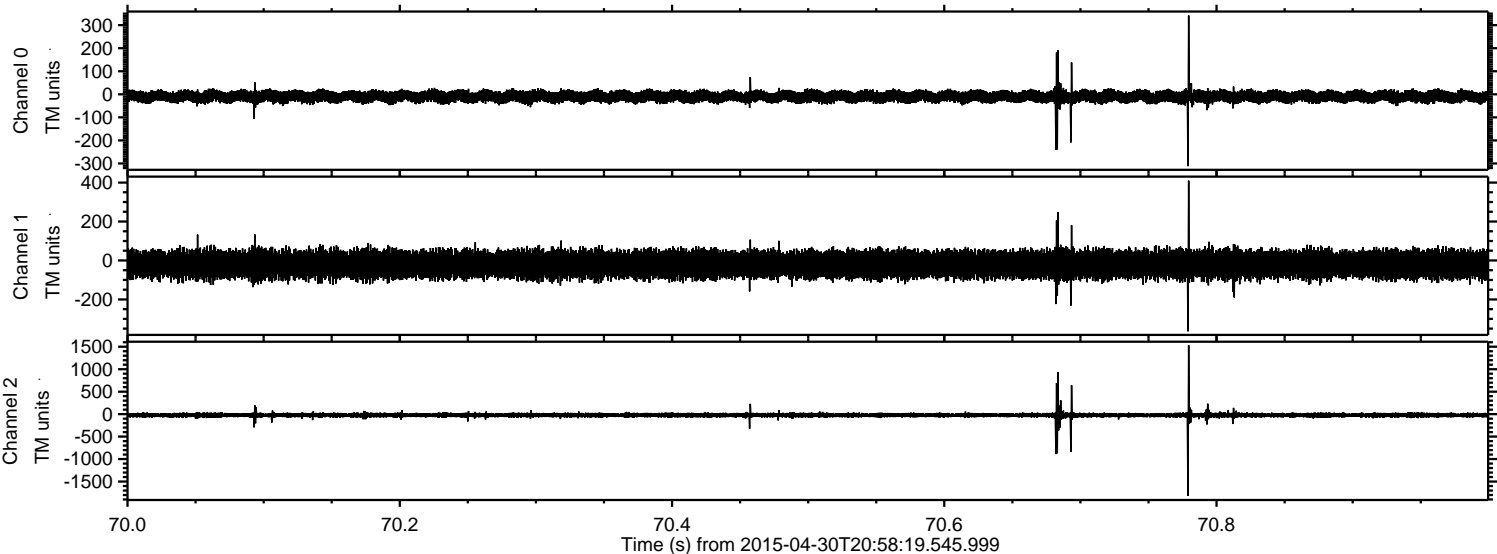
Processed Thu Apr 30 23:05:33 2015 by ELM ver.2012-10-06 from 001__elm20150430_205818__dat00.bin



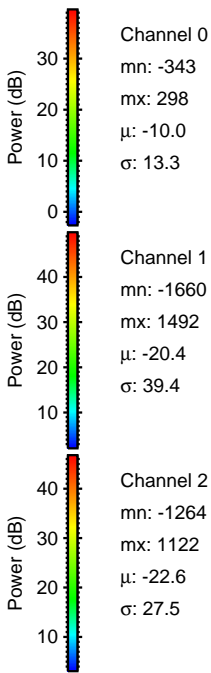
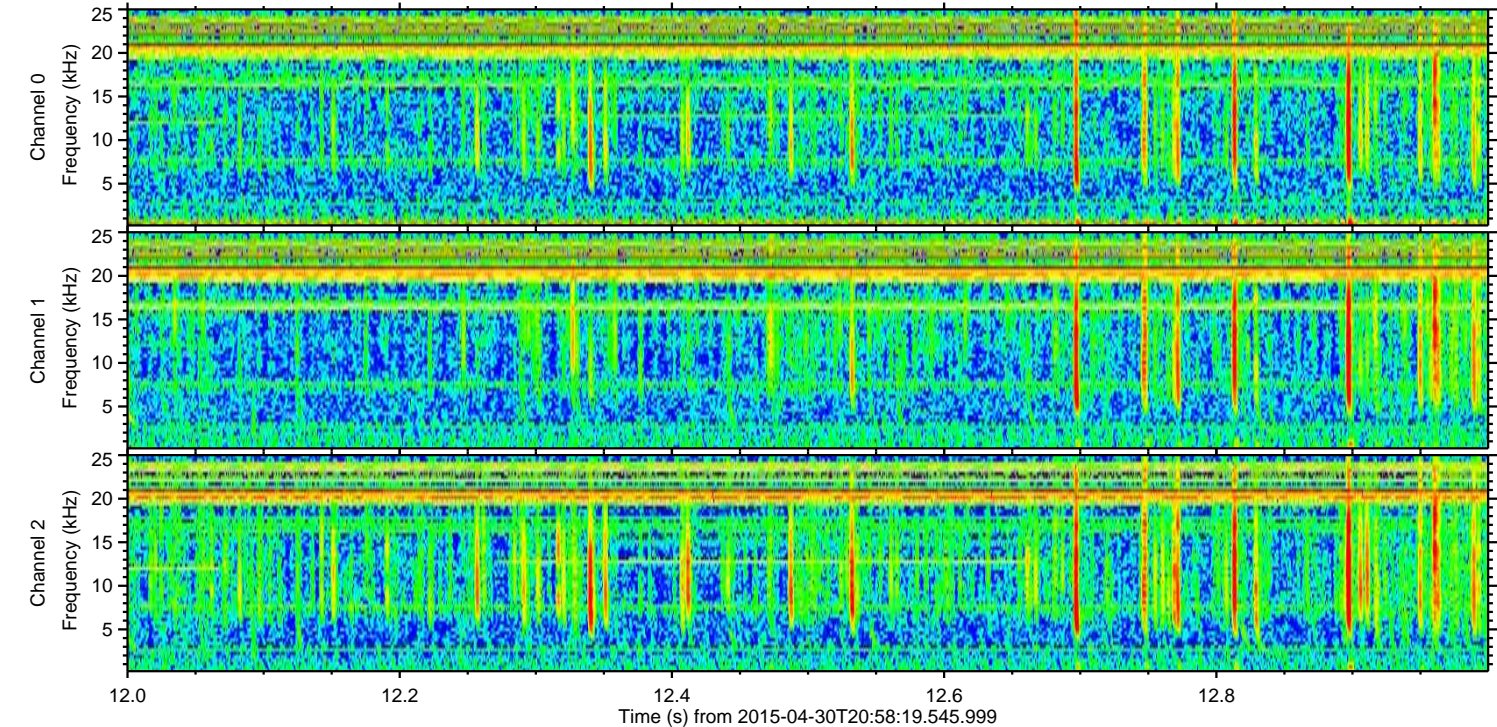
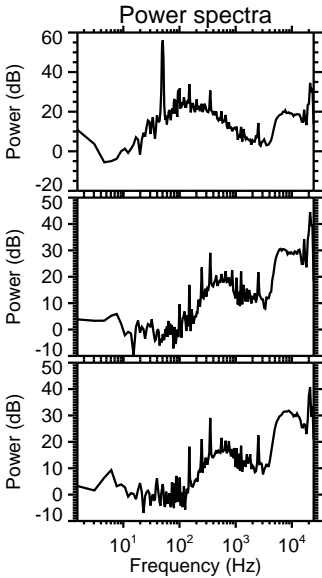
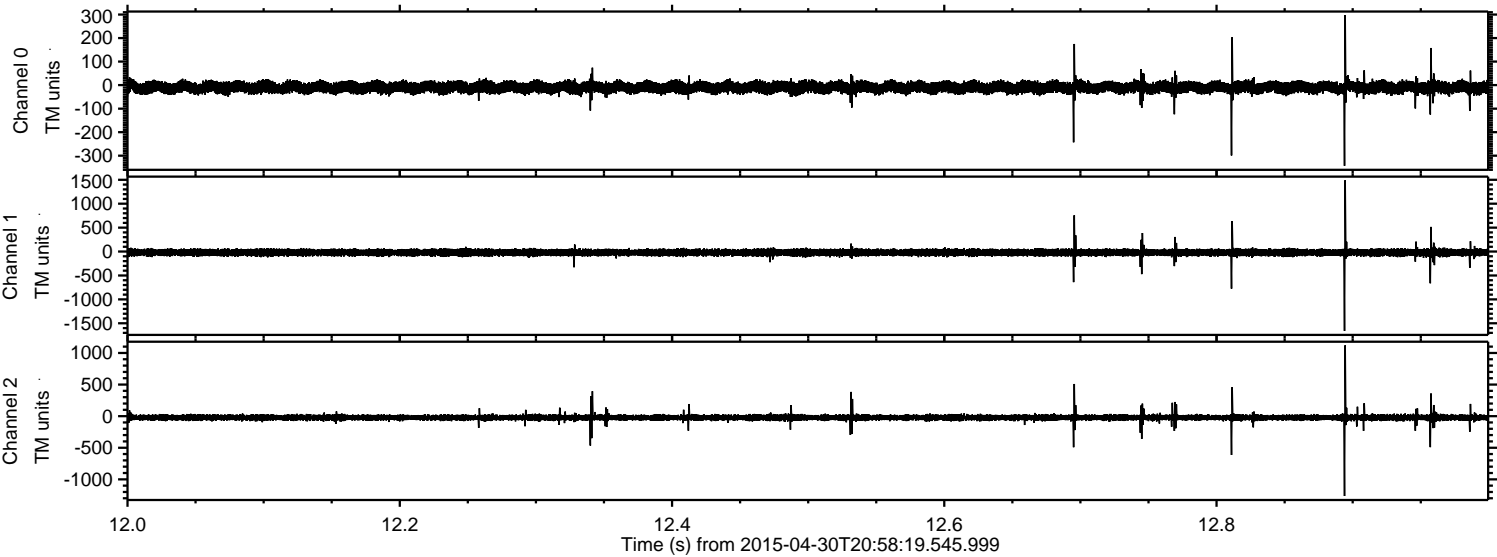
Processed Thu Apr 30 23:05:34 2015 by ELM ver.2012-10-06 from 001__elm20150430_205818__dat00.bin



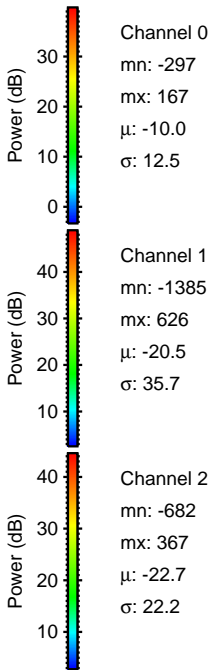
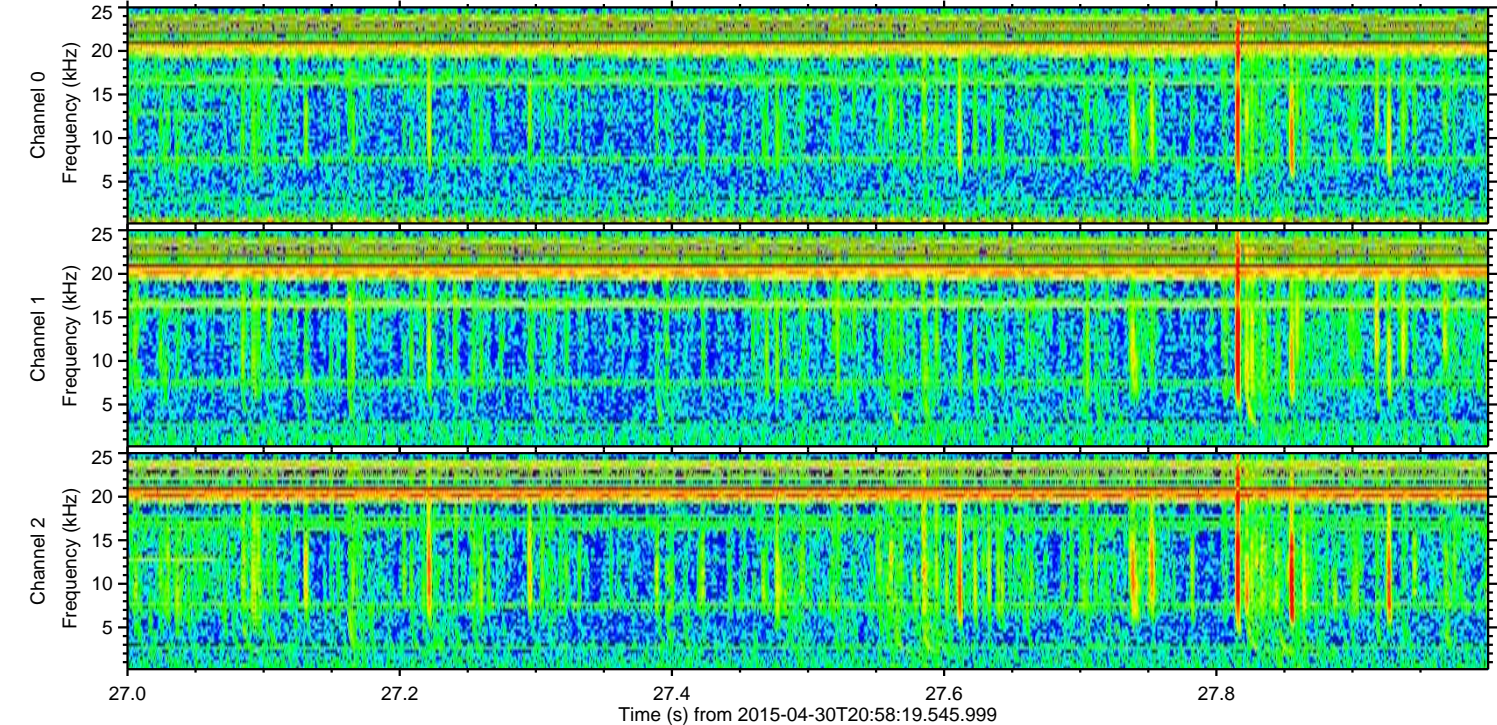
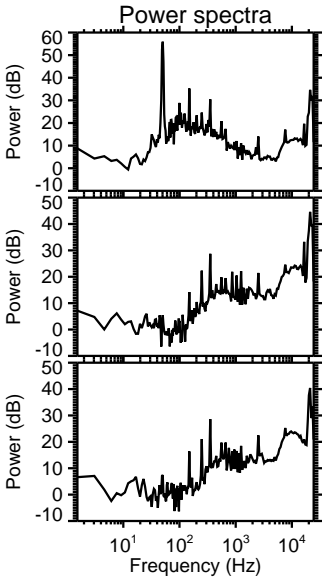
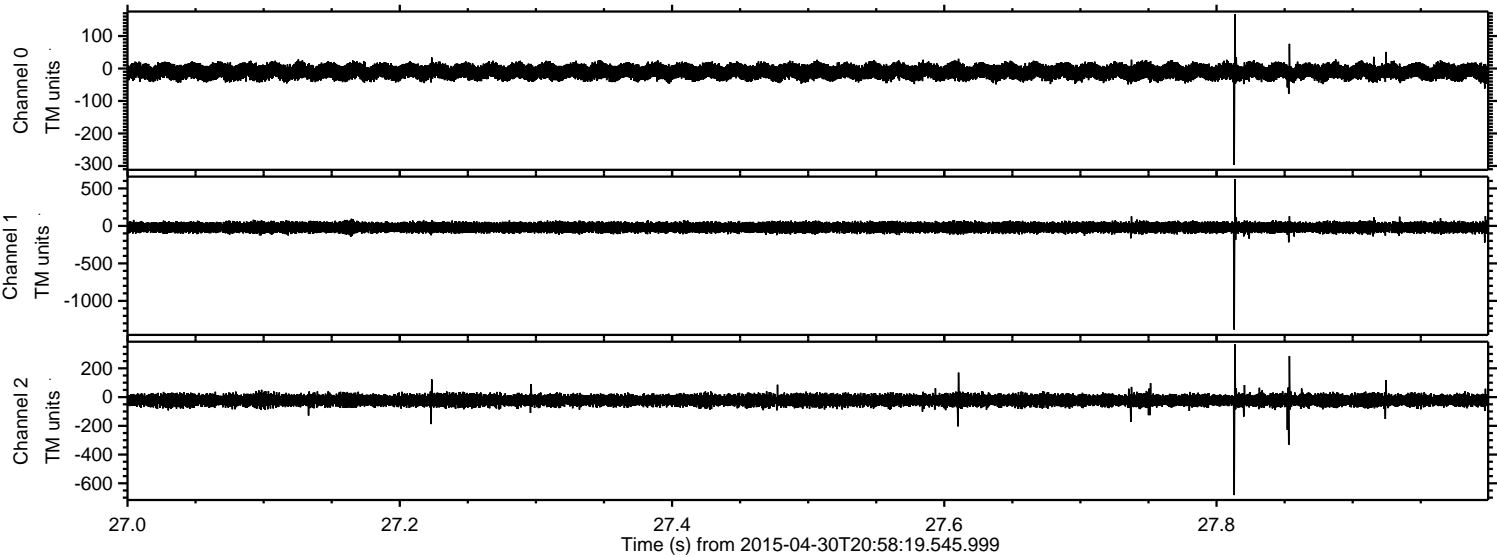
Processed Thu Apr 30 23:05:35 2015 by ELM ver.2012-10-06 from 001__elm20150430_205818__dat00.bin



Processed Thu Apr 30 23:05:36 2015 by ELM ver.2012-10-06 from 001__elm20150430_205818__dat00.bin



Processed Thu Apr 30 23:05:37 2015 by ELM ver.2012-10-06 from 001__elm20150430_205818__dat00.bin



Processed Thu Apr 30 23:05:38 2015 by ELM ver.2012-10-06 from 001__elm20150430_205818__dat00.bin

