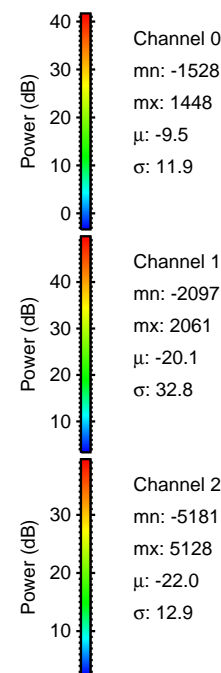
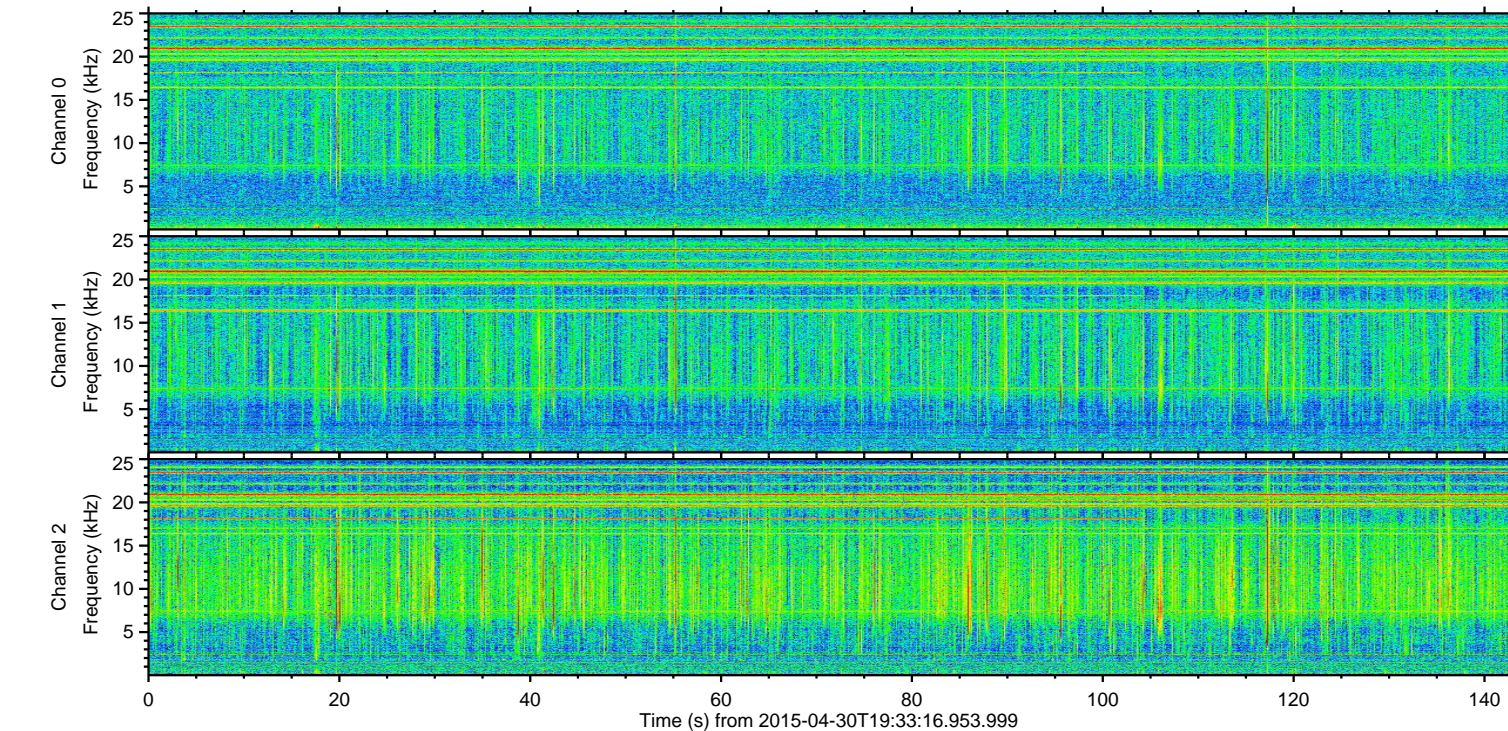
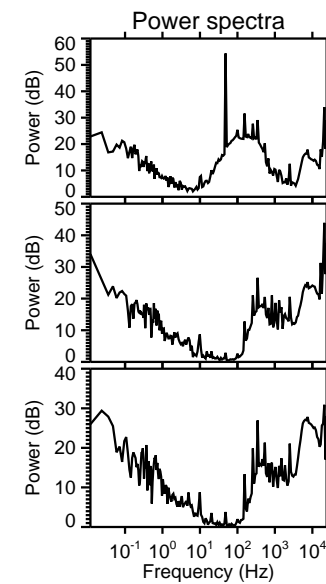
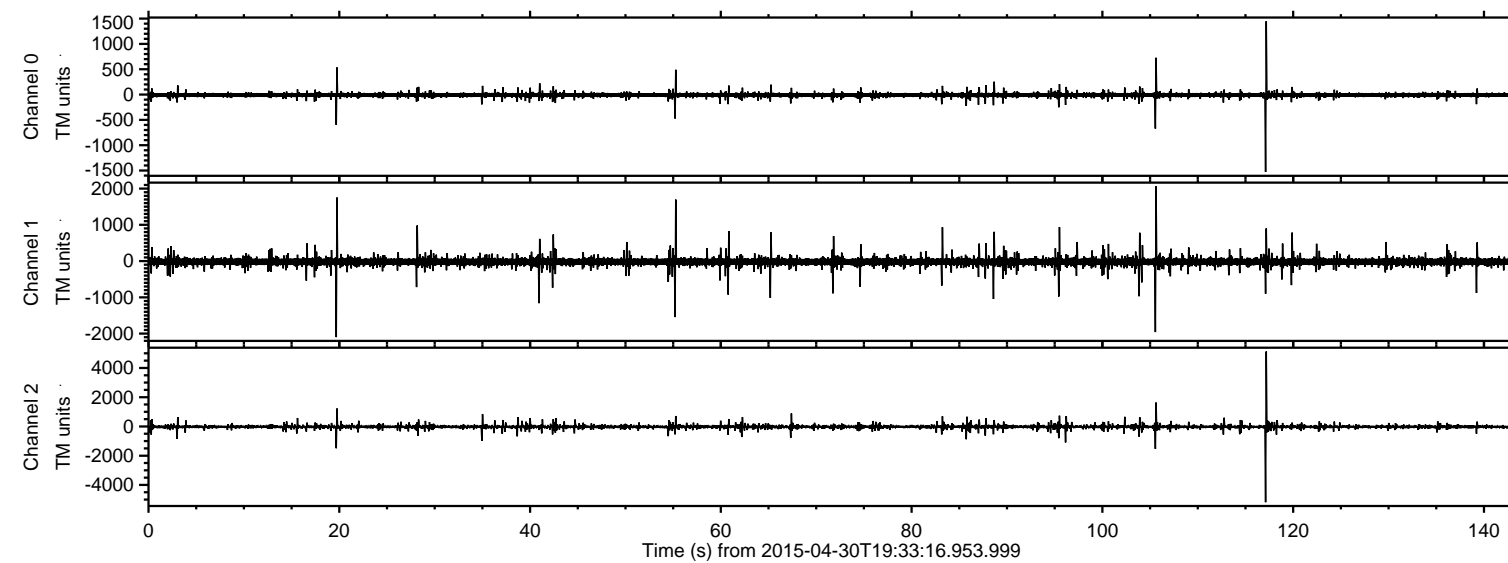


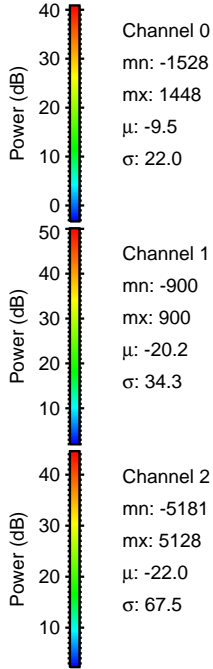
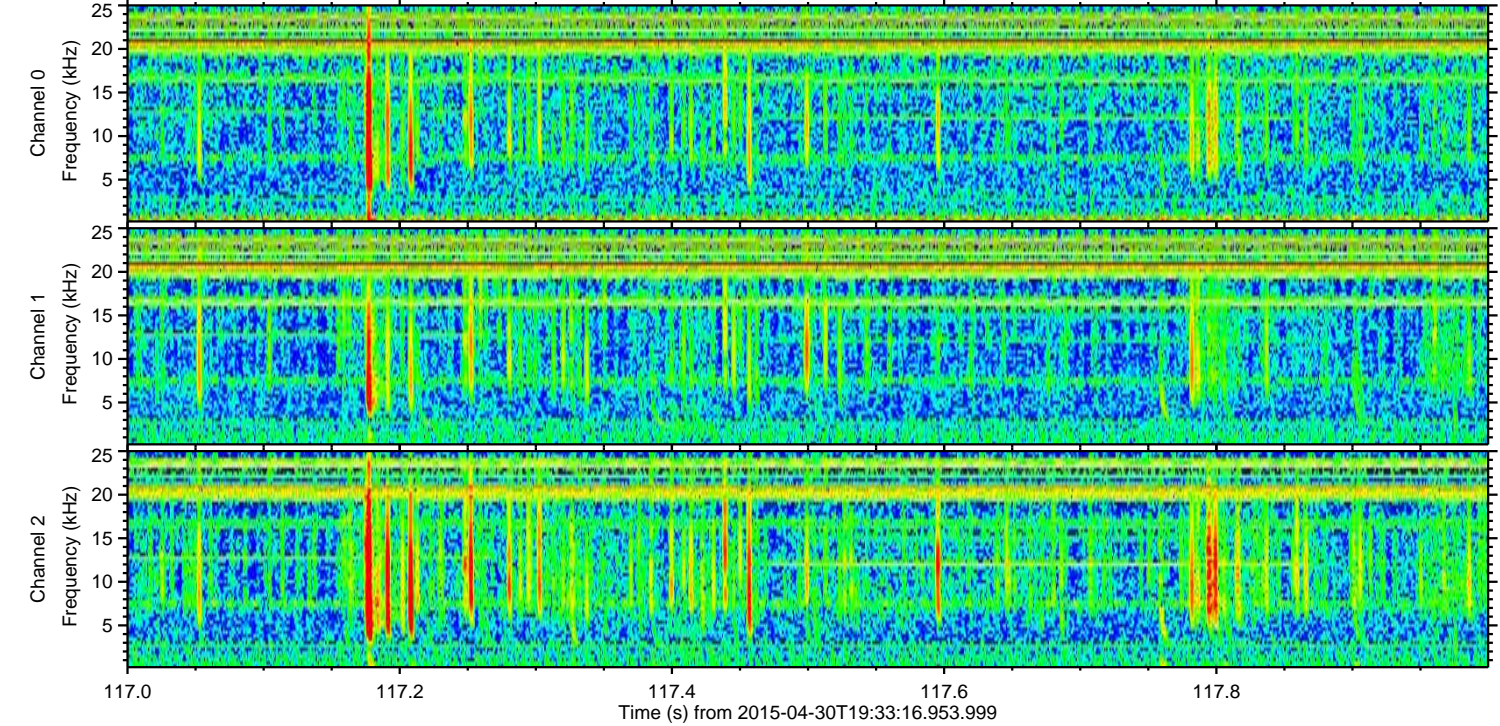
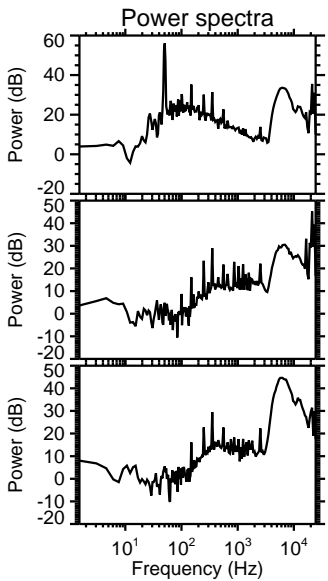
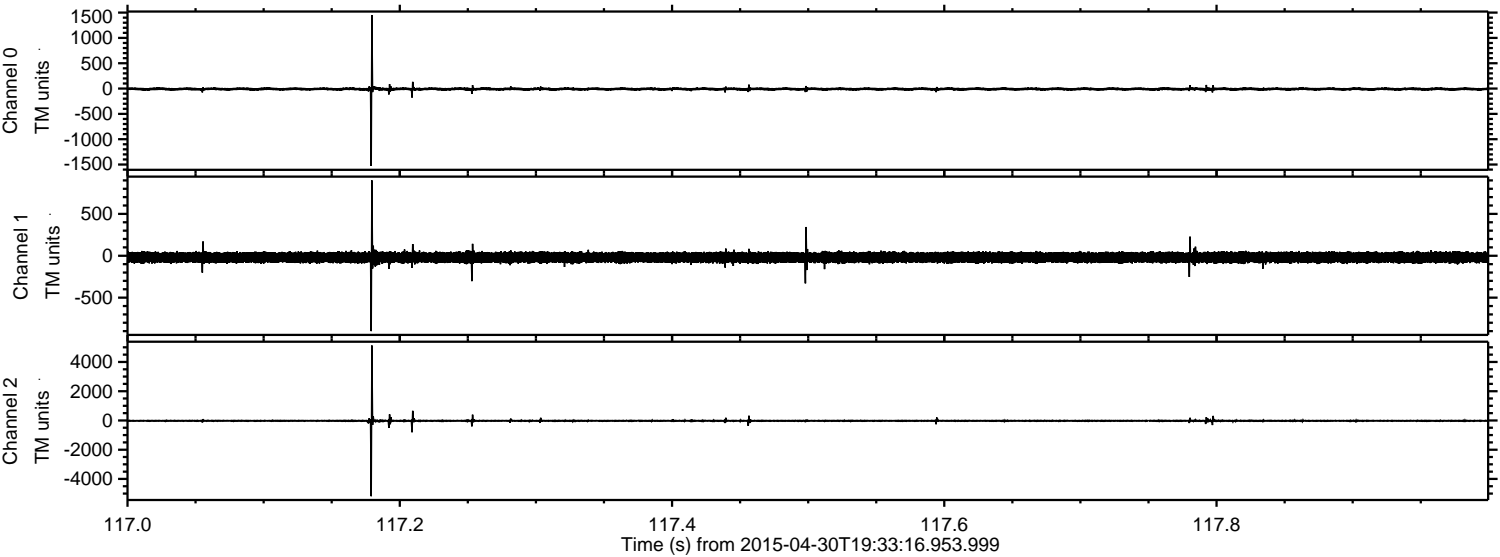
ELMAVAN 3D WAVEFORMS (Measured data sampled at 50 kHz) 49528 packets of 144 samples from 2015-04-30T19:33:16.953.999.

Processed Thu Apr 30 21:40:35 2015 by ELM ver.2012-10-06 from 001__elm20150430_193315__dat00.bin

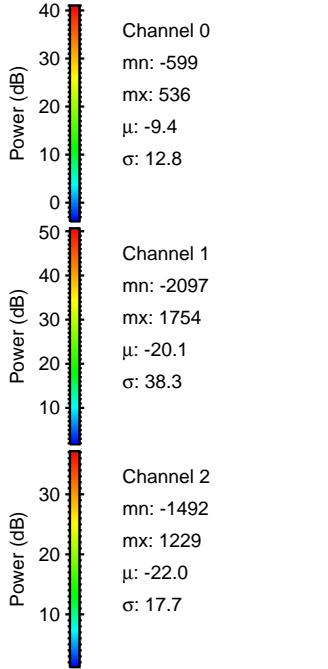
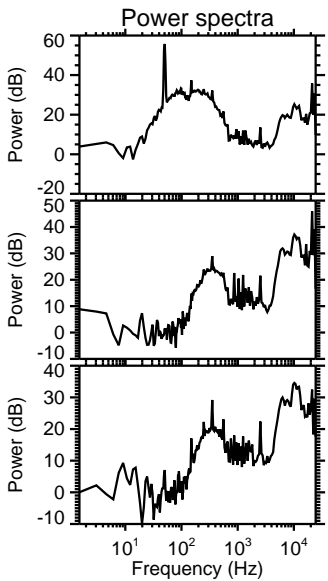
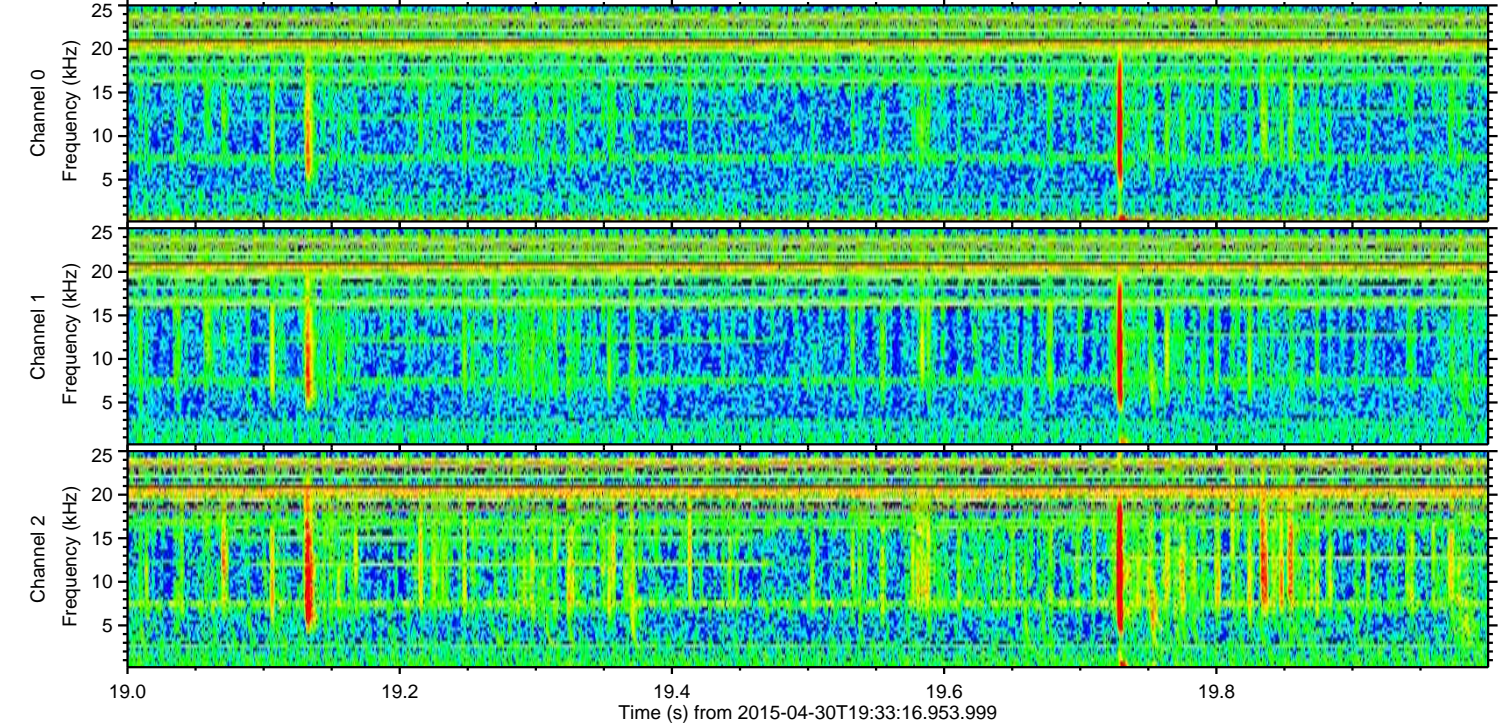
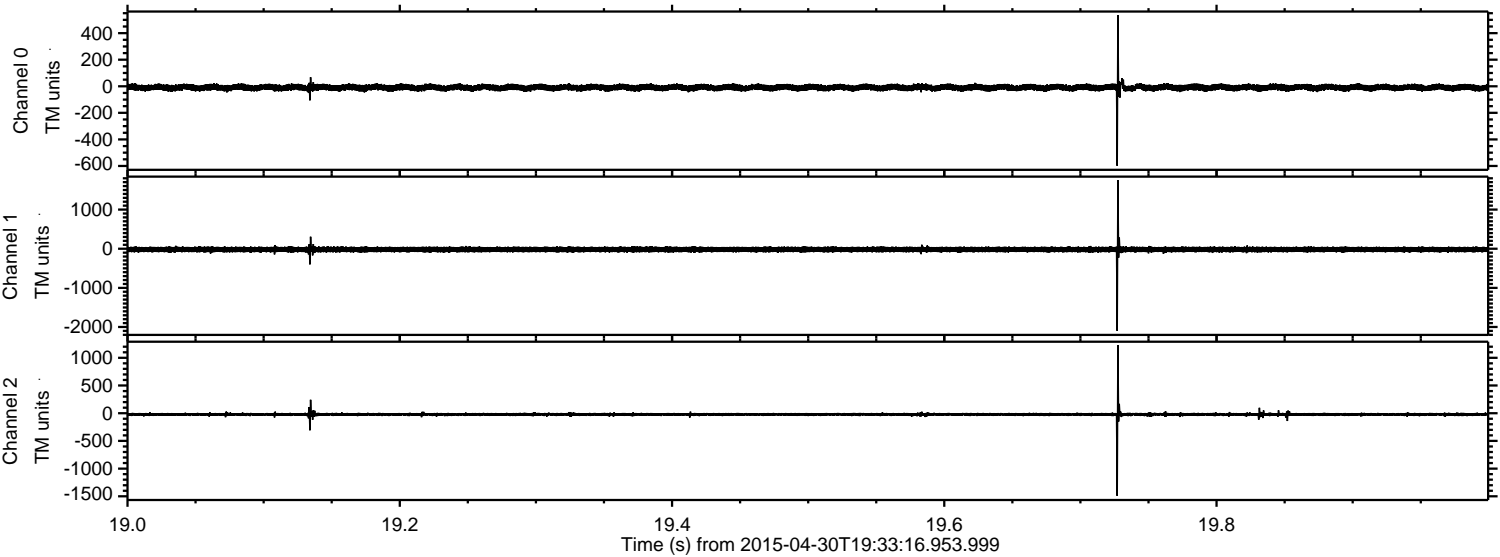


ELMAVAN 3D WAVEFORMS (Measured data sampled at 50 kHz) 49528 packets of 144 samples from 2015-04-30T19:33:16.953.999. Part 118/143

Processed Thu Apr 30 21:40:51 2015 by ELM ver.2012-10-06 from 001__elm20150430_193315__dat00.bin

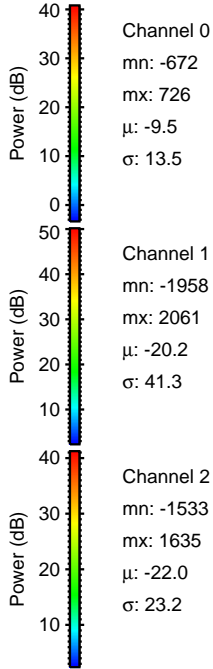
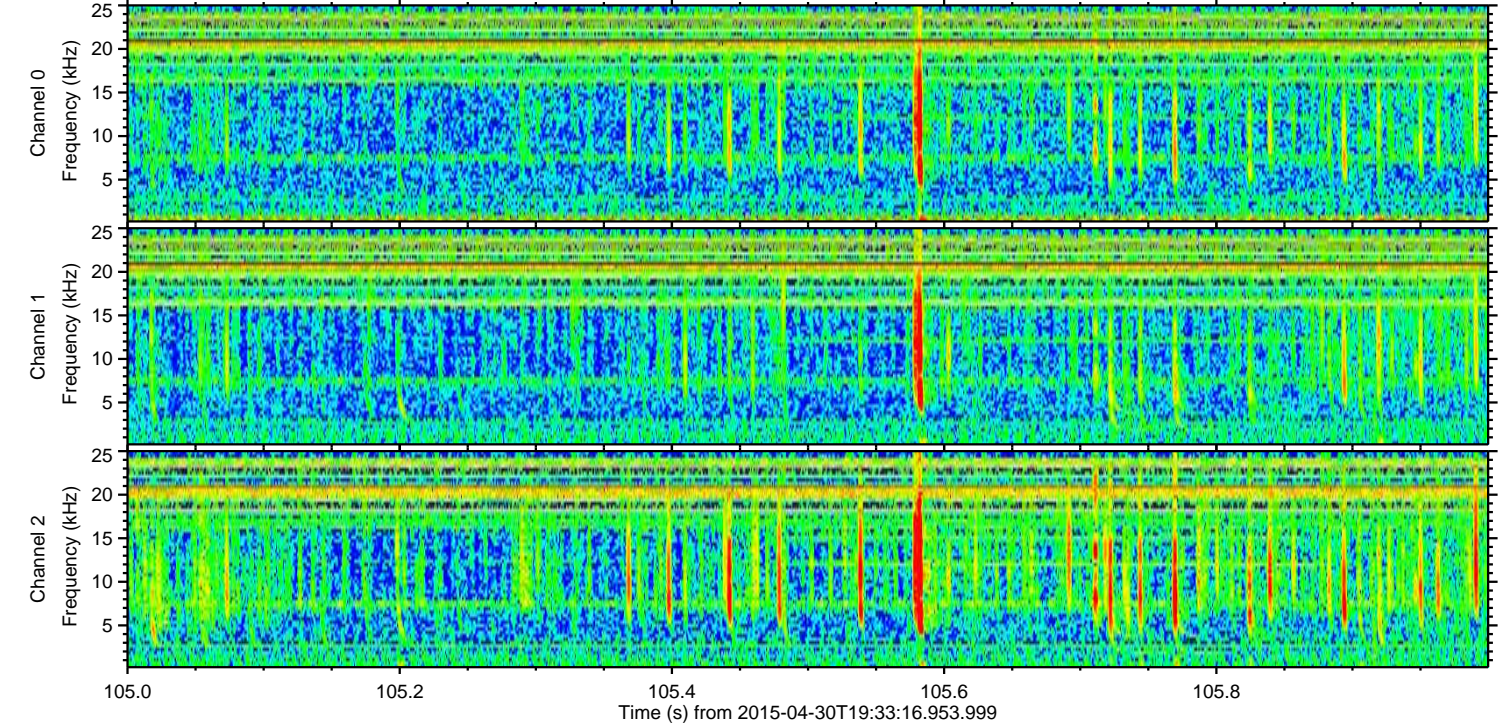
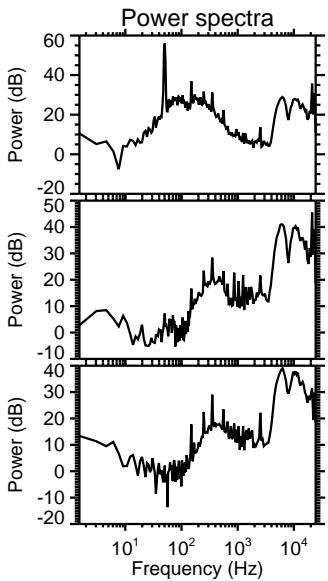
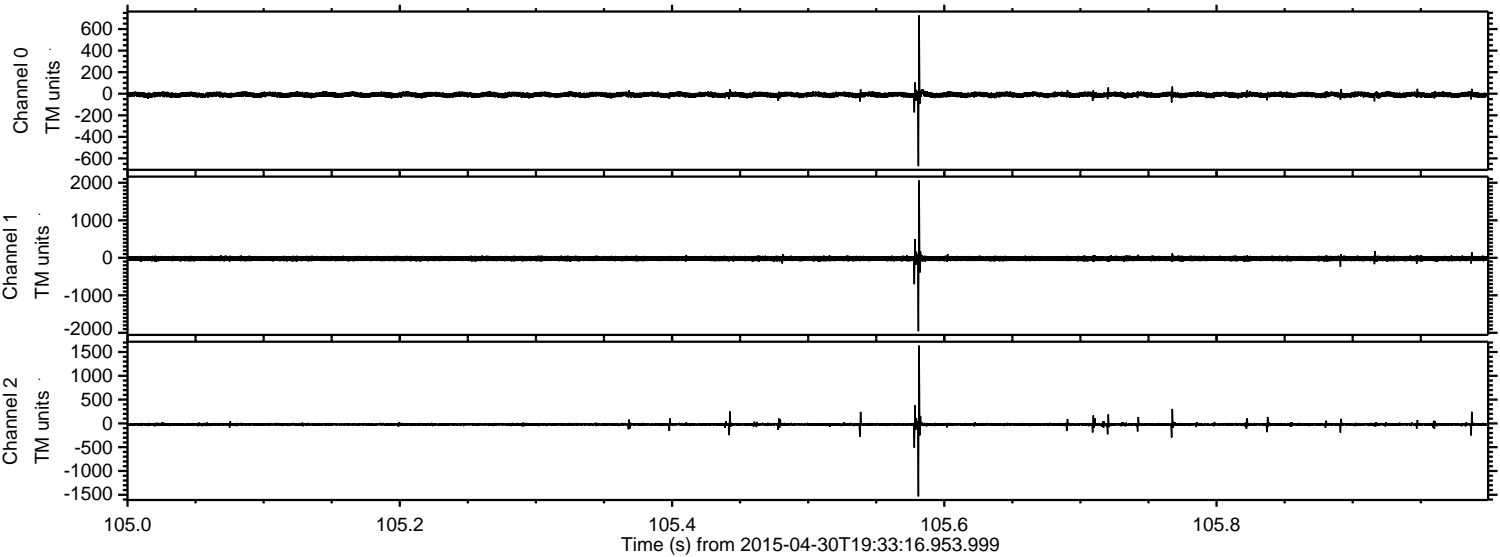


Processed Thu Apr 30 21:40:53 2015 by ELM ver.2012-10-06 from 001__elm20150430_193315__dat00.bin



ELMAVAN 3D WAVEFORMS (Measured data sampled at 50 kHz) 49528 packets of 144 samples from 2015-04-30T19:33:16.953.999. Part 106/143

Processed Thu Apr 30 21:40:54 2015 by ELM ver.2012-10-06 from 001__elm20150430_193315__dat00.bin

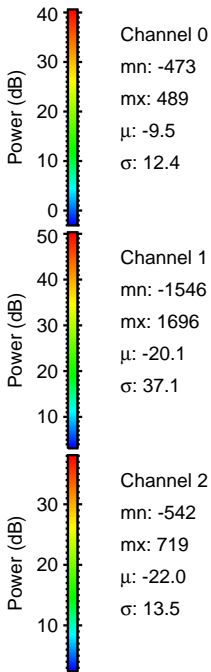
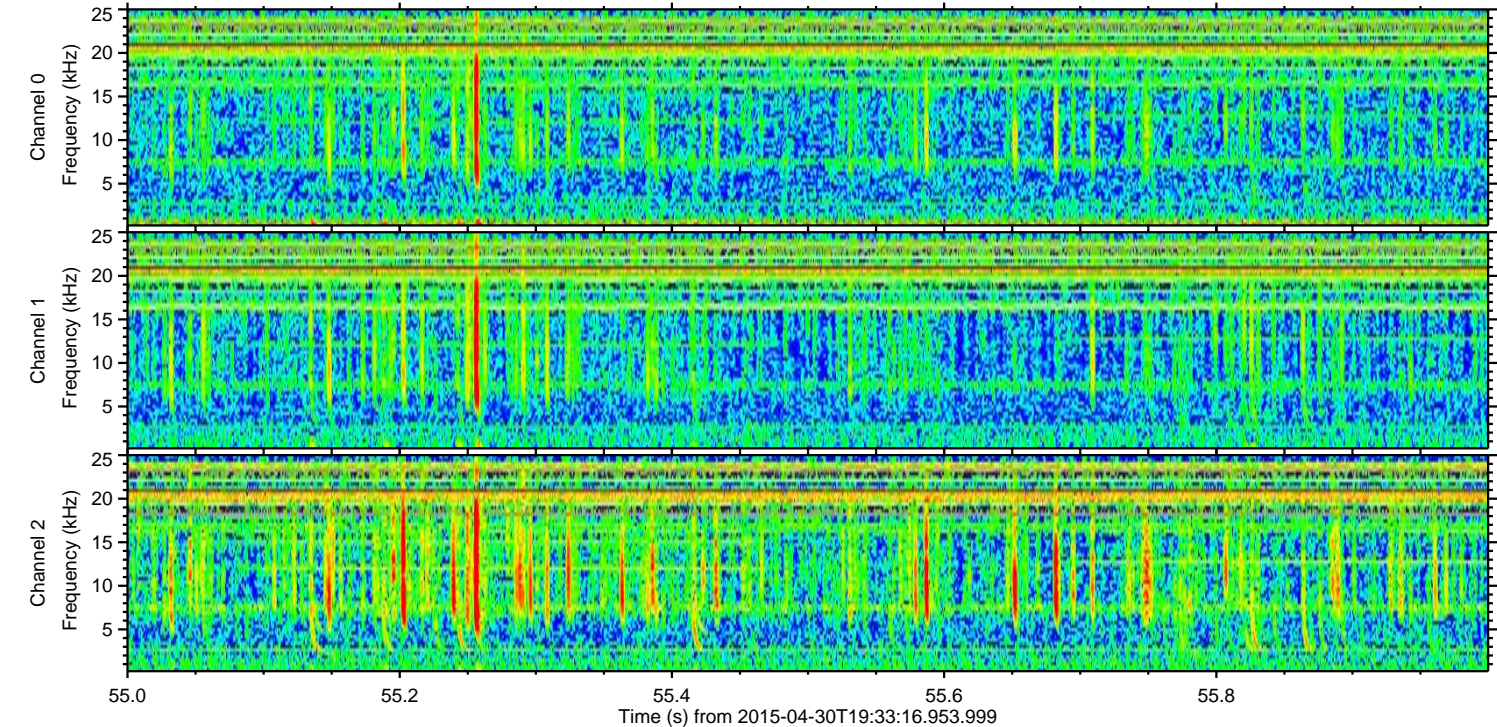
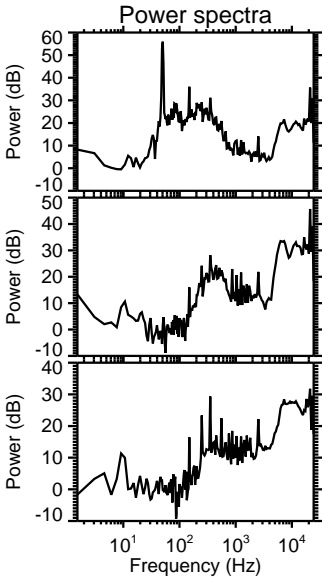
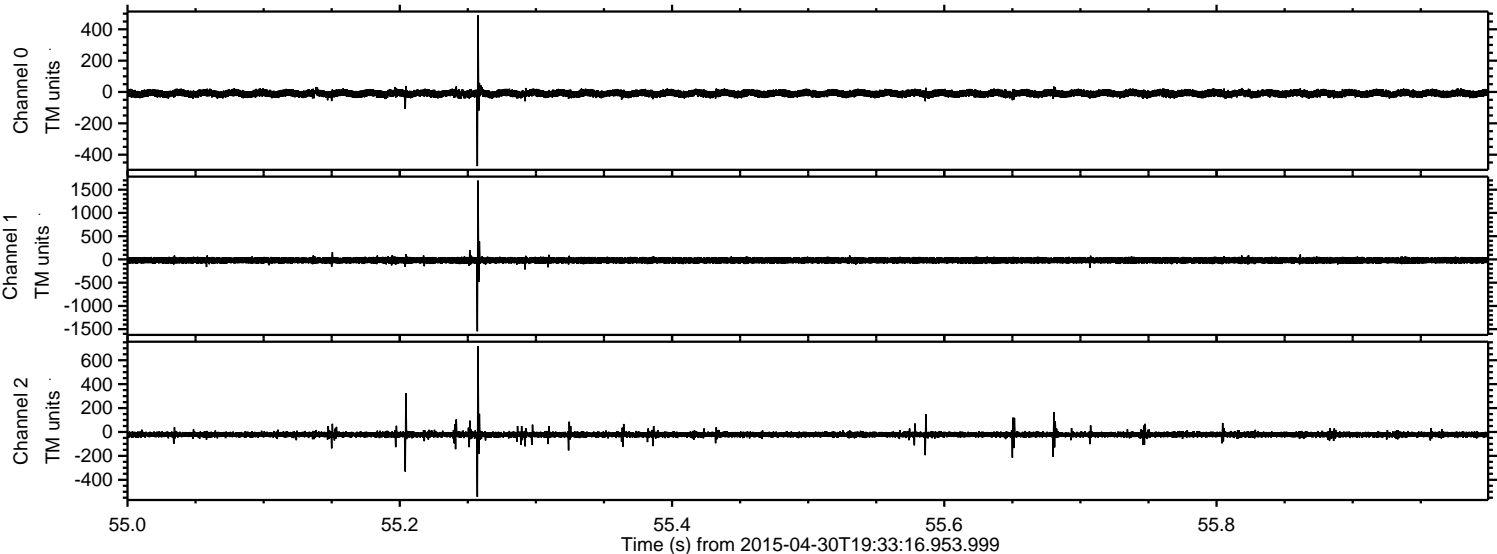


Channel 0
mn: -672
mx: 726
 μ : -9.5
 σ : 13.5

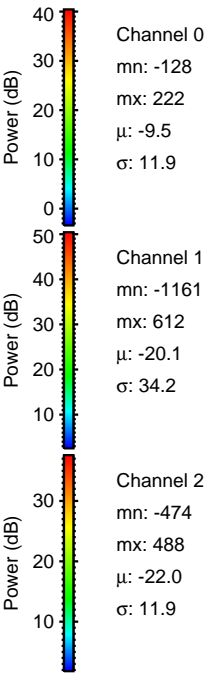
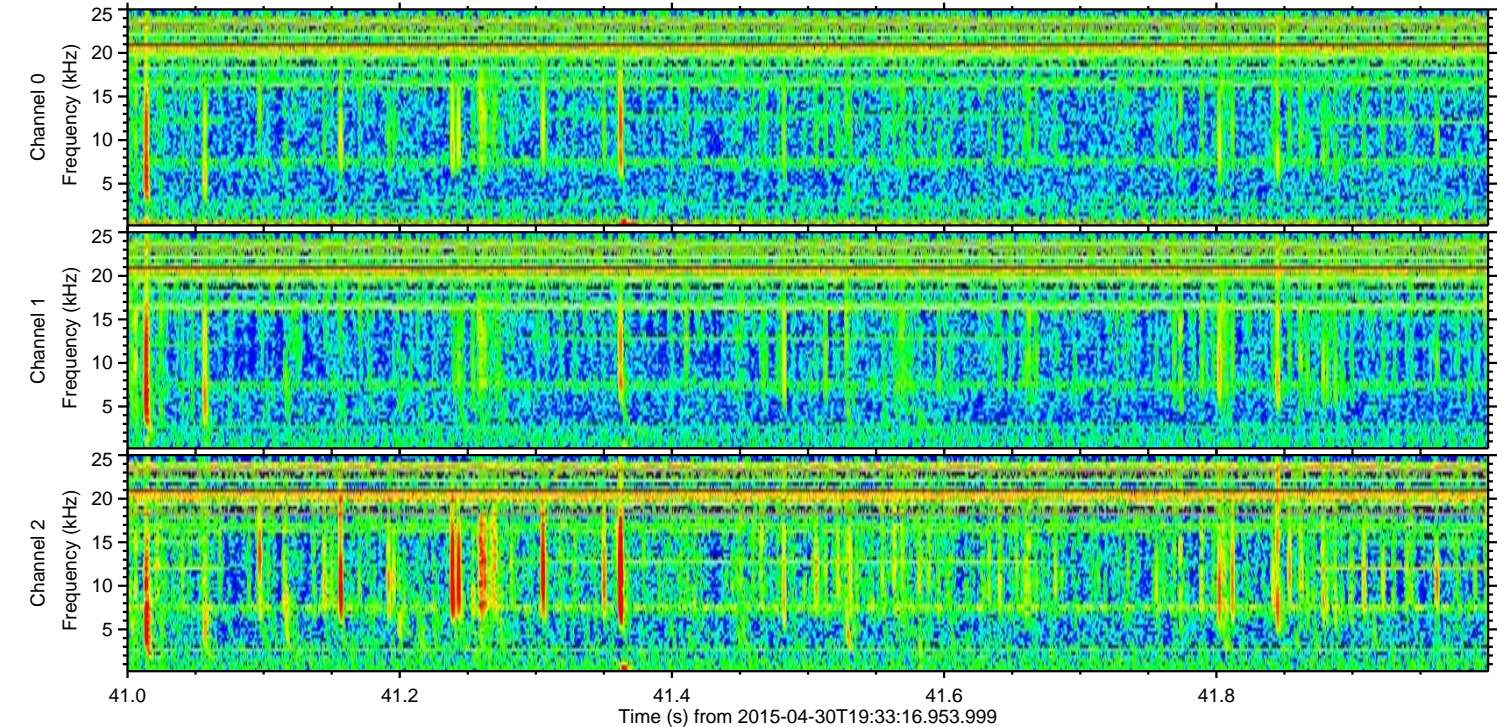
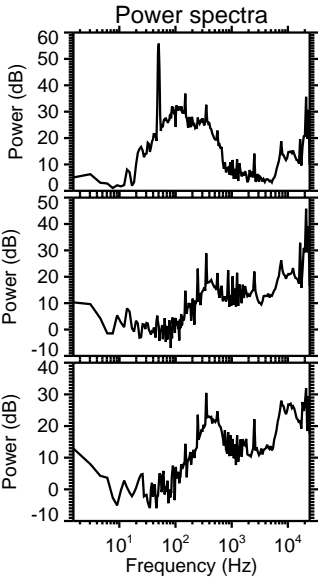
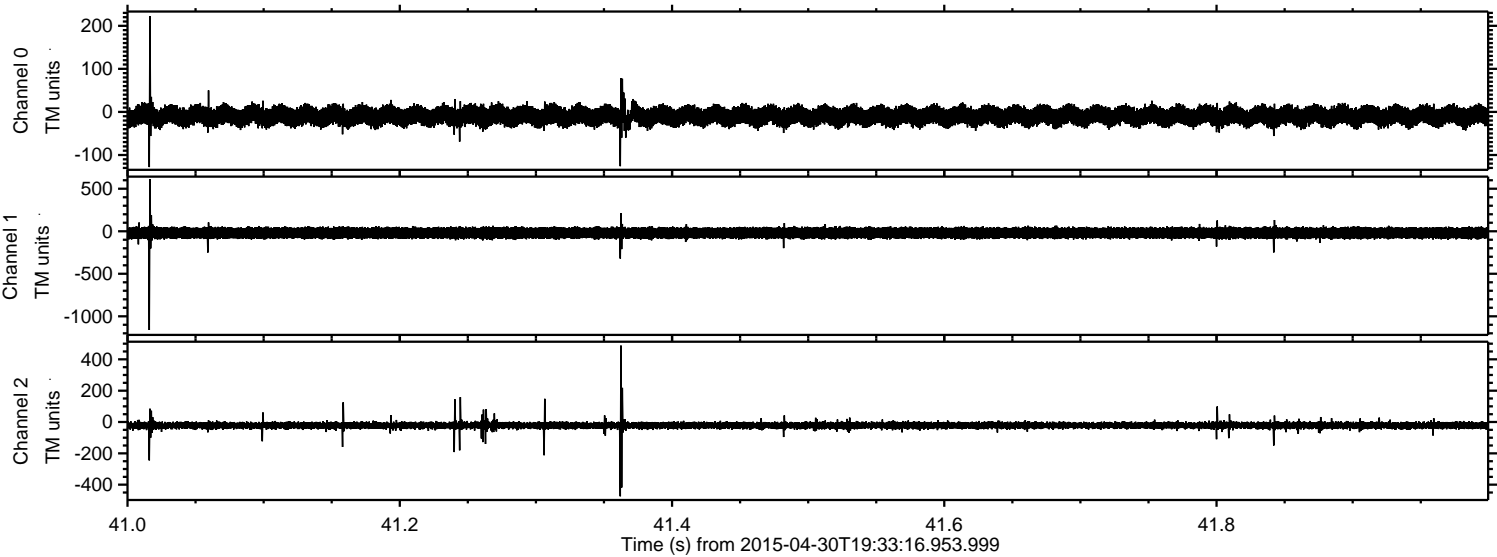
Channel 1
mn: -1958
mx: 2061
 μ : -20.2
 σ : 41.3

Channel 2
mn: -1533
mx: 1635
 μ : -22.0
 σ : 23.2

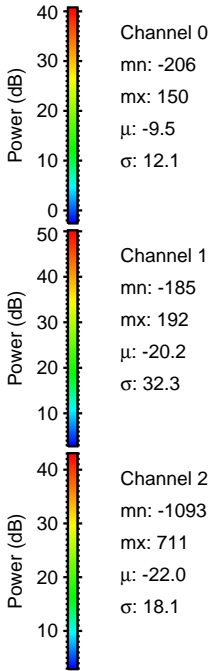
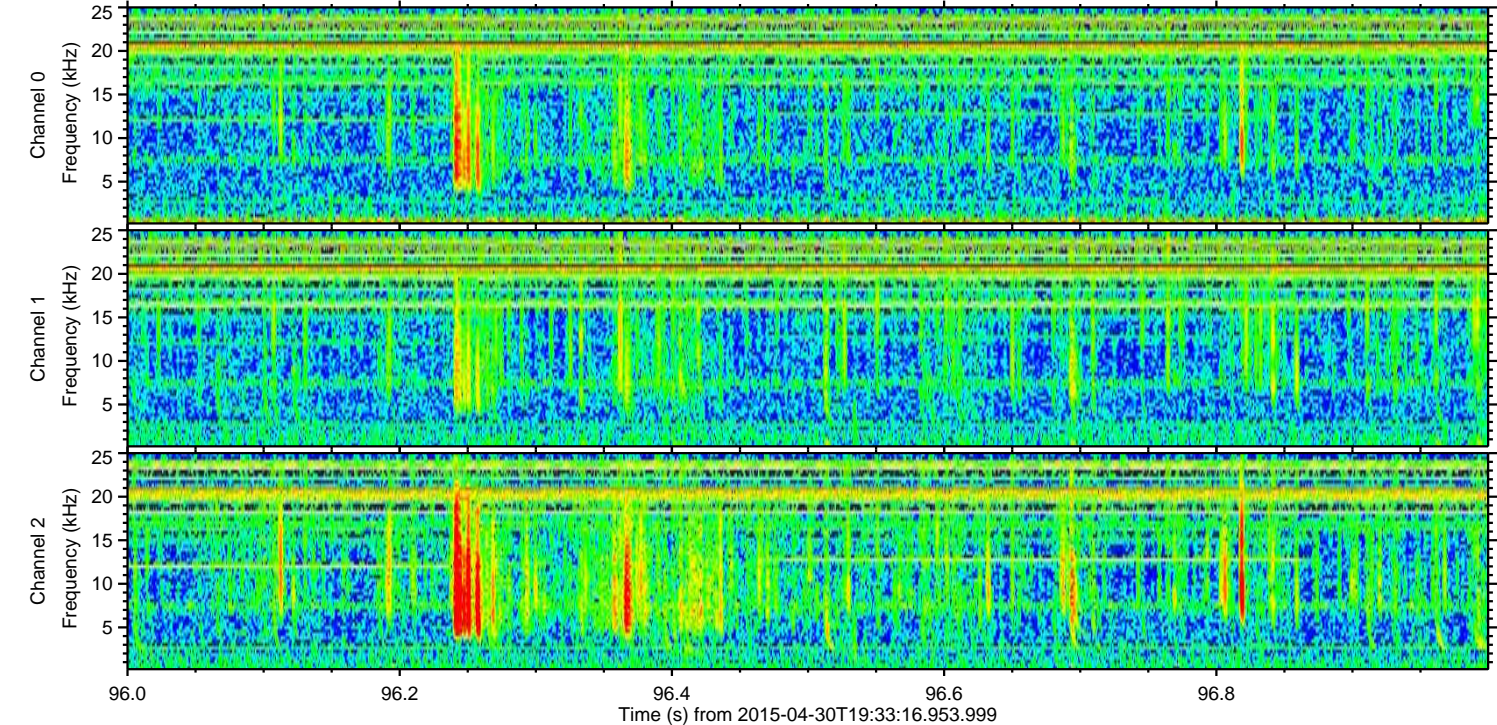
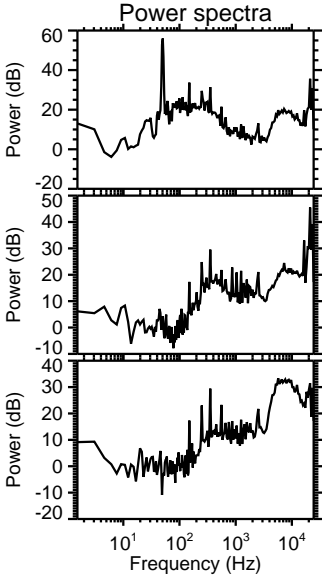
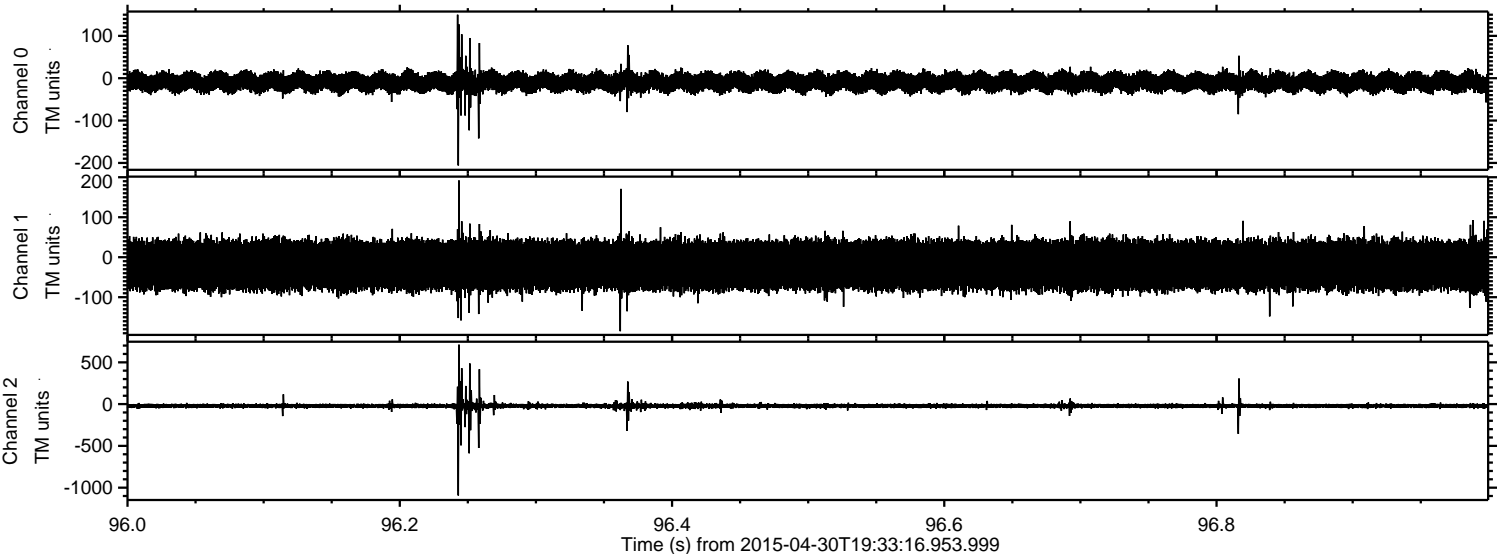
Processed Thu Apr 30 21:40:55 2015 by ELM ver.2012-10-06 from 001__elm20150430_193315__dat00.bin



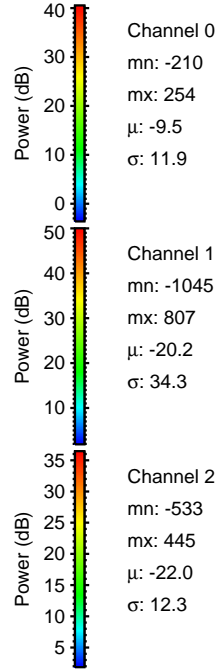
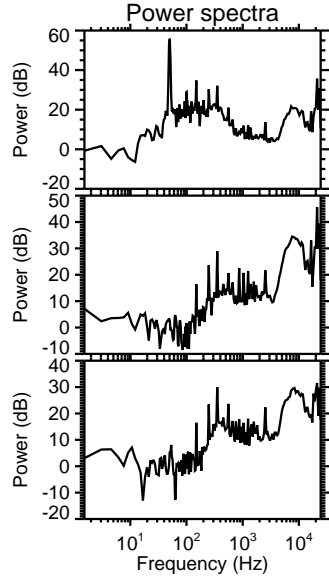
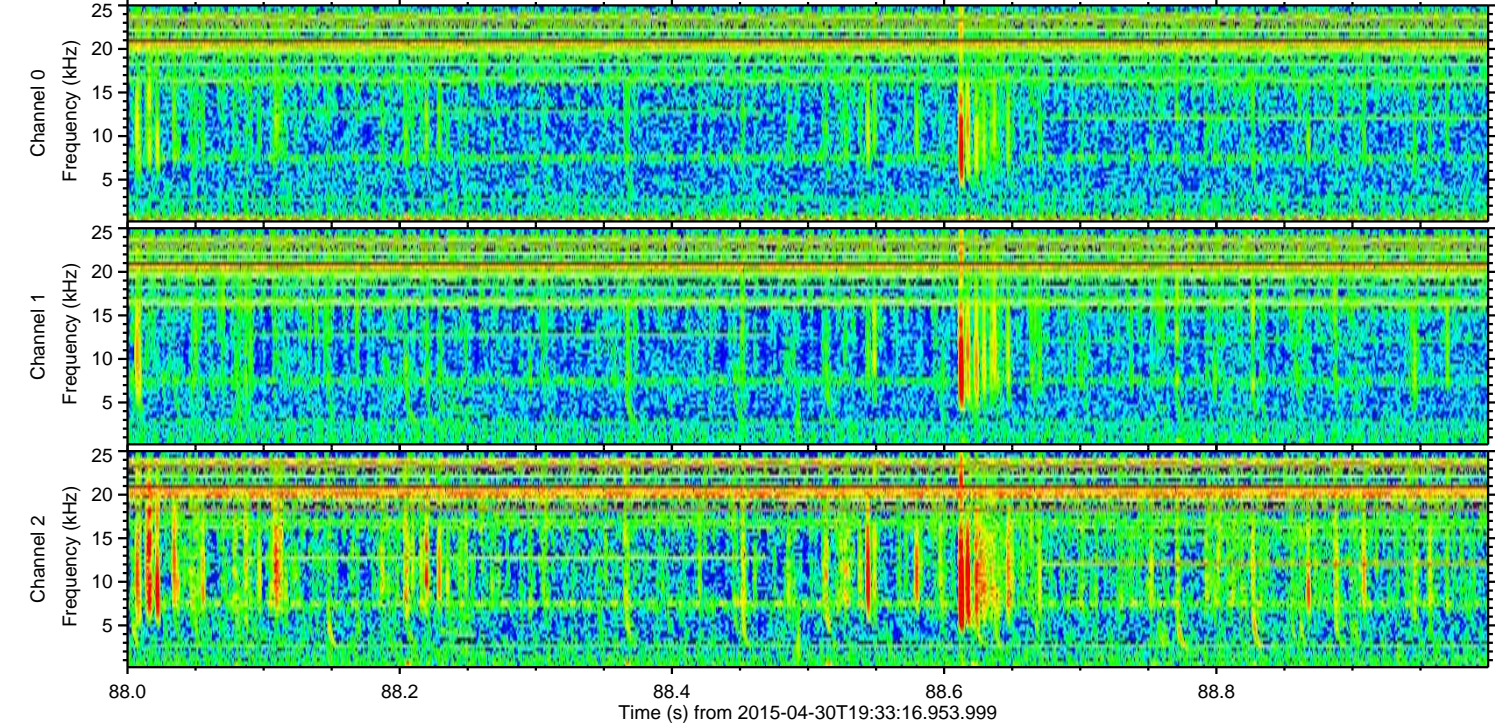
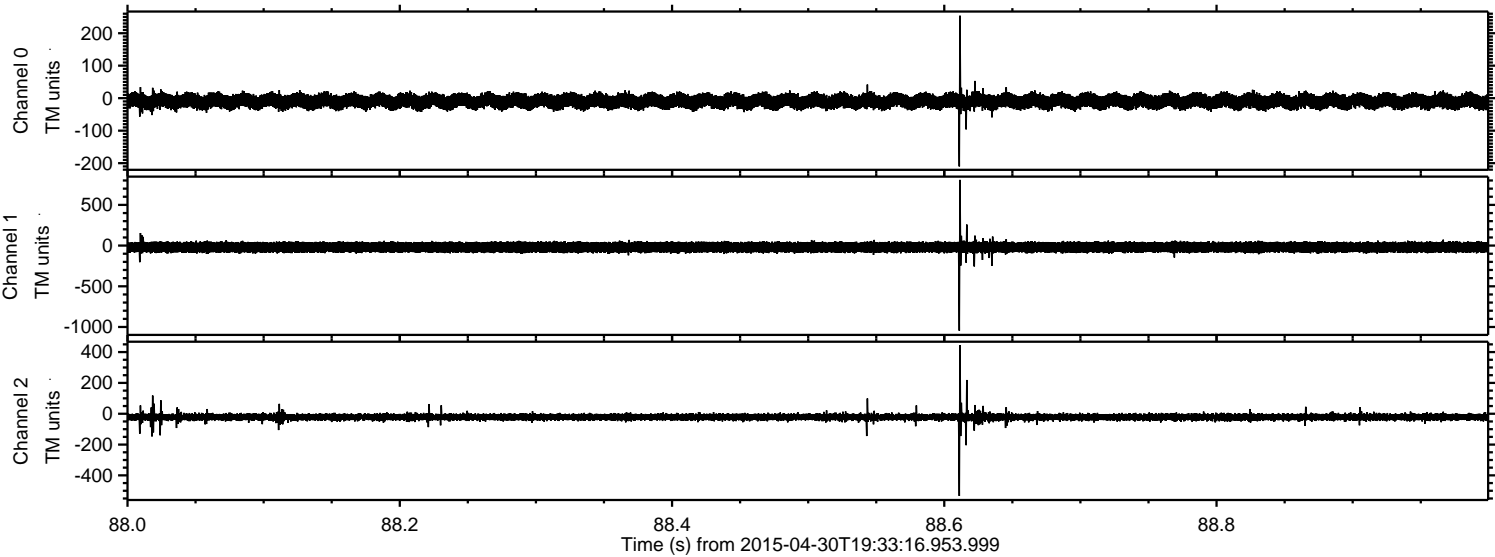
Processed Thu Apr 30 21:40:56 2015 by ELM ver.2012-10-06 from 001__elm20150430_193315__dat00.bin



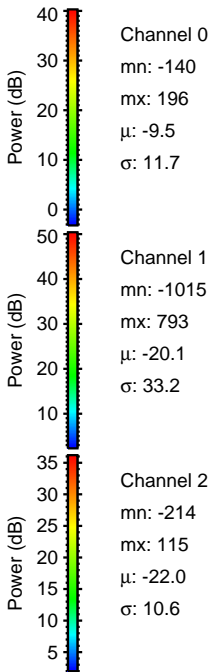
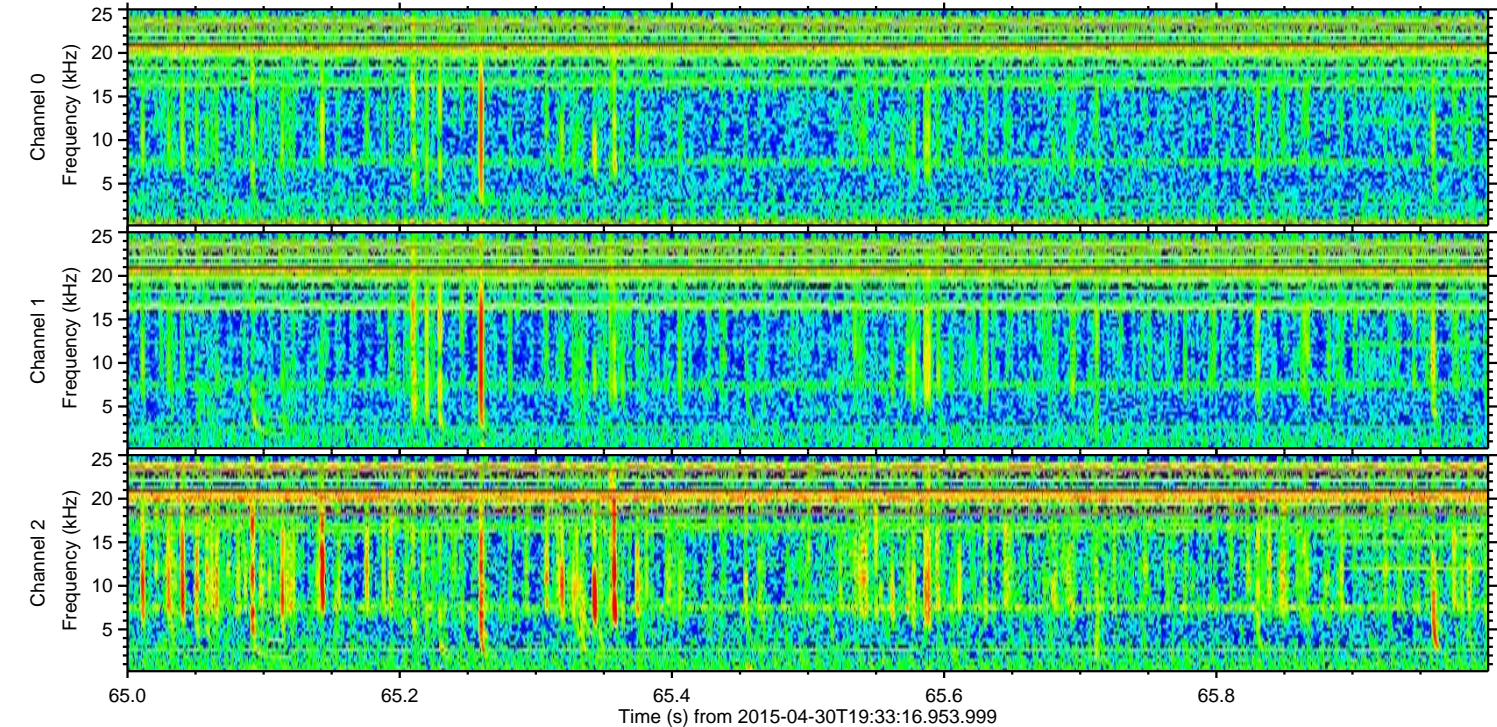
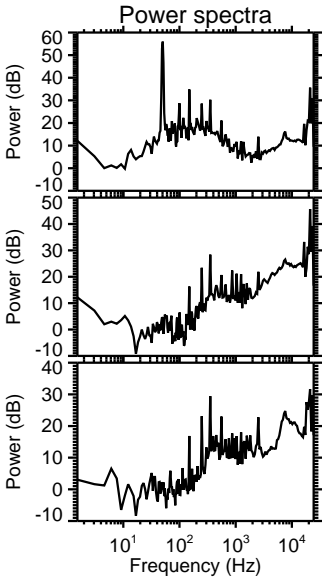
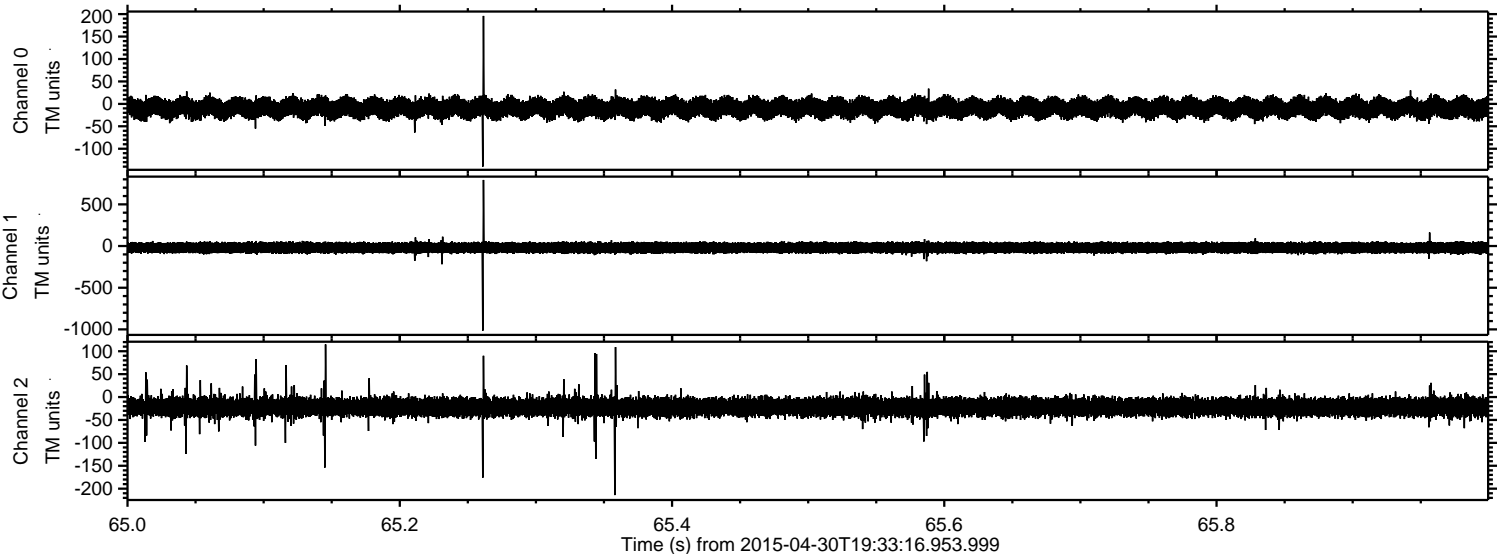
Processed Thu Apr 30 21:40:58 2015 by ELM ver.2012-10-06 from 001__elm20150430_193315__dat00.bin



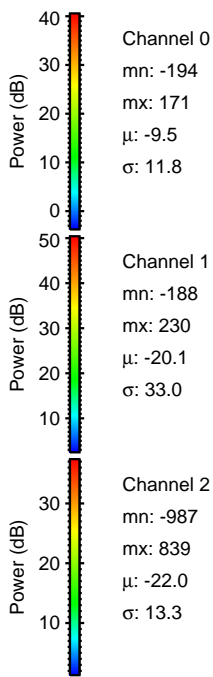
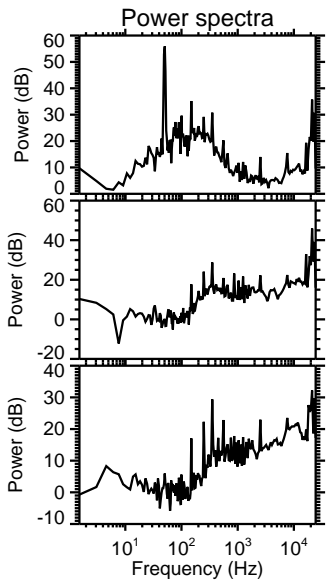
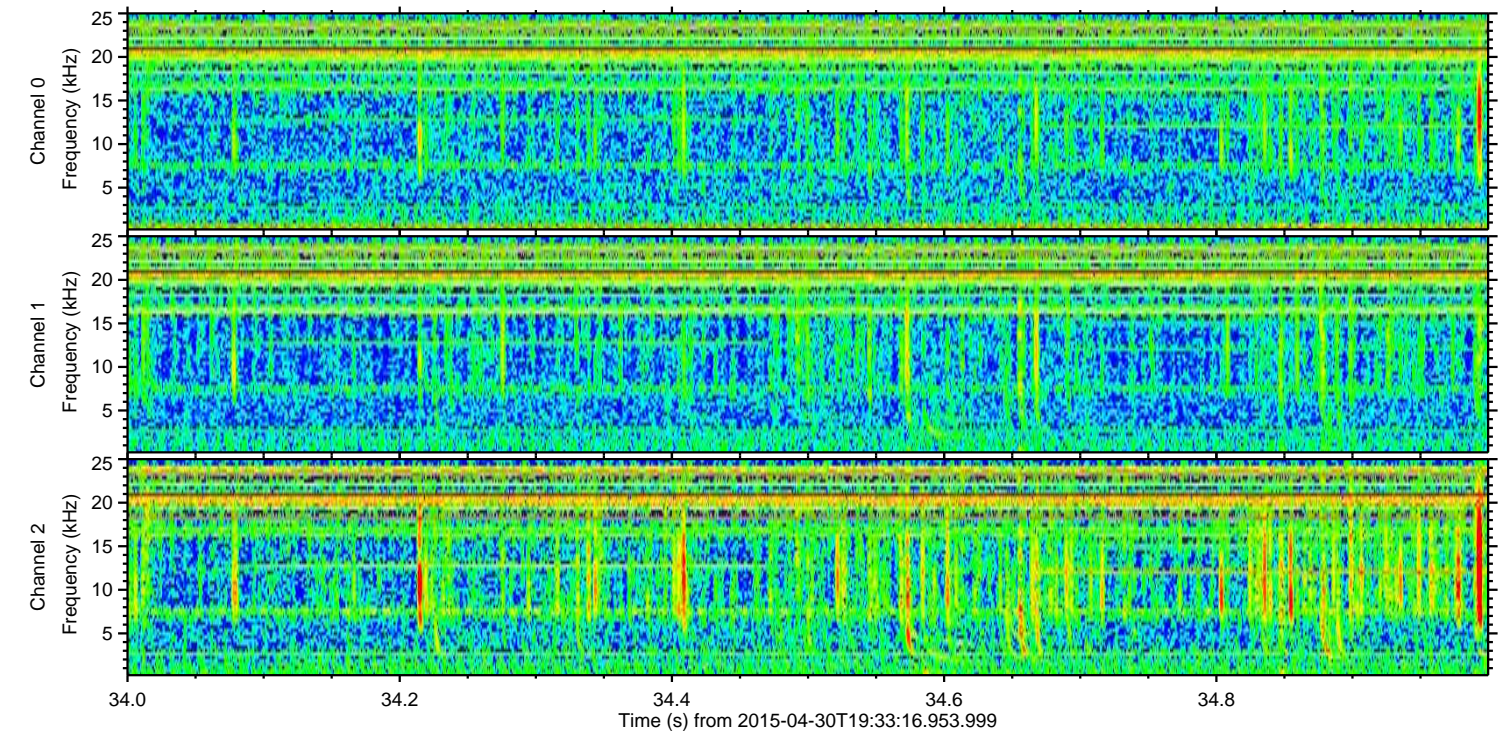
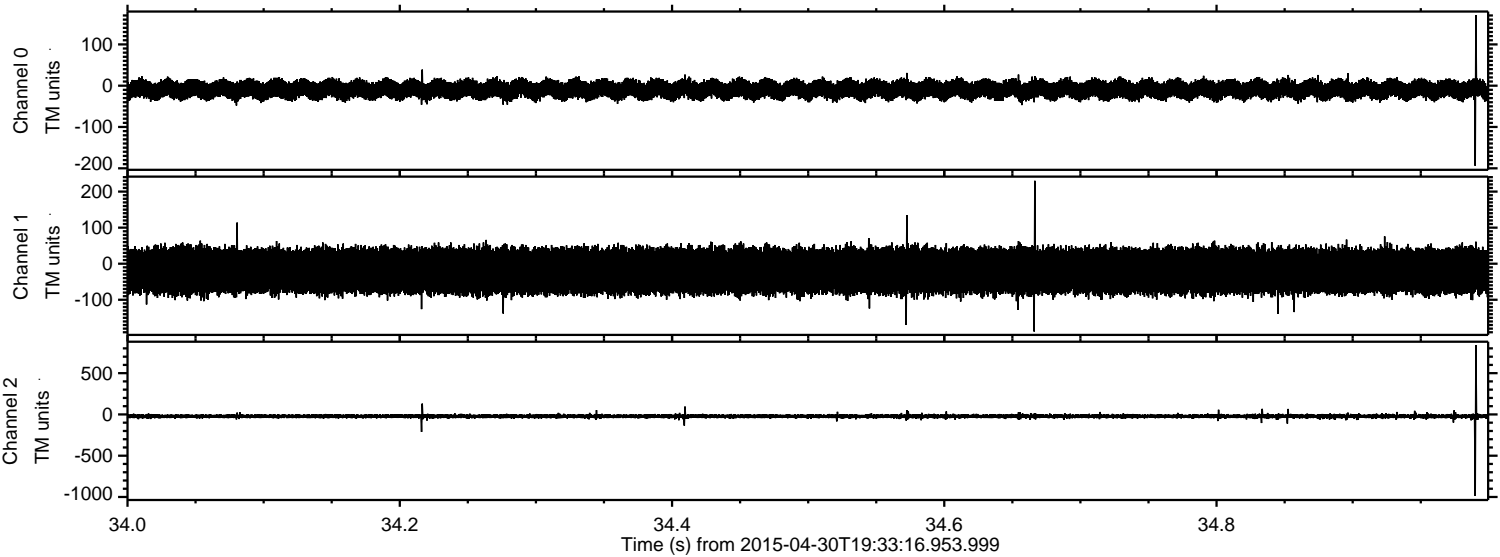
Processed Thu Apr 30 21:41:00 2015 by ELM ver.2012-10-06 from 001__elm20150430_193315__dat00.bin



Processed Thu Apr 30 21:41:03 2015 by ELM ver.2012-10-06 from 001__elm20150430_193315__dat00.bin



Processed Thu Apr 30 21:41:05 2015 by ELM ver.2012-10-06 from 001__elm20150430_193315__dat00.bin



Power spectra

Channel 0
mn: -194
mx: 171
 μ : -9.5
 σ : 11.8

Channel 1
mn: -188
mx: 230
 μ : -20.1
 σ : 33.0

Channel 2
mn: -987
mx: 839
 μ : -22.0
 σ : 13.3

Processed Thu Apr 30 21:41:07 2015 by ELM ver.2012-10-06 from 001__elm20150430_193315__dat00.bin

