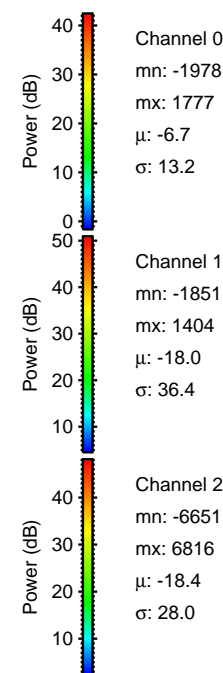
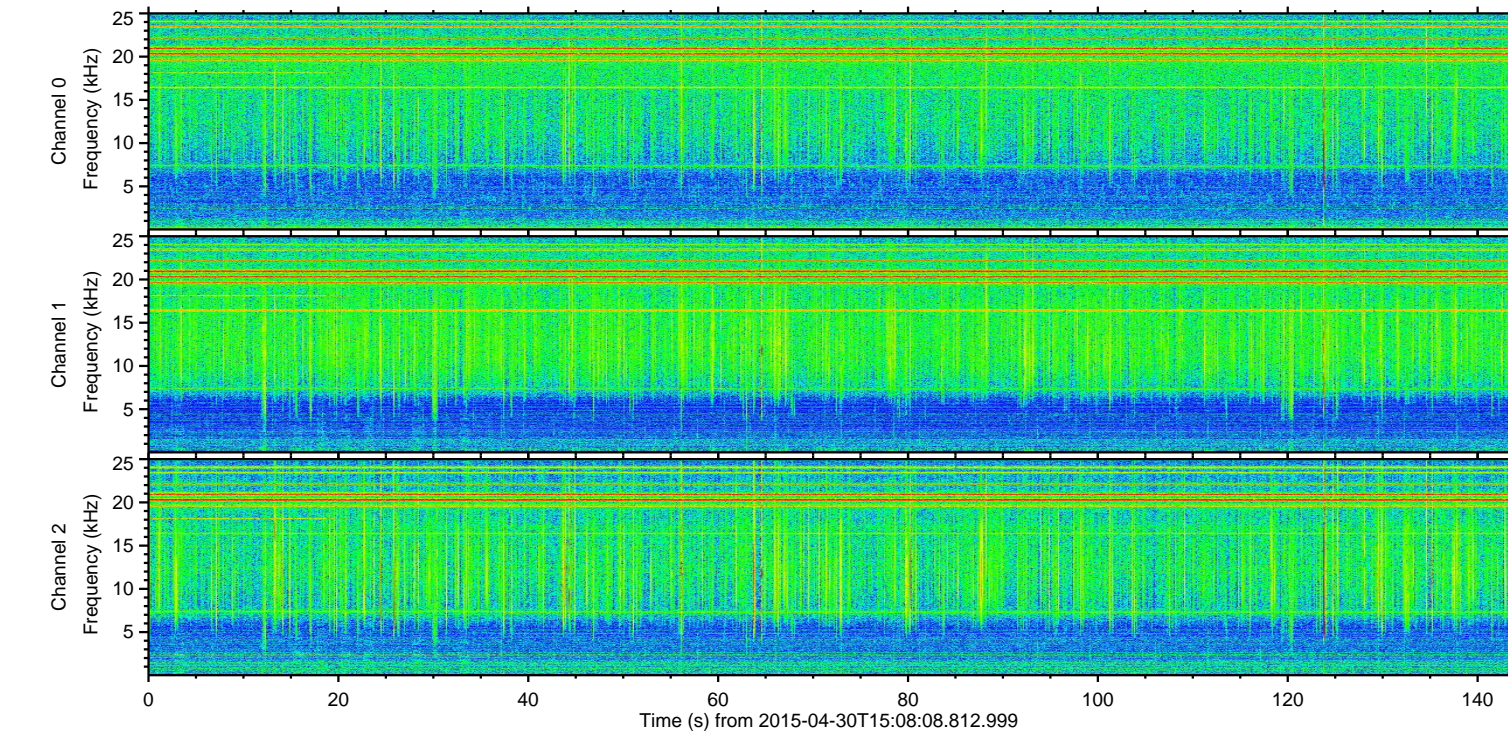
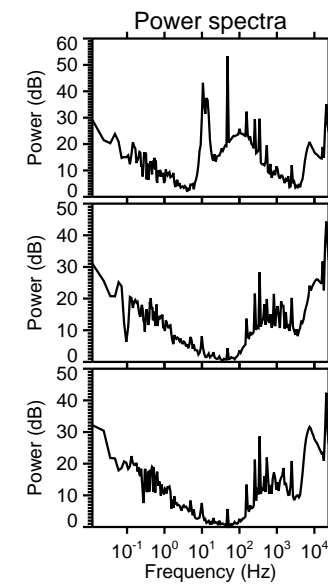
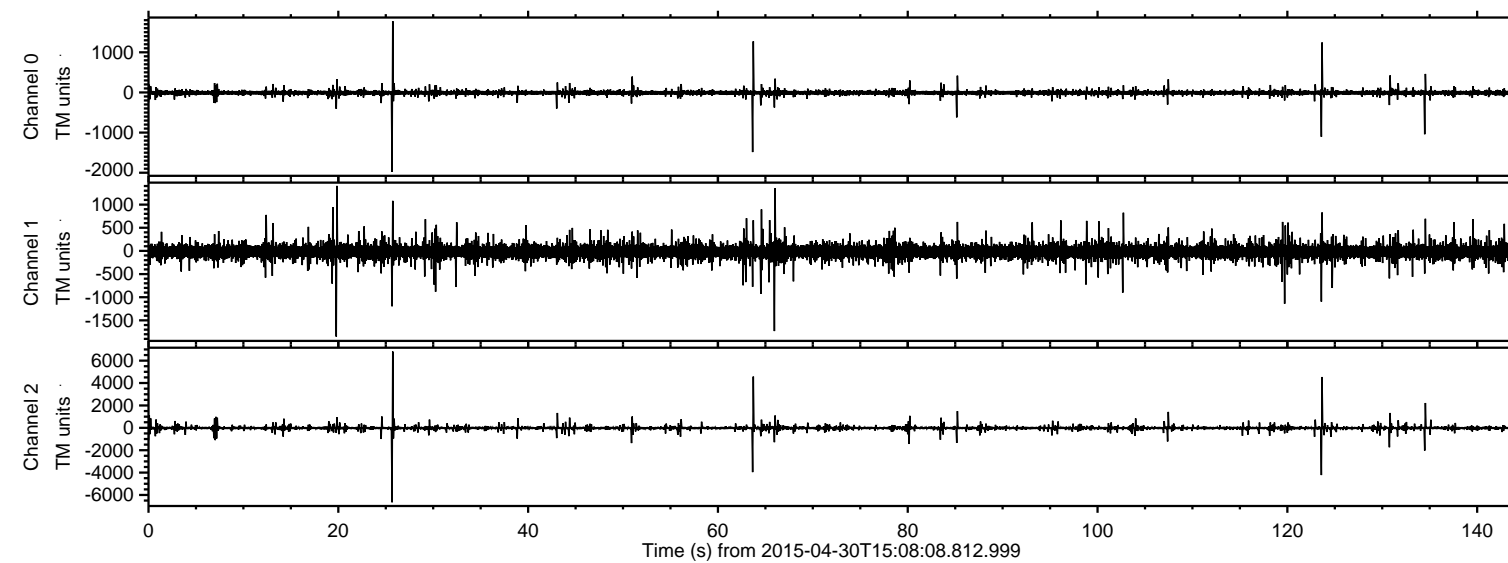


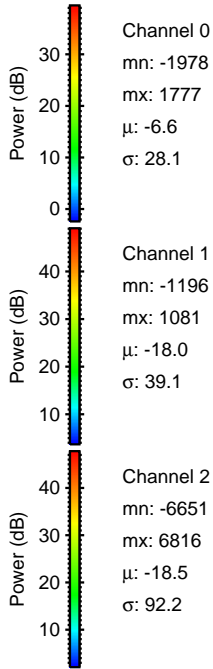
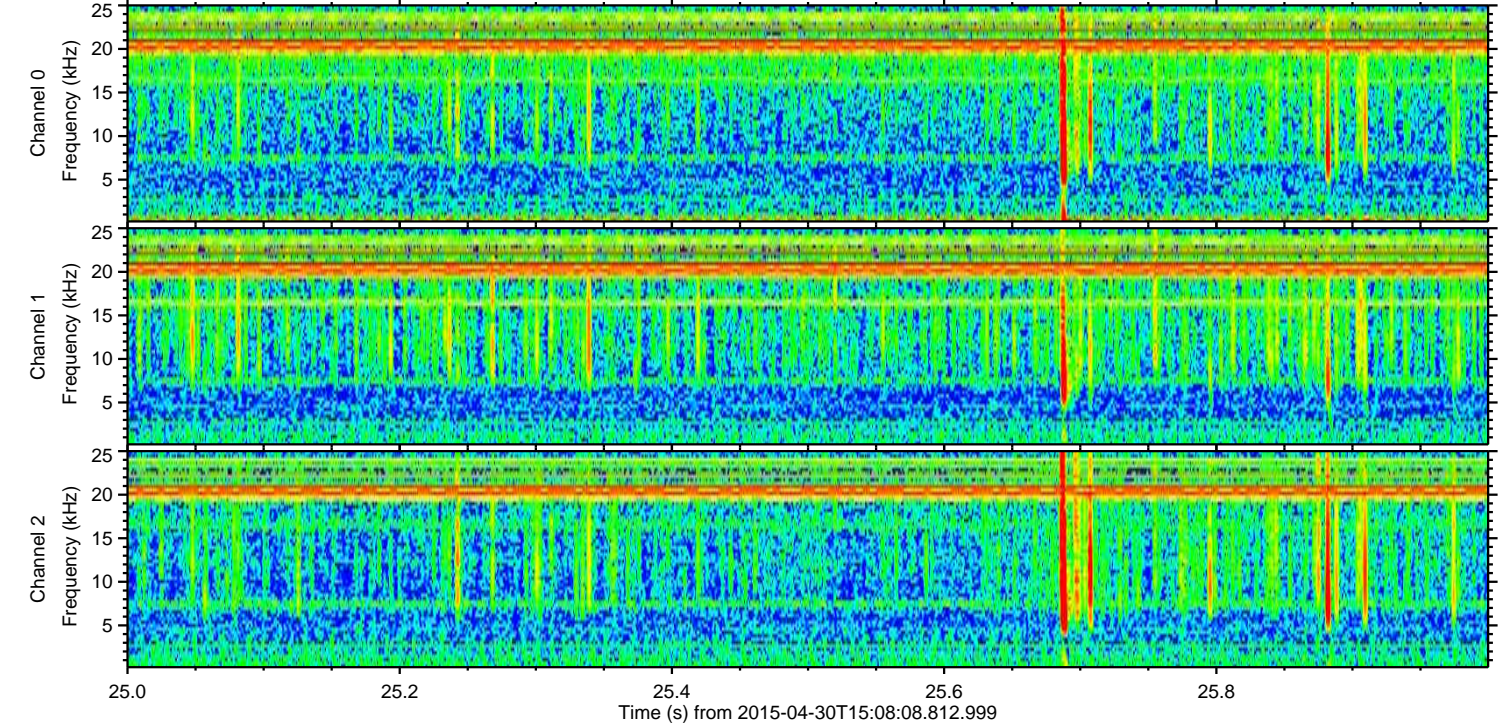
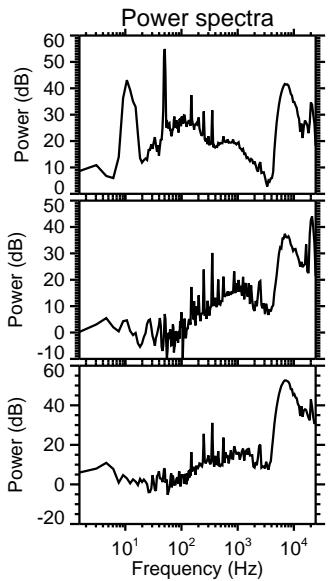
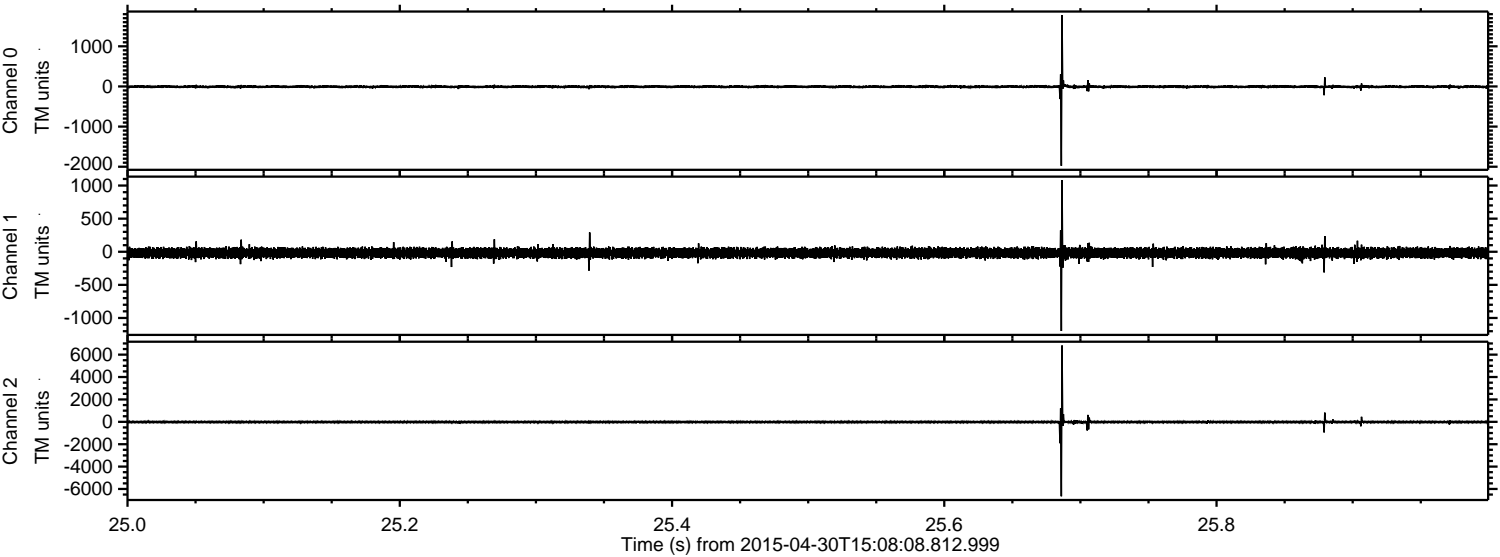
# ELMAVAN 3D WAVEFORMS (Measured data sampled at 50 kHz) 49781 packets of 144 samples from 2015-04-30T15:08:08.812.999.

Processed Thu Apr 30 17:15:31 2015 by ELM ver.2012-10-06 from 001\_\_elm20150430\_150807\_\_dat00.bin





Processed Thu Apr 30 17:15:42 2015 by ELM ver.2012-10-06 from 001\_\_elm20150430\_150807\_\_dat00.bin



Channel 0  
mn: -1978  
mx: 1777  
 $\mu$ : -6.6  
 $\sigma$ : 28.1

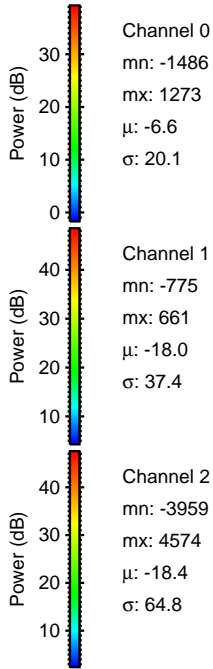
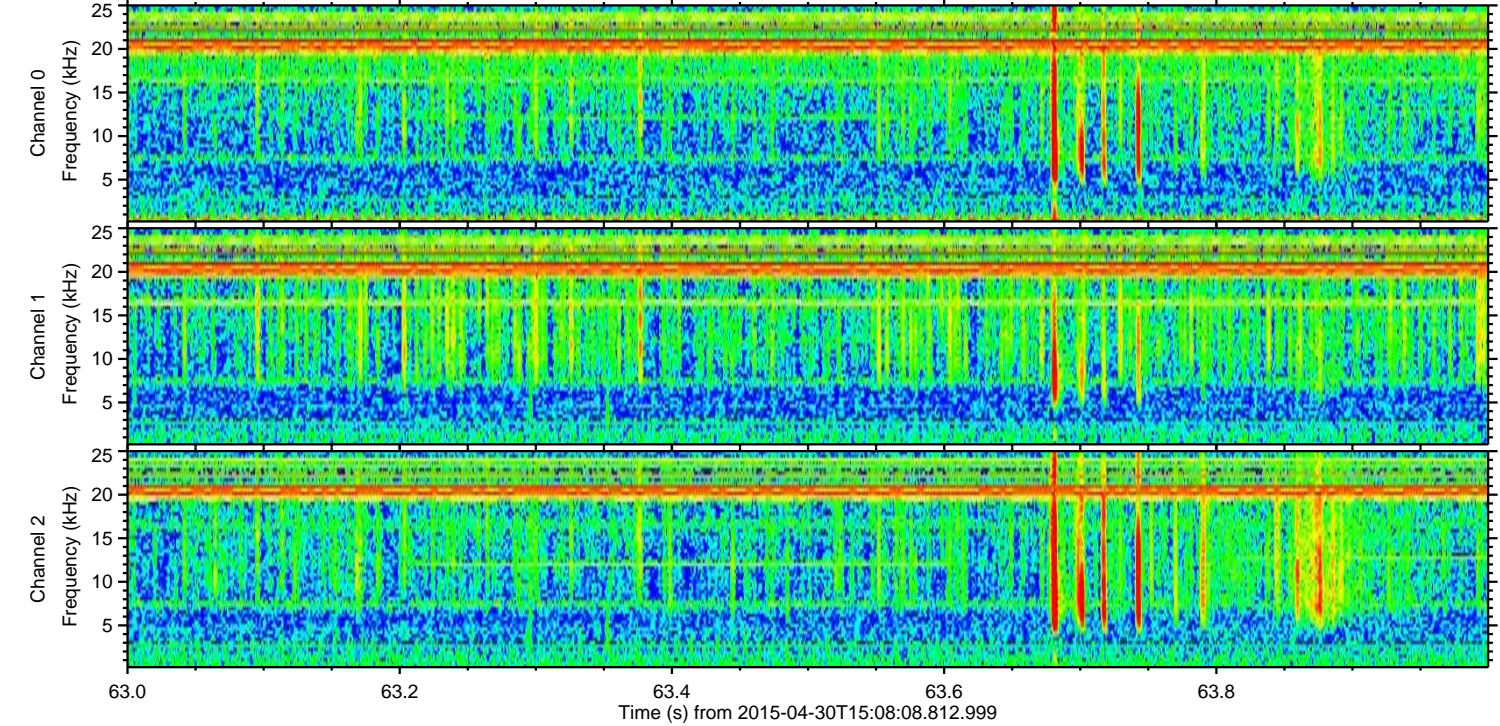
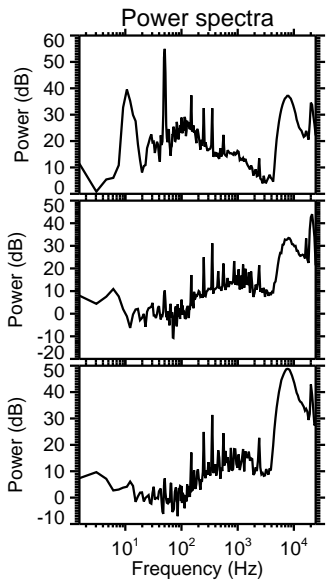
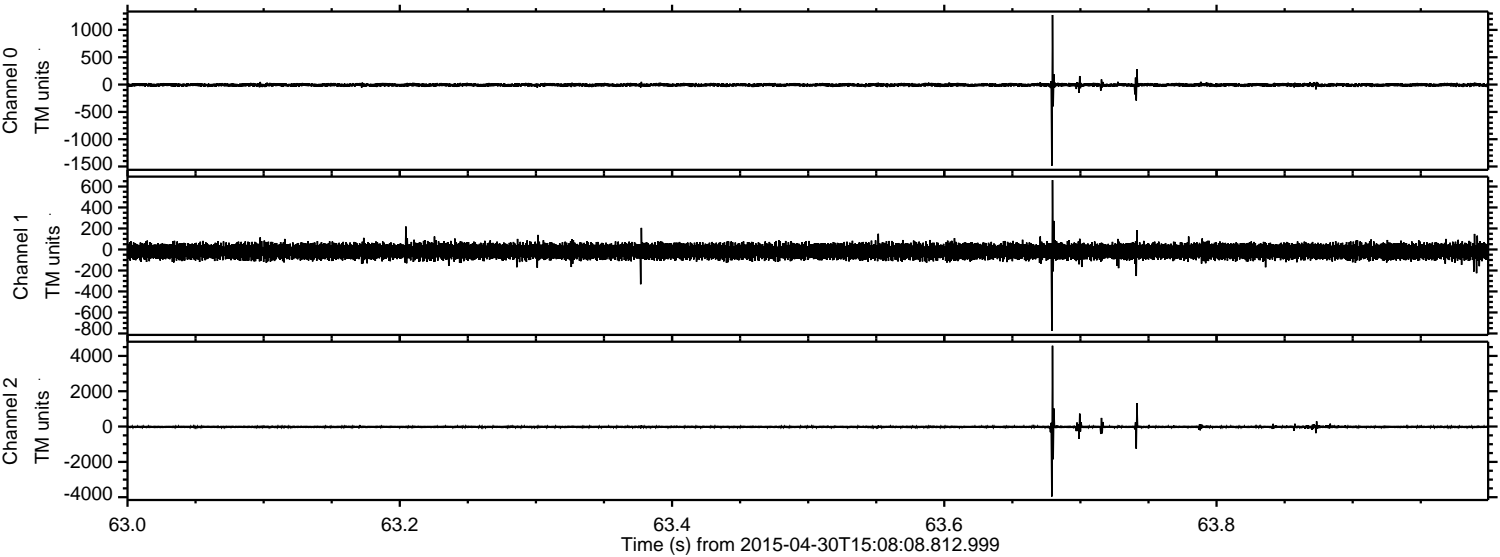
Channel 1  
mn: -1196  
mx: 1081  
 $\mu$ : -18.0  
 $\sigma$ : 39.1

Channel 2  
mn: -6651  
mx: 6816  
 $\mu$ : -18.5  
 $\sigma$ : 92.2



ELMAVAN 3D WAVEFORMS (Measured data sampled at 50 kHz) 49781 packets of 144 samples from 2015-04-30T15:08:08.812.999. Part 64/144

Processed Thu Apr 30 17:15:43 2015 by ELM ver.2012-10-06 from 001\_\_elm20150430\_150807\_\_dat00.bin



Channel 0  
mn: -1486  
mx: 1273  
 $\mu$ : -6.6  
 $\sigma$ : 20.1

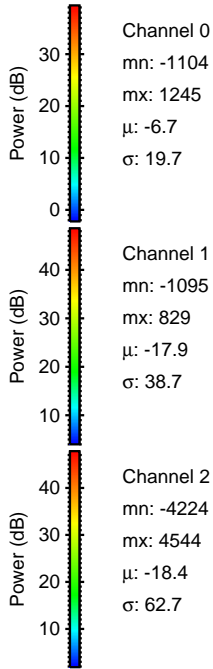
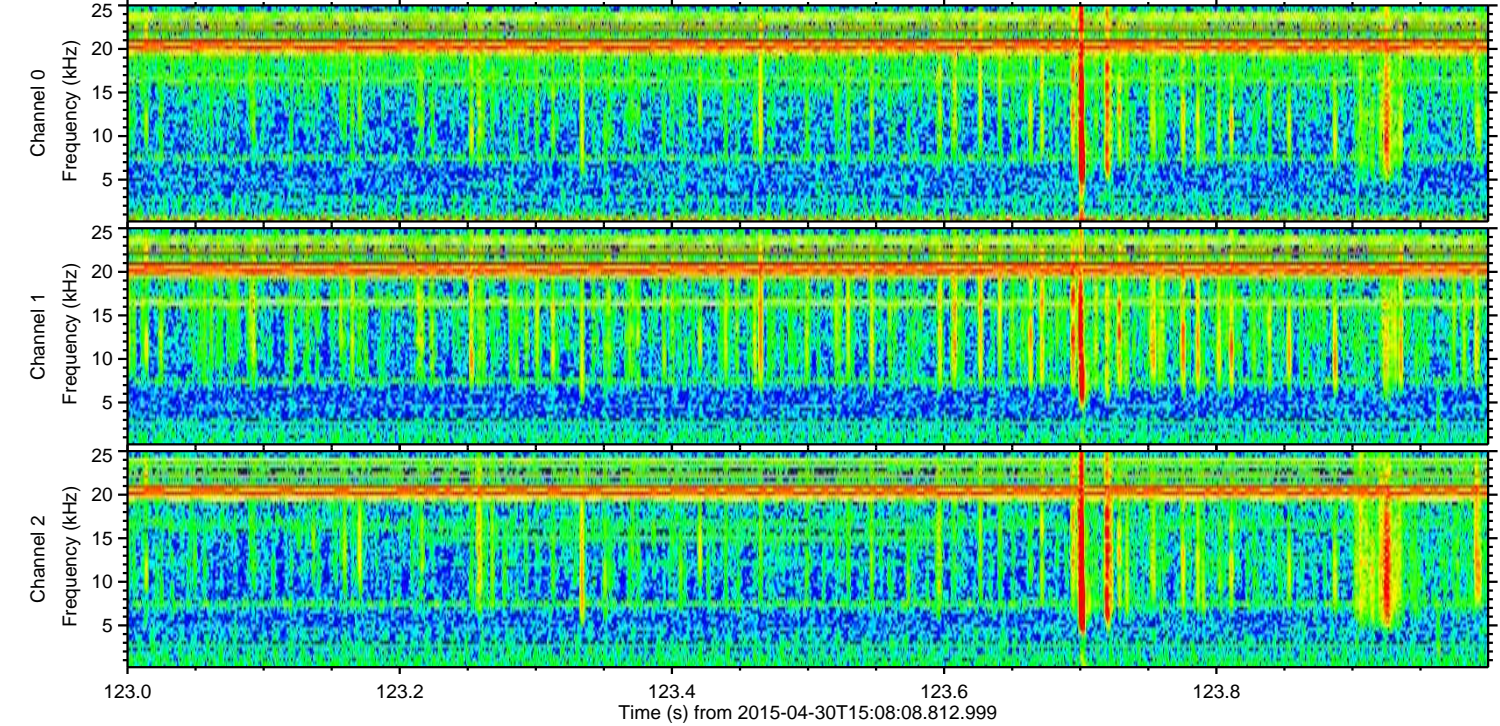
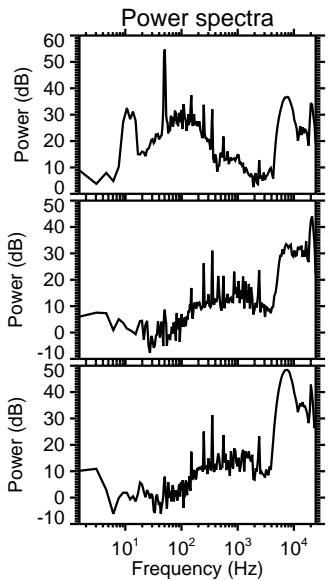
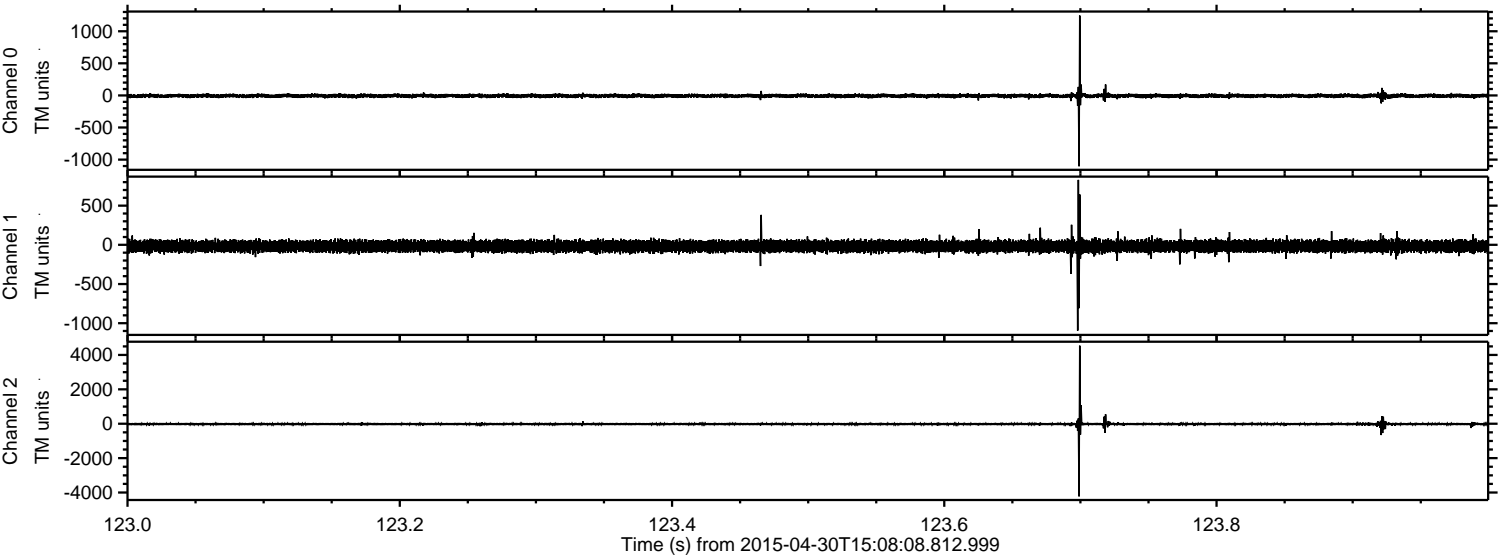
Channel 1  
mn: -775  
mx: 661  
 $\mu$ : -18.0  
 $\sigma$ : 37.4

Channel 2  
mn: -3959  
mx: 4574  
 $\mu$ : -18.4  
 $\sigma$ : 64.8



ELMAVAN 3D WAVEFORMS (Measured data sampled at 50 kHz) 49781 packets of 144 samples from 2015-04-30T15:08:08.812.999. Part 124/144

Processed Thu Apr 30 17:15:44 2015 by ELM ver.2012-10-06 from 001\_\_elm20150430\_150807\_\_dat00.bin



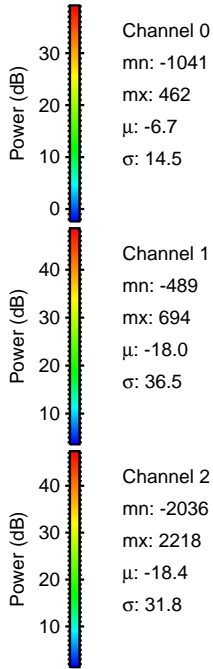
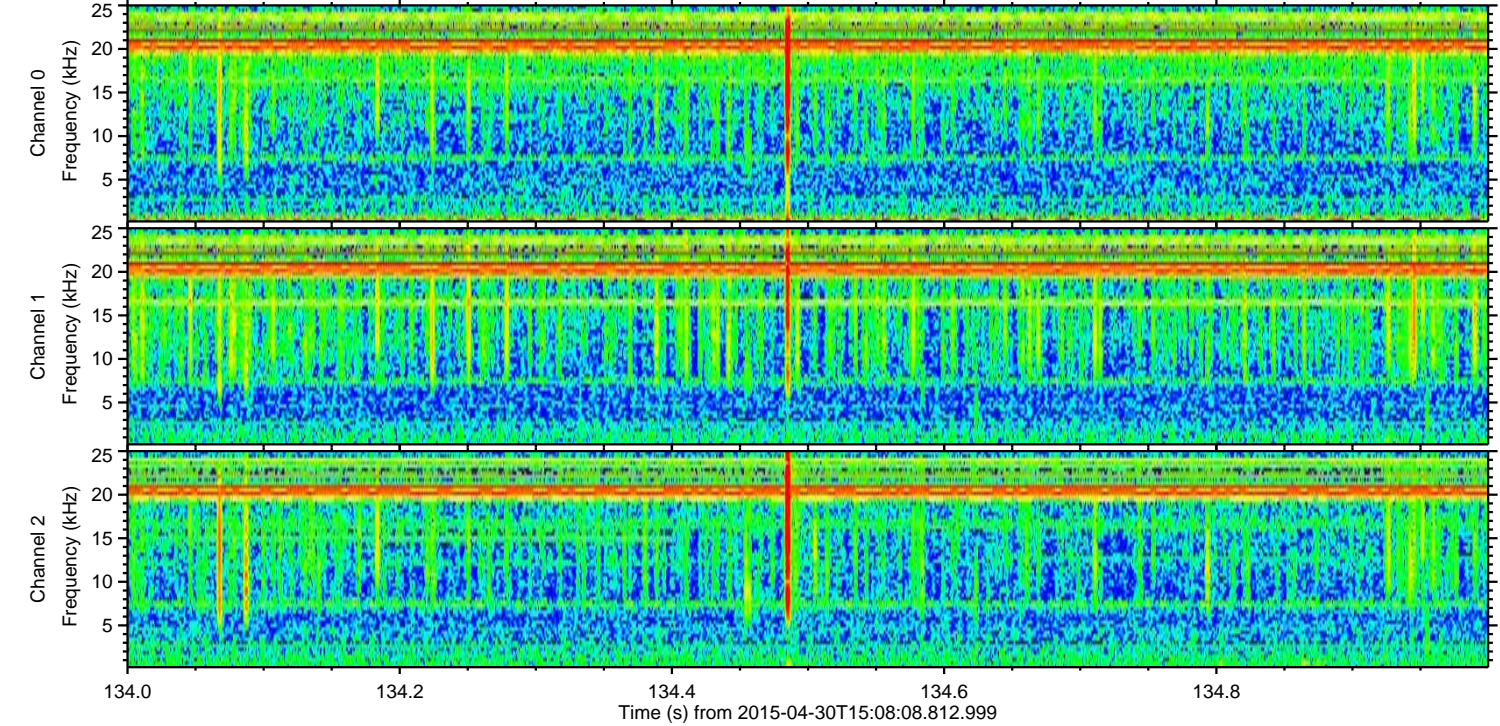
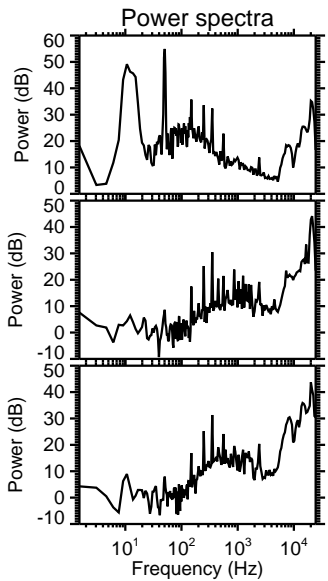
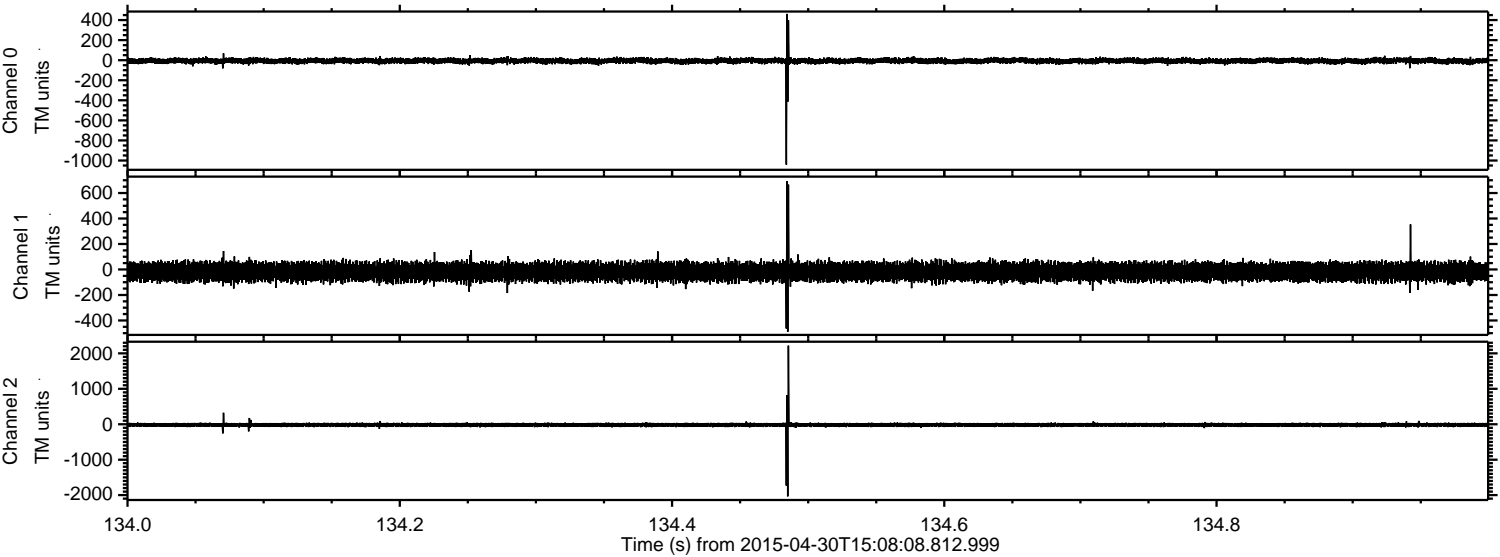
Channel 0  
mn: -1104  
mx: 1245  
 $\mu$ : -6.7  
 $\sigma$ : 19.7

Channel 1  
mn: -1095  
mx: 829  
 $\mu$ : -17.9  
 $\sigma$ : 38.7

Channel 2  
mn: -4224  
mx: 4544  
 $\mu$ : -18.4  
 $\sigma$ : 62.7



Processed Thu Apr 30 17:15:45 2015 by ELM ver.2012-10-06 from 001\_\_elm20150430\_150807\_\_dat00.bin



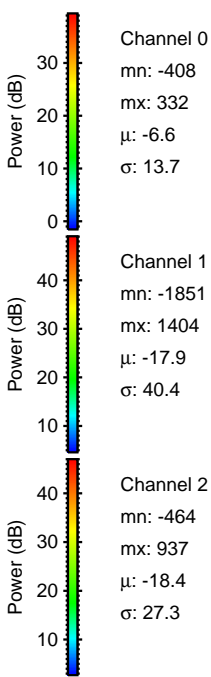
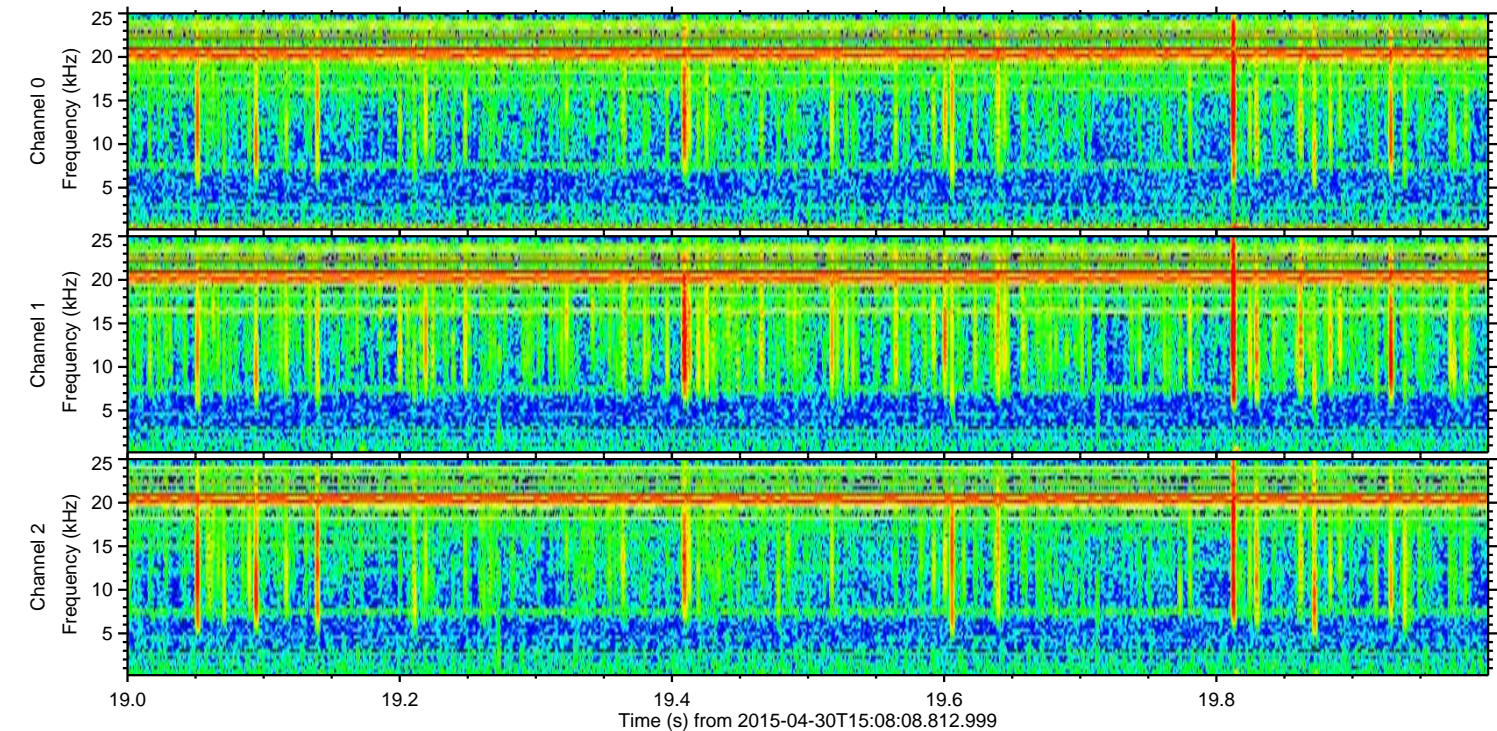
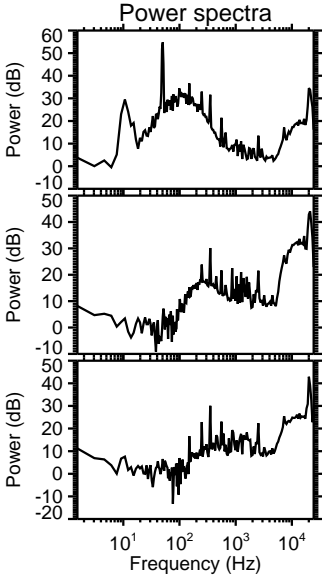
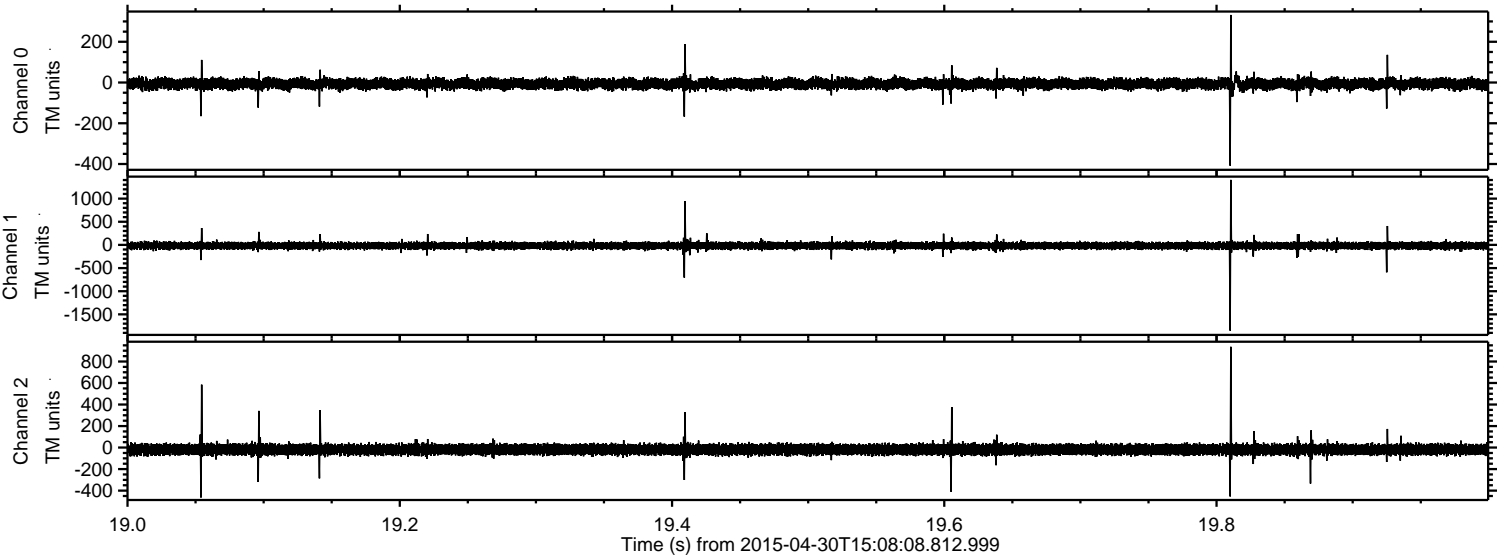
Channel 0  
mn: -1041  
mx: 462  
 $\mu$ : -6.7  
 $\sigma$ : 14.5

Channel 1  
mn: -489  
mx: 694  
 $\mu$ : -18.0  
 $\sigma$ : 36.5

Channel 2  
mn: -2036  
mx: 2218  
 $\mu$ : -18.4  
 $\sigma$ : 31.8



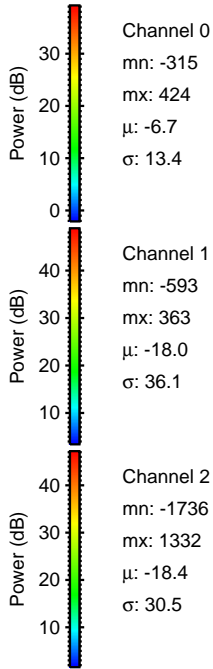
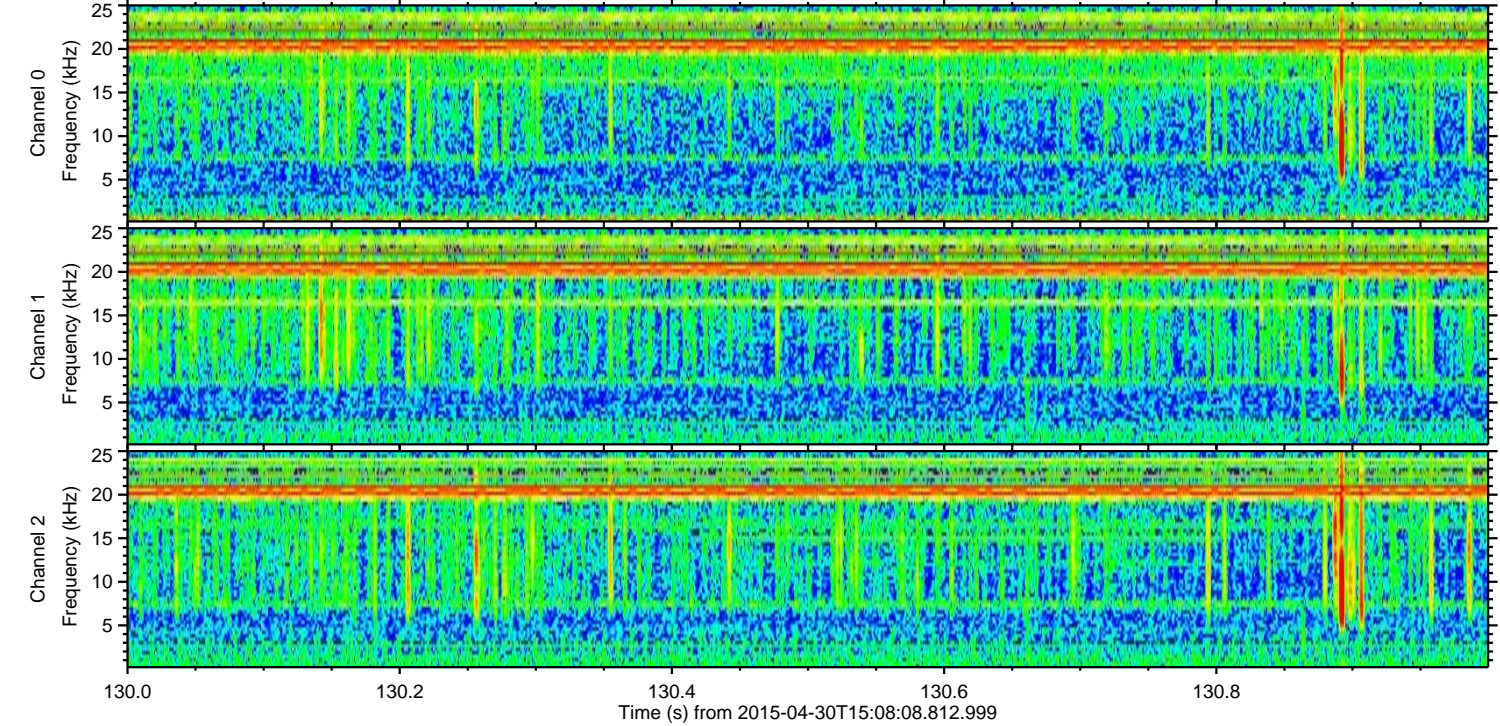
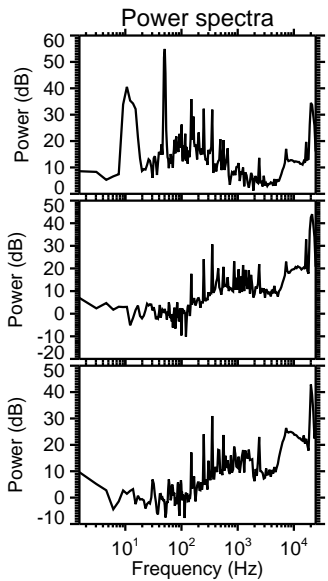
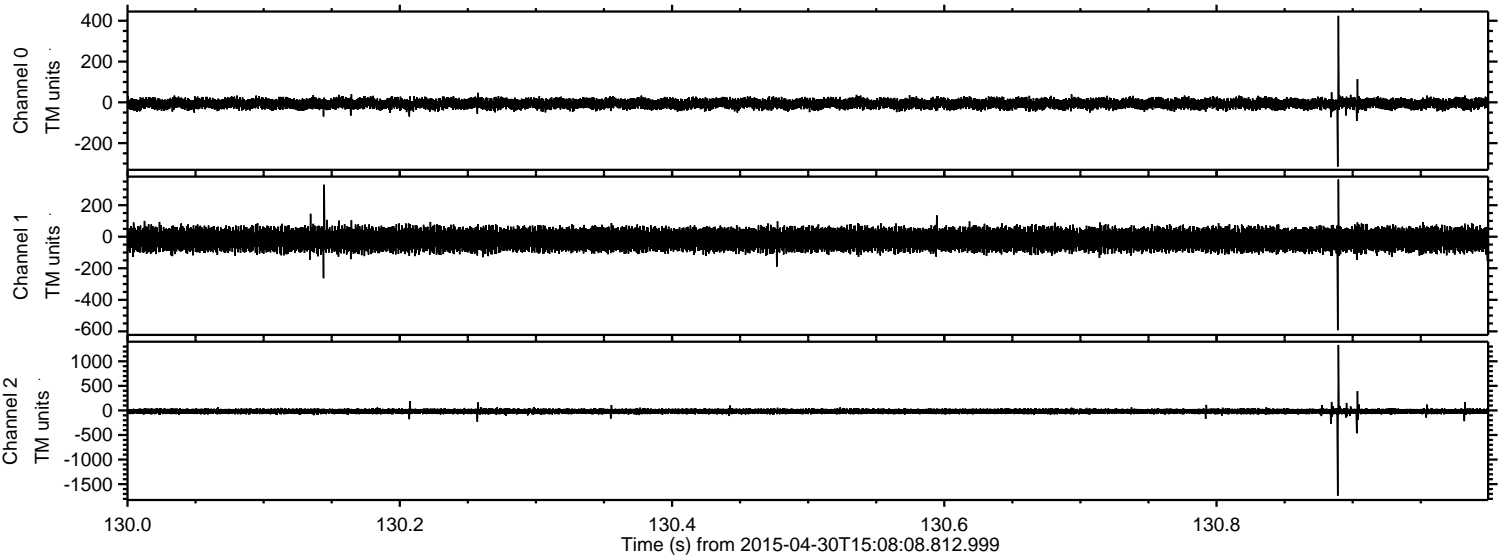
Processed Thu Apr 30 17:15:46 2015 by ELM ver.2012-10-06 from 001\_\_elm20150430\_150807\_\_dat00.bin





ELMAVAN 3D WAVEFORMS (Measured data sampled at 50 kHz) 49781 packets of 144 samples from 2015-04-30T15:08:08.812.999. Part 131/144

Processed Thu Apr 30 17:15:47 2015 by ELM ver.2012-10-06 from 001\_\_elm20150430\_150807\_\_dat00.bin



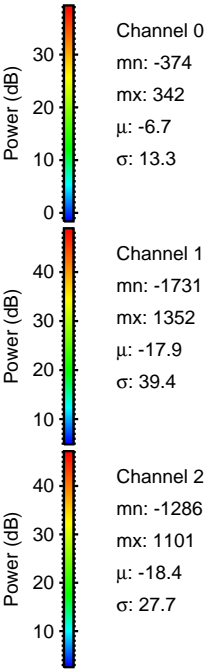
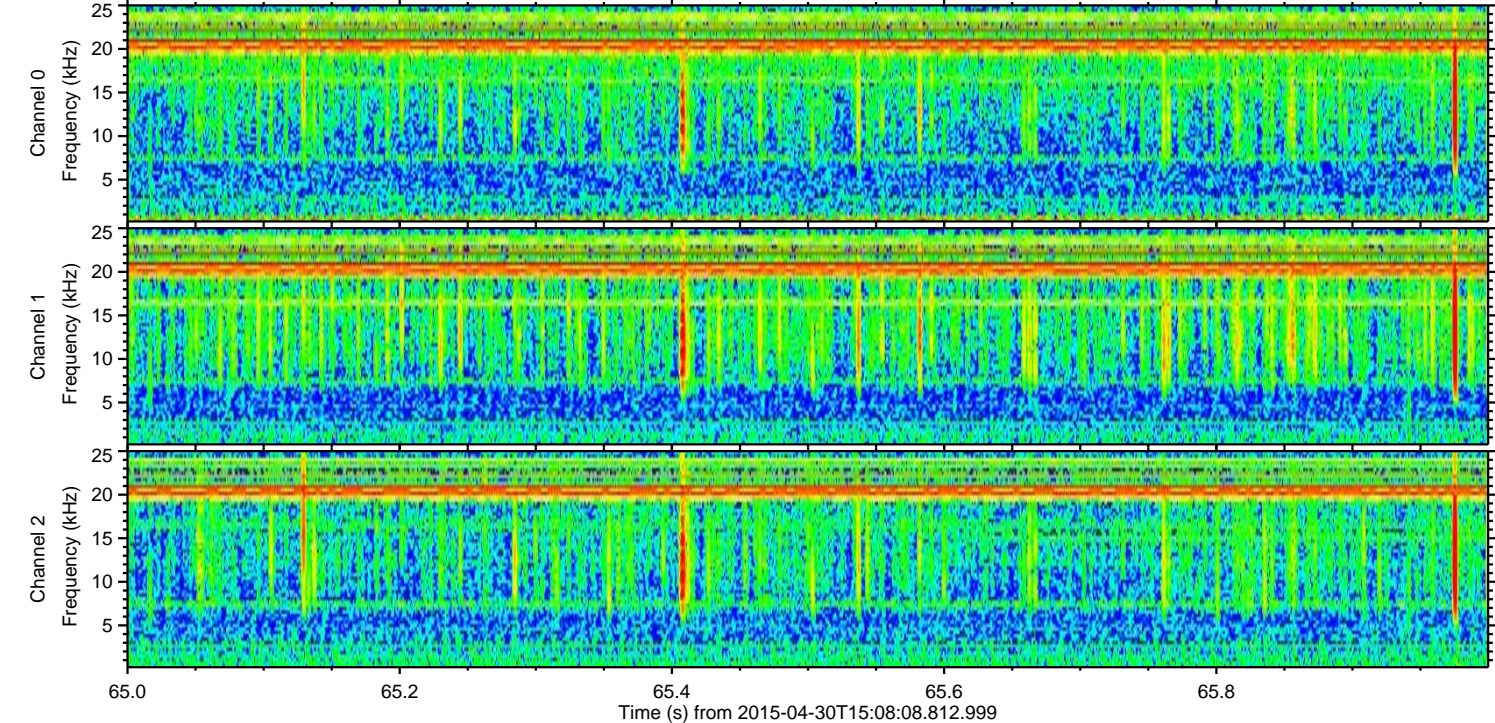
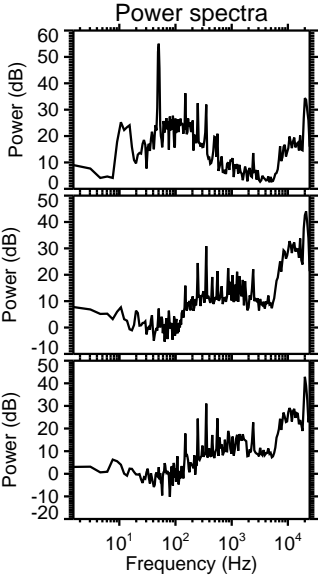
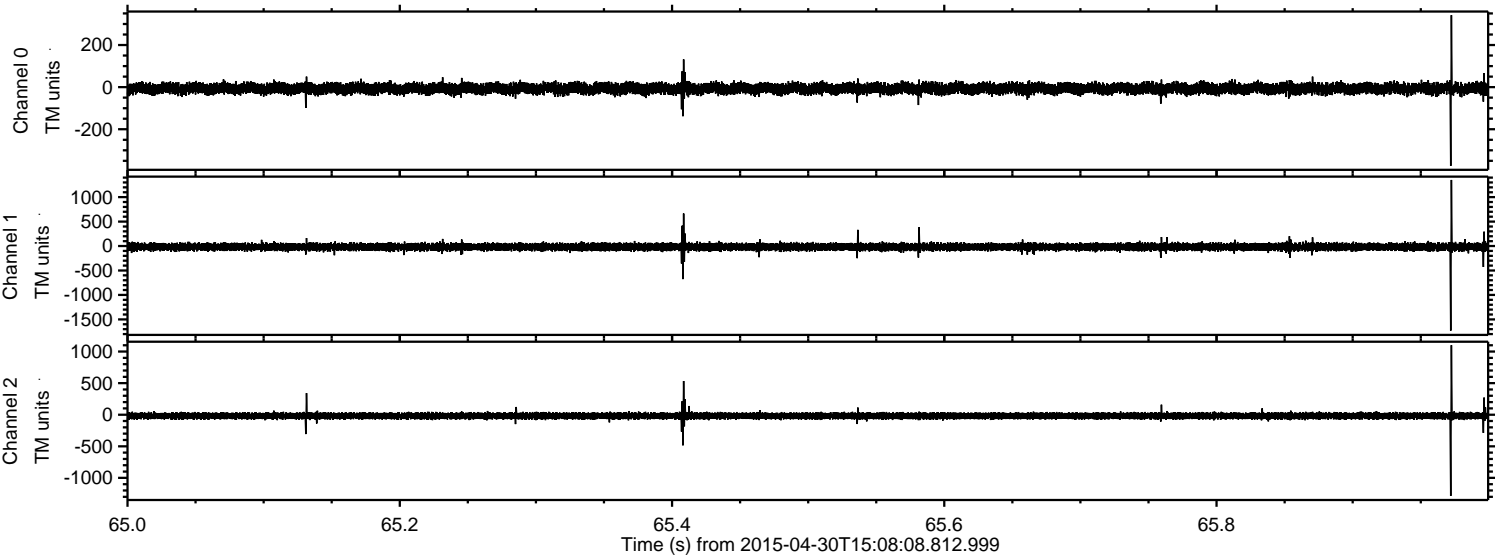
Channel 0  
mn: -315  
mx: 424  
 $\mu$ : -6.7  
 $\sigma$ : 13.4

Channel 1  
mn: -593  
mx: 363  
 $\mu$ : -18.0  
 $\sigma$ : 36.1

Channel 2  
mn: -1736  
mx: 1332  
 $\mu$ : -18.4  
 $\sigma$ : 30.5

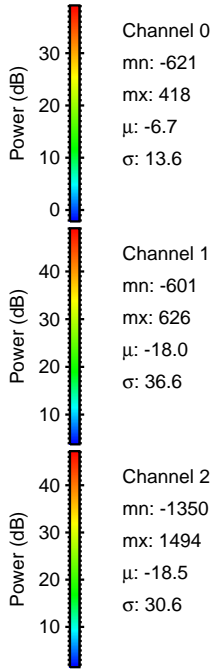
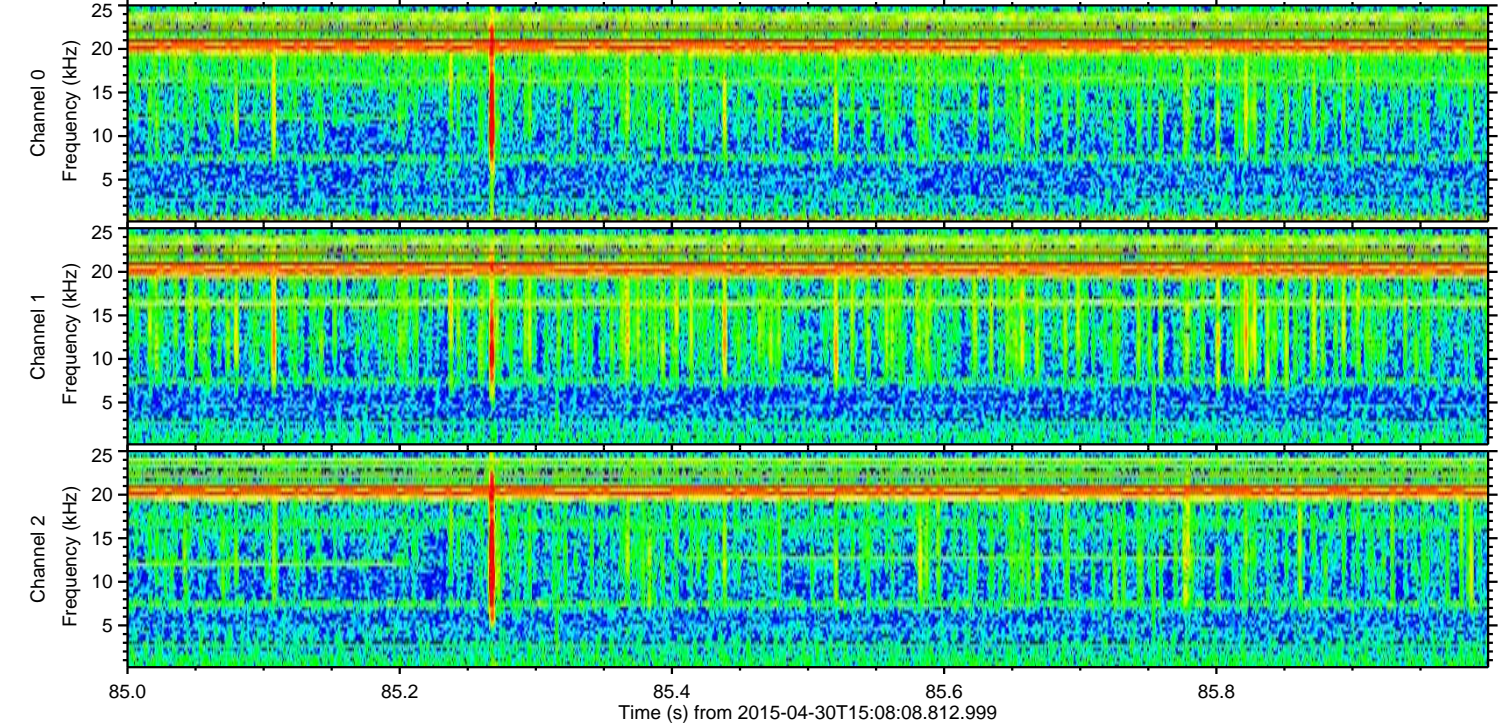
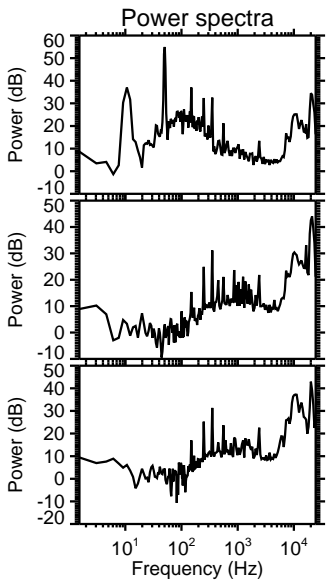
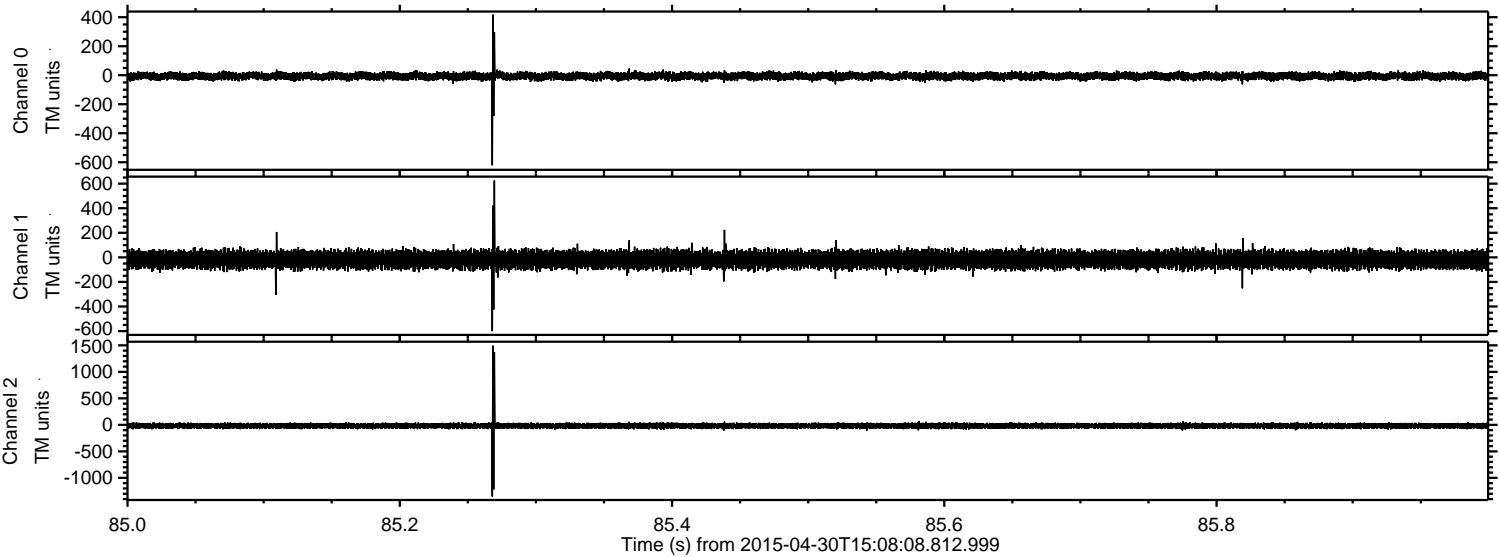


Processed Thu Apr 30 17:15:48 2015 by ELM ver.2012-10-06 from 001\_\_elm20150430\_150807\_\_dat00.bin



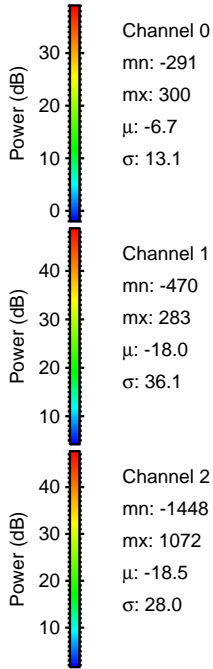
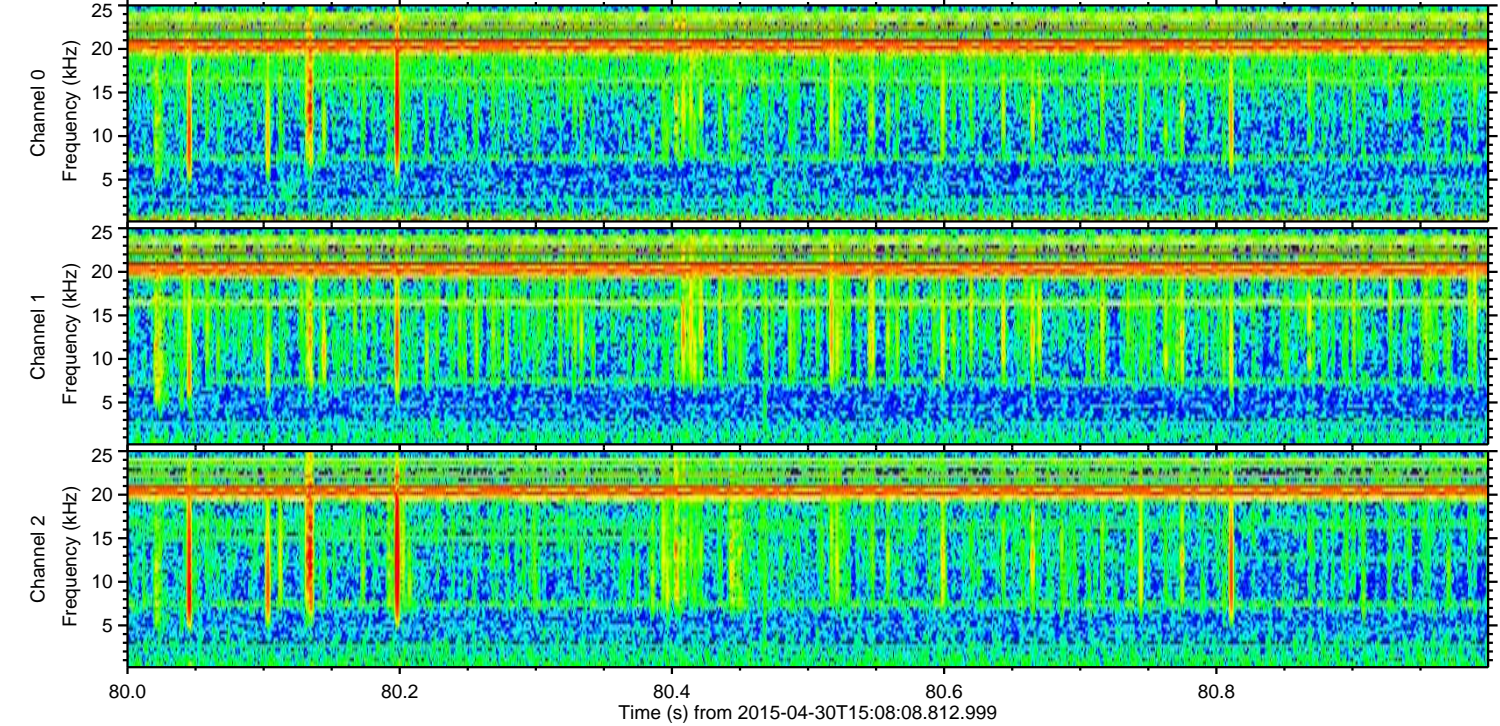
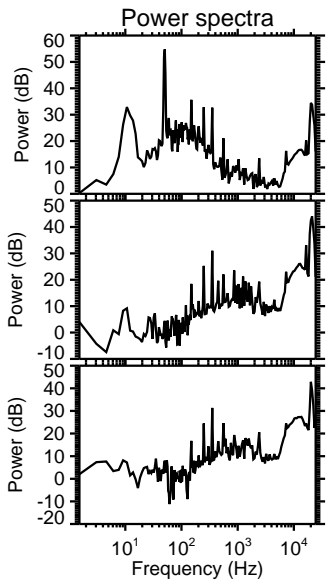
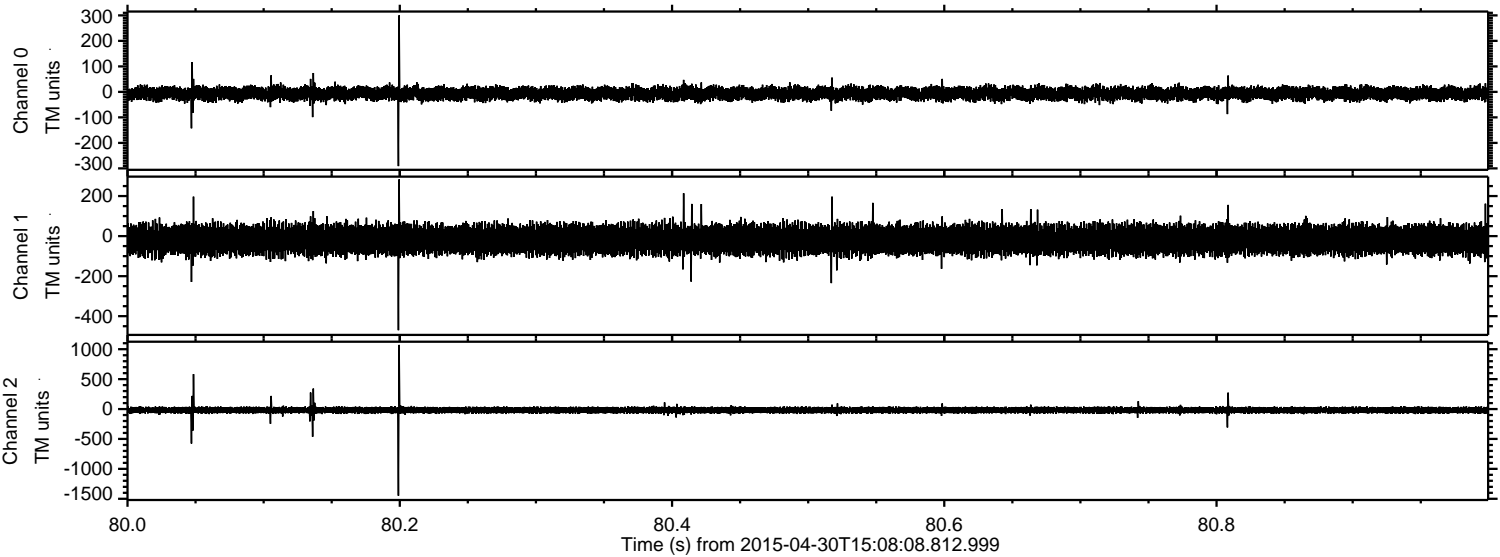


Processed Thu Apr 30 17:15:49 2015 by ELM ver.2012-10-06 from 001\_\_elm20150430\_150807\_\_dat00.bin





Processed Thu Apr 30 17:15:50 2015 by ELM ver.2012-10-06 from 001\_\_elm20150430\_150807\_\_dat00.bin





Processed Thu Apr 30 17:15:50 2015 by ELM ver.2012-10-06 from 001\_\_elm20150430\_150807\_\_dat00.bin

