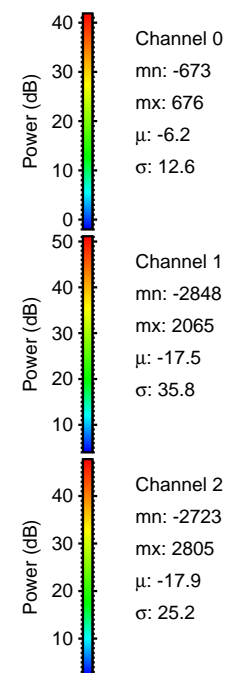
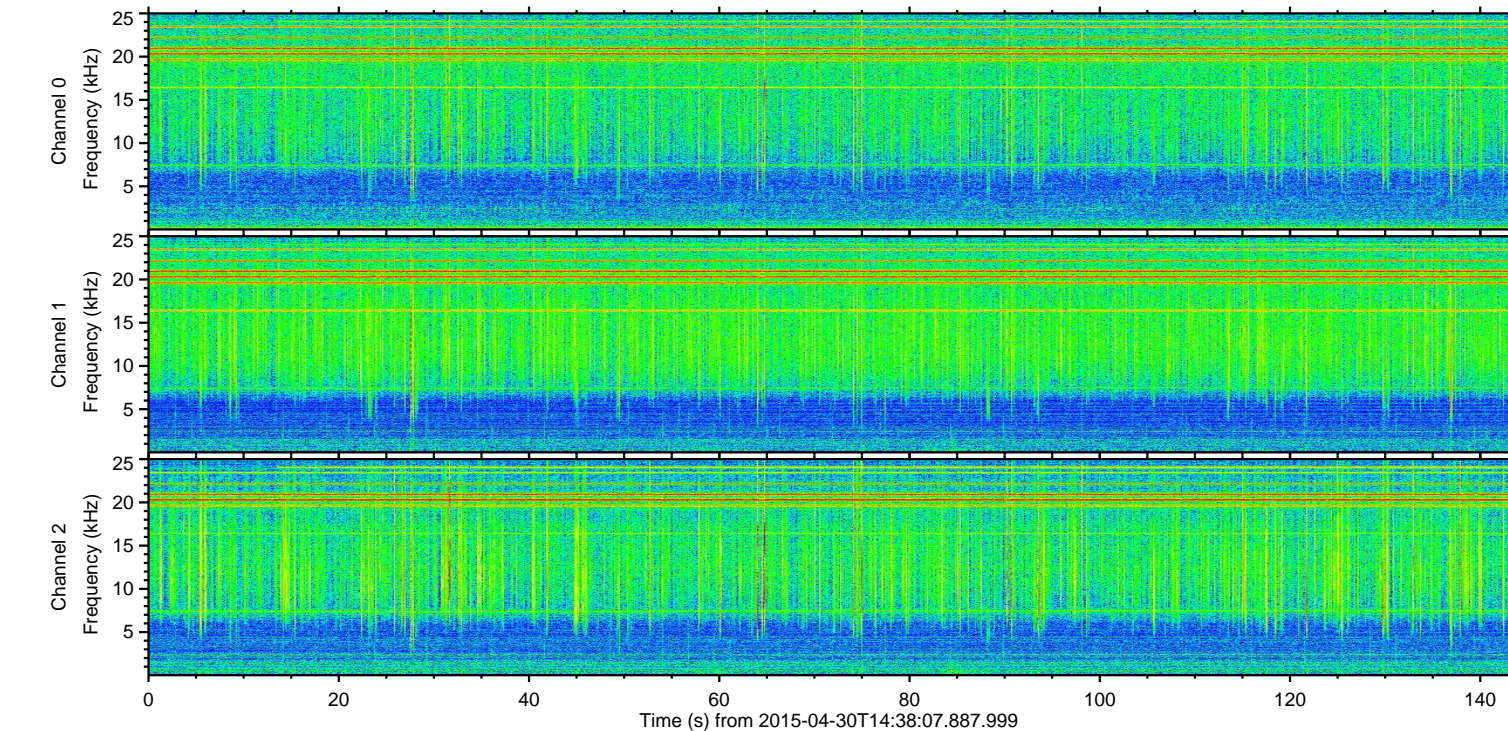
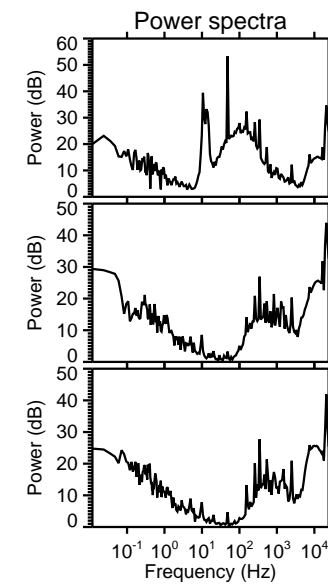
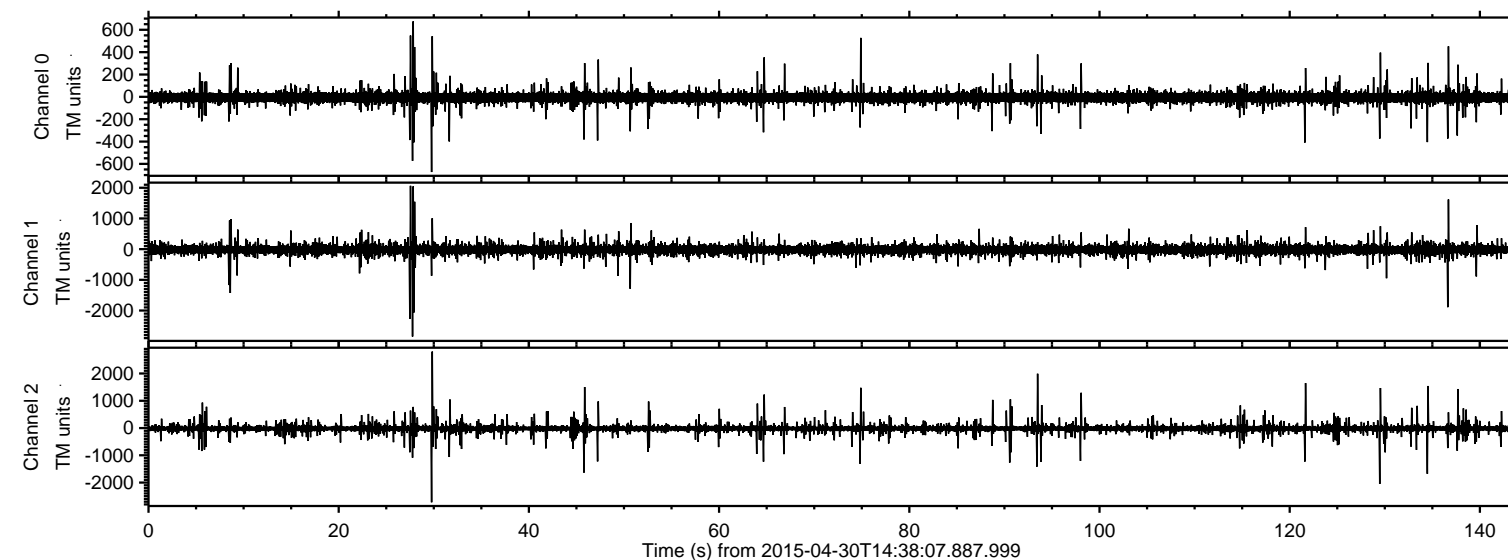
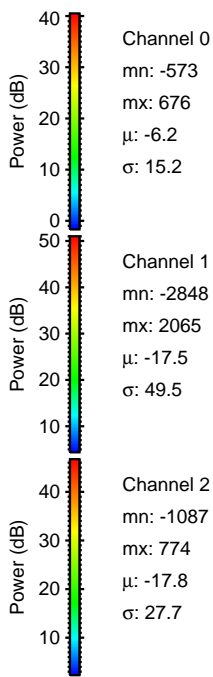
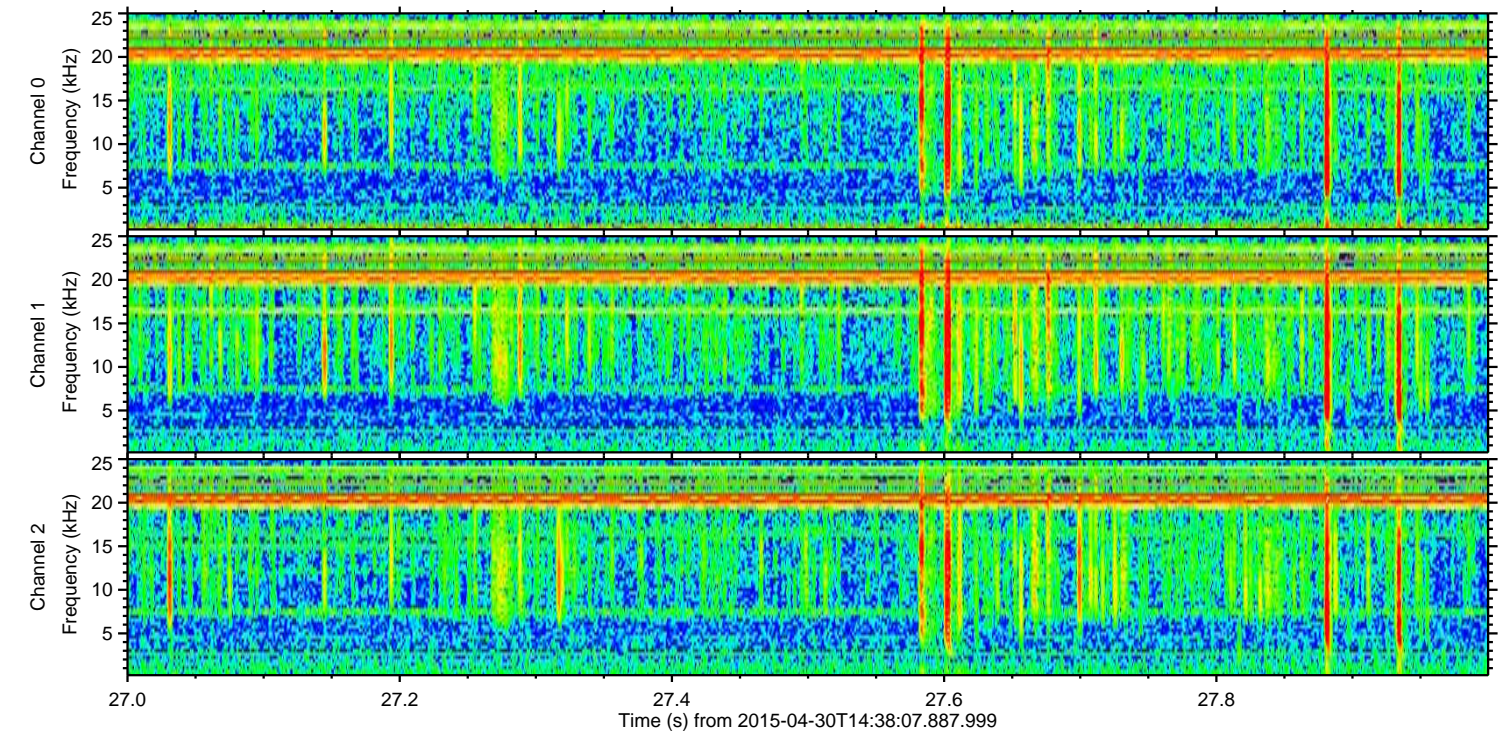
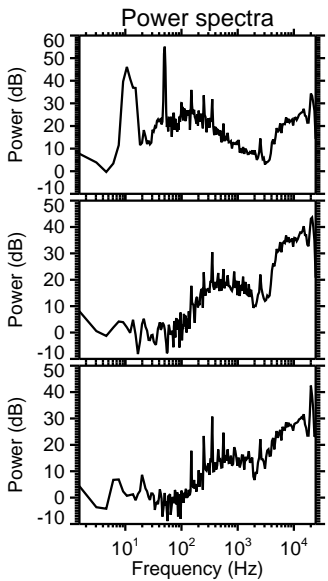
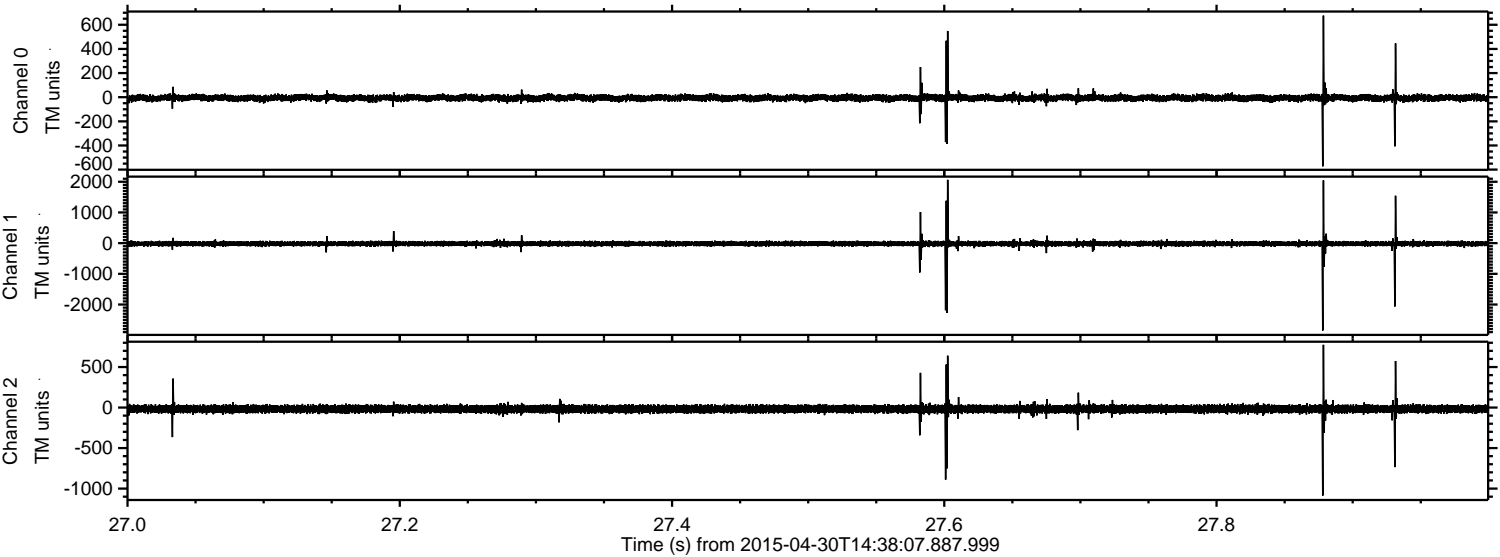


ELMAVAN 3D WAVEFORMS (Measured data sampled at 50 kHz) 49679 packets of 144 samples from 2015-04-30T14:38:07.887.999.

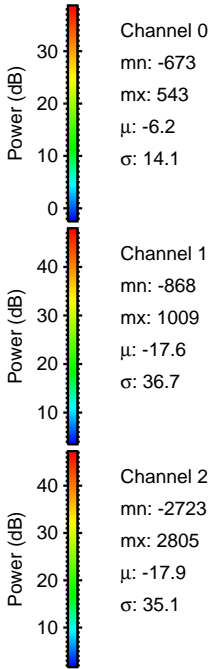
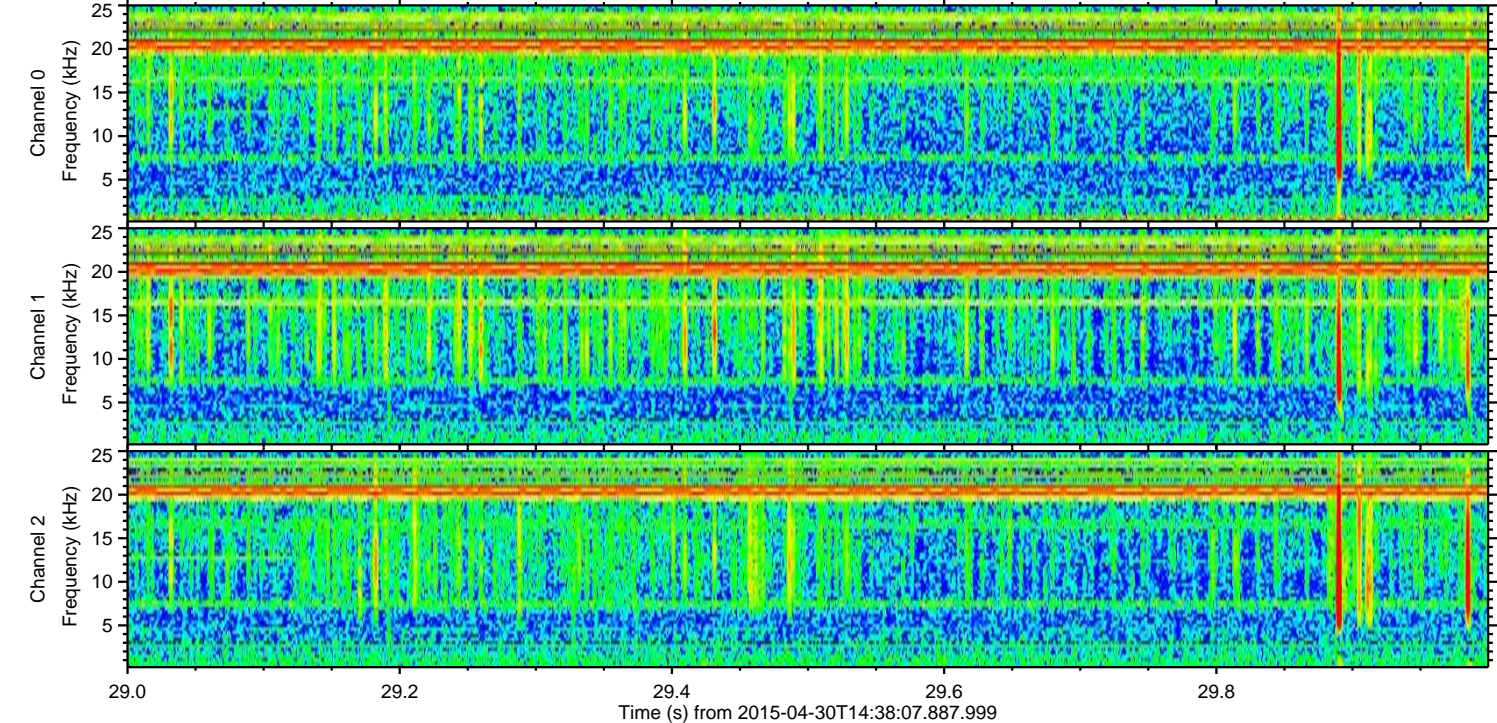
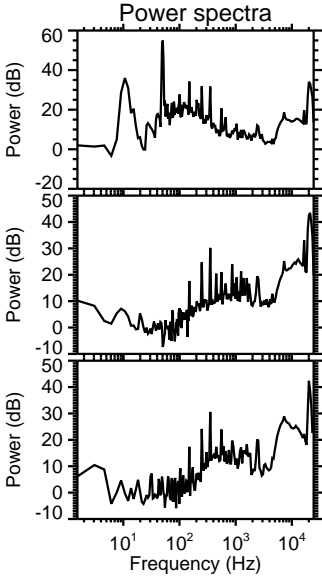
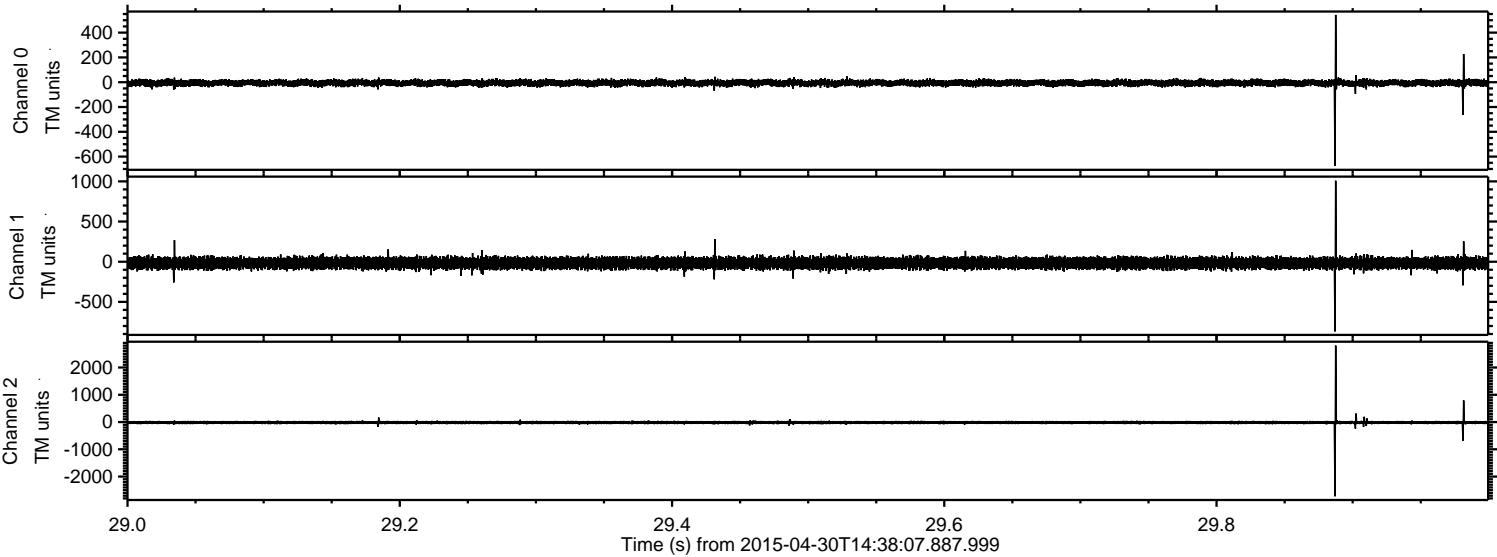
Processed Thu Apr 30 16:44:46 2015 by ELM ver.2012-10-06 from 001__elm20150430_143806__dat00.bin



Processed Thu Apr 30 16:44:57 2015 by ELM ver.2012-10-06 from 001__elm20150430_143806__dat00.bin

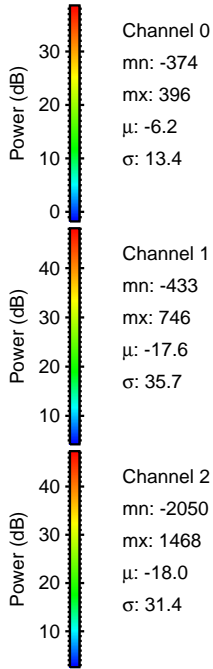
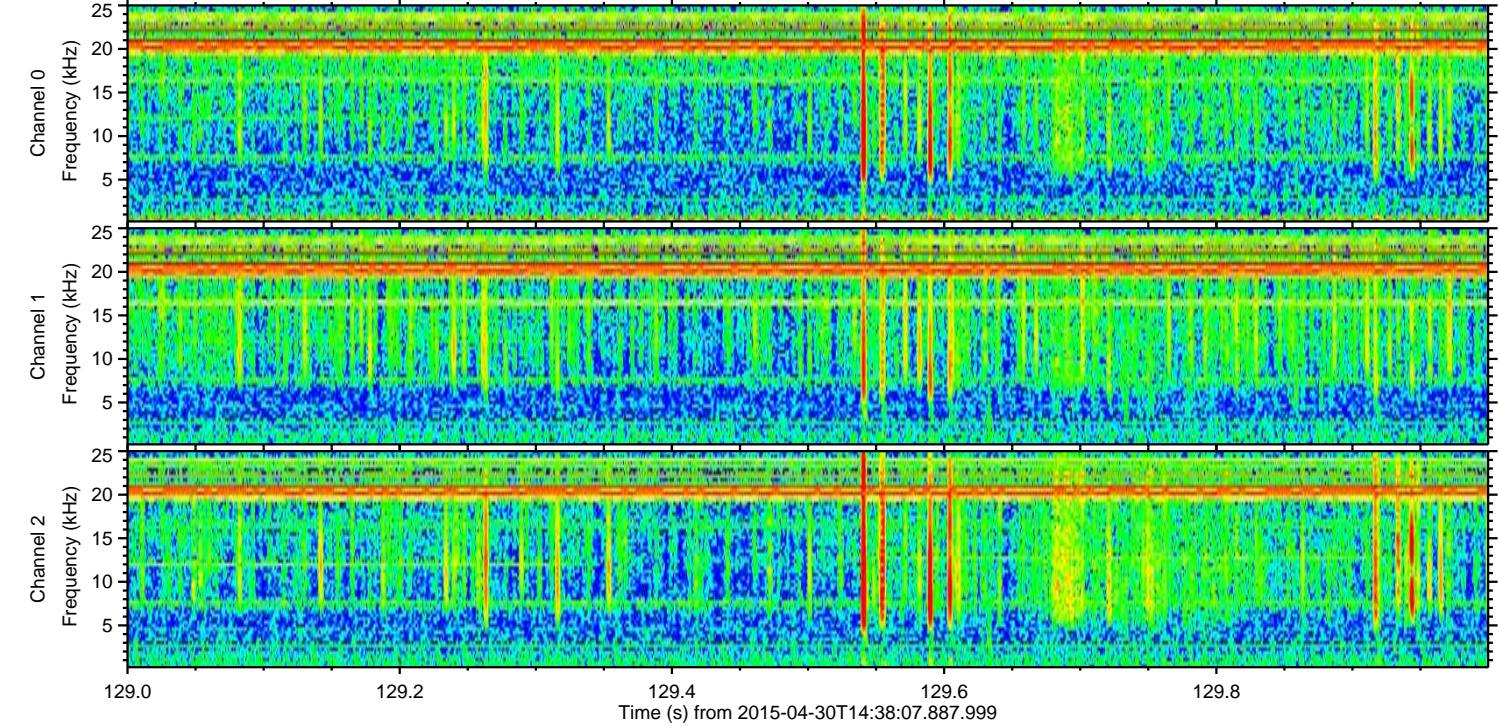
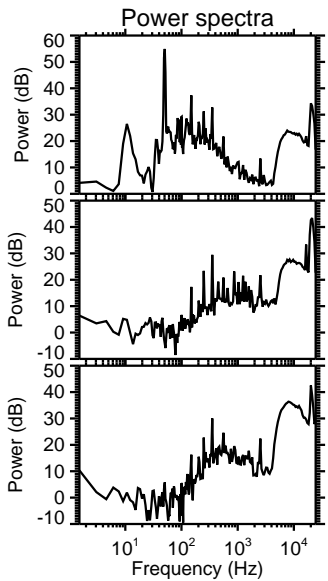
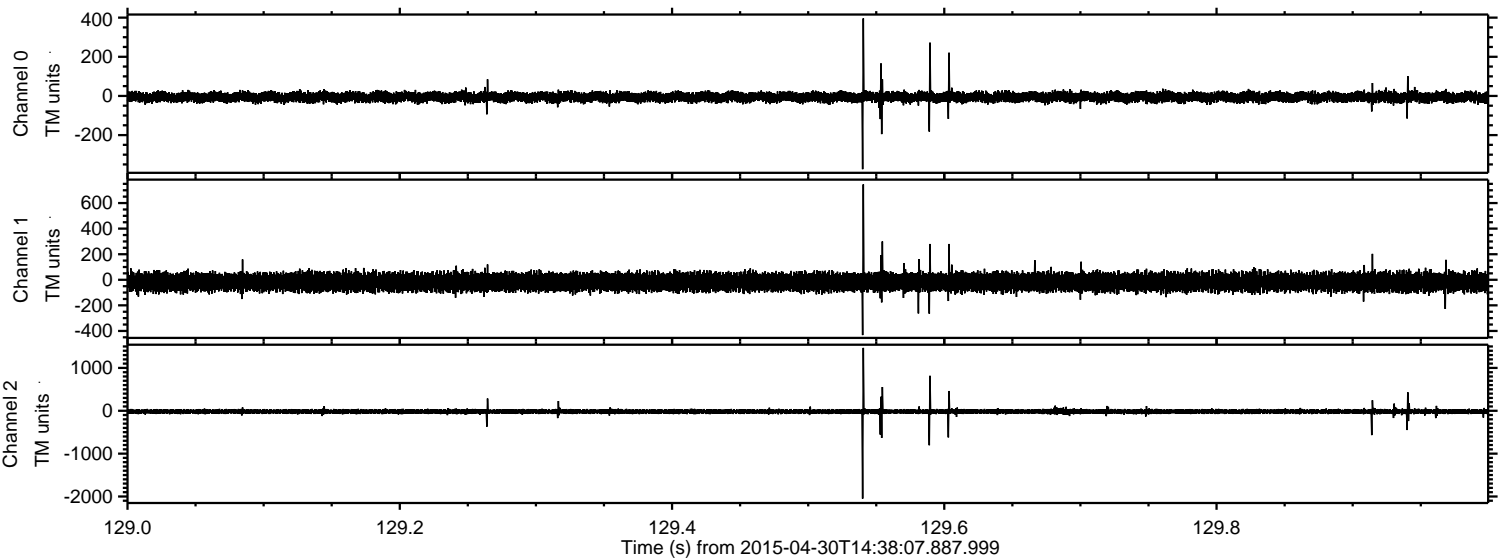


Processed Thu Apr 30 16:44:58 2015 by ELM ver.2012-10-06 from 001__elm20150430_143806__dat00.bin



ELMAVAN 3D WAVEFORMS (Measured data sampled at 50 kHz) 49679 packets of 144 samples from 2015-04-30T14:38:07.887.999. Part 130/144

Processed Thu Apr 30 16:44:59 2015 by ELM ver.2012-10-06 from 001__elm20150430_143806__dat00.bin

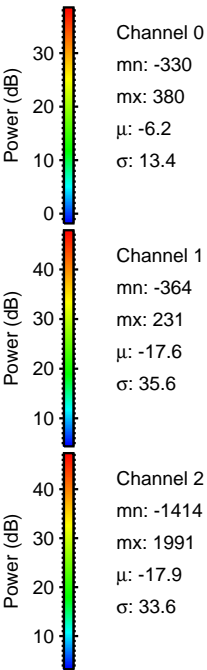
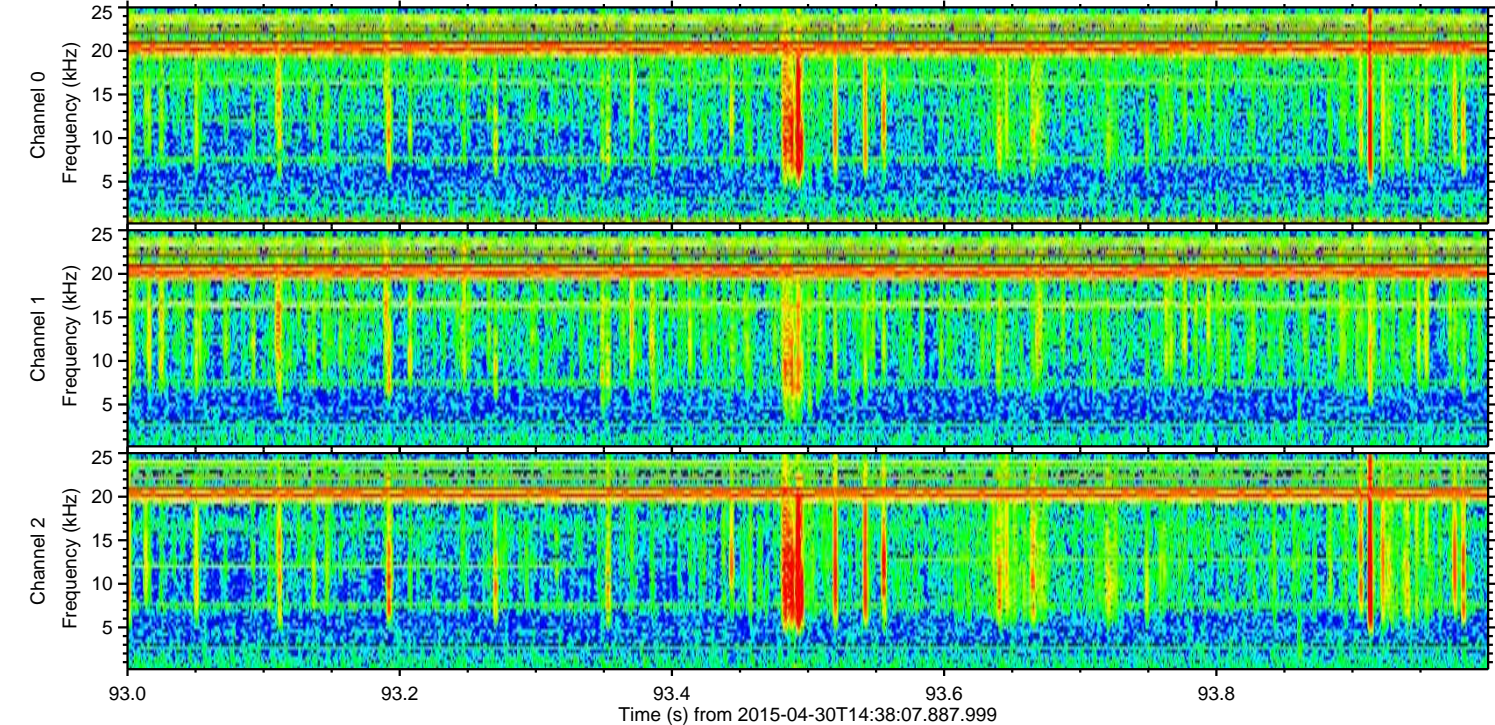
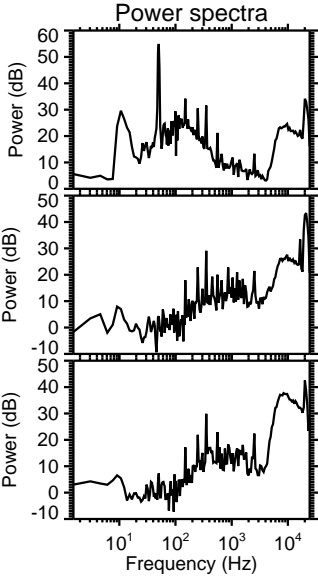
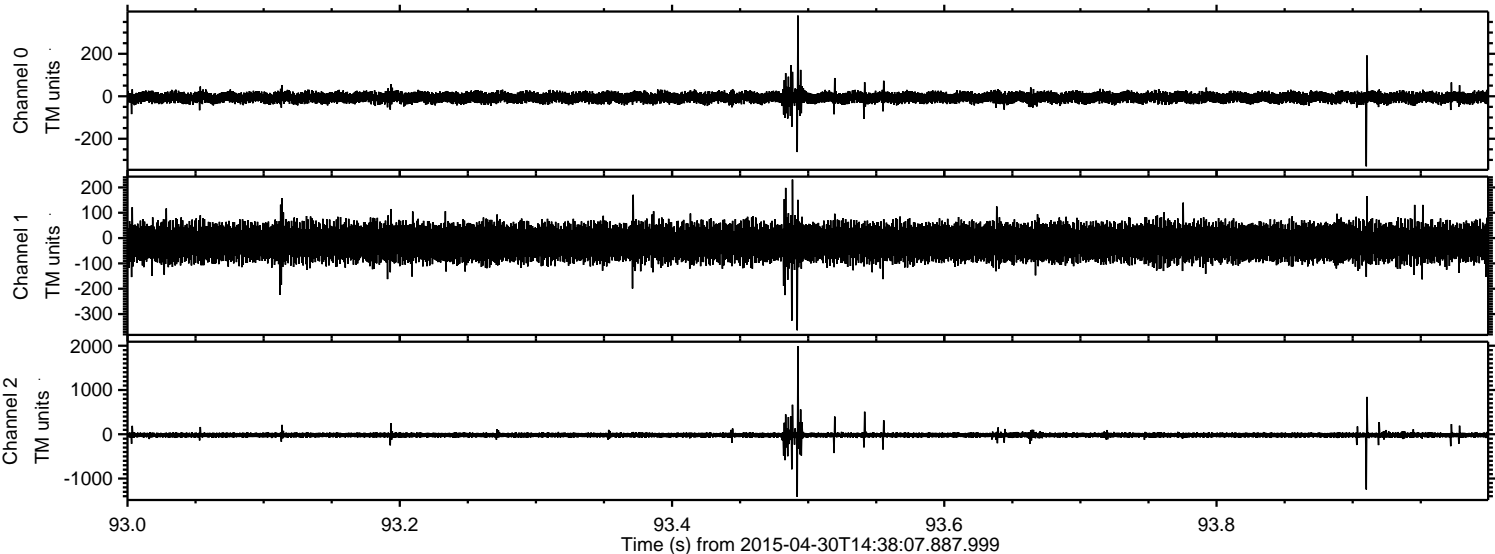


Channel 0
mn: -374
mx: 396
 μ : -6.2
 σ : 13.4

Channel 1
mn: -433
mx: 746
 μ : -17.6
 σ : 35.7

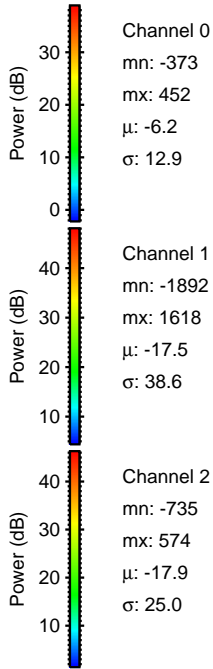
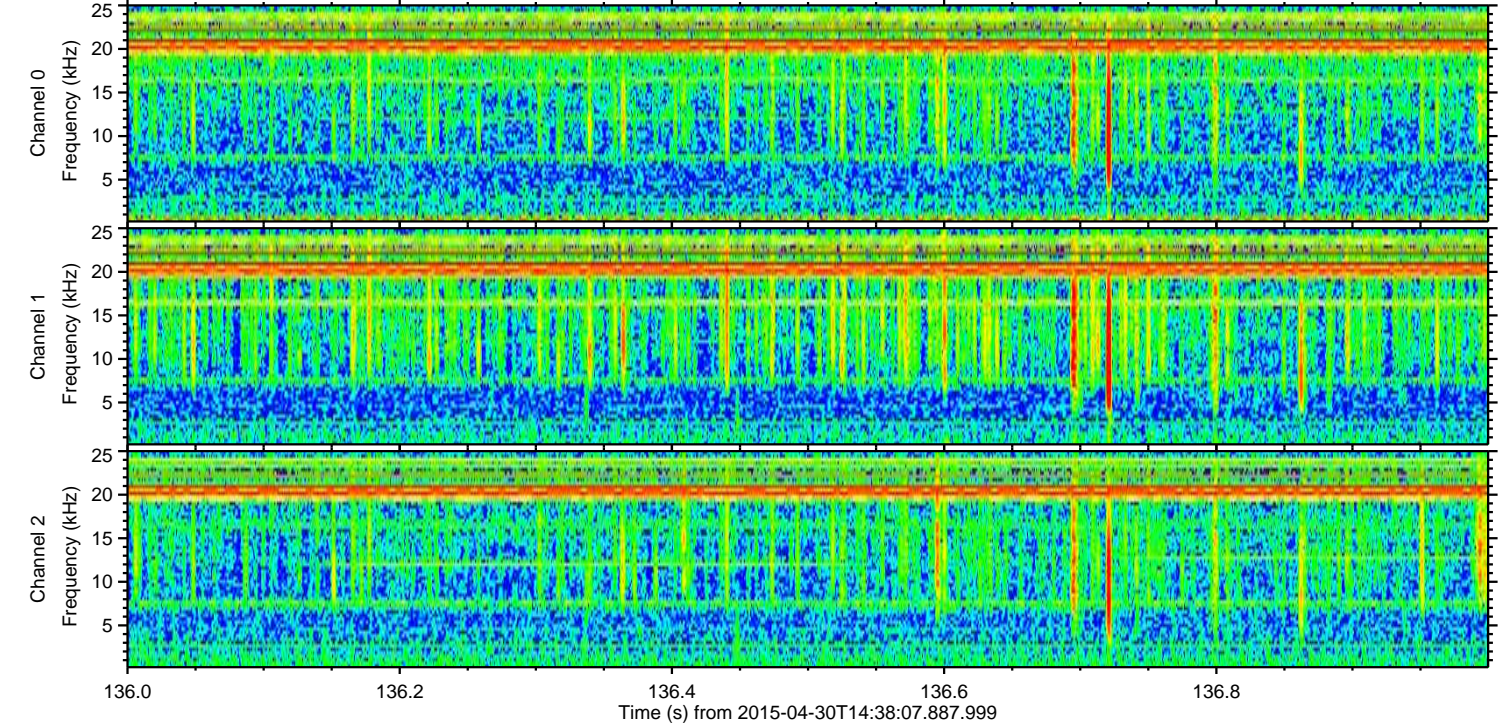
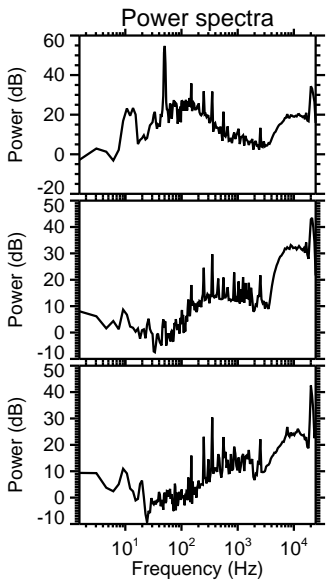
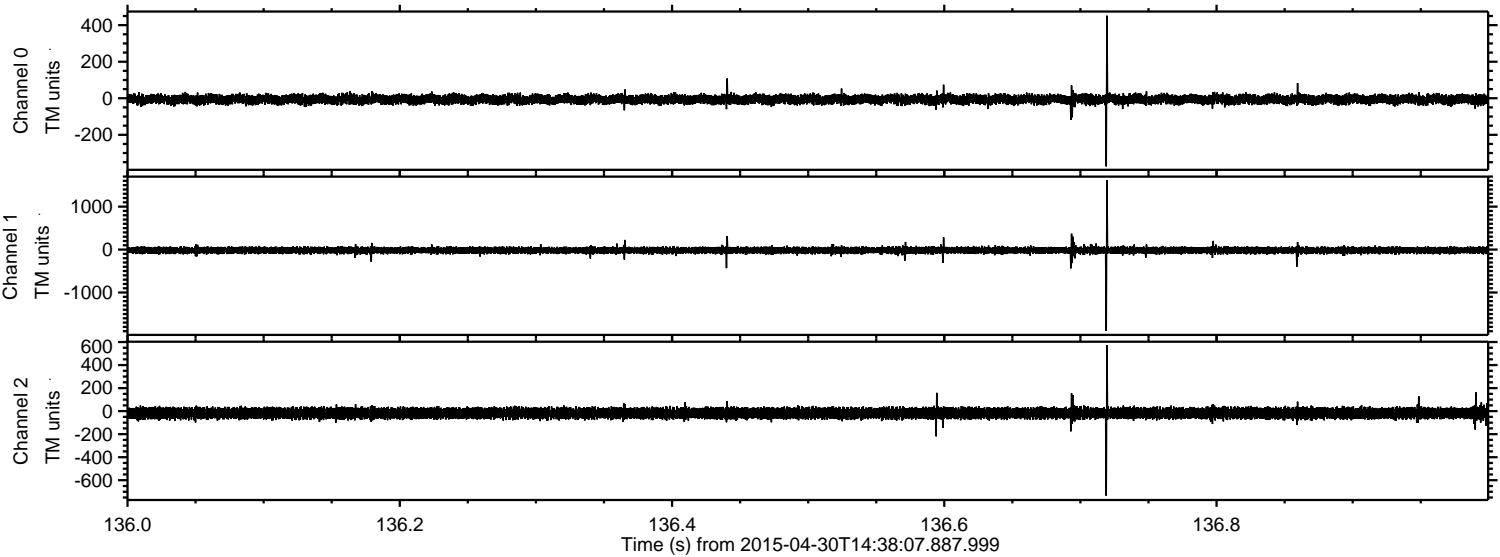
Channel 2
mn: -2050
mx: 1468
 μ : -18.0
 σ : 31.4

Processed Thu Apr 30 16:45:00 2015 by ELM ver.2012-10-06 from 001__elm20150430_143806__dat00.bin



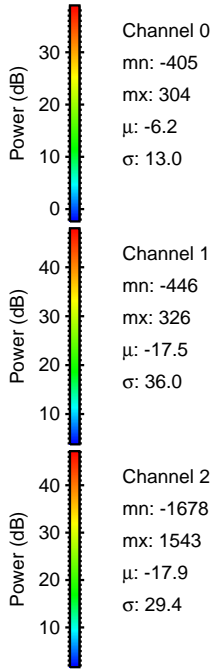
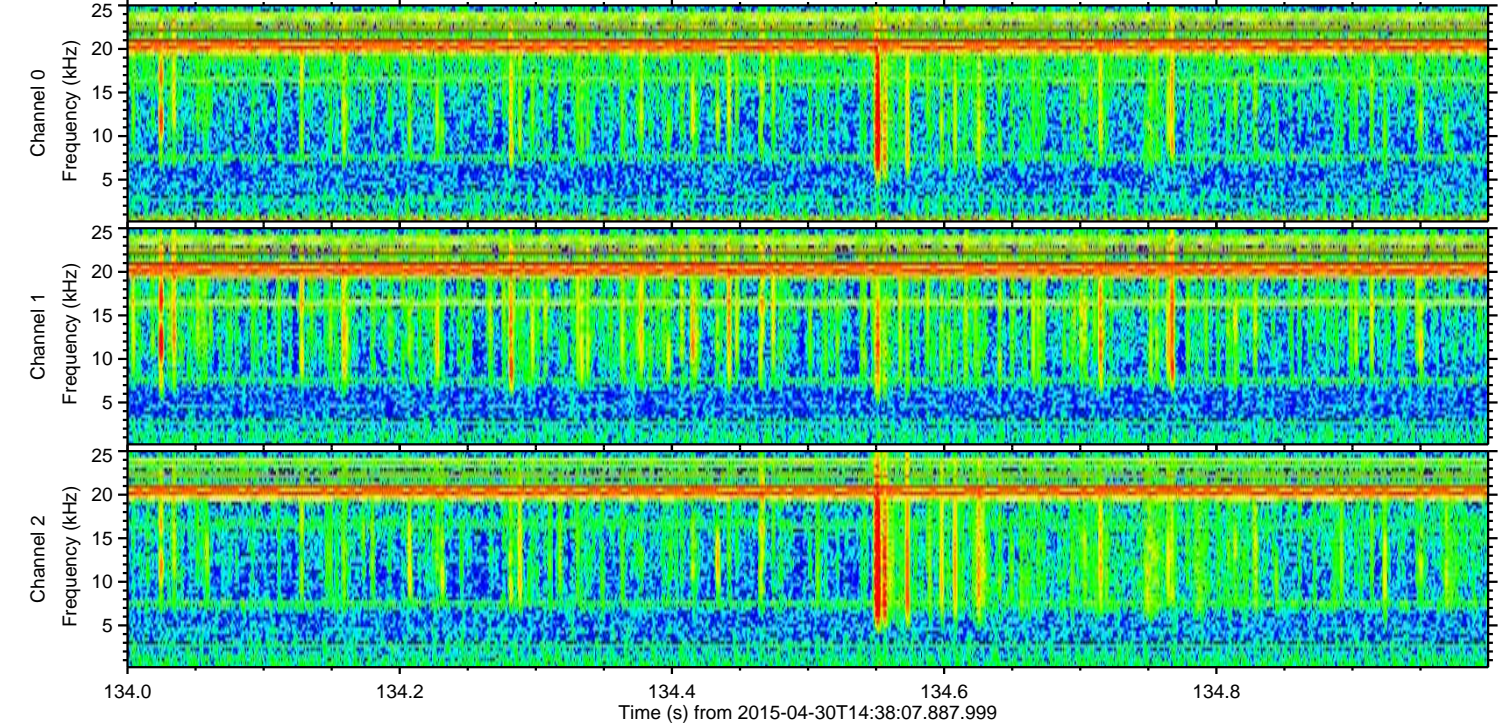
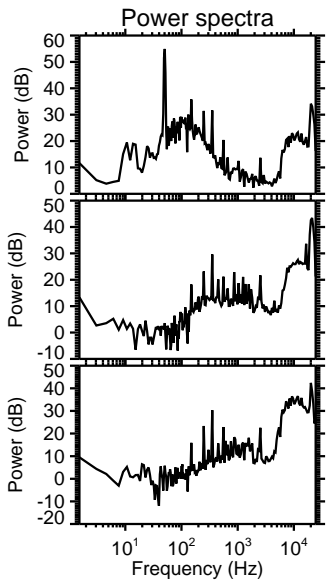
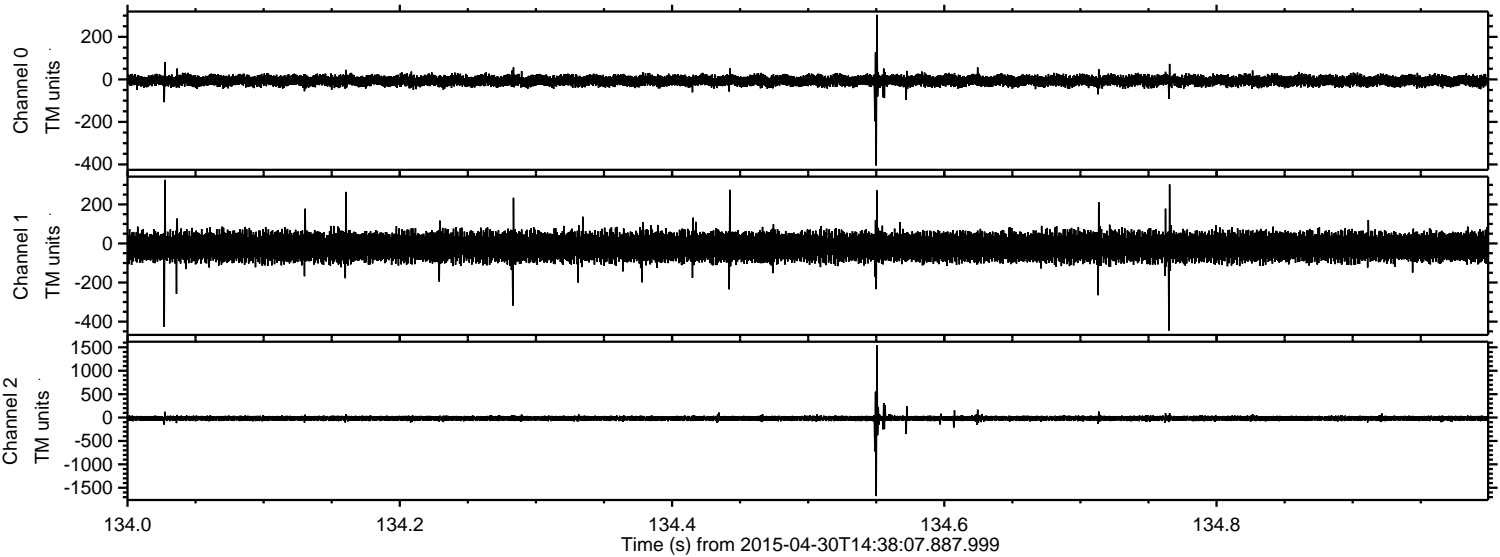
ELMAVAN 3D WAVEFORMS (Measured data sampled at 50 kHz) 49679 packets of 144 samples from 2015-04-30T14:38:07.887.999. Part 137/144

Processed Thu Apr 30 16:45:01 2015 by ELM ver.2012-10-06 from 001__elm20150430_143806__dat00.bin



ELMAVAN 3D WAVEFORMS (Measured data sampled at 50 kHz) 49679 packets of 144 samples from 2015-04-30T14:38:07.887.999. Part 135/144

Processed Thu Apr 30 16:45:02 2015 by ELM ver.2012-10-06 from 001__elm20150430_143806__dat00.bin

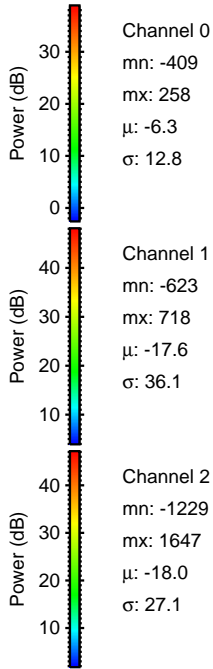
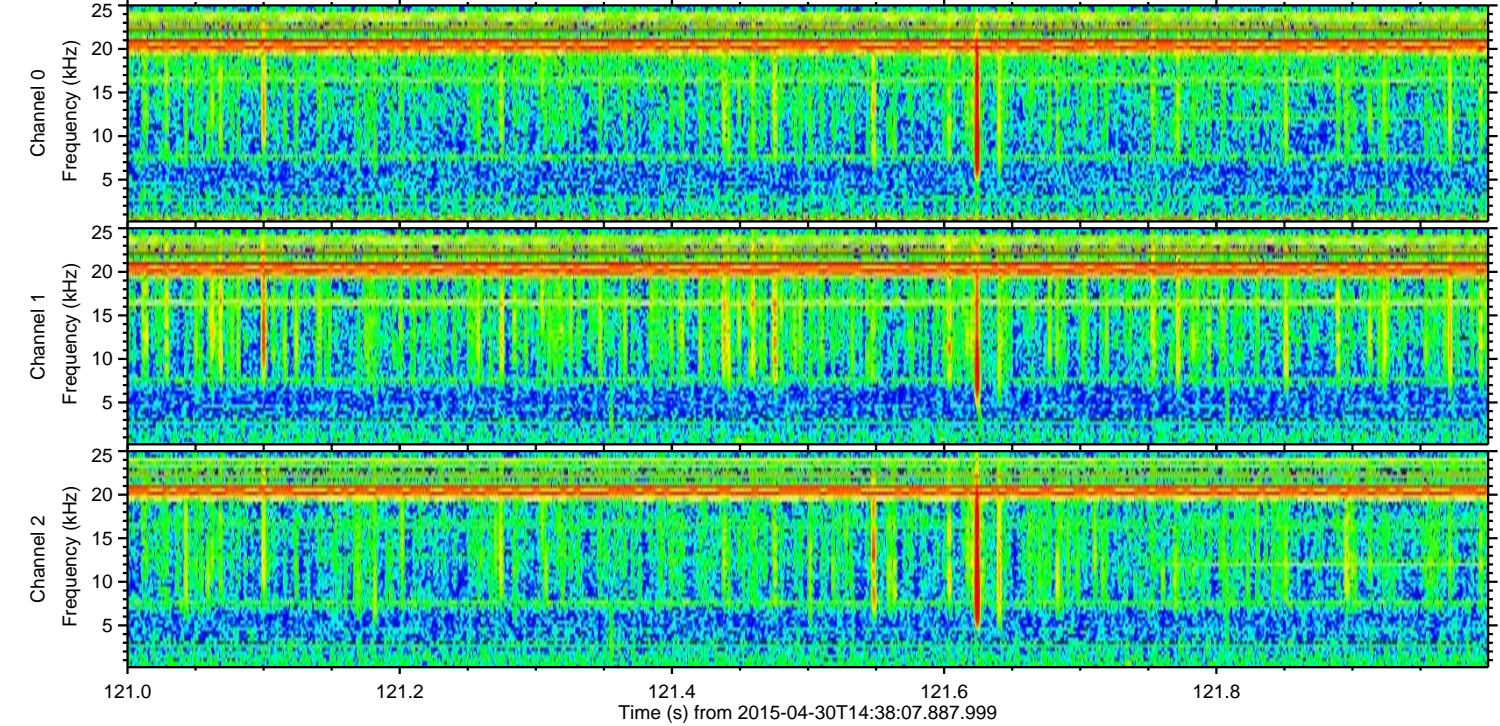
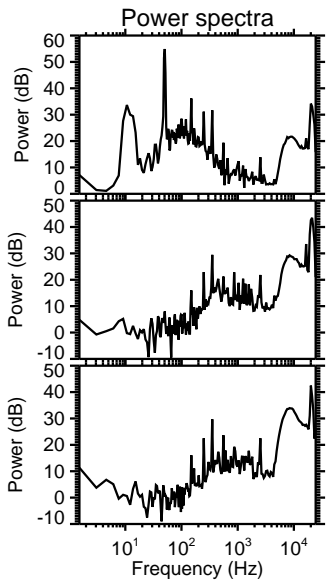
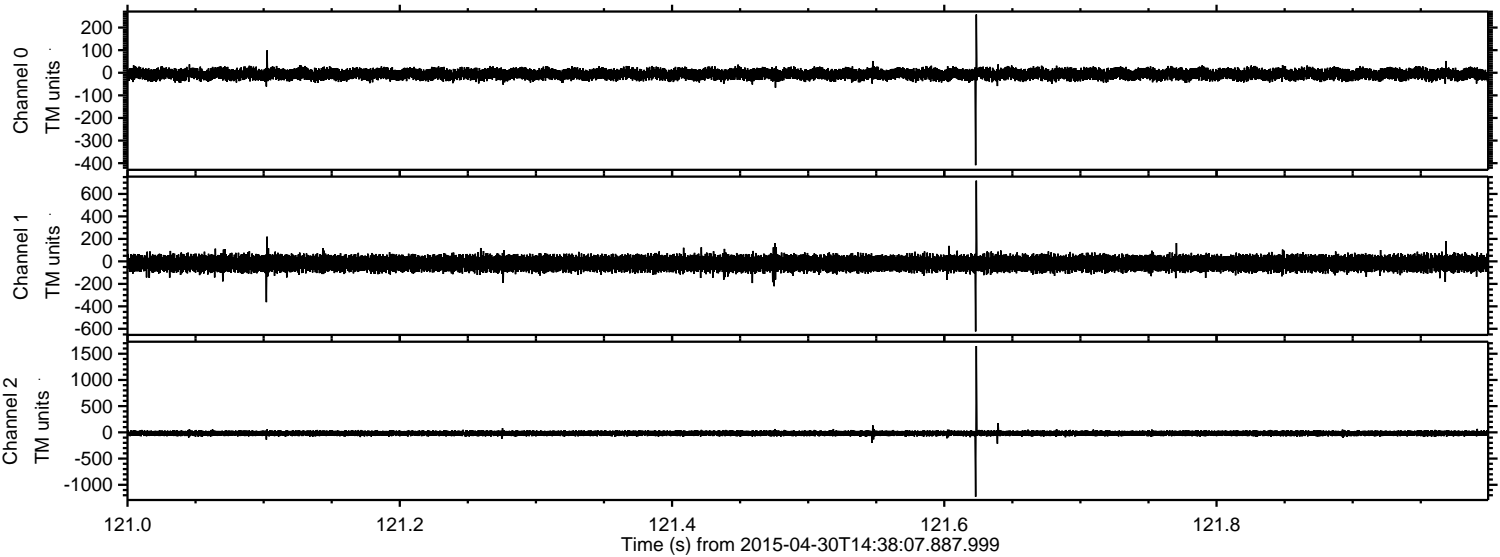


Channel 0
mn: -405
mx: 304
 μ : -6.2
 σ : 13.0

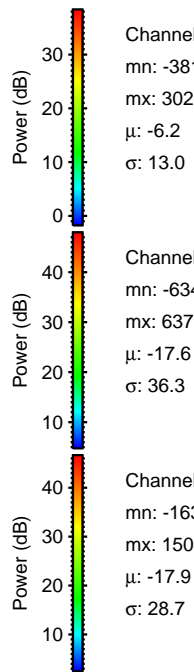
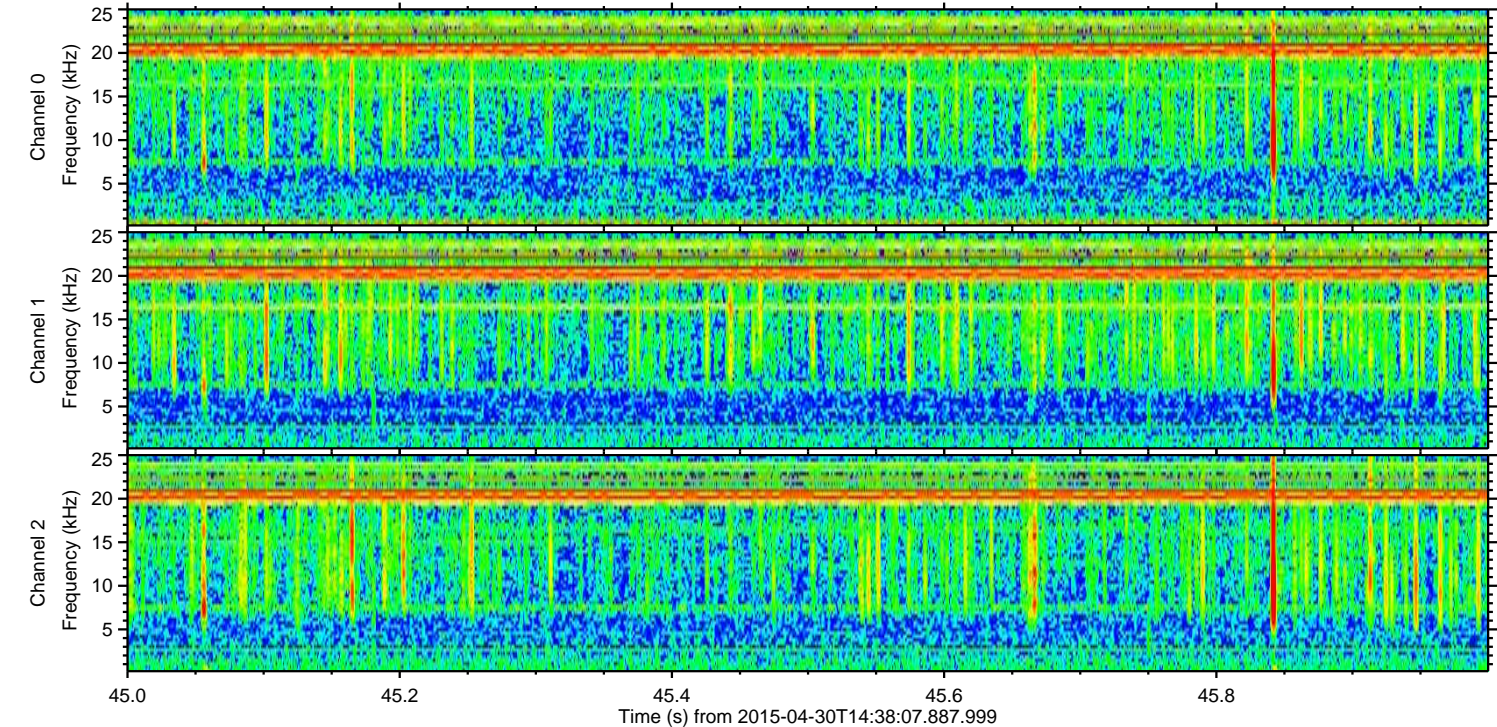
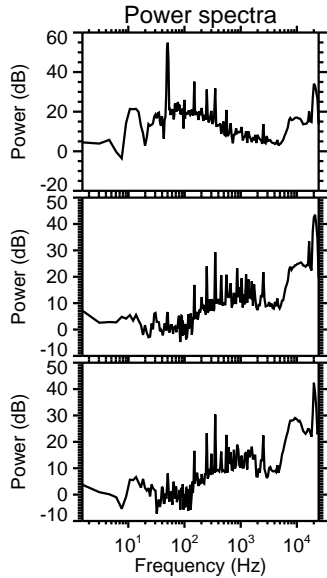
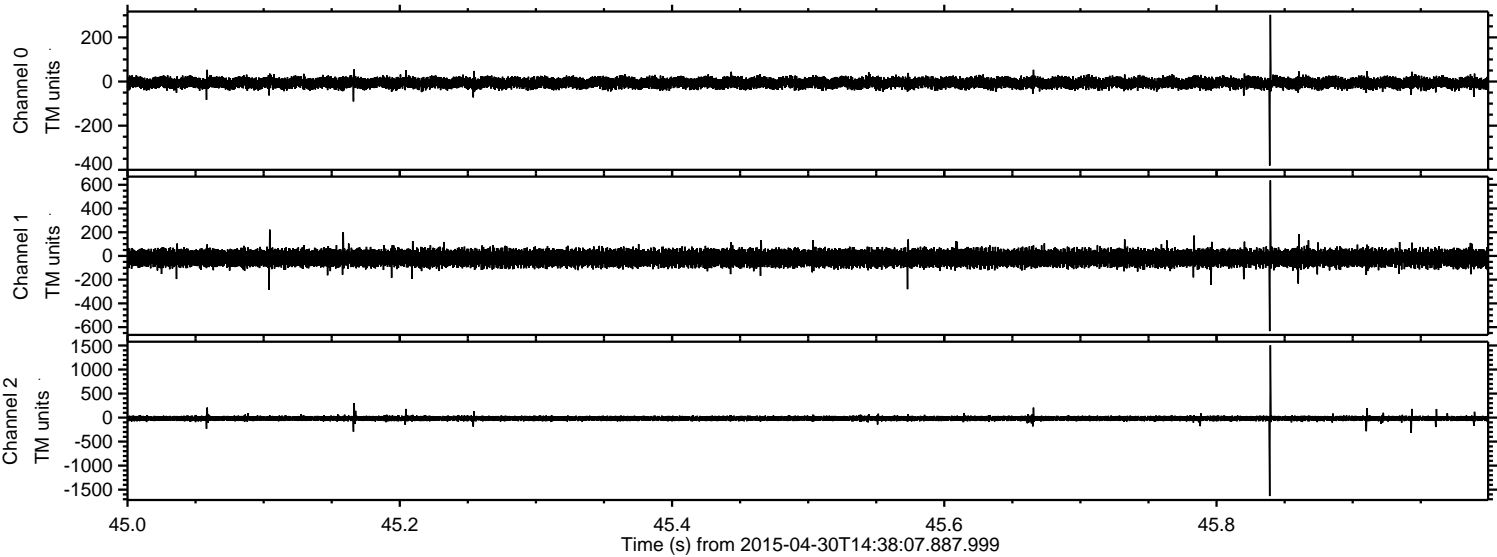
Channel 1
mn: -446
mx: 326
 μ : -17.5
 σ : 36.0

Channel 2
mn: -1678
mx: 1543
 μ : -17.9
 σ : 29.4

Processed Thu Apr 30 16:45:03 2015 by ELM ver.2012-10-06 from 001__elm20150430_143806__dat00.bin



Processed Thu Apr 30 16:45:04 2015 by ELM ver.2012-10-06 from 001__elm20150430_143806__dat00.bin



Channel 0
mn: -381
mx: 302
 μ : -6.2
 σ : 13.0

Channel 1
mn: -634
mx: 637
 μ : -17.6
 σ : 36.3

Channel 2
mn: -1634
mx: 1504
 μ : -17.9
 σ : 28.7

Processed Thu Apr 30 16:45:05 2015 by ELM ver.2012-10-06 from 001__elm20150430_143806__dat00.bin

