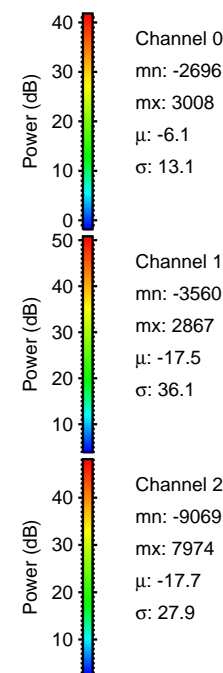
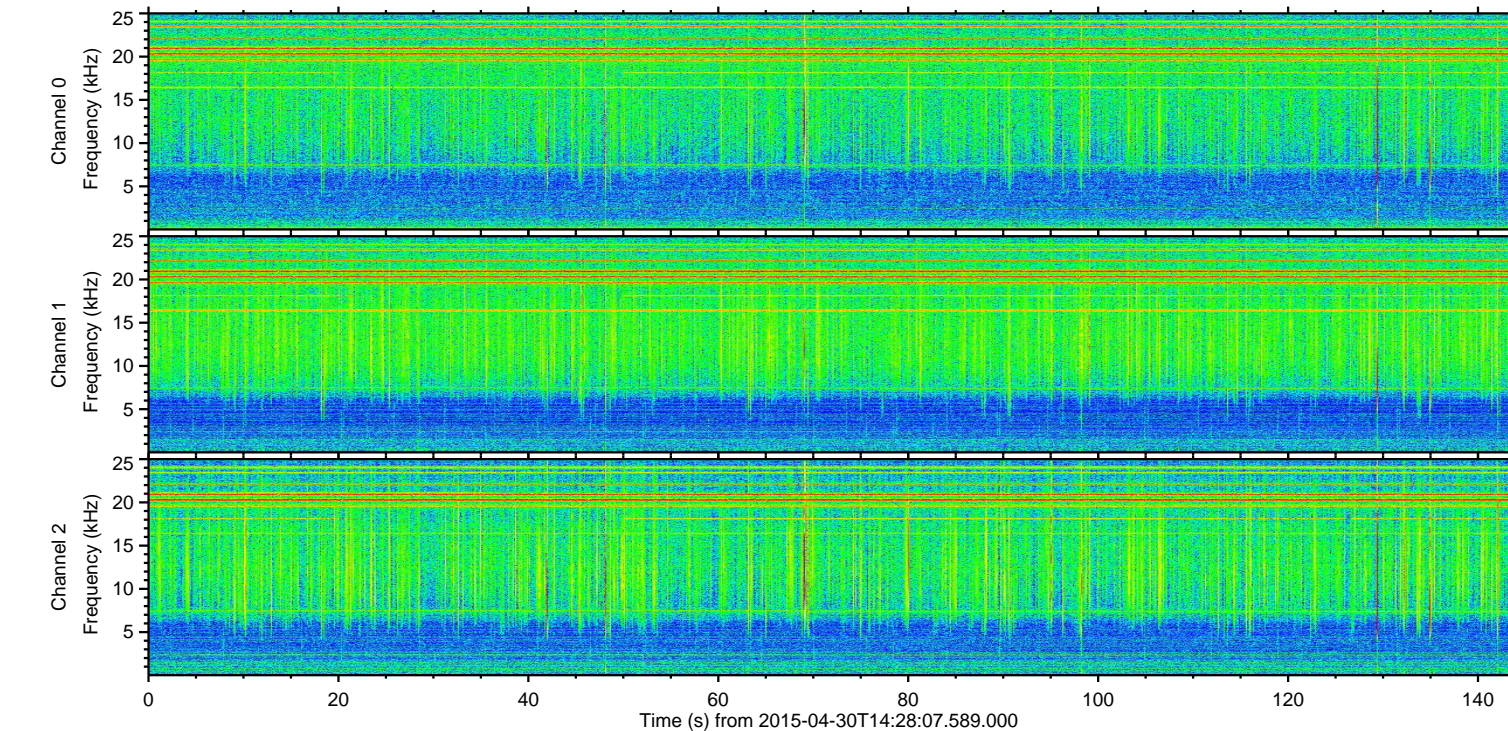
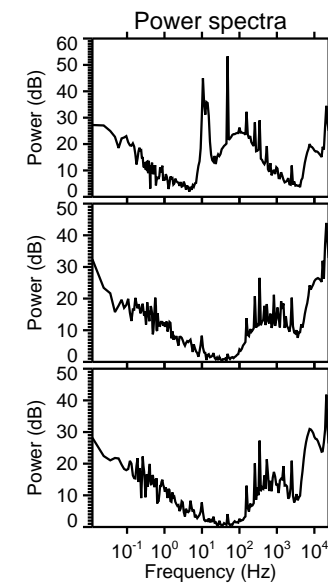
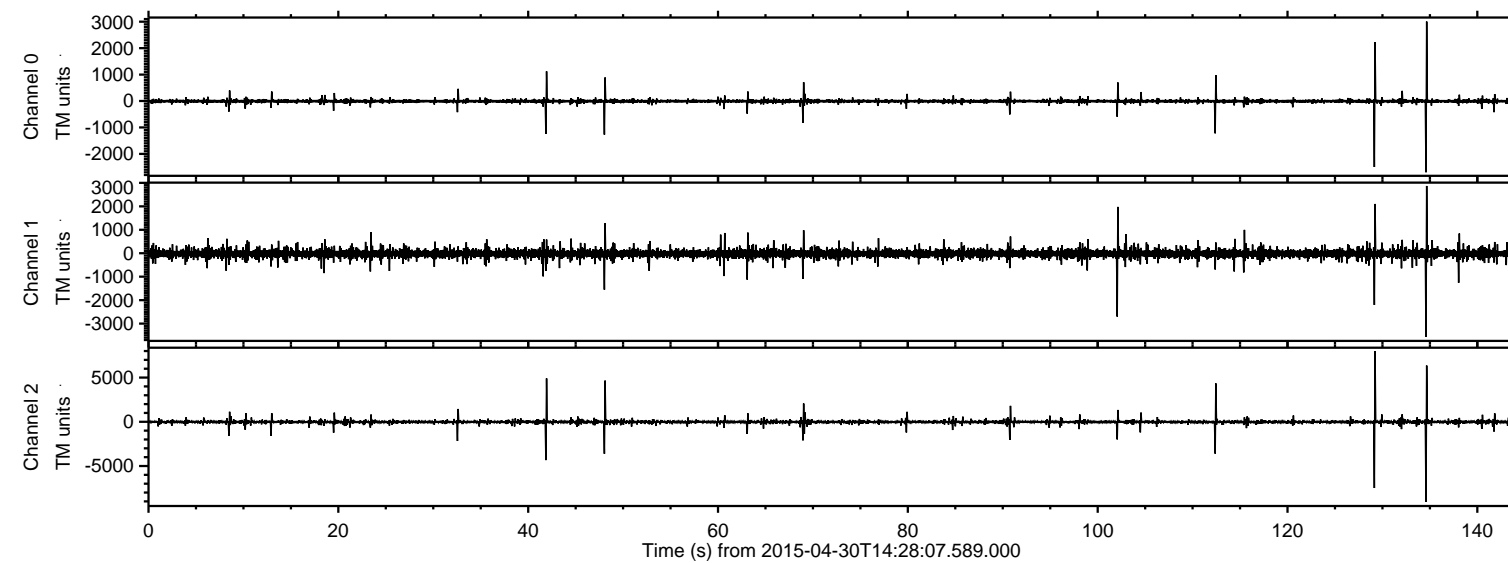


# ELMAVAN 3D WAVEFORMS (Measured data sampled at 50 kHz) 49774 packets of 144 samples from 2015-04-30T14:28:07.589.000.

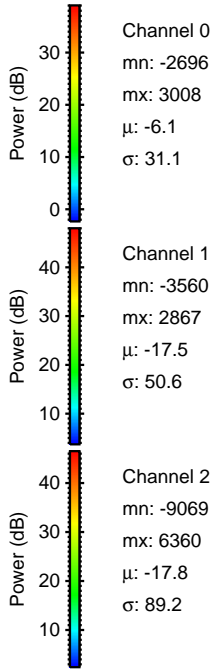
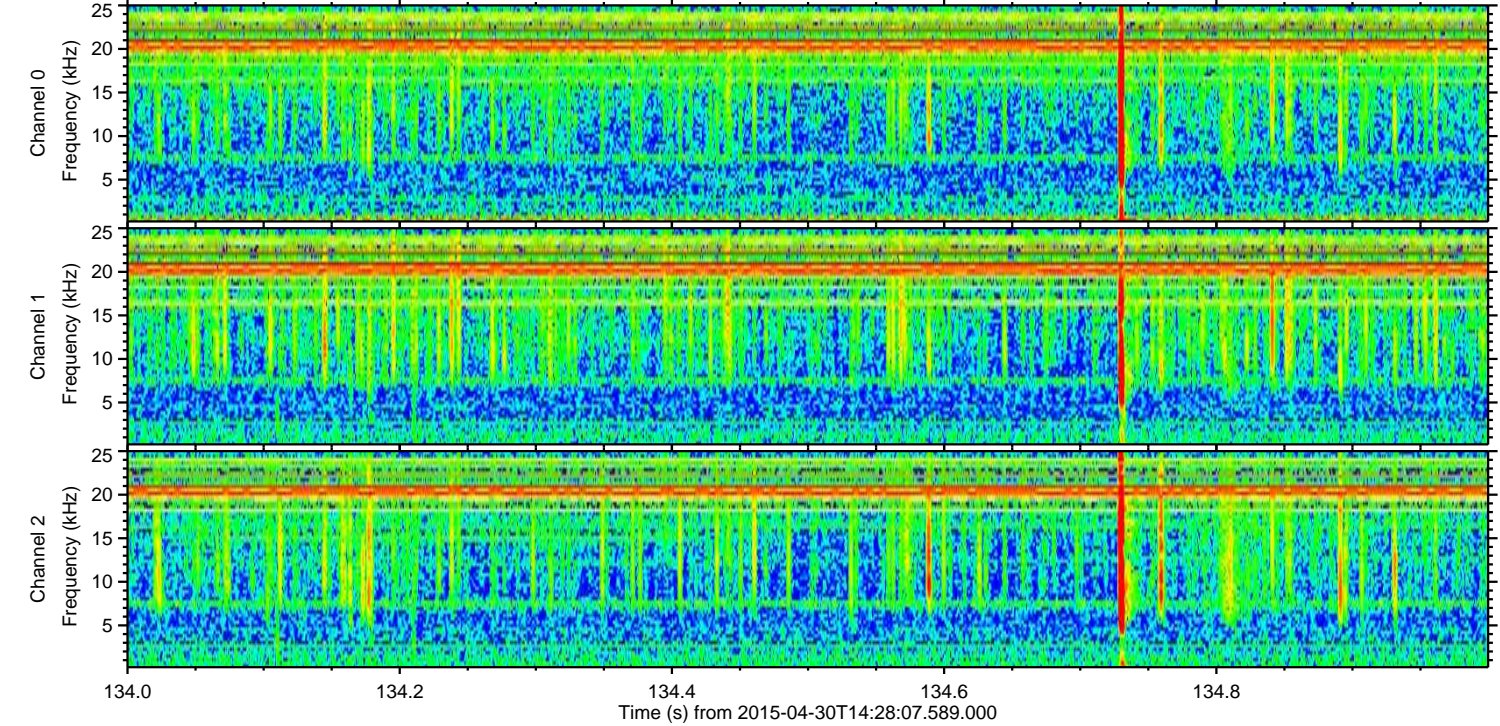
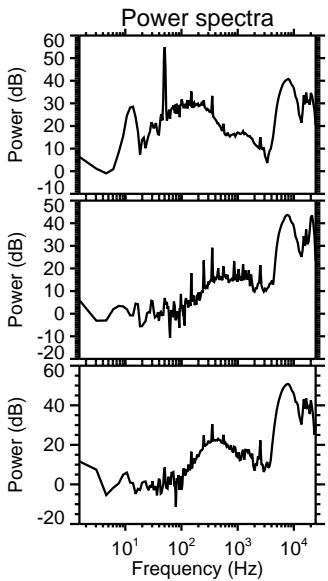
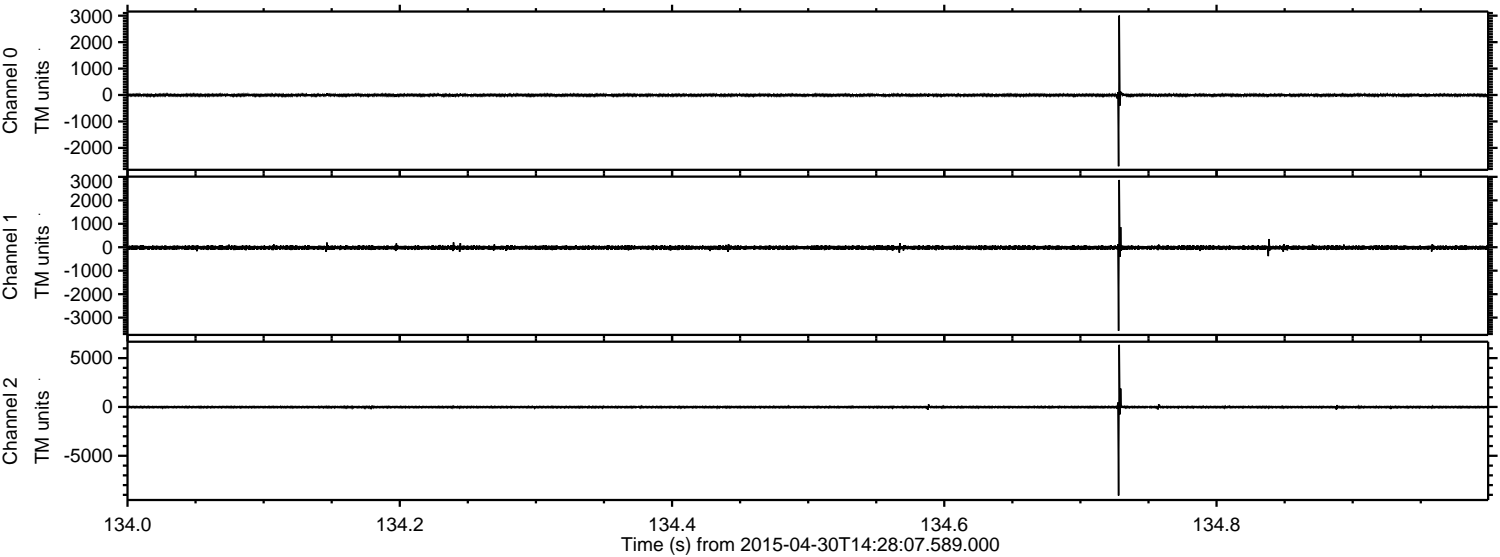
Processed Thu Apr 30 16:35:26 2015 by ELM ver.2012-10-06 from 001\_\_elm20150430\_142806\_\_dat00.bin





ELMAVAN 3D WAVEFORMS (Measured data sampled at 50 kHz) 49774 packets of 144 samples from 2015-04-30T14:28:07.589.000. Part 135/144

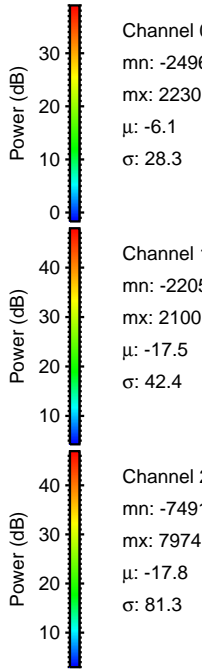
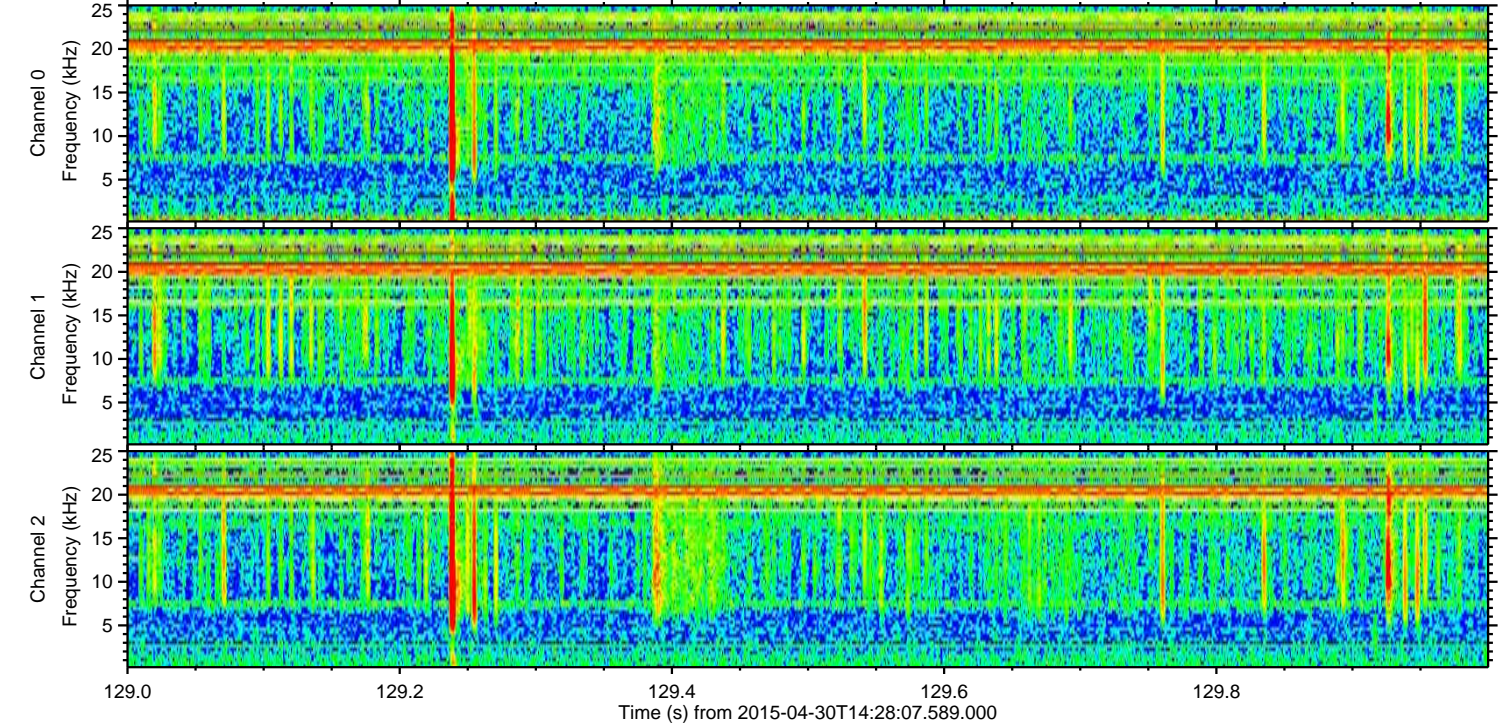
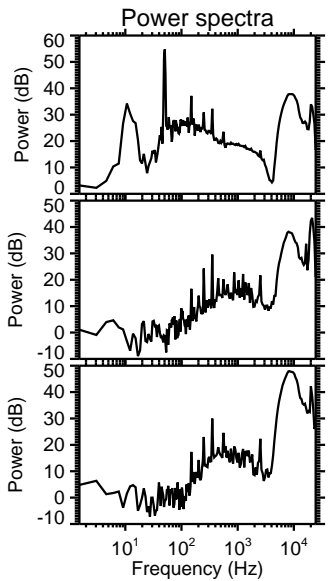
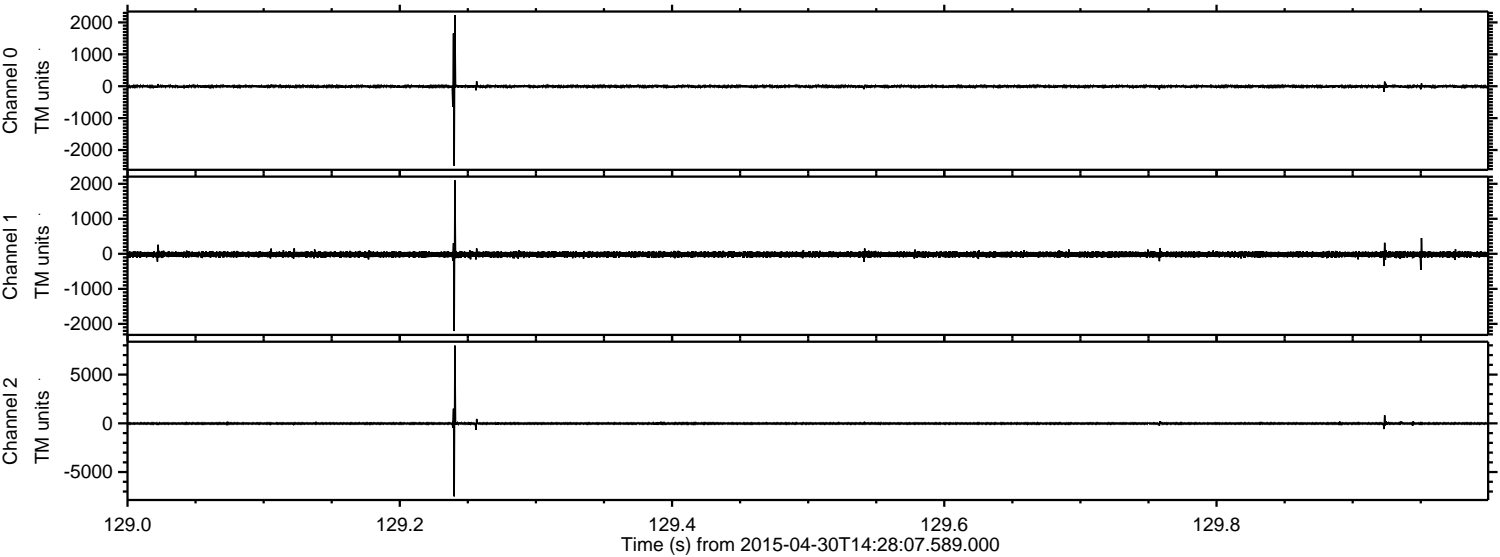
Processed Thu Apr 30 16:35:37 2015 by ELM ver.2012-10-06 from 001\_\_elm20150430\_142806\_\_dat00.bin





ELMAVAN 3D WAVEFORMS (Measured data sampled at 50 kHz) 49774 packets of 144 samples from 2015-04-30T14:28:07.589.000. Part 130/144

Processed Thu Apr 30 16:35:38 2015 by ELM ver.2012-10-06 from 001\_\_elm20150430\_142806\_\_dat00.bin



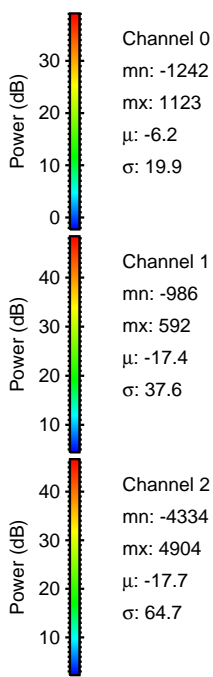
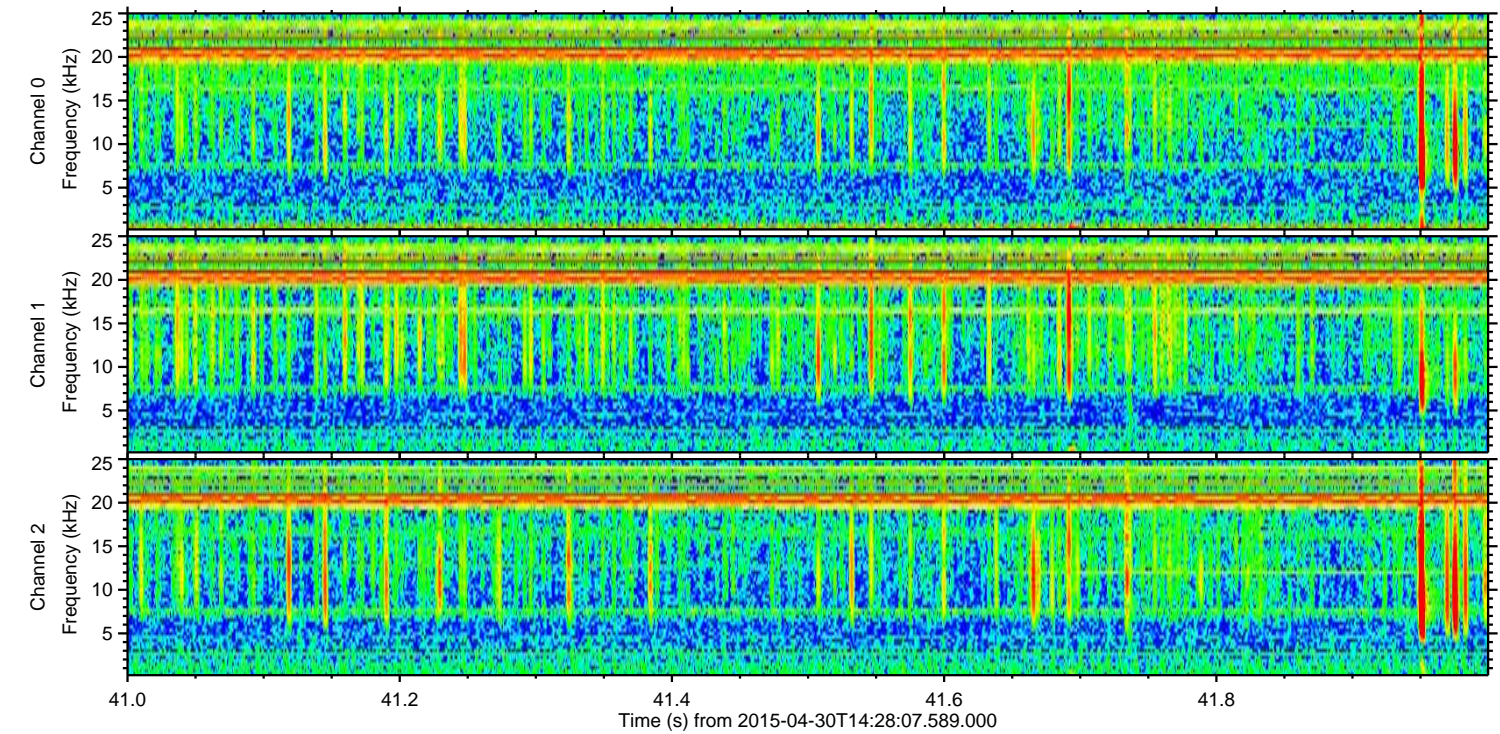
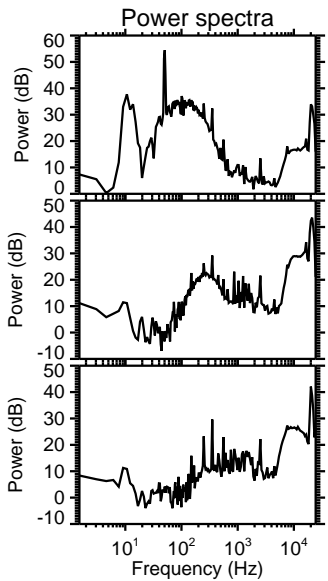
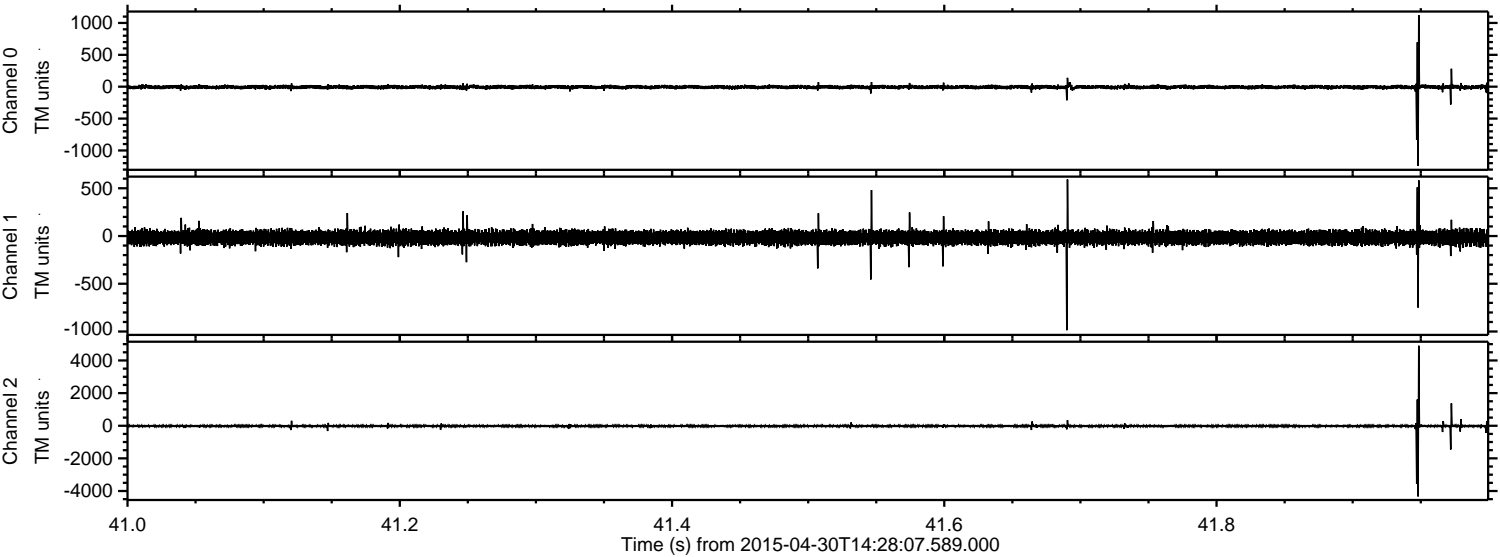
Channel 0  
mn: -2496  
mx: 2230  
 $\mu$ : -6.1  
 $\sigma$ : 28.3

Channel 1  
mn: -2205  
mx: 2100  
 $\mu$ : -17.5  
 $\sigma$ : 42.4

Channel 2  
mn: -7491  
mx: 7974  
 $\mu$ : -17.8  
 $\sigma$ : 81.3

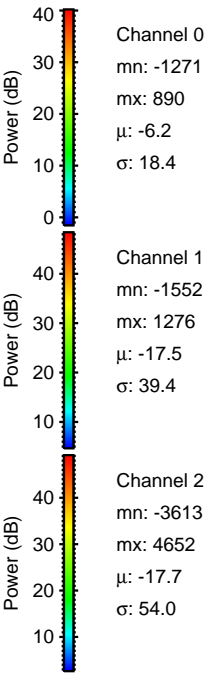
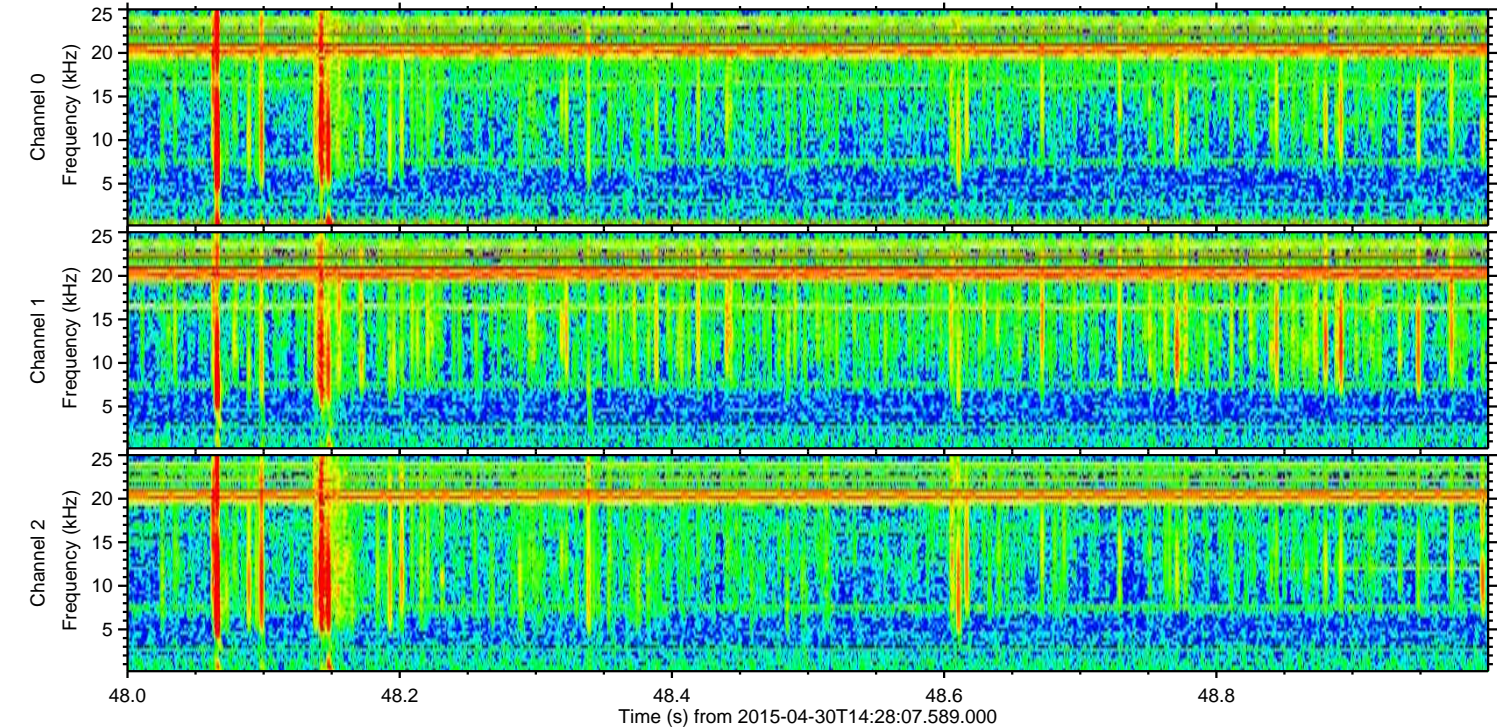
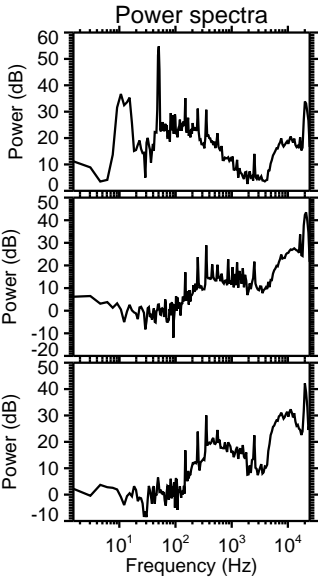
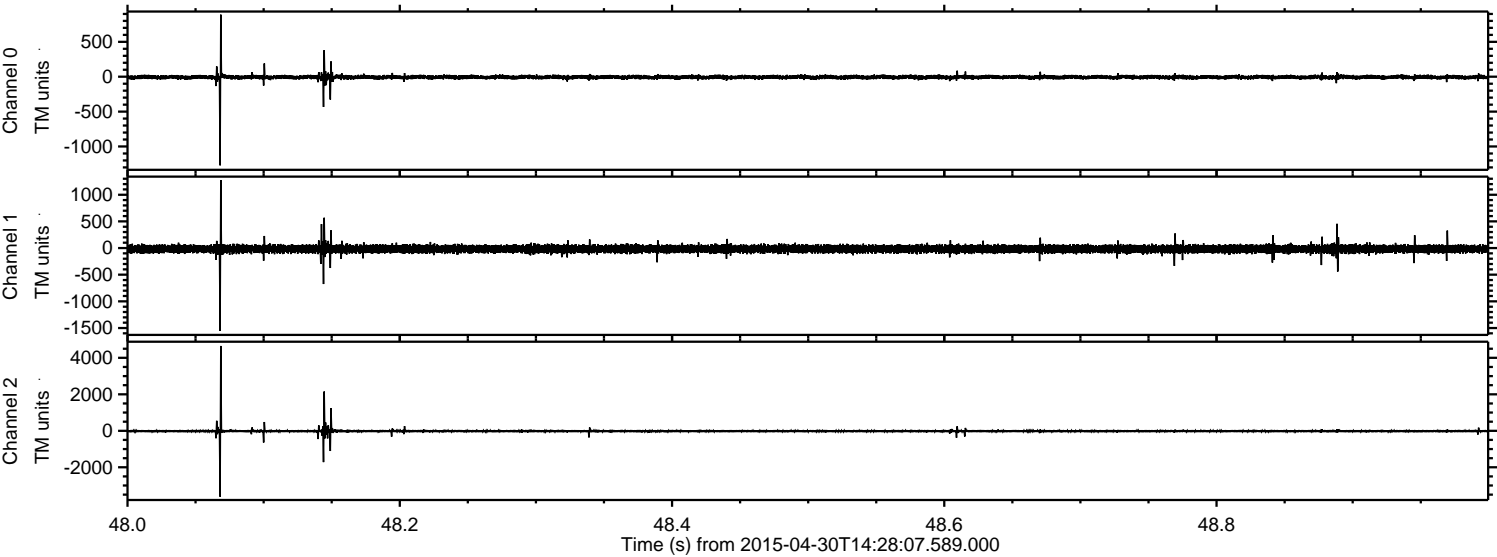


Processed Thu Apr 30 16:35:39 2015 by ELM ver.2012-10-06 from 001\_\_elm20150430\_142806\_\_dat00.bin





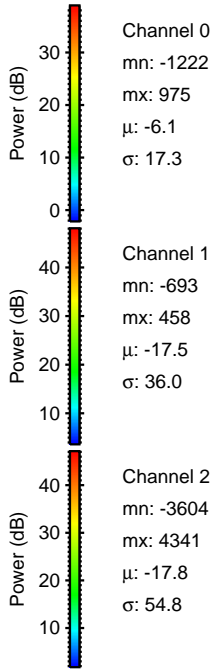
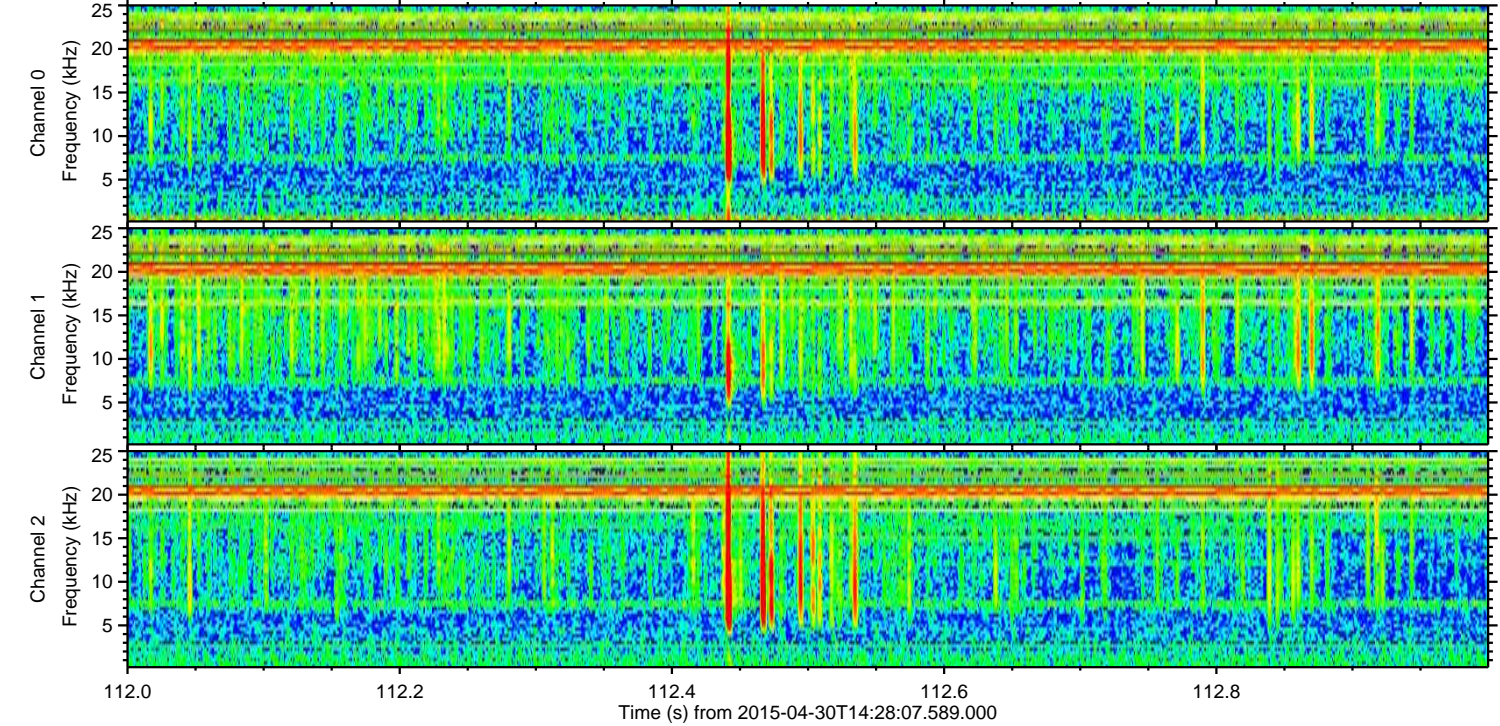
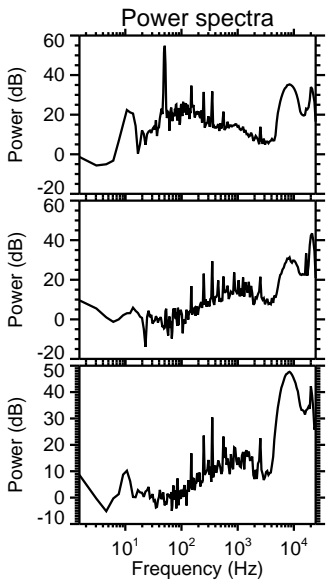
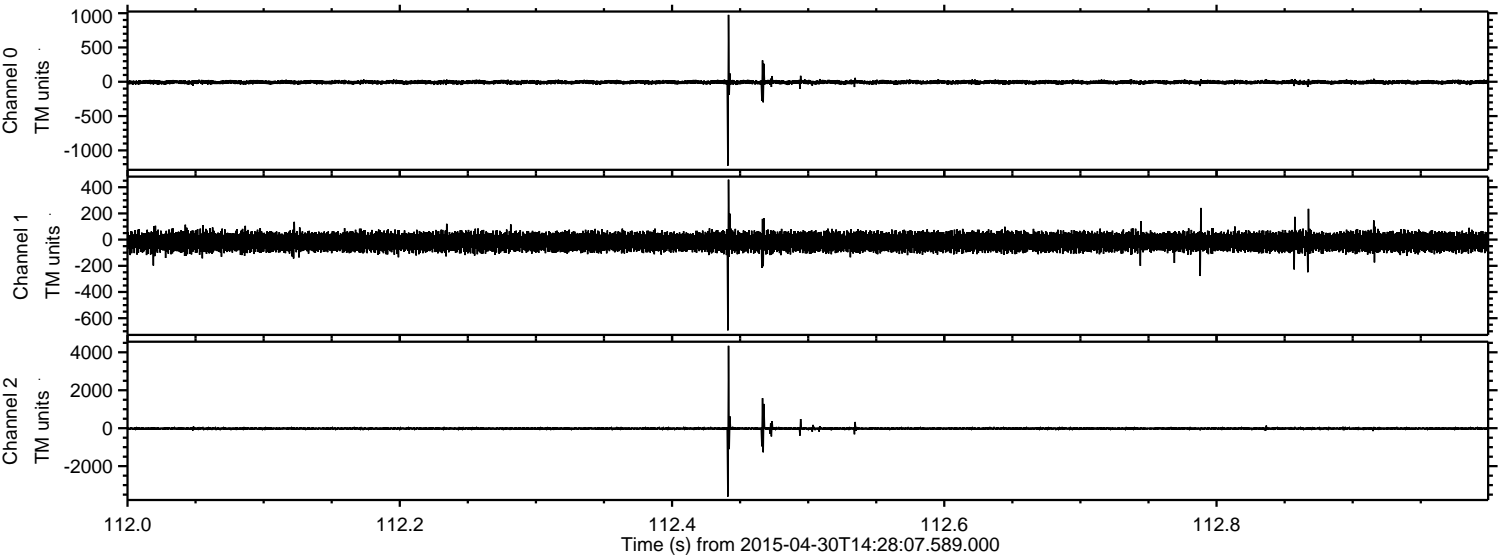
Processed Thu Apr 30 16:35:40 2015 by ELM ver.2012-10-06 from 001\_\_elm20150430\_142806\_\_dat00.bin





ELMAVAN 3D WAVEFORMS (Measured data sampled at 50 kHz) 49774 packets of 144 samples from 2015-04-30T14:28:07.589.000. Part 113/144

Processed Thu Apr 30 16:35:41 2015 by ELM ver.2012-10-06 from 001\_\_elm20150430\_142806\_\_dat00.bin



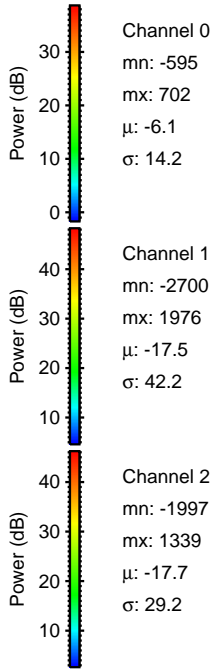
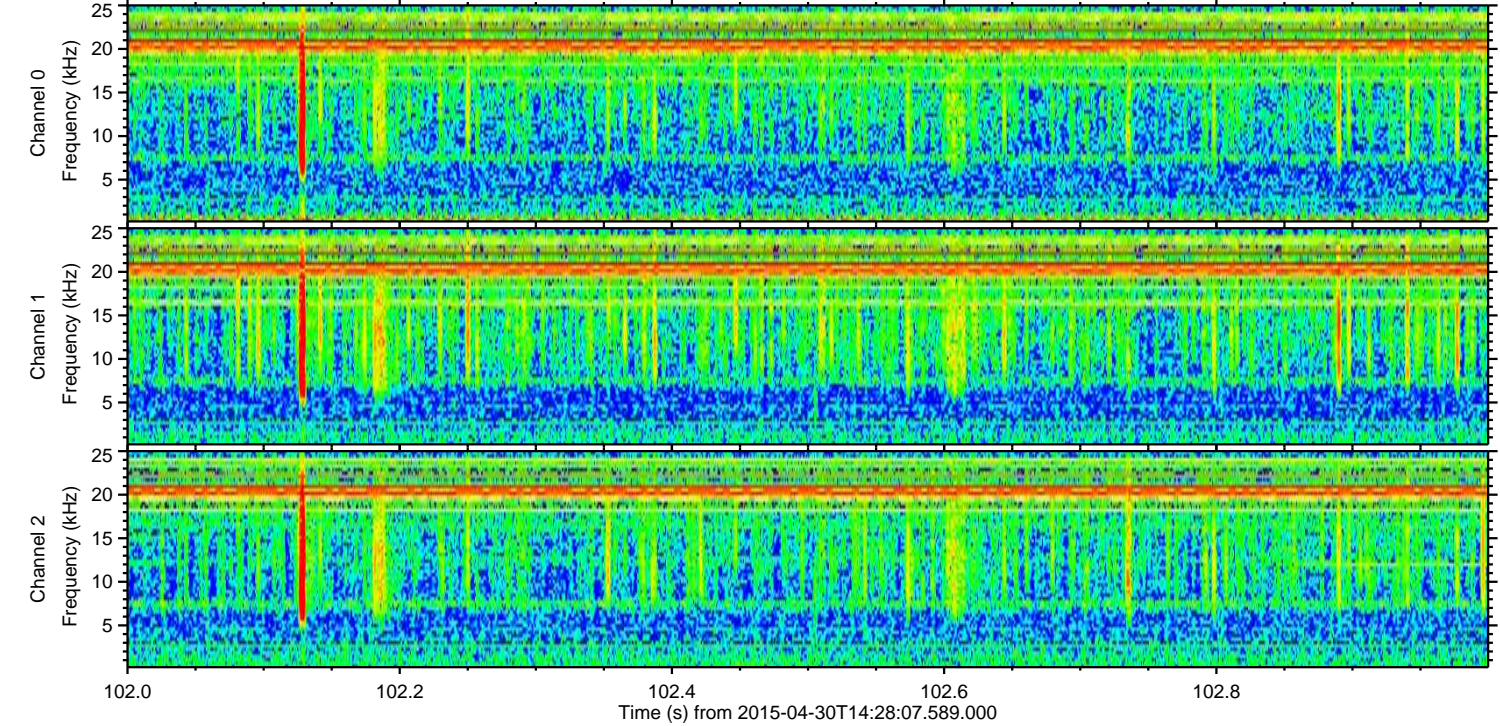
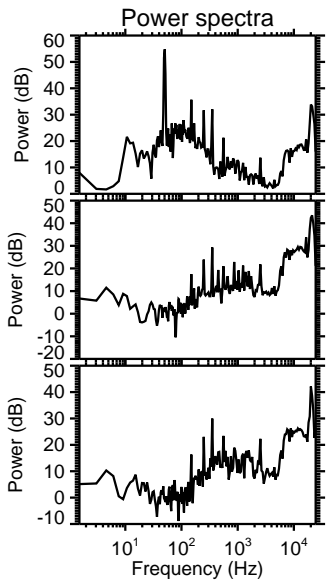
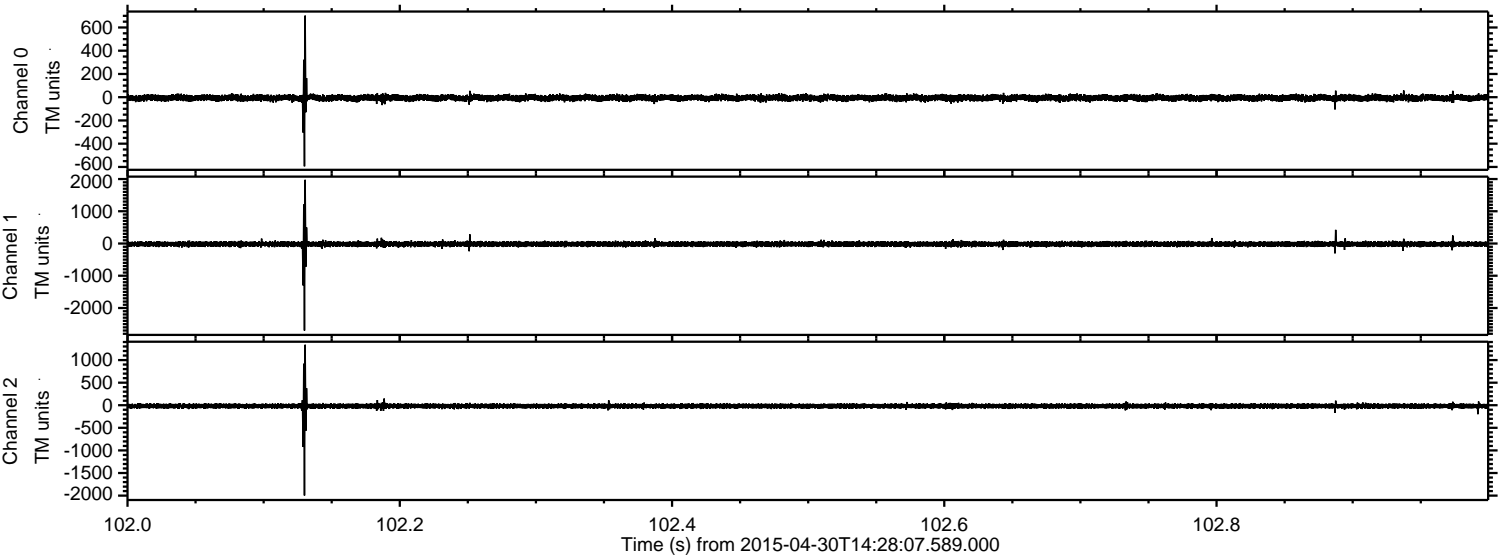
Channel 0  
mn: -1222  
mx: 975  
 $\mu$ : -6.1  
 $\sigma$ : 17.3

Channel 1  
mn: -693  
mx: 458  
 $\mu$ : -17.5  
 $\sigma$ : 36.0

Channel 2  
mn: -3604  
mx: 4341  
 $\mu$ : -17.8  
 $\sigma$ : 54.8

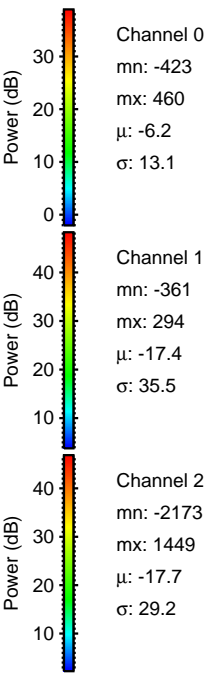
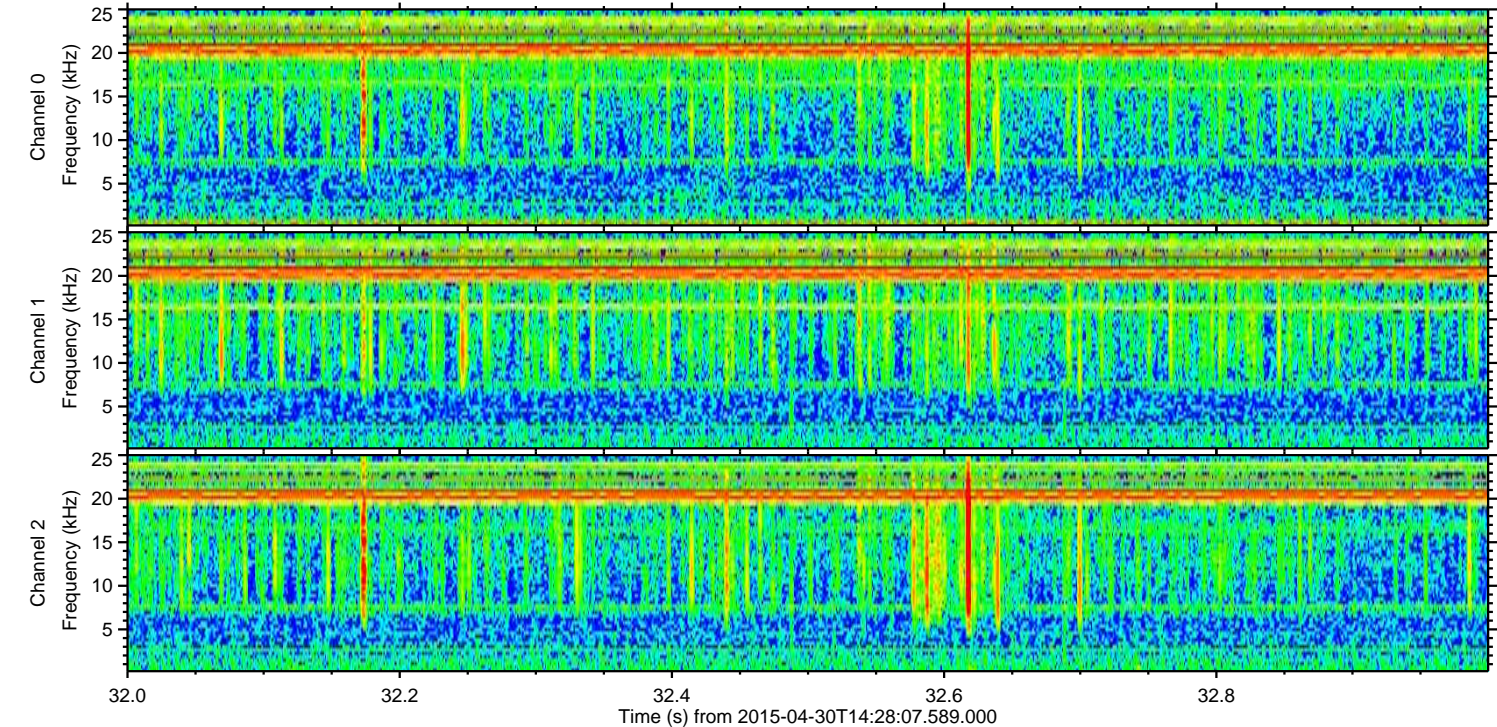
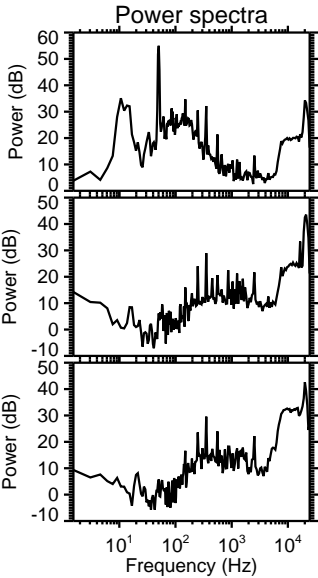
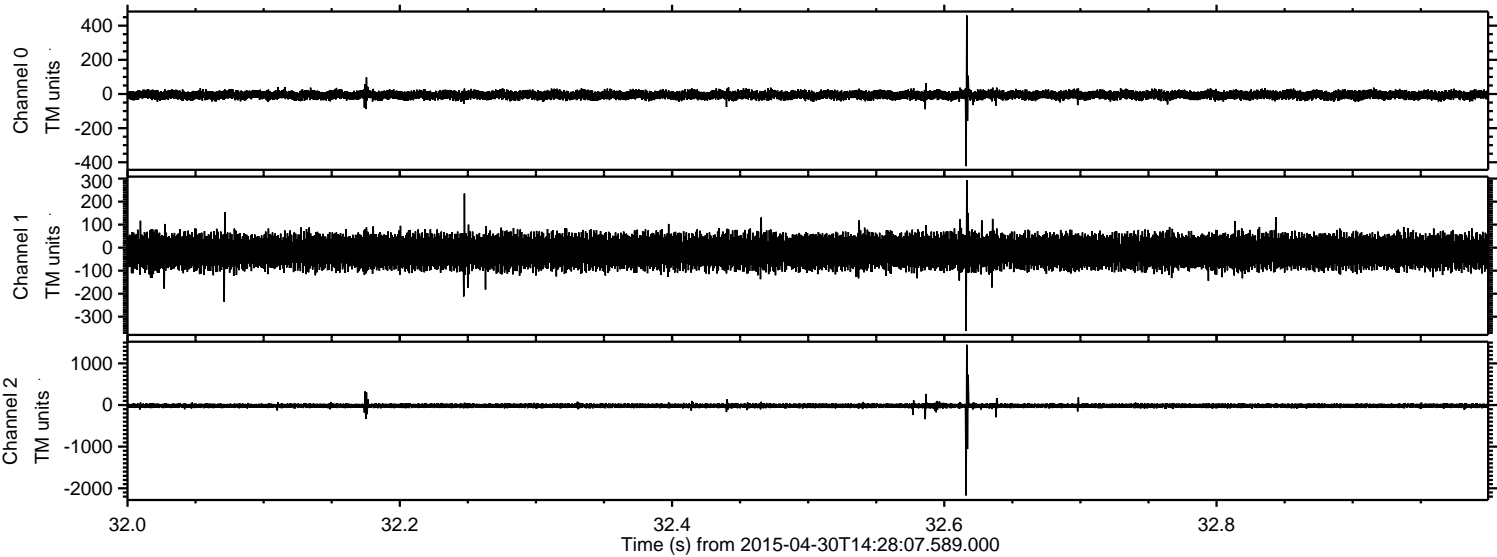


Processed Thu Apr 30 16:35:42 2015 by ELM ver.2012-10-06 from 001\_\_elm20150430\_142806\_\_dat00.bin



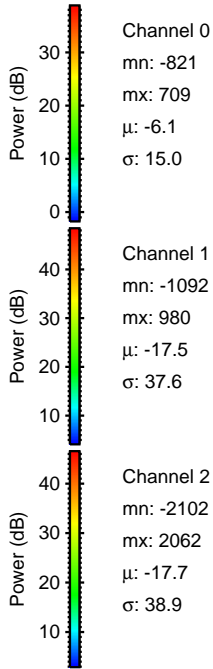
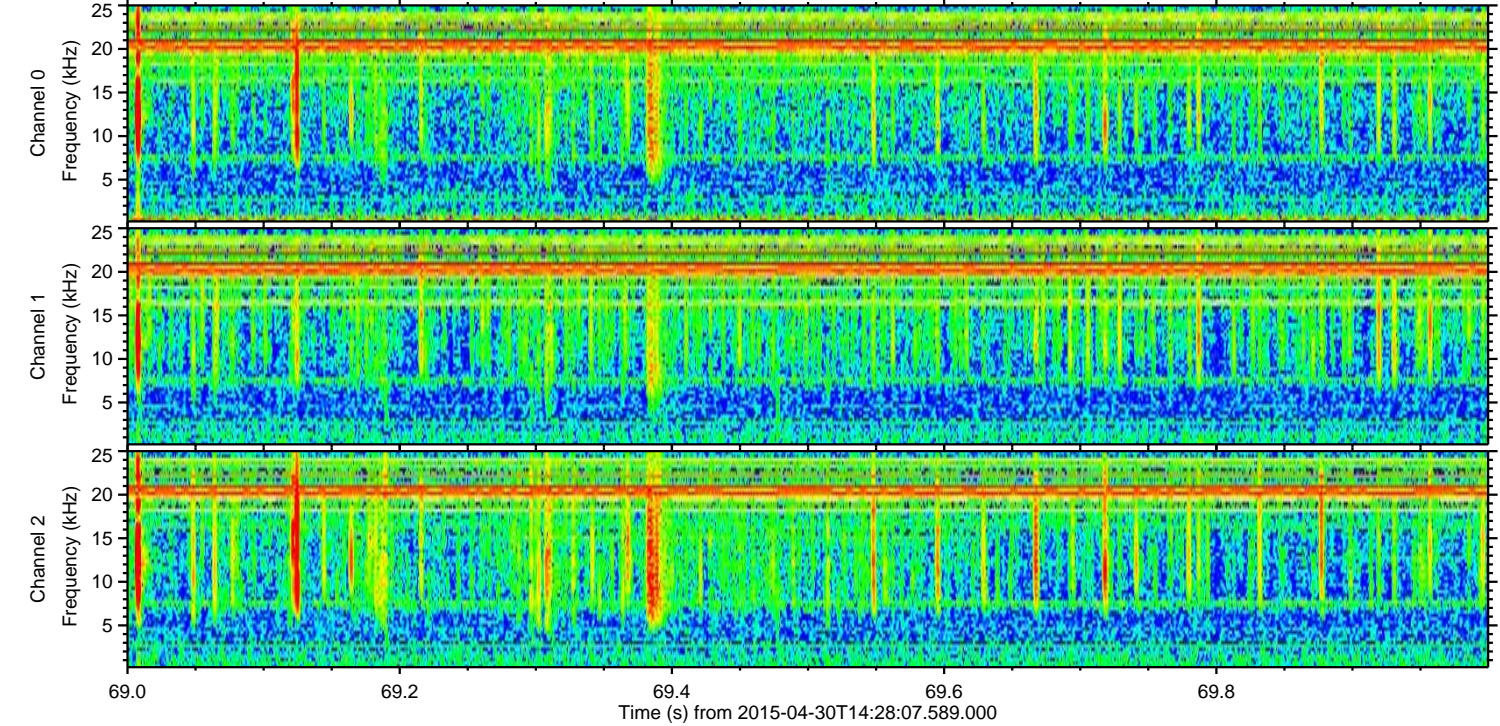
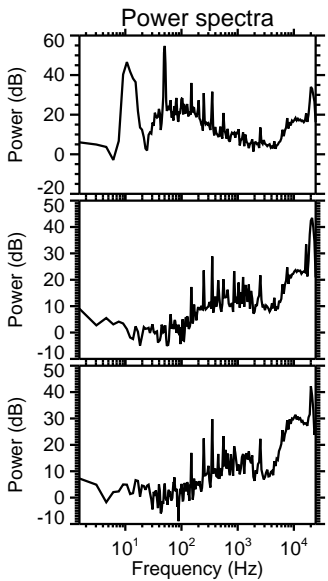
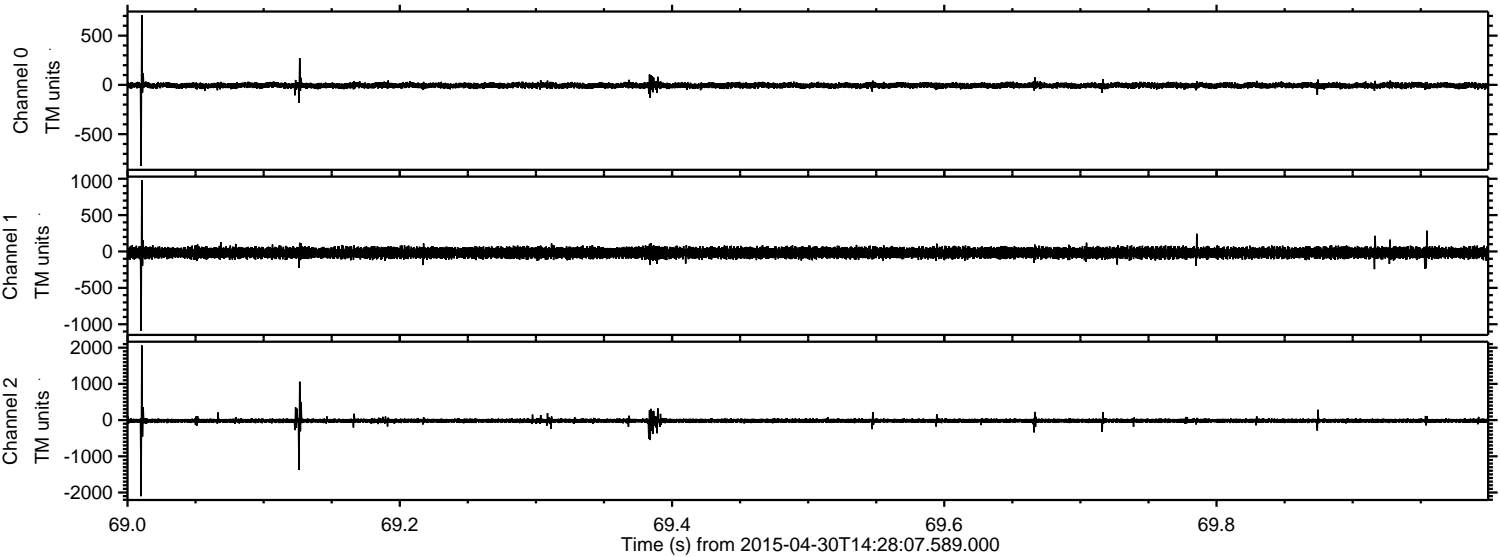


Processed Thu Apr 30 16:35:43 2015 by ELM ver.2012-10-06 from 001\_\_elm20150430\_142806\_\_dat00.bin





Processed Thu Apr 30 16:35:44 2015 by ELM ver.2012-10-06 from 001\_\_elm20150430\_142806\_\_dat00.bin



Channel 0  
mn: -821  
mx: 709  
 $\mu$ : -6.1  
 $\sigma$ : 15.0

Channel 1  
mn: -1092  
mx: 980  
 $\mu$ : -17.5  
 $\sigma$ : 37.6

Channel 2  
mn: -2102  
mx: 2062  
 $\mu$ : -17.7  
 $\sigma$ : 38.9



Processed Thu Apr 30 16:35:45 2015 by ELM ver.2012-10-06 from 001\_\_elm20150430\_142806\_\_dat00.bin

