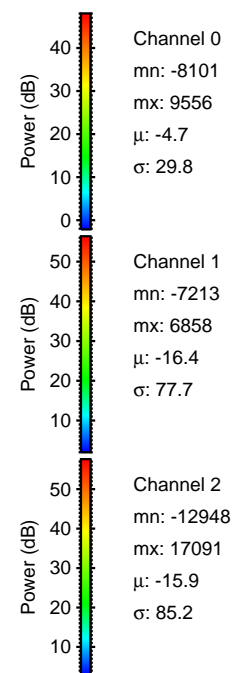
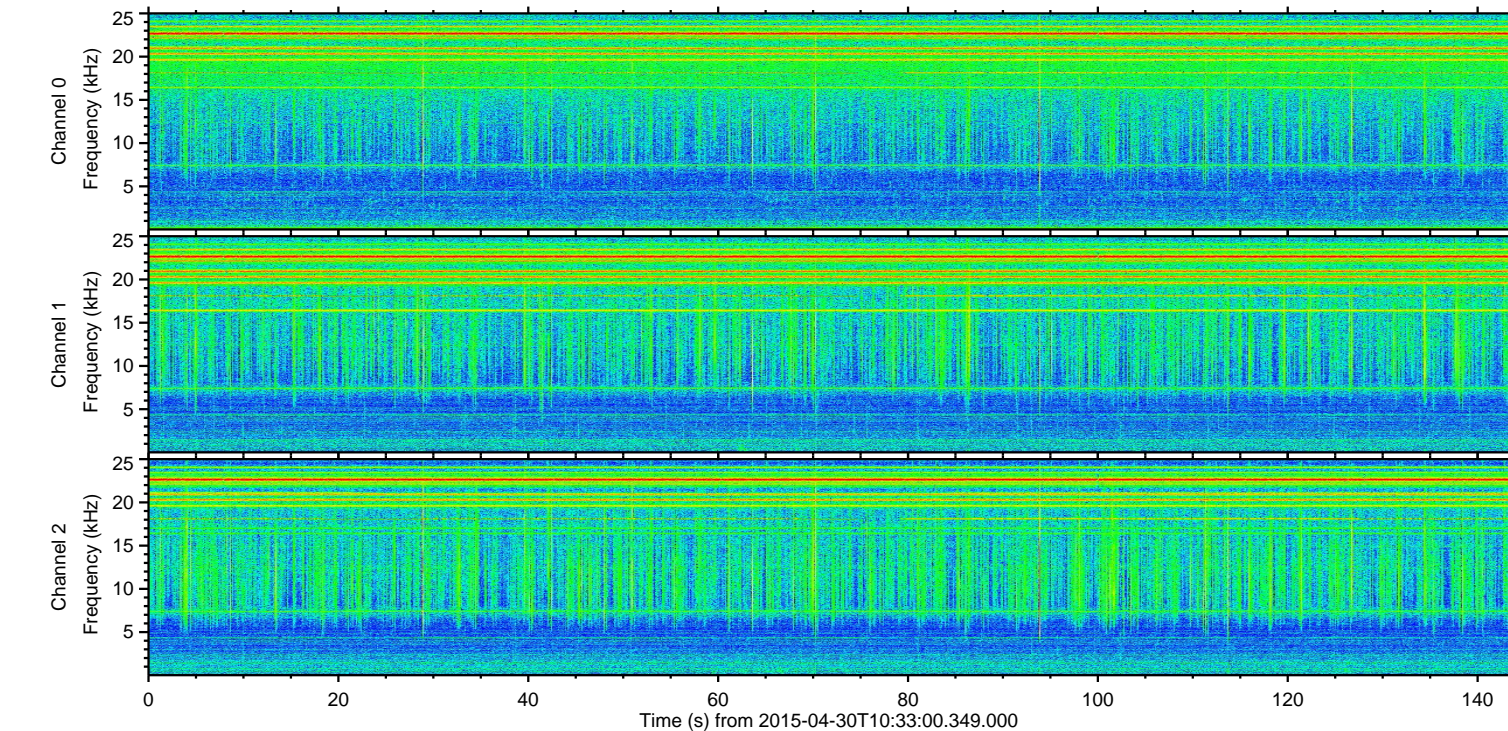
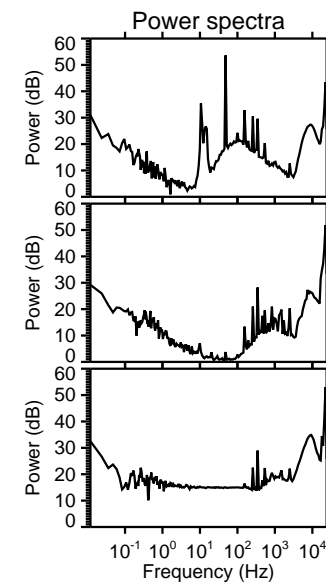
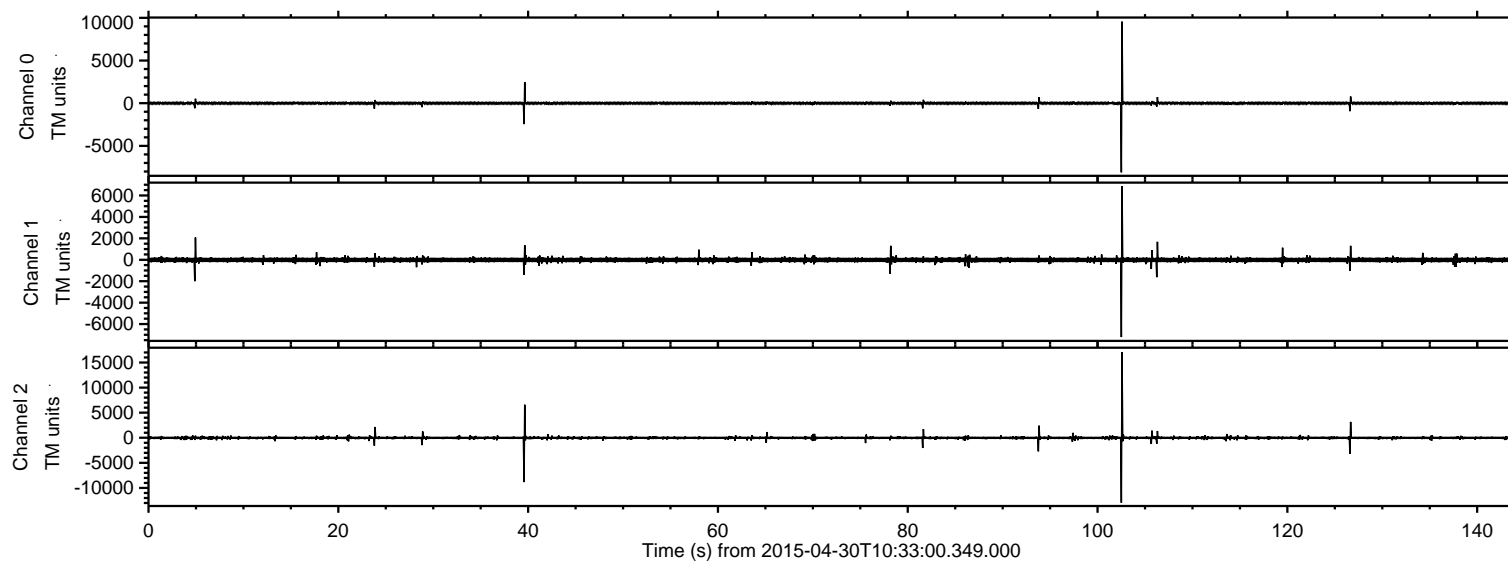


# ELMAVAN 3D WAVEFORMS (Measured data sampled at 50 kHz) 49780 packets of 144 samples from 2015-04-30T10:33:00.349.000.

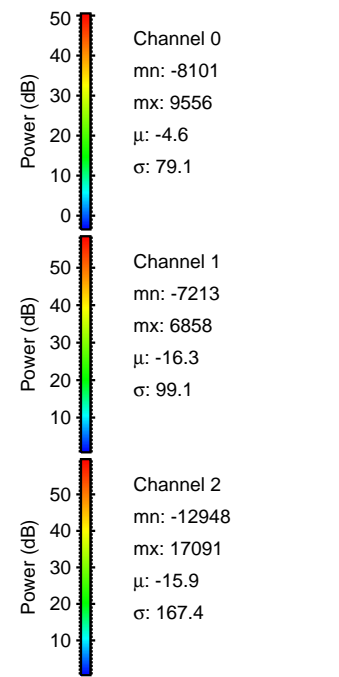
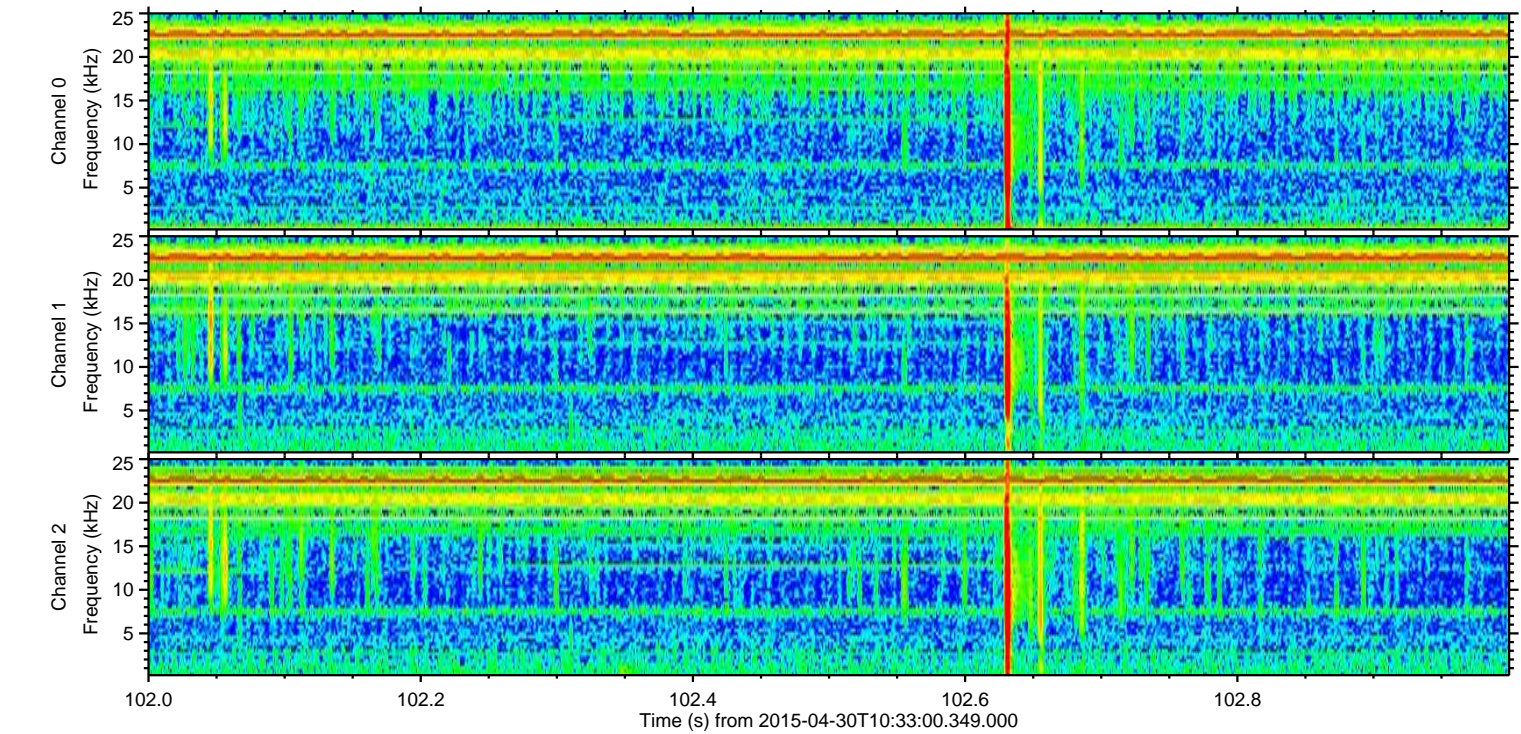
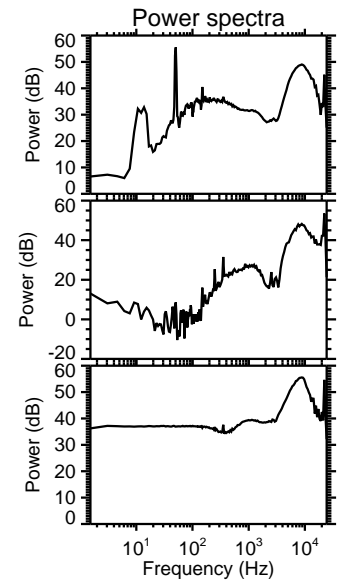
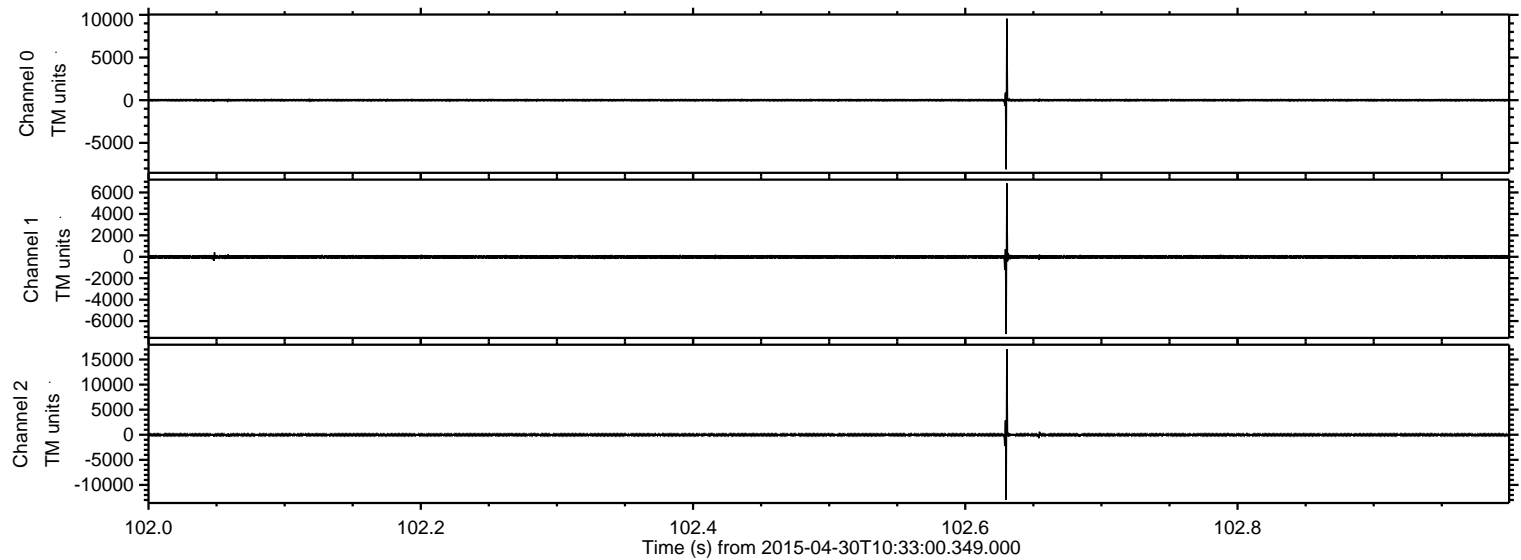
Processed Thu Apr 30 12:40:27 2015 by ELM ver.2012-10-06 from 001\_\_elm20150430\_103259\_\_dat00.bin





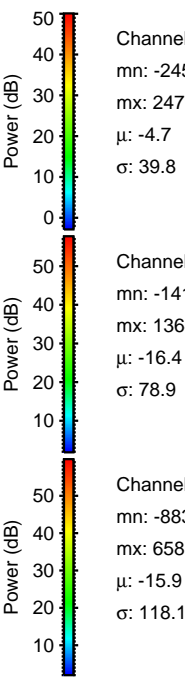
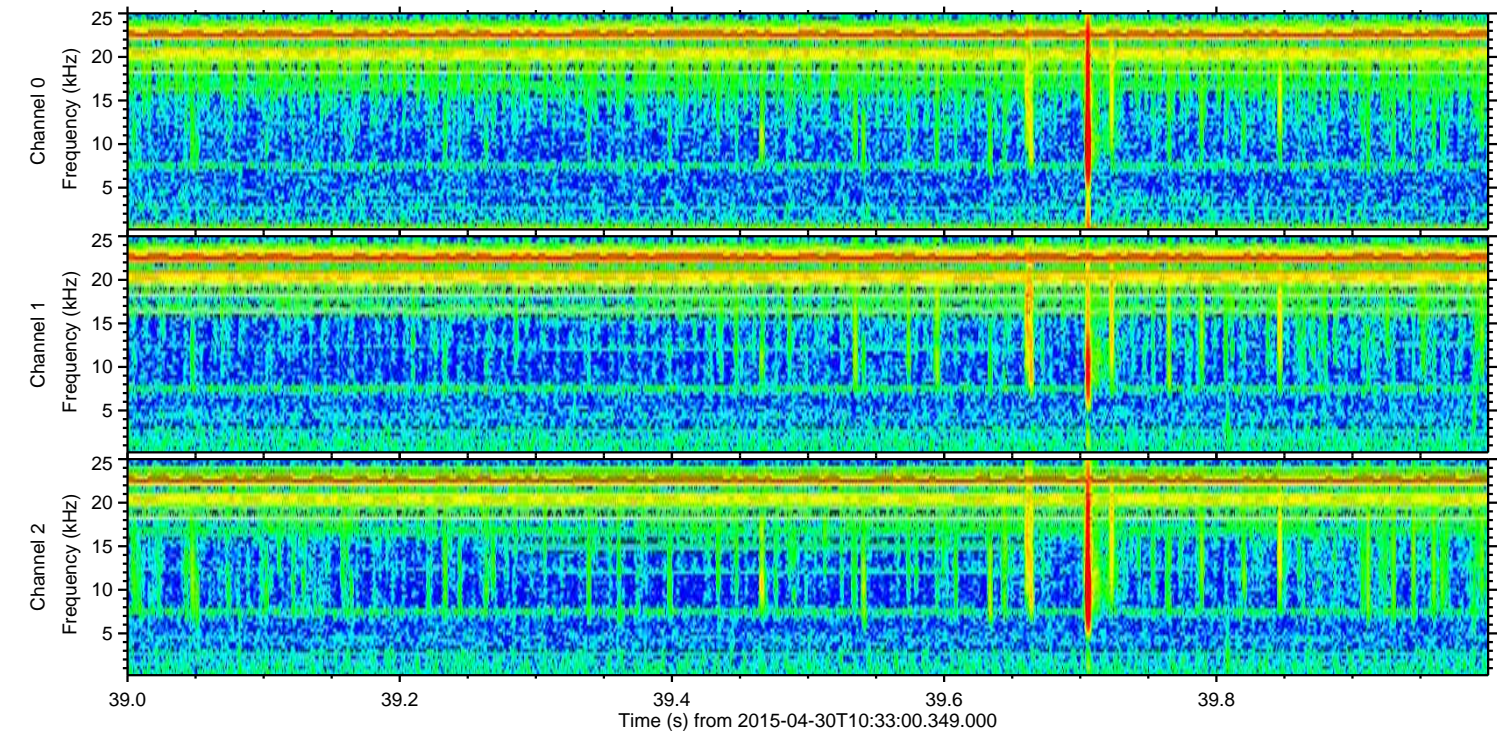
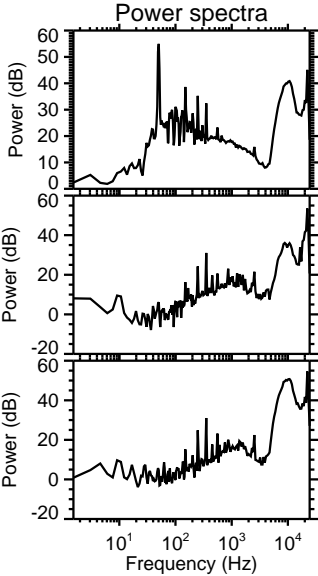
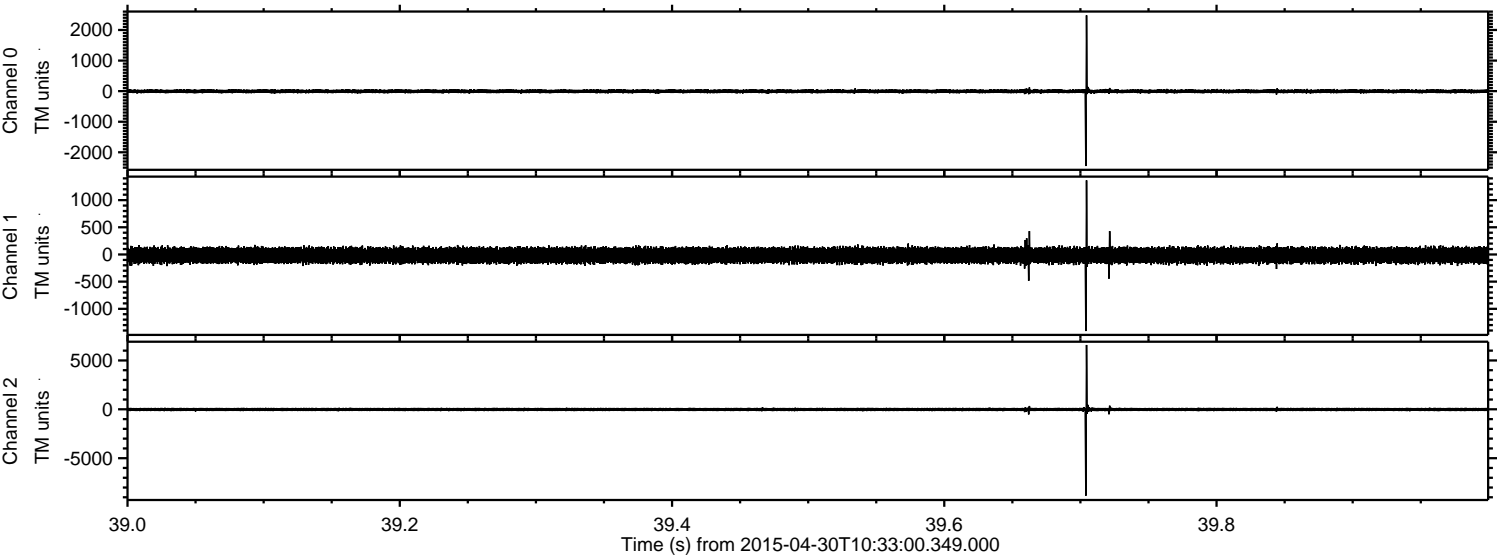
ELMAVAN 3D WAVEFORMS (Measured data sampled at 50 kHz) 49780 packets of 144 samples from 2015-04-30T10:33:00.349.000. Part 103/144

Processed Thu Apr 30 12:40:38 2015 by ELM ver.2012-10-06 from 001\_\_elm20150430\_103259\_\_dat00.bin





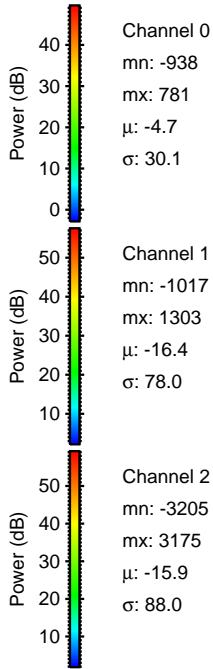
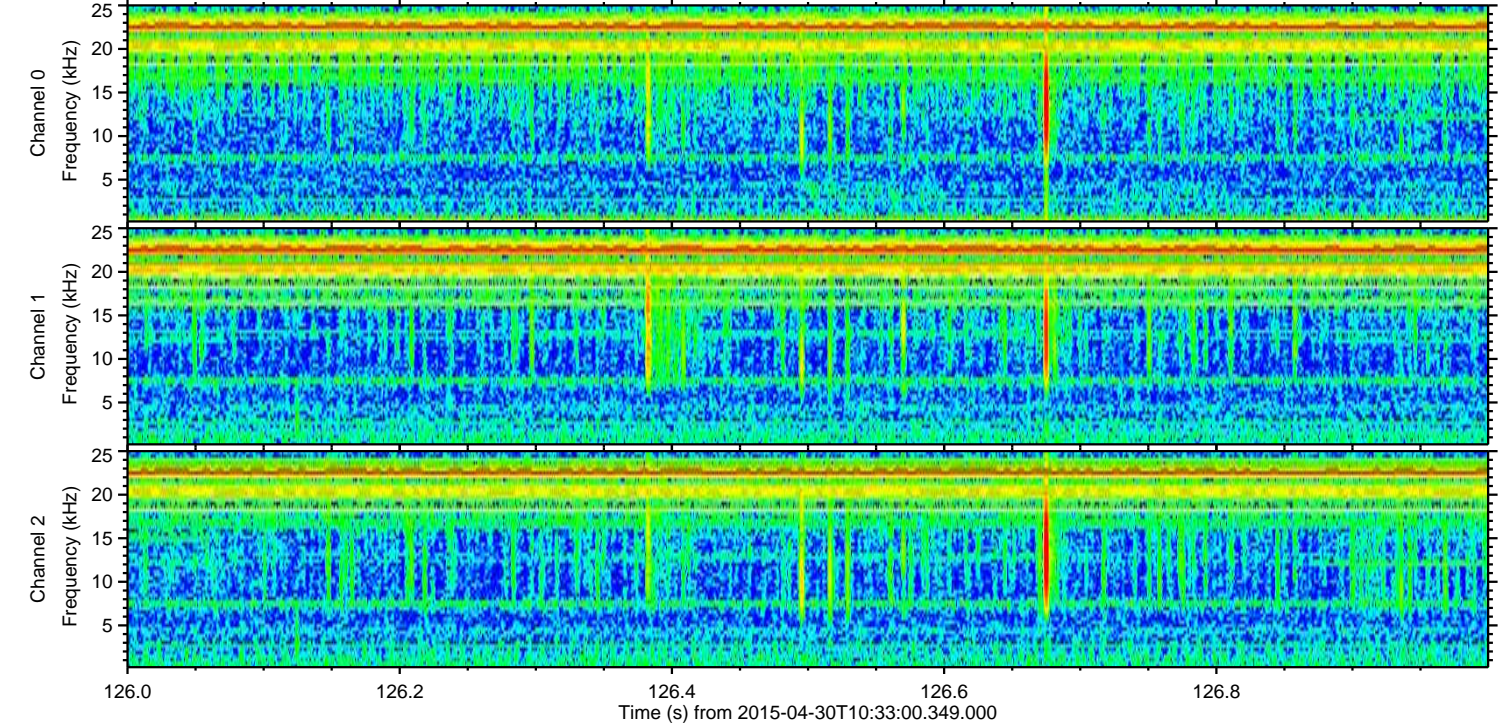
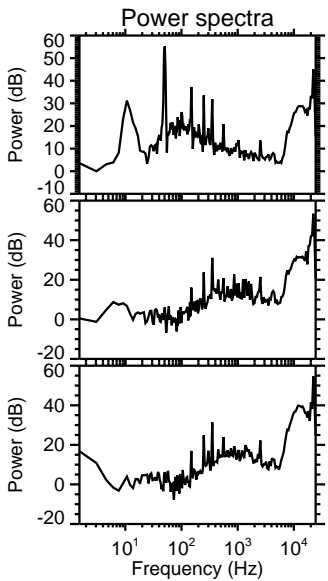
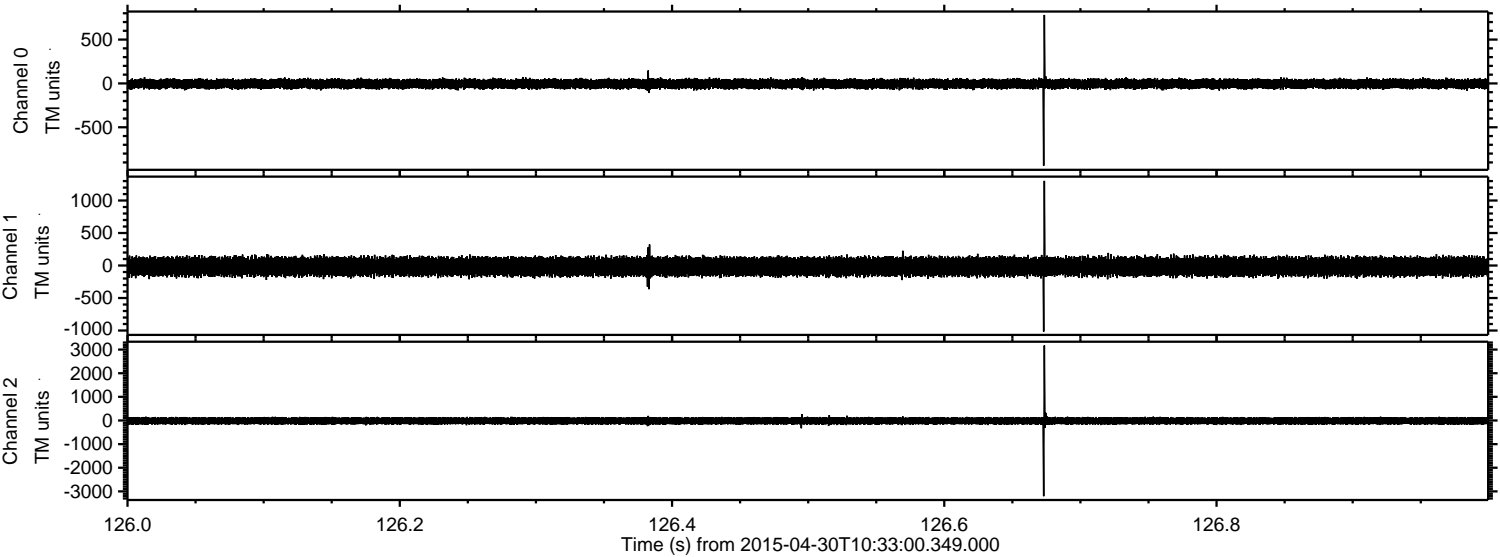
Processed Thu Apr 30 12:40:39 2015 by ELM ver.2012-10-06 from 001\_\_elm20150430\_103259\_\_dat00.bin





ELMAVAN 3D WAVEFORMS (Measured data sampled at 50 kHz) 49780 packets of 144 samples from 2015-04-30T10:33:00.349.000. Part 127/144

Processed Thu Apr 30 12:40:40 2015 by ELM ver.2012-10-06 from 001\_\_elm20150430\_103259\_\_dat00.bin



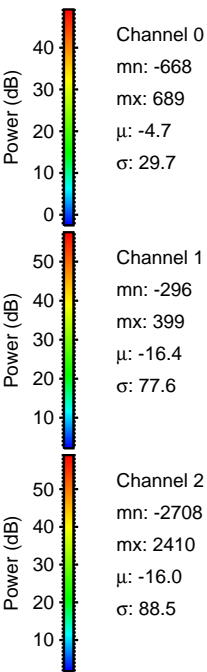
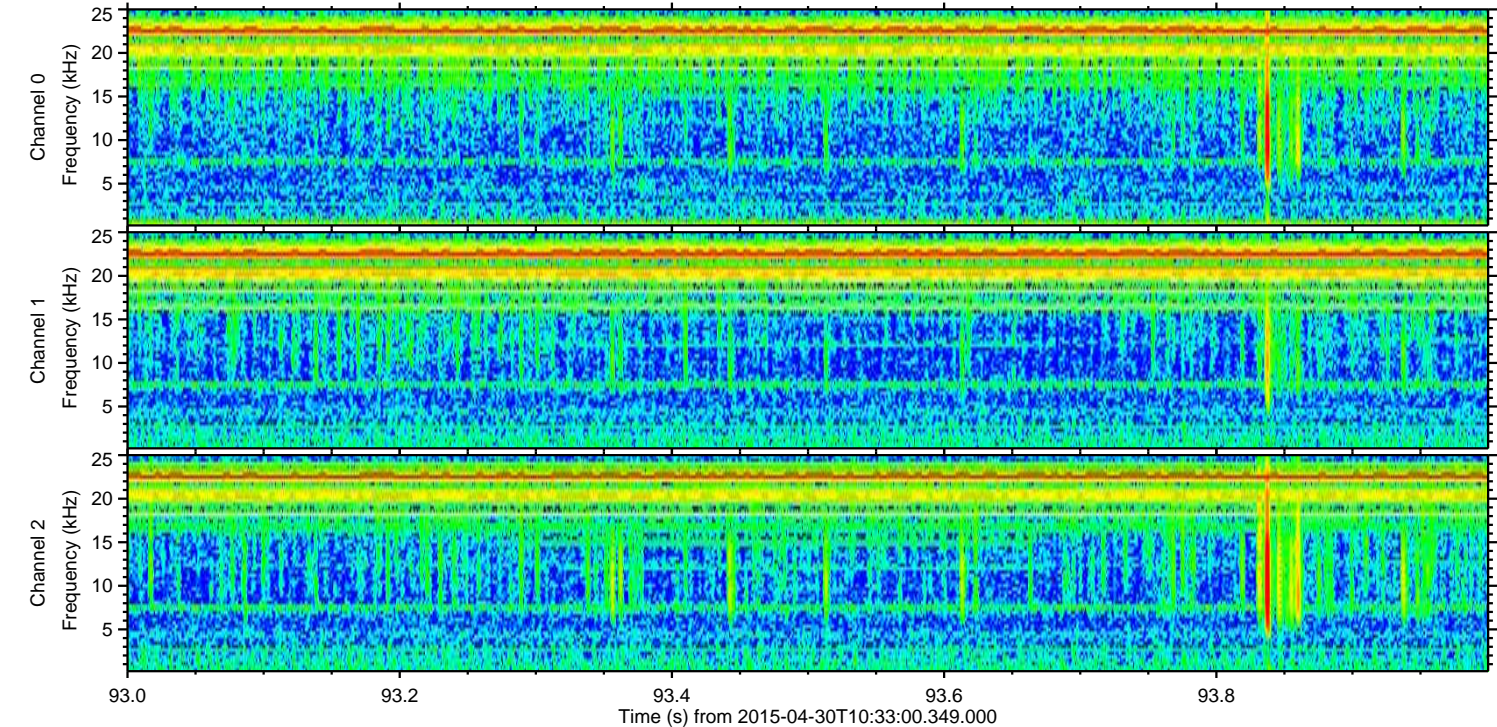
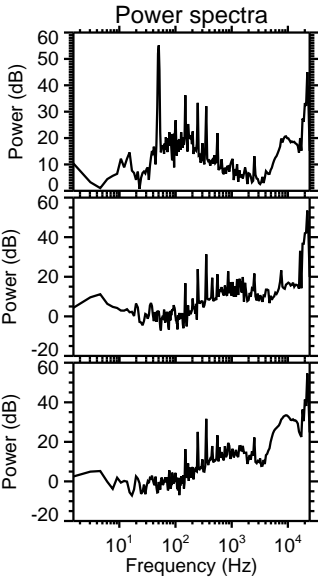
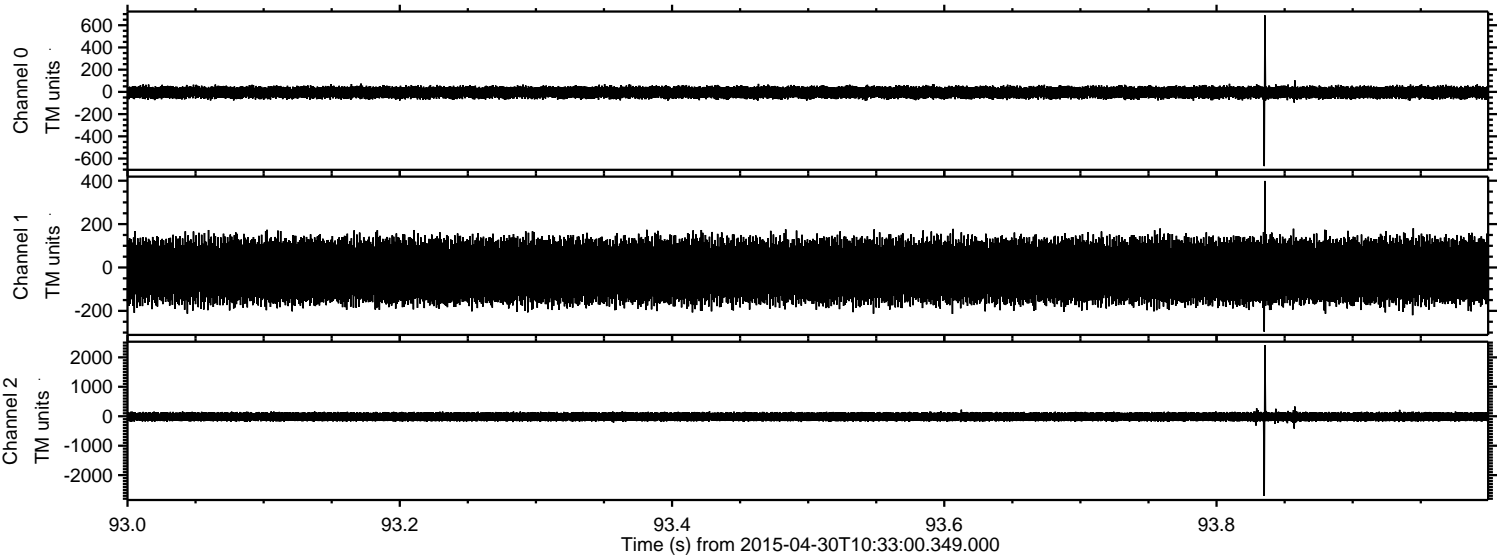
Channel 0  
mn: -938  
mx: 781  
 $\mu$ : -4.7  
 $\sigma$ : 30.1

Channel 1  
mn: -1017  
mx: 1303  
 $\mu$ : -16.4  
 $\sigma$ : 78.0

Channel 2  
mn: -3205  
mx: 3175  
 $\mu$ : -15.9  
 $\sigma$ : 88.0

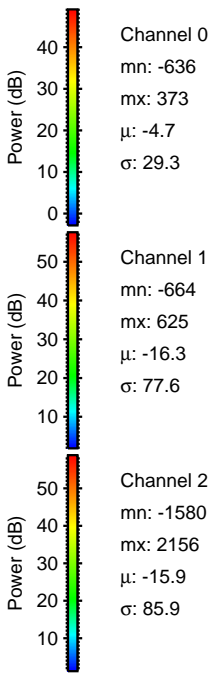
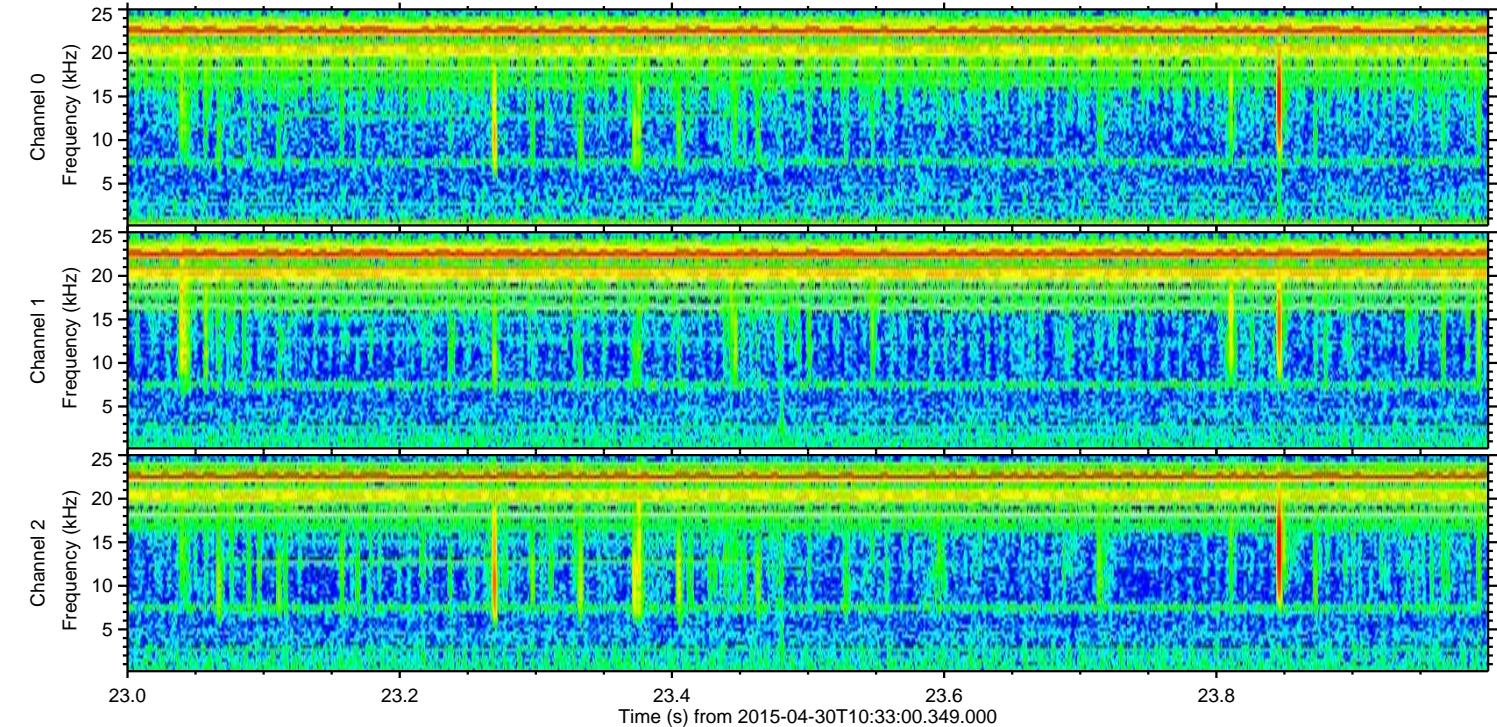
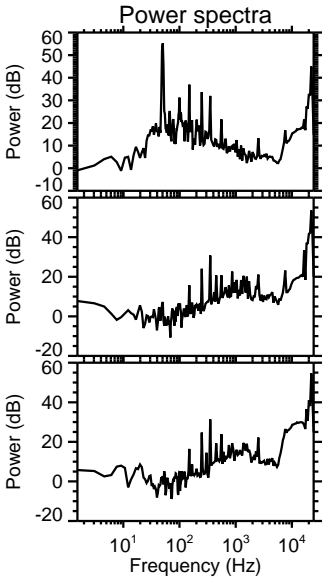
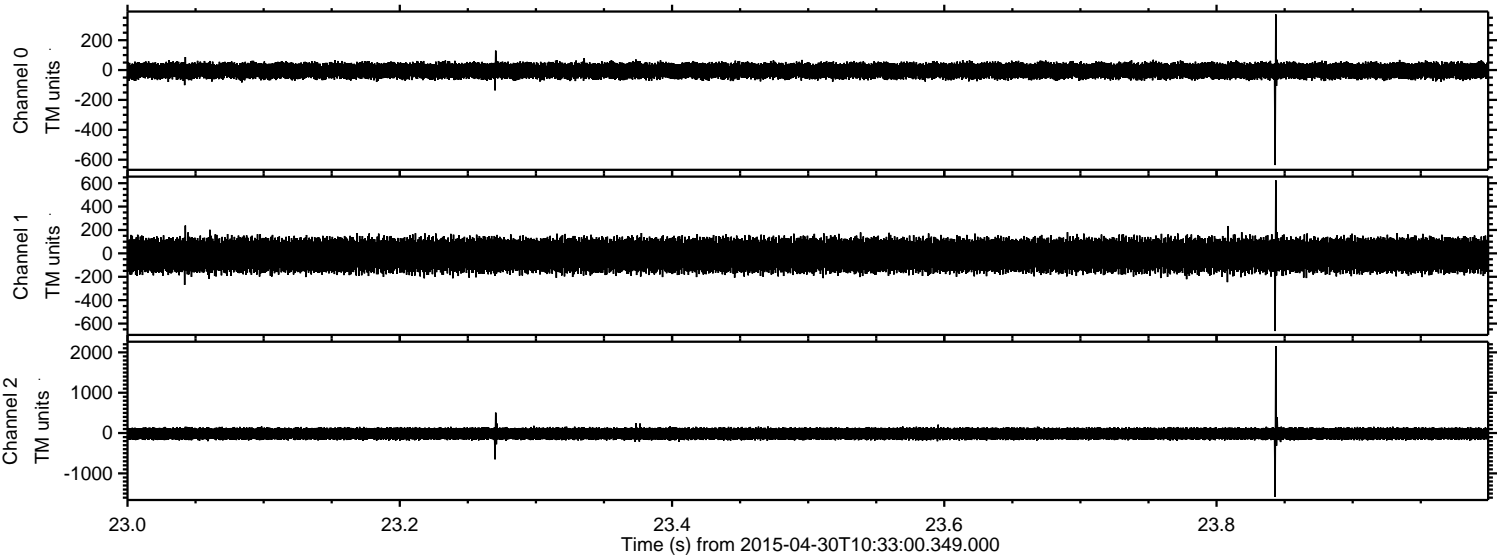


Processed Thu Apr 30 12:40:41 2015 by ELM ver.2012-10-06 from 001\_\_elm20150430\_103259\_\_dat00.bin



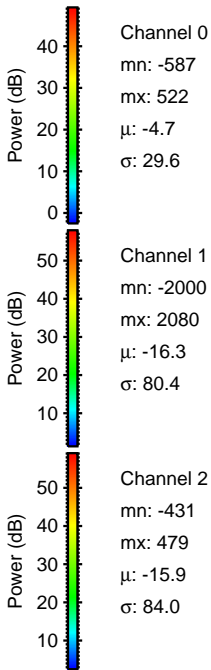
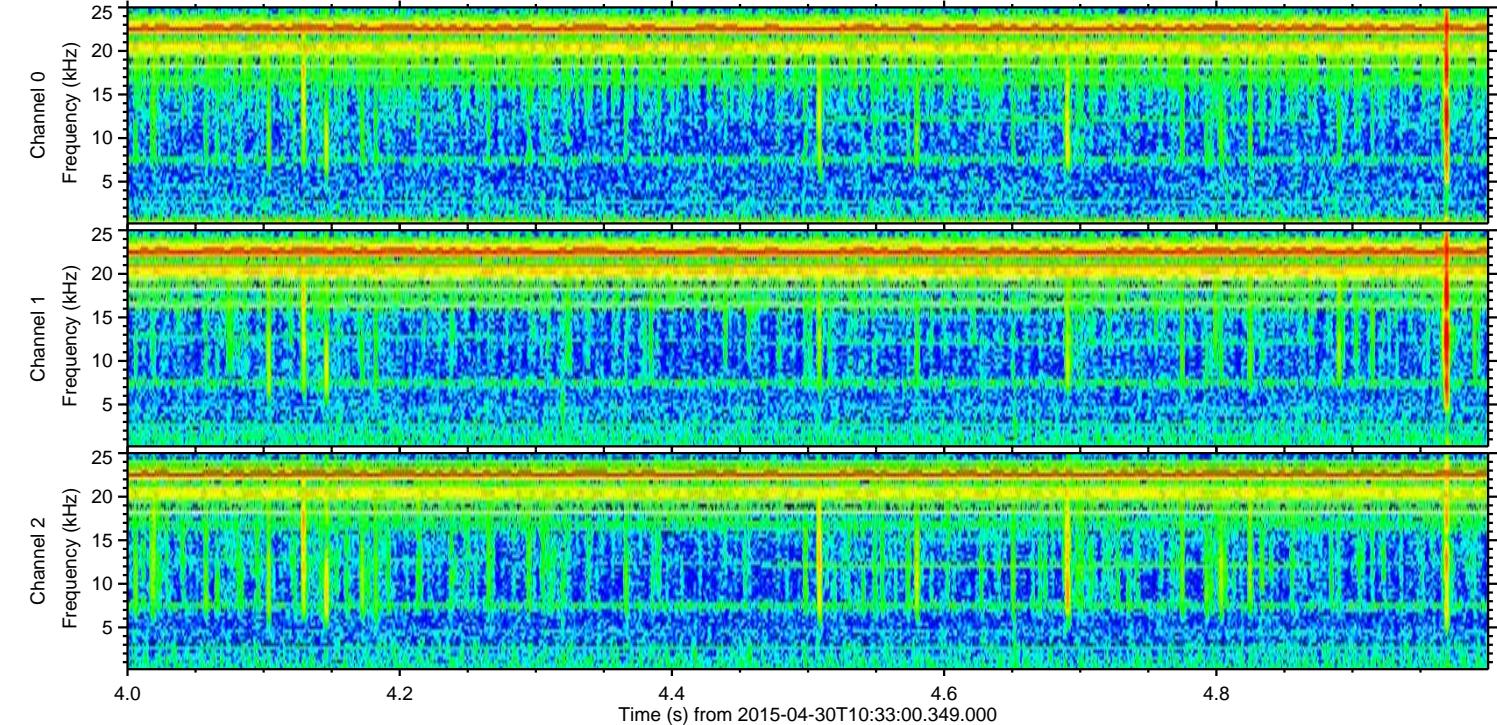
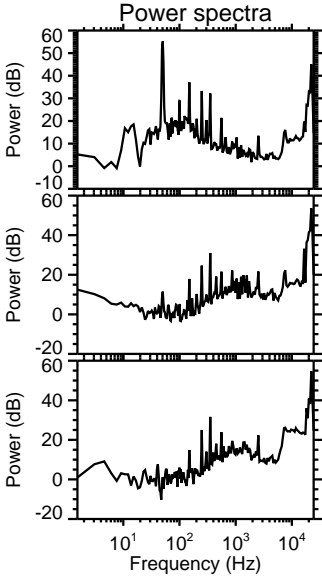
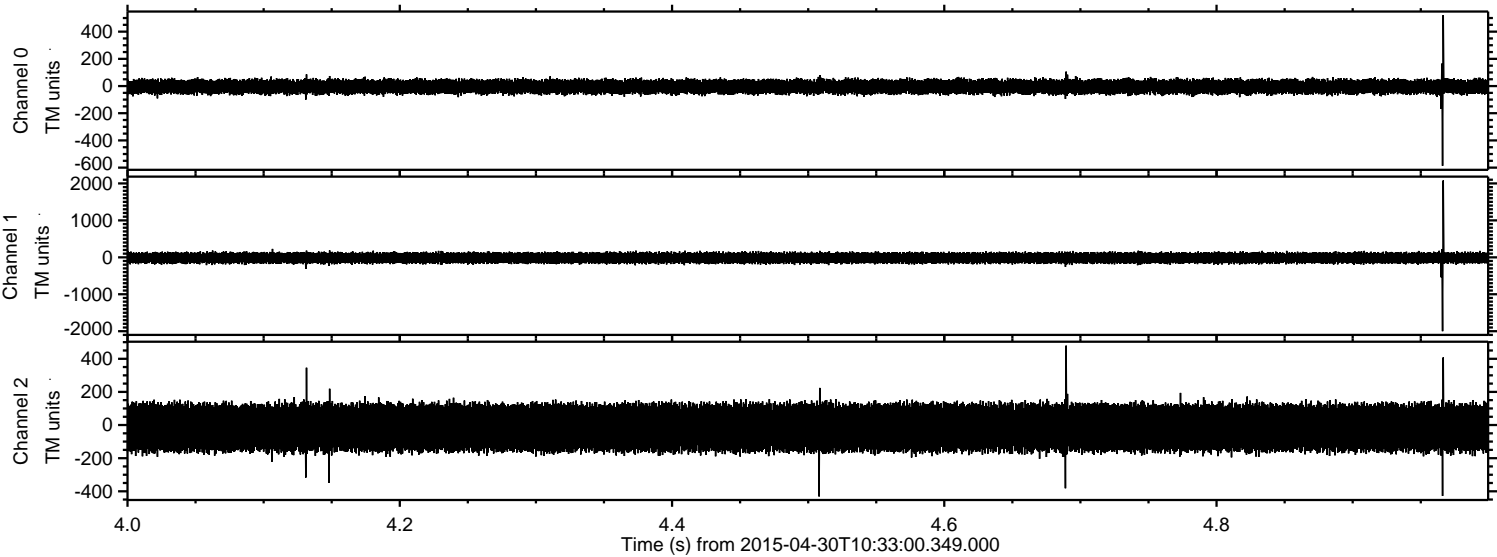


Processed Thu Apr 30 12:40:42 2015 by ELM ver.2012-10-06 from 001\_\_elm20150430\_103259\_\_dat00.bin



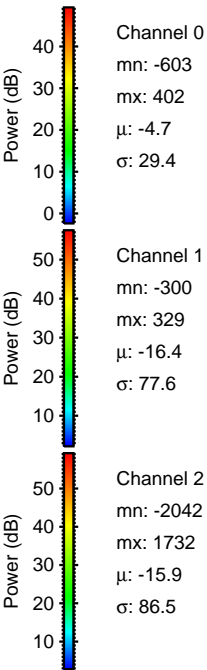
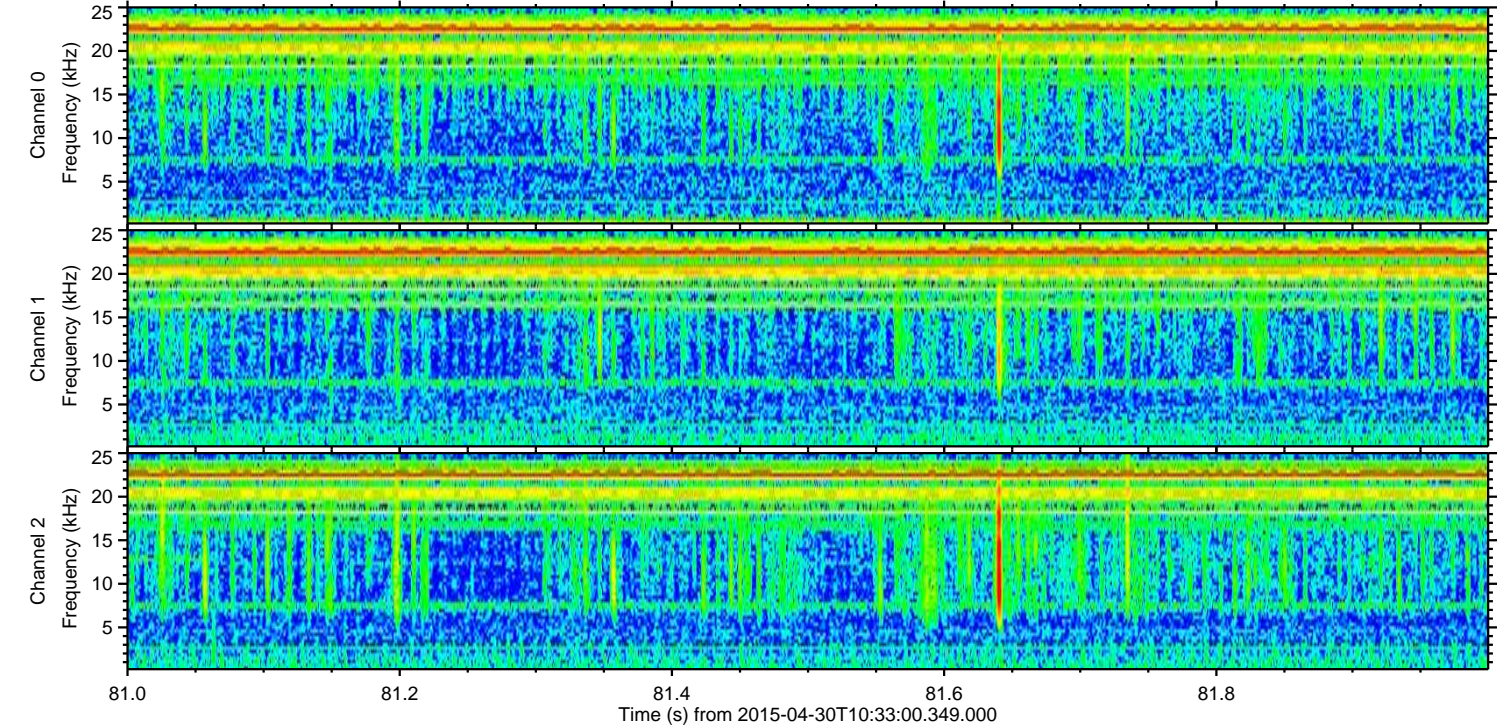
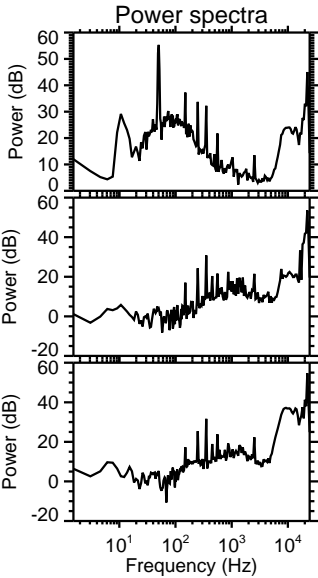
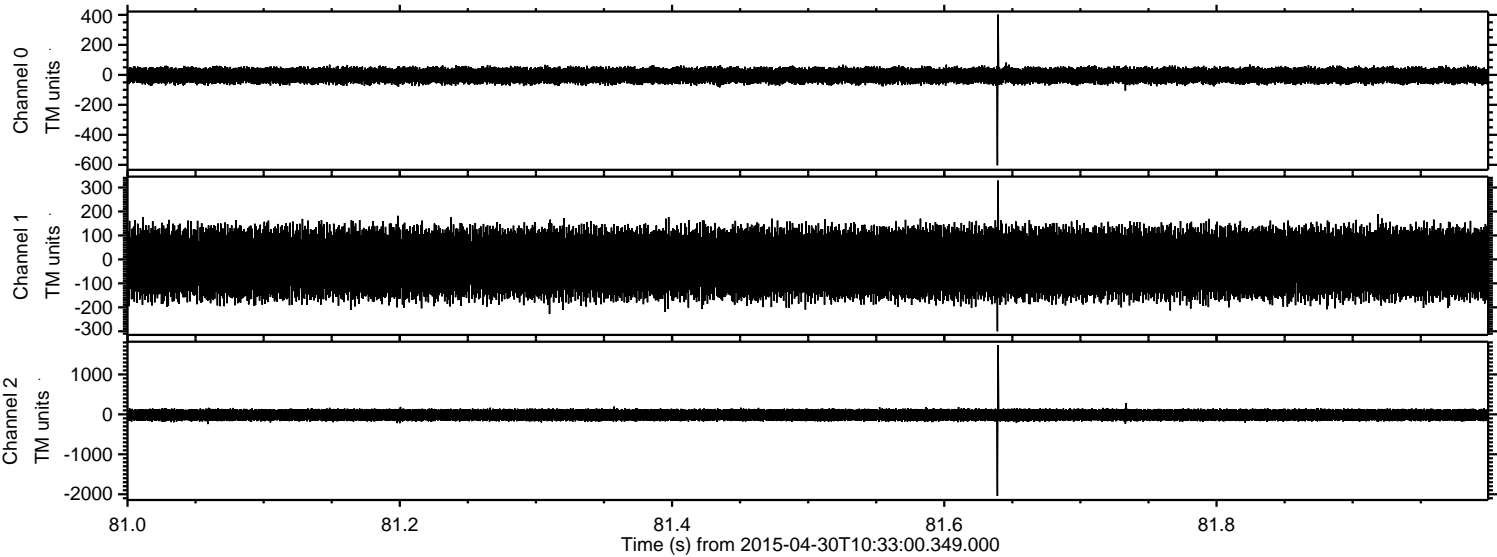


Processed Thu Apr 30 12:40:43 2015 by ELM ver.2012-10-06 from 001\_\_elm20150430\_103259\_\_dat00.bin



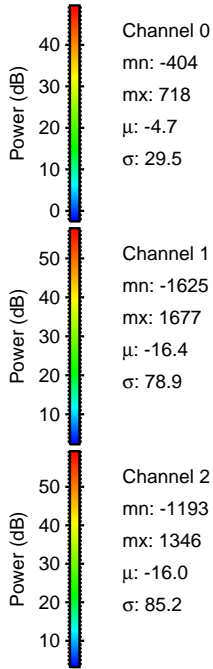
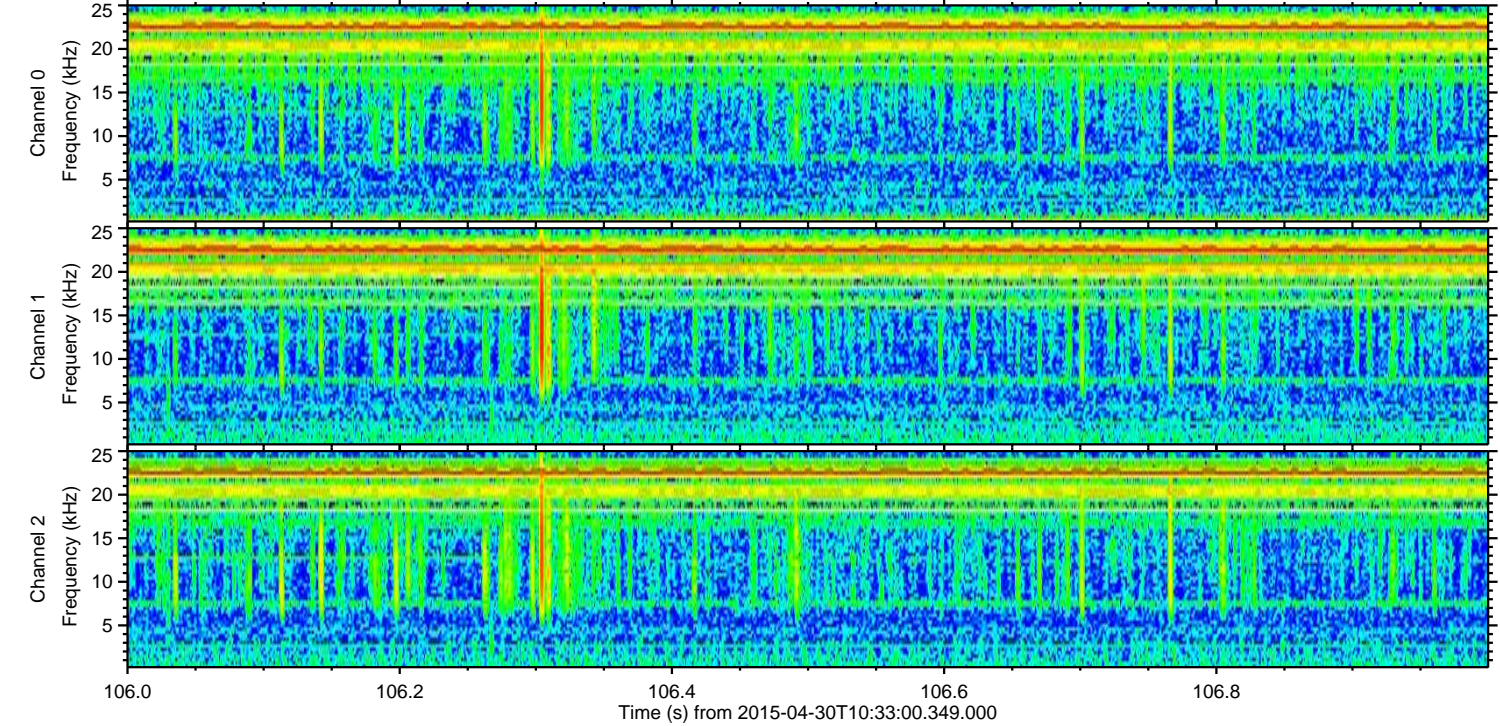
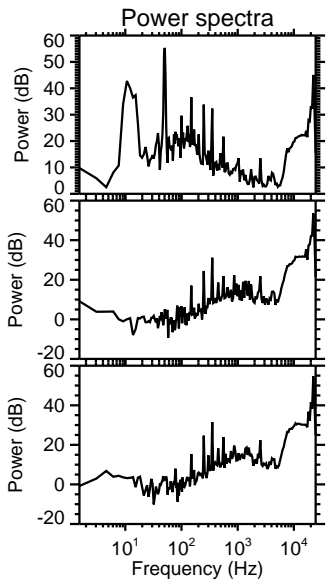
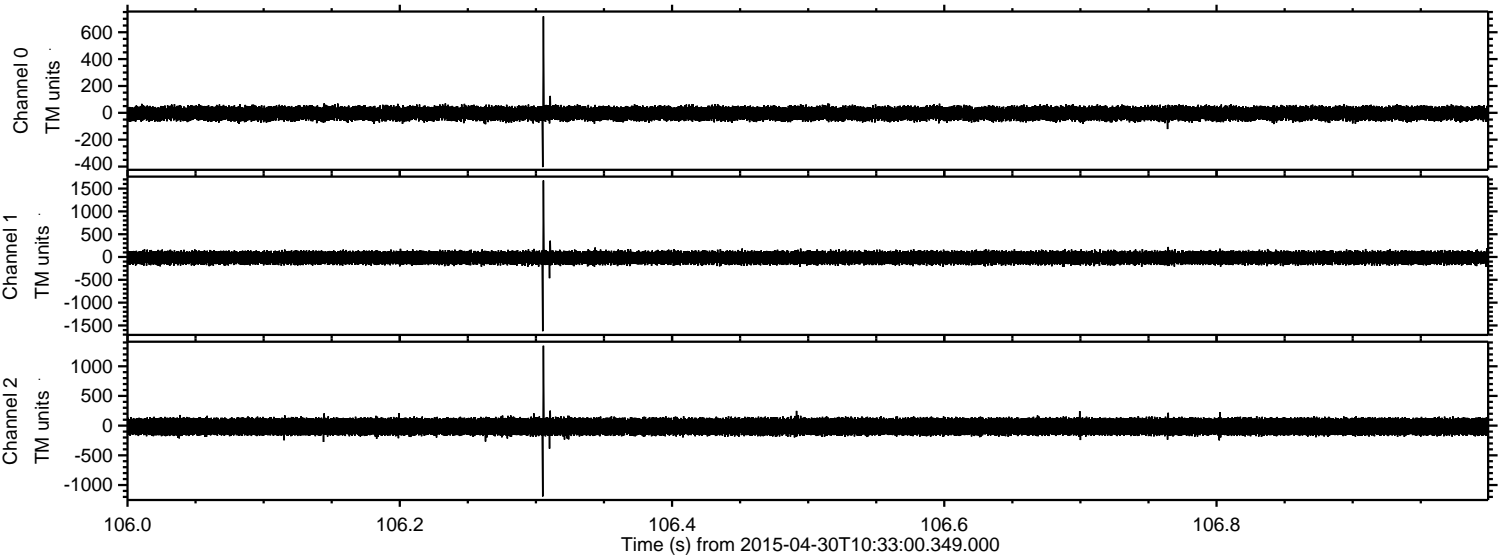


Processed Thu Apr 30 12:40:44 2015 by ELM ver.2012-10-06 from 001\_\_elm20150430\_103259\_\_dat00.bin



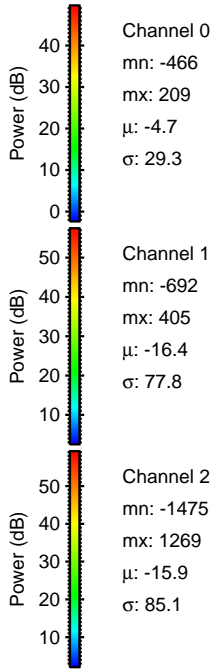
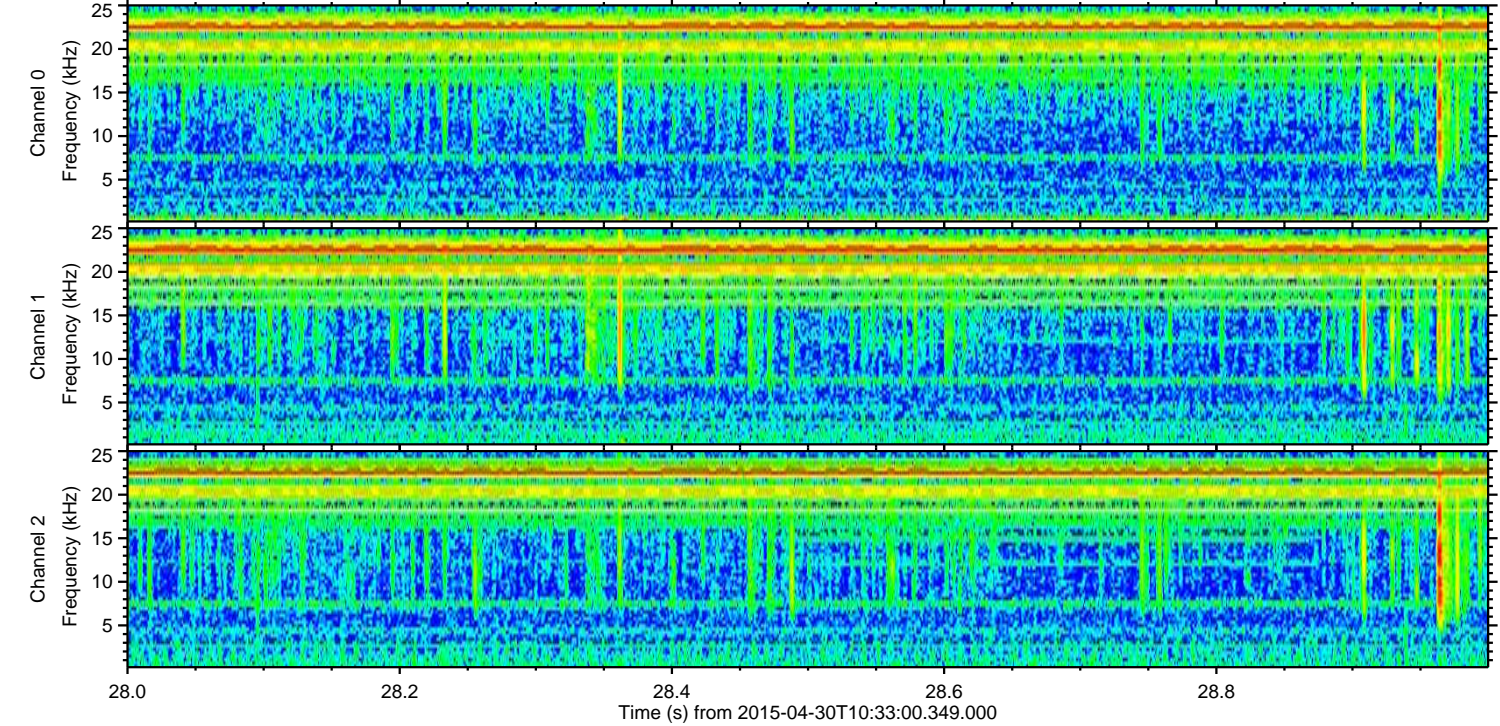
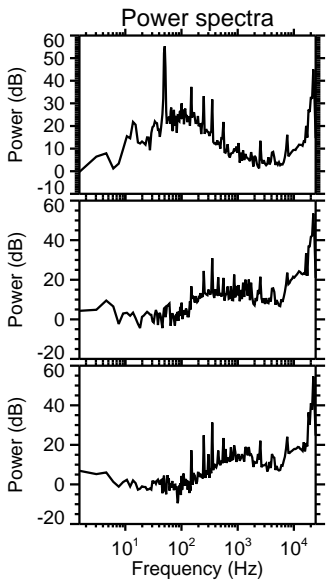
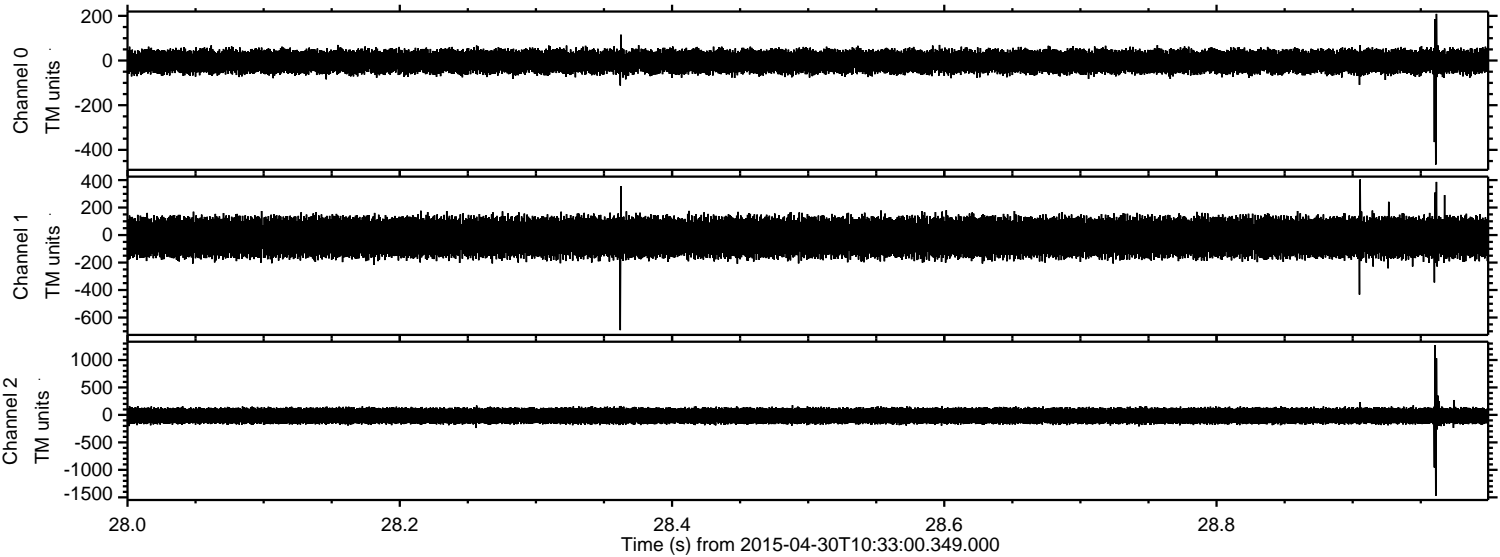


Processed Thu Apr 30 12:40:45 2015 by ELM ver.2012-10-06 from 001\_\_elm20150430\_103259\_\_dat00.bin





Processed Thu Apr 30 12:40:46 2015 by ELM ver.2012-10-06 from 001\_\_elm20150430\_103259\_\_dat00.bin





Processed Thu Apr 30 12:40:47 2015 by ELM ver.2012-10-06 from 001\_\_elm20150430\_103259\_\_dat00.bin

