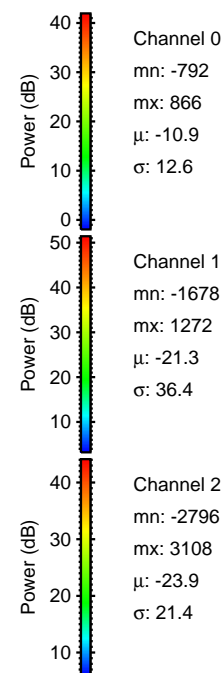
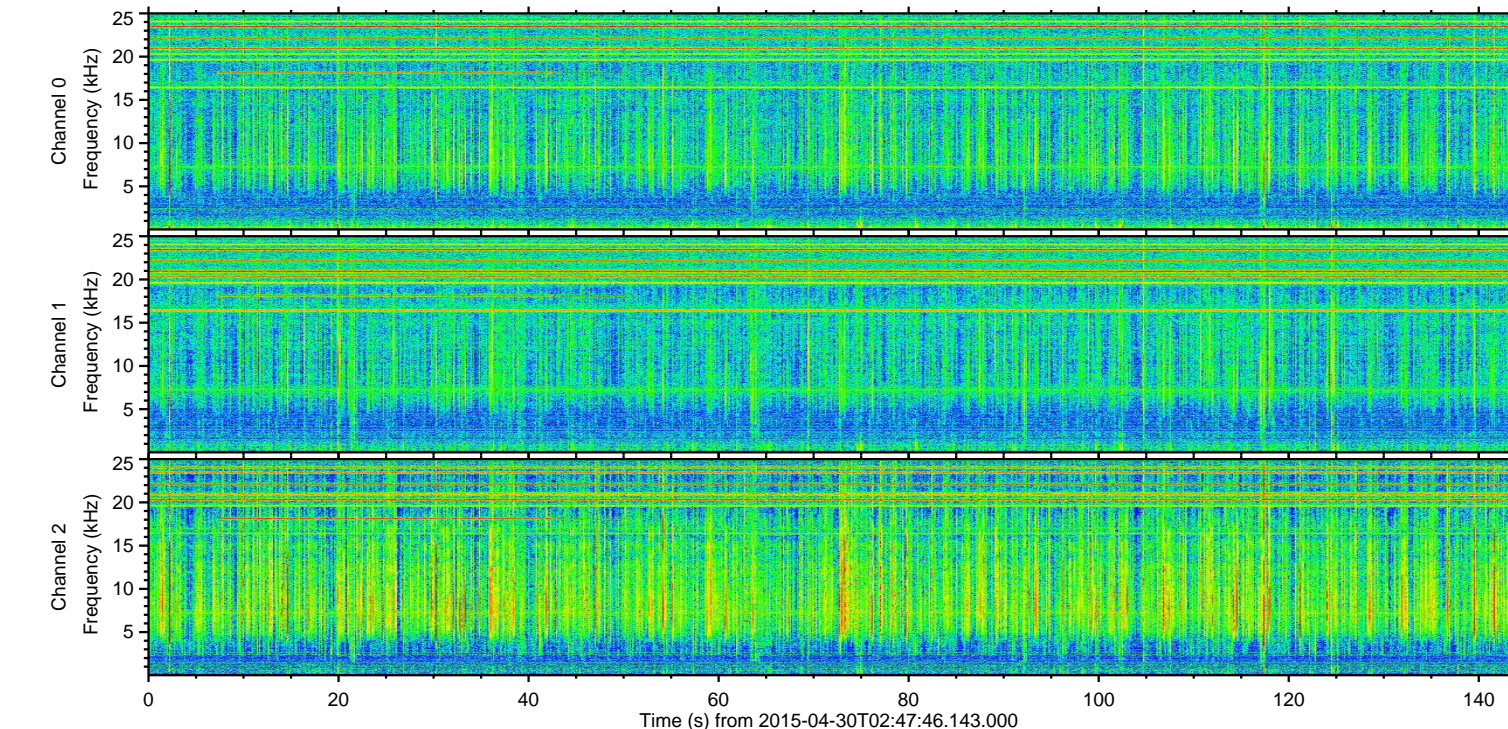
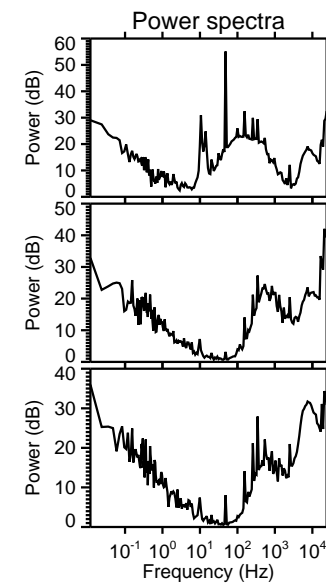
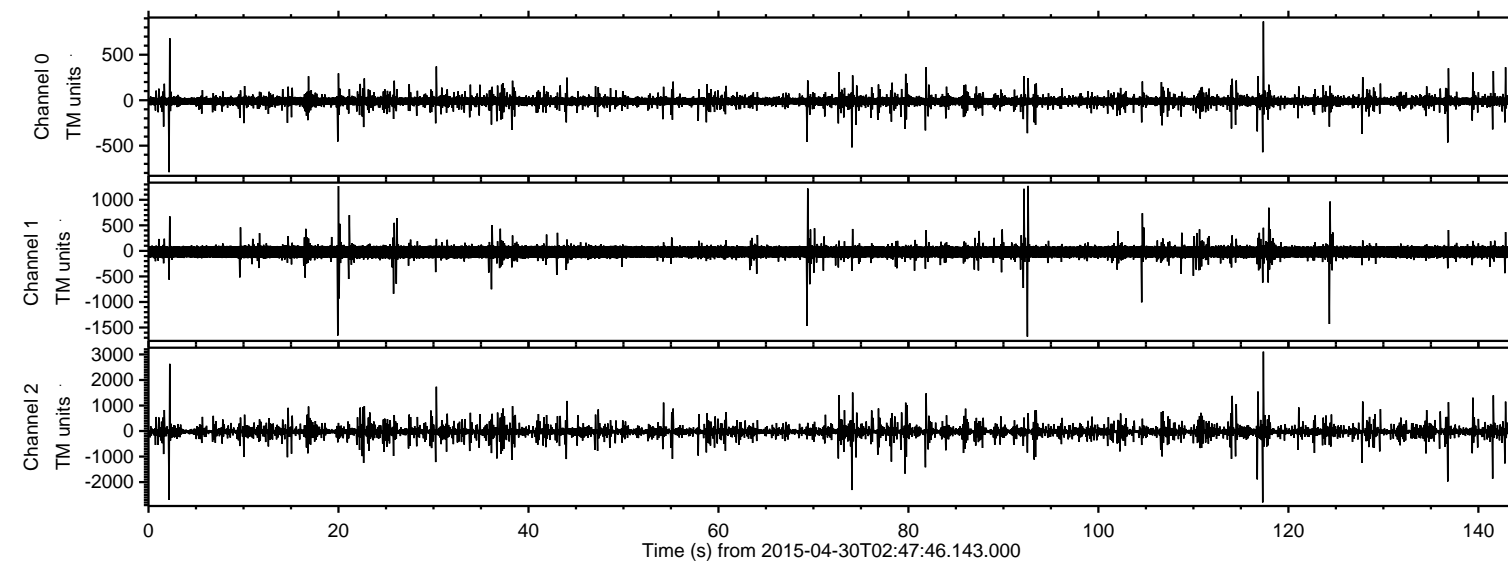


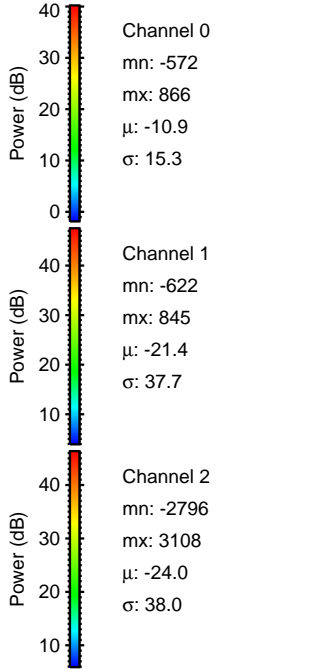
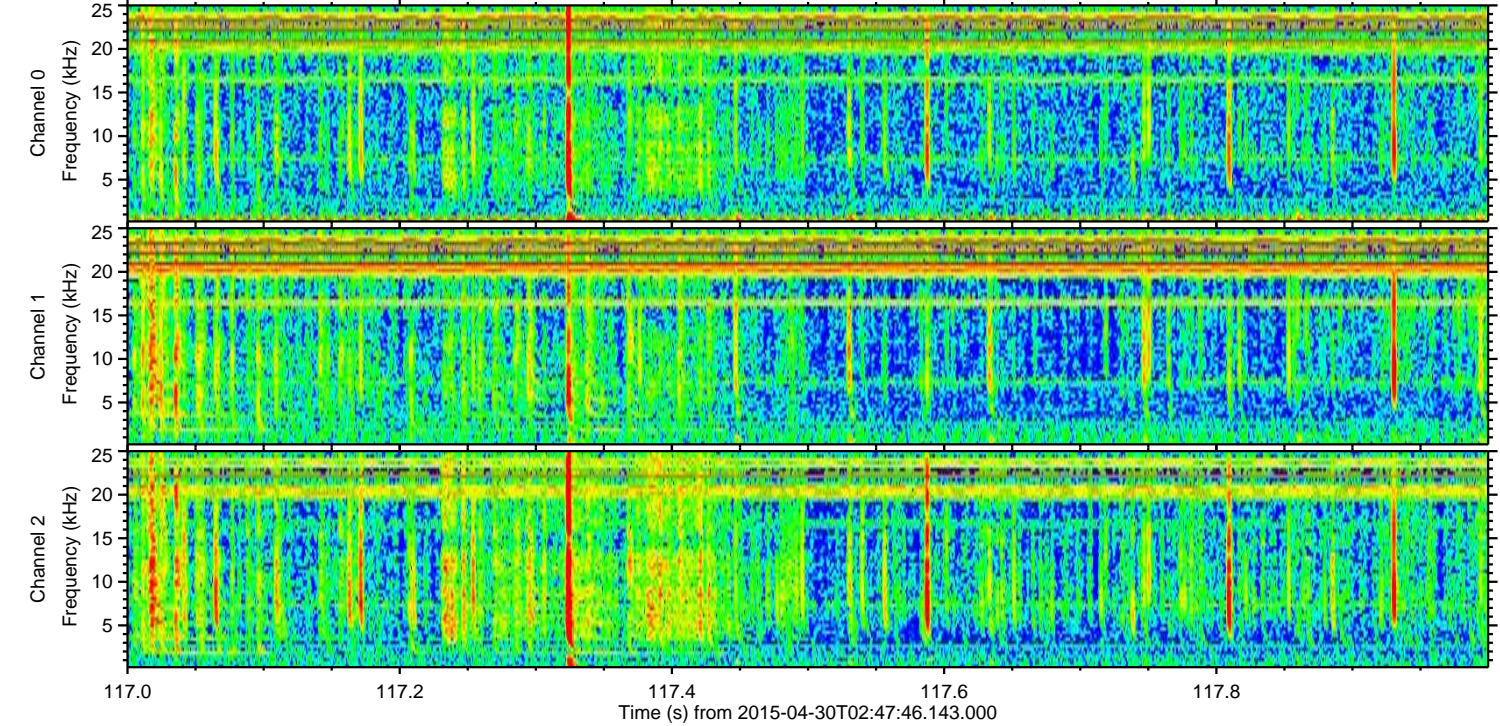
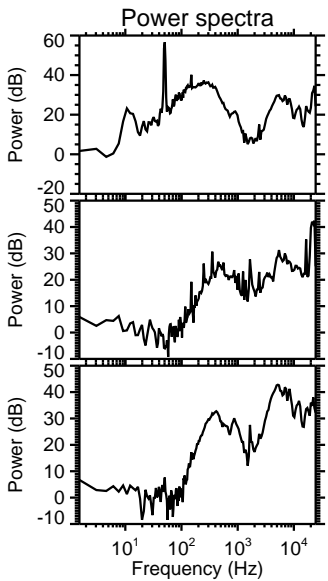
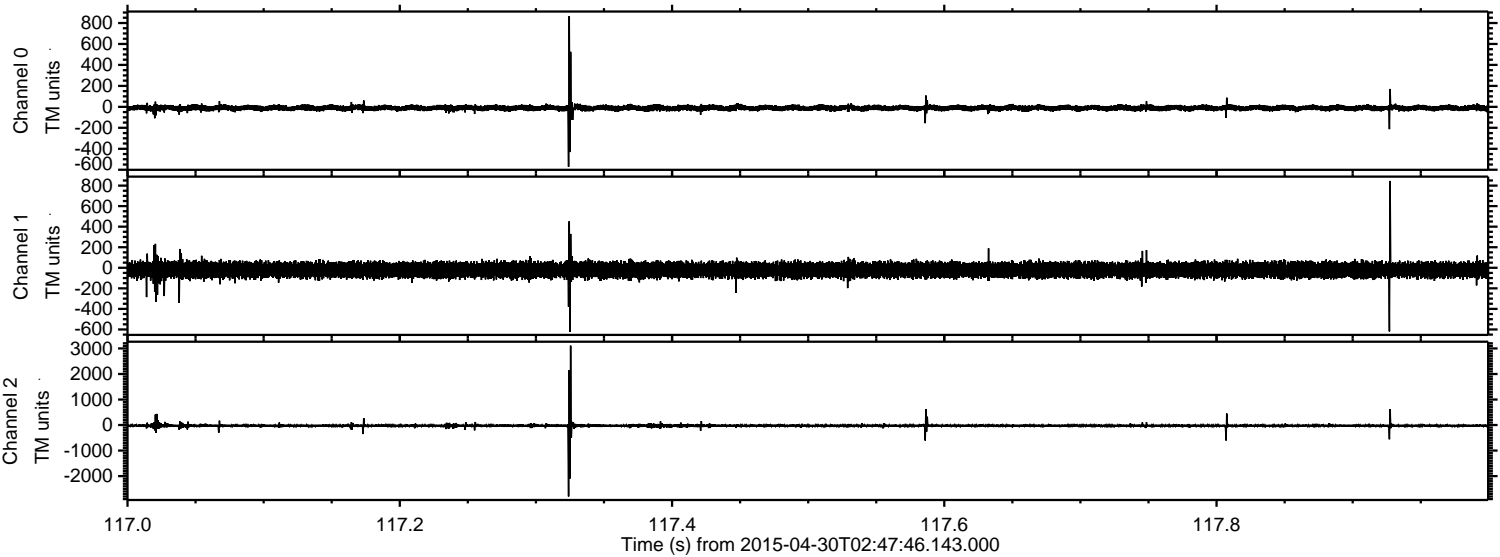
ELMAVAN 3D WAVEFORMS (Measured data sampled at 50 kHz) 49736 packets of 144 samples from 2015-04-30T02:47:46.143.000.

Processed Thu Apr 30 04:54:38 2015 by ELM ver.2012-10-06 from 001__elm20150430_024745__dat00.bin

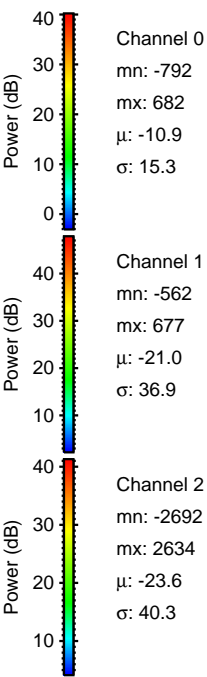
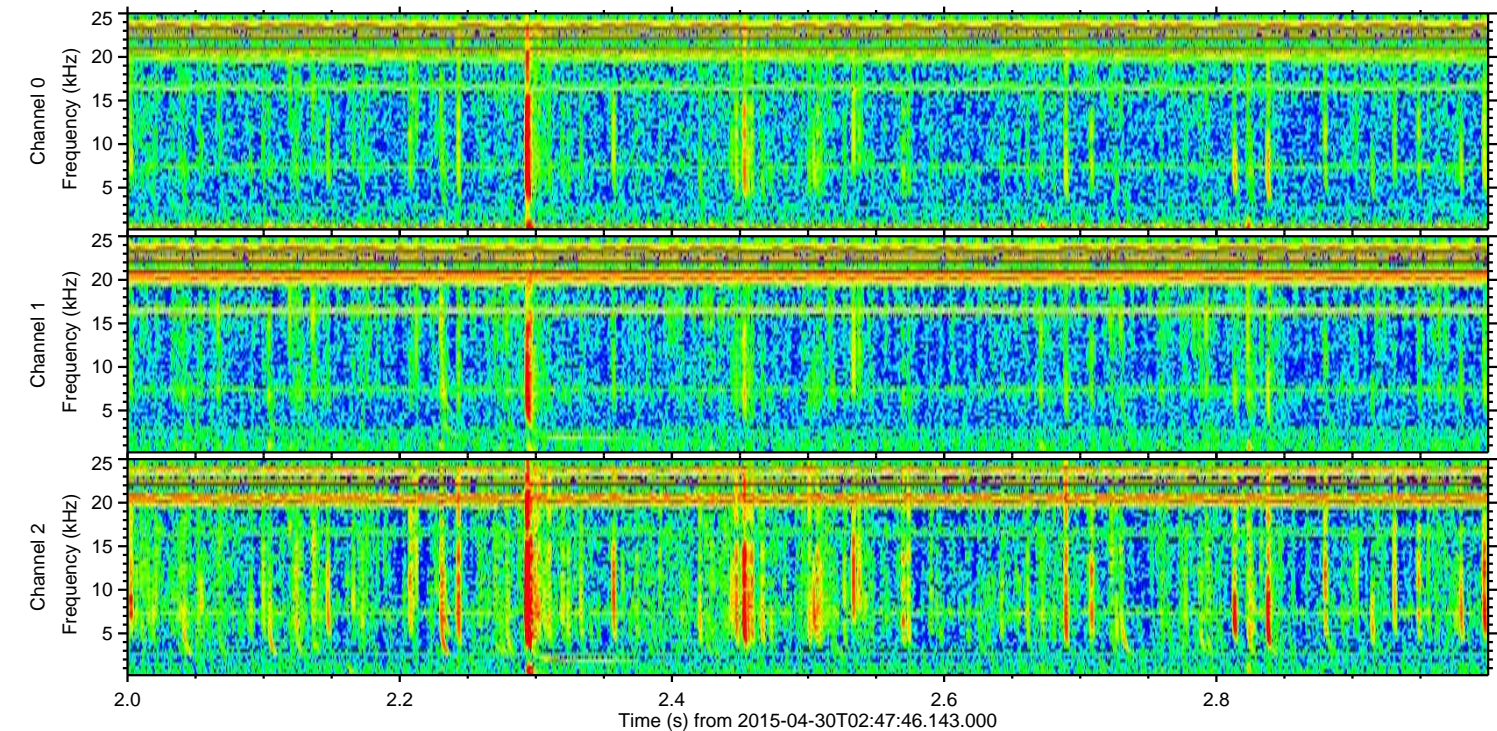
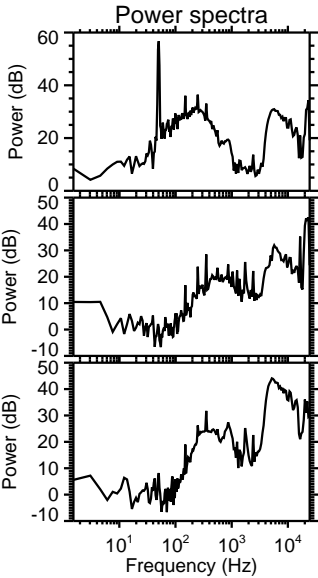
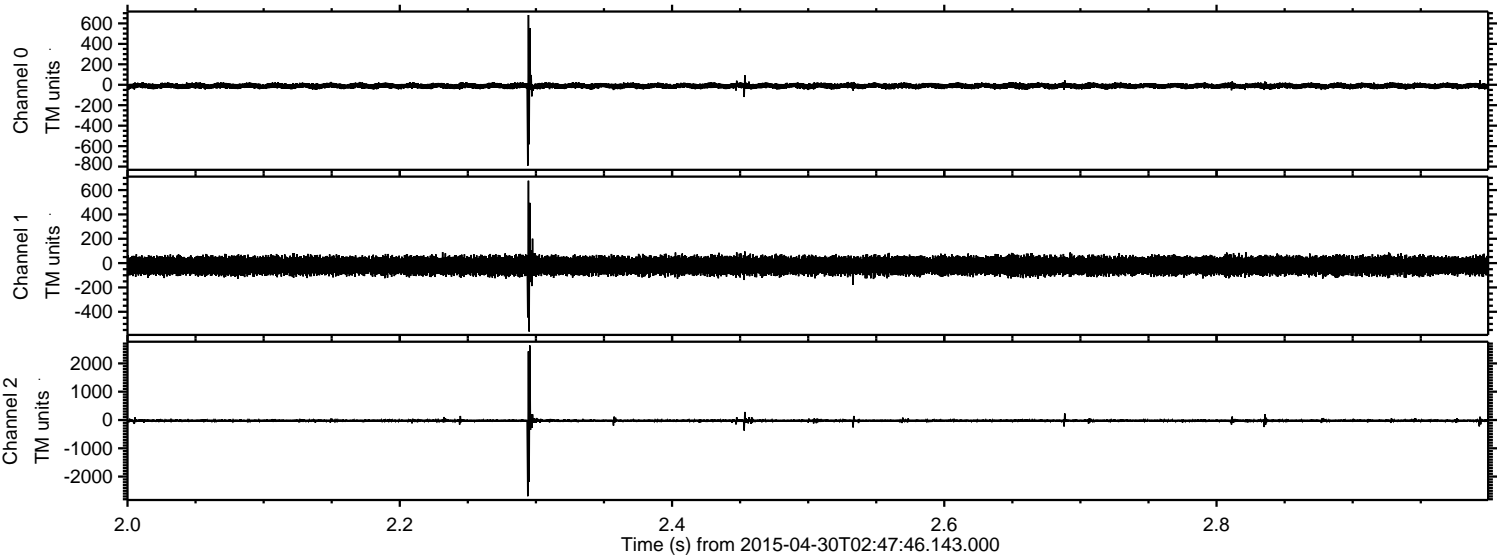


ELMAVAN 3D WAVEFORMS (Measured data sampled at 50 kHz) 49736 packets of 144 samples from 2015-04-30T02:47:46.143.000. Part 118/144

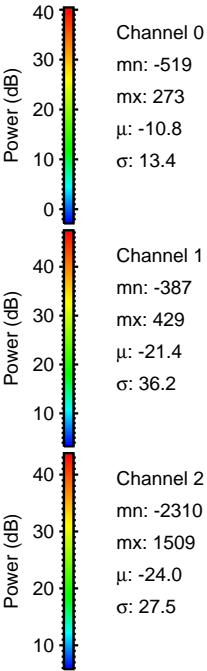
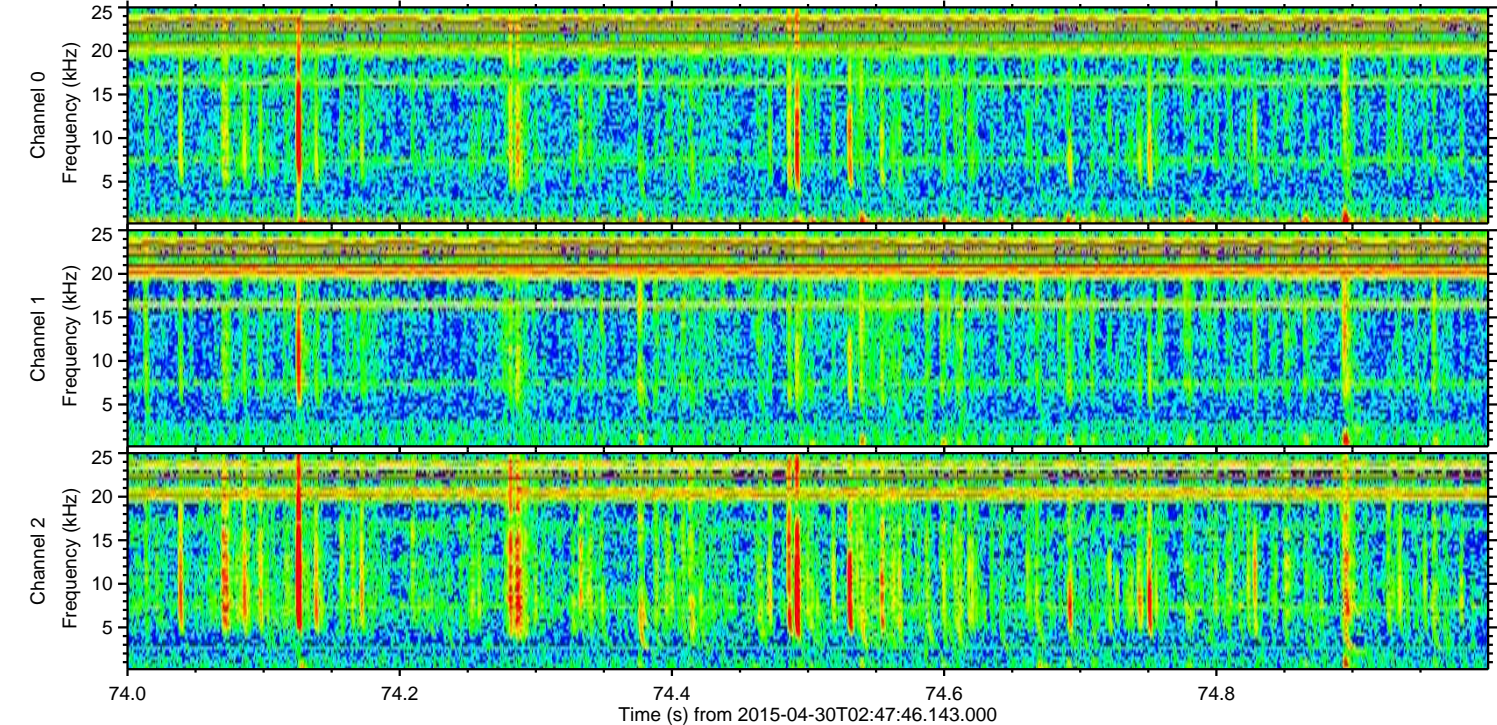
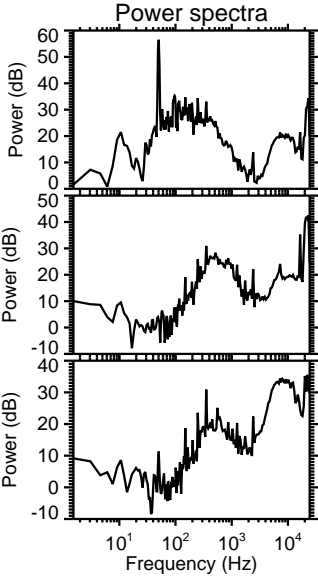
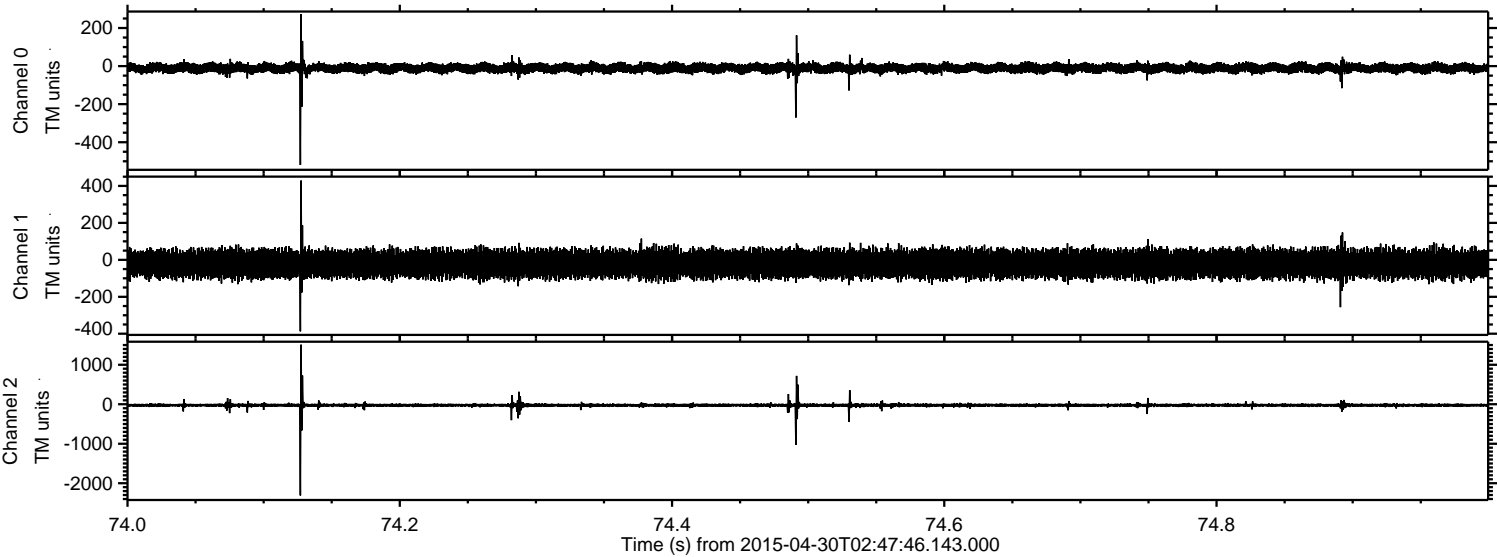
Processed Thu Apr 30 04:54:49 2015 by ELM ver.2012-10-06 from 001__elm20150430_024745__dat00.bin



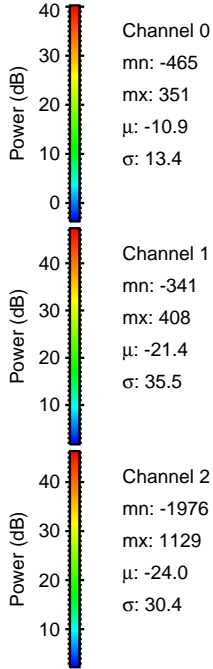
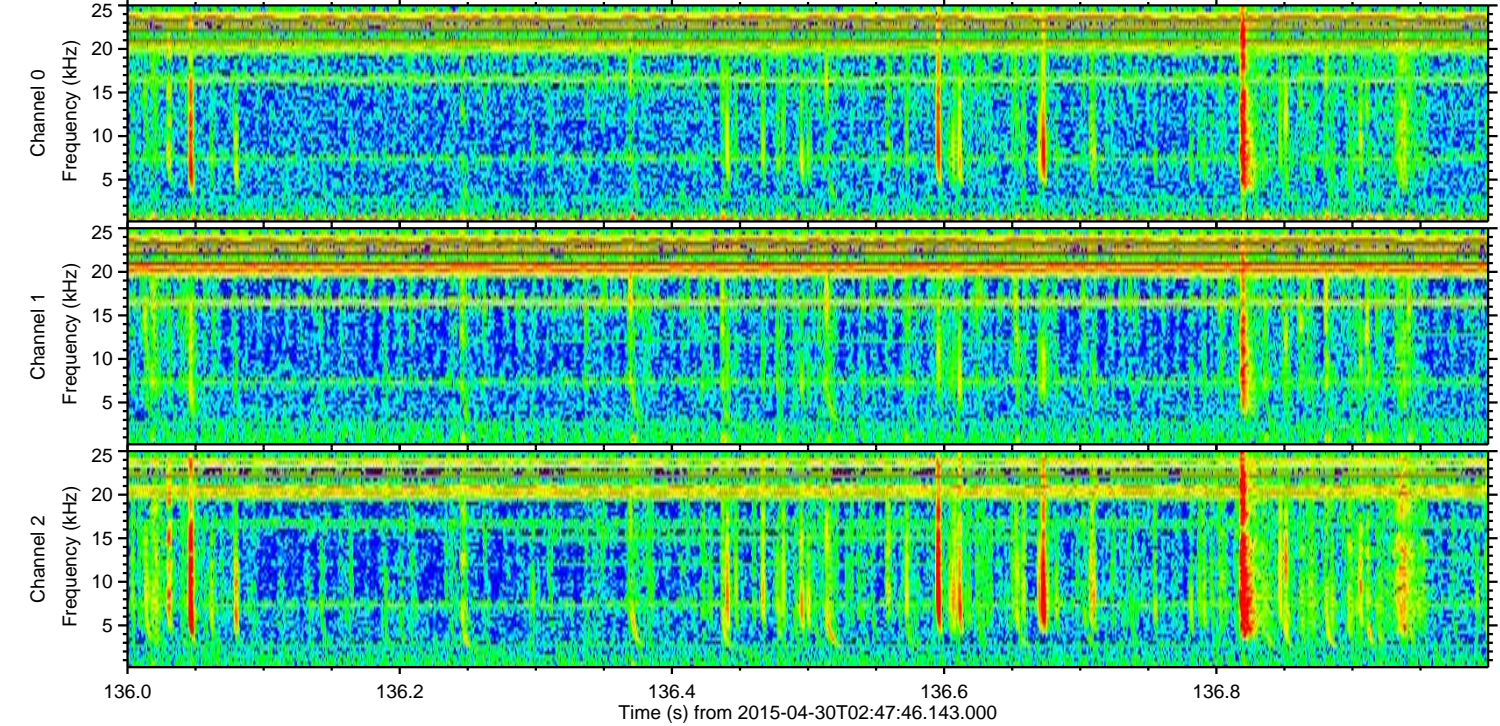
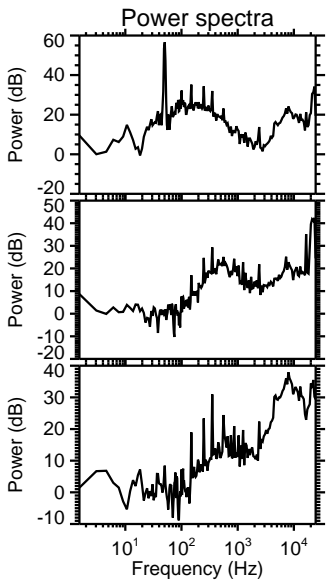
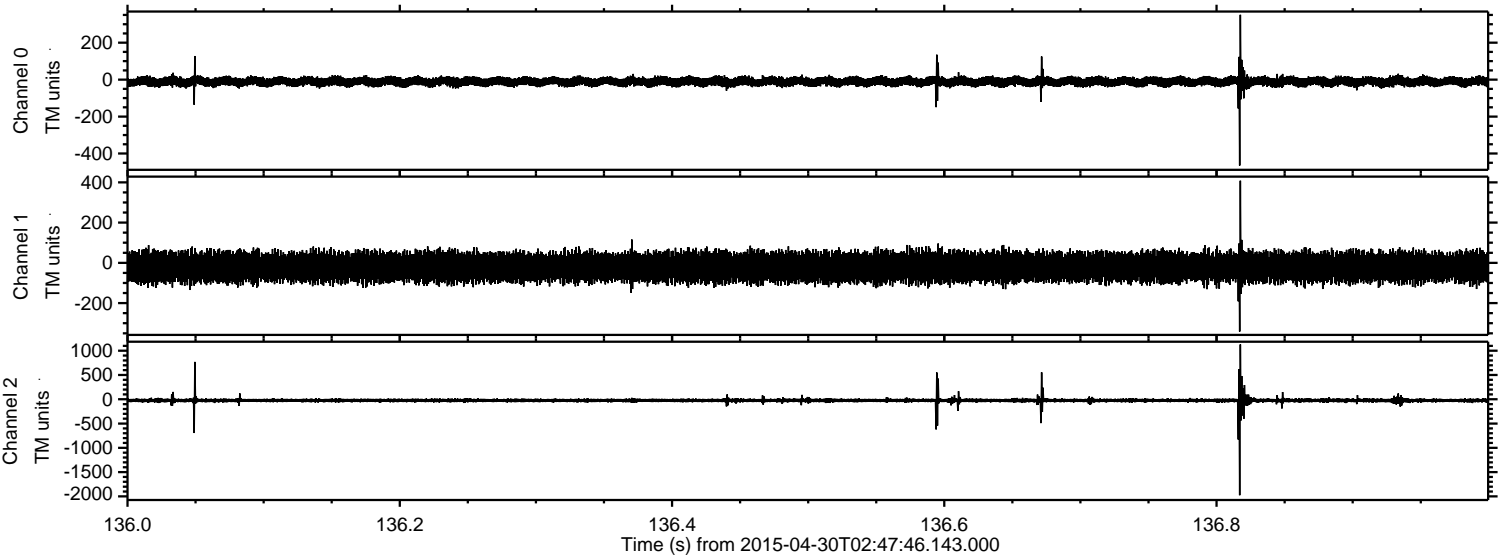
Processed Thu Apr 30 04:54:50 2015 by ELM ver.2012-10-06 from 001__elm20150430_024745__dat00.bin



Processed Thu Apr 30 04:54:51 2015 by ELM ver.2012-10-06 from 001__elm20150430_024745__dat00.bin

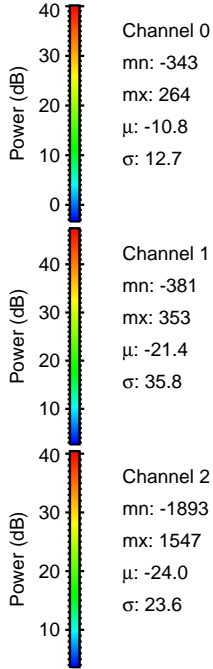
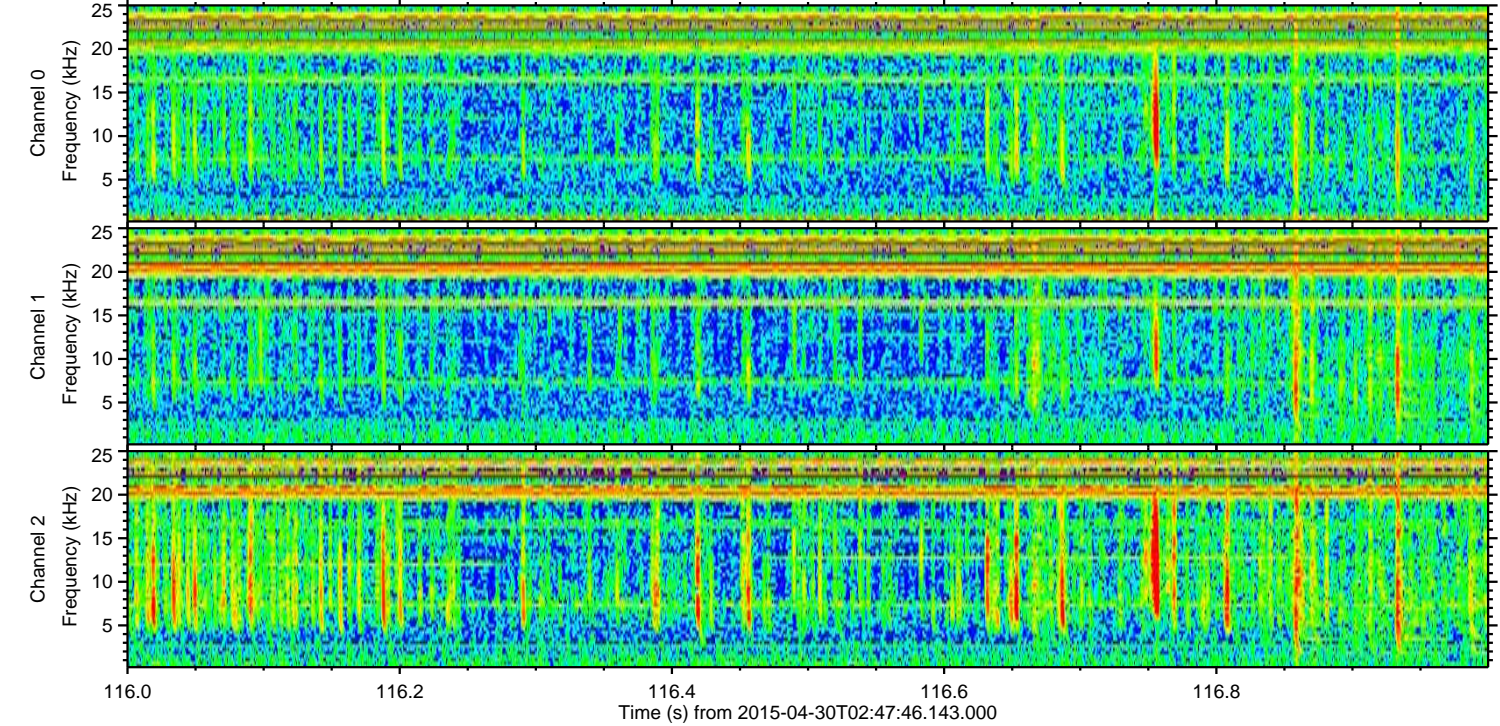
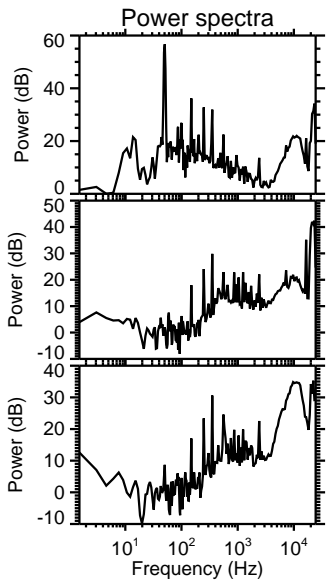
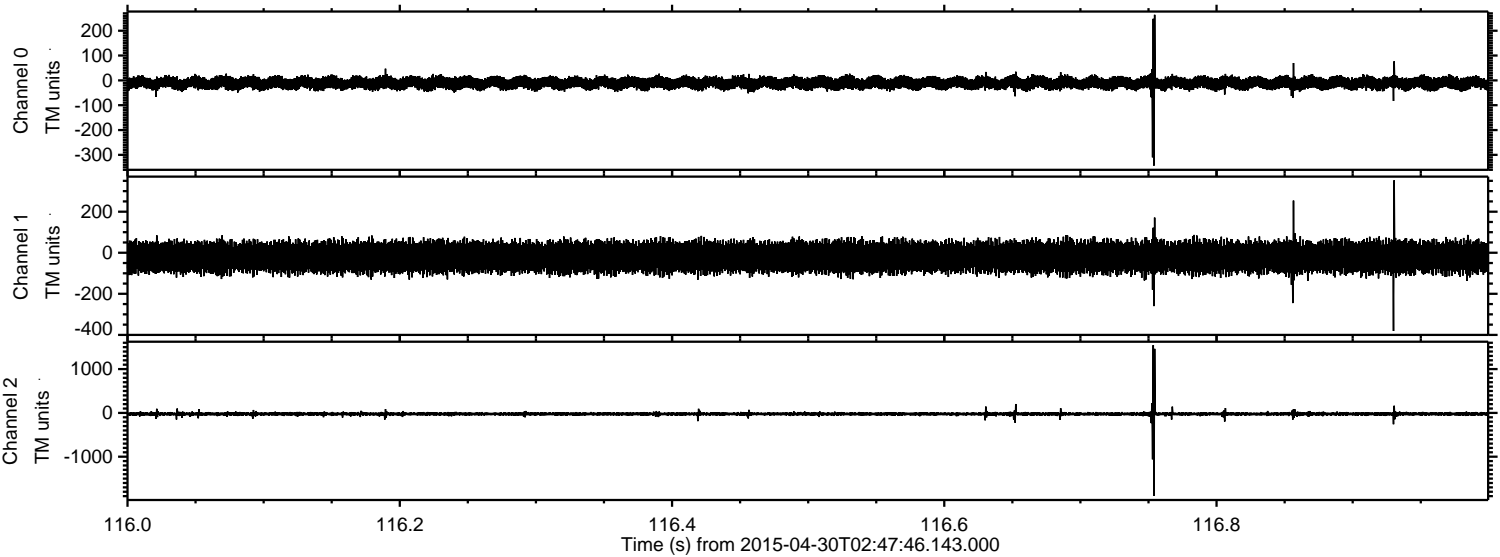


Processed Thu Apr 30 04:54:52 2015 by ELM ver.2012-10-06 from 001__elm20150430_024745__dat00.bin



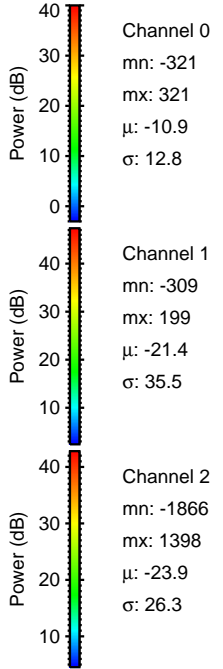
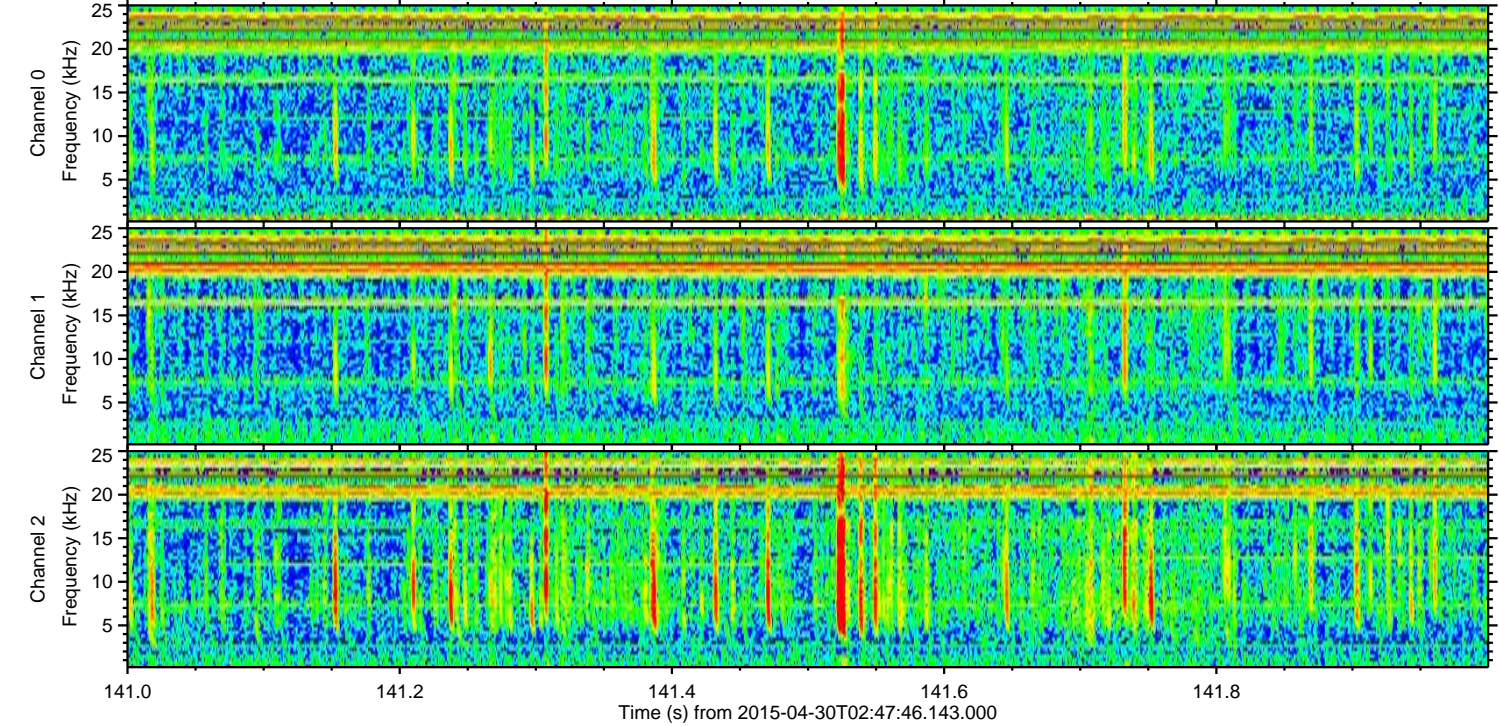
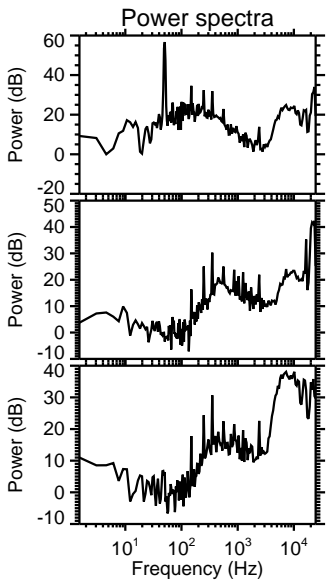
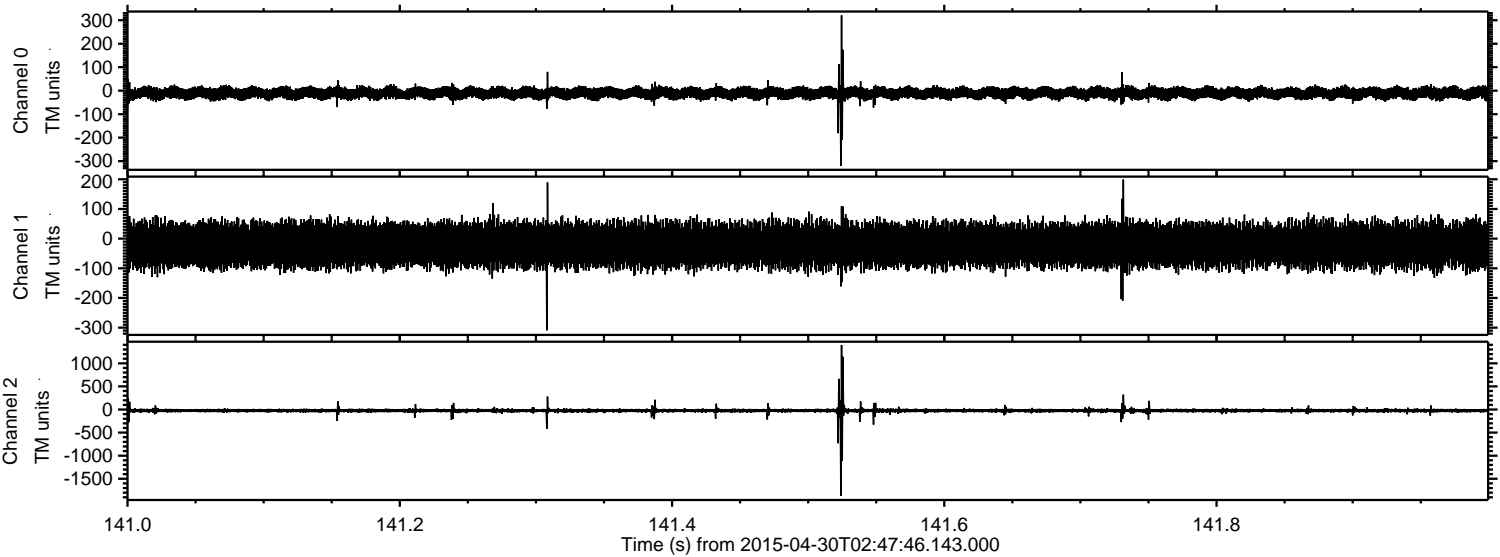
ELMAVAN 3D WAVEFORMS (Measured data sampled at 50 kHz) 49736 packets of 144 samples from 2015-04-30T02:47:46.143.000. Part 117/144

Processed Thu Apr 30 04:54:53 2015 by ELM ver.2012-10-06 from 001__elm20150430_024745__dat00.bin



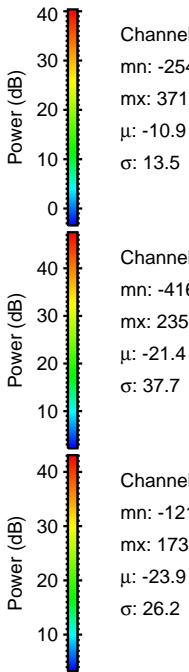
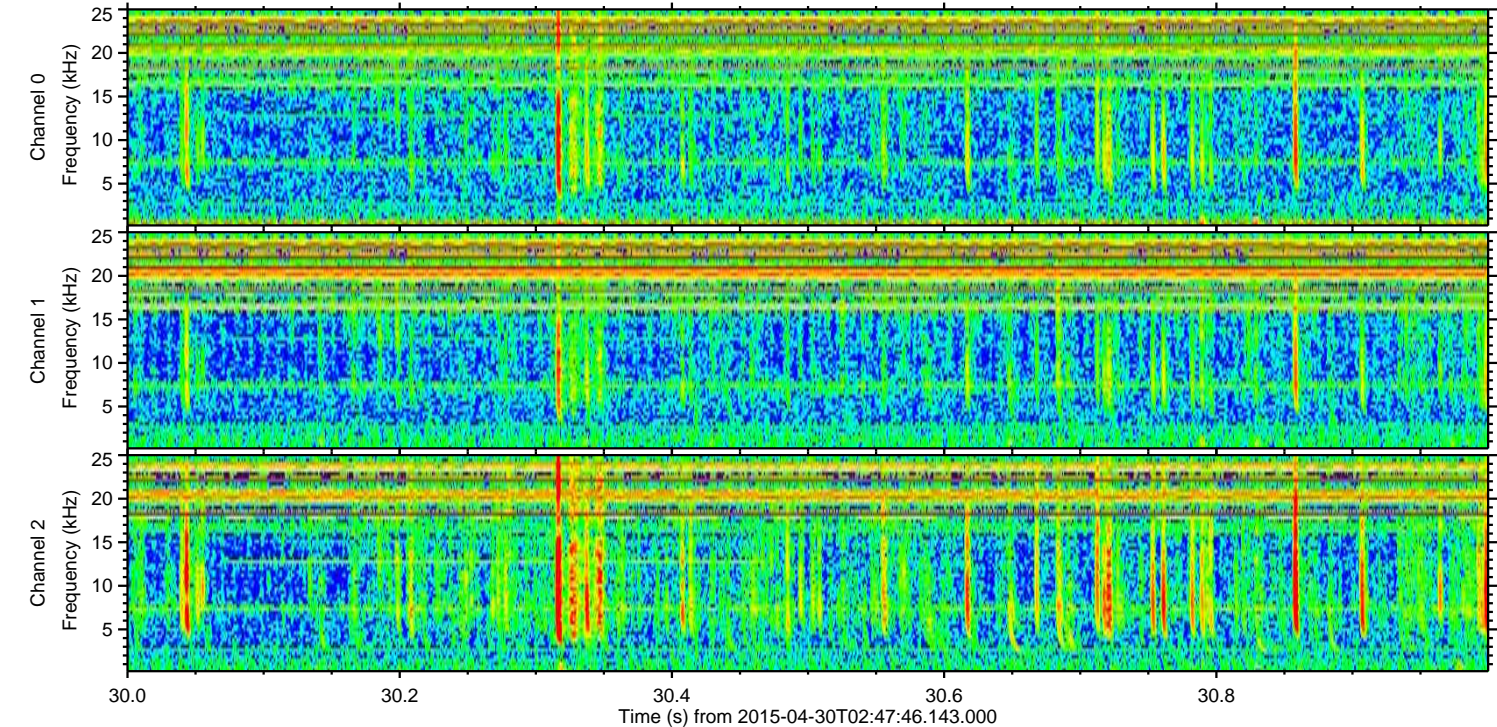
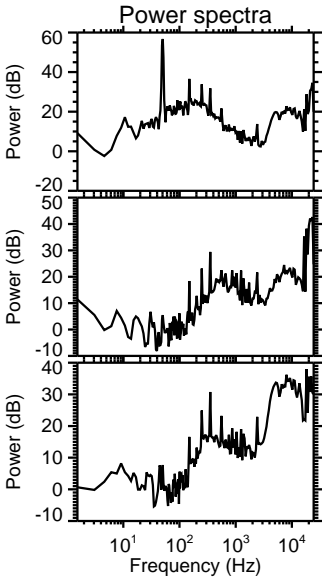
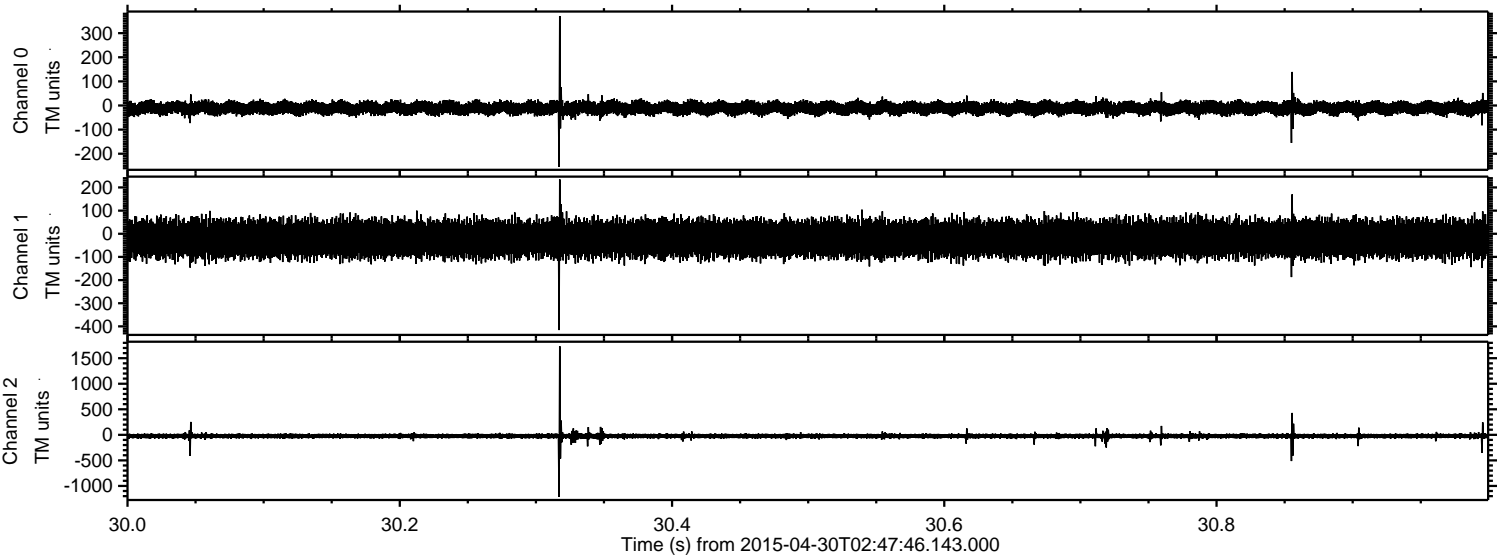
ELMAVAN 3D WAVEFORMS (Measured data sampled at 50 kHz) 49736 packets of 144 samples from 2015-04-30T02:47:46.143.000. Part 142/144

Processed Thu Apr 30 04:54:54 2015 by ELM ver.2012-10-06 from 001__elm20150430_024745__dat00.bin

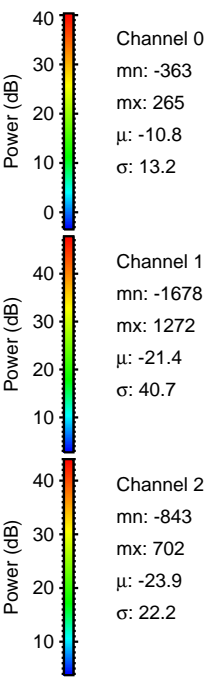
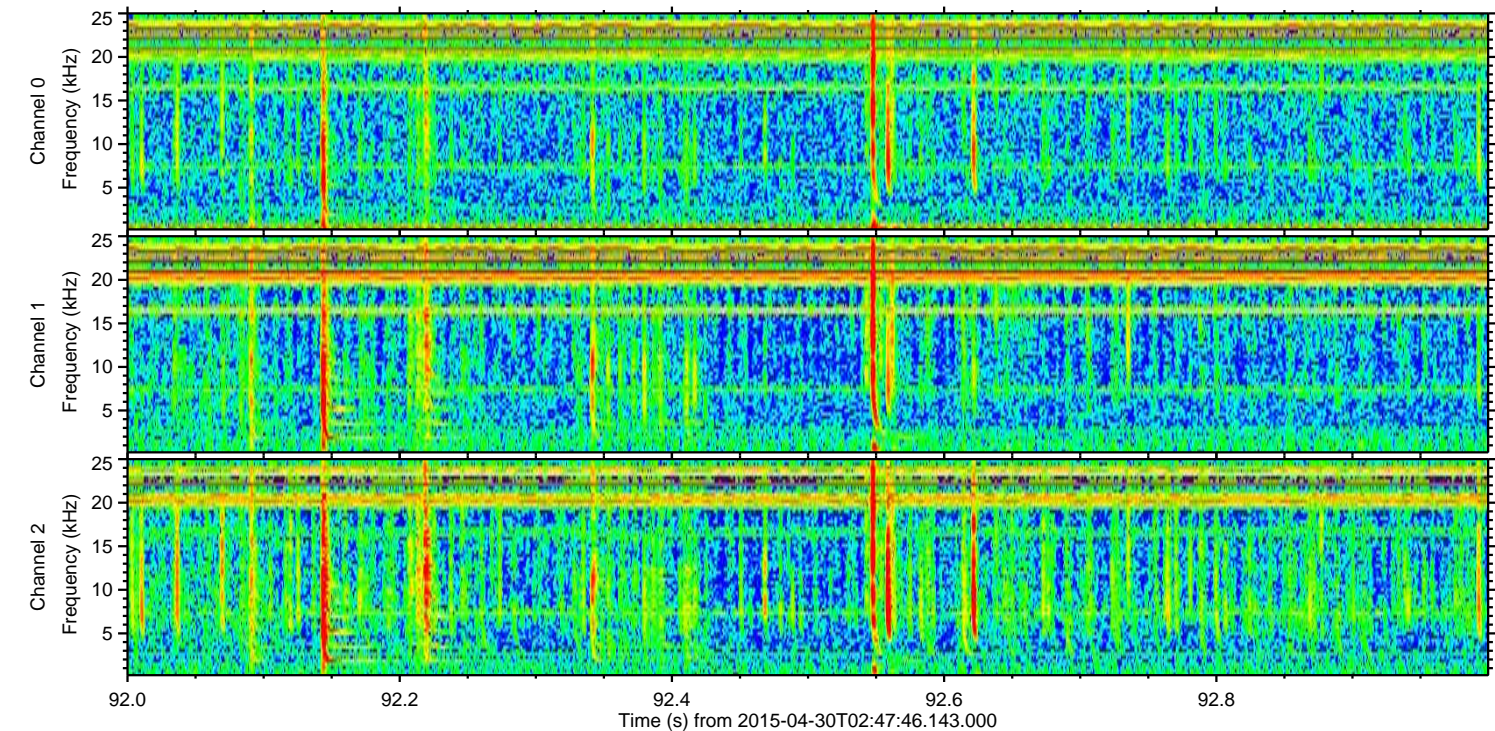
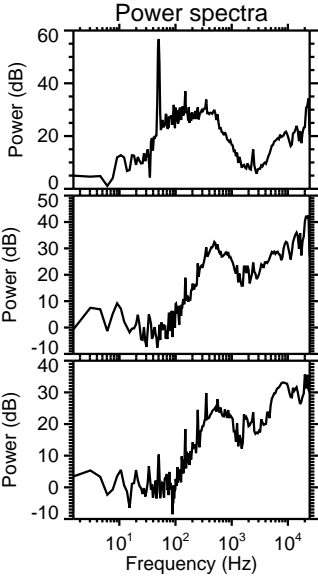
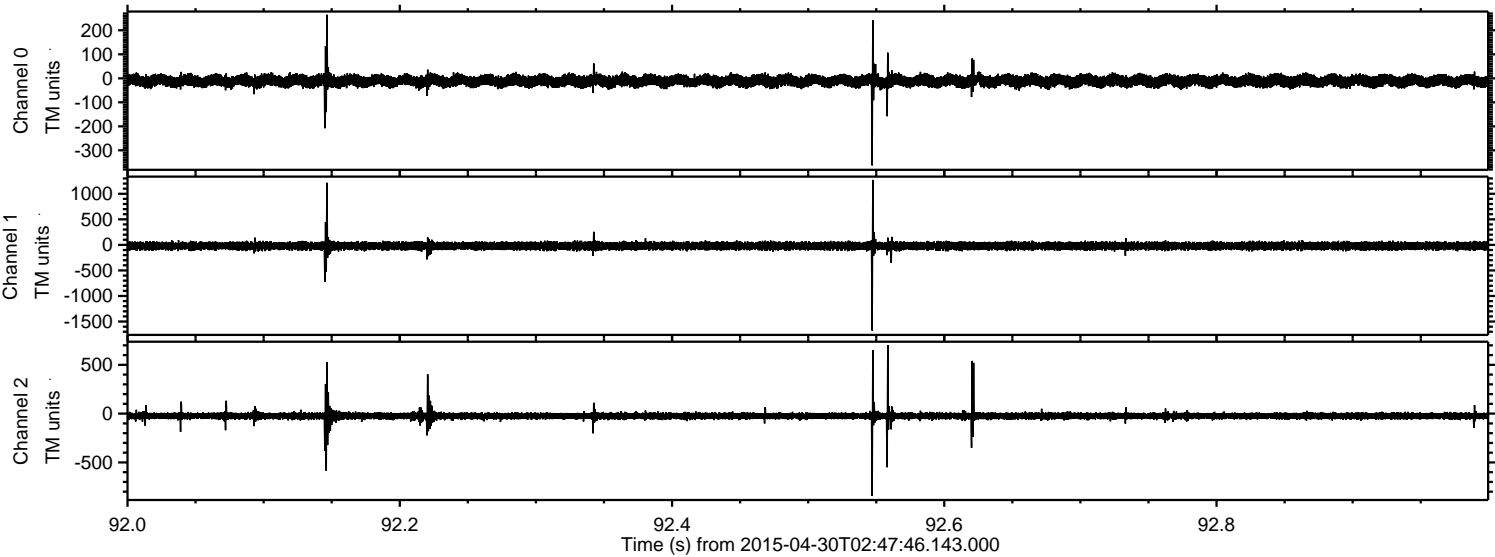


ELMAVAN 3D WAVEFORMS (Measured data sampled at 50 kHz) 49736 packets of 144 samples from 2015-04-30T02:47:46.143.000. Part 31/144

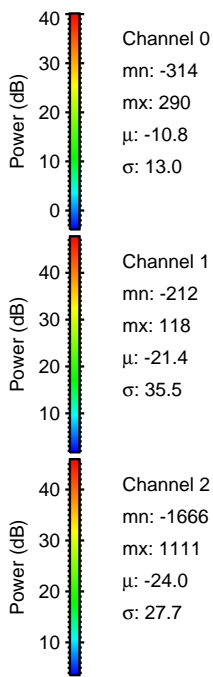
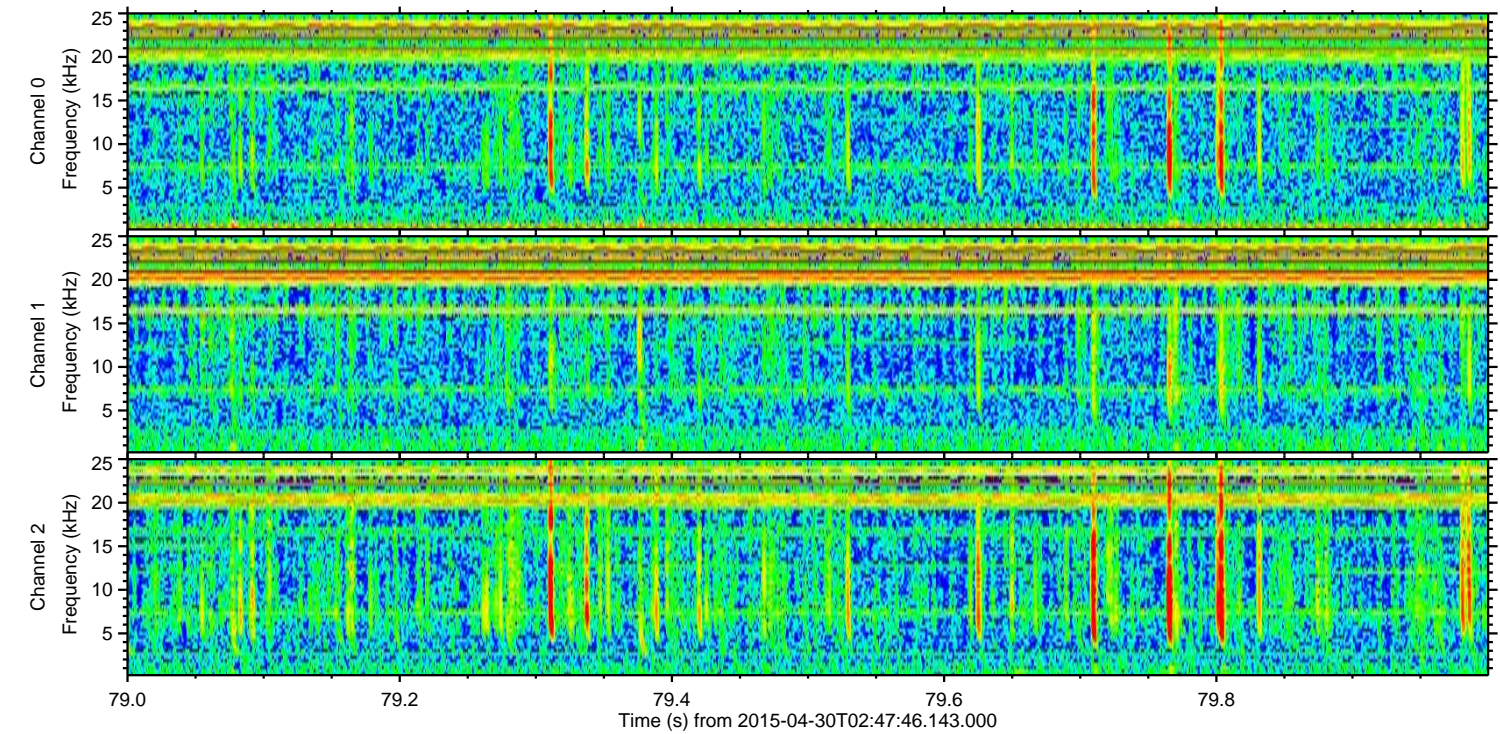
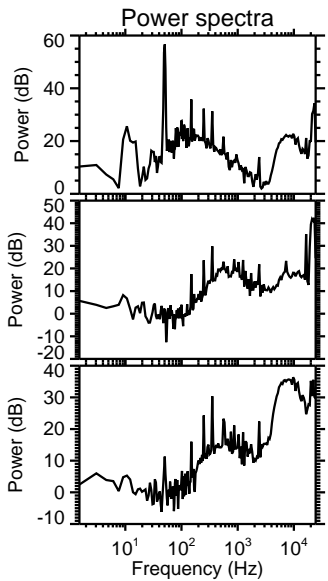
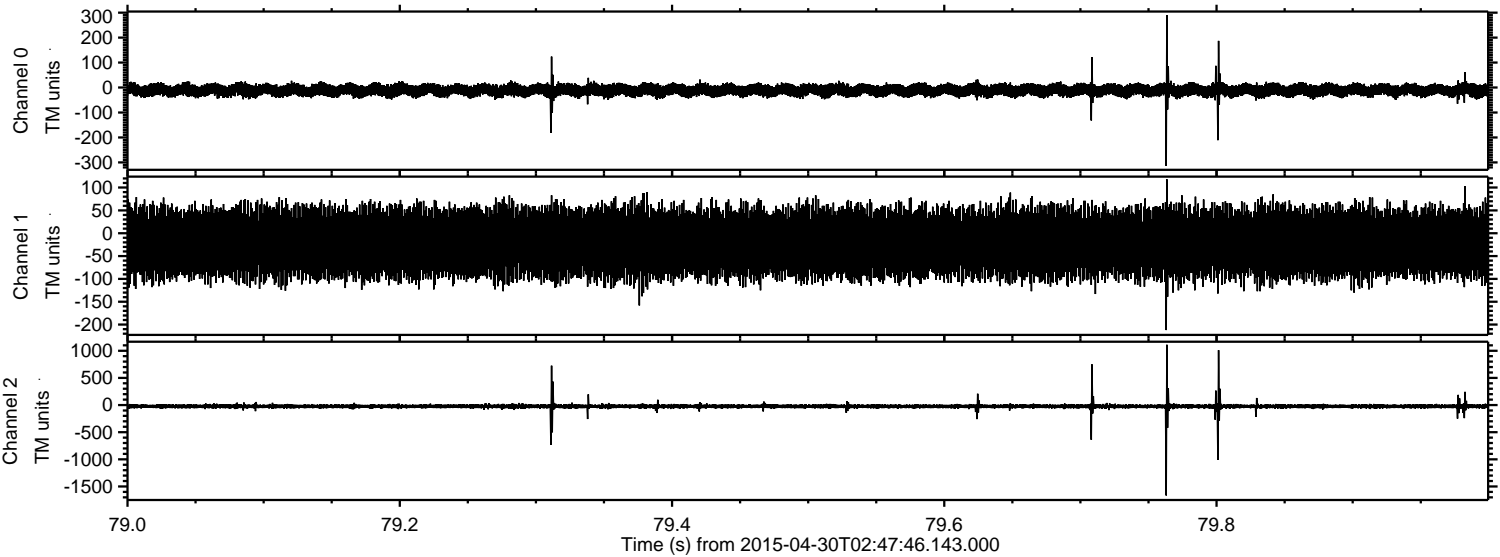
Processed Thu Apr 30 04:54:55 2015 by ELM ver.2012-10-06 from 001__elm20150430_024745__dat00.bin



Processed Thu Apr 30 04:54:56 2015 by ELM ver.2012-10-06 from 001__elm20150430_024745__dat00.bin



Processed Thu Apr 30 04:54:57 2015 by ELM ver.2012-10-06 from 001__elm20150430_024745__dat00.bin



Channel 0
mn: -314
mx: 290
 μ : -10.8
 σ : 13.0

Channel 1
mn: -212
mx: 118
 μ : -21.4
 σ : 35.5

Channel 2
mn: -1666
mx: 1111
 μ : -24.0
 σ : 27.7

Processed Thu Apr 30 04:54:58 2015 by ELM ver.2012-10-06 from 001__elm20150430_024745__dat00.bin

