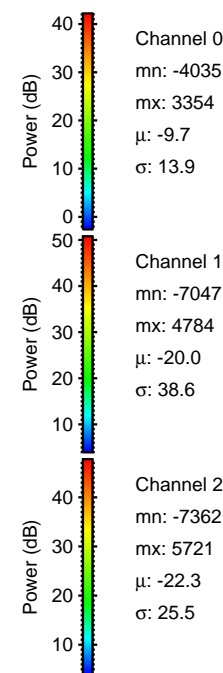
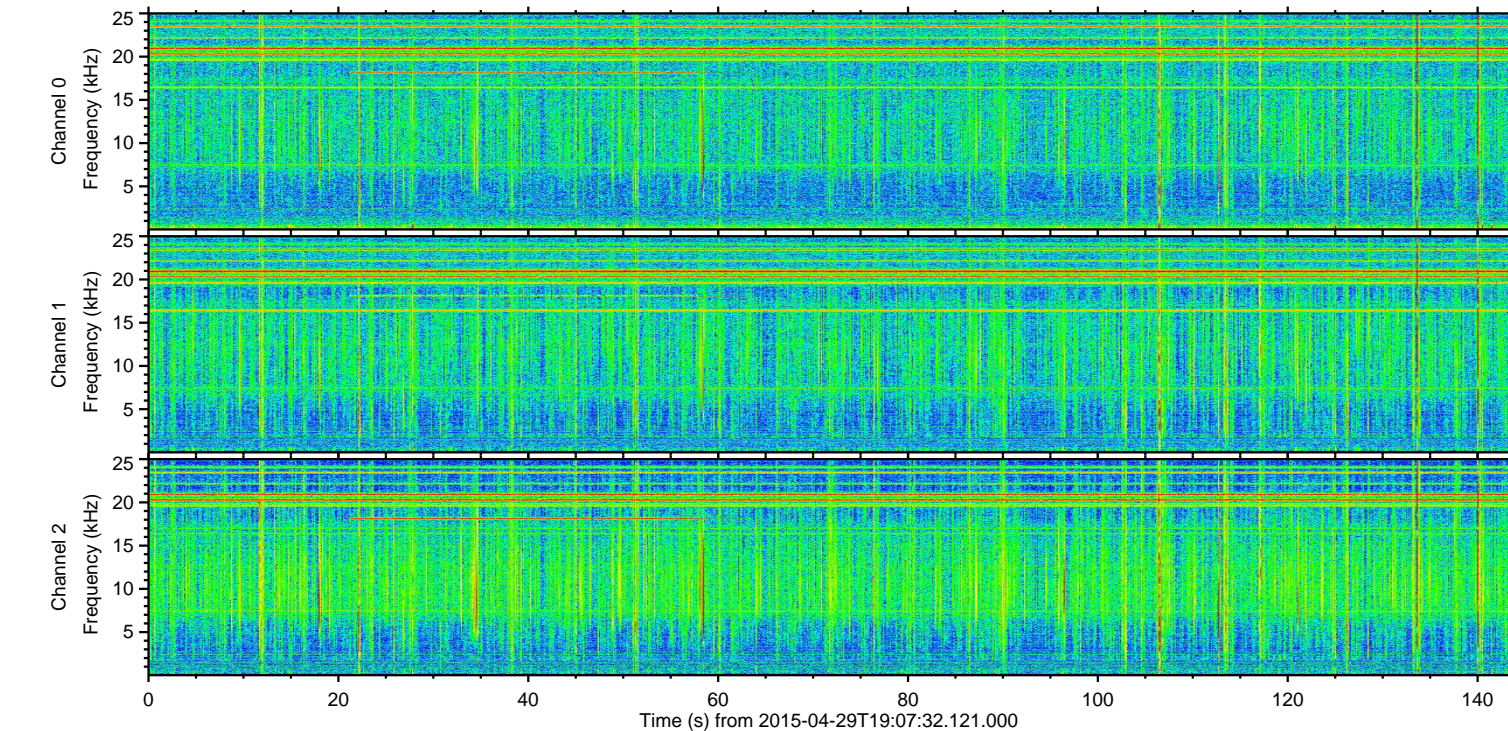
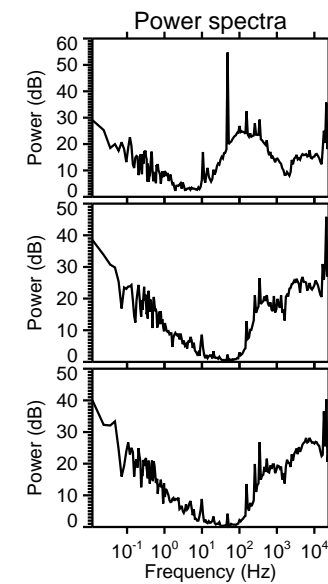
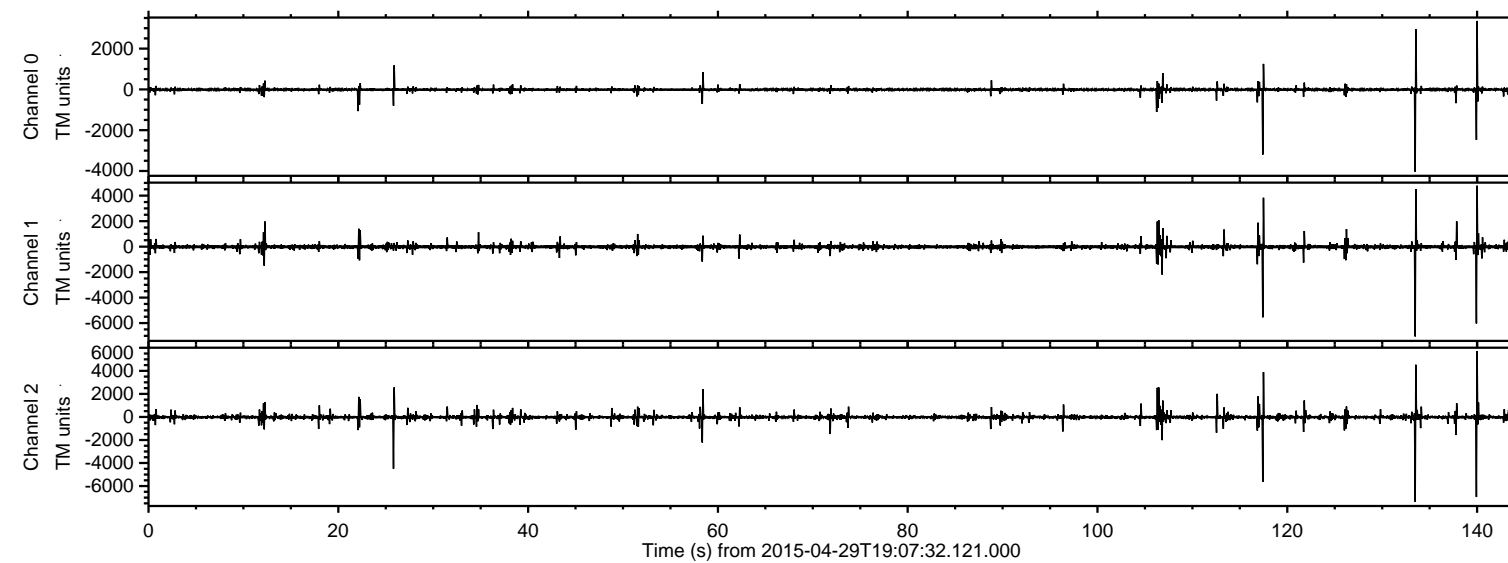


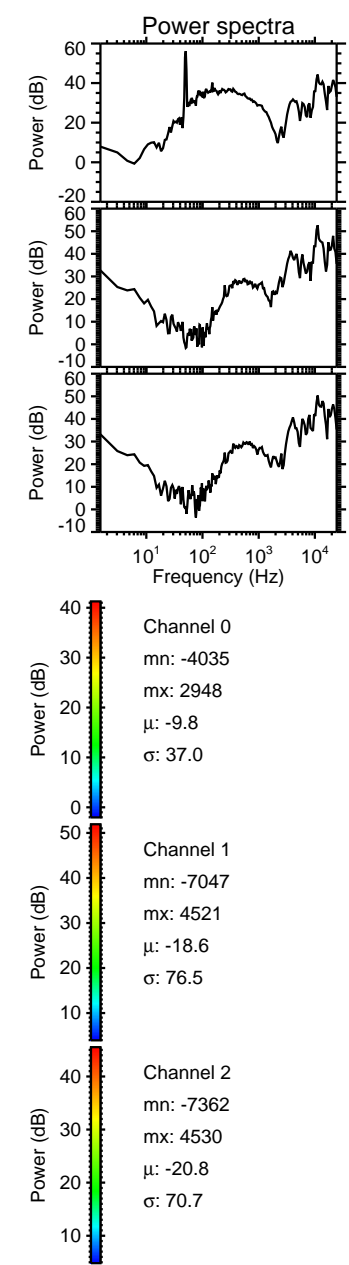
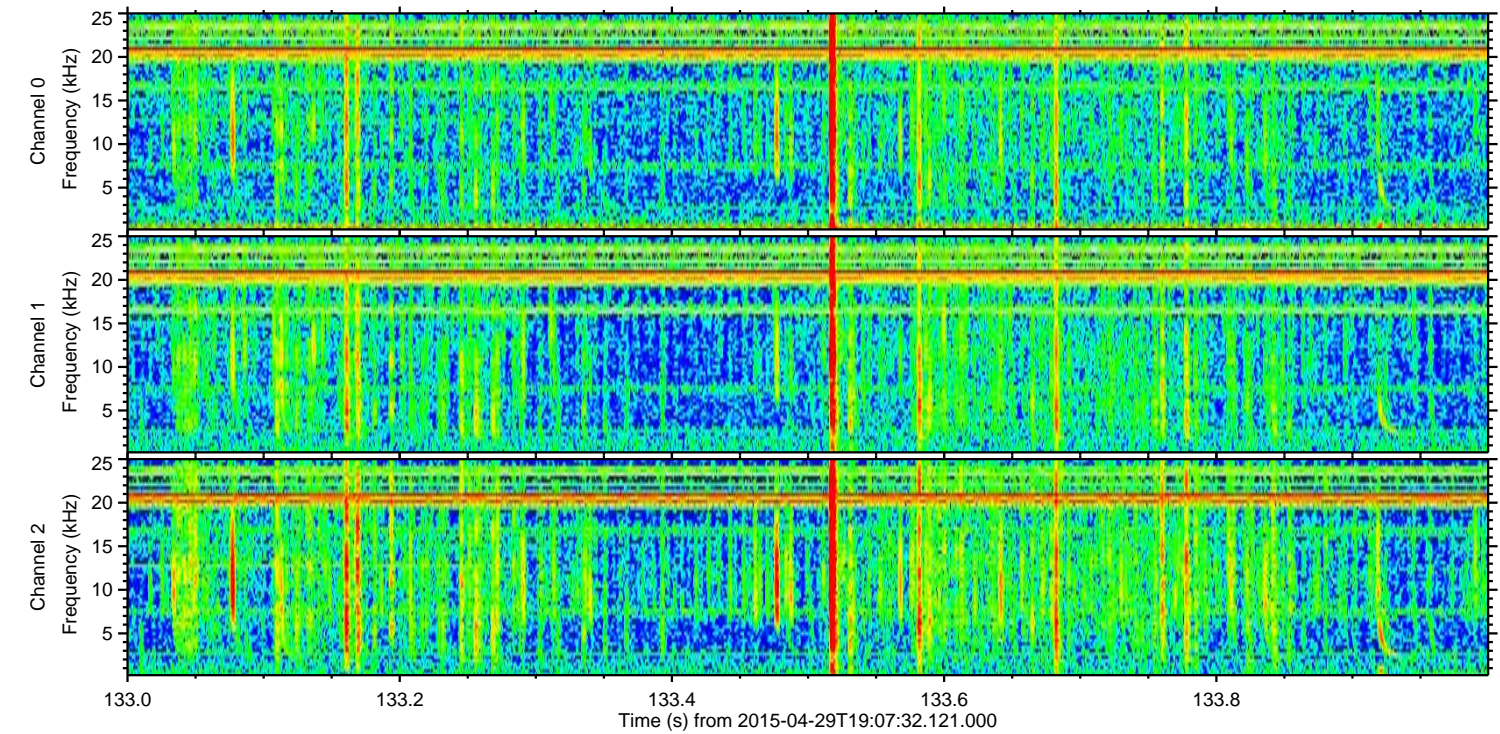
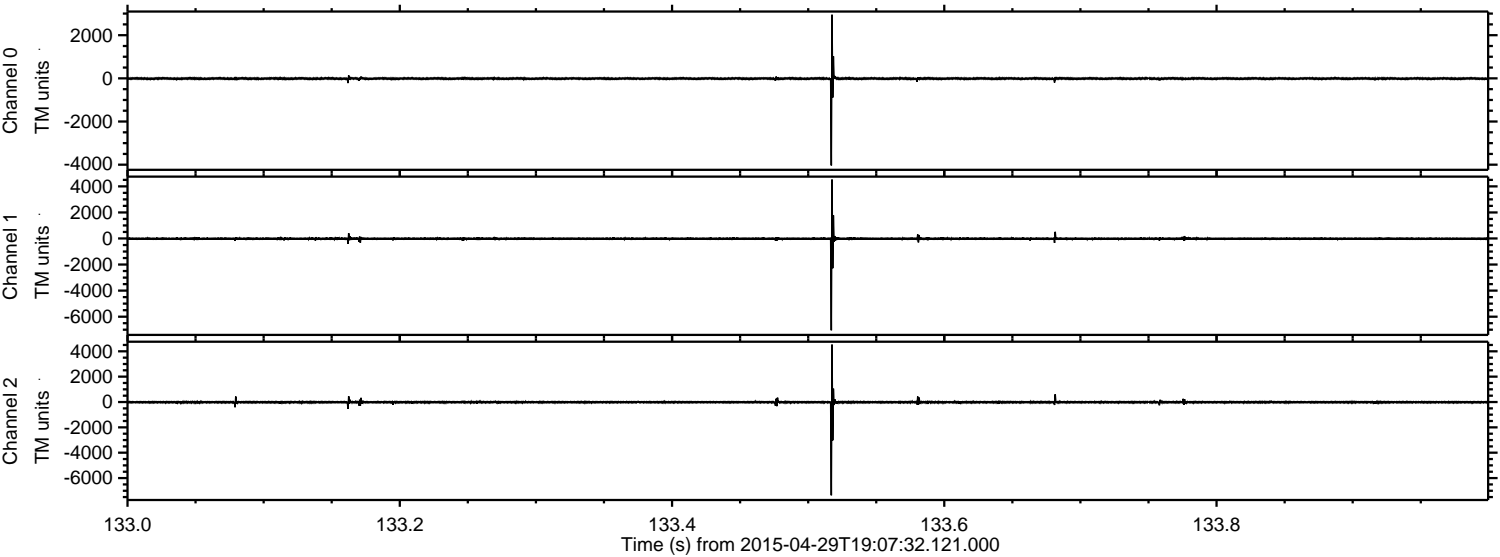
ELMAVAN 3D WAVEFORMS (Measured data sampled at 50 kHz) 49784 packets of 144 samples from 2015-04-29T19:07:32.121.000.

Processed Wed Apr 29 21:14:41 2015 by ELM ver.2012-10-06 from 001__elm20150429_190731__dat00.bin



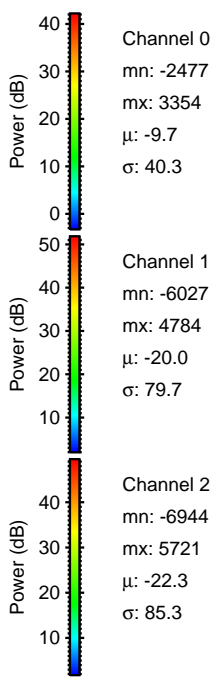
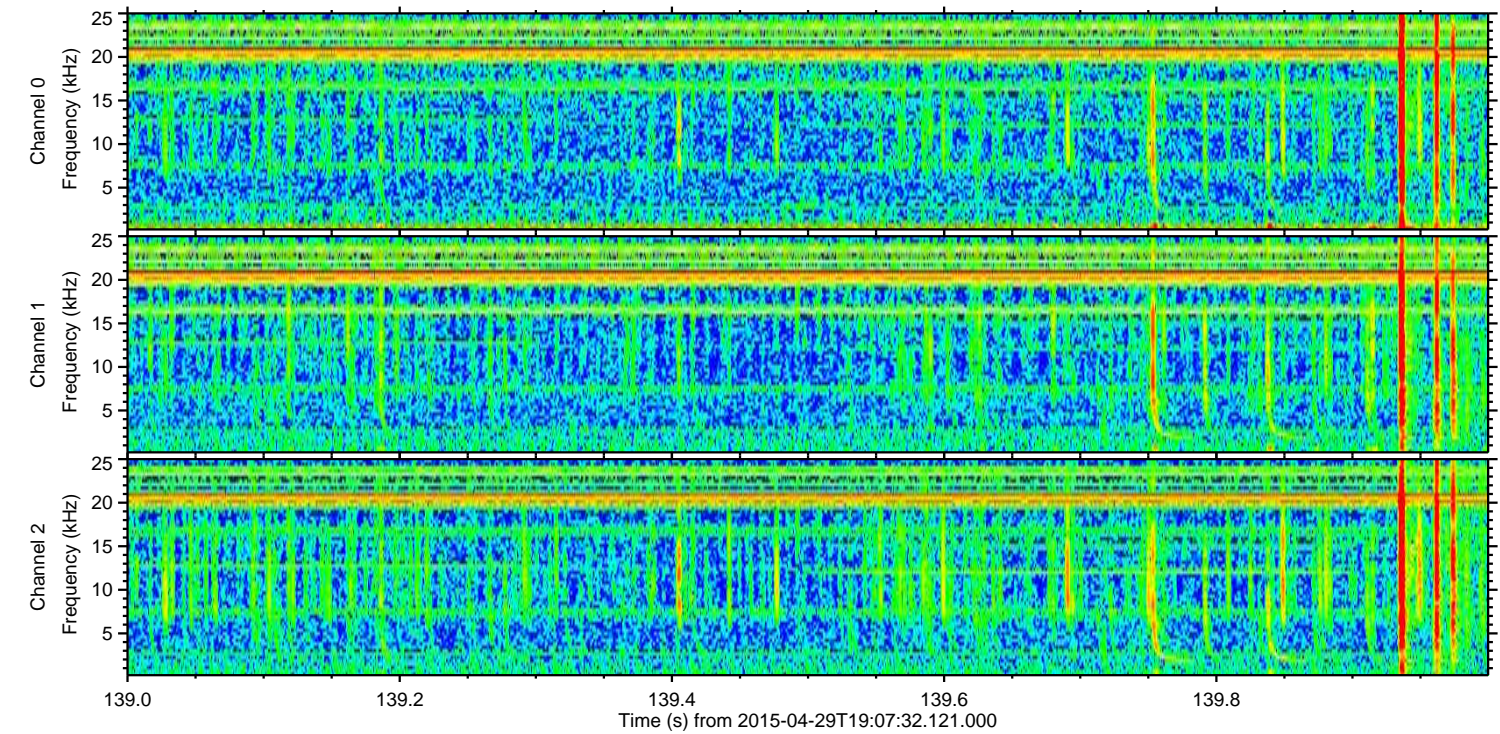
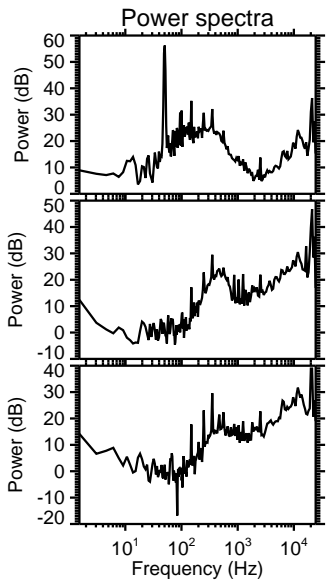
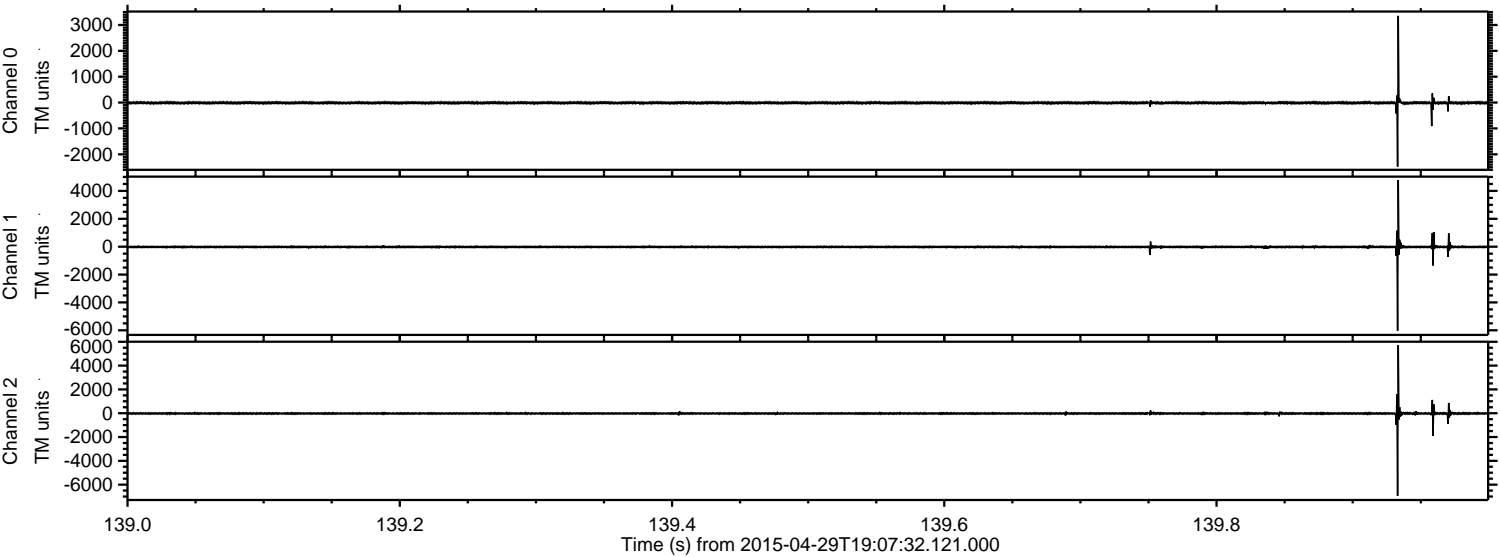
ELMAVAN 3D WAVEFORMS (Measured data sampled at 50 kHz) 49784 packets of 144 samples from 2015-04-29T19:07:32.121.000. Part 134/144

Processed Wed Apr 29 21:14:53 2015 by ELM ver.2012-10-06 from 001__elm20150429_190731__dat00.bin



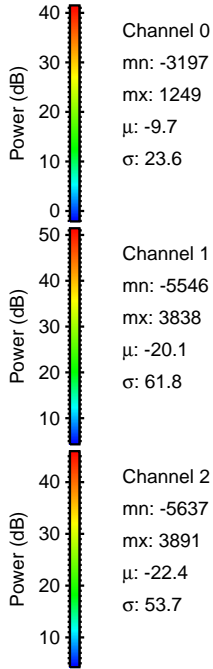
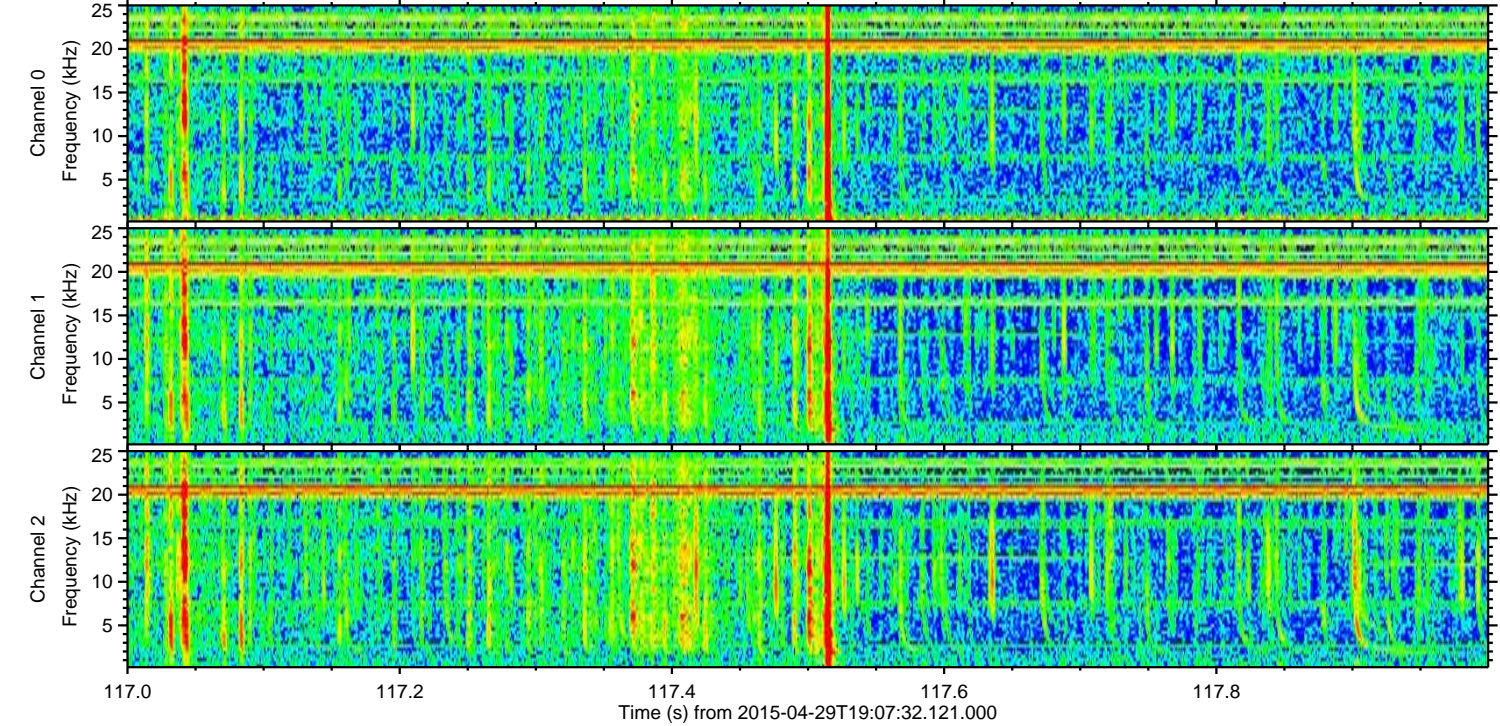
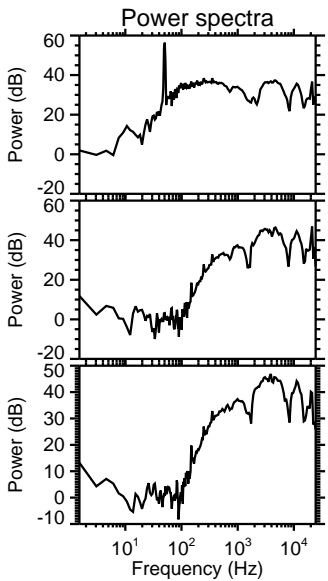
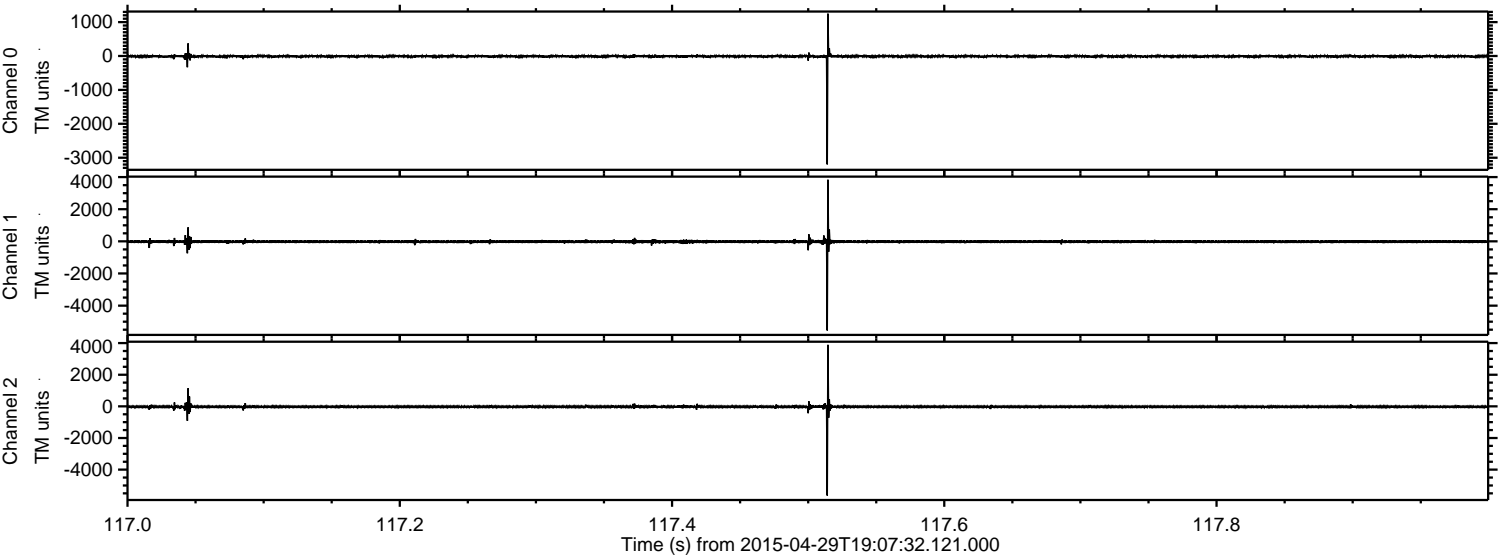
ELMAVAN 3D WAVEFORMS (Measured data sampled at 50 kHz) 49784 packets of 144 samples from 2015-04-29T19:07:32.121.000. Part 140/144

Processed Wed Apr 29 21:14:54 2015 by ELM ver.2012-10-06 from 001__elm20150429_190731__dat00.bin



ELMAVAN 3D WAVEFORMS (Measured data sampled at 50 kHz) 49784 packets of 144 samples from 2015-04-29T19:07:32.121.000. Part 118/144

Processed Wed Apr 29 21:14:55 2015 by ELM ver.2012-10-06 from 001__elm20150429_190731__dat00.bin



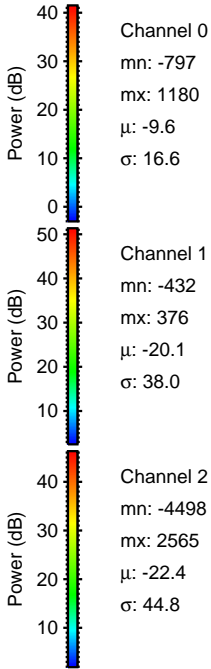
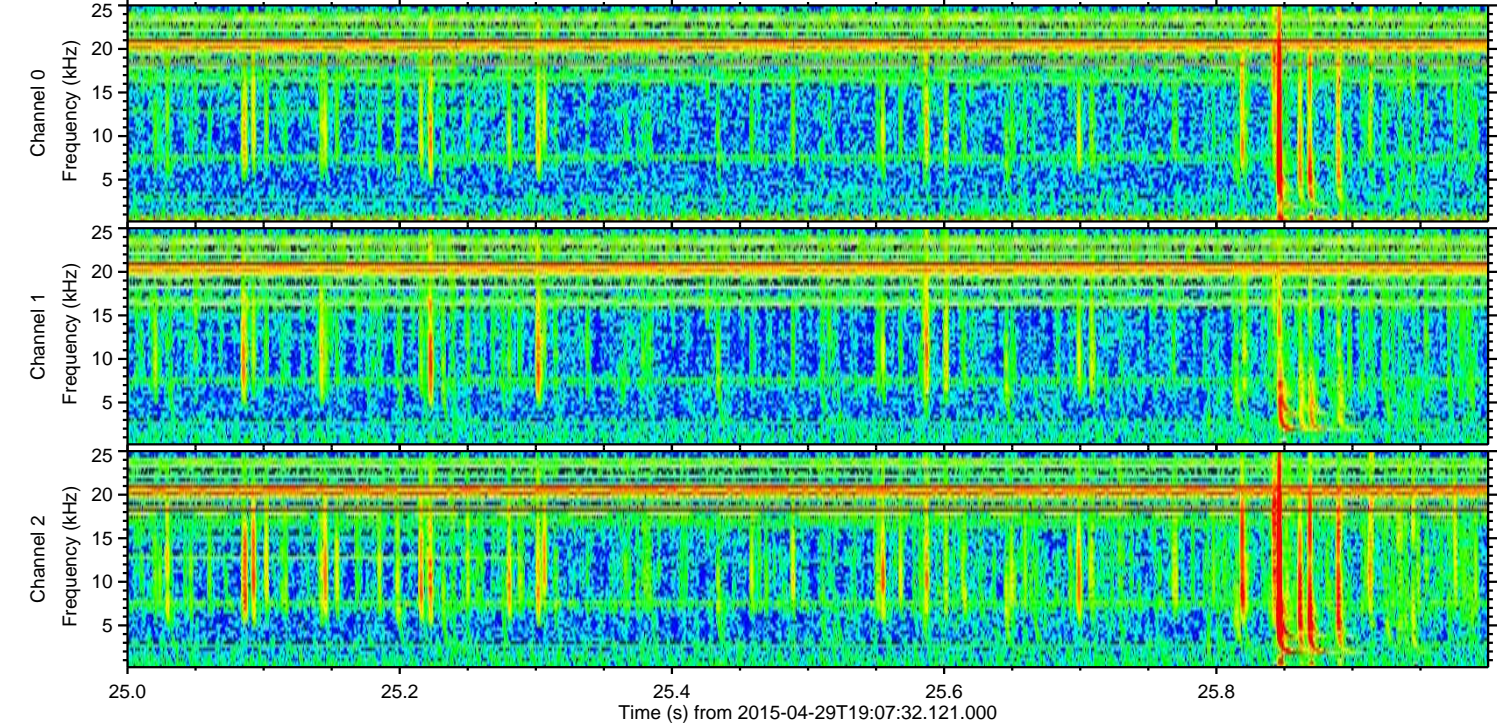
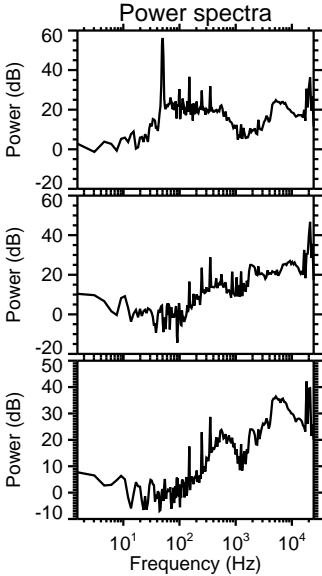
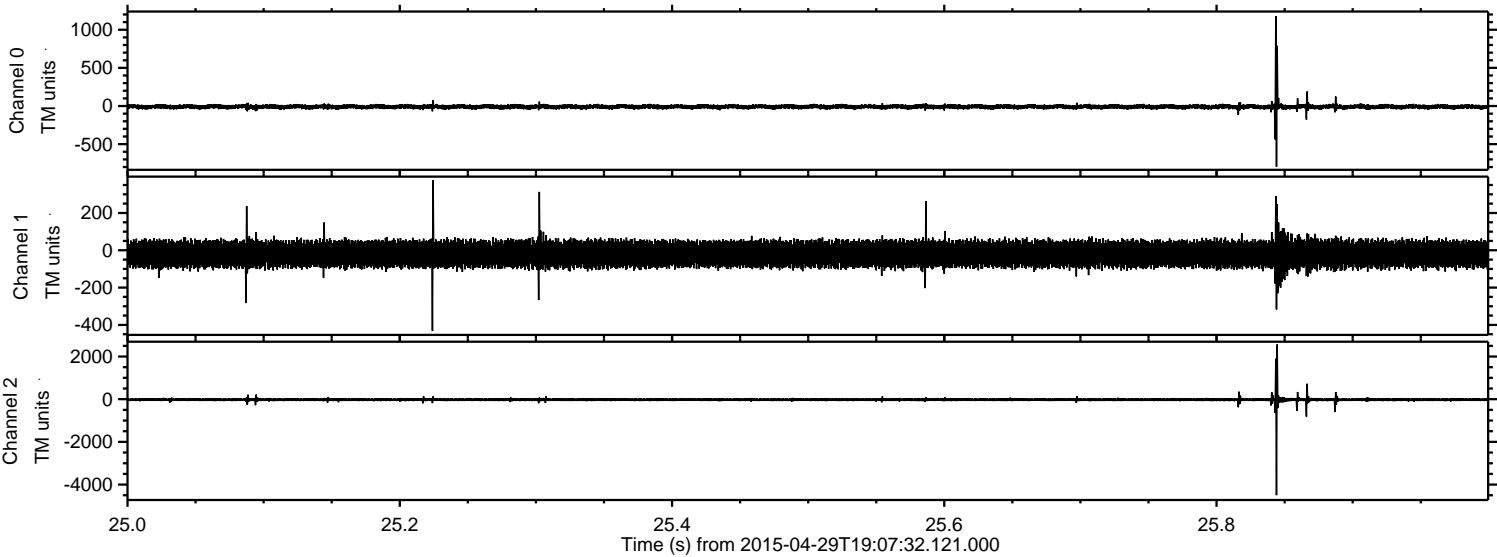
Channel 0
mn: -3197
mx: 1249
 μ : -9.7
 σ : 23.6

Channel 1
mn: -5546
mx: 3838
 μ : -20.1
 σ : 61.8

Channel 2
mn: -5637
mx: 3891
 μ : -22.4
 σ : 53.7

ELMAVAN 3D WAVEFORMS (Measured data sampled at 50 kHz) 49784 packets of 144 samples from 2015-04-29T19:07:32.121.000. Part 26/144

Processed Wed Apr 29 21:14:56 2015 by ELM ver.2012-10-06 from 001__elm20150429_190731__dat00.bin



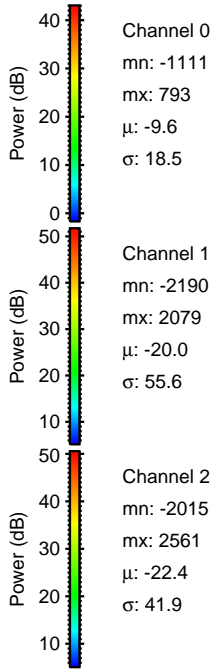
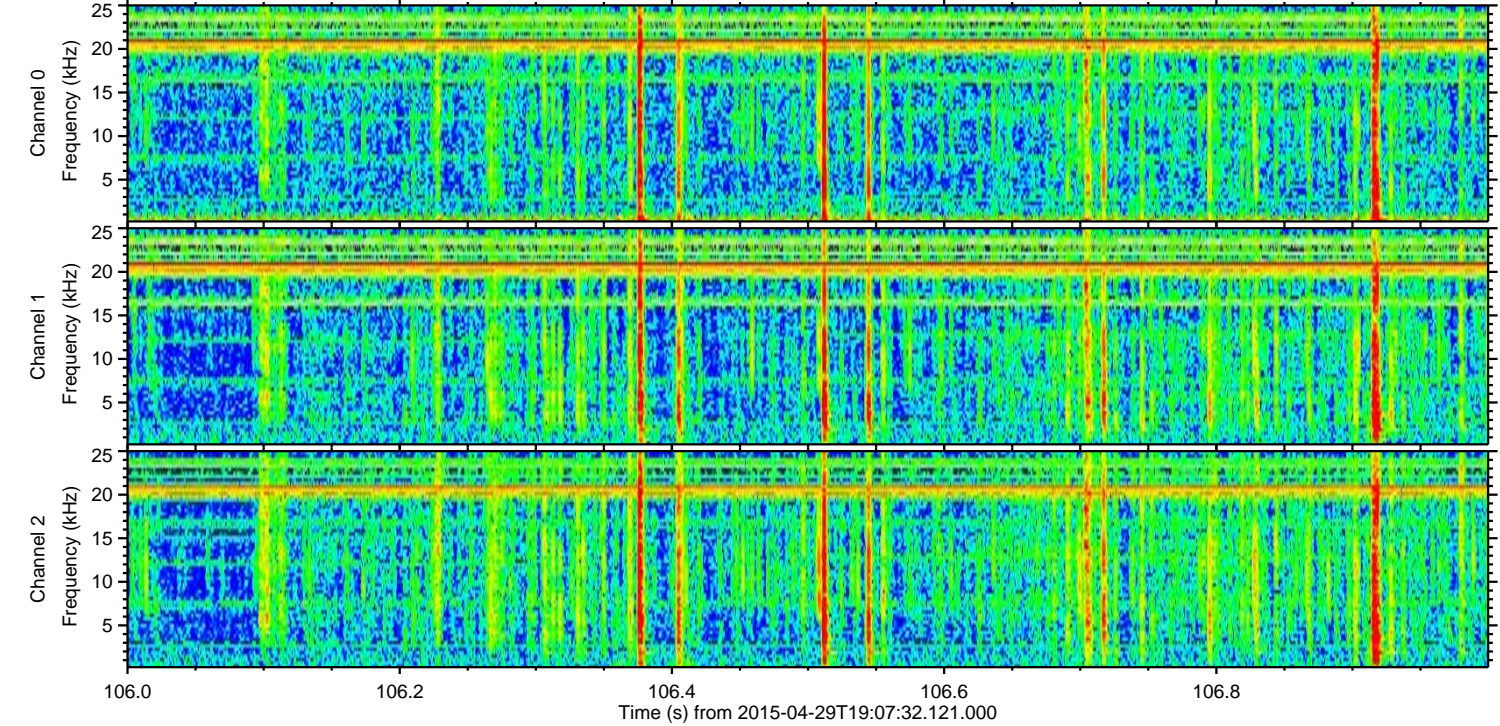
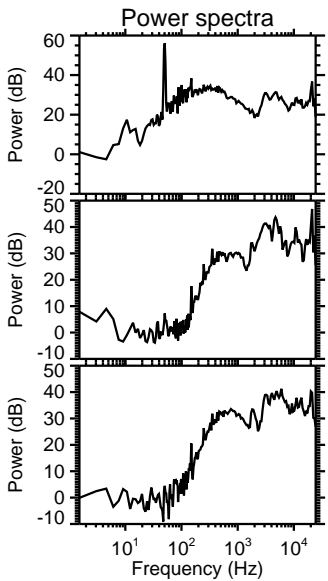
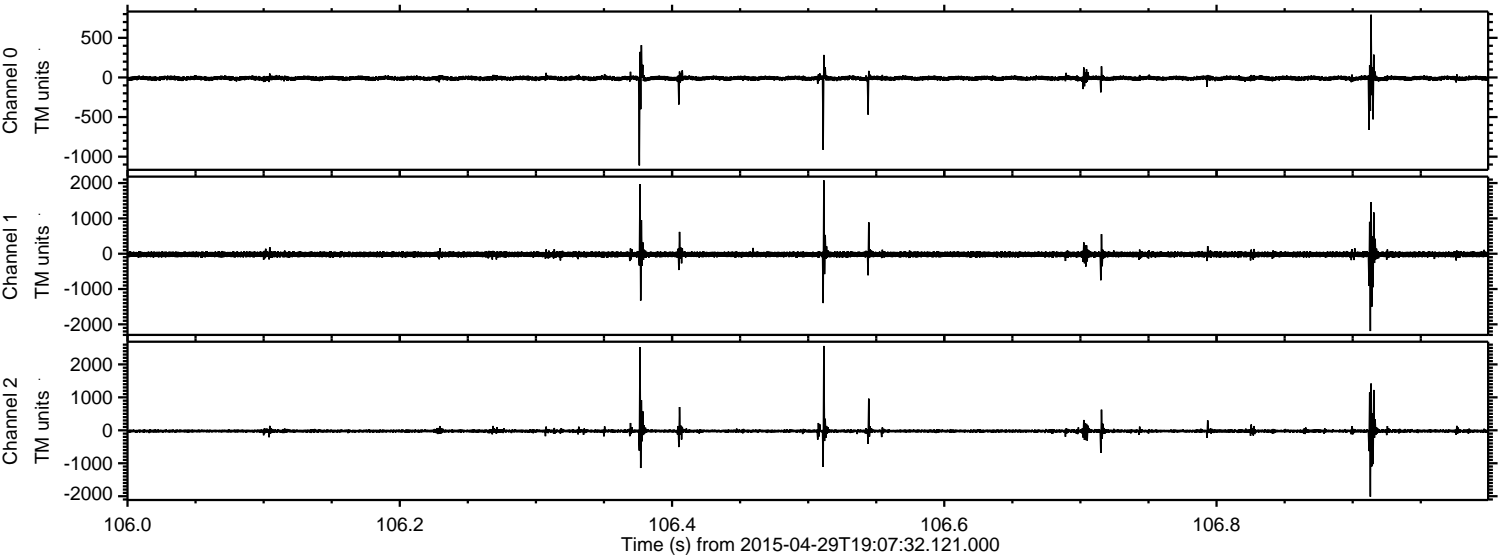
Channel 0
mn: -797
mx: 1180
 μ : -9.6
 σ : 16.6

Channel 1
mn: -432
mx: 376
 μ : -20.1
 σ : 38.0

Channel 2
mn: -4498
mx: 2565
 μ : -22.4
 σ : 44.8

ELMAVAN 3D WAVEFORMS (Measured data sampled at 50 kHz) 49784 packets of 144 samples from 2015-04-29T19:07:32.121.000. Part 107/144

Processed Wed Apr 29 21:14:57 2015 by ELM ver.2012-10-06 from 001__elm20150429_190731__dat00.bin

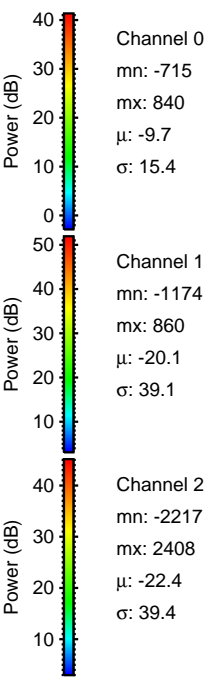
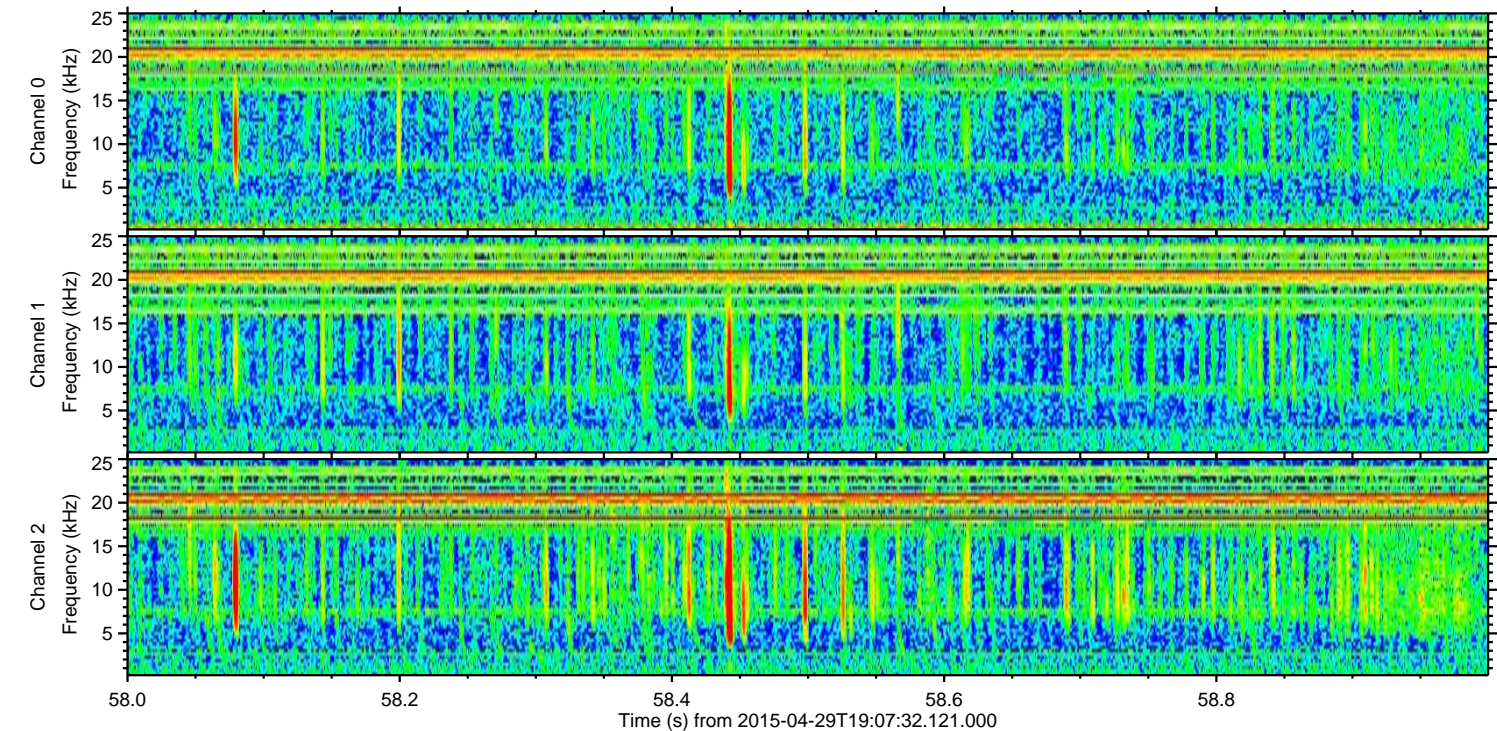
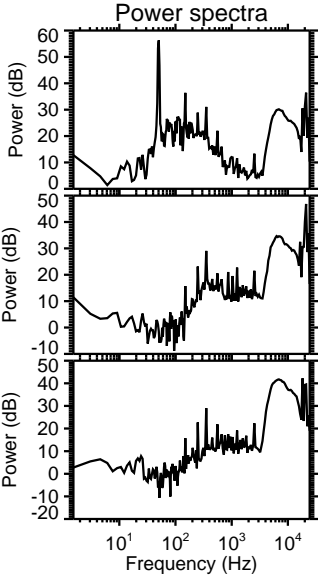
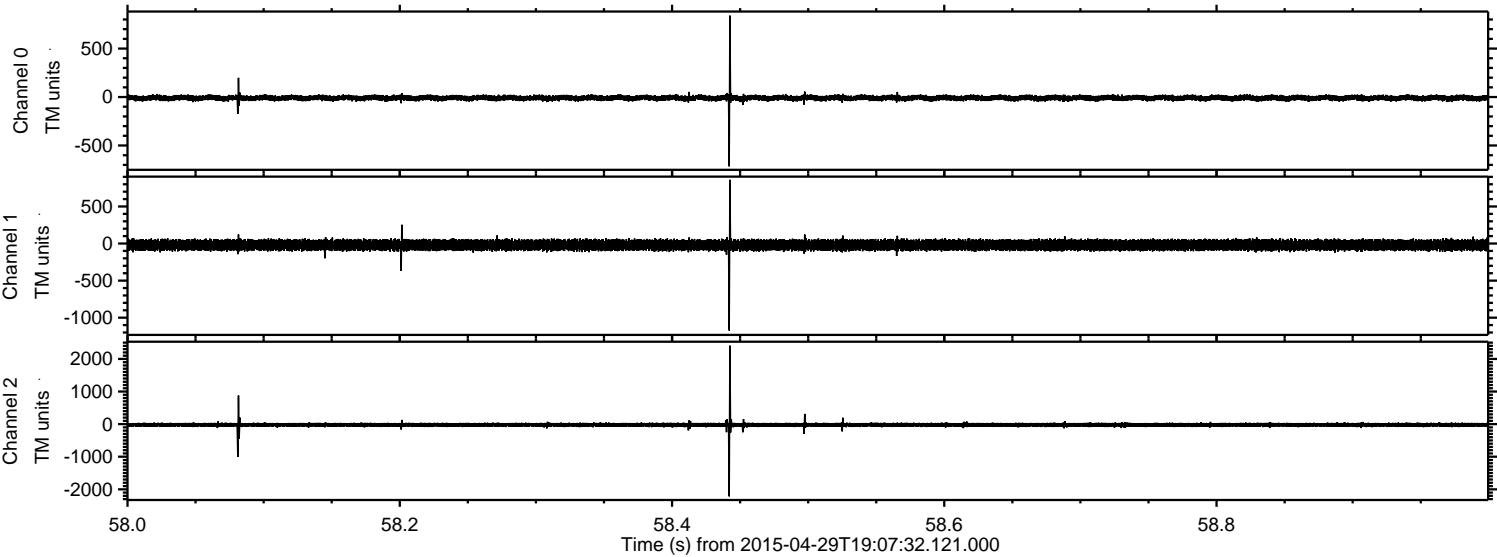


Channel 0
mn: -1111
mx: 793
 μ : -9.6
 σ : 18.5

Channel 1
mn: -2190
mx: 2079
 μ : -20.0
 σ : 55.6

Channel 2
mn: -2015
mx: 2561
 μ : -22.4
 σ : 41.9

Processed Wed Apr 29 21:14:57 2015 by ELM ver.2012-10-06 from 001_elm20150429_190731__dat00.bin



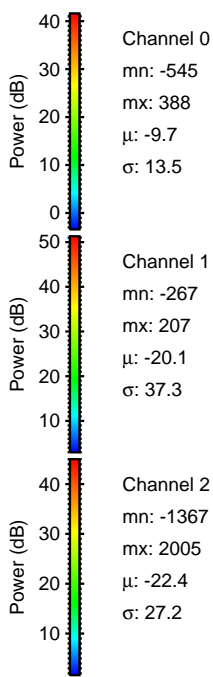
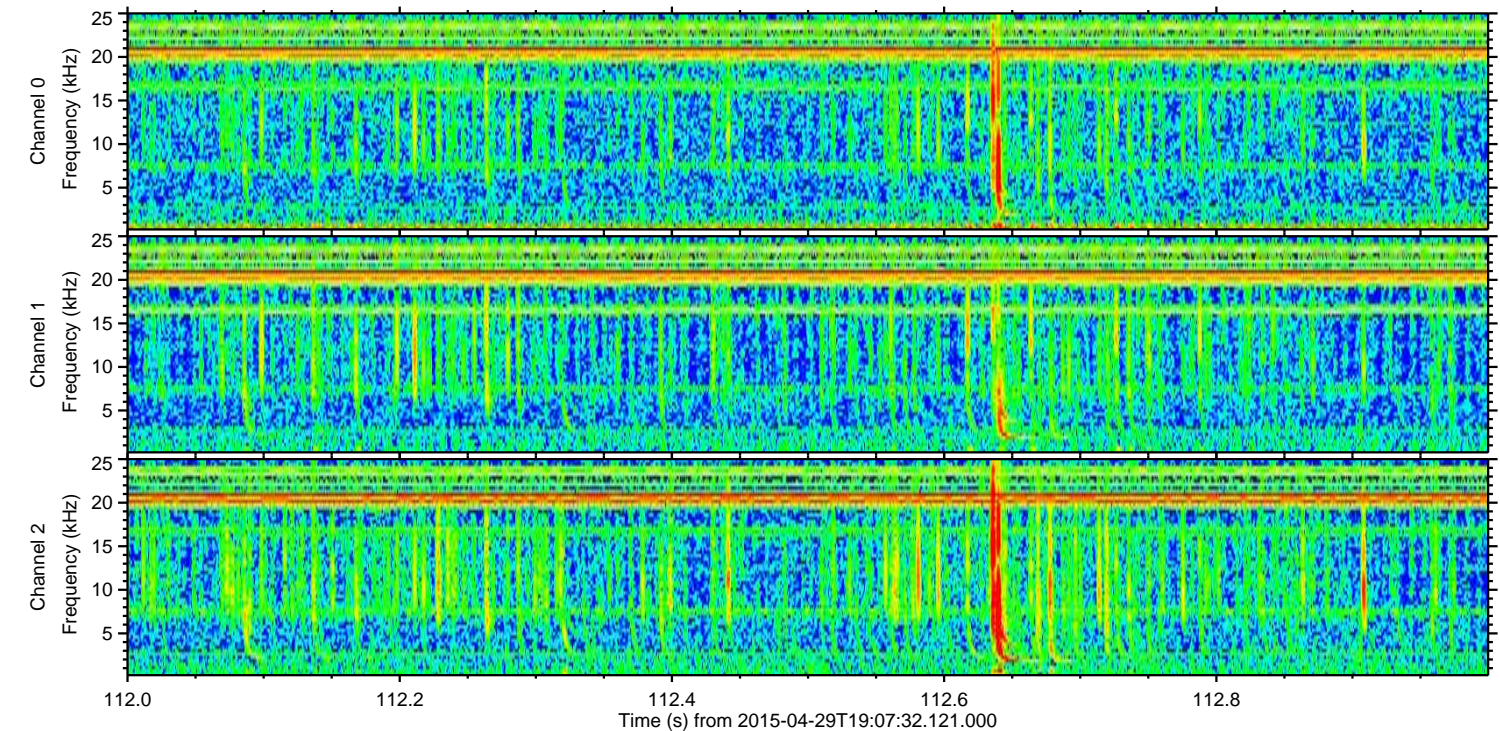
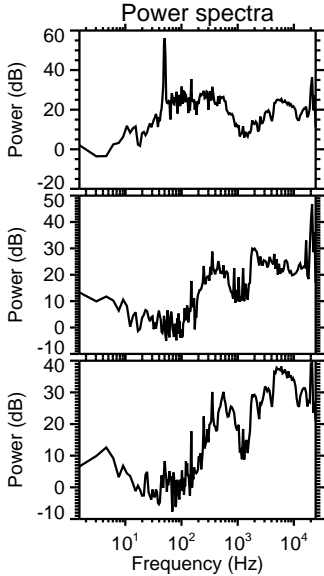
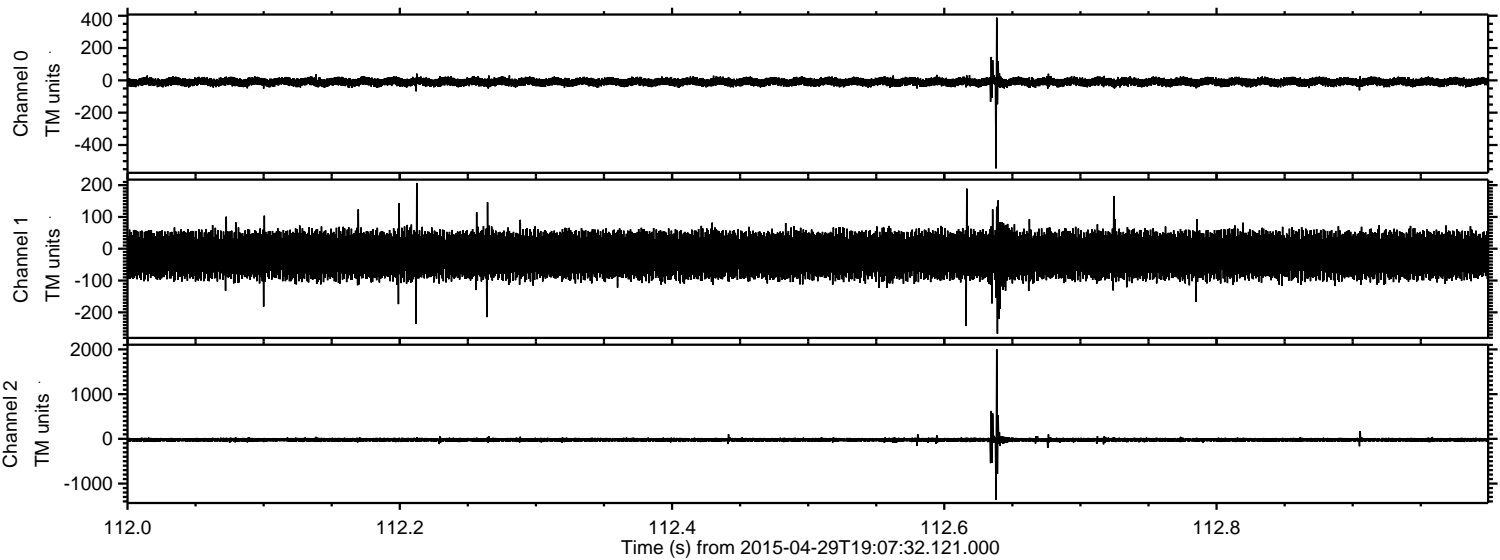
Channel 0
mn: -715
mx: 840
 μ : -9.7
 σ : 15.4

Channel 1
mn: -1174
mx: 860
 μ : -20.1
 σ : 39.1

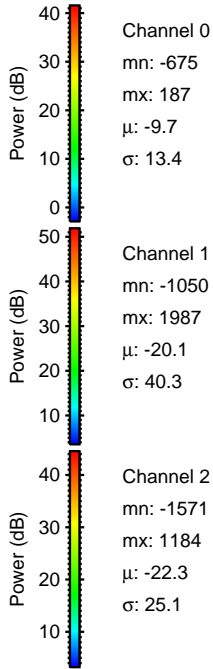
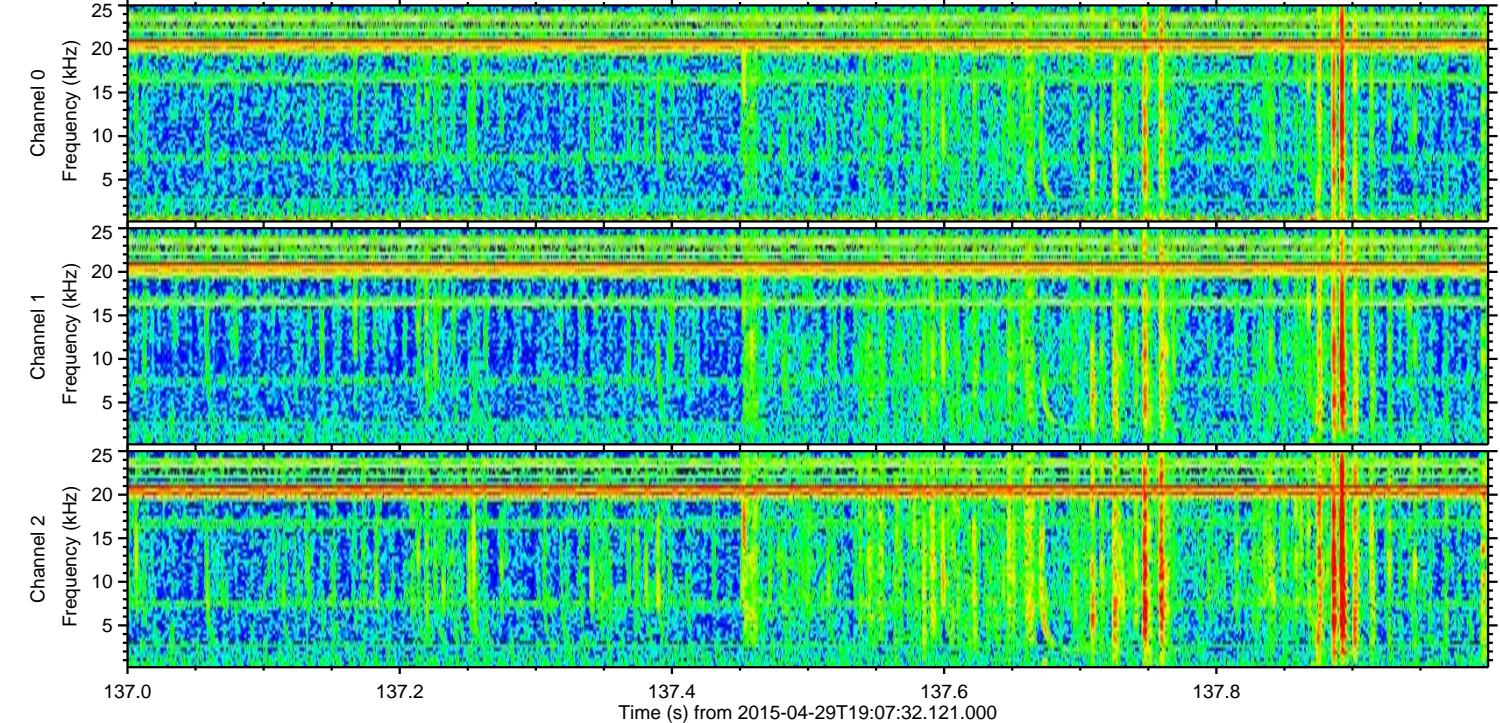
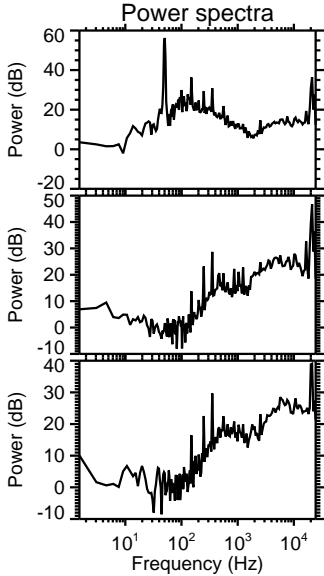
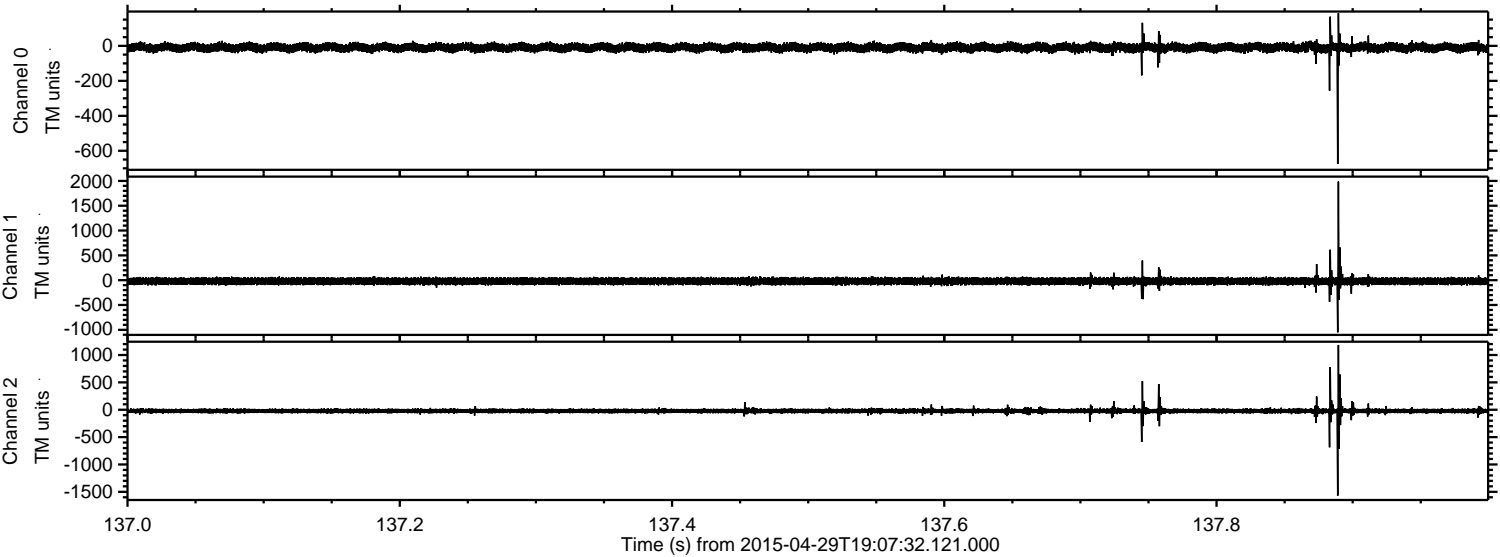
Channel 2
mn: -2217
mx: 2408
 μ : -22.4
 σ : 39.4

ELMAVAN 3D WAVEFORMS (Measured data sampled at 50 kHz) 49784 packets of 144 samples from 2015-04-29T19:07:32.121.000. Part 113/144

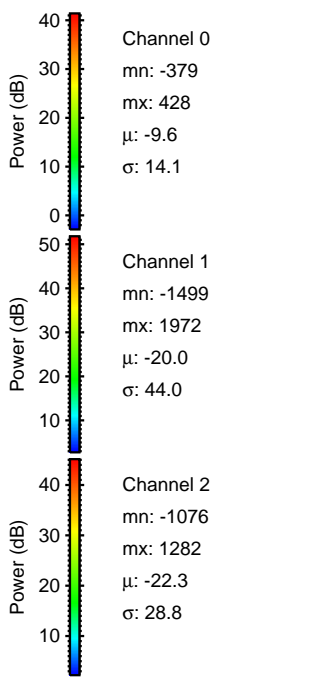
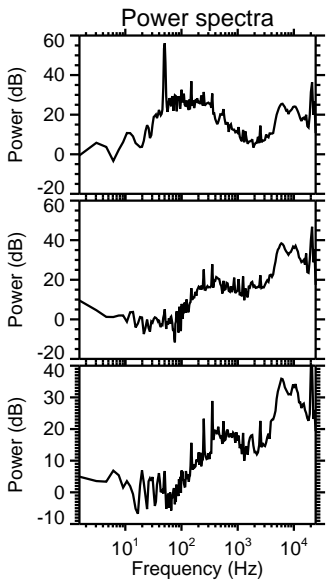
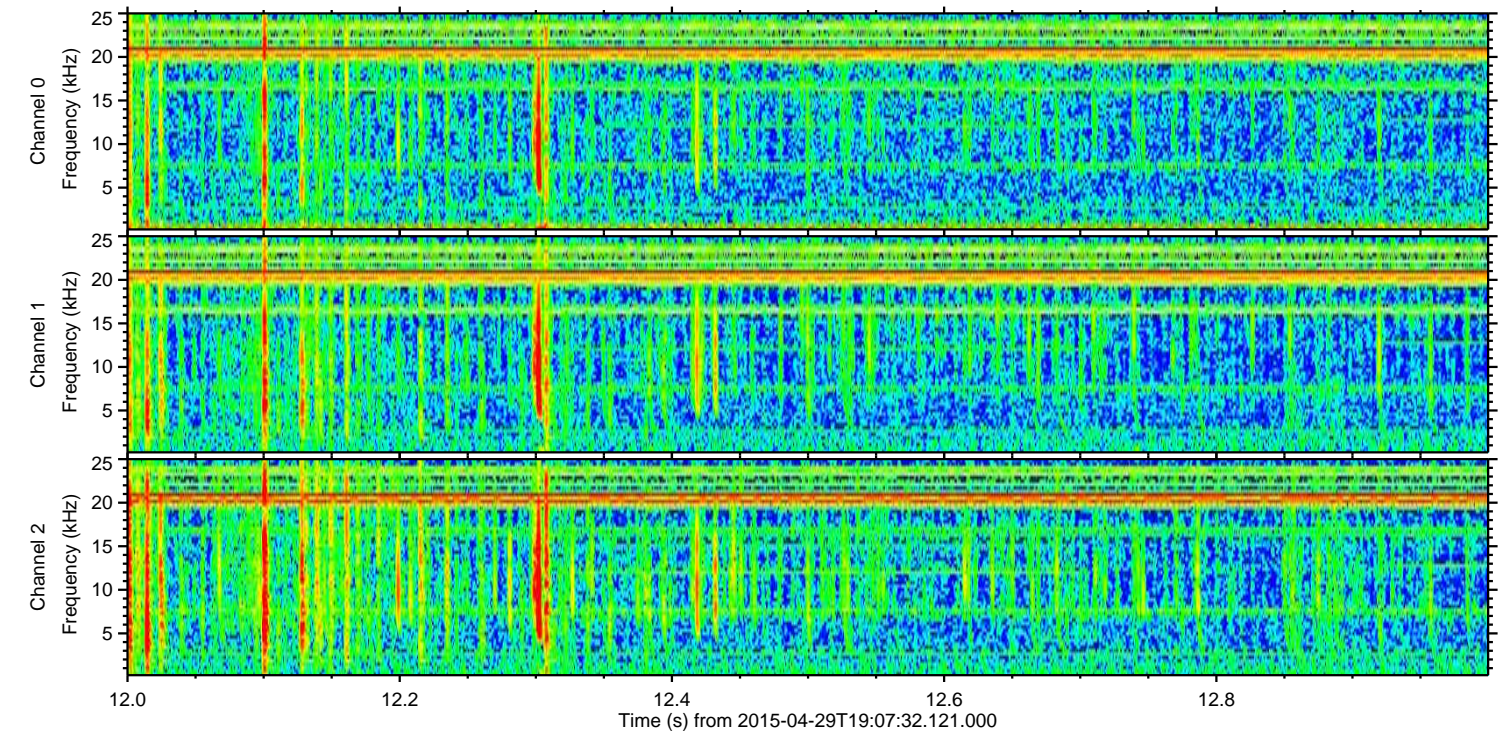
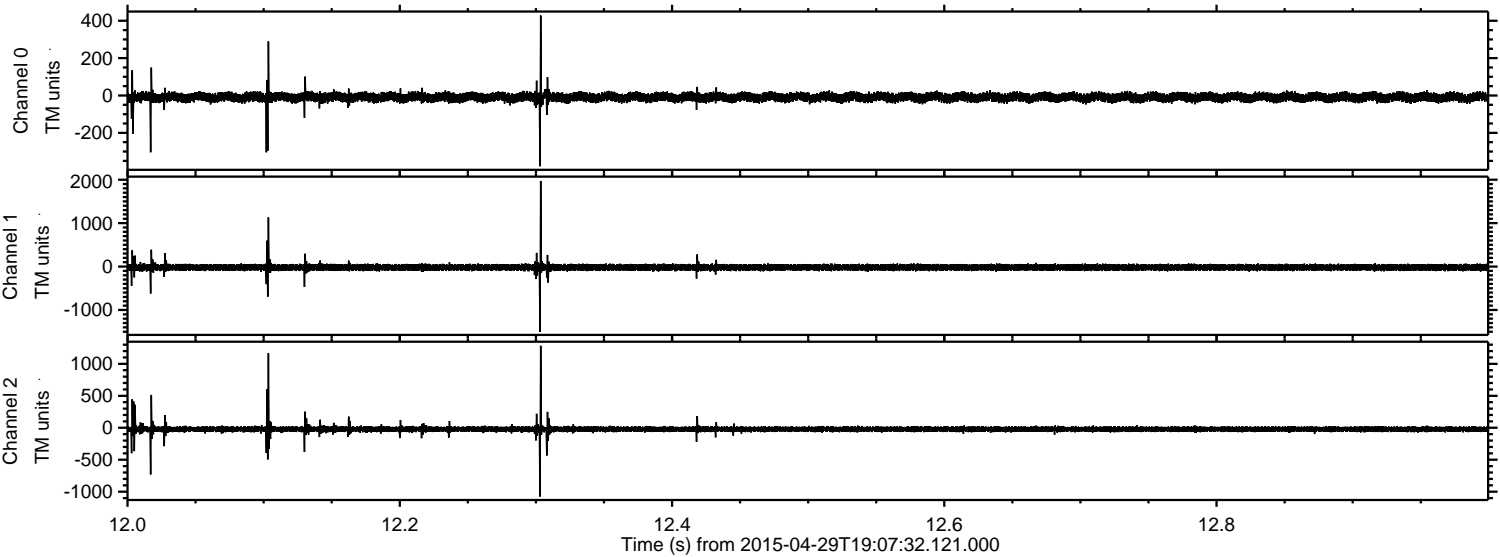
Processed Wed Apr 29 21:14:58 2015 by ELM ver.2012-10-06 from 001__elm20150429_190731__dat00.bin



Processed Wed Apr 29 21:14:59 2015 by ELM ver.2012-10-06 from 001__elm20150429_190731__dat00.bin



Processed Wed Apr 29 21:15:00 2015 by ELM ver.2012-10-06 from 001__elm20150429_190731__dat00.bin



ELMAVAN 3D WAVEFORMS (Measured data sampled at 50 kHz) 49784 packets of 144 samples from 2015-04-29T19:07:32.121.000. Part 109/144

