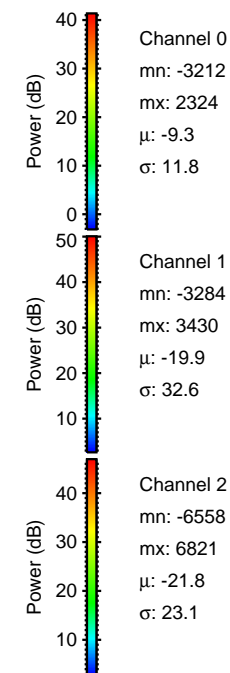
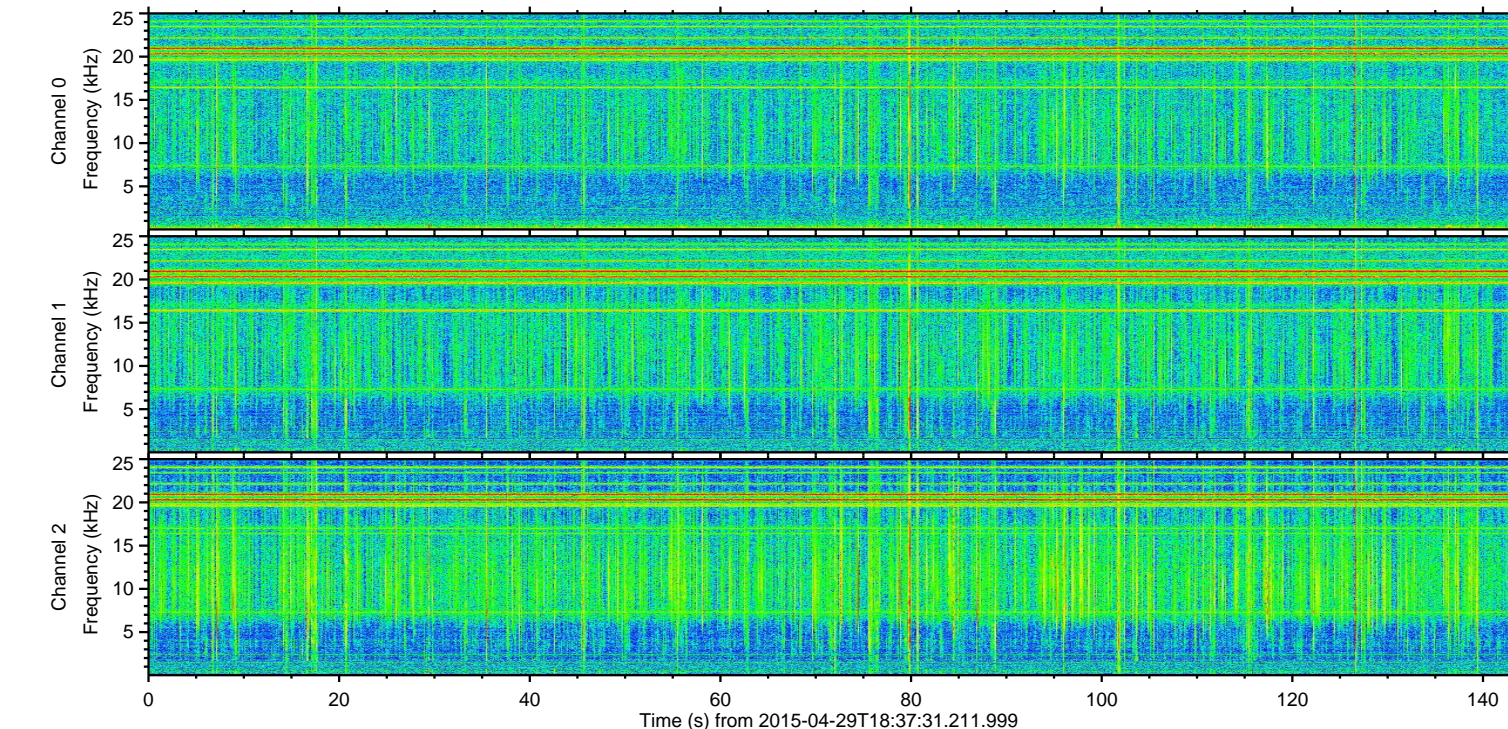
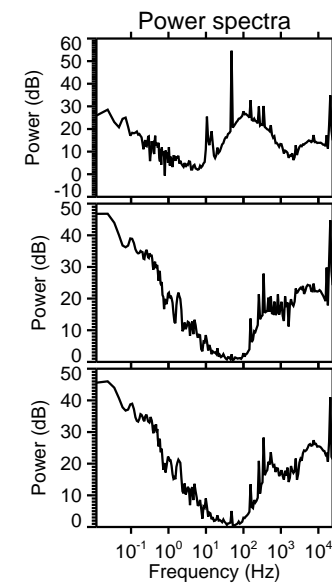
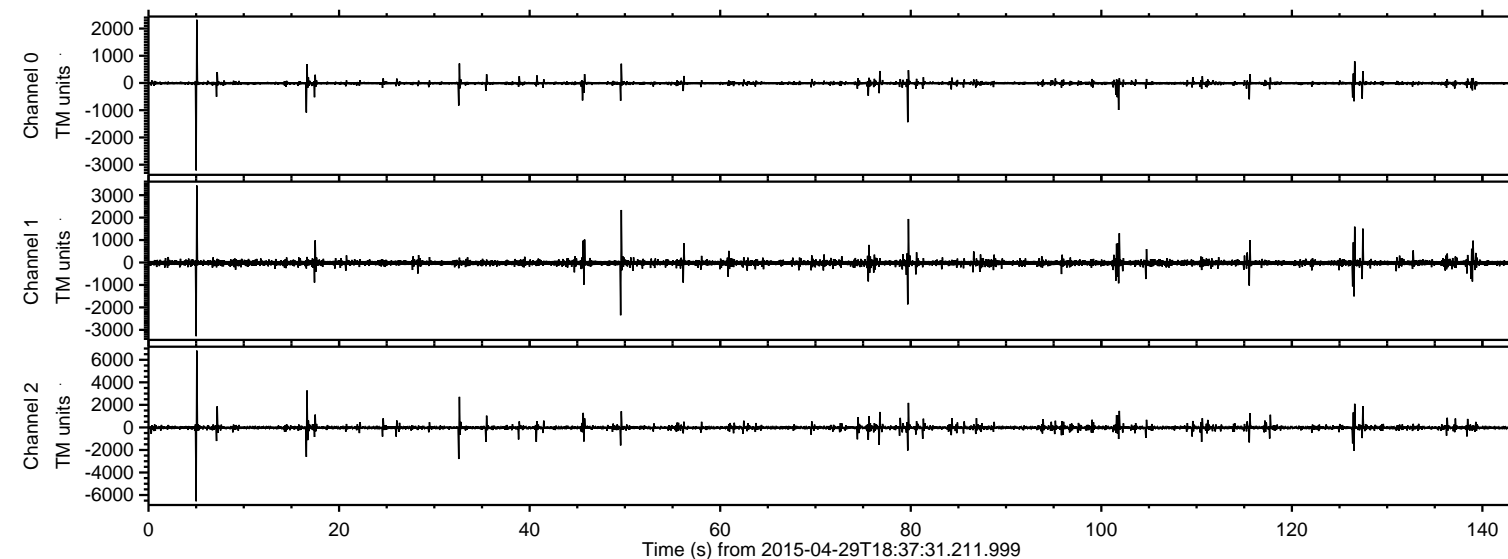


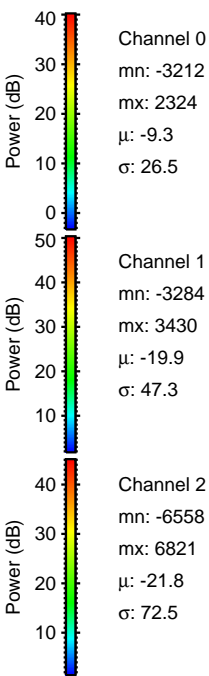
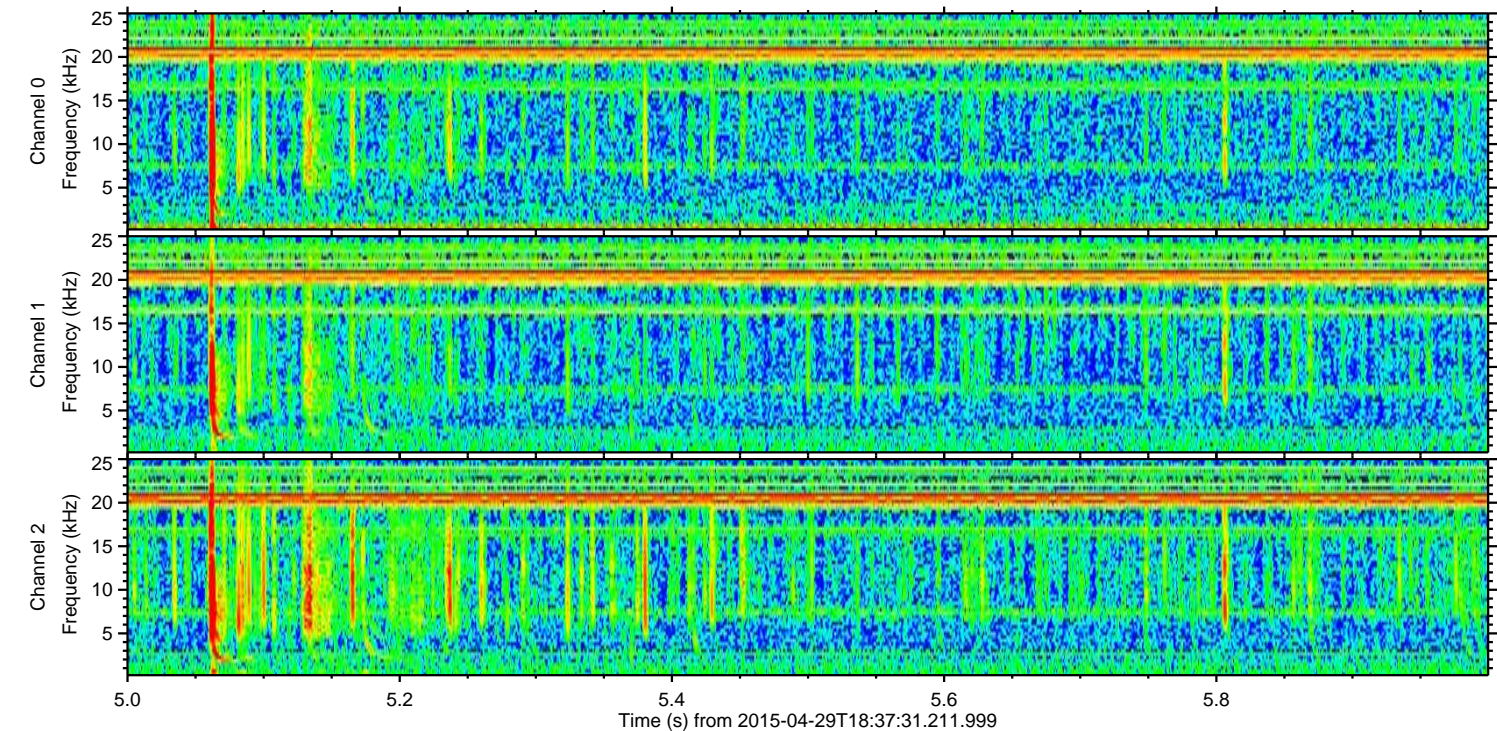
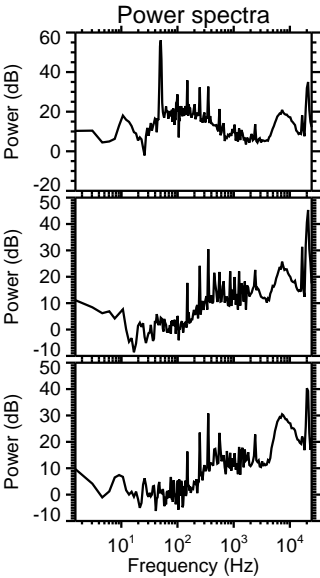
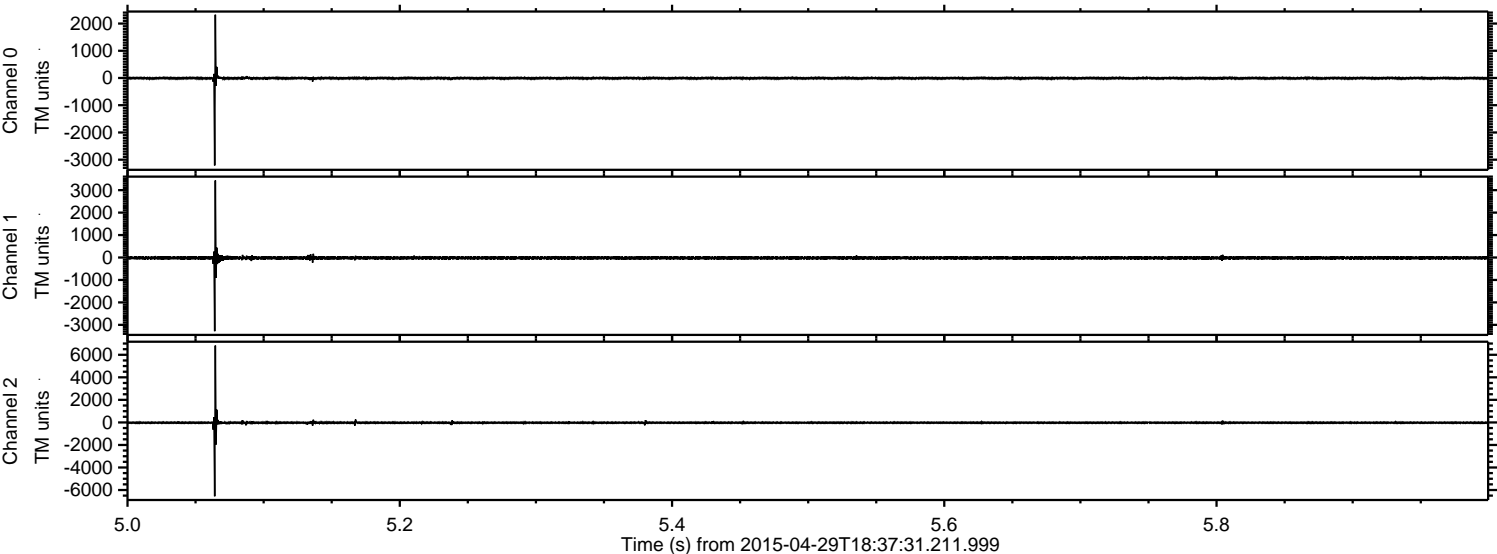
ELMAVAN 3D WAVEFORMS (Measured data sampled at 50 kHz) 49585 packets of 144 samples from 2015-04-29T18:37:31.211.999.

Processed Wed Apr 29 20:45:45 2015 by ELM ver.2012-10-06 from 001\_\_elm20150429\_183730\_\_dat00.bin





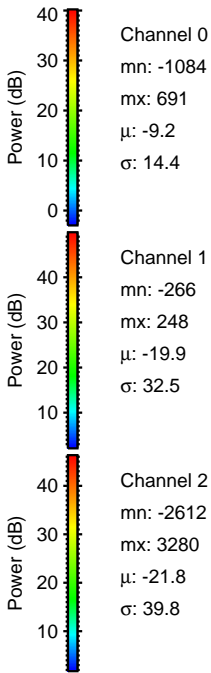
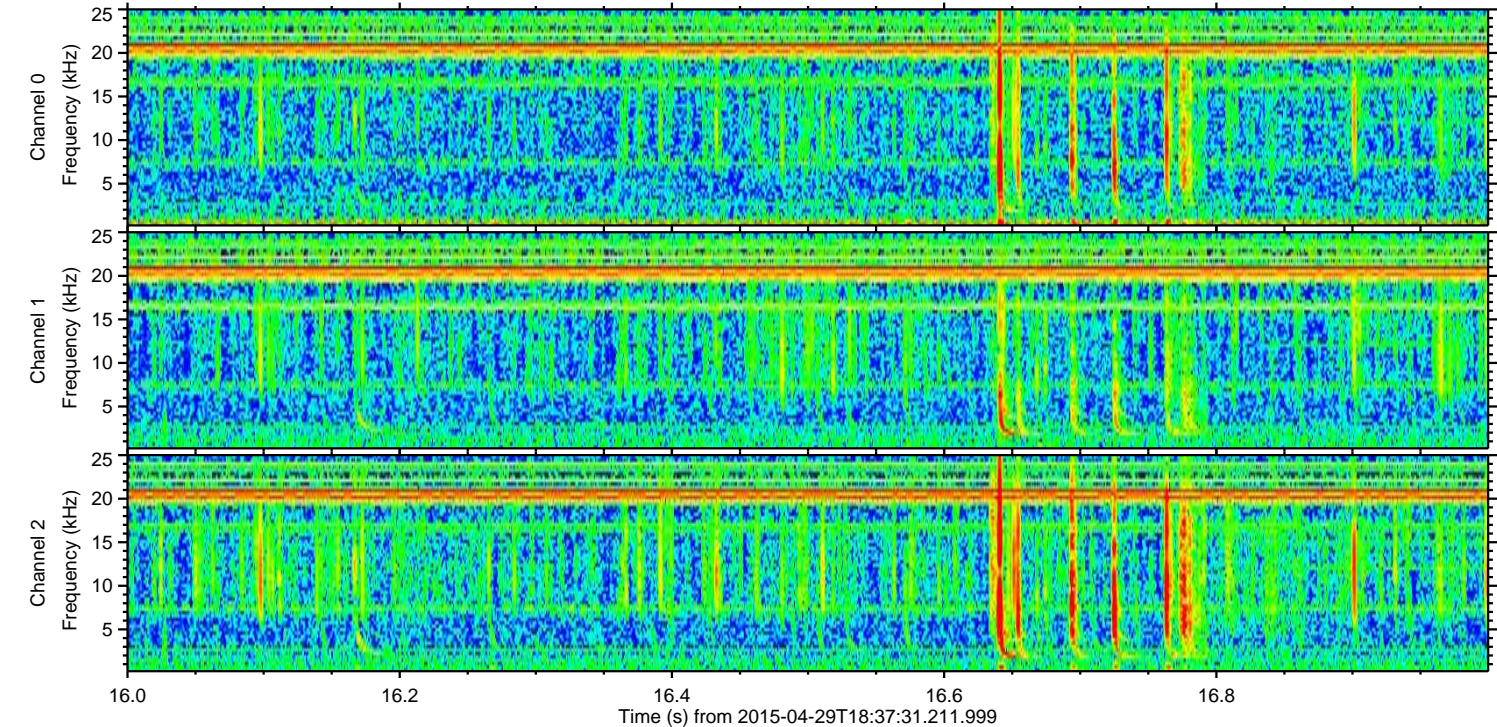
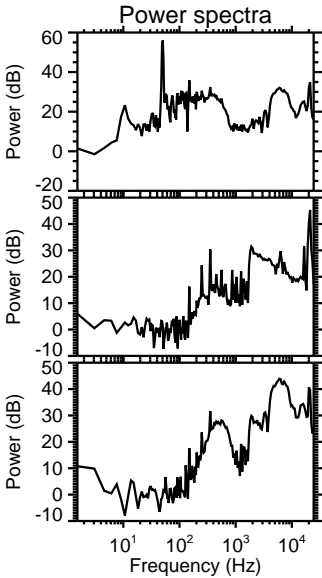
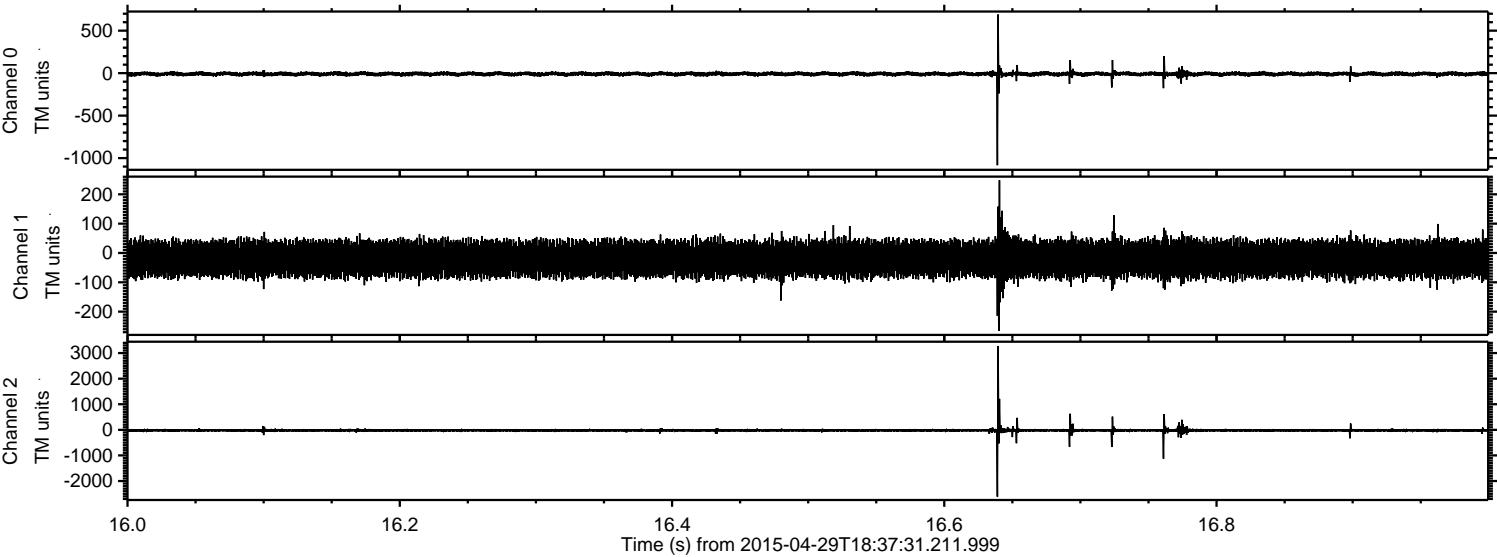
Processed Wed Apr 29 20:46:00 2015 by ELM ver.2012-10-06 from 001\_\_elm20150429\_183730\_\_dat00.bin





ELMAVAN 3D WAVEFORMS (Measured data sampled at 50 kHz) 49585 packets of 144 samples from 2015-04-29T18:37:31.211.999. Part 17/143

Processed Wed Apr 29 20:46:01 2015 by ELM ver.2012-10-06 from 001\_\_elm20150429\_183730\_\_dat00.bin



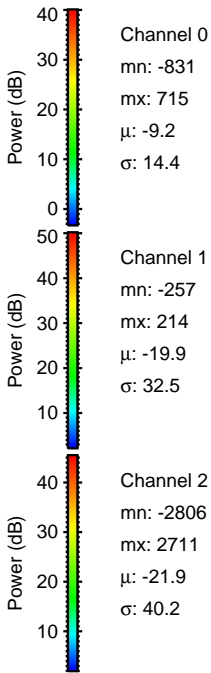
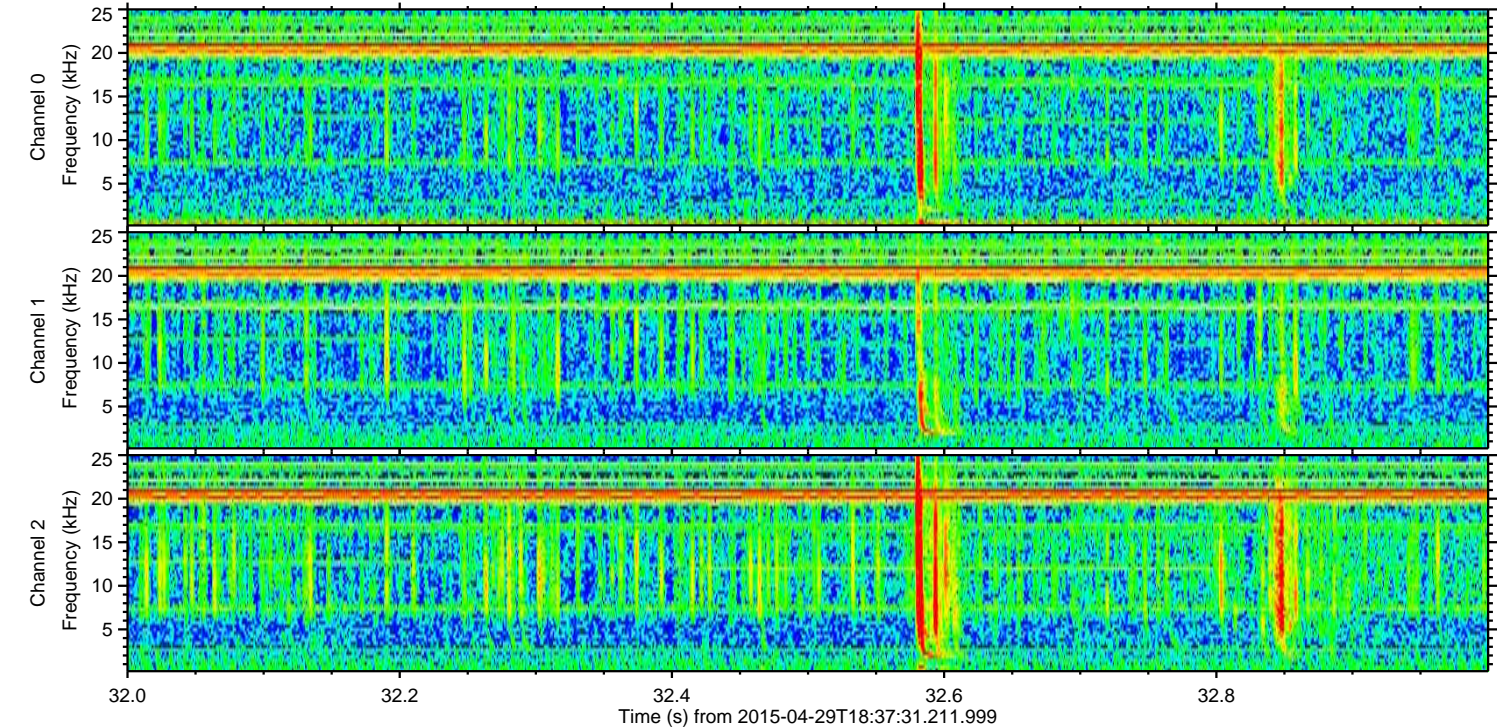
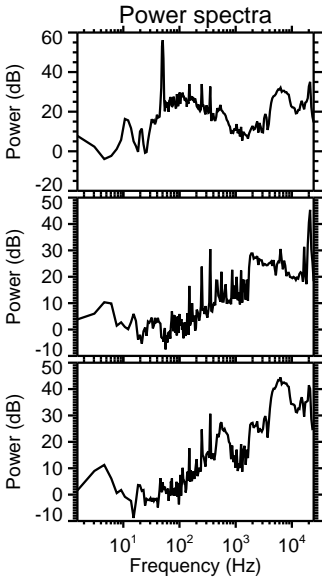
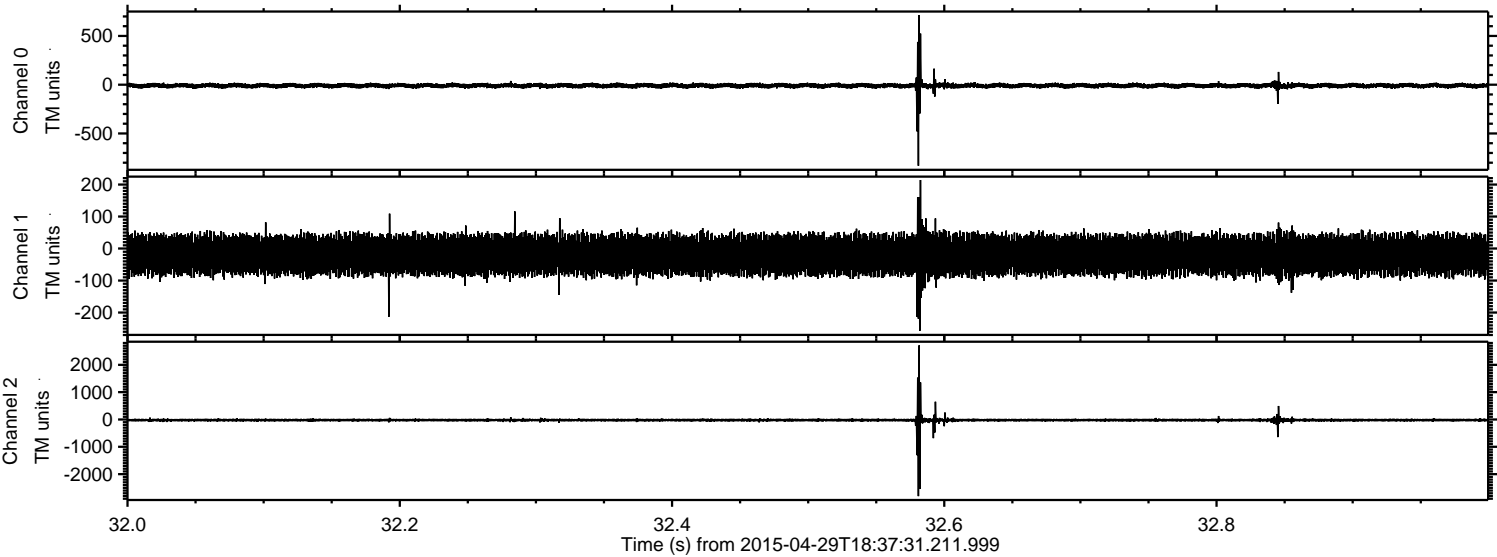
Channel 0  
mn: -1084  
mx: 691  
 $\mu$ : -9.2  
 $\sigma$ : 14.4

Channel 1  
mn: -266  
mx: 248  
 $\mu$ : -19.9  
 $\sigma$ : 32.5

Channel 2  
mn: -2612  
mx: 3280  
 $\mu$ : -21.8  
 $\sigma$ : 39.8

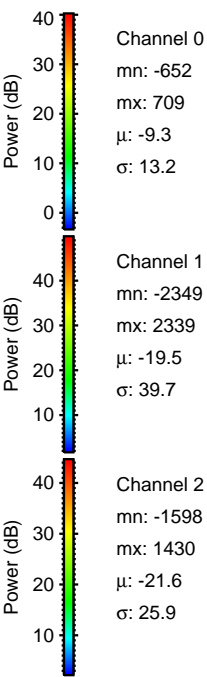
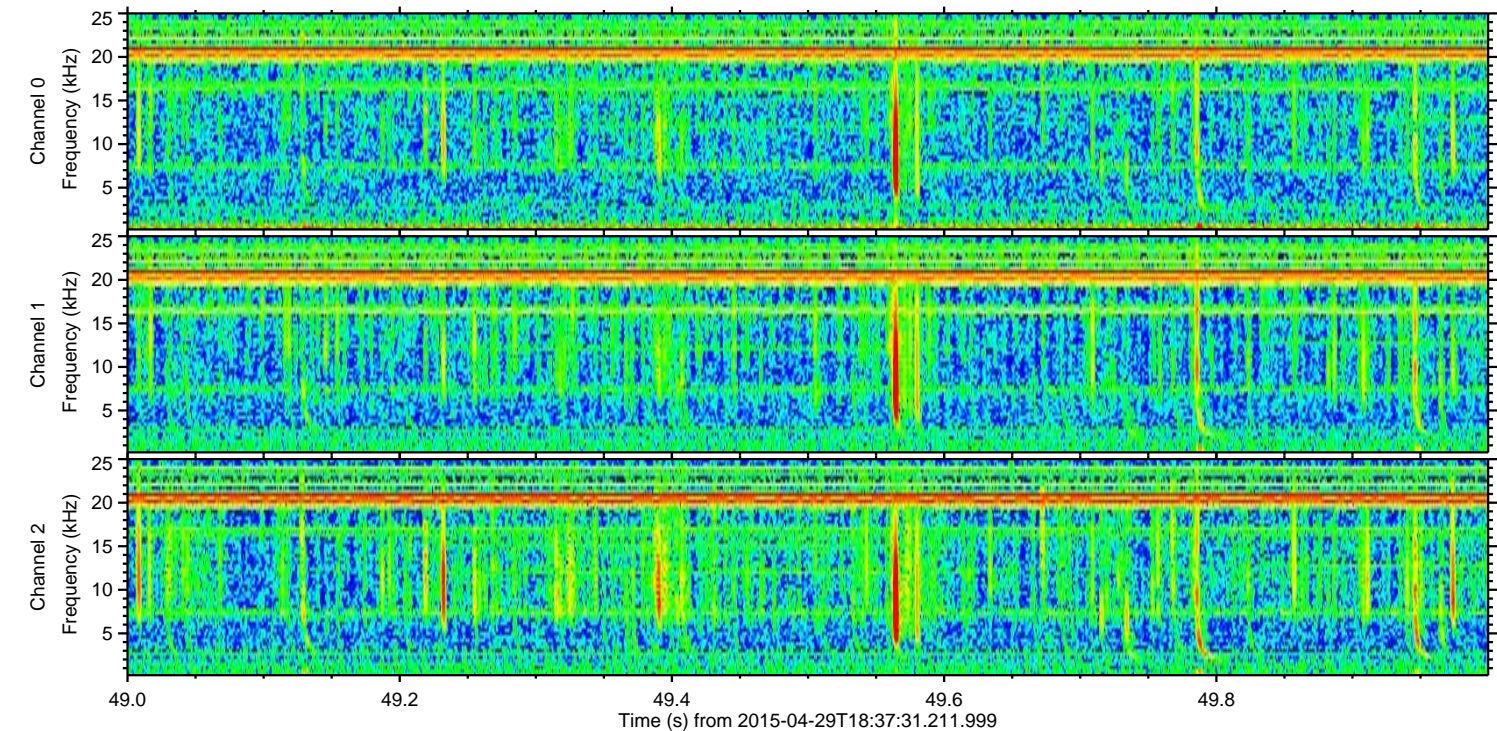
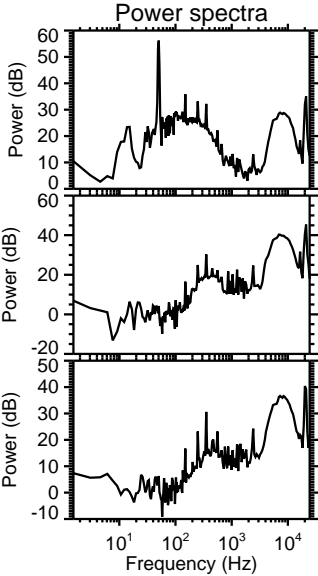
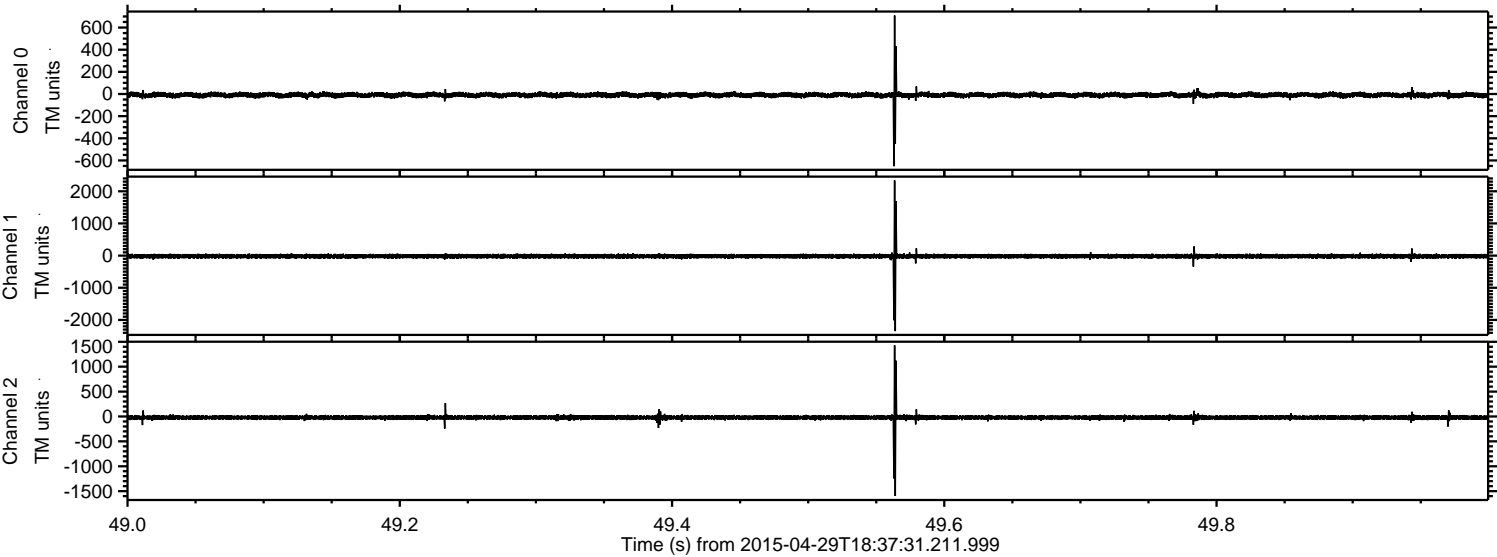


Processed Wed Apr 29 20:46:03 2015 by ELM ver.2012-10-06 from 001\_elm20150429\_183730\_\_dat00.bin



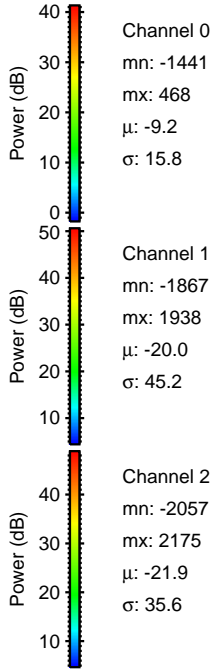
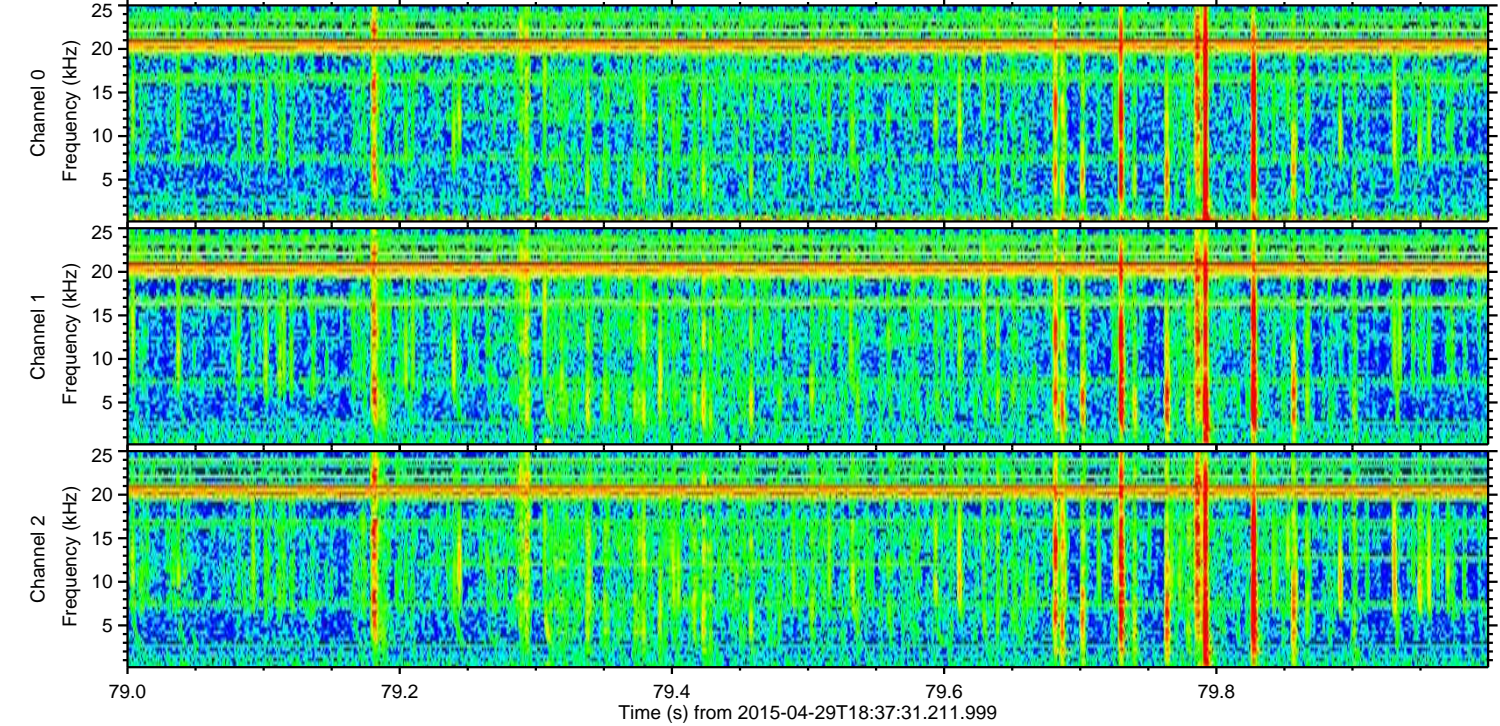
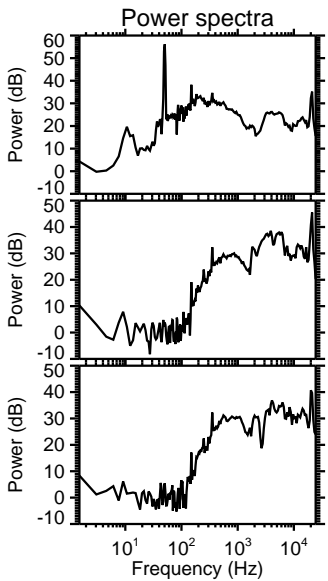
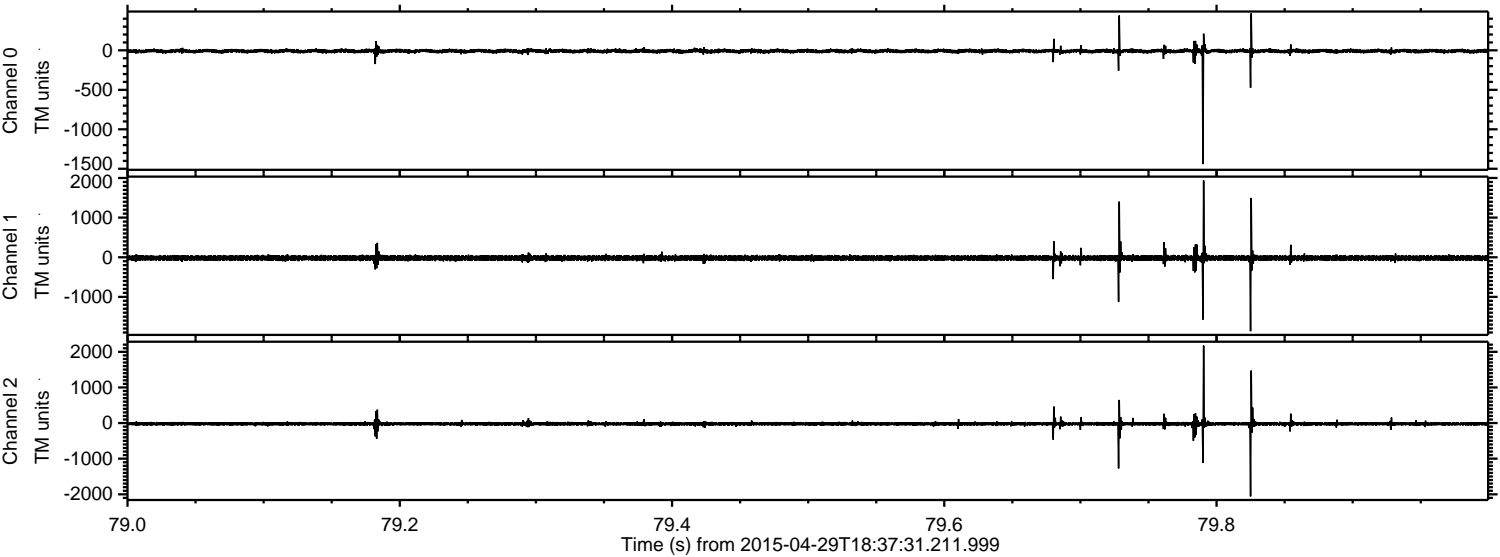


Processed Wed Apr 29 20:46:04 2015 by ELM ver.2012-10-06 from 001\_\_elm20150429\_183730\_\_dat00.bin





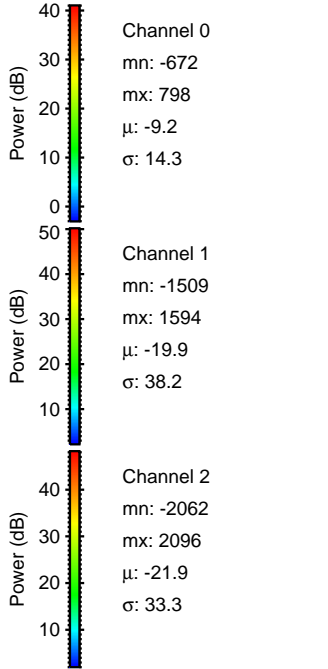
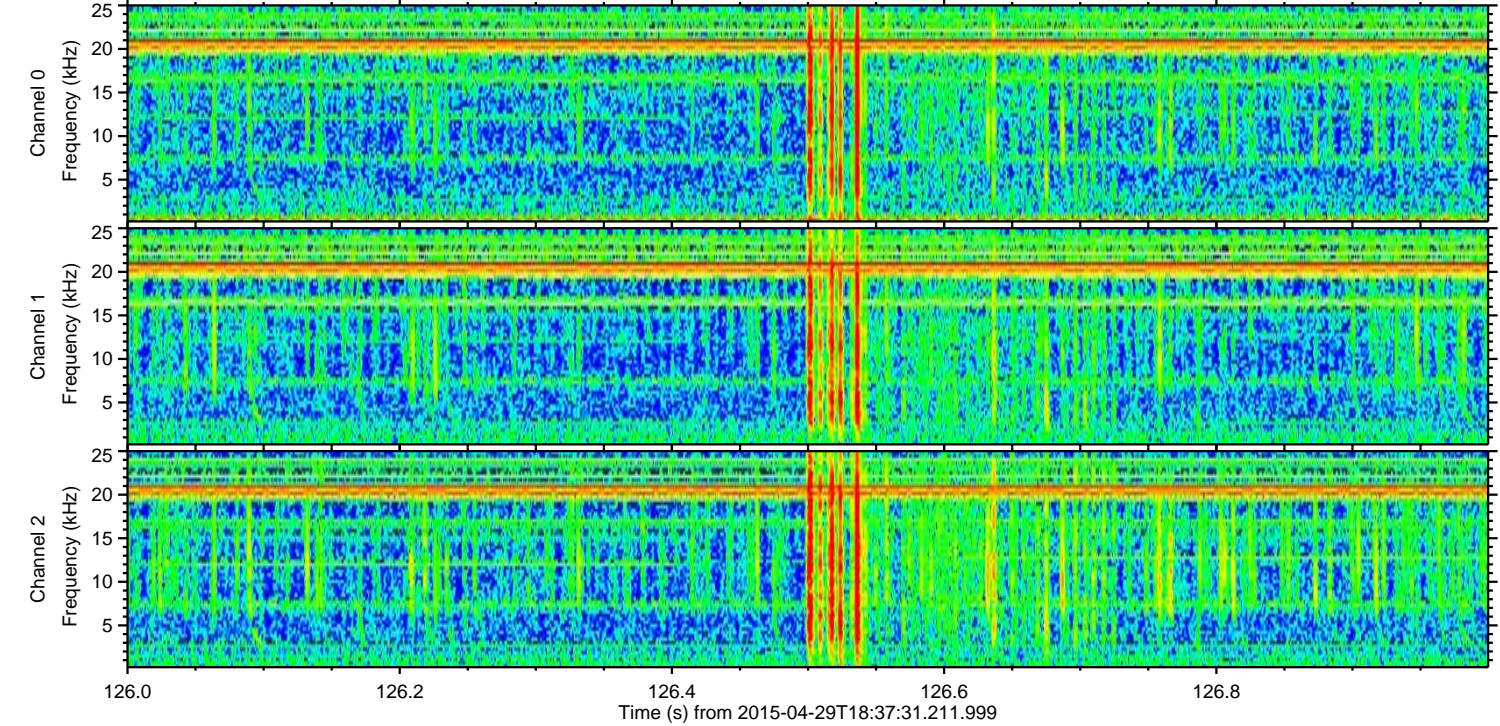
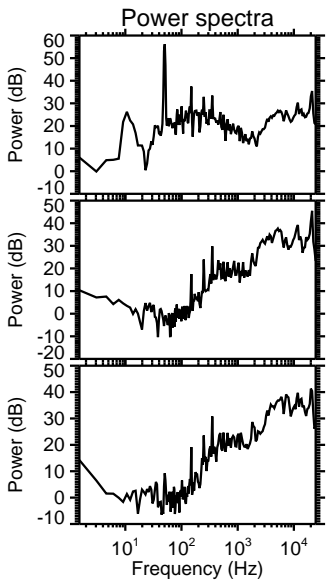
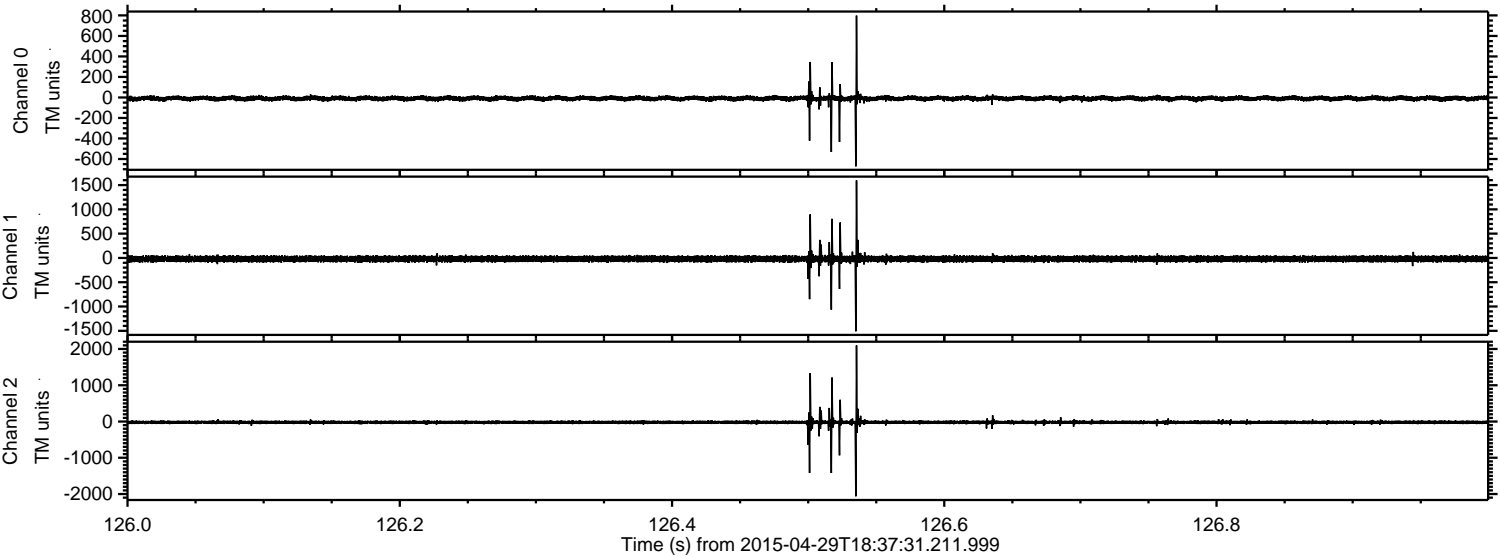
Processed Wed Apr 29 20:46:05 2015 by ELM ver.2012-10-06 from 001\_\_elm20150429\_183730\_\_dat00.bin





ELMAVAN 3D WAVEFORMS (Measured data sampled at 50 kHz) 49585 packets of 144 samples from 2015-04-29T18:37:31.211.999. Part 127/143

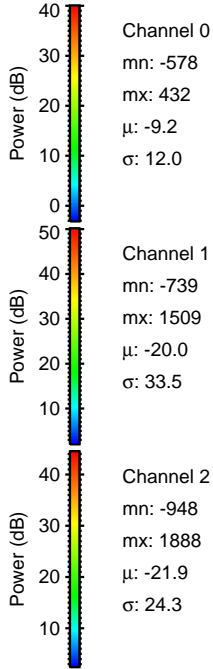
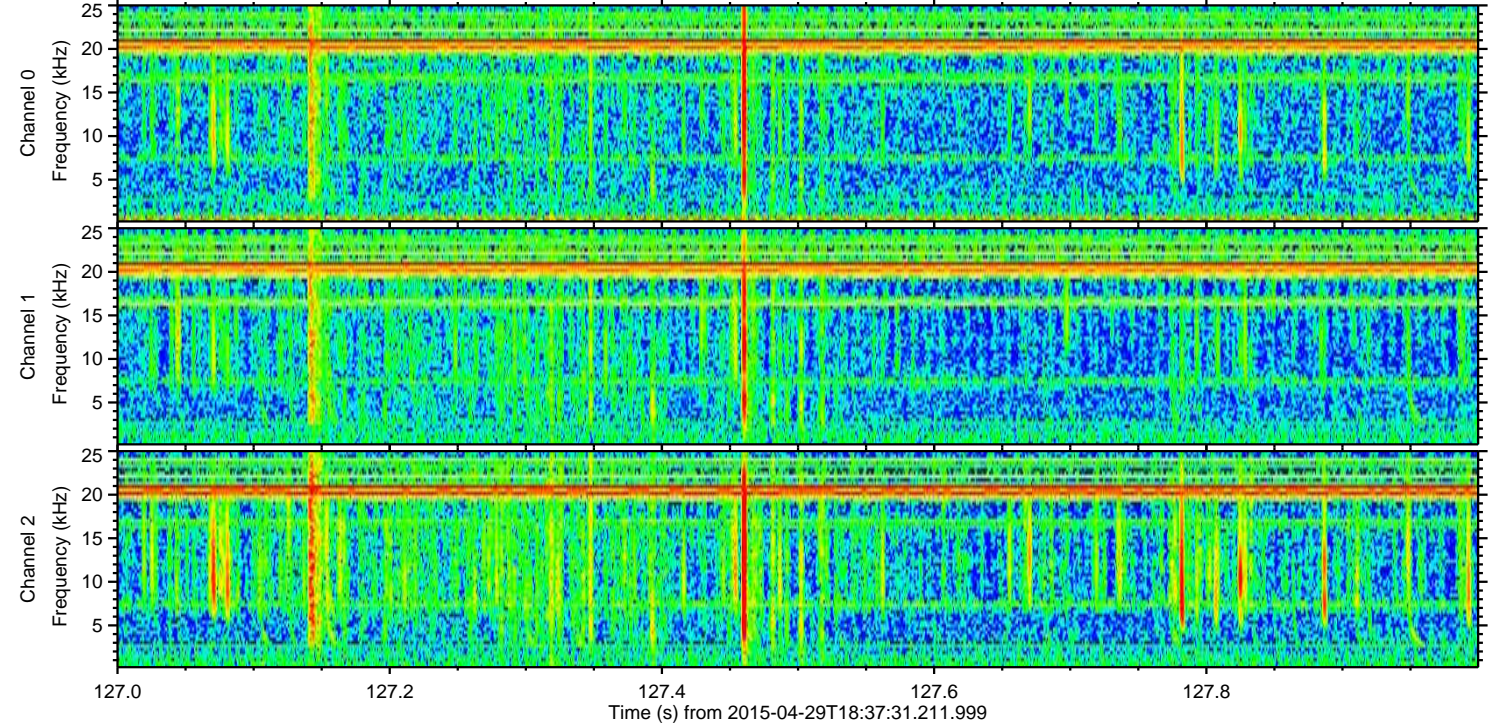
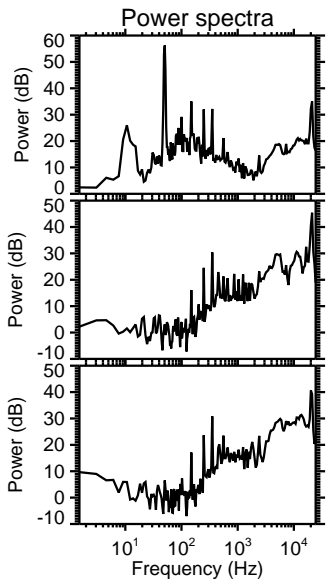
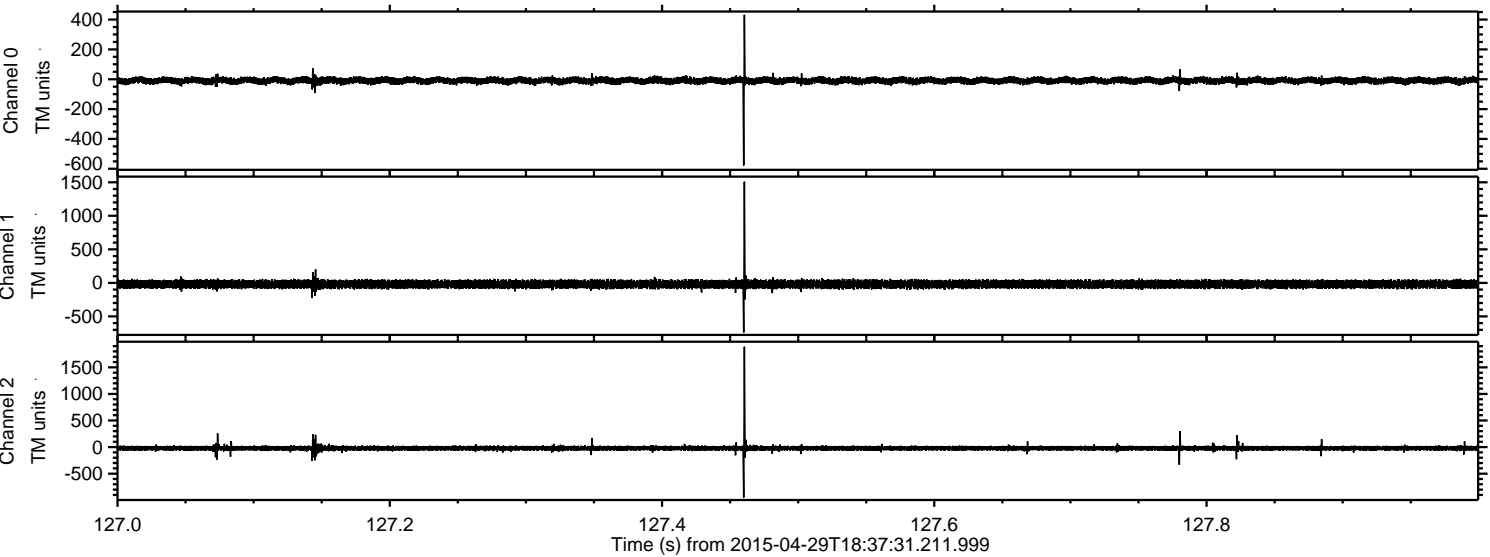
Processed Wed Apr 29 20:46:06 2015 by ELM ver.2012-10-06 from 001\_\_elm20150429\_183730\_\_dat00.bin





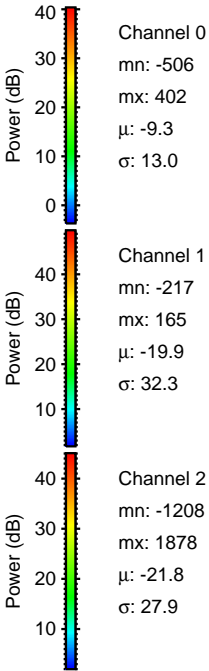
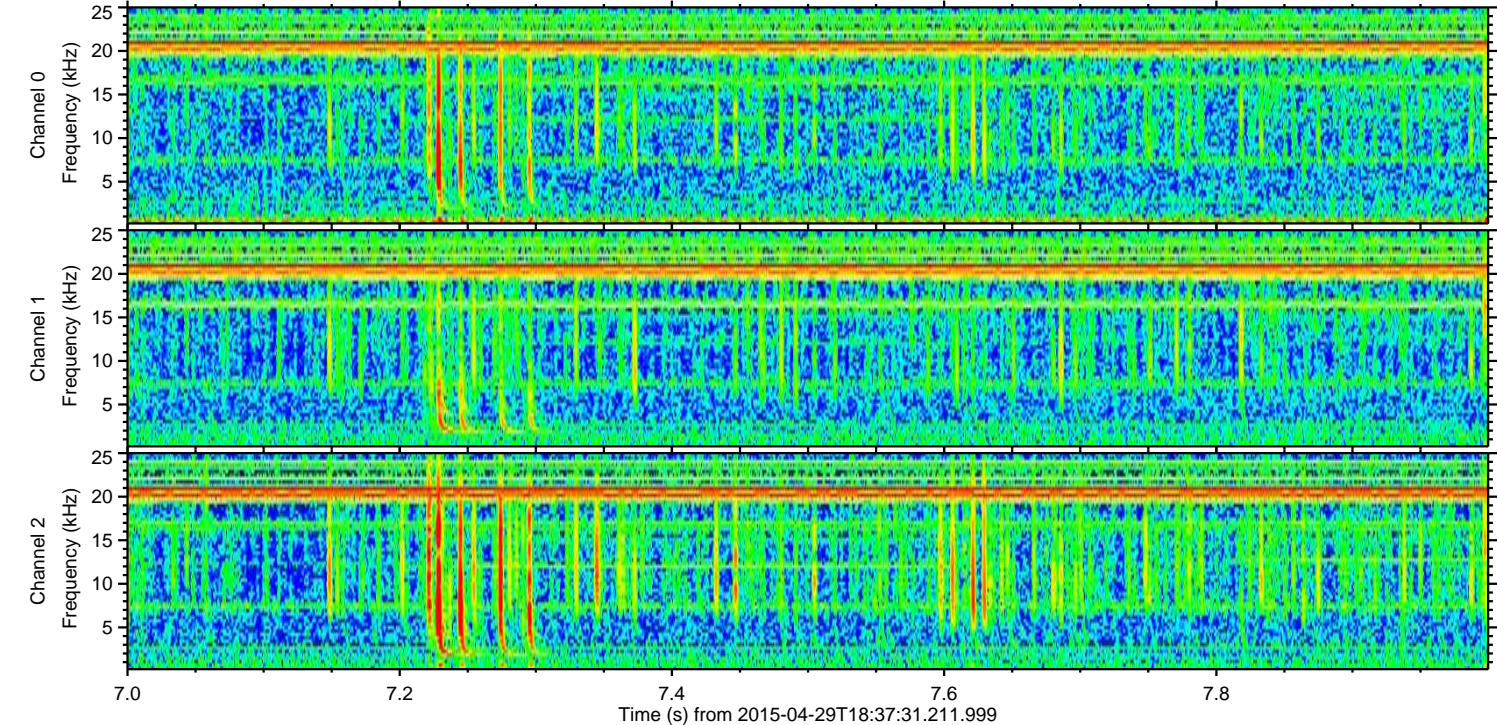
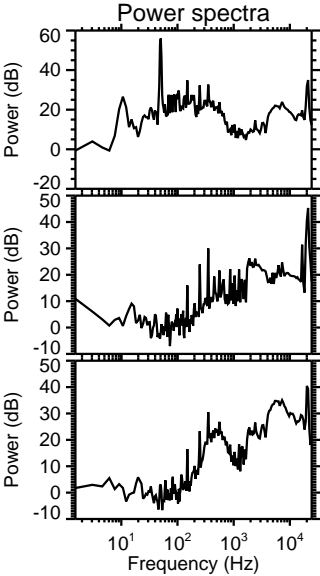
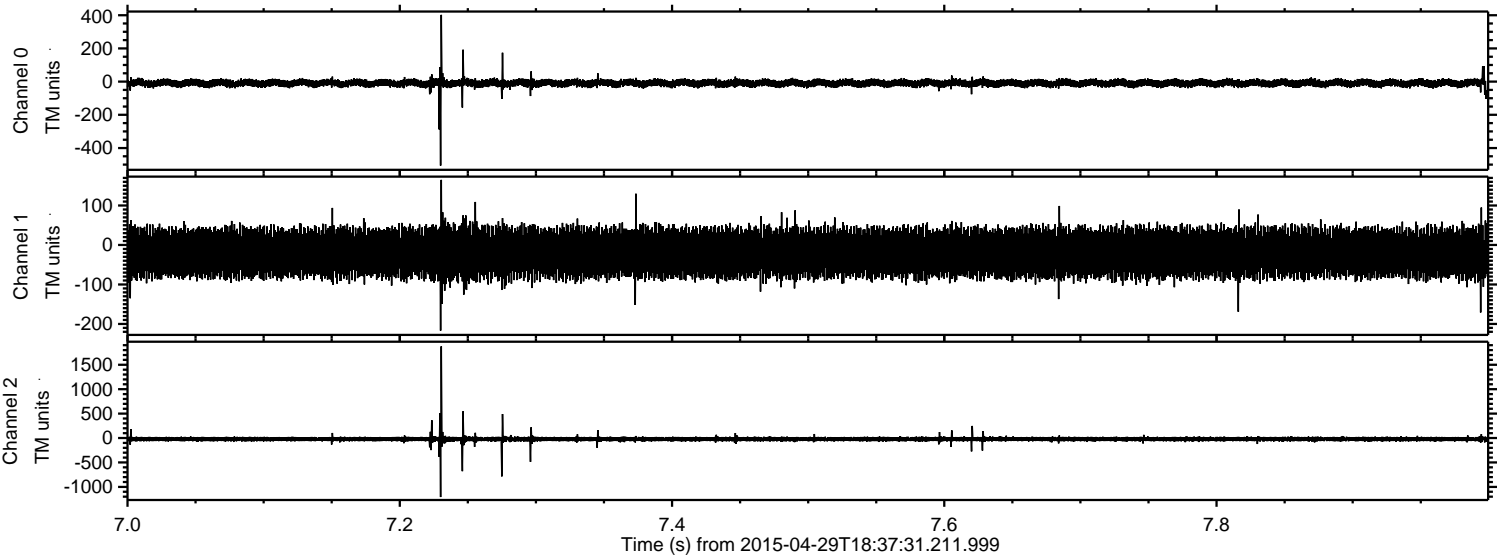
ELMAVAN 3D WAVEFORMS (Measured data sampled at 50 kHz) 49585 packets of 144 samples from 2015-04-29T18:37:31.211.999. Part 128/143

Processed Wed Apr 29 20:46:07 2015 by ELM ver.2012-10-06 from 001\_\_elm20150429\_183730\_\_dat00.bin





Processed Wed Apr 29 20:46:08 2015 by ELM ver.2012-10-06 from 001\_\_elm20150429\_183730\_\_dat00.bin



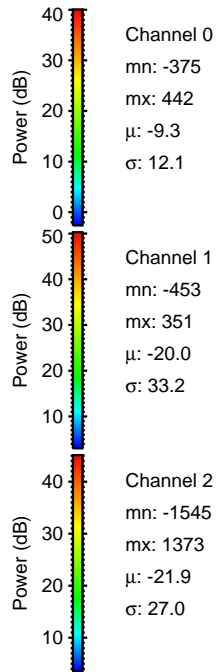
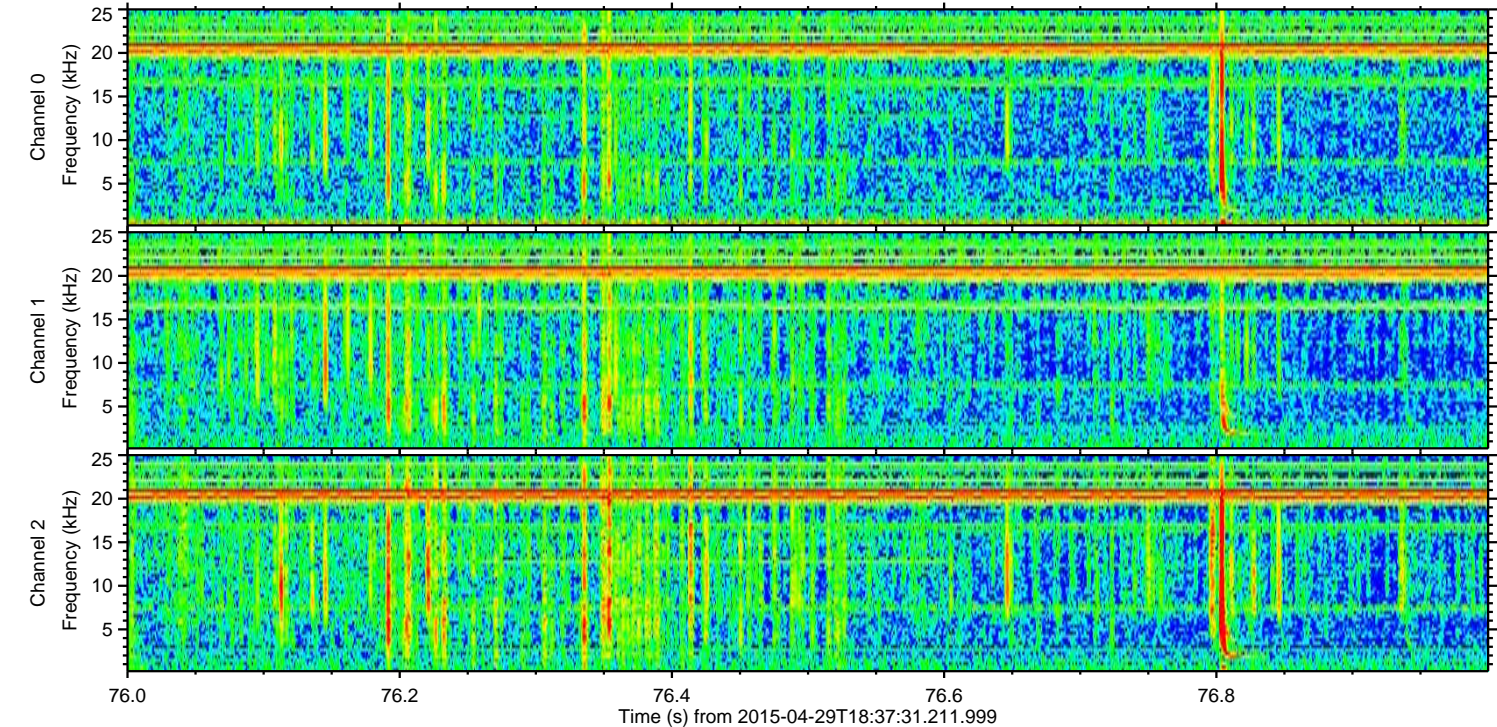
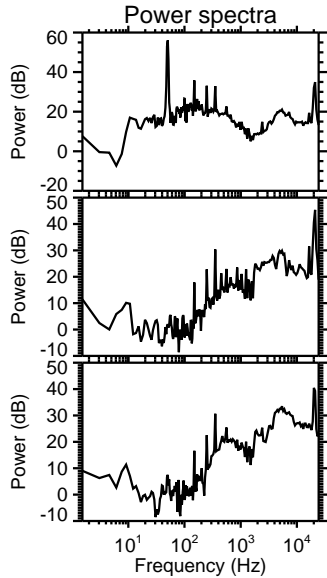
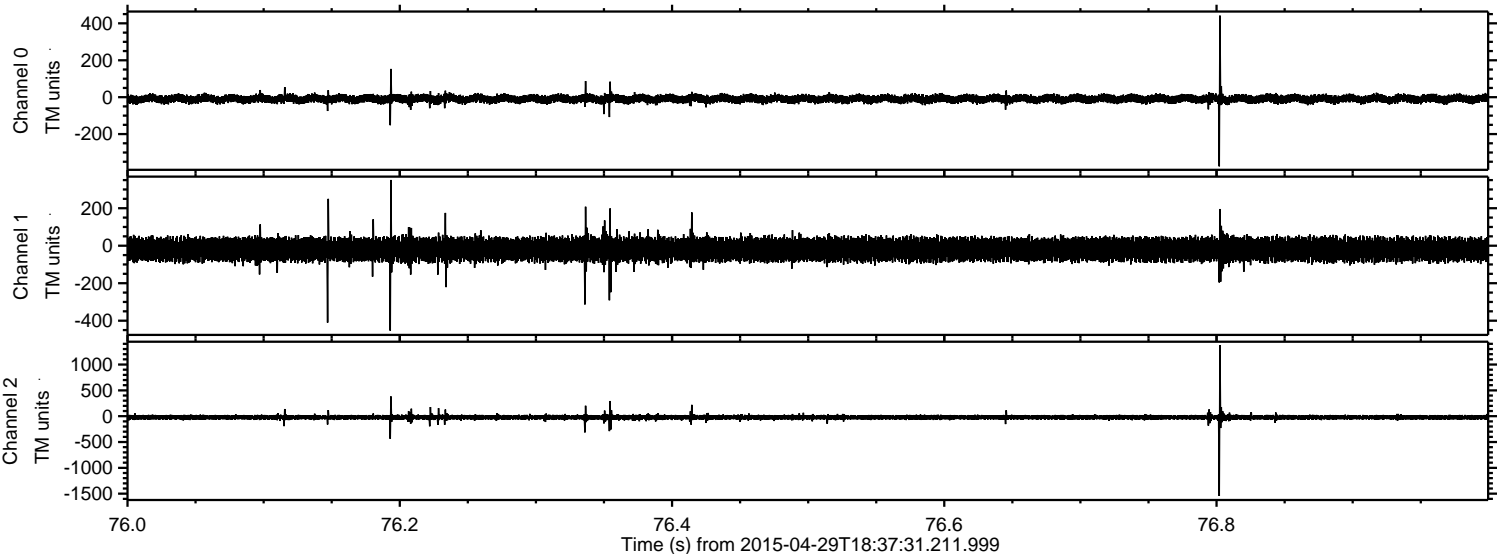
Channel 0  
mn: -506  
mx: 402  
 $\mu$ : -9.3  
 $\sigma$ : 13.0

Channel 1  
mn: -217  
mx: 165  
 $\mu$ : -19.9  
 $\sigma$ : 32.3

Channel 2  
mn: -1208  
mx: 1878  
 $\mu$ : -21.8  
 $\sigma$ : 27.9



Processed Wed Apr 29 20:46:09 2015 by ELM ver.2012-10-06 from 001\_\_elm20150429\_183730\_\_dat00.bin





ELMAVAN 3D WAVEFORMS (Measured data sampled at 50 kHz) 49585 packets of 144 samples from 2015-04-29T18:37:31.211.999. Part 60/143

Processed Wed Apr 29 20:46:10 2015 by ELM ver.2012-10-06 from 001\_\_elm20150429\_183730\_\_dat00.bin

