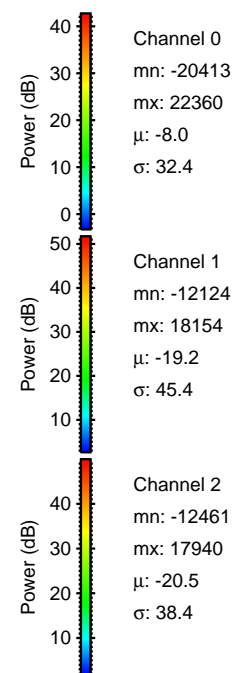
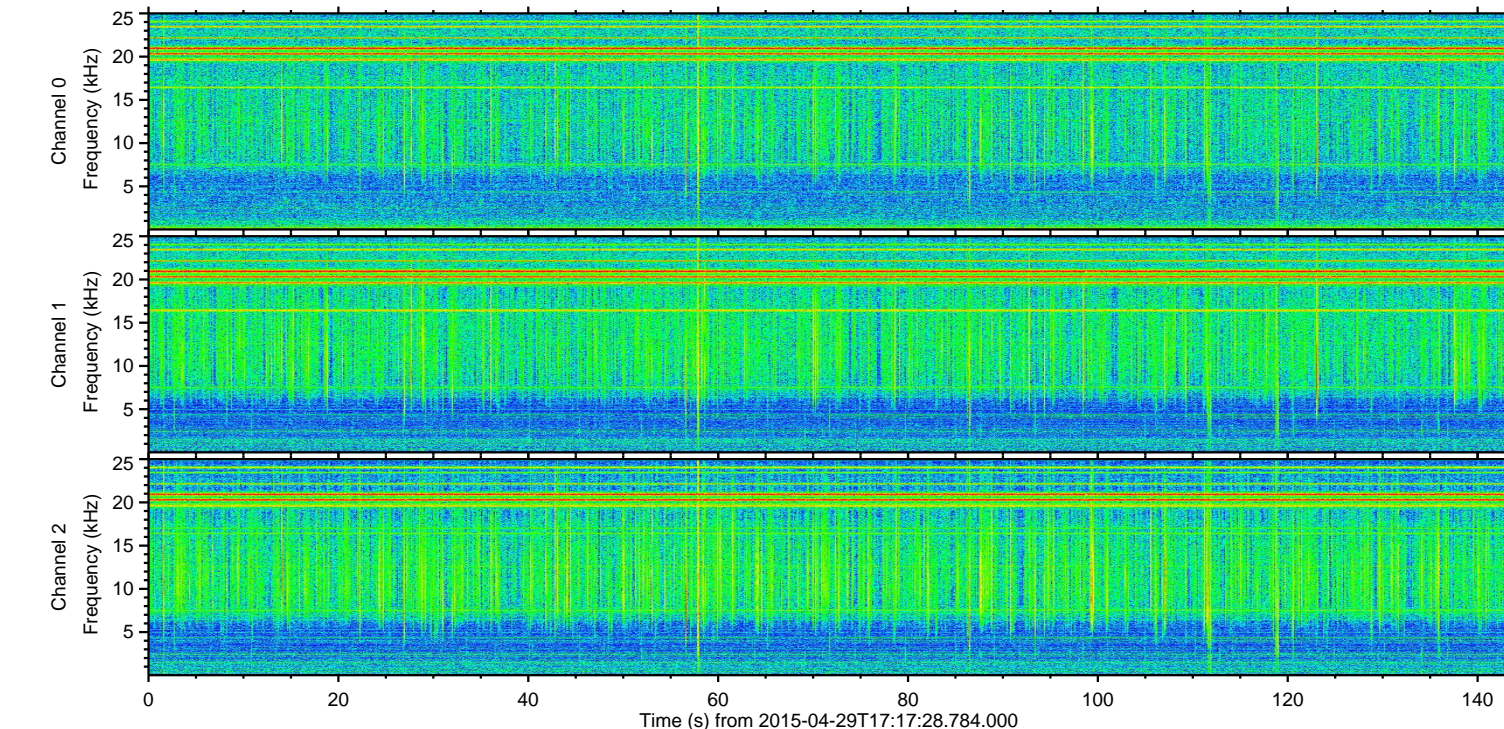
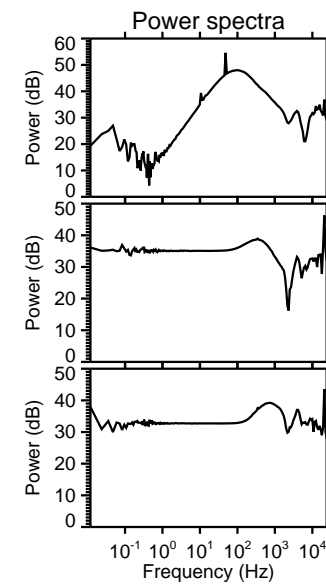
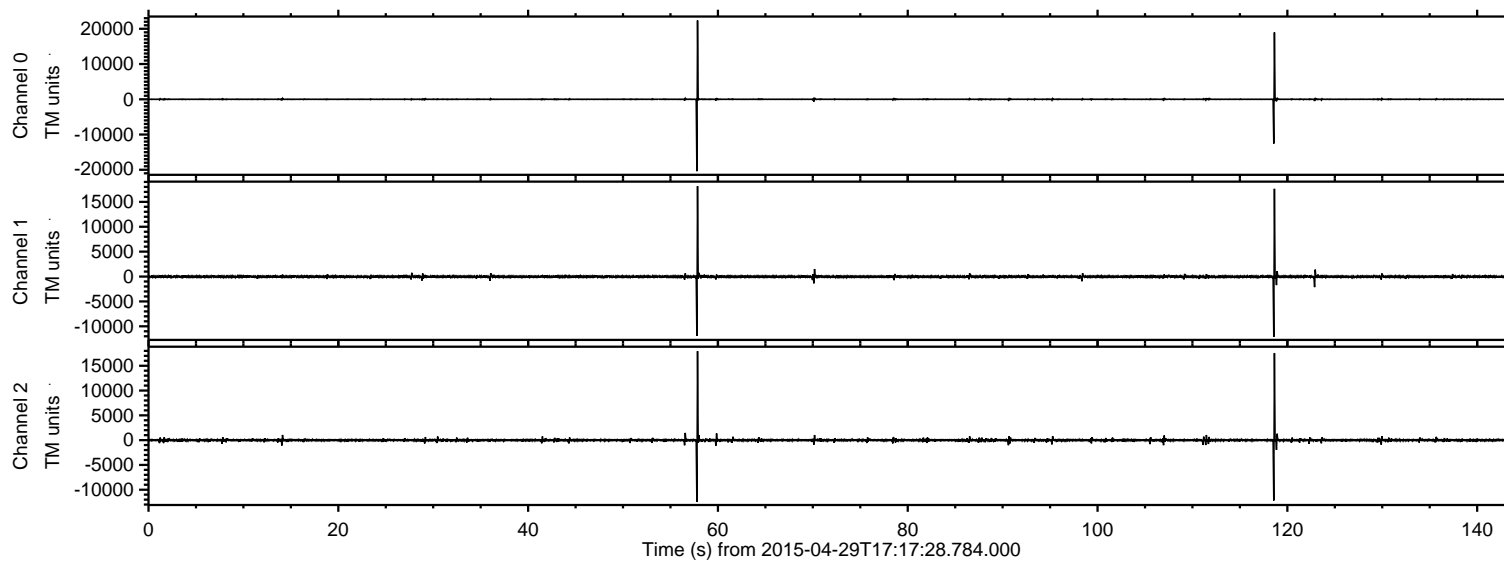


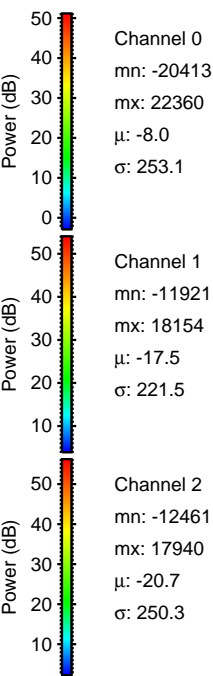
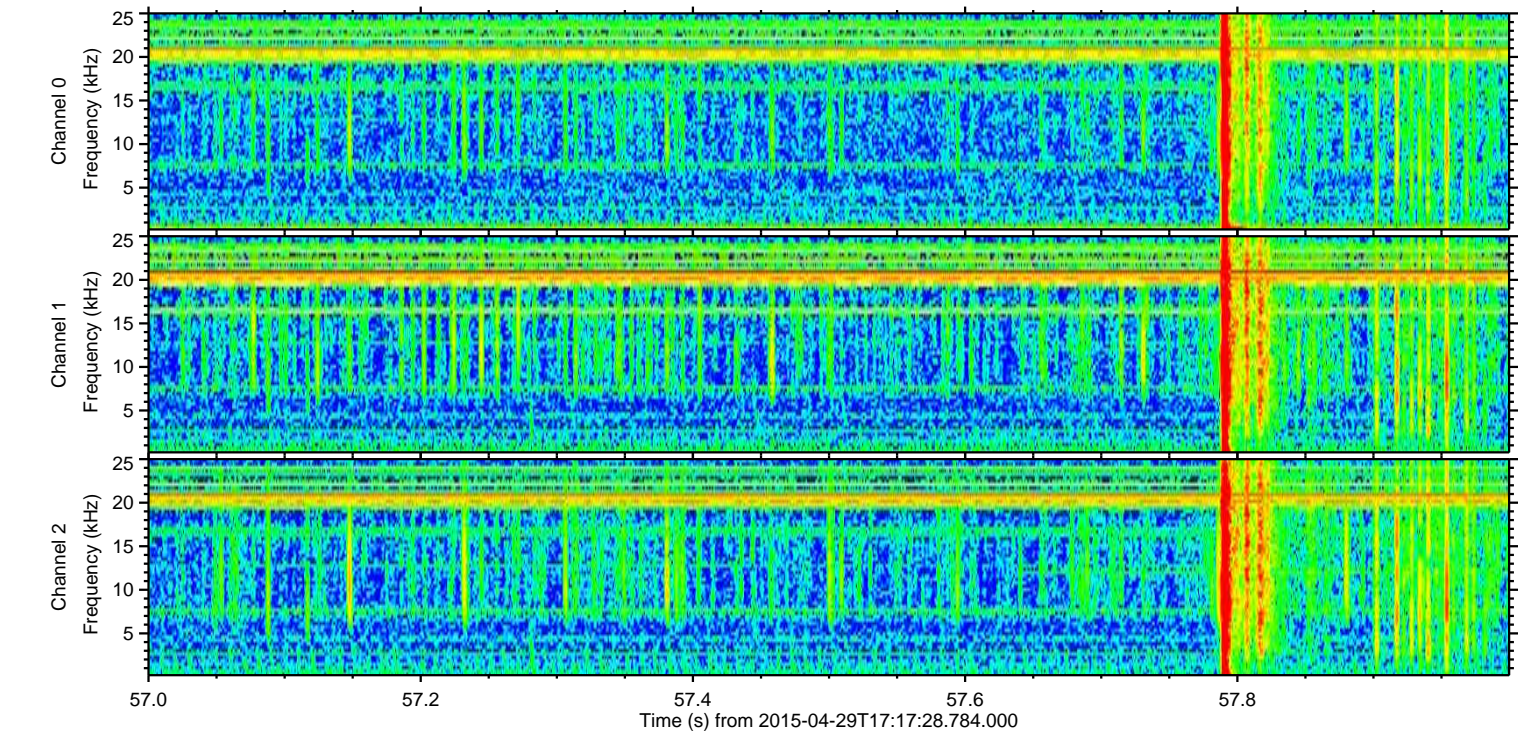
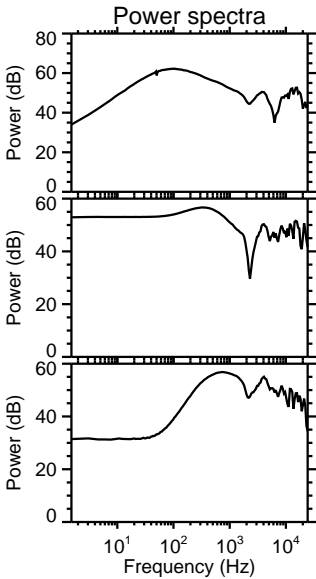
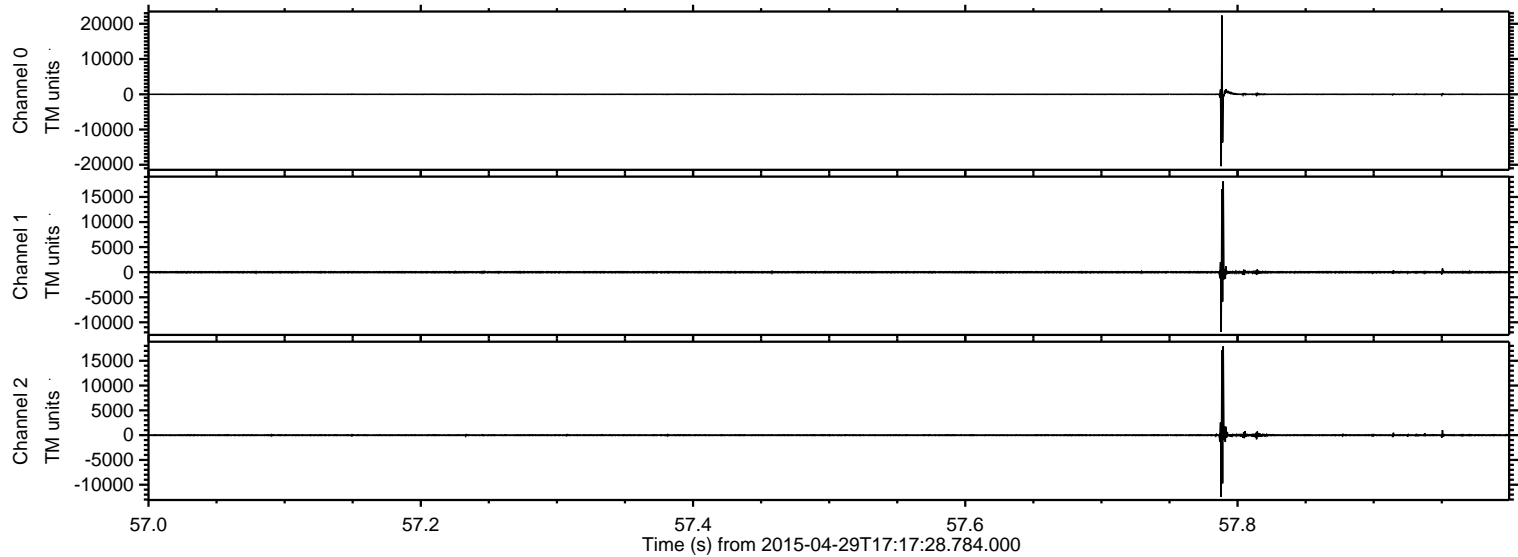
ELMAVAN 3D WAVEFORMS (Measured data sampled at 50 kHz) 49781 packets of 144 samples from 2015-04-29T17:17:28.784.000.

Processed Wed Apr 29 19:24:15 2015 by ELM ver.2012-10-06 from 001__elm20150429_171727__dat00.bin



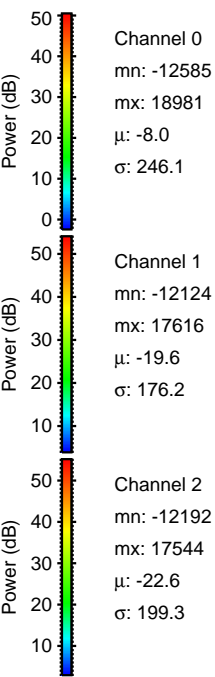
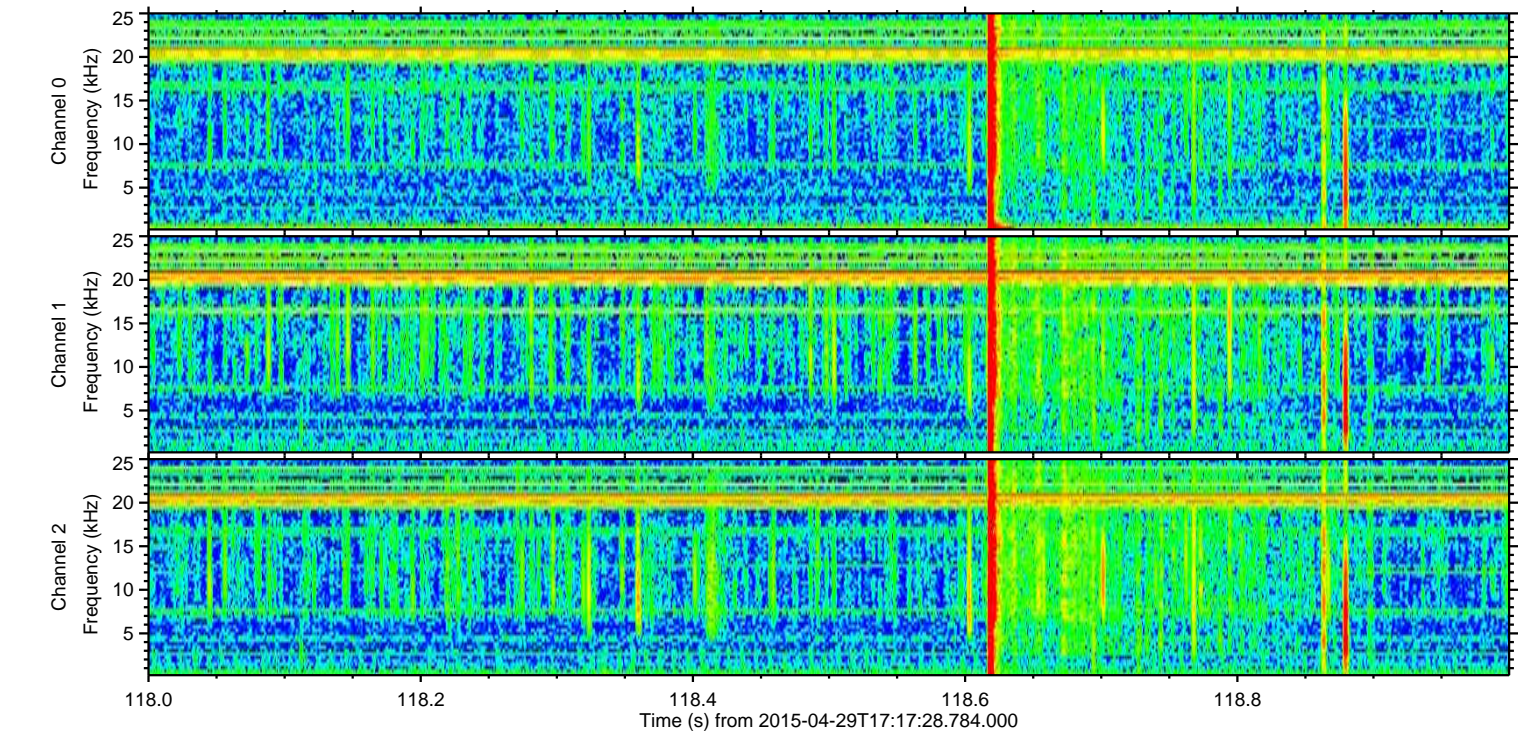
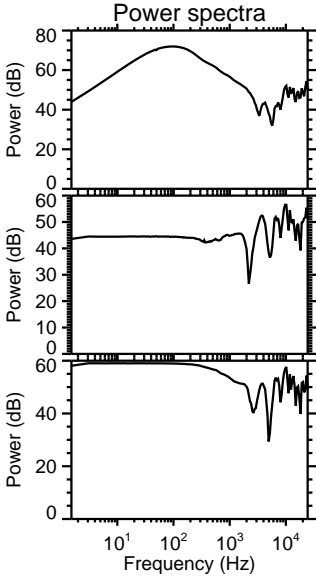
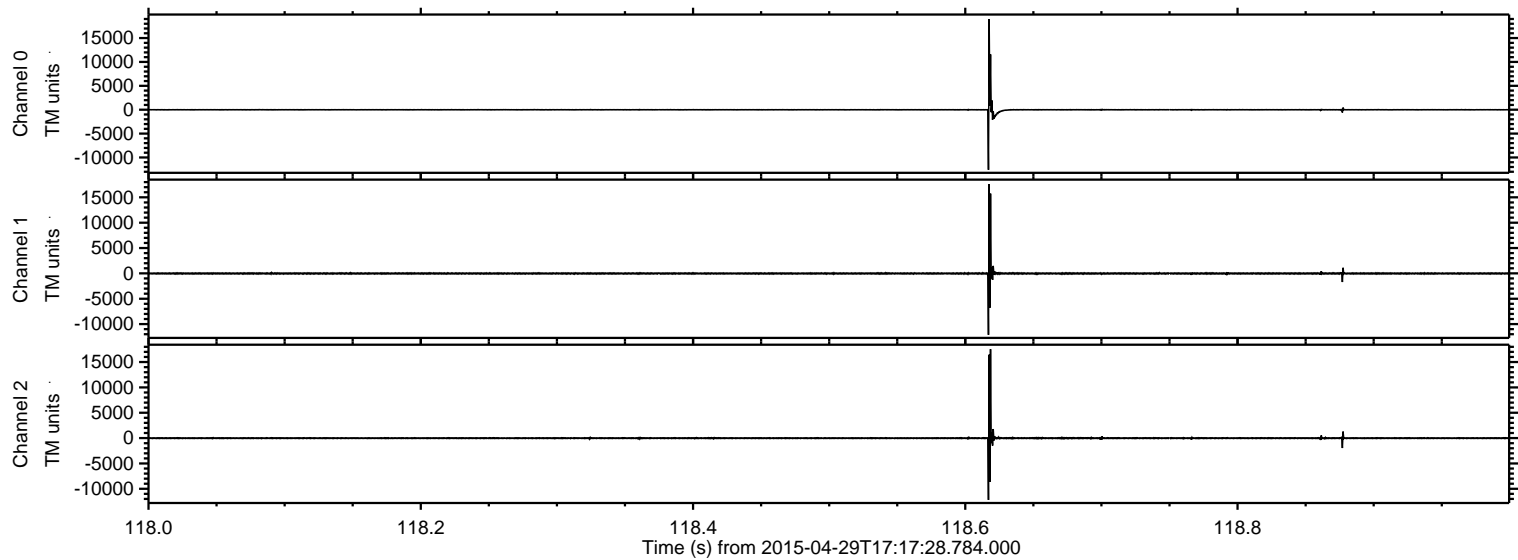
ELMAVAN 3D WAVEFORMS (Measured data sampled at 50 kHz) 49781 packets of 144 samples from 2015-04-29T17:17:28.784.000. Part 58/144

Processed Wed Apr 29 19:24:26 2015 by ELM ver.2012-10-06 from 001__elm20150429_171727__dat00.bin

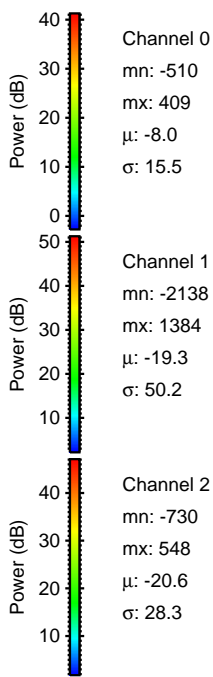
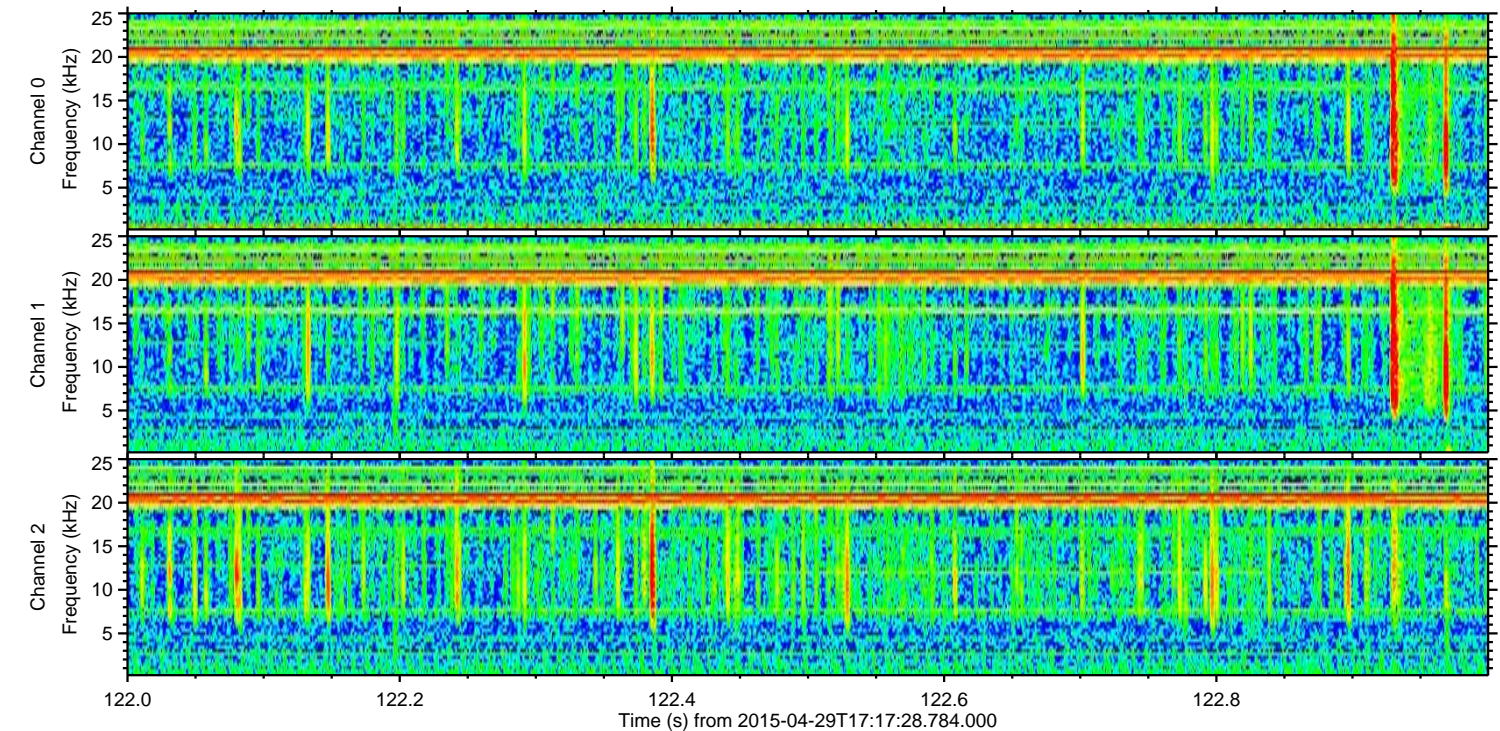
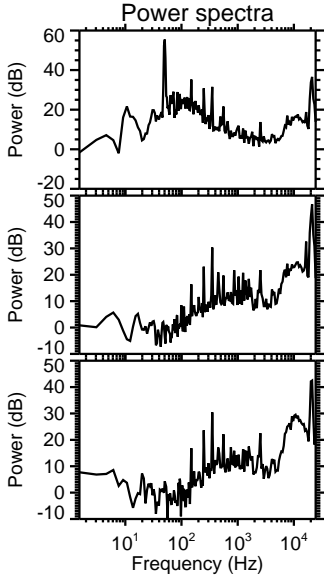
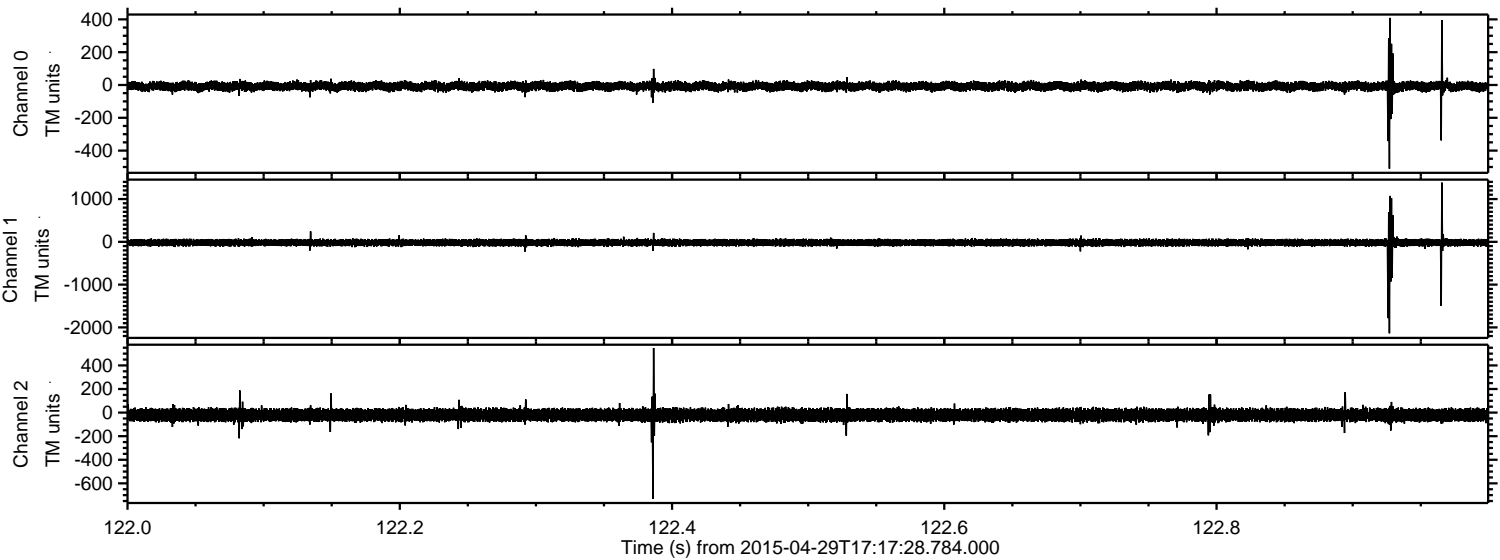


ELMAVAN 3D WAVEFORMS (Measured data sampled at 50 kHz) 49781 packets of 144 samples from 2015-04-29T17:17:28.784.000. Part 119/144

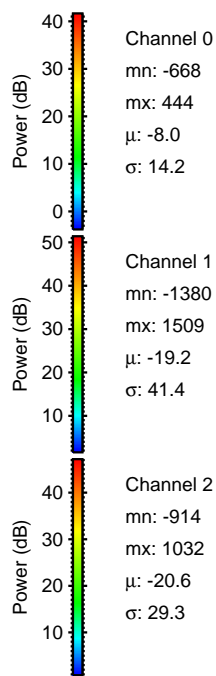
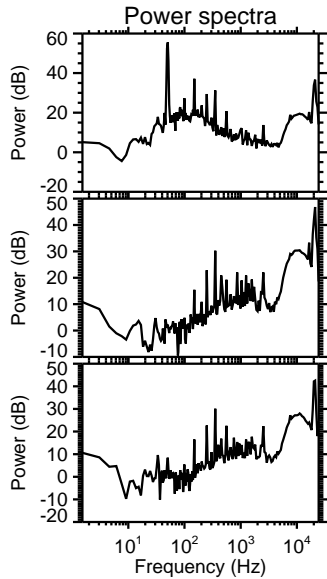
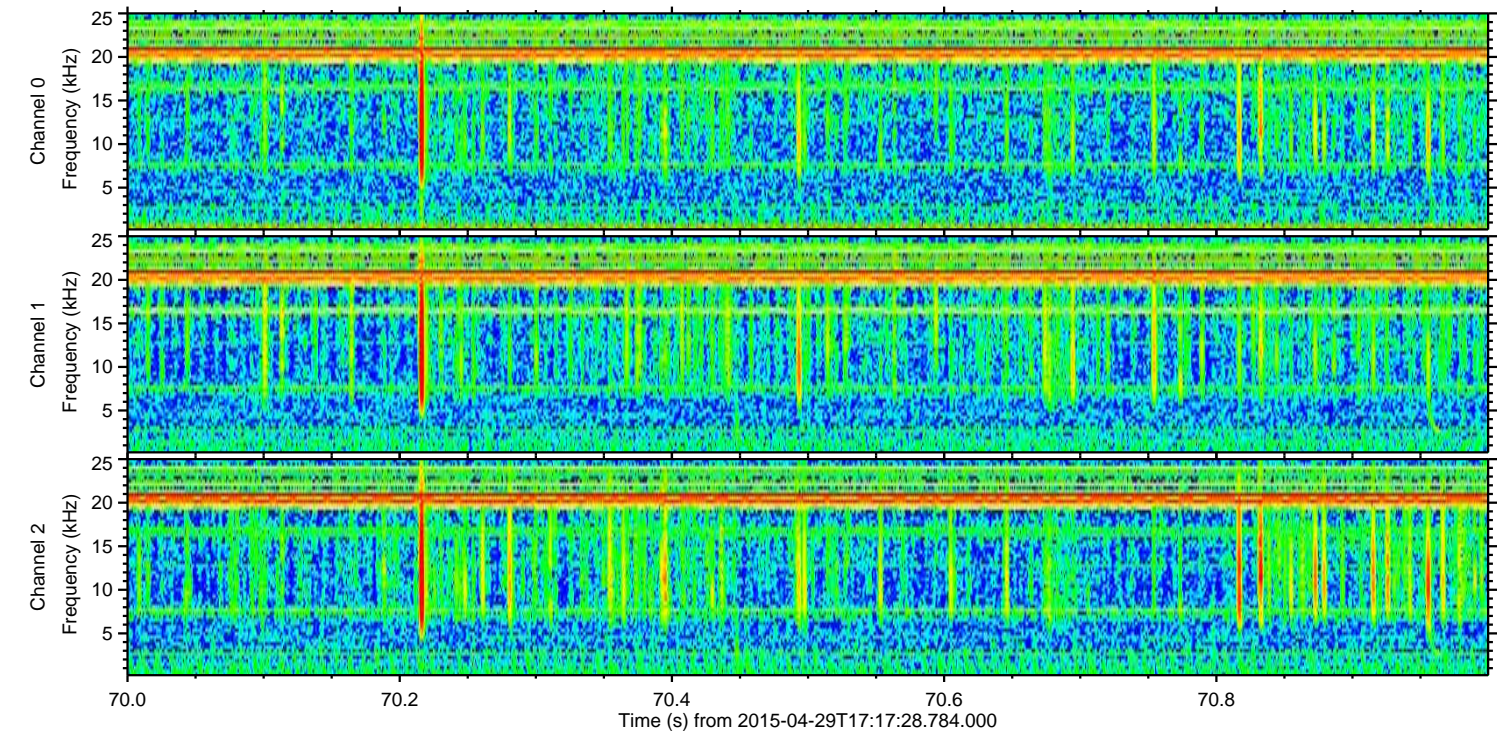
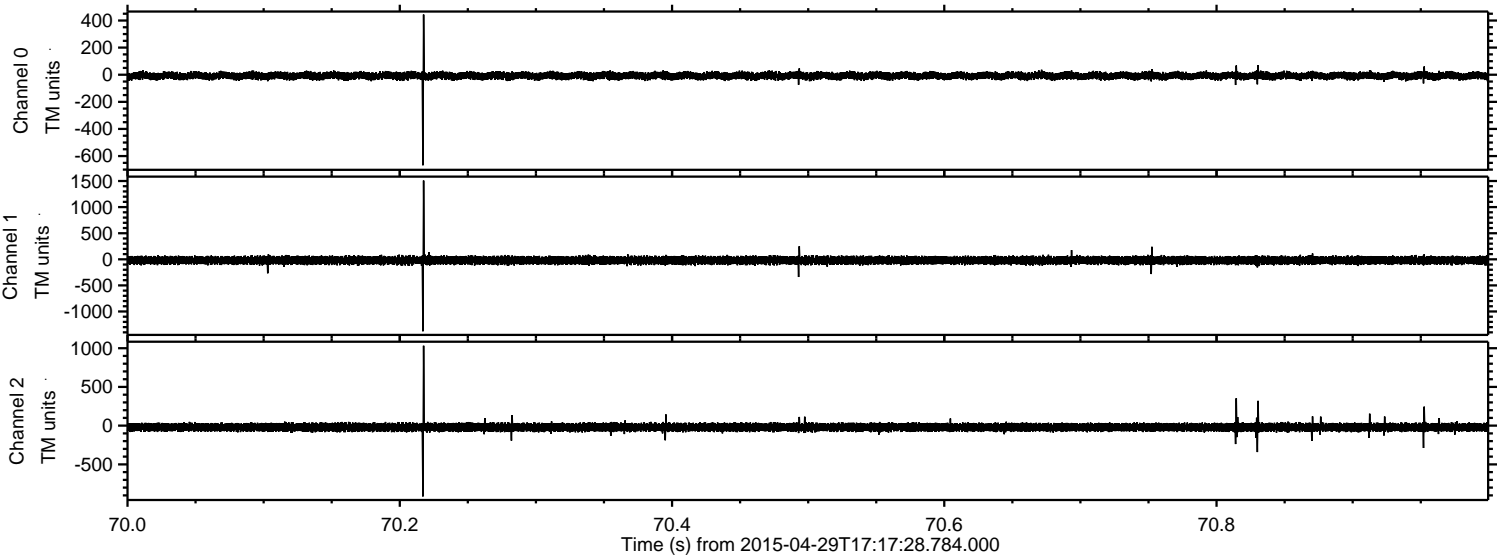
Processed Wed Apr 29 19:24:27 2015 by ELM ver.2012-10-06 from 001__elm20150429_171727__dat00.bin



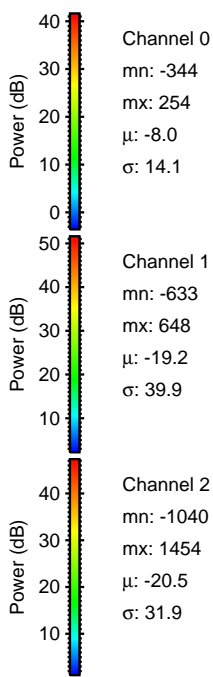
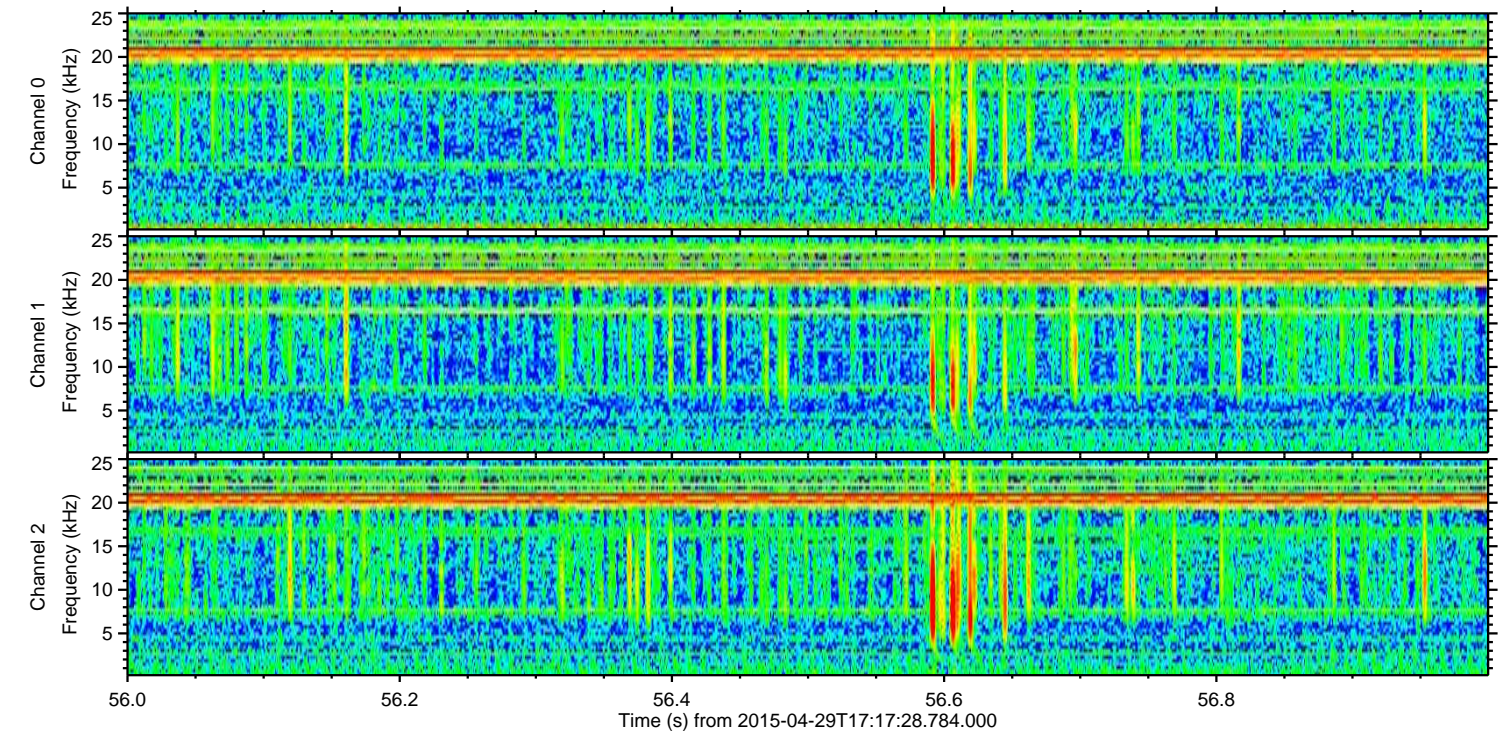
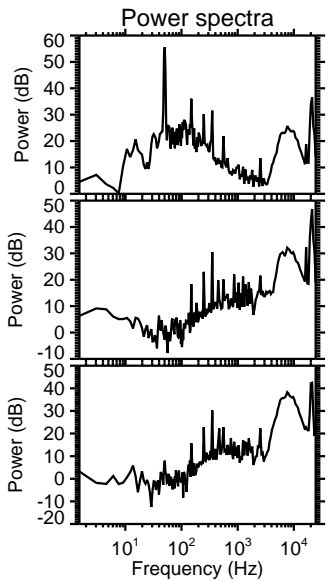
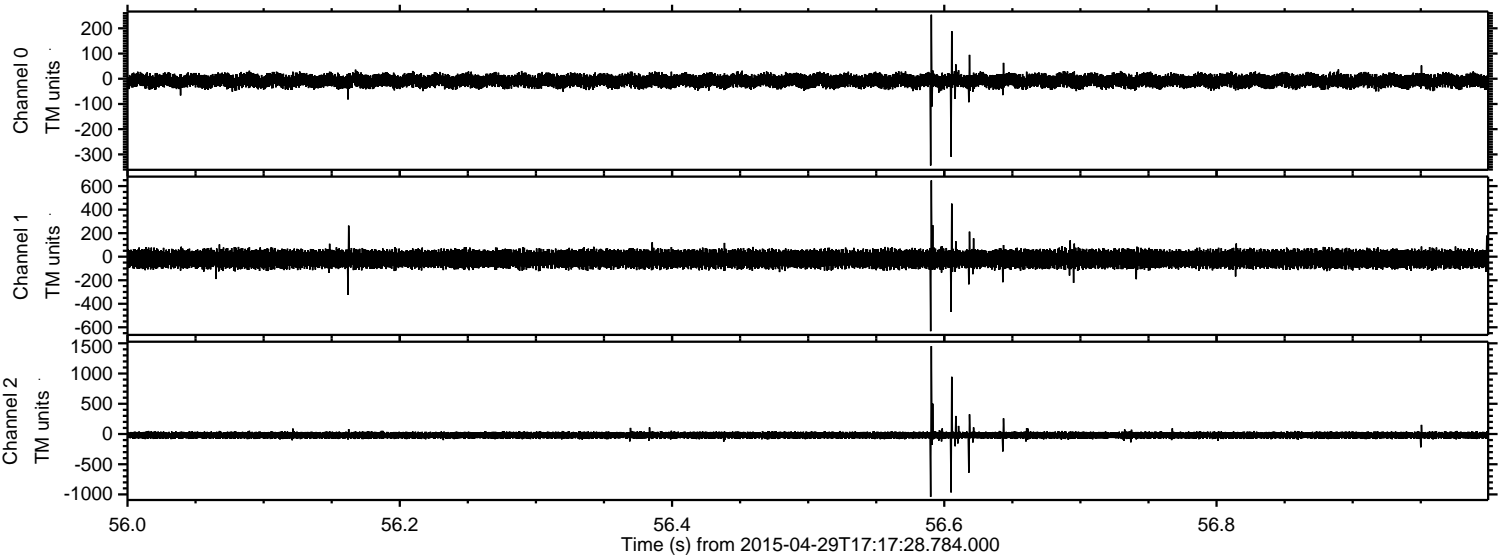
Processed Wed Apr 29 19:24:28 2015 by ELM ver.2012-10-06 from 001_elm20150429_171727__dat00.bin



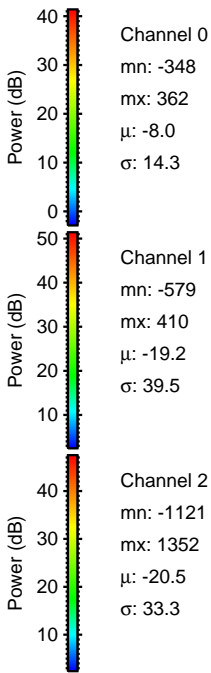
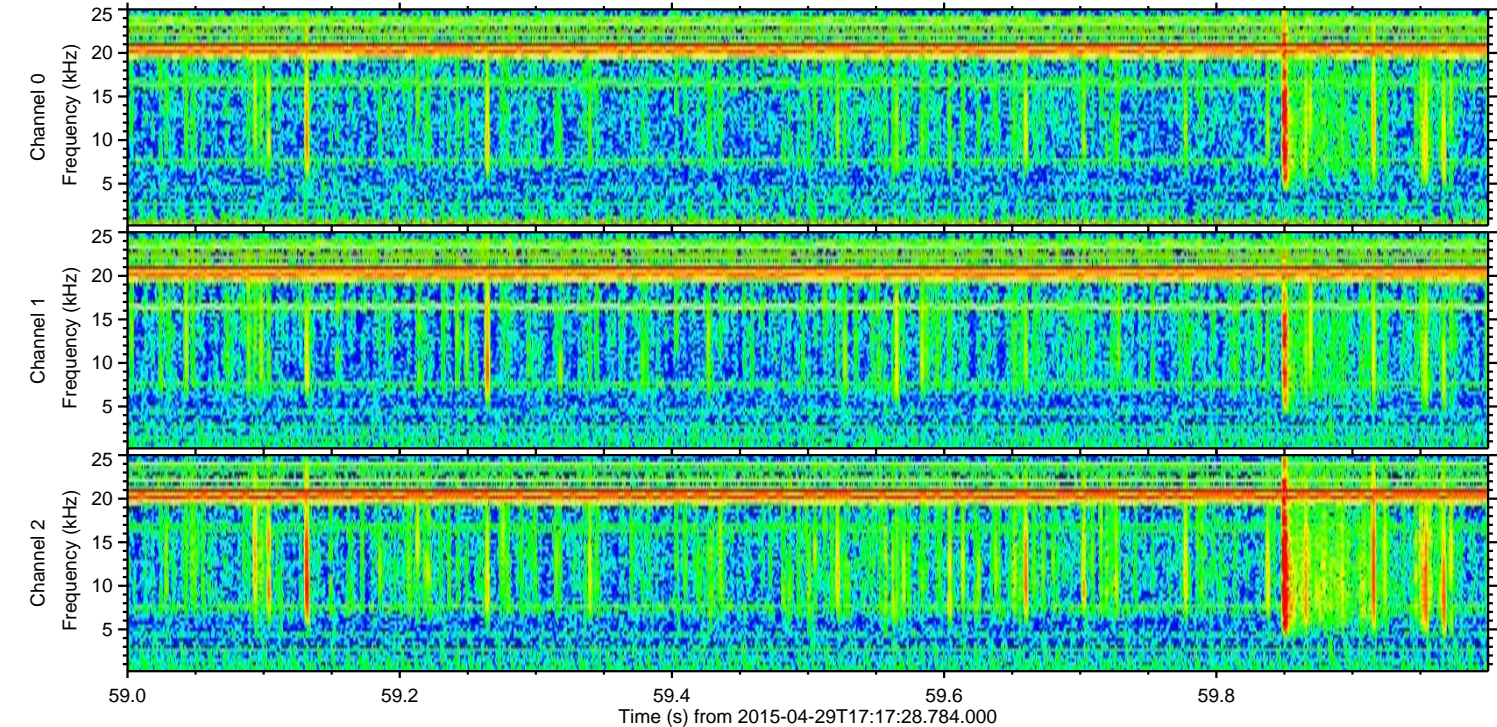
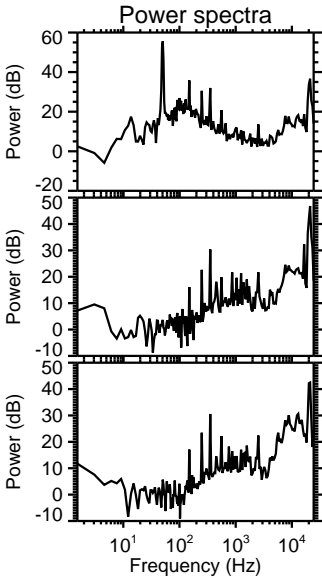
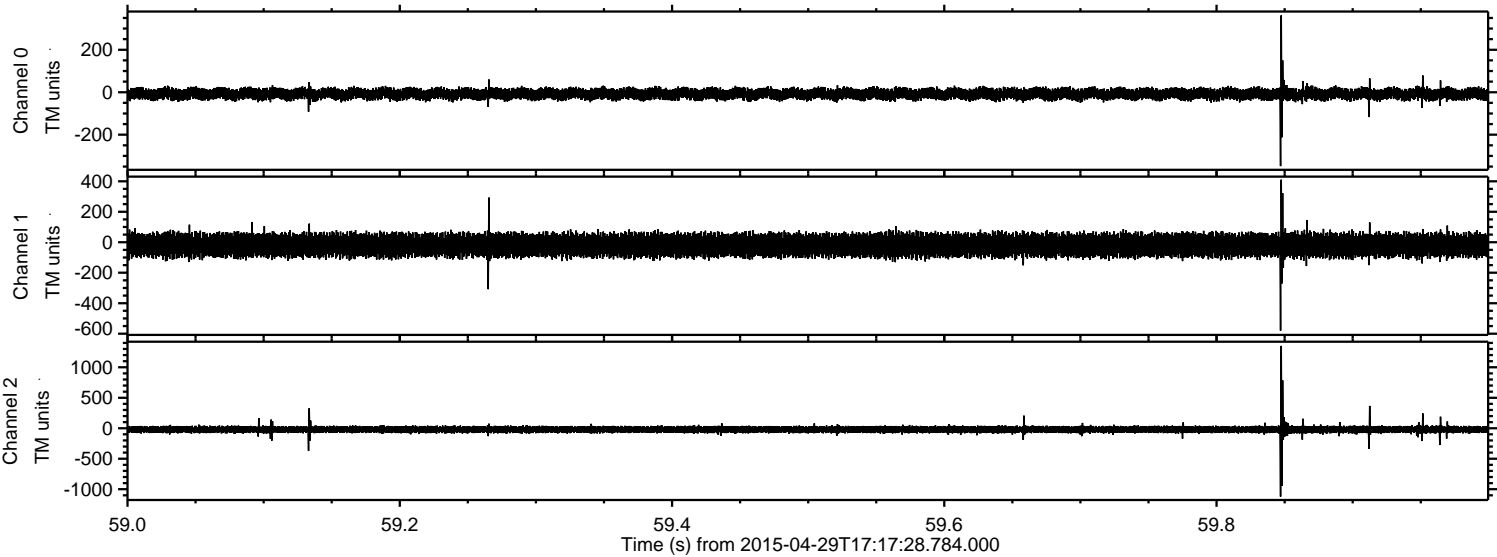
Processed Wed Apr 29 19:24:29 2015 by ELM ver.2012-10-06 from 001__elm20150429_171727__dat00.bin



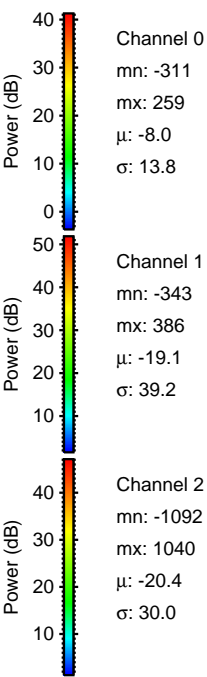
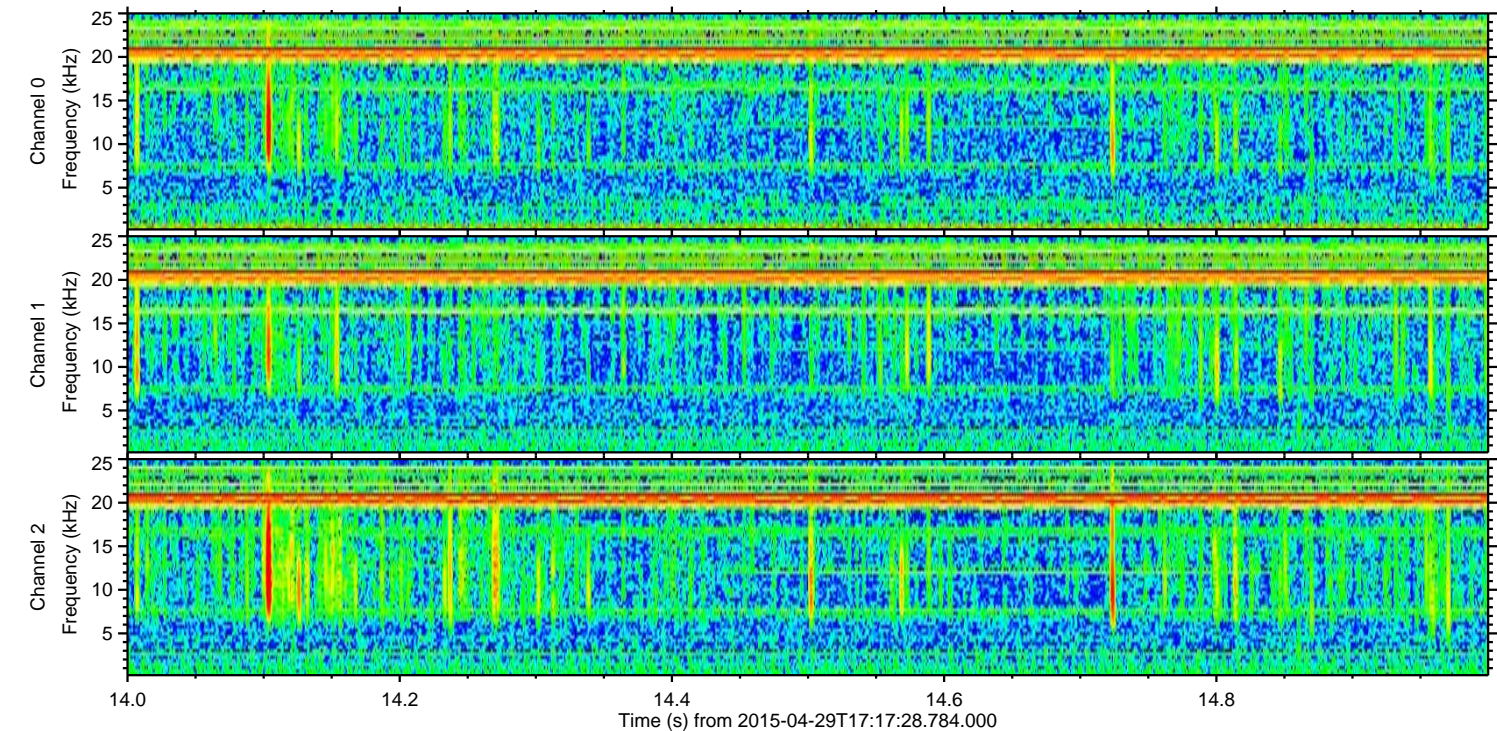
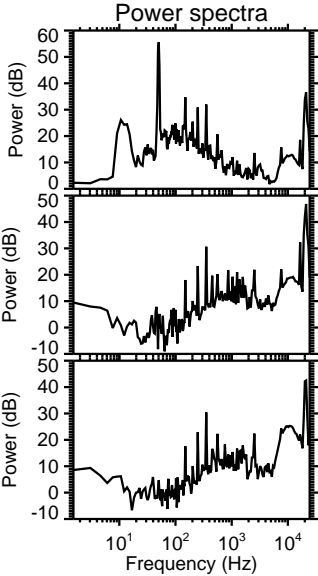
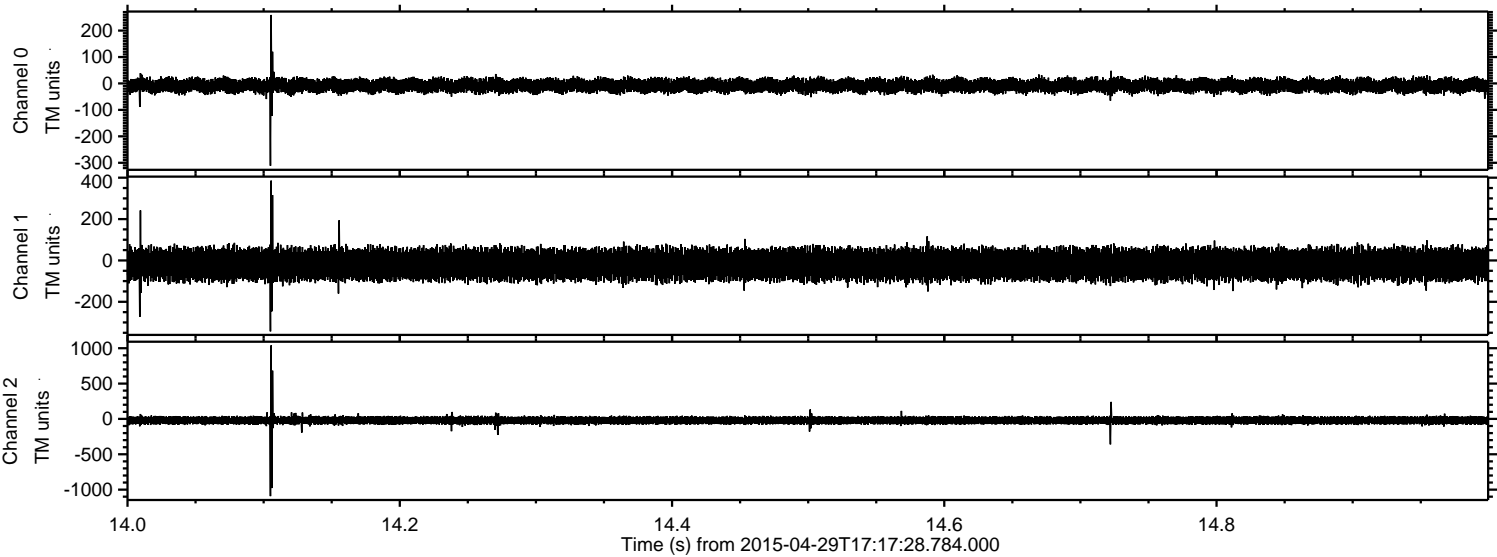
Processed Wed Apr 29 19:24:30 2015 by ELM ver.2012-10-06 from 001__elm20150429_171727__dat00.bin



Processed Wed Apr 29 19:24:31 2015 by ELM ver.2012-10-06 from 001__elm20150429_171727__dat00.bin

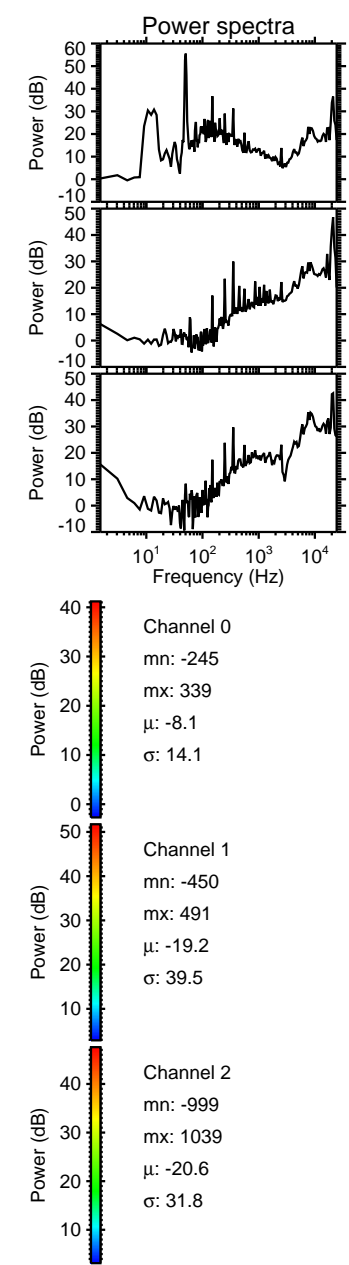
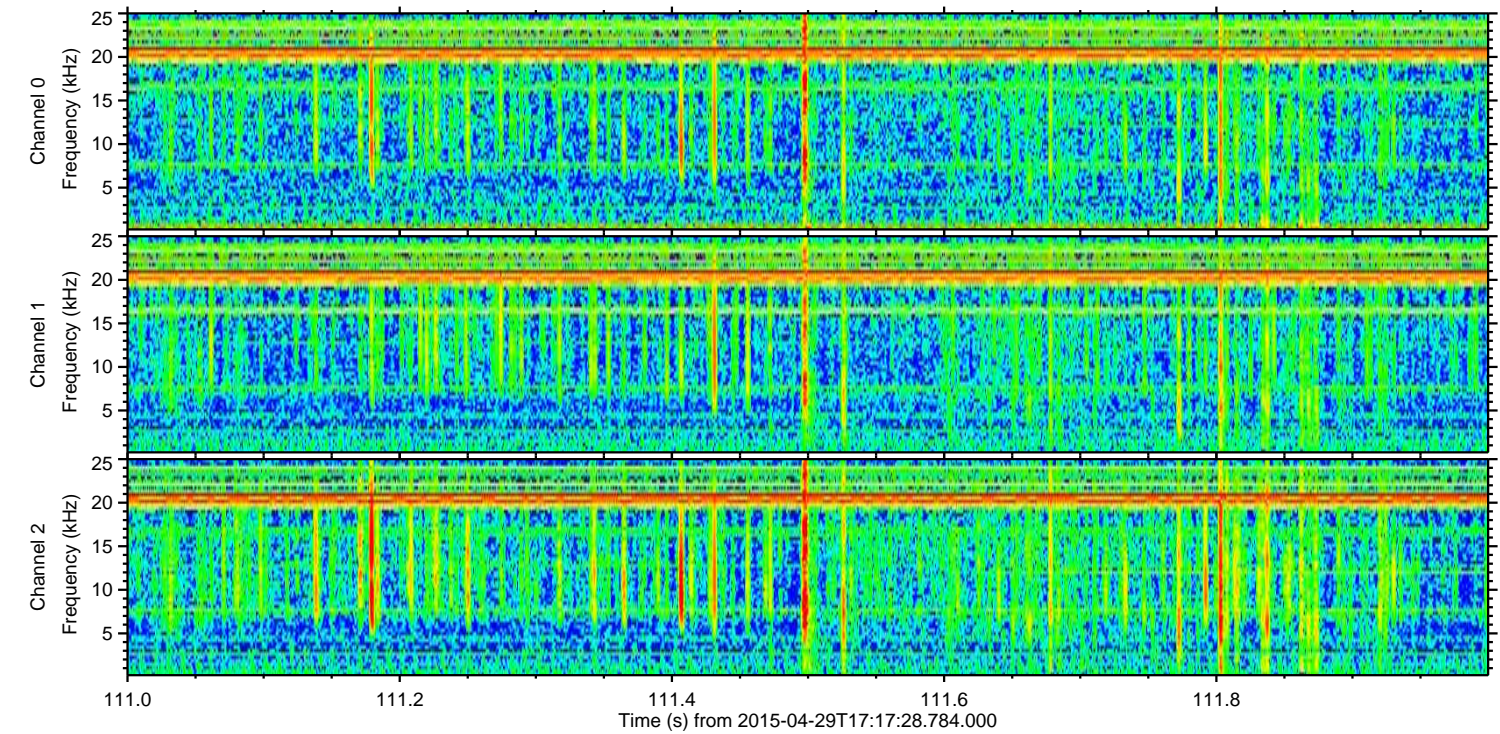
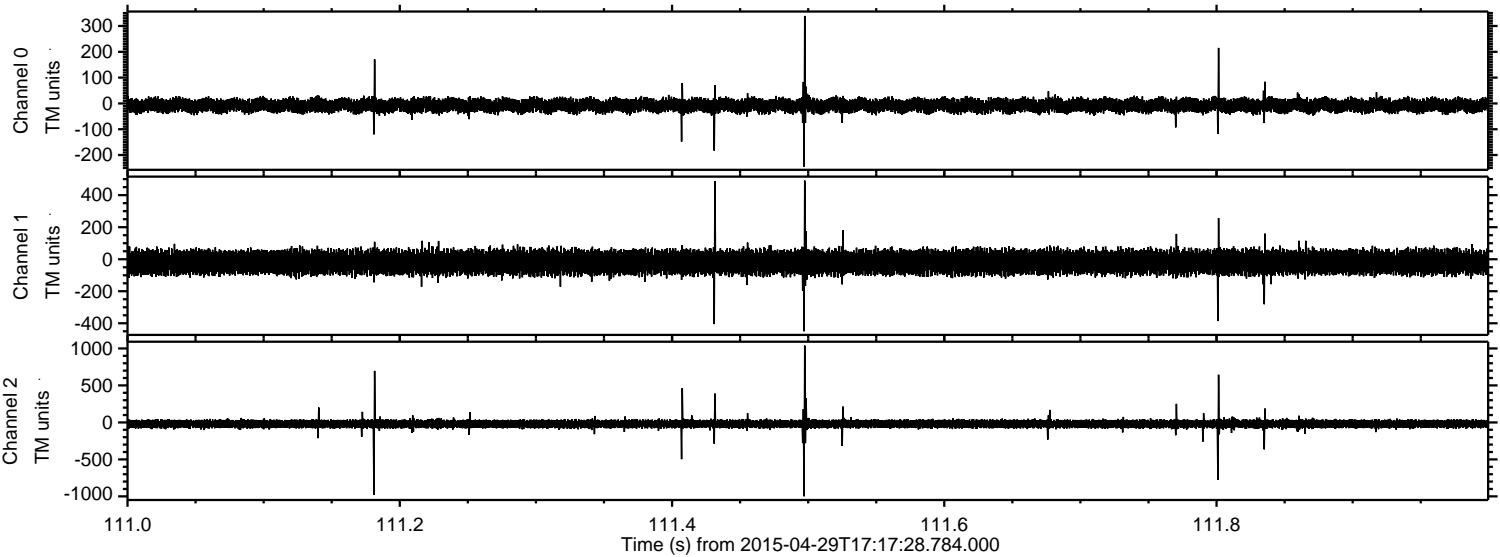


Processed Wed Apr 29 19:24:32 2015 by ELM ver.2012-10-06 from 001__elm20150429_171727__dat00.bin

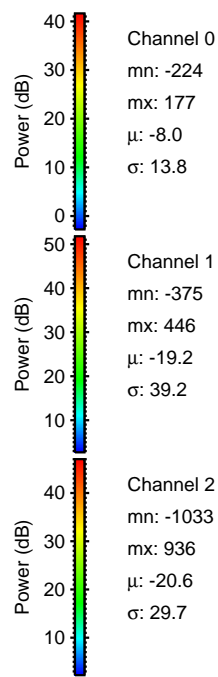
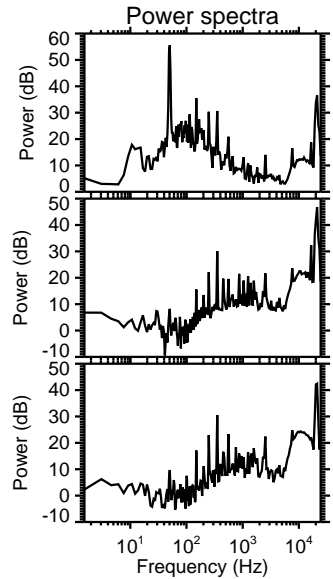
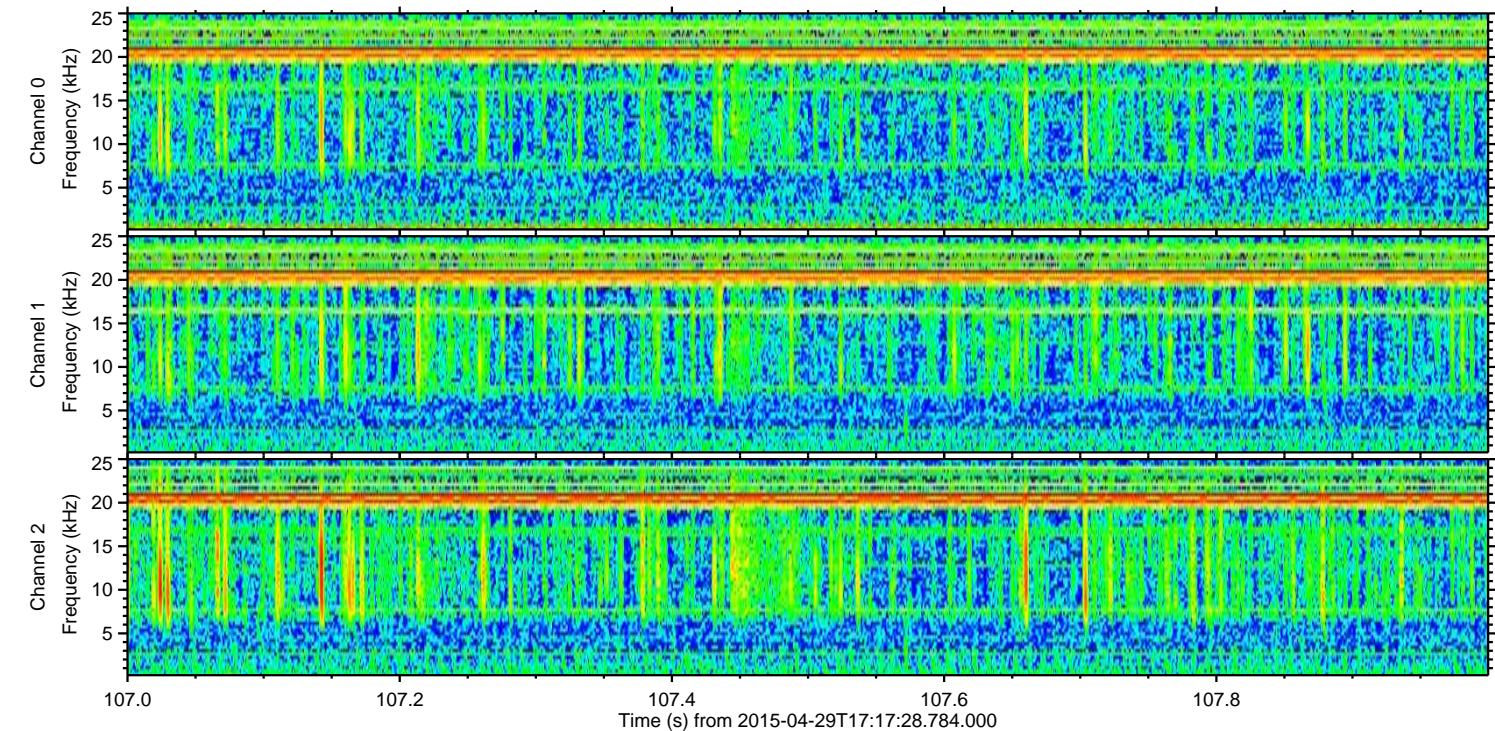
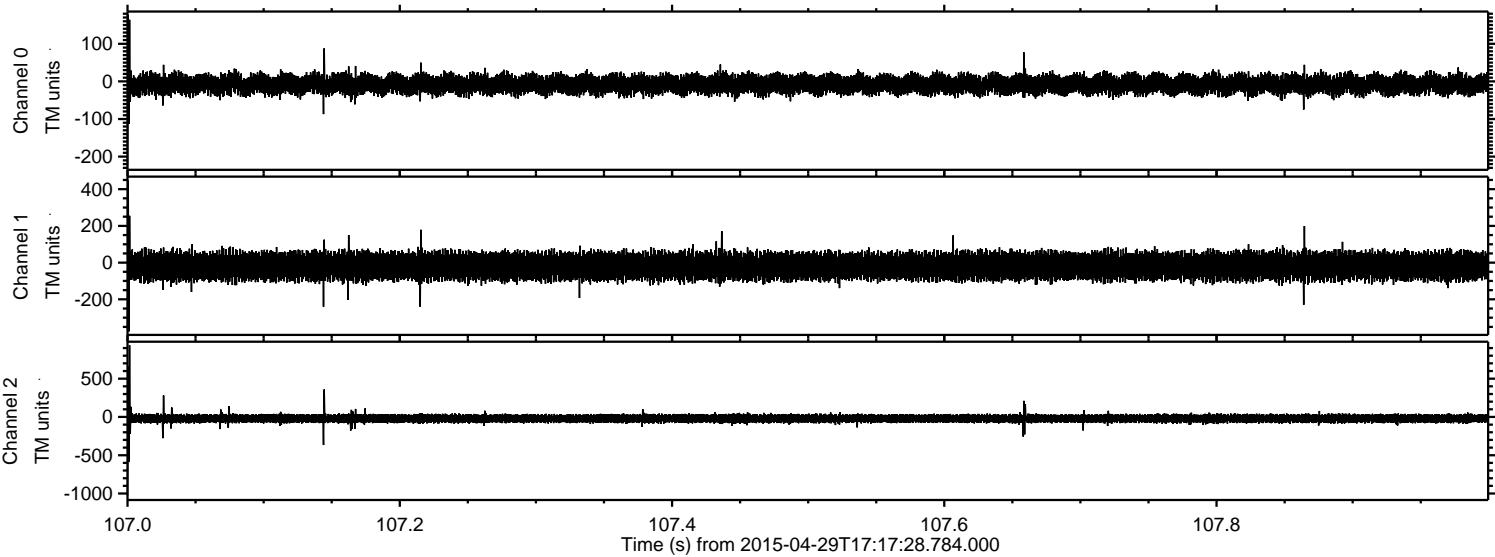


ELMAVAN 3D WAVEFORMS (Measured data sampled at 50 kHz) 49781 packets of 144 samples from 2015-04-29T17:17:28.784.000. Part 112/144

Processed Wed Apr 29 19:24:33 2015 by ELM ver.2012-10-06 from 001__elm20150429_171727__dat00.bin



Processed Wed Apr 29 19:24:34 2015 by ELM ver.2012-10-06 from 001__elm20150429_171727__dat00.bin



Channel 0
mn: -224
mx: 177
 μ : -8.0
 σ : 13.8

Channel 1
mn: -375
mx: 446
 μ : -19.2
 σ : 39.2

Channel 2
mn: -1033
mx: 936
 μ : -20.6
 σ : 29.7

Processed Wed Apr 29 19:24:35 2015 by ELM ver.2012-10-06 from 001__elm20150429_171727__dat00.bin

