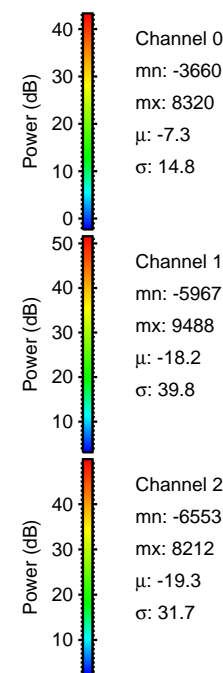
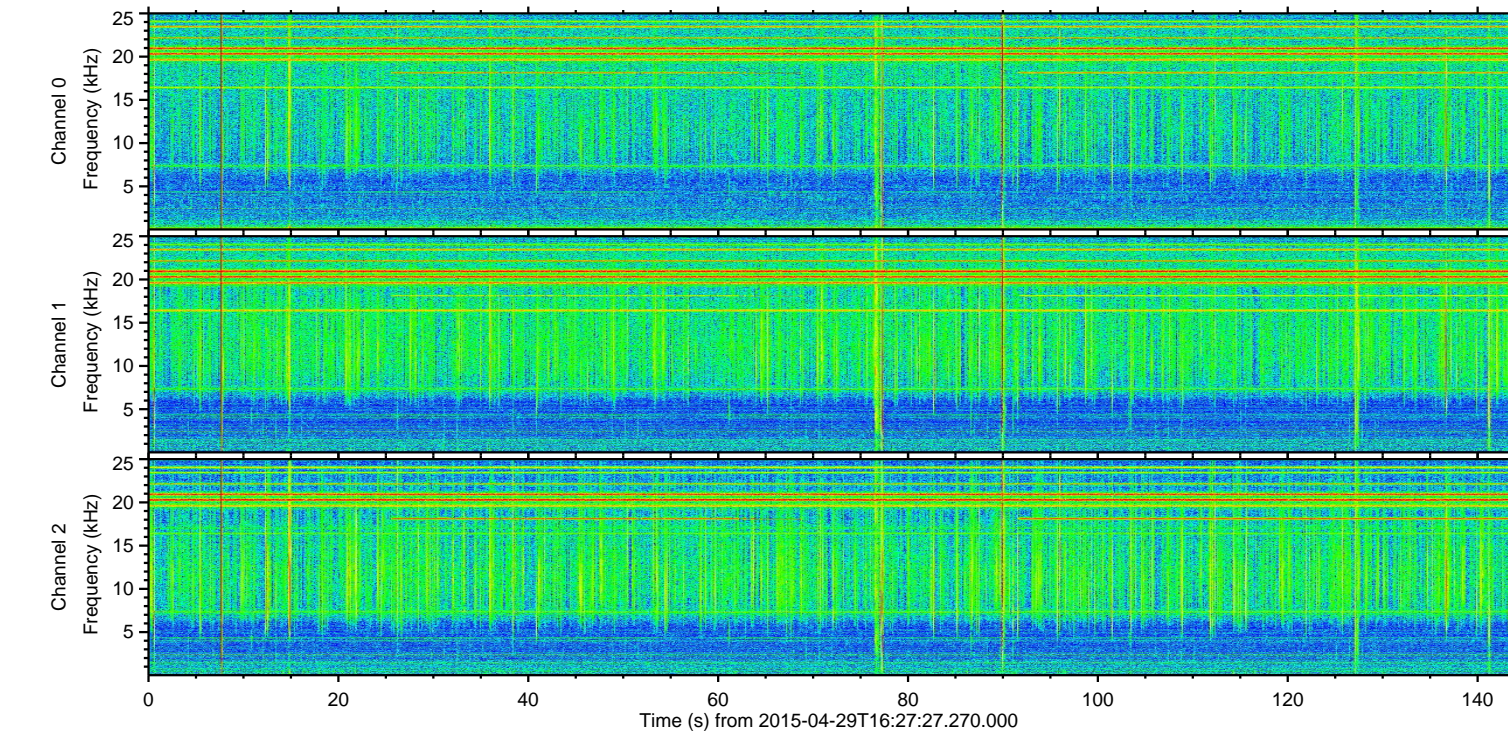
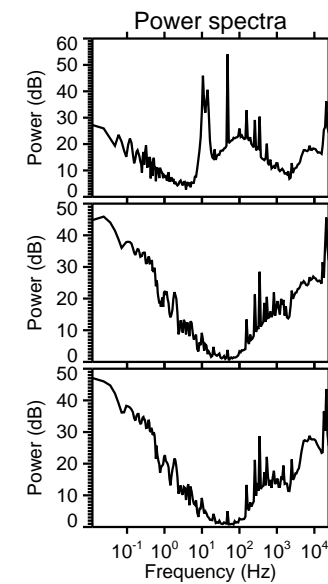
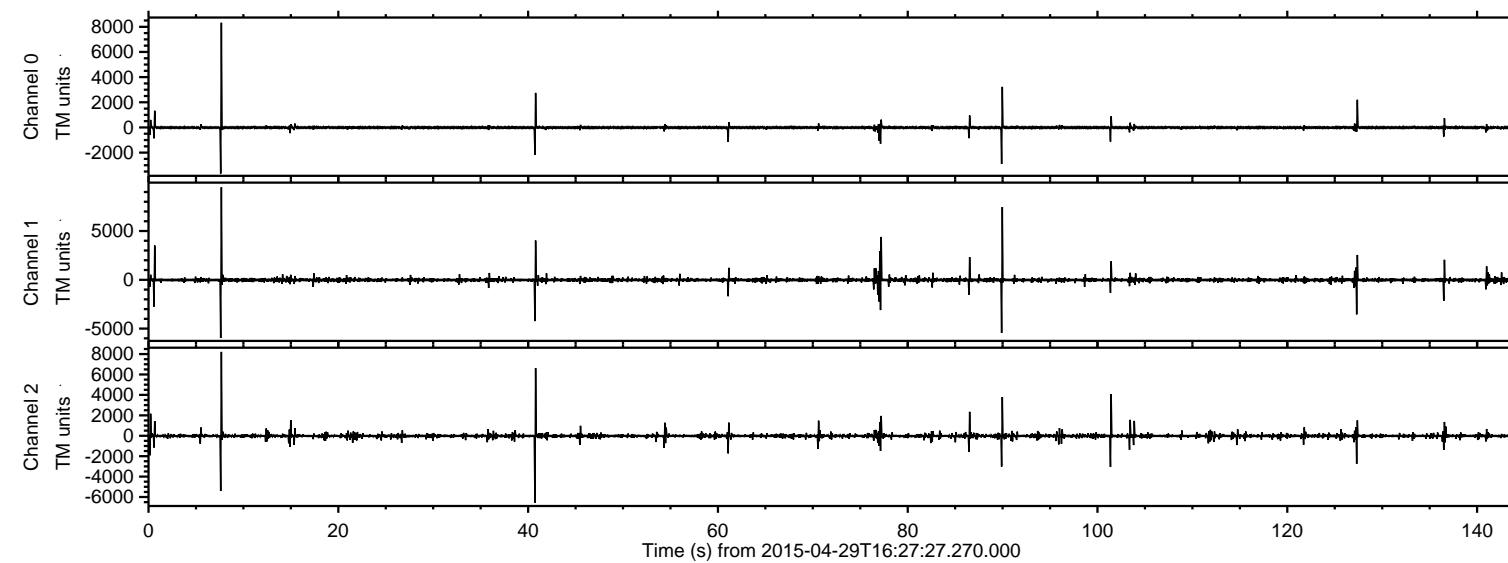
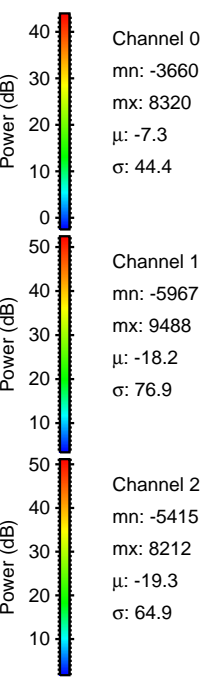
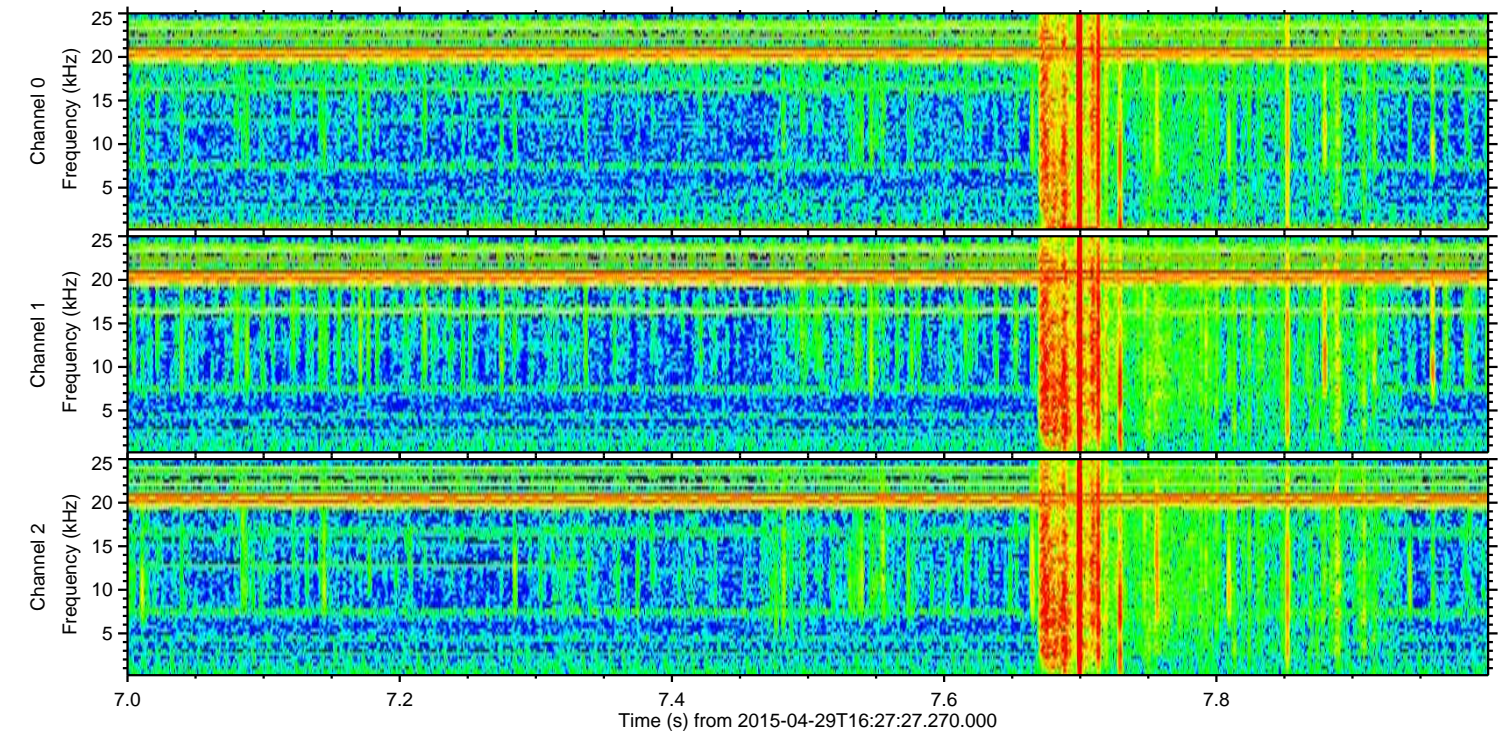
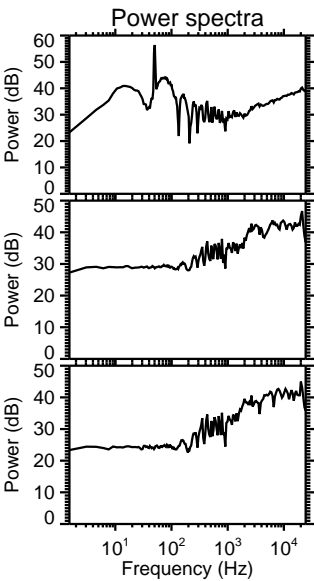
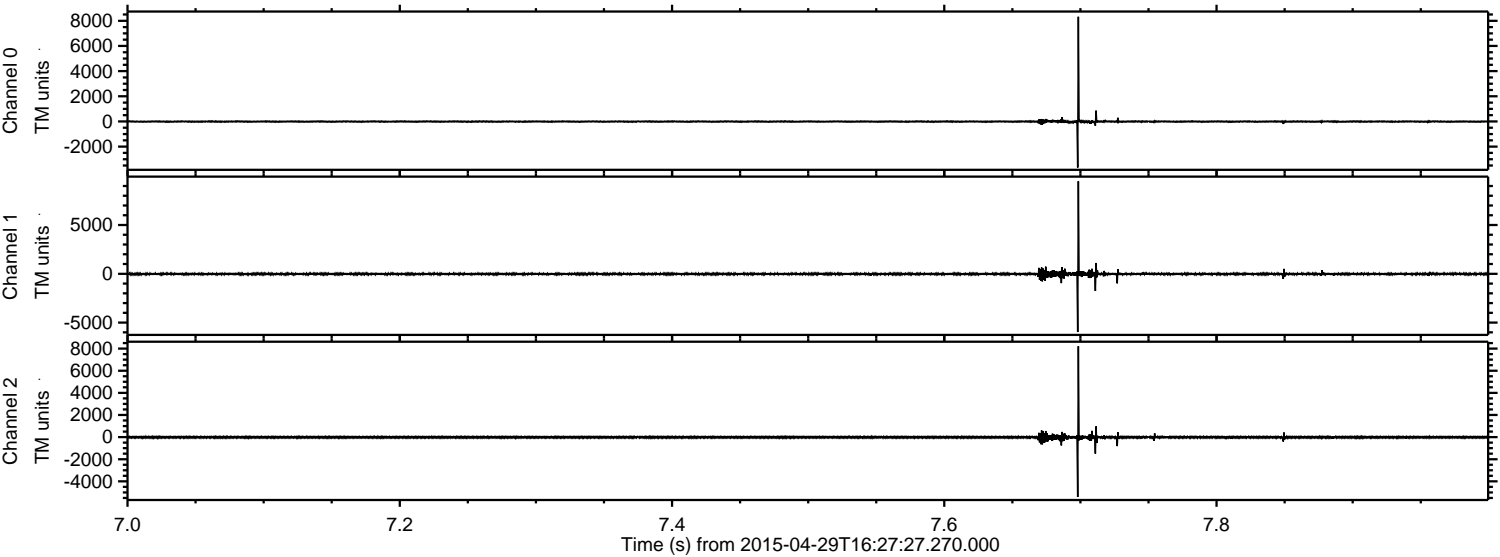


ELMAVAN 3D WAVEFORMS (Measured data sampled at 50 kHz) 49783 packets of 144 samples from 2015-04-29T16:27:27.270.000.

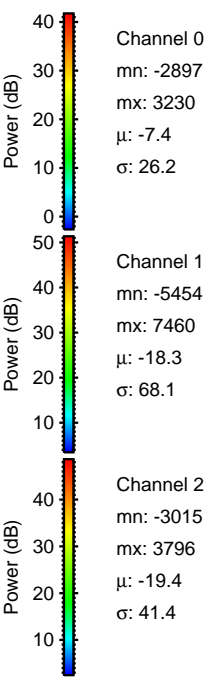
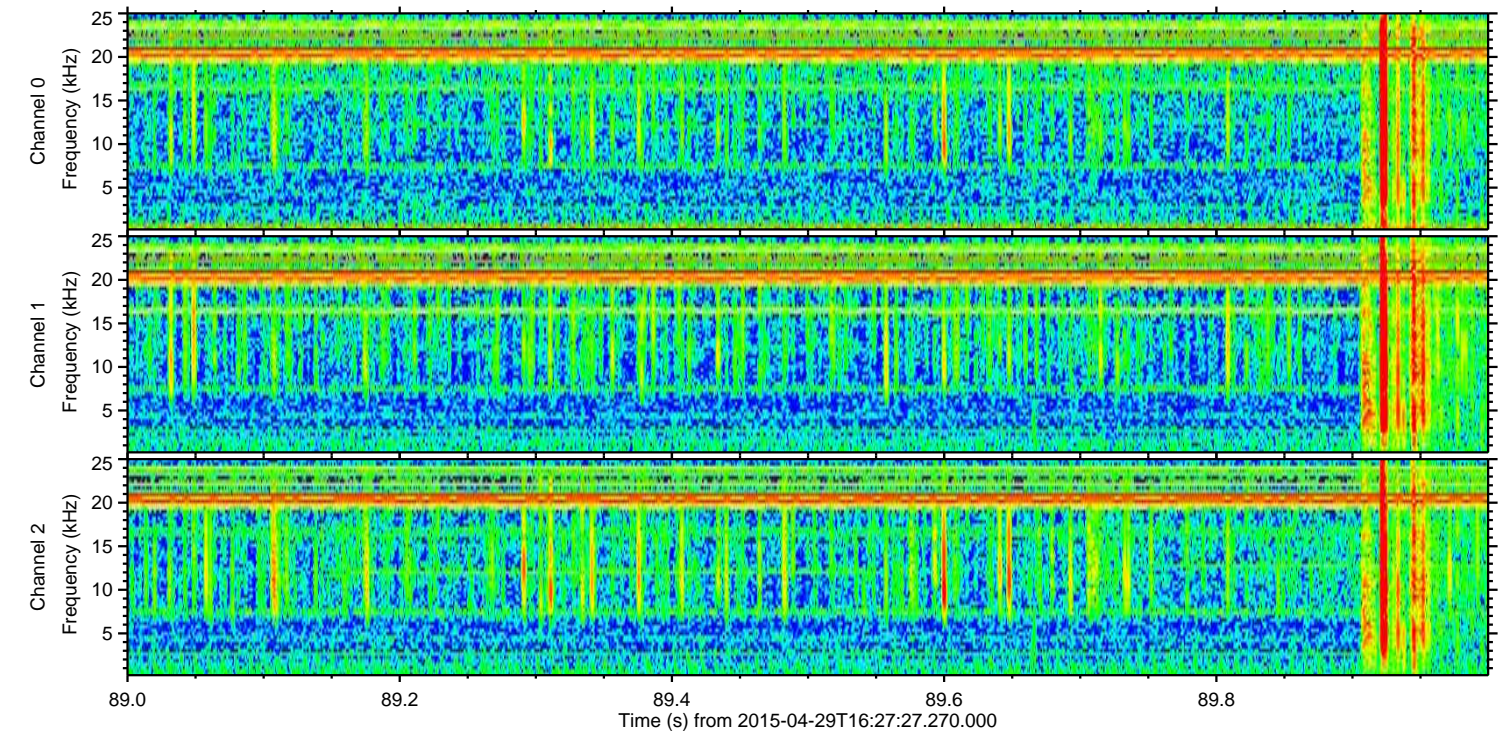
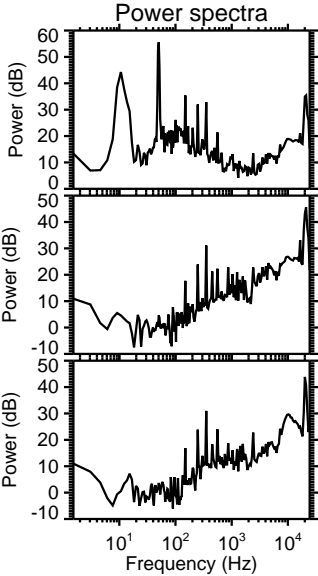
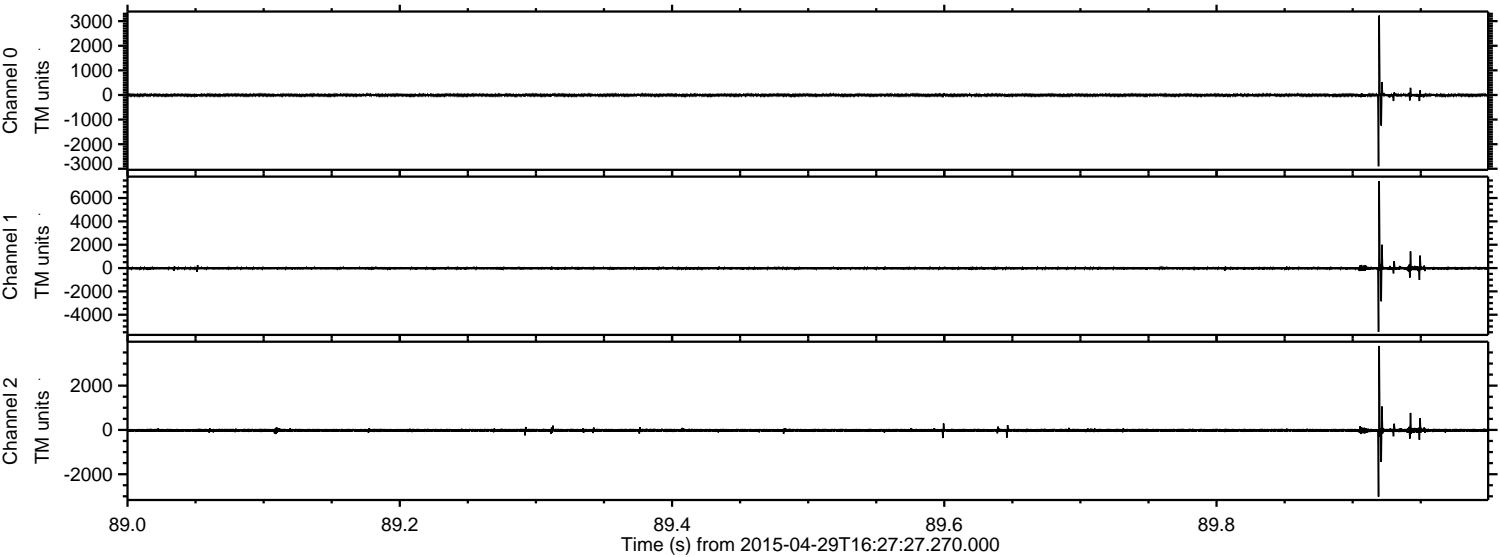
Processed Wed Apr 29 18:34:54 2015 by ELM ver.2012-10-06 from 001__elm20150429_162726__dat00.bin



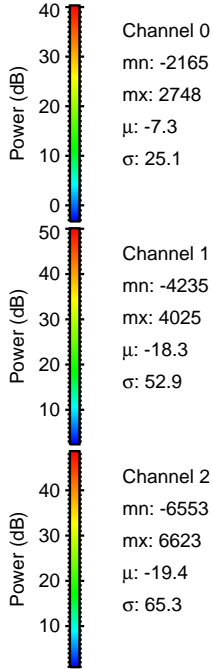
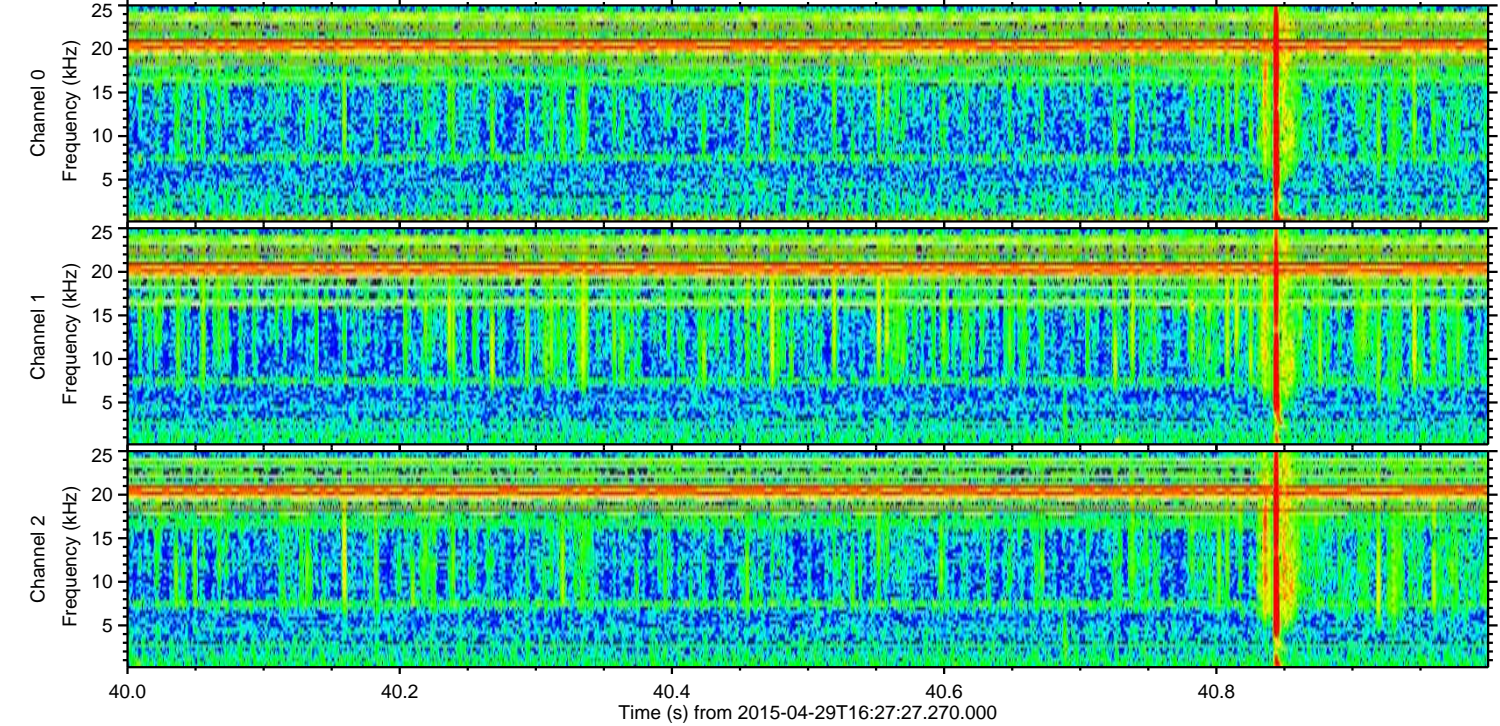
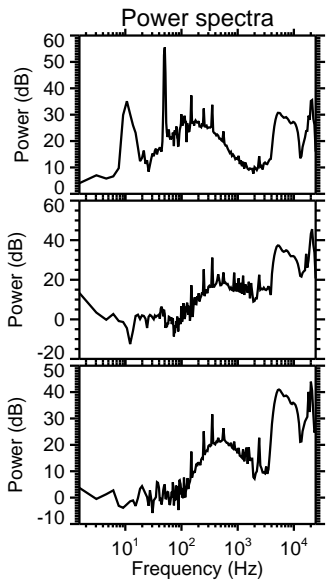
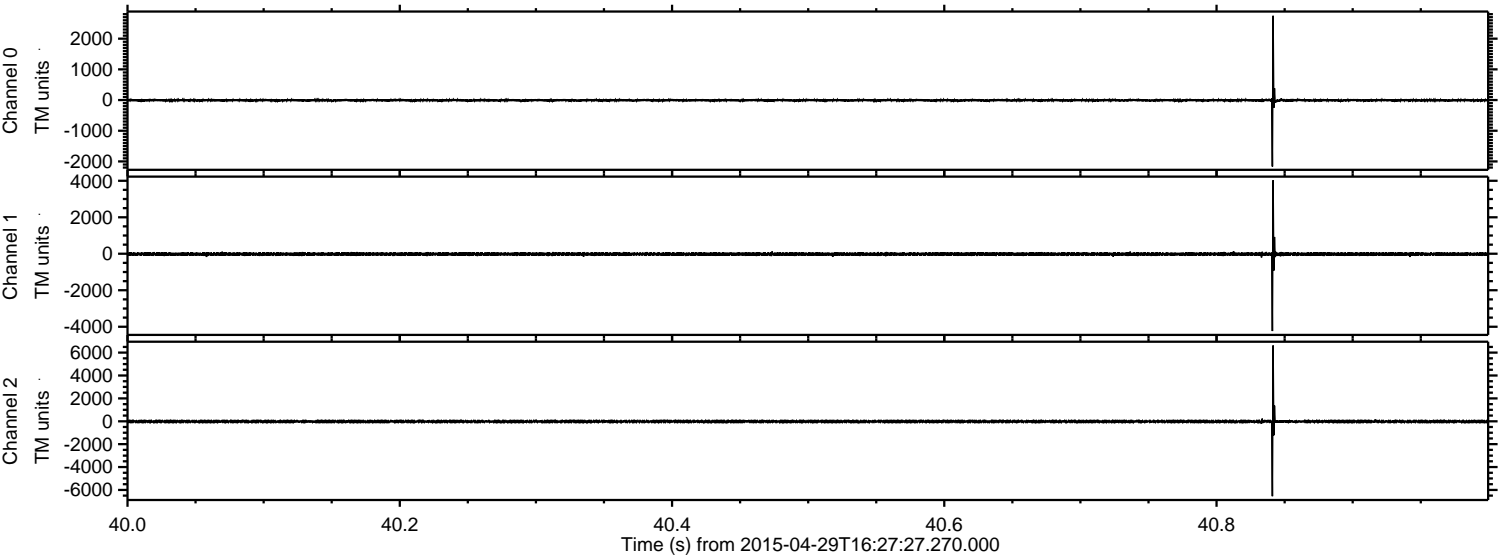
Processed Wed Apr 29 18:35:06 2015 by ELM ver.2012-10-06 from 001__elm20150429_162726__dat00.bin



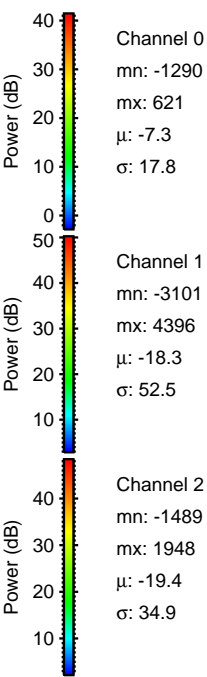
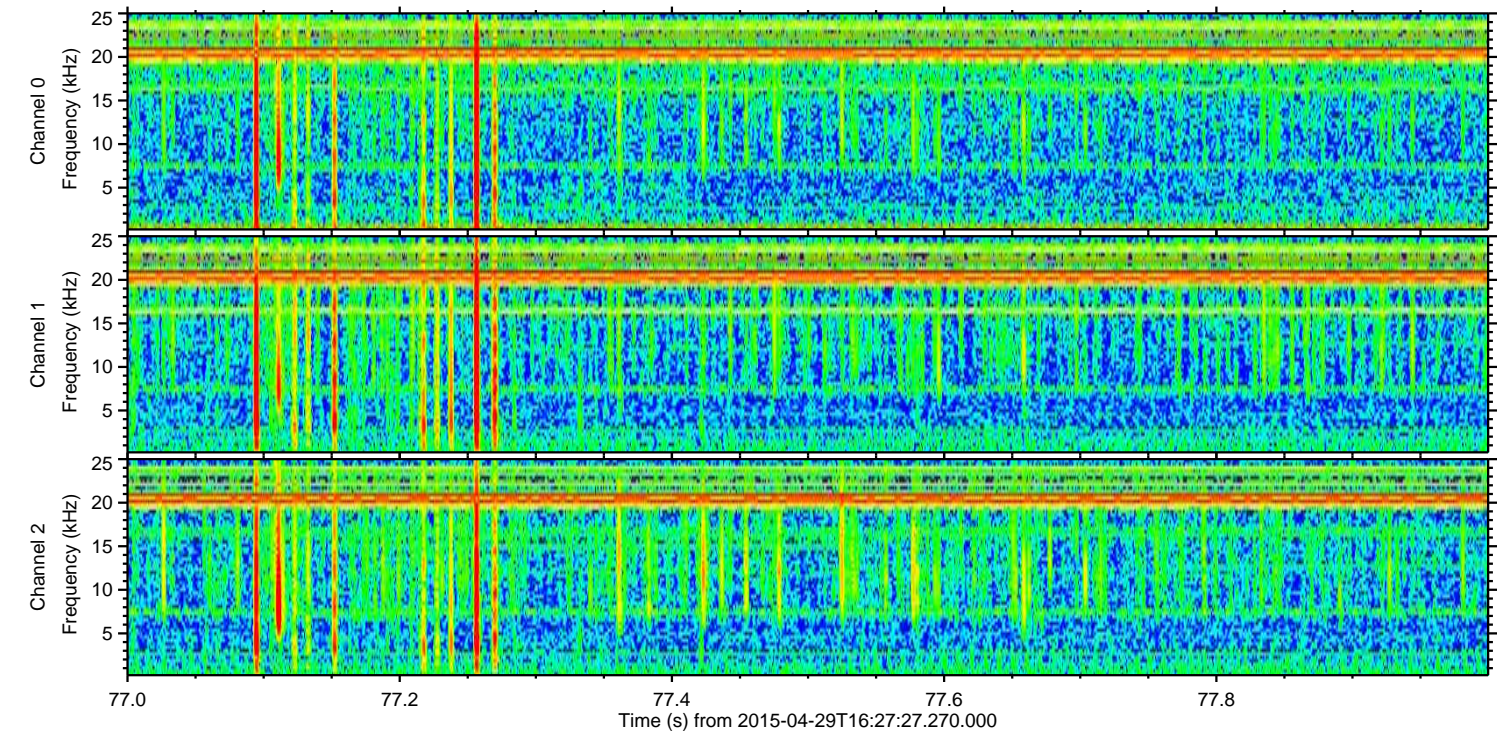
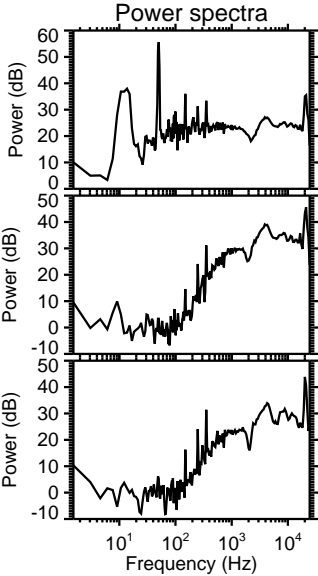
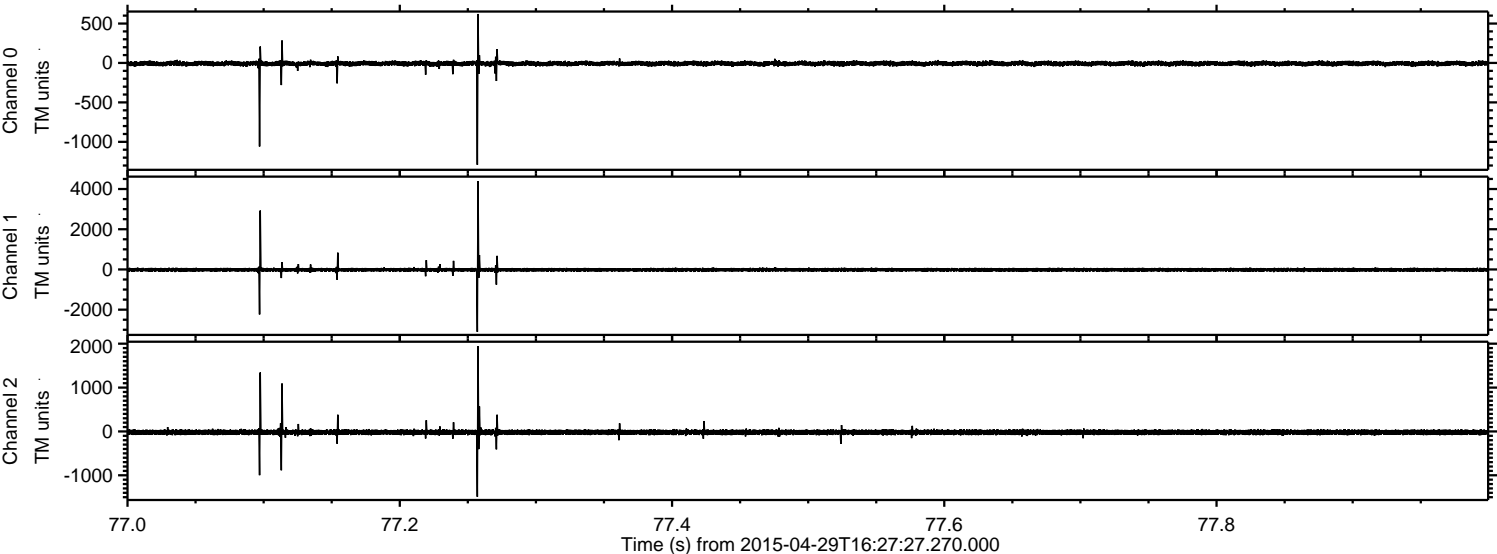
Processed Wed Apr 29 18:35:07 2015 by ELM ver.2012-10-06 from 001__elm20150429_162726__dat00.bin



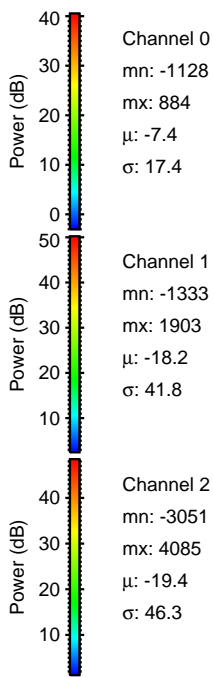
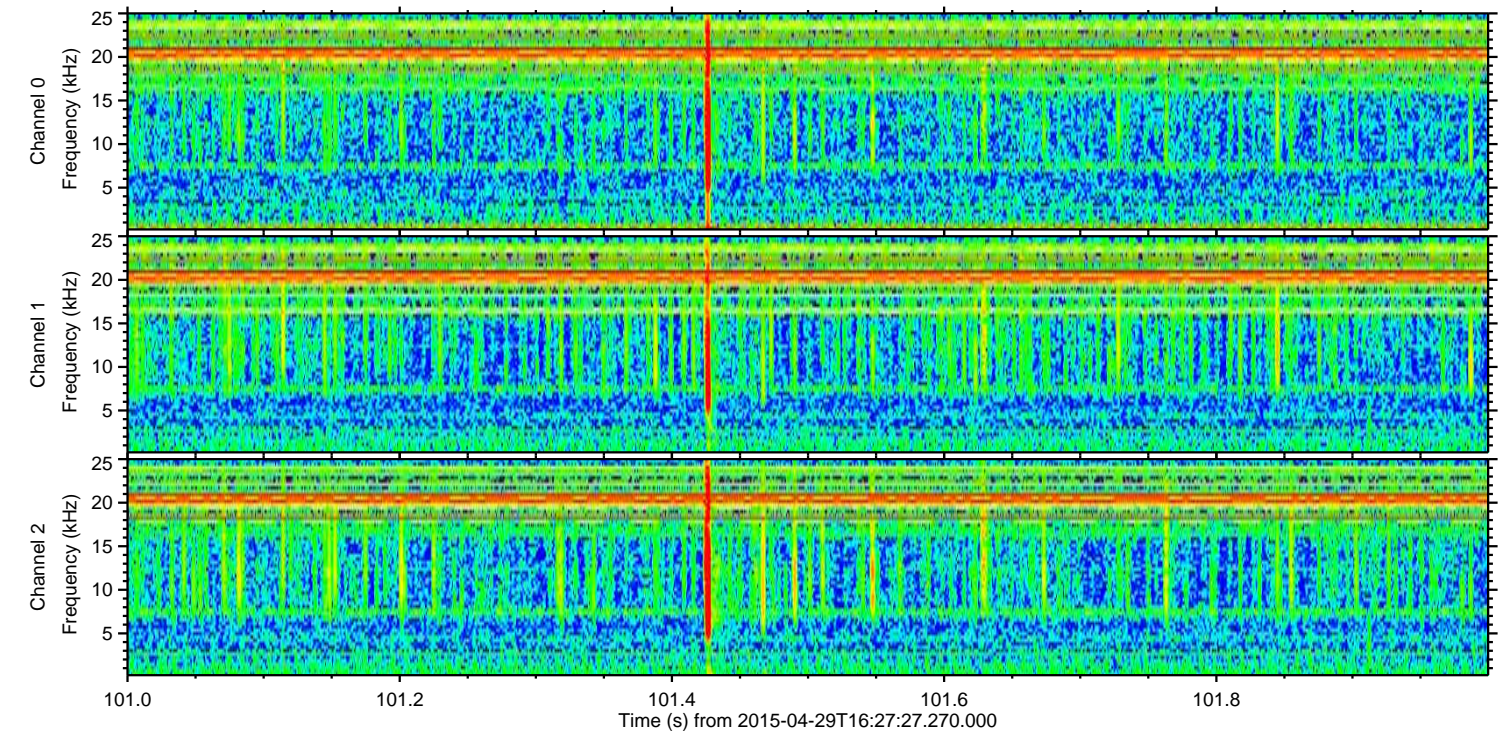
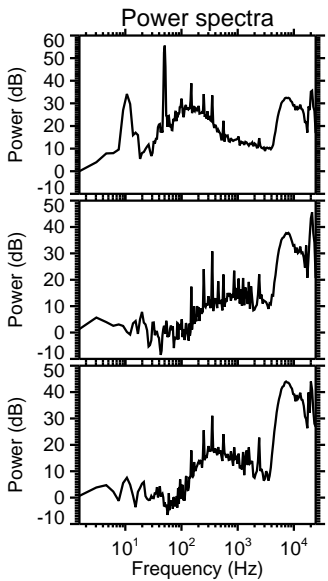
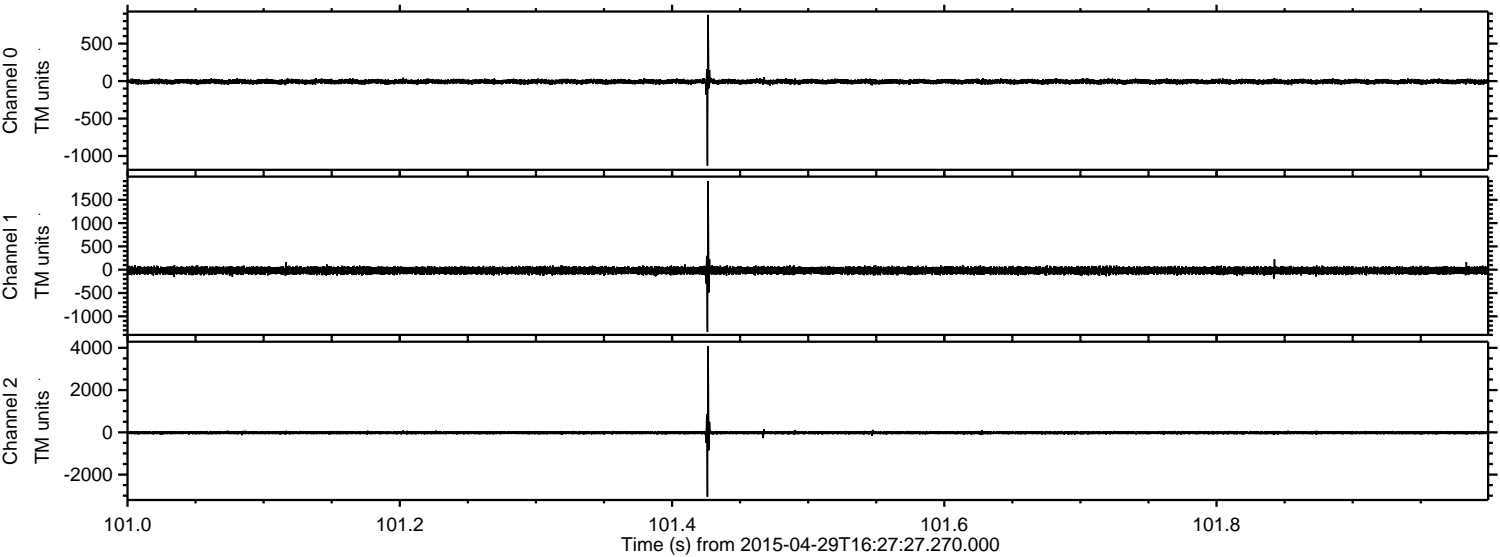
Processed Wed Apr 29 18:35:08 2015 by ELM ver.2012-10-06 from 001__elm20150429_162726__dat00.bin



Processed Wed Apr 29 18:35:09 2015 by ELM ver.2012-10-06 from 001__elm20150429_162726__dat00.bin



Processed Wed Apr 29 18:35:10 2015 by ELM ver.2012-10-06 from 001__elm20150429_162726__dat00.bin



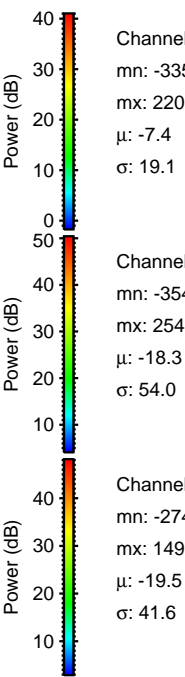
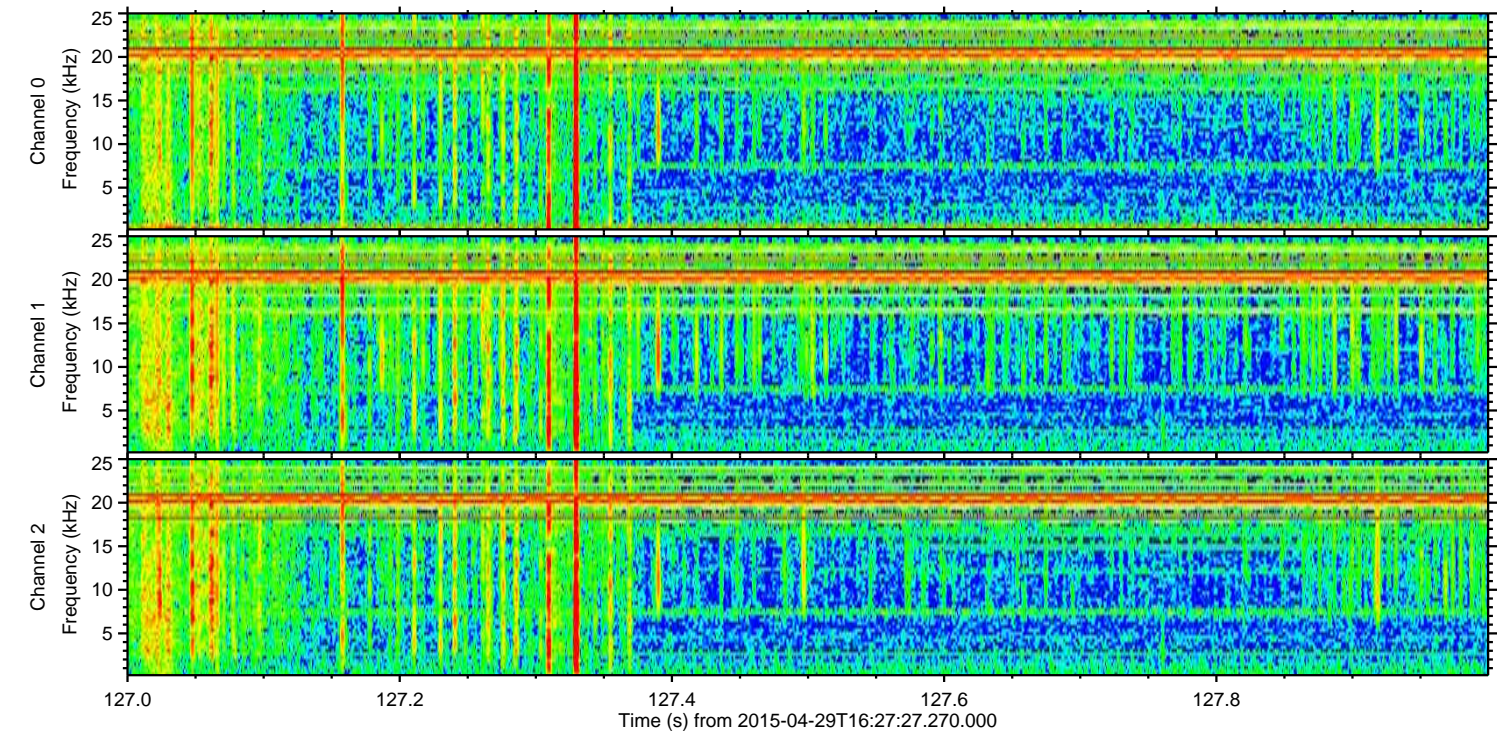
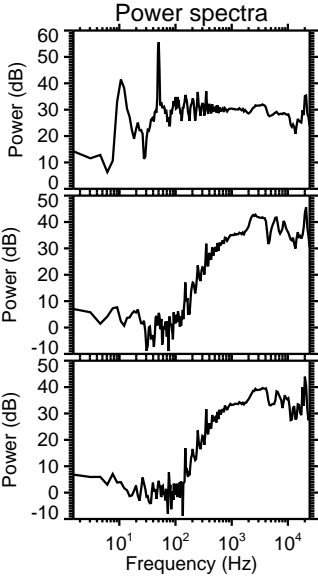
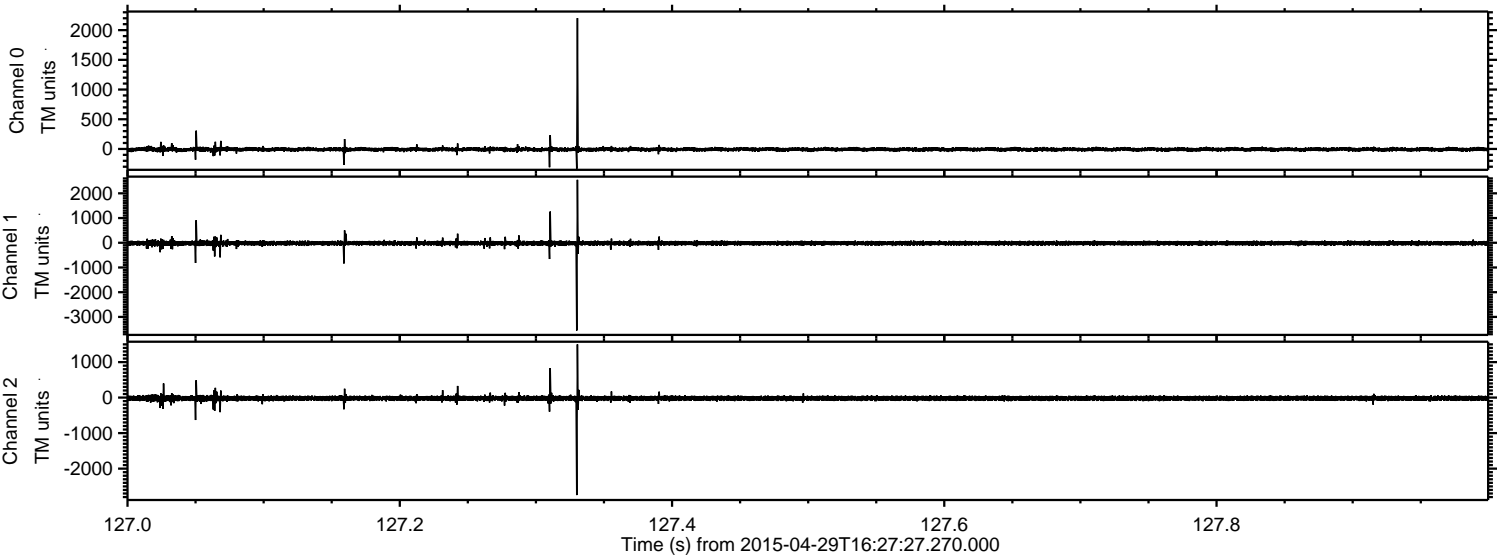
Channel 0
mn: -1128
mx: 884
 μ : -7.4
 σ : 17.4

Channel 1
mn: -1333
mx: 1903
 μ : -18.2
 σ : 41.8

Channel 2
mn: -3051
mx: 4085
 μ : -19.4
 σ : 46.3

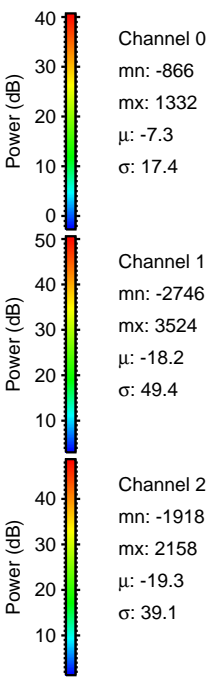
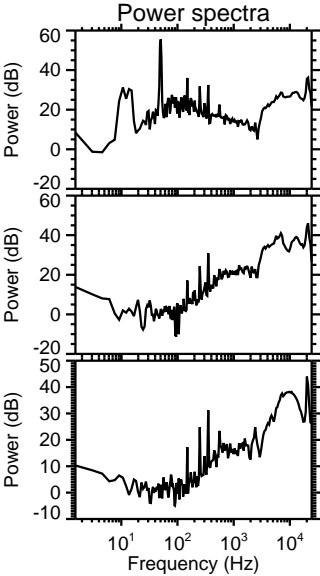
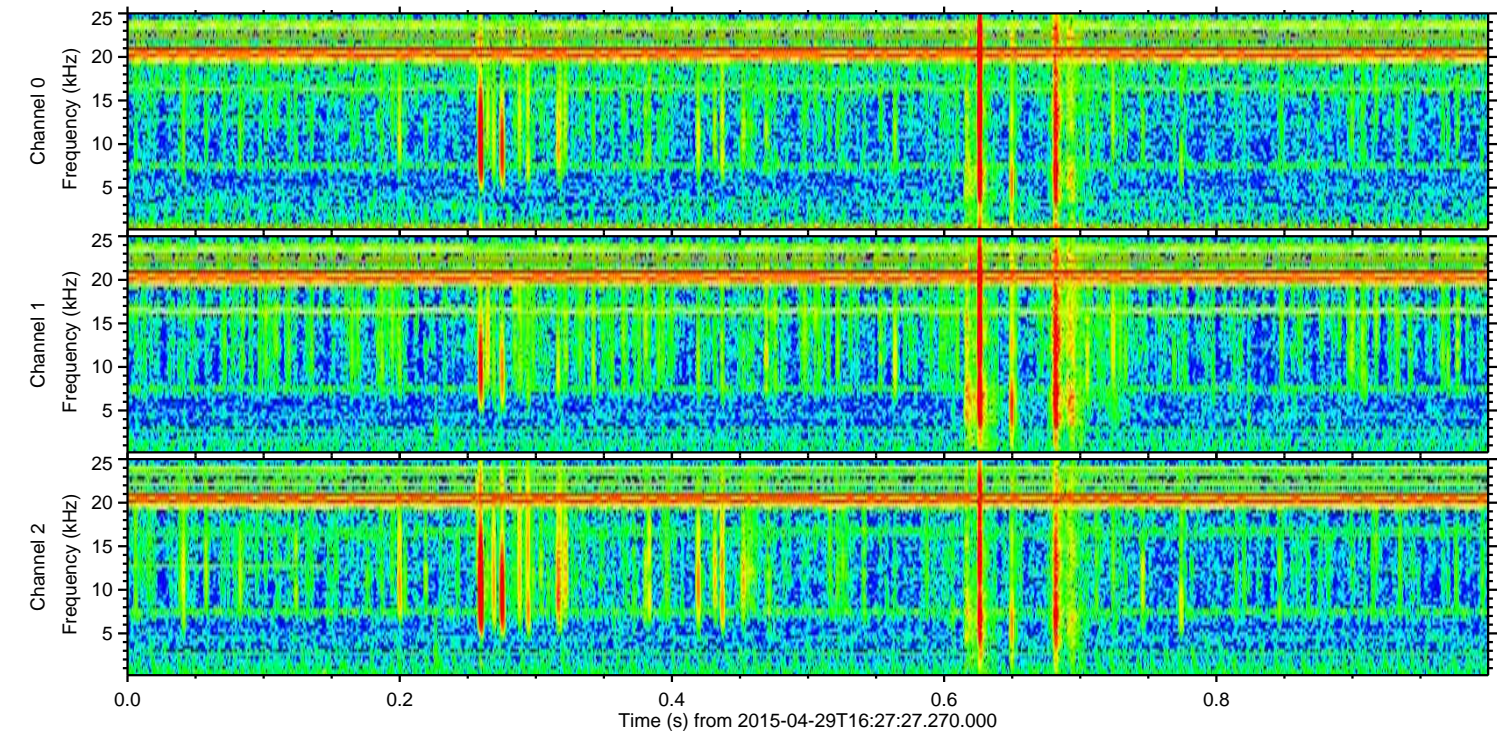
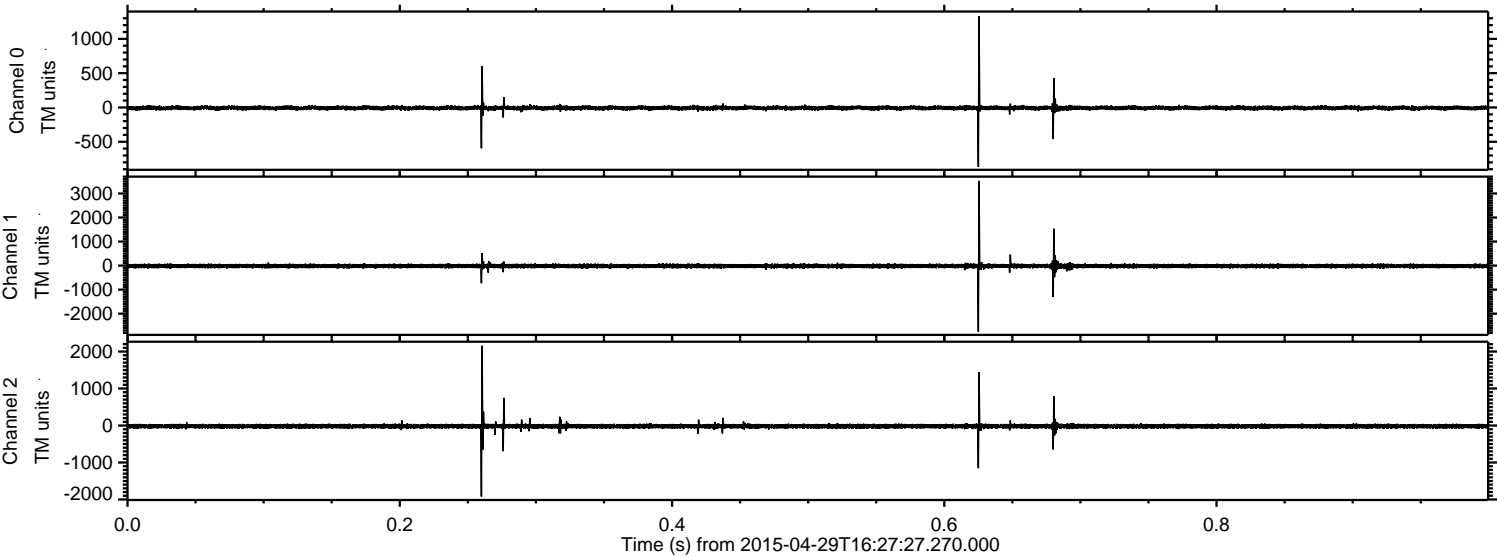
ELMAVAN 3D WAVEFORMS (Measured data sampled at 50 kHz) 49783 packets of 144 samples from 2015-04-29T16:27:27.270.000. Part 128/144

Processed Wed Apr 29 18:35:11 2015 by ELM ver.2012-10-06 from 001__elm20150429_162726__dat00.bin



ELMAVAN 3D WAVEFORMS (Measured data sampled at 50 kHz) 49783 packets of 144 samples from 2015-04-29T16:27:27.270.000. Part 1/144

Processed Wed Apr 29 18:35:11 2015 by ELM ver.2012-10-06 from 001__elm20150429_162726__dat00.bin

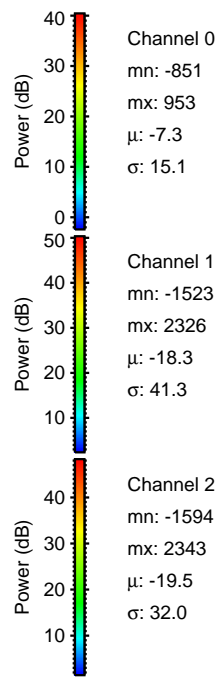
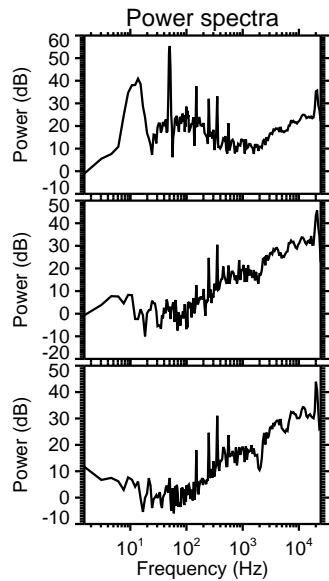
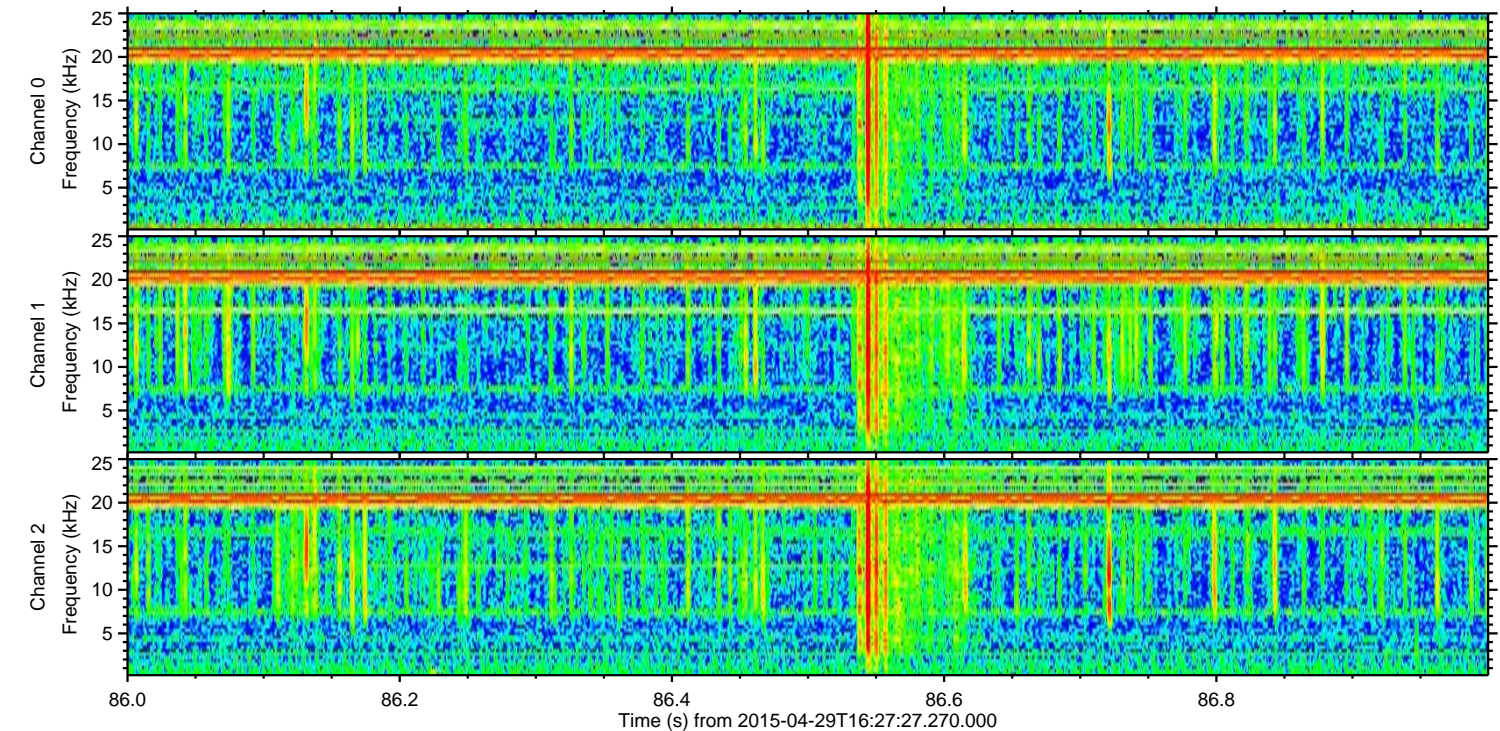
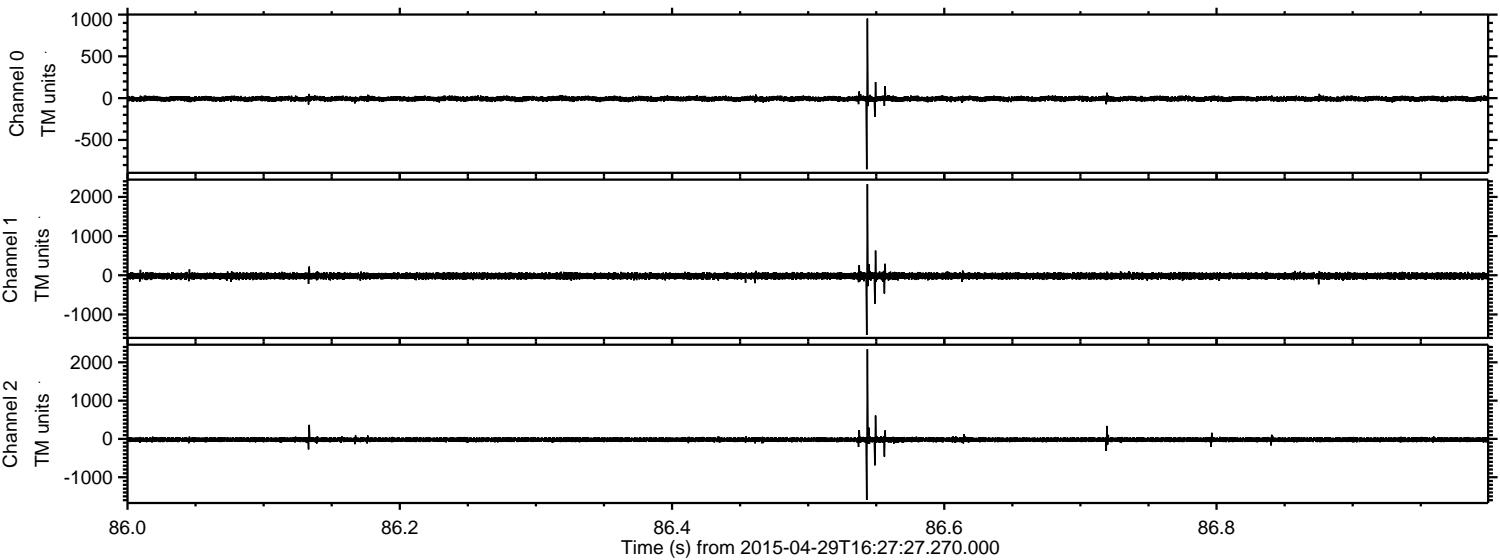


Channel 0
mn: -866
mx: 1332
 μ : -7.3
 σ : 17.4

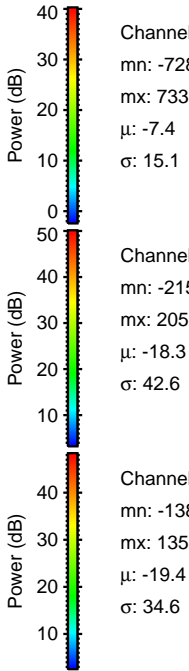
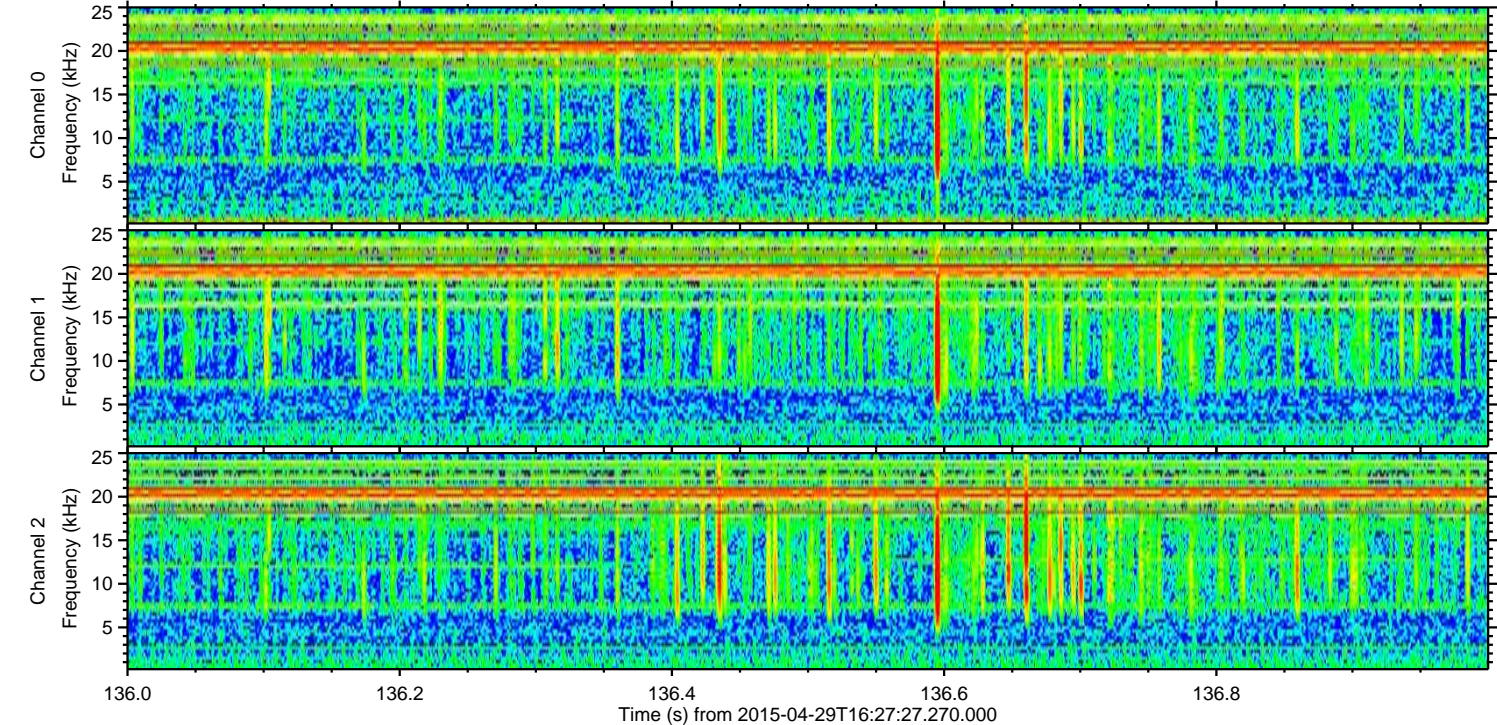
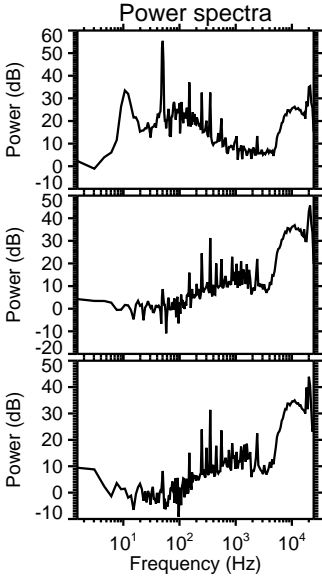
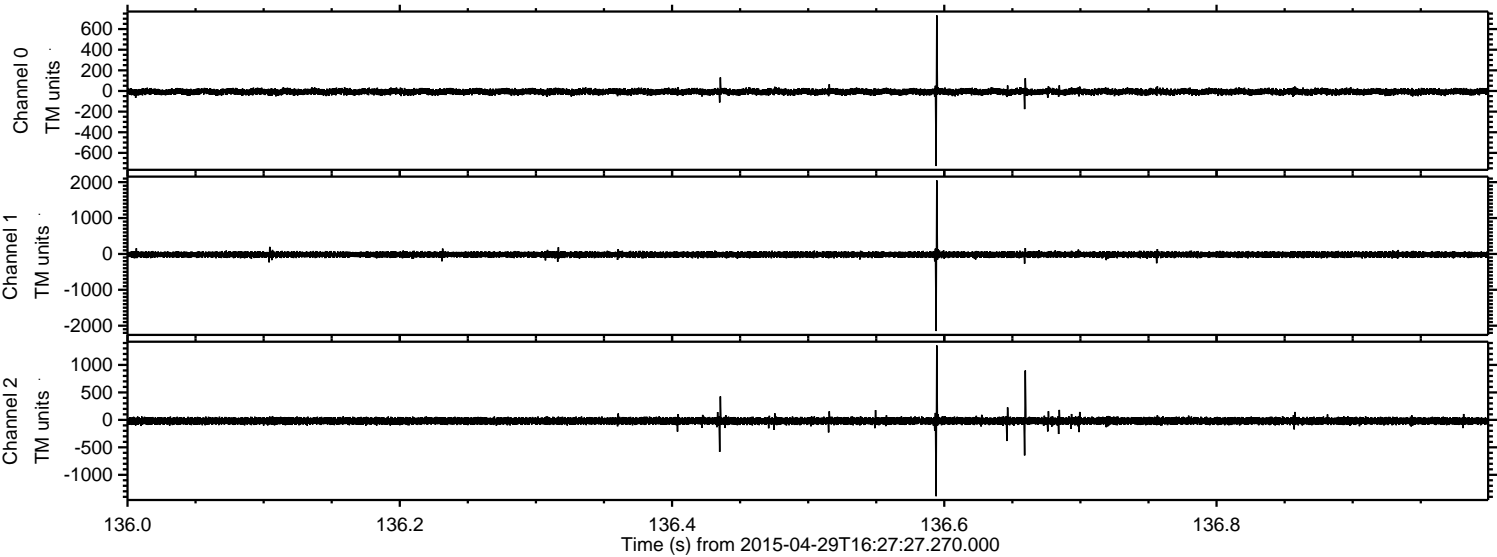
Channel 1
mn: -2746
mx: 3524
 μ : -18.2
 σ : 49.4

Channel 2
mn: -1918
mx: 2158
 μ : -19.3
 σ : 39.1

Processed Wed Apr 29 18:35:12 2015 by ELM ver.2012-10-06 from 001__elm20150429_162726__dat00.bin



Processed Wed Apr 29 18:35:13 2015 by ELM ver.2012-10-06 from 001__elm20150429_162726__dat00.bin



Processed Wed Apr 29 18:35:14 2015 by ELM ver.2012-10-06 from 001__elm20150429_162726__dat00.bin

