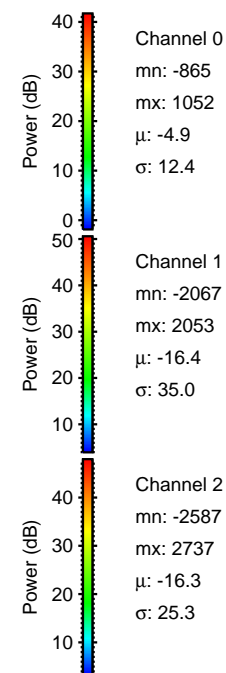
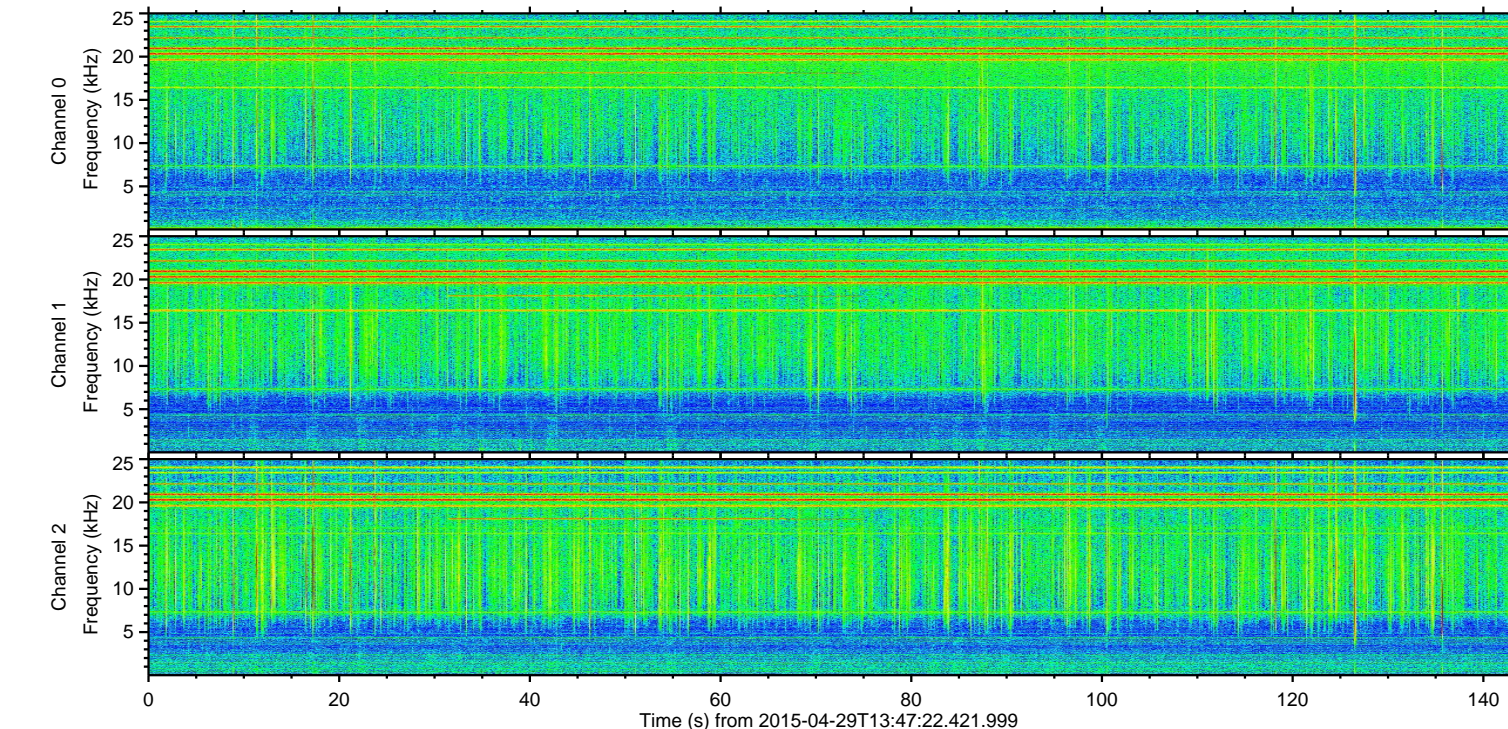
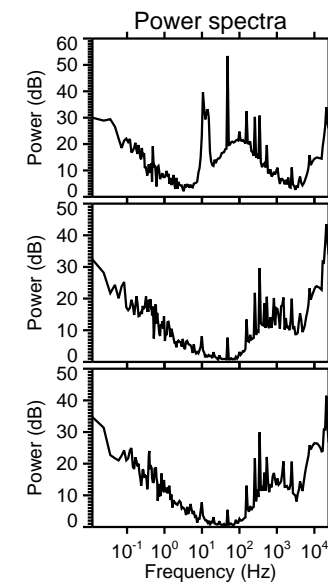
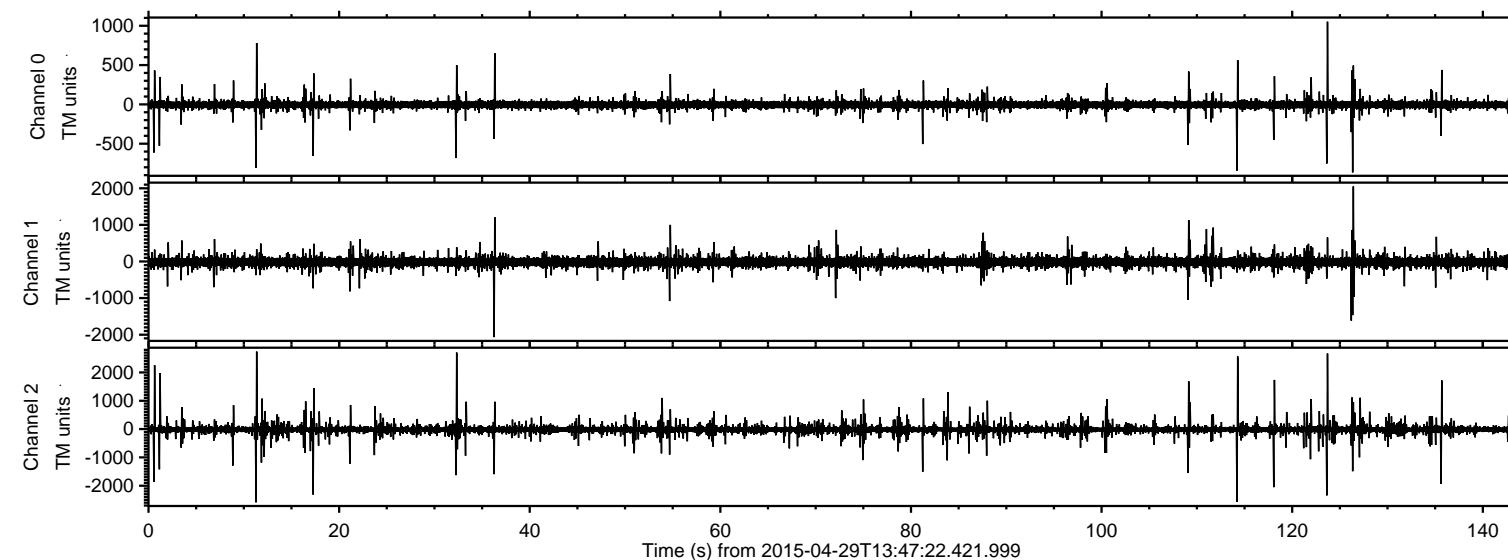


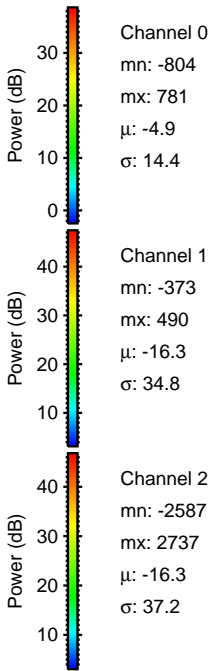
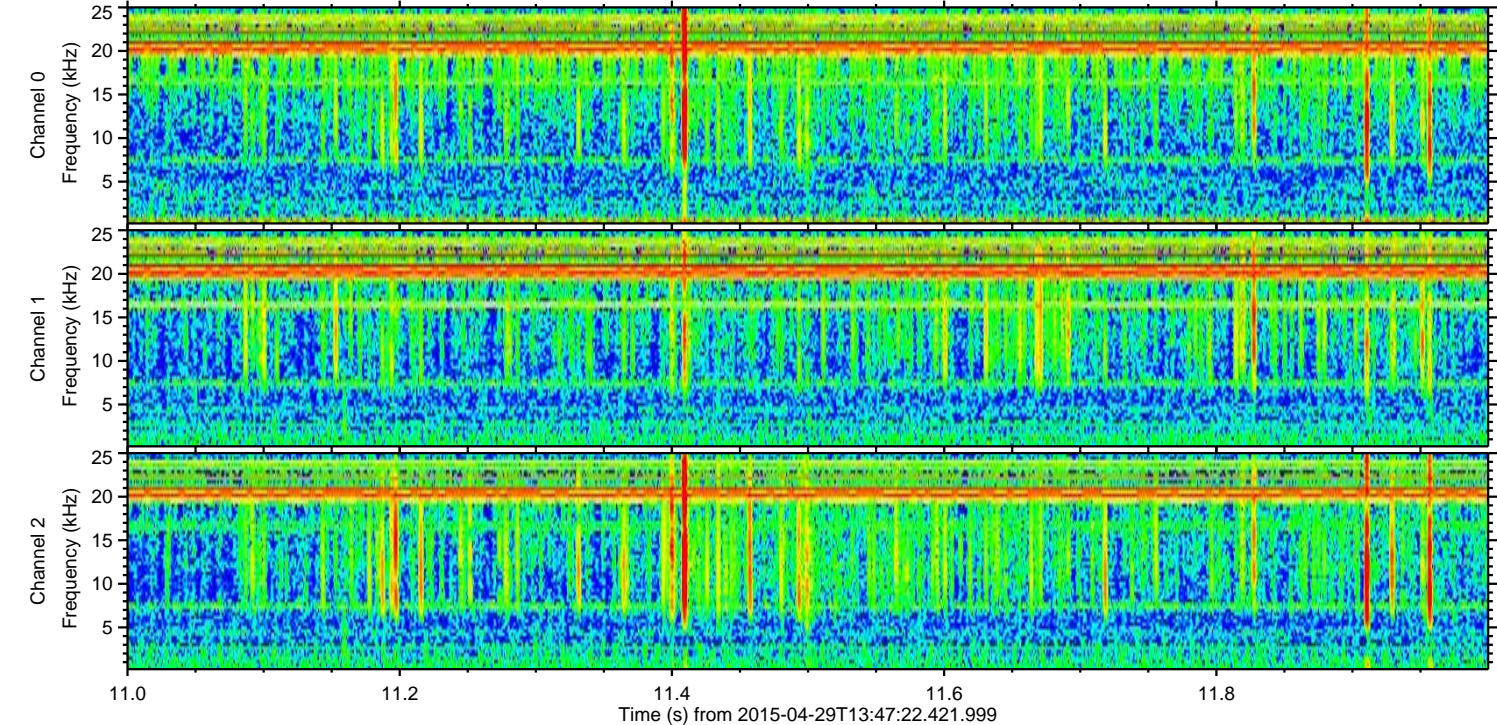
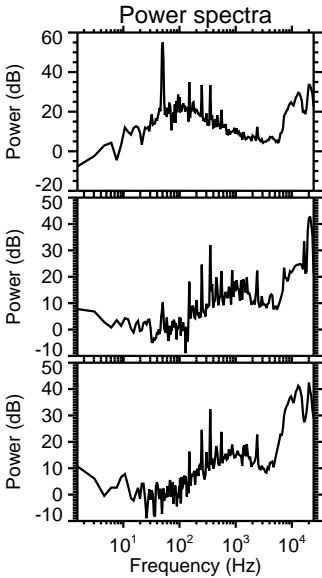
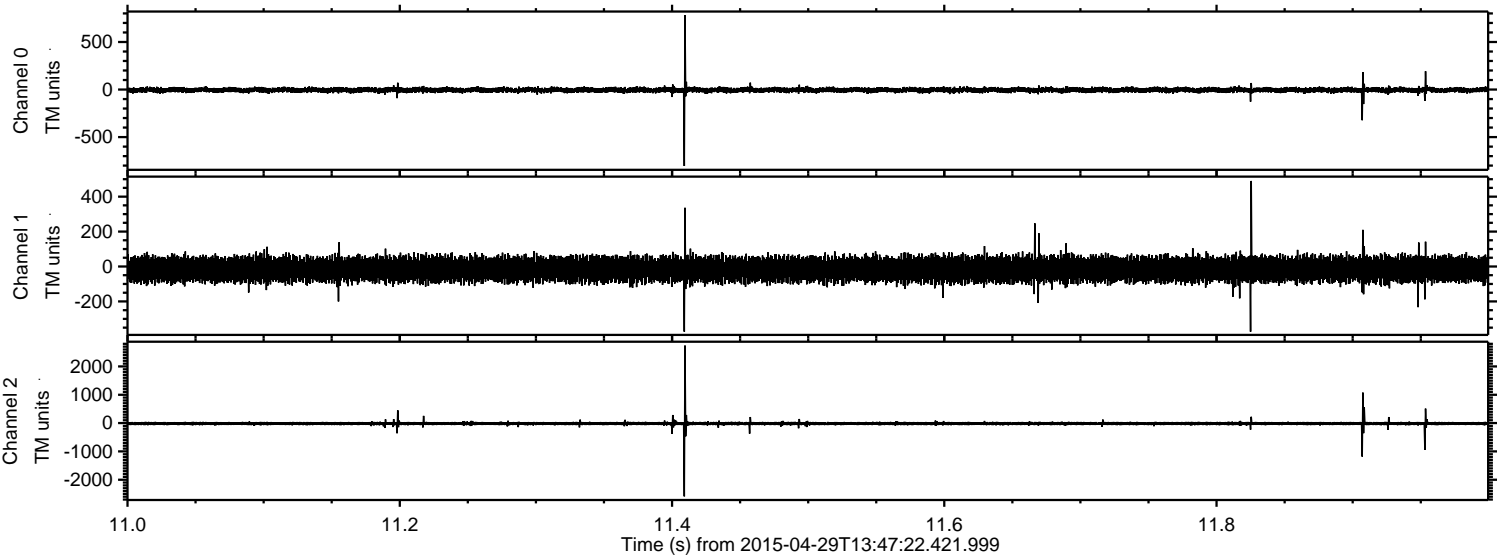
# ELMAVAN 3D WAVEFORMS (Measured data sampled at 50 kHz) 49570 packets of 144 samples from 2015-04-29T13:47:22.421.999.

Processed Wed Apr 29 15:54:27 2015 by ELM ver.2012-10-06 from 001\_\_elm20150429\_134721\_\_dat00.bin





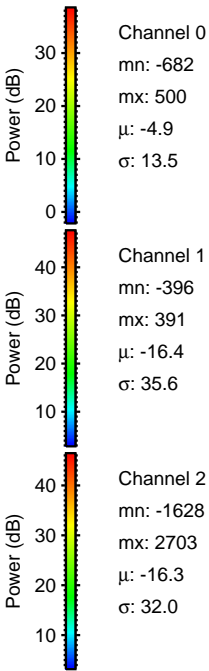
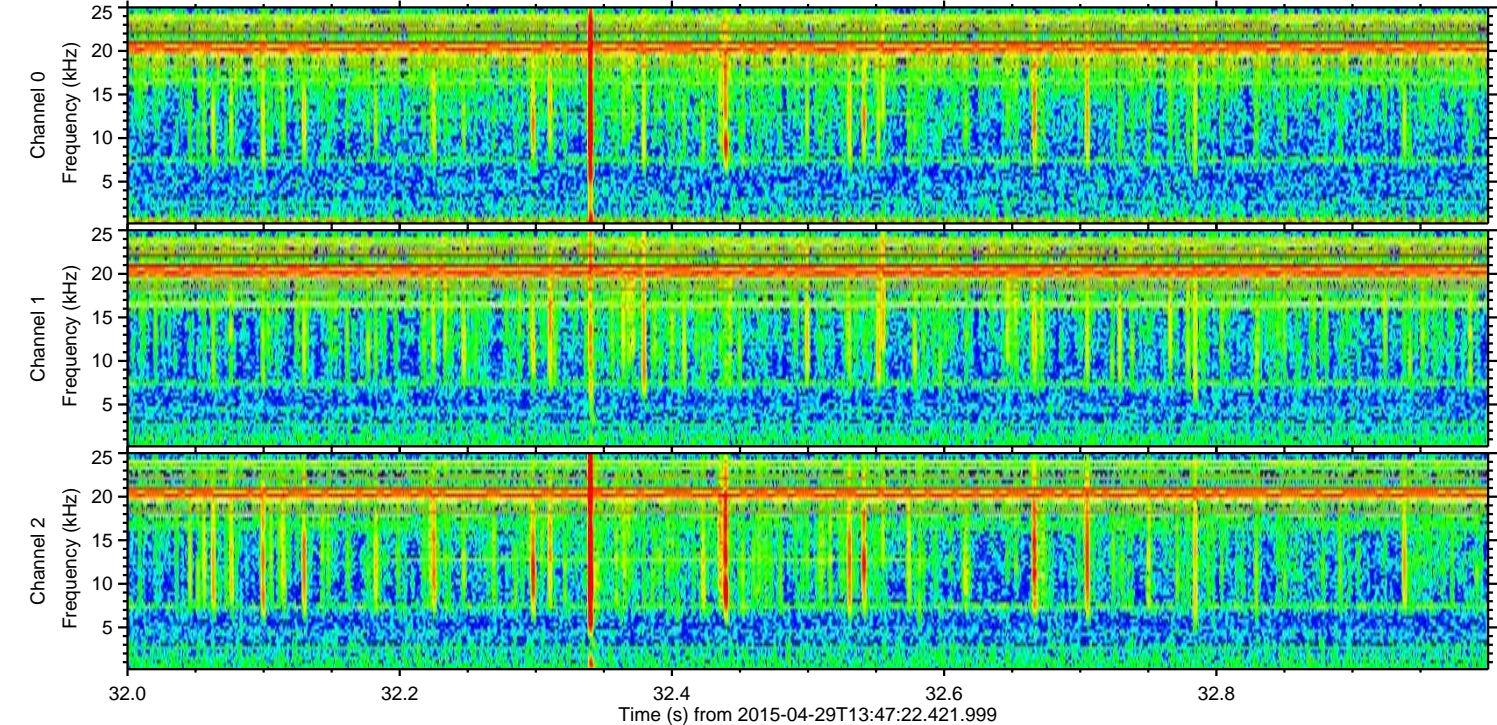
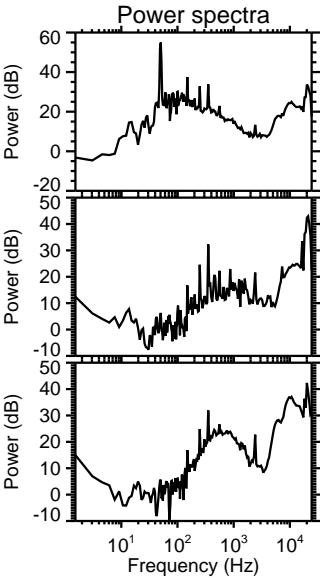
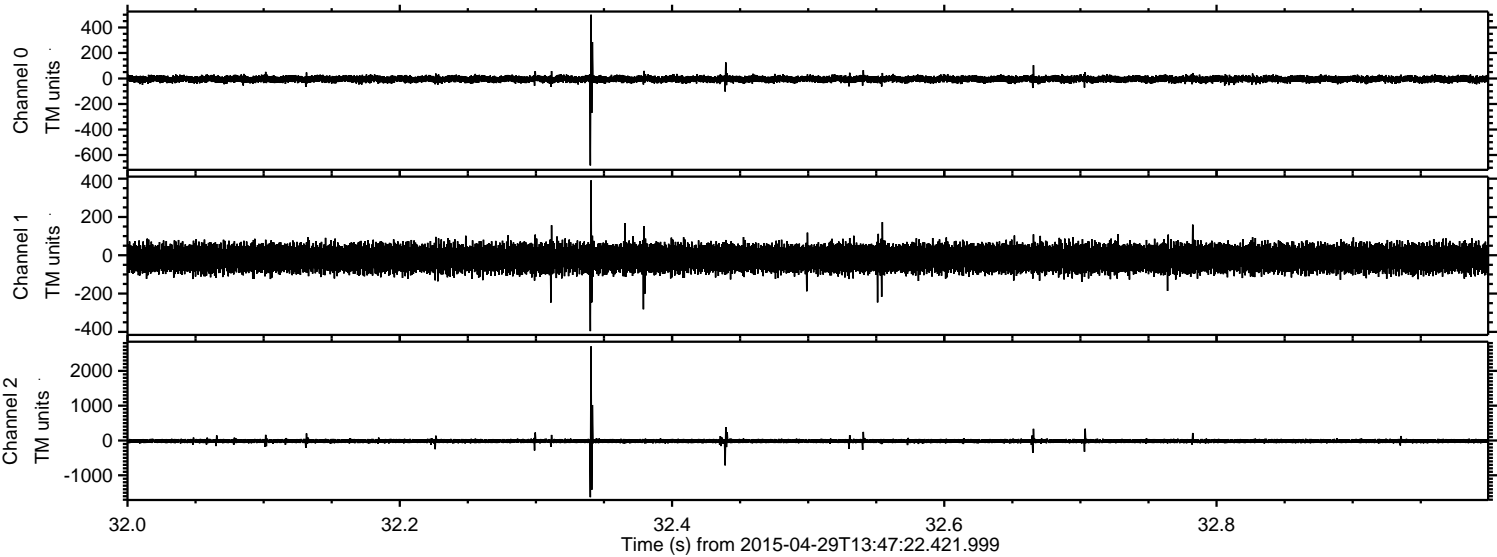
Processed Wed Apr 29 15:54:42 2015 by ELM ver.2012-10-06 from 001\_\_elm20150429\_134721\_\_dat00.bin





ELMAVAN 3D WAVEFORMS (Measured data sampled at 50 kHz) 49570 packets of 144 samples from 2015-04-29T13:47:22.421.999. Part 33/143

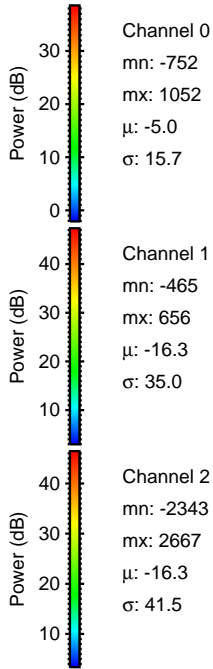
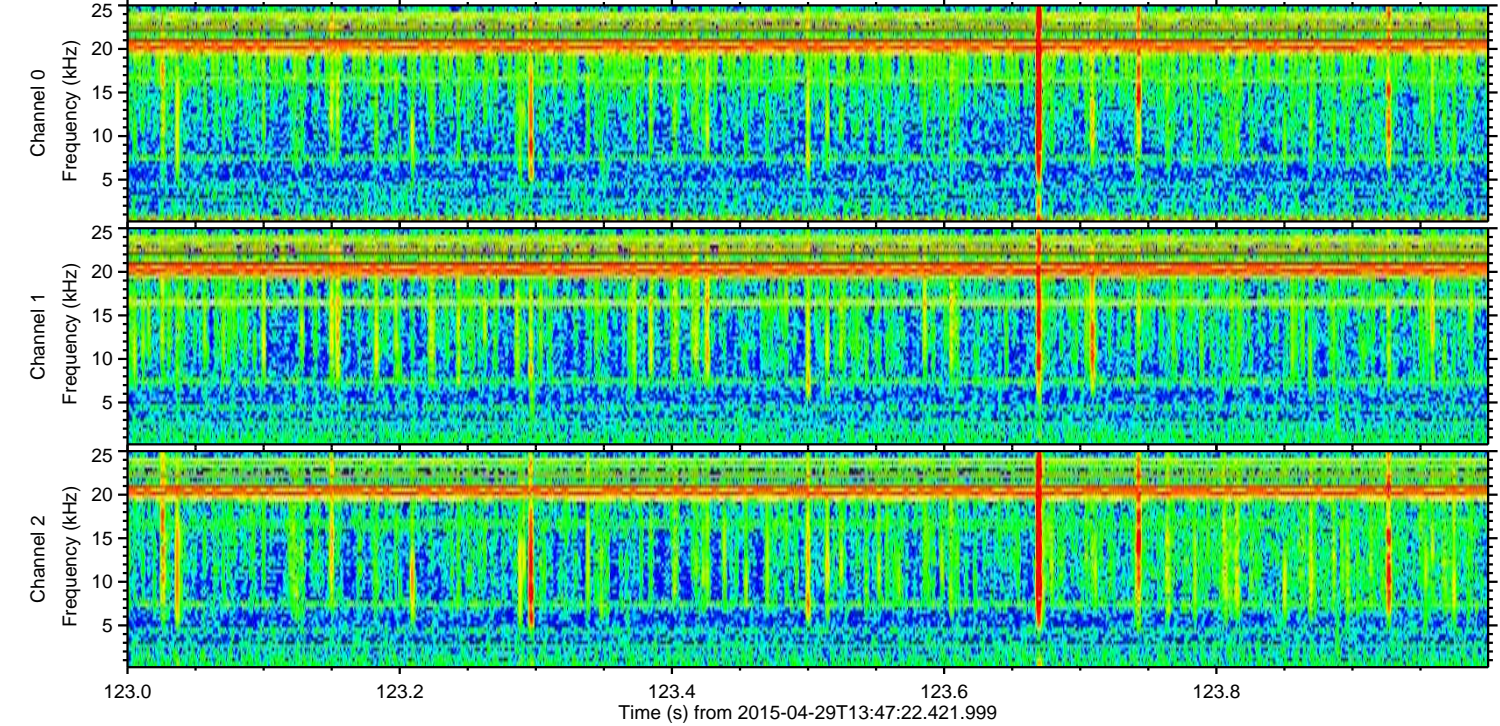
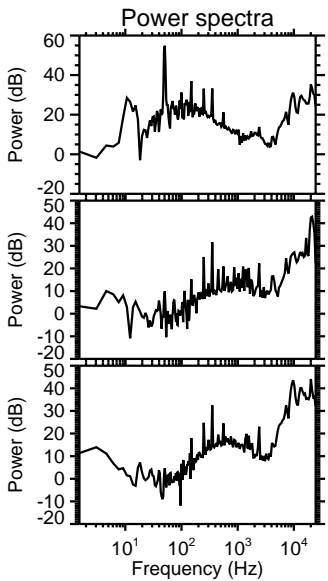
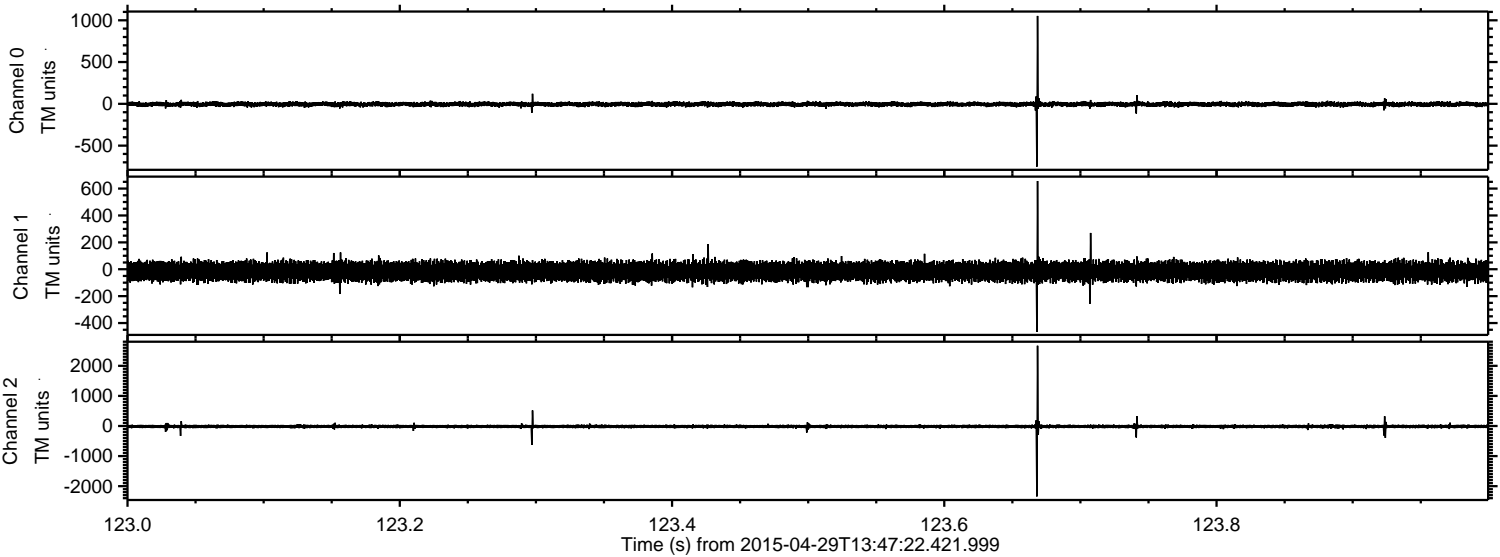
Processed Wed Apr 29 15:54:43 2015 by ELM ver.2012-10-06 from 001\_elm20150429\_134721\_\_dat00.bin





ELMAVAN 3D WAVEFORMS (Measured data sampled at 50 kHz) 49570 packets of 144 samples from 2015-04-29T13:47:22.421.999. Part 124/143

Processed Wed Apr 29 15:54:44 2015 by ELM ver.2012-10-06 from 001\_\_elm20150429\_134721\_\_dat00.bin



Channel 0  
mn: -752  
mx: 1052  
 $\mu$ : -5.0  
 $\sigma$ : 15.7

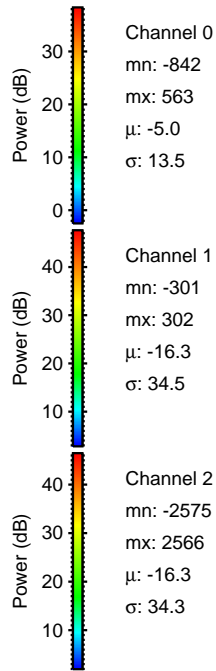
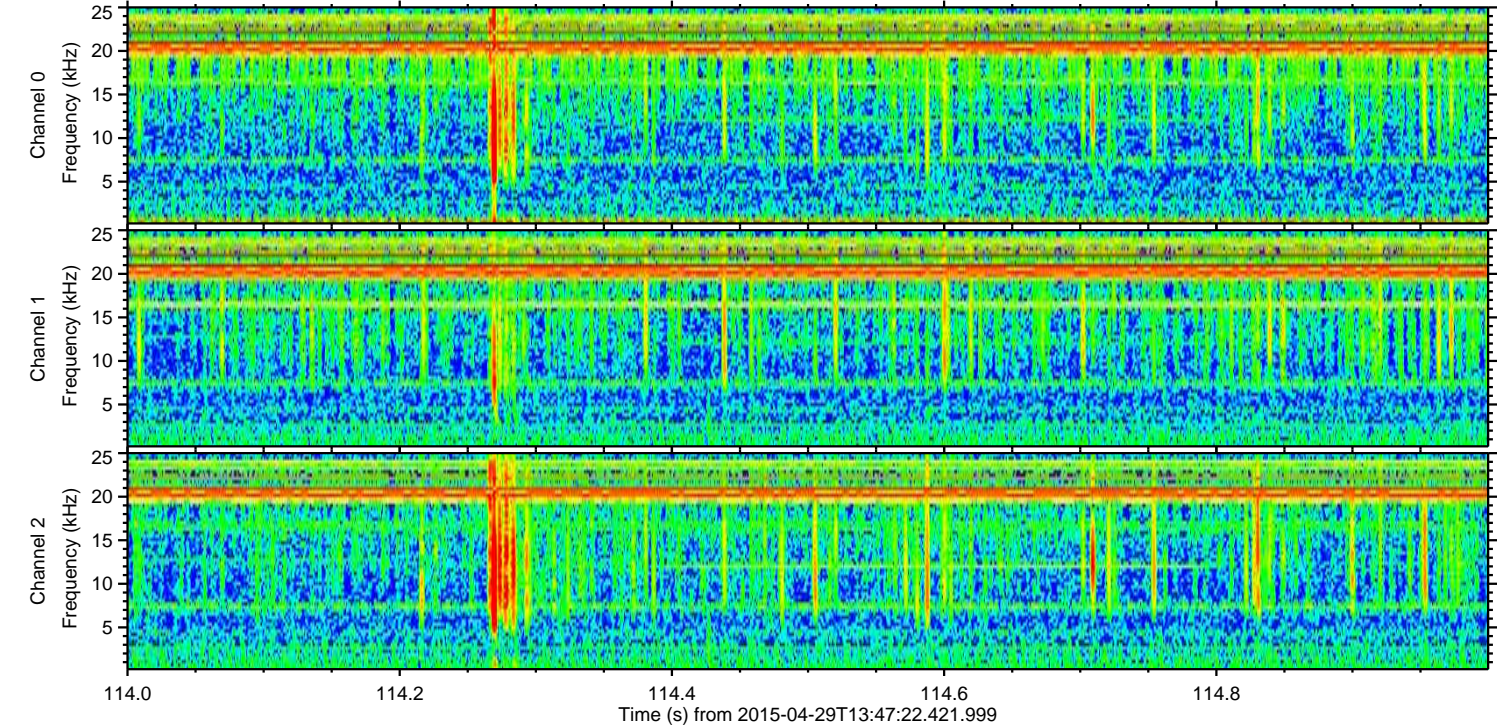
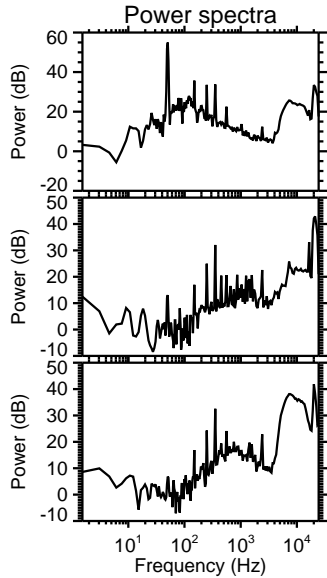
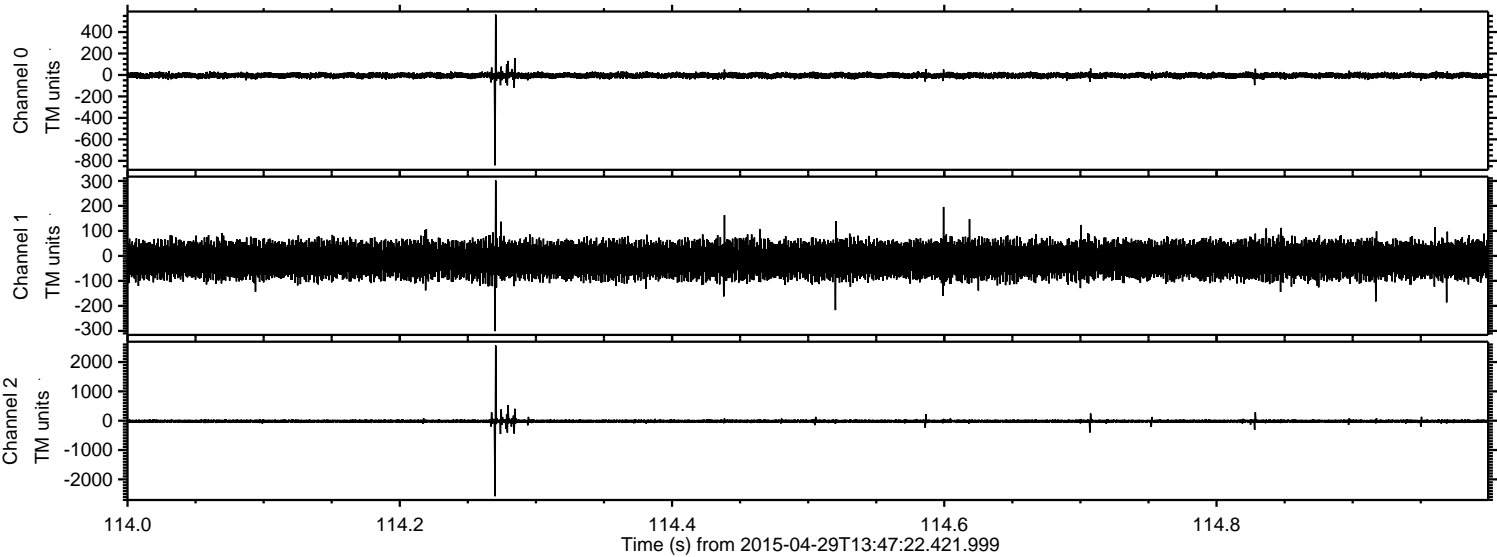
Channel 1  
mn: -465  
mx: 656  
 $\mu$ : -16.3  
 $\sigma$ : 35.0

Channel 2  
mn: -2343  
mx: 2667  
 $\mu$ : -16.3  
 $\sigma$ : 41.5



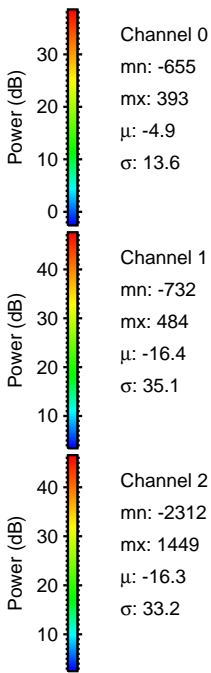
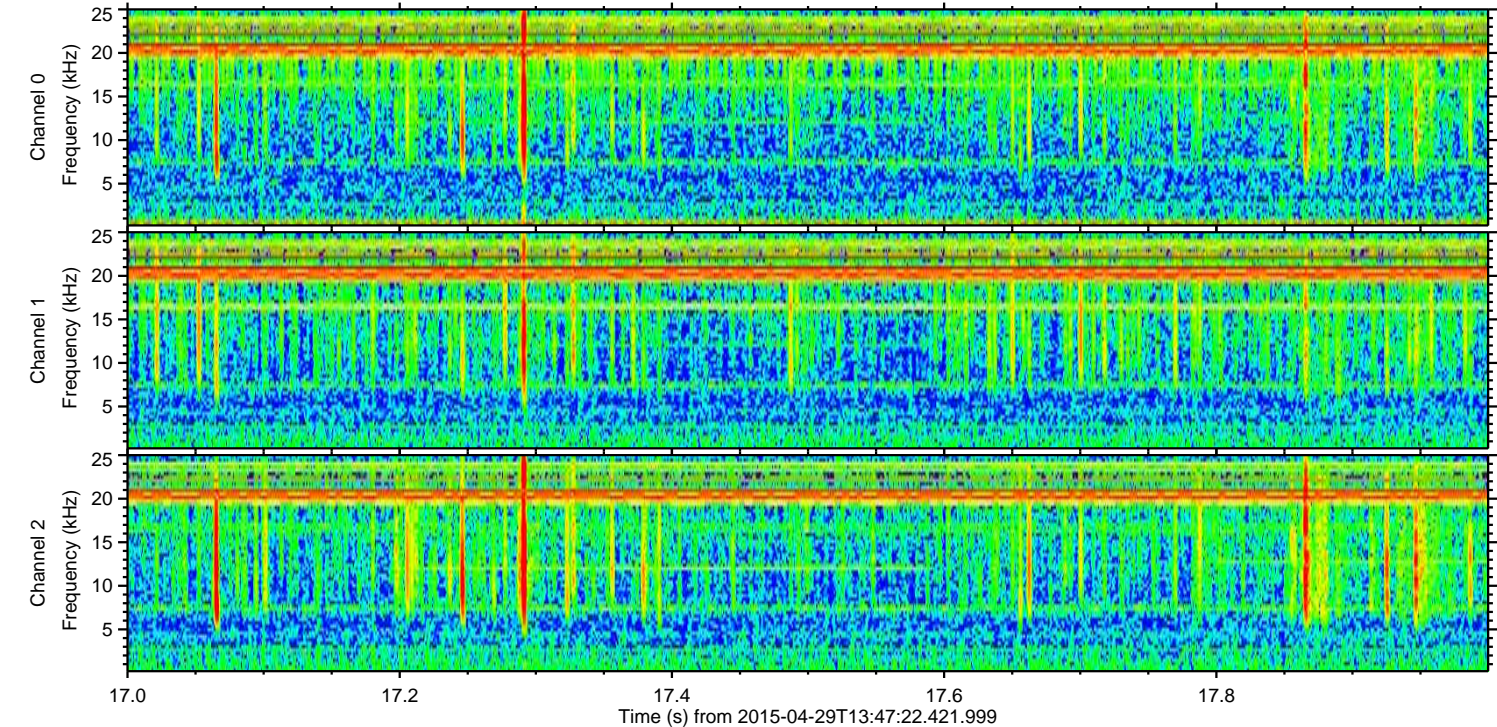
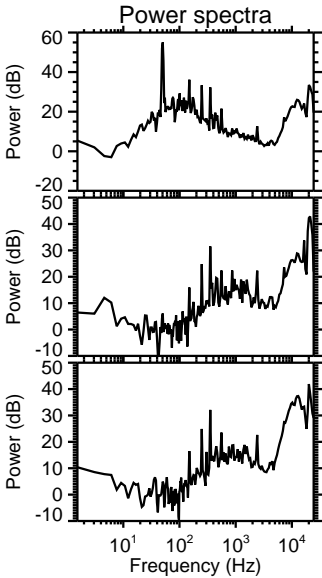
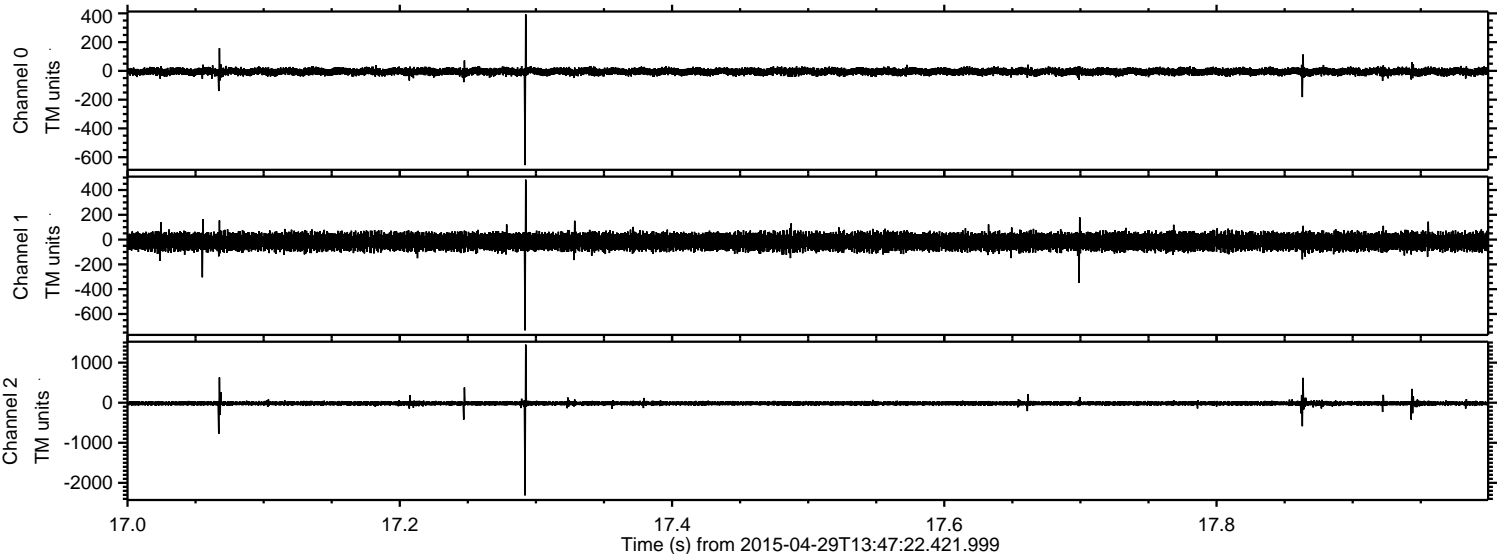
ELMAVAN 3D WAVEFORMS (Measured data sampled at 50 kHz) 49570 packets of 144 samples from 2015-04-29T13:47:22.421.999. Part 115/143

Processed Wed Apr 29 15:54:45 2015 by ELM ver.2012-10-06 from 001\_\_elm20150429\_134721\_\_dat00.bin





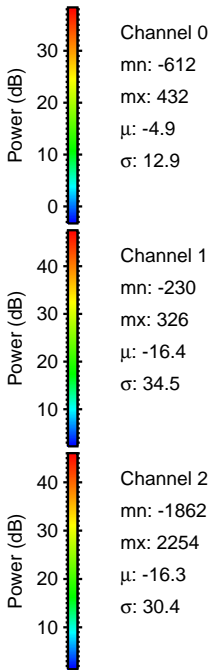
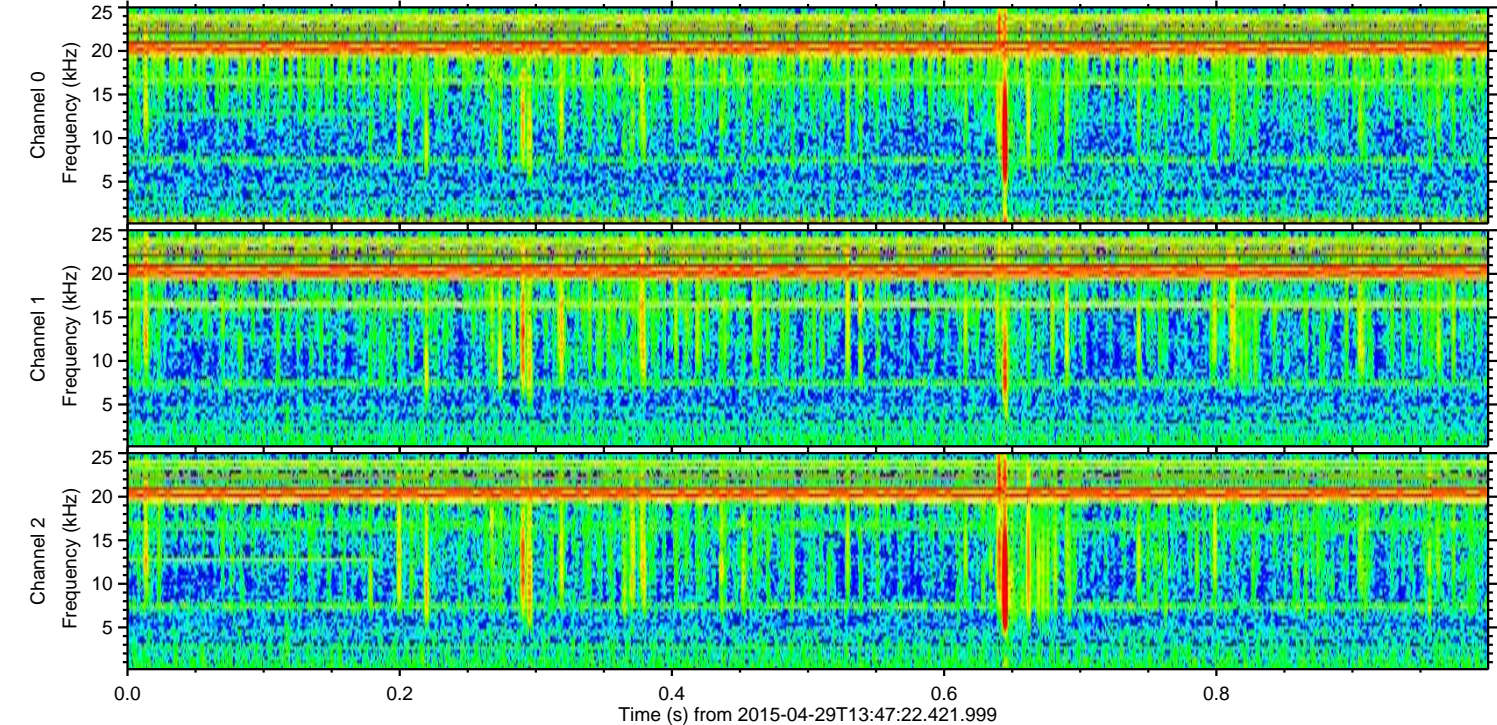
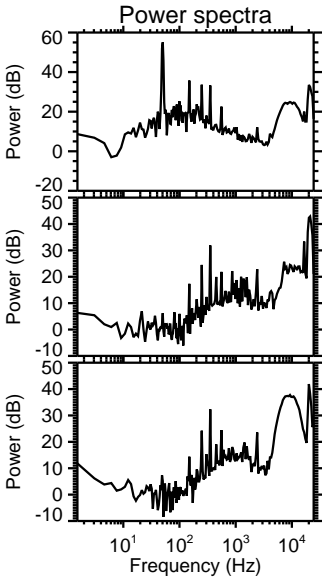
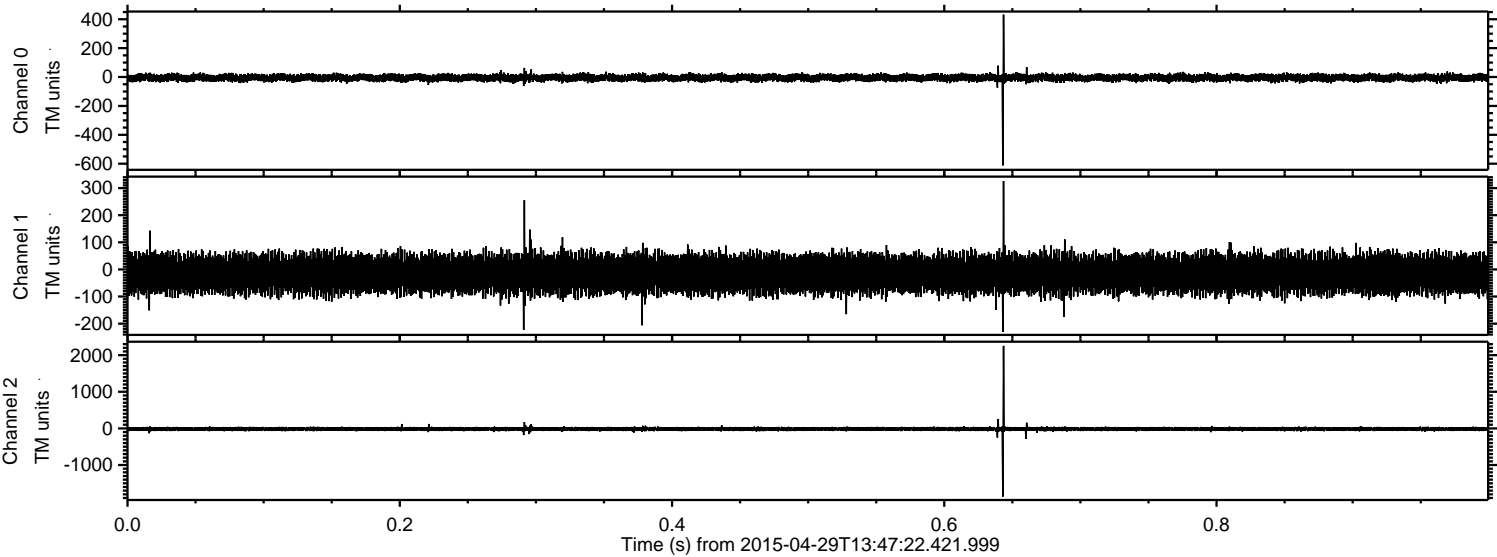
Processed Wed Apr 29 15:54:46 2015 by ELM ver.2012-10-06 from 001\_\_elm20150429\_134721\_\_dat00.bin





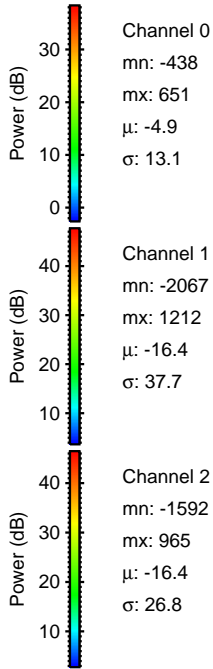
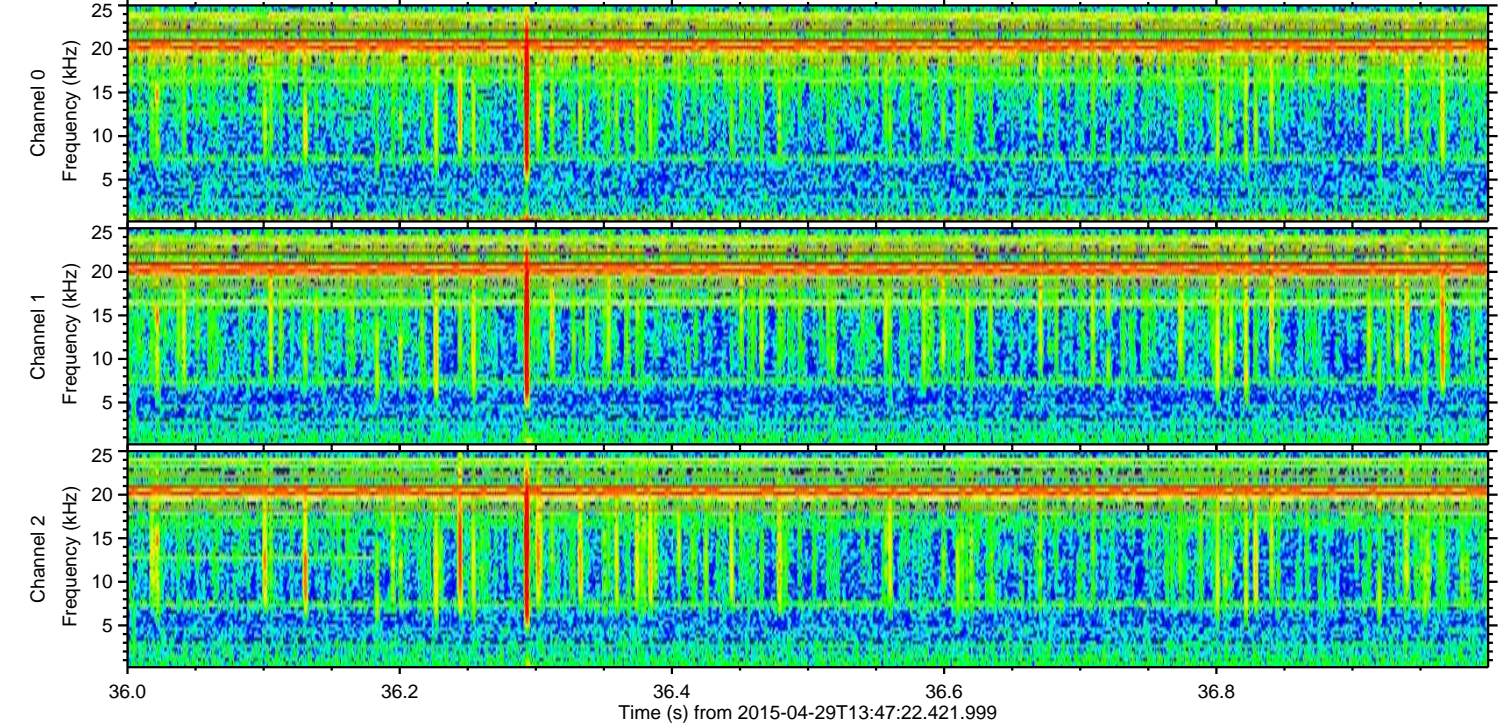
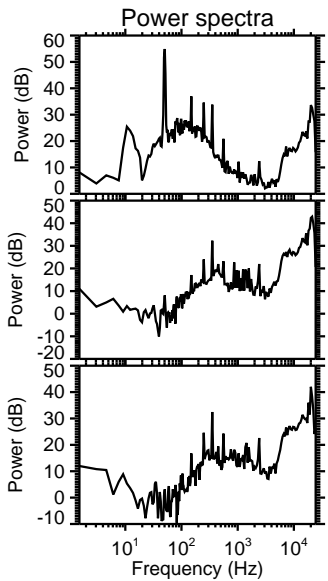
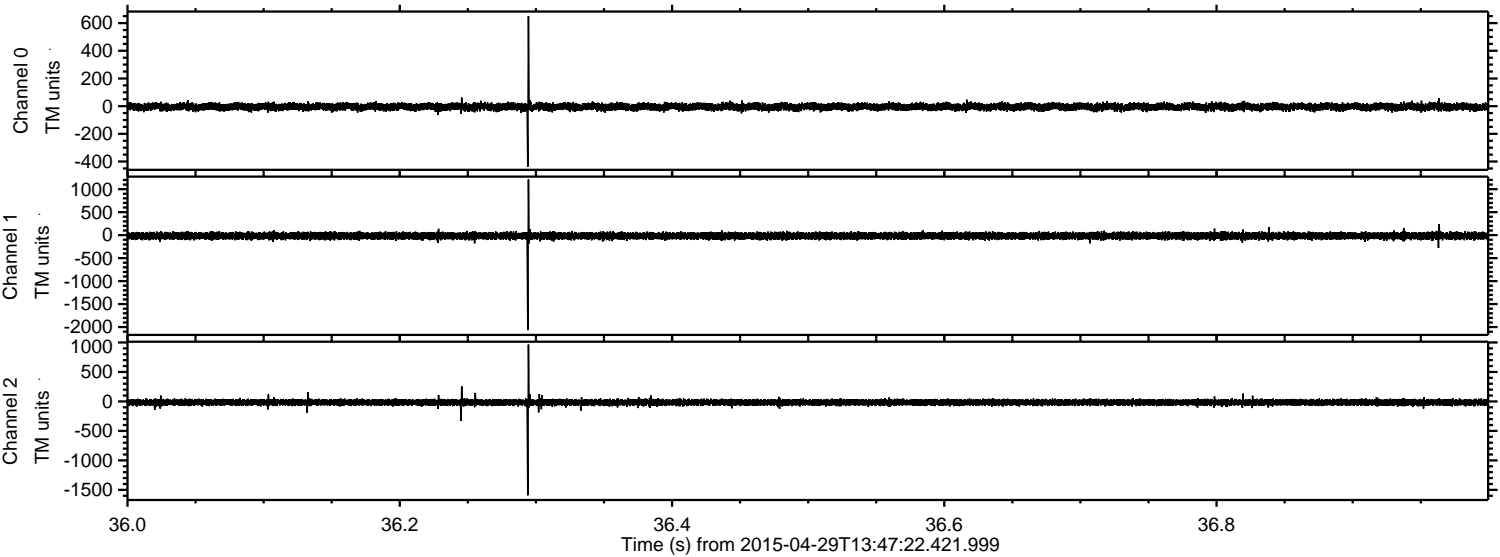
ELMAVAN 3D WAVEFORMS (Measured data sampled at 50 kHz) 49570 packets of 144 samples from 2015-04-29T13:47:22.421.999. Part 1/143

Processed Wed Apr 29 15:54:47 2015 by ELM ver.2012-10-06 from 001\_\_elm20150429\_134721\_\_dat00.bin





Processed Wed Apr 29 15:54:48 2015 by ELM ver.2012-10-06 from 001\_\_elm20150429\_134721\_\_dat00.bin



Channel 0  
mn: -438  
mx: 651  
 $\mu$ : -4.9  
 $\sigma$ : 13.1

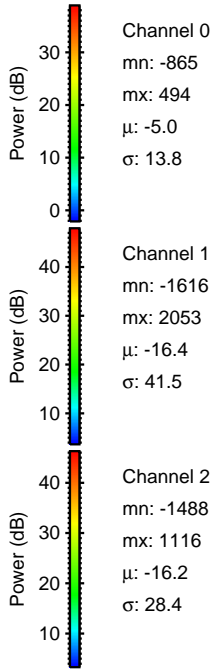
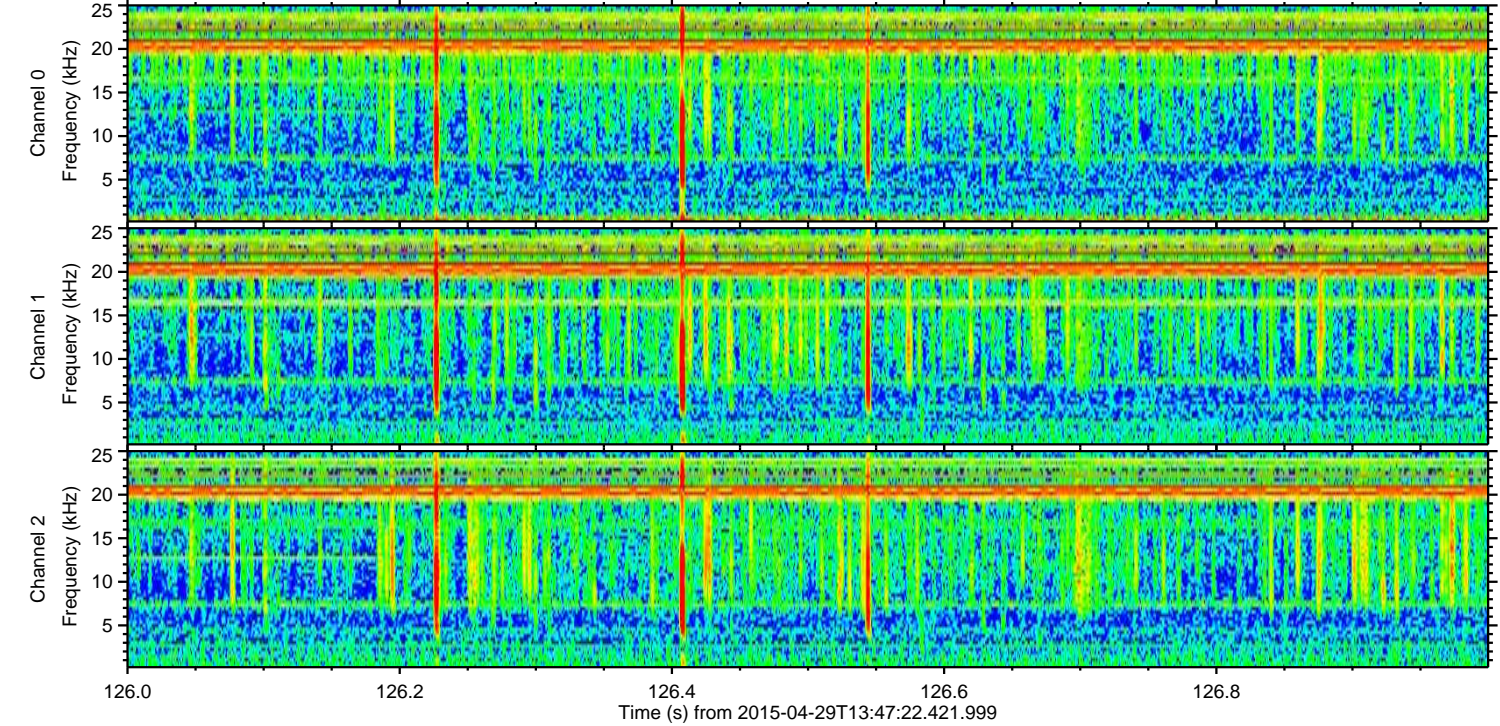
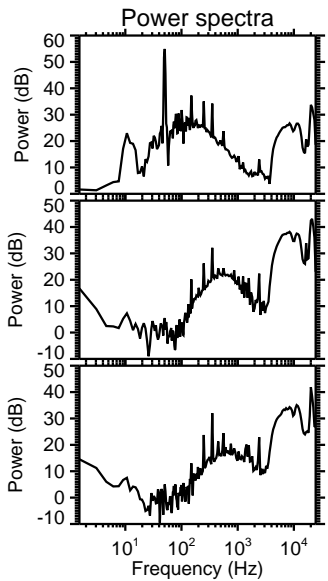
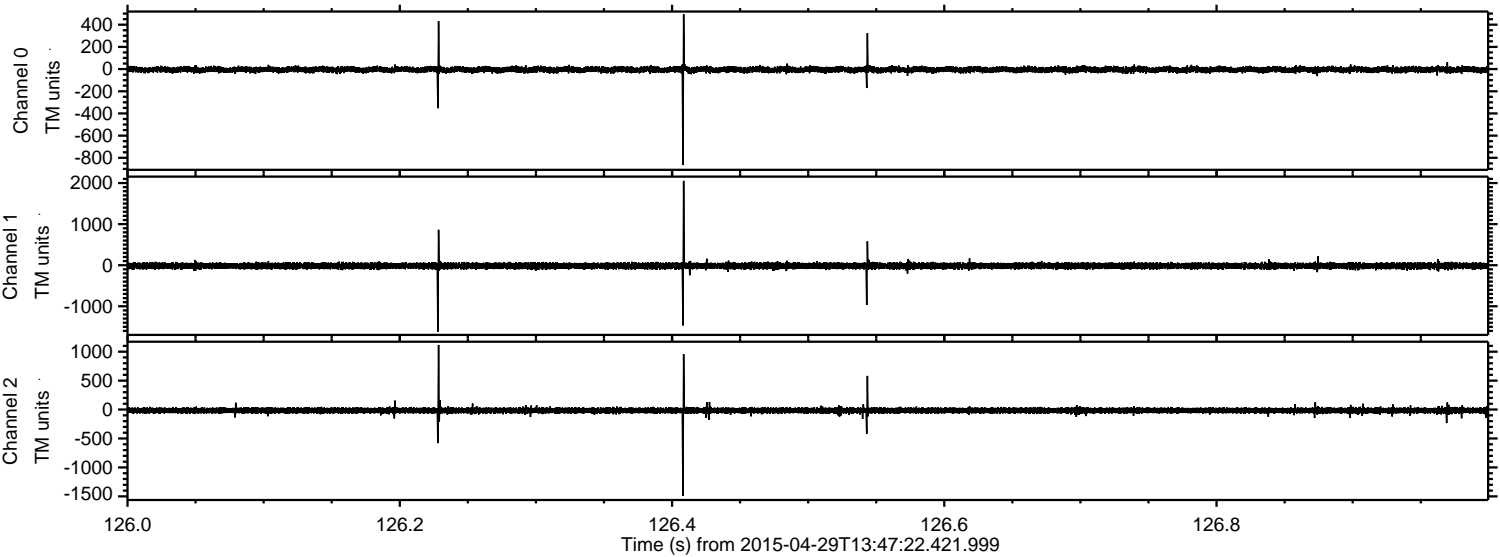
Channel 1  
mn: -2067  
mx: 1212  
 $\mu$ : -16.4  
 $\sigma$ : 37.7

Channel 2  
mn: -1592  
mx: 965  
 $\mu$ : -16.4  
 $\sigma$ : 26.8



ELMAVAN 3D WAVEFORMS (Measured data sampled at 50 kHz) 49570 packets of 144 samples from 2015-04-29T13:47:22.421.999. Part 127/143

Processed Wed Apr 29 15:54:49 2015 by ELM ver.2012-10-06 from 001\_\_elm20150429\_134721\_\_dat00.bin



Channel 0  
mn: -865  
mx: 494  
 $\mu$ : -5.0  
 $\sigma$ : 13.8

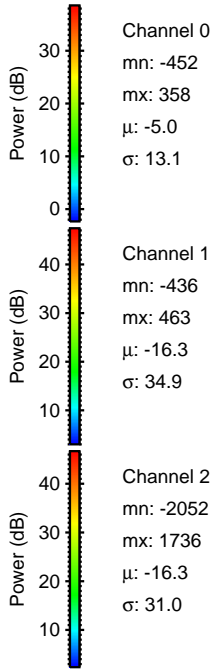
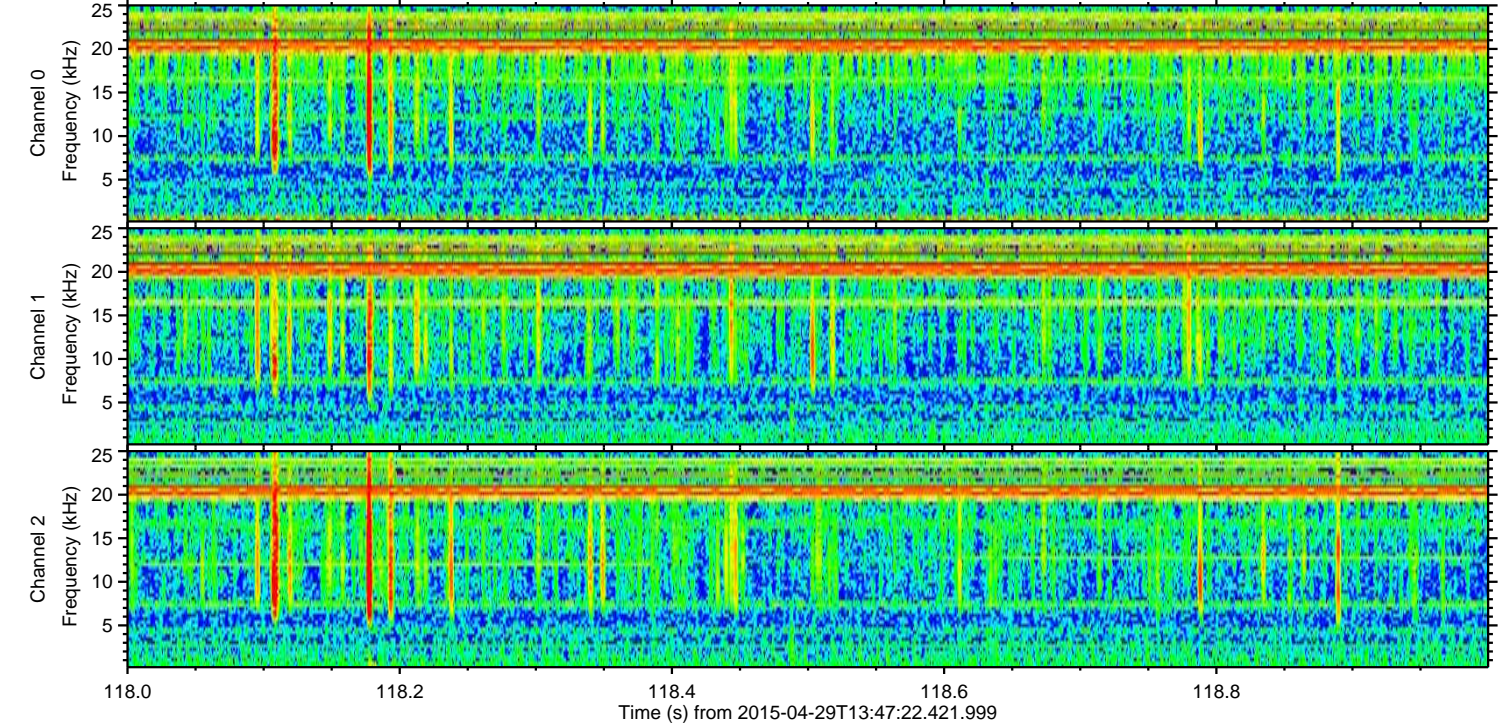
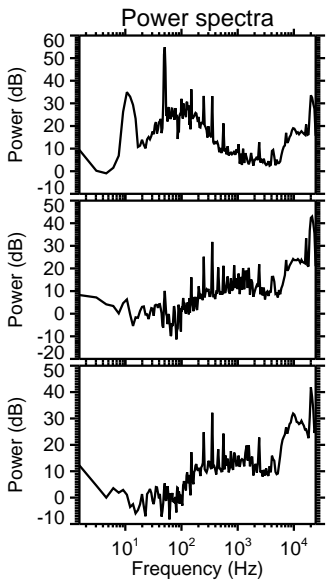
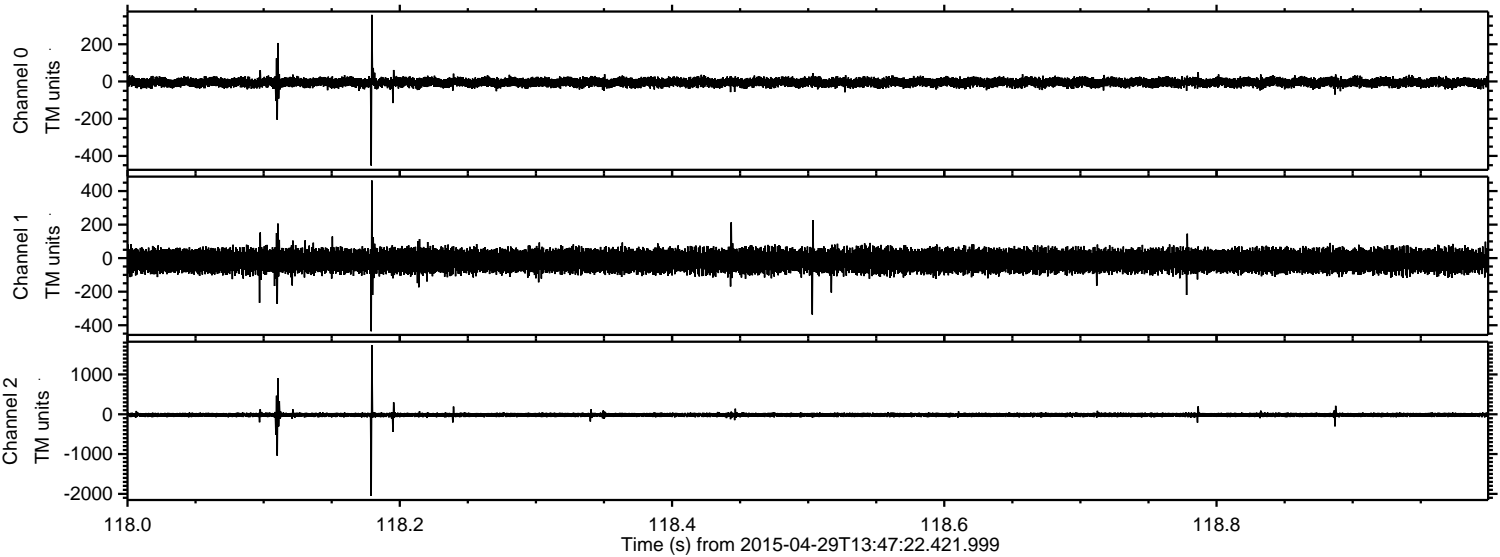
Channel 1  
mn: -1616  
mx: 2053  
 $\mu$ : -16.4  
 $\sigma$ : 41.5

Channel 2  
mn: -1488  
mx: 1116  
 $\mu$ : -16.2  
 $\sigma$ : 28.4



ELMAVAN 3D WAVEFORMS (Measured data sampled at 50 kHz) 49570 packets of 144 samples from 2015-04-29T13:47:22.421.999. Part 119/143

Processed Wed Apr 29 15:54:50 2015 by ELM ver.2012-10-06 from 001\_\_elm20150429\_134721\_\_dat00.bin





Processed Wed Apr 29 15:54:51 2015 by ELM ver.2012-10-06 from 001\_elm20150429\_134721\_dat00.bin

