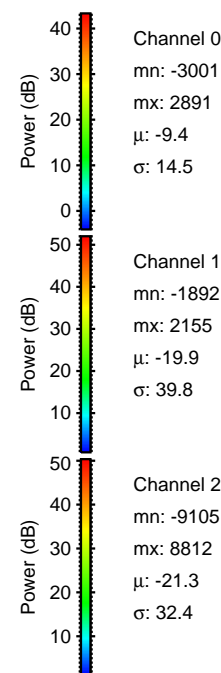
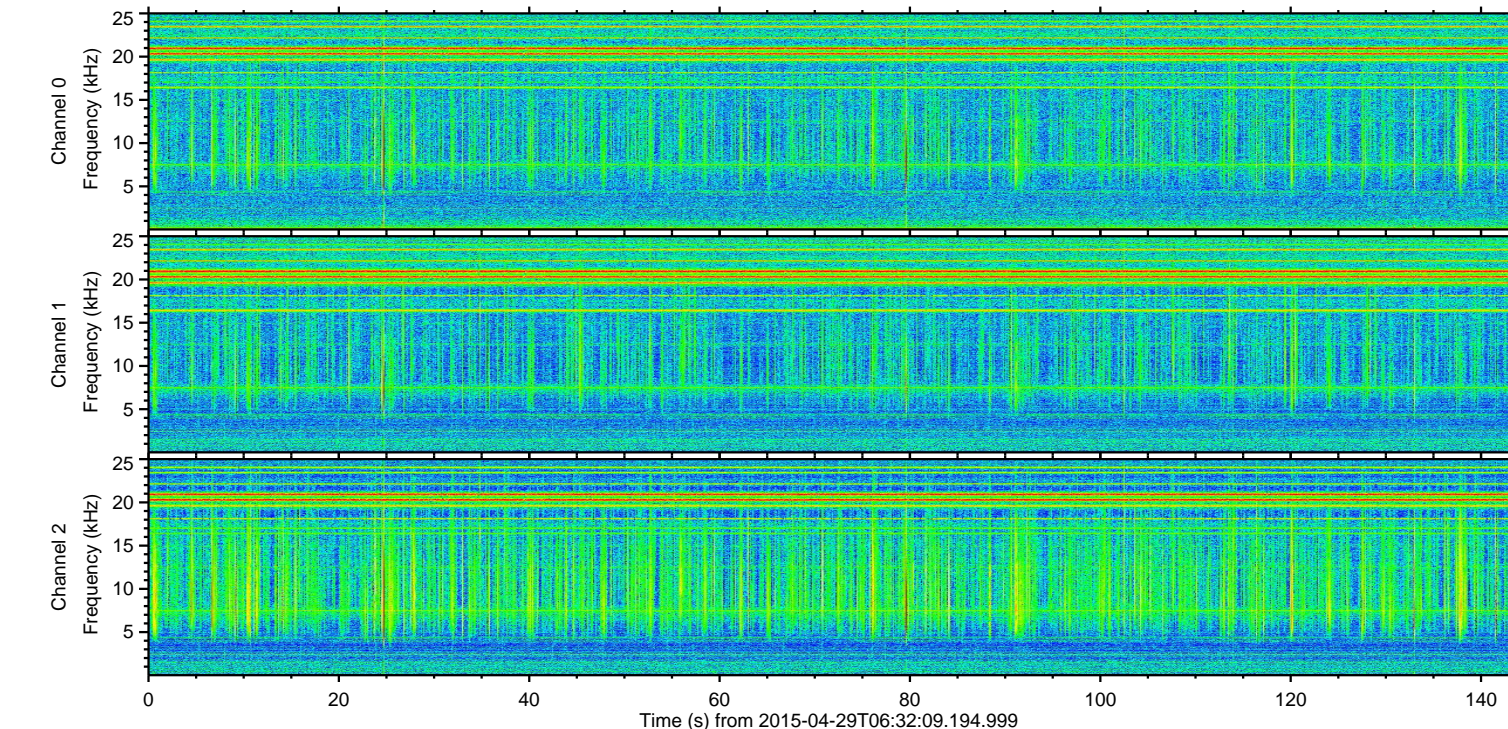
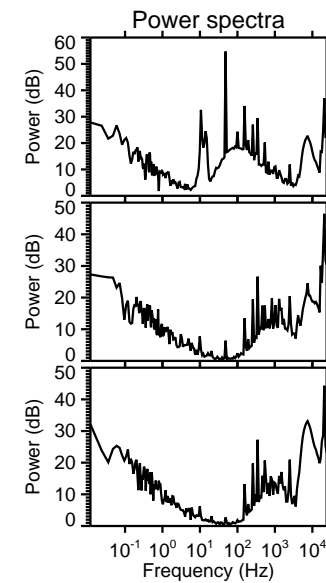
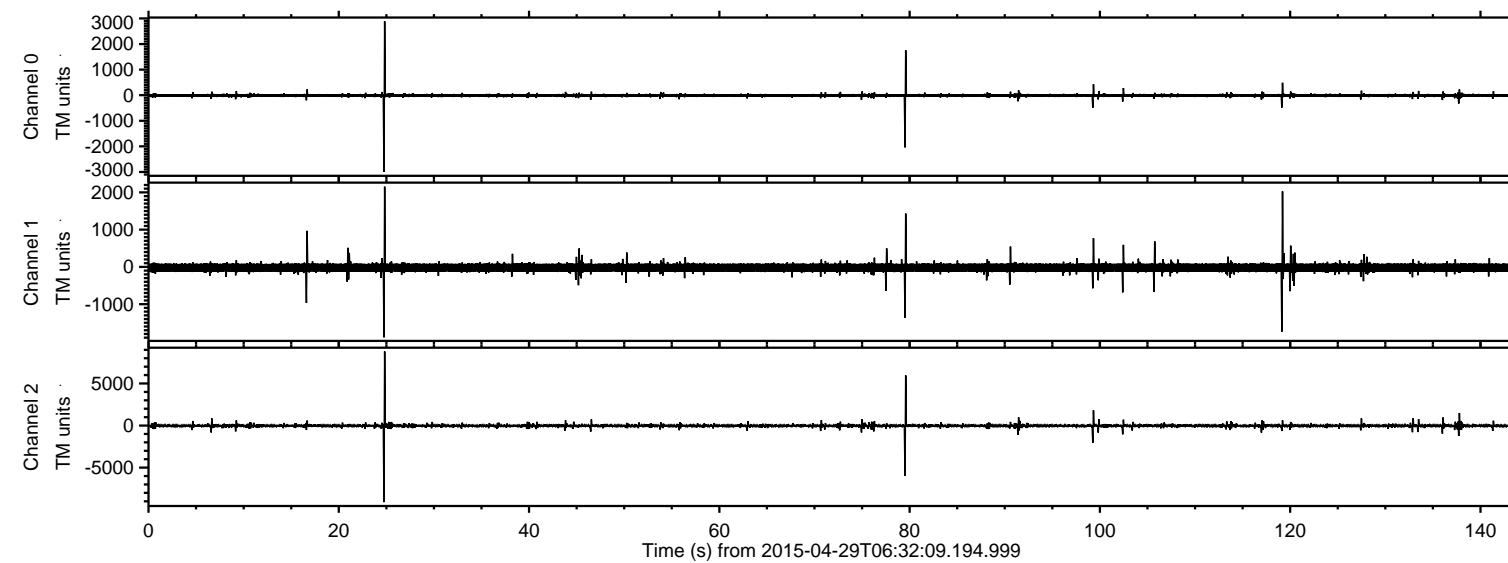


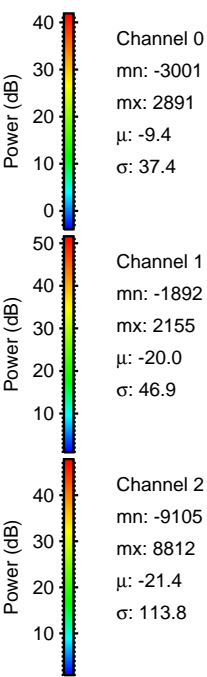
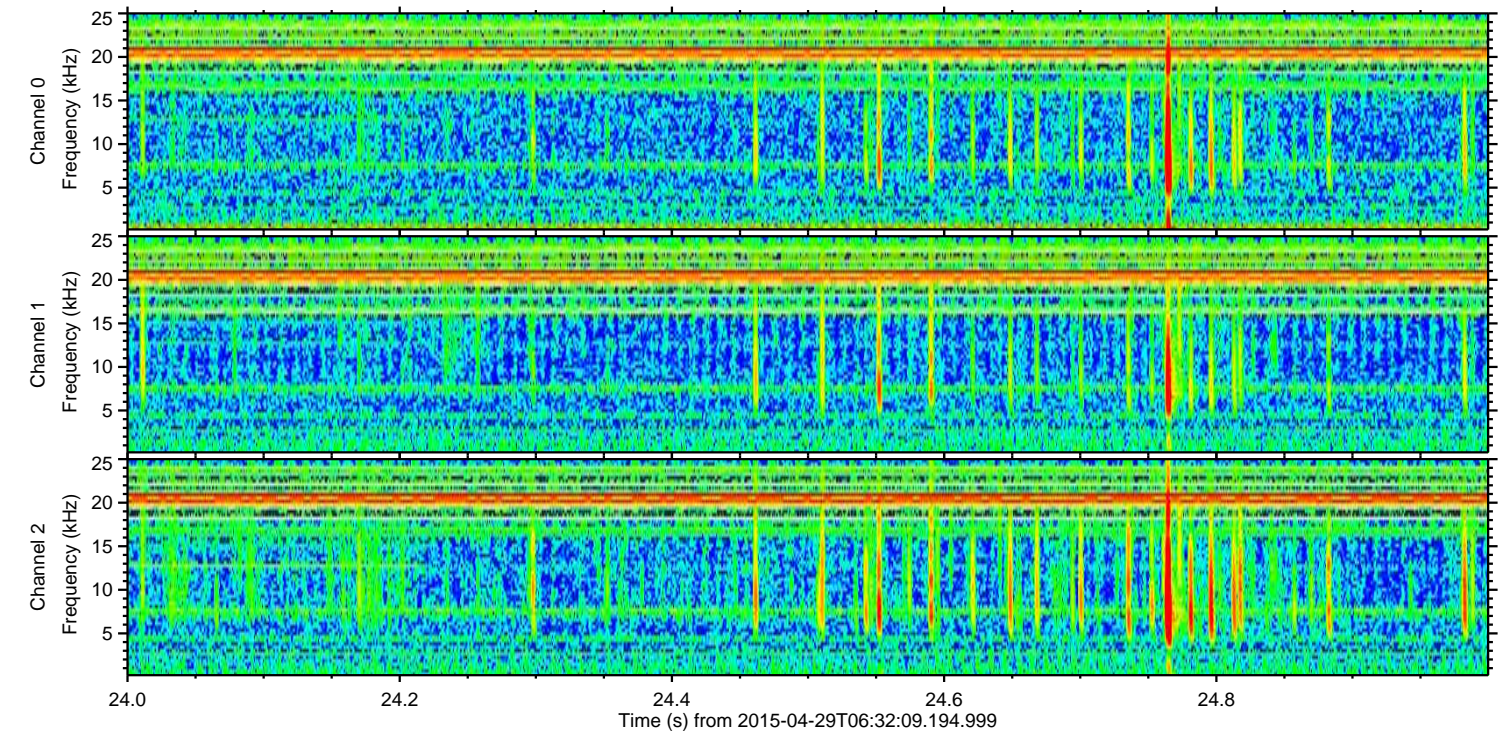
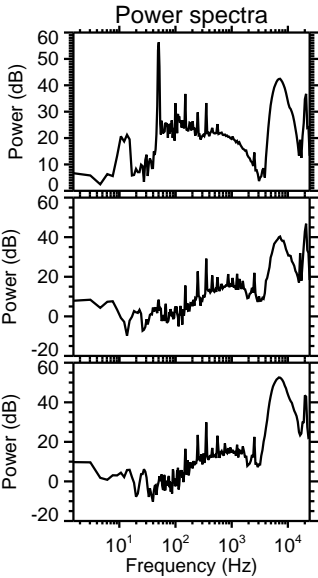
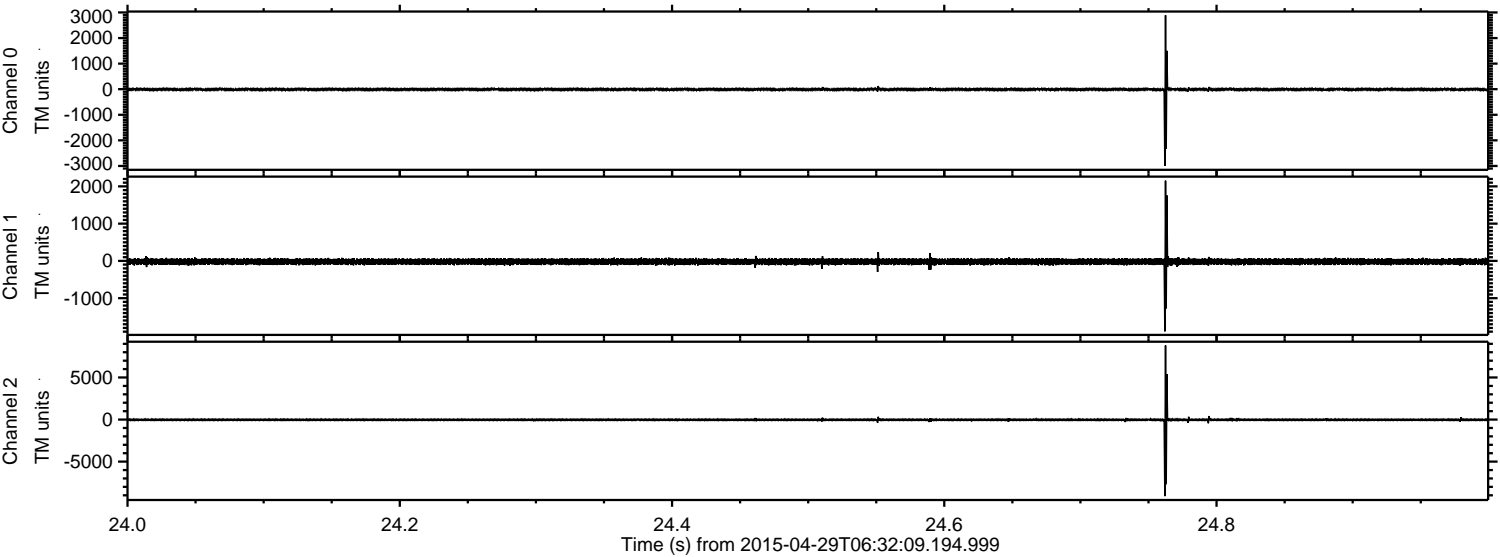
# ELMAVAN 3D WAVEFORMS (Measured data sampled at 50 kHz) 49658 packets of 144 samples from 2015-04-29T06:32:09.194.999.

Processed Wed Apr 29 08:39:25 2015 by ELM ver.2012-10-06 from 001\_\_elm20150429\_063208\_\_dat00.bin





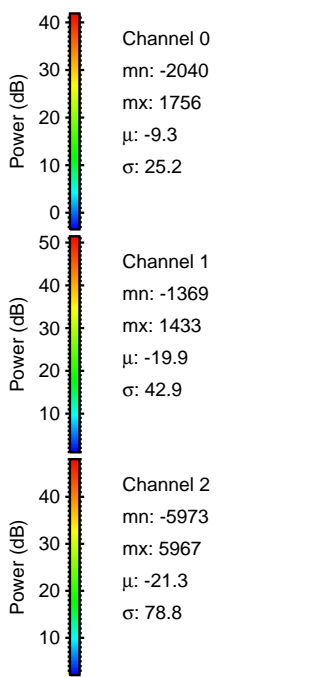
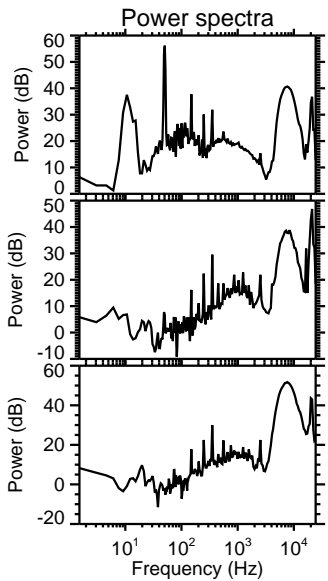
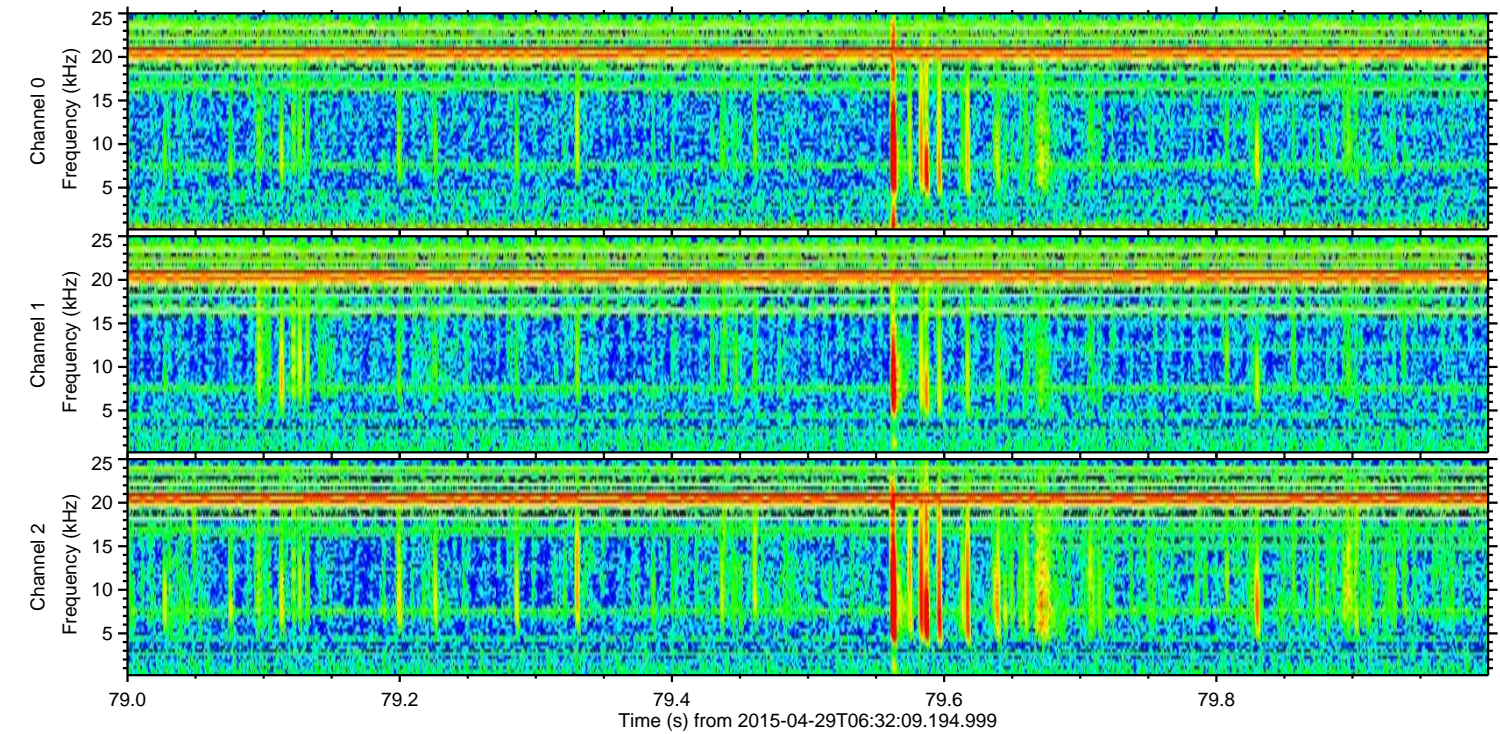
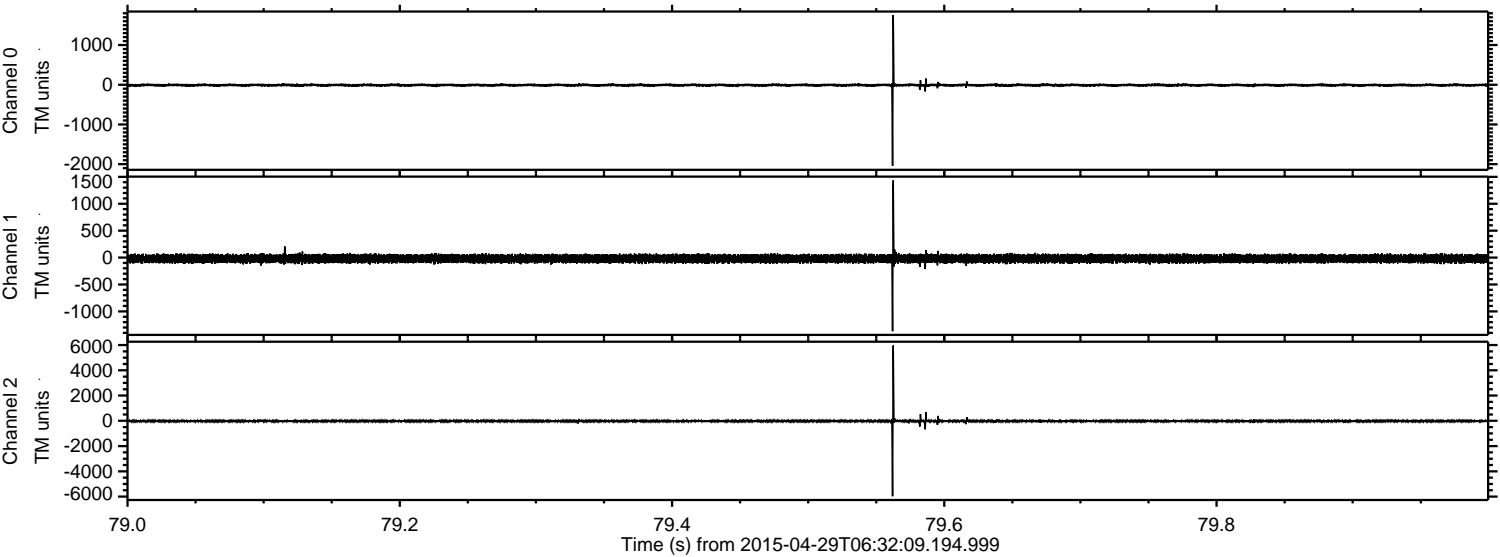
Processed Wed Apr 29 08:39:43 2015 by ELM ver.2012-10-06 from 001\_\_elm20150429\_063208\_\_dat00.bin





ELMAVAN 3D WAVEFORMS (Measured data sampled at 50 kHz) 49658 packets of 144 samples from 2015-04-29T06:32:09.194.999. Part 80/144

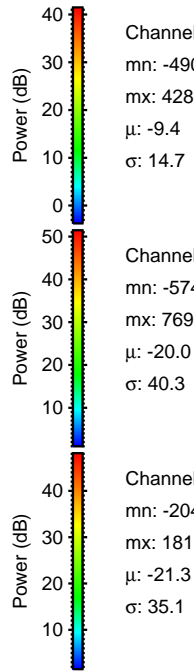
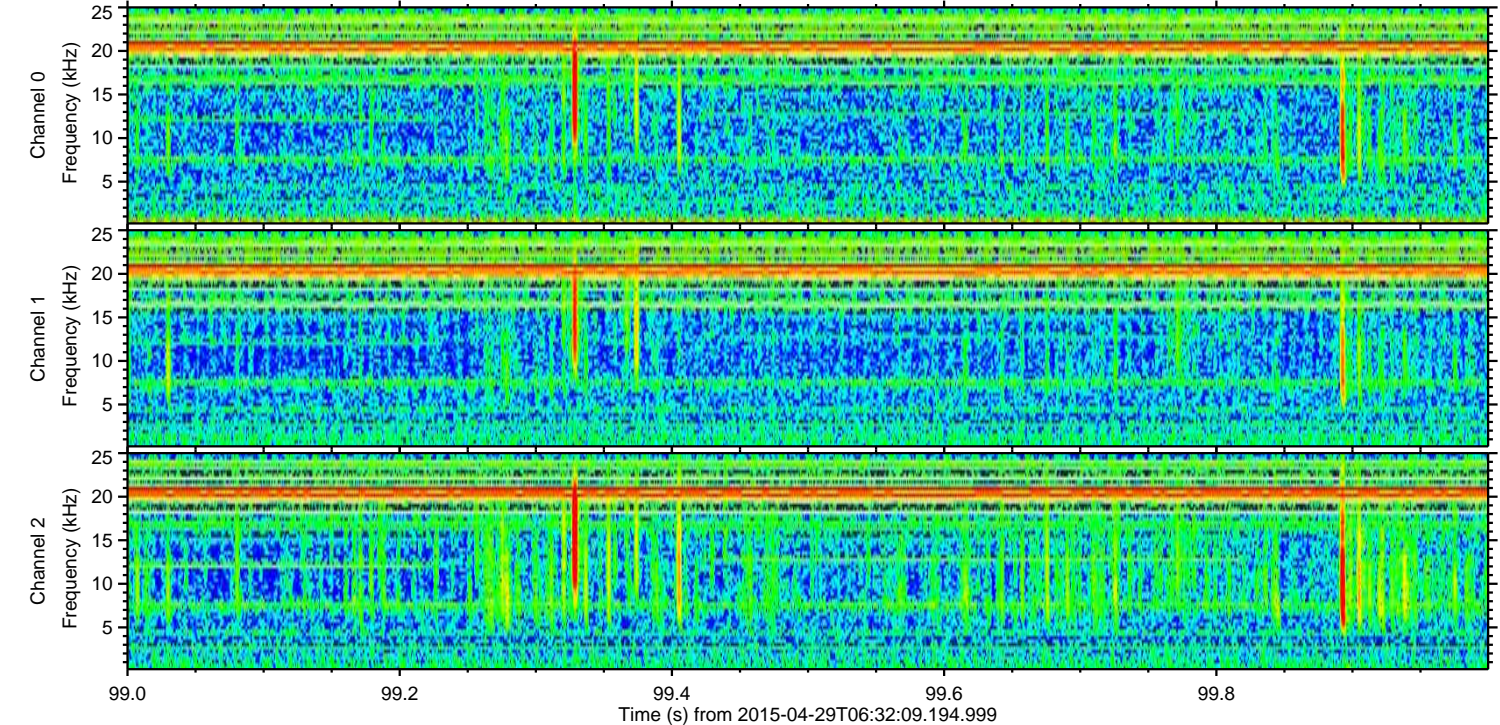
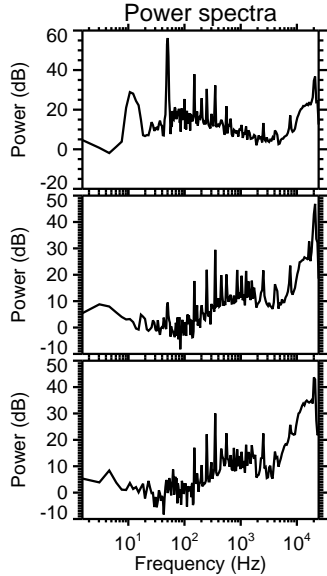
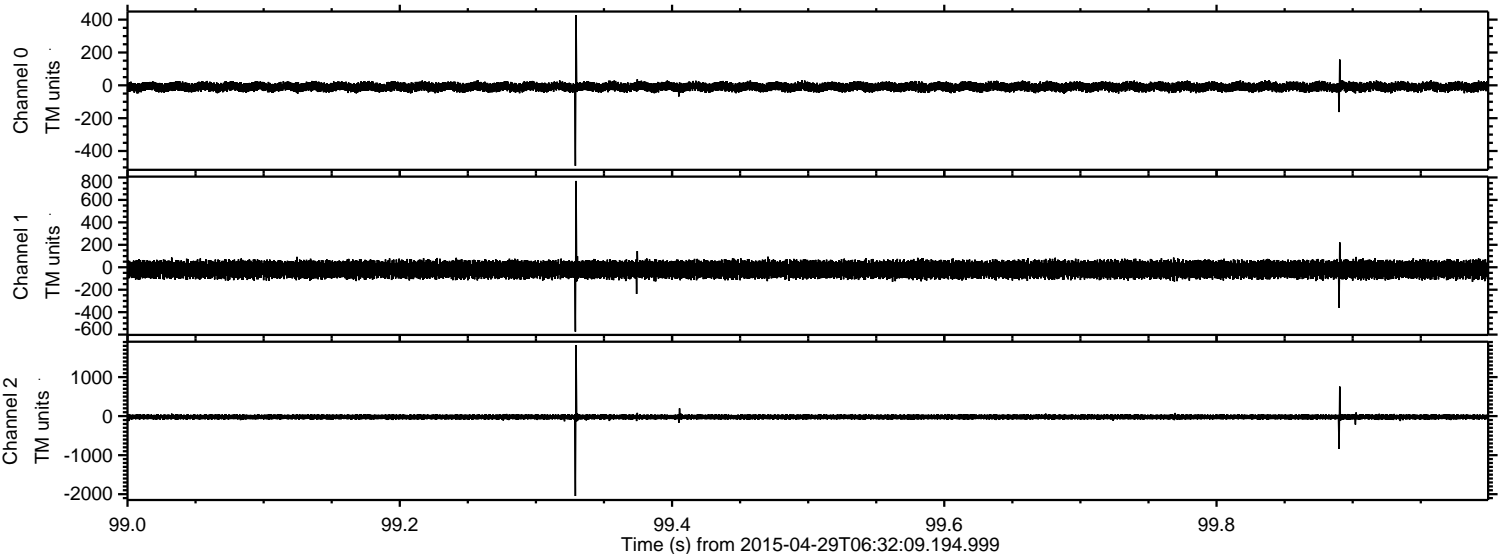
Processed Wed Apr 29 08:39:44 2015 by ELM ver.2012-10-06 from 001\_\_elm20150429\_063208\_\_dat00.bin





ELMAVAN 3D WAVEFORMS (Measured data sampled at 50 kHz) 49658 packets of 144 samples from 2015-04-29T06:32:09.194.999. Part 100/144

Processed Wed Apr 29 08:39:45 2015 by ELM ver.2012-10-06 from 001\_\_elm20150429\_063208\_\_dat00.bin



Channel 0  
mn: -490  
mx: 428  
 $\mu$ : -9.4  
 $\sigma$ : 14.7

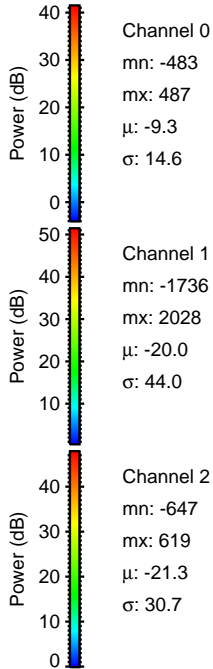
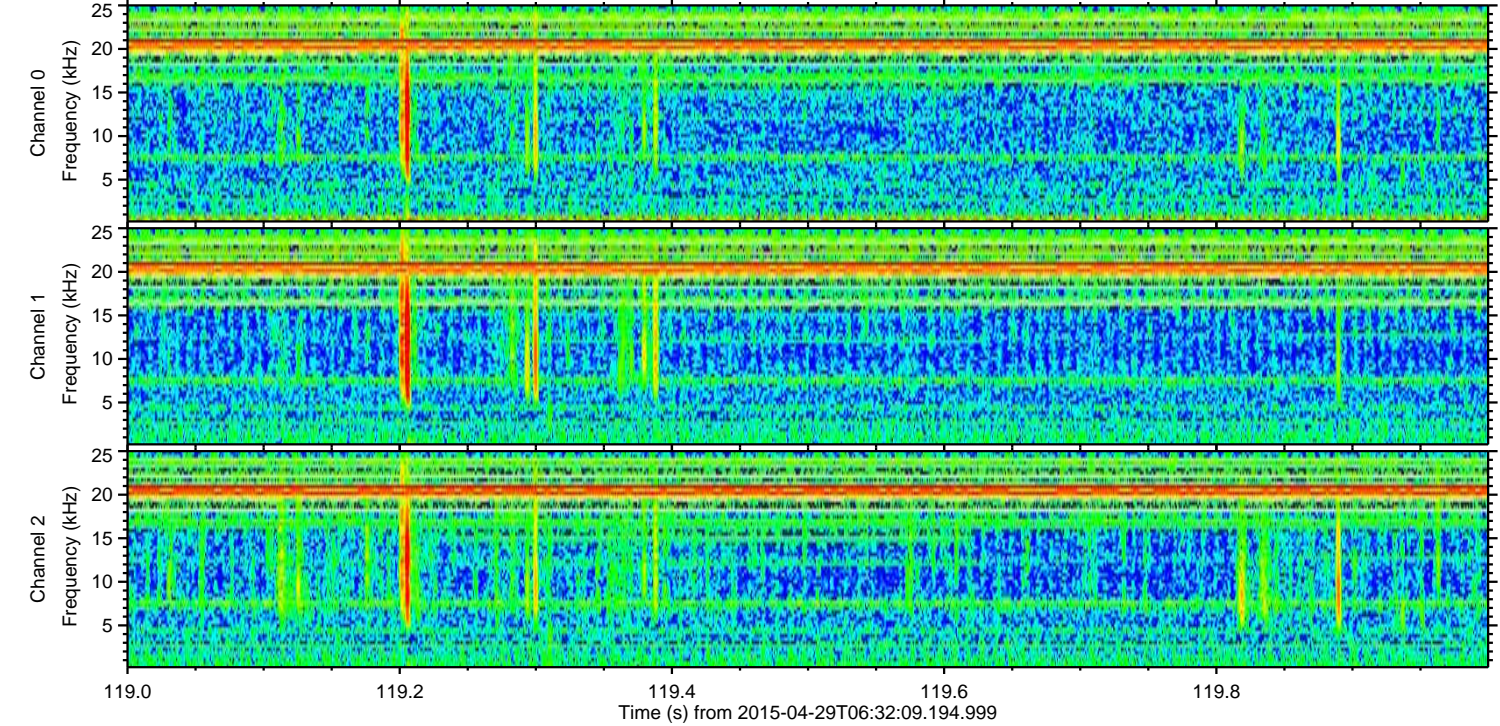
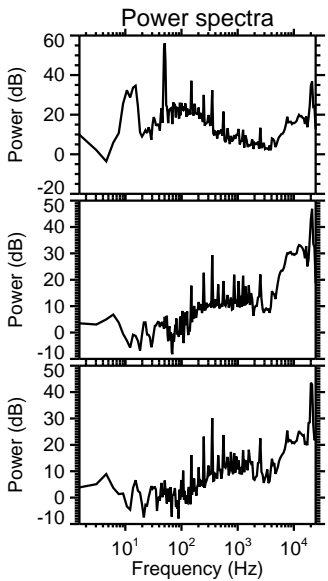
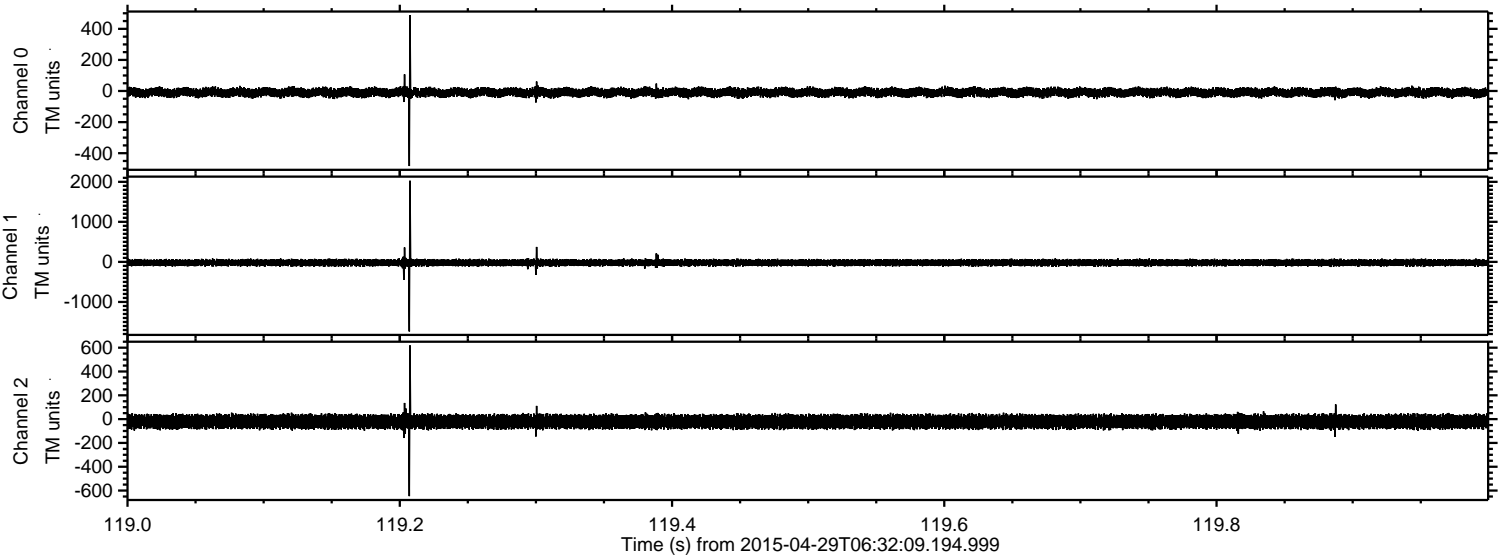
Channel 1  
mn: -574  
mx: 769  
 $\mu$ : -20.0  
 $\sigma$ : 40.3

Channel 2  
mn: -2047  
mx: 1816  
 $\mu$ : -21.3  
 $\sigma$ : 35.1



ELMAVAN 3D WAVEFORMS (Measured data sampled at 50 kHz) 49658 packets of 144 samples from 2015-04-29T06:32:09.194.999. Part 120/144

Processed Wed Apr 29 08:39:46 2015 by ELM ver.2012-10-06 from 001\_\_elm20150429\_063208\_\_dat00.bin



Channel 0  
mn: -483  
mx: 487  
 $\mu$ : -9.3  
 $\sigma$ : 14.6

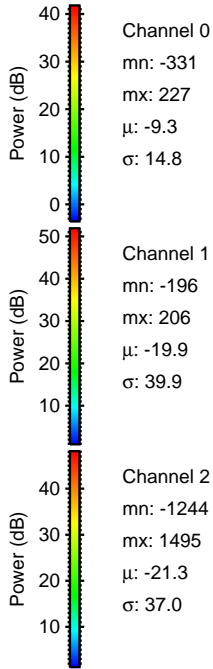
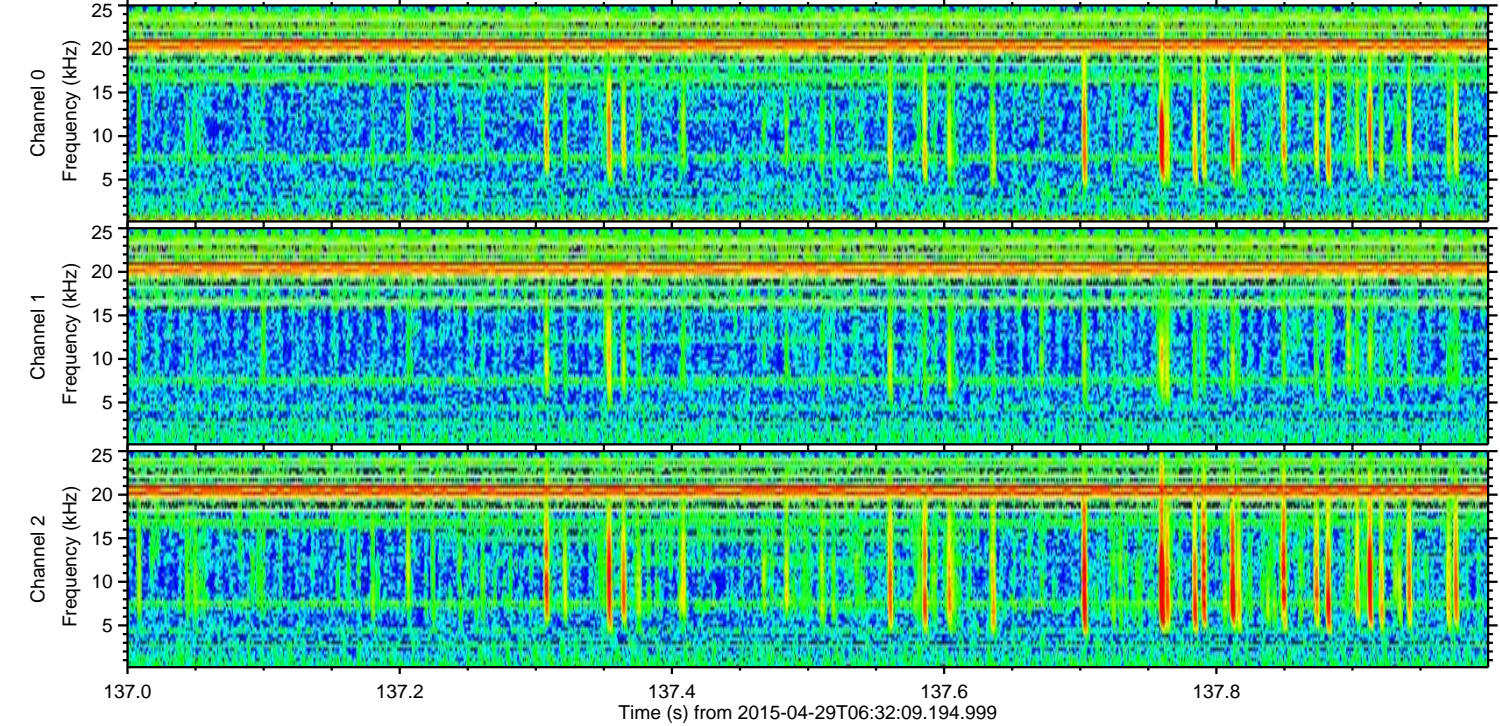
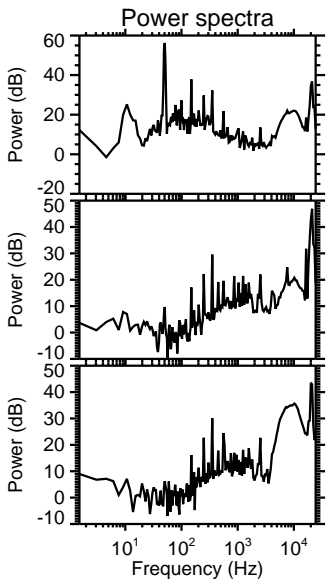
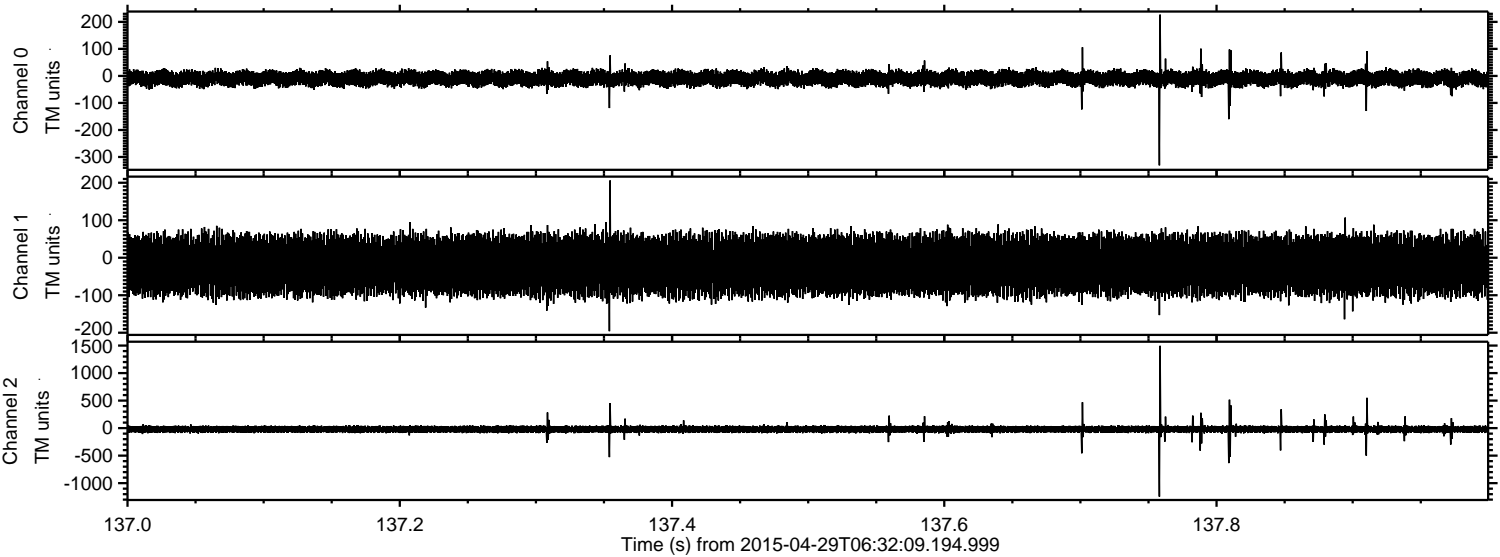
Channel 1  
mn: -1736  
mx: 2028  
 $\mu$ : -20.0  
 $\sigma$ : 44.0

Channel 2  
mn: -647  
mx: 619  
 $\mu$ : -21.3  
 $\sigma$ : 30.7



ELMAVAN 3D WAVEFORMS (Measured data sampled at 50 kHz) 49658 packets of 144 samples from 2015-04-29T06:32:09.194.999. Part 138/144

Processed Wed Apr 29 08:39:47 2015 by ELM ver.2012-10-06 from 001\_\_elm20150429\_063208\_\_dat00.bin



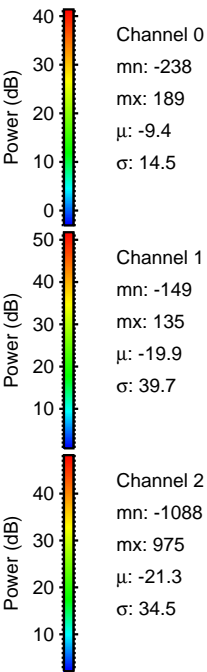
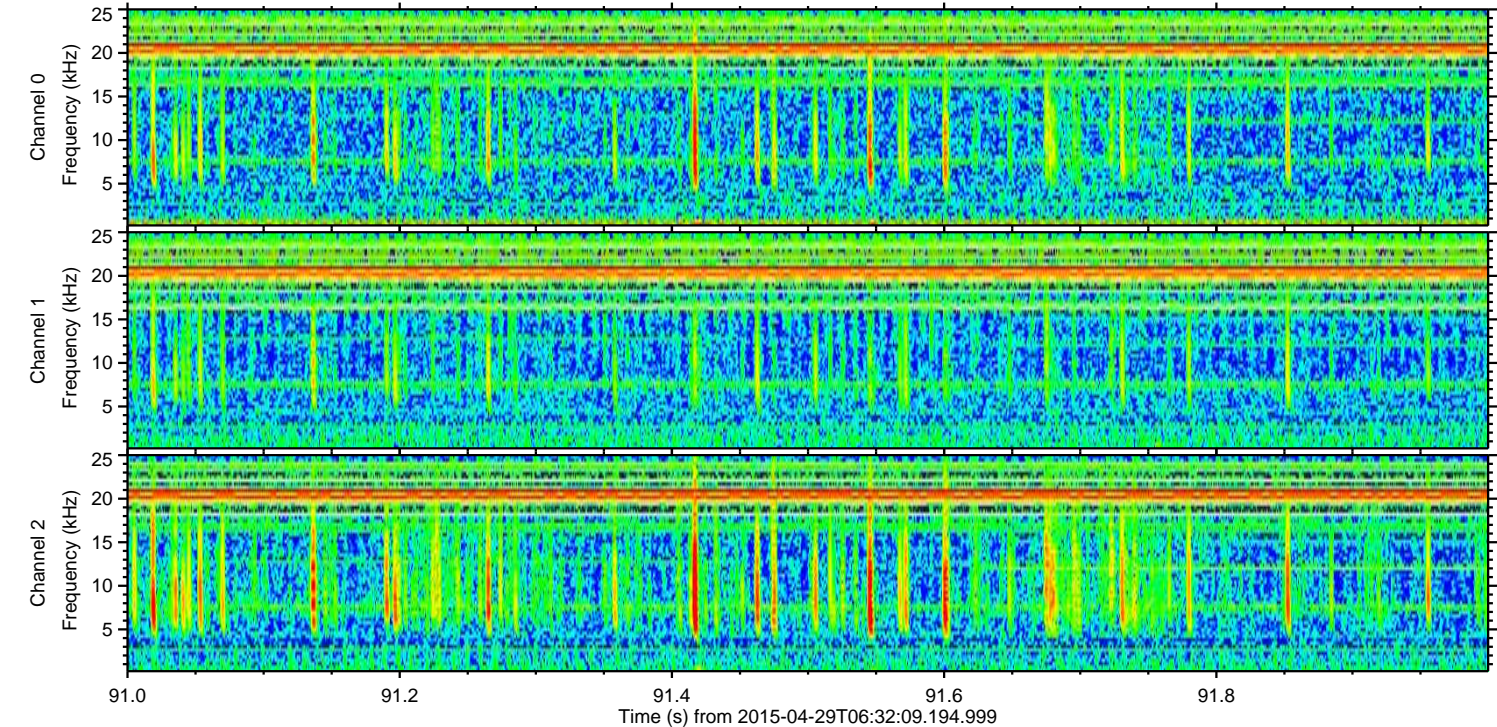
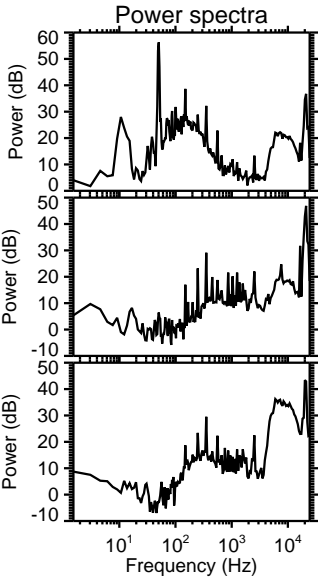
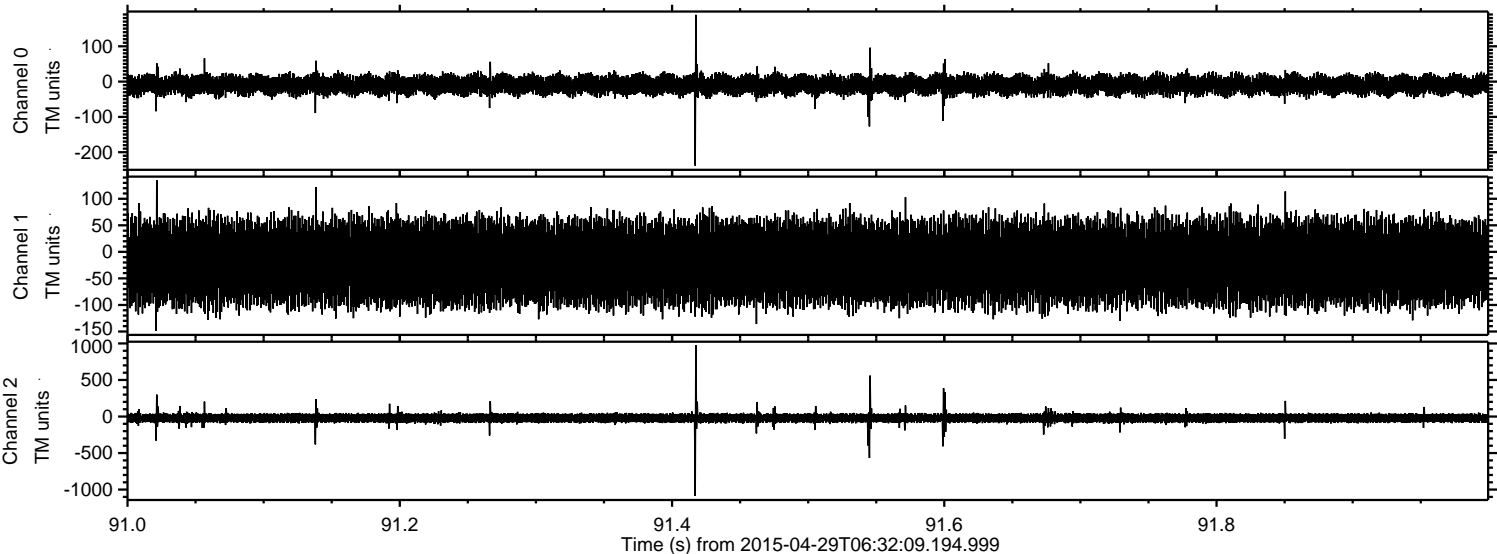
Channel 0  
mn: -331  
mx: 227  
 $\mu$ : -9.3  
 $\sigma$ : 14.8

Channel 1  
mn: -196  
mx: 206  
 $\mu$ : -19.9  
 $\sigma$ : 39.9

Channel 2  
mn: -1244  
mx: 1495  
 $\mu$ : -21.3  
 $\sigma$ : 37.0



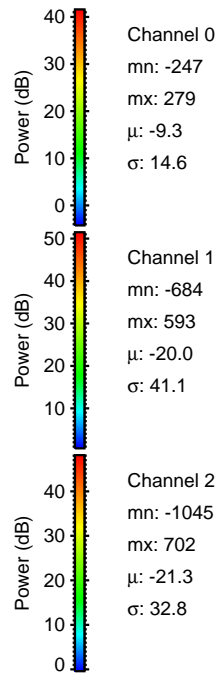
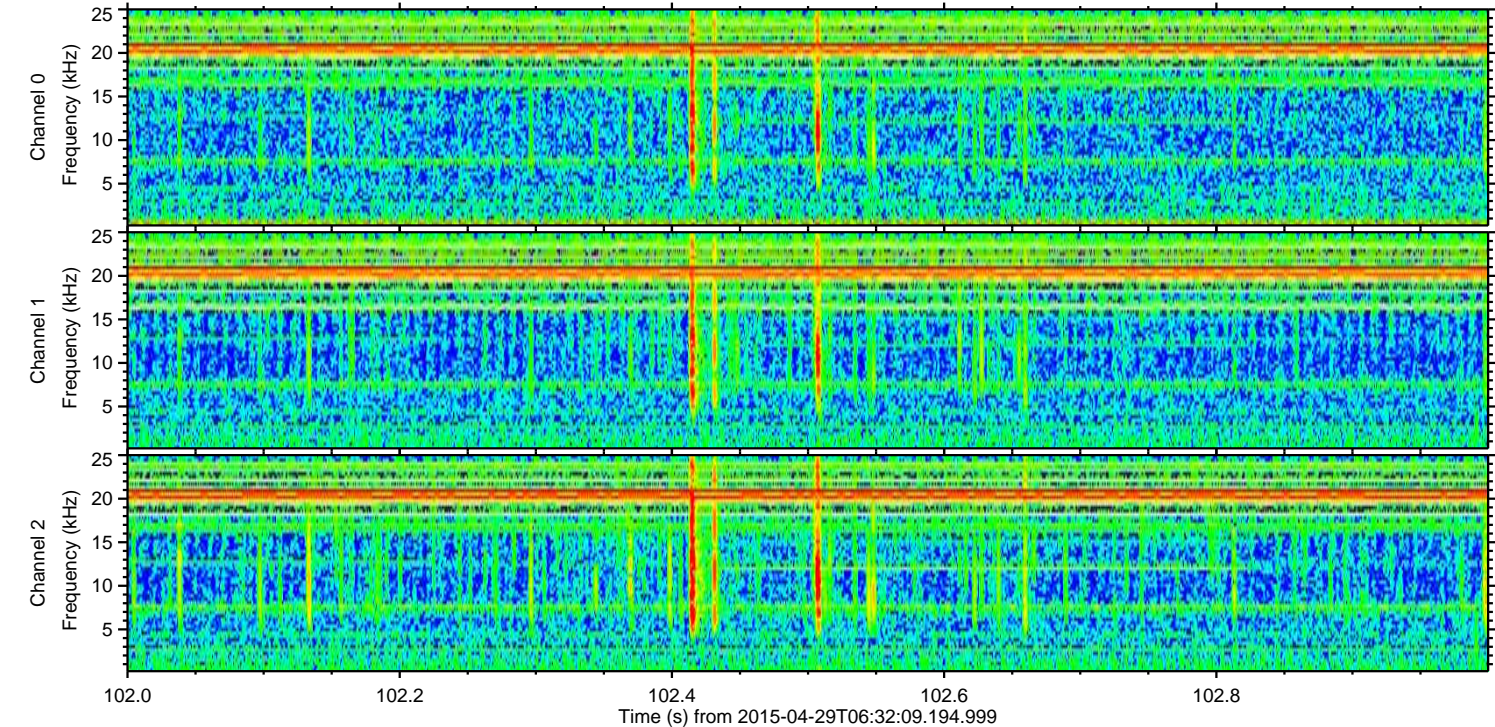
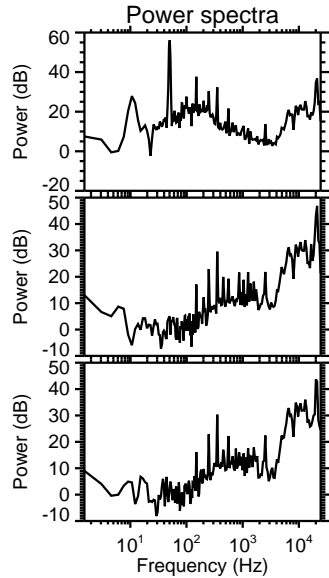
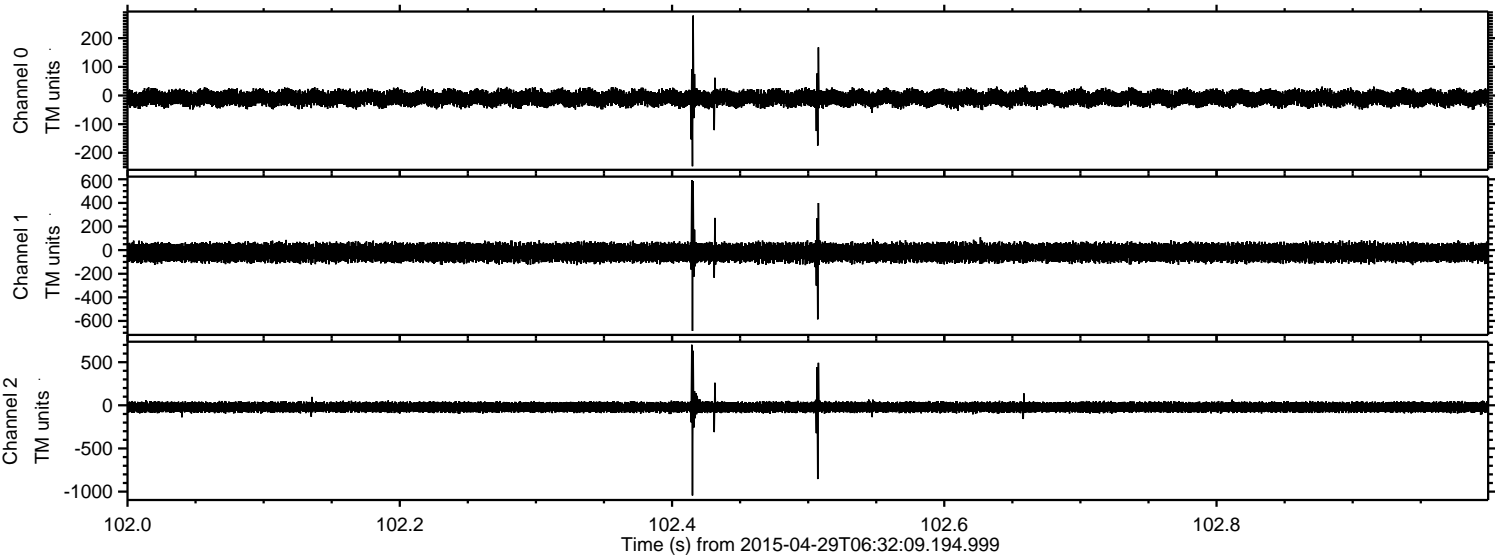
Processed Wed Apr 29 08:39:48 2015 by ELM ver.2012-10-06 from 001\_\_elm20150429\_063208\_\_dat00.bin





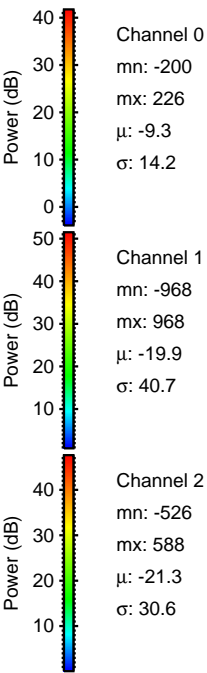
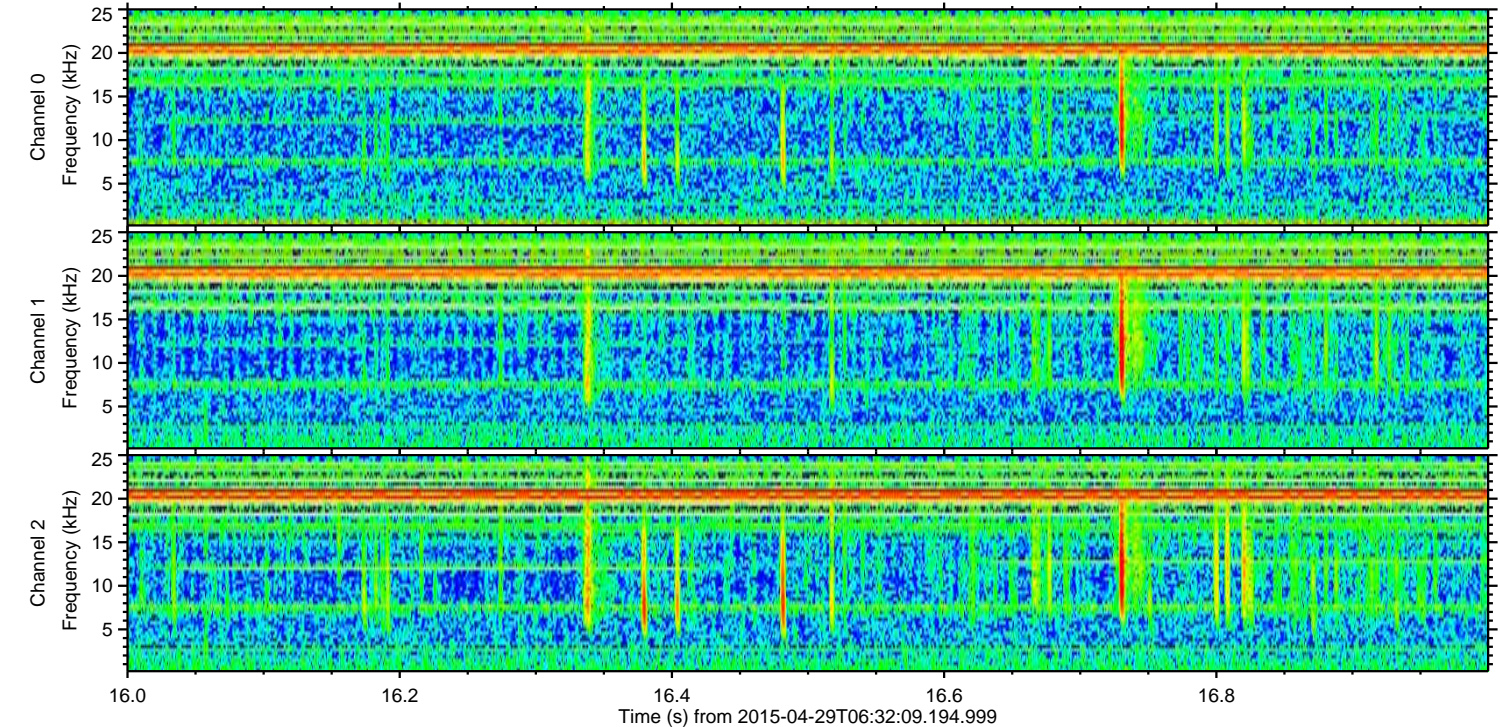
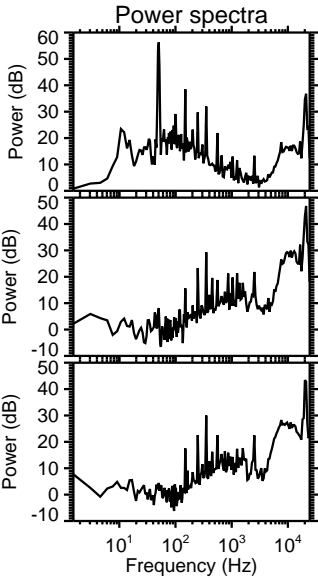
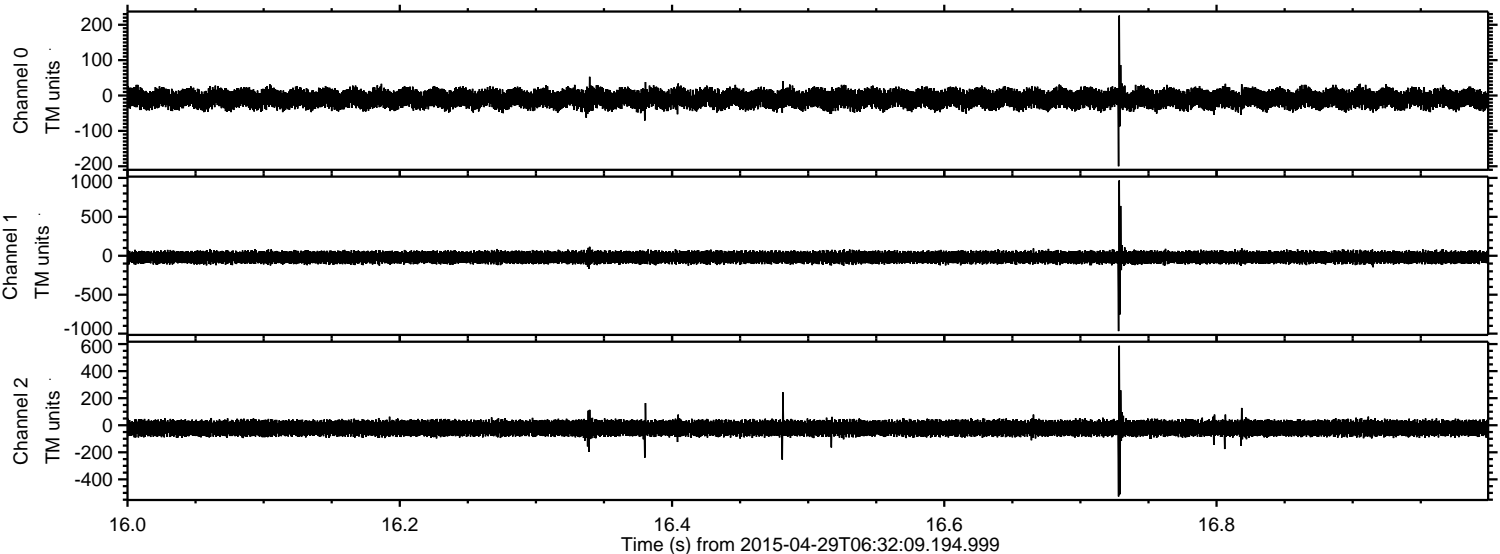
ELMAVAN 3D WAVEFORMS (Measured data sampled at 50 kHz) 49658 packets of 144 samples from 2015-04-29T06:32:09.194.999. Part 103/144

Processed Wed Apr 29 08:39:49 2015 by ELM ver.2012-10-06 from 001\_\_elm20150429\_063208\_\_dat00.bin





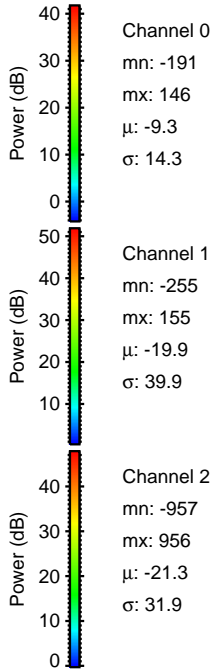
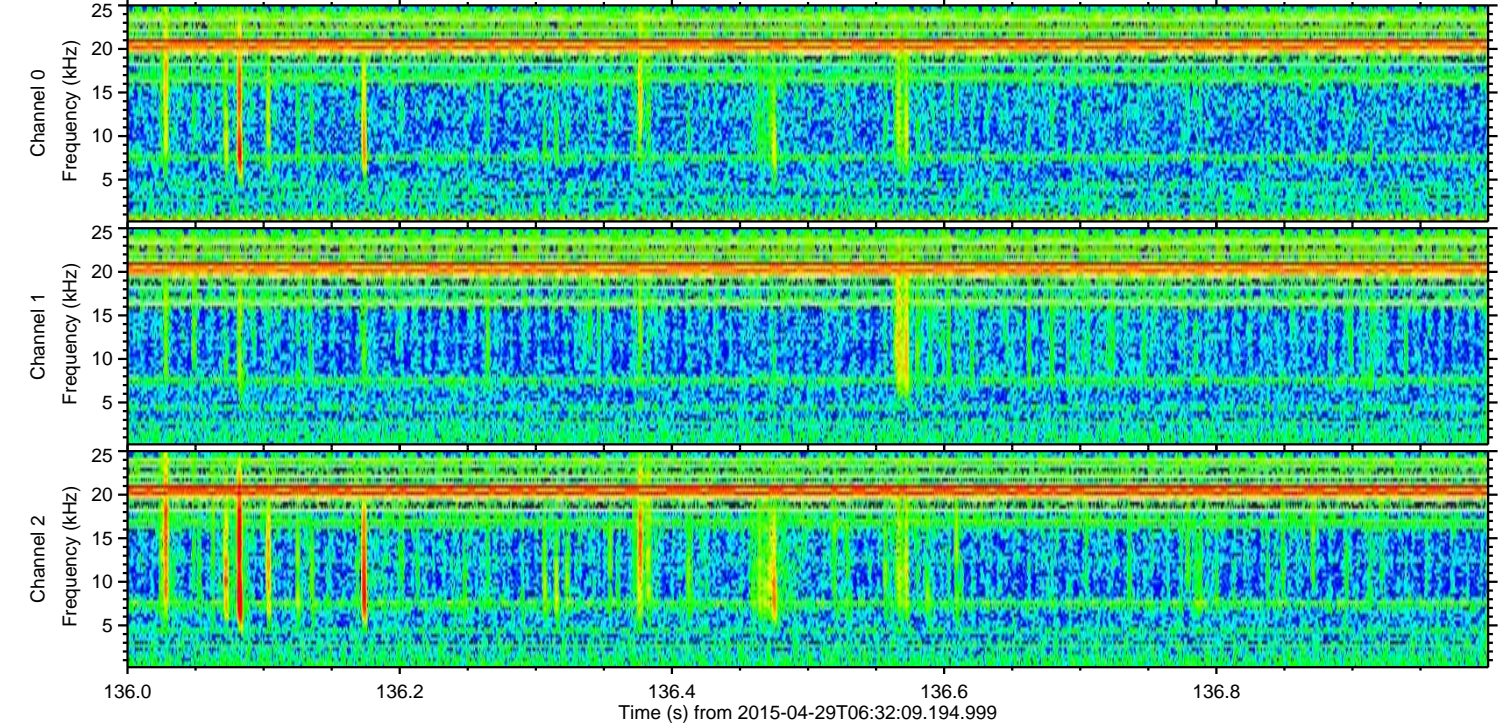
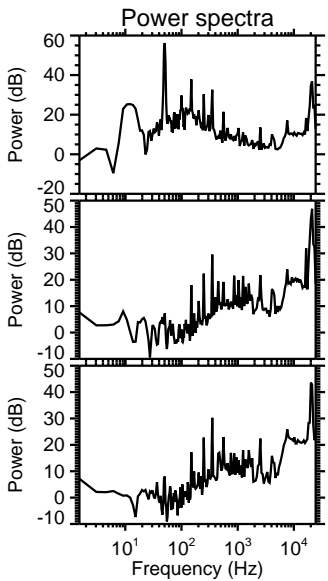
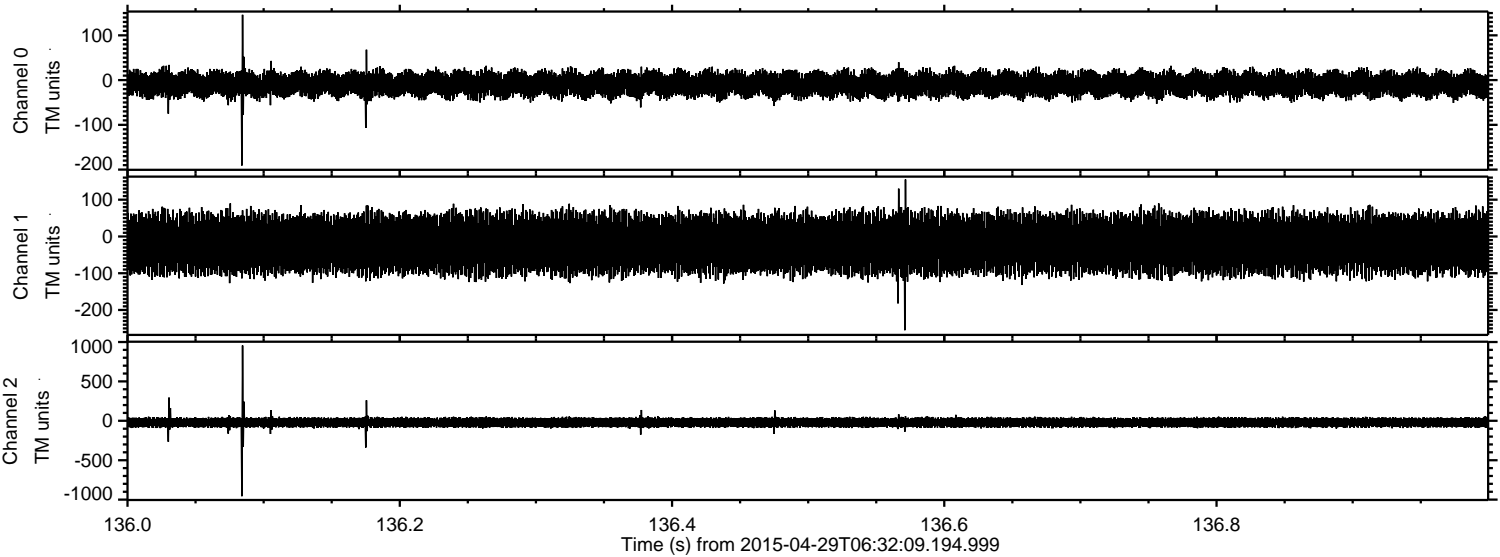
Processed Wed Apr 29 08:39:50 2015 by ELM ver.2012-10-06 from 001\_\_elm20150429\_063208\_\_dat00.bin





ELMAVAN 3D WAVEFORMS (Measured data sampled at 50 kHz) 49658 packets of 144 samples from 2015-04-29T06:32:09.194.999. Part 137/144

Processed Wed Apr 29 08:39:51 2015 by ELM ver.2012-10-06 from 001\_\_elm20150429\_063208\_\_dat00.bin





Processed Wed Apr 29 08:39:52 2015 by ELM ver.2012-10-06 from 001\_\_elm20150429\_063208\_\_dat00.bin

