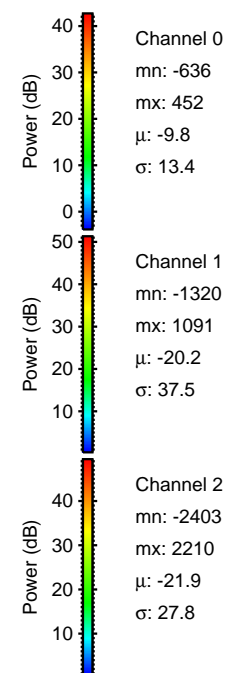
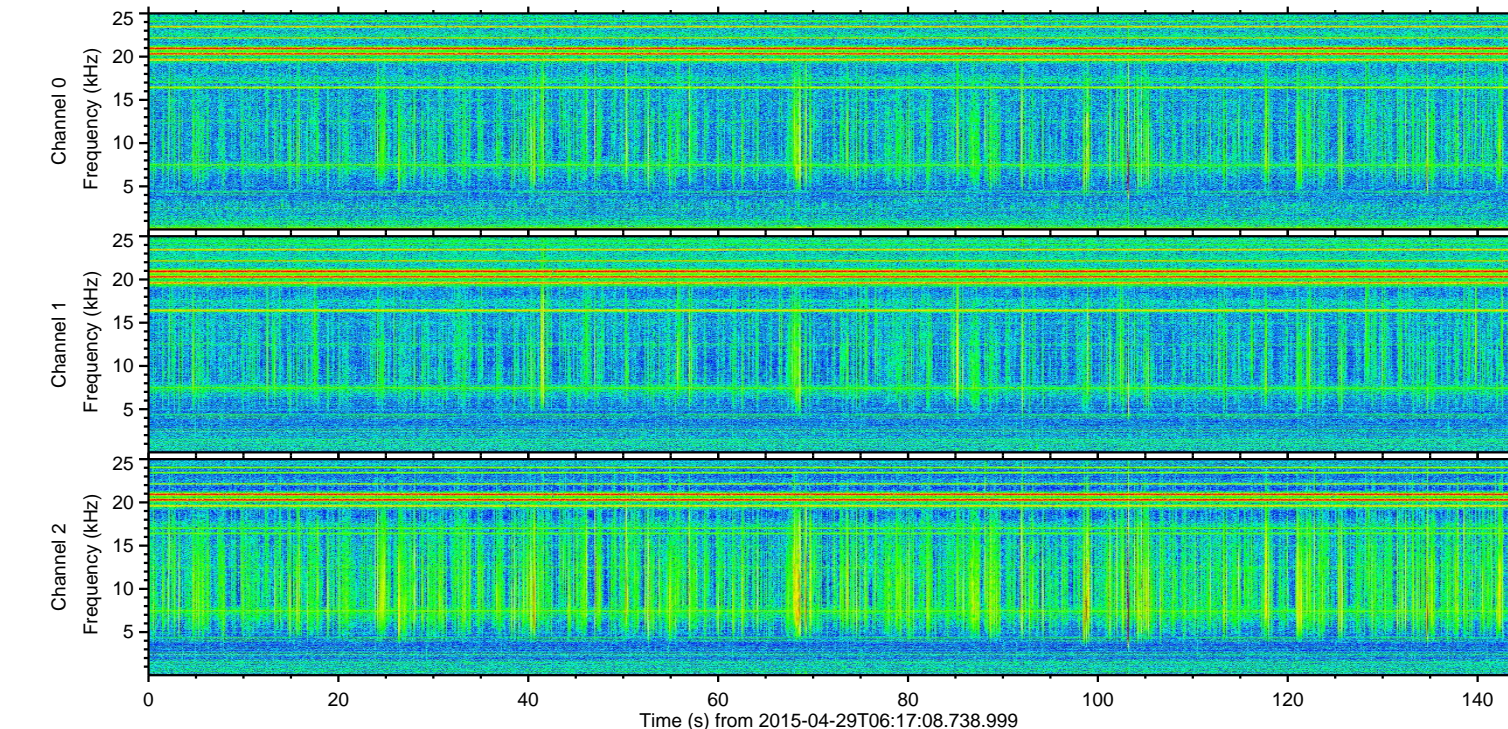
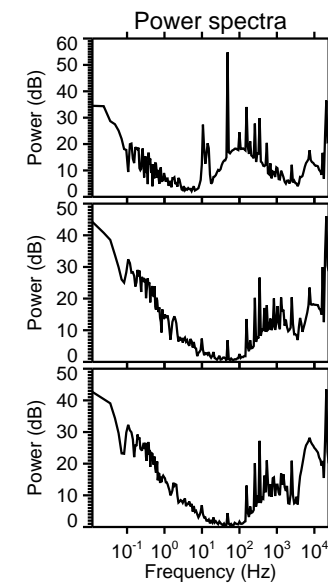
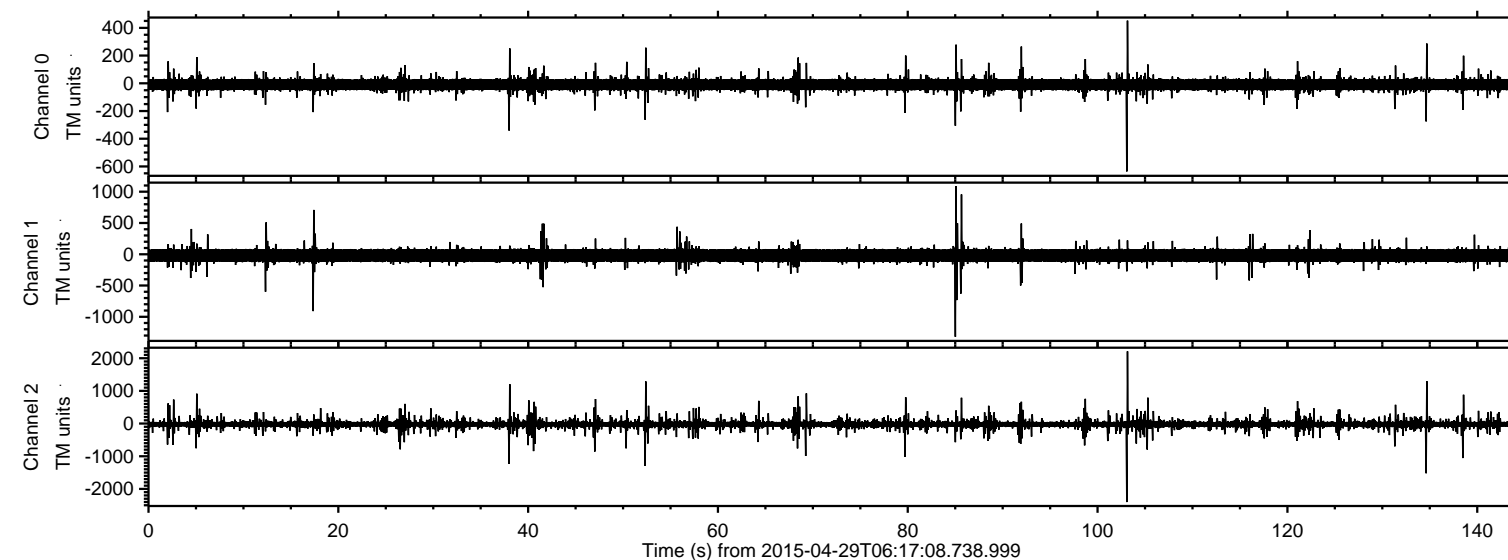


ELMAVAN 3D WAVEFORMS (Measured data sampled at 50 kHz) 49779 packets of 144 samples from 2015-04-29T06:17:08.738.999.

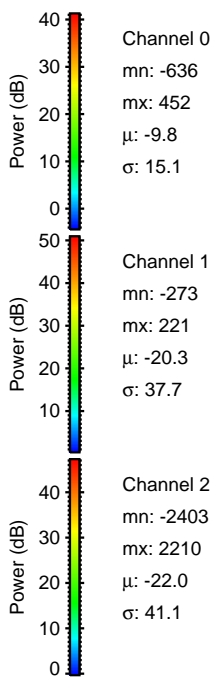
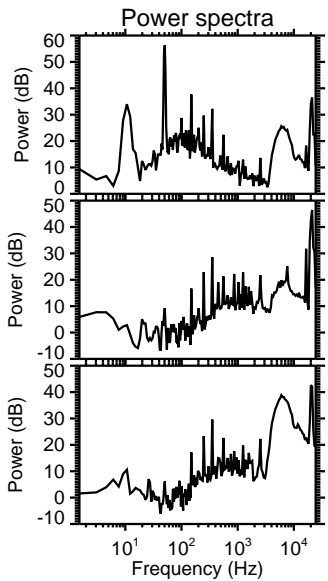
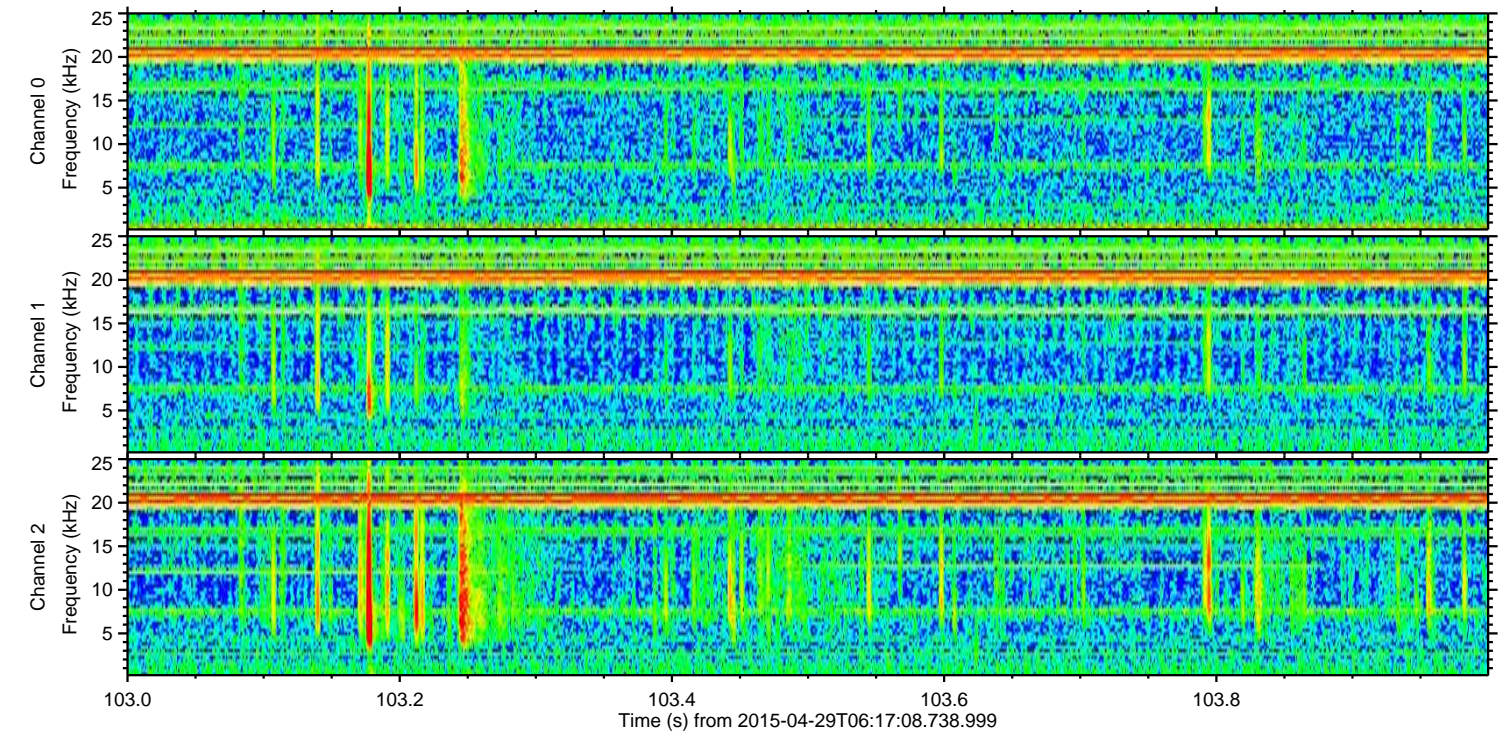
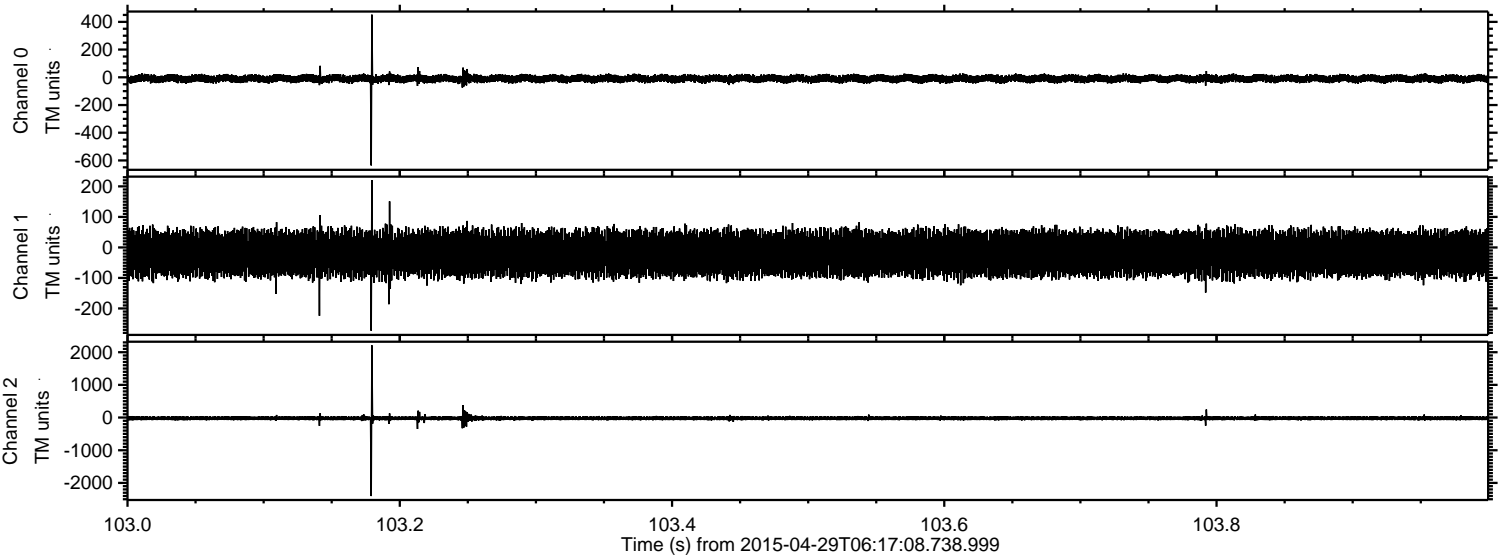
Processed Wed Apr 29 08:24:09 2015 by ELM ver.2012-10-06 from 001\_\_elm20150429\_061707\_\_dat00.bin





ELMAVAN 3D WAVEFORMS (Measured data sampled at 50 kHz) 49779 packets of 144 samples from 2015-04-29T06:17:08.738.999. Part 104/144

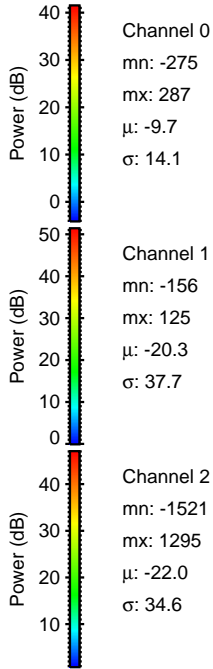
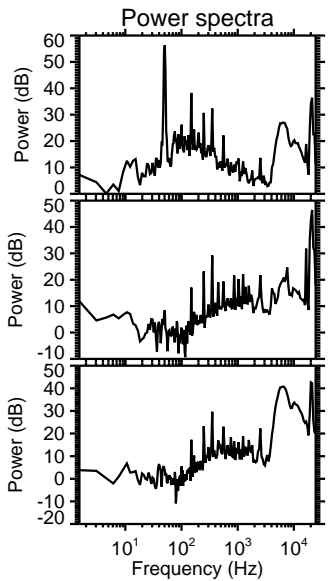
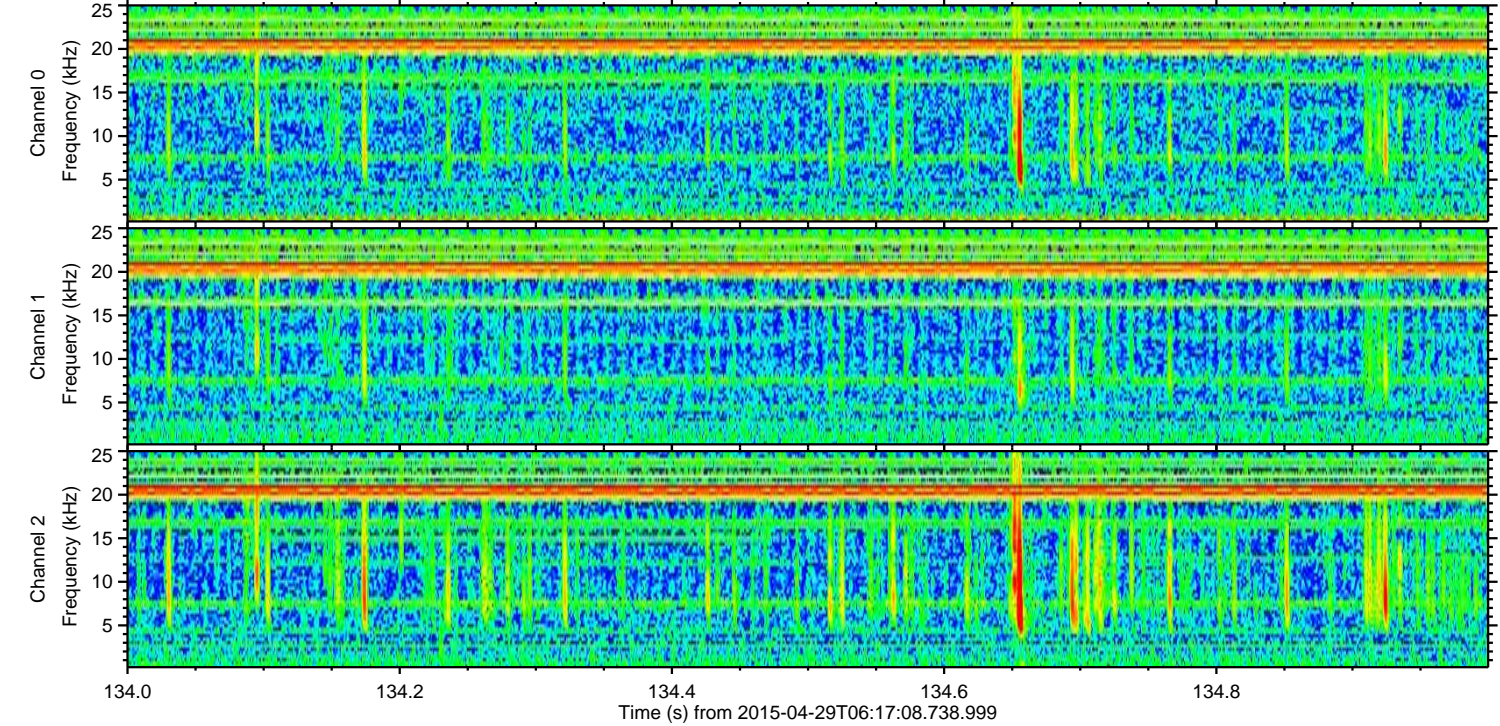
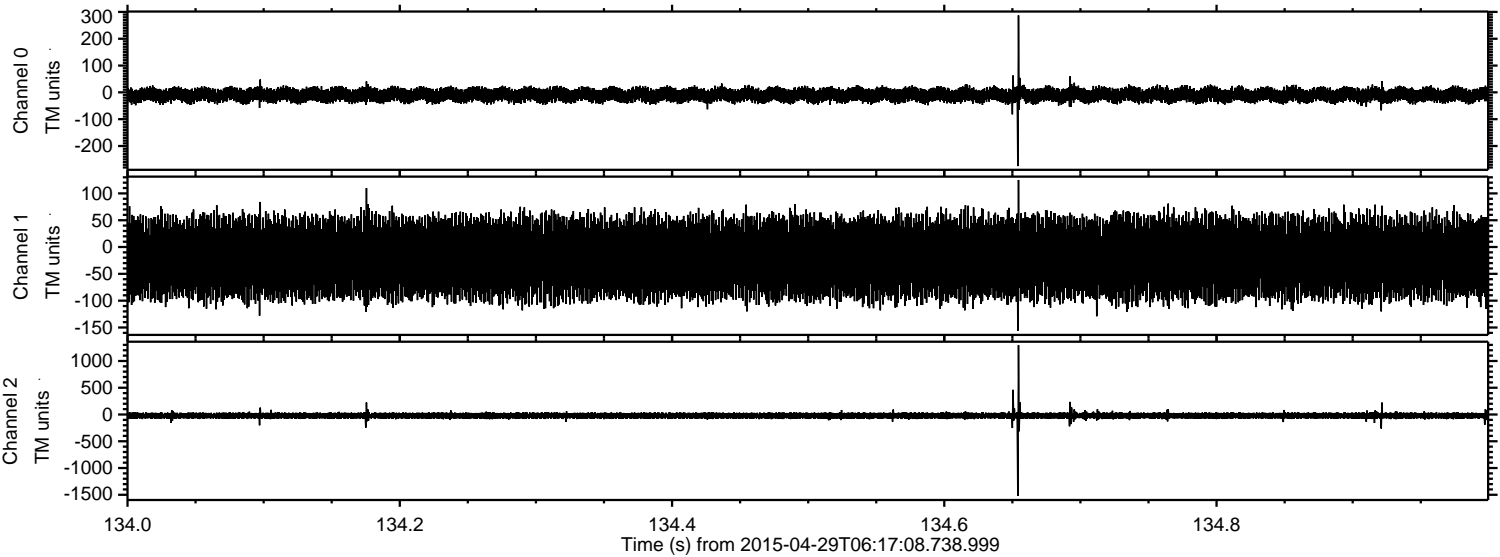
Processed Wed Apr 29 08:24:20 2015 by ELM ver.2012-10-06 from 001\_\_elm20150429\_061707\_\_dat00.bin





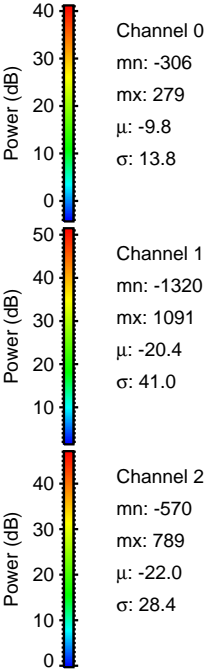
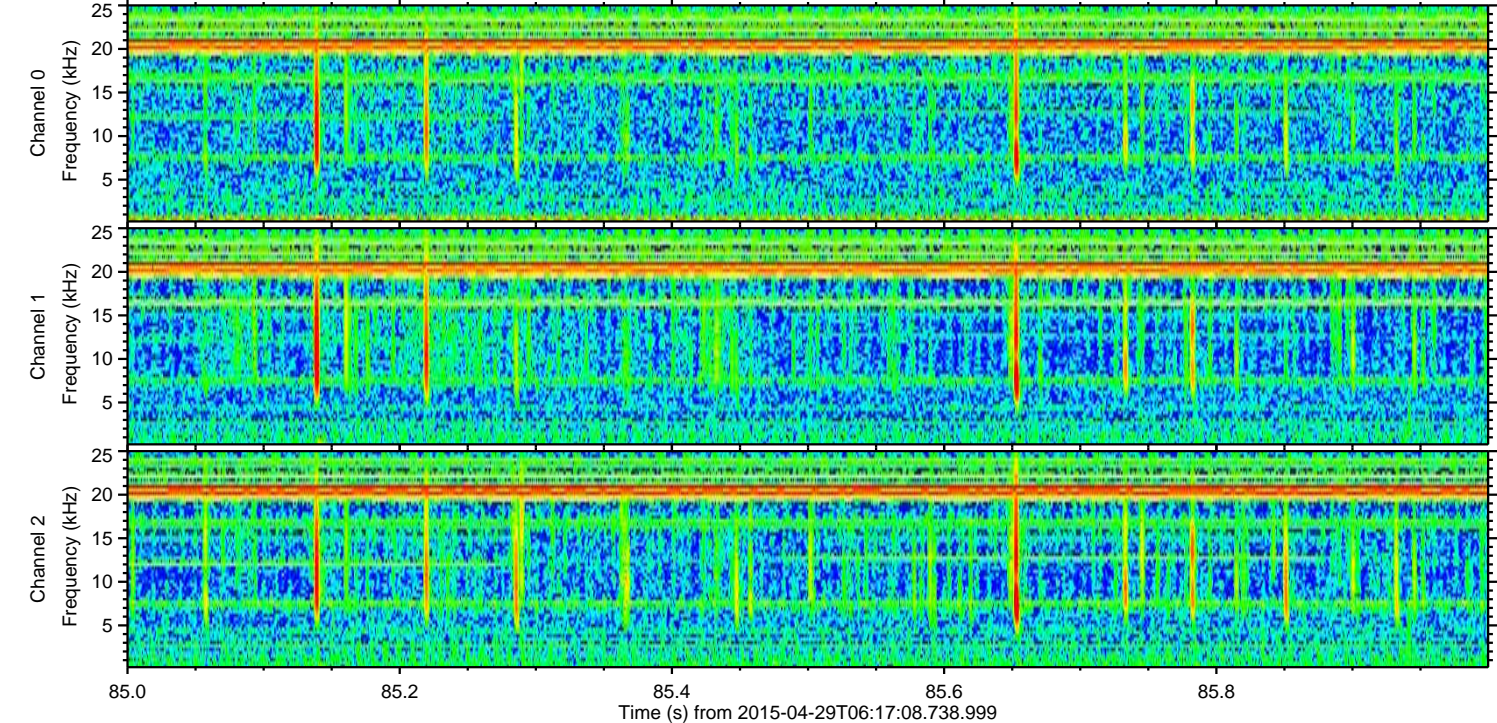
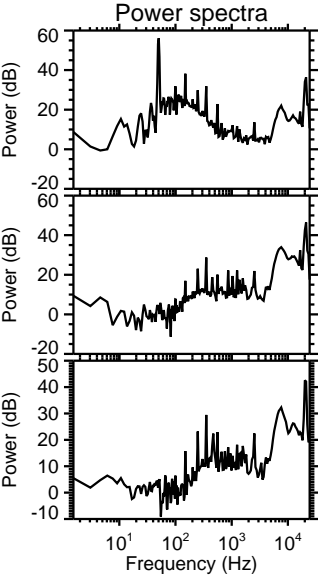
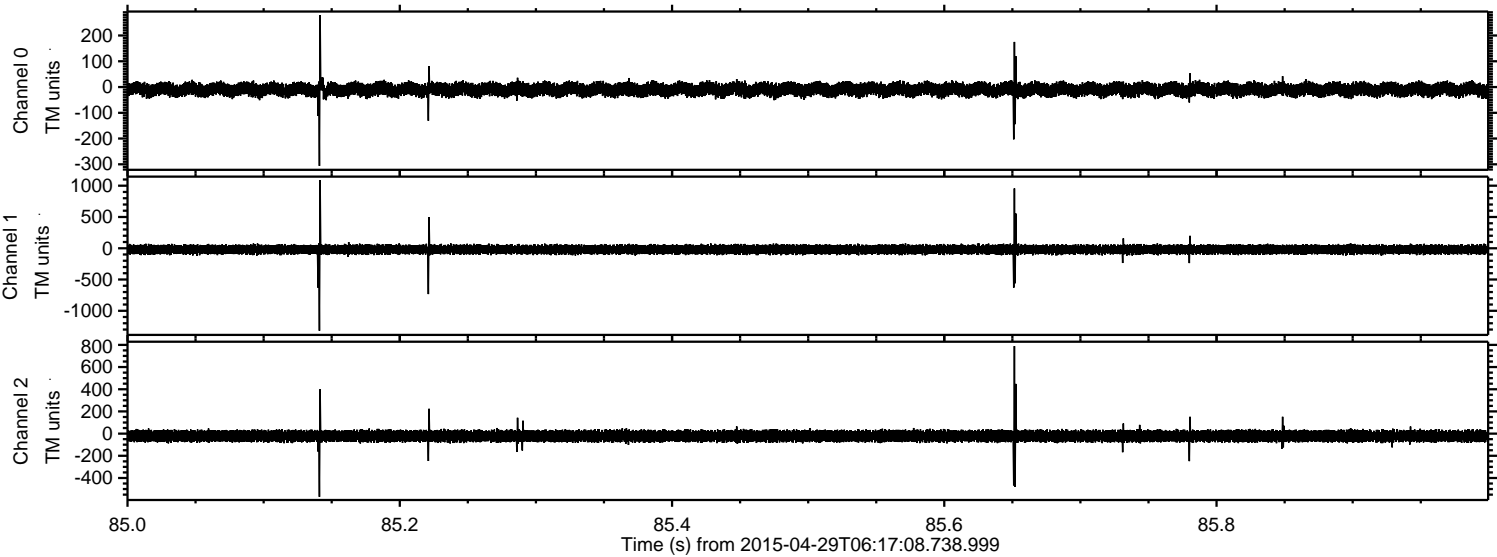
ELMAVAN 3D WAVEFORMS (Measured data sampled at 50 kHz) 49779 packets of 144 samples from 2015-04-29T06:17:08.738.999. Part 135/144

Processed Wed Apr 29 08:24:21 2015 by ELM ver.2012-10-06 from 001\_\_elm20150429\_061707\_\_dat00.bin



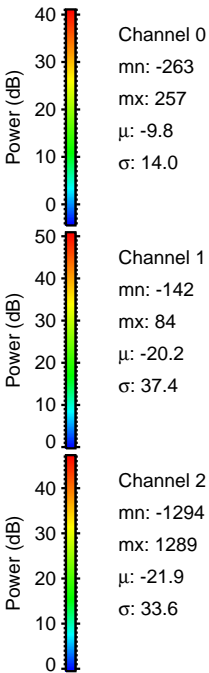
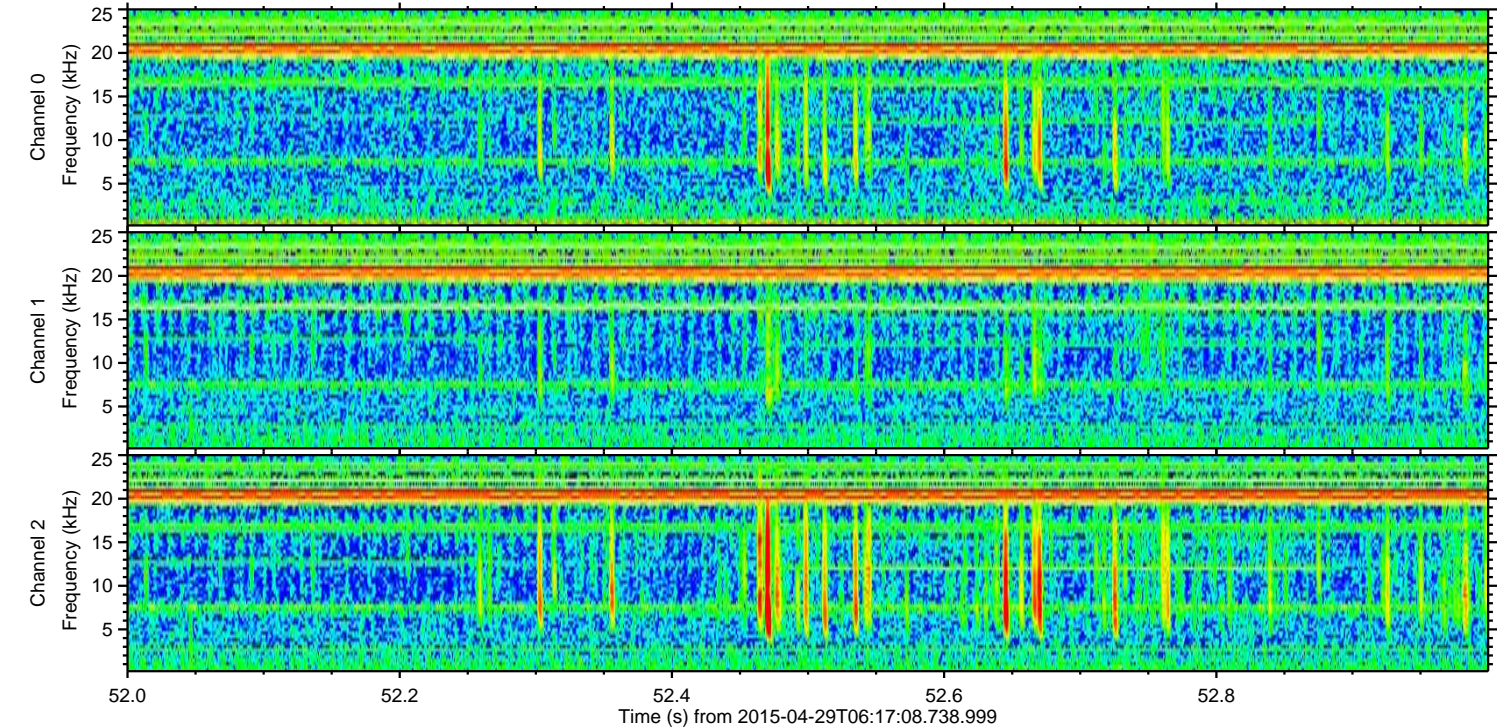
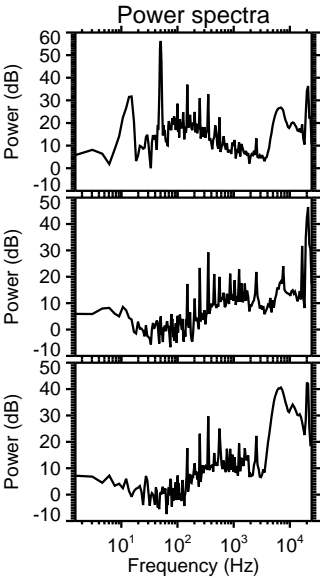
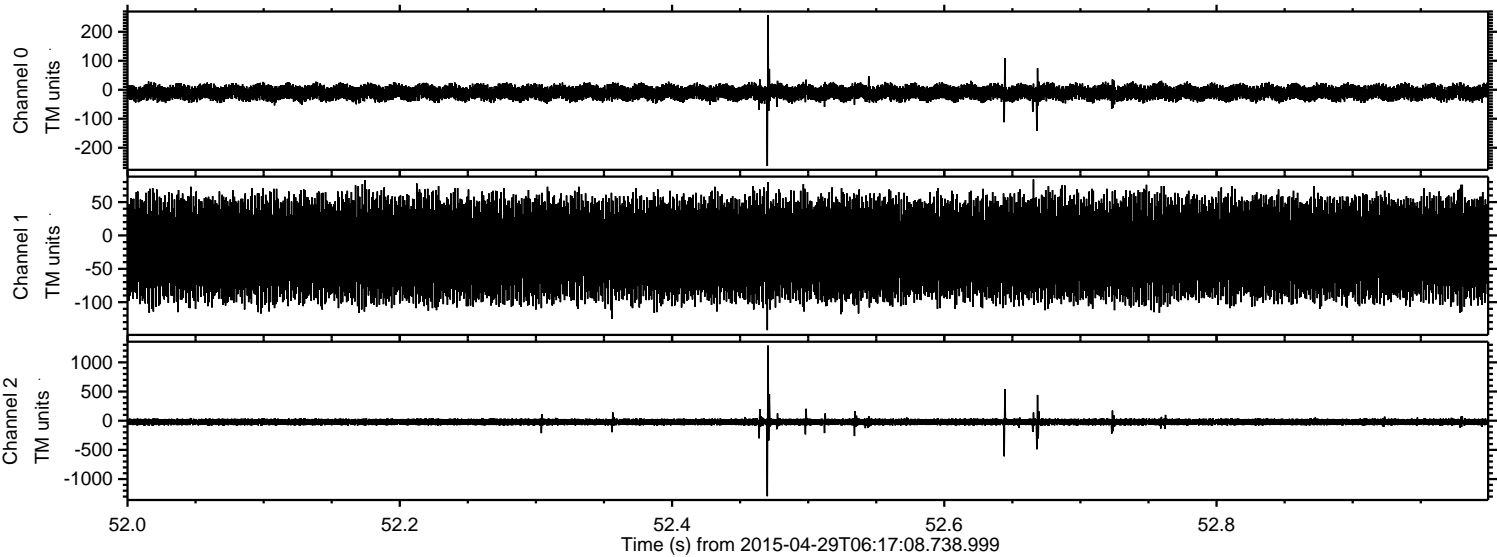


Processed Wed Apr 29 08:24:22 2015 by ELM ver.2012-10-06 from 001\_\_elm20150429\_061707\_\_dat00.bin



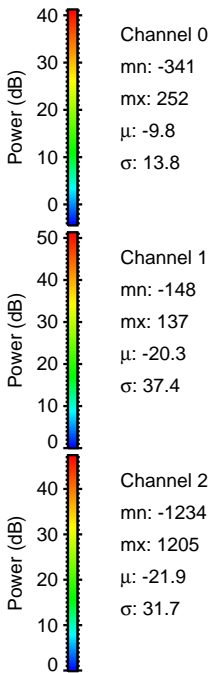
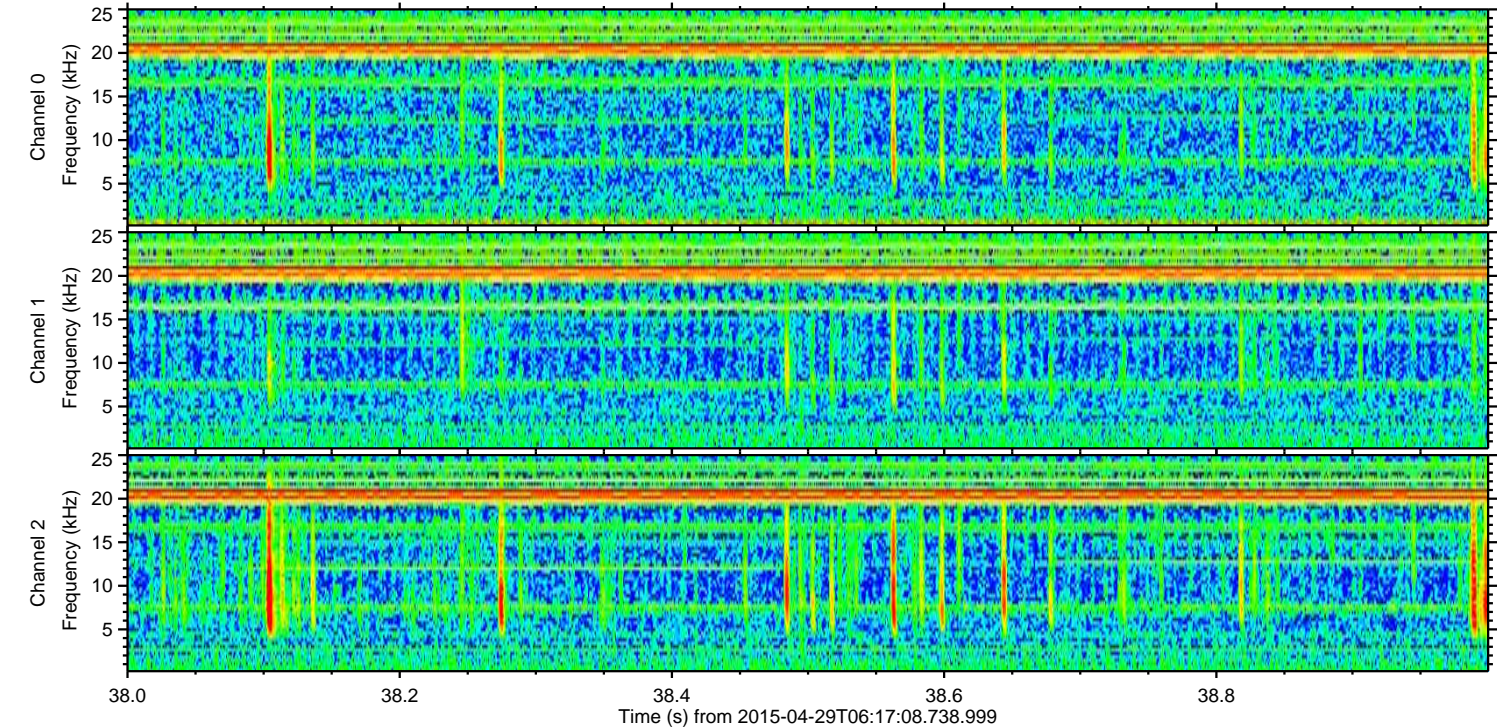
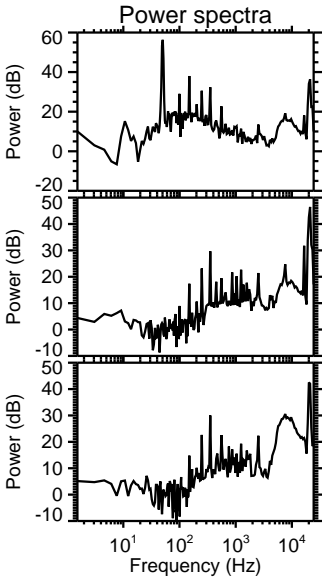
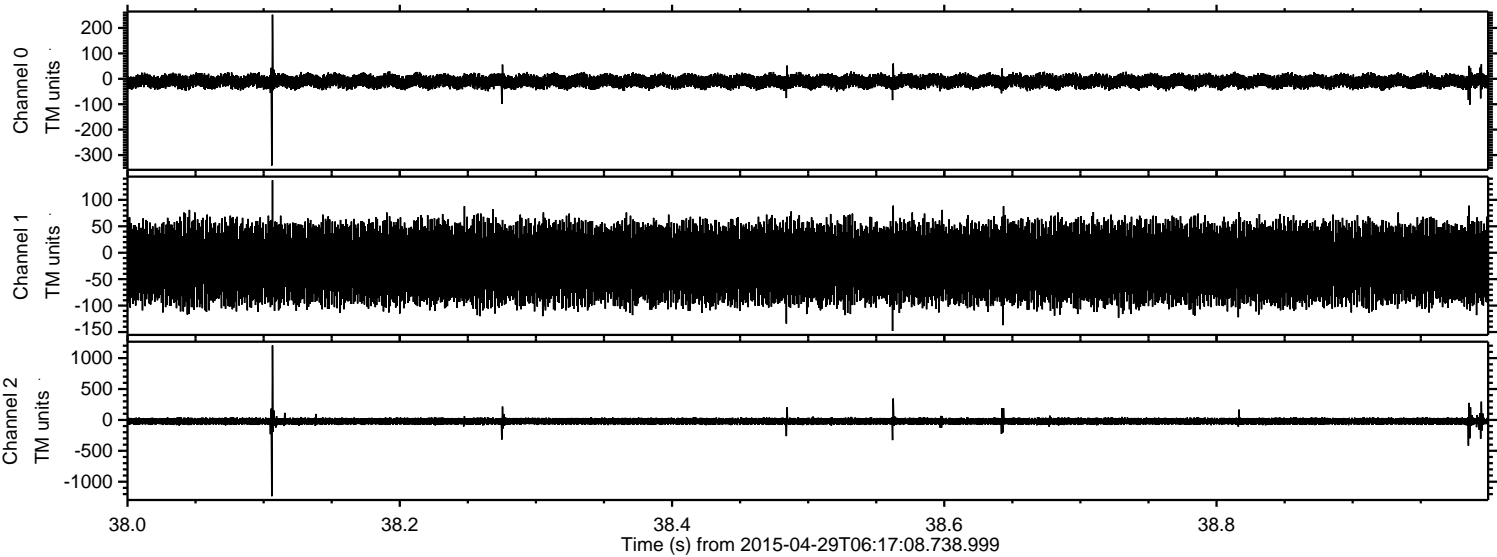


Processed Wed Apr 29 08:24:23 2015 by ELM ver.2012-10-06 from 001\_\_elm20150429\_061707\_\_dat00.bin





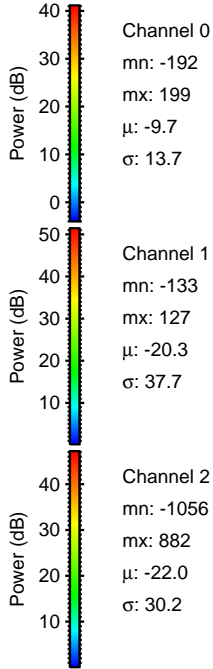
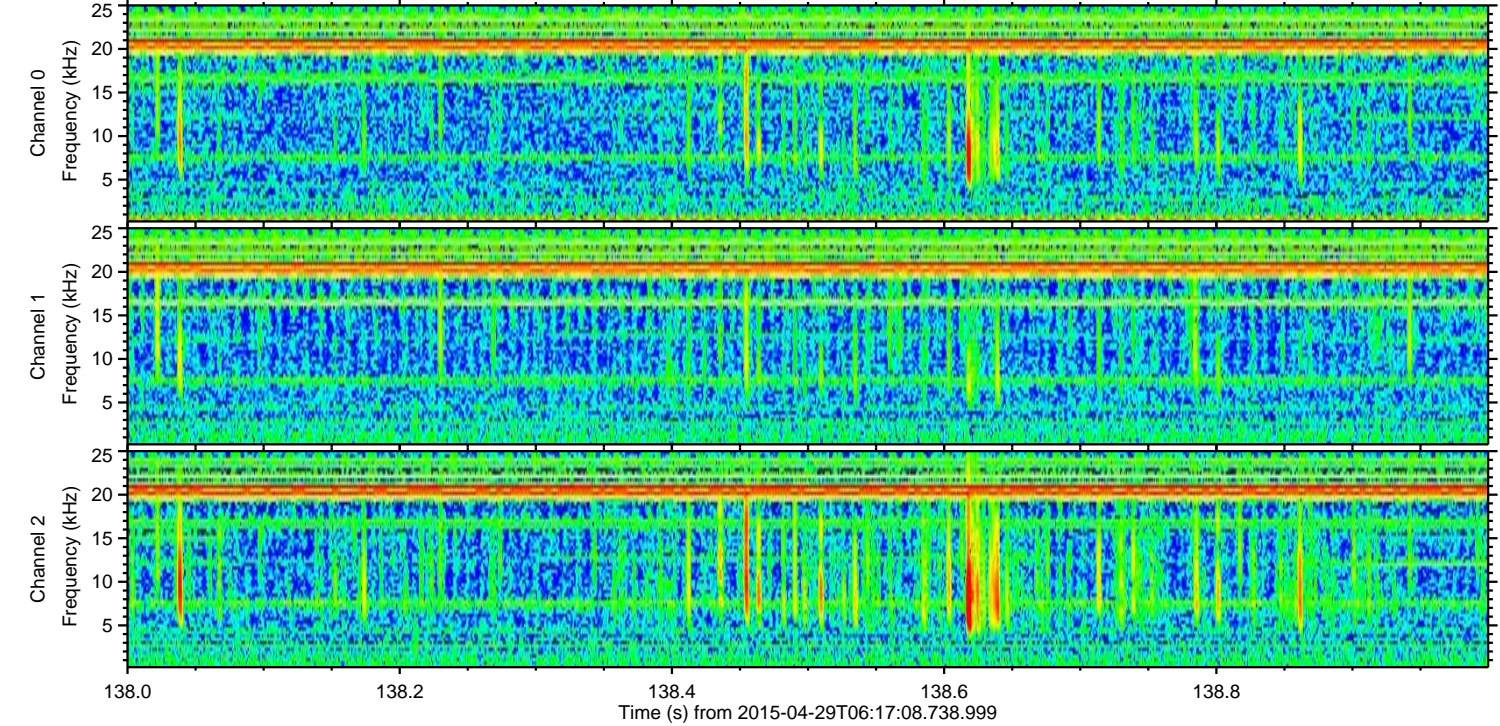
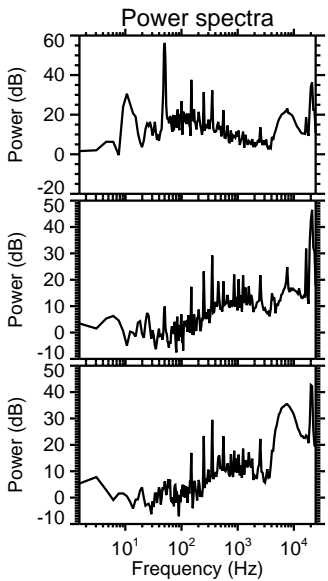
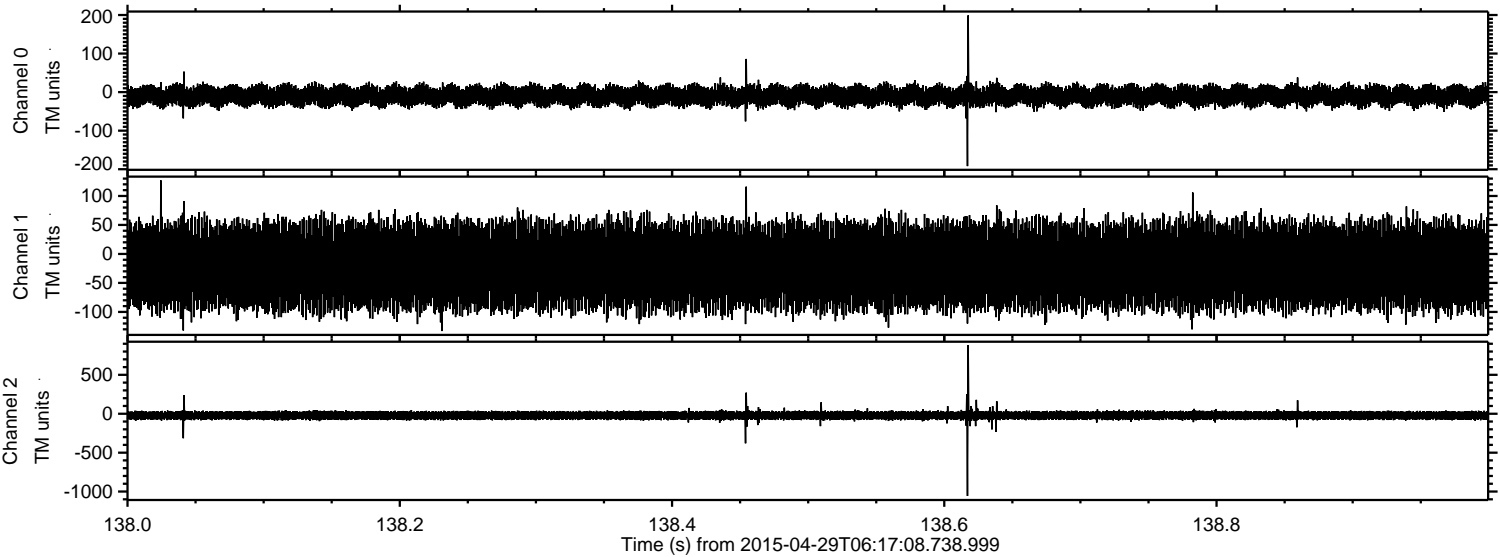
Processed Wed Apr 29 08:24:24 2015 by ELM ver.2012-10-06 from 001\_\_elm20150429\_061707\_\_dat00.bin





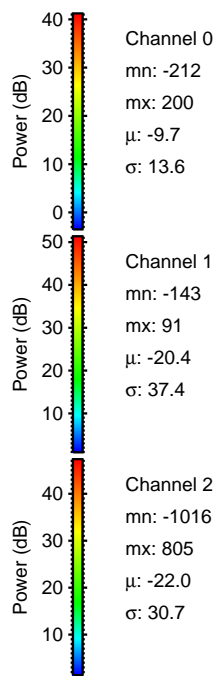
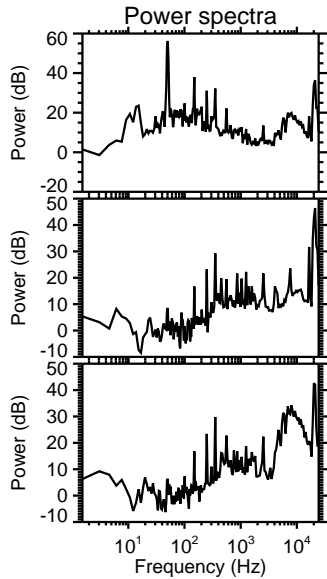
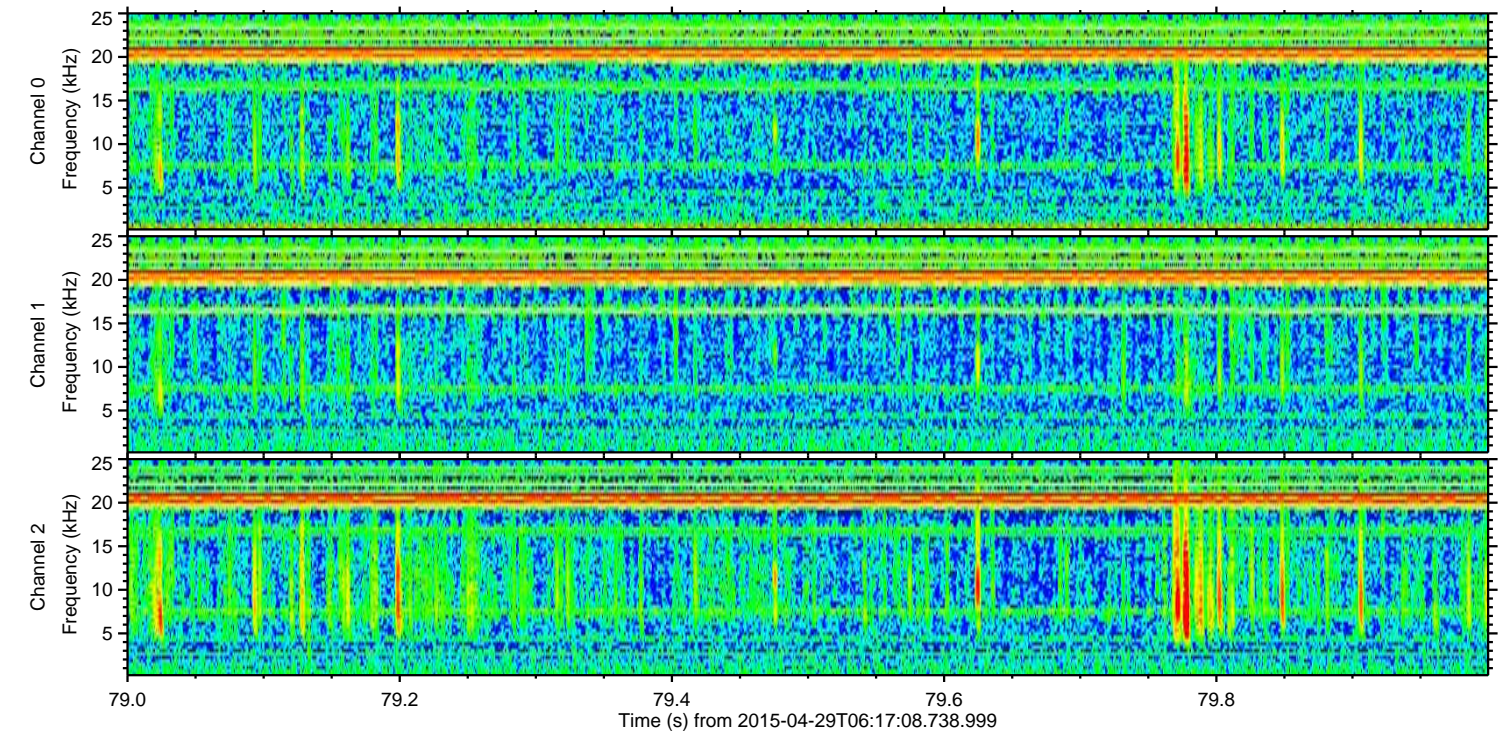
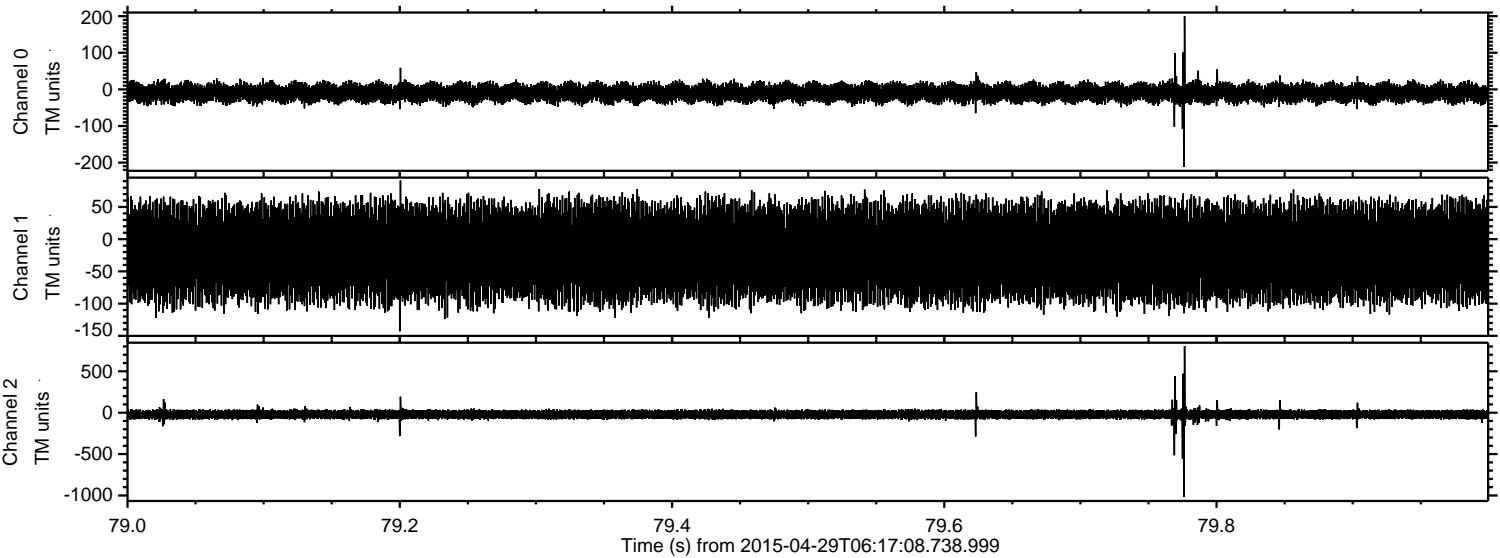
ELMAVAN 3D WAVEFORMS (Measured data sampled at 50 kHz) 49779 packets of 144 samples from 2015-04-29T06:17:08.738.999. Part 139/144

Processed Wed Apr 29 08:24:25 2015 by ELM ver.2012-10-06 from 001\_\_elm20150429\_061707\_\_dat00.bin



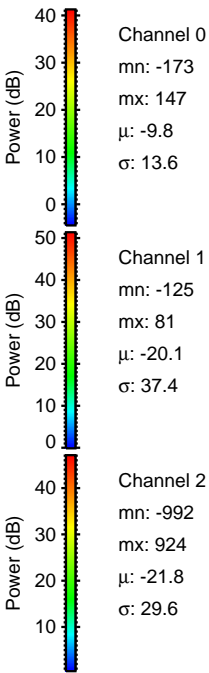
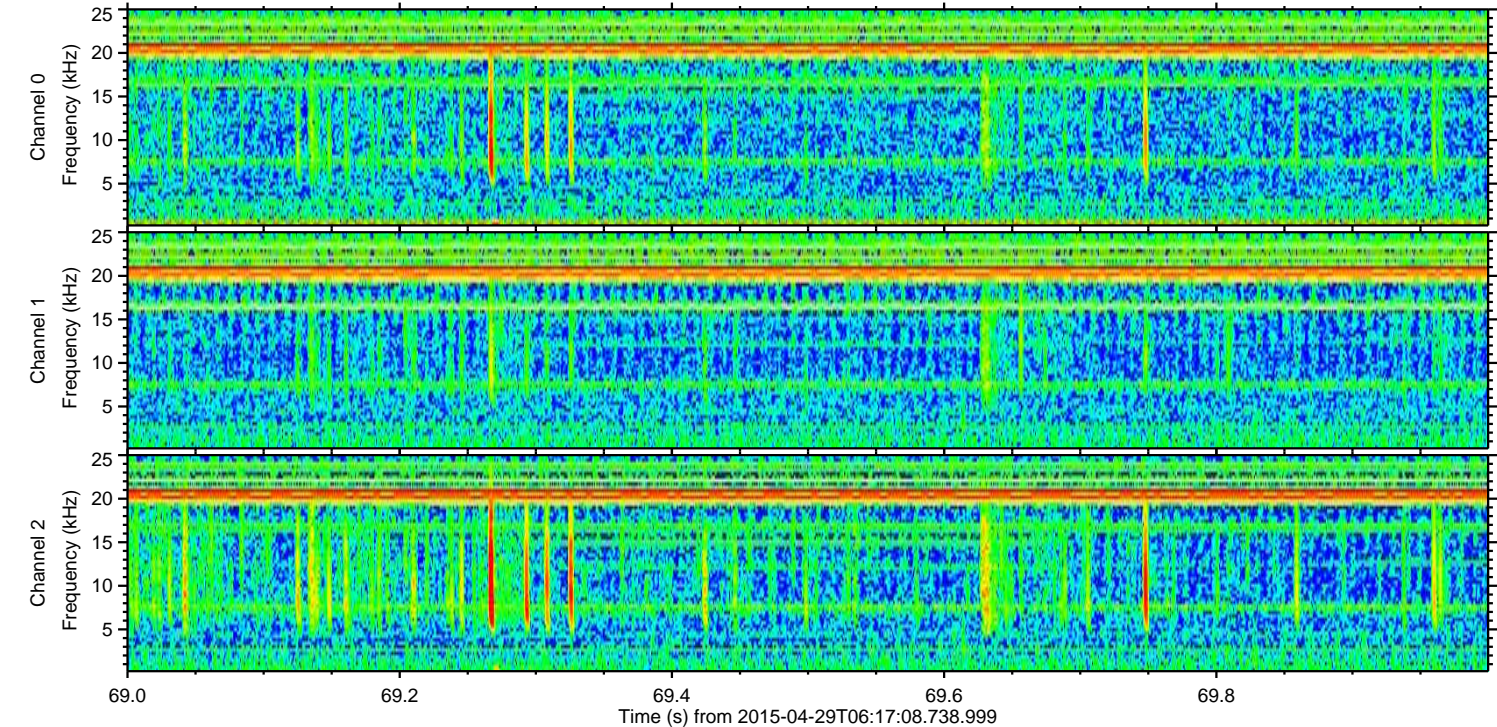
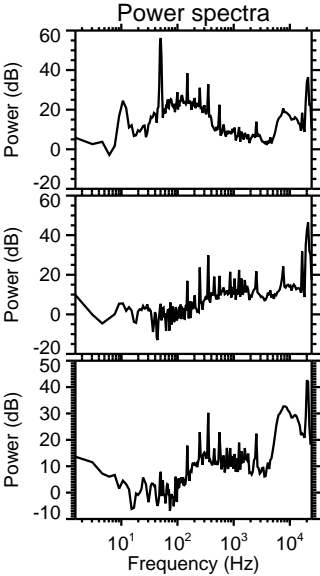
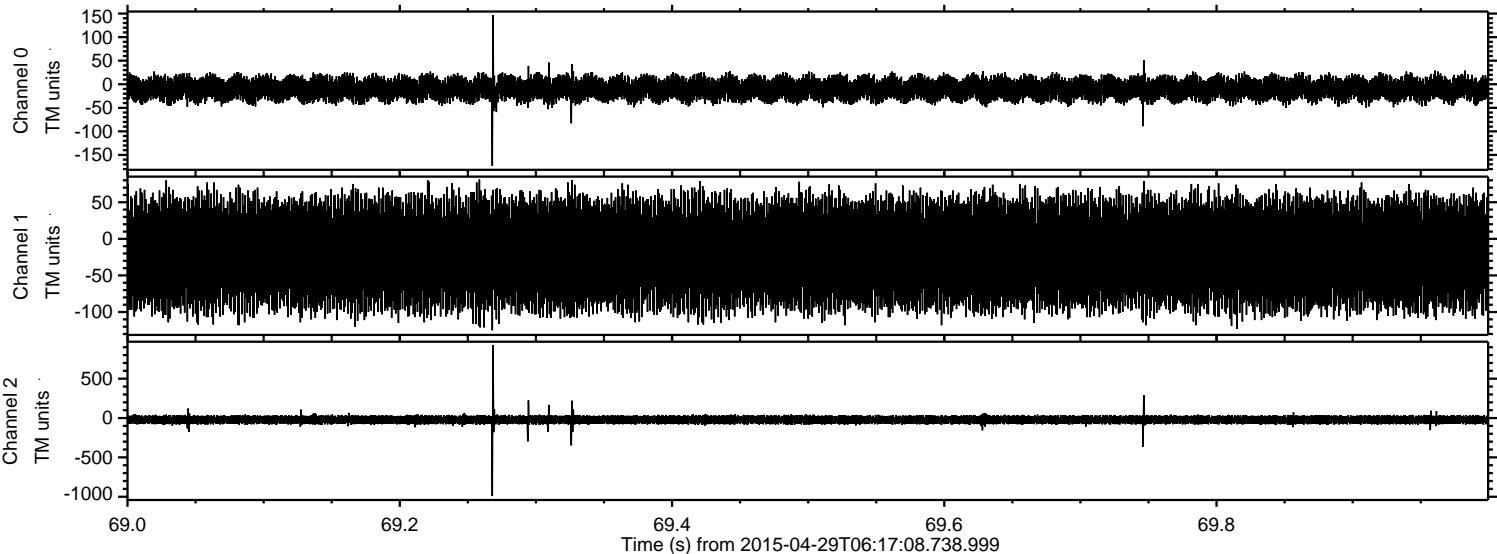


Processed Wed Apr 29 08:24:26 2015 by ELM ver.2012-10-06 from 001\_\_elm20150429\_061707\_\_dat00.bin



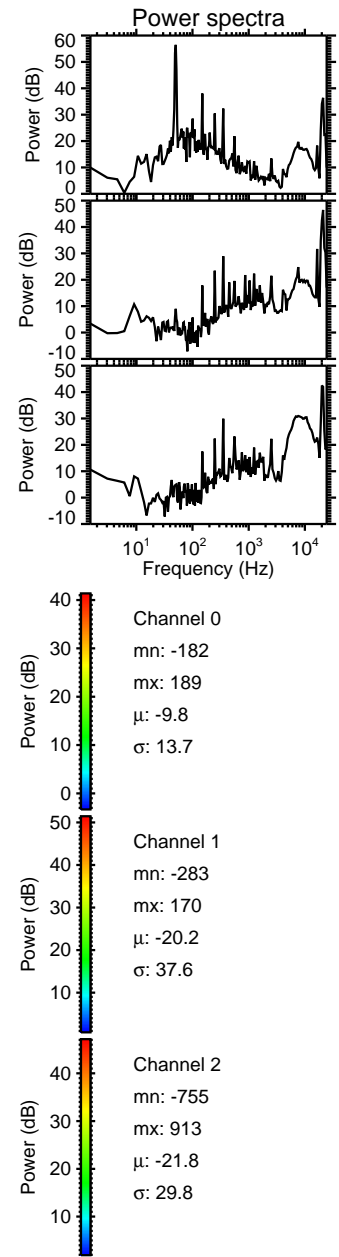
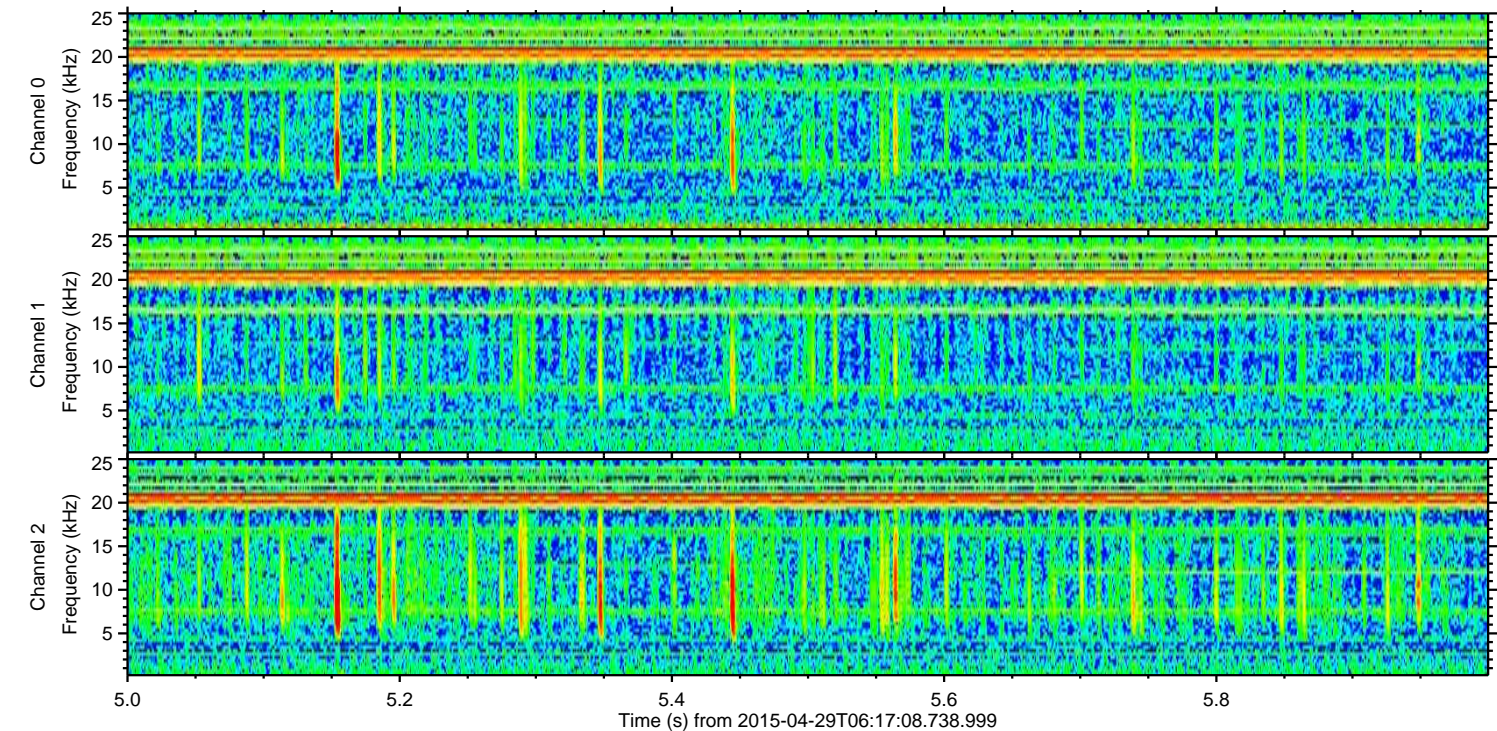
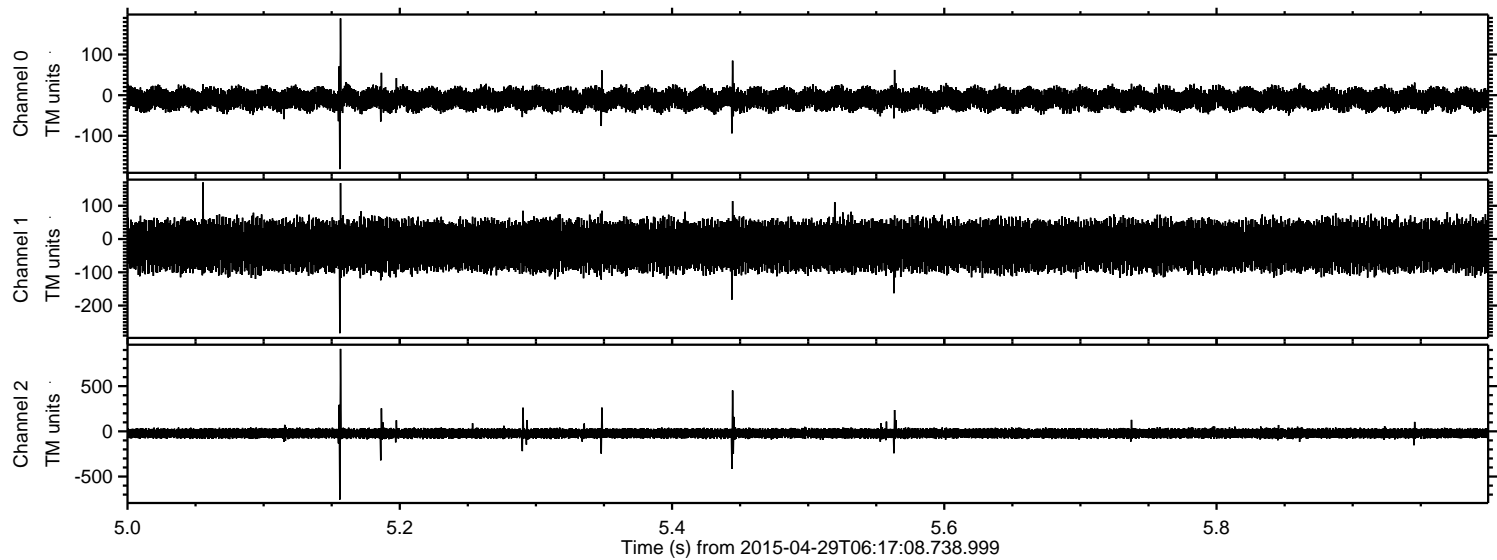


Processed Wed Apr 29 08:24:27 2015 by ELM ver.2012-10-06 from 001\_\_elm20150429\_061707\_\_dat00.bin





Processed Wed Apr 29 08:24:28 2015 by ELM ver.2012-10-06 from 001\_\_elm20150429\_061707\_\_dat00.bin





Processed Wed Apr 29 08:24:29 2015 by ELM ver.2012-10-06 from 001\_\_elm20150429\_061707\_\_dat00.bin

