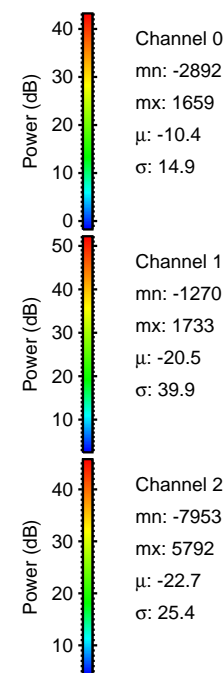
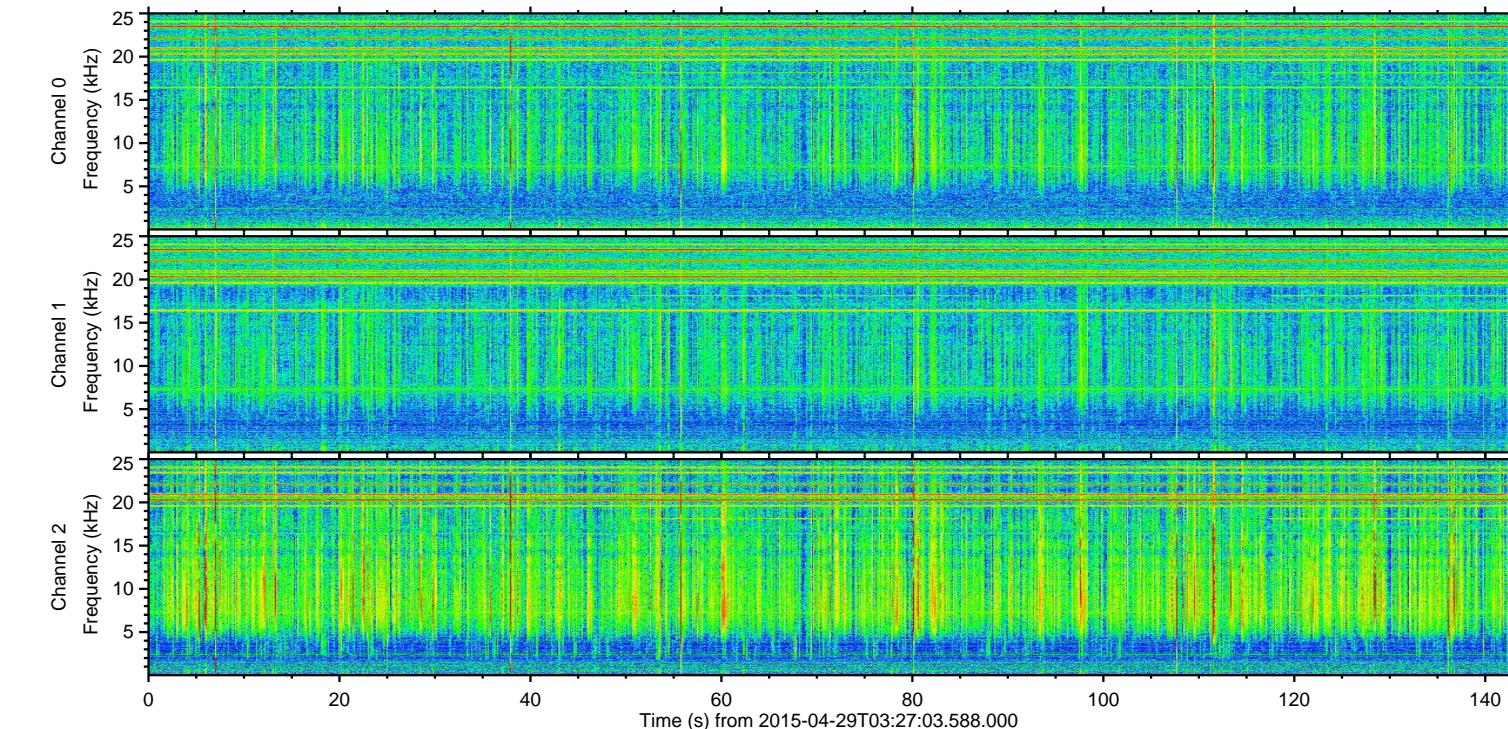
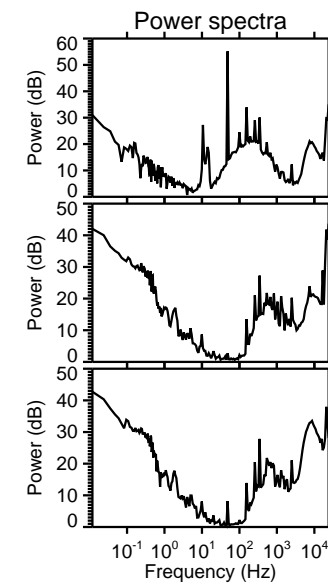
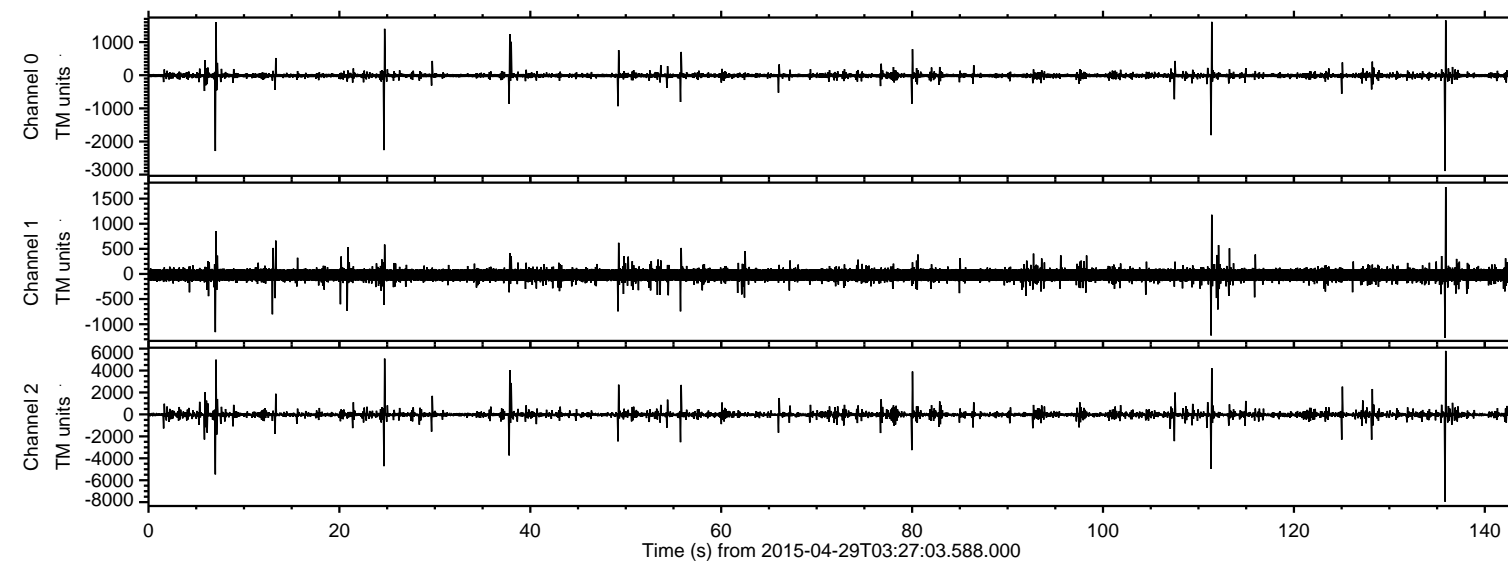


# ELMAVAN 3D WAVEFORMS (Measured data sampled at 50 kHz) 49496 packets of 144 samples from 2015-04-29T03:27:03.588.000.

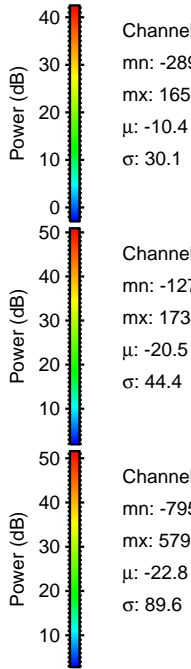
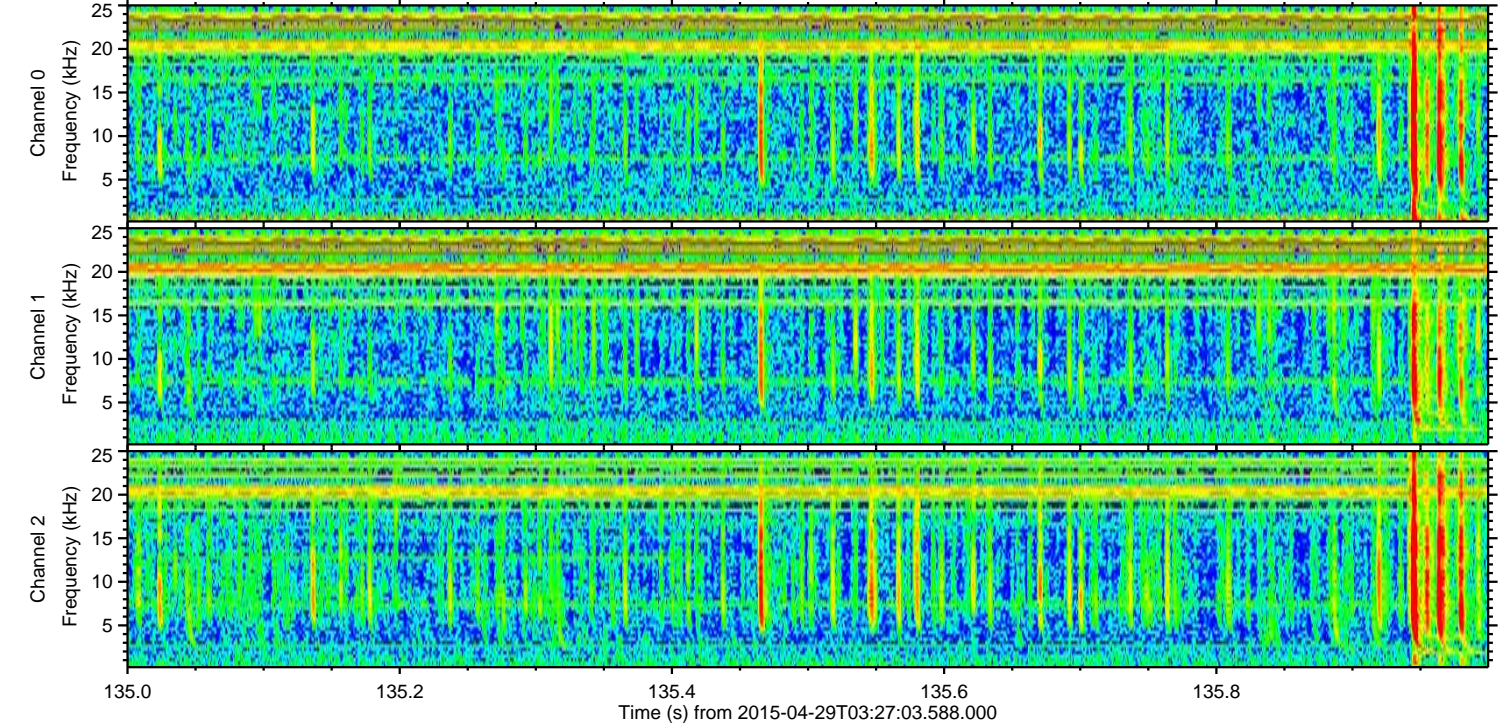
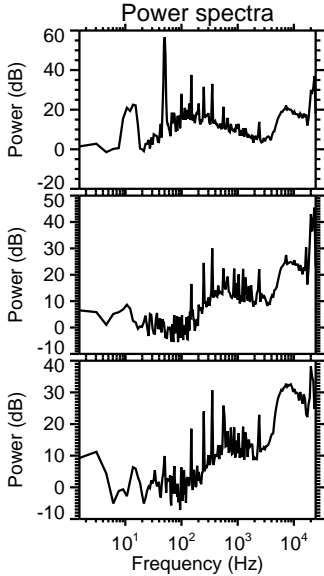
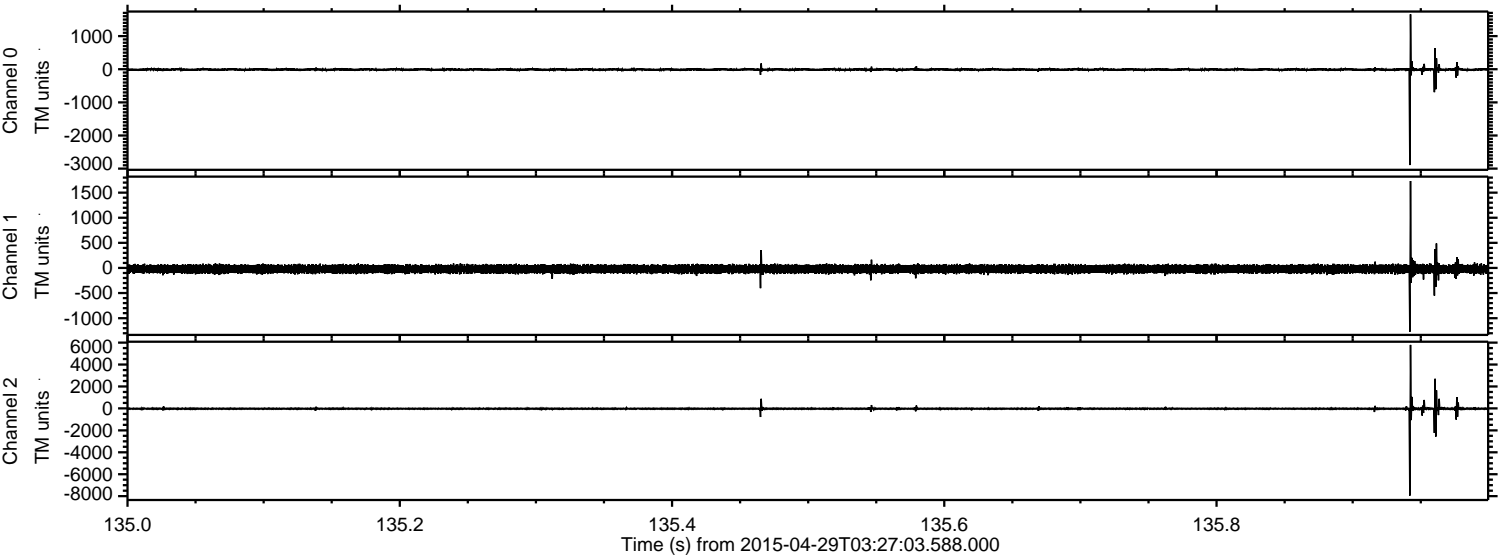
Processed Wed Apr 29 05:35:37 2015 by ELM ver.2012-10-06 from 001\_\_elm20150429\_032702\_\_dat00.bin





ELMAVAN 3D WAVEFORMS (Measured data sampled at 50 kHz) 49496 packets of 144 samples from 2015-04-29T03:27:03.588.000. Part 136/143

Processed Wed Apr 29 05:35:52 2015 by ELM ver.2012-10-06 from 001\_\_elm20150429\_032702\_\_dat00.bin



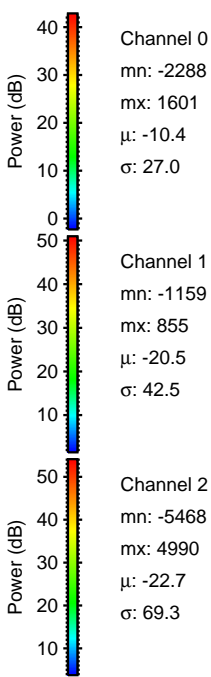
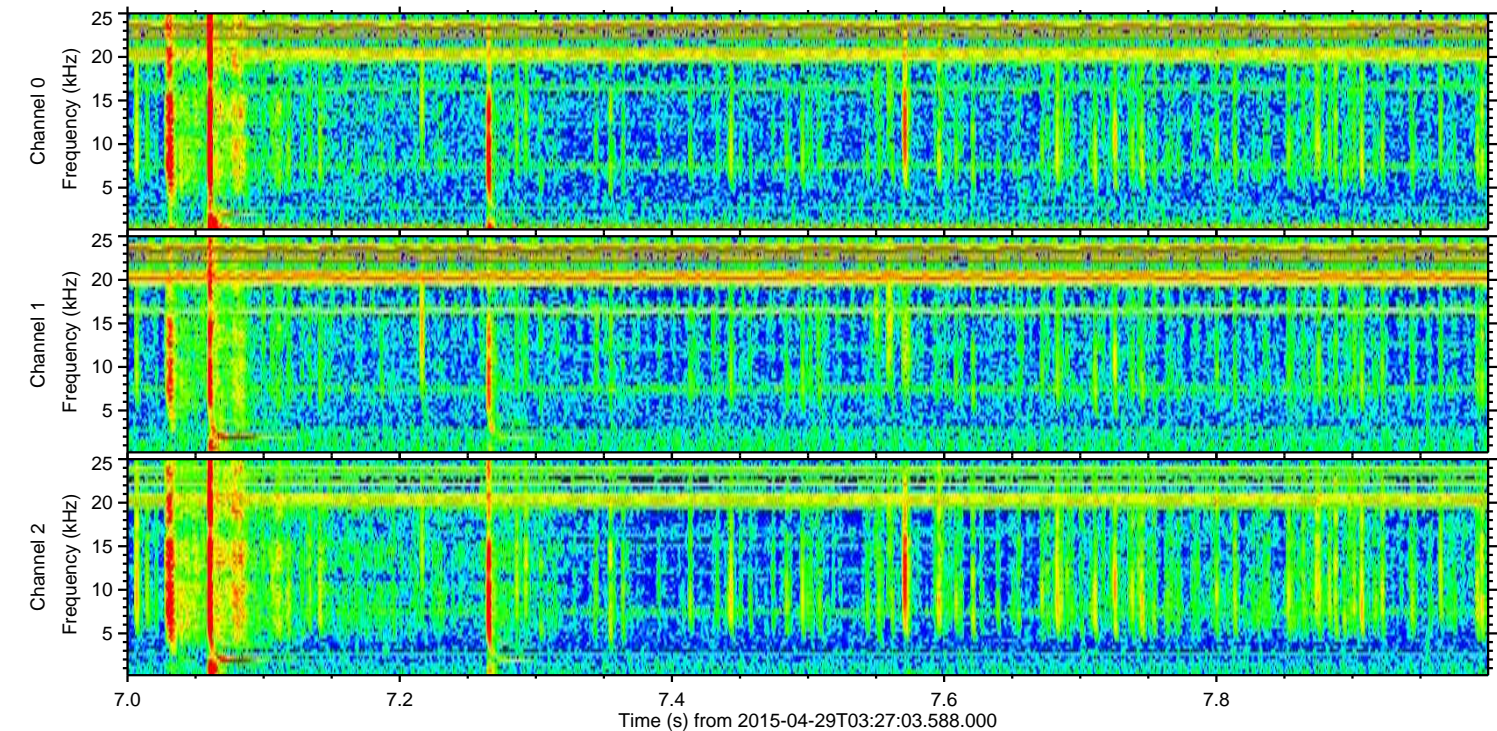
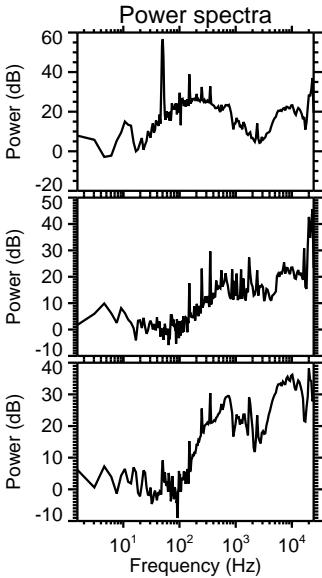
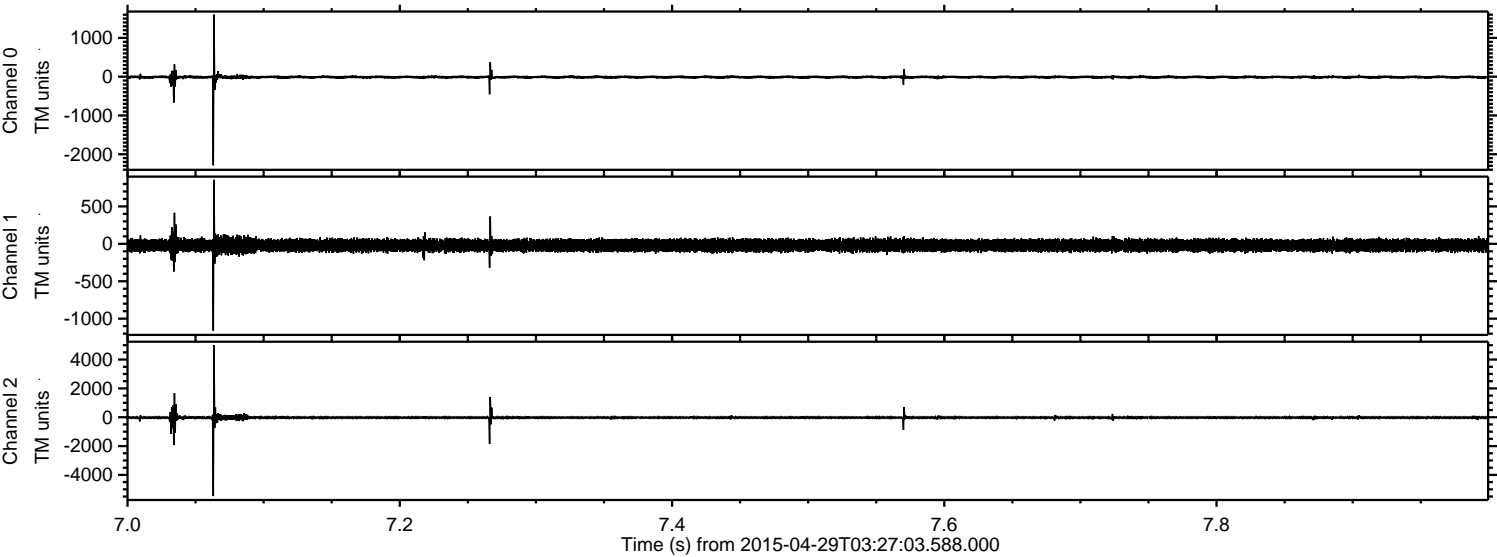
Channel 0  
mn: -2892  
mx: 1659  
 $\mu$ : -10.4  
 $\sigma$ : 30.1

Channel 1  
mn: -1270  
mx: 1733  
 $\mu$ : -20.5  
 $\sigma$ : 44.4

Channel 2  
mn: -7953  
mx: 5792  
 $\mu$ : -22.8  
 $\sigma$ : 89.6



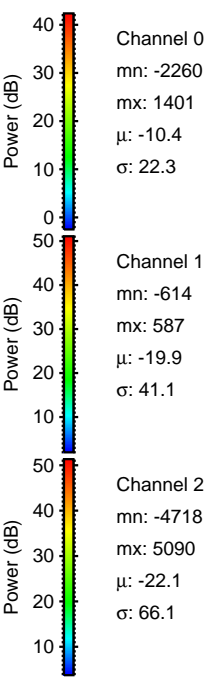
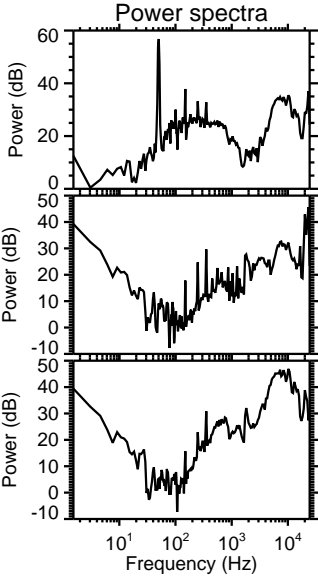
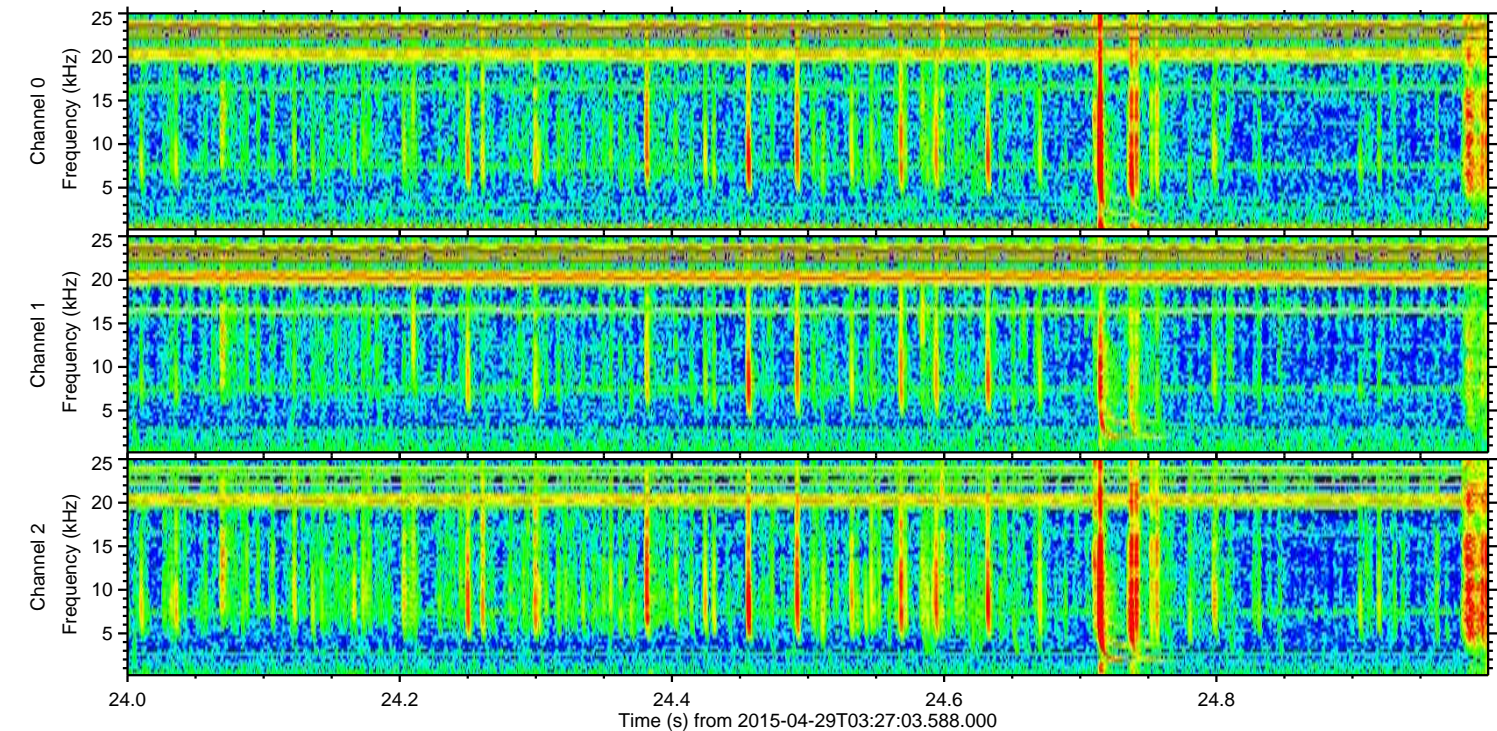
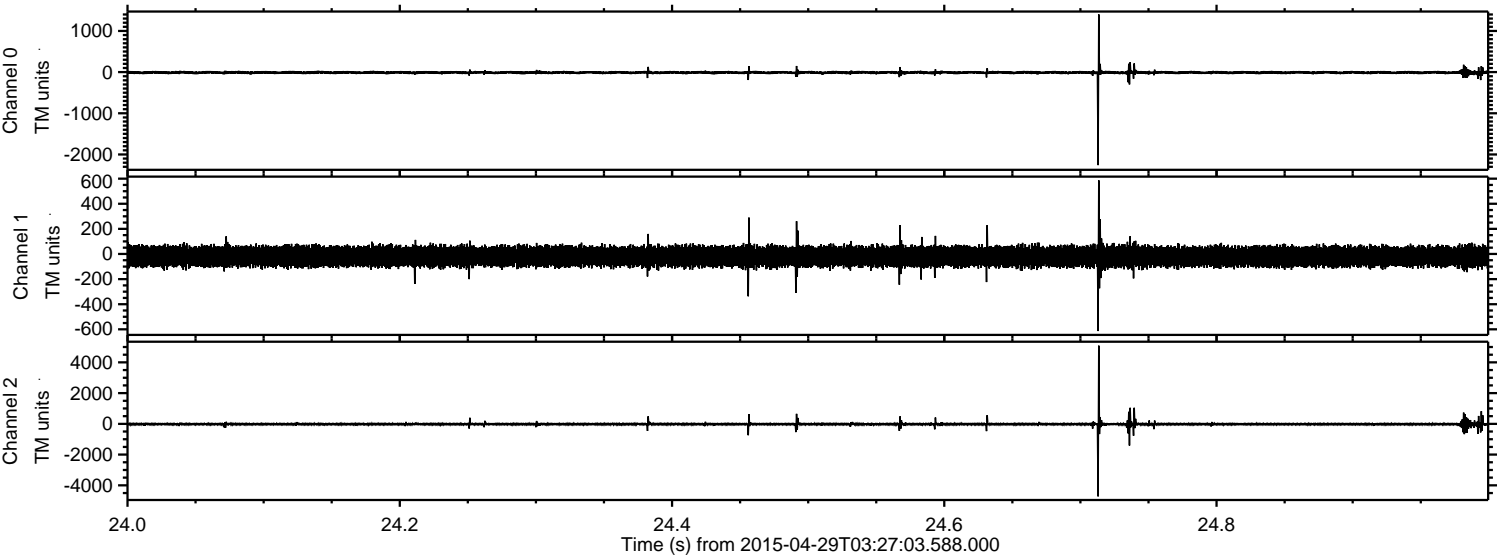
Processed Wed Apr 29 05:35:54 2015 by ELM ver.2012-10-06 from 001\_\_elm20150429\_032702\_\_dat00.bin





ELMAVAN 3D WAVEFORMS (Measured data sampled at 50 kHz) 49496 packets of 144 samples from 2015-04-29T03:27:03.588.000. Part 25/143

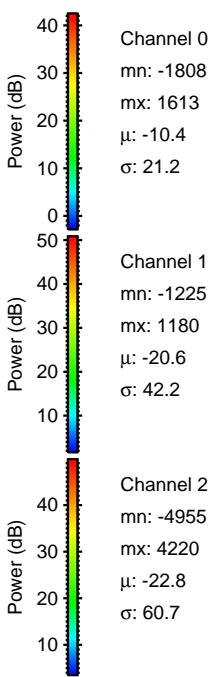
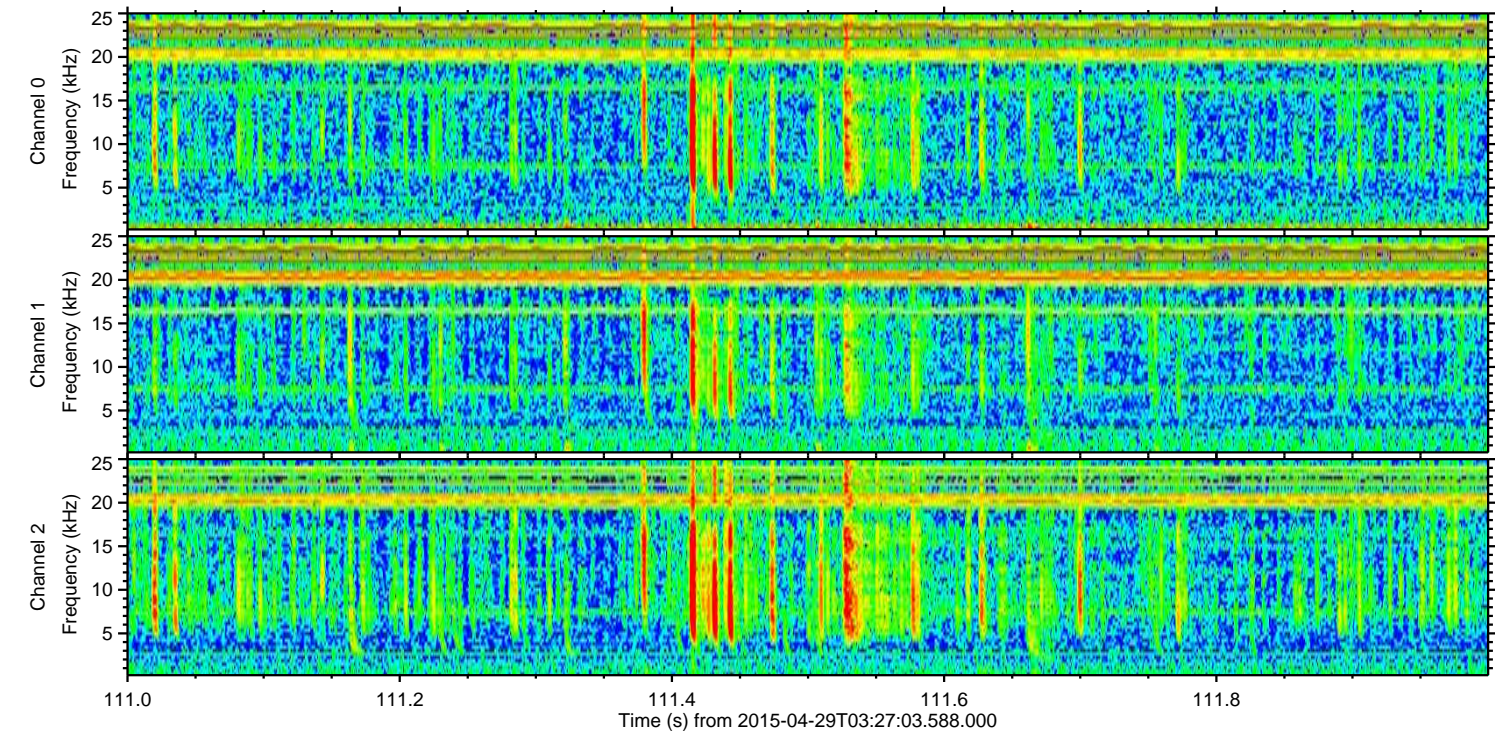
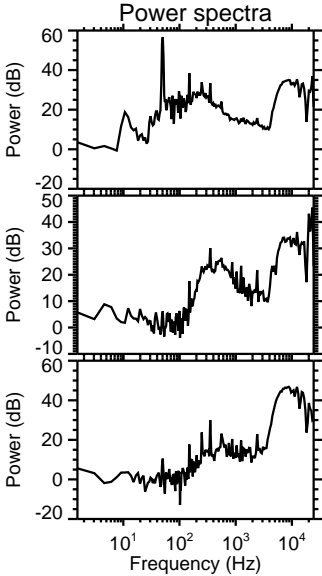
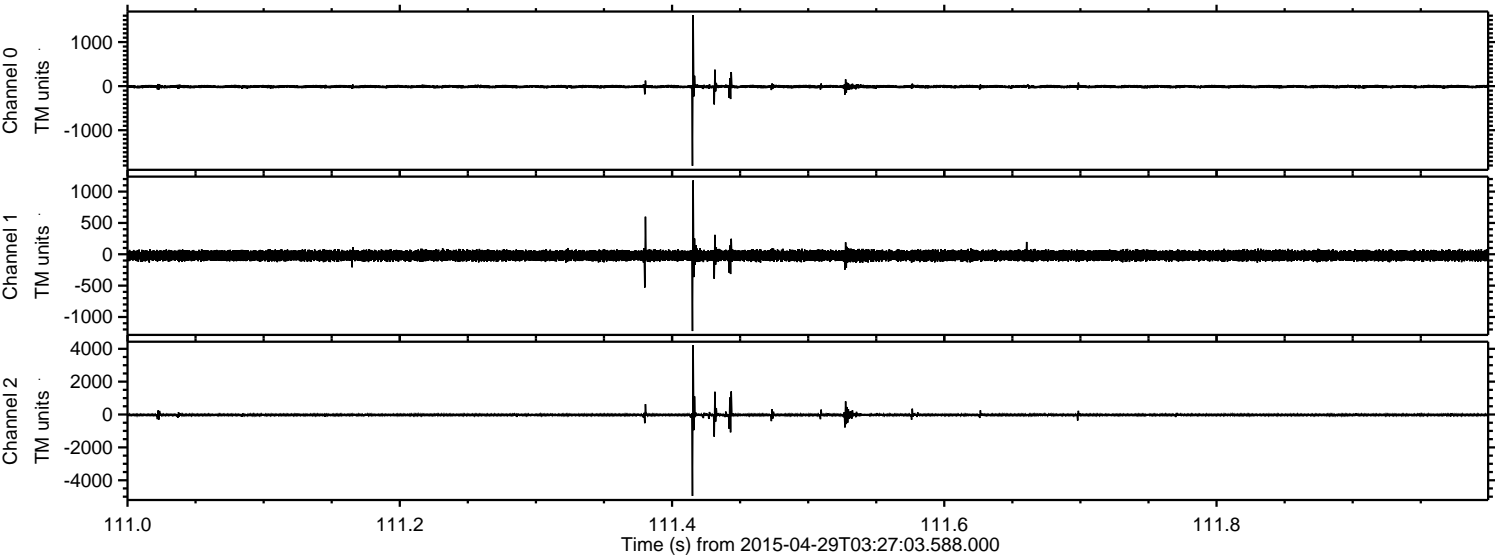
Processed Wed Apr 29 05:35:55 2015 by ELM ver.2012-10-06 from 001\_\_elm20150429\_032702\_\_dat00.bin





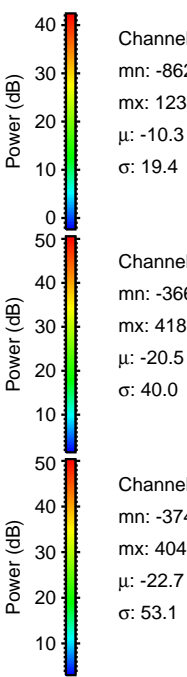
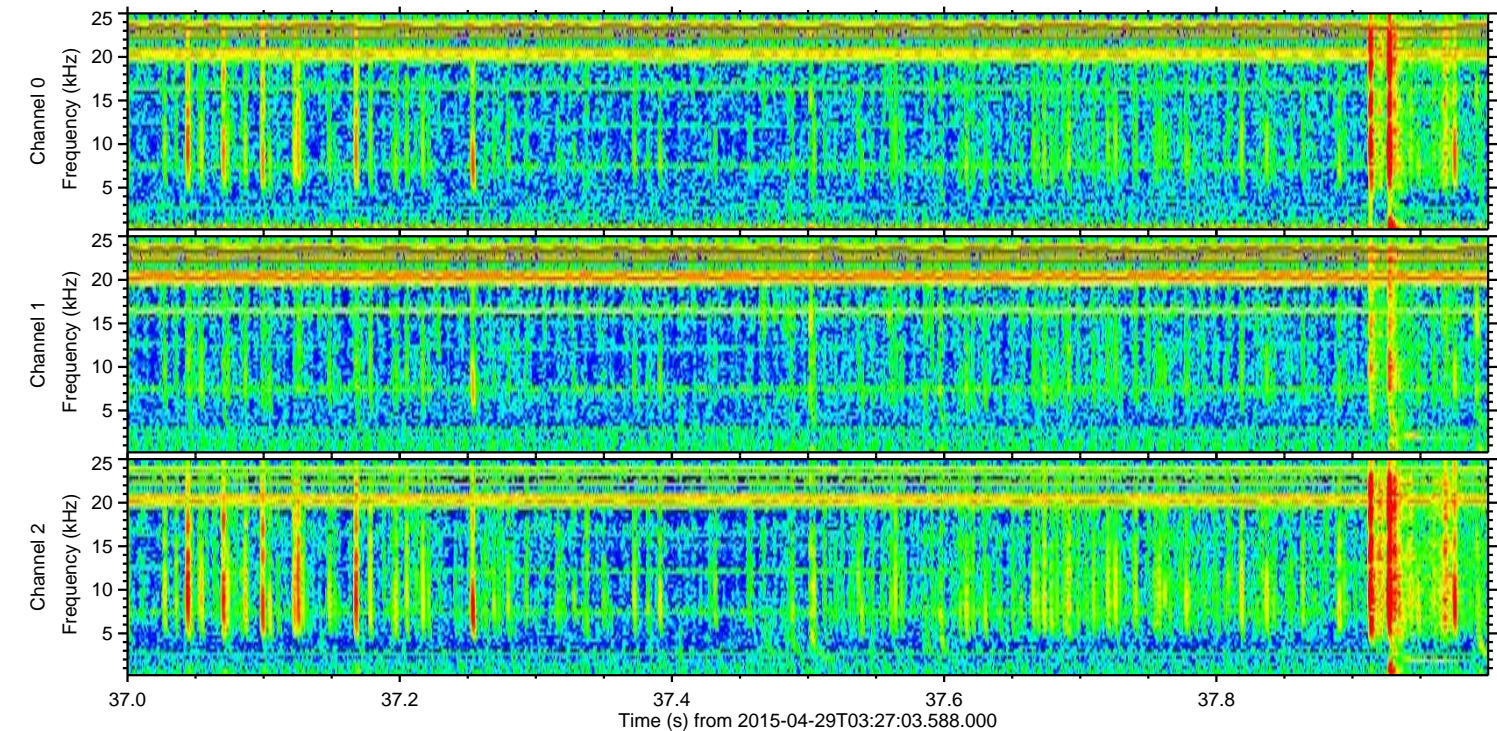
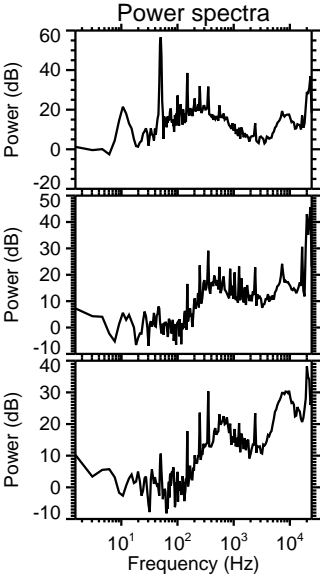
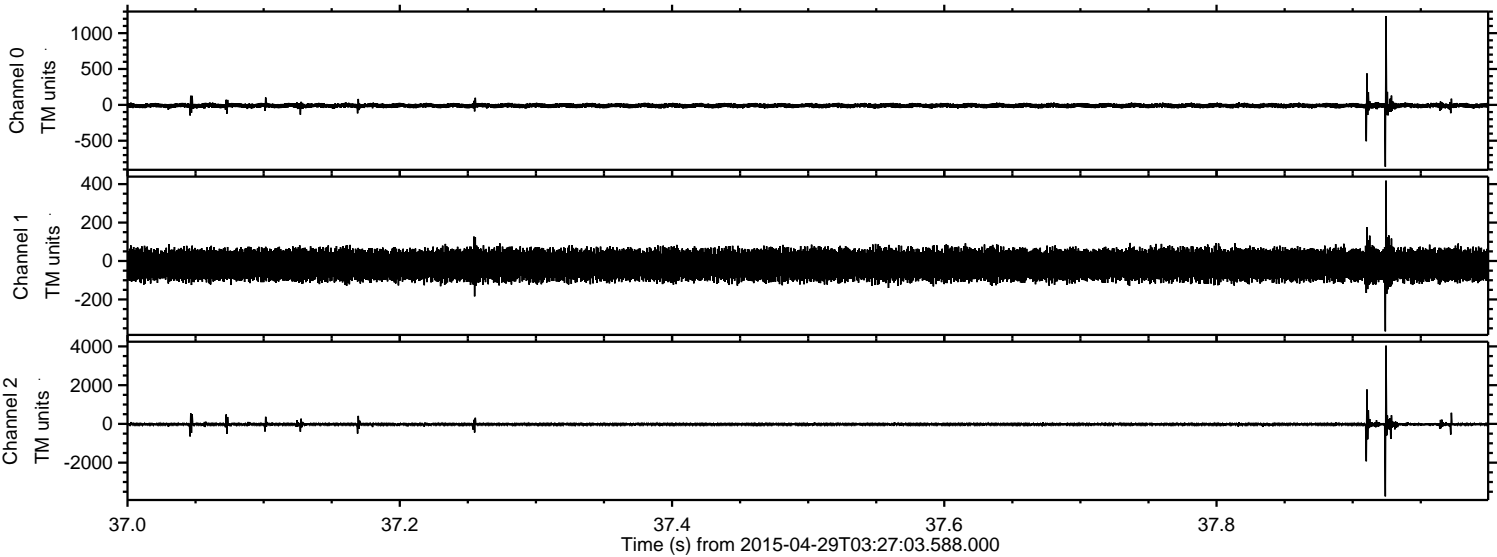
ELMAVAN 3D WAVEFORMS (Measured data sampled at 50 kHz) 49496 packets of 144 samples from 2015-04-29T03:27:03.588.000. Part 112/143

Processed Wed Apr 29 05:35:56 2015 by ELM ver.2012-10-06 from 001\_\_elm20150429\_032702\_\_dat00.bin





Processed Wed Apr 29 05:35:57 2015 by ELM ver.2012-10-06 from 001\_\_elm20150429\_032702\_\_dat00.bin



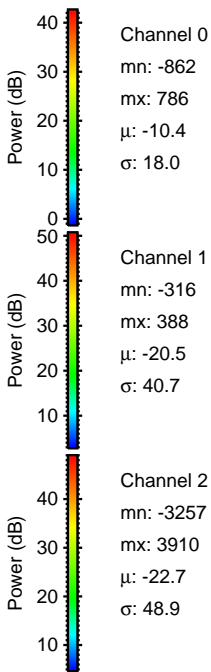
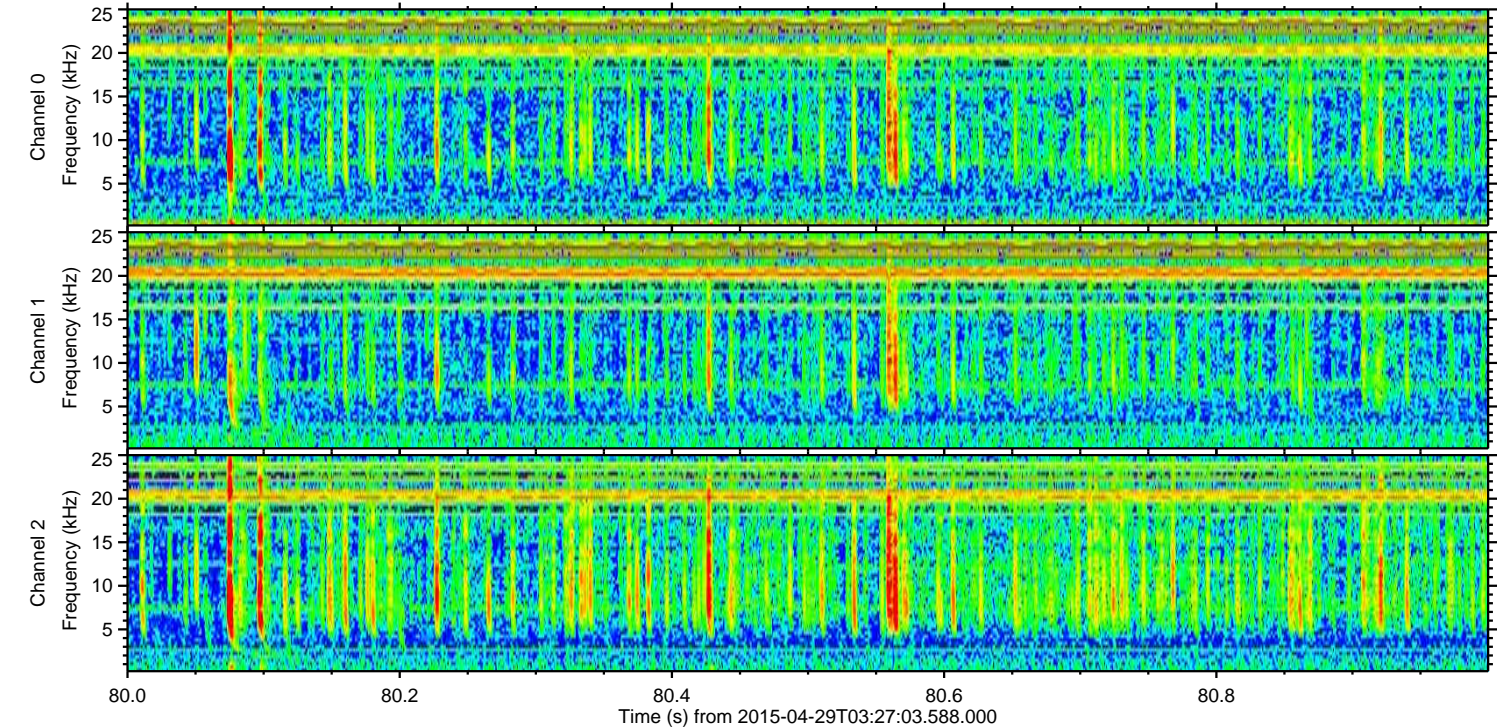
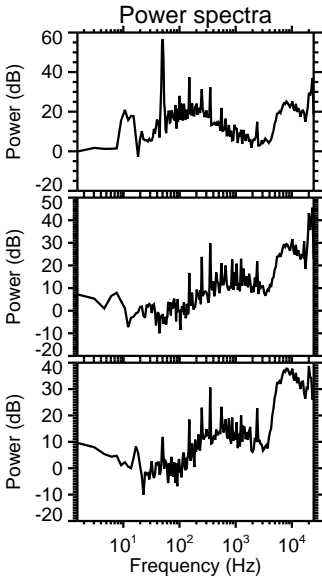
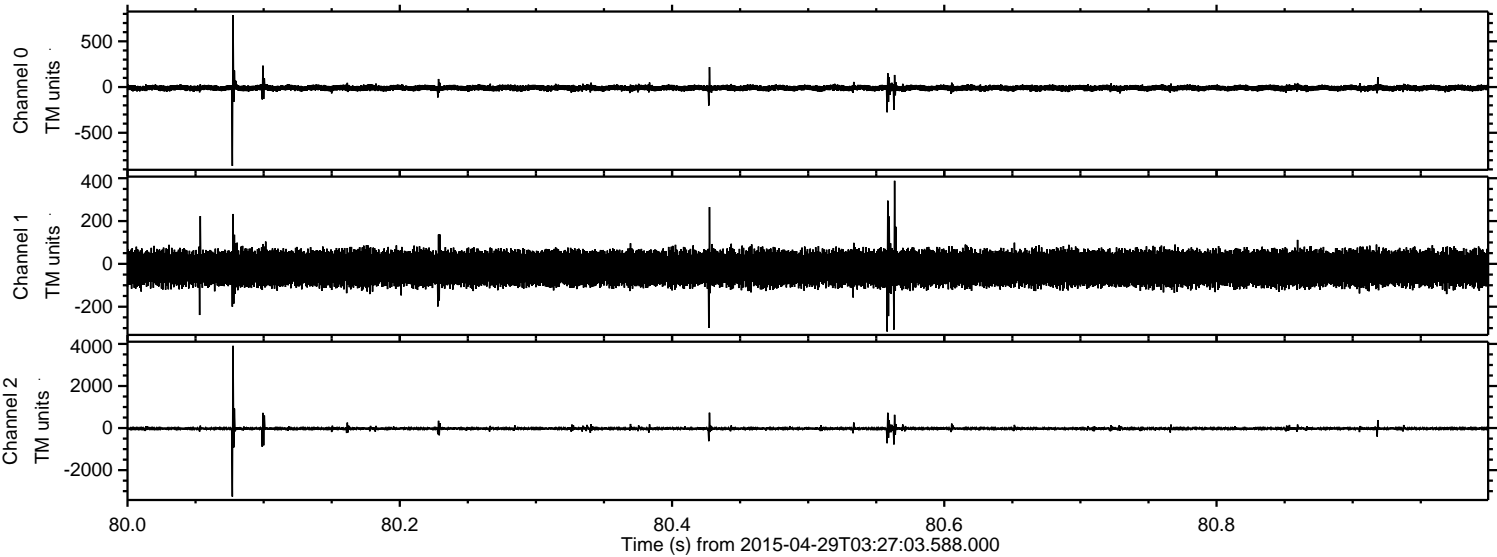
Channel 0  
mn: -862  
mx: 1239  
 $\mu$ : -10.3  
 $\sigma$ : 19.4

Channel 1  
mn: -366  
mx: 418  
 $\mu$ : -20.5  
 $\sigma$ : 40.0

Channel 2  
mn: -3740  
mx: 4040  
 $\mu$ : -22.7  
 $\sigma$ : 53.1

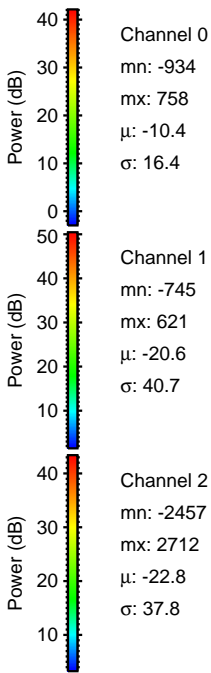
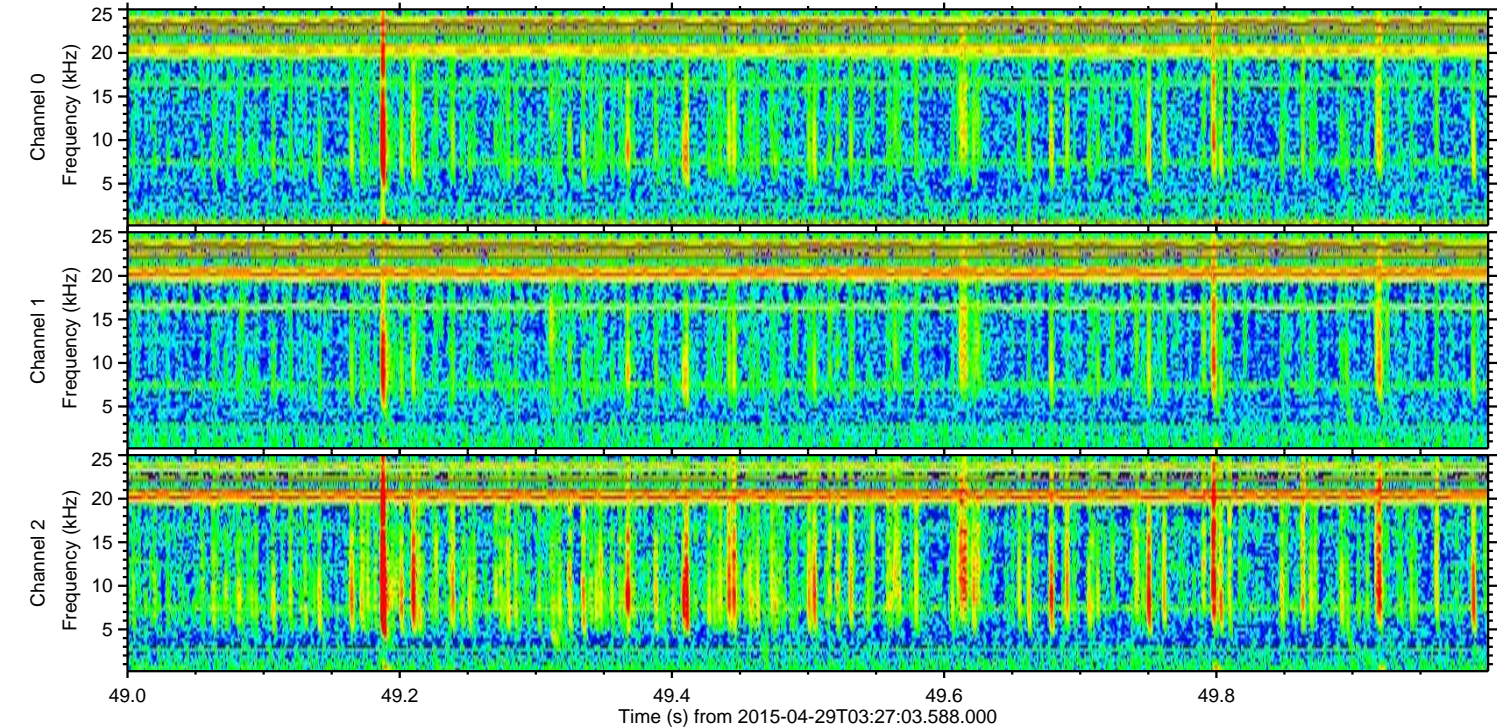
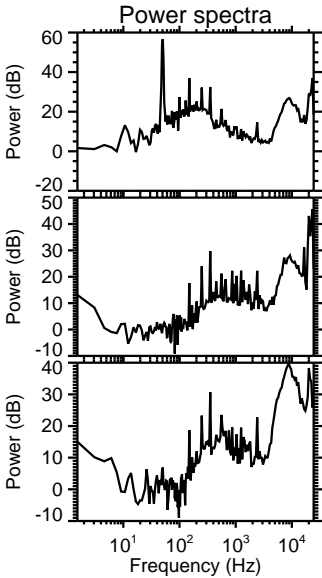
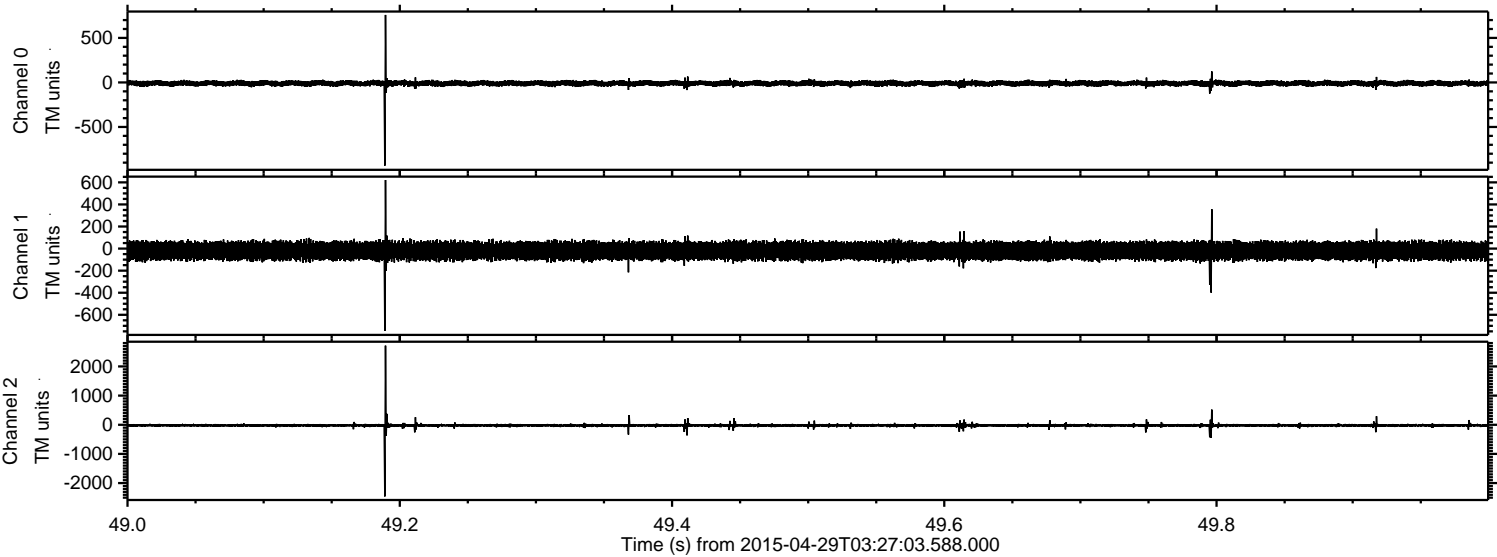


Processed Wed Apr 29 05:35:58 2015 by ELM ver.2012-10-06 from 001\_\_elm20150429\_032702\_\_dat00.bin





Processed Wed Apr 29 05:35:59 2015 by ELM ver.2012-10-06 from 001\_\_elm20150429\_032702\_\_dat00.bin



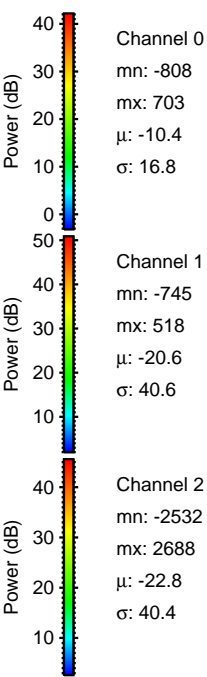
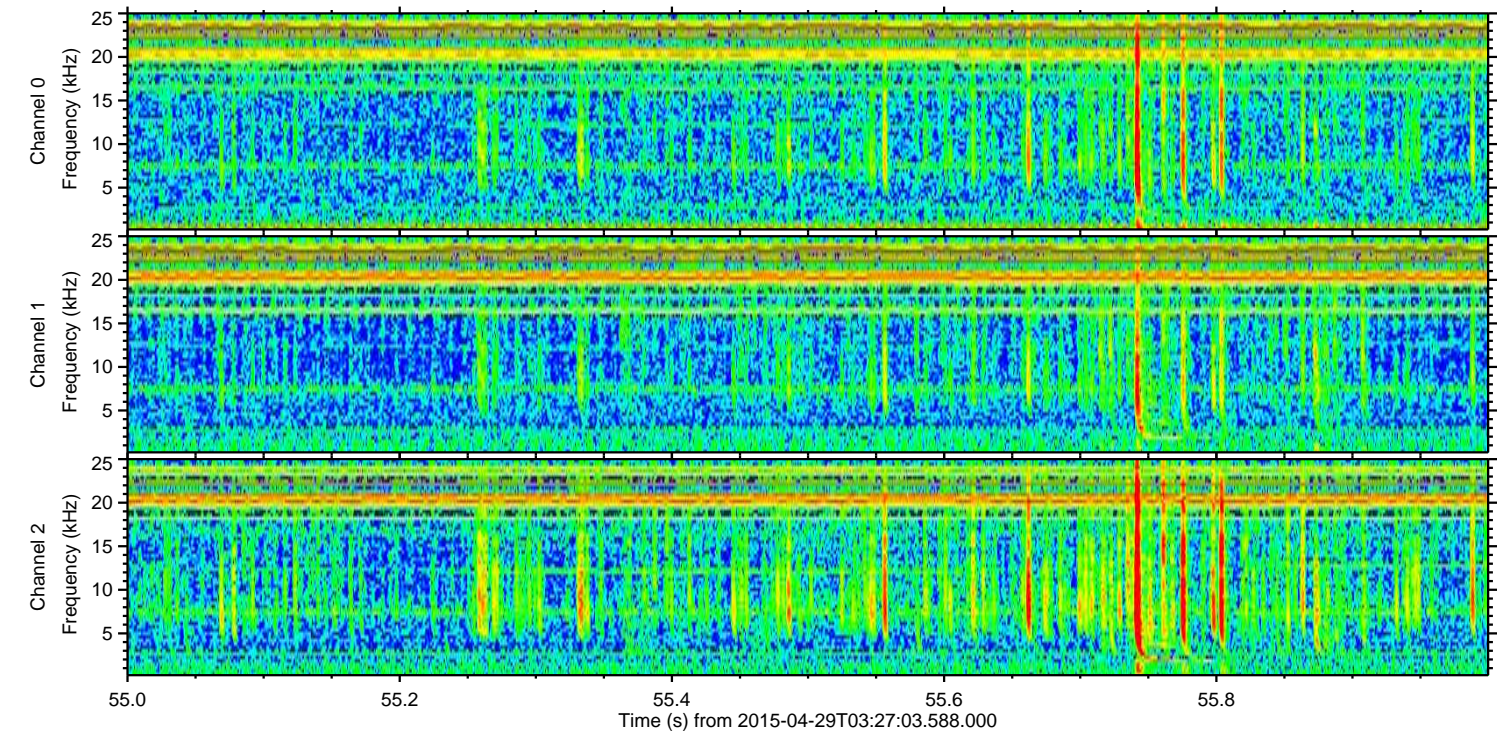
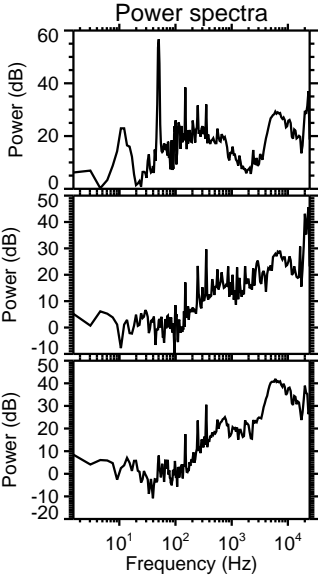
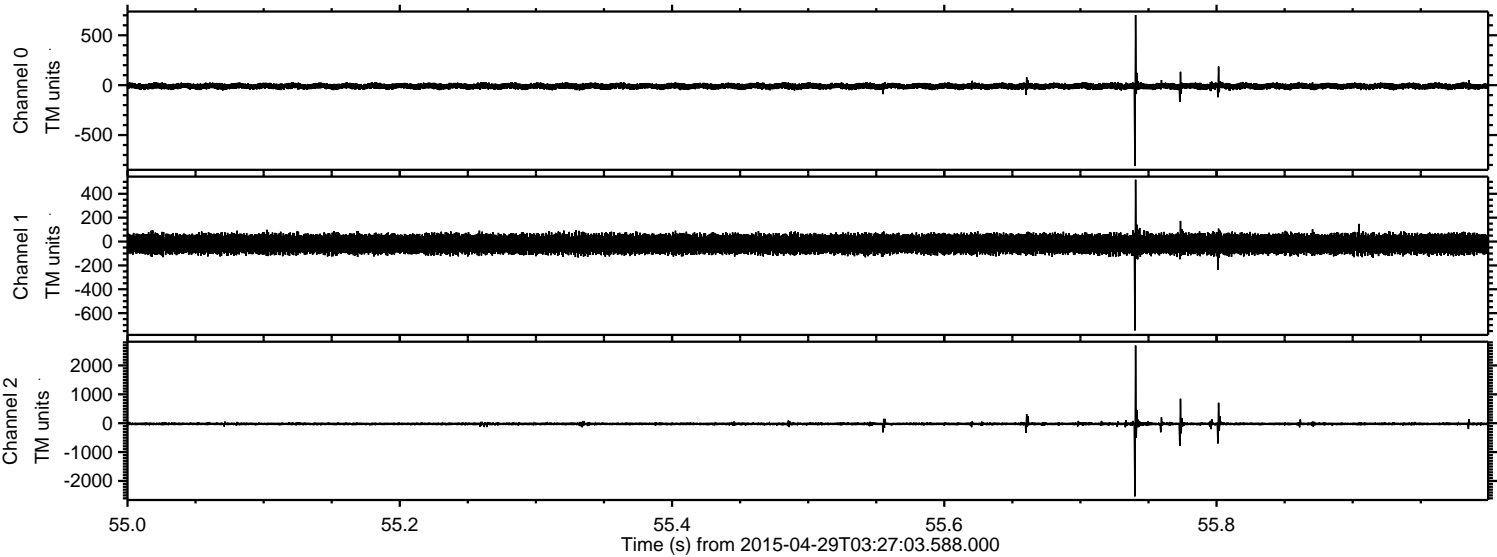
Channel 0  
mn: -934  
mx: 758  
 $\mu$ : -10.4  
 $\sigma$ : 16.4

Channel 1  
mn: -745  
mx: 621  
 $\mu$ : -20.6  
 $\sigma$ : 40.7

Channel 2  
mn: -2457  
mx: 2712  
 $\mu$ : -22.8  
 $\sigma$ : 37.8



Processed Wed Apr 29 05:36:00 2015 by ELM ver.2012-10-06 from 001\_\_elm20150429\_032702\_\_dat00.bin



Channel 0  
mn: -808  
mx: 703  
 $\mu$ : -10.4  
 $\sigma$ : 16.8

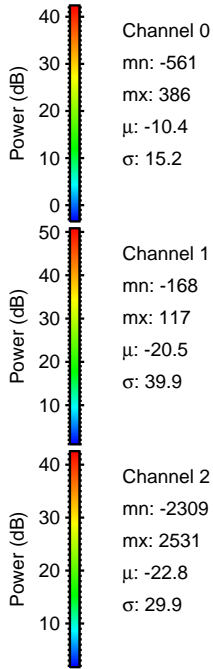
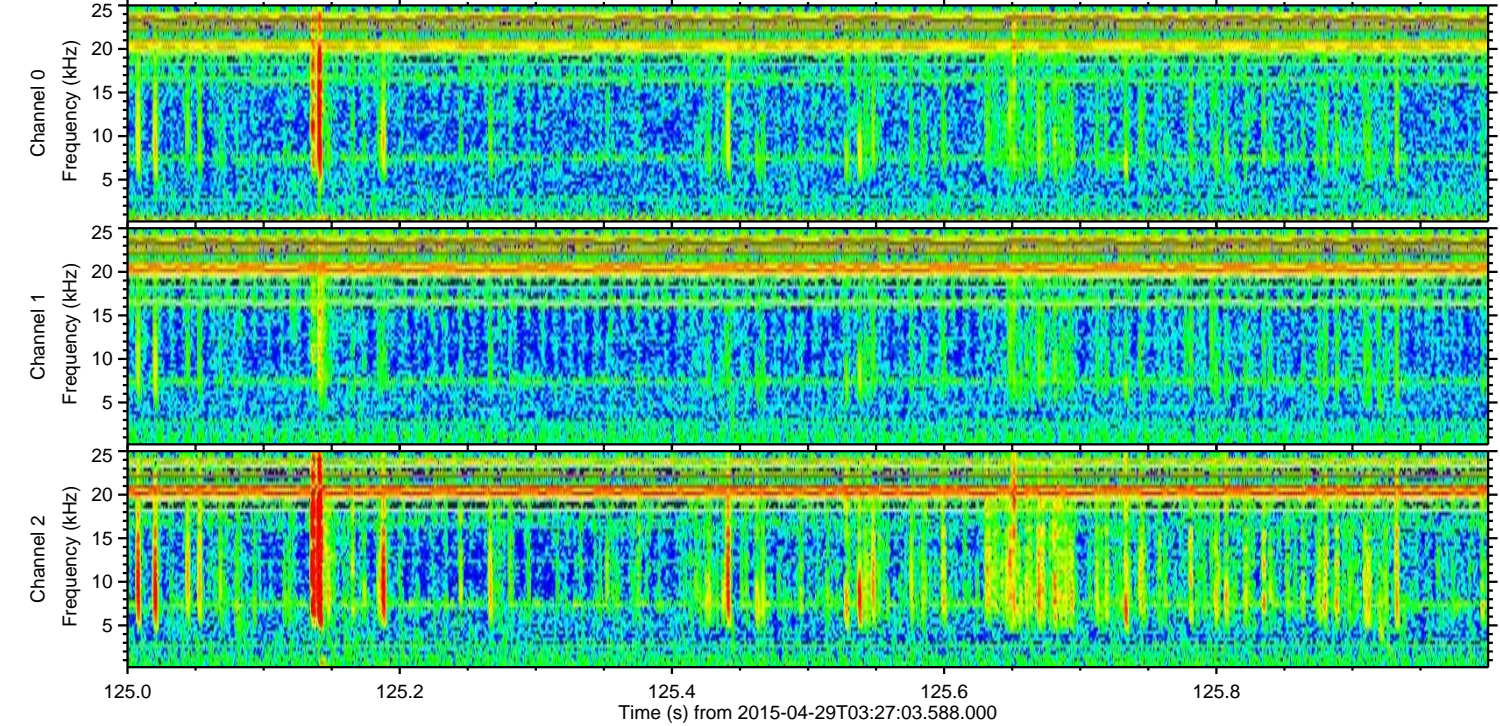
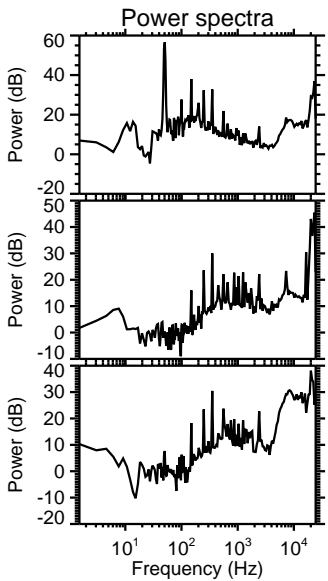
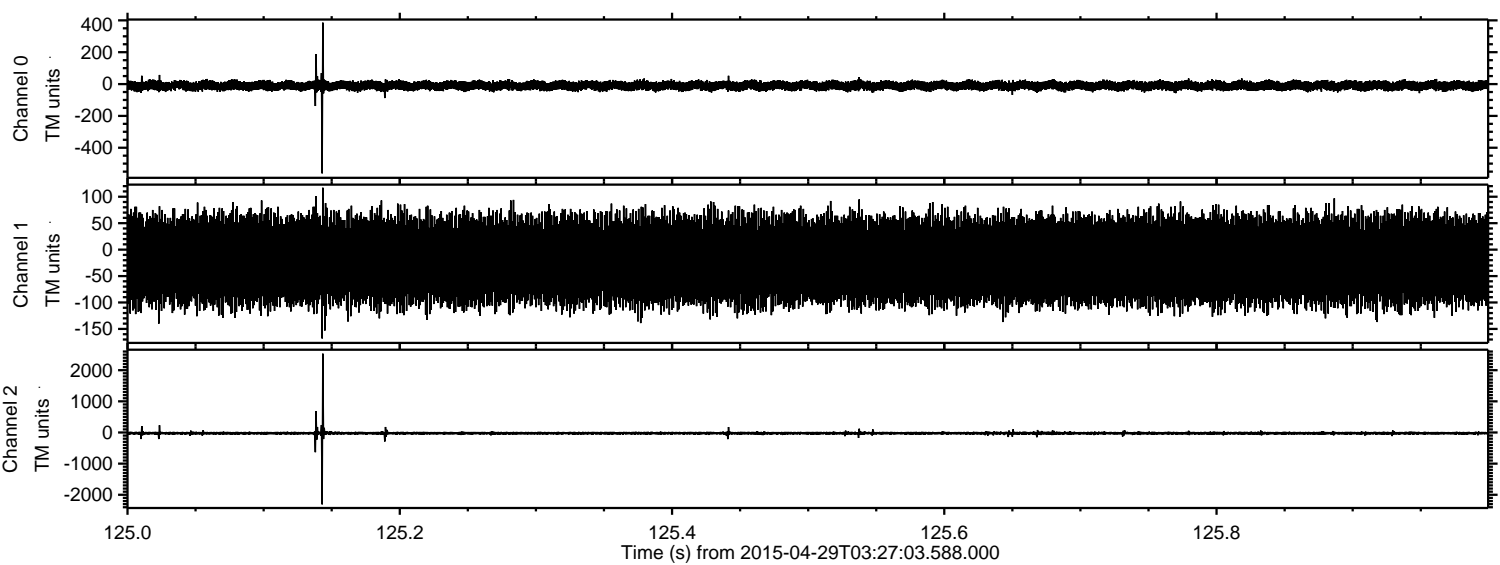
Channel 1  
mn: -745  
mx: 518  
 $\mu$ : -20.6  
 $\sigma$ : 40.6

Channel 2  
mn: -2532  
mx: 2688  
 $\mu$ : -22.8  
 $\sigma$ : 40.4



ELMAVAN 3D WAVEFORMS (Measured data sampled at 50 kHz) 49496 packets of 144 samples from 2015-04-29T03:27:03.588.000. Part 126/143

Processed Wed Apr 29 05:36:02 2015 by ELM ver.2012-10-06 from 001\_\_elm20150429\_032702\_\_dat00.bin



Channel 0  
mn: -561  
mx: 386  
 $\mu$ : -10.4  
 $\sigma$ : 15.2

Channel 1  
mn: -168  
mx: 117  
 $\mu$ : -20.5  
 $\sigma$ : 39.9

Channel 2  
mn: -2309  
mx: 2531  
 $\mu$ : -22.8  
 $\sigma$ : 29.9



Processed Wed Apr 29 05:36:03 2015 by ELM ver.2012-10-06 from 001\_\_elm20150429\_032702\_\_dat00.bin

