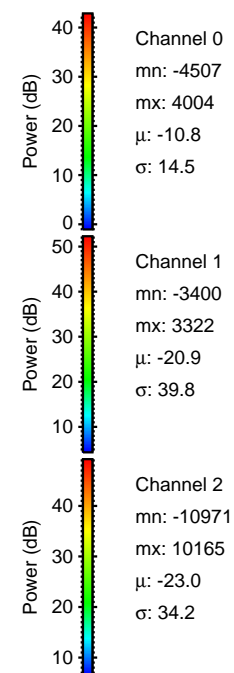
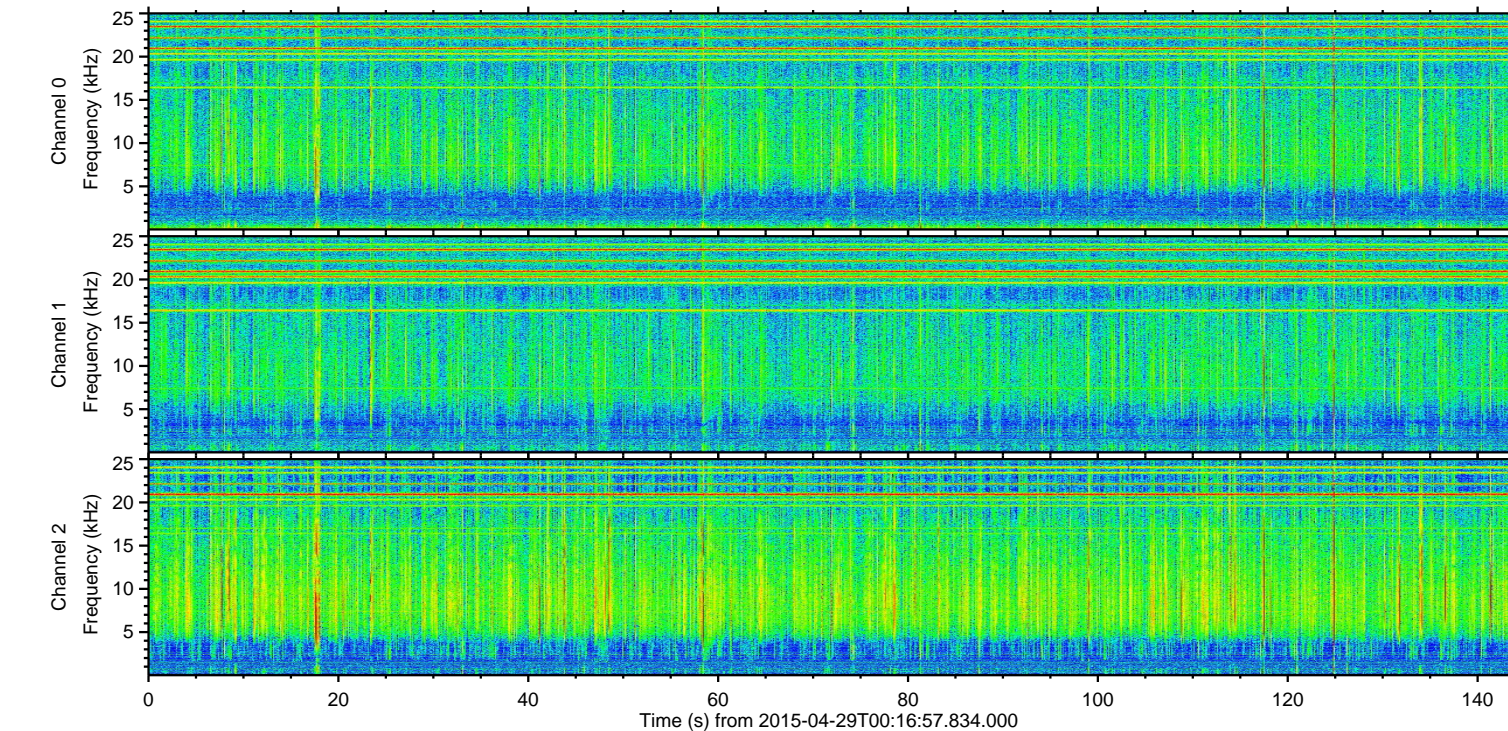
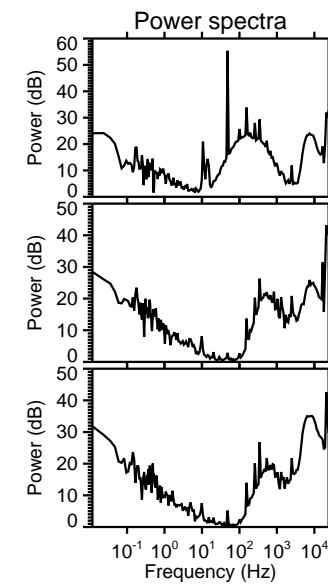
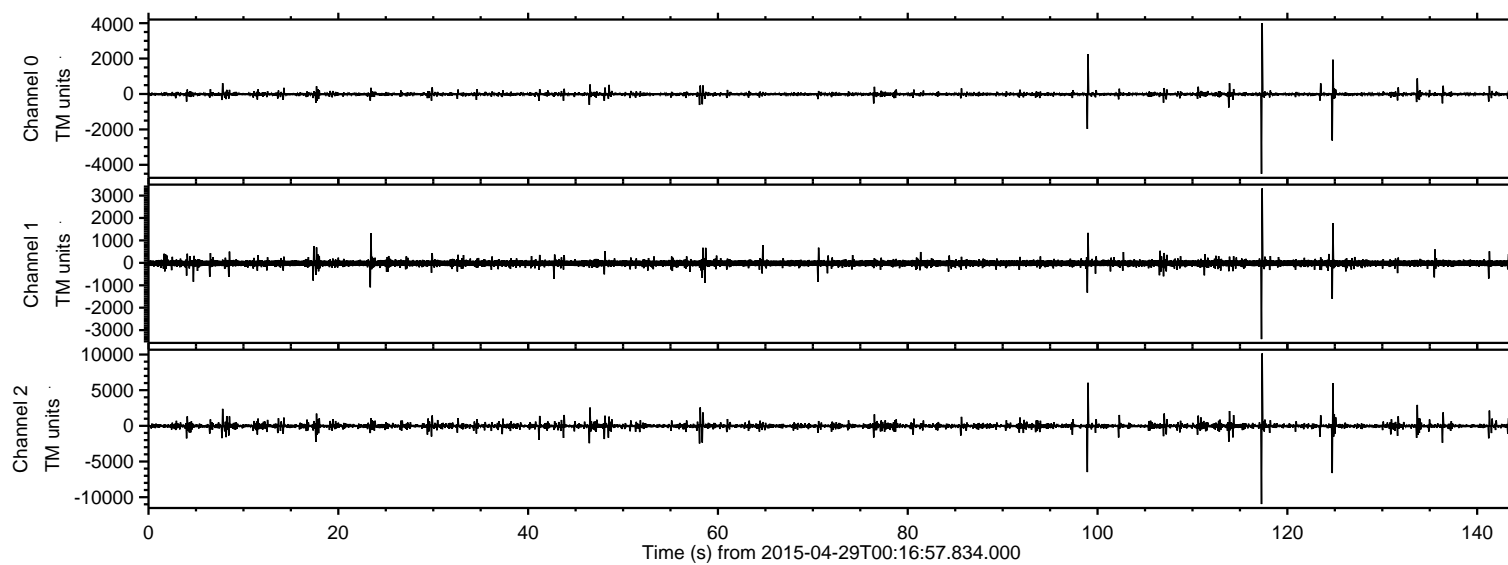


# ELMAVAN 3D WAVEFORMS (Measured data sampled at 50 kHz) 49780 packets of 144 samples from 2015-04-29T00:16:57.834.000.

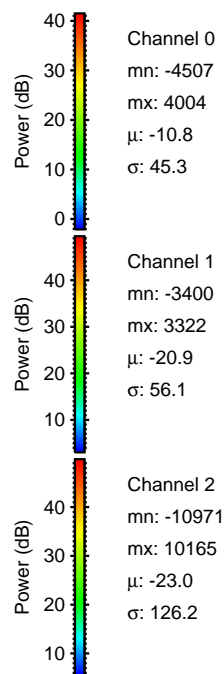
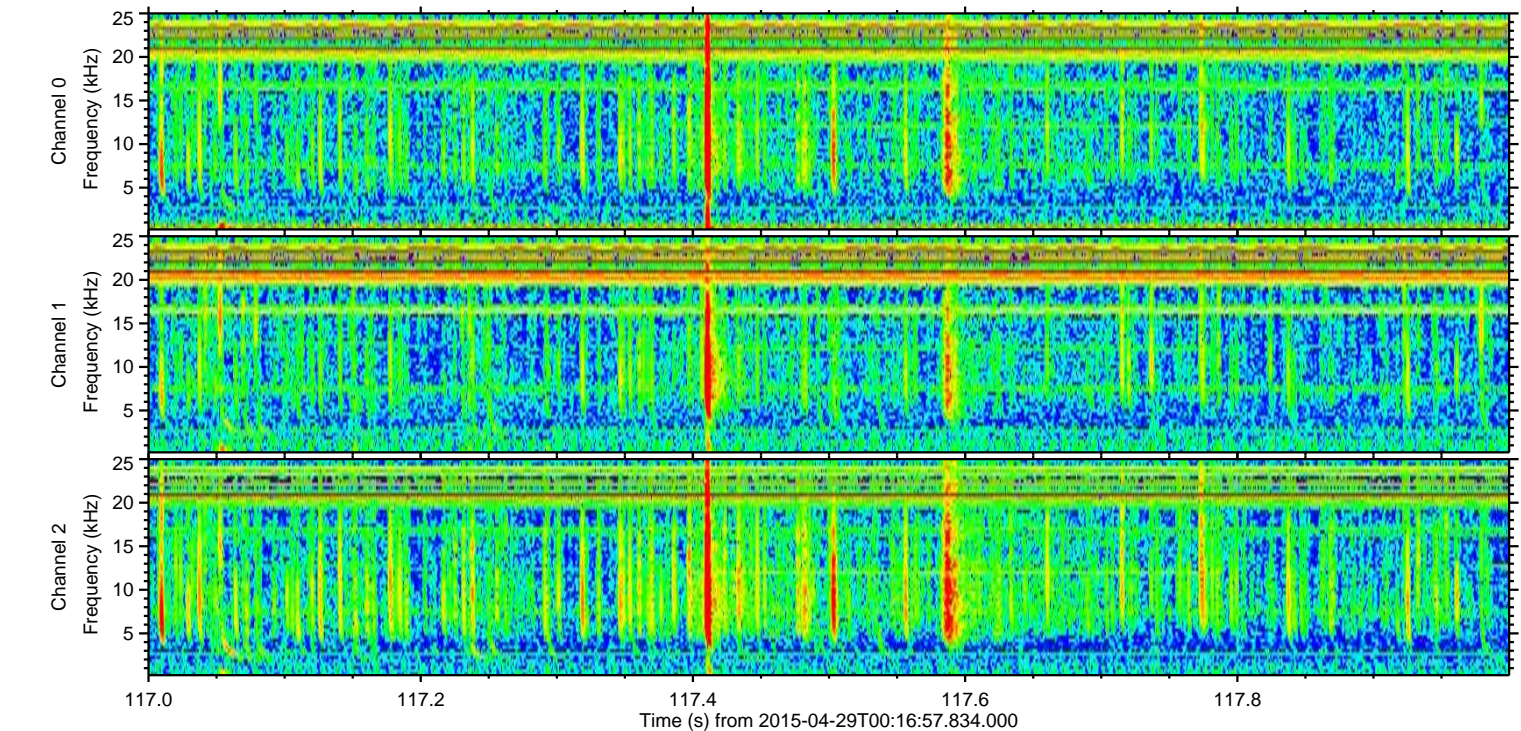
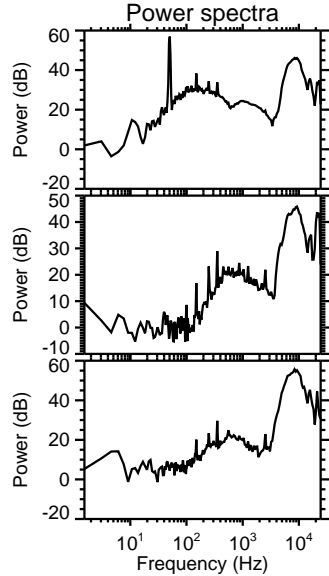
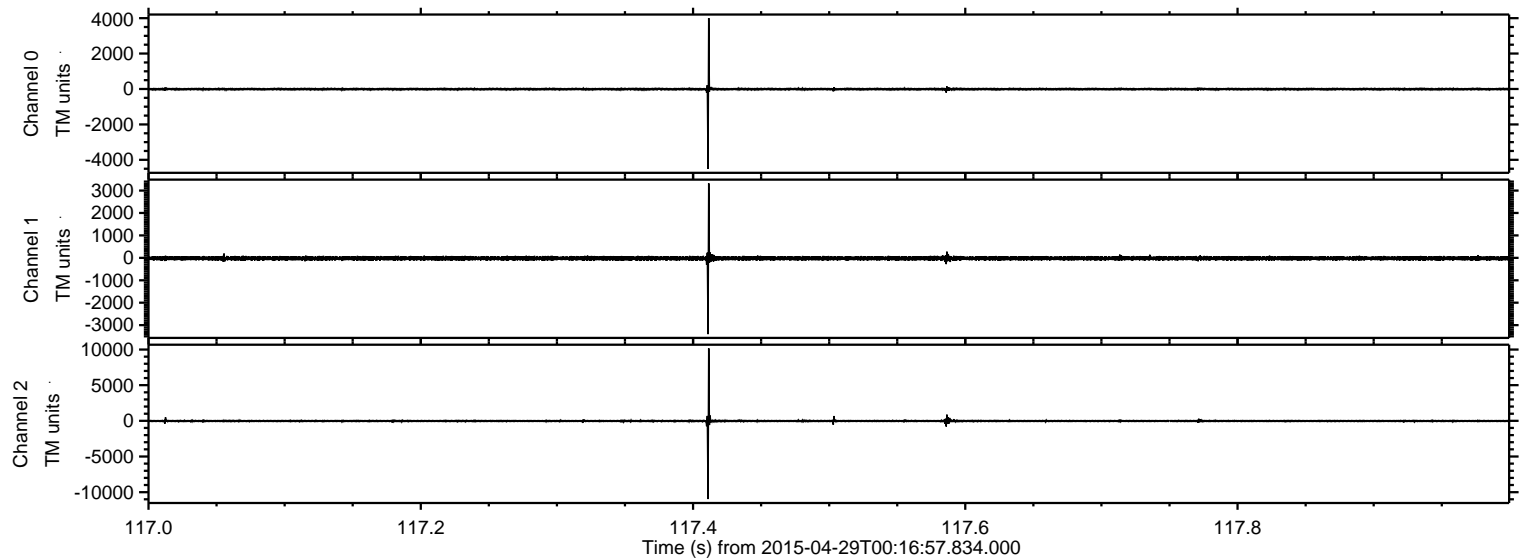
Processed Wed Apr 29 02:24:27 2015 by ELM ver.2012-10-06 from 001\_\_elm20150429\_001656\_\_dat00.bin





ELMAVAN 3D WAVEFORMS (Measured data sampled at 50 kHz) 49780 packets of 144 samples from 2015-04-29T00:16:57.834.000. Part 118/144

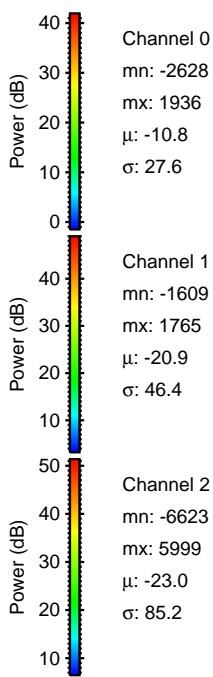
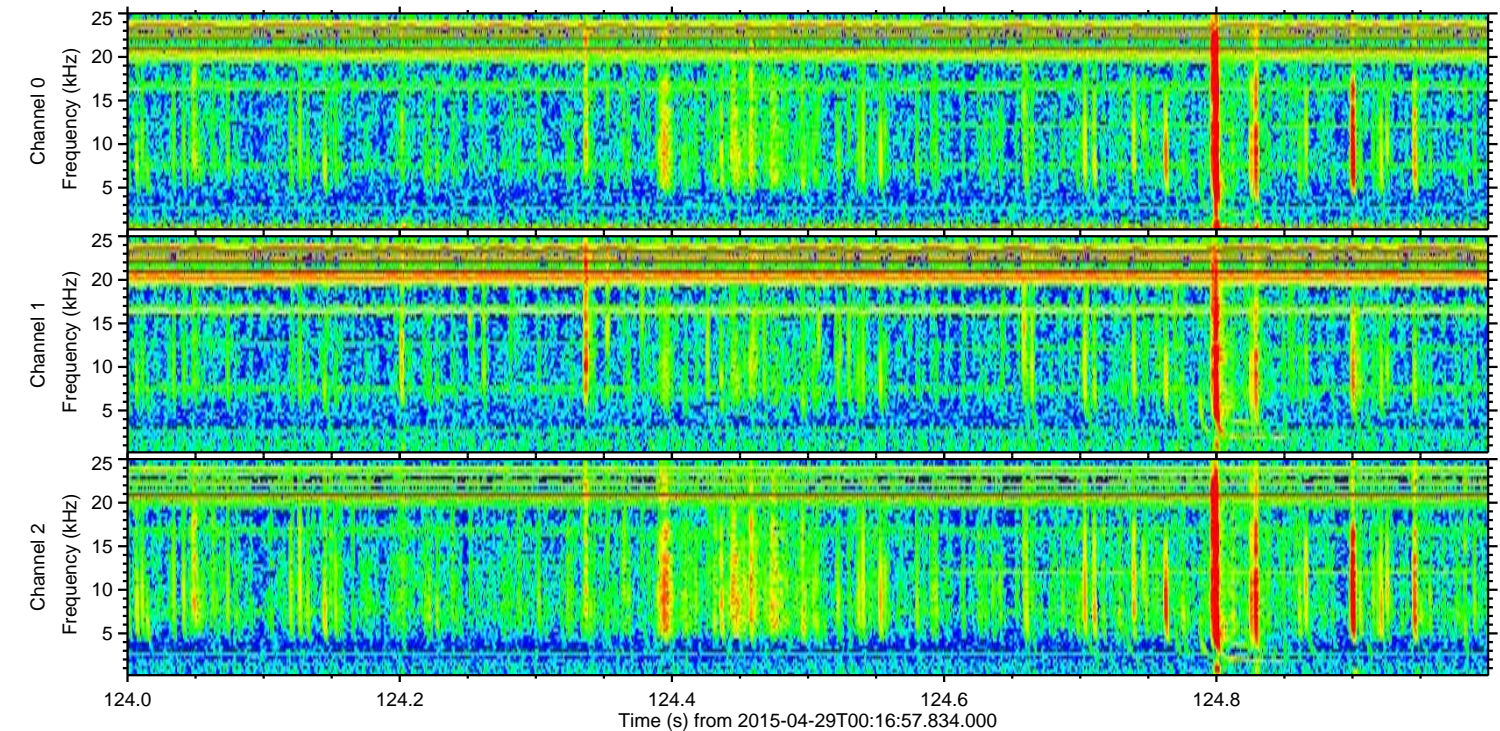
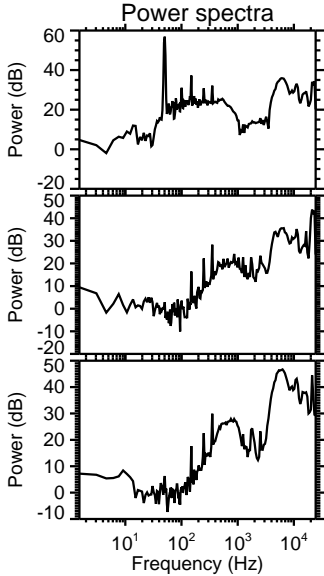
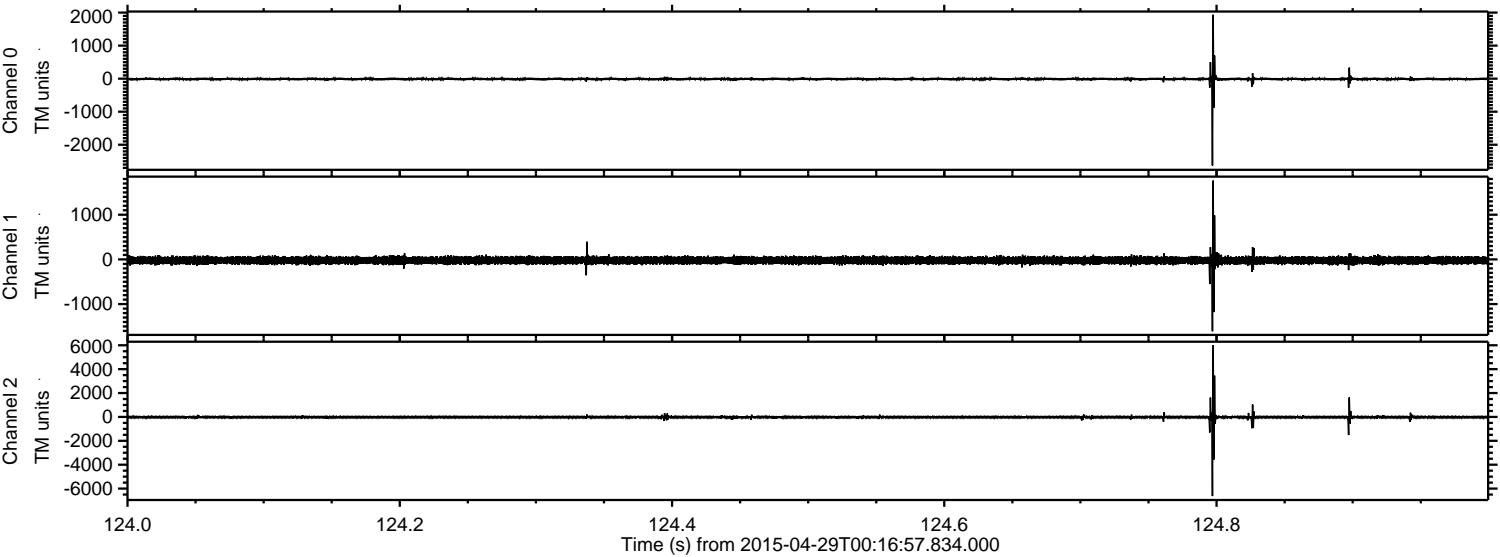
Processed Wed Apr 29 02:24:39 2015 by ELM ver.2012-10-06 from 001\_\_elm20150429\_001656\_\_dat00.bin





ELMAVAN 3D WAVEFORMS (Measured data sampled at 50 kHz) 49780 packets of 144 samples from 2015-04-29T00:16:57.834.000. Part 125/144

Processed Wed Apr 29 02:24:40 2015 by ELM ver.2012-10-06 from 001\_\_elm20150429\_001656\_\_dat00.bin



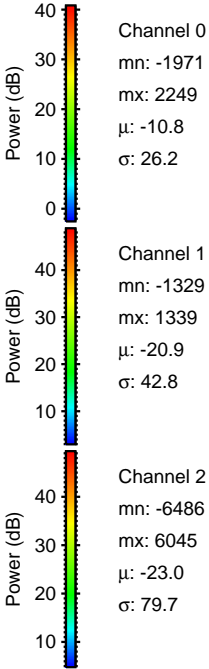
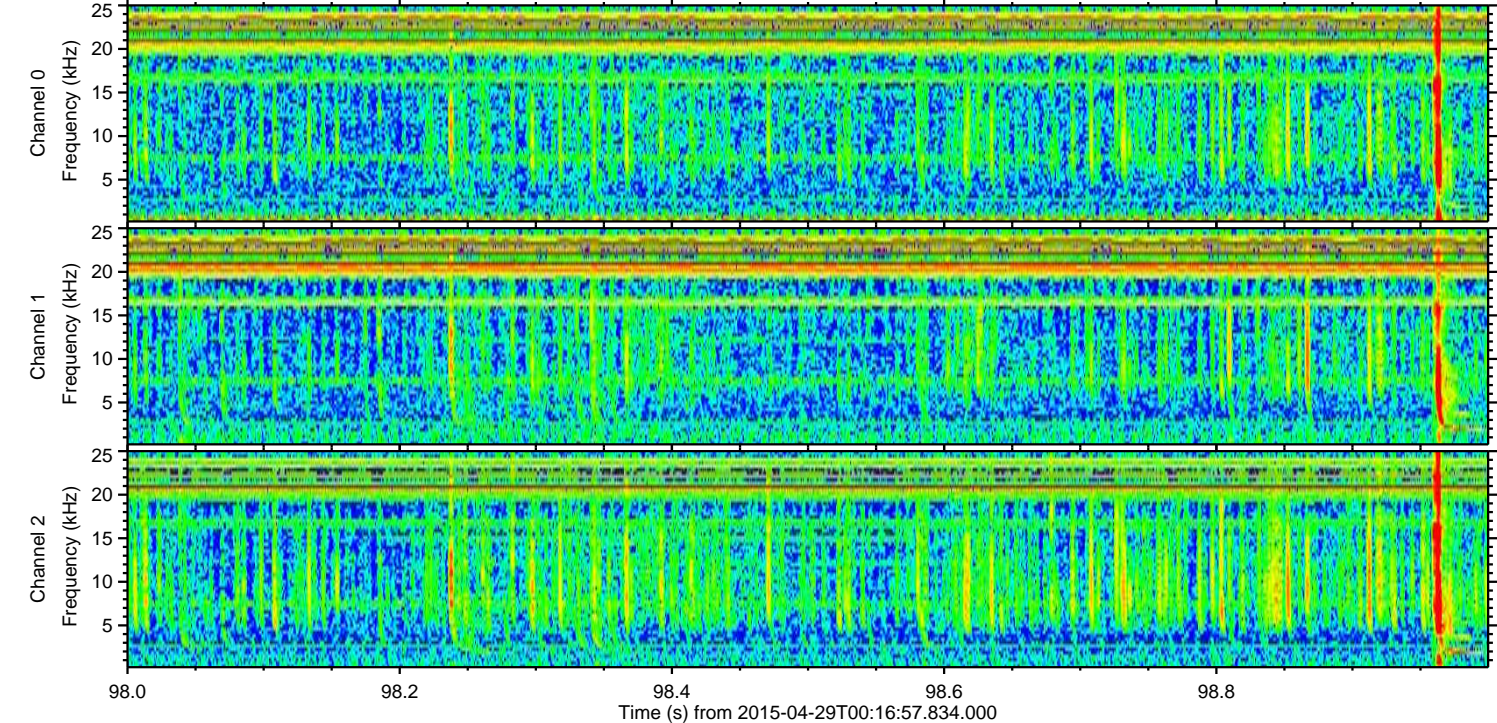
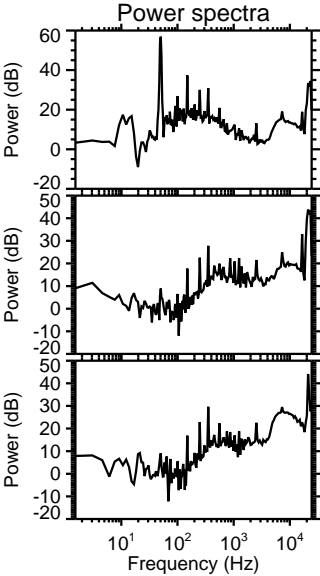
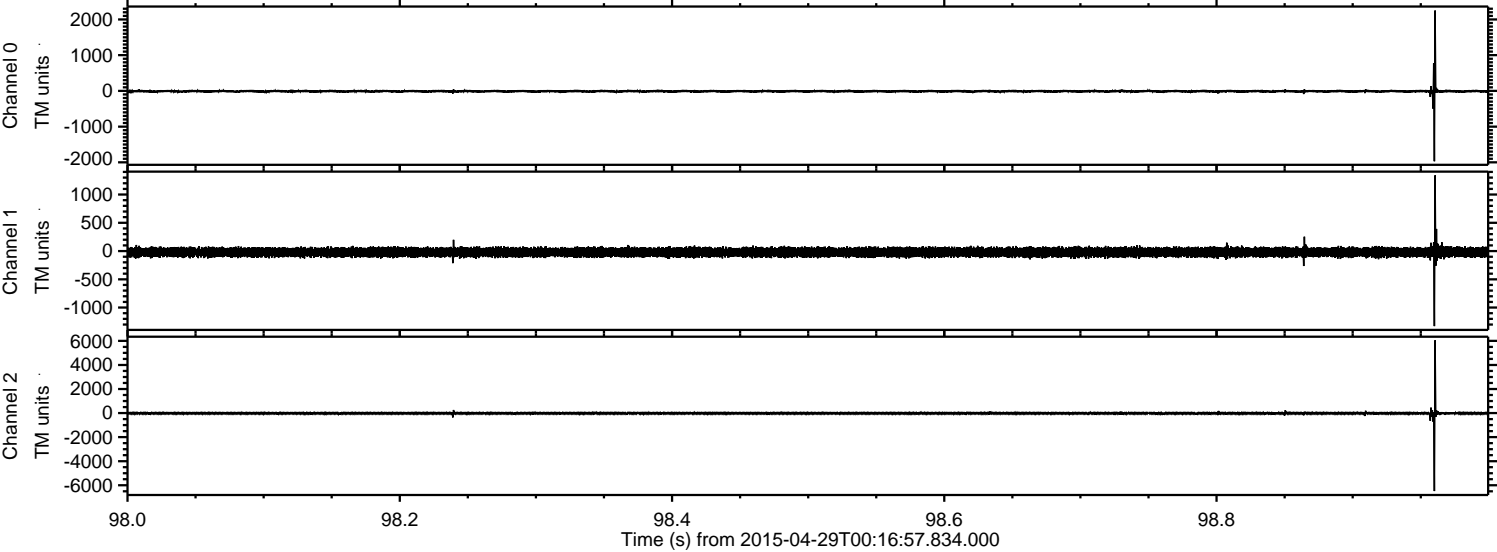
Channel 0  
mn: -2628  
mx: 1936  
 $\mu$ : -10.8  
 $\sigma$ : 27.6

Channel 1  
mn: -1609  
mx: 1765  
 $\mu$ : -20.9  
 $\sigma$ : 46.4

Channel 2  
mn: -6623  
mx: 5999  
 $\mu$ : -23.0  
 $\sigma$ : 85.2

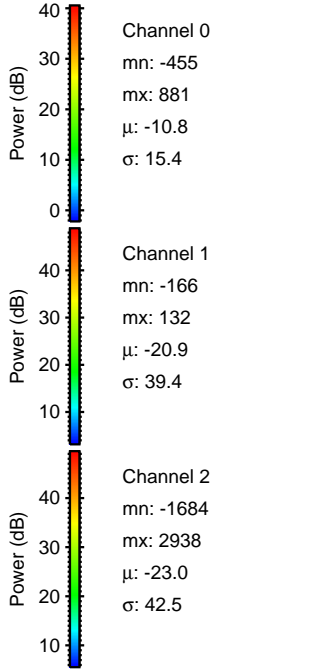
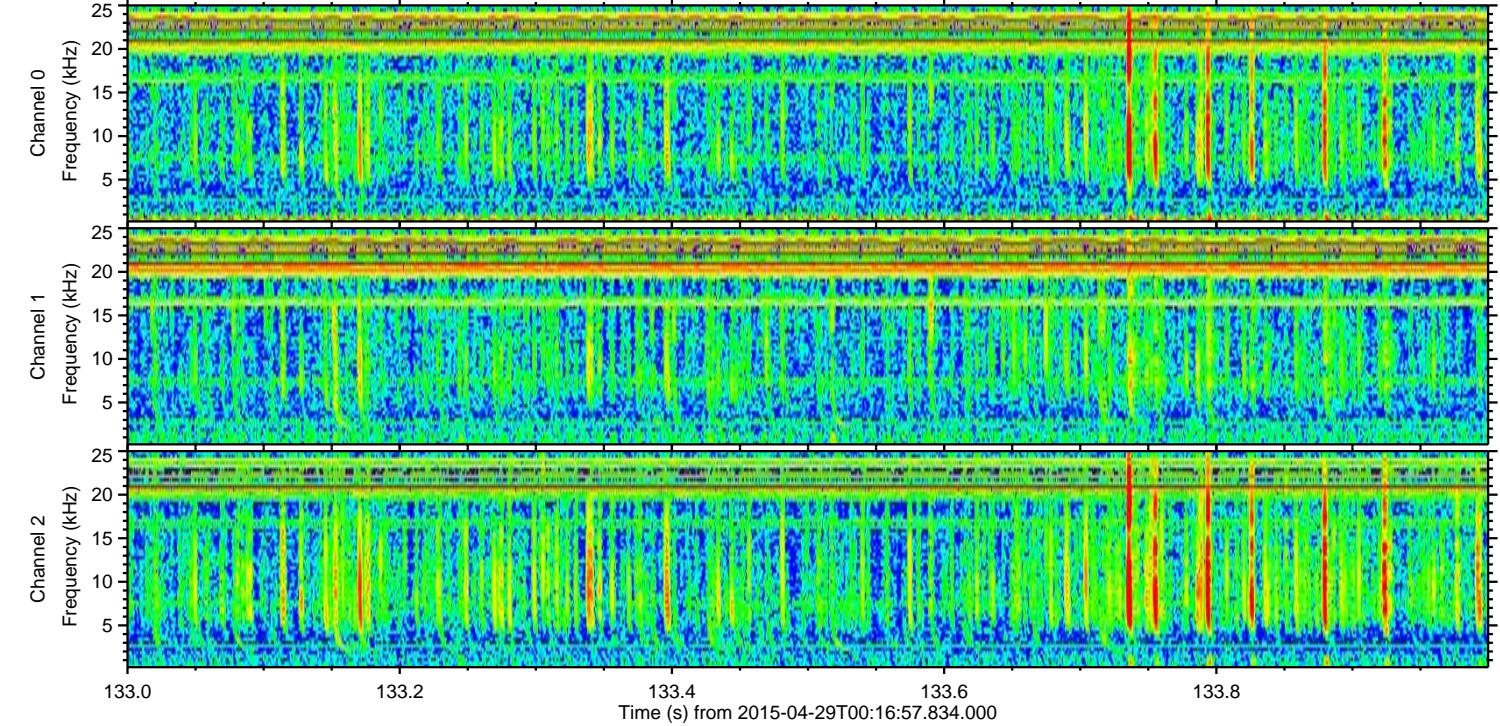
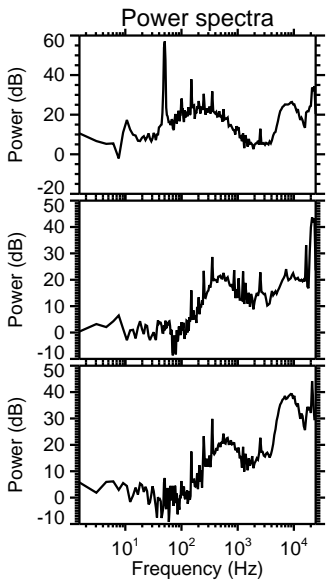
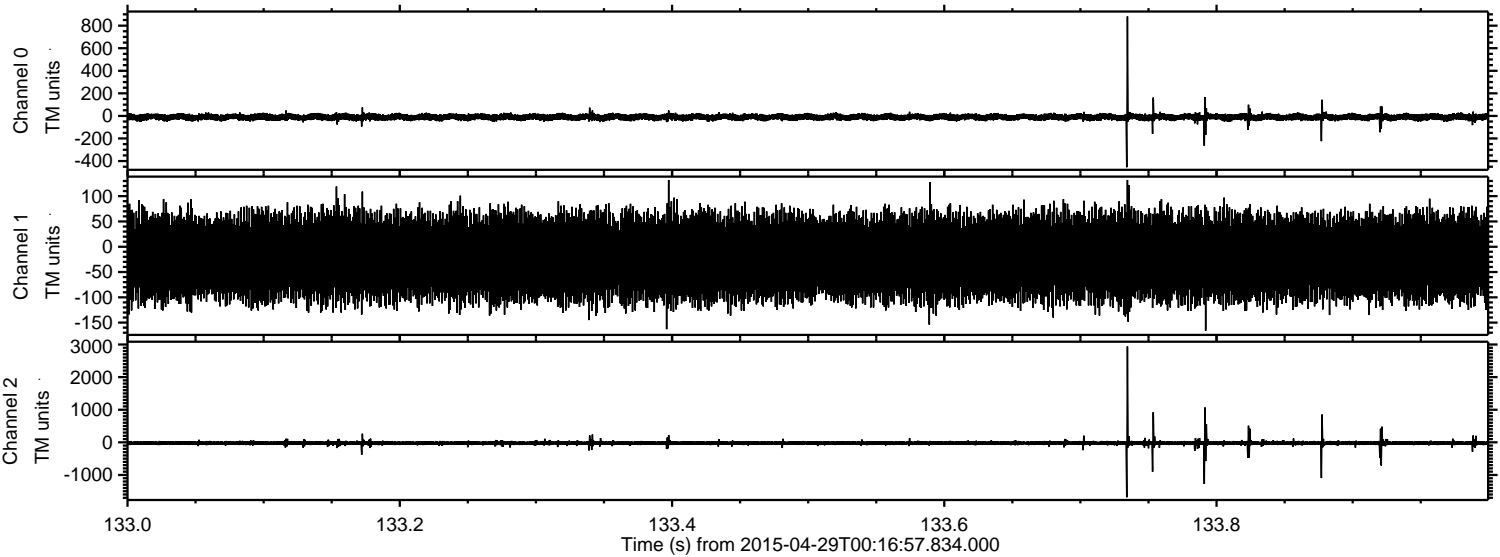


Processed Wed Apr 29 02:24:40 2015 by ELM ver.2012-10-06 from 001\_\_elm20150429\_001656\_\_dat00.bin



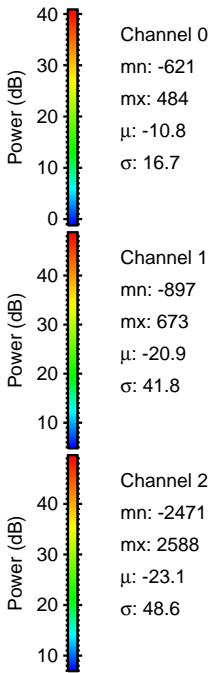
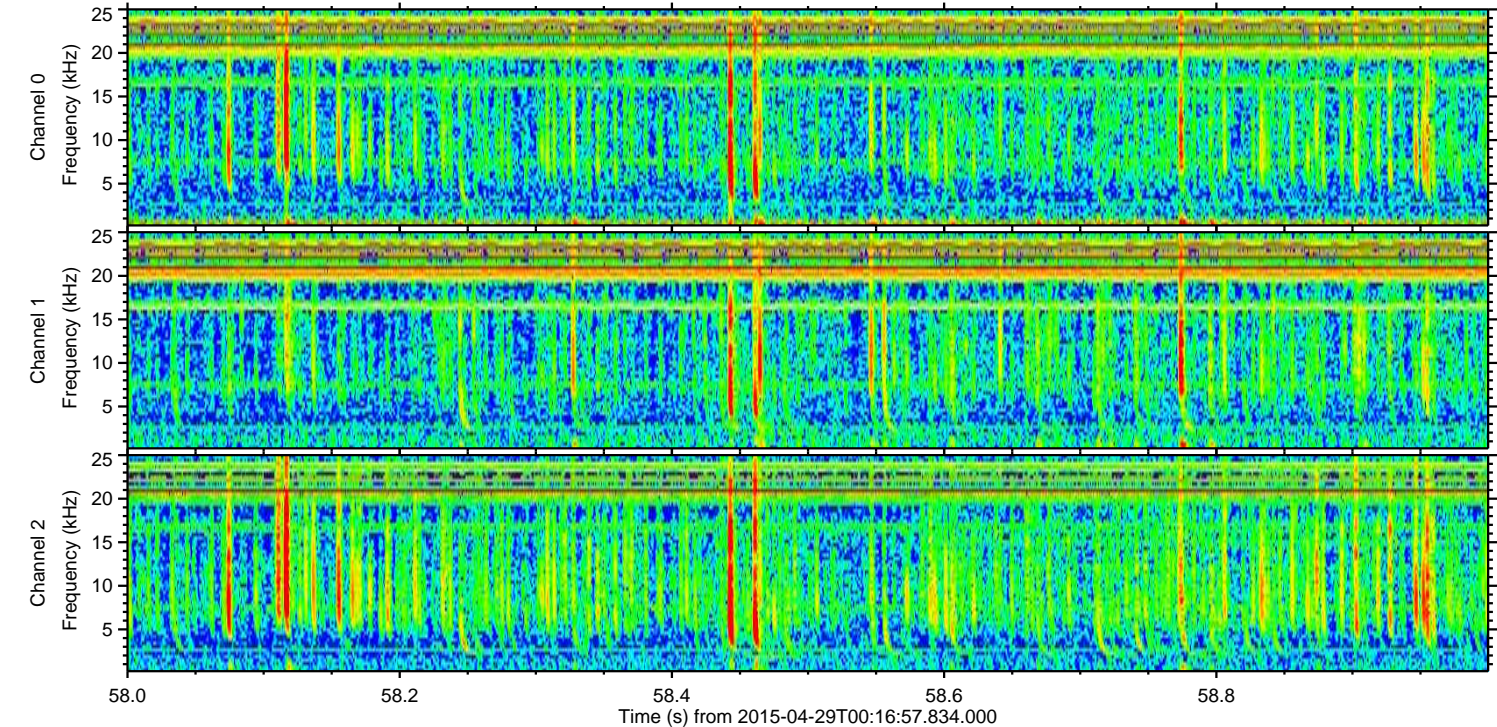
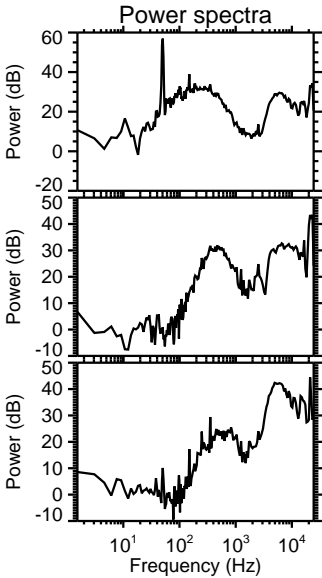
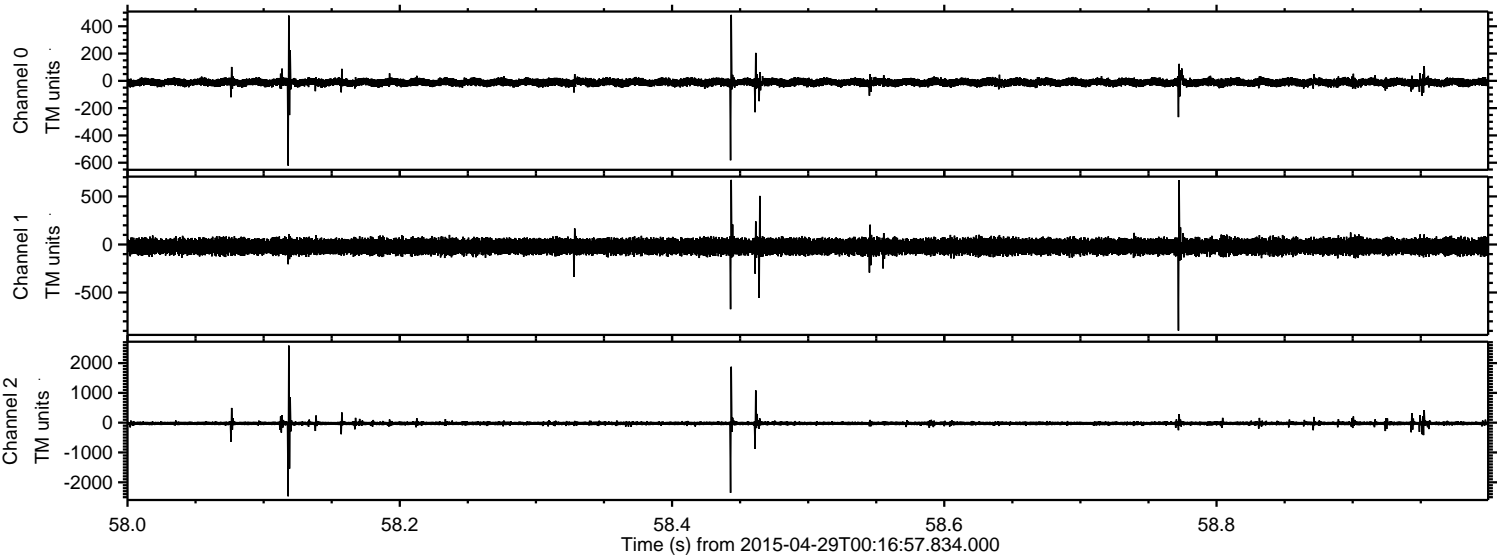


Processed Wed Apr 29 02:24:41 2015 by ELM ver.2012-10-06 from 001\_\_elm20150429\_001656\_\_dat00.bin





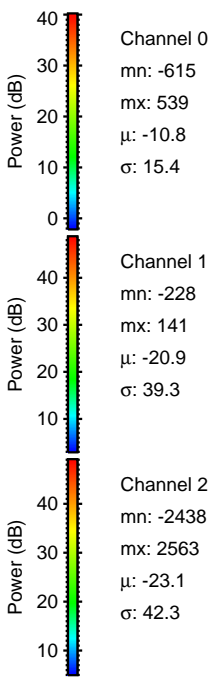
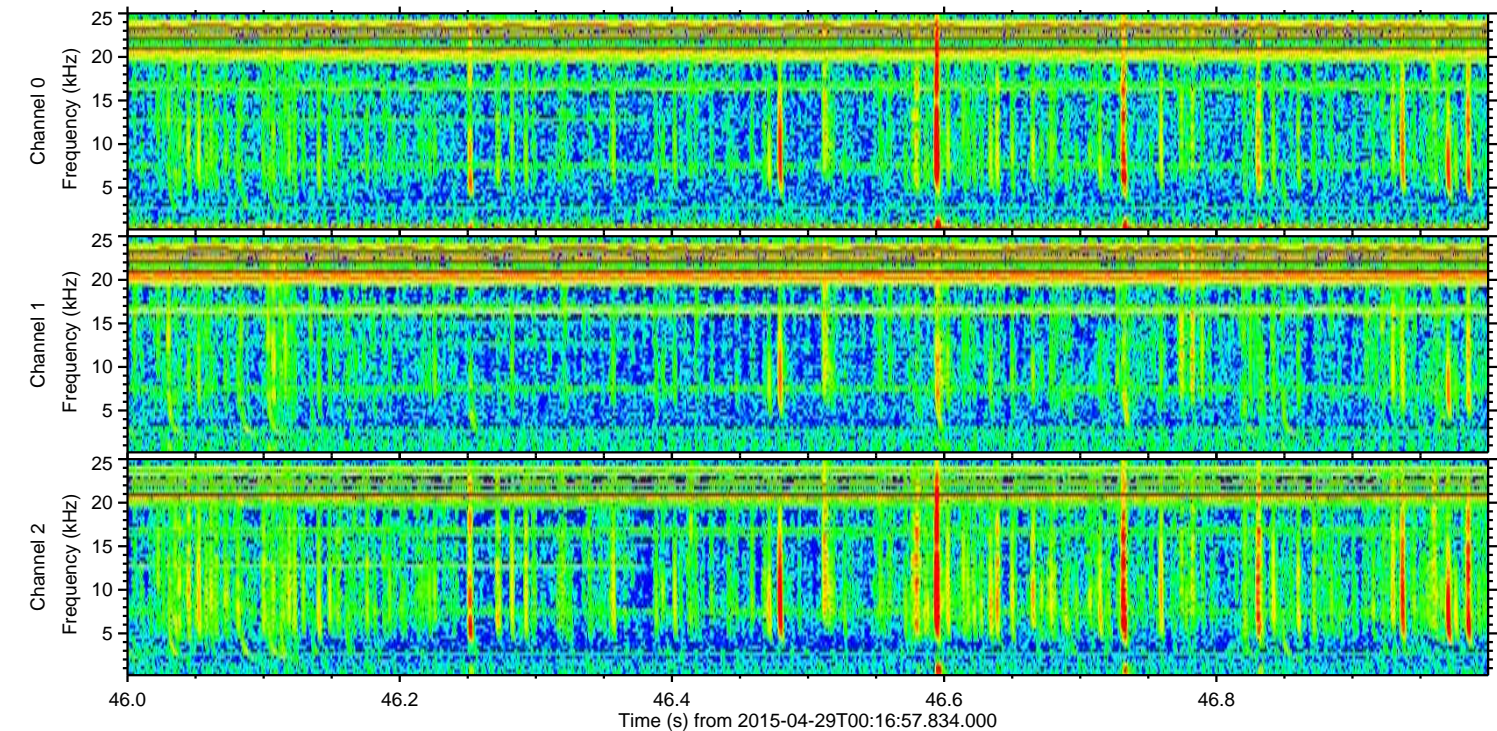
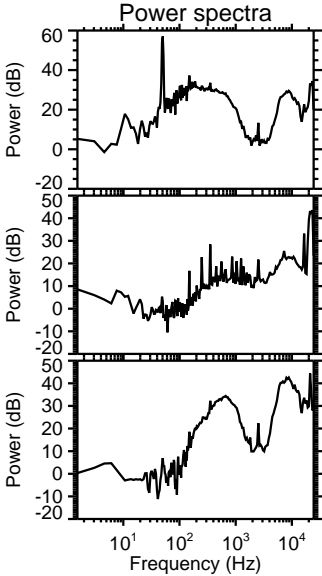
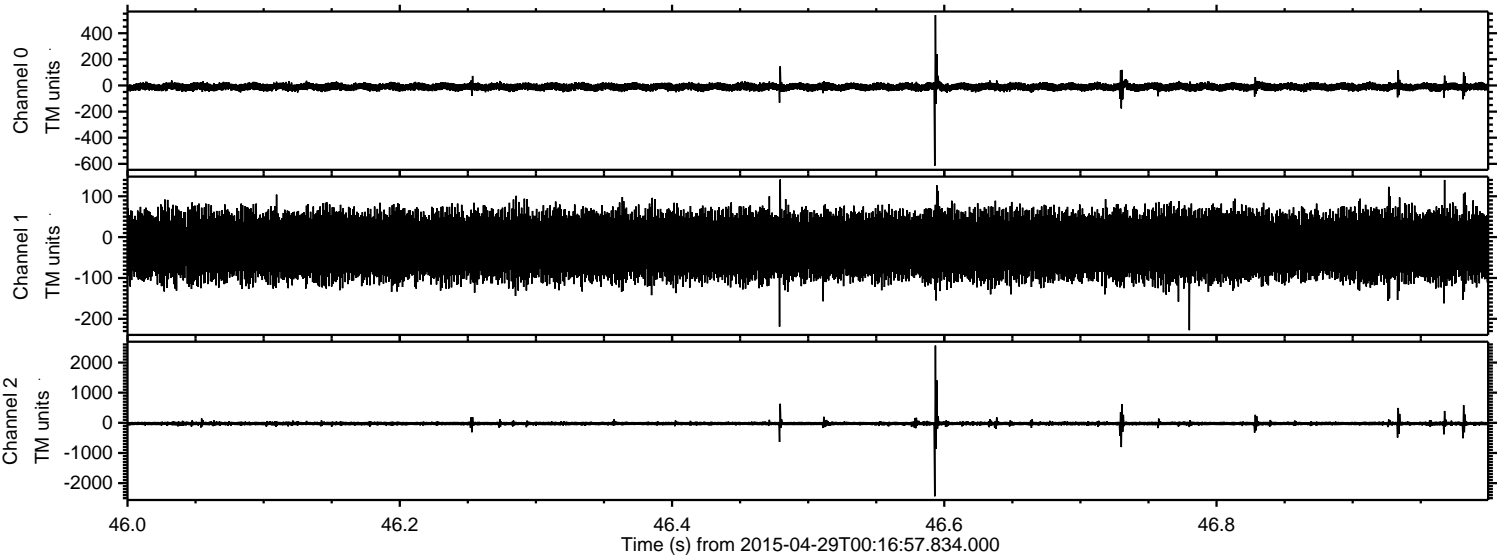
Processed Wed Apr 29 02:24:42 2015 by ELM ver.2012-10-06 from 001\_\_elm20150429\_001656\_\_dat00.bin





ELMAVAN 3D WAVEFORMS (Measured data sampled at 50 kHz) 49780 packets of 144 samples from 2015-04-29T00:16:57.834.000. Part 47/144

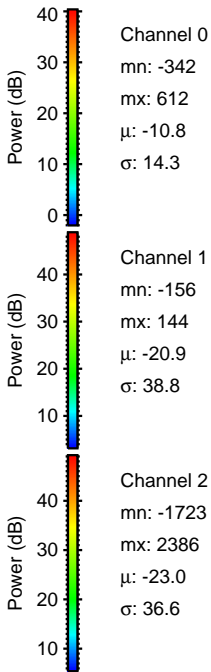
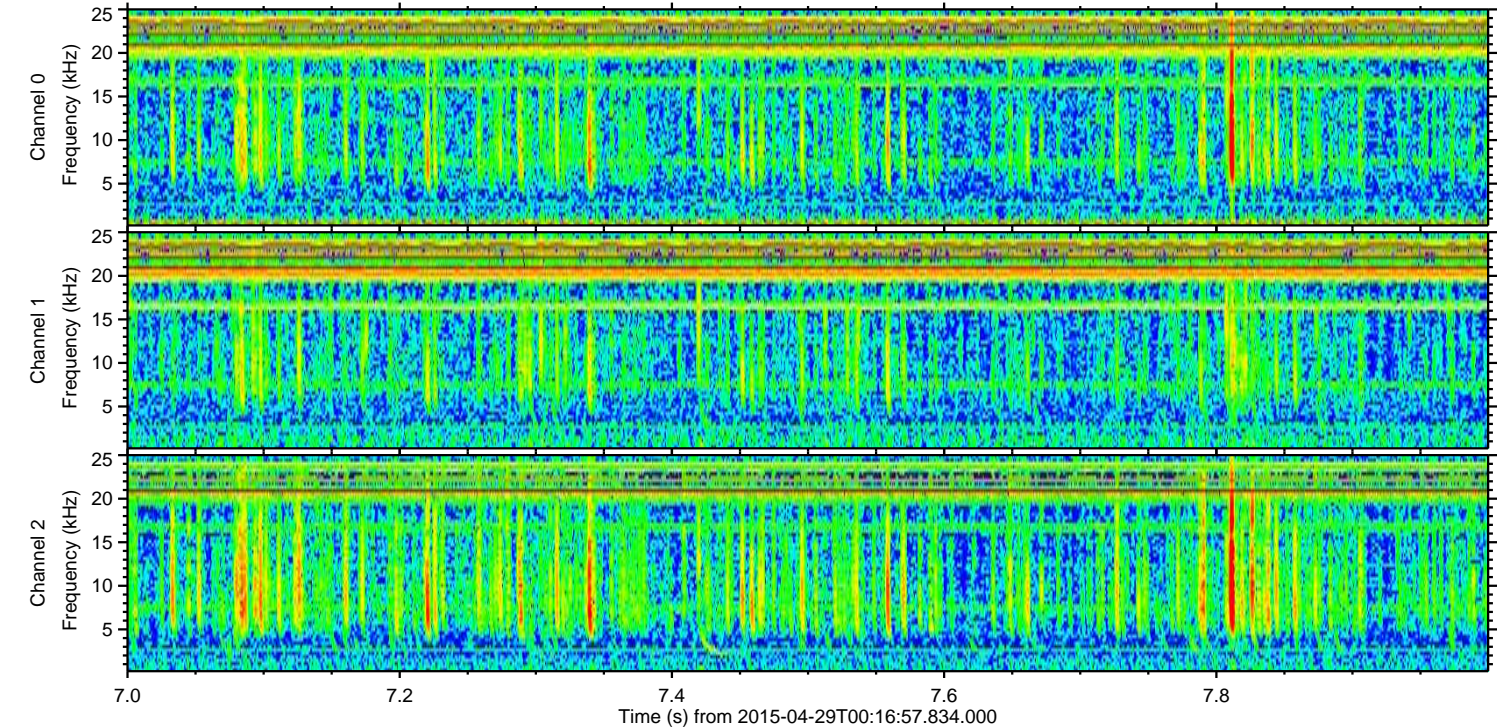
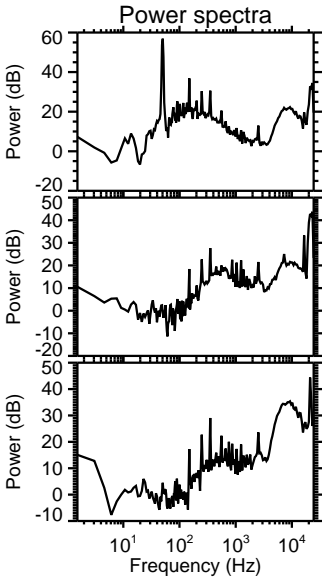
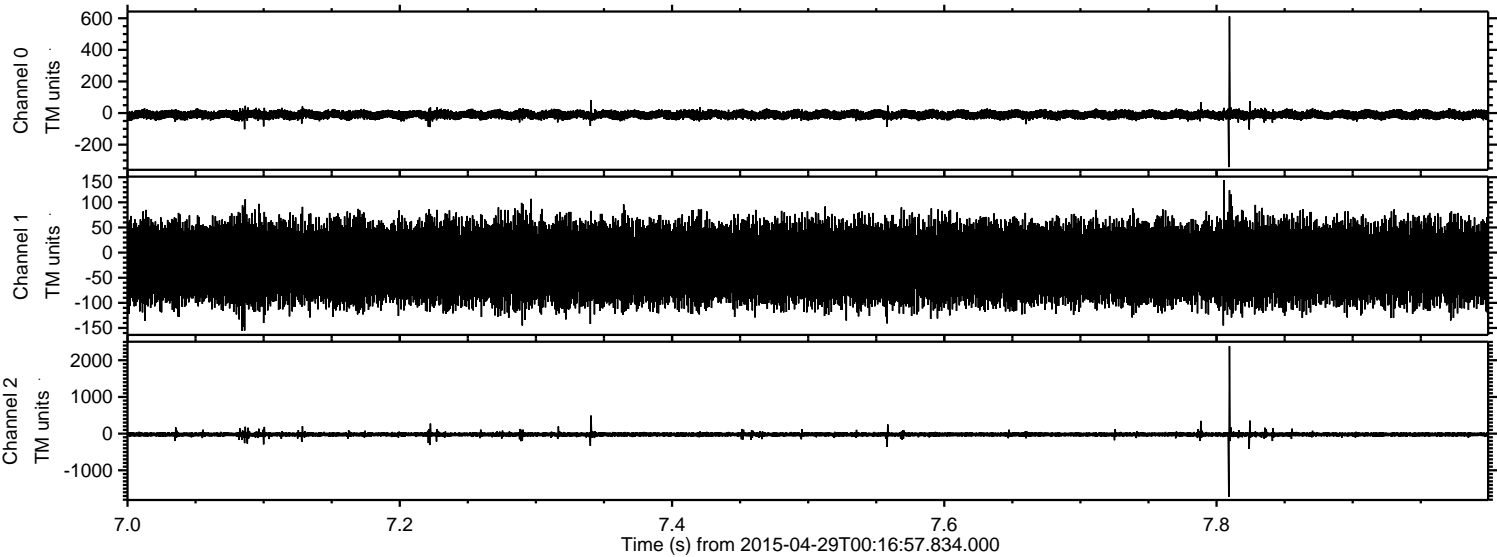
Processed Wed Apr 29 02:24:43 2015 by ELM ver.2012-10-06 from 001\_\_elm20150429\_001656\_\_dat00.bin





ELMAVAN 3D WAVEFORMS (Measured data sampled at 50 kHz) 49780 packets of 144 samples from 2015-04-29T00:16:57.834.000. Part 8/144

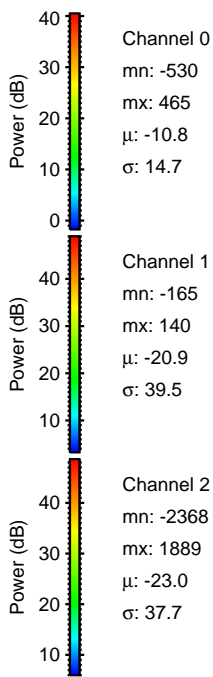
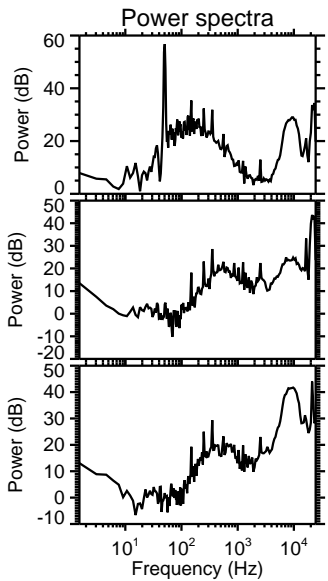
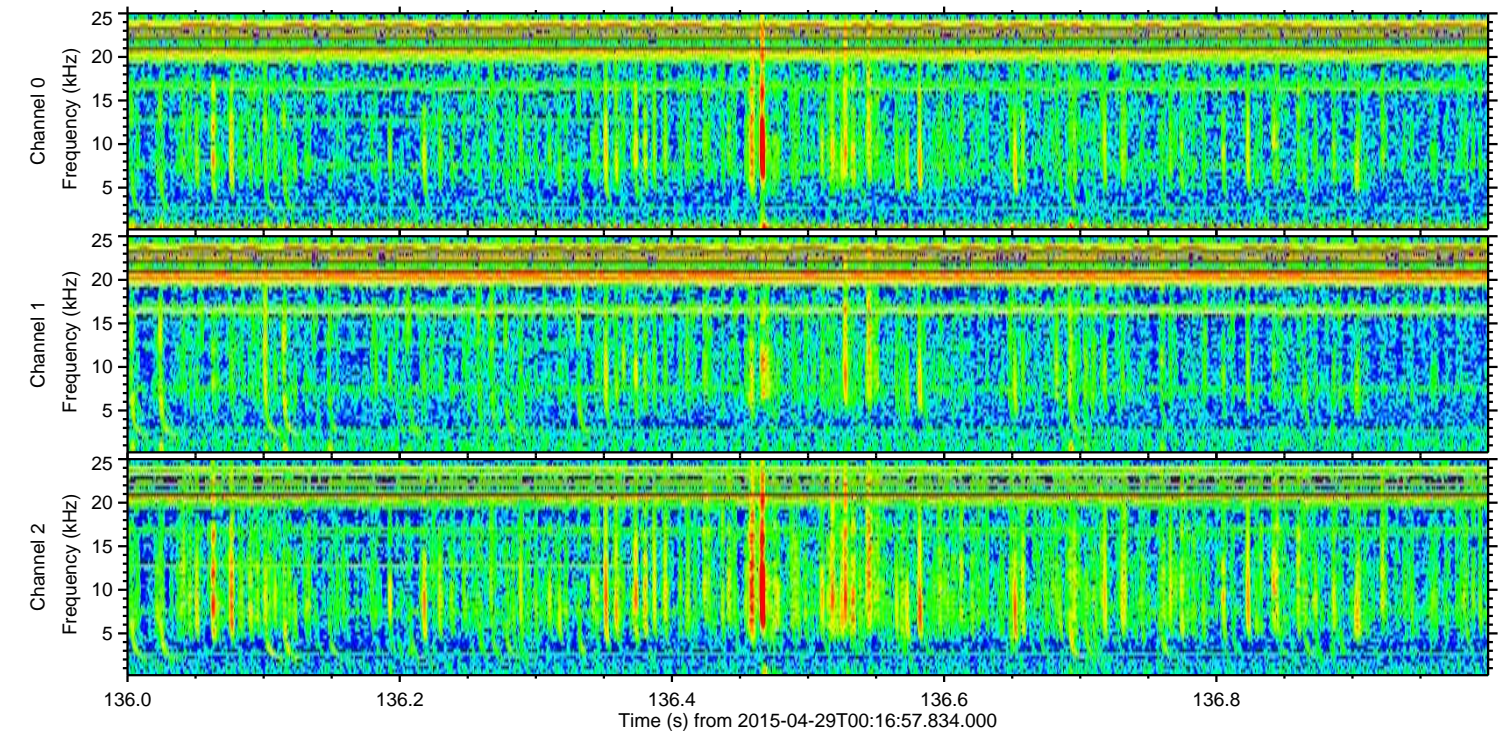
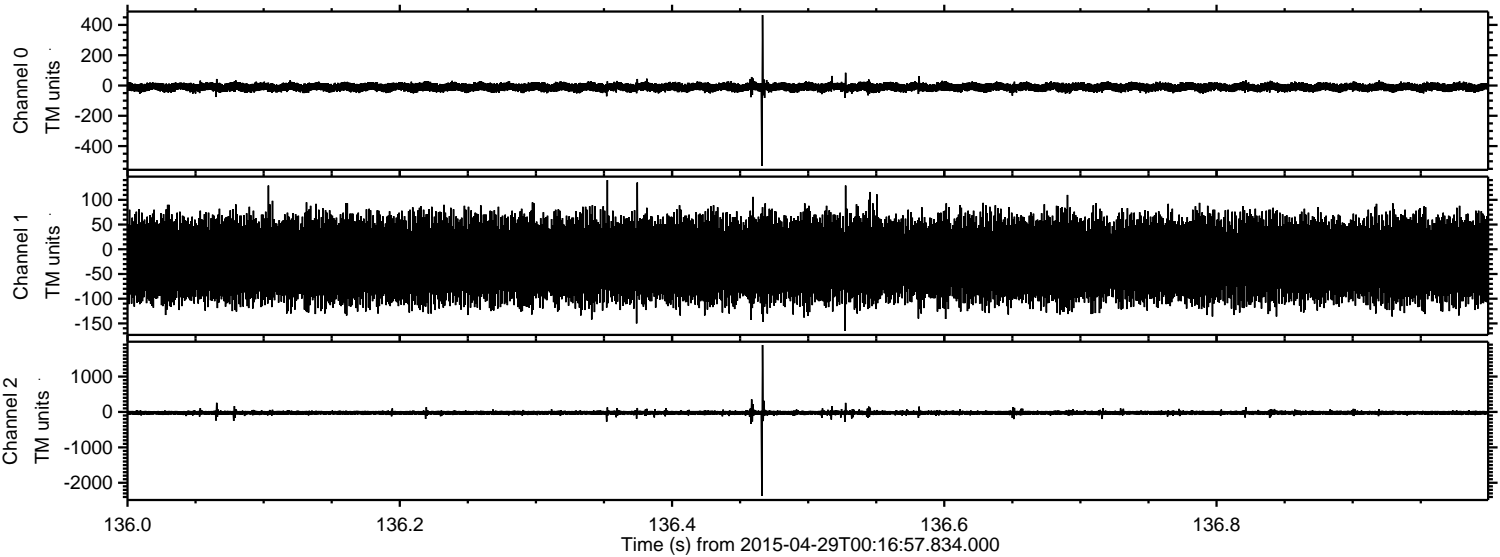
Processed Wed Apr 29 02:24:44 2015 by ELM ver.2012-10-06 from 001\_\_elm20150429\_001656\_\_dat00.bin





ELMAVAN 3D WAVEFORMS (Measured data sampled at 50 kHz) 49780 packets of 144 samples from 2015-04-29T00:16:57.834.000. Part 137/144

Processed Wed Apr 29 02:24:45 2015 by ELM ver.2012-10-06 from 001\_\_elm20150429\_001656\_\_dat00.bin



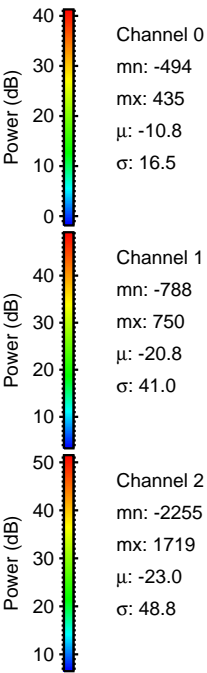
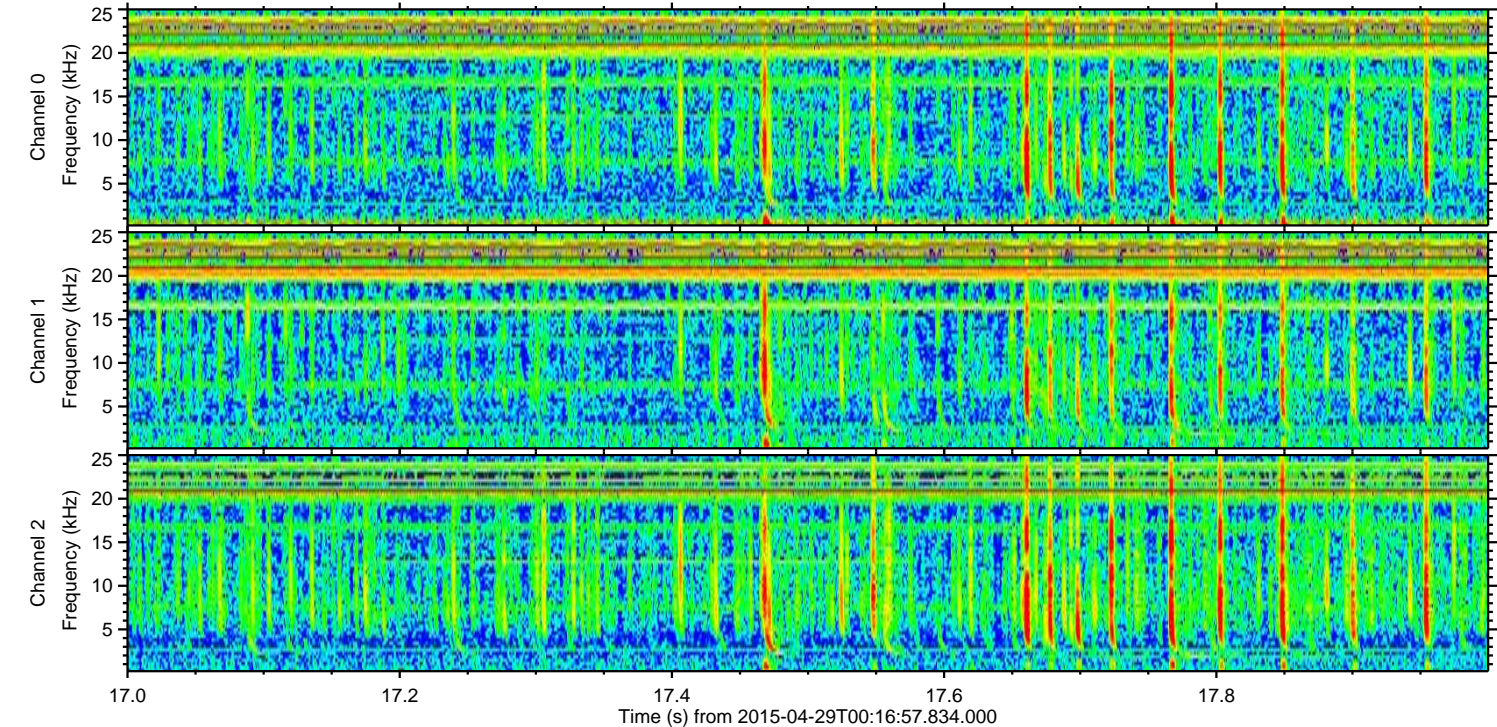
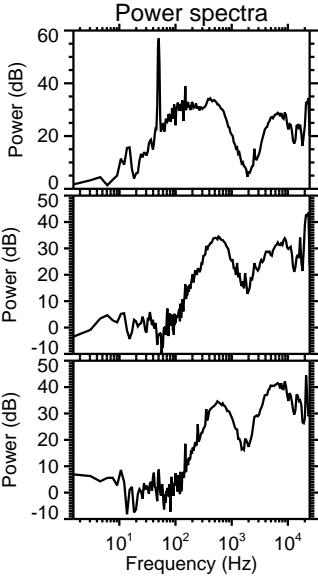
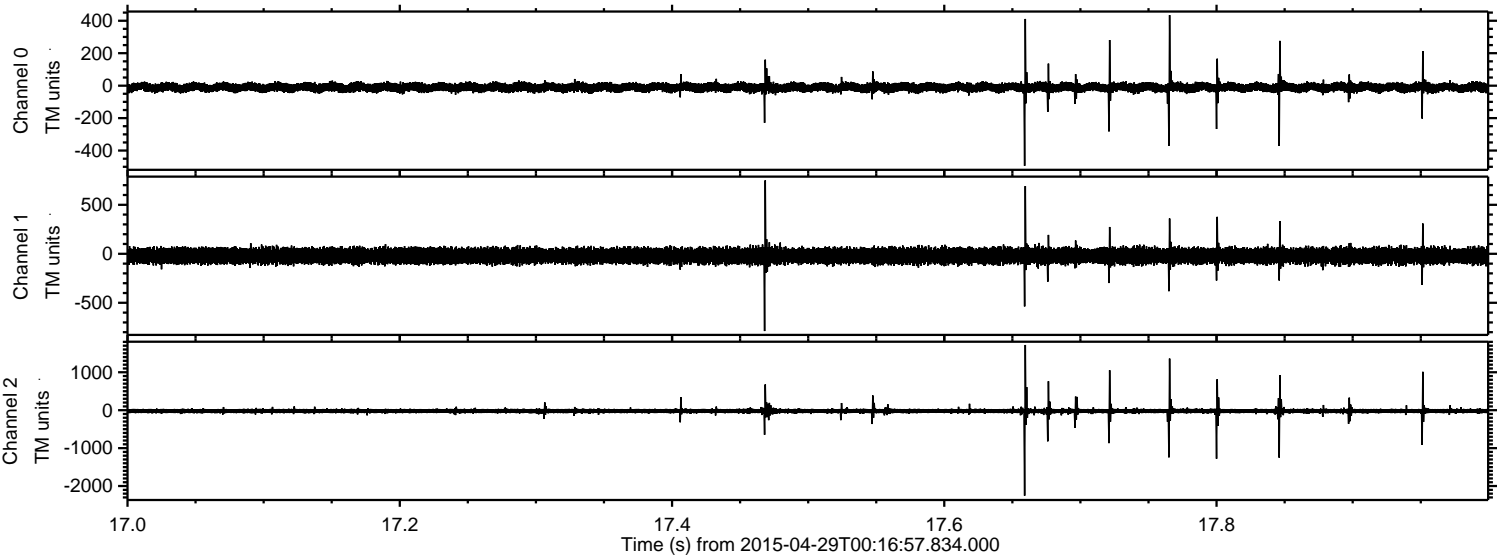
Channel 0  
mn: -530  
mx: 465  
 $\mu$ : -10.8  
 $\sigma$ : 14.7

Channel 1  
mn: -165  
mx: 140  
 $\mu$ : -20.9  
 $\sigma$ : 39.5

Channel 2  
mn: -2368  
mx: 1889  
 $\mu$ : -23.0  
 $\sigma$ : 37.7



Processed Wed Apr 29 02:24:46 2015 by ELM ver.2012-10-06 from 001\_\_elm20150429\_001656\_\_dat00.bin





ELMAVAN 3D WAVEFORMS (Measured data sampled at 50 kHz) 49780 packets of 144 samples from 2015-04-29T00:16:57.834.000. Part 11/144

Processed Wed Apr 29 02:24:47 2015 by ELM ver.2012-10-06 from 001\_\_elm20150429\_001656\_\_dat00.bin

