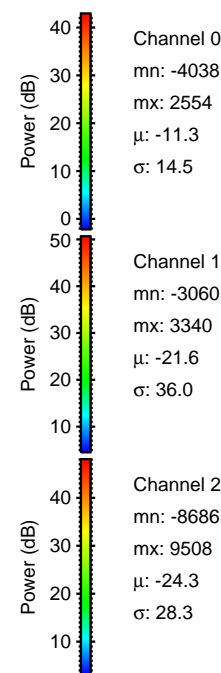
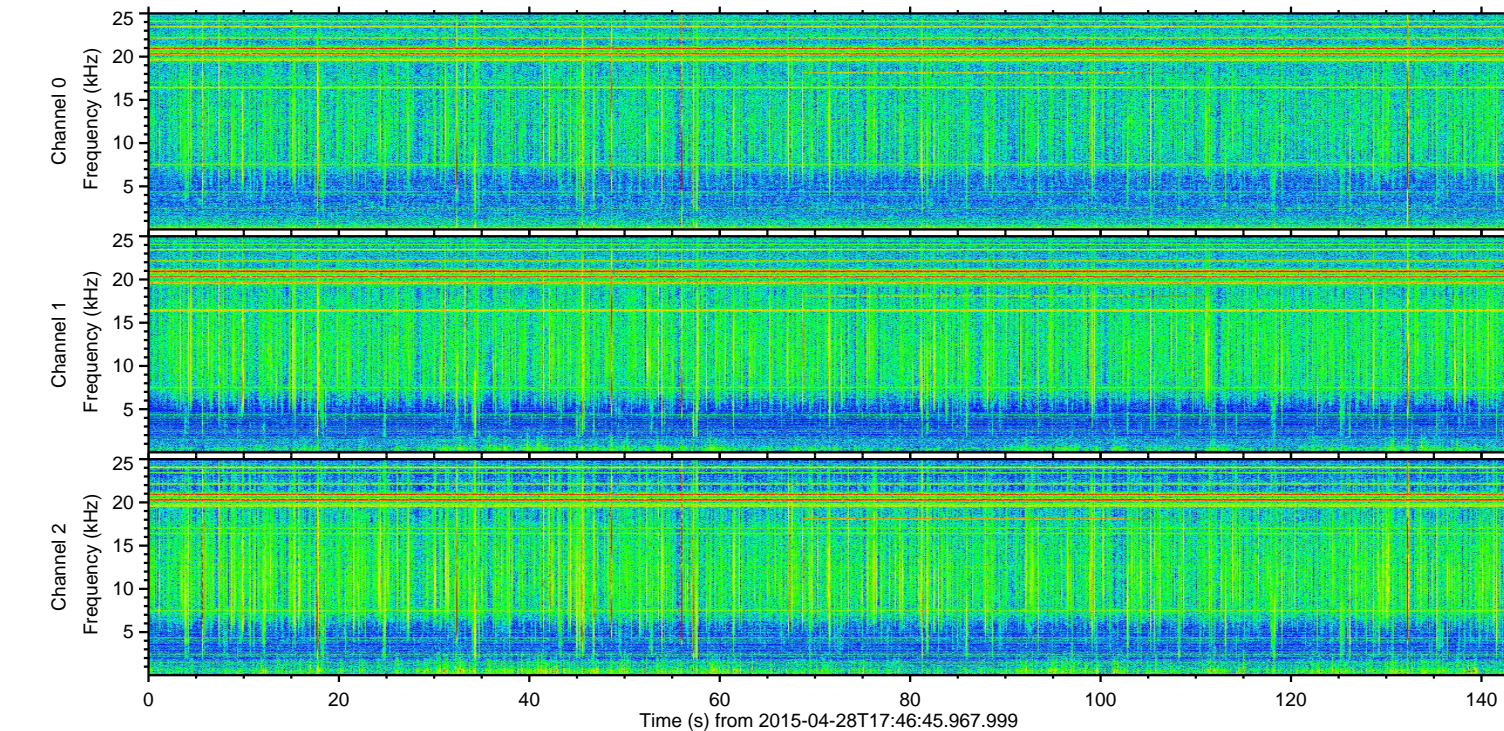
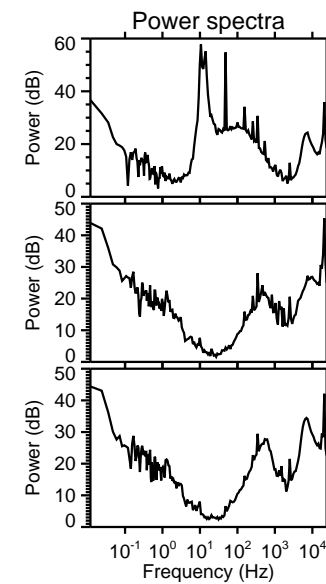
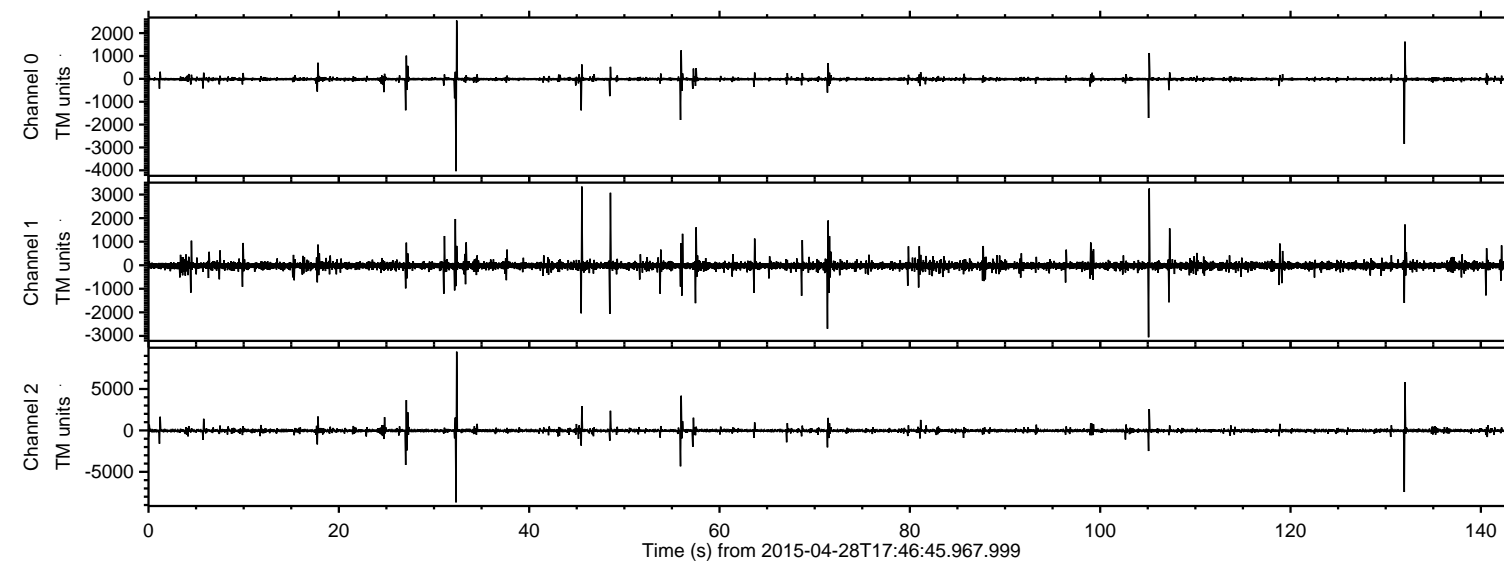
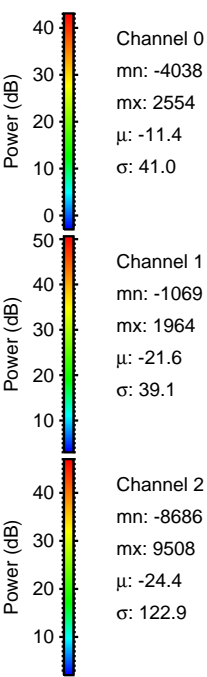
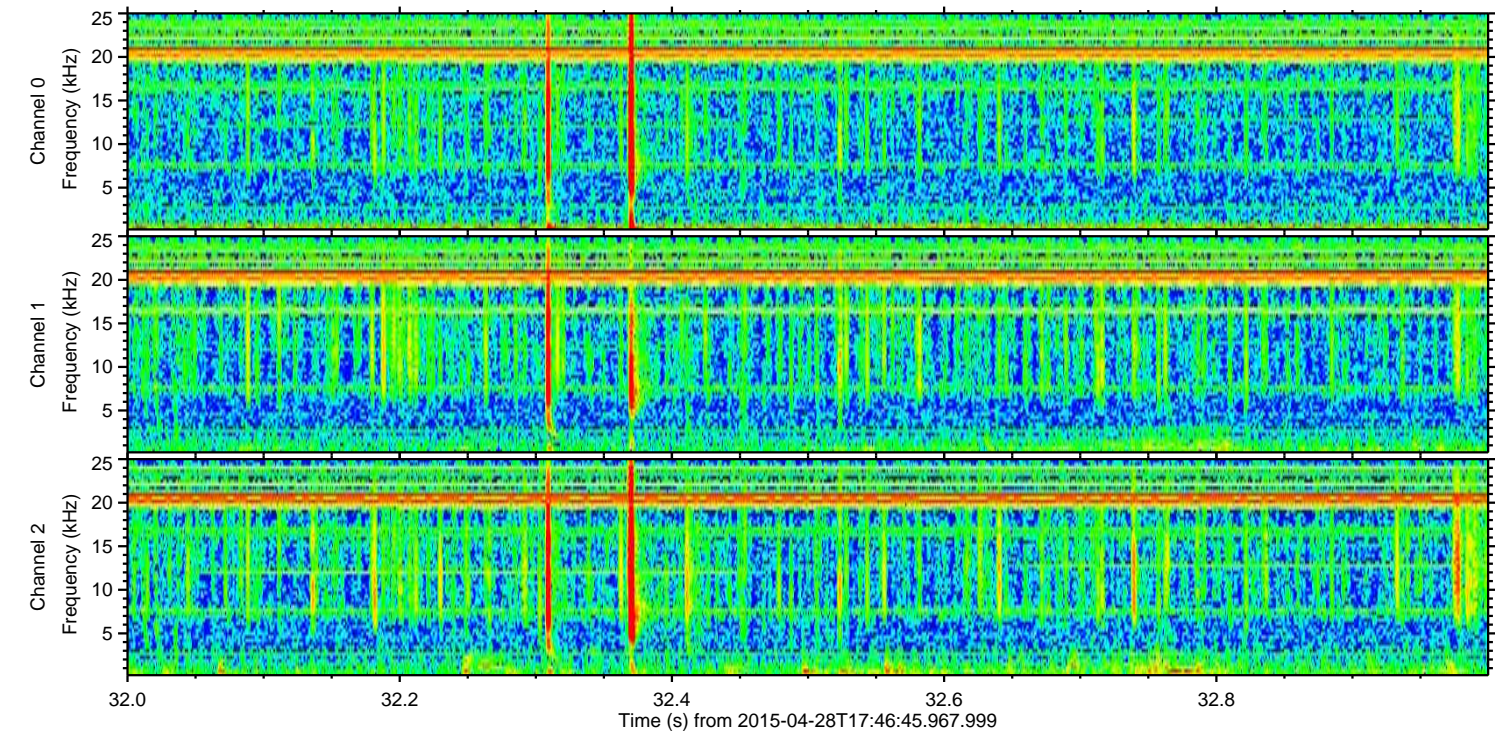
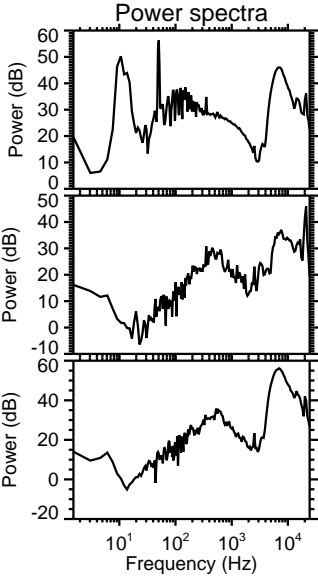
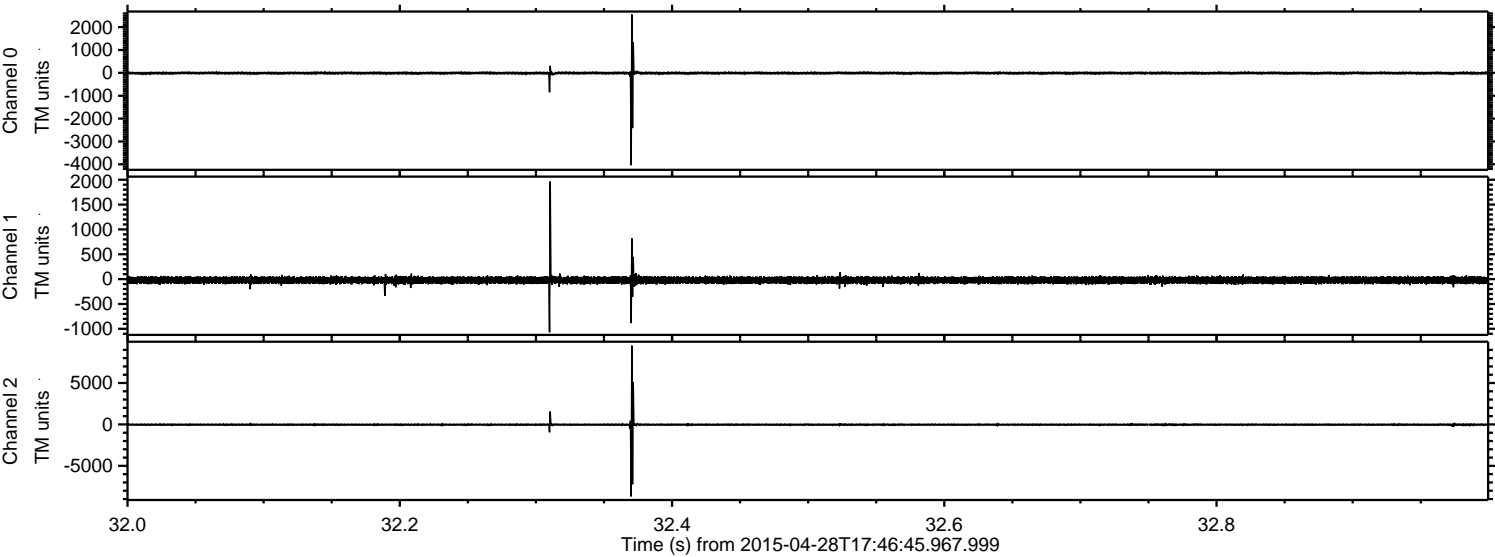


ELMAVAN 3D WAVEFORMS (Measured data sampled at 50 kHz) 49643 packets of 144 samples from 2015-04-28T17:46:45.967.999.

Processed Tue Apr 28 19:53:57 2015 by ELM ver.2012-10-06 from 001__elm20150428_174644__dat00.bin

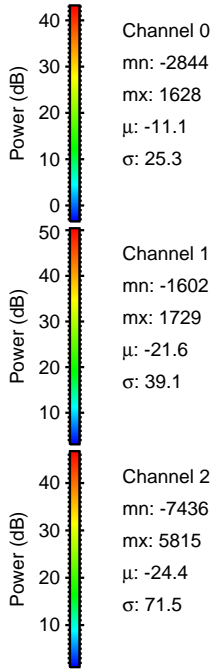
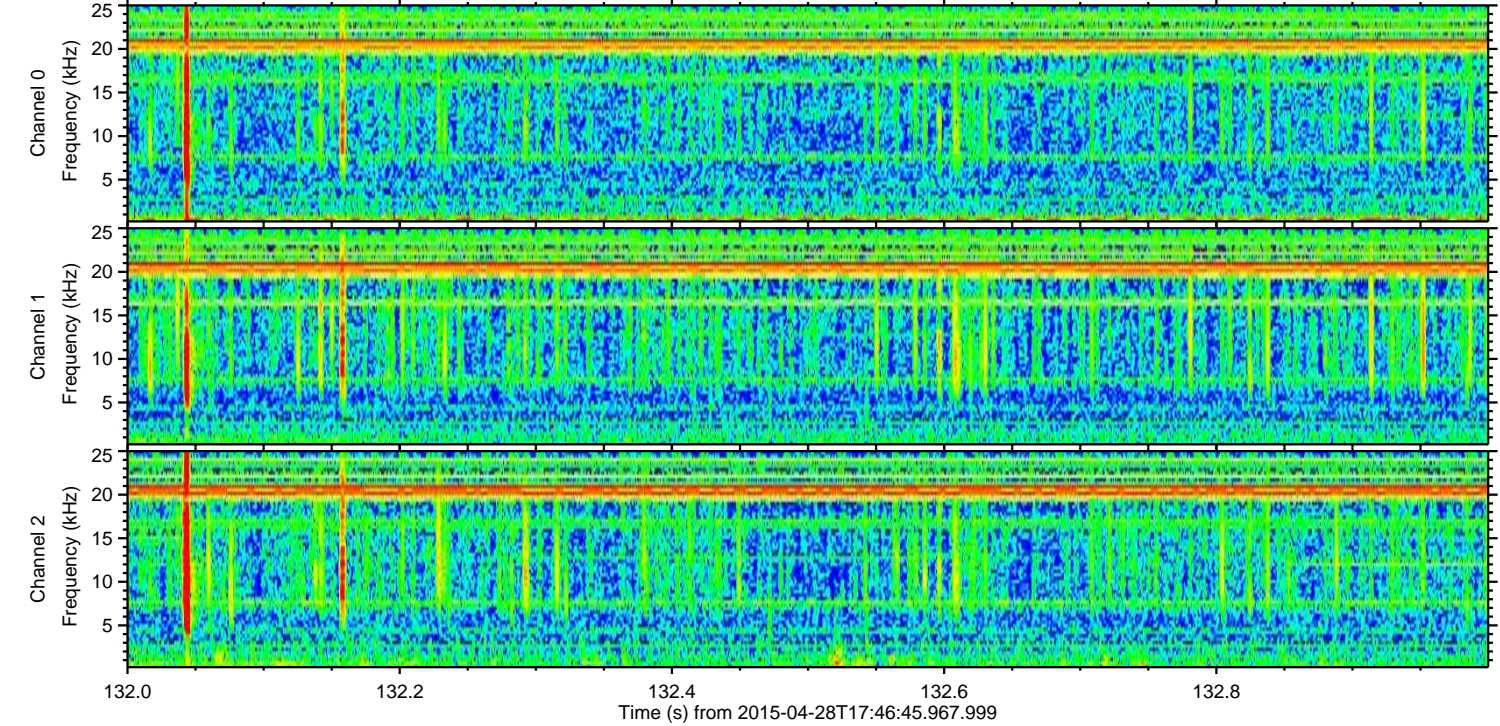
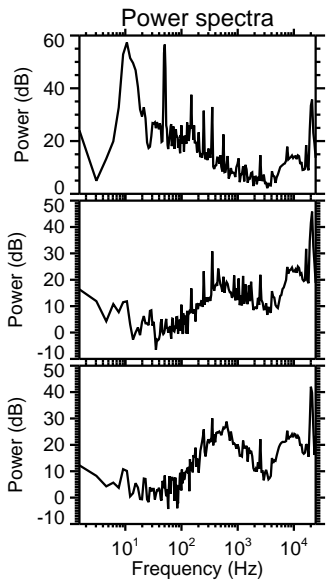
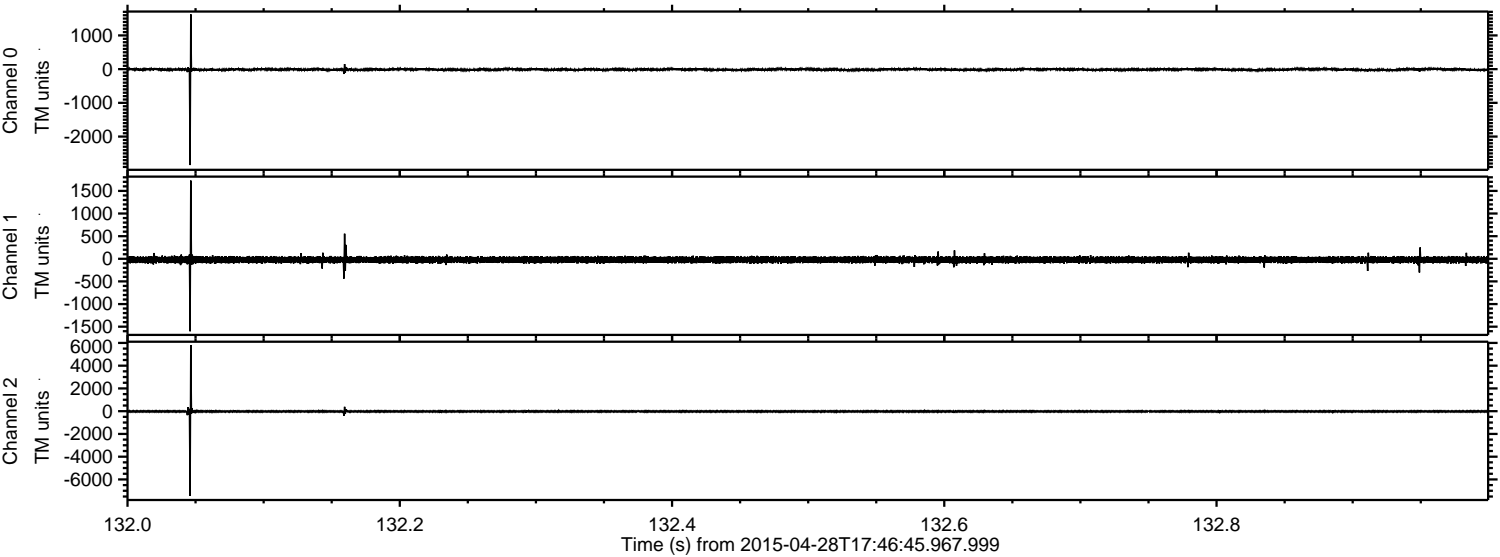


Processed Tue Apr 28 19:54:13 2015 by ELM ver.2012-10-06 from 001__elm20150428_174644__dat00.bin

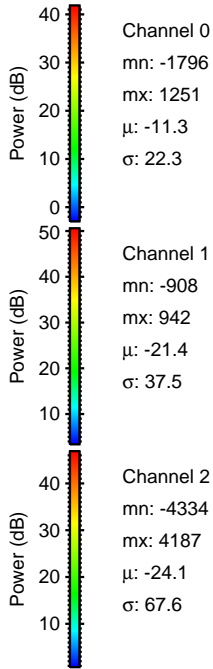
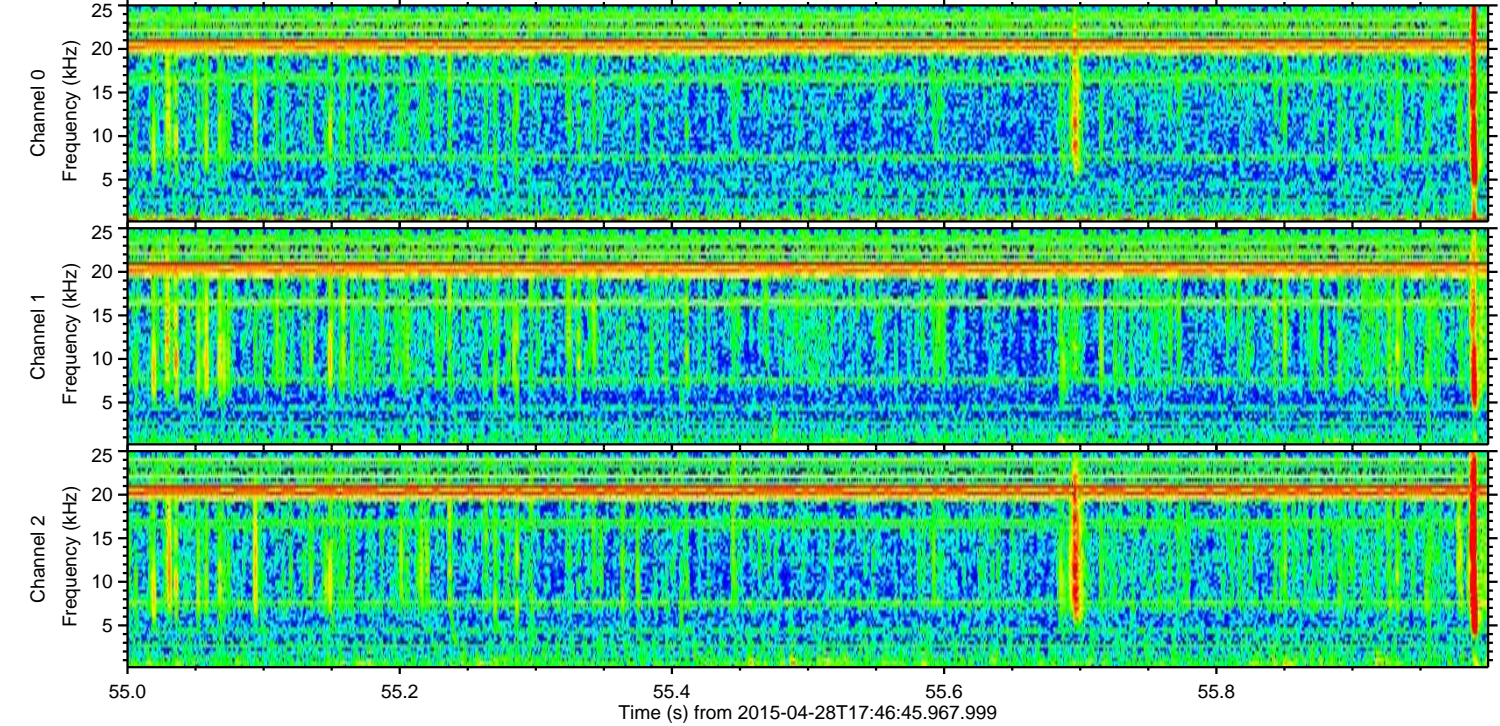
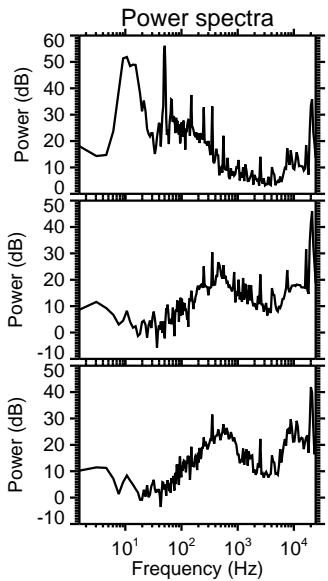
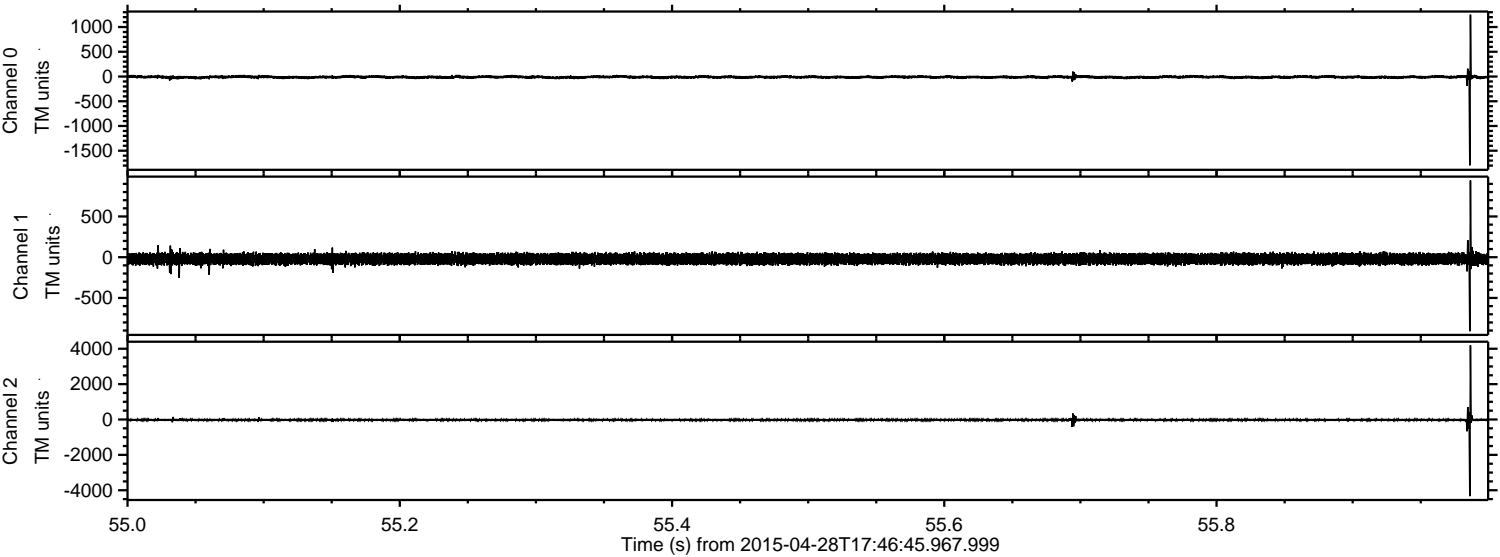


ELMAVAN 3D WAVEFORMS (Measured data sampled at 50 kHz) 49643 packets of 144 samples from 2015-04-28T17:46:45.967.999. Part 133/143

Processed Tue Apr 28 19:54:14 2015 by ELM ver.2012-10-06 from 001__elm20150428_174644__dat00.bin



Processed Tue Apr 28 19:54:15 2015 by ELM ver.2012-10-06 from 001__elm20150428_174644__dat00.bin

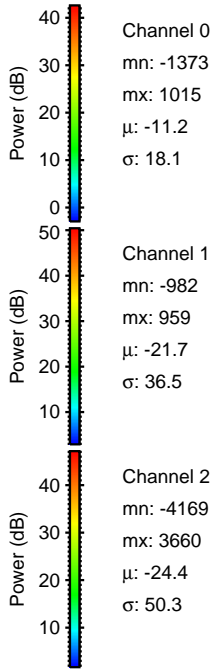
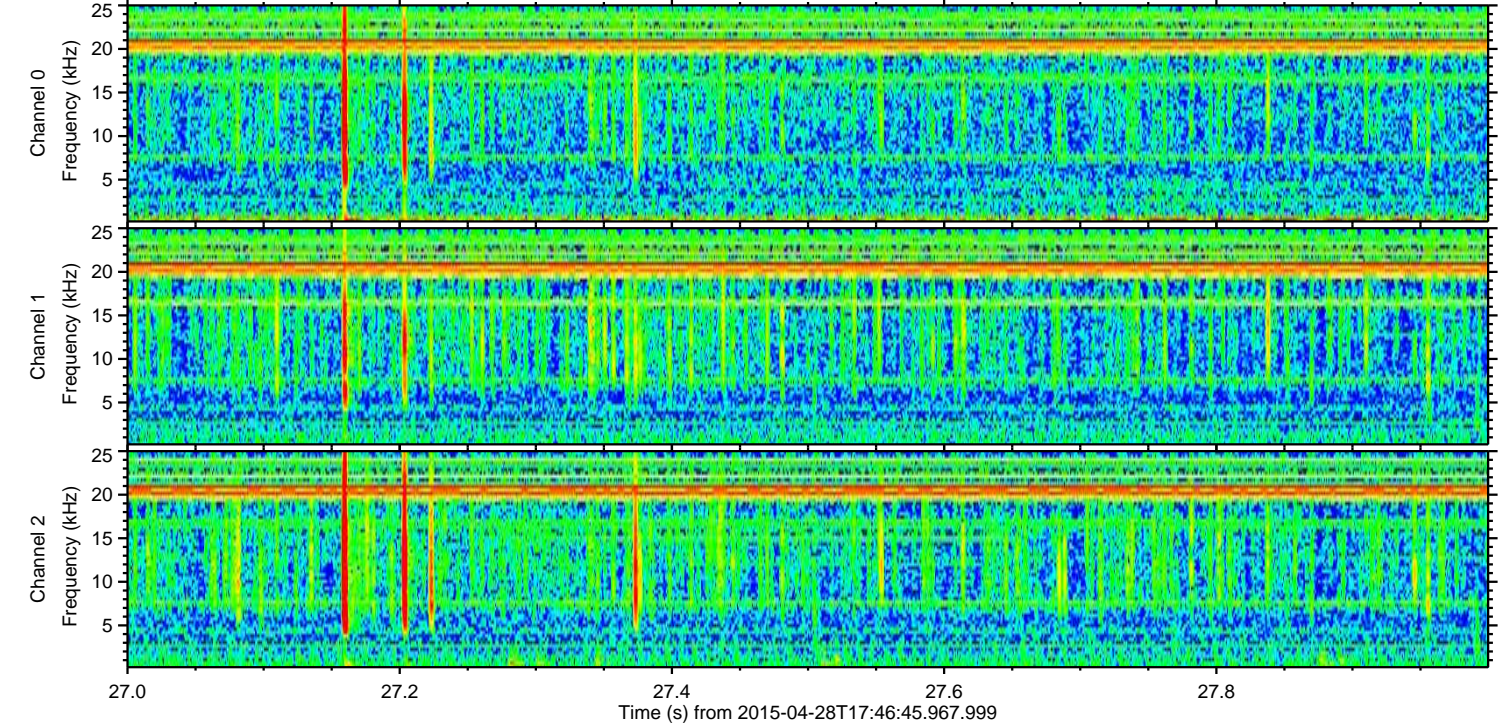
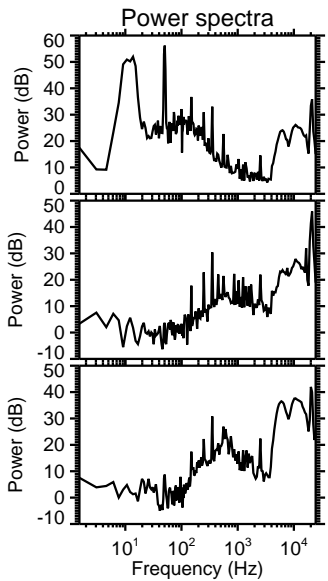
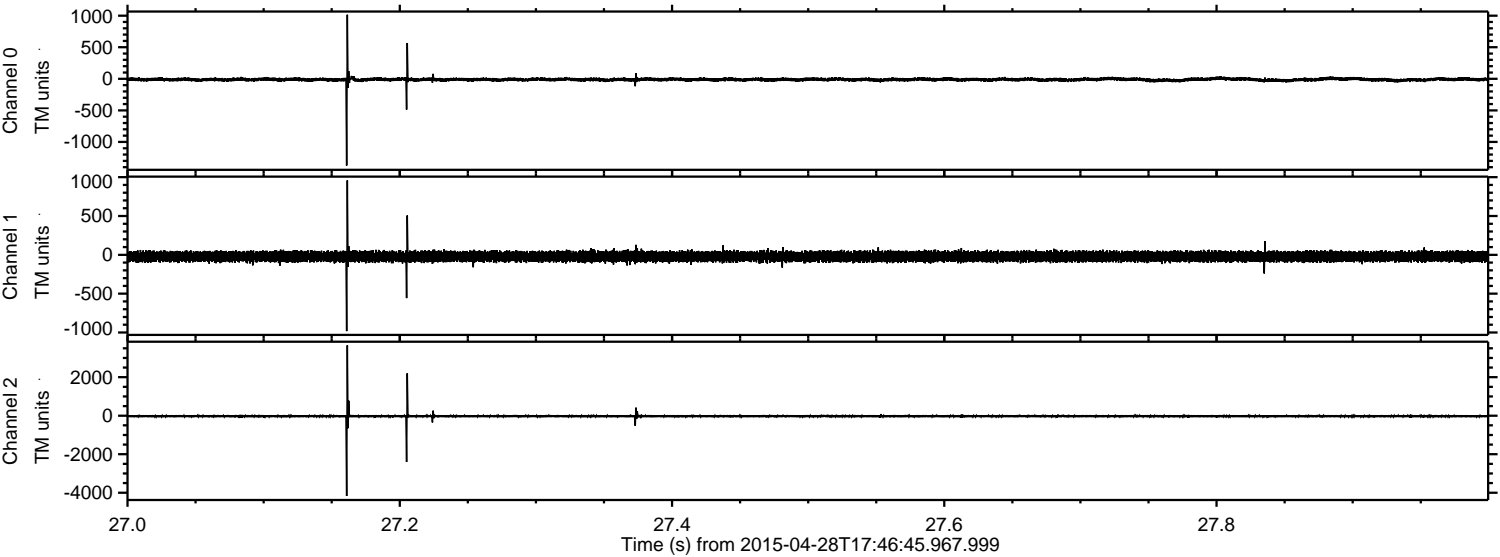


Channel 0
mn: -1796
mx: 1251
 μ : -11.3
 σ : 22.3

Channel 1
mn: -908
mx: 942
 μ : -21.4
 σ : 37.5

Channel 2
mn: -4334
mx: 4187
 μ : -24.1
 σ : 67.6

Processed Tue Apr 28 19:54:16 2015 by ELM ver.2012-10-06 from 001__elm20150428_174644__dat00.bin



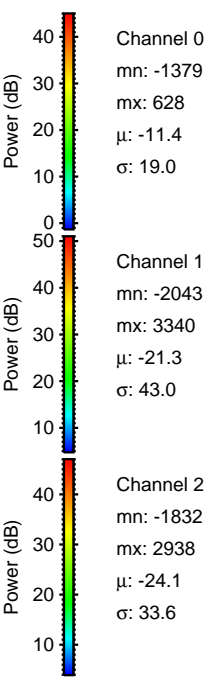
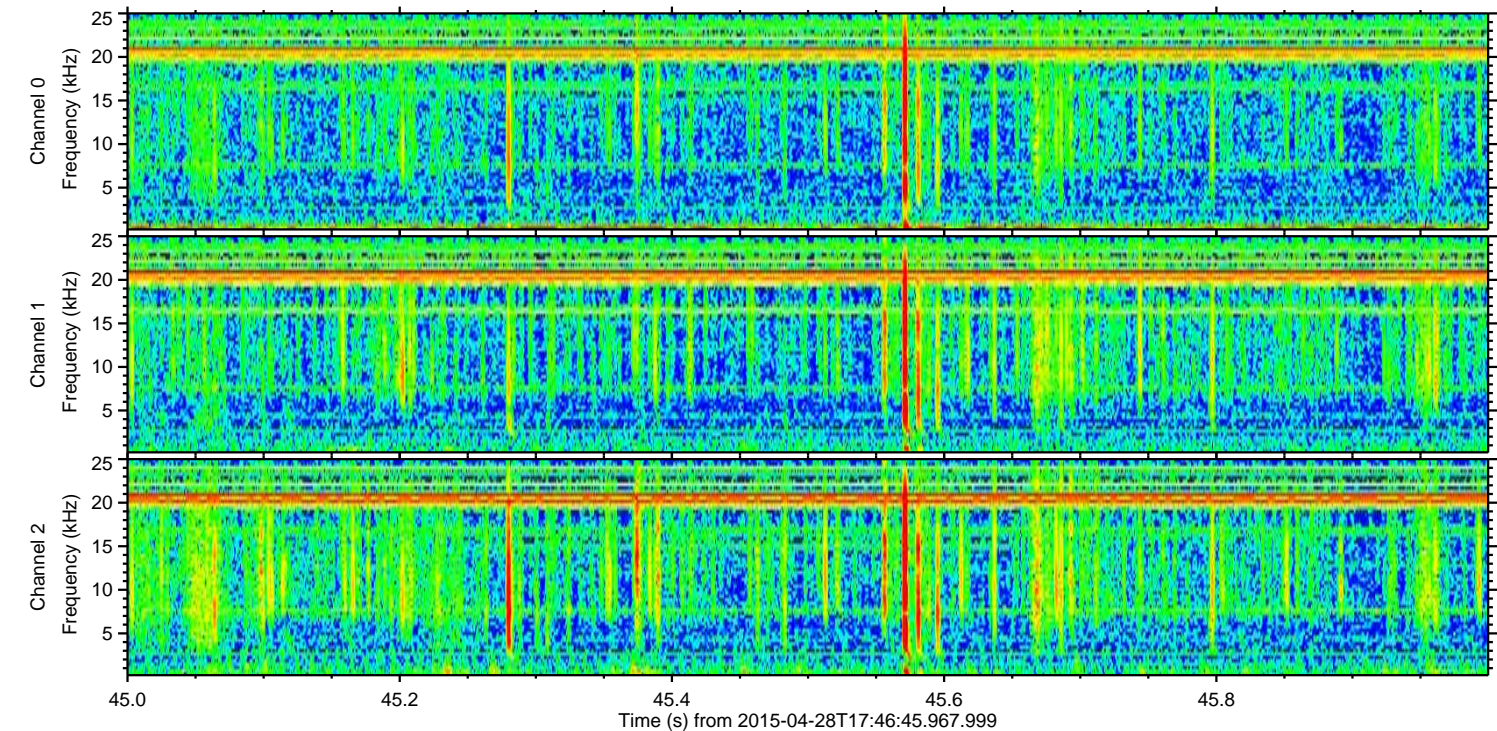
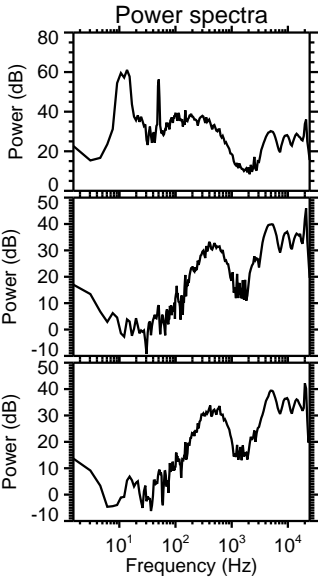
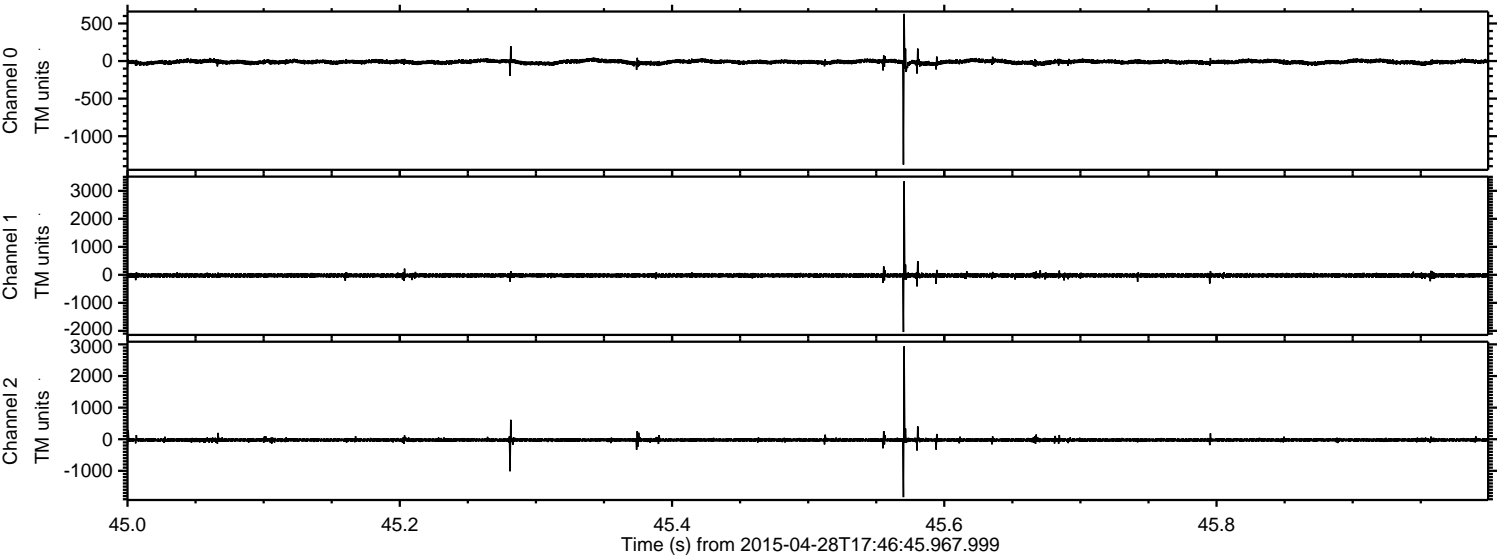
Channel 0
mn: -1373
mx: 1015
 μ : -11.2
 σ : 18.1

Channel 1
mn: -982
mx: 959
 μ : -21.7
 σ : 36.5

Channel 2
mn: -4169
mx: 3660
 μ : -24.4
 σ : 50.3

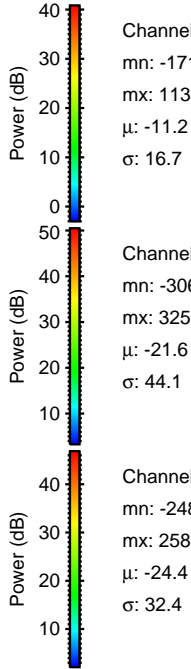
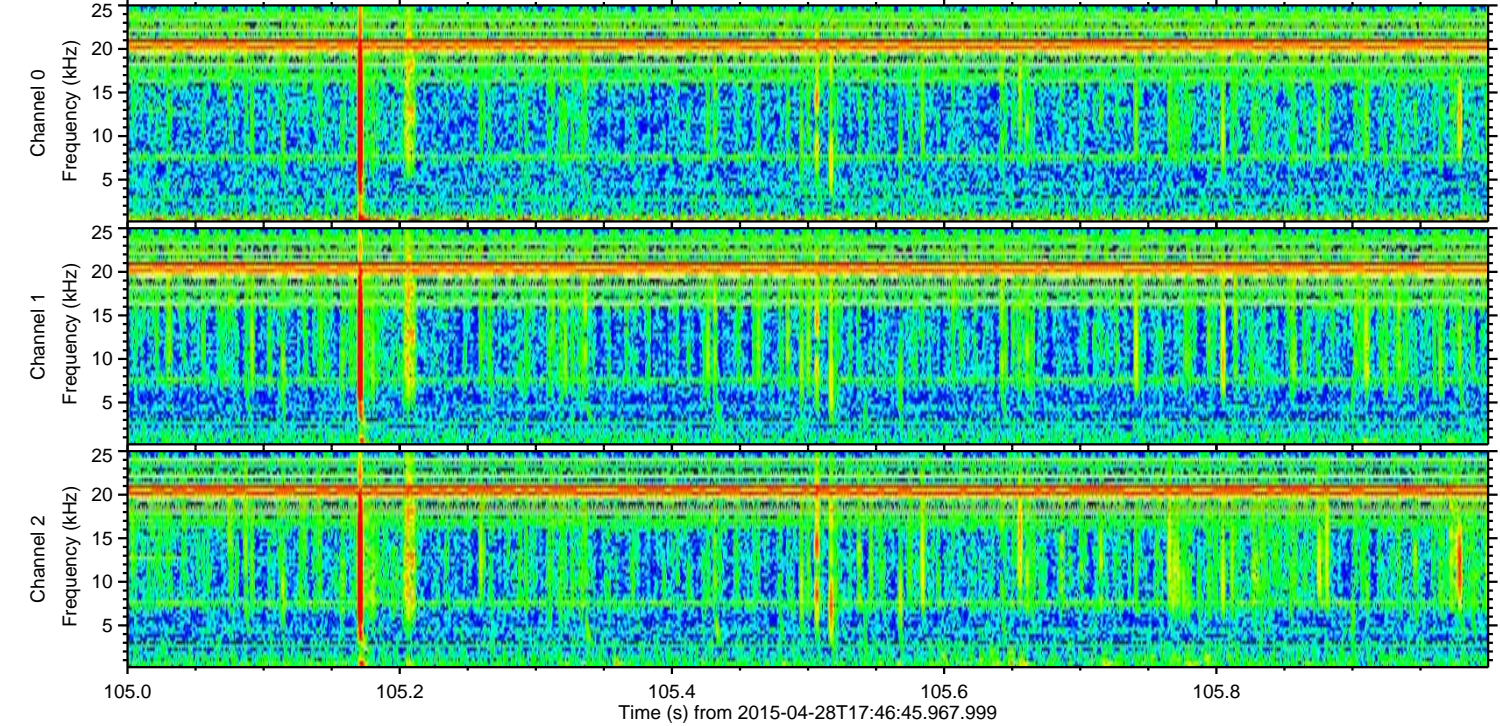
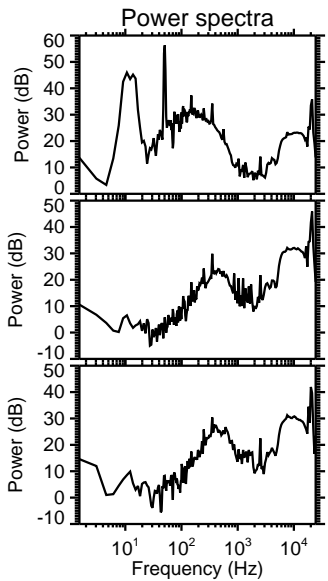
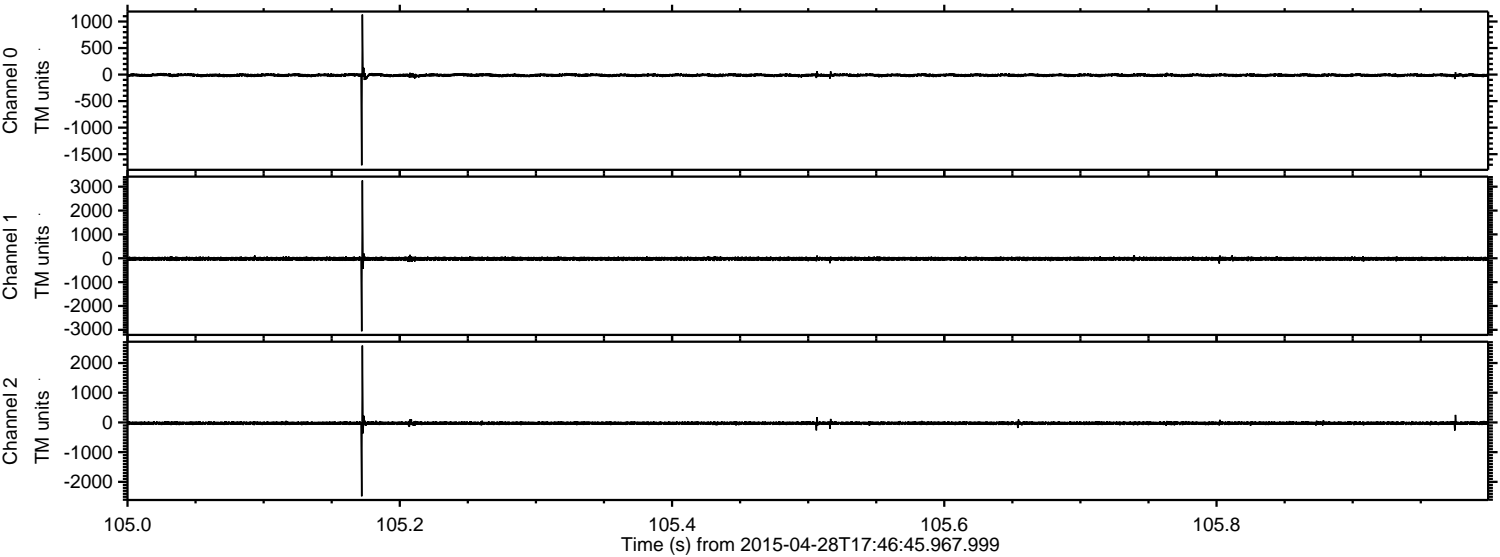
ELMAVAN 3D WAVEFORMS (Measured data sampled at 50 kHz) 49643 packets of 144 samples from 2015-04-28T17:46:45.967.999. Part 46/143

Processed Tue Apr 28 19:54:19 2015 by ELM ver.2012-10-06 from 001__elm20150428_174644__dat00.bin



ELMAVAN 3D WAVEFORMS (Measured data sampled at 50 kHz) 49643 packets of 144 samples from 2015-04-28T17:46:45.967.999. Part 106/143

Processed Tue Apr 28 19:54:21 2015 by ELM ver.2012-10-06 from 001__elm20150428_174644__dat00.bin

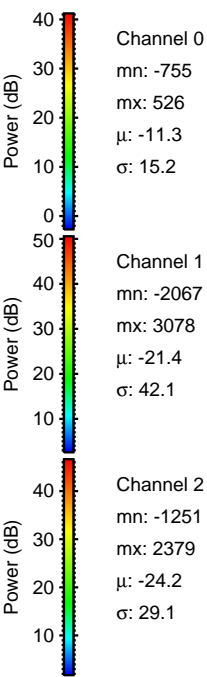
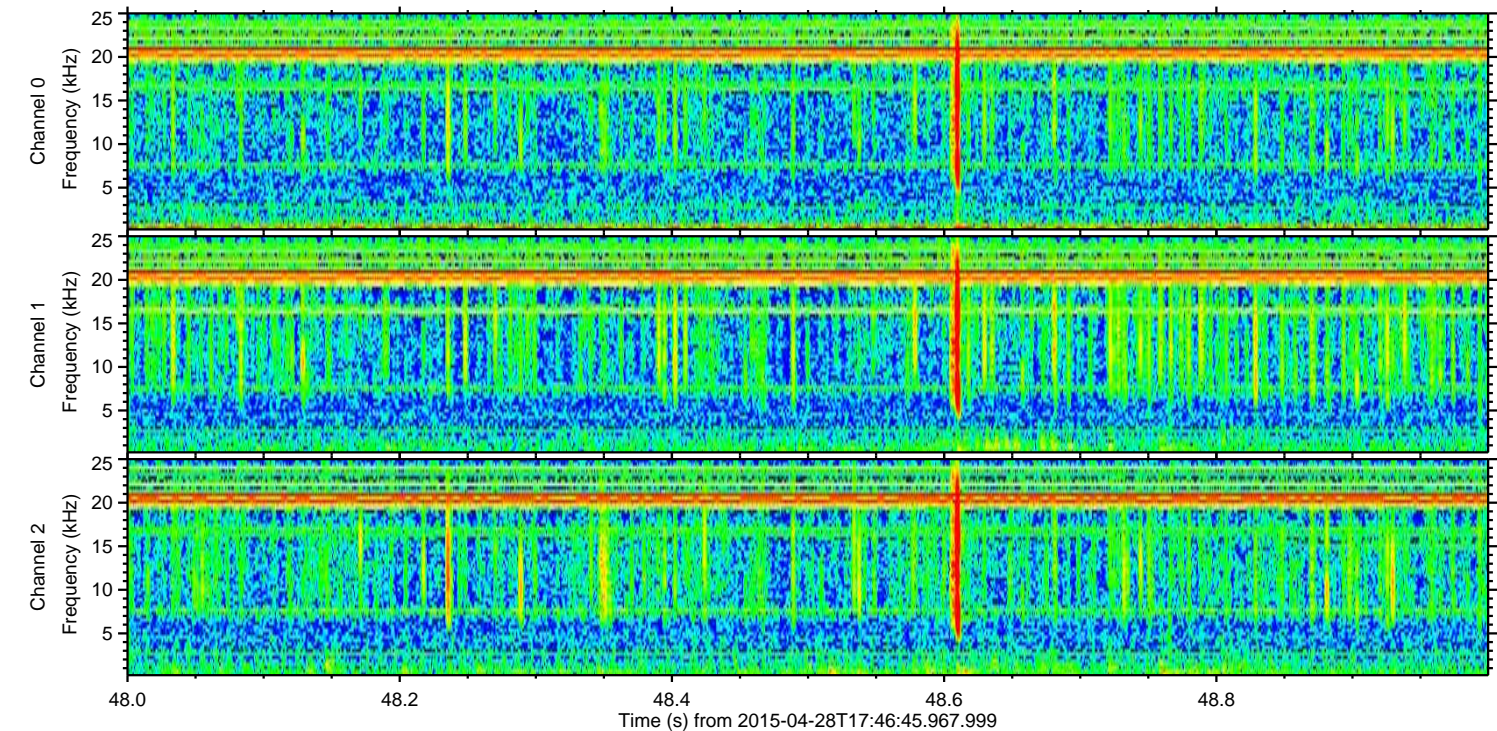
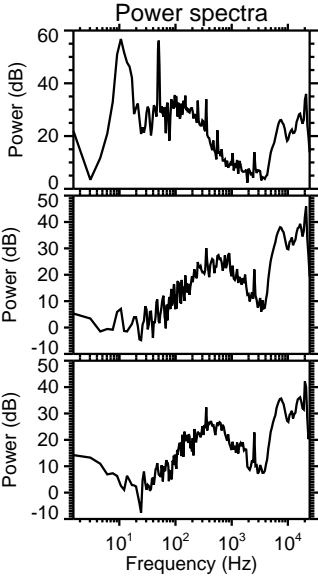
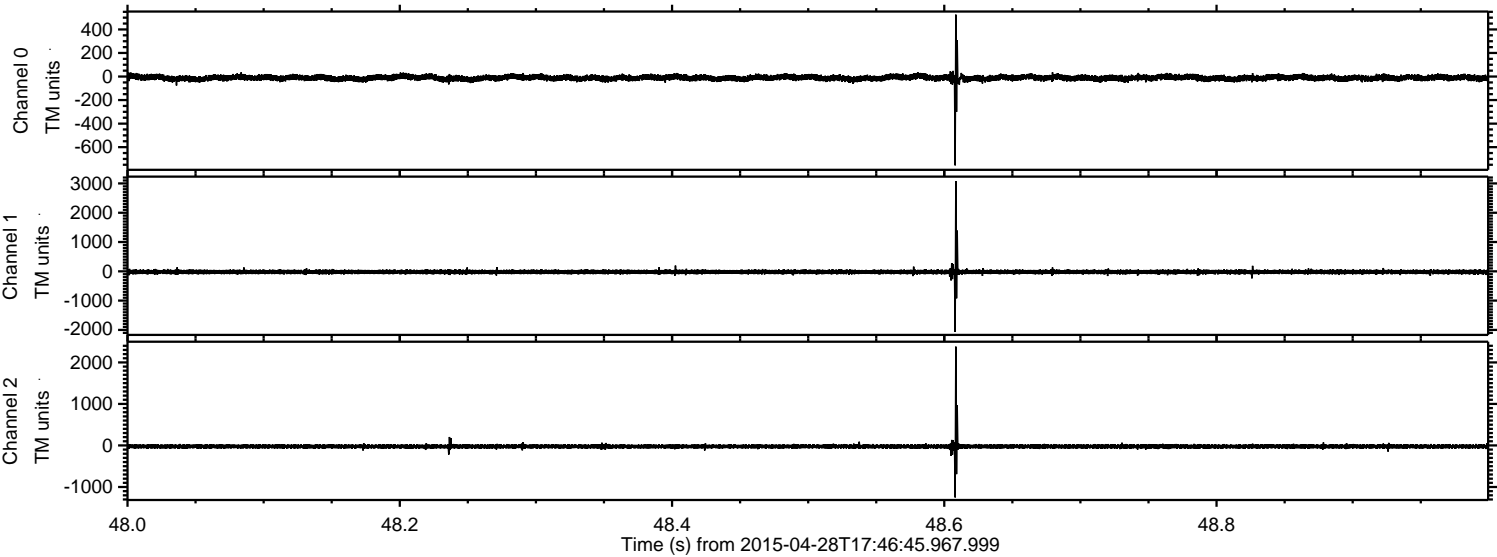


Channel 0
mn: -1710
mx: 1132
 μ : -11.2
 σ : 16.7

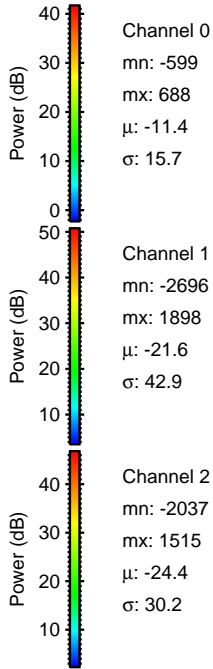
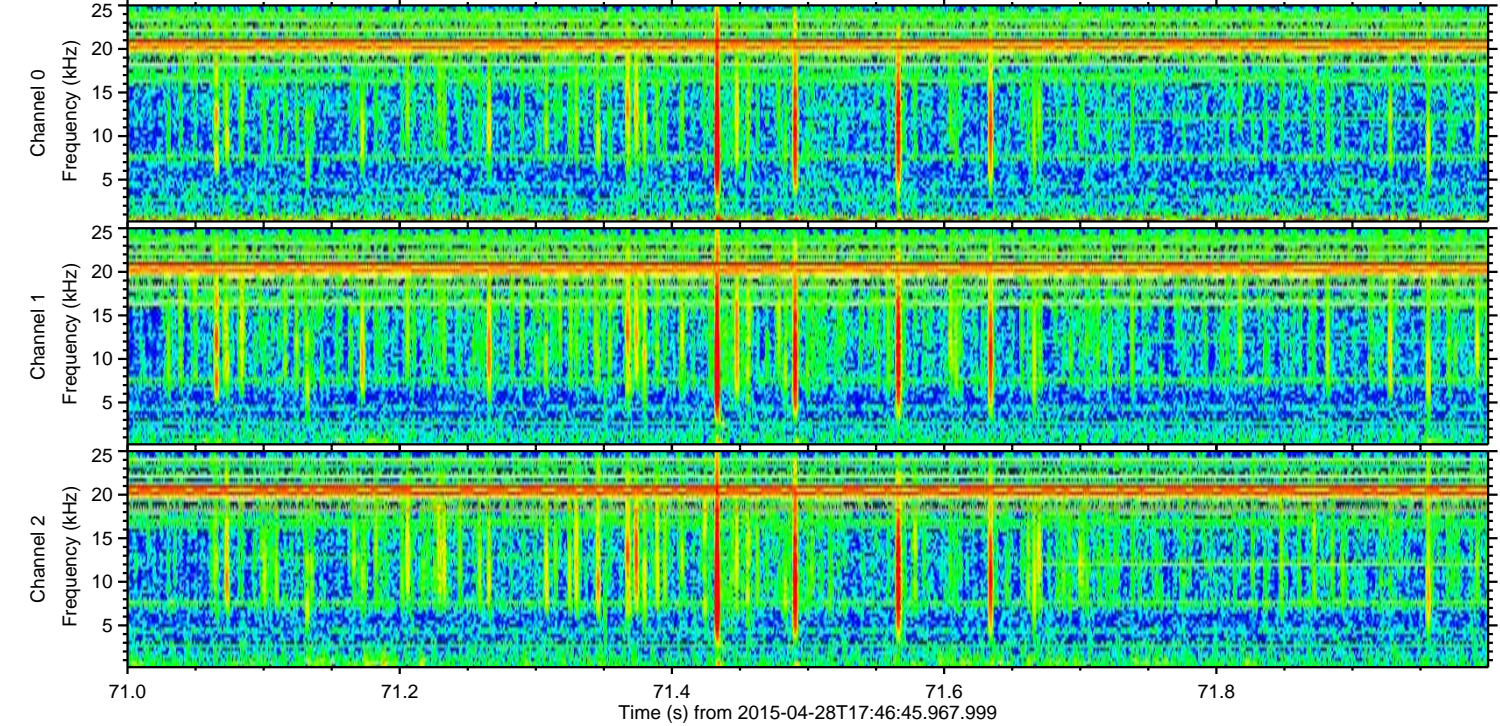
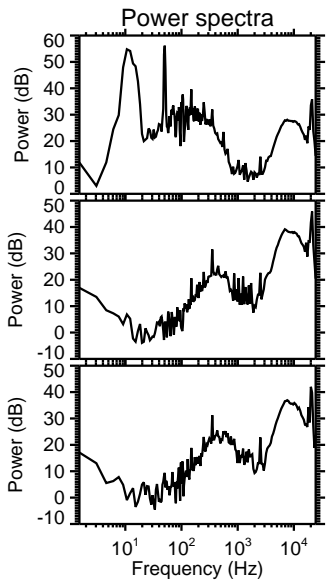
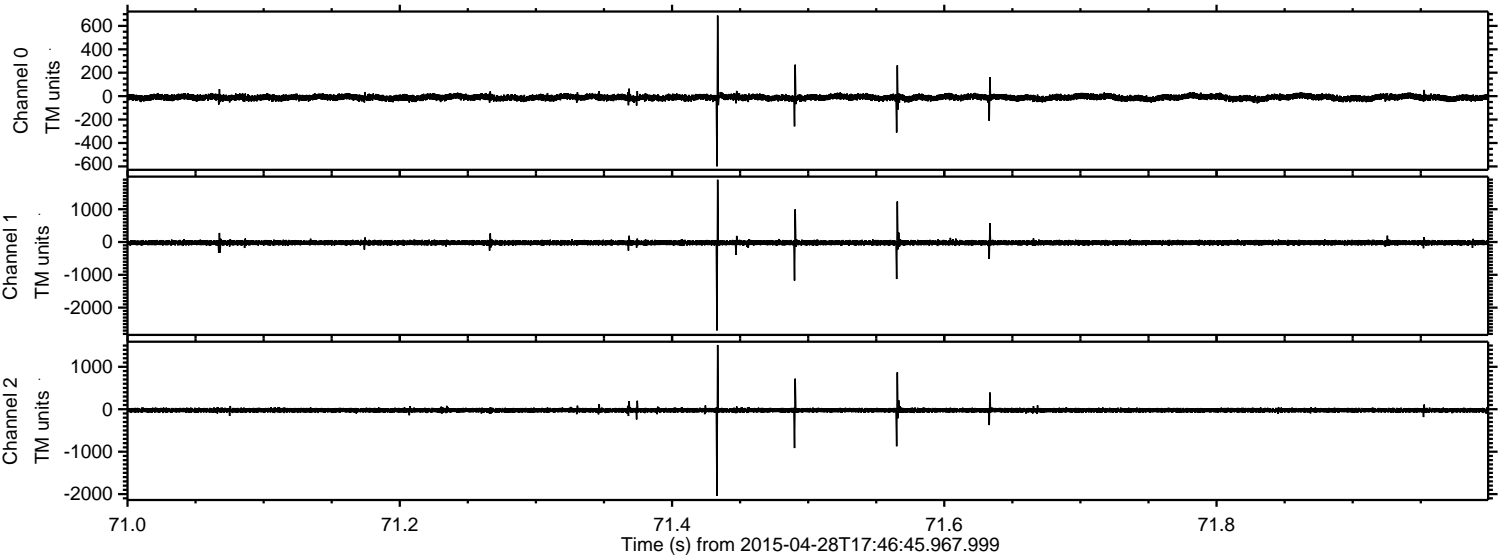
Channel 1
mn: -3060
mx: 3259
 μ : -21.6
 σ : 44.1

Channel 2
mn: -2485
mx: 2588
 μ : -24.4
 σ : 32.4

Processed Tue Apr 28 19:54:24 2015 by ELM ver.2012-10-06 from 001__elm20150428_174644__dat00.bin



Processed Tue Apr 28 19:54:26 2015 by ELM ver.2012-10-06 from 001__elm20150428_174644__dat00.bin



Channel 0
mn: -599
mx: 688
 μ : -11.4
 σ : 15.7

Channel 1
mn: -2696
mx: 1898
 μ : -21.6
 σ : 42.9

Channel 2
mn: -2037
mx: 1515
 μ : -24.4
 σ : 30.2

Processed Tue Apr 28 19:54:27 2015 by ELM ver.2012-10-06 from 001__elm20150428_174644__dat00.bin

