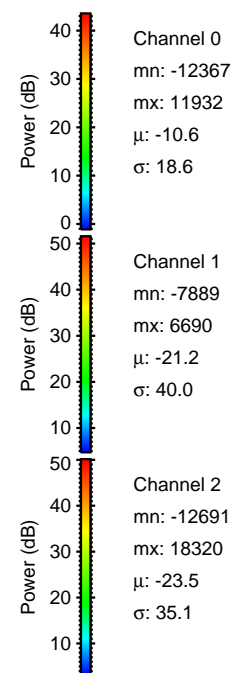
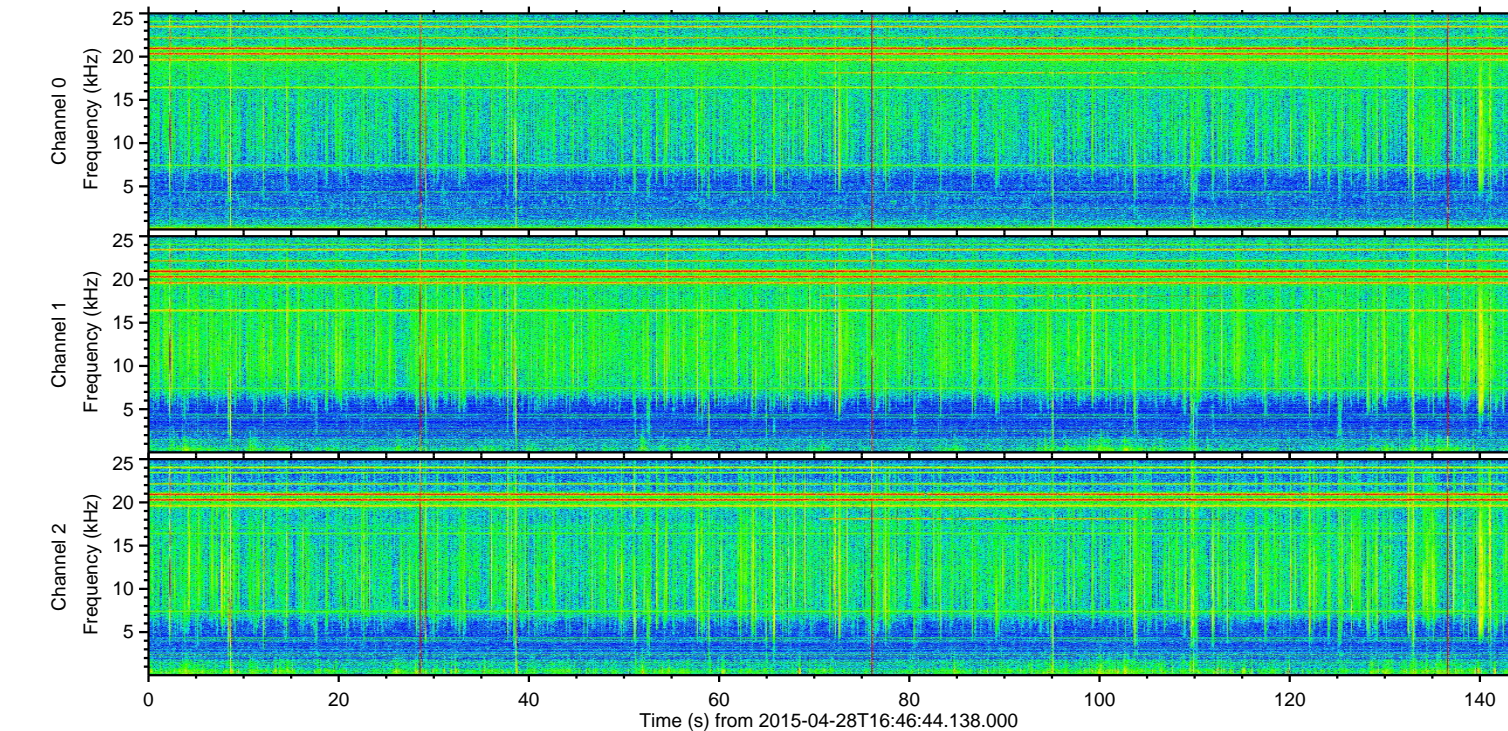
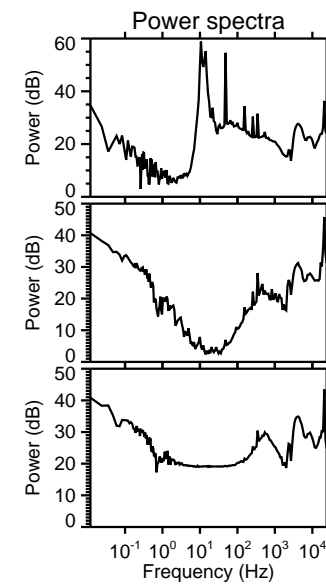
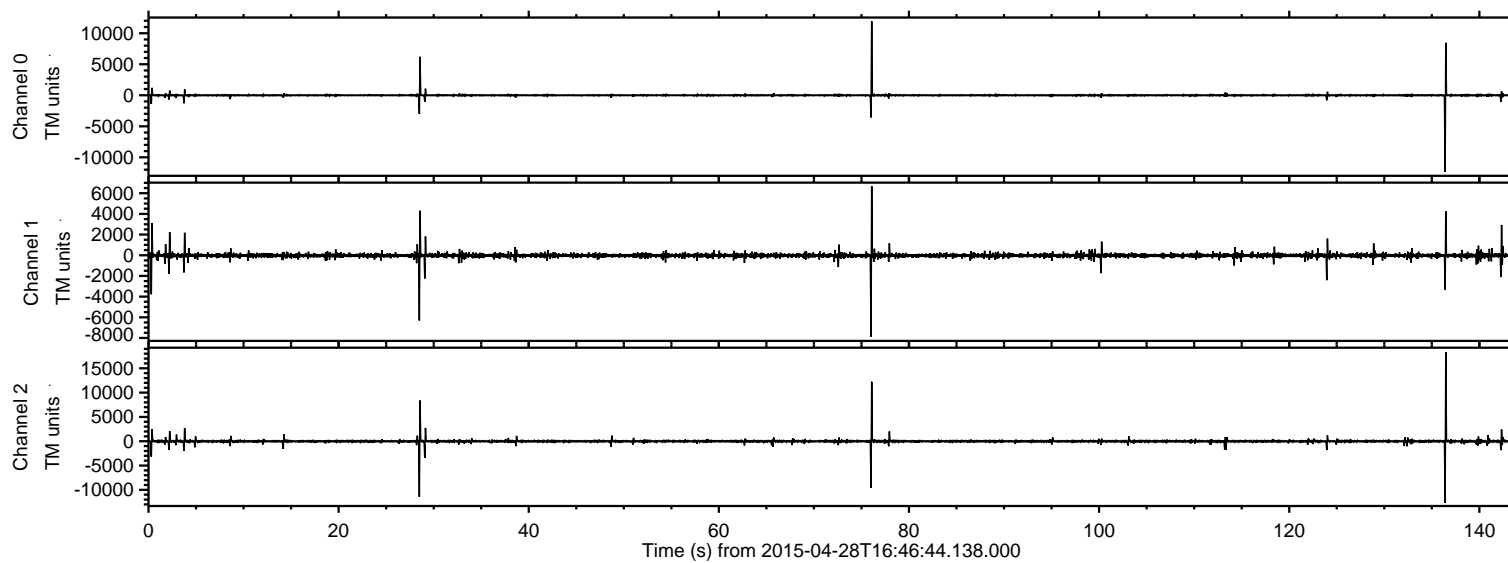


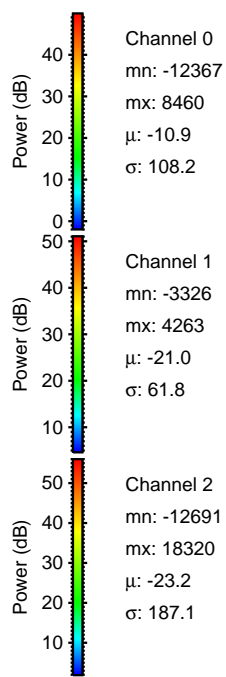
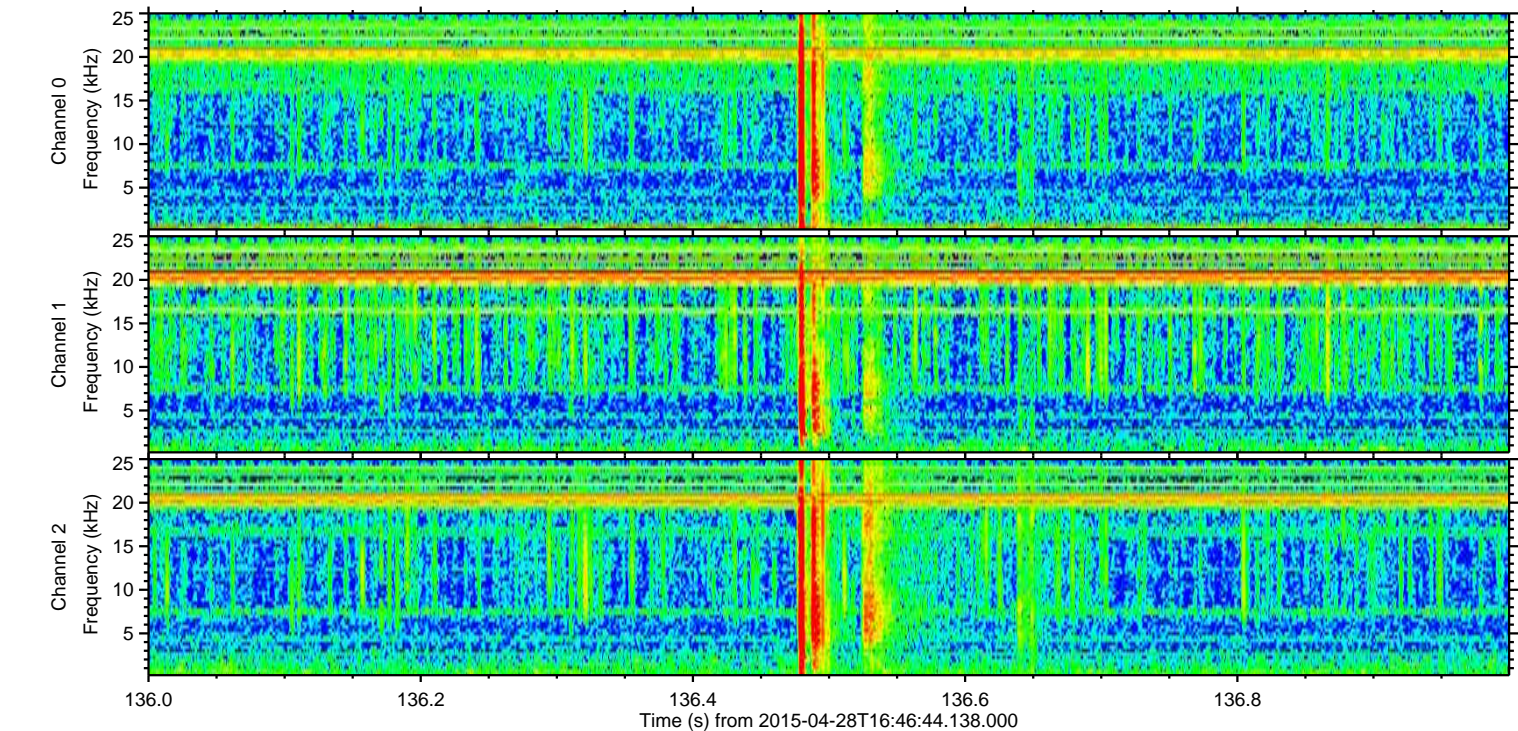
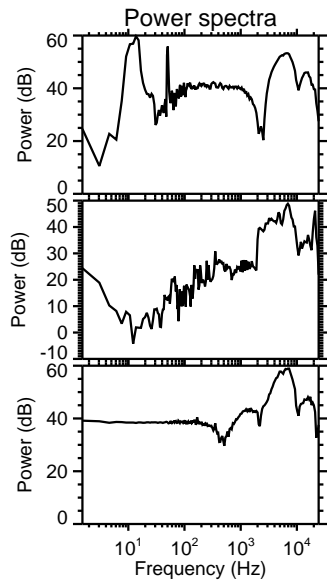
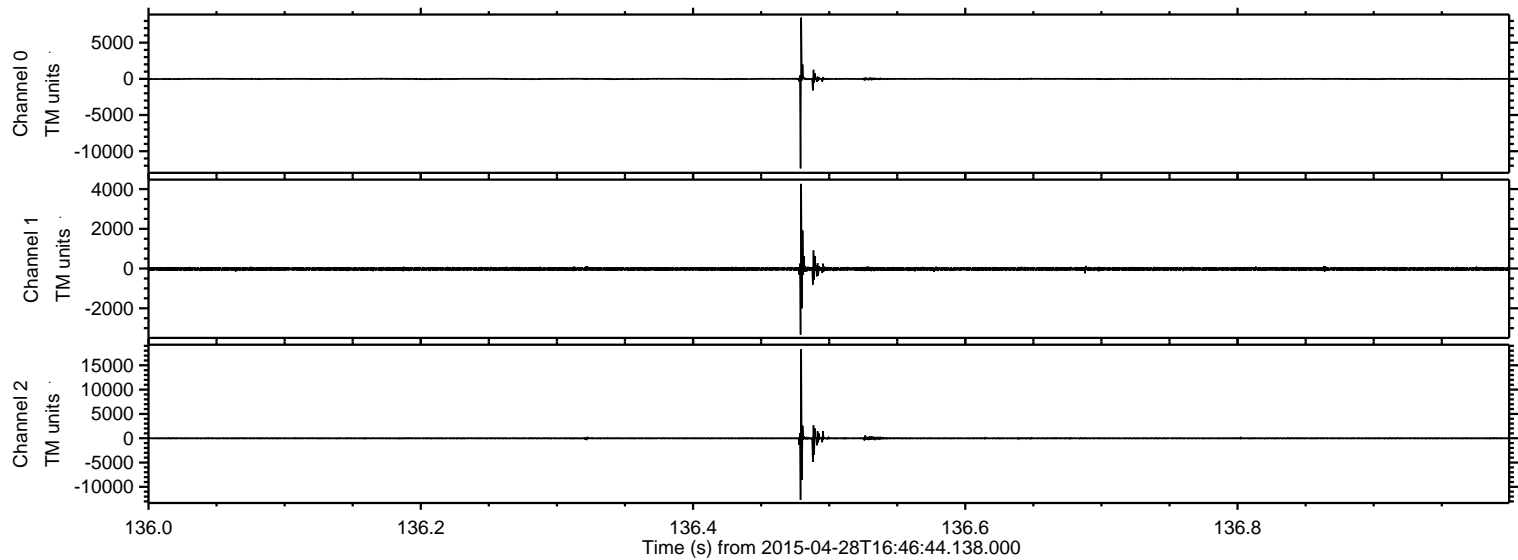
ELMAVAN 3D WAVEFORMS (Measured data sampled at 50 kHz) 49700 packets of 144 samples from 2015-04-28T16:46:44.138.000.

Processed Tue Apr 28 18:53:34 2015 by ELM ver.2012-10-06 from 001__elm20150428_164643__dat00.bin

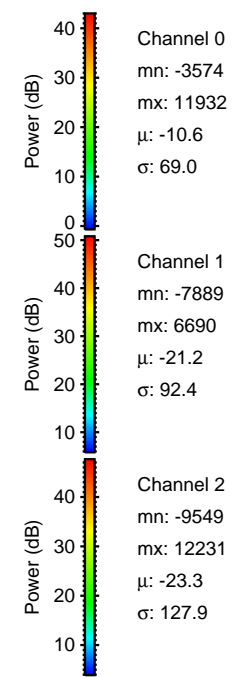
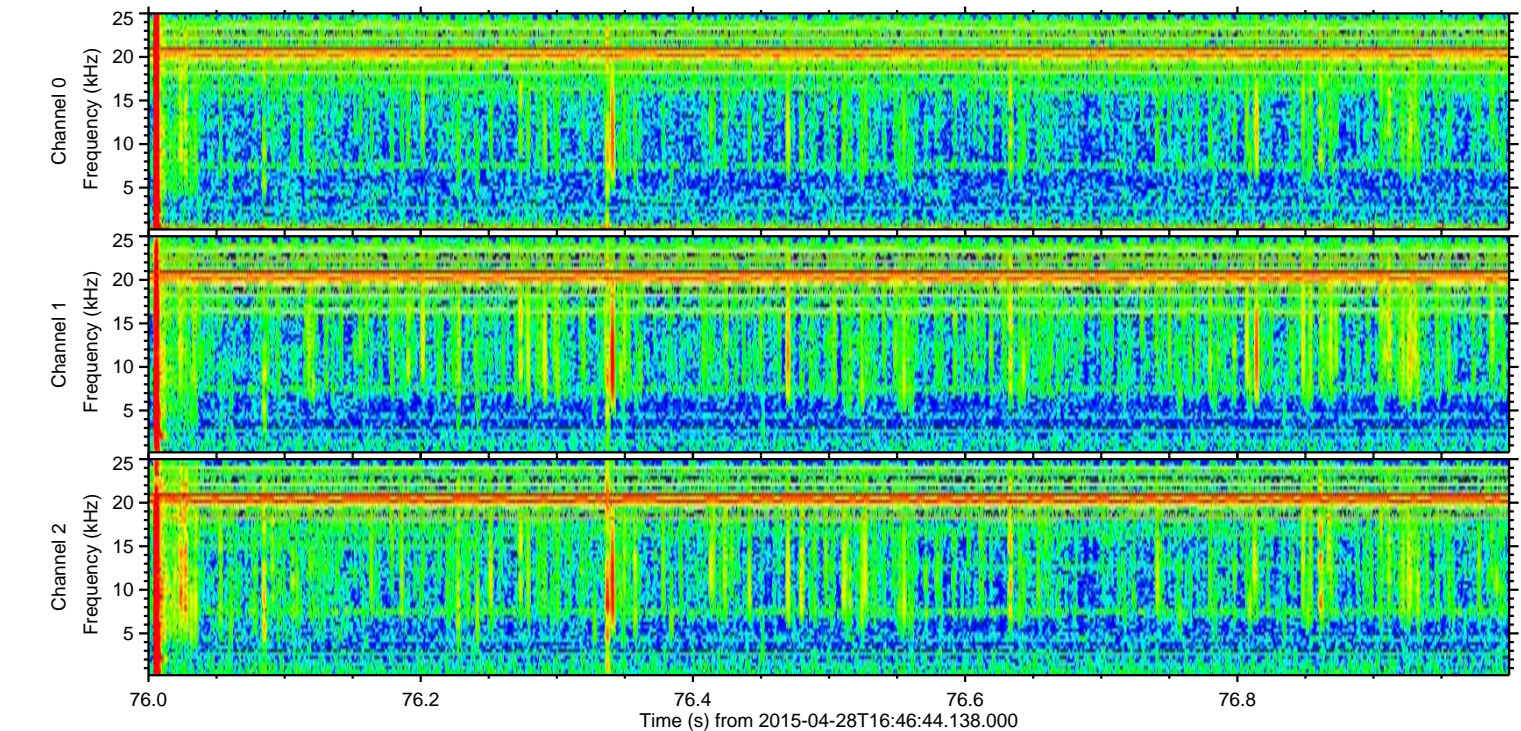
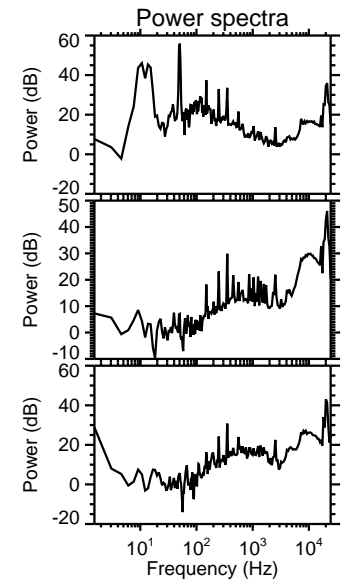
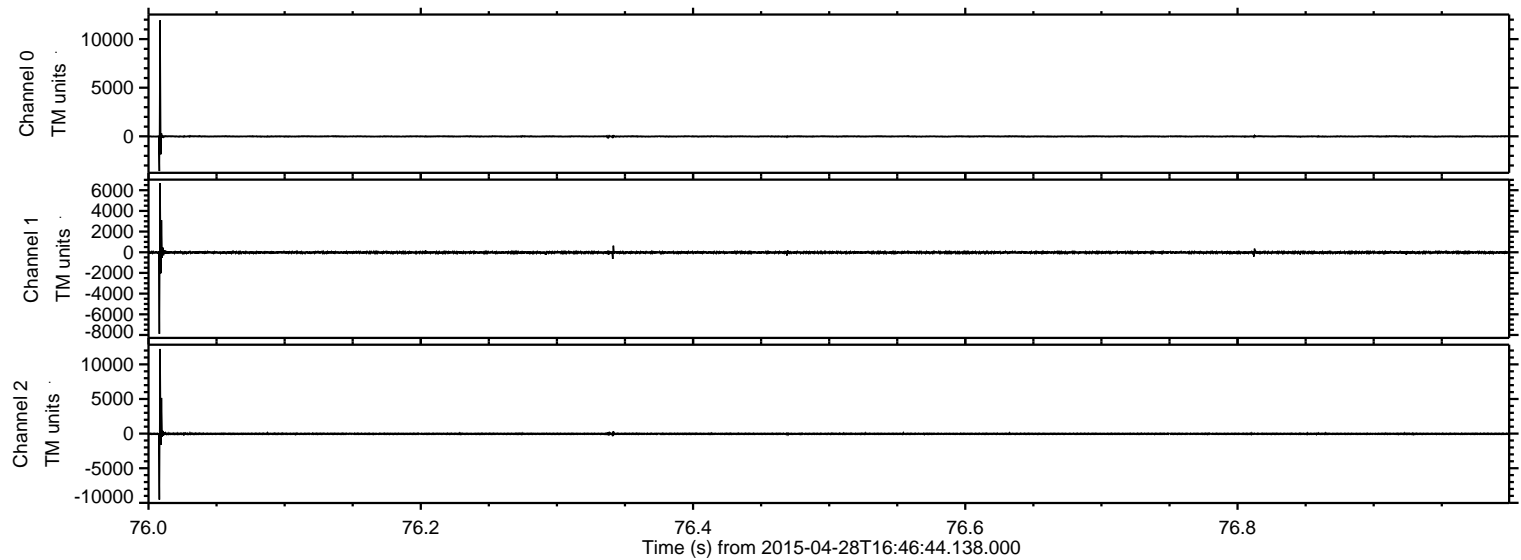


ELMAVAN 3D WAVEFORMS (Measured data sampled at 50 kHz) 49700 packets of 144 samples from 2015-04-28T16:46:44.138.000. Part 137/144

Processed Tue Apr 28 18:53:45 2015 by ELM ver.2012-10-06 from 001__elm20150428_164643__dat00.bin



Processed Tue Apr 28 18:53:46 2015 by ELM ver.2012-10-06 from 001__elm20150428_164643__dat00.bin

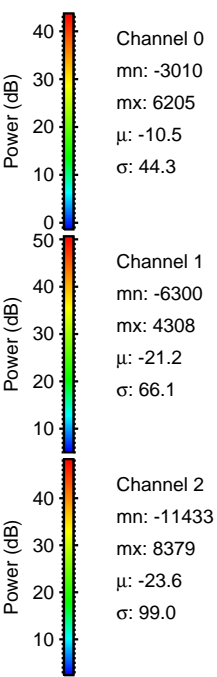
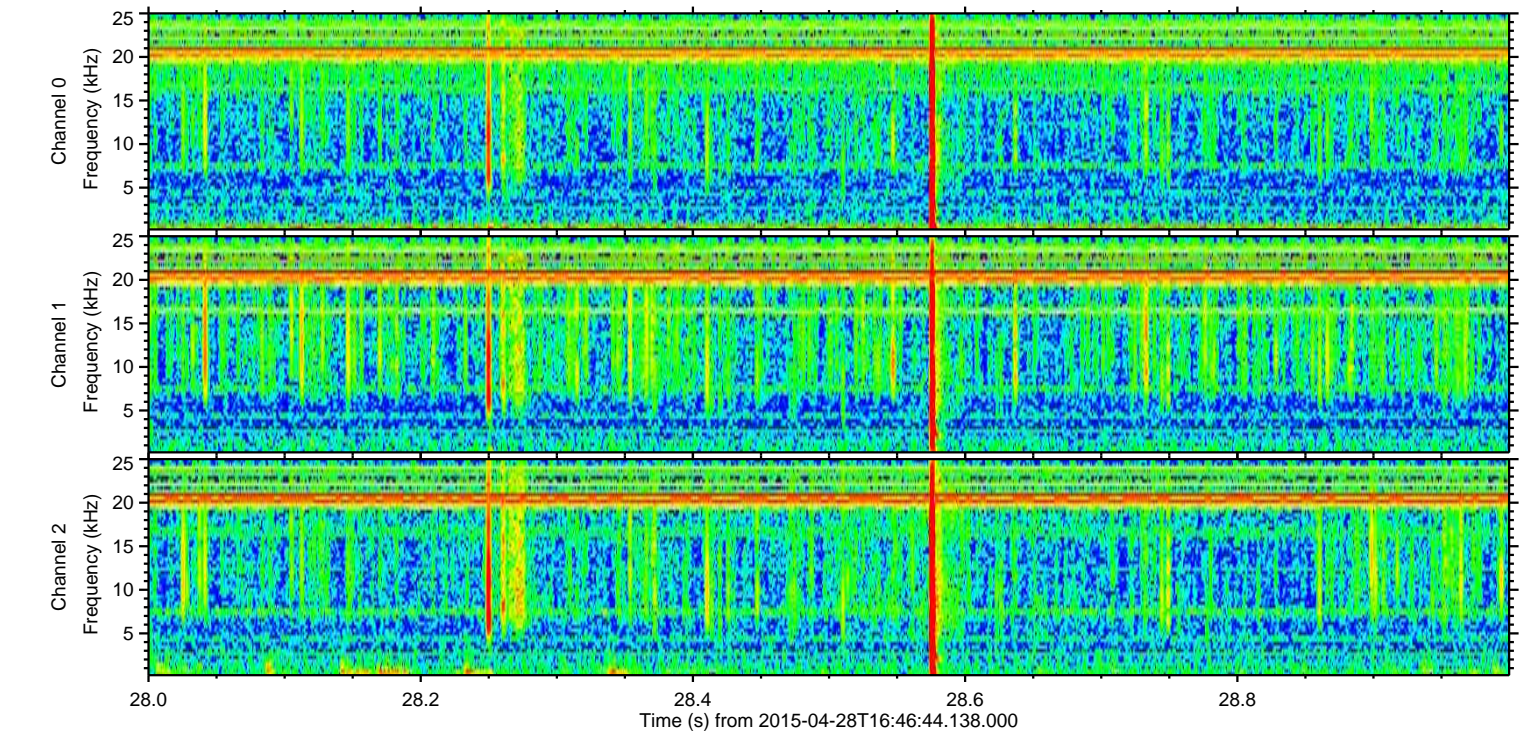
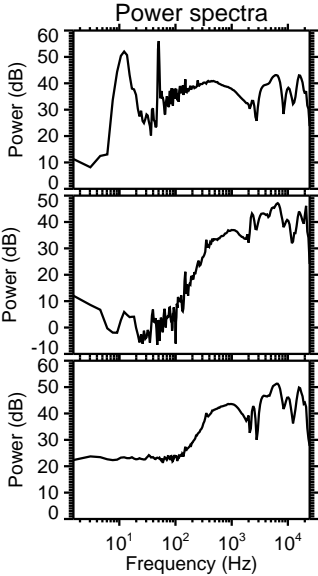
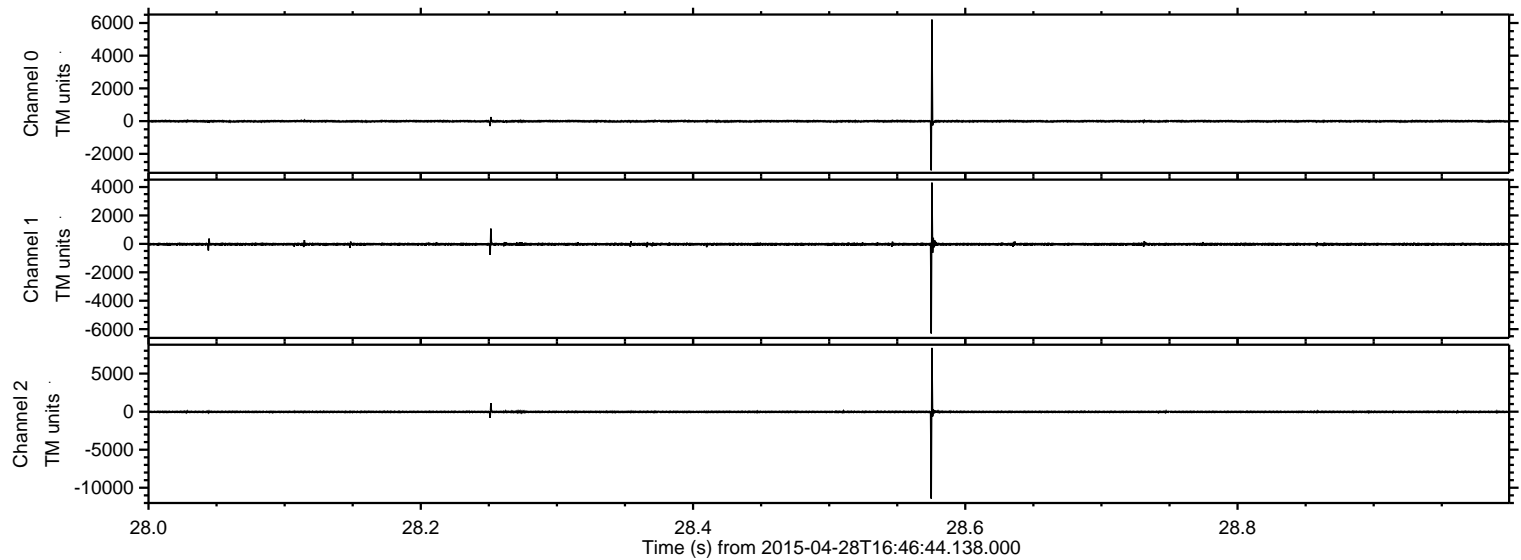


Channel 0
mn: -3574
mx: 11932
 μ : -10.6
 σ : 69.0

Channel 1
mn: -7889
mx: 6690
 μ : -21.2
 σ : 92.4

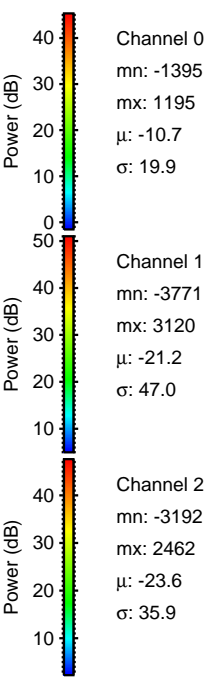
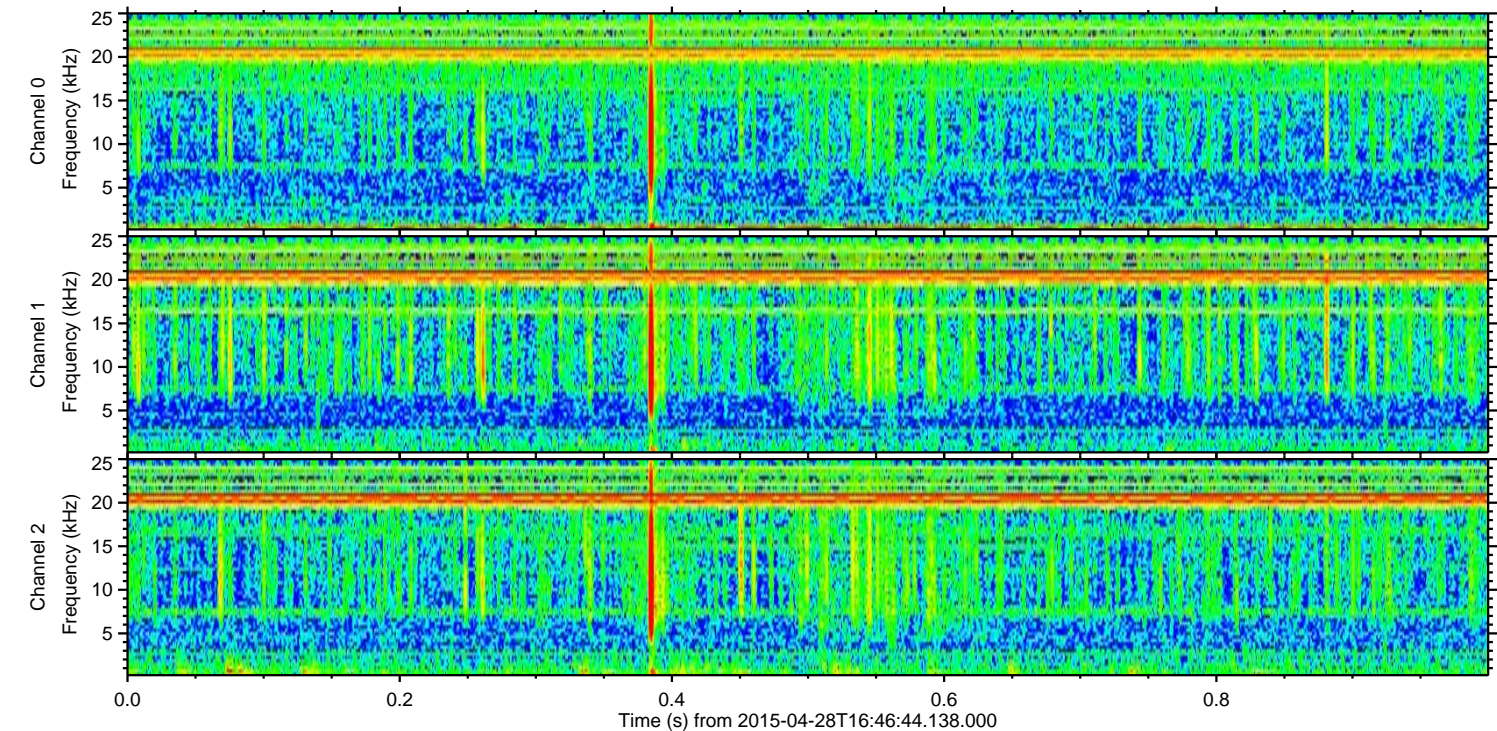
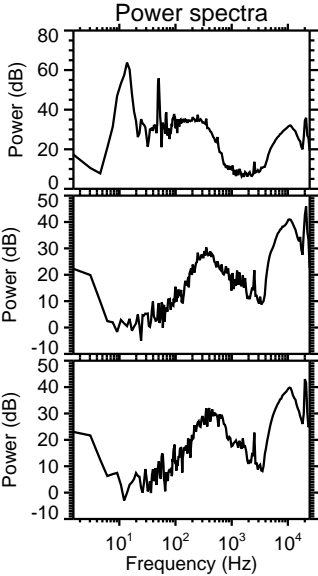
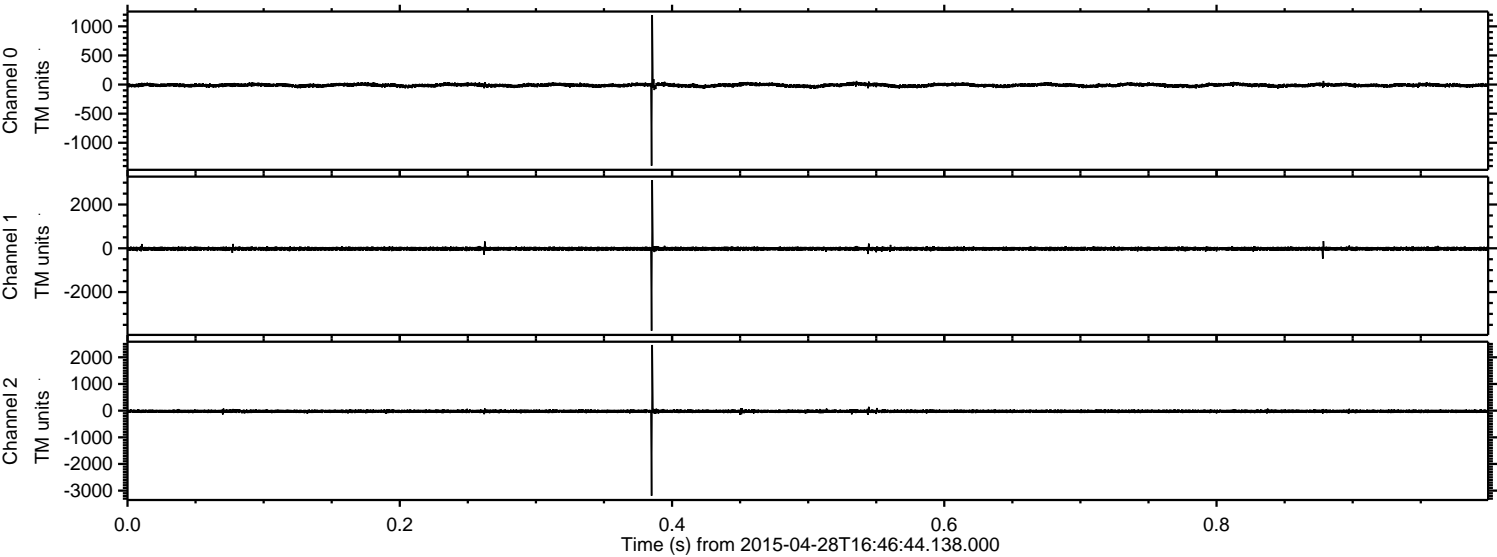
Channel 2
mn: -9549
mx: 12231
 μ : -23.3
 σ : 127.9

Processed Tue Apr 28 18:53:47 2015 by ELM ver.2012-10-06 from 001__elm20150428_164643__dat00.bin

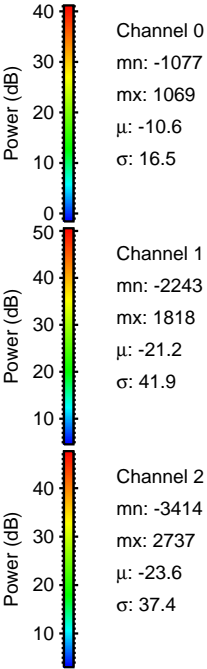
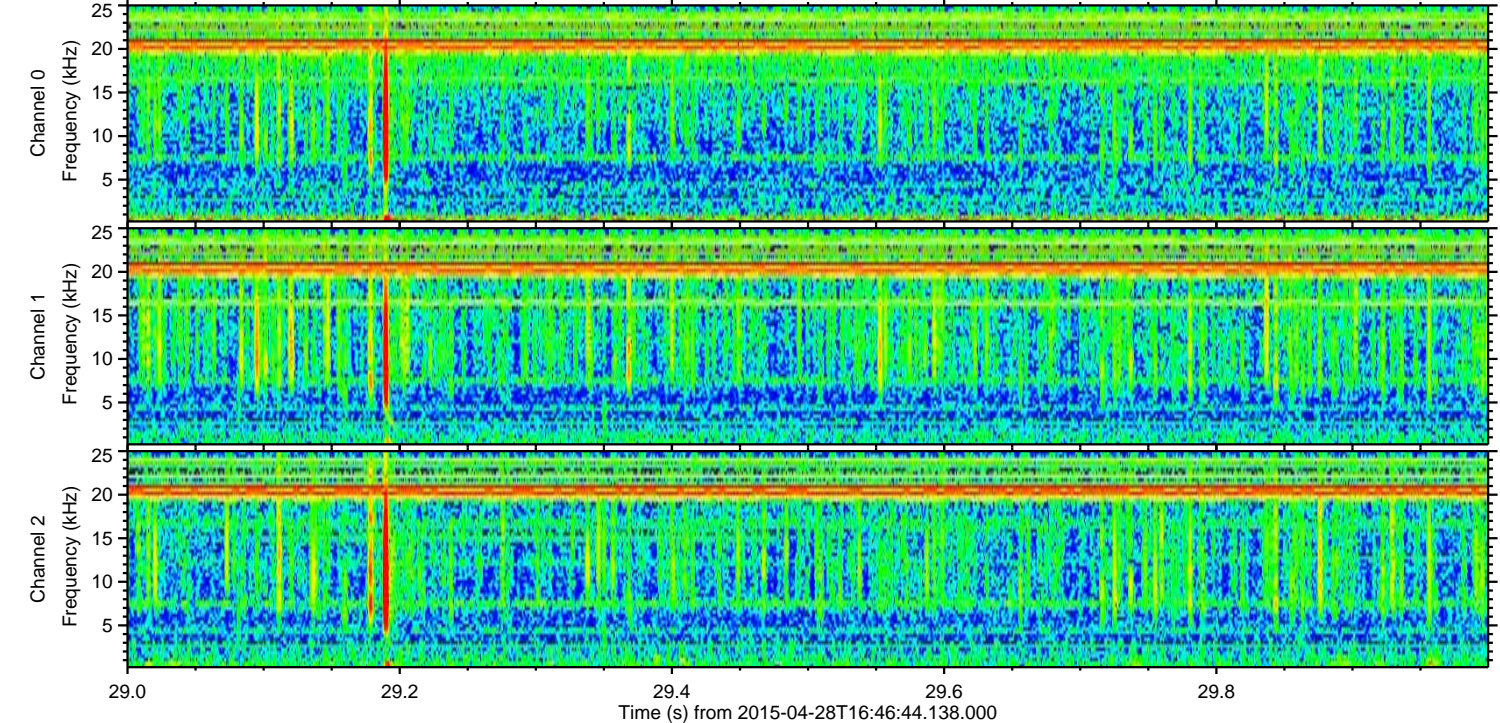
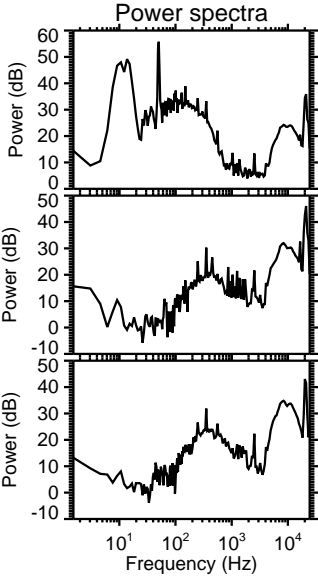
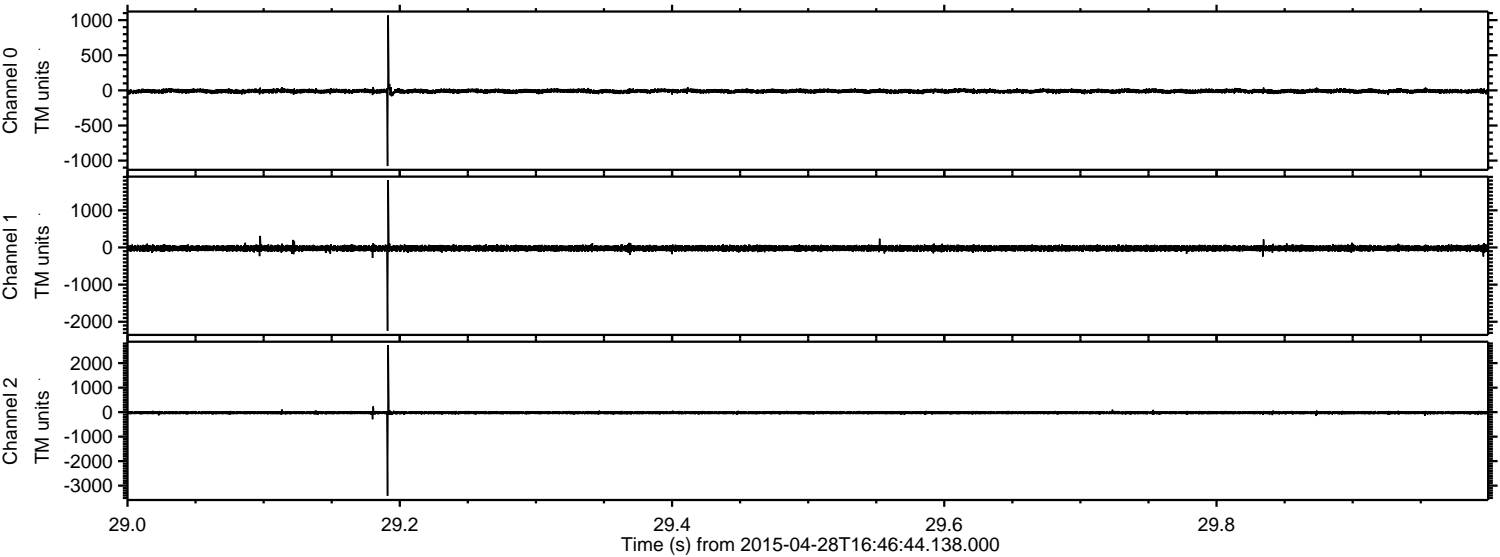


ELMAVAN 3D WAVEFORMS (Measured data sampled at 50 kHz) 49700 packets of 144 samples from 2015-04-28T16:46:44.138.000. Part 1/144

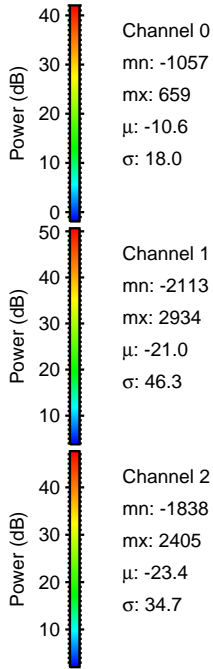
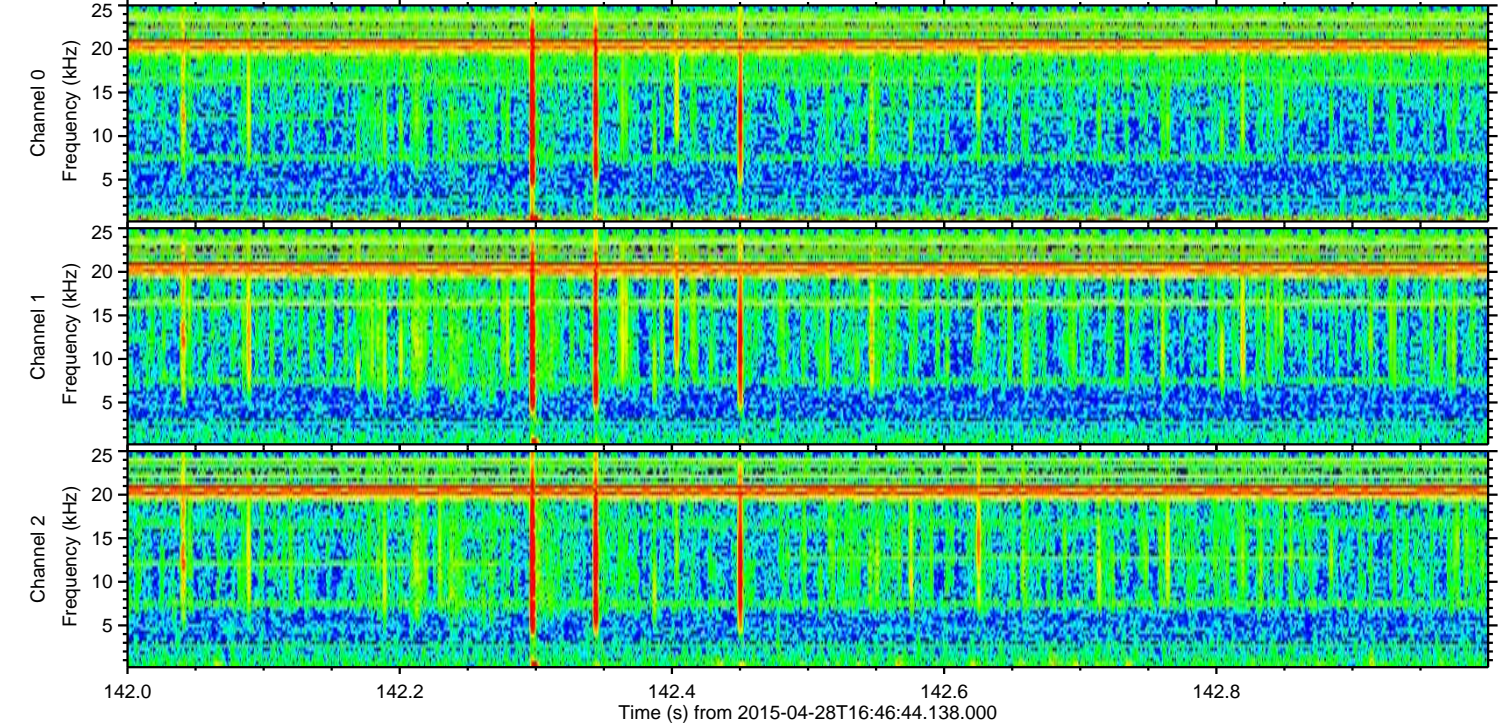
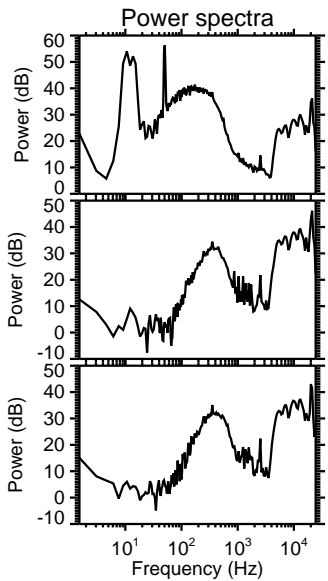
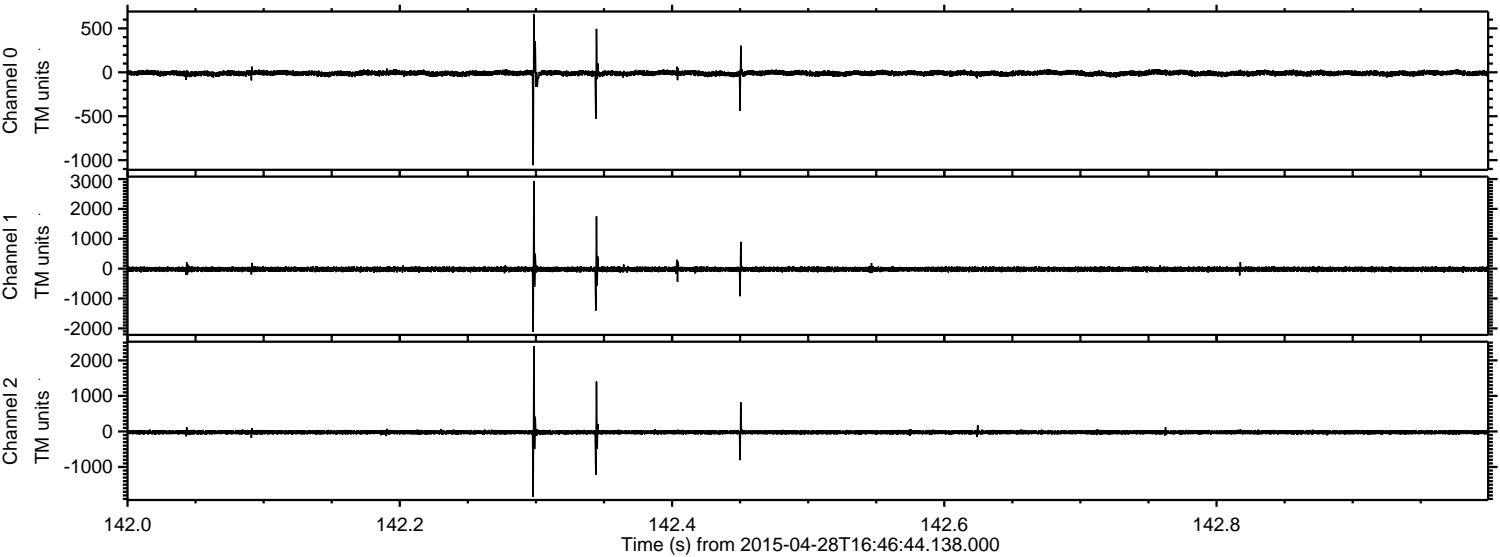
Processed Tue Apr 28 18:53:48 2015 by ELM ver.2012-10-06 from 001__elm20150428_164643__dat00.bin



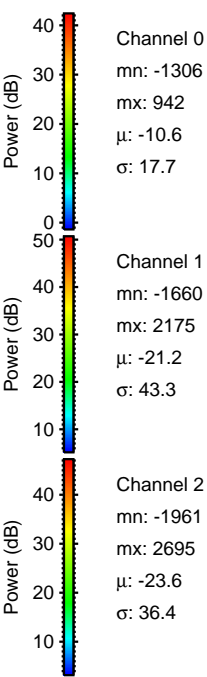
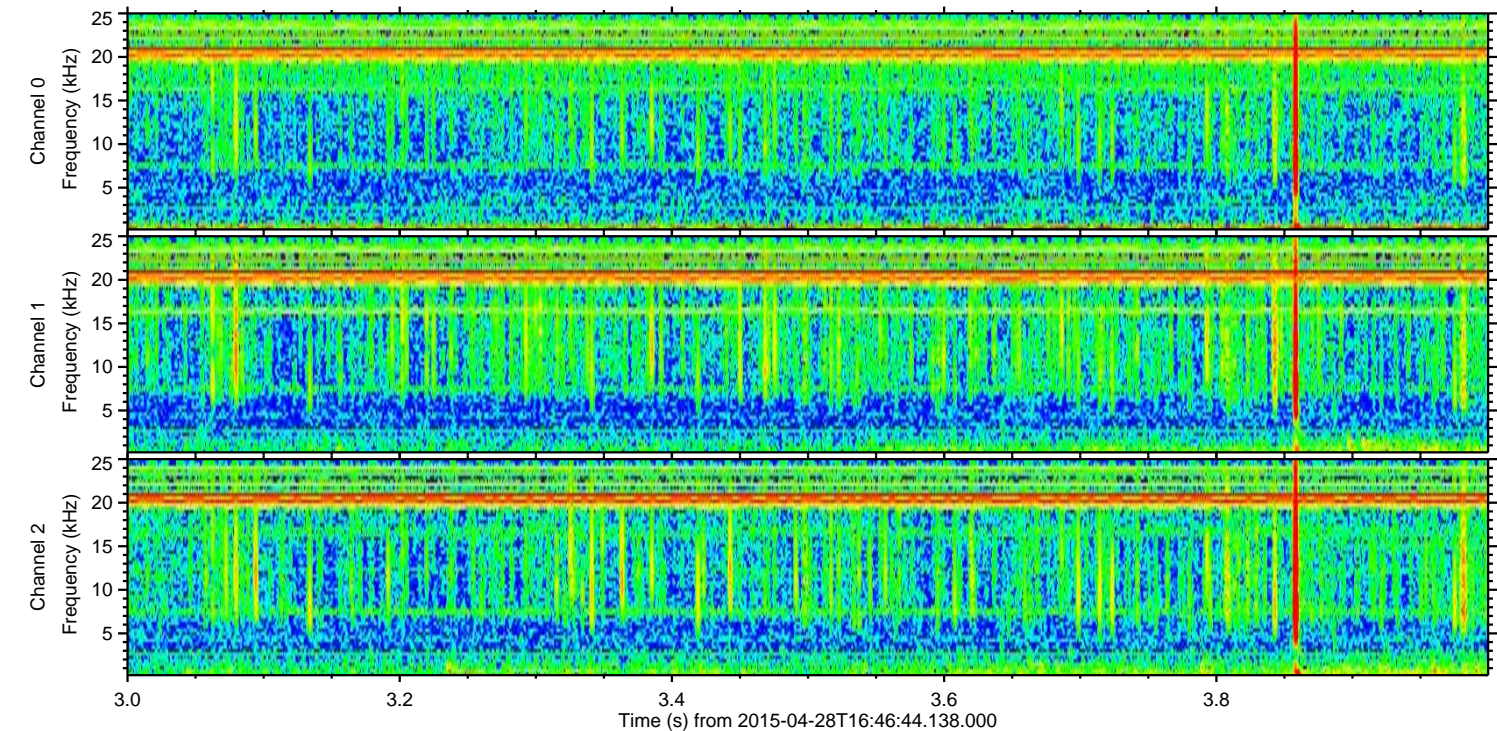
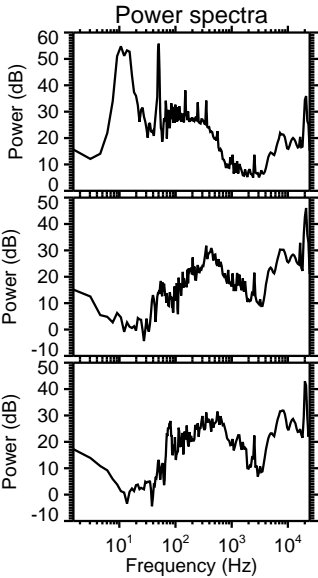
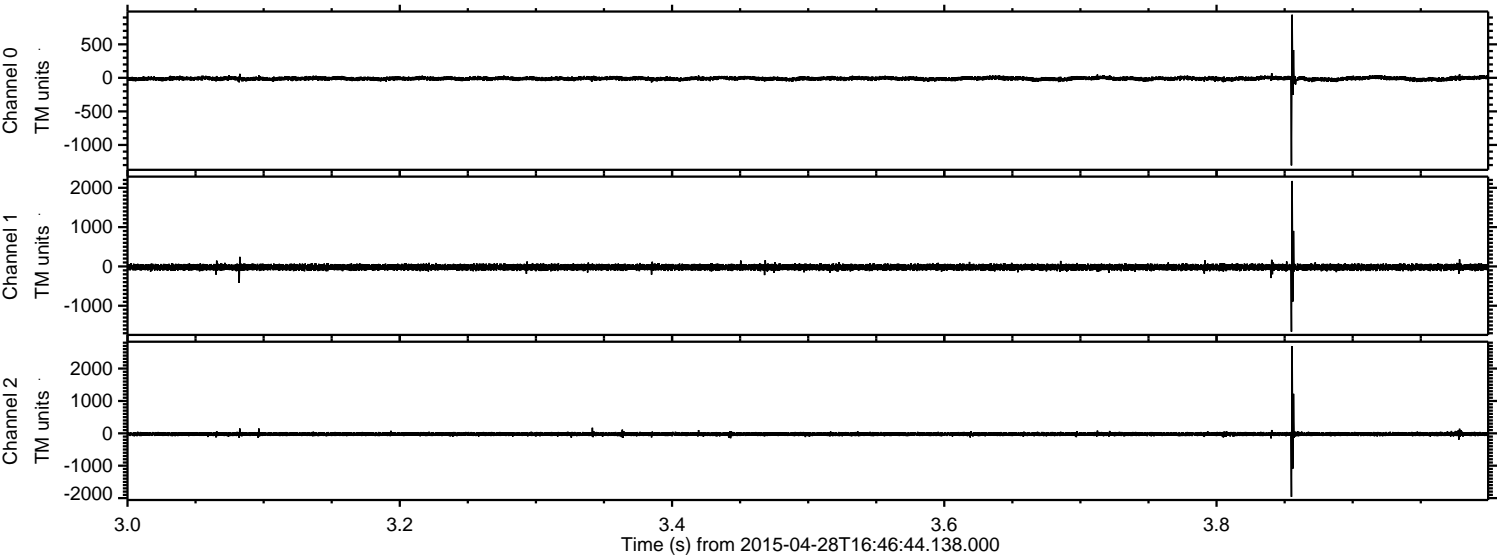
Processed Tue Apr 28 18:53:49 2015 by ELM ver.2012-10-06 from 001__elm20150428_164643__dat00.bin



Processed Tue Apr 28 18:53:50 2015 by ELM ver.2012-10-06 from 001__elm20150428_164643__dat00.bin

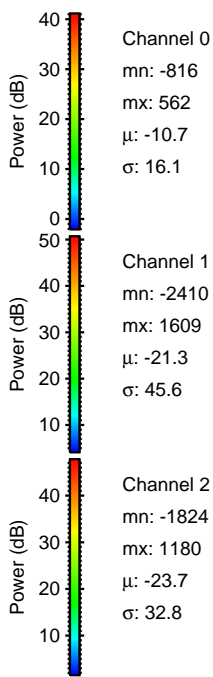
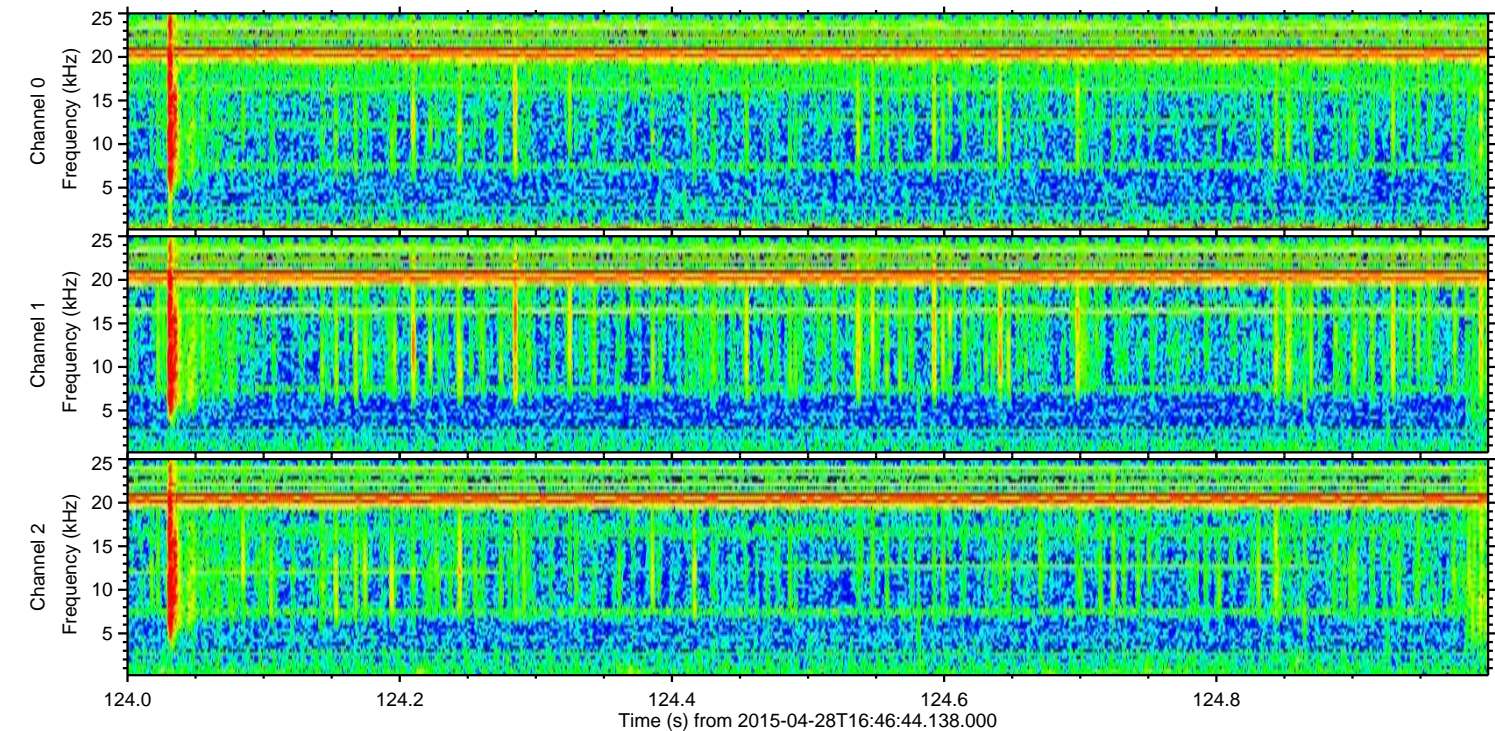
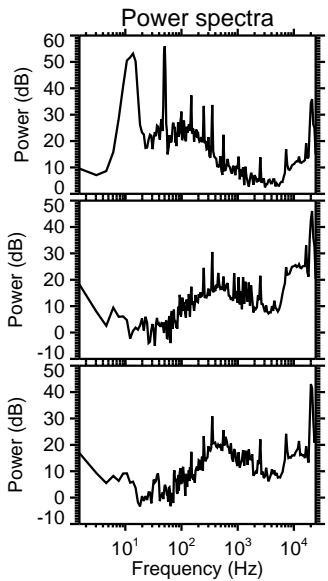
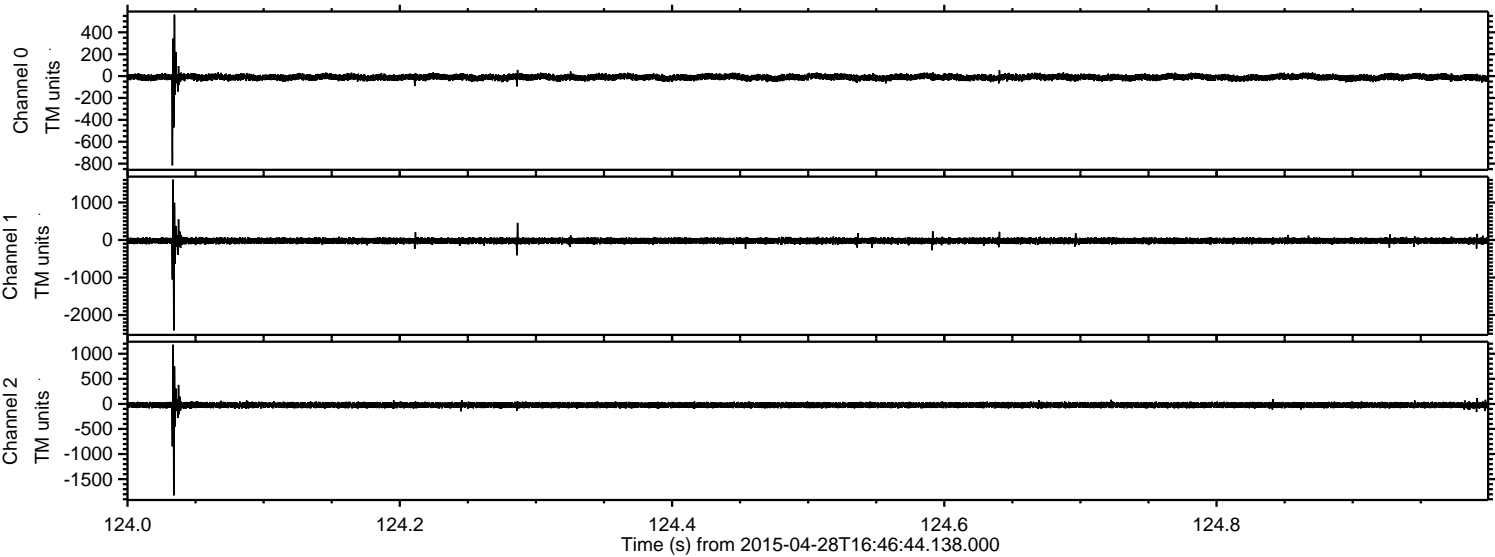


Processed Tue Apr 28 18:53:51 2015 by ELM ver.2012-10-06 from 001__elm20150428_164643__dat00.bin



ELMAVAN 3D WAVEFORMS (Measured data sampled at 50 kHz) 49700 packets of 144 samples from 2015-04-28T16:46:44.138.000. Part 125/144

Processed Tue Apr 28 18:53:52 2015 by ELM ver.2012-10-06 from 001__elm20150428_164643__dat00.bin



Channel 0
mn: -816
mx: 562
 μ : -10.7
 σ : 16.1

Channel 1
mn: -2410
mx: 1609
 μ : -21.3
 σ : 45.6

Channel 2
mn: -1824
mx: 1180
 μ : -23.7
 σ : 32.8

Processed Tue Apr 28 18:53:53 2015 by ELM ver.2012-10-06 from 001__elm20150428_164643__dat00.bin

