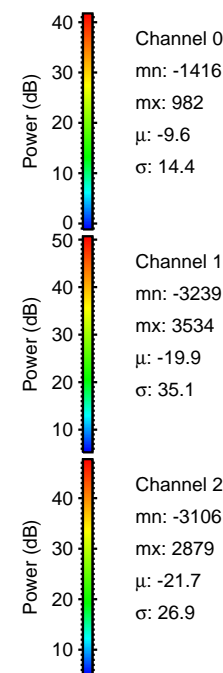
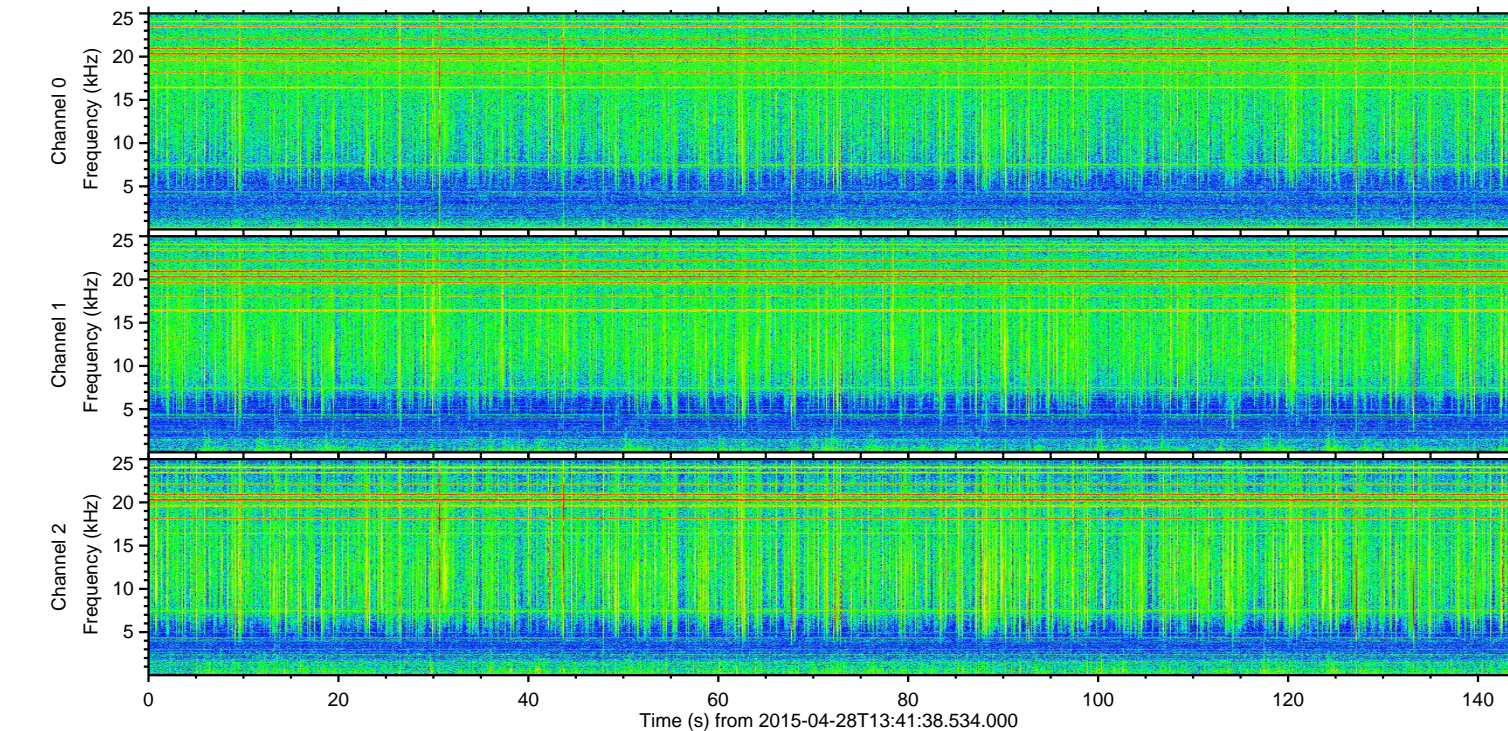
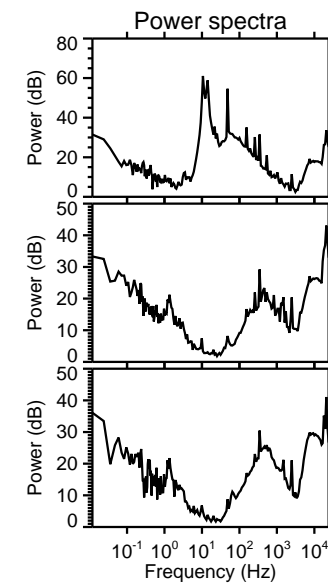
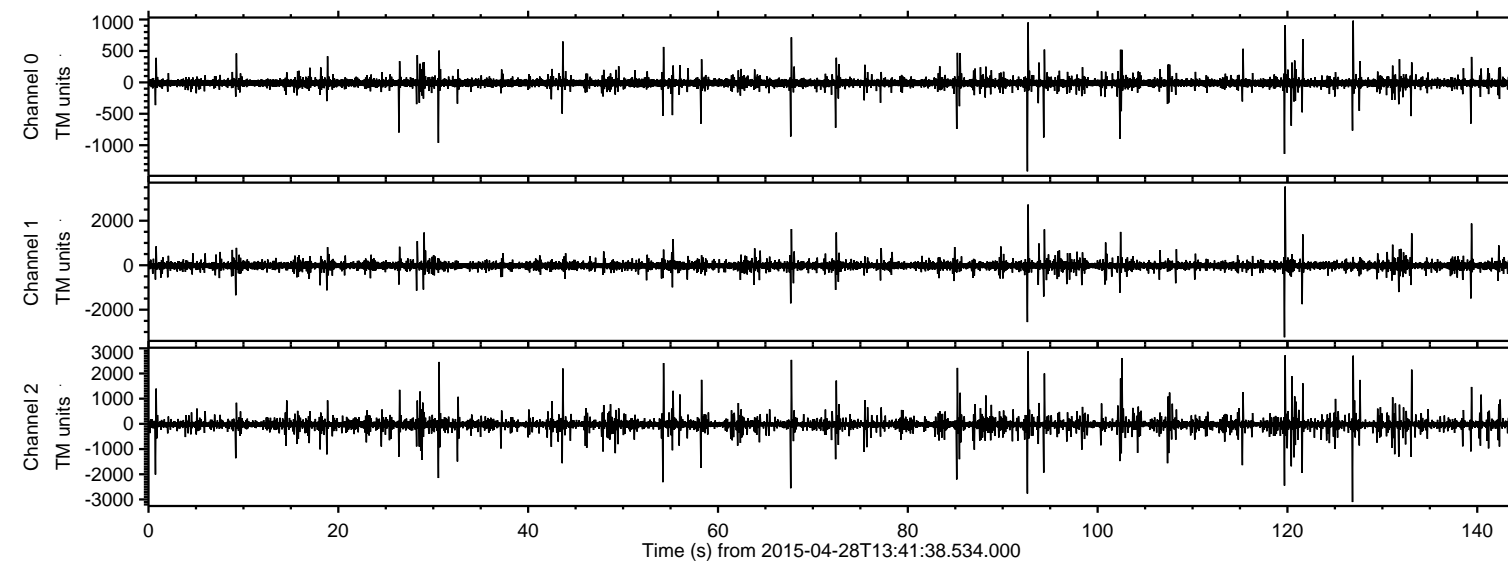


ELMAVAN 3D WAVEFORMS (Measured data sampled at 50 kHz) 49777 packets of 144 samples from 2015-04-28T13:41:38.534.000.

Processed Tue Apr 28 15:48:57 2015 by ELM ver.2012-10-06 from 001__elm20150428_134137__dat00.bin



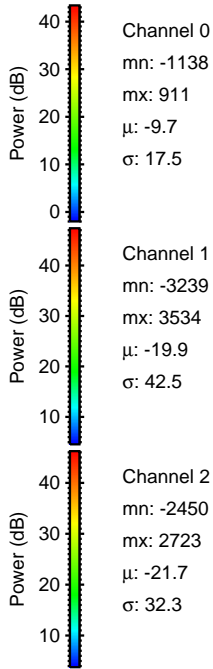
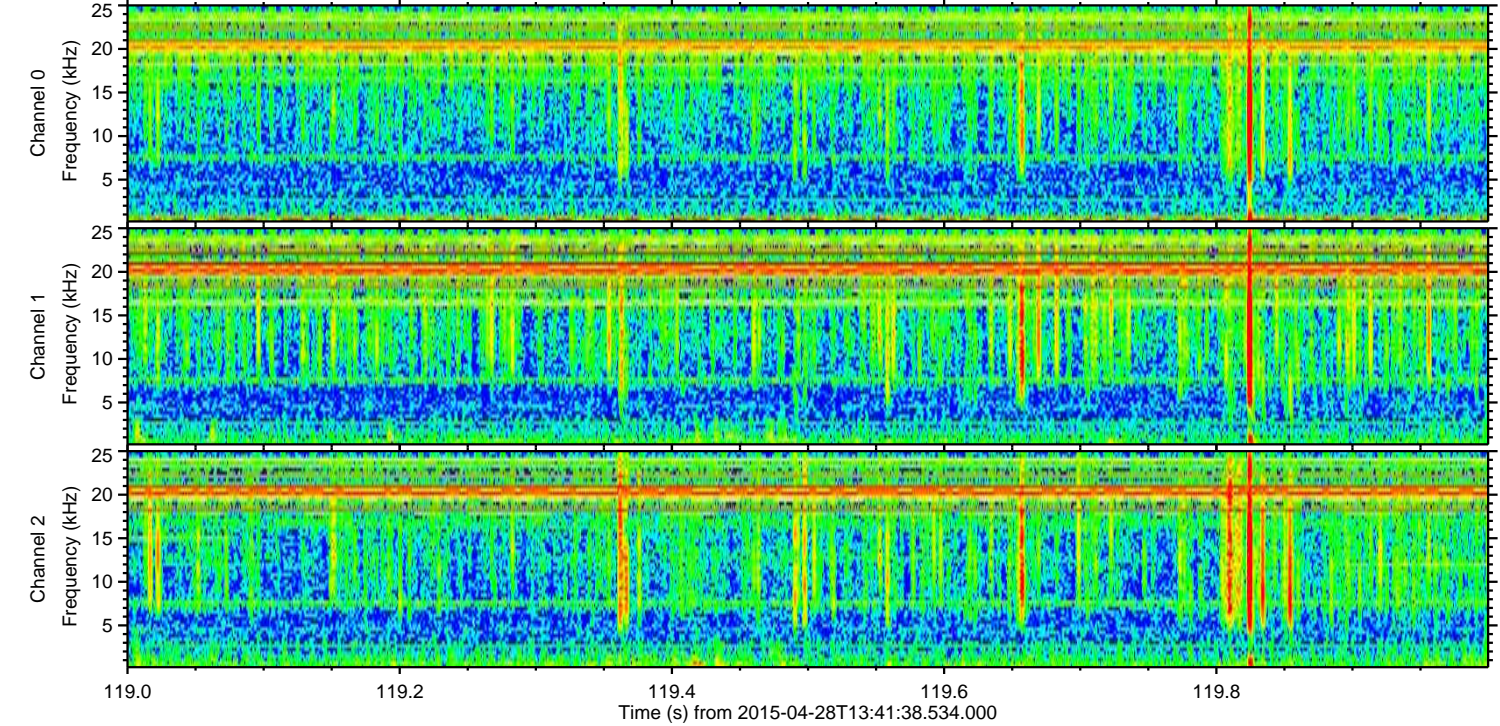
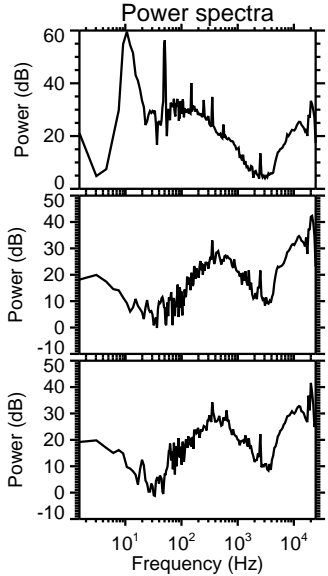
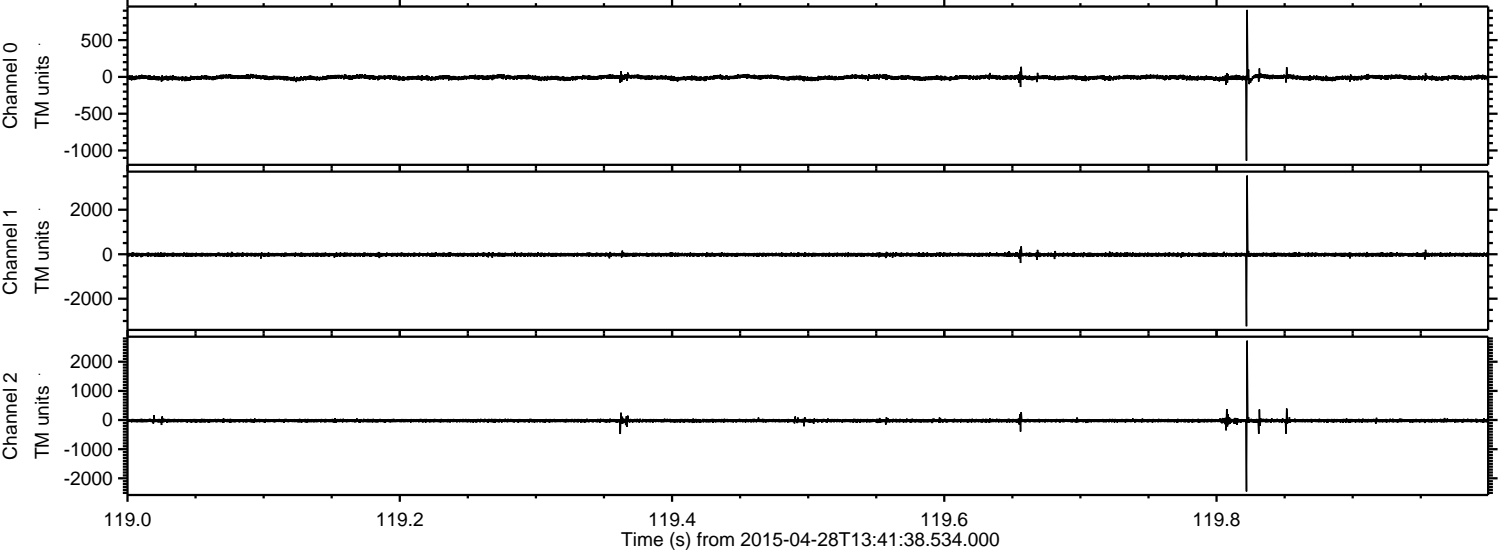
Channel 0
mn: -1416
mx: 982
 μ : -9.6
 σ : 14.4

Channel 1
mn: -3239
mx: 3534
 μ : -19.9
 σ : 35.1

Channel 2
mn: -3106
mx: 2879
 μ : -21.7
 σ : 26.9

ELMAVAN 3D WAVEFORMS (Measured data sampled at 50 kHz) 49777 packets of 144 samples from 2015-04-28T13:41:38.534.000. Part 120/144

Processed Tue Apr 28 15:49:09 2015 by ELM ver.2012-10-06 from 001__elm20150428_134137__dat00.bin



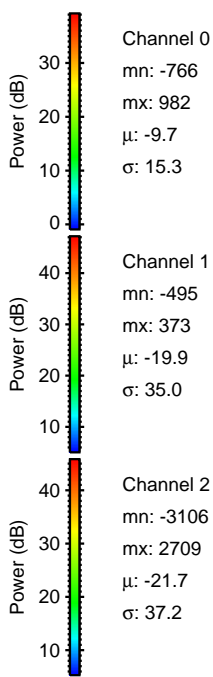
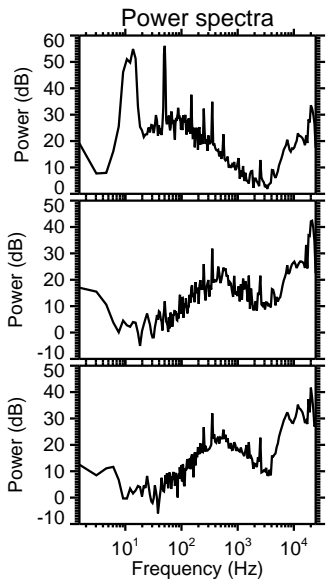
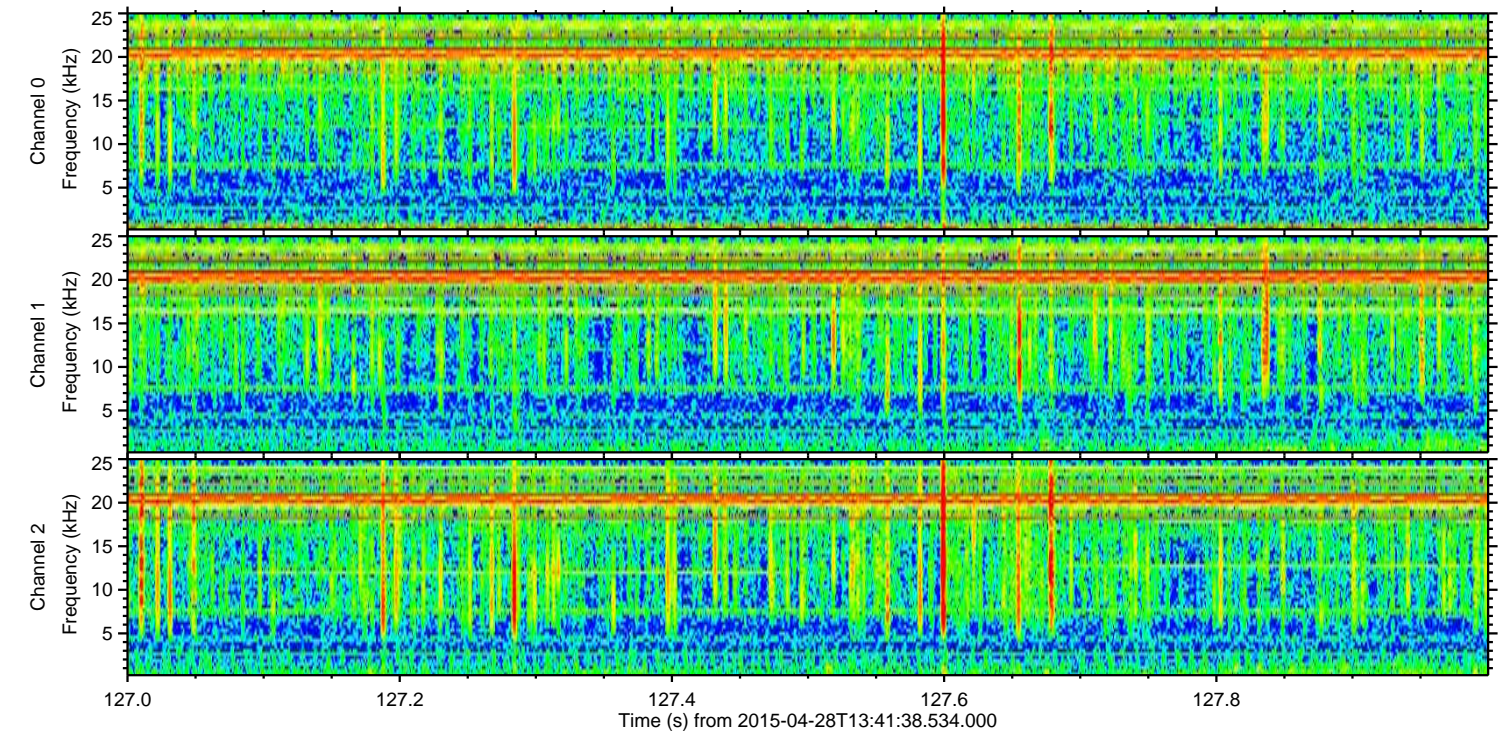
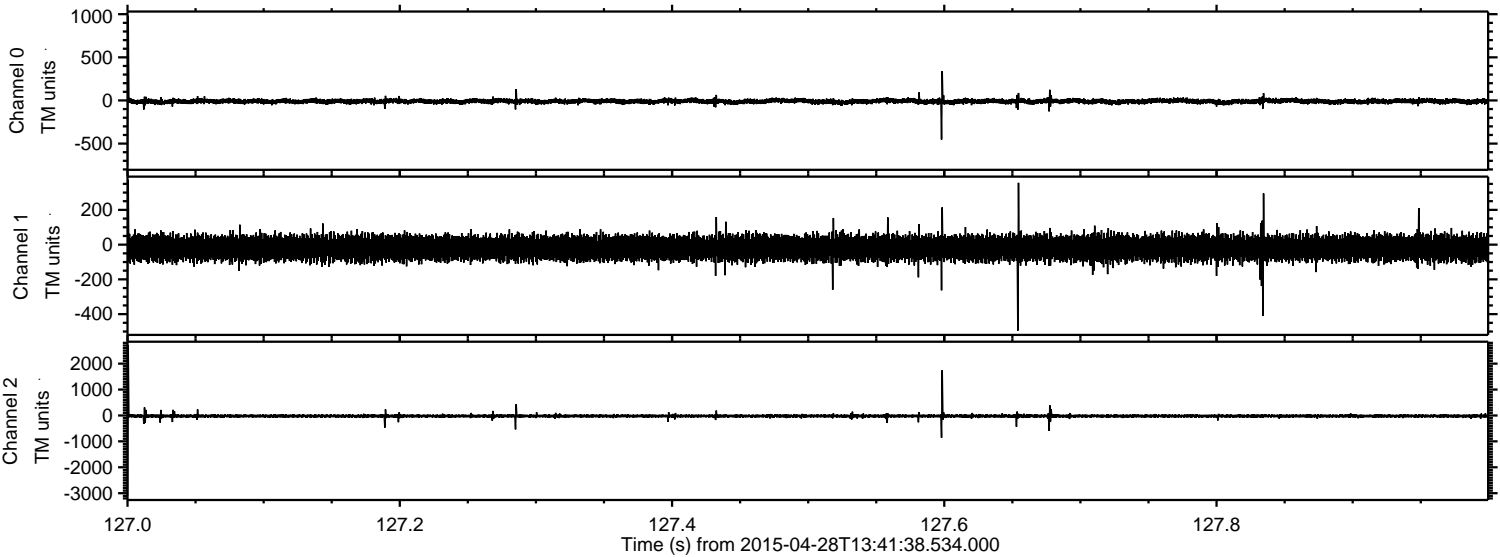
Channel 0
mn: -1138
mx: 911
 μ : -9.7
 σ : 17.5

Channel 1
mn: -3239
mx: 3534
 μ : -19.9
 σ : 42.5

Channel 2
mn: -2450
mx: 2723
 μ : -21.7
 σ : 32.3

ELMAVAN 3D WAVEFORMS (Measured data sampled at 50 kHz) 49777 packets of 144 samples from 2015-04-28T13:41:38.534.000. Part 128/144

Processed Tue Apr 28 15:49:10 2015 by ELM ver.2012-10-06 from 001__elm20150428_134137__dat00.bin



Channel 0

mn: -766
mx: 982
 μ : -9.7
 σ : 15.3

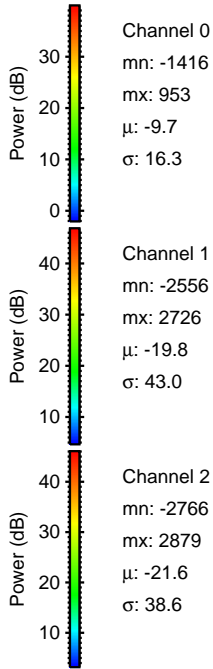
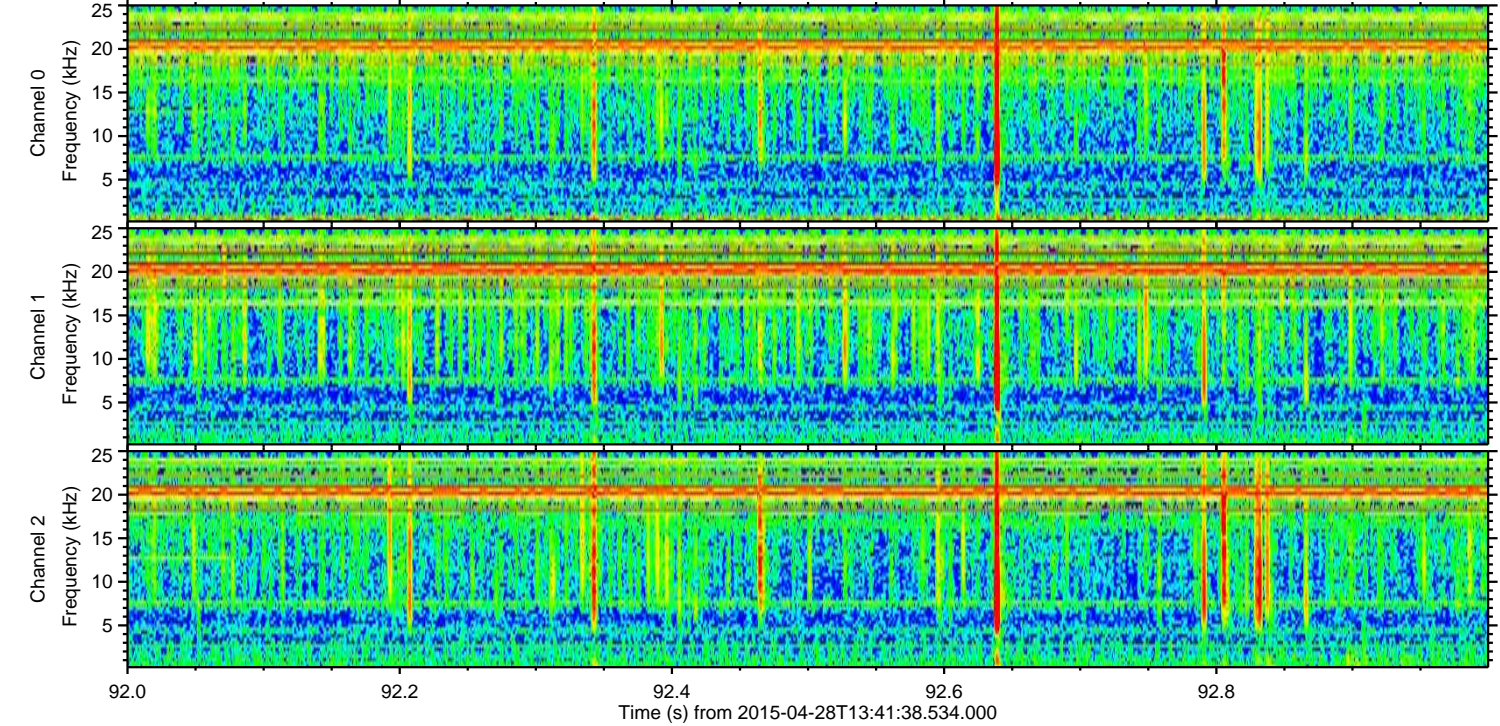
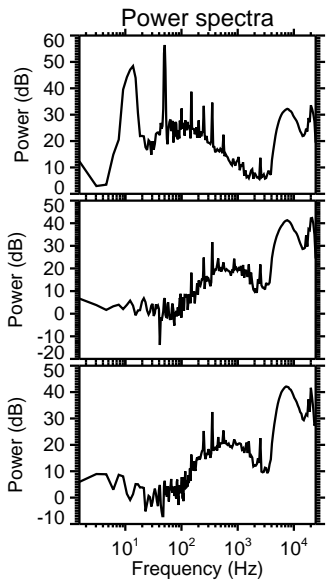
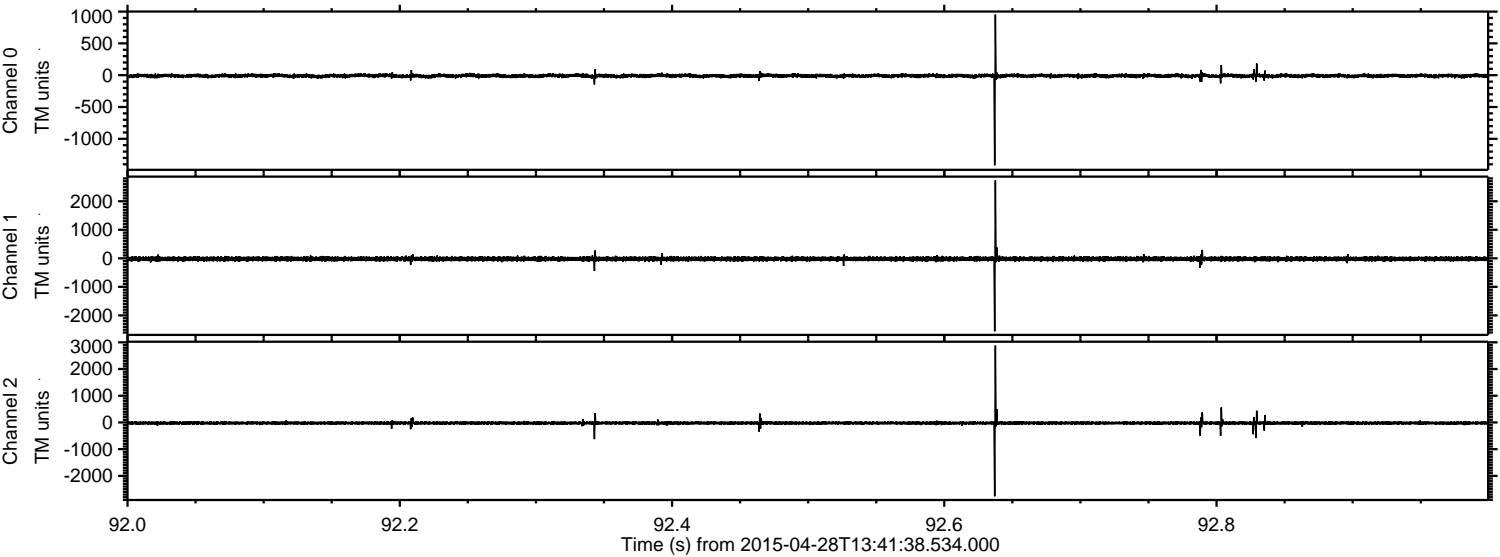
Channel 1

mn: -495
mx: 373
 μ : -19.9
 σ : 35.0

Channel 2

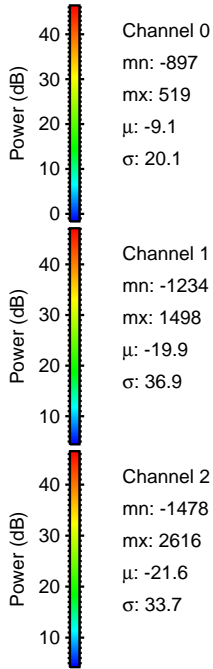
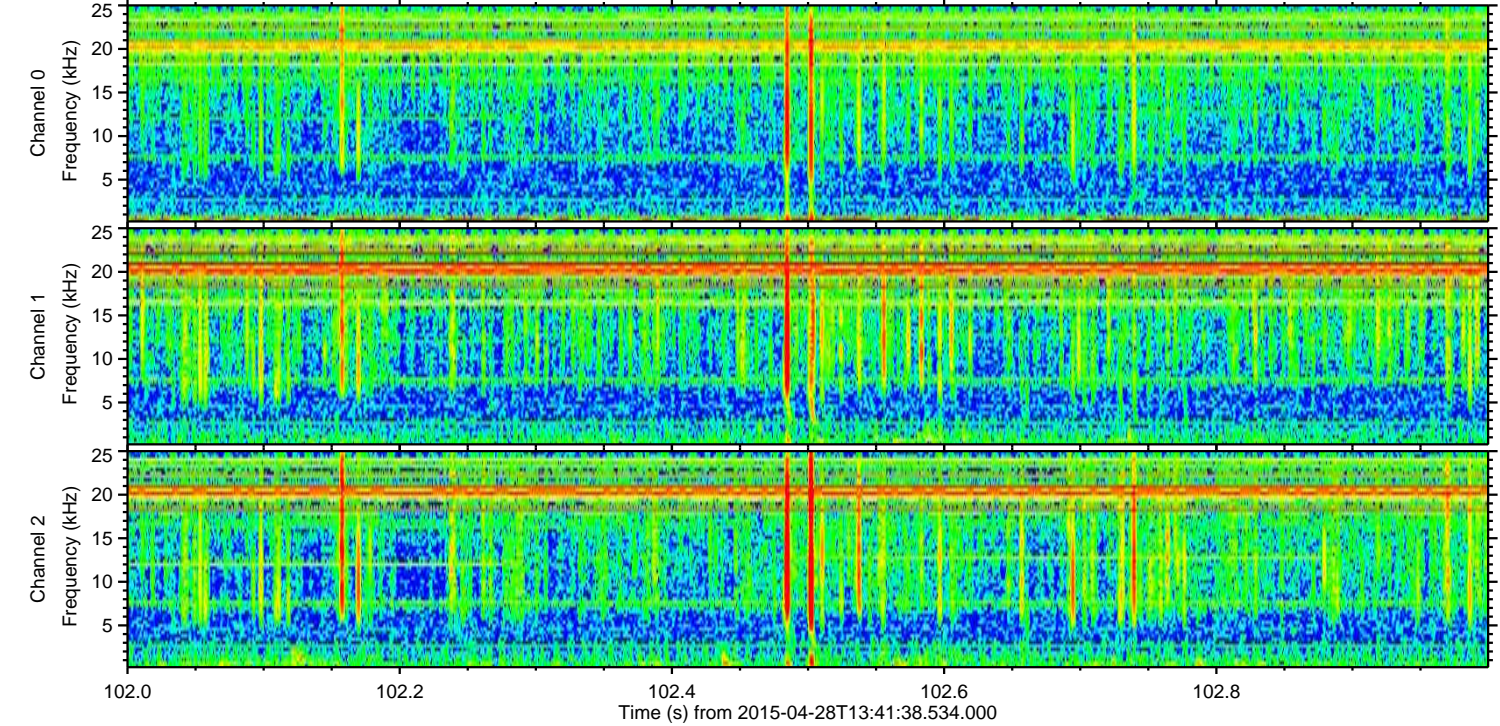
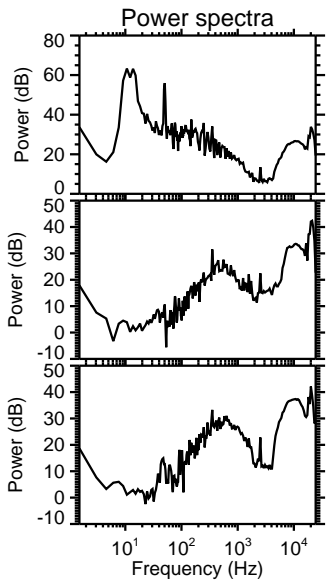
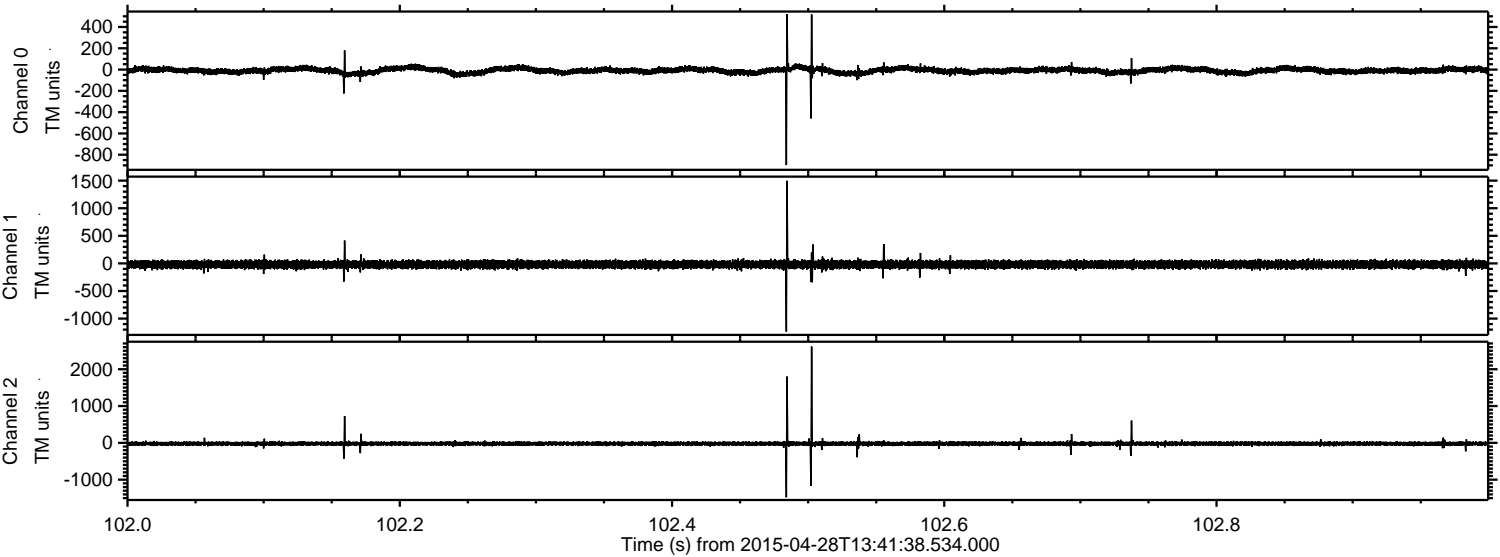
mn: -3106
mx: 2709
 μ : -21.7
 σ : 37.2

Processed Tue Apr 28 15:49:11 2015 by ELM ver.2012-10-06 from 001__elm20150428_134137__dat00.bin



ELMAVAN 3D WAVEFORMS (Measured data sampled at 50 kHz) 49777 packets of 144 samples from 2015-04-28T13:41:38.534.000. Part 103/144

Processed Tue Apr 28 15:49:12 2015 by ELM ver.2012-10-06 from 001__elm20150428_134137__dat00.bin

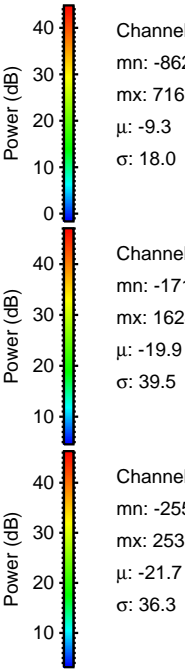
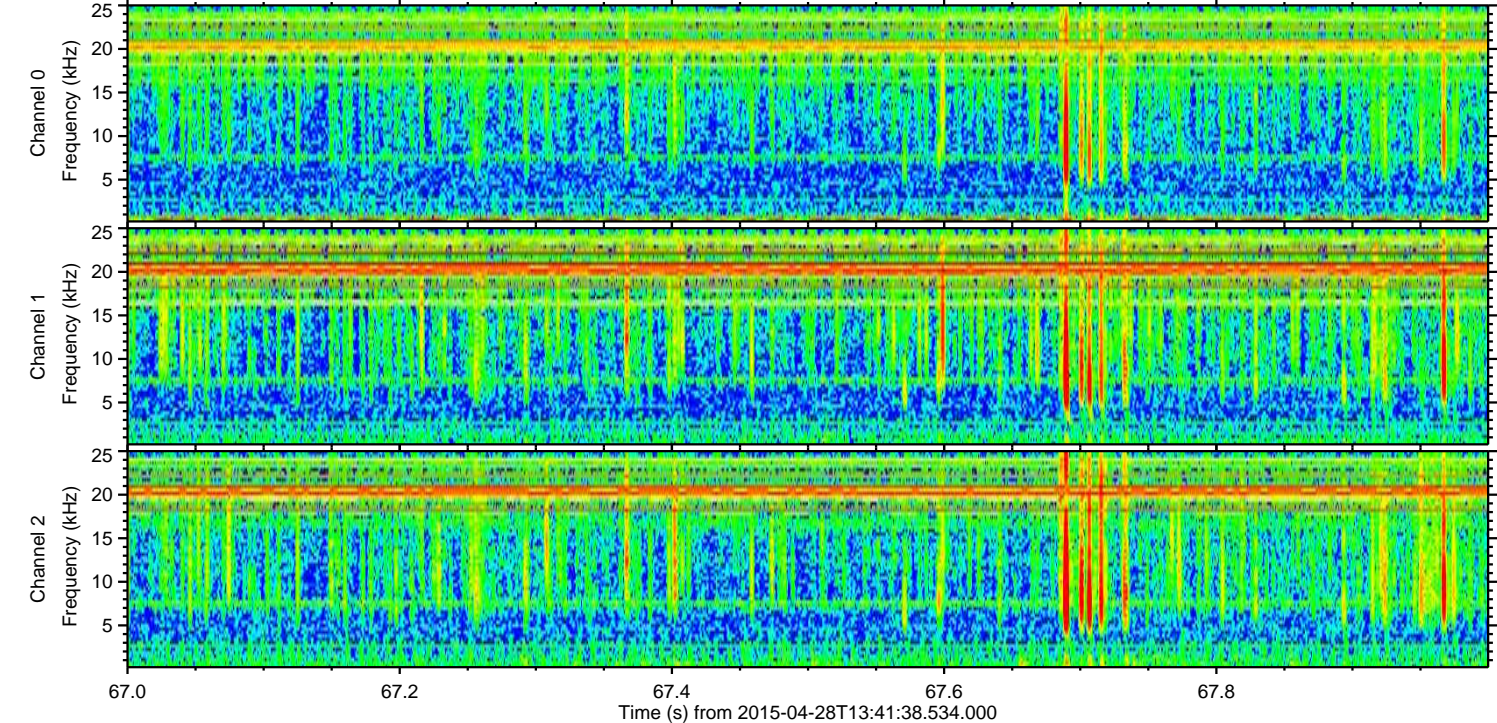
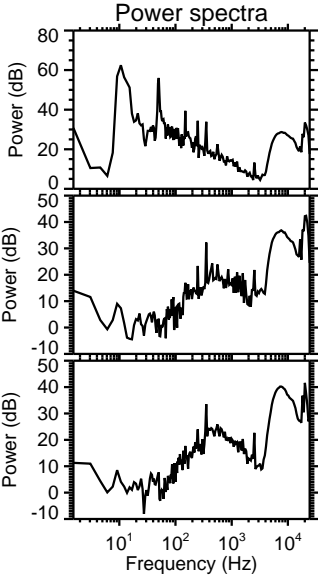
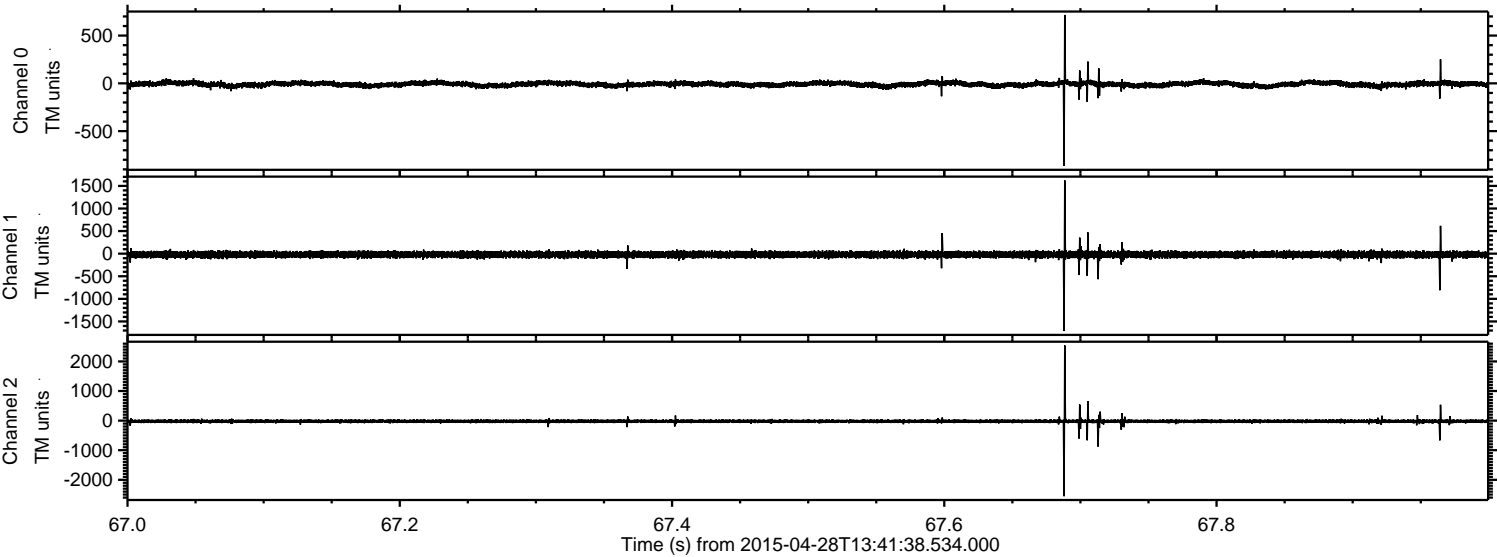


Channel 0
mn: -897
mx: 519
 μ : -9.1
 σ : 20.1

Channel 1
mn: -1234
mx: 1498
 μ : -19.9
 σ : 36.9

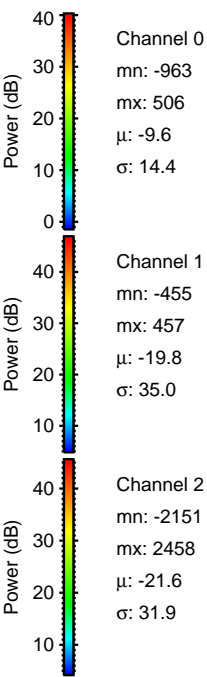
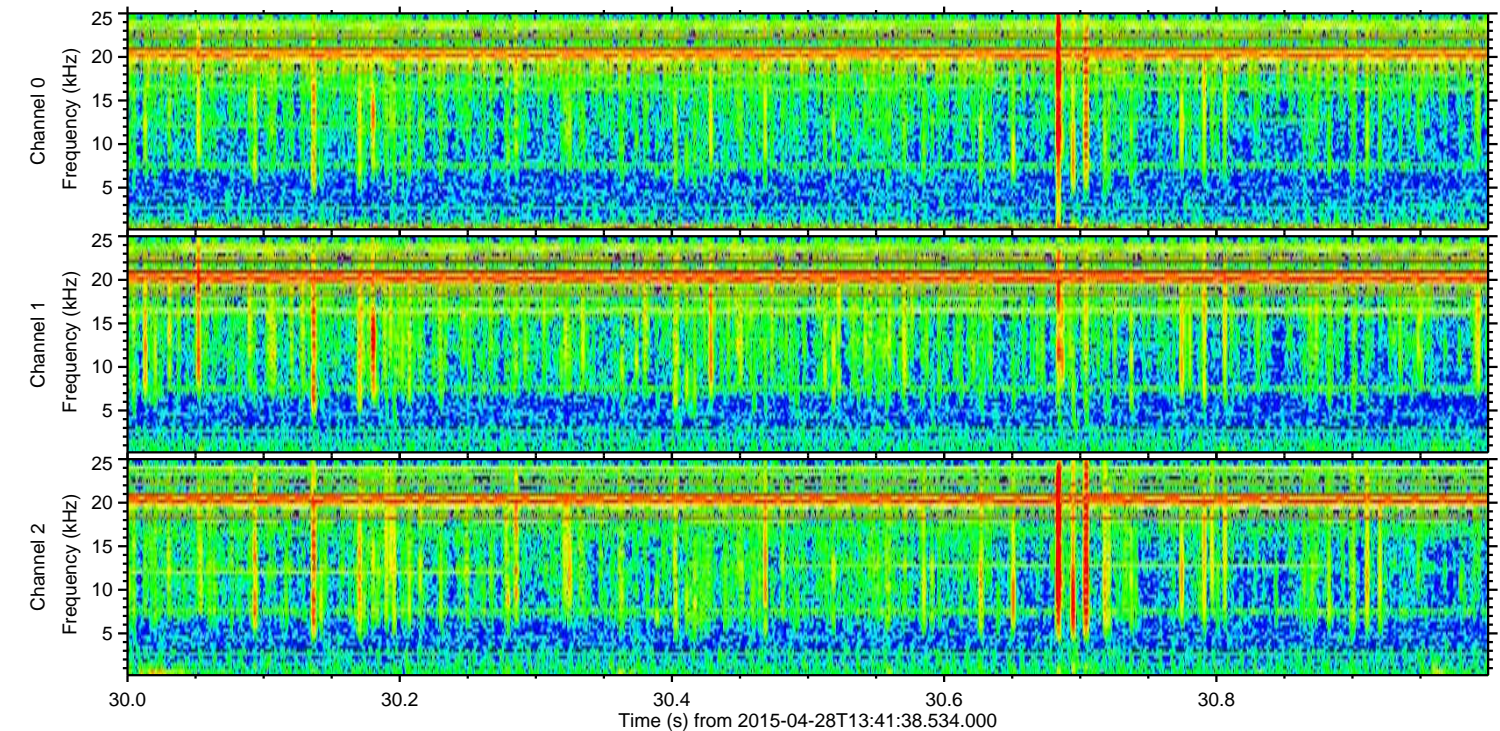
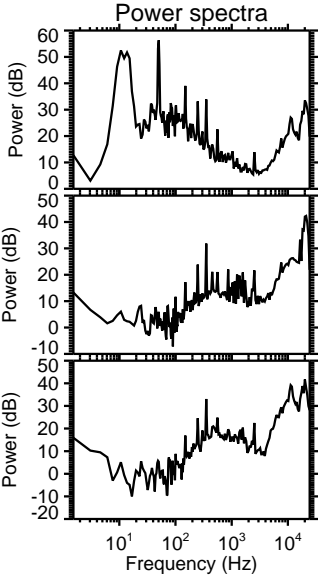
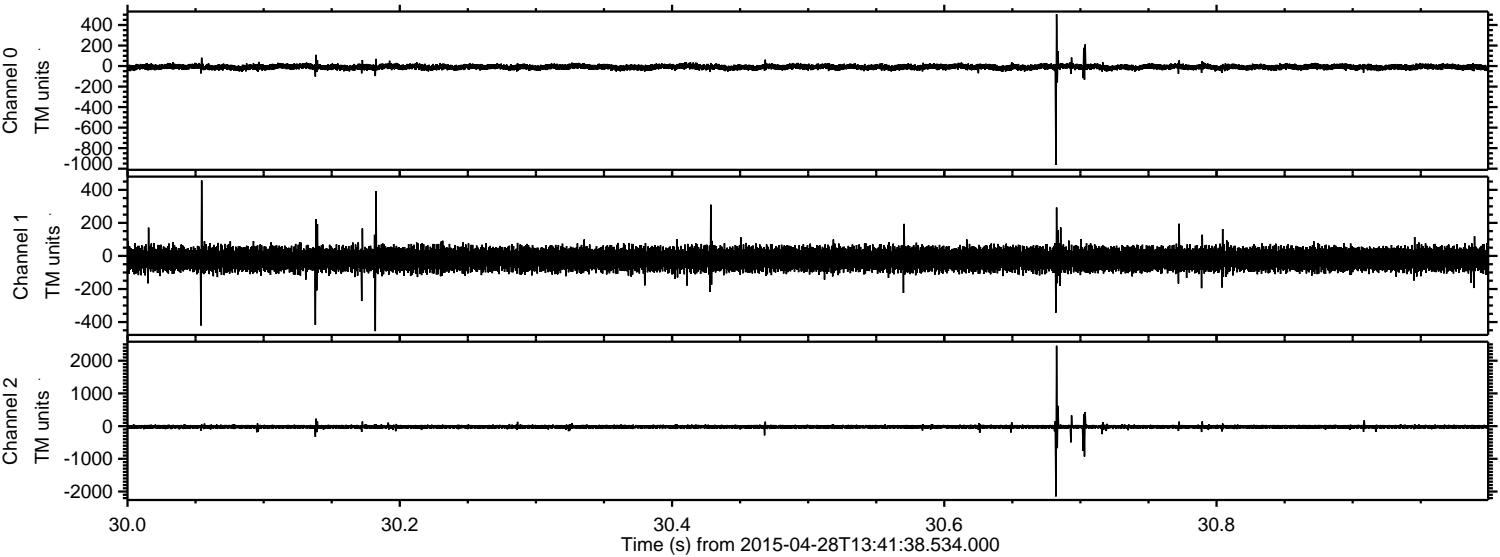
Channel 2
mn: -1478
mx: 2616
 μ : -21.6
 σ : 33.7

Processed Tue Apr 28 15:49:13 2015 by ELM ver.2012-10-06 from 001__elm20150428_134137__dat00.bin

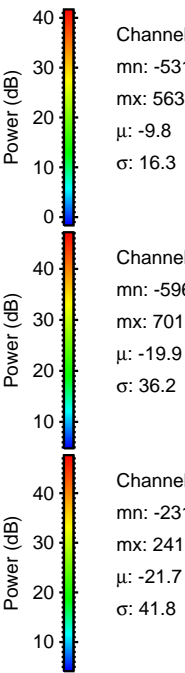
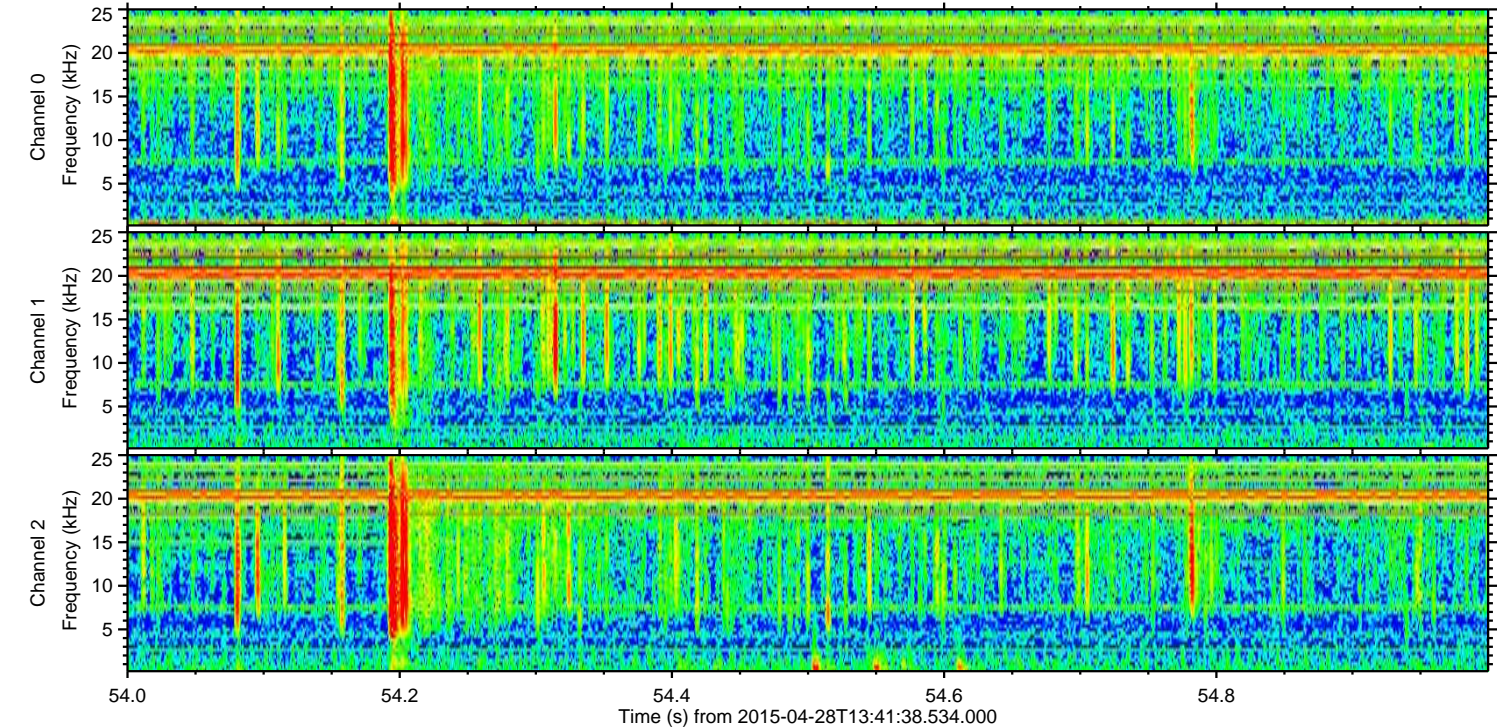
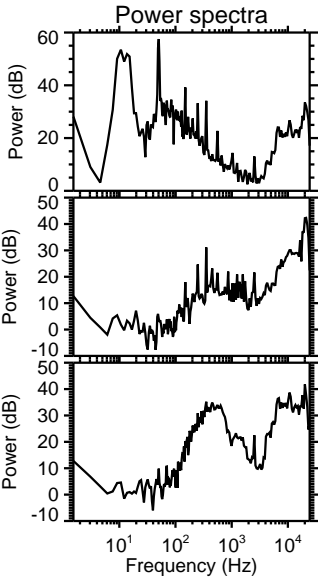
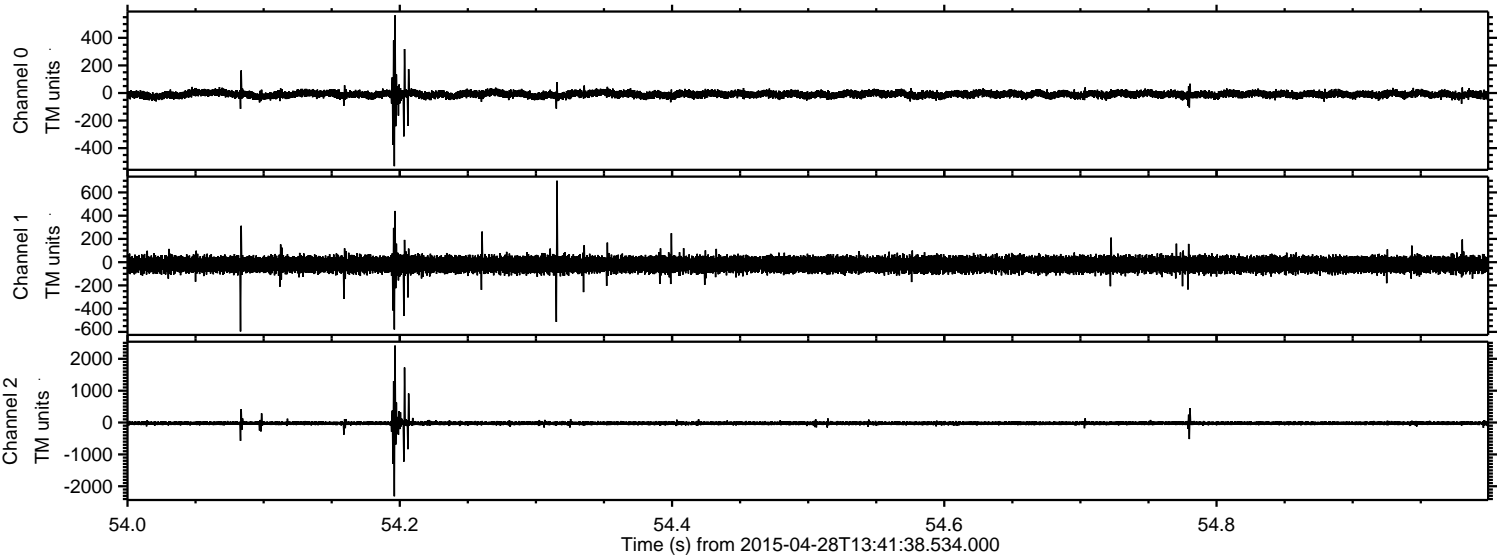


ELMAVAN 3D WAVEFORMS (Measured data sampled at 50 kHz) 49777 packets of 144 samples from 2015-04-28T13:41:38.534.000. Part 31/144

Processed Tue Apr 28 15:49:14 2015 by ELM ver.2012-10-06 from 001__elm20150428_134137__dat00.bin



Processed Tue Apr 28 15:49:15 2015 by ELM ver.2012-10-06 from 001__elm20150428_134137__dat00.bin



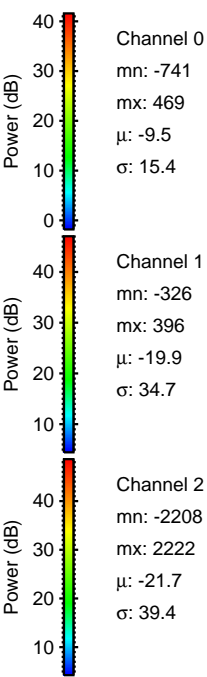
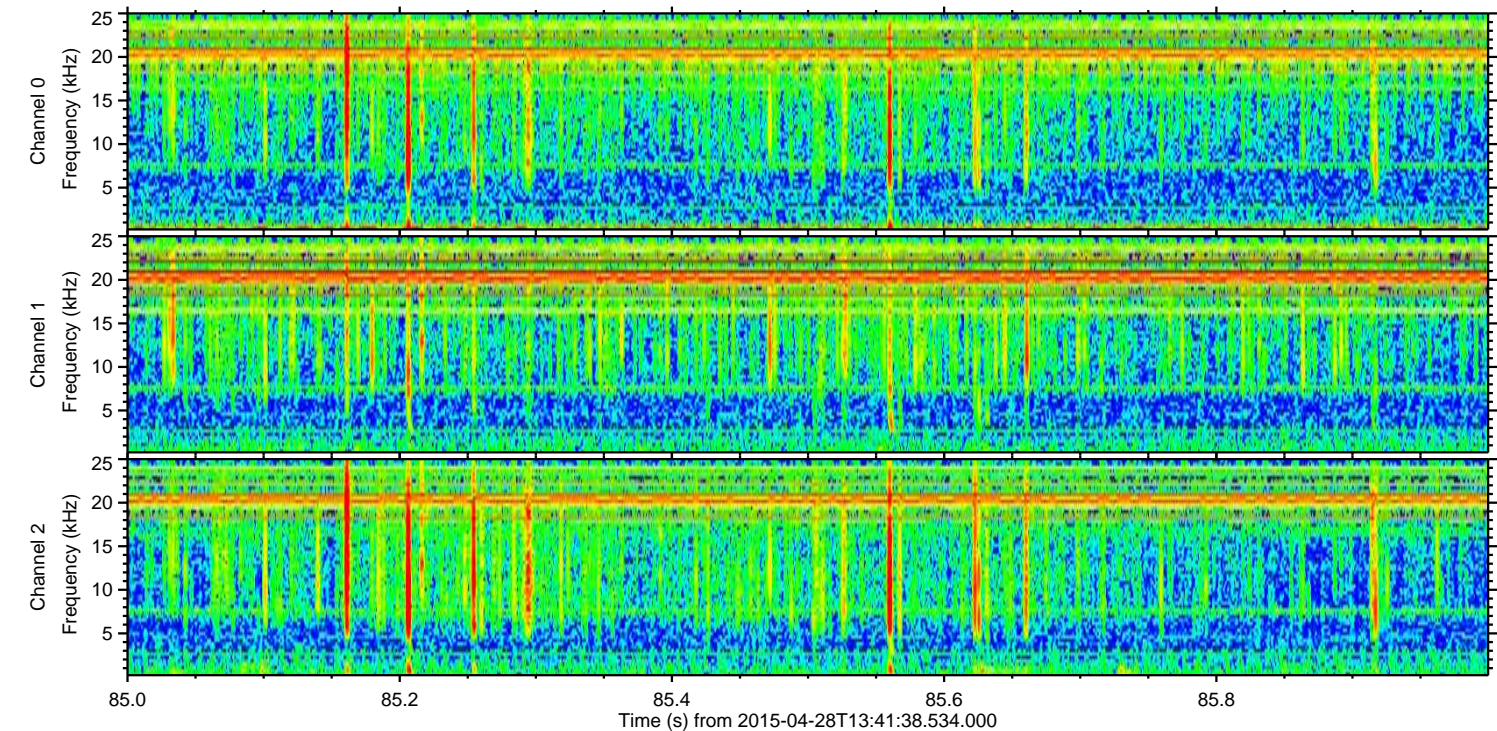
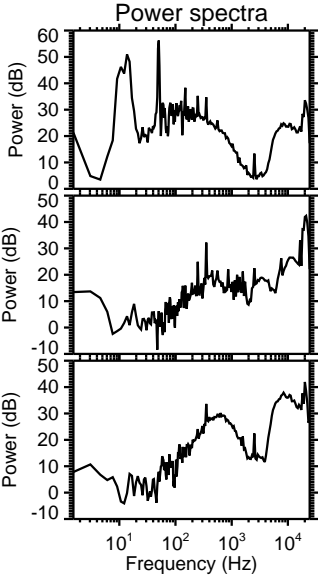
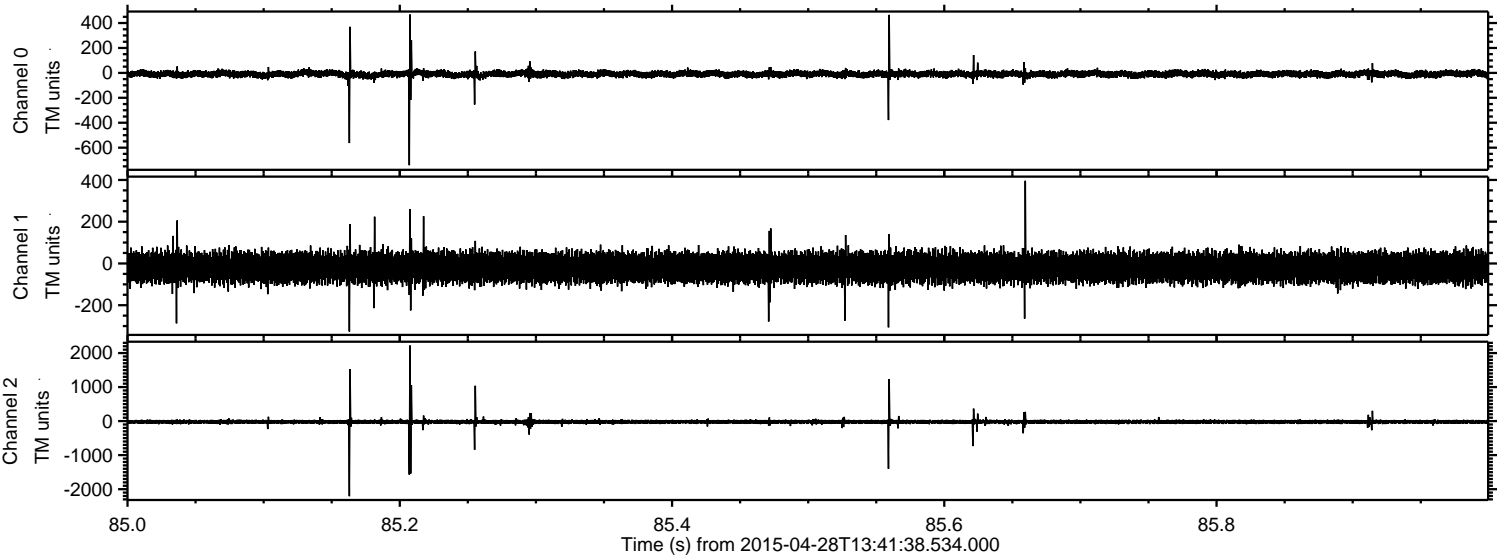
Channel 0
mn: -531
mx: 563
 μ : -9.8
 σ : 16.3

Channel 1
mn: -596
mx: 701
 μ : -19.9
 σ : 36.2

Channel 2
mn: -2315
mx: 2415
 μ : -21.7
 σ : 41.8

ELMAVAN 3D WAVEFORMS (Measured data sampled at 50 kHz) 49777 packets of 144 samples from 2015-04-28T13:41:38.534.000. Part 86/144

Processed Tue Apr 28 15:49:16 2015 by ELM ver.2012-10-06 from 001__elm20150428_134137__dat00.bin



ELMAVAN 3D WAVEFORMS (Measured data sampled at 50 kHz) 49777 packets of 144 samples from 2015-04-28T13:41:38.534.000. Part 44/144

Processed Tue Apr 28 15:49:17 2015 by ELM ver.2012-10-06 from 001__elm20150428_134137__dat00.bin

