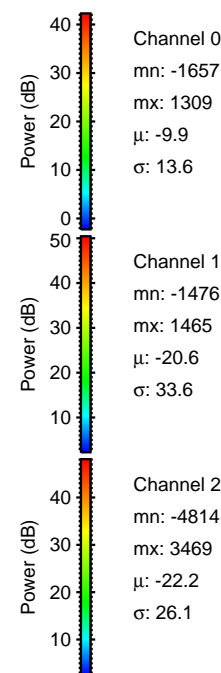
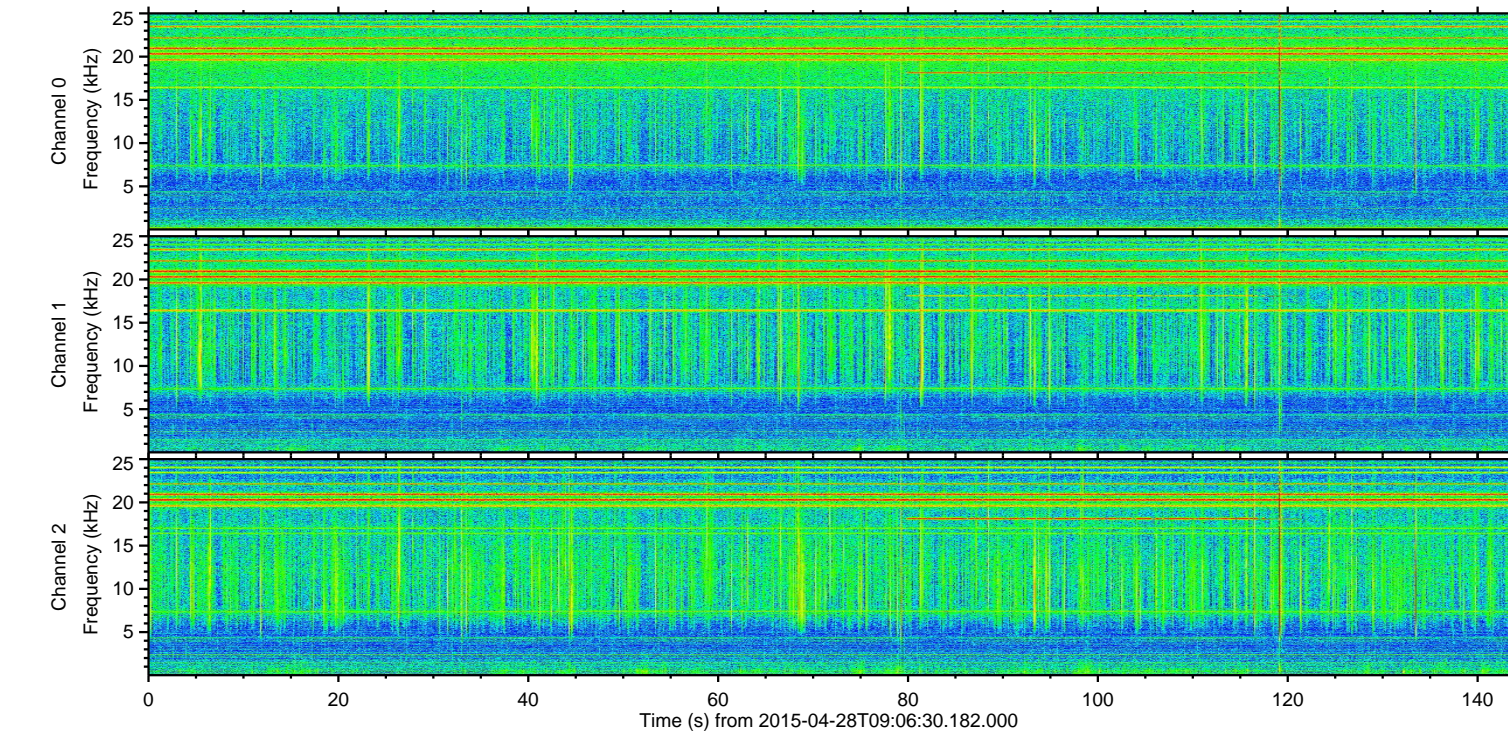
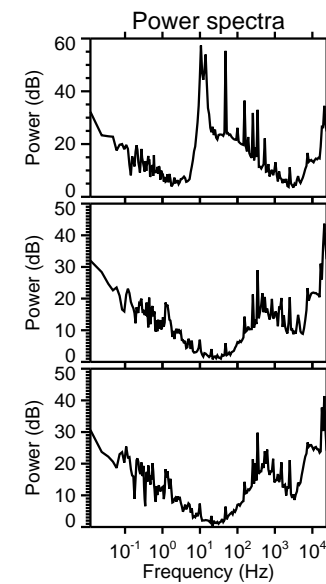
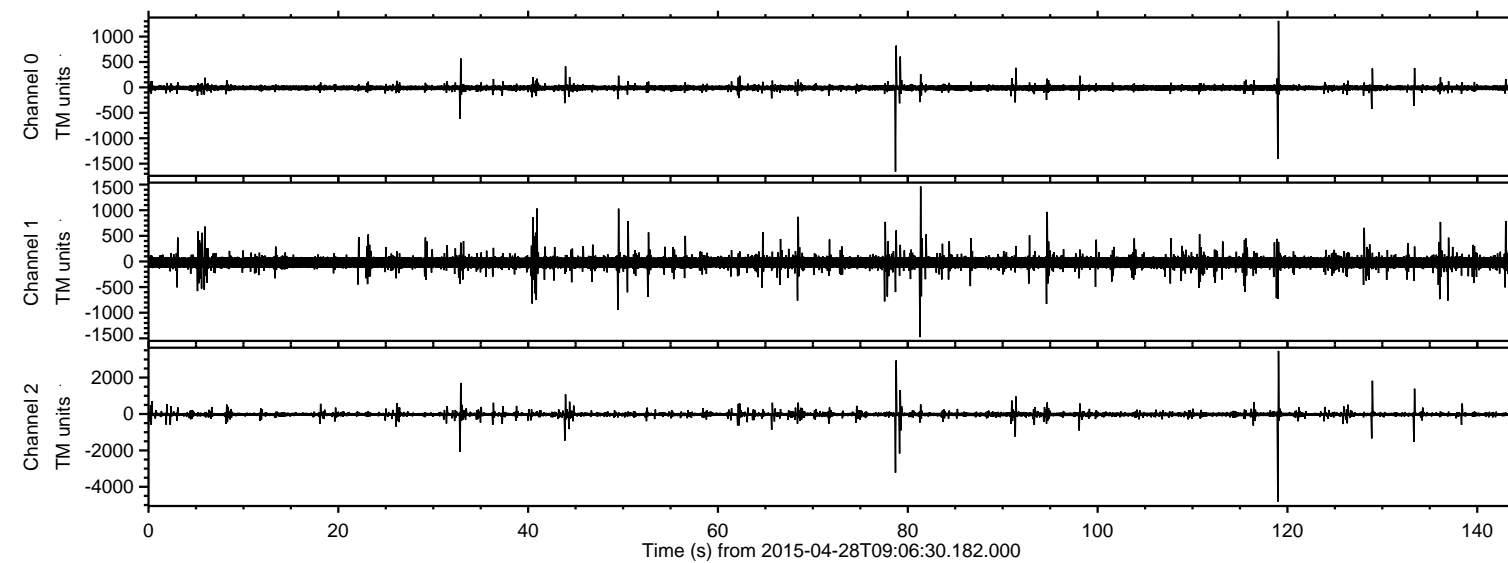


# ELMAVAN 3D WAVEFORMS (Measured data sampled at 50 kHz) 49778 packets of 144 samples from 2015-04-28T09:06:30.182.000.

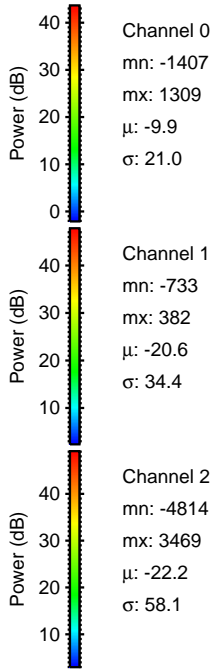
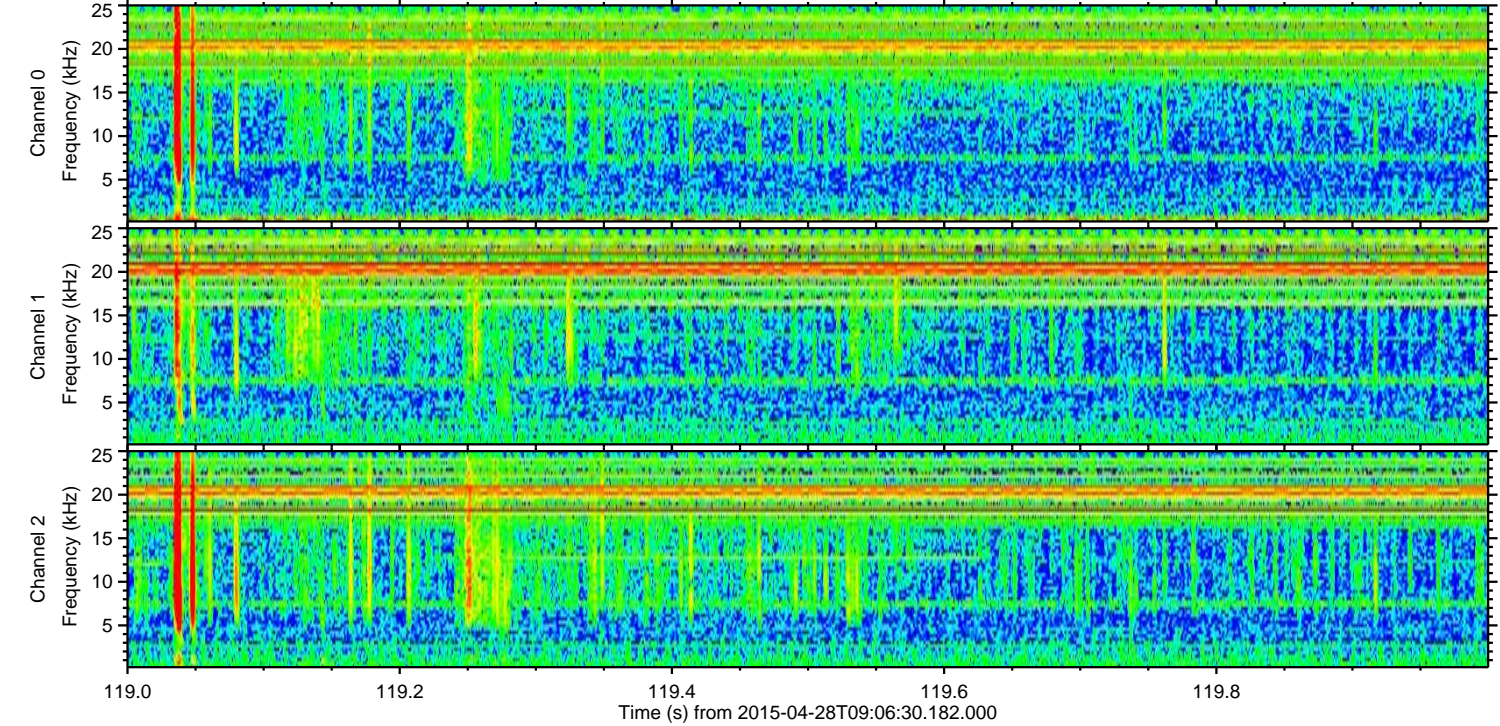
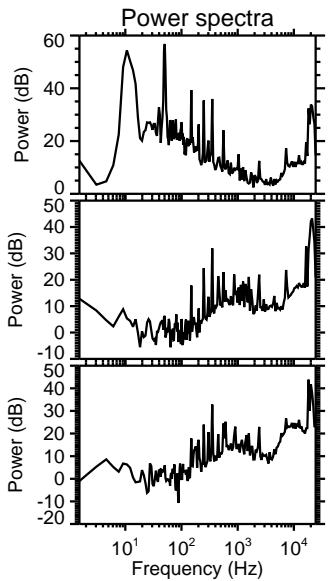
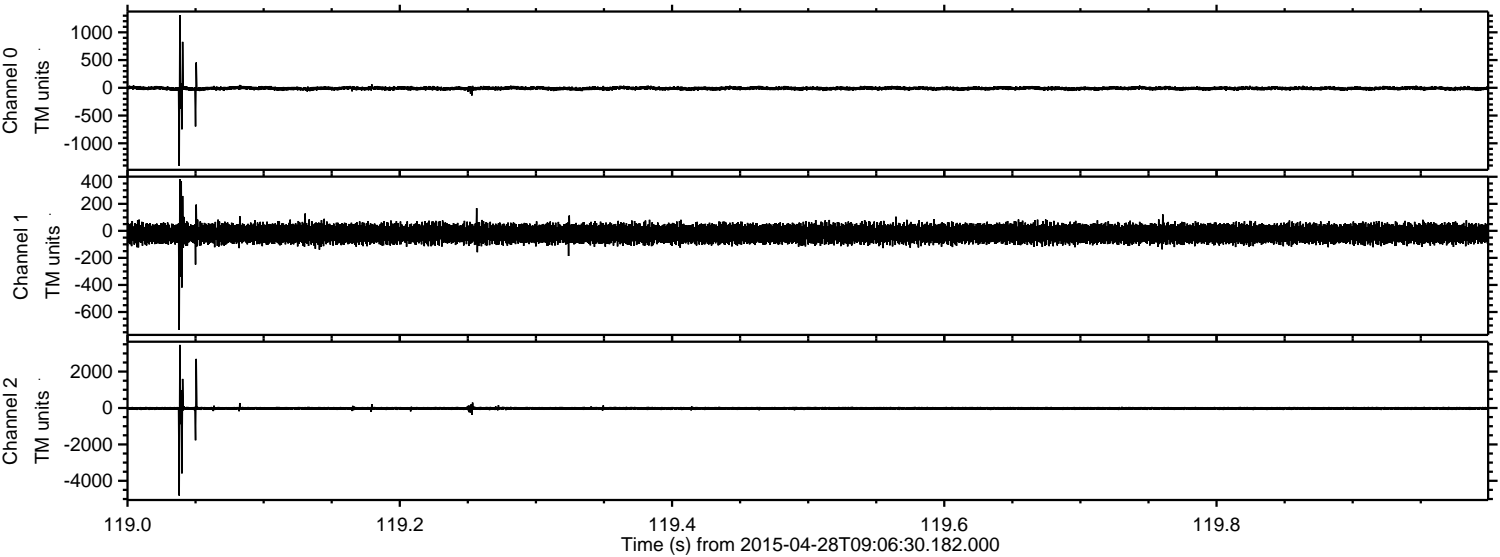
Processed Tue Apr 28 11:14:04 2015 by ELM ver.2012-10-06 from 001\_\_elm20150428\_090629\_\_dat00.bin





ELMAVAN 3D WAVEFORMS (Measured data sampled at 50 kHz) 49778 packets of 144 samples from 2015-04-28T09:06:30.182.000. Part 120/144

Processed Tue Apr 28 11:14:16 2015 by ELM ver.2012-10-06 from 001\_\_elm20150428\_090629\_\_dat00.bin



Channel 0  
mn: -1407  
mx: 1309  
 $\mu$ : -9.9  
 $\sigma$ : 21.0

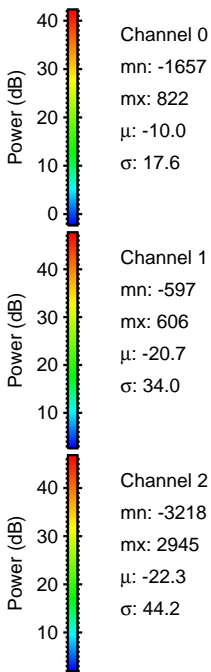
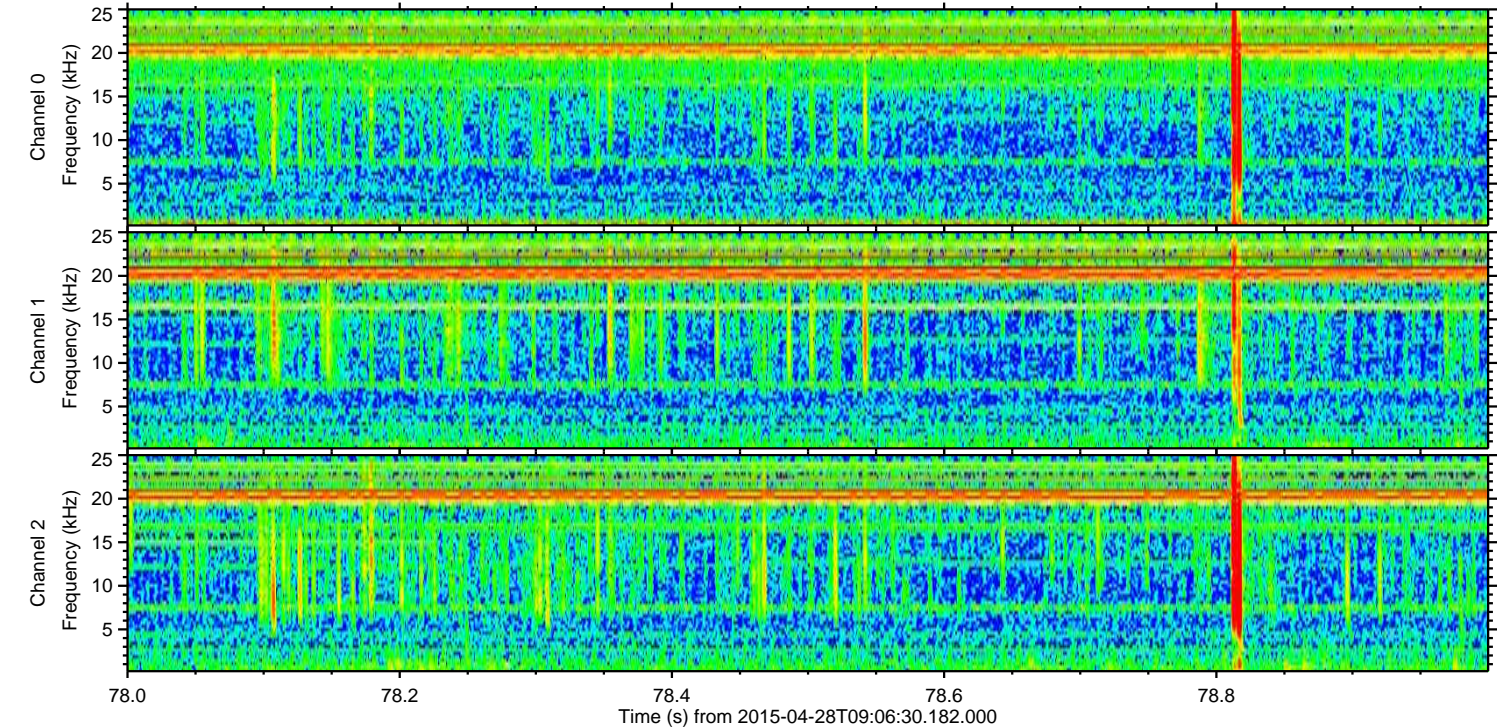
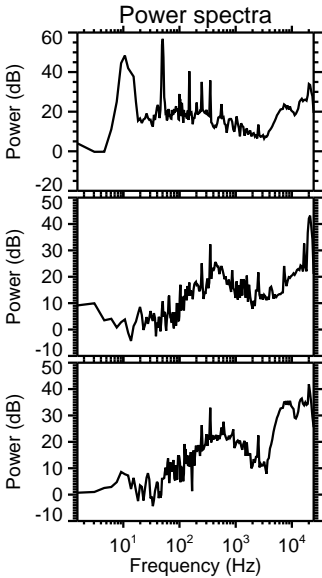
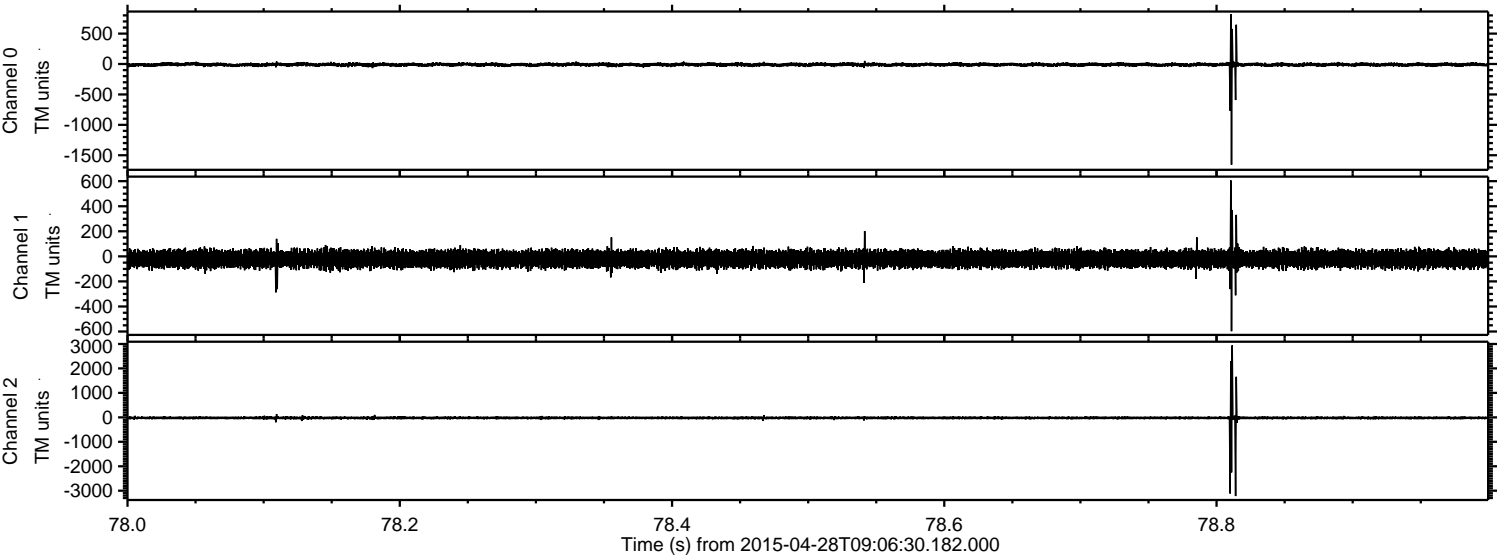
Channel 1  
mn: -733  
mx: 382  
 $\mu$ : -20.6  
 $\sigma$ : 34.4

Channel 2  
mn: -4814  
mx: 3469  
 $\mu$ : -22.2  
 $\sigma$ : 58.1



ELMAVAN 3D WAVEFORMS (Measured data sampled at 50 kHz) 49778 packets of 144 samples from 2015-04-28T09:06:30.182.000. Part 79/144

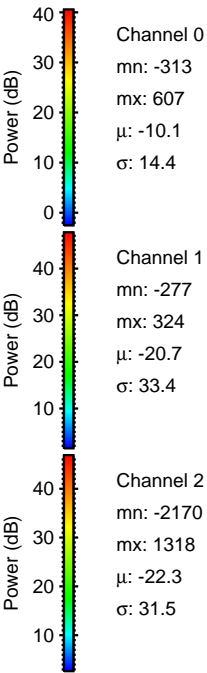
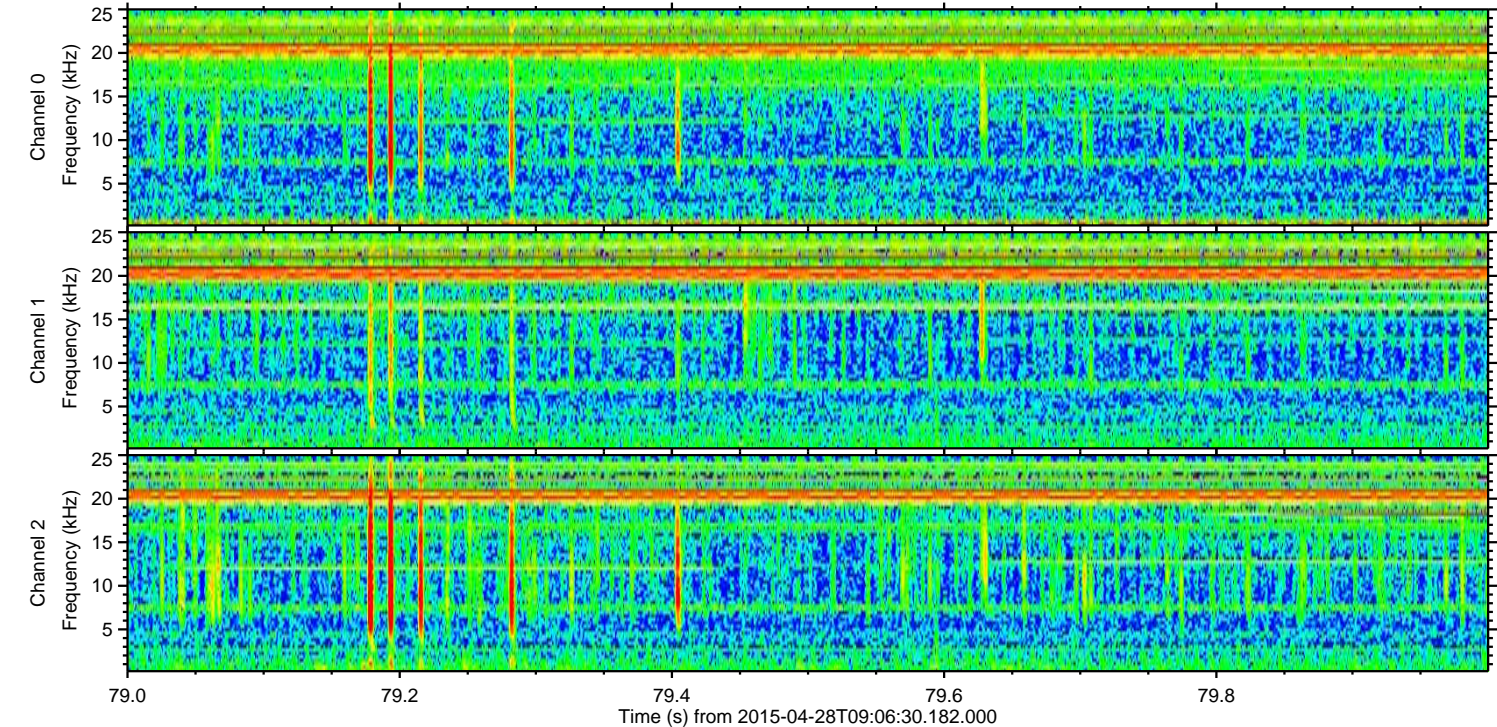
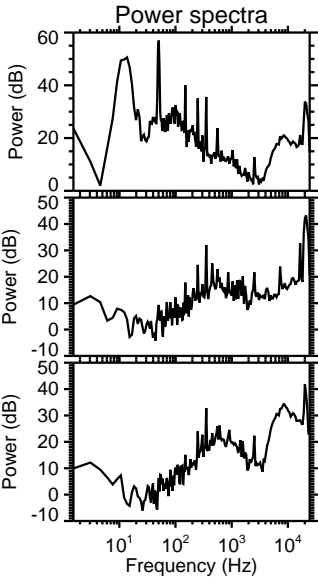
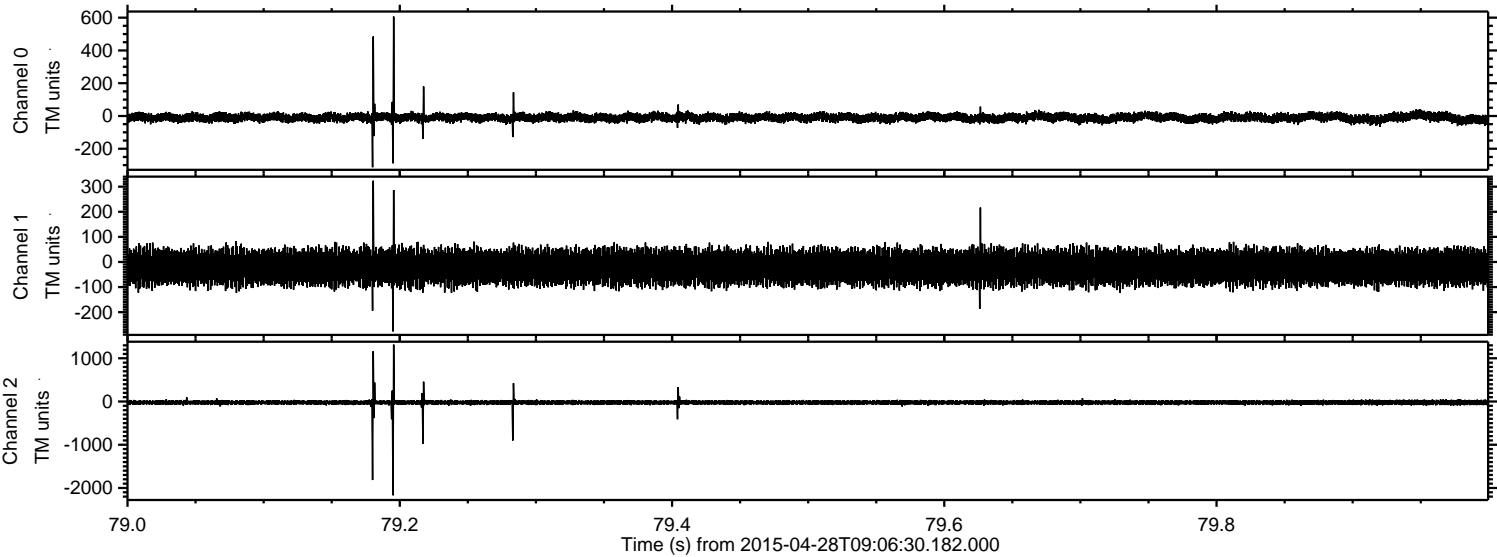
Processed Tue Apr 28 11:14:17 2015 by ELM ver.2012-10-06 from 001\_\_elm20150428\_090629\_\_dat00.bin





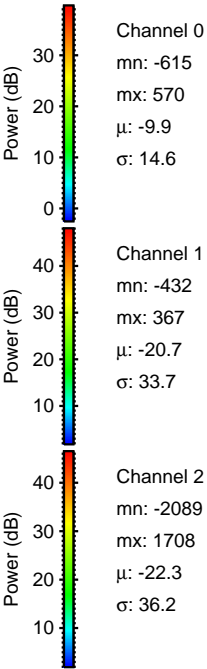
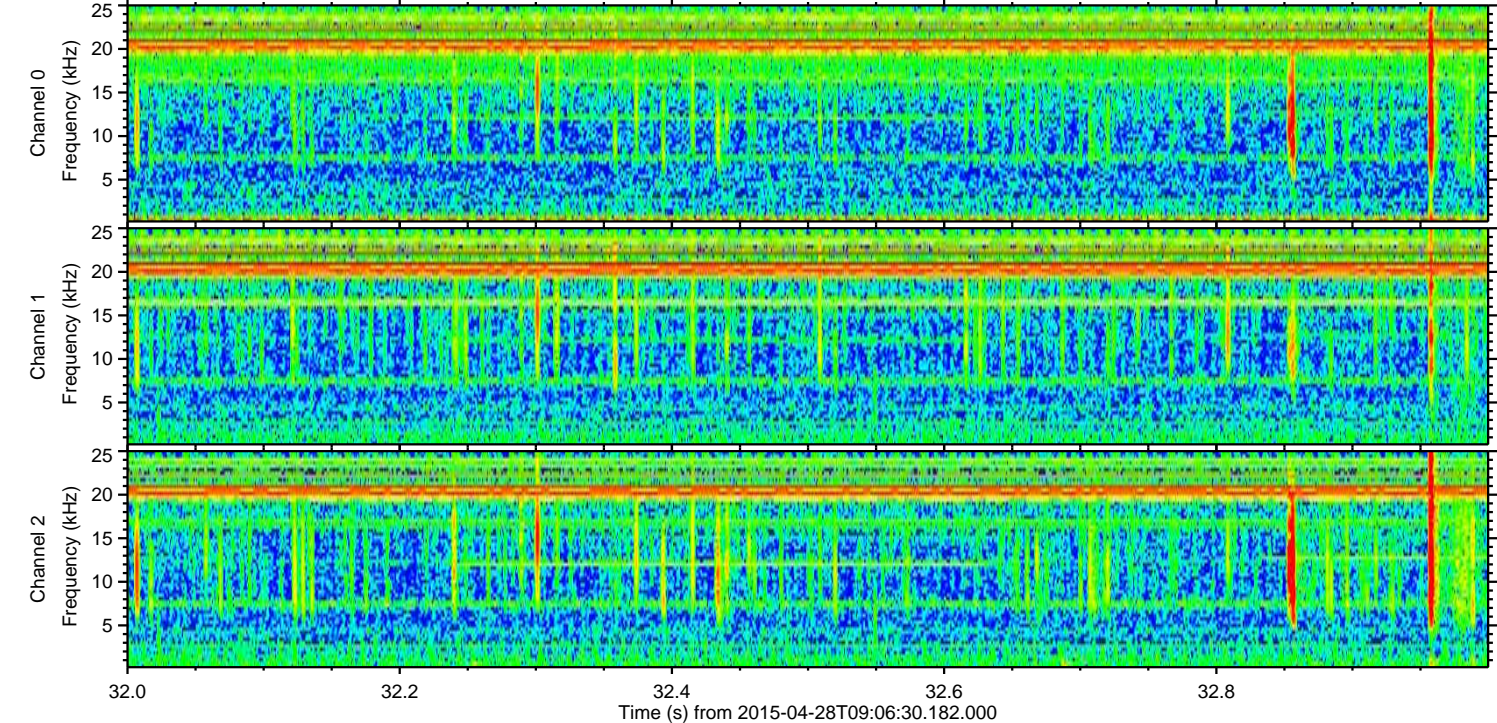
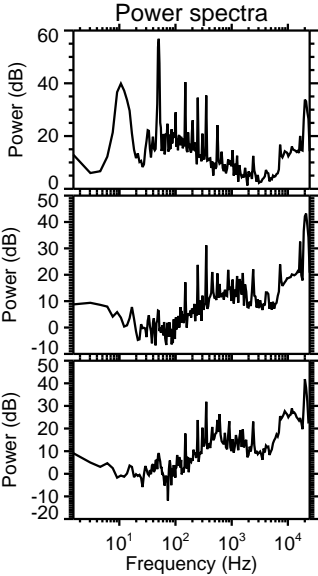
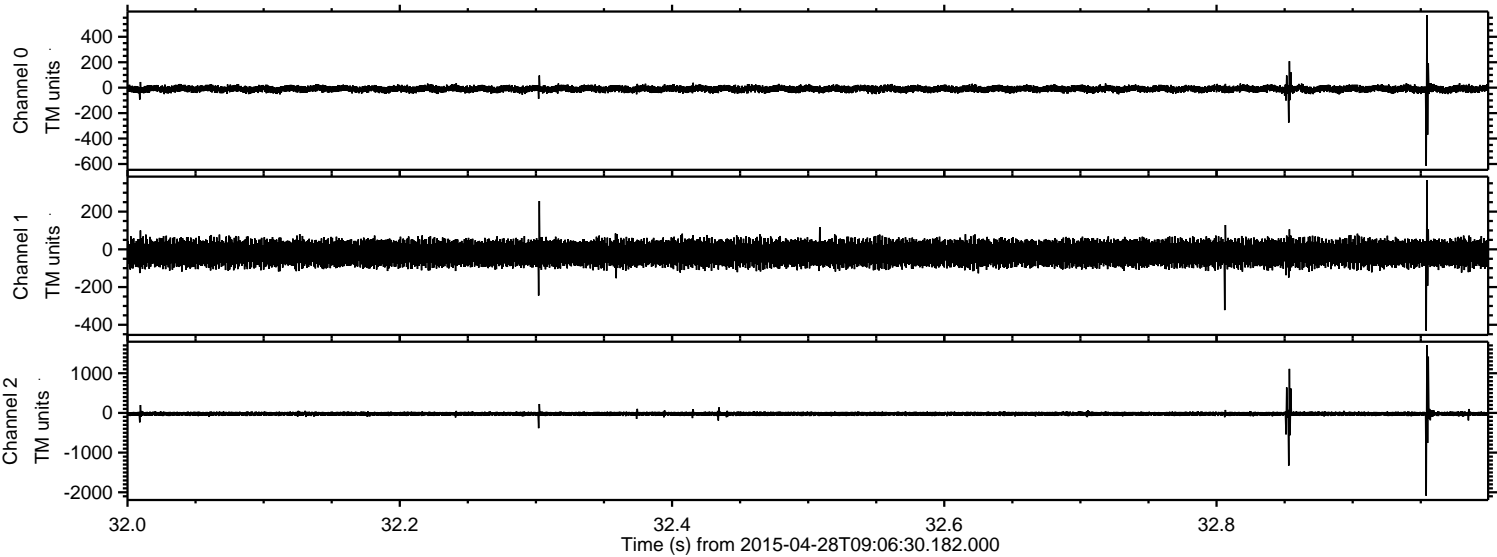
ELMAVAN 3D WAVEFORMS (Measured data sampled at 50 kHz) 49778 packets of 144 samples from 2015-04-28T09:06:30.182.000. Part 80/144

Processed Tue Apr 28 11:14:18 2015 by ELM ver.2012-10-06 from 001\_\_elm20150428\_090629\_\_dat00.bin





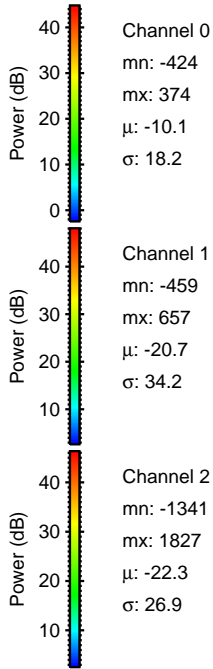
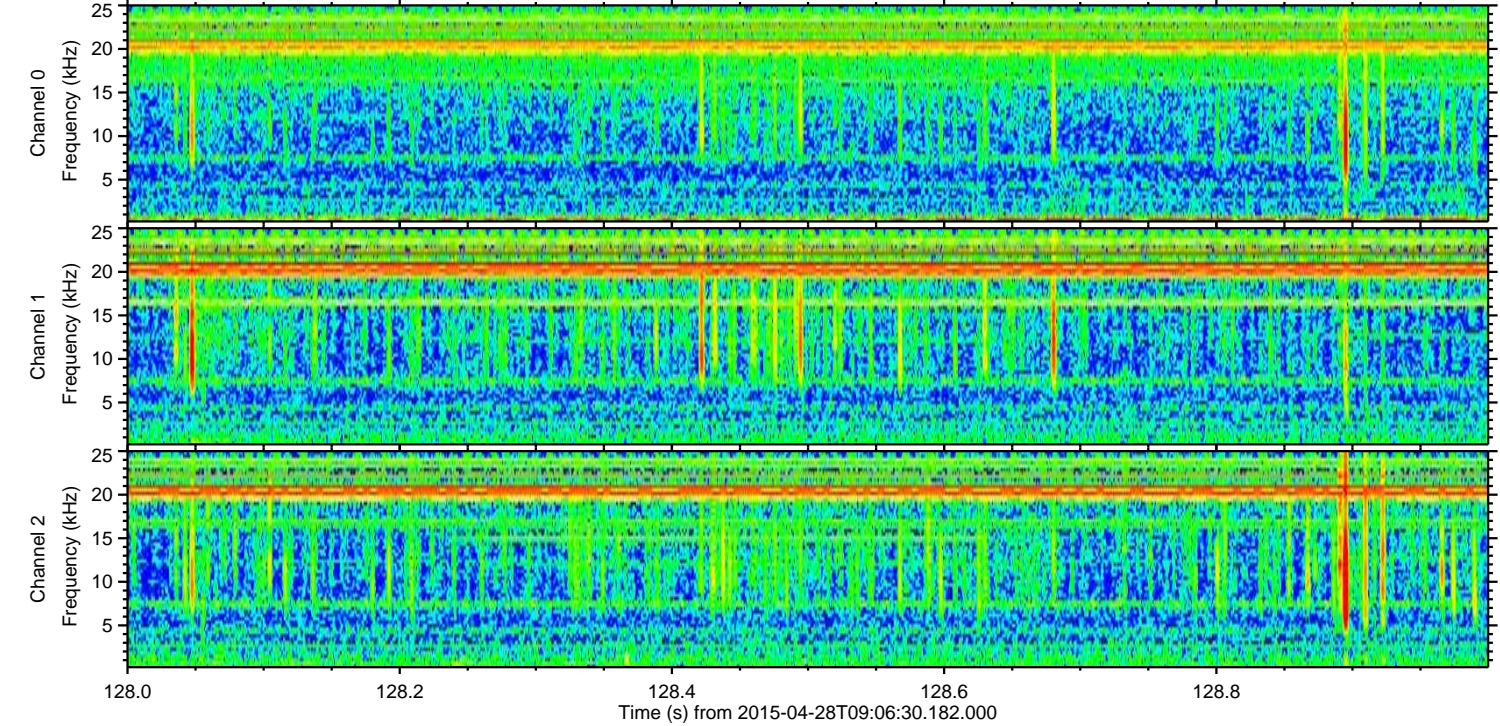
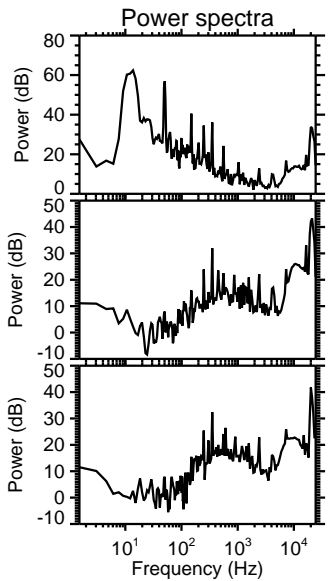
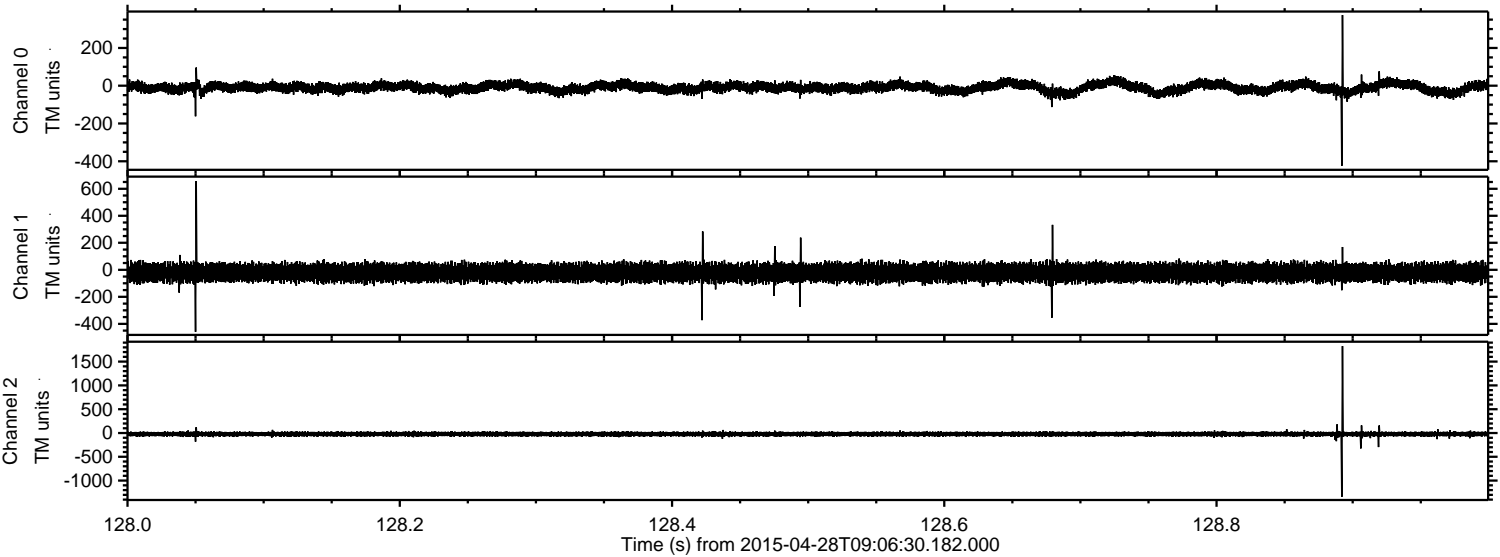
Processed Tue Apr 28 11:14:19 2015 by ELM ver.2012-10-06 from 001\_\_elm20150428\_090629\_\_dat00.bin





ELMAVAN 3D WAVEFORMS (Measured data sampled at 50 kHz) 49778 packets of 144 samples from 2015-04-28T09:06:30.182.000. Part 129/144

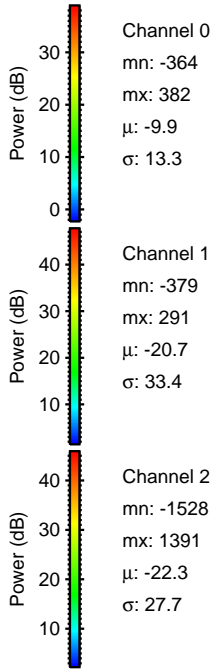
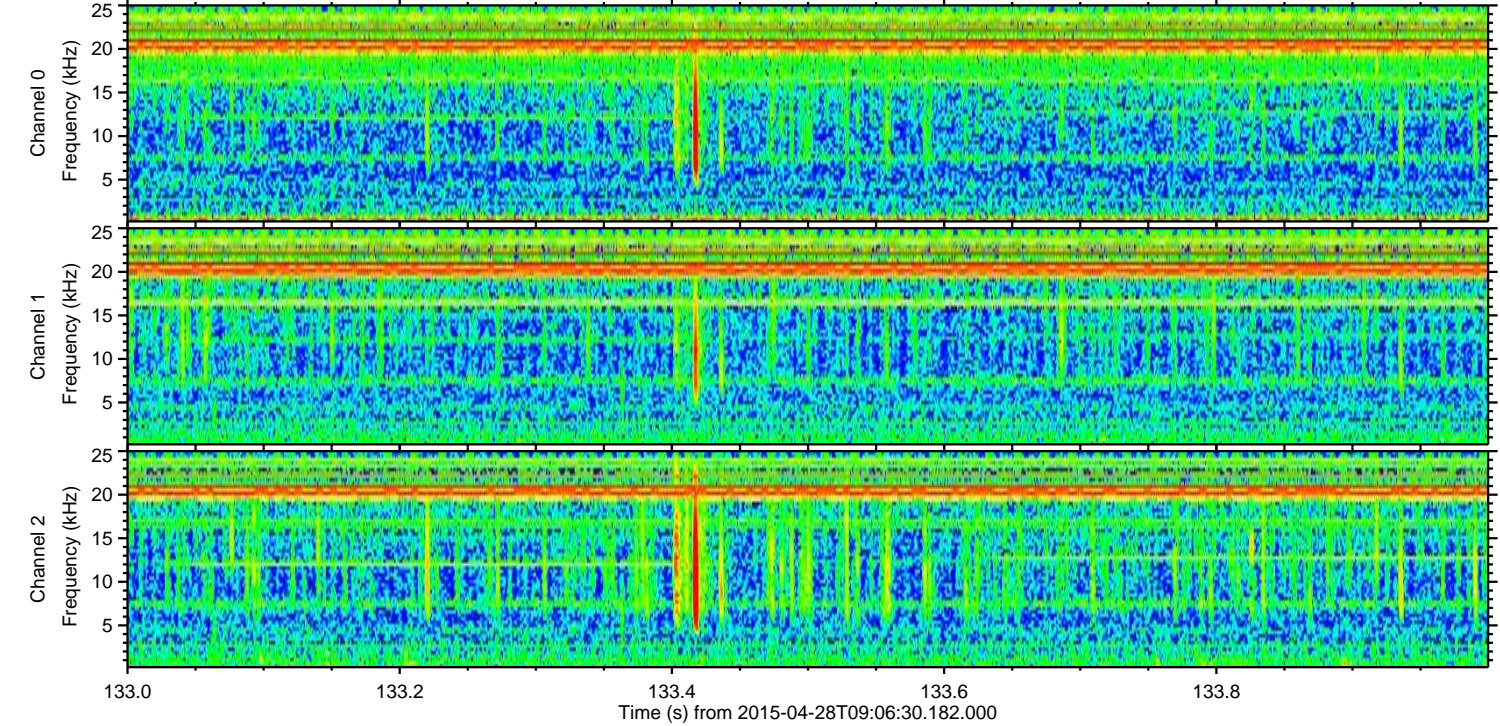
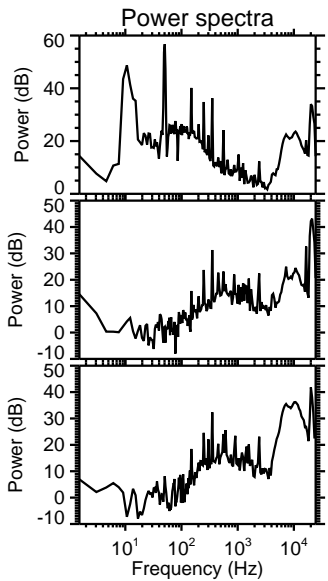
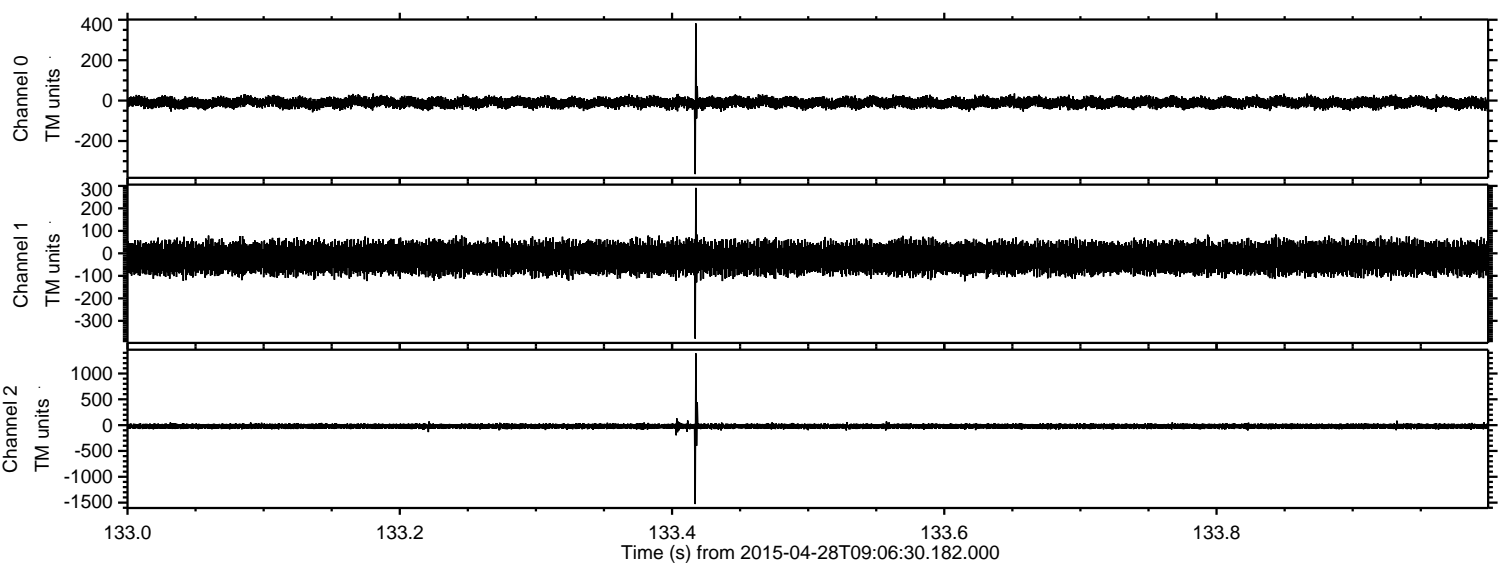
Processed Tue Apr 28 11:14:20 2015 by ELM ver.2012-10-06 from 001\_\_elm20150428\_090629\_\_dat00.bin





ELMAVAN 3D WAVEFORMS (Measured data sampled at 50 kHz) 49778 packets of 144 samples from 2015-04-28T09:06:30.182.000. Part 134/144

Processed Tue Apr 28 11:14:21 2015 by ELM ver.2012-10-06 from 001\_\_elm20150428\_090629\_\_dat00.bin



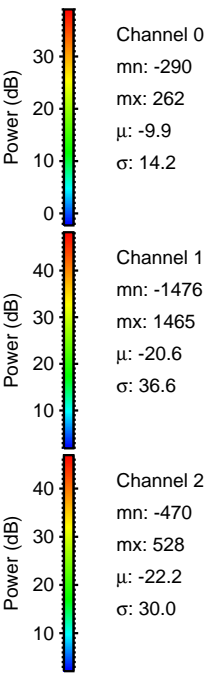
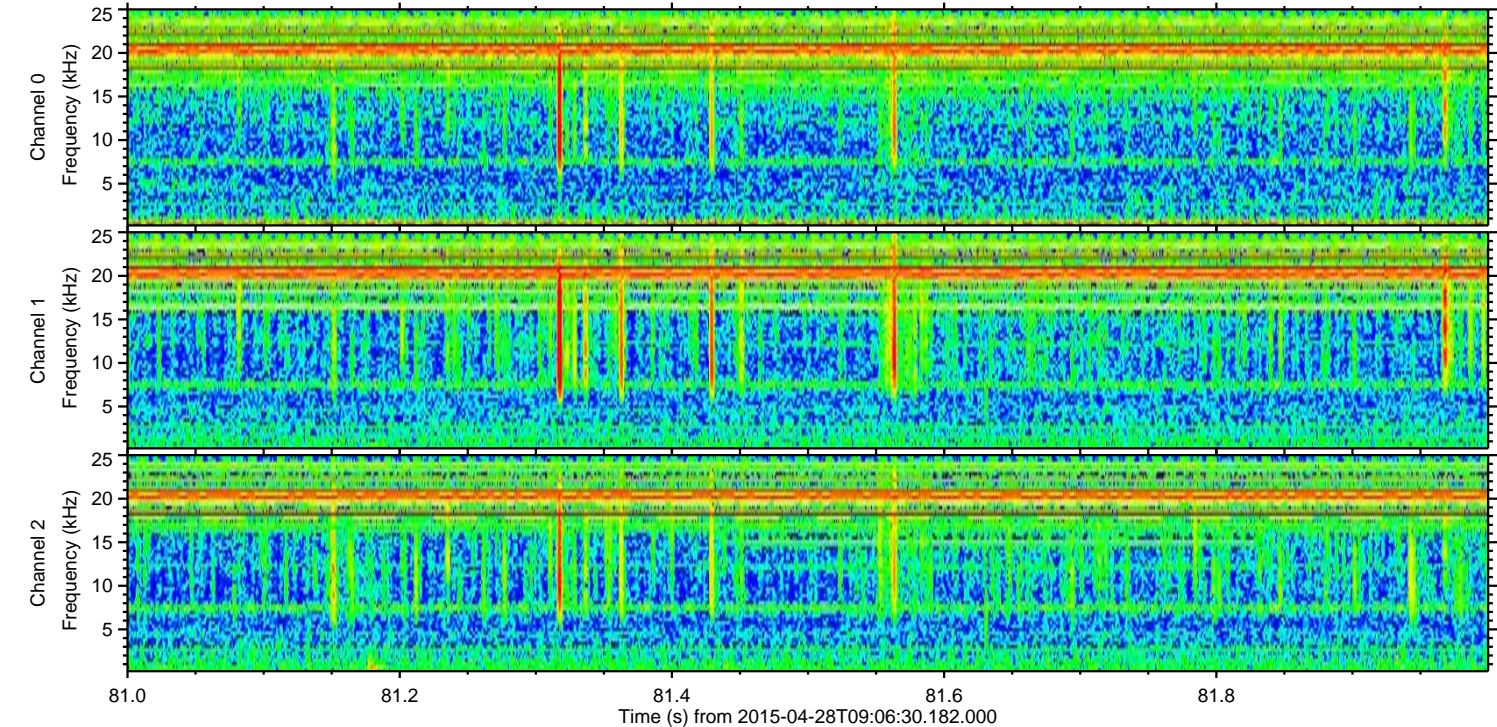
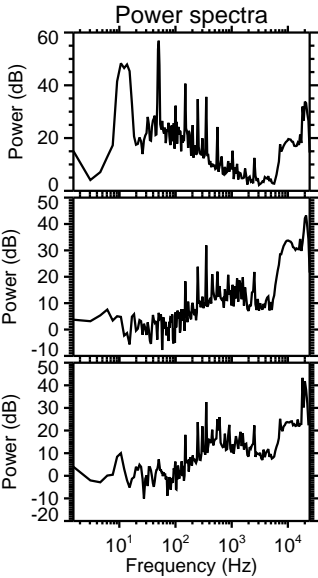
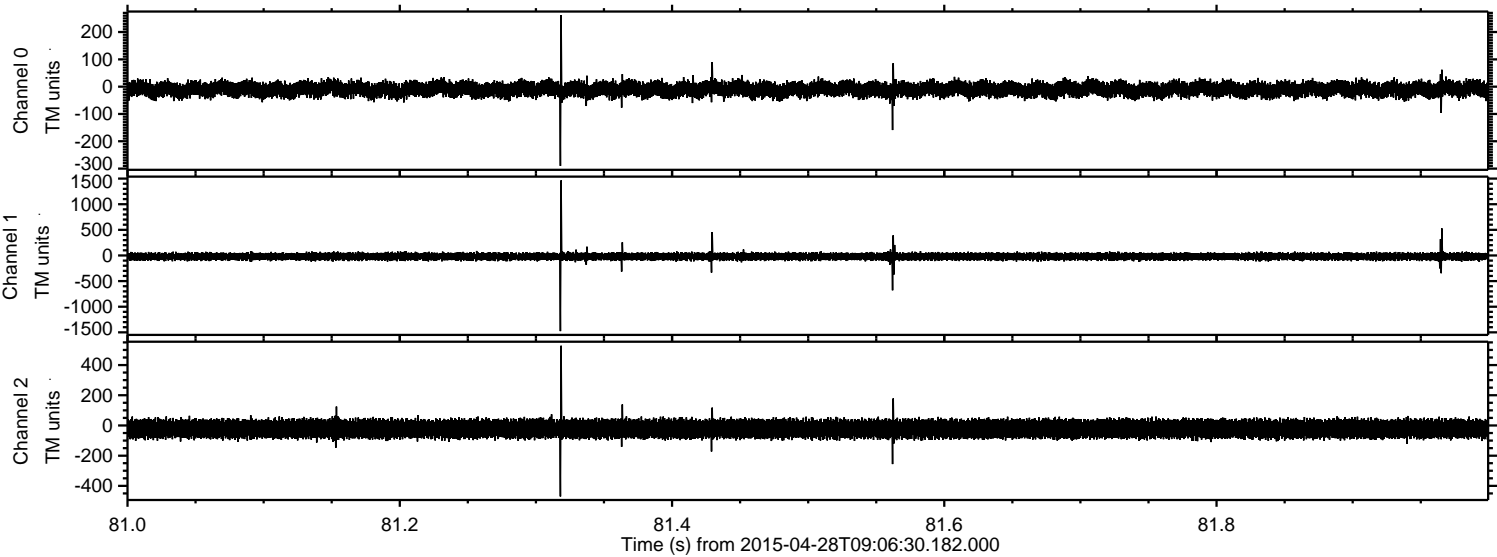
Channel 0  
mn: -364  
mx: 382  
 $\mu$ : -9.9  
 $\sigma$ : 13.3

Channel 1  
mn: -379  
mx: 291  
 $\mu$ : -20.7  
 $\sigma$ : 33.4

Channel 2  
mn: -1528  
mx: 1391  
 $\mu$ : -22.3  
 $\sigma$ : 27.7



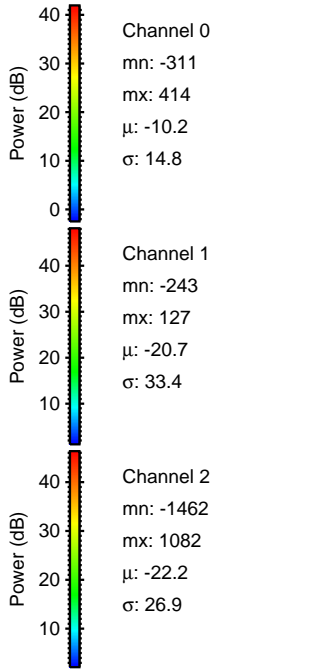
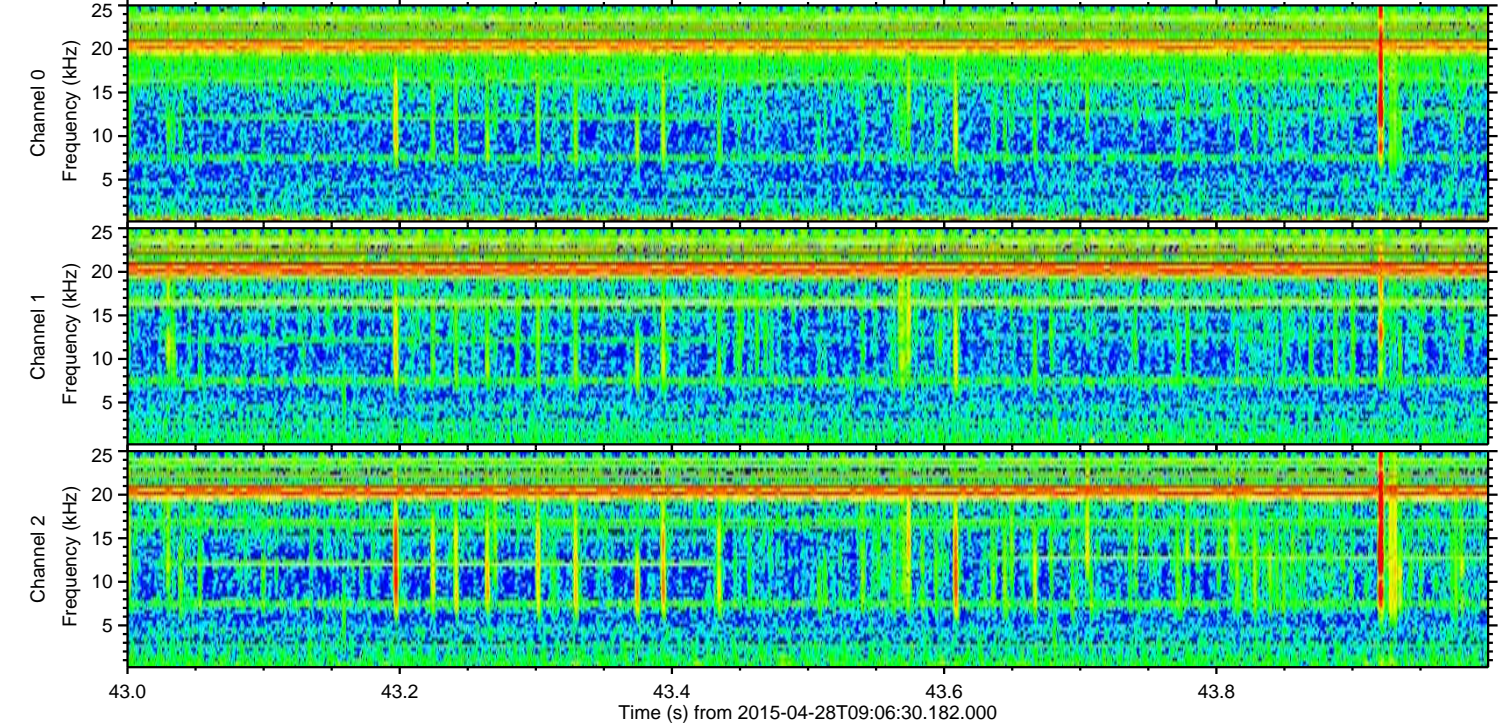
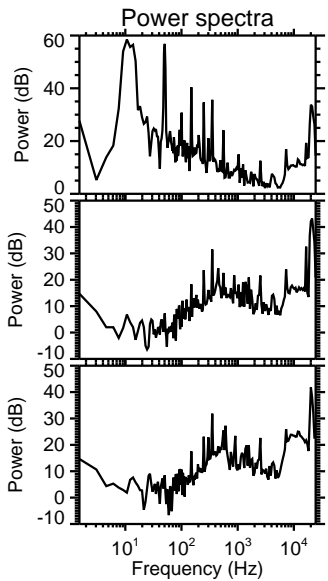
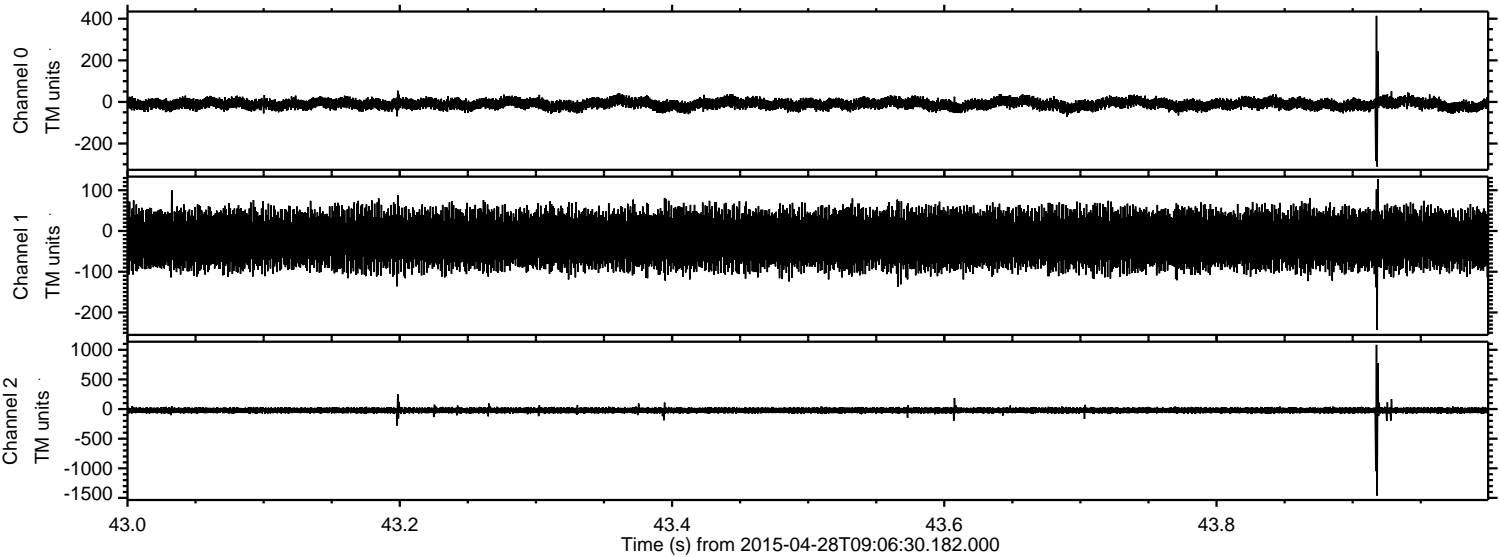
Processed Tue Apr 28 11:14:22 2015 by ELM ver.2012-10-06 from 001\_\_elm20150428\_090629\_\_dat00.bin





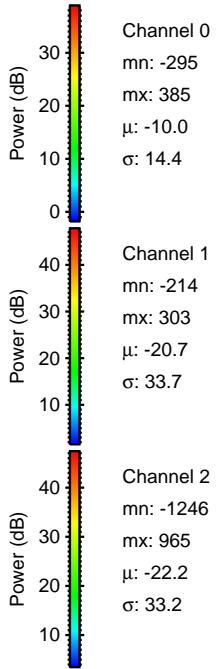
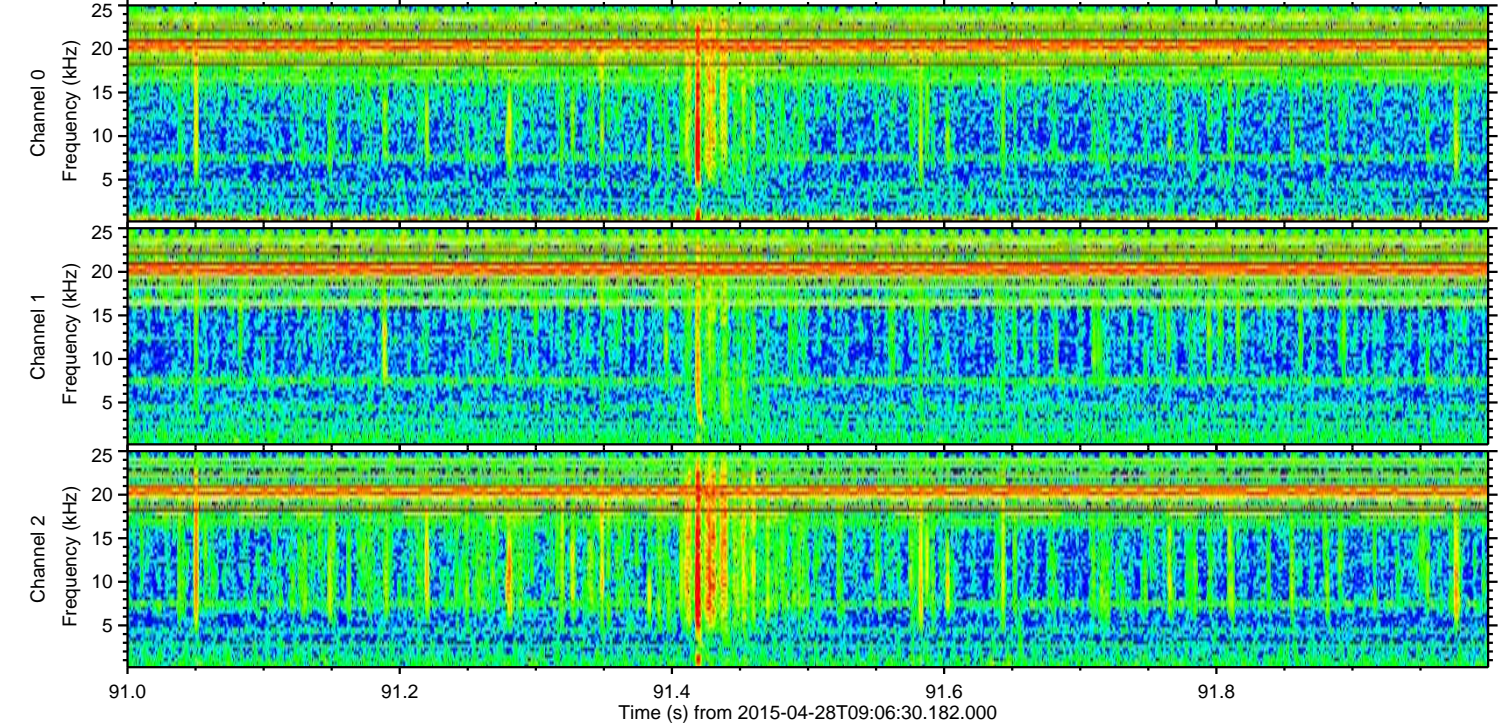
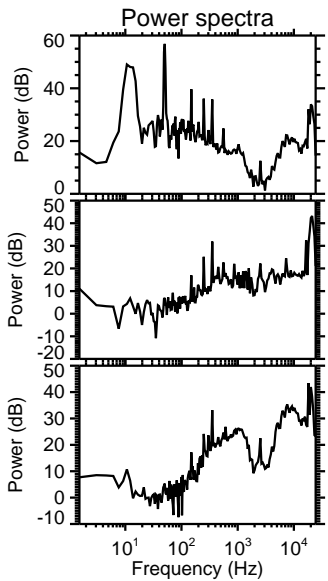
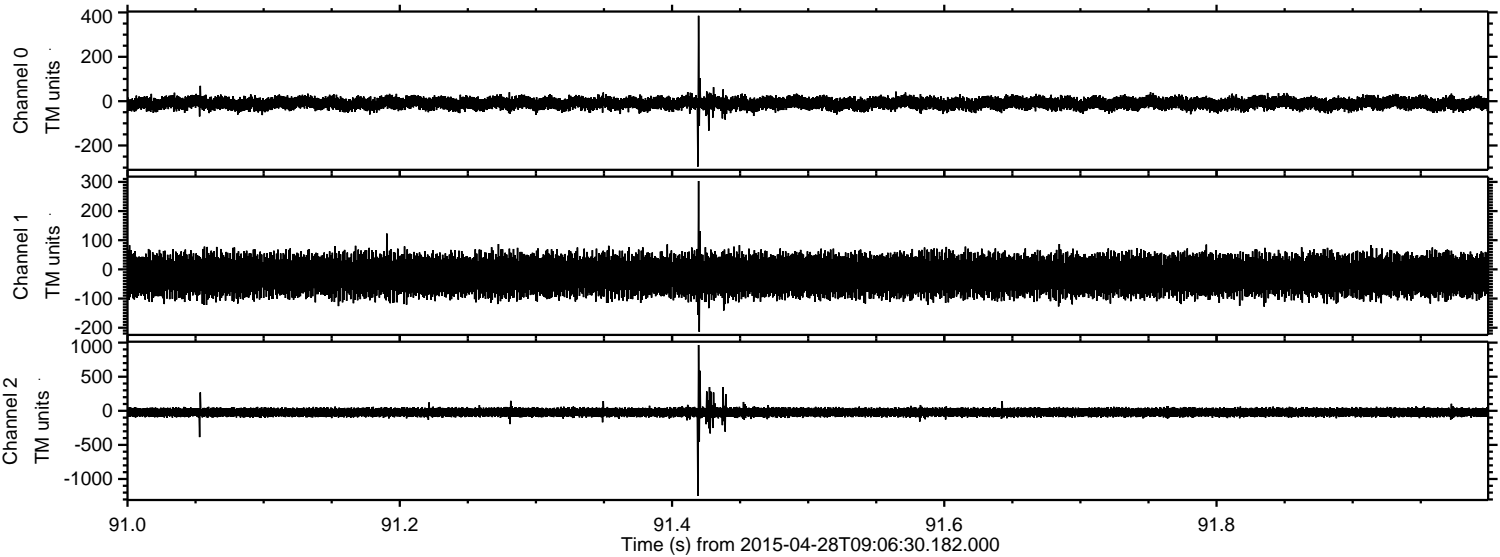
ELMAVAN 3D WAVEFORMS (Measured data sampled at 50 kHz) 49778 packets of 144 samples from 2015-04-28T09:06:30.182.000. Part 44/144

Processed Tue Apr 28 11:14:23 2015 by ELM ver.2012-10-06 from 001\_\_elm20150428\_090629\_\_dat00.bin





Processed Tue Apr 28 11:14:23 2015 by ELM ver.2012-10-06 from 001\_\_elm20150428\_090629\_\_dat00.bin





ELMAVAN 3D WAVEFORMS (Measured data sampled at 50 kHz) 49778 packets of 144 samples from 2015-04-28T09:06:30.182.000. Part 10/144

Processed Tue Apr 28 11:14:24 2015 by ELM ver.2012-10-06 from 001\_\_elm20150428\_090629\_\_dat00.bin

