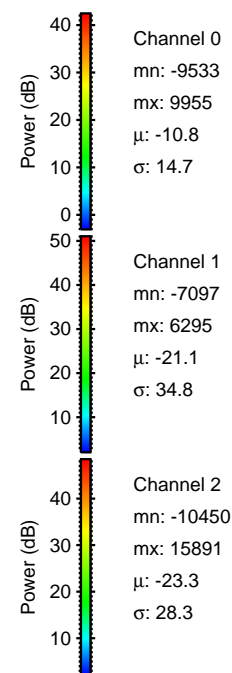
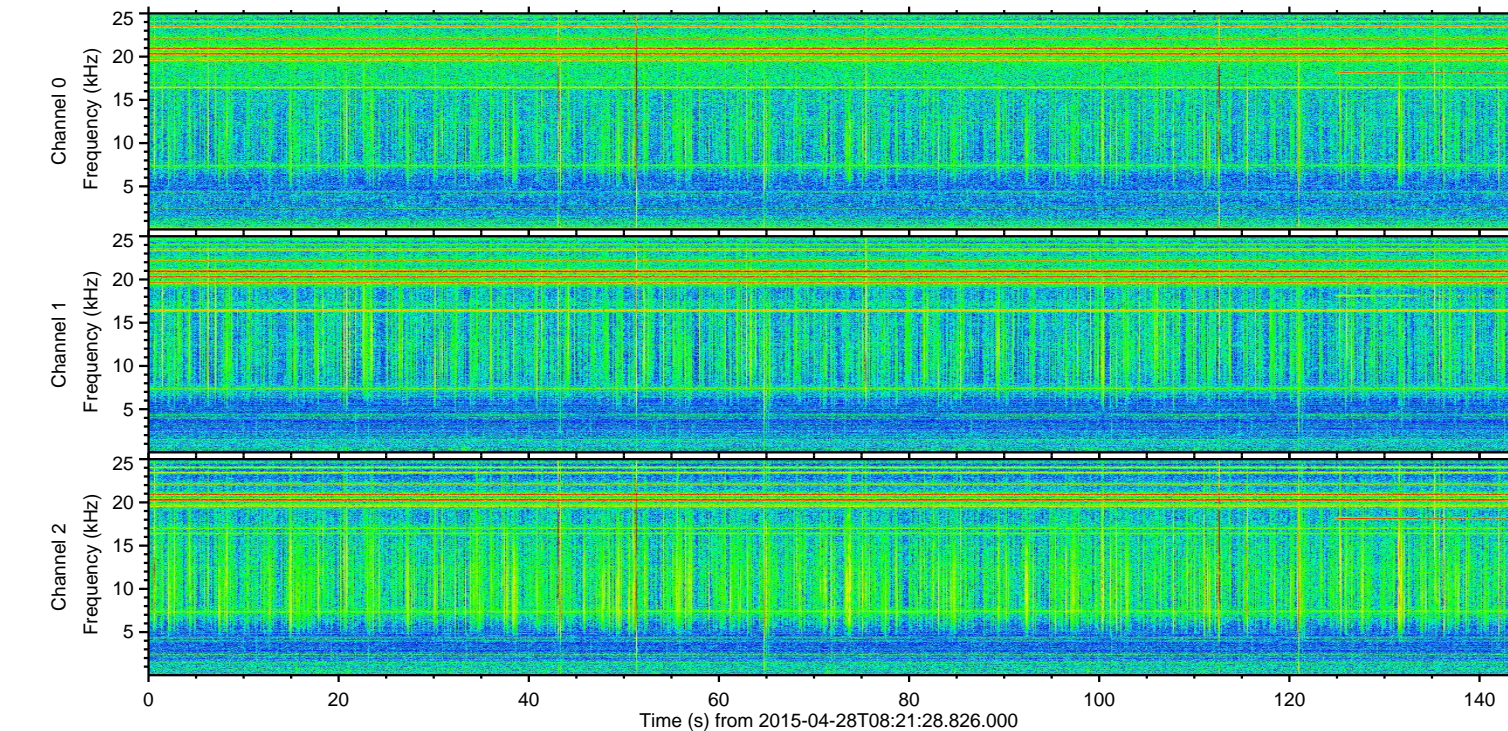
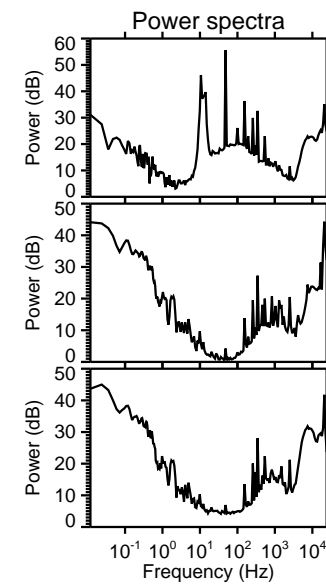
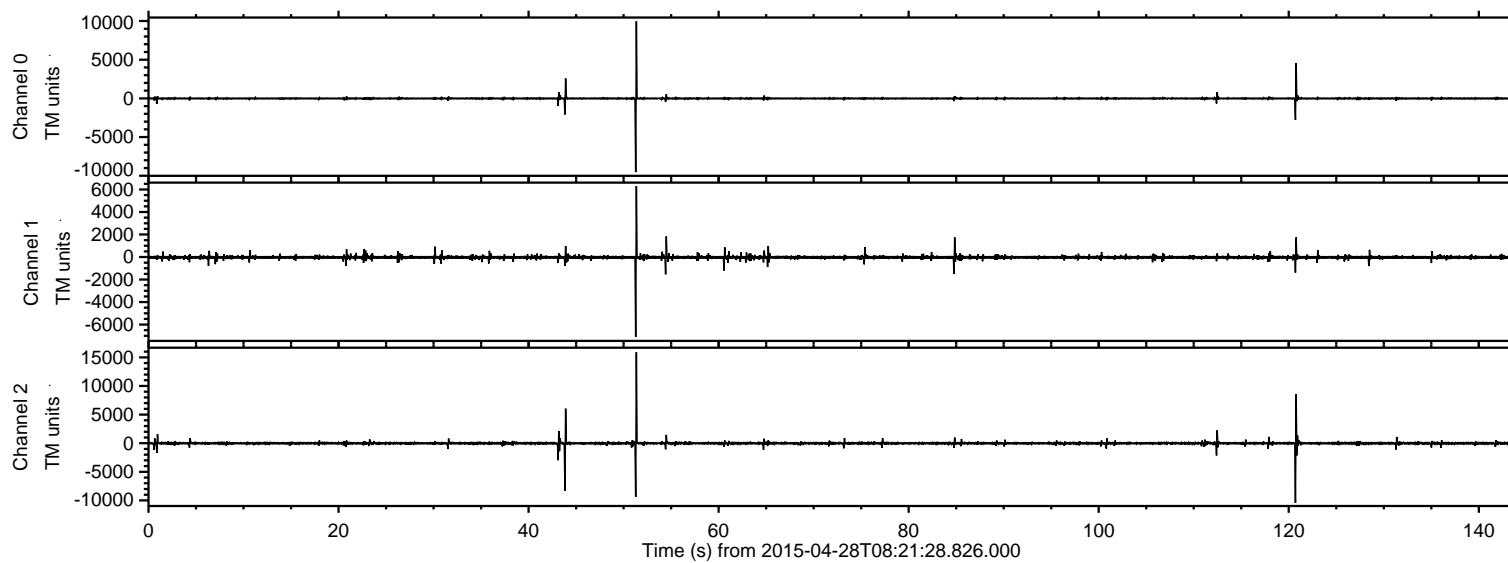
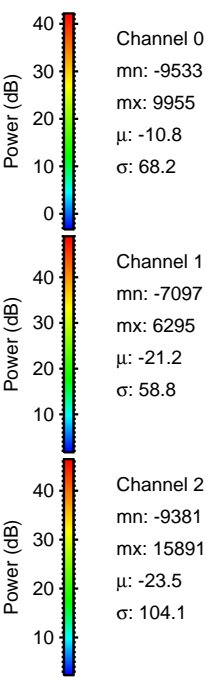
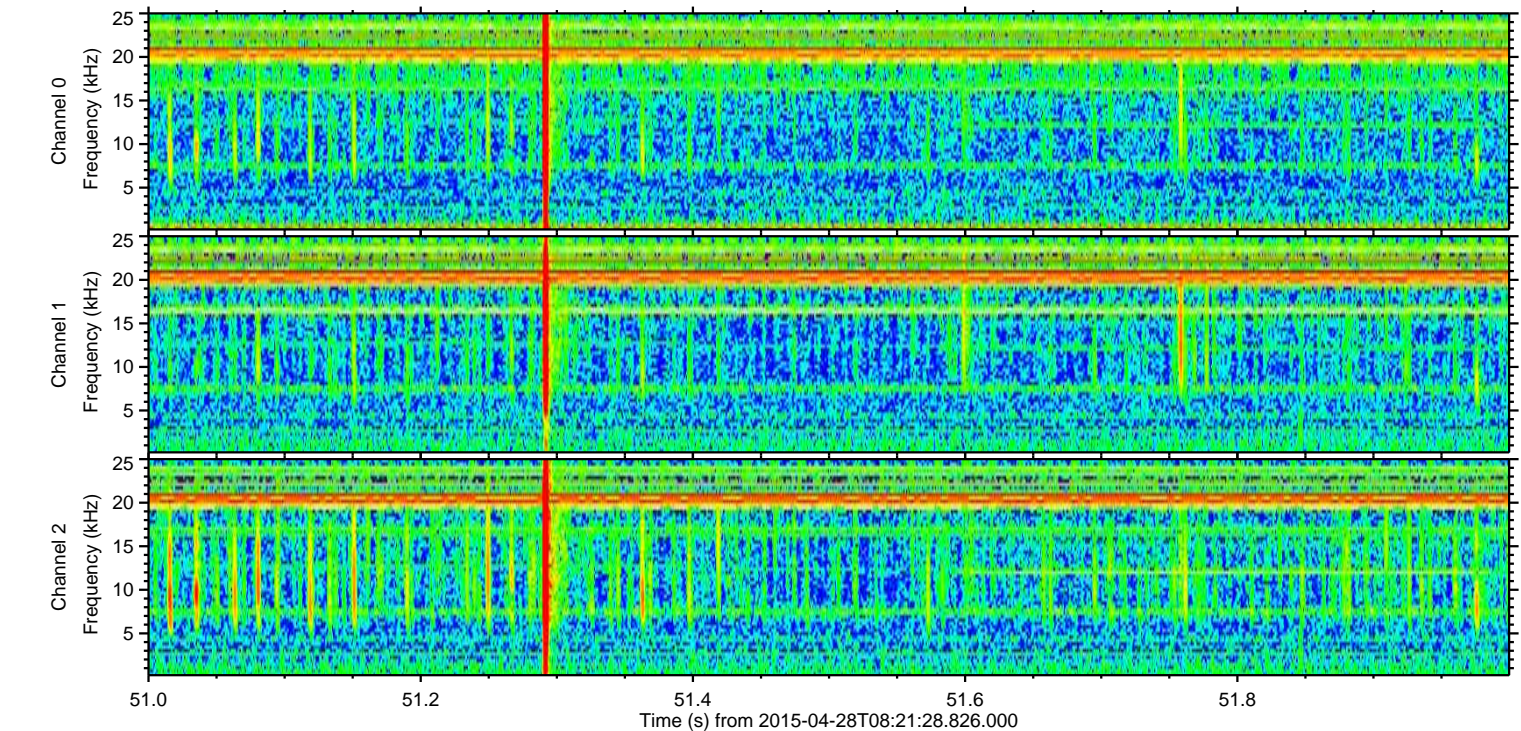
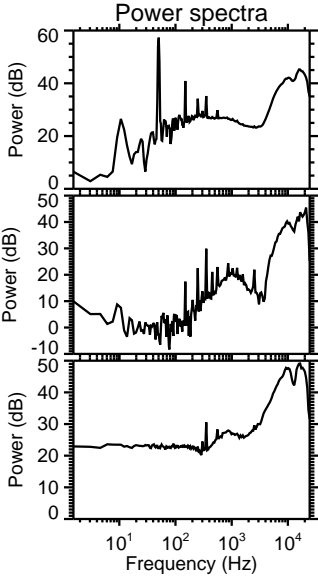
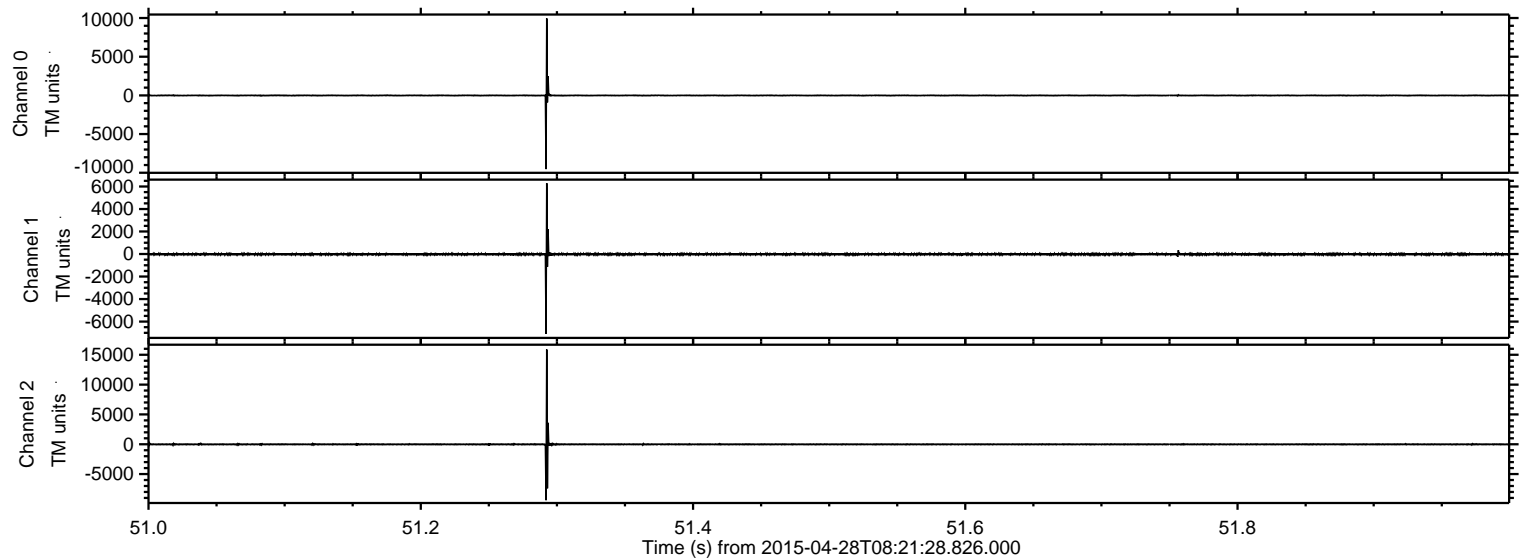


ELMAVAN 3D WAVEFORMS (Measured data sampled at 50 kHz) 49720 packets of 144 samples from 2015-04-28T08:21:28.826.000.

Processed Tue Apr 28 10:29:11 2015 by ELM ver.2012-10-06 from 001__elm20150428_082127__dat00.bin

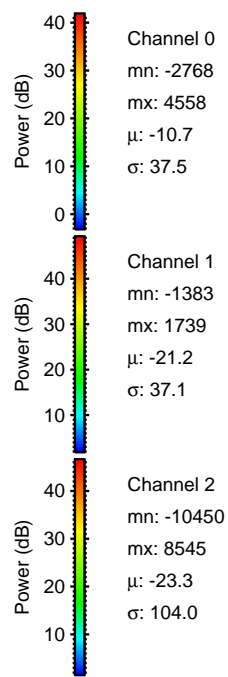
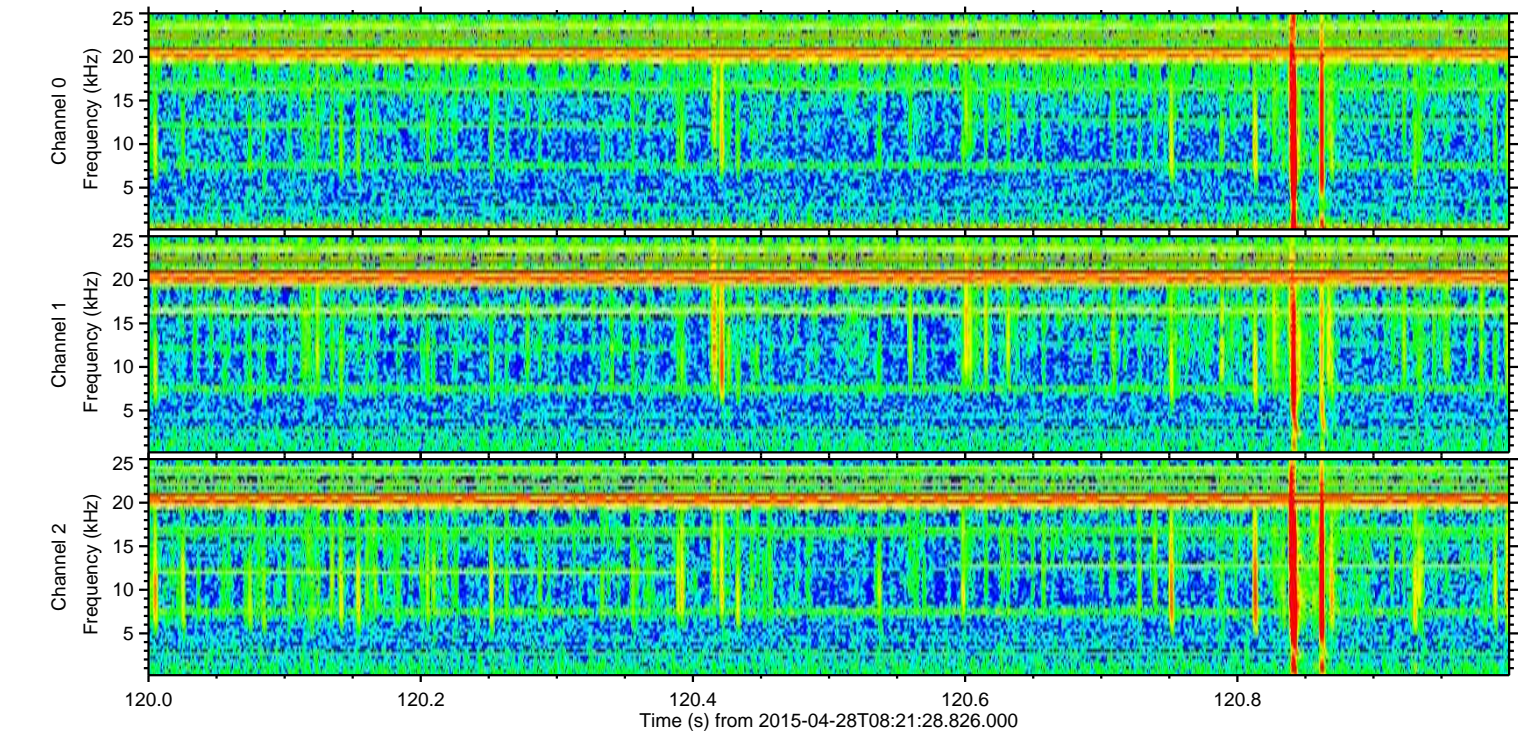
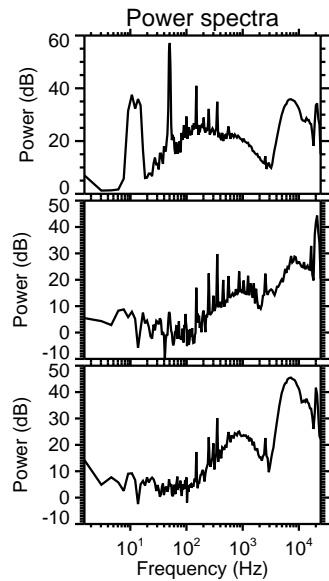
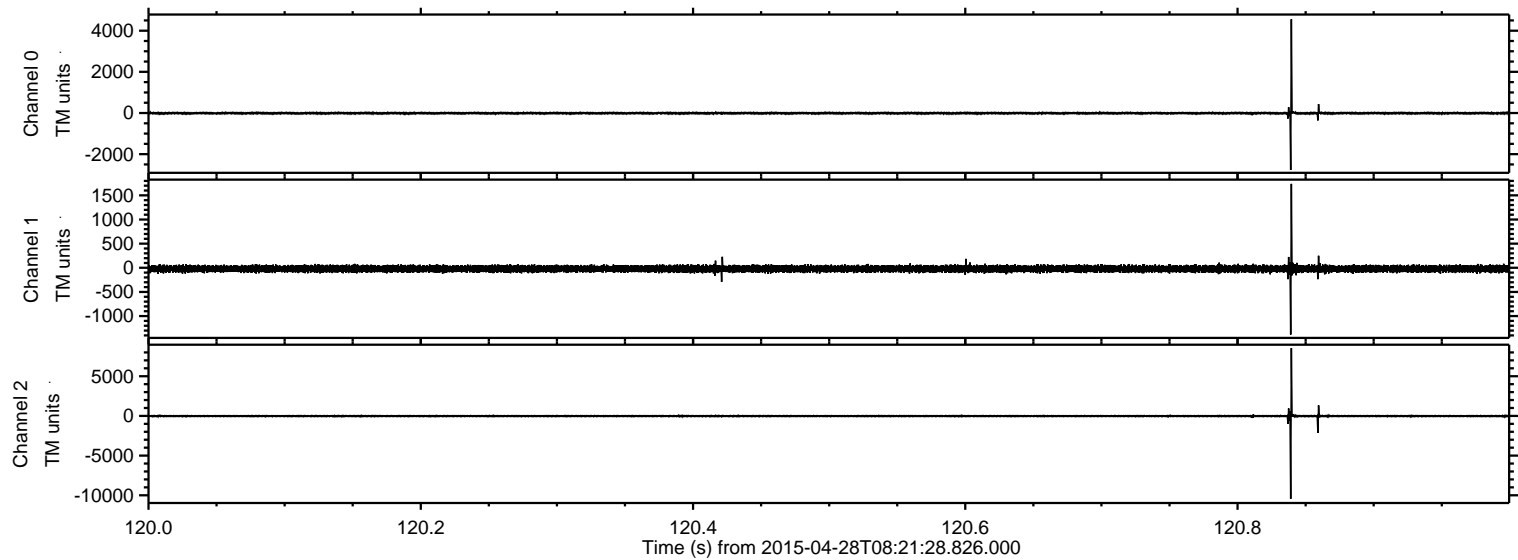


Processed Tue Apr 28 10:29:24 2015 by ELM ver.2012-10-06 from 001__elm20150428_082127__dat00.bin

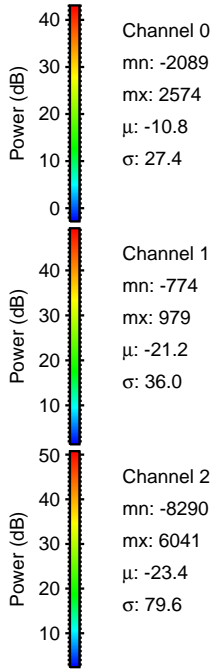
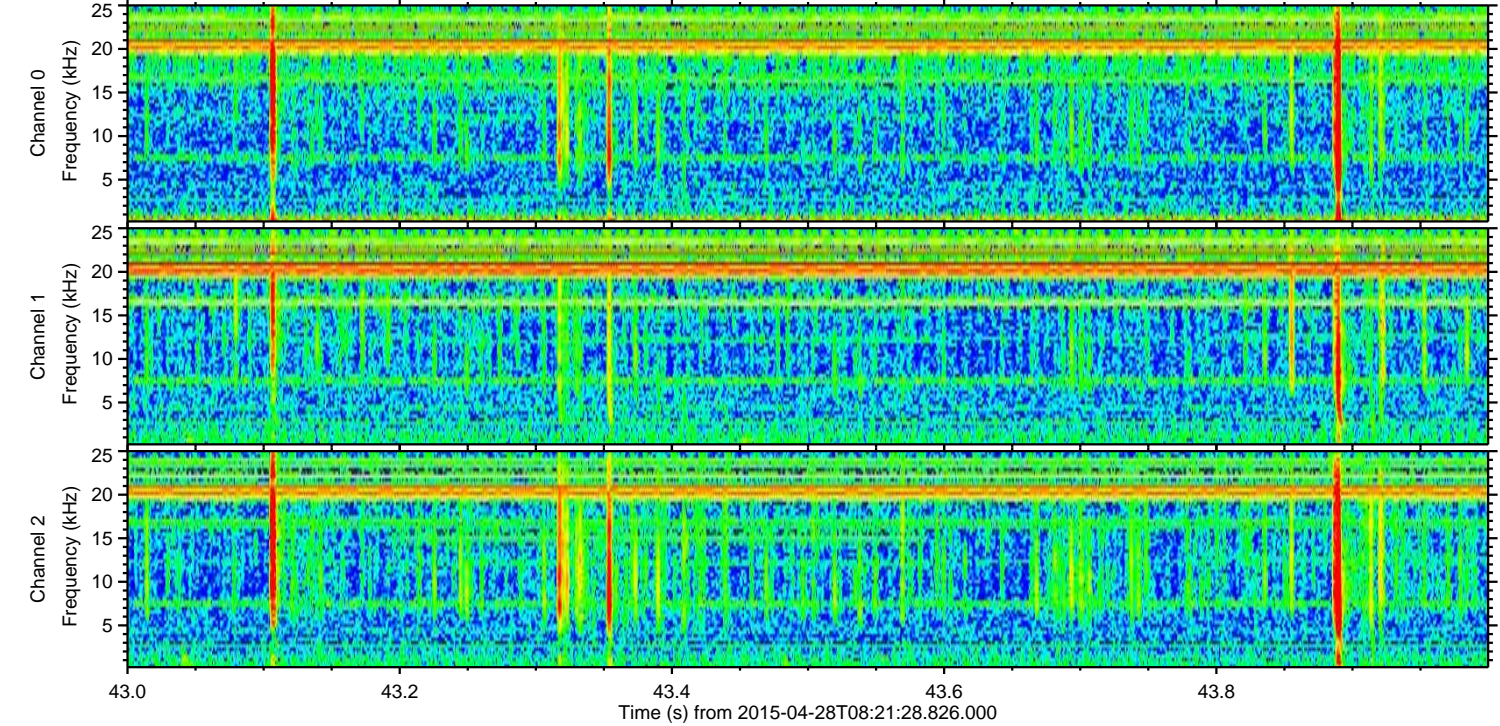
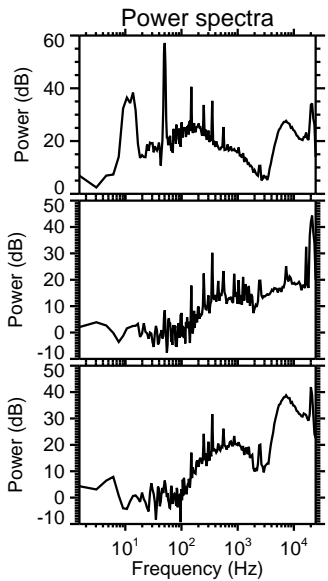
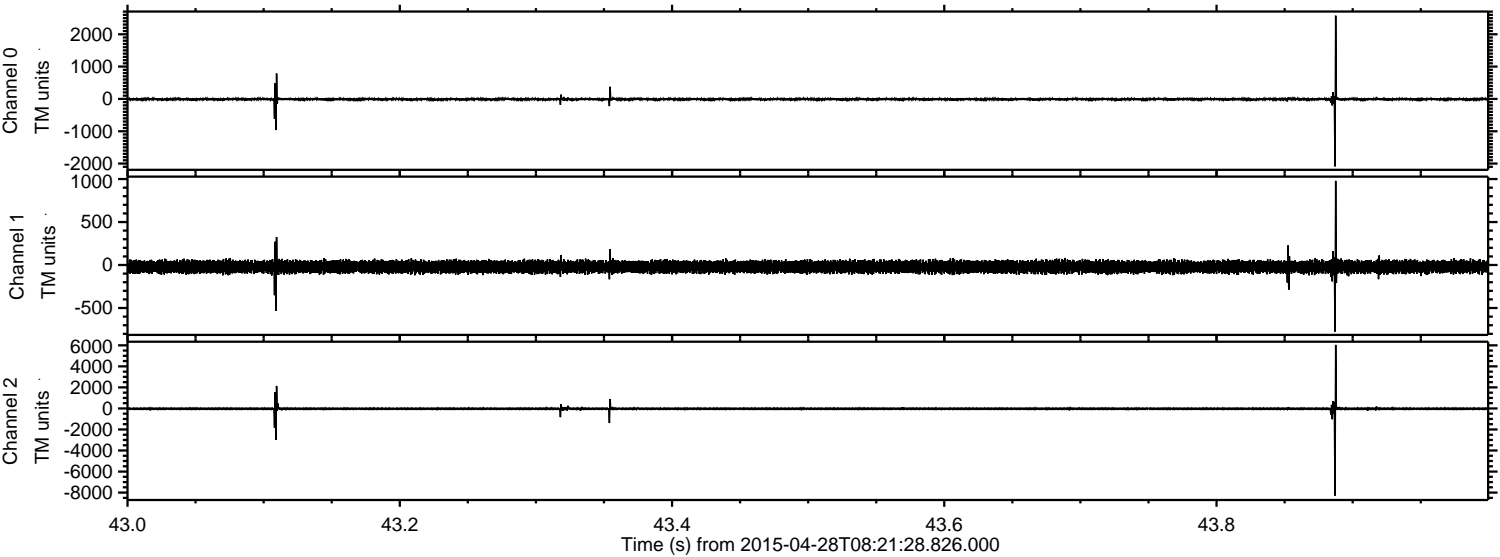


ELMAVAN 3D WAVEFORMS (Measured data sampled at 50 kHz) 49720 packets of 144 samples from 2015-04-28T08:21:28.826.000. Part 121/144

Processed Tue Apr 28 10:29:25 2015 by ELM ver.2012-10-06 from 001__elm20150428_082127__dat00.bin



Processed Tue Apr 28 10:29:26 2015 by ELM ver.2012-10-06 from 001__elm20150428_082127__dat00.bin

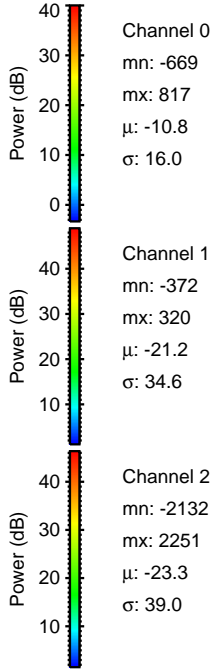
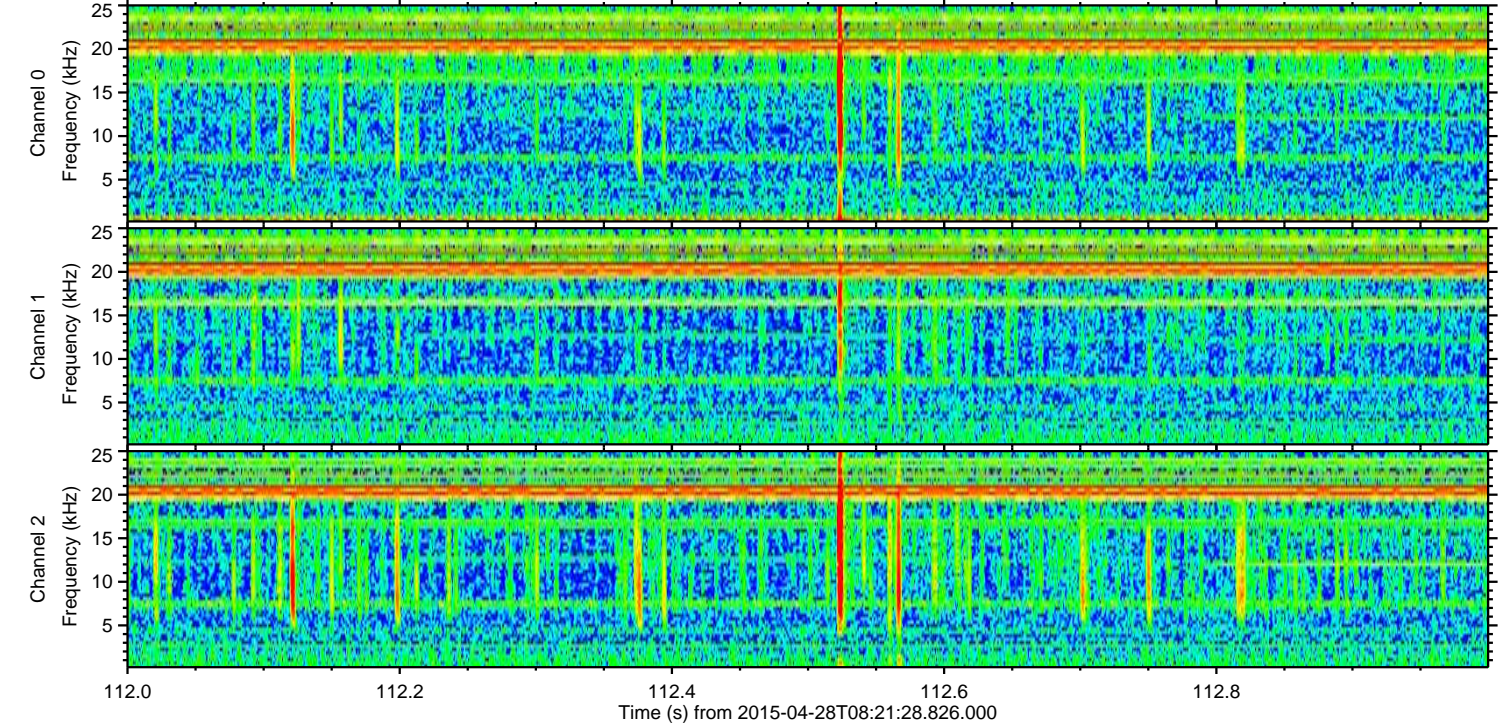
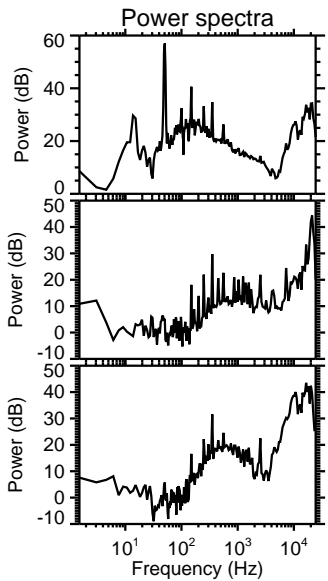
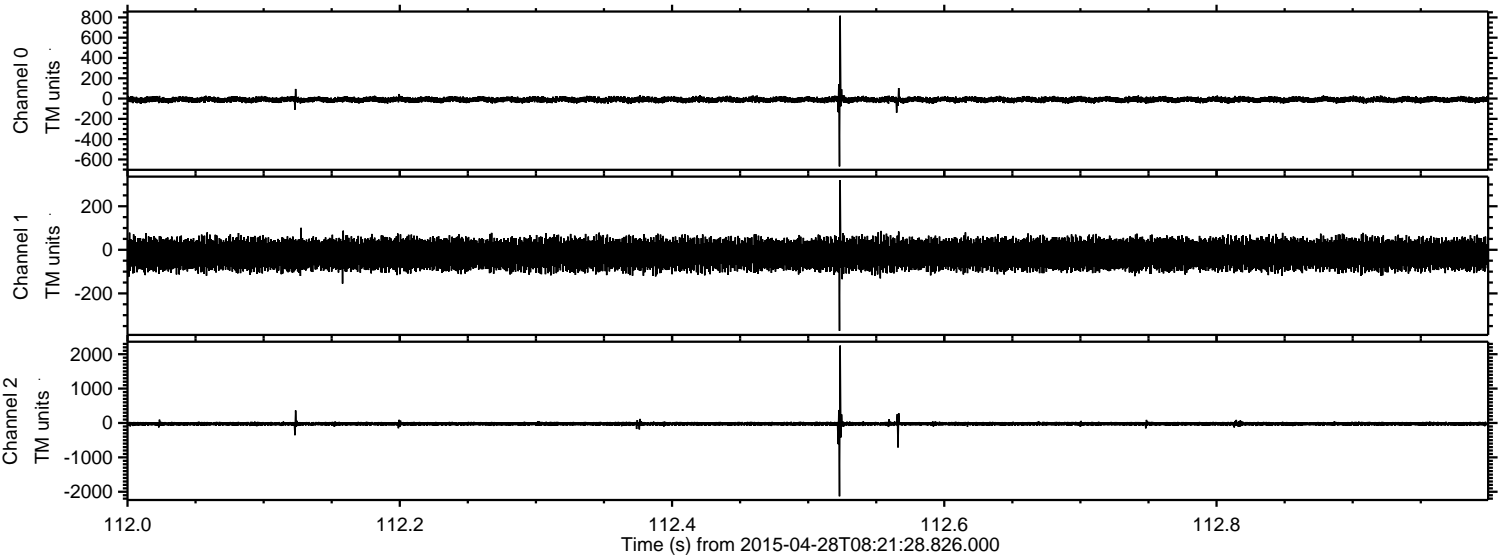


Channel 0
mn: -2089
mx: 2574
 μ : -10.8
 σ : 27.4

Channel 1
mn: -774
mx: 979
 μ : -21.2
 σ : 36.0

Channel 2
mn: -8290
mx: 6041
 μ : -23.4
 σ : 79.6

Processed Tue Apr 28 10:29:27 2015 by ELM ver.2012-10-06 from 001__elm20150428_082127__dat00.bin

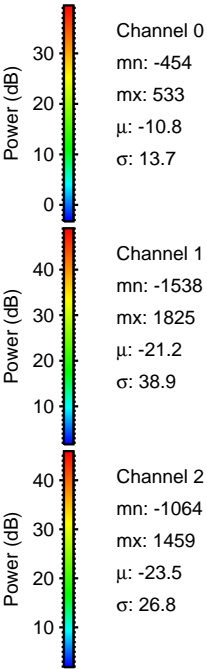
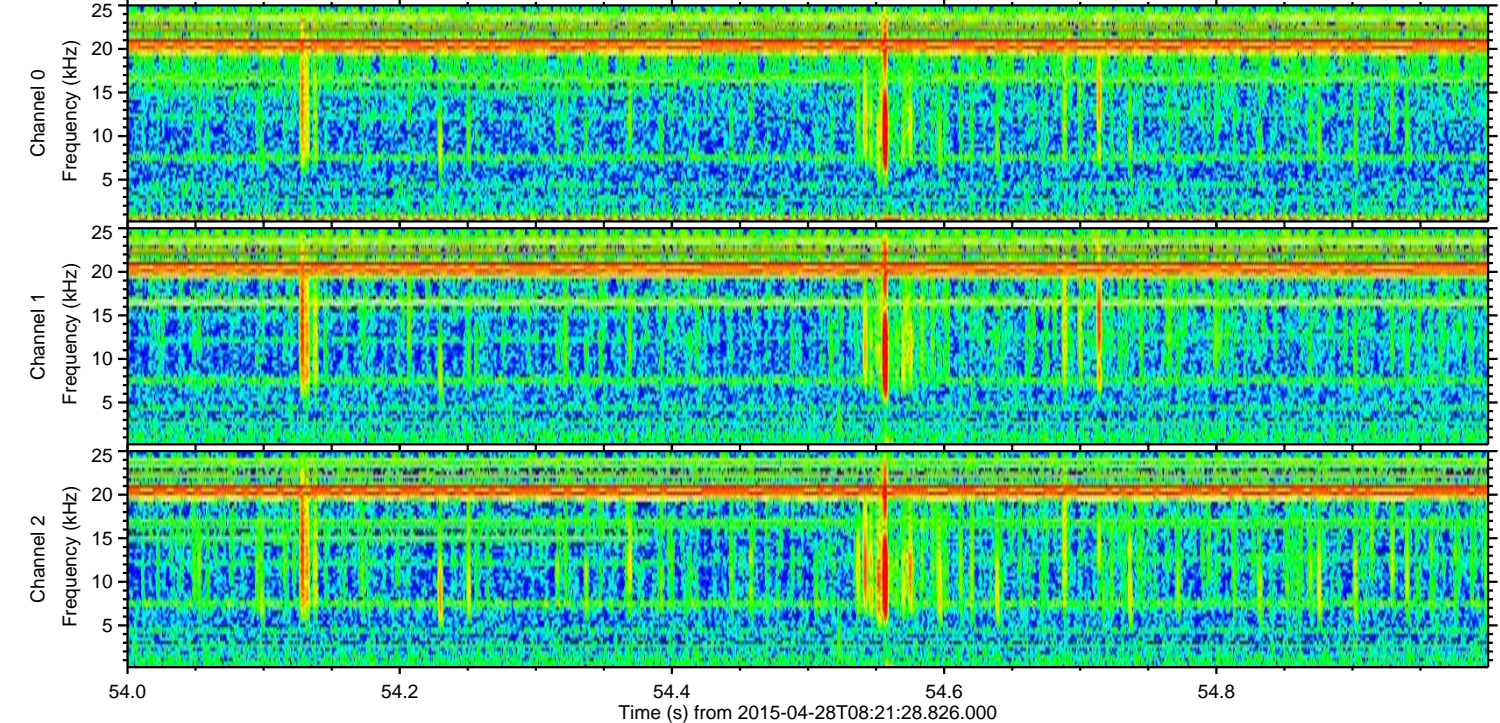
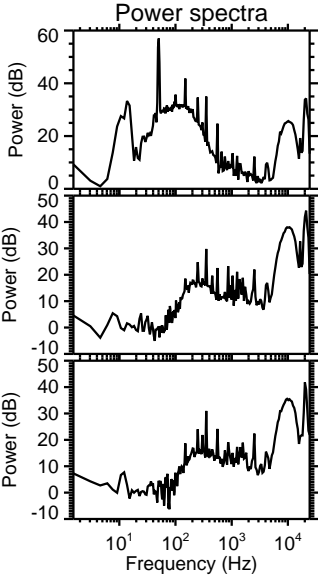
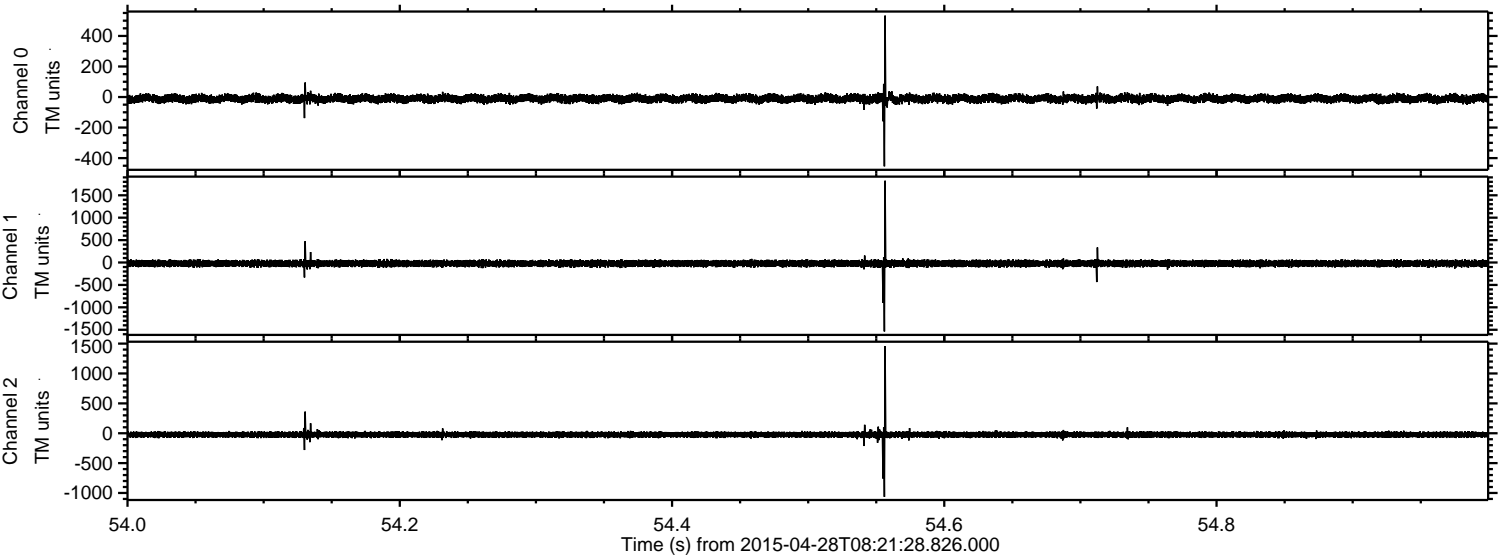


Channel 0
mn: -669
mx: 817
 μ : -10.8
 σ : 16.0

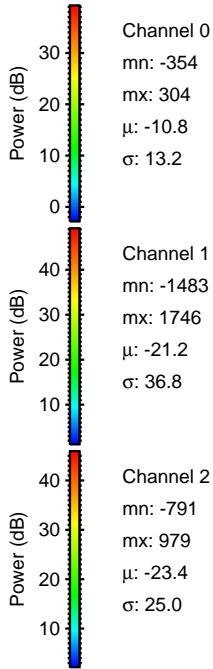
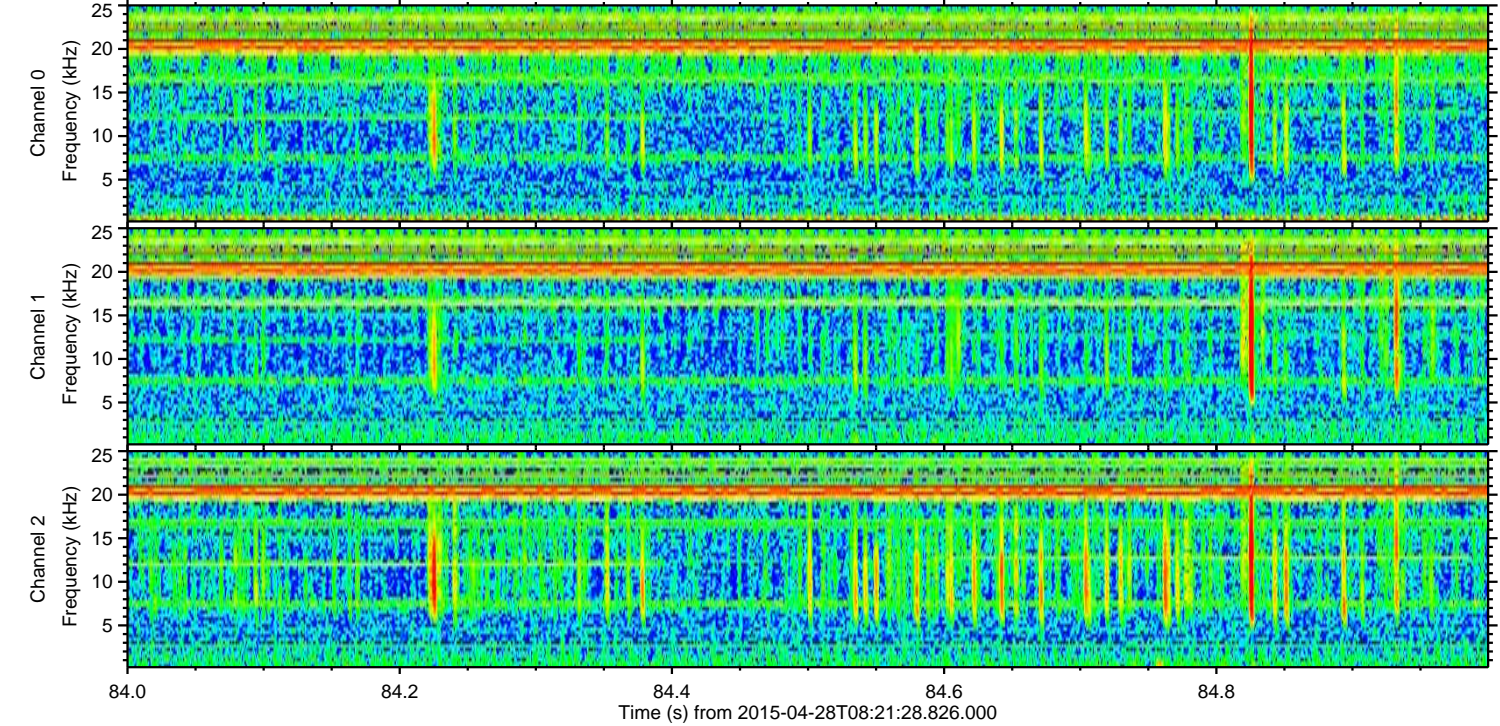
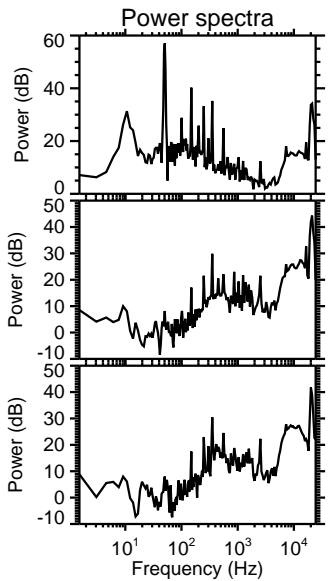
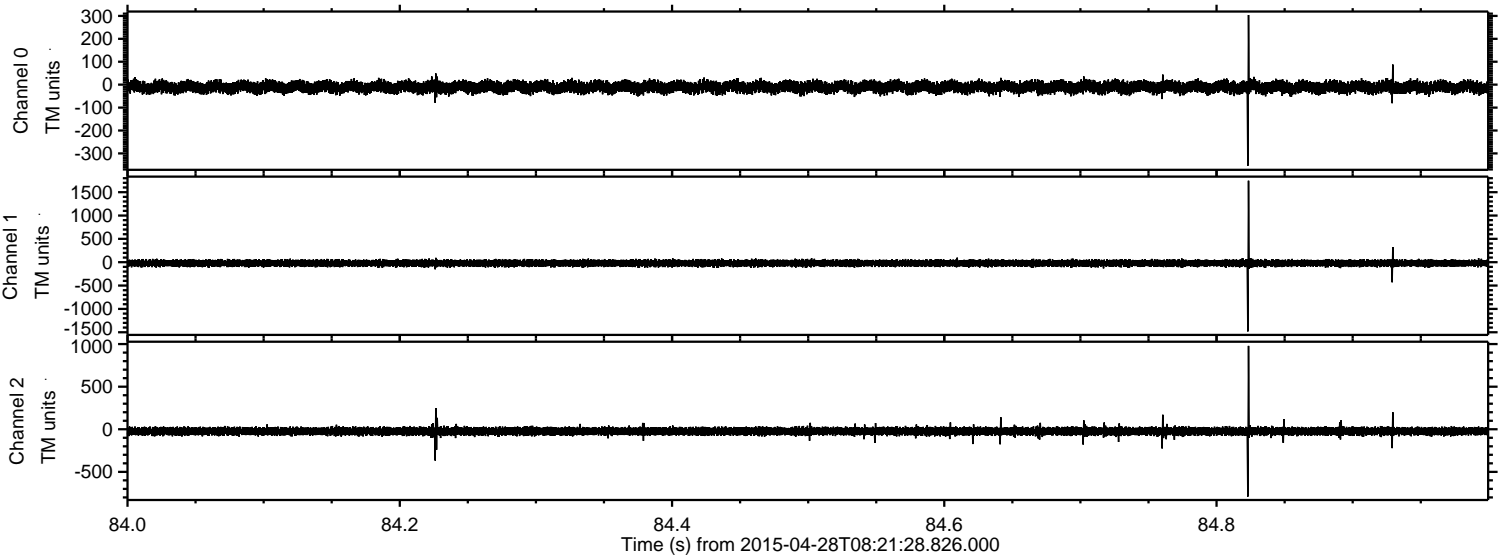
Channel 1
mn: -372
mx: 320
 μ : -21.2
 σ : 34.6

Channel 2
mn: -2132
mx: 2251
 μ : -23.3
 σ : 39.0

Processed Tue Apr 28 10:29:28 2015 by ELM ver.2012-10-06 from 001__elm20150428_082127__dat00.bin

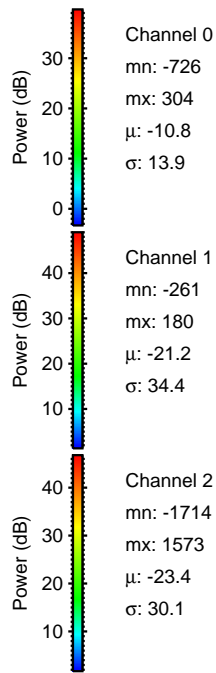
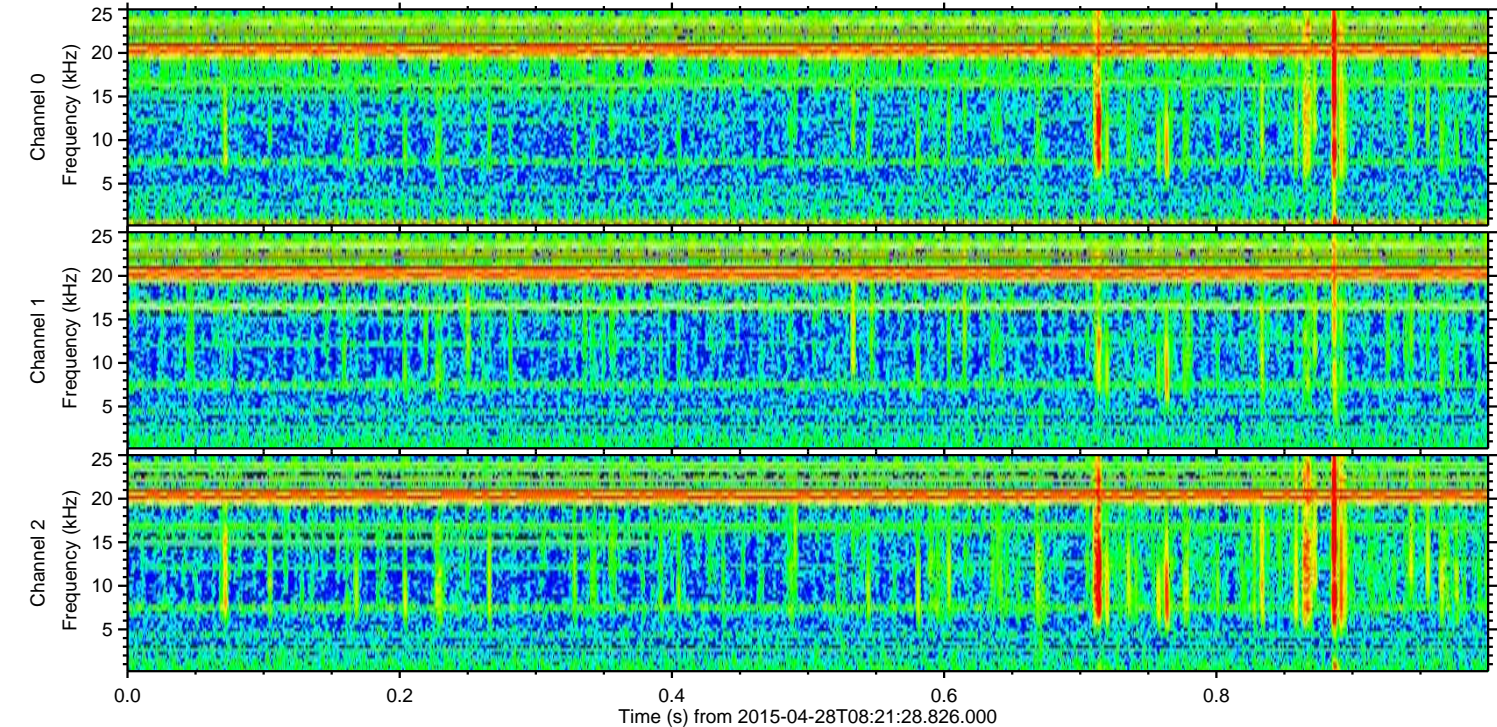
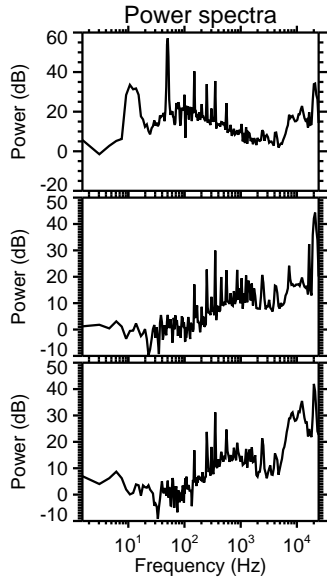
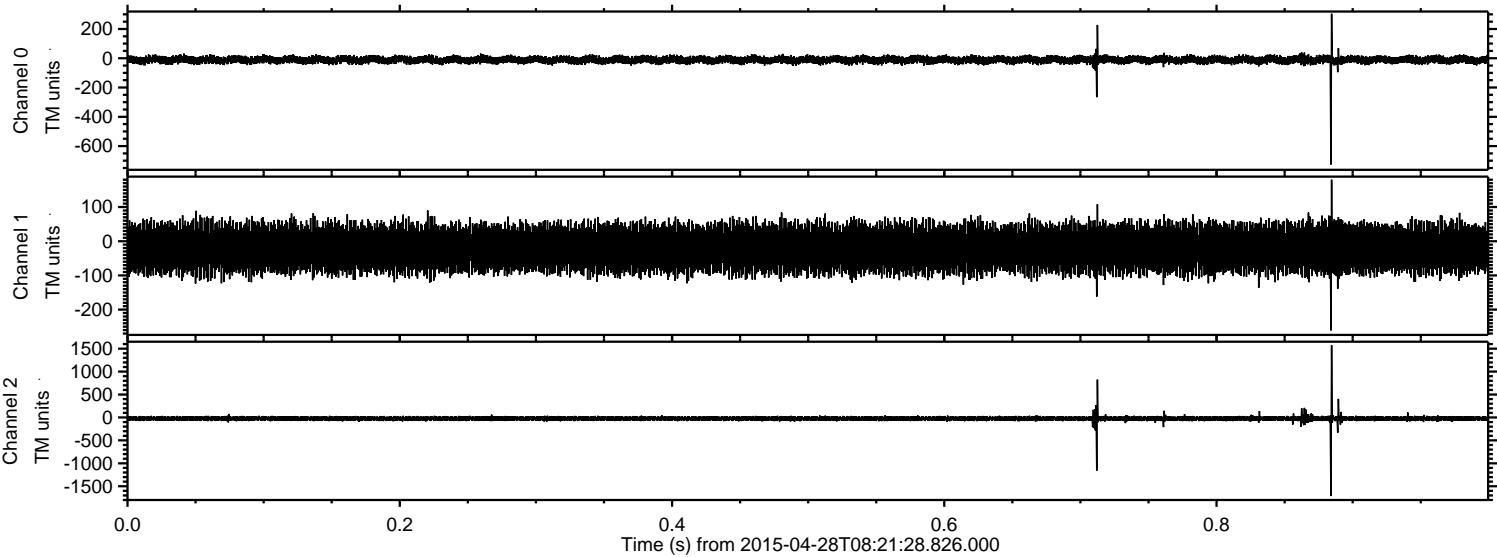


Processed Tue Apr 28 10:29:29 2015 by ELM ver.2012-10-06 from 001__elm20150428_082127__dat00.bin

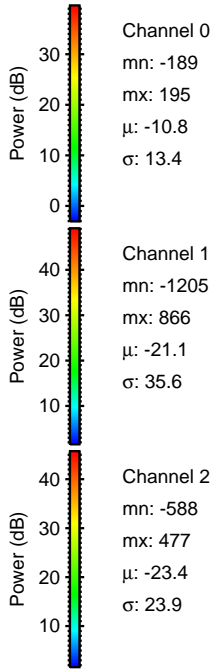
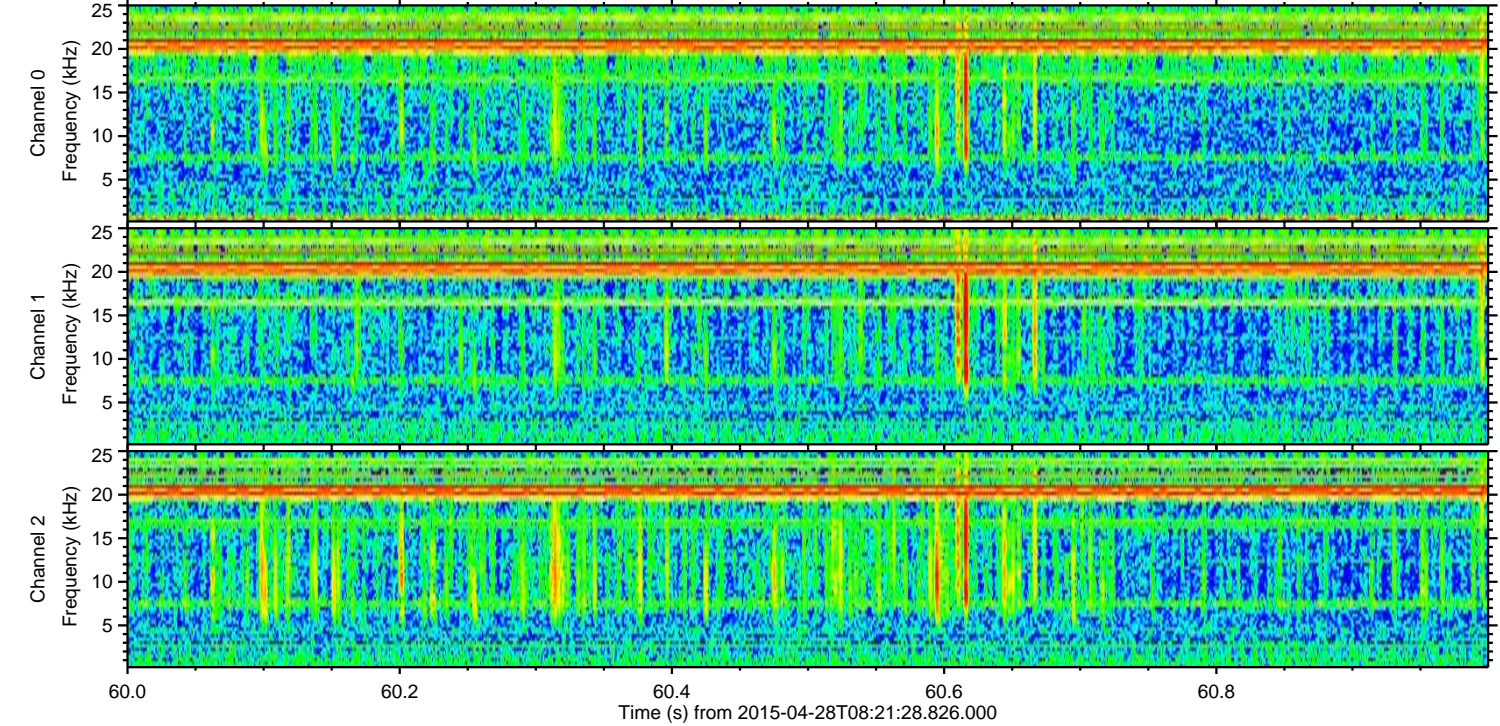
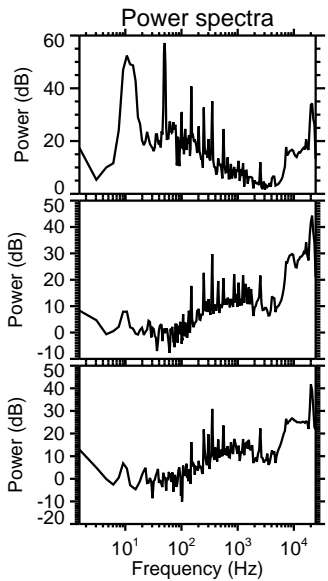
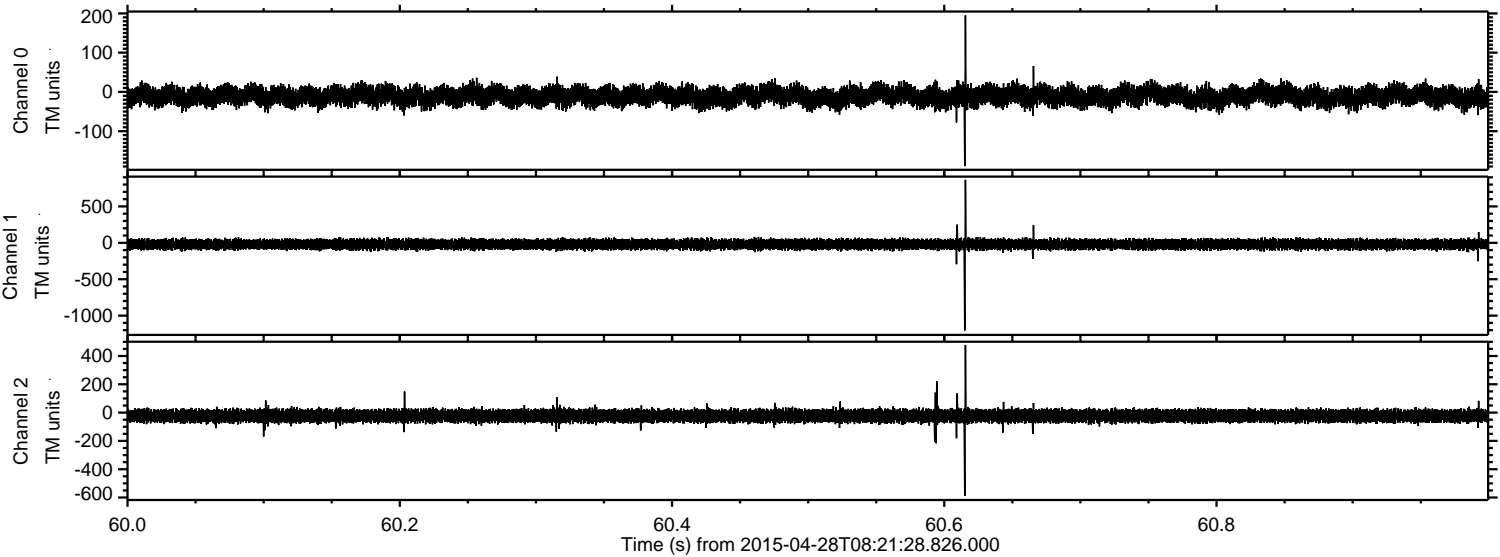


ELMAVAN 3D WAVEFORMS (Measured data sampled at 50 kHz) 49720 packets of 144 samples from 2015-04-28T08:21:28.826.000. Part 1/144

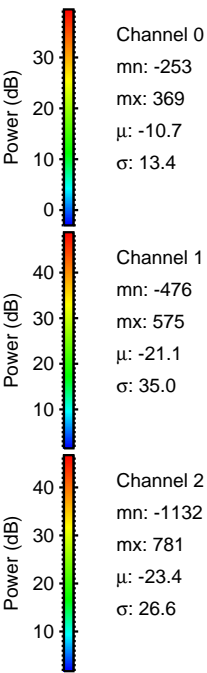
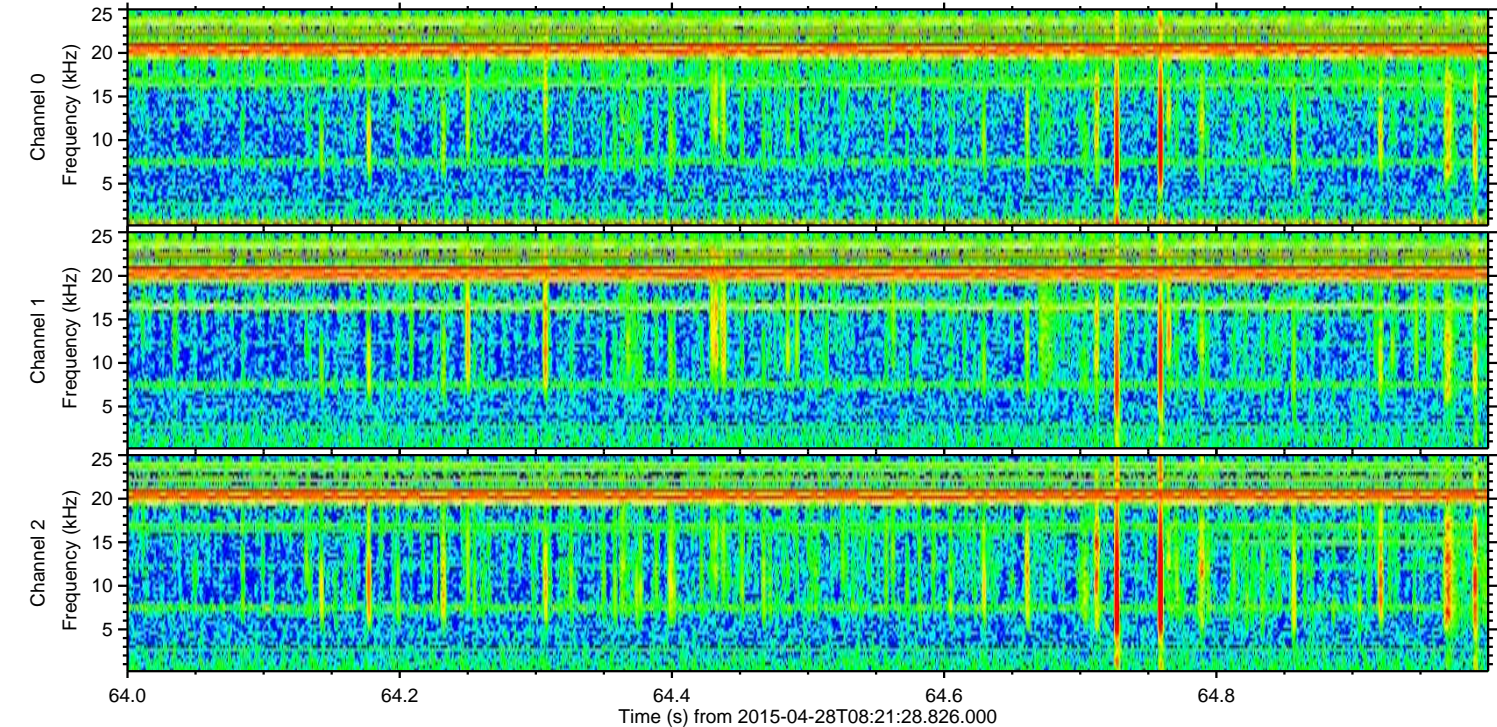
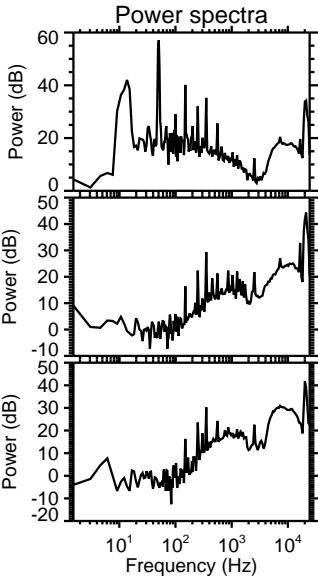
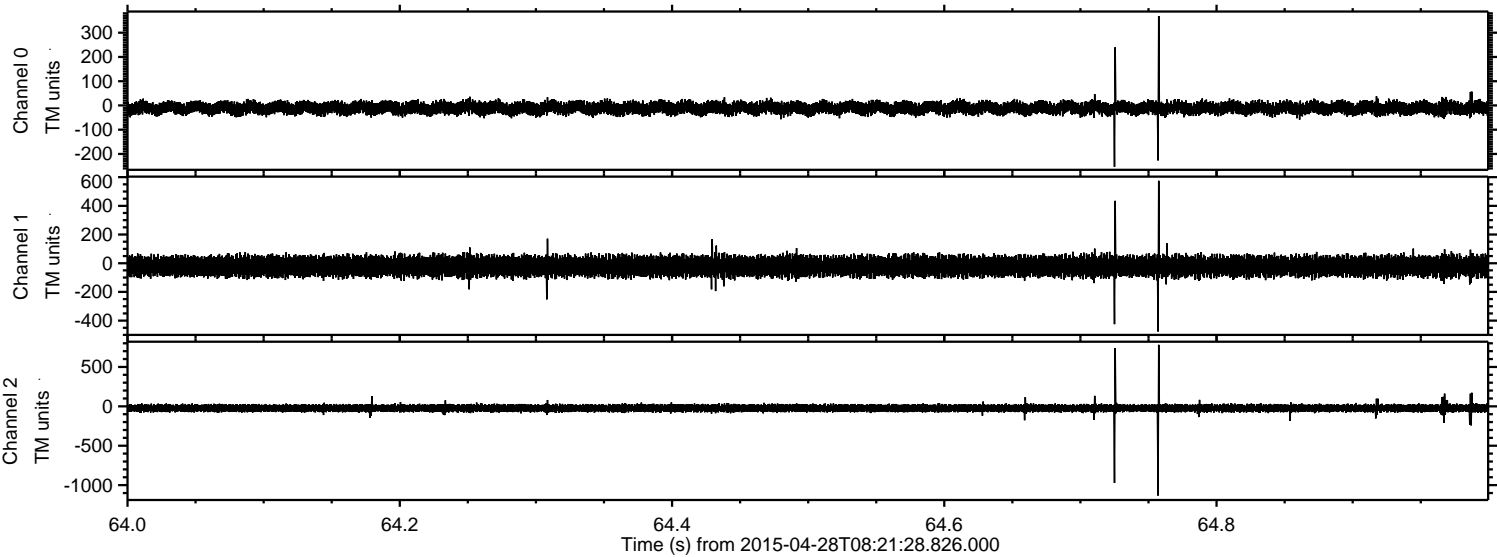
Processed Tue Apr 28 10:29:30 2015 by ELM ver.2012-10-06 from 001__elm20150428_082127__dat00.bin



Processed Tue Apr 28 10:29:31 2015 by ELM ver.2012-10-06 from 001__elm20150428_082127__dat00.bin



Processed Tue Apr 28 10:29:32 2015 by ELM ver.2012-10-06 from 001__elm20150428_082127__dat00.bin



Processed Tue Apr 28 10:29:33 2015 by ELM ver.2012-10-06 from 001__elm20150428_082127__dat00.bin

