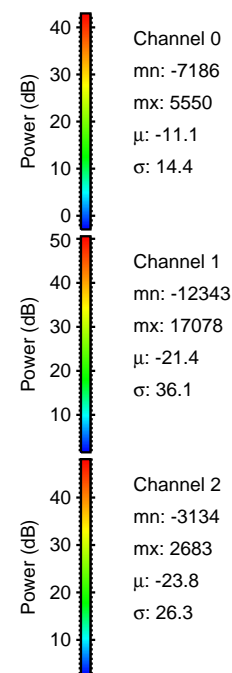
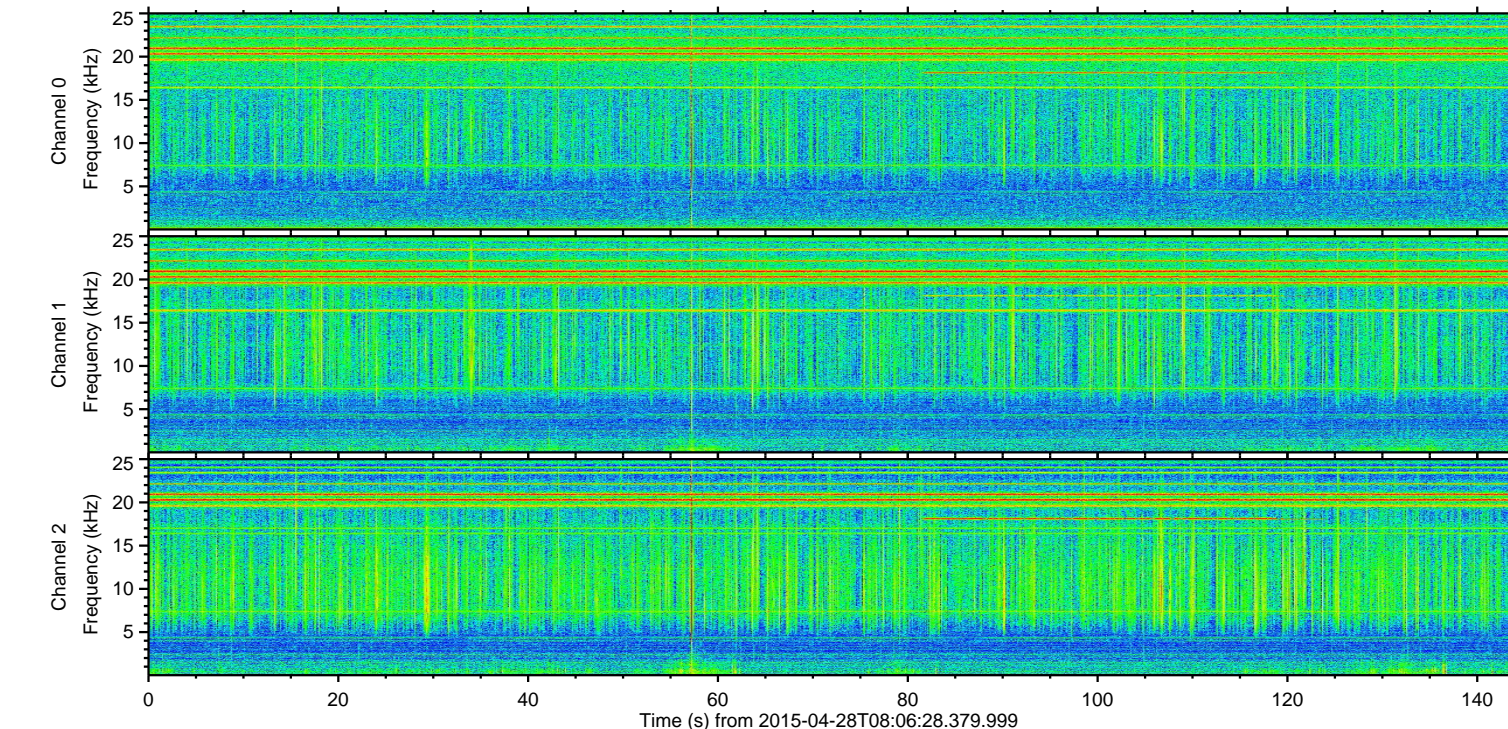
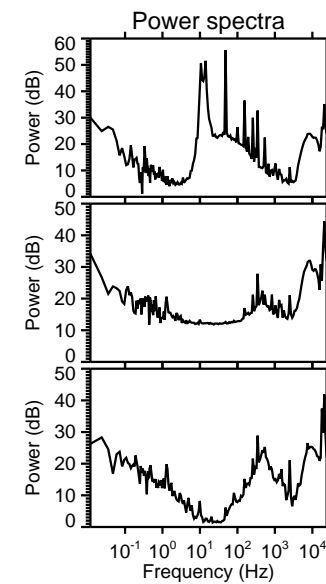
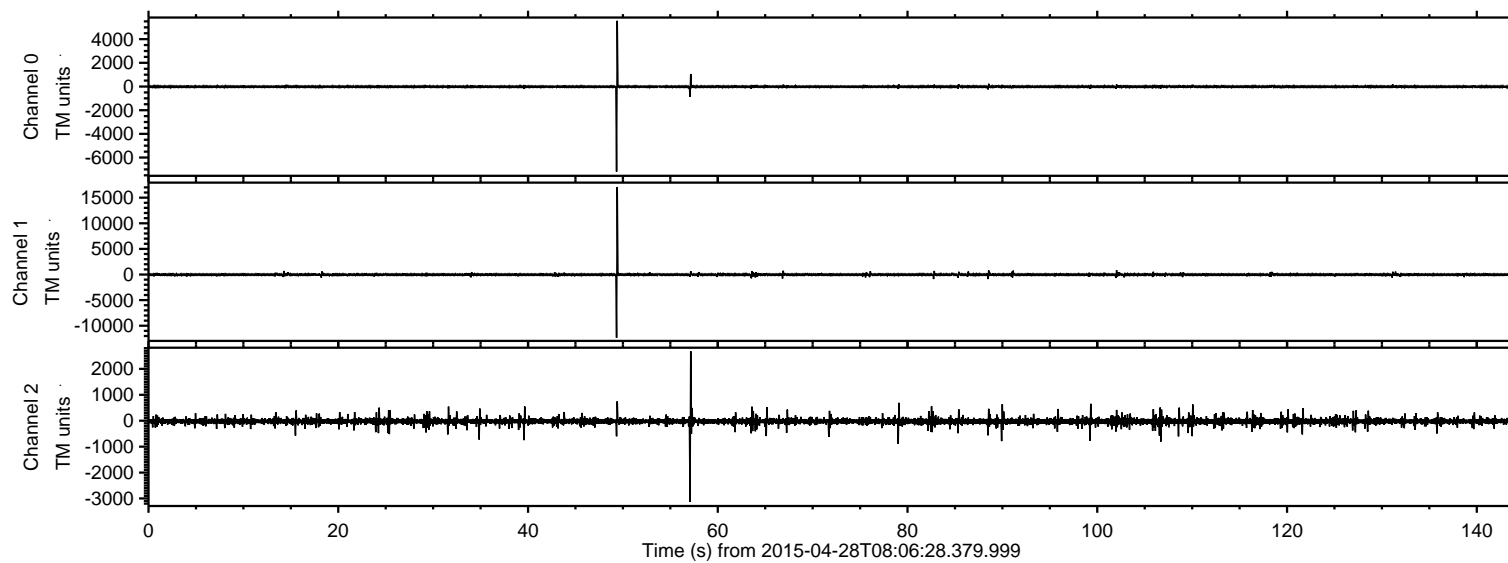
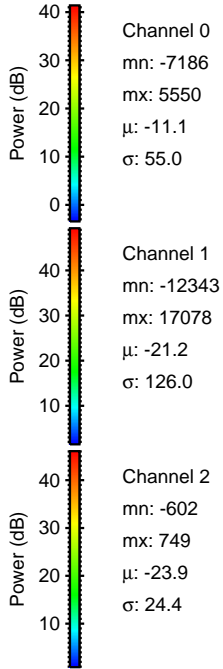
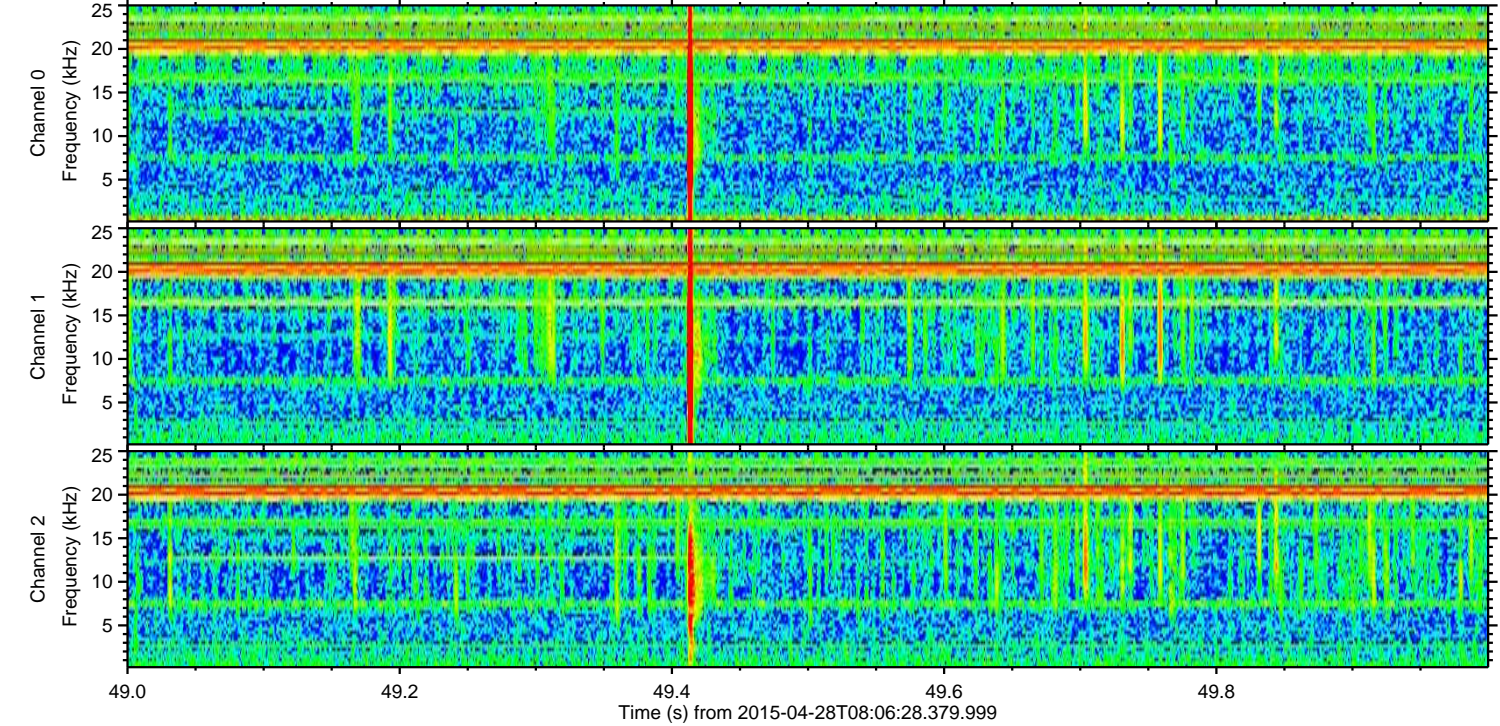
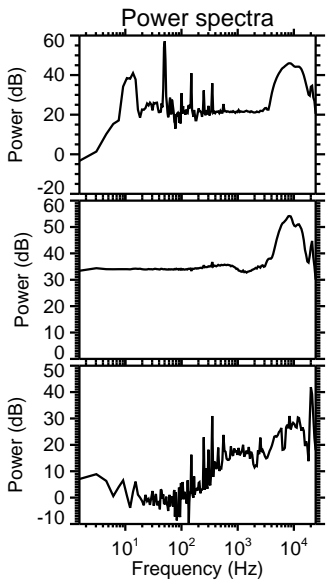
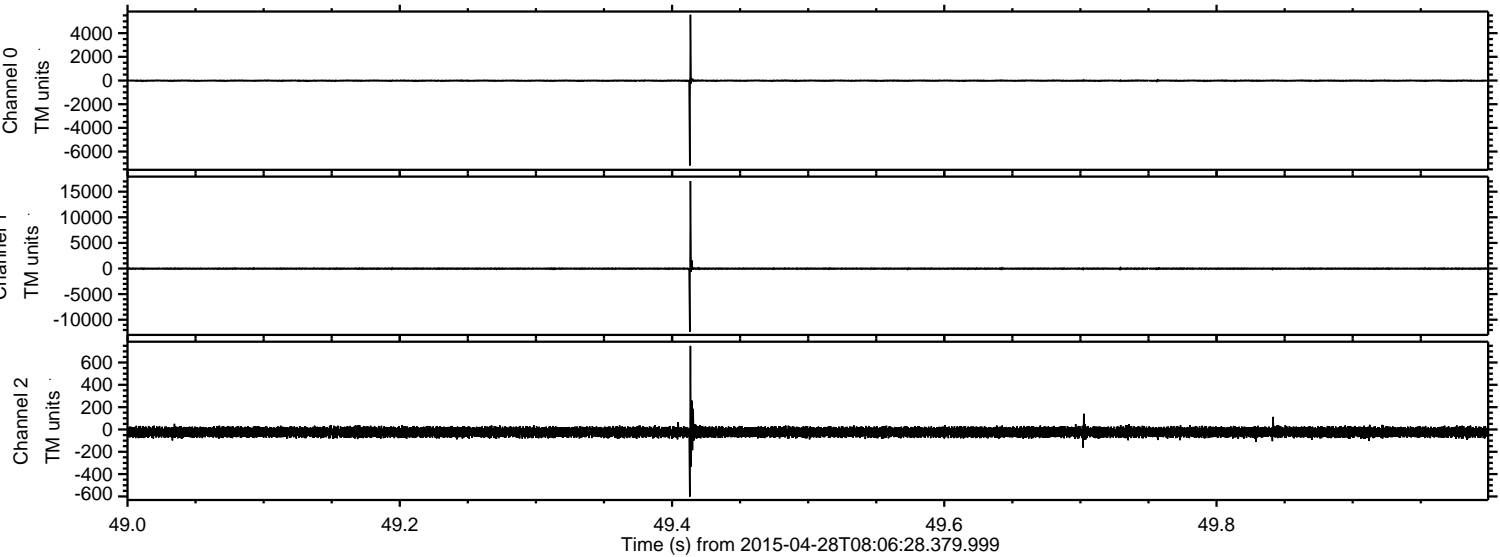


ELMAVAN 3D WAVEFORMS (Measured data sampled at 50 kHz) 49795 packets of 144 samples from 2015-04-28T08:06:28.379.999.

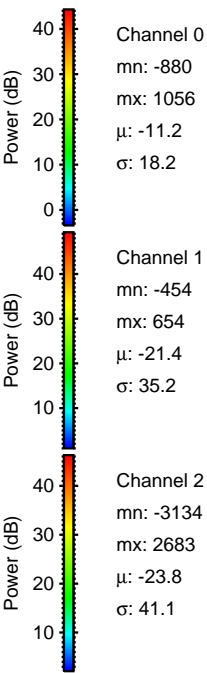
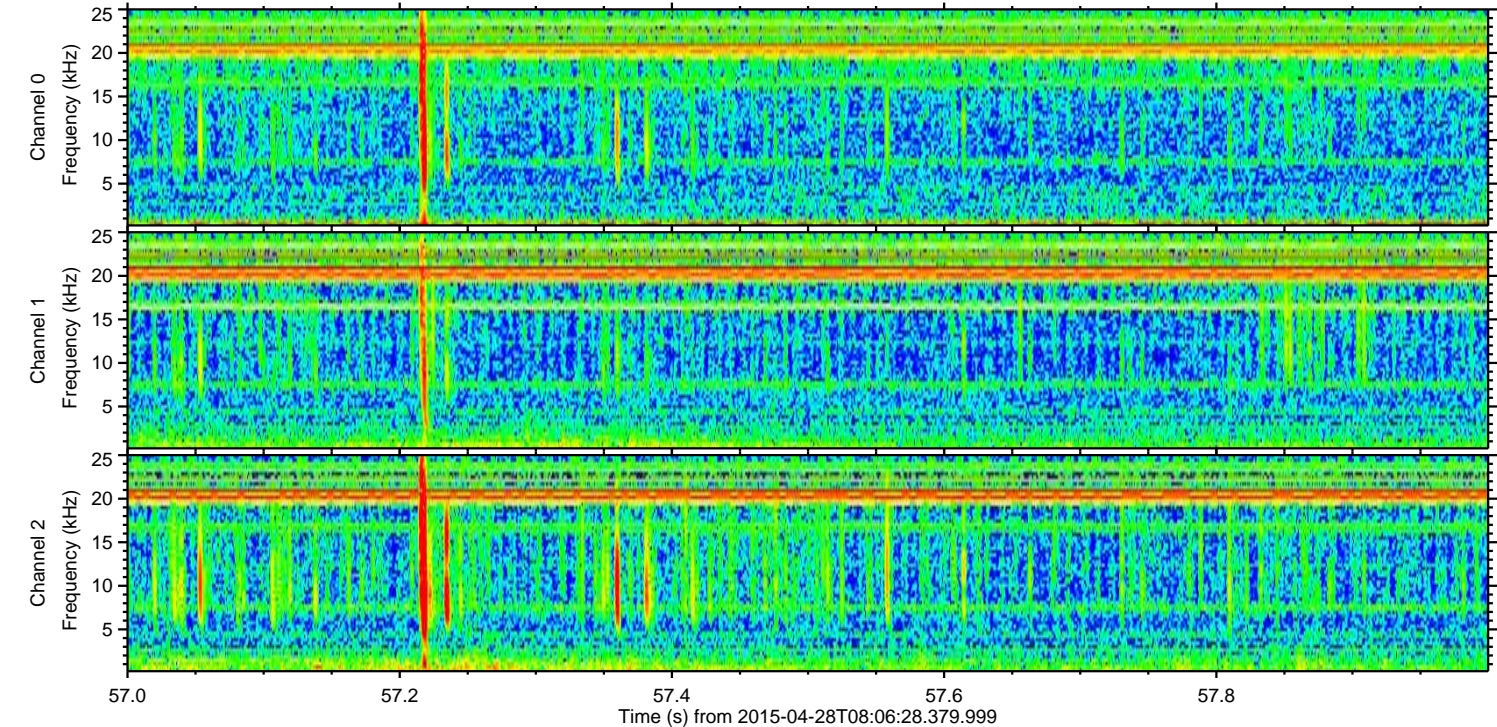
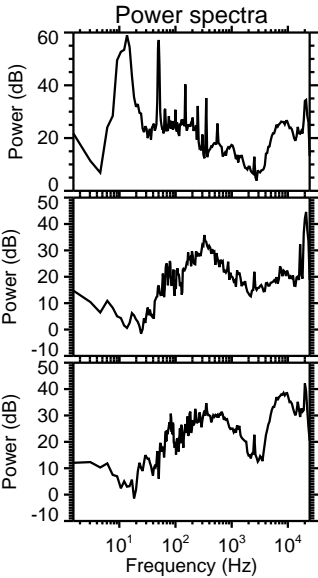
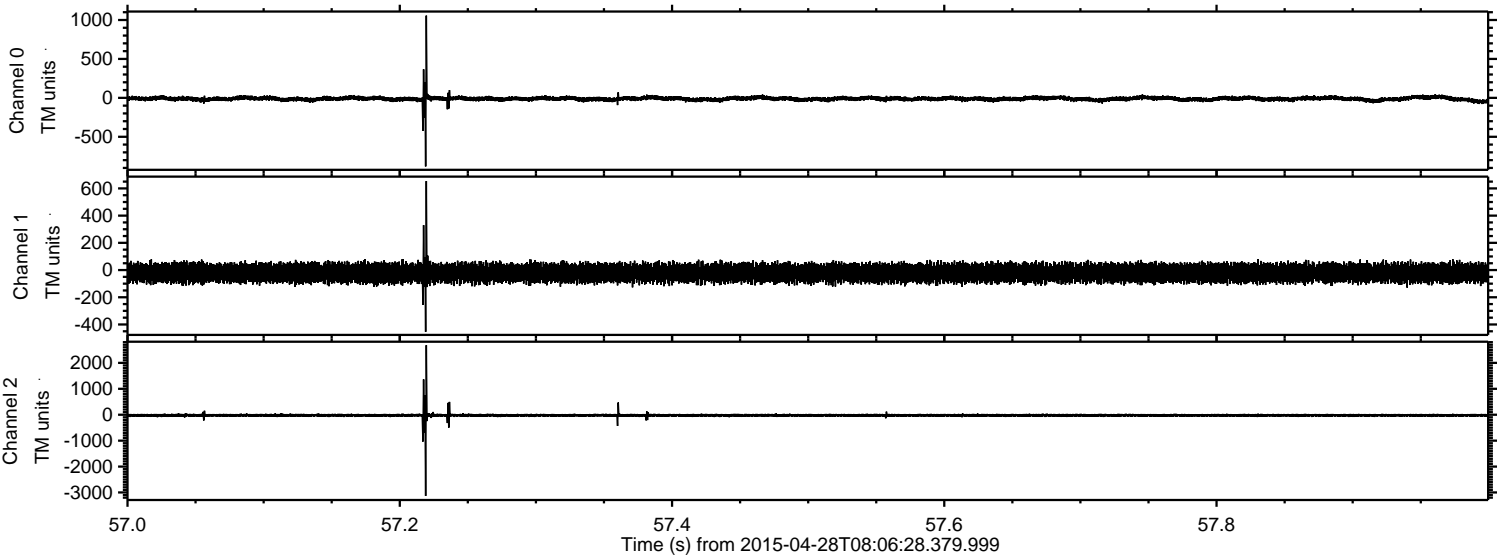
Processed Tue Apr 28 10:14:18 2015 by ELM ver.2012-10-06 from 001__elm20150428_080627__dat00.bin



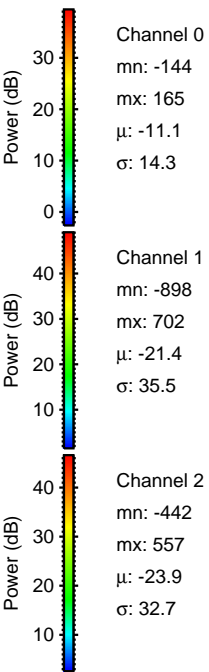
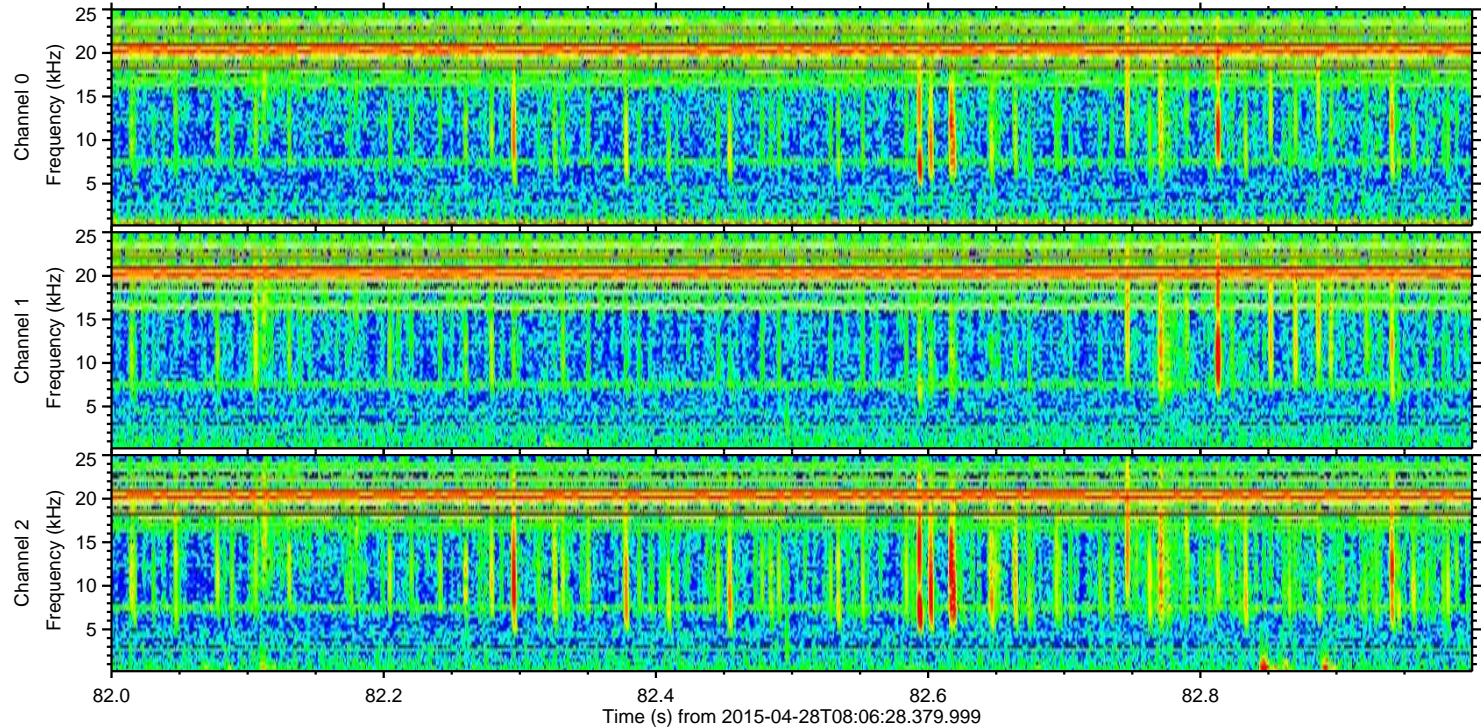
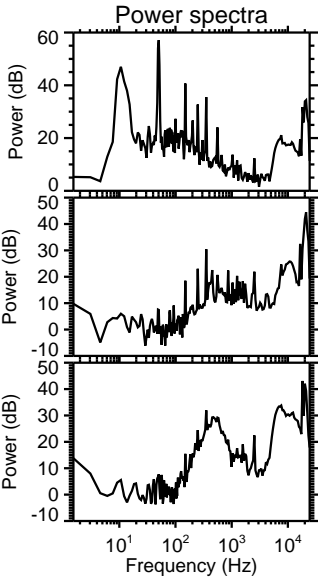
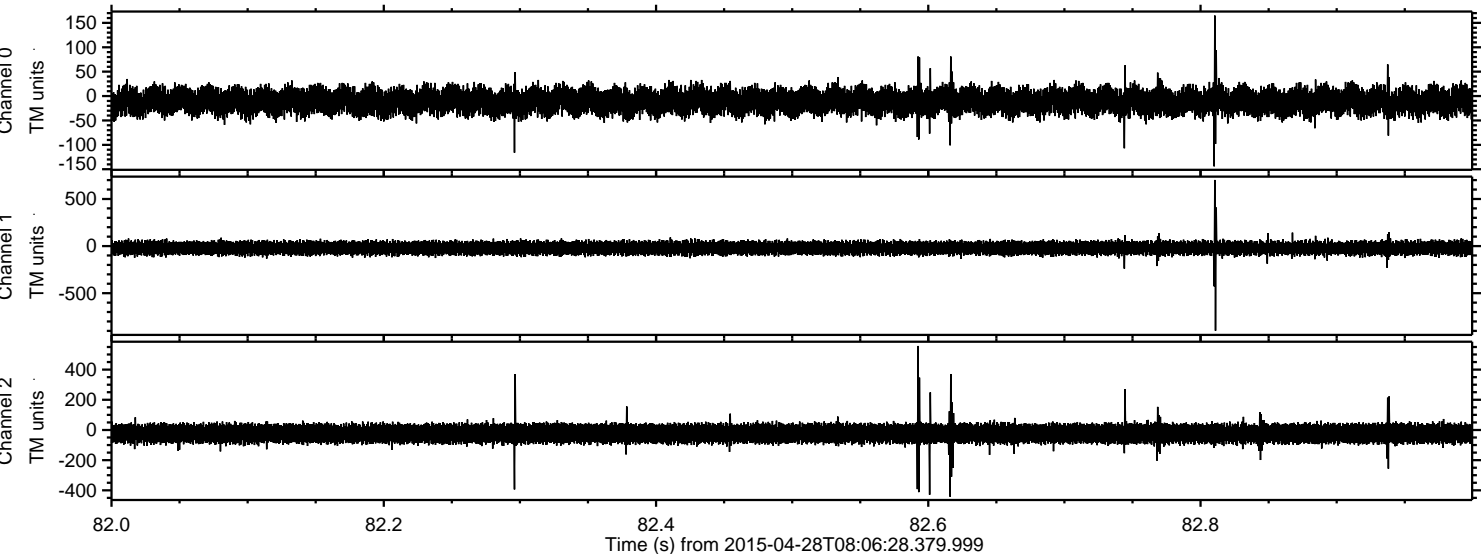
Processed Tue Apr 28 10:14:29 2015 by ELM ver.2012-10-06 from 001__elm20150428_080627__dat00.bin



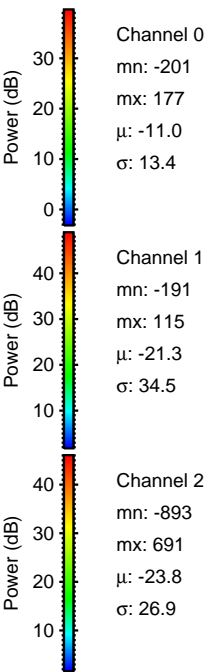
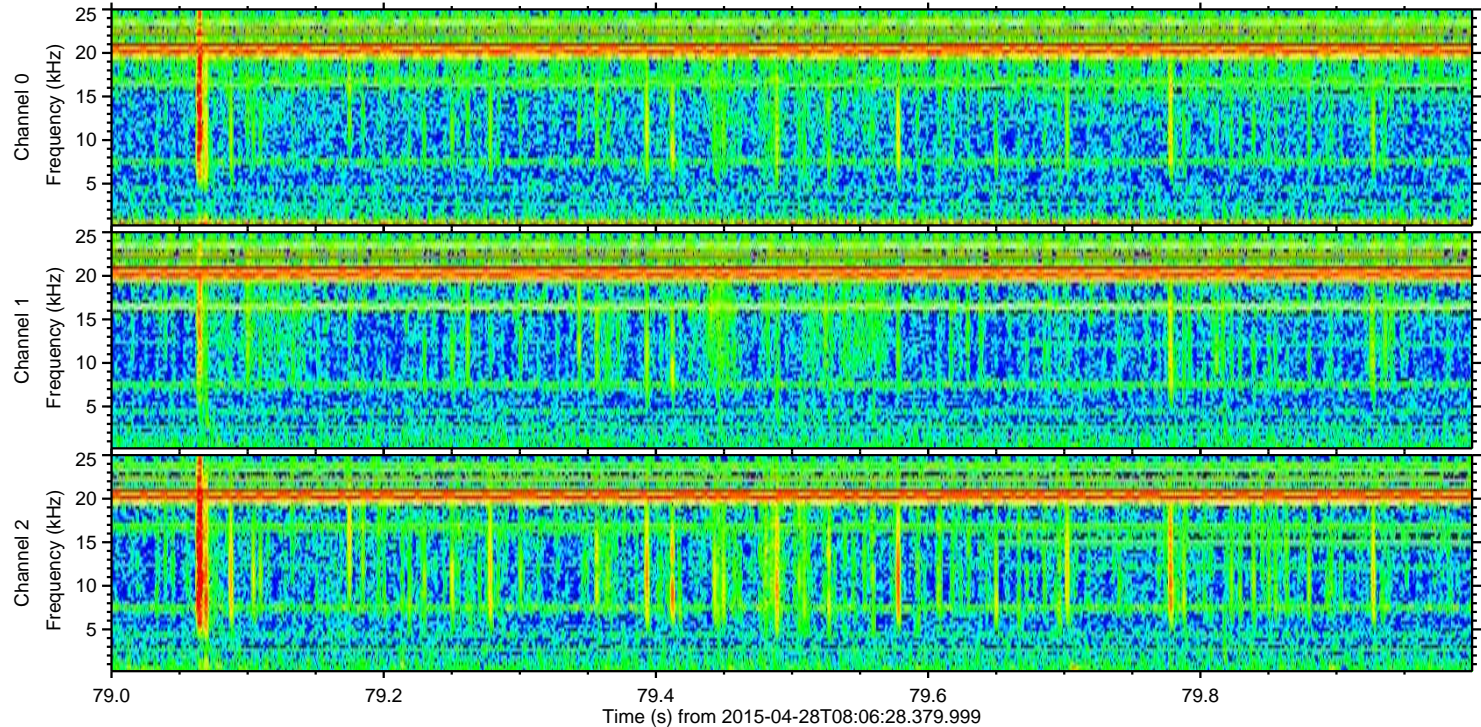
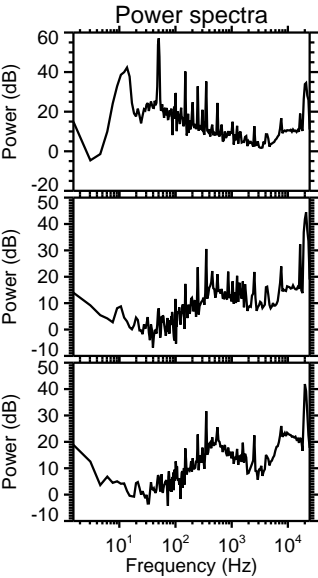
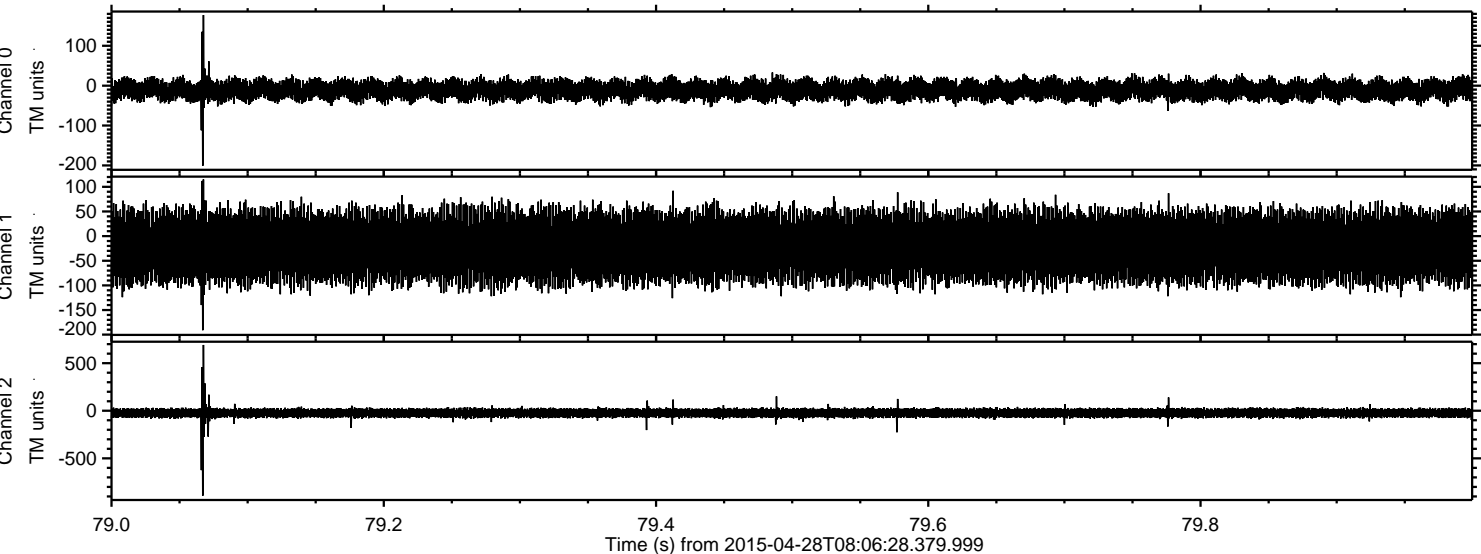
Processed Tue Apr 28 10:14:30 2015 by ELM ver.2012-10-06 from 001__elm20150428_080627__dat00.bin



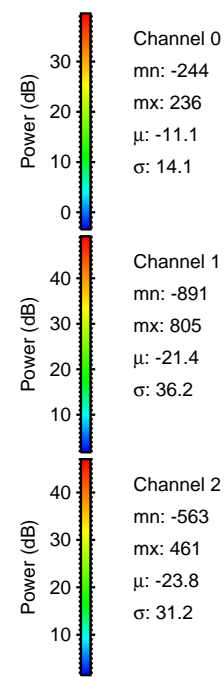
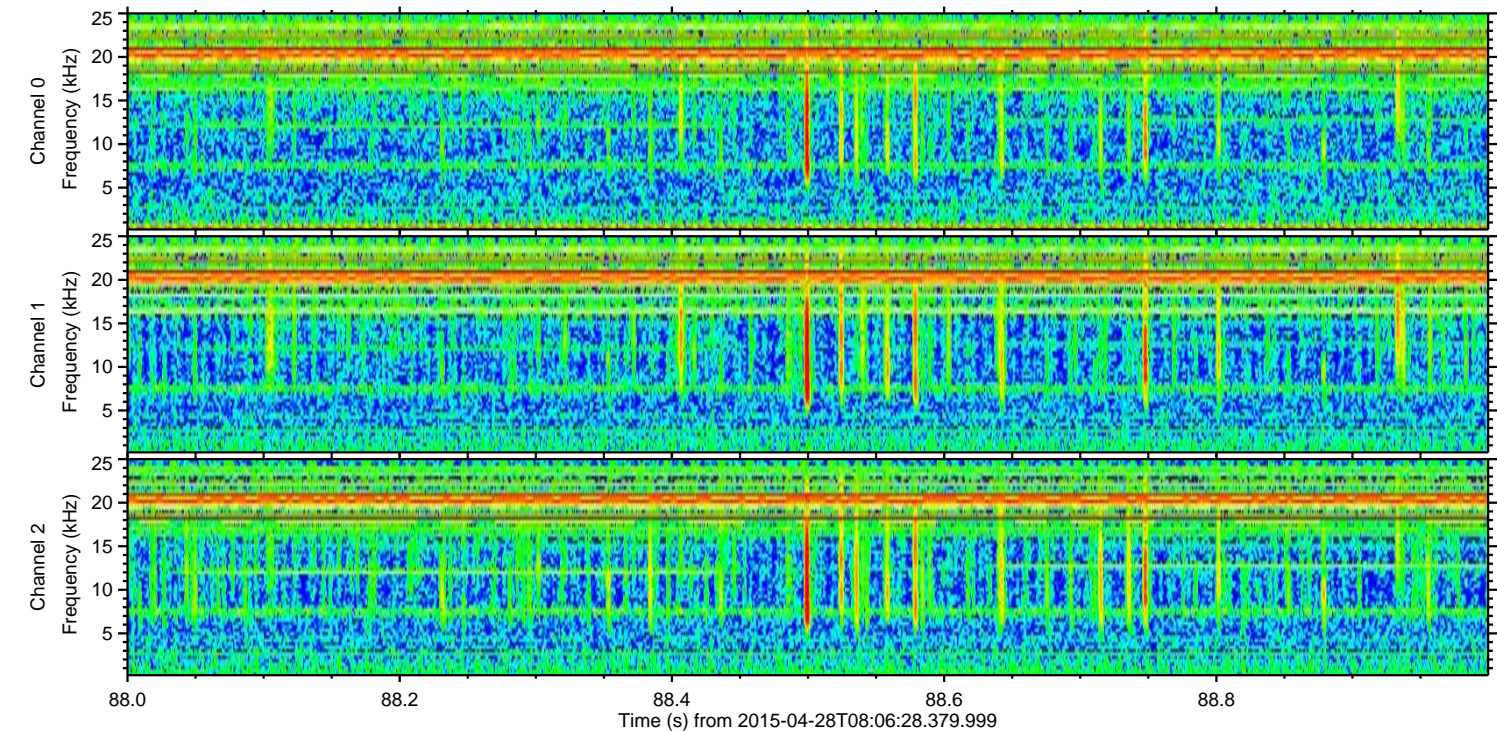
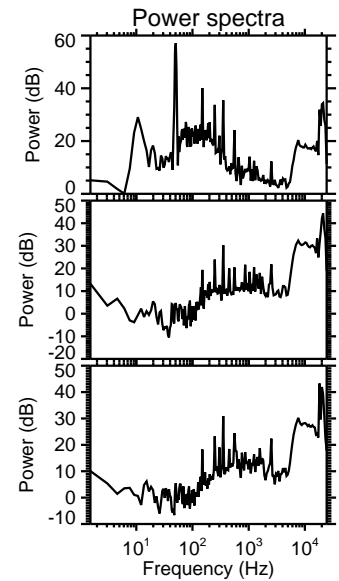
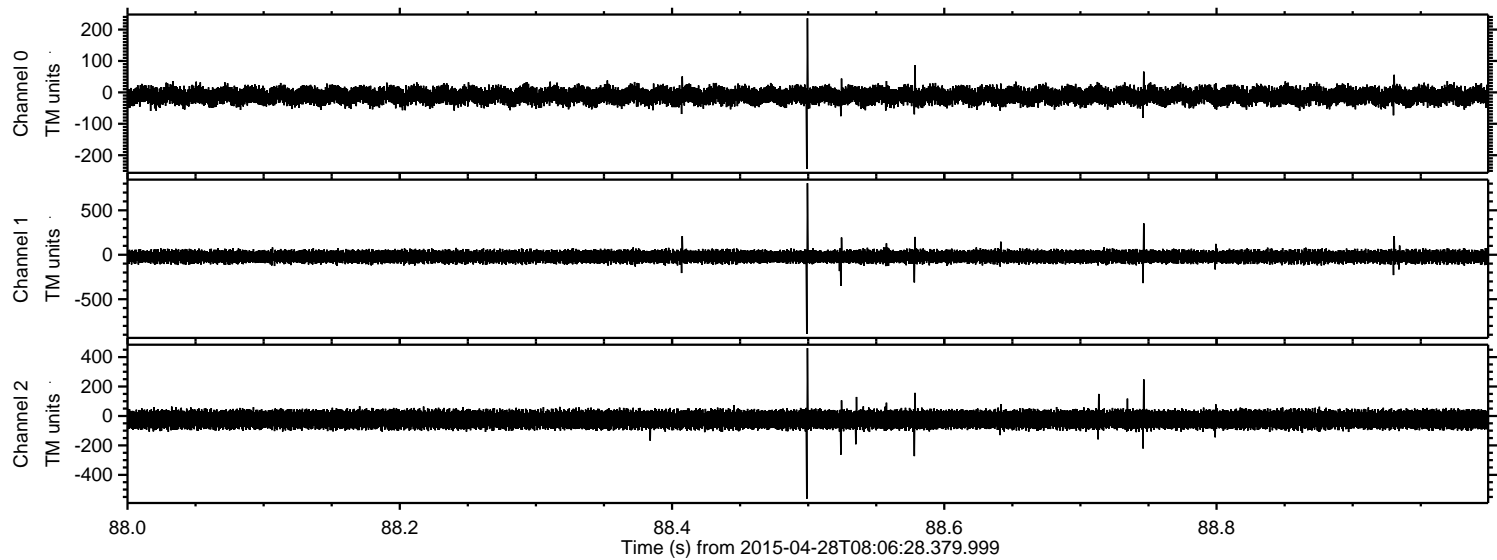
Processed Tue Apr 28 10:14:31 2015 by ELM ver.2012-10-06 from 001__elm20150428_080627__dat00.bin



Processed Tue Apr 28 10:14:32 2015 by ELM ver.2012-10-06 from 001__elm20150428_080627__dat00.bin

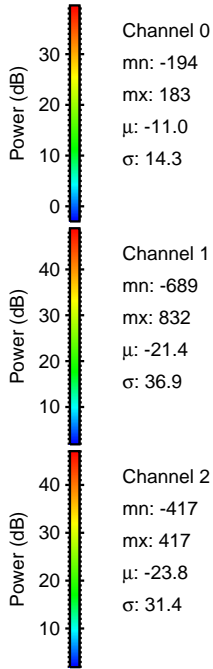
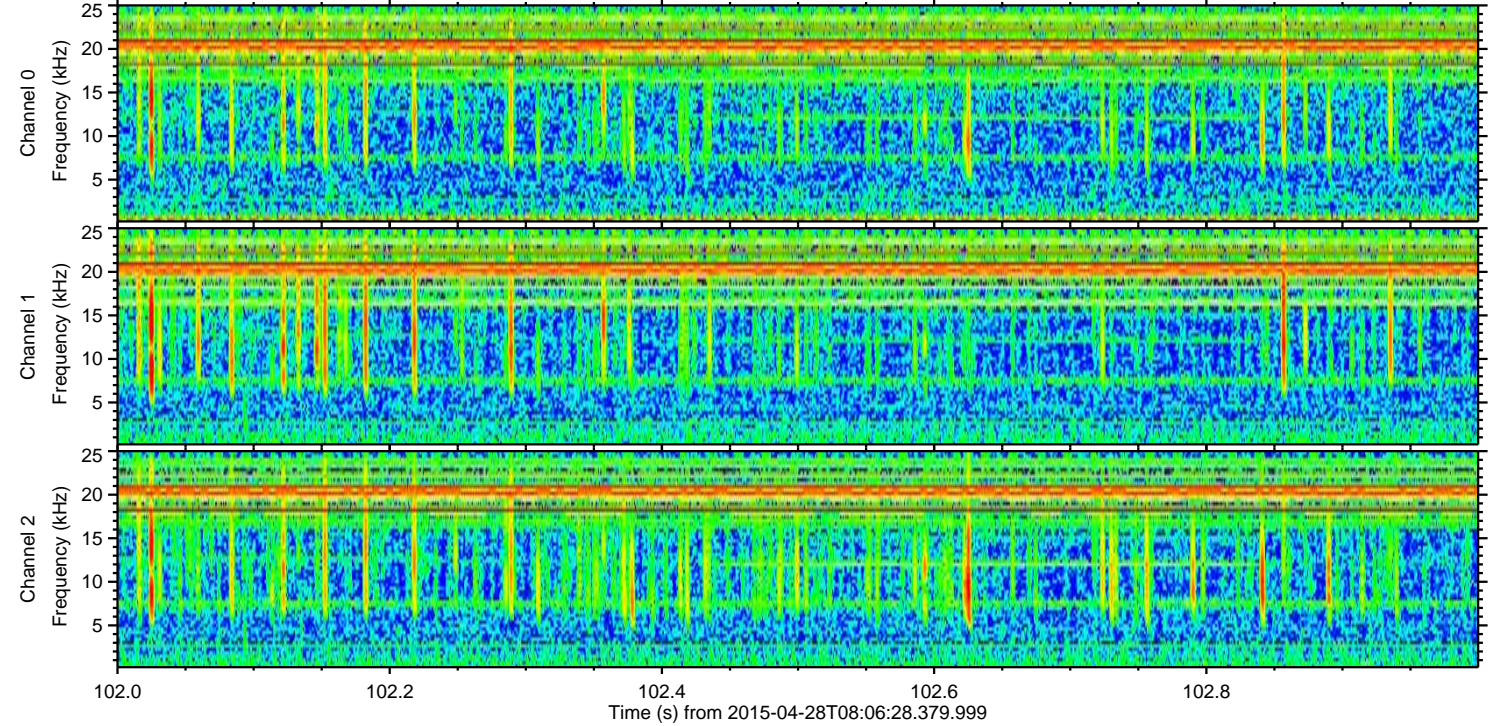
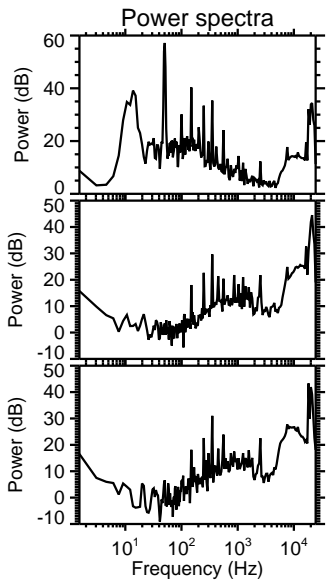
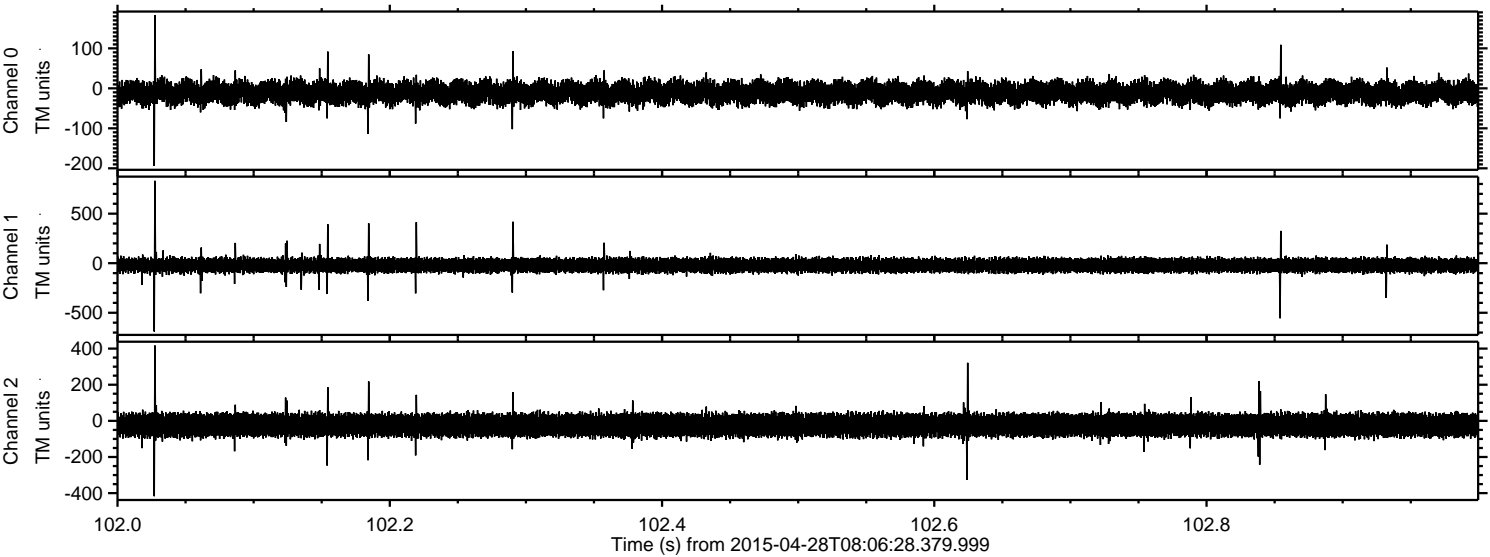


Processed Tue Apr 28 10:14:33 2015 by ELM ver.2012-10-06 from 001__elm20150428_080627__dat00.bin



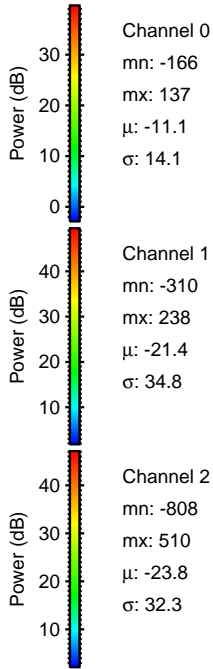
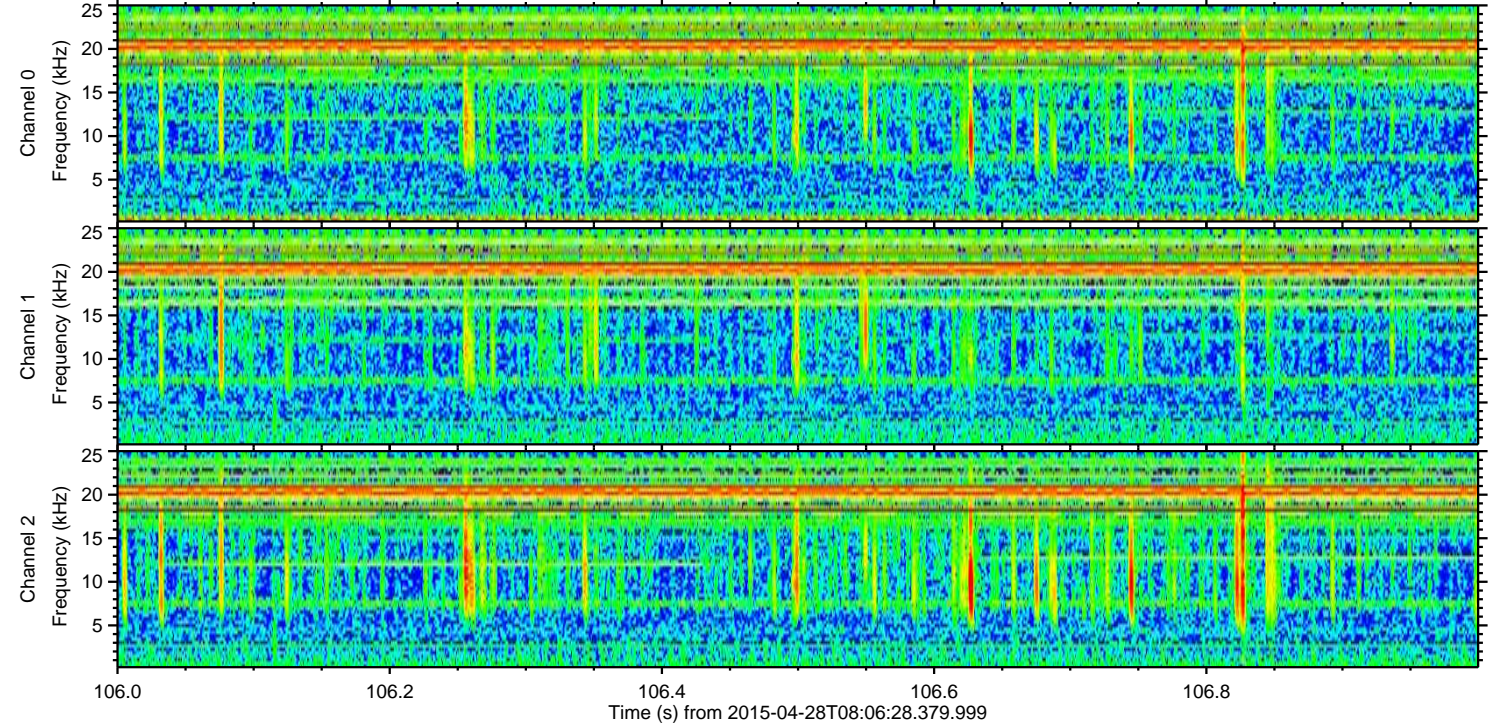
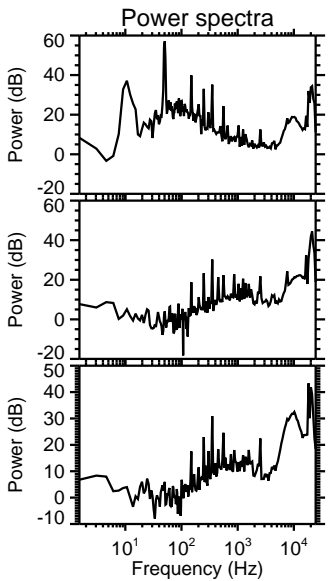
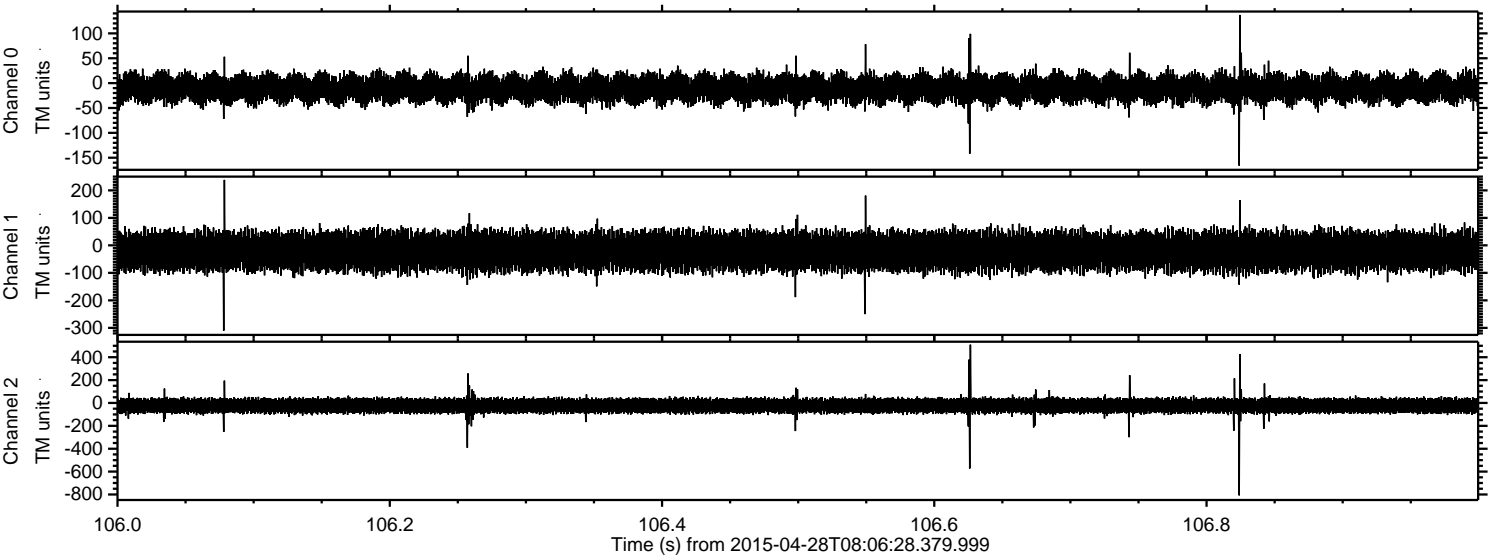
ELMAVAN 3D WAVEFORMS (Measured data sampled at 50 kHz) 49795 packets of 144 samples from 2015-04-28T08:06:28.379.999. Part 103/144

Processed Tue Apr 28 10:14:34 2015 by ELM ver.2012-10-06 from 001__elm20150428_080627__dat00.bin

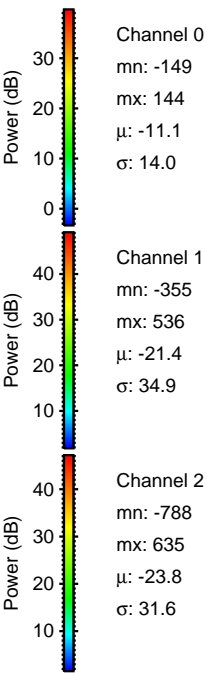
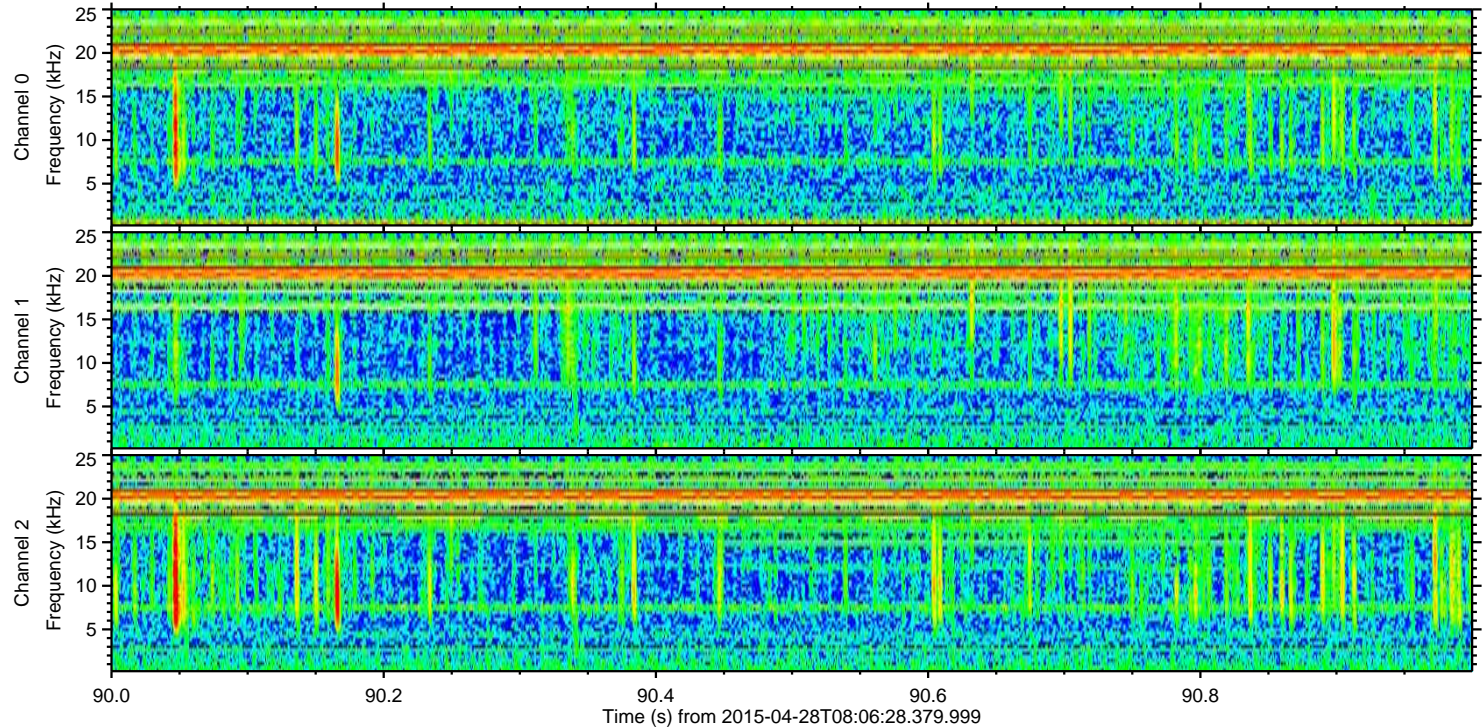
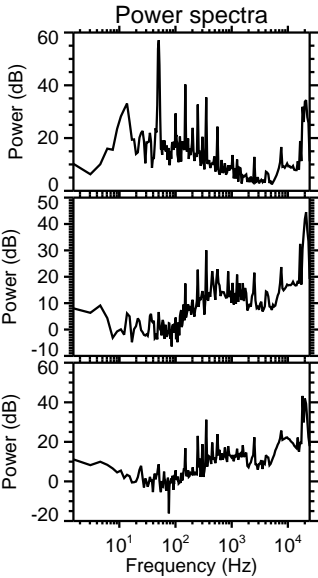
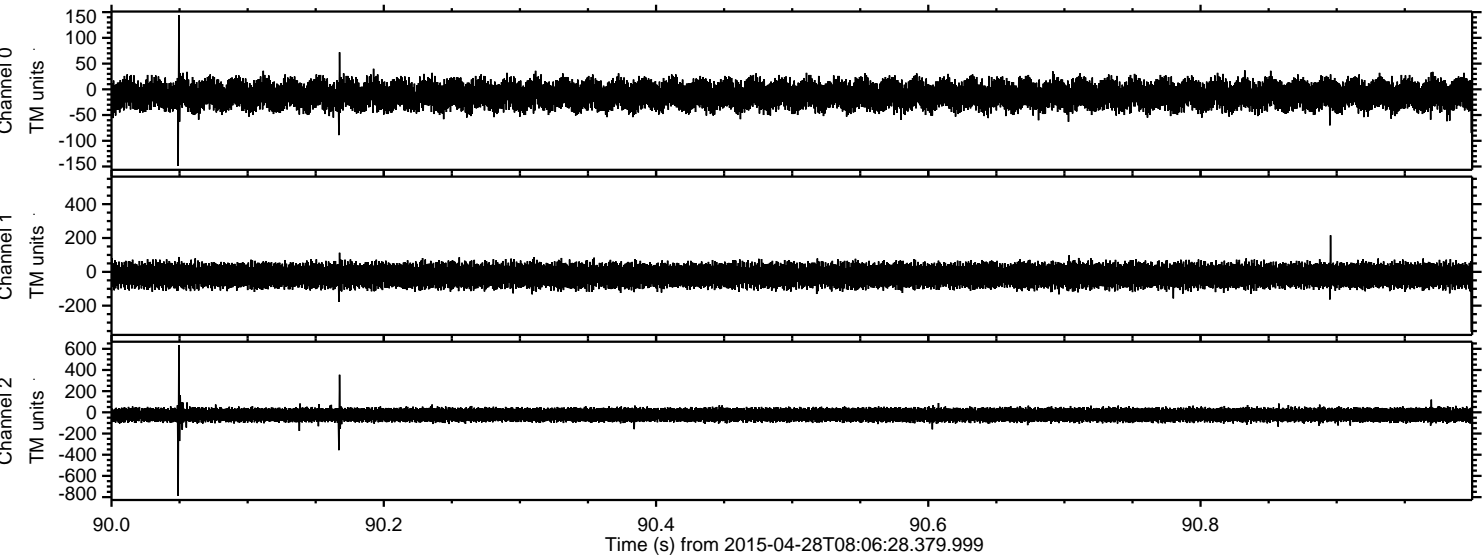


ELMAVAN 3D WAVEFORMS (Measured data sampled at 50 kHz) 49795 packets of 144 samples from 2015-04-28T08:06:28.379.999. Part 107/144

Processed Tue Apr 28 10:14:35 2015 by ELM ver.2012-10-06 from 001__elm20150428_080627__dat00.bin

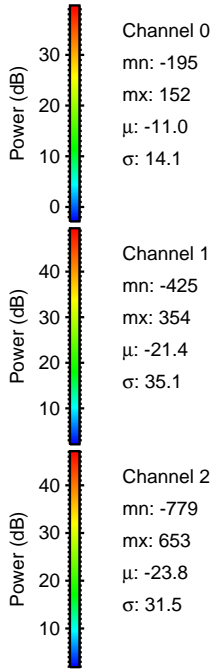
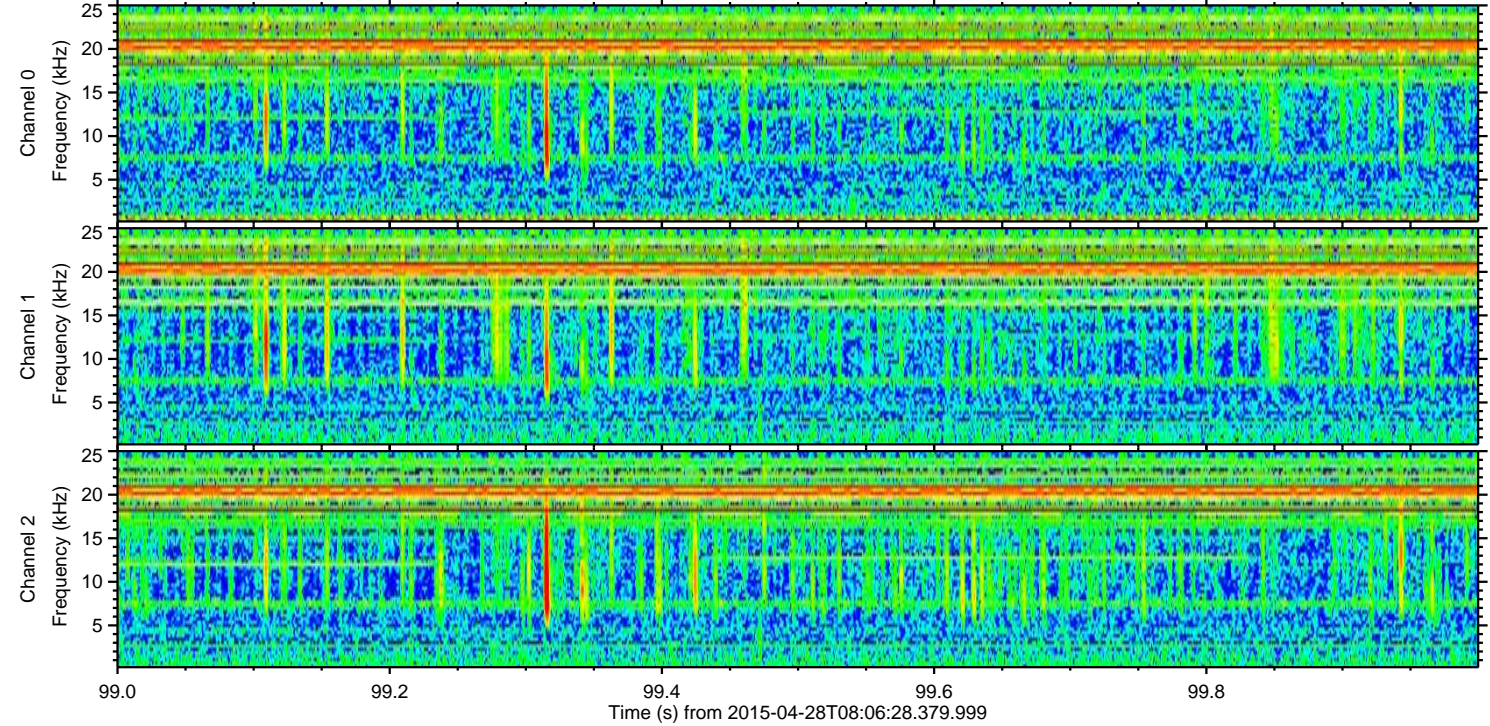
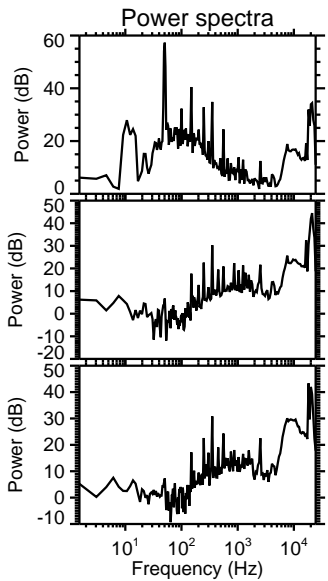
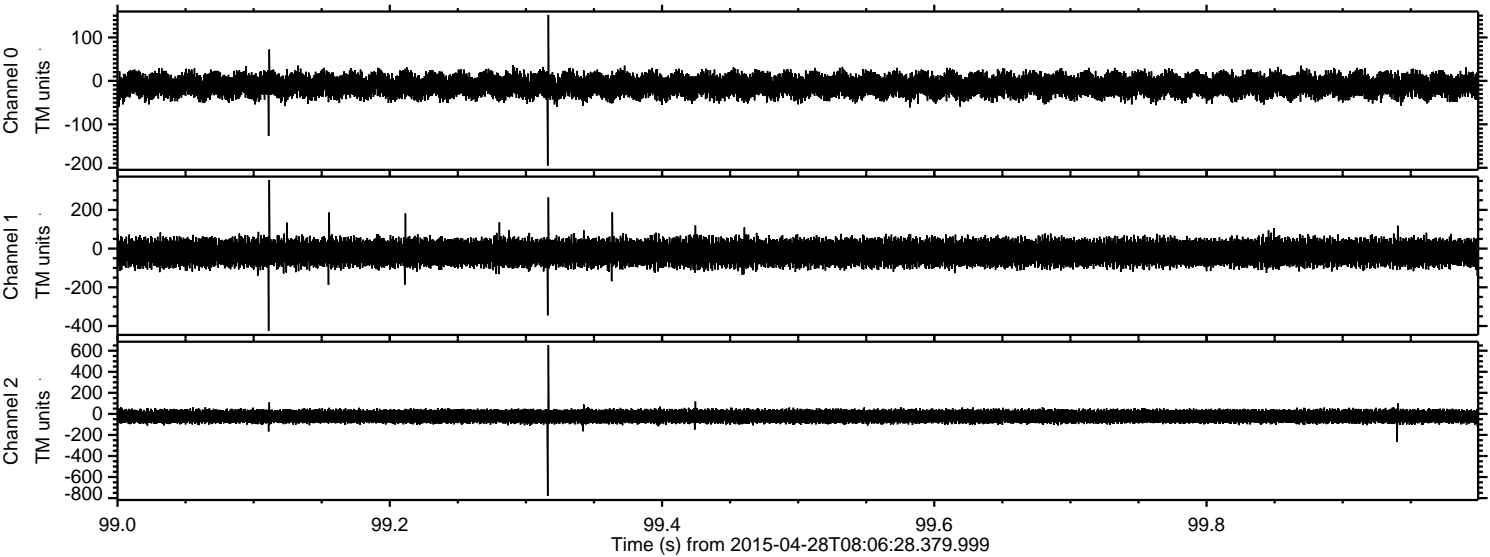


Processed Tue Apr 28 10:14:36 2015 by ELM ver.2012-10-06 from 001__elm20150428_080627__dat00.bin



ELMAVAN 3D WAVEFORMS (Measured data sampled at 50 kHz) 49795 packets of 144 samples from 2015-04-28T08:06:28.379.999. Part 100/144

Processed Tue Apr 28 10:14:37 2015 by ELM ver.2012-10-06 from 001__elm20150428_080627__dat00.bin



Channel 0
mn: -195
mx: 152
 μ : -11.0
 σ : 14.1

Channel 1
mn: -425
mx: 354
 μ : -21.4
 σ : 35.1

Channel 2
mn: -779
mx: 653
 μ : -23.8
 σ : 31.5

