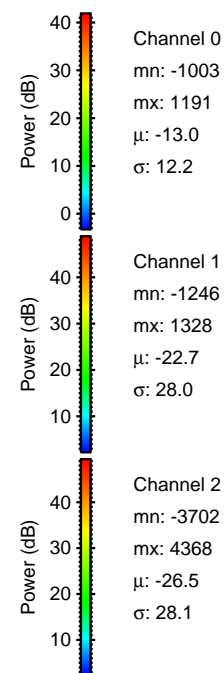
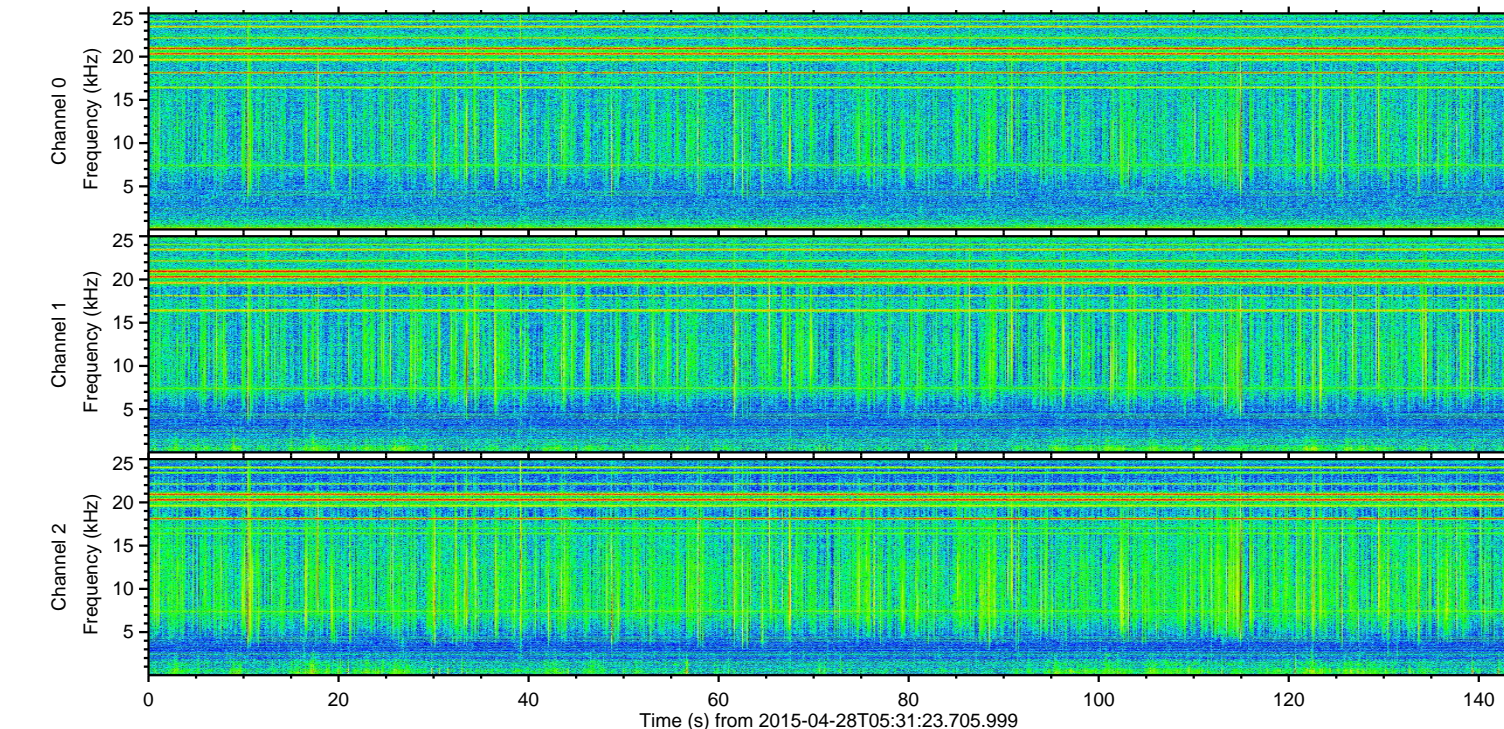
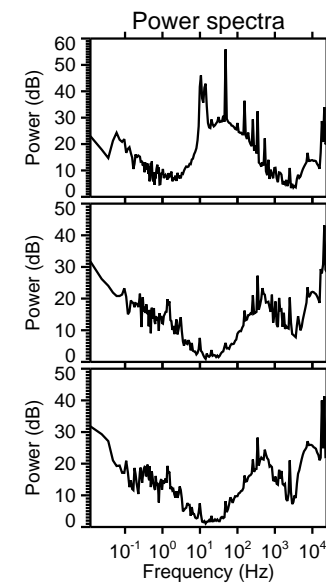
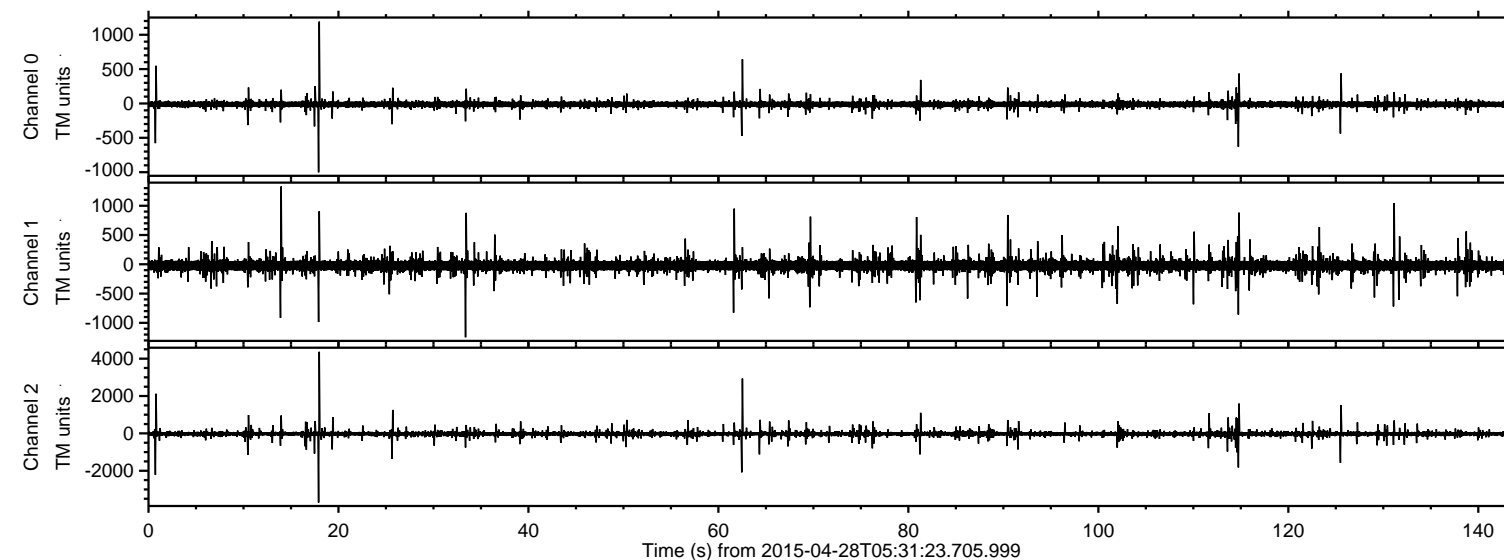


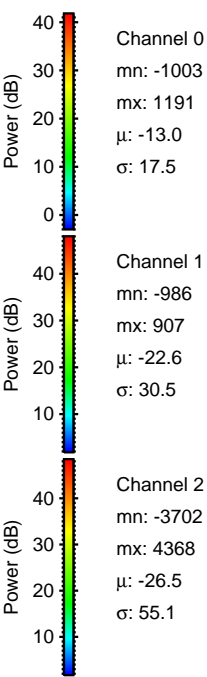
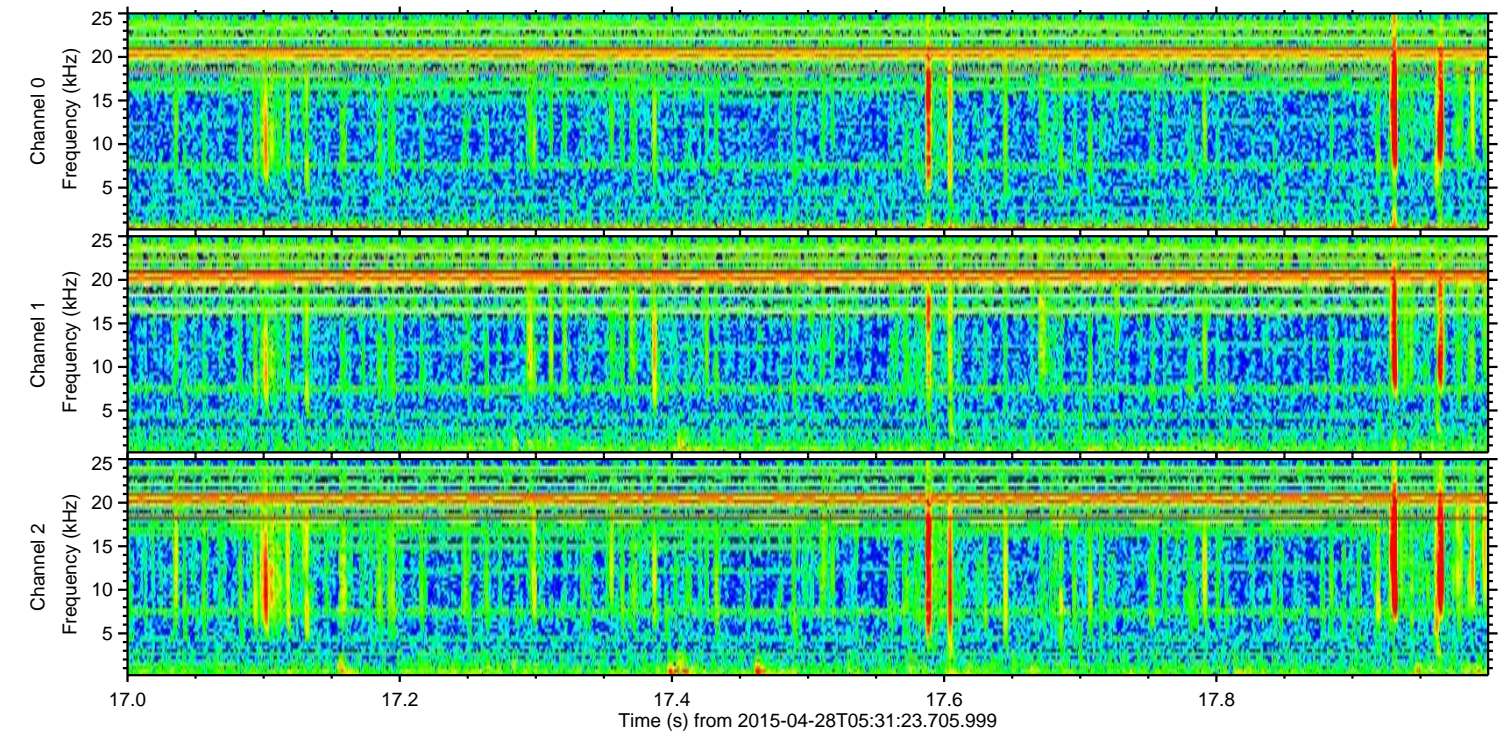
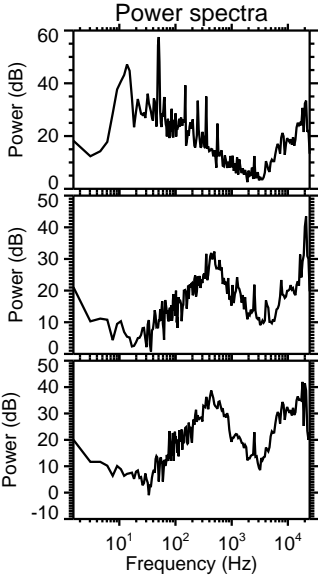
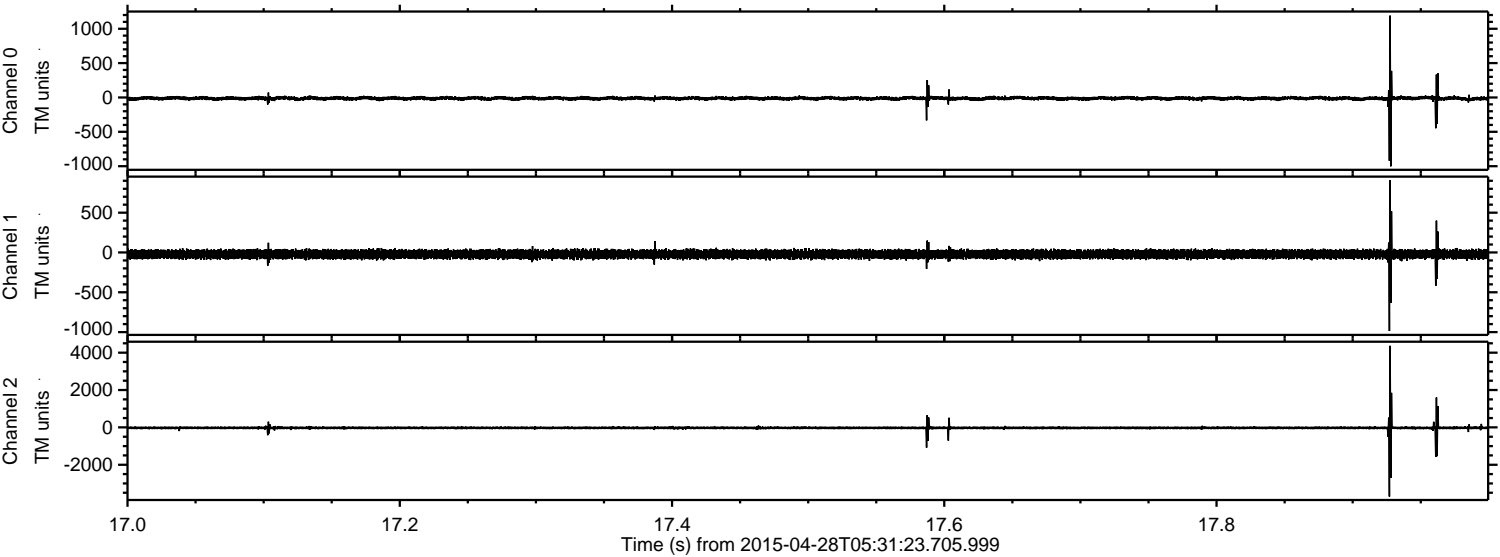
# ELMAVAN 3D WAVEFORMS (Measured data sampled at 50 kHz) 49739 packets of 144 samples from 2015-04-28T05:31:23.705.999.

Processed Tue Apr 28 07:38:37 2015 by ELM ver.2012-10-06 from 001\_\_elm20150428\_053122\_\_dat00.bin



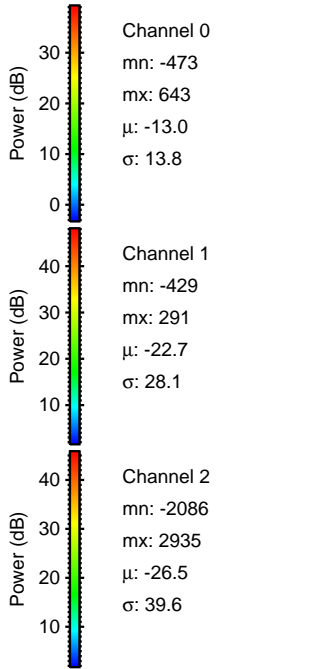
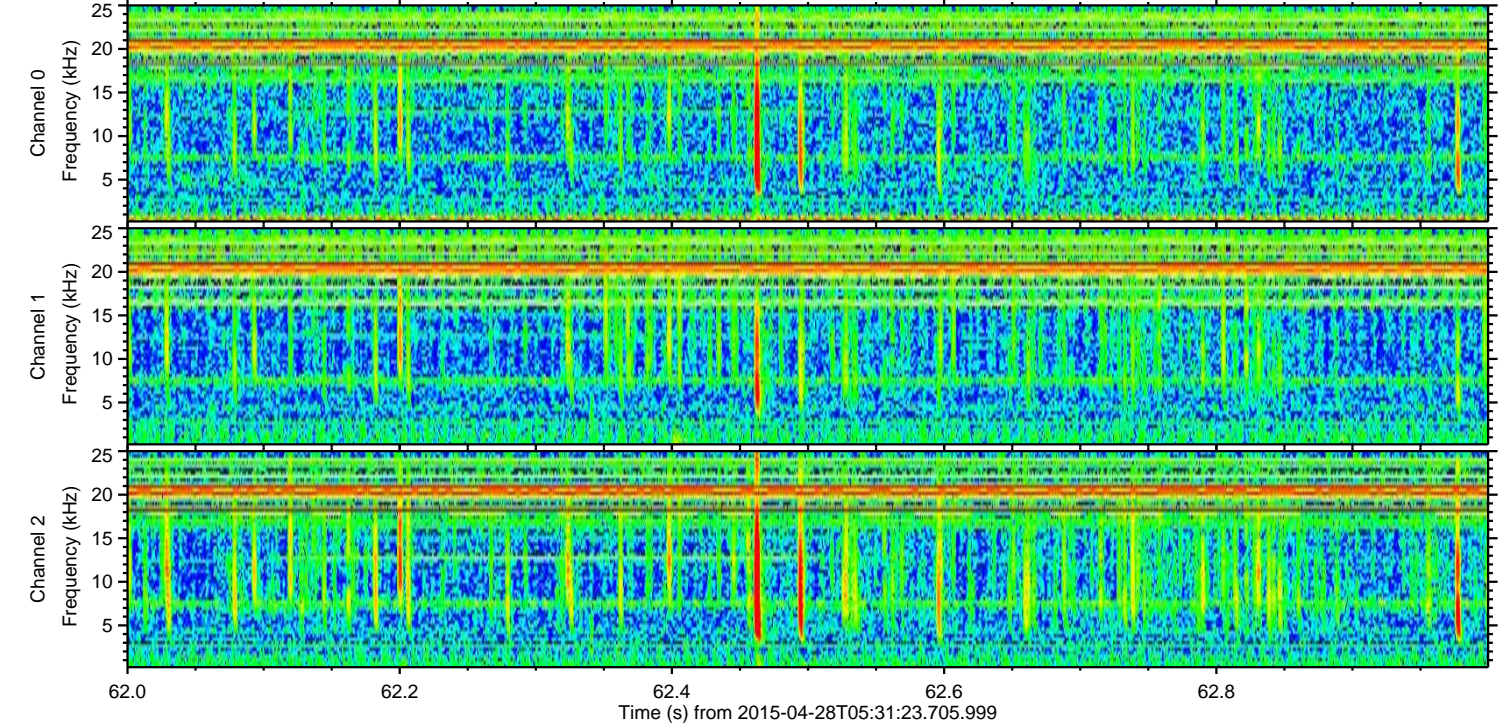
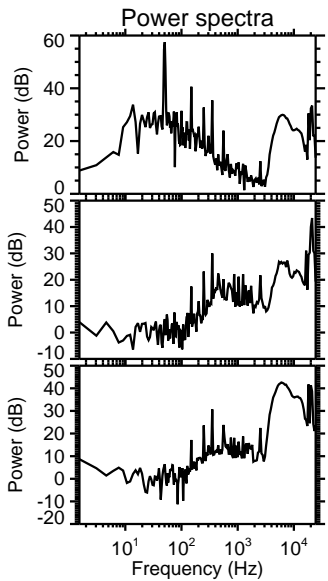
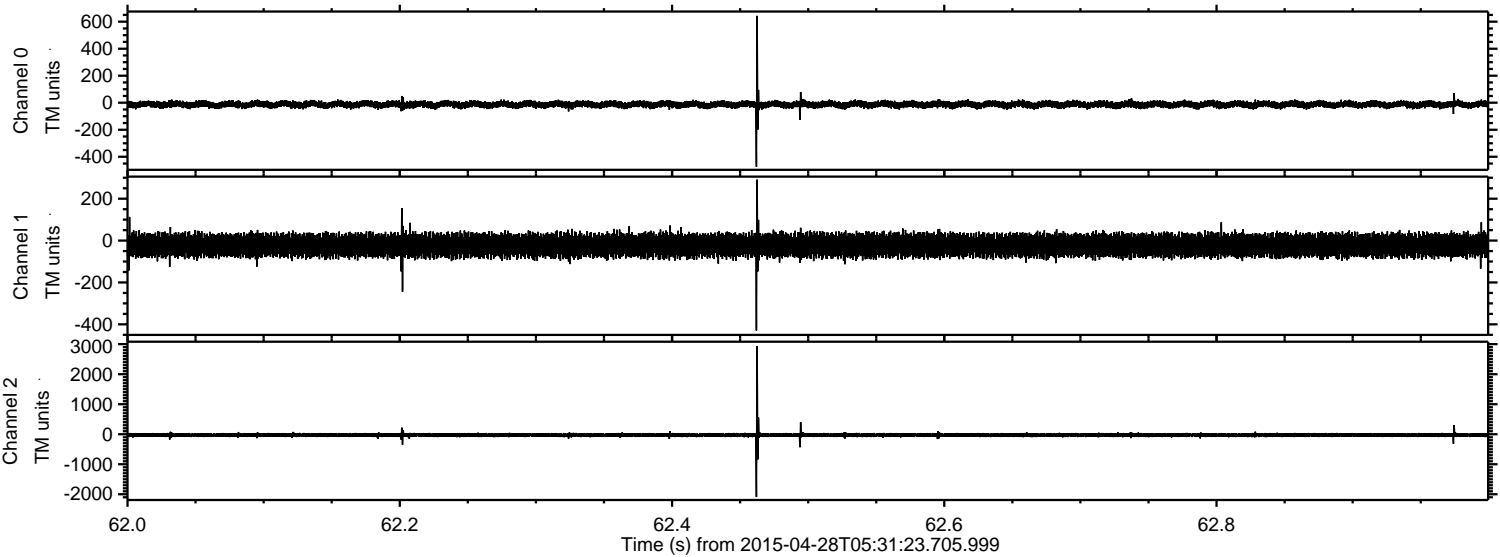
ELMAVAN 3D WAVEFORMS (Measured data sampled at 50 kHz) 49739 packets of 144 samples from 2015-04-28T05:31:23.705.999. Part 18/144

Processed Tue Apr 28 07:38:48 2015 by ELM ver.2012-10-06 from 001\_\_elm20150428\_053122\_\_dat00.bin



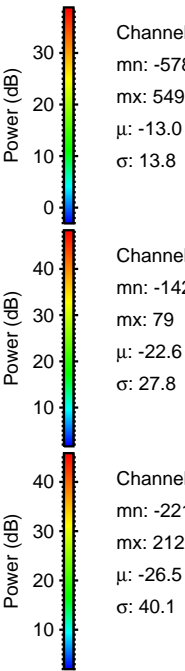
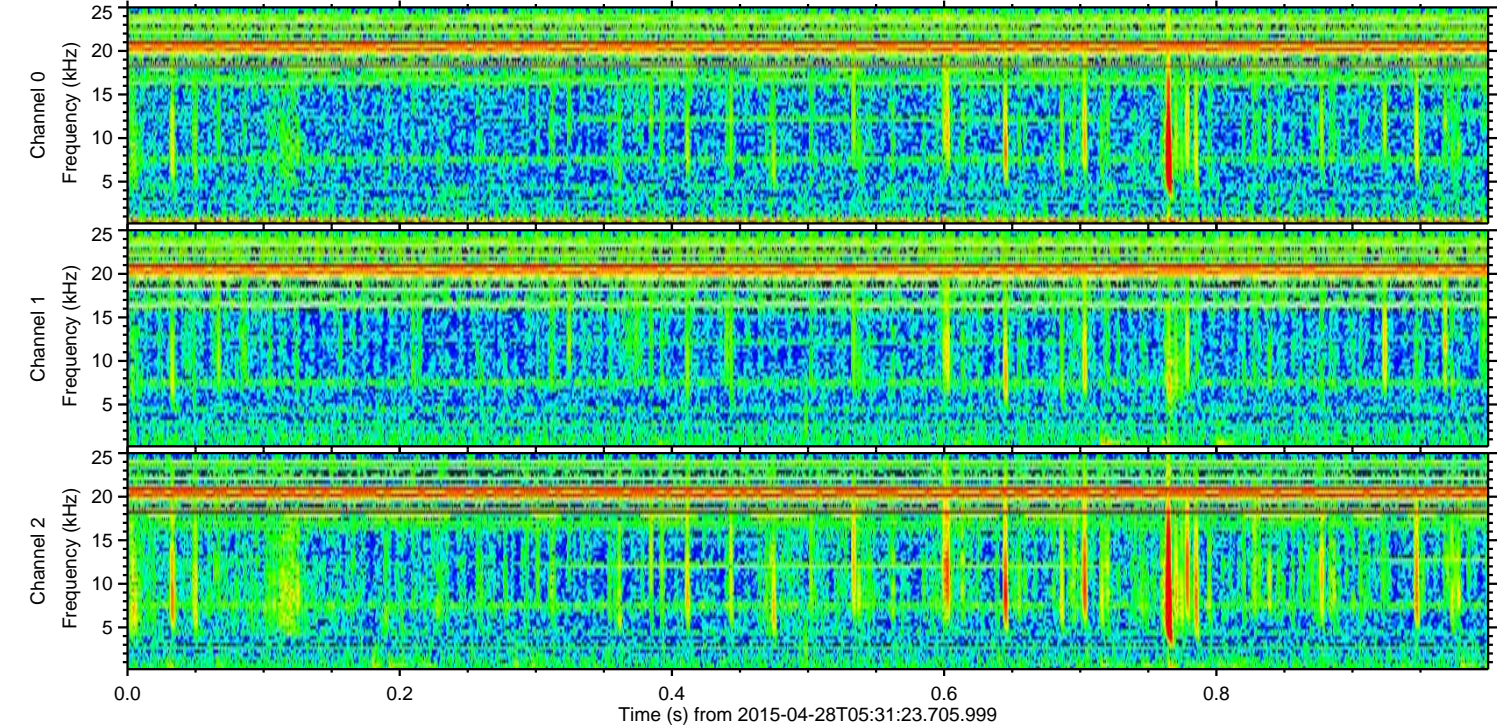
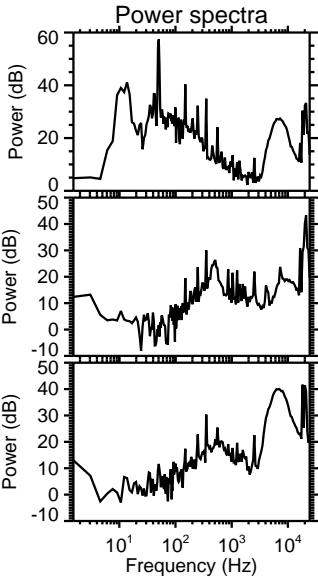
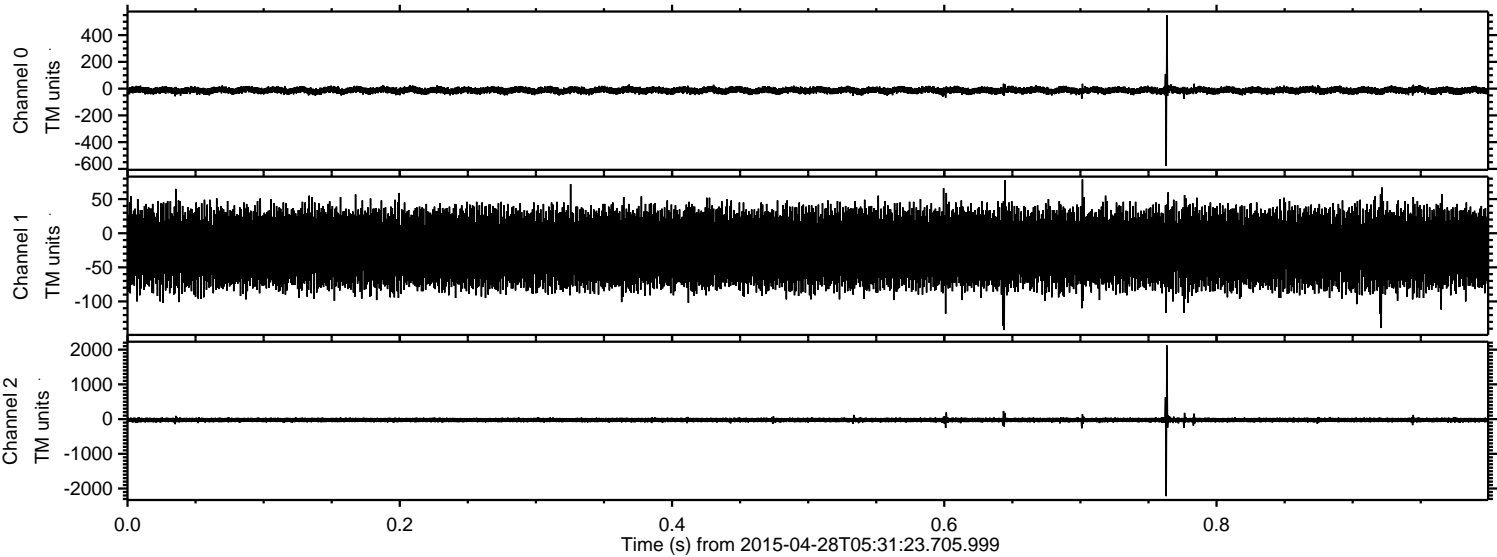
ELMAVAN 3D WAVEFORMS (Measured data sampled at 50 kHz) 49739 packets of 144 samples from 2015-04-28T05:31:23.705.999. Part 63/144

Processed Tue Apr 28 07:38:49 2015 by ELM ver.2012-10-06 from 001\_\_elm20150428\_053122\_\_dat00.bin



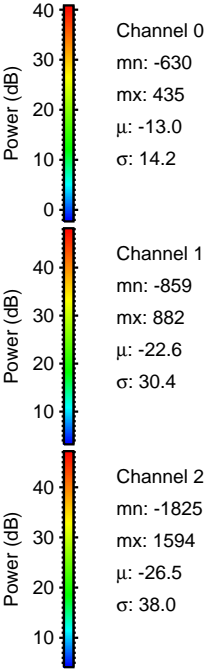
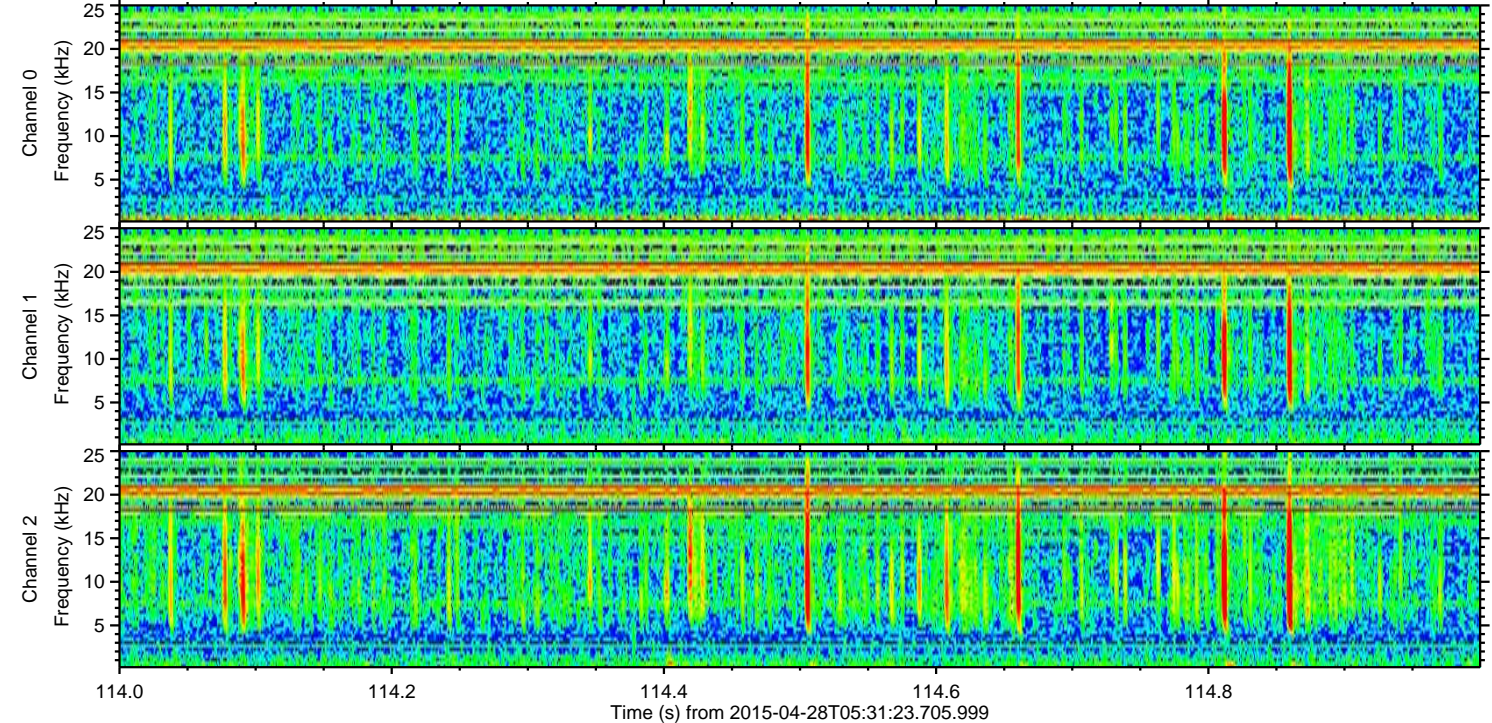
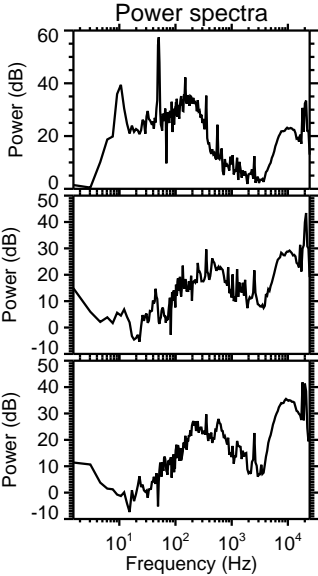
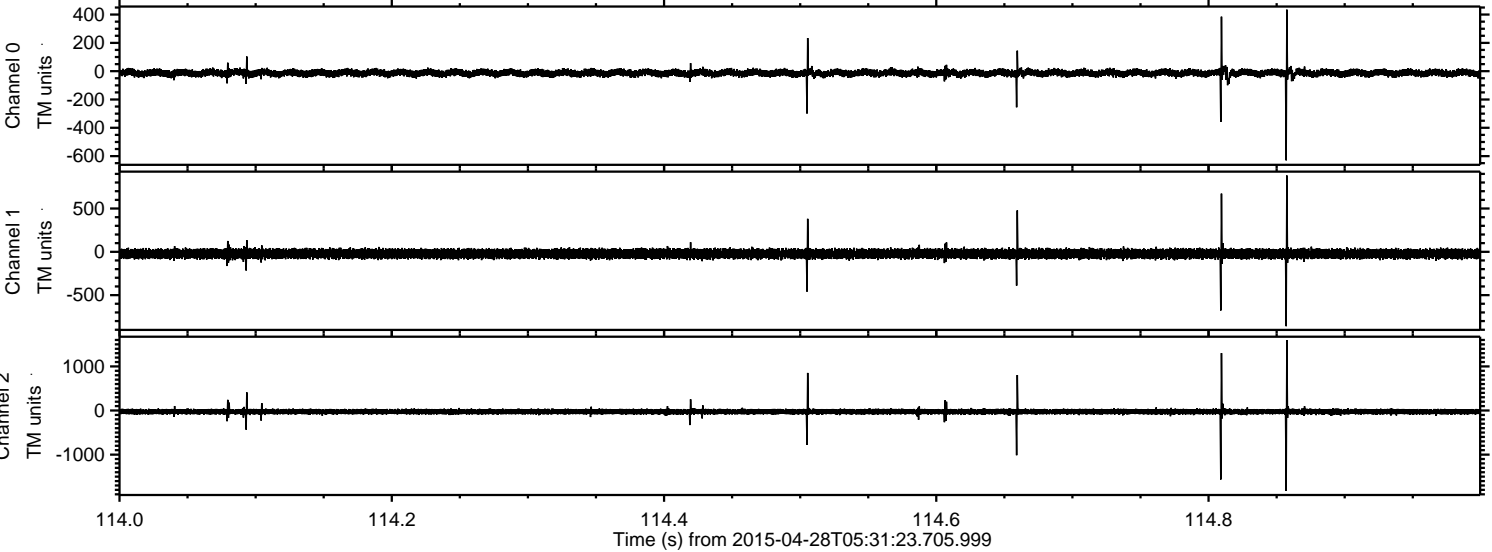
ELMAVAN 3D WAVEFORMS (Measured data sampled at 50 kHz) 49739 packets of 144 samples from 2015-04-28T05:31:23.705.999. Part 1/144

Processed Tue Apr 28 07:38:50 2015 by ELM ver.2012-10-06 from 001\_\_elm20150428\_053122\_\_dat00.bin



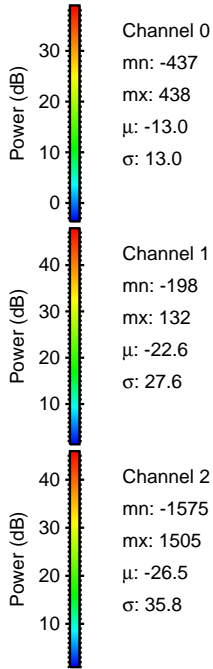
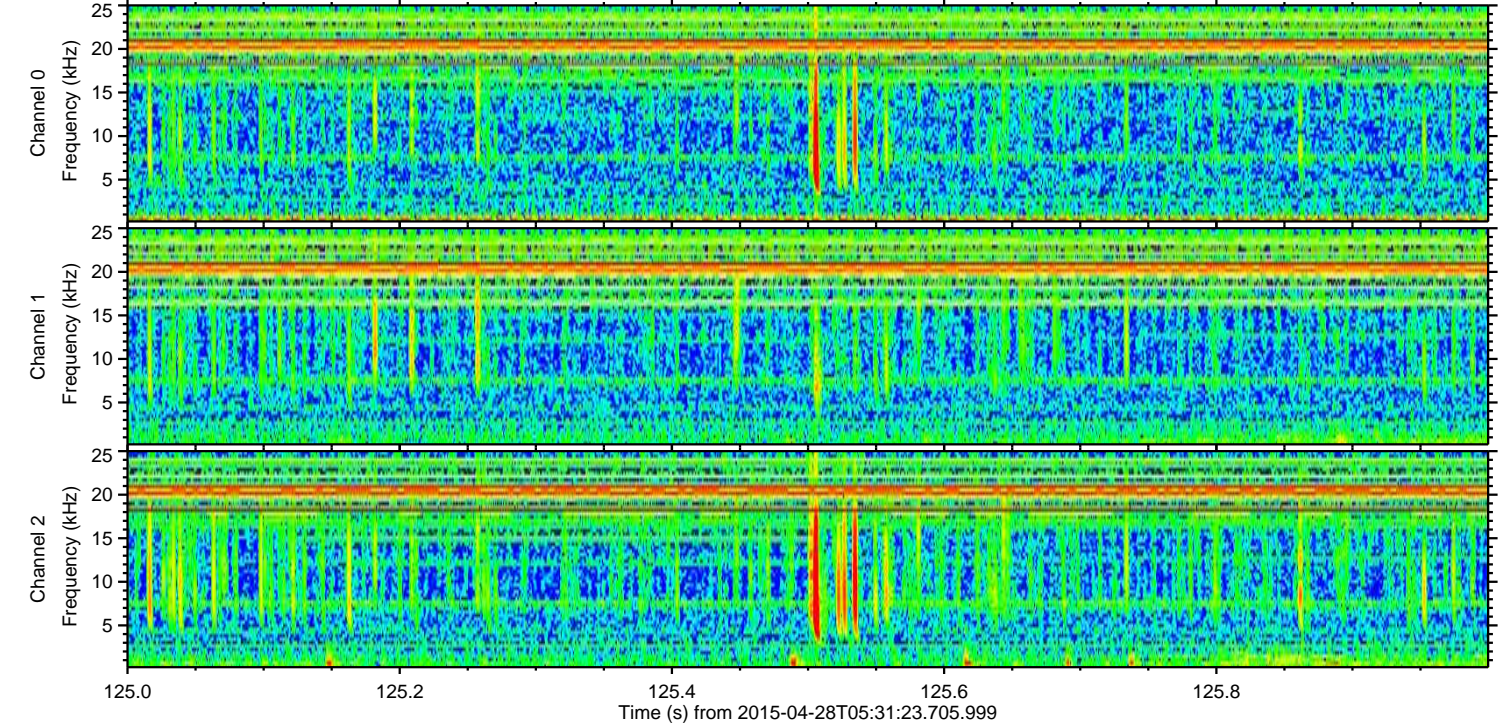
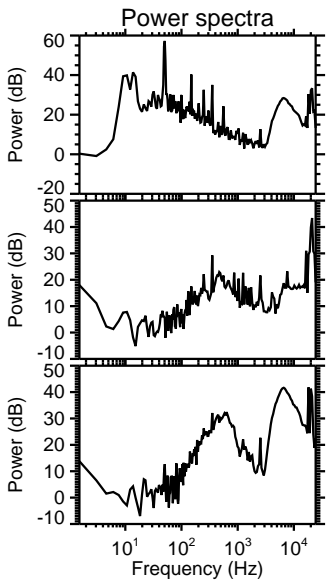
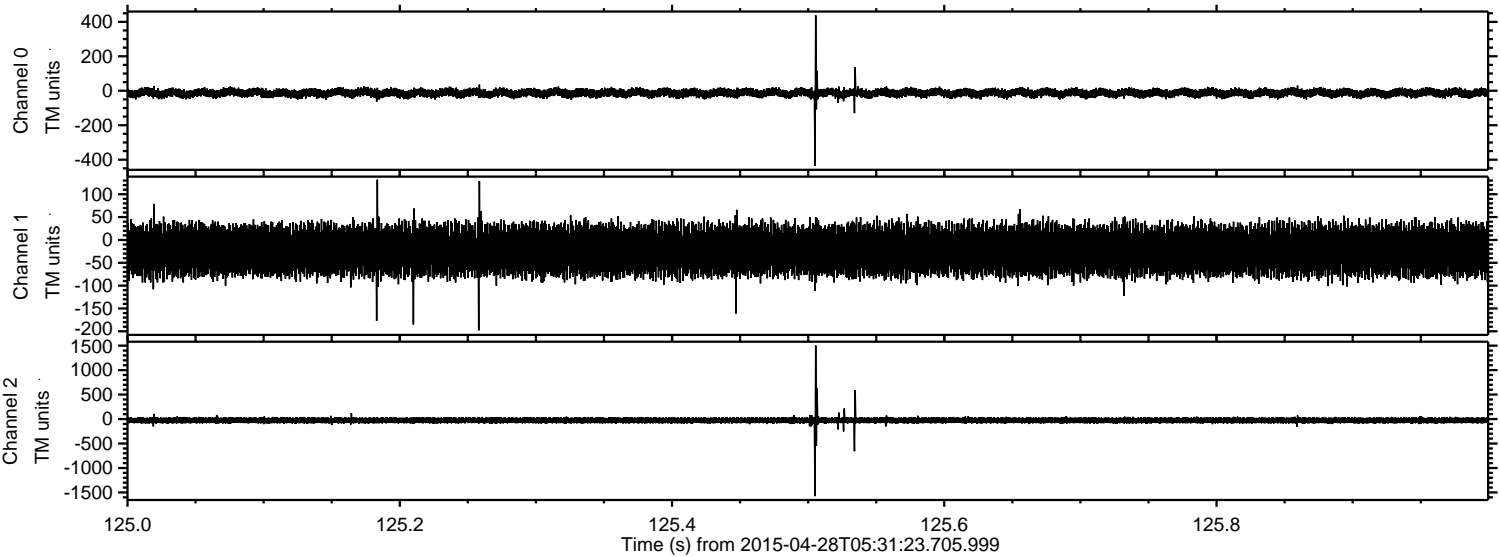
ELMAVAN 3D WAVEFORMS (Measured data sampled at 50 kHz) 49739 packets of 144 samples from 2015-04-28T05:31:23.705.999. Part 115/144

Processed Tue Apr 28 07:38:51 2015 by ELM ver.2012-10-06 from 001\_\_elm20150428\_053122\_\_dat00.bin



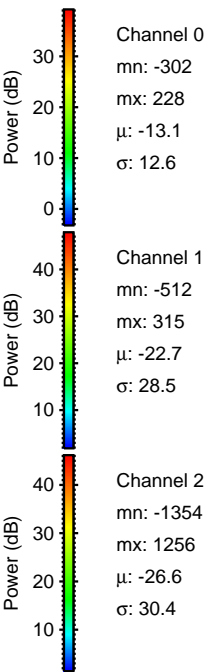
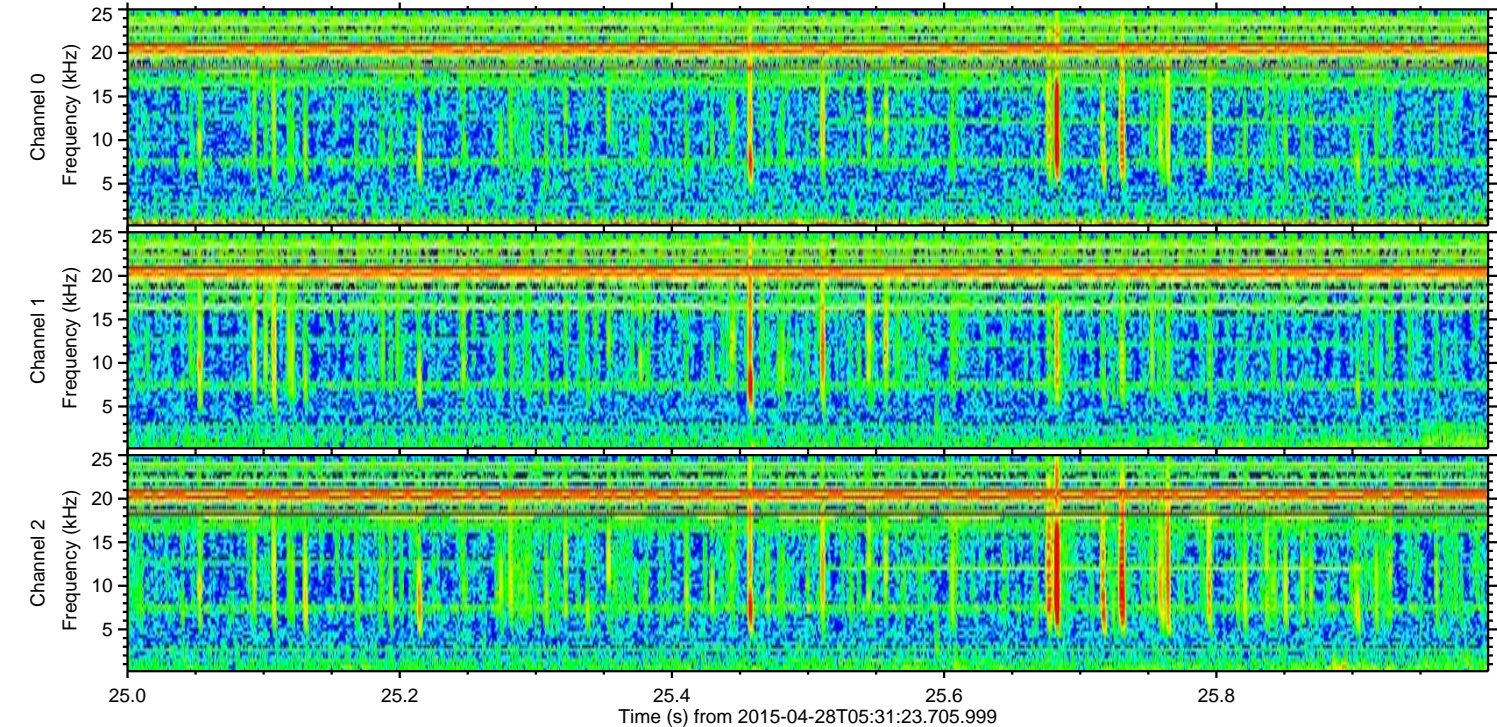
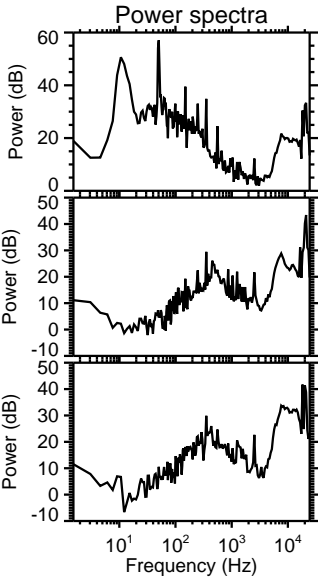
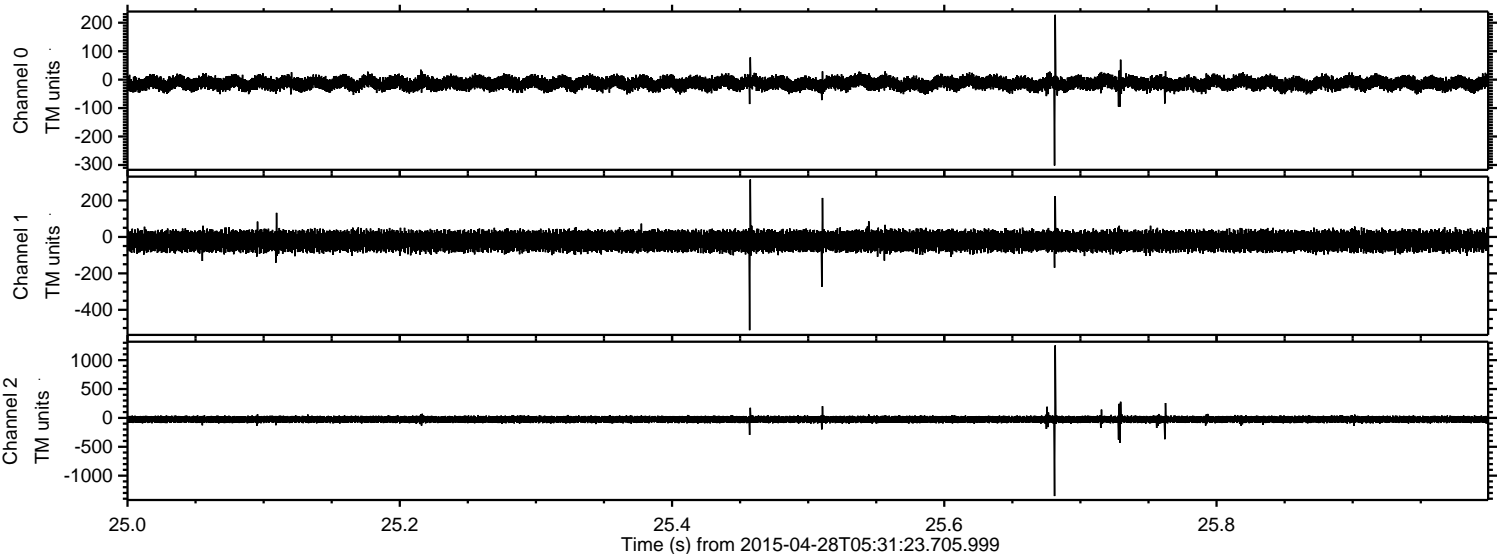
ELMAVAN 3D WAVEFORMS (Measured data sampled at 50 kHz) 49739 packets of 144 samples from 2015-04-28T05:31:23.705.999. Part 126/144

Processed Tue Apr 28 07:38:52 2015 by ELM ver.2012-10-06 from 001\_\_elm20150428\_053122\_\_dat00.bin



ELMAVAN 3D WAVEFORMS (Measured data sampled at 50 kHz) 49739 packets of 144 samples from 2015-04-28T05:31:23.705.999. Part 26/144

Processed Tue Apr 28 07:38:53 2015 by ELM ver.2012-10-06 from 001\_\_elm20150428\_053122\_\_dat00.bin



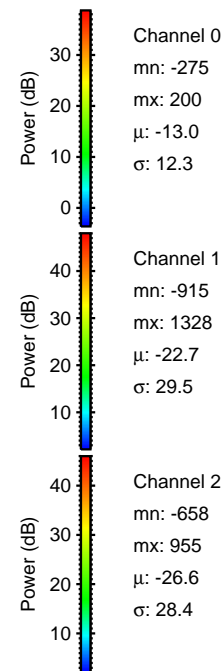
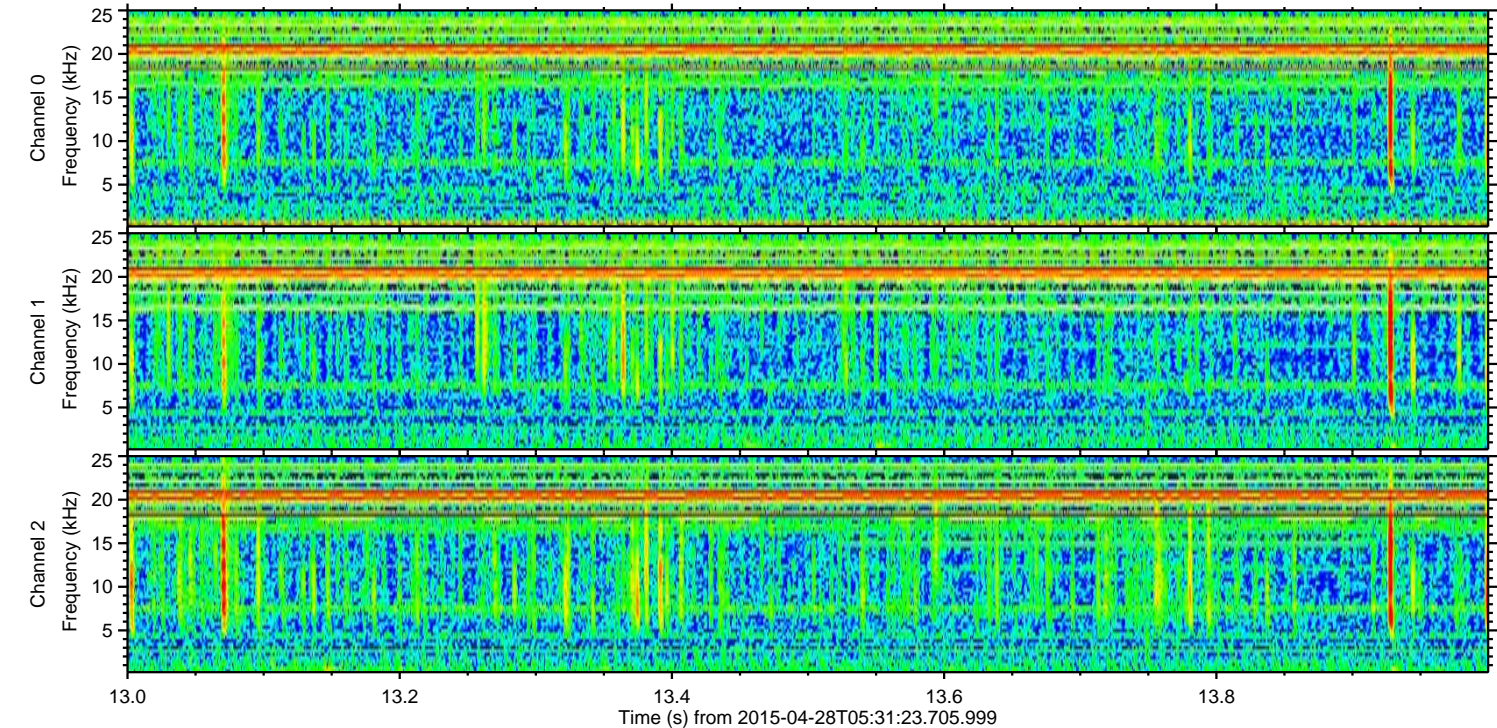
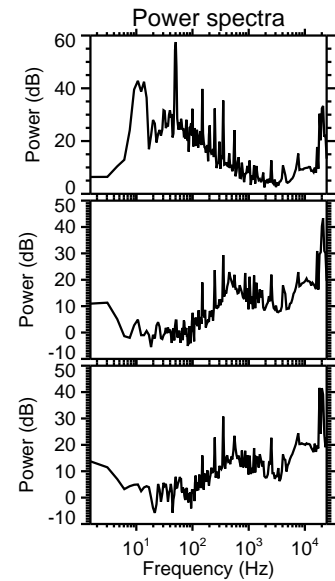
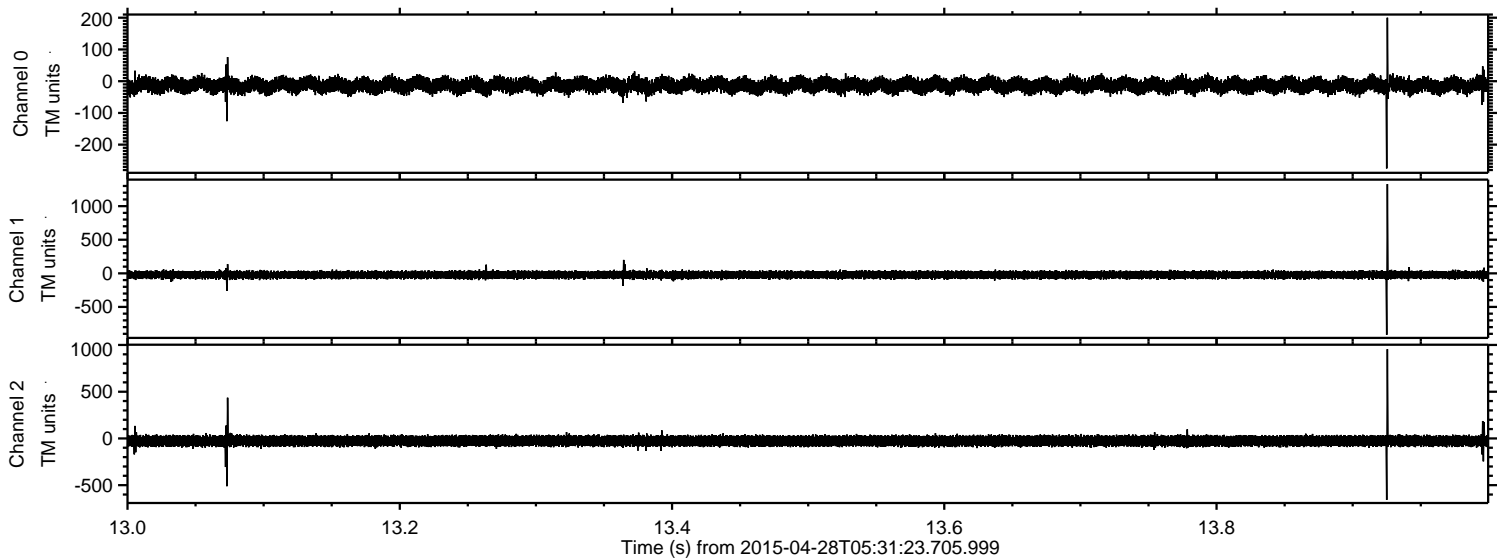
Channel 0  
mn: -302  
mx: 228  
 $\mu$ : -13.1  
 $\sigma$ : 12.6

Channel 1  
mn: -512  
mx: 315  
 $\mu$ : -22.7  
 $\sigma$ : 28.5

Channel 2  
mn: -1354  
mx: 1256  
 $\mu$ : -26.6  
 $\sigma$ : 30.4

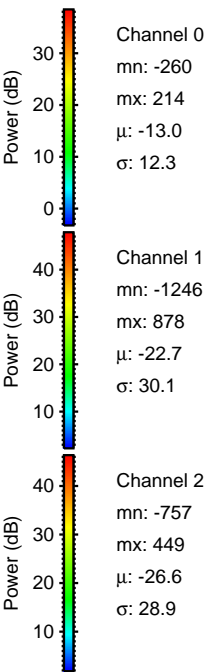
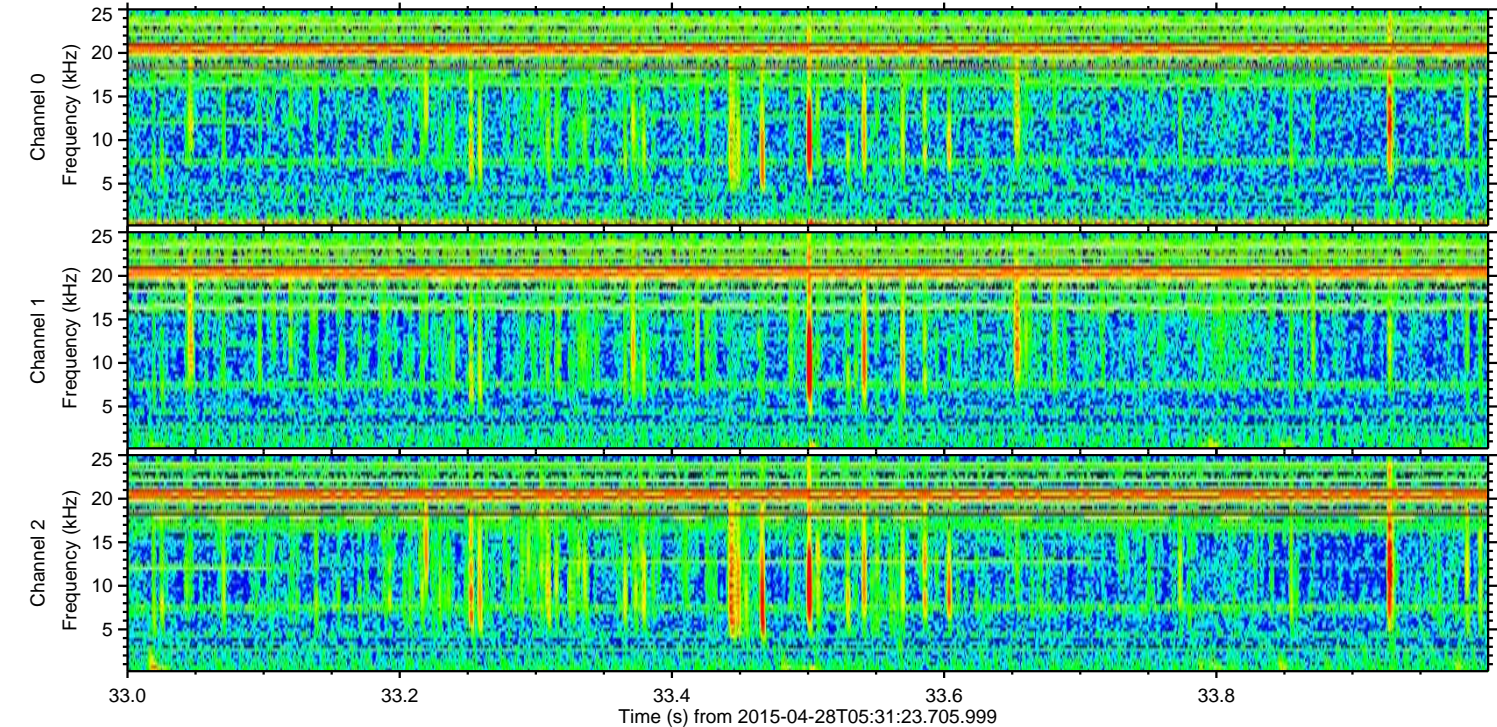
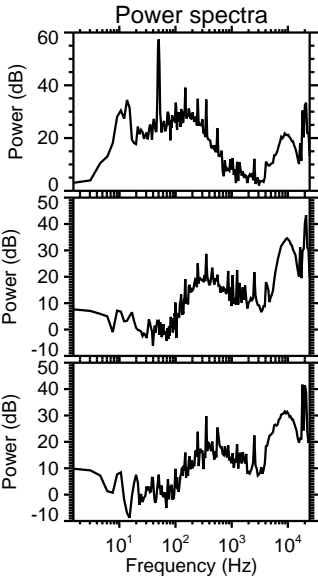
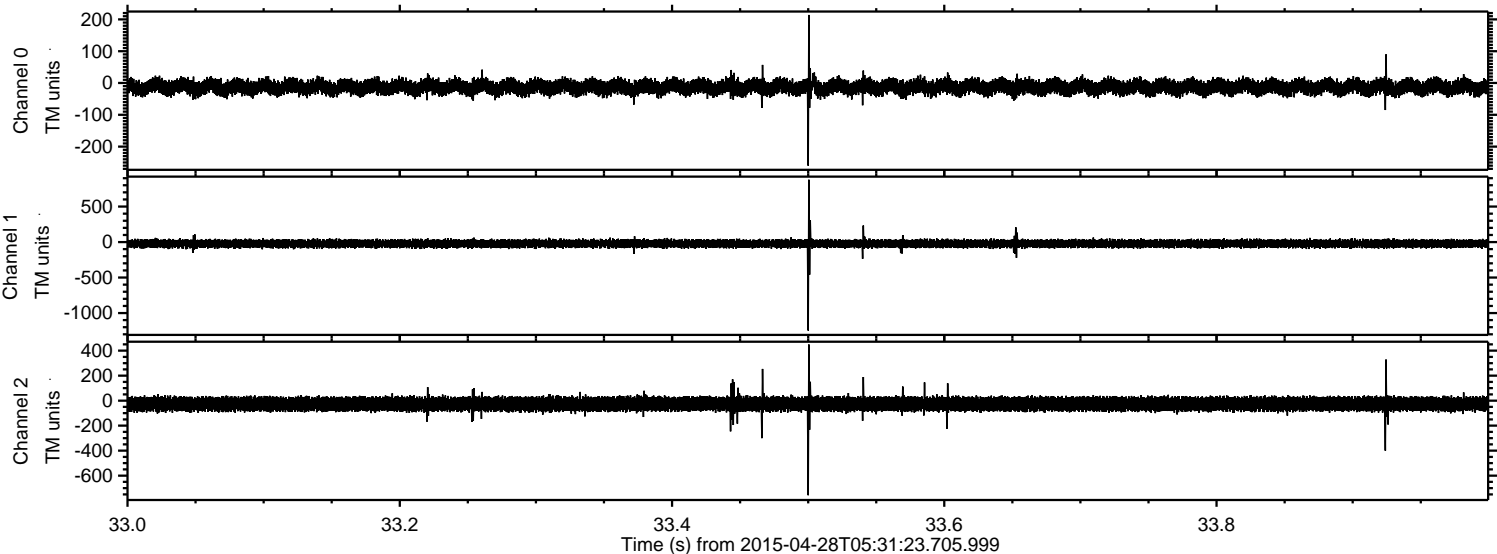
ELMAVAN 3D WAVEFORMS (Measured data sampled at 50 kHz) 49739 packets of 144 samples from 2015-04-28T05:31:23.705.999. Part 14/144

Processed Tue Apr 28 07:38:54 2015 by ELM ver.2012-10-06 from 001\_\_elm20150428\_053122\_\_dat00.bin



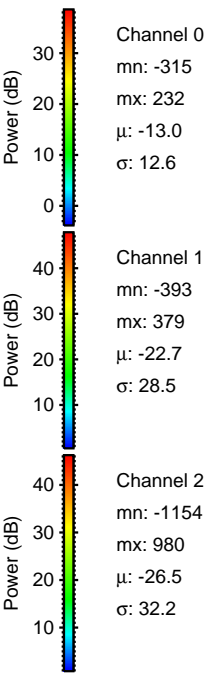
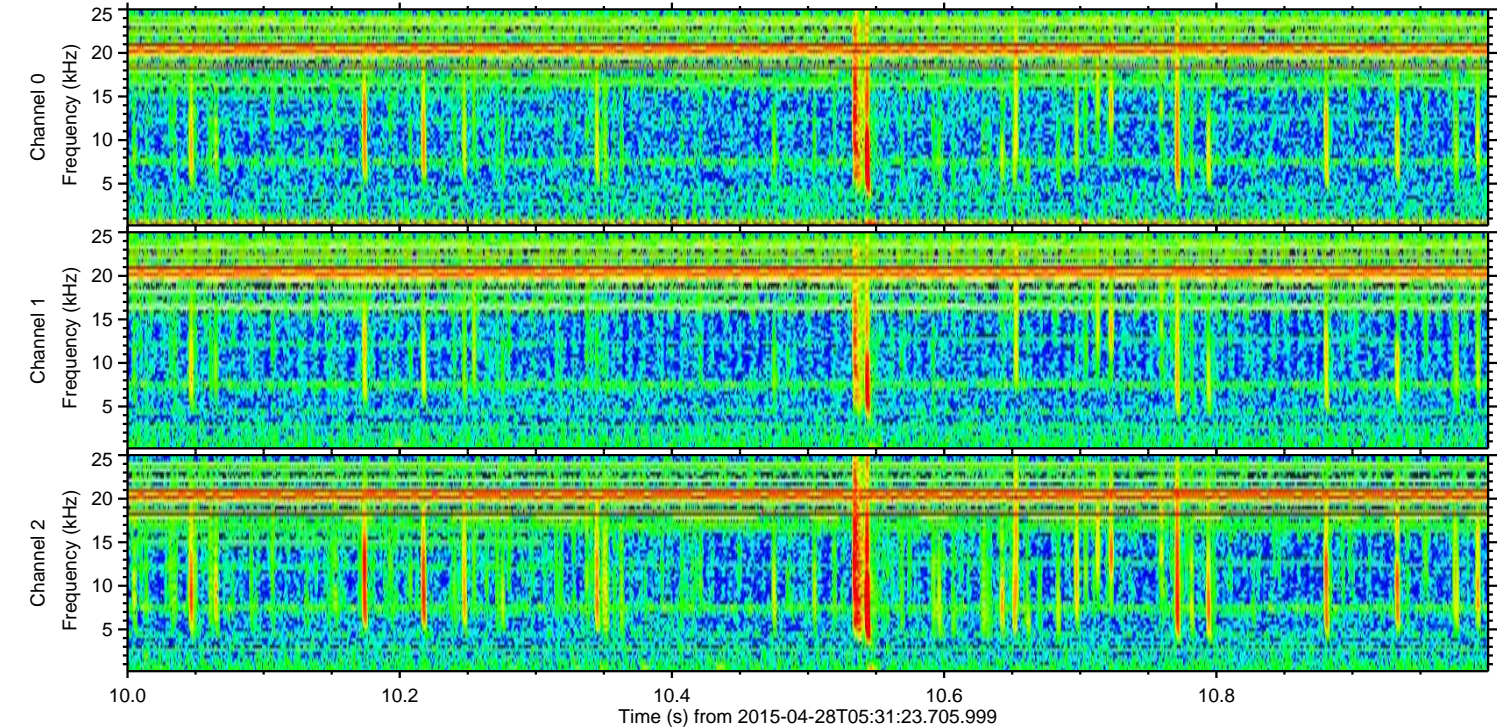
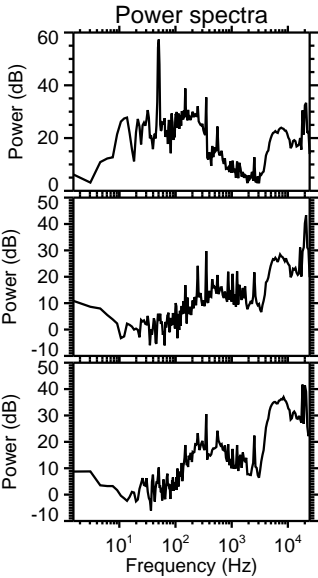
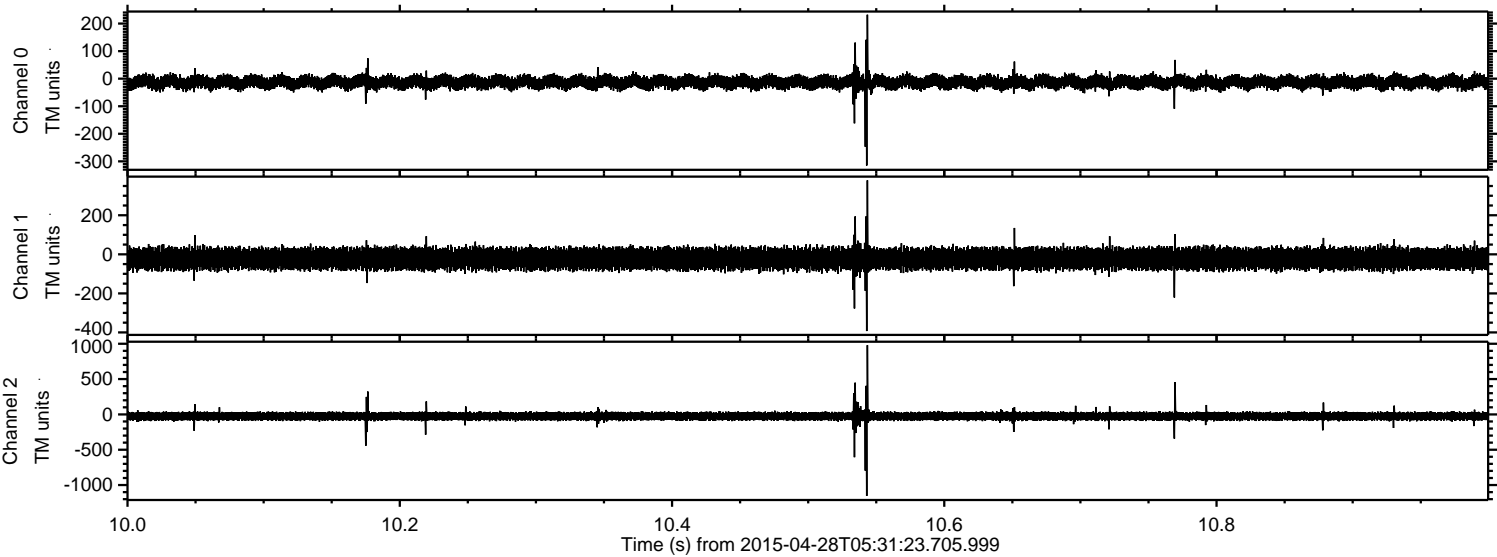
ELMAVAN 3D WAVEFORMS (Measured data sampled at 50 kHz) 49739 packets of 144 samples from 2015-04-28T05:31:23.705.999. Part 34/144

Processed Tue Apr 28 07:38:55 2015 by ELM ver.2012-10-06 from 001\_\_elm20150428\_053122\_\_dat00.bin



ELMAVAN 3D WAVEFORMS (Measured data sampled at 50 kHz) 49739 packets of 144 samples from 2015-04-28T05:31:23.705.999. Part 11/144

Processed Tue Apr 28 07:38:56 2015 by ELM ver.2012-10-06 from 001\_\_elm20150428\_053122\_\_dat00.bin



Processed Tue Apr 28 07:38:57 2015 by ELM ver.2012-10-06 from 001\_\_elm20150428\_053122\_\_dat00.bin

