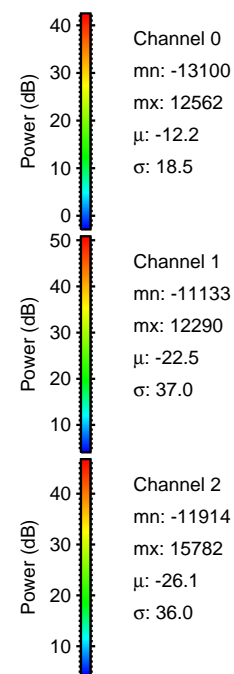
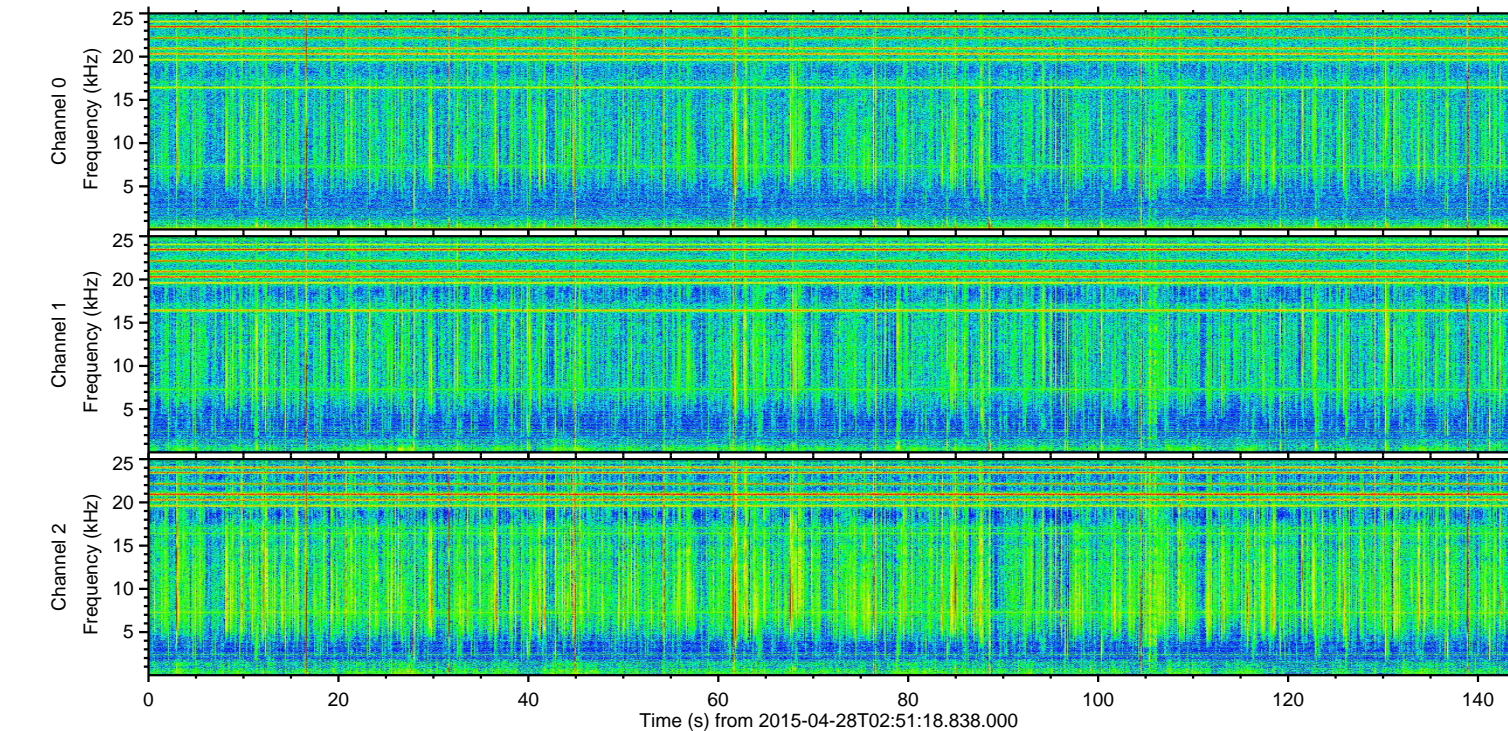
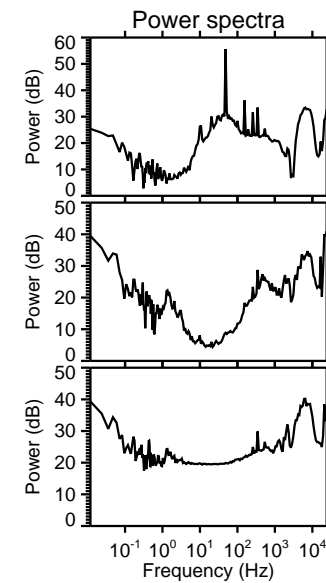
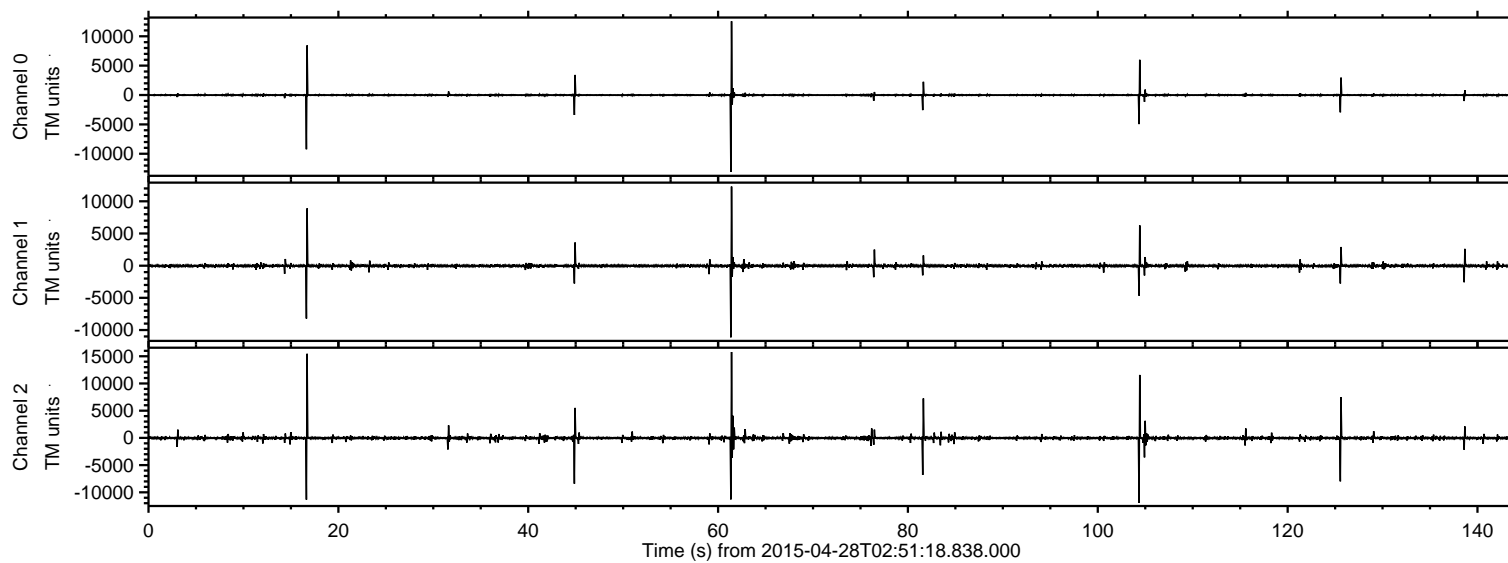


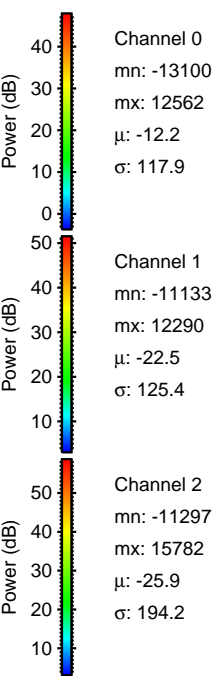
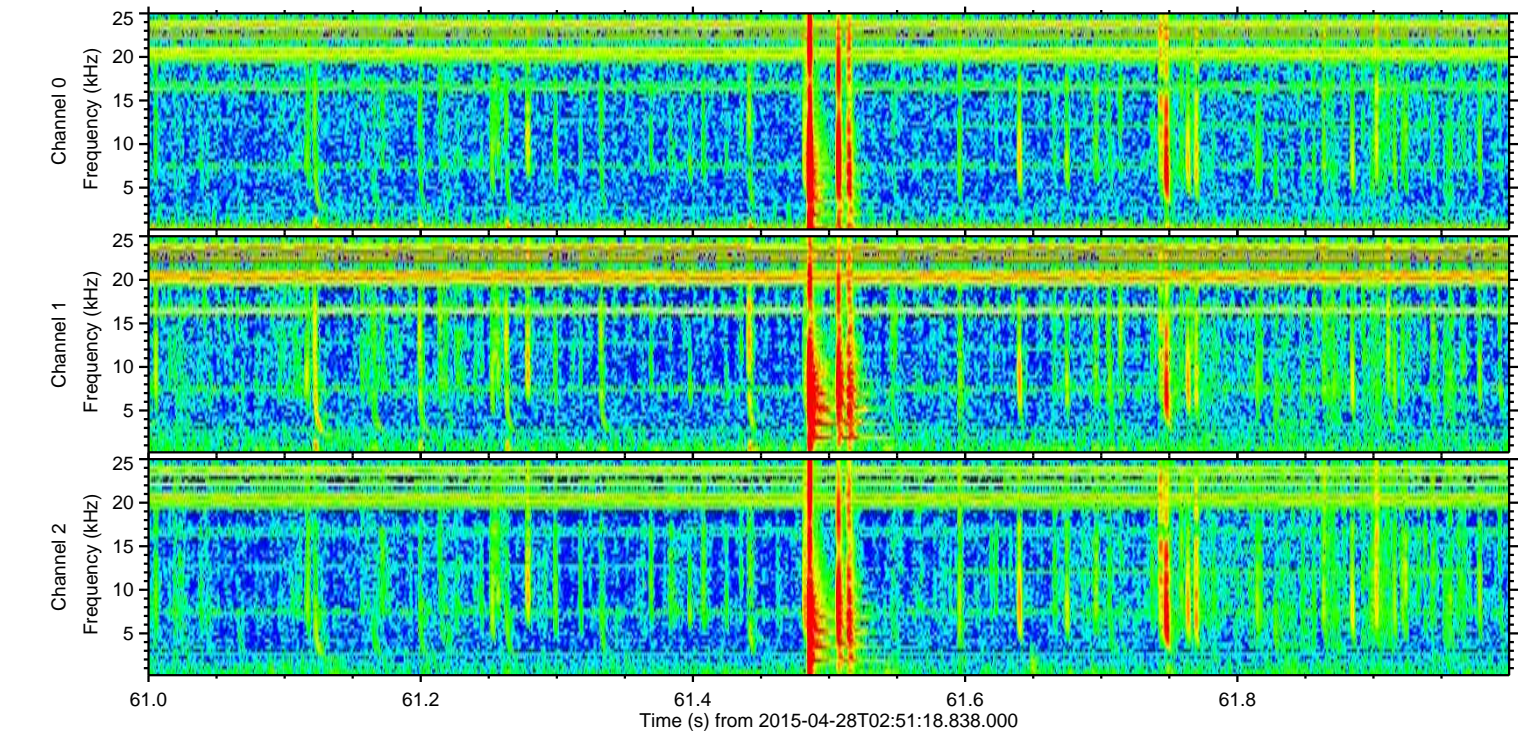
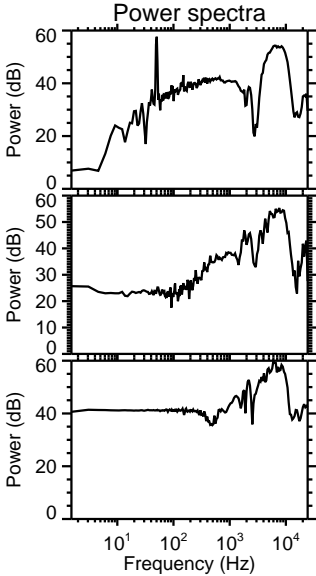
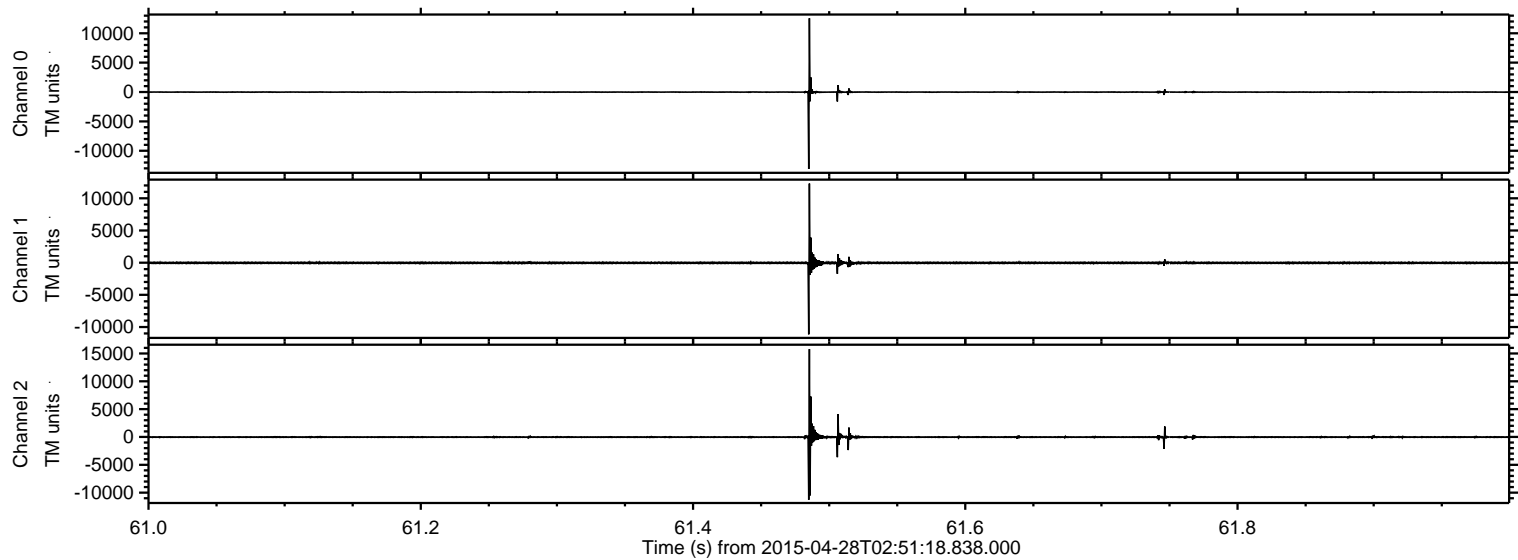
# ELMAVAN 3D WAVEFORMS (Measured data sampled at 50 kHz) 49769 packets of 144 samples from 2015-04-28T02:51:18.838.000.

Processed Tue Apr 28 04:57:57 2015 by ELM ver.2012-10-06 from 001\_\_elm20150428\_025117\_\_dat00.bin



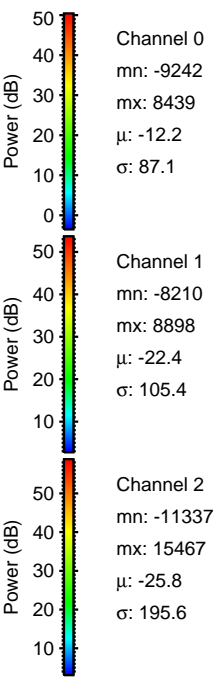
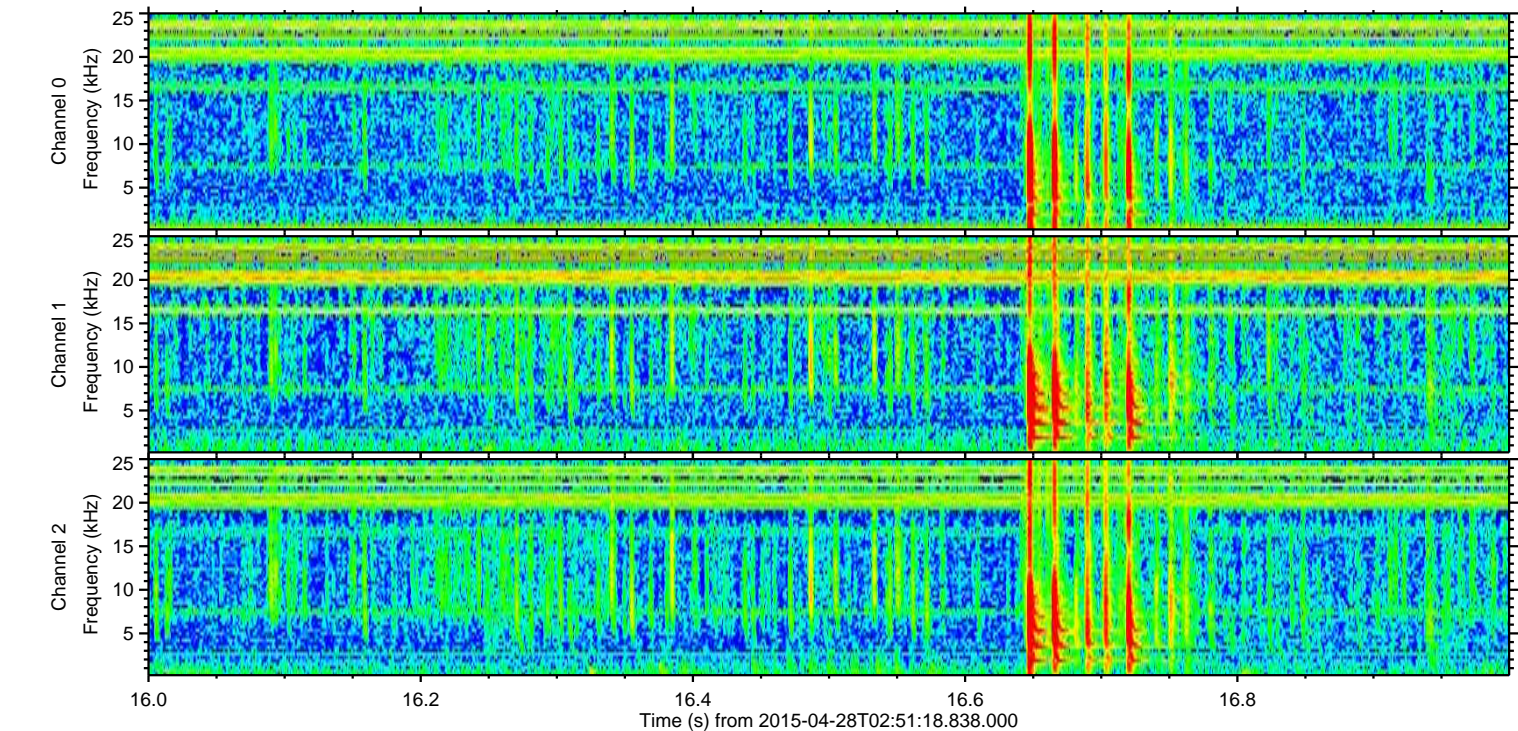
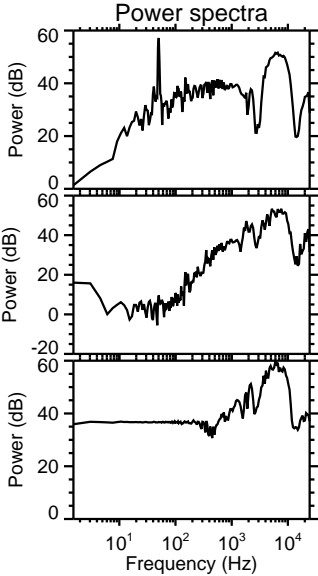
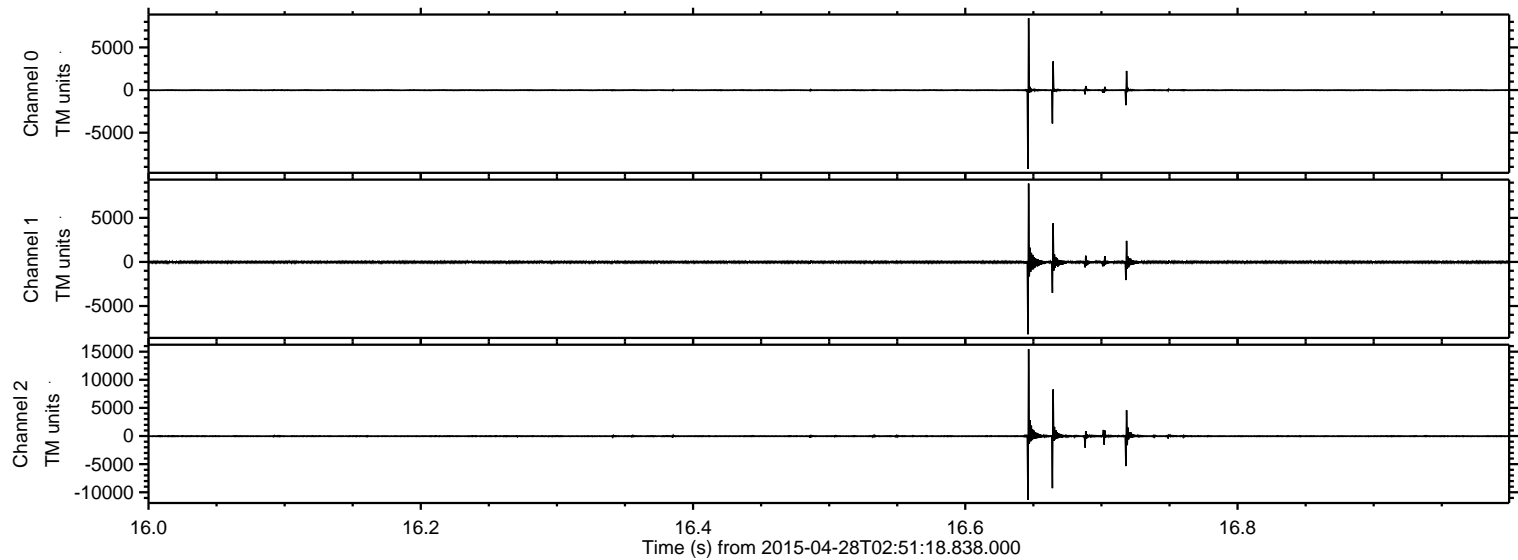
ELMAVAN 3D WAVEFORMS (Measured data sampled at 50 kHz) 49769 packets of 144 samples from 2015-04-28T02:51:18.838.000. Part 62/144

Processed Tue Apr 28 04:58:09 2015 by ELM ver.2012-10-06 from 001\_\_elm20150428\_025117\_\_dat00.bin



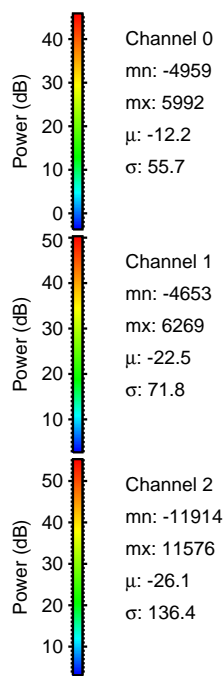
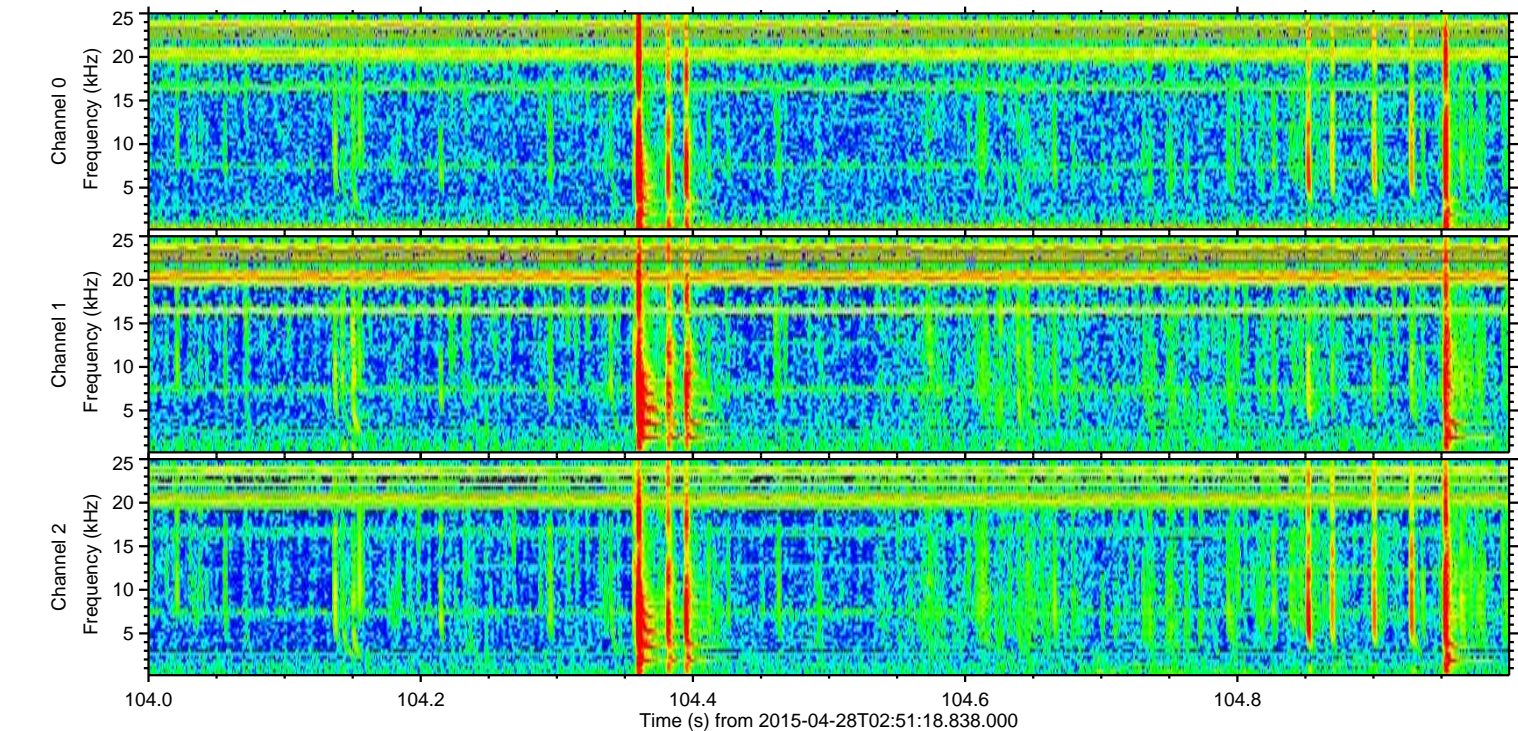
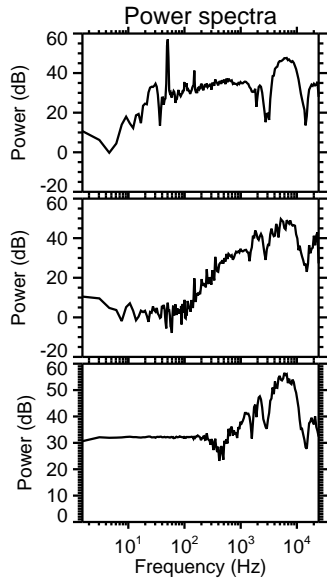
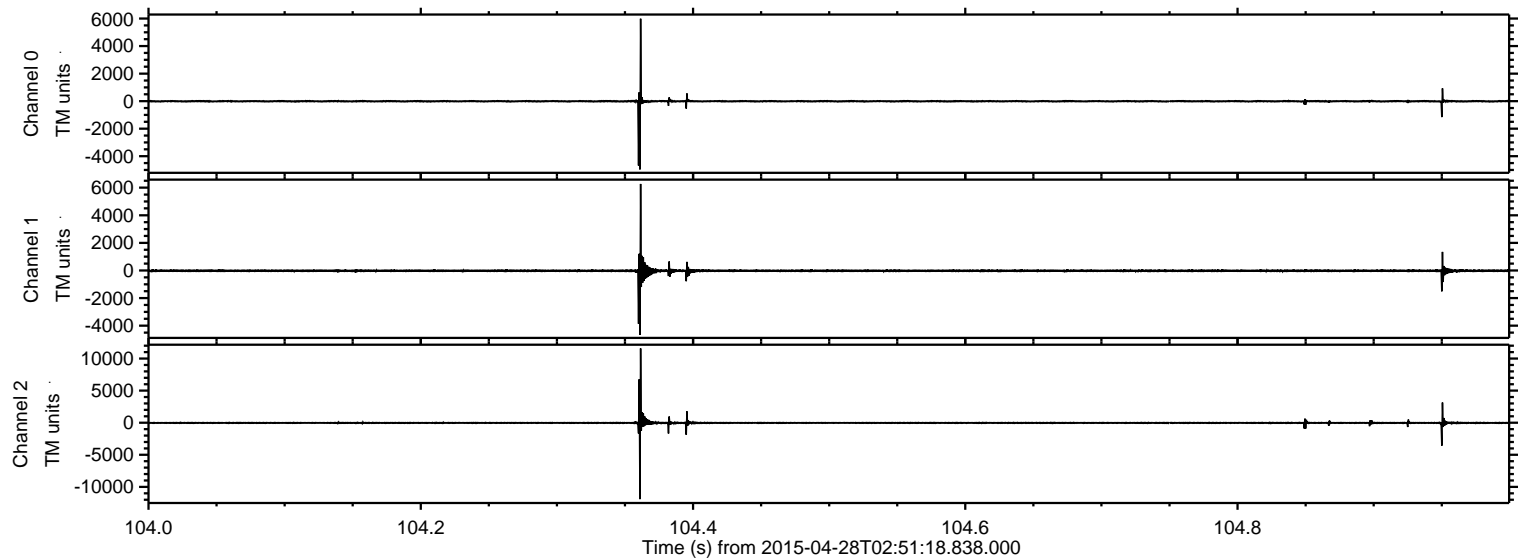
ELMAVAN 3D WAVEFORMS (Measured data sampled at 50 kHz) 49769 packets of 144 samples from 2015-04-28T02:51:18.838.000. Part 17/144

Processed Tue Apr 28 04:58:10 2015 by ELM ver.2012-10-06 from 001\_\_elm20150428\_025117\_\_dat00.bin

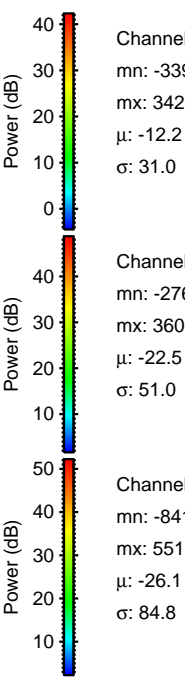
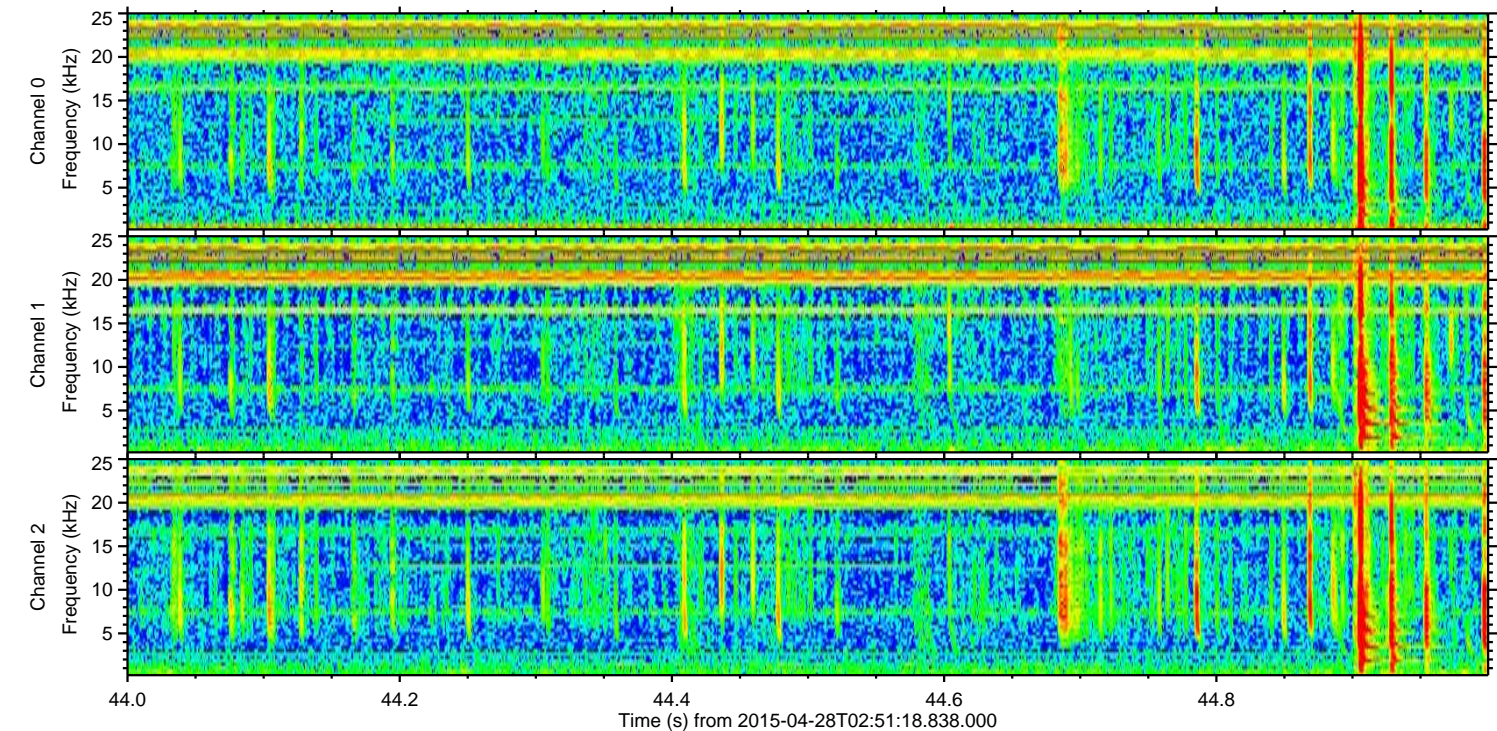
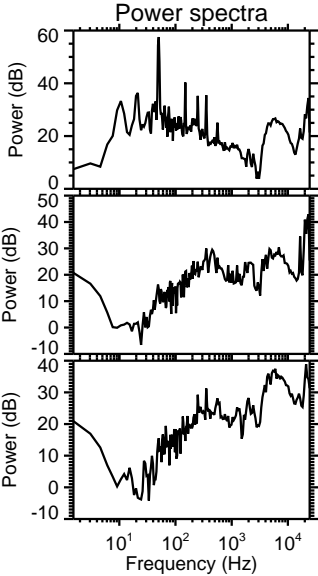
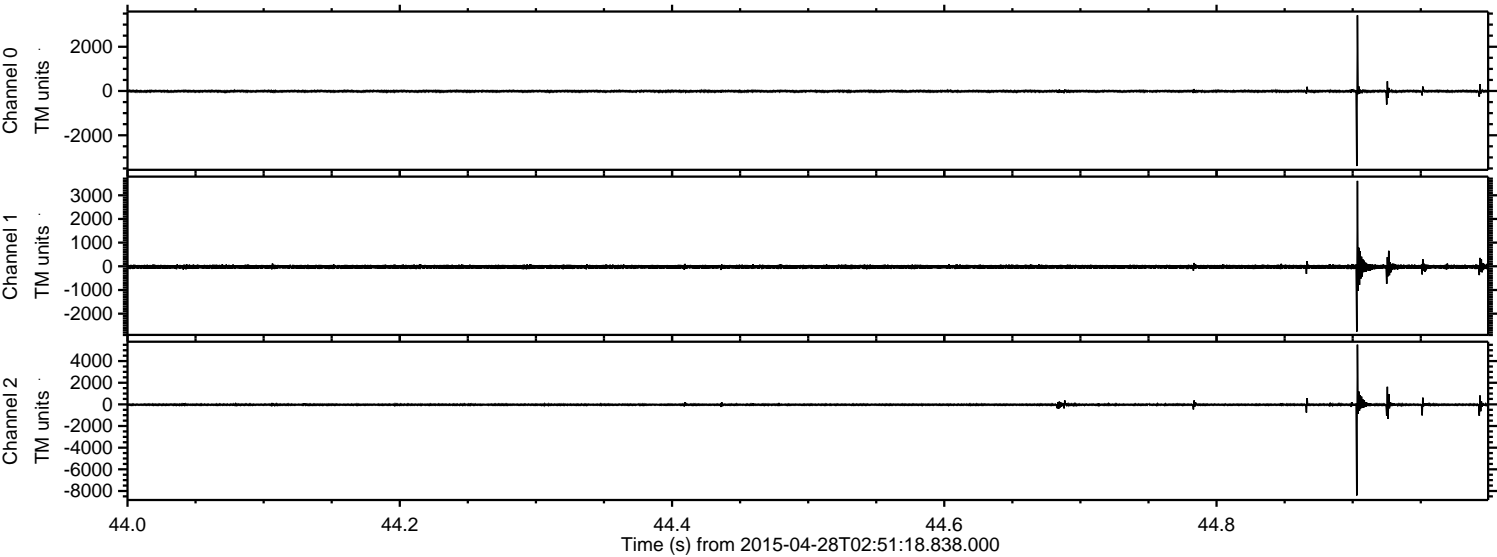


ELMAVAN 3D WAVEFORMS (Measured data sampled at 50 kHz) 49769 packets of 144 samples from 2015-04-28T02:51:18.838.000. Part 105/144

Processed Tue Apr 28 04:58:11 2015 by ELM ver.2012-10-06 from 001\_\_elm20150428\_025117\_\_dat00.bin



Processed Tue Apr 28 04:58:12 2015 by ELM ver.2012-10-06 from 001\_\_elm20150428\_025117\_\_dat00.bin



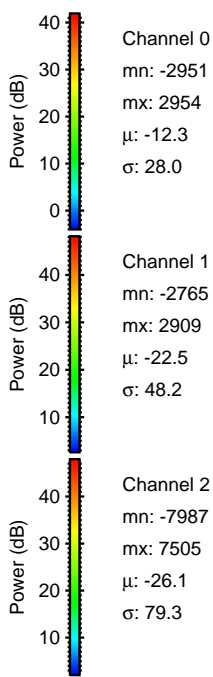
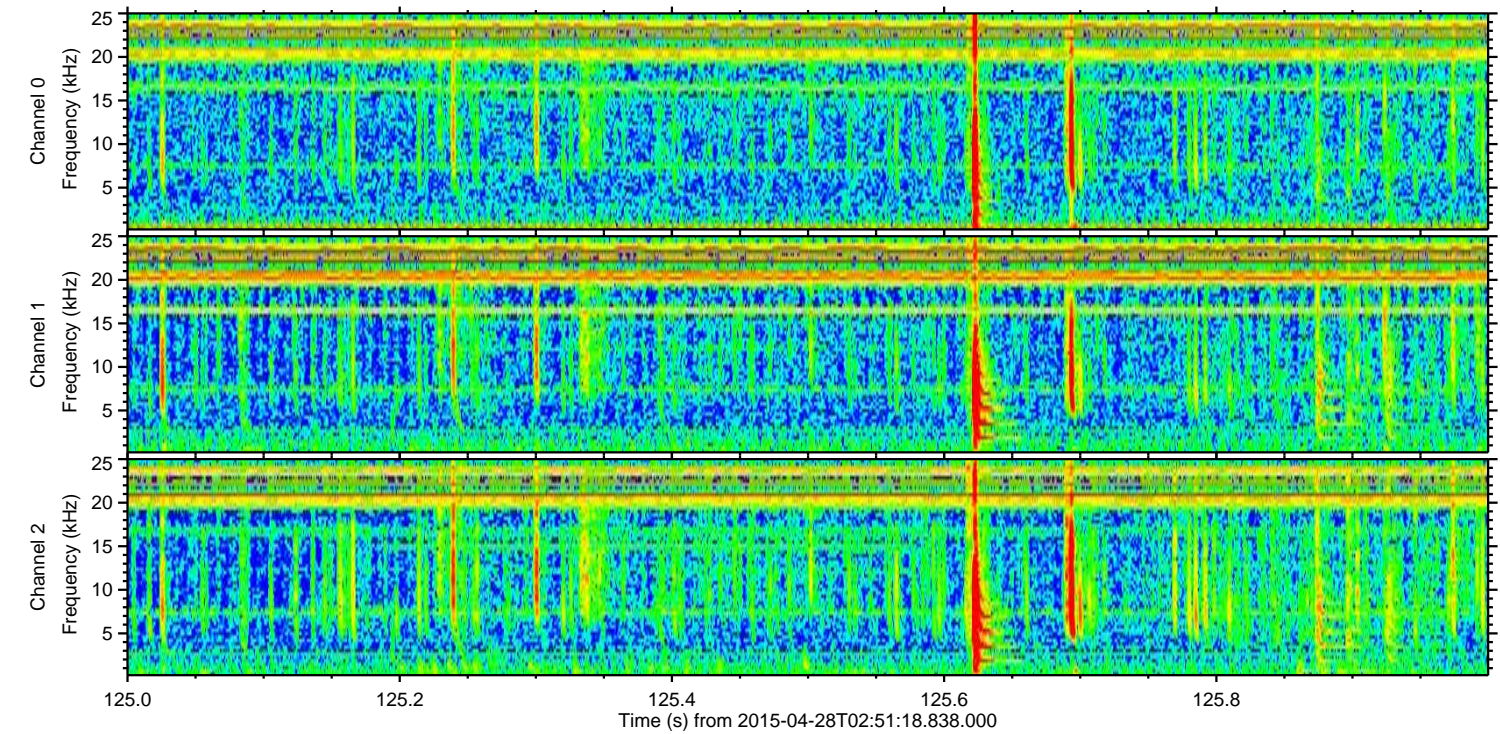
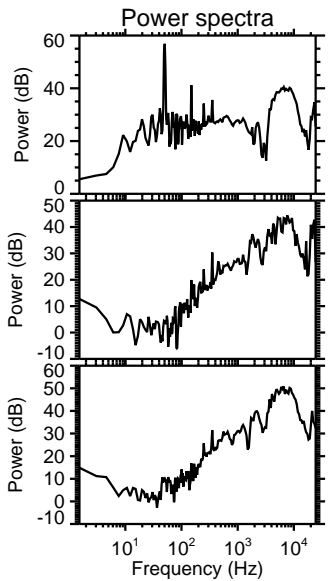
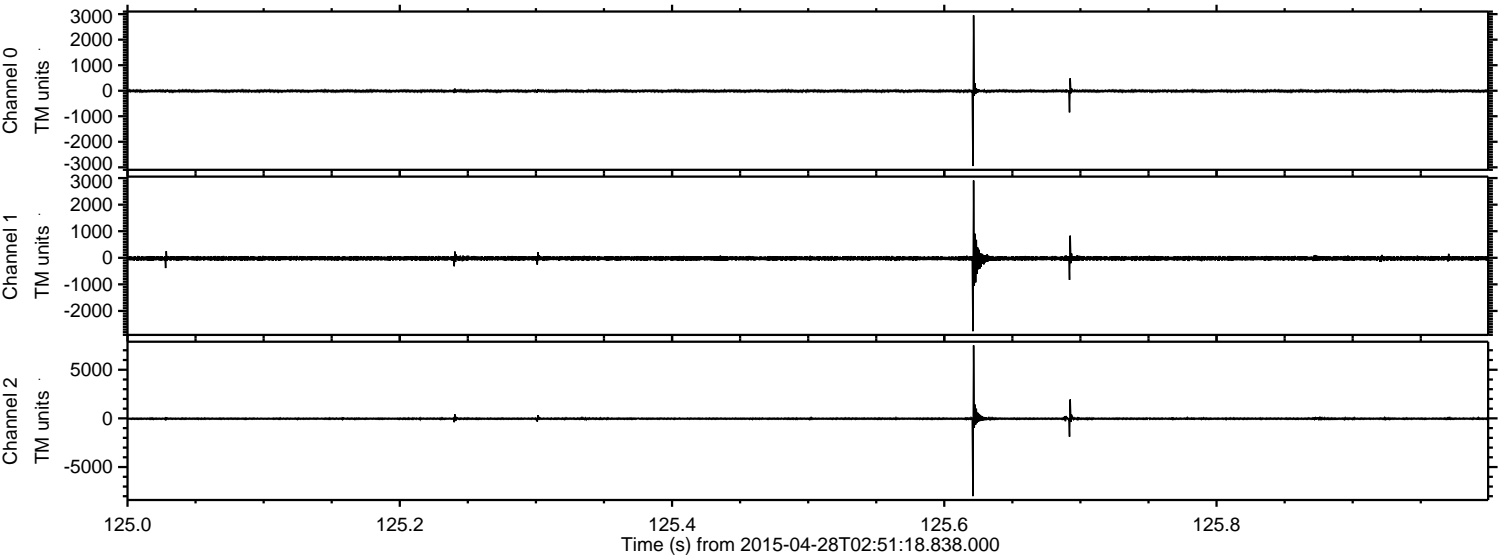
Channel 0  
mn: -3392  
mx: 3420  
μ: -12.2  
σ: 31.0

Channel 1  
mn: -2760  
mx: 3607  
μ: -22.5  
σ: 51.0

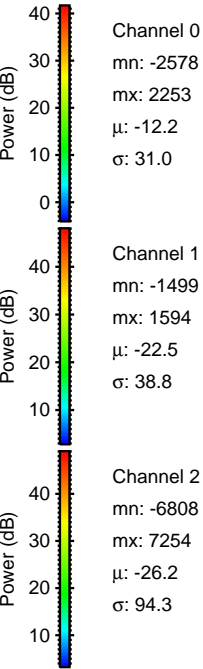
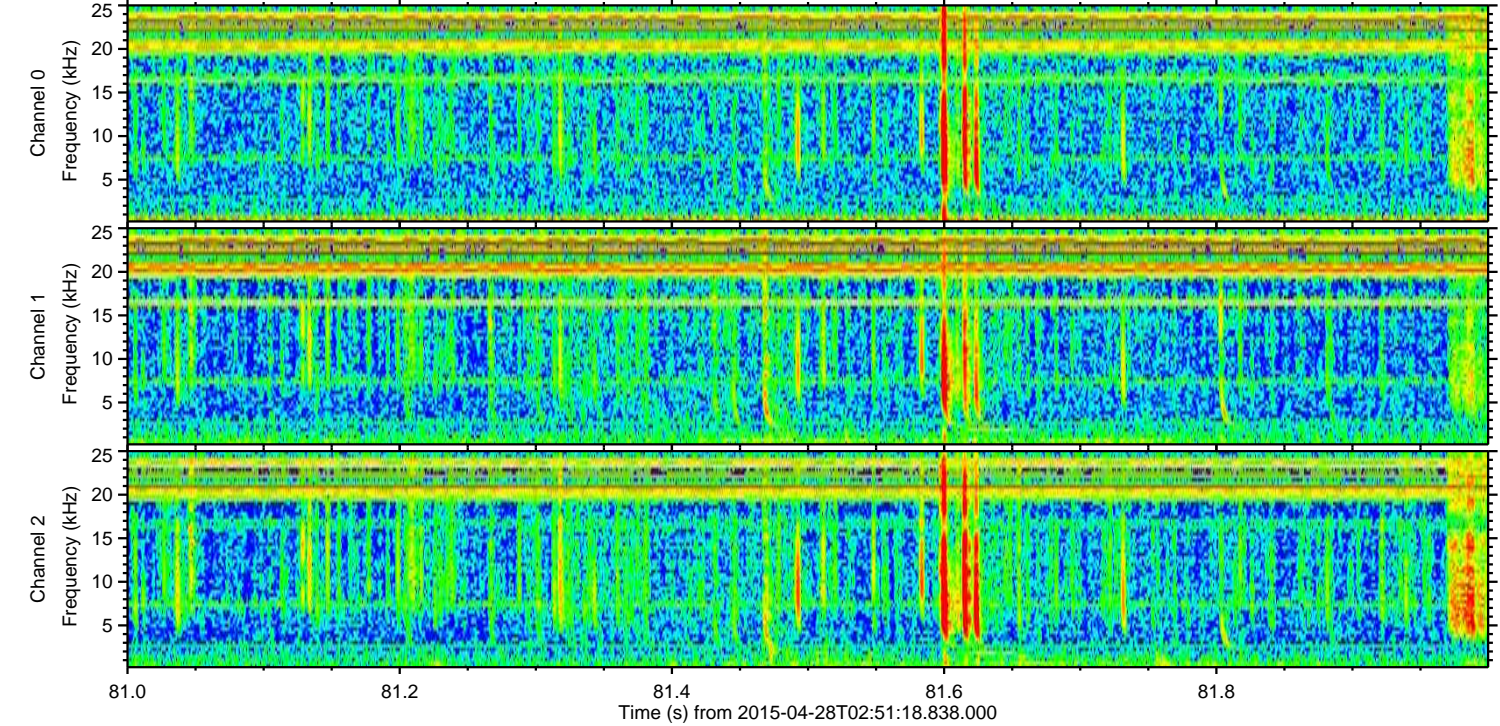
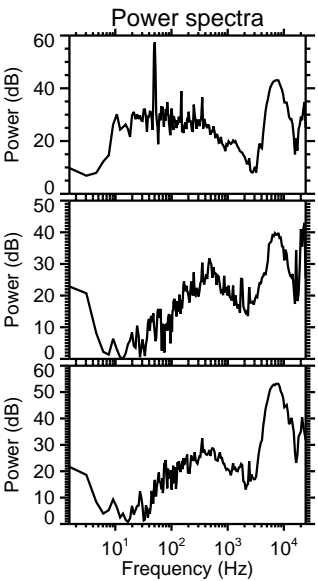
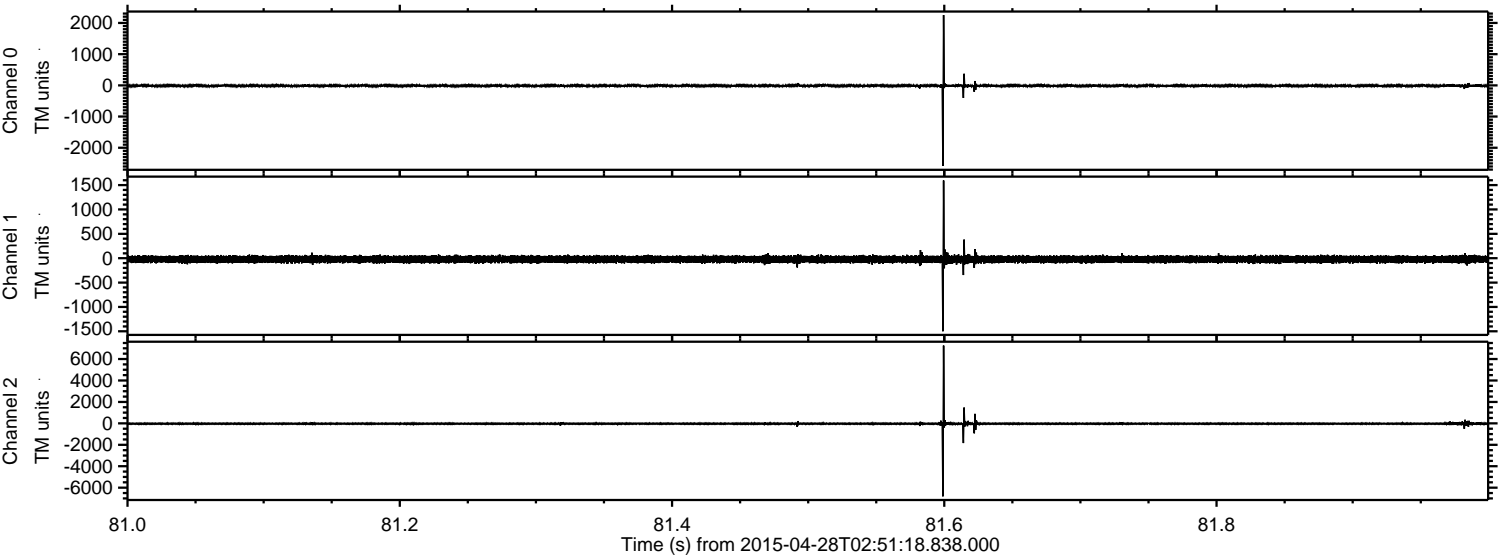
Channel 2  
mn: -8413  
mx: 5513  
μ: -26.1  
σ: 84.8

ELMAVAN 3D WAVEFORMS (Measured data sampled at 50 kHz) 49769 packets of 144 samples from 2015-04-28T02:51:18.838.000. Part 126/144

Processed Tue Apr 28 04:58:13 2015 by ELM ver.2012-10-06 from 001\_\_elm20150428\_025117\_\_dat00.bin



Processed Tue Apr 28 04:58:14 2015 by ELM ver.2012-10-06 from 001\_\_elm20150428\_025117\_\_dat00.bin



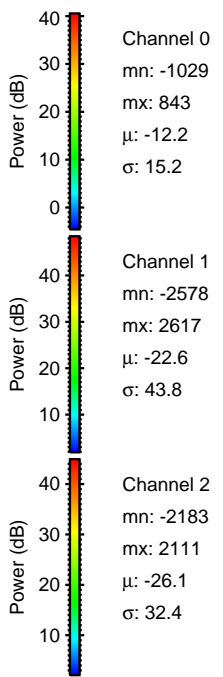
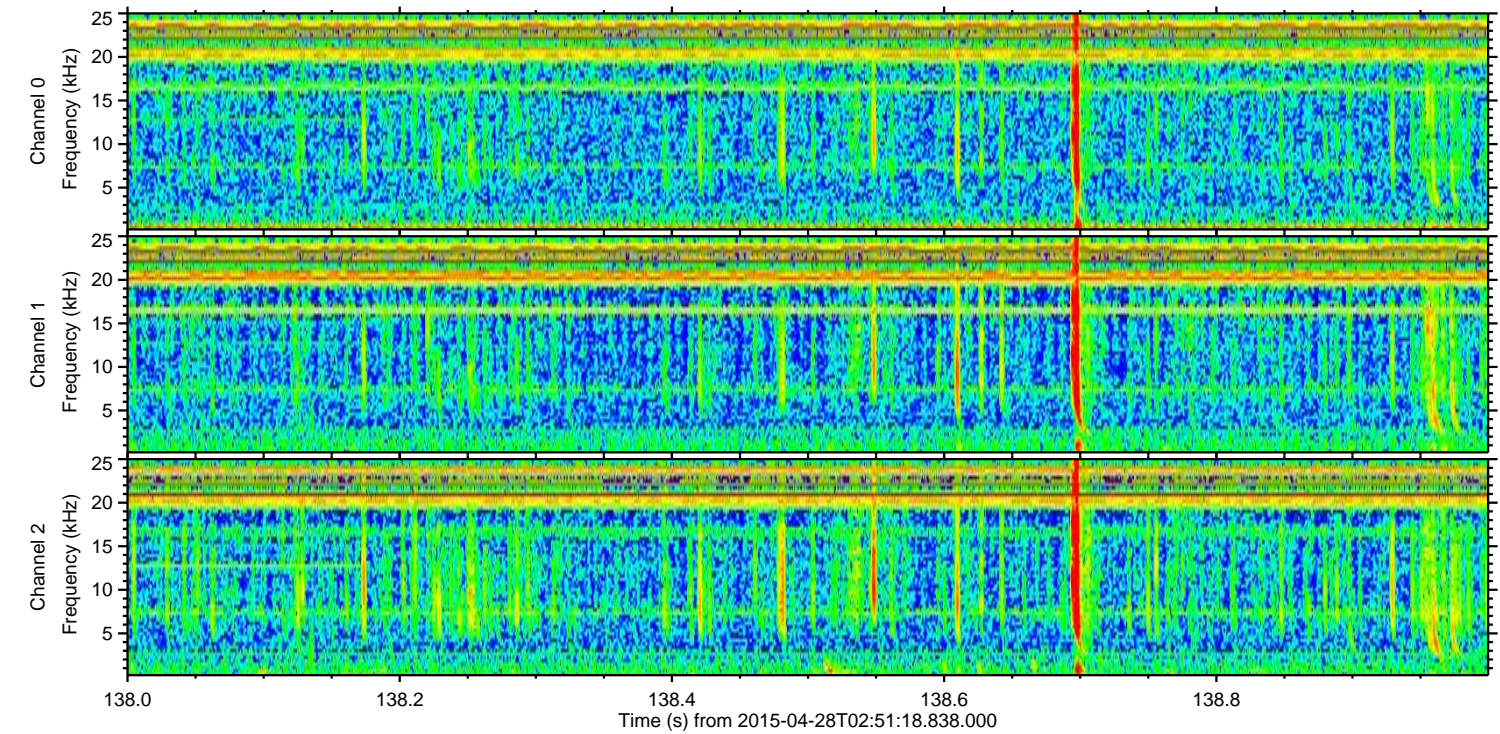
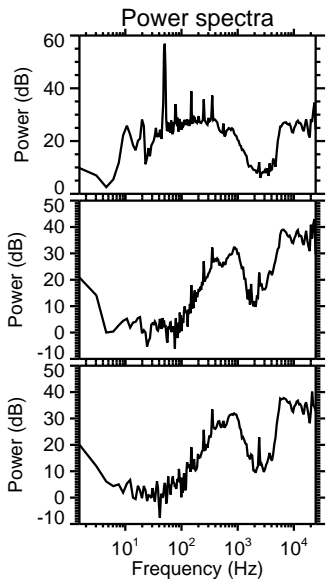
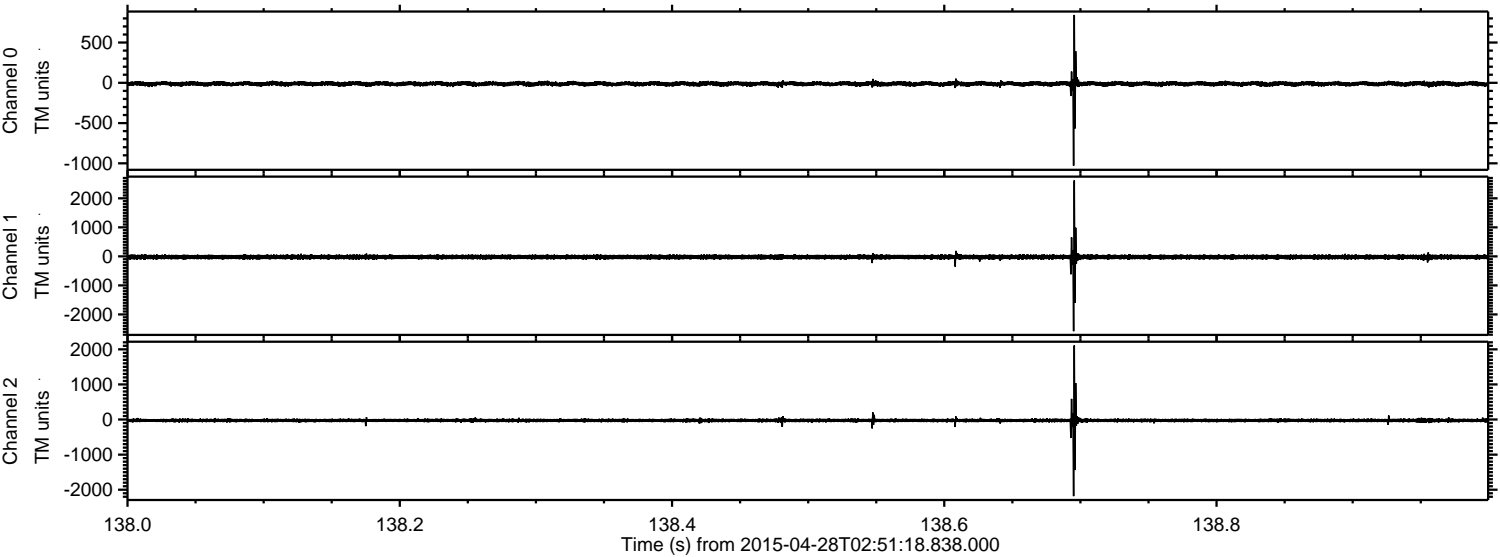
Channel 0  
mn: -2578  
mx: 2253  
 $\mu$ : -12.2  
 $\sigma$ : 31.0

Channel 1  
mn: -1499  
mx: 1594  
 $\mu$ : -22.5  
 $\sigma$ : 38.8

Channel 2  
mn: -6808  
mx: 7254  
 $\mu$ : -26.2  
 $\sigma$ : 94.3

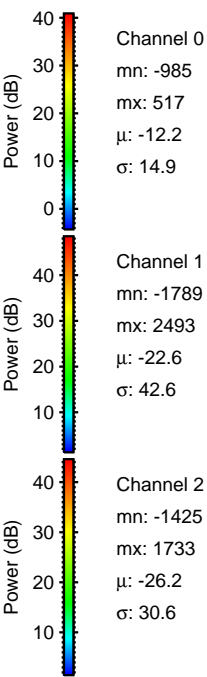
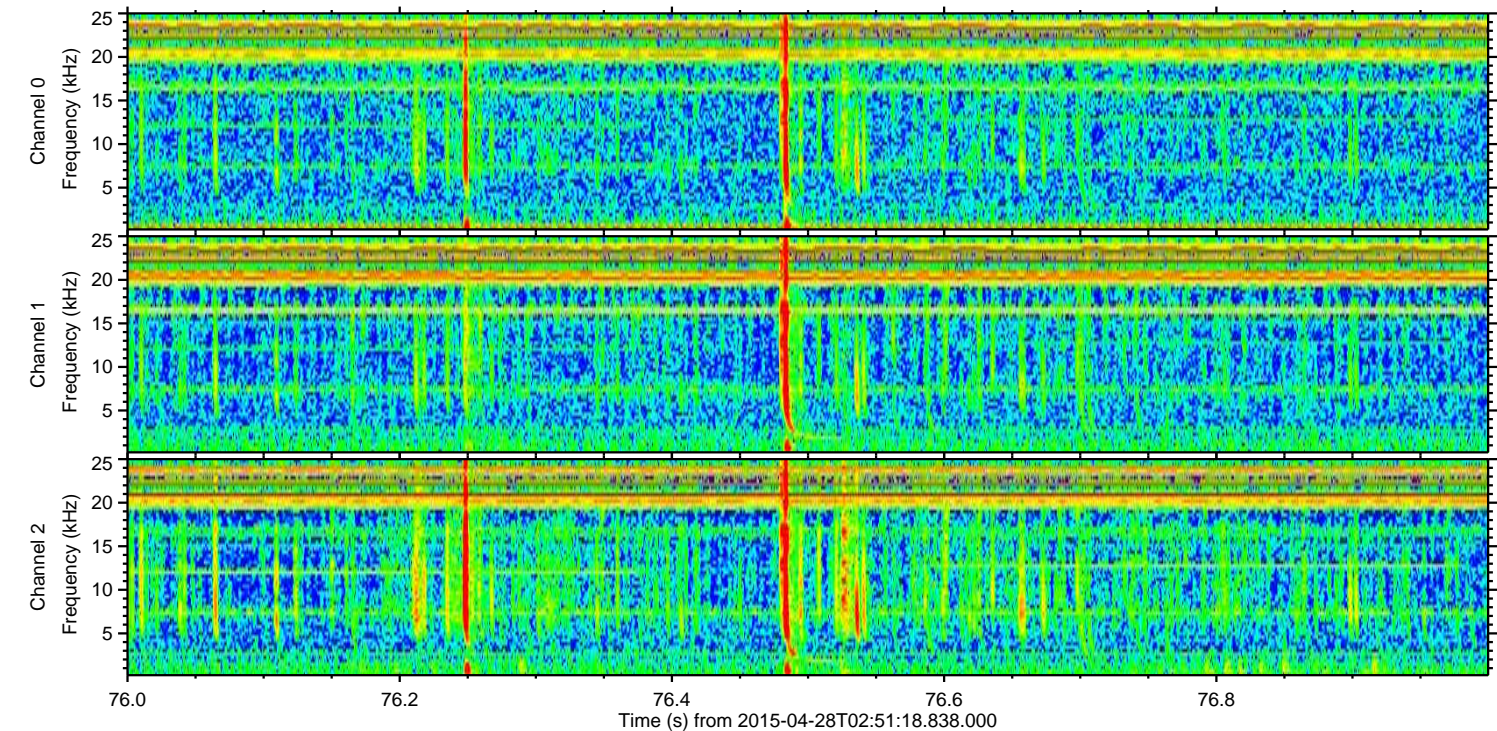
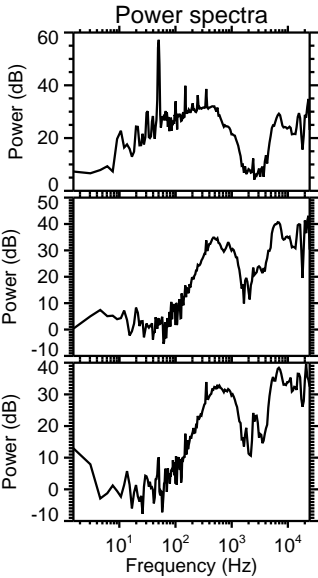
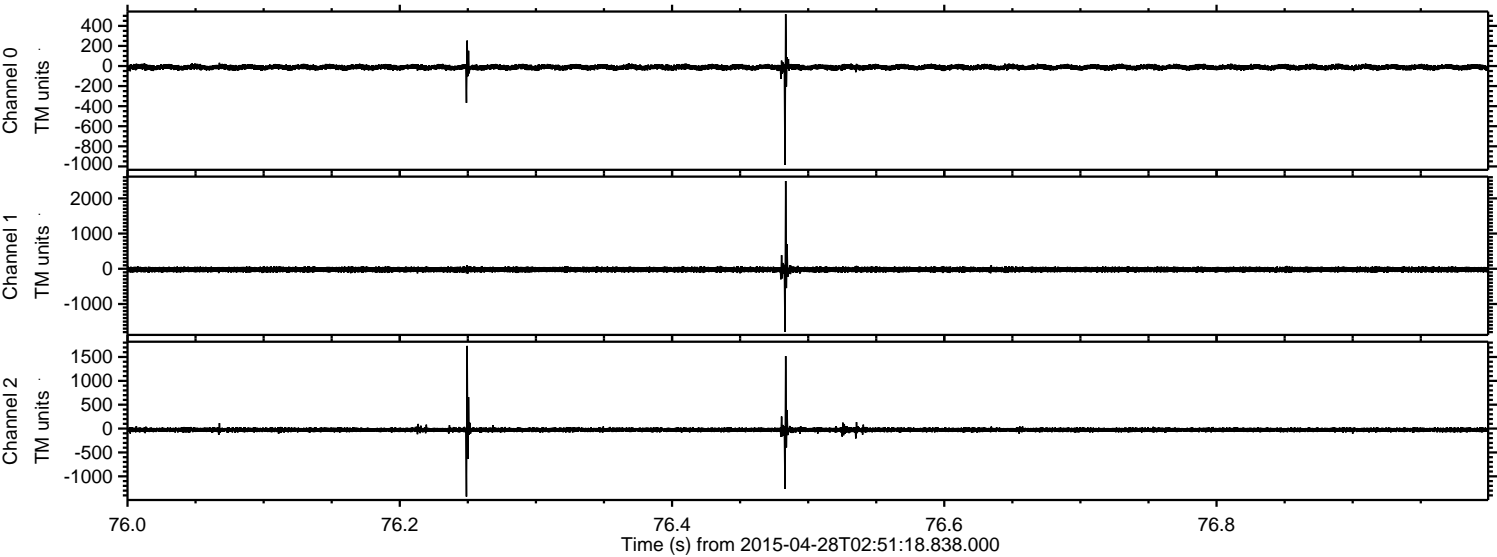
ELMAVAN 3D WAVEFORMS (Measured data sampled at 50 kHz) 49769 packets of 144 samples from 2015-04-28T02:51:18.838.000. Part 139/144

Processed Tue Apr 28 04:58:15 2015 by ELM ver.2012-10-06 from 001\_\_elm20150428\_025117\_\_dat00.bin

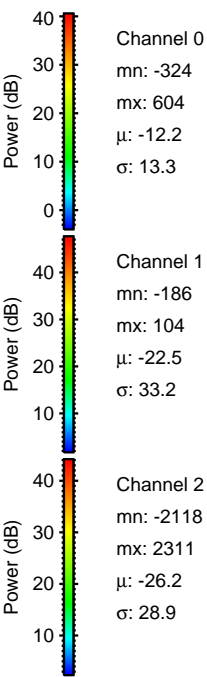
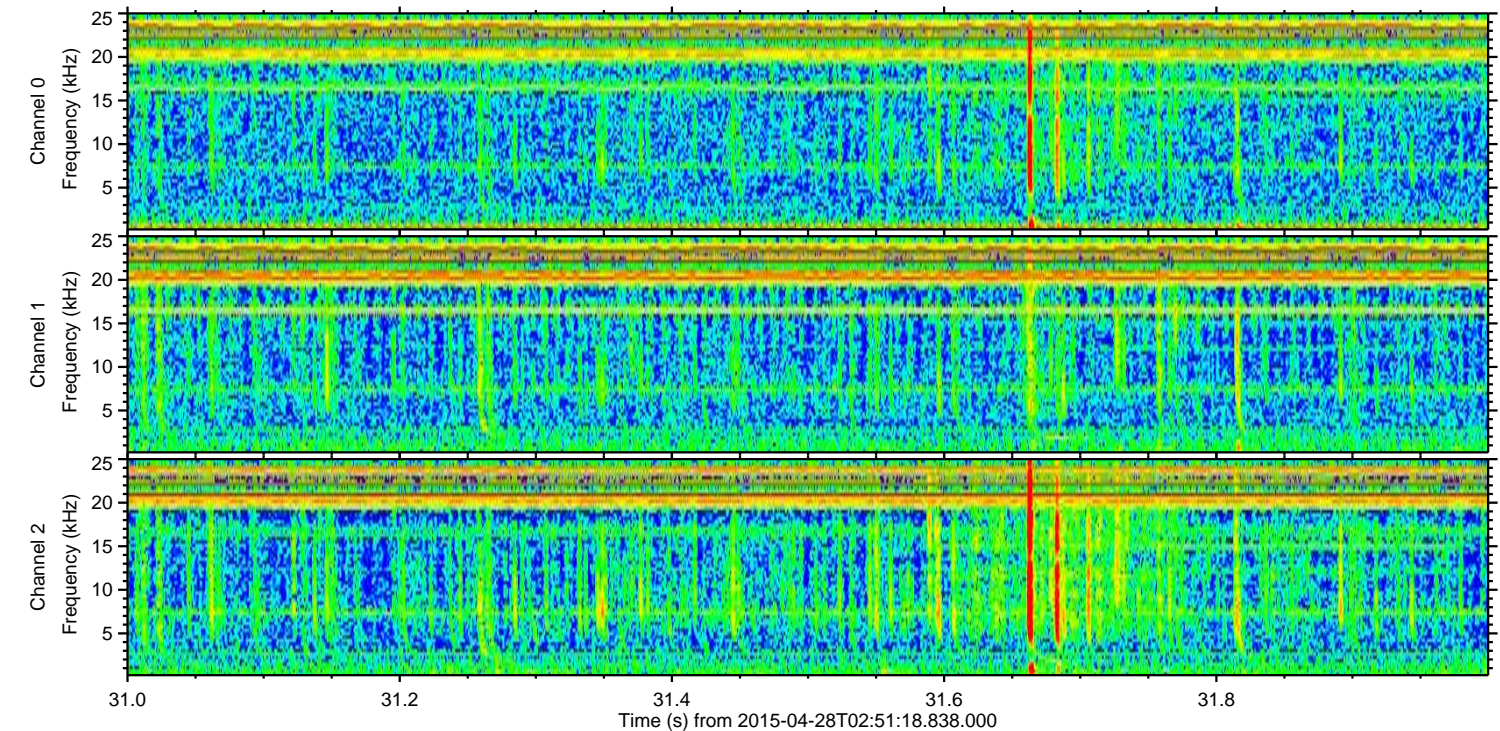
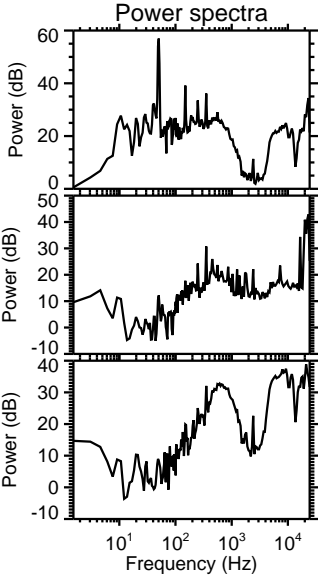
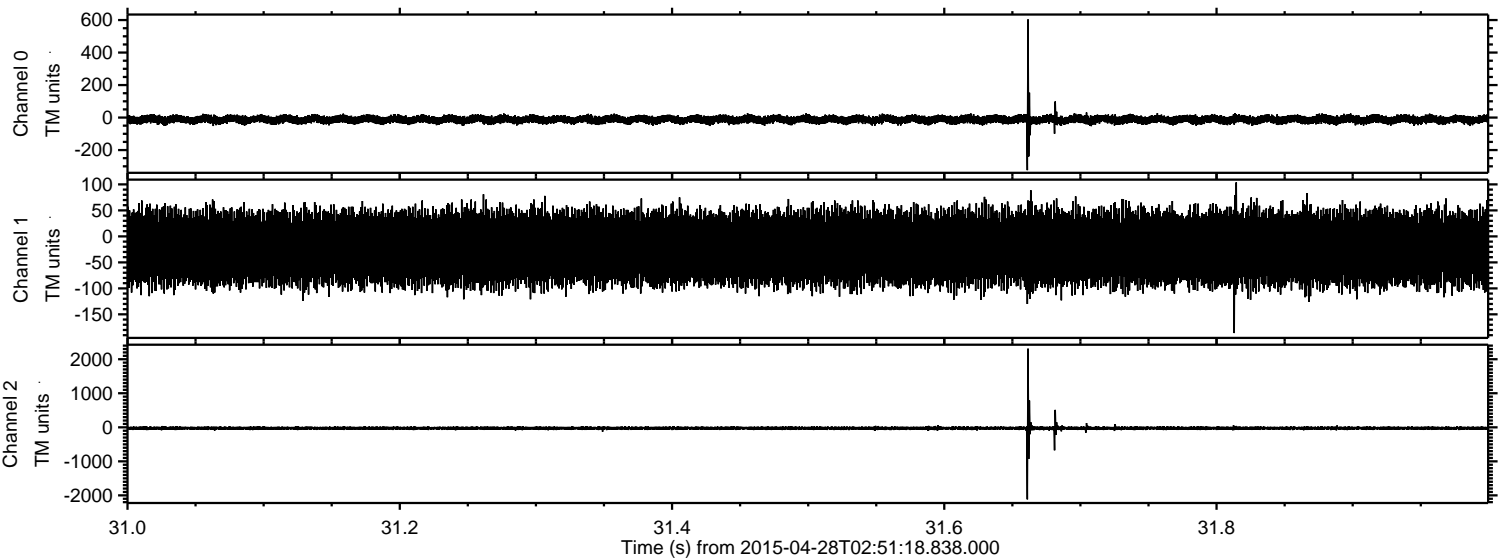


ELMAVAN 3D WAVEFORMS (Measured data sampled at 50 kHz) 49769 packets of 144 samples from 2015-04-28T02:51:18.838.000. Part 77/144

Processed Tue Apr 28 04:58:15 2015 by ELM ver.2012-10-06 from 001\_\_elm20150428\_025117\_\_dat00.bin



Processed Tue Apr 28 04:58:16 2015 by ELM ver.2012-10-06 from 001\_\_elm20150428\_025117\_\_dat00.bin



Processed Tue Apr 28 04:58:17 2015 by ELM ver.2012-10-06 from 001\_\_elm20150428\_025117\_\_dat00.bin

