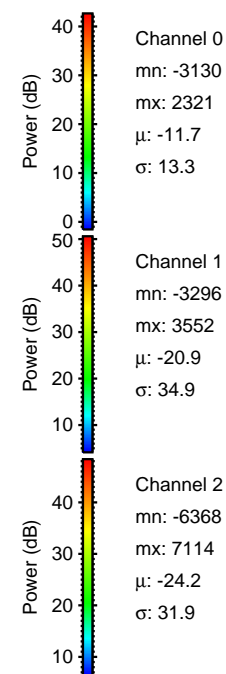
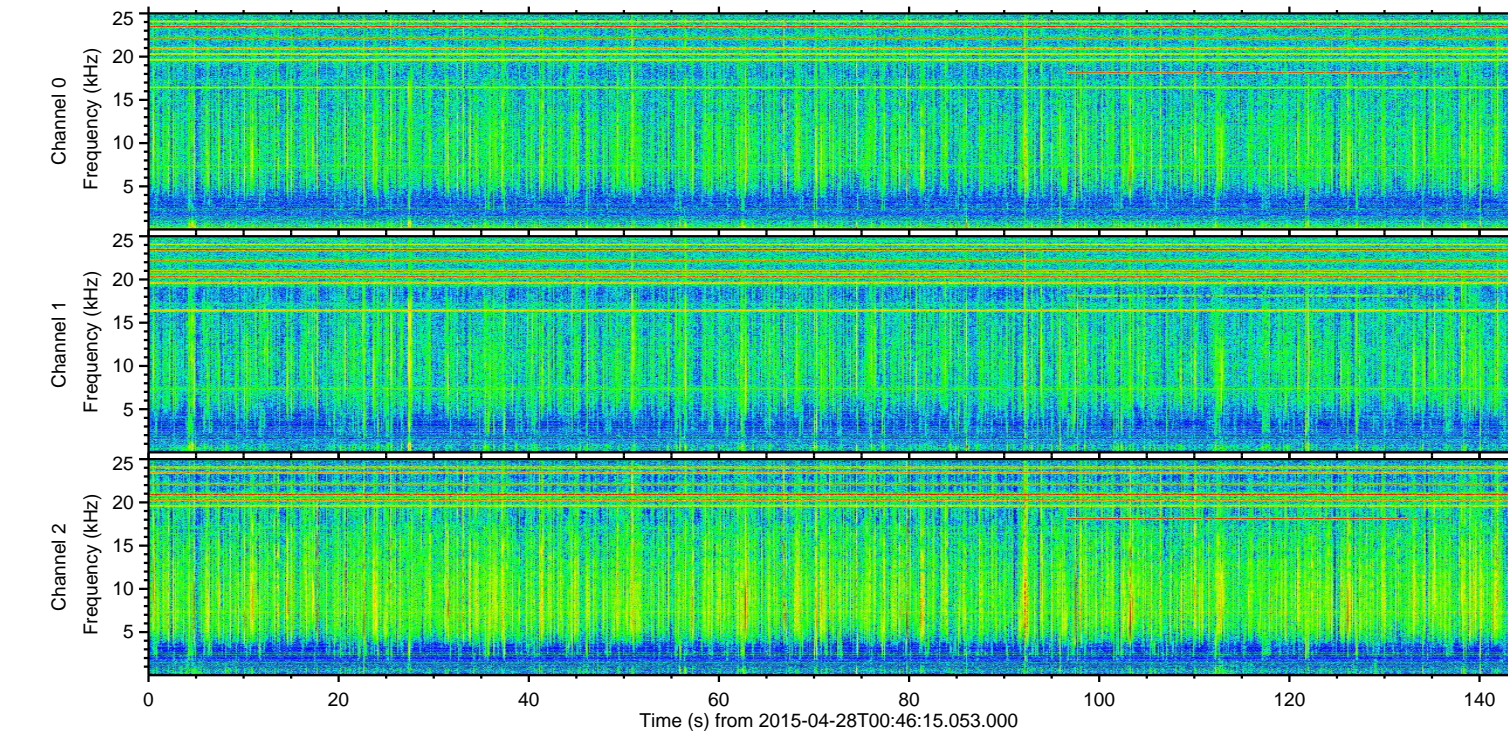
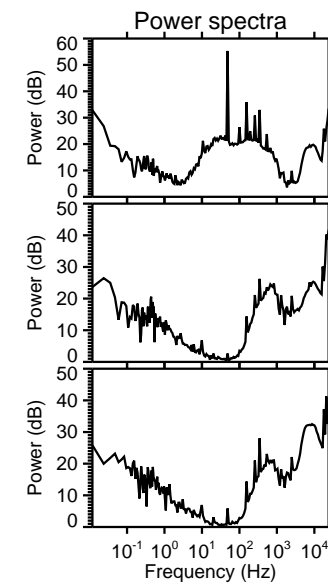
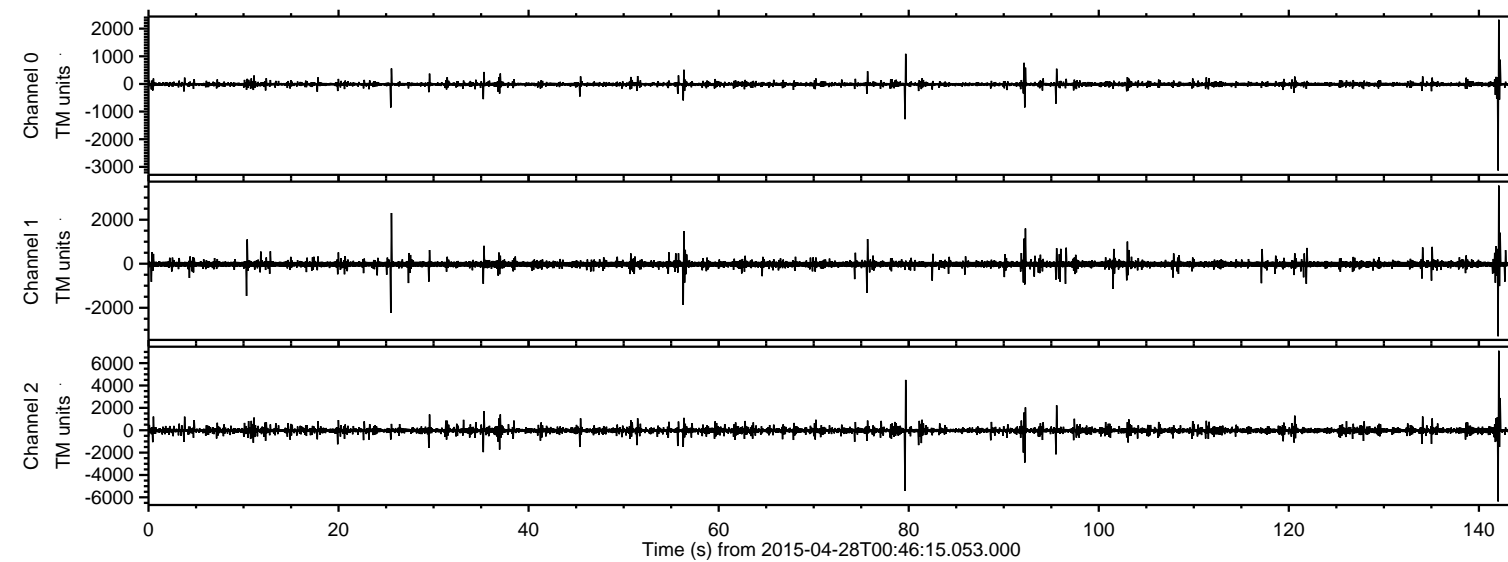


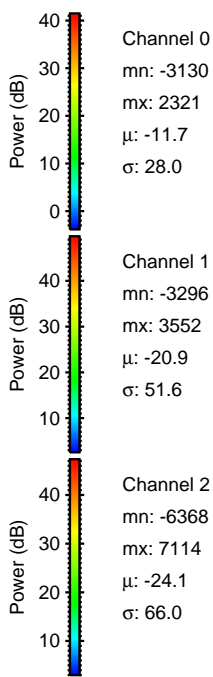
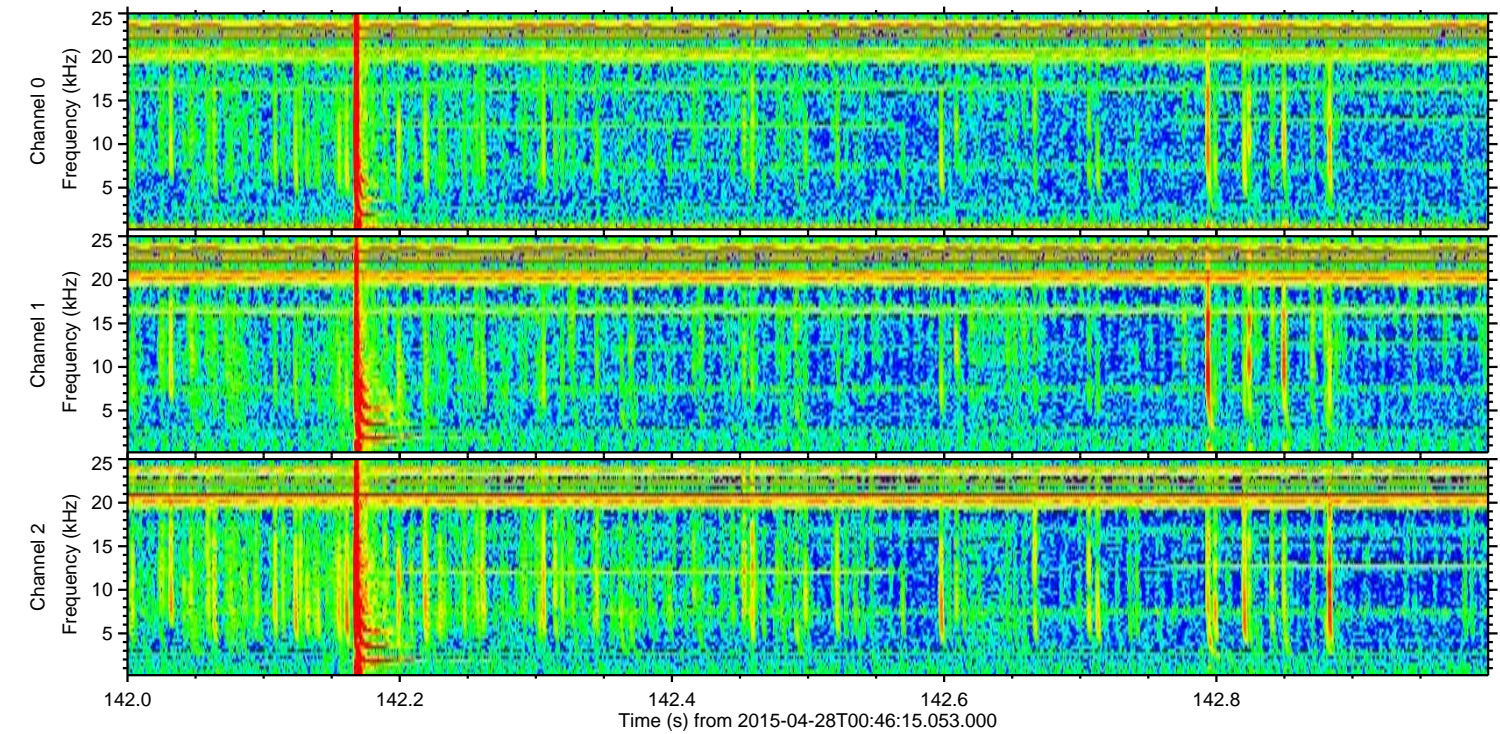
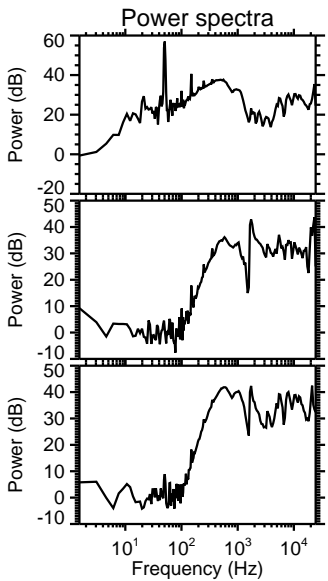
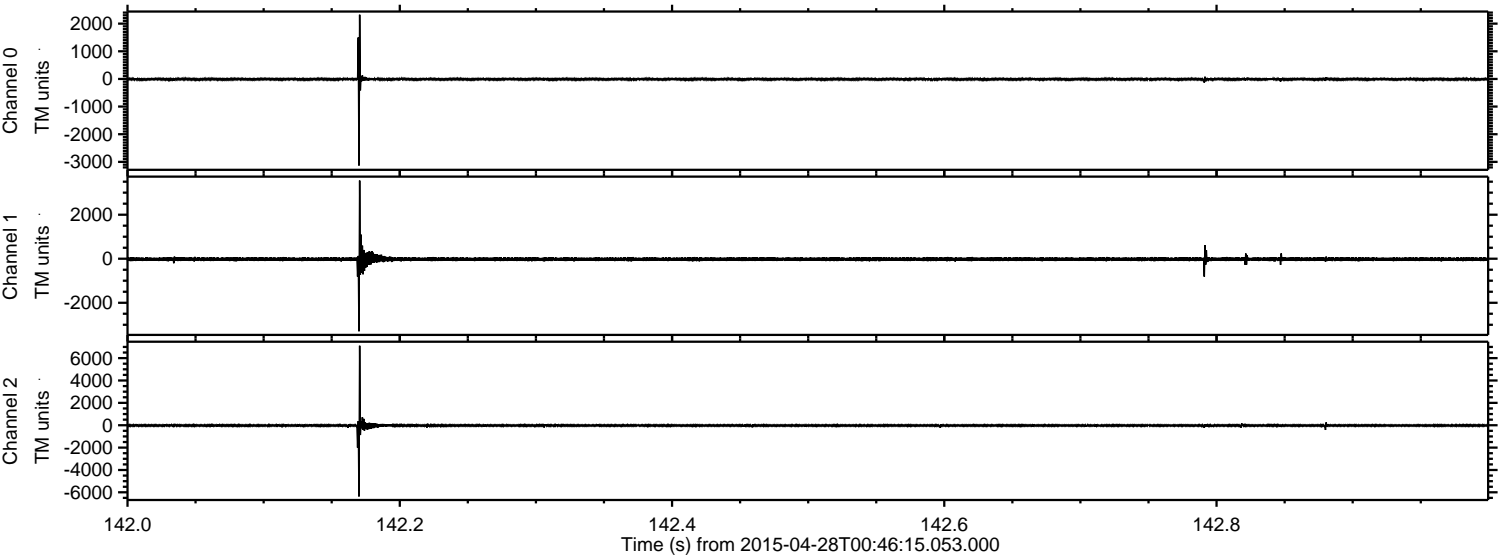
ELMAVAN 3D WAVEFORMS (Measured data sampled at 50 kHz) 49717 packets of 144 samples from 2015-04-28T00:46:15.053.000.

Processed Tue Apr 28 02:53:09 2015 by ELM ver.2012-10-06 from 001__elm20150428_004614__dat00.bin



ELMAVAN 3D WAVEFORMS (Measured data sampled at 50 kHz) 49717 packets of 144 samples from 2015-04-28T00:46:15.053.000. Part 143/144

Processed Tue Apr 28 02:53:21 2015 by ELM ver.2012-10-06 from 001__elm20150428_004614__dat00.bin

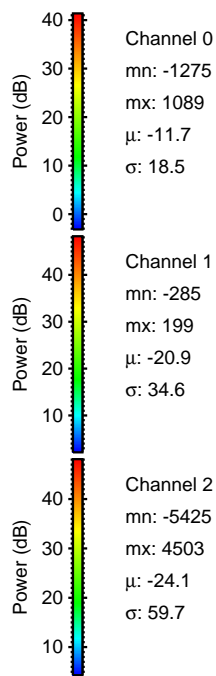
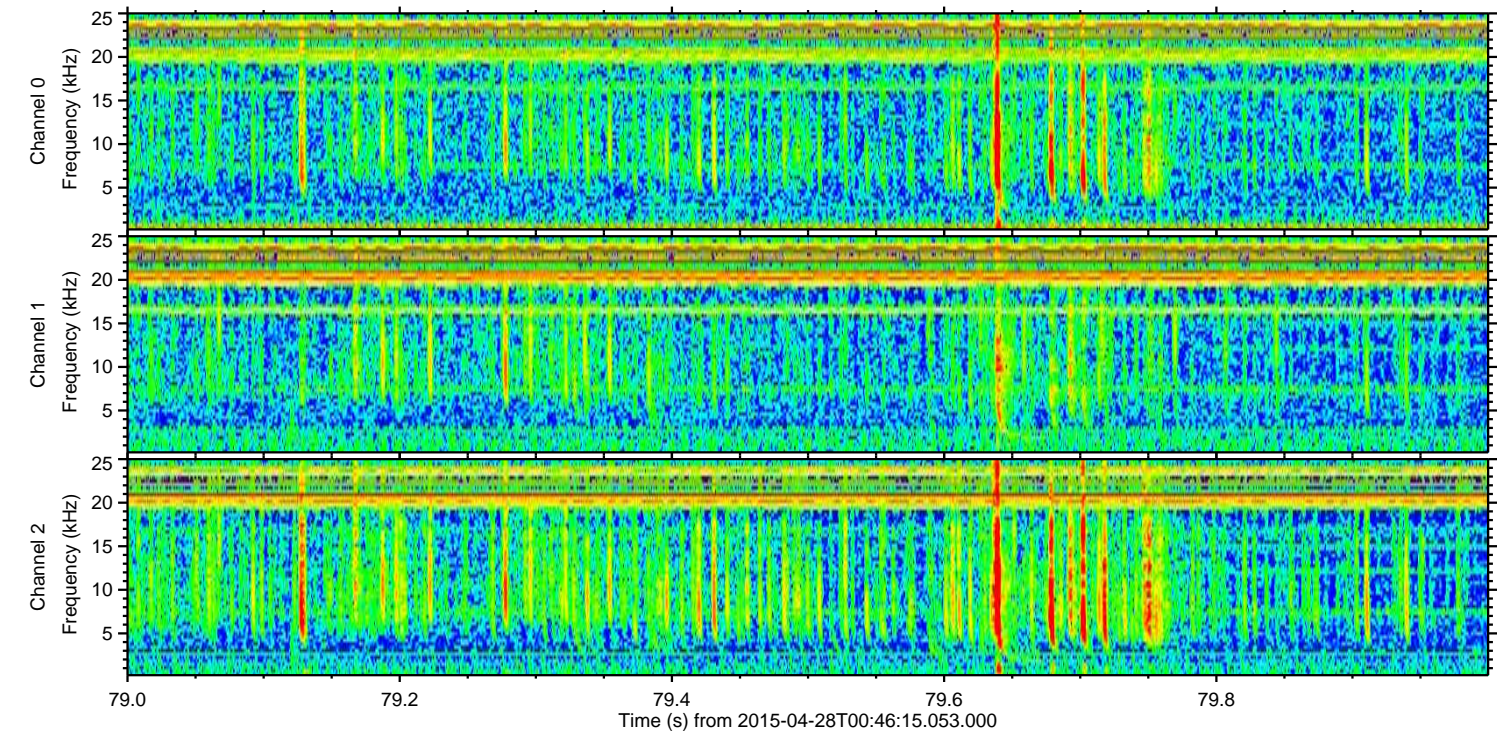
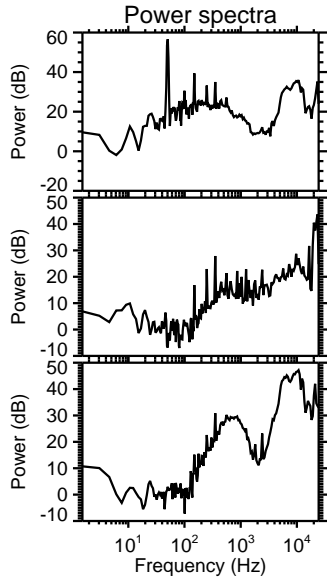
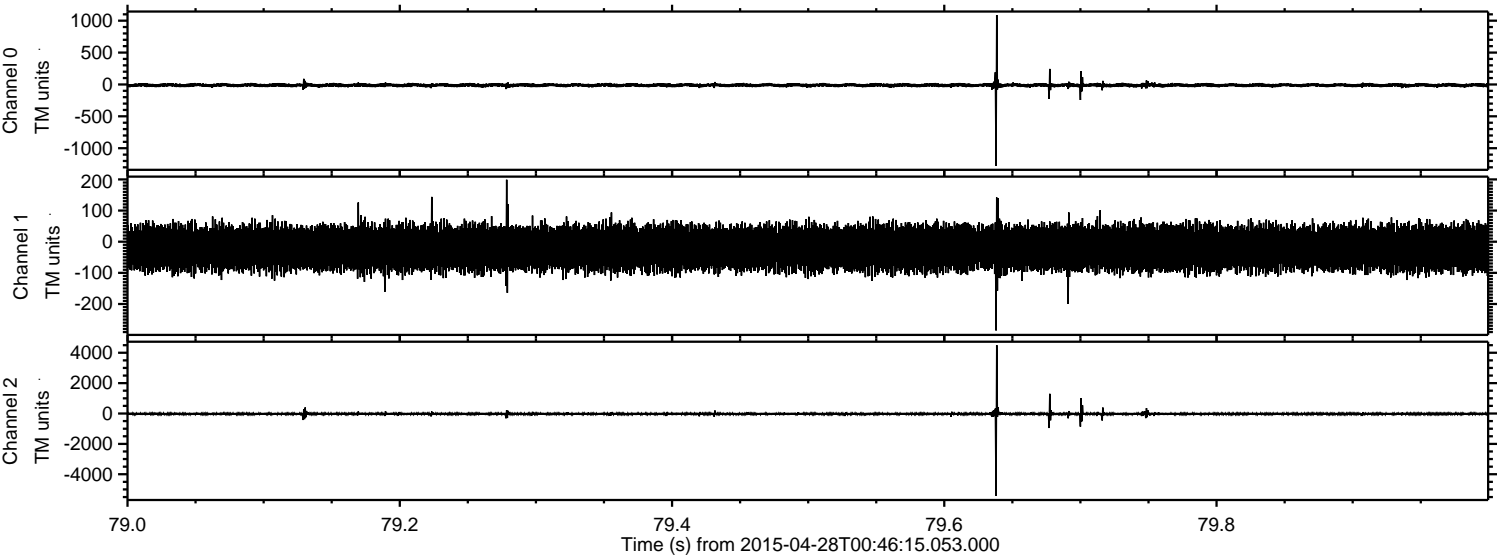


Channel 0
mn: -3130
mx: 2321
 μ : -11.7
 σ : 28.0

Channel 1
mn: -3296
mx: 3552
 μ : -20.9
 σ : 51.6

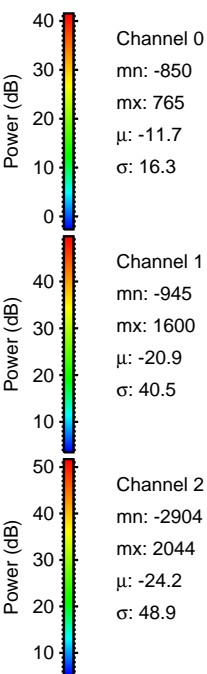
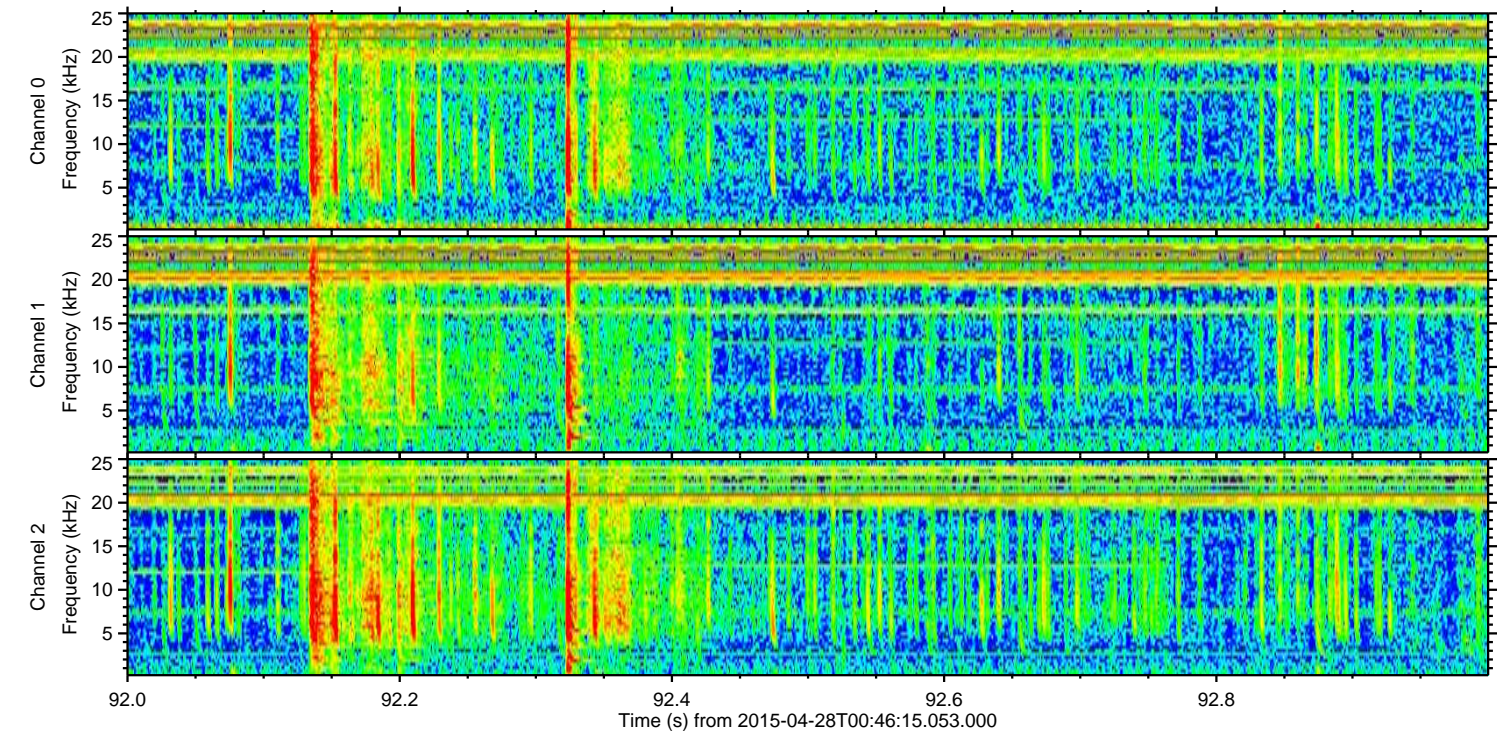
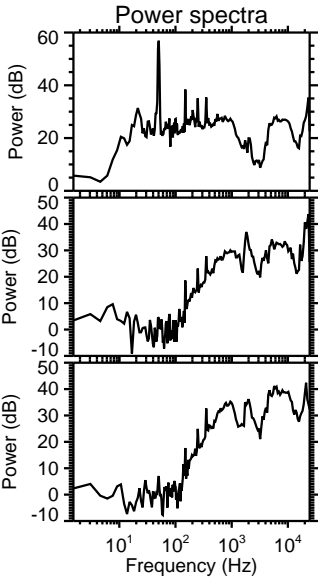
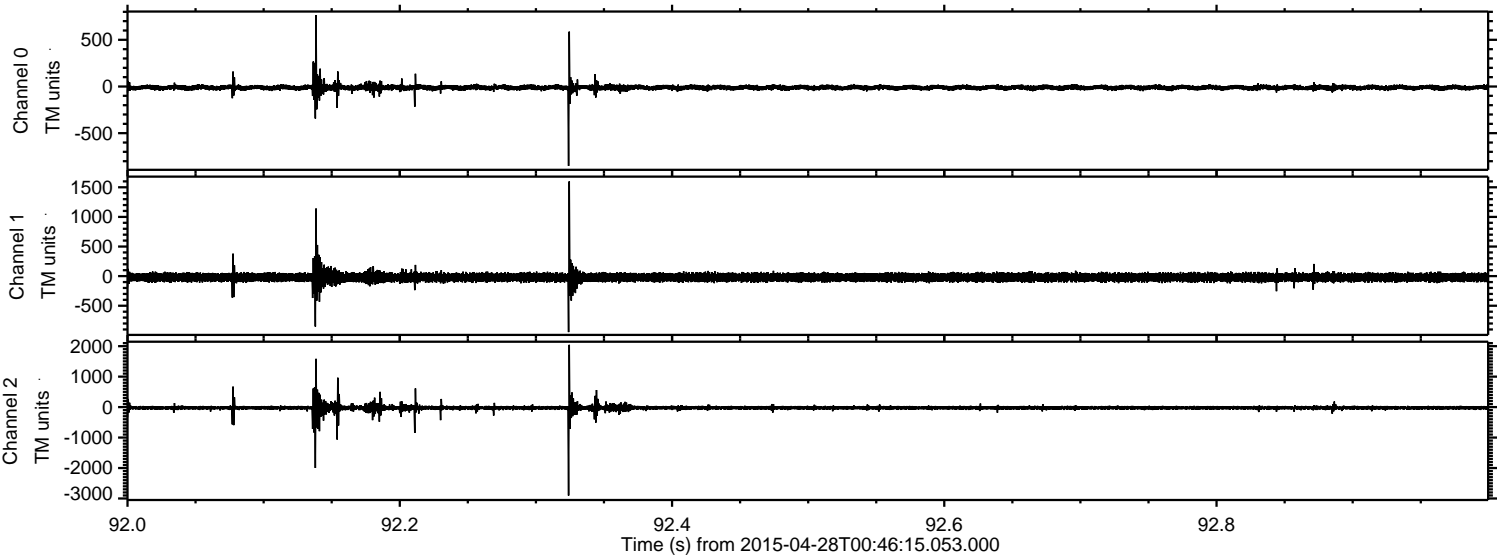
Channel 2
mn: -6368
mx: 7114
 μ : -24.1
 σ : 66.0

Processed Tue Apr 28 02:53:22 2015 by ELM ver.2012-10-06 from 001__elm20150428_004614__dat00.bin

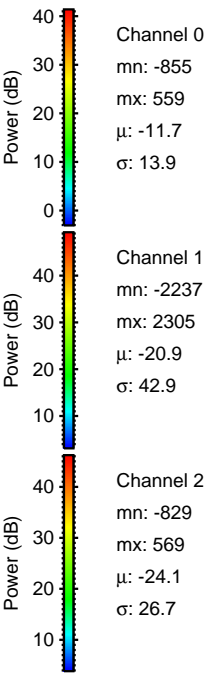
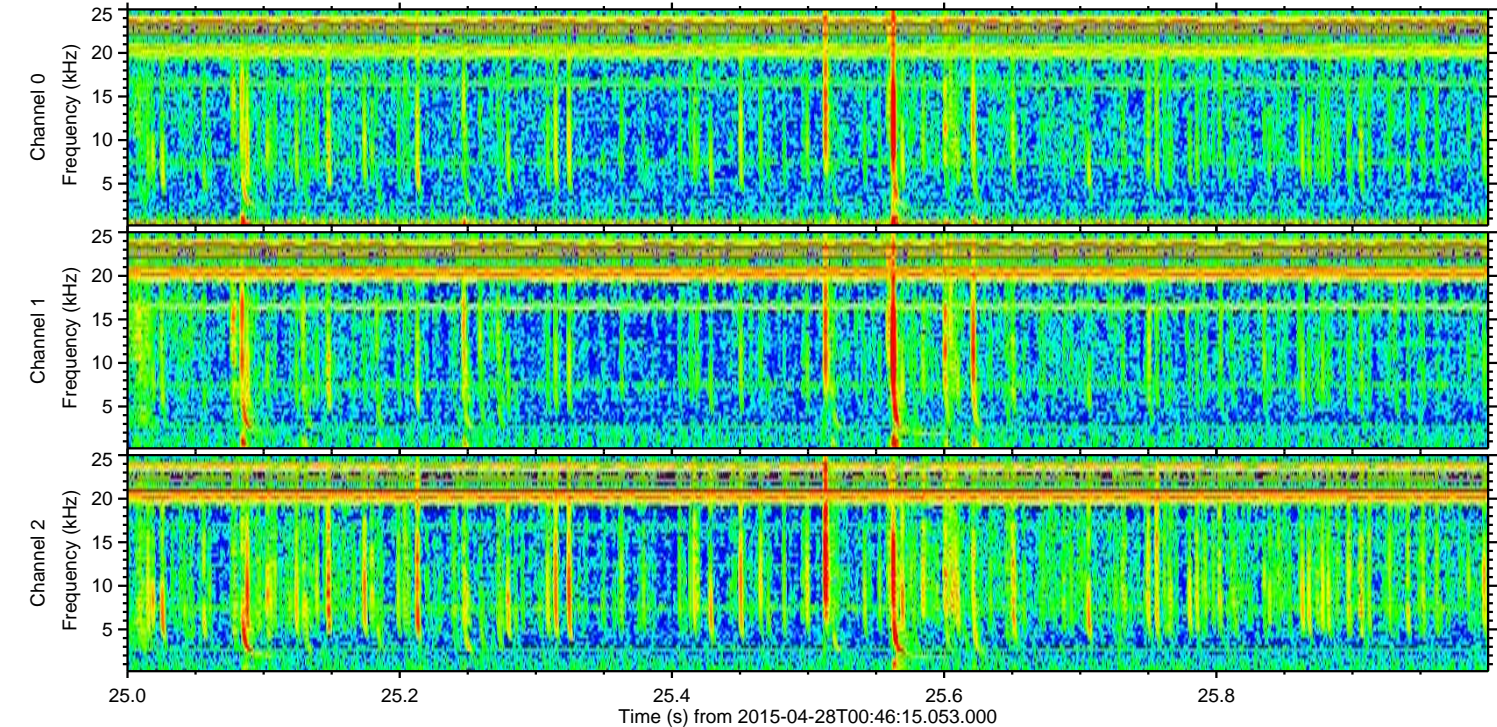
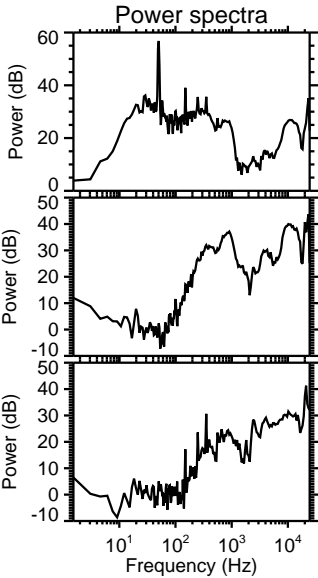
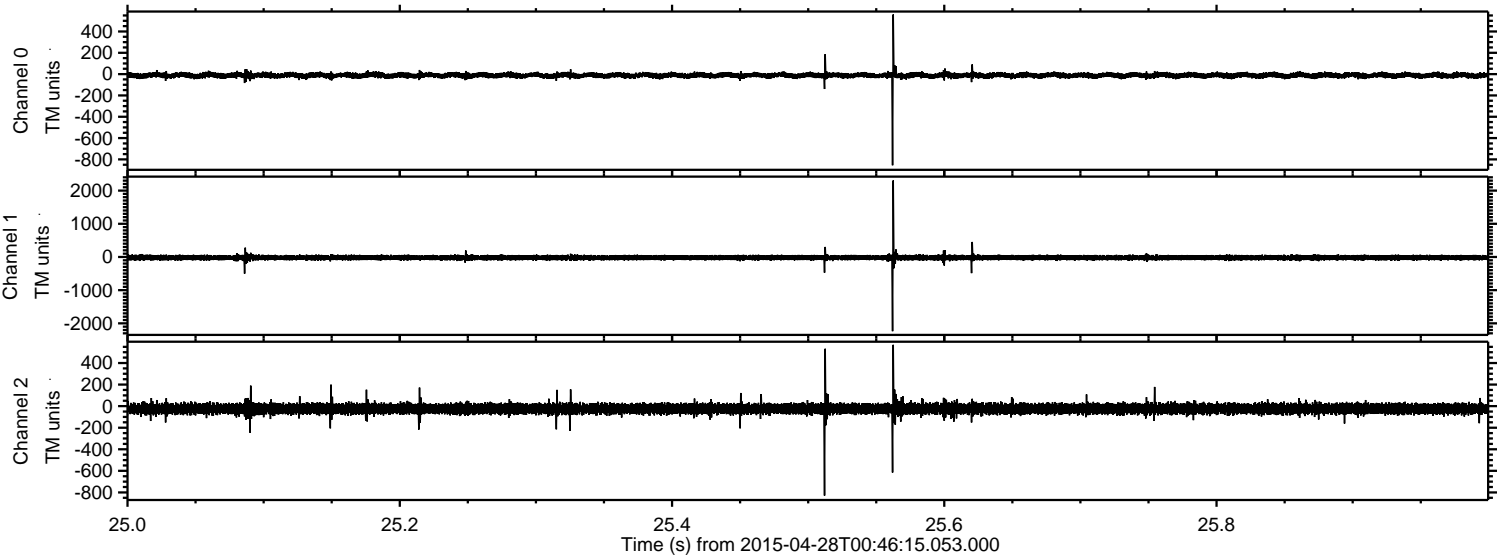


ELMAVAN 3D WAVEFORMS (Measured data sampled at 50 kHz) 49717 packets of 144 samples from 2015-04-28T00:46:15.053.000. Part 93/144

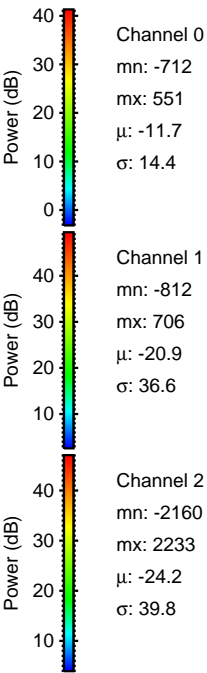
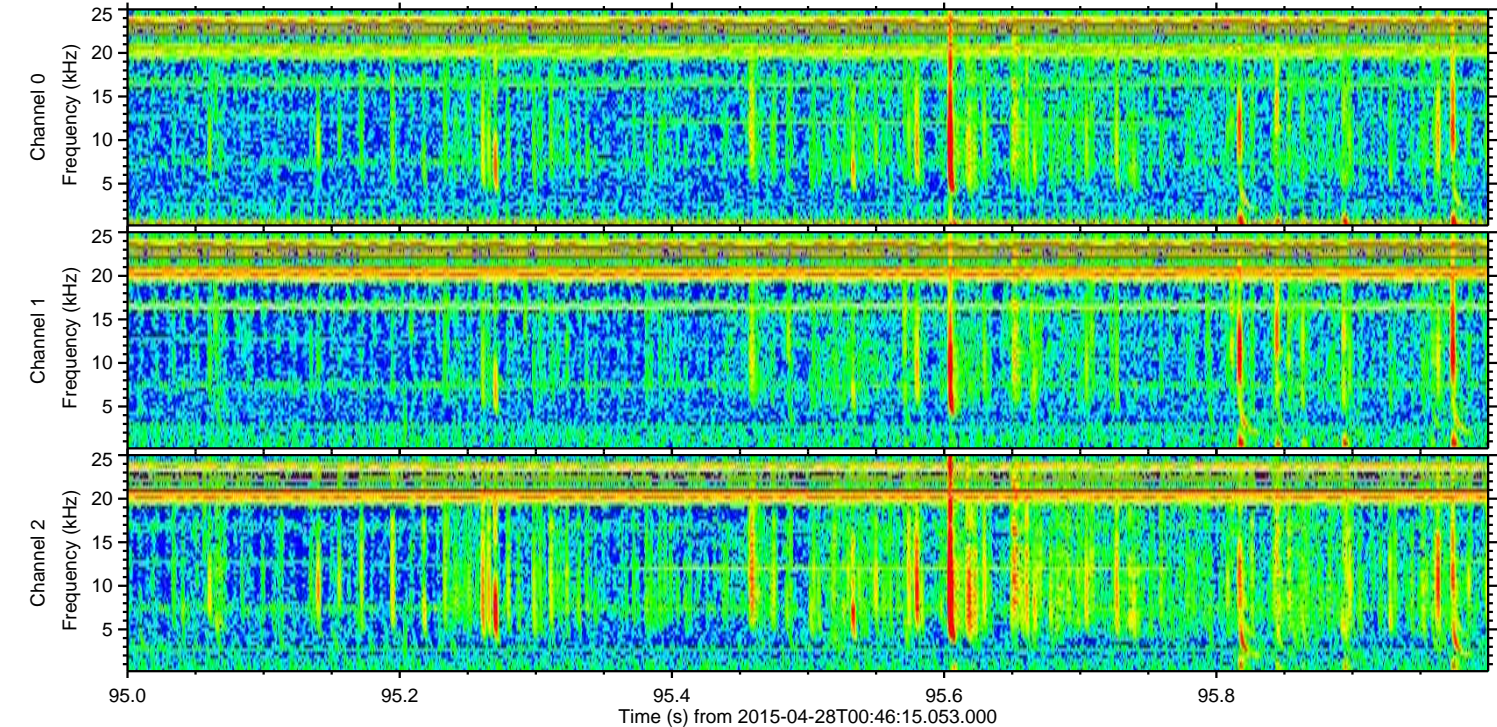
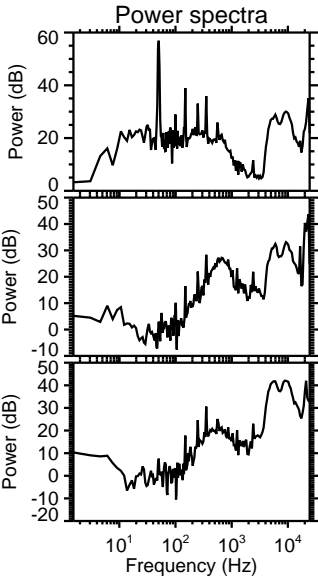
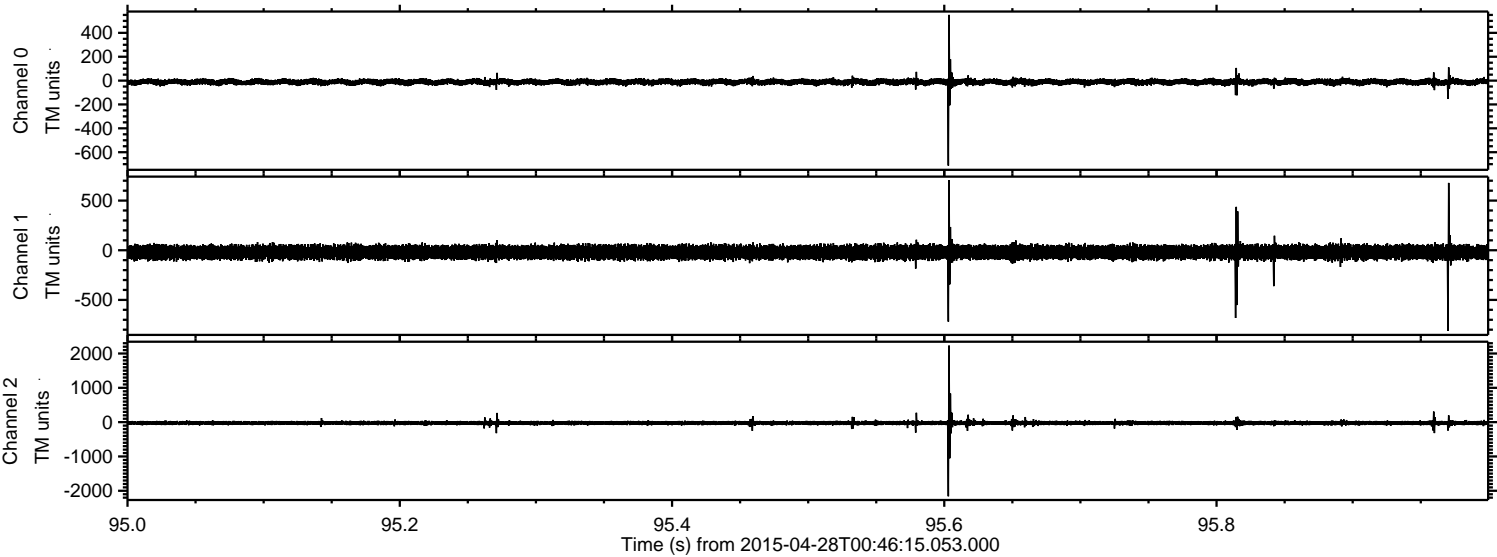
Processed Tue Apr 28 02:53:22 2015 by ELM ver.2012-10-06 from 001__elm20150428_004614__dat00.bin



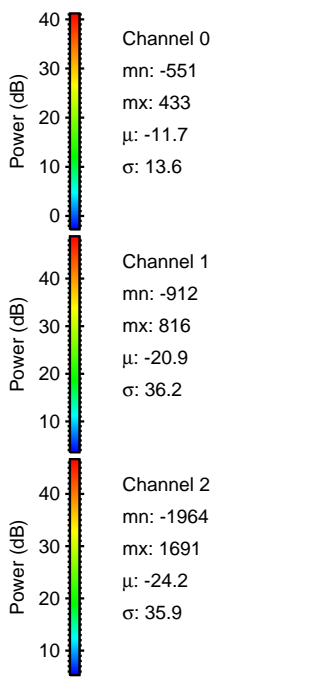
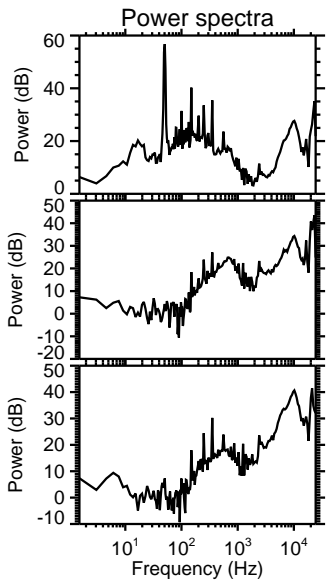
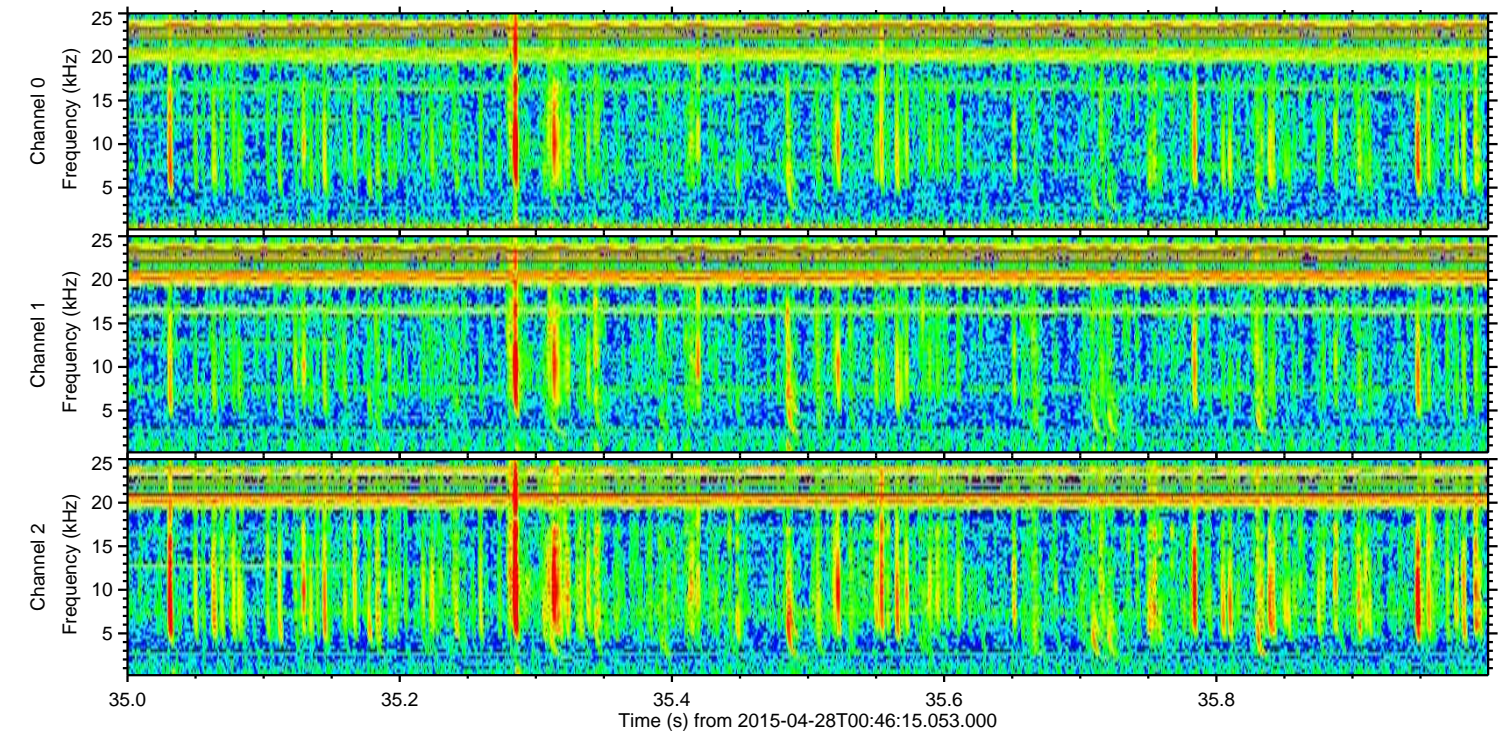
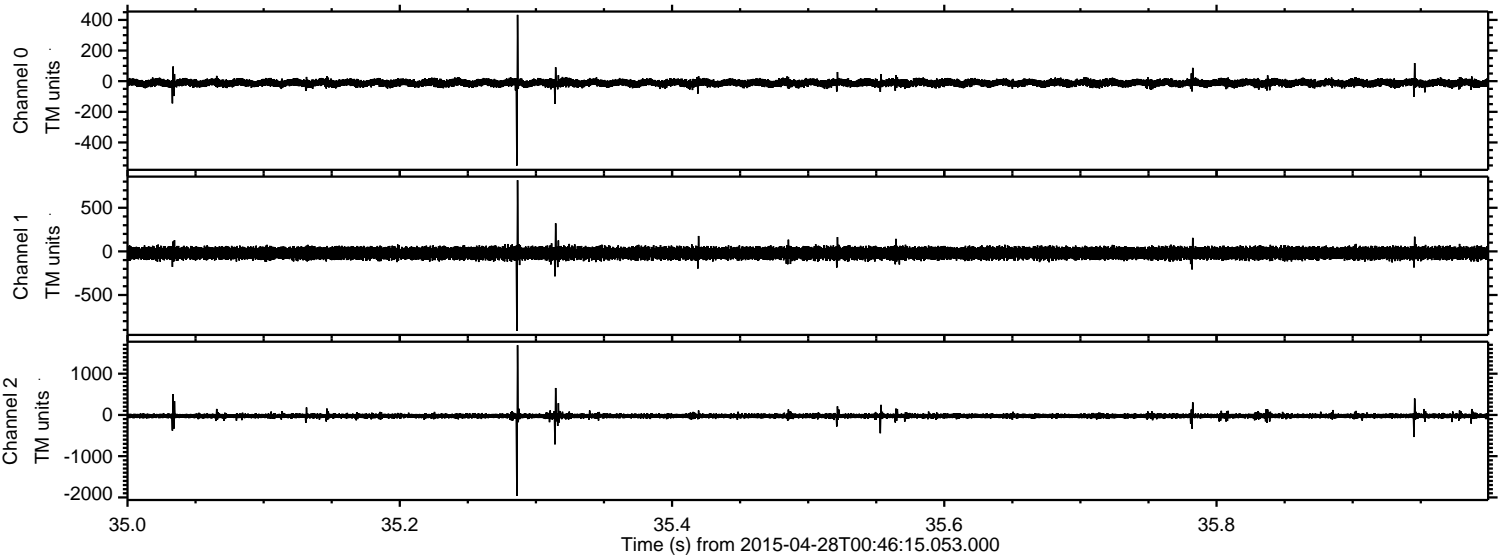
Processed Tue Apr 28 02:53:23 2015 by ELM ver.2012-10-06 from 001__elm20150428_004614__dat00.bin



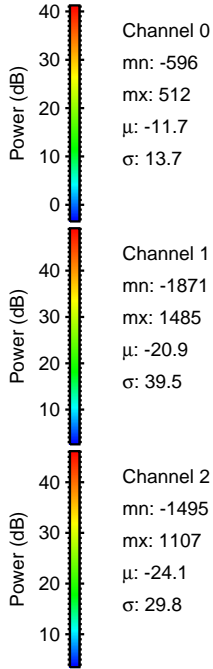
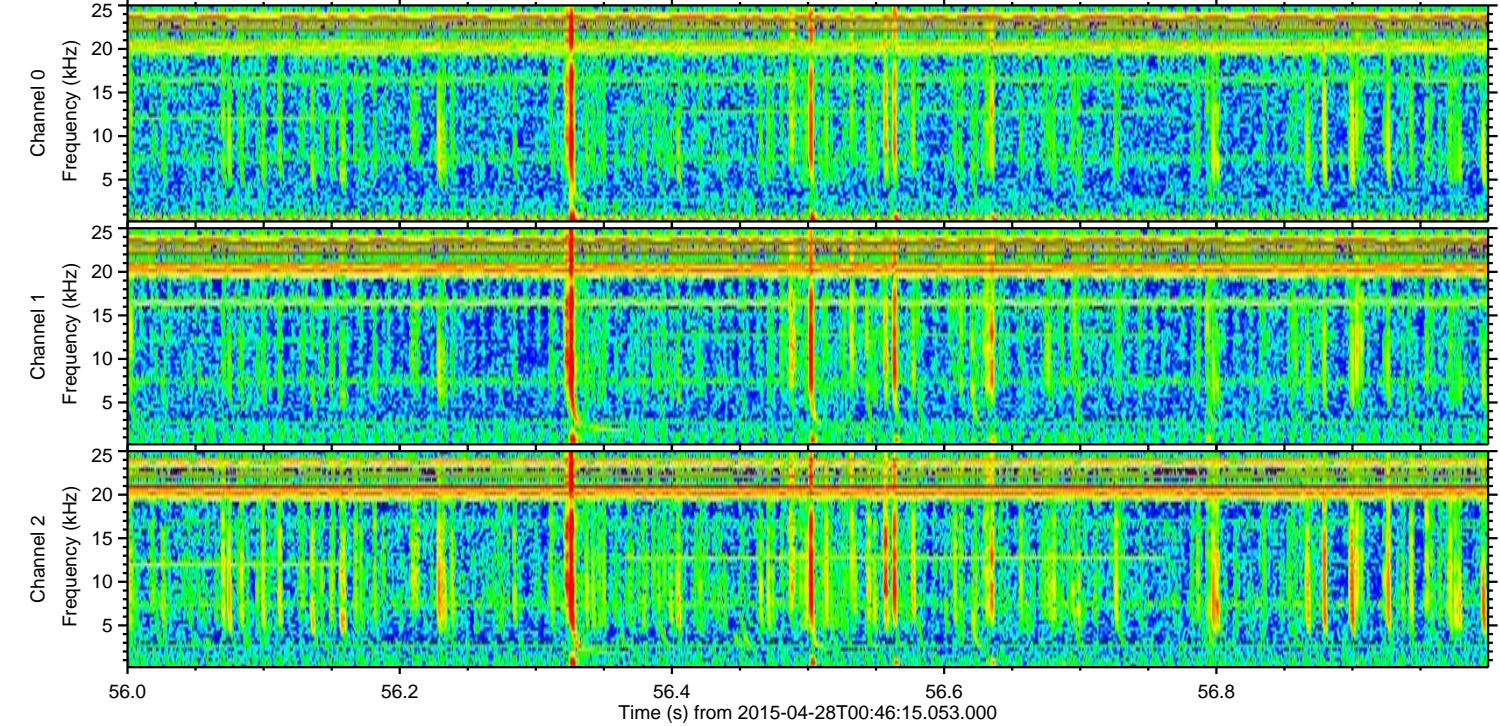
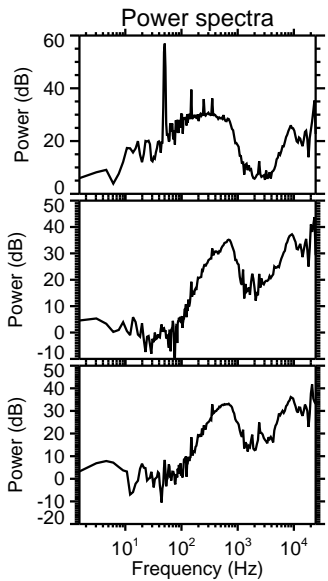
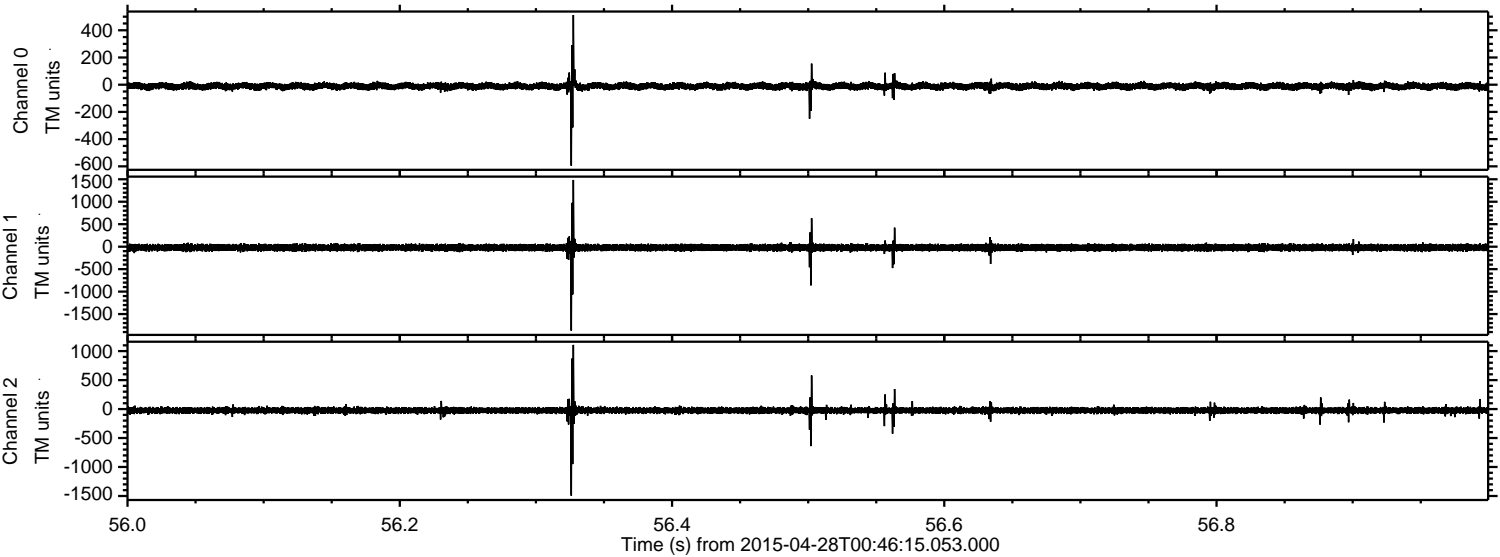
Processed Tue Apr 28 02:53:24 2015 by ELM ver.2012-10-06 from 001__elm20150428_004614__dat00.bin



Processed Tue Apr 28 02:53:25 2015 by ELM ver.2012-10-06 from 001__elm20150428_004614__dat00.bin



Processed Tue Apr 28 02:53:26 2015 by ELM ver.2012-10-06 from 001__elm20150428_004614__dat00.bin

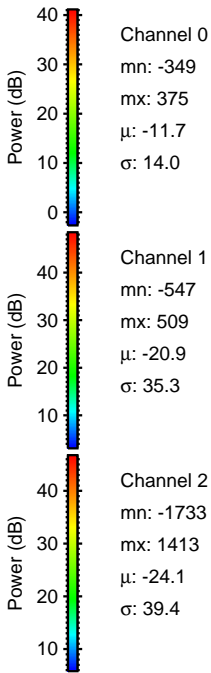
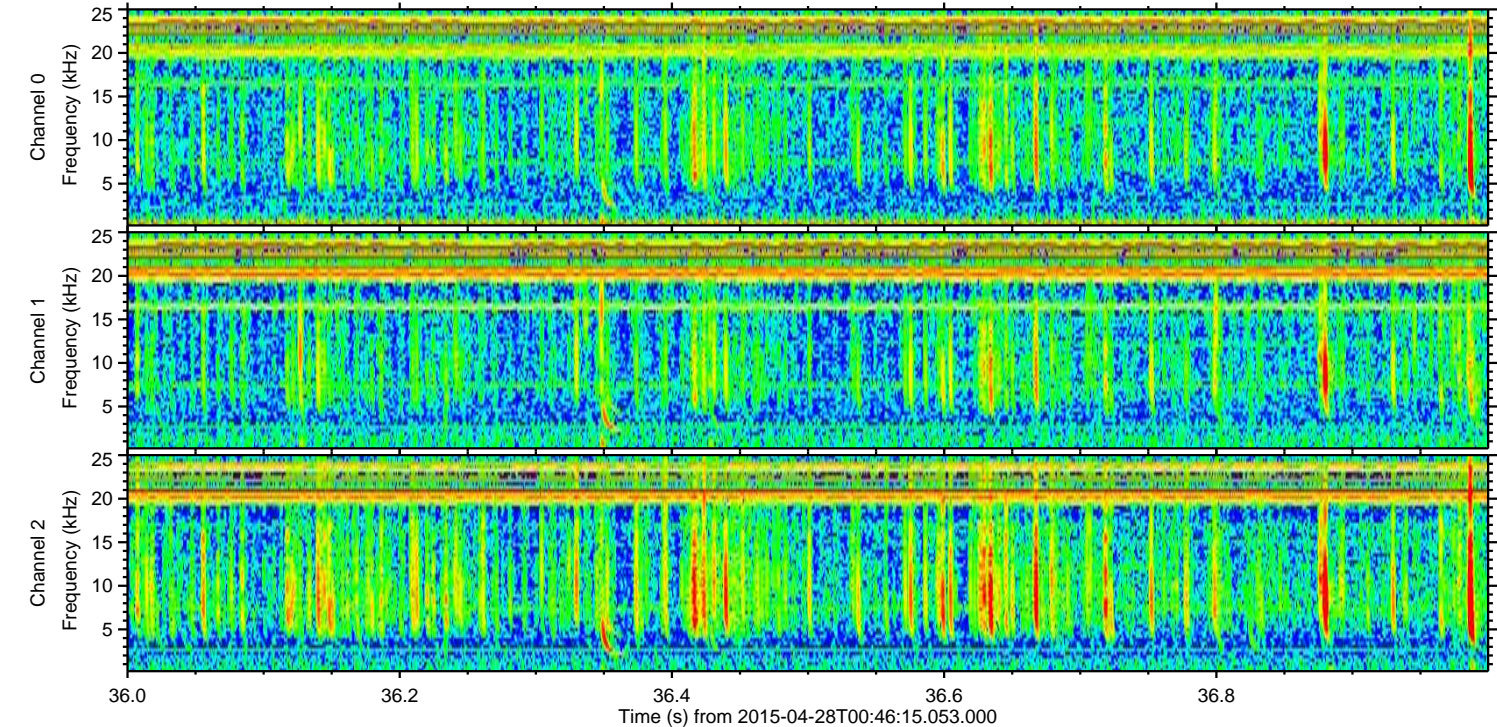
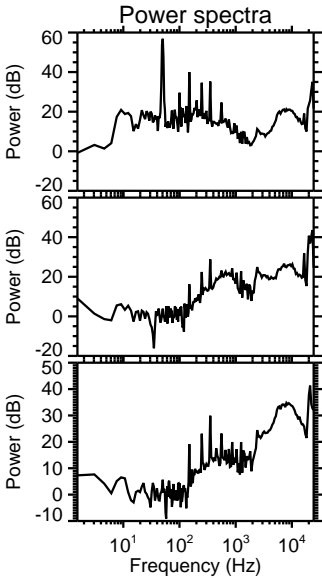
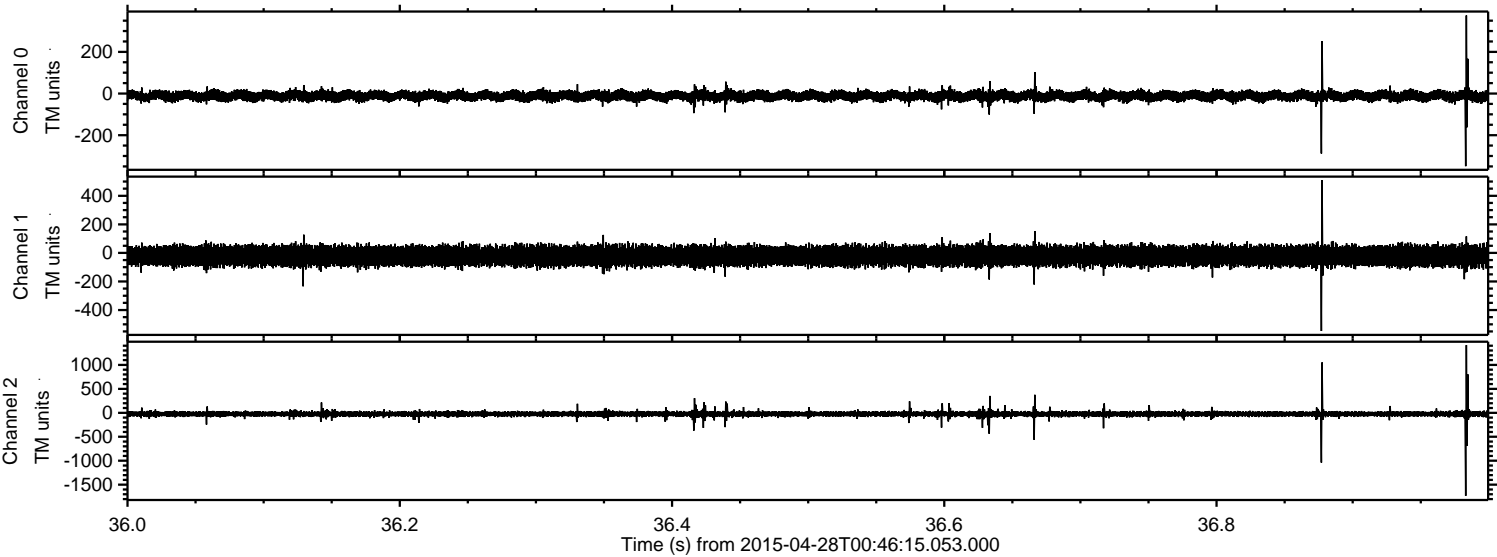


Channel 0
mn: -596
mx: 512
 μ : -11.7
 σ : 13.7

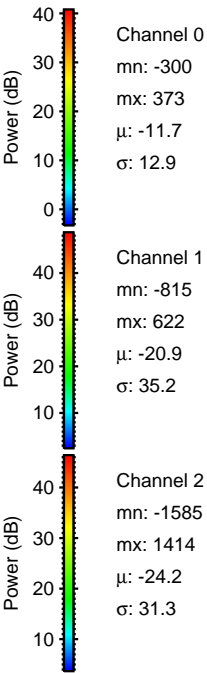
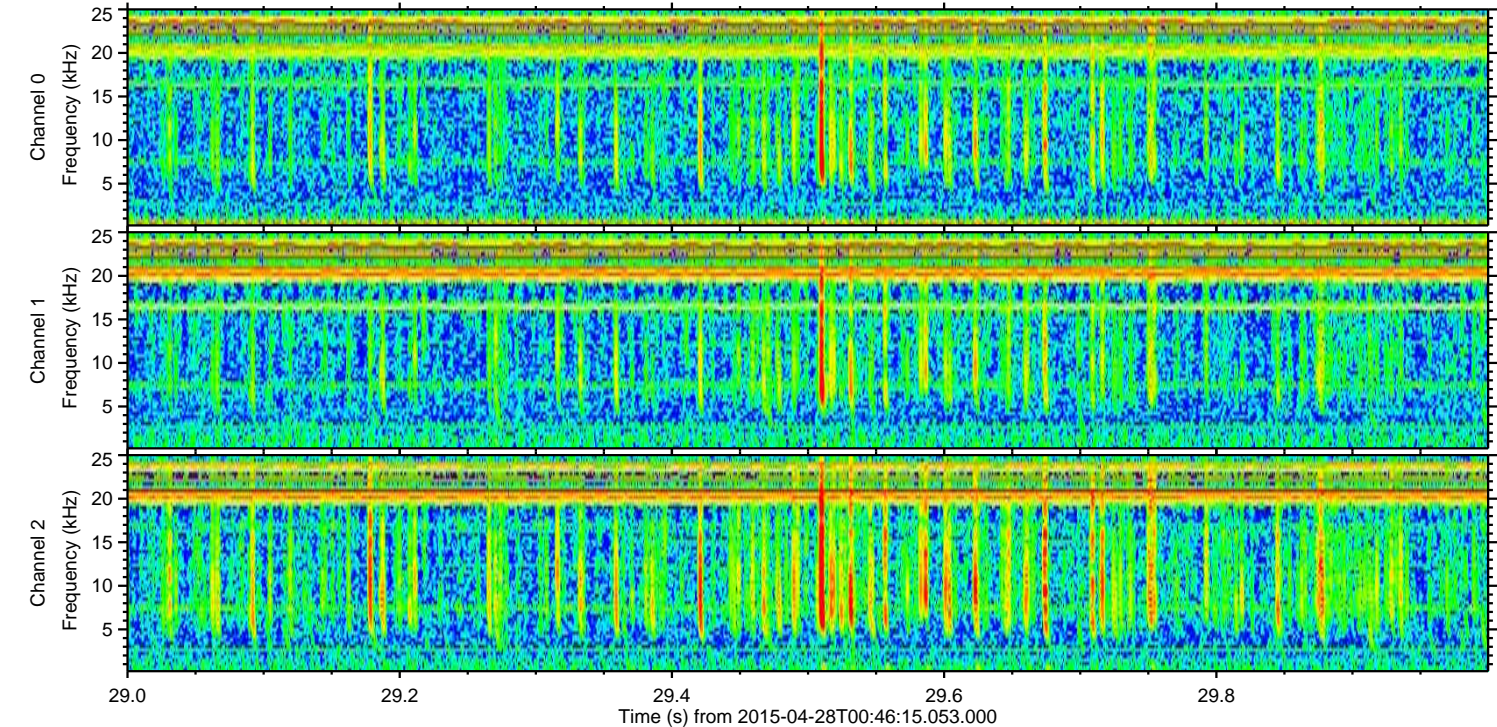
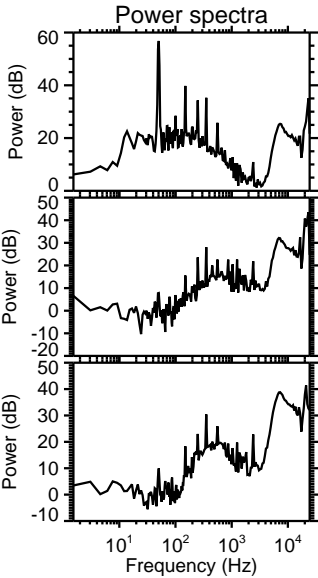
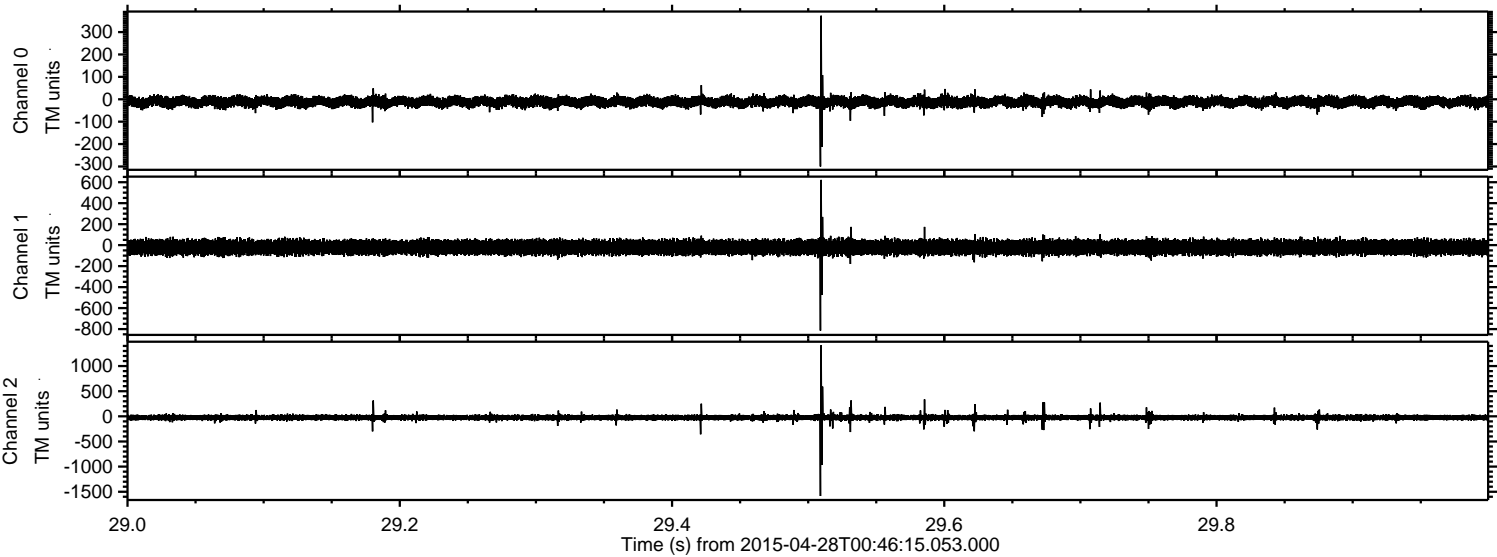
Channel 1
mn: -1871
mx: 1485
 μ : -20.9
 σ : 39.5

Channel 2
mn: -1495
mx: 1107
 μ : -24.1
 σ : 29.8

Processed Tue Apr 28 02:53:27 2015 by ELM ver.2012-10-06 from 001__elm20150428_004614__dat00.bin



Processed Tue Apr 28 02:53:28 2015 by ELM ver.2012-10-06 from 001__elm20150428_004614__dat00.bin



Processed Tue Apr 28 02:53:29 2015 by ELM ver.2012-10-06 from 001__elm20150428_004614__dat00.bin

