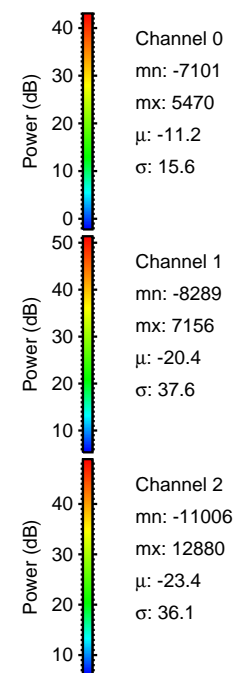
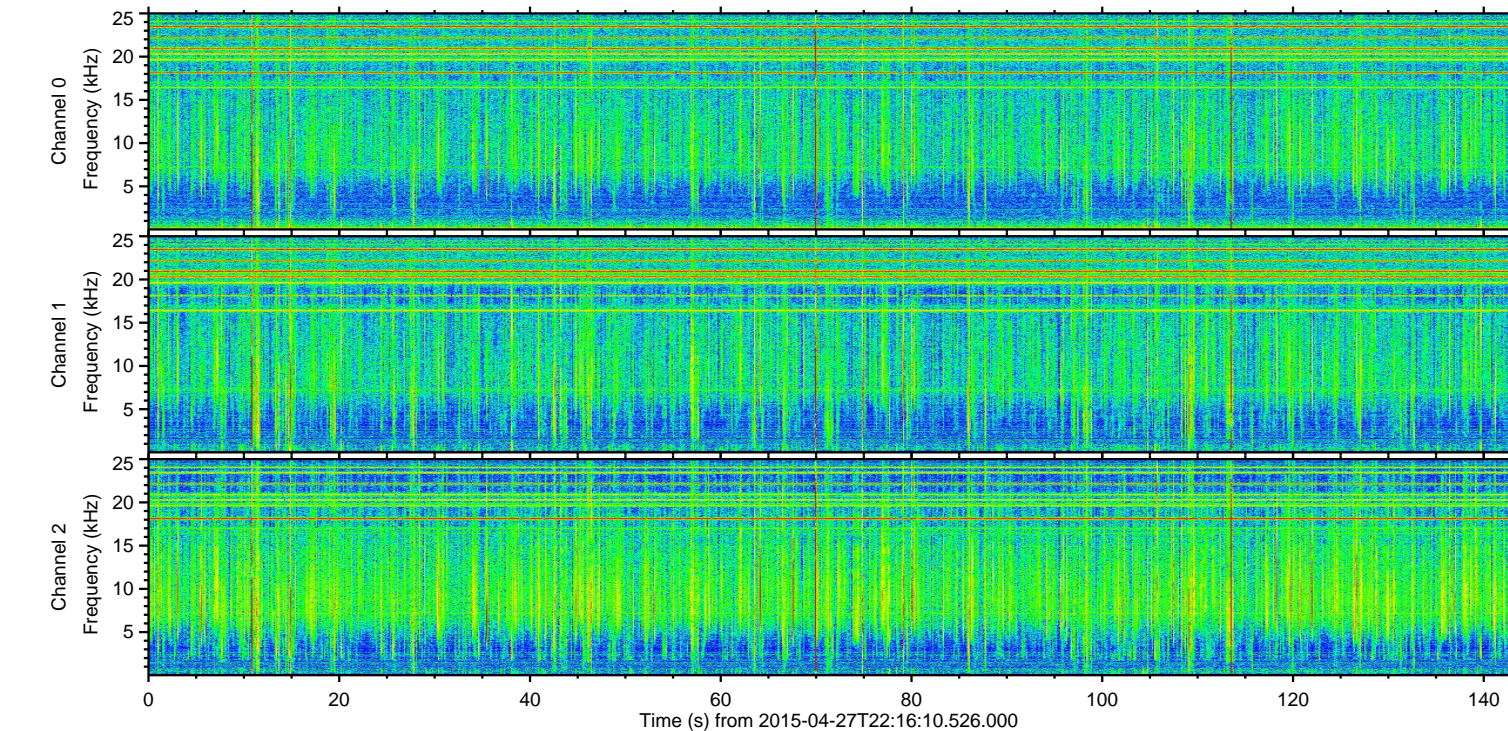
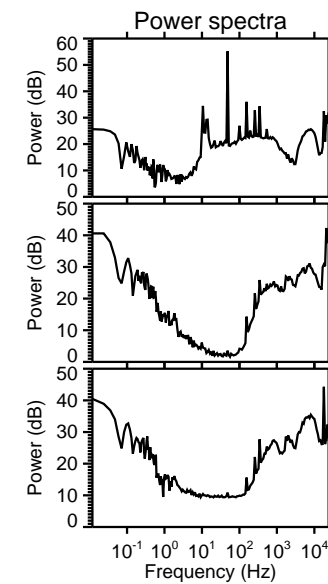
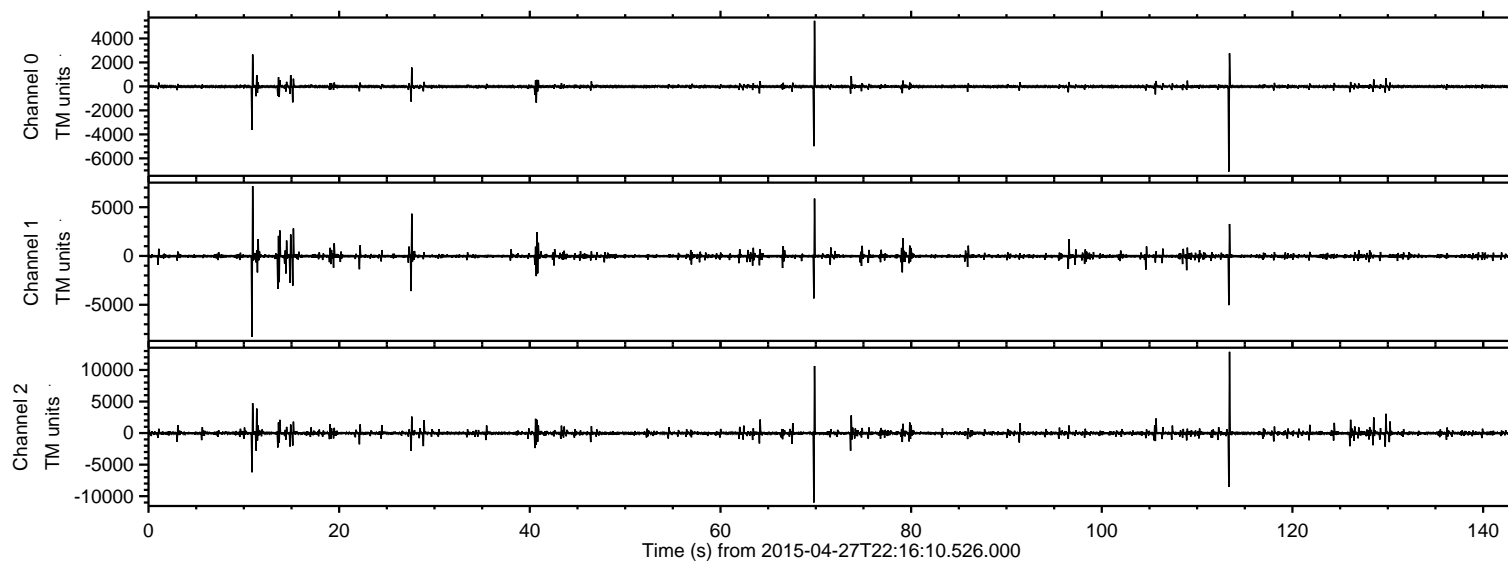


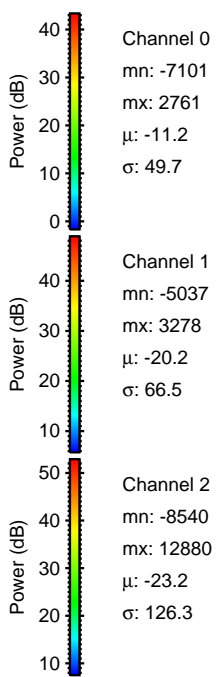
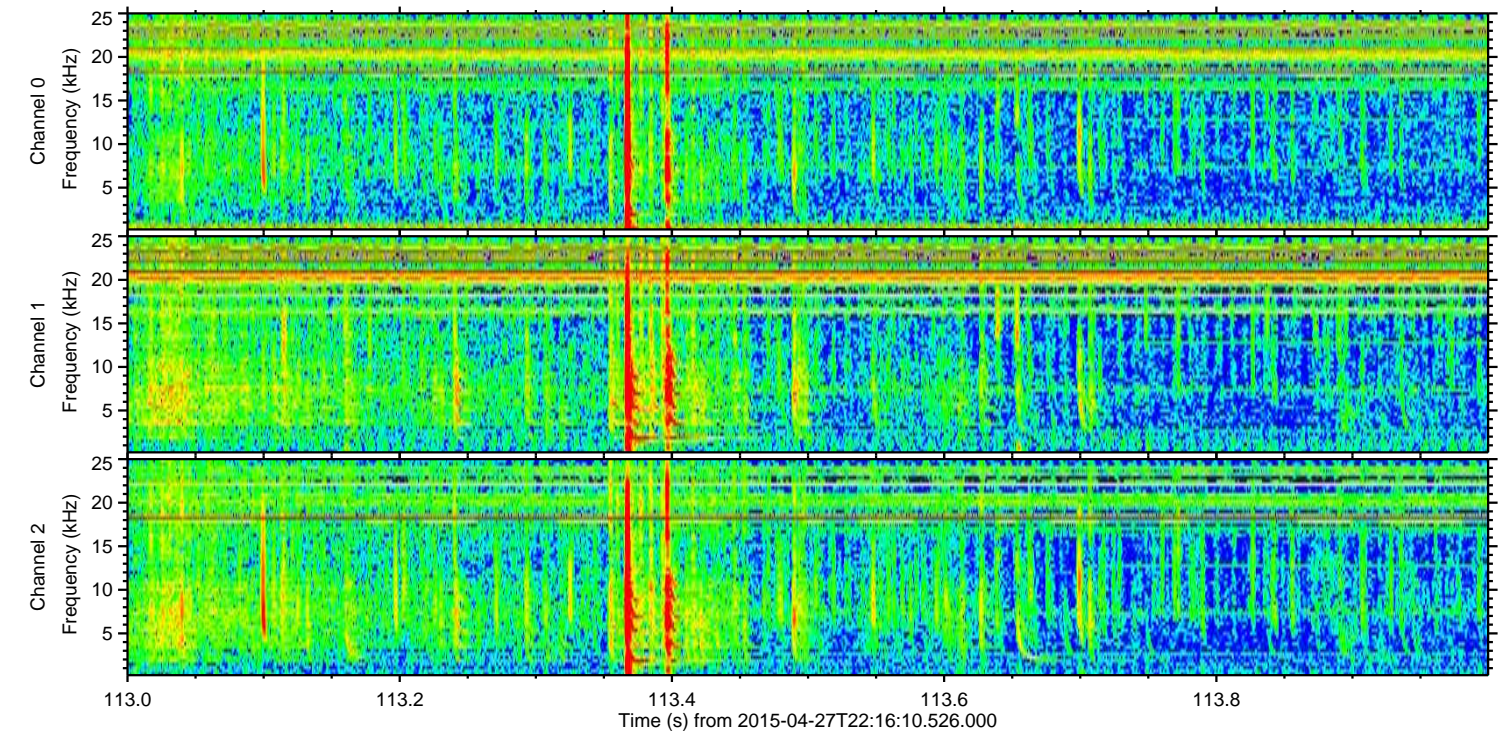
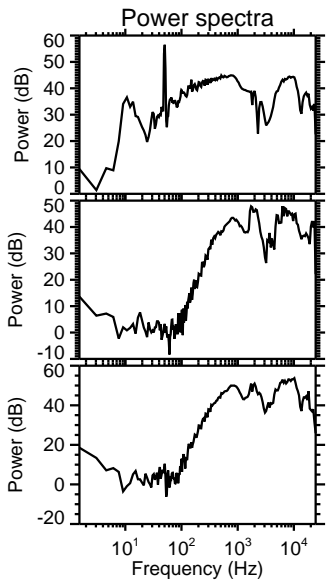
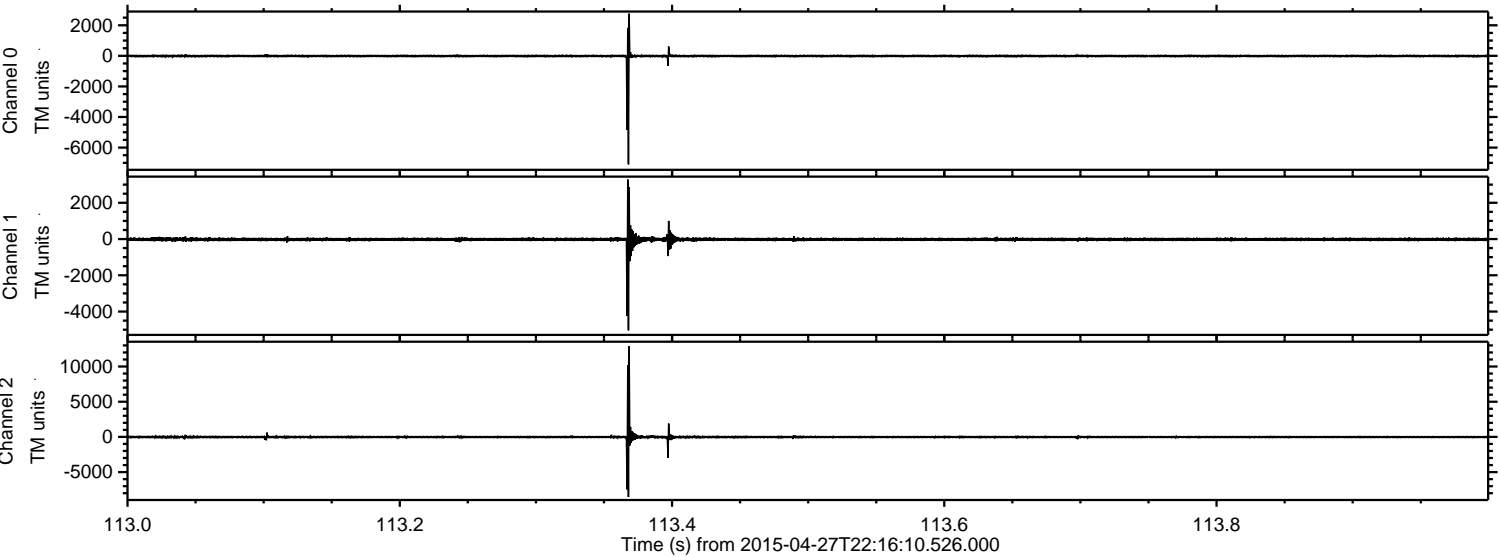
ELMAVAN 3D WAVEFORMS (Measured data sampled at 50 kHz) 49559 packets of 144 samples from 2015-04-27T22:16:10.526.000.

Processed Tue Apr 28 00:25:04 2015 by ELM ver.2012-10-06 from 001__elm20150427_221609__dat00.bin



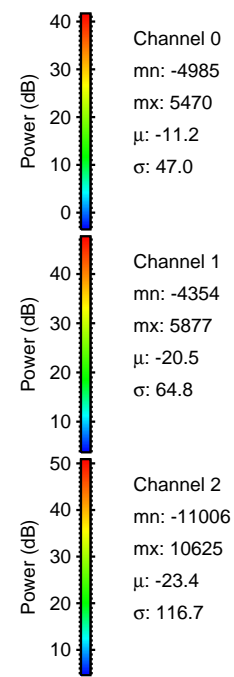
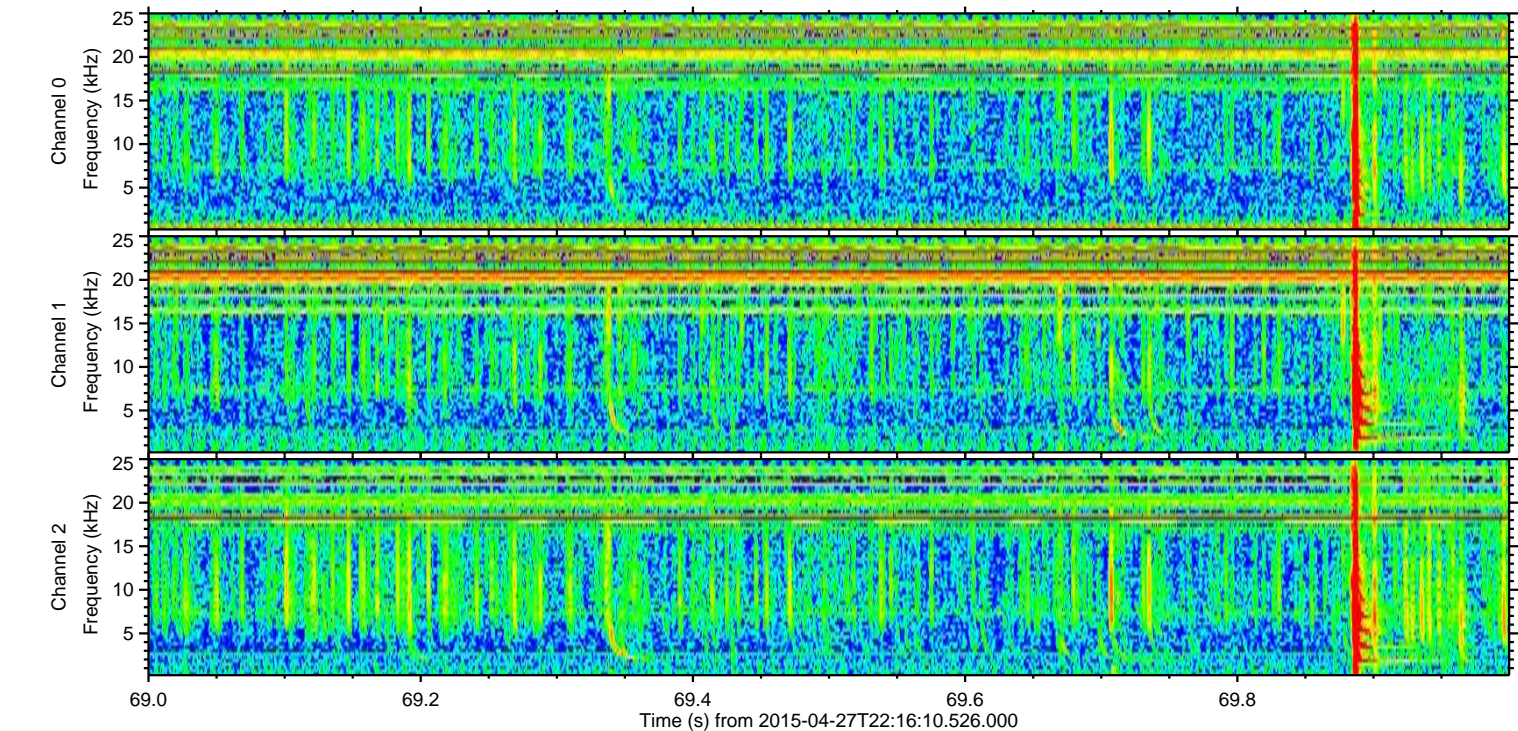
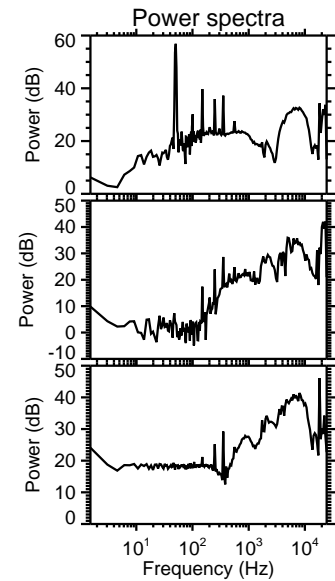
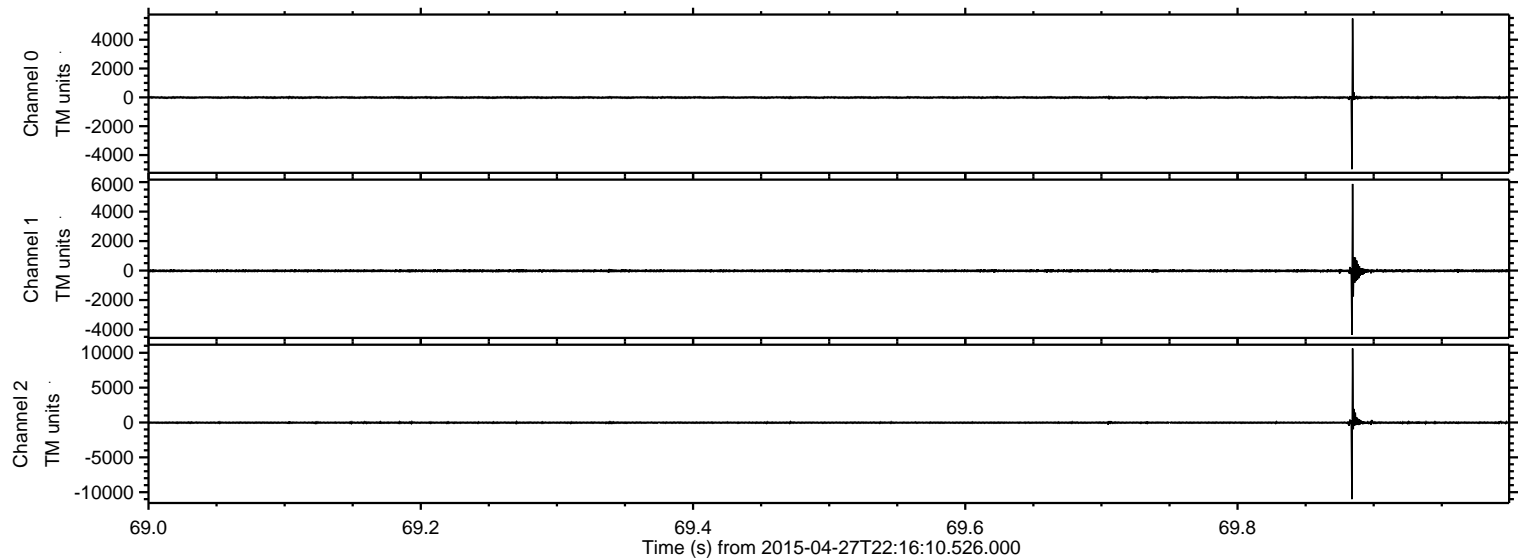
ELMAVAN 3D WAVEFORMS (Measured data sampled at 50 kHz) 49559 packets of 144 samples from 2015-04-27T22:16:10.526.000. Part 114/143

Processed Tue Apr 28 00:25:19 2015 by ELM ver.2012-10-06 from 001__elm20150427_221609__dat00.bin



ELMAVAN 3D WAVEFORMS (Measured data sampled at 50 kHz) 49559 packets of 144 samples from 2015-04-27T22:16:10.526.000. Part 70/143

Processed Tue Apr 28 00:25:20 2015 by ELM ver.2012-10-06 from 001__elm20150427_221609__dat00.bin



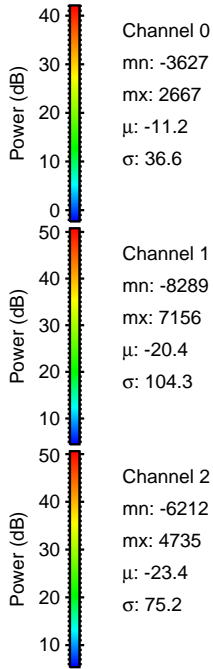
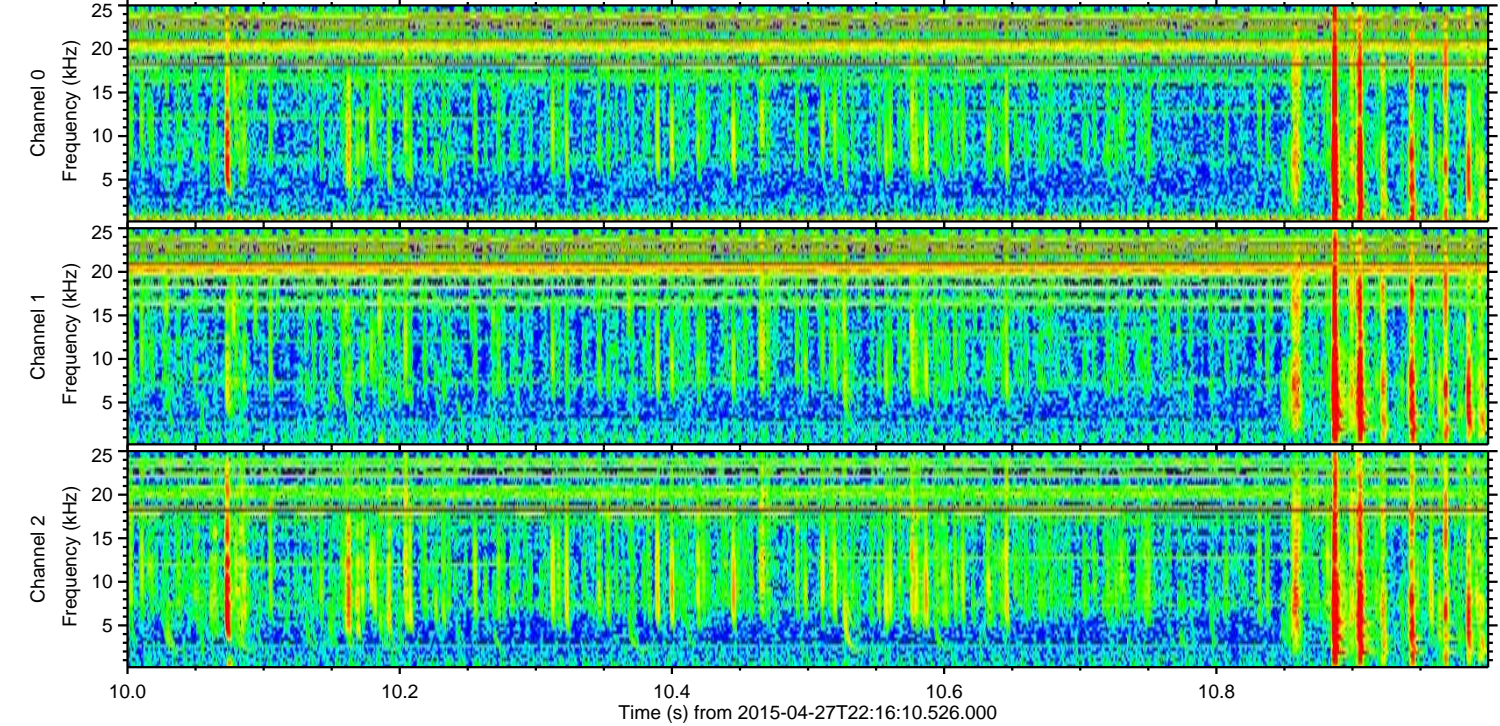
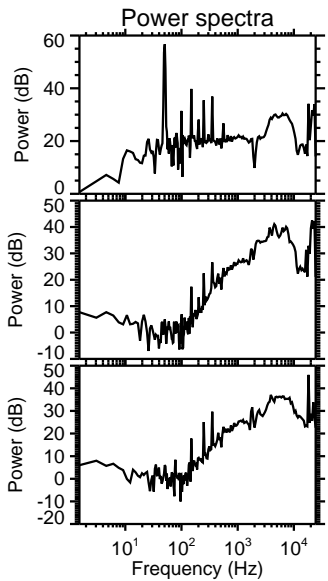
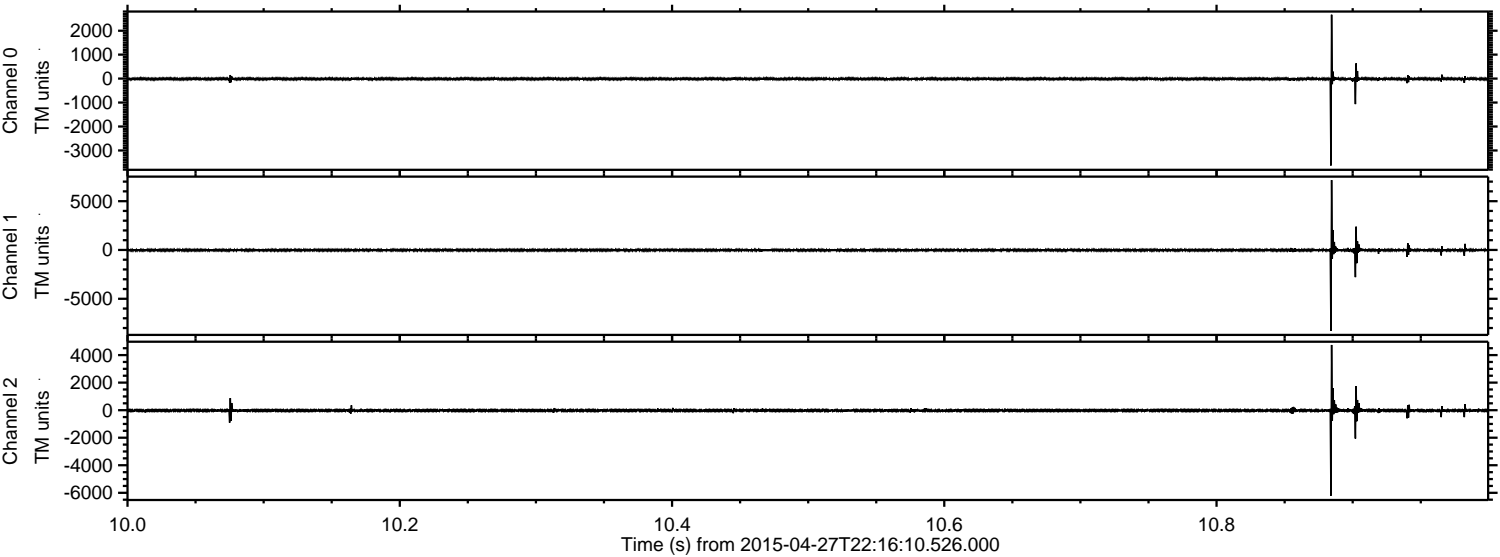
Channel 0
mn: -4985
mx: 5470
 μ : -11.2
 σ : 47.0

Channel 1
mn: -4354
mx: 5877
 μ : -20.5
 σ : 64.8

Channel 2
mn: -11006
mx: 10625
 μ : -23.4
 σ : 116.7

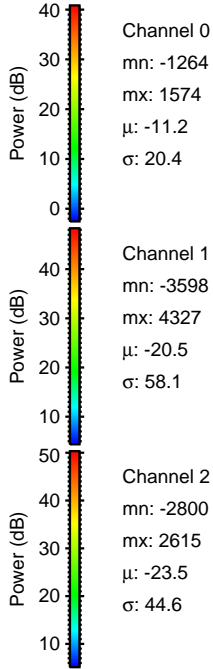
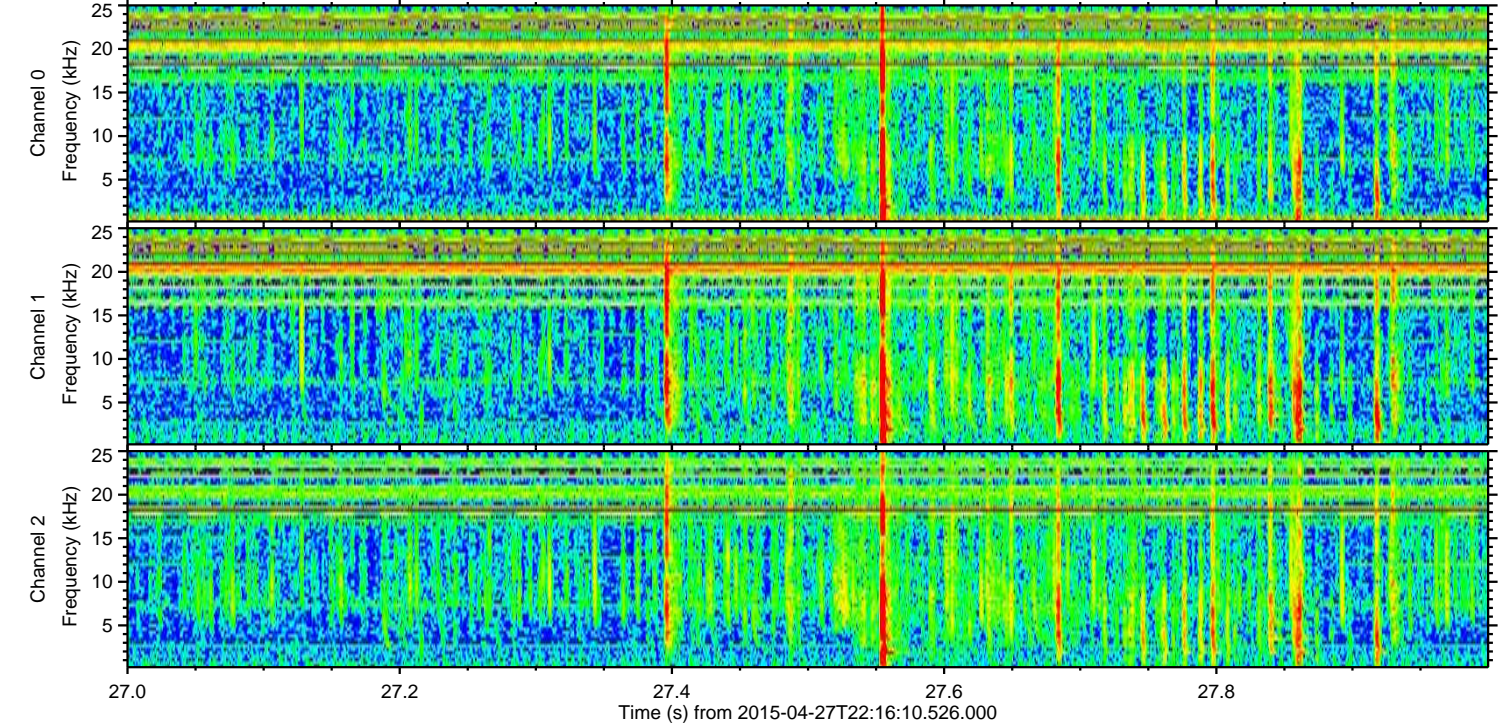
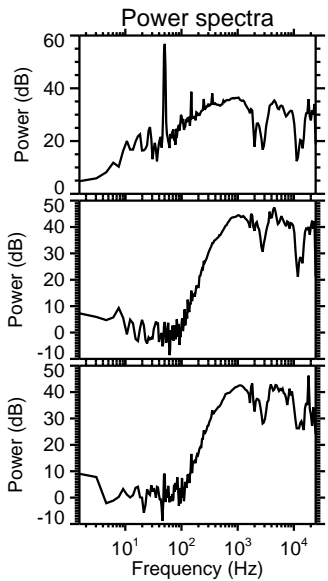
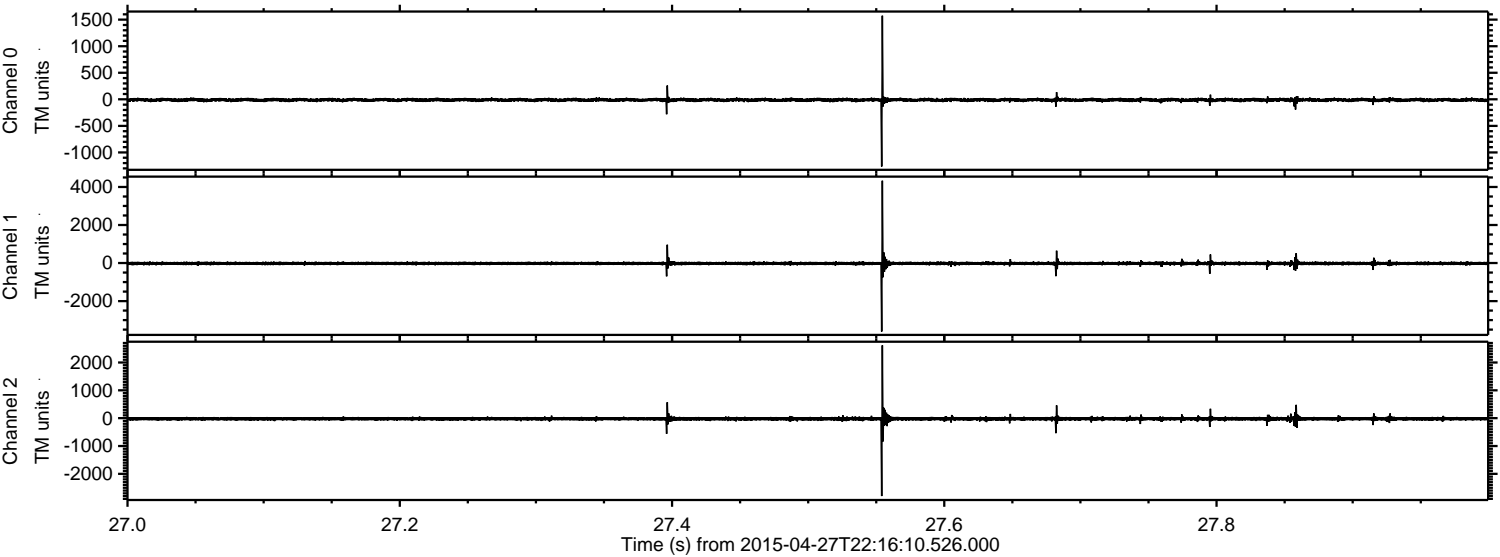
ELMAVAN 3D WAVEFORMS (Measured data sampled at 50 kHz) 49559 packets of 144 samples from 2015-04-27T22:16:10.526.000. Part 11/143

Processed Tue Apr 28 00:25:21 2015 by ELM ver.2012-10-06 from 001__elm20150427_221609__dat00.bin

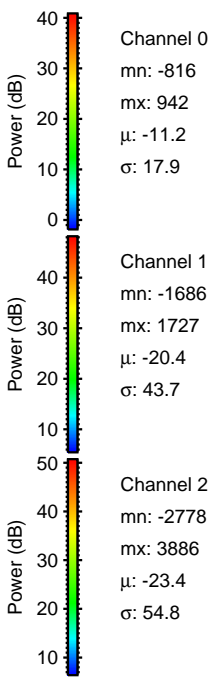
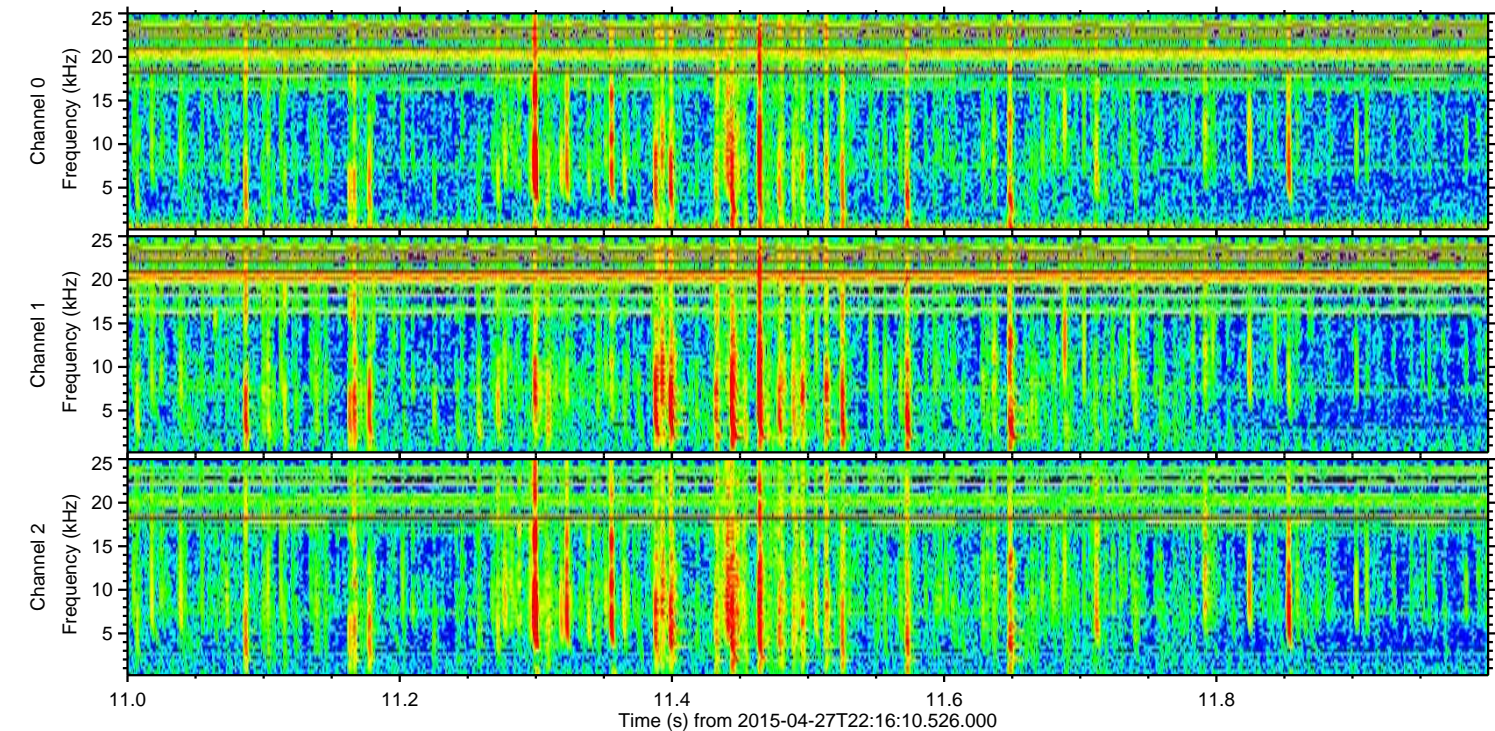
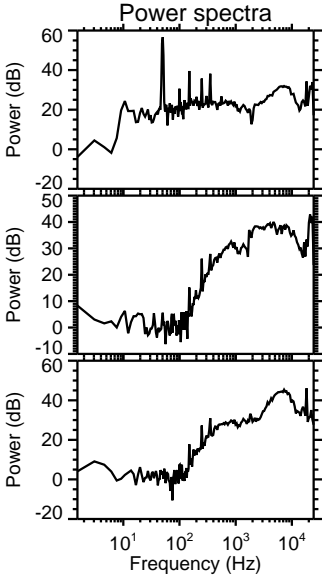
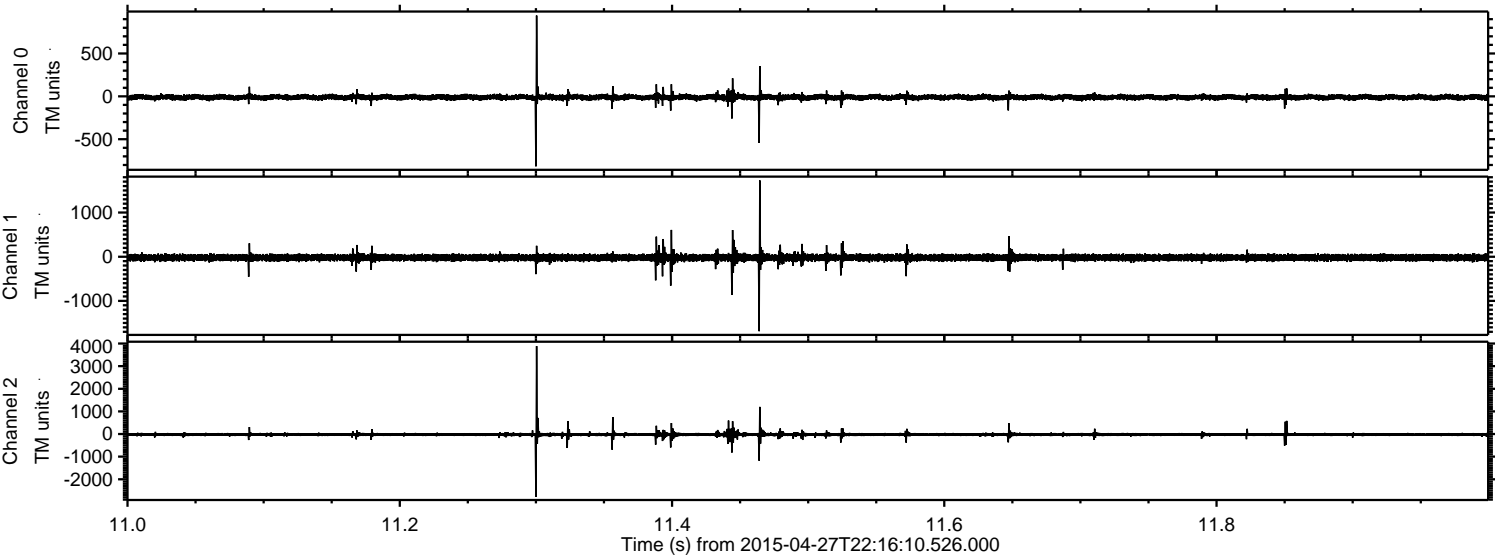


ELMAVAN 3D WAVEFORMS (Measured data sampled at 50 kHz) 49559 packets of 144 samples from 2015-04-27T22:16:10.526.000. Part 28/143

Processed Tue Apr 28 00:25:22 2015 by ELM ver.2012-10-06 from 001__elm20150427_221609__dat00.bin



Processed Tue Apr 28 00:25:23 2015 by ELM ver.2012-10-06 from 001__elm20150427_221609__dat00.bin



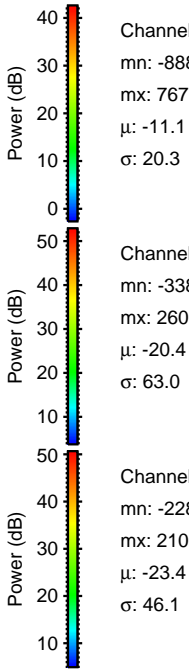
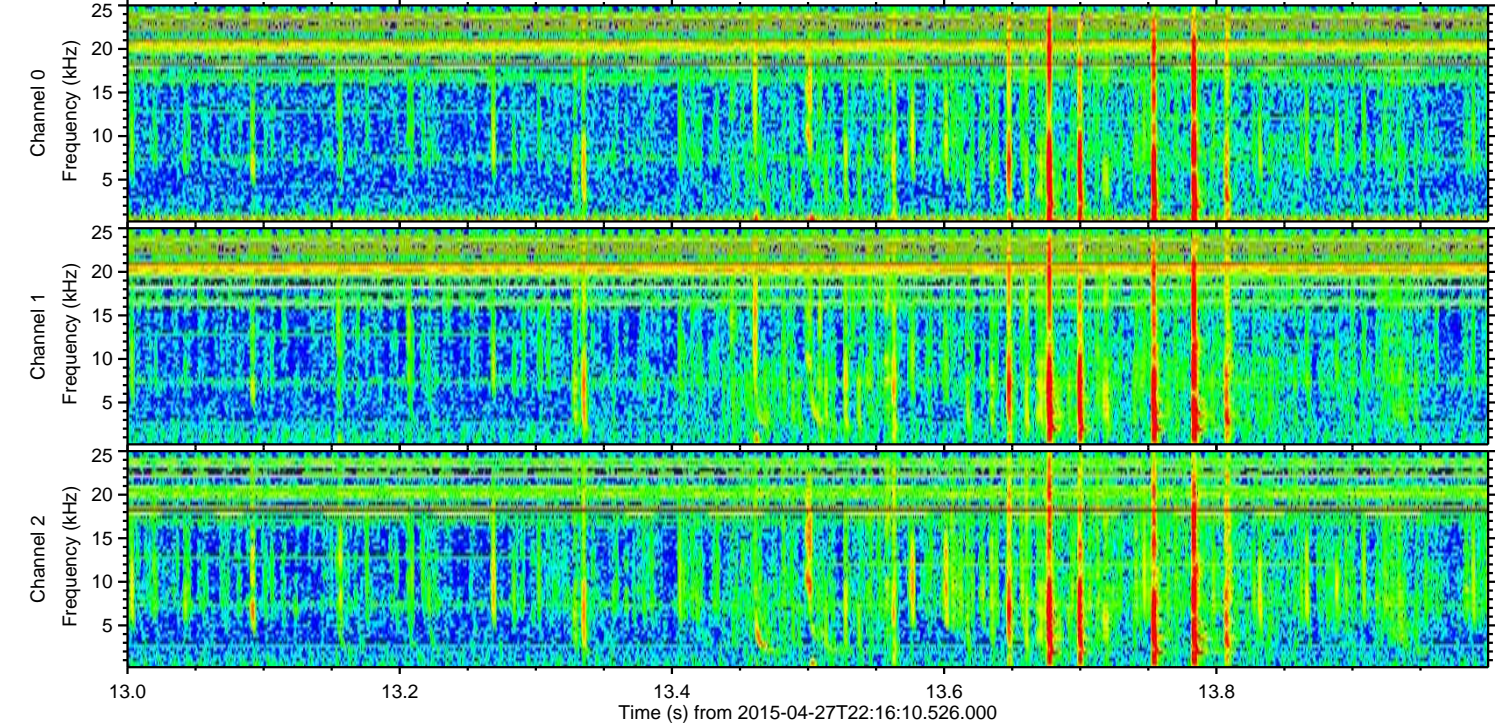
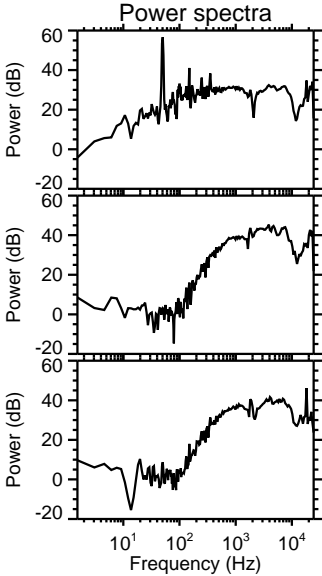
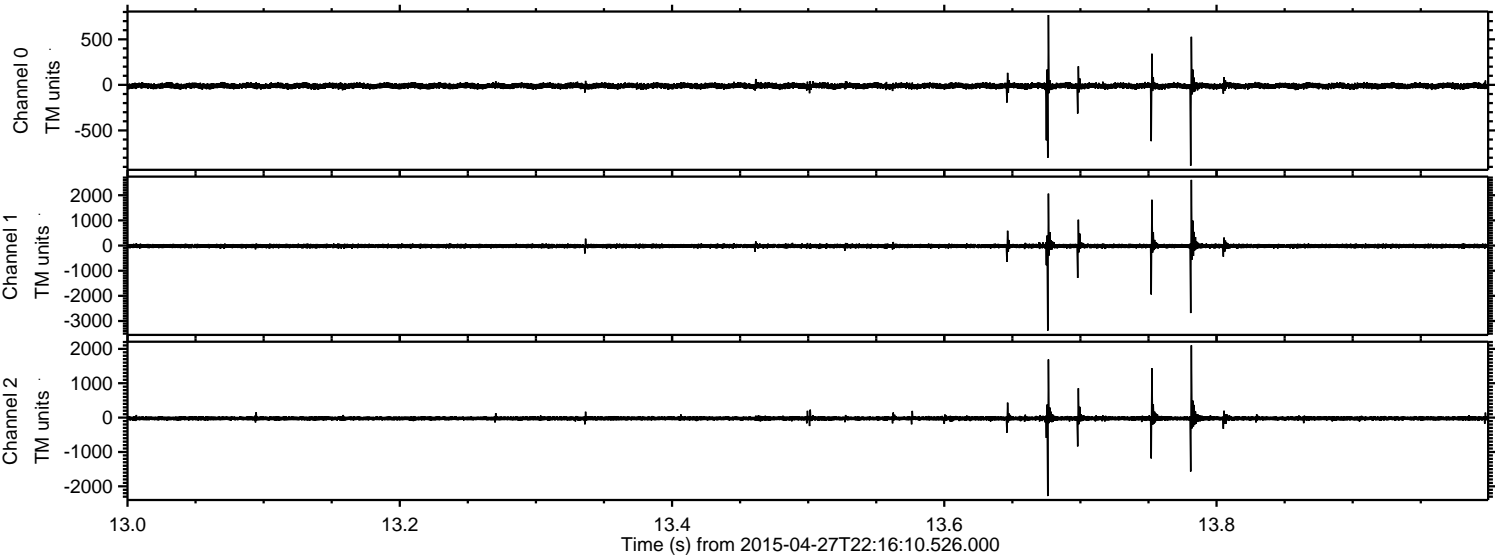
Channel 0
mn: -816
mx: 942
 μ : -11.2
 σ : 17.9

Channel 1
mn: -1686
mx: 1727
 μ : -20.4
 σ : 43.7

Channel 2
mn: -2778
mx: 3886
 μ : -23.4
 σ : 54.8

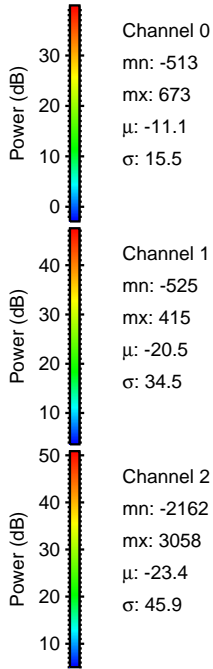
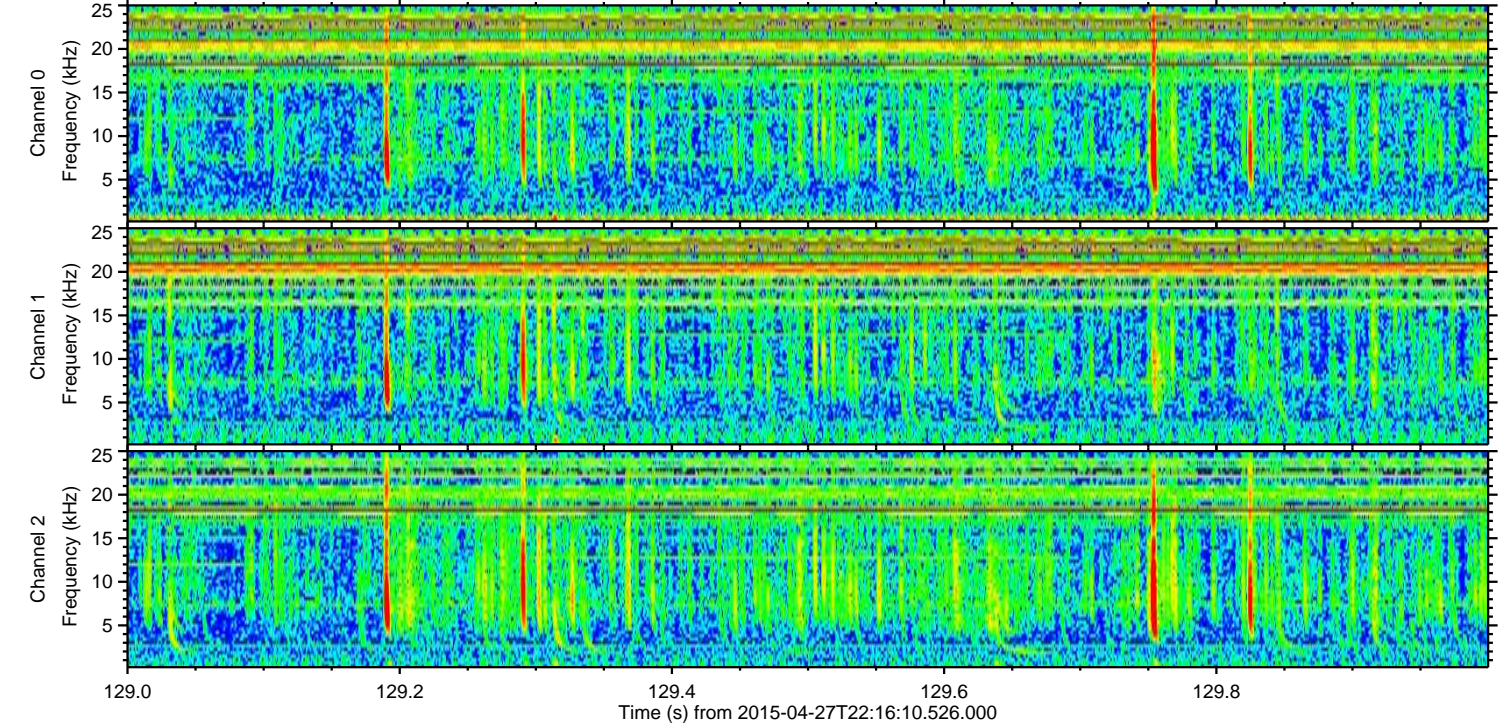
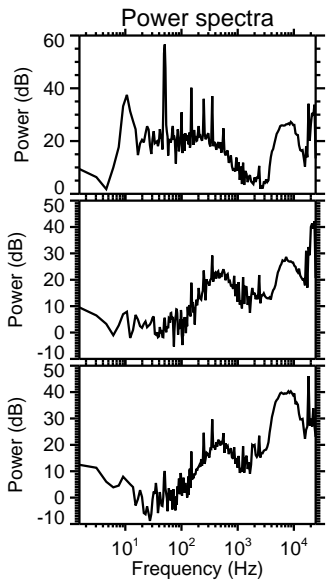
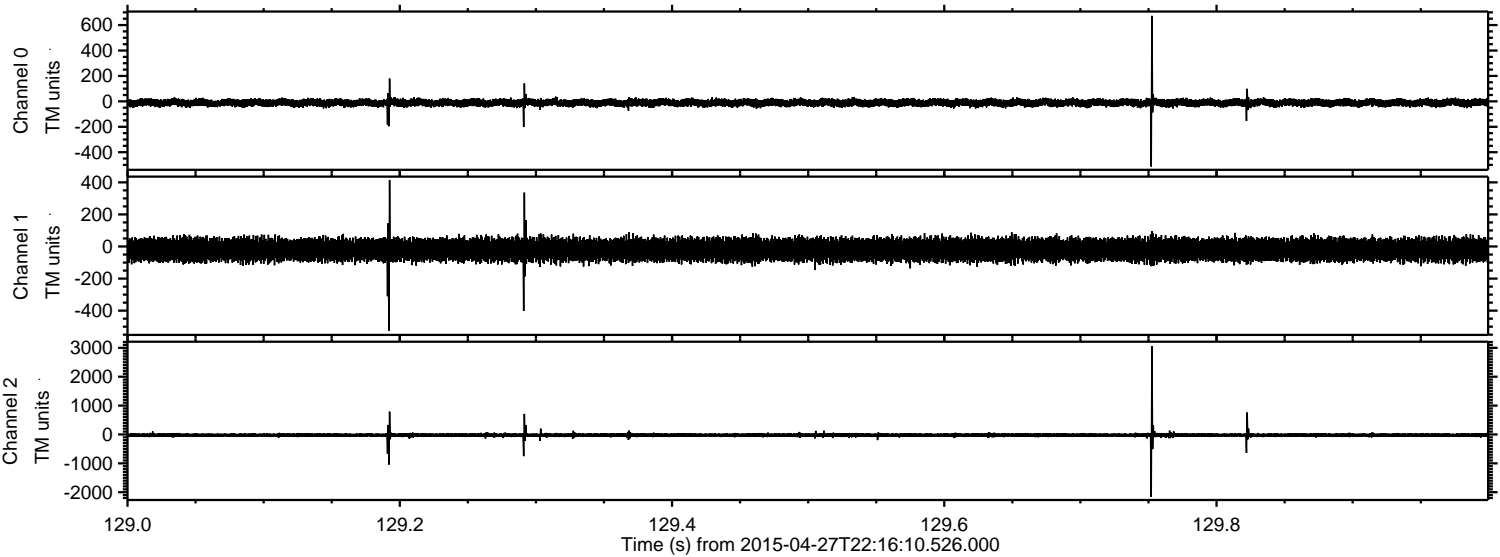
ELMAVAN 3D WAVEFORMS (Measured data sampled at 50 kHz) 49559 packets of 144 samples from 2015-04-27T22:16:10.526.000. Part 14/143

Processed Tue Apr 28 00:25:24 2015 by ELM ver.2012-10-06 from 001__elm20150427_221609__dat00.bin



ELMAVAN 3D WAVEFORMS (Measured data sampled at 50 kHz) 49559 packets of 144 samples from 2015-04-27T22:16:10.526.000. Part 130/143

Processed Tue Apr 28 00:25:25 2015 by ELM ver.2012-10-06 from 001__elm20150427_221609__dat00.bin



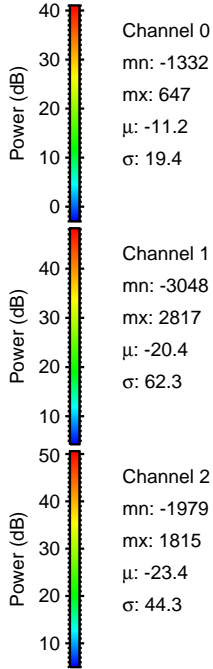
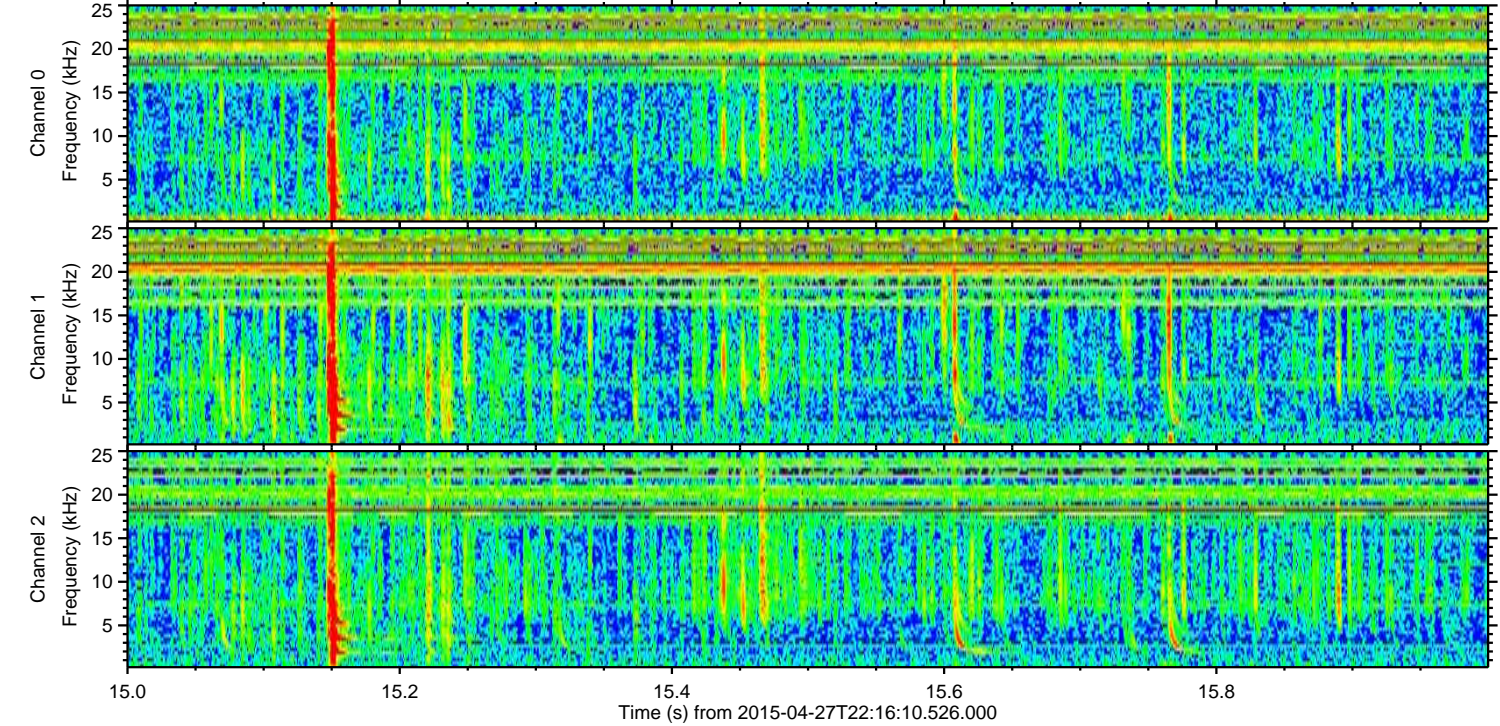
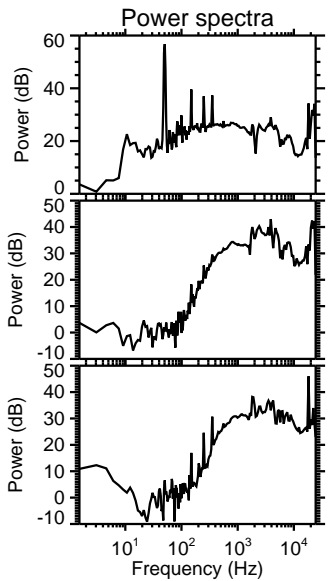
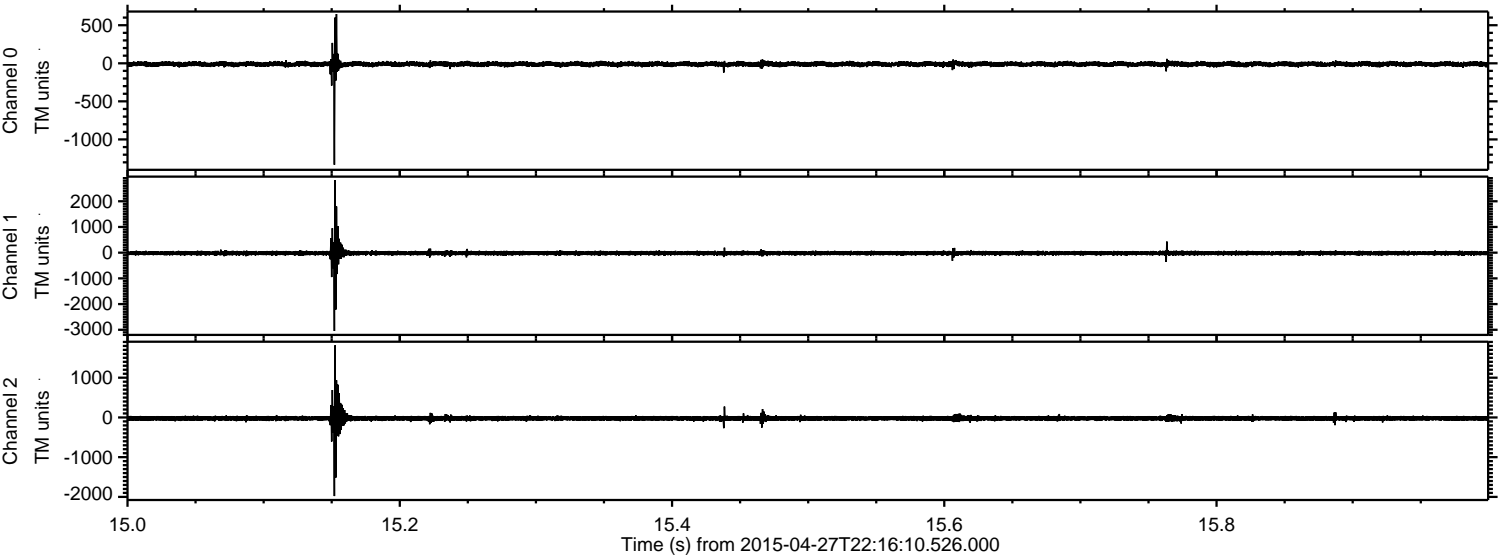
Channel 0
mn: -513
mx: 673
 μ : -11.1
 σ : 15.5

Channel 1
mn: -525
mx: 415
 μ : -20.5
 σ : 34.5

Channel 2
mn: -2162
mx: 3058
 μ : -23.4
 σ : 45.9

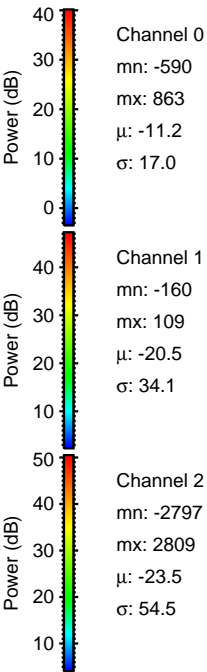
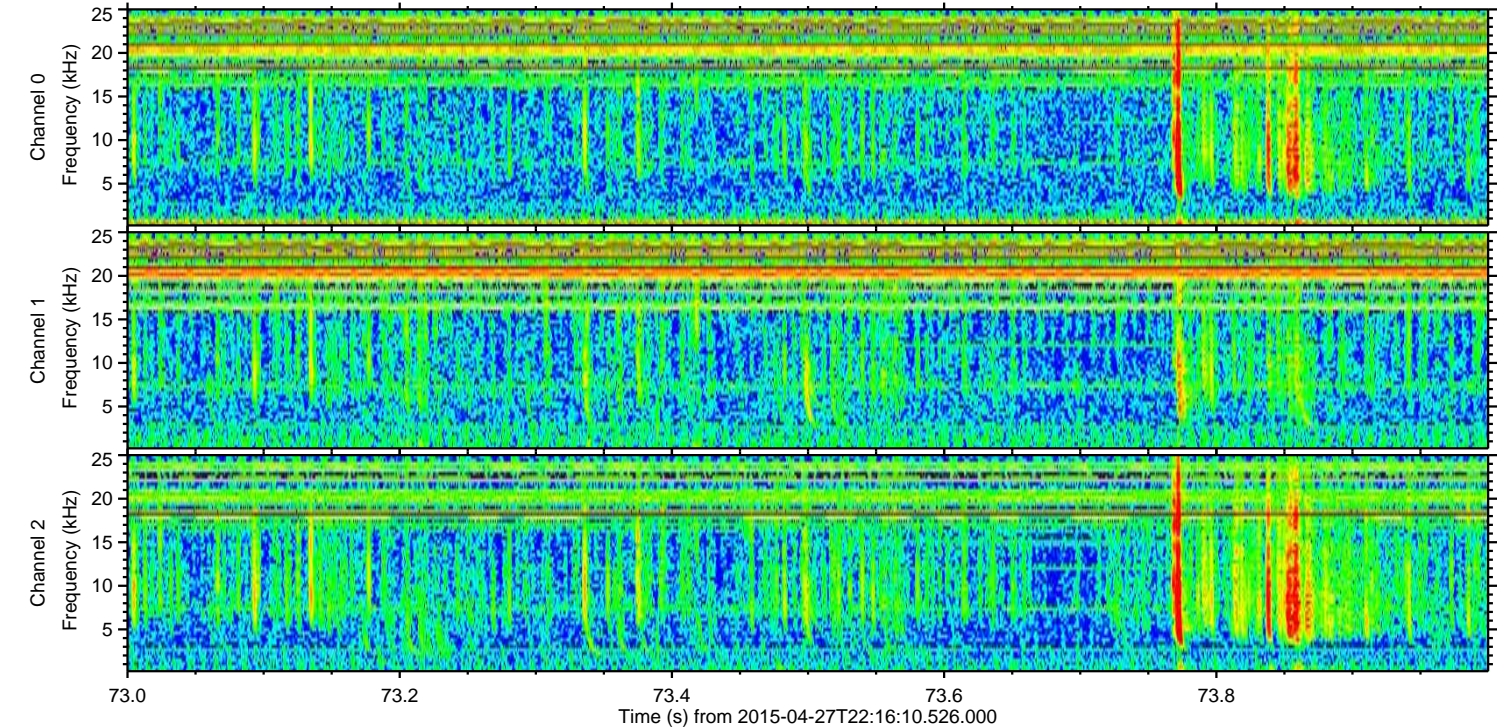
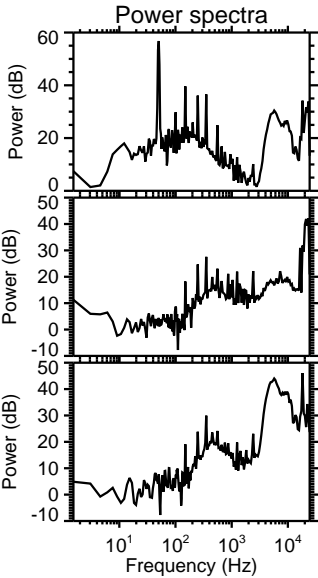
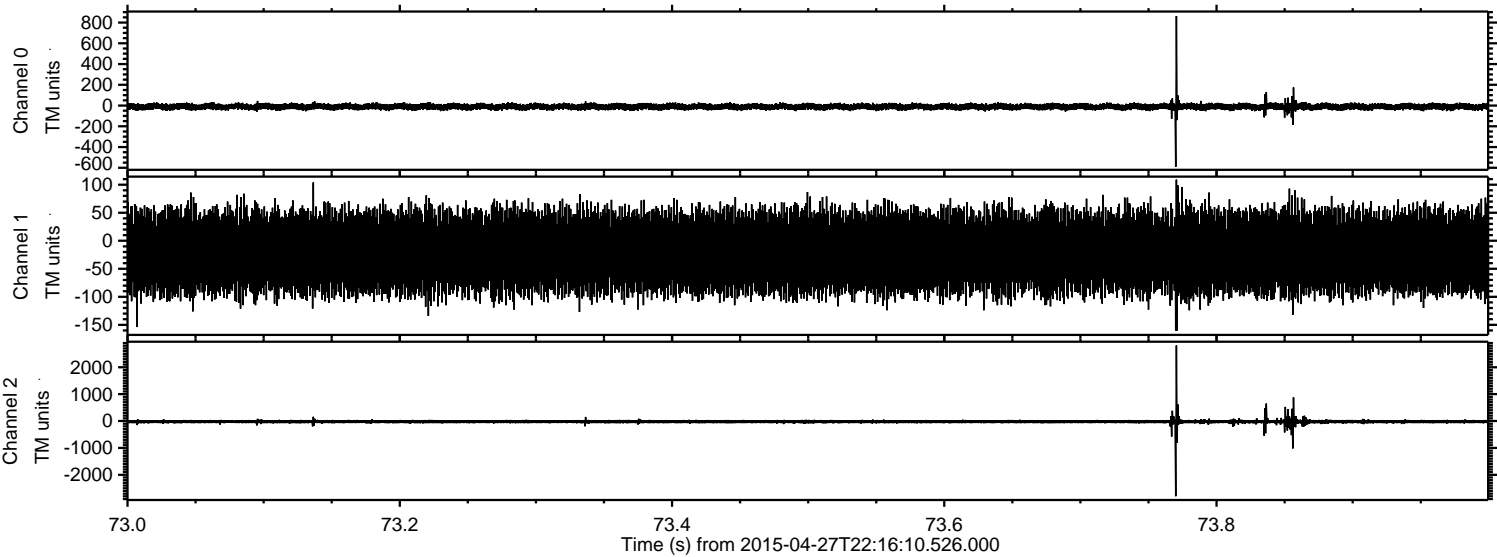
ELMAVAN 3D WAVEFORMS (Measured data sampled at 50 kHz) 49559 packets of 144 samples from 2015-04-27T22:16:10.526.000. Part 16/143

Processed Tue Apr 28 00:25:26 2015 by ELM ver.2012-10-06 from 001__elm20150427_221609__dat00.bin



ELMAVAN 3D WAVEFORMS (Measured data sampled at 50 kHz) 49559 packets of 144 samples from 2015-04-27T22:16:10.526.000. Part 74/143

Processed Tue Apr 28 00:25:27 2015 by ELM ver.2012-10-06 from 001__elm20150427_221609__dat00.bin



ELMAVAN 3D WAVEFORMS (Measured data sampled at 50 kHz) 49559 packets of 144 samples from 2015-04-27T22:16:10.526.000. Part 116/143

Processed Tue Apr 28 00:25:29 2015 by ELM ver.2012-10-06 from 001__elm20150427_221609__dat00.bin

