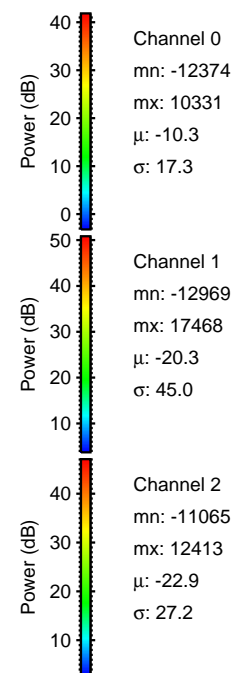
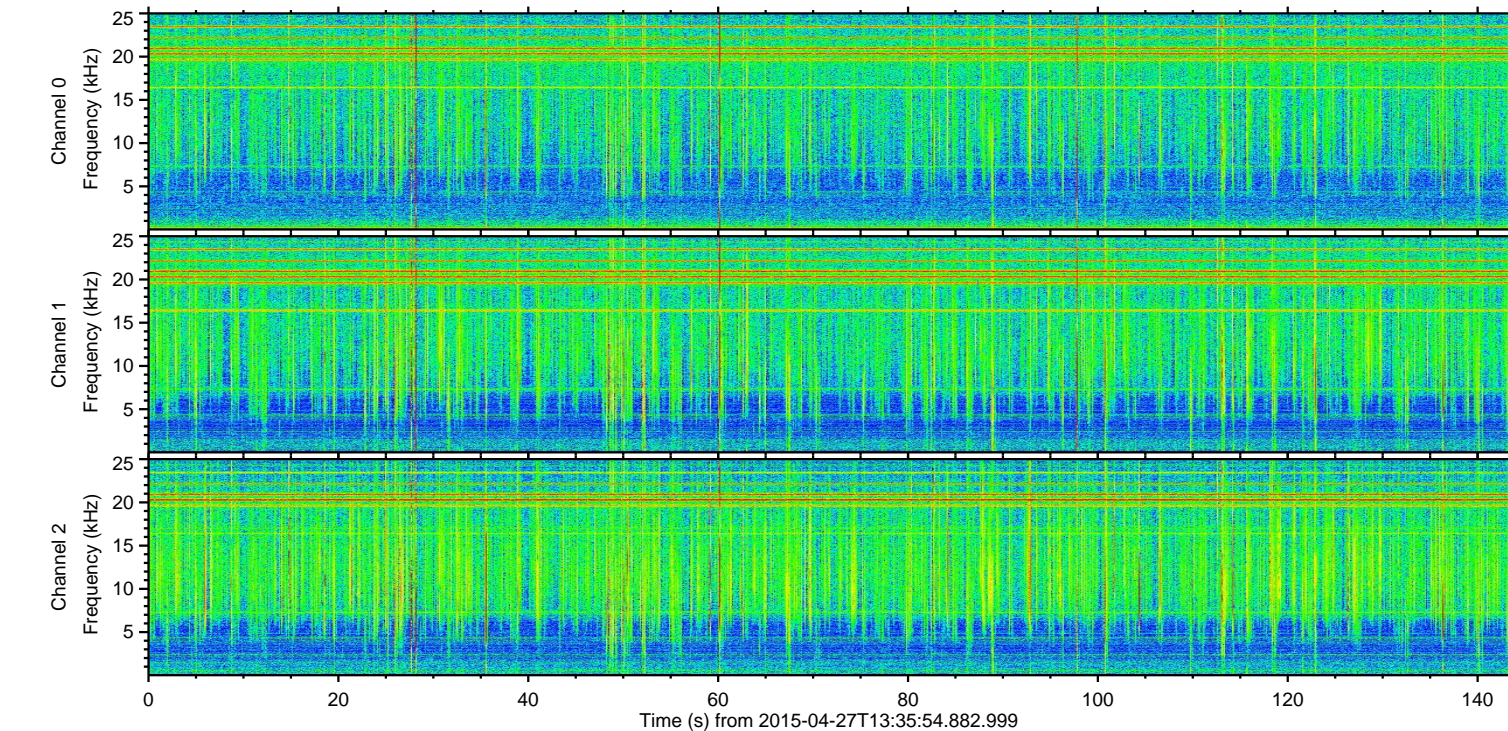
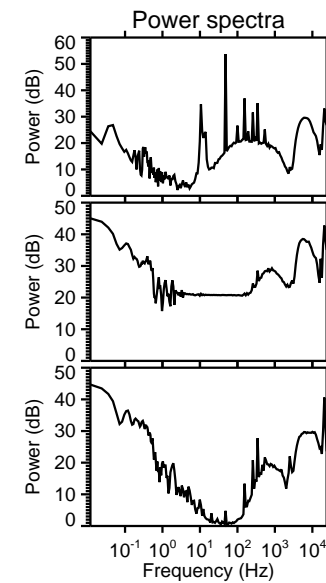
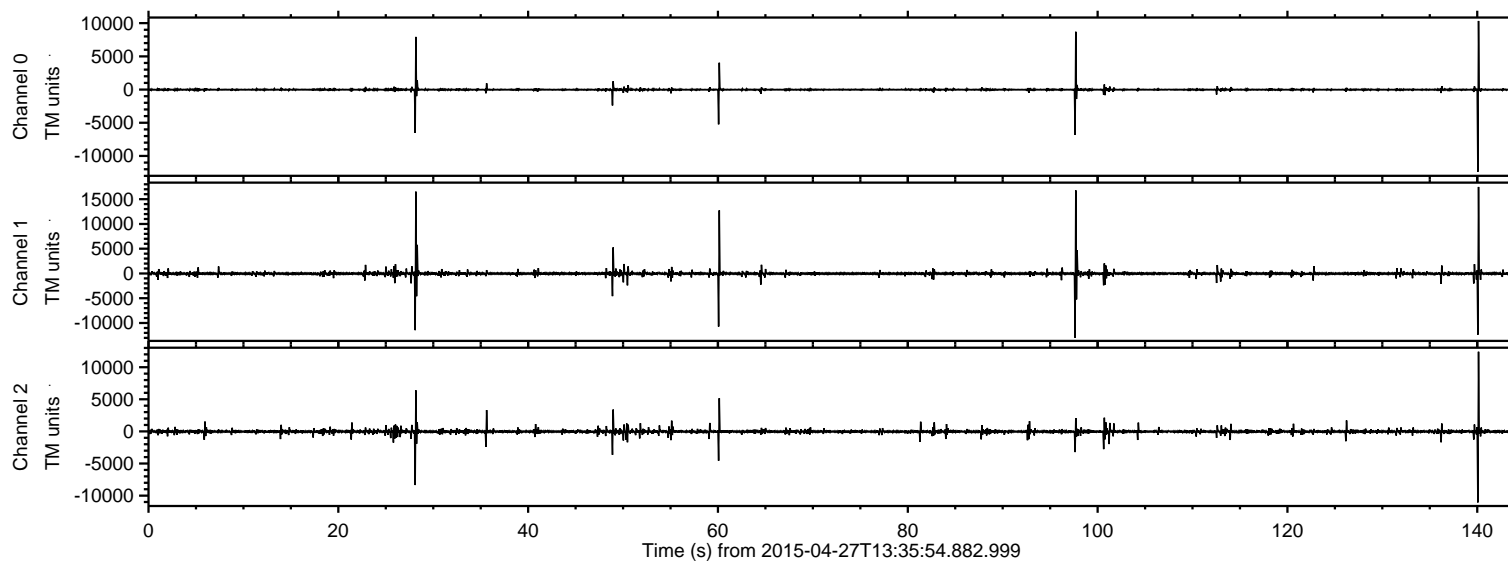


# ELMAVAN 3D WAVEFORMS (Measured data sampled at 50 kHz) 49778 packets of 144 samples from 2015-04-27T13:35:54.882.999.

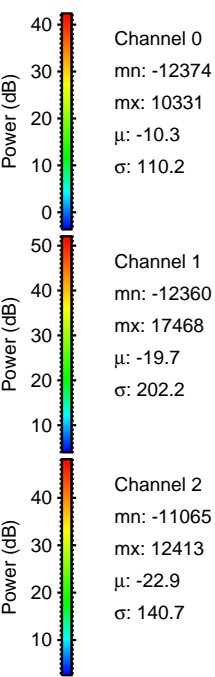
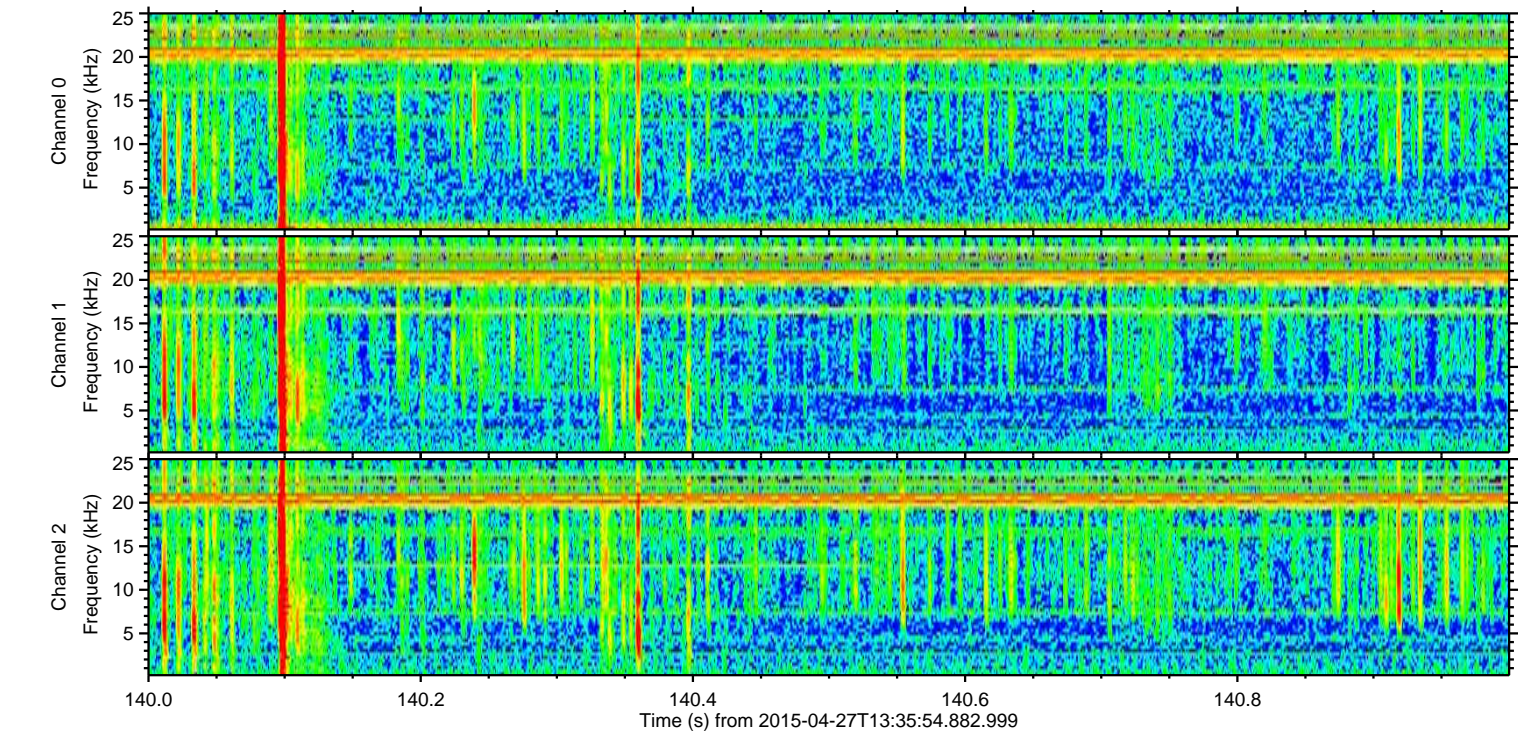
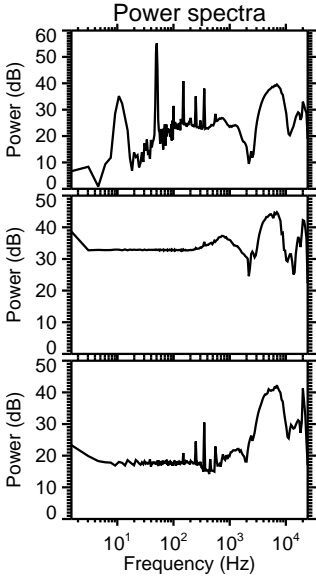
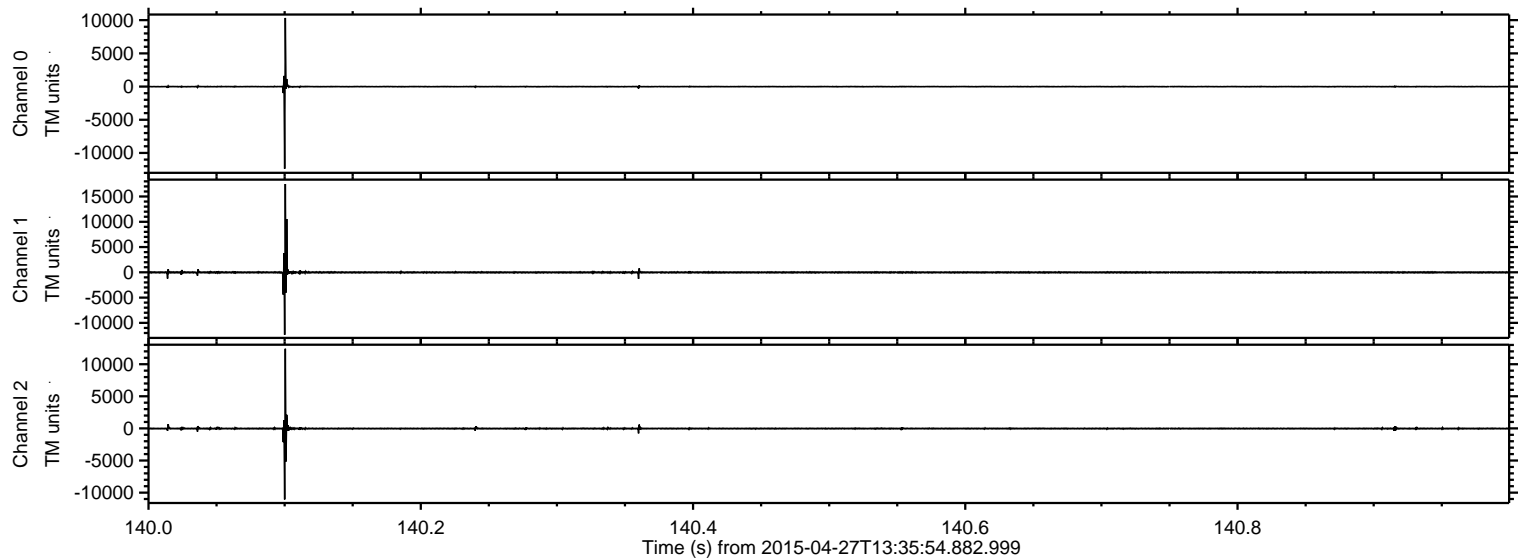
Processed Mon Apr 27 15:43:16 2015 by ELM ver.2012-10-06 from 001\_\_elm20150427\_133553\_\_dat00.bin





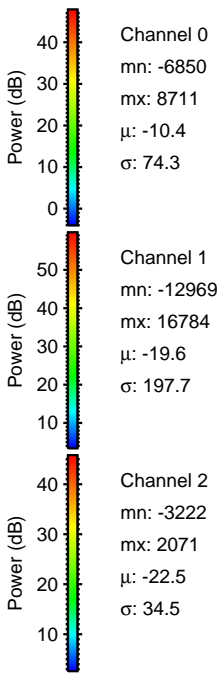
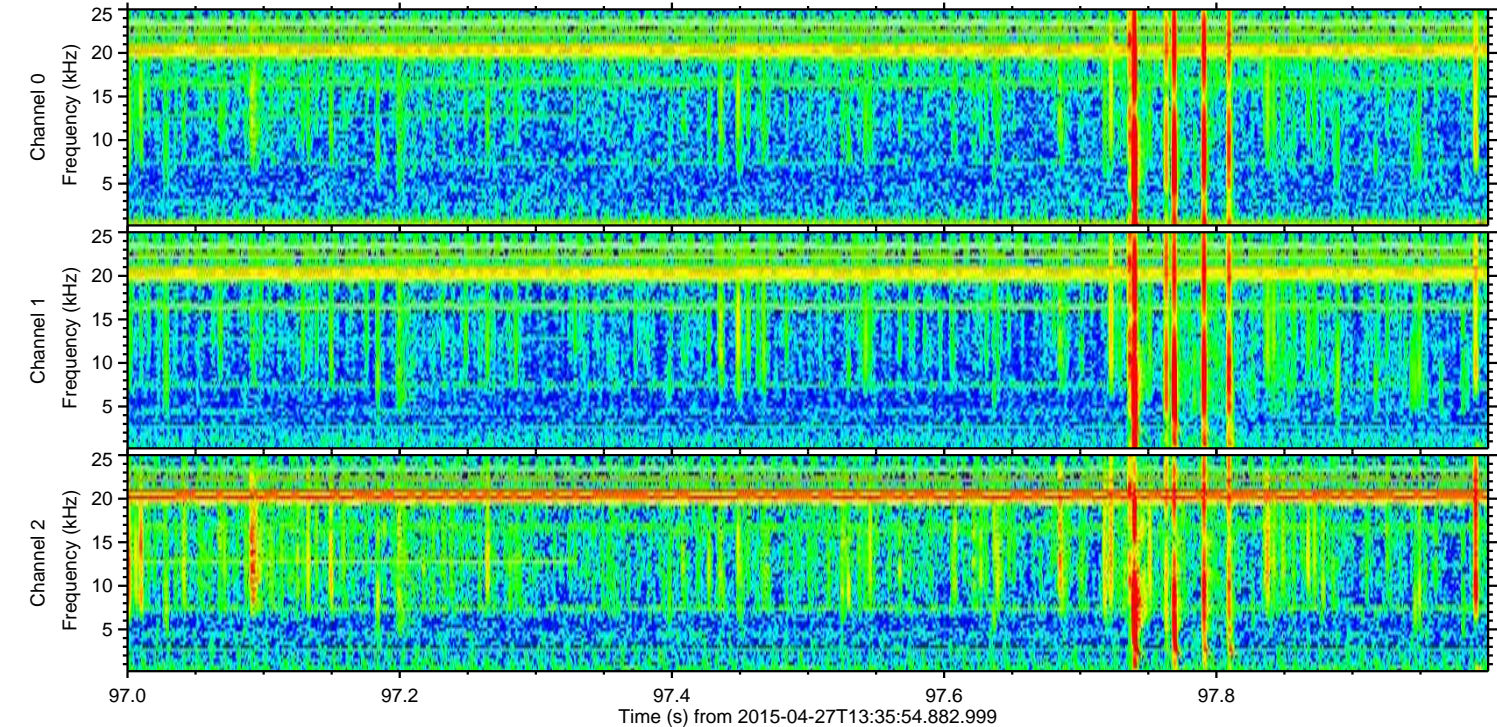
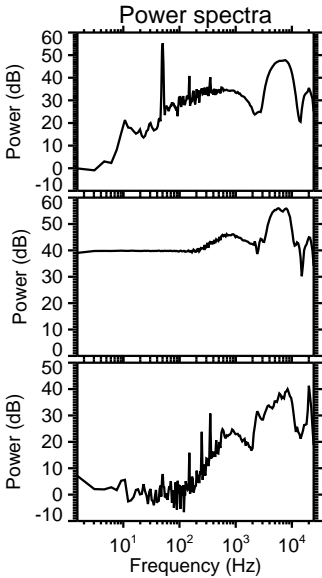
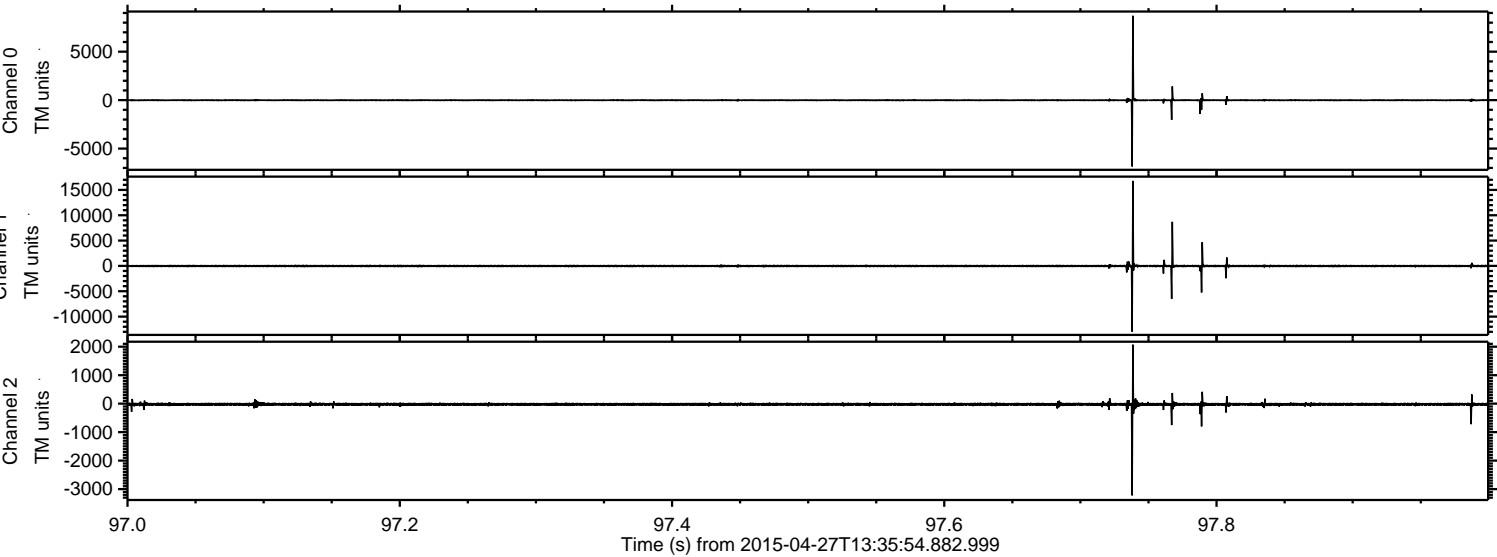
ELMAVAN 3D WAVEFORMS (Measured data sampled at 50 kHz) 49778 packets of 144 samples from 2015-04-27T13:35:54.882.999. Part 141/144

Processed Mon Apr 27 15:43:27 2015 by ELM ver.2012-10-06 from 001\_\_elm20150427\_133553\_\_dat00.bin



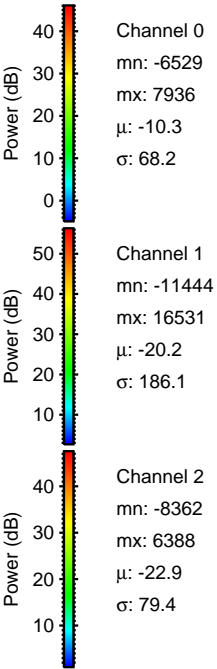
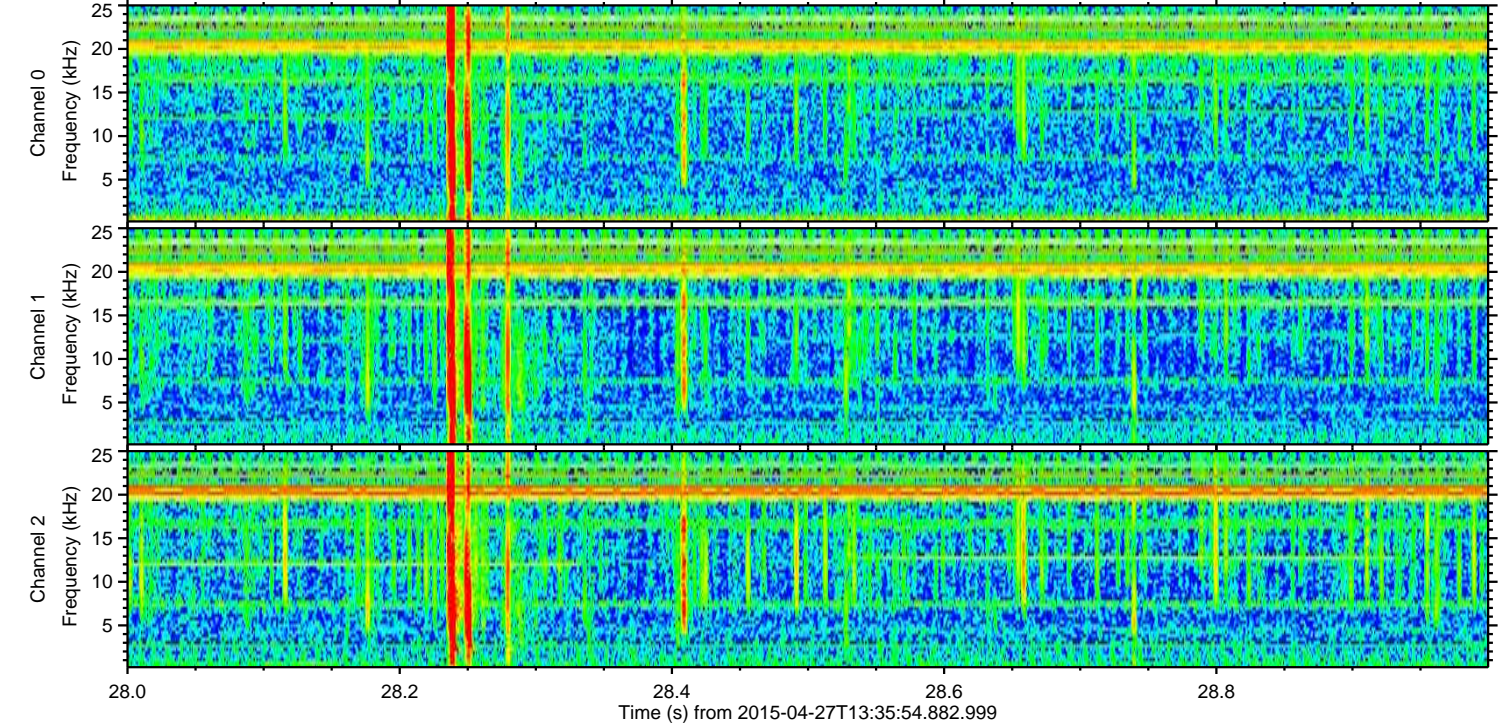
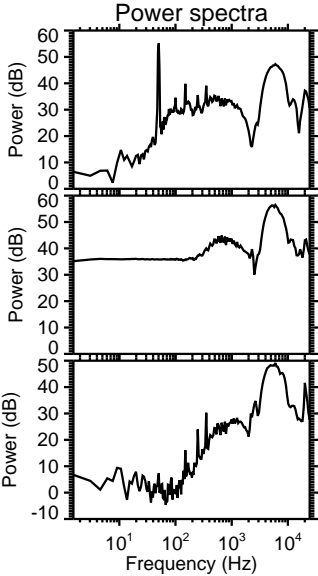
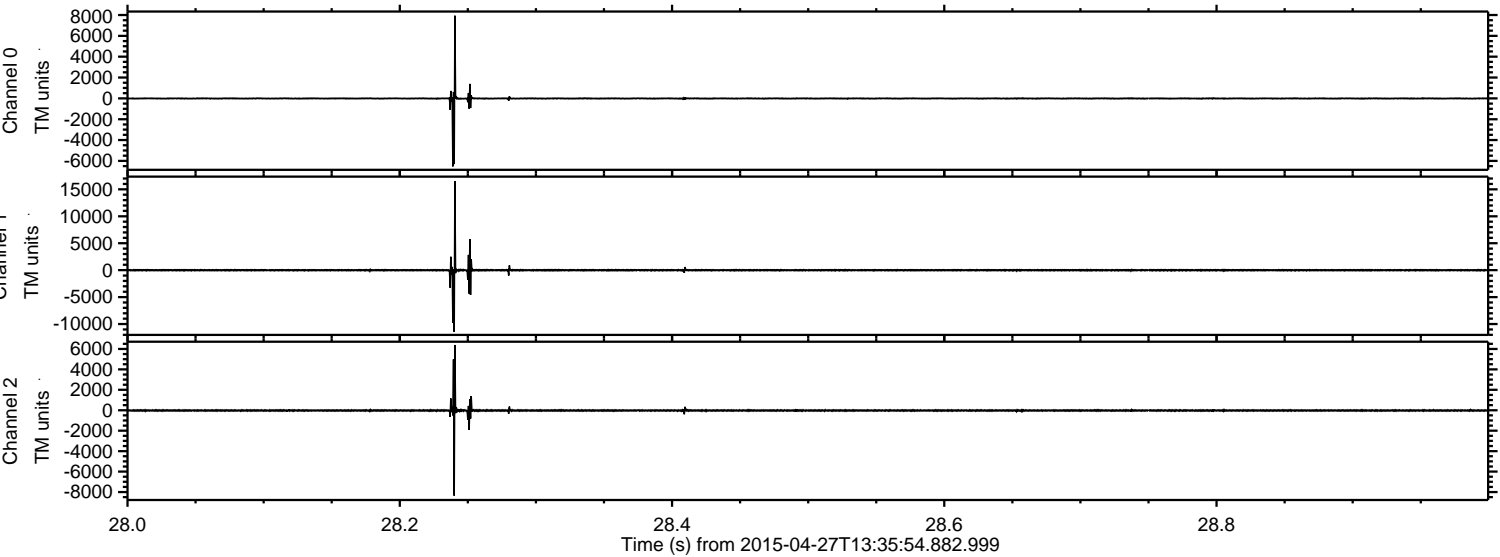


Processed Mon Apr 27 15:43:28 2015 by ELM ver.2012-10-06 from 001\_\_elm20150427\_133553\_\_dat00.bin



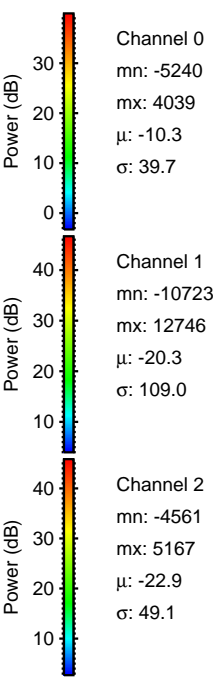
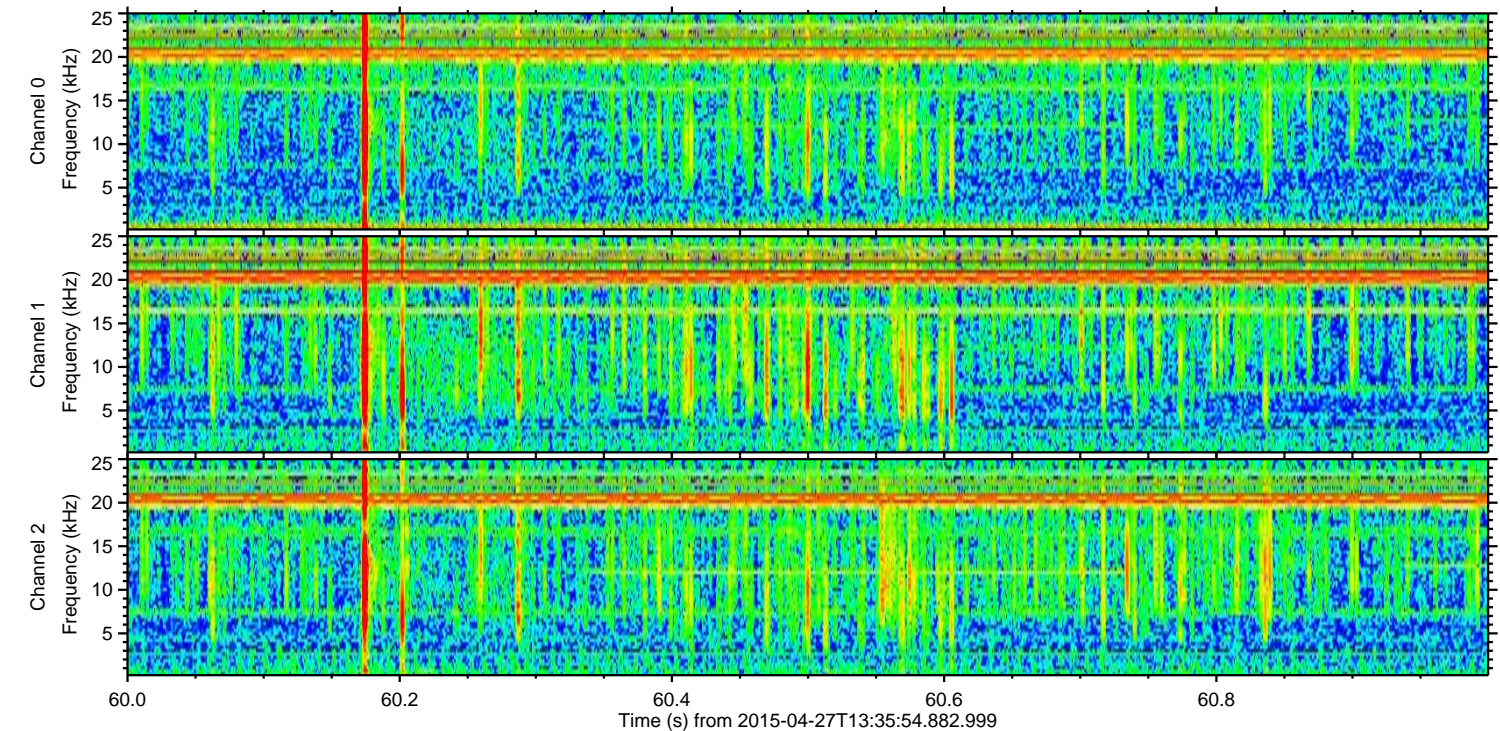
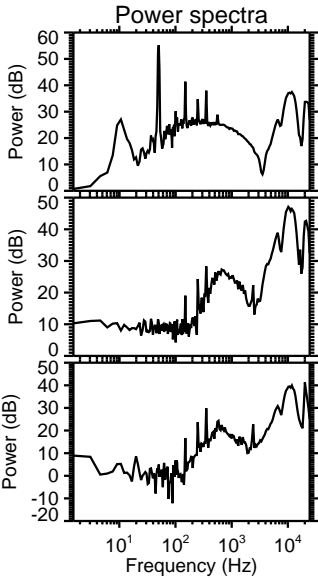
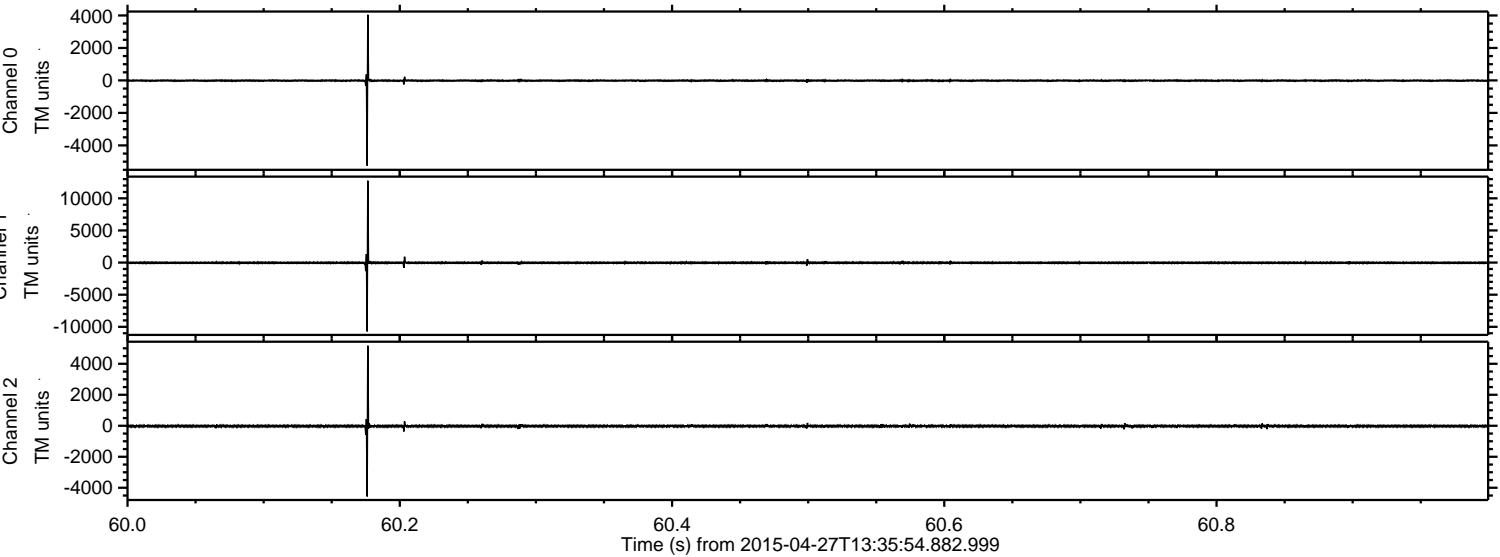


Processed Mon Apr 27 15:43:29 2015 by ELM ver.2012-10-06 from 001\_\_elm20150427\_133553\_\_dat00.bin



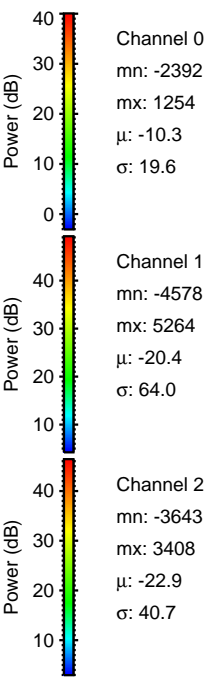
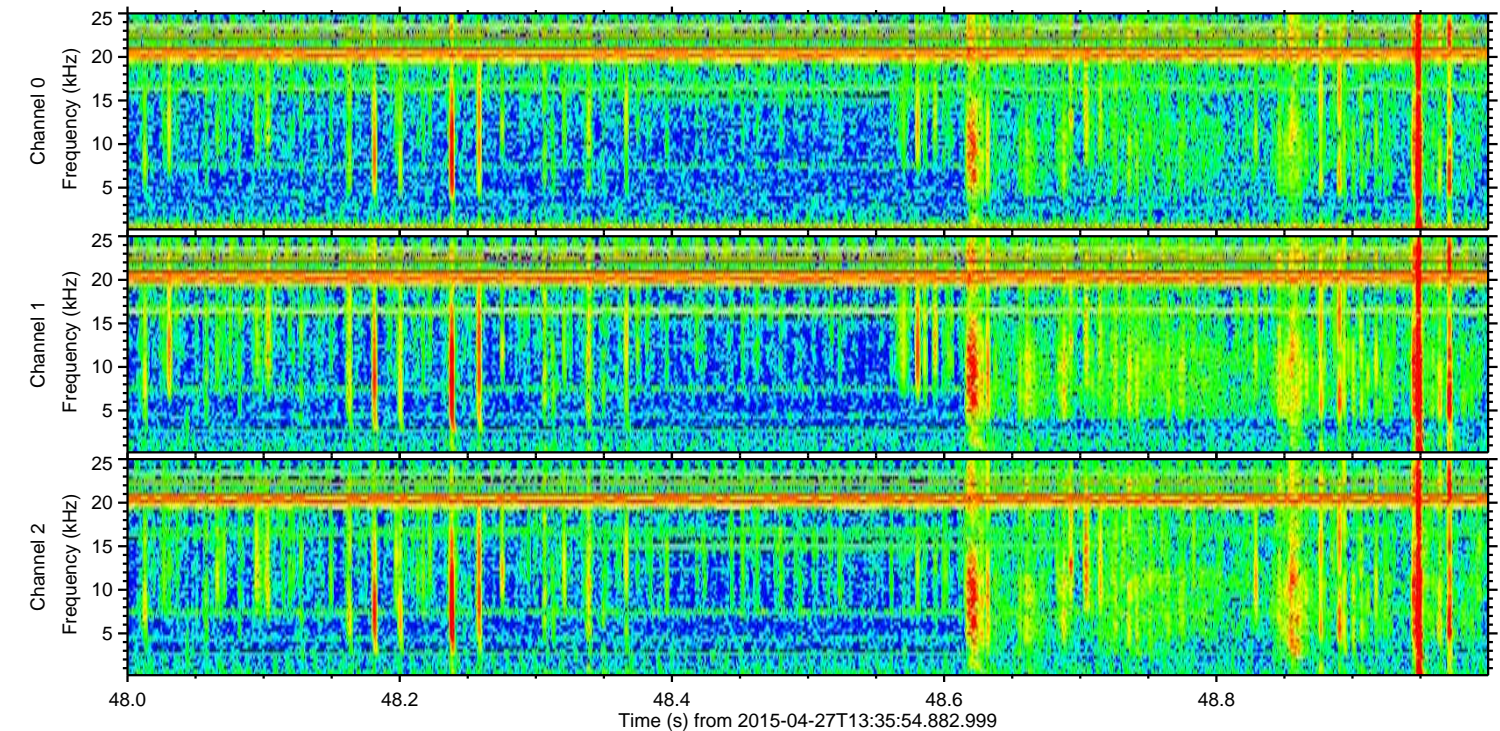
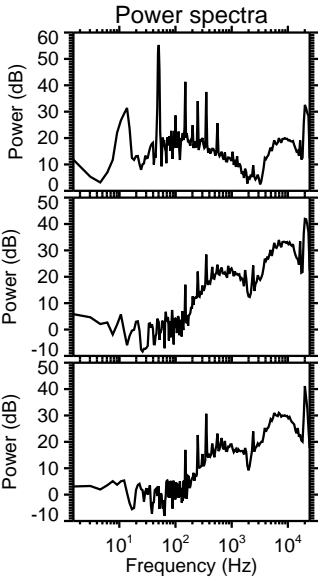
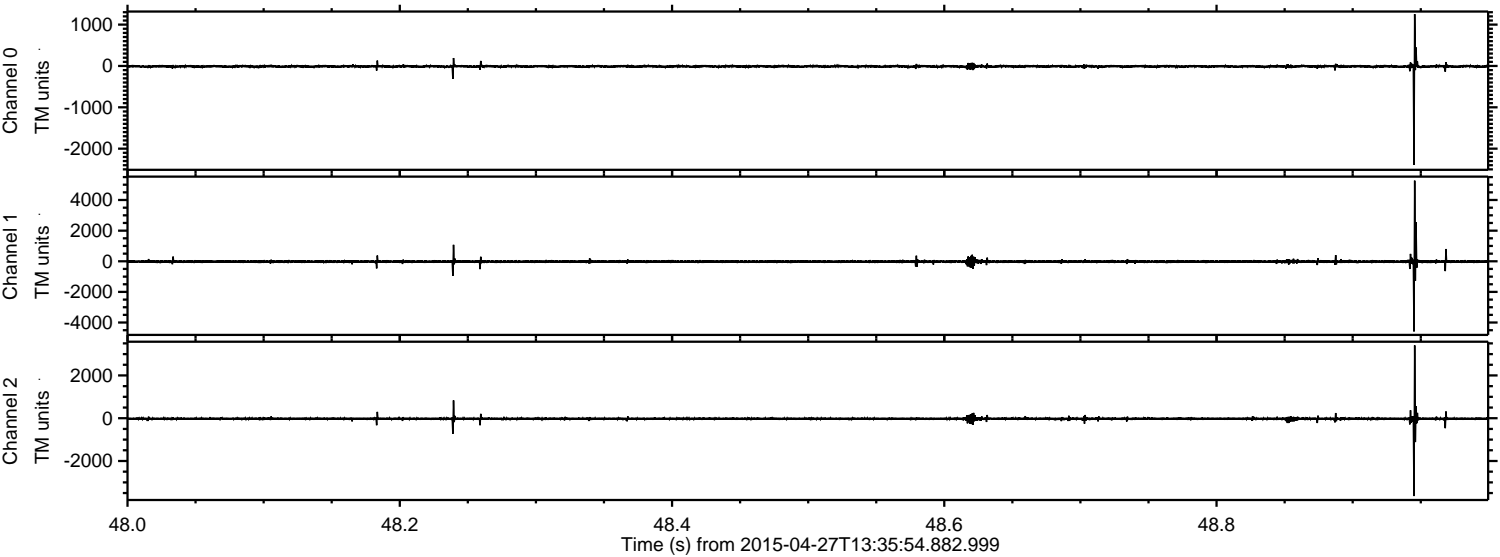


Processed Mon Apr 27 15:43:30 2015 by ELM ver.2012-10-06 from 001\_\_elm20150427\_133553\_\_dat00.bin



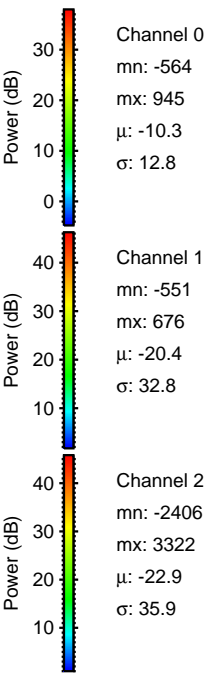
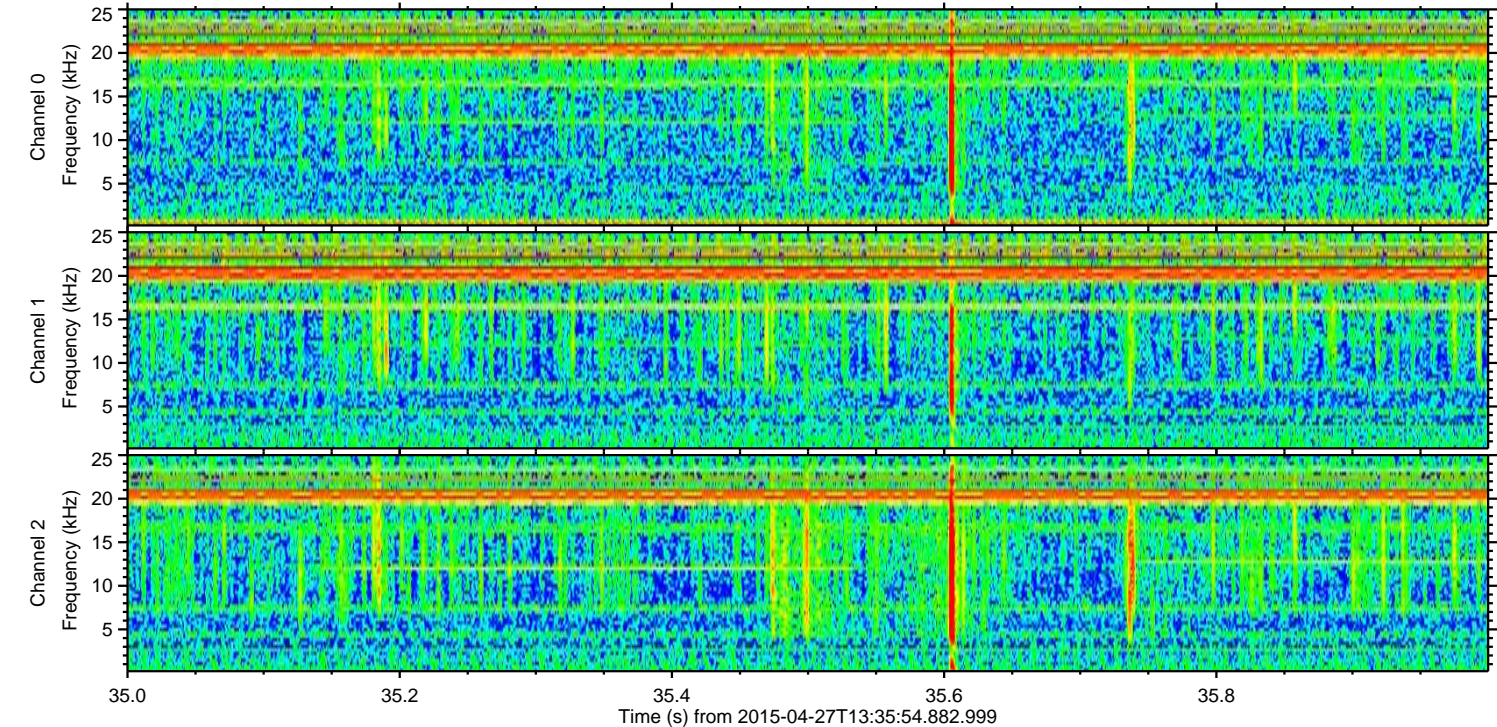
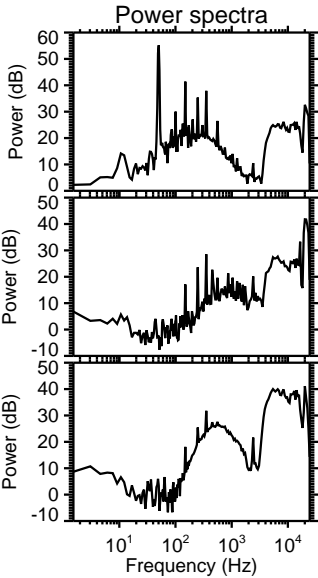
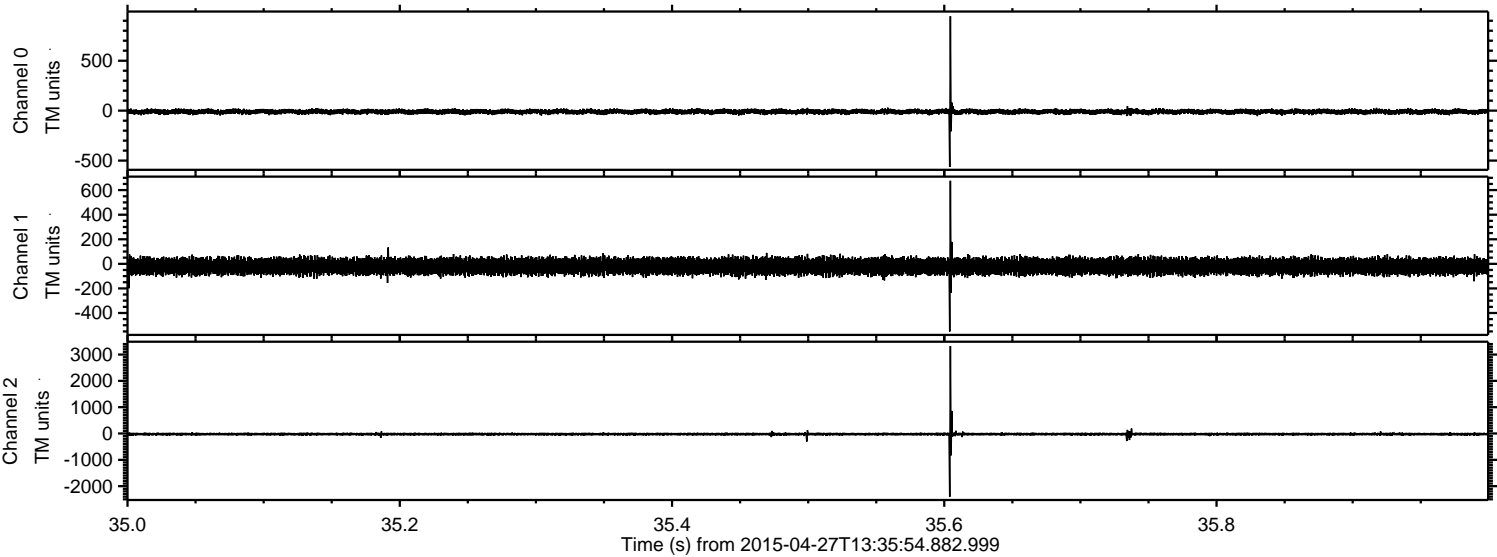


Processed Mon Apr 27 15:43:31 2015 by ELM ver.2012-10-06 from 001\_\_elm20150427\_133553\_\_dat00.bin





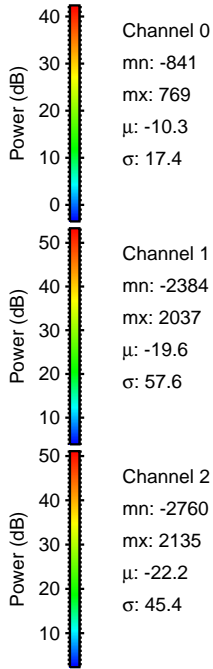
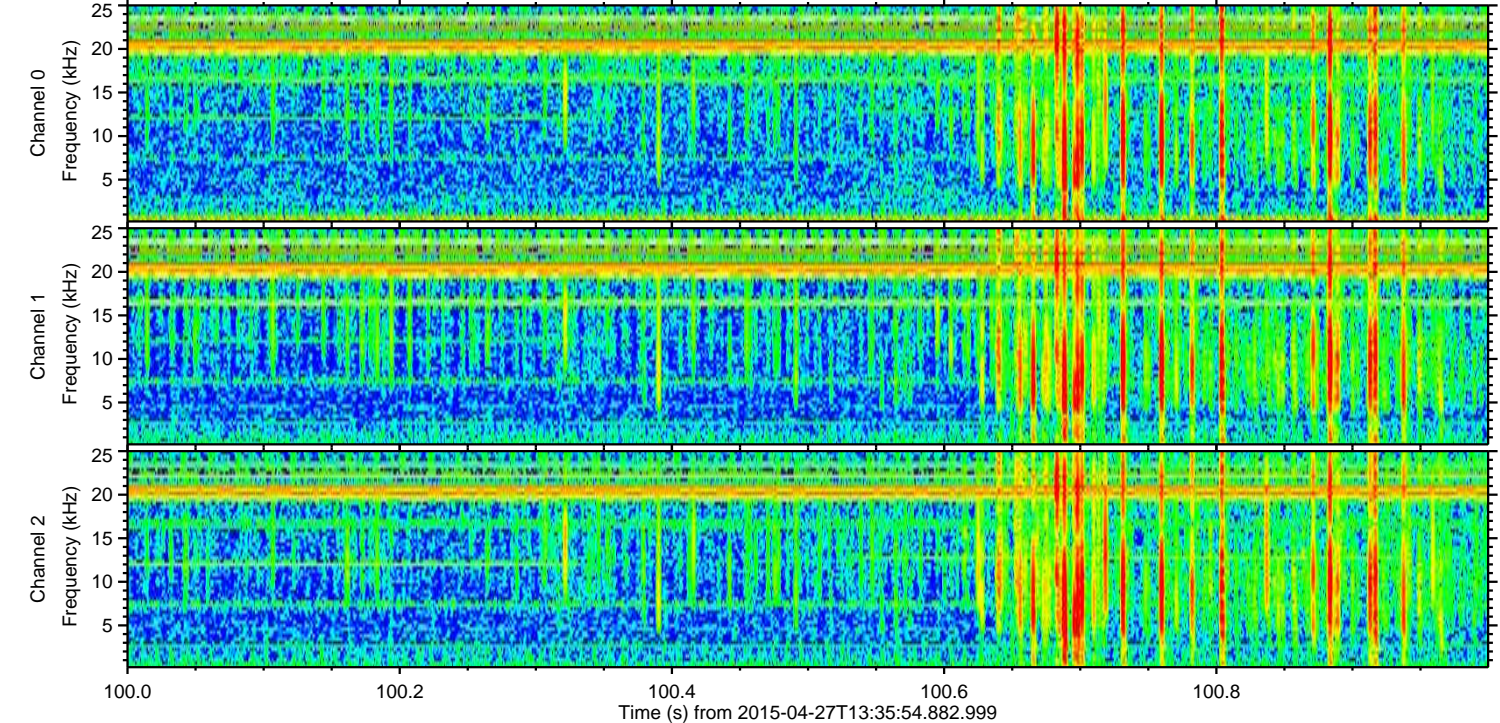
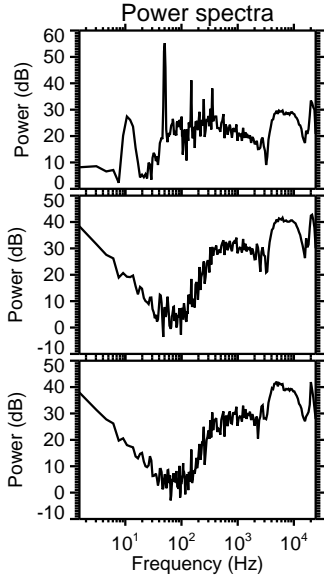
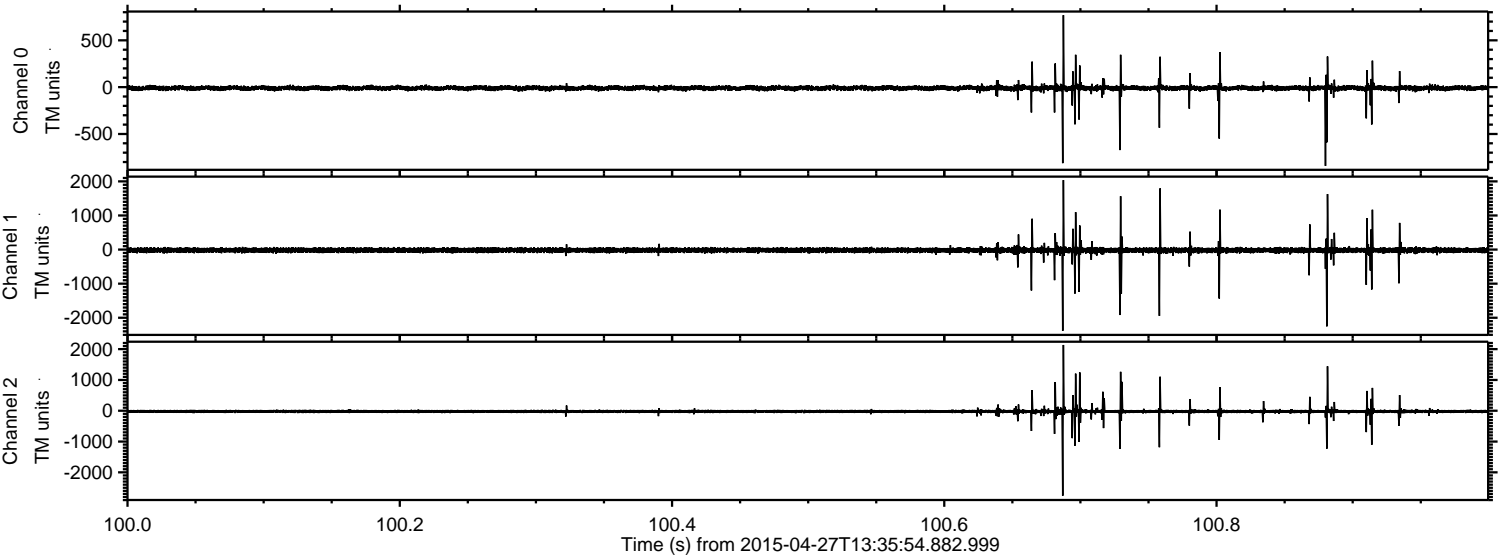
Processed Mon Apr 27 15:43:32 2015 by ELM ver.2012-10-06 from 001\_\_elm20150427\_133553\_\_dat00.bin





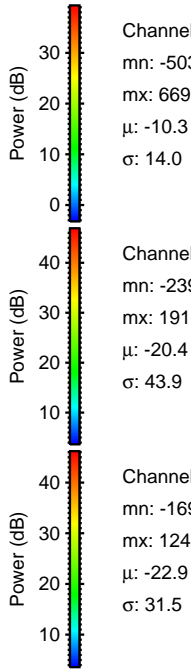
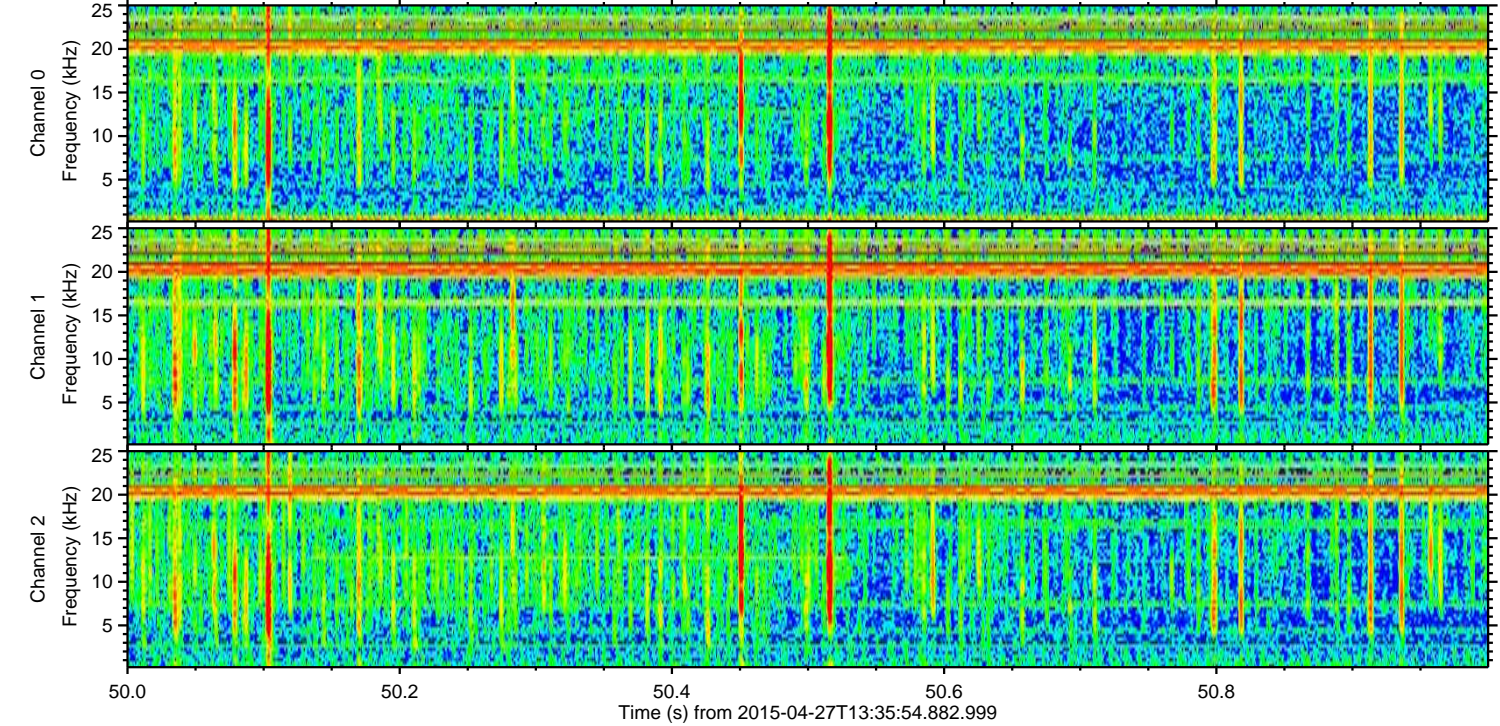
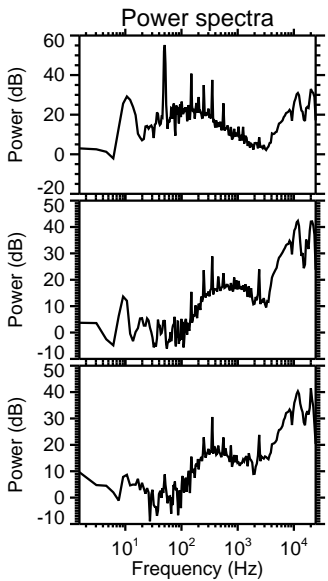
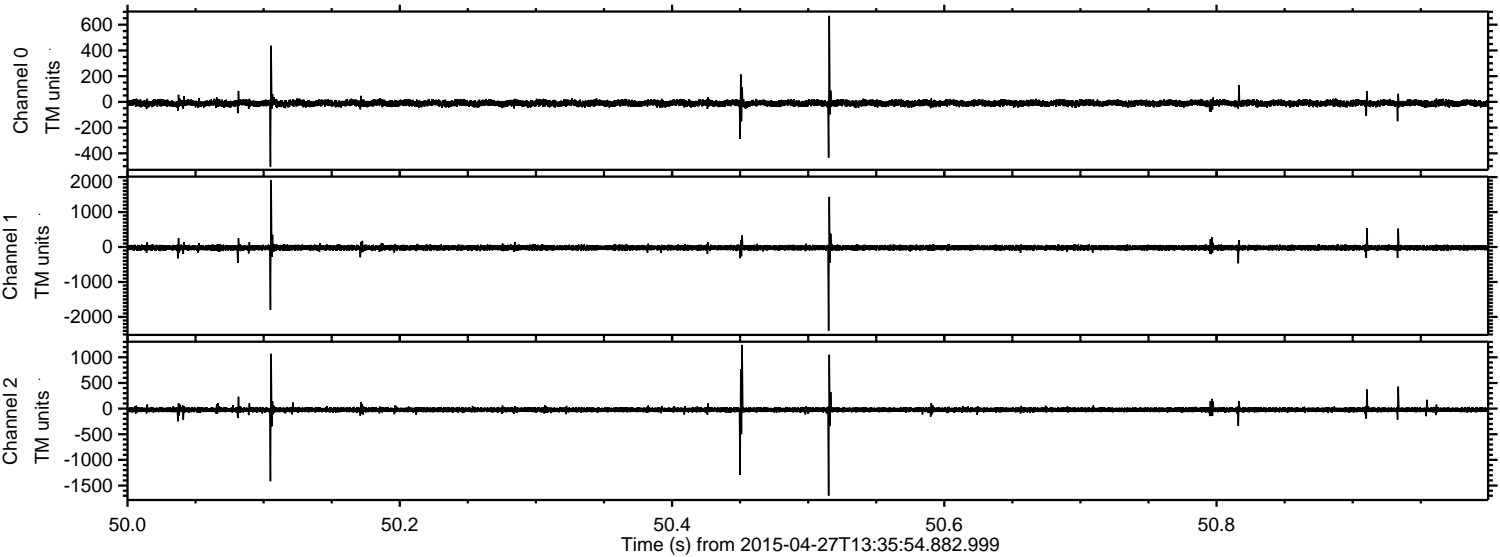
ELMAVAN 3D WAVEFORMS (Measured data sampled at 50 kHz) 49778 packets of 144 samples from 2015-04-27T13:35:54.882.999. Part 101/144

Processed Mon Apr 27 15:43:33 2015 by ELM ver.2012-10-06 from 001\_\_elm20150427\_133553\_\_dat00.bin





Processed Mon Apr 27 15:43:34 2015 by ELM ver.2012-10-06 from 001\_\_elm20150427\_133553\_\_dat00.bin



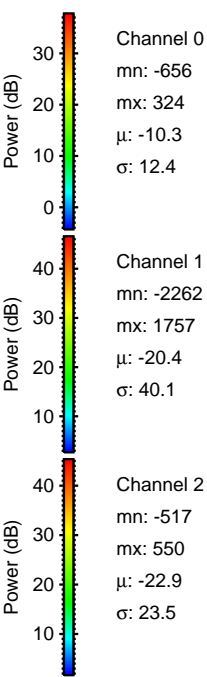
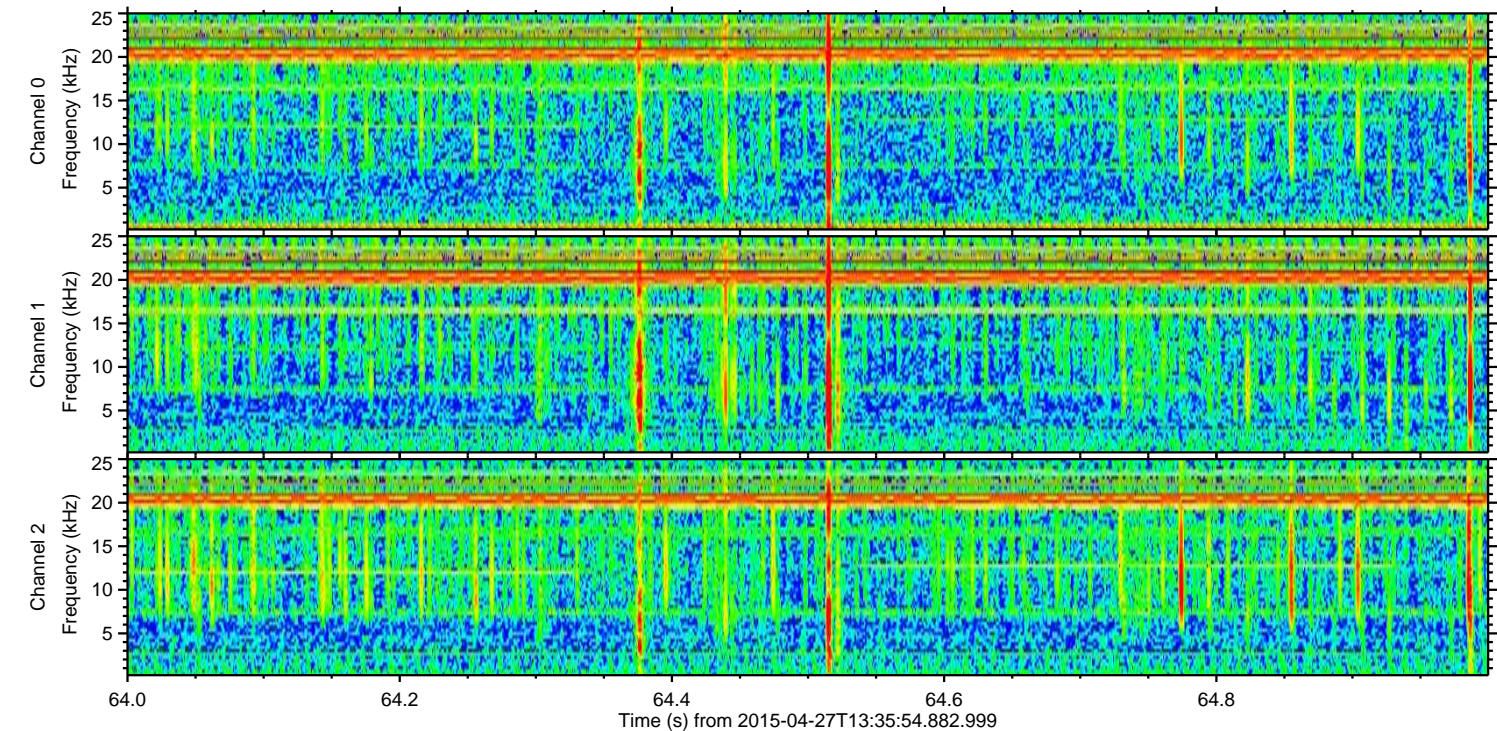
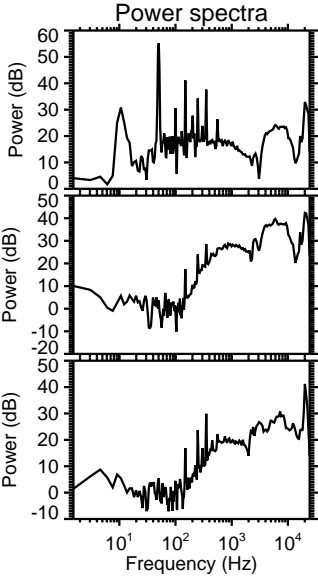
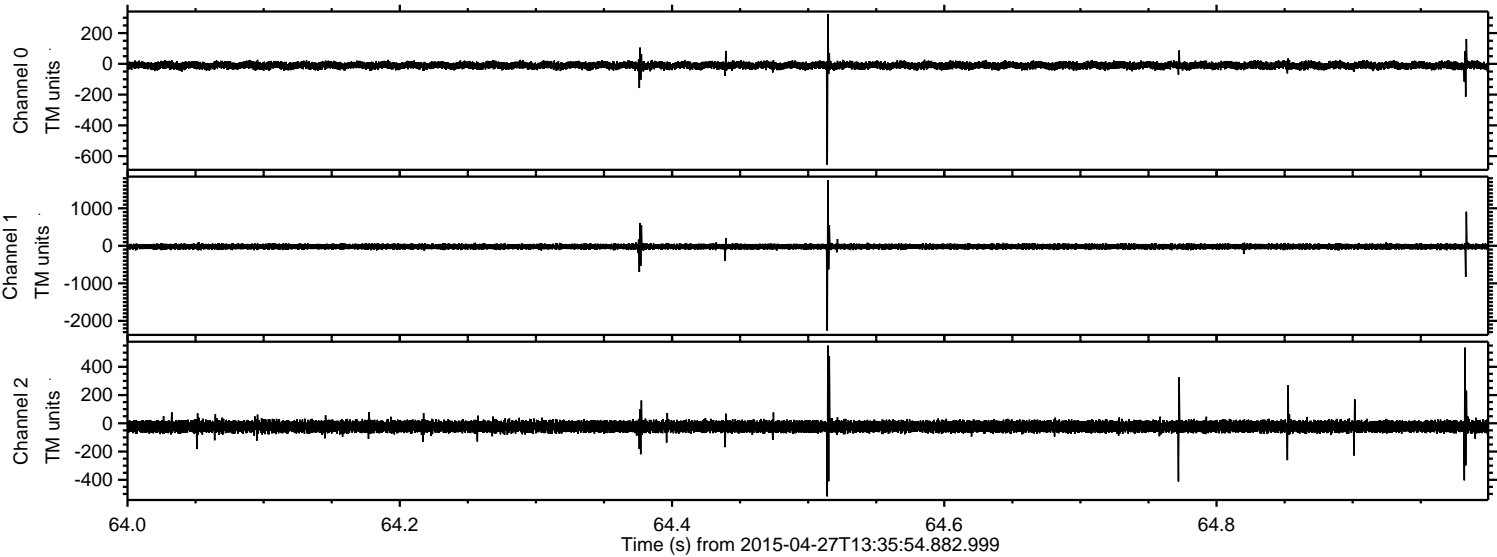
Channel 0  
mn: -503  
mx: 669  
 $\mu$ : -10.3  
 $\sigma$ : 14.0

Channel 1  
mn: -2394  
mx: 1918  
 $\mu$ : -20.4  
 $\sigma$ : 43.9

Channel 2  
mn: -1697  
mx: 1242  
 $\mu$ : -22.9  
 $\sigma$ : 31.5



Processed Mon Apr 27 15:43:35 2015 by ELM ver.2012-10-06 from 001\_\_elm20150427\_133553\_\_dat00.bin





Processed Mon Apr 27 15:43:36 2015 by ELM ver.2012-10-06 from 001\_\_elm20150427\_133553\_\_dat00.bin

