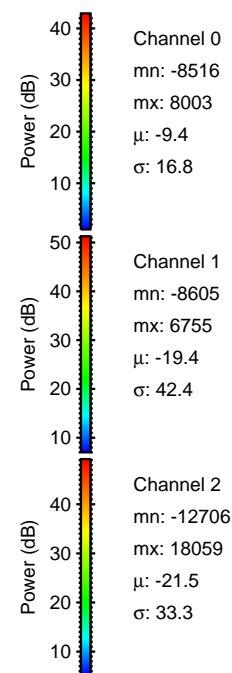
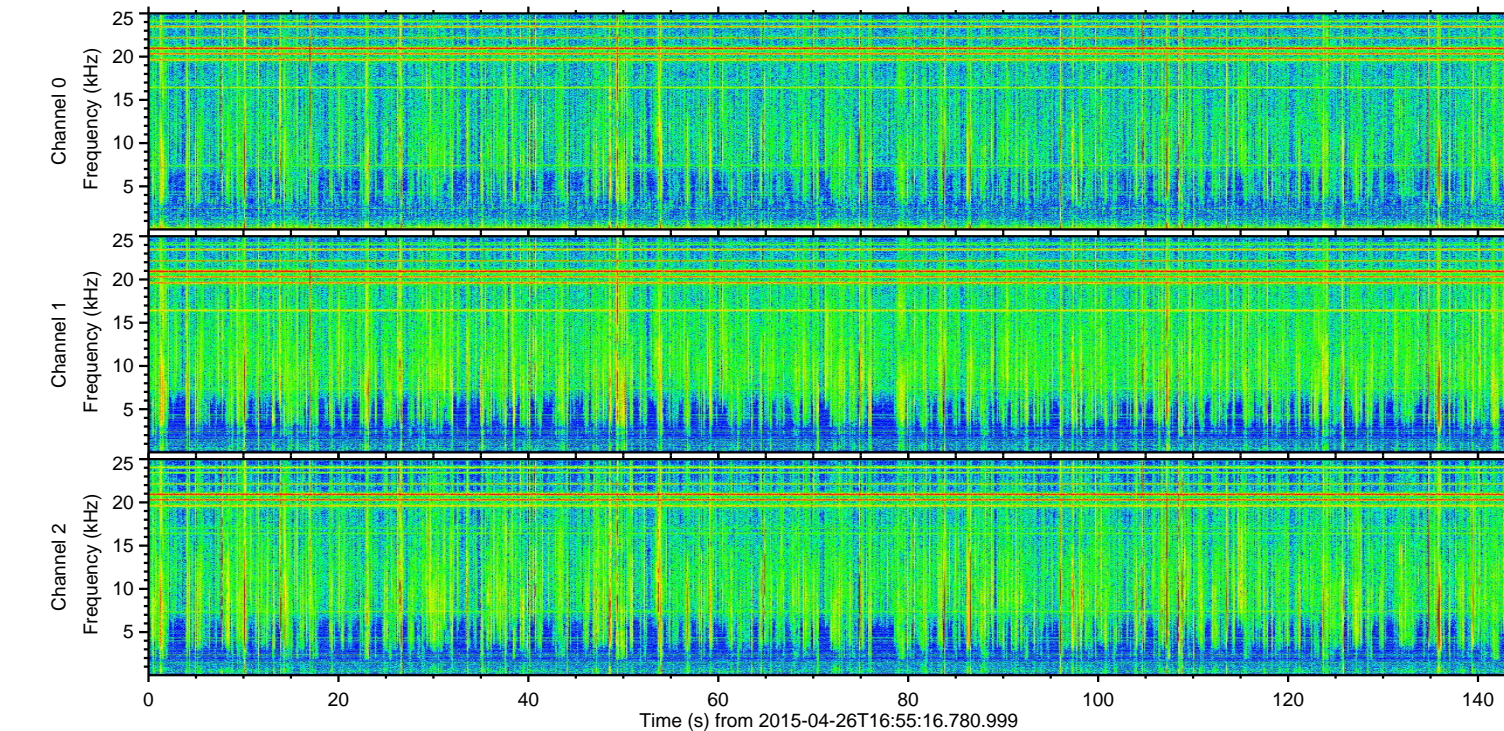
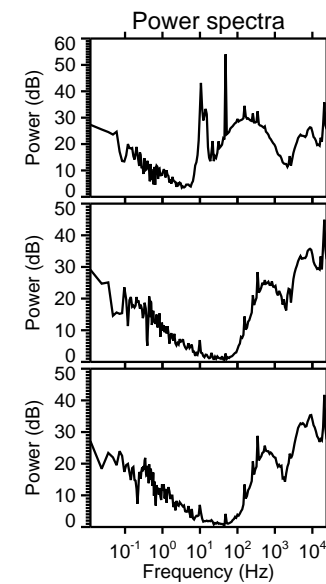
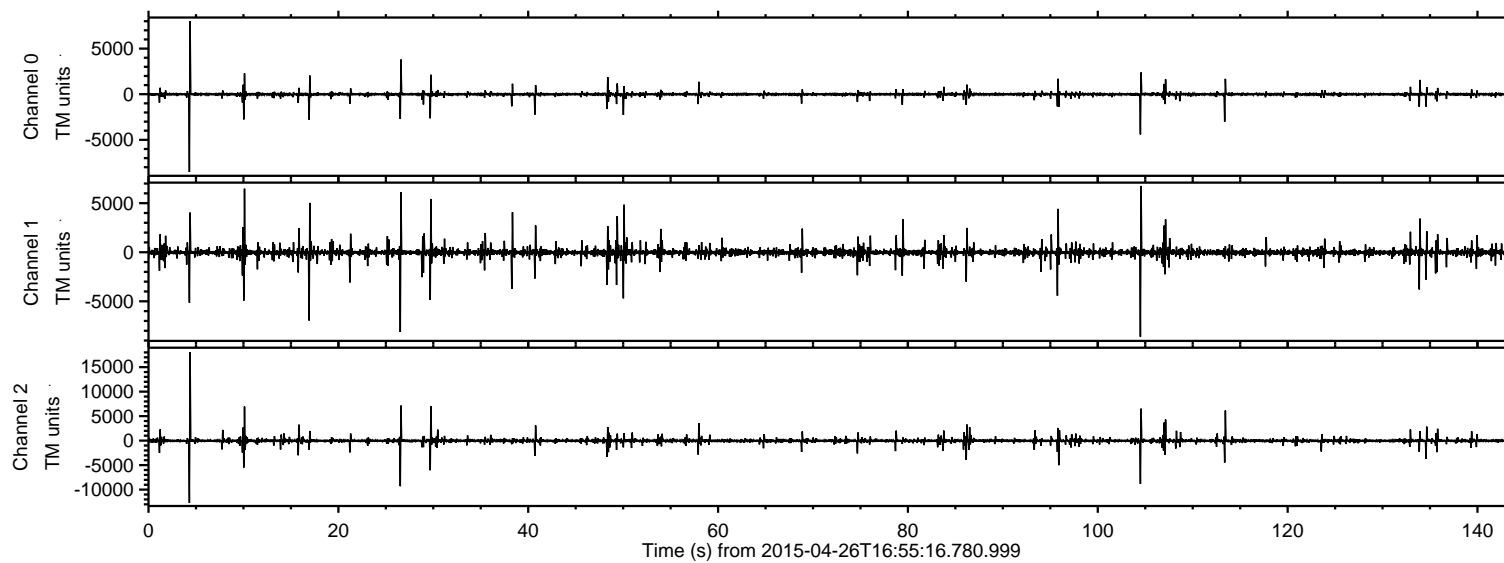
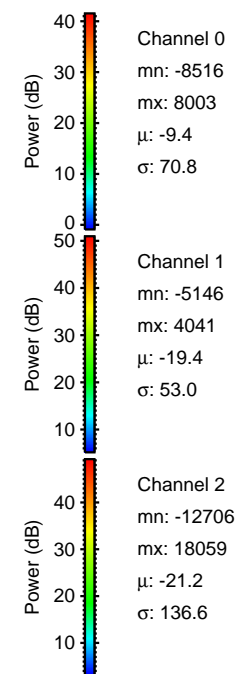
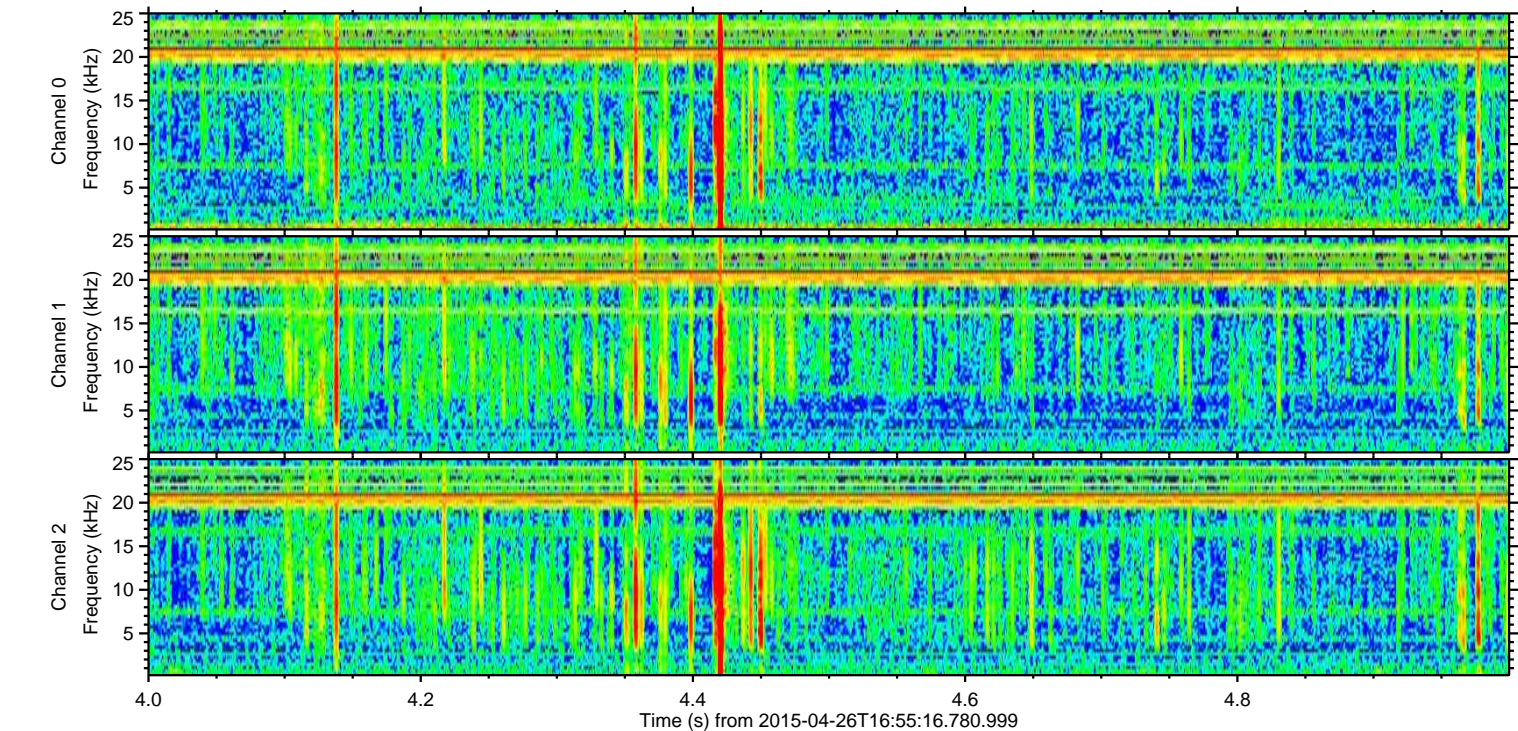
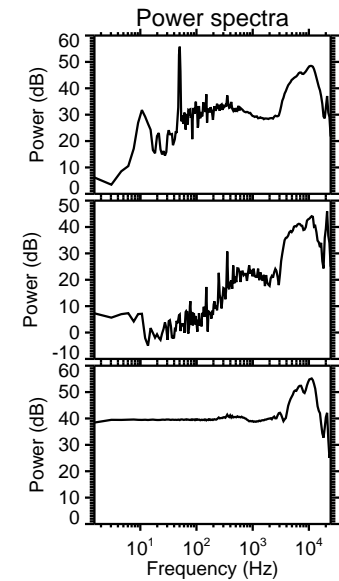
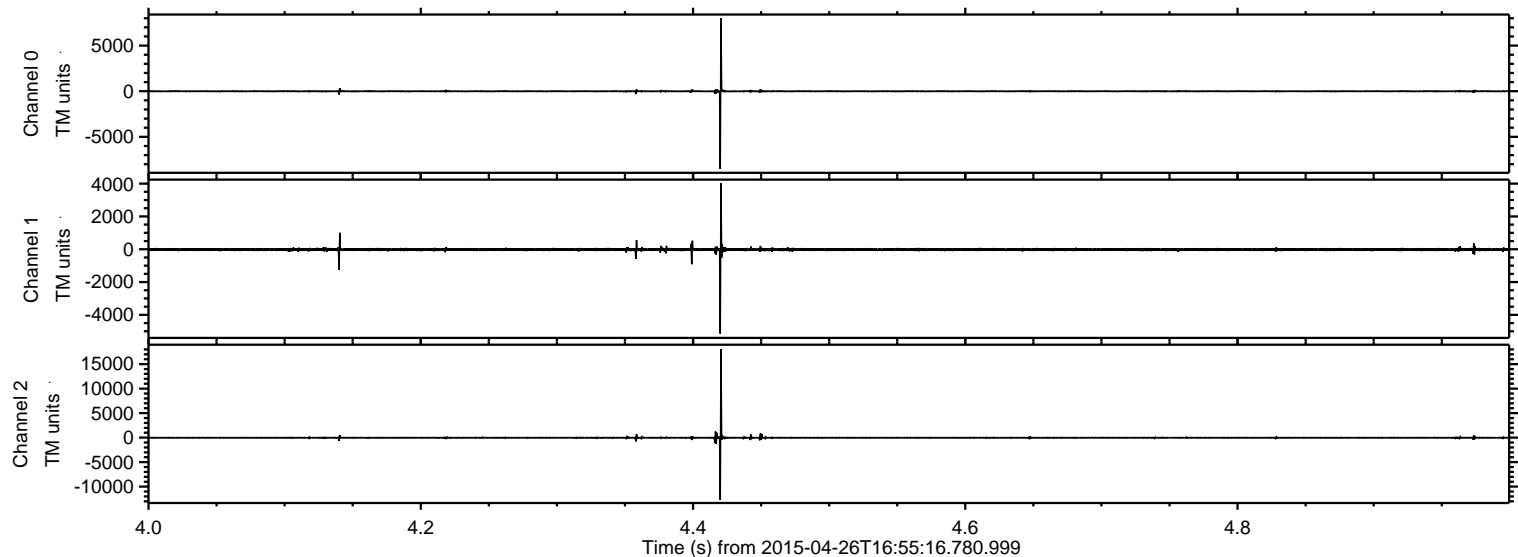


ELMAVAN 3D WAVEFORMS (Measured data sampled at 50 kHz) 49769 packets of 144 samples from 2015-04-26T16:55:16.780.999.

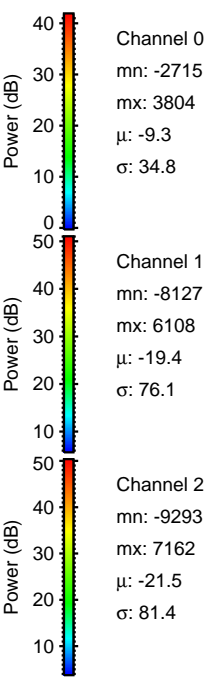
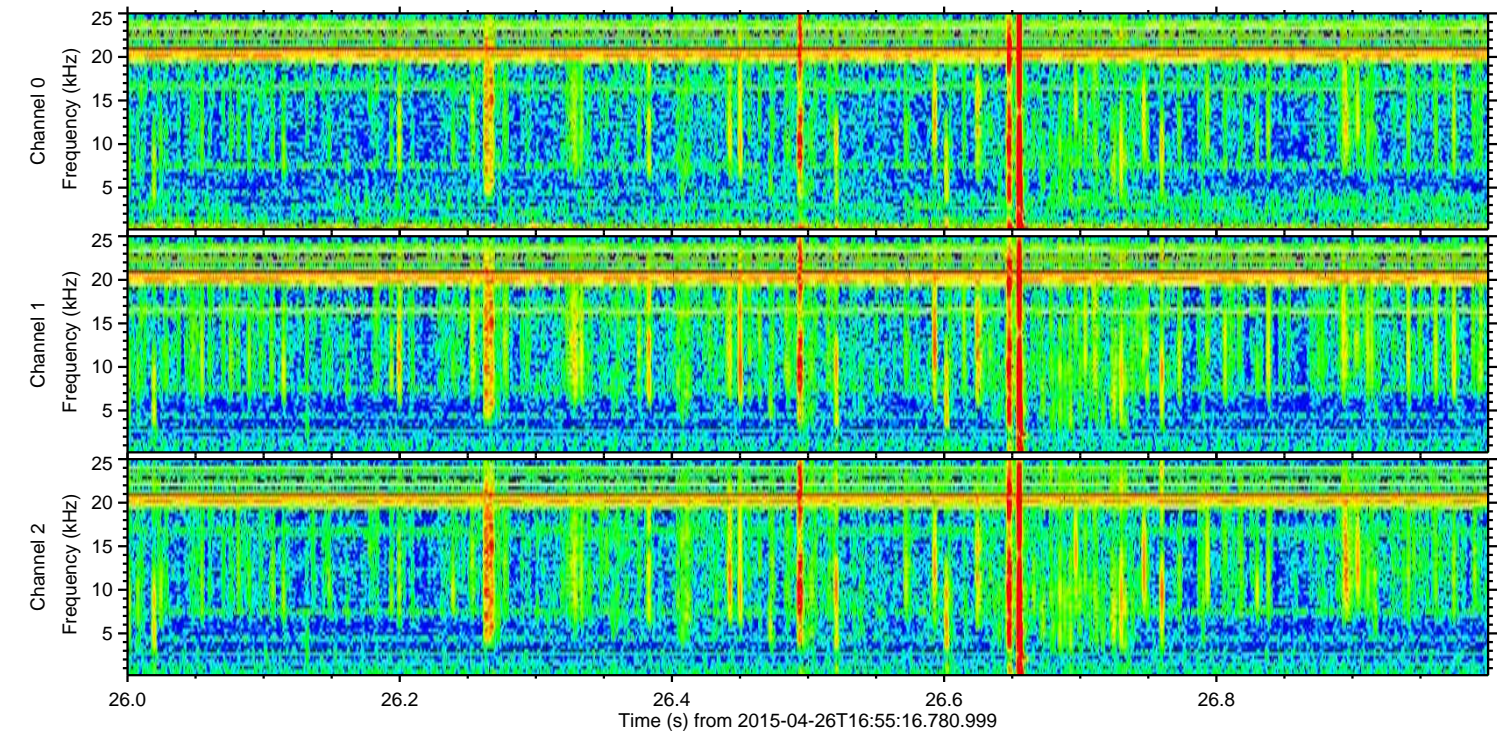
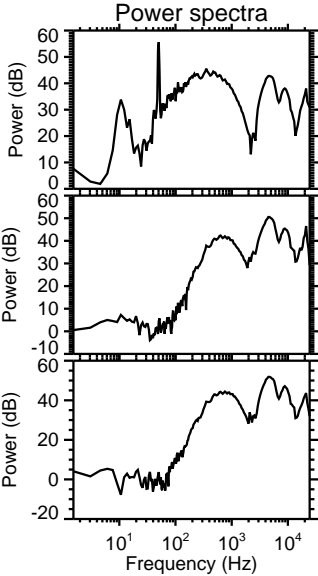
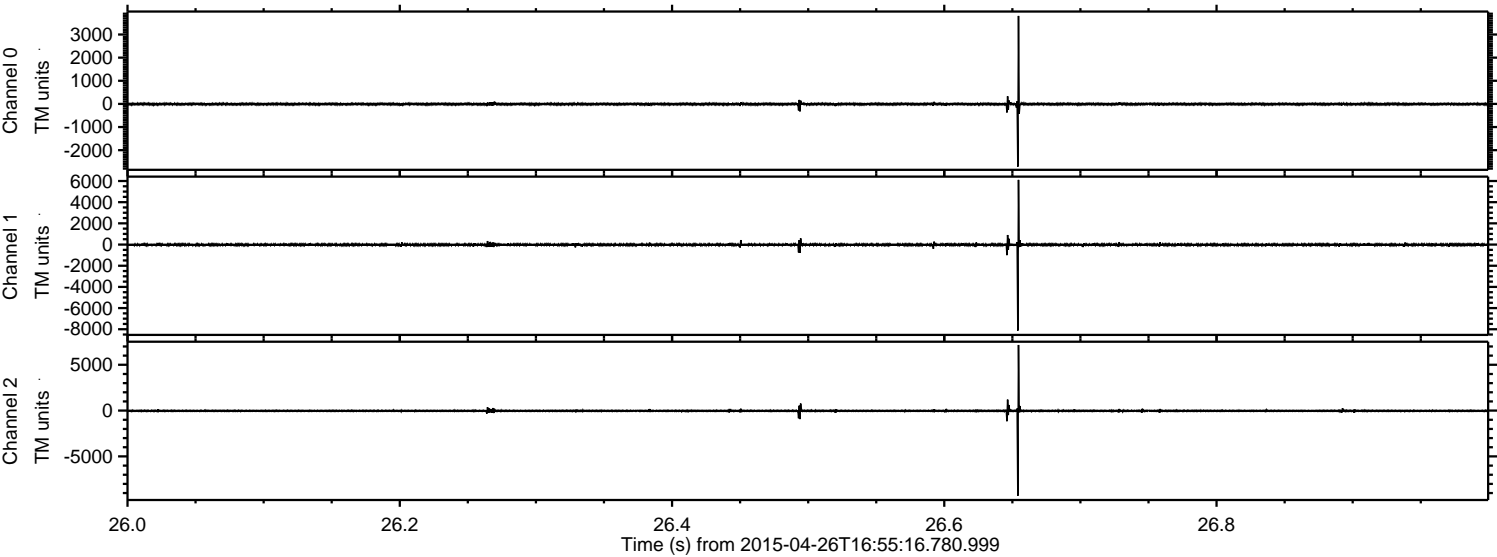
Processed Sun Apr 26 19:01:57 2015 by ELM ver.2012-10-06 from 001__elm20150426_165515__dat00.bin



Processed Sun Apr 26 19:02:08 2015 by ELM ver.2012-10-06 from 001__elm20150426_165515__dat00.bin

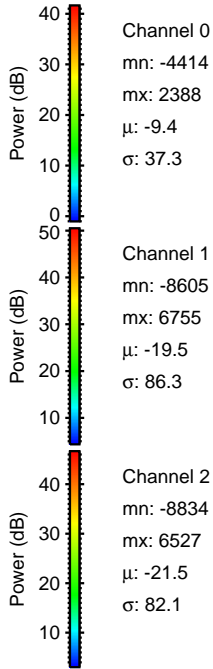
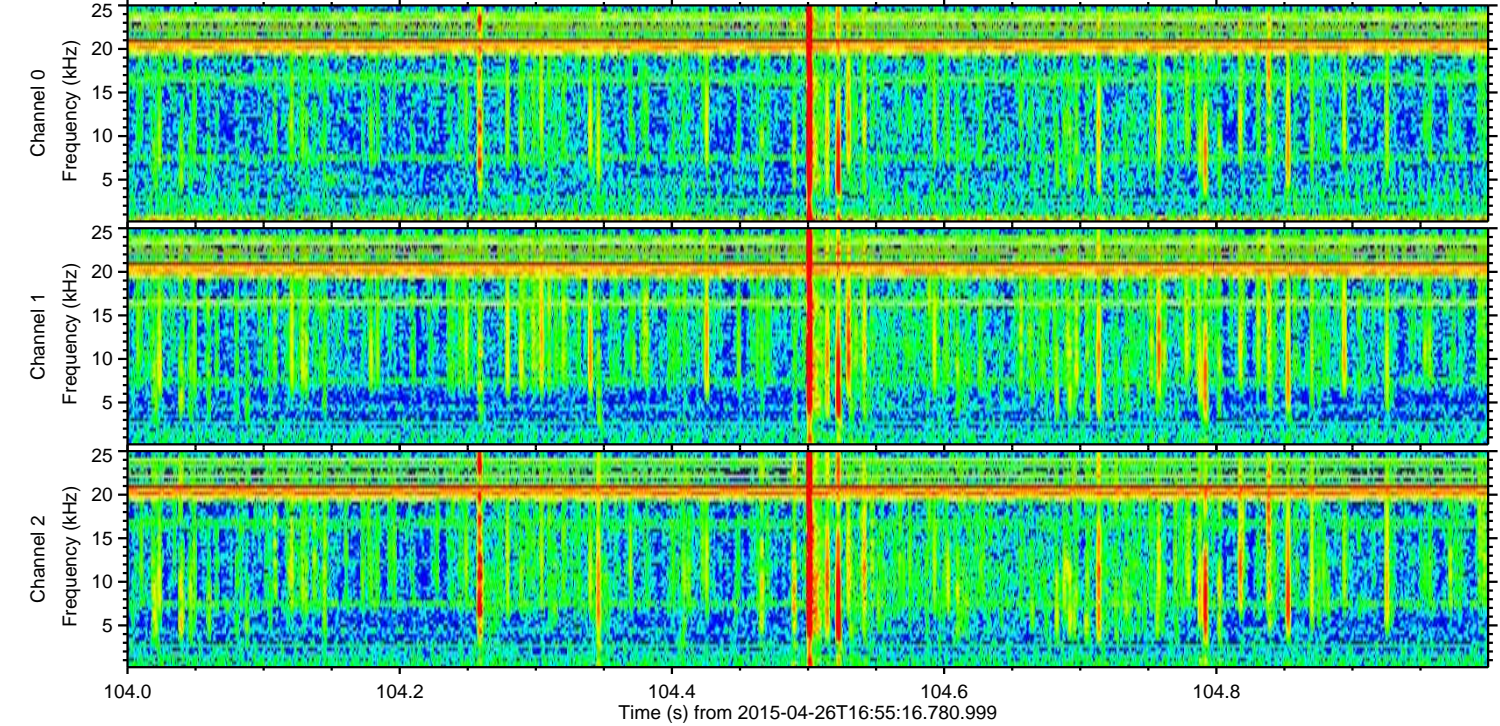
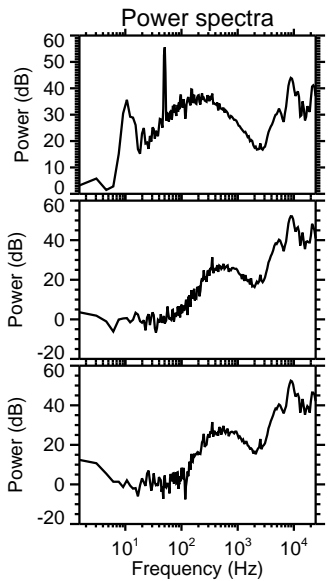
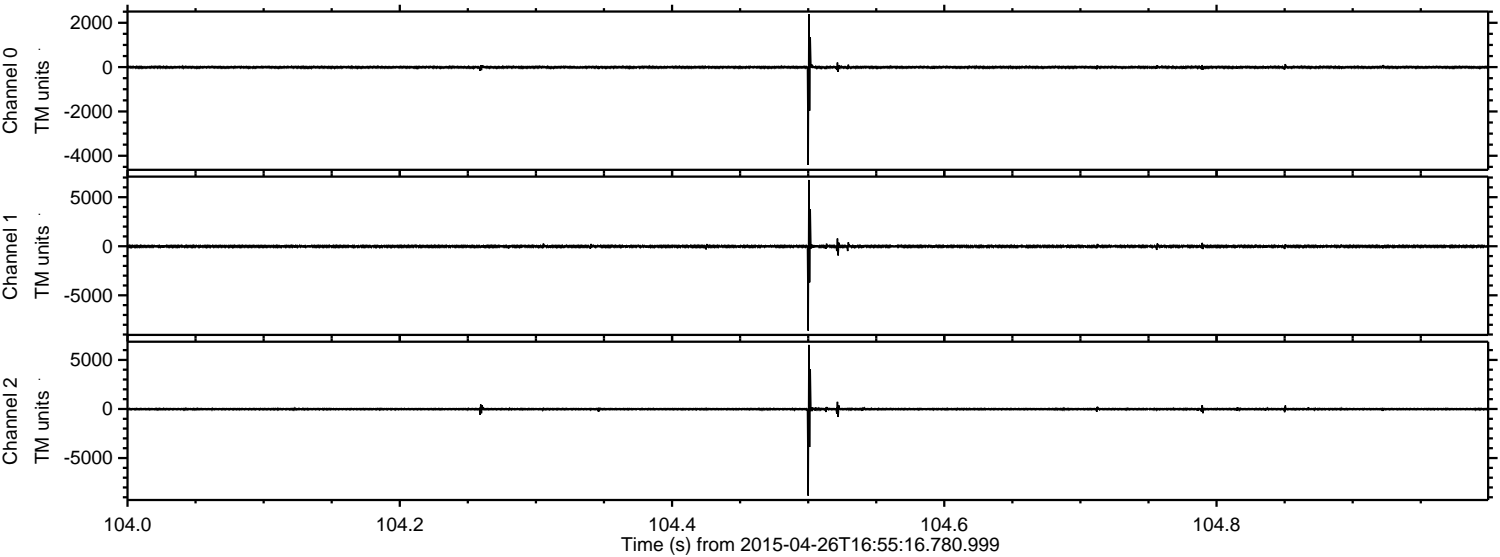


Processed Sun Apr 26 19:02:09 2015 by ELM ver.2012-10-06 from 001__elm20150426_165515__dat00.bin

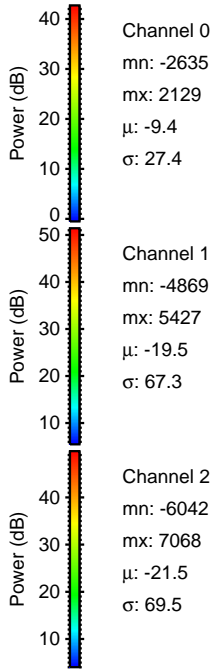
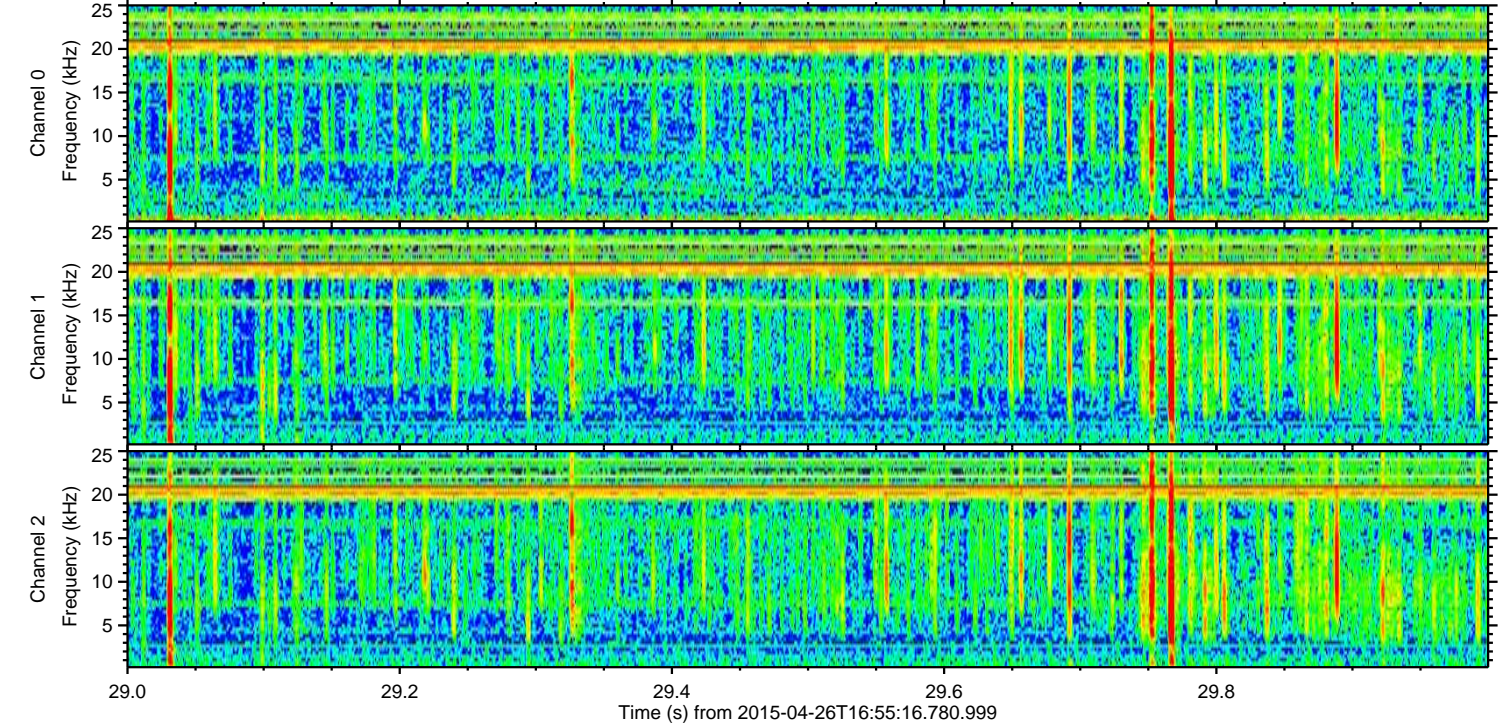
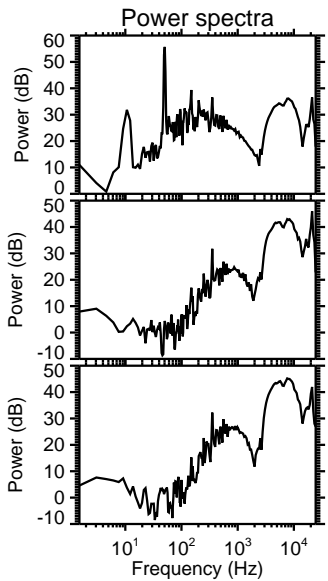
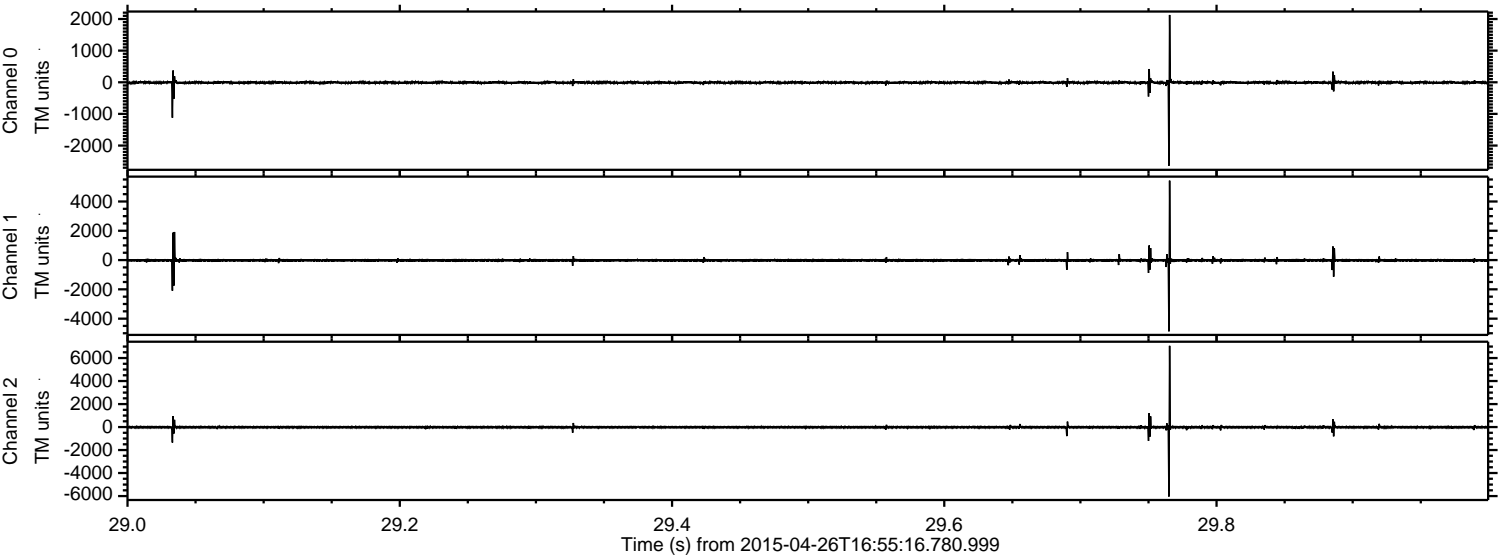


ELMAVAN 3D WAVEFORMS (Measured data sampled at 50 kHz) 49769 packets of 144 samples from 2015-04-26T16:55:16.780.999. Part 105/144

Processed Sun Apr 26 19:02:10 2015 by ELM ver.2012-10-06 from 001__elm20150426_165515__dat00.bin

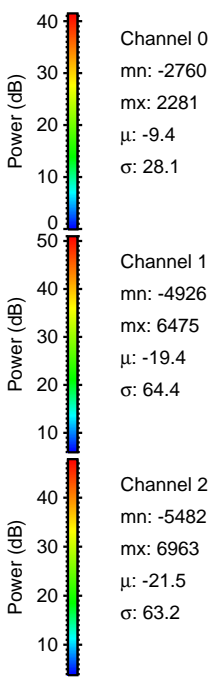
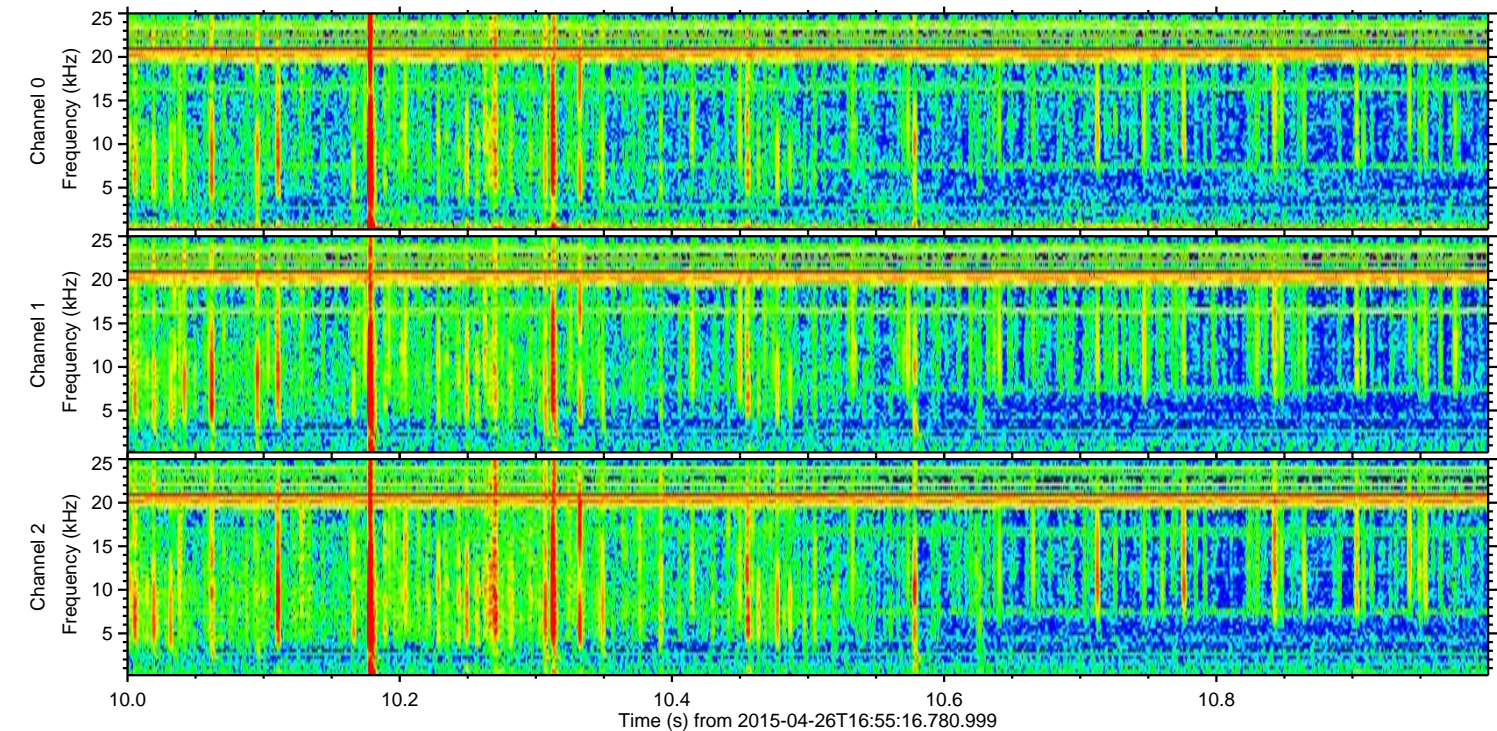
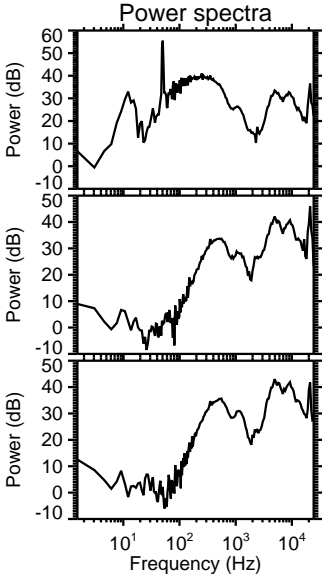
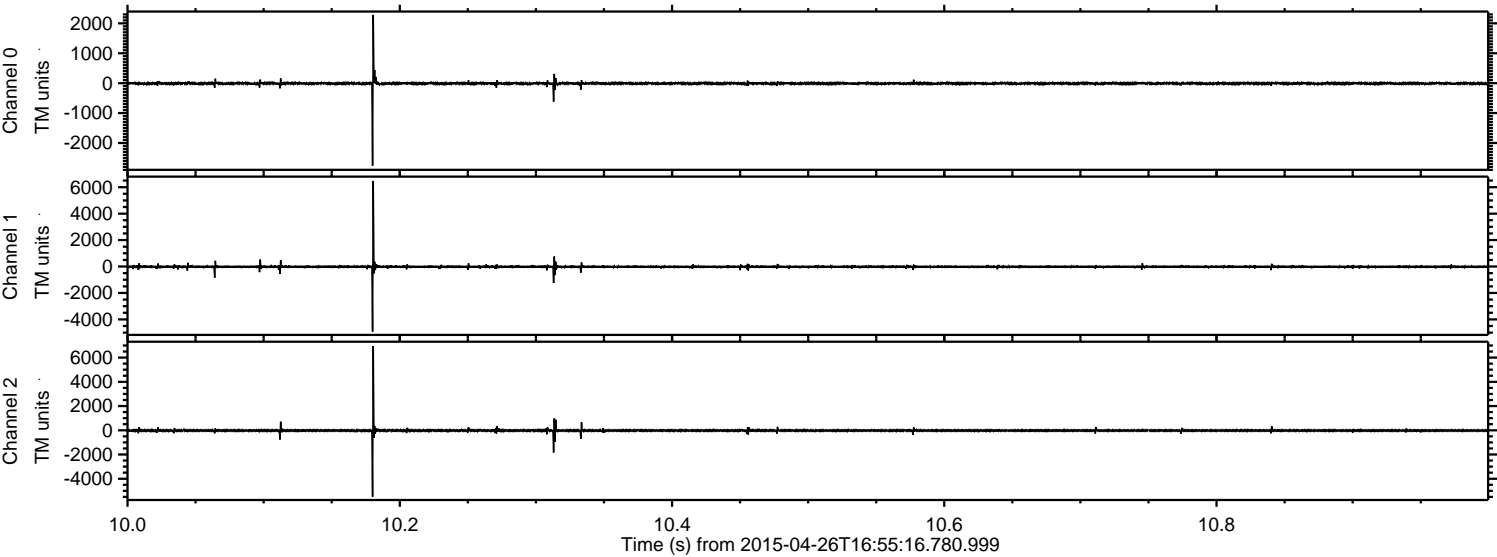


Processed Sun Apr 26 19:02:11 2015 by ELM ver.2012-10-06 from 001__elm20150426_165515__dat00.bin

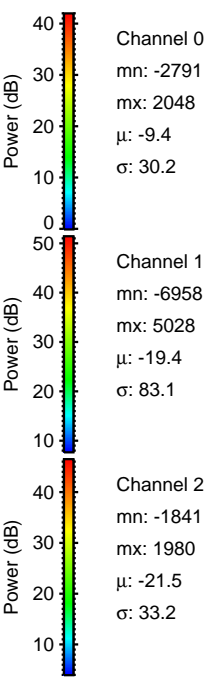
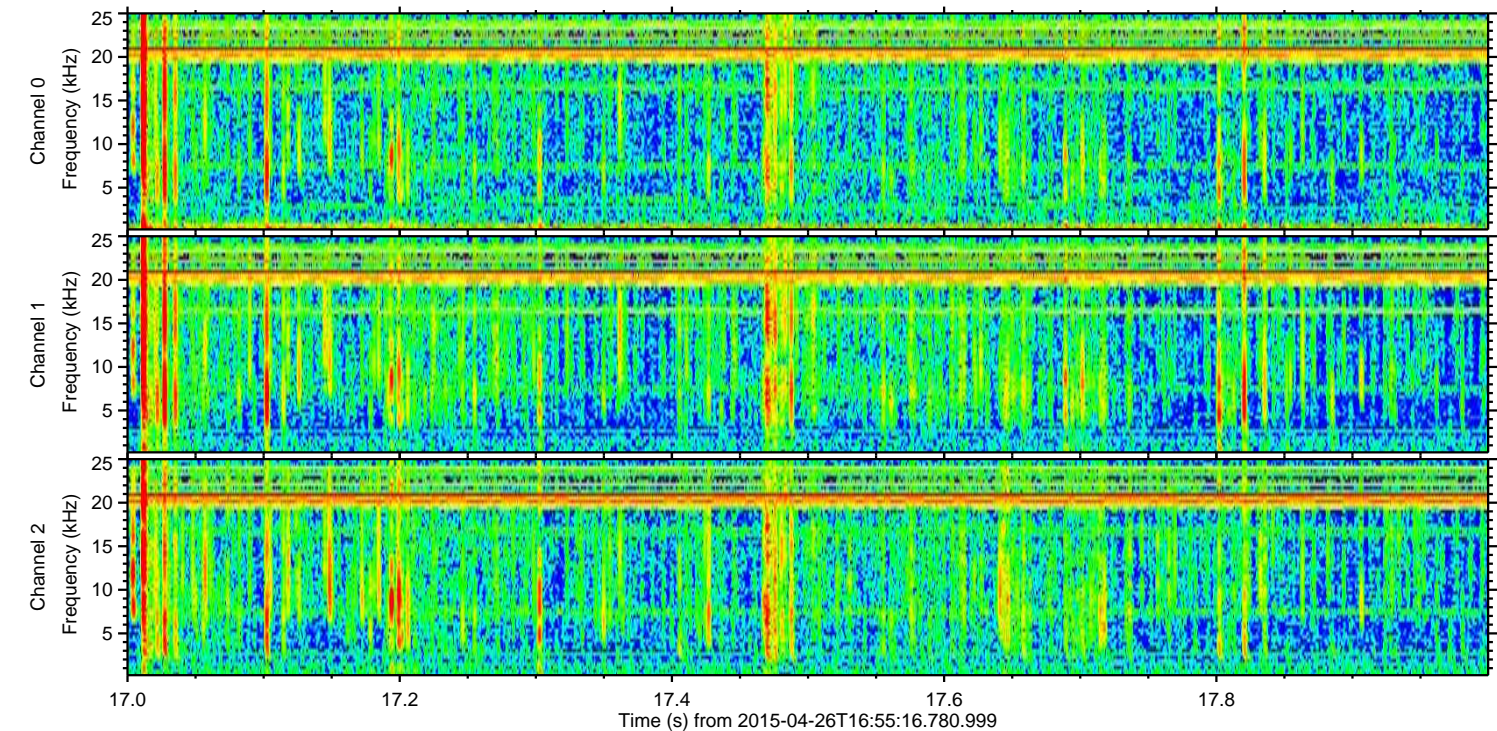
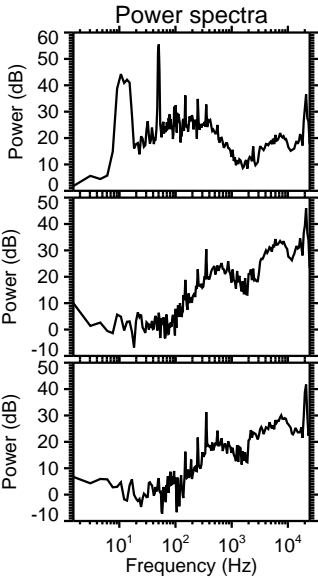
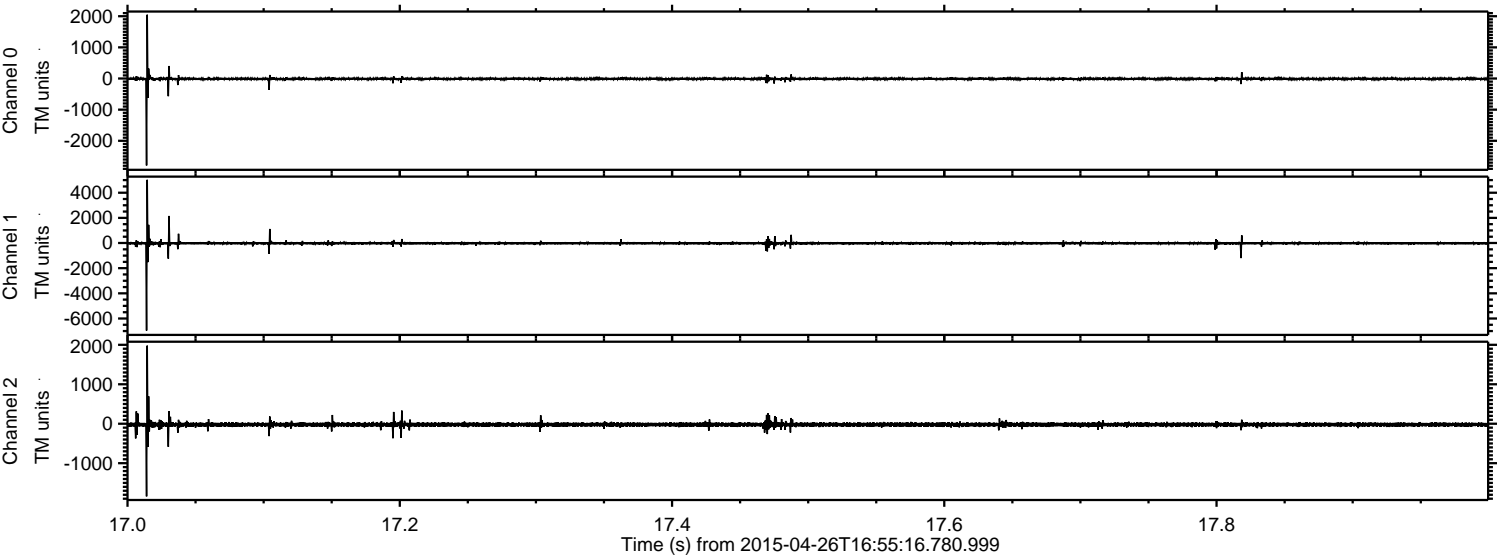


ELMAVAN 3D WAVEFORMS (Measured data sampled at 50 kHz) 49769 packets of 144 samples from 2015-04-26T16:55:16.780.999. Part 11/144

Processed Sun Apr 26 19:02:12 2015 by ELM ver.2012-10-06 from 001__elm20150426_165515__dat00.bin

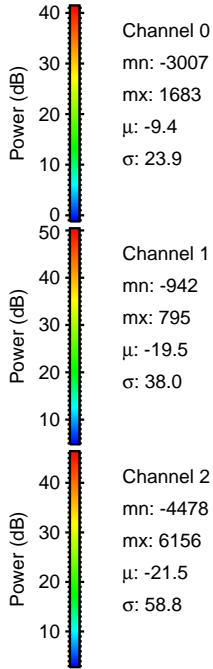
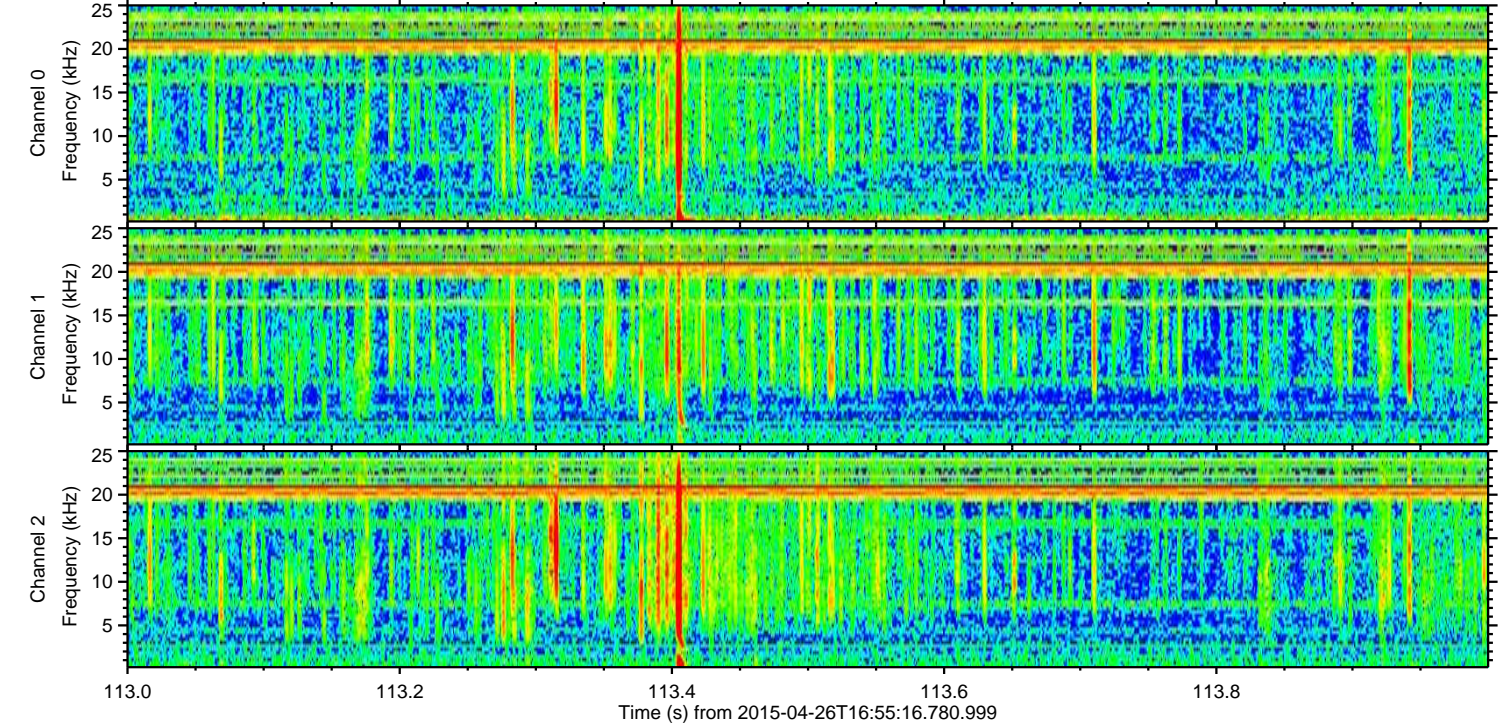
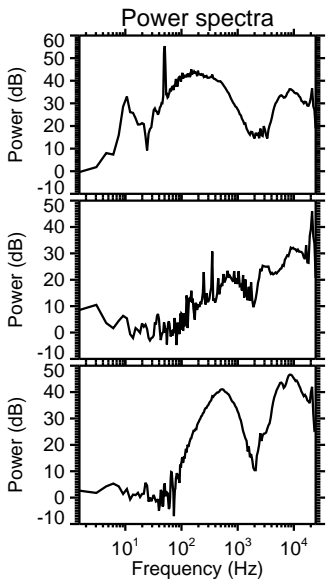
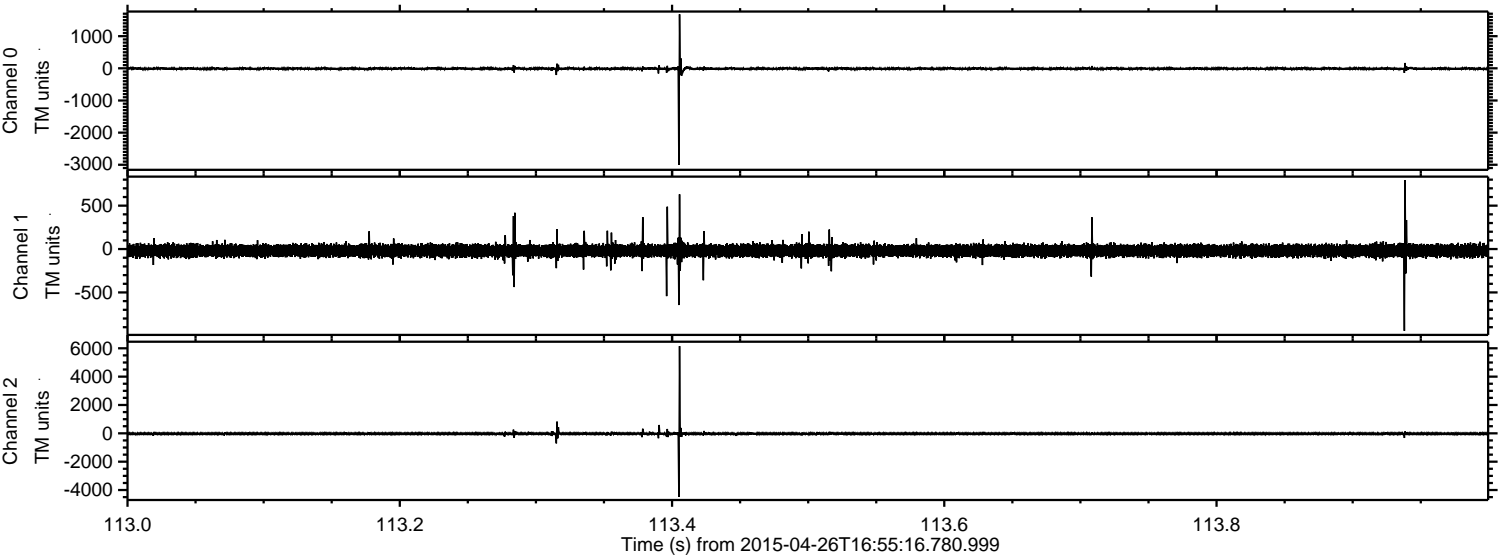


Processed Sun Apr 26 19:02:13 2015 by ELM ver.2012-10-06 from 001__elm20150426_165515__dat00.bin



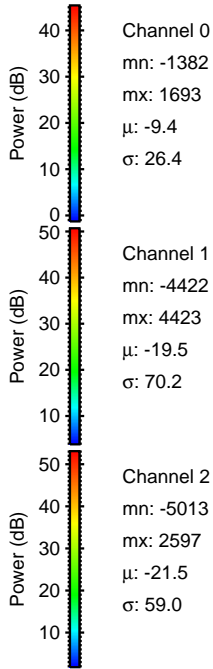
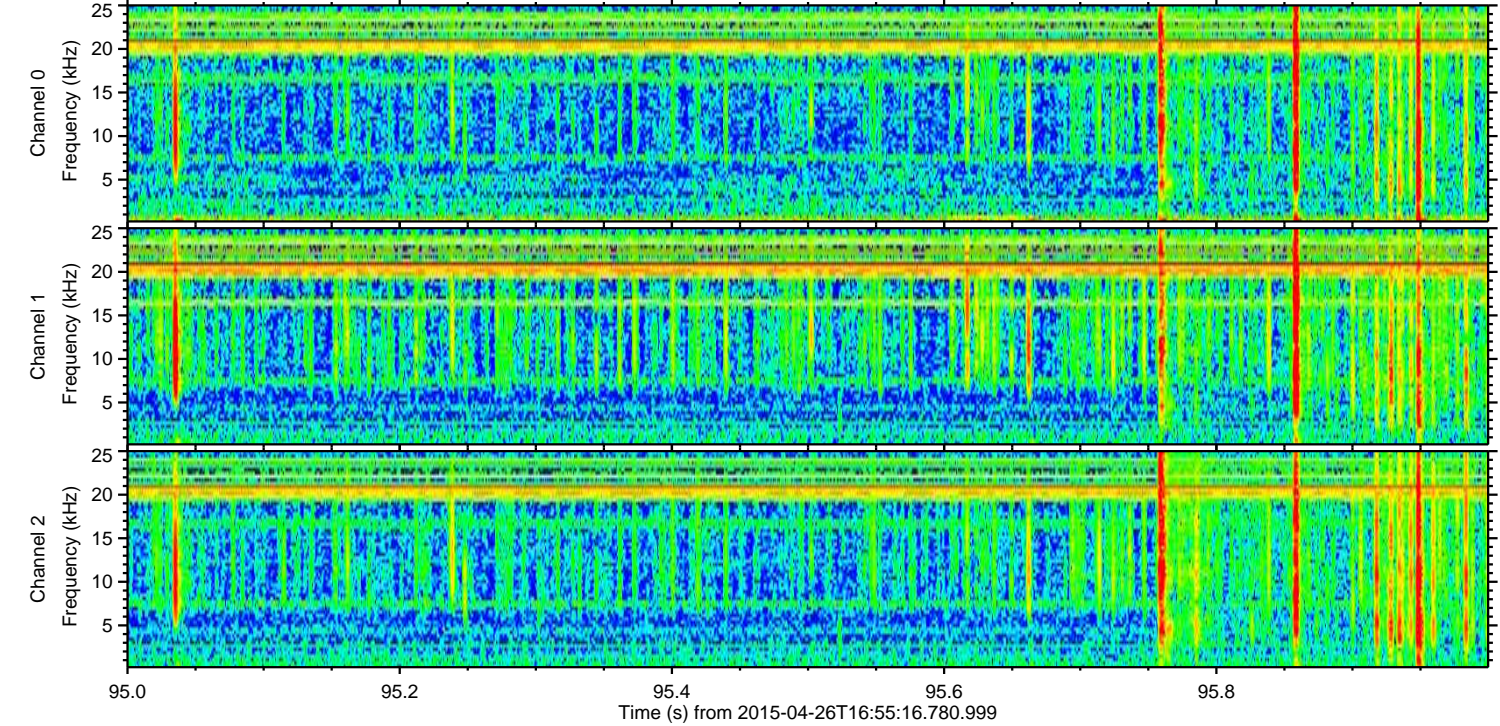
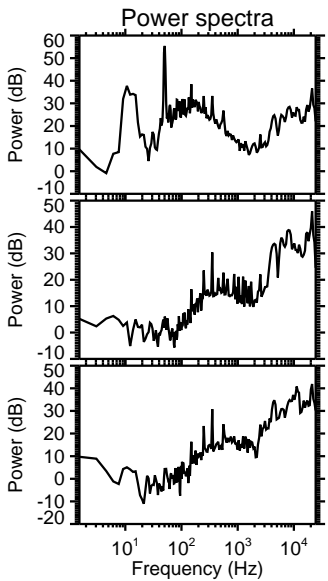
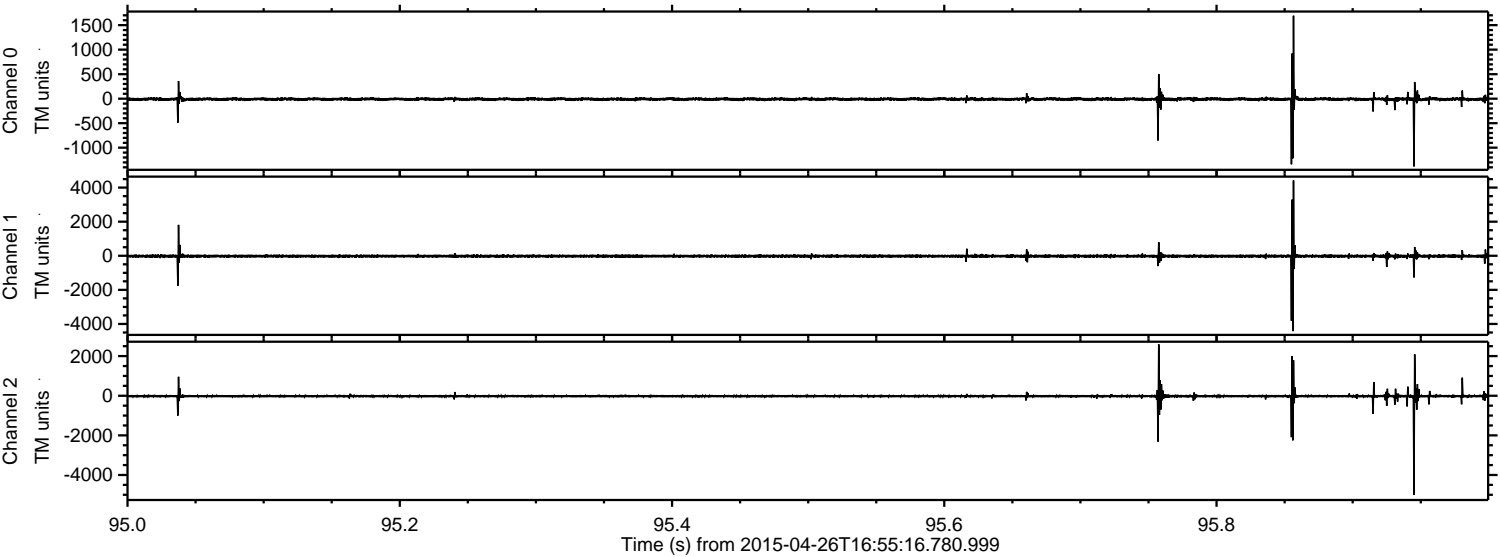
ELMAVAN 3D WAVEFORMS (Measured data sampled at 50 kHz) 49769 packets of 144 samples from 2015-04-26T16:55:16.780.999. Part 114/144

Processed Sun Apr 26 19:02:14 2015 by ELM ver.2012-10-06 from 001__elm20150426_165515__dat00.bin



ELMAVAN 3D WAVEFORMS (Measured data sampled at 50 kHz) 49769 packets of 144 samples from 2015-04-26T16:55:16.780.999. Part 96/144

Processed Sun Apr 26 19:02:15 2015 by ELM ver.2012-10-06 from 001__elm20150426_165515__dat00.bin

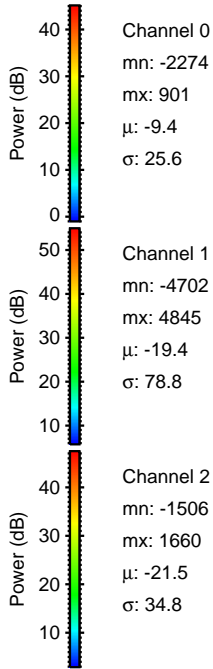
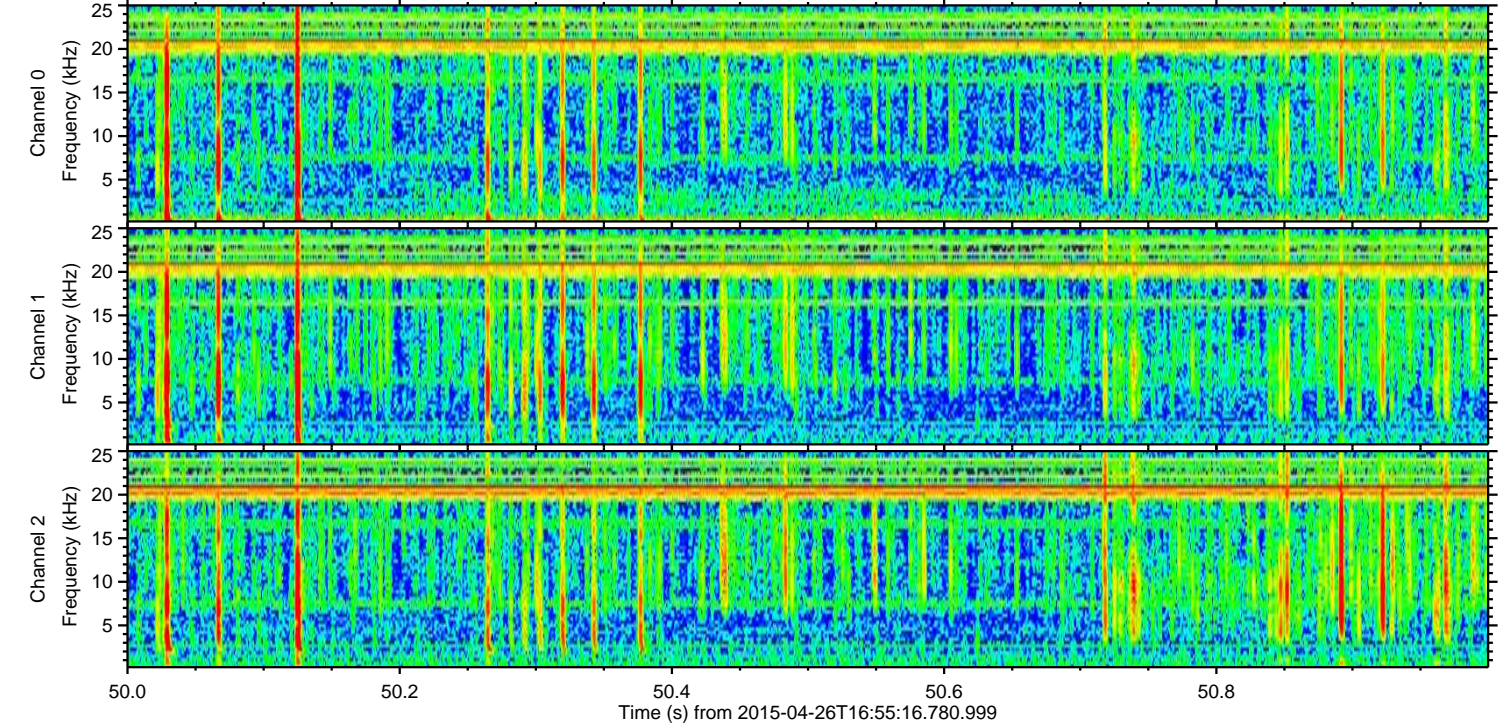
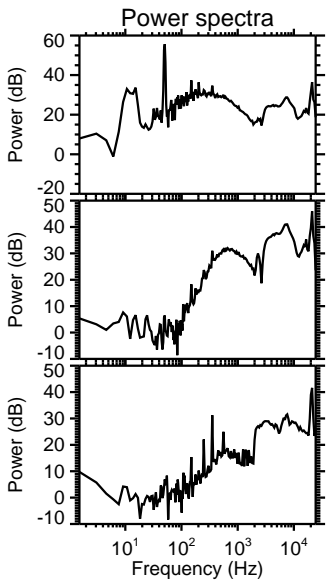
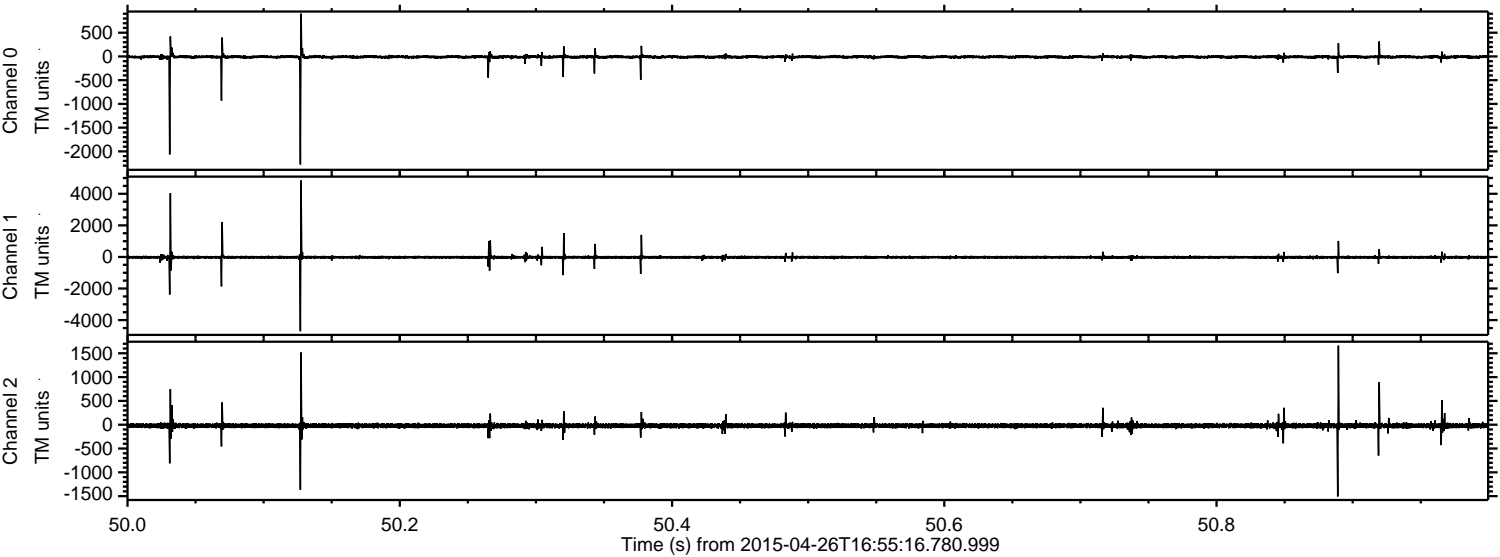


Channel 0
mn: -1382
mx: 1693
 μ : -9.4
 σ : 26.4

Channel 1
mn: -4422
mx: 4423
 μ : -19.5
 σ : 70.2

Channel 2
mn: -5013
mx: 2597
 μ : -21.5
 σ : 59.0

Processed Sun Apr 26 19:02:16 2015 by ELM ver.2012-10-06 from 001__elm20150426_165515__dat00.bin



Processed Sun Apr 26 19:02:17 2015 by ELM ver.2012-10-06 from 001__elm20150426_165515__dat00.bin

