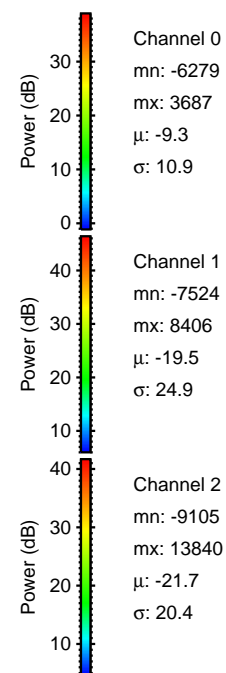
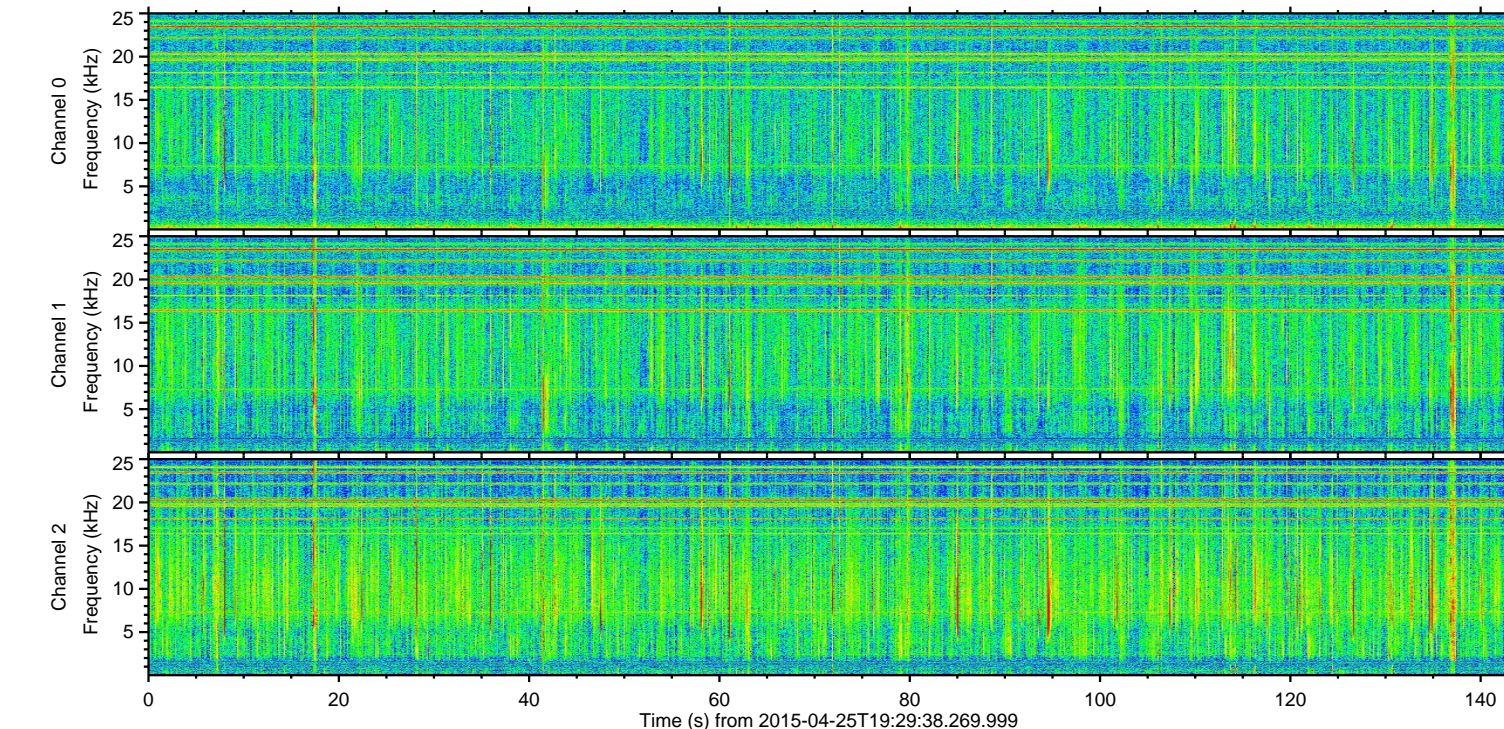
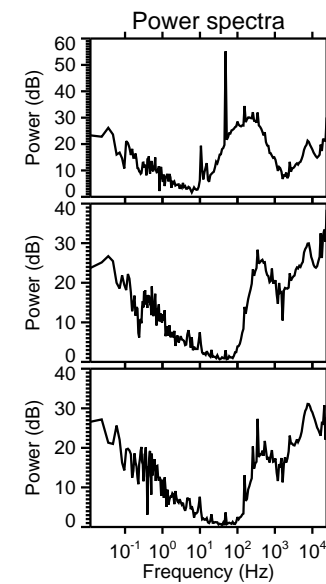
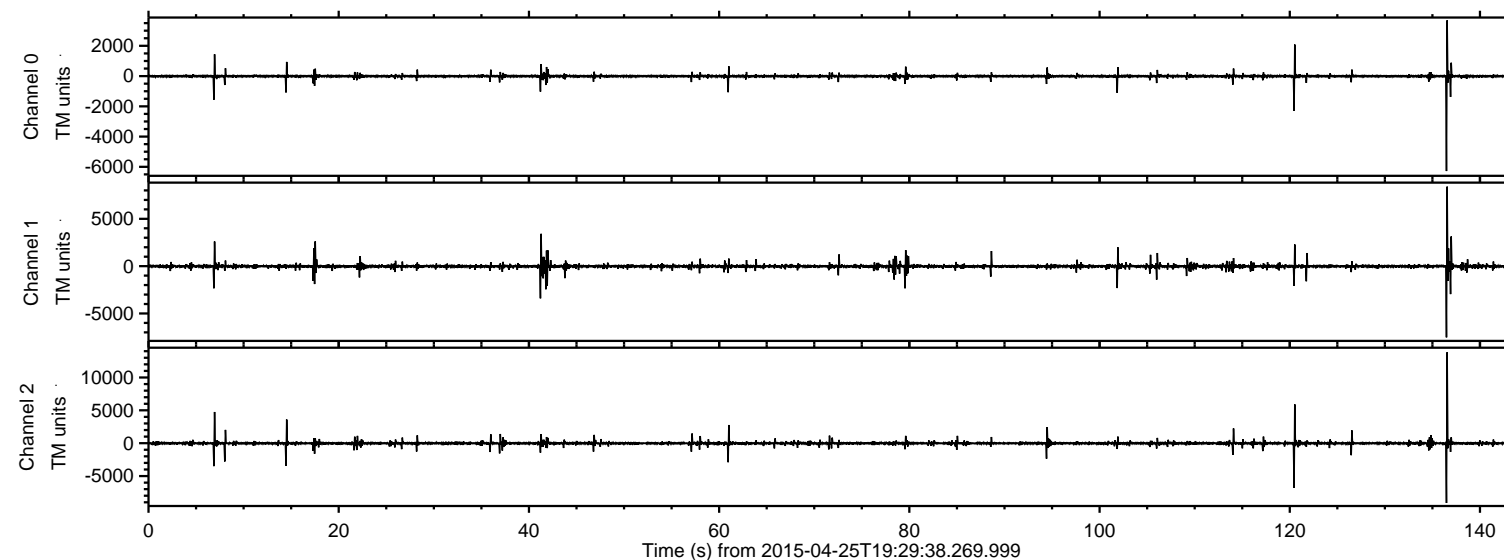


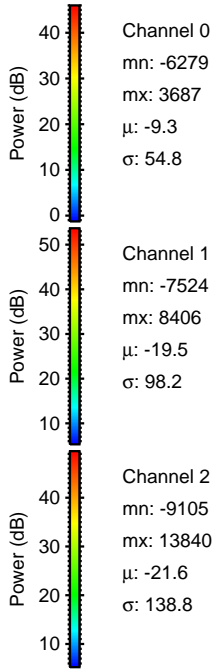
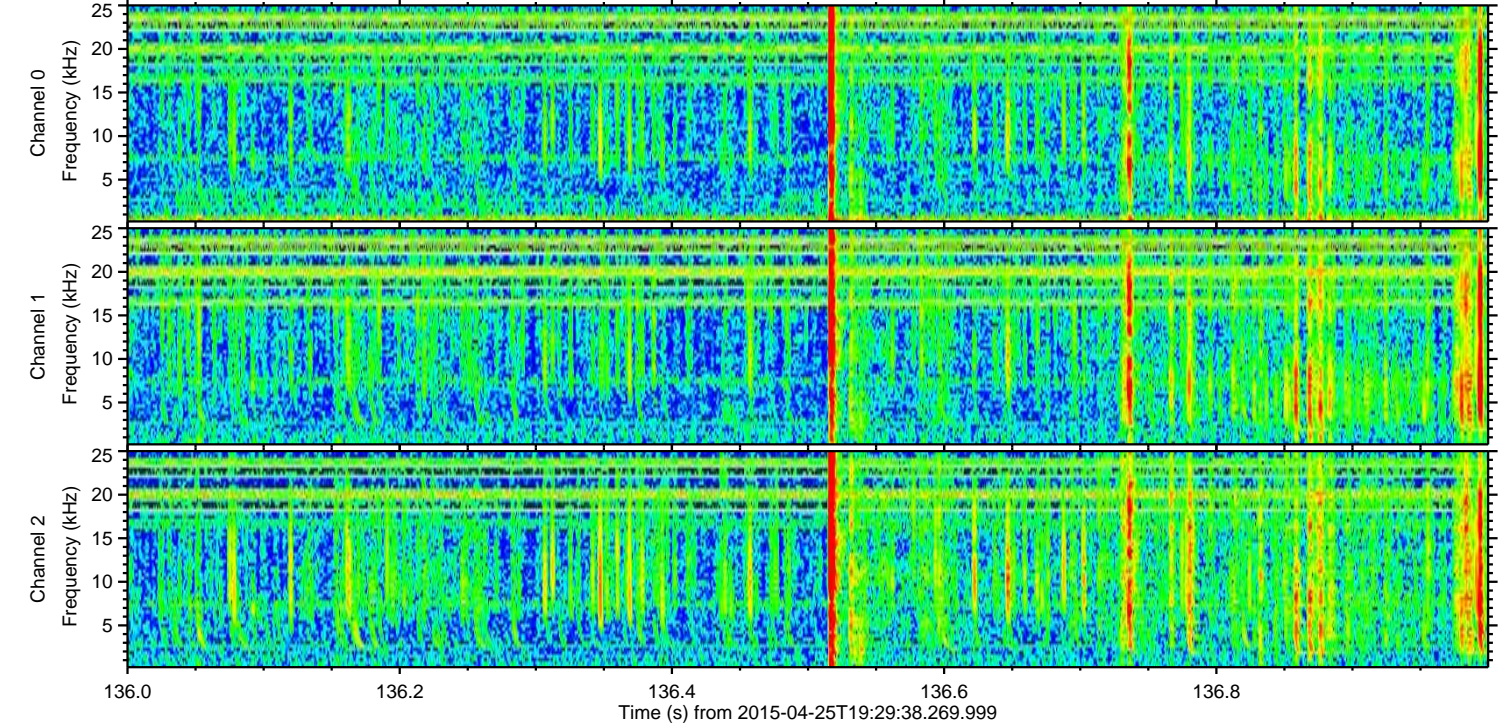
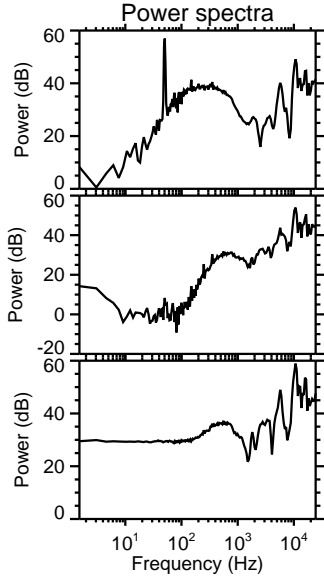
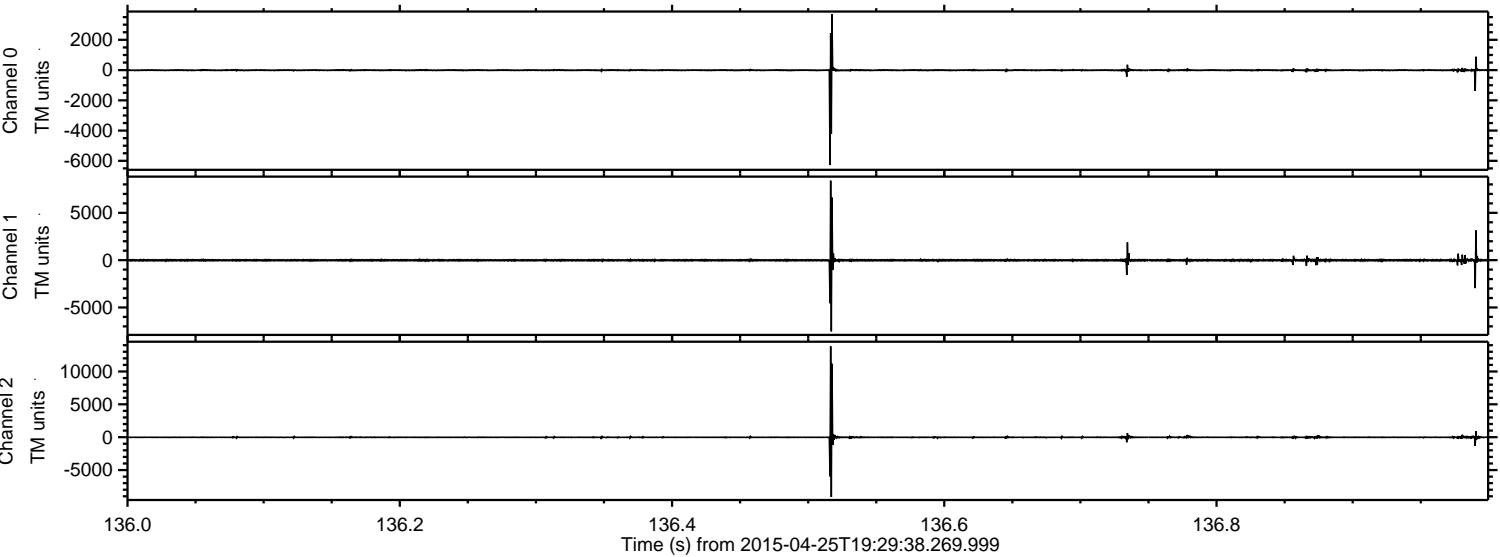
ELMAVAN 3D WAVEFORMS (Measured data sampled at 50 kHz) 49675 packets of 144 samples from 2015-04-25T19:29:38.269.999.

Processed Sun Apr 26 09:55:46 2015 by ELM ver.2012-10-06 from 001__elm20150425_192937__dat00.bin



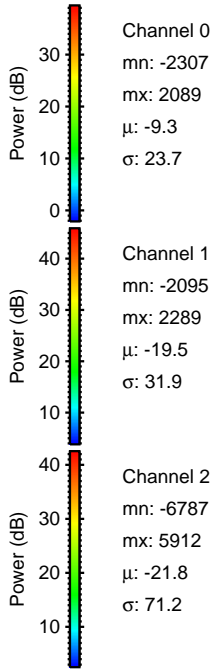
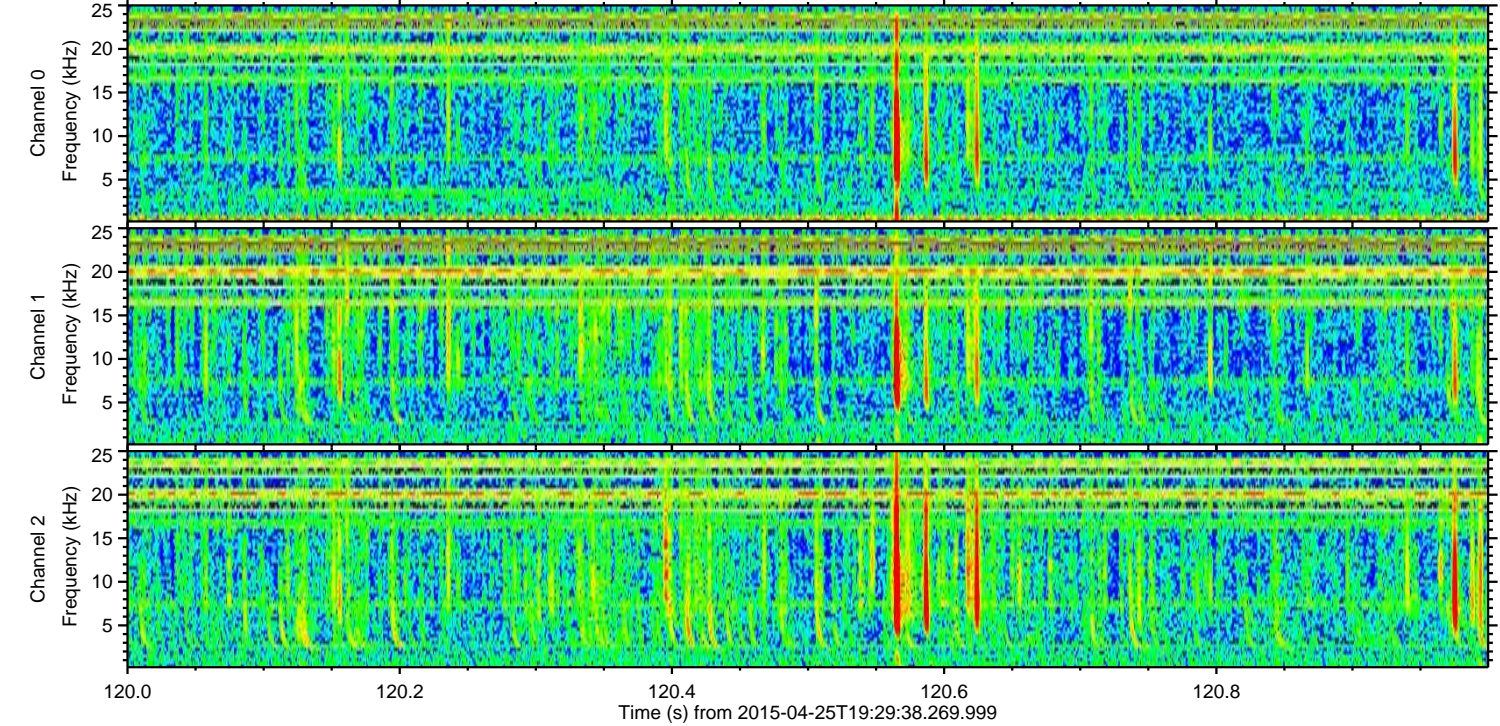
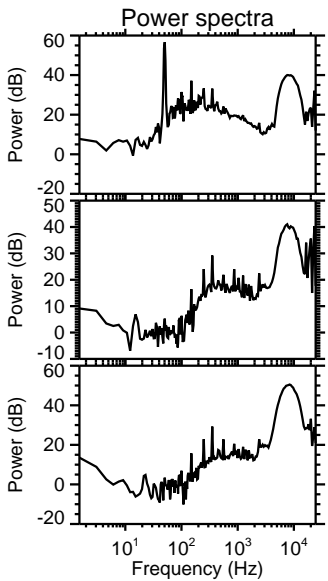
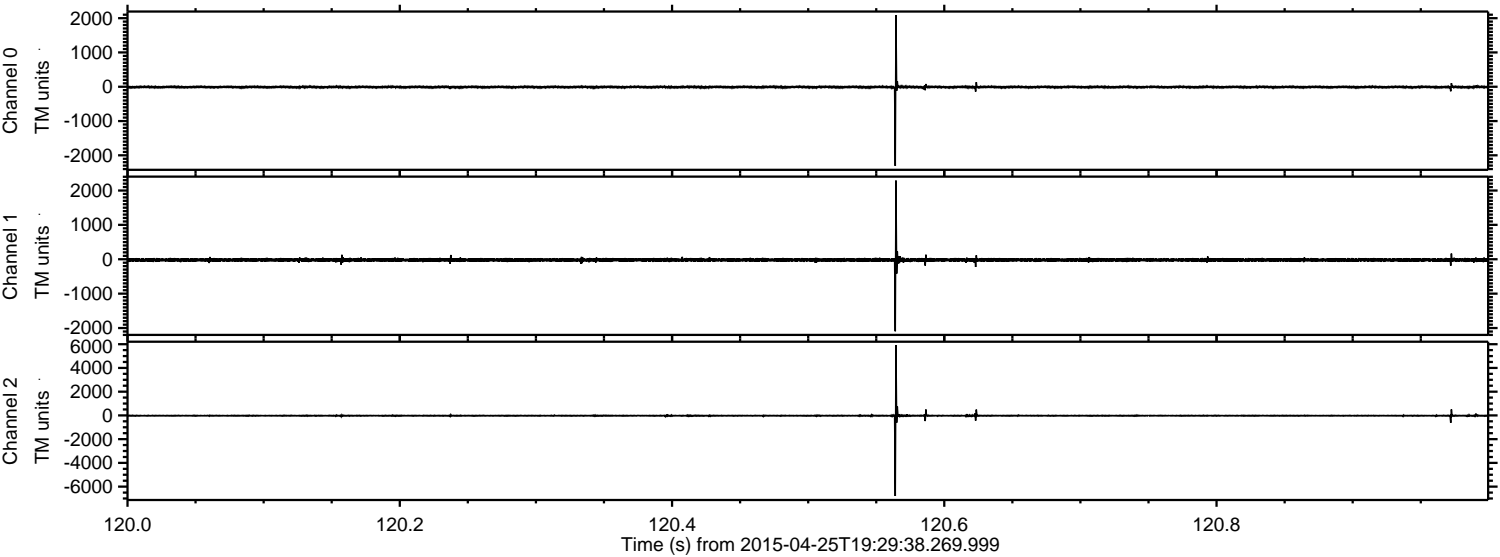
ELMAVAN 3D WAVEFORMS (Measured data sampled at 50 kHz) 49675 packets of 144 samples from 2015-04-25T19:29:38.269.999. Part 137/144

Processed Sun Apr 26 09:56:05 2015 by ELM ver.2012-10-06 from 001__elm20150425_192937__dat00.bin



ELMAVAN 3D WAVEFORMS (Measured data sampled at 50 kHz) 49675 packets of 144 samples from 2015-04-25T19:29:38.269.999. Part 121/144

Processed Sun Apr 26 09:56:07 2015 by ELM ver.2012-10-06 from 001__elm20150425_192937__dat00.bin



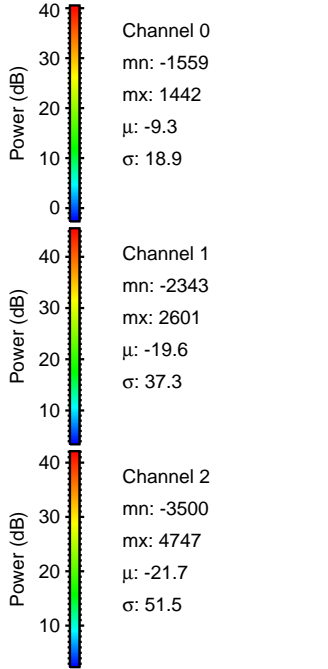
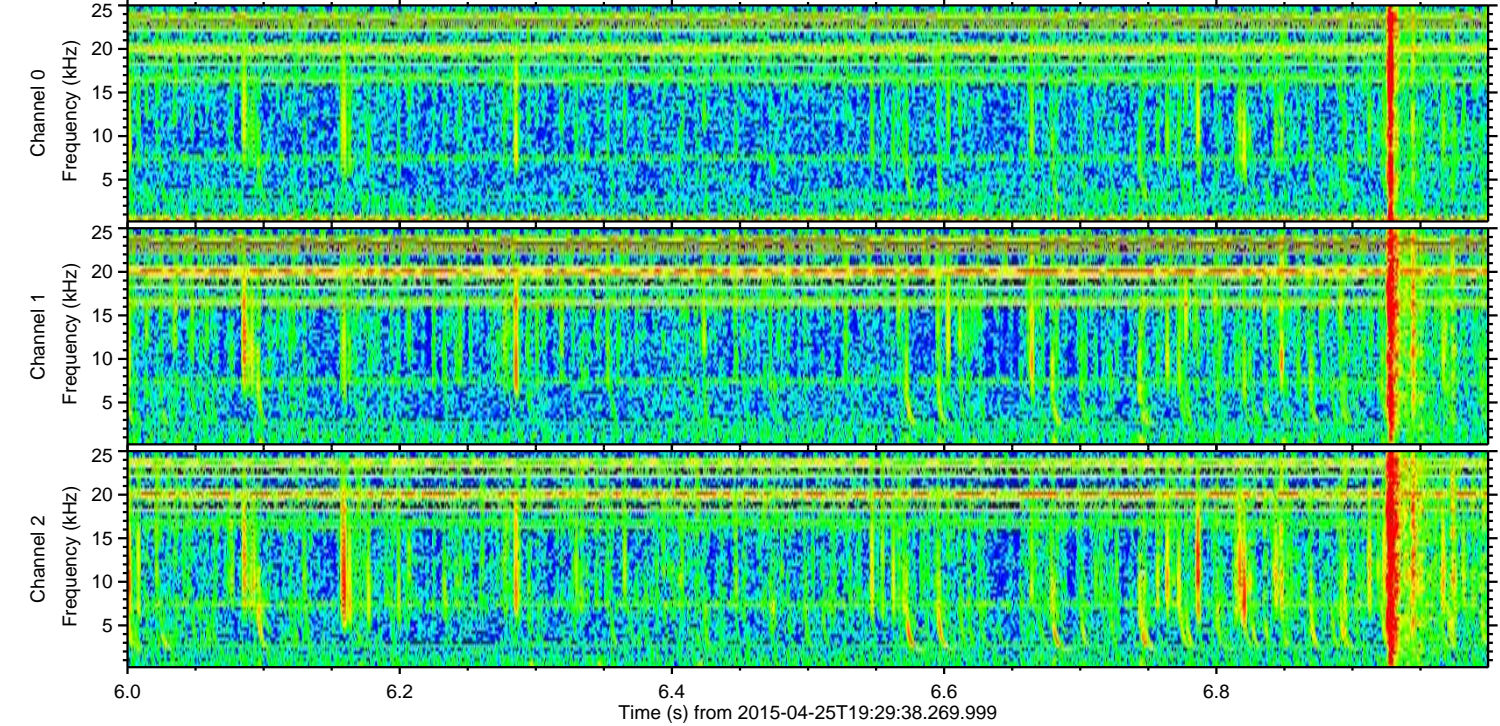
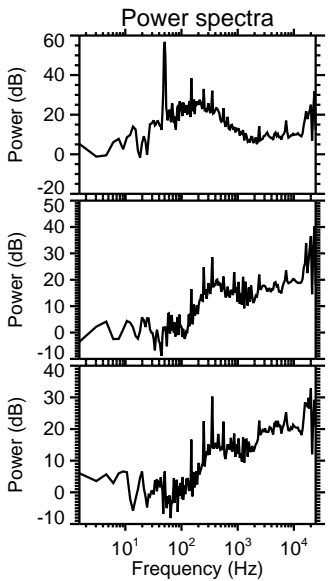
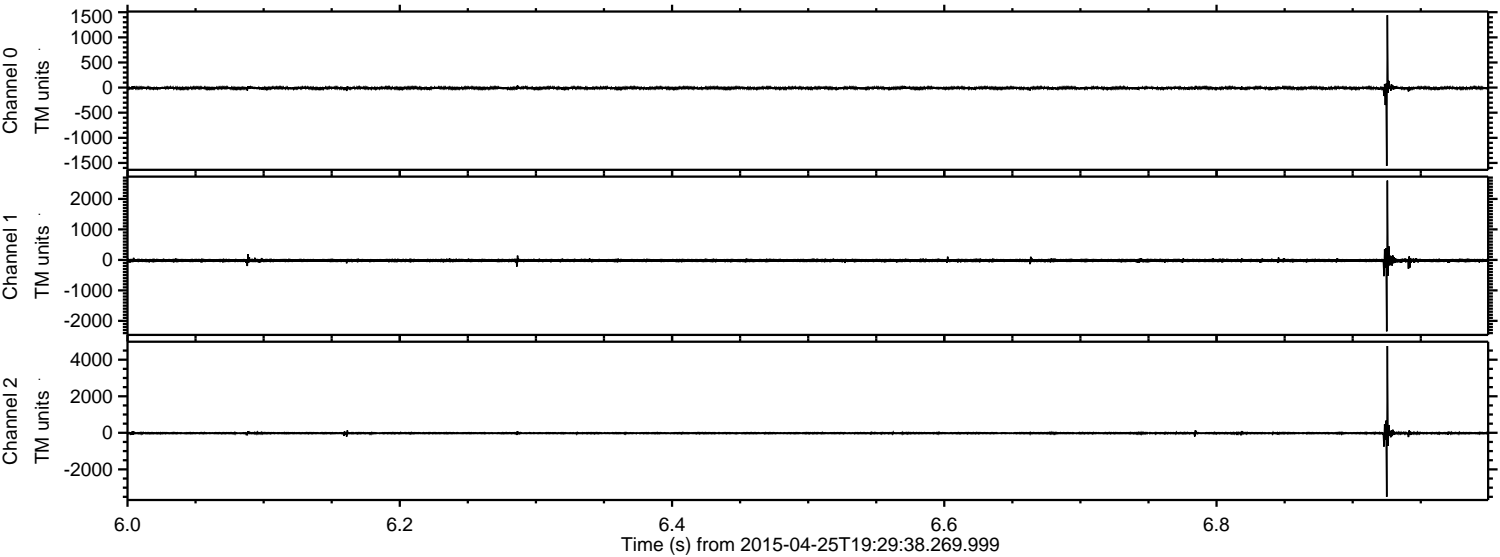
Channel 0
mn: -2307
mx: 2089
 μ : -9.3
 σ : 23.7

Channel 1
mn: -2095
mx: 2289
 μ : -19.5
 σ : 31.9

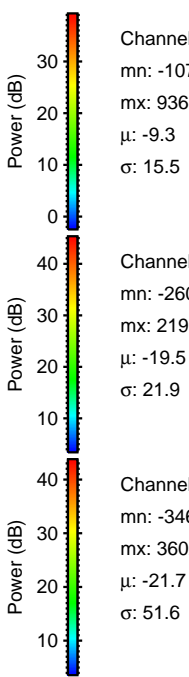
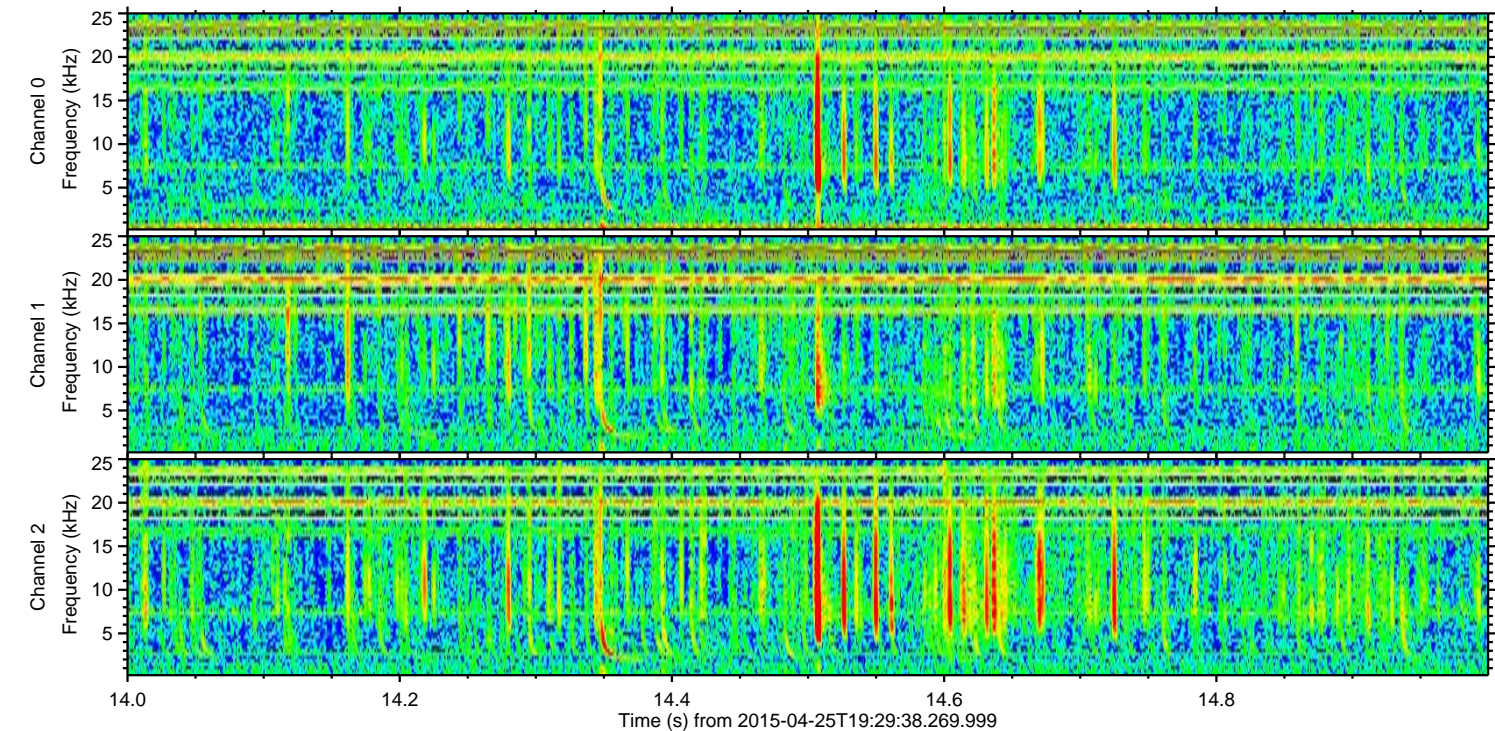
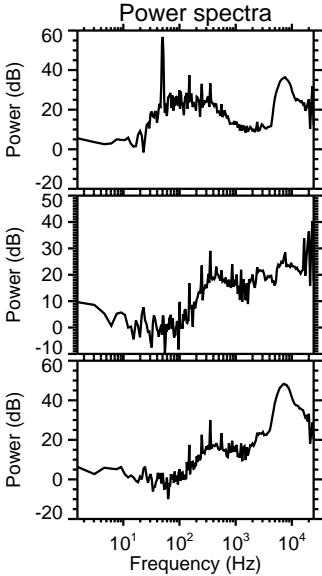
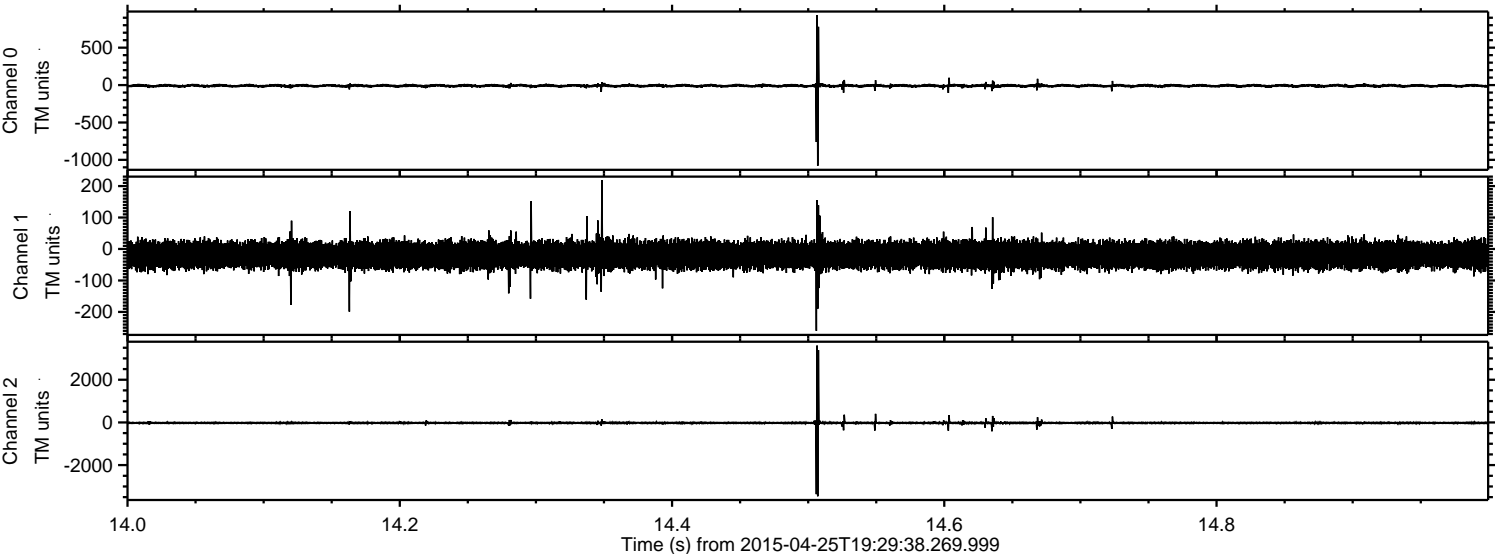
Channel 2
mn: -6787
mx: 5912
 μ : -21.8
 σ : 71.2

ELMAVAN 3D WAVEFORMS (Measured data sampled at 50 kHz) 49675 packets of 144 samples from 2015-04-25T19:29:38.269.999. Part 7/144

Processed Sun Apr 26 09:56:09 2015 by ELM ver.2012-10-06 from 001__elm20150425_192937__dat00.bin

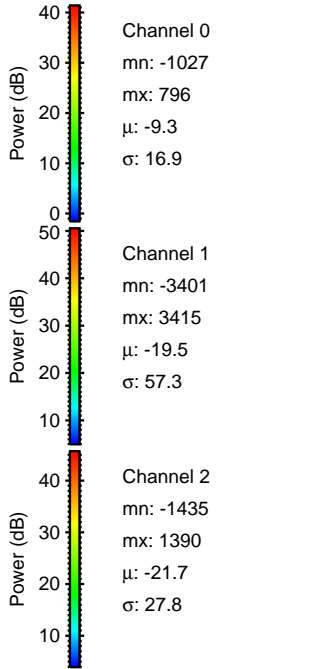
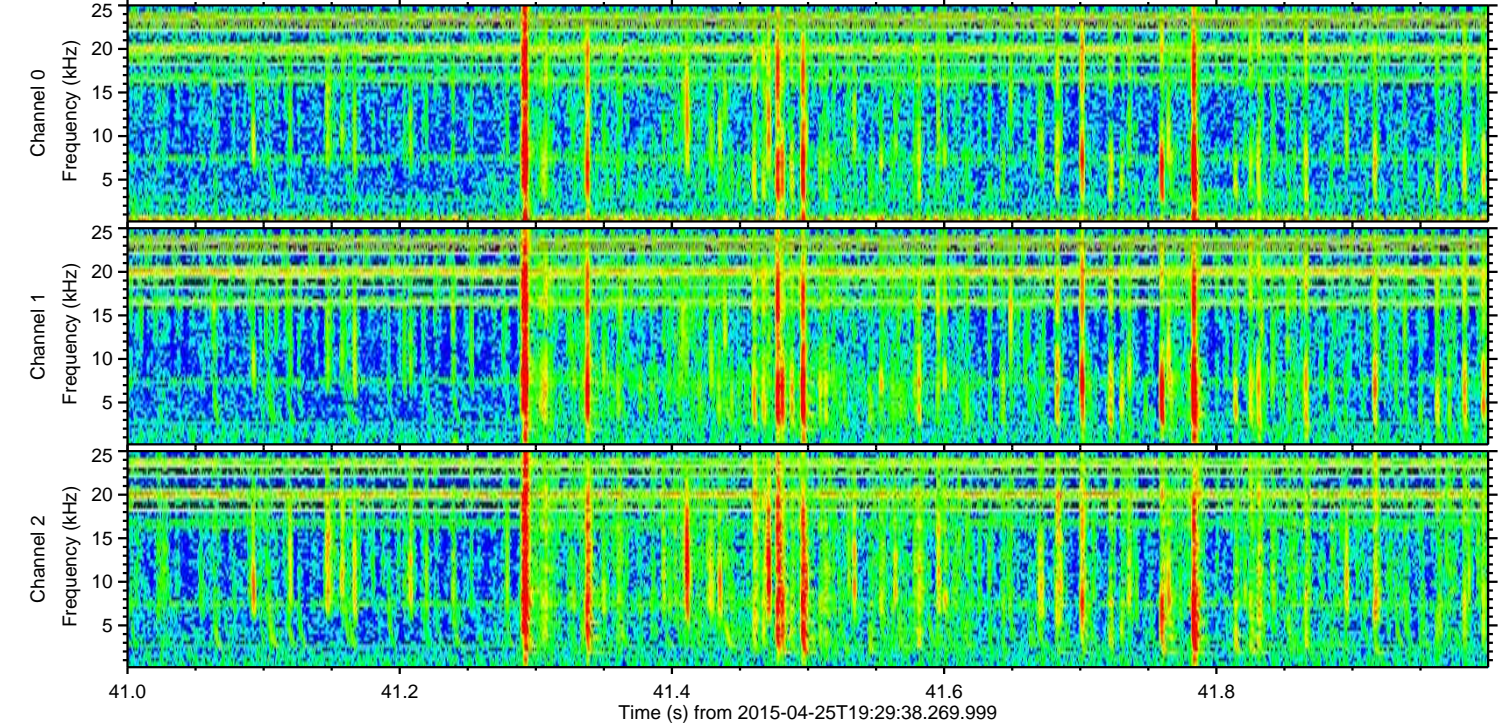
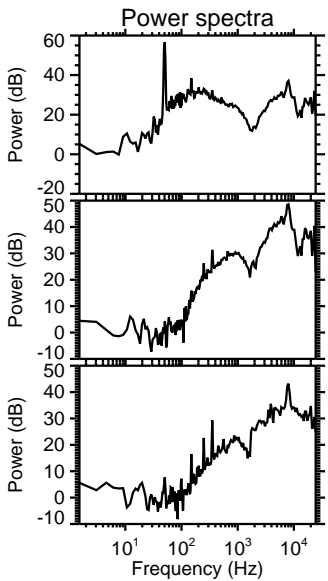
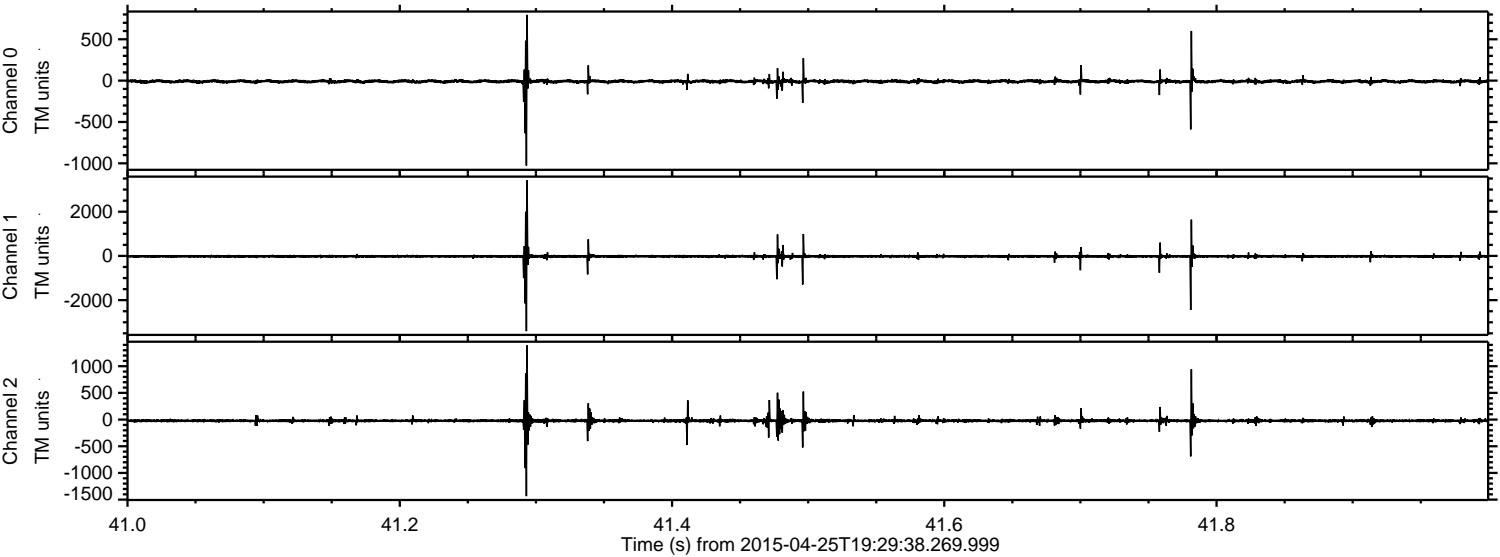


Processed Sun Apr 26 09:56:10 2015 by ELM ver.2012-10-06 from 001__elm20150425_192937__dat00.bin

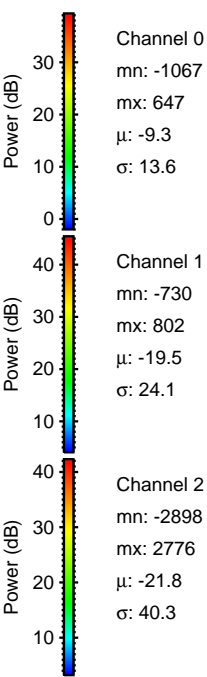
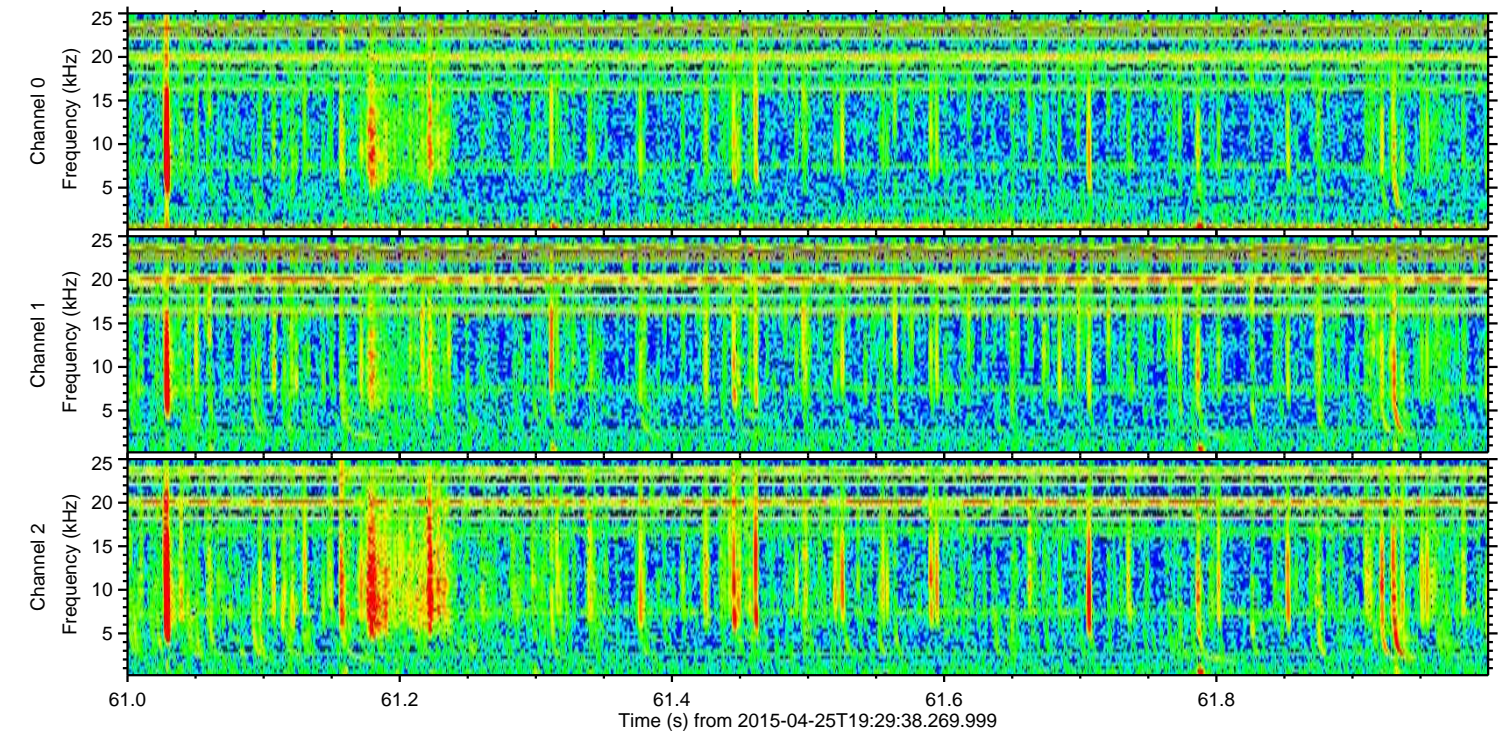
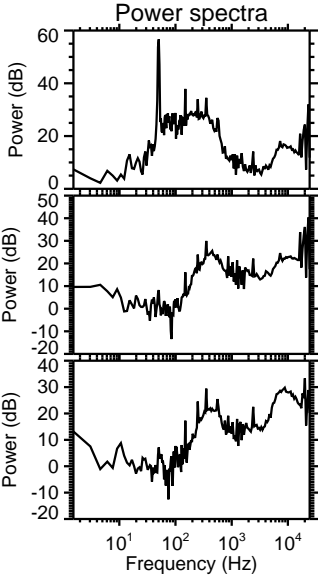
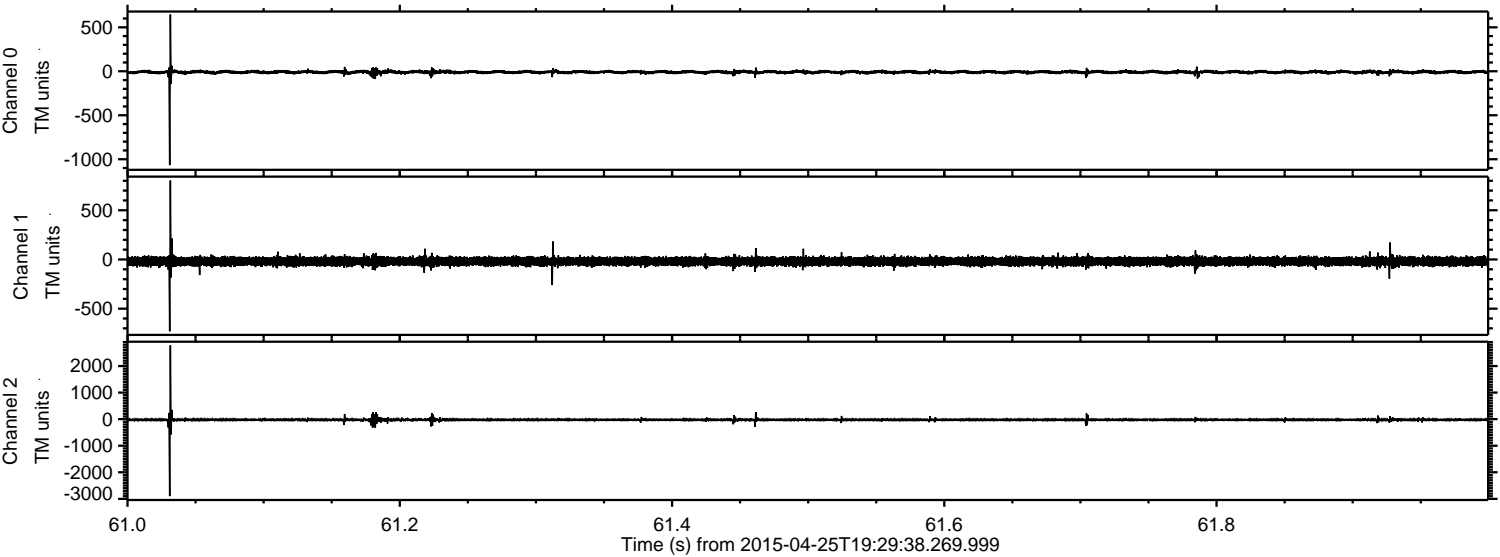


ELMAVAN 3D WAVEFORMS (Measured data sampled at 50 kHz) 49675 packets of 144 samples from 2015-04-25T19:29:38.269.999. Part 42/144

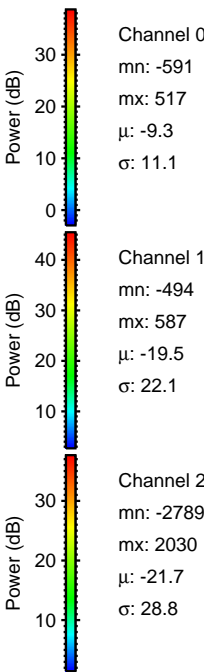
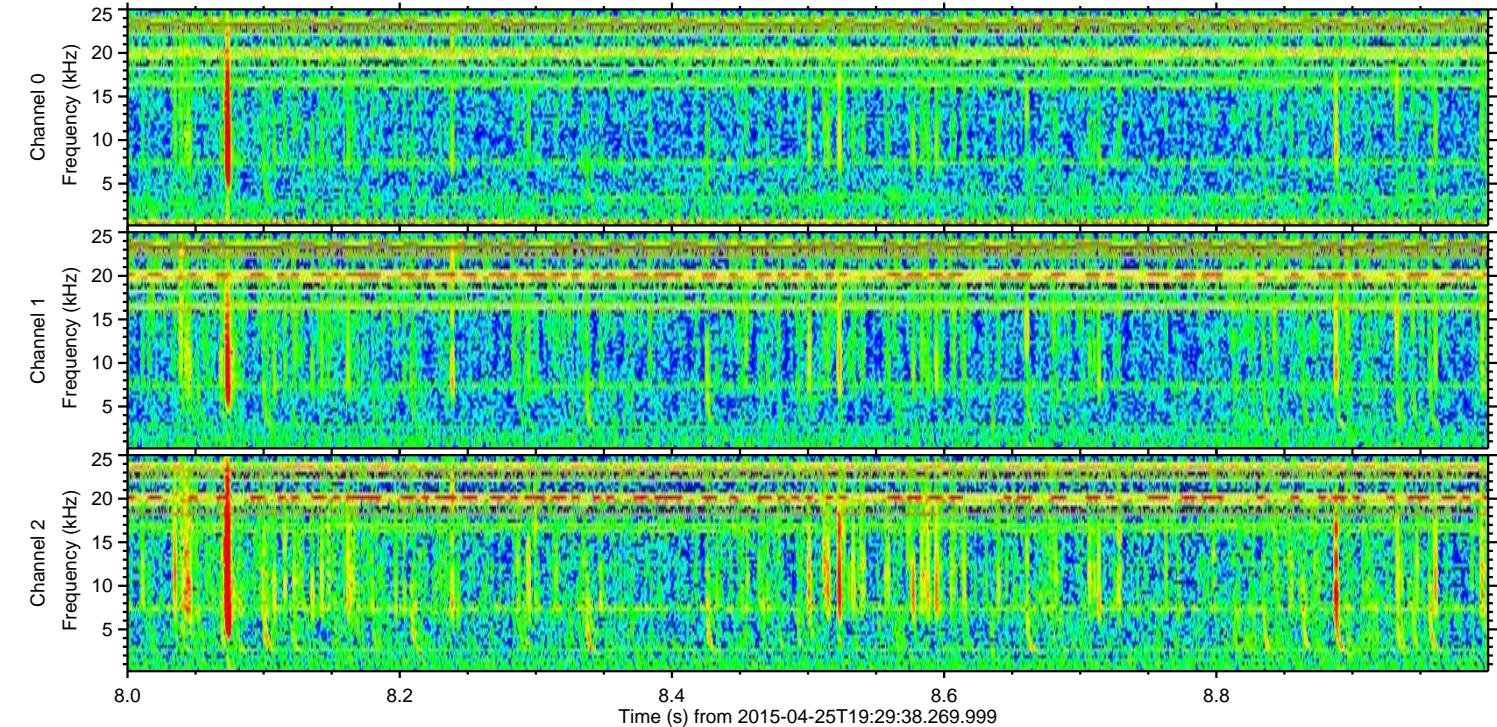
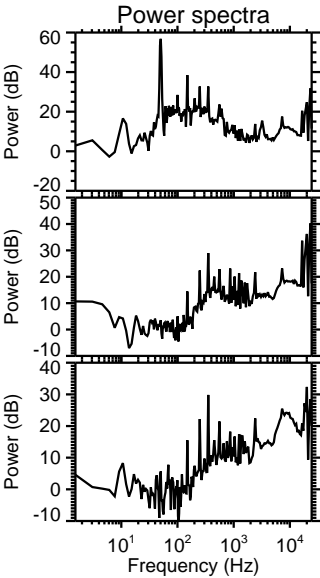
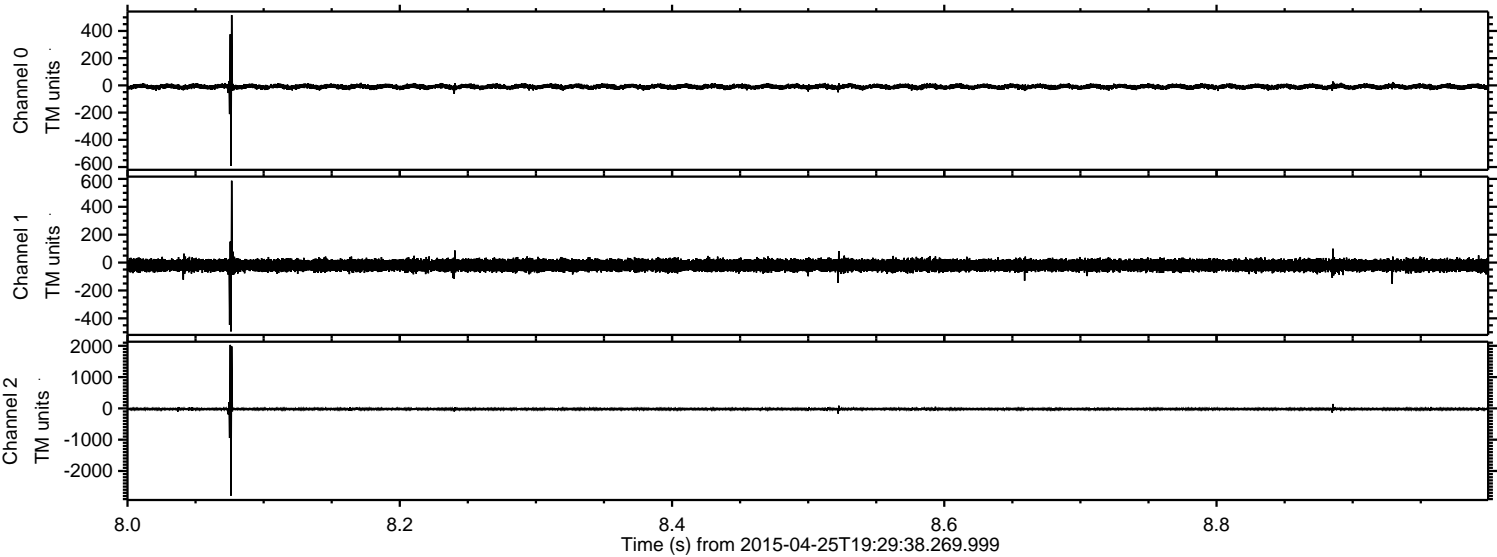
Processed Sun Apr 26 09:56:11 2015 by ELM ver.2012-10-06 from 001__elm20150425_192937__dat00.bin



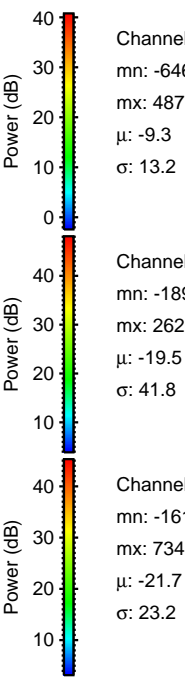
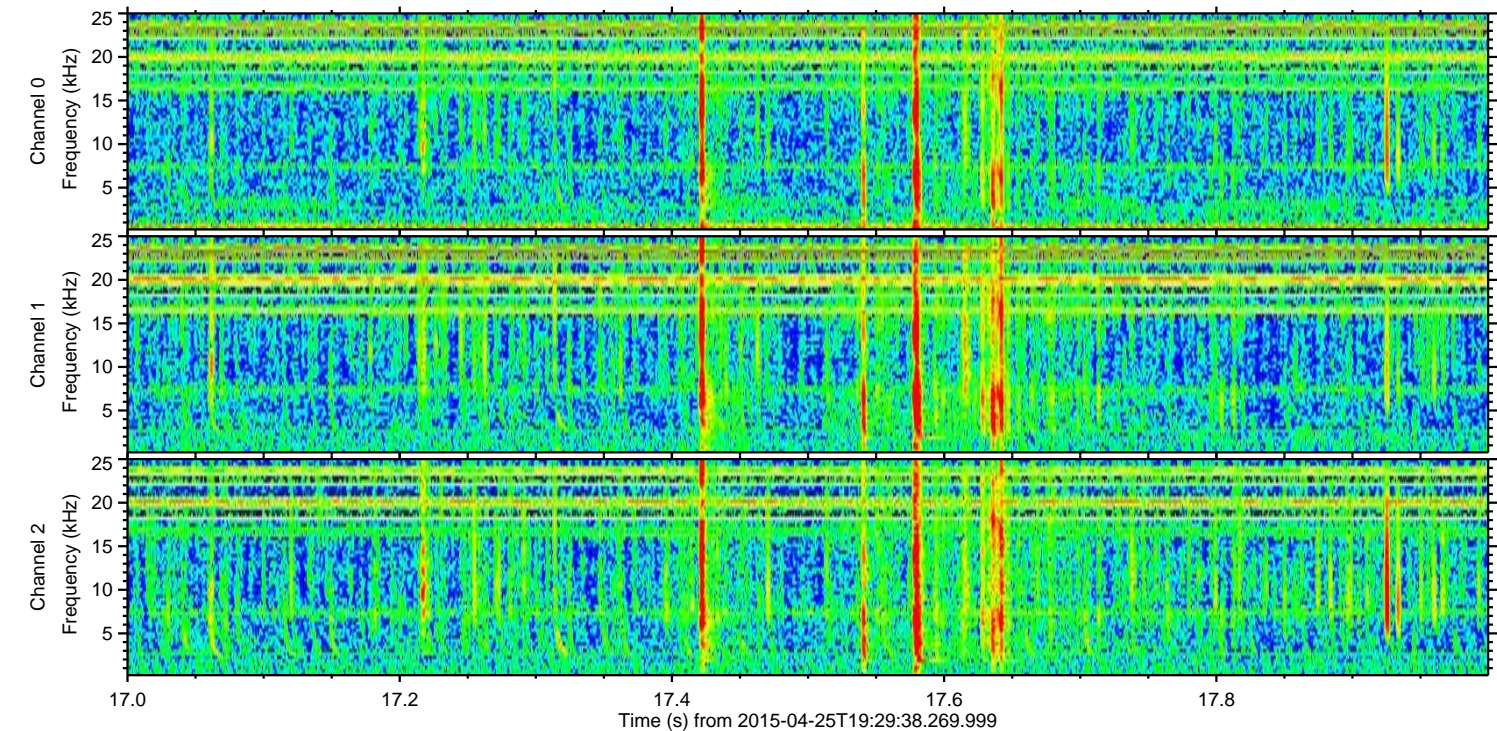
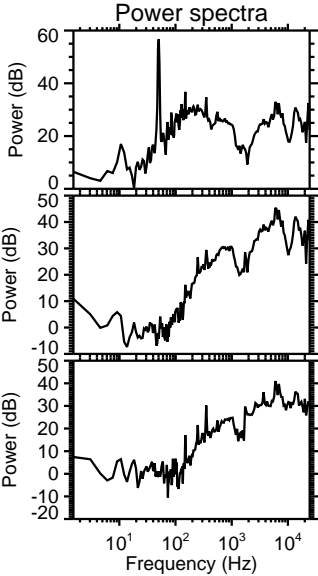
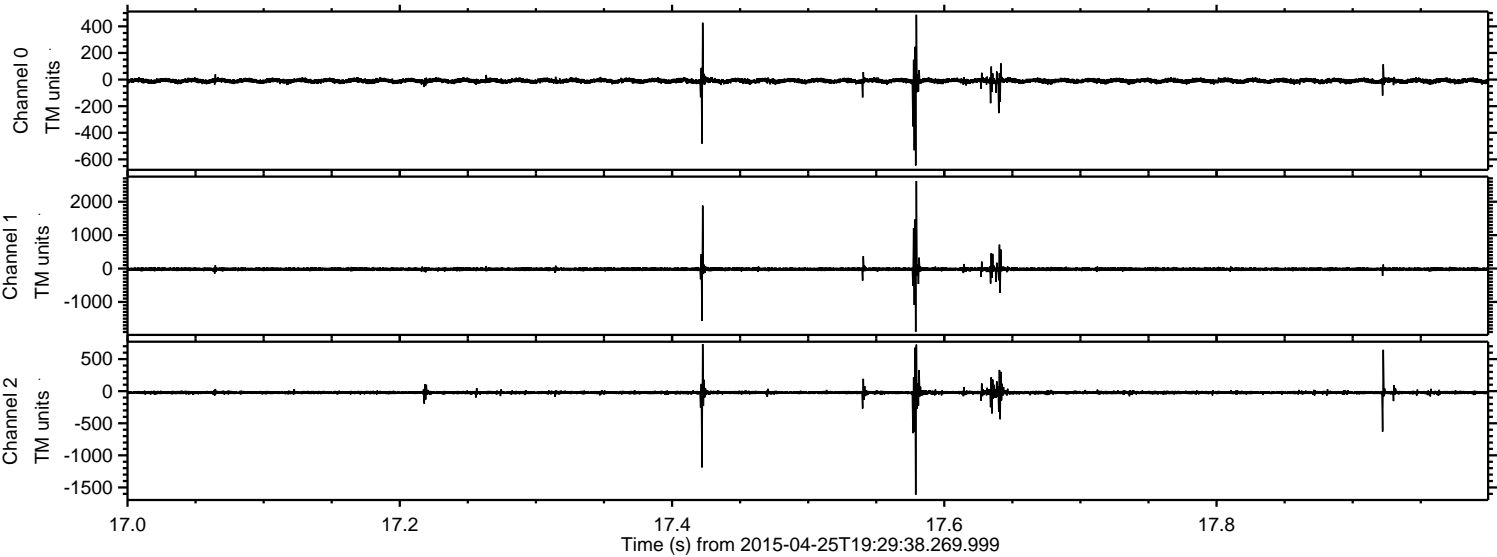
Processed Sun Apr 26 09:56:12 2015 by ELM ver.2012-10-06 from 001__elm20150425_192937__dat00.bin



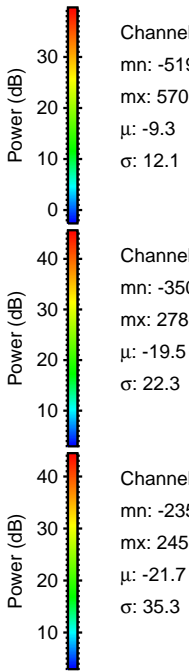
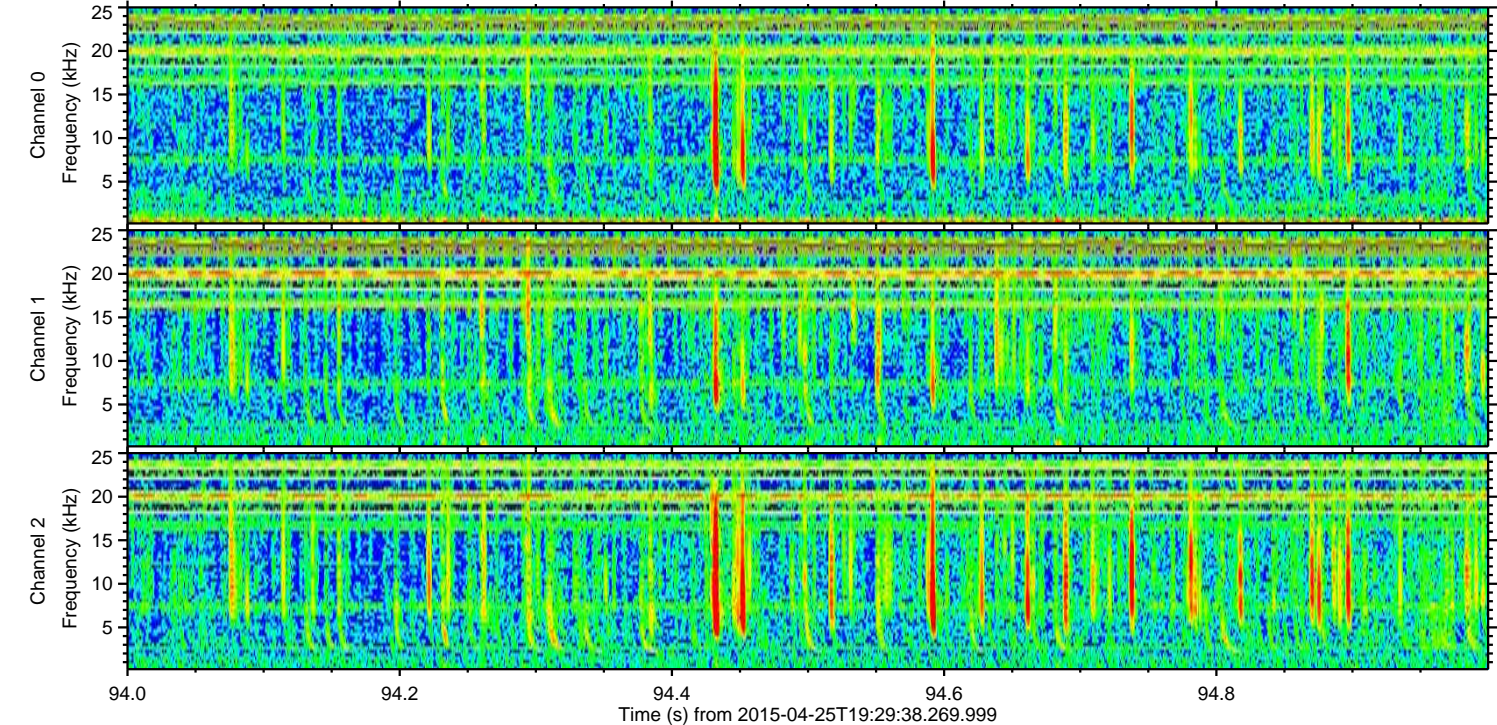
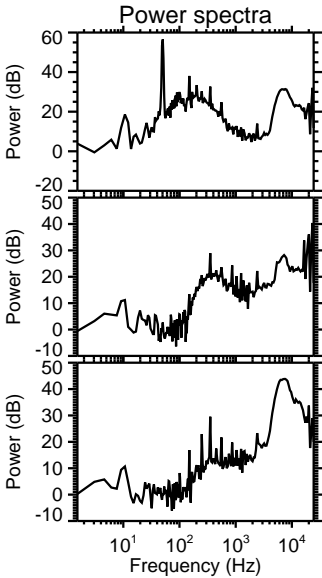
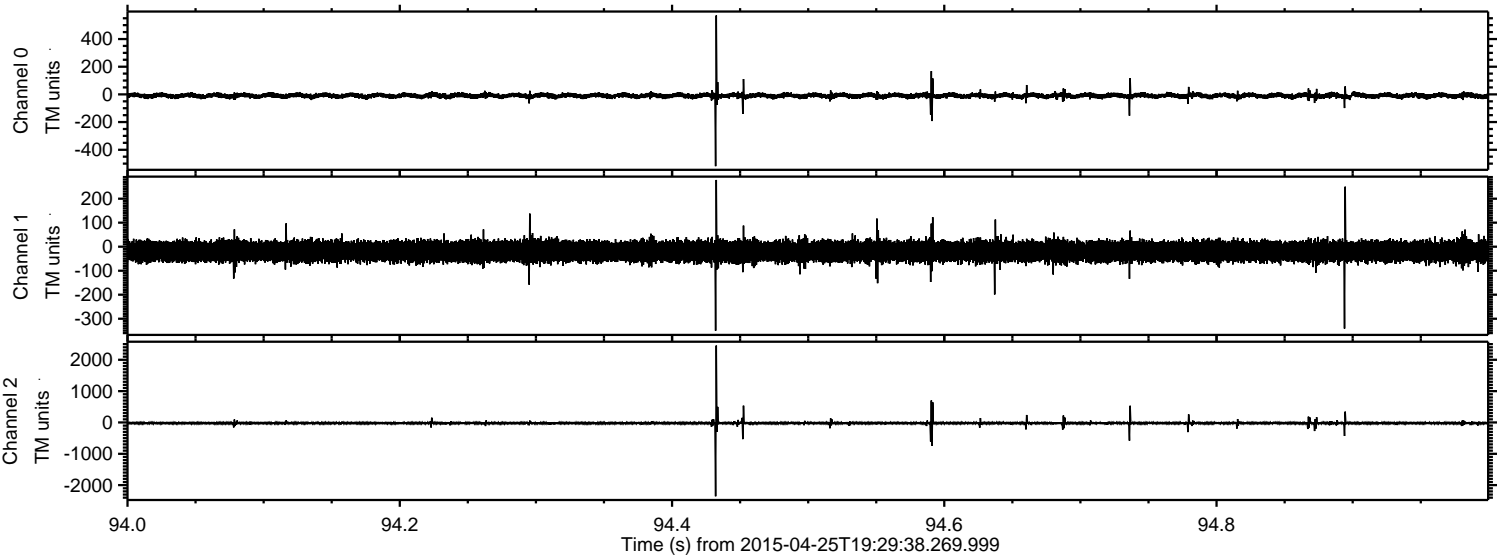
Processed Sun Apr 26 09:56:13 2015 by ELM ver.2012-10-06 from 001__elm20150425_192937__dat00.bin



Processed Sun Apr 26 09:56:14 2015 by ELM ver.2012-10-06 from 001__elm20150425_192937__dat00.bin



Processed Sun Apr 26 09:56:15 2015 by ELM ver.2012-10-06 from 001__elm20150425_192937__dat00.bin



Processed Sun Apr 26 09:56:16 2015 by ELM ver.2012-10-06 from 001__elm20150425_192937__dat00.bin

