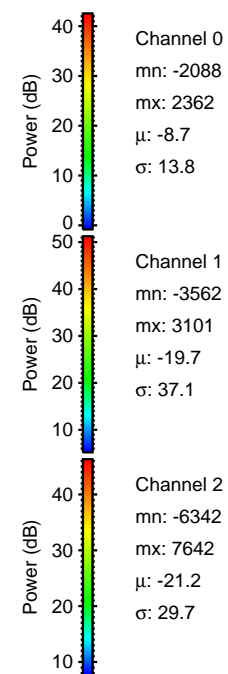
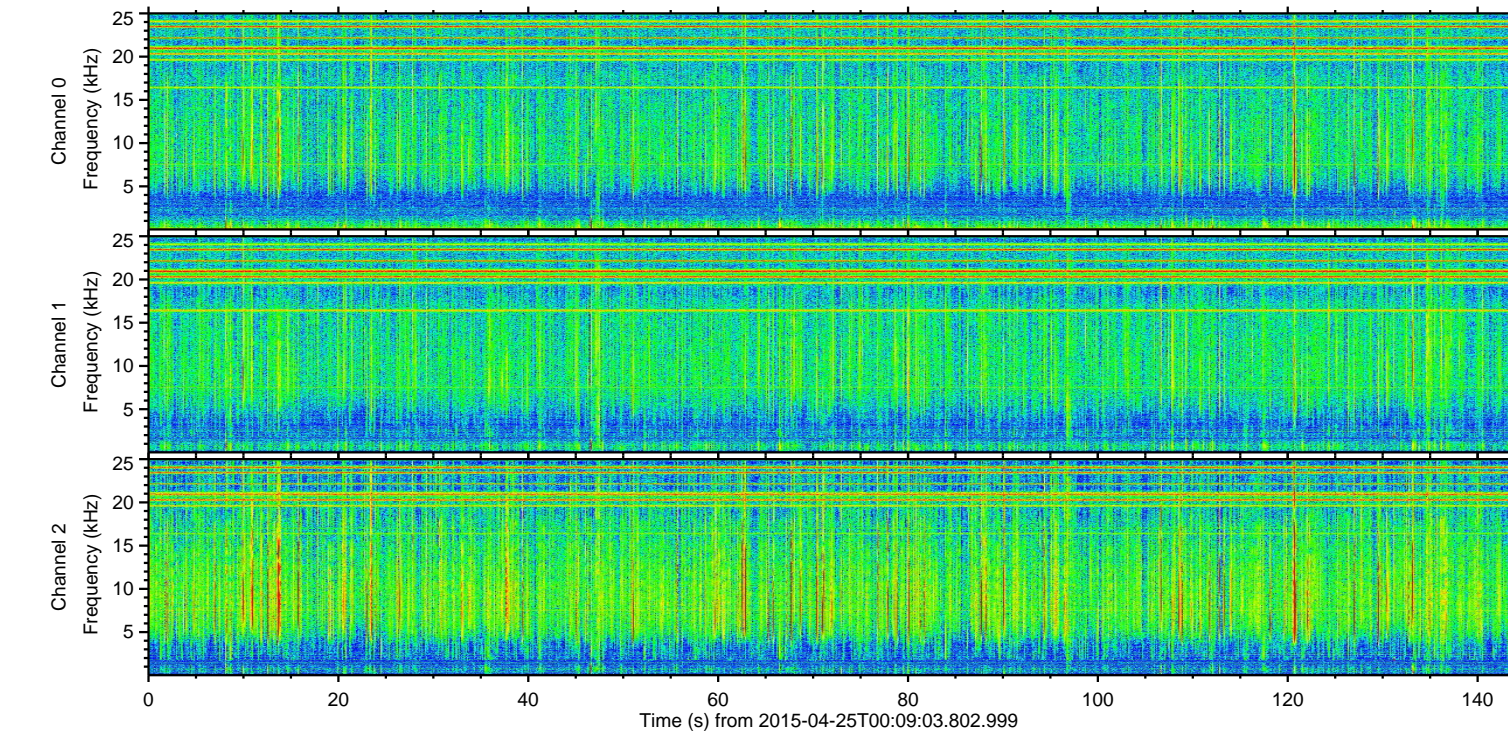
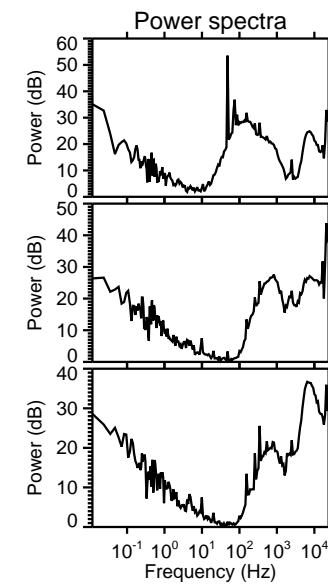
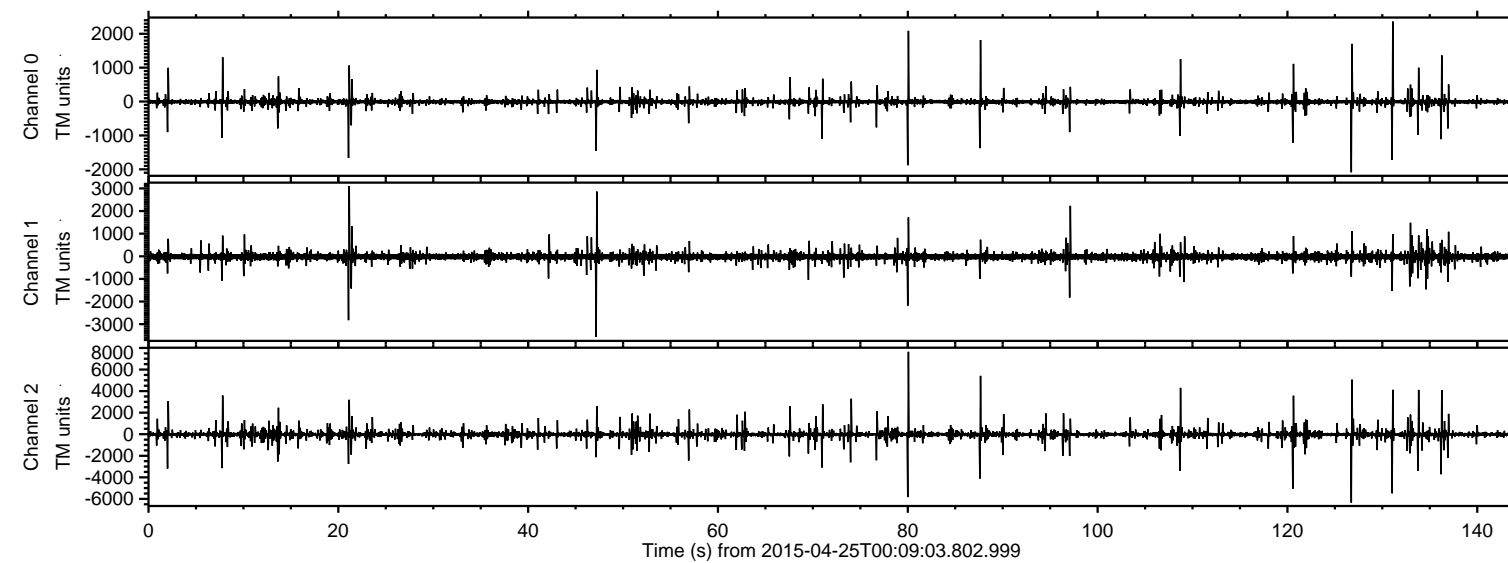
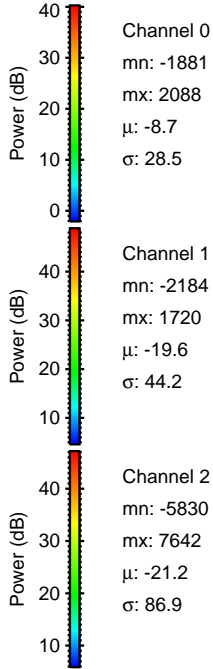
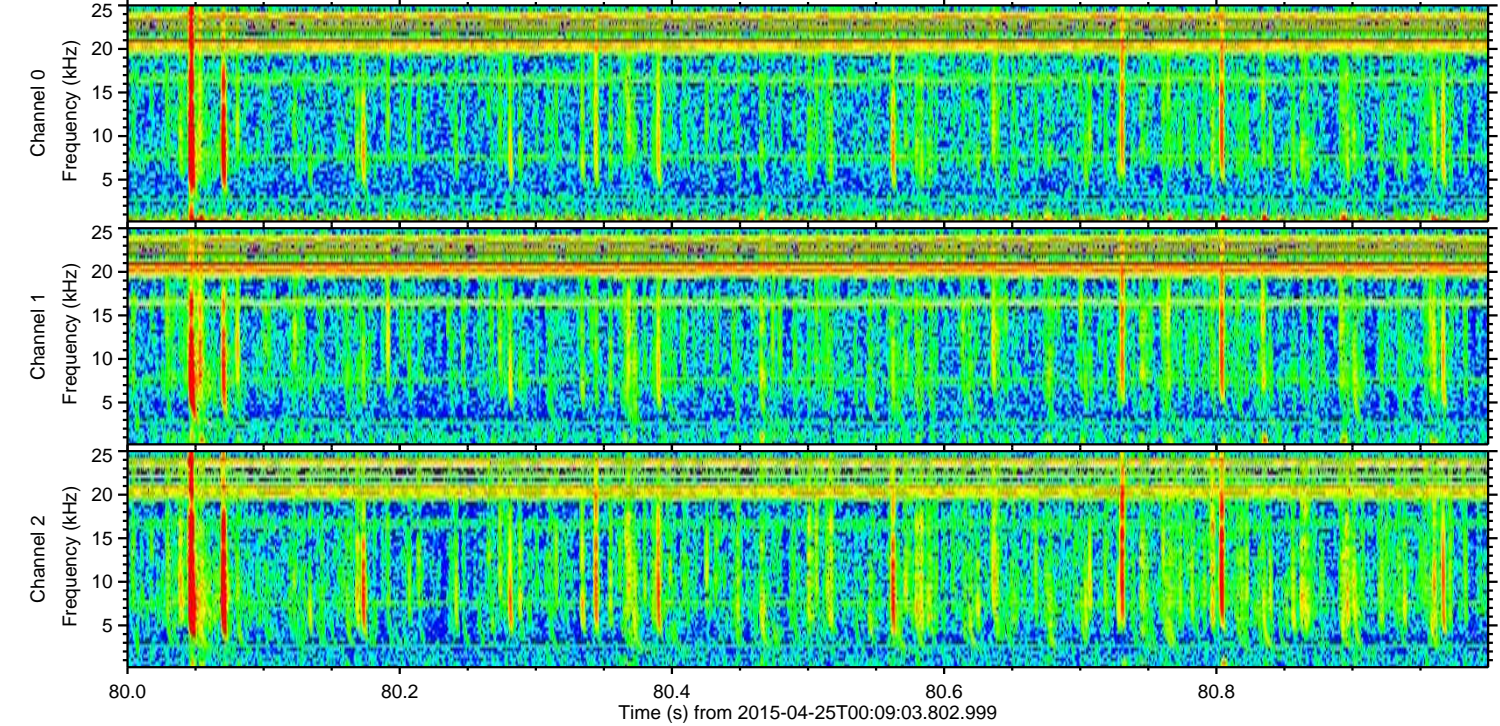
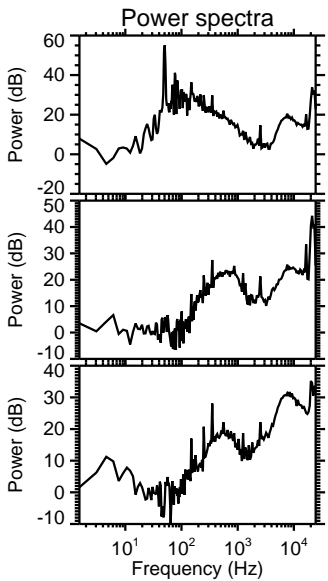
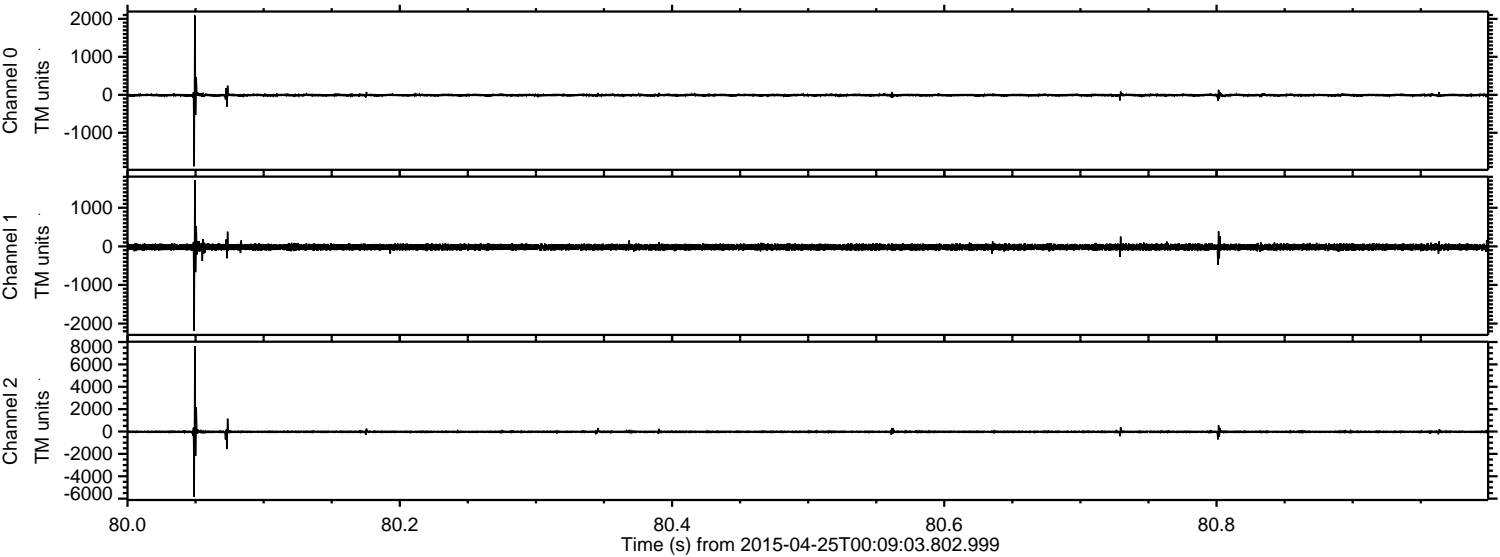


ELMAVAN 3D WAVEFORMS (Measured data sampled at 50 kHz) 49778 packets of 144 samples from 2015-04-25T00:09:03.802.999.

Processed Sat Apr 25 02:16:17 2015 by ELM ver.2012-10-06 from 001__elm20150425_000902__dat00.bin



Processed Sat Apr 25 02:16:28 2015 by ELM ver.2012-10-06 from 001__elm20150425_000902__dat00.bin



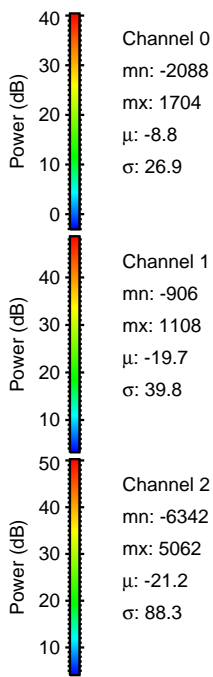
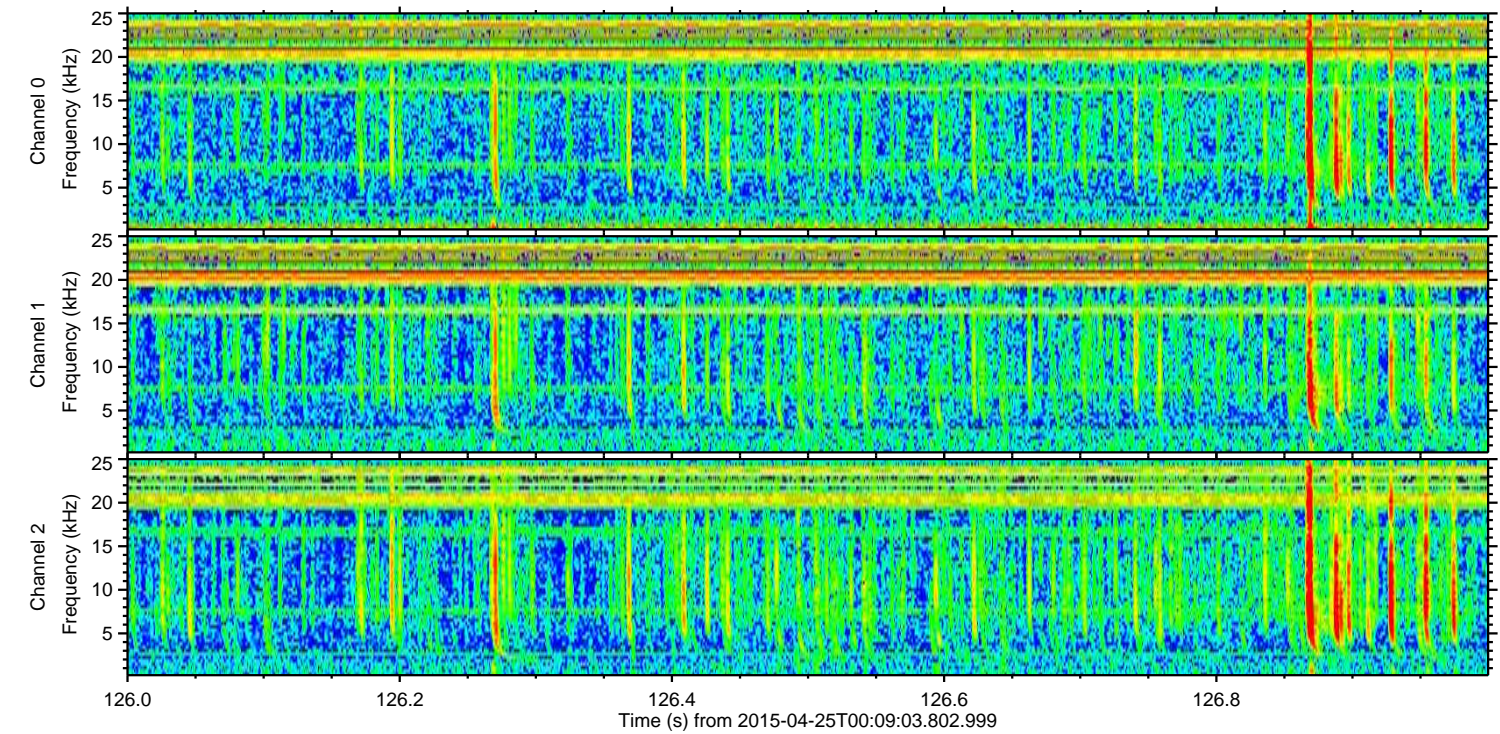
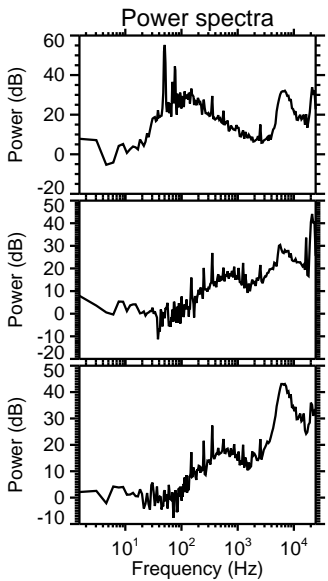
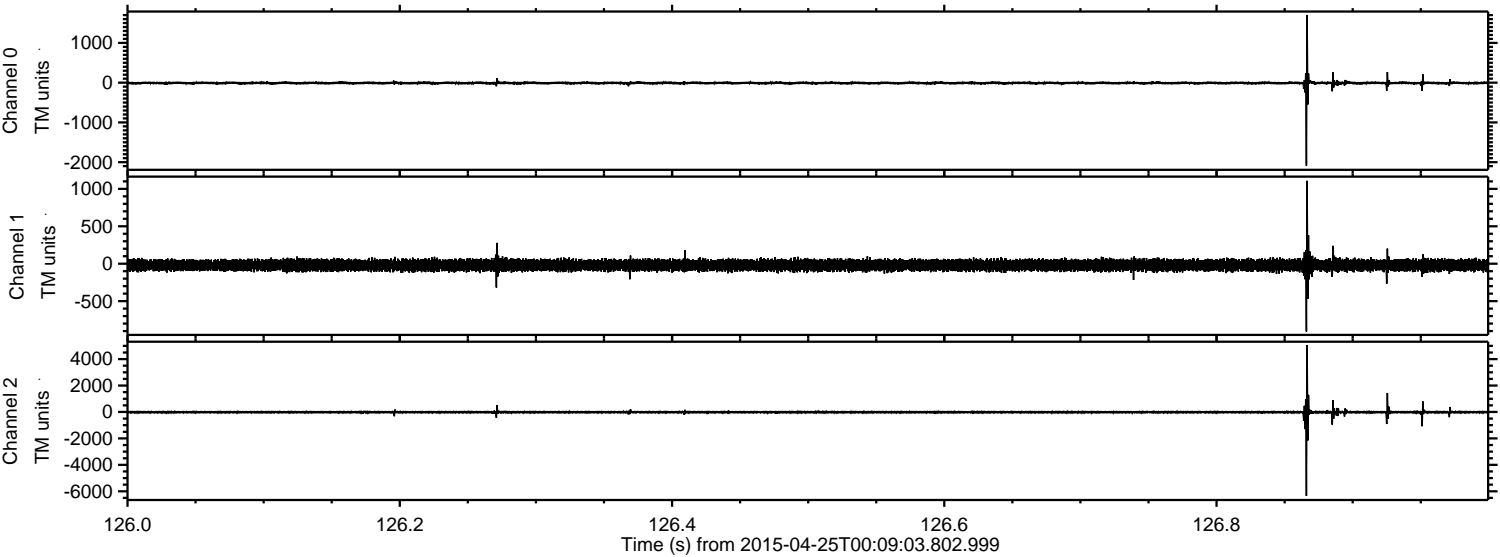
Channel 0
mn: -1881
mx: 2088
 μ : -8.7
 σ : 28.5

Channel 1
mn: -2184
mx: 1720
 μ : -19.6
 σ : 44.2

Channel 2
mn: -5830
mx: 7642
 μ : -21.2
 σ : 86.9

ELMAVAN 3D WAVEFORMS (Measured data sampled at 50 kHz) 49778 packets of 144 samples from 2015-04-25T00:09:03.802.999. Part 127/144

Processed Sat Apr 25 02:16:29 2015 by ELM ver.2012-10-06 from 001__elm20150425_000902__dat00.bin



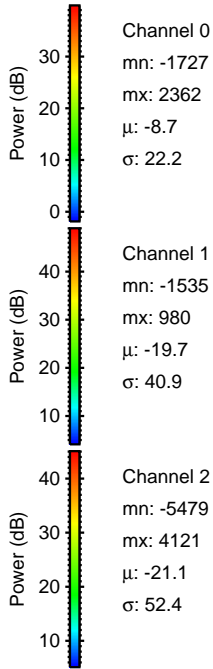
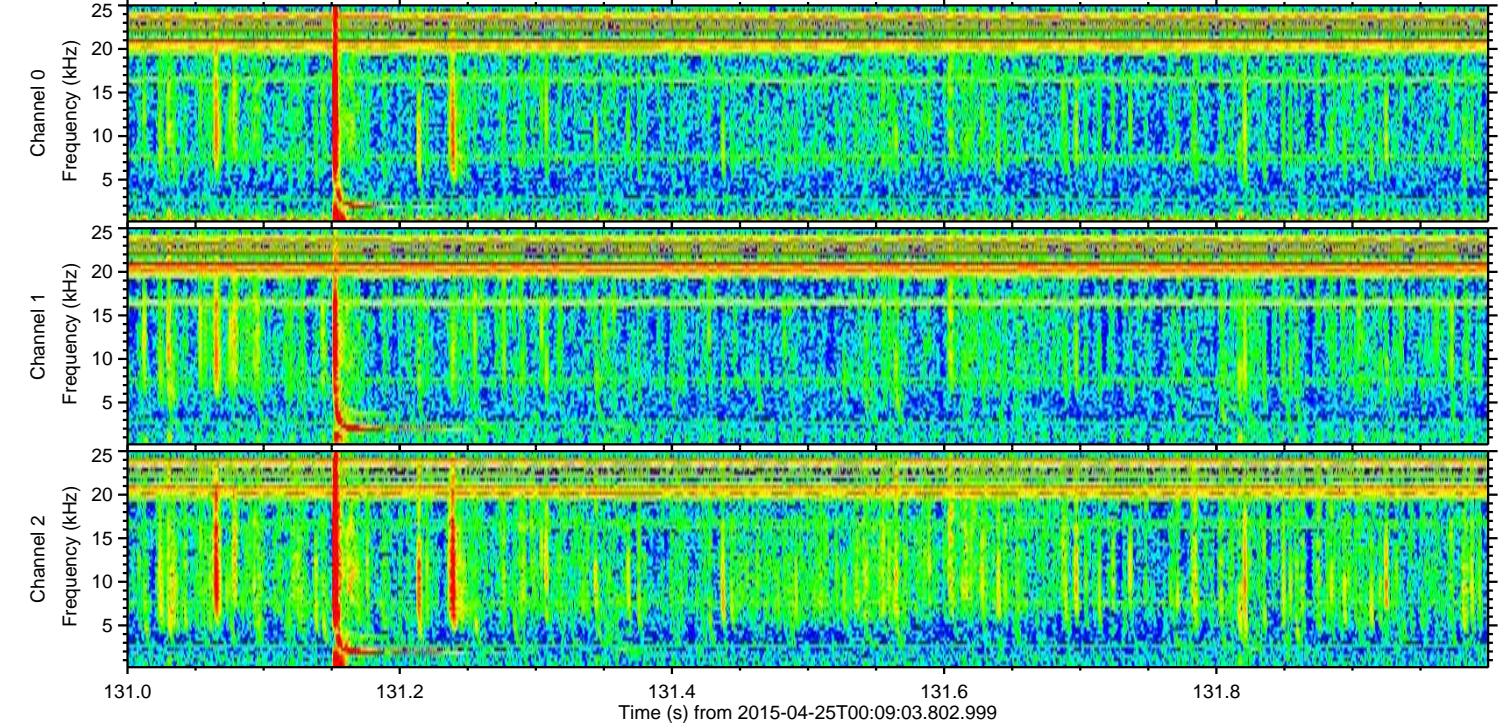
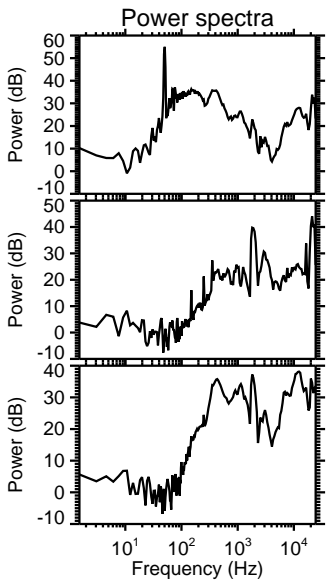
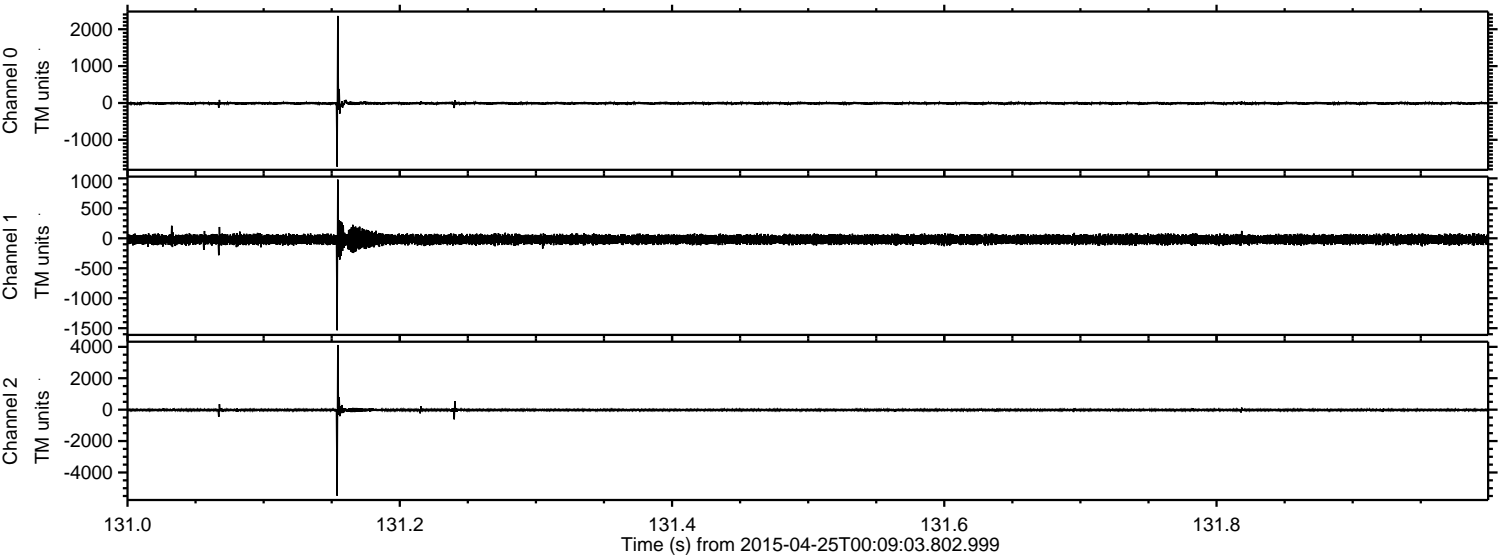
Channel 0
mn: -2088
mx: 1704
 μ : -8.8
 σ : 26.9

Channel 1
mn: -906
mx: 1108
 μ : -19.7
 σ : 39.8

Channel 2
mn: -6342
mx: 5062
 μ : -21.2
 σ : 88.3

ELMAVAN 3D WAVEFORMS (Measured data sampled at 50 kHz) 49778 packets of 144 samples from 2015-04-25T00:09:03.802.999. Part 132/144

Processed Sat Apr 25 02:16:30 2015 by ELM ver.2012-10-06 from 001__elm20150425_000902__dat00.bin



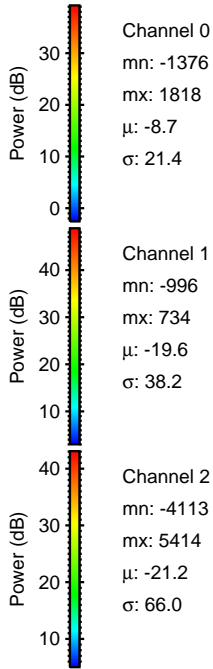
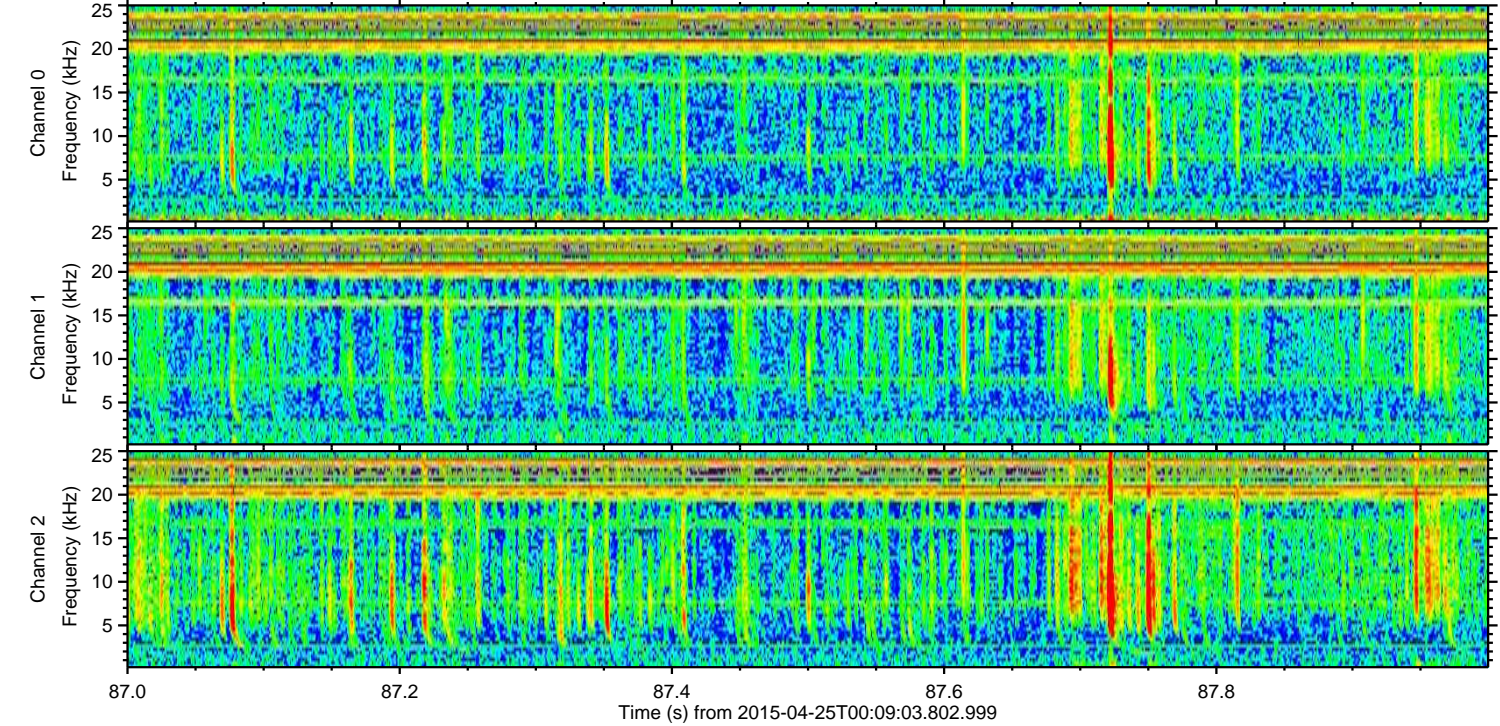
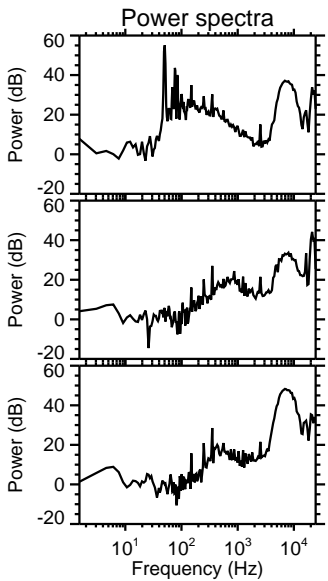
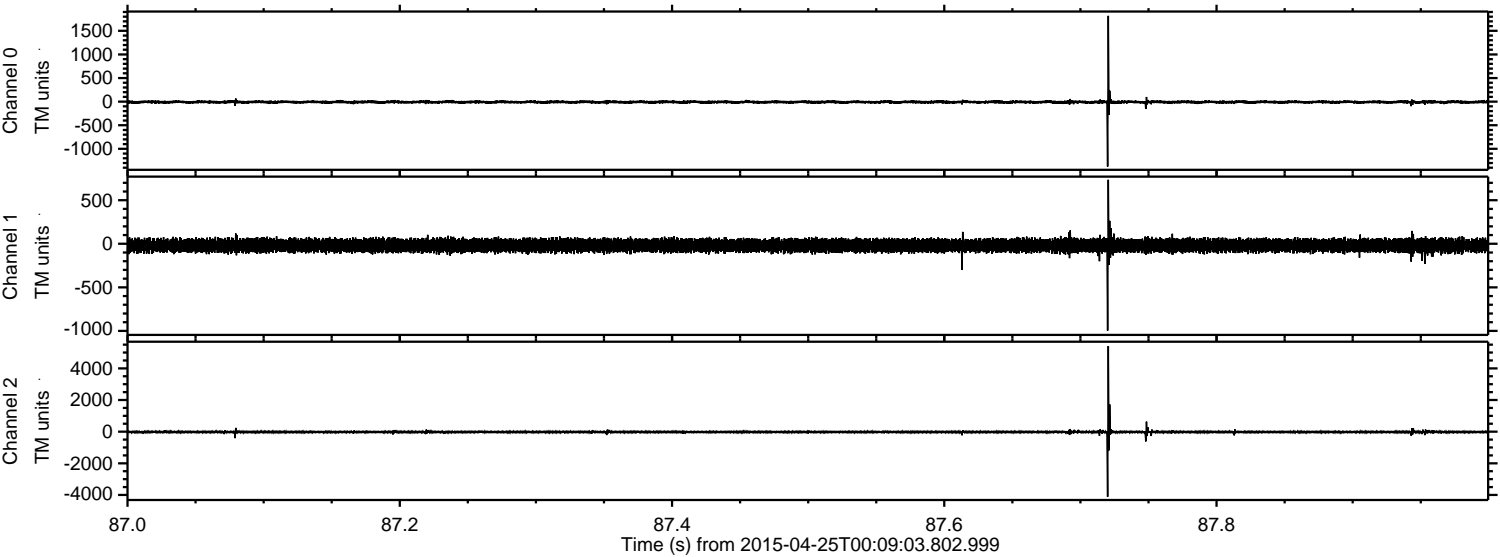
Channel 0
mn: -1727
mx: 2362
 μ : -8.7
 σ : 22.2

Channel 1
mn: -1535
mx: 980
 μ : -19.7
 σ : 40.9

Channel 2
mn: -5479
mx: 4121
 μ : -21.1
 σ : 52.4

ELMAVAN 3D WAVEFORMS (Measured data sampled at 50 kHz) 49778 packets of 144 samples from 2015-04-25T00:09:03.802.999. Part 88/144

Processed Sat Apr 25 02:16:31 2015 by ELM ver.2012-10-06 from 001__elm20150425_000902__dat00.bin



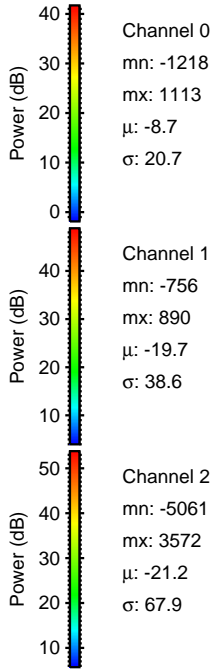
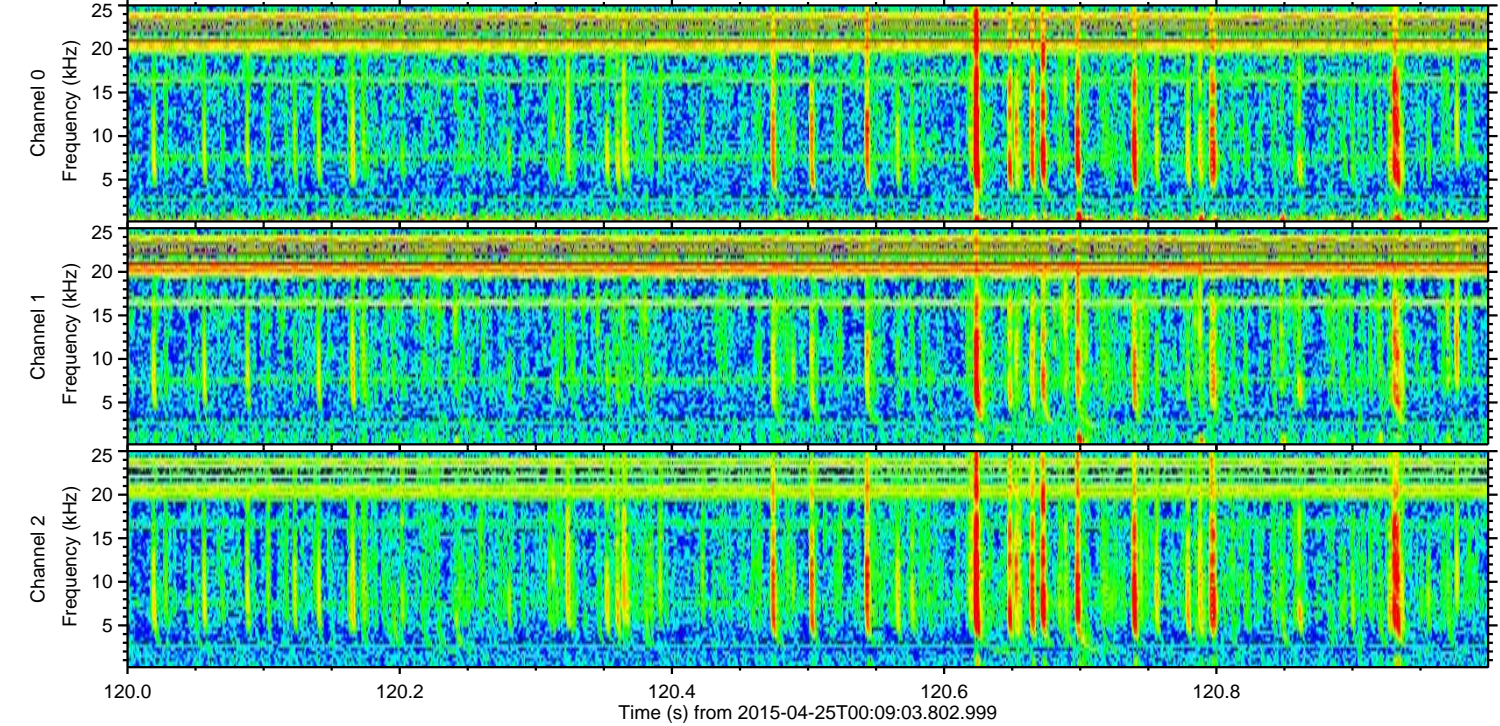
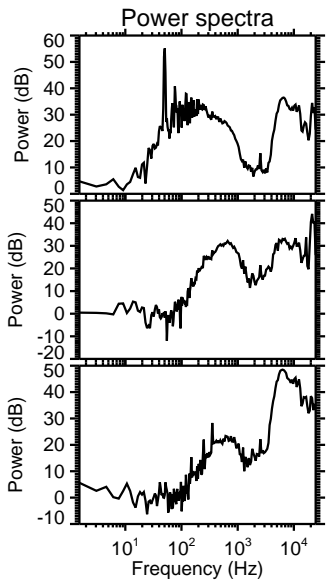
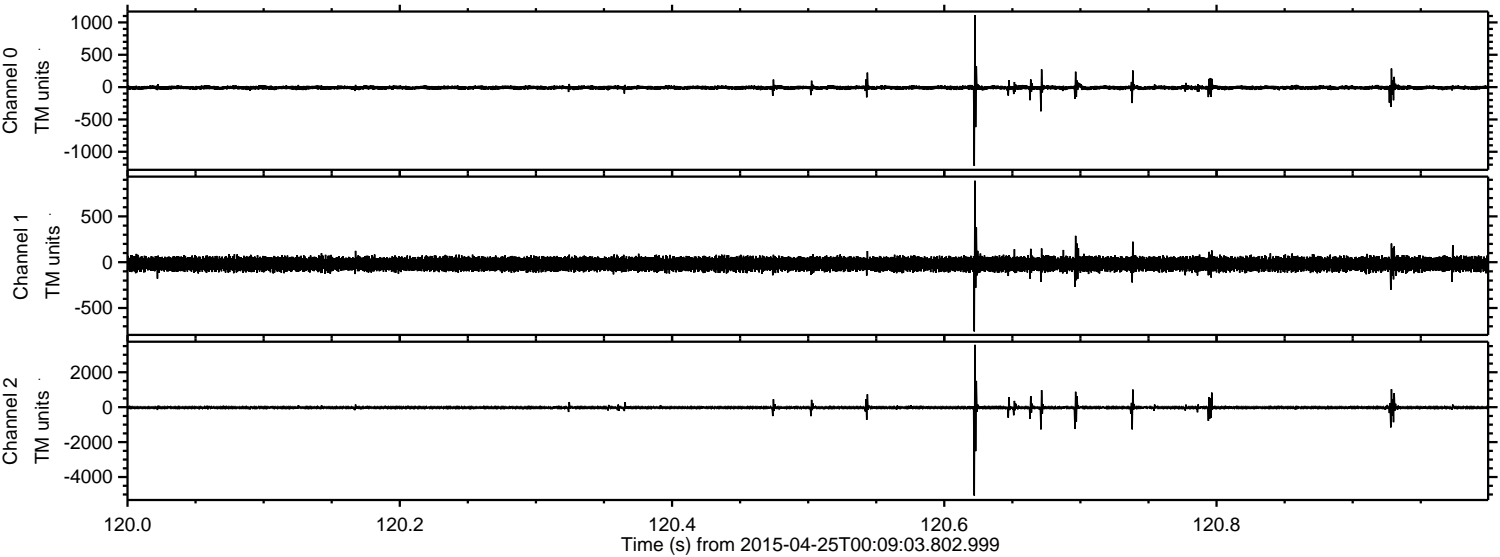
Channel 0
mn: -1376
mx: 1818
 μ : -8.7
 σ : 21.4

Channel 1
mn: -996
mx: 734
 μ : -19.6
 σ : 38.2

Channel 2
mn: -4113
mx: 5414
 μ : -21.2
 σ : 66.0

ELMAVAN 3D WAVEFORMS (Measured data sampled at 50 kHz) 49778 packets of 144 samples from 2015-04-25T00:09:03.802.999. Part 121/144

Processed Sat Apr 25 02:16:32 2015 by ELM ver.2012-10-06 from 001__elm20150425_000902__dat00.bin



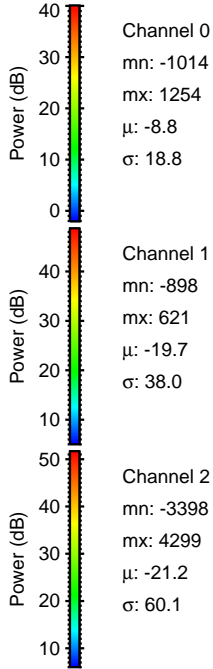
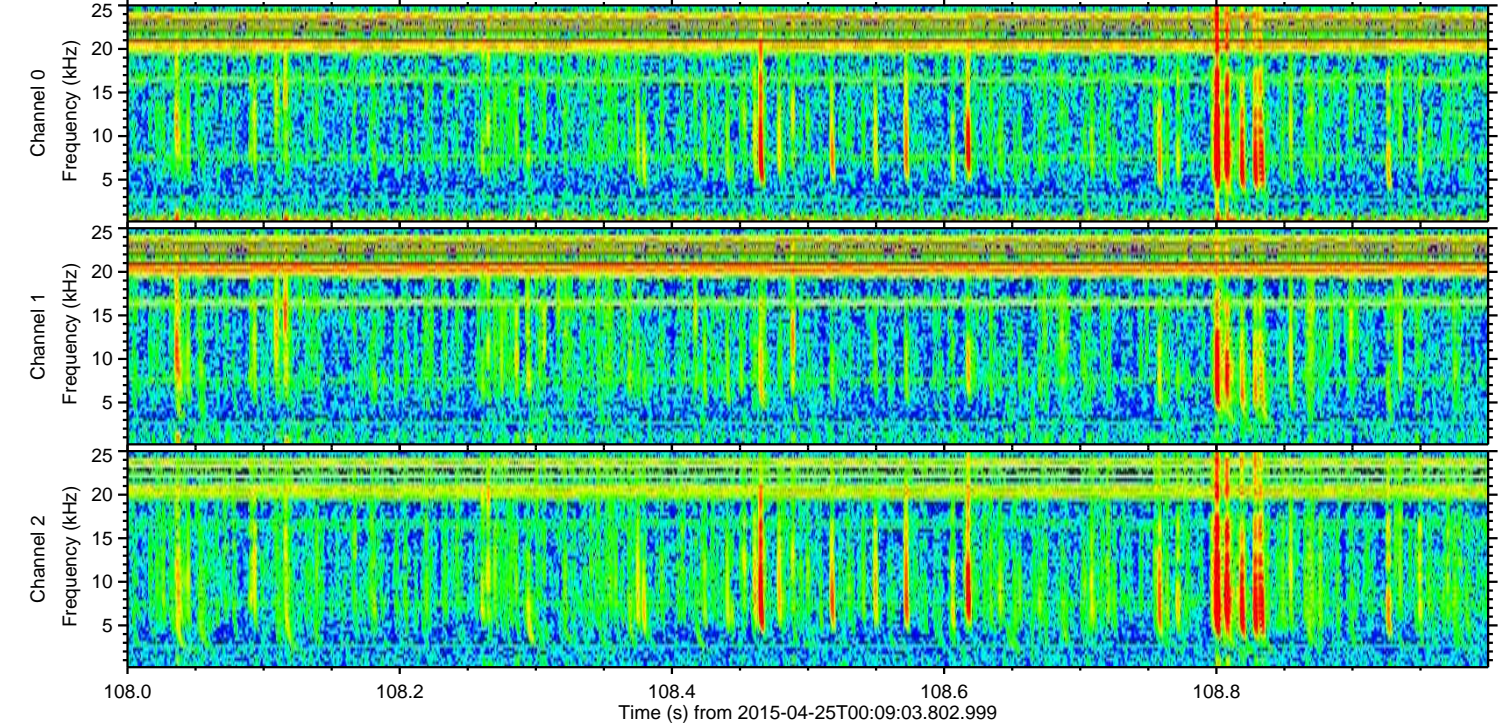
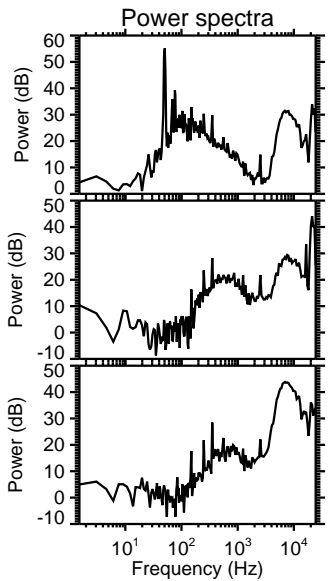
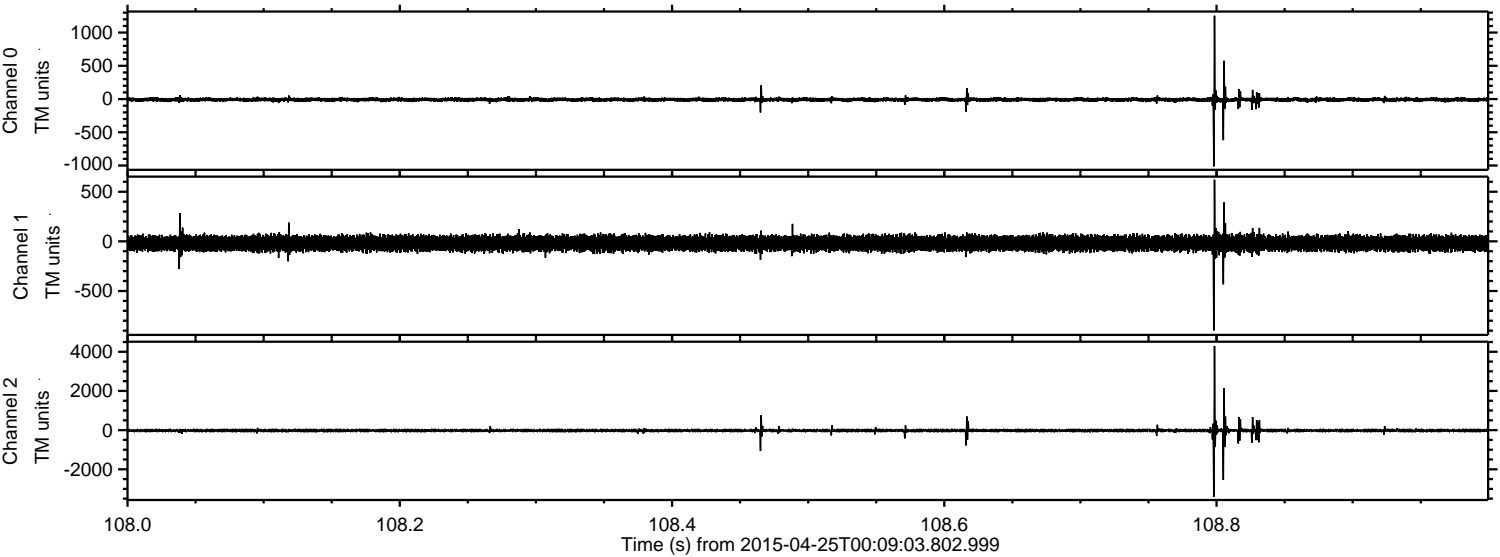
Channel 0
mn: -1218
mx: 1113
 μ : -8.7
 σ : 20.7

Channel 1
mn: -756
mx: 890
 μ : -19.7
 σ : 38.6

Channel 2
mn: -5061
mx: 3572
 μ : -21.2
 σ : 67.9

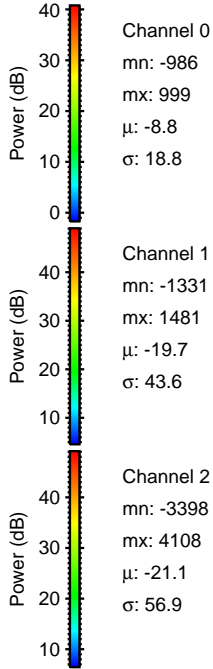
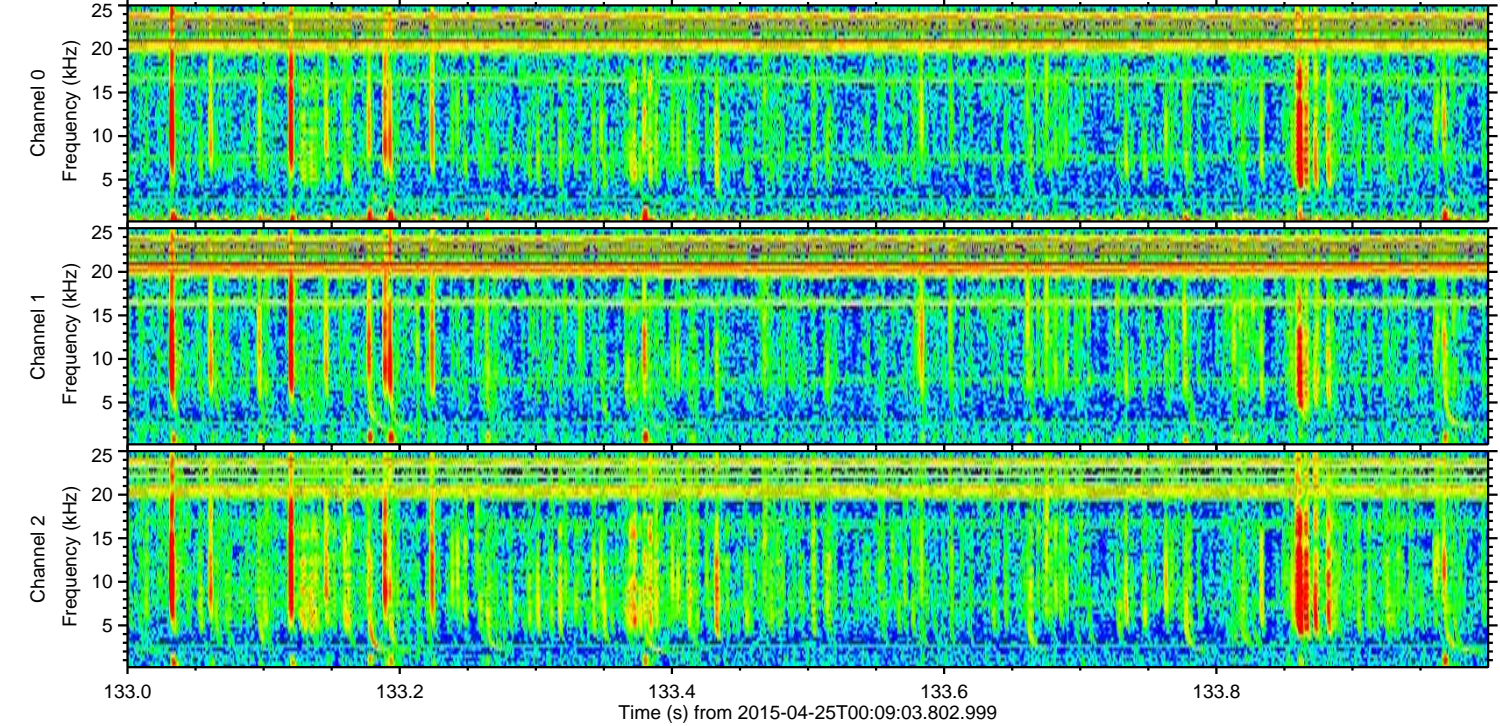
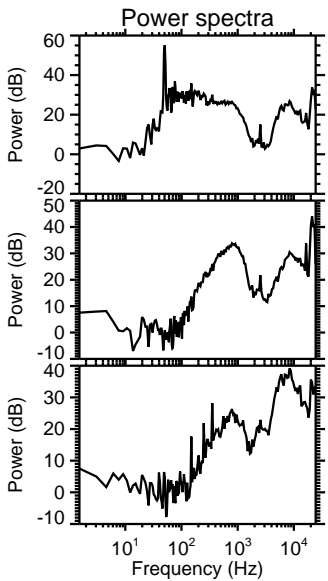
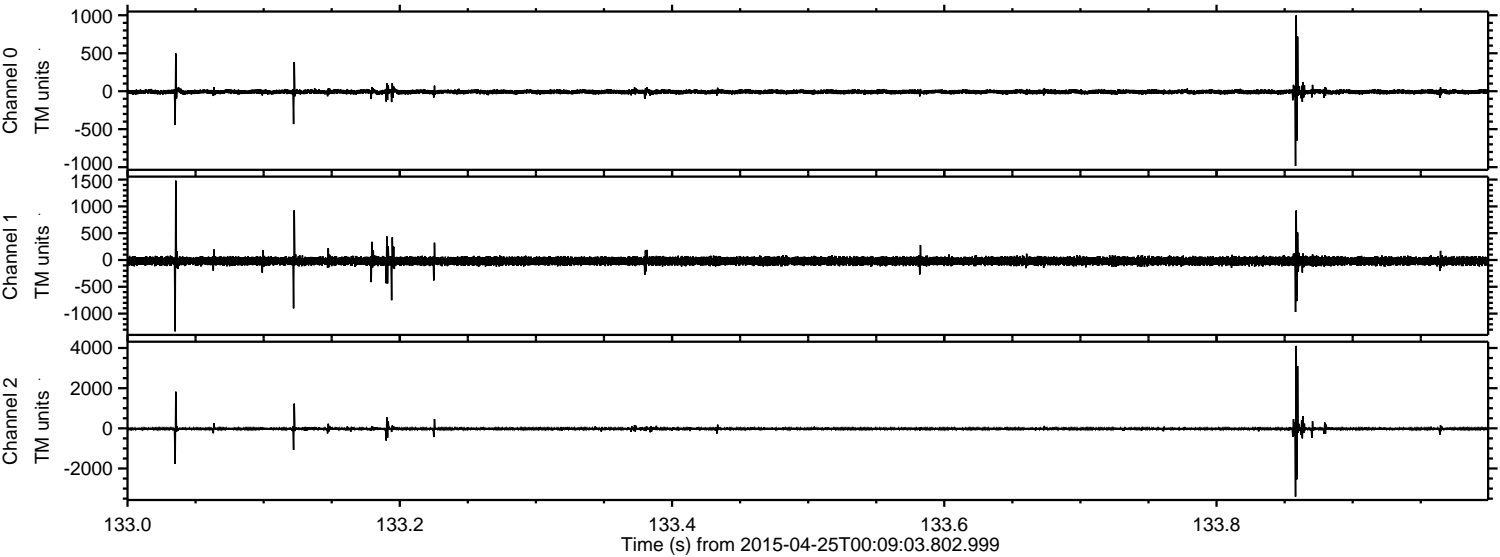
ELMAVAN 3D WAVEFORMS (Measured data sampled at 50 kHz) 49778 packets of 144 samples from 2015-04-25T00:09:03.802.999. Part 109/144

Processed Sat Apr 25 02:16:33 2015 by ELM ver.2012-10-06 from 001__elm20150425_000902__dat00.bin



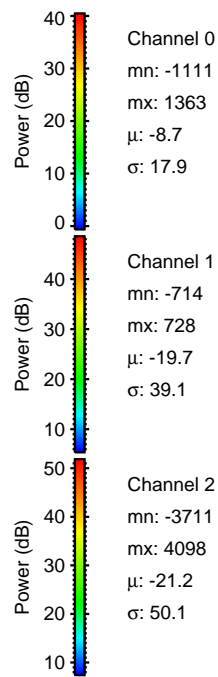
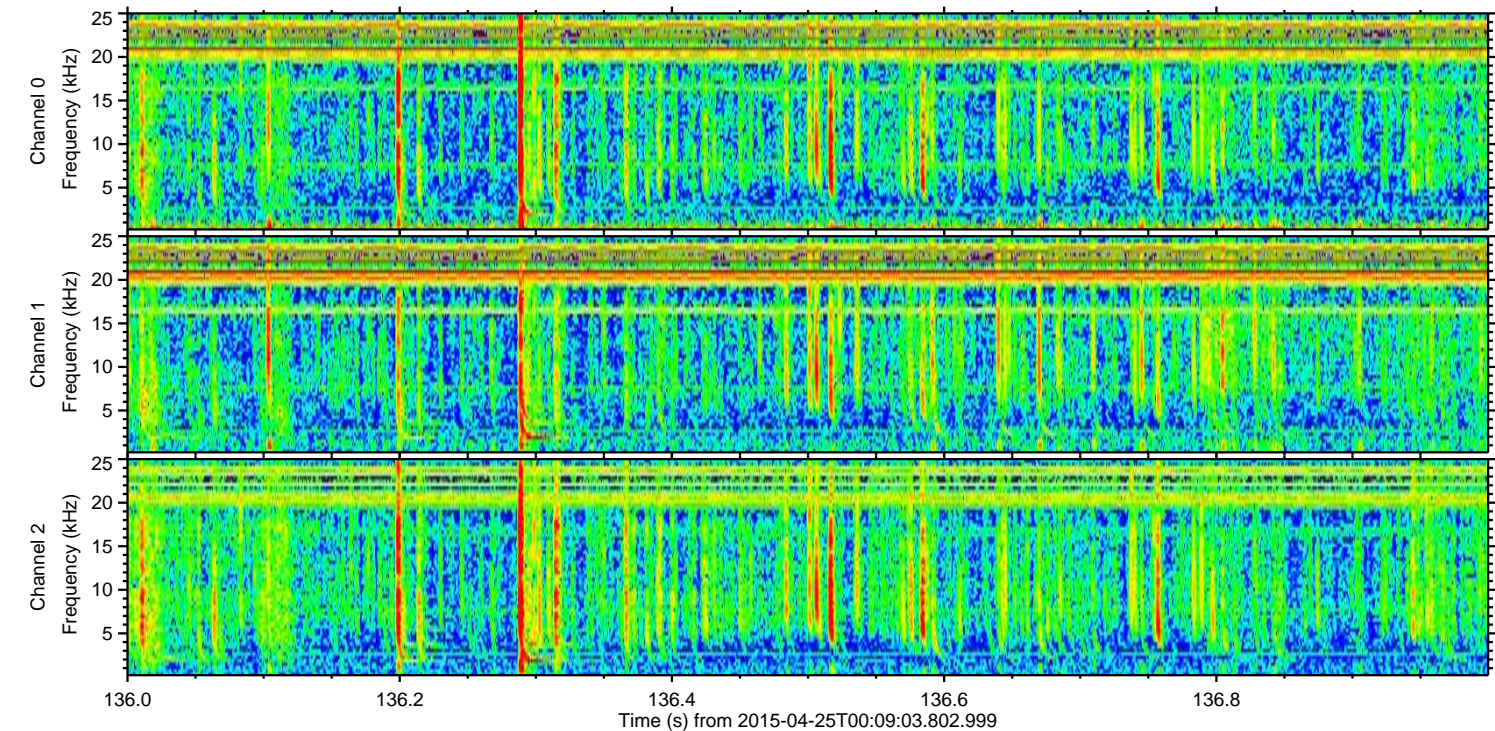
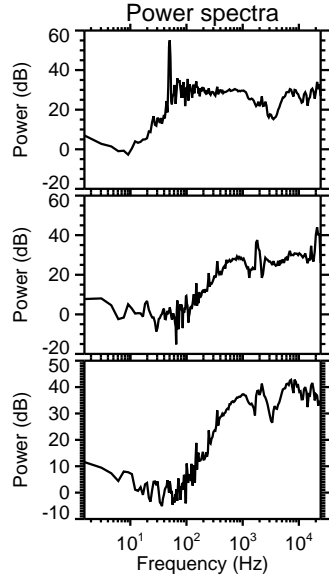
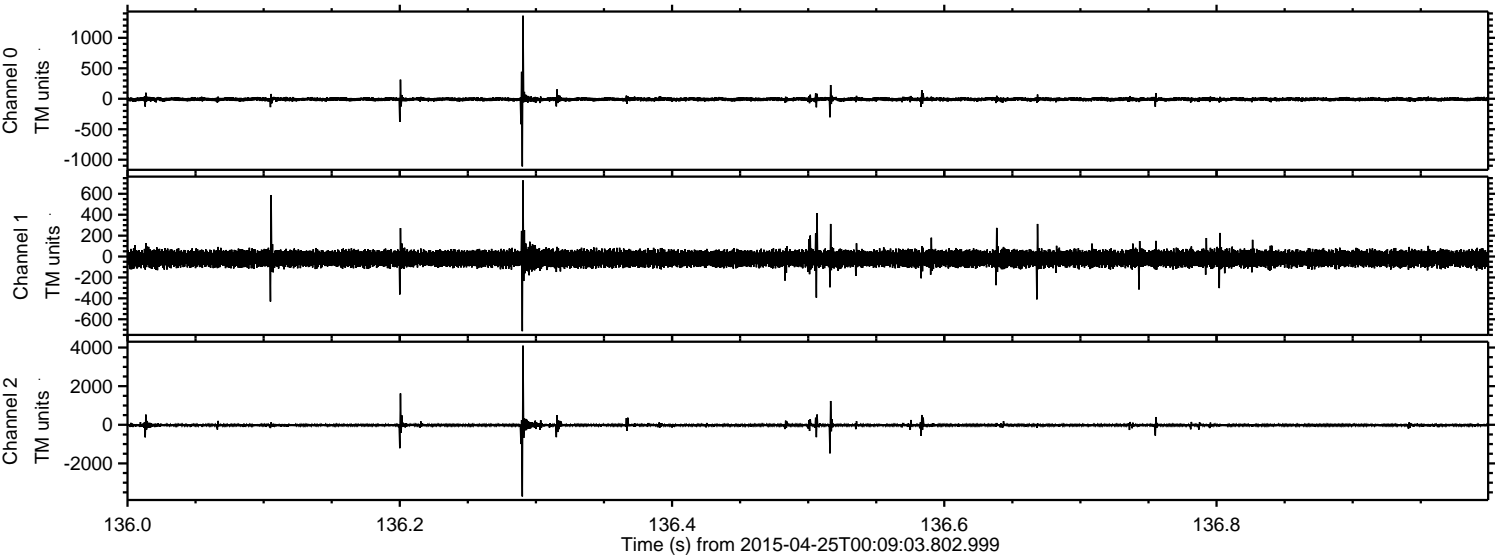
ELMAVAN 3D WAVEFORMS (Measured data sampled at 50 kHz) 49778 packets of 144 samples from 2015-04-25T00:09:03.802.999. Part 134/144

Processed Sat Apr 25 02:16:34 2015 by ELM ver.2012-10-06 from 001__elm20150425_000902__dat00.bin

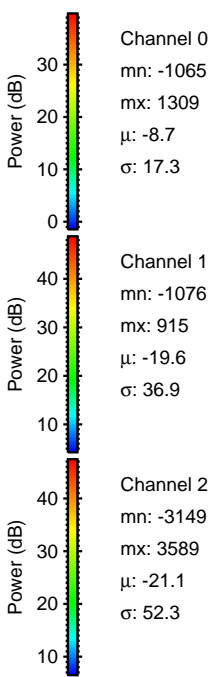
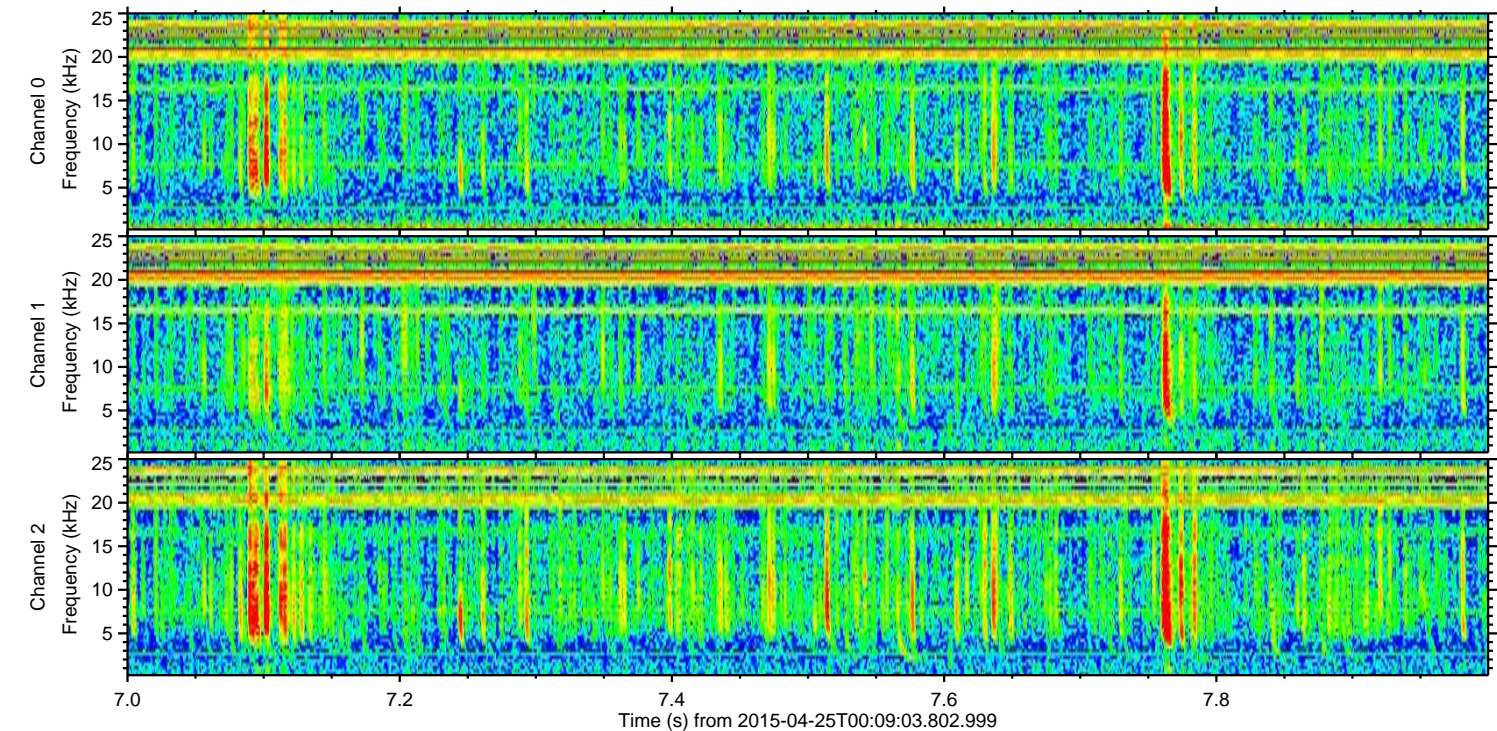
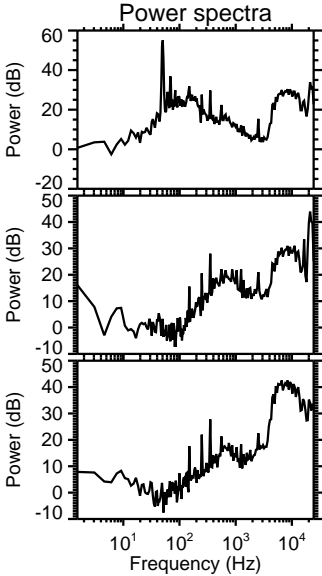
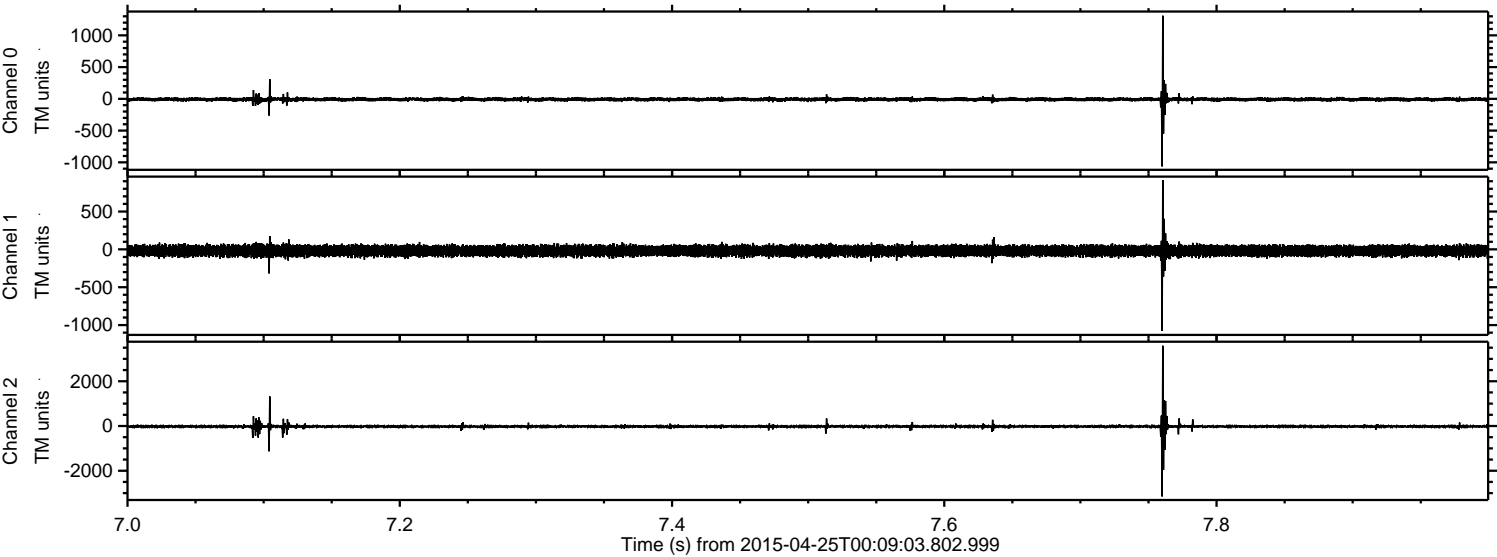


ELMAVAN 3D WAVEFORMS (Measured data sampled at 50 kHz) 49778 packets of 144 samples from 2015-04-25T00:09:03.802.999. Part 137/144

Processed Sat Apr 25 02:16:35 2015 by ELM ver.2012-10-06 from 001__elm20150425_000902__dat00.bin



Processed Sat Apr 25 02:16:36 2015 by ELM ver.2012-10-06 from 001__elm20150425_000902__dat00.bin



ELMAVAN 3D WAVEFORMS (Measured data sampled at 50 kHz) 49778 packets of 144 samples from 2015-04-25T00:09:03.802.999. Part 139/144

