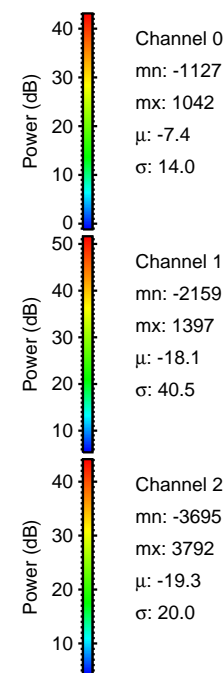
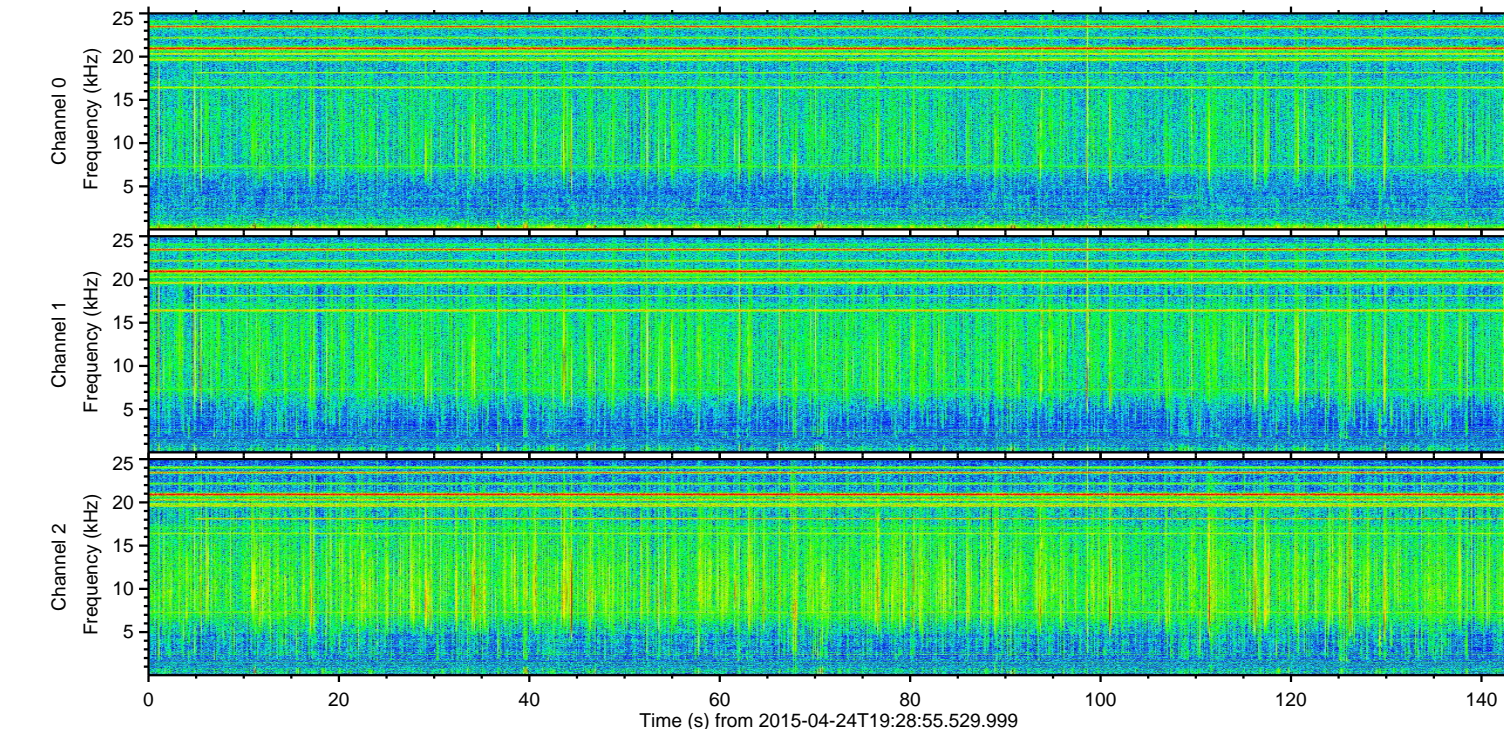
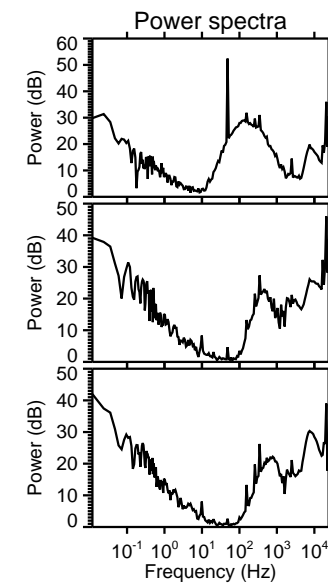
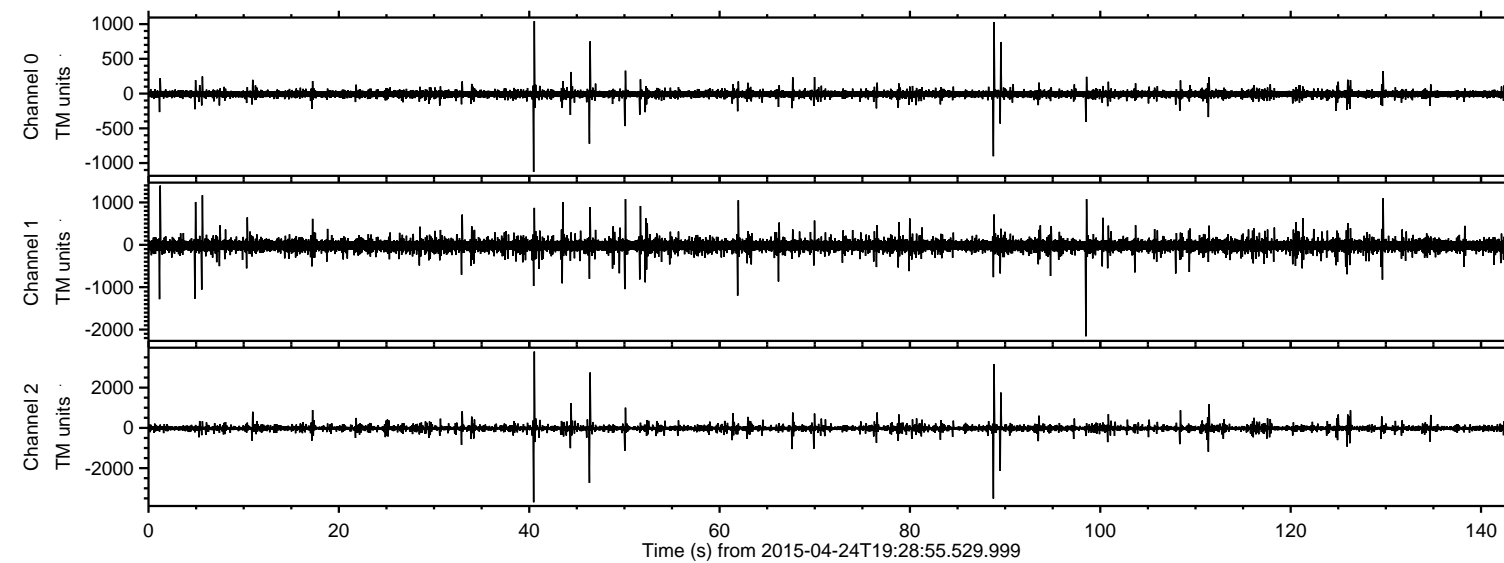
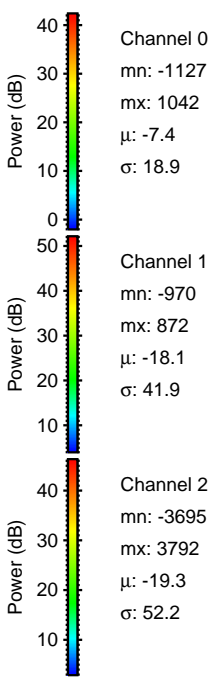
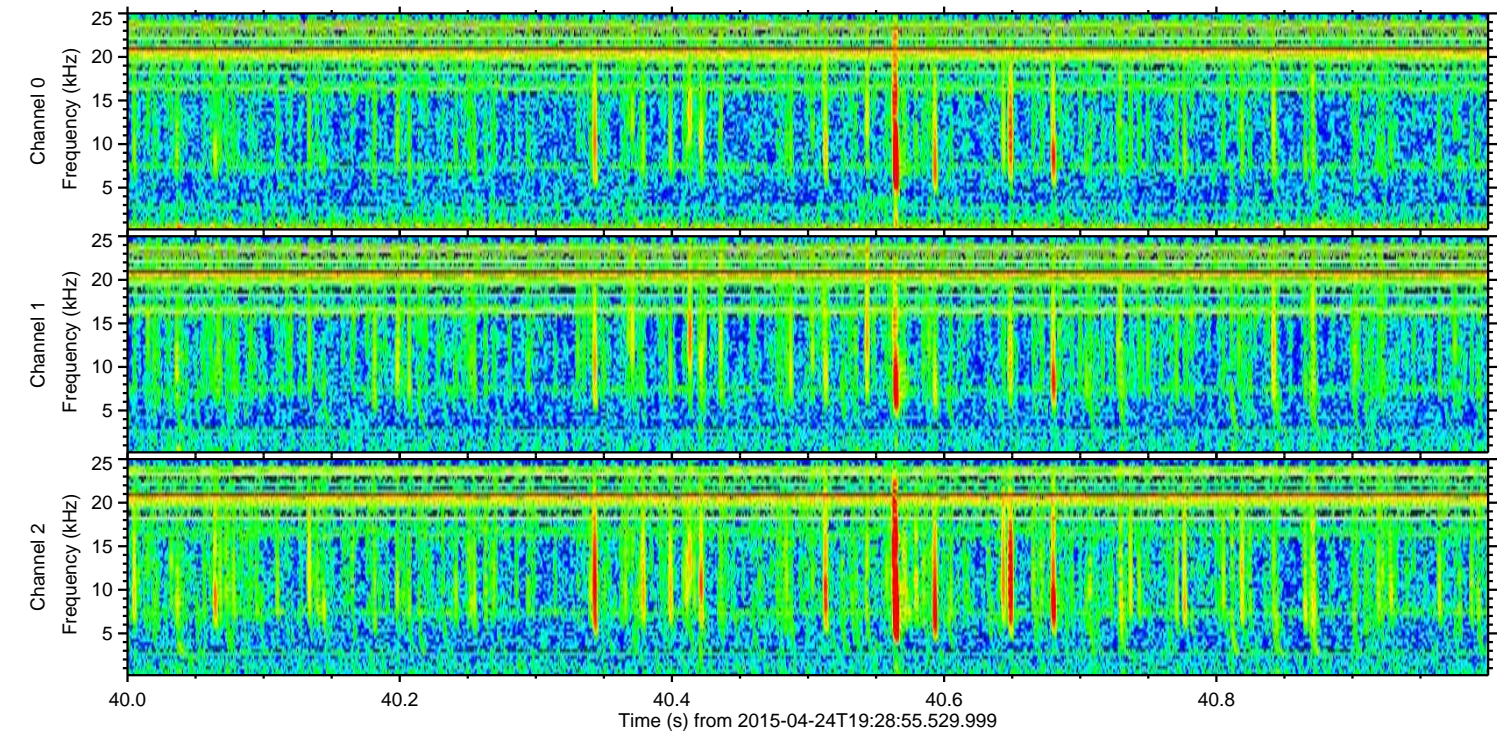
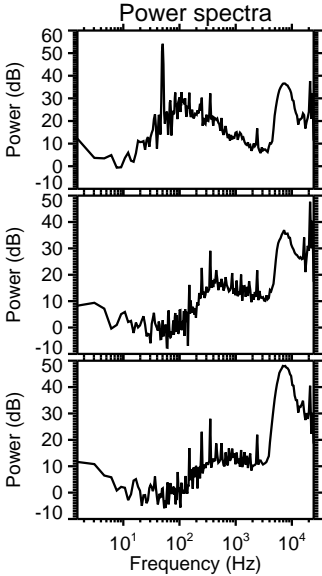
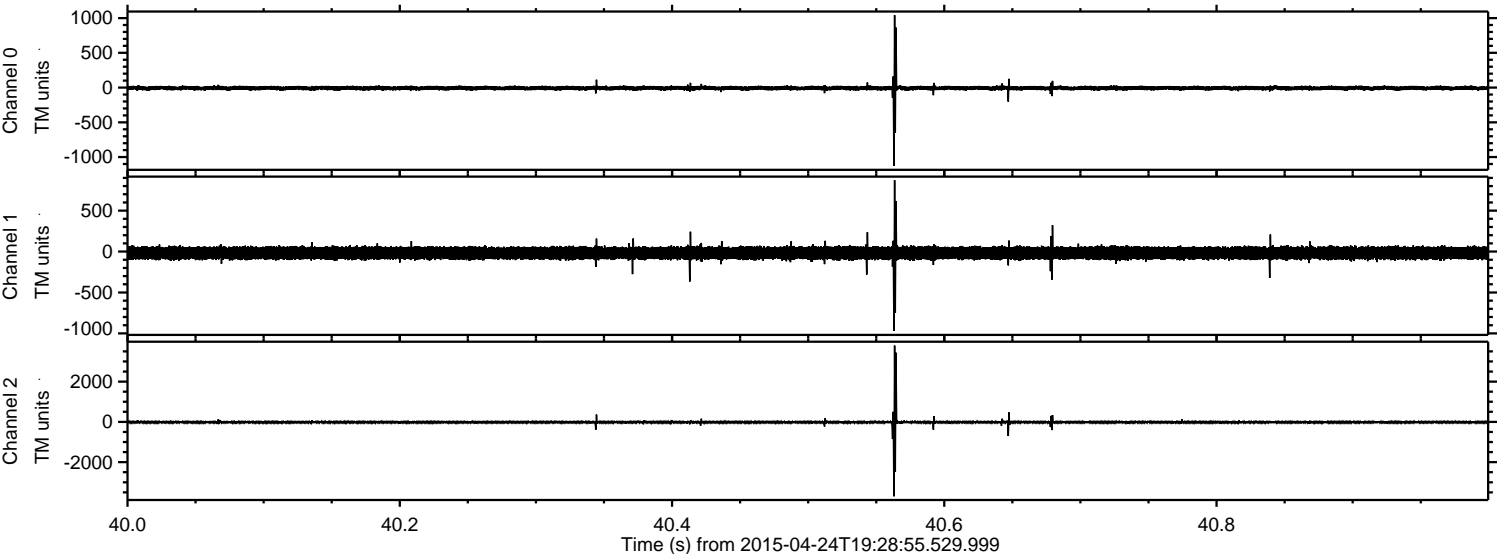


ELMAVAN 3D WAVEFORMS (Measured data sampled at 50 kHz) 49637 packets of 144 samples from 2015-04-24T19:28:55.529.999.

Processed Fri Apr 24 21:35:51 2015 by ELM ver.2012-10-06 from 001\_\_elm20150424\_192854\_\_dat00.bin



Processed Fri Apr 24 21:36:03 2015 by ELM ver.2012-10-06 from 001\_\_elm20150424\_192854\_\_dat00.bin

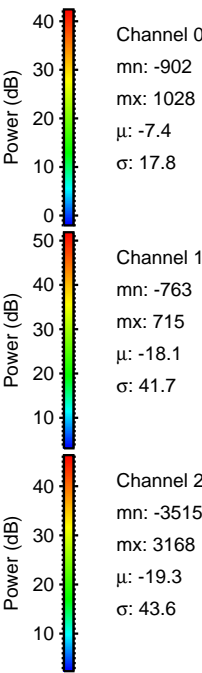
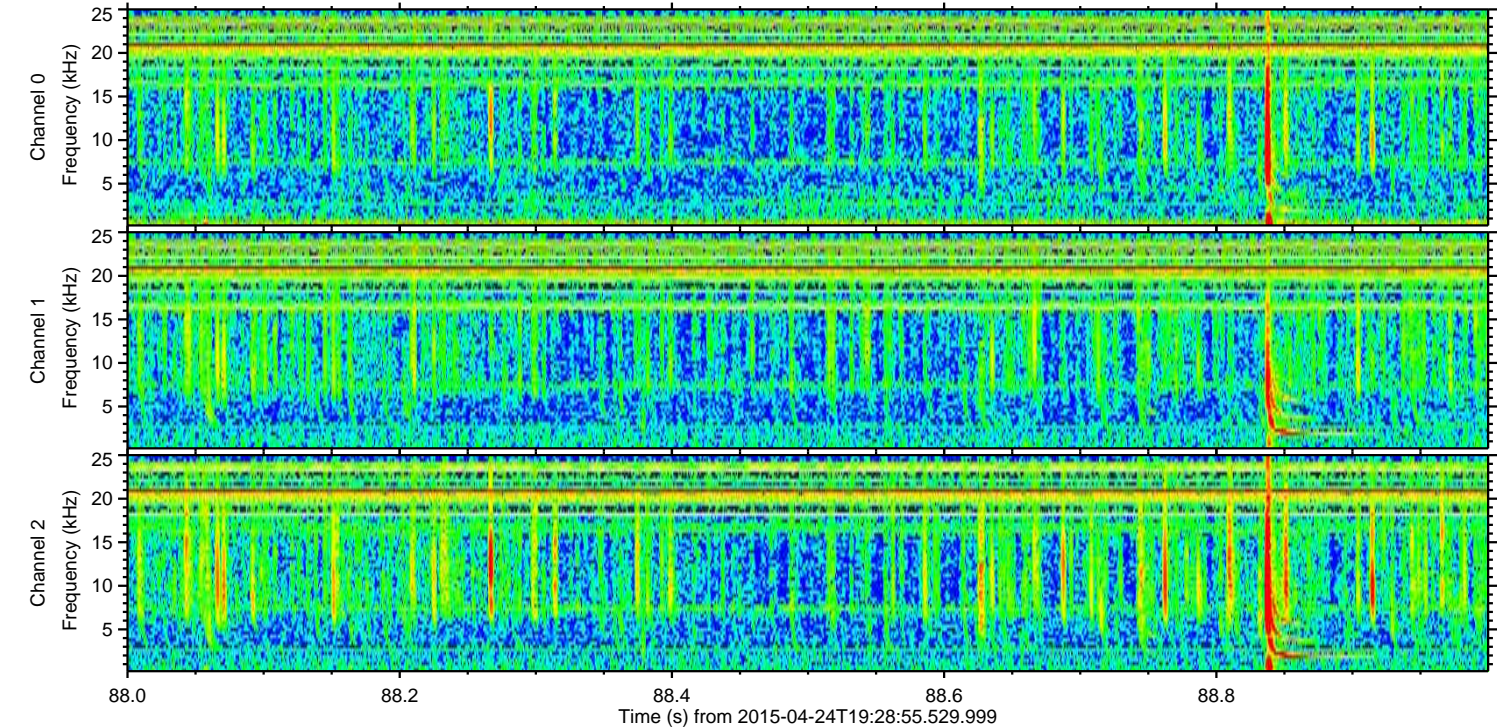
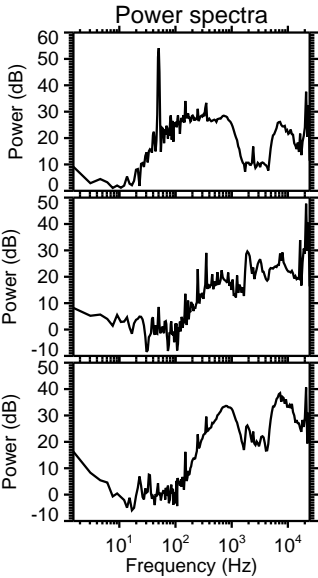
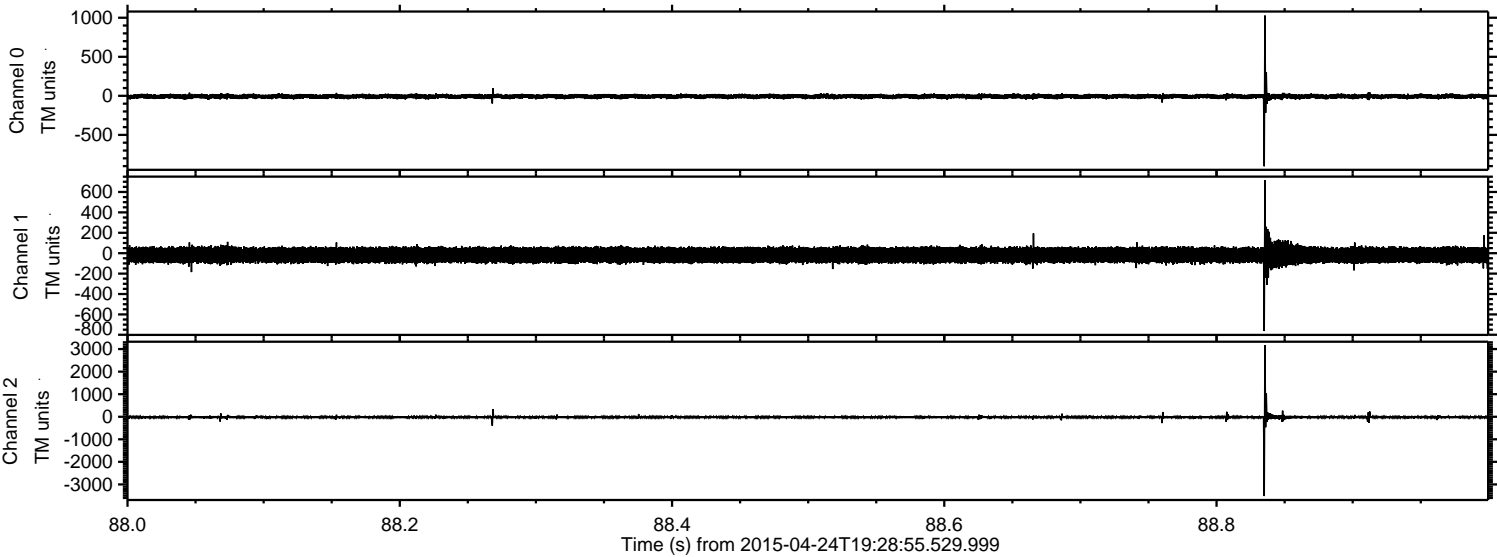


Channel 0  
mn: -1127  
mx: 1042  
 $\mu$ : -7.4  
 $\sigma$ : 18.9

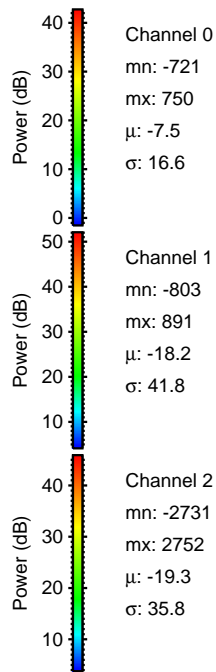
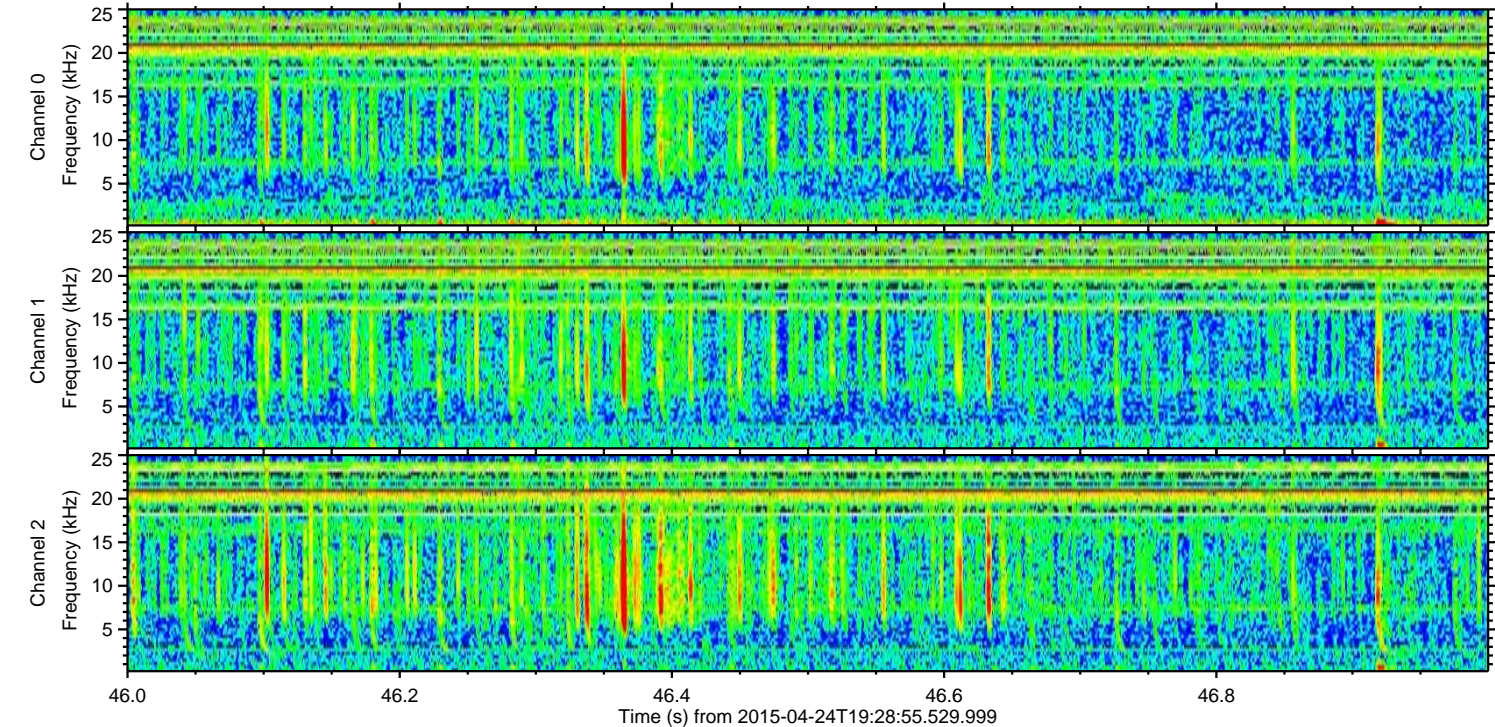
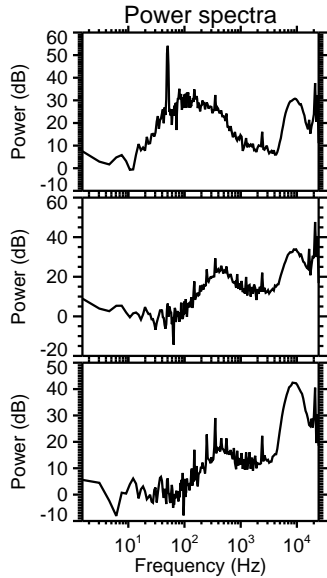
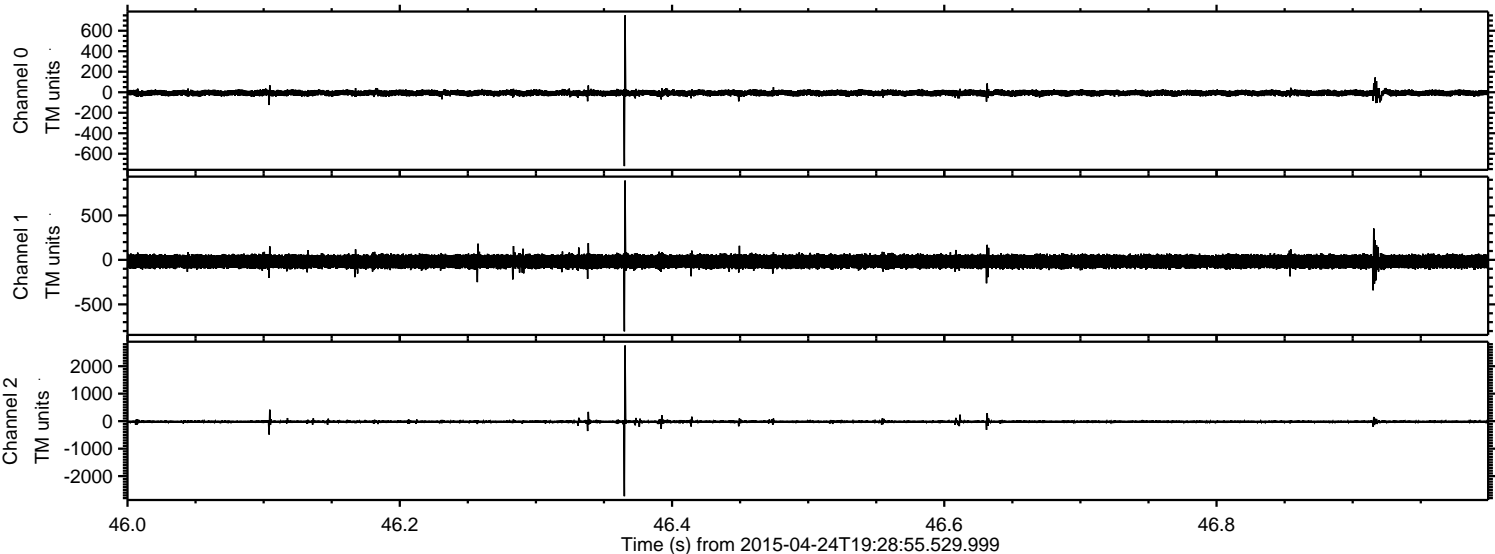
Channel 1  
mn: -970  
mx: 872  
 $\mu$ : -18.1  
 $\sigma$ : 41.9

Channel 2  
mn: -3695  
mx: 3792  
 $\mu$ : -19.3  
 $\sigma$ : 52.2

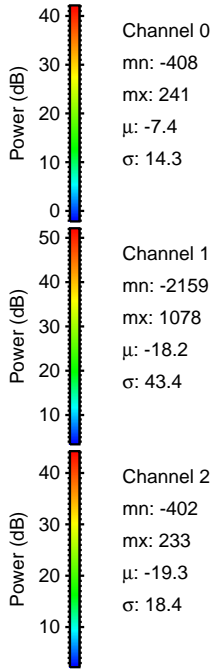
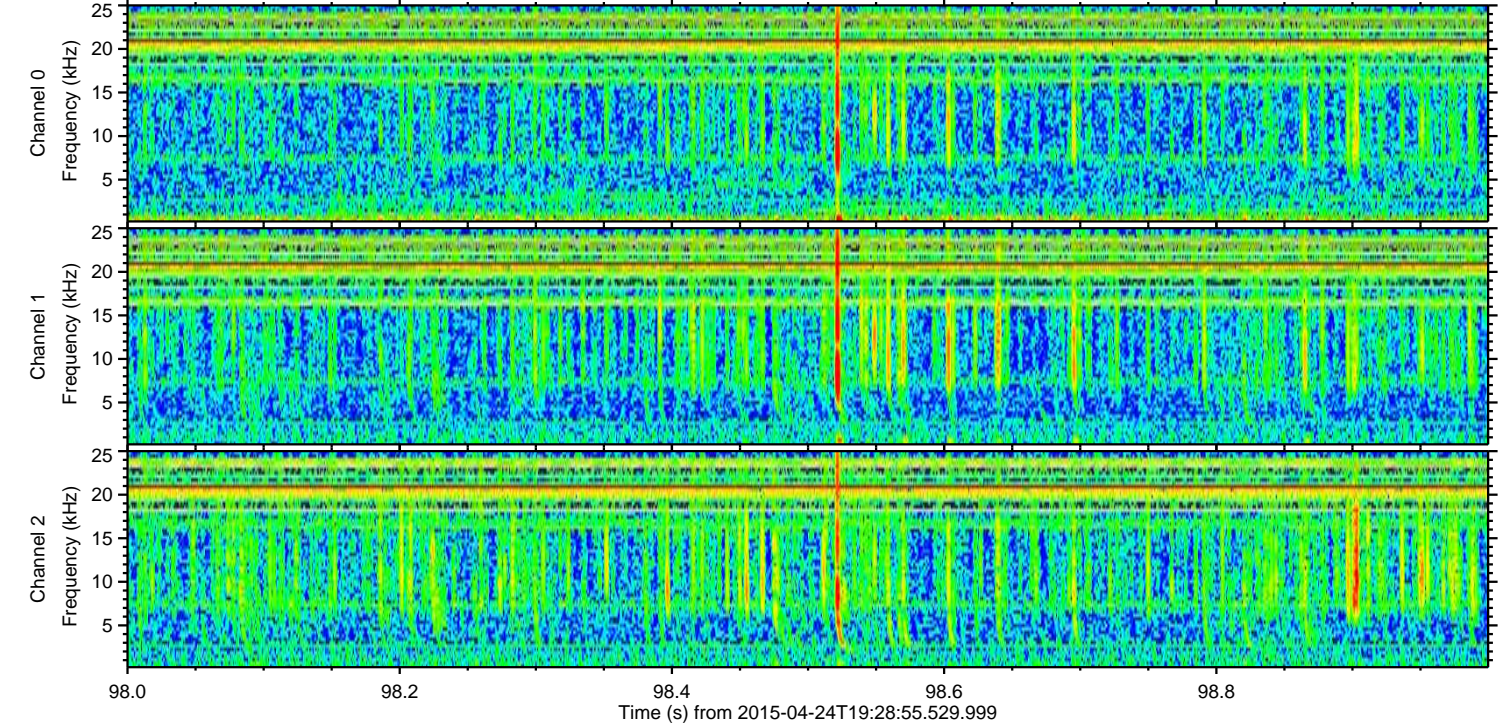
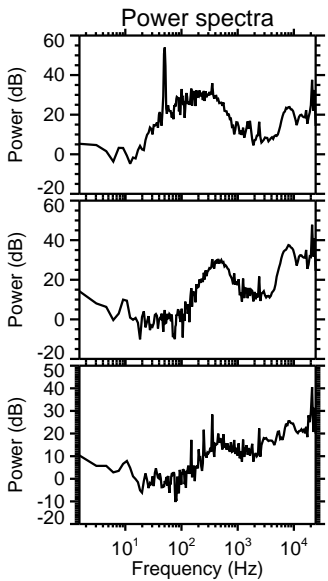
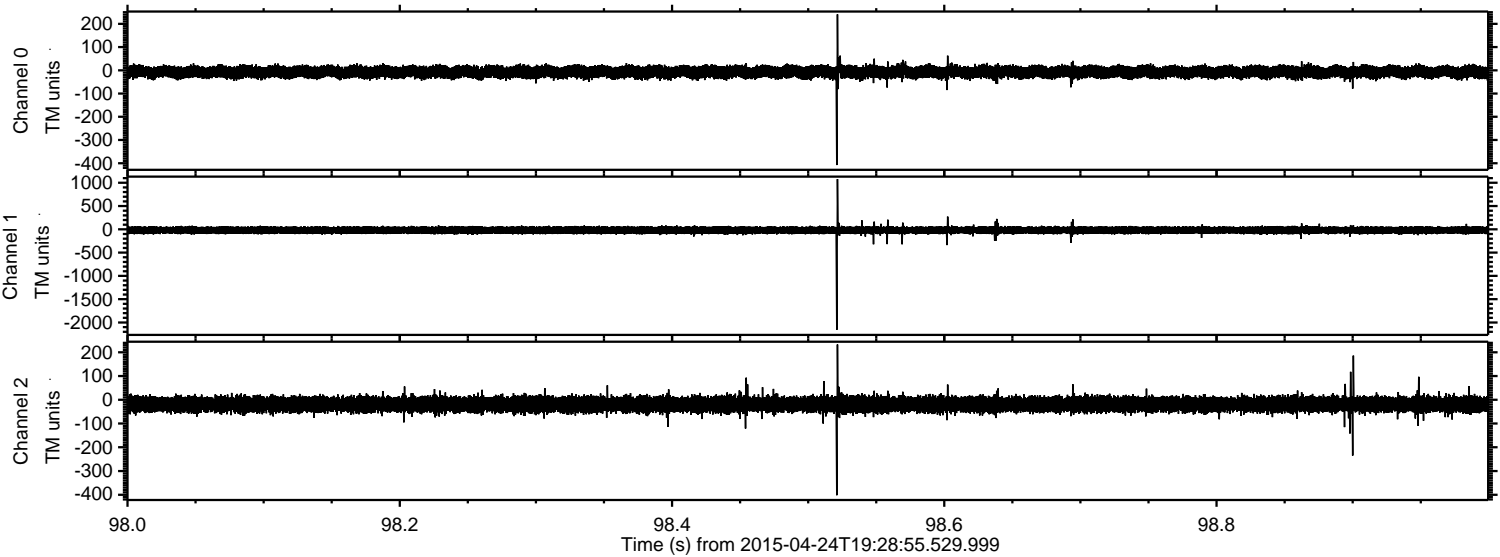
Processed Fri Apr 24 21:36:04 2015 by ELM ver.2012-10-06 from 001\_\_elm20150424\_192854\_\_dat00.bin



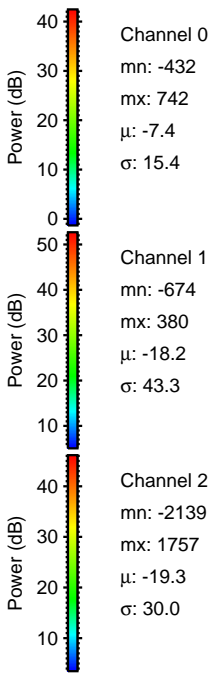
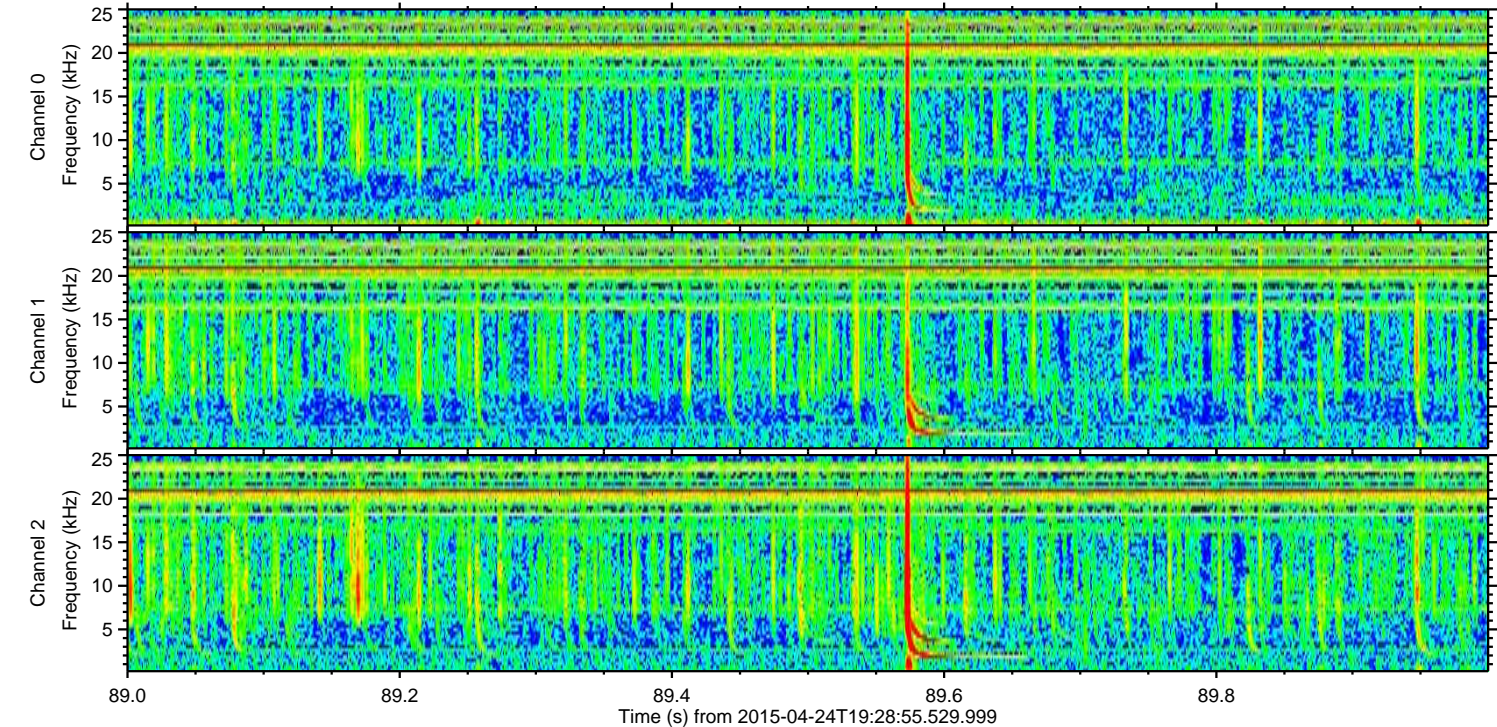
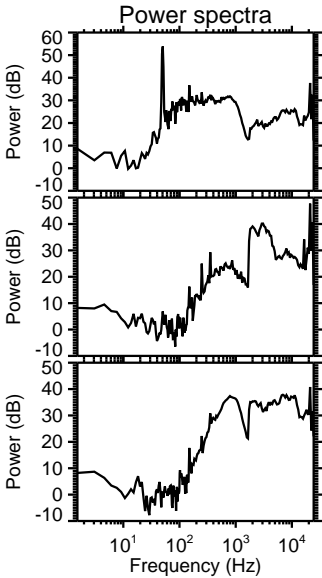
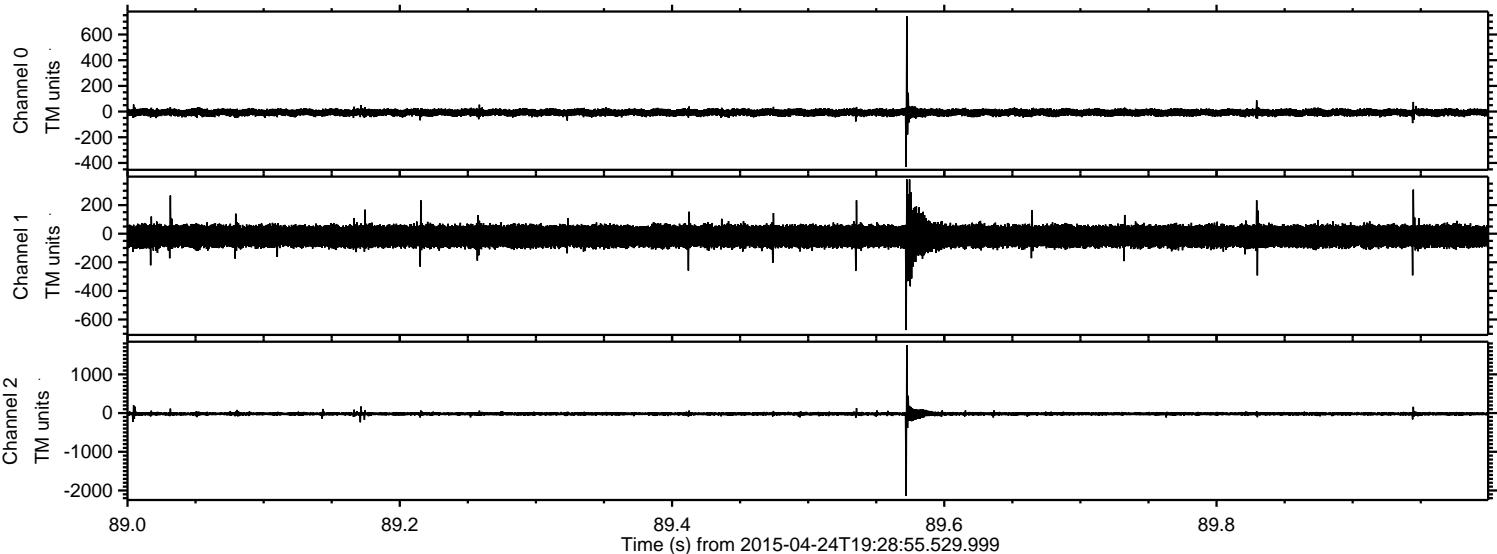
Processed Fri Apr 24 21:36:05 2015 by ELM ver.2012-10-06 from 001\_\_elm20150424\_192854\_\_dat00.bin



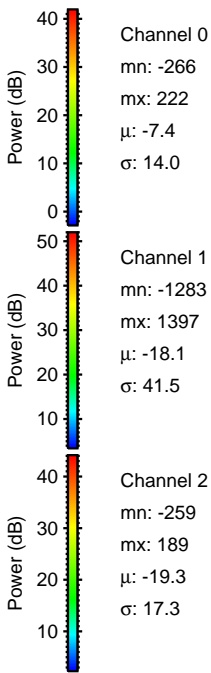
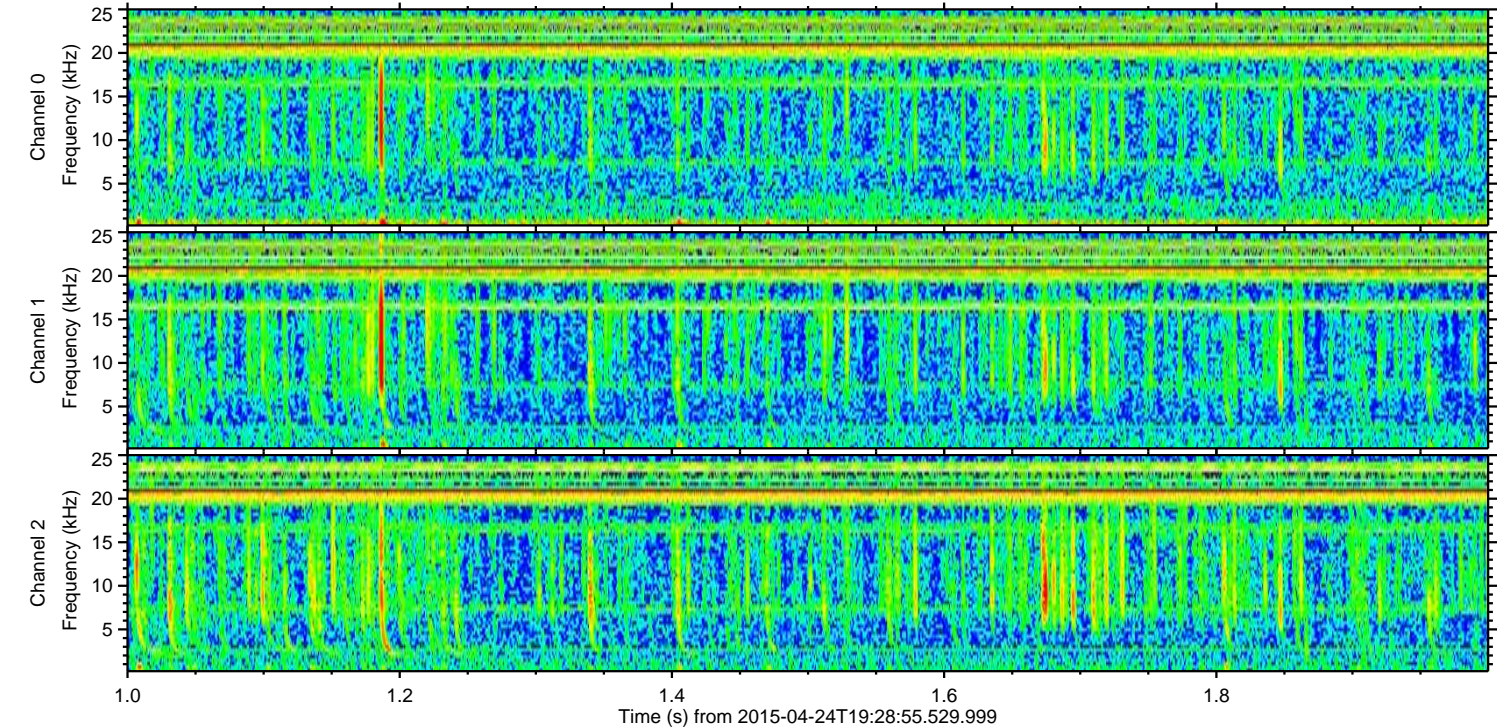
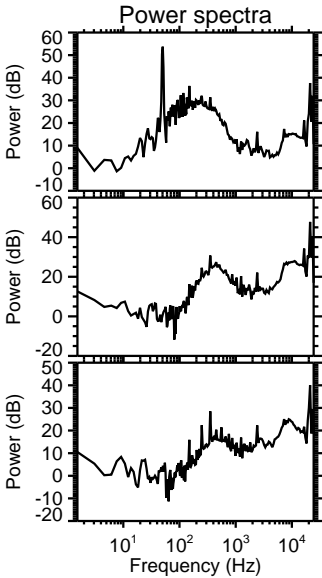
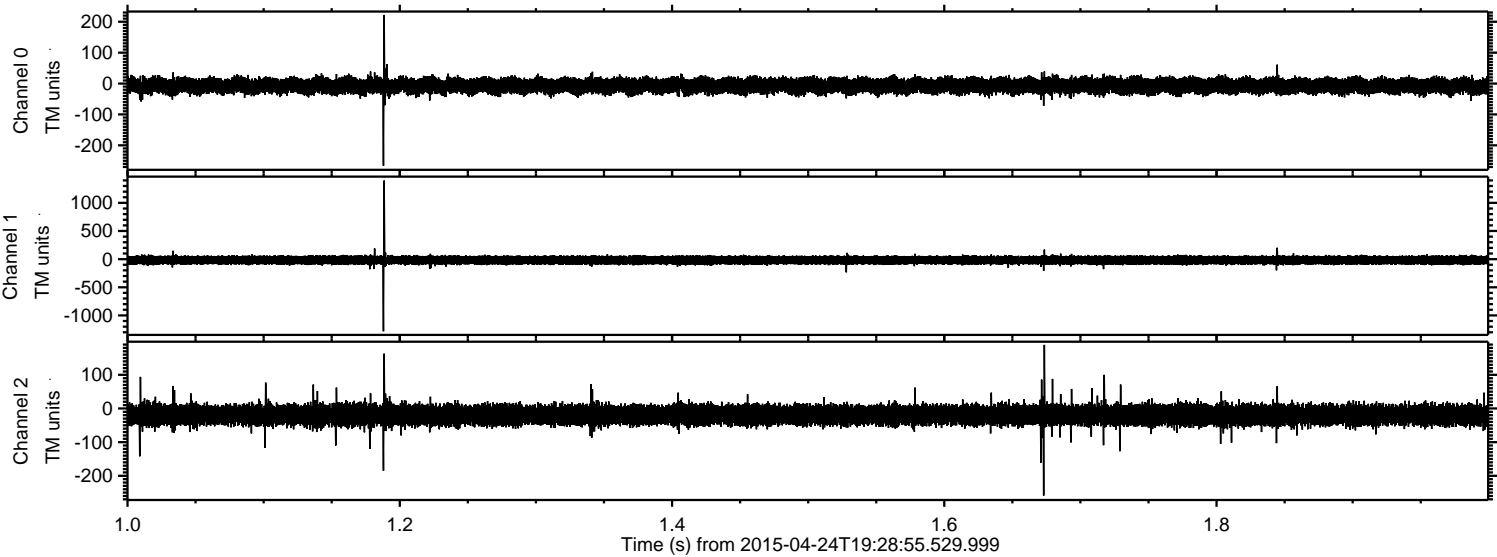
Processed Fri Apr 24 21:36:05 2015 by ELM ver.2012-10-06 from 001\_\_elm20150424\_192854\_\_dat00.bin



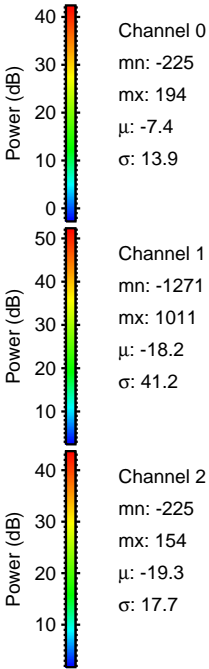
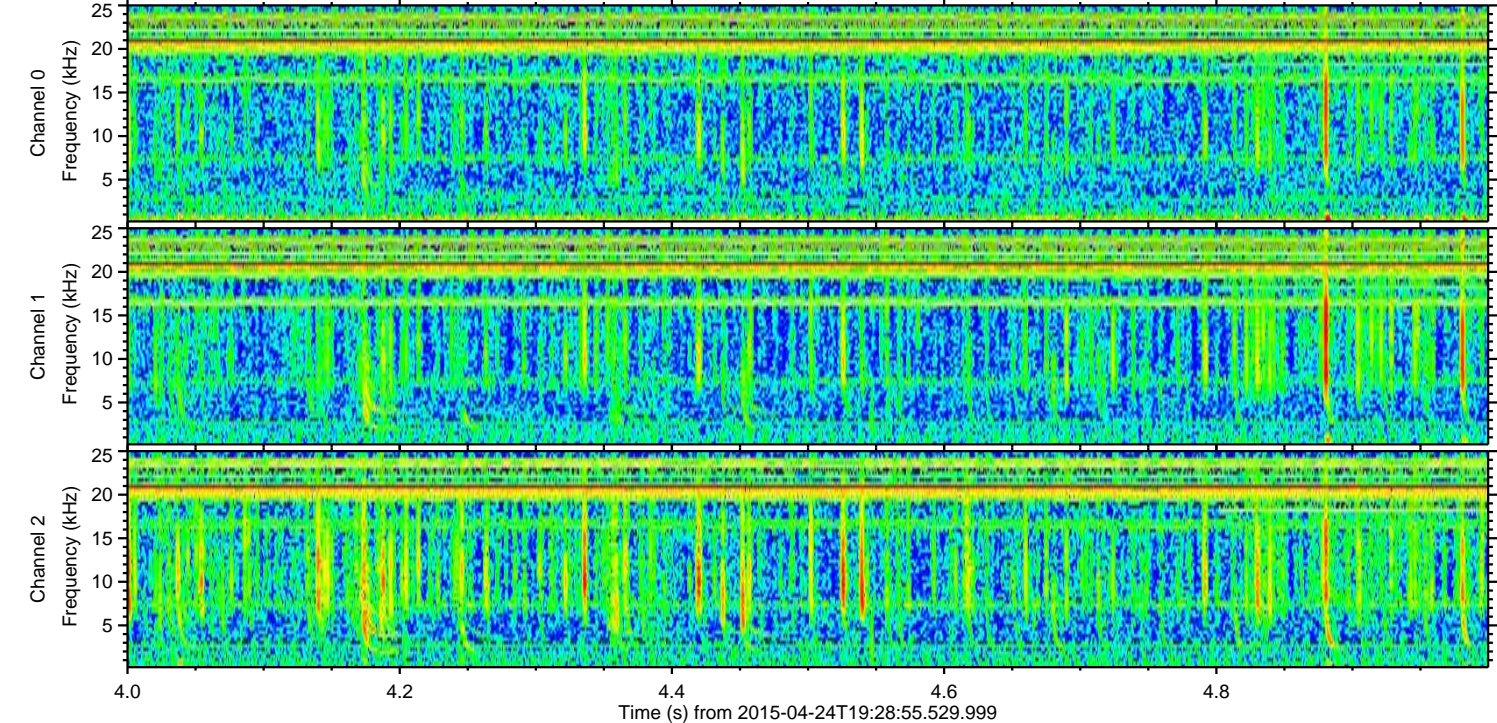
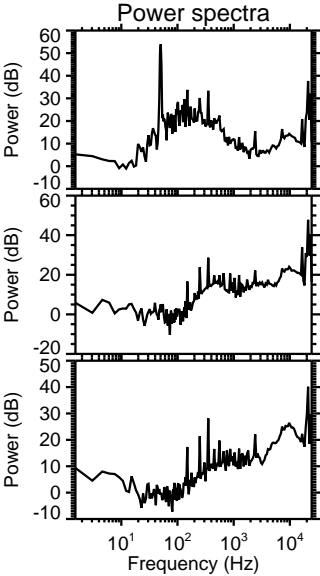
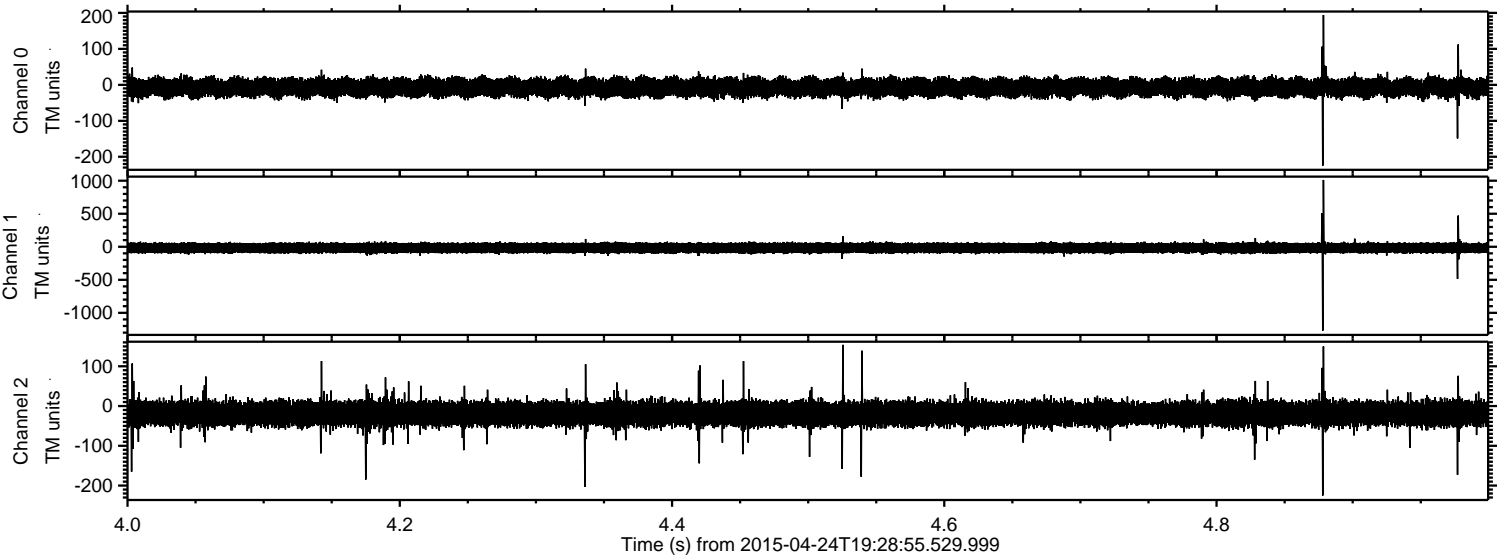
Processed Fri Apr 24 21:36:06 2015 by ELM ver.2012-10-06 from 001\_\_elm20150424\_192854\_\_dat00.bin



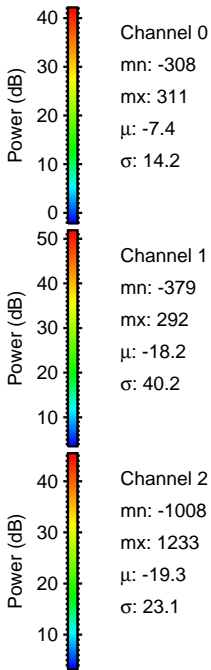
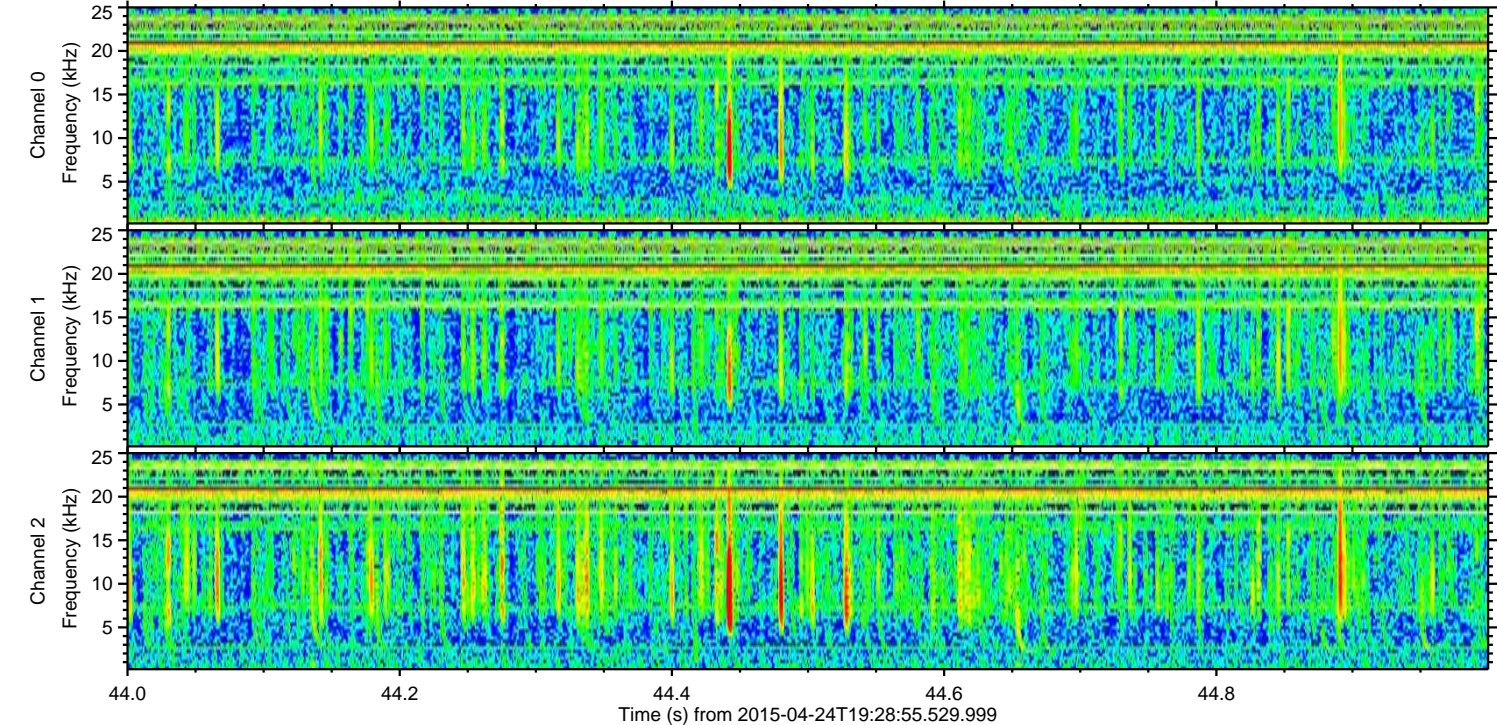
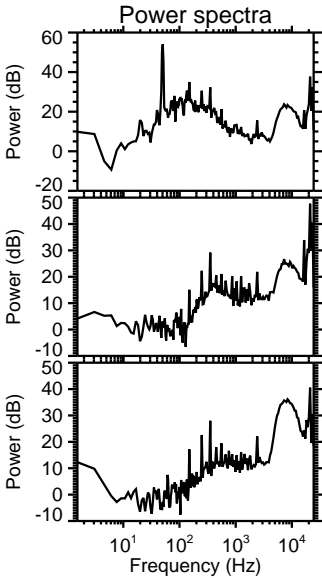
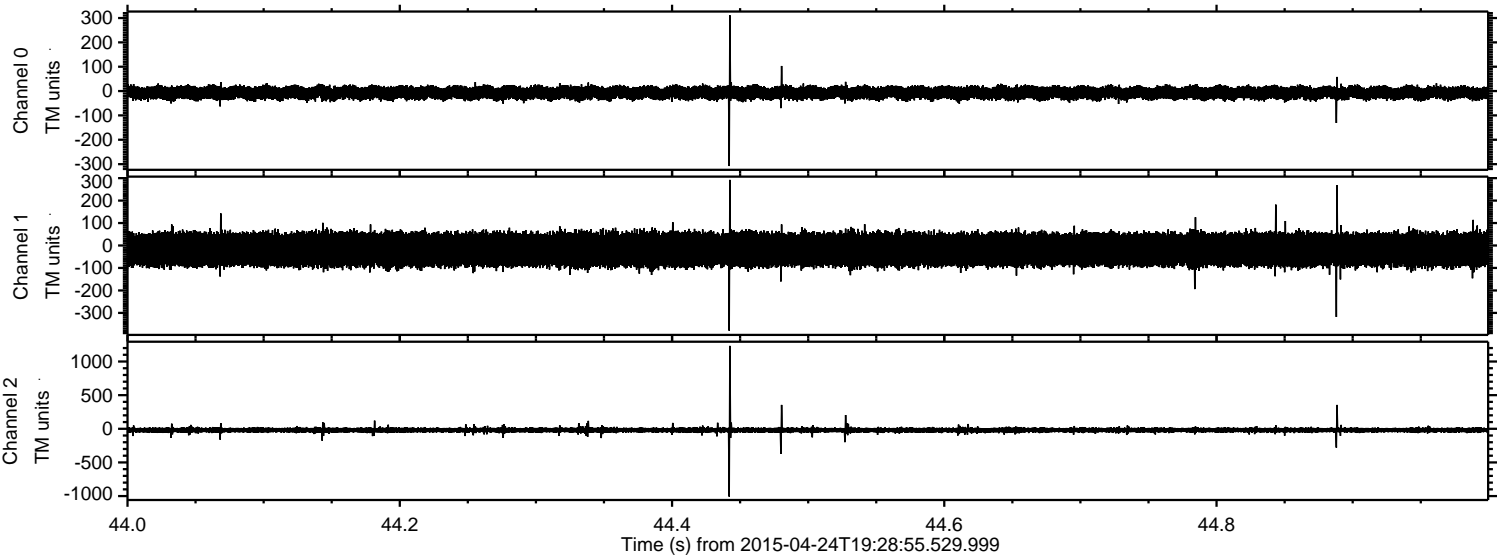
Processed Fri Apr 24 21:36:07 2015 by ELM ver.2012-10-06 from 001\_\_elm20150424\_192854\_\_dat00.bin



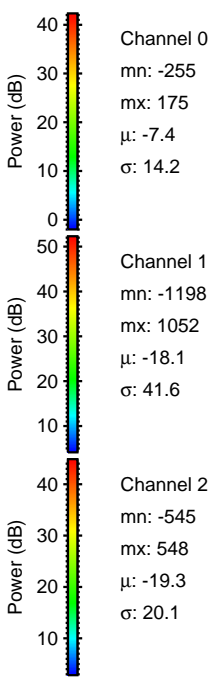
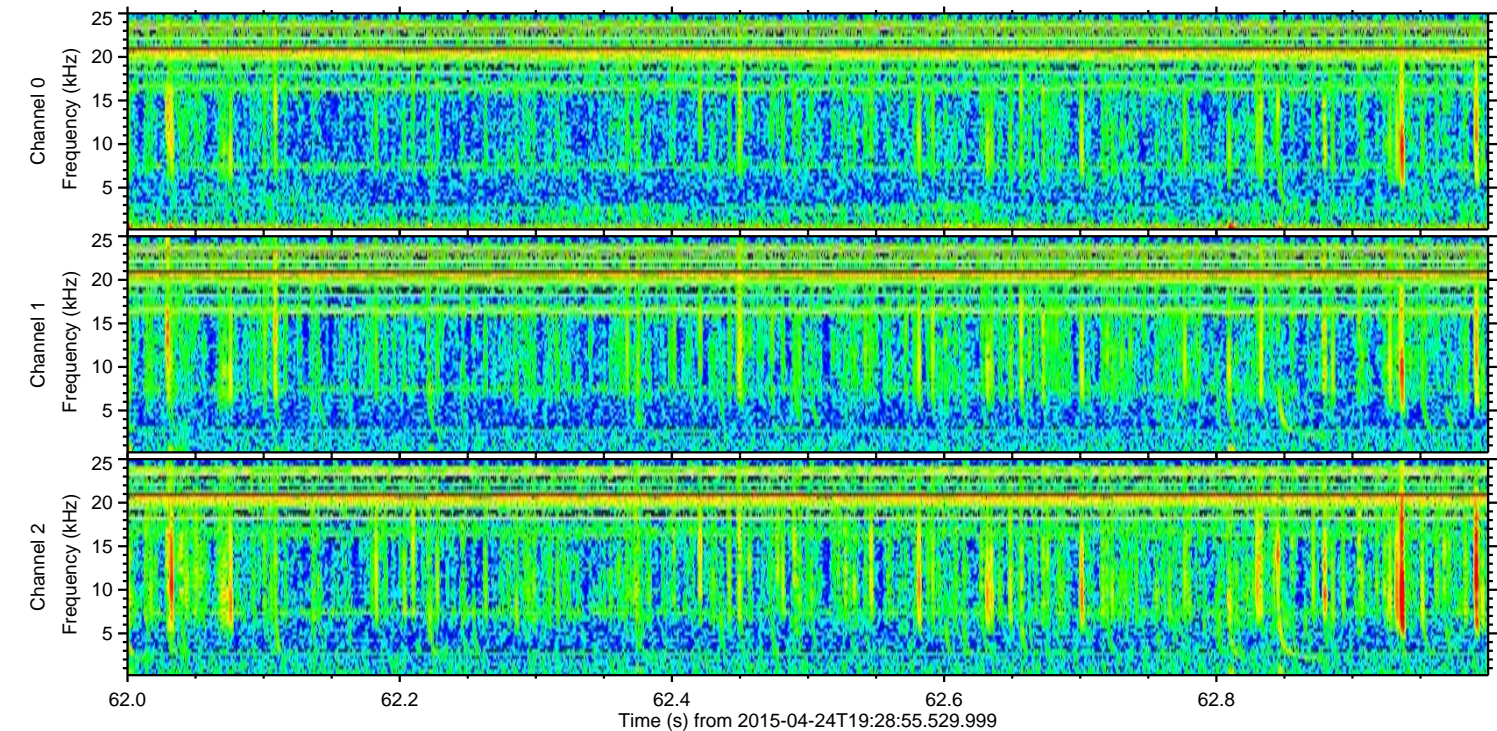
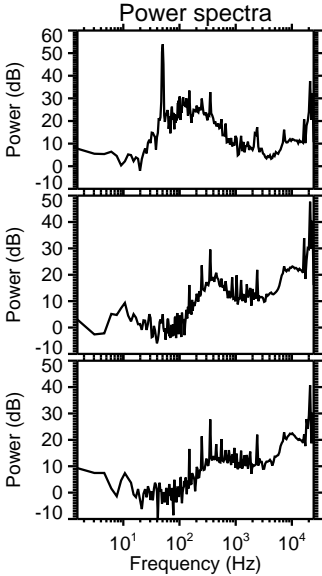
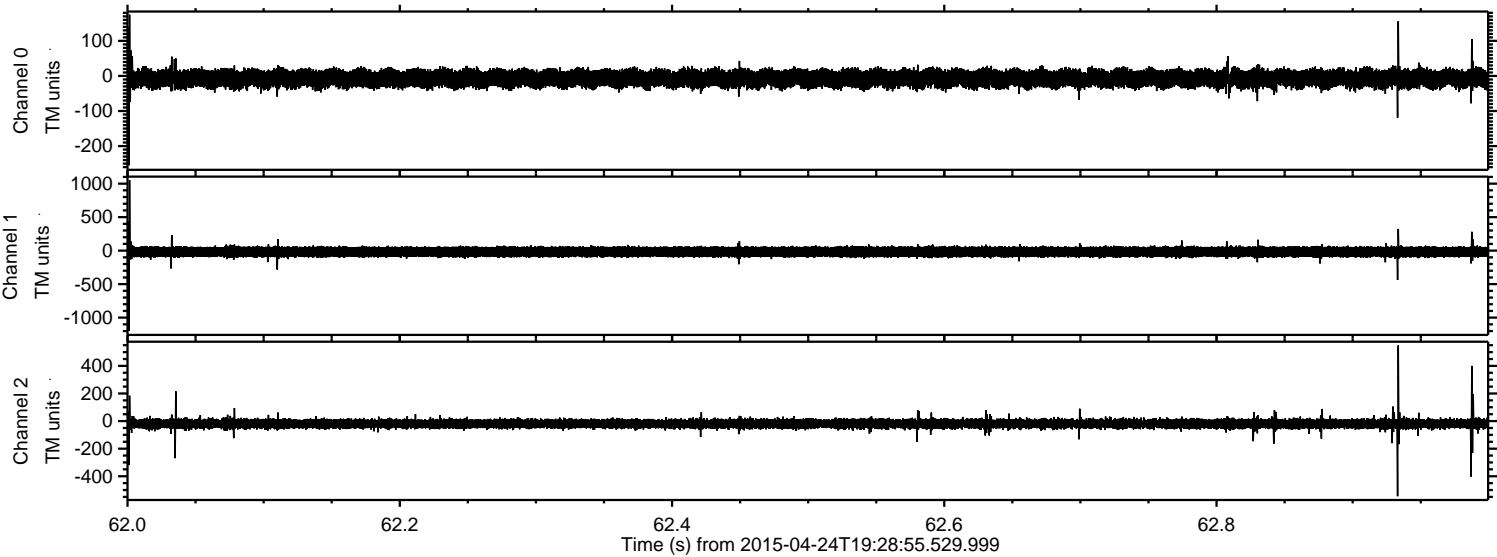
Processed Fri Apr 24 21:36:08 2015 by ELM ver.2012-10-06 from 001\_\_elm20150424\_192854\_\_dat00.bin



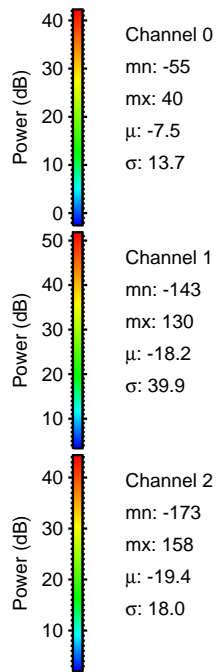
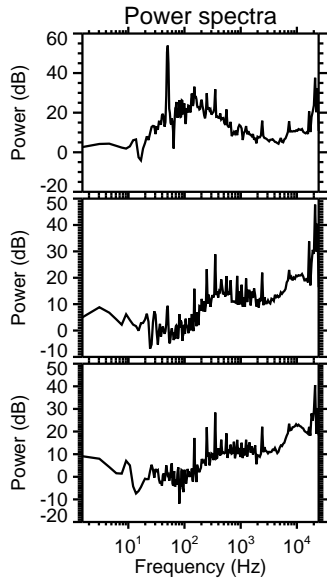
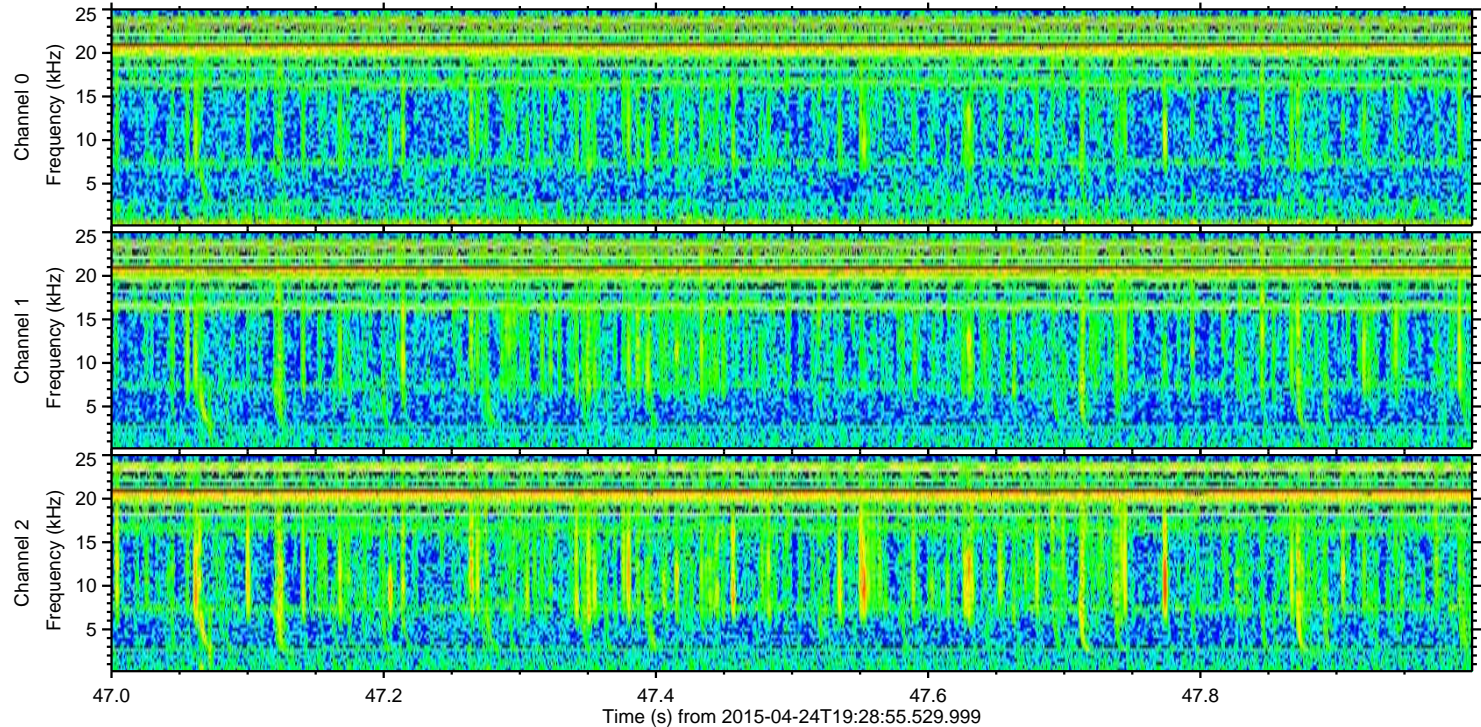
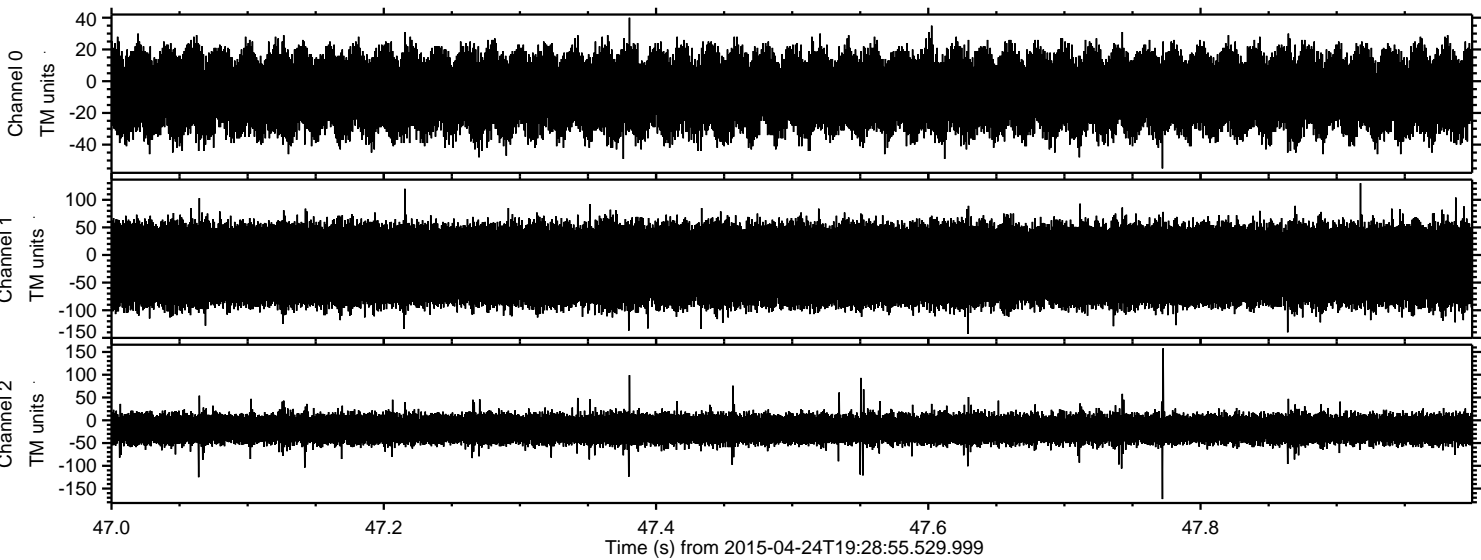
Processed Fri Apr 24 21:36:09 2015 by ELM ver.2012-10-06 from 001\_\_elm20150424\_192854\_\_dat00.bin



Processed Fri Apr 24 21:36:10 2015 by ELM ver.2012-10-06 from 001\_\_elm20150424\_192854\_\_dat00.bin



Processed Fri Apr 24 21:36:11 2015 by ELM ver.2012-10-06 from 001\_\_elm20150424\_192854\_\_dat00.bin



Channel 0  
mn: -55  
mx: 40  
 $\mu$ : -7.5  
 $\sigma$ : 13.7

Channel 1  
mn: -143  
mx: 130  
 $\mu$ : -18.2  
 $\sigma$ : 39.9

Channel 2  
mn: -173  
mx: 158  
 $\mu$ : -19.4  
 $\sigma$ : 18.0