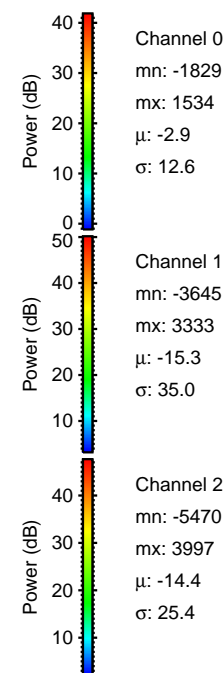
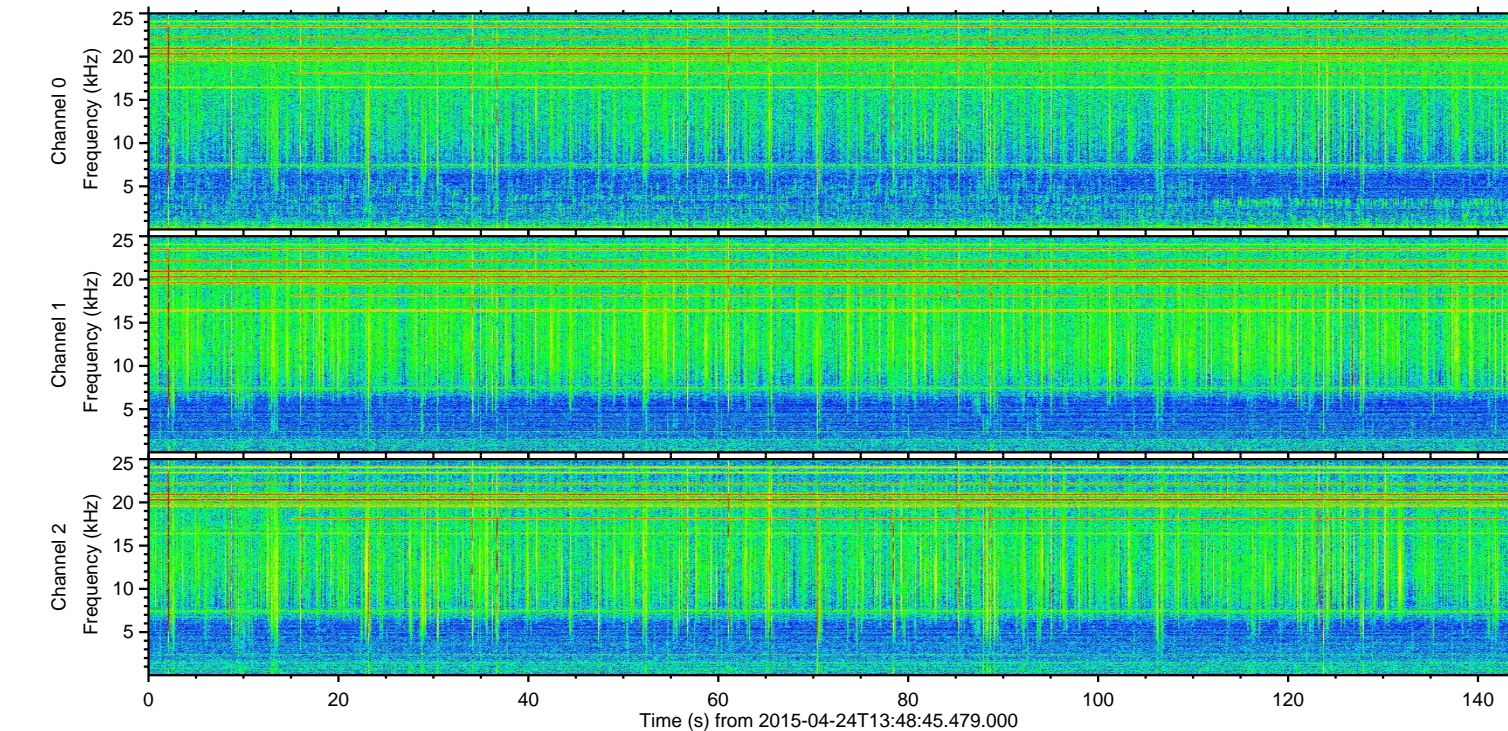
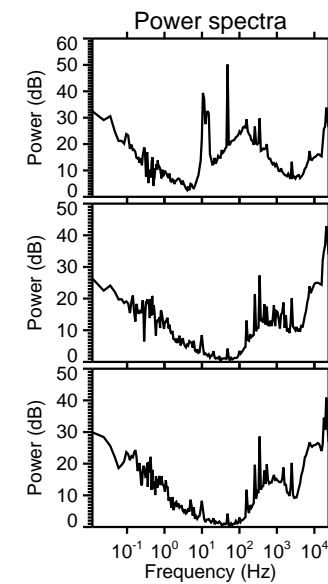
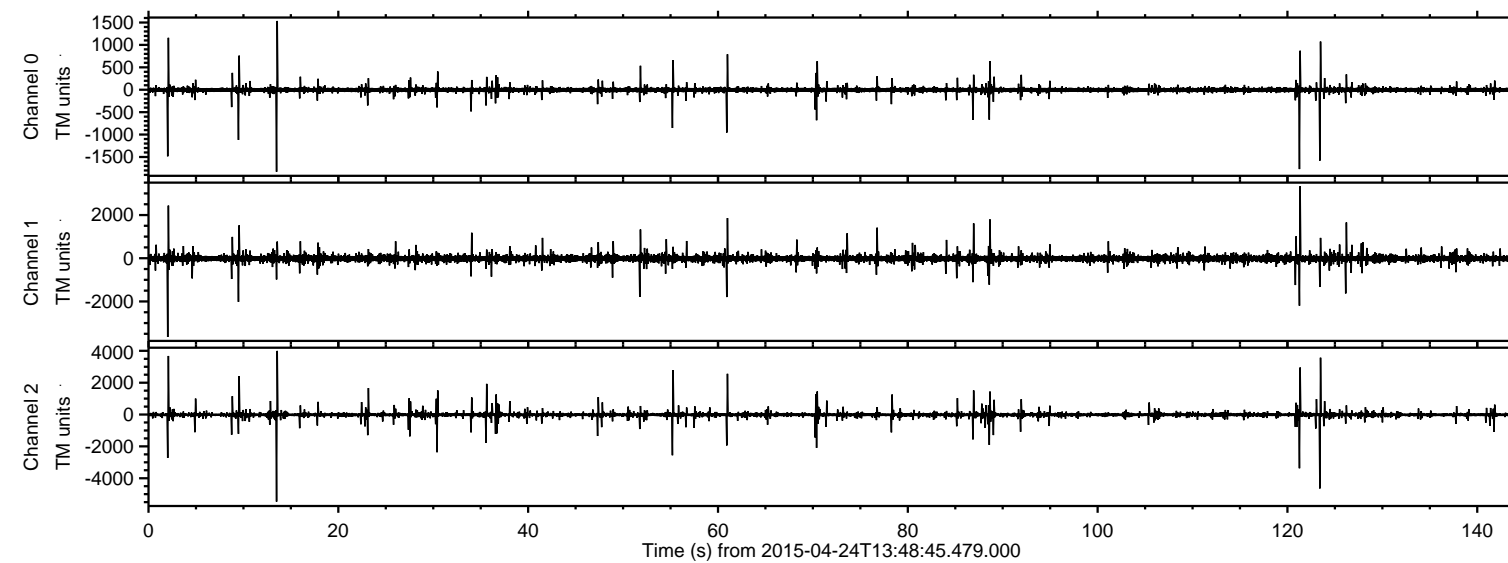
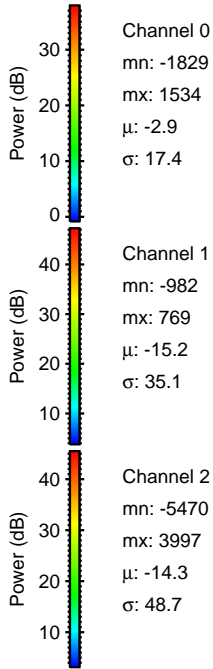
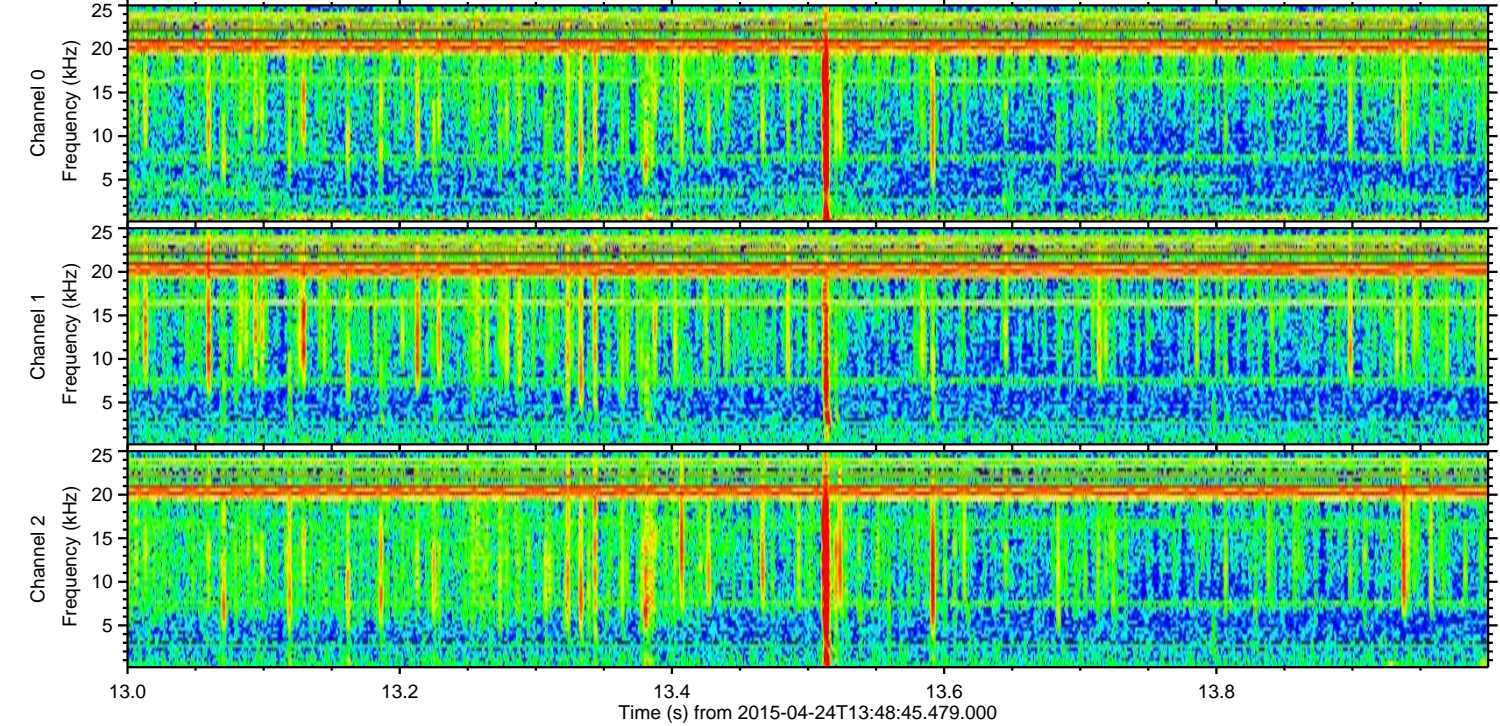
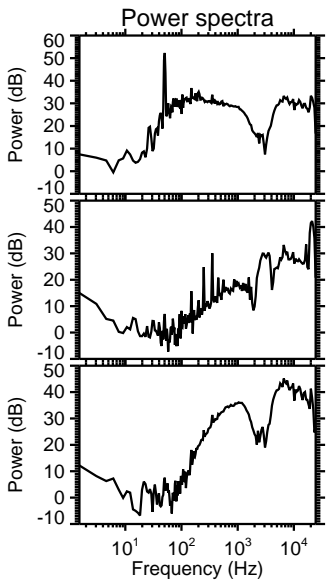
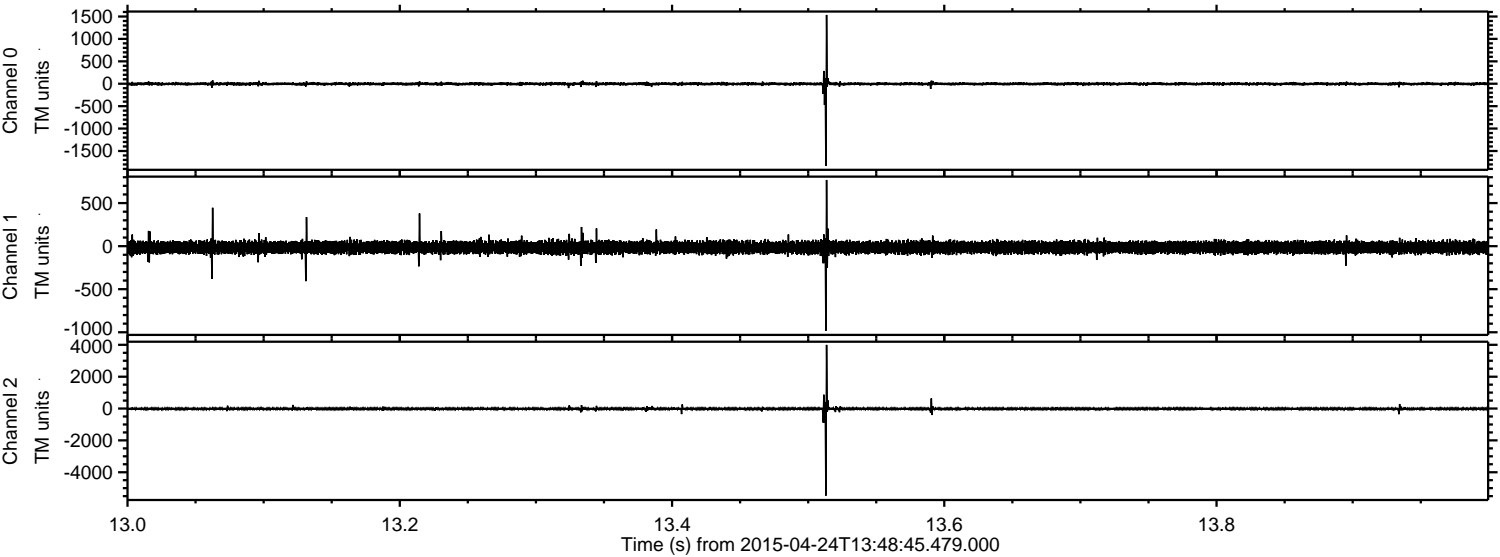


ELMAVAN 3D WAVEFORMS (Measured data sampled at 50 kHz) 49777 packets of 144 samples from 2015-04-24T13:48:45.479.000.

Processed Fri Apr 24 15:55:35 2015 by ELM ver.2012-10-06 from 001__elm20150424_134844__dat00.bin



Processed Fri Apr 24 15:55:47 2015 by ELM ver.2012-10-06 from 001__elm20150424_134844__dat00.bin



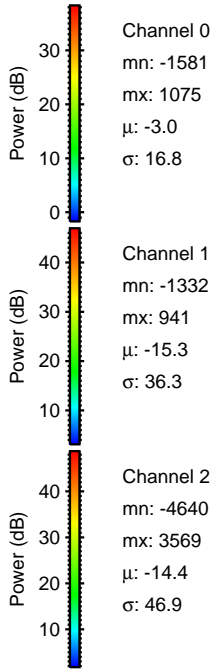
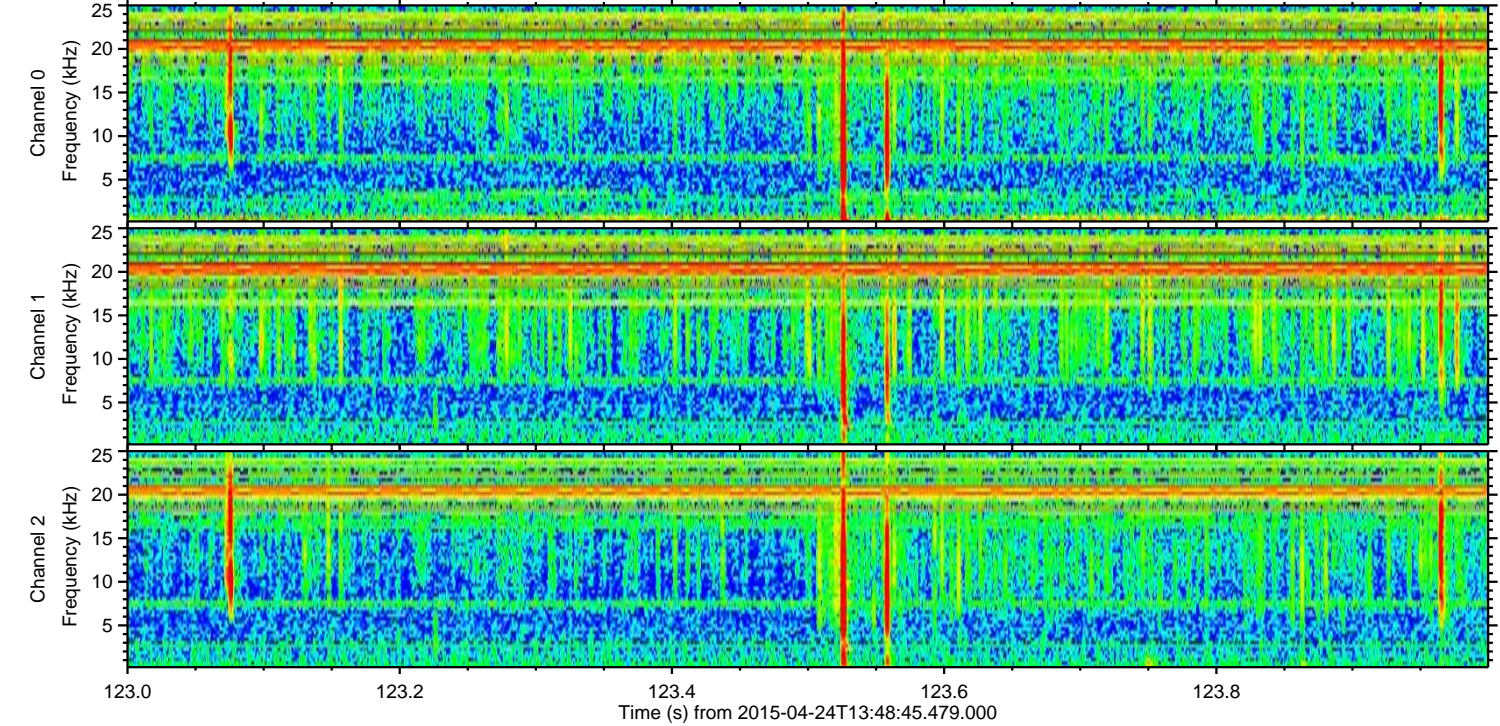
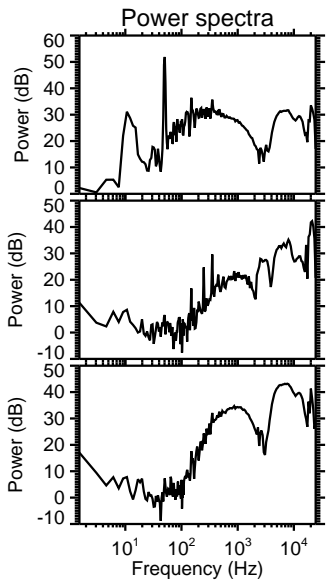
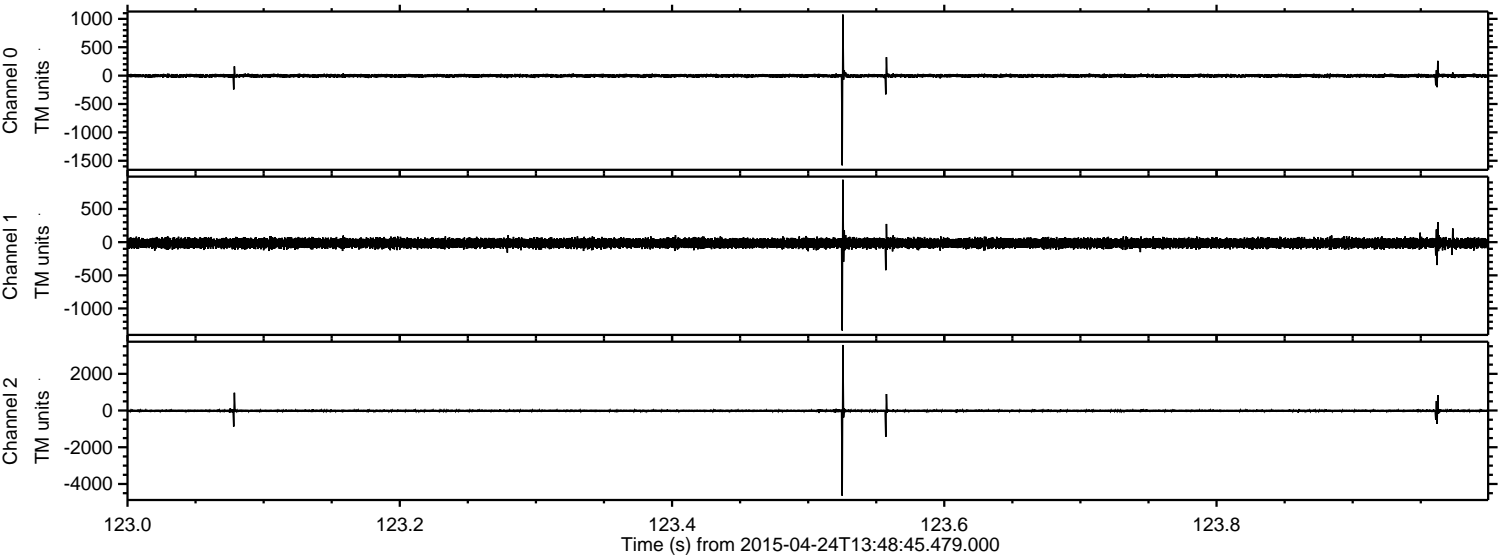
Channel 0
mn: -1829
mx: 1534
 μ : -2.9
 σ : 17.4

Channel 1
mn: -982
mx: 769
 μ : -15.2
 σ : 35.1

Channel 2
mn: -5470
mx: 3997
 μ : -14.3
 σ : 48.7

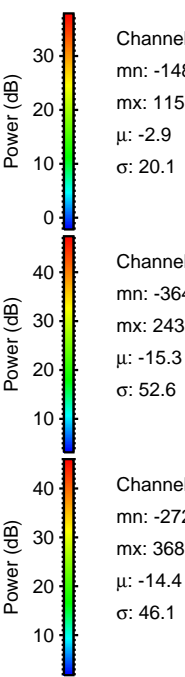
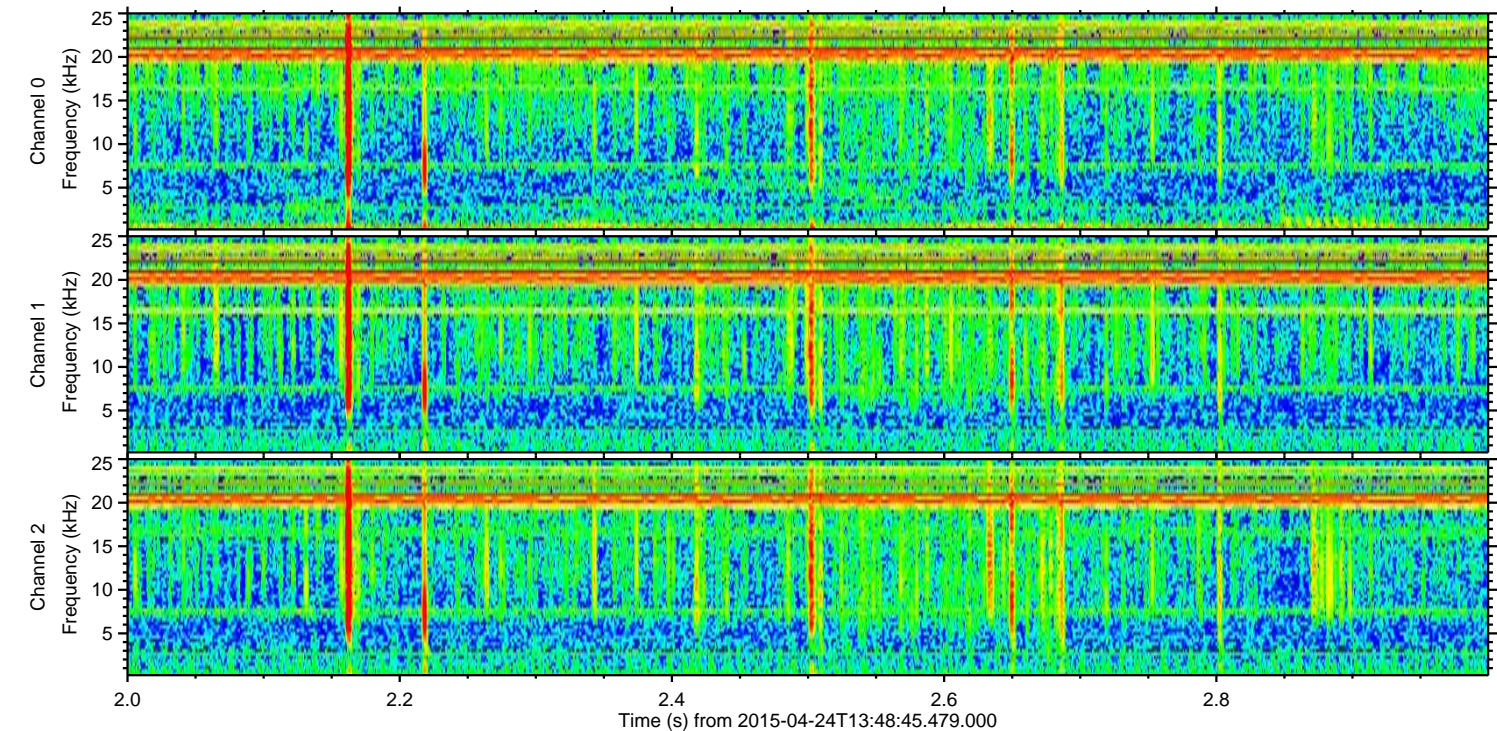
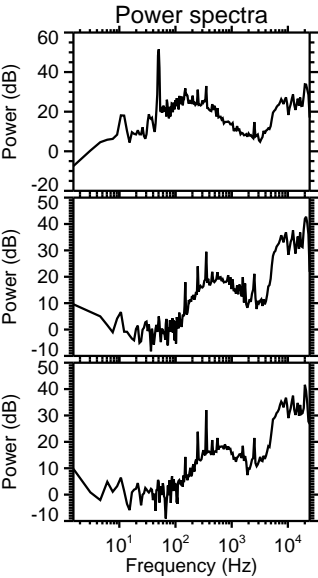
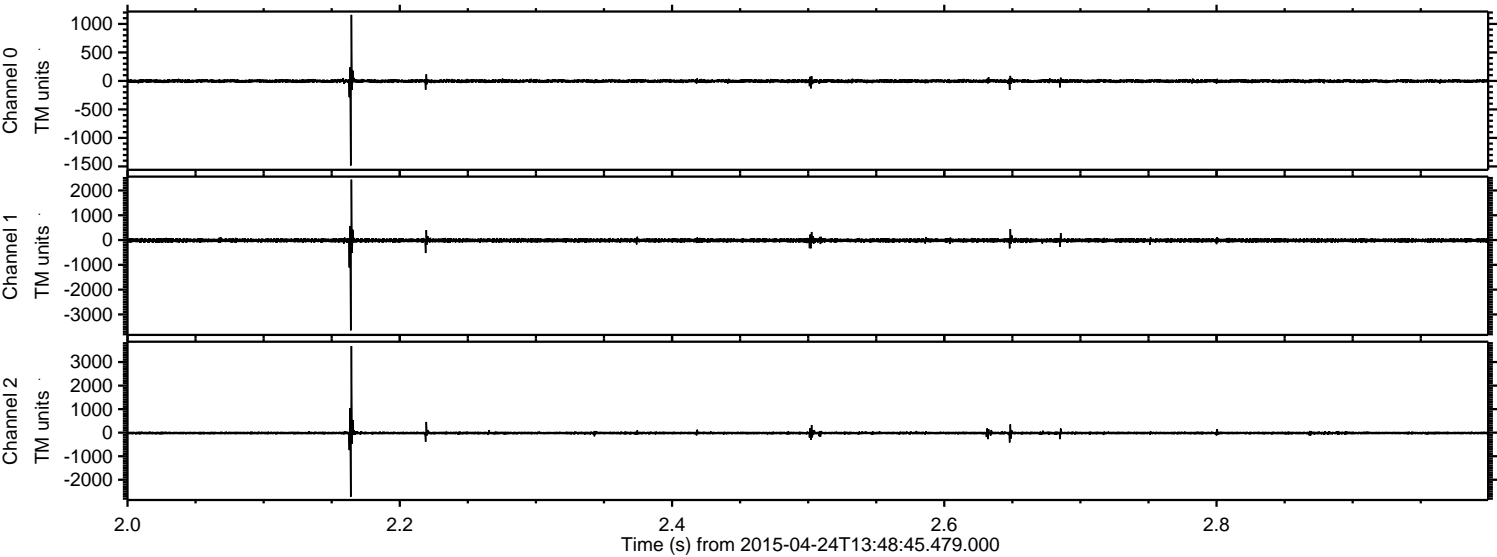
ELMAVAN 3D WAVEFORMS (Measured data sampled at 50 kHz) 49777 packets of 144 samples from 2015-04-24T13:48:45.479.000. Part 124/144

Processed Fri Apr 24 15:55:48 2015 by ELM ver.2012-10-06 from 001__elm20150424_134844__dat00.bin



ELMAVAN 3D WAVEFORMS (Measured data sampled at 50 kHz) 49777 packets of 144 samples from 2015-04-24T13:48:45.479.000. Part 3/144

Processed Fri Apr 24 15:55:49 2015 by ELM ver.2012-10-06 from 001__elm20150424_134844__dat00.bin



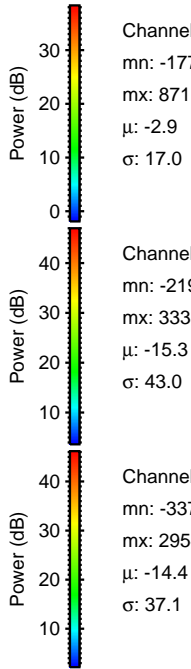
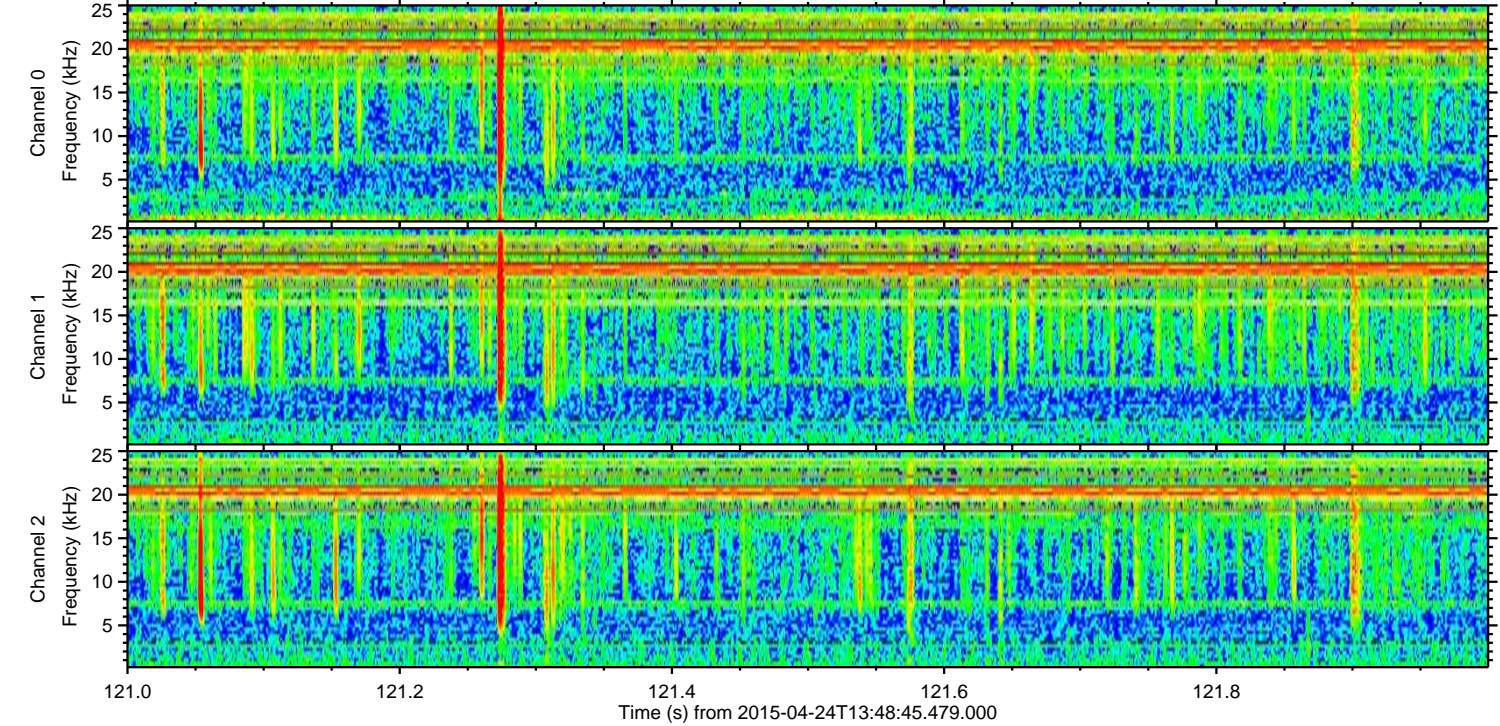
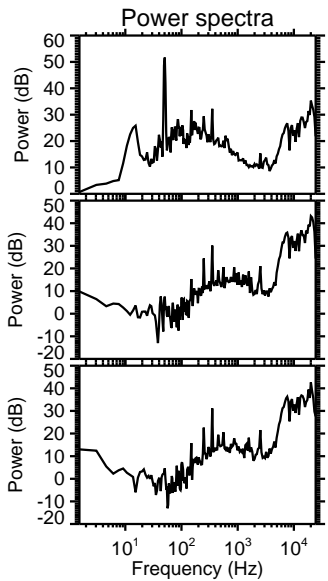
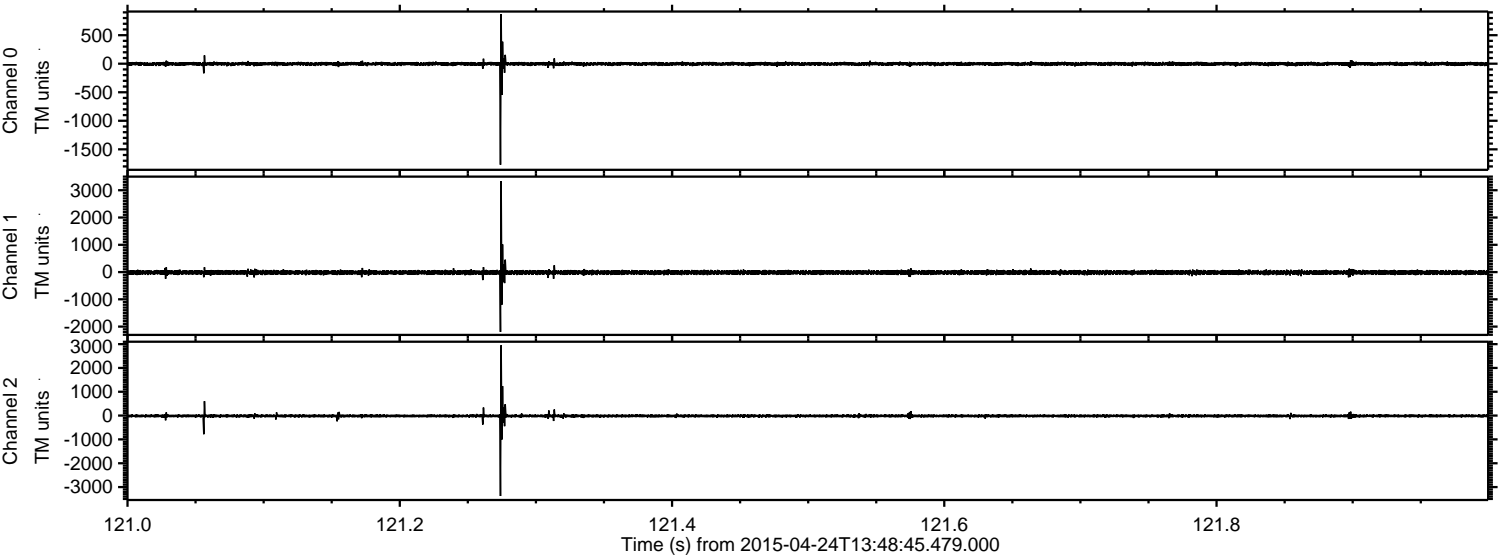
Channel 0
mn: -1486
mx: 1159
 μ : -2.9
 σ : 20.1

Channel 1
mn: -3645
mx: 2435
 μ : -15.3
 σ : 52.6

Channel 2
mn: -2723
mx: 3680
 μ : -14.4
 σ : 46.1

ELMAVAN 3D WAVEFORMS (Measured data sampled at 50 kHz) 49777 packets of 144 samples from 2015-04-24T13:48:45.479.000. Part 122/144

Processed Fri Apr 24 15:55:49 2015 by ELM ver.2012-10-06 from 001__elm20150424_134844__dat00.bin

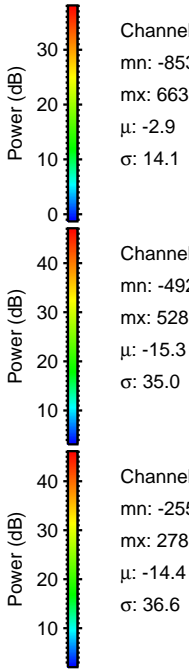
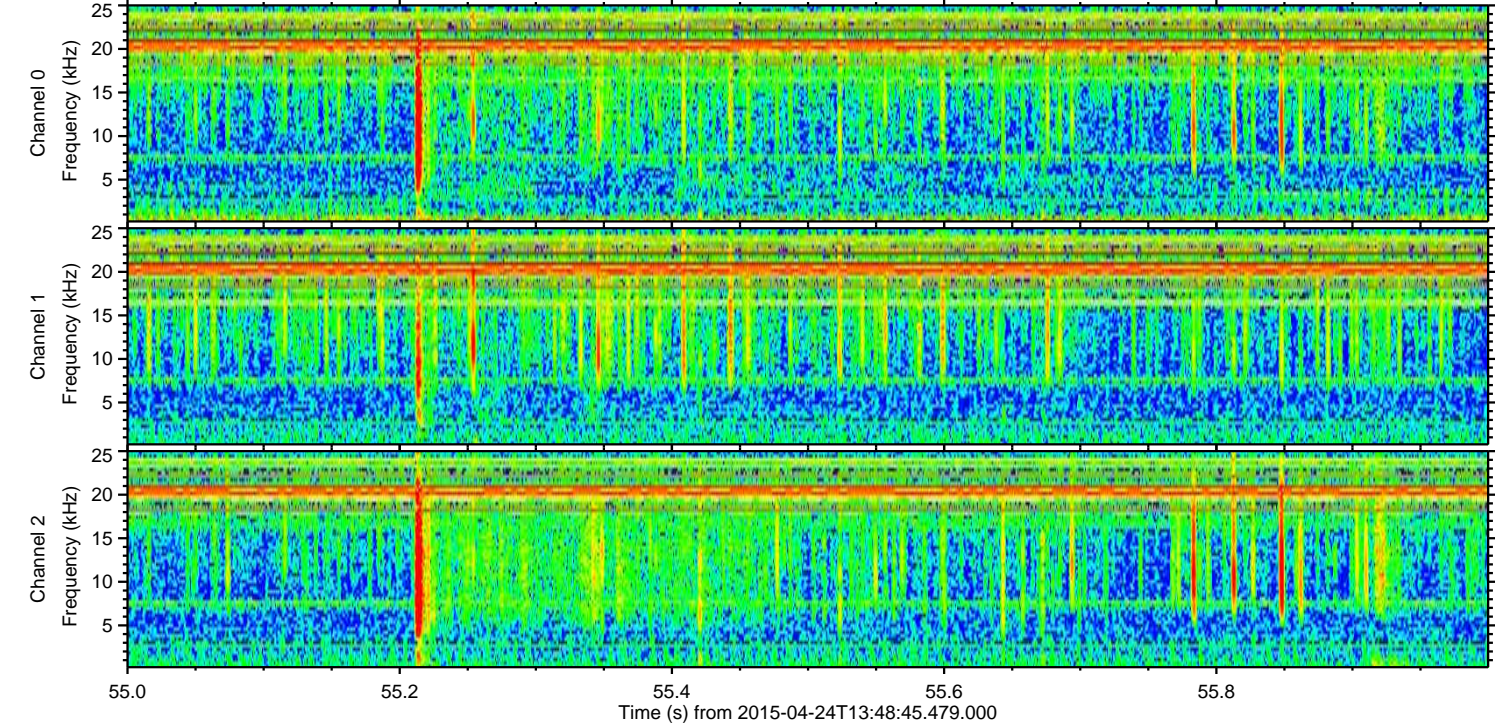
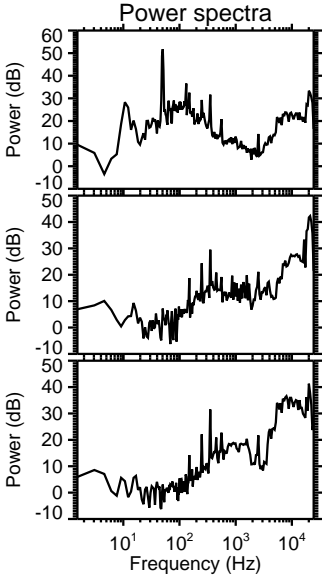
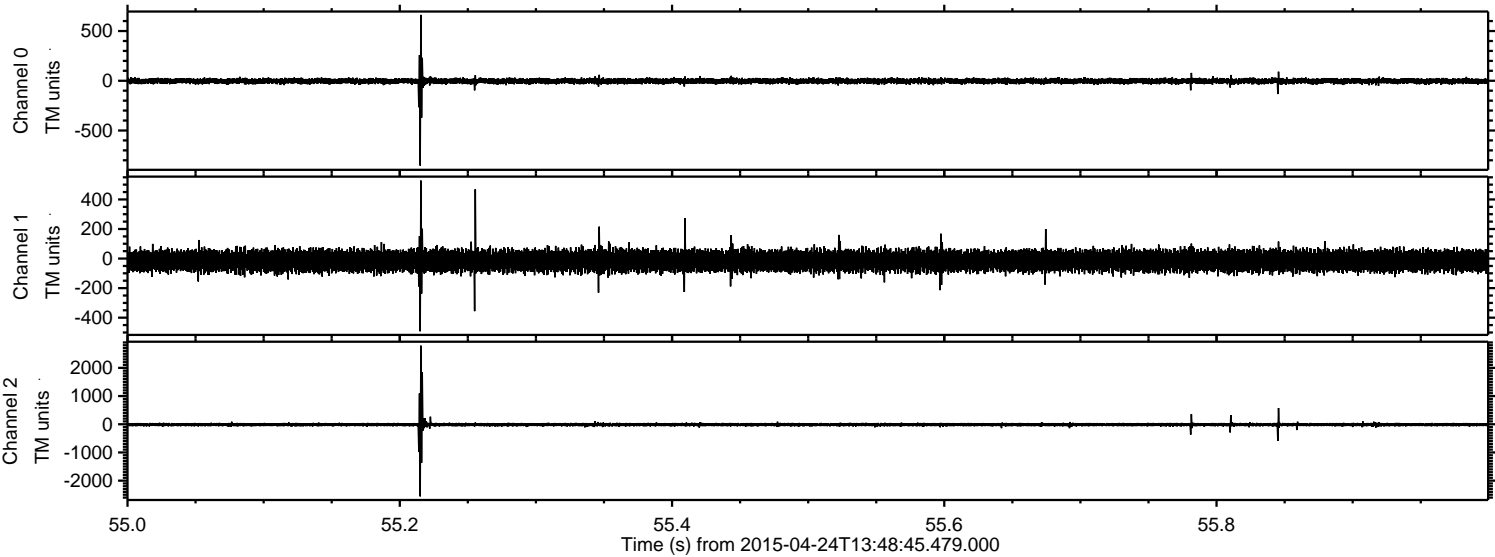


Channel 0
mn: -1771
mx: 871
 μ : -2.9
 σ : 17.0

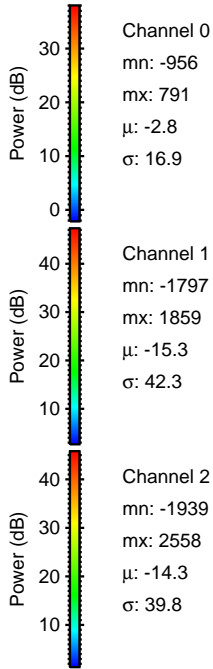
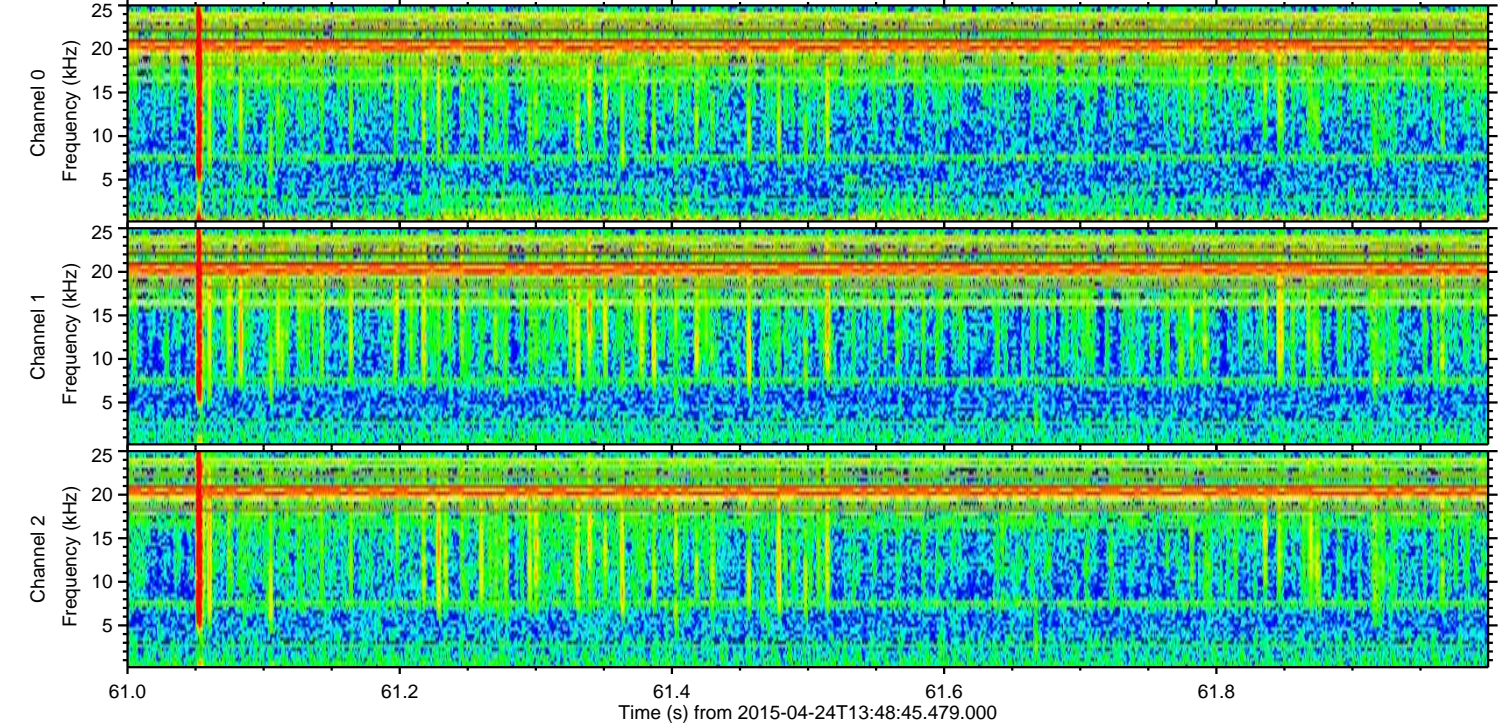
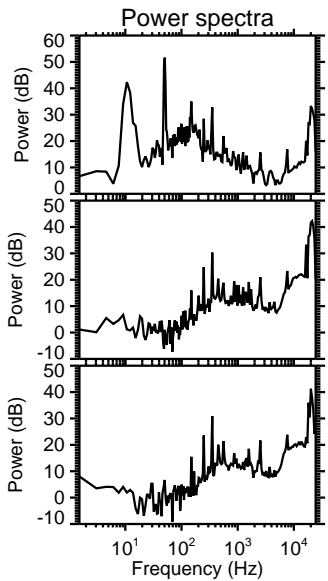
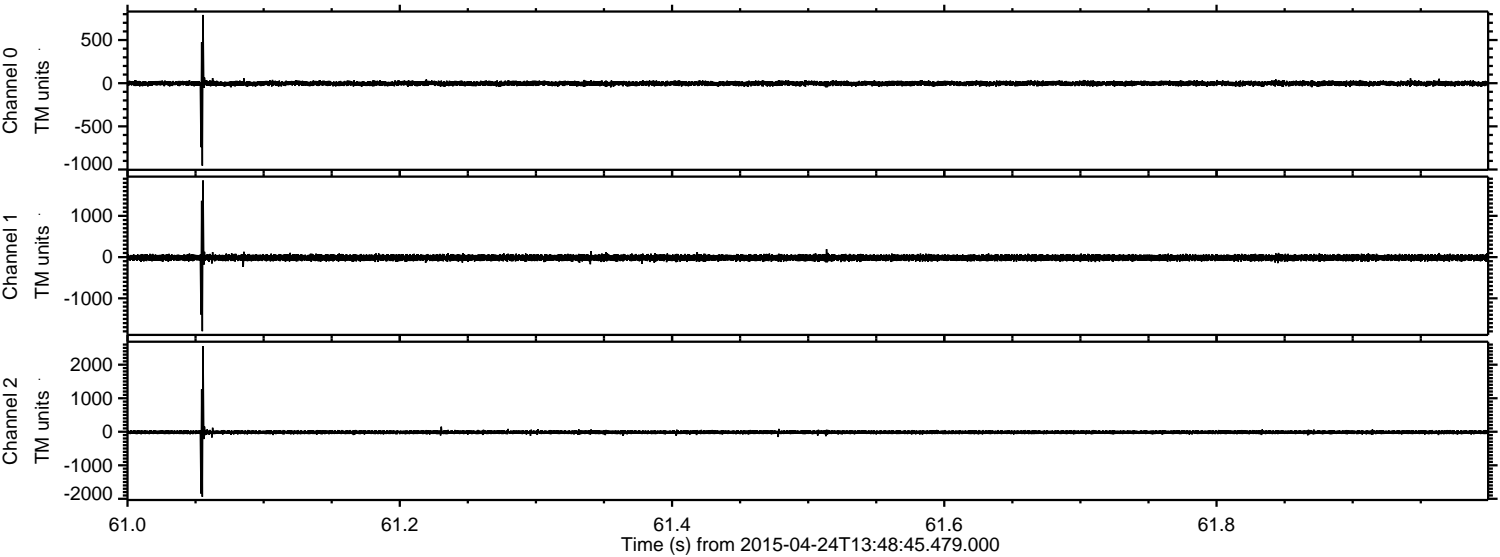
Channel 1
mn: -2195
mx: 3333
 μ : -15.3
 σ : 43.0

Channel 2
mn: -3375
mx: 2954
 μ : -14.4
 σ : 37.1

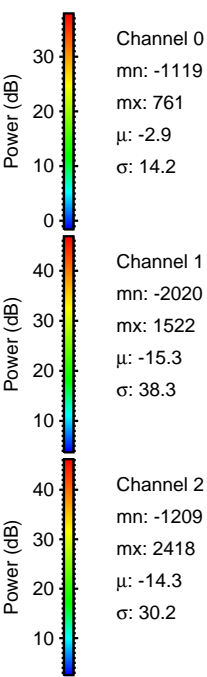
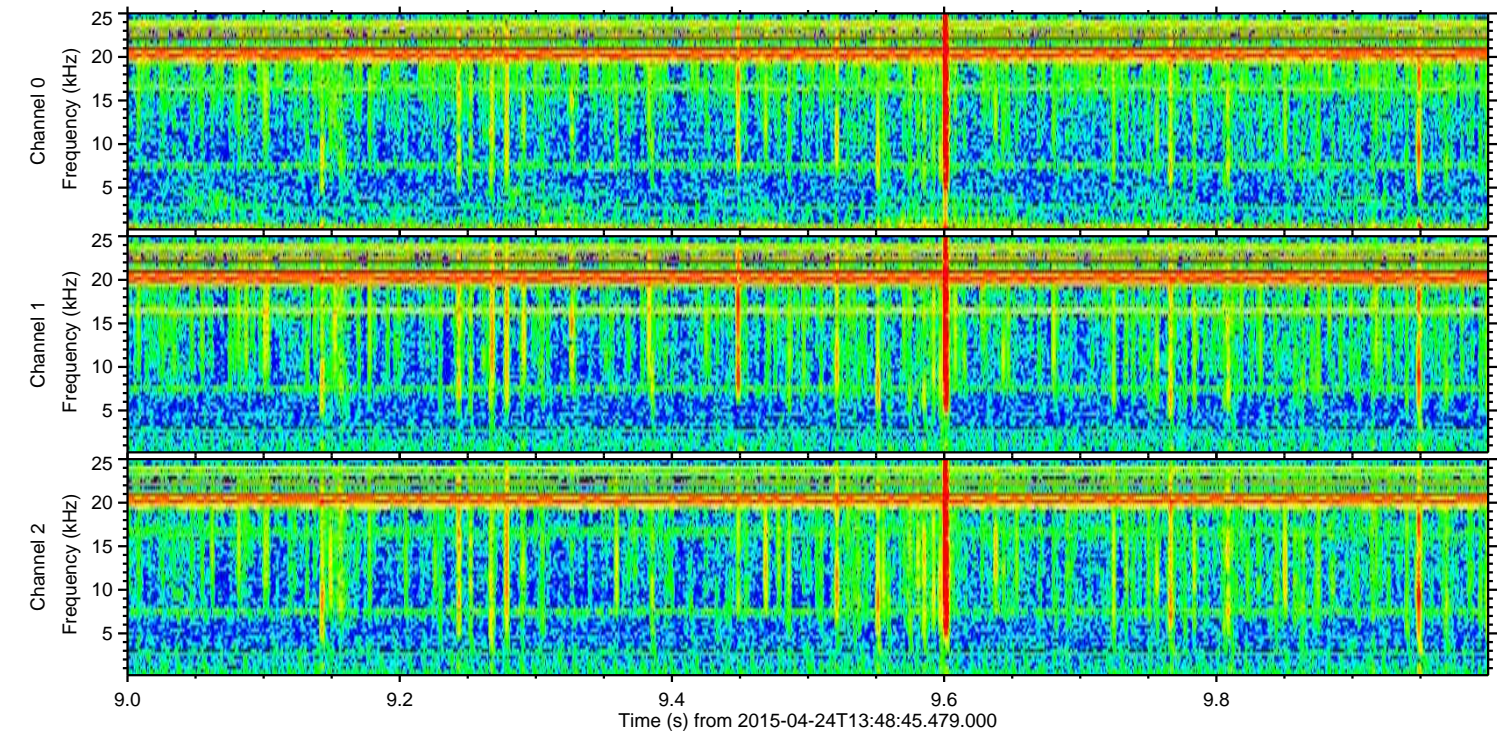
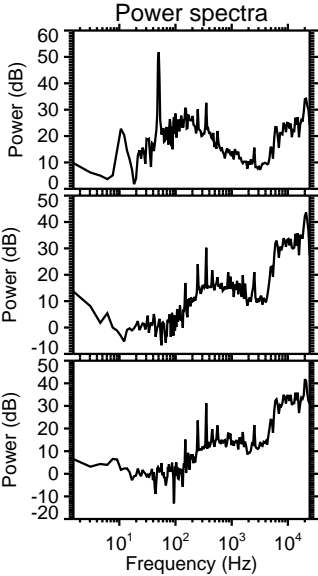
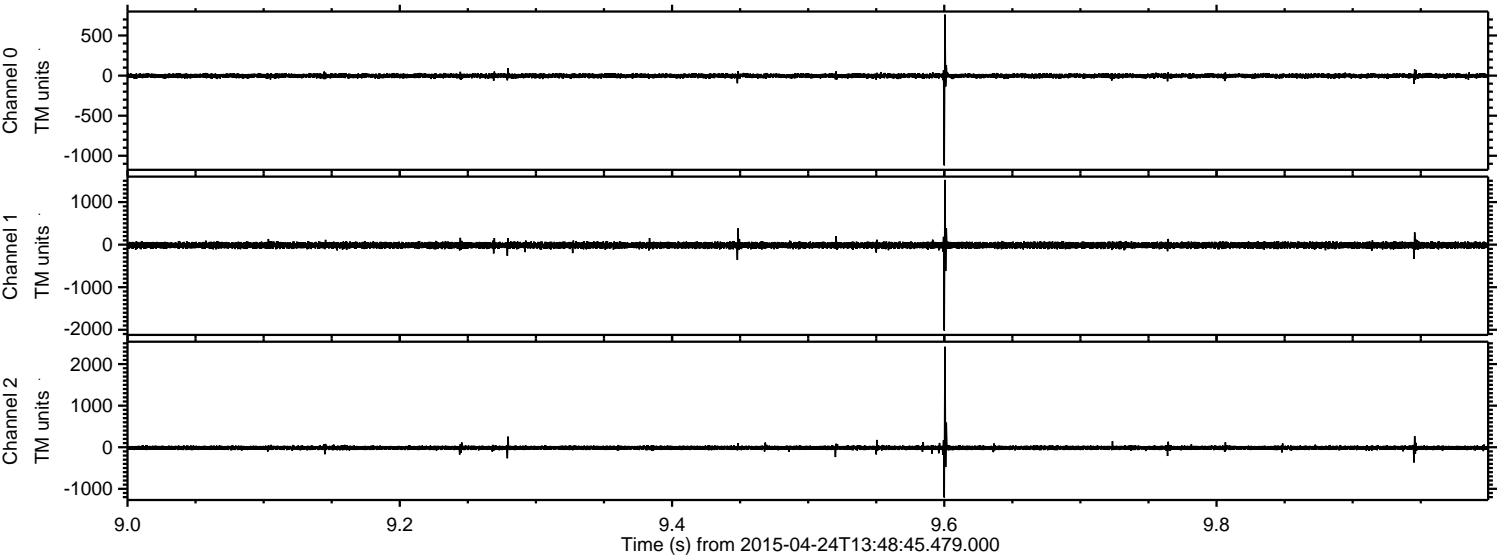
Processed Fri Apr 24 15:55:50 2015 by ELM ver.2012-10-06 from 001__elm20150424_134844__dat00.bin



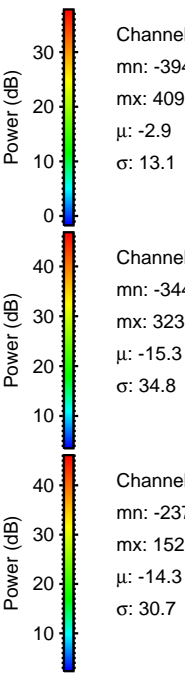
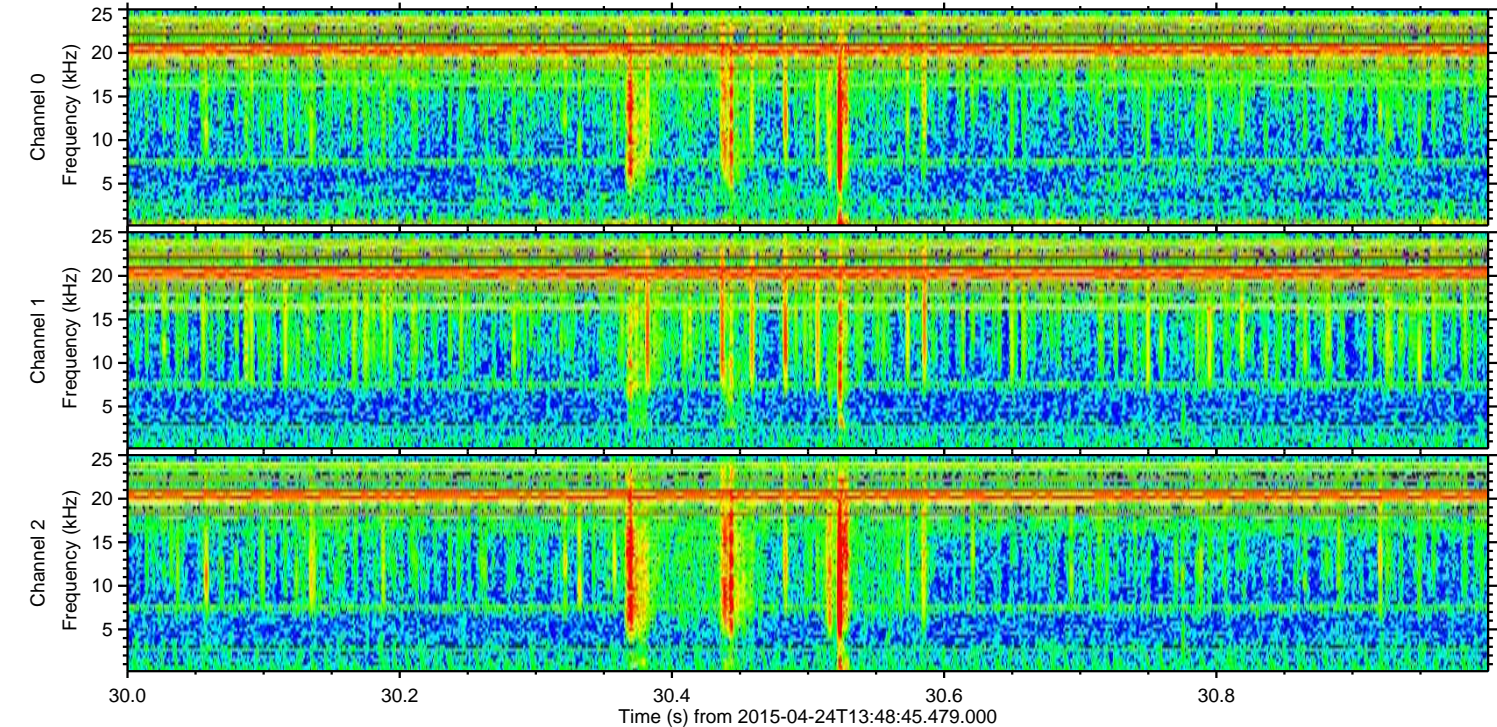
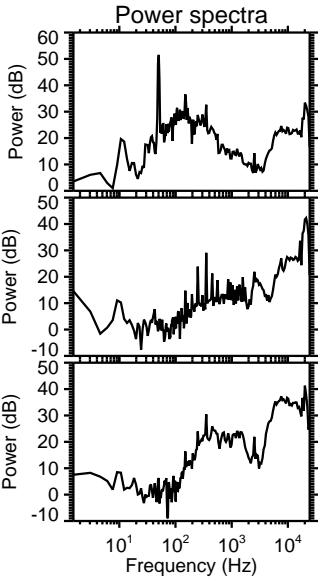
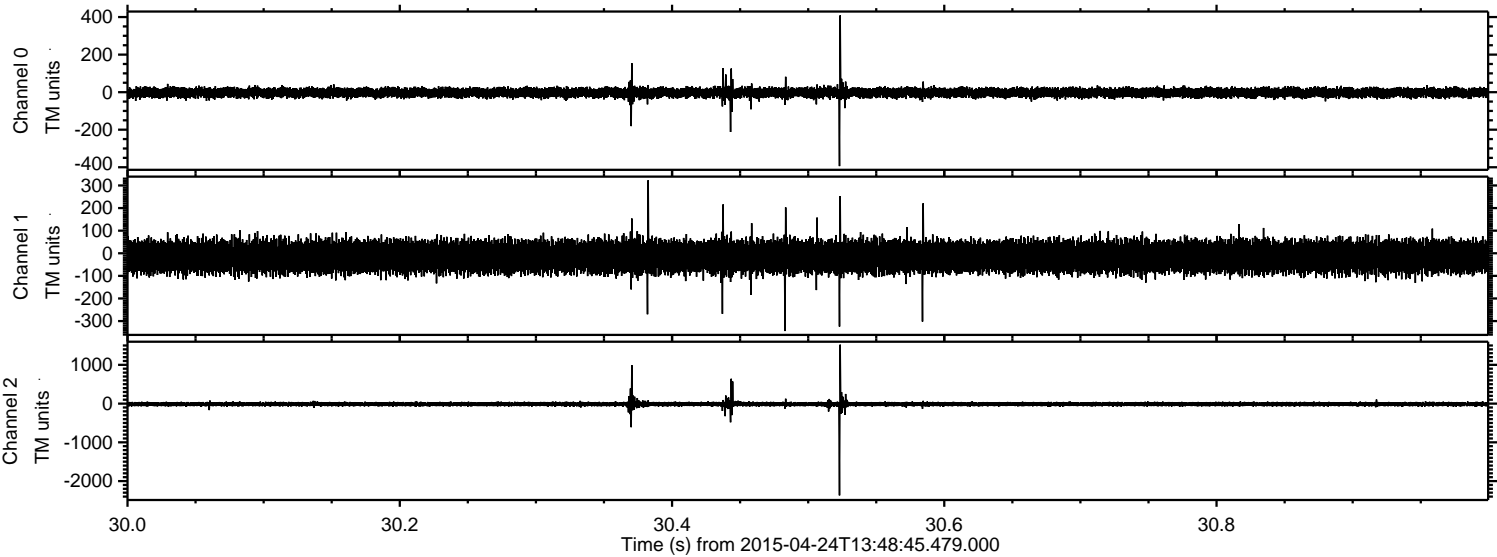
Processed Fri Apr 24 15:55:51 2015 by ELM ver.2012-10-06 from 001__elm20150424_134844__dat00.bin



Processed Fri Apr 24 15:55:52 2015 by ELM ver.2012-10-06 from 001__elm20150424_134844__dat00.bin



Processed Fri Apr 24 15:55:53 2015 by ELM ver.2012-10-06 from 001__elm20150424_134844__dat00.bin

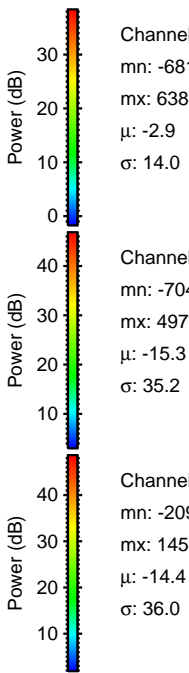
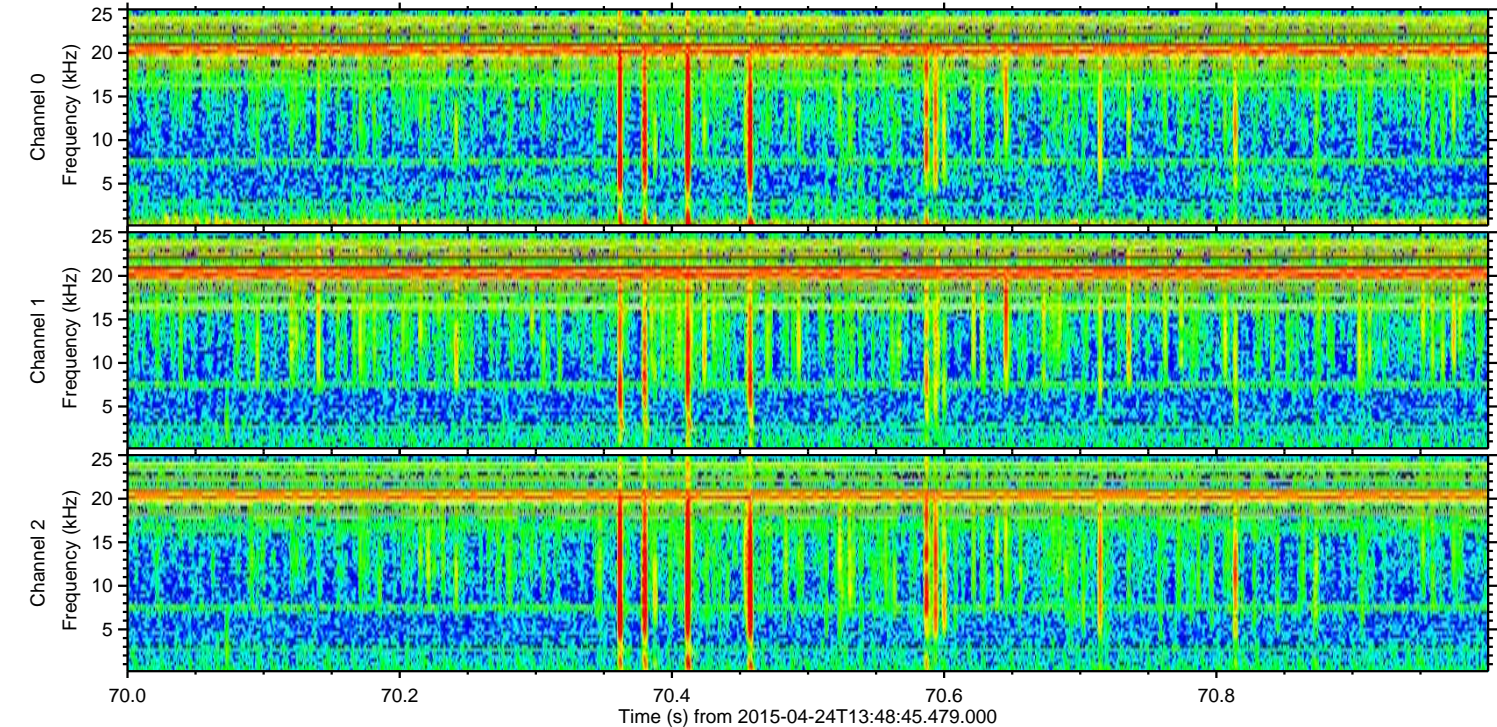
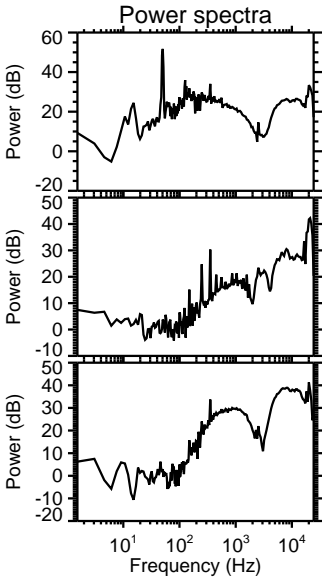
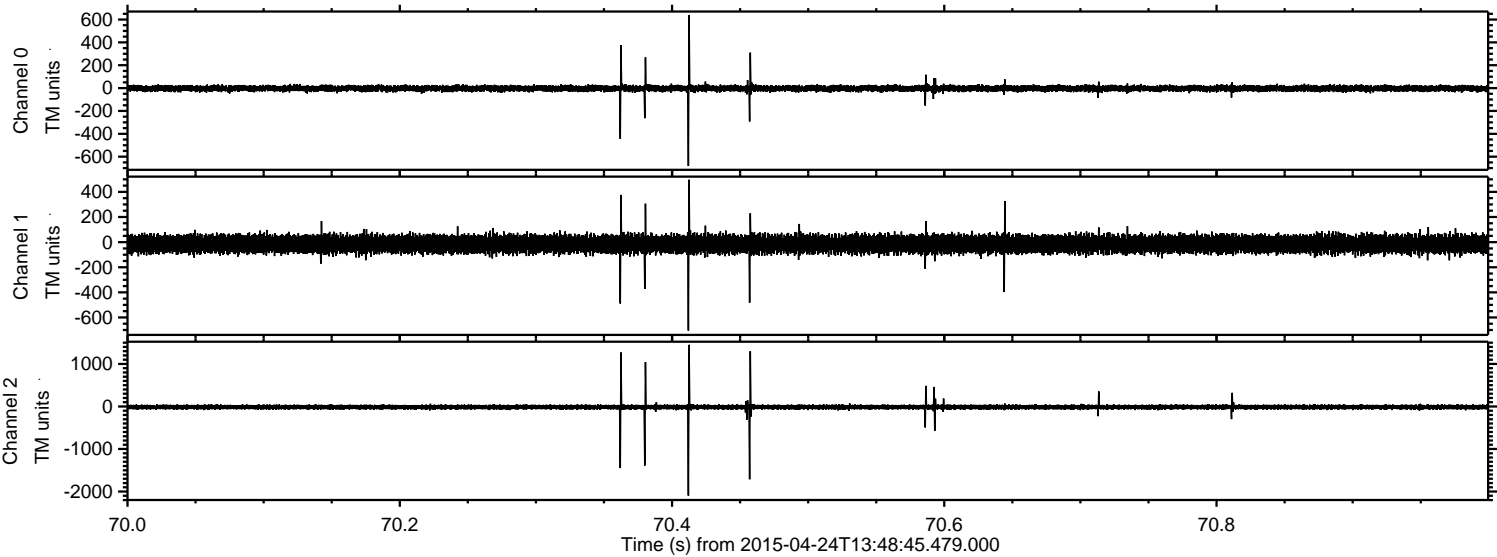


Channel 0
mn: -394
mx: 409
 μ : -2.9
 σ : 13.1

Channel 1
mn: -344
mx: 323
 μ : -15.3
 σ : 34.8

Channel 2
mn: -2370
mx: 1521
 μ : -14.3
 σ : 30.7

Processed Fri Apr 24 15:55:54 2015 by ELM ver.2012-10-06 from 001__elm20150424_134844__dat00.bin



Processed Fri Apr 24 15:55:55 2015 by ELM ver.2012-10-06 from 001__elm20150424_134844__dat00.bin

