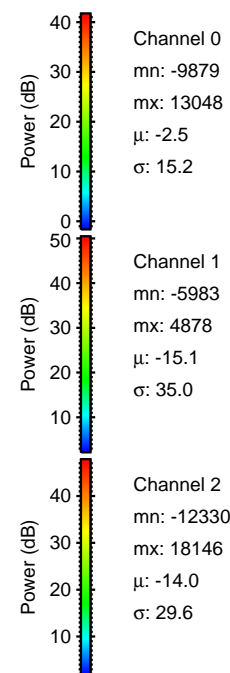
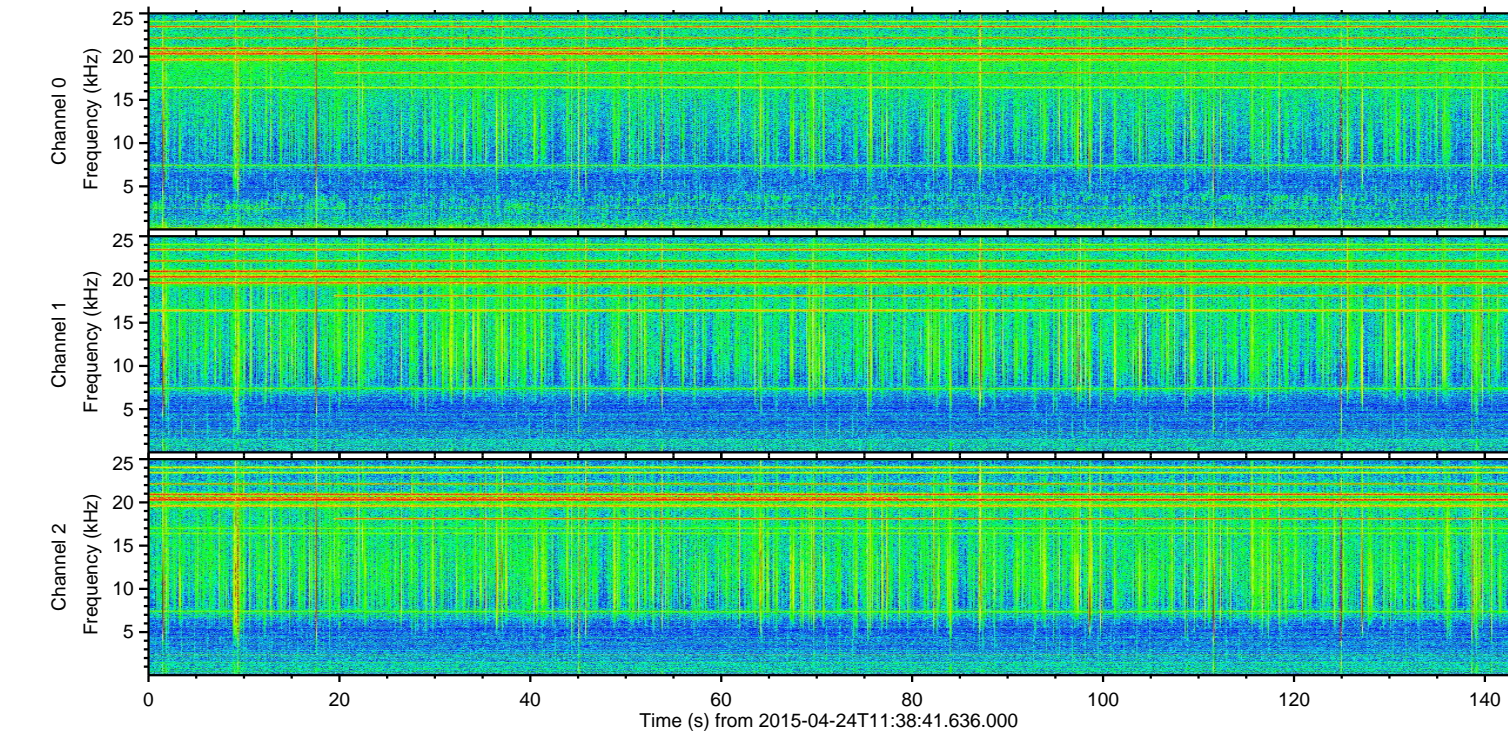
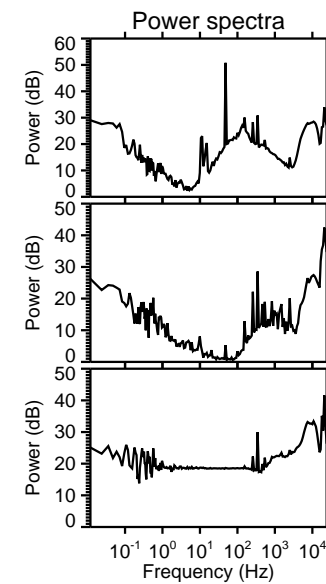
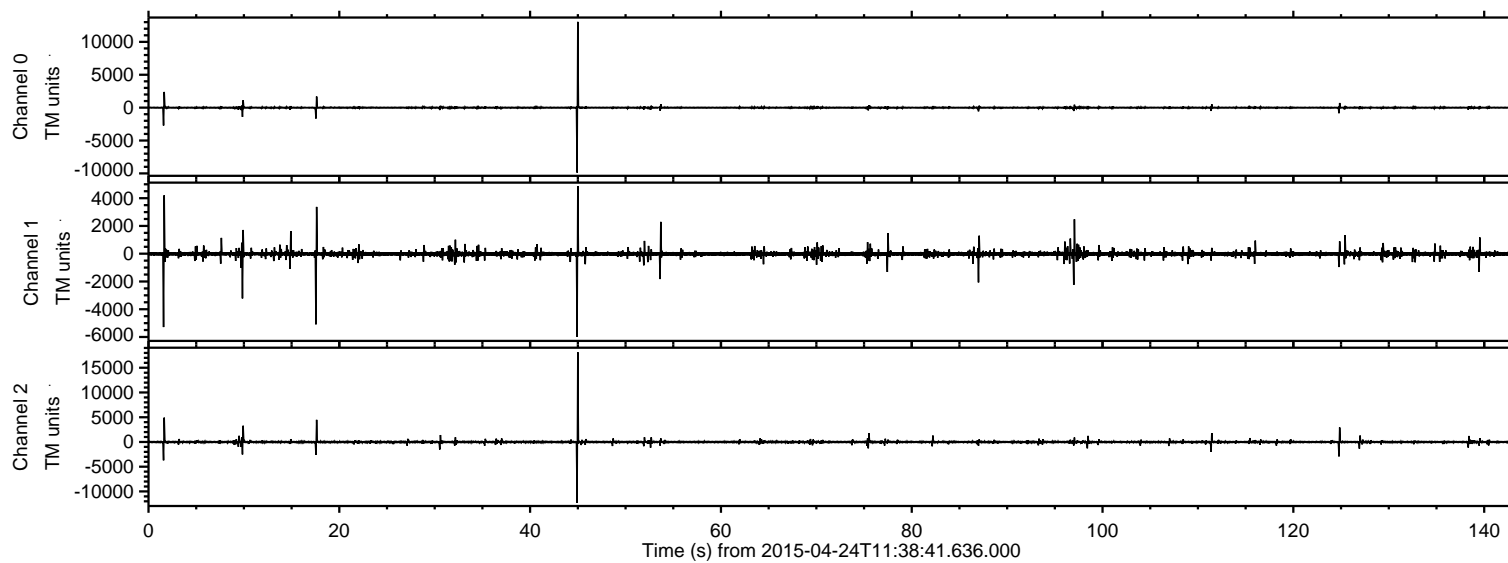
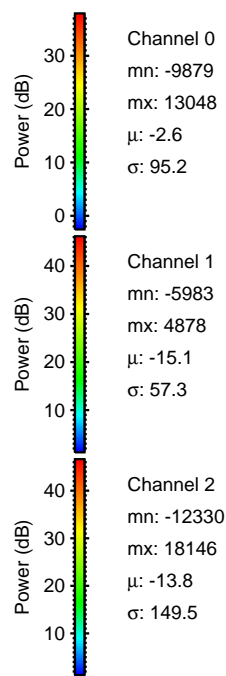
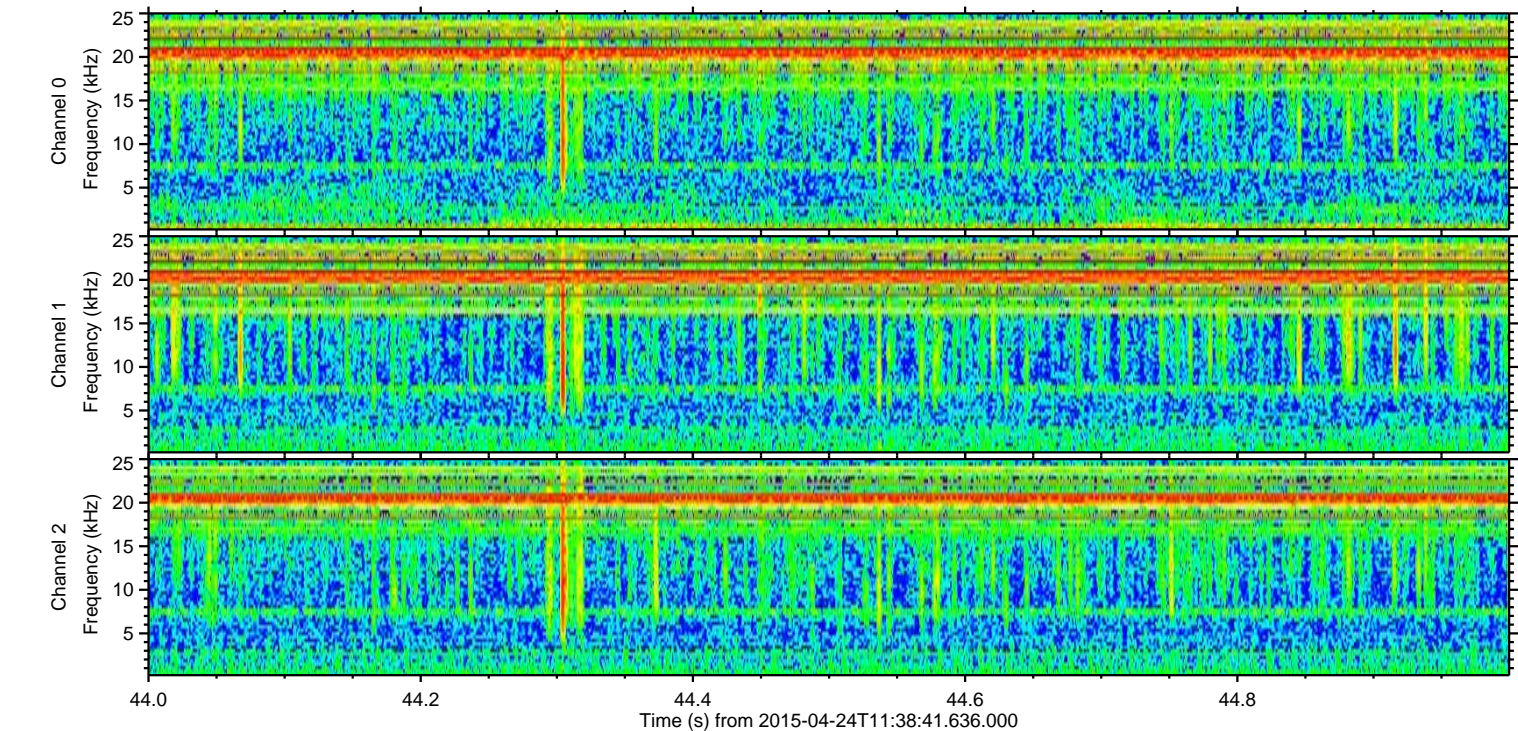
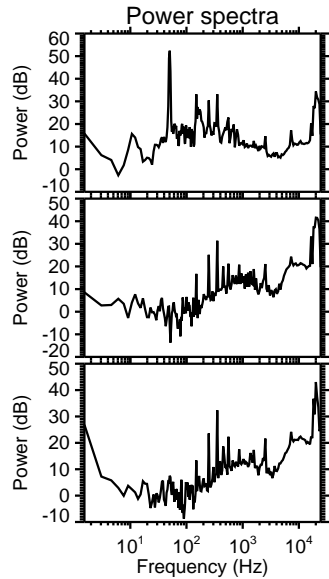
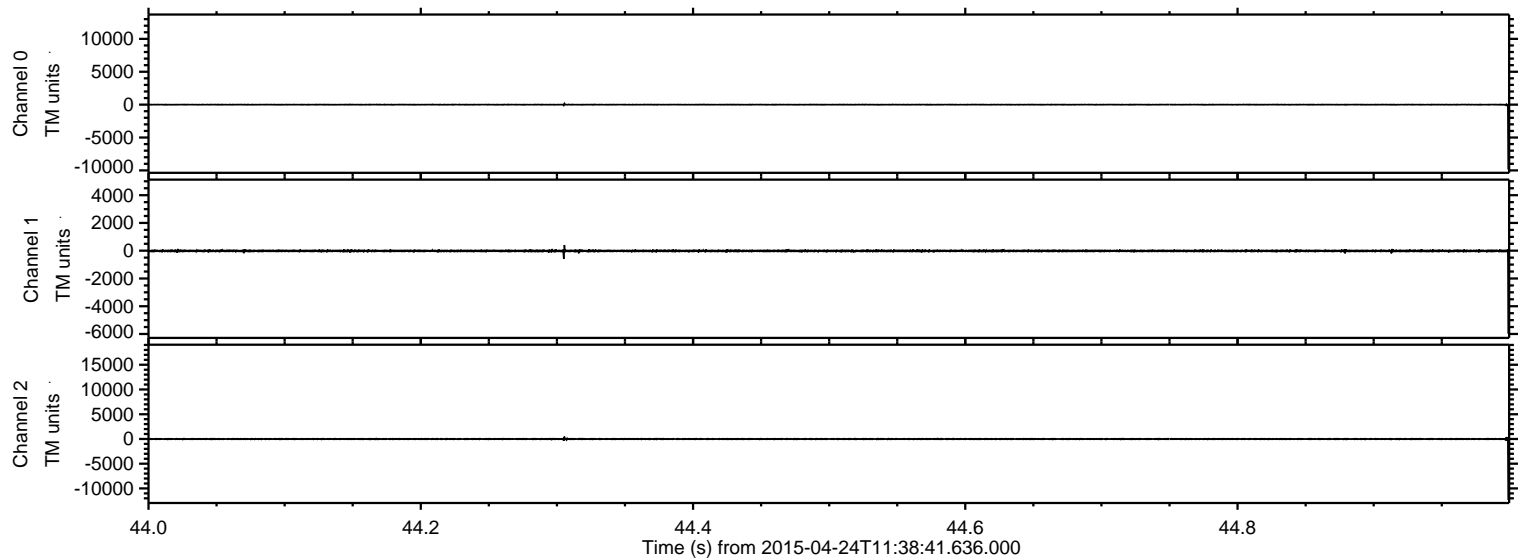


ELMAVAN 3D WAVEFORMS (Measured data sampled at 50 kHz) 49520 packets of 144 samples from 2015-04-24T11:38:41.636.000.

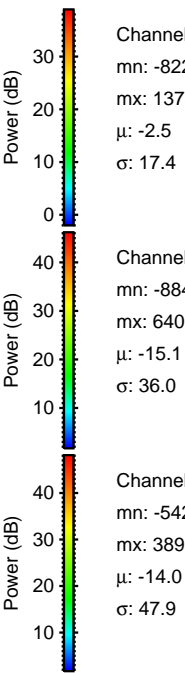
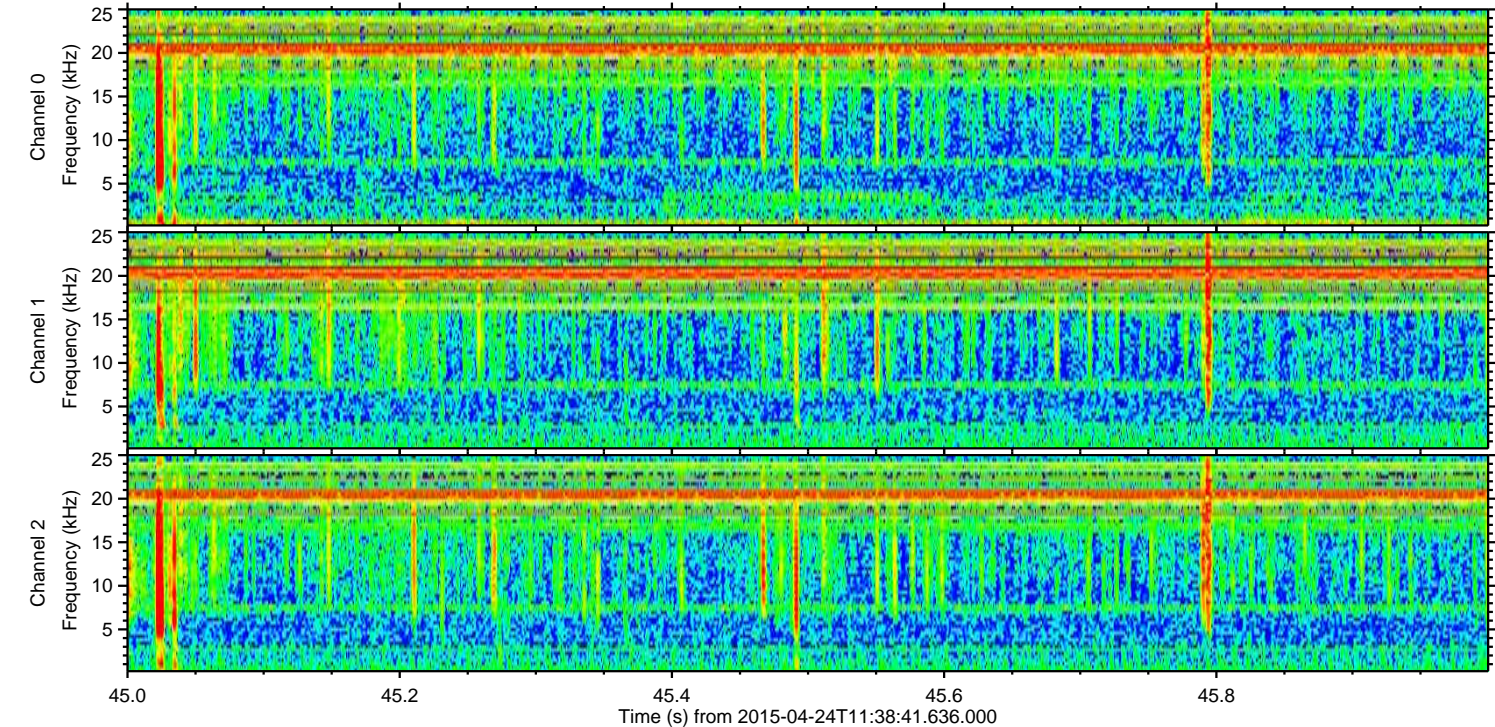
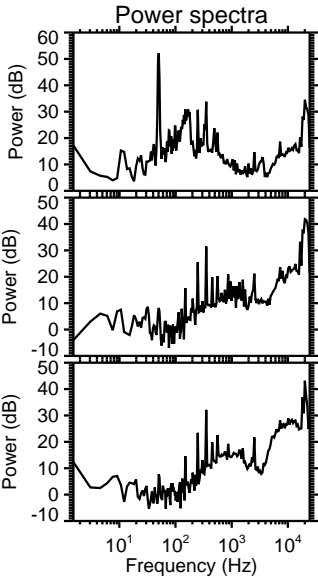
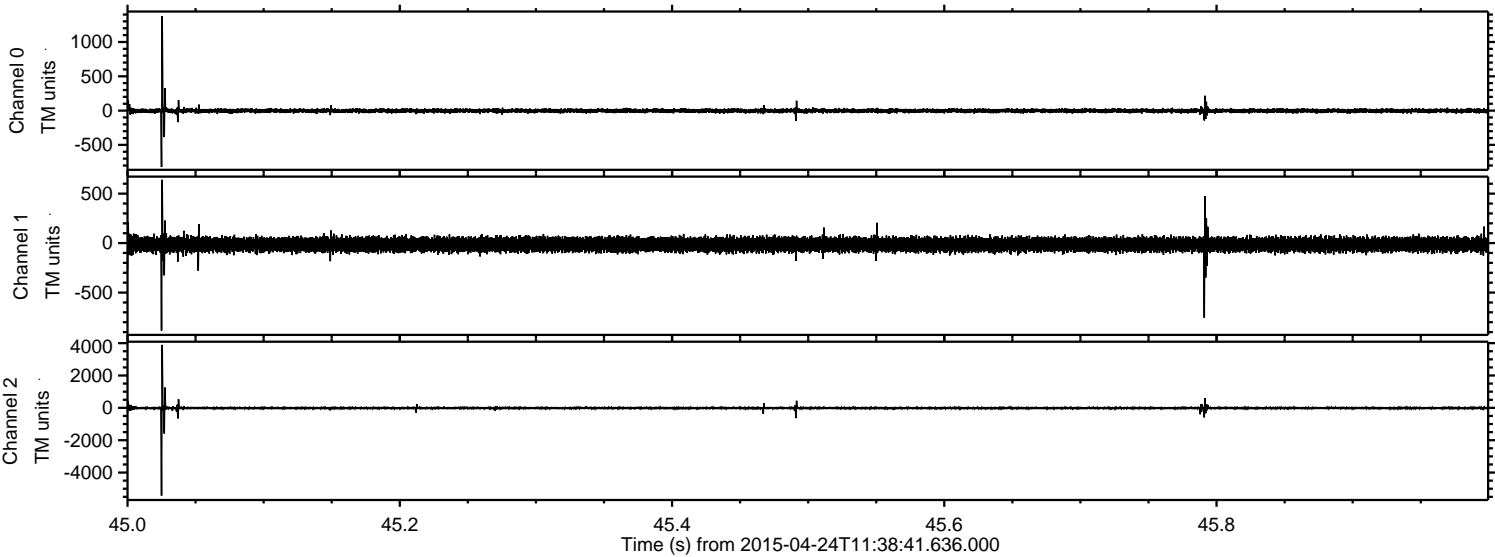
Processed Fri Apr 24 13:45:14 2015 by ELM ver.2012-10-06 from 001__elm20150424_113840__dat00.bin



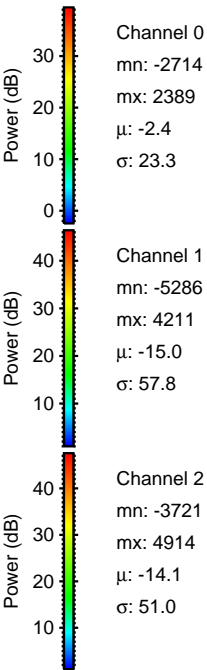
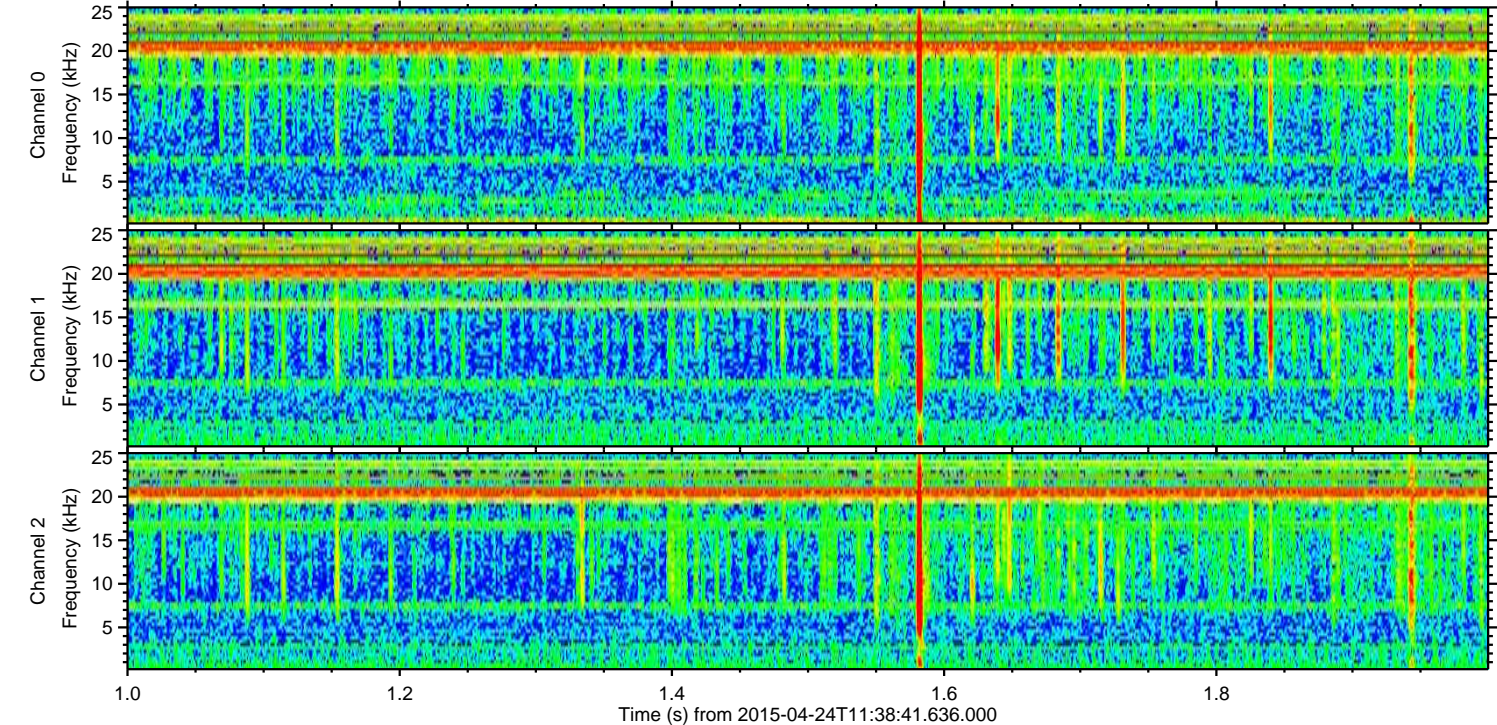
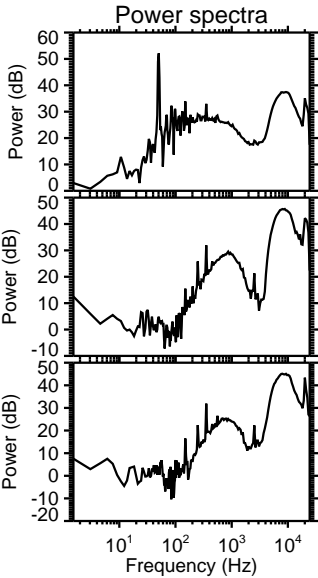
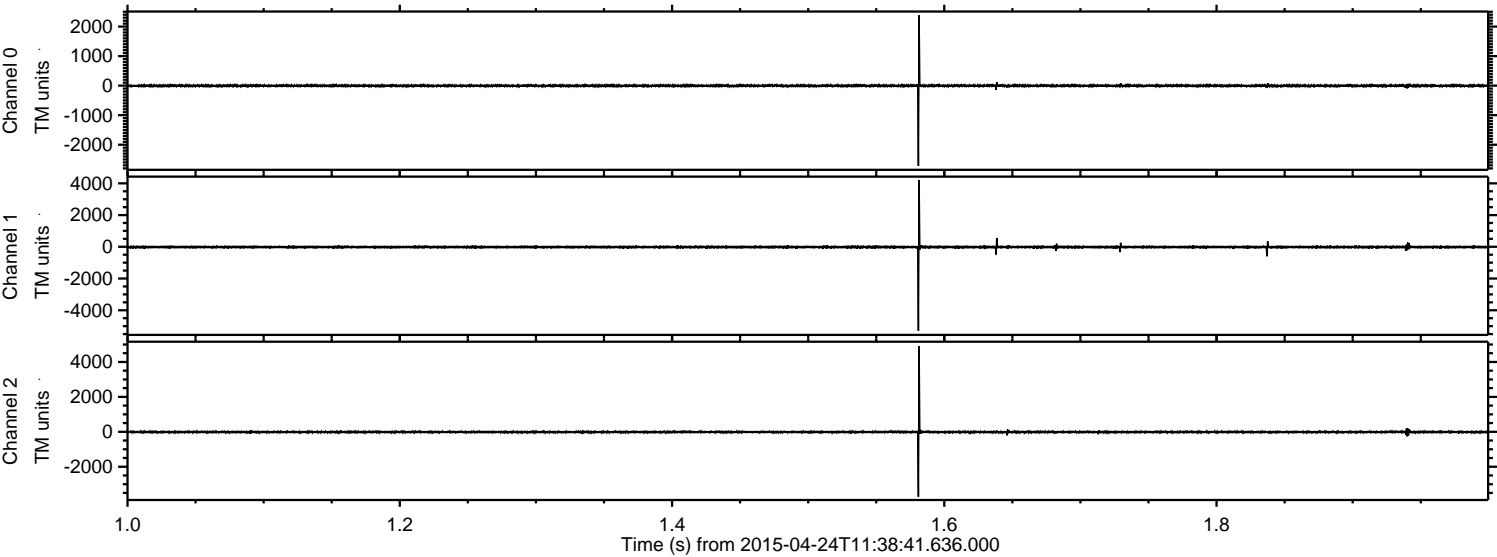
Processed Fri Apr 24 13:45:29 2015 by ELM ver.2012-10-06 from 001__elm20150424_113840__dat00.bin



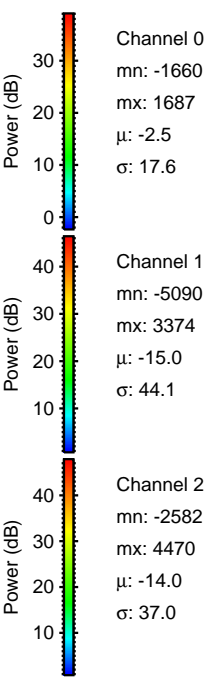
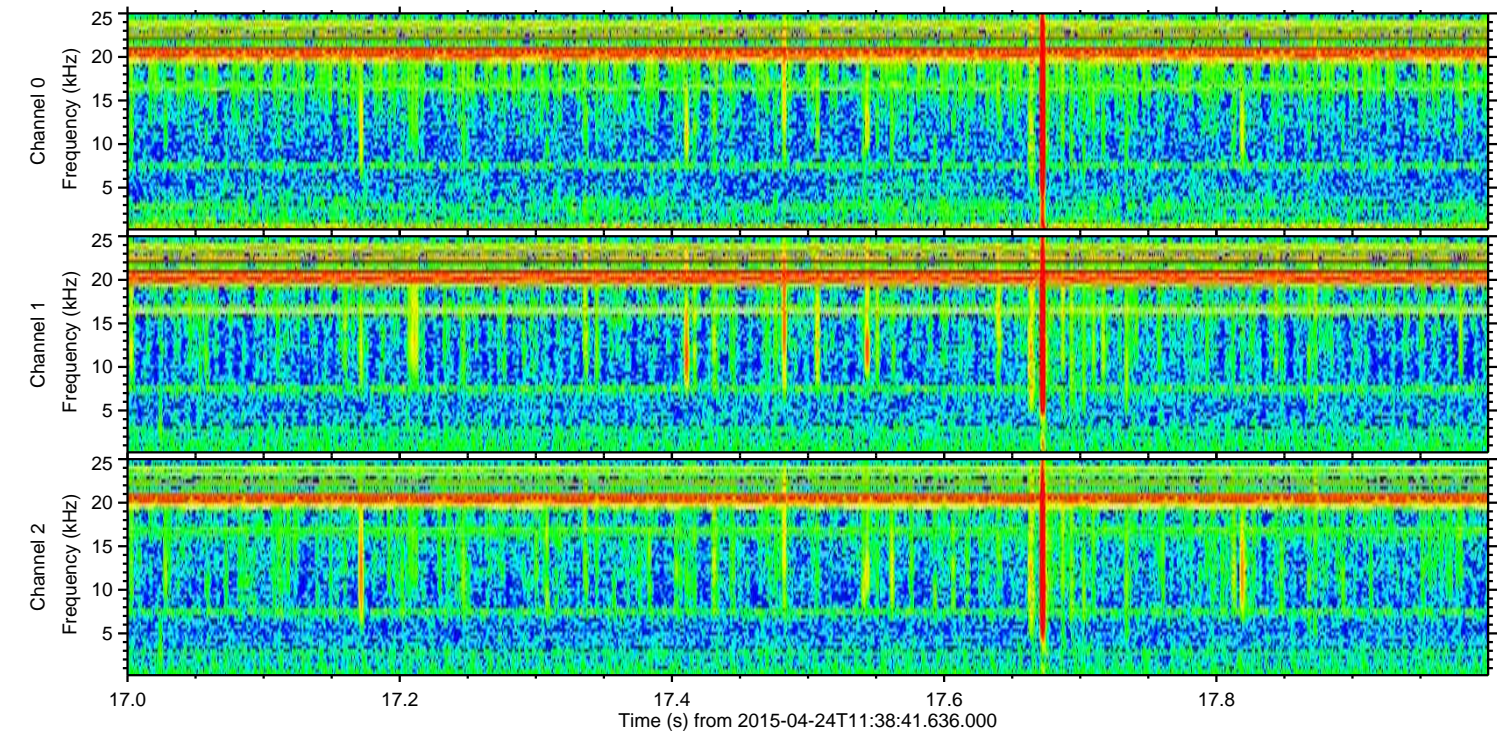
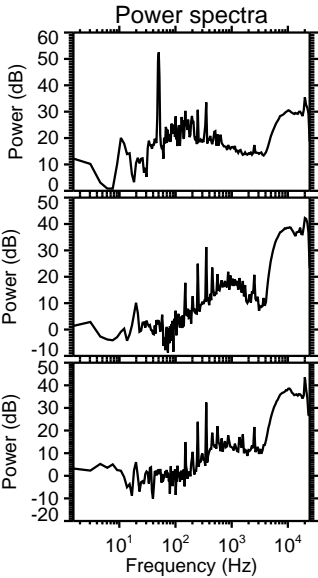
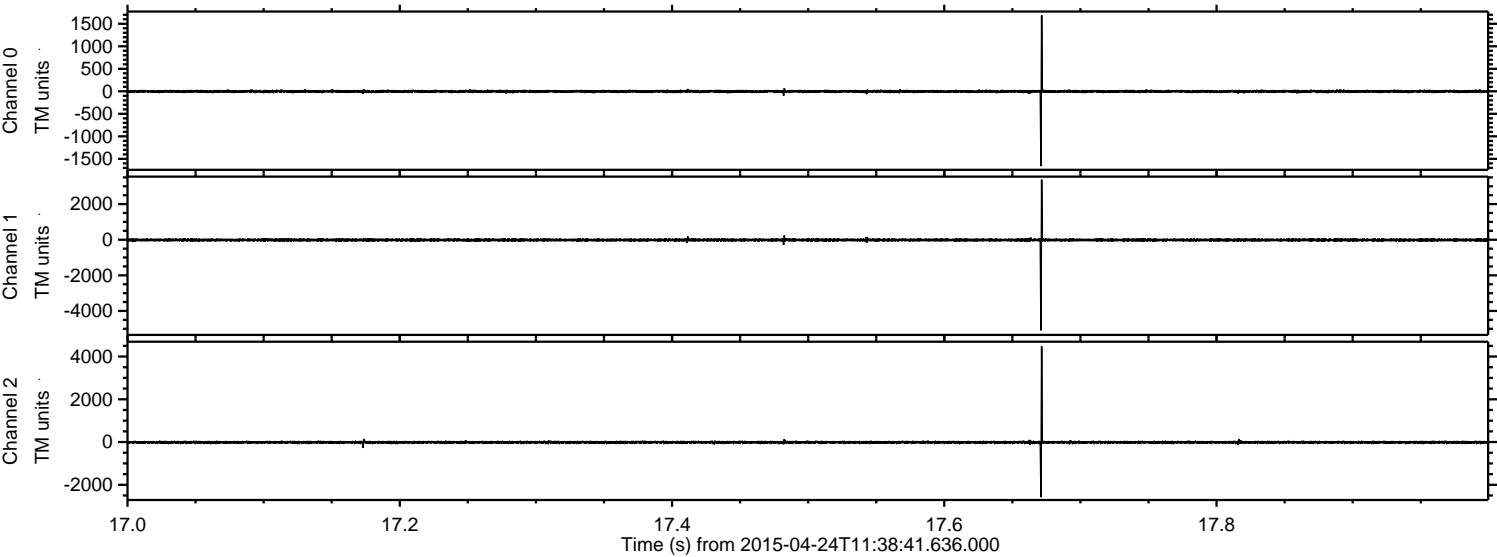
Processed Fri Apr 24 13:45:30 2015 by ELM ver.2012-10-06 from 001__elm20150424_113840__dat00.bin



Processed Fri Apr 24 13:45:31 2015 by ELM ver.2012-10-06 from 001__elm20150424_113840__dat00.bin



Processed Fri Apr 24 13:45:32 2015 by ELM ver.2012-10-06 from 001__elm20150424_113840__dat00.bin



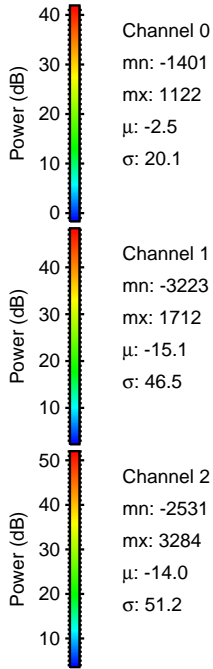
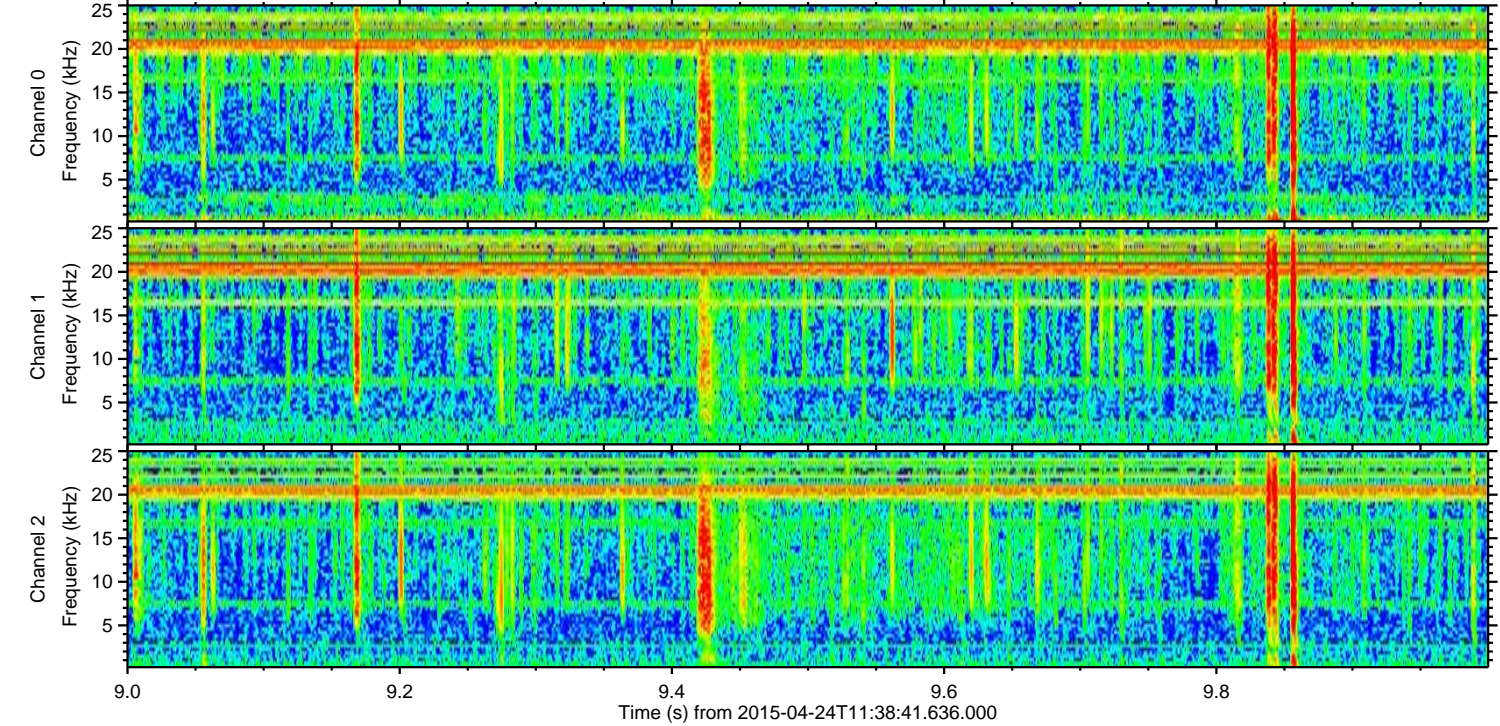
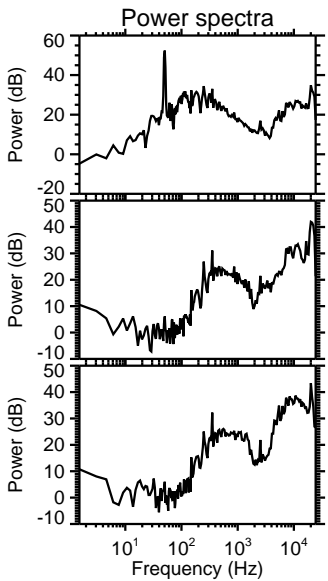
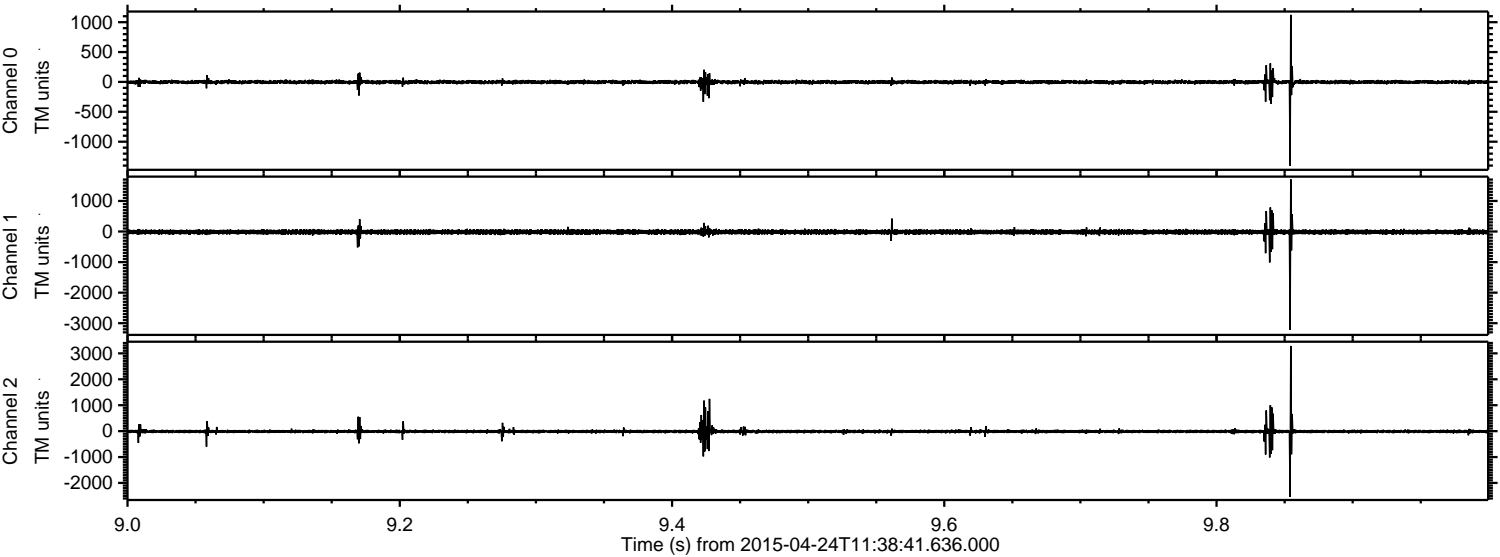
Channel 0
mn: -1660
mx: 1687
 μ : -2.5
 σ : 17.6

Channel 1
mn: -5090
mx: 3374
 μ : -15.0
 σ : 44.1

Channel 2
mn: -2582
mx: 4470
 μ : -14.0
 σ : 37.0

ELMAVAN 3D WAVEFORMS (Measured data sampled at 50 kHz) 49520 packets of 144 samples from 2015-04-24T11:38:41.636.000. Part 10/143

Processed Fri Apr 24 13:45:33 2015 by ELM ver.2012-10-06 from 001__elm20150424_113840__dat00.bin



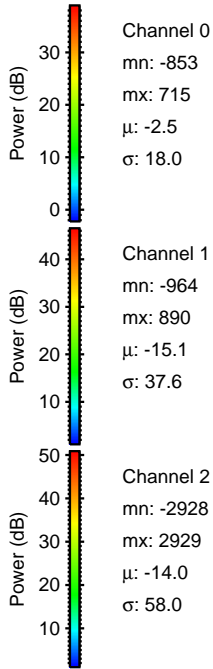
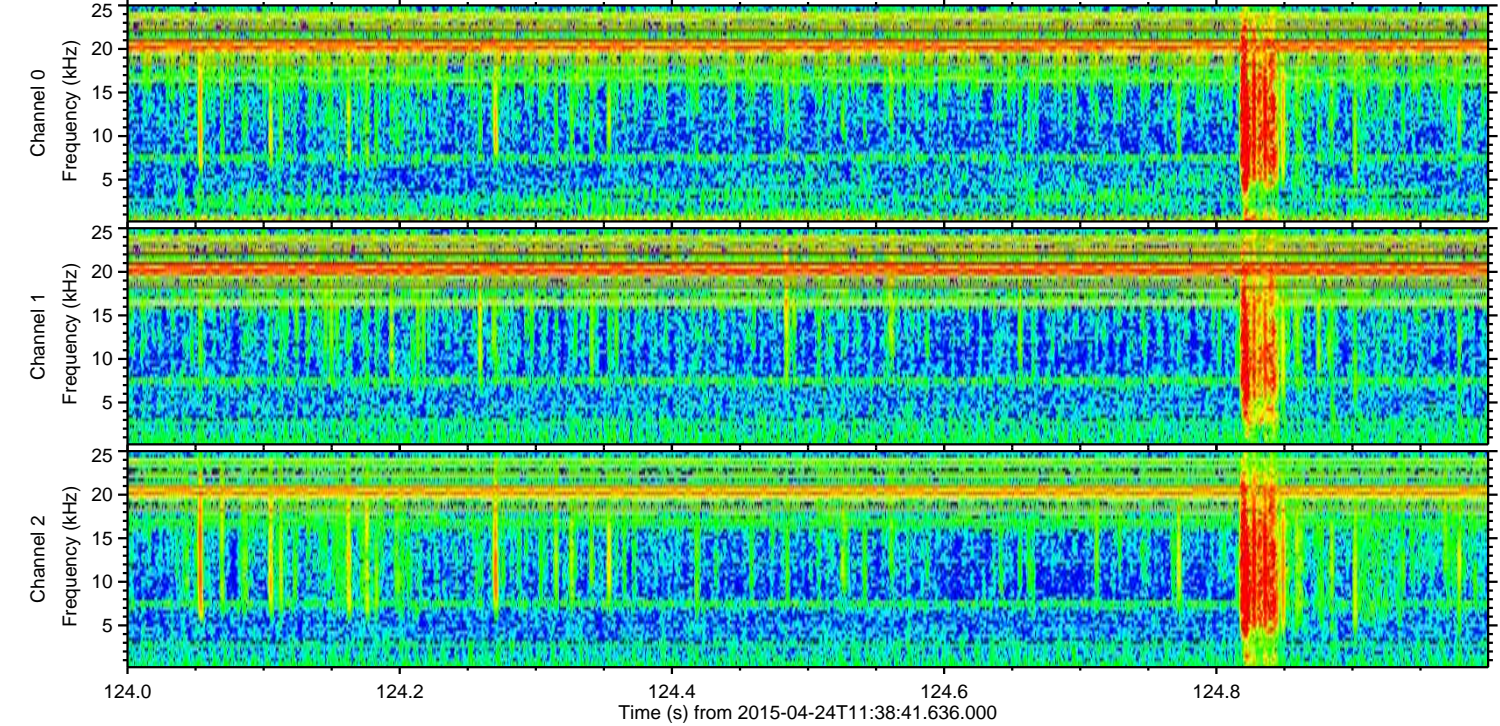
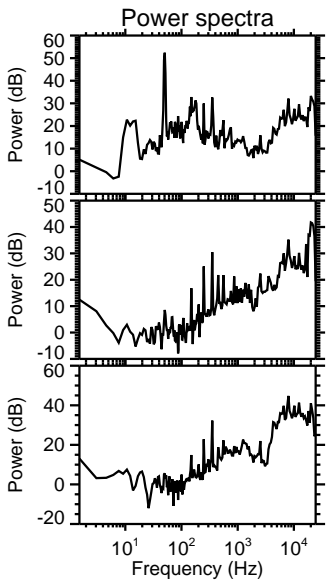
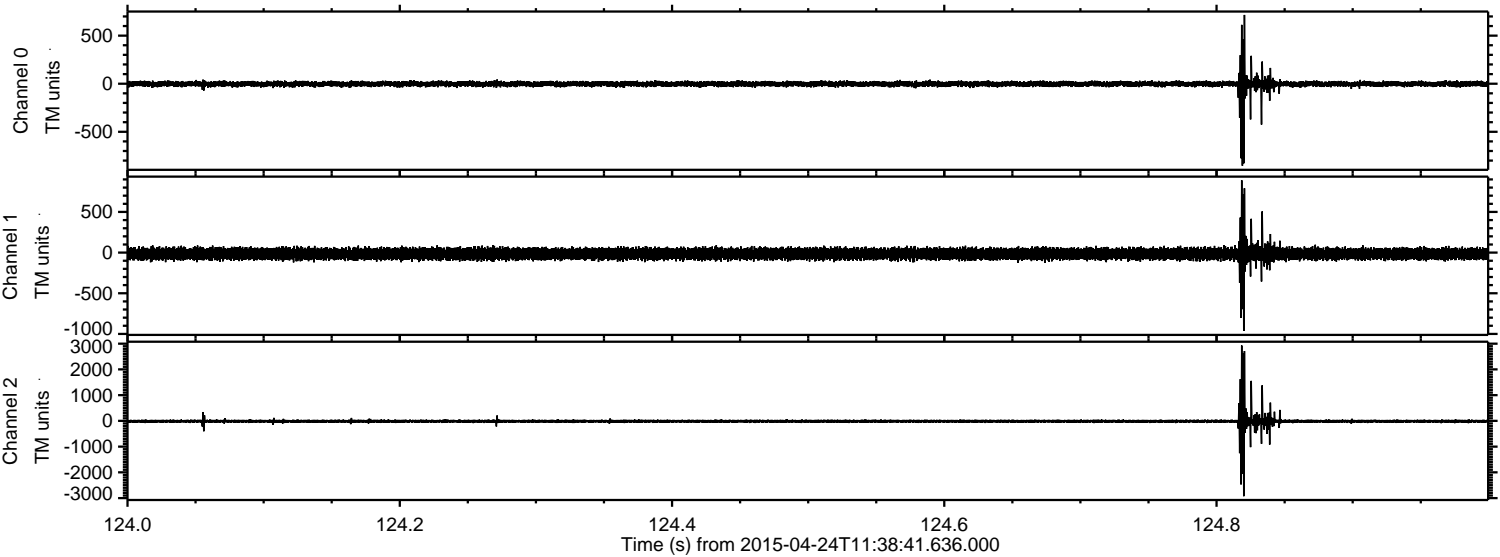
Channel 0
mn: -1401
mx: 1122
 μ : -2.5
 σ : 20.1

Channel 1
mn: -3223
mx: 1712
 μ : -15.1
 σ : 46.5

Channel 2
mn: -2531
mx: 3284
 μ : -14.0
 σ : 51.2

ELMAVAN 3D WAVEFORMS (Measured data sampled at 50 kHz) 49520 packets of 144 samples from 2015-04-24T11:38:41.636.000. Part 125/143

Processed Fri Apr 24 13:45:34 2015 by ELM ver.2012-10-06 from 001__elm20150424_113840__dat00.bin

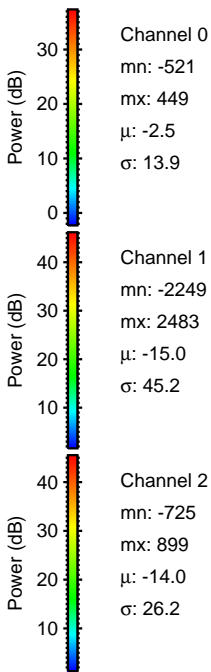
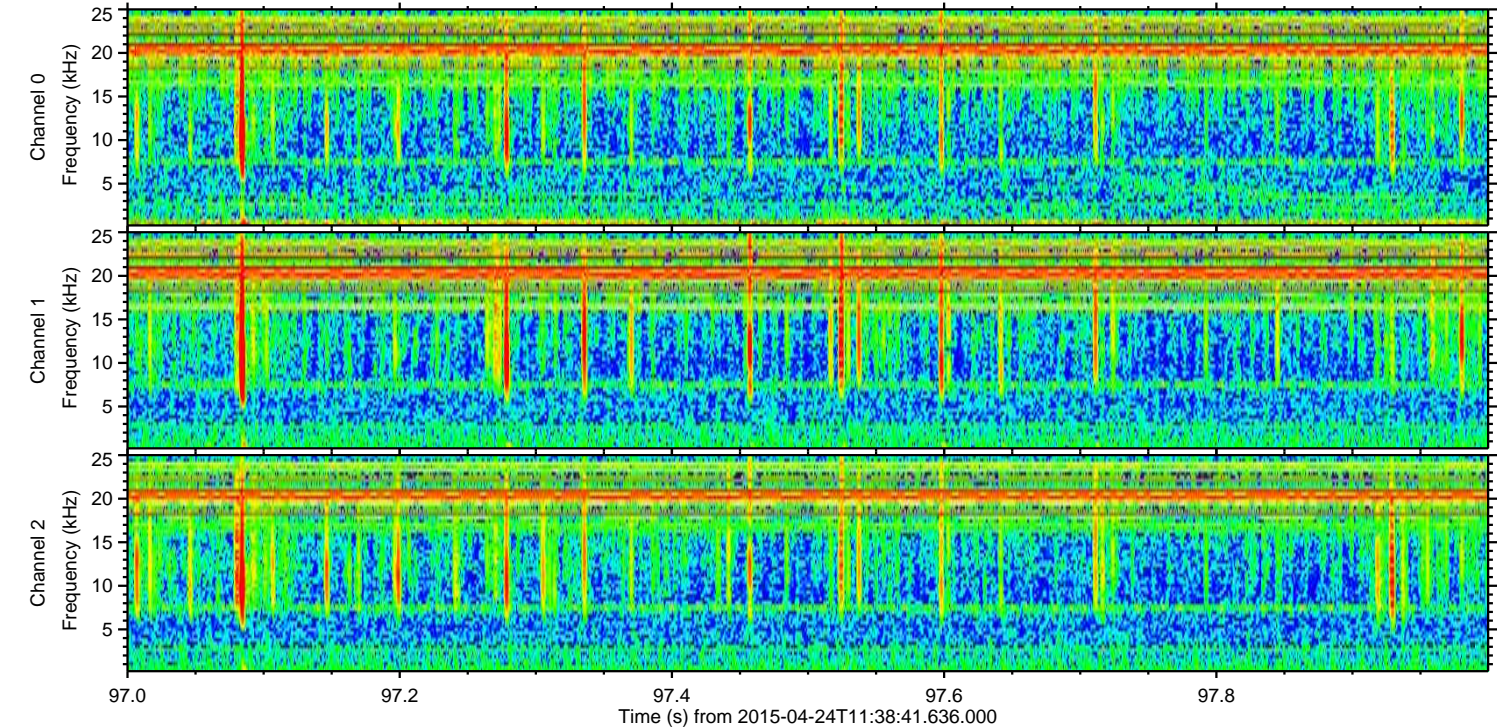
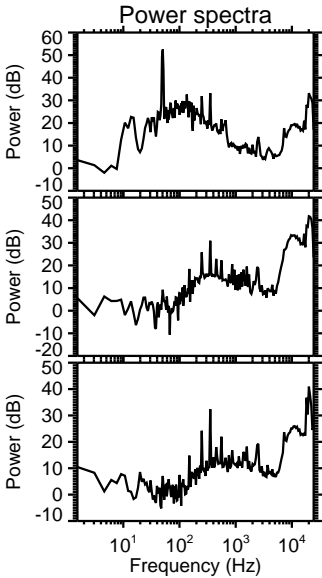
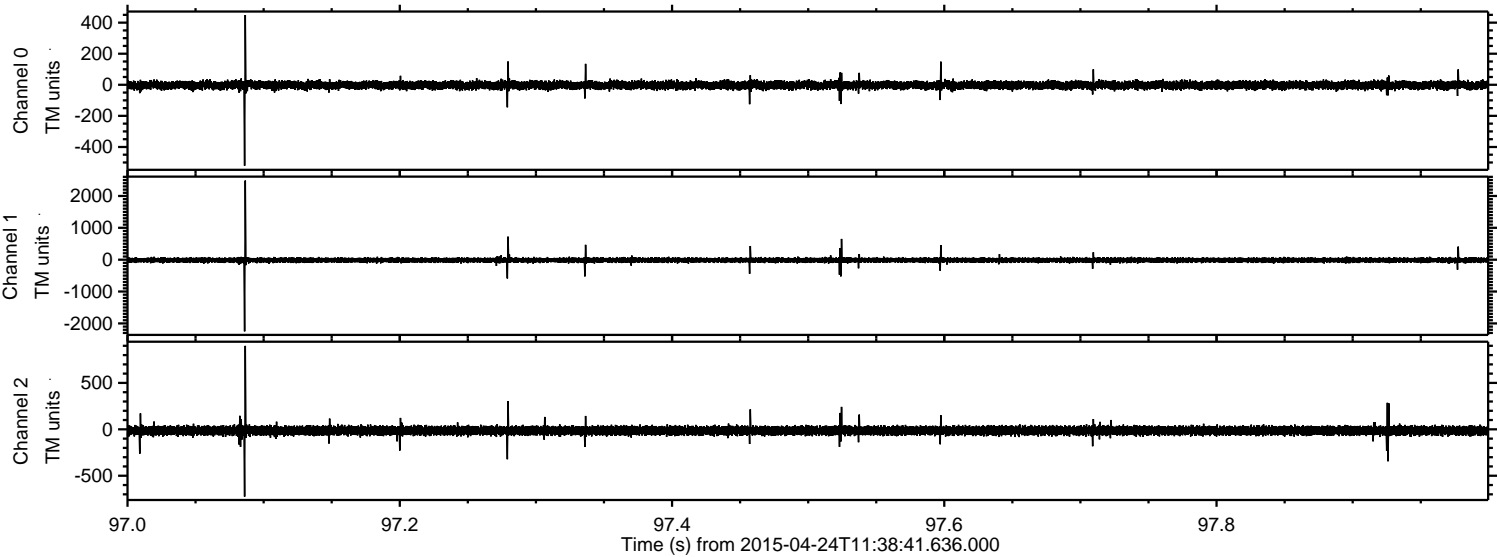


Channel 0
mn: -853
mx: 715
 μ : -2.5
 σ : 18.0

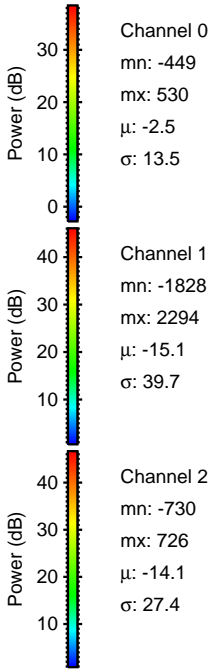
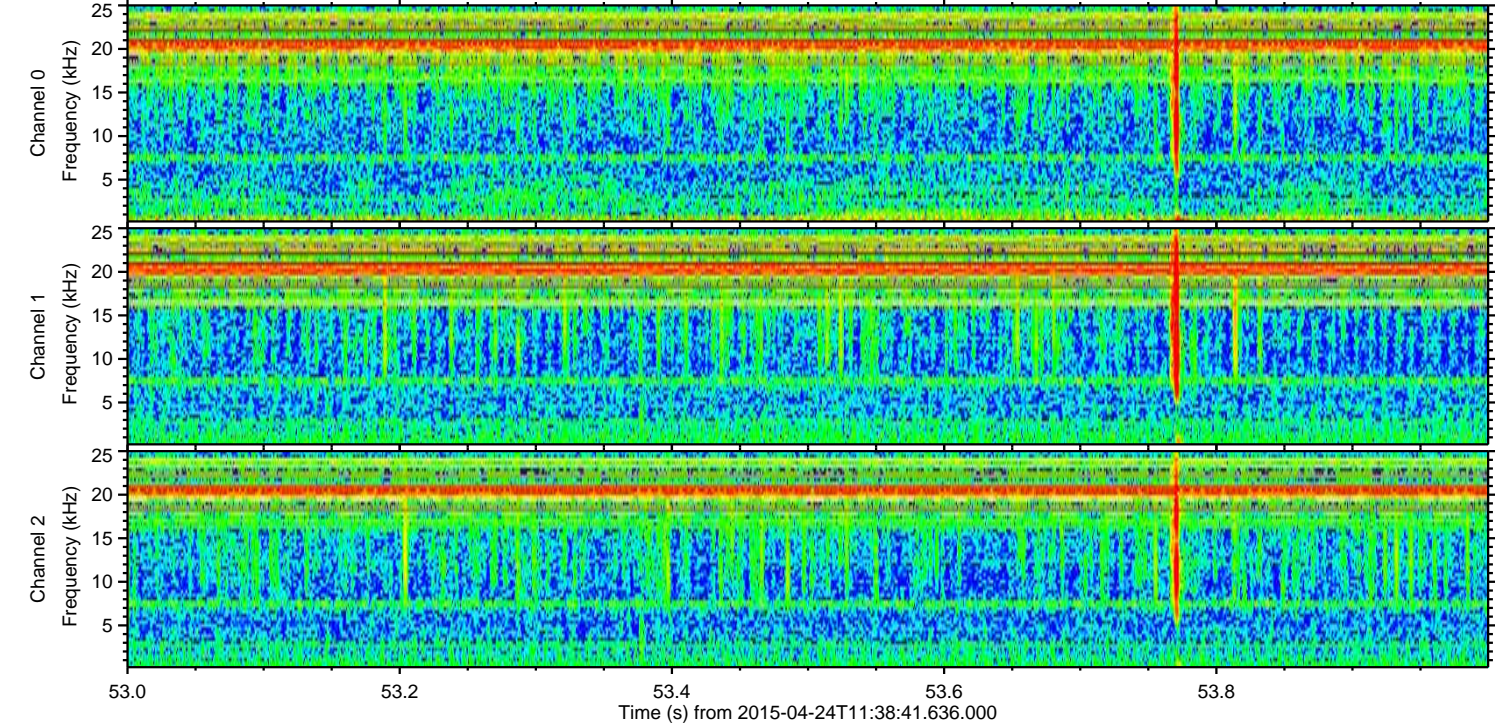
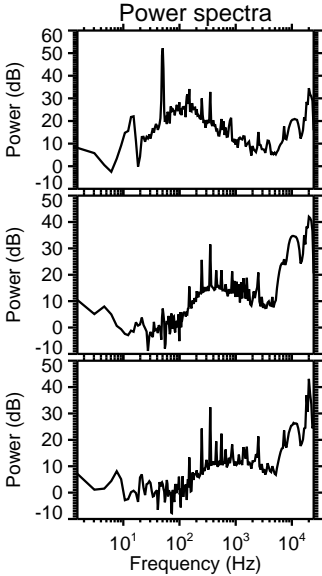
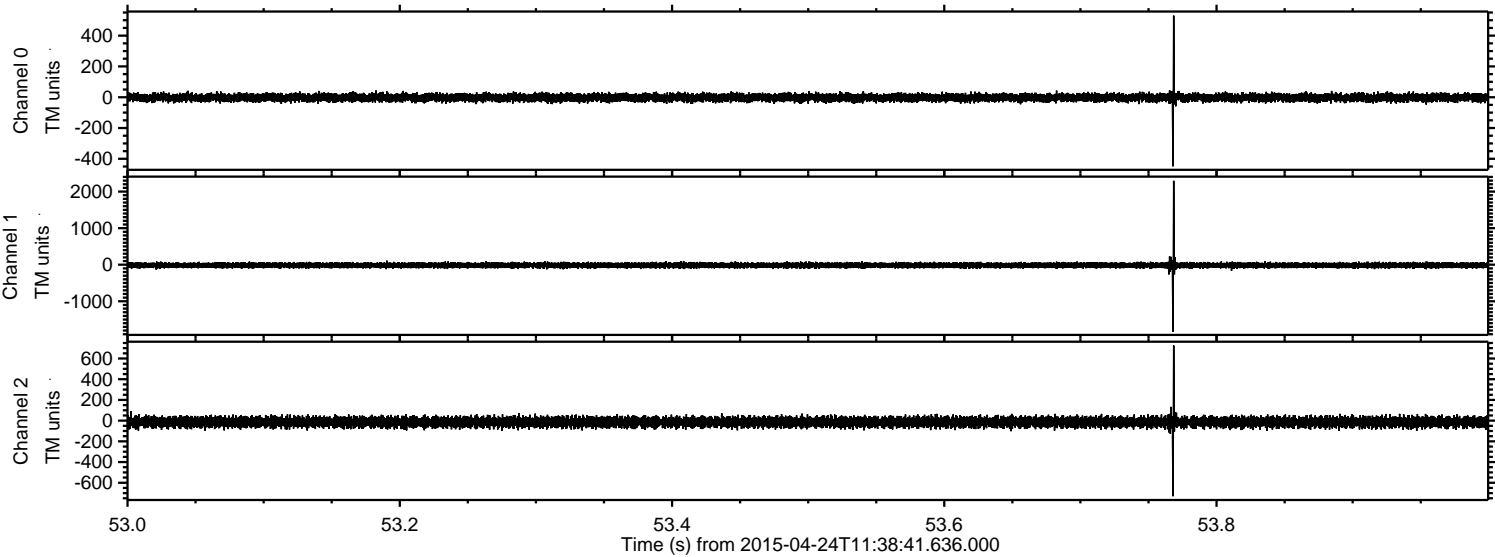
Channel 1
mn: -964
mx: 890
 μ : -15.1
 σ : 37.6

Channel 2
mn: -2928
mx: 2929
 μ : -14.0
 σ : 58.0

Processed Fri Apr 24 13:45:35 2015 by ELM ver.2012-10-06 from 001__elm20150424_113840__dat00.bin



Processed Fri Apr 24 13:45:38 2015 by ELM ver.2012-10-06 from 001__elm20150424_113840__dat00.bin



Processed Fri Apr 24 13:45:40 2015 by ELM ver.2012-10-06 from 001__elm20150424_113840__dat00.bin

