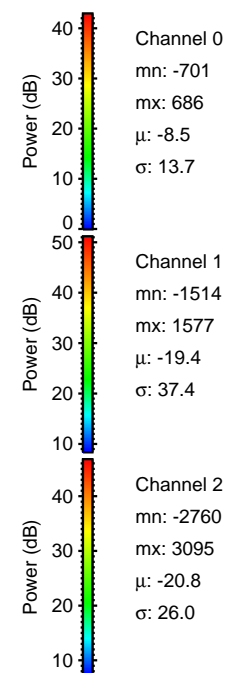
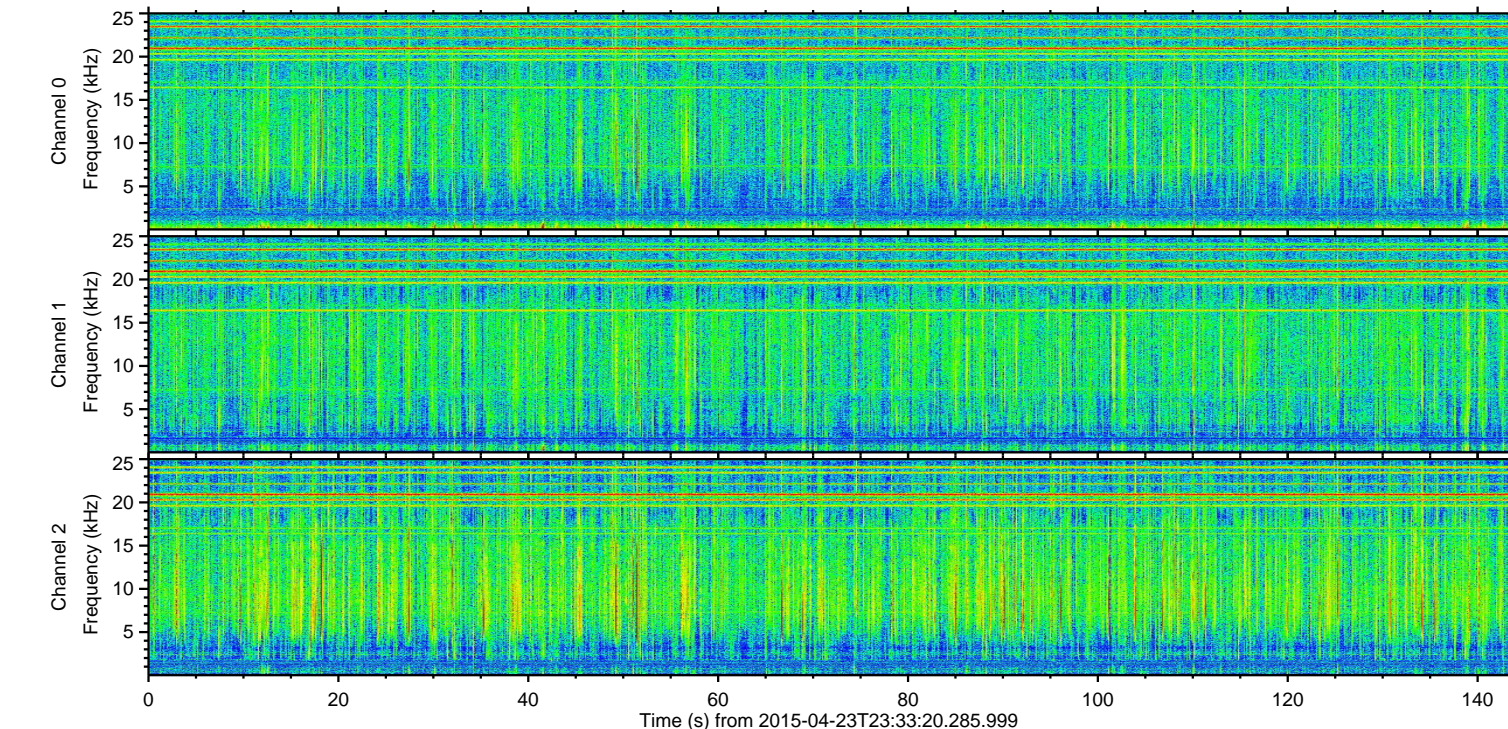
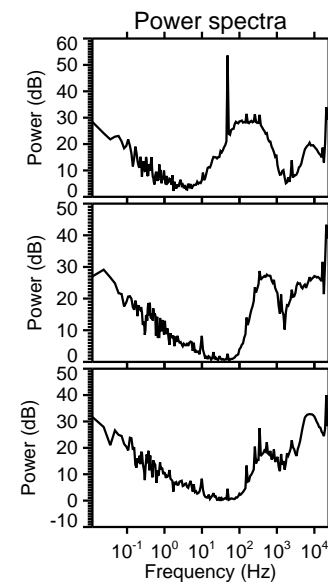
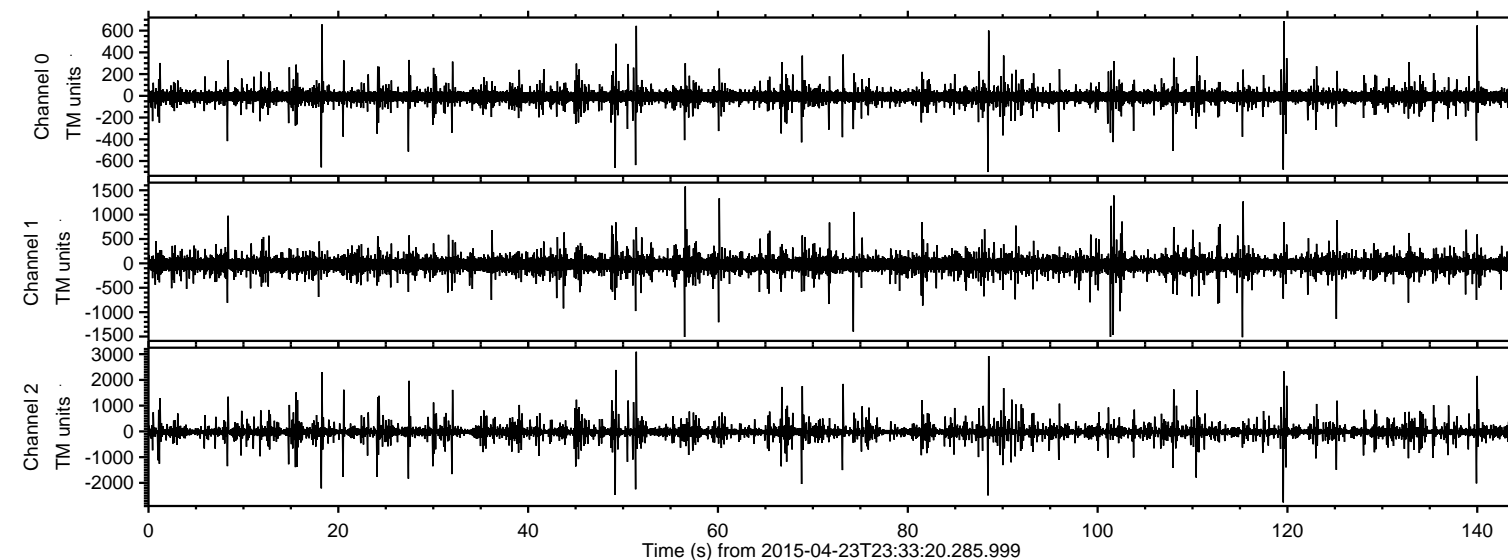
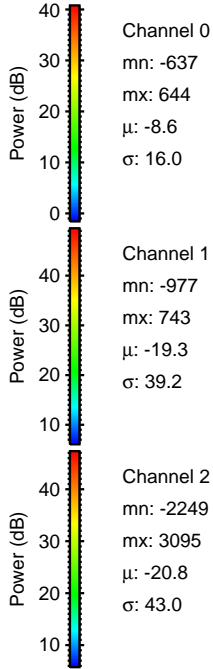
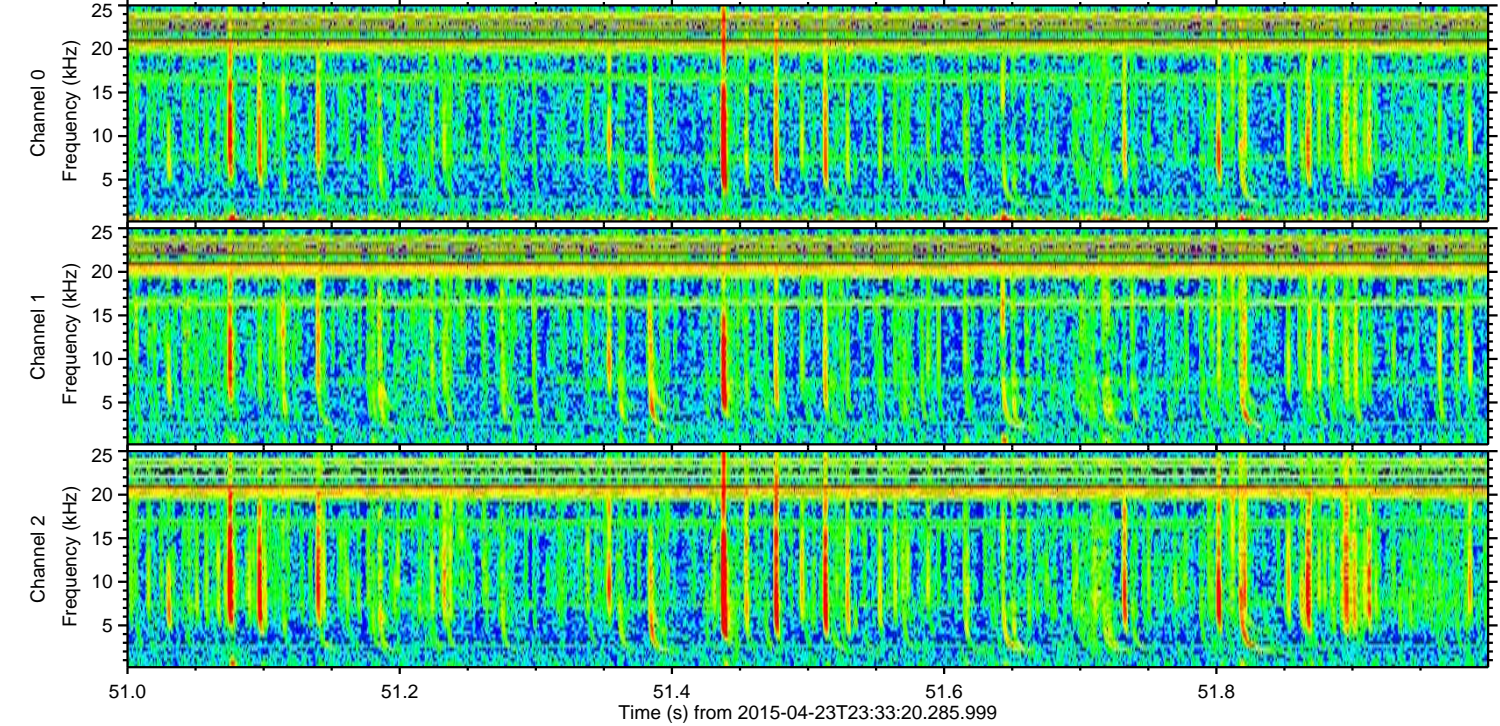
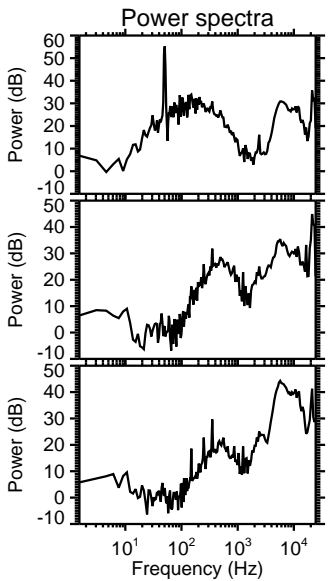
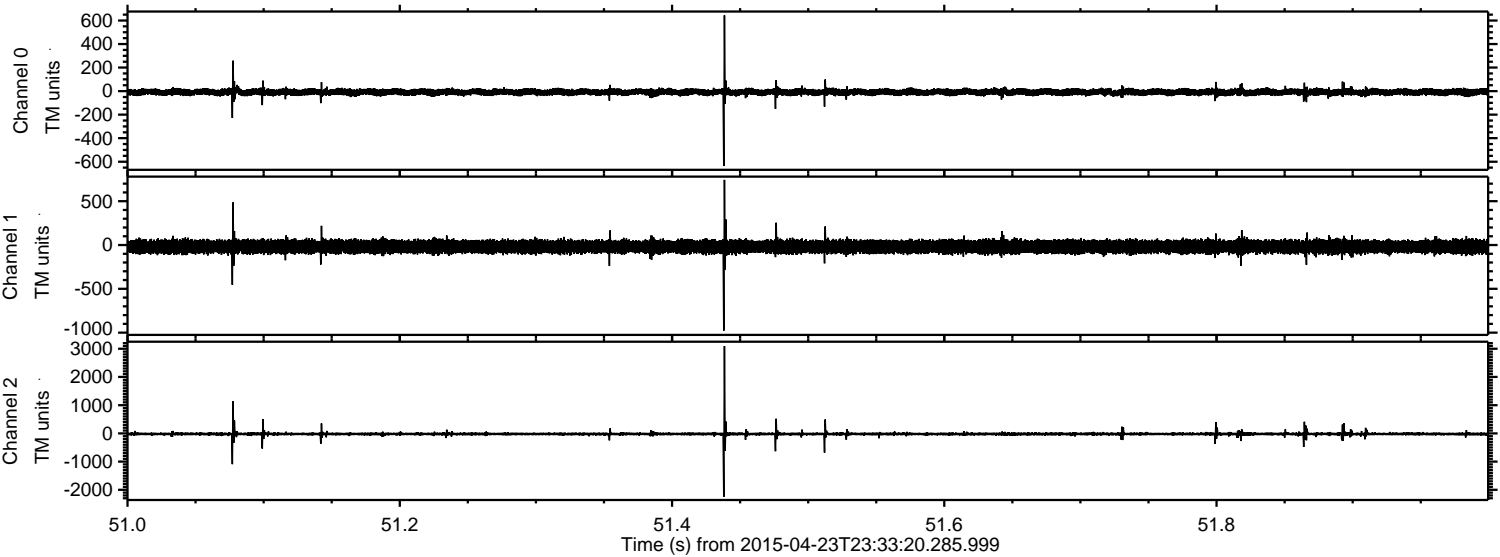


ELMAVAN 3D WAVEFORMS (Measured data sampled at 50 kHz) 49778 packets of 144 samples from 2015-04-23T23:33:20.285.999.

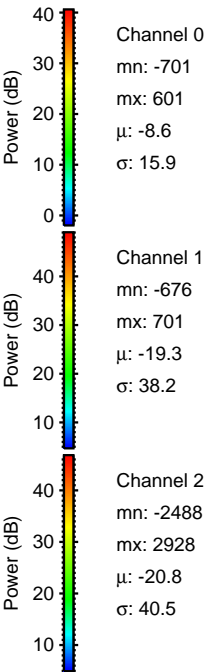
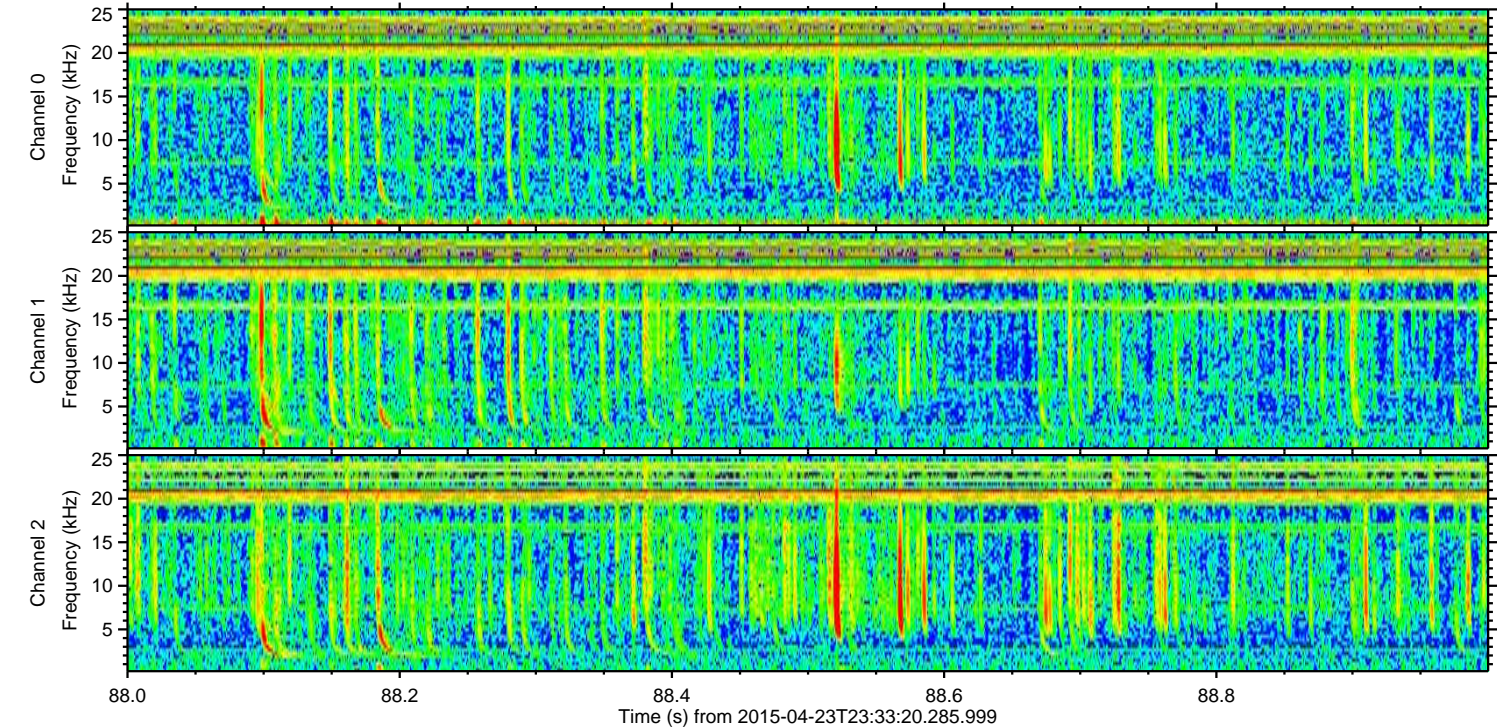
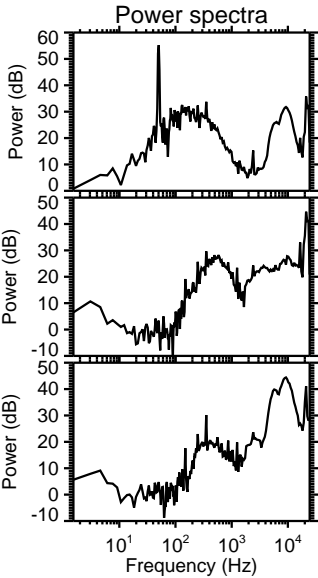
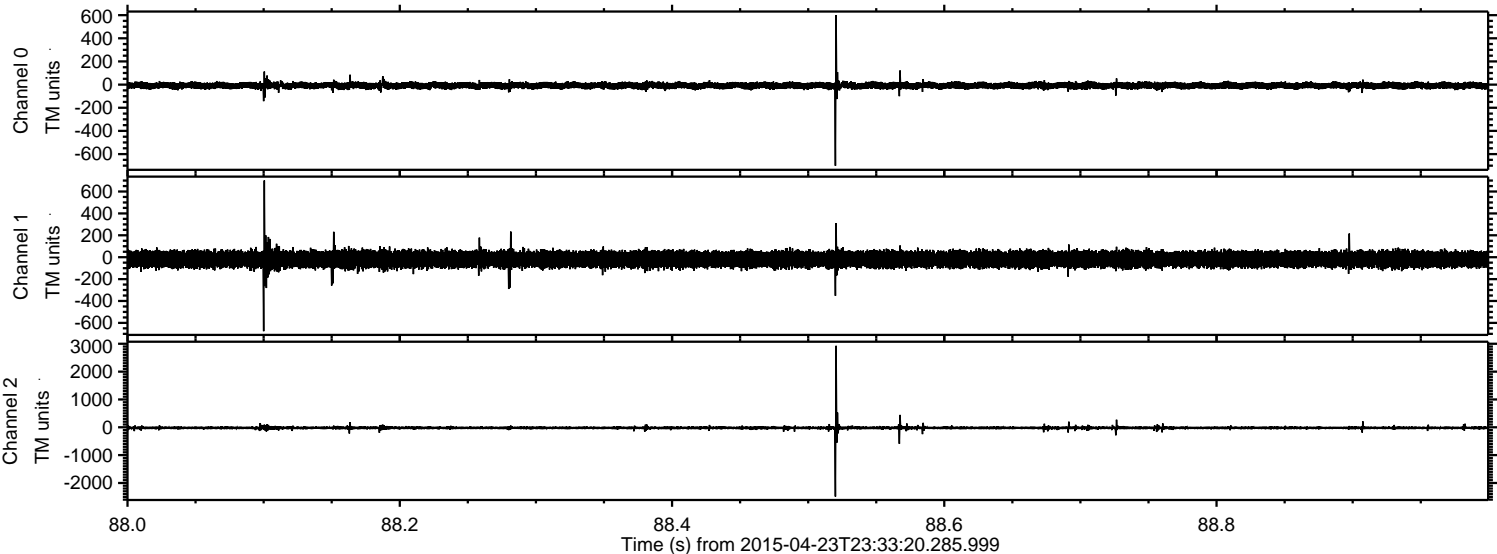
Processed Fri Apr 24 01:40:15 2015 by ELM ver.2012-10-06 from 001__elm20150423_233319__dat00.bin



Processed Fri Apr 24 01:40:27 2015 by ELM ver.2012-10-06 from 001__elm20150423_233319__dat00.bin

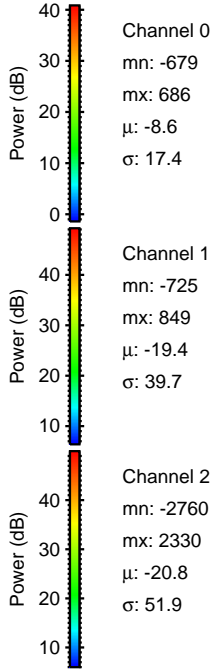
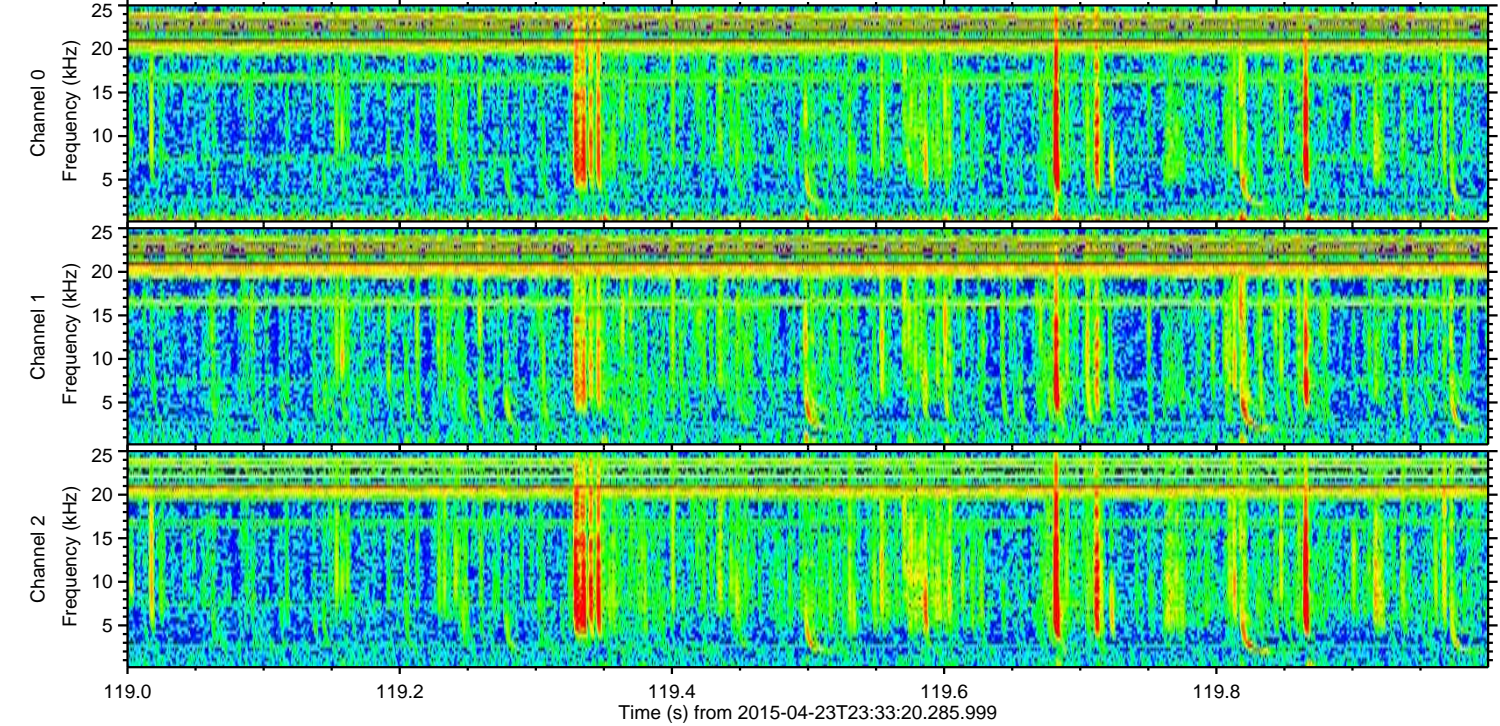
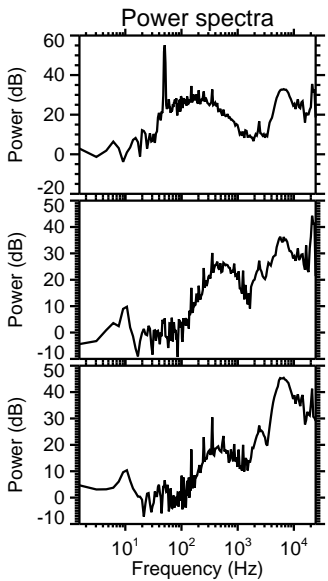
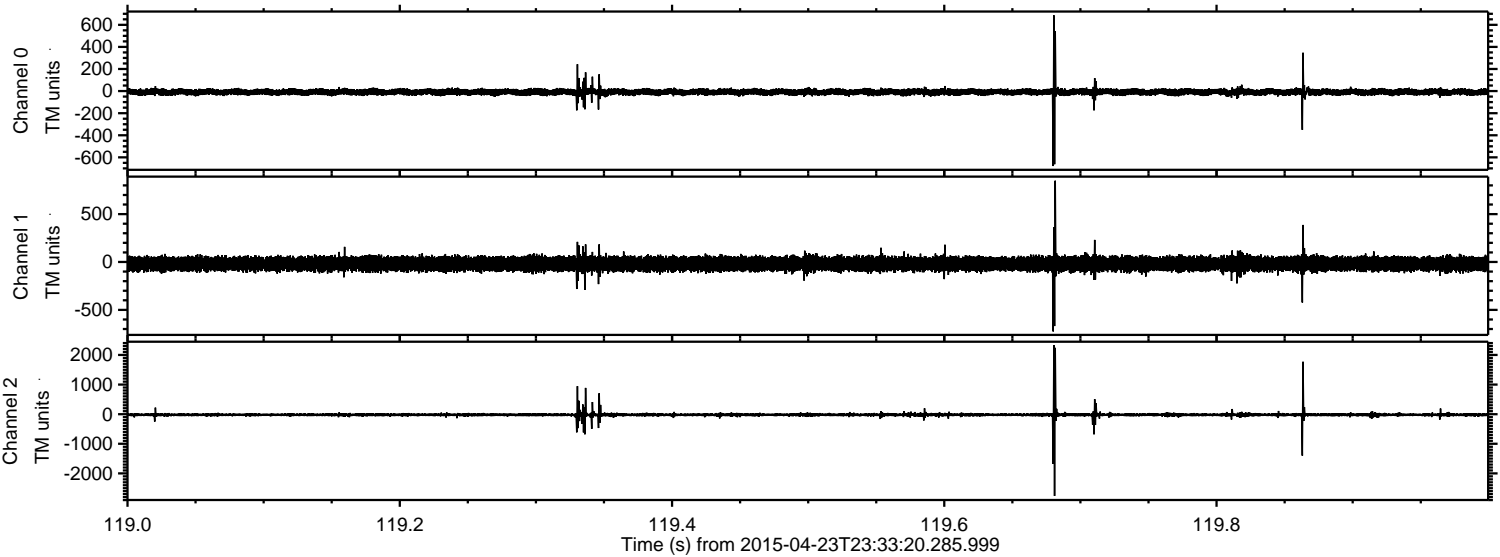


Processed Fri Apr 24 01:40:28 2015 by ELM ver.2012-10-06 from 001__elm20150423_233319__dat00.bin

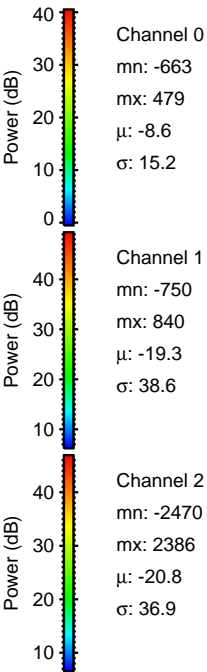
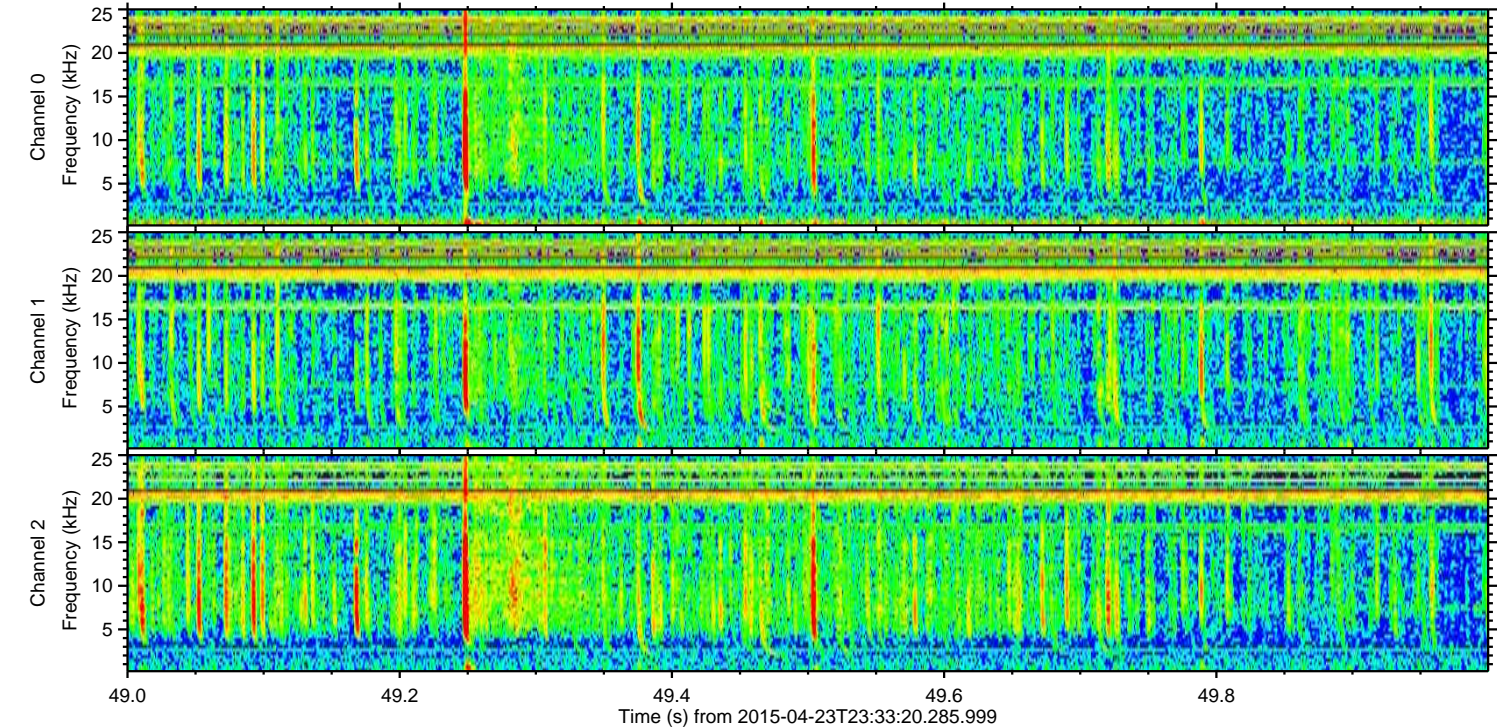
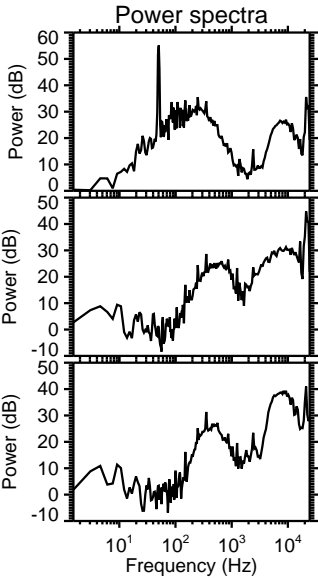
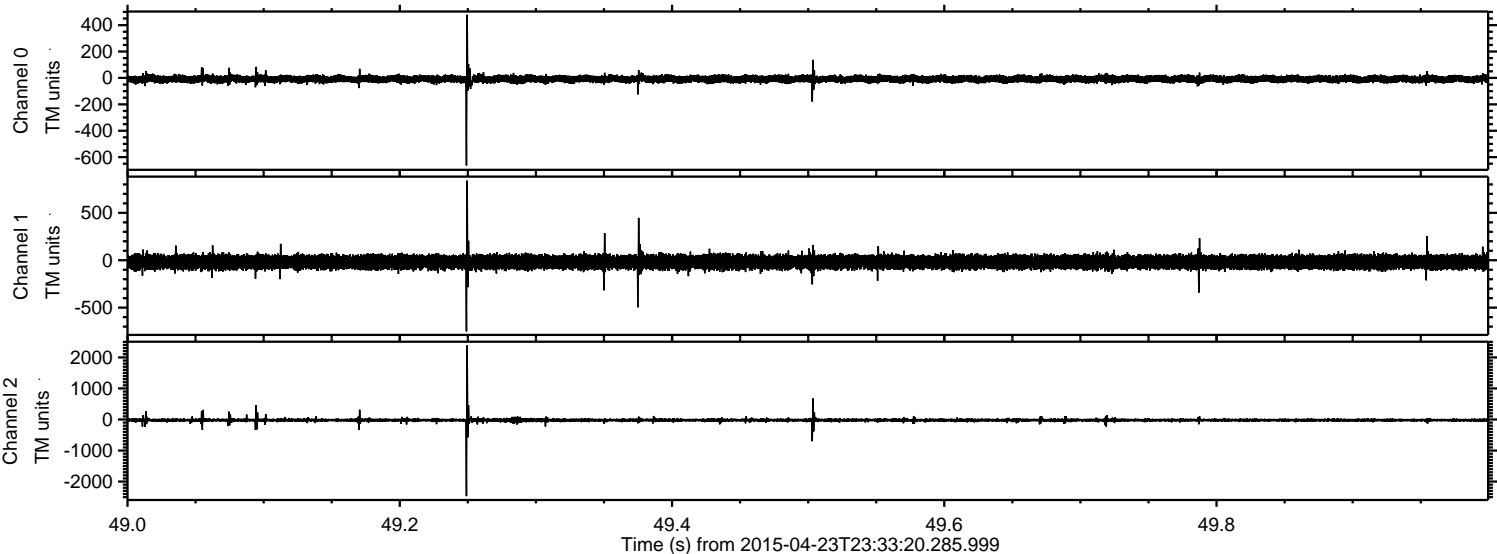


ELMAVAN 3D WAVEFORMS (Measured data sampled at 50 kHz) 49778 packets of 144 samples from 2015-04-23T23:33:20.285.999. Part 120/144

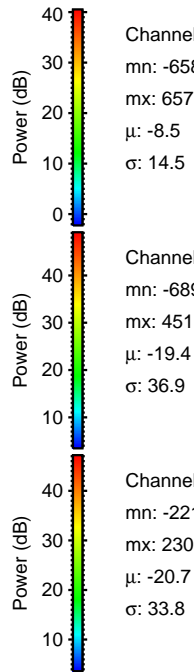
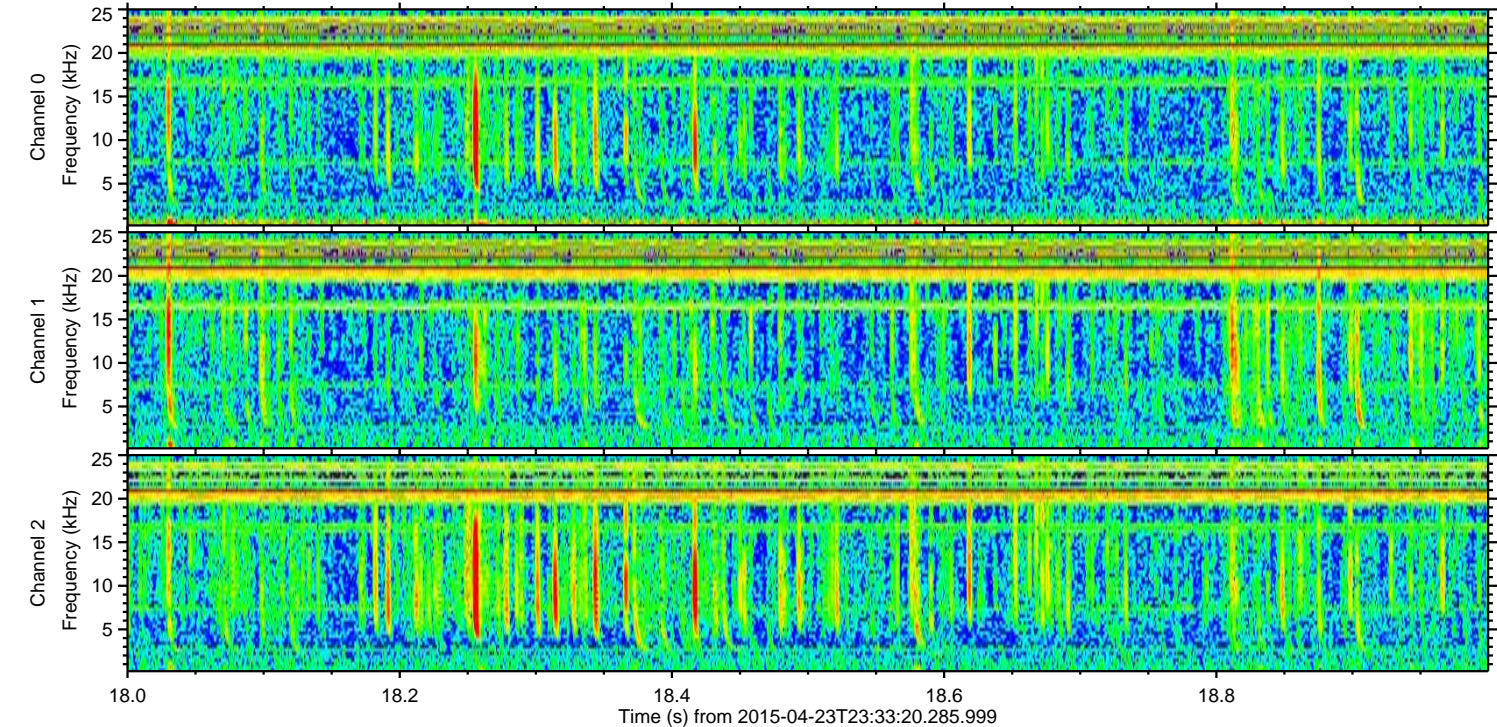
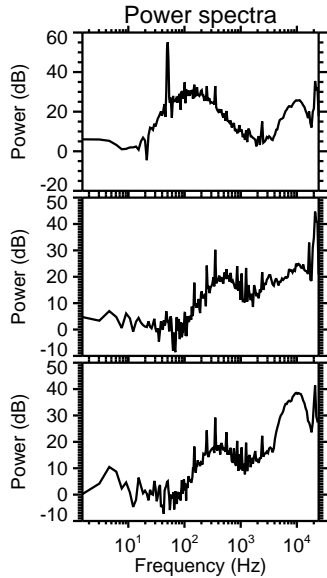
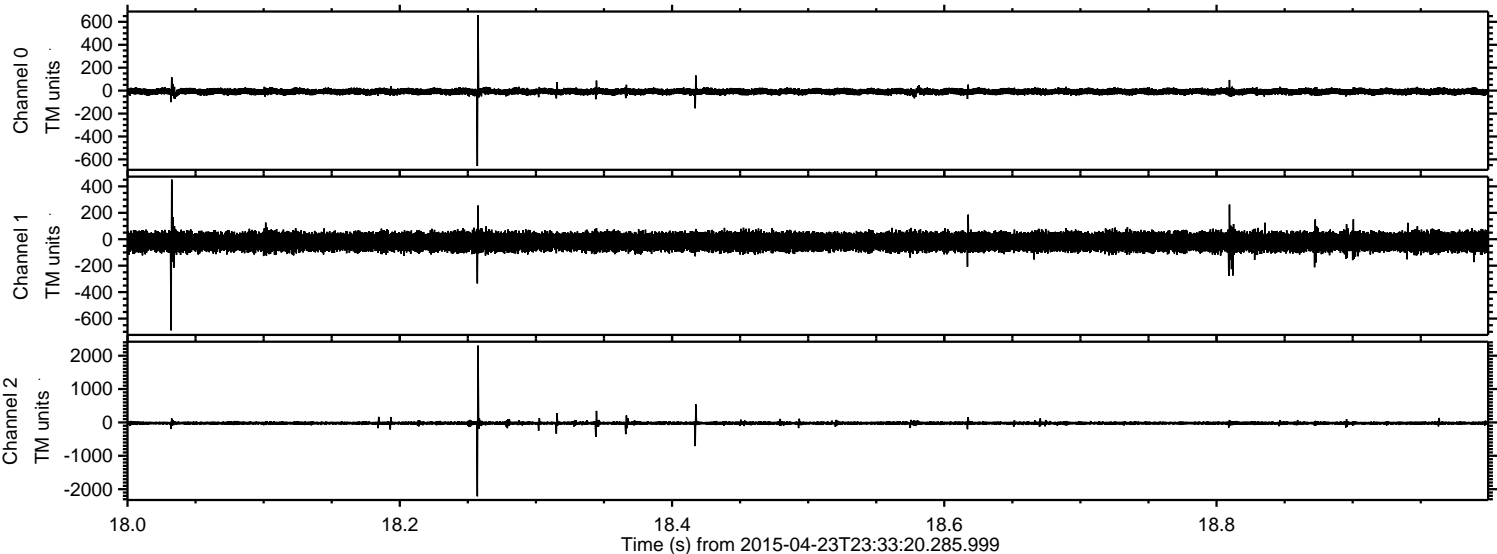
Processed Fri Apr 24 01:40:29 2015 by ELM ver.2012-10-06 from 001__elm20150423_233319__dat00.bin



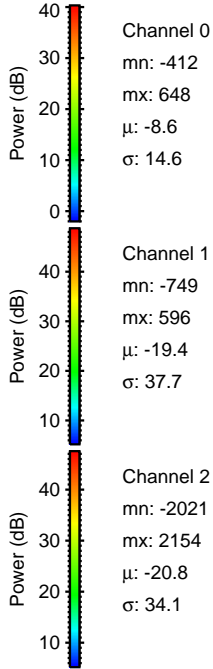
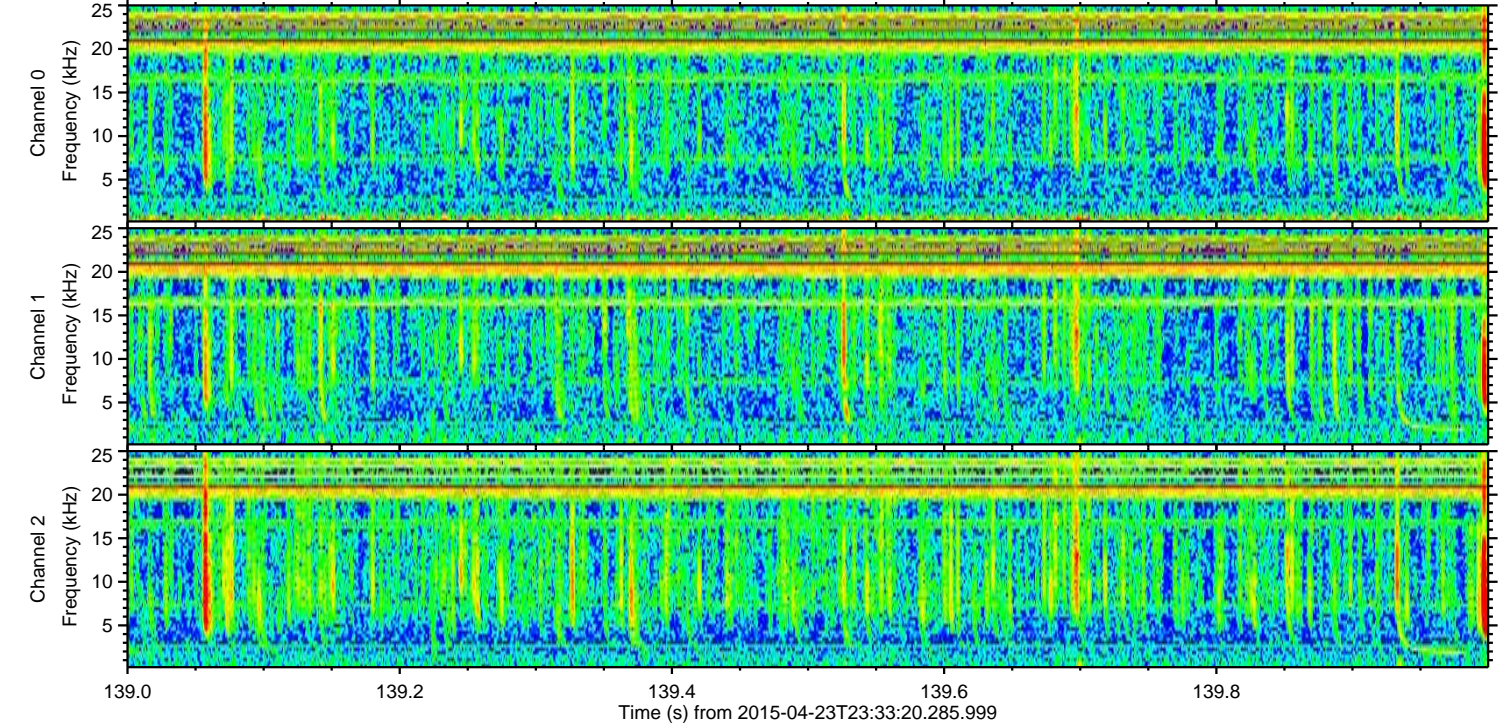
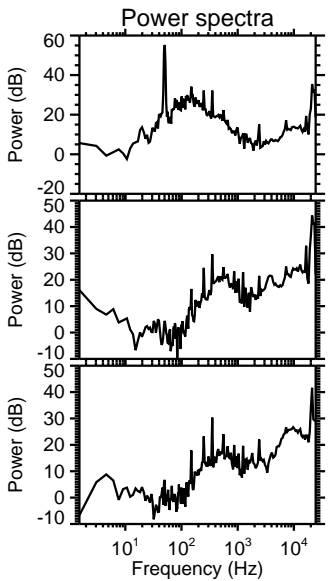
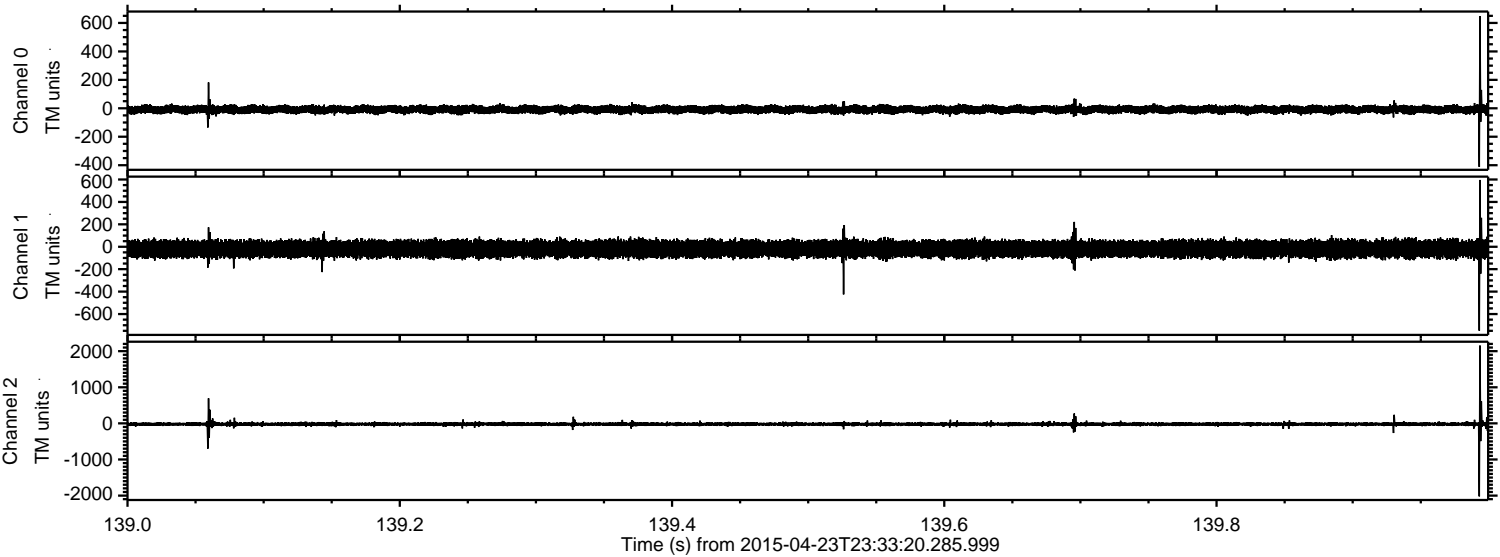
Processed Fri Apr 24 01:40:30 2015 by ELM ver.2012-10-06 from 001__elm20150423_233319__dat00.bin



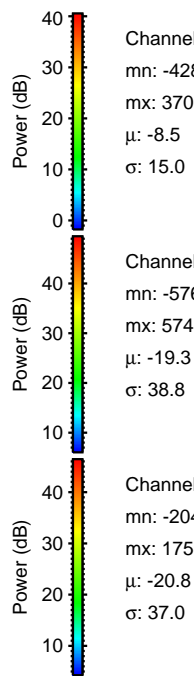
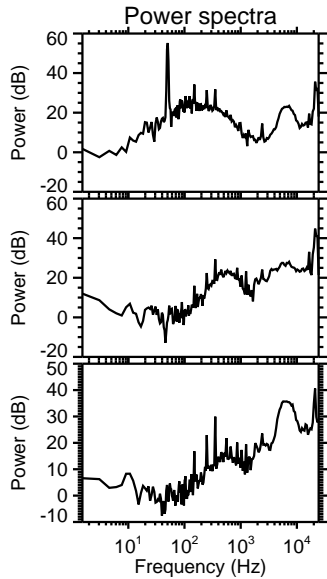
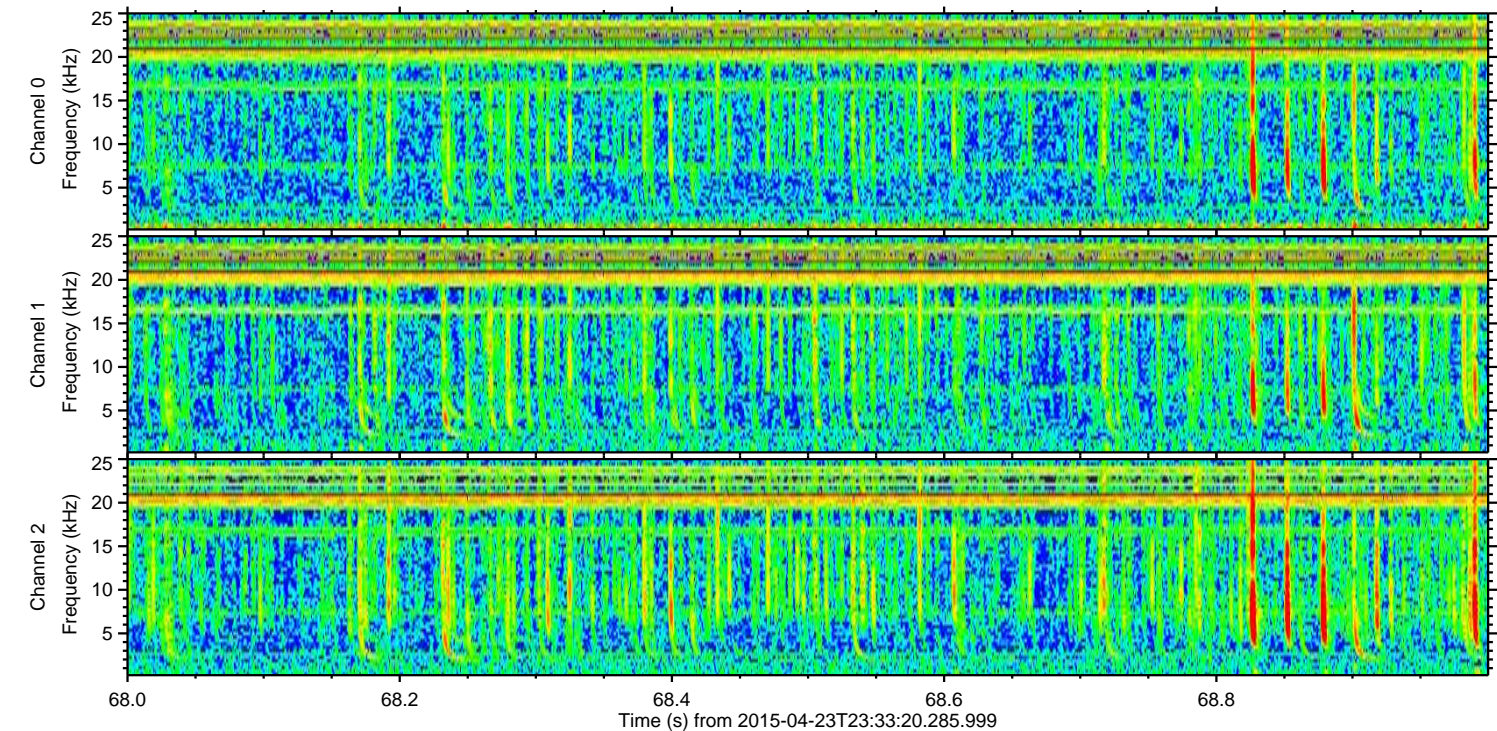
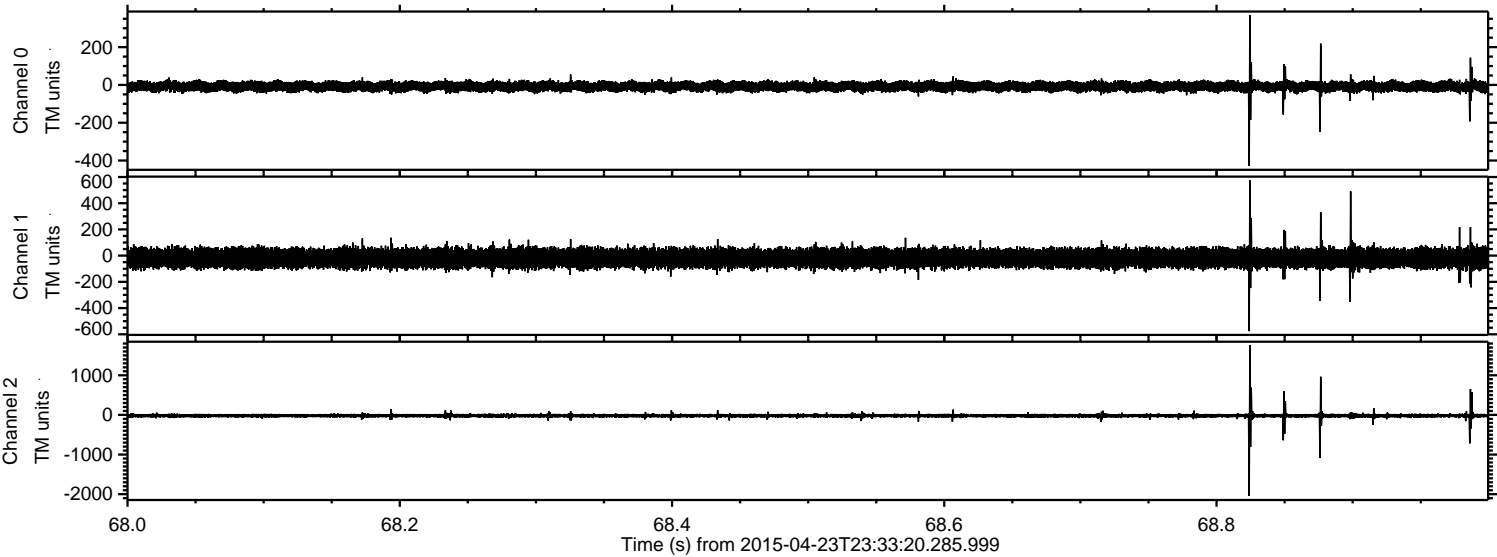
Processed Fri Apr 24 01:40:30 2015 by ELM ver.2012-10-06 from 001__elm20150423_233319__dat00.bin



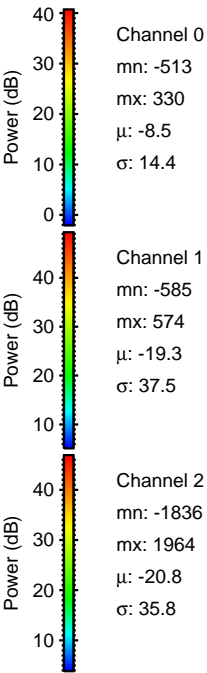
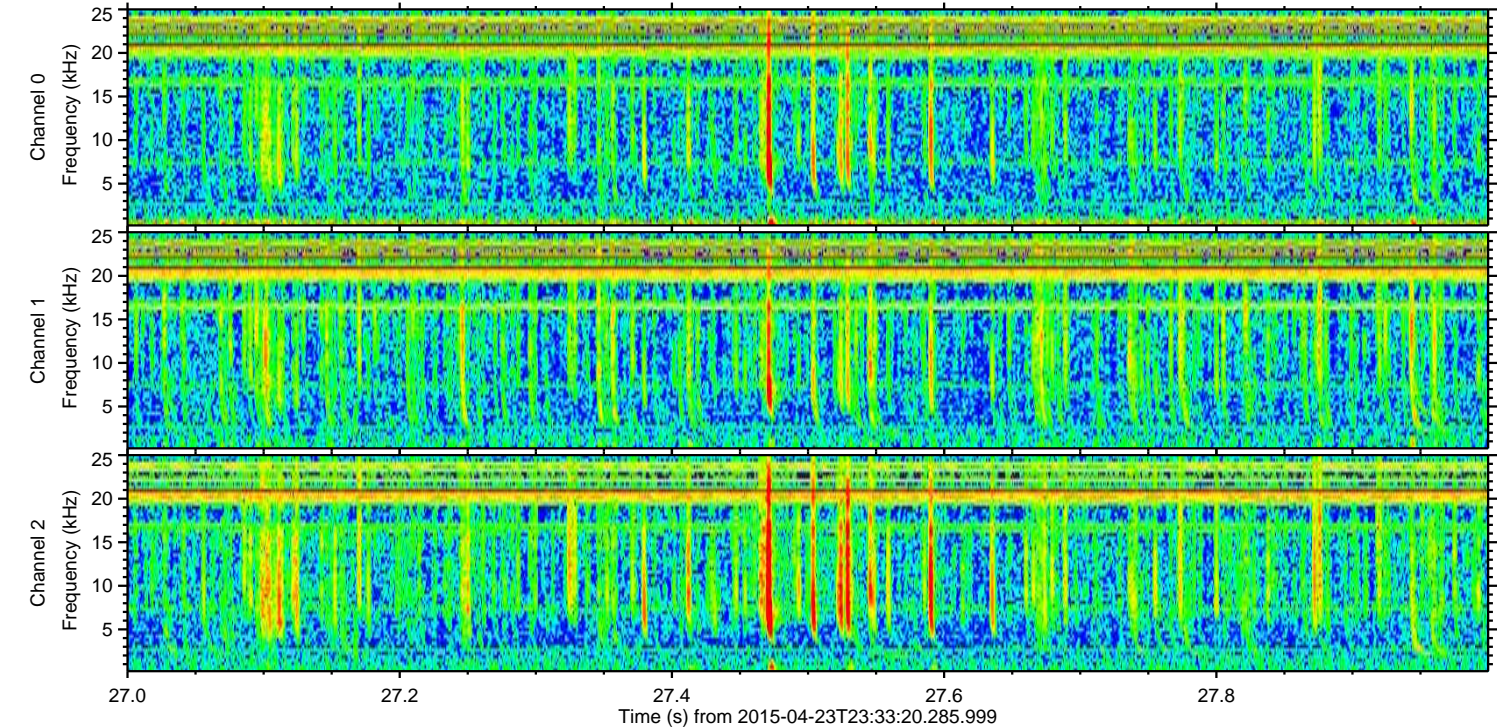
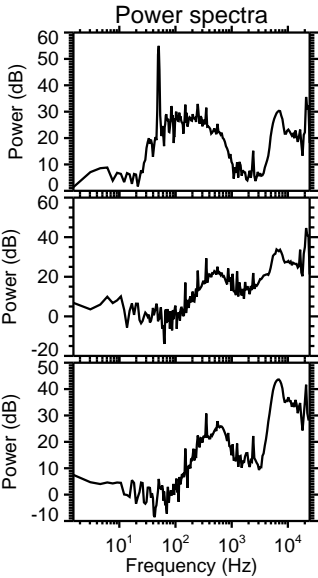
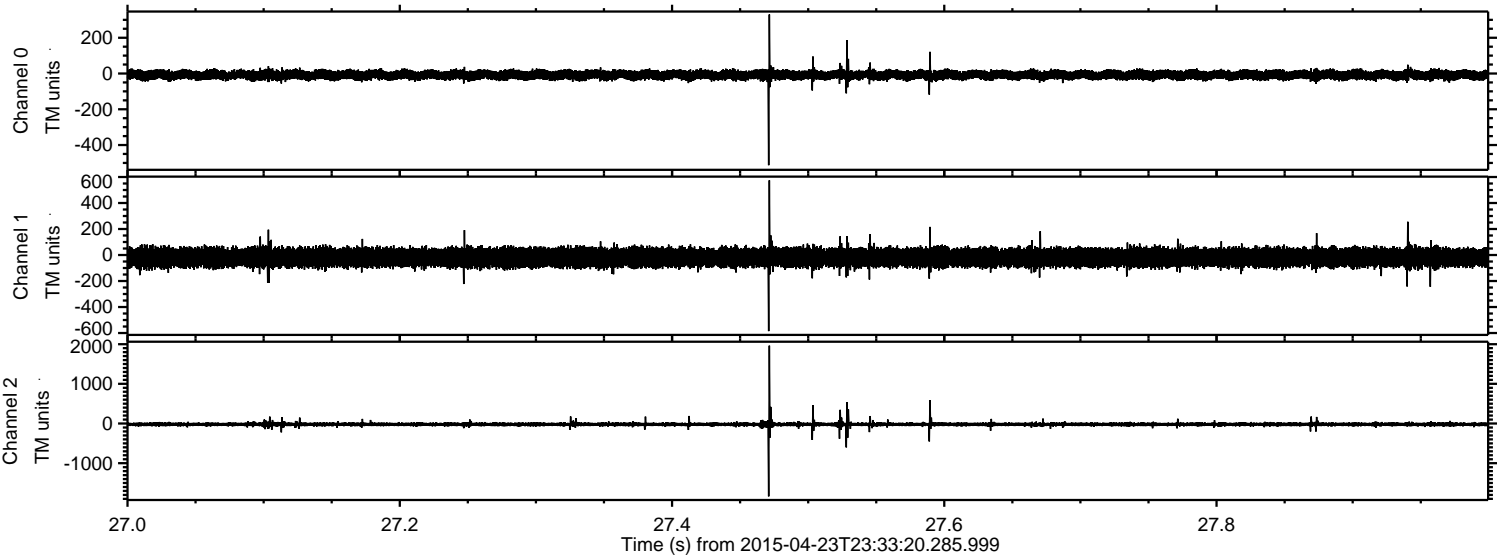
Processed Fri Apr 24 01:40:31 2015 by ELM ver.2012-10-06 from 001__elm20150423_233319__dat00.bin



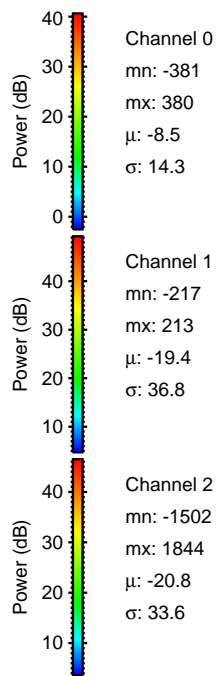
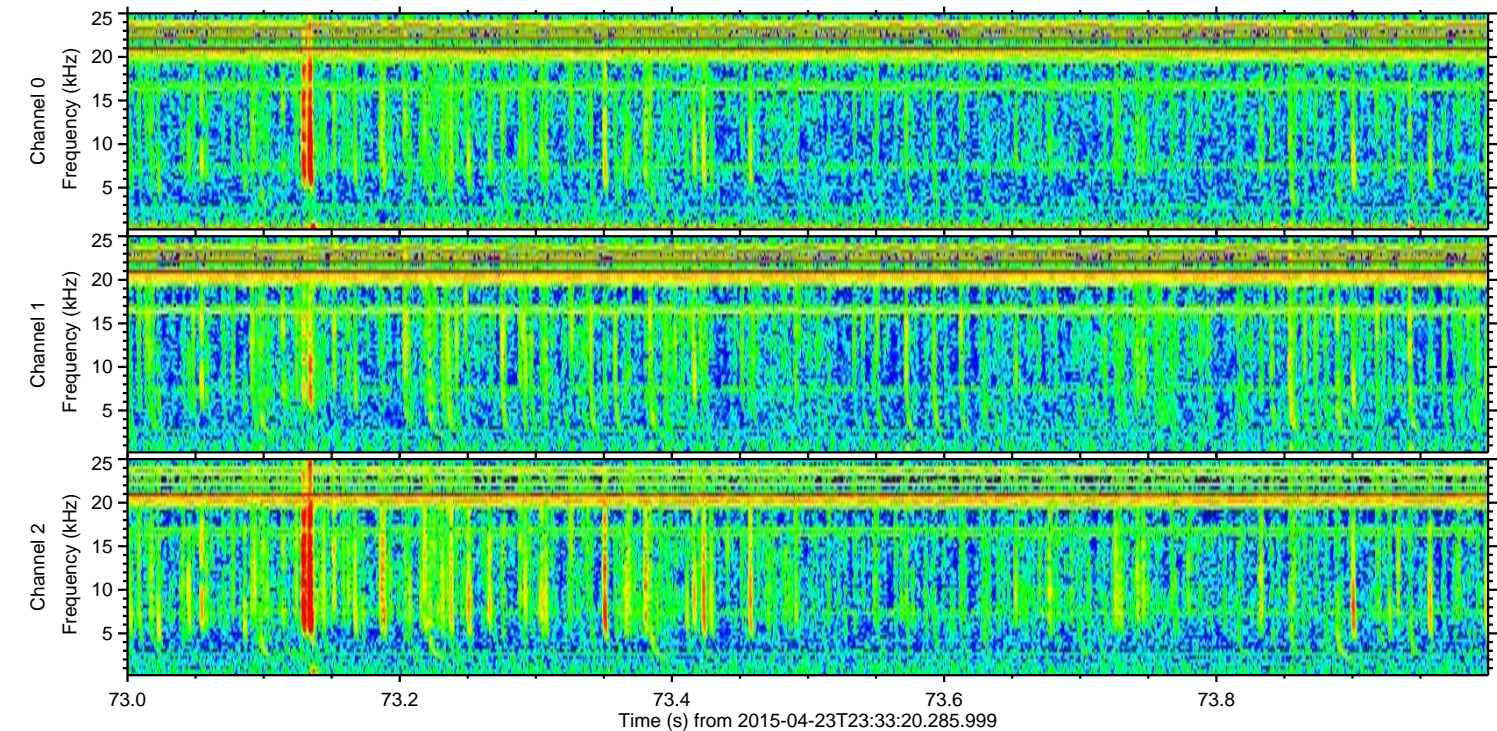
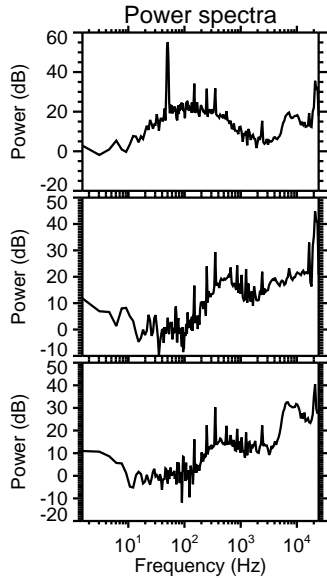
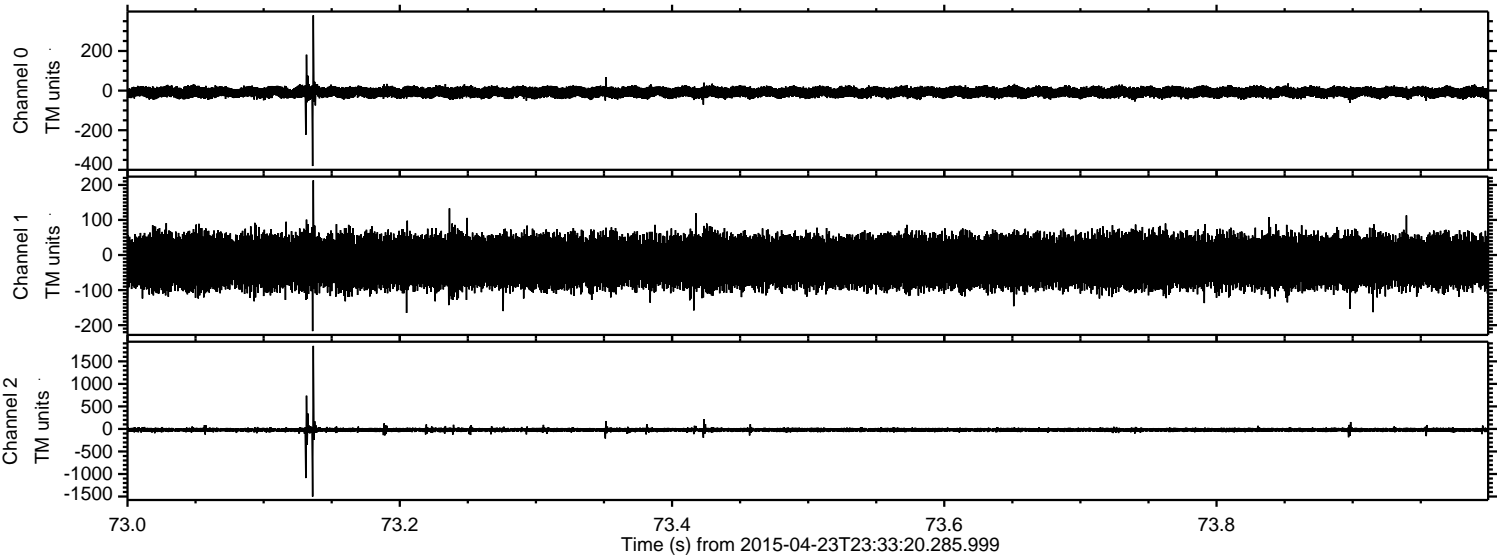
Processed Fri Apr 24 01:40:32 2015 by ELM ver.2012-10-06 from 001__elm20150423_233319__dat00.bin



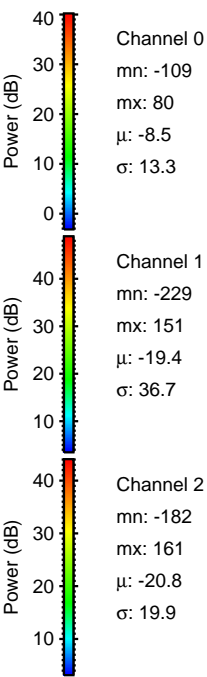
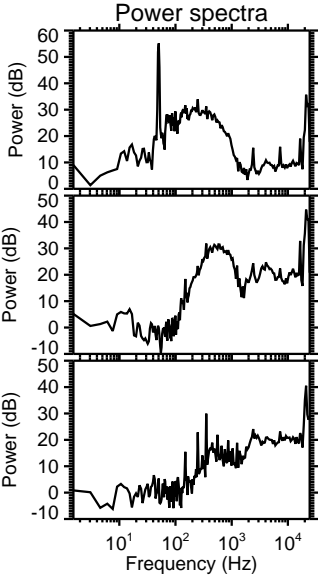
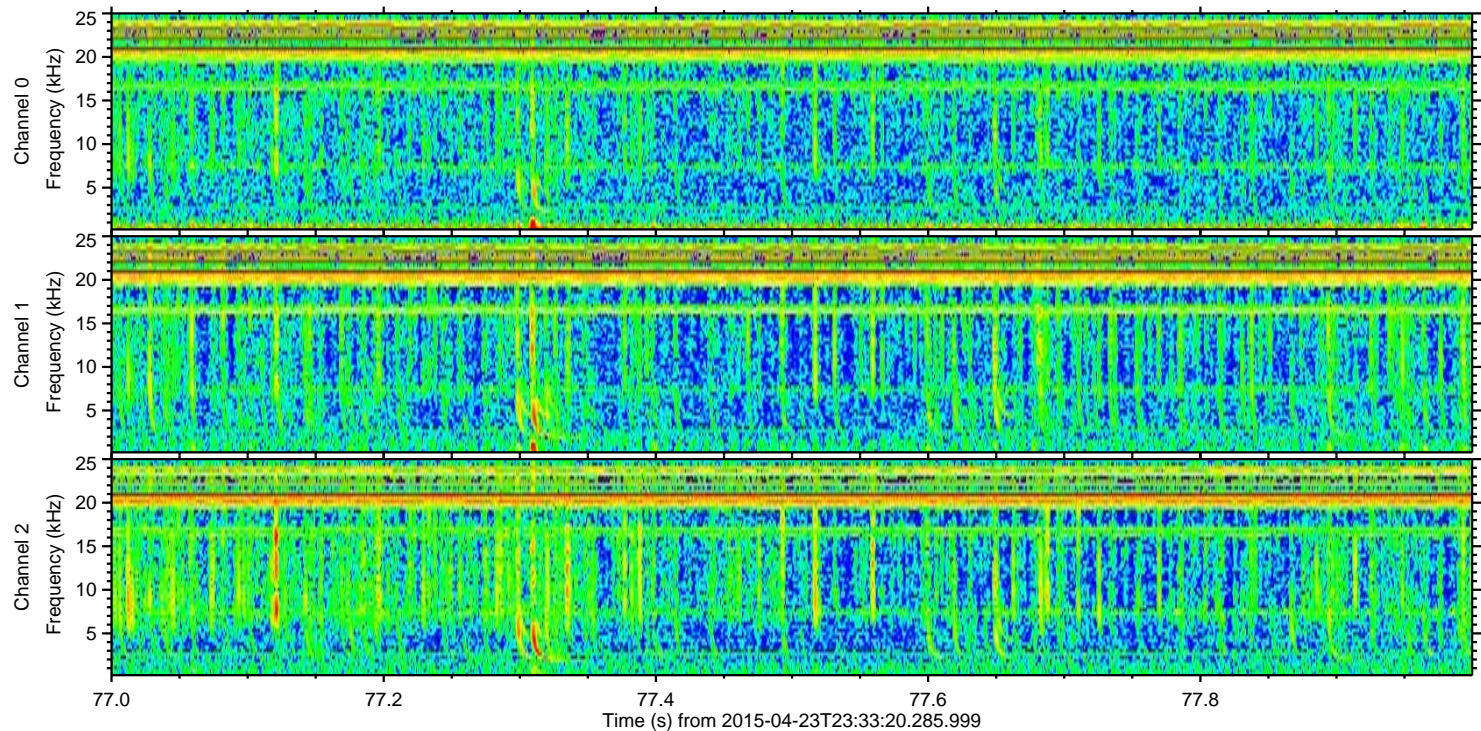
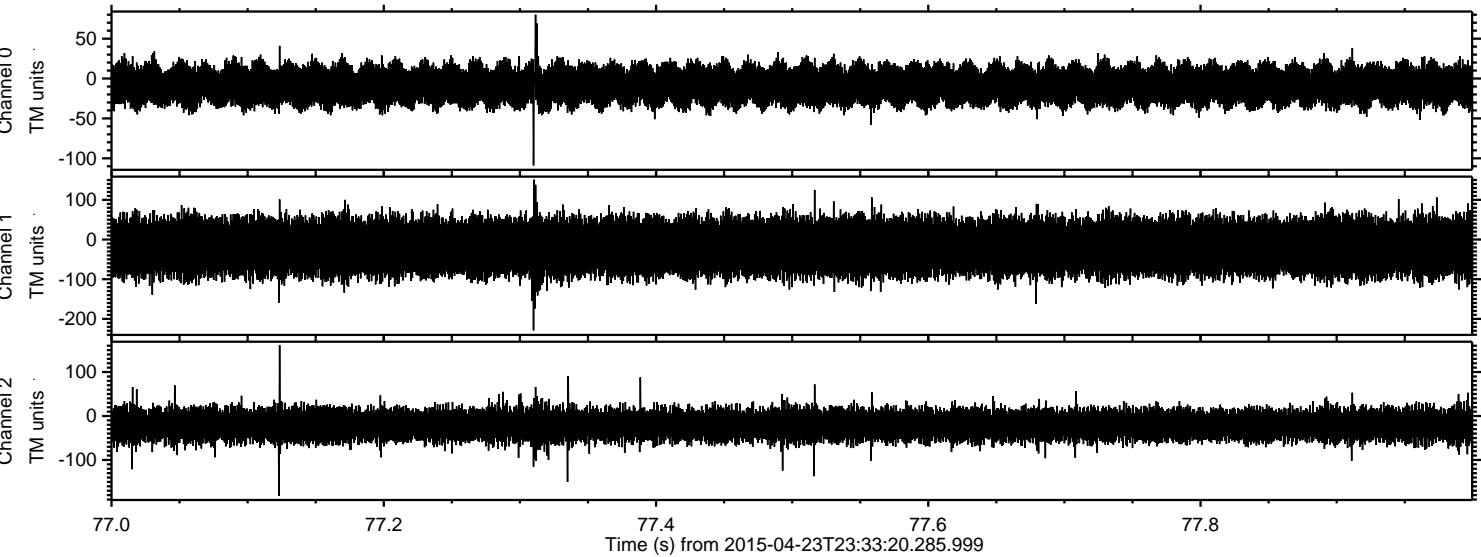
Processed Fri Apr 24 01:40:33 2015 by ELM ver.2012-10-06 from 001__elm20150423_233319__dat00.bin



Processed Fri Apr 24 01:40:34 2015 by ELM ver.2012-10-06 from 001__elm20150423_233319__dat00.bin



Processed Fri Apr 24 01:40:35 2015 by ELM ver.2012-10-06 from 001__elm20150423_233319__dat00.bin



Channel 0
mn: -109
mx: 80
 μ : -8.5
 σ : 13.3

Channel 1
mn: -229
mx: 151
 μ : -19.4
 σ : 36.7

Channel 2
mn: -182
mx: 161
 μ : -20.8
 σ : 19.9