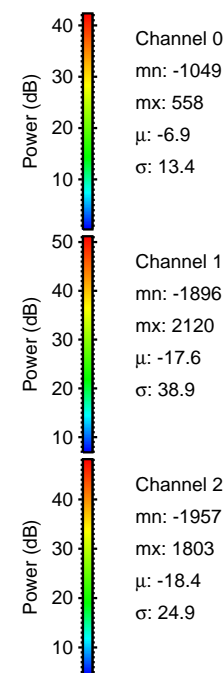
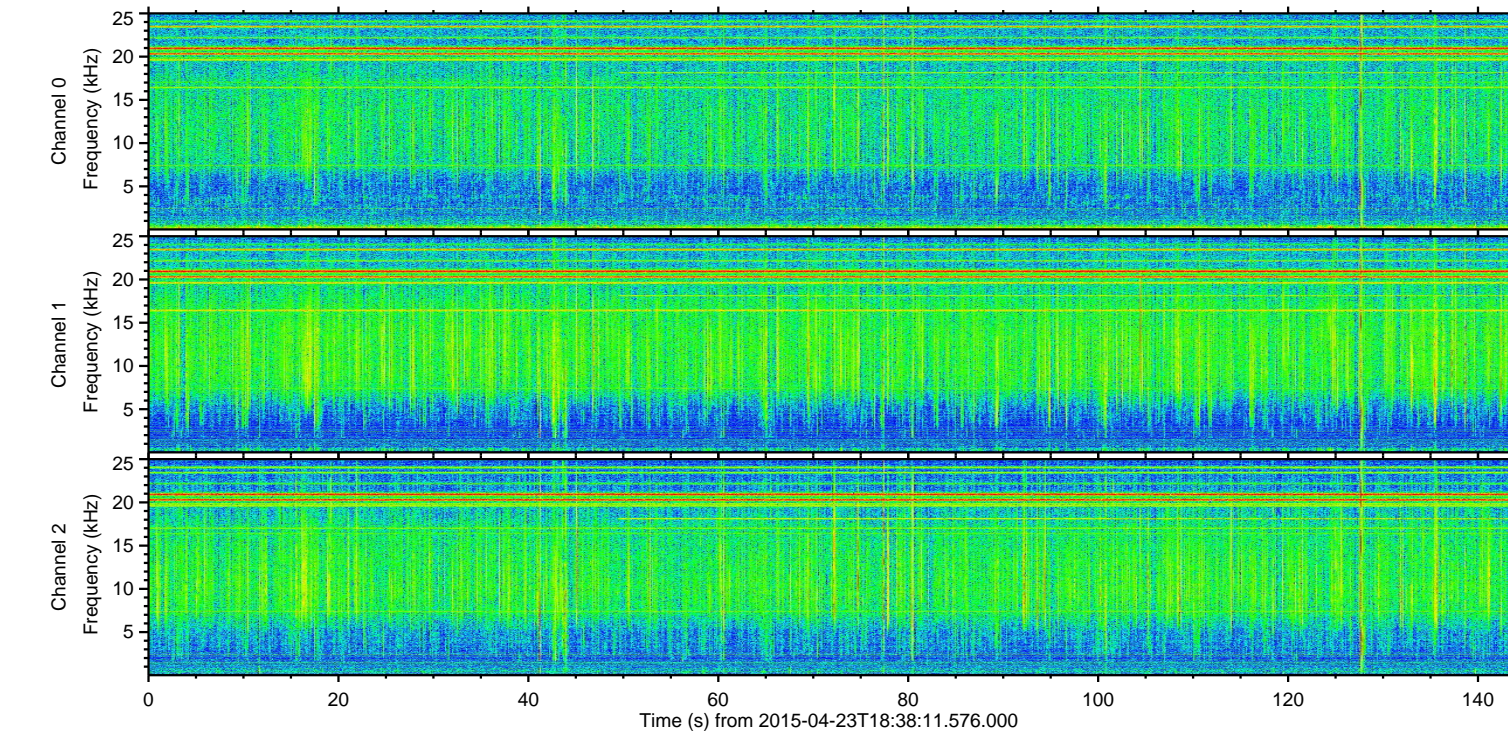
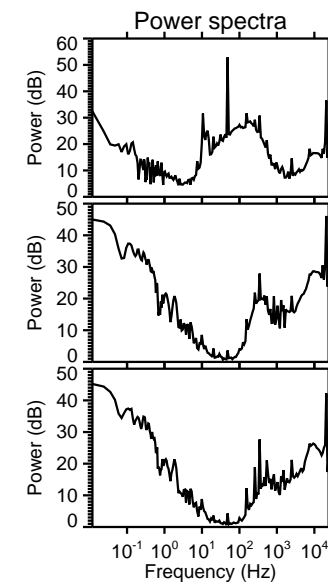
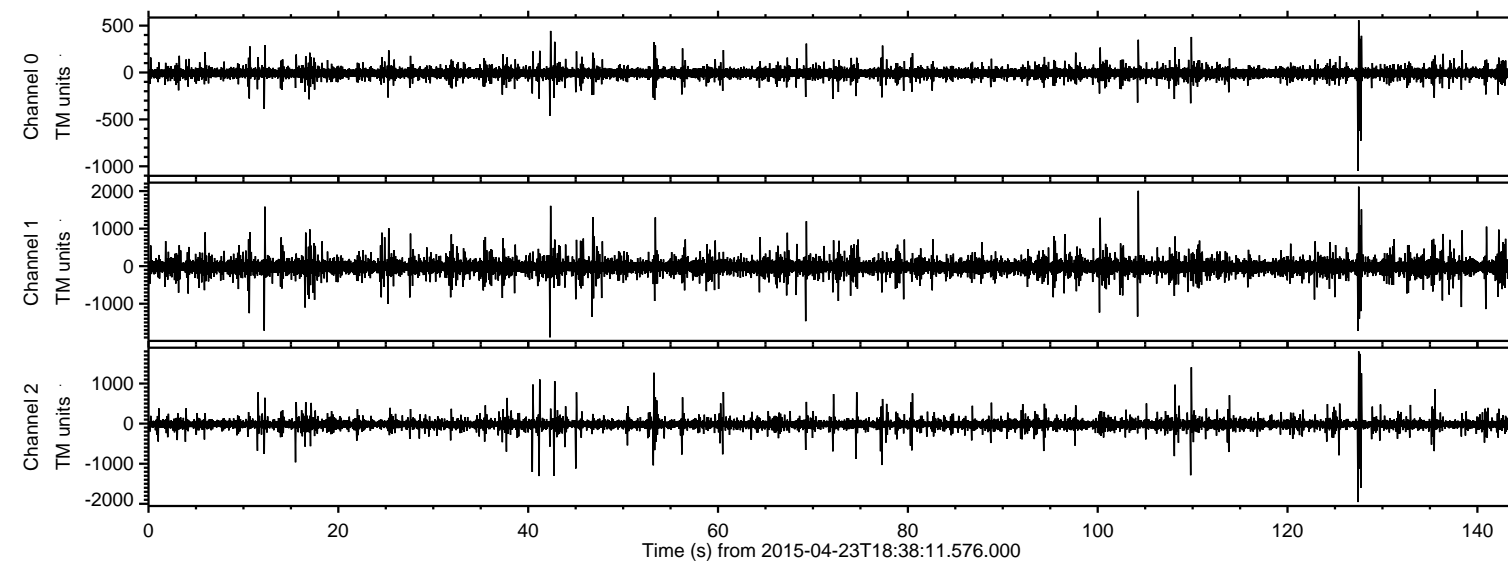


# ELMAVAN 3D WAVEFORMS (Measured data sampled at 50 kHz) 49773 packets of 144 samples from 2015-04-23T18:38:11.576.000.

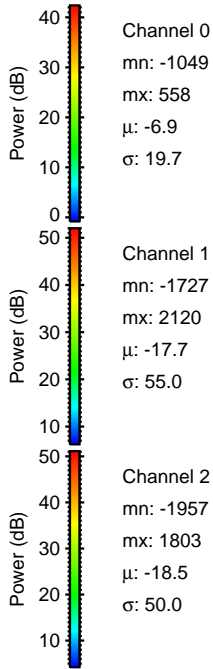
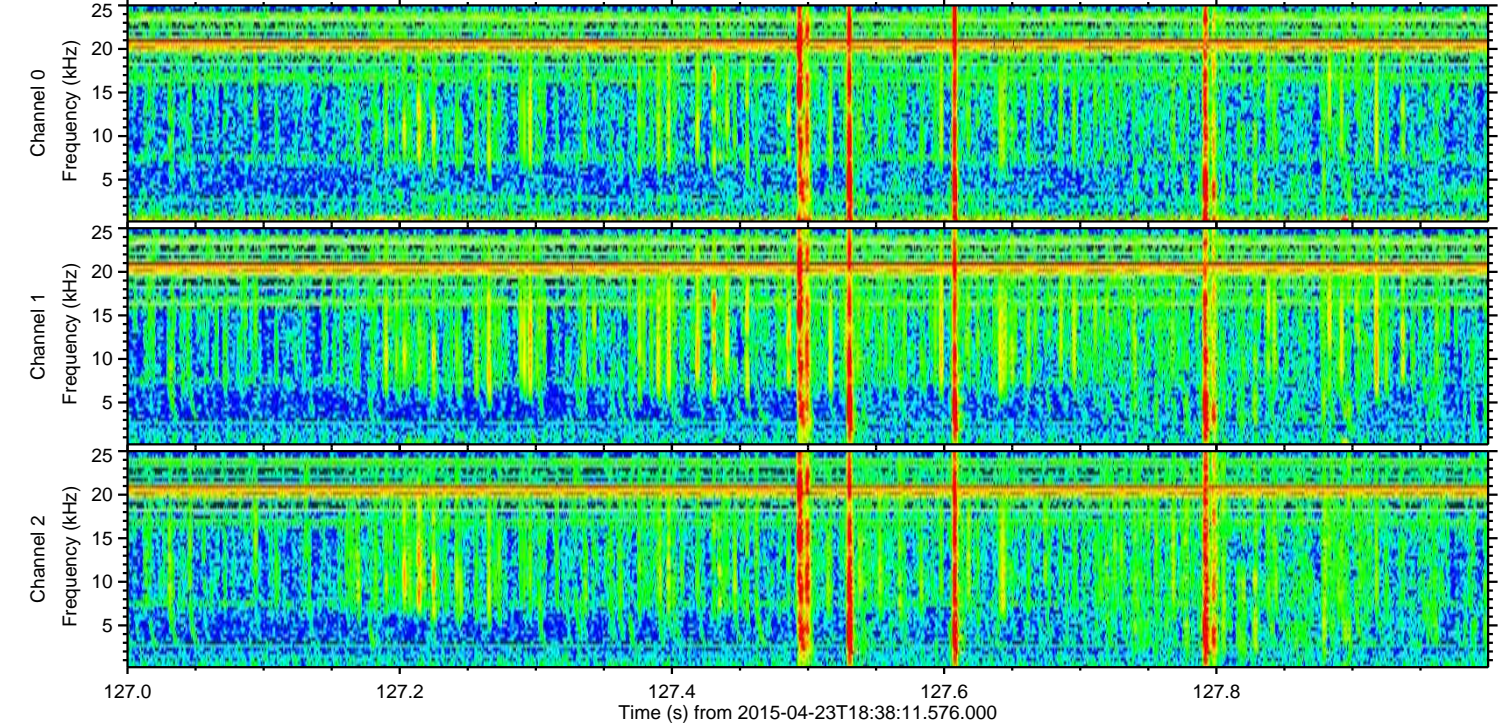
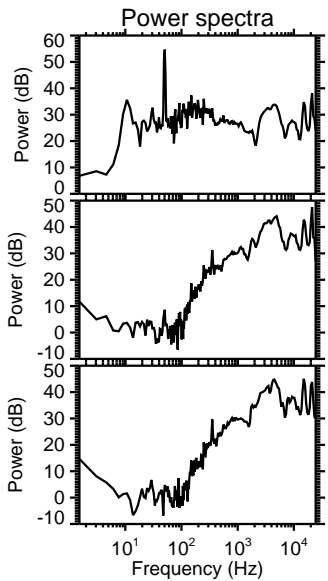
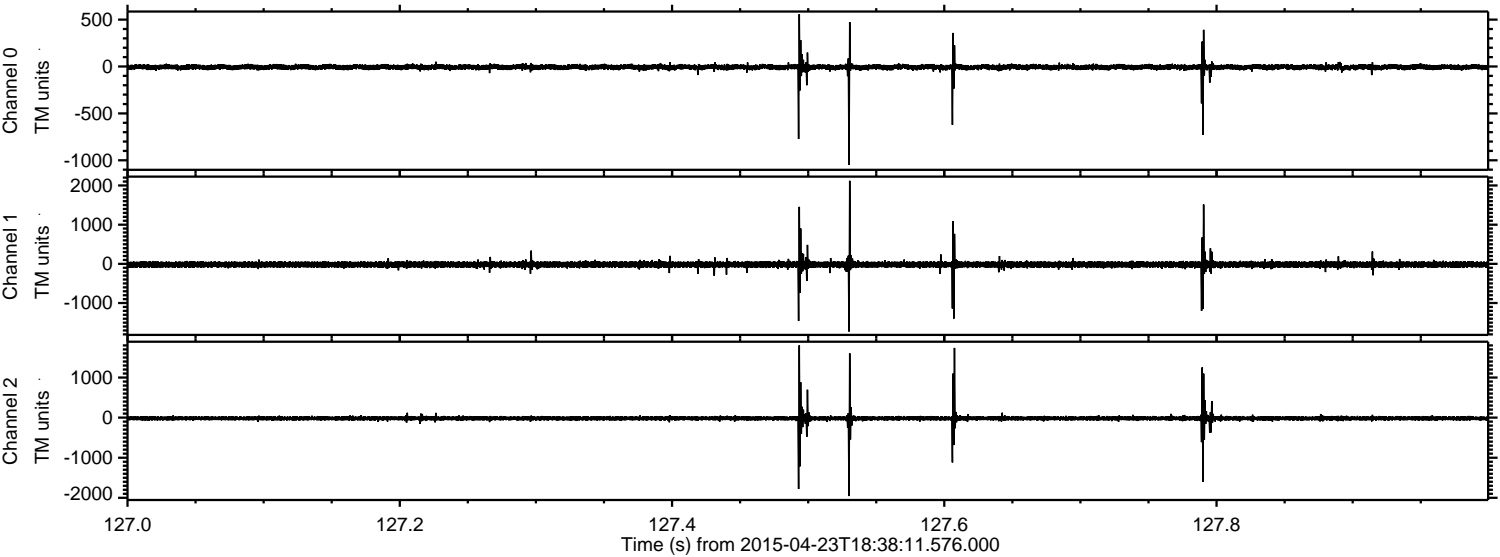
Processed Thu Apr 23 20:45:01 2015 by ELM ver.2012-10-06 from 001\_\_elm20150423\_183810\_\_dat00.bin





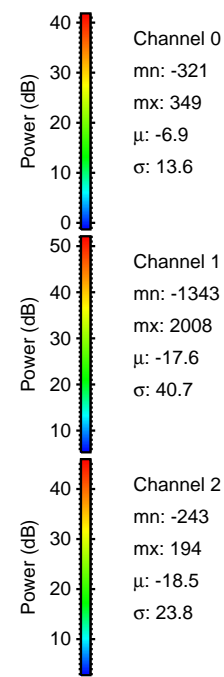
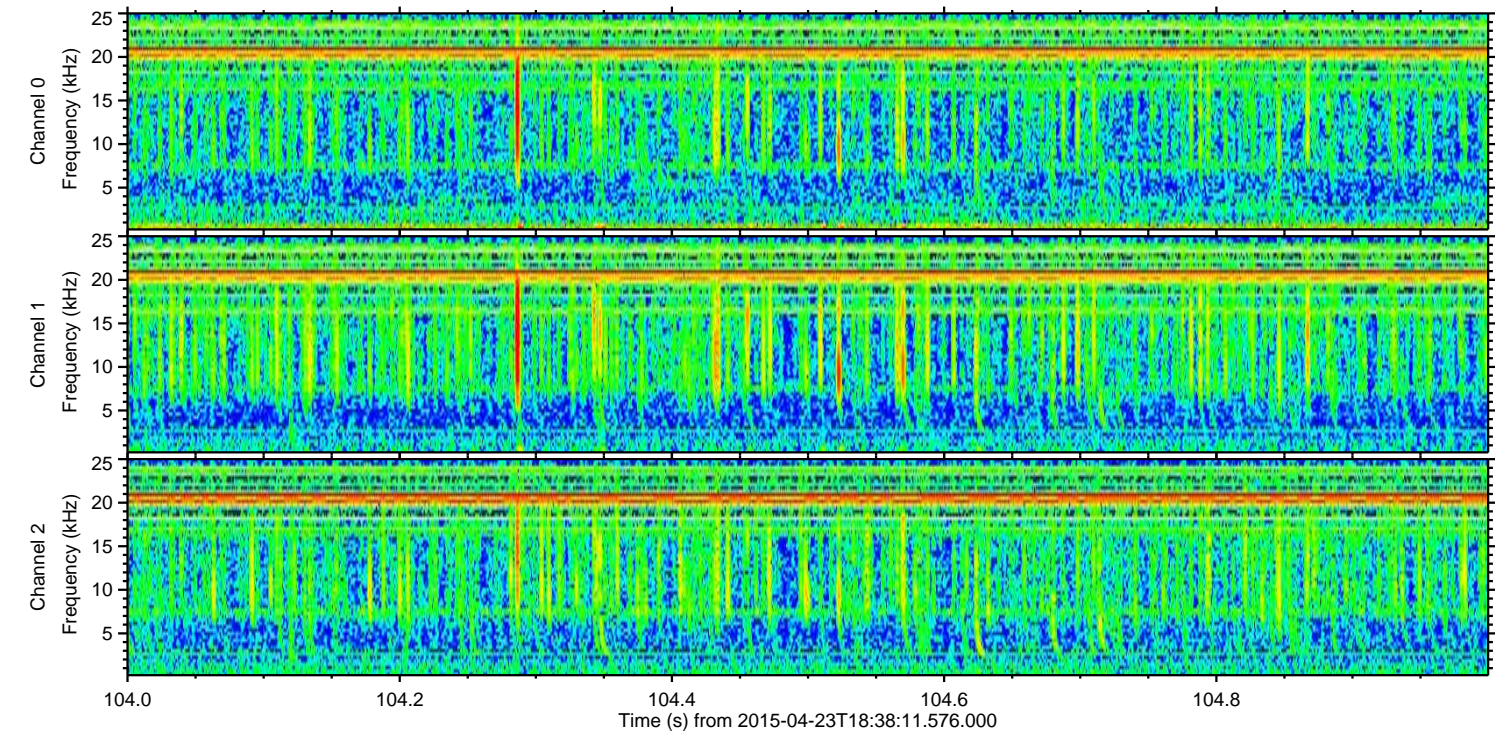
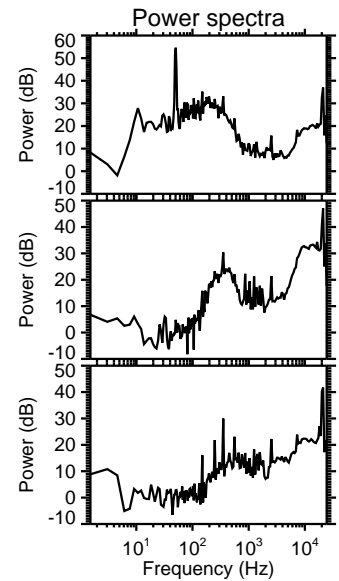
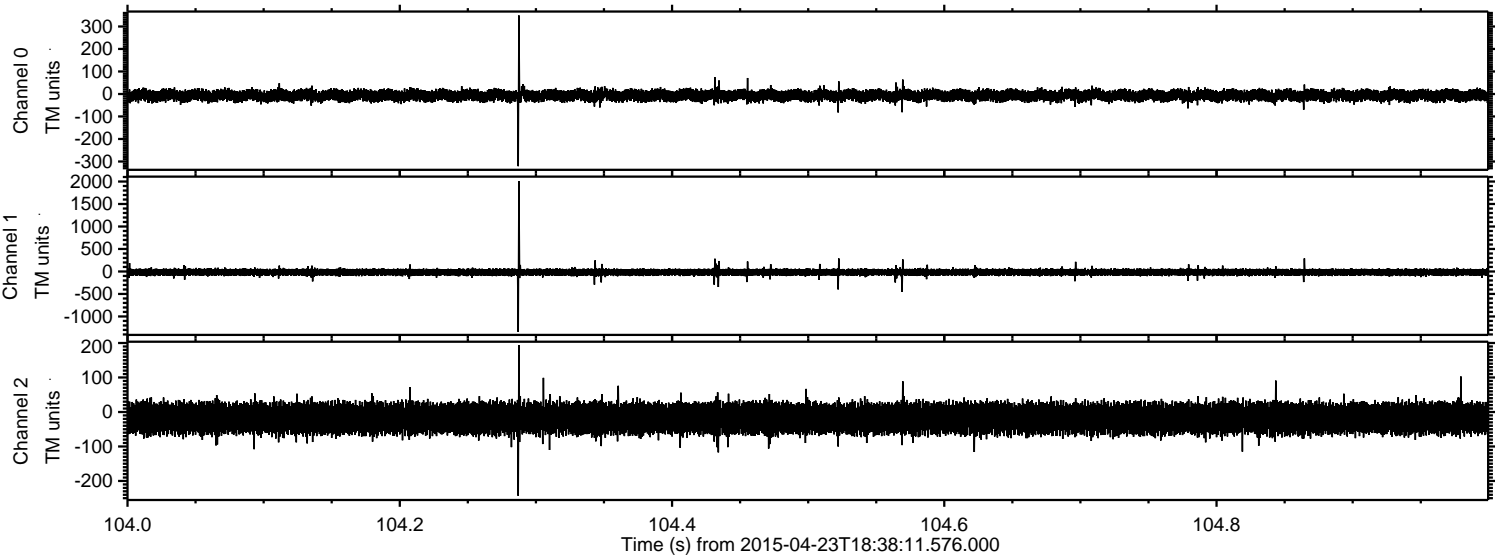
ELMAVAN 3D WAVEFORMS (Measured data sampled at 50 kHz) 49773 packets of 144 samples from 2015-04-23T18:38:11.576.000. Part 128/144

Processed Thu Apr 23 20:45:12 2015 by ELM ver.2012-10-06 from 001\_\_elm20150423\_183810\_\_dat00.bin



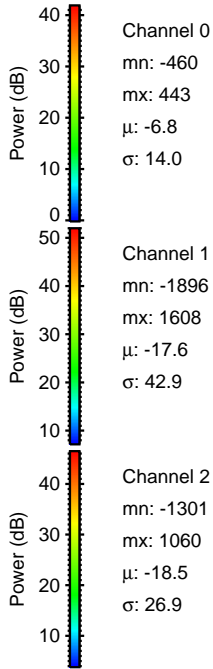
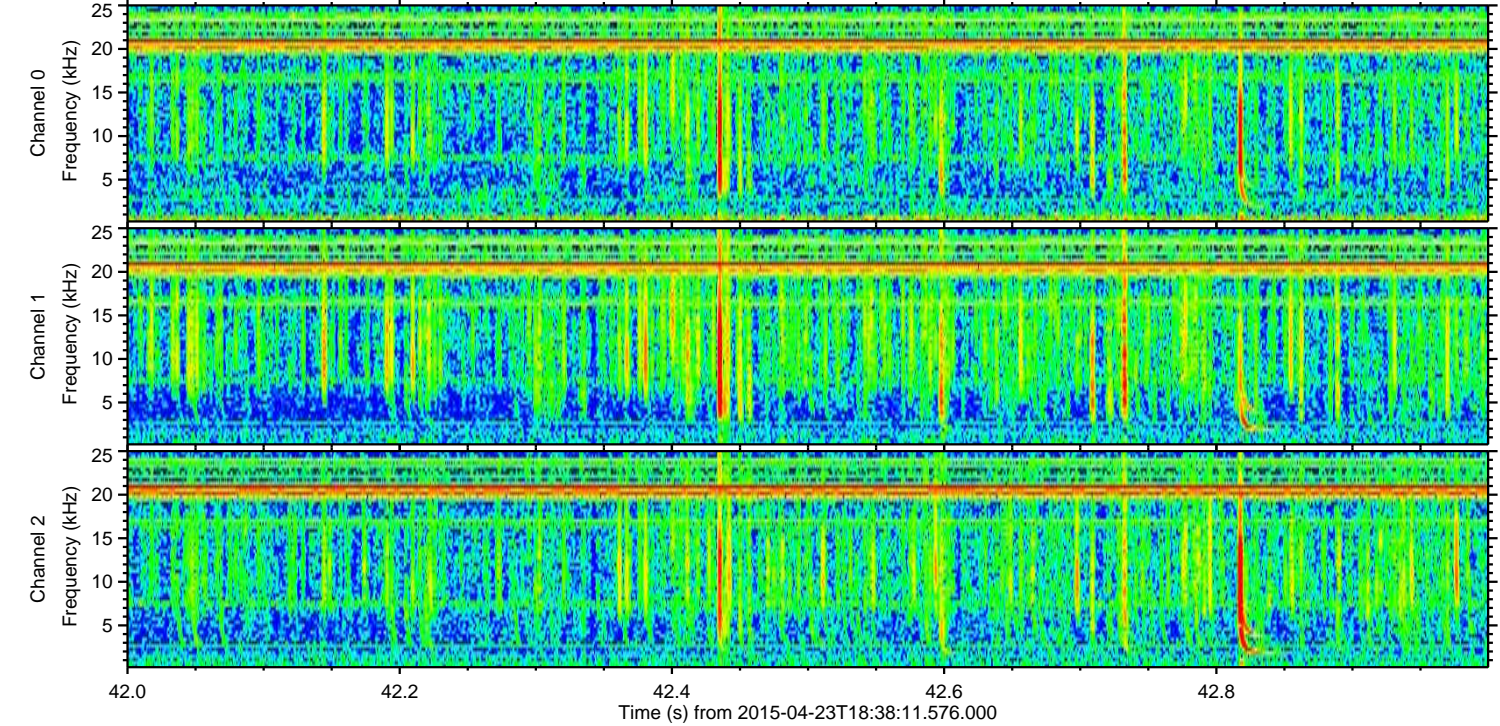
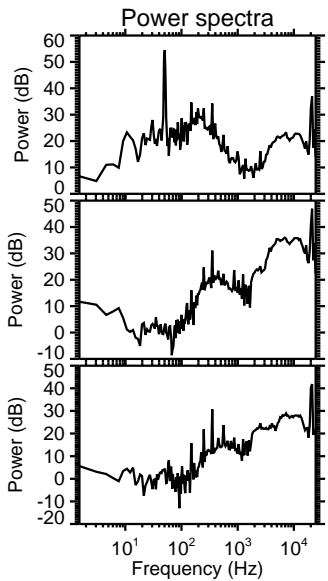
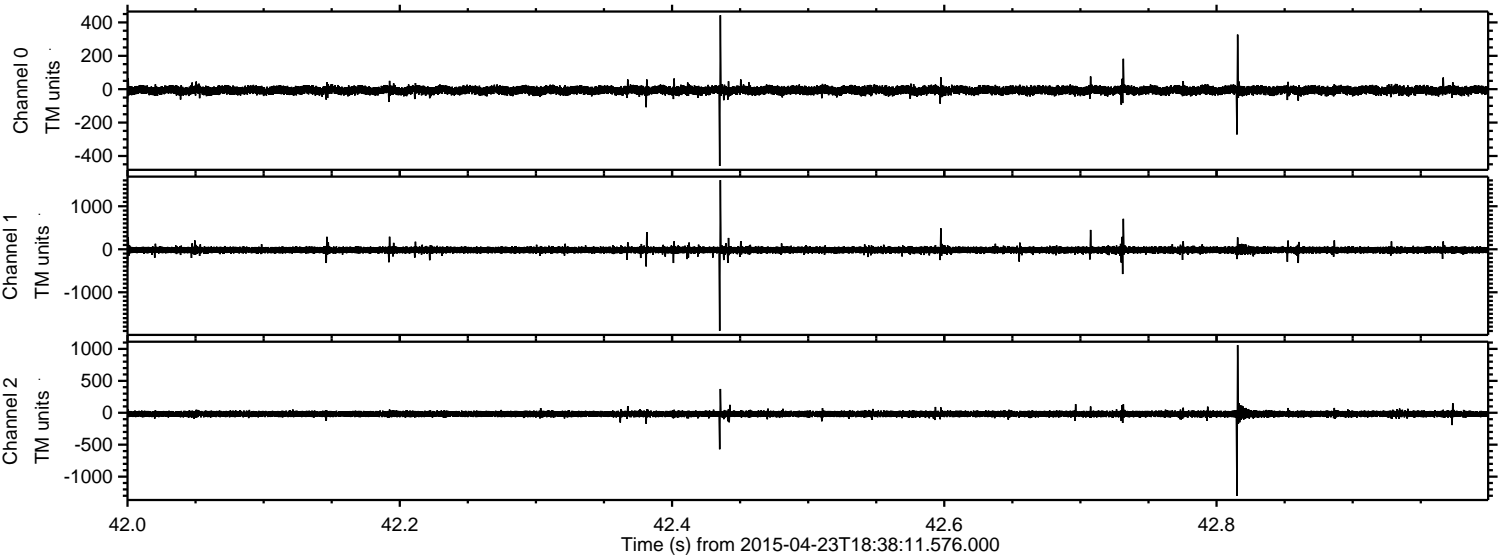


Processed Thu Apr 23 20:45:13 2015 by ELM ver.2012-10-06 from 001\_\_elm20150423\_183810\_\_dat00.bin



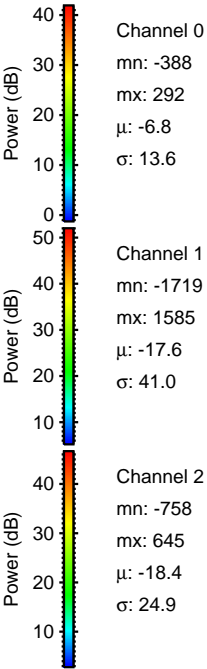
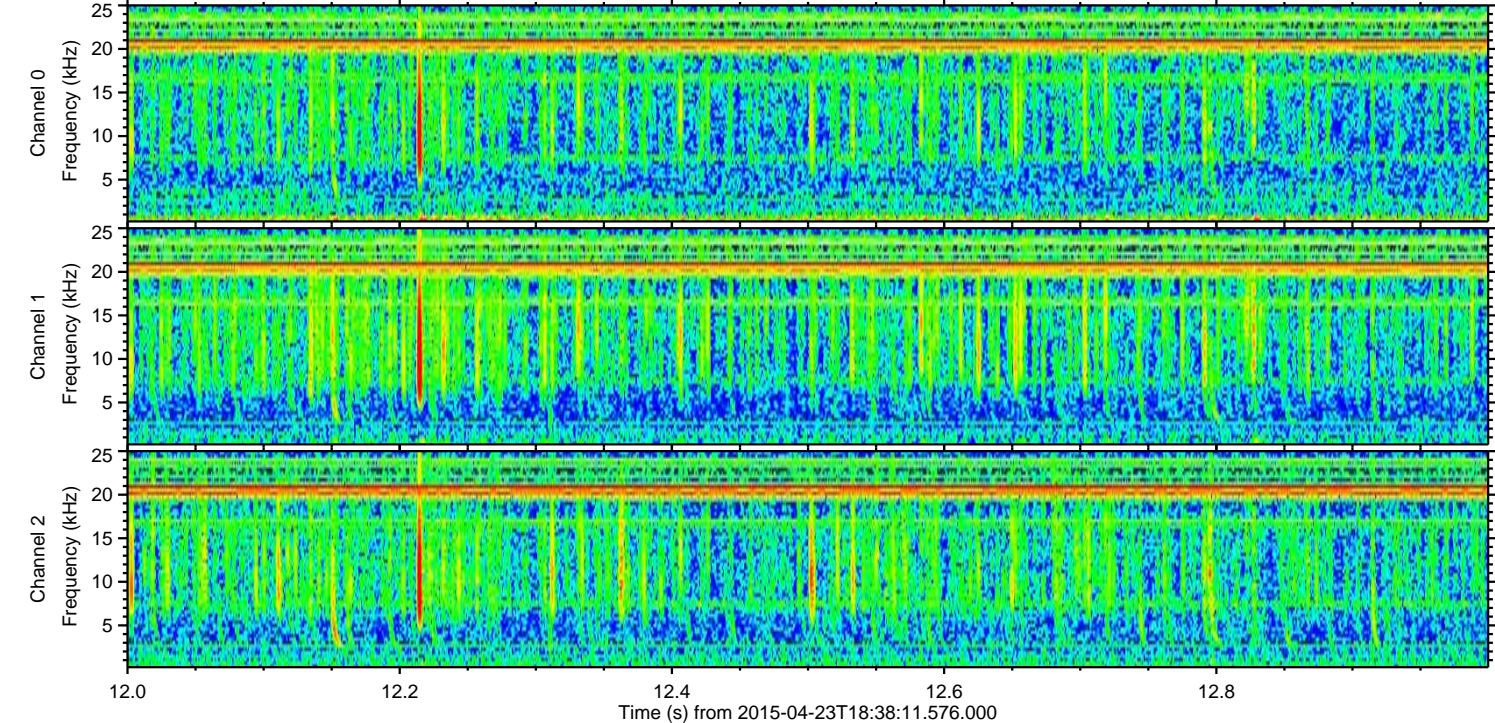
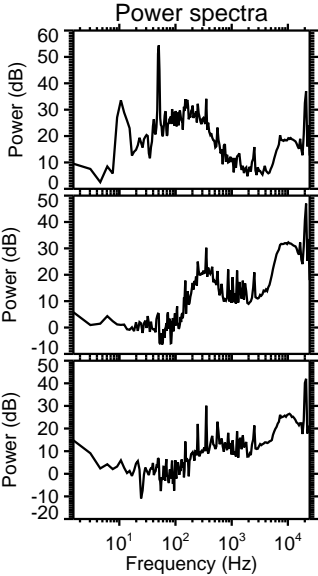
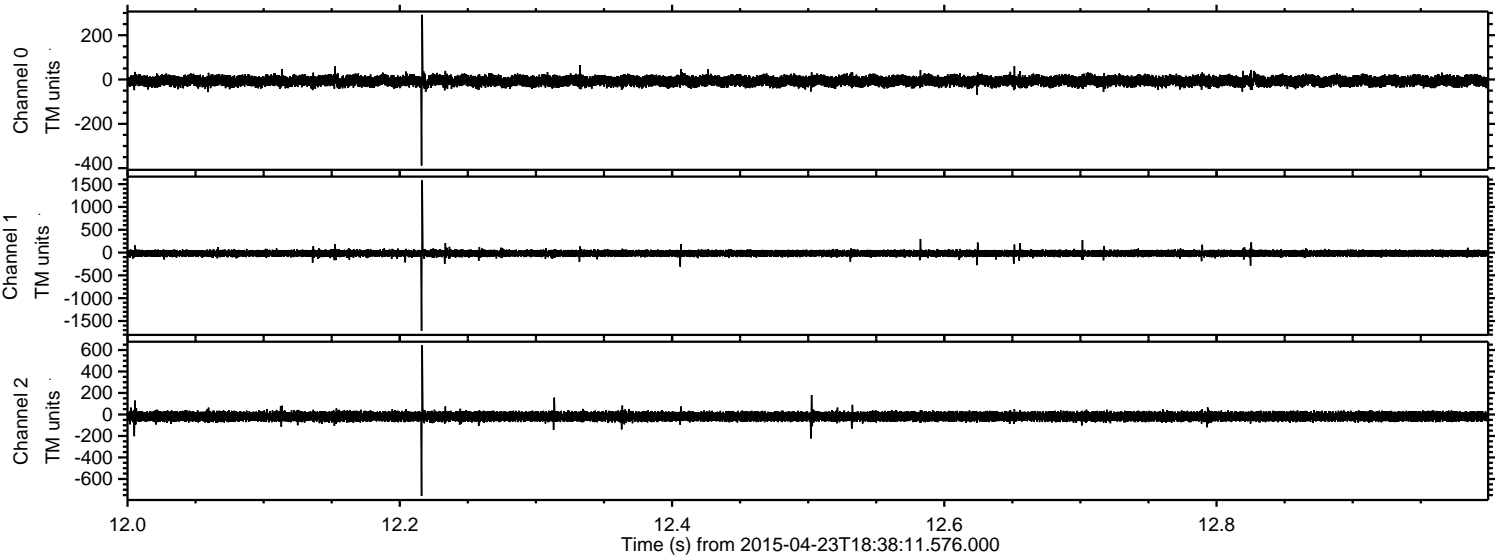


Processed Thu Apr 23 20:45:14 2015 by ELM ver.2012-10-06 from 001\_\_elm20150423\_183810\_\_dat00.bin



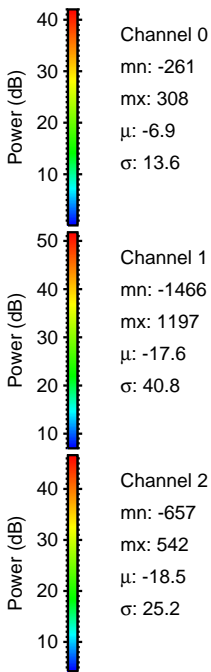
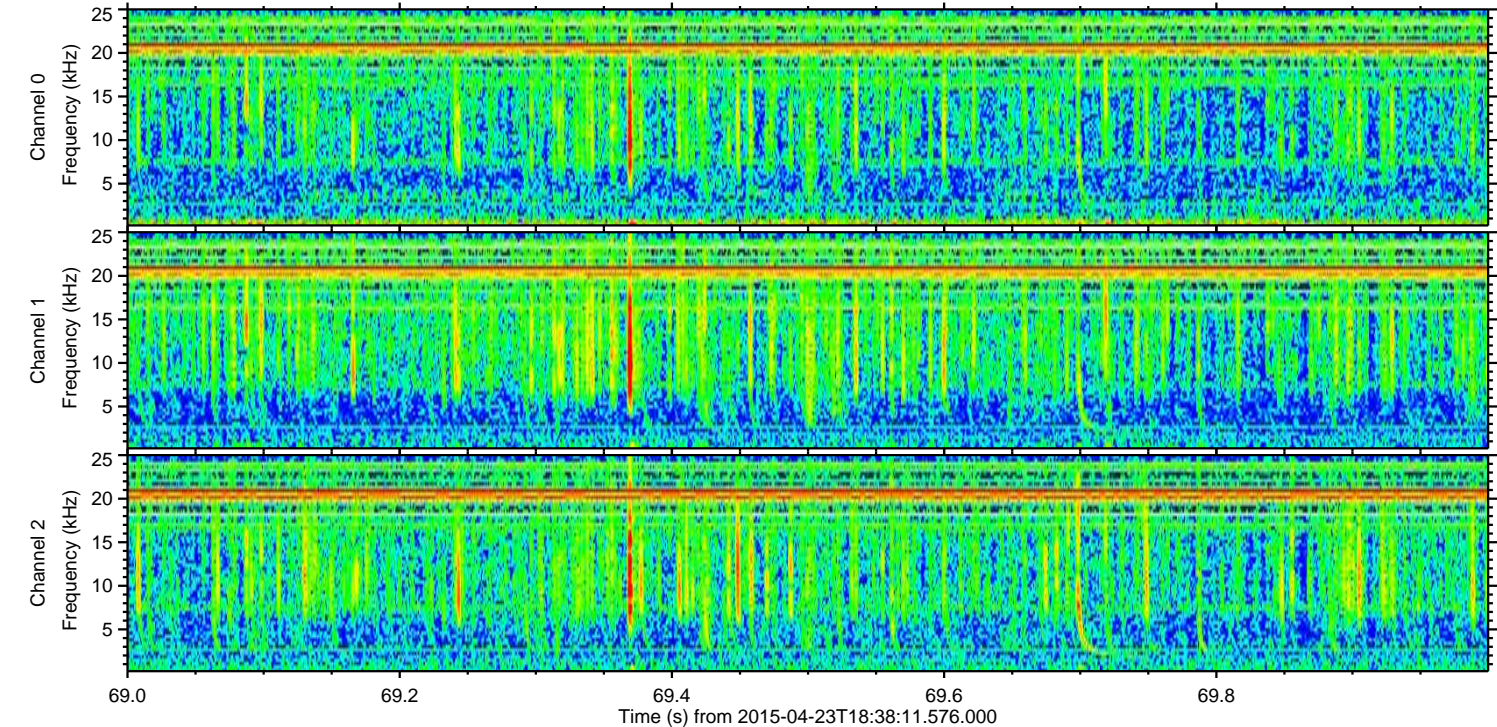
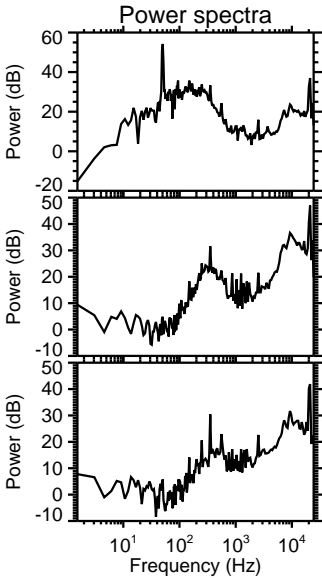
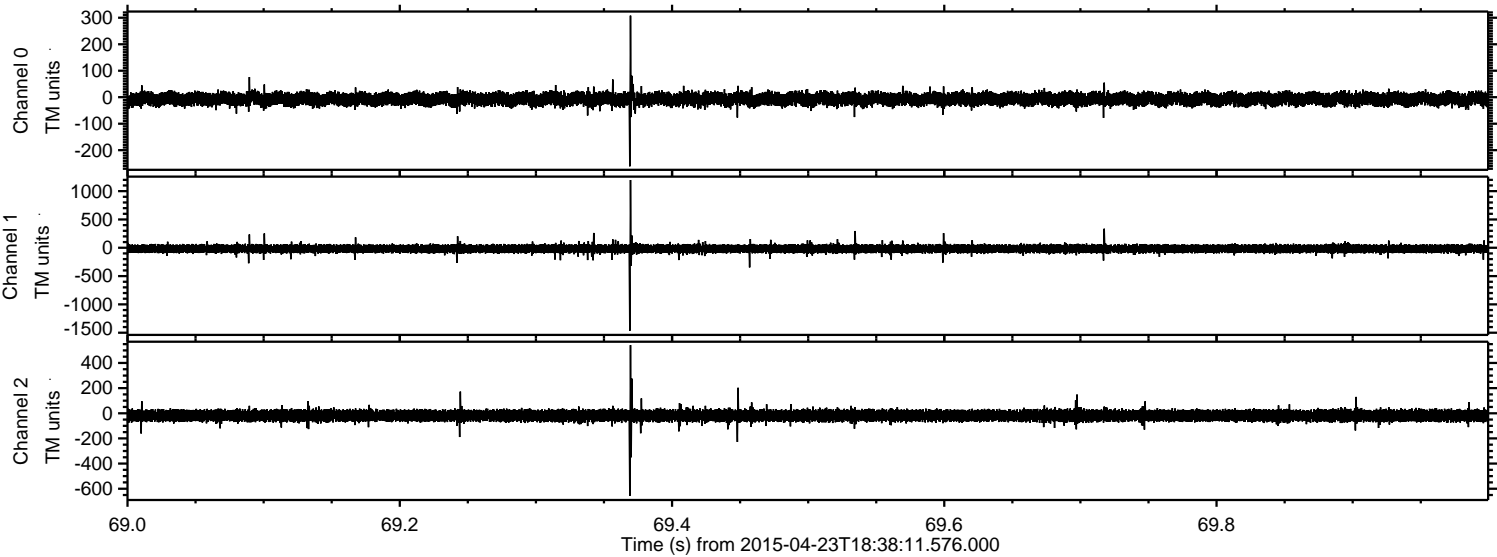


Processed Thu Apr 23 20:45:15 2015 by ELM ver.2012-10-06 from 001\_\_elm20150423\_183810\_\_dat00.bin





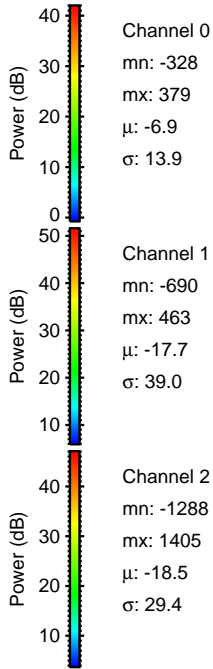
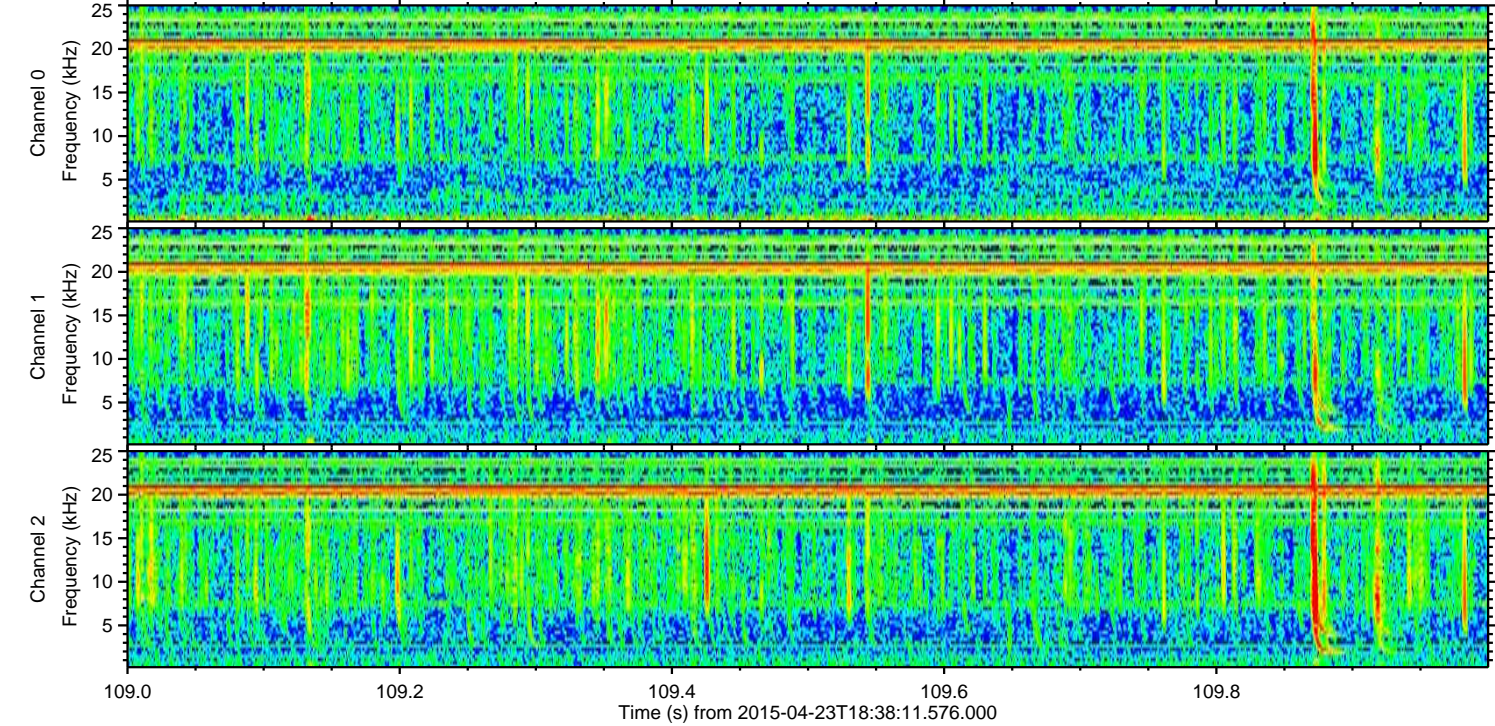
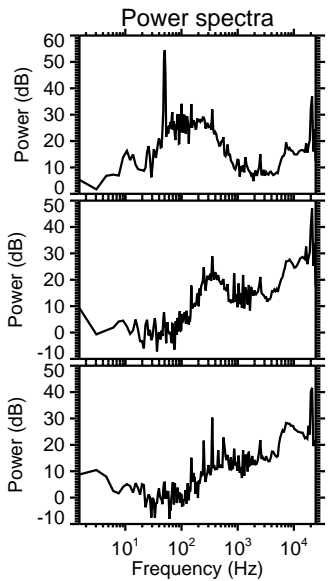
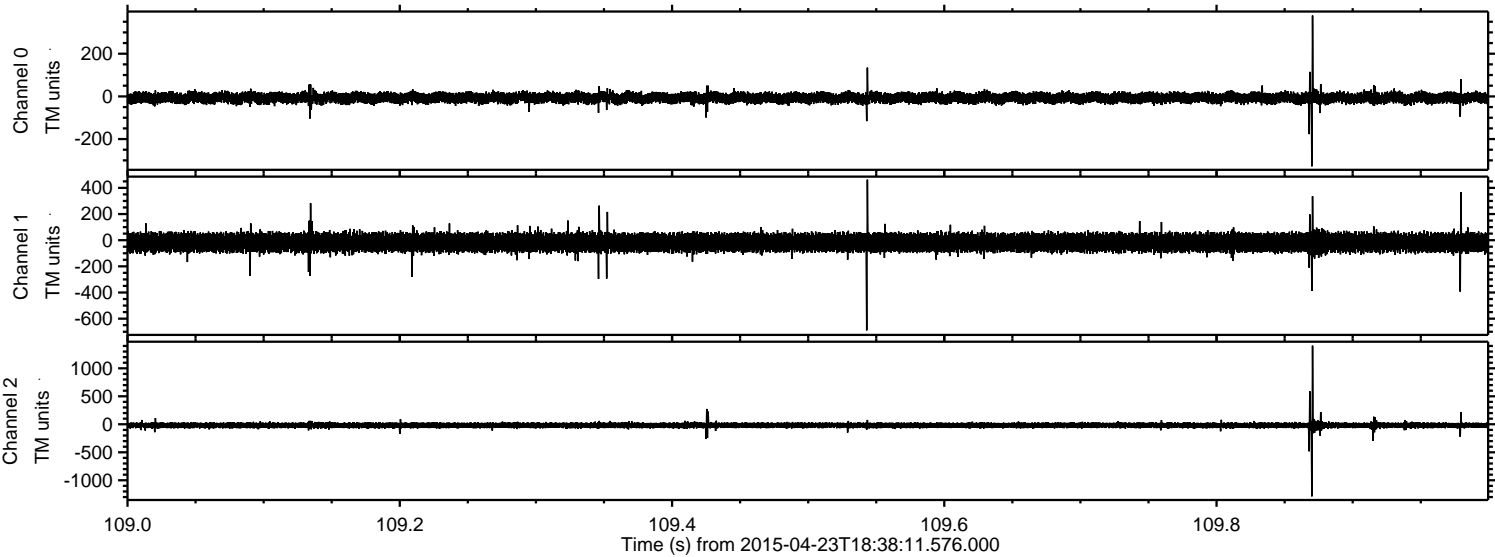
Processed Thu Apr 23 20:45:16 2015 by ELM ver.2012-10-06 from 001\_\_elm20150423\_183810\_\_dat00.bin





ELMAVAN 3D WAVEFORMS (Measured data sampled at 50 kHz) 49773 packets of 144 samples from 2015-04-23T18:38:11.576.000. Part 110/144

Processed Thu Apr 23 20:45:17 2015 by ELM ver.2012-10-06 from 001\_\_elm20150423\_183810\_\_dat00.bin



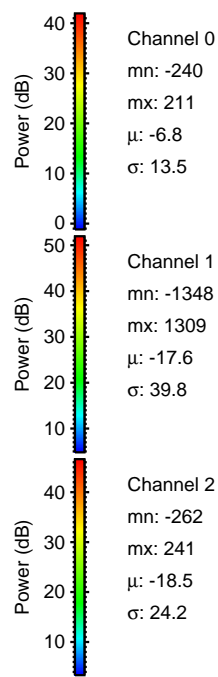
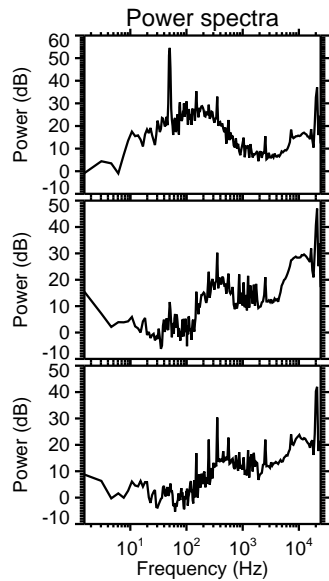
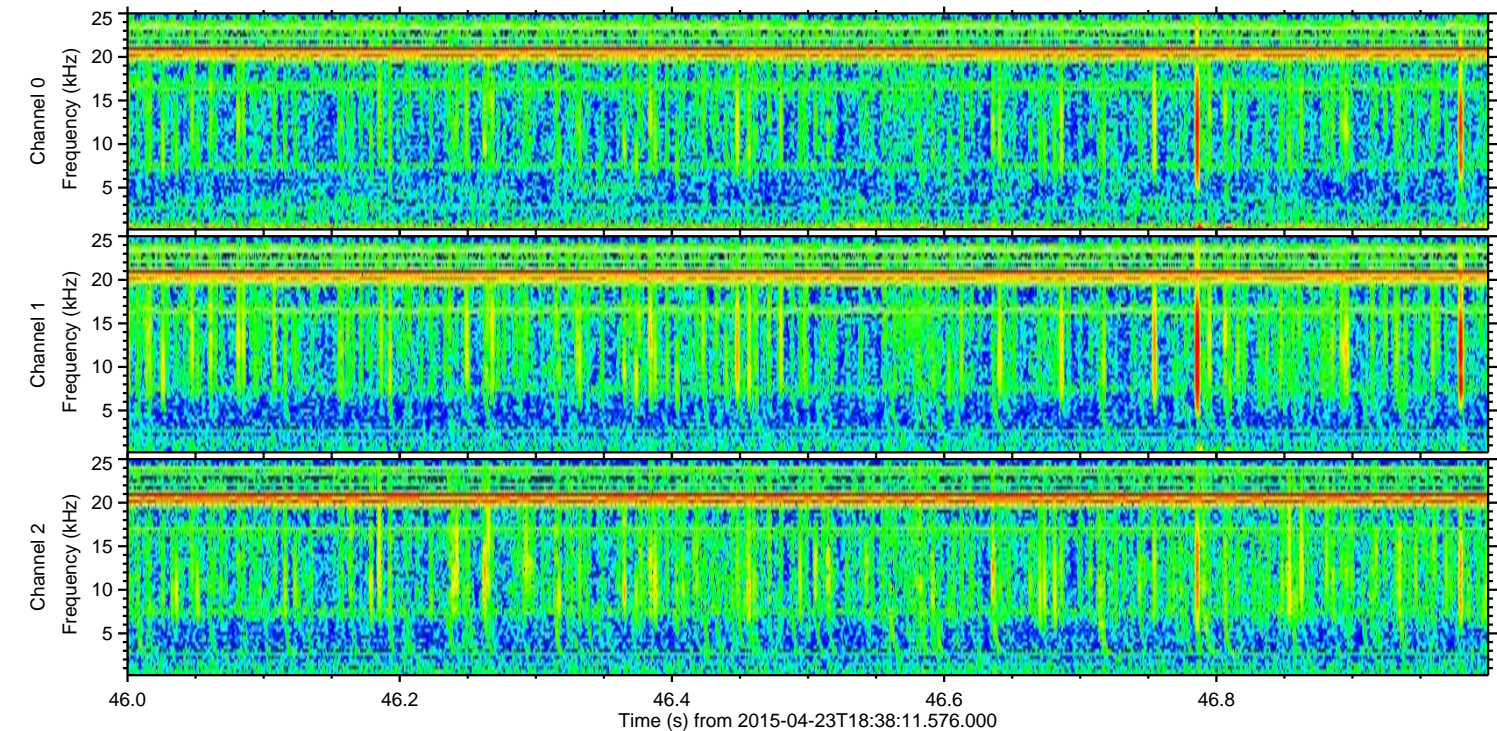
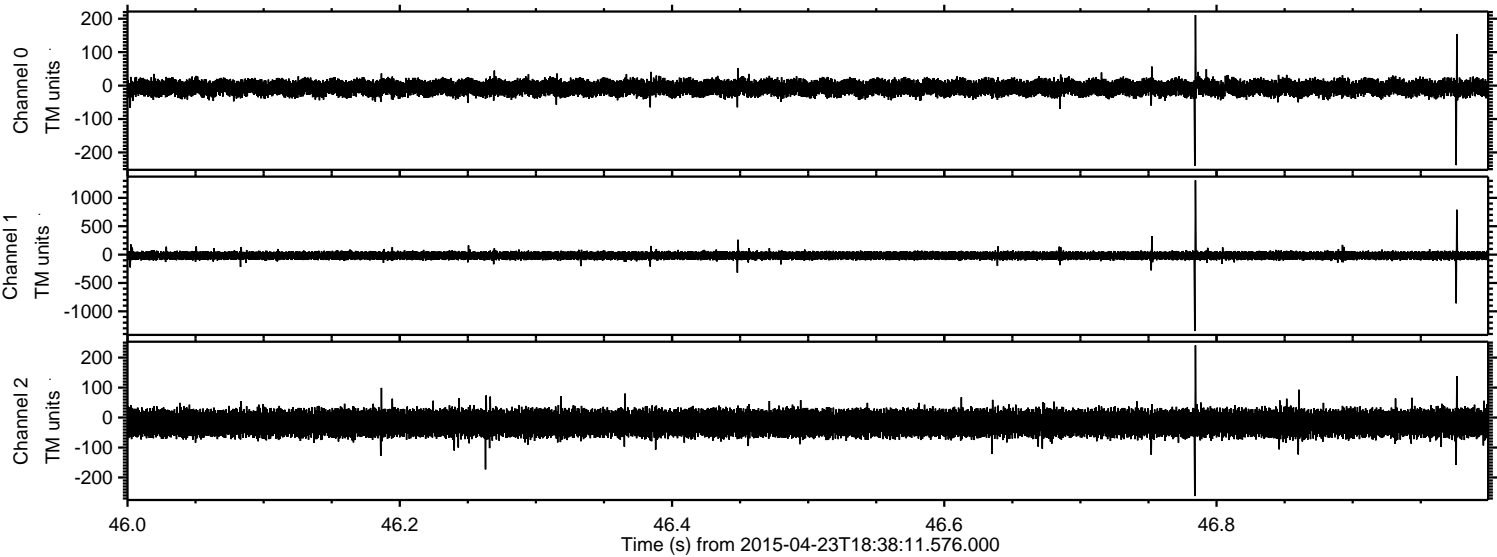
Channel 0  
mn: -328  
mx: 379  
 $\mu$ : -6.9  
 $\sigma$ : 13.9

Channel 1  
mn: -690  
mx: 463  
 $\mu$ : -17.7  
 $\sigma$ : 39.0

Channel 2  
mn: -1288  
mx: 1405  
 $\mu$ : -18.5  
 $\sigma$ : 29.4



Processed Thu Apr 23 20:45:18 2015 by ELM ver.2012-10-06 from 001\_\_elm20150423\_183810\_\_dat00.bin



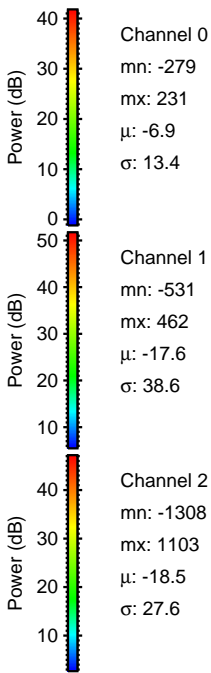
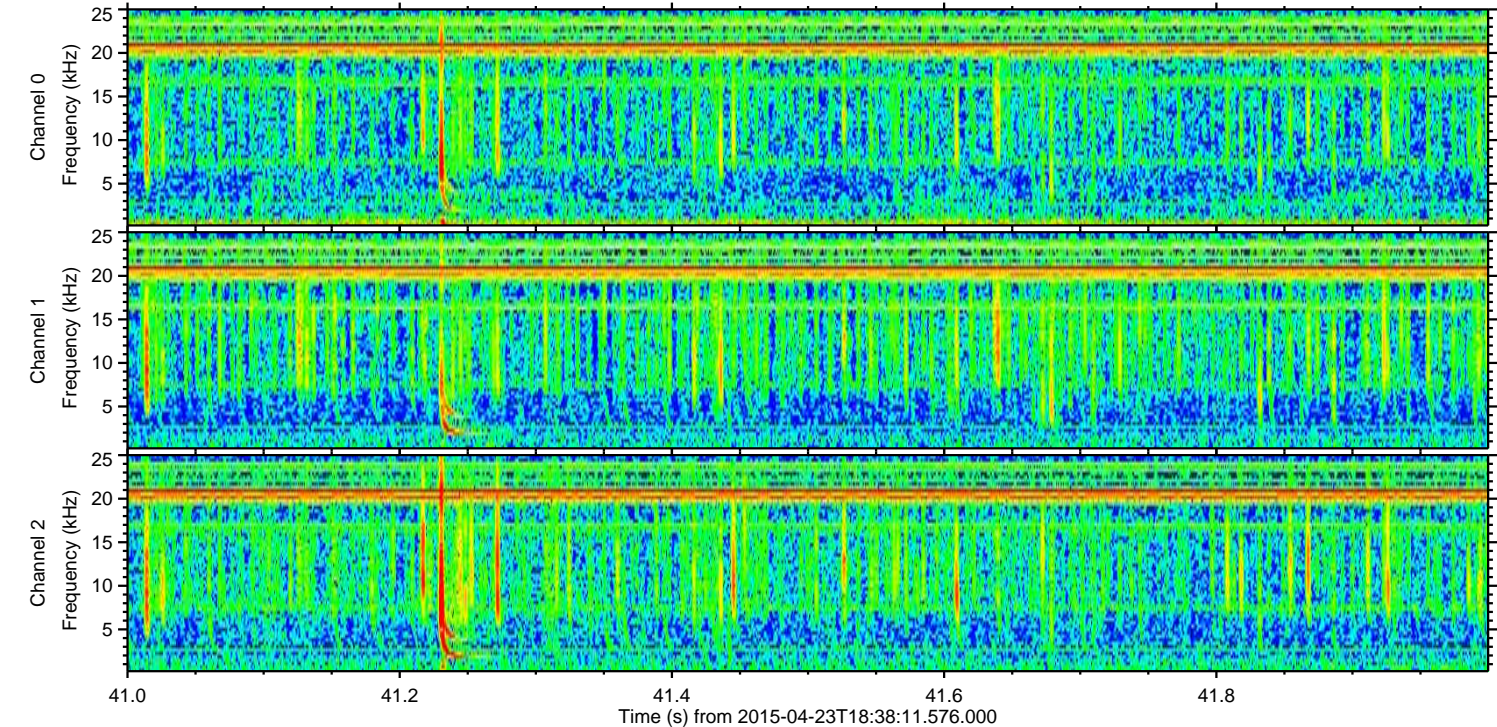
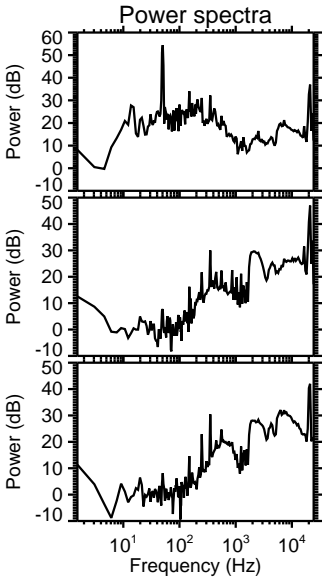
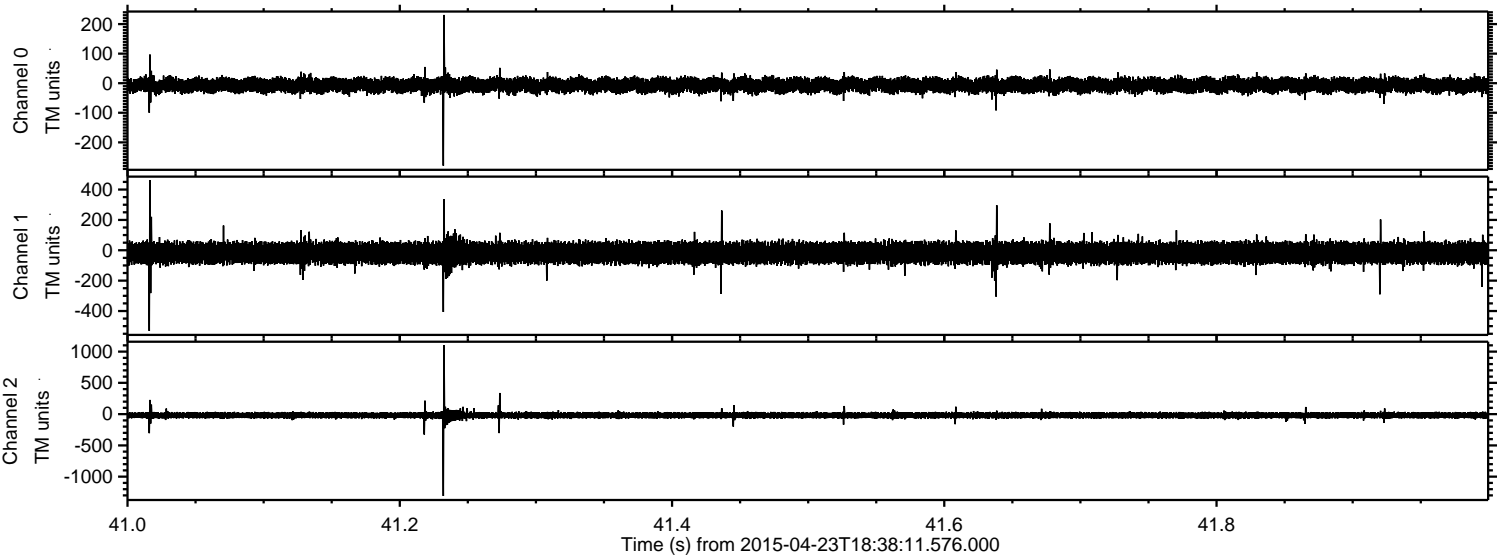
Channel 0  
mn: -240  
mx: 211  
 $\mu$ : -6.8  
 $\sigma$ : 13.5

Channel 1  
mn: -1348  
mx: 1309  
 $\mu$ : -17.6  
 $\sigma$ : 39.8

Channel 2  
mn: -262  
mx: 241  
 $\mu$ : -18.5  
 $\sigma$ : 24.2



Processed Thu Apr 23 20:45:19 2015 by ELM ver.2012-10-06 from 001\_\_elm20150423\_183810\_\_dat00.bin





Processed Thu Apr 23 20:45:20 2015 by ELM ver.2012-10-06 from 001\_\_elm20150423\_183810\_\_dat00.bin

