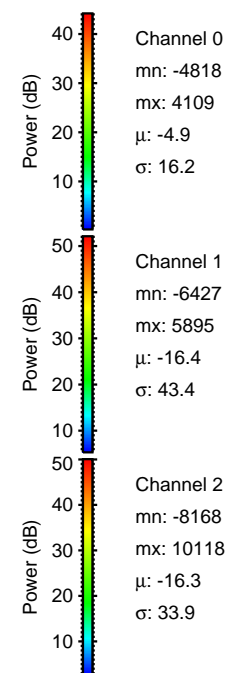
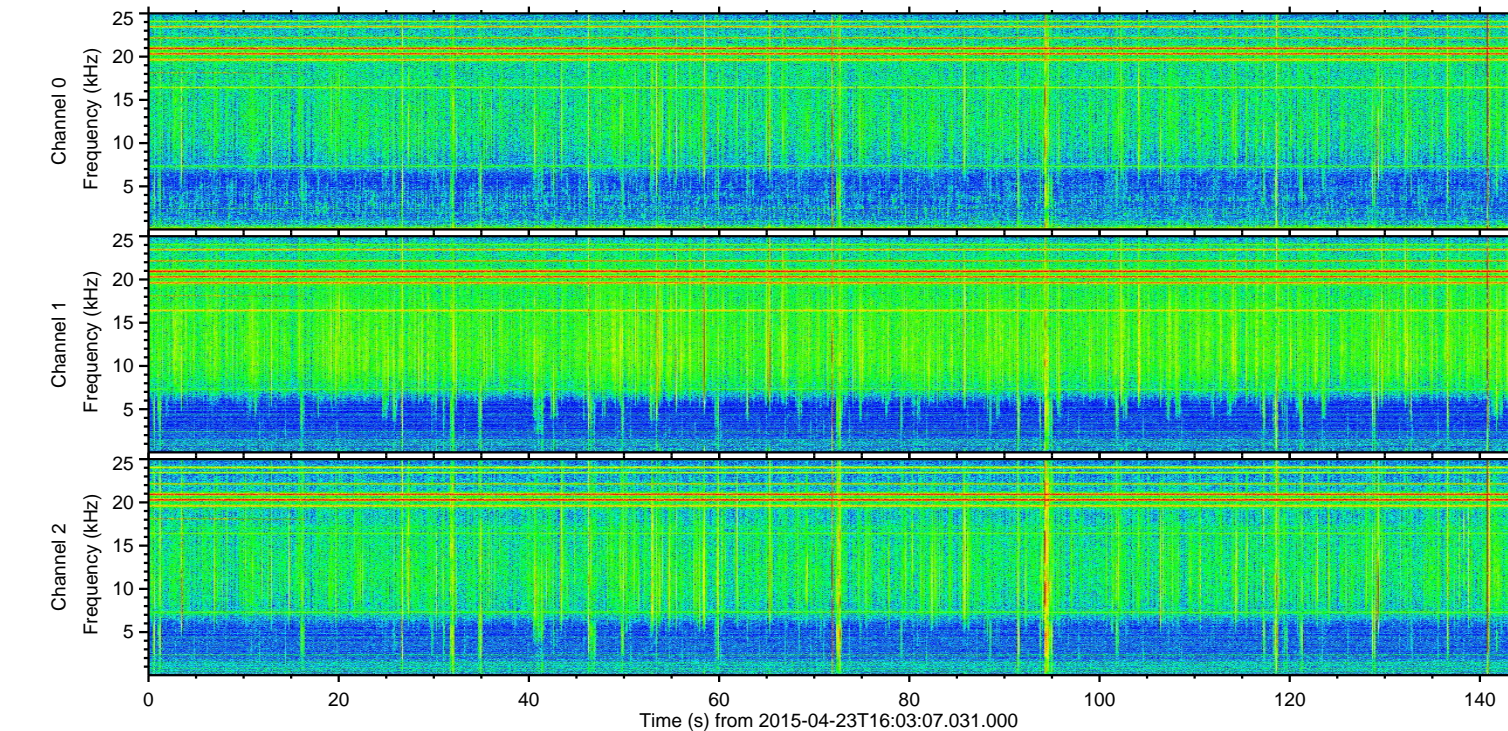
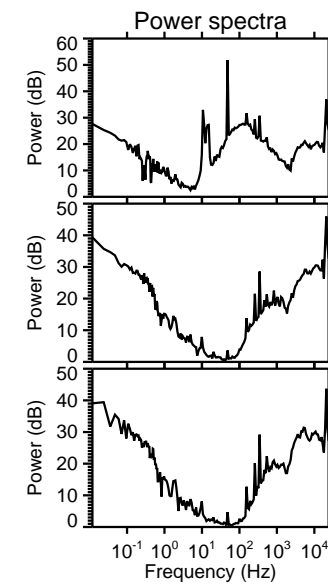
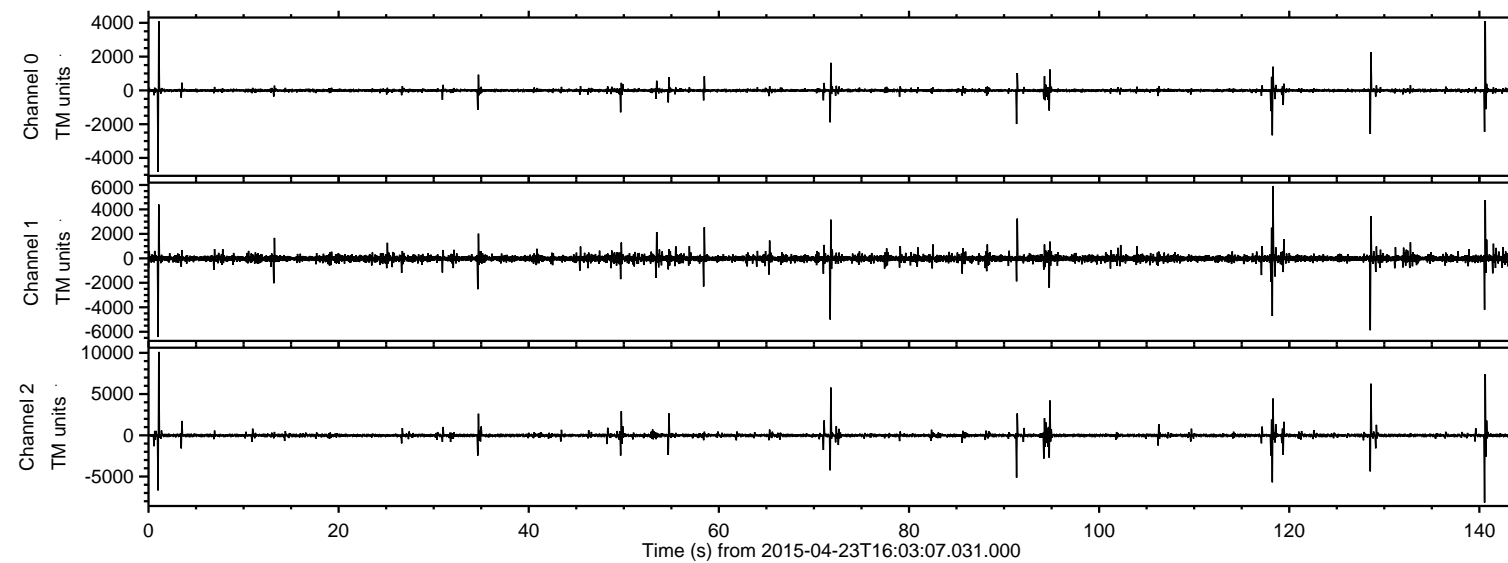


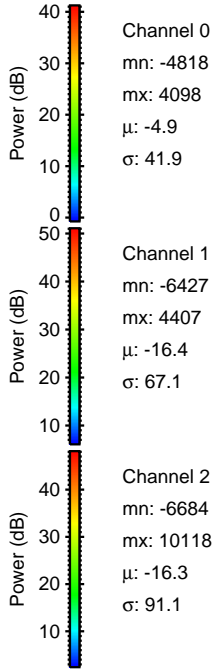
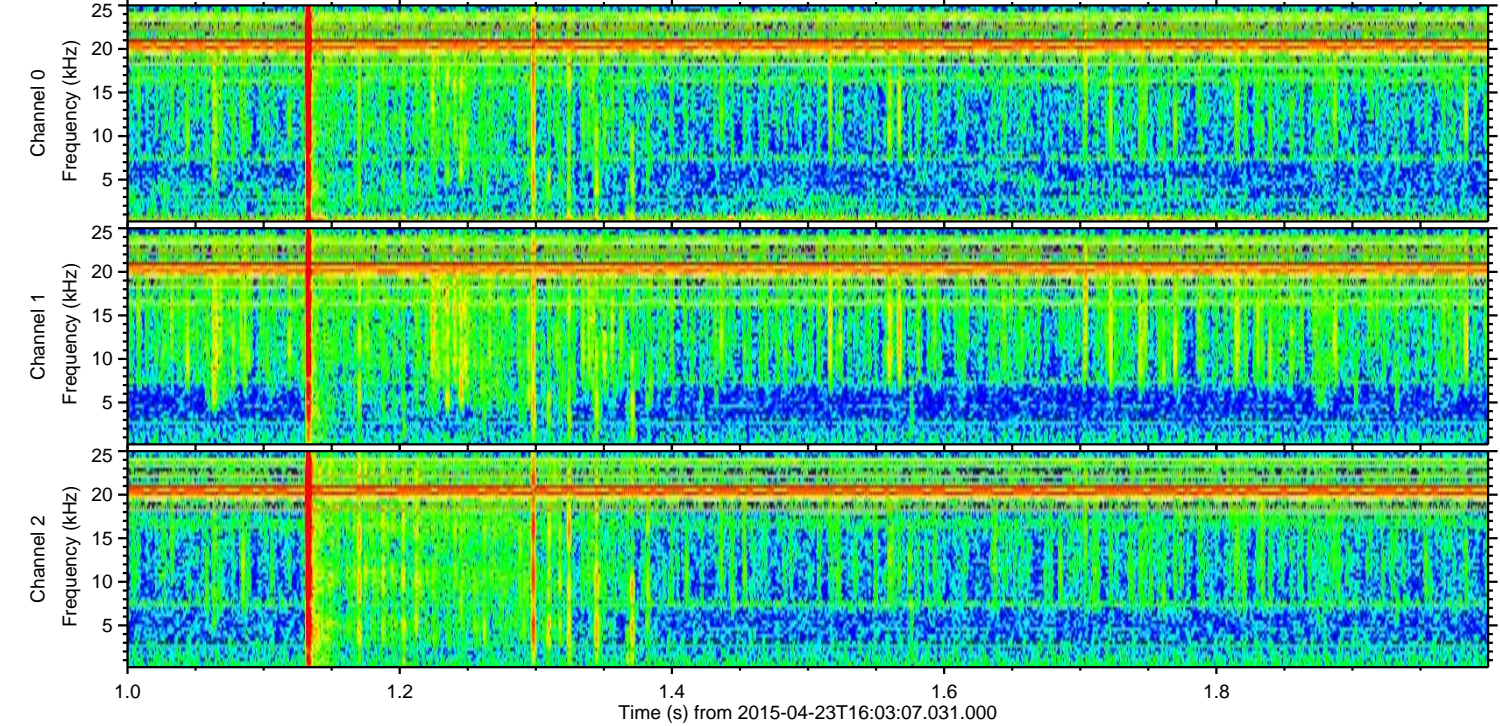
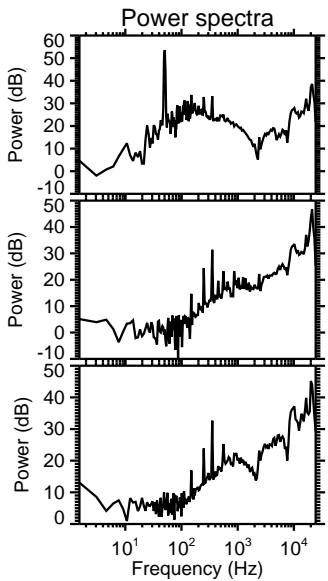
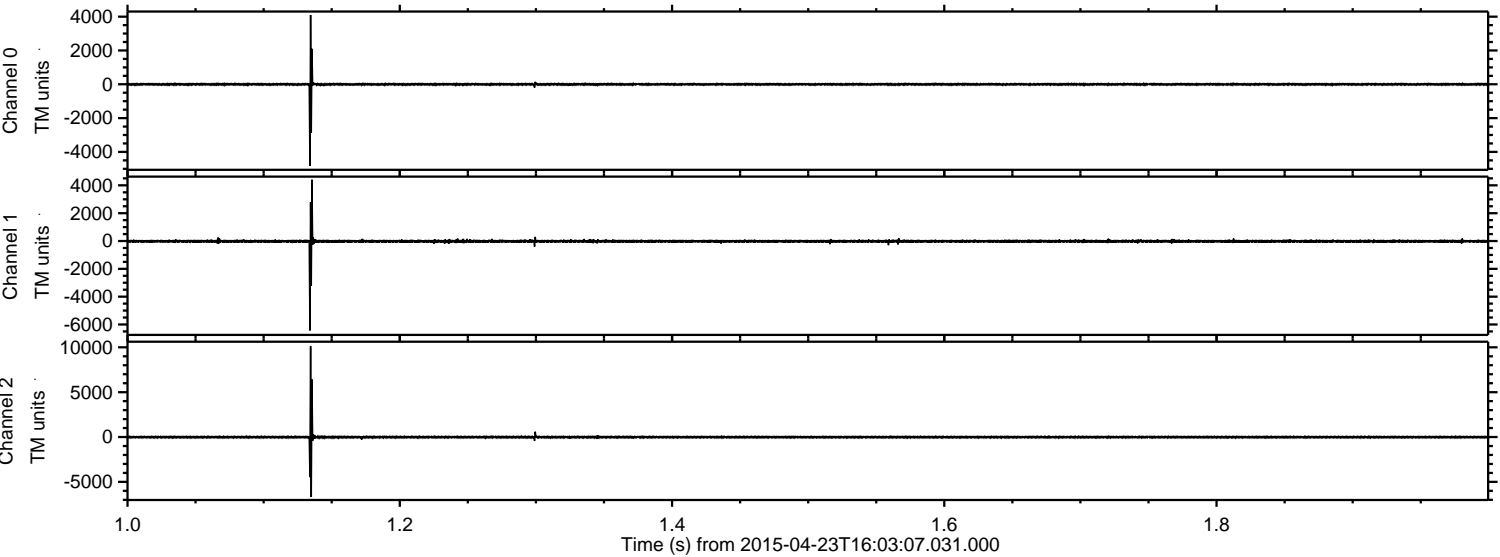
ELMAVAN 3D WAVEFORMS (Measured data sampled at 50 kHz) 49699 packets of 144 samples from 2015-04-23T16:03:07.031.000.

Processed Thu Apr 23 18:09:43 2015 by ELM ver.2012-10-06 from 001__elm20150423_160306__dat00.bin



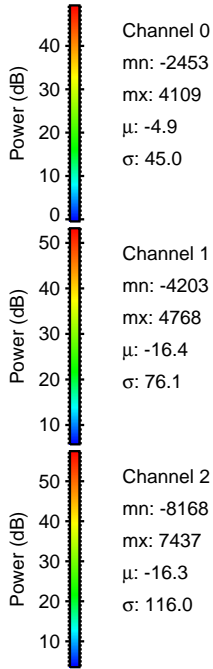
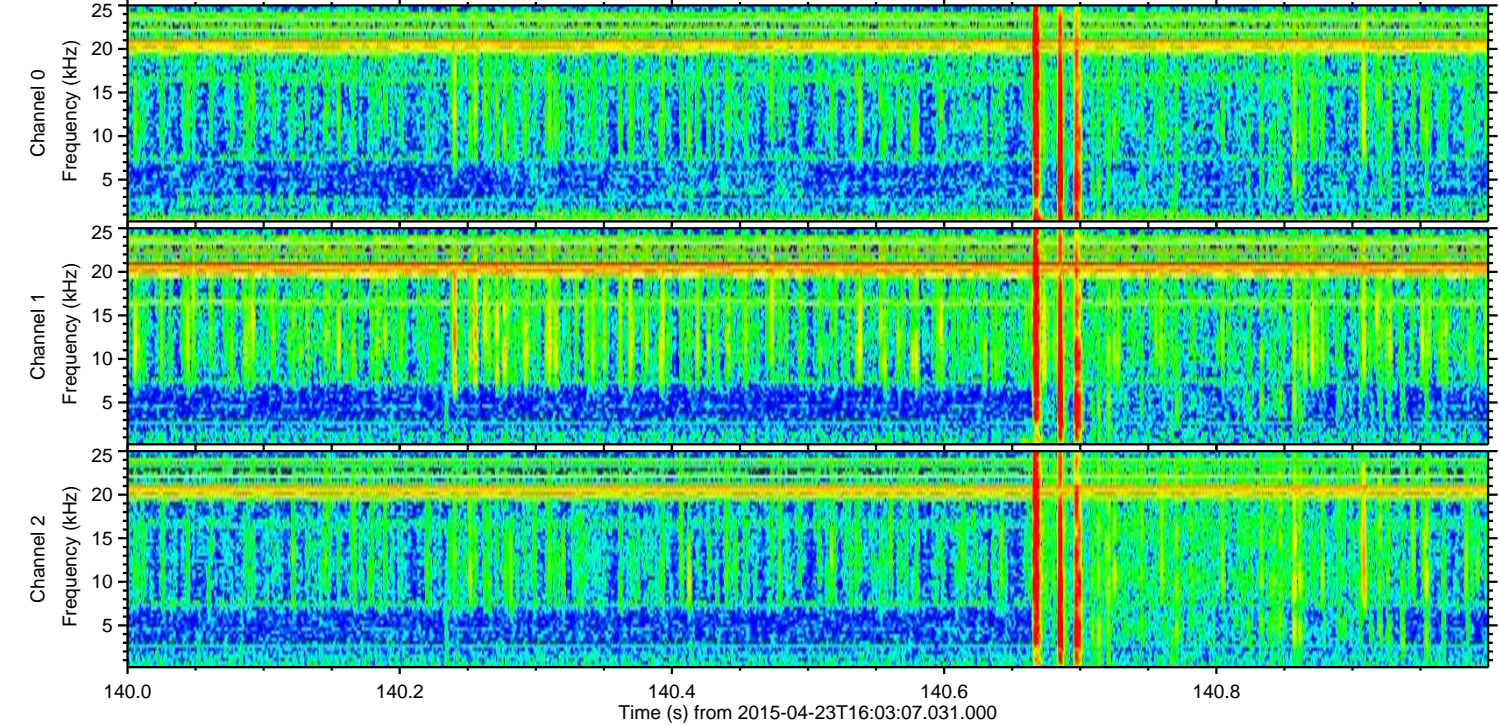
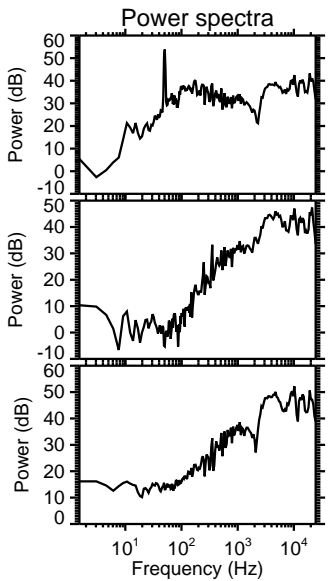
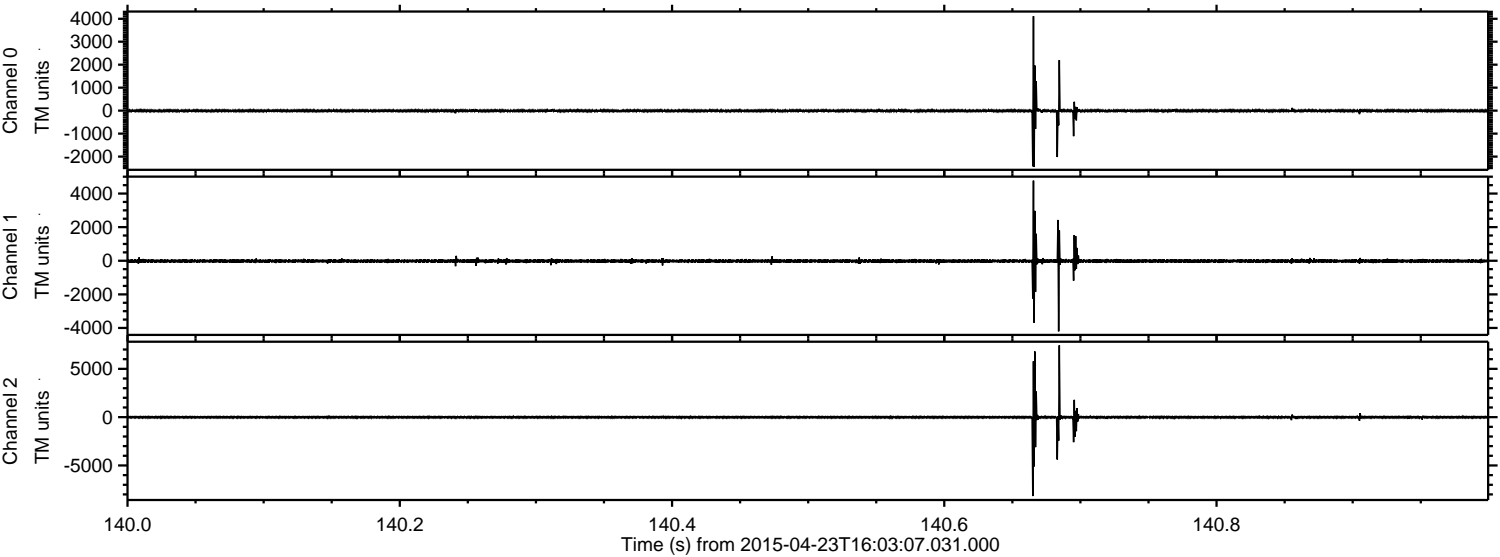
ELMAVAN 3D WAVEFORMS (Measured data sampled at 50 kHz) 49699 packets of 144 samples from 2015-04-23T16:03:07.031.000. Part 2/144

Processed Thu Apr 23 18:09:54 2015 by ELM ver.2012-10-06 from 001__elm20150423_160306__dat00.bin



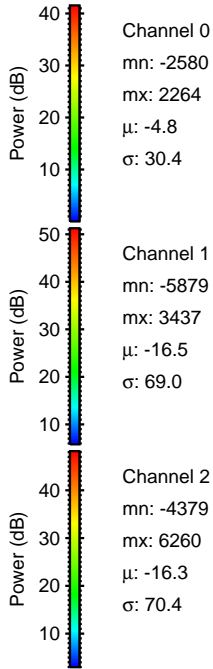
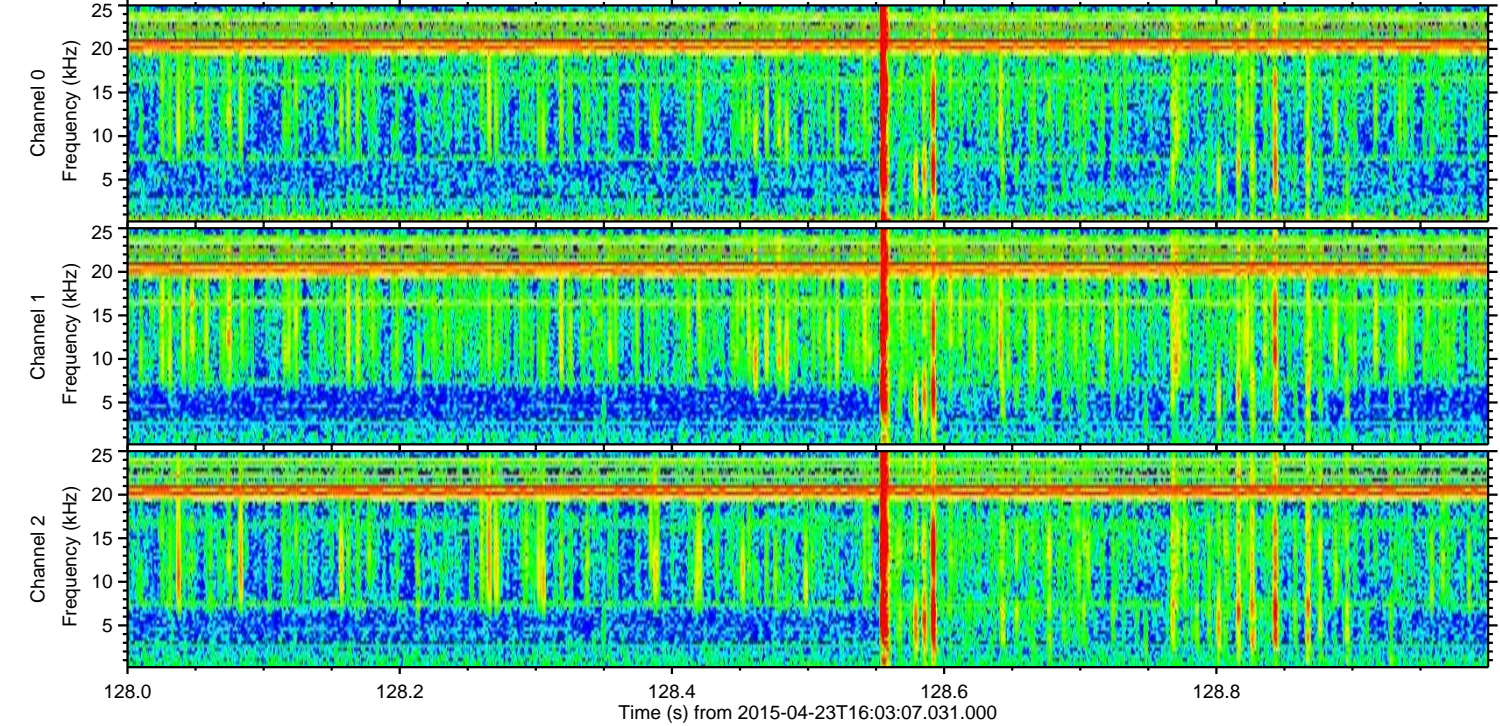
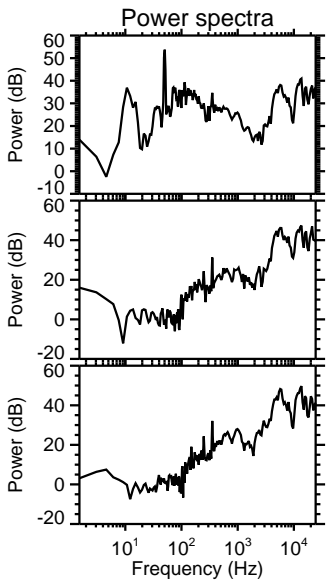
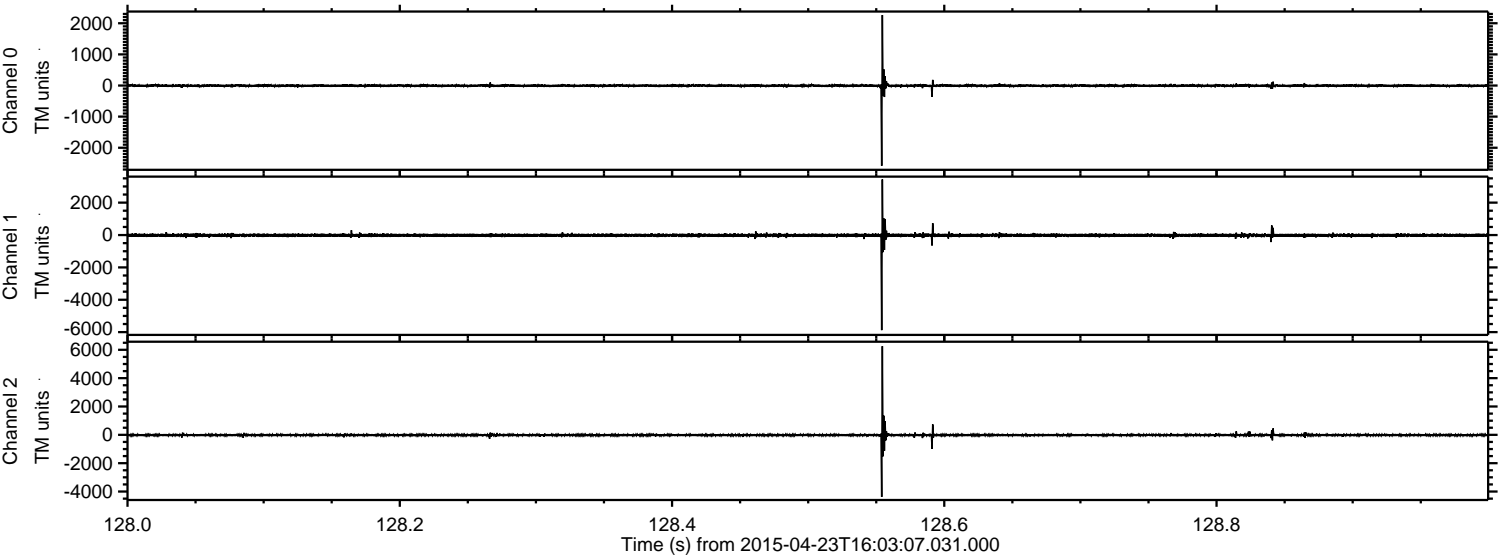
ELMAVAN 3D WAVEFORMS (Measured data sampled at 50 kHz) 49699 packets of 144 samples from 2015-04-23T16:03:07.031.000. Part 141/144

Processed Thu Apr 23 18:09:55 2015 by ELM ver.2012-10-06 from 001__elm20150423_160306__dat00.bin



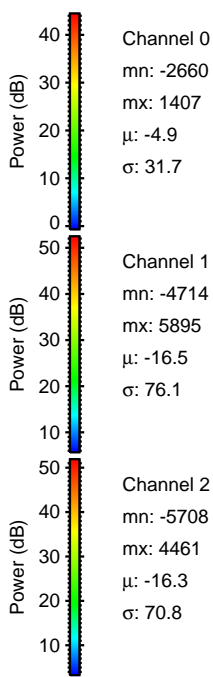
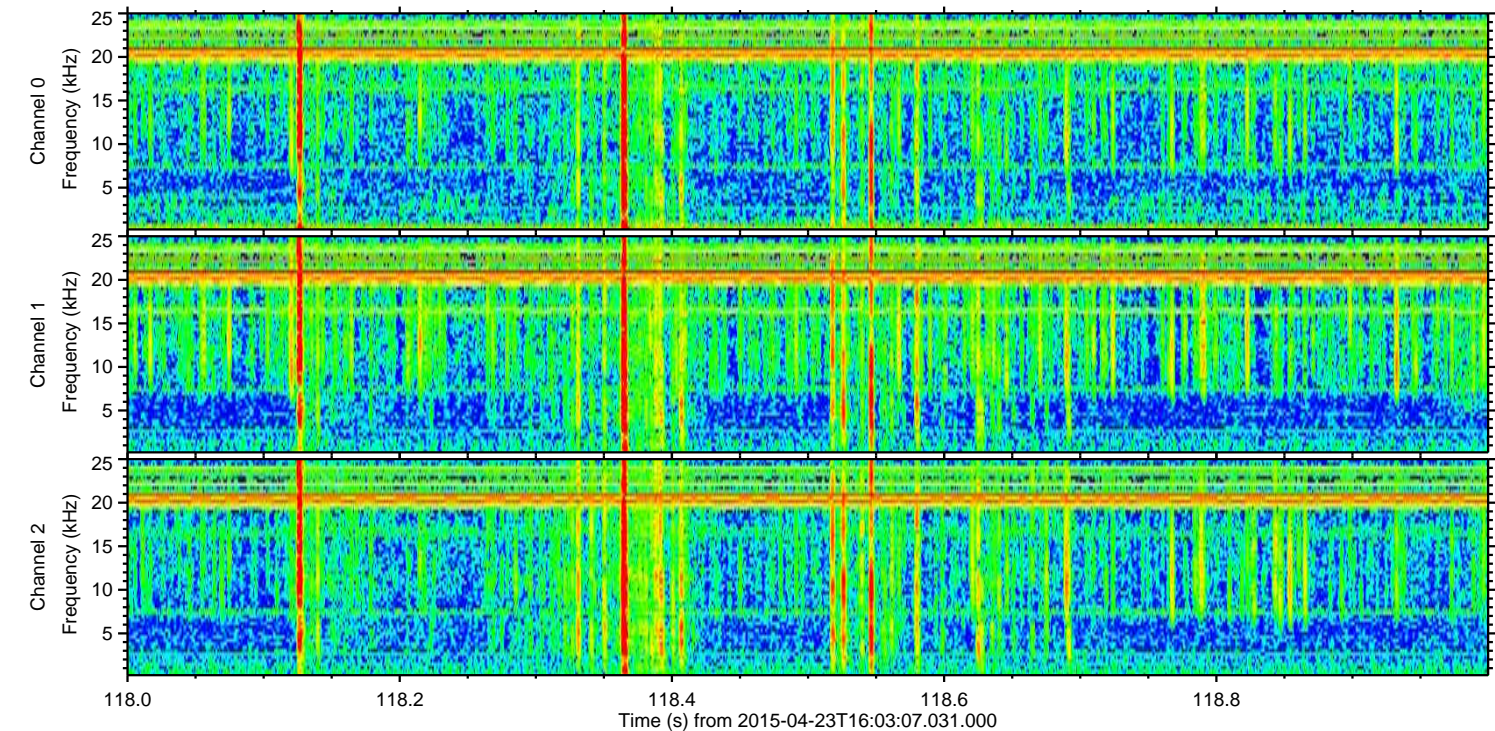
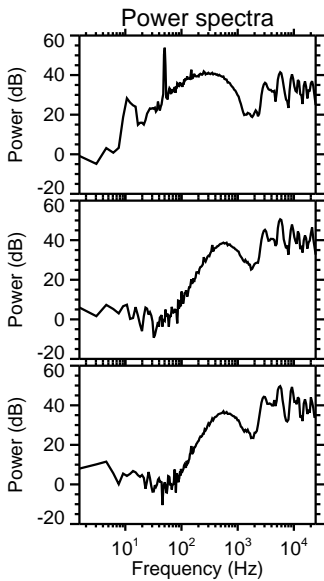
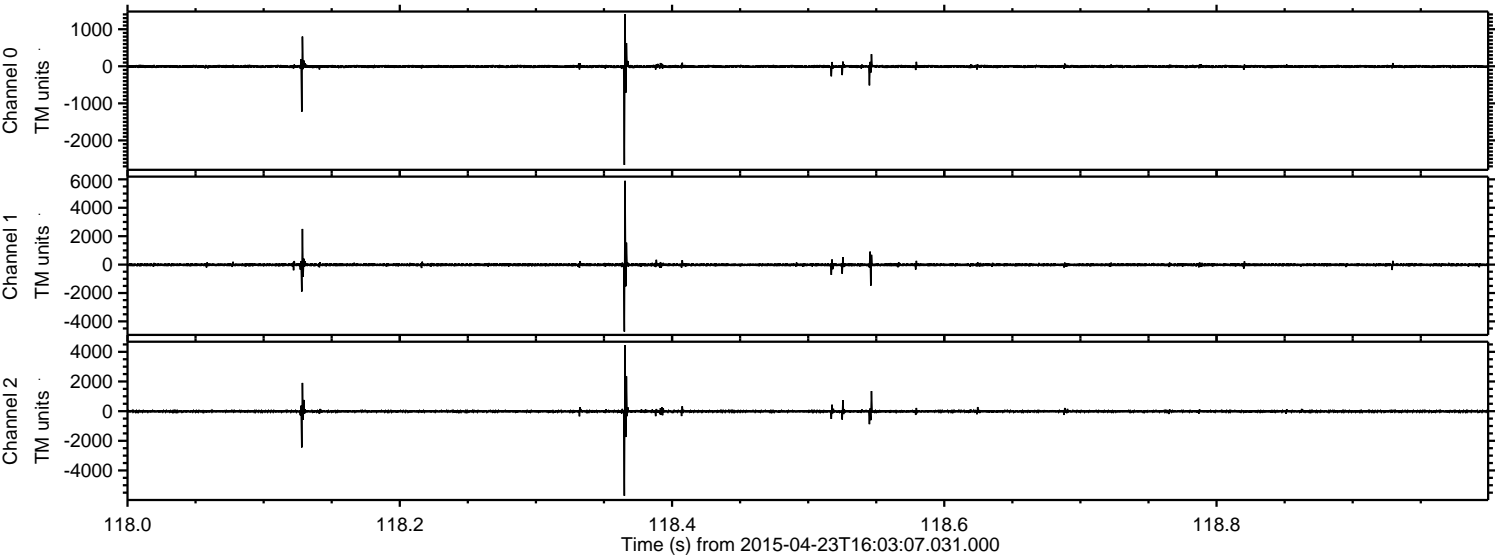
ELMAVAN 3D WAVEFORMS (Measured data sampled at 50 kHz) 49699 packets of 144 samples from 2015-04-23T16:03:07.031.000. Part 129/144

Processed Thu Apr 23 18:09:56 2015 by ELM ver.2012-10-06 from 001__elm20150423_160306__dat00.bin



ELMAVAN 3D WAVEFORMS (Measured data sampled at 50 kHz) 49699 packets of 144 samples from 2015-04-23T16:03:07.031.000. Part 119/144

Processed Thu Apr 23 18:09:57 2015 by ELM ver.2012-10-06 from 001__elm20150423_160306__dat00.bin

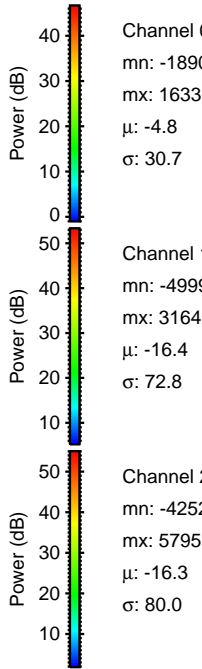
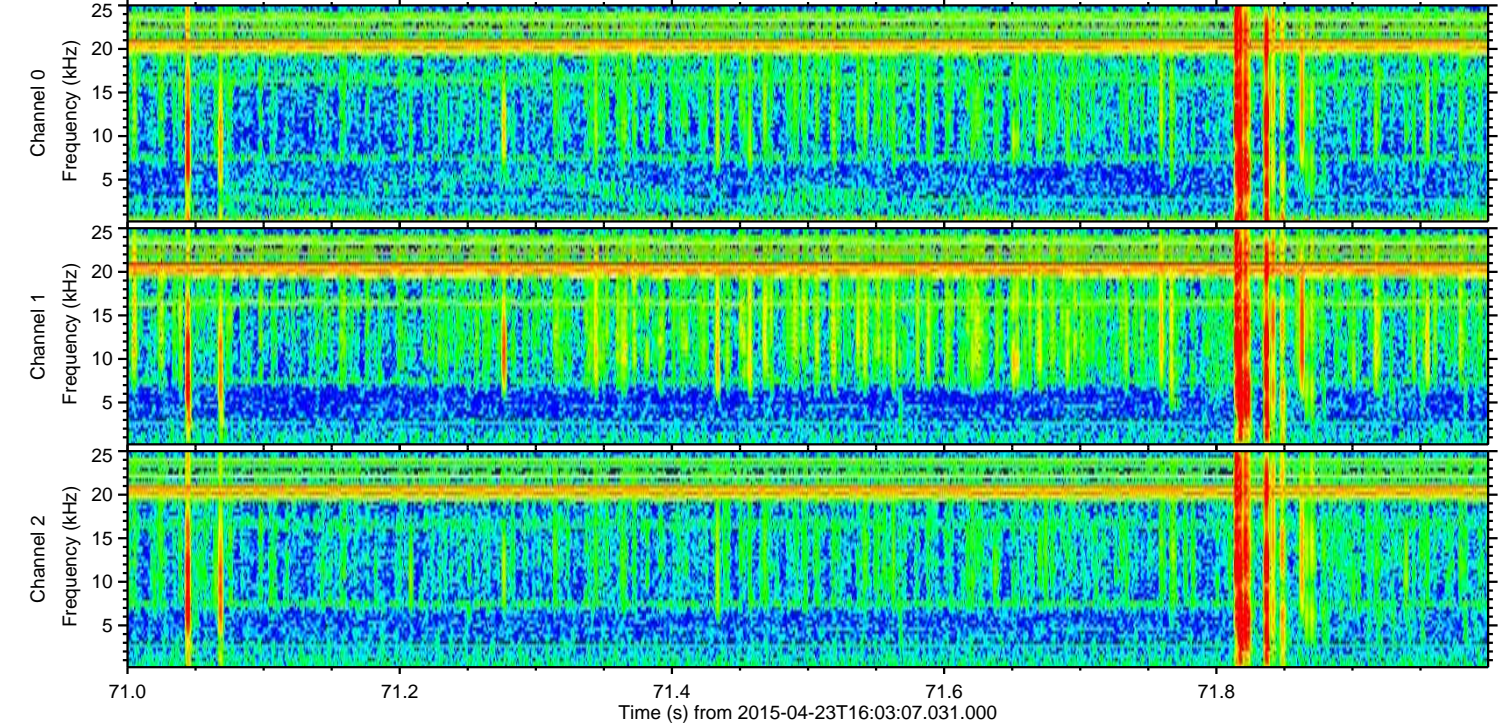
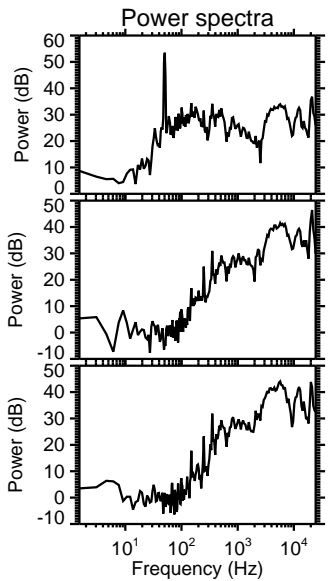
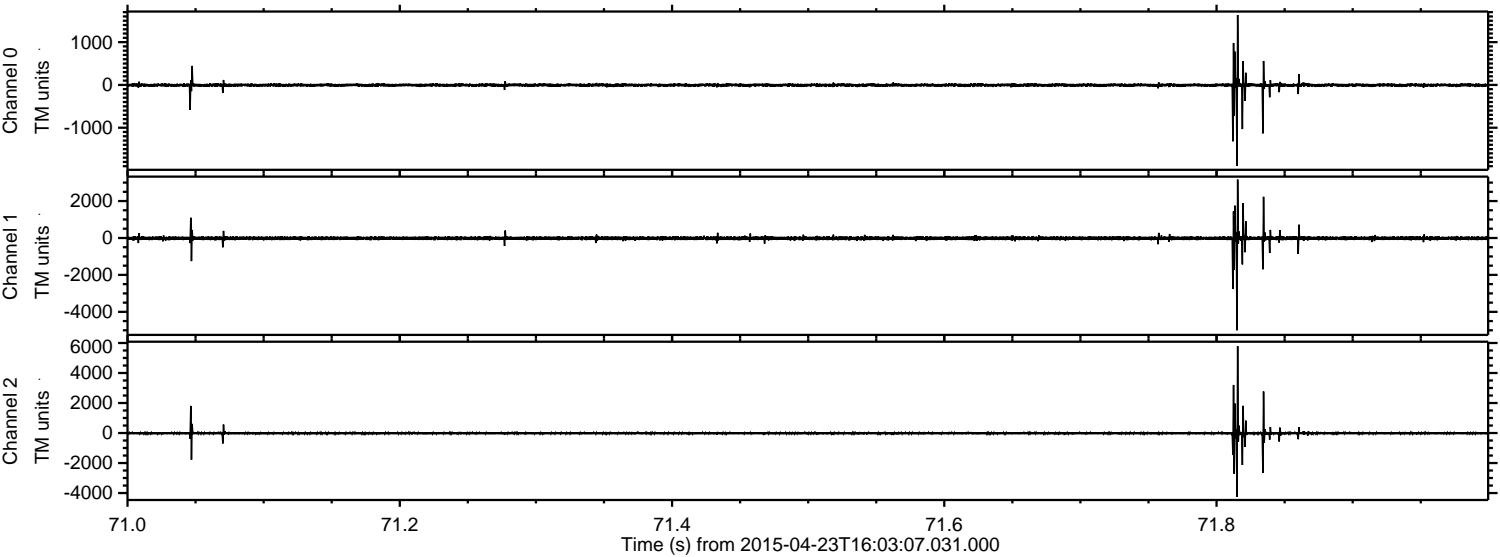


Channel 0
mn: -2660
mx: 1407
 μ : -4.9
 σ : 31.7

Channel 1
mn: -4714
mx: 5895
 μ : -16.5
 σ : 76.1

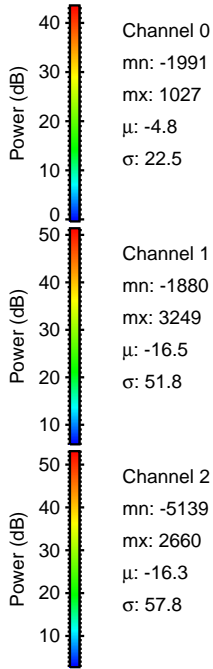
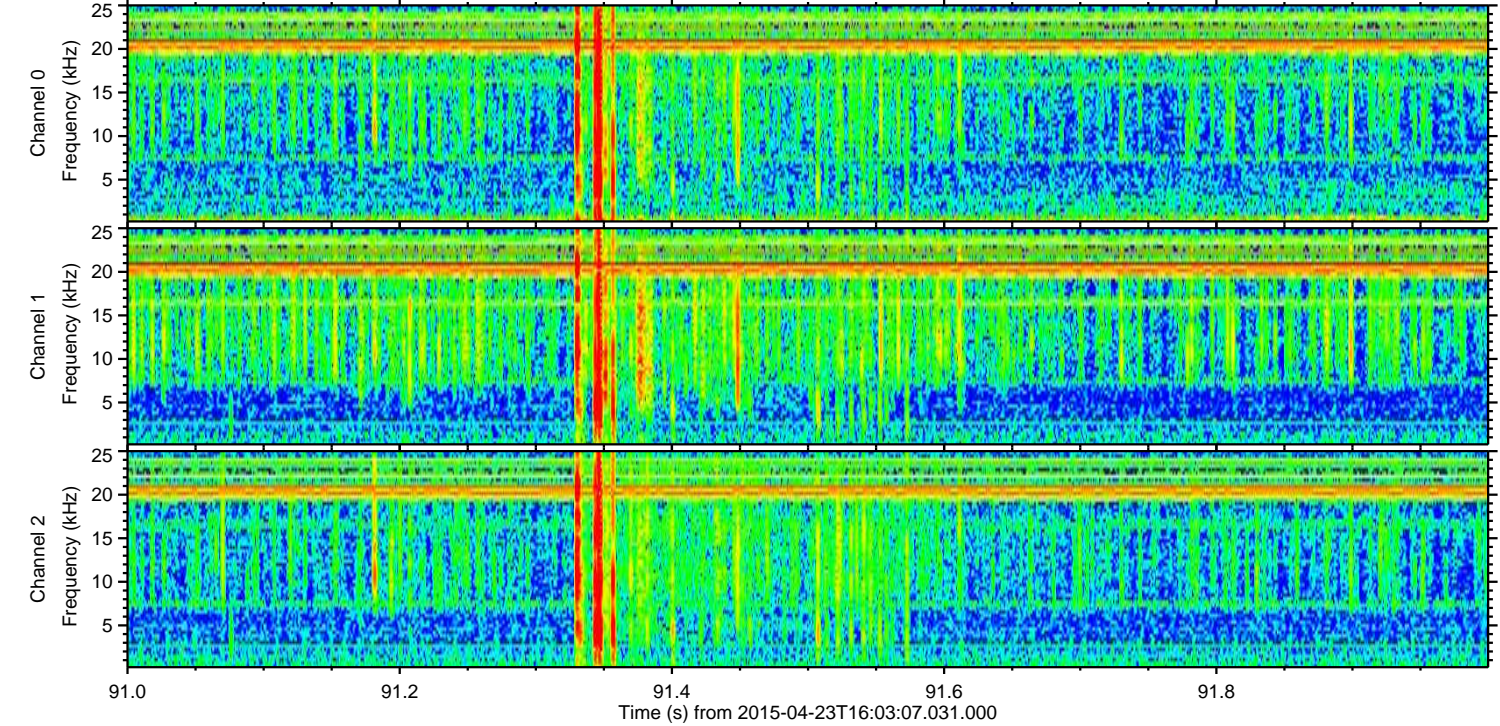
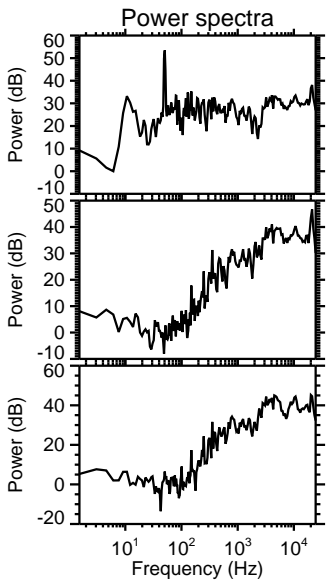
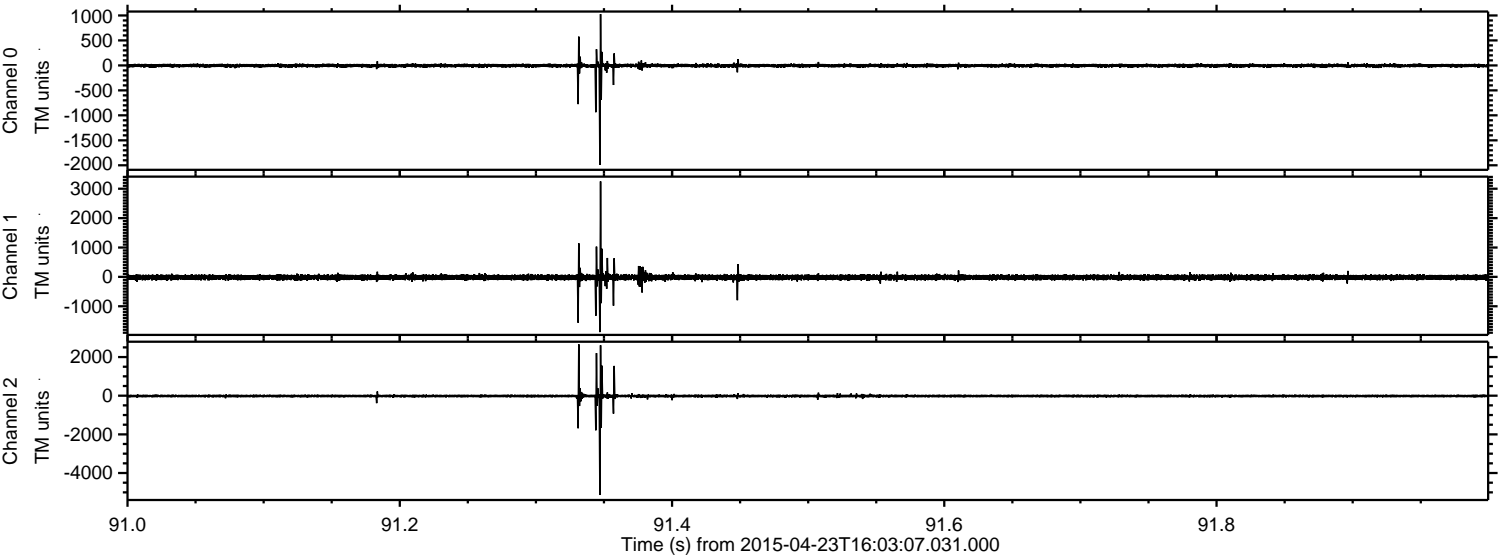
Channel 2
mn: -5708
mx: 4461
 μ : -16.3
 σ : 70.8

Processed Thu Apr 23 18:09:58 2015 by ELM ver.2012-10-06 from 001__elm20150423_160306__dat00.bin



ELMAVAN 3D WAVEFORMS (Measured data sampled at 50 kHz) 49699 packets of 144 samples from 2015-04-23T16:03:07.031.000. Part 92/144

Processed Thu Apr 23 18:09:59 2015 by ELM ver.2012-10-06 from 001__elm20150423_160306__dat00.bin

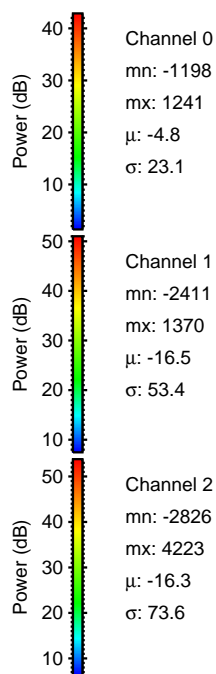
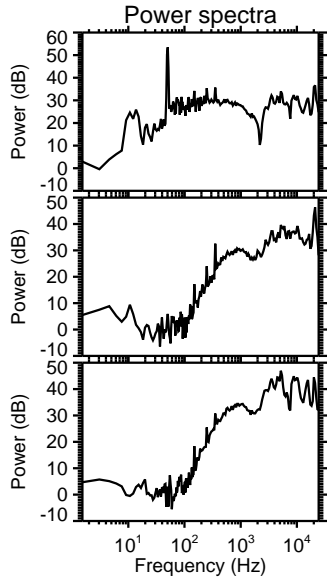
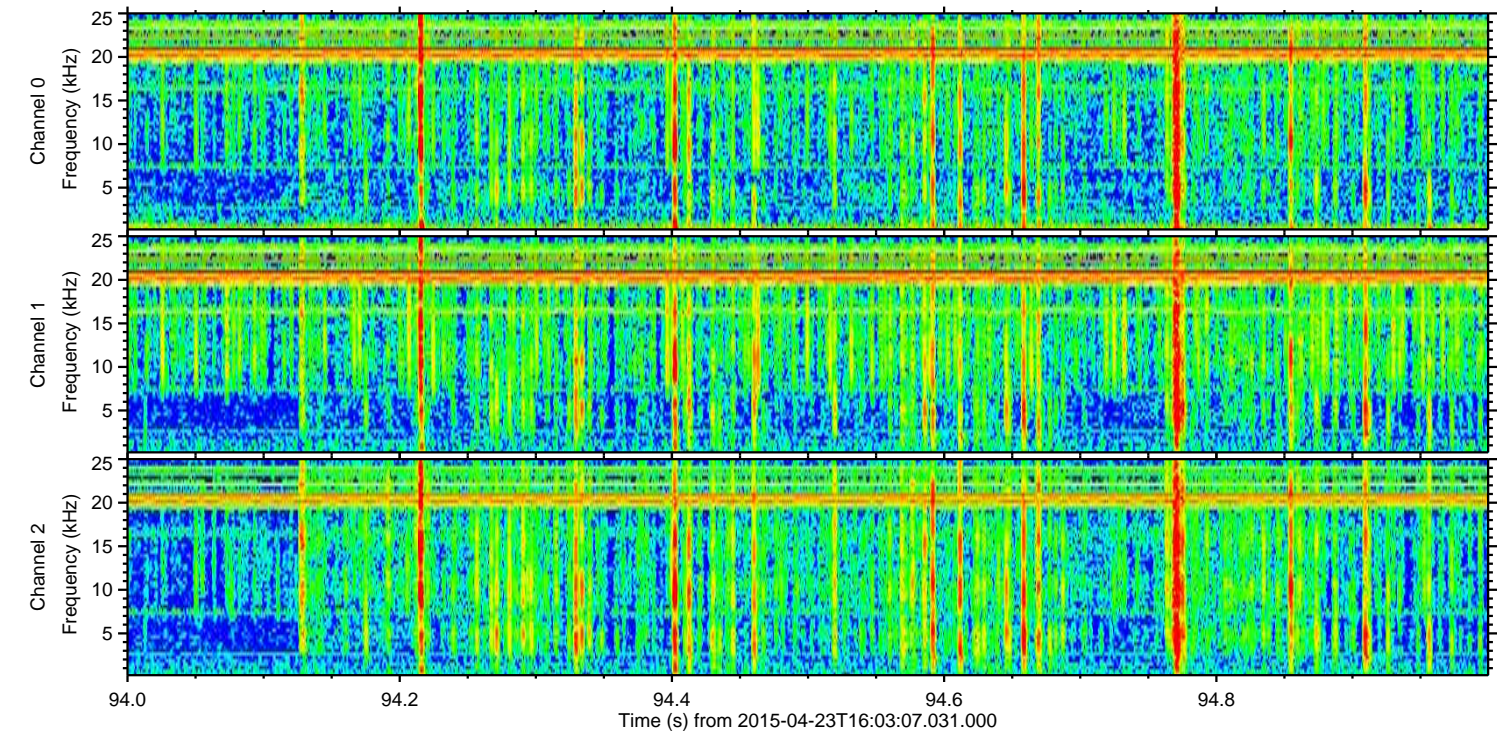
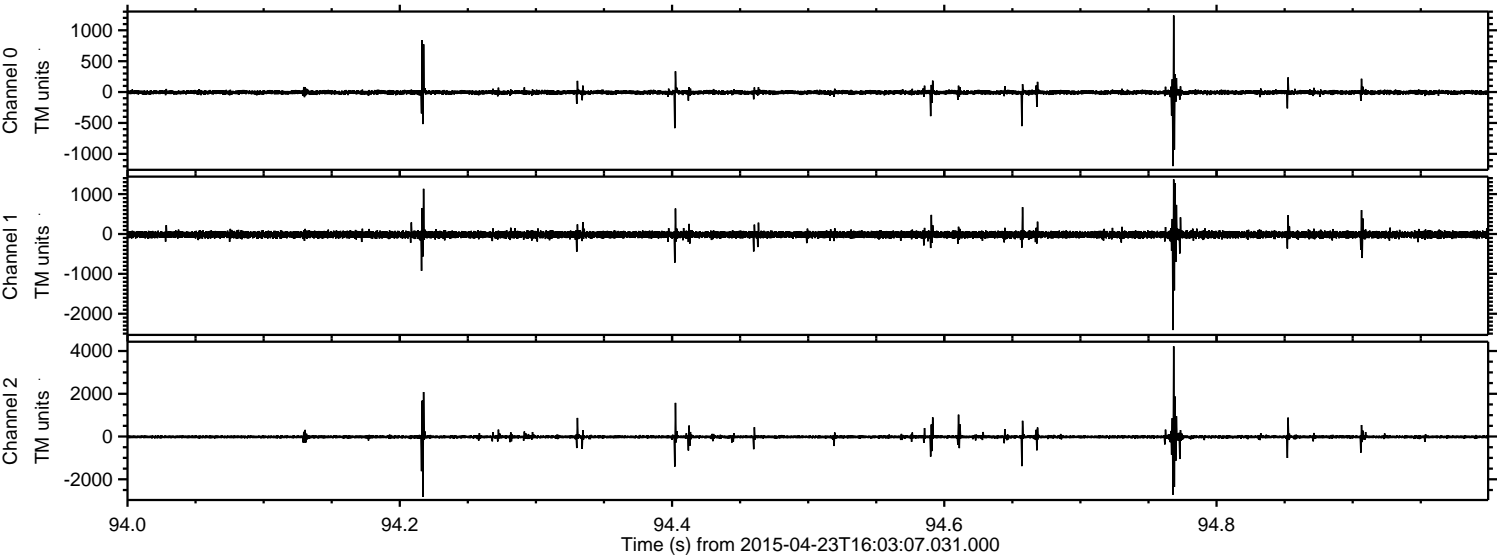


Channel 0
mn: -1991
mx: 1027
 μ : -4.8
 σ : 22.5

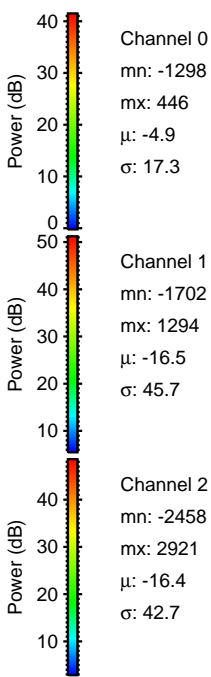
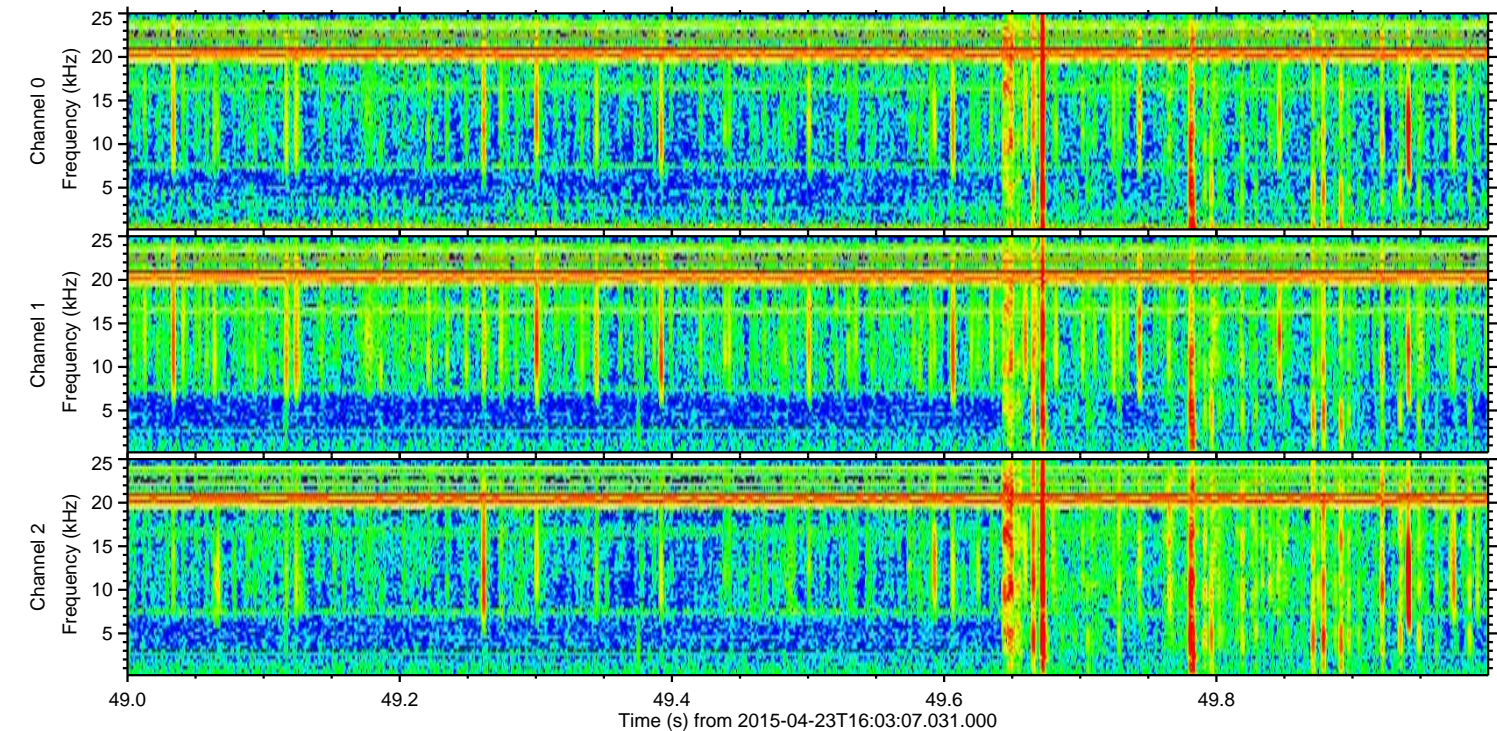
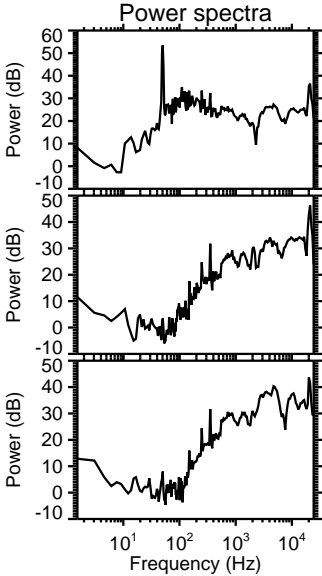
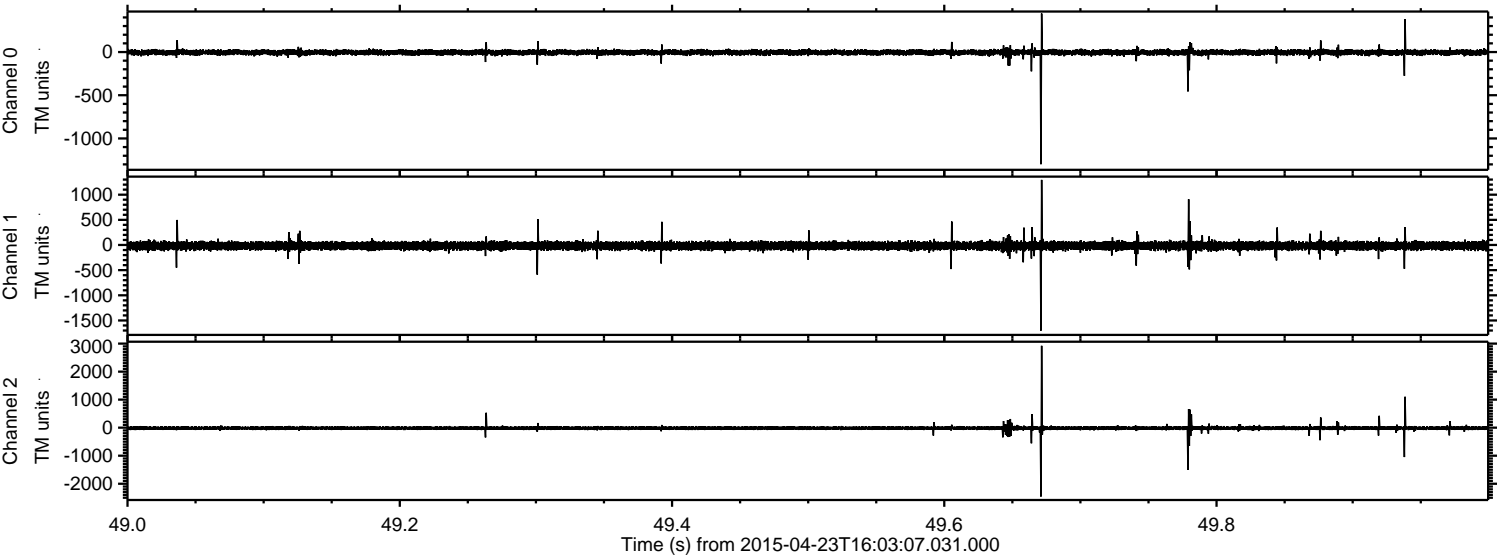
Channel 1
mn: -1880
mx: 3249
 μ : -16.5
 σ : 51.8

Channel 2
mn: -5139
mx: 2660
 μ : -16.3
 σ : 57.8

Processed Thu Apr 23 18:10:00 2015 by ELM ver.2012-10-06 from 001__elm20150423_160306__dat00.bin



Processed Thu Apr 23 18:10:01 2015 by ELM ver.2012-10-06 from 001__elm20150423_160306__dat00.bin



Processed Thu Apr 23 18:10:02 2015 by ELM ver.2012-10-06 from 001__elm20150423_160306__dat00.bin

