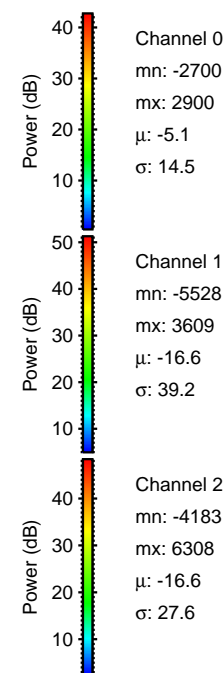
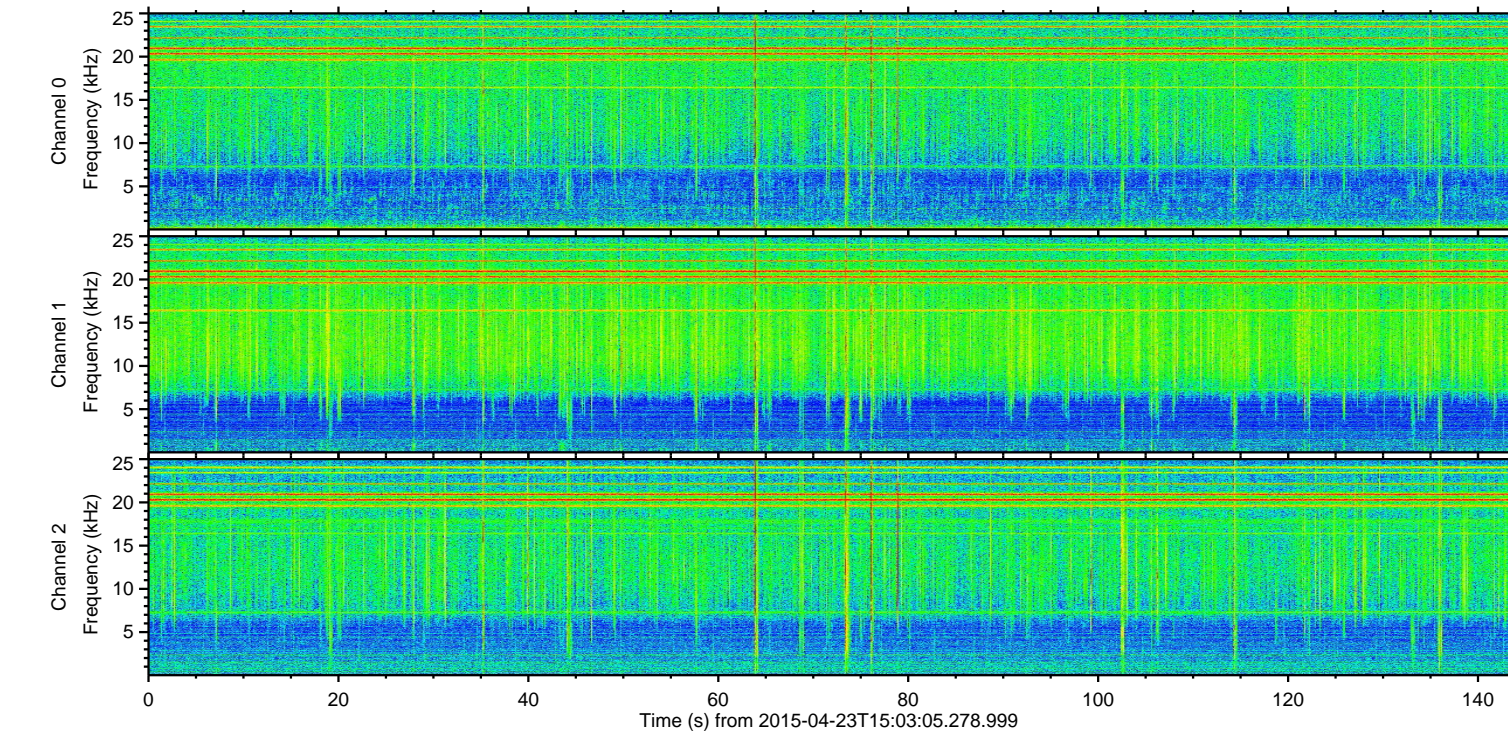
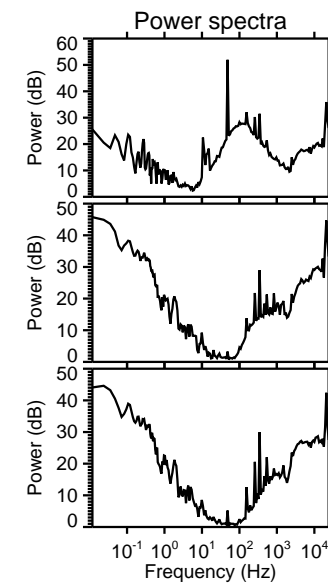
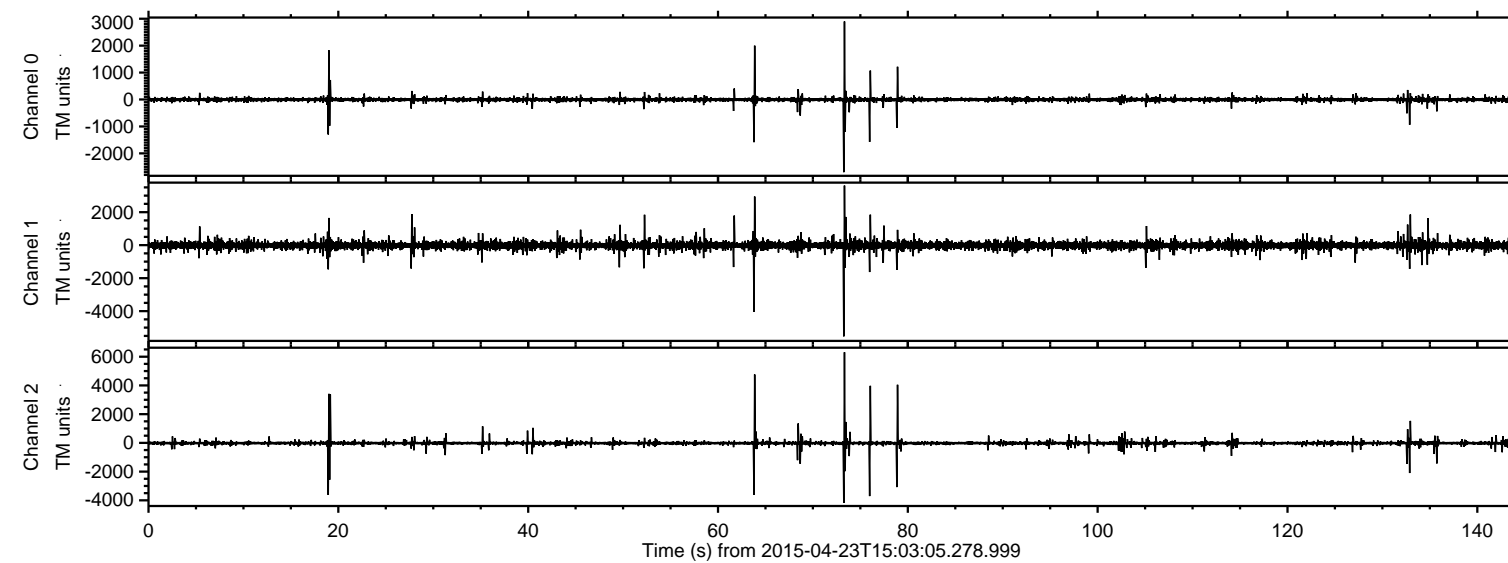
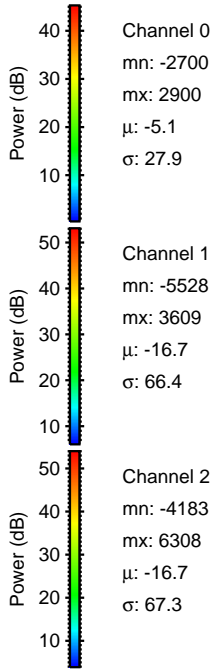
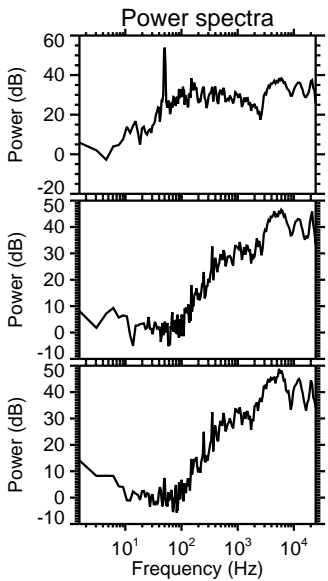
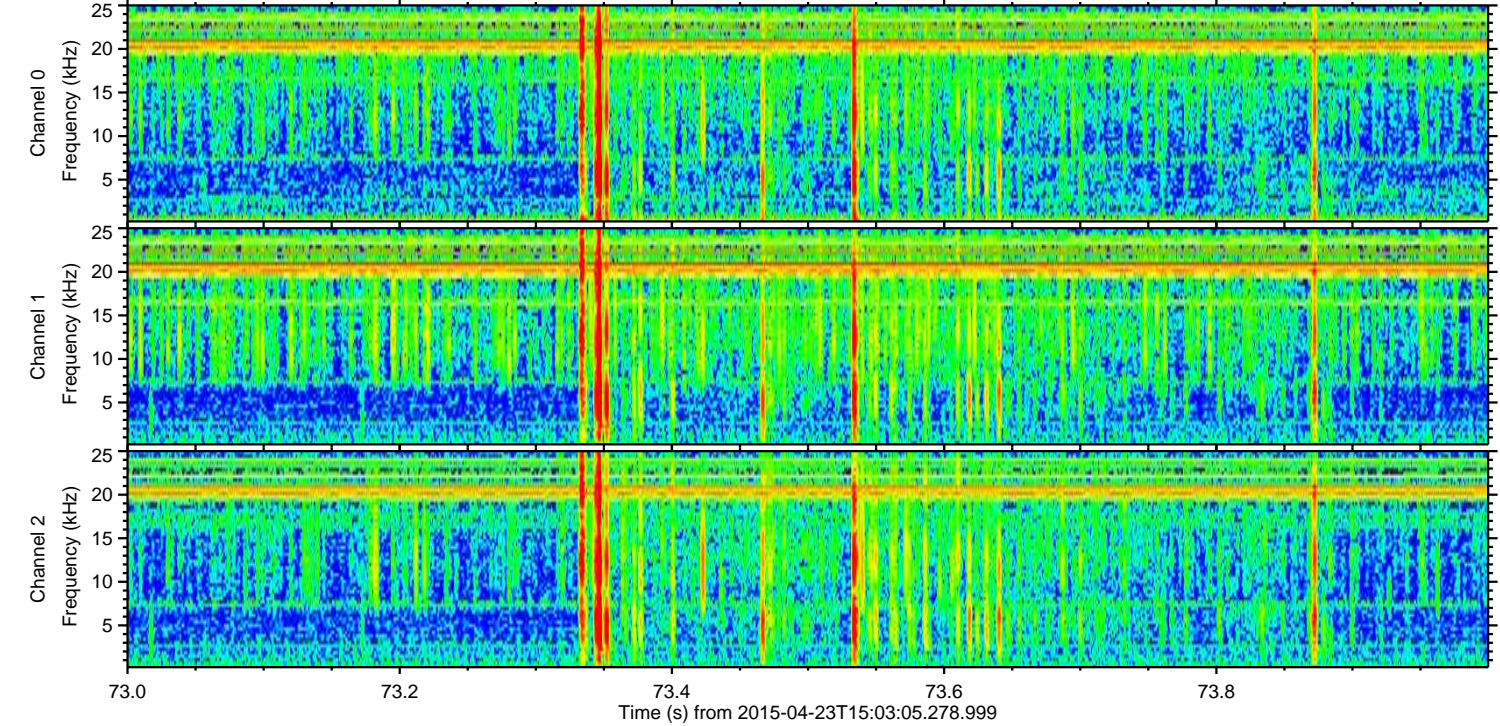
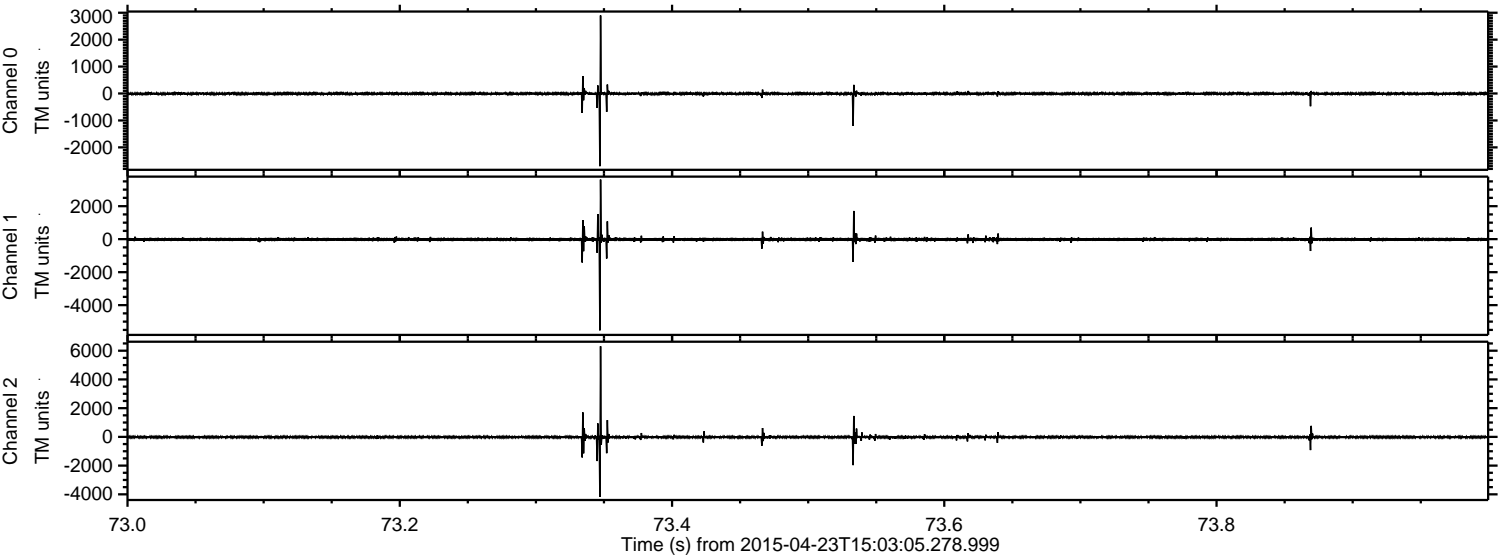


ELMAVAN 3D WAVEFORMS (Measured data sampled at 50 kHz) 49776 packets of 144 samples from 2015-04-23T15:03:05.278.999.

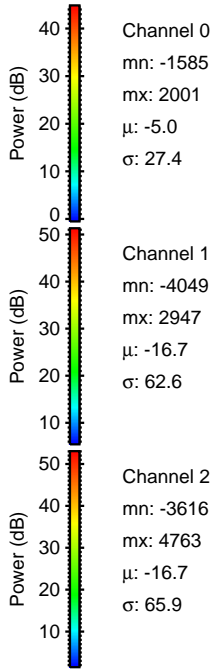
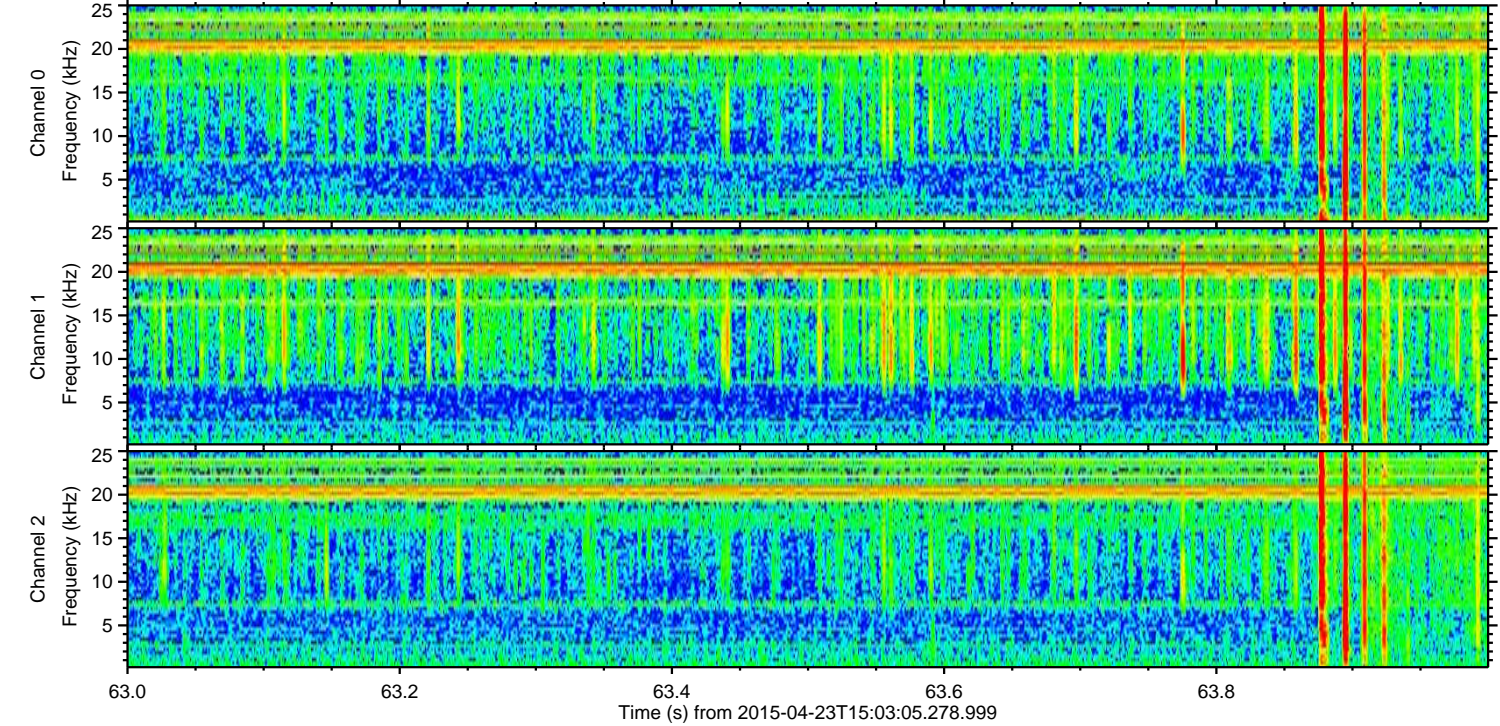
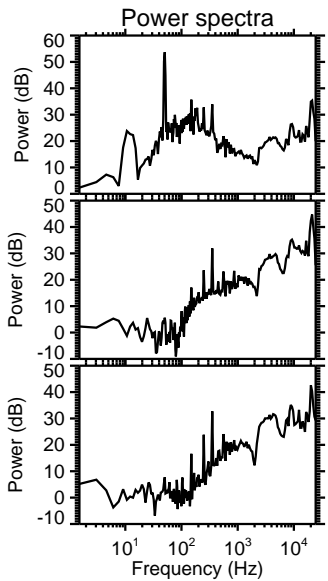
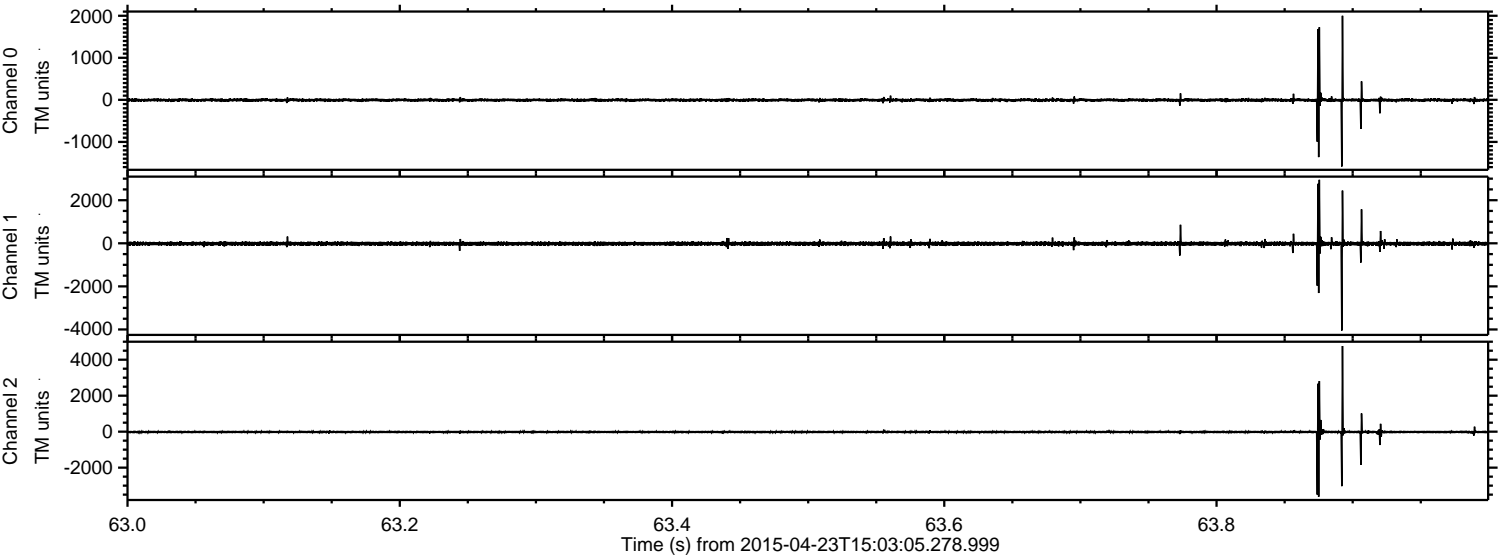
Processed Thu Apr 23 17:10:14 2015 by ELM ver.2012-10-06 from 001__elm20150423_150304__dat00.bin



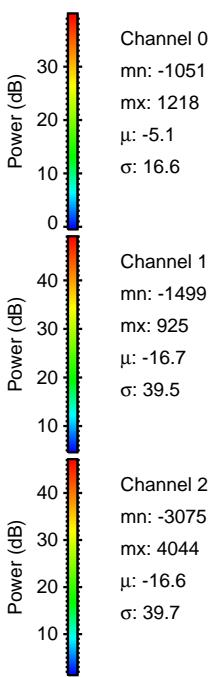
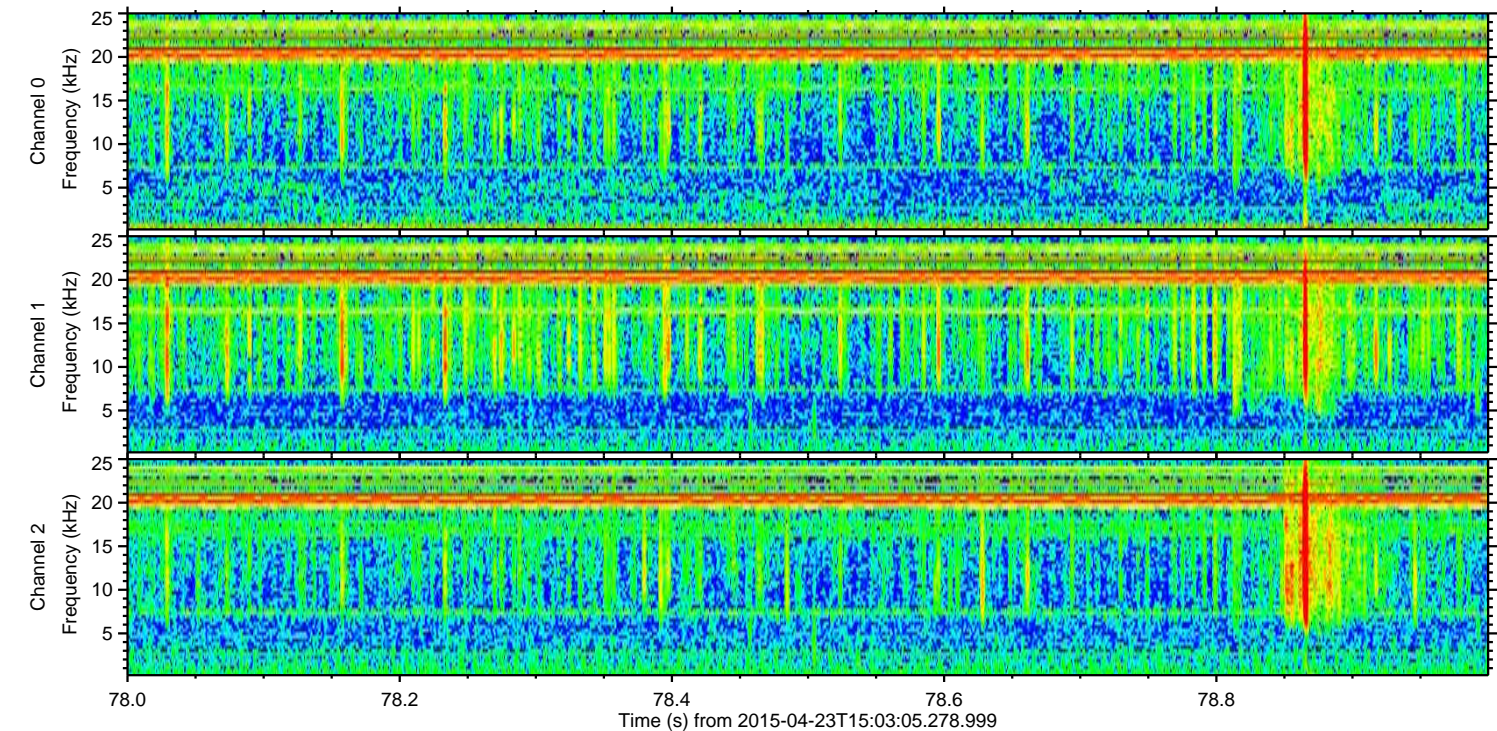
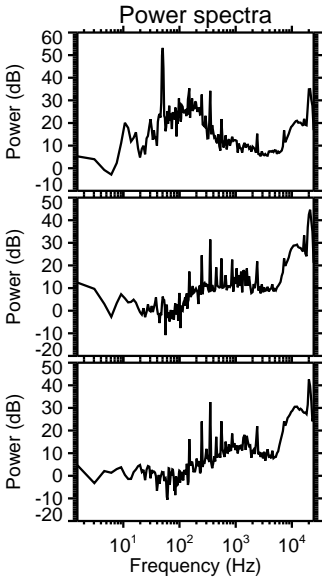
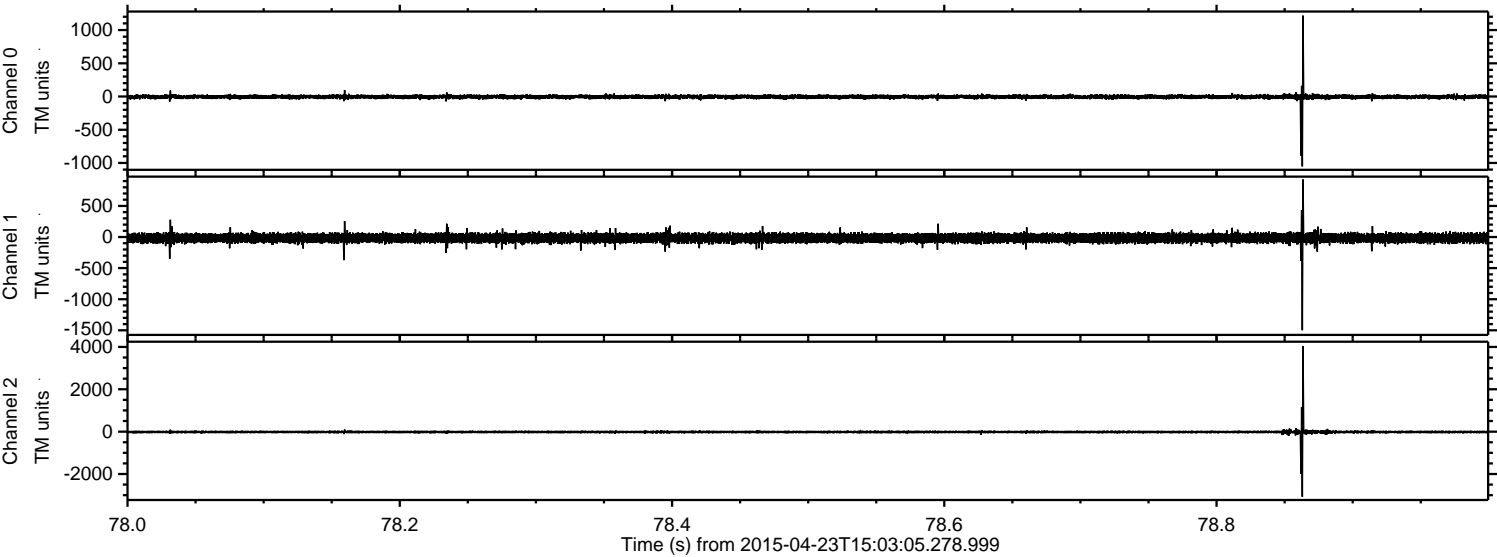
Processed Thu Apr 23 17:10:26 2015 by ELM ver.2012-10-06 from 001__elm20150423_150304__dat00.bin



Processed Thu Apr 23 17:10:27 2015 by ELM ver.2012-10-06 from 001__elm20150423_150304__dat00.bin

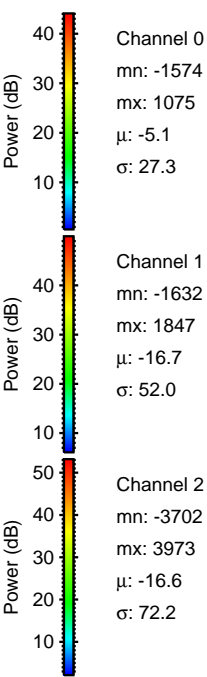
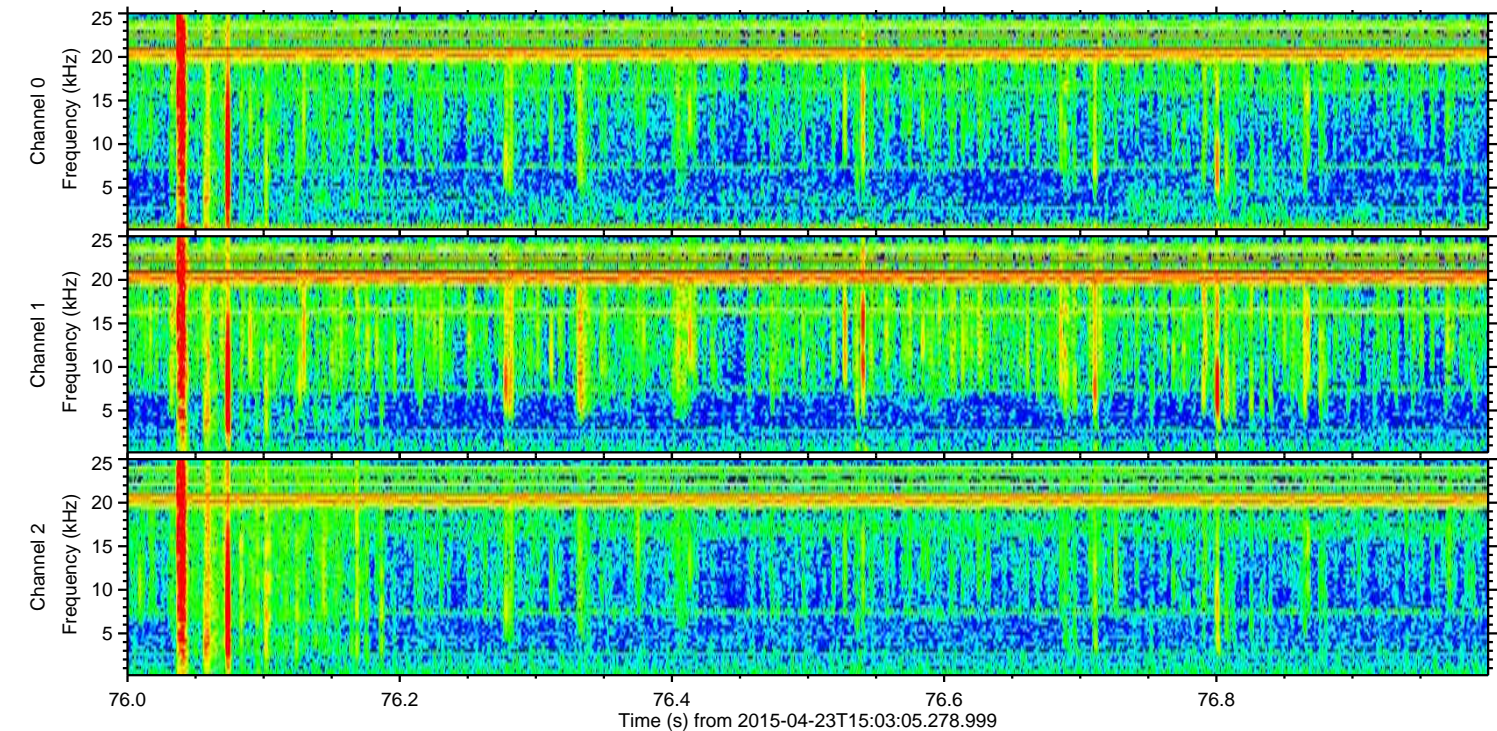
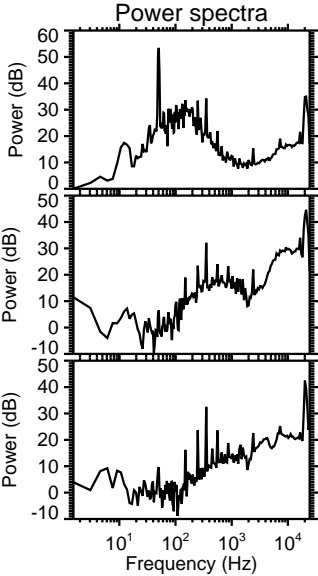
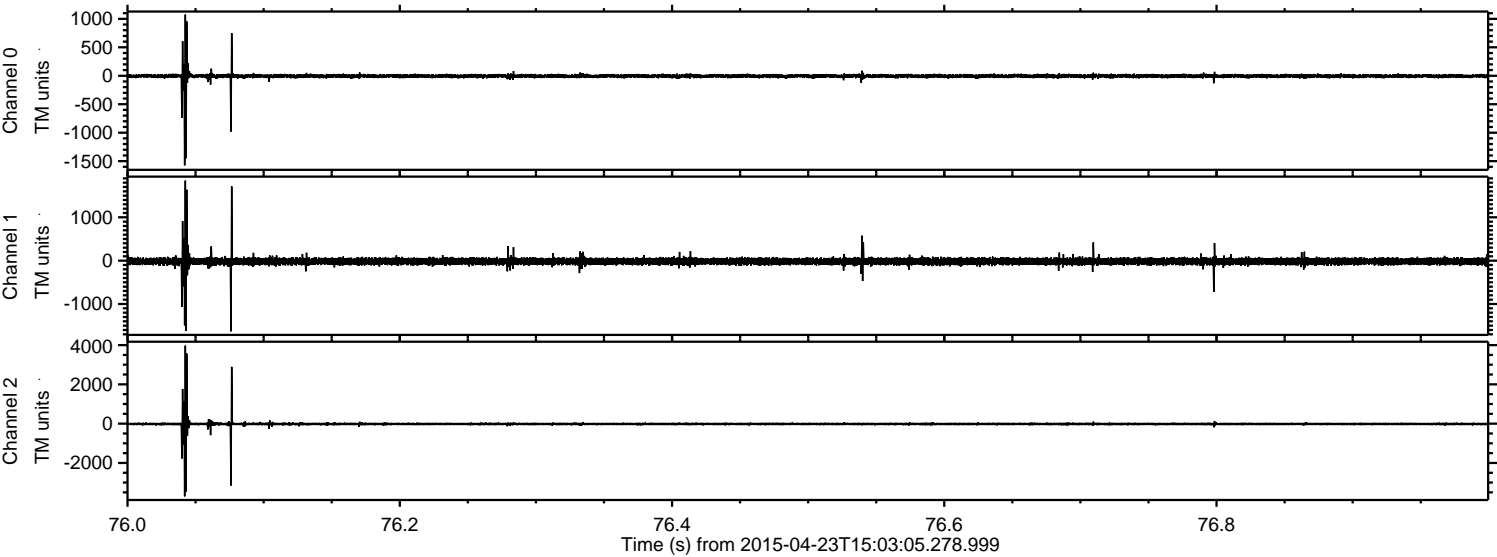


Processed Thu Apr 23 17:10:28 2015 by ELM ver.2012-10-06 from 001__elm20150423_150304__dat00.bin

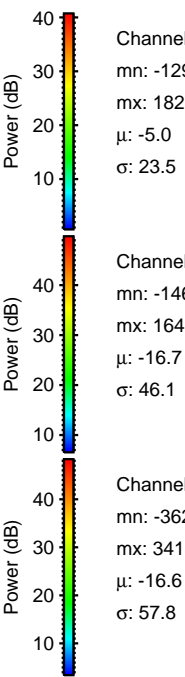
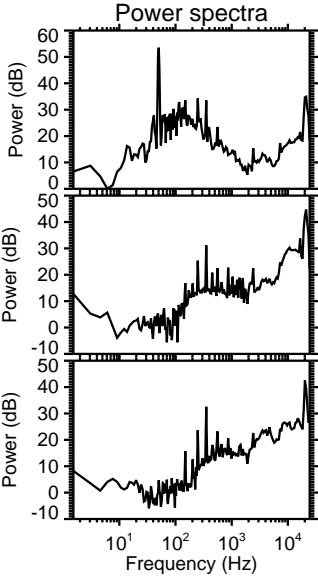
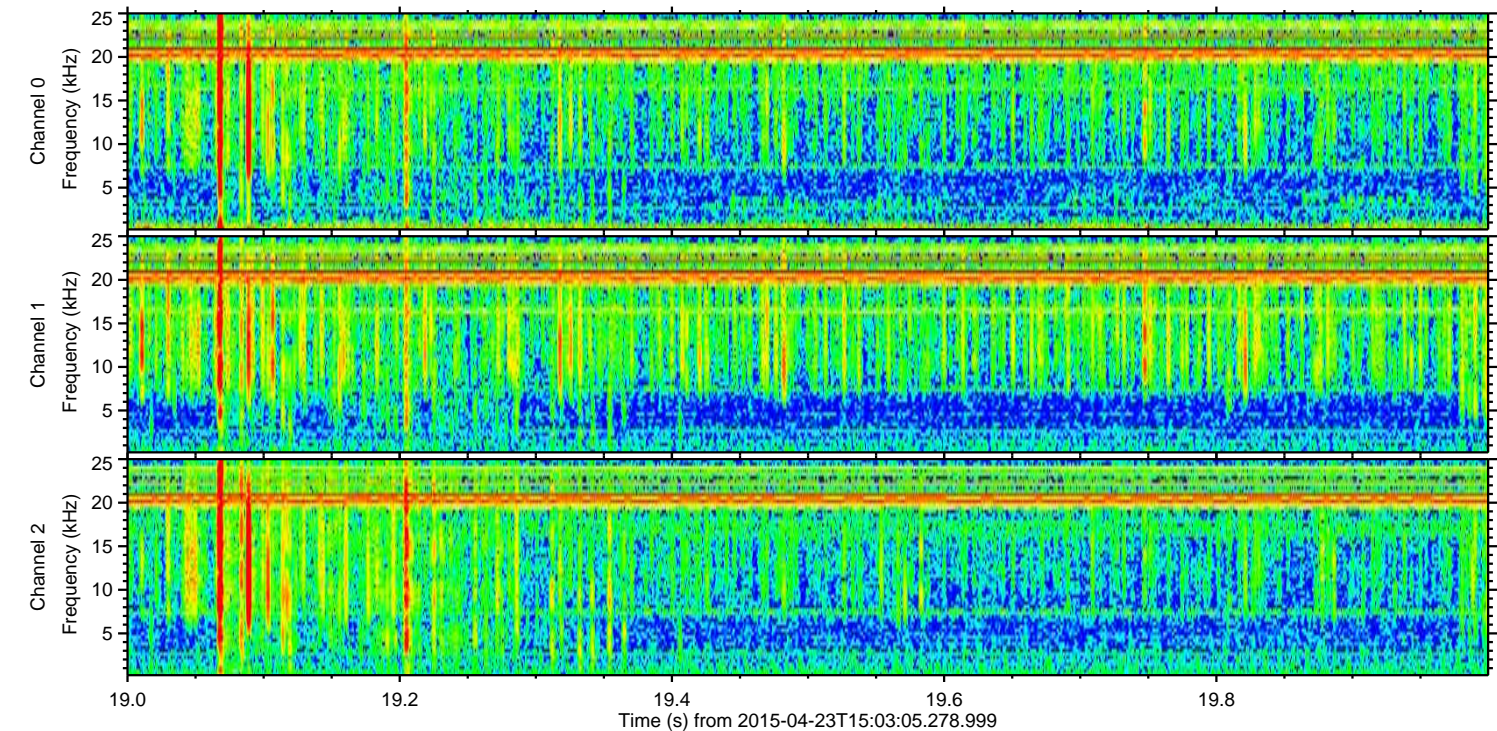
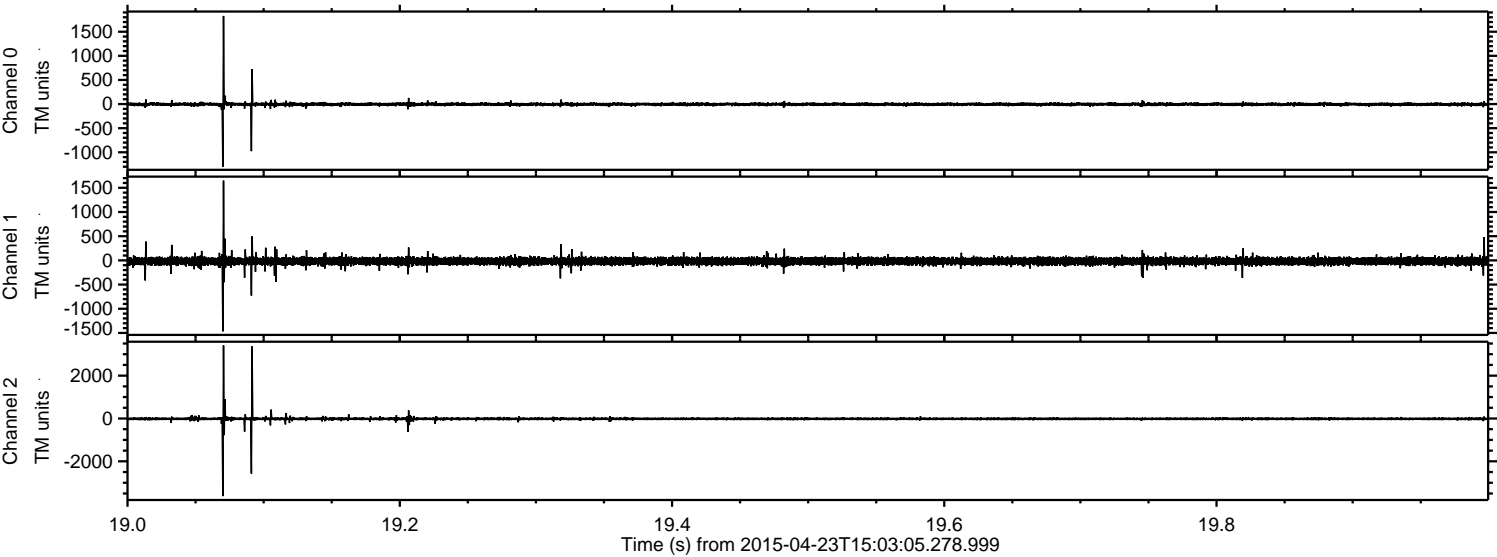


ELMAVAN 3D WAVEFORMS (Measured data sampled at 50 kHz) 49776 packets of 144 samples from 2015-04-23T15:03:05.278.999. Part 77/144

Processed Thu Apr 23 17:10:29 2015 by ELM ver.2012-10-06 from 001__elm20150423_150304__dat00.bin

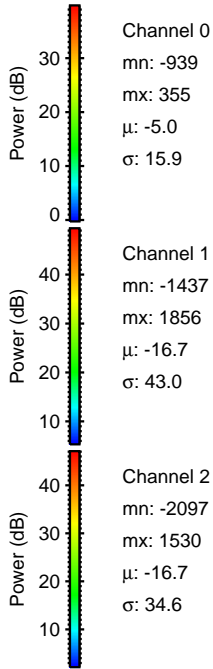
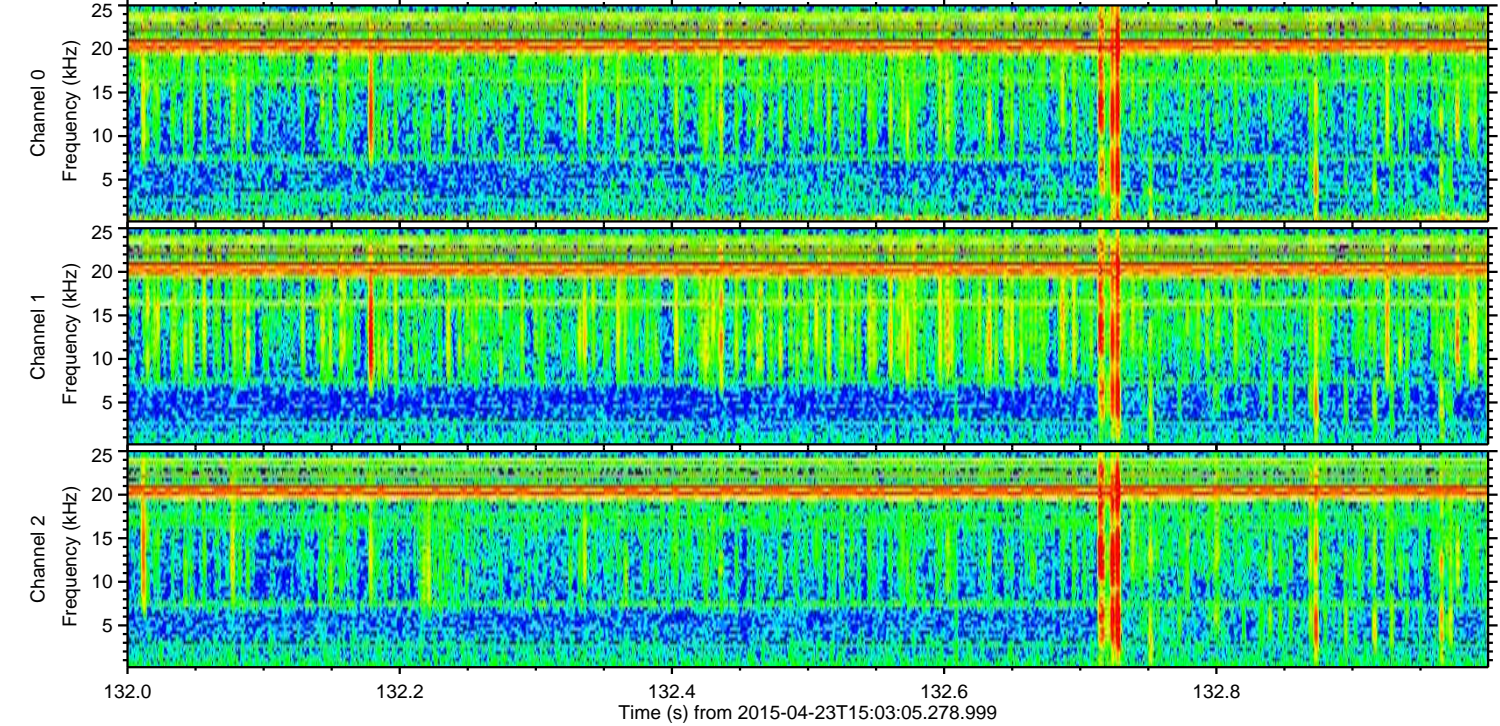
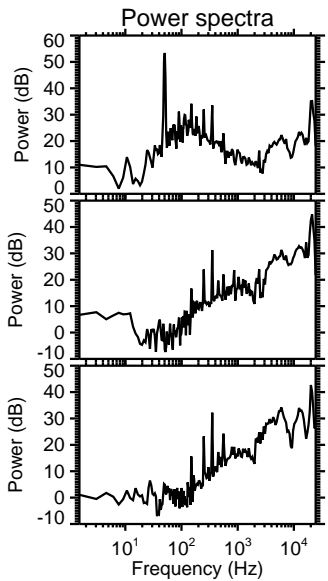
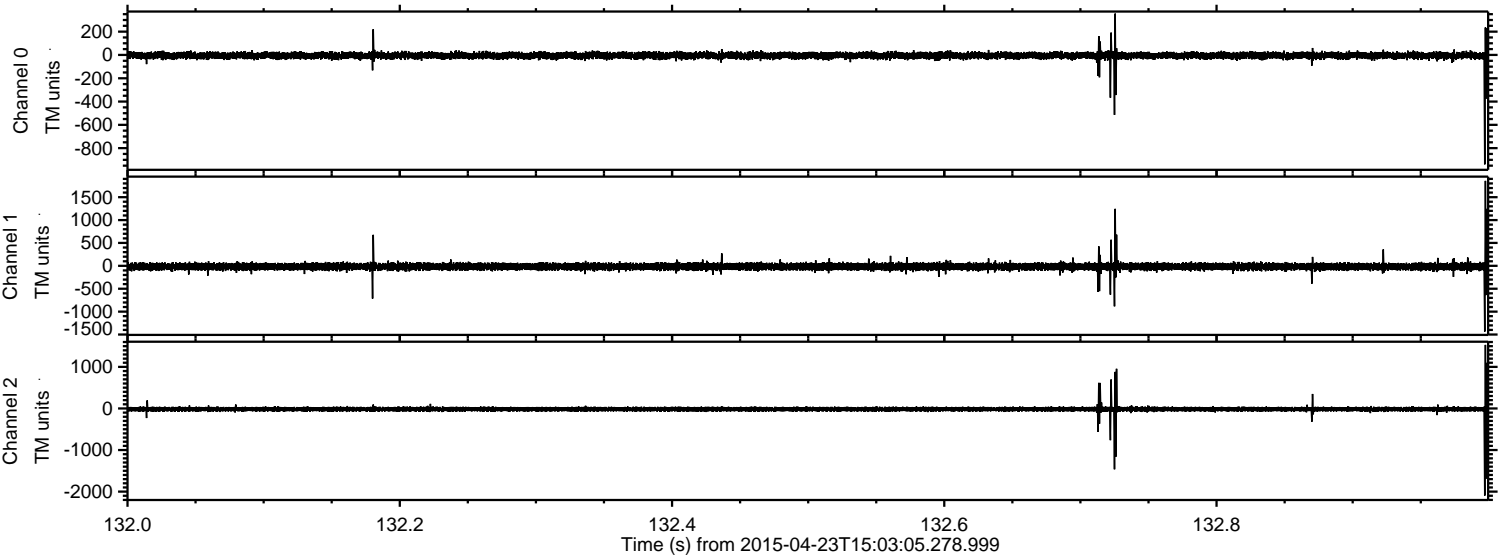


Processed Thu Apr 23 17:10:30 2015 by ELM ver.2012-10-06 from 001__elm20150423_150304__dat00.bin

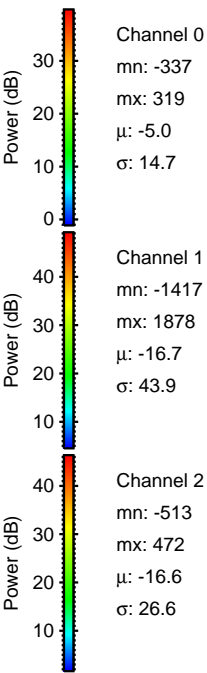
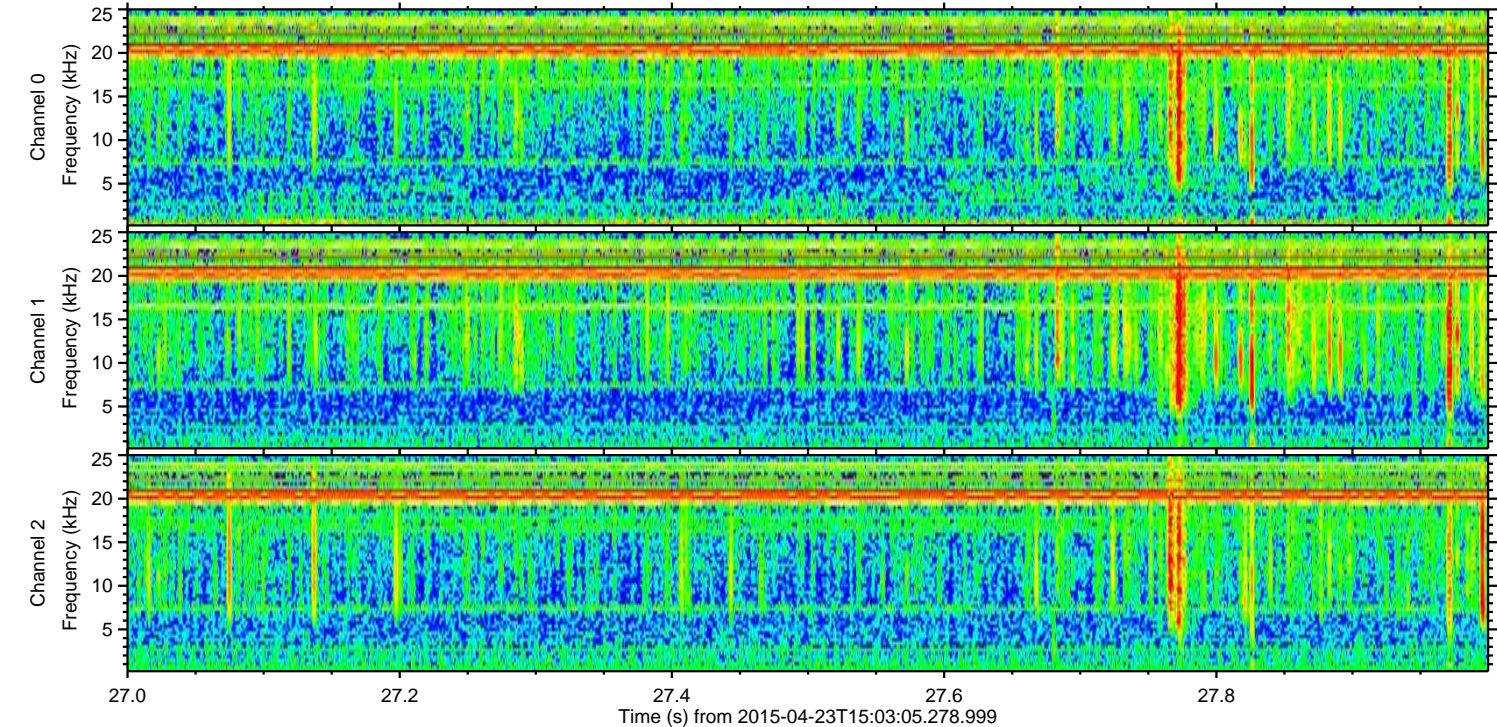
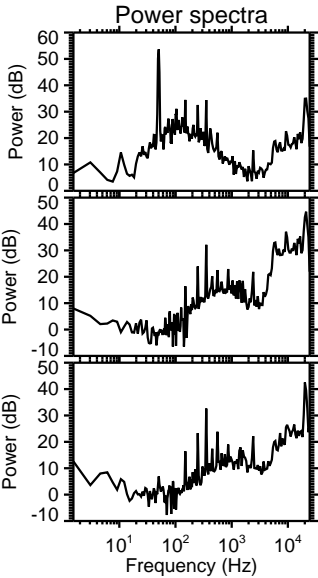
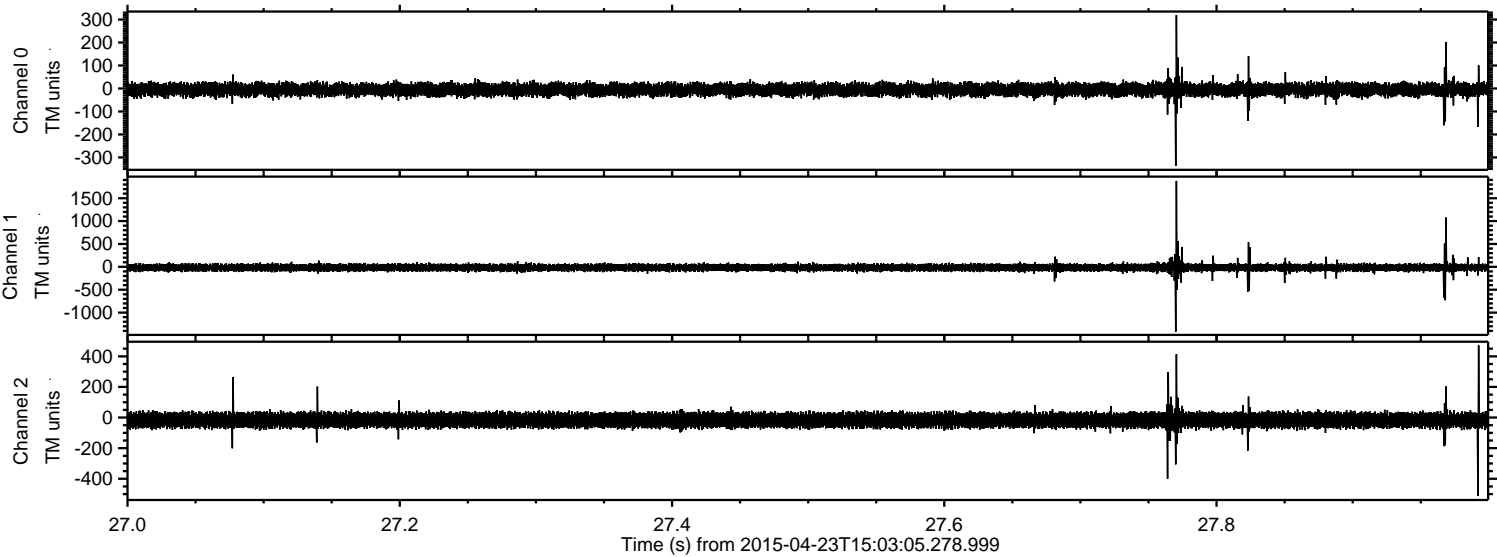


ELMAVAN 3D WAVEFORMS (Measured data sampled at 50 kHz) 49776 packets of 144 samples from 2015-04-23T15:03:05.278.999. Part 133/144

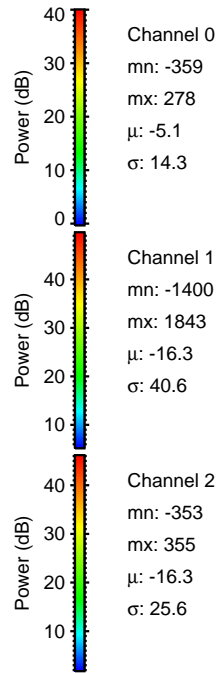
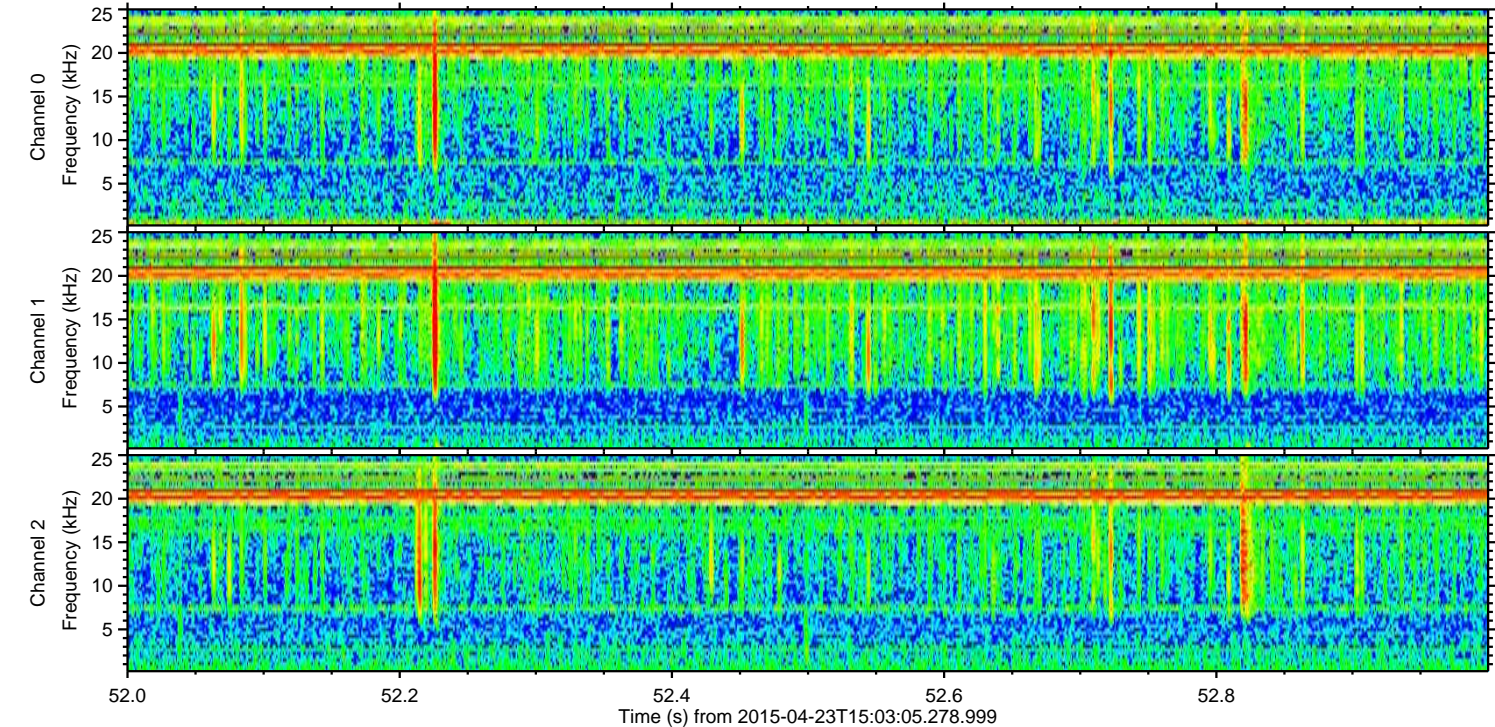
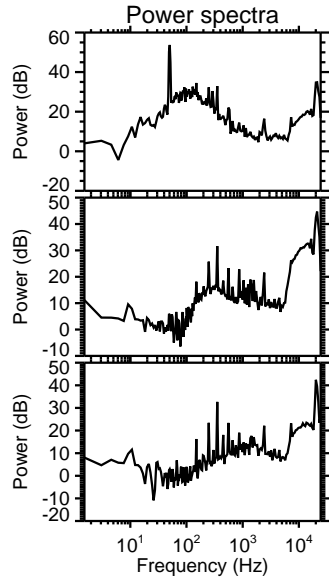
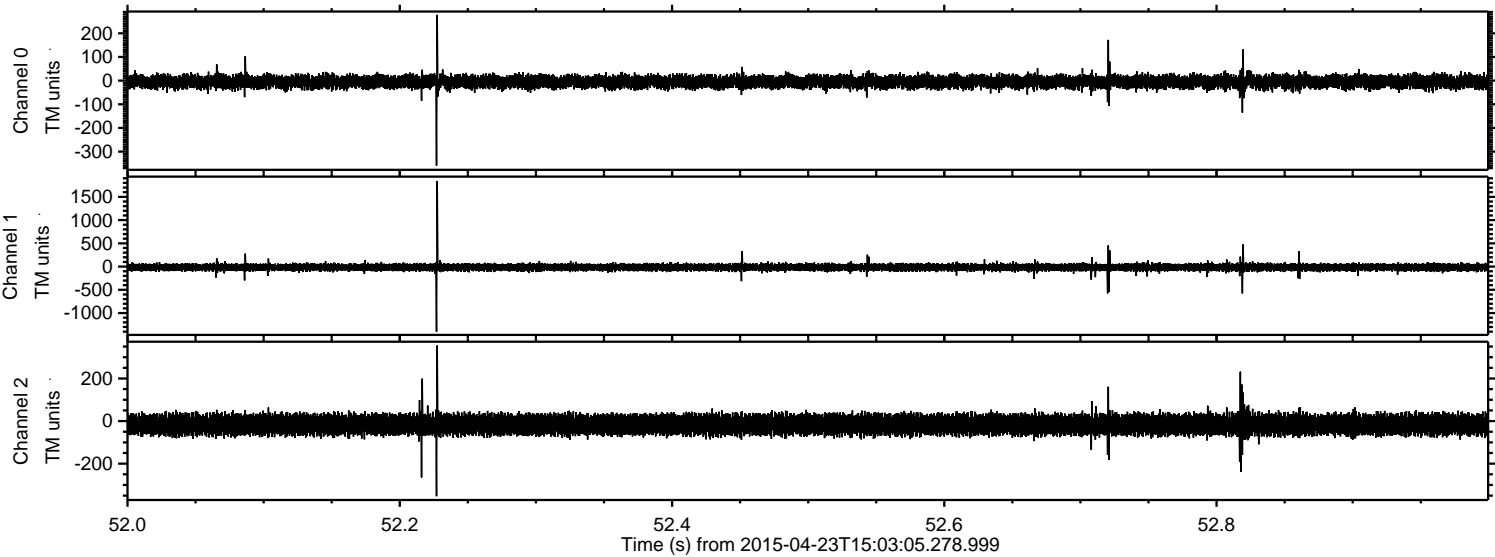
Processed Thu Apr 23 17:10:31 2015 by ELM ver.2012-10-06 from 001__elm20150423_150304__dat00.bin



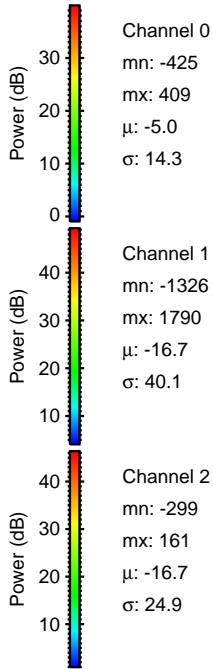
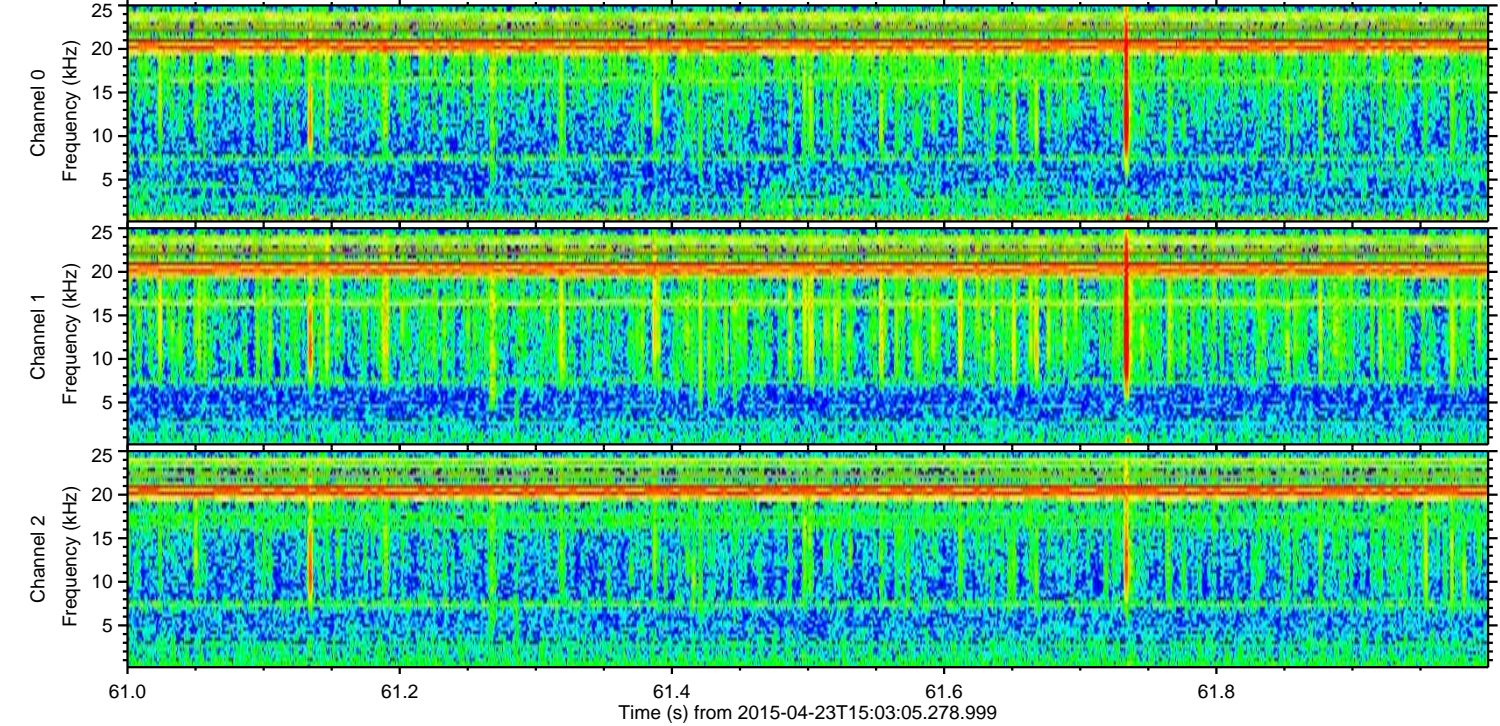
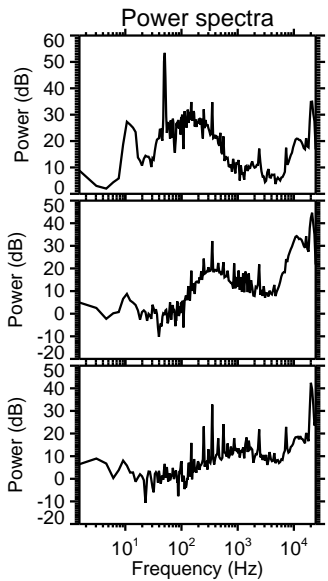
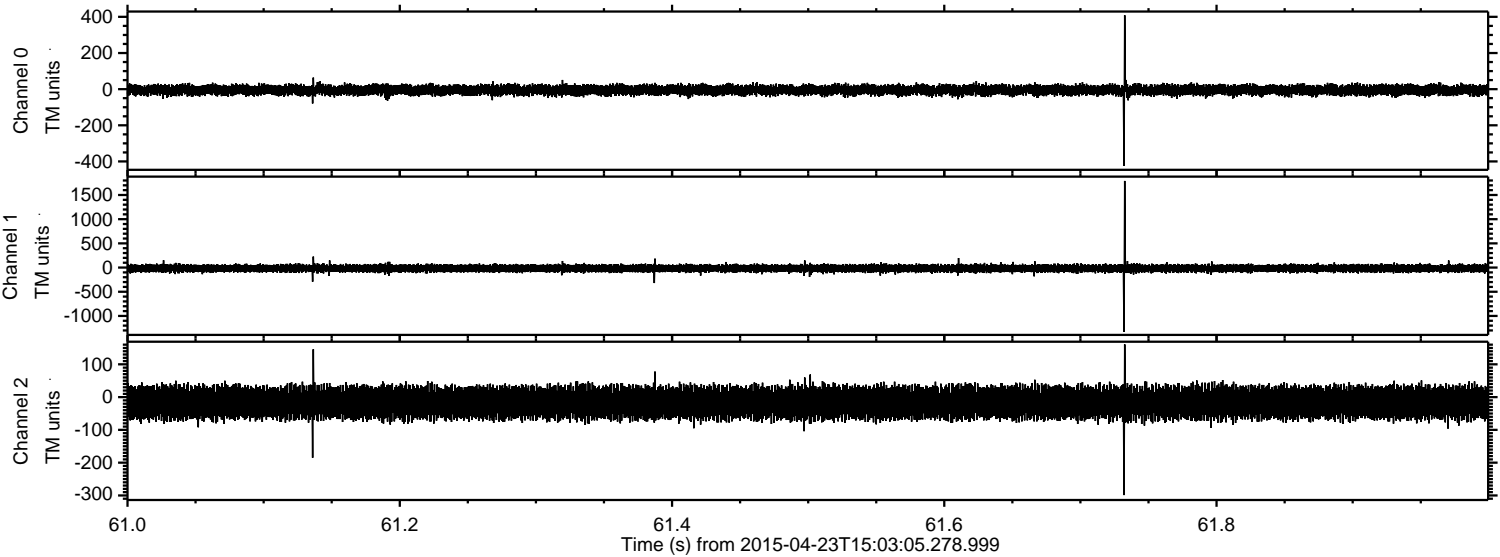
Processed Thu Apr 23 17:10:31 2015 by ELM ver.2012-10-06 from 001__elm20150423_150304__dat00.bin



Processed Thu Apr 23 17:10:32 2015 by ELM ver.2012-10-06 from 001__elm20150423_150304__dat00.bin



Processed Thu Apr 23 17:10:33 2015 by ELM ver.2012-10-06 from 001__elm20150423_150304__dat00.bin



Channel 0
mn: -425
mx: 409
 μ : -5.0
 σ : 14.3

Channel 1
mn: -1326
mx: 1790
 μ : -16.7
 σ : 40.1

Channel 2
mn: -299
mx: 161
 μ : -16.7
 σ : 24.9

