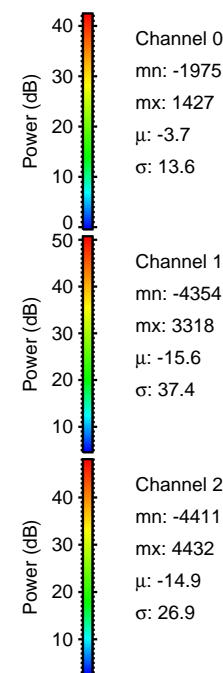
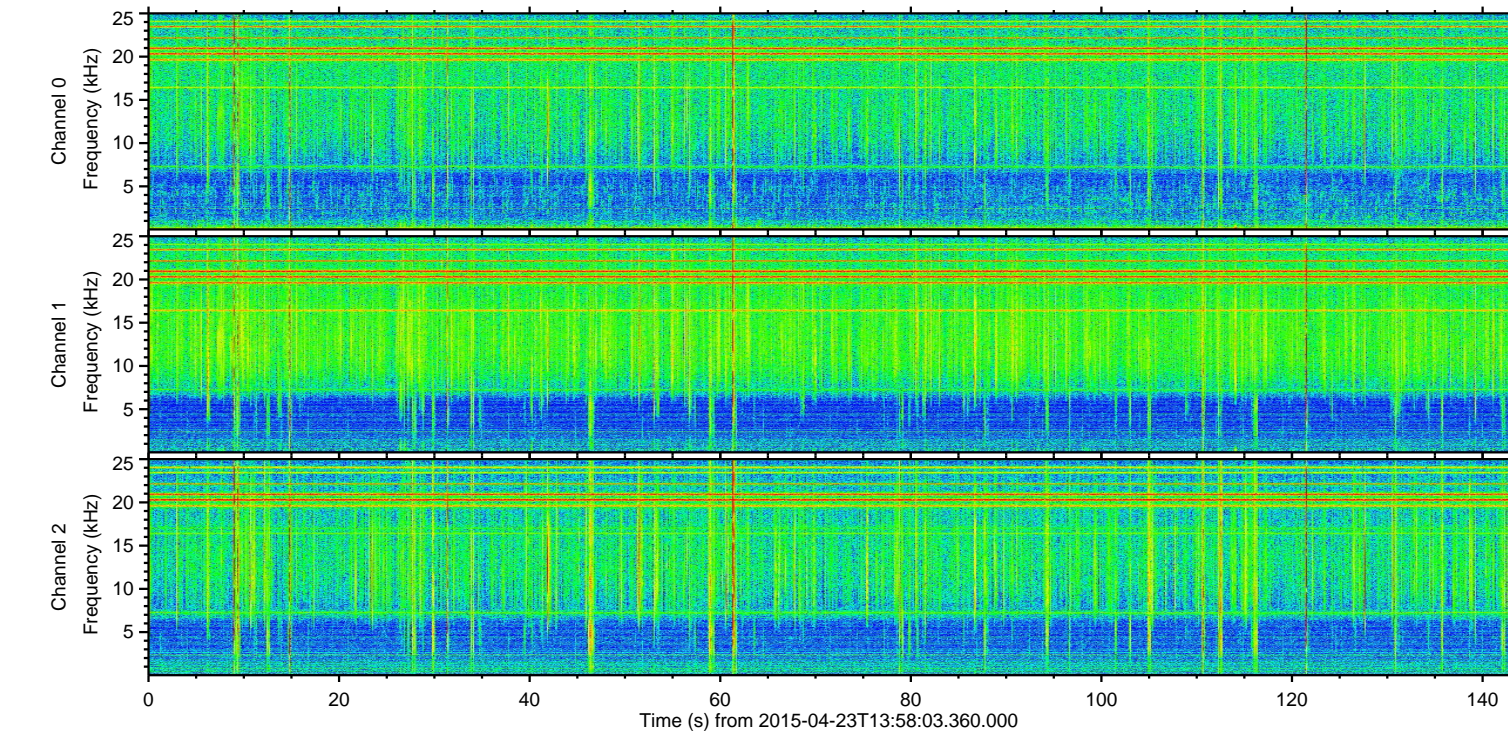
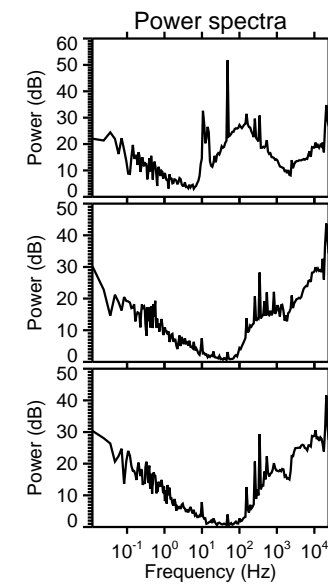
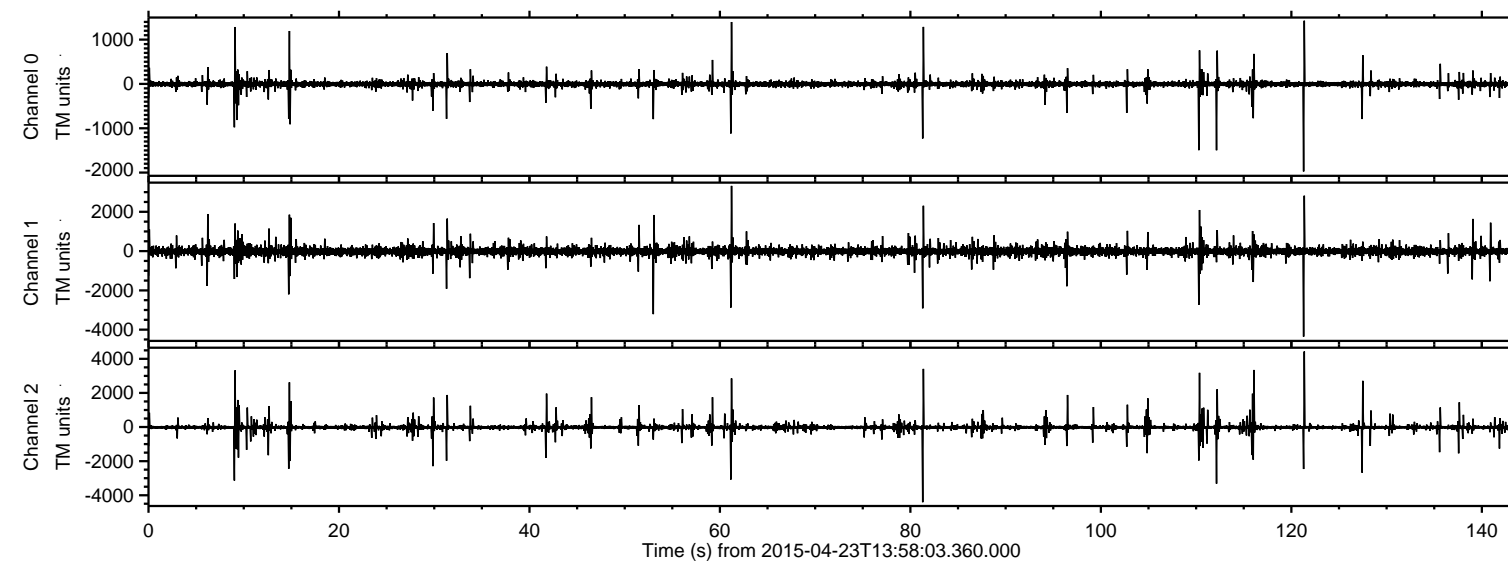


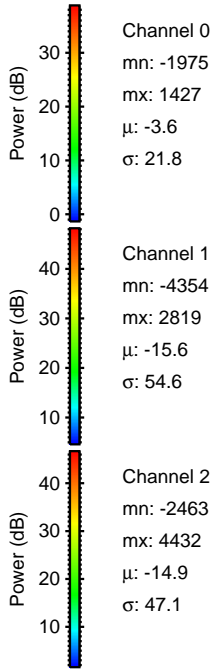
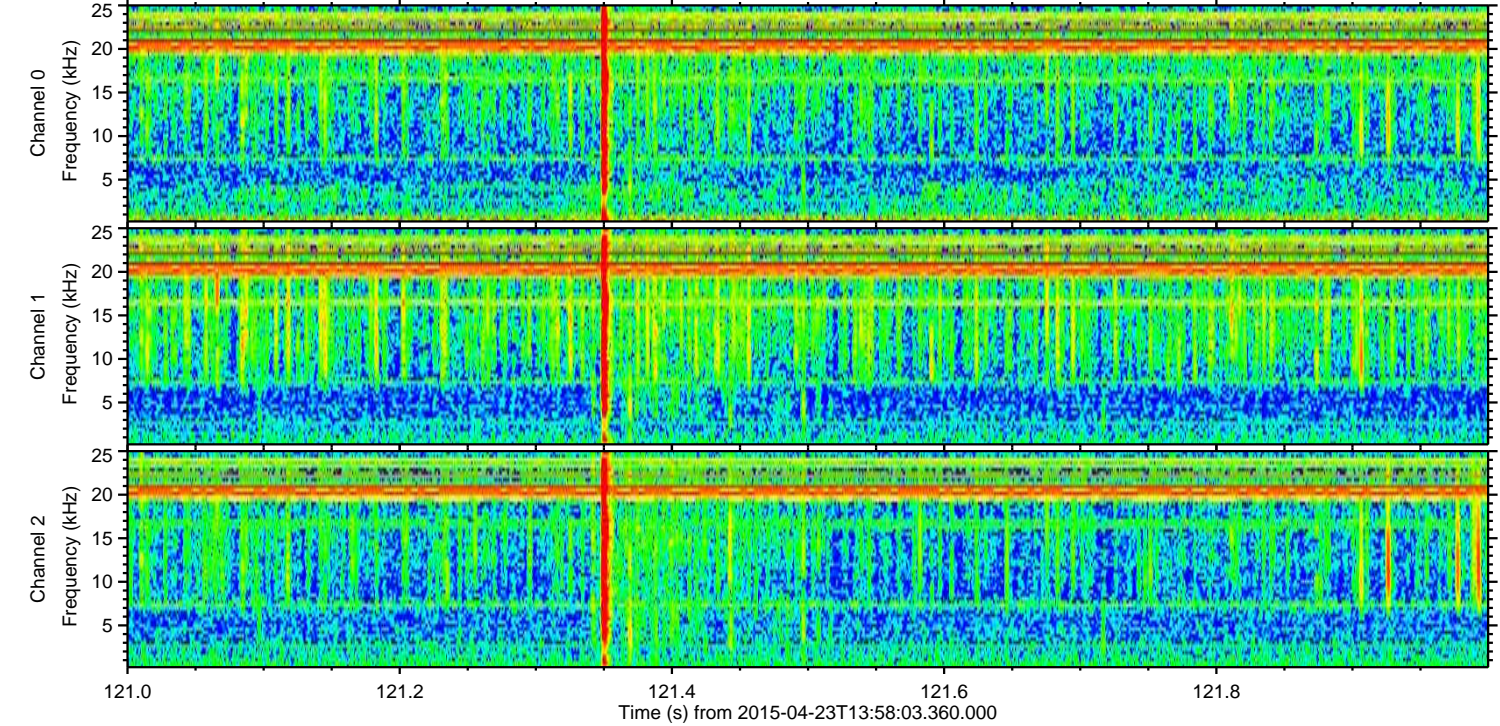
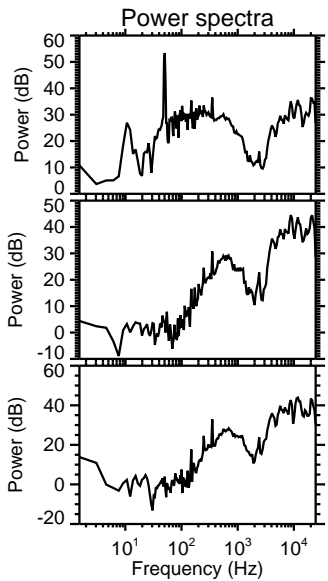
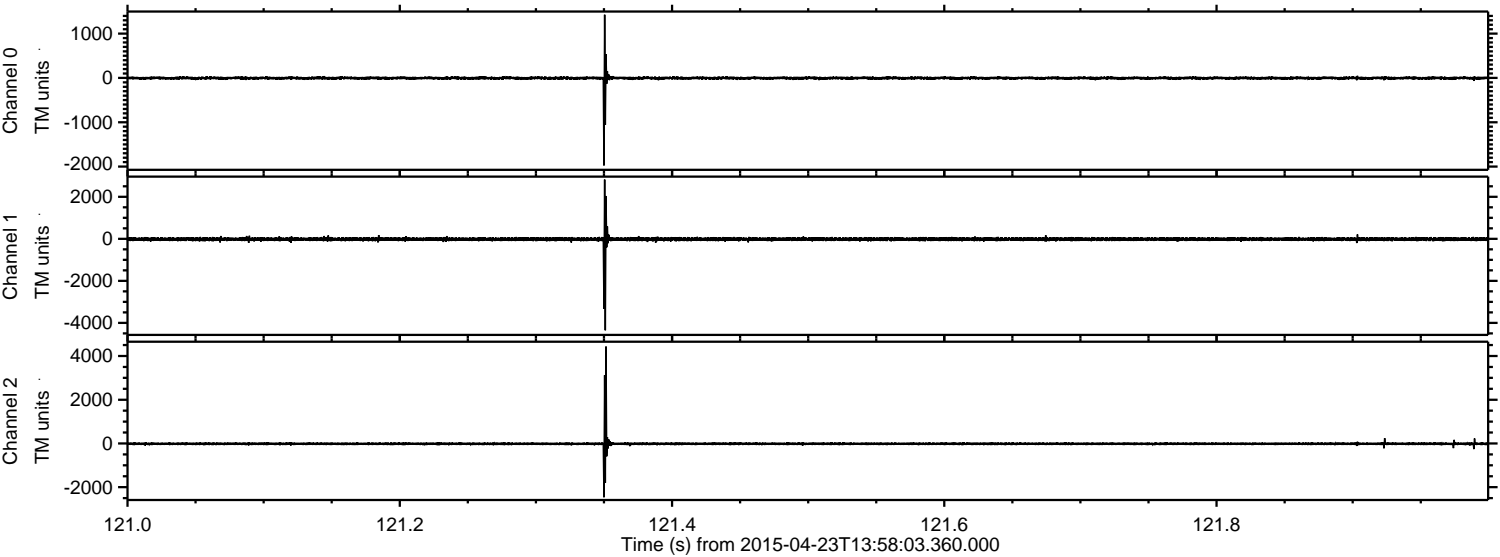
ELMAVAN 3D WAVEFORMS (Measured data sampled at 50 kHz) 49607 packets of 144 samples from 2015-04-23T13:58:03.360.000.

Processed Thu Apr 23 16:05:20 2015 by ELM ver.2012-10-06 from 001__elm20150423_135802__dat00.bin



ELMAVAN 3D WAVEFORMS (Measured data sampled at 50 kHz) 49607 packets of 144 samples from 2015-04-23T13:58:03.360.000. Part 122/143

Processed Thu Apr 23 16:05:35 2015 by ELM ver.2012-10-06 from 001__elm20150423_135802__dat00.bin

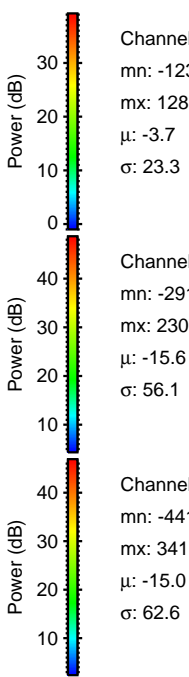
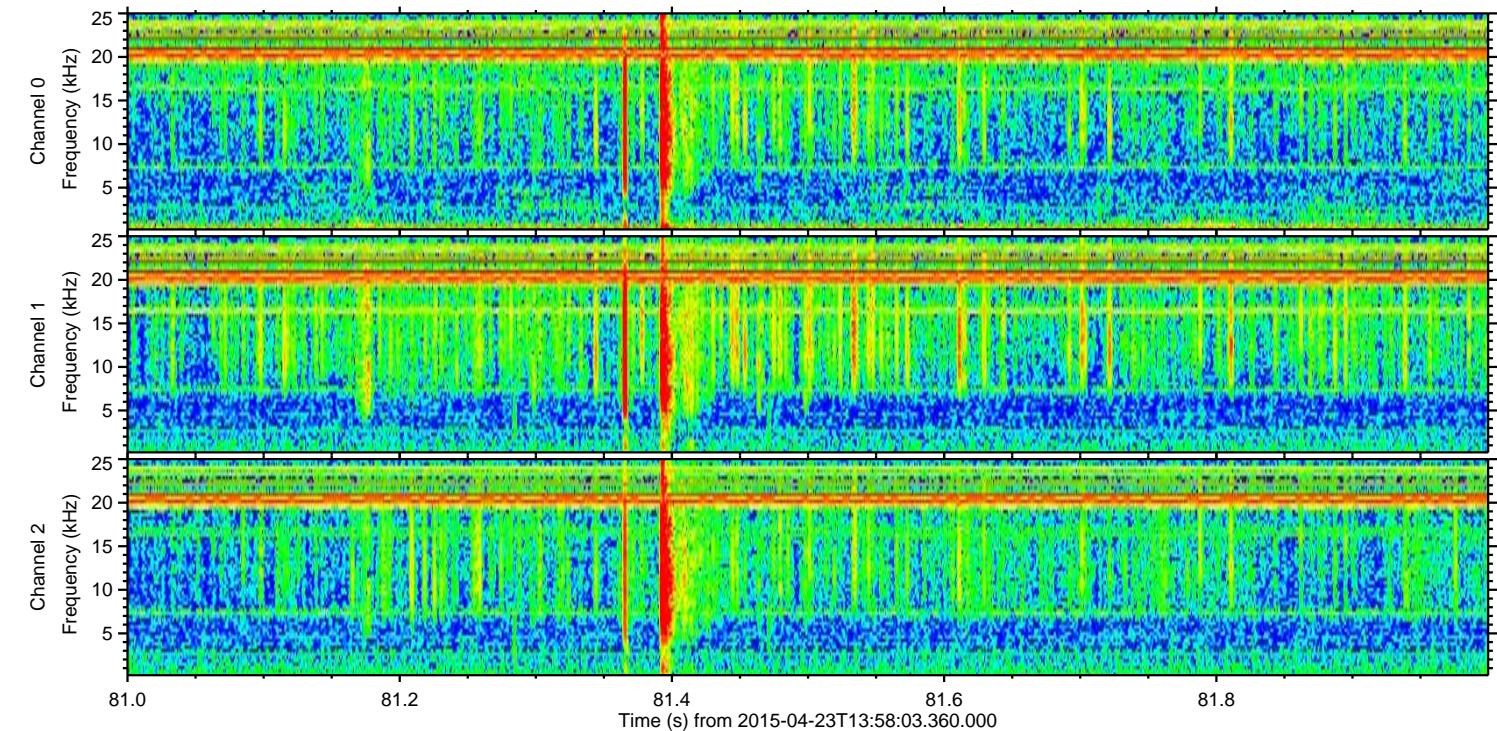
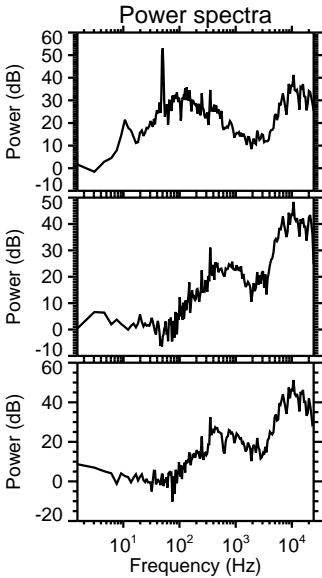
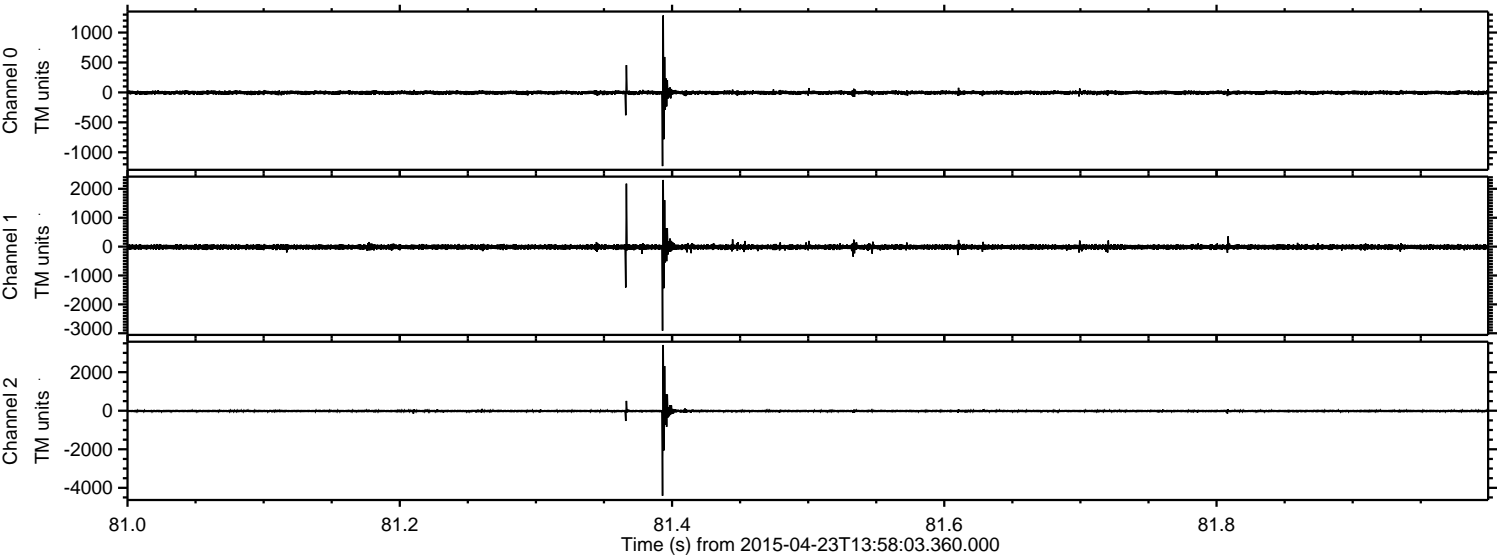


Channel 0
mn: -1975
mx: 1427
 μ : -3.6
 σ : 21.8

Channel 1
mn: -4354
mx: 2819
 μ : -15.6
 σ : 54.6

Channel 2
mn: -2463
mx: 4432
 μ : -14.9
 σ : 47.1

Processed Thu Apr 23 16:05:36 2015 by ELM ver.2012-10-06 from 001__elm20150423_135802__dat00.bin



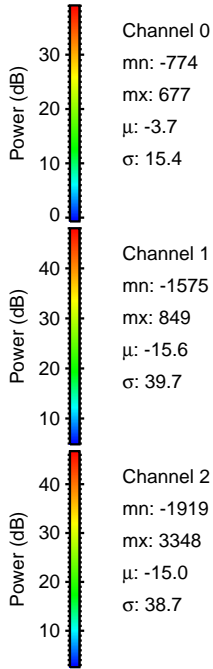
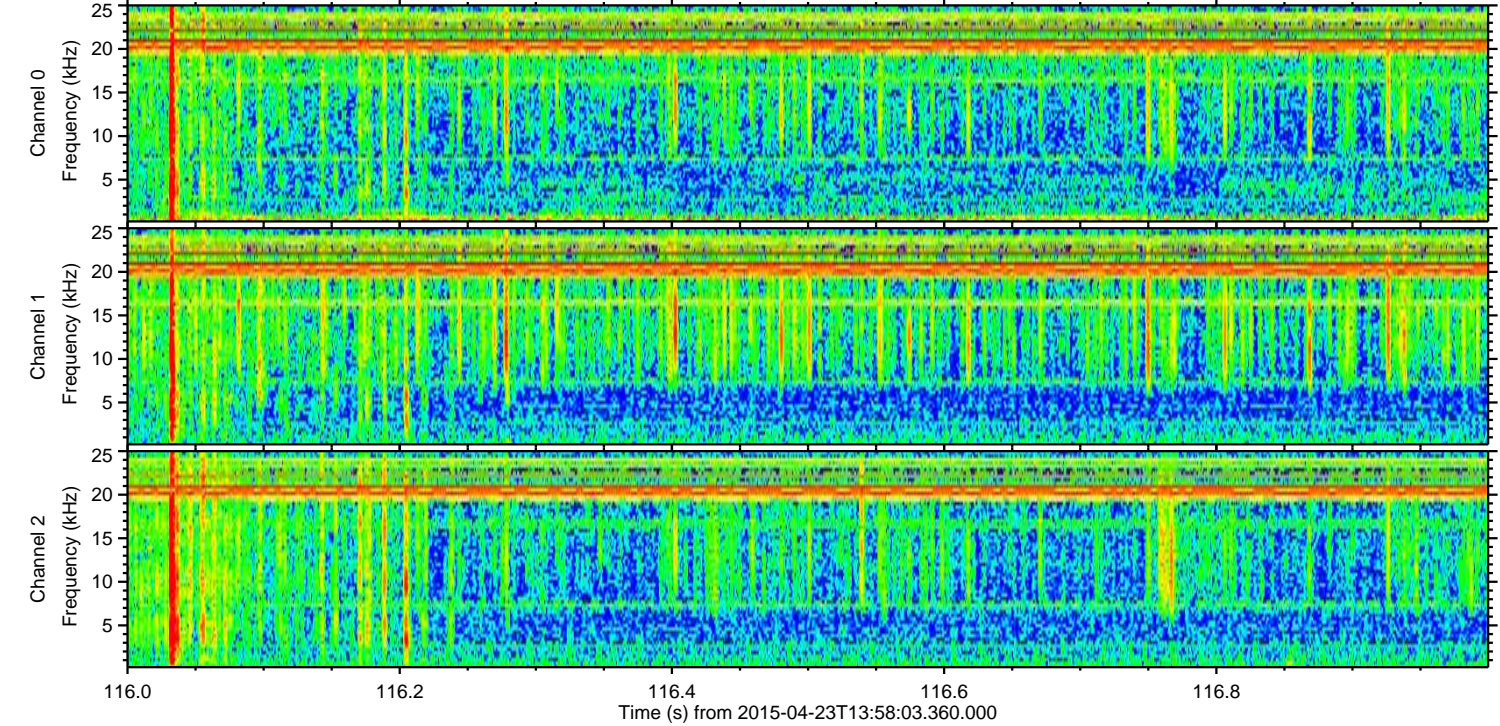
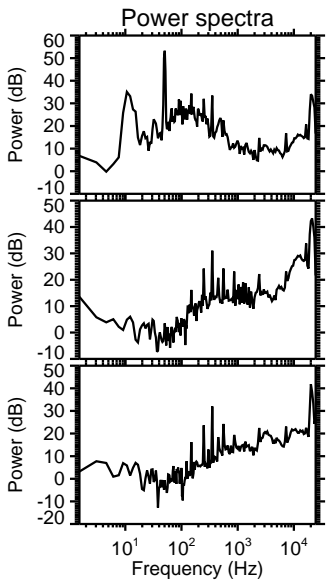
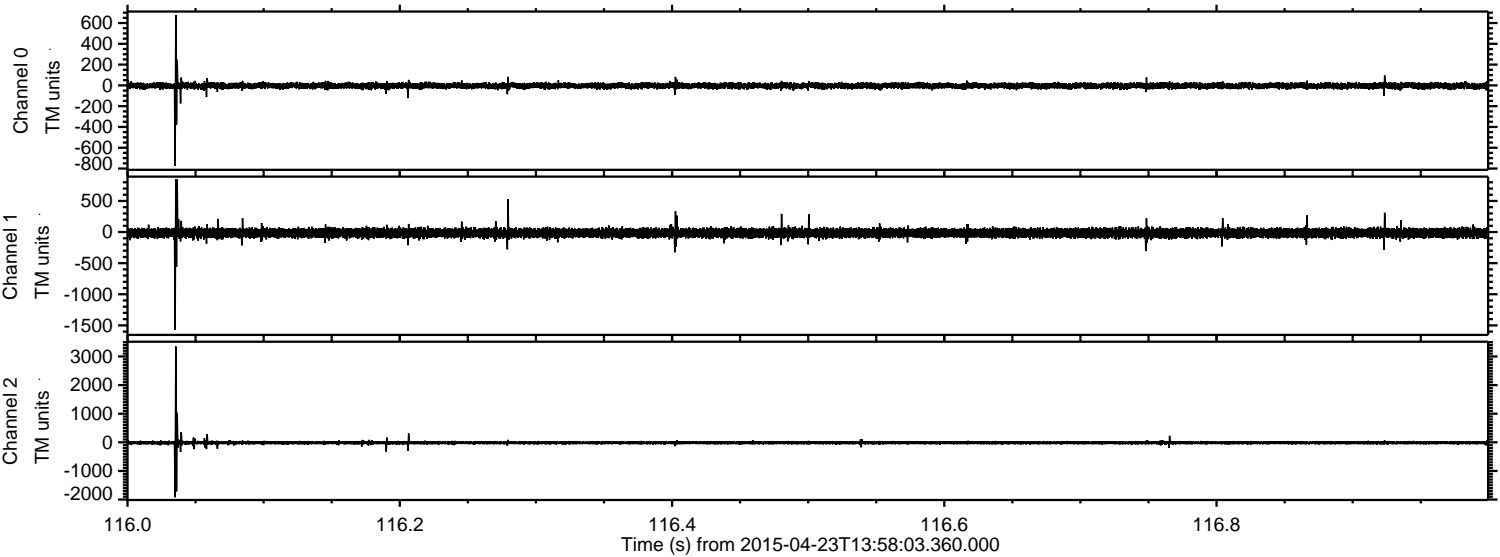
Channel 0
mn: -1231
mx: 1287
 μ : -3.7
 σ : 23.3

Channel 1
mn: -2912
mx: 2307
 μ : -15.6
 σ : 56.1

Channel 2
mn: -4411
mx: 3411
 μ : -15.0
 σ : 62.6

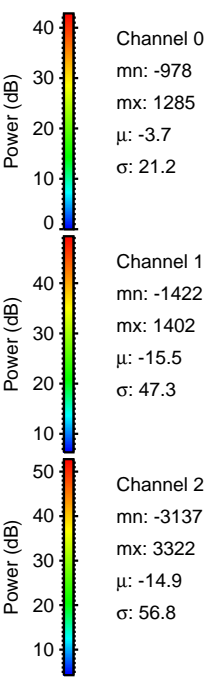
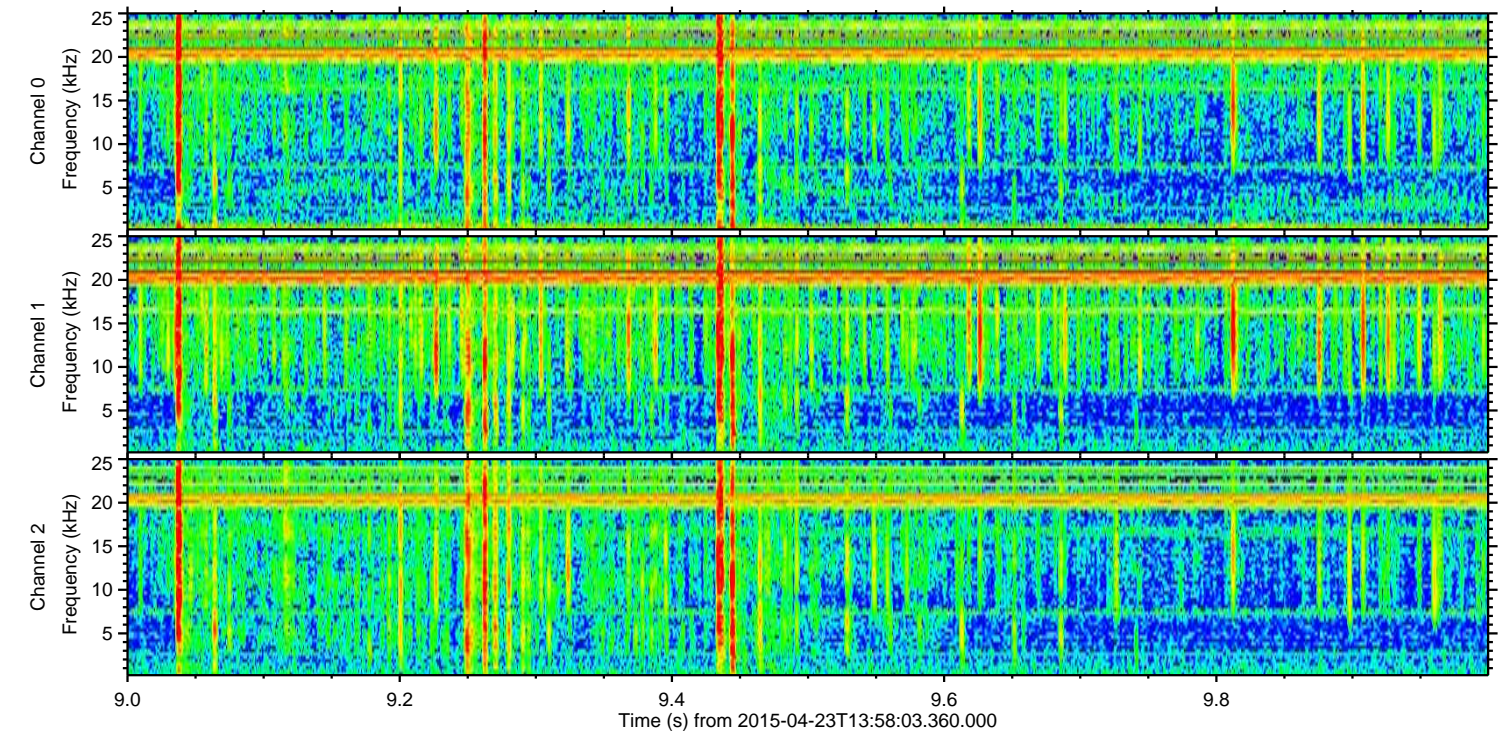
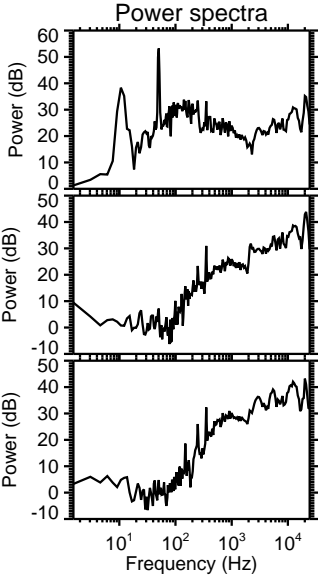
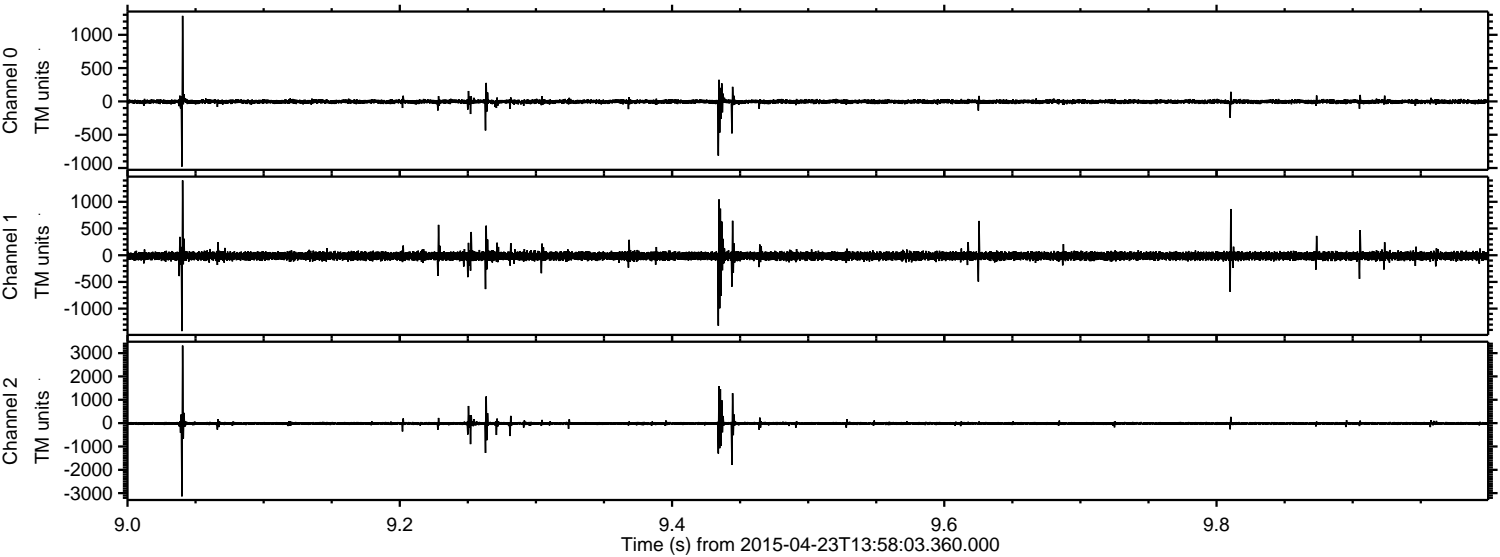
ELMAVAN 3D WAVEFORMS (Measured data sampled at 50 kHz) 49607 packets of 144 samples from 2015-04-23T13:58:03.360.000. Part 117/143

Processed Thu Apr 23 16:05:37 2015 by ELM ver.2012-10-06 from 001__elm20150423_135802__dat00.bin



ELMAVAN 3D WAVEFORMS (Measured data sampled at 50 kHz) 49607 packets of 144 samples from 2015-04-23T13:58:03.360.000. Part 10/143

Processed Thu Apr 23 16:05:38 2015 by ELM ver.2012-10-06 from 001__elm20150423_135802__dat00.bin



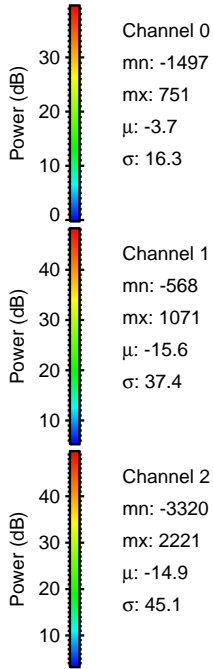
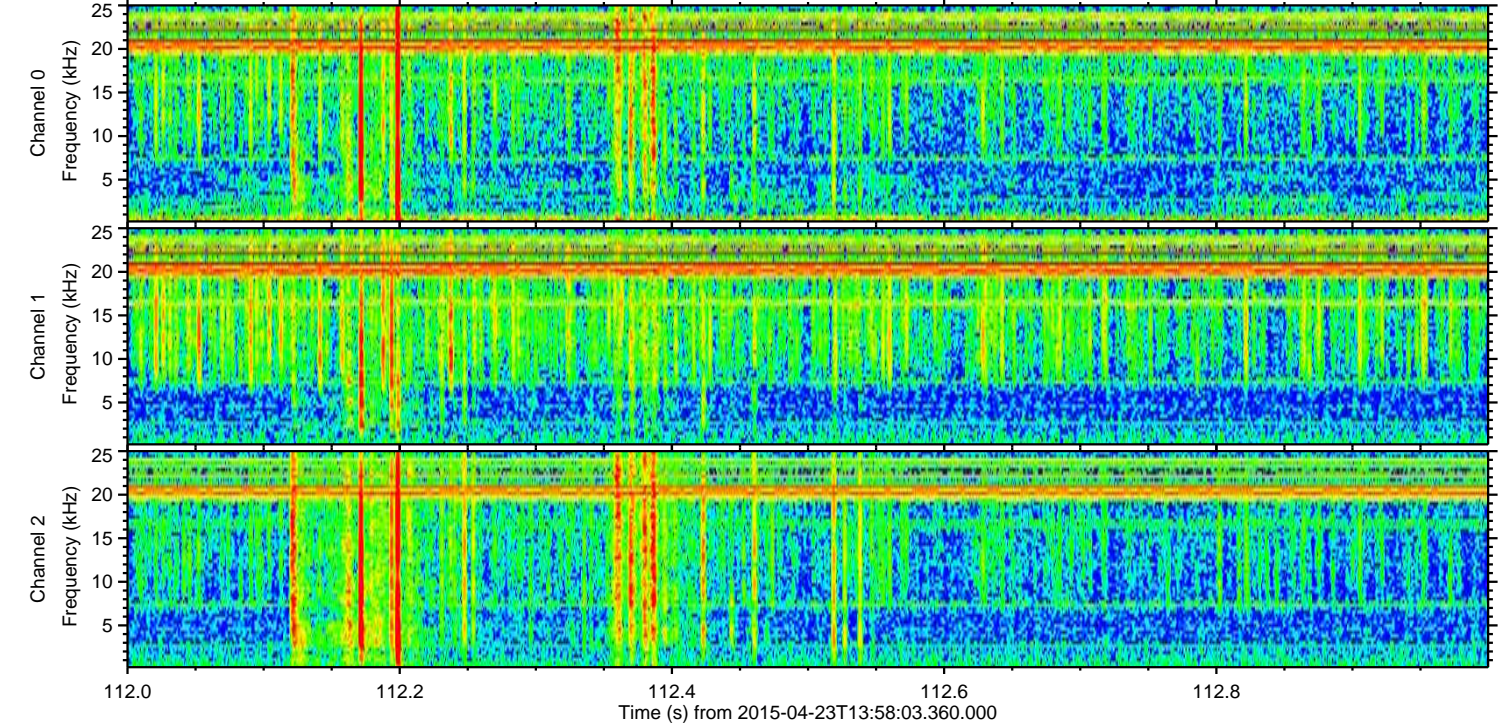
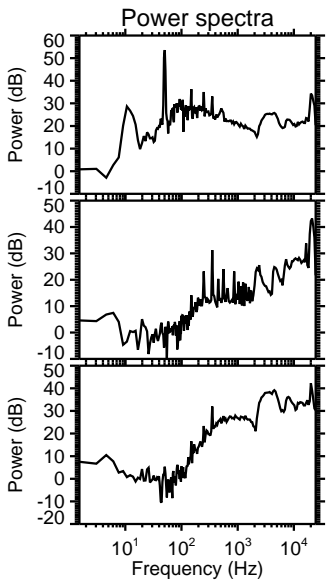
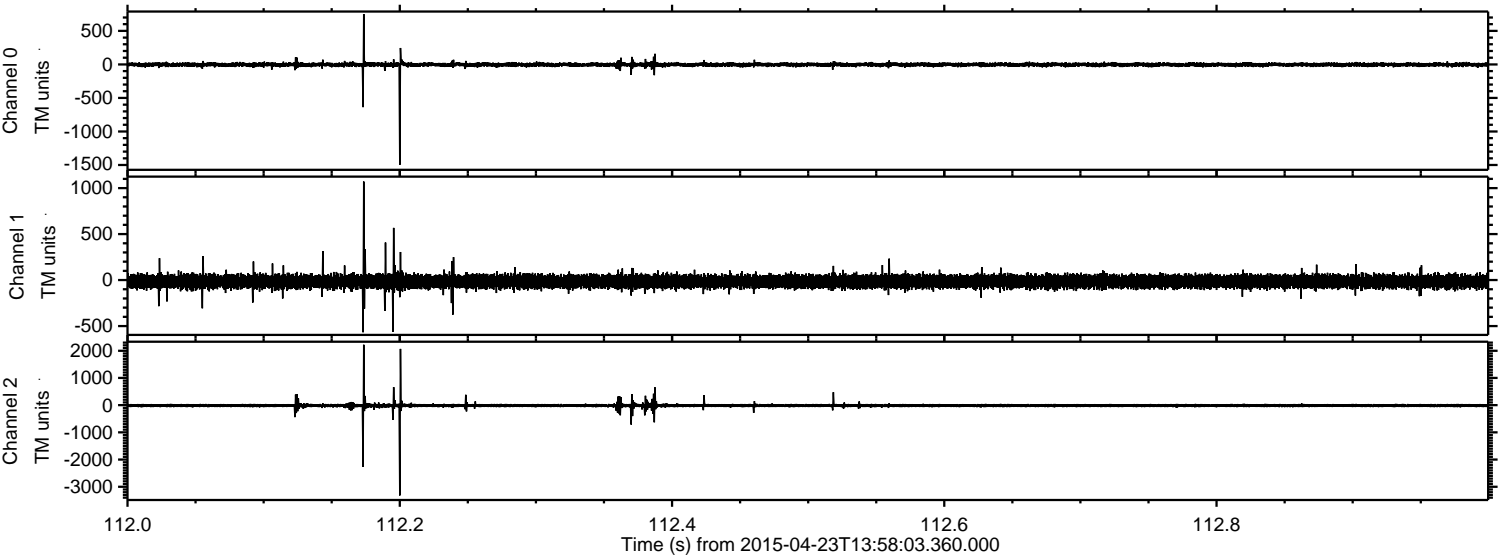
Channel 0
mn: -978
mx: 1285
 μ : -3.7
 σ : 21.2

Channel 1
mn: -1422
mx: 1402
 μ : -15.5
 σ : 47.3

Channel 2
mn: -3137
mx: 3322
 μ : -14.9
 σ : 56.8

ELMAVAN 3D WAVEFORMS (Measured data sampled at 50 kHz) 49607 packets of 144 samples from 2015-04-23T13:58:03.360.000. Part 113/143

Processed Thu Apr 23 16:05:40 2015 by ELM ver.2012-10-06 from 001__elm20150423_135802__dat00.bin

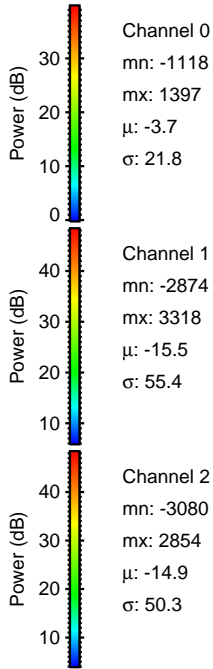
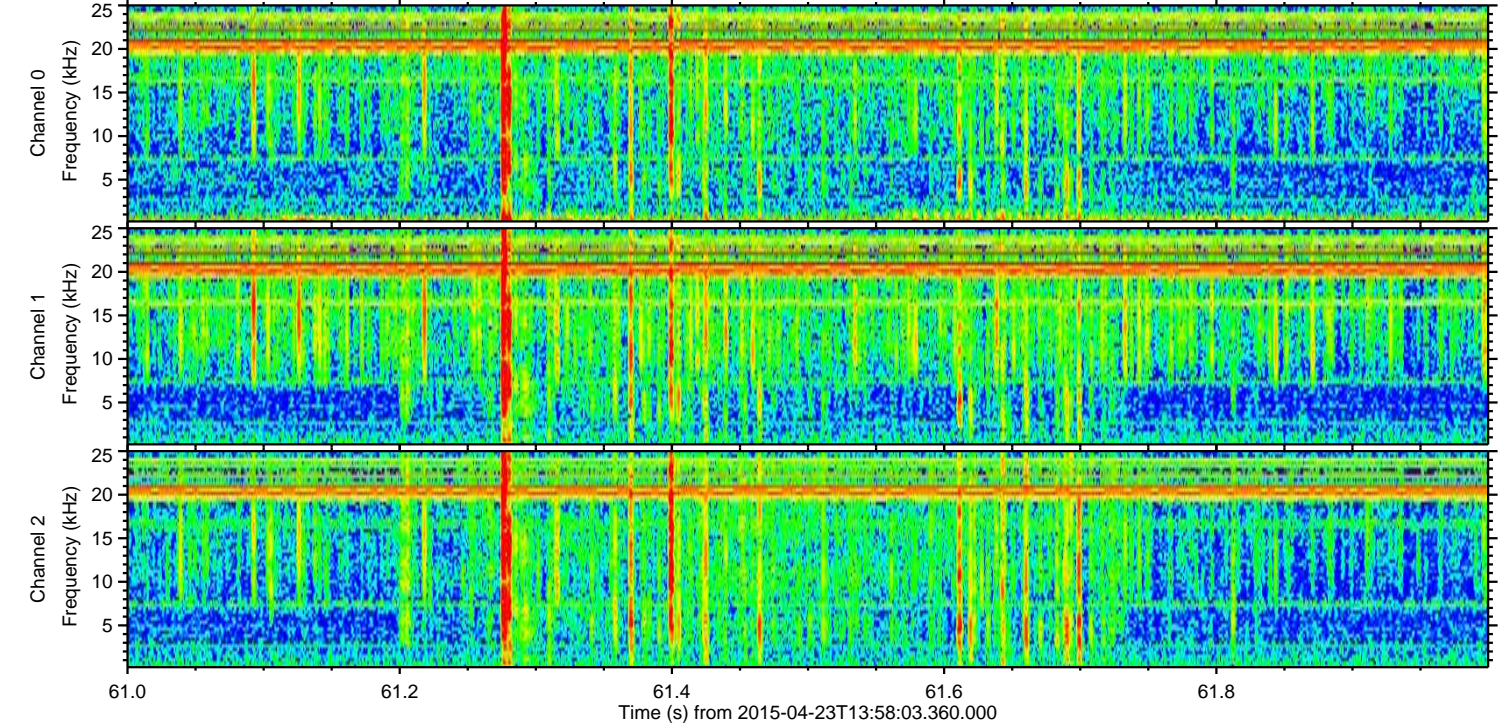
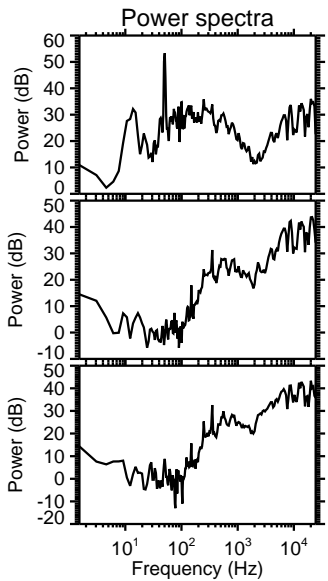
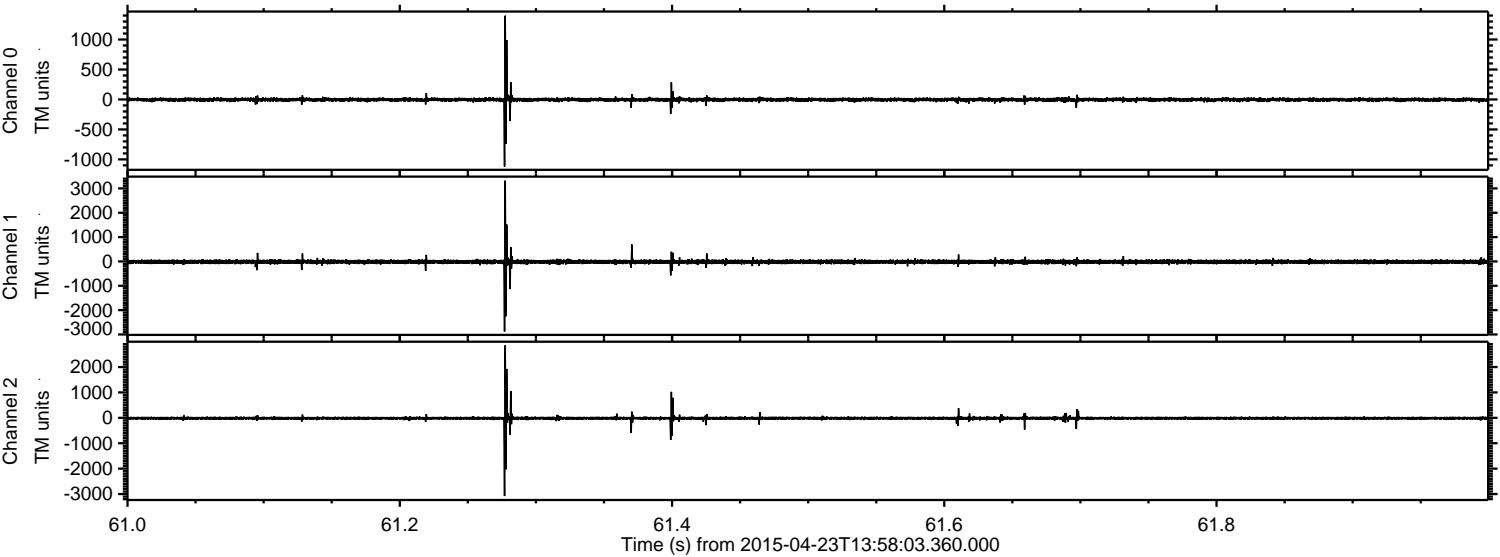


Channel 0
mn: -1497
mx: 751
 μ : -3.7
 σ : 16.3

Channel 1
mn: -568
mx: 1071
 μ : -15.6
 σ : 37.4

Channel 2
mn: -3320
mx: 2221
 μ : -14.9
 σ : 45.1

Processed Thu Apr 23 16:05:42 2015 by ELM ver.2012-10-06 from 001__elm20150423_135802__dat00.bin

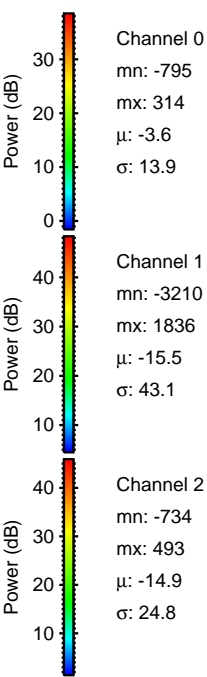
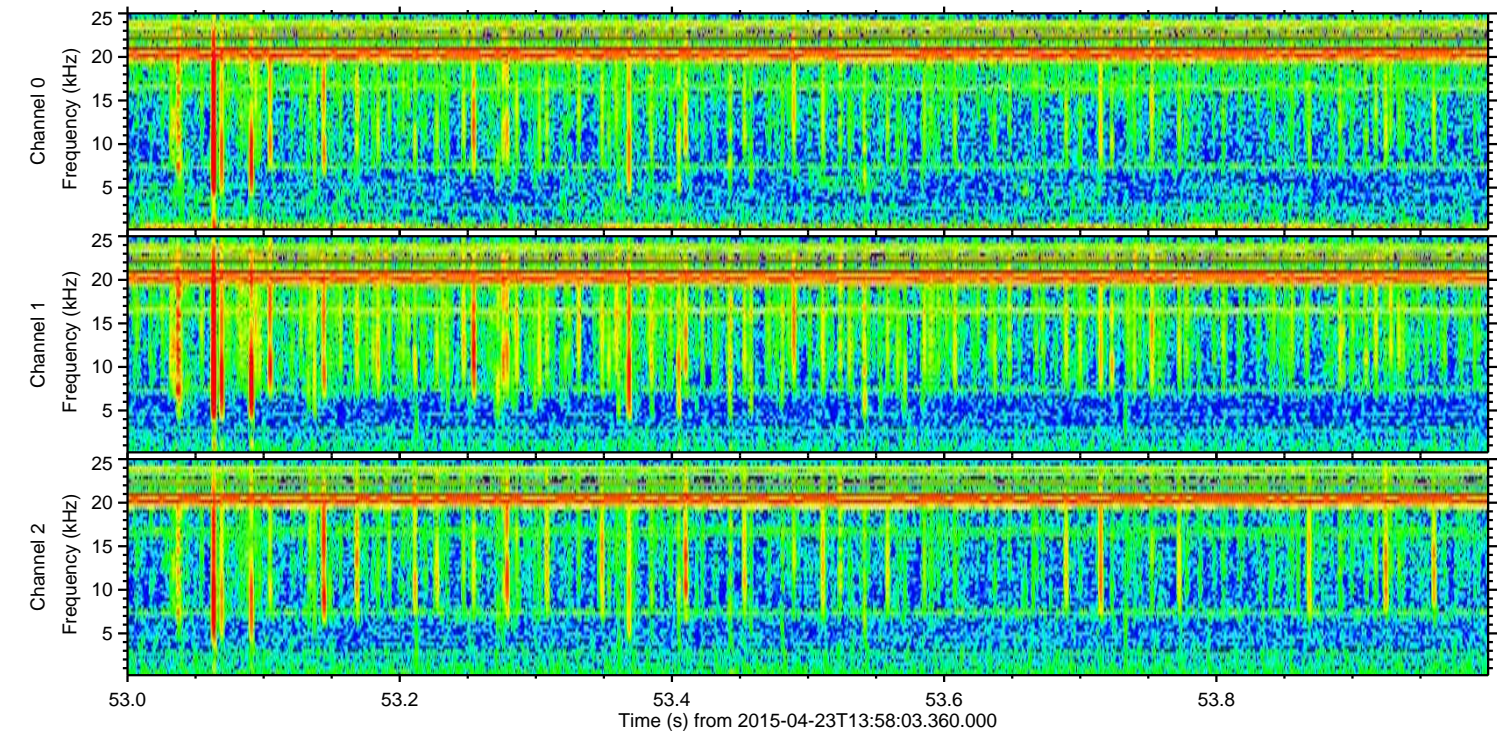
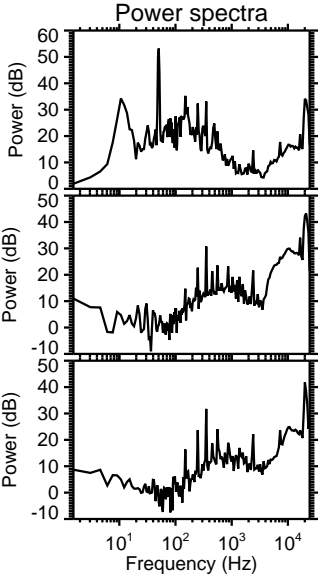
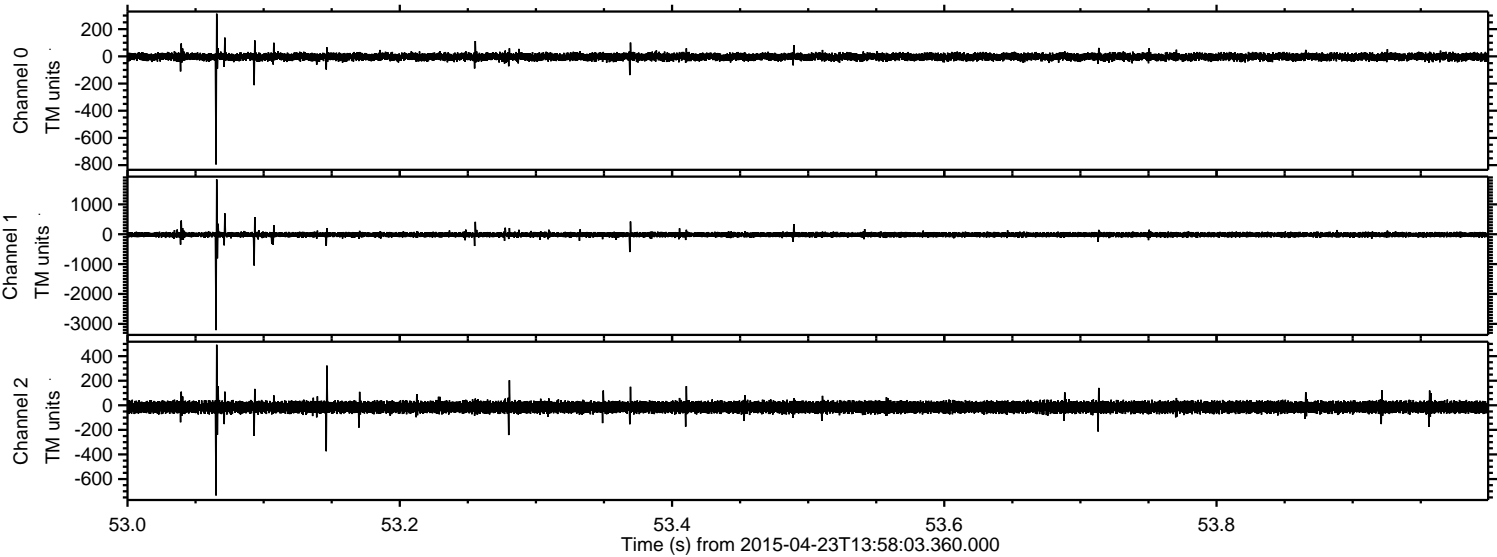


Channel 0
mn: -1118
mx: 1397
 μ : -3.7
 σ : 21.8

Channel 1
mn: -2874
mx: 3318
 μ : -15.5
 σ : 55.4

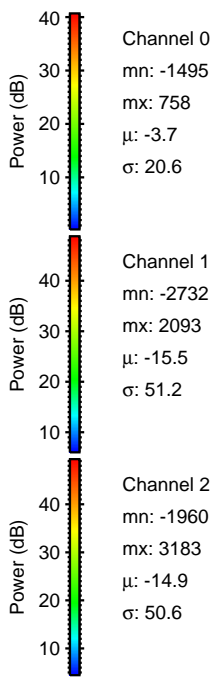
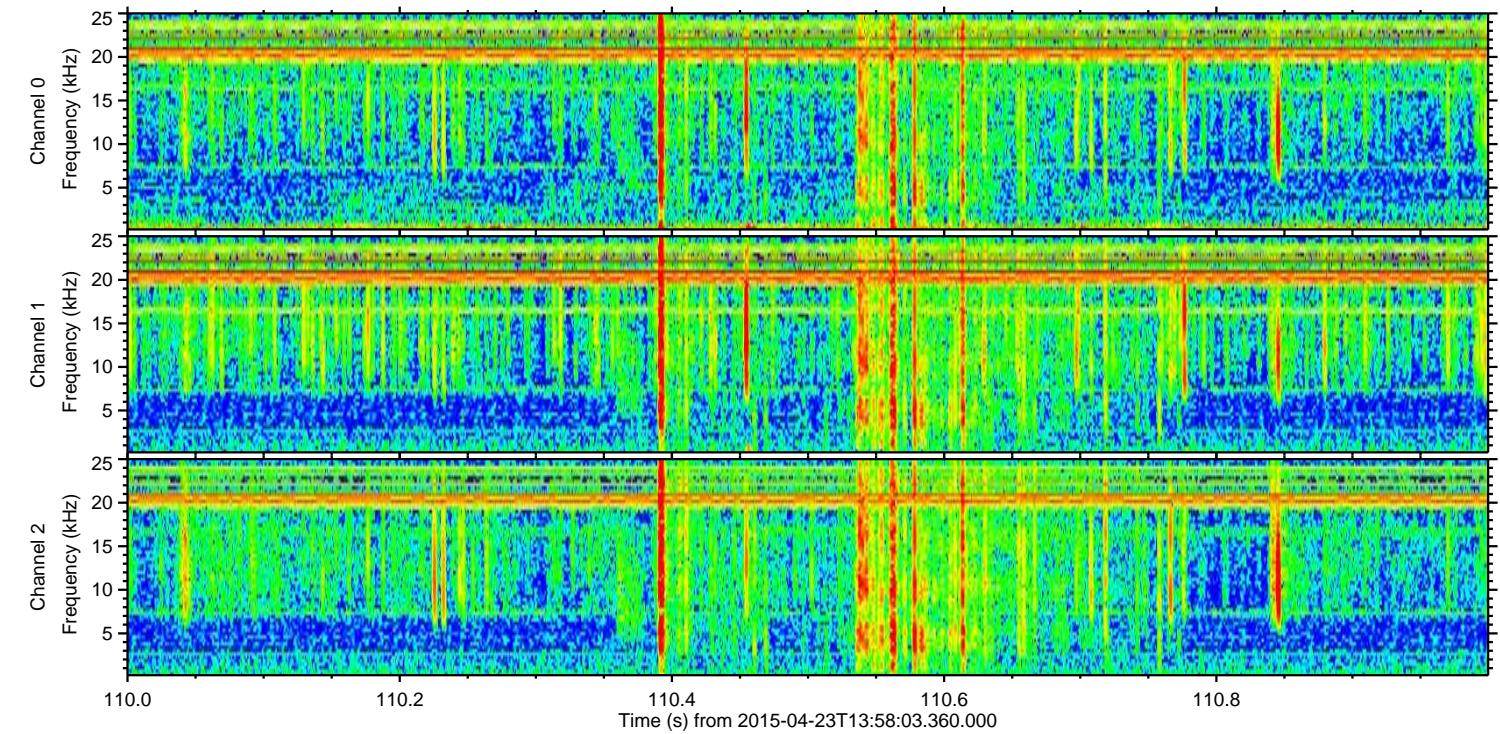
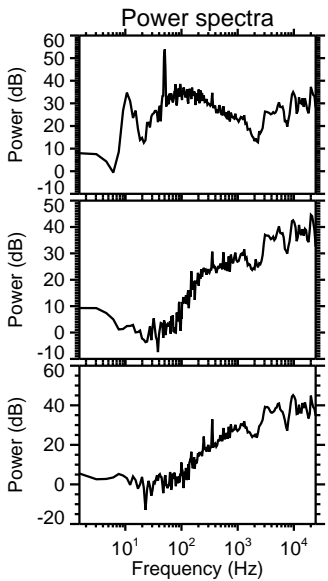
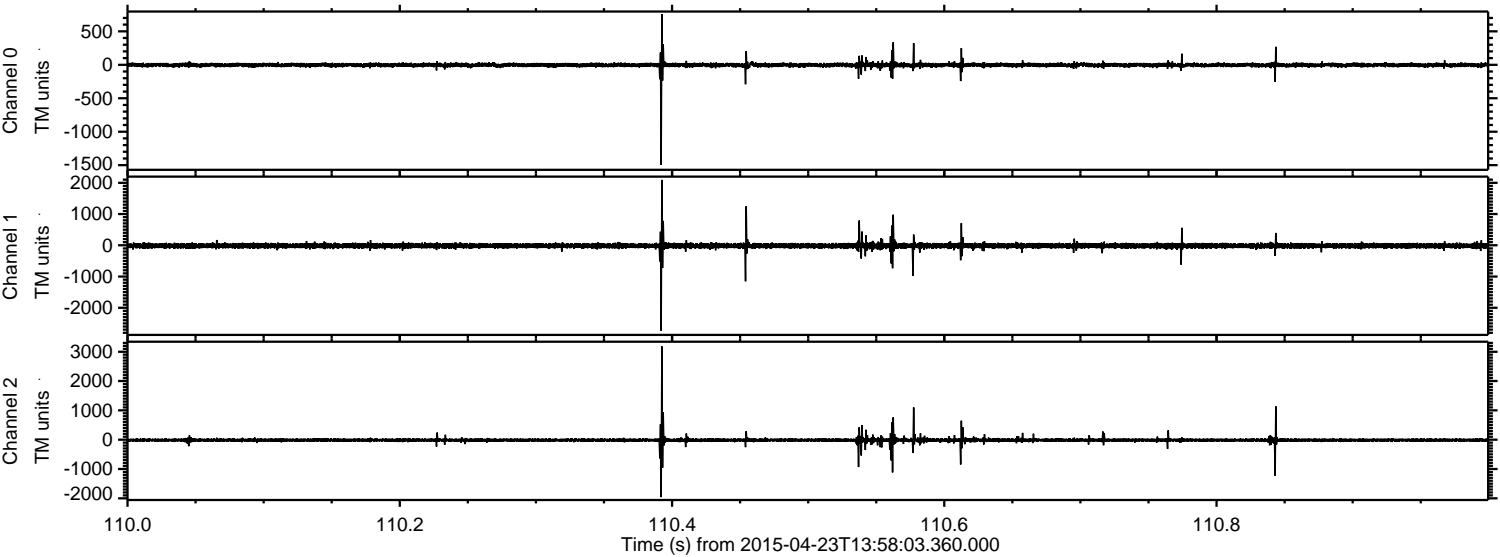
Channel 2
mn: -3080
mx: 2854
 μ : -14.9
 σ : 50.3

Processed Thu Apr 23 16:05:44 2015 by ELM ver.2012-10-06 from 001__elm20150423_135802__dat00.bin



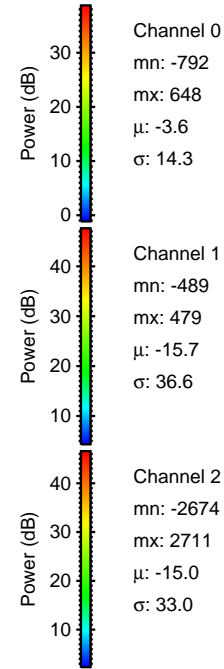
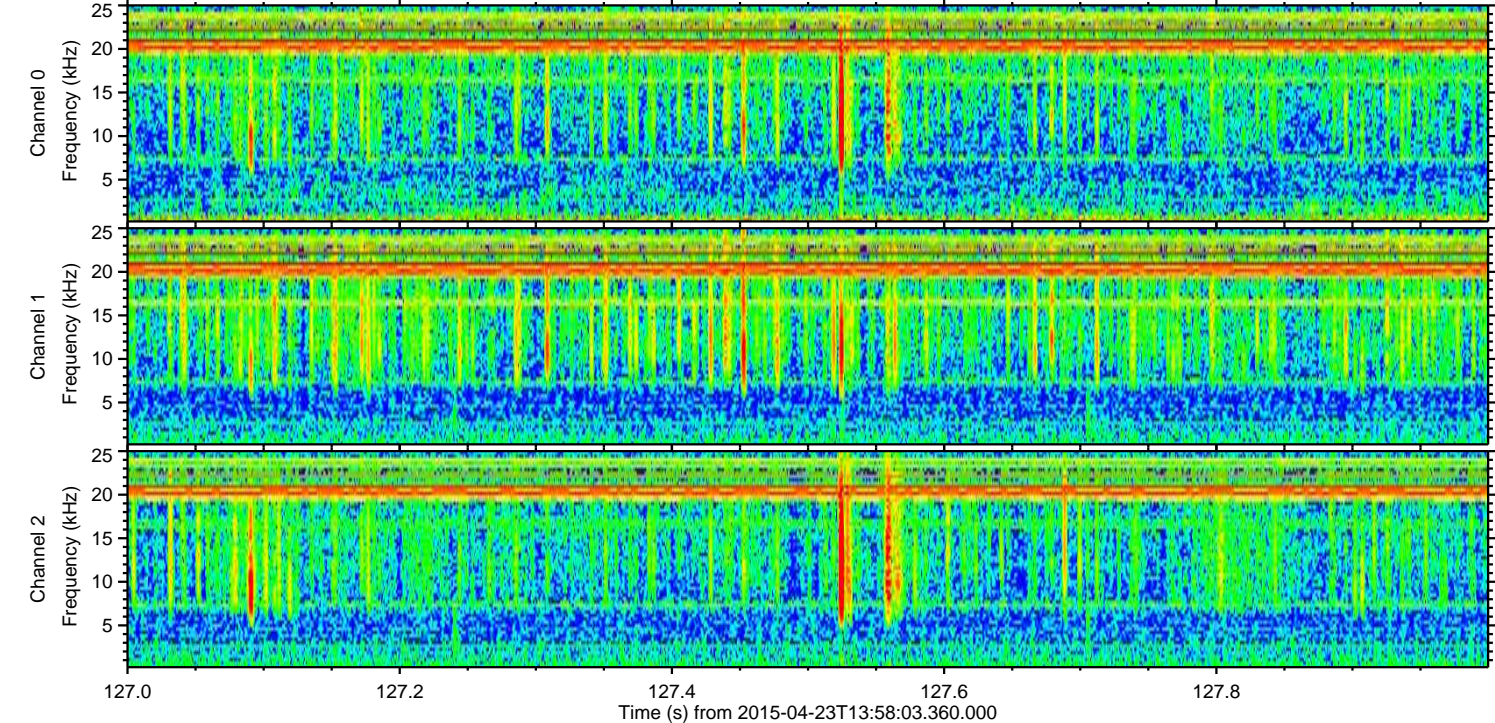
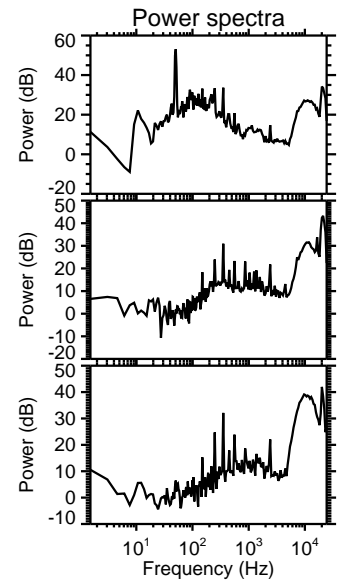
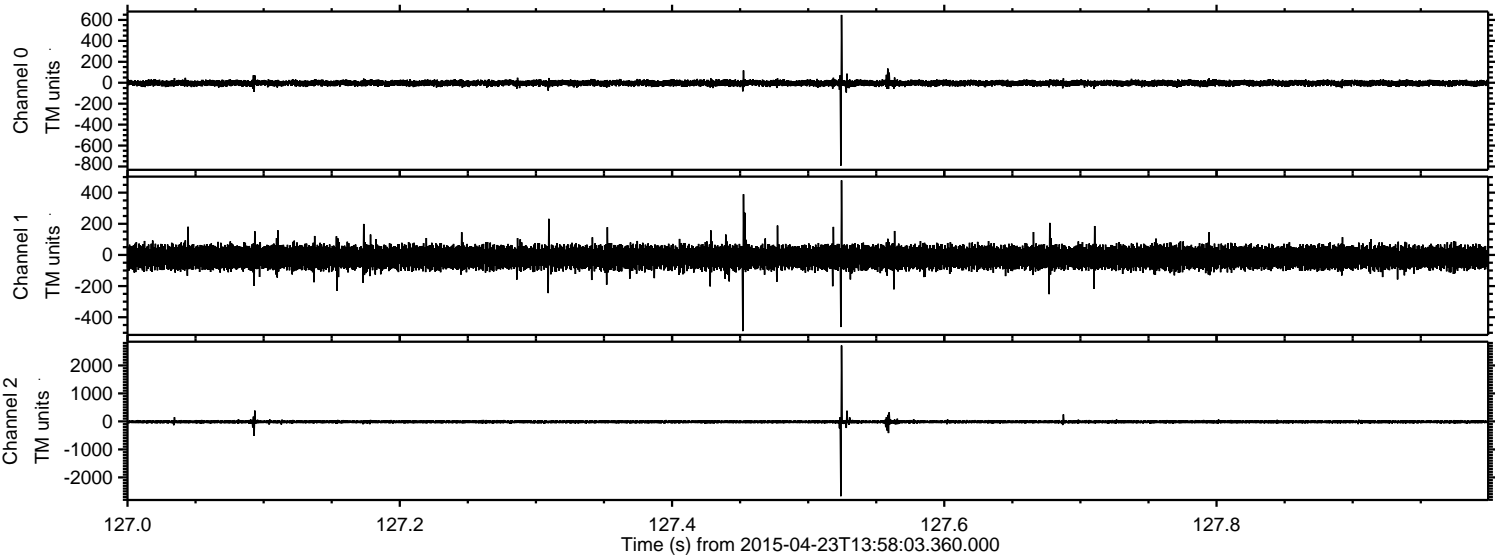
ELMAVAN 3D WAVEFORMS (Measured data sampled at 50 kHz) 49607 packets of 144 samples from 2015-04-23T13:58:03.360.000. Part 111/143

Processed Thu Apr 23 16:05:47 2015 by ELM ver.2012-10-06 from 001__elm20150423_135802__dat00.bin



ELMAVAN 3D WAVEFORMS (Measured data sampled at 50 kHz) 49607 packets of 144 samples from 2015-04-23T13:58:03.360.000. Part 128/143

Processed Thu Apr 23 16:05:48 2015 by ELM ver.2012-10-06 from 001__elm20150423_135802__dat00.bin



Processed Thu Apr 23 16:05:50 2015 by ELM ver.2012-10-06 from 001__elm20150423_135802__dat00.bin

