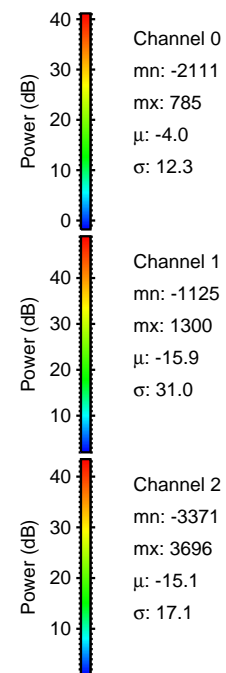
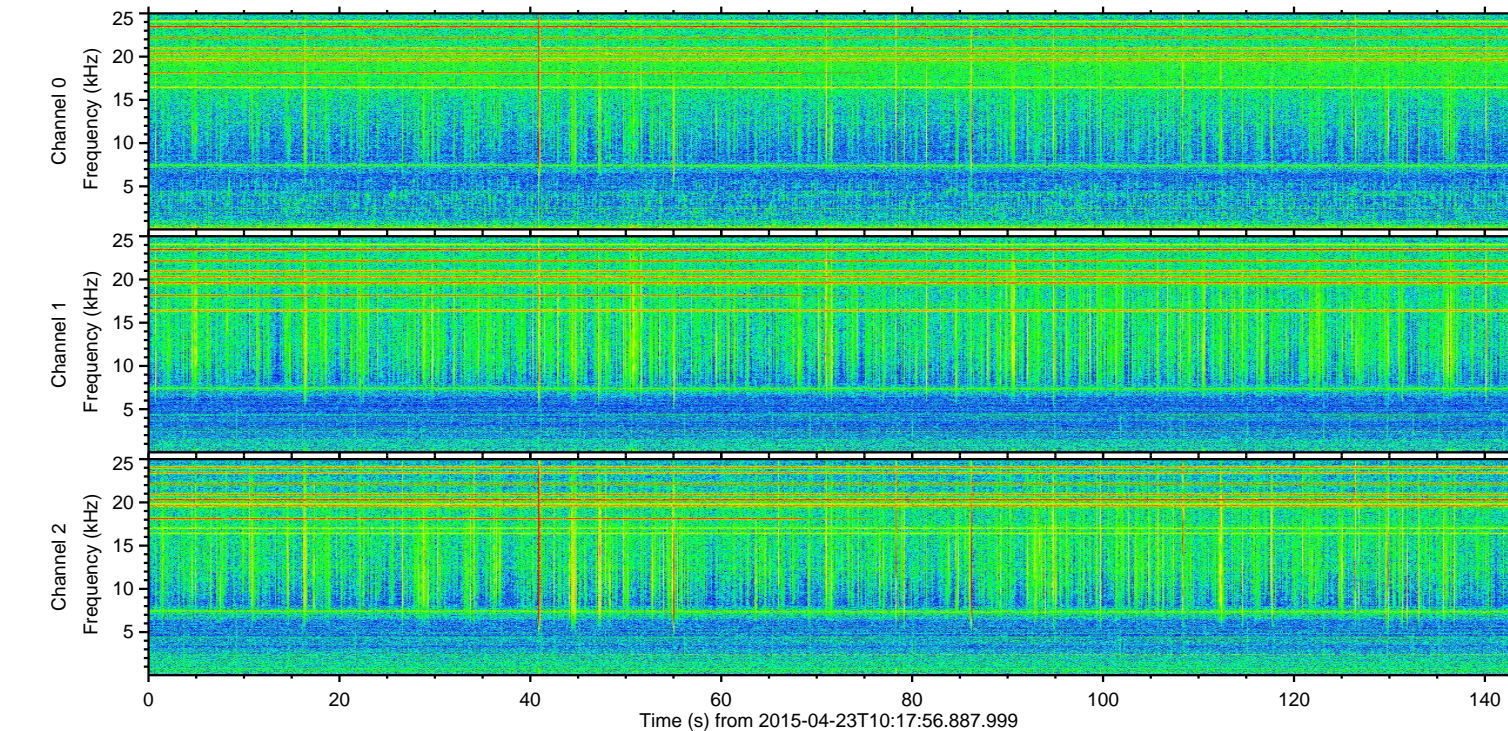
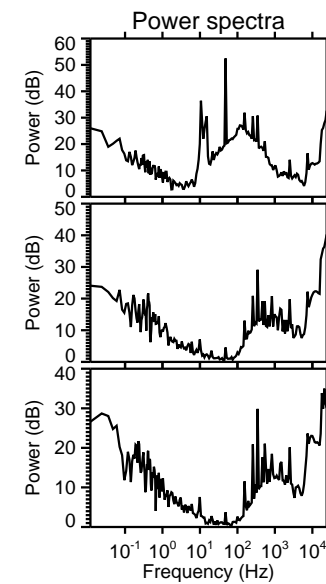
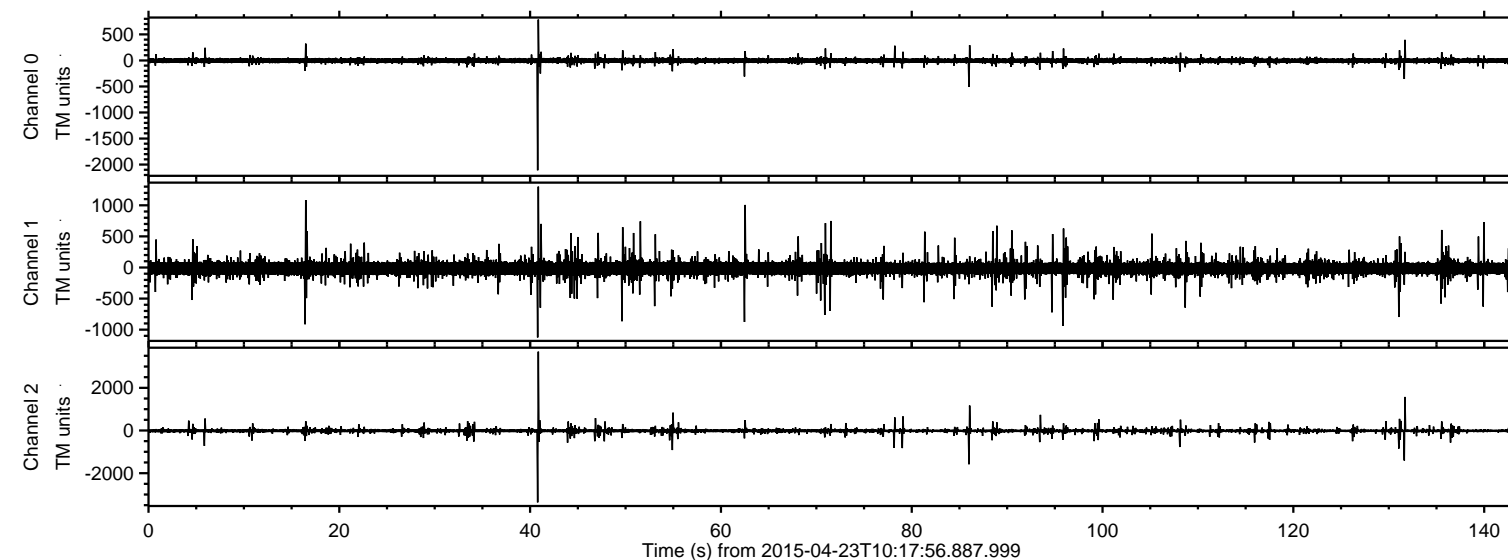
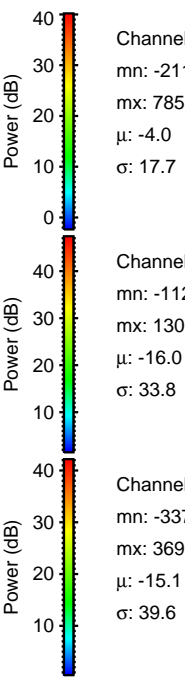
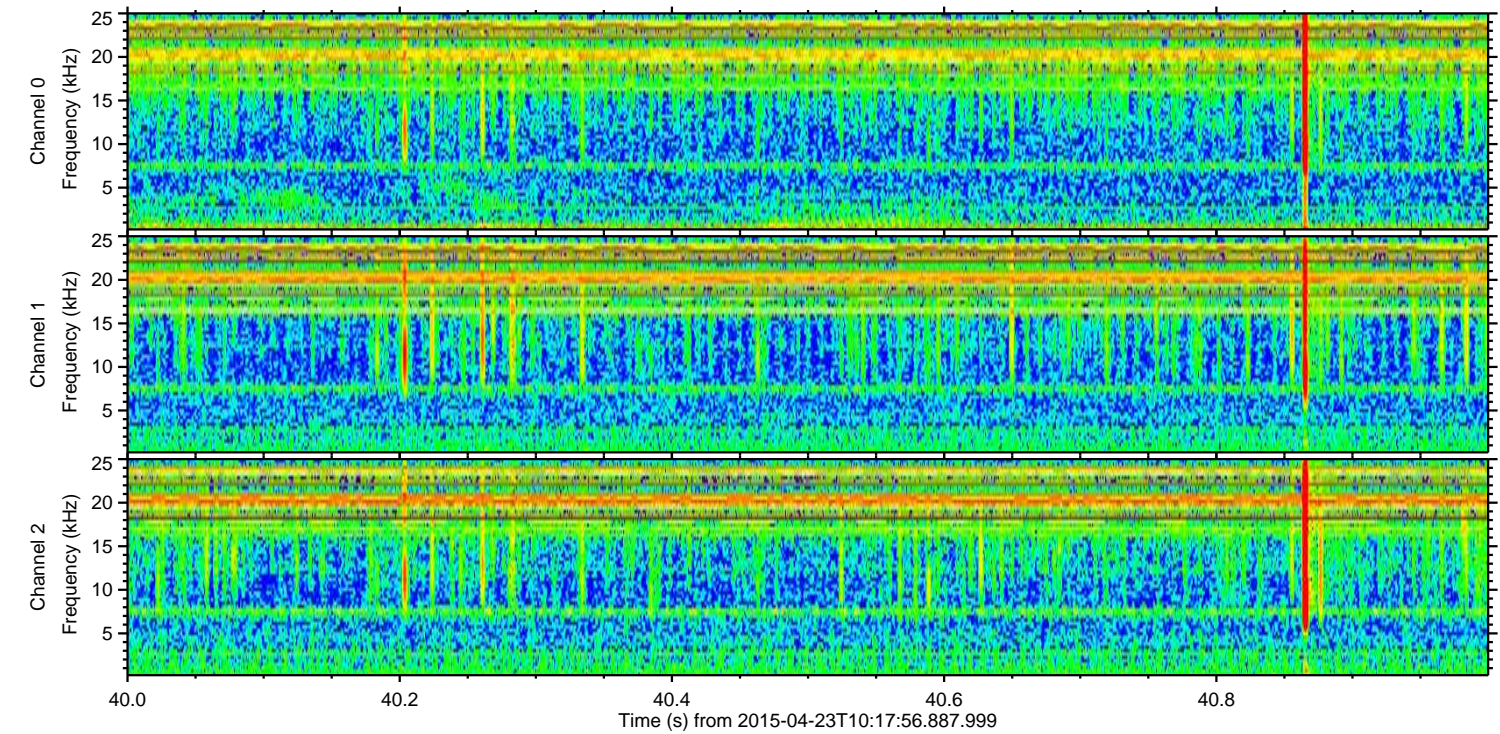
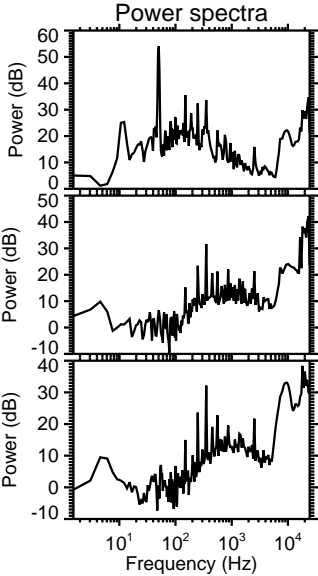
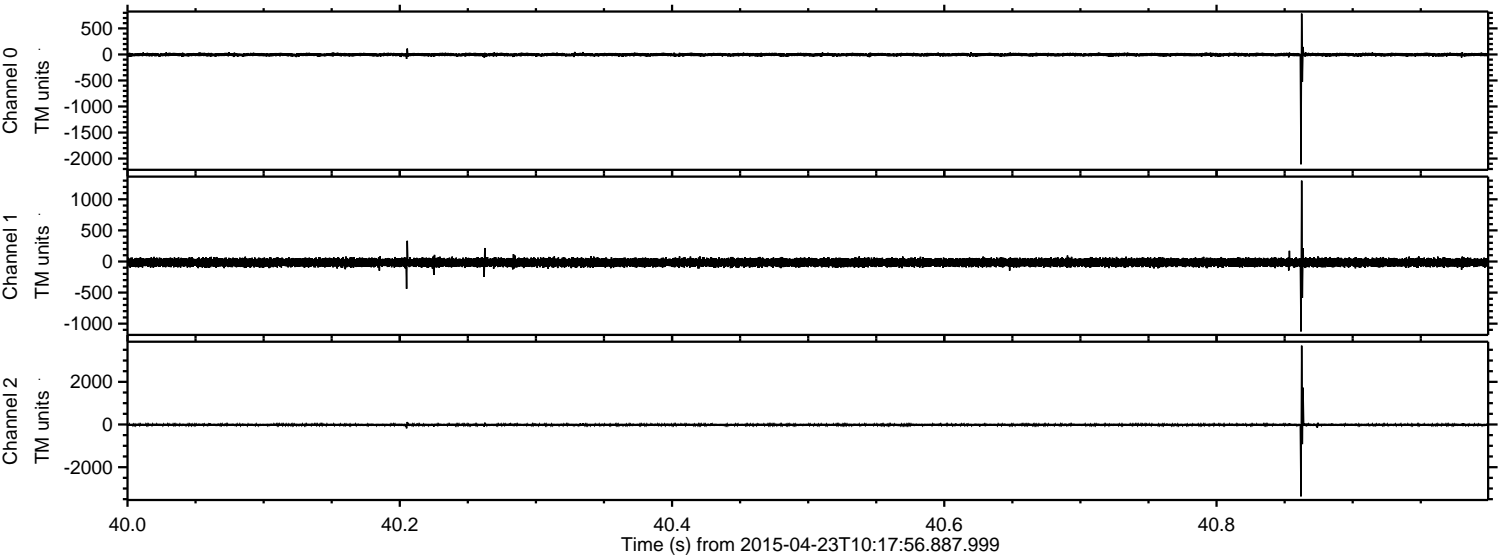


ELMAVAN 3D WAVEFORMS (Measured data sampled at 50 kHz) 49520 packets of 144 samples from 2015-04-23T10:17:56.887.999.

Processed Thu Apr 23 12:25:15 2015 by ELM ver.2012-10-06 from 001__elm20150423_101755__dat00.bin



Processed Thu Apr 23 12:25:35 2015 by ELM ver.2012-10-06 from 001__elm20150423_101755__dat00.bin

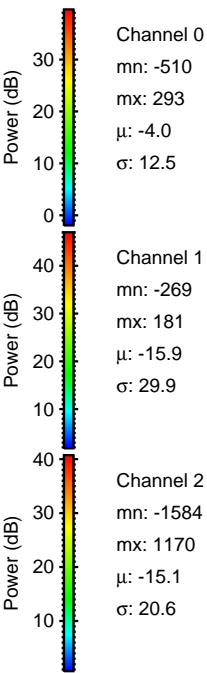
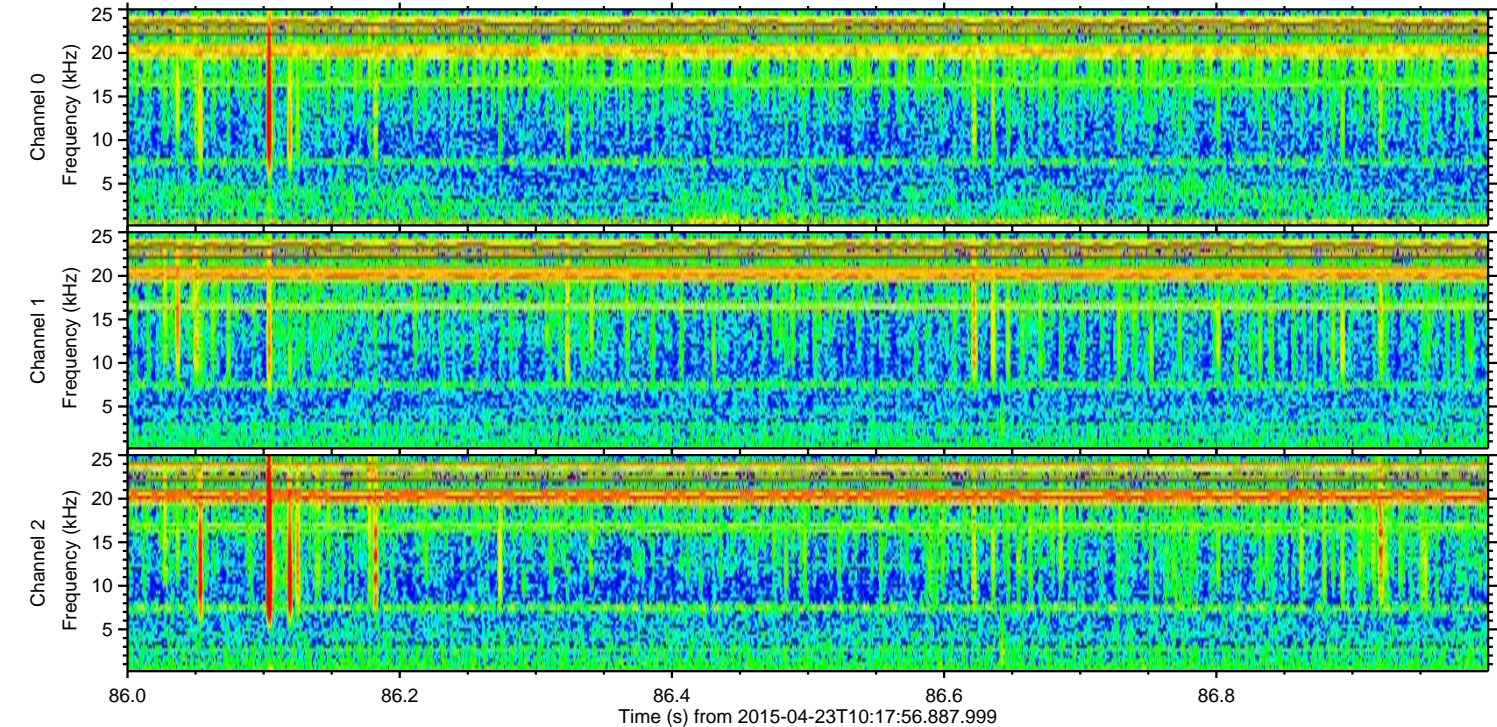
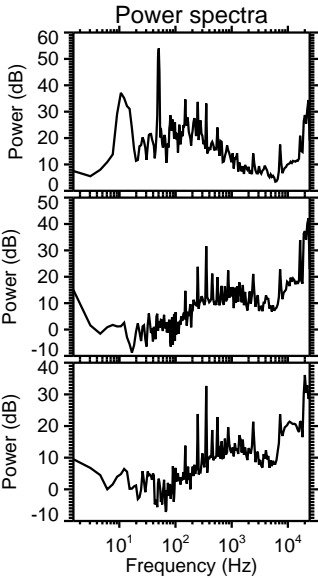
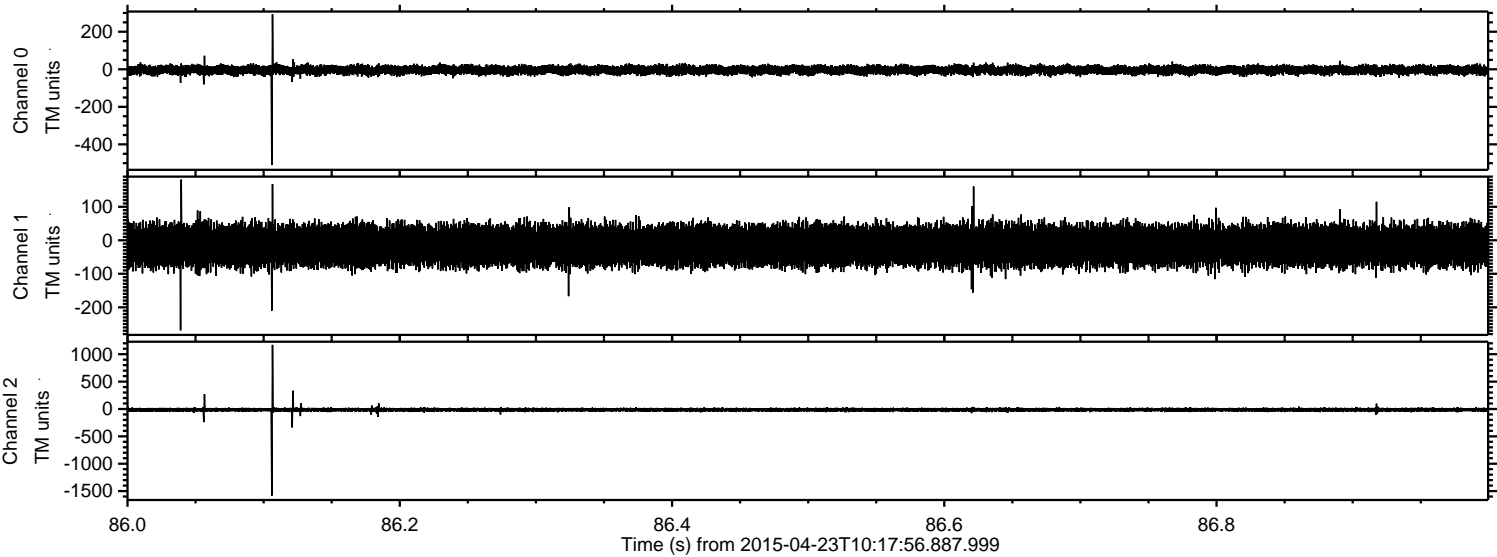


Channel 0
mn: -2111
mx: 785
 μ : -4.0
 σ : 17.7

Channel 1
mn: -1125
mx: 1300
 μ : -16.0
 σ : 33.8

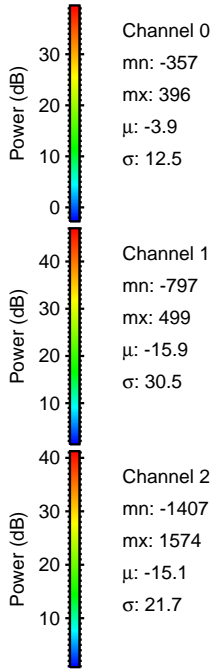
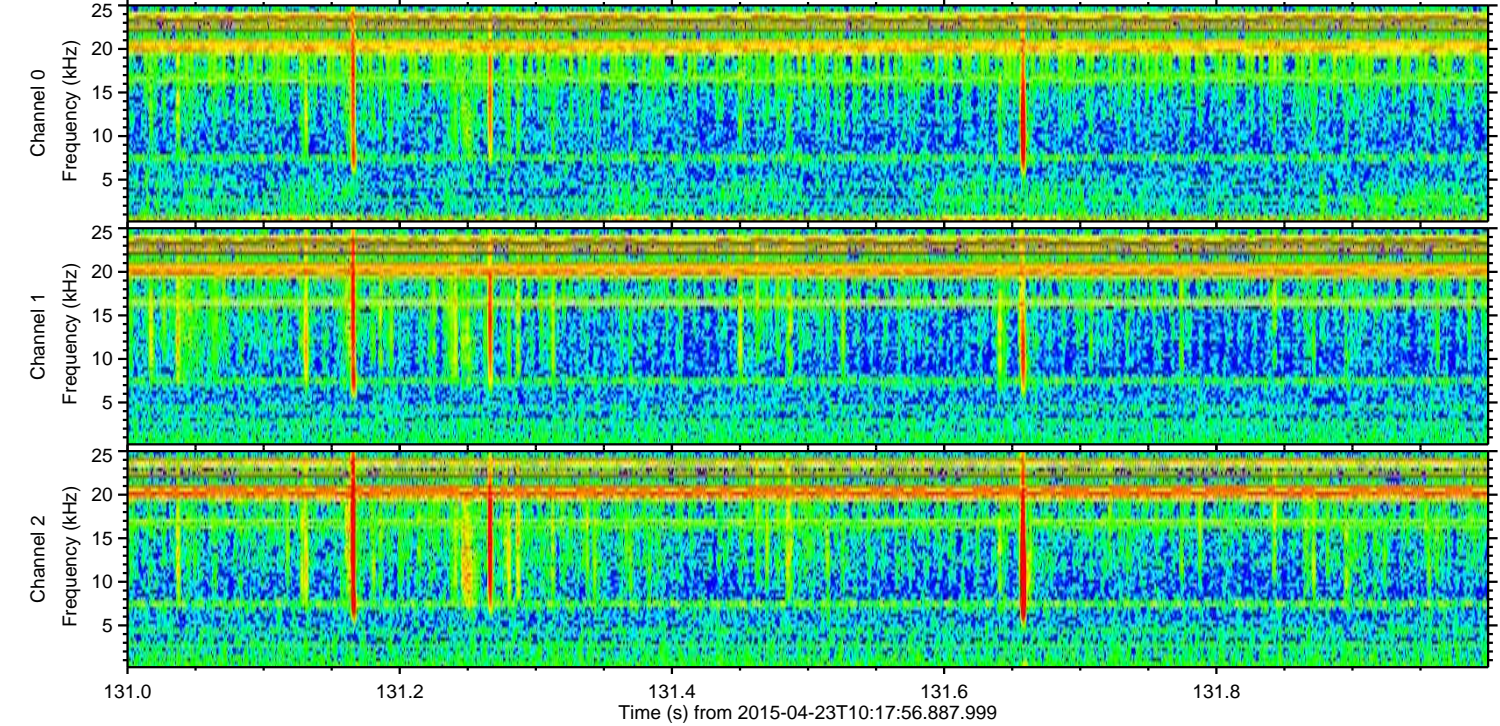
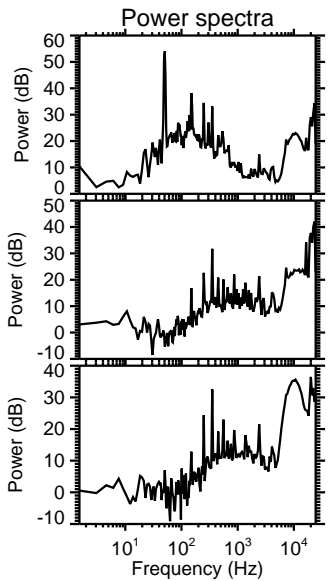
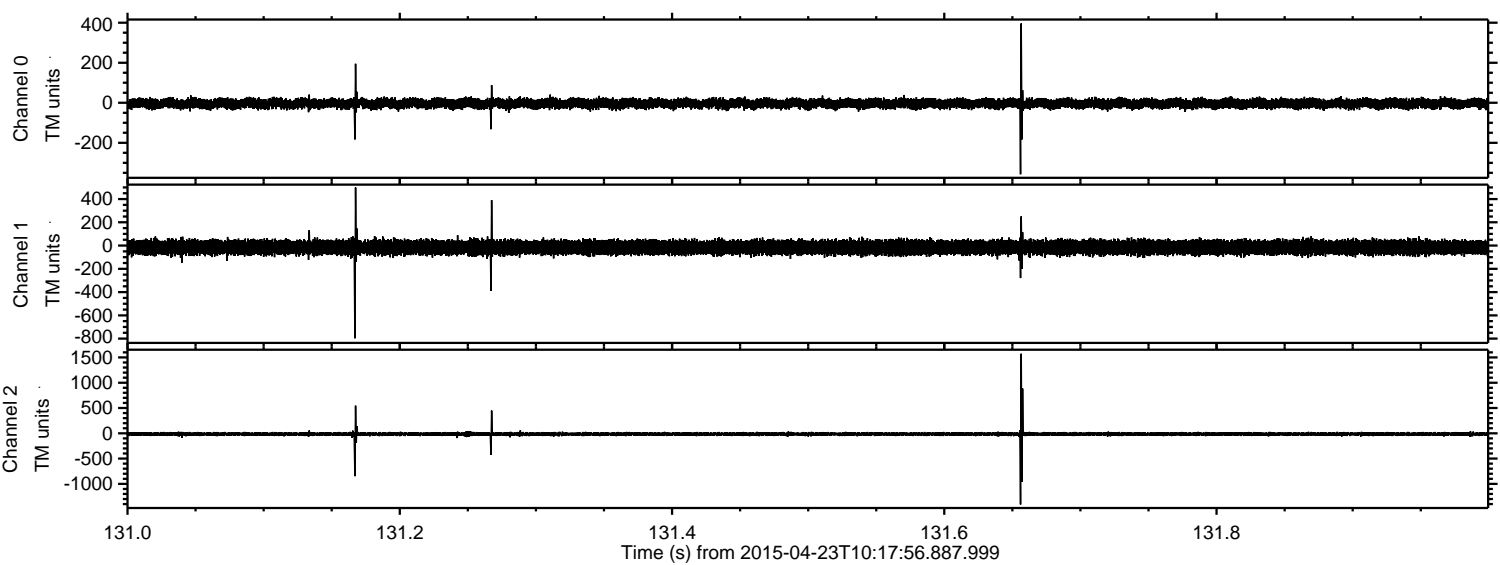
Channel 2
mn: -3371
mx: 3696
 μ : -15.1
 σ : 39.6

Processed Thu Apr 23 12:25:36 2015 by ELM ver.2012-10-06 from 001__elm20150423_101755__dat00.bin



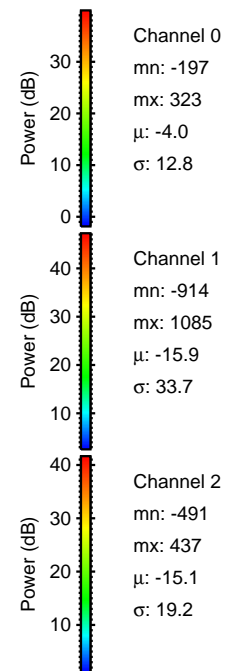
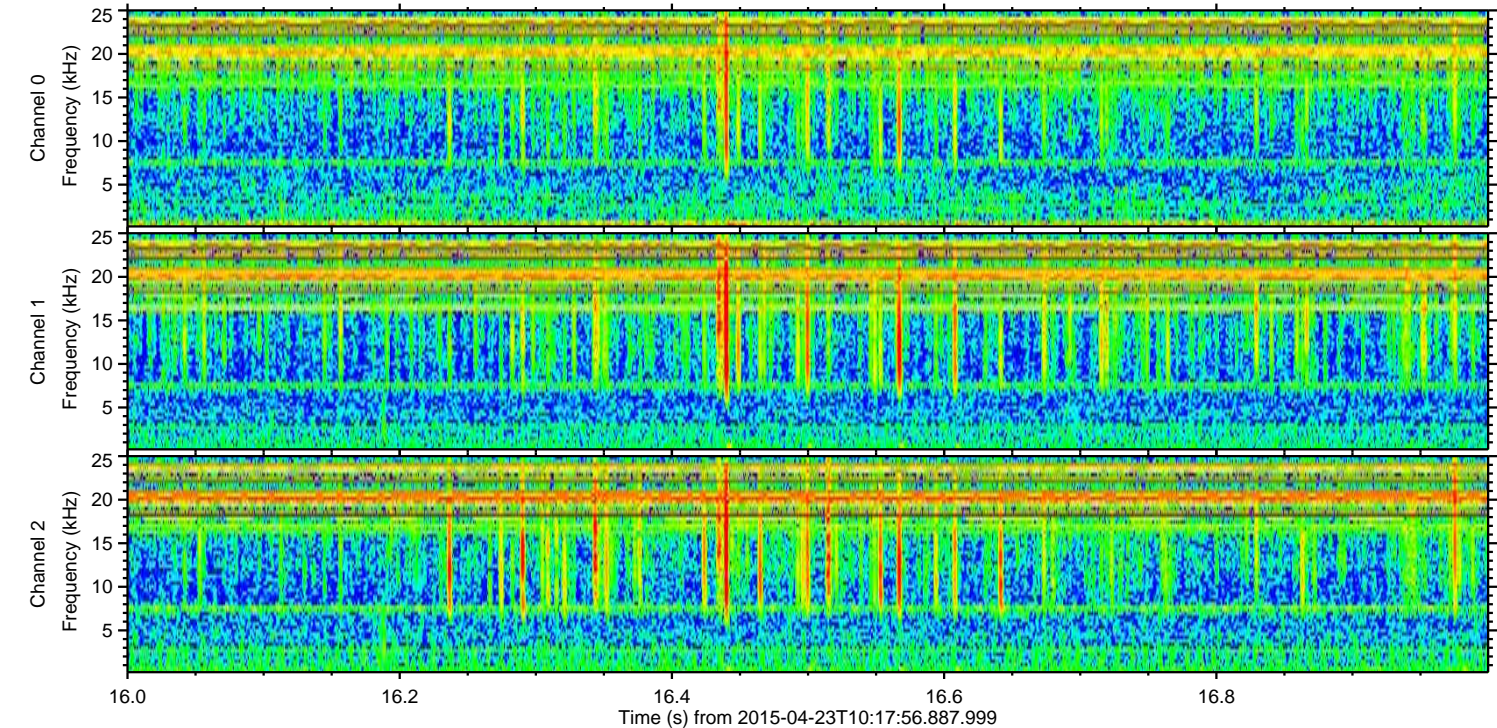
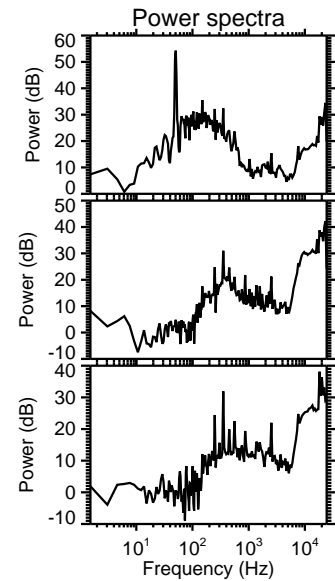
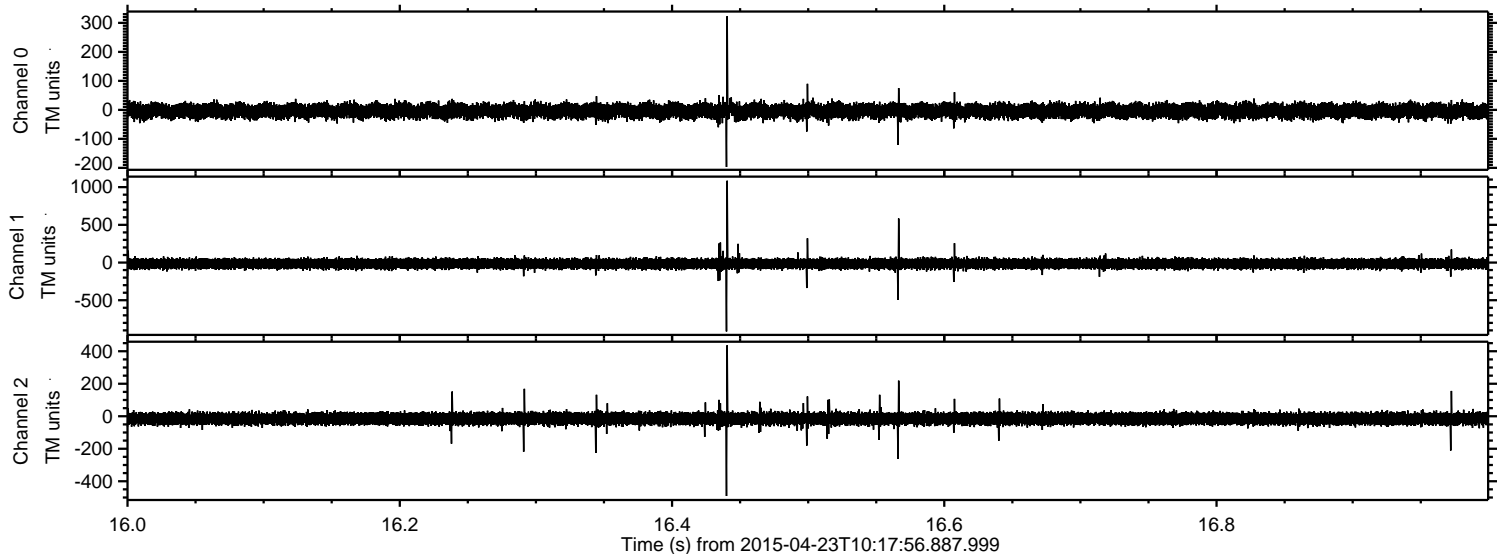
ELMAVAN 3D WAVEFORMS (Measured data sampled at 50 kHz) 49520 packets of 144 samples from 2015-04-23T10:17:56.887.999. Part 132/143

Processed Thu Apr 23 12:25:37 2015 by ELM ver.2012-10-06 from 001__elm20150423_101755__dat00.bin

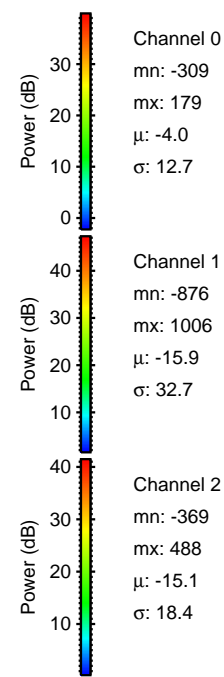
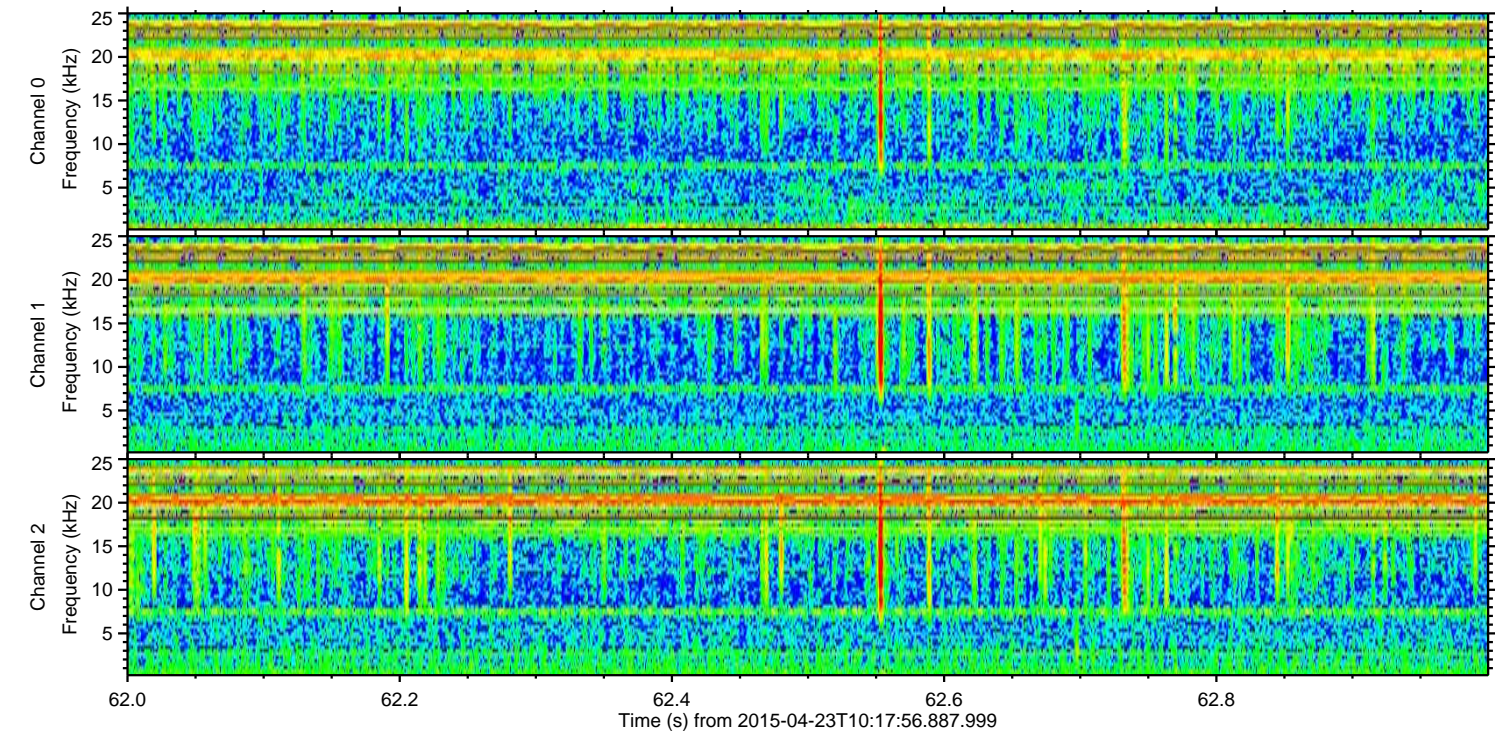
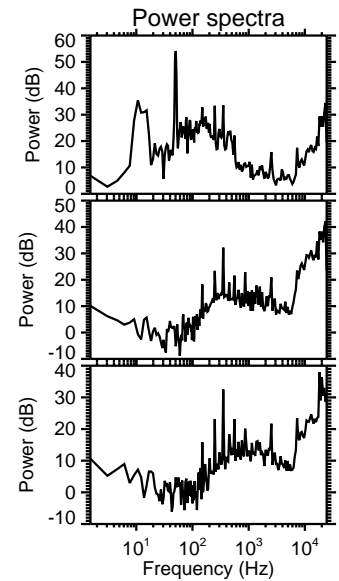
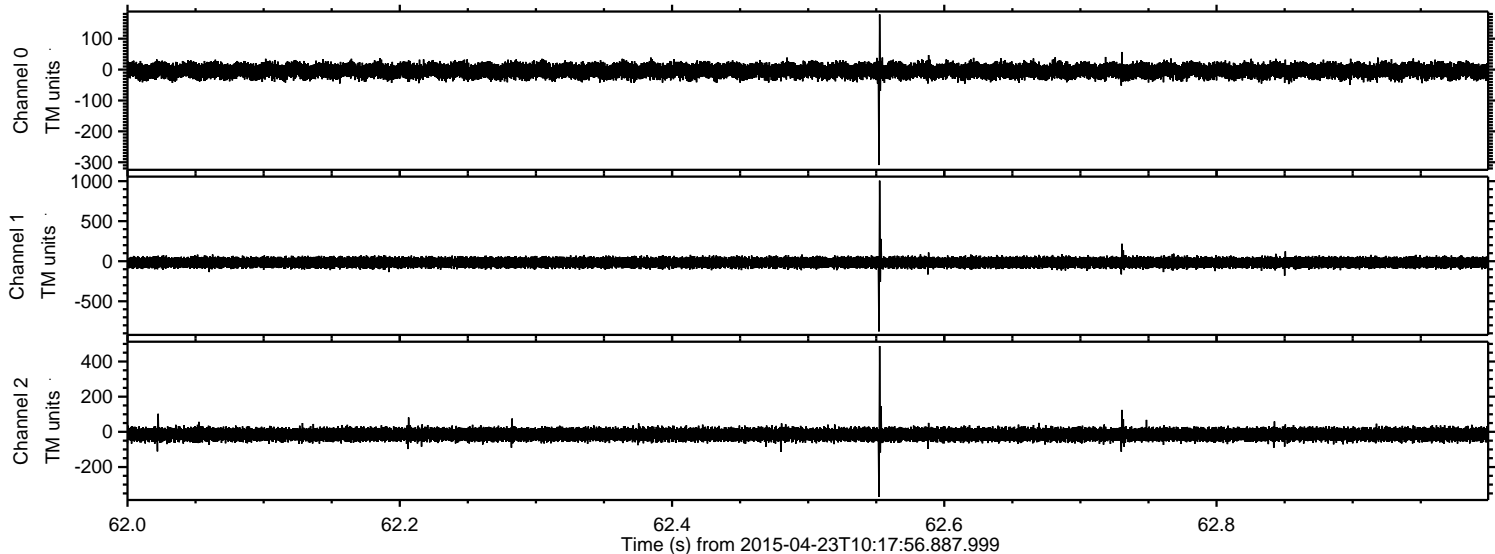


ELMAVAN 3D WAVEFORMS (Measured data sampled at 50 kHz) 49520 packets of 144 samples from 2015-04-23T10:17:56.887.999. Part 17/143

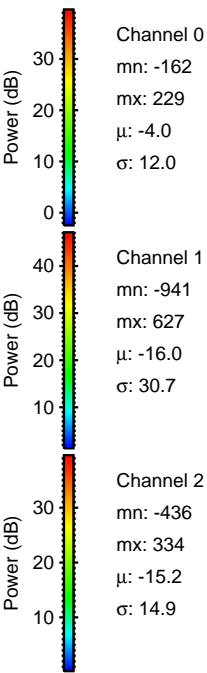
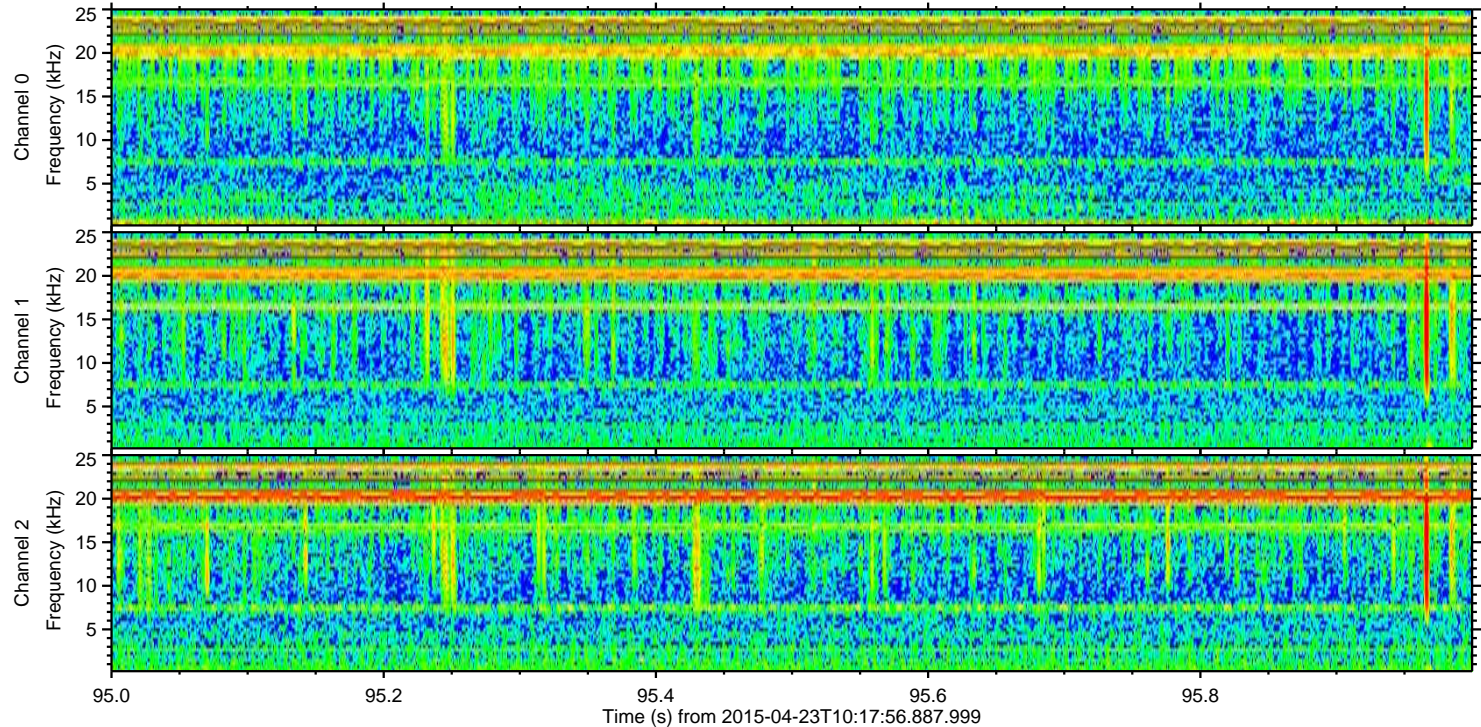
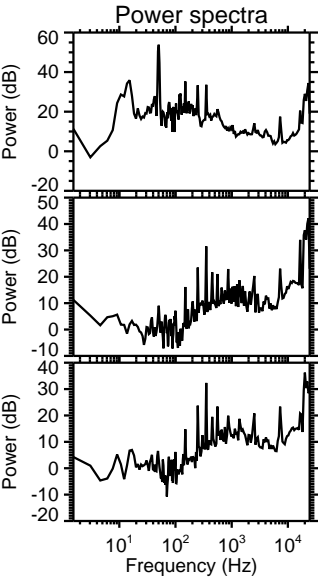
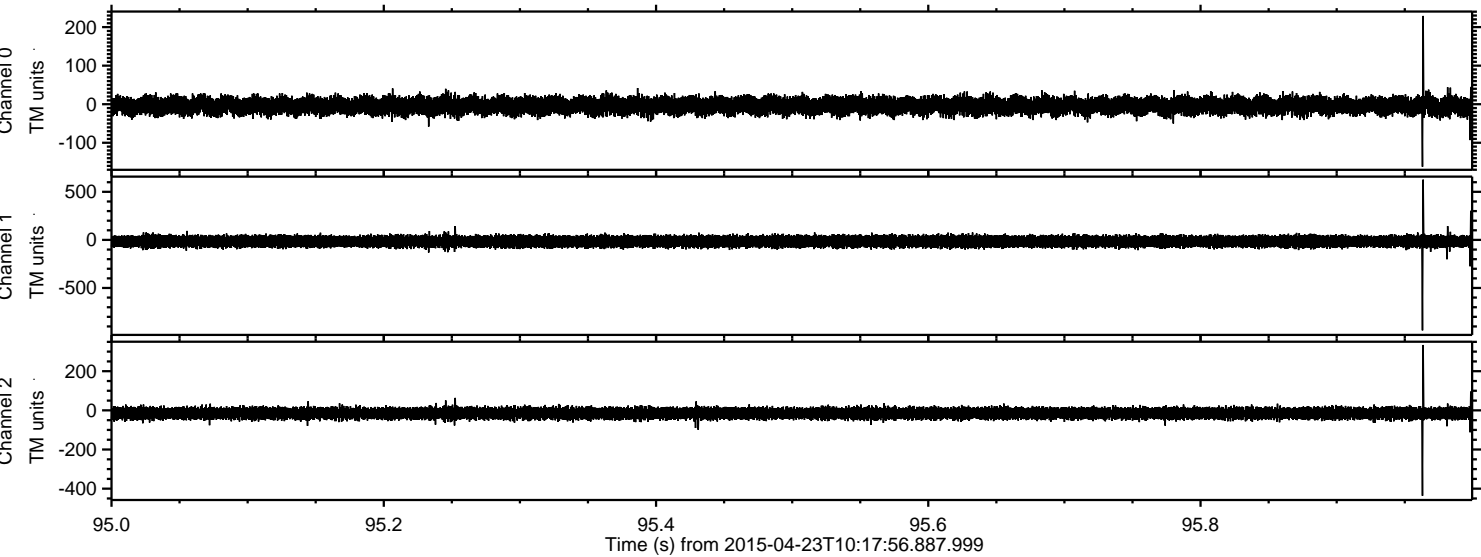
Processed Thu Apr 23 12:25:38 2015 by ELM ver.2012-10-06 from 001__elm20150423_101755__dat00.bin



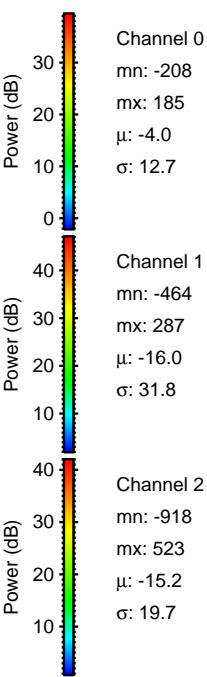
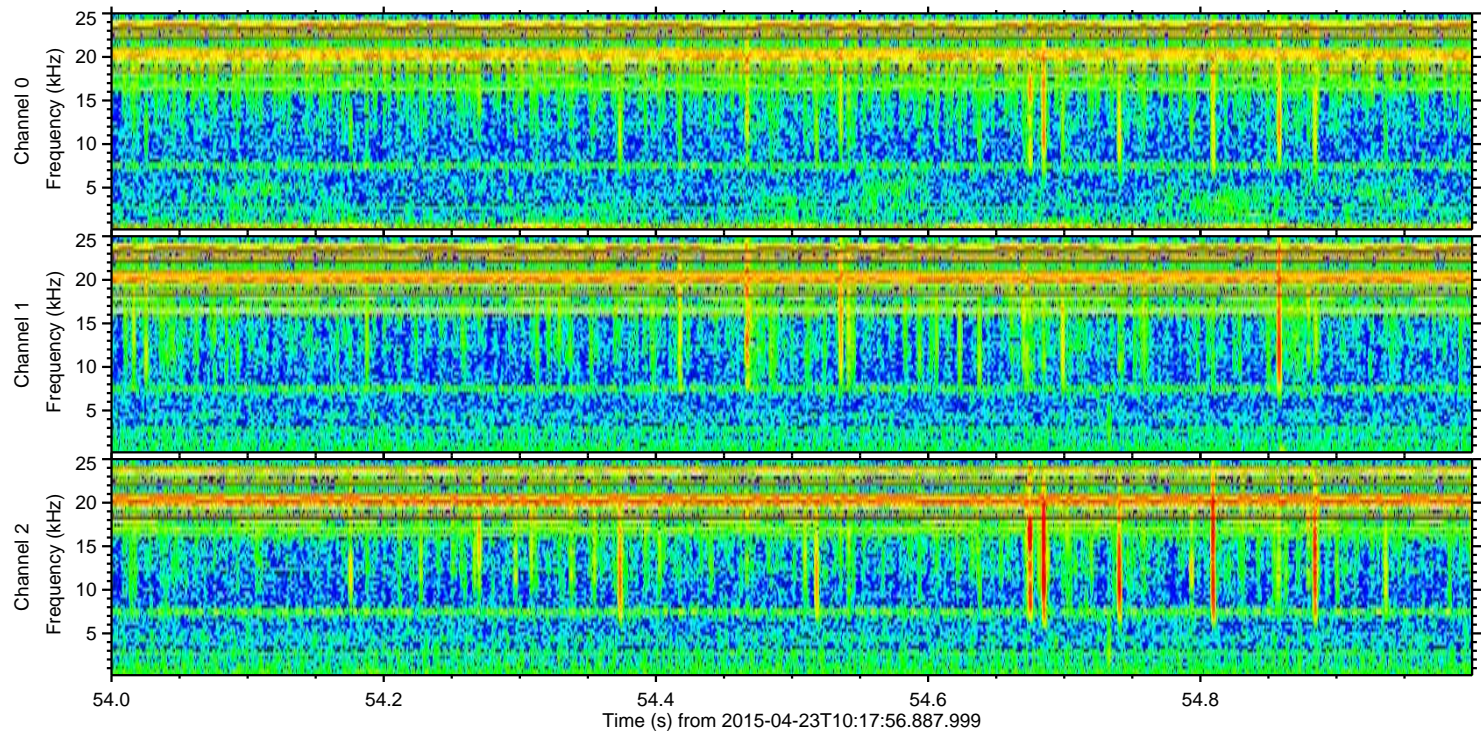
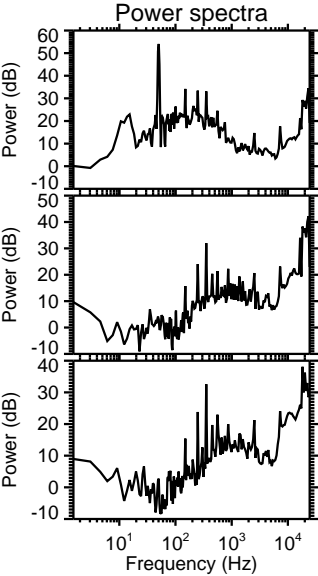
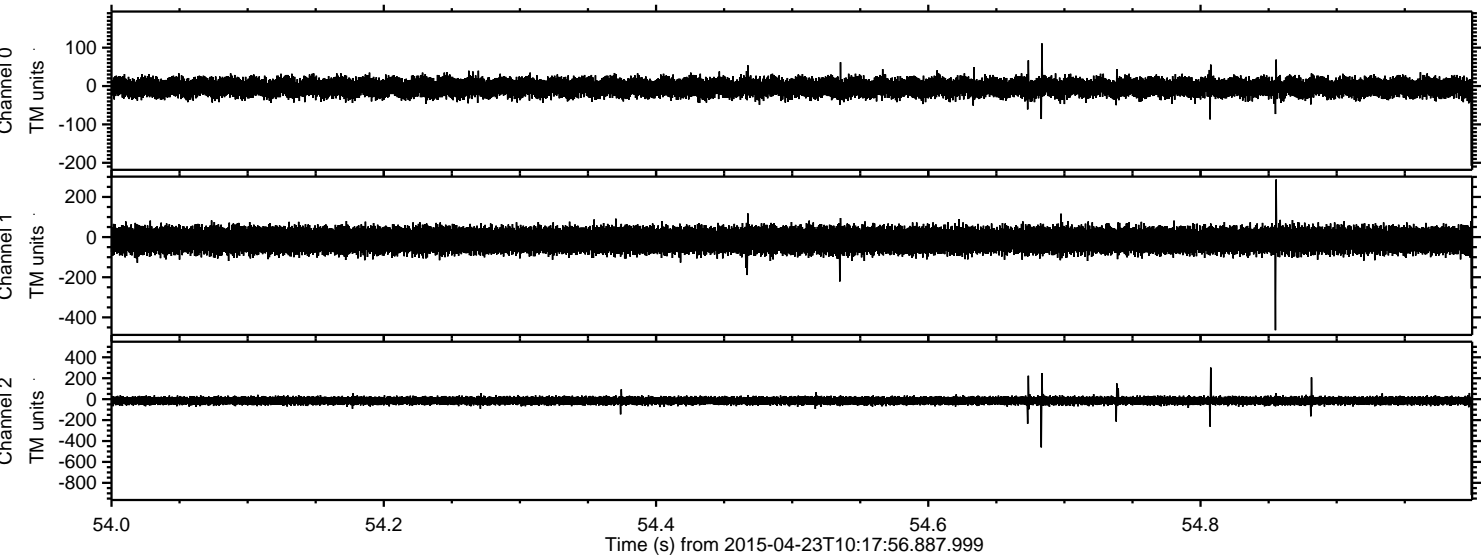
Processed Thu Apr 23 12:25:39 2015 by ELM ver.2012-10-06 from 001__elm20150423_101755__dat00.bin



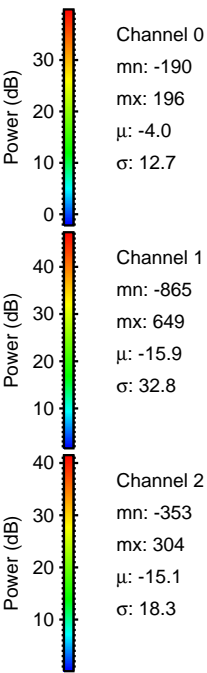
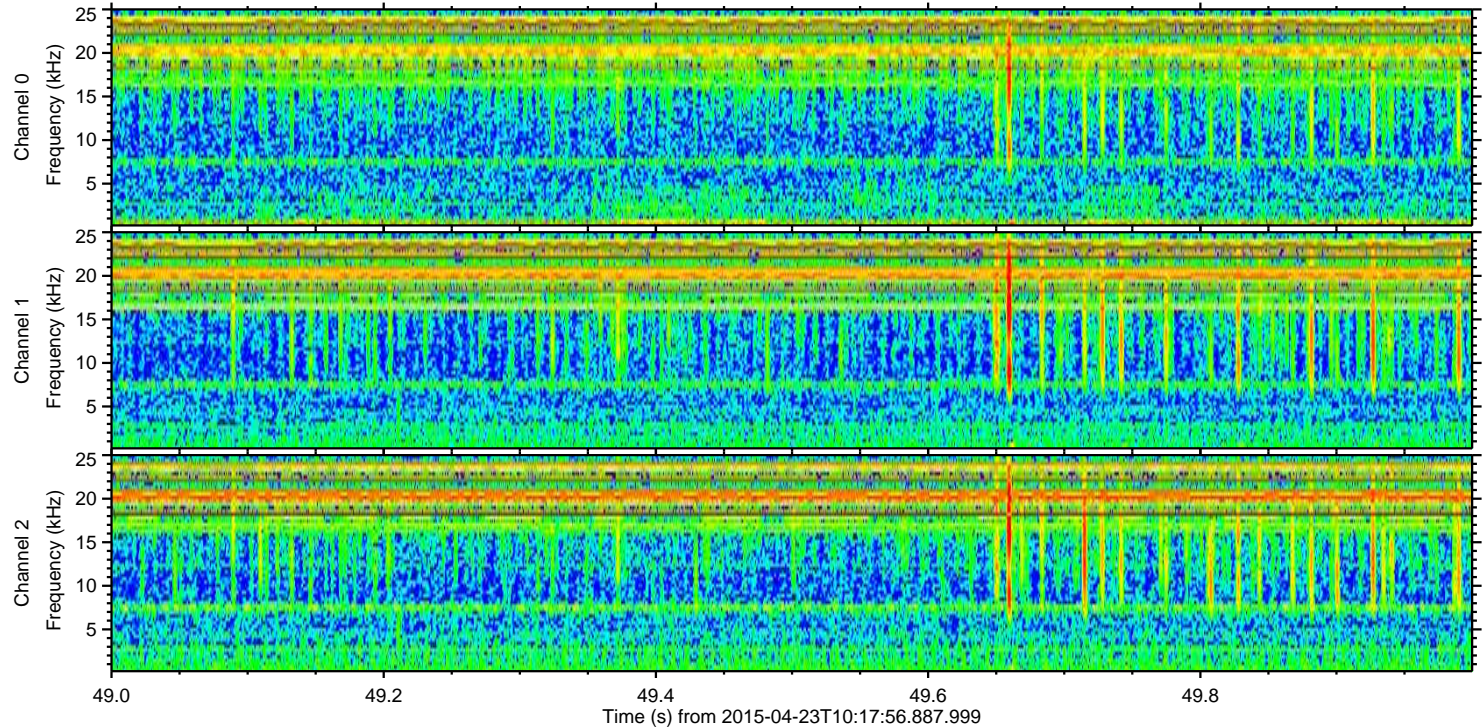
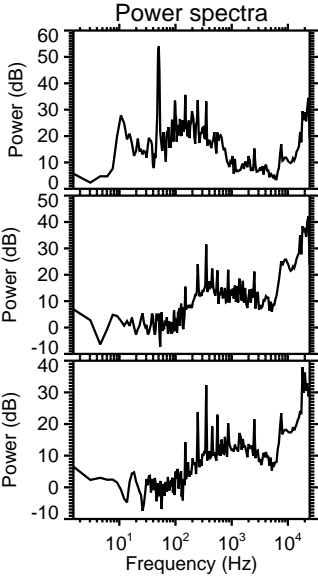
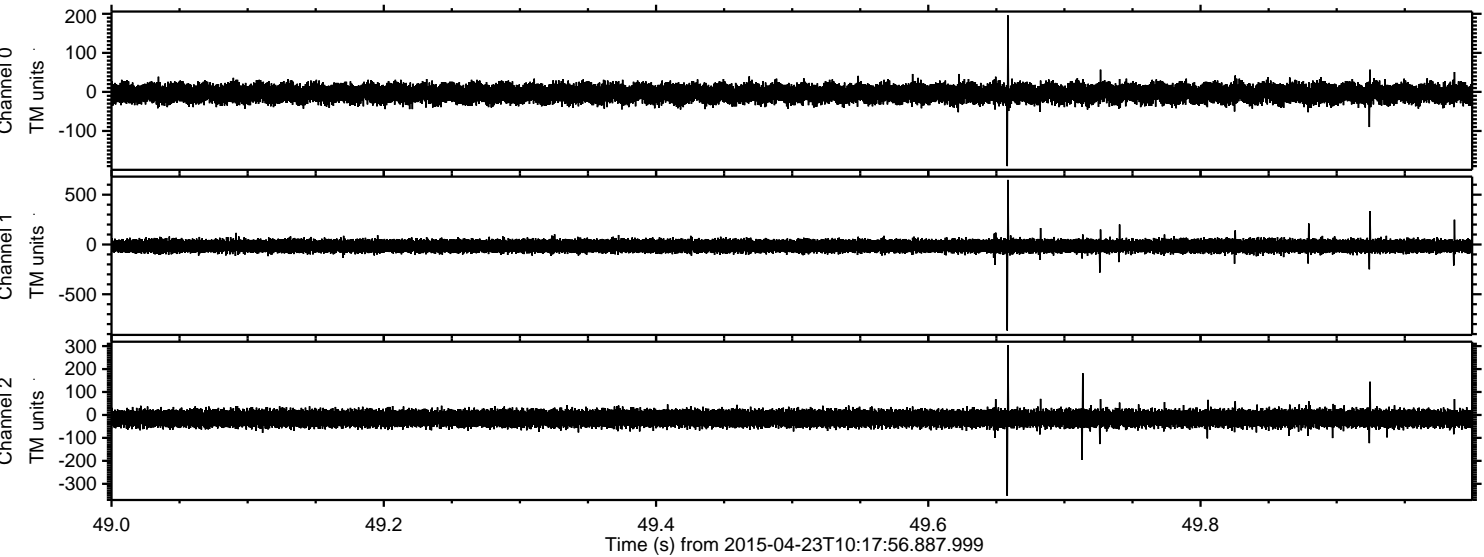
Processed Thu Apr 23 12:25:40 2015 by ELM ver.2012-10-06 from 001__elm20150423_101755__dat00.bin



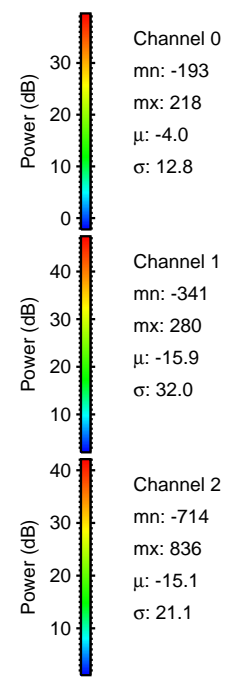
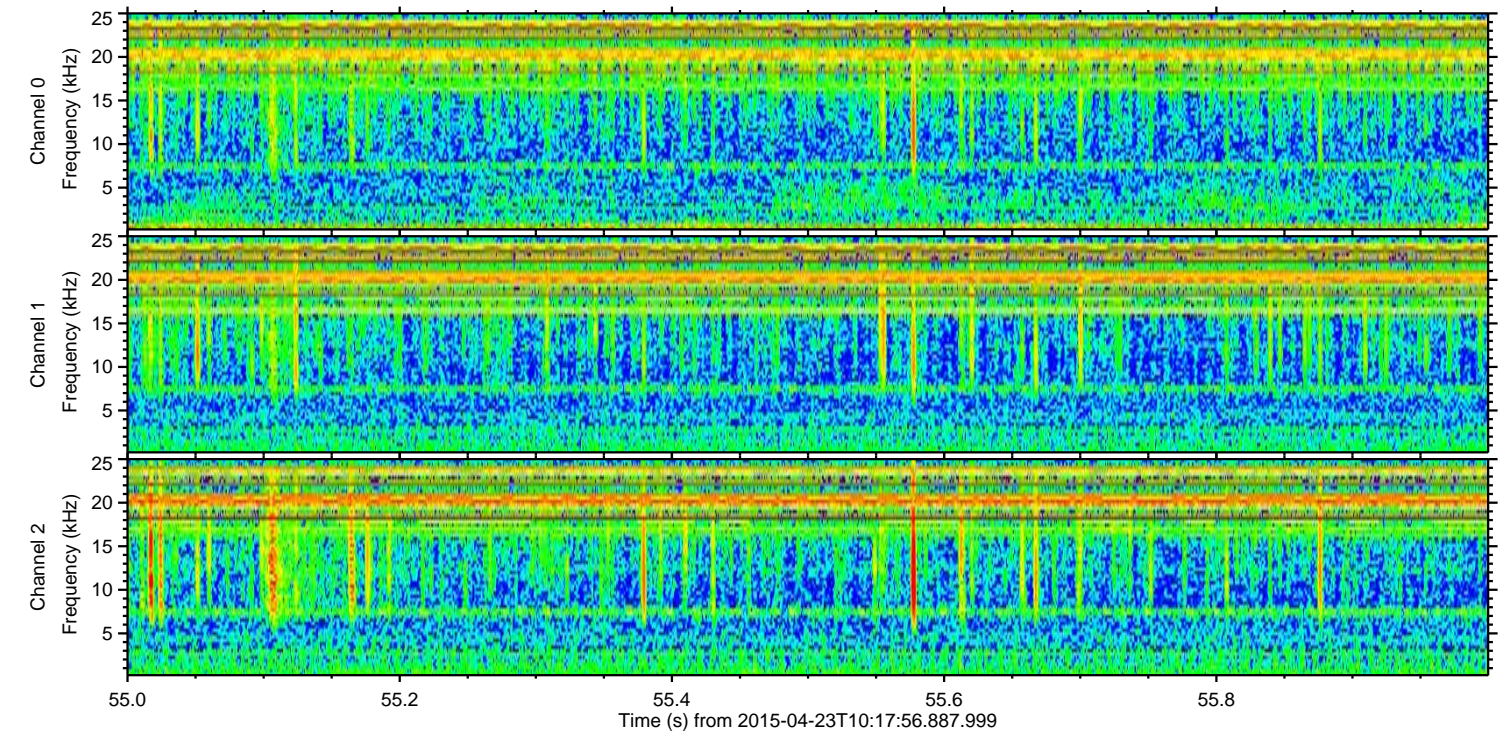
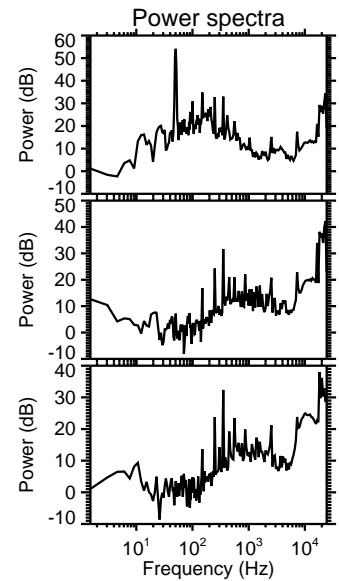
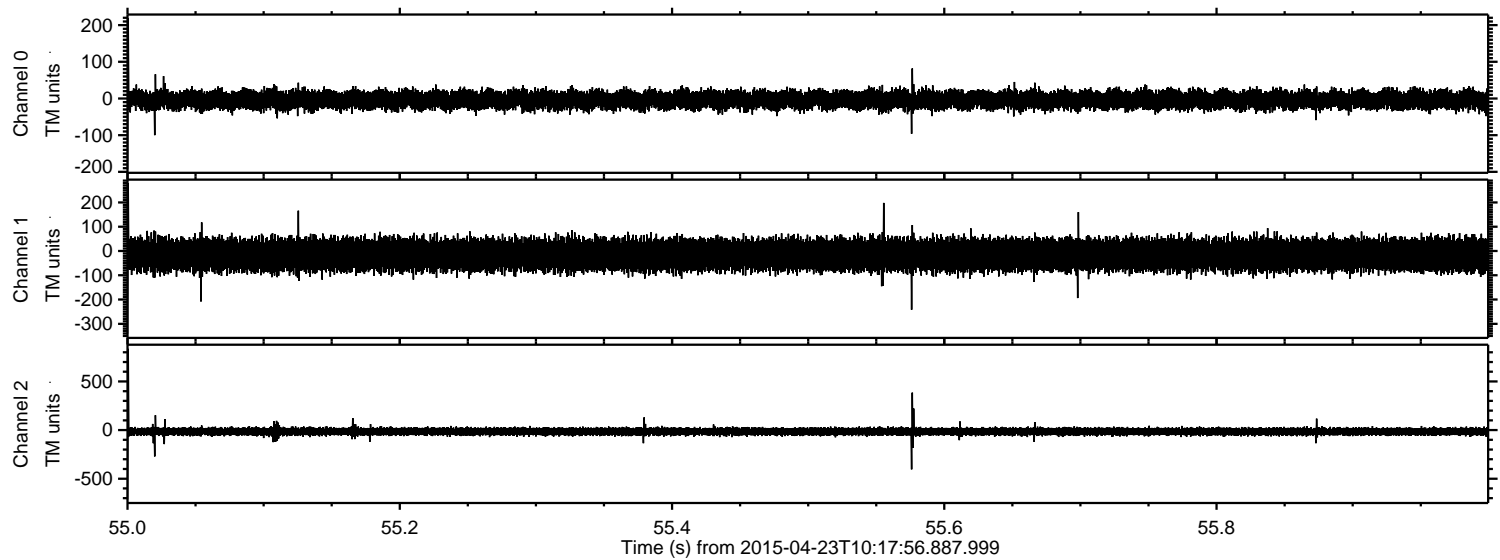
Processed Thu Apr 23 12:25:41 2015 by ELM ver.2012-10-06 from 001__elm20150423_101755__dat00.bin



Processed Thu Apr 23 12:25:42 2015 by ELM ver.2012-10-06 from 001__elm20150423_101755__dat00.bin



Processed Thu Apr 23 12:25:43 2015 by ELM ver.2012-10-06 from 001__elm20150423_101755__dat00.bin



Channel 0
mn: -193
mx: 218
 μ : -4.0
 σ : 12.8

Channel 1
mn: -341
mx: 280
 μ : -15.9
 σ : 32.0

Channel 2
mn: -714
mx: 836
 μ : -15.1
 σ : 21.1

