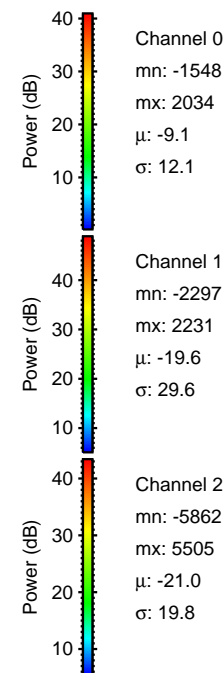
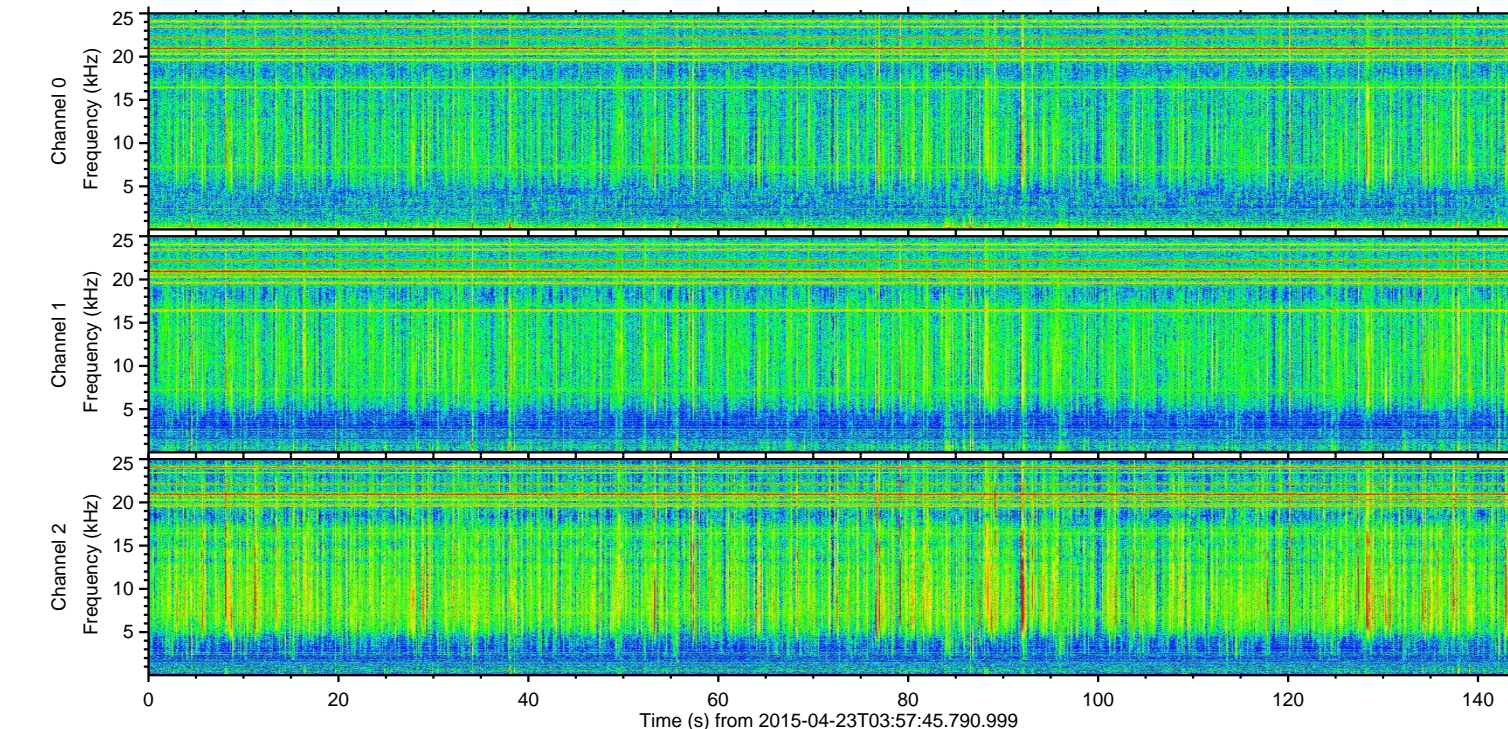
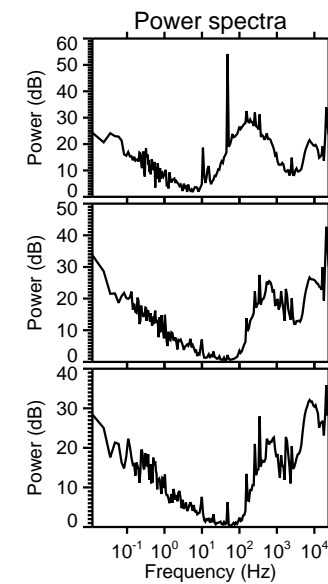
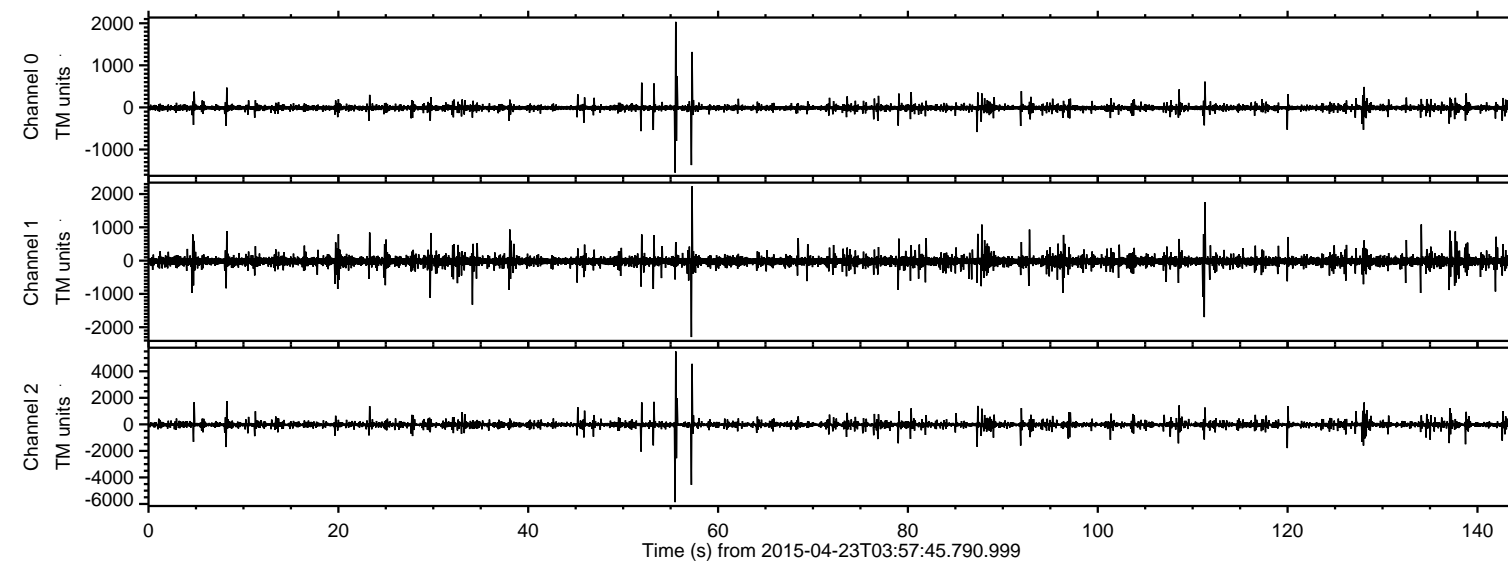
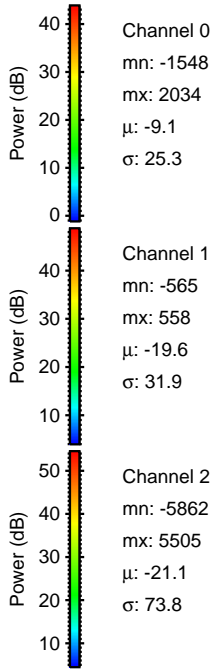
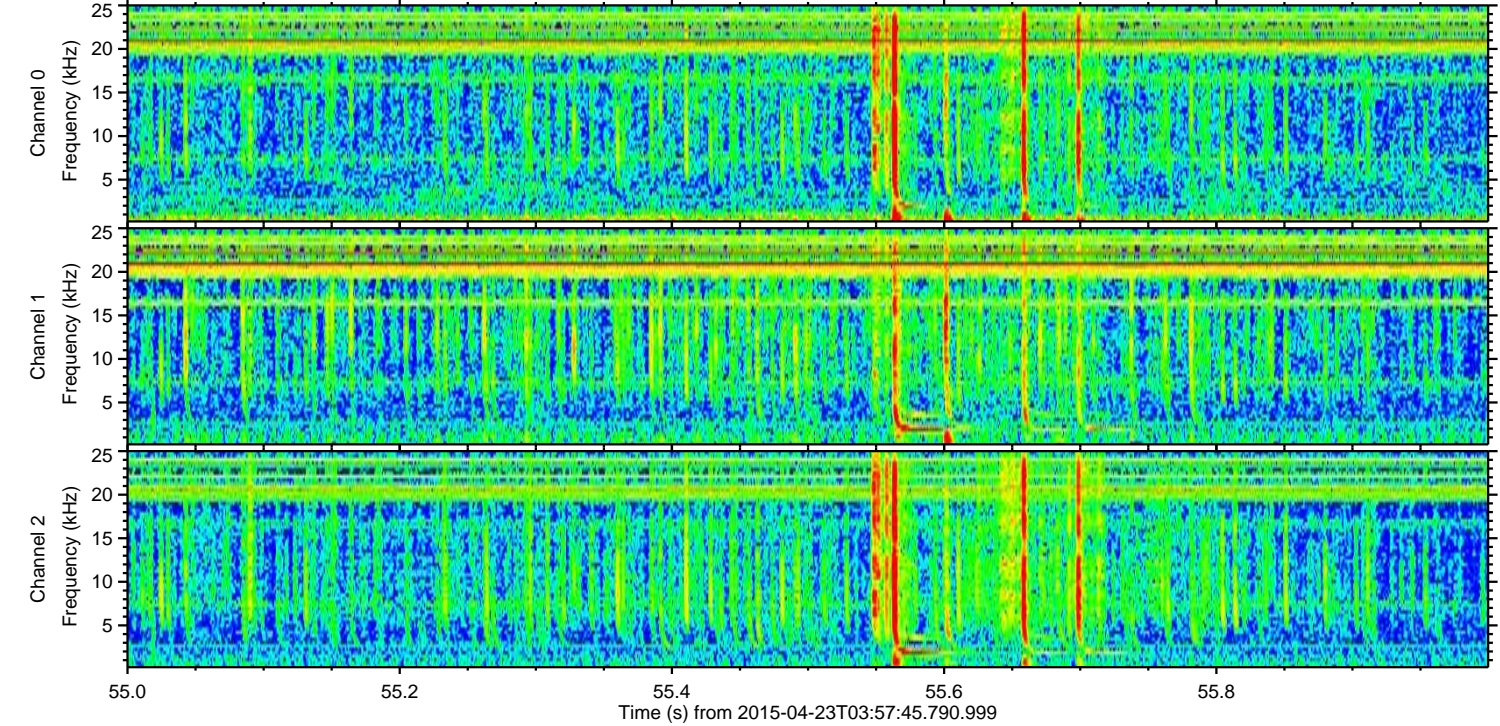
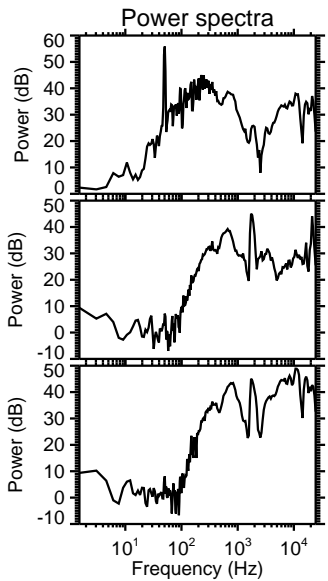
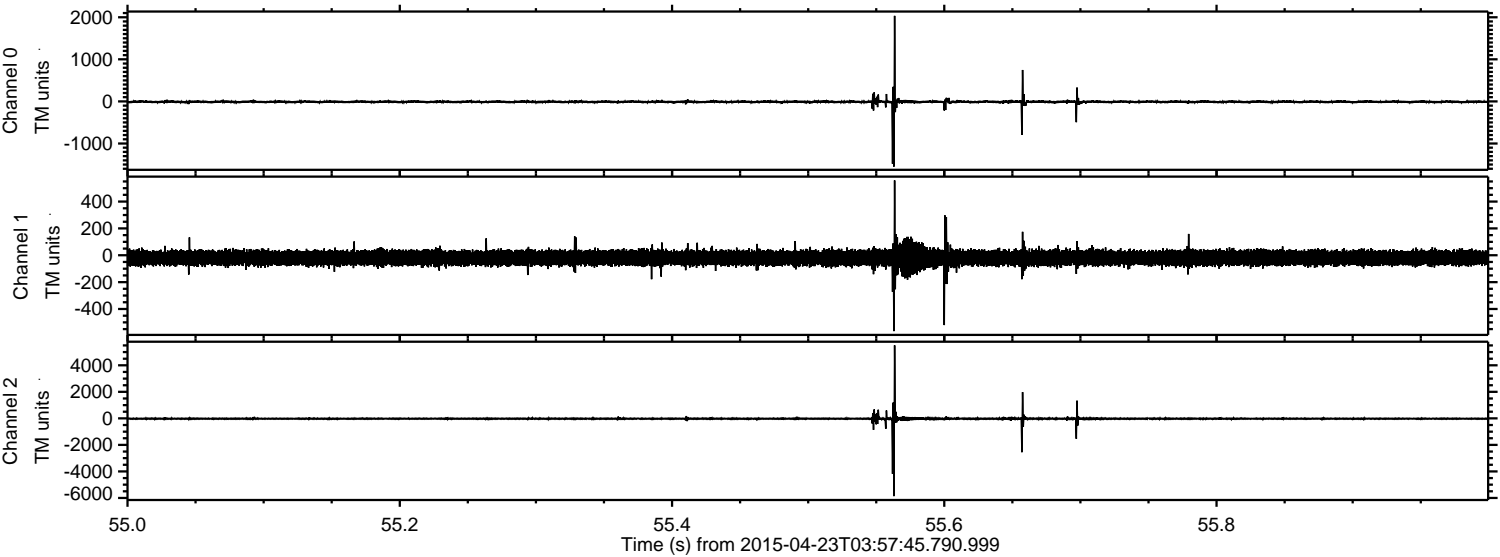


ELMAVAN 3D WAVEFORMS (Measured data sampled at 50 kHz) 49771 packets of 144 samples from 2015-04-23T03:57:45.790.999.

Processed Thu Apr 23 06:04:22 2015 by ELM ver.2012-10-06 from 001__elm20150423_035744__dat00.bin



Processed Thu Apr 23 06:04:34 2015 by ELM ver.2012-10-06 from 001__elm20150423_035744__dat00.bin

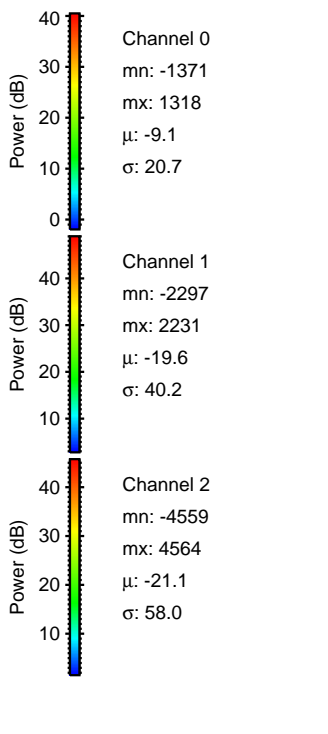
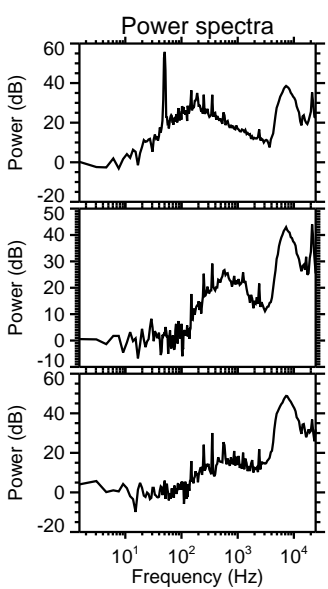
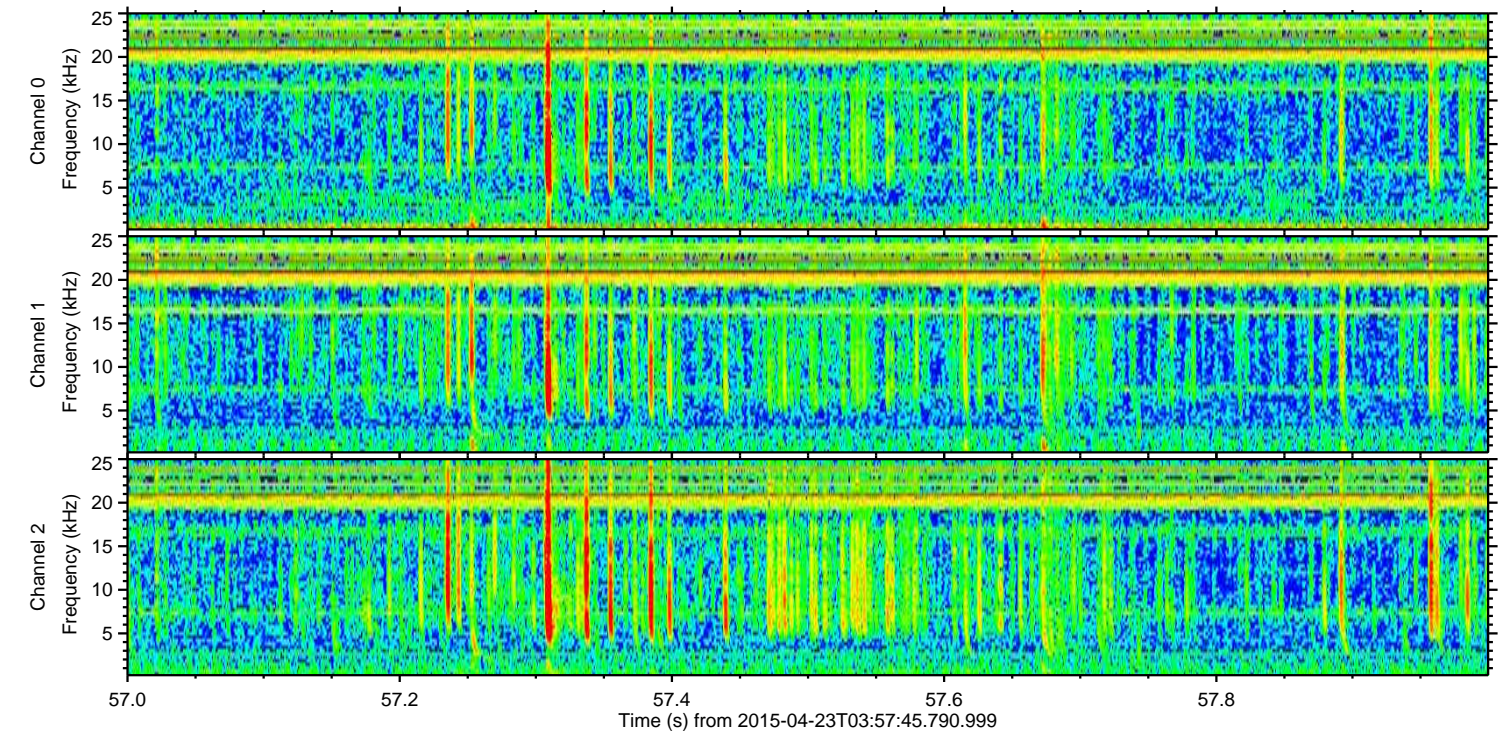
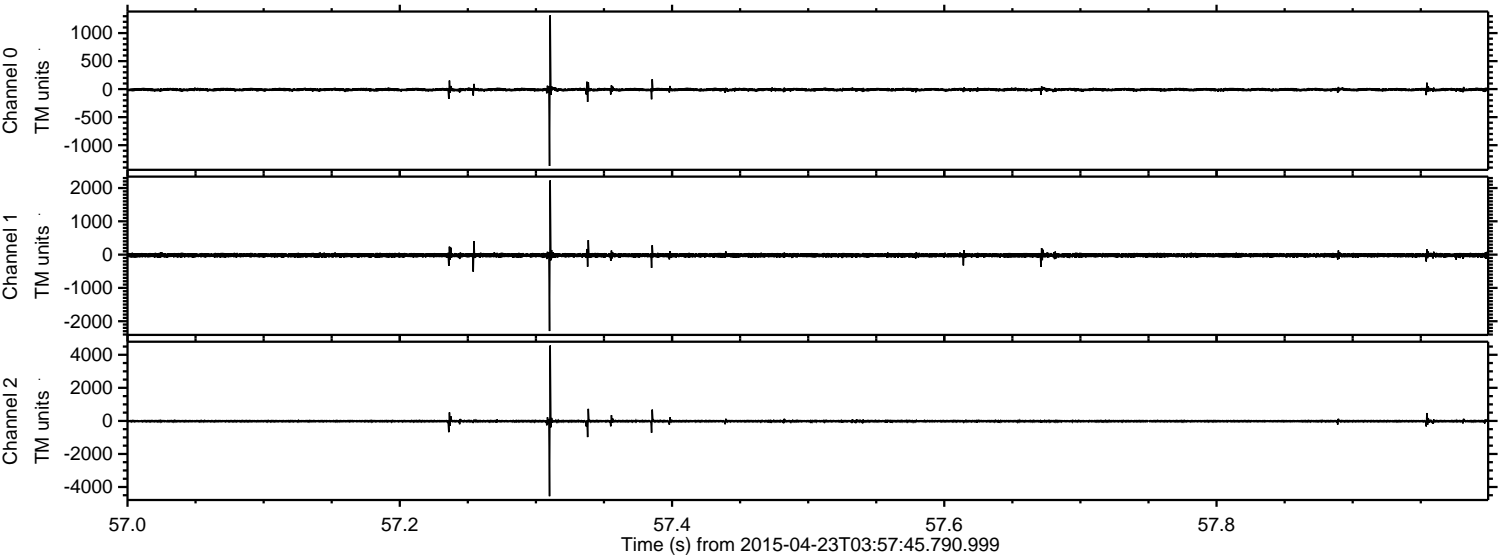


Channel 0
mn: -1548
mx: 2034
 μ : -9.1
 σ : 25.3

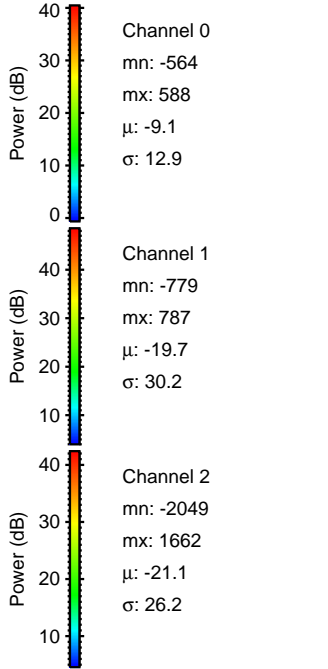
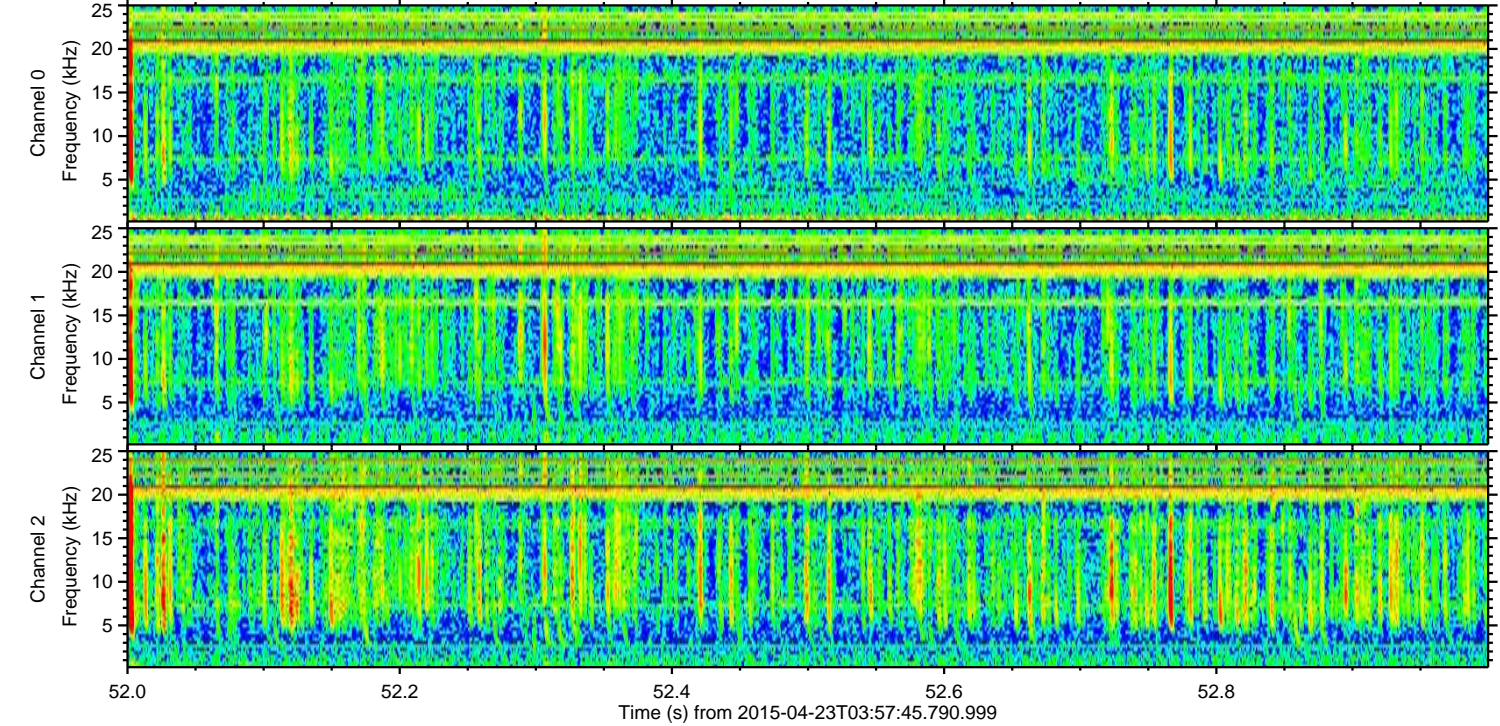
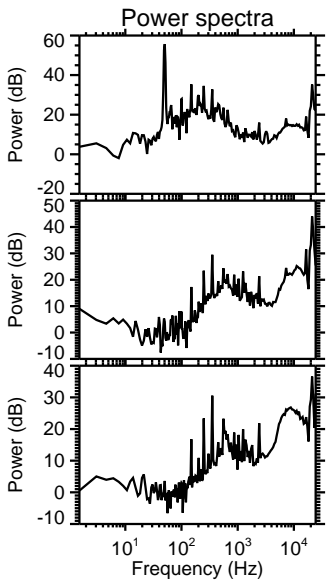
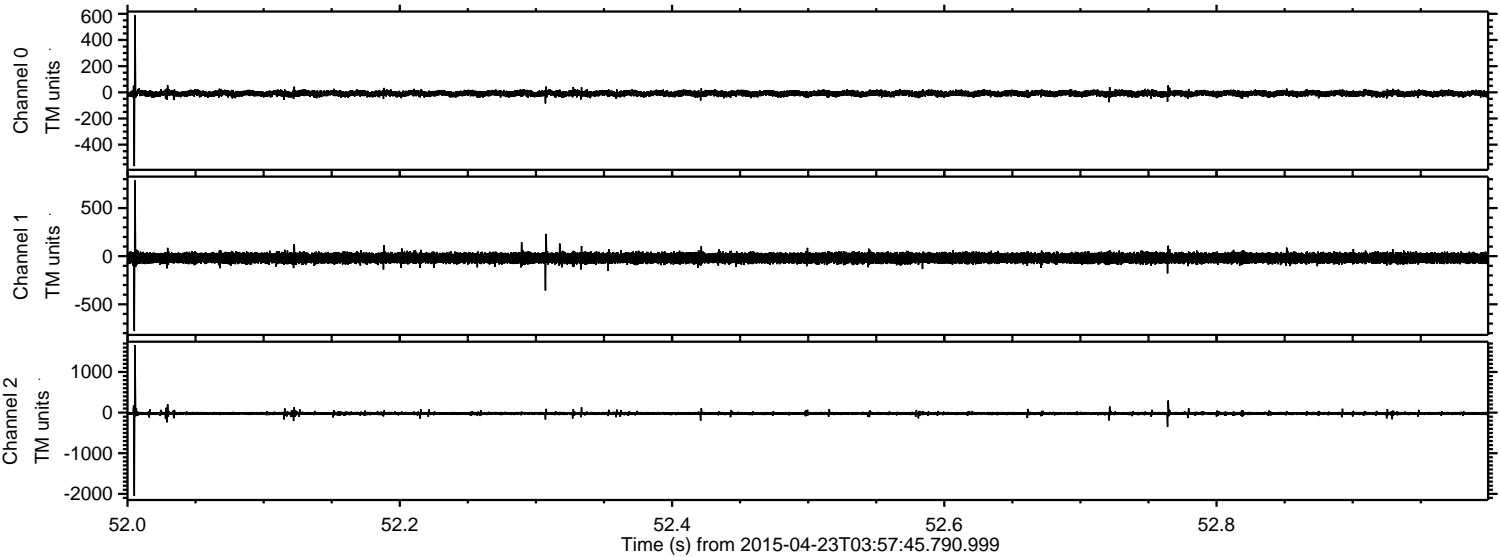
Channel 1
mn: -565
mx: 558
 μ : -19.6
 σ : 31.9

Channel 2
mn: -5862
mx: 5505
 μ : -21.1
 σ : 73.8

Processed Thu Apr 23 06:04:34 2015 by ELM ver.2012-10-06 from 001__elm20150423_035744__dat00.bin

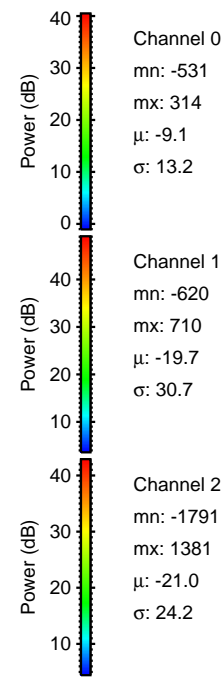
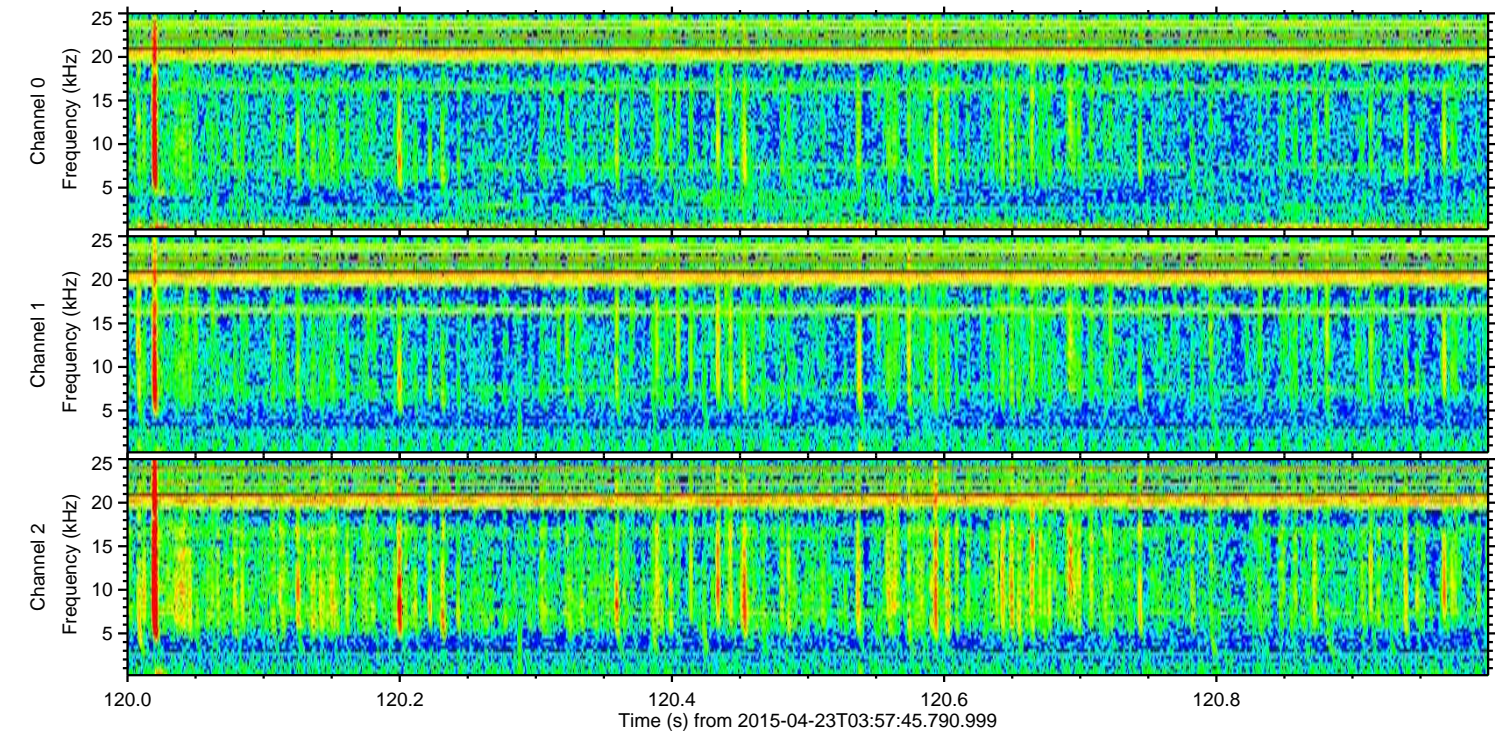
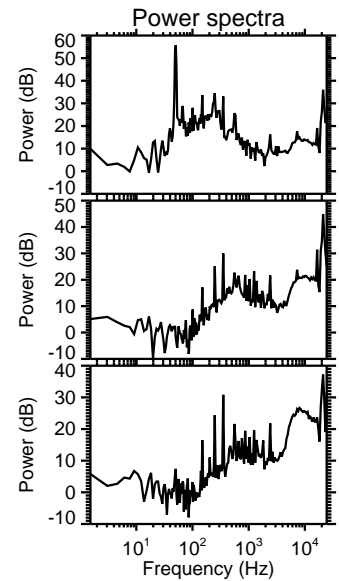
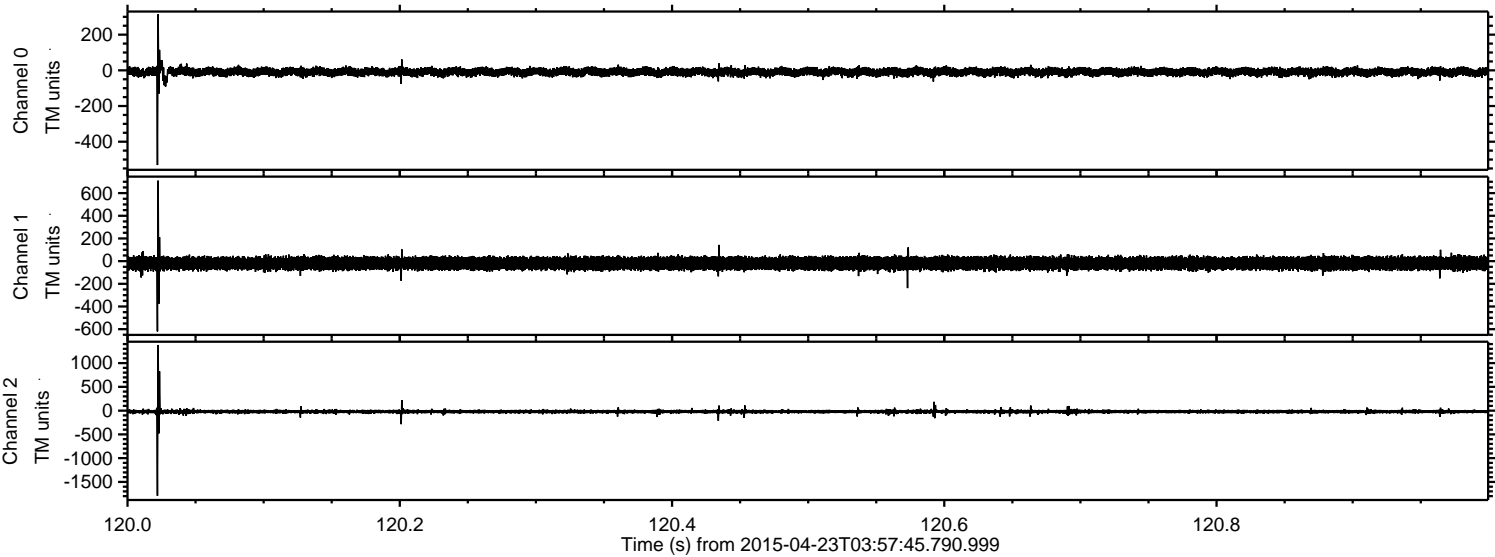


Processed Thu Apr 23 06:04:35 2015 by ELM ver.2012-10-06 from 001__elm20150423_035744__dat00.bin

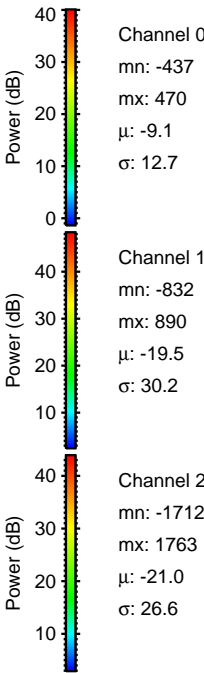
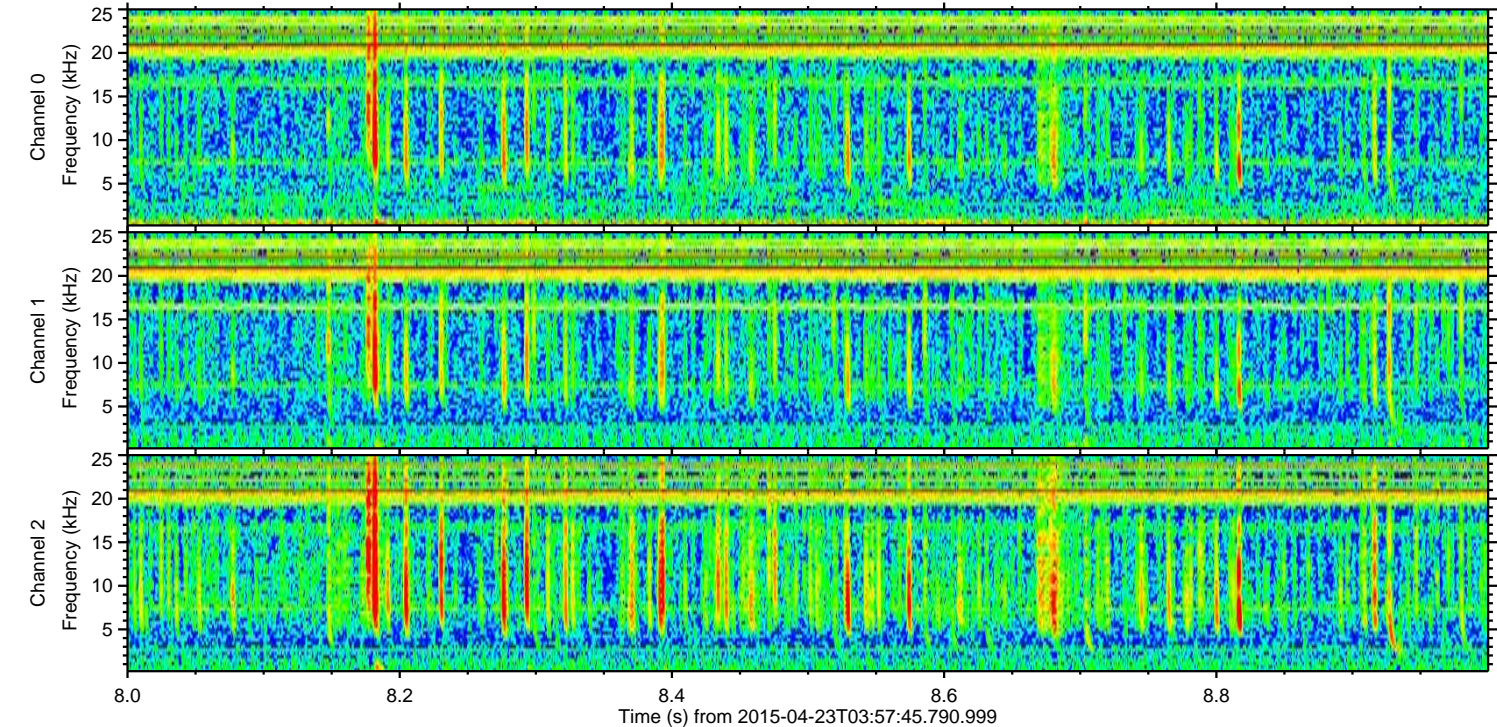
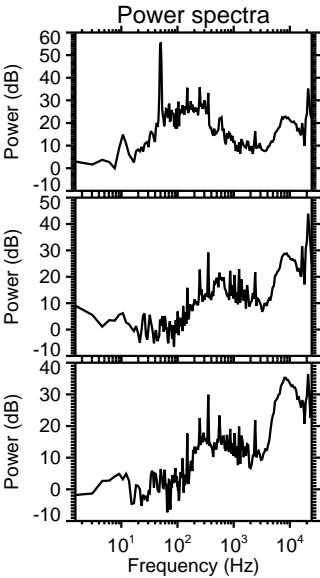
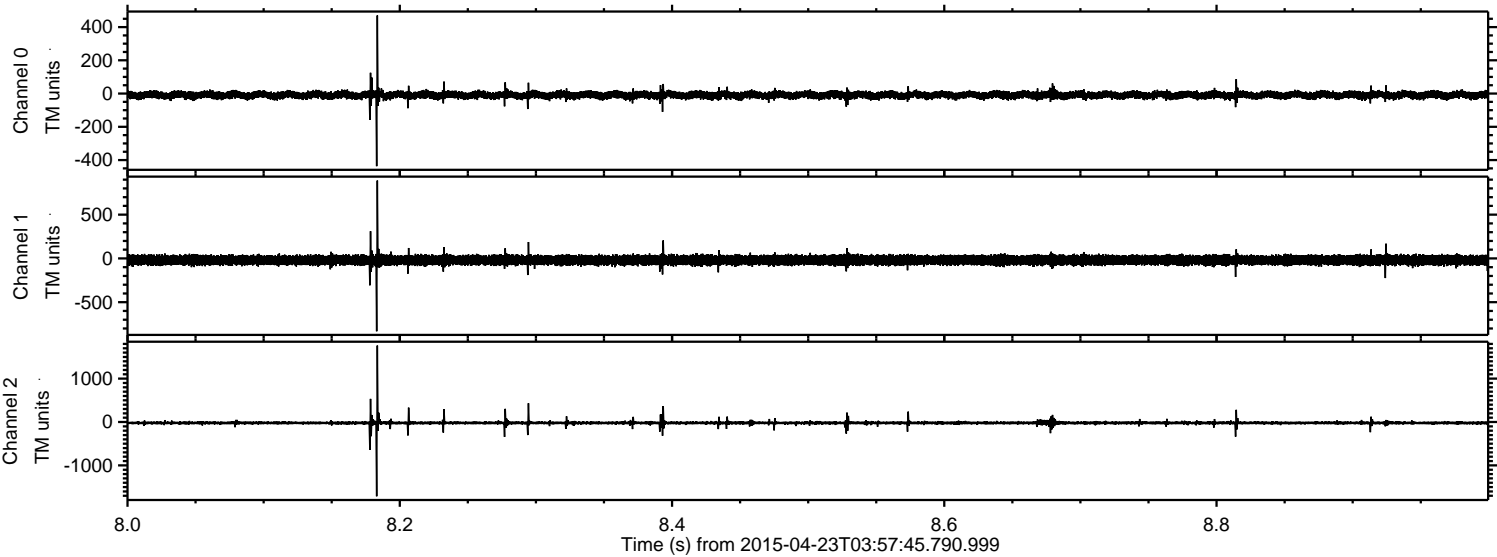


ELMAVAN 3D WAVEFORMS (Measured data sampled at 50 kHz) 49771 packets of 144 samples from 2015-04-23T03:57:45.790.999. Part 121/144

Processed Thu Apr 23 06:04:36 2015 by ELM ver.2012-10-06 from 001__elm20150423_035744__dat00.bin

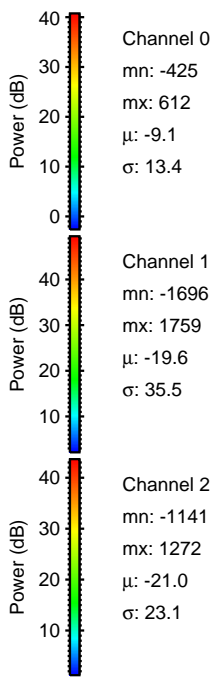
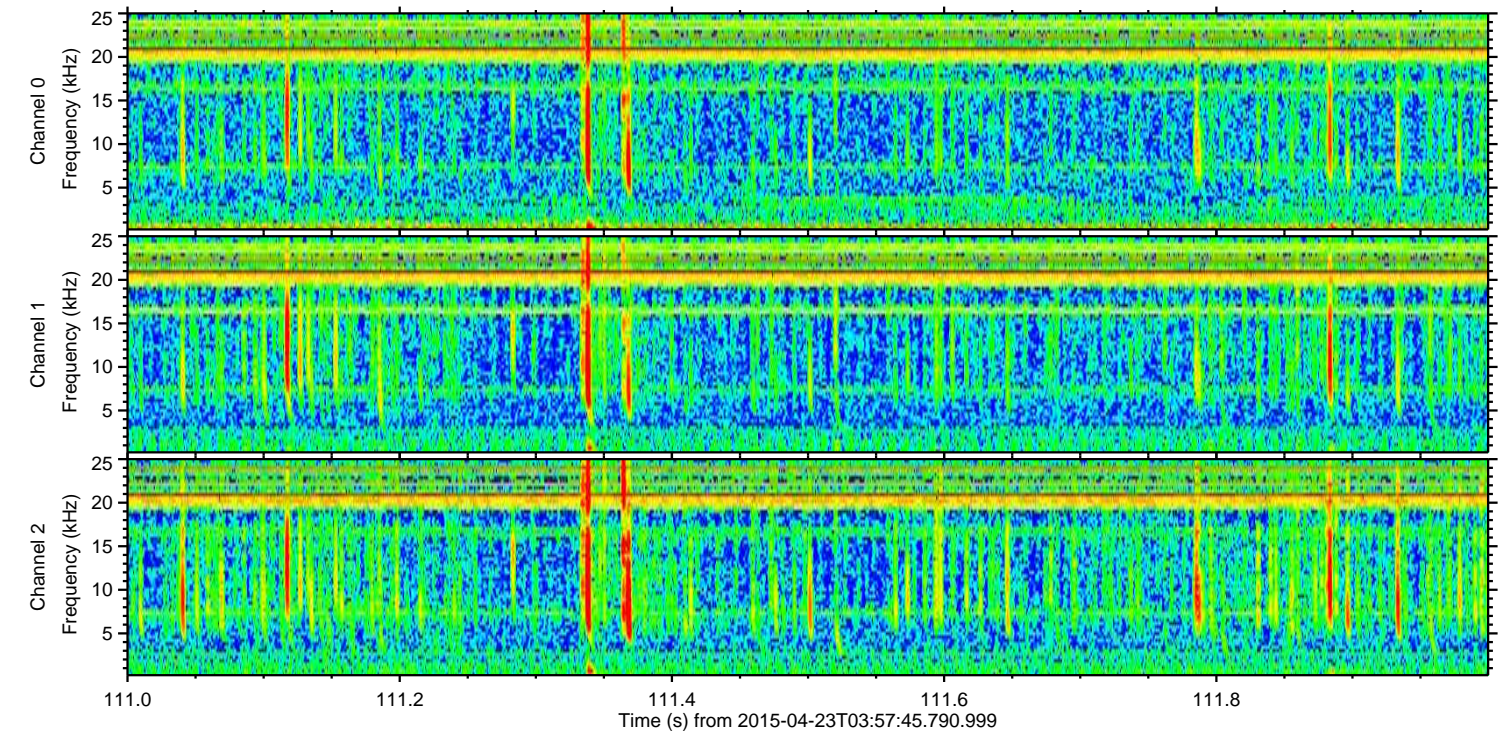
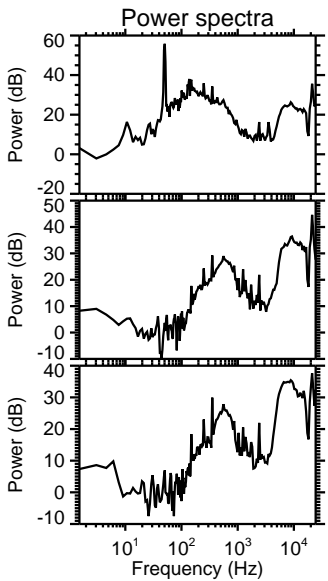
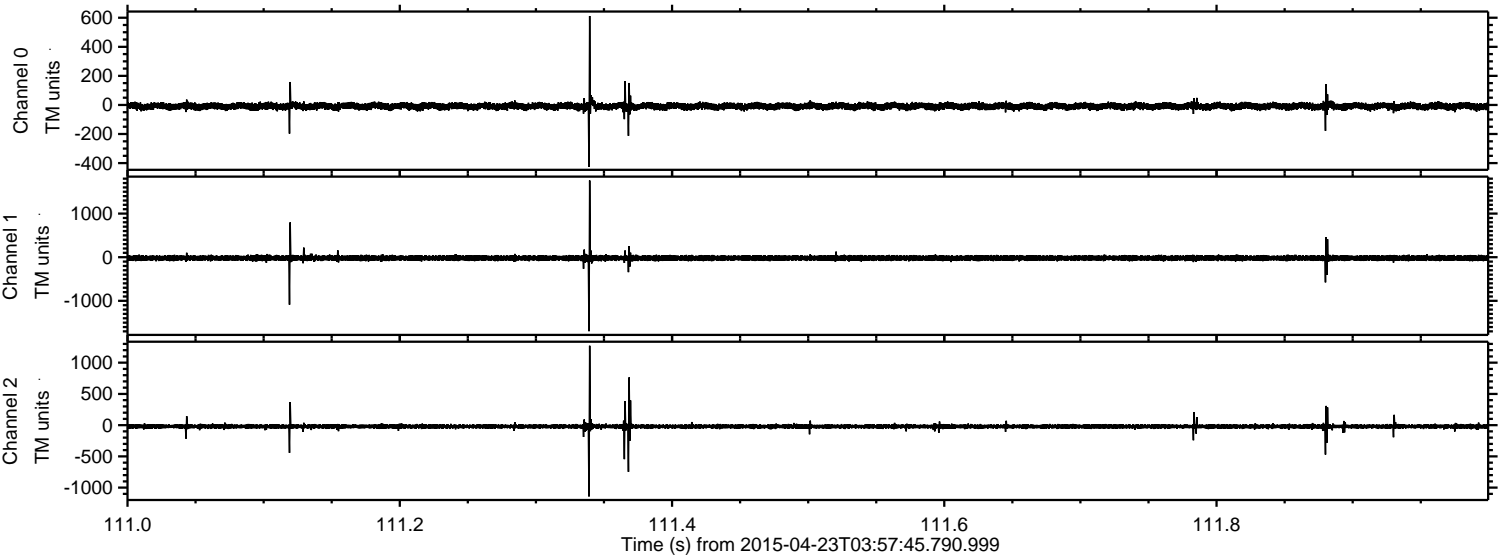


Processed Thu Apr 23 06:04:37 2015 by ELM ver.2012-10-06 from 001__elm20150423_035744__dat00.bin

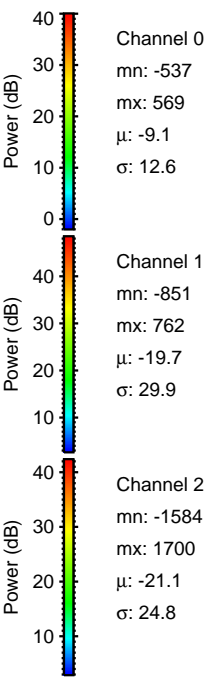
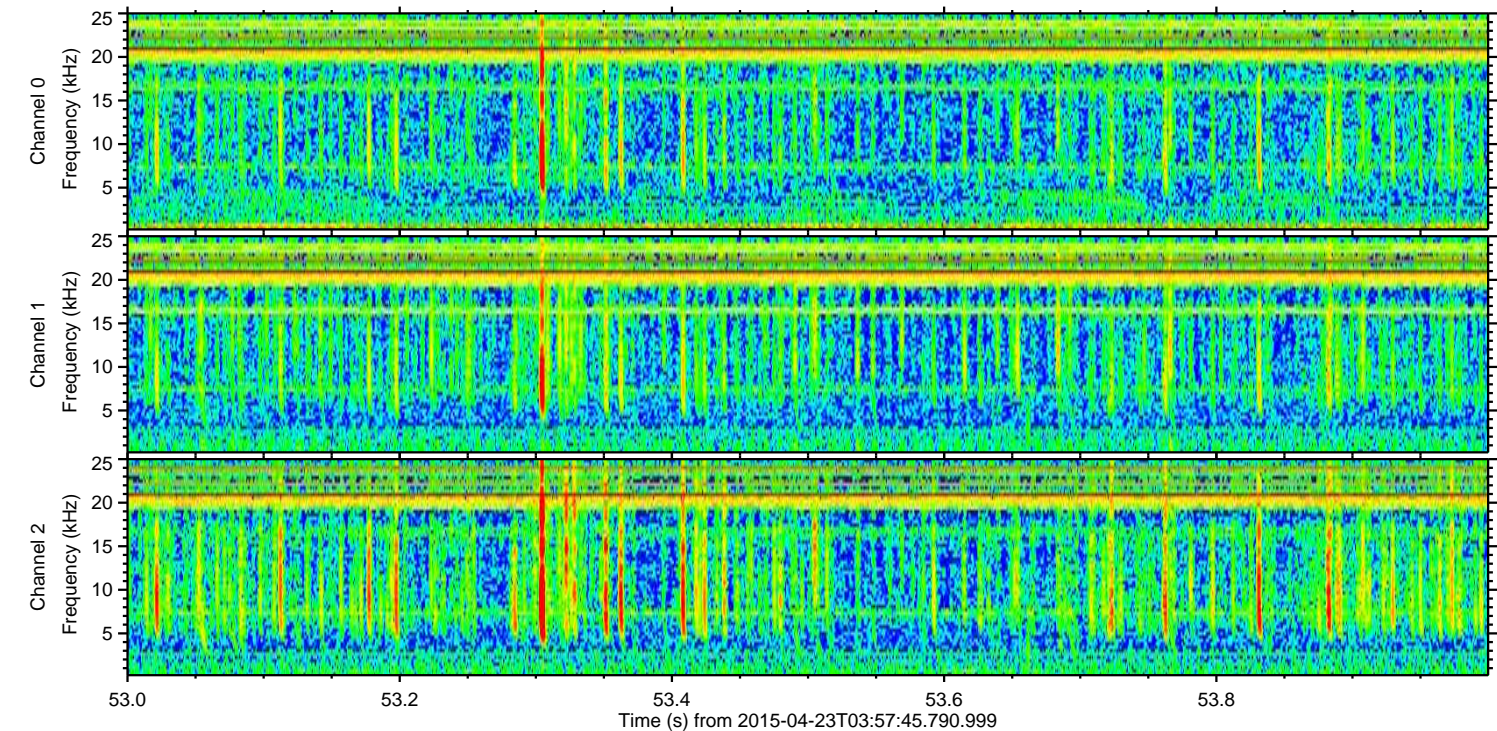
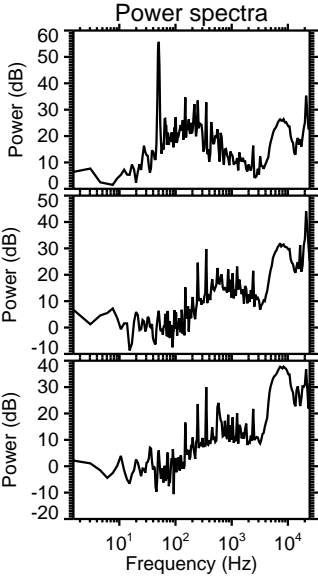
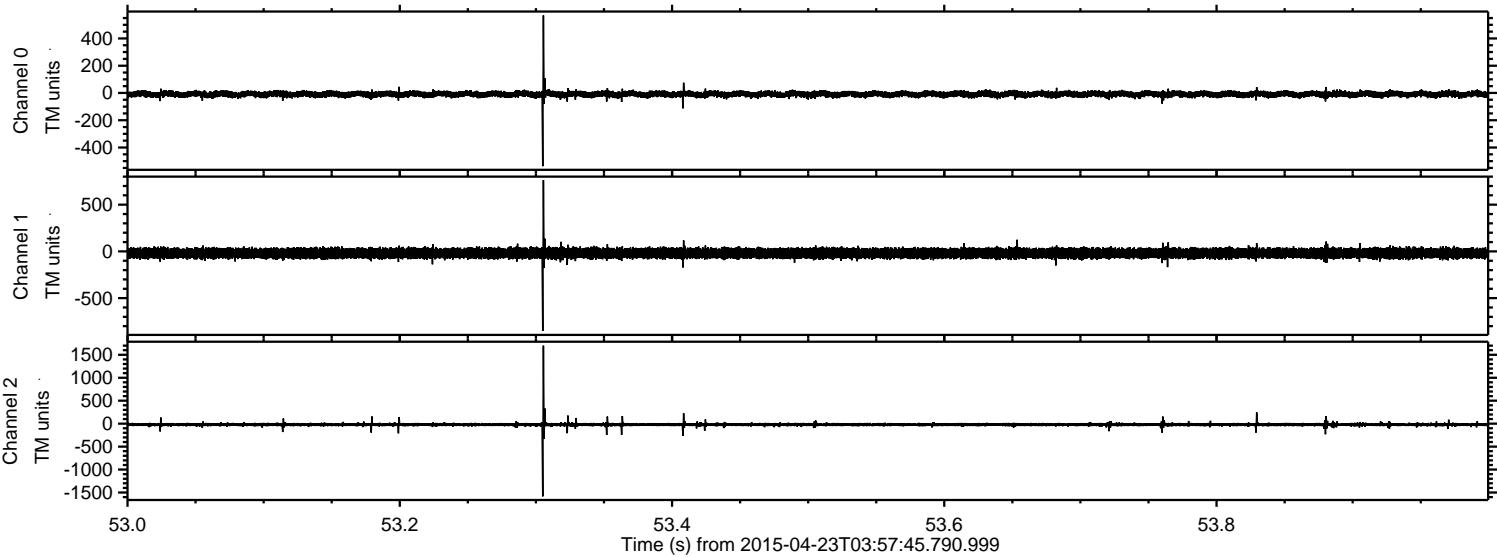


ELMAVAN 3D WAVEFORMS (Measured data sampled at 50 kHz) 49771 packets of 144 samples from 2015-04-23T03:57:45.790.999. Part 112/144

Processed Thu Apr 23 06:04:38 2015 by ELM ver.2012-10-06 from 001__elm20150423_035744__dat00.bin



Processed Thu Apr 23 06:04:39 2015 by ELM ver.2012-10-06 from 001__elm20150423_035744__dat00.bin

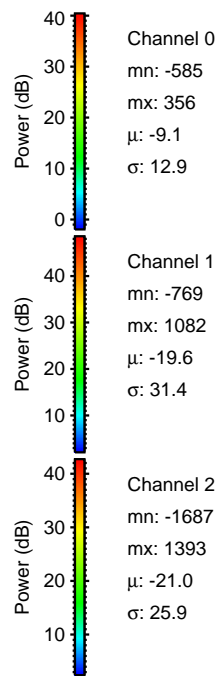
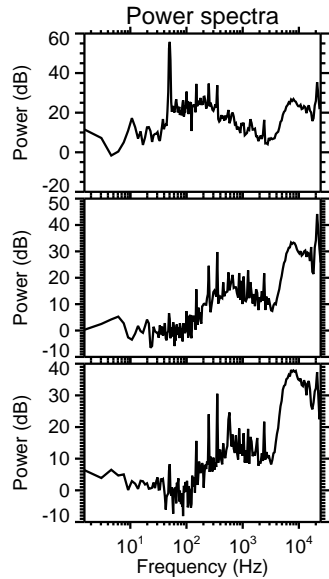
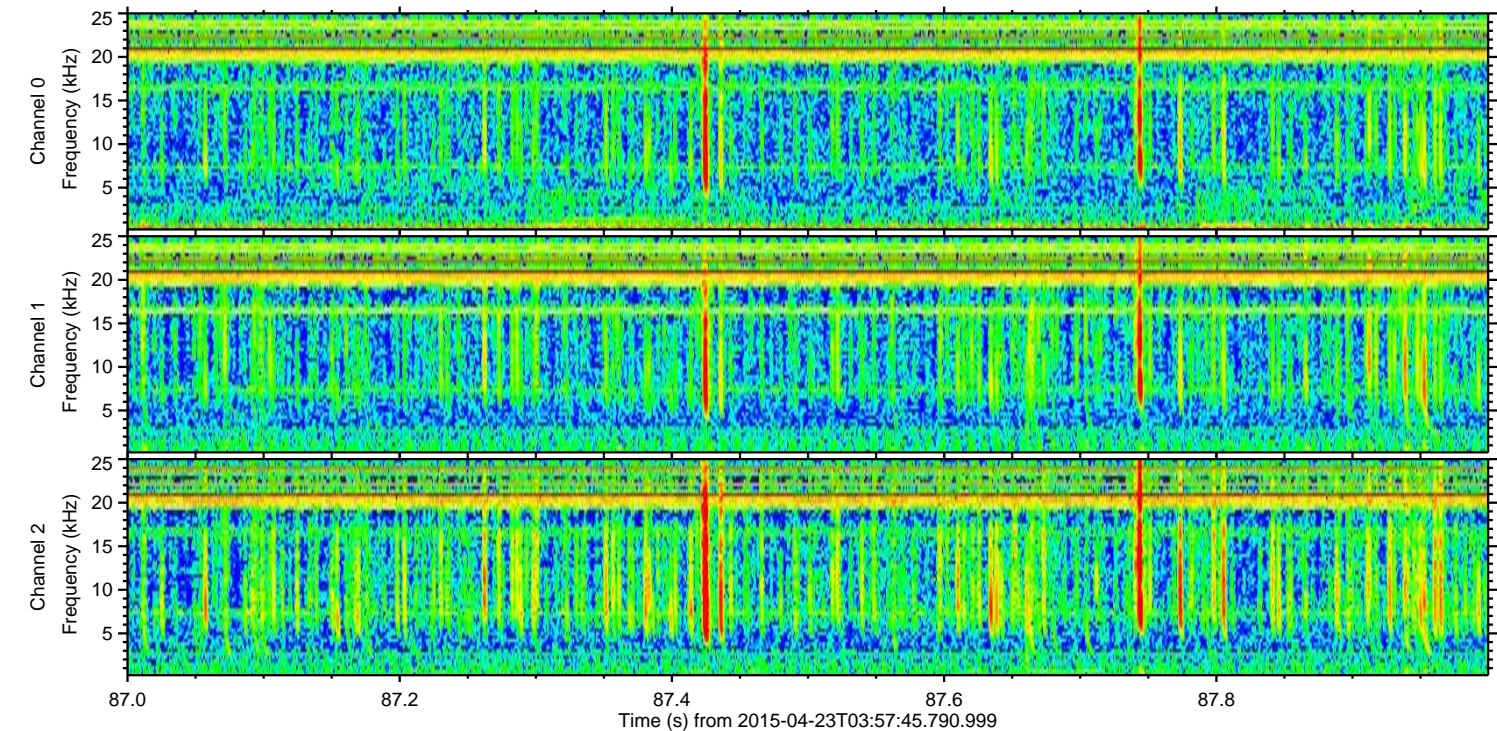
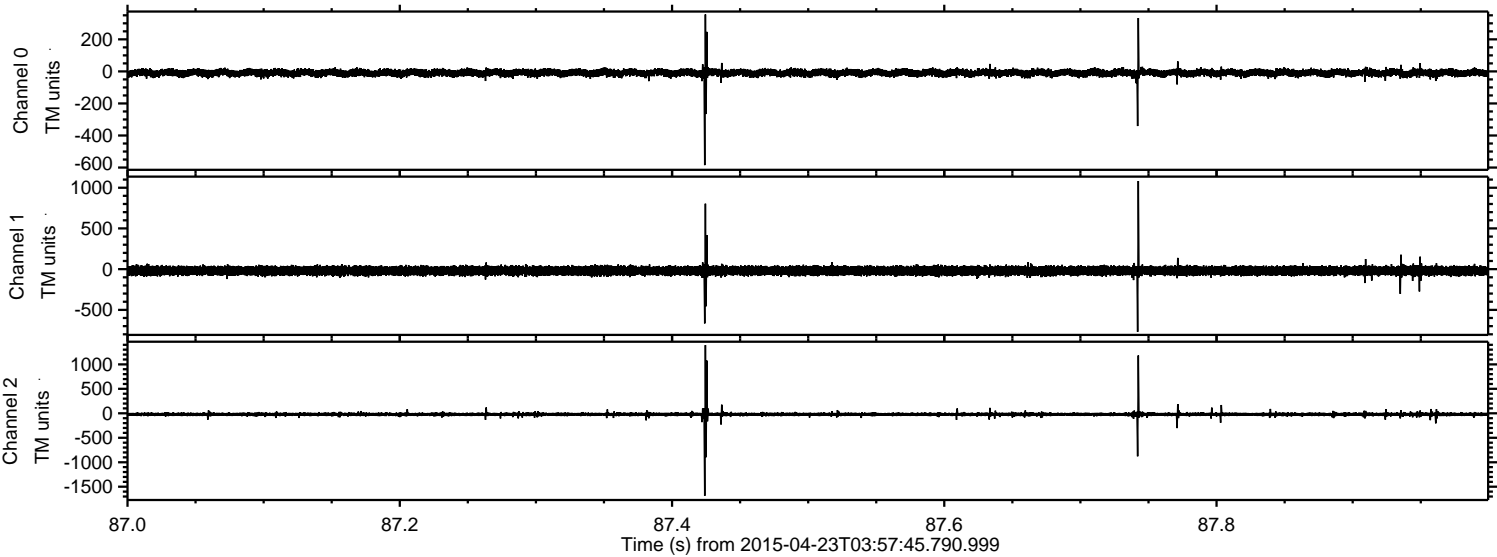


Channel 0
mn: -537
mx: 569
 μ : -9.1
 σ : 12.6

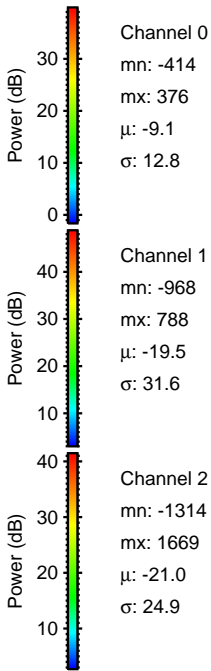
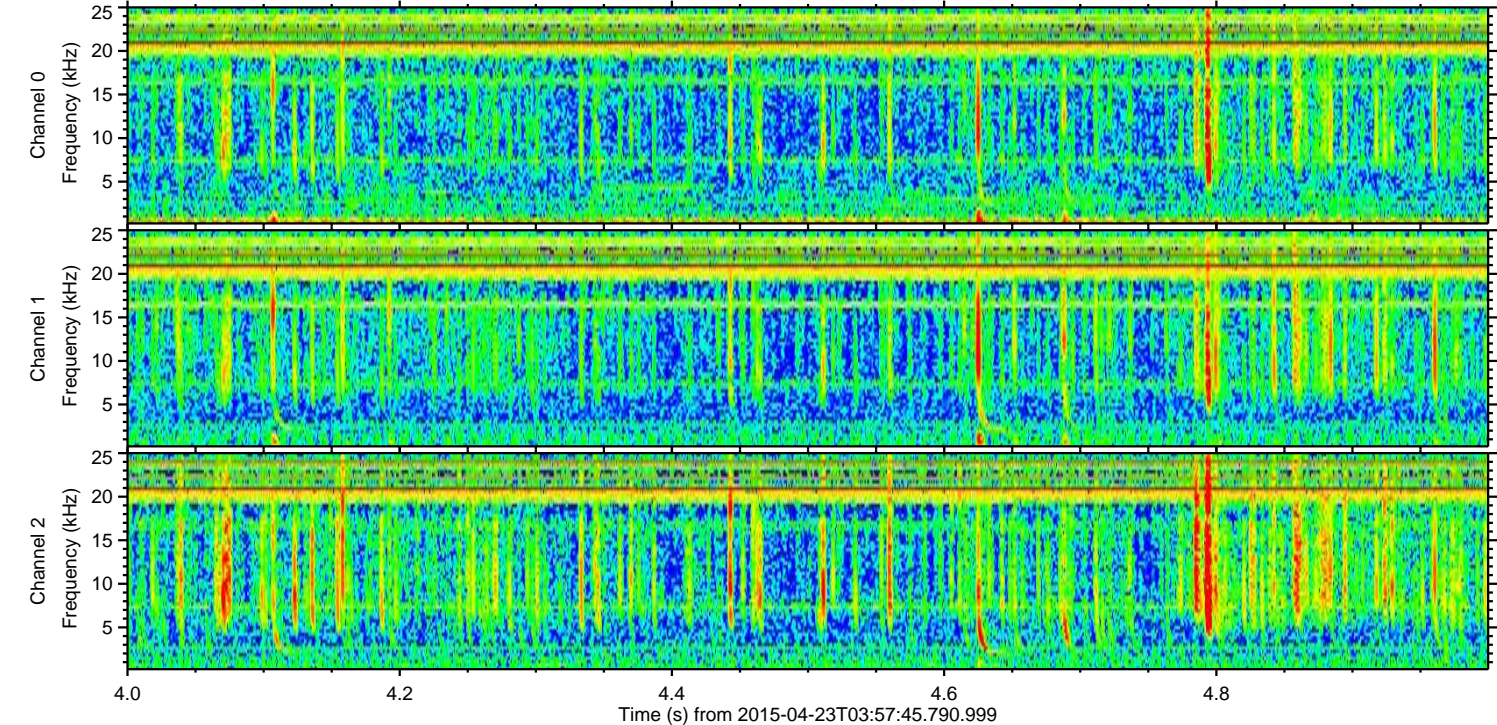
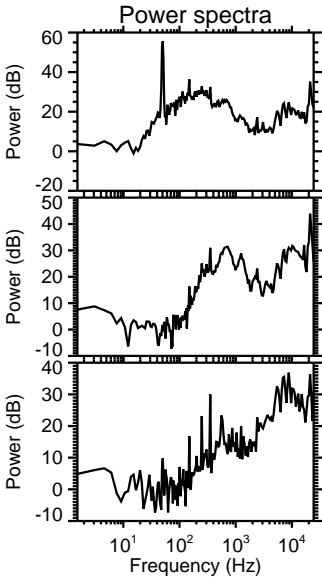
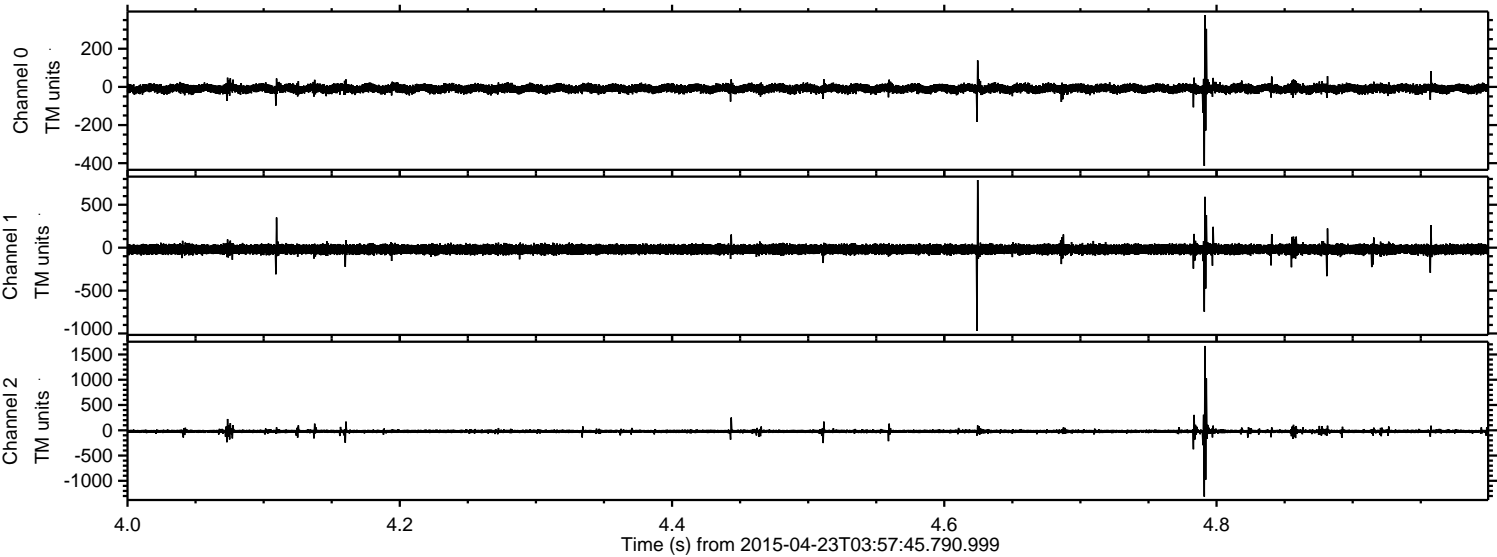
Channel 1
mn: -851
mx: 762
 μ : -19.7
 σ : 29.9

Channel 2
mn: -1584
mx: 1700
 μ : -21.1
 σ : 24.8

Processed Thu Apr 23 06:04:40 2015 by ELM ver.2012-10-06 from 001__elm20150423_035744__dat00.bin



Processed Thu Apr 23 06:04:41 2015 by ELM ver.2012-10-06 from 001__elm20150423_035744__dat00.bin



Processed Thu Apr 23 06:04:42 2015 by ELM ver.2012-10-06 from 001__elm20150423_035744__dat00.bin

