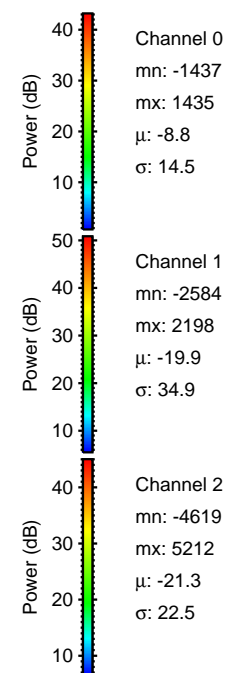
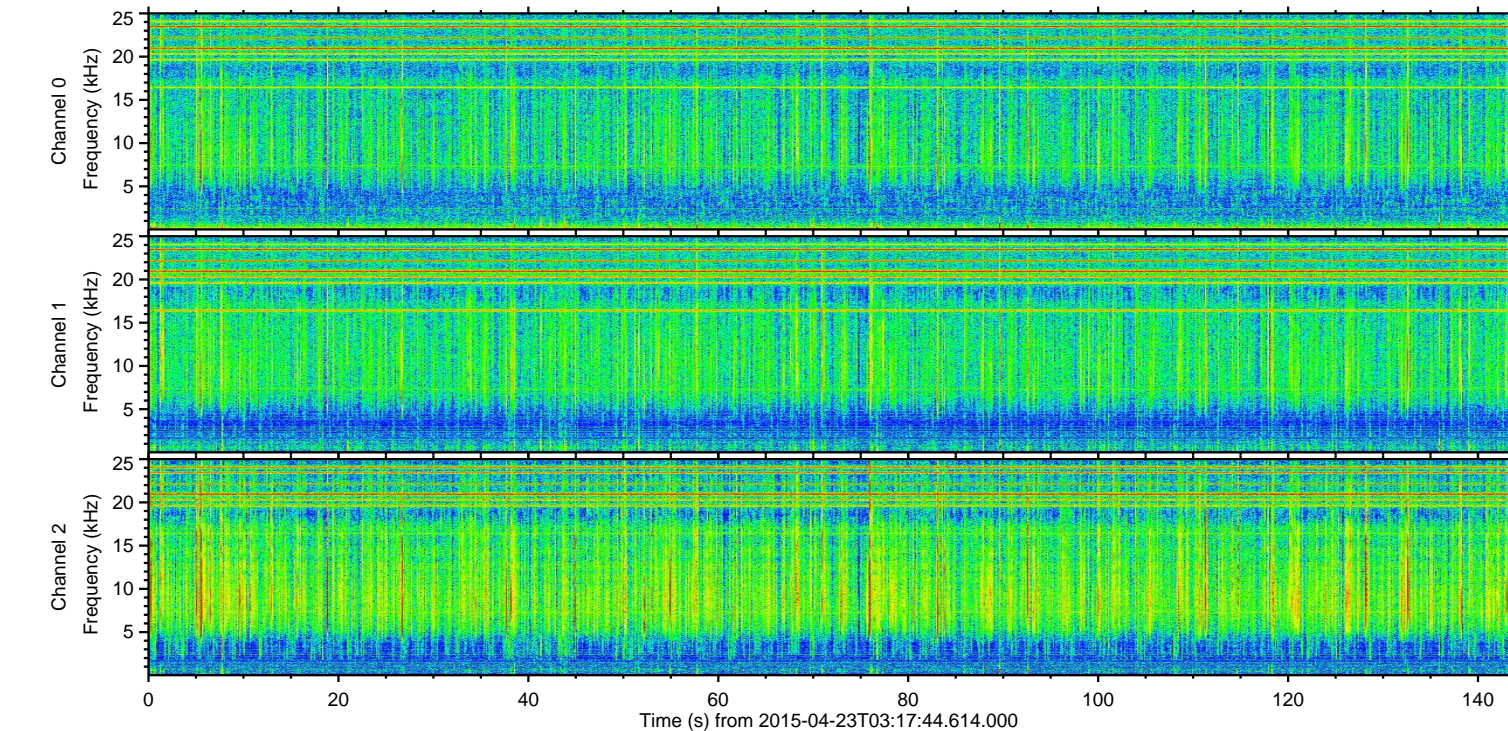
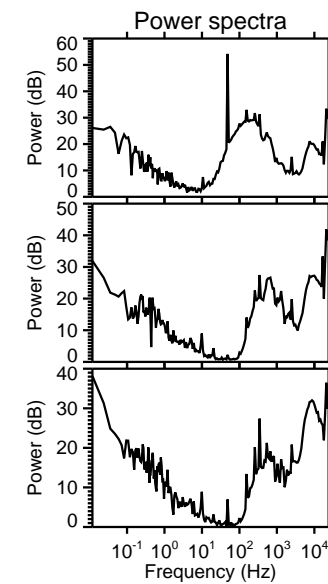
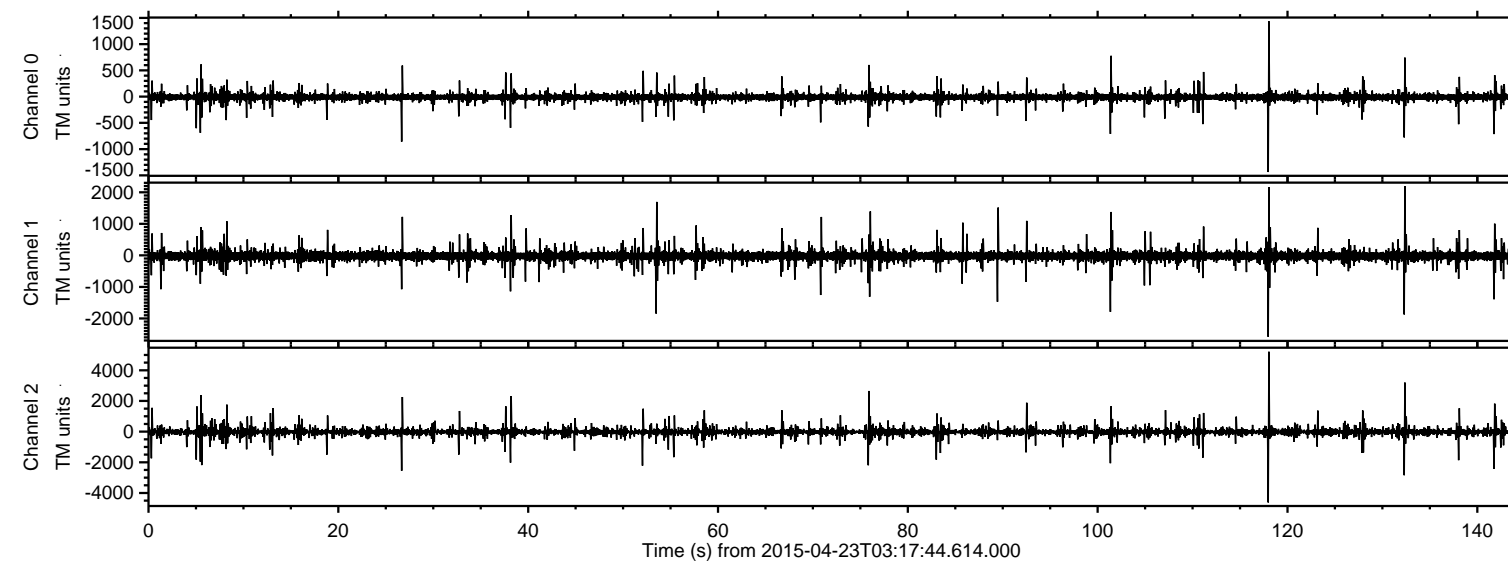


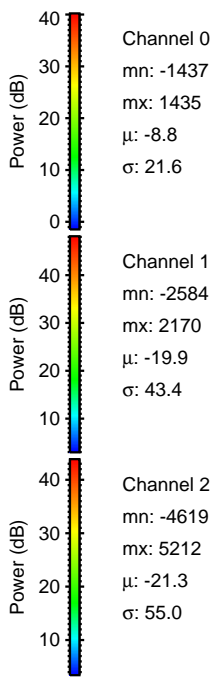
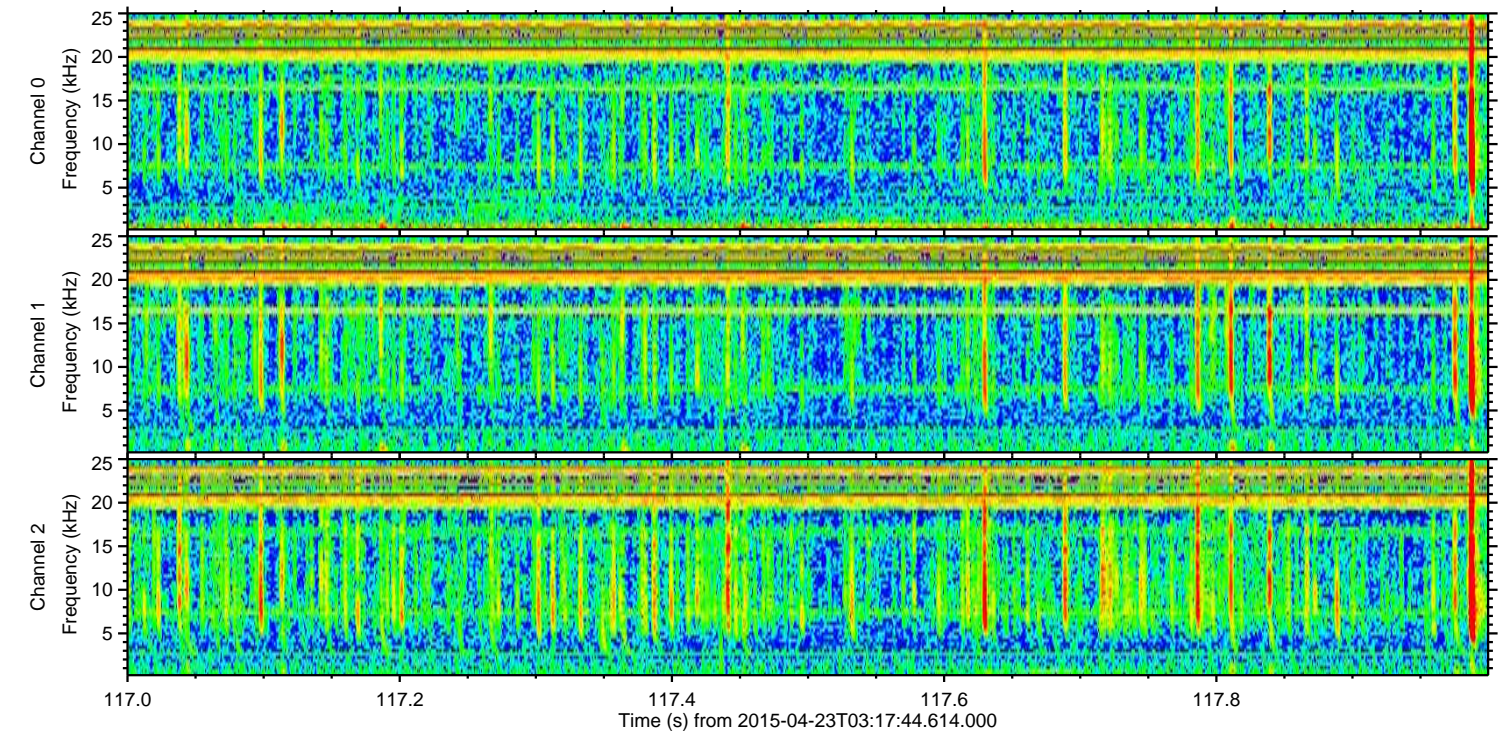
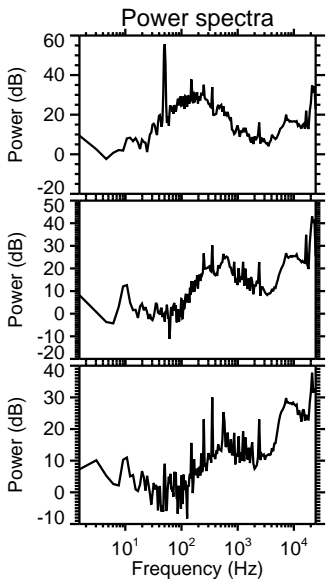
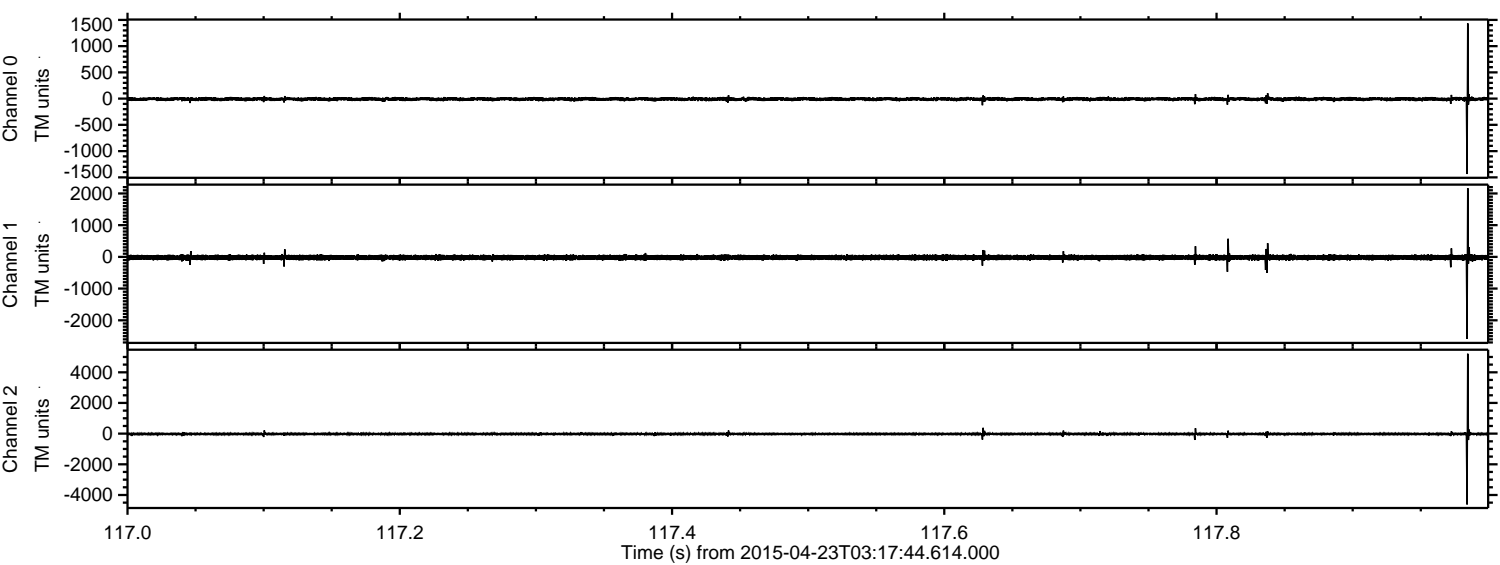
ELMAVAN 3D WAVEFORMS (Measured data sampled at 50 kHz) 49776 packets of 144 samples from 2015-04-23T03:17:44.614.000.

Processed Thu Apr 23 05:24:23 2015 by ELM ver.2012-10-06 from 001__elm20150423_031743__dat00.bin



ELMAVAN 3D WAVEFORMS (Measured data sampled at 50 kHz) 49776 packets of 144 samples from 2015-04-23T03:17:44.614.000. Part 118/144

Processed Thu Apr 23 05:24:35 2015 by ELM ver.2012-10-06 from 001__elm20150423_031743__dat00.bin



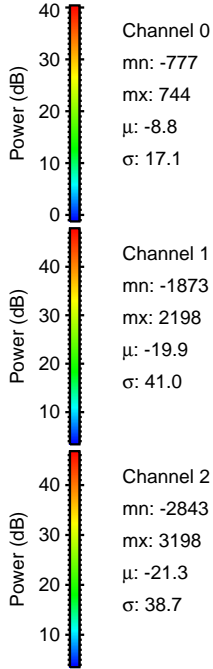
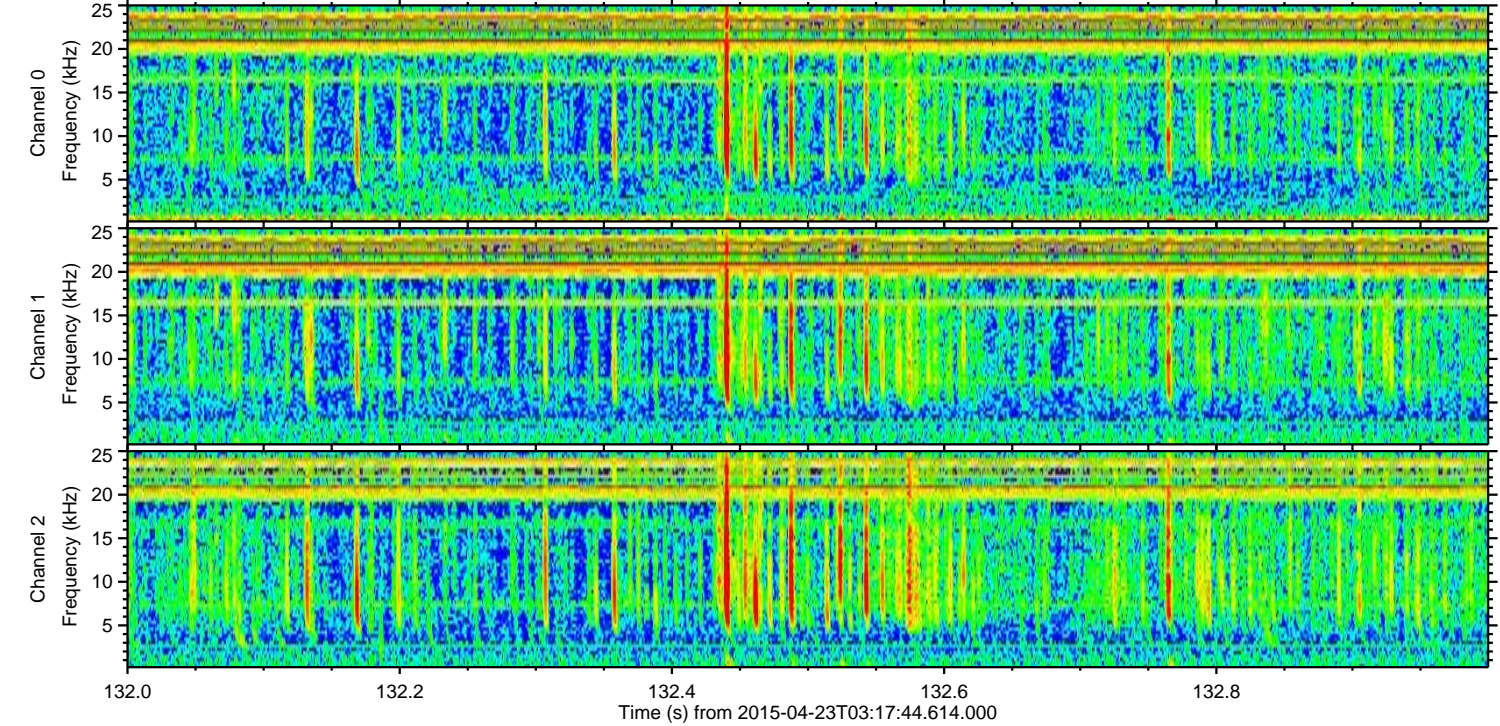
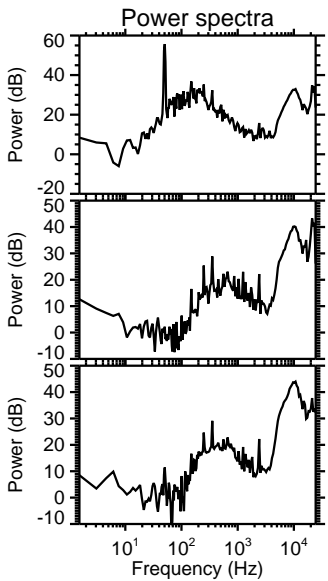
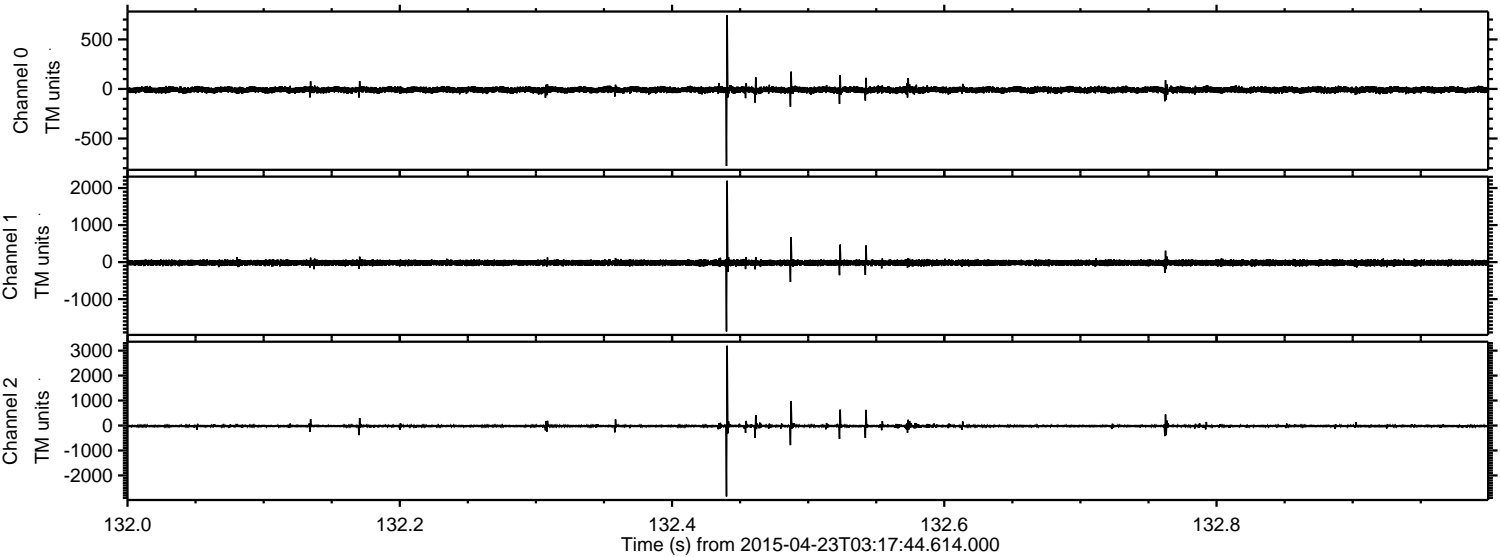
Channel 0
mn: -1437
mx: 1435
 μ : -8.8
 σ : 21.6

Channel 1
mn: -2584
mx: 2170
 μ : -19.9
 σ : 43.4

Channel 2
mn: -4619
mx: 5212
 μ : -21.3
 σ : 55.0

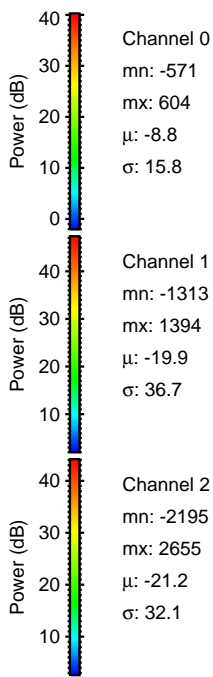
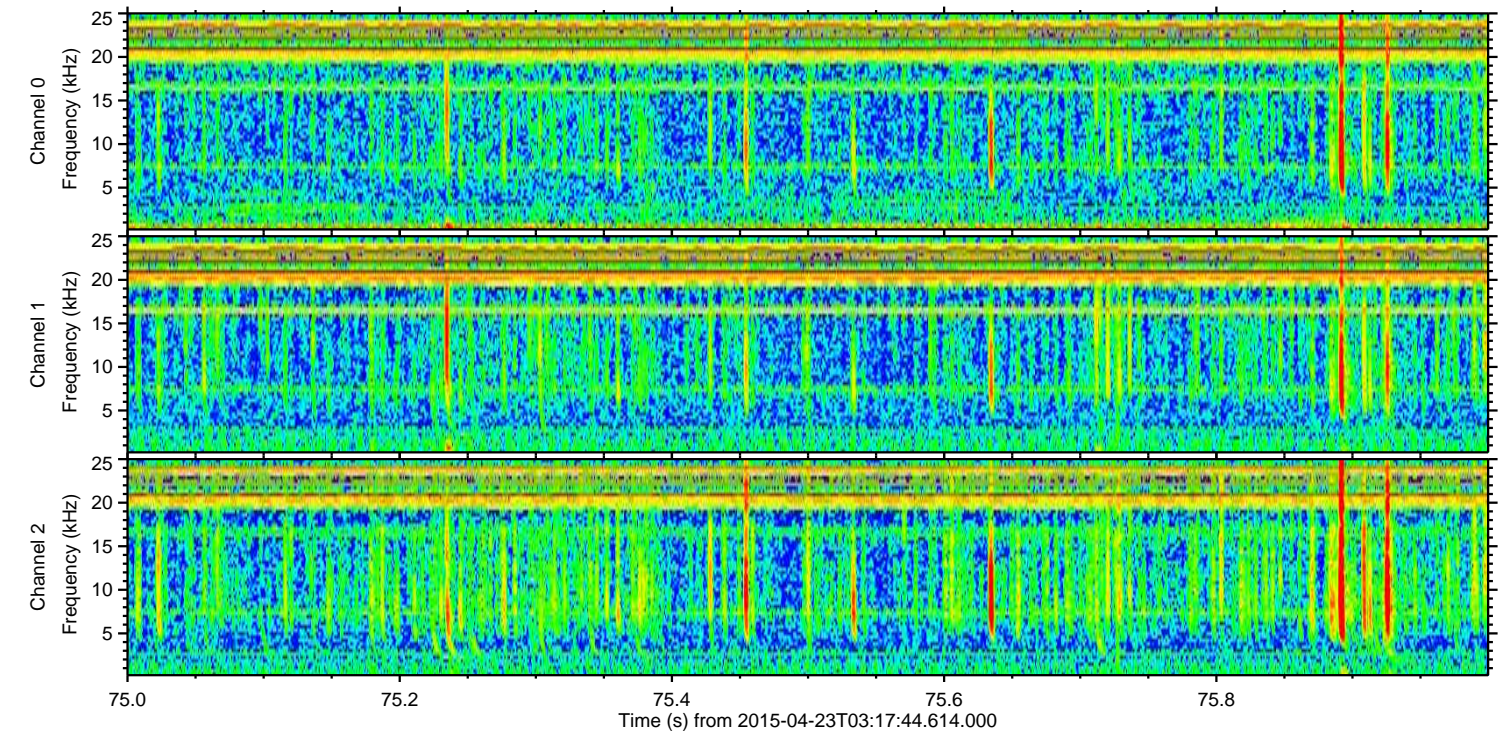
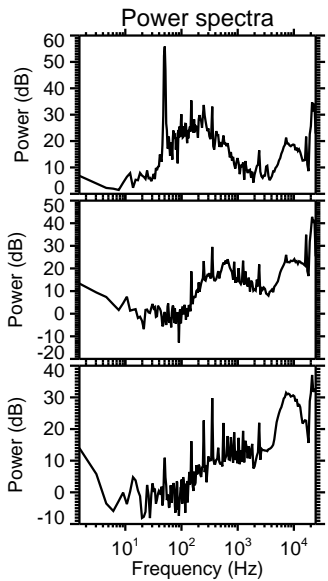
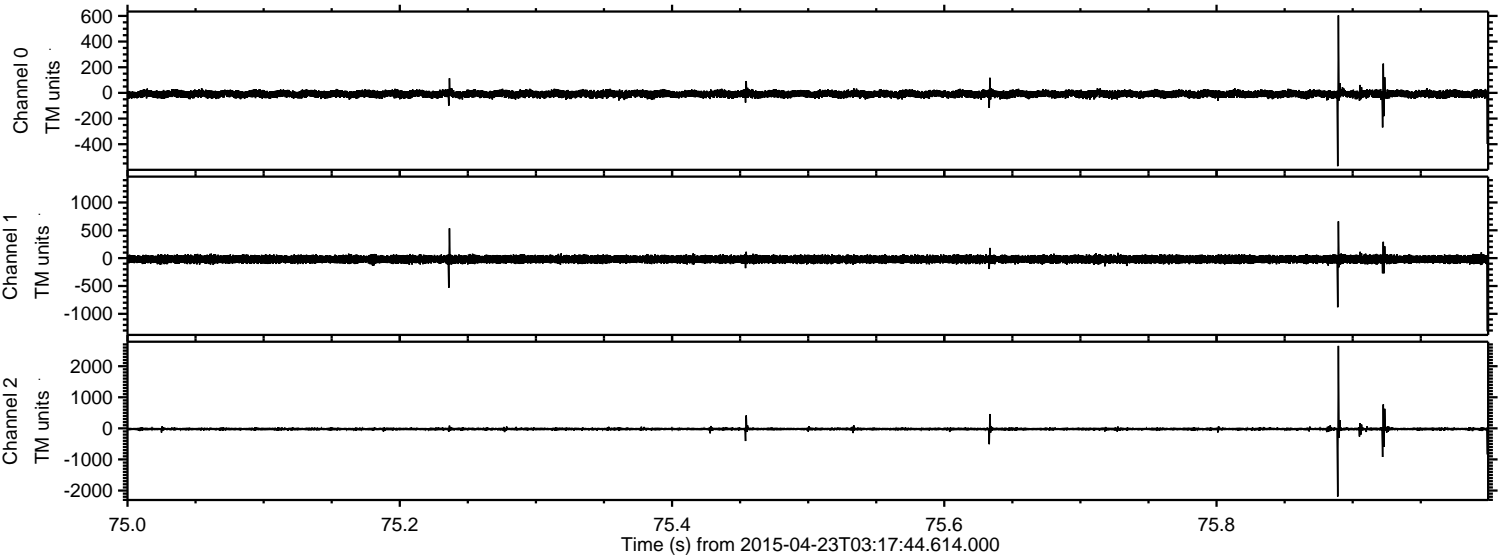
ELMAVAN 3D WAVEFORMS (Measured data sampled at 50 kHz) 49776 packets of 144 samples from 2015-04-23T03:17:44.614.000. Part 133/144

Processed Thu Apr 23 05:24:36 2015 by ELM ver.2012-10-06 from 001__elm20150423_031743__dat00.bin



ELMAVAN 3D WAVEFORMS (Measured data sampled at 50 kHz) 49776 packets of 144 samples from 2015-04-23T03:17:44.614.000. Part 76/144

Processed Thu Apr 23 05:24:37 2015 by ELM ver.2012-10-06 from 001__elm20150423_031743__dat00.bin



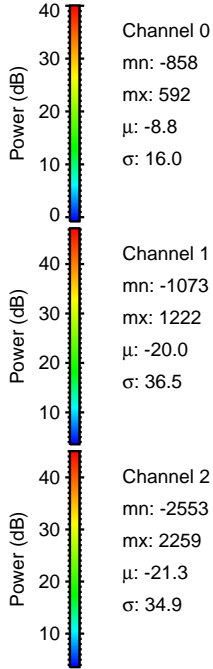
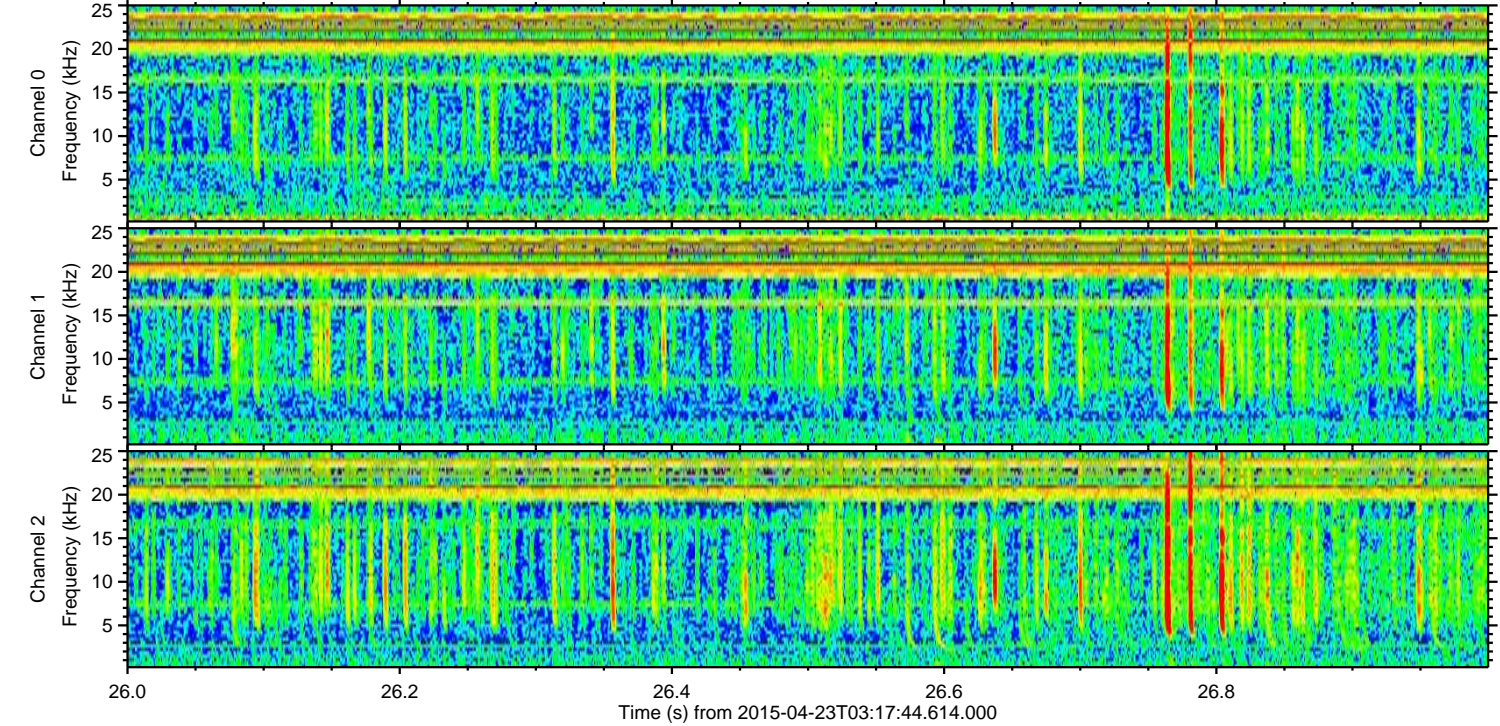
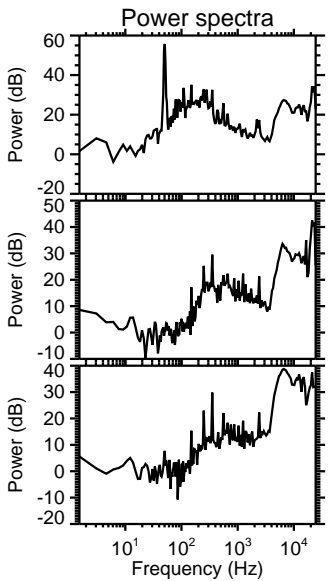
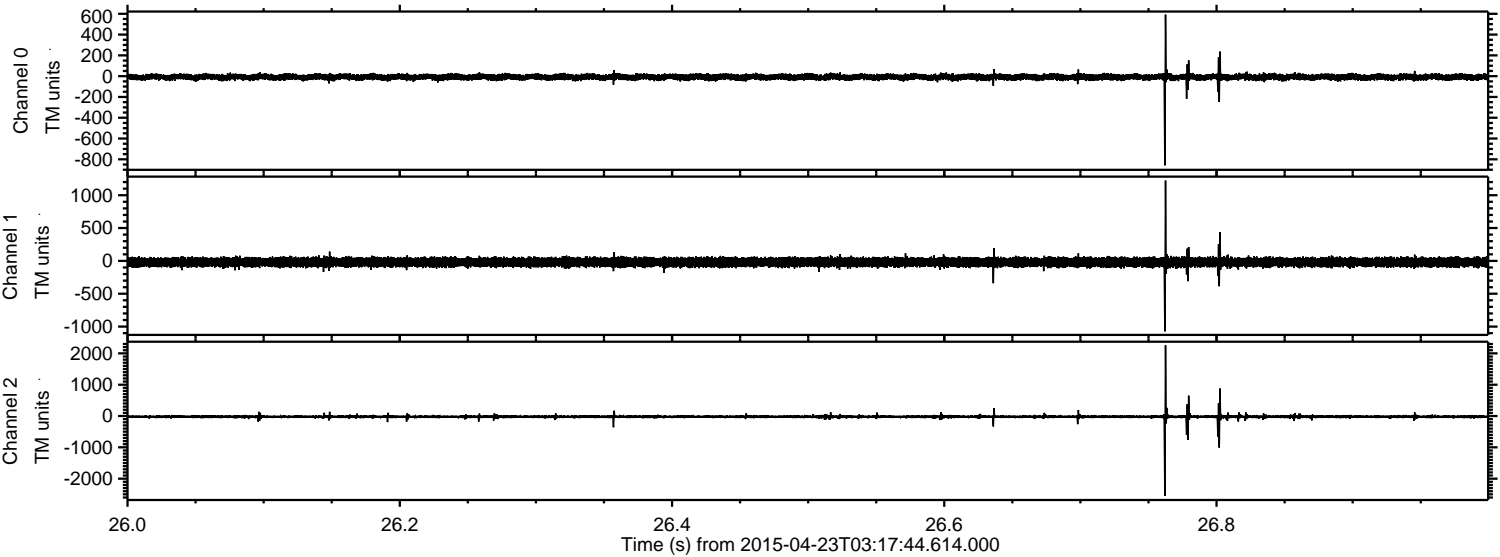
Channel 0
mn: -571
mx: 604
 μ : -8.8
 σ : 15.8

Channel 1
mn: -1313
mx: 1394
 μ : -19.9
 σ : 36.7

Channel 2
mn: -2195
mx: 2655
 μ : -21.2
 σ : 32.1

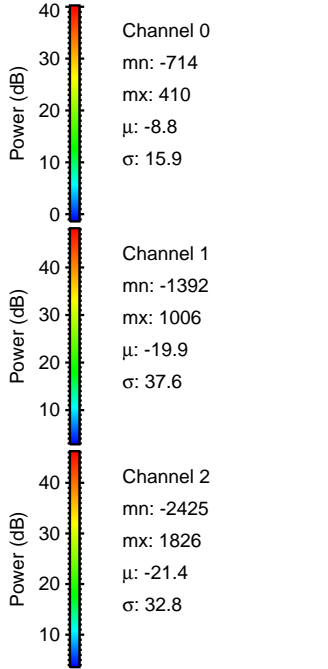
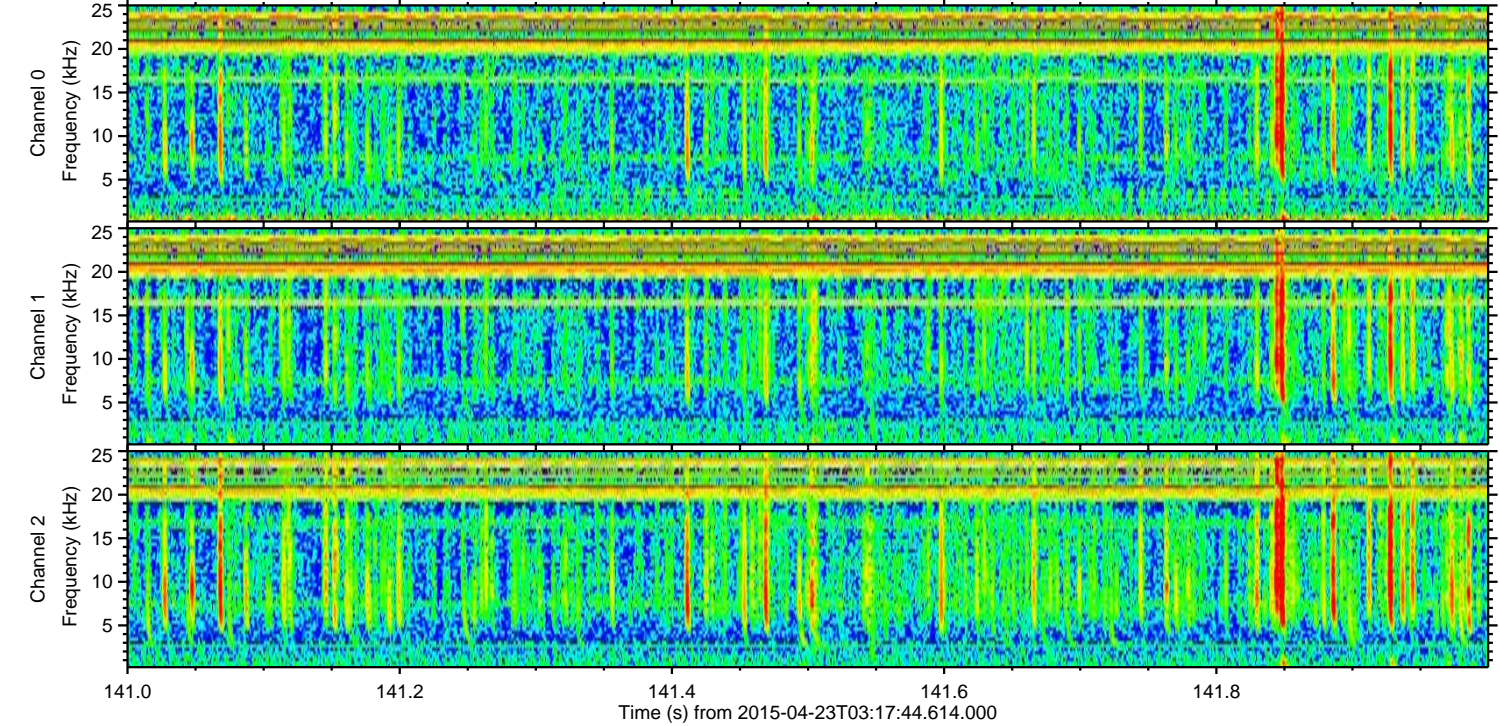
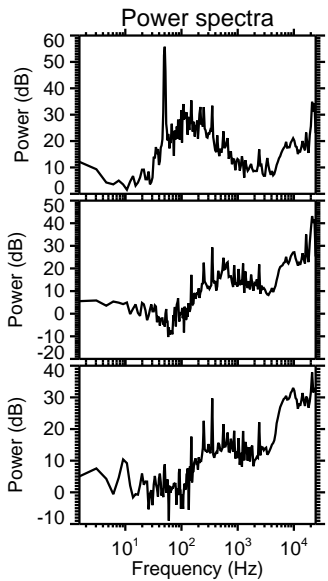
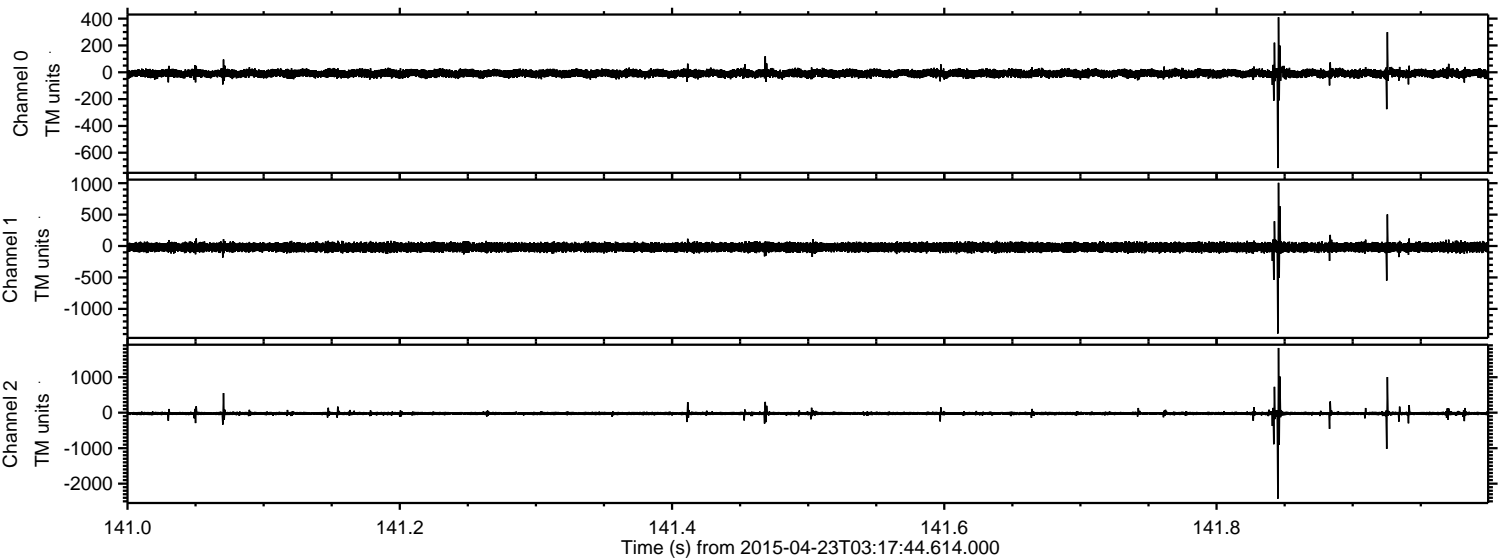
ELMAVAN 3D WAVEFORMS (Measured data sampled at 50 kHz) 49776 packets of 144 samples from 2015-04-23T03:17:44.614.000. Part 27/144

Processed Thu Apr 23 05:24:38 2015 by ELM ver.2012-10-06 from 001__elm20150423_031743__dat00.bin

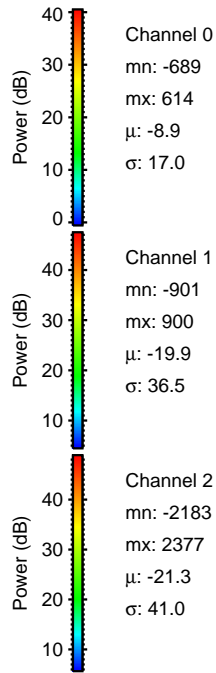
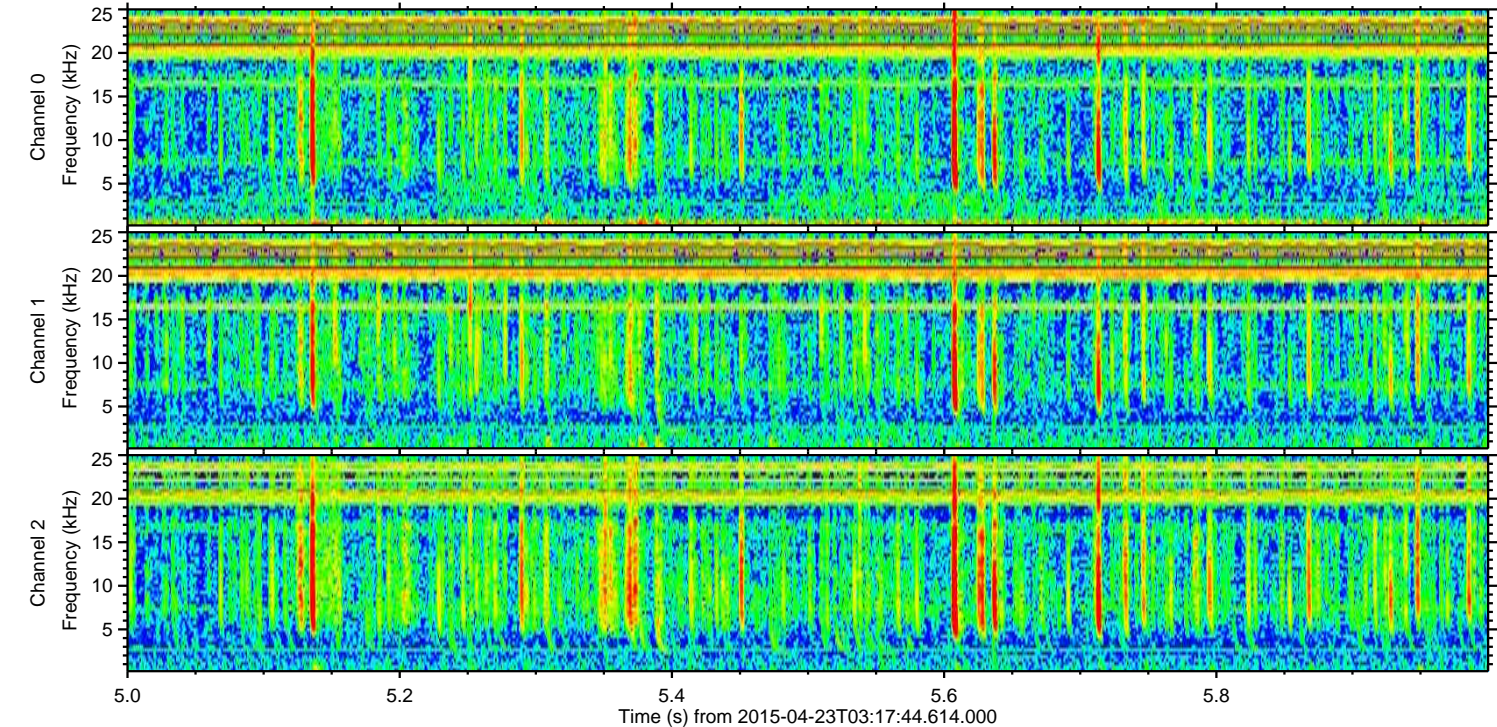
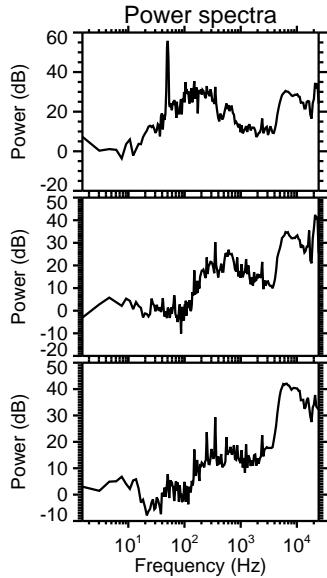
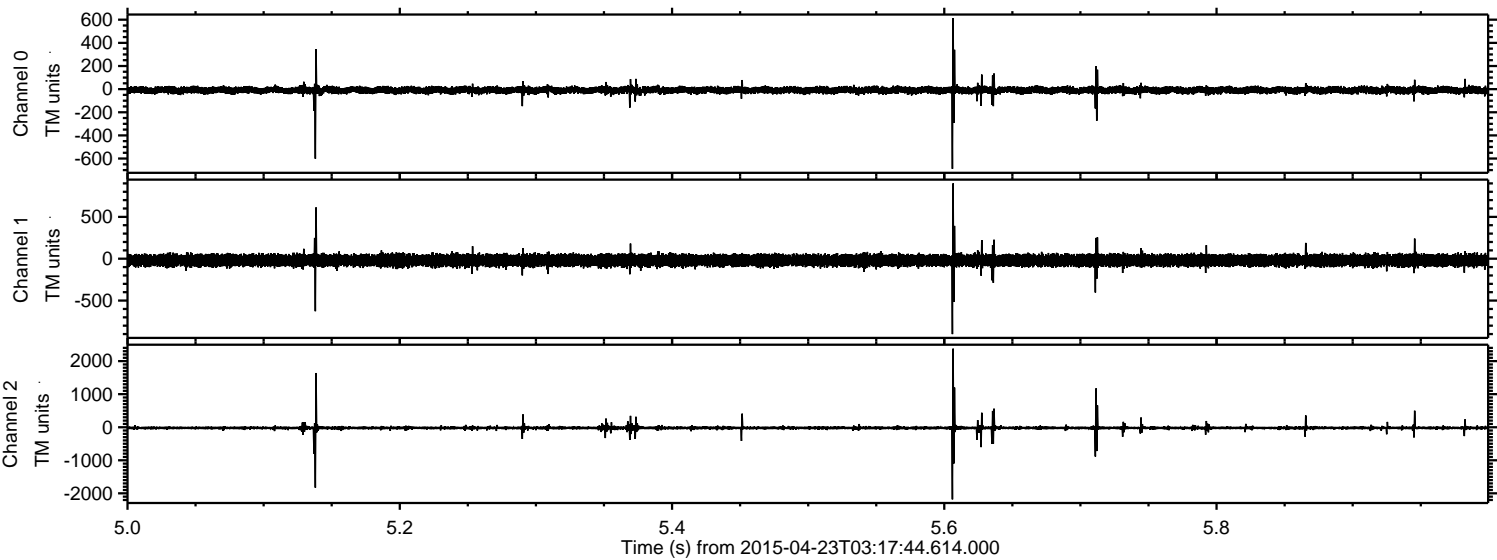


ELMAVAN 3D WAVEFORMS (Measured data sampled at 50 kHz) 49776 packets of 144 samples from 2015-04-23T03:17:44.614.000. Part 142/144

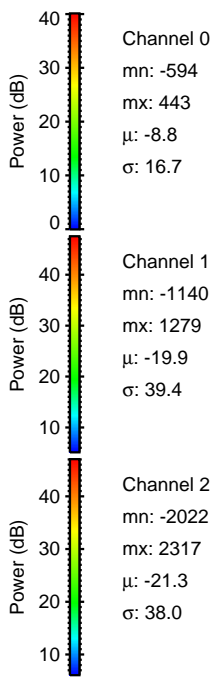
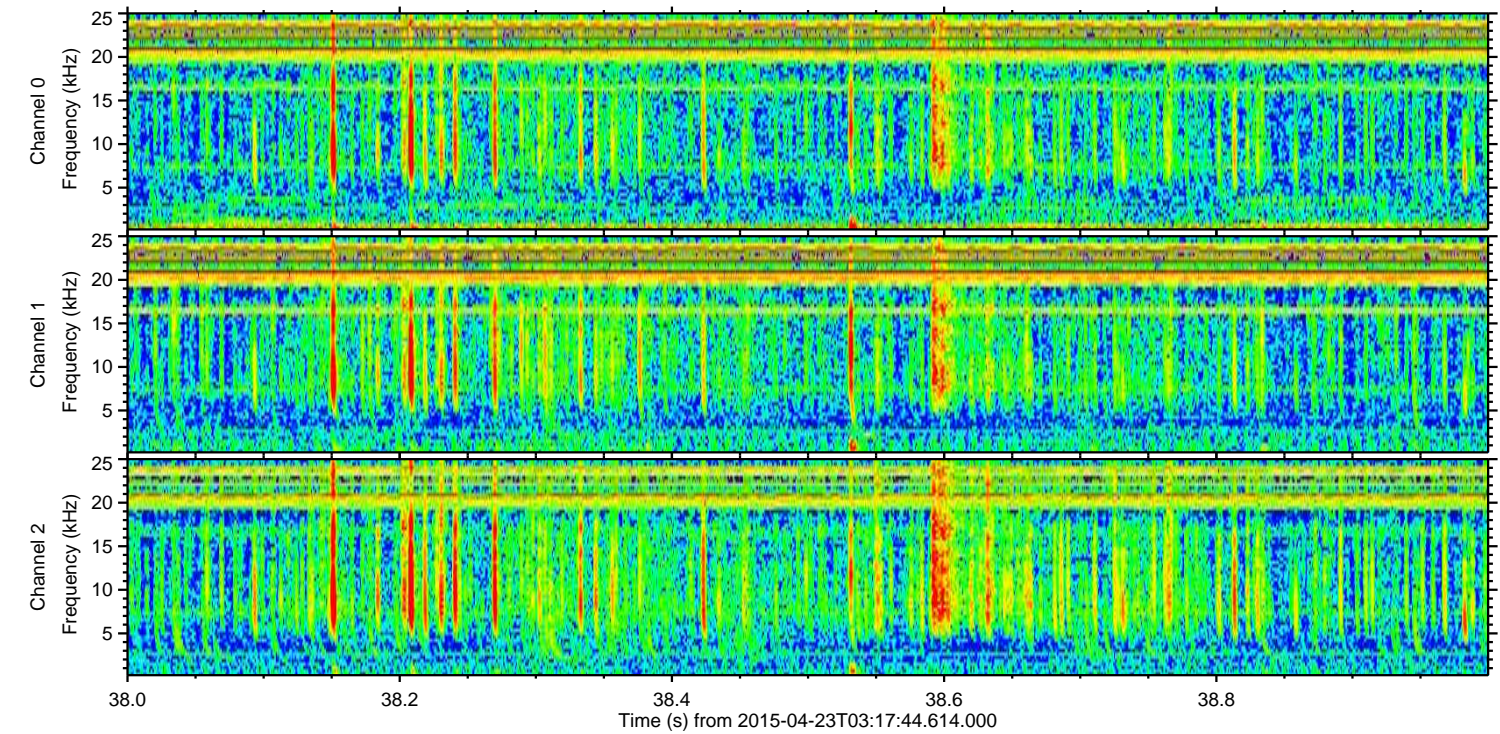
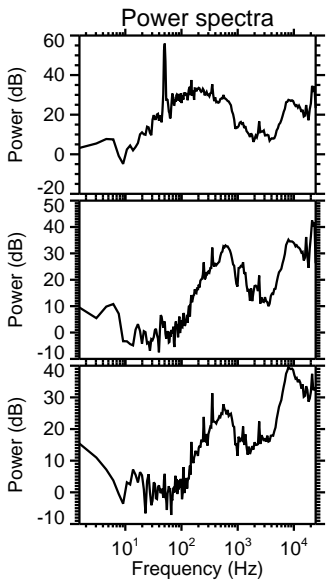
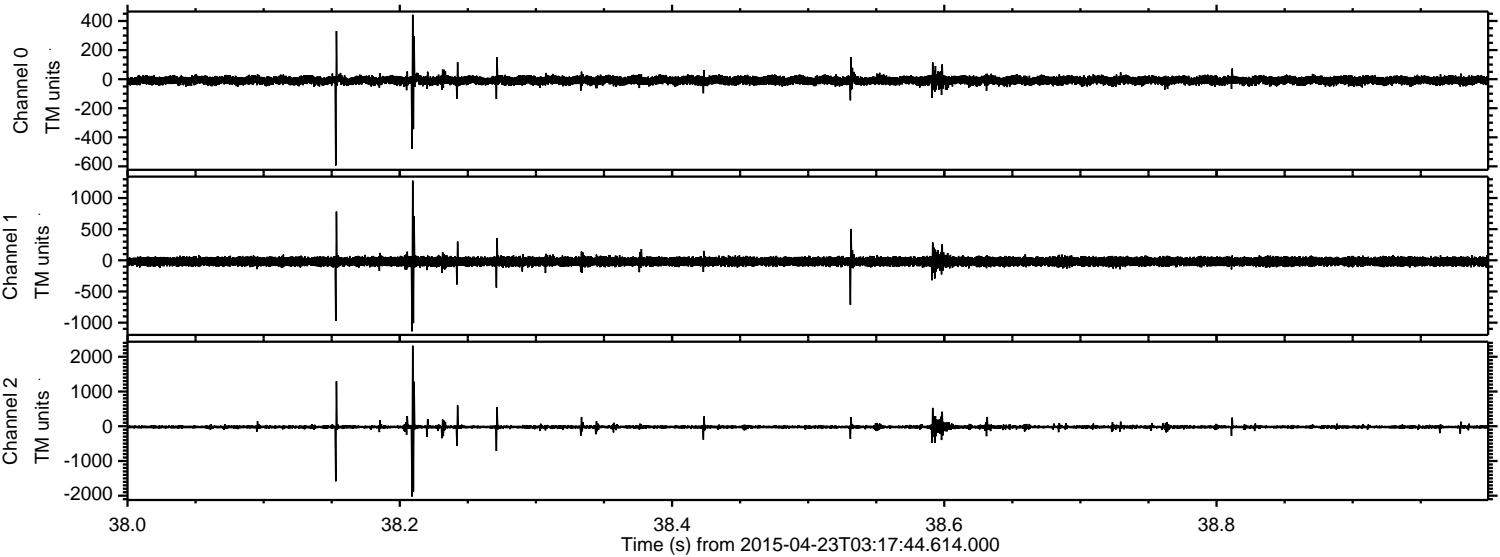
Processed Thu Apr 23 05:24:38 2015 by ELM ver.2012-10-06 from 001__elm20150423_031743__dat00.bin



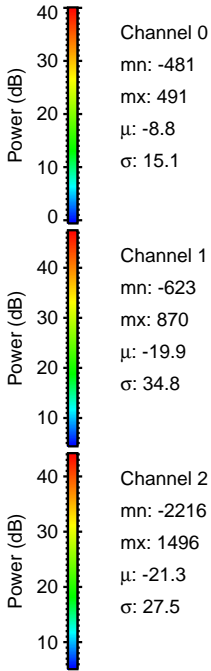
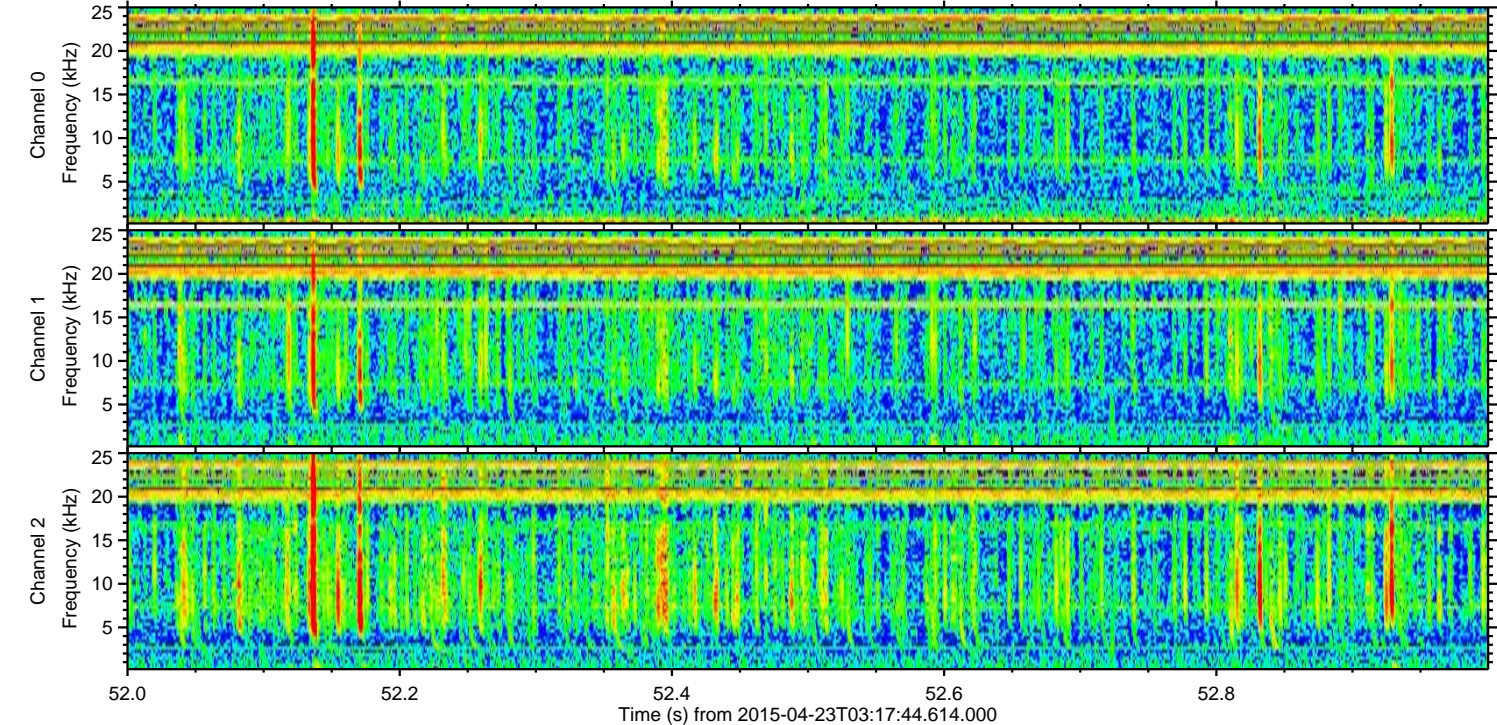
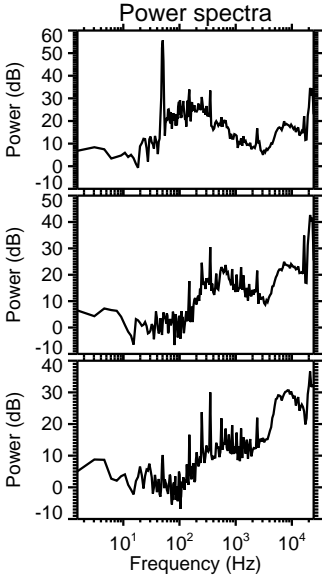
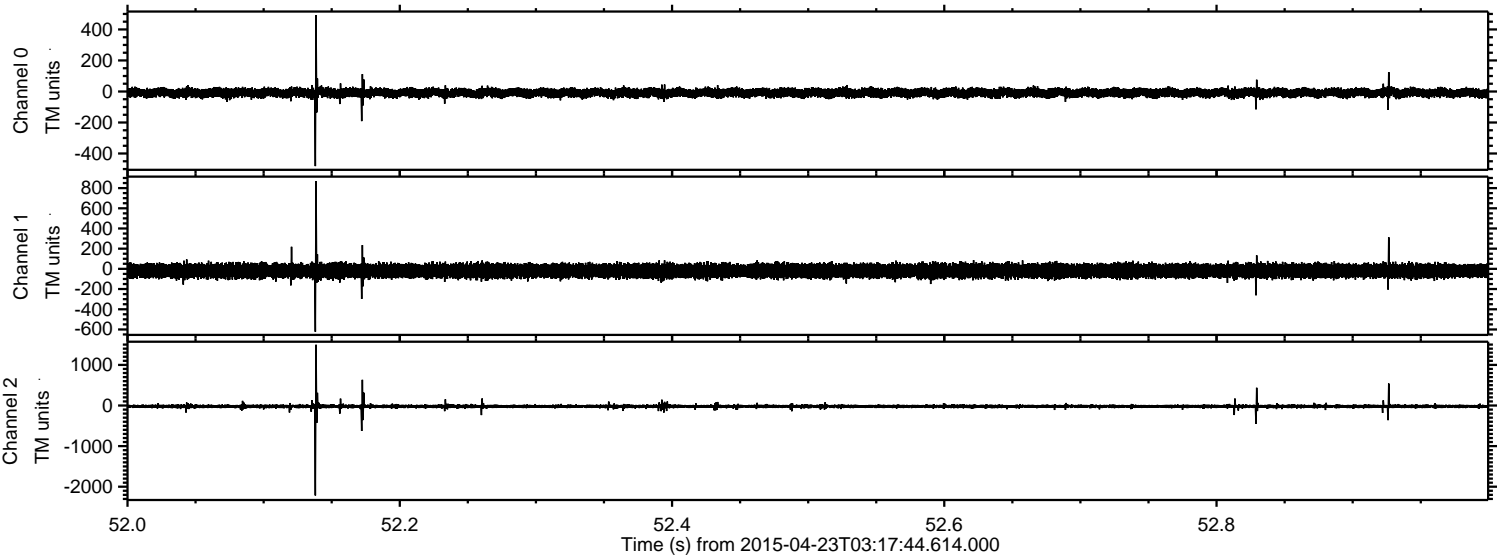
Processed Thu Apr 23 05:24:39 2015 by ELM ver.2012-10-06 from 001__elm20150423_031743__dat00.bin



Processed Thu Apr 23 05:24:40 2015 by ELM ver.2012-10-06 from 001__elm20150423_031743__dat00.bin



Processed Thu Apr 23 05:24:41 2015 by ELM ver.2012-10-06 from 001__elm20150423_031743__dat00.bin



Processed Thu Apr 23 05:24:42 2015 by ELM ver.2012-10-06 from 001__elm20150423_031743__dat00.bin

