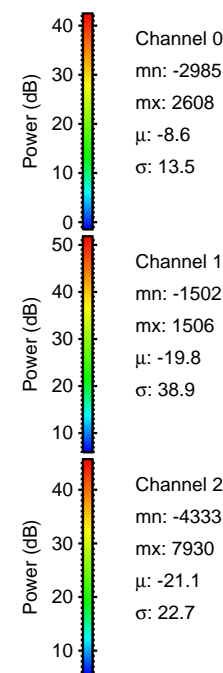
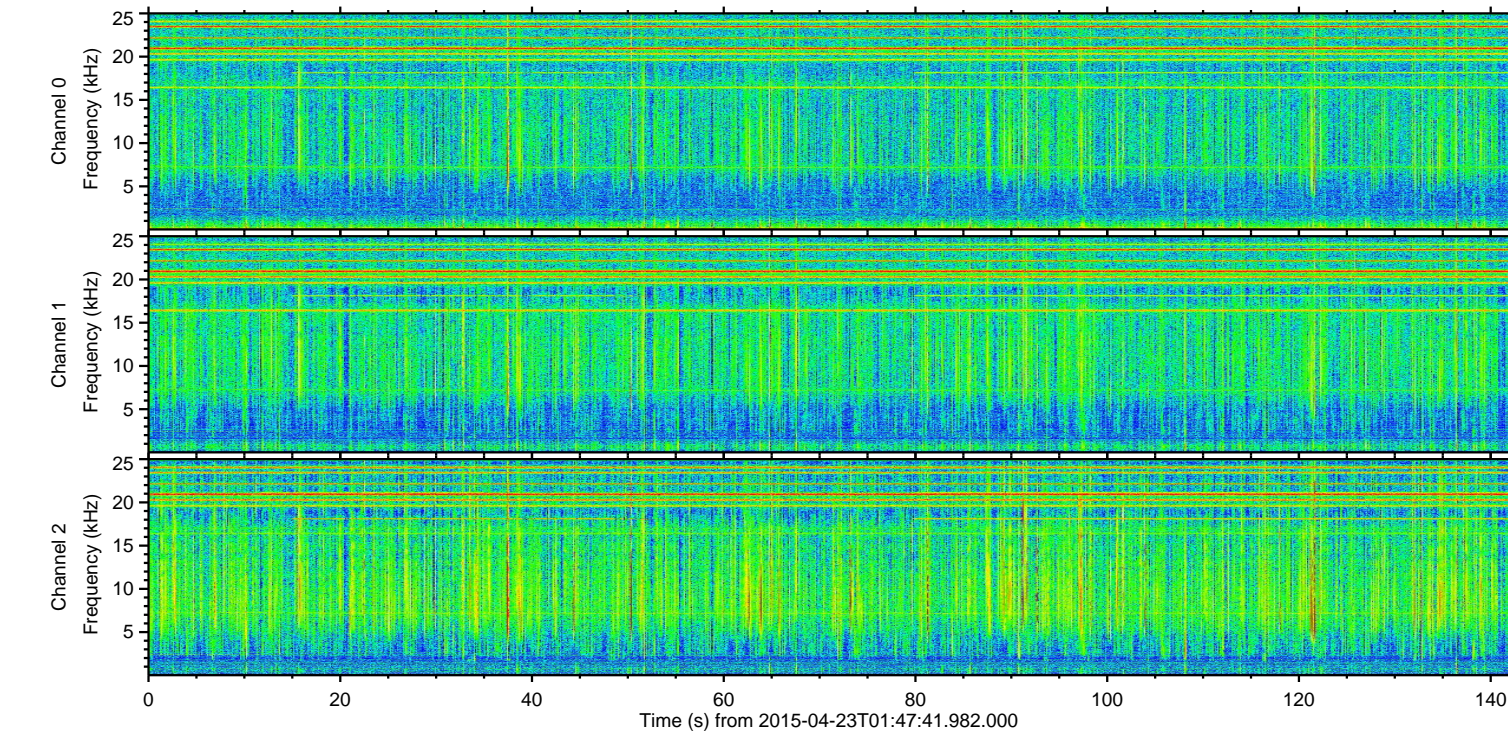
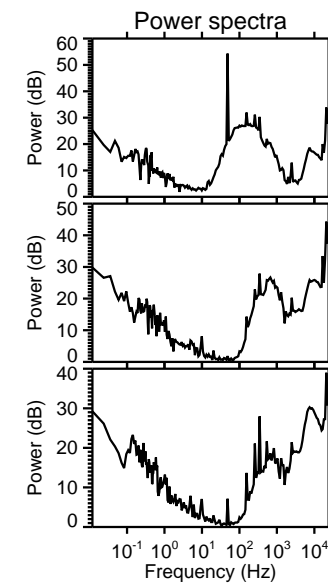
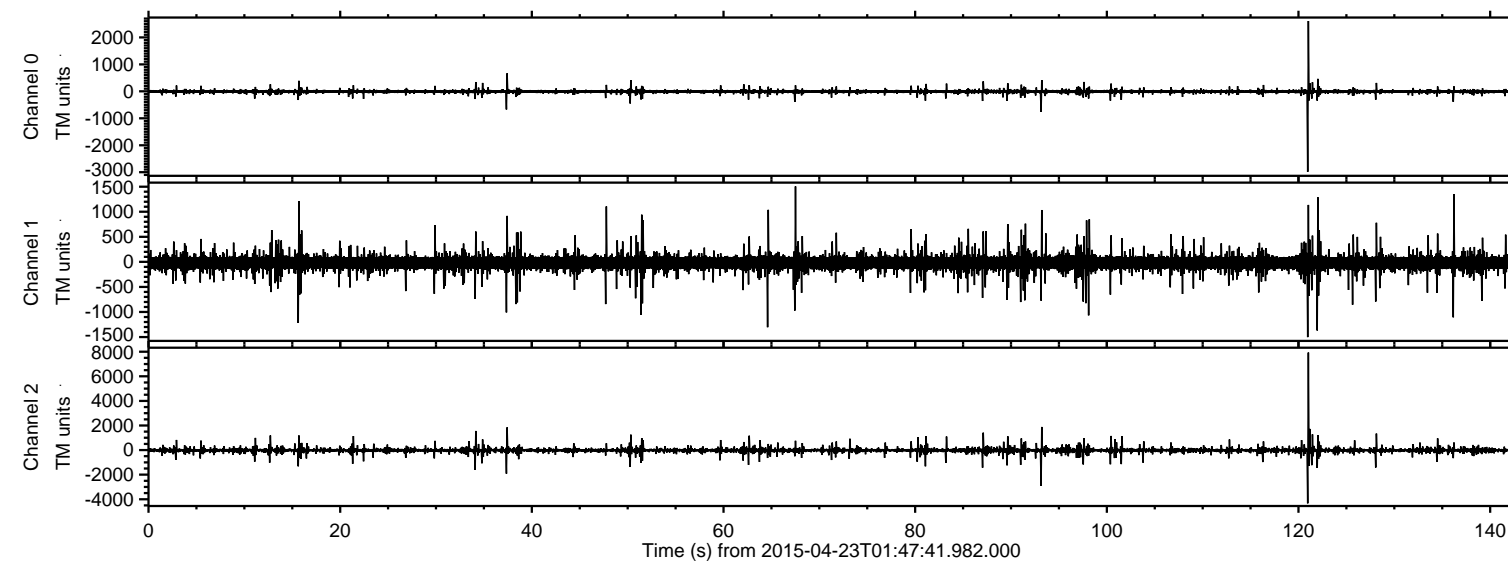


ELMAVAN 3D WAVEFORMS (Measured data sampled at 50 kHz) 49299 packets of 144 samples from 2015-04-23T01:47:41.982.000.

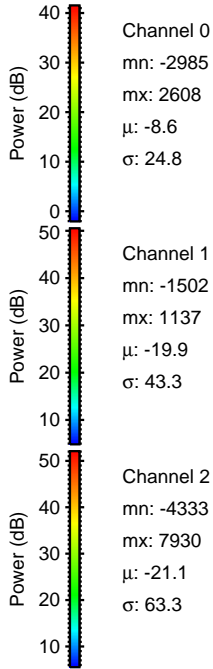
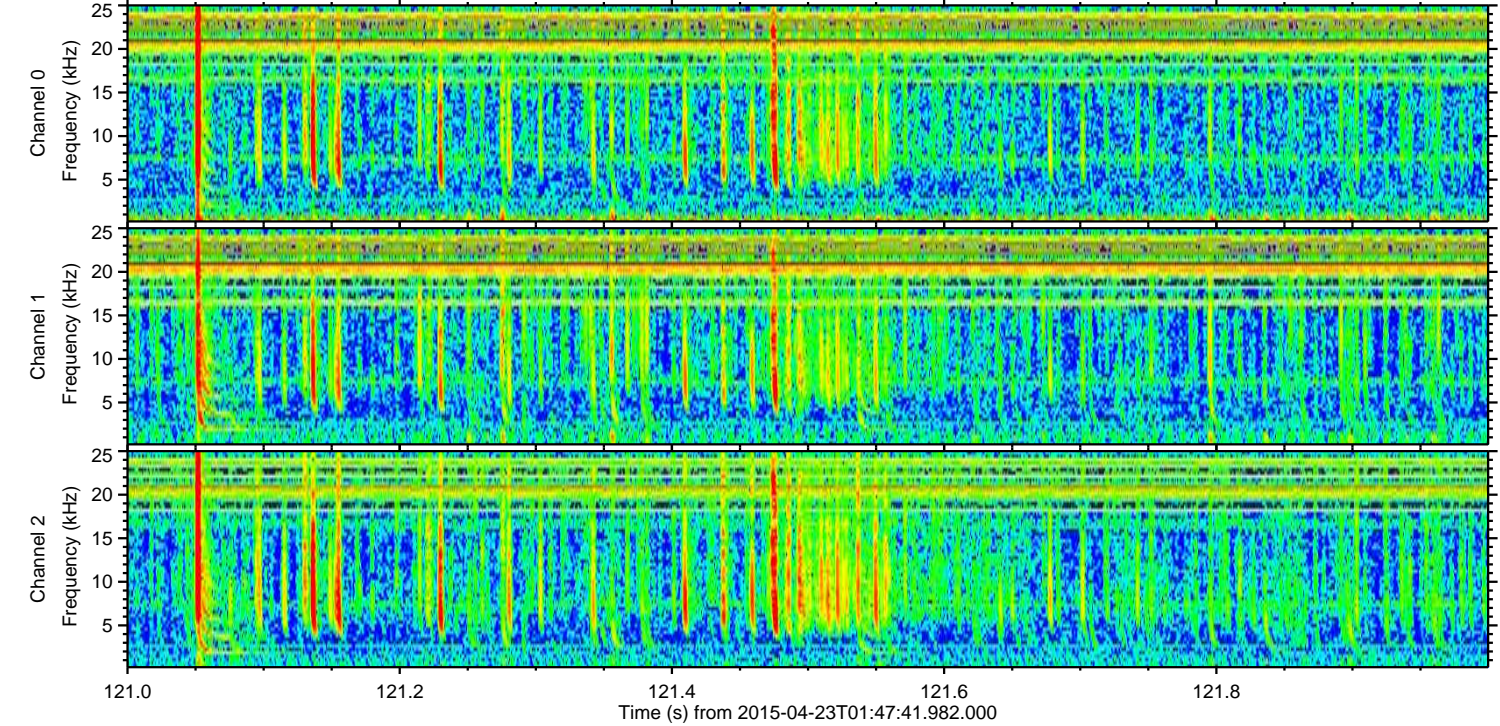
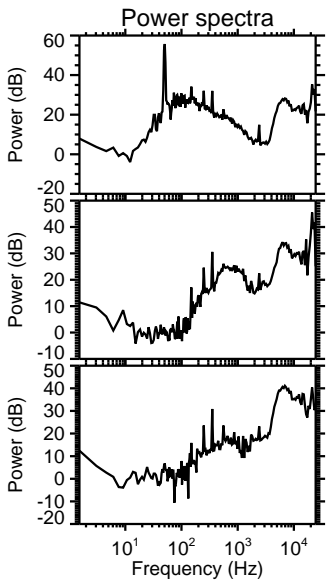
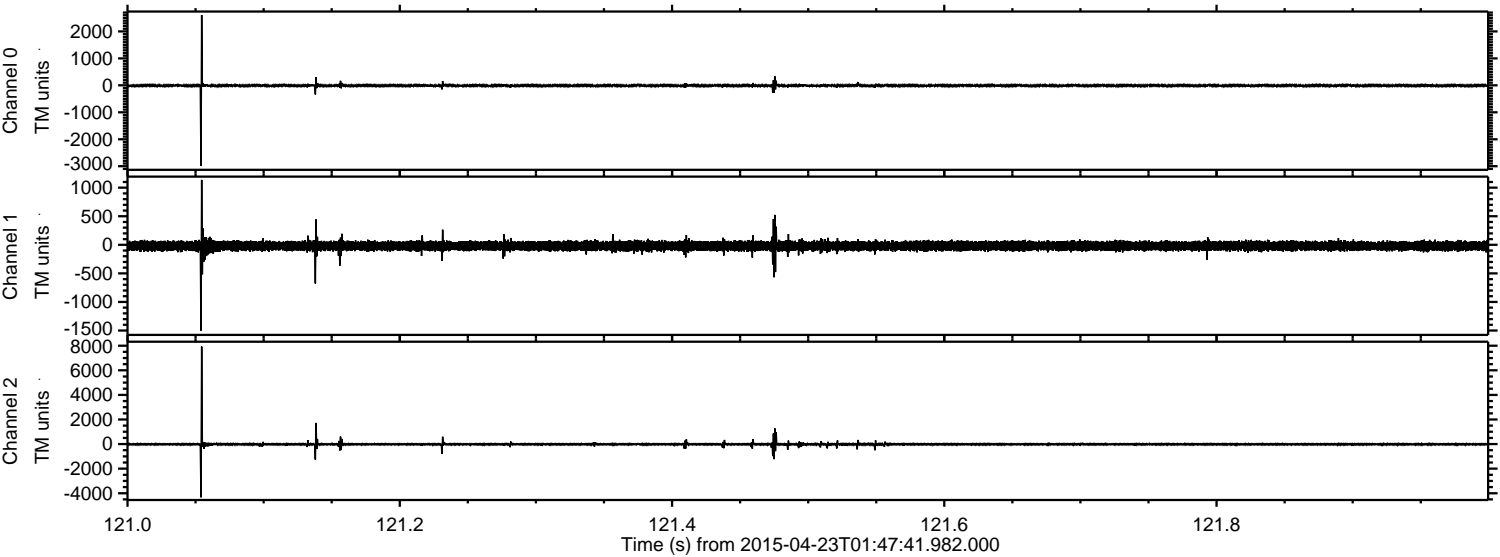
Processed Thu Apr 23 03:55:05 2015 by ELM ver.2012-10-06 from 001\_\_elm20150423\_014740\_\_dat00.bin





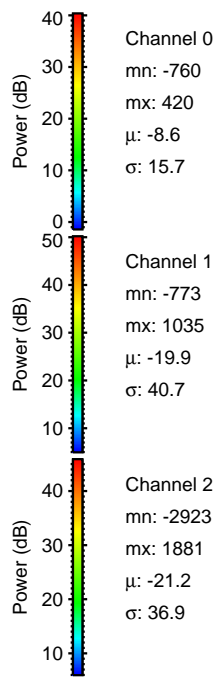
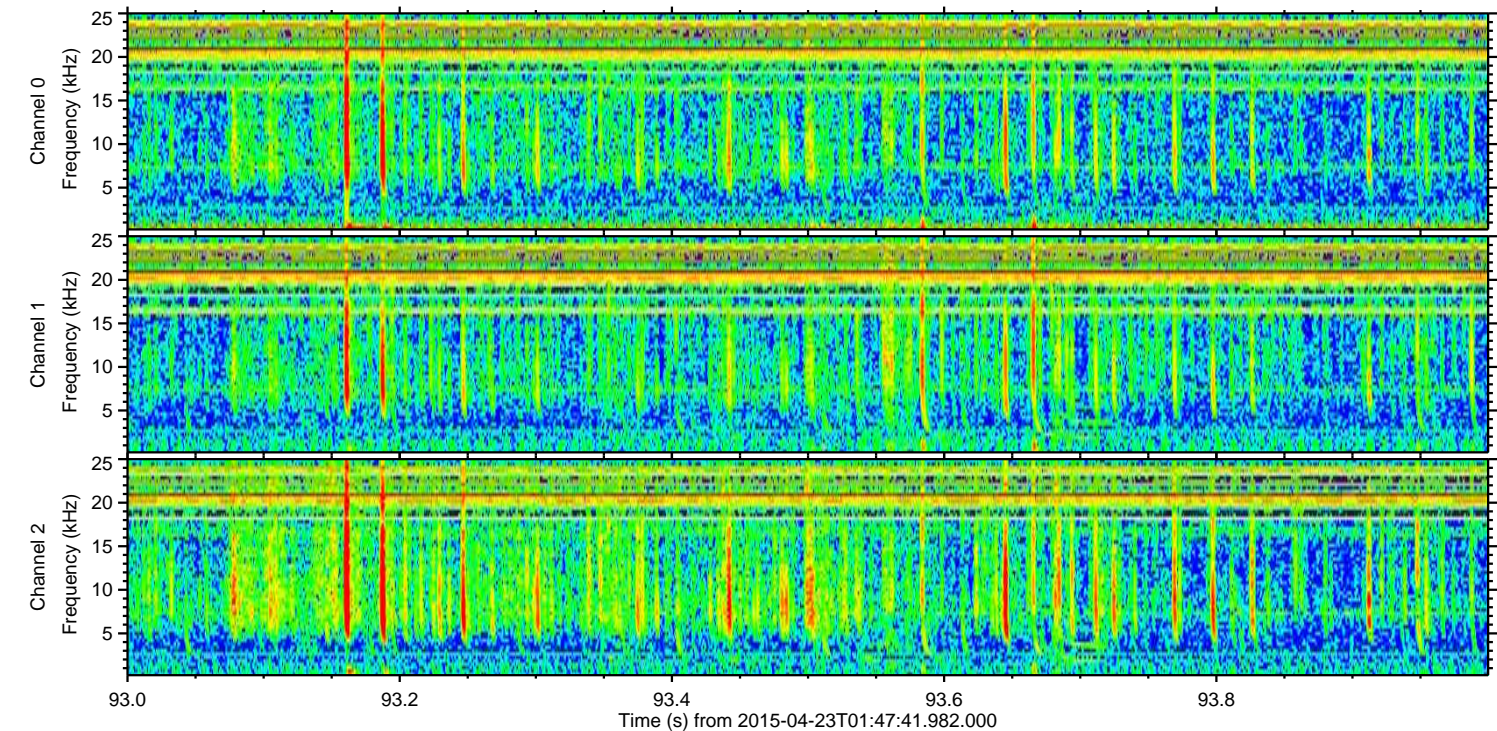
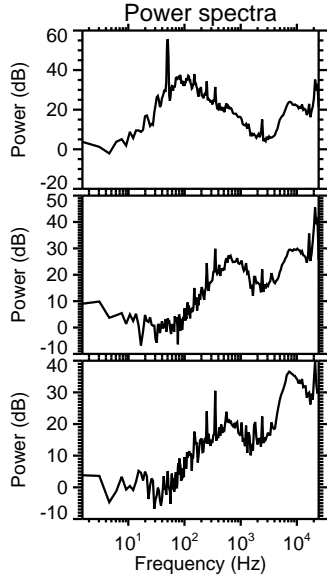
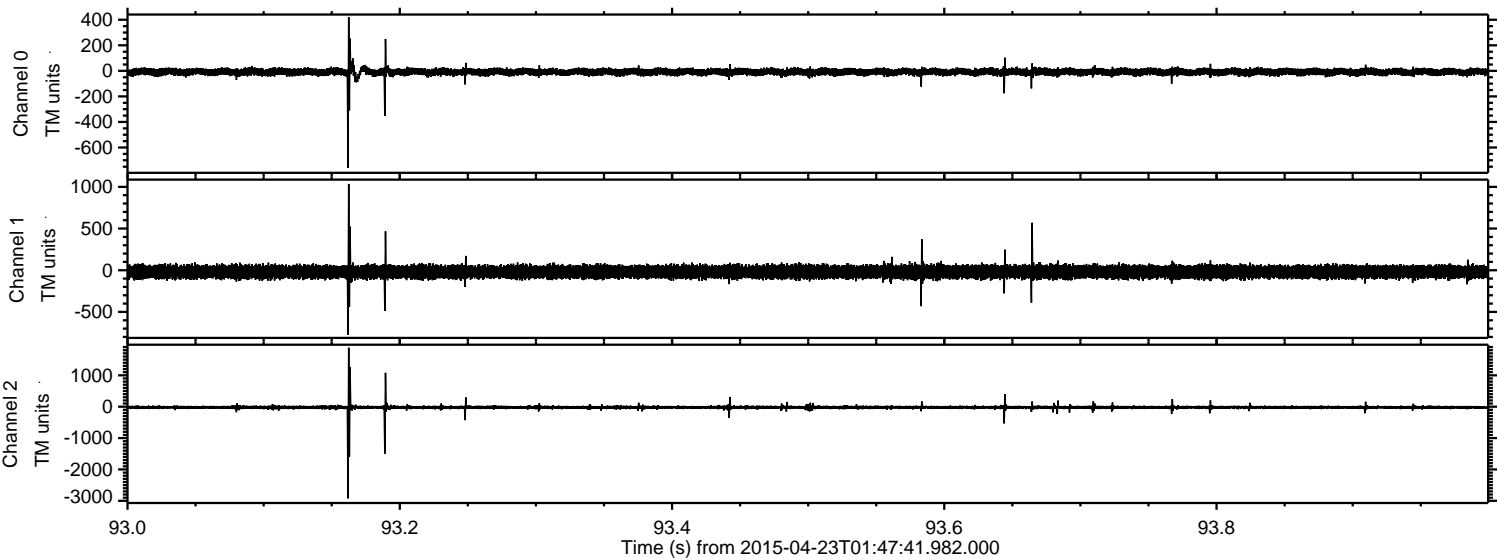
ELMAVAN 3D WAVEFORMS (Measured data sampled at 50 kHz) 49299 packets of 144 samples from 2015-04-23T01:47:41.982.000. Part 122/142

Processed Thu Apr 23 03:55:20 2015 by ELM ver.2012-10-06 from 001\_\_elm20150423\_014740\_\_dat00.bin



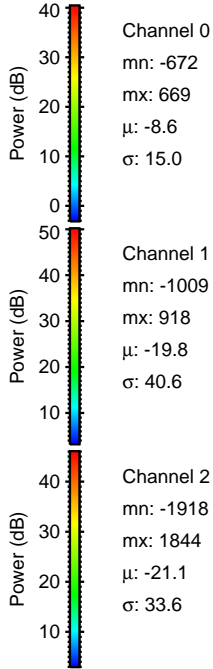
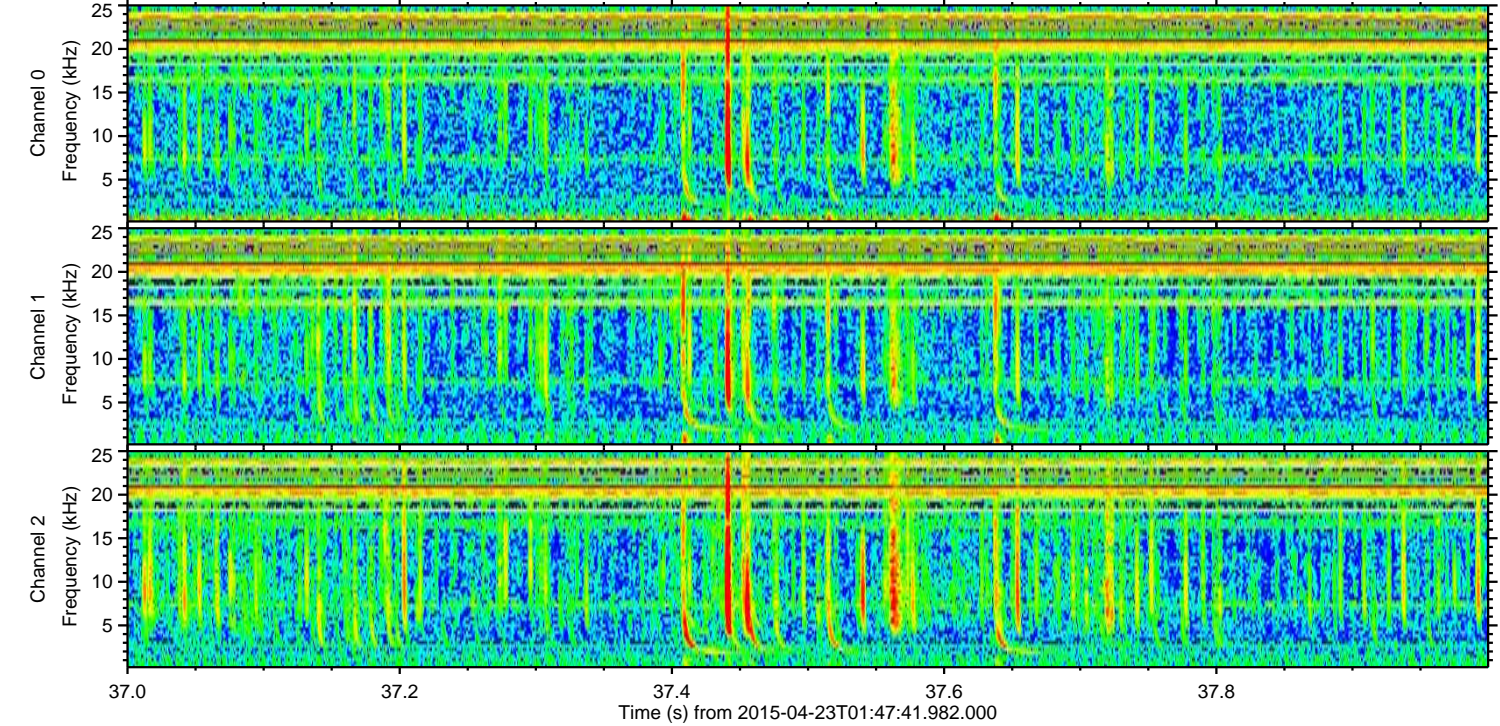
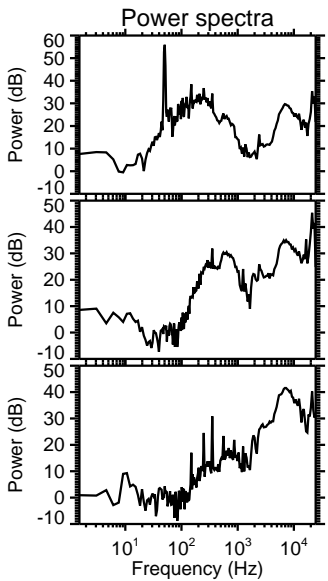
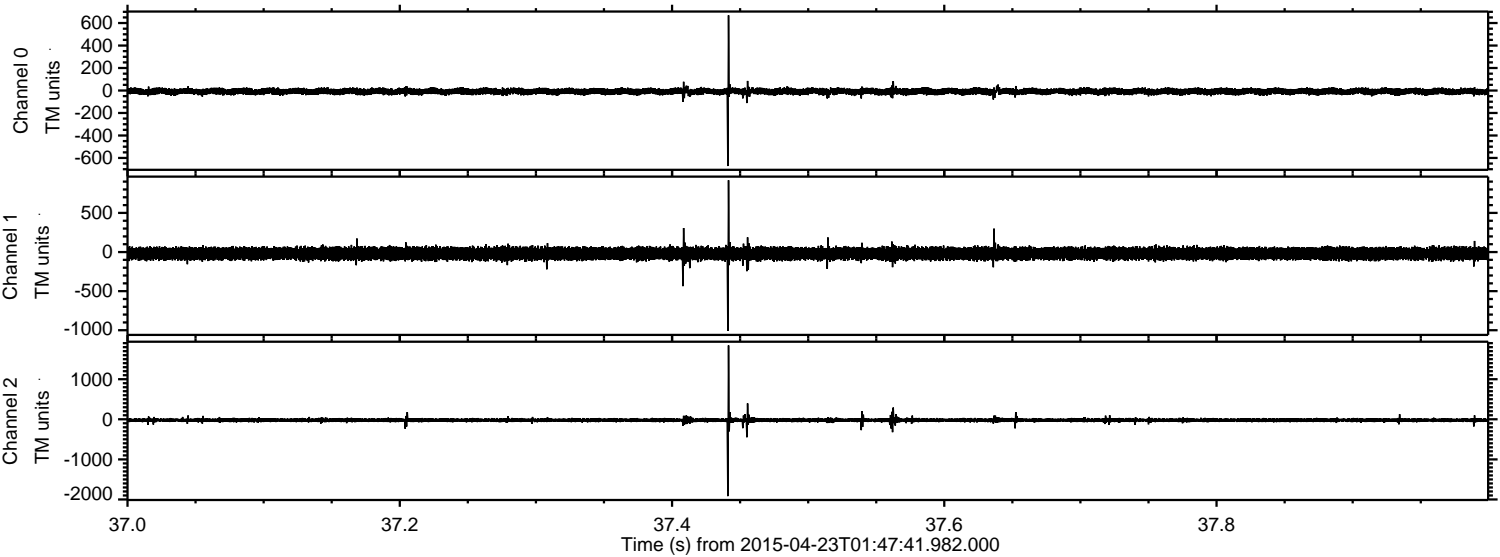


Processed Thu Apr 23 03:55:22 2015 by ELM ver.2012-10-06 from 001\_\_elm20150423\_014740\_\_dat00.bin



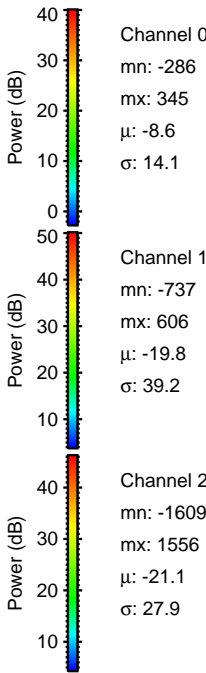
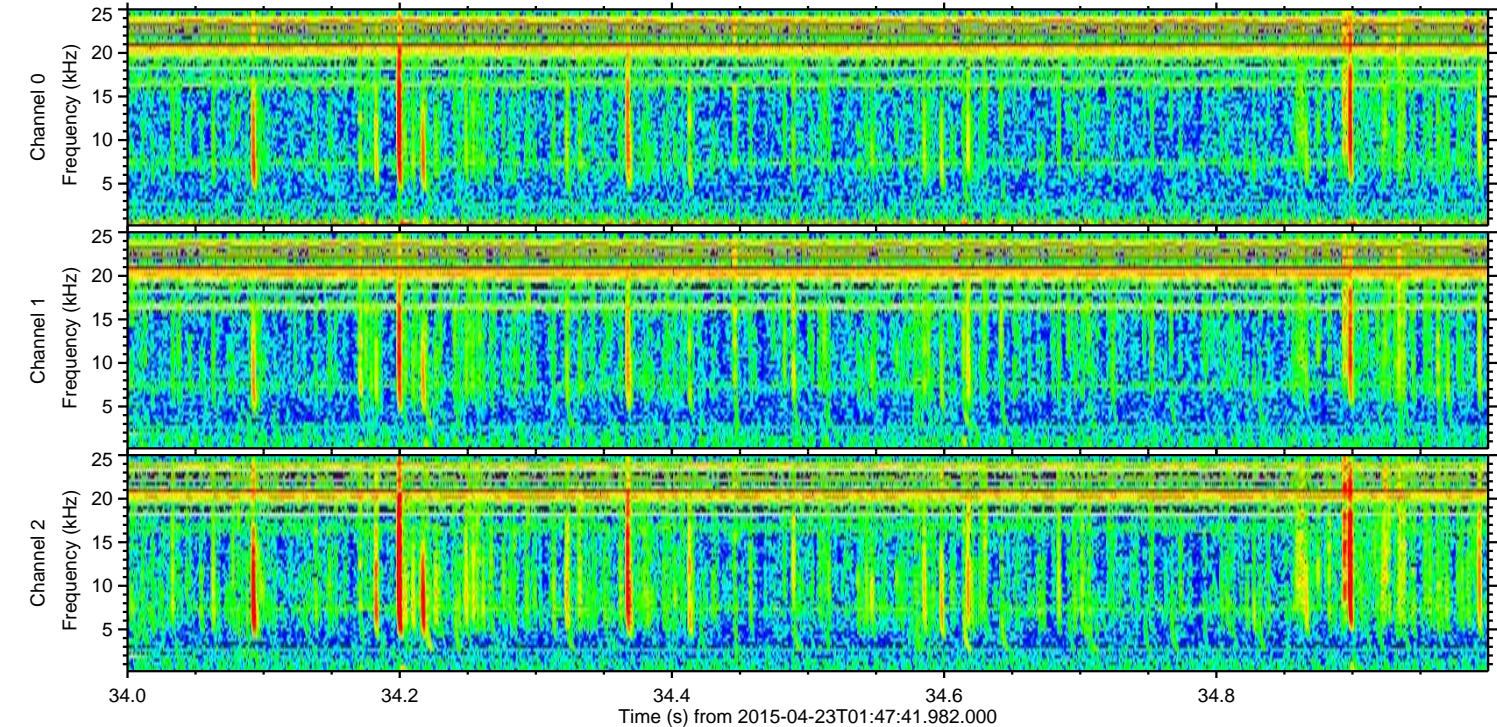
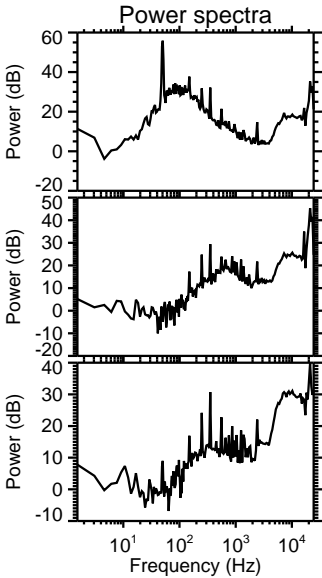
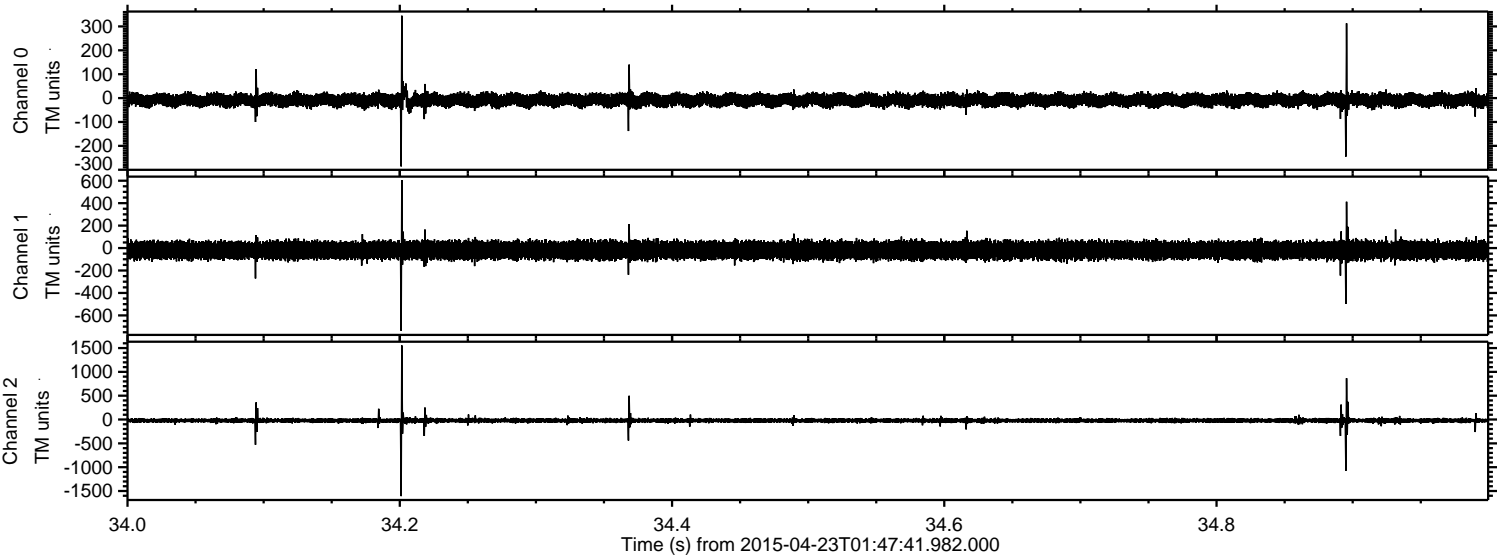


Processed Thu Apr 23 03:55:23 2015 by ELM ver.2012-10-06 from 001\_\_elm20150423\_014740\_\_dat00.bin





Processed Thu Apr 23 03:55:24 2015 by ELM ver.2012-10-06 from 001\_\_elm20150423\_014740\_\_dat00.bin



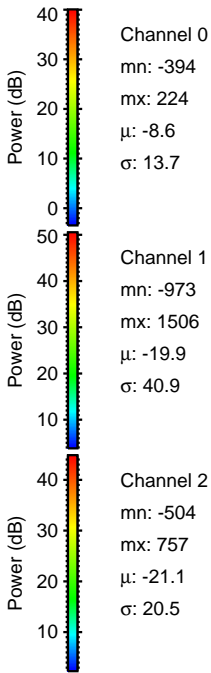
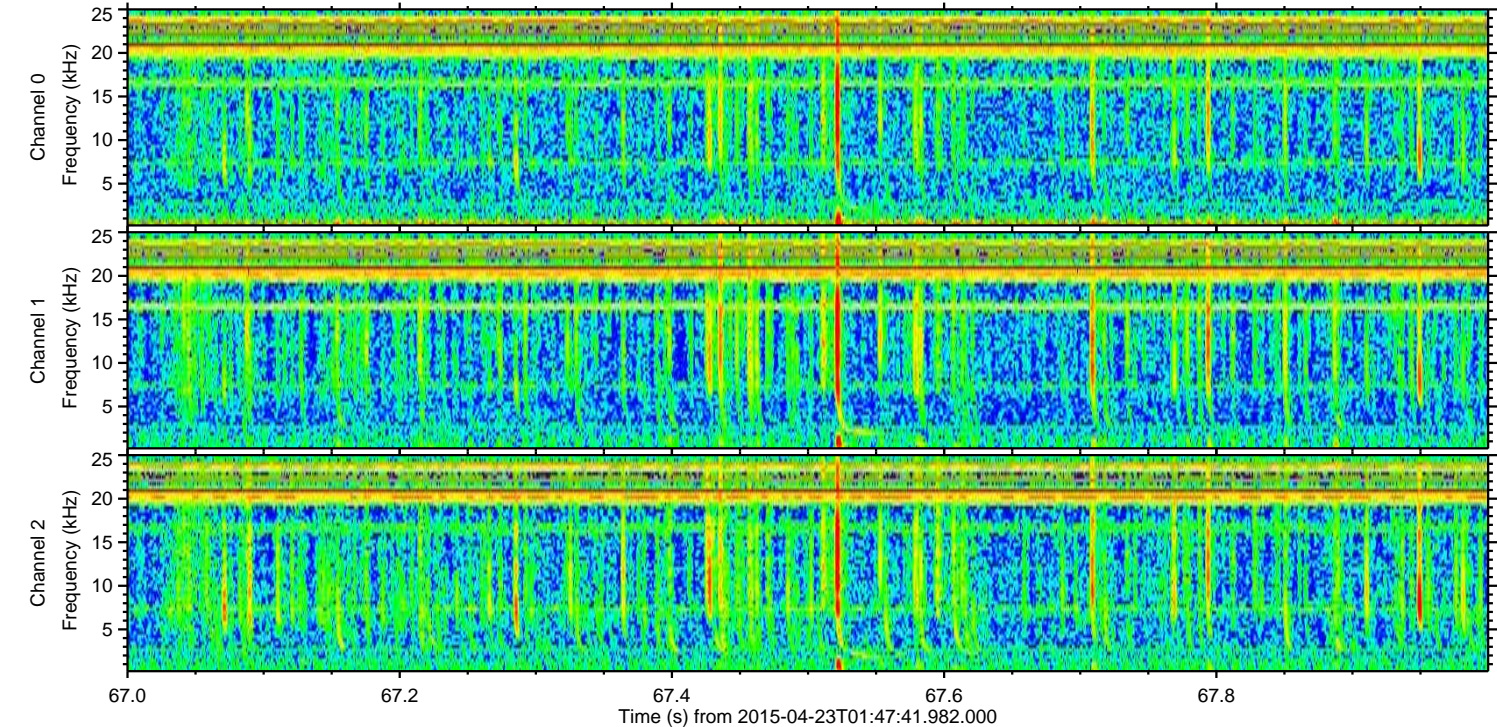
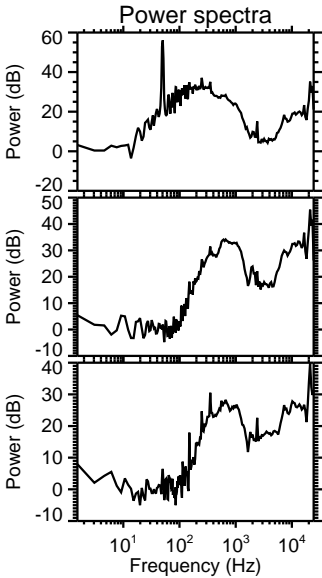
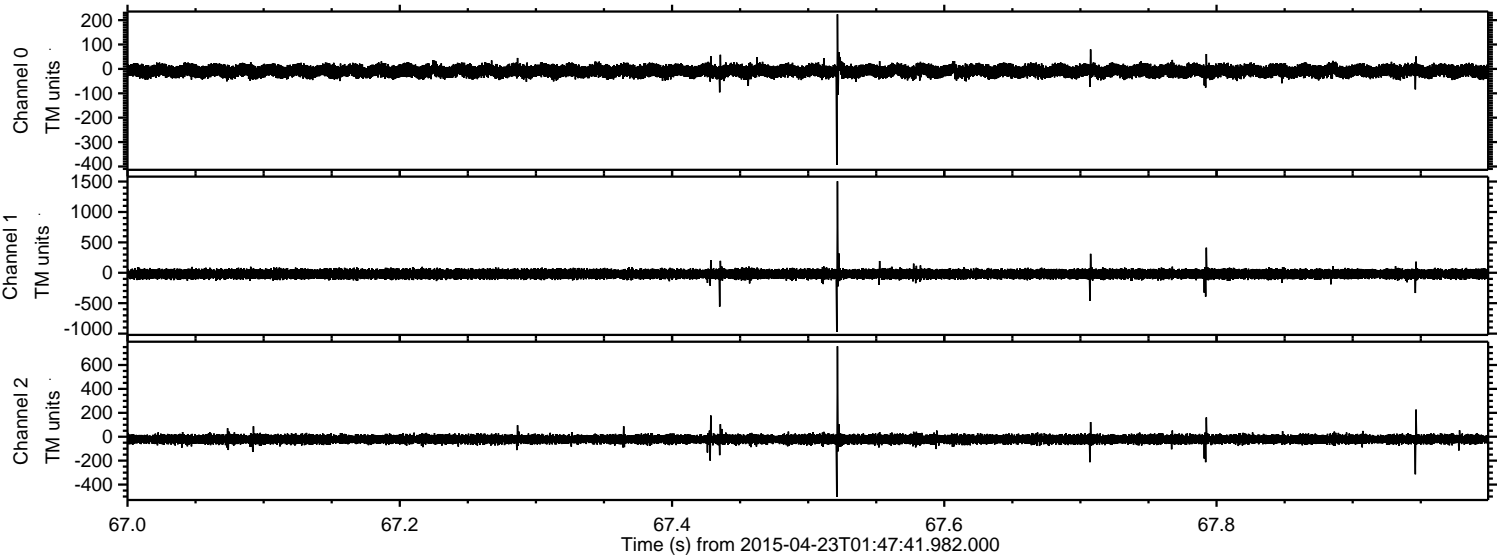
Channel 0  
mn: -286  
mx: 345  
 $\mu$ : -8.6  
 $\sigma$ : 14.1

Channel 1  
mn: -737  
mx: 606  
 $\mu$ : -19.8  
 $\sigma$ : 39.2

Channel 2  
mn: -1609  
mx: 1556  
 $\mu$ : -21.1  
 $\sigma$ : 27.9



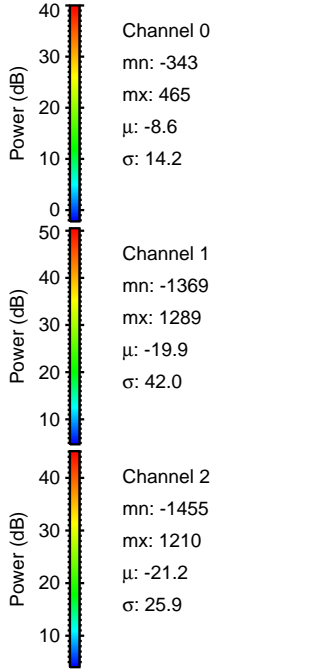
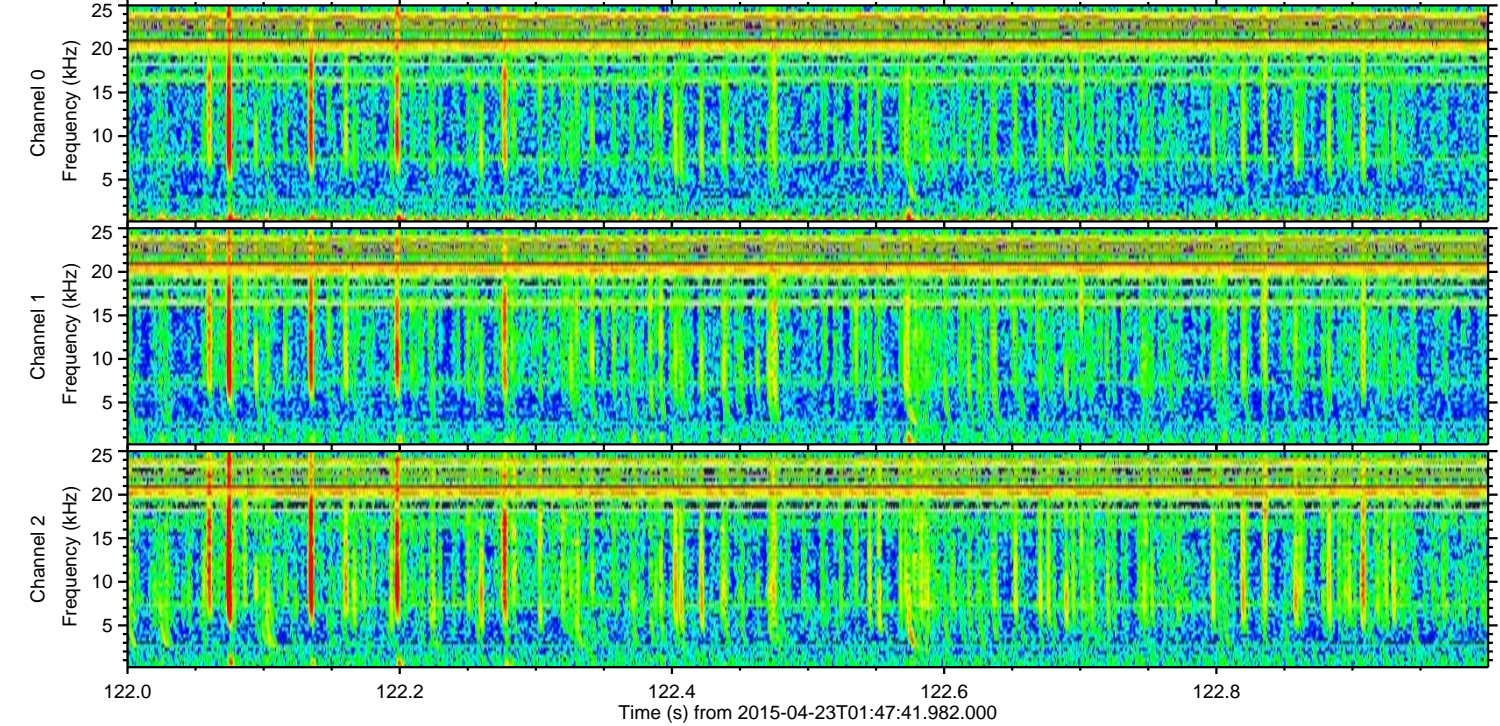
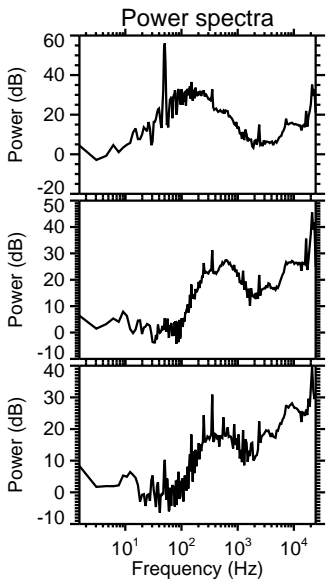
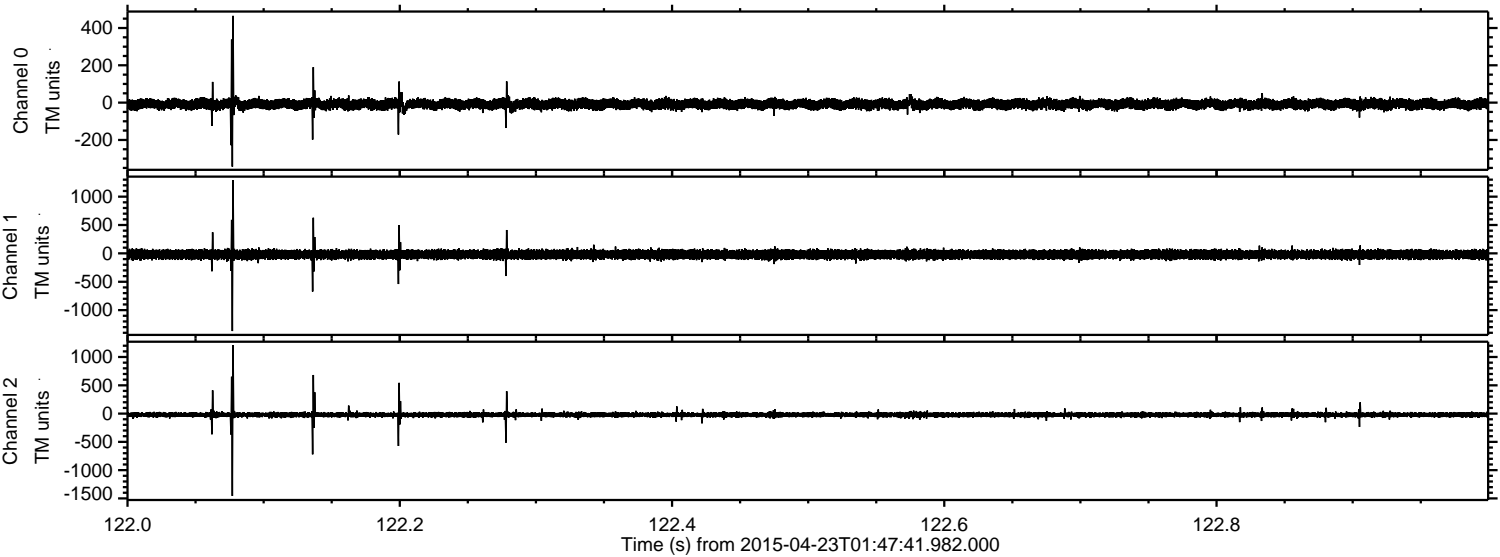
Processed Thu Apr 23 03:55:25 2015 by ELM ver.2012-10-06 from 001\_\_elm20150423\_014740\_\_dat00.bin





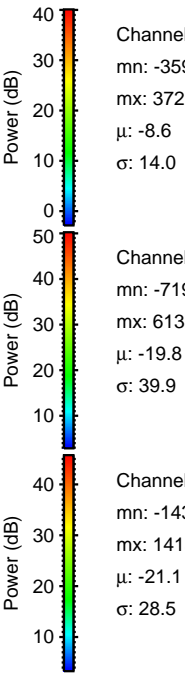
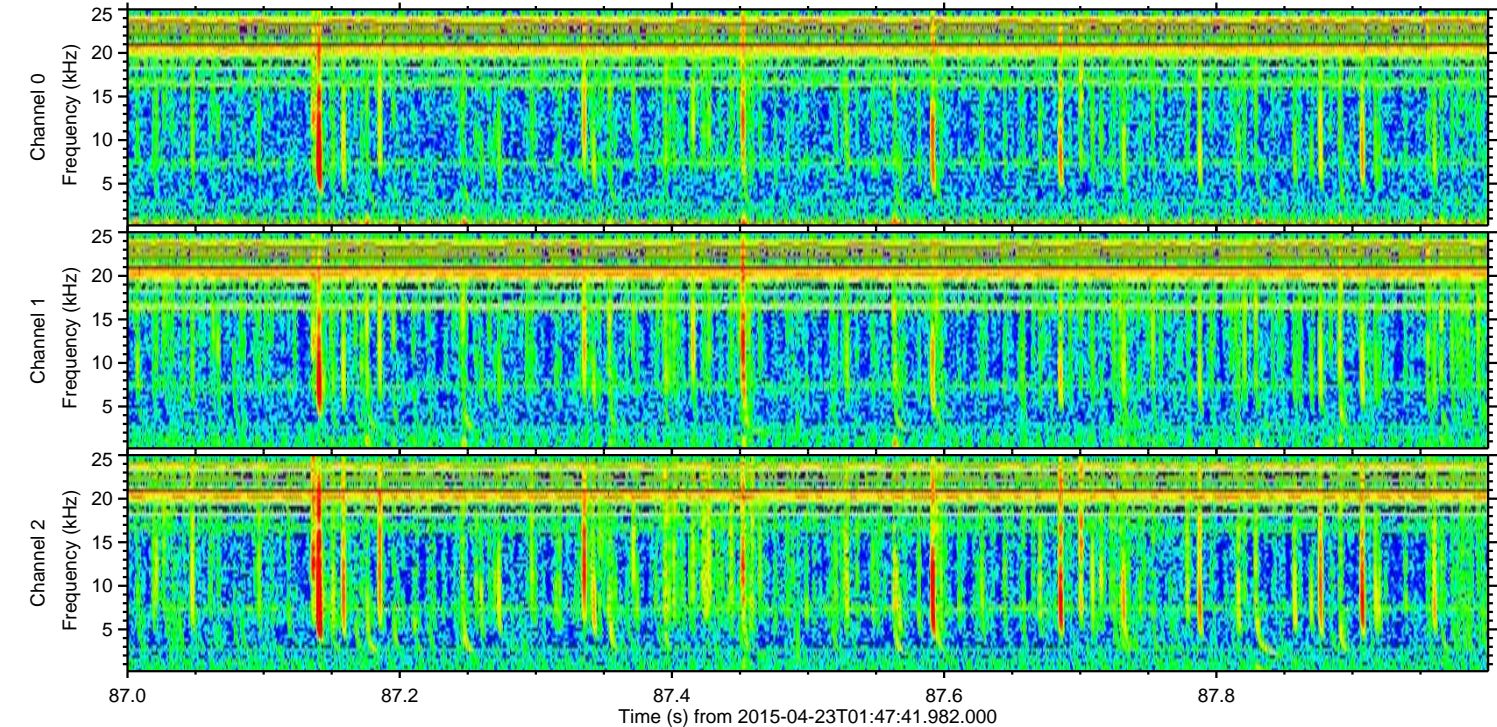
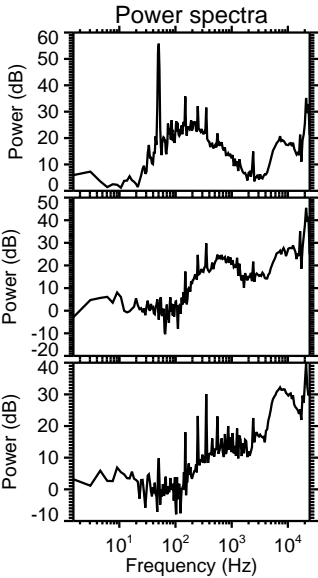
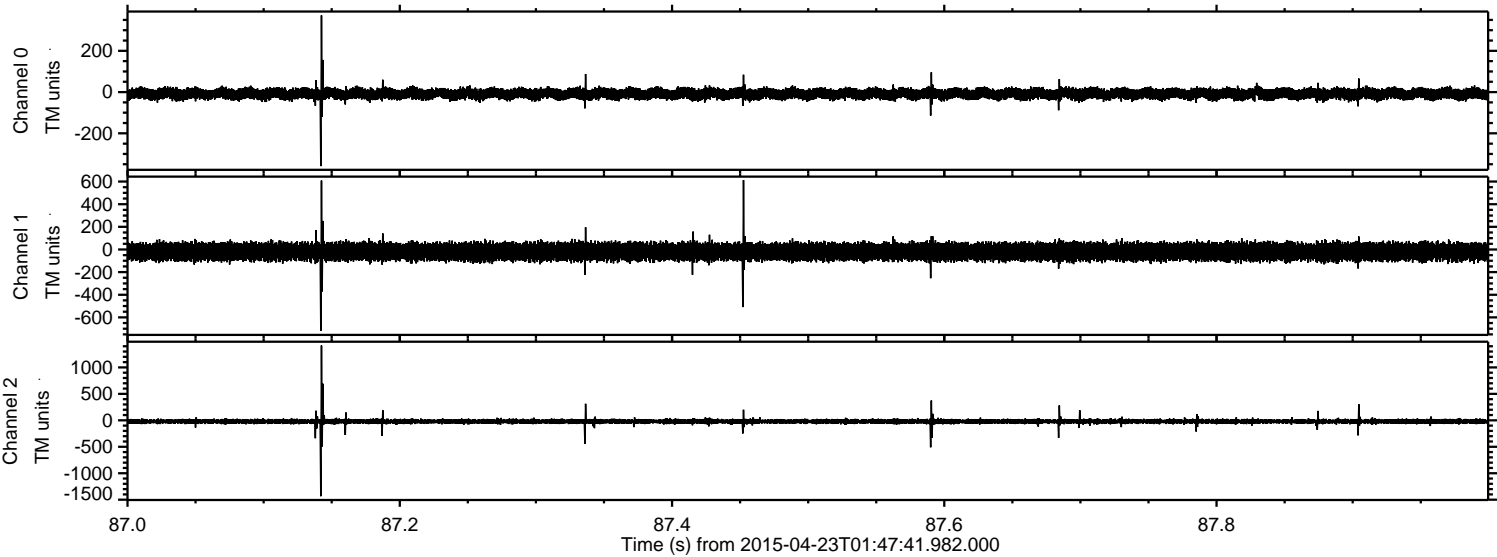
ELMAVAN 3D WAVEFORMS (Measured data sampled at 50 kHz) 49299 packets of 144 samples from 2015-04-23T01:47:41.982.000. Part 123/142

Processed Thu Apr 23 03:55:26 2015 by ELM ver.2012-10-06 from 001\_\_elm20150423\_014740\_\_dat00.bin





Processed Thu Apr 23 03:55:27 2015 by ELM ver.2012-10-06 from 001\_\_elm20150423\_014740\_\_dat00.bin



Channel 0  
mn: -359  
mx: 372  
 $\mu$ : -8.6  
 $\sigma$ : 14.0

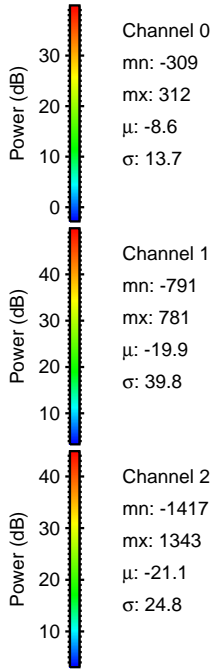
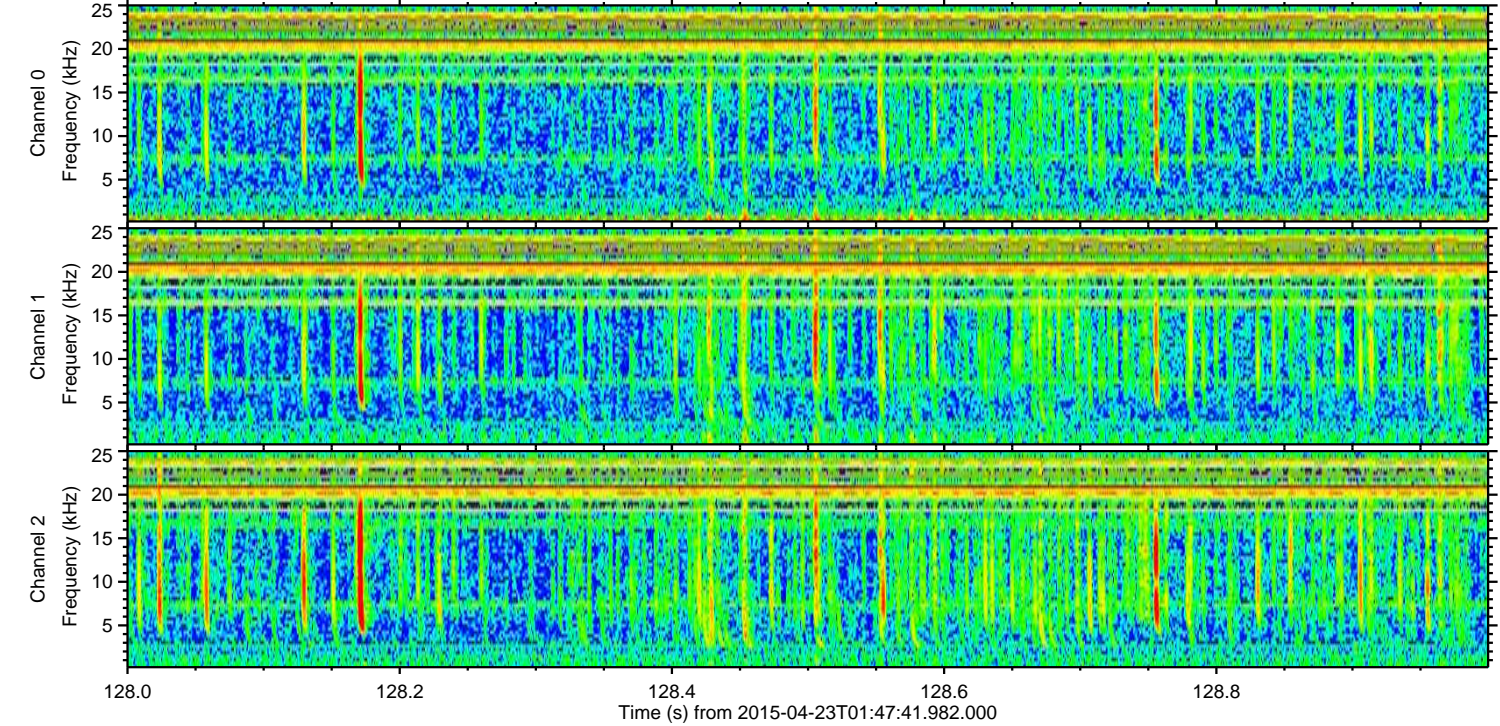
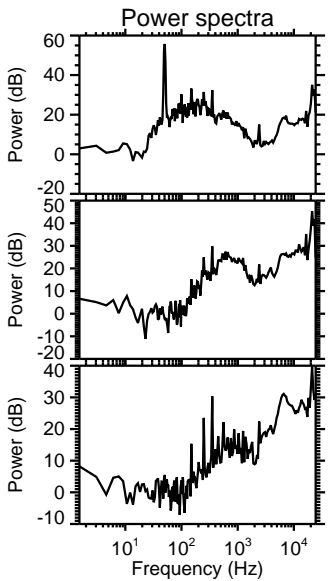
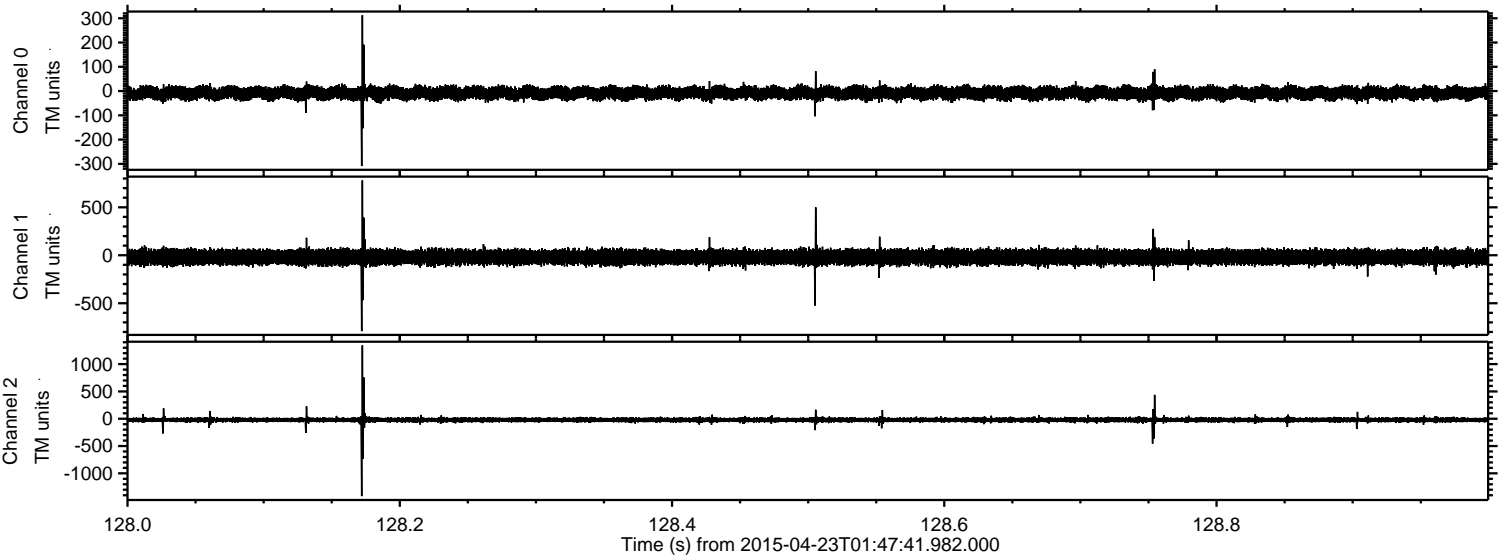
Channel 1  
mn: -719  
mx: 613  
 $\mu$ : -19.8  
 $\sigma$ : 39.9

Channel 2  
mn: -1434  
mx: 1415  
 $\mu$ : -21.1  
 $\sigma$ : 28.5



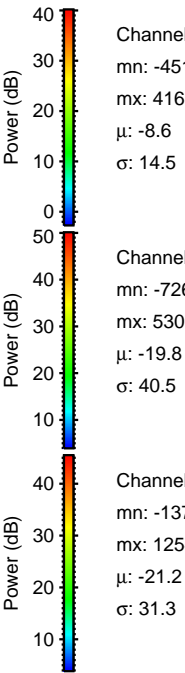
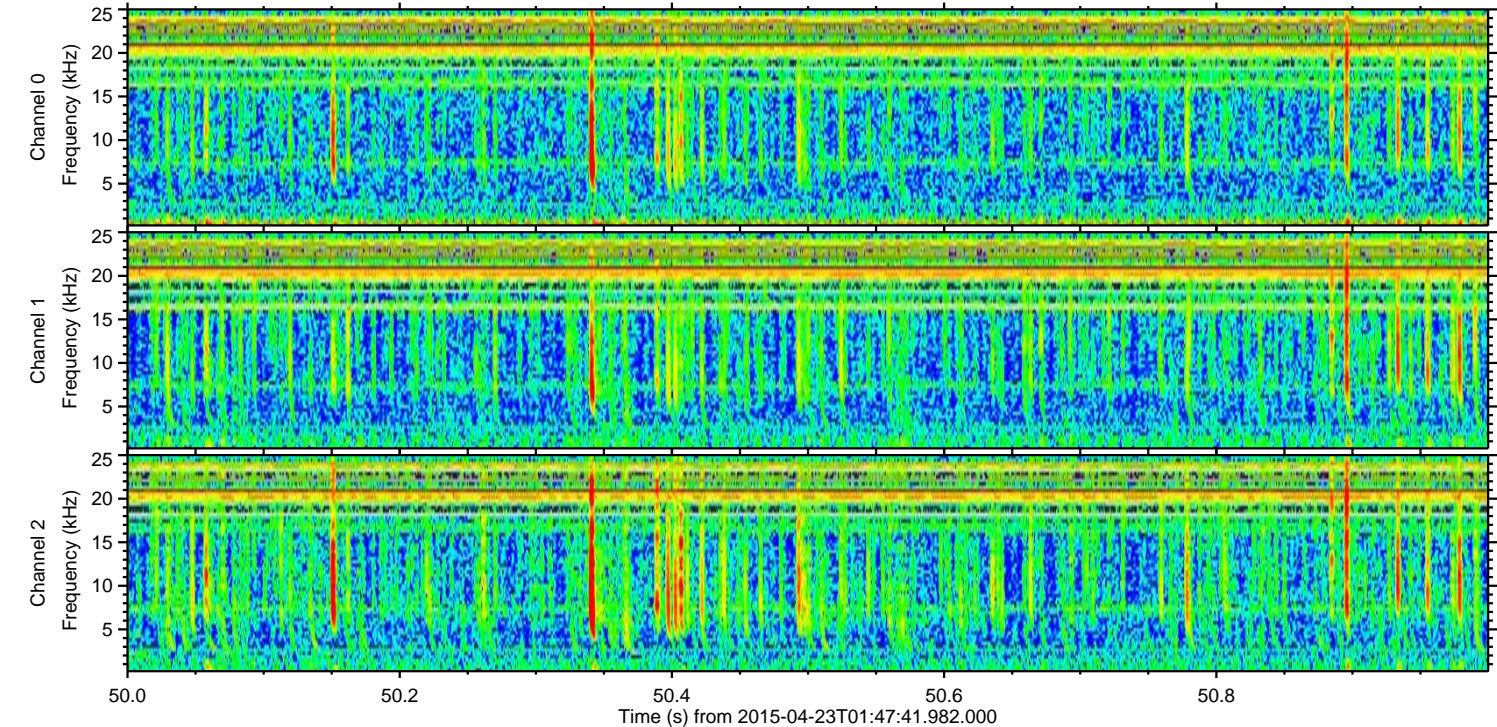
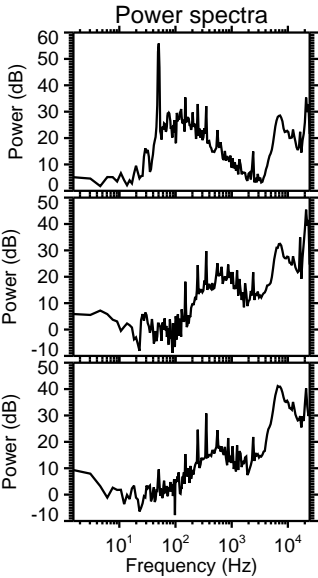
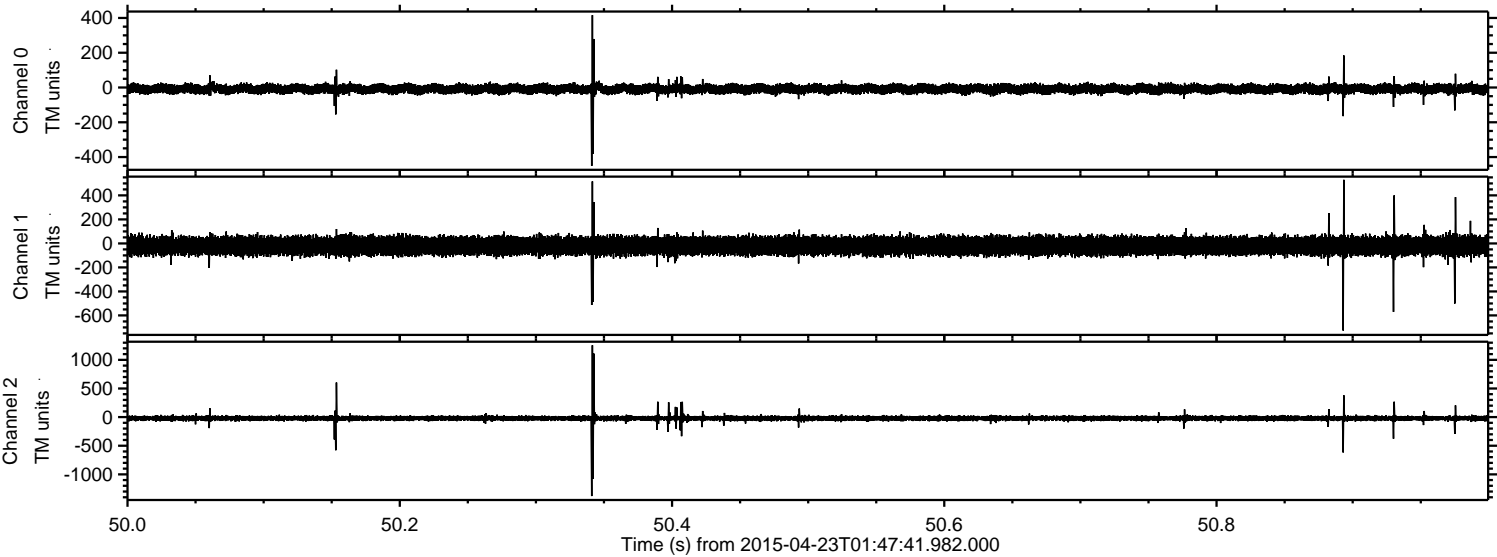
ELMAVAN 3D WAVEFORMS (Measured data sampled at 50 kHz) 49299 packets of 144 samples from 2015-04-23T01:47:41.982.000. Part 129/142

Processed Thu Apr 23 03:55:29 2015 by ELM ver.2012-10-06 from 001\_\_elm20150423\_014740\_\_dat00.bin





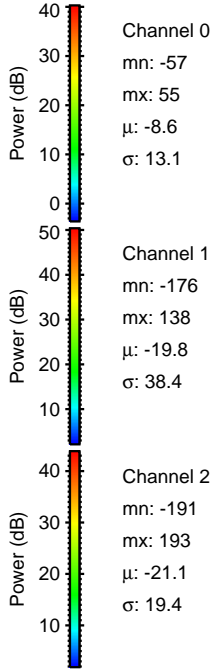
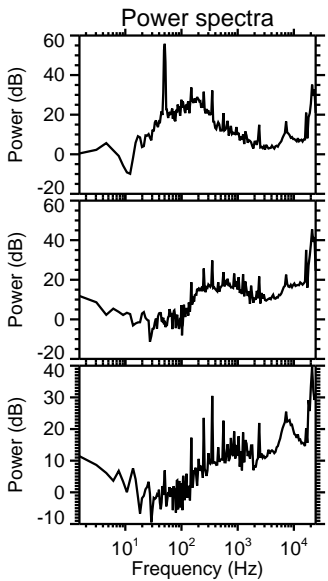
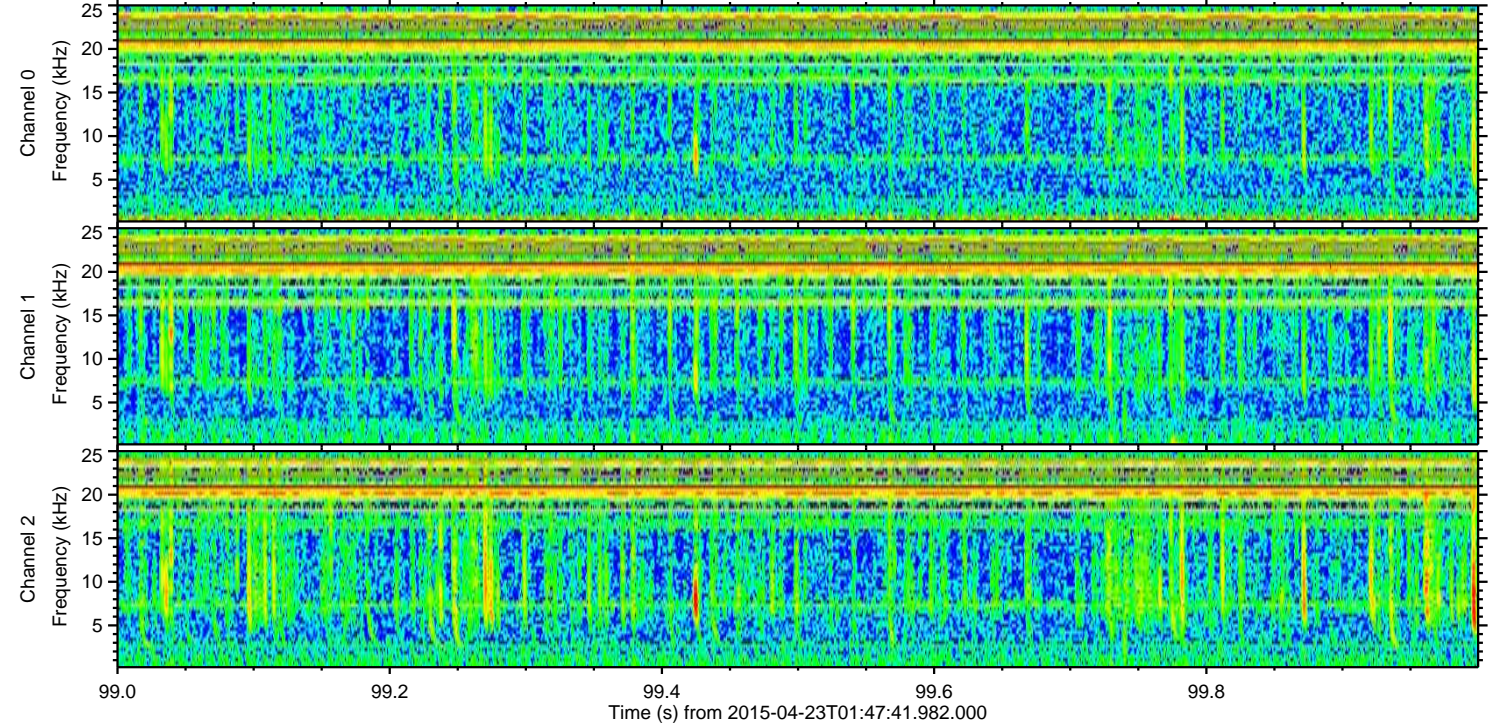
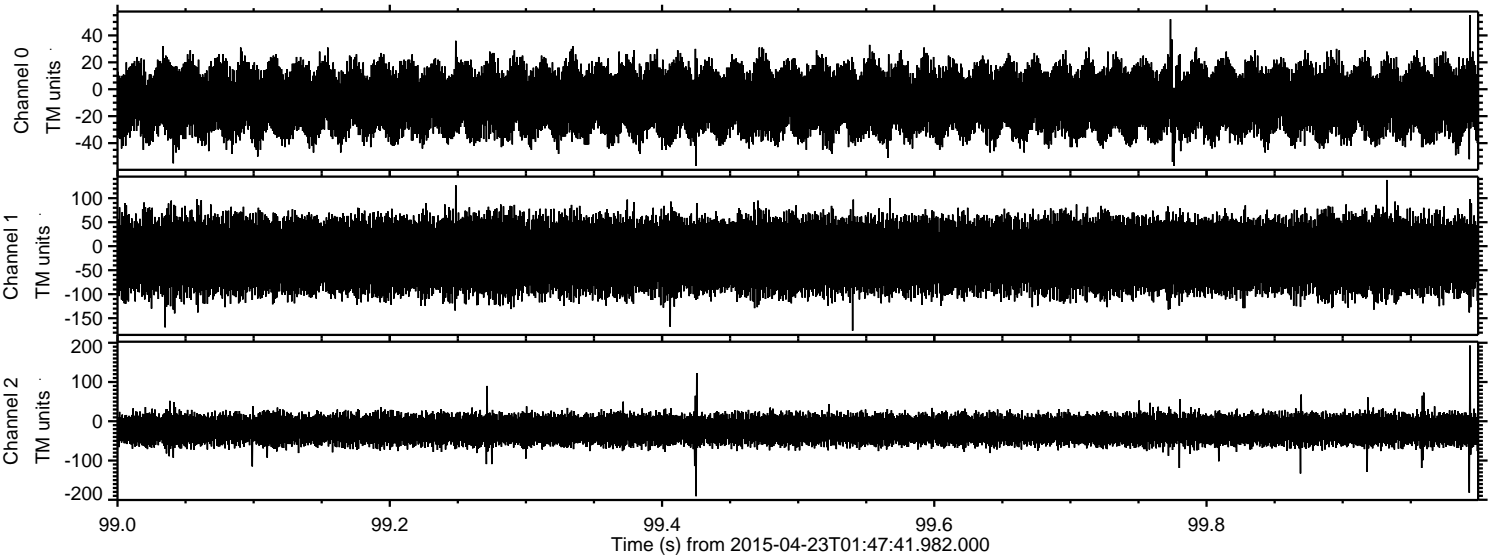
Processed Thu Apr 23 03:55:30 2015 by ELM ver.2012-10-06 from 001\_\_elm20150423\_014740\_\_dat00.bin





ELMAVAN 3D WAVEFORMS (Measured data sampled at 50 kHz) 49299 packets of 144 samples from 2015-04-23T01:47:41.982.000. Part 100/142

Processed Thu Apr 23 03:55:31 2015 by ELM ver.2012-10-06 from 001\_\_elm20150423\_014740\_\_dat00.bin



Channel 0  
mn: -57  
mx: 55  
 $\mu$ : -8.6  
 $\sigma$ : 13.1

Channel 1  
mn: -176  
mx: 138  
 $\mu$ : -19.8  
 $\sigma$ : 38.4

Channel 2  
mn: -191  
mx: 193  
 $\mu$ : -21.1  
 $\sigma$ : 19.4