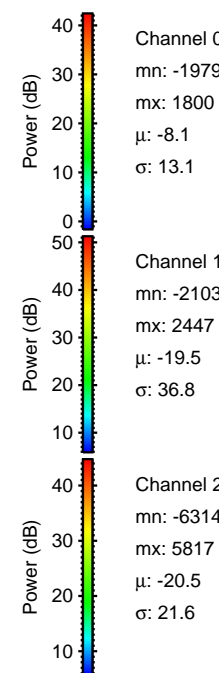
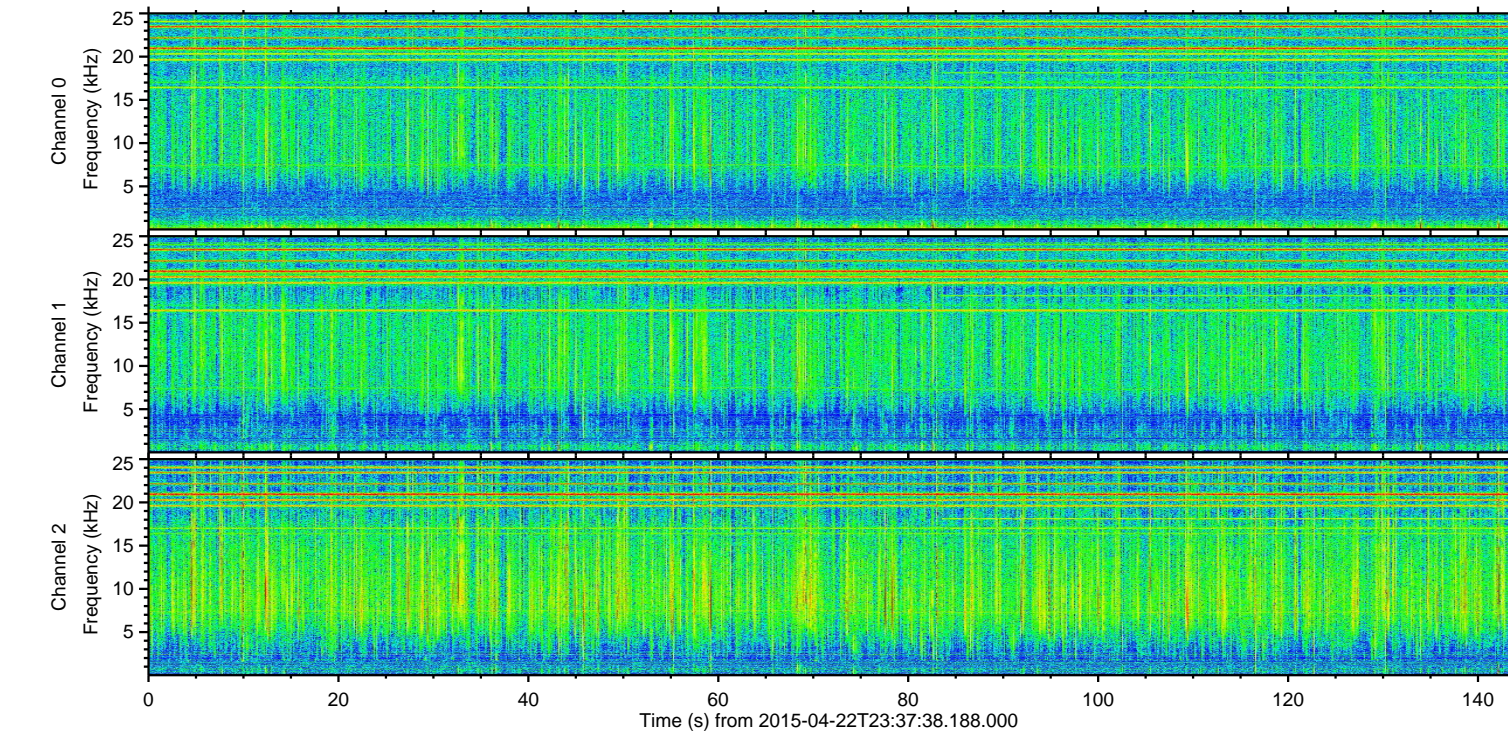
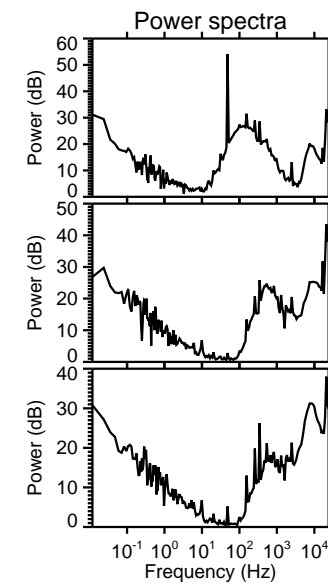
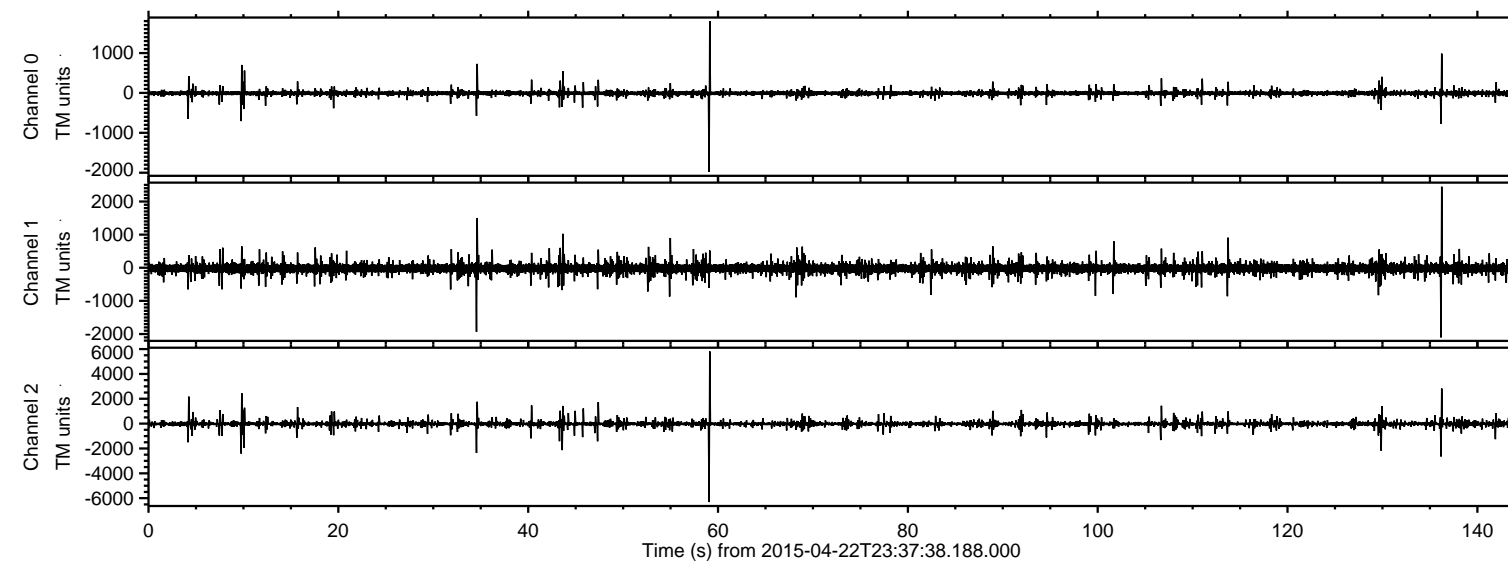
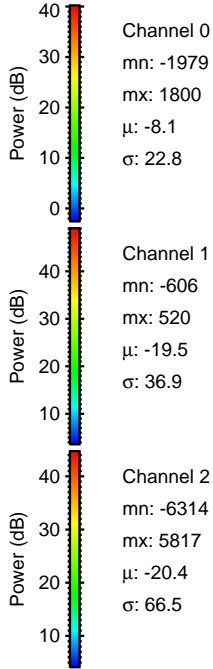
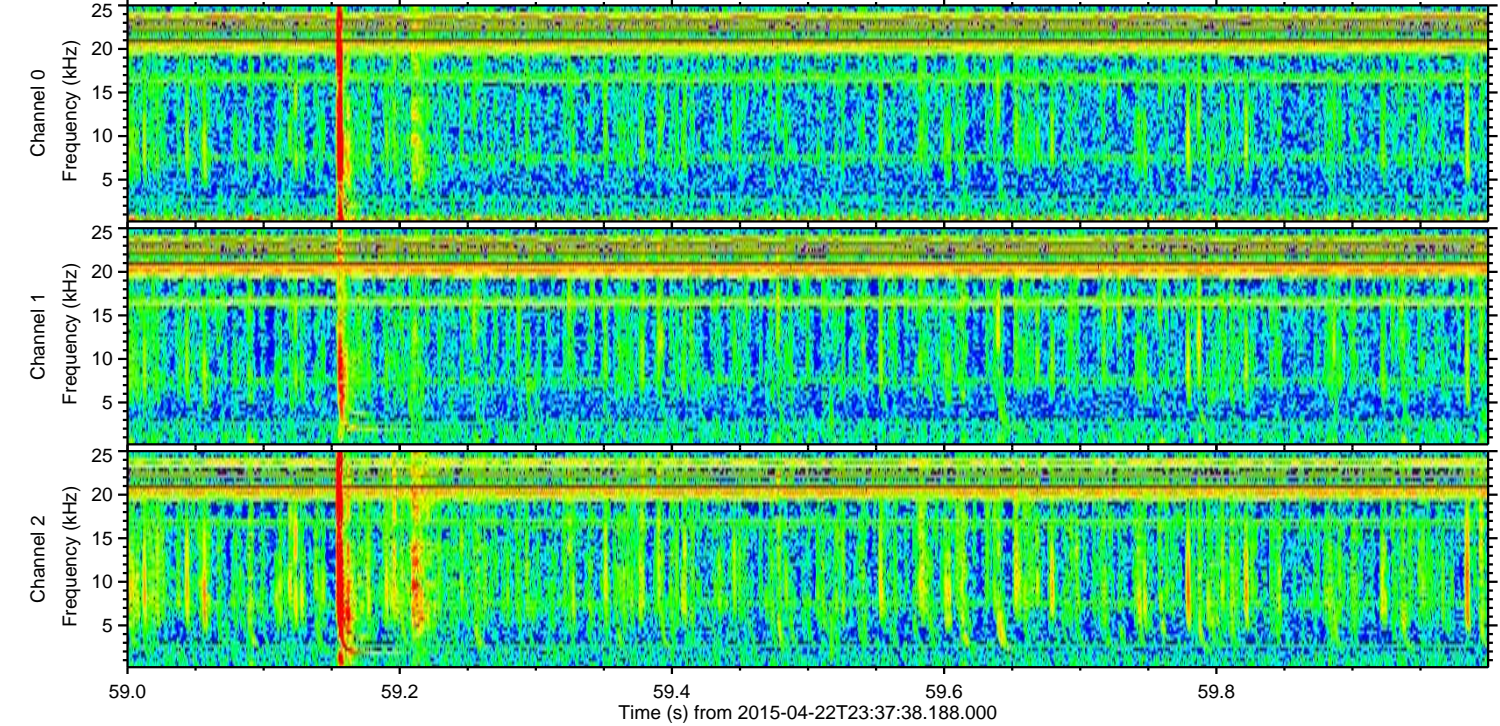
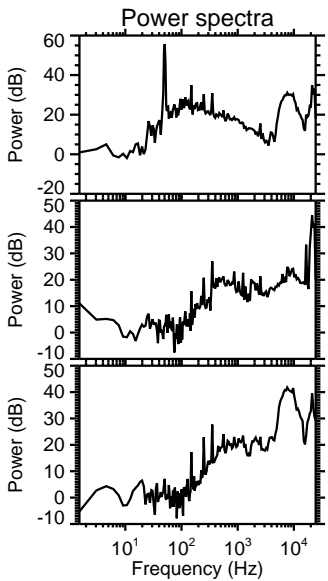
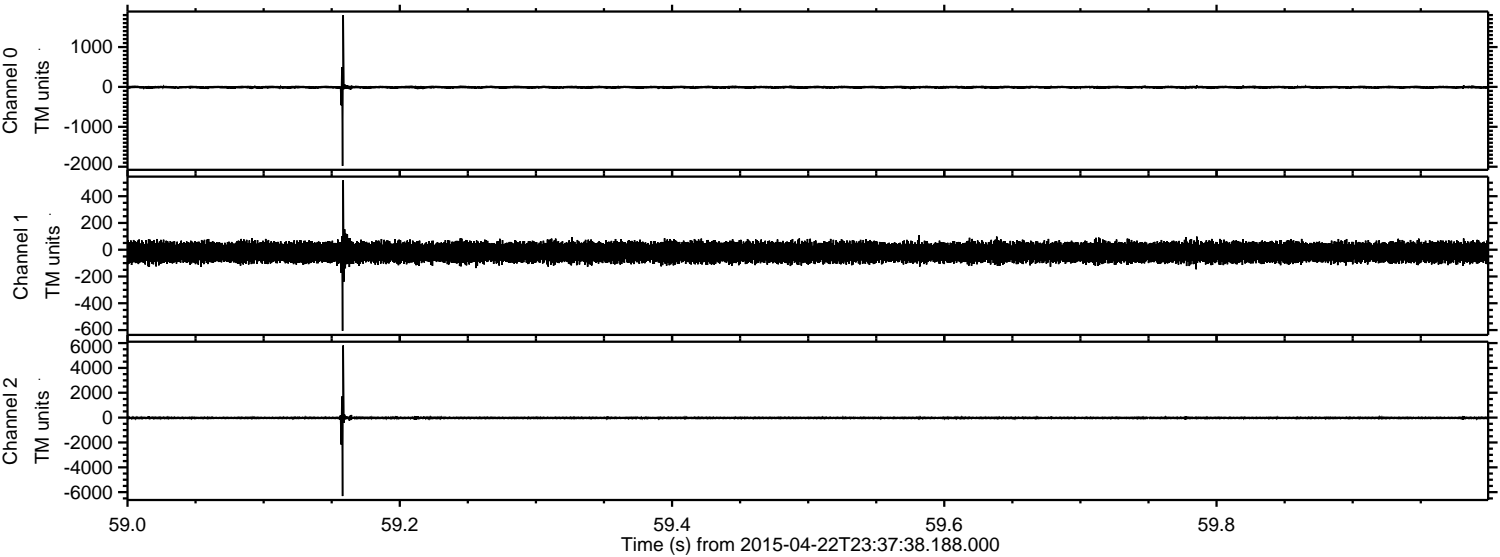


ELMAVAN 3D WAVEFORMS (Measured data sampled at 50 kHz) 49773 packets of 144 samples from 2015-04-22T23:37:38.188.000.

Processed Thu Apr 23 01:44:36 2015 by ELM ver.2012-10-06 from 001__elm20150422_233737__dat00.bin

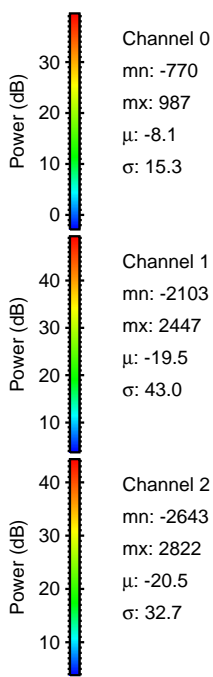
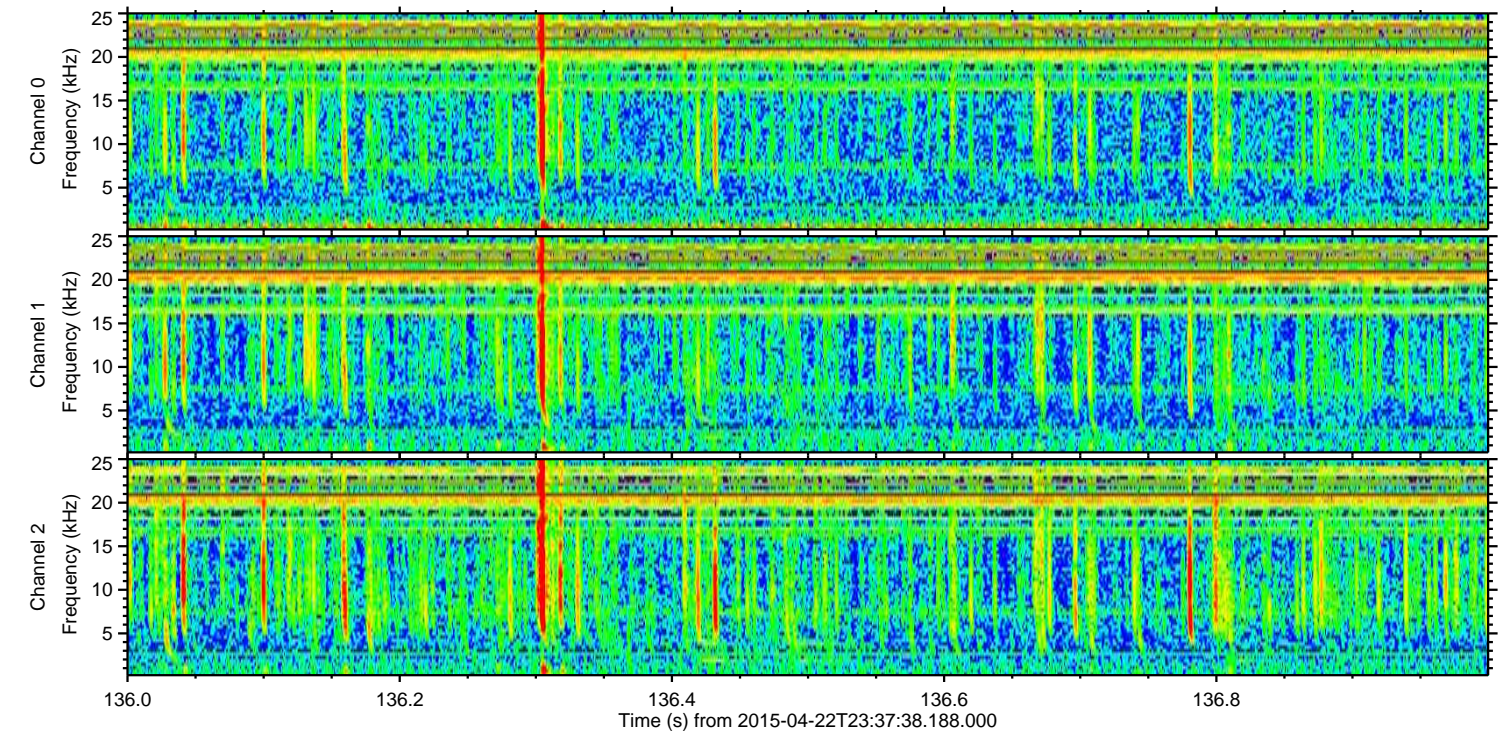
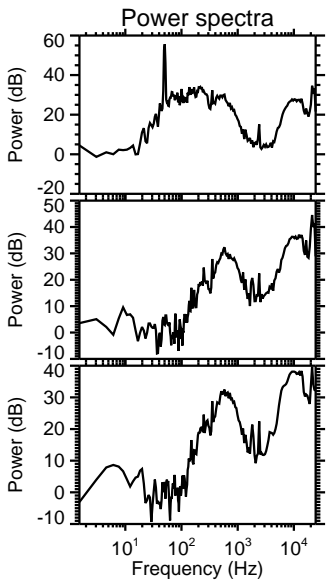
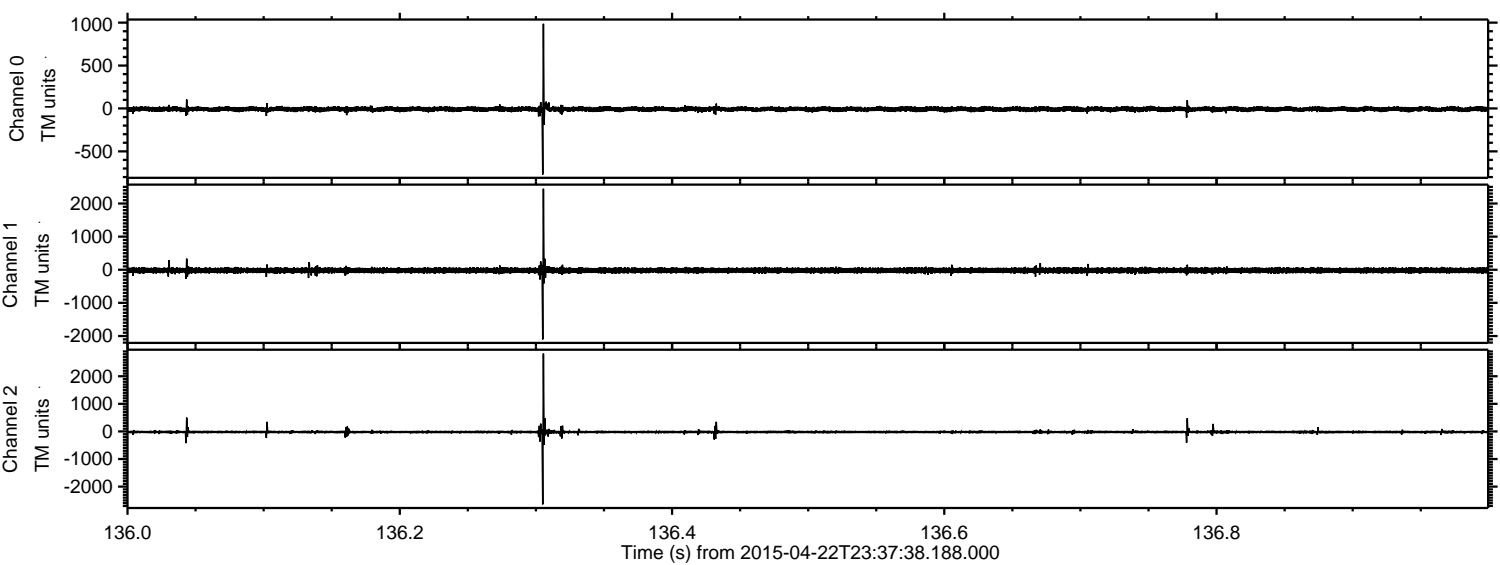


Processed Thu Apr 23 01:44:48 2015 by ELM ver.2012-10-06 from 001__elm20150422_233737__dat00.bin



ELMAVAN 3D WAVEFORMS (Measured data sampled at 50 kHz) 49773 packets of 144 samples from 2015-04-22T23:37:38.188.000. Part 137/144

Processed Thu Apr 23 01:44:48 2015 by ELM ver.2012-10-06 from 001__elm20150422_233737__dat00.bin

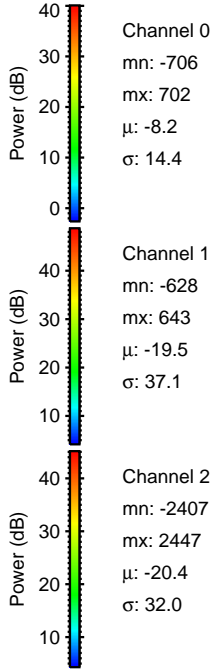
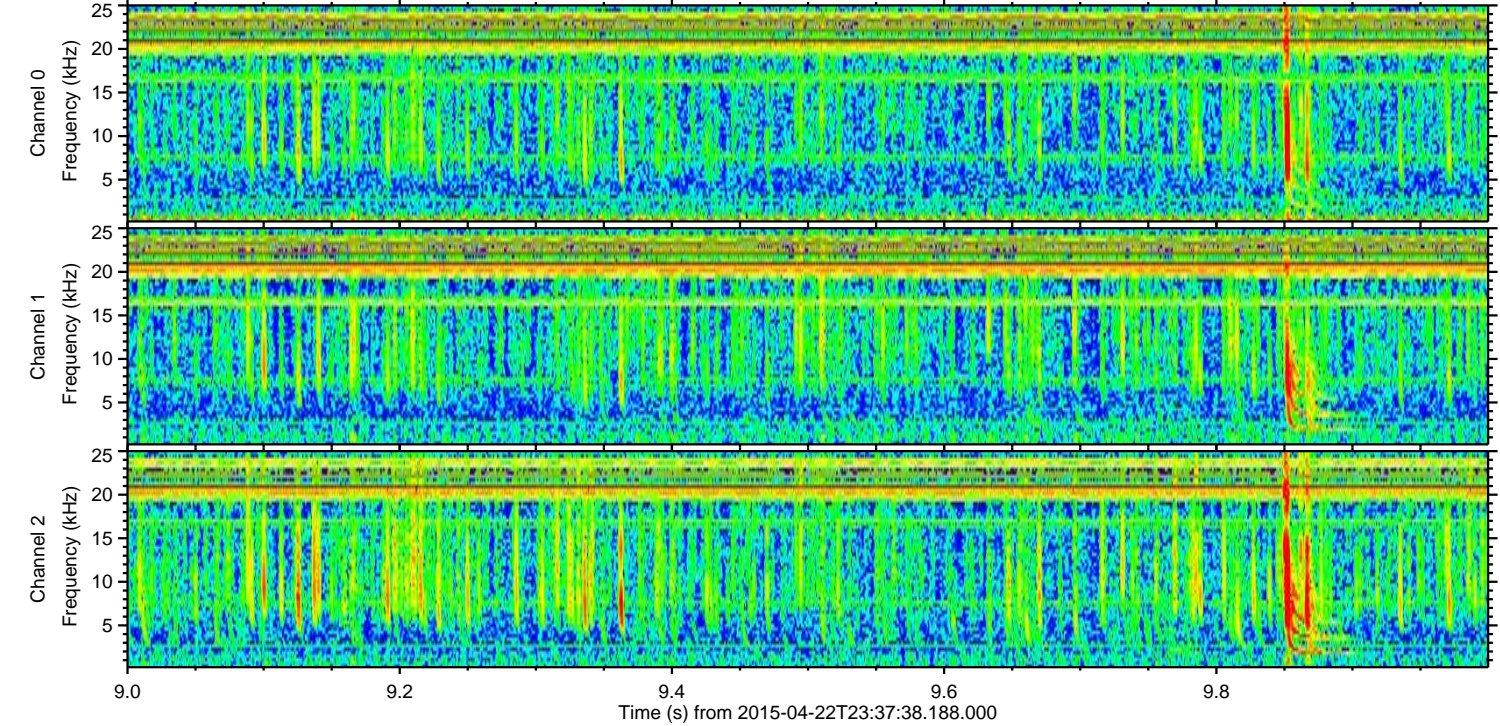
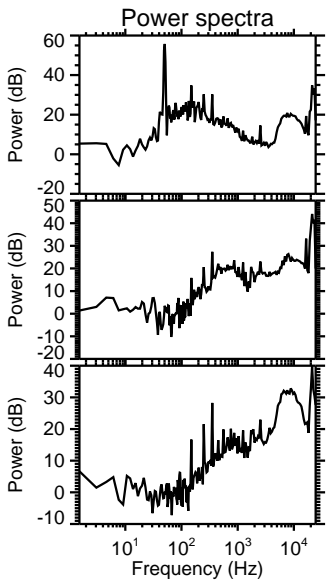
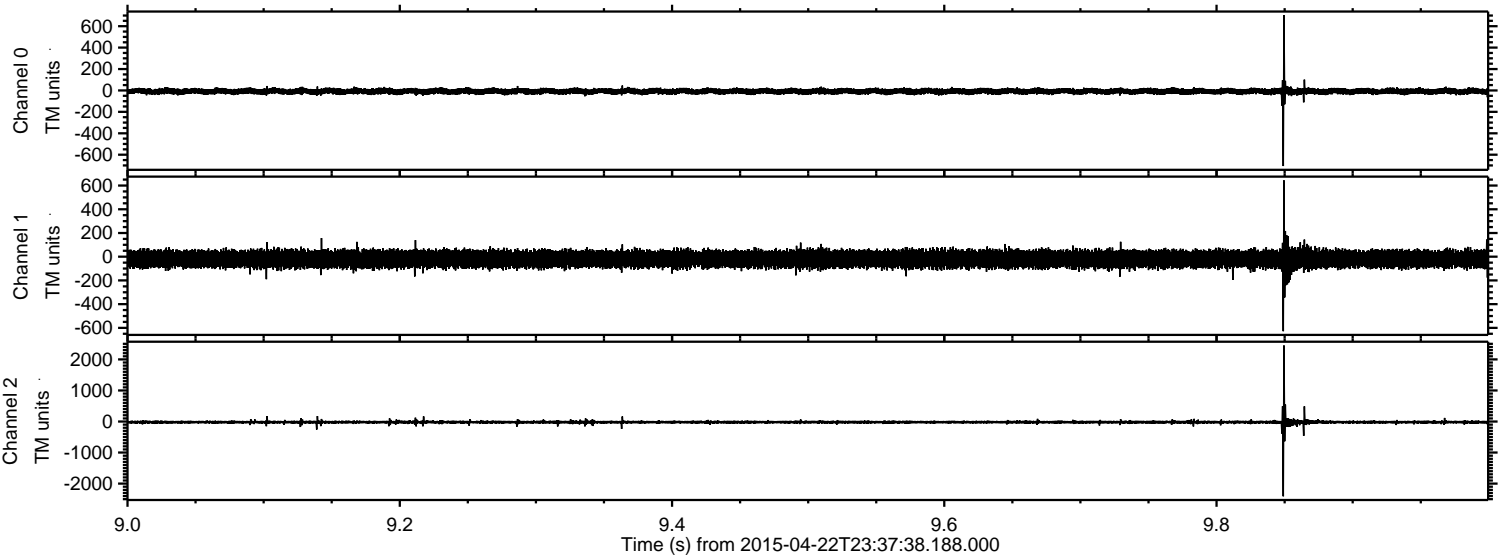


Channel 0
mn: -770
mx: 987
 μ : -8.1
 σ : 15.3

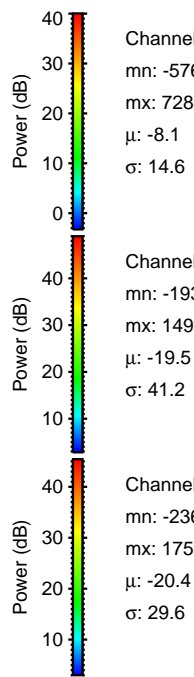
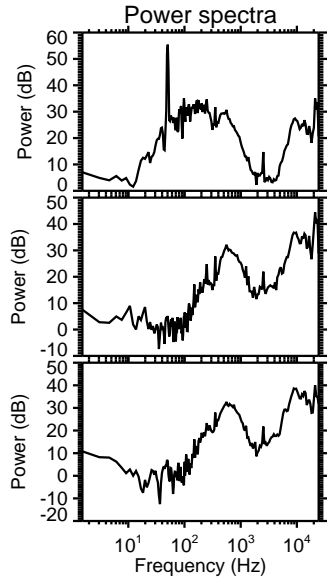
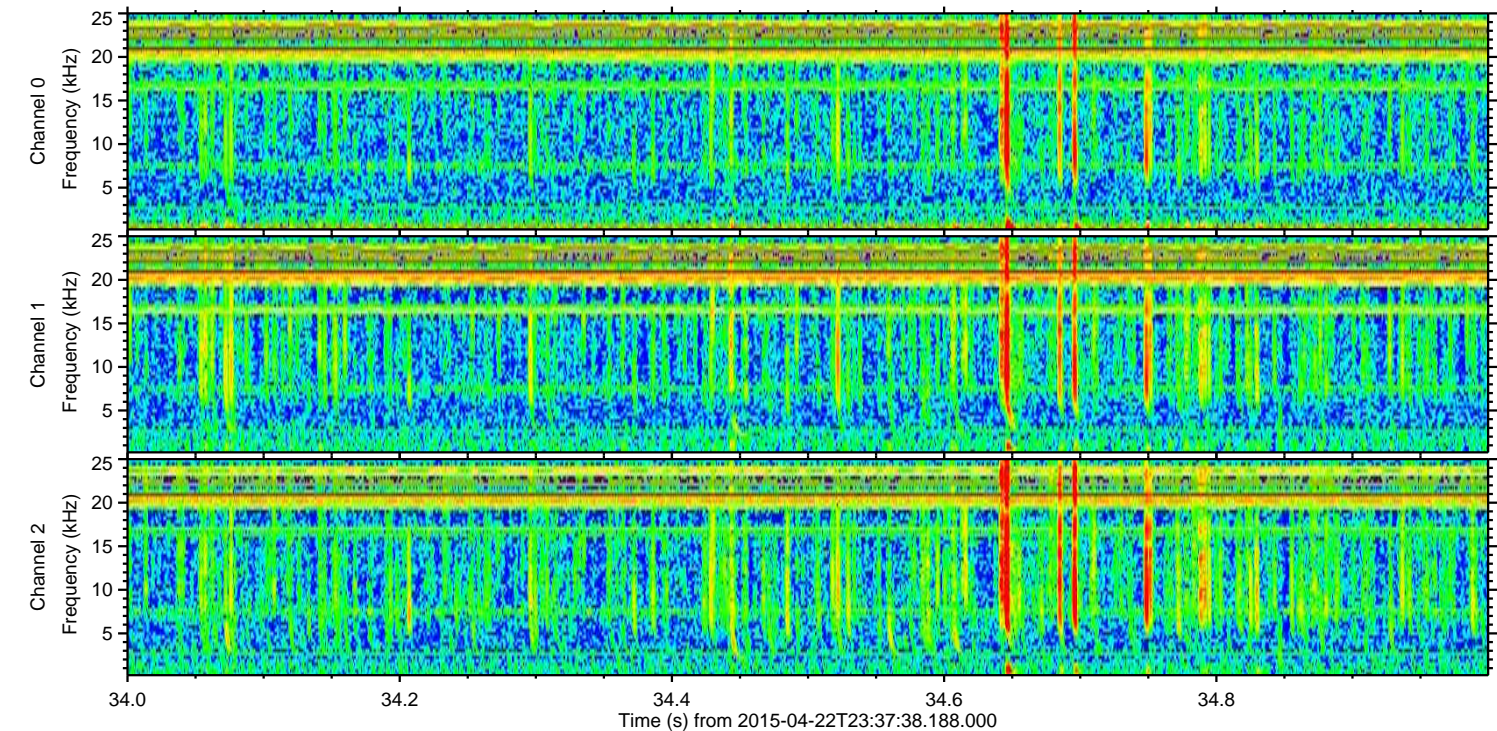
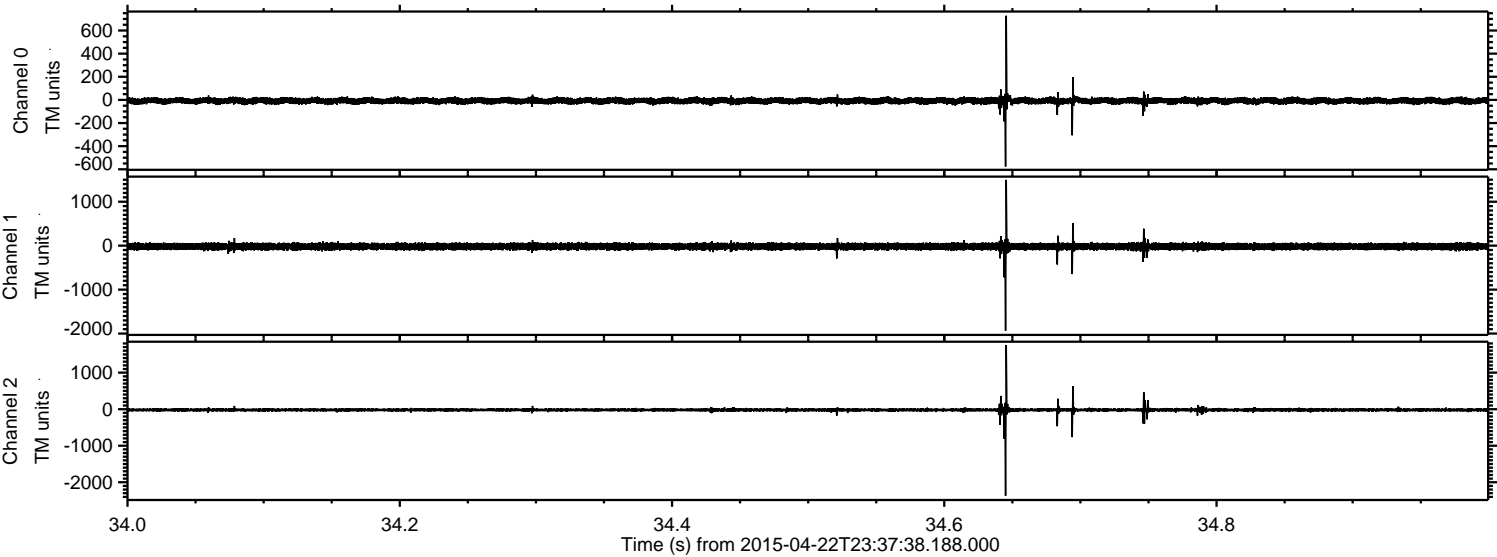
Channel 1
mn: -2103
mx: 2447
 μ : -19.5
 σ : 43.0

Channel 2
mn: -2643
mx: 2822
 μ : -20.5
 σ : 32.7

Processed Thu Apr 23 01:44:49 2015 by ELM ver.2012-10-06 from 001__elm20150422_233737__dat00.bin

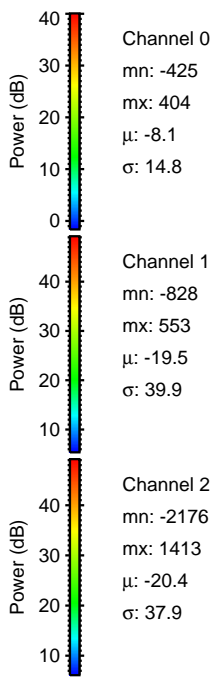
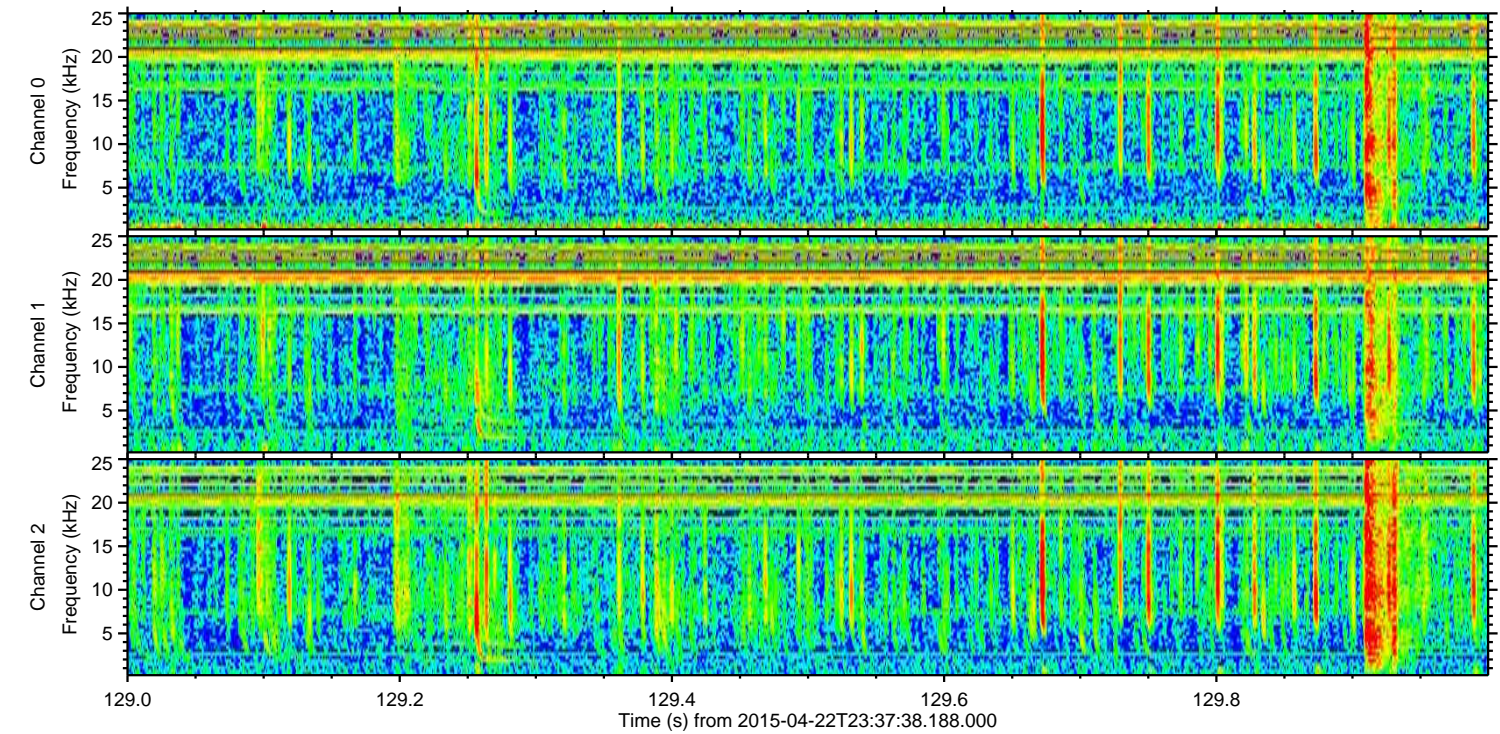
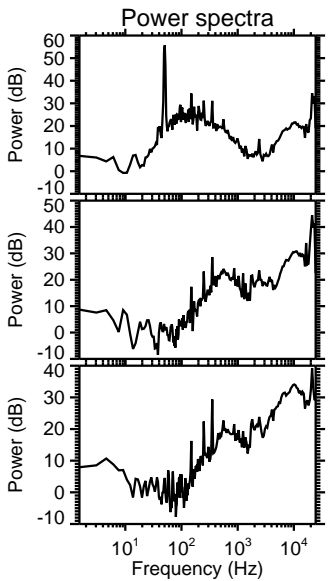
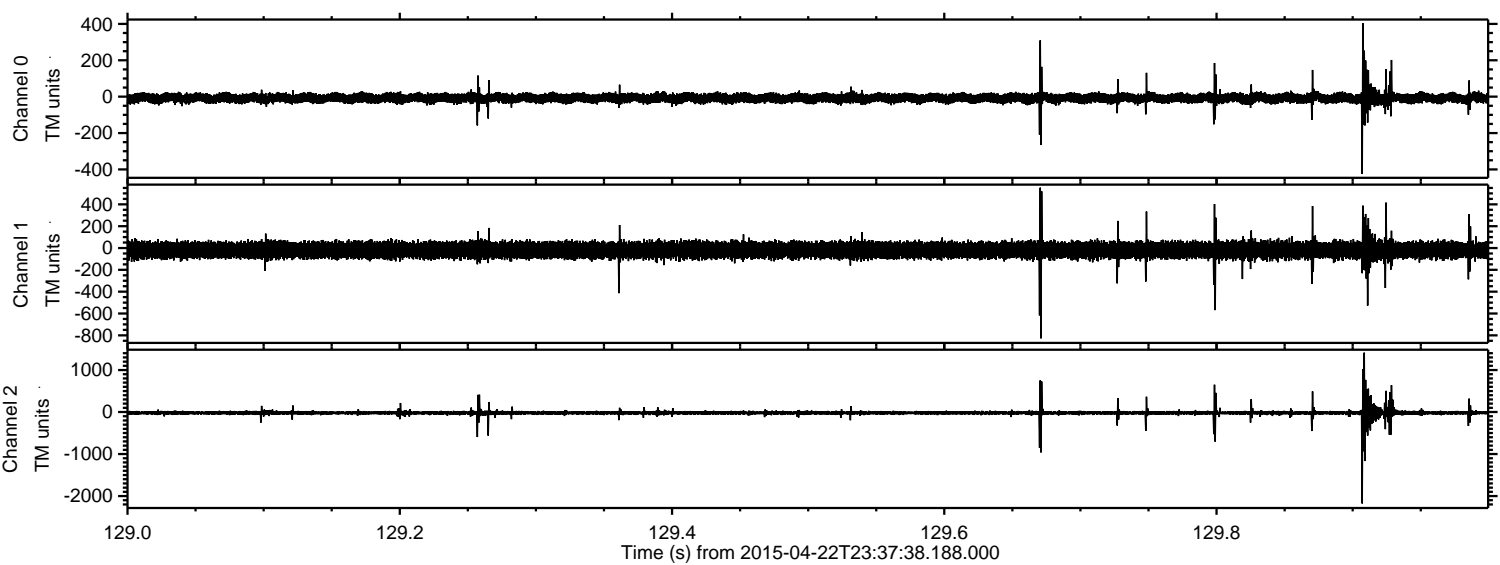


Processed Thu Apr 23 01:44:50 2015 by ELM ver.2012-10-06 from 001__elm20150422_233737__dat00.bin



ELMAVAN 3D WAVEFORMS (Measured data sampled at 50 kHz) 49773 packets of 144 samples from 2015-04-22T23:37:38.188.000. Part 130/144

Processed Thu Apr 23 01:44:51 2015 by ELM ver.2012-10-06 from 001__elm20150422_233737__dat00.bin

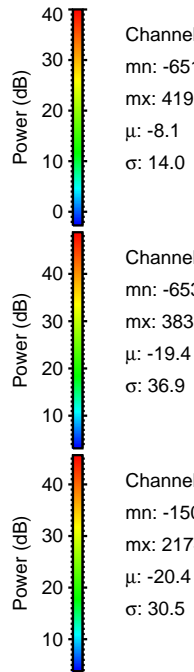
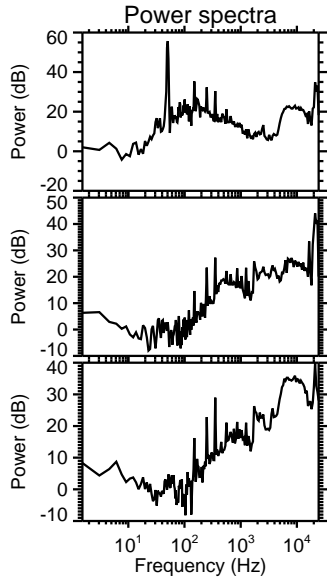
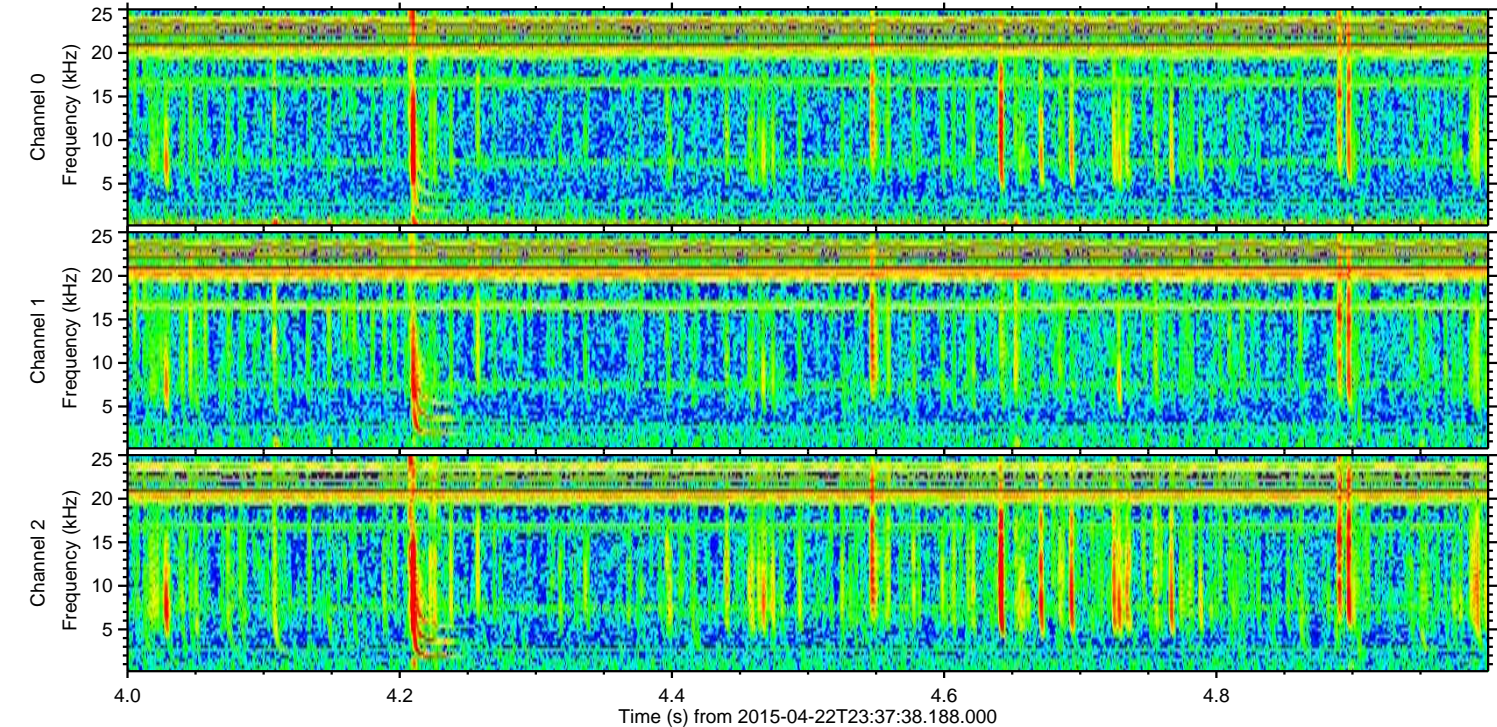
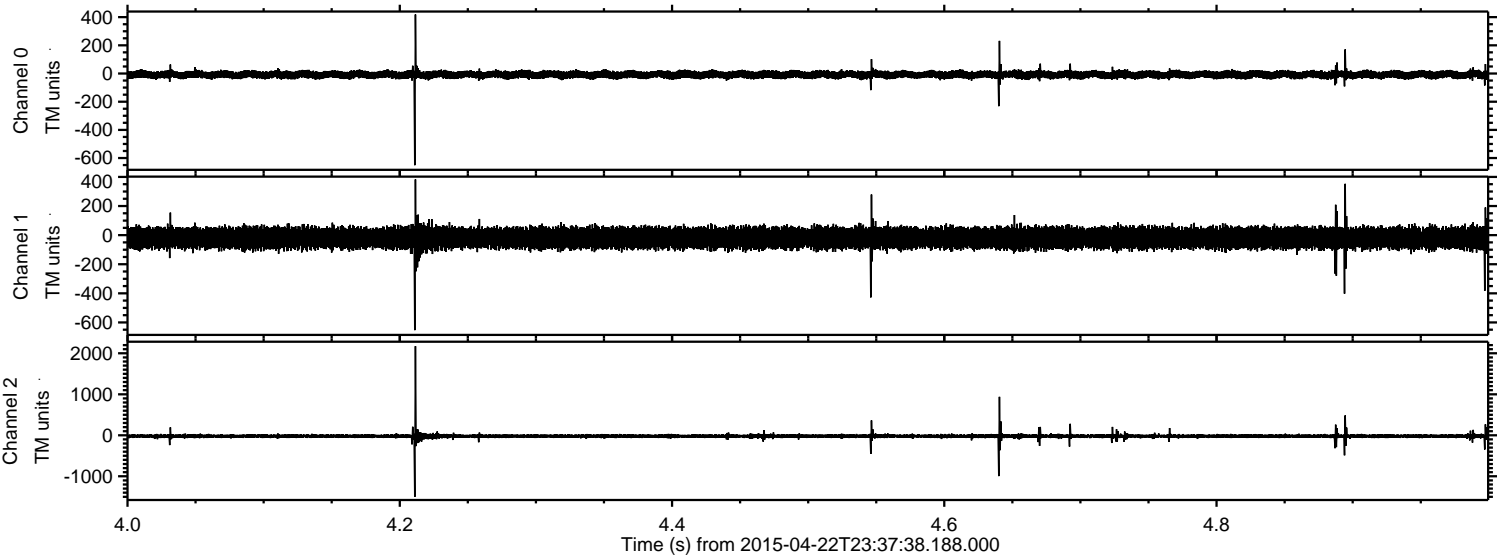


Channel 0
mn: -425
mx: 404
 μ : -8.1
 σ : 14.8

Channel 1
mn: -828
mx: 553
 μ : -19.5
 σ : 39.9

Channel 2
mn: -2176
mx: 1413
 μ : -20.4
 σ : 37.9

Processed Thu Apr 23 01:44:52 2015 by ELM ver.2012-10-06 from 001__elm20150422_233737__dat00.bin

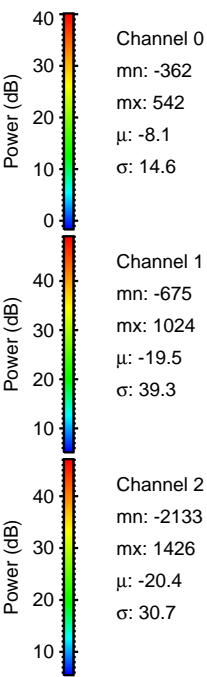
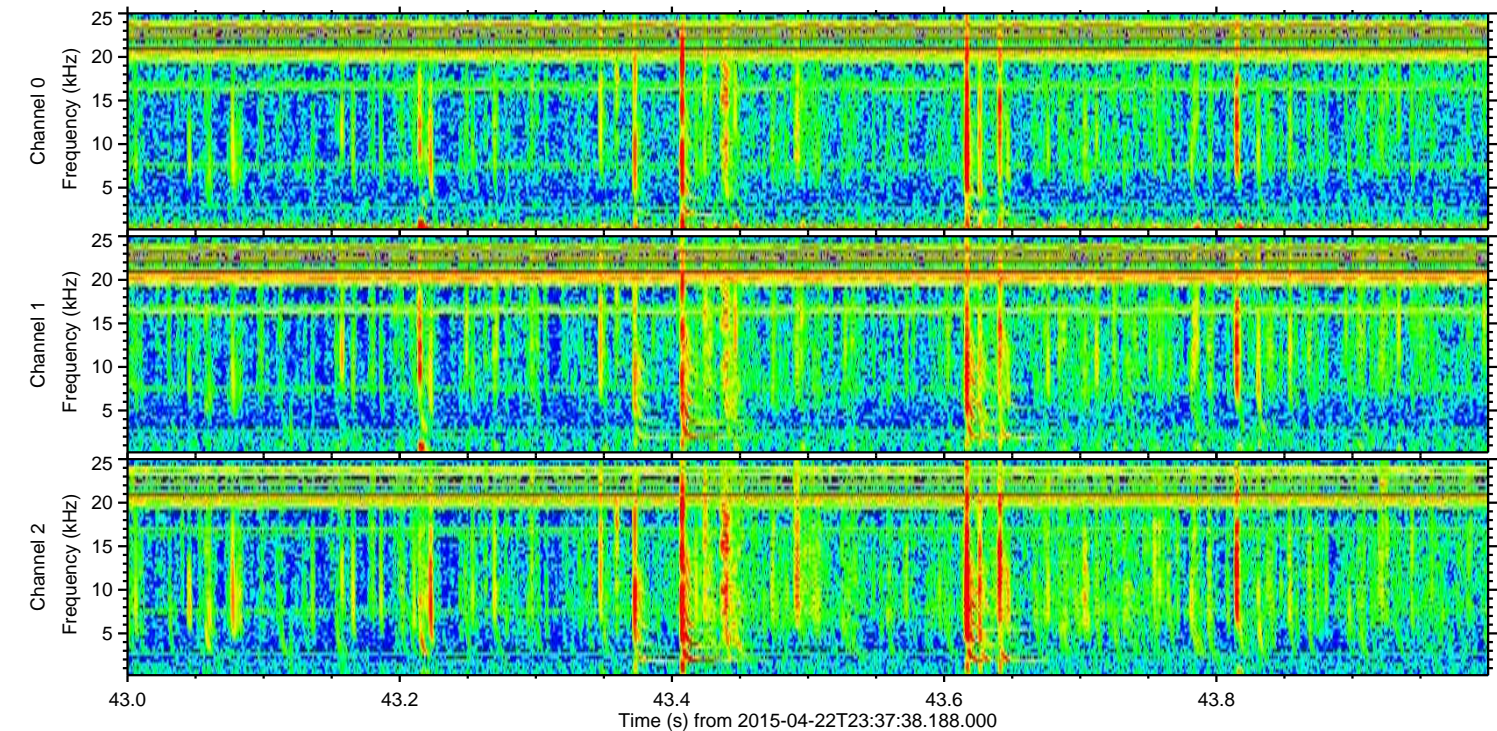
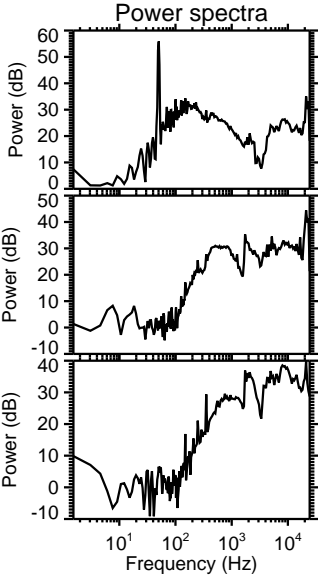
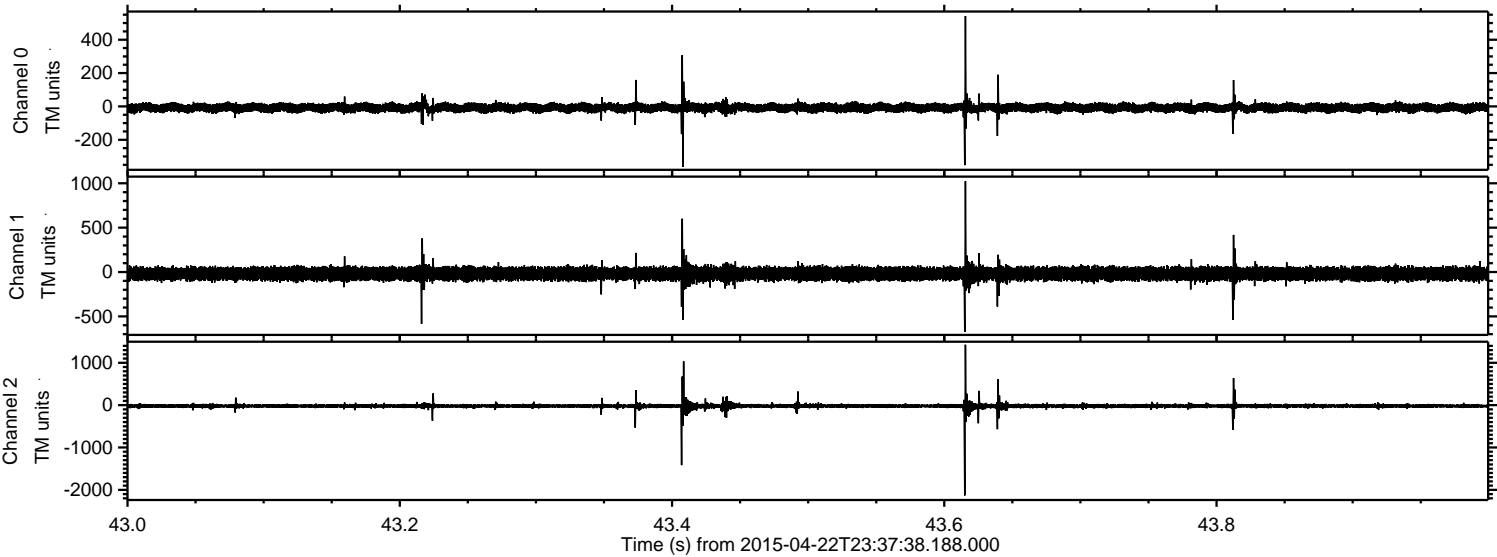


Channel 0
mn: -651
mx: 419
 μ : -8.1
 σ : 14.0

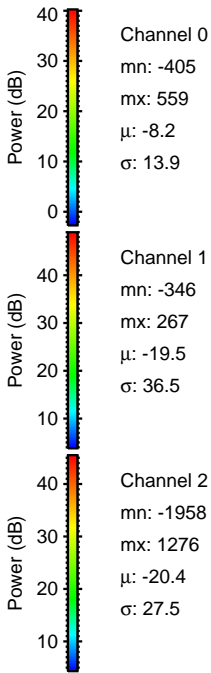
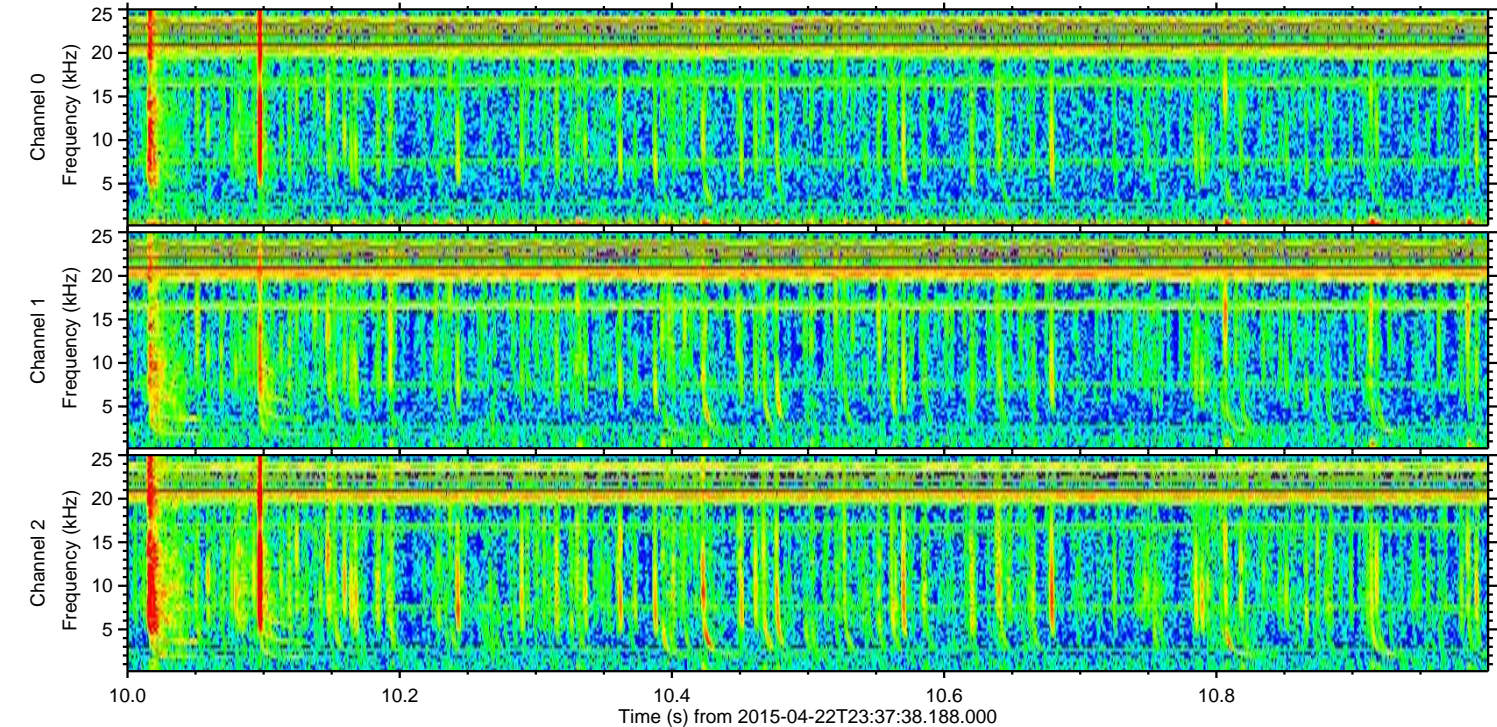
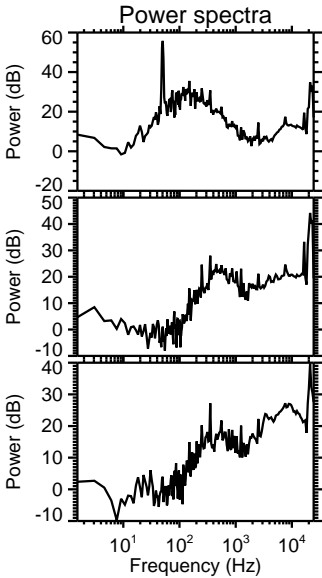
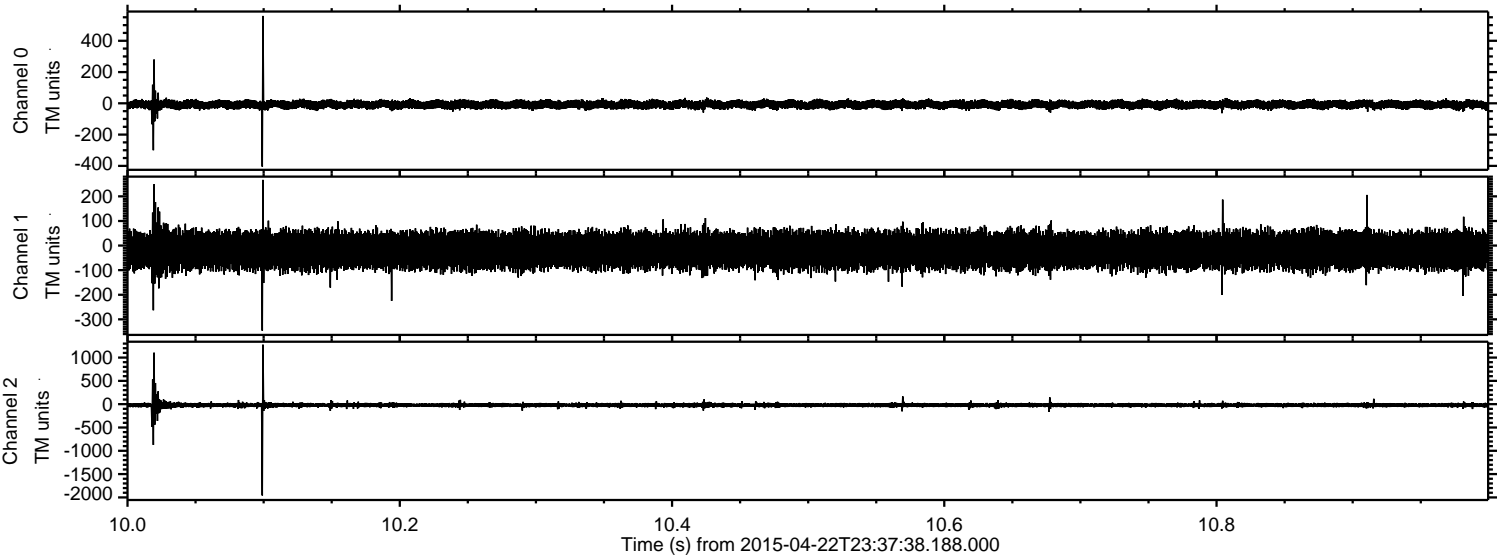
Channel 1
mn: -653
mx: 383
 μ : -19.4
 σ : 36.9

Channel 2
mn: -1503
mx: 2174
 μ : -20.4
 σ : 30.5

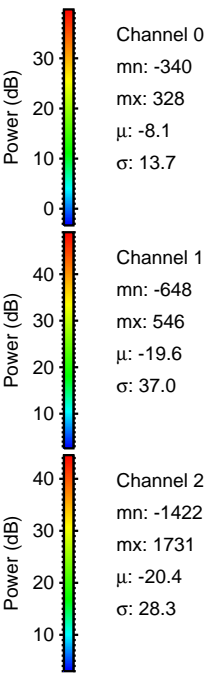
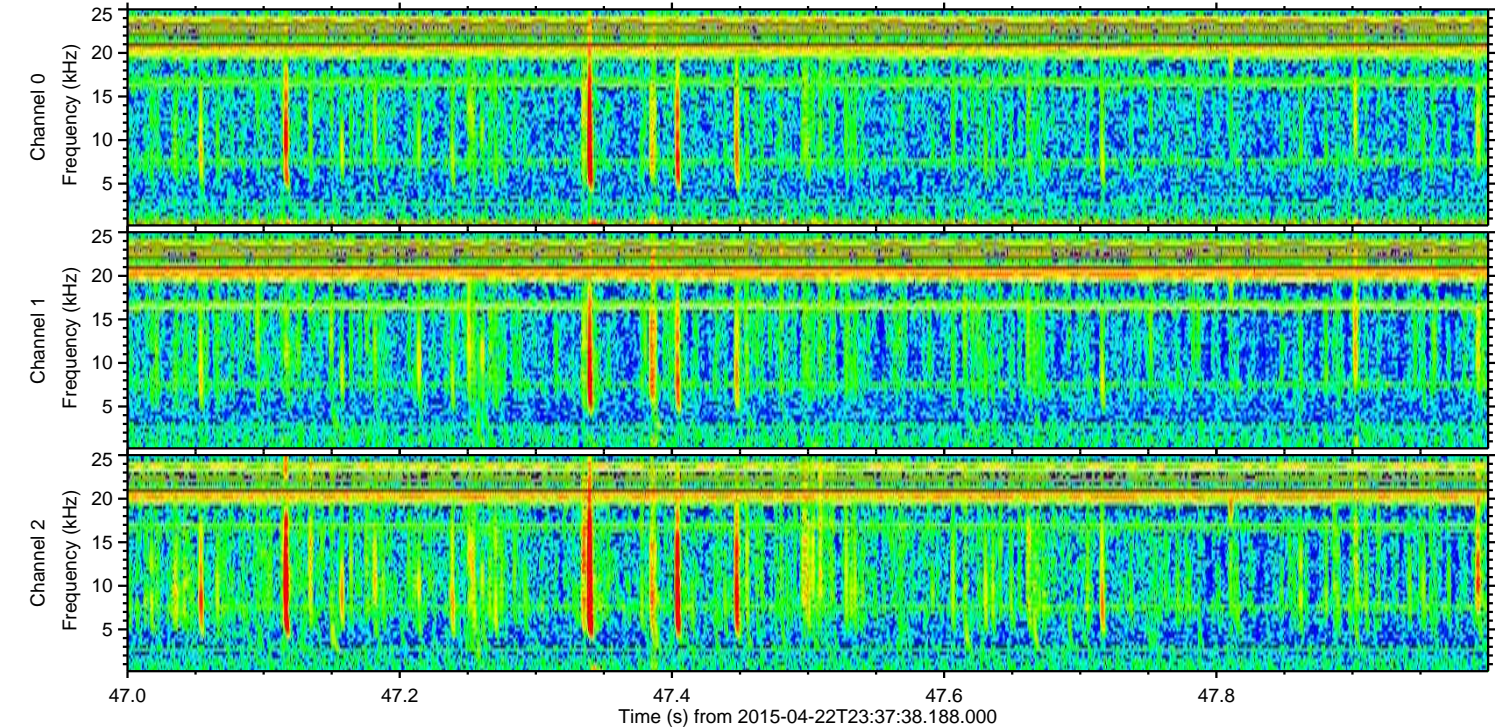
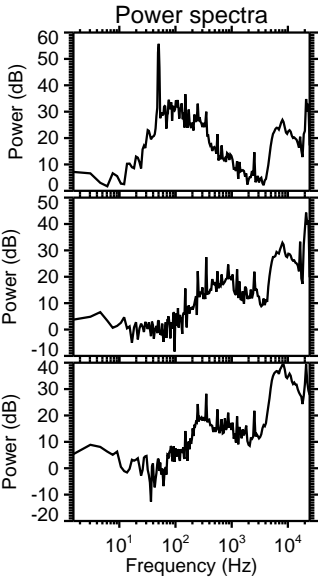
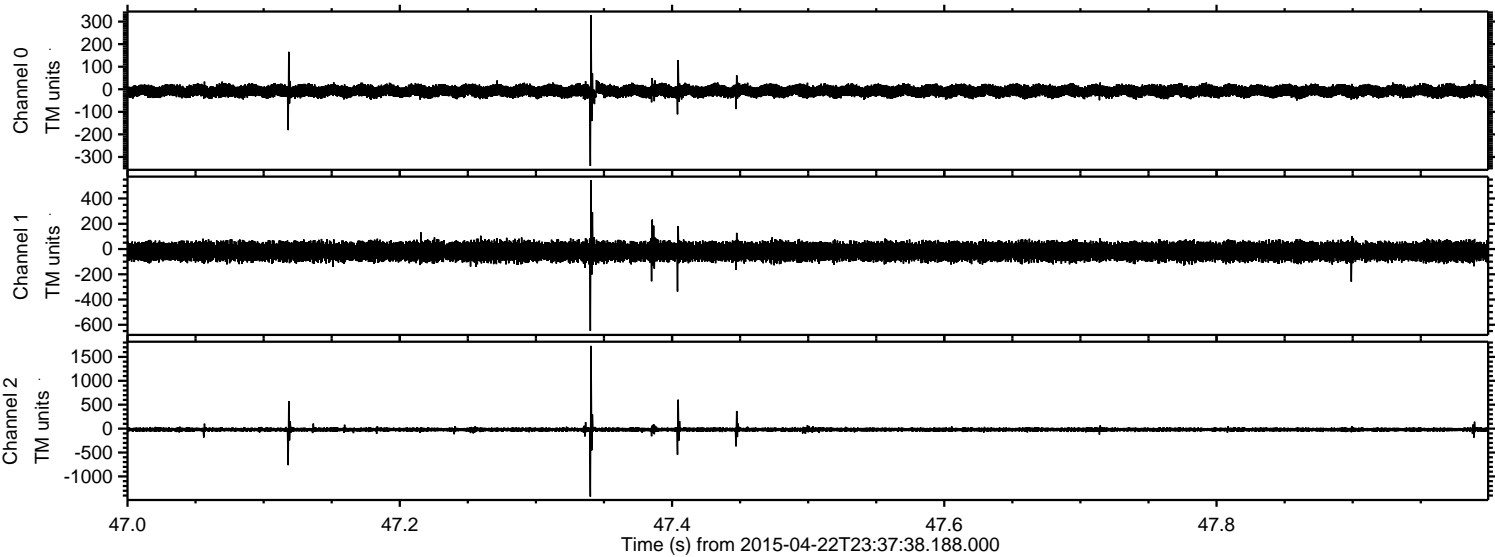
Processed Thu Apr 23 01:44:53 2015 by ELM ver.2012-10-06 from 001__elm20150422_233737__dat00.bin



Processed Thu Apr 23 01:44:54 2015 by ELM ver.2012-10-06 from 001__elm20150422_233737__dat00.bin



Processed Thu Apr 23 01:44:55 2015 by ELM ver.2012-10-06 from 001__elm20150422_233737__dat00.bin



Processed Thu Apr 23 01:44:56 2015 by ELM ver.2012-10-06 from 001__elm20150422_233737__dat00.bin

