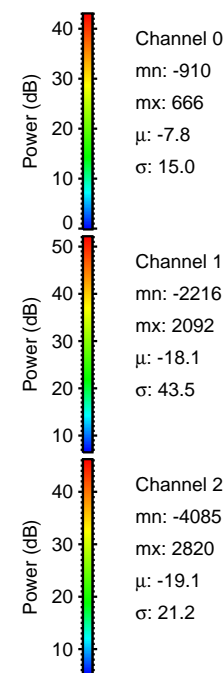
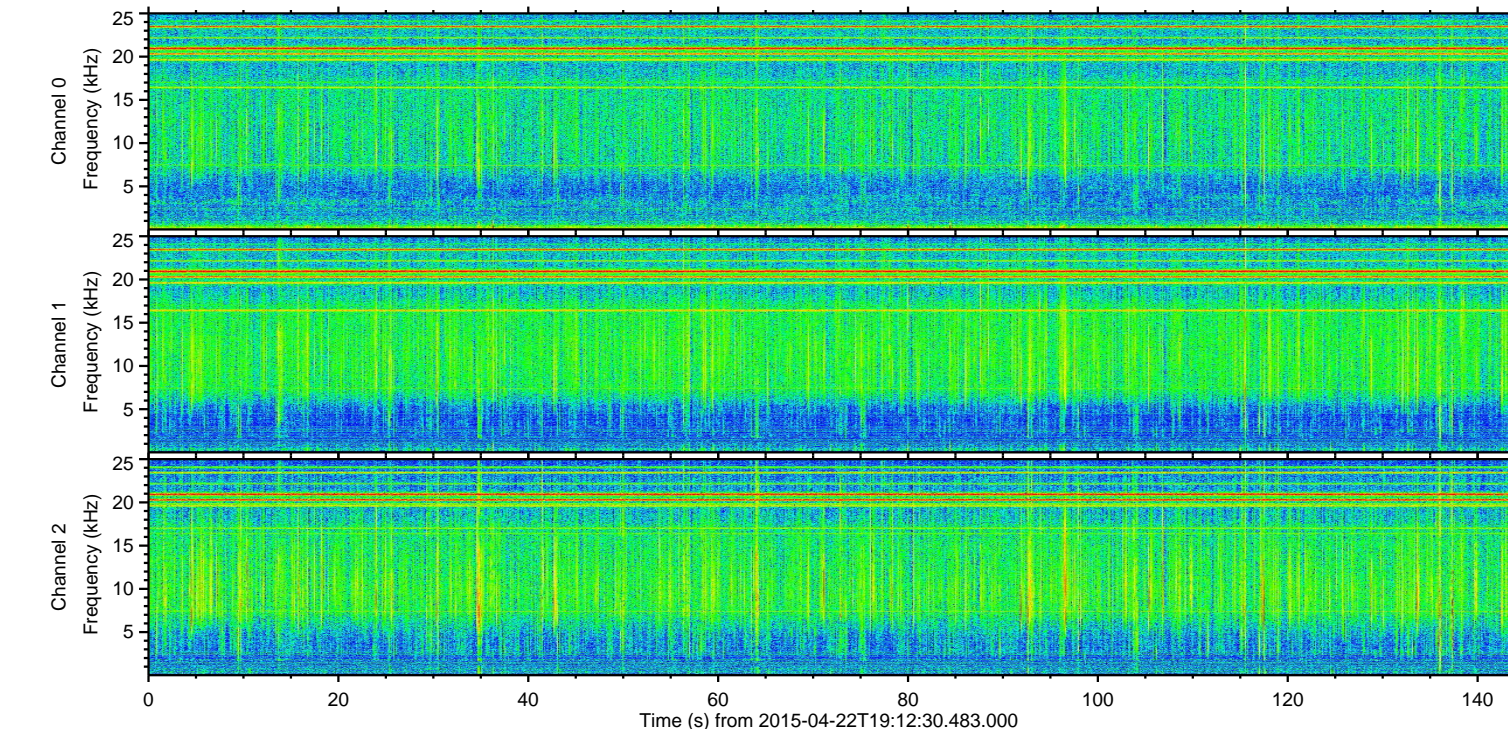
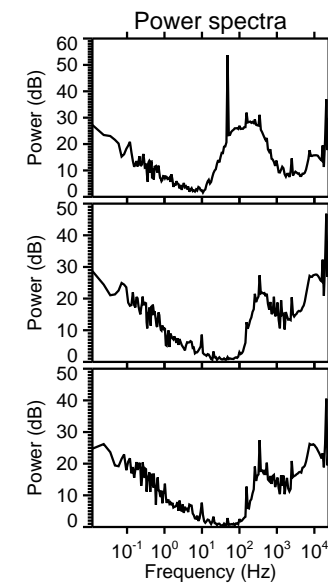
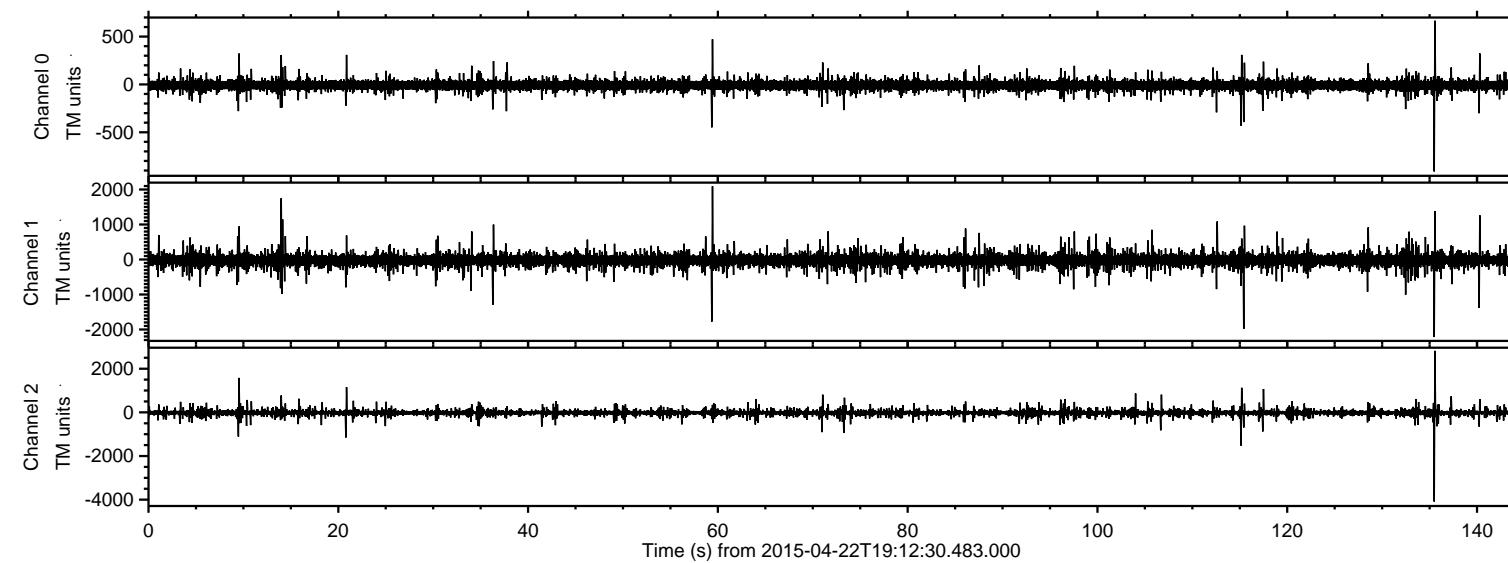
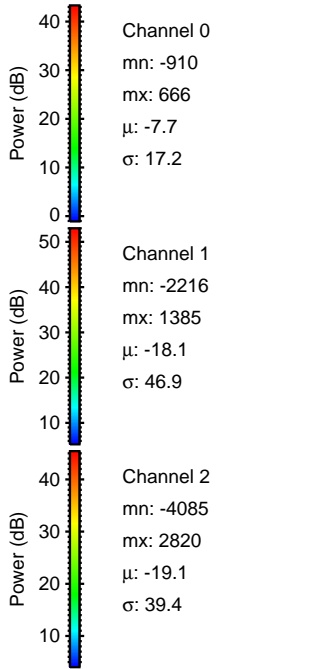
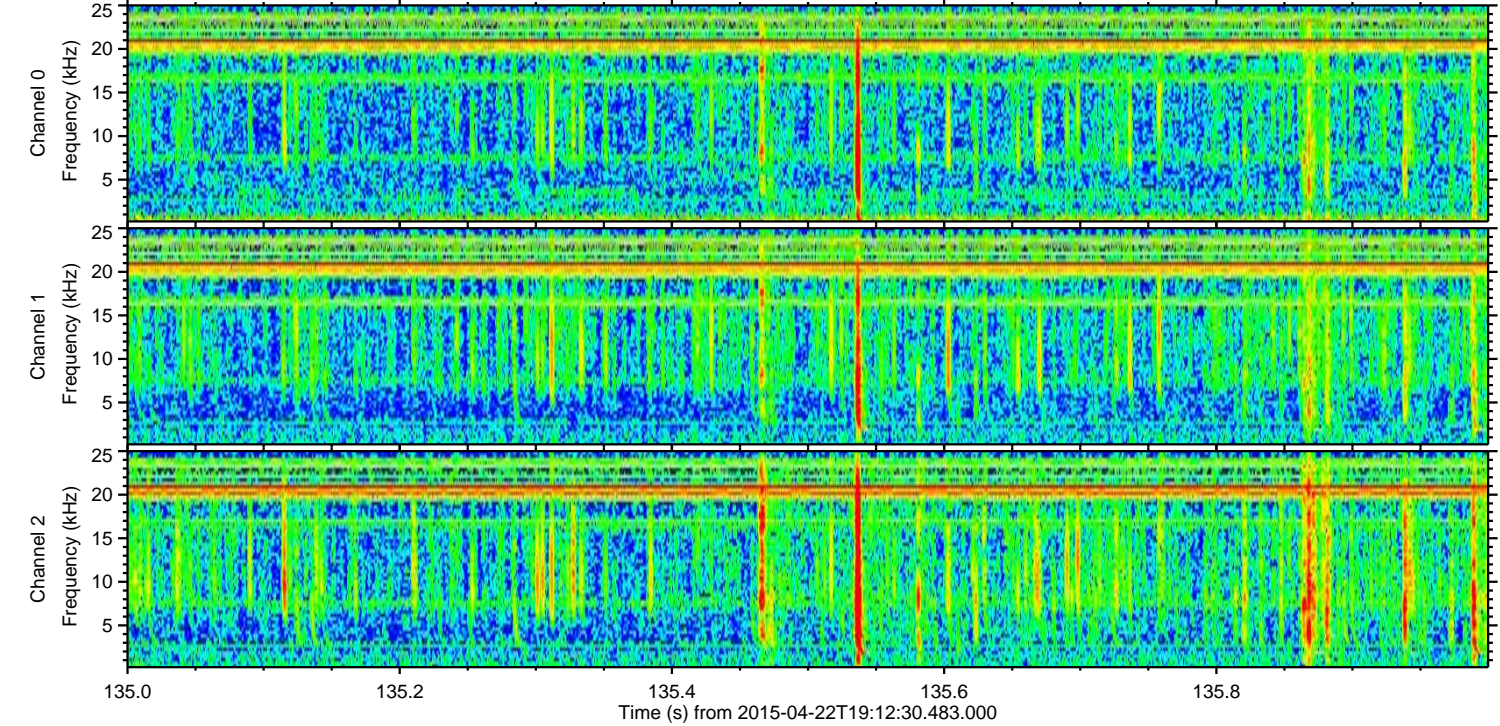
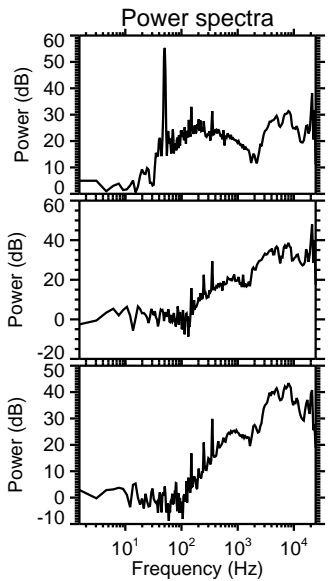
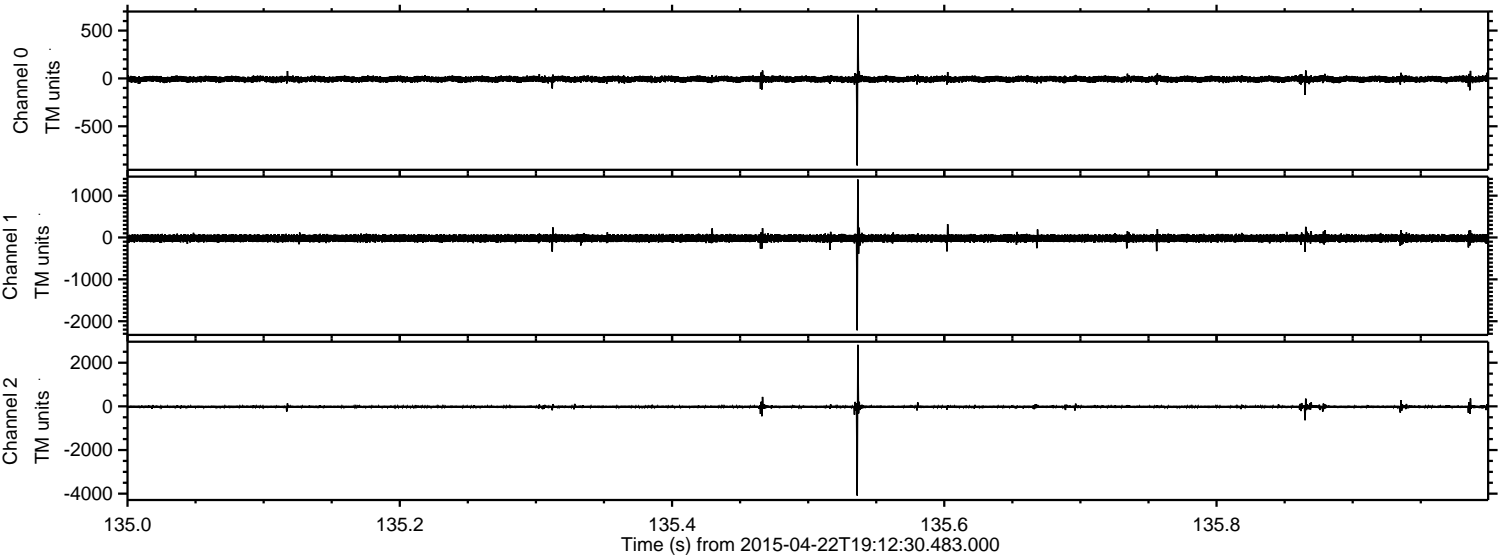


ELMAVAN 3D WAVEFORMS (Measured data sampled at 50 kHz) 49786 packets of 144 samples from 2015-04-22T19:12:30.483.000.

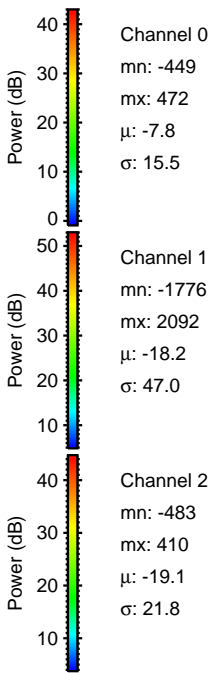
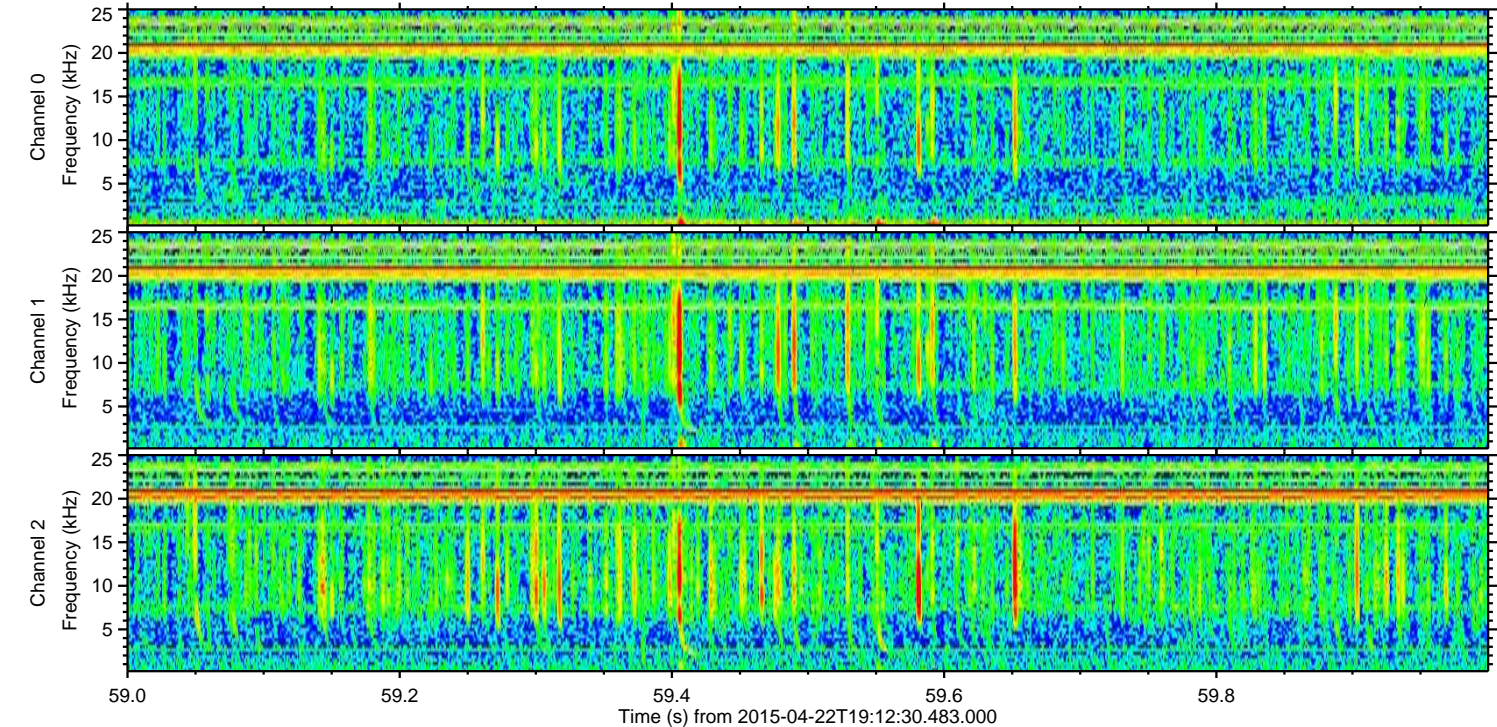
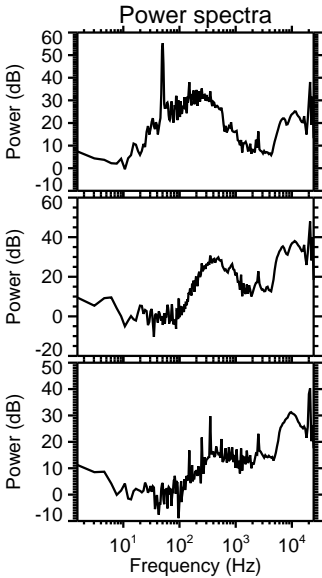
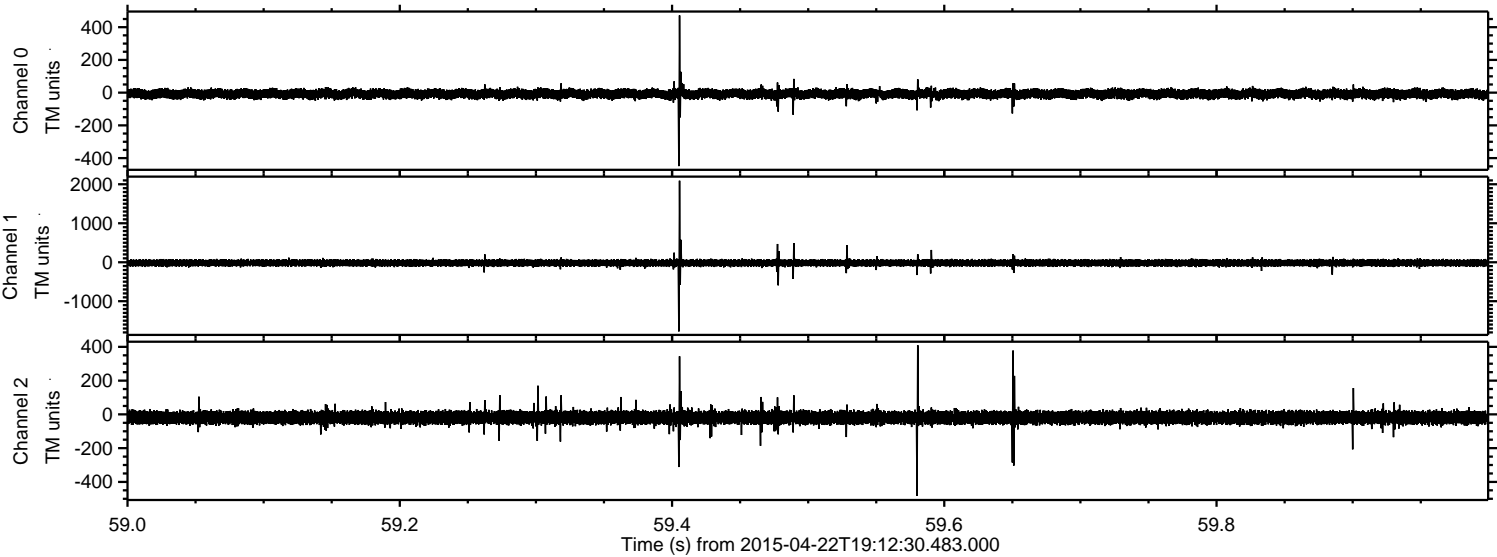
Processed Wed Apr 22 21:19:28 2015 by ELM ver.2012-10-06 from 001__elm20150422_191229__dat00.bin



Processed Wed Apr 22 21:19:39 2015 by ELM ver.2012-10-06 from 001__elm20150422_191229__dat00.bin

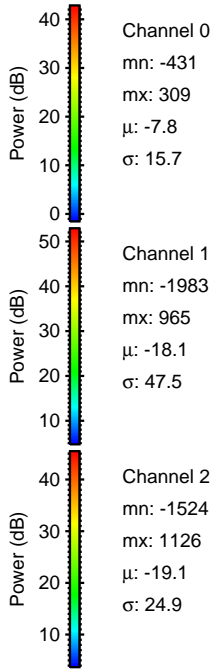
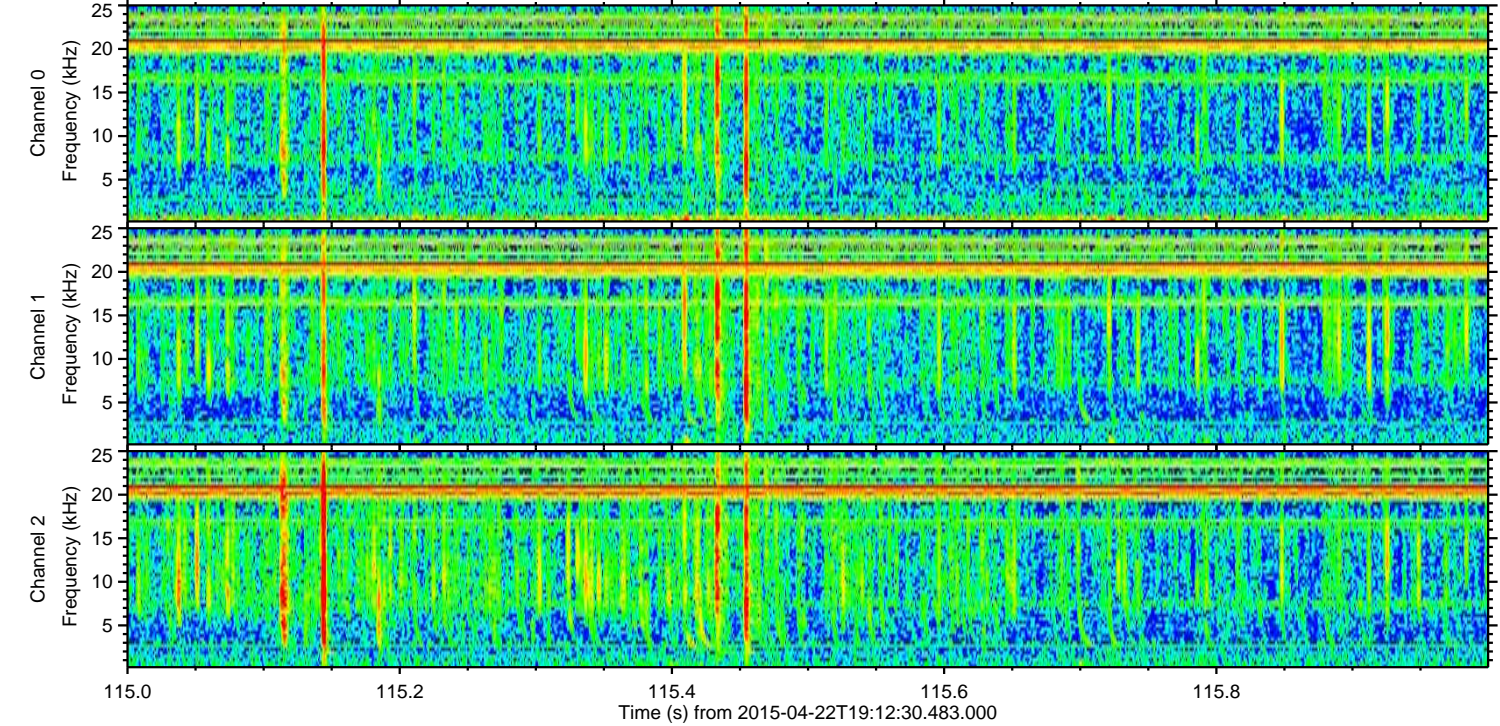
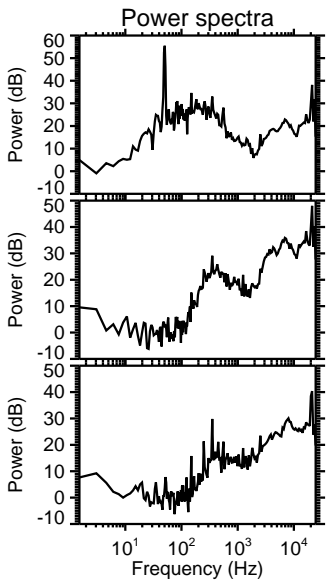
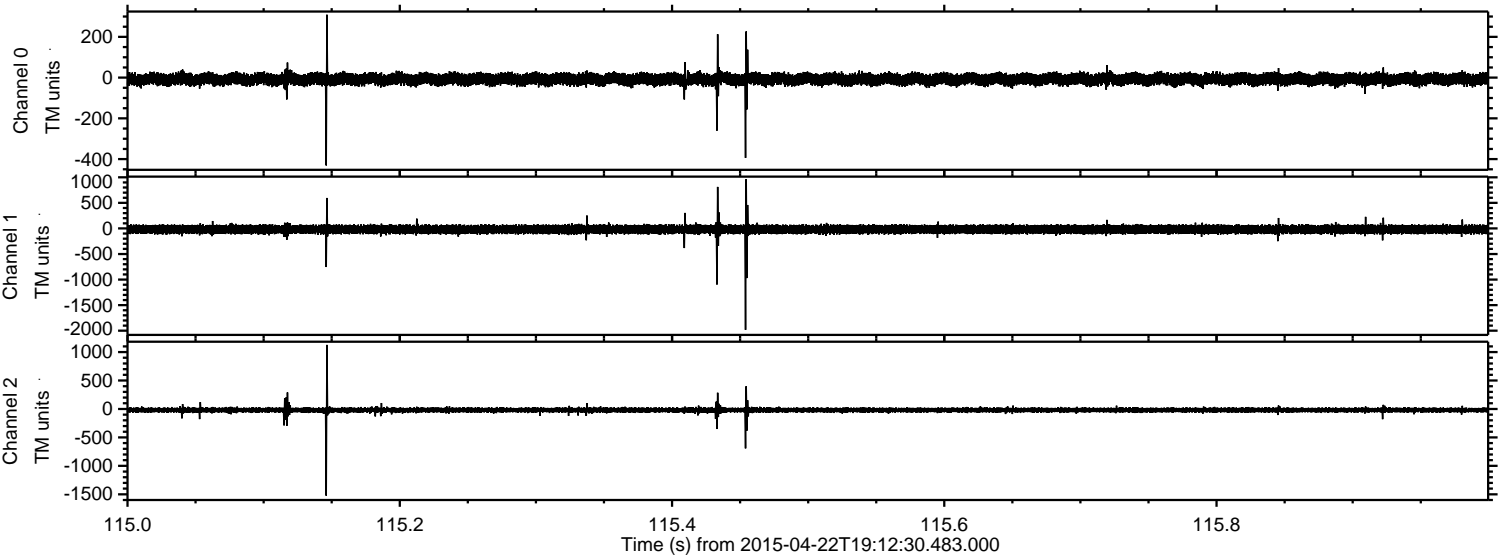


Processed Wed Apr 22 21:19:40 2015 by ELM ver.2012-10-06 from 001__elm20150422_191229__dat00.bin

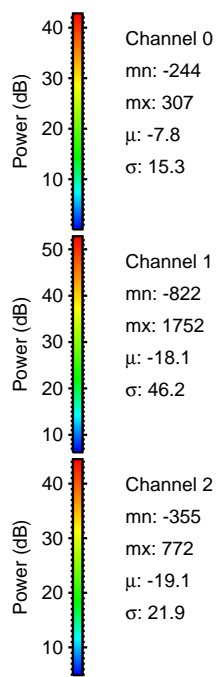
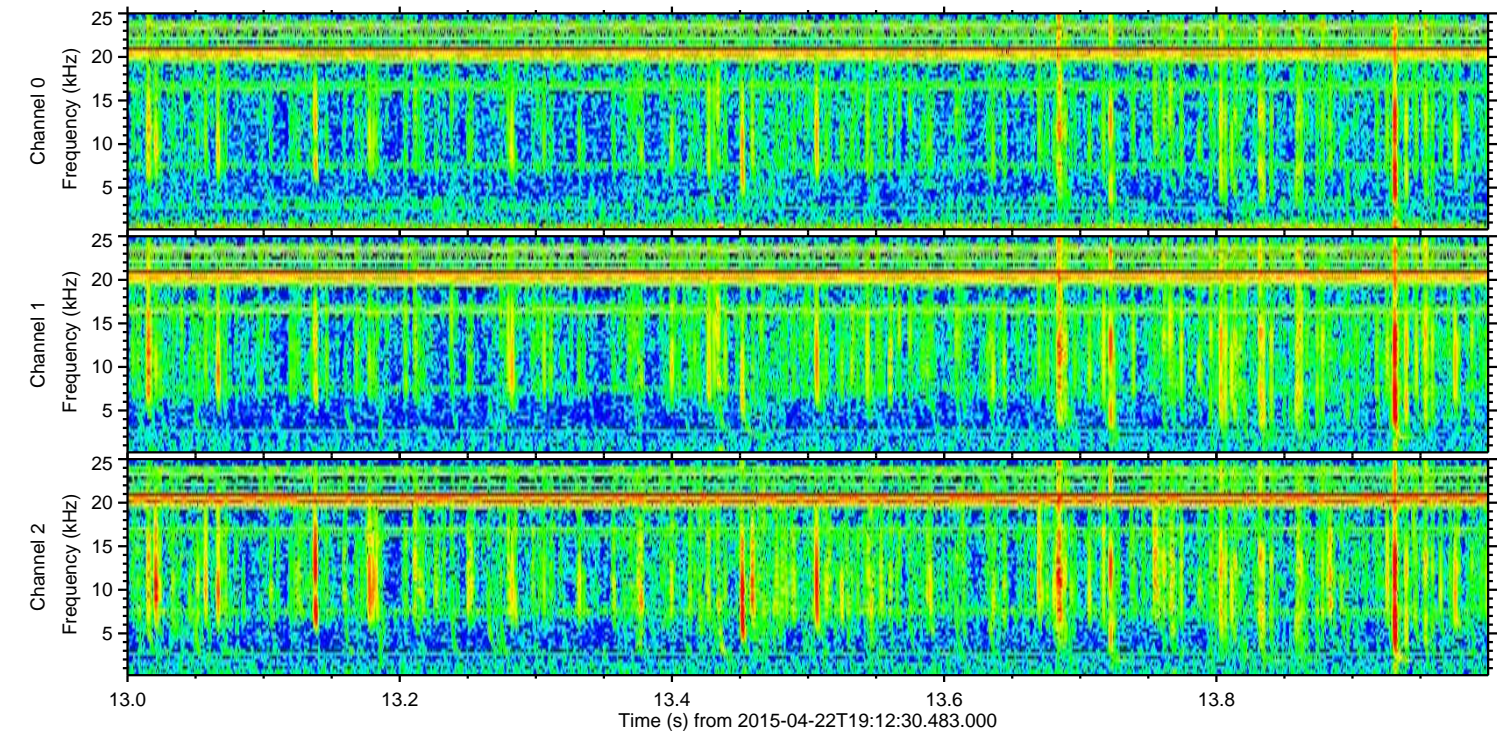
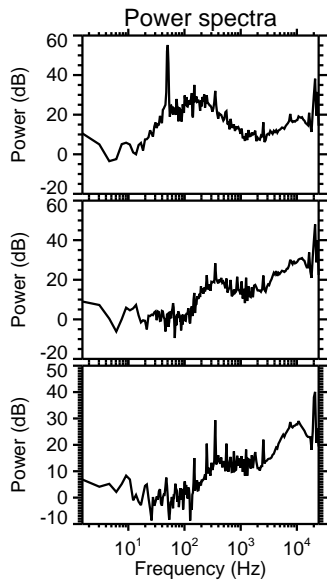
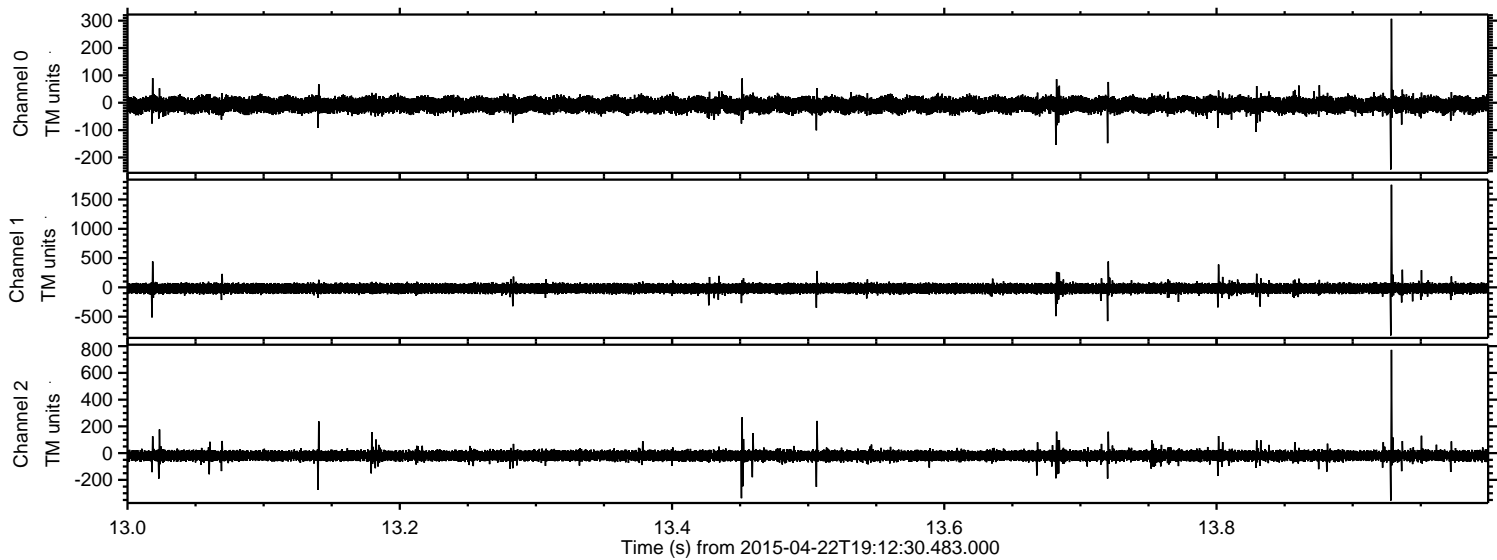


ELMAVAN 3D WAVEFORMS (Measured data sampled at 50 kHz) 49786 packets of 144 samples from 2015-04-22T19:12:30.483.000. Part 116/144

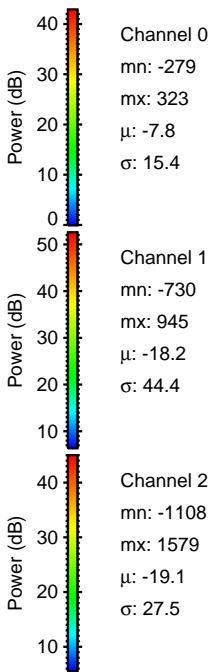
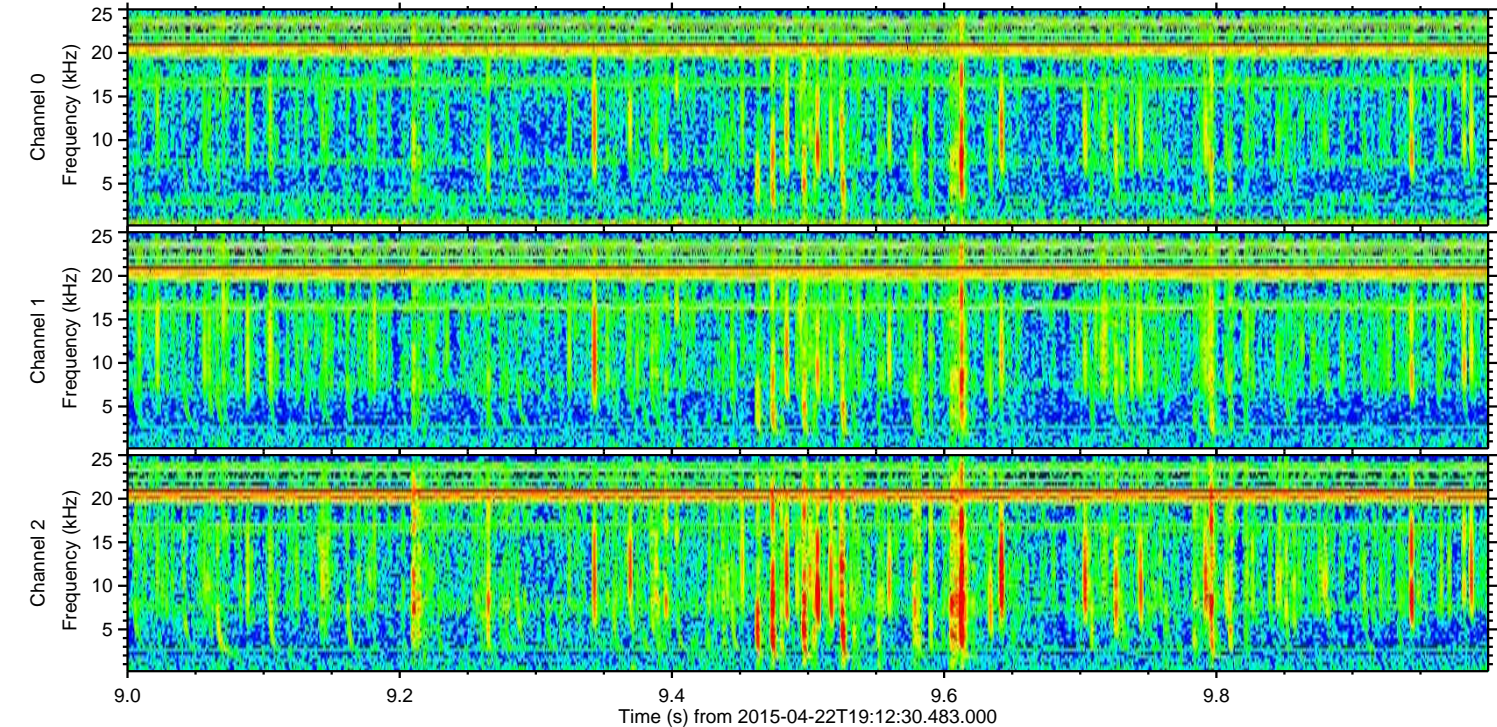
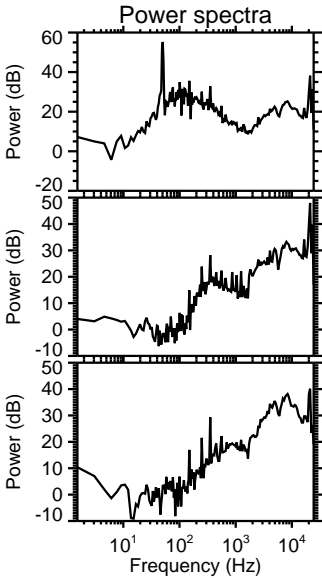
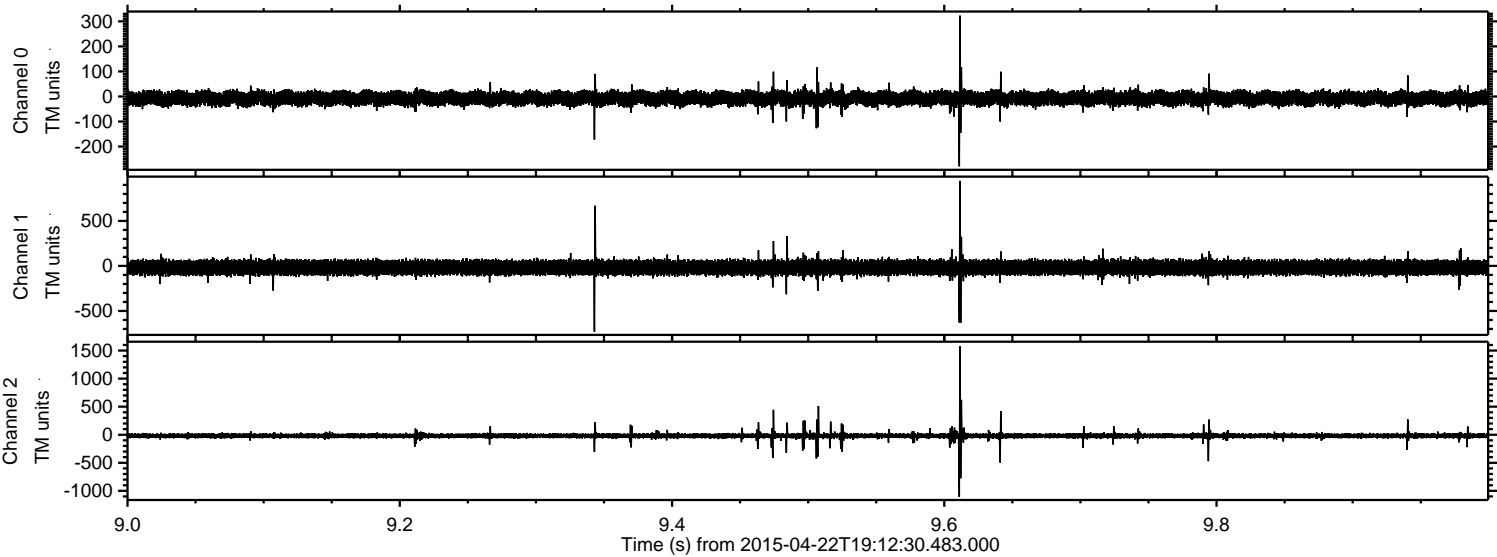
Processed Wed Apr 22 21:19:41 2015 by ELM ver.2012-10-06 from 001__elm20150422_191229__dat00.bin



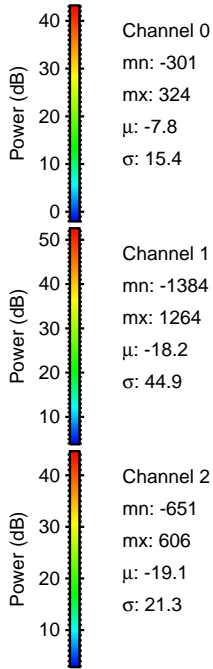
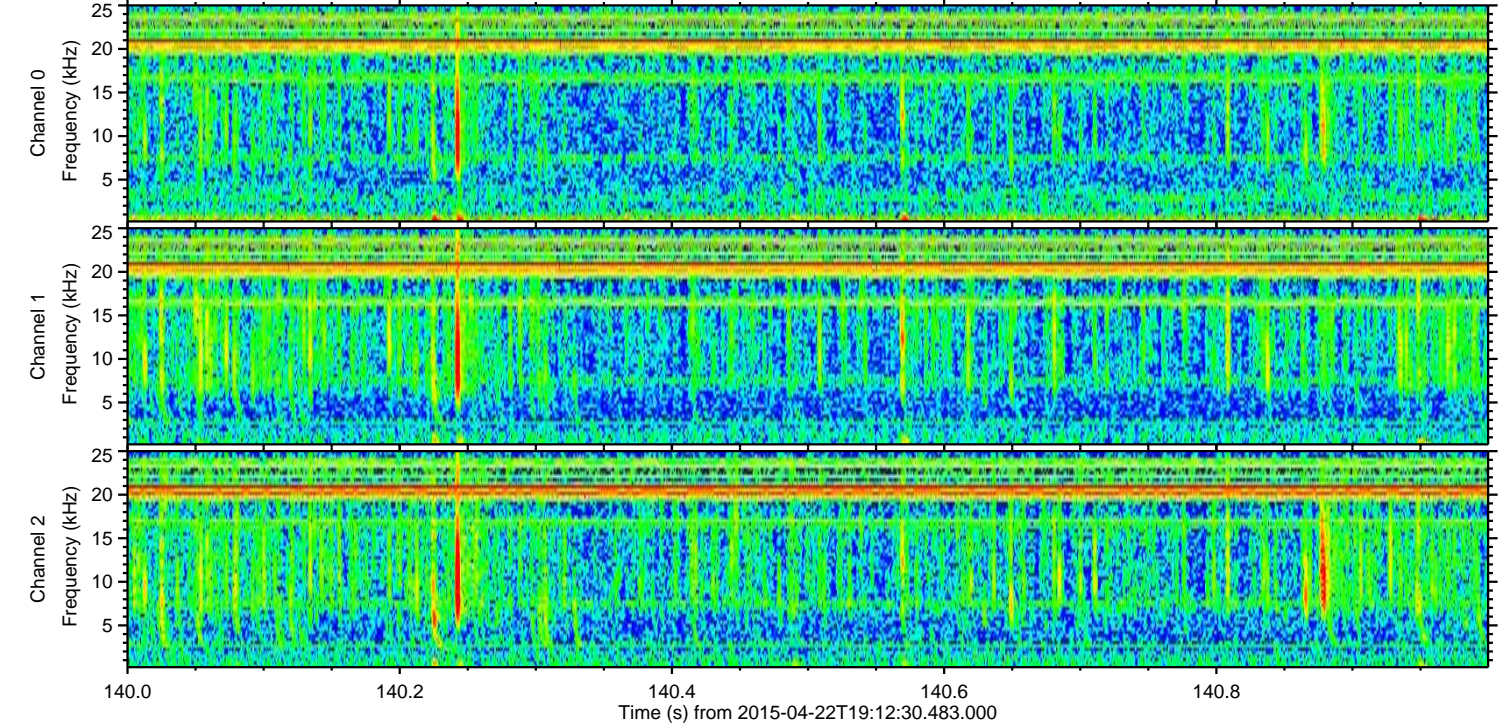
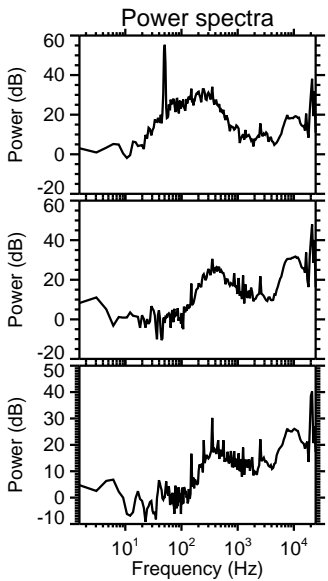
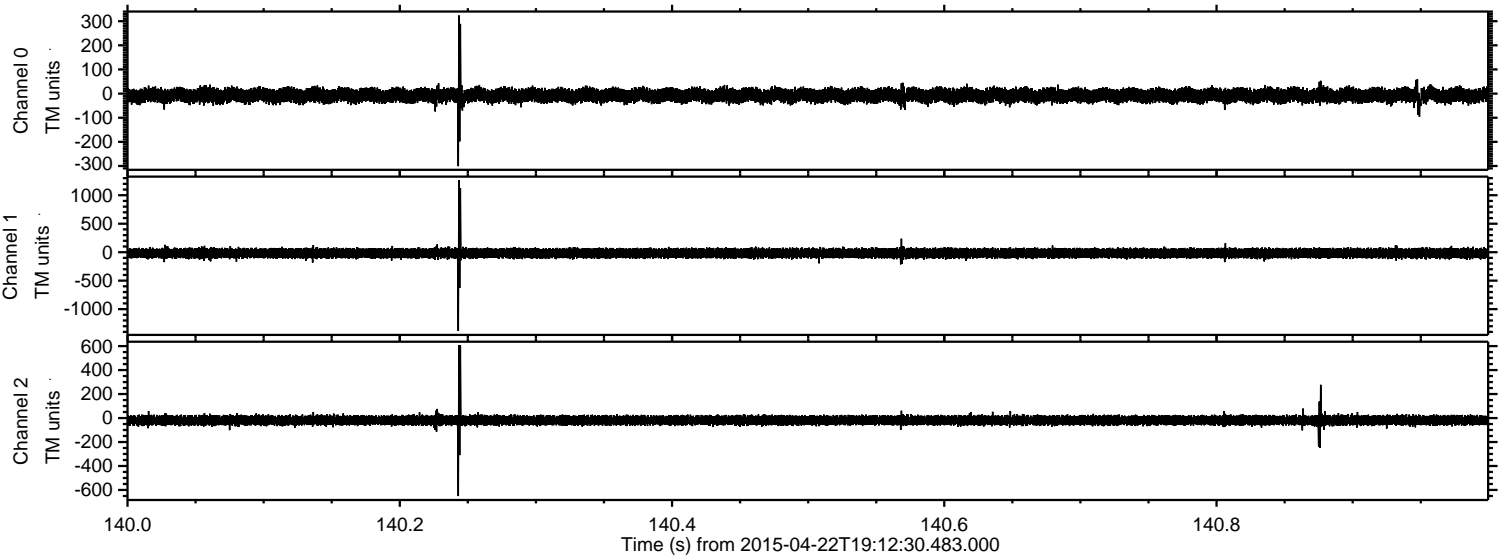
Processed Wed Apr 22 21:19:42 2015 by ELM ver.2012-10-06 from 001__elm20150422_191229__dat00.bin



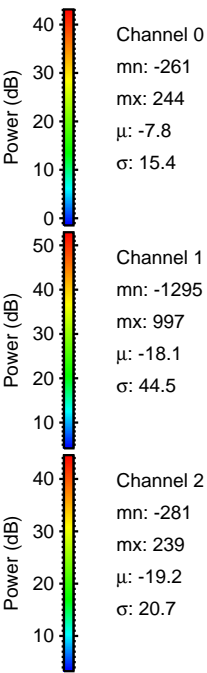
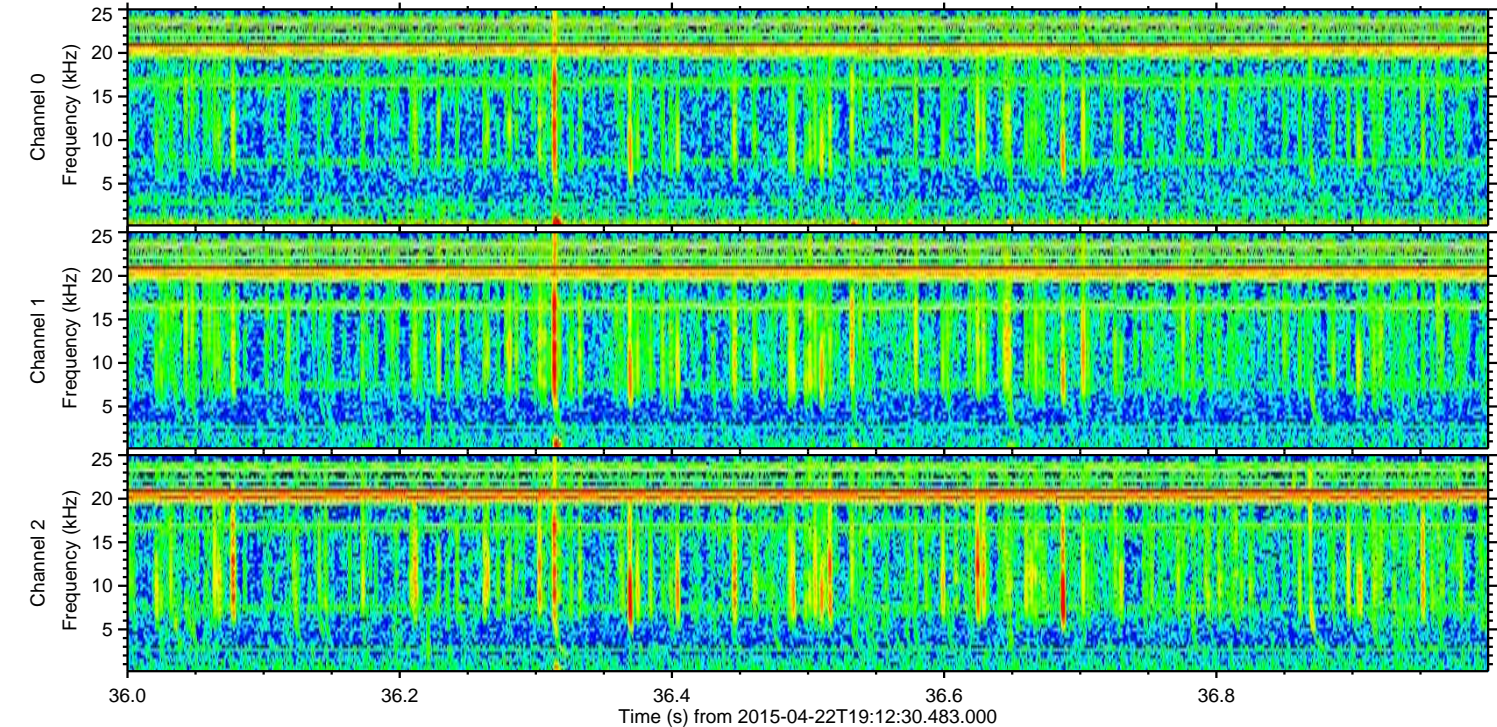
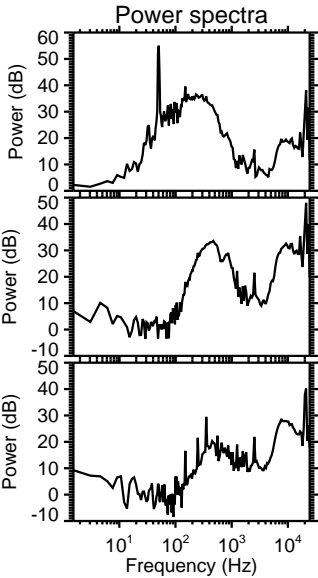
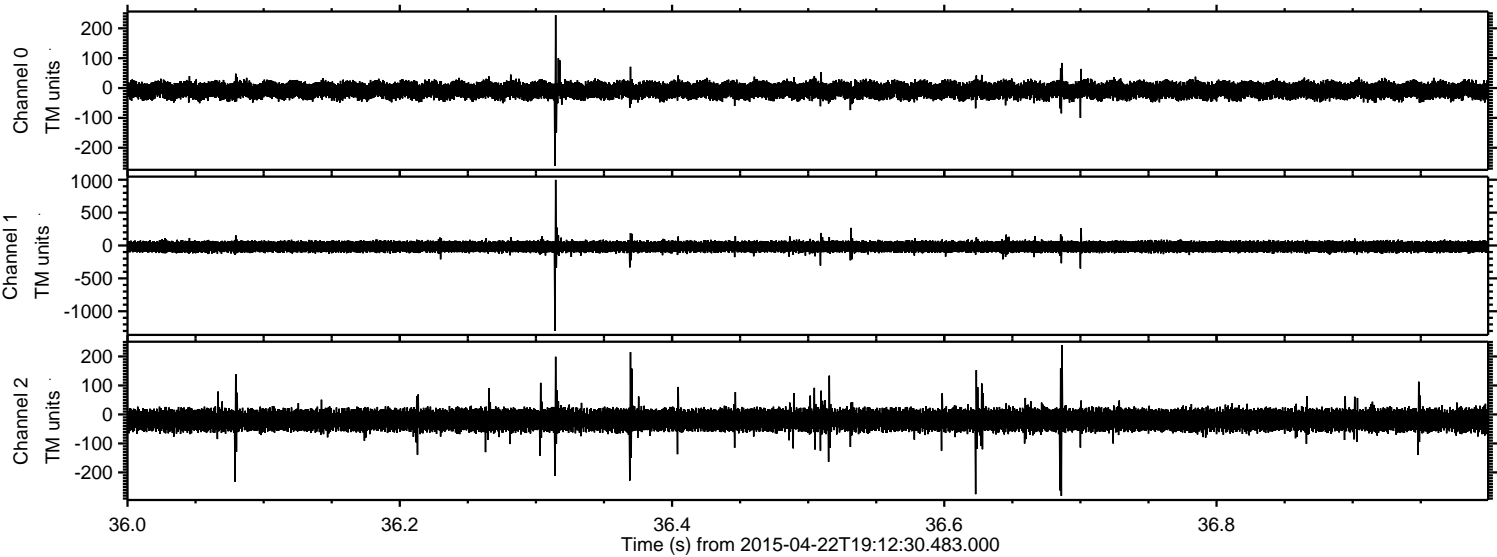
Processed Wed Apr 22 21:19:43 2015 by ELM ver.2012-10-06 from 001__elm20150422_191229__dat00.bin



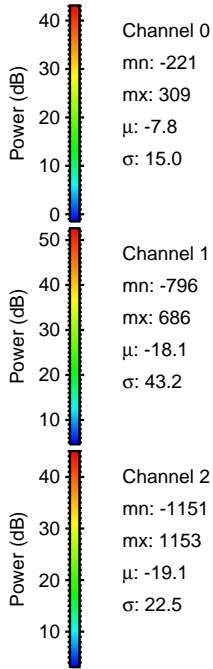
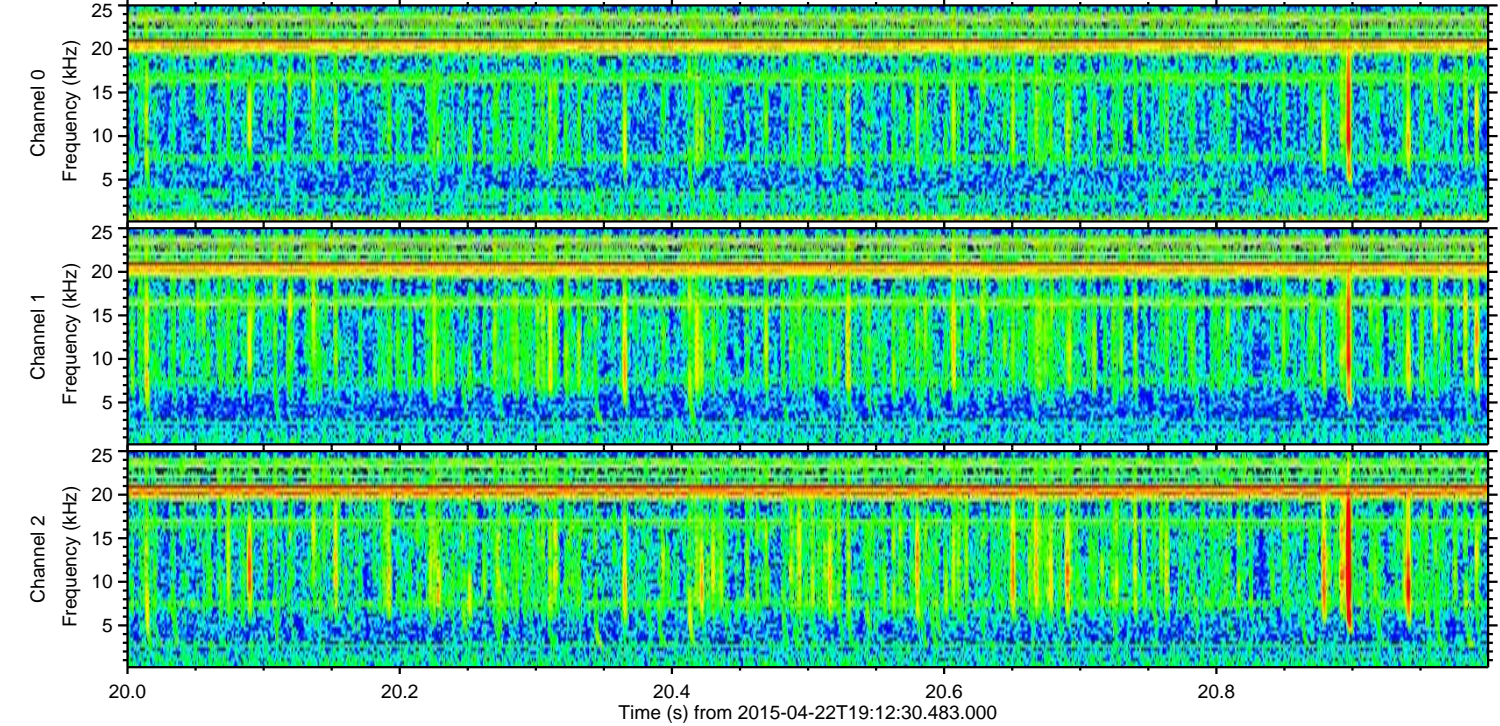
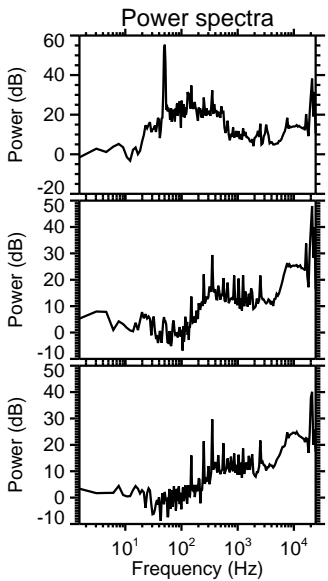
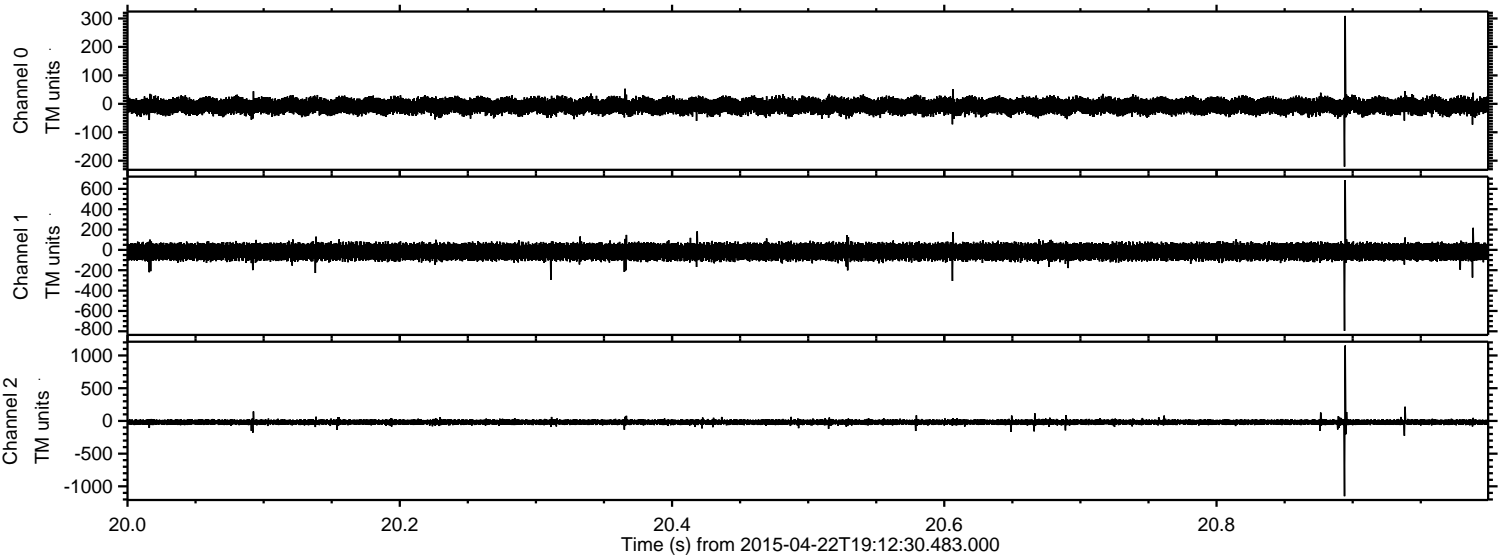
Processed Wed Apr 22 21:19:44 2015 by ELM ver.2012-10-06 from 001__elm20150422_191229__dat00.bin



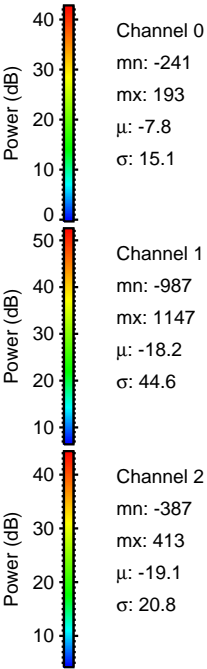
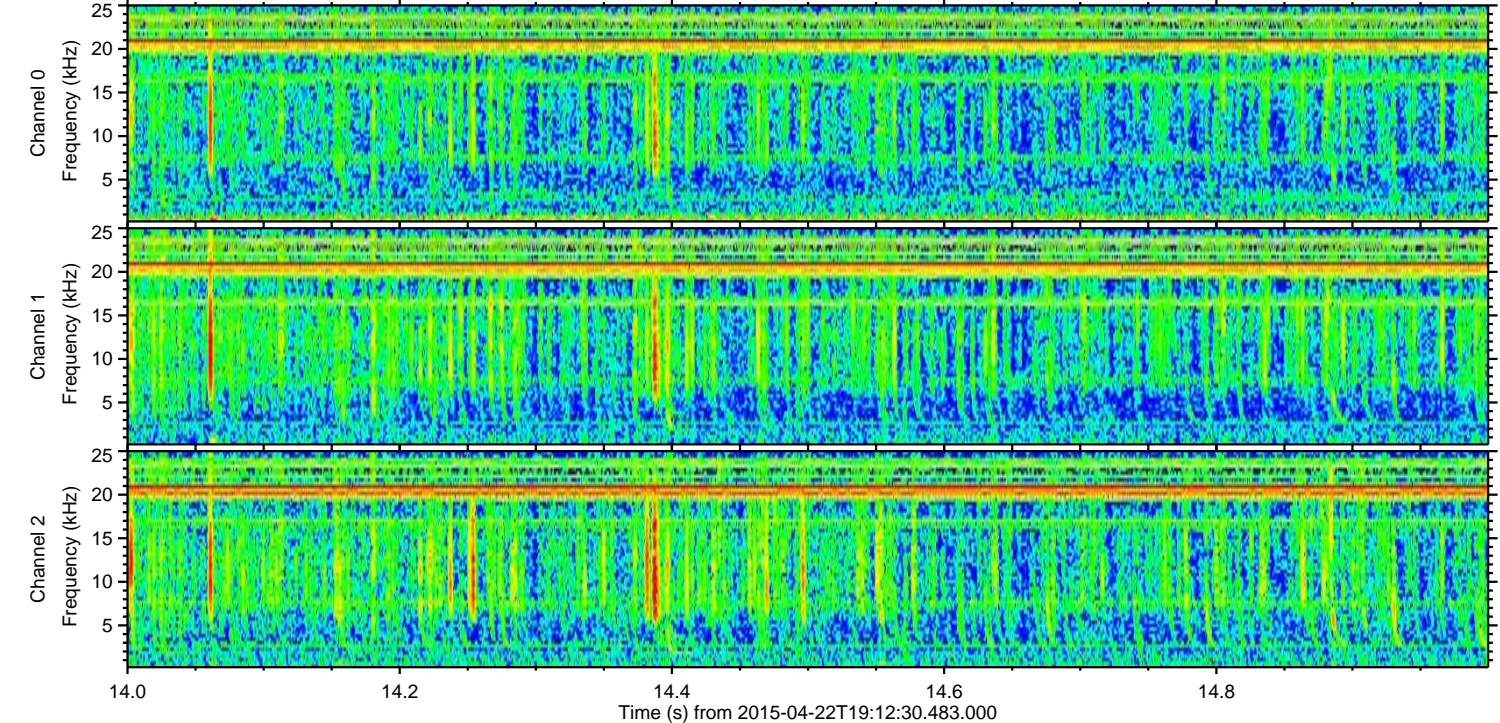
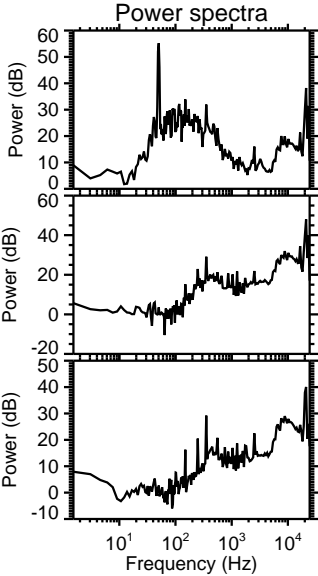
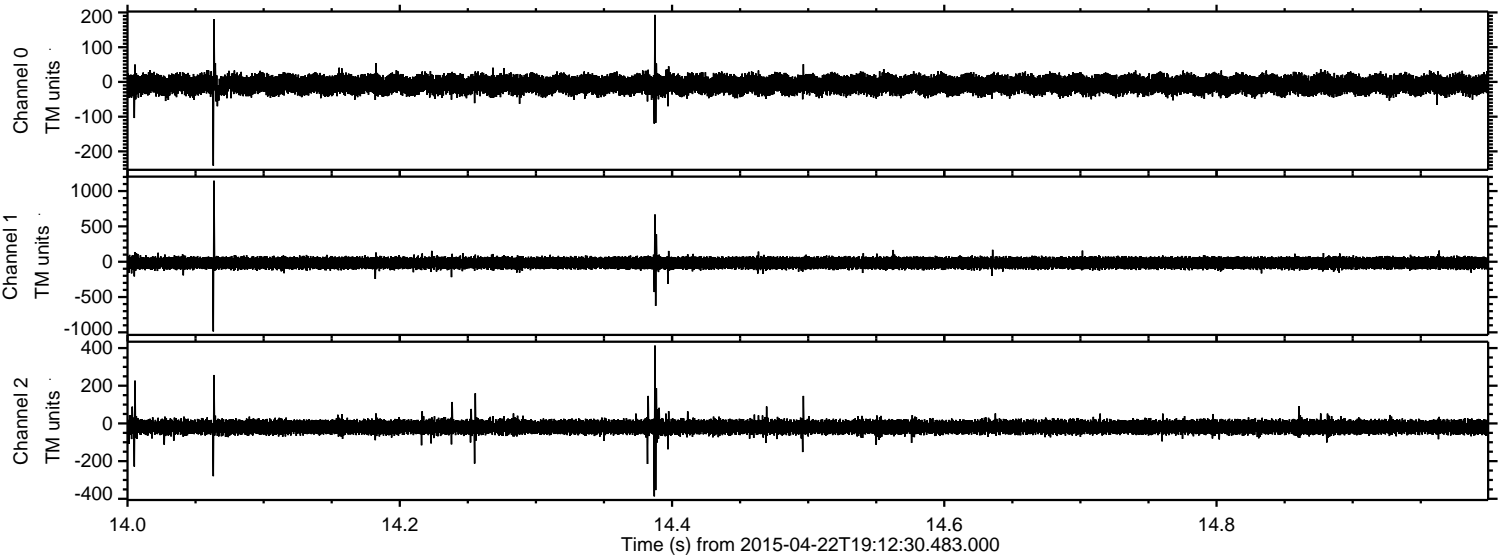
Processed Wed Apr 22 21:19:45 2015 by ELM ver.2012-10-06 from 001__elm20150422_191229__dat00.bin



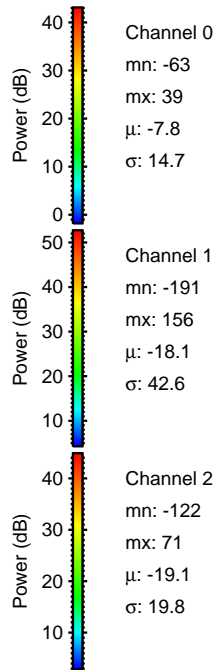
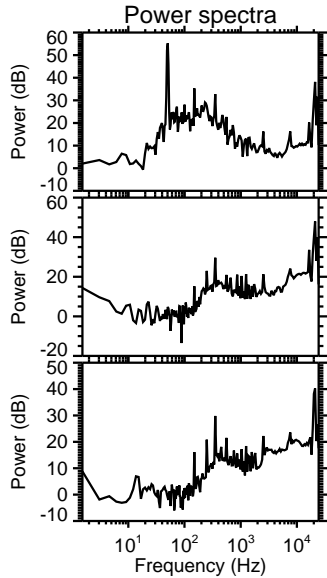
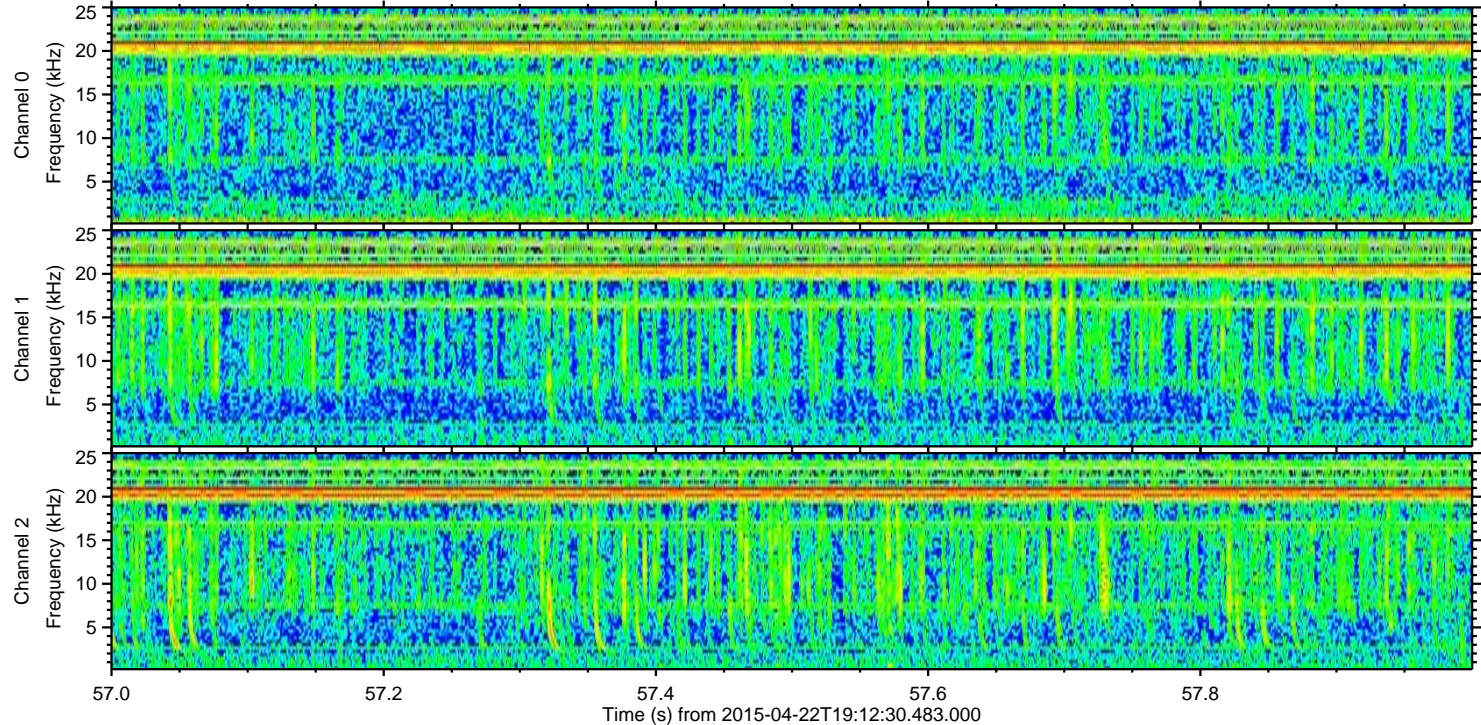
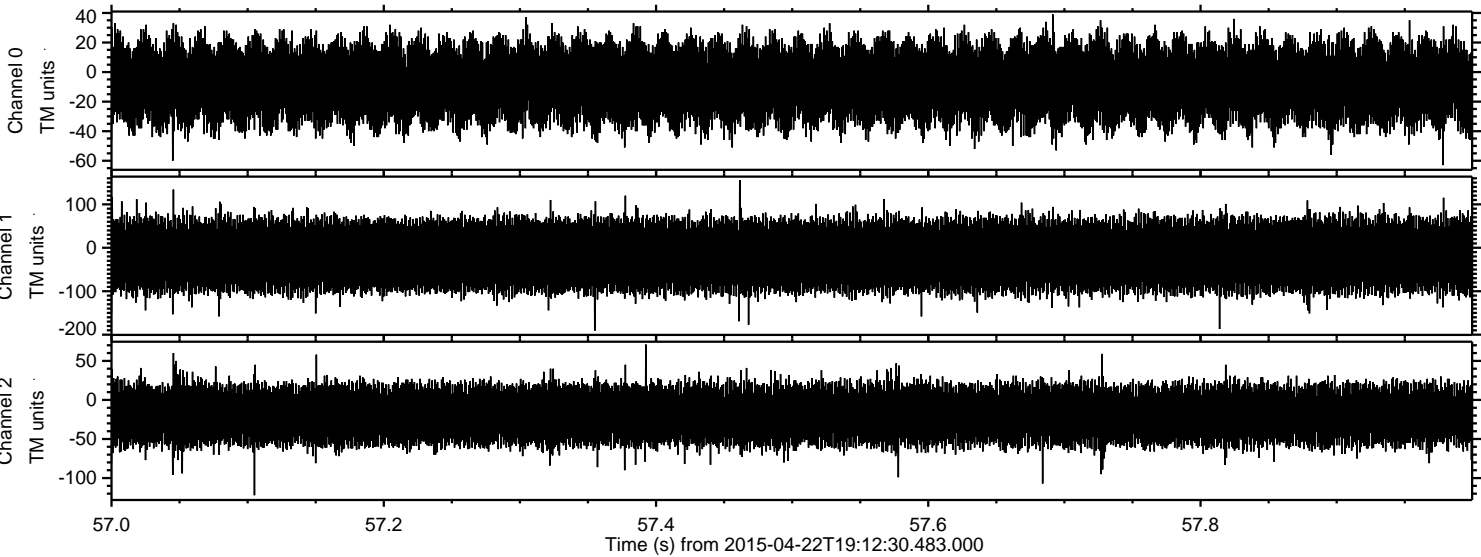
Processed Wed Apr 22 21:19:46 2015 by ELM ver.2012-10-06 from 001__elm20150422_191229__dat00.bin



Processed Wed Apr 22 21:19:47 2015 by ELM ver.2012-10-06 from 001__elm20150422_191229__dat00.bin



Processed Wed Apr 22 21:19:48 2015 by ELM ver.2012-10-06 from 001__elm20150422_191229__dat00.bin



Channel 0
mn: -63
mx: 39
 μ : -7.8
 σ : 14.7

Channel 1
mn: -191
mx: 156
 μ : -18.1
 σ : 42.6

Channel 2
mn: -122
mx: 71
 μ : -19.1
 σ : 19.8