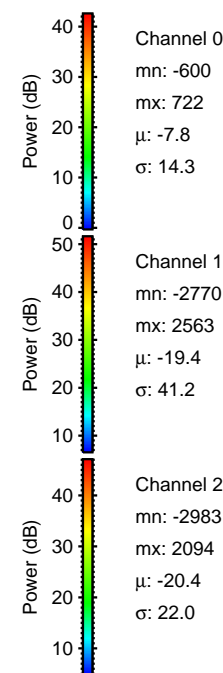
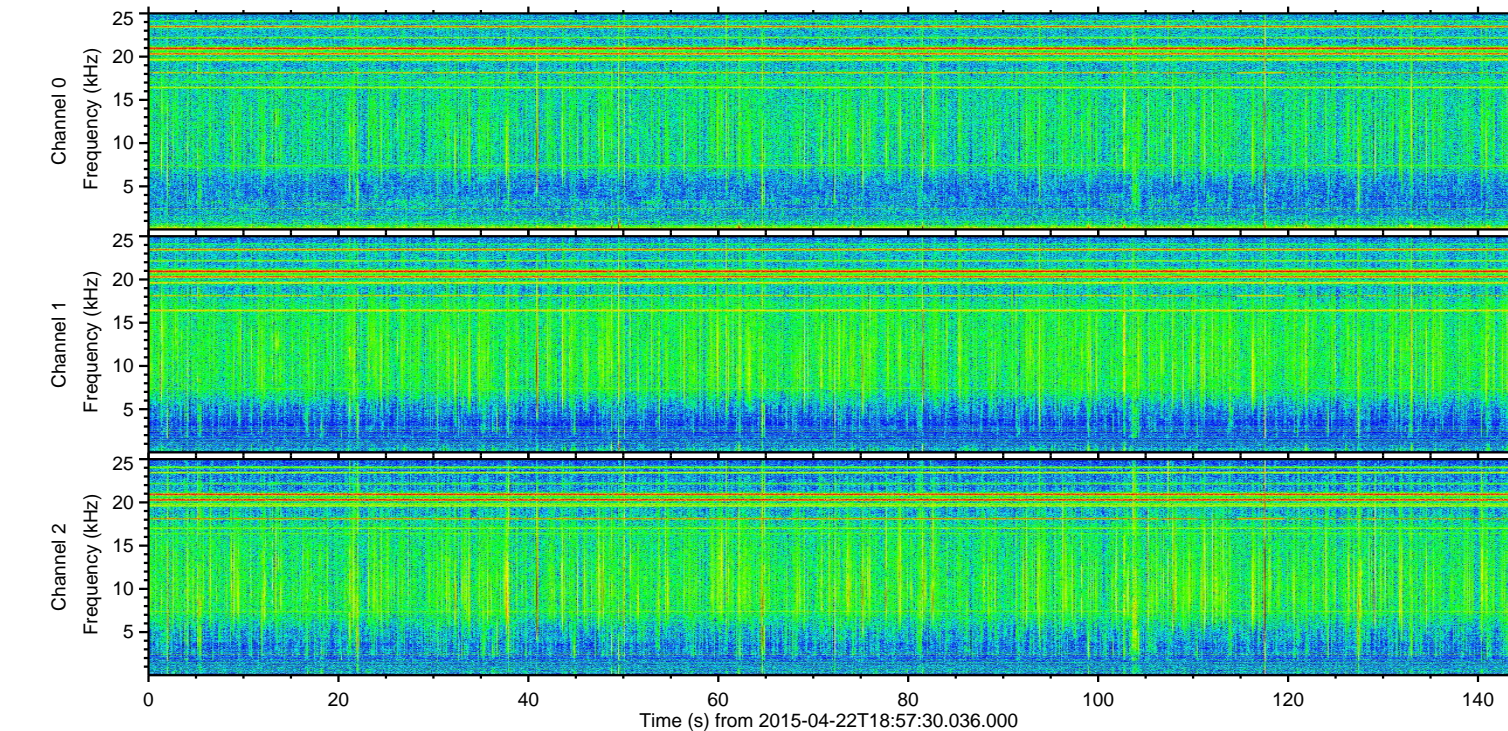
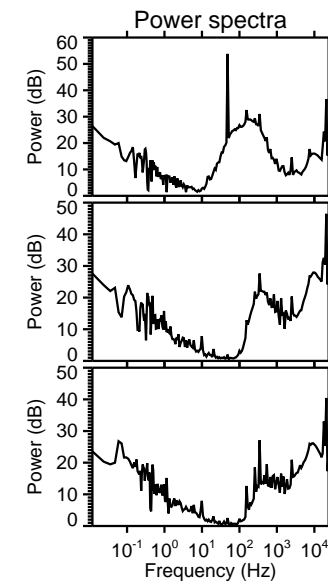
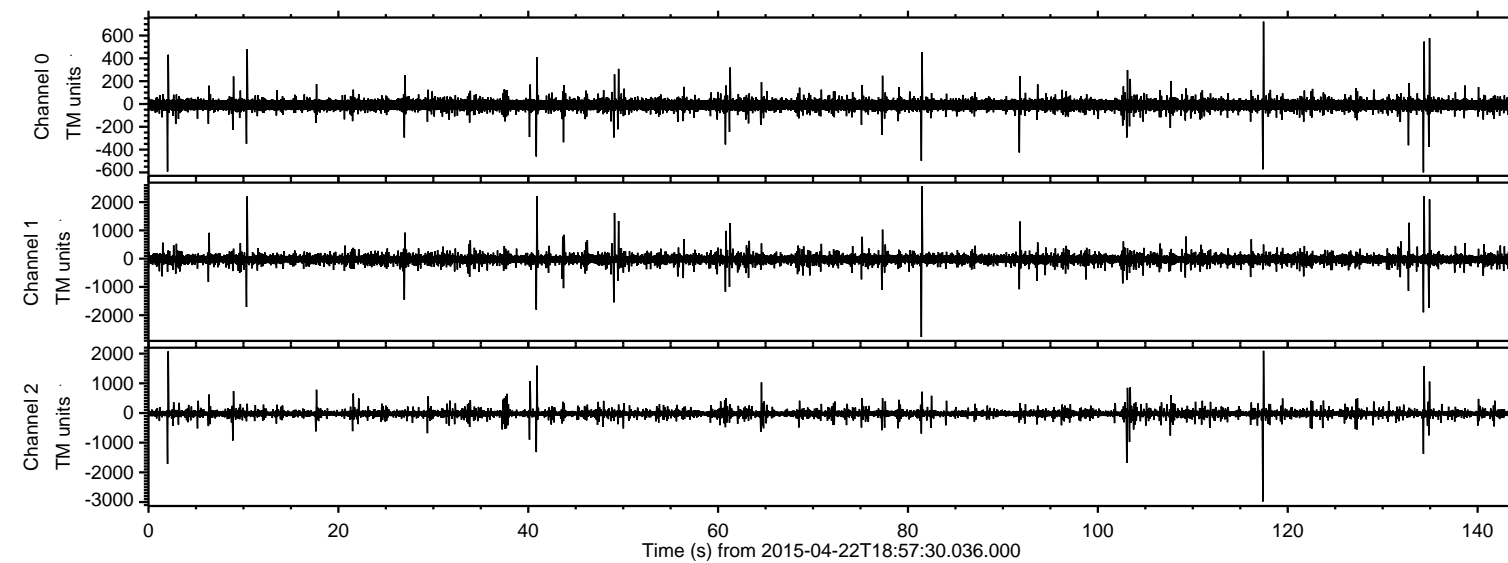


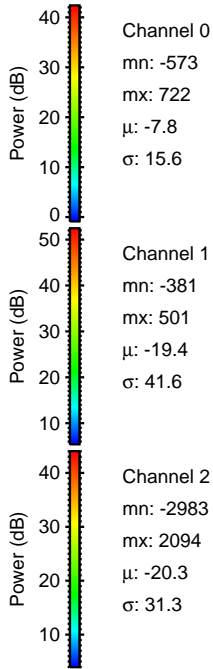
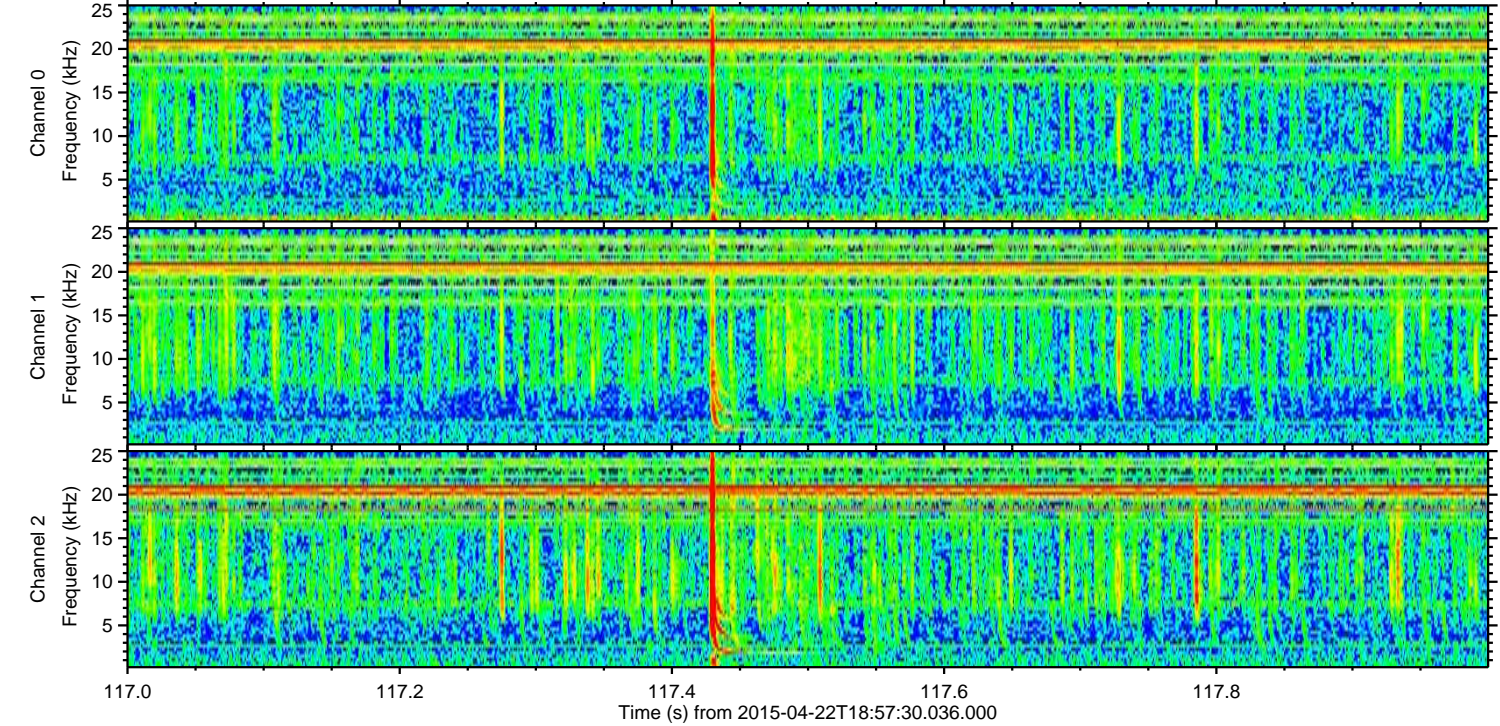
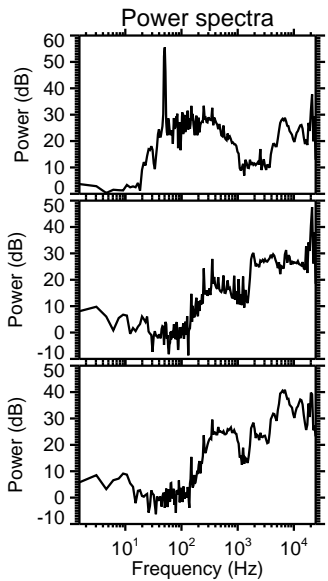
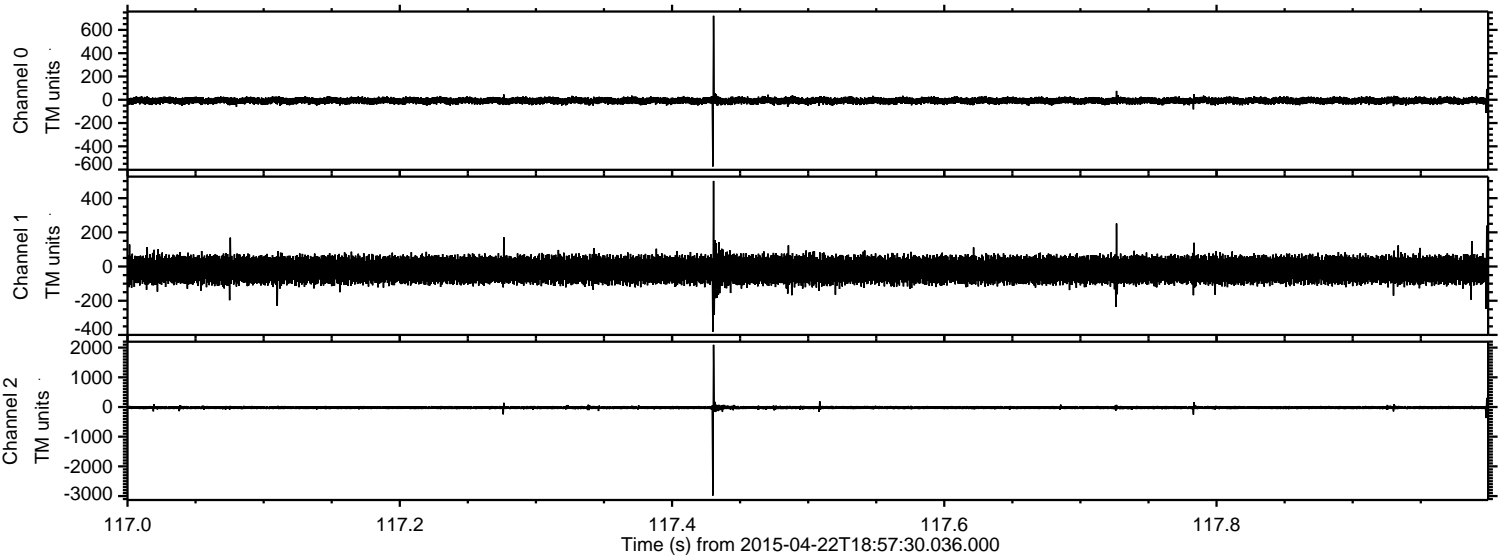
ELMAVAN 3D WAVEFORMS (Measured data sampled at 50 kHz) 49765 packets of 144 samples from 2015-04-22T18:57:30.036.000.

Processed Wed Apr 22 21:04:13 2015 by ELM ver.2012-10-06 from 001__elm20150422_185729__dat00.bin

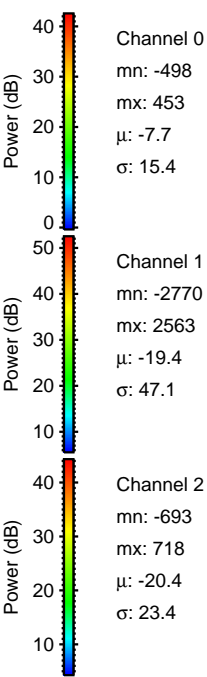
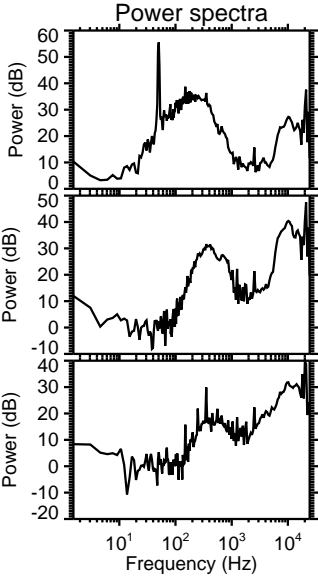
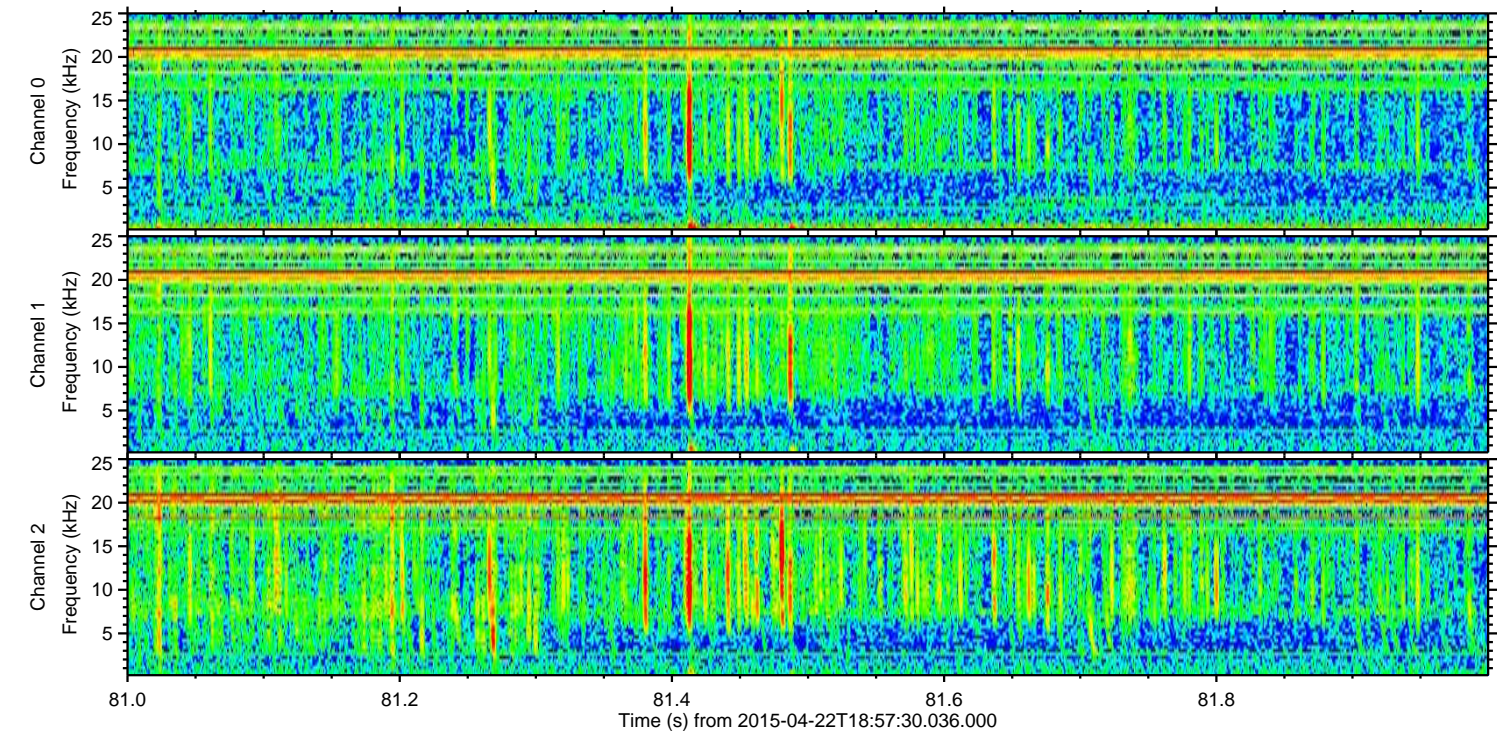
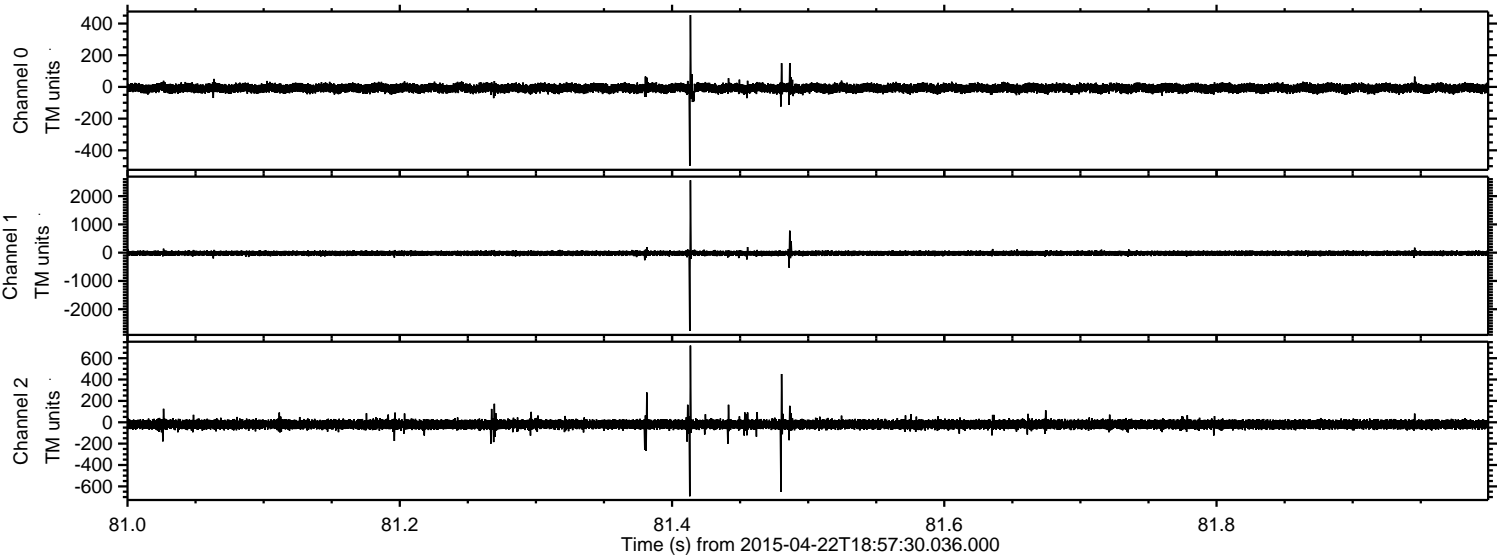


ELMAVAN 3D WAVEFORMS (Measured data sampled at 50 kHz) 49765 packets of 144 samples from 2015-04-22T18:57:30.036.000. Part 118/144

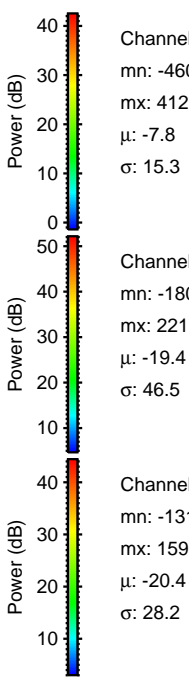
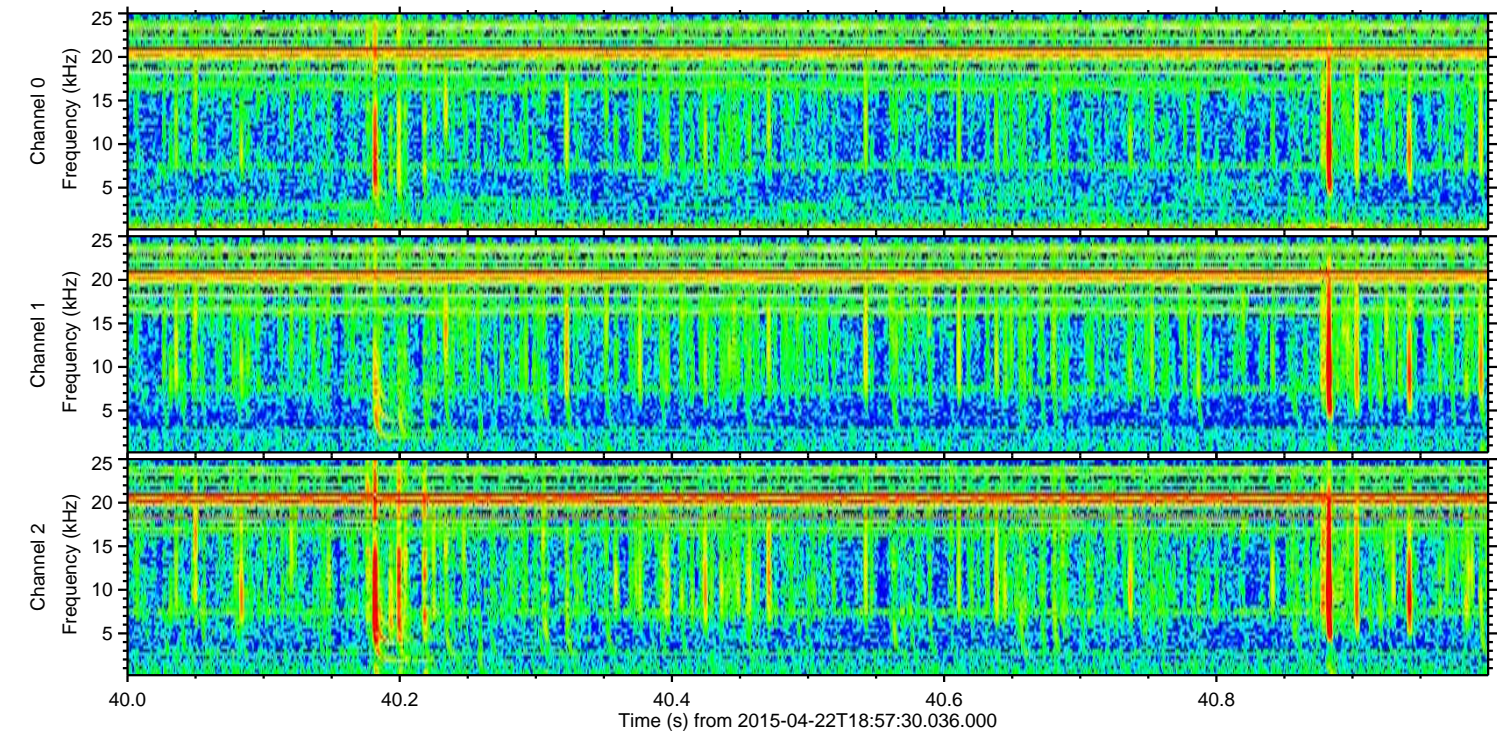
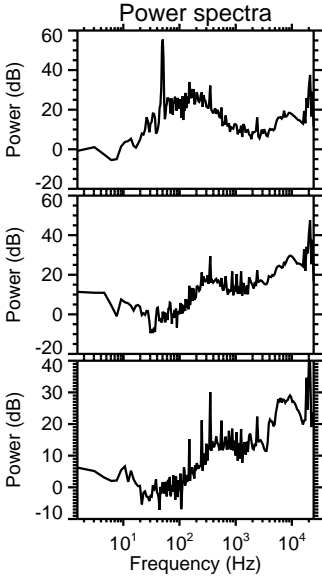
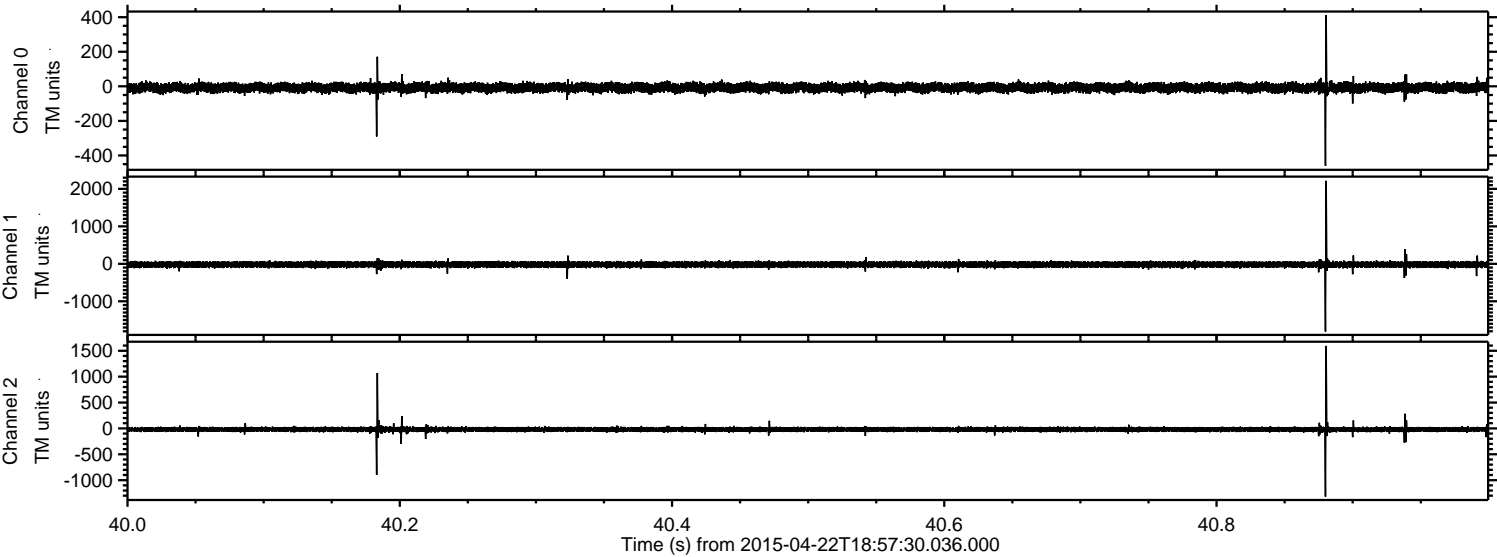
Processed Wed Apr 22 21:04:24 2015 by ELM ver.2012-10-06 from 001__elm20150422_185729__dat00.bin



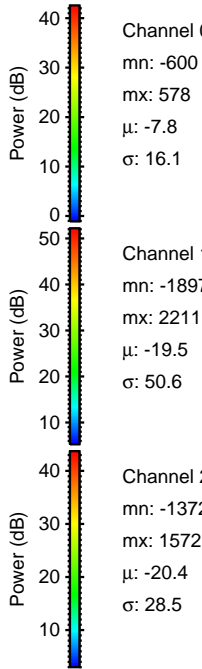
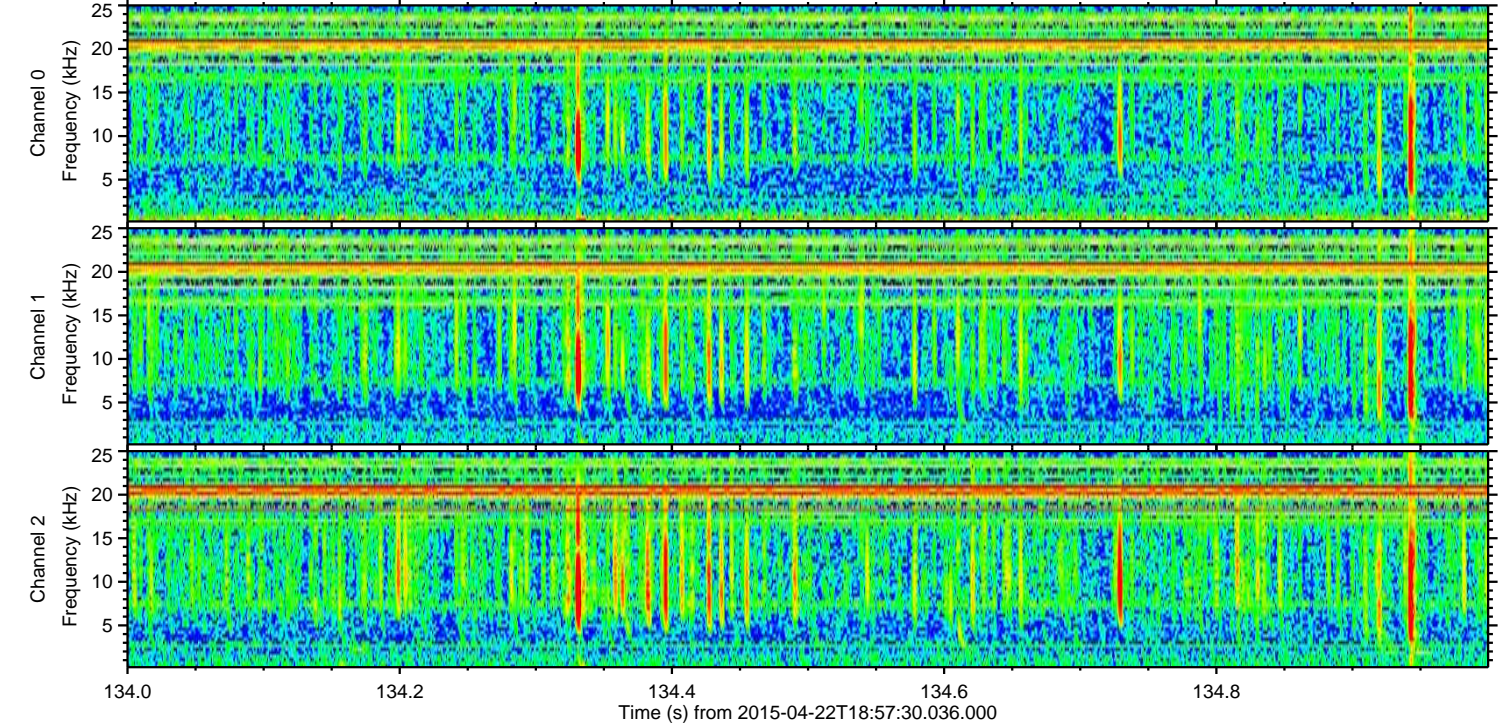
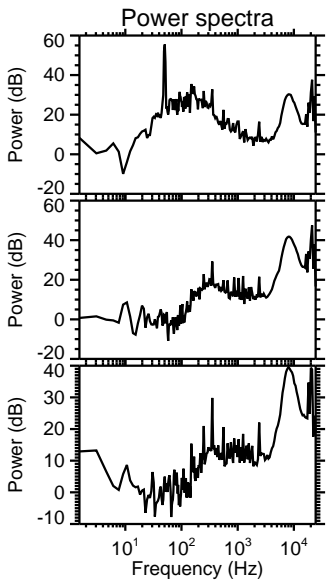
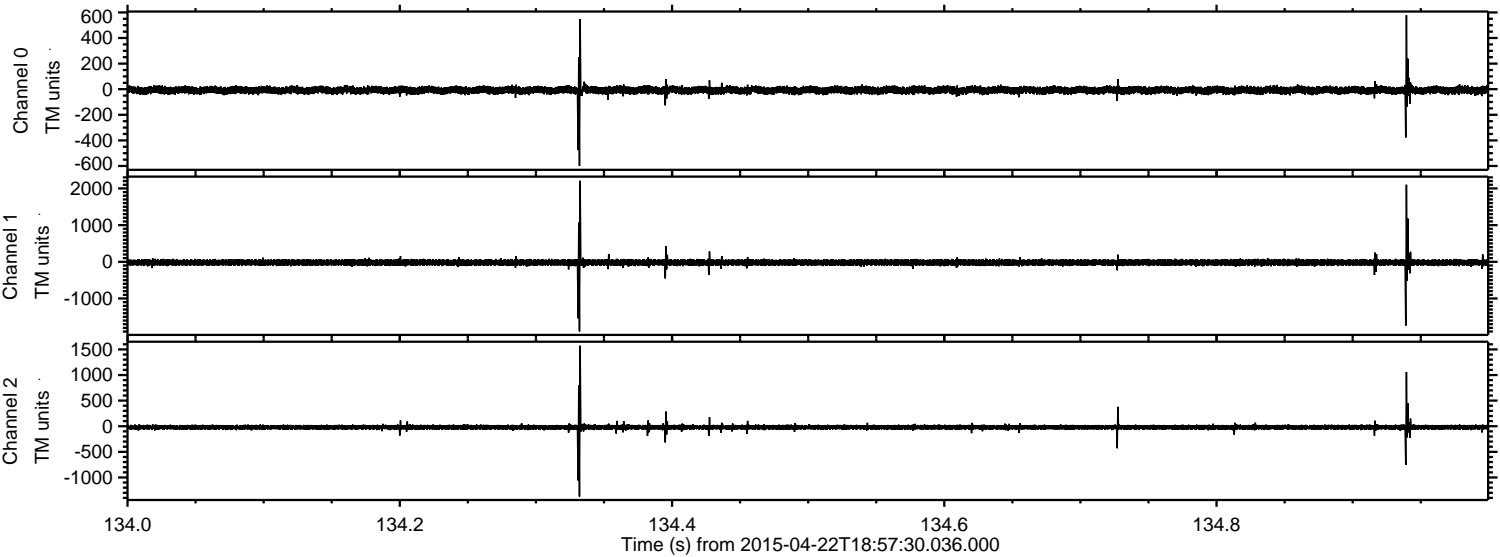
Processed Wed Apr 22 21:04:25 2015 by ELM ver.2012-10-06 from 001__elm20150422_185729__dat00.bin



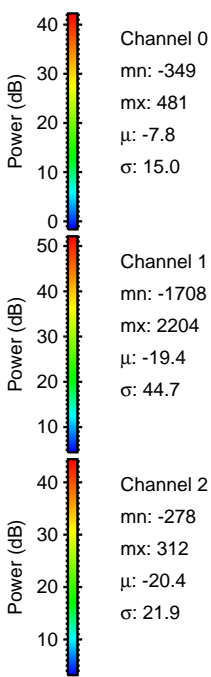
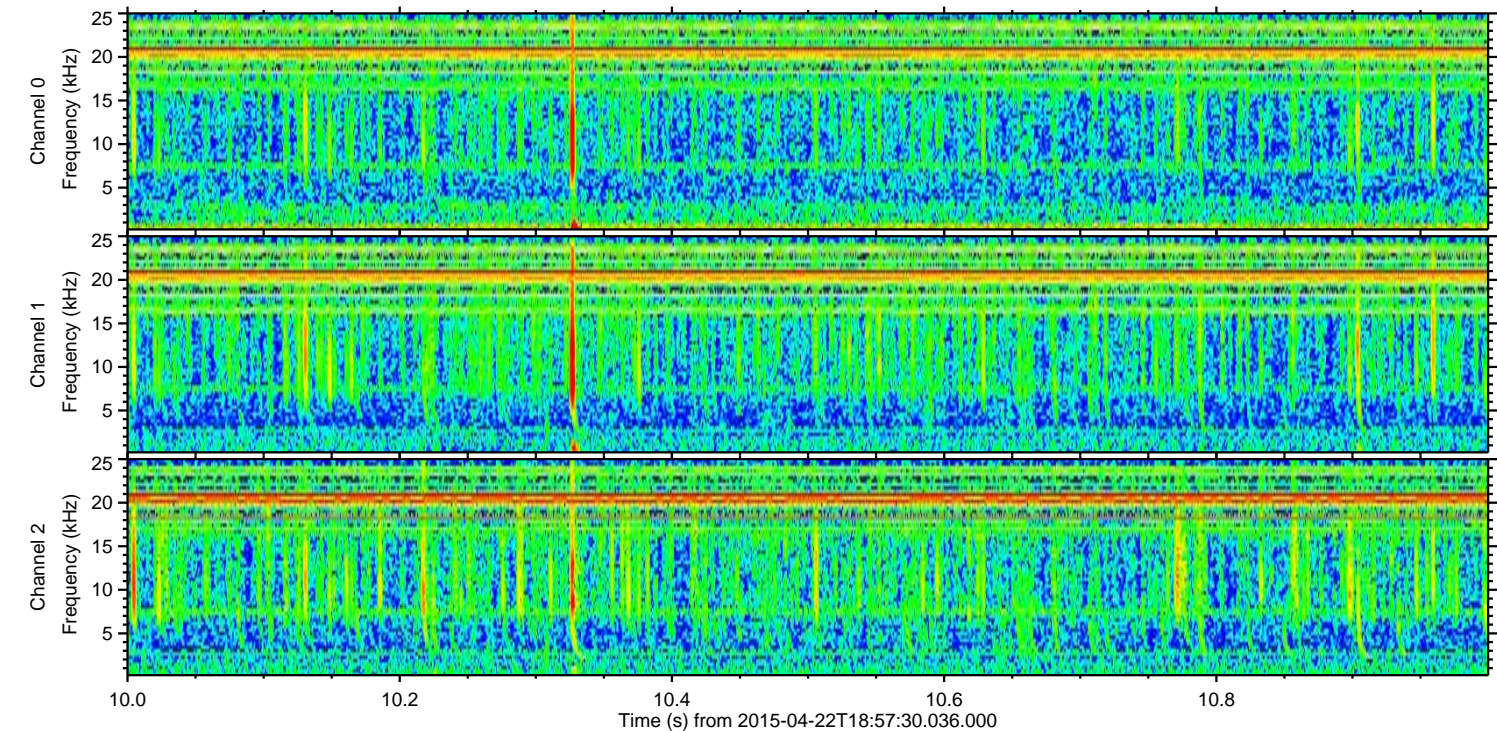
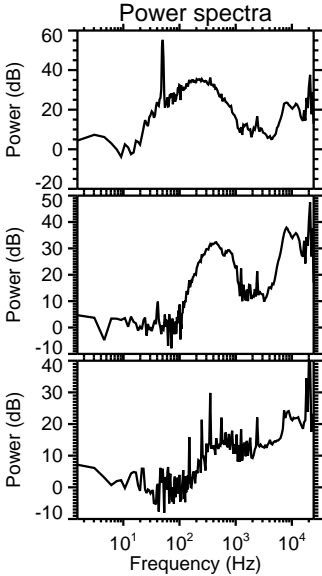
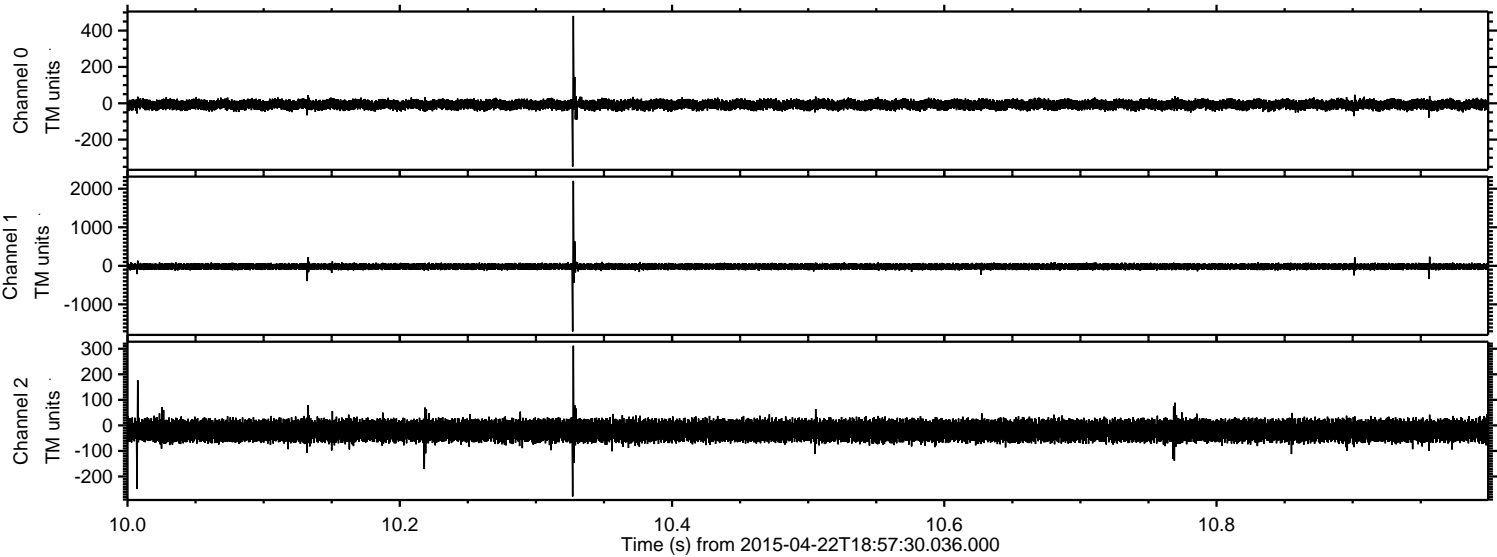
Processed Wed Apr 22 21:04:26 2015 by ELM ver.2012-10-06 from 001__elm20150422_185729__dat00.bin



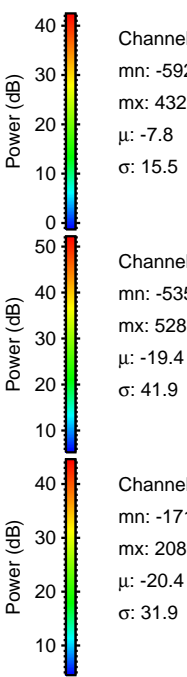
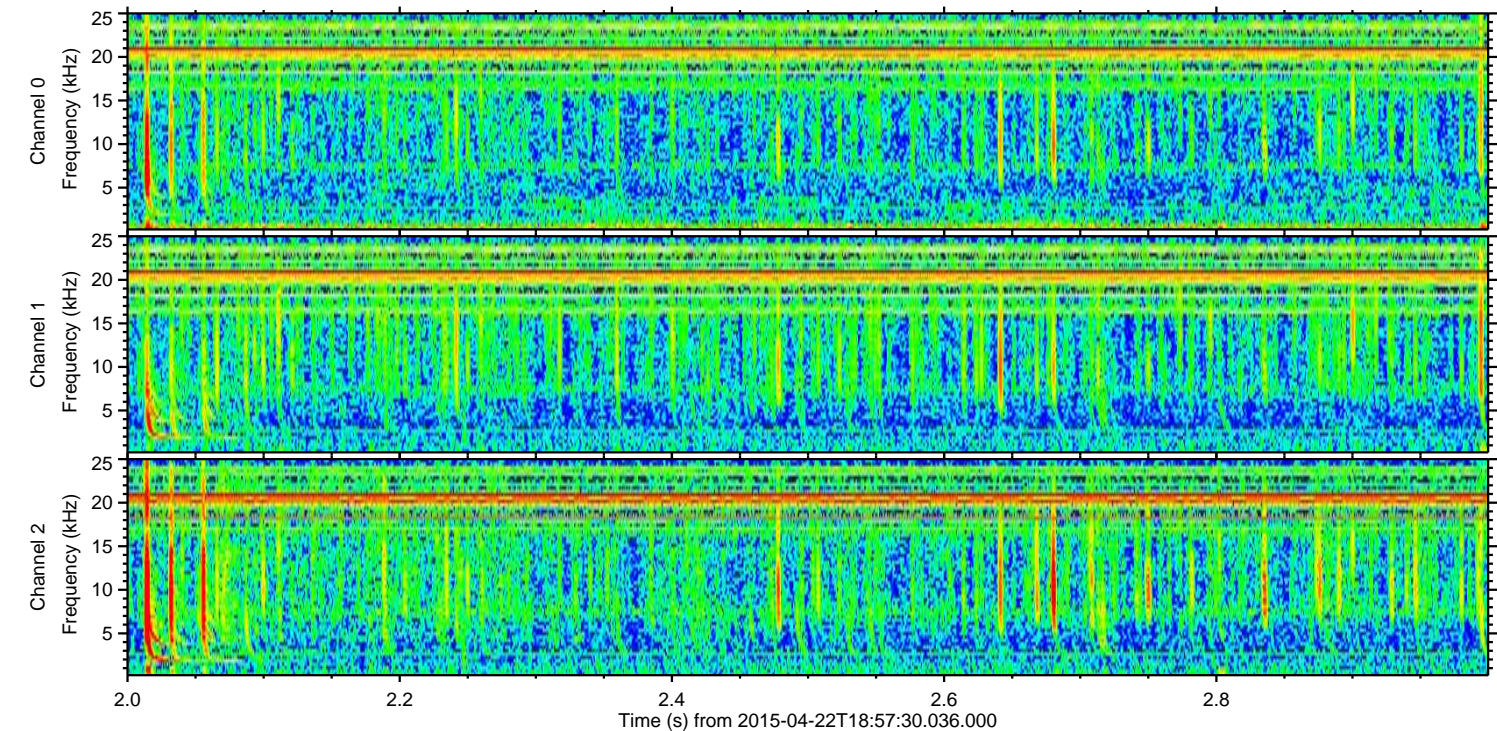
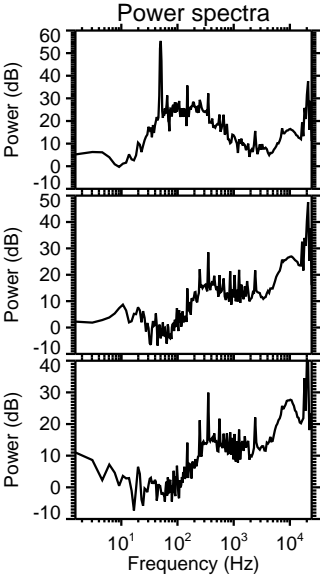
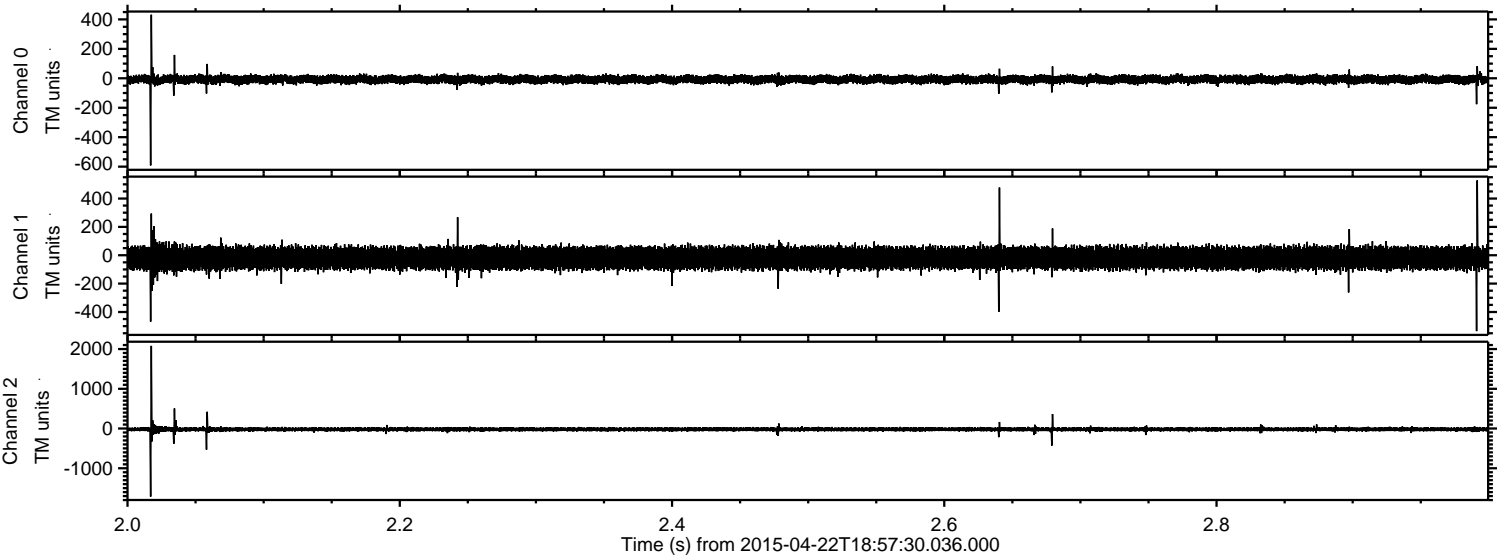
Processed Wed Apr 22 21:04:27 2015 by ELM ver.2012-10-06 from 001__elm20150422_185729__dat00.bin



Processed Wed Apr 22 21:04:28 2015 by ELM ver.2012-10-06 from 001__elm20150422_185729__dat00.bin

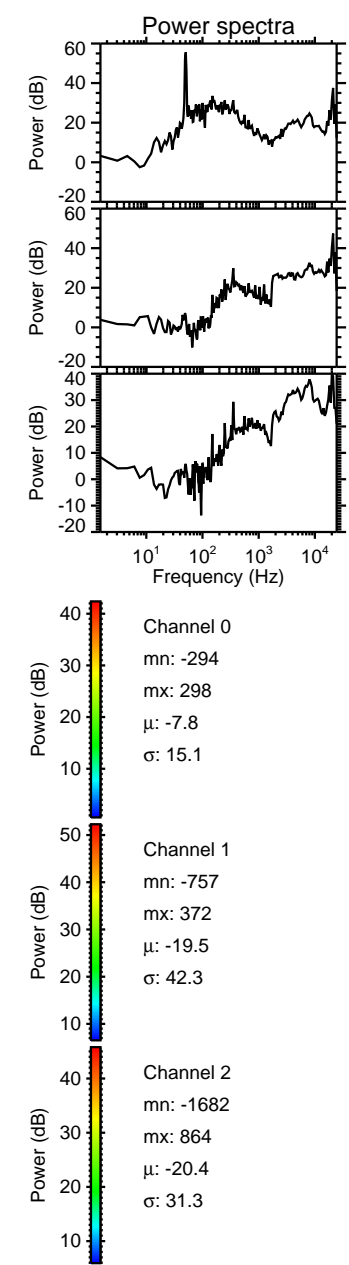
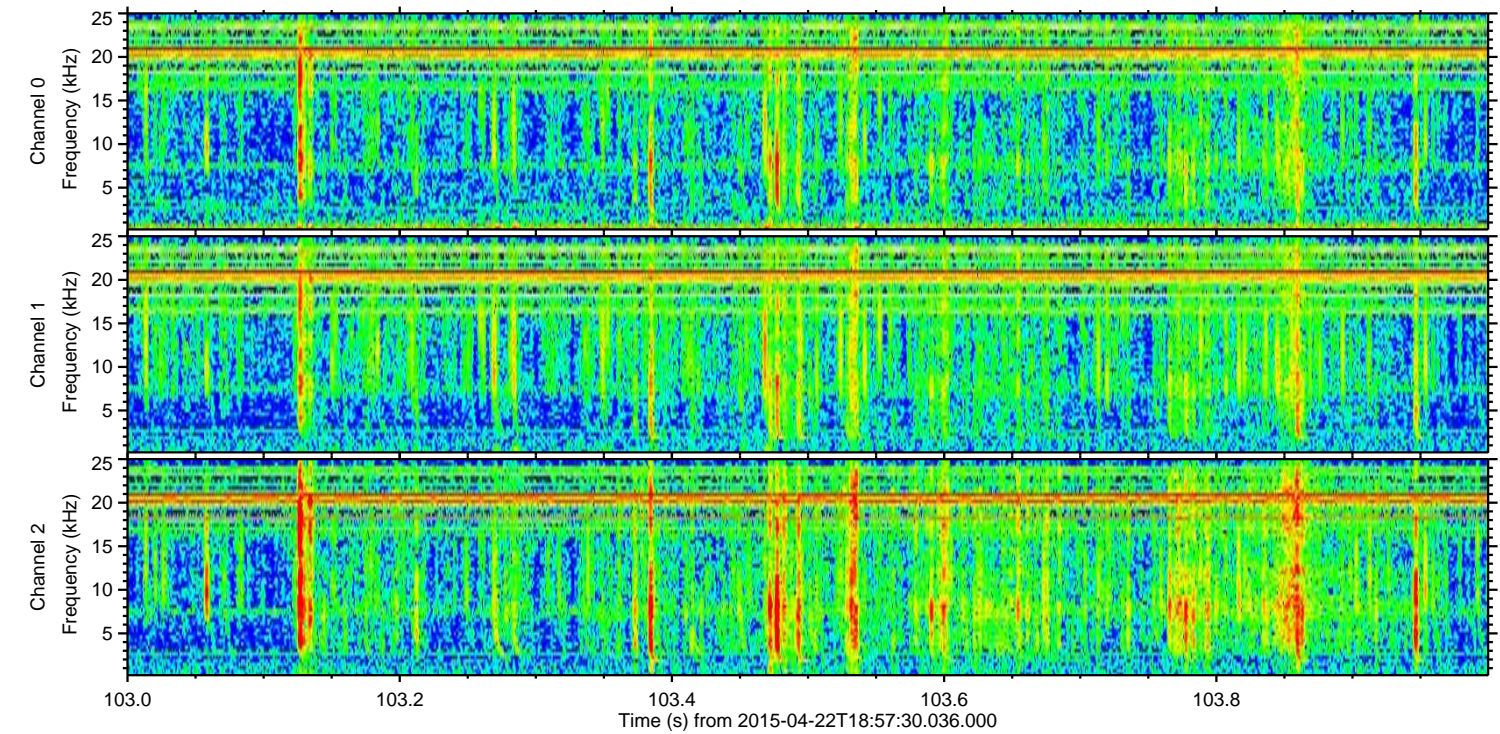
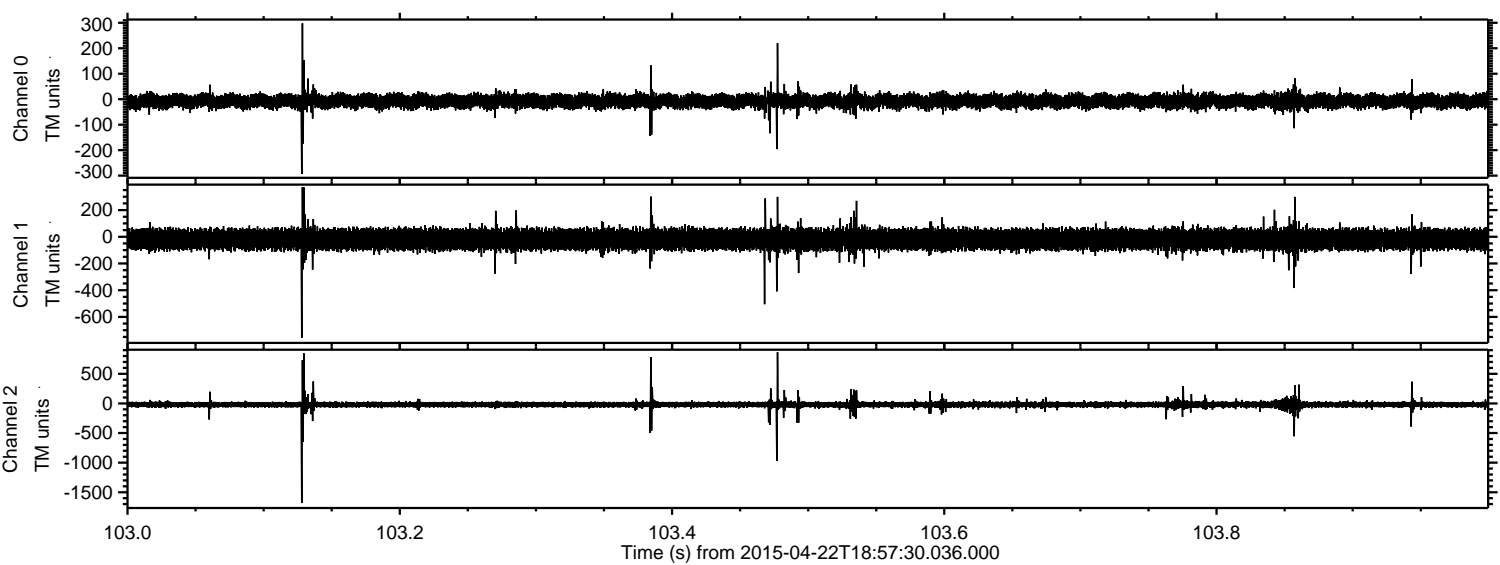


Processed Wed Apr 22 21:04:29 2015 by ELM ver.2012-10-06 from 001__elm20150422_185729__dat00.bin

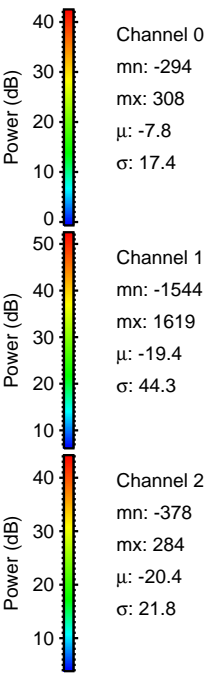
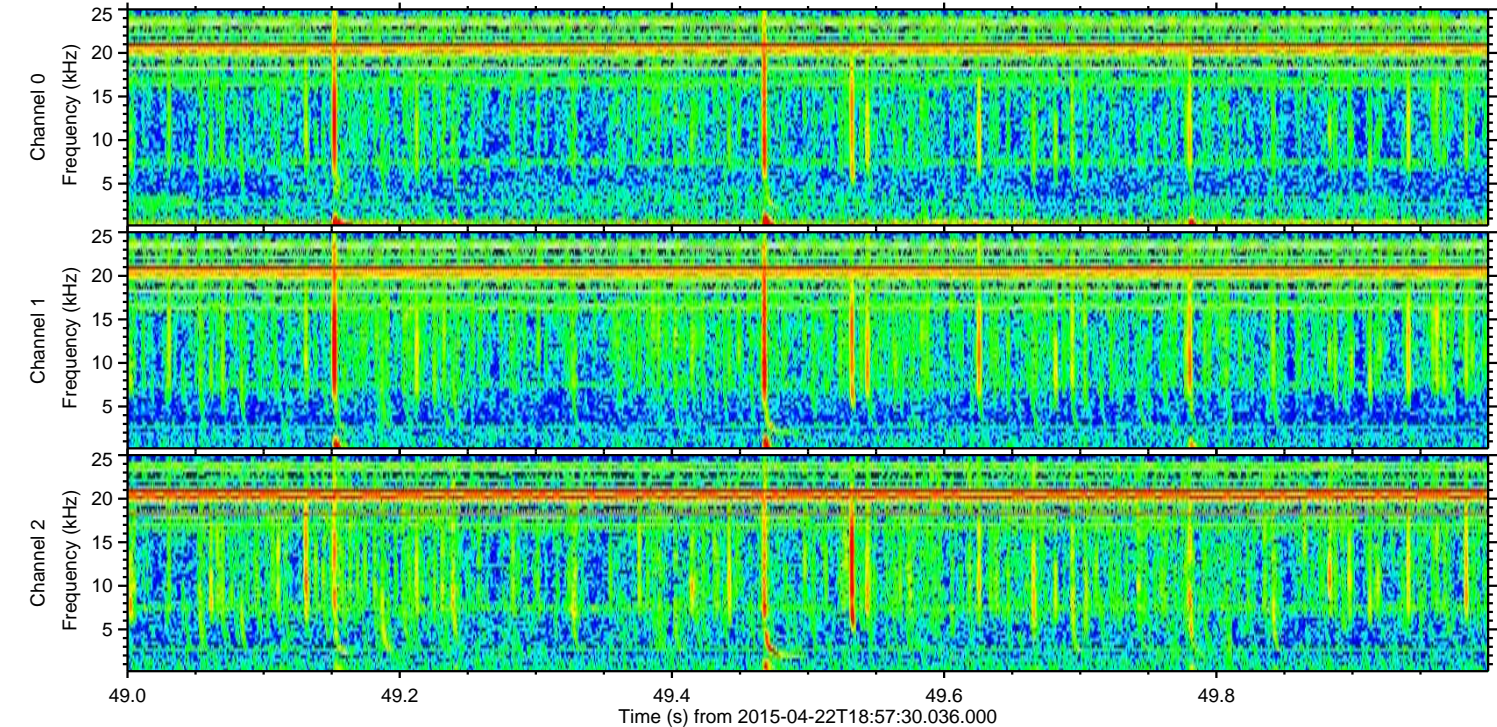
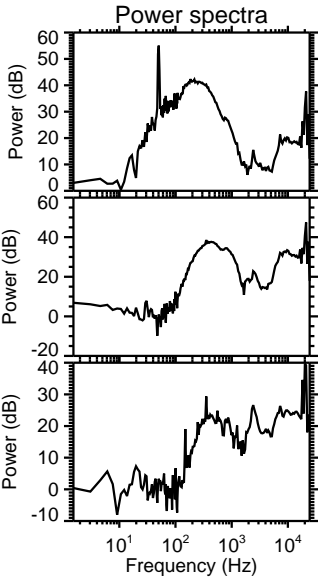
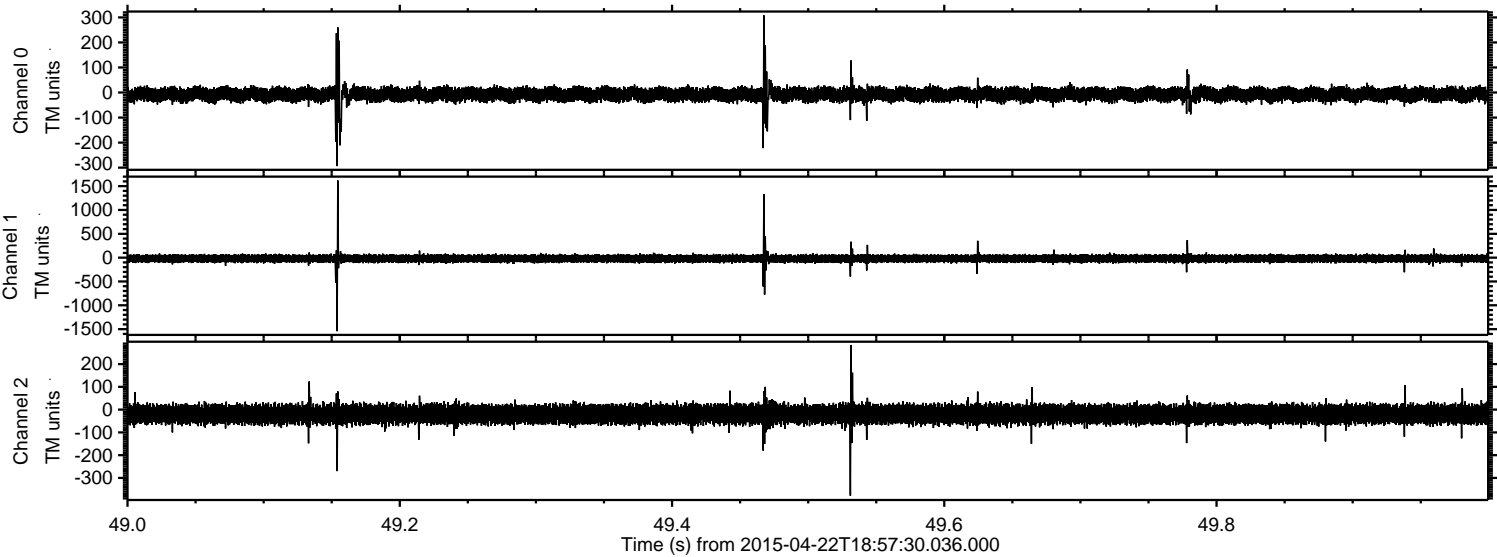


ELMAVAN 3D WAVEFORMS (Measured data sampled at 50 kHz) 49765 packets of 144 samples from 2015-04-22T18:57:30.036.000. Part 104/144

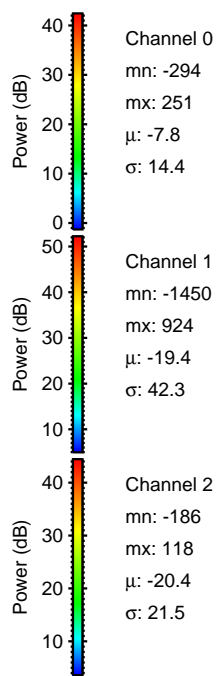
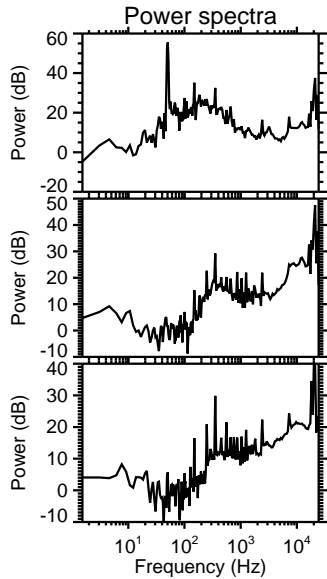
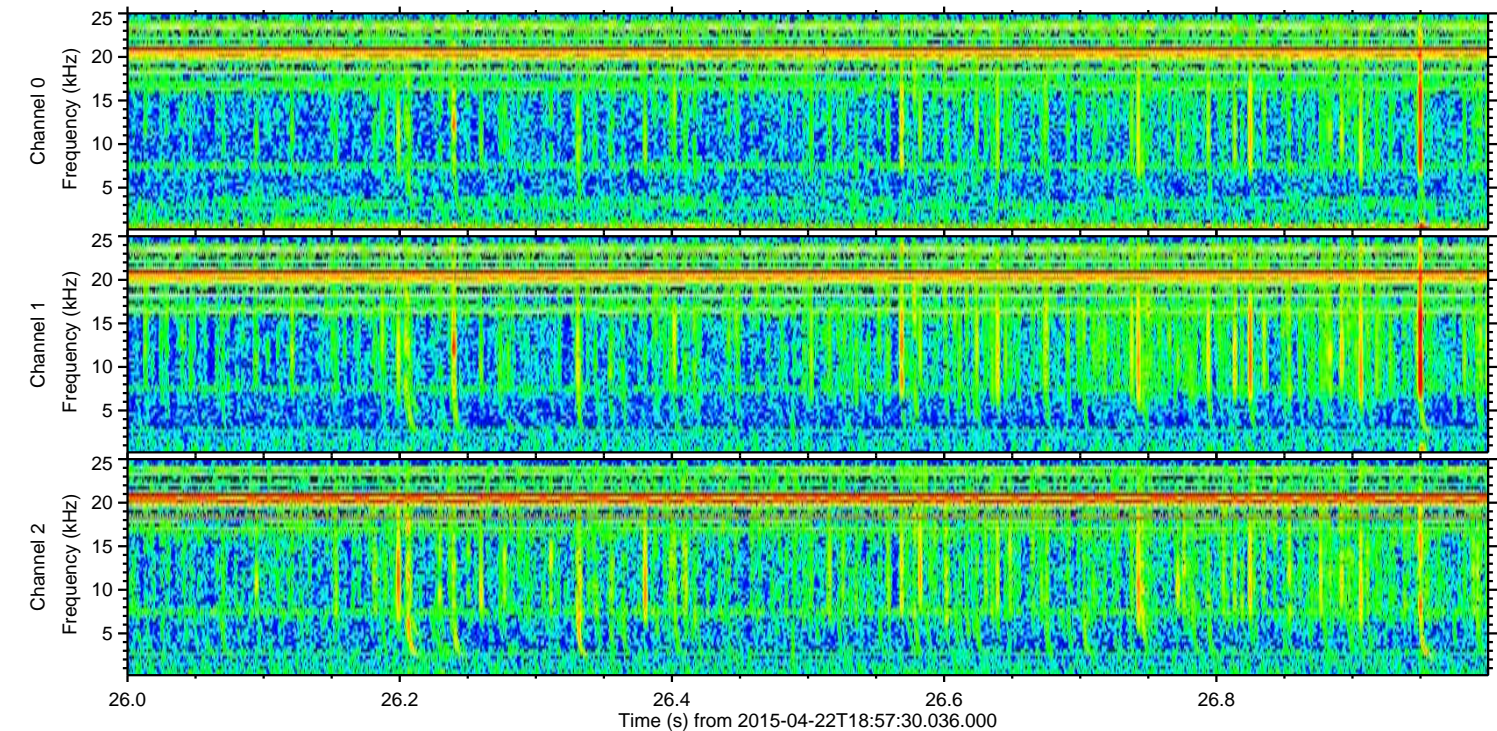
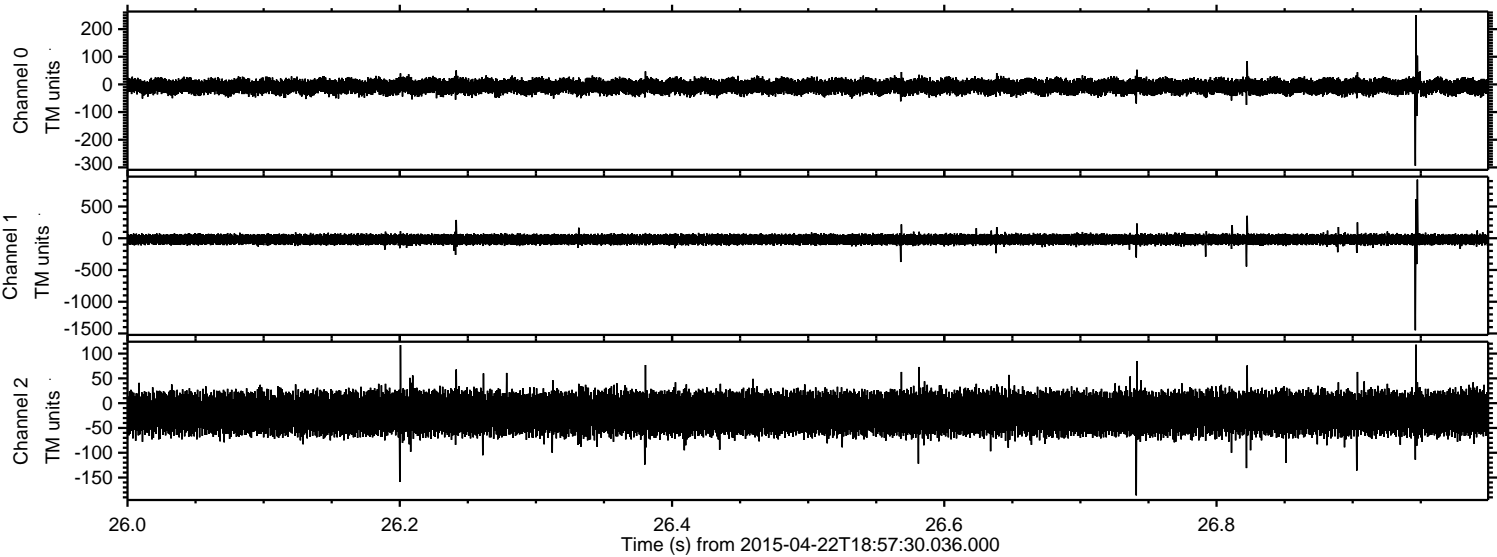
Processed Wed Apr 22 21:04:30 2015 by ELM ver.2012-10-06 from 001__elm20150422_185729__dat00.bin



Processed Wed Apr 22 21:04:31 2015 by ELM ver.2012-10-06 from 001__elm20150422_185729__dat00.bin



Processed Wed Apr 22 21:04:32 2015 by ELM ver.2012-10-06 from 001__elm20150422_185729__dat00.bin



Channel 0
mn: -294
mx: 251
 μ : -7.8
 σ : 14.4

Channel 1
mn: -1450
mx: 924
 μ : -19.4
 σ : 42.3

Channel 2
mn: -186
mx: 118
 μ : -20.4
 σ : 21.5

Processed Wed Apr 22 21:04:33 2015 by ELM ver.2012-10-06 from 001__elm20150422_185729__dat00.bin

