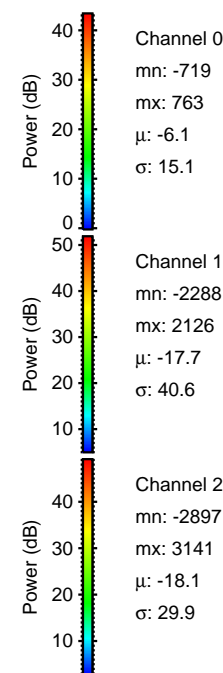
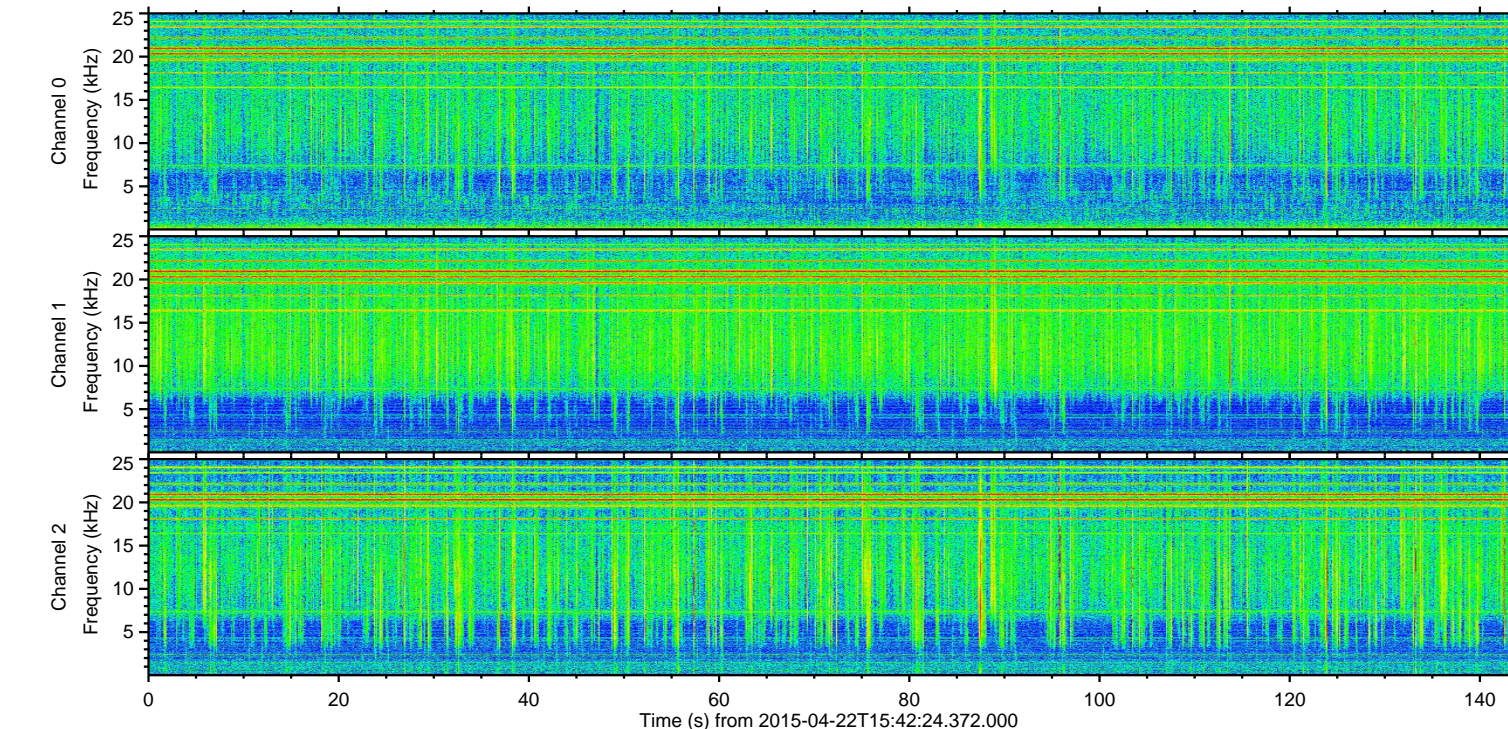
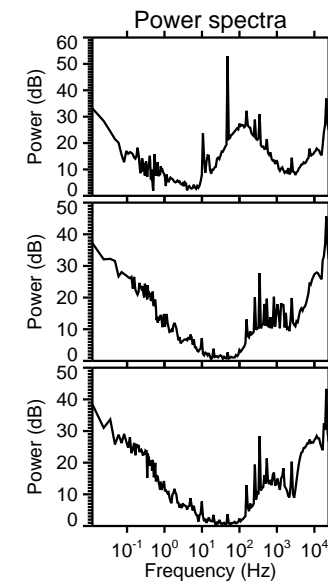
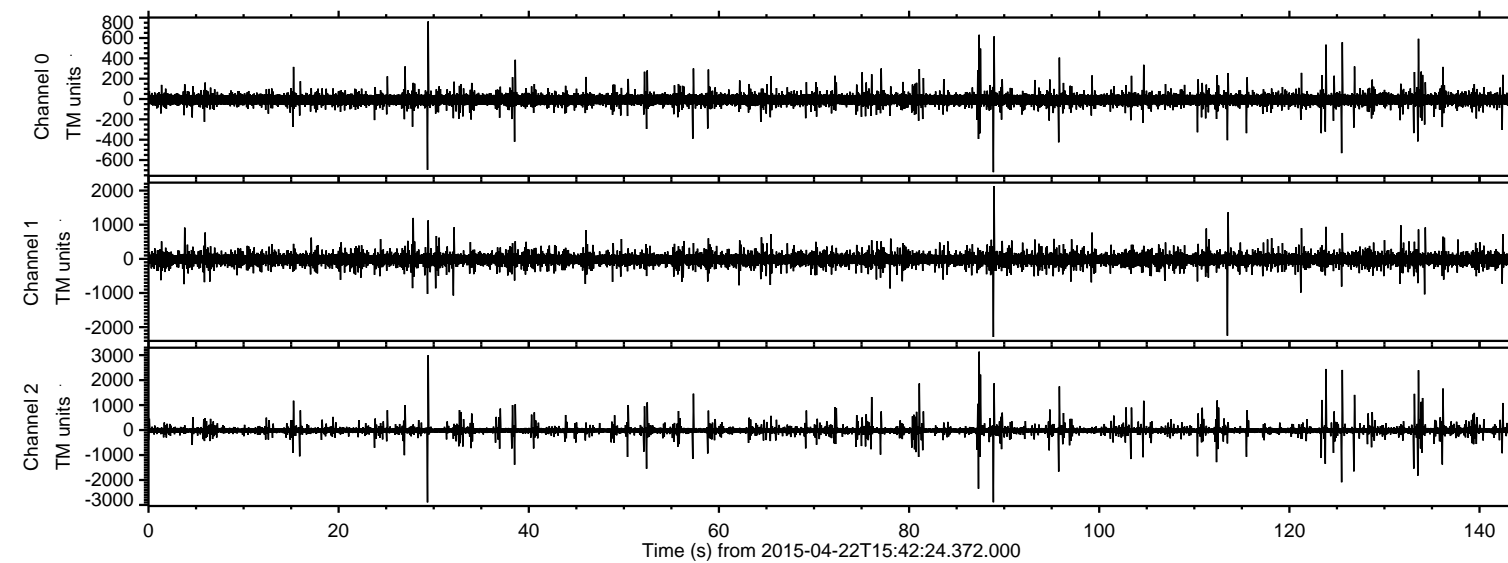
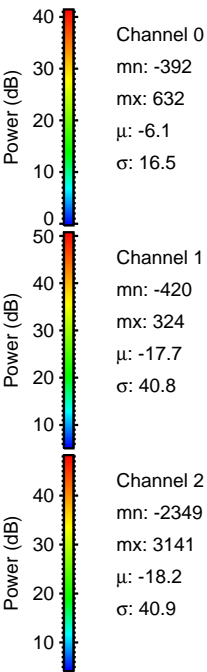
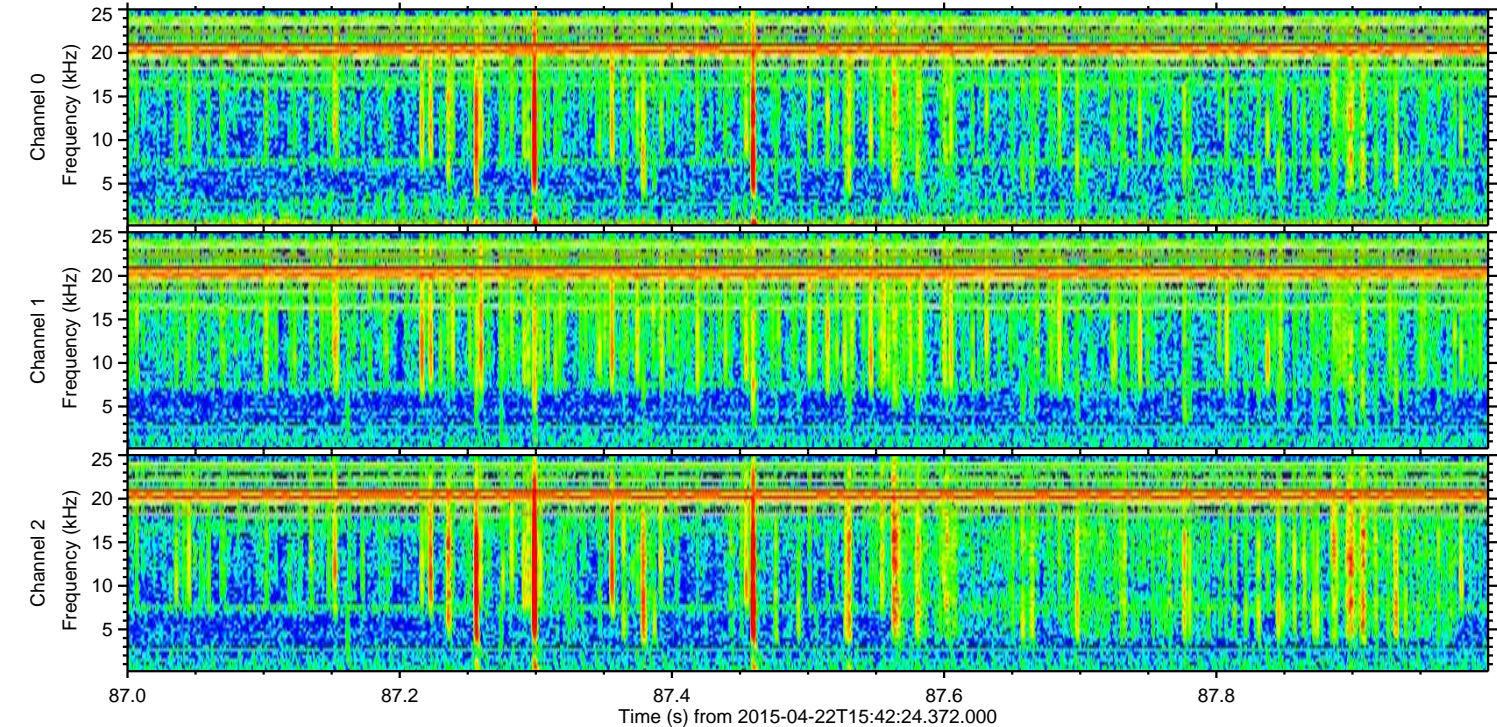
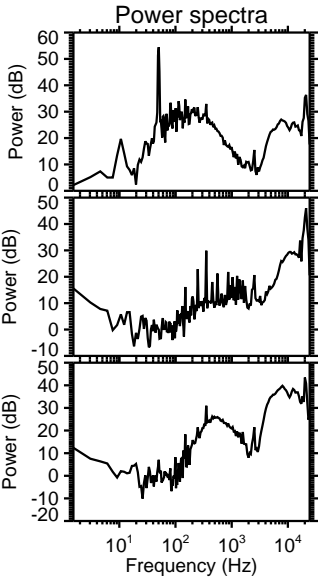
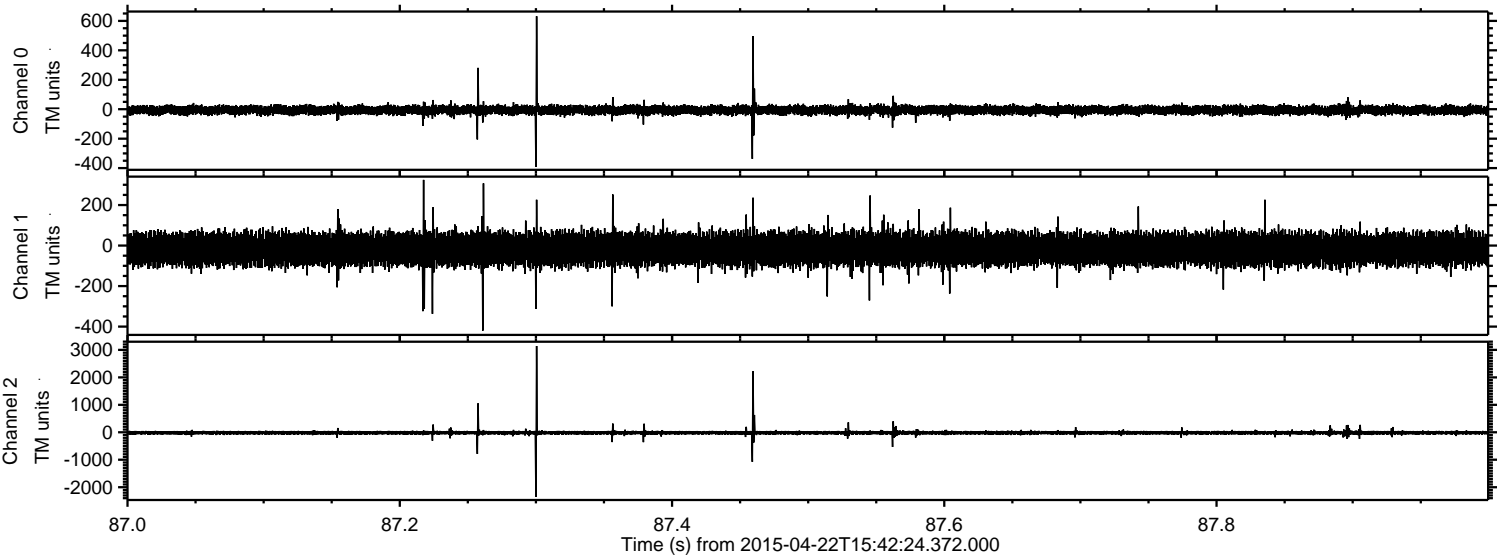


ELMAVAN 3D WAVEFORMS (Measured data sampled at 50 kHz) 49693 packets of 144 samples from 2015-04-22T15:42:24.372.000.

Processed Wed Apr 22 17:49:31 2015 by ELM ver.2012-10-06 from 001__elm20150422_154223__dat00.bin



Processed Wed Apr 22 17:49:42 2015 by ELM ver.2012-10-06 from 001__elm20150422_154223__dat00.bin

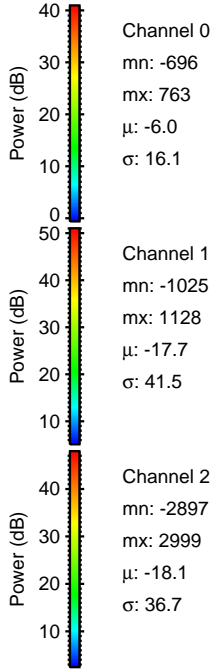
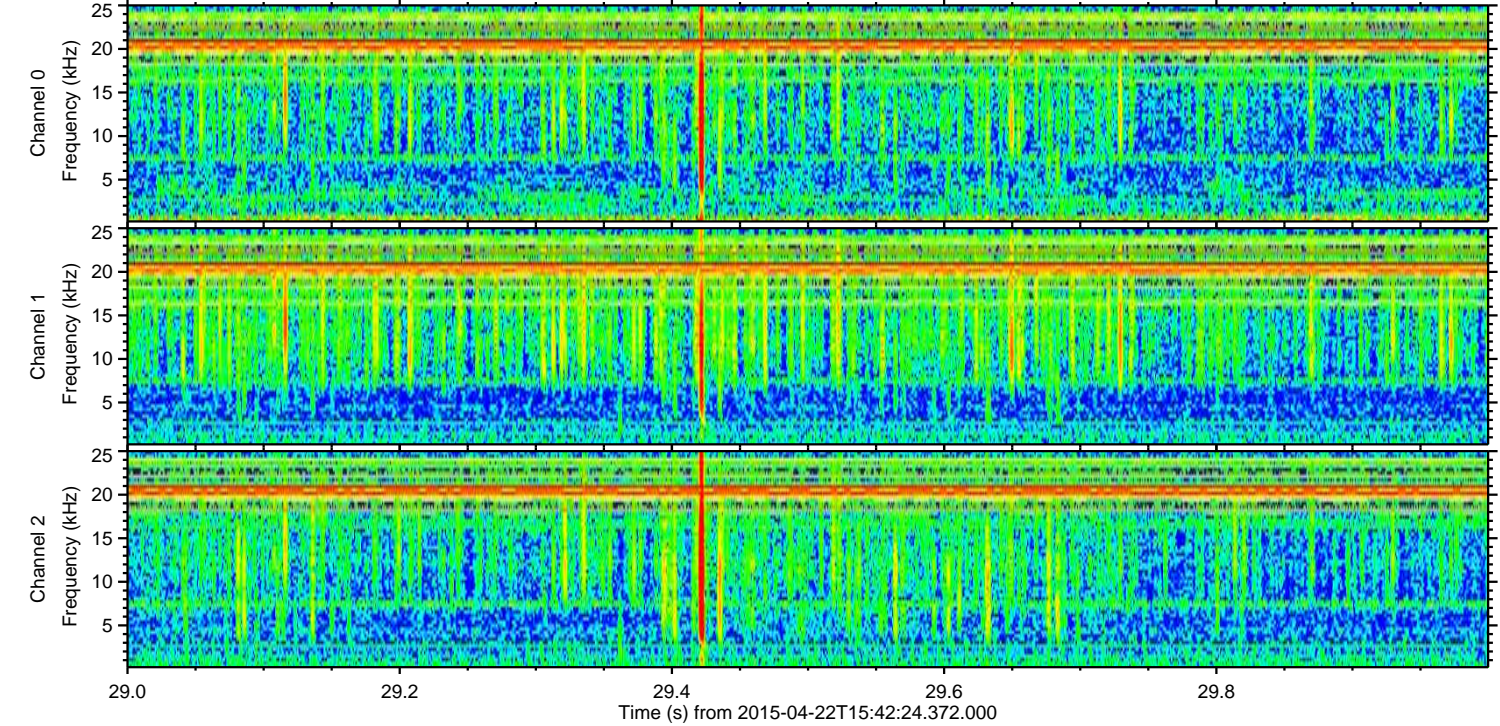
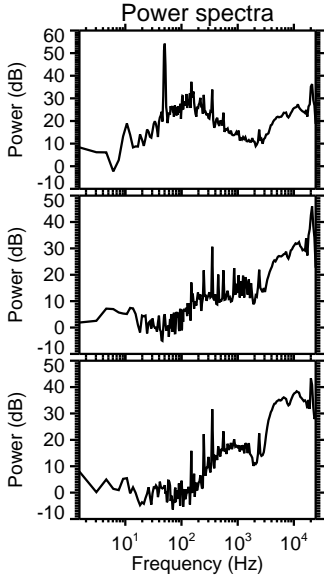
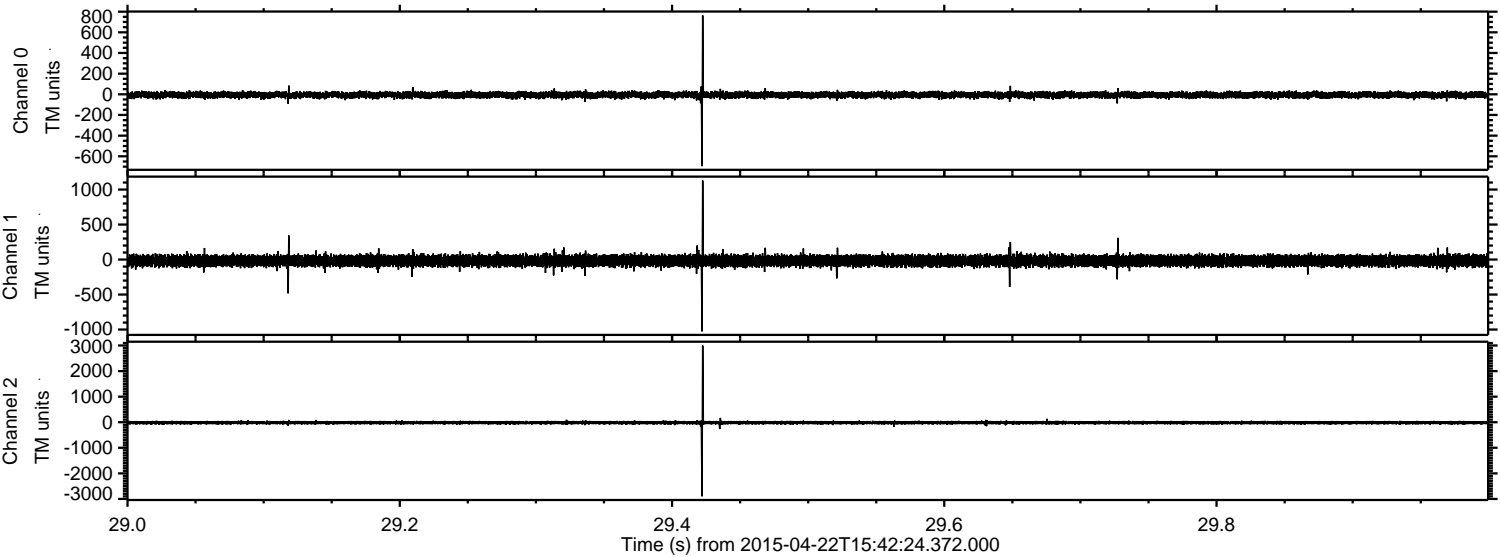


Channel 0
mn: -392
mx: 632
 μ : -6.1
 σ : 16.5

Channel 1
mn: -420
mx: 324
 μ : -17.7
 σ : 40.8

Channel 2
mn: -2349
mx: 3141
 μ : -18.2
 σ : 40.9

Processed Wed Apr 22 17:49:43 2015 by ELM ver.2012-10-06 from 001__elm20150422_154223__dat00.bin

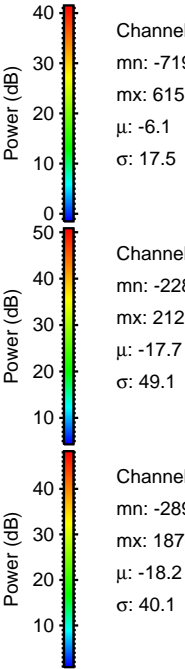
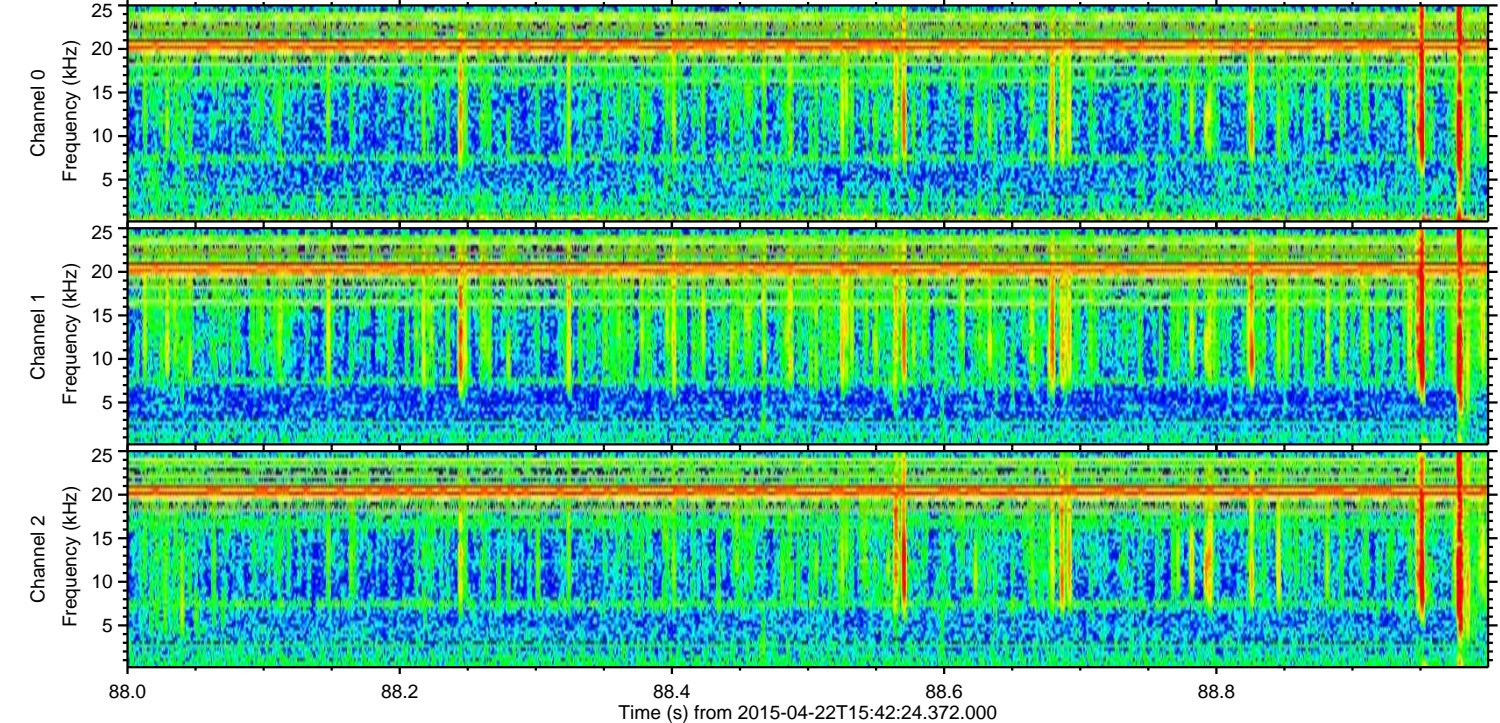
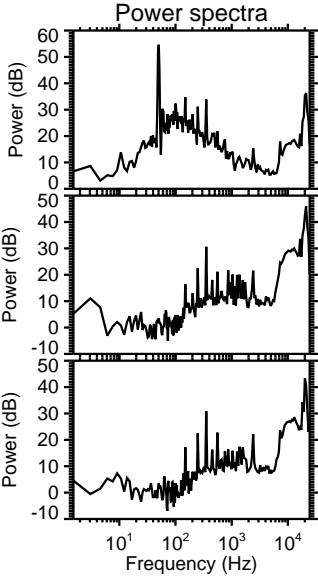
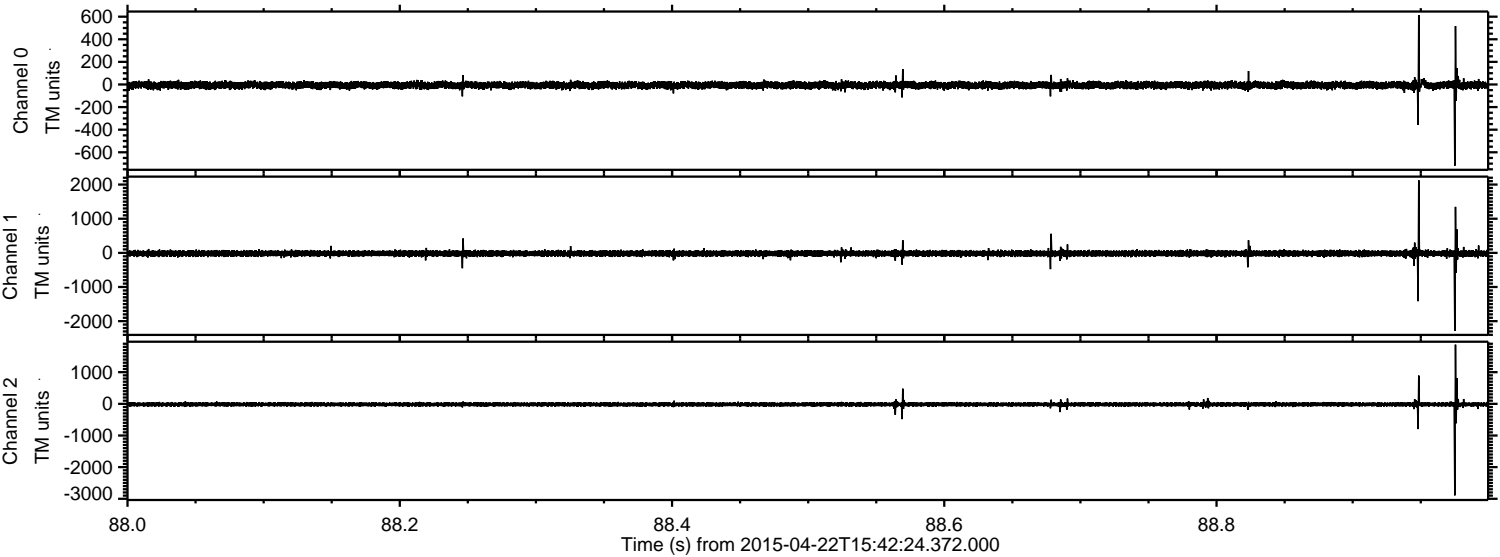


Channel 0
mn: -696
mx: 763
 μ : -6.0
 σ : 16.1

Channel 1
mn: -1025
mx: 1128
 μ : -17.7
 σ : 41.5

Channel 2
mn: -2897
mx: 2999
 μ : -18.1
 σ : 36.7

Processed Wed Apr 22 17:49:44 2015 by ELM ver.2012-10-06 from 001__elm20150422_154223__dat00.bin



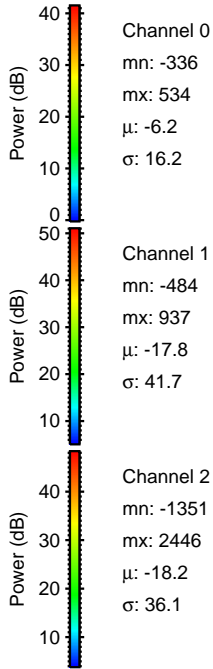
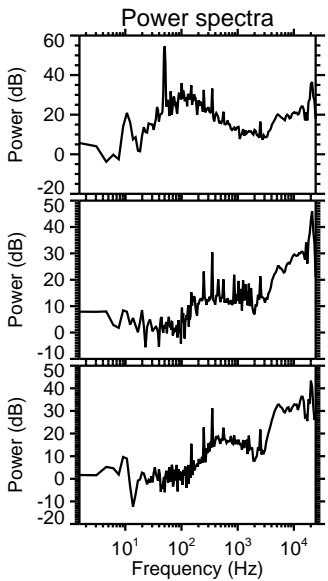
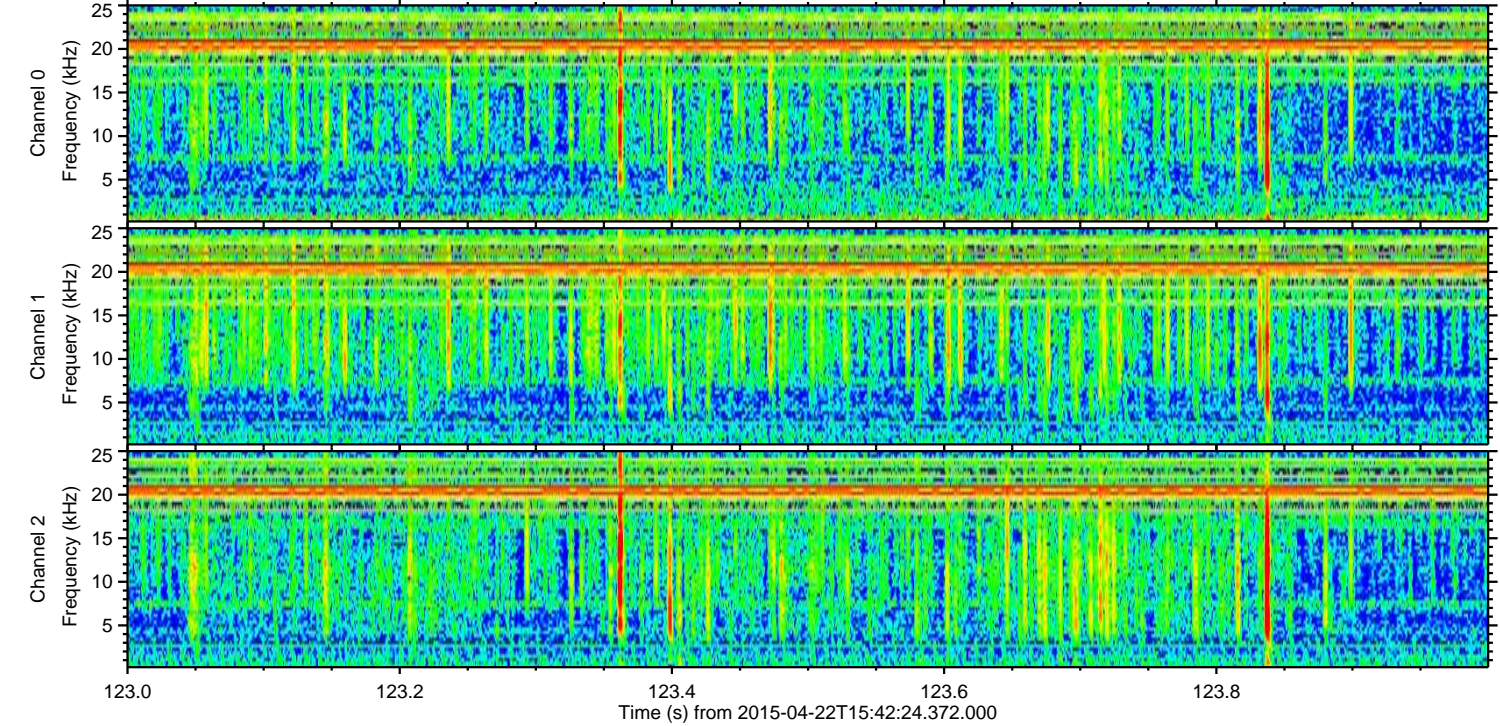
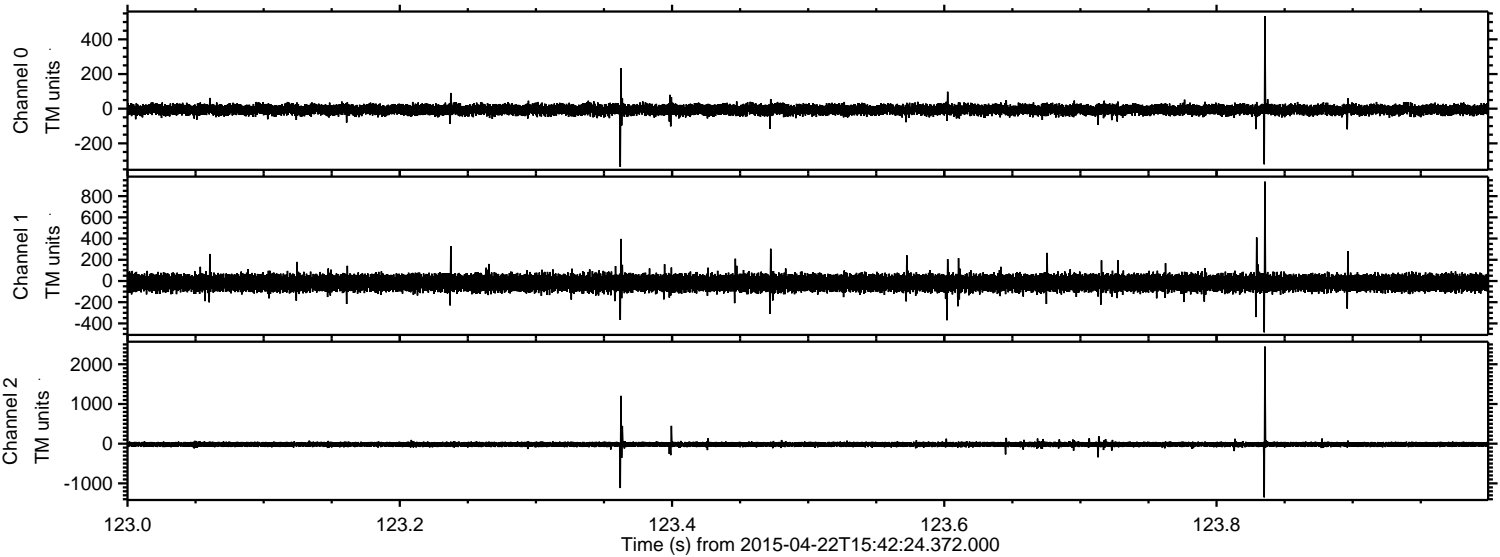
Channel 0
mn: -719
mx: 615
 μ : -6.1
 σ : 17.5

Channel 1
mn: -2288
mx: 2126
 μ : -17.7
 σ : 49.1

Channel 2
mn: -2894
mx: 1870
 μ : -18.2
 σ : 40.1

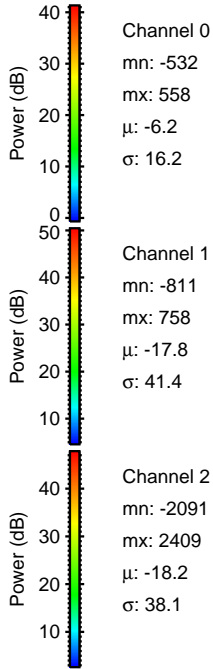
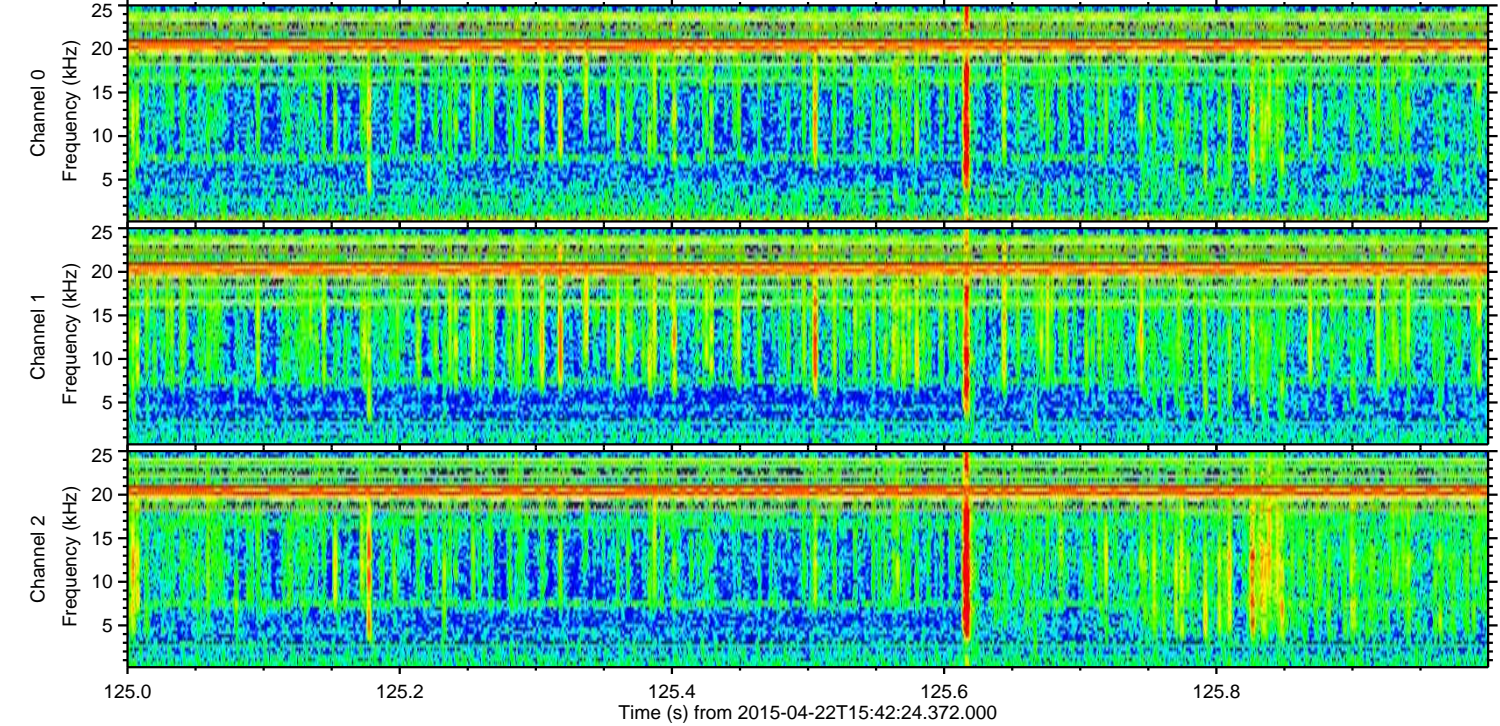
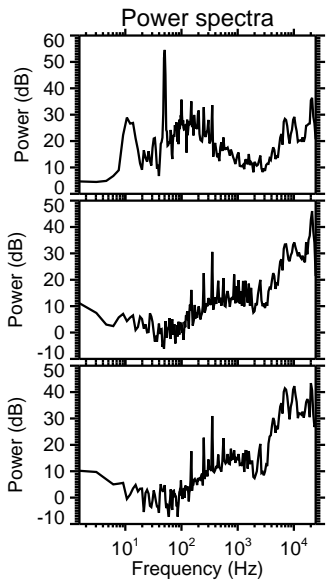
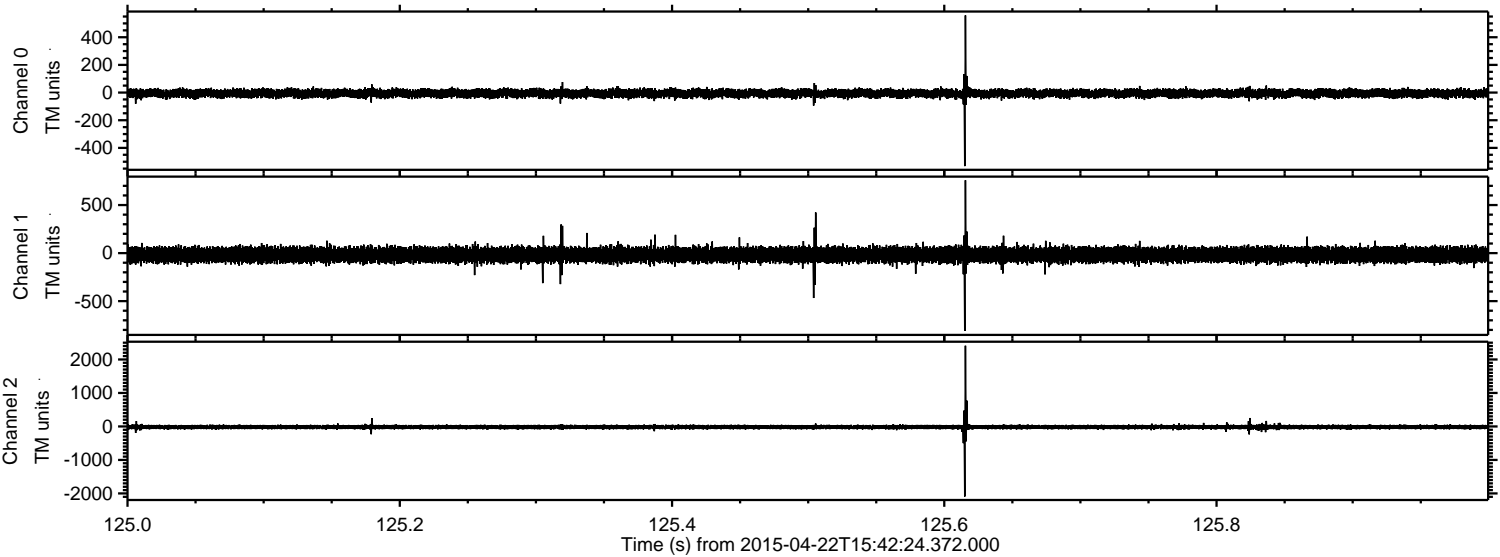
ELMAVAN 3D WAVEFORMS (Measured data sampled at 50 kHz) 49693 packets of 144 samples from 2015-04-22T15:42:24.372.000. Part 124/144

Processed Wed Apr 22 17:49:45 2015 by ELM ver.2012-10-06 from 001__elm20150422_154223__dat00.bin

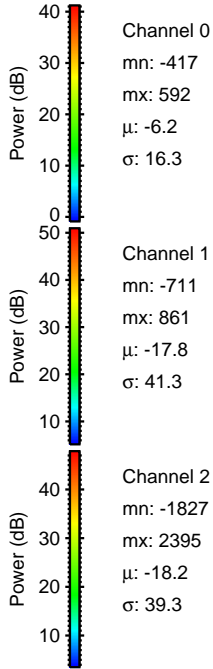
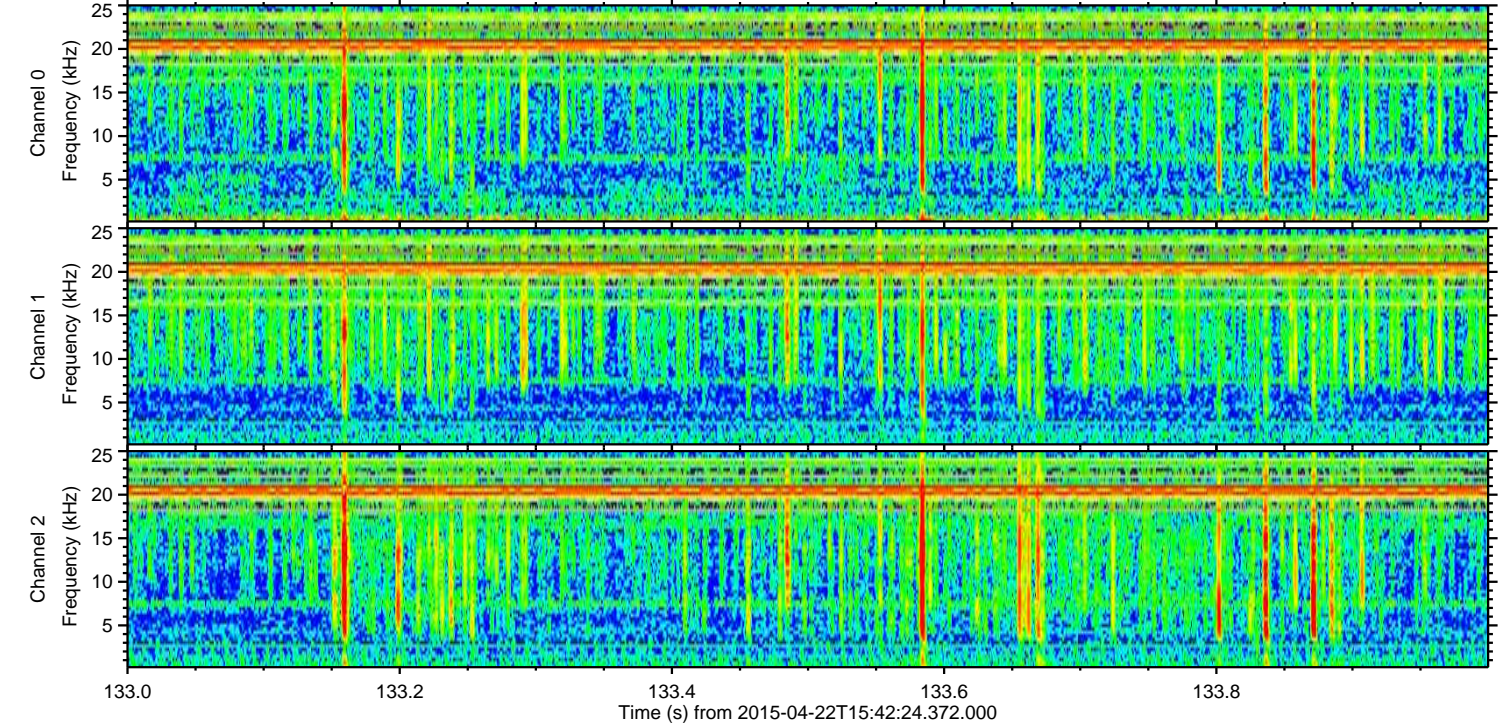
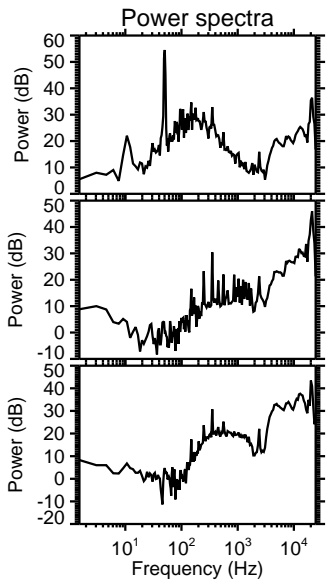
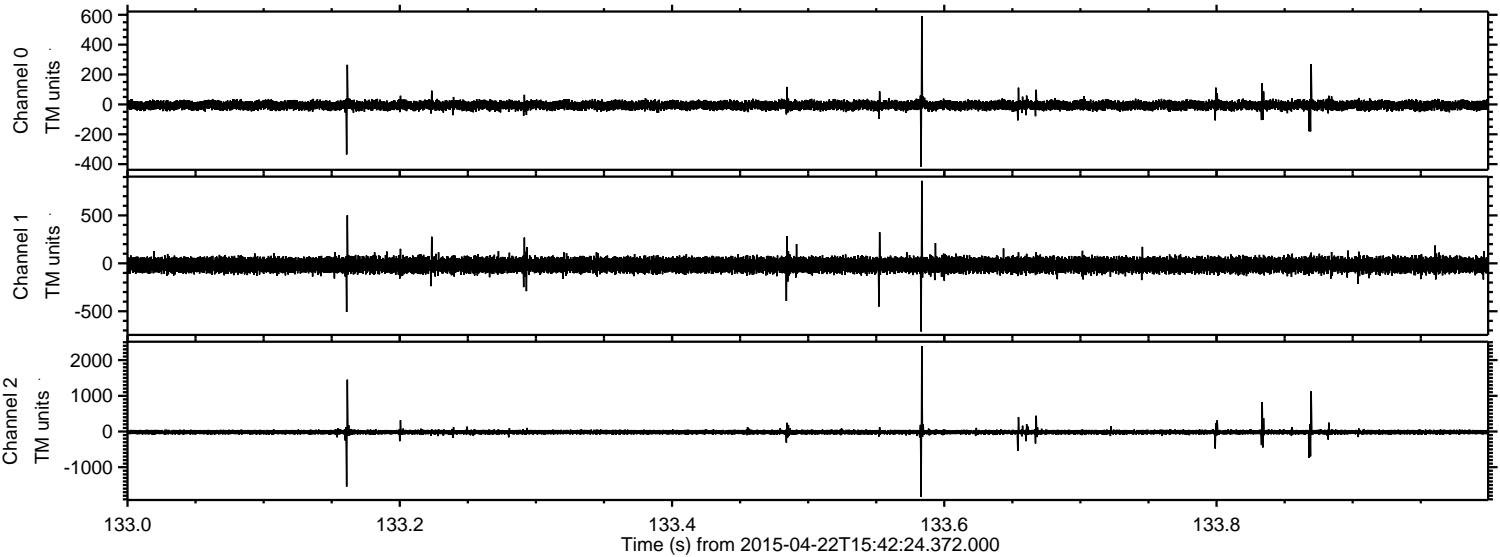


ELMAVAN 3D WAVEFORMS (Measured data sampled at 50 kHz) 49693 packets of 144 samples from 2015-04-22T15:42:24.372.000. Part 126/144

Processed Wed Apr 22 17:49:46 2015 by ELM ver.2012-10-06 from 001__elm20150422_154223__dat00.bin



Processed Wed Apr 22 17:49:47 2015 by ELM ver.2012-10-06 from 001__elm20150422_154223__dat00.bin

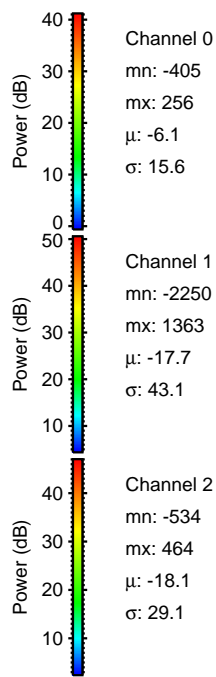
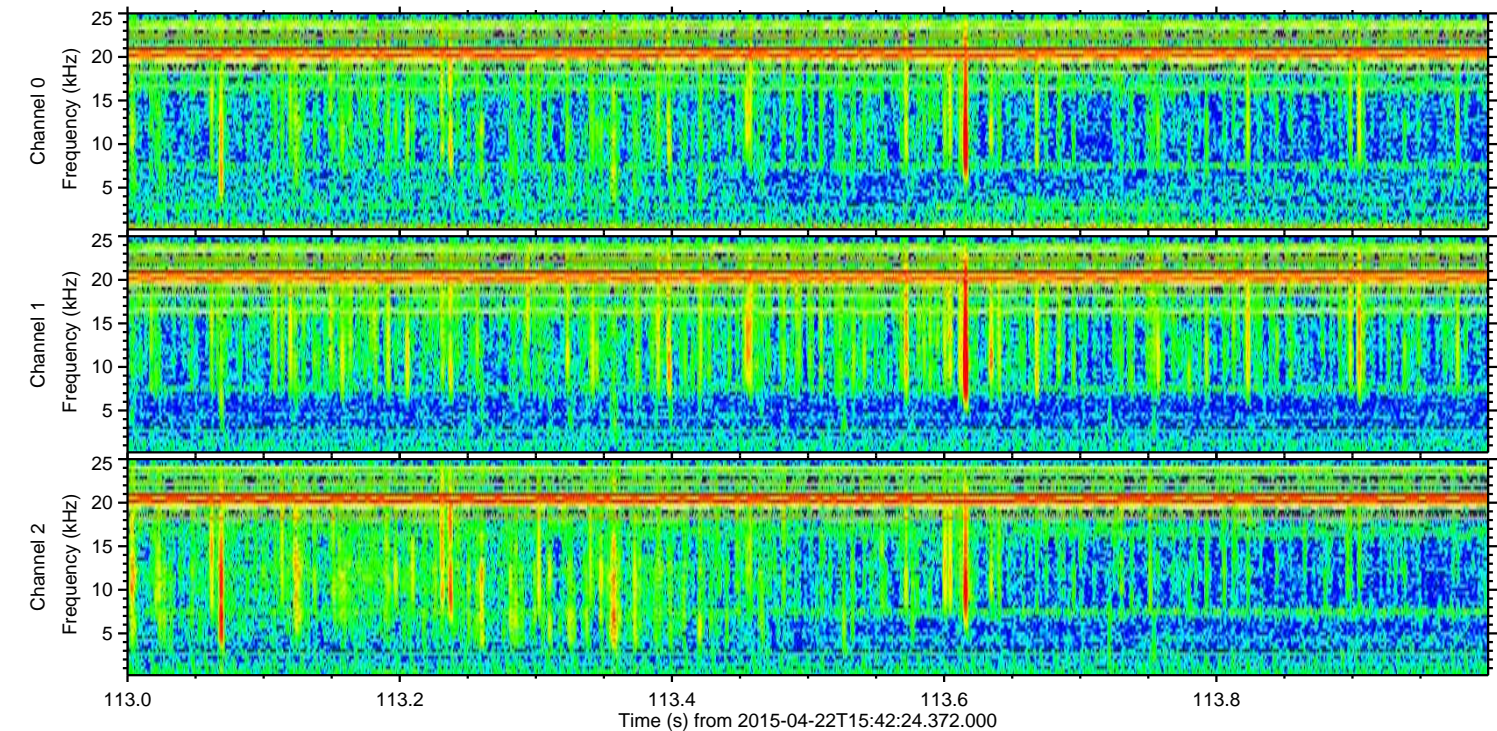
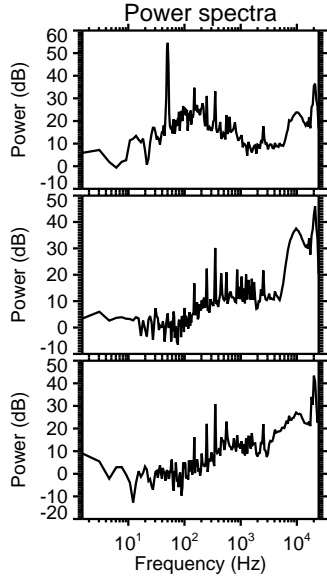
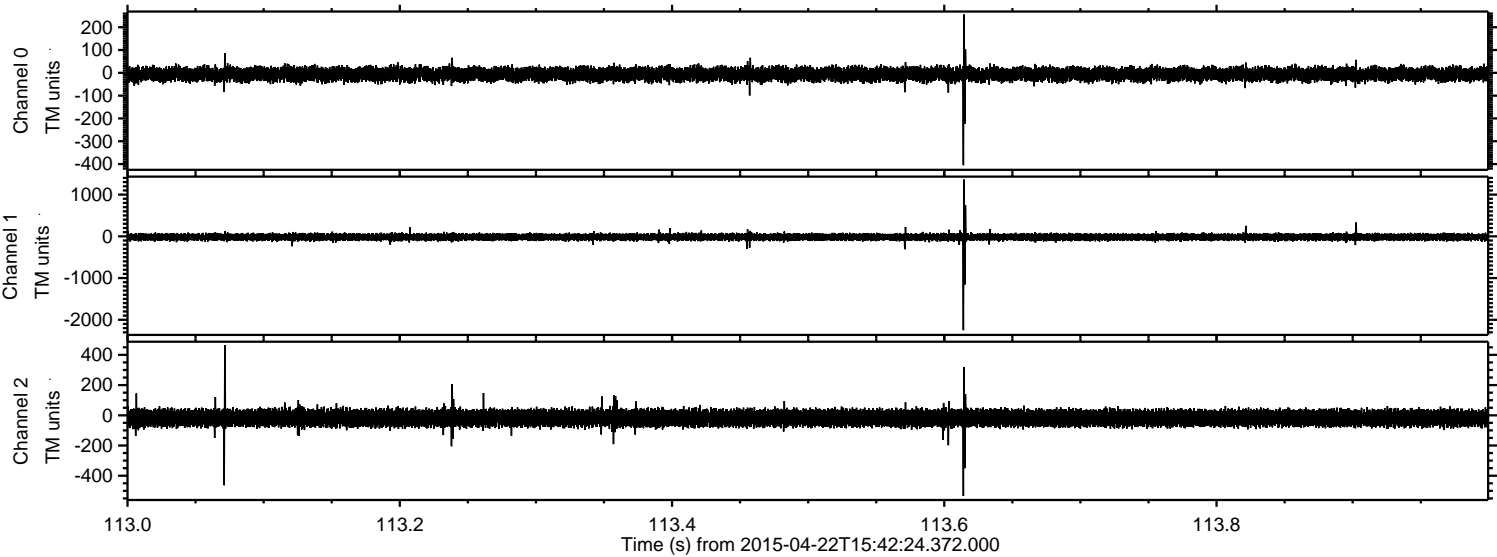


Channel 0
mn: -417
mx: 592
 μ : -6.2
 σ : 16.3

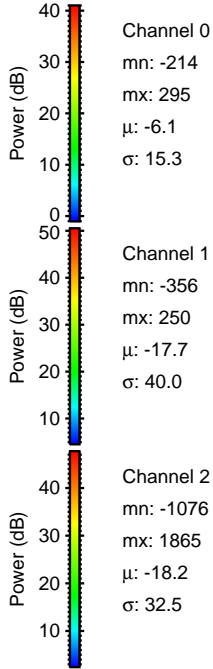
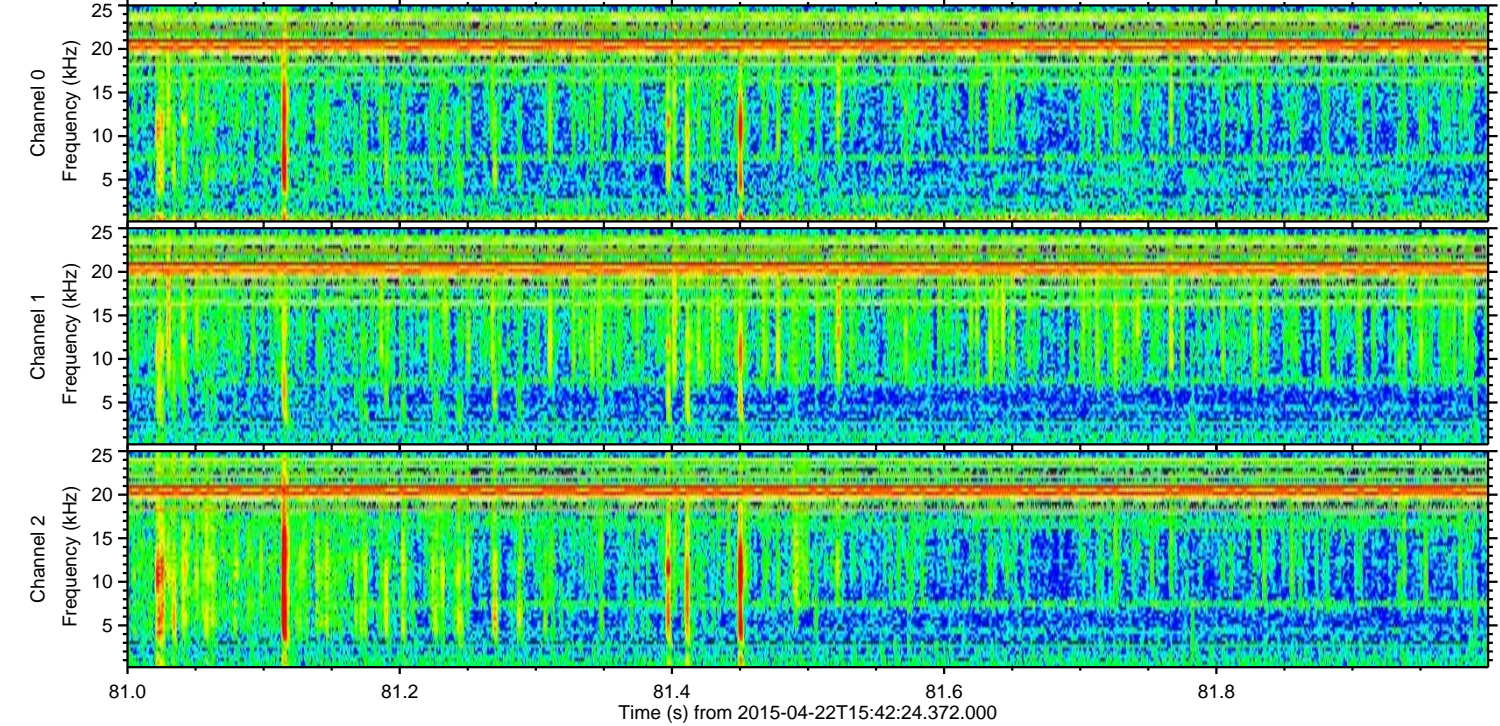
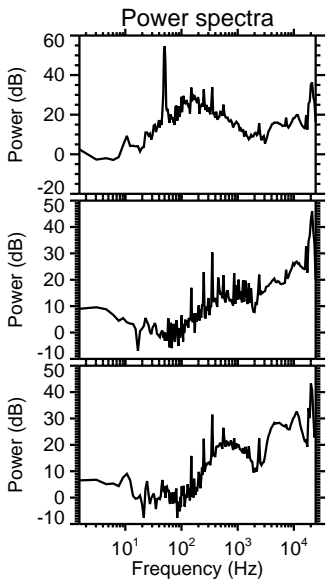
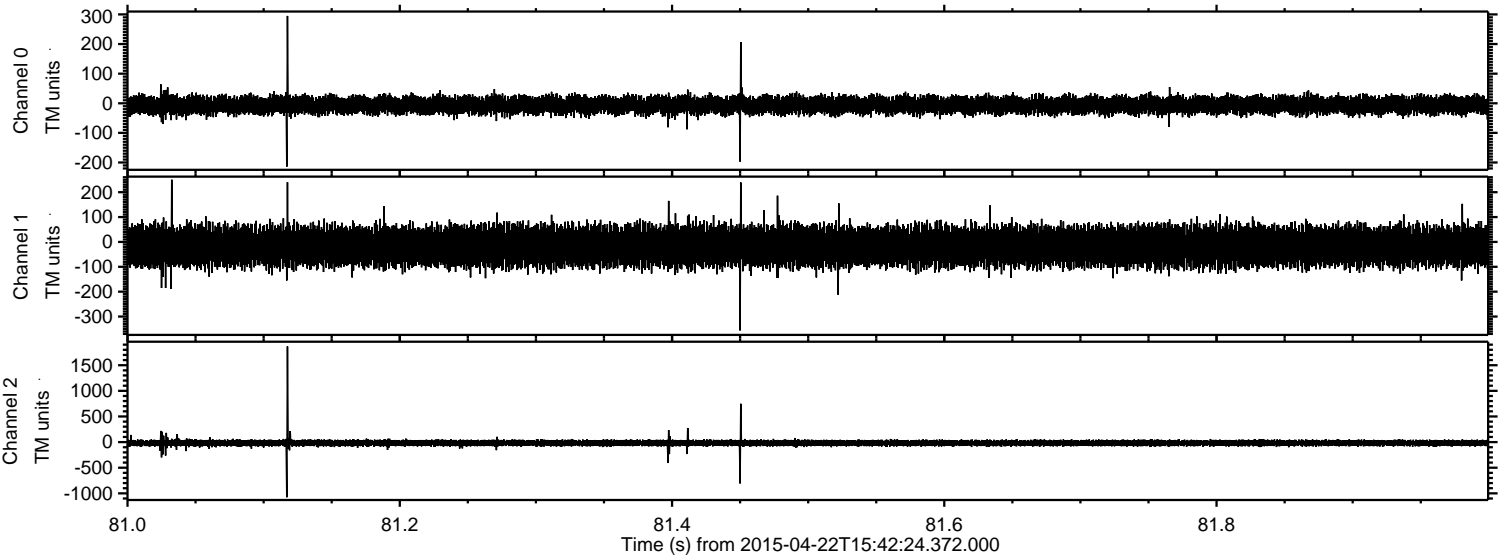
Channel 1
mn: -711
mx: 861
 μ : -17.8
 σ : 41.3

Channel 2
mn: -1827
mx: 2395
 μ : -18.2
 σ : 39.3

Processed Wed Apr 22 17:49:48 2015 by ELM ver.2012-10-06 from 001__elm20150422_154223__dat00.bin



Processed Wed Apr 22 17:49:49 2015 by ELM ver.2012-10-06 from 001__elm20150422_154223__dat00.bin



Processed Wed Apr 22 17:49:50 2015 by ELM ver.2012-10-06 from 001__elm20150422_154223__dat00.bin

